

1 **Association of healthcare fragmentation and overall survival in patients with kidney**
2 **transplant in Colombia**

3

4 **Author list:**

5 Luis Manuel Barrera¹, Daniela Sánchez-Santiesteban², Giancarlo Buitrago^{1,2}

6

7 ¹ Fundación Cardioinfantil – La Cardio, Bogotá D.C., Colombia

8 ² Instituto de Investigaciones Clínicas. Facultad de Medicina. Universidad Nacional de

9 Colombia

10

11 **Corresponding author:**

12 Giancarlo Buitrago MD MSc PhD

13 E-mail: gbuitragog@unal.edu.co

14 Address: Ave Cra 30 #45-03, Bogotá, Colombia

15 **ABSTRACT**

16 **Objective:** Kidney transplantation requires a multidisciplinary approach to achieve optimal
17 outcomes. Healthcare fragmentation can negatively impact clinical outcomes; however, this
18 issue remains understudied in low- and middle-income countries (LMICs). This study aimed
19 to assess healthcare fragmentation in kidney transplant patients during their first post-
20 transplant year and evaluate its association with three-year survival among patients enrolled
21 in Colombia's contributory healthcare scheme.

22

23 **Methods:** A retrospective cohort study was conducted using administrative data from
24 Colombia's contributory healthcare scheme. The cohort included kidney transplant recipients
25 (2012–2016) who survived the first post-transplant year. Healthcare fragmentation was
26 measured by the number of unique providers involved in the first year. Patients were
27 categorised into high- and low-fragmentation groups based on the 75th percentile of provider
28 distribution. The primary outcome was three-year survival, analysed using multivariate Cox
29 regression to estimate hazard ratios (HRs), adjusted for age, sex, Charlson Comorbidity Index
30 (CCI), insurer, region, and transplant year.

31

32 **Results:** The cohort comprised 2,028 kidney transplant patients, with a mean age of 47.7
33 years (SD: 13.4), 38.7% female, and 68.7% presenting a $CCI \leq 3$. Healthcare fragmentation
34 ranged from 1 to 34 providers, with a mean of 8.94 (SD: 6.77). High fragmentation (≥ 11
35 providers) was observed in 30.2% of patients. Three-year mortality was significantly higher
36 in the high-fragmentation group (18%) compared to the low-fragmentation group (12%)
37 ($p=0.04$). High fragmentation was associated with a 49% increased mortality risk (adjusted
38 HR: 1.49; 95% CI: 1.12–1.97; $p=0.01$).

39

40 **Conclusion:** Healthcare fragmentation significantly reduces three-year overall survival in
41 kidney transplant recipients in Colombia. These findings underscore the importance of
42 integrated care models and improved coordination among providers to enhance patient
43 outcomes, particularly in resource-limited settings.

44

45

46

47

48

49

50

51

52

53

54

55

56

57

58

59

60

61

62

63 INTRODUCTION

64 Kidney transplantation is recognised as the most effective treatment for patients with end-
65 stage renal disease, significantly improving survival rates and quality of life compared to
66 long-term dialysis [1,2]. Despite its clinical benefits, the success of renal transplantation
67 depends heavily on comprehensive, multidisciplinary care that addresses various challenges,
68 including immunosuppressive therapy, management of comorbid conditions, and the
69 prevention and early detection of complications [3–5]. Coordinated care is critical in ensuring
70 optimal outcomes, as patients require regular follow-ups, monitoring by specialised teams,
71 and laboratory by healthcare providers [5]. However, fragmentation within healthcare
72 systems, defined by inadequate communication and lack of integration among providers,
73 disrupts this continuum of care, leading to adverse clinical outcomes [6–9]. In kidney
74 transplantation, for example, fragmentation can lead to delays in diagnosis and treatment,
75 duplication of medical services, increased costs, and worse health outcomes, ultimately
76 compromising the potential benefits of transplantation [10,11].

77

78 Due to their fragmented health systems, Latin American countries face significant challenges
79 in delivering integrated healthcare. In Colombia, fragmentation manifests both horizontally,
80 through a lack of coordination between providers at the same level of care, and vertically
81 [12]. This fragmentation is further exacerbated in Colombia by the decentralised structure of
82 the healthcare system, which disperses responsibility across multiple actors, including public
83 and private providers, insurers, and regional authorities. For complex medical procedures
84 like kidney transplantation, the consequences of fragmentation are particularly severe as they
85 encounter obstacles such as inconsistent follow-up, limited access to necessary medications,
86 and insufficient communication between transplant centres and other providers. These

87 challenges not only hinder recovery but also increase the likelihood of complications,
88 hospital readmissions, and preventable mortality.

89

90 Healthcare fragmentation has been studied in chronic conditions such as cancer and
91 cardiovascular diseases [13–17]; however, kidney transplantation, which requires a similarly
92 high level of care integration, remains understudied. To our knowledge, no studies have
93 specifically evaluated the association between healthcare fragmentation and survival
94 outcomes in renal transplant recipients in low- and middle-income countries (LMICs). This
95 gap in the literature underscores the need for targeted research to understand better how
96 fragmented care influences transplant success, particularly in the Colombian context, where
97 fragmentation challenges are pronounced.

98

99 This study aims to address this gap by assessing the extent of care fragmentation experienced
100 by renal transplant patients during the critical first year following transplantation and
101 evaluating its association with three-year overall survival. By analysing data from a large
102 national cohort, this research seeks to provide evidence of the association of healthcare
103 fragmentation on clinical outcomes. The findings can potentially inform health policies and
104 interventions to reduce care fragmentation, improve coordination among healthcare
105 providers, and optimise resource use in this population. Ultimately, the study highlights the
106 importance of integrated care models in enhancing renal transplant patients' survival and
107 quality of life, particularly in resource-limited and fragmented healthcare systems like
108 Colombia.

109

110 **METHODS**

111 **Study Design and Population**

112 This retrospective cohort study was conducted based on administrative data of adult patients
113 who underwent kidney transplantation between 2012 and 2016 and were enrolled in the
114 contributory health insurance system. The cohort was constructed using the Base for the
115 Study of Capitation Unit Sufficiency (UPC) to identify all adult patients with a kidney
116 transplantation record [18]. All subjects included in the study had to survive the first-year
117 post-transplant to allow for the measurement of fragmentation during this period. After this
118 initial year, each subject was followed for up to three years or until death, whichever occurred
119 first. We used the Mortality Registry Module from the Unified Affiliation Registry (RUF)

120 to determine the mortality date [19].

121

122 This study utilised two primary administrative databases, anonymised and linked, using
123 unique identifiers by the Ministry of Health (MoH). The UPC database is highly standardised
124 and is the primary source of information used by the Ministry of Health (MoH) for the annual
125 estimation of the UPC in the healthcare system. The database includes detailed information
126 on each utilised service, such as the Unified Health Procedure Code (CUPS), an ICD-10 code
127 associated with the service, the service date, the cost paid by each insurer to each provider,
128 the patient's sex, the insurer to which the patient is affiliated, the city where the service was
129 provided, the provider's registration code, and an anonymised individual identifier for each
130 affiliate. Additionally, the RUF Mortality Registry Module contains information from
131 death certificates for all Colombians, including the date of death and diagnosis. International
132 assessments have confirmed the reliability of RUF data, with 91% of deaths registered
133 through death certificates as of 2016 [20]. These databases were provided to the Clinical
134 Research Institute at the Faculty of Medicine of the Universidad Nacional de Colombia by

135 the Office of Information Technologies of MoH for research purposes. This study was
136 approved by the Faculty of Medicine Ethics Committee at the Universidad Nacional de
137 Colombia (Approval Number: 004-029).

138

139 **Exposure, Outcome, and Control Variables**

140 As mentioned, all included patients survived the first-year post-transplantation as an
141 inclusion criterion. To measure healthcare fragmentation, we counted the number of different
142 healthcare providers involved in the patient's care during the first year of post-transplantation.
143 This number was the primary exposure variable and has been used in similar studies [13–
144 16,21]. After the first year of survival, all patients were followed for an additional three years.
145 Using information from the RUAF database, the three-year survival time was estimated,
146 corresponding to the study's primary outcome variable. Control variables included age, sex,
147 comorbidities measured using the Charlson Comorbidity Index (CCI) [22], insurer,
148 geographic region, and year of transplantation.

149

150 **Analysis**

151 Baseline characteristics of the cohort were described using measures of central tendency and
152 dispersion for continuous variables and relative and absolute frequencies for categorical
153 variables. The quartiles of the primary exposure variable (i.e., the number of different
154 providers in the first-year post-transplantation) were identified.

155

156 The cohort was divided into high fragmentation (those exposed to a number of providers
157 greater than or equal to the 75th percentile of the distribution) and low fragmentation (those
158 exposed to a number of providers below the 75th percentile). An analysis of the crude three-

159 year mortality proportion and unadjusted survival was performed. Using a multivariate Cox
160 regression model, the hazard ratio (HR) of being exposed to highly fragmented healthcare
161 compared to low-fragmentation healthcare was estimated, controlling for the previously
162 mentioned covariables. The proportionality assumption was evaluated with graphical and
163 statistical tests using Schoenfeld residuals. All estimators were presented with 95%
164 confidence intervals. Analyses were conducted using Stata 17 MP (licensed to the
165 Universidad Nacional de Colombia). This article followed the STROBE (Strengthening the
166 Reporting of Observational Studies in Epidemiology) guidelines to ensure transparency and
167 thoroughness in reporting the findings.

168

169 **RESULTS**

170 Between 2012 and 2016, a total of 3,999 patients underwent kidney transplantation. After
171 excluding 47 patients under 18 years old and 1,924 patients who died within the first year,
172 2,028 patients were eligible for the study. No records were lost in the follow-up as each of
173 the 2,028 participants was followed for three years or until death, whichever occurred first.
174 The flowchart in Figure 1 provides additional details on the selection process.

175

176 **Fig 1. STROBE flow chart.** UPC: Base for the Study of Capitation Unit Sufficiency
177 Database.

178

179 Table 1 presents detailed sociodemographic, clinical and exposure characteristics of the
180 cohort. Of the total cohort, 785 patients (38.7%) were women, and the mean age was 47.7
181 years (Standard Deviation [SD] 13.4 years). A total of 1,394 patients (68.7%) had a CCI of

182 3 or less. Bogotá was the region with the highest number of transplants, with a total of 923
 183 (45.5%), and a decline in the number of transplants per year was observed (see Table 1).

184

185 **Table 1. Description of cohort baseline characteristics**

Variable	Total	Level of healthcare fragmentation	
		Low	High
	N=2,028	N=1,415	N=613
Female; N (%)	785 (38.7%)	543 (38.4%)	242 (39.5%)
Age (years); X (SD)	47.70 (13.45)	47.26 (13.43)	48.72 (13.46)
Categorised age; N (%)			
18-30	237 (11.7%)	167 (11.8%)	70 (11.4%)
30-49	829 (40.9%)	605 (42.8%)	224 (36.5%)
50-59	560 (27.6%)	378 (26.7%)	182 (29.7%)
60-69	341 (16.8%)	221 (15.6%)	120 (19.6%)
70 or older	61 (3.0%)	44 (3.1%)	17 (2.8%)
CCI; Median (IQR)	3.00 (2.00)	2.00 (2.00)	3.00 (3.00)
Categorised CCI; N (%)			
3 or less	1,395 (68.8%)	1,034 (73.1%)	361 (58.9%)
4 a 5	411 (20.3%)	240 (17.0%)	171 (27.9%)
6 a 7	151 (7.4%)	95 (6.7%)	56 (9.1%)
8 or more	71 (3.5%)	46 (3.3%)	25 (4.1%)
Geographic Region; N (%)			
Atlantica	163 (8.0%)	84 (5.9%)	79 (12.9%)
Bogotá DC	923 (45.5%)	697 (49.3%)	226 (36.9%)
Central	377 (18.6%)	201 (14.2%)	176 (28.7%)
Oriental	183 (9.0%)	119 (8.4%)	64 (10.4%)
Pacífica	373 (18.4%)	307 (21.7%)	66 (10.8%)
Other departments	9 (0.4%)	7 (0.5%)	2 (0.3%)
Year of kidney transplant; N (%)			
2012	571 (28.2%)	348 (24.6%)	223 (36.4%)
2013	430 (21.2%)	299 (21.1%)	131 (21.4%)
2014	493 (24.3%)	414 (29.3%)	79 (12.9%)
2015	291 (14.3%)	208 (14.7%)	83 (13.5%)
2016	243 (12.0%)	146 (10.3%)	97 (15.8%)
Healthcare fragmentation on first year post- kidney transplant			
Mean of different healthcare; X (SD)	8.94 (4.47)	6.63 (2.25)	14.27 (3.71)

Categorised Healthcare fragmentation; N (%)

Low fragmentación (10 or less)	1,415 (69.8%)	1,415 (100.0%)	0 (0.0%)
High fragmentación (11 or more)	613 (30.2%)	0 (0.0%)	613 (100.0%)

186 N: Number; X: Mean; SD: Standard Deviation; IQR: Interquartile Range; CCI:

187 Comorbidities Charlson Index

188

189 The degree of healthcare fragmentation, measured as the number of distinct providers
 190 involved in a patient’s care during the first year post-transplant, ranged from 1 to 34, with a
 191 mean of 8.94 (SD: 6.77). The 25th, 50th, and 75th percentiles were 6, 8, and 11 providers,
 192 respectively. Among the regions analysed, the Central region exhibited the highest mean
 193 fragmentation, with an average of 10.78 providers (SD: 4.65), while the Pacific region
 194 showed the lowest, with an average of 7.96 providers (SD: 3.73) (Table 2). At the
 195 departmental level, the highest fragmentation was observed in Sucre (14.00; SD: 5.10), La
 196 Guajira (12.13; SD: 5.67), and Caquetá (13.60; SD: 5.19). Conversely, the lowest
 197 fragmentation was found in Nariño (6.33; SD: 2.65) and Arauca (6.50; SD: 2.12). Figure 2
 198 illustrates the geographic distribution of healthcare fragmentation across Colombia,
 199 highlighting significant regional variability.

200

201 **Table 2. Healthcare Fragmentation by Geographic Regions in Colombia according to**
 202 **the number of different providers involved during the first year of post-transplant**
 203 **healthcare attention**

Geographic Region ^a	Mean	95% CI
Atlántica	10.65	7.92 ; 13.38
Bogotá DC	8.25	5.51 ; 11.00
Central	10.79	7.90 ; 13.67

Oriental	9.07	6.42 ; 11.72
Pacífica	7.97	5.66 ; 10.28
Other departments	9.22	6.73 ; 11.72

204 ^a Atlantica: Atlántico, Bolívar, Cesar, Cordoba, Magdalena, La Guajira, Sucre, and San
205 Andres; Metropolitan: Bogotá D.C. and Cundinamarca; Central: Antioquia, Caldas, Huila;
206 Risaralda, Tolima, and Quindío; Oriental: Boyaca, Caquetá, Santander, Norte de Santander,
207 Arauca, Meta, Casanare, and Guaviare; and Pacífica: Valle del Cauca, Cauca, Choco, and
208 Nariño. Abbreviations: CI: Confidence Interval.

209

210 **Fig 2. Geographical distribution of healthcare fragmentation.** Geographic distribution of
211 exposure to healthcare fragmentation measured as number of different HCPIs in the first year
212 of care after kidney transplantation in adults belonging to the contributory regimen in
213 Colombia. Abbreviations: HCPIs: Healthcare Provider Institutions.

214

215 Patients were categorised into two groups: high fragmentation, comprising those who
216 consulted 11 or more providers ($\geq p75$), and low fragmentation, comprising those who
217 consulted ten or fewer providers ($< p75$). 1,415 patients (69.7%) experienced low
218 fragmentation, whereas 613 patients (30.2%) were exposed to high fragmentation. Table 3
219 shows the crude three-year mortality proportions for each baseline characteristic evaluated.
220 Patients exposed to low fragmentation had a mortality proportion of 0.12, while those
221 exposed to high fragmentation had a mortality proportion of 0.18 ($p=0.04$). Other
222 characteristics where differences were observed included age category and CCI. No
223 differences were found by sex or geographic region.

224

225 **Table 3. Three-year Mortality Proportions by Baseline Characteristics**

Characteristic	Mortality Proportion	95% CI
Fragmentation in the first year post-transplant		
Low fragmentation (10 or fewer providers)	0.12	0.10 - 0.14
High fragmentation (11 or more providers)	0.18	0.14 - 0.21
Sex		
Female	0.14	0.12 - 0.16
Male	0.14	0.11 - 0.16
Age category		
18-30	0.04	0.01 - 0.06
30-49	0.09	0.07 - 0.11
50-59	0.15	0.12 - 0.18
60-69	0.27	0.21 - 0.32
70 or older	0.39	0.24 - 0.55
Charlson Comorbidity Index		
3 or fewer	0.10	0.08 - 0.11
4 to 5	0.23	0.19 - 0.28
6 to 7	0.25	0.17 - 0.33
8 or more	0.14	0.05 - 0.23
Geographic region		
Atlantic	0.09	0.05 - 0.14
Bogotá DC	0.16	0.13 - 0.19
Central	0.11	0.08 - 0.15
Eastern	0.16	0.10 - 0.22
Pacific	0.13	0.09 - 0.16
Other departments	0.00	NA
Year of transplant		
2012	0.12	0.09 - 0.15
2013	0.11	0.08 - 0.14
2014	0.17	0.14 - 0.21
2015	0.15	0.10 - 0.19
2016	0.15	0.10 - 0.20

226 Abbreviations: 95% CI, 95% confidence interval.

227

228 Table 4 presents the multivariate Cox model, showing that exposure to a highly fragmented

229 healthcare increases the risk of death at 3 years by 49% (HR: 1.49; 95% CI 1.12–1.97;

230 p=0.01) after adjusting for sex, age, CCI, geographic region, year of transplantation, and

231 insurer (Figure 3). Other factors associated with lower three-year survival included being
 232 over 30 years old, having a CCI greater than 4, and being female.

233

234 **Table 4. Adjusted HR of overall survival of adults with kidney transplants by the level**
 235 **of healthcare fragmentation, defined by the number of different providers involved**
 236 **during the first year of post-transplant healthcare attention**

Characteristic	Hazard Ratio	95% CI	P-Value
Fragmentation in the first year post-transplant			
Low fragmentation (10 or fewer providers)	Ref		
High fragmentation (11 or more providers)	1.49	1.12 - 1.97	0.01
Sex			
Male	Ref		
Female	1.30	1.01 - 1.67	0.04
Age category			
18-30	Ref		
30-49	2.30	1.15 - 4.60	0.02
50-59	3.88	1.93 - 7.80	<0.01
60-69	6.84	3.40 - 13.77	<0.01
70 or older	12.01	5.51 - 26.20	<0.01
Charlson Comorbidity Index			
3 or fewer	Ref		
4 to 5	1.93	1.47 - 2.54	<0.01
6 to 7	1.83	1.24 - 2.69	<0.01
8 or more	1.09	0.57 - 2.10	0.79
Geographic region			
Atlantic	Ref		
Bogotá DC	1.26	0.69 - 2.29	0.45
Central	0.93	0.51 - 1.71	0.82
Eastern	1.63	0.86 - 3.06	0.13
Pacific	1.12	0.61 - 2.08	0.71
Other departments	0.00	0.00 - .	1.00
Year of transplant			
2012	Ref		
2013	0.95	0.65 - 1.39	0.78
2014	1.19	0.83 - 1.71	0.35

2015	1.18	0.78 - 1.78	0.43
2016	1.47	0.92 - 2.35	0.11

237 The HR was adjusted for Sex, Age, CCI, geographic region, year of transplant and insurer.

238 Abbreviations: 95% CI, 95% confidence interval; Ref: Reference.

239

240 **Fig 3. Three-year overall survival of adults with kidney transplants by the level of**
241 **healthcare fragmentation, defined by the number of different providers involved**
242 **during the first year of post-transplant healthcare attention.**

243

244

245 **DISCUSSION**

246

247 This study evaluated the association between healthcare fragmentation during the first year
248 after kidney transplantation and survival outcomes. Our findings demonstrate that high
249 fragmentation, defined as exposure to 11 or more unique healthcare providers within the first-
250 year post-transplant, was associated with a 49% increased mortality risk within three years
251 (HR: 1.49; 95% CI 1.12–1.97; p=0.01) for each additional provider participating in
252 healthcare during the first-year post-transplant.

253

254 Healthcare fragmentation in this study was measured by the number of different healthcare
255 institutions involved in a patient's care during the first-year post-transplant. To our
256 knowledge, this is the first study investigating the relationship between healthcare
257 fragmentation and three-year survival of patients with kidney transplantation in an LMIC;
258 however, this fragmentation metric has been used before in other chronic conditions, such as

259 cancer, and our findings are consistent with the existing literature, also reporting poorer
260 outcomes in patients with high levels of fragmentation [13–15,21]. Mechanisms driving these
261 associations likely include delays in treatment, duplication of medical services, and poor
262 coordination among healthcare providers, all of which undermine the potential benefits of
263 transplantation [17].

264

265 Our results also revealed significant geographical variability in fragmentation across
266 Colombia. Patients in the Central and Atlantic regions experienced the highest levels of
267 fragmentation. In contrast, patients in the Pacific region exhibited lower fragmentation levels,
268 likely due to limited access to specialised care rather than effective healthcare integration.
269 Additionally, in areas with low population density and fewer healthcare facilities, patients
270 often need to travel long distances to access specialised care, potentially leading to delays in
271 treatment. These findings underscore the need for fragmentation metrics that account for
272 travel distance and geographic barriers, particularly in countries with pronounced disparities
273 in healthcare availability and accessibility.

274

275 This study has several strengths. The reliability of the data is a crucial advantage as it
276 provides robust evidence on the relationship between healthcare fragmentation and transplant
277 outcomes. The UPC database has been widely used in previous studies [23–30], and the
278 RUAF death registry offers extensive coverage, documenting over 90% of deaths
279 nationwide, further supporting their validity as valuable research tools. Additionally, the
280 specificity of kidney transplant procedures, which are unlikely to be misclassified due to their
281 cost and complexity, enhances the reliability of the data.

282

283 However, some limitations must be addressed. Administrative databases lack detailed
284 clinical information, which may leave behind some crucial covariables. Furthermore, there
285 needs to be a standardised measure of fragmentation that limits comparisons with studies
286 from other parts of the world. Future research should explore more nuanced fragmentation
287 metrics to capture its association with clinical outcomes better. Qualitative studies could also
288 provide valuable insights into the experiences of patients and providers navigating
289 fragmented healthcare systems, helping to inform policy and improve care integration.

290

291 **CONCLUSION**

292 This study demonstrates that higher care fragmentation, measured by the number of unique
293 healthcare providers involved during the first-year post-transplantation, is associated with
294 reduced three-year overall survival in renal transplant patients in Colombia. Patients exposed
295 to high fragmentation faced a 49% increased risk of death, highlighting the critical need to
296 improve care coordination in this population. Our findings emphasise the importance of
297 integrated healthcare models and multidisciplinary teams to reduce fragmentation, enhance
298 clinical outcomes, and optimise resource use. Policymakers should prioritise efforts to
299 streamline healthcare delivery, particularly in resource-limited settings, to mitigate the
300 negative impacts of care fragmentation. Further research is needed to explore effective
301 strategies for integrating care and addressing regional disparities in healthcare access, which
302 could inform policies to improve outcomes for patients with chronic conditions, including
303 those requiring renal transplantation.

304

305 **ACKNOWLEDGMENTS**

306 We thank Colombia's Ministry of Health and Social Protection for providing the
307 administrative databases that made this study possible. We also thank the Clinical Research
308 Student Group at the Faculty of Medicine of the Universidad Nacional de Colombia for their
309 valuable contributions. This study's preliminary findings were presented and discussed
310 within this group, enriching the interpretation and scope of our results. Additionally, this
311 research was partially funded by the NIHR GHPSR researcher-led grant NIHR150067, which
312 used UK aid from the UK Government to support global health research.

313

314 REFERENCES

- 315 1. Rosselli D, Rueda J-D, Diaz C. Cost-effectiveness of kidney transplantation compared with
316 chronic dialysis in end-stage renal disease. *Saudi J Kidney Dis Transplant*. 2015;26: 733.
317 doi:10.4103/1319-2442.160175
- 318 2. Johnson DS, Meyer KB. Integrated Care for People with Kidney Disease: The Perspective of
319 a Nonprofit Dialysis Provider. *Clin J Am Soc Nephrol CJASN*. 2019;14: 448–450.
320 doi:10.2215/CJN.13641118
- 321 3. Taber DJ, Pilch NA, McGillicuddy JW, Bratton CF, Chavin KD, Baliga PK. Improved Patient
322 Safety and Outcomes With a Comprehensive Interdisciplinary Improvement Initiative in
323 Kidney Transplant Recipients. *Am J Med Qual*. 2013;28: 103–112.
324 doi:10.1177/1062860612450309
- 325 4. Thangto P, Srisuk O, Chunpeak K, Hutchinson A, Van Gulik N. Effectiveness of a
326 multidisciplinary self-management education programme for kidney transplant recipients in
327 Thailand. *J Kidney Care*. 2022;7: 163–171. doi:10.12968/jokc.2022.7.4.163
- 328 5. Fonouni H, Golriz M, Mehrabi A, Oweira H, Schmied BM, Müller SA, et al. The Role of an
329 Interdisciplinary Transplant Team on Living Donation Kidney Transplantation Program.
330 *Transplant Proc*. 2010;42: 137–140. doi:10.1016/j.transproceed.2009.12.038
- 331 6. Joo JY. Fragmented care and chronic illness patient outcomes: A systematic review. *Nurs*
332 *Open*. 2023;10: 3460–3473. doi:10.1002/nop2.1607
- 333 7. Kern LM, Seirup JK, Rajan M, Jawahar R, Stuard SS. Fragmented ambulatory care and
334 subsequent healthcare utilization among Medicare beneficiaries. *Am J Manag Care*. 2018;24:
335 e278–e284.
- 336 8. Kern LM, Seirup JK, Rajan M, Jawahar R, Stuard SS. Fragmented ambulatory care and
337 subsequent emergency department visits and hospital admissions among Medicaid
338 beneficiaries. *Am J Manag Care*. 2019;25: 107–112.

- 339 9. Prior A, Vestergaard CH, Vedsted P, Smith SM, Virgilsen LF, Rasmussen LA, et al.
340 Healthcare fragmentation, multimorbidity, potentially inappropriate medication, and
341 mortality: a Danish nationwide cohort study. *BMC Med.* 2023;21: 305. doi:10.1186/s12916-
342 023-03021-3
- 343 10. Rangaswami J, Bangalore S, Kaplan B, Birdwell KA, Wiseman AC, McCullough PA, et al.
344 Cardiovascular disease care fragmentation in kidney transplantation: a call for action. *Kidney*
345 *Int.* 2019;96: 568–571. doi:10.1016/j.kint.2019.04.042
- 346 11. Sloan CE, Zhong J, Mohottige D, Hall R, Diamantidis CJ, Boulware LE, et al. Fragmentation
347 of care as a barrier to optimal ESKD management. *Semin Dial.* 2020;33: 440–448.
348 doi:10.1111/sdi.12929
- 349 12. Organización Panamericana de la Salud. *Redes Integradas de Servicios de Salud: Conceptos,*
350 *Opciones de Política y Hoja de Ruta para su Implementación en las Américas.* 2010.
- 351 13. Patiño AF, Buitrago G, Agudelo NR, Espinel LS, Gamboa O, Eslava-Schmalbach J, et al.
352 Association of healthcare fragmentation and the survival of patients with colorectal cancer in
353 Colombia. In Review; 2022 Aug. doi:10.21203/rs.3.rs-1856519/v1
- 354 14. Gamboa Ó, Buitrago G, Patiño AF, Agudelo NR, Espinel LS, Eslava-Schmalbach J, et al.
355 Fragmentation of Care and Its Association With Survival and Costs for Patients With Breast
356 Cancer in Colombia. *JCO Glob Oncol.* 2023; e2200393. doi:10.1200/GO.22.00393
- 357 15. Patiño-Benavidez AF, Buitrago G, Rozo-Agudelo N, Saldaña-Espinel LE, Gamboa-Garay
358 ÓA, Eslava-Schmalbach J, et al. Association of Healthcare Fragmentation and the Survival of
359 Patients with Colorectal Cancer in Colombia. *Value Health Reg Issues.* 2024;41: 63–71.
360 doi:10.1016/j.vhri.2023.12.003
- 361 16. Rozo Agudelo N, Saldaña Espinel LE, Patiño Benavidez AF, Gamboa Garay OA, Buitrago G.
362 Effect of healthcare fragmentation on breast, stomach, and colorectal cancer mortality in
363 Colombia: A measurement estimated through administrative databases. *J Clin Oncol.* 2021;39:
364 e18808–e18808. doi:10.1200/JCO.2021.39.15_suppl.e18808
- 365 17. Frandsen BR, Joynt KE, Rebitzer JB, Jha AK. Care fragmentation, quality, and costs among
366 chronically ill patients. *Am J Manag Care.* 2015;21: 355–362.
- 367 18. Ministerio de Salud y Protección Social. Unidad de pago por capitación (UPC). [cited 25 May
368 2023]. Available: [https://www.minsalud.gov.co/salud/POS/Paginas/unidad-de-pago-por-](https://www.minsalud.gov.co/salud/POS/Paginas/unidad-de-pago-por-capitacion-upc.aspx)
369 [capitacion-upc.aspx](https://www.minsalud.gov.co/salud/POS/Paginas/unidad-de-pago-por-capitacion-upc.aspx)
- 370 19. Ministerio de Salud y Protección Social. Registro Único de Afiliados RUAF. [cited 25 Apr
371 2023]. Available: <https://ruaf.sispro.gov.co/>
- 372 20. Cendales R, Pardo C. Quality of death certification in Colombia. *Colomb Médica CM.* 49:
373 121–127. doi:10.25100/cm.v49i1.3155
- 374 21. Nicolás Rozo Agudelo. *Desenlaces económicos sobre fragmentación en la atención de*
375 *pacientes con cáncer de mama y estómago en el régimen contributivo en Colombia.* Bogotá,
376 Colombia: Universidad Nacional de Colombia; 2022.

- 377 22. Oliveros H, Buitrago G. Validation and adaptation of the Charlson Comorbidity Index using
378 administrative data from the Colombian health system: retrospective cohort study. *BMJ Open*.
379 2022;12: e054058. doi:10.1136/bmjopen-2021-054058
- 380 23. Buitrago G, Moreno-Serra R. Conflict violence reduction and pregnancy outcomes: A
381 regression discontinuity design in Colombia. Stock SJ, editor. *PLOS Med*. 2021;18:
382 e1003684. doi:10.1371/journal.pmed.1003684
- 383 24. Buitrago G, Arevalo K, Moyano JS, Caycedo R, Gaitan H. Appendectomy in Third Trimester
384 of Pregnancy and Birth Outcomes: A Propensity Score Analysis of a 6-Year Cohort Study
385 Using Administrative Claims Data. *World J Surg*. 2020;44: 12–20. doi:10.1007/s00268-019-
386 05200-x
- 387 25. Buitrago G, Junca E, Eslava-Schmalbach J, Caycedo R, Pinillos P, Leal LC. Clinical
388 Outcomes and Healthcare Costs Associated with Laparoscopic Appendectomy in a
389 Middle-Income Country with Universal Health Coverage. *World J Surg*. 2019;43: 67–74.
390 doi:10.1007/s00268-018-4777-5
- 391 26. Torres GF, Alarcón BA, Reyes-Sanchez JM, Castaño-Gamboa N, Buitrago G. Net costs of
392 breast cancer in Colombia: a cost-of-illness study based on administrative claims databases.
393 *Cost Eff Resour Alloc*. 2024;22: 54. doi:10.1186/s12962-024-00562-z
- 394 27. Rosero EB, Eslava-Schmalbach J, Garzón-Orjuela N, Buitrago G, Joshi GP. Failure to Rescue
395 and Mortality Differences After Appendectomy in a Low-Middle-Income Country and the
396 United States. *Anesth Analg*. 2022 [cited 9 Dec 2024]. doi:10.1213/ANE.0000000000006336
- 397 28. Maldonado-Cañón K, Buitrago G, Molina G, Rincón Tello FM, Maldonado-Escalante J.
398 Teaching hospitals and their influence on survival after valve replacement procedures: A
399 retrospective cohort study using inverse probability of treatment weighting (IPTW). Ranjan R,
400 editor. *PLOS ONE*. 2023;18: e0290734. doi:10.1371/journal.pone.0290734
- 401 29. Cuesta AJ, Guevara O, Buitrago G. Hospital volume, postoperative mortality, and costs after
402 gastrectomy for gastric cancer in colombia: is there any association? *ABCD Arq Bras Cir Dig*
403 *São Paulo*. 2023;36: e1745. doi:10.1590/0102-672020230027e1745
- 404 30. Amaya-Nieto J, Torres G, Buitrago G. Prevalence of lung cancer in Colombia and a new
405 diagnostic algorithm using health administrative databases: A real-world evidence study.
406 Guimaraes RM, editor. *PLOS ONE*. 2023;18: e0269079. doi:10.1371/journal.pone.0269079
- 407

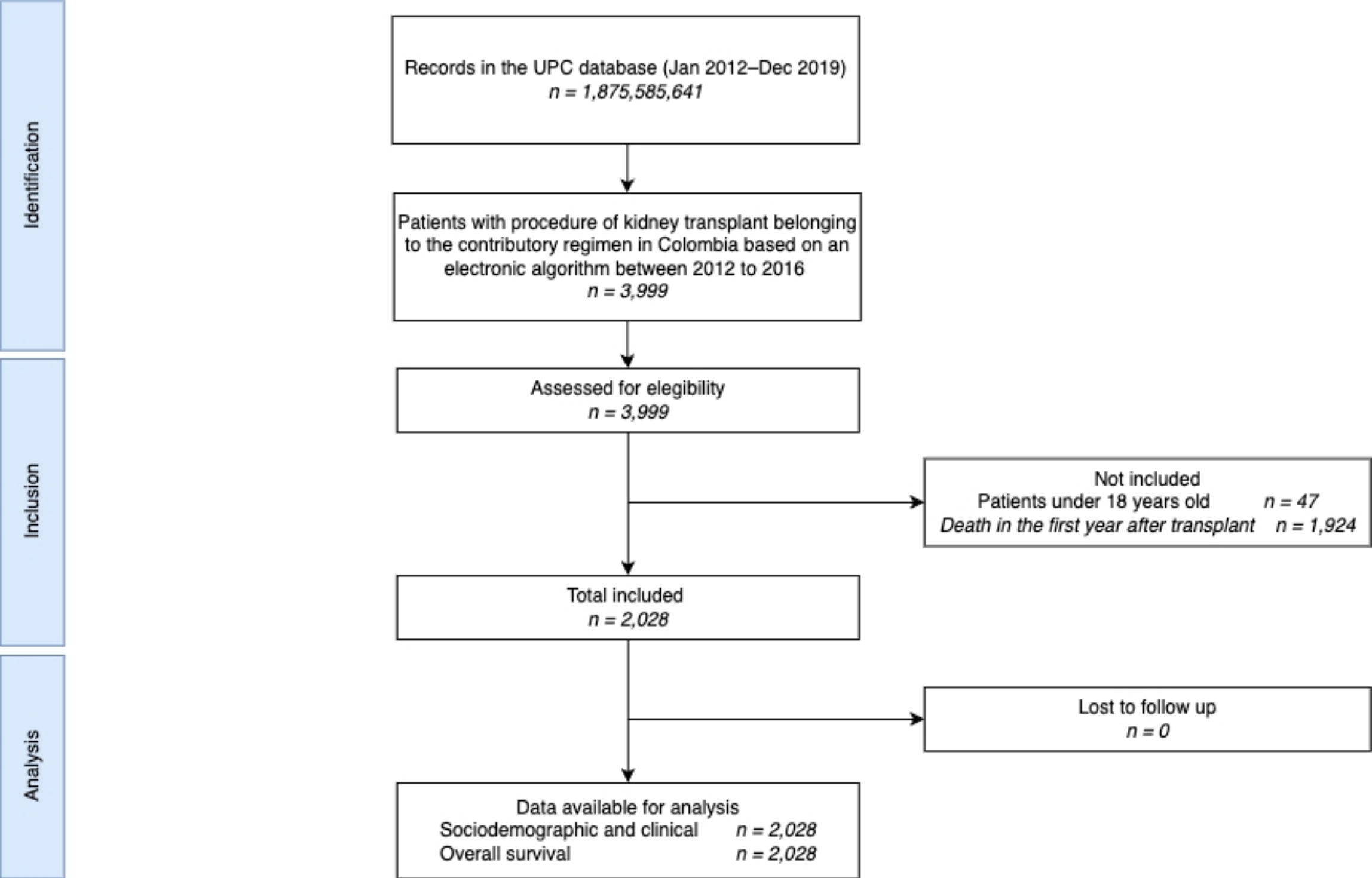


Fig1

Overall survival by level of healthcare fragmentation

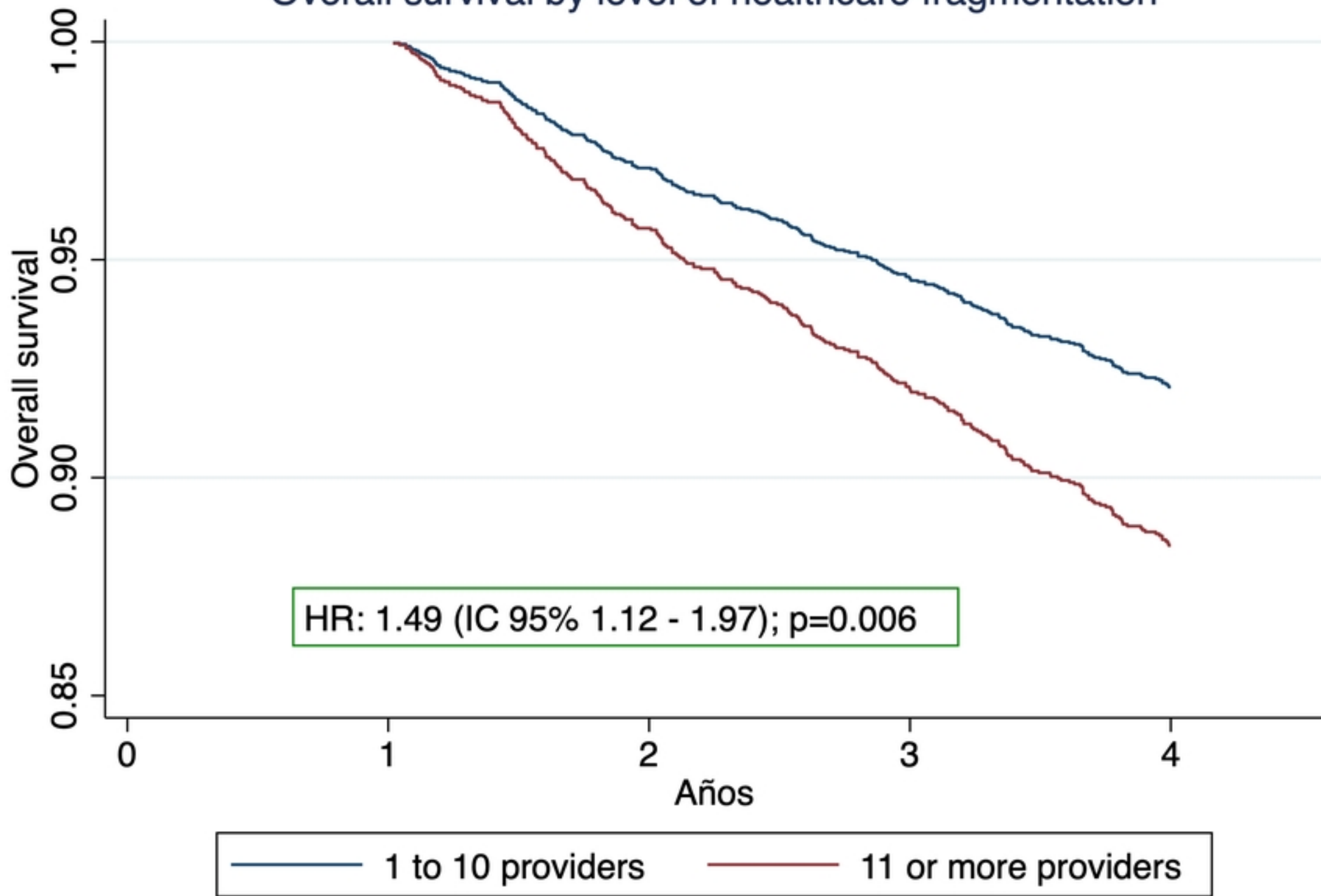


Fig3