

1 **Target product profiles for new diagnostics to inform**  
2 **strongyloidiasis control programs**

3

4 **Short title:** Diagnostics to inform strongyloidiasis deworming programs

5

6 Adama Kazienga<sup>1,2\*</sup>, Luc E. Coffeng<sup>2</sup>, Sara Roose<sup>1</sup>, Sake de Vlas<sup>2</sup>, Dora Buonfrate<sup>3</sup>

7 Salvatore Scarso<sup>3</sup>, Francesca Tamarozzi<sup>3</sup>, Bruno Levecke<sup>1</sup>

8

9 <sup>1</sup>Department of Translational Physiology, Infectiology and Public Health, Ghent  
10 University, Merelbeke, Belgium

11 <sup>2</sup>Department of Public Health, Erasmus MC, University Medical Center Rotterdam,  
12 Rotterdam, The Netherlands

13 <sup>3</sup> Department of Infectious, Tropical Diseases and Microbiology, IRCCS Sacro Cuore  
14 Don Calabria Hospital, Negrar di Valpolicella, Verona, Italy

15

16 \*Corresponding author: [kazienga\\_adama@yahoo.fr](mailto:kazienga_adama@yahoo.fr)

## 17 **Abstract**

18 **Background:** The World Health Organization calls for the development of new  
19 diagnostics to support large-scale deworming programs against strongyloidiasis. To  
20 better steer research and development (R&D) of new diagnostics, it is imperative to  
21 identify the minimal requirements that new diagnostics should meet, the so-called  
22 target product profiles (TPPs). While diagnostic TPPs exist for other major soil-  
23 transmitted helminthiases, none exist for strongyloidiasis.

24 **Methods:** We investigated a range of potential diagnostic TPPs using our previously  
25 developed simulation framework for the effect of imperfect diagnostics on the cost and  
26 correctness of program decisions. With this framework, we studied the minimum  
27 requirements for diagnostic performance, cost per test and sample throughput for  
28 future assays while comparing the survey costs with those of the reference Baermann  
29 method. As potential assay platforms, we considered antibody (Ab)-detecting assays,  
30 including a point-of-care lateral flow assay (LFA) and a laboratory-based Ab-ELISA.  
31 We also determined cost-efficient school-based survey designs for two currently  
32 available assays: Bordier Ab-ELISA and a prototype NIE-LFA.

33 **Principal findings:** Our findings highlighted that (i) specificity rather than sensitivity is  
34 a critical parameter to consider for R&D of new diagnostic methods for monitoring  
35 control programs; (ii) the requirements for diagnostic performance became less  
36 stringent with an increasing sample size and when higher risks of incorrect decision-  
37 making were accepted. When focusing on the assay formats, the LFA resulted in lower  
38 survey costs compared to the Baermann method. Ab-ELISA was cost-efficient only if  
39 the diagnostic performance was nearly perfect combined with low cost per test and

40 high sample throughput. Of all the three assays considered here, the prototype NIE-  
41 LFA allowed for the most cost-efficient survey designs.

42 **Conclusion/significance:** R&D should focus on developing point-of-care assays with  
43 high specificity. The prototype NIE-LFA is a cost-efficient alternative to Baermann to  
44 support control programs for strongyloidiasis.

45

46 **Keywords:** strongyloidiasis, diagnostics, sensitivity, specificity, sample throughput,  
47 cost-analysis, target product profiles

## 48 **Author summary**

49 The World Health Organization calls for the development of rapid, easy-to-use, and  
50 performant point-of-care diagnostics to follow up large-scale deworming programs  
51 against strongyloidiasis. However, there are no further recommendations regarding the  
52 required performance and cost of such new diagnostics. We performed a simulation  
53 study and a cost analysis to assess the minimum requirements in terms of diagnostic  
54 sensitivity and specificity, cost per test, and sample throughput for future assays while  
55 comparing the survey costs with those of a reference method. In addition, we  
56 determined the most cost-efficient survey designs to support control programs for  
57 strongyloidiasis applying currently available assays. Our results indicate that research  
58 & development efforts should focus on developing point-of-care assays with high  
59 specificity. Of the currently available diagnostics, a prototype of a rapid diagnostic test  
60 resulted in the lowest total survey cost, while restricting the risk of incorrect policy  
61 decisions to the minimum.

## 62 Introduction

63 Strongyloidiasis is caused by the parasitic worm *Strongyloides stercoralis* and is  
64 one of the 21 neglected tropical diseases (NTDs), as classified by the World Health  
65 Organization (WHO) [1]. This parasitic roundworm is transmitted to humans through  
66 skin contact with contaminated soil, and hence belongs to the group of soil-transmitted  
67 helminths (STHs) [1–3]. As global burden, it is estimated that 600 million people  
68 worldwide are infected by *S. stercoralis*, being prevalent mainly in tropical and  
69 subtropical areas [4]. In response to this burden on public health, and after the long  
70 neglect, the WHO has now explicitly incorporated a strongyloidiasis-specific target in  
71 its 2020-2030 roadmap for STHs, namely the establishment of efficient strongyloidiasis  
72 control programs [1]. To this end, the WHO recommends preventive chemotherapy  
73 (PC) with a single oral dose of ivermectin (200 µm/kg) to entire communities in endemic  
74 areas [5].

75 The initiation of these large-scale deworming programs is recommended when the  
76 detected prevalence of *S. stercoralis* larvae in stool, diagnosed through Baermann  
77 method or agar plate culture [6–9], exceeds 5% (~10% true prevalence) in a school-  
78 based survey or 10% (~20% true prevalence) in a community-based survey. When  
79 deploying serology-based assays, the detected prevalence thresholds for initiating  
80 deworming are higher (school-based survey: 15%; community-based survey: 25%) [5].

81 Today, there is an unmet need for affordable and scalable diagnostics to monitor and  
82 evaluate (M&E) *S. stercoralis* infections in (suspected) endemic populations. To better  
83 steer the development of new diagnostics, it is imperative to identify the minimal  
84 requirements that such new diagnostics should meet, the so-called target product  
85 profiles (TPPs). To date, the WHO has already supported the development of

86 diagnostic TPPs for 12 NTDs [10–19]. While a TPP exists for M&E of the major STHs  
87 control programs [13], it does not include strongyloidiasis. Here, we considered  
88 serological tests and determined the minimal requirements of diagnostic performance,  
89 sample throughput and cost per test, with the aim to support the development of a TPP  
90 for diagnostics deployed to inform strongyloidiasis control programs. In addition, we  
91 determined cost-efficient school-based survey designs for two currently available Ab-  
92 based assays: a commercially available Ab-ELISA and a prototype of a lateral flow  
93 assay (LFA).

## 94 **Methods**

95 We assessed the minimal requirements for four attributes (sensitivity, specificity,  
96 throughput, and cost per test) for three hypothetical serological tests in three steps. In  
97 the **first step**, we applied a previously developed simulation framework [20] to  
98 determine those combinations of sensitivity and specificity that minimize the risk of  
99 incorrect program decisions in the presence of logistic constraints (the number of  
100 schools and the number of children per school that can be sampled). In the **second**  
101 **step**, we determined those combinations of sensitivity and specificity that also fulfilled  
102 budget constraints, where the total survey costs should not exceed that of a survey  
103 based on the Baermann method. In the **third step**, we determined the minimal  
104 requirements for sample throughput and cost per test of new diagnostics, along with  
105 their diagnostic accuracy (sensitivity and specificity), that meet both the logistic and  
106 budget constraints.

107 In addition, we determined the most cost-efficient survey designs when using two  
108 currently available Ab-based assays: the commercially available *Strongyloides ratti*  
109 IgG ELISA (Bordier Affinity Products, Crissier, Switzerland), and a prototype point-of-

110 care lateral flow assay (LFA) developed by the Institute for Research in Molecular  
111 Medicine of the Universiti Sains Malaysia [6].

112

### 113 **Required diagnostic performance in the presence of logistic constraints**

114 To determine those combinations of sensitivity and specificity that minimize the risk  
115 of incorrect program decisions in the presence of logistic constraints, we applied a  
116 previously developed simulation framework [20]. This framework is based on a two-  
117 stage lot-quality assurance sampling (LQAS) strategy and allows to determine the risk  
118 of incorrect program decisions when imperfect tests are deployed. The general details  
119 of this framework have been described elsewhere to inform school-based STH control  
120 programs [20]. Here, we limit ourselves to justifying the values for the eight input  
121 parameters that are required to determine the risk of incorrect decision-making (see  
122 **Table S1**). These eight input parameters can be divided into three groups. The first  
123 group represents the parameters of primary interest: test sensitivity ( $se$ ) and specificity  
124 ( $sp$ ). Next, we have setting-specific parameters: the program prevalence decision  
125 threshold ( $T$ ) and the intracluster correlation coefficient ( $ICC$ ) which represents the  
126 degree of geographical variation in prevalences. Finally, we have the framework  
127 constraints, which consist of logistic constraints and several parameters related to the  
128 risk of incorrect decisions. For the logistic constraints, we capped the maximum  
129 number of sampled schools ( $n_{schools}$ ) and the number of children per school ( $n_{children}$ ).  
130 With regard to risk of incorrect decisions, we defined the maximum allowed probability  
131 of unnecessary continuing STH control ( $E_{overtreat}$ ) when the true prevalence is at some  
132 value (lower limit or  $LL$ ) under the prevalence decision threshold. Similarly, we defined  
133 the maximum allowed risk of prematurely stopping ( $E_{undertreat}$ ) the program when the  
134 true prevalence is at some value above the decision thresholds (upper limit or  $UL$ ).

135 We let the diagnostic test sensitivity and specificity vary from 50% to 100% (with  
136 increments of 2 percentage points), resulting in 676 theoretical diagnostic tests with  
137 different diagnostic performance (26 values for sensitivity x 26 values for specificity).  
138 The program prevalence decision threshold  $T$  represents the true underlying  
139 prevalence that triggers distribution of ivermectin and was set at 10%, assuming that  
140 school-age children will be sampled [5]. The chosen value for the intra-cluster  
141 correlation ( $ICC = 0.0014$ ) reflects the spatial heterogeneity in strongyloidiasis  
142 measured across 6,846 SAC from 64 schools in Ethiopia who were screened for the  
143 presence of anti-*Strongyloides* antibodies in their plasma (see **S1 Info**). We quantified  
144 the  $ICC$  using a generalized linear mixed model using these data. We further let the  
145 number of schools visited ( $n_{schools}$ ) vary from 5 to 10 with increments of 1. Assuming  
146 that at most 100 children can be sampled per school, for each combination of sensitivity  
147 and specificity we determined the minimum number of schools that would have to be  
148 sampled to achieve a sufficiently low risk of incorrect program decisions (details  
149 below). To calculate the risk of incorrect program decisions, the prevalence limits ( $LL$   
150 and  $UL$ ) surrounding  $T$  were arbitrarily set at  $T \pm 25\% \times T$  ( $LL = 7.5\%$ ,  $UL = 12.5\%$ )  
151 [20]. Then, for each combination of  $se$ ,  $sp$ , and  $n_{schools}$ , we determined the risk of  
152 overtreating and undertreating using Monte Carlo simulation (10,000 iterations). We  
153 kept all the combinations of sensitivity, specificity, and number of schools that satisfied  
154 the condition of ideal decision-making ( $E_{overtreatment} = 10\%$  and  $E_{undertreat} = 5\%$ ) or  
155 adequate decision-making ( $E_{overtreatment} = 25\%$  and  $E_{undertreat} = 5\%$ ), as in the previous  
156 study [20].

157



## 158 **Required diagnostic performance in the presence of budget constraints**

159 After having considered logistic constraints, we assessed which combinations of  
160 performance of hypothetical serological diagnostic tests (sensitivity, specificity),  
161 number of schools, and number of children of schools allow for ideal or adequate  
162 decision-making while remaining within a target budget. Here, we restricted the target  
163 budget to the total cost of a Baermann-based survey that was sufficiently powered for  
164 ideal or adequate decision-making. For each combination of diagnostic performance  
165 and sample size, we calculated the survey cost considering two alternative diagnostic  
166 assay formats for the detection of anti-*Strongyloides* antibodies (Ab): an LFA that  
167 allows for point-of-care testing of whole blood and an Ab-ELISA that can be used in a  
168 central laboratory testing approach. For the Ab-ELISA, we considered the possibility of  
169 testing either plasma or eluate from dry blood spot (DBS) samples, resulting in three  
170 implementation choices: LFA, Ab-ELISA/plasma, and Ab-ELISA/DBS. We distinguish  
171 between these three implementation choices as they have different impacts on survey  
172 costs (details below).

173

### 174 *Simulating the impact of diagnostic test performance and survey design*

175 To determine the required performance of serological diagnostics, we used our  
176 simulation framework as described above, but we now allowed the number of sampled  
177 children per school to vary from 10 to 100, by increments of 2. This is because with  
178 improved diagnostic performance, generally, fewer children might be required per  
179 school. For each combination of  $se$ ,  $sp$ , and  $n_{schools}$  and  $n_{children}$ , we performed 10,000  
180 repeated Monte Carlo simulations and again determined the risk of overtreatment and  
181 undertreatment. We kept all the combinations of diagnostic performance and survey  
182 design that satisfied the conditions of ideal decision-making ( $E_{overtreatment} = 10\%$  and

183  $E_{undertreat} = 5\%$ ) or adequate decision-making ( $E_{overtreatment} = 25\%$  and  $E_{undertreat} =$   
184  $5\%$ ), as in the previous study [20].

185 For the Baerman method, we only determined which combinations of number of  
186 schools and number of children per school allowed for adequate and ideal decision-  
187 making, fixing the sensitivity and specificity at 50.0% and 98.0% as reported in  
188 literature [6]. However, we note that such high specificity can only be attained by well-  
189 trained microscopists. Since less optimal specificity requires a larger samples size (and  
190 thus more expensive surveys) [20,21], we also assessed the outcome of survey design  
191 when the specificity of the Baermann method was reduced from 98% to 93%, while  
192 keeping the sensitivity at 50%.

### 193 *Estimate the total survey costs*

194 For each diagnostic test (Baermann and hypothetical serological tests) and survey  
195 design we calculated the total survey costs, which comprised four cost items: (i) the  
196 operational cost to inform all schools about the survey ( $Cost_{inform}$ ), (ii) the cost to  
197 collect and prepare all individual samples for further analysis ( $Cost_{collect}$ ), (iii) the cost  
198 to transport all samples to a central laboratory ( $Cost_{transport}$ ; Ab-ELISA only), and (iv)  
199 the cost to analyze all samples ( $Cost_{analysis}$ ). To estimate the total survey cost for any  
200 given survey design, we assumed that a working day consists of 8 hours.  
201 Consequently, the number of samples that can be collected and further analyzed daily  
202 is limited and varies between deployed diagnostic methods. Therefore, for each survey  
203 design and deployed diagnostic method, we determined the number of working days  
204 required to collect and further analyze all samples from the recruited children. This  
205 required number of days depends on the number of laboratory technicians in the  
206 mobile team, the number of working hours per day, the number of samples collected

207 per hour, and the sample throughput per hour that one person can analyze (see **S2**  
208 **Info**). We considered that 4 laboratory technicians would be needed per day when  
209 deploying the Baermann method, while only 2 technicians would be needed if using  
210 the Ab-based assays (LFA, Ab-ELISA/Plasma, and Ab-ELISA/DBS). We further  
211 included the costs of various required items (see **S3 Info**) based on an itemized cost-  
212 assessment representing the real costs of a school-based survey carried out in  
213 Ecuador [6]. This itemized cost-assessment included the cost of consumables to  
214 collect one sample ( $Cost_{collect}$ ), the cost to prepare one sample ( $Cost_{prep}$ ), the cost to  
215 test one sample ( $Cost_{test}$ ), the daily salary for every technician and nurse in the mobile  
216 team ( $Cost_{tech}$ ), the daily salary for local helper ( $Cost_{helper}$ , only required when  
217 deploying the Baermann method) and the daily cost of car rental, petrol, and driver  
218 wages ( $Cost_{drivers}$ ). Note that we did not consider costs for establishing and maintaining  
219 laboratory infrastructures. We further assumed that all work takes place on regular  
220 working days and that the team does not take any breaks during processing. Further  
221 details on how we estimated the total survey costs can be found in **S2 Info**.

222

223 *Required diagnostic performance to not exceed the total cost of Baermann-based*  
224 *survey*

225 After we determined the total survey cost for each combination of diagnostic  
226 performance and survey design, we set a benchmark for the total survey cost for new  
227 hypothetical serological tests, using Baermann as the reference. For this, we  
228 considered those combinations of  $n_{schools}$  and  $n_{children}$  that allowed a Baermann-based  
229 survey to result in adequate and ideal decision-making for the lowest total survey cost.  
230 Given this benchmark cost, we identified for each implementation scenario (LFA, Ab-  
231 ELISA/plasma, and Ab-ELISA/DBS) those combinations of diagnostic sensitivity and

232 specificity that were logistically feasible and resulted in a total survey cost that did not  
233 exceed the benchmark cost.

234

### 235 **Minimal requirements for sample throughput and cost per test**

236 We previously showed that higher diagnostic performance allows for a reduction of  
237 sample size for the same level of program decision-making (adequate or ideal), thus  
238 allowing for less stringent requirements in terms of sample throughput and cost per  
239 test [20]. We therefore explored the minimal requirements for sample throughput and  
240 cost per test such that the total survey cost does not exceed that of a survey based on  
241 the Baermann method (benchmark cost). To this end, we repeated the total survey  
242 cost analysis for the three implementation scenarios while varying the sample  
243 throughput (5, 10, 20, and 40 samples per hour) and cost per test (0.20 EUR to 15  
244 EUR, with 0.20 EUR increment). Finally, we determined those combinations of  
245 diagnostic performance, sample throughput and cost per test that met both the logistic  
246 and budget constraints.

247

### 248 **Most cost-efficient survey design for existing serological assays**

249 We determined the most cost-efficient survey designs for two existing serological  
250 assays, including a commercially available Ab-ELISA and a prototype LFA. For the Ab-  
251 ELISA, we based our assumptions about sensitivity (79%) and specificity (93%) on the  
252 commercially available *Strongyloides ratti* IgG ELISA (Bordier Ab-ELISA, Bordier  
253 Affinity Products, Crissier, Switzerland), based on crude antigens of the parasite  
254 *Strongyloides ratti*. For the prototype LFA, we considered a cassette-format  
255 immunochromatographic rapid diagnostic test developed by the Institute for Research

256 in Molecular Medicine of the Universiti Sains Malaysia. This LFA is based on the  
257 recombinant antigen NIE (NIE-LFA) [22]. To determine the most cost-efficient survey  
258 design for these assays, we calculated the total survey costs for each combination of  
259 survey design ( $n_{schools} \times n_{children}$ ) as described in **S2 Info**, while fixing the sensitivity  
260 and specificity at 79.0% and 93.0%, respectively [6]. These tests are assumed to only  
261 differ in terms of cost to test one sample, cost to prepare sample, cost to test one  
262 sample and the number of samples that can be analyzed by one person in one hour  
263 (see **S2 Info**). The most cost-efficient survey design is the one ( $n_{school} \times n_{children}$ ) that  
264 minimized the total survey cost while attaining an adequate and an ideal program  
265 decision-making.

## 266 **Results**

### 267 **Required diagnostic performance in the presence of logistic constraints**

268 Given the presence of logistic constraints, we investigated the combinations of  
269 sensitivity and specificity that minimize the risk of incorrect programs decisions. **Fig 1**  
270 represents the required diagnostic performance (minimum sensitivity and specificity)  
271 for adequate (**Fig 1A**) and ideal (**Fig 1B**) decision-making when sampling 100 children  
272 per school (the assumed maximum logistically feasible number) across five to 10  
273 schools. Three important points can be noted in this figure. First, requirements are  
274 more stringent for specificity than for sensitivity. For example, specificity cannot be  
275 below 72% for adequate decision-making (**Fig 1A**) and 84% for ideal decision-making  
276 (**Fig 1B**), whereas sensitivity could be as low as 50% in both cases. Second, the  
277 requirements for sensitivity and specificity are inversely correlated. For example, when  
278 sampling seven schools with a theoretical test with a specificity of 98%, the sensitivity  
279 should be at least 50% to allow adequate decision-making, while when deploying a

280 theoretical test with a specificity of 84%, the sensitivity should be at least 92%. Third,  
281 the requirements for diagnostic performance become less stringent as a function of an  
282 increasing number of schools (thus more children are screened) and increasing risk of  
283 incorrect decision-making. When focusing on adequate program decision-making and  
284 fixing the specificity at 96% (**Fig 1A**), the required sensitivity was 58% when 7 schools  
285 were sampled, while it was 50% when 10 schools were included. When now focusing  
286 on ideal program decision-making (**Fig 1B**) while fixing the specificity at 96% and the  
287 number of schools at 7 (**Fig 1B**), the required sensitivity was 78% (instead of 58% for  
288 adequate decision making)

289

290

291 **Fig 1. Required sensitivity and specificity when making adequate and ideal program decisions**  
292 **in the presence of logistic constraints.** The figure indicates the required sensitivity and specificity for  
293 adequate ( $E_{undertreatment} = 5\%$  and  $E_{overtreatment} = 25\%$ ; **Panel A**) and ideal decision-making (  
294  $E_{undertreatment} = 5\%$  and  $E_{overtreatment} = 10\%$ ; **Panel B**) when sampling 100 children per school for  
295 different number of schools (colored lines). The black dot represents the diagnostic performance of the  
296 Baermann method (sensitivity = 50.0% and specificity = 98.0%).

297

298

299

### 300 **Required diagnostic performance in the presence of budget constraints**

301 While we have considered logistic constraints so far, we further explored those  
302 combinations of sensitivity and specificity that allowed for adequate and ideal decision-  
303 making in the presence of budget constraints. For this, we explored three  
304 implementation choices (LFA, Ab-ELISA/plasma and Ab-ELISA/DBS) while not  
305 allowing the total survey cost to exceed the cost of a Baerman-based survey. For  
306 adequate decision-making, the most cost-efficient survey design for Baerman-based  
307 survey involved a total of 644 children ( $= n_{school} \times n_{child} = 7 \times 92$ ), resulting in a total  
308 survey cost of 9,410 EUR. As soon as 41 children test positive (= decision cutoff  $c$ ),

309 one could already stop screening and initiate a strongyloidiasis control program. For  
310 ideal decision-making, the most cost-efficient design involved a total of 980 children (=  $n_{schools} \times n_{children} = 10 \times 98$ ), resulting in an estimated total survey cost of 13,968  
311 EUR. For this level of decision-making, 65 positive test results would trigger large-scale  
312 deworming. If the assumed specificity of Baermann was 93% instead of 98% because  
313 of insufficiently trained laboratory technicians, the required sample size was beyond  
314 what was considered logistically feasible (adequate: 13 schools x 96 children per  
315 school; ideal: 20 schools x 96 children), resulting in a total cost of 17,625 EUR  
316 (adequate) and 27,103 EUR (ideal). We will therefore base the benchmark for total  
317 survey costs on the assumption that the Baermann method is performed by well-  
318 trained technicians (i.e., specificity of 98%).  
319

320 After defining the cost benchmark, we continued identifying those combinations of  
321 sensitivity and specificity of hypothetical new serological tests that allowed for a survey  
322 that was not more expensive than the most cost-efficient Baermann-based survey  
323 design. **Table 1** presents the required diagnostic performance (sensitivity and  
324 specificity) for adequate and ideal decision-making when deploying an LFA and Ab-  
325 ELISA/Plasma in the presence of both logistic and budget constraints. When focusing  
326 on LFA, two crucial points can be made. First, this table indicates that when an LFA  
327 format is applied, the test performance can take a wide range of values for sensitivity  
328 and specificity, the two parameters again being inversely correlated. Second, when  
329 looking more closely into the absolute values, they represent all possible combinations  
330 of sensitivity and specificity illustrated in **Fig 1** (all combinations above the purple line).  
331 In other words, even when the sampling effort is maximized (10 schools and 100  
332 children per school), the total survey costs never exceeded that of a Baermann-based

333 survey, highlighting that the budget constraints had no impact on the requirements for  
334 the diagnostic performance of LFA.

335 For Ab-ELISA-based surveys, which are more expensive ( see **S2 Info**), the impact of  
336 budget constraints on the requirements for diagnostic performance was more  
337 pronounced, resulting in fewer and more stringent diagnostic performance options. For  
338 an Ab-ELISA-based survey to be as cost-efficient as a Baermann-based survey for  
339 adequate decision-making, its required sensitivity should be at least 80%, while its  
340 specificity cannot be below 98% (**Table 1**). Additionally, the required number of schools  
341 and children that need to be sampled was lower for an Ab-ELISA-based surveys  
342 compared to LFA (5 schools vs. 10 schools and 100 children per school).

343

344

345

346

347

348

349

350

351

352

353



354 **Table 1. Required specificity and sensitivity for adequate and ideal decision-making when**  
 355 **deploying LFA and Ab-ELISA/Plasma in the presence of both logistic and budget constraints.**  
 356 The table summarizes the sensitivity and specificity for the LFA and Ab-ELISA/Plasma to achieve  
 357 adequate ( $E_{undertreatment} = 5\%$  and  $E_{overtreatment} = 25\%$ ) and ideal program decision-making (  
 358  $E_{undertreatment} = 5\%$  and  $E_{overtreatment} = 10\%$ ). Each of these combinations result in a total survey cost  
 359 that does not exceed that of a Baermann-based survey (assuming a specificity of 98% and sensitivity  
 360 of 50% for the Baermann method). Ab-ELISA/Plasma: Ab-ELISA assays that are based on plasma. Note  
 361 that the blank cells indicate that there were no combinations of sensitivity and specificity that resulted in  
 362 sufficiently low risk of incorrect decision-making.

Specificity (%)	Minimum sensitivity LFA (%)		Minimum sensitivity Ab-ELISA/Plasma (%)	
	Adequate decision-making	Ideal decision-making	Adequate decision-making	Ideal decision-making
100	50	50	80	82
98	50	50	94	96
96	50	60		
94	54	70		
92	60	78		
90	68	82		
88	70	88		
86	76	92		
84	80	100		
82	84			
80	88			
78	90			
76	94			
74	96			
72	100			

363

### 364 **Minimal requirements for sample throughput and cost per test**

365 We then looked at how better diagnostic performance allows for less stringent  
 366 sample throughput and cost per test for all logistically feasible surveys. When focusing  
 367 on LFA (**Fig 2A** and **2B**), we note two important aspects. First, results confirm that  
 368 improving the sensitivity and specificity of a test allowed for higher costs per test (shift  
 369 from dark green to red colored tiles), with the highest possible cost per test for a LFA  
 370 with 100% sensitivity and specificity. As illustrated in **Fig S1**, improving the diagnostic  
 371 performance required smaller sample sizes for the same level of program decision-  
 372 making, thus allowing to have higher cost per test for the same total survey cost.  
 373 Second, by comparing **Figs 2A** and **2B**, we can see that the maximum cost per test  
 374 was very similar for tests with lower (5 samples per hour) and higher throughput (40  
 375 samples per hour). For example, when fixing diagnostic performance at 92%

376 specificity and 74% sensitivity, the maximum cost per test equaled 6.4 EUR when five  
377 samples per hour were processed, and 7.6 EUR when 40 samples per hour can be  
378 processed. As such, improving the diagnostic performance allows for a relatively  
379 higher maximum cost per test than improving the sample throughput.

380 When comparing these findings for LFA (**Figs 2A** and **2B**) with those for Ab-  
381 ELISA/Plasma (**Figs 2C** and **2D**), two important differences can be noticed. First, as  
382 expected from the performance options in presence of budget constraints (**Table 1**;  
383 LFA: **Fig 2A** vs. Ab-ELISA: **Fig 2C**), there are fewer and more stringent diagnostic  
384 performance options for Ab-ELISA (fewer colored tiles in the figure). Second, the  
385 requirements for the cost per test are stricter for Ab-ELISA (fewer red tiles), indicating  
386 that the cost per test should be relatively cheap. For example, if we focus on a  
387 throughput of five samples per hour, the maximum cost for test with a specificity of  
388 100% and sensitivity of 52% was 13.6 EUR when deployed as LFA format, while this  
389 was 1.0 EUR when deployed as an Ab-ELISA format.

390

391 **Fig 2. The maximum cost per test for an LFA and Ab-ELISA/Plasma for adequate decision**  
392 **making.** This figure presents the maximum cost per test for all possible combinations of sensitivity and  
393 specificity, sample throughput (number of samples that can be analyzed by one technician in one hour)  
394 that allowed for adequate ( $E_{undertreatment} = 5\%$  and  $E_{overtreatment} = 25\%$ ) decision-making for an LFA  
395 (**Panel A:** sample throughput of five samples per hour; **Panel B:** sample throughput of 40 samples per  
396 hour) and Ab-ELISA format (**Panel C:** sample throughput of five samples per hour; **Panel D:** sample  
397 throughput of 40 samples per hour). Note that the maximum cost per test is the true maximum cost per  
398 test that could work in at least one logistically feasible survey design that is not more expensive than  
399 the benchmark cost based on the Baermann method. Absence of tiles indicates that the combination of  
400 sensitivity and specificity was inadequate for decision-making, given the logistic and budget constraints.

401 We next focus on the maximum cost per test for an LFA and Ab-ELISA/Plasma across  
402 different combinations of diagnostic performance and sample throughput for ideal  
403 (instead of adequate) decision-making (**Fig 3**). Overall, we noted two aspects. First,  
404 for ideal decision-making (**Fig 3**), patterns in maximum cost per test (as function of  
405 sensitivity, specificity and throughput) are essentially the same as for adequate  
406 decision-making (**Fig 2**). However, diagnostic performance requirements are more  
407 stringent, meaning there are fewer options. Next, given that the benchmark cost for  
408 ideal decision-making was set to be higher than for adequate decision-making, the  
409 maximum cost per test for a given diagnostic performance was actually very similar  
410 between the two levels of certainty in decision-making.

411

412 **Fig 3. The maximum cost per test for an LFA and Ab-ELISA/Plasma for ideal decision making.**  
413 This figure represents all possible combinations of sensitivity and specificity, sample throughput (number  
414 of samples that can be analyzed by one technician in one hour), and the maximum cost per test (in  
415 EUR) that allowed for adequate ( $E_{undertreatment} = 5\%$  and  $E_{overtreatment} = 10\%$ ) decision-making for an  
416 LFA (**Panel A**: sample throughput of five samples per hour; **Panel B**: sample throughput of 40 samples  
417 per hour) and Ab-ELISA format (**Panel C**: sample throughput of five samples per hour; **Panel D**: sample  
418 throughput of 40 samples per hour). Note that the maximum cost per test is the true maximum cost per  
419 test that could work in at least one logistically feasible survey design that is not more expensive than  
420 the benchmark cost based on the Baermann method. Absence of tiles indicates that the combination of  
421 sensitivity and specificity was inadequate for decision-making, given the logistic and budget constraints.

422

423

424 **Most cost-efficient survey design for existing Ab-based assays**

425 We finally determined the most cost-efficient survey designs when deploying two  
426 currently available Ab-based assays. **Table 2** summarizes the most cost-efficient  
427 survey designs that allowed for adequate and ideal decision-making for these two tests  
428 when assuming the diagnostic performance reported by Tamarozzi et al. [6] (sensitivity  
429 = 79% and specificity = 93%). Compared to the Baermann method, two important  
430 differences can be noted for these Ab-based assays. First, the required sample size  
431 for the survey is slightly smaller when deploying Ab-based assays. For instance, when

432 considering adequate decision-making, a total of 644 children ( $= n_{school} \times n_{child}$   
433  $= 7 \times 92$ ) need to be screened when using the Baermann method. This required  
434 sample size decreased to 564 children ( $= n_{school} \times n_{child} = 6 \times 94$ ) when deploying  
435 Ab-based assays. Second, despite this smaller sample size, the surveys were more  
436 expensive when deploying Ab-based assays compared to the cost of a cost-efficient  
437 Baermann-based survey. For instance, when deploying the Bordier Ab-ELISA, the total  
438 survey costs were 81% times higher when applied on plasma (Bordier Ab-  
439 ELISA/Plasma) and 82% times higher when applied on DBS (Bordier Ab-ELISA/DBS).  
440 In contrast, deploying LFA resulted in cheaper surveys compared to the cost of a cost-  
441 efficient Baermann-based survey. For example, for adequate decision-making, the  
442 total survey costs for NIE-LFA were 52% times lower than that of surveys based on  
443 the Baermann method. If these Ab-based tests are implemented (6 schools and 94  
444 children per school), 76 positive test results would trigger large-scale deworming  
445 programs for adequate decision making and 123 for ideal decision-making (9 schools  
446 and 98 children per school).

447 **Table 2. The most cost-efficient survey design to initiate large-scale deworming against**  
 448 **strongyloidiasis when deploying Baermann method and existing Ab-based assays.** This table  
 449 represents the required sample size ( $n_{school} \times n_{children}$ ), the decision cutoff  $c$ , and the total survey cost  
 450 to assess whether the true prevalence of strongyloidiasis is under or above 10% for adequate and ideal  
 451 decision-making. Bordier Ab-ELISA represents a commercially available *Strongyloides ratti* IgG ELISA  
 452 (Bordier Affinity Products, Crissier, Switzerland) applied on either plasma (Bordier Ab-ELISA/plasma) or  
 453 dried blood samples (Bordier Ab-ELISA/DBS). NIE-LFA is a prototype (research use only) lateral flow  
 454 assay (LFA) developed by the Institute for Research in Molecular Medicine of the Universiti Sains  
 455 Malaysia. This LFA is based on the recombinant antigen NIE.

Method	Sensitivity	Specificity	$n_{schools}$	$n_{children}$	Decision cutoff ( $c$ )	Total survey cost (EUR)
<b>Adequate decision making</b>						
Baermann method	0.50	0.98	7	92	41	9,410
Bordier Ab-ELISA/Plasma	0.79	0.93	6	94	76	17,067
Bordier Ab-ELISA/DBS	0.79	0.93	6	94	76	17,197
NIE-LFA	0.79	0.93	6	94	76	4,949
<b>Ideal decision making</b>						
Baermann method	0.50	0.98	10	98	65	13,968
Bordier Ab-ELISA/Plasma	0.79	0.93	9	98	123	26,391
Bordier Ab-ELISA/DBS	0.79	0.93	9	98	123	26,448
NIE-LFA	0.79	0.93	9	98	123	7,424

456

457

458

459

460

461

462

463

464

## 465 Discussion

466 The WHO calls for the development of rapid, easy-to-use, and performant point-of-  
467 care diagnostics for M&E of large-scale deworming programs [1]. While a TPP exists  
468 for M&E of STH control programs, it does not include strongyloidiasis. Therefore, we  
469 determined the minimal requirements of diagnostics for strongyloidiasis in terms of  
470 diagnostic performance (sensitivity and specificity), sample throughput and cost per  
471 test for diagnosing strongyloidiasis, with the aim to further support the development of  
472 a diagnostic TPPs for this NTD.

473 In the presence of logistic constraints (the number of schools that can be visited  
474 per day and the number of children per school are limited), we found that sensitivity  
475 and specificity are inversely correlated, and that specificity is critical to consider when  
476 developing a diagnostic assay to be deployed in population-based surveys. Indeed,  
477 depending on the acceptable risk of making a wrong program decision, specificity  
478 should be at least 72% for adequate and 84% for ideal or even higher for both (e.g.  
479 sensitivity is less than 100%). For the sensitivity, it should be at 50% for both program  
480 decision-making (adequate and ideal) or even higher in case the specificity is less than  
481 100% (**Fig 1**). This need for highly specific diagnostics aligns with the results of  
482 previous studies [20,21] and the recently published WHO TPPs for diagnostics to be  
483 deployed in M&E of large-scale deworming programs for NTDs such as lymphatic  
484 filariasis, onchocerciasis, and schistosomiasis [11–14]. In each of these TPPs, the  
485 minimum required specificity is 94%, while the minimum required sensitivity was set to  
486 60%, which is roughly comparable to our recommendations for strongyloidiasis  
487 diagnostics.

488 When also considering budget constraints and exploring different implementation  
489 choices (LFA, Ab-ELISA/plasma, and Ab-ELISA/DBS) and scenarios of sample  
490 throughput and cost per test, our results indicated that a LFA holds the most promise  
491 as a diagnostic format to take cost-efficient program decisions. Implementing an LFA  
492 allowed for a lower total survey costs compared to a Baermann-based survey, even  
493 when its diagnostic performance is less optimal (lower specificity compared to  
494 Baermann) and the cost per test is higher. In contrast, surveys based on Ab-ELISA  
495 turned out to be more expensive compared to Baermann method, unless a nearly  
496 perfect diagnostic performance, low cost per test, and high sample throughput was  
497 reached. This can be explained by the additional cost of needing to prepare the  
498 samples for testing (Ab-ELISA/plasma: 9.27 EUR per sample and Ab-ELISA/DBS:  
499 11.49 EUR per sample) and the cost per test (10.79 EUR). A potential cost-saving  
500 strategy would be using the same samples to test for multiple NTDs (or other diseases)  
501 at the same time, and thus spreading the costs of the sample preparation step over  
502 multiple disease control programs. This would also align with the WHO vision for  
503 integrated disease surveillance and control, offering a streamlined approach to tackling  
504 NTDs alongside other infectious diseases [1,13].

505 These results are particularly welcomed since, recently, a number of  
506 immunochromatographic rapid tests for the diagnosis of strongyloidiasis have been  
507 developed, most of which based on the recombinant antigens NIE and SsIR, [23]  
508 Currently, none of these tests are commercially available, and they have been  
509 evaluated mostly in laboratory-based studies [24–28]. However, their performance  
510 seems promising in a number of studies (complying with the requirements defined  
511 here, **Table 1**), importantly including two field-based projects [6,24,29]. These findings,  
512 although requiring confirmation and validation in larger cohorts and different settings,

513 support further R&D of this type of assays for strongyloidiasis control programs. R&D  
514 should carefully consider the physical characteristics of the LFA assay, such as  
515 cassette vs. dipstick format, as these could impact the test's method protocol,  
516 diagnostic performance, cost per test, and material disposal requirements.

517 Finally, we defined cost-efficient survey designs for the control of strongyloidiasis when  
518 deploying Baermann and two existing Ab-based tests: the Bordier Ab-ELISA and NIE-  
519 LFA. When deploying the reference Baermann method in a school-based survey, we  
520 estimated the need to sample seven schools (92 children per schools) and 10 schools  
521 (98 children per school) for adequate and ideal decision-making, respectively. These  
522 survey designs minimize the total survey cost, while ensuring reliable decision making  
523 (adequate: 9,410 EUR; ideal: 13,968 EUR). When deploying the NIE-LFA, the total  
524 survey costs could be further reduced (adequate decision making 4,949 EUR and ideal  
525 decision making 7,424 EUR), making it a cost-efficient alternative to Baermann. On  
526 the contrary, the Bordier Ab-ELISA turned out to be more resource demanding than  
527 LFA, due to the high costs per test (Bordier Ab-ELISA: 10.79 EUR vs. NIE-LFA: 2.09  
528 EUR) and the costs to prepare the samples for laboratory testing (Ab-ELISA/plasma:  
529 9.27 EUR and Ab-ELISA/DBS: 11.49 EUR). Another reason to recommend an (NIE-  
530 )LFA over the Baermann method, is the feasibility of implementing this kind of  
531 diagnostic test. Indeed, we noted that the Baermann method needs adequate training  
532 to ensure the high specificity (98%) reported in the ESTRELLA study [6], while the  
533 training requirement to ensure accurate test performance is minimal for the (NIE-)LFA.  
534 Using a less experienced team when deploying Baermann may result in a reduced  
535 specificity, which in turn will increase the sample size (and total survey cost) required  
536 to make adequate or ideal decision making. Note that all our recommended survey  
537 designs aim to be no more costly than a well-trained team of experienced technicians.



538 Therefore, in case we accept that the benchmark cost does not necessarily represent  
539 a team of experienced technicians, then such a cost benchmark would allow the  
540 requirements for new diagnostics to be less stringent (lower performance, lower  
541 sample throughput, and higher cost per test).

542 As a limitation of our study, it is important to note that the estimated costs were based  
543 on data obtained from a school-based survey carried out in Ecuador, and hence the  
544 reported values should not be interpreted as absolute. Despite of this, we are confident  
545 that our general conclusions are robust to context-dependent changes in cost  
546 components. A major strength of our simulation framework is therefore that  
547 assumptions about these itemized costs can be easily adapted to represent any  
548 setting.

549

## 550 **Conclusions**

551 We provided insights into the required diagnostic performance, cost per test and  
552 sample throughput that may steer R&D choices for new diagnostics to inform  
553 strongyloidiasis control programs. When focusing on Ab-based assays, our results  
554 indicate that R&D should focus on the development of point-of-care diagnostics or  
555 laboratory-based formats that allow for testing multiple NTDs on the same sample. Of  
556 all current diagnostic tests, the NIE-LFA was a cost-efficient alternative to Baermann  
557 to make program decisions, encouraging its further development for  
558 commercialization.

559

560

561

## 562 **Acknowledgments**

563 We are grateful to our partner institutions in Ecuador: Mariella Anselmi, Cintia Caicedo  
564 and Rosanna Prandi from the Centre for Community Epidemiology and Tropical  
565 Medicine (CECOMET) and Yosselin Vicuña from the Universidad Central del Ecuador,  
566 Quito, Ecuador, for providing support for completing the itemized costs of materials  
567 used in the current study.

## 568 **Funding**

569 This work was funded through the Consortium of Experts in Neglected Tropical  
570 Diseases (<https://www.centd.org/en/>); and Research Foundation Flanders (G0F4320N;  
571 <https://www.fwo.be/en/>).

572

573

574

575

576

577

578

579

580

## 581                   **References**

- 582   1.   World Health Organization. Ending the neglect to attain the Sustainable  
583   Development Goals: A road map for neglected tropical diseases 2021–2030. In:  
584   World Health Organization [Internet]. 2021 [cited 10 Feb 2022]. Available:  
585   <https://www.who.int/publications/i/item/9789240010352>
- 586   2.   Jourdan PM, Lamberton PHL, Fenwick A, Addiss DG. Soil-transmitted helminth  
587   infections. *Lancet*. 2018;391: 252–265.
- 588   3.   Soil-transmitted helminth infections. [cited 12 Aug 2022]. Available:  
589   [https://www.who.int/news-room/fact-sheets/detail/soil-transmitted-helminth-](https://www.who.int/news-room/fact-sheets/detail/soil-transmitted-helminth-infections)  
590   infections
- 591   4.   Buonfrate D, Bisanzio D, Giorli G, Odermatt P, Fürst T, Greenaway C, et al. The  
592   global prevalence of *Strongyloides stercoralis* infection. *Pathogens*. 2020;9: 468.
- 593   5.   WHO guideline on preventive chemotherapy for public health control of  
594   strongyloidiasis. [cited 6 Aug 2024]. Available:  
595   <https://www.who.int/publications/i/item/9789240094024>
- 596   6.   Tamarozzi F, Guevara ÁG, Anselmi M, Vicuña Y, Prandi R, Marquez M, et al.  
597   Accuracy, acceptability, and feasibility of diagnostic tests for the screening of  
598   *Strongyloides stercoralis* in the field (ESTRELLA): a cross-sectional study in  
599   Ecuador. *Lancet Glob Heal*. 2023;11: e740–e748.
- 600   7.   Gelaye W, Williams NA, Kepha S, Junior AM, Fleitas PE, Marti-Soler H, et al.  
601   Performance evaluation of Baermann techniques: the quest for developing a  
602   microscopy reference standard for the diagnosis of *Strongyloides stercoralis*.  
603   *PLoS Negl Trop Dis*. 2021;15: e0009076.
- 604   8.   Buonfrate D, Formenti F, Perandin F, Bisoffi Z. Novel approaches to the  
605   diagnosis of *Strongyloides stercoralis* infection. *Clin Microbiol Infect*. 2015;21:  
606   543–552.
- 607   9.   Requena-Méndez A, Chiodini P, Bisoffi Z, Buonfrate D, Gotuzzo E, Muñoz J.  
608   The laboratory diagnosis and follow up of strongyloidiasis: a systematic review.  
609   *PLoS Negl Trop Dis*. 2013;7: e2002.
- 610   10.   Souza AA, Ducker C, Argaw D, King JD, Solomon AW, Biamonte MA, et al.  
611   Diagnostics and the neglected tropical diseases roadmap: setting the agenda for  
612   2030. *Trans R Soc Trop Med Hyg*. 2021;115: 129–135.
- 613   11.   WHO. Onchocerciasis: diagnostic target product profile to support preventive  
614   chemotherapy. [cited 16 Aug 2021]. Available:  
615   <https://www.who.int/publications/i/item/9789240024496>
- 616   12.   WHO. Diagnostic test for surveillance of lymphatic filariasis: target product  
617   profile. [cited 16 Aug 2021]. Available:  
618   <https://www.who.int/publications/i/item/9789240018648>
- 619   13.   WHO. Diagnostic target product profile for monitoring and evaluation of soil-  
620   transmitted helminth control programmes. [cited 16 Aug 2021]. Available:

- 621 <https://www.who.int/publications/i/item/9789240031227>
- 622 14. WHO. Diagnostic target product profiles for monitoring, evaluation and  
623 surveillance of schistosomiasis control programmes. [cited 11 Oct 2021].  
624 Available: <https://www.who.int/publications/i/item/9789240031104>
- 625 15. Target product profile for the detection of a case of yaws and the detection of  
626 azithromycin resistance. [cited 7 Aug 2024]. Available:  
627 <https://iris.who.int/handle/10665/353978>
- 628 16. Target product profile for a gambiense human African trypanosomiasis test to  
629 identify individuals to receive widened treatment. [cited 7 Aug 2024]. Available:  
630 <https://iris.who.int/handle/10665/352579>
- 631 17. Target product profile for a test for rhodesiense human African trypanosomiasis  
632 diagnosis usable in peripheral health facilities. [cited 7 Aug 2024]. Available:  
633 <https://iris.who.int/handle/10665/344165>
- 634 18. Target product profile for a gambiense human African trypanosomiasis individual  
635 test to assess infection in low prevalence settings. [cited 7 Aug 2024]. Available:  
636 <https://iris.who.int/handle/10665/365383>
- 637 19. Target product profile for a gambiense human African trypanosomiasis high-  
638 throughput test for verification of elimination. [cited 7 Aug 2024]. Available:  
639 <https://iris.who.int/handle/10665/365384>
- 640 20. Kazienga A, Coffeng LE, de Vlas SJ, Levecke B. Two-stage lot quality assurance  
641 sampling framework for monitoring and evaluation of neglected tropical  
642 diseases, allowing for imperfect diagnostics and spatial heterogeneity. *PLoS*  
643 *Negl Trop Dis*. 2022;16: e0010353.
- 644 21. Levecke B, Coffeng LE, Hanna C, Pullan RL, Gass KM. Assessment of the  
645 required performance and the development of corresponding program decision  
646 rules for neglected tropical diseases diagnostic tests: Monitoring and evaluation  
647 of soil-transmitted helminthiasis control programs as a case study. *PLoS Negl*  
648 *Trop Dis*. 2021;15: e0009740.
- 649 22. Balachandra D, Rahumatullah A, Lim TS, Mustafa FH, Ahmad H, Anuar NS, et  
650 al. A new antigen detection ELISA for the diagnosis of *Strongyloides* infection.  
651 *Acta Trop*. 2021;221: 105986.
- 652 23. Buonfrate D, Tamarozzi F, Paradies P, Watts MR, Bradbury RS, Bisoffi Z. The  
653 diagnosis of human and companion animal *Strongyloides stercoralis* infection:  
654 challenges and solutions. A scoping review. *Adv Parasitol*. 2022;118: 1–84.
- 655 24. Yunus MH, Arifin N, Balachandra D, Anuar NS, Noordin R. Lateral flow dipstick  
656 test for serodiagnosis of strongyloidiasis. *Am J Trop Med Hyg*. 2019;101: 432.
- 657 25. Noordin R, Osman E, Kalantari N, Anuar NS, Gorgani-Firouzjaee T, Sithithaworn  
658 P, et al. A point-of-care cassette test for detection of *Strongyloides stercoralis*.  
659 *Acta Trop*. 2022;226: 106251.
- 660 26. Tamarozzi F, Longoni SS, Mazzi C, Rizzi E, Noordin R, Buonfrate D. The  
661 accuracy of a recombinant antigen immunochromatographic test for the

- 662 detection of *Strongyloides stercoralis* infection in migrants from sub-Saharan  
663 Africa. *Parasit Vectors*. 2022;15: 142.
- 664 27. Sadaow L, Sanpool O, Rodpai R, Boonroumkaew P, Maleewong W, Intapan PM.  
665 Development of immunochromatographic device as a point-of-care tool for  
666 serodiagnosis of human strongyloidiasis cases. *Eur J Clin Microbiol Infect Dis*.  
667 2020;39: 465–470.
- 668 28. Boonroumkaew P, Sadaow L, Sanpool O, Rodpai R, Thanchomnang T,  
669 Phupiewkham W, et al. Effectiveness of *Strongyloides* recombinant IgG  
670 immunoreactive antigen in detecting IgG and IgG4 subclass antibodies for  
671 diagnosis of human strongyloidiasis using rapid immunochromatographic tests.  
672 *Diagnostics*. 2020;10: 615.
- 673 29. Wongphutorn P, Noordin R, Anuar NS, Worasith C, Kopolrat KY, Homwong C,  
674 et al. Examination of Diagnostic Performance of New IgG4 Rapid Test  
675 Compared with IgG-and IgG4-ELISAs to Investigate Epidemiology of  
676 Strongyloidiasis in Northeast Thailand. *Am J Trop Med Hyg*. 2024; tpm230518–  
677 tpm230518.

679 **Supporting information**

680 **S1 Table. Values of the required parameters to assess the risk of incorrect decision-making when**  
681 **currently available test platforms are deployed.**

682

683 **S1 Info. Quantification of spatial heterogeneity in strongyloidiasis**

684

685 **S2 Info. Estimation of the total survey cost**

686

687

688 **S3 Info. Itemized cost-assessment**

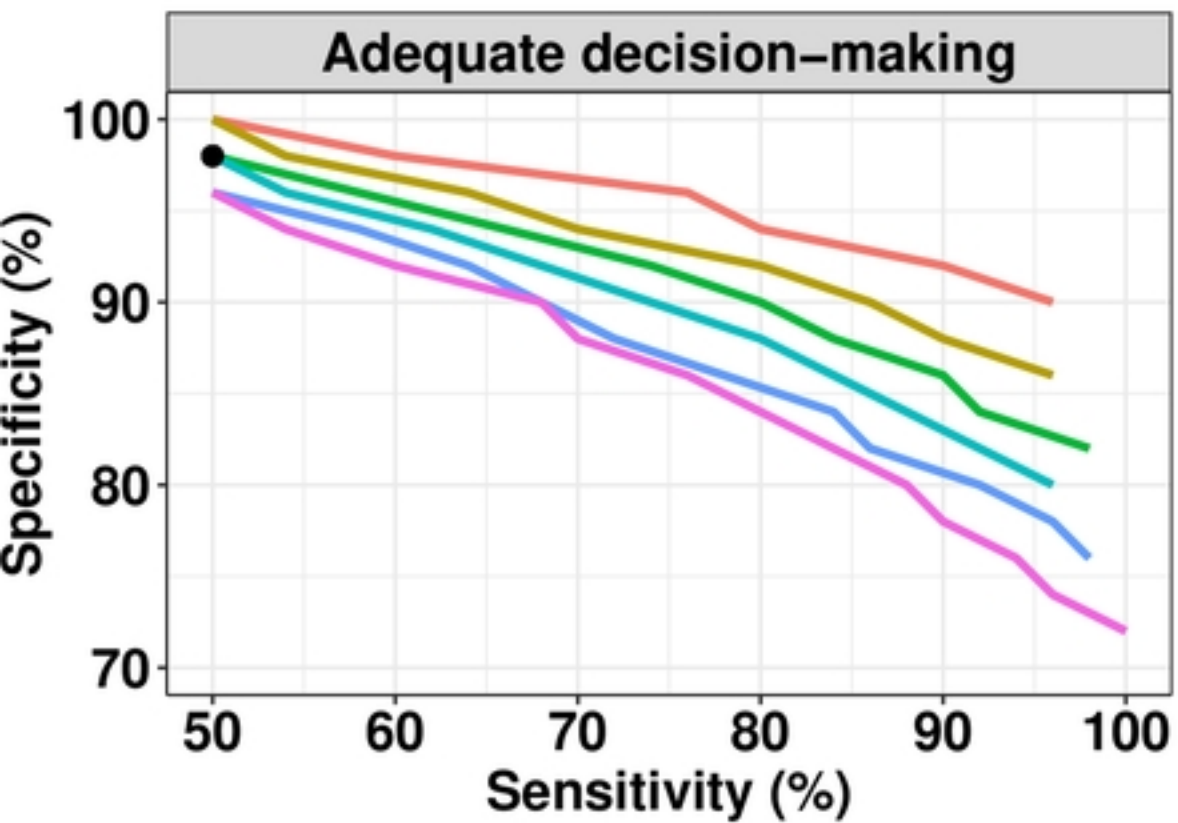
689

690

691 **Fig S1. The impact of diagnostic performance on maximum cost per test and required sample**  
692 **size.** This figure represents all possible combinations of sensitivity and specificity and the maximum  
693 cost per test (in EUR) (**Panel A:** LFA and **Panel C:** Ab-ELISA/Plasma) and the required sample size  
694 (**Panel B:** LFA and **Panel D:** Ab-ELISA/Plasma) that allowed for adequate ( $E_{undertreatment} = 5\%$  and  
695  $E_{overtreatment} = 25\%$ ) decision-making. Note that the maximum cost per test is the true maximum cost  
696 per test that could work in at least one logistically feasible survey design that is not more expensive than  
697 the benchmark cost based on the Baermann method. Also, the required sample size corresponds to the  
698 minimum required number of schools and children per school that need to be sampled for each  
699 combination of sensitivity and specificity. Absence of tiles indicates that the combination of sensitivity  
700 and specificity was inadequate for decision-making, given the logistic and budget constraints.

Number of schools 5 7 9  
6 8 10

A



B

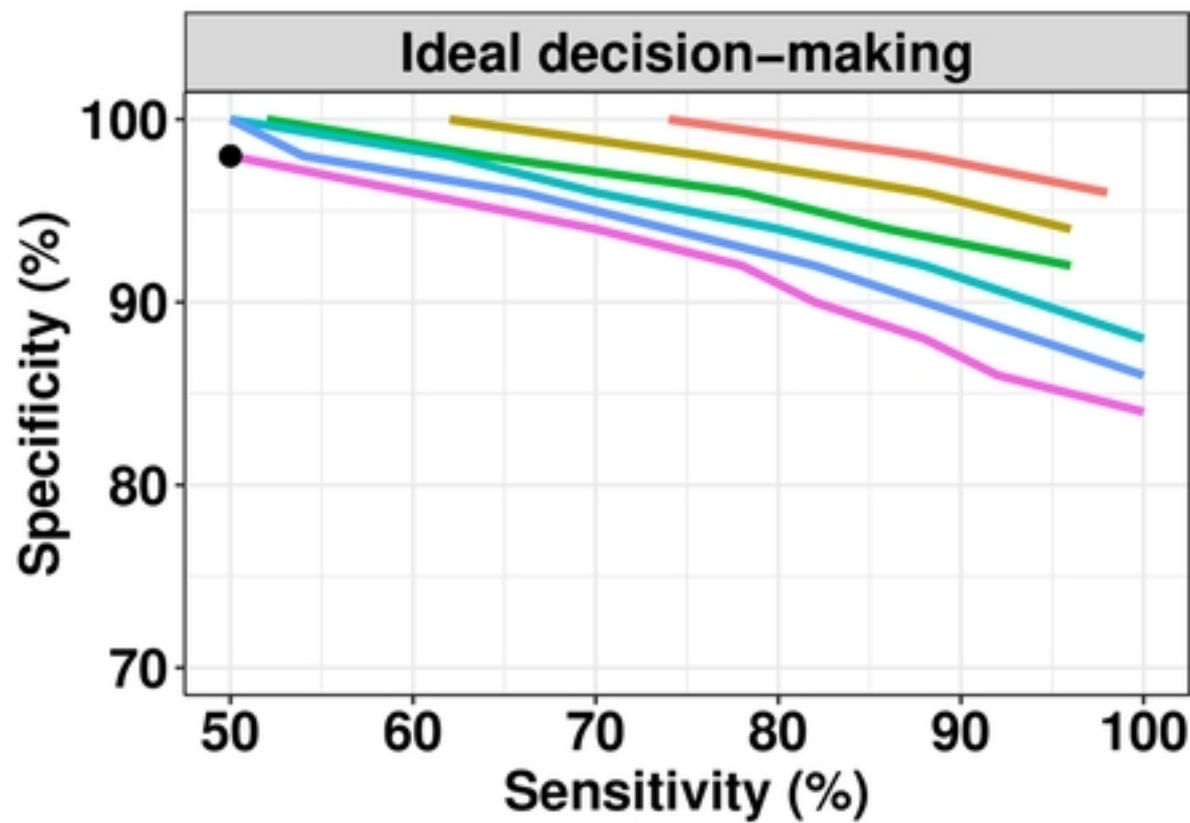


Fig1

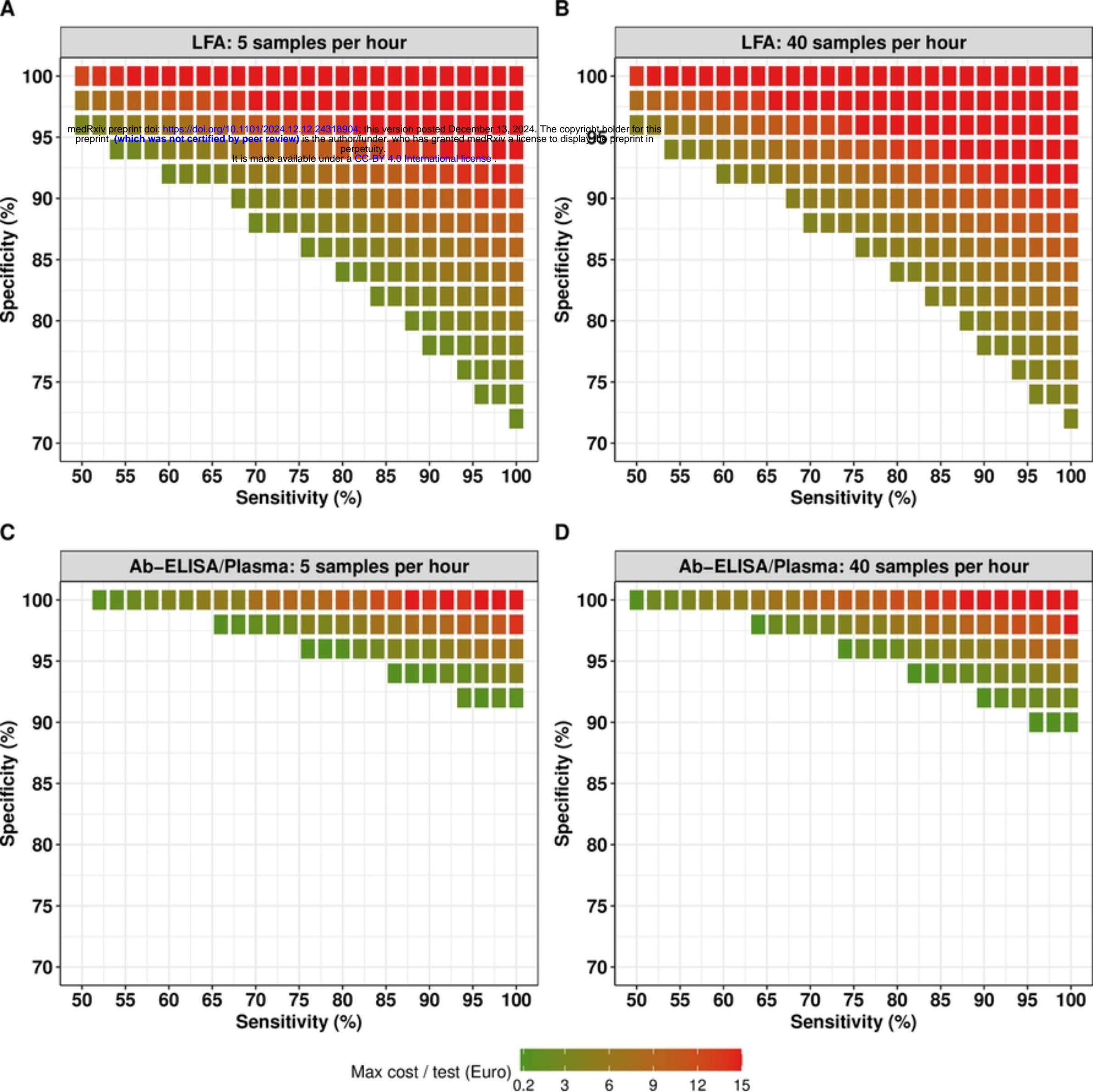


Fig2



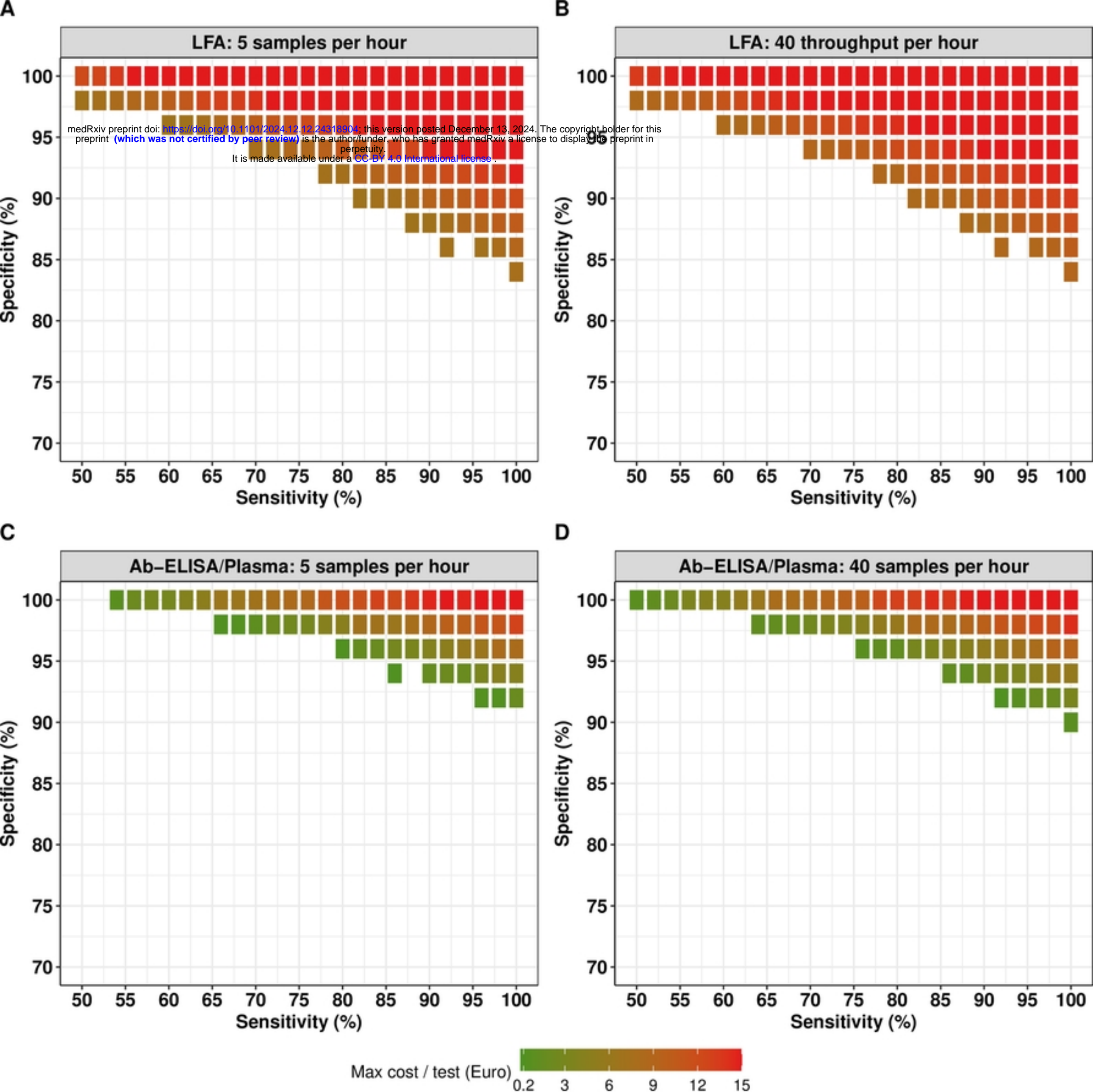


Fig3