

*Complete title*

**Severe outcomes and length of stay among people with schizophrenia hospitalized for COVID-19: A population-based retrospective cohort study**

*Authors*

Jessica Gronsbell<sup>1,2,3</sup>

John Wang<sup>4</sup>

Hilary Thurston<sup>5</sup>

Jianhui Gao<sup>1</sup>

Yaqi Shi<sup>1</sup>

Anthony D. Train<sup>6</sup>

Debra Butt<sup>3,7,8</sup>

Andrea Gershon<sup>9,10</sup>

Braden O'Neill<sup>3</sup>

Karen Tu<sup>3,4,11</sup>

<sup>1</sup> Department of Statistical Sciences, University of Toronto, Toronto, ON, Canada

<sup>2</sup> Department of Computer Science, University of Toronto, Toronto, ON, Canada

<sup>3</sup> Department of Family & Community Medicine, University of Toronto, Toronto, ON, Canada

<sup>4</sup> Research and Innovation, North York General Hospital

<sup>5</sup> Department of Gender, Feminist & Women's Studies, York University, Toronto, ON, Canada

<sup>6</sup> Department of Family Medicine, Queen's University, Kingston, ON, Canada

<sup>7</sup> Department of Family and Community Medicine, North York General Hospital

<sup>8</sup> Department of Family and Community Medicine, Scarborough Health Network

<sup>9</sup> Department of Medicine, Sunnybrook Health Sciences Centre, Toronto, ON, Canada

<sup>10</sup> Department of Medicine, University of Toronto, Toronto, ON, Canada

<sup>11</sup> Toronto Western Family Health Team, University Health Network, Toronto, ON, Canada

*Correspondence*

Jessica Gronsbell

Address: 700 University Ave, Toronto, ON, Canada, M5G 1Z5

Email: [j.gronsbell@utoronto.ca](mailto:j.gronsbell@utoronto.ca)

Telephone number: 416-978-3452

## Abstract

**Background and Hypothesis:** Schizophrenia is associated with substantial physical and psychiatric comorbidities that increase the risk of severe outcomes in COVID-19 infection. However, few studies have examined the differences in care and outcomes among people with schizophrenia throughout the pandemic. We hypothesized that rates of in-hospital mortality, admission to the intensive care unit (ICU), and length of stay differed among people with and without schizophrenia.

**Study Design:** We conducted a population-based retrospective cohort study using administrative health data from Ontario, Canada that included individuals hospitalized for COVID-19 between February 2020 and October 2023. We compared mortality, ICU admission, and length of stay using regression models adjusted for age, sex, comorbidities, vaccination status, and sociodemographic characteristics.

**Study Results:** We evaluated 66,959 hospital admissions, 4.3% (2,884) of which involved people with schizophrenia. People with schizophrenia had a significantly decreased rate of ICU admission (adjusted OR: 0.74, [0.67, 0.82]), a longer length of stay (adjusted RR: 1.25, [1.21, 1.30]), but a similar risk of mortality (adjusted OR: 1.09, [0.98, 1.22]) as people without schizophrenia. Age modified the relationship between schizophrenia and ICU admission. People with schizophrenia aged 60-75 were substantially less likely to be admitted to the ICU relative to those without (18.4% vs. 26.5%,  $p < .001$ ).

**Conclusions:** Our findings underscore disparities in care and outcomes among people with and without schizophrenia. These disparities vary by age and suggest that people with schizophrenia may not be receiving the same level of care as people without schizophrenia.

## Introduction

The COVID-19 pandemic revealed deep inequities and health infrastructural limitations in crisis response, particularly for vulnerable populations [1,2]. Among these populations, people with schizophrenia are of particular concern due to their substantial physical and psychiatric comorbidities, which adversely affect health, limit access to healthcare, and shorten life expectancy [3]. The complexity of schizophrenia requires extensive and specialized care, often exceeding what healthcare systems can provide [4]. Consequently, understanding both the severity of COVID-19 outcomes and the adequacy of care for individuals with schizophrenia is critically important.

A small number of studies from early in the COVID-19 pandemic investigated the impact of COVID-19 on people with schizophrenia [5]. Population-based studies in the U.S. and South Korea identified that people with schizophrenia were more likely to test positive for COVID-19 [6–8]. Later, an Israeli study found that this population is less likely to be vaccinated, placing them at higher risk for hospitalization and severe outcomes such as intensive care unit (ICU) admission and mortality [9–13]. A US study confirmed a higher COVID-19 mortality rate among people with schizophrenia, while studies from Israel, Denmark, and Spain reported increased risks of both hospitalization and COVID-19 related death in this population [8,13–16]. However, a small South Korean study did not find an increased mortality risk for those with schizophrenia [7]. Notably, only one study conducted in France examined both mortality and ICU admission to explore disparities in both health outcomes and care between people with and without schizophrenia [17]. This study confirmed the higher COVID-19 mortality risk observed in other studies and highlighted a significant disparity in care as people with schizophrenia were less likely to be admitted to the ICU compared to people without schizophrenia.

These findings point to a pressing health equity crisis, as evidence indicates that people with schizophrenia may be more likely to experience severe COVID-19 infections while potentially receiving less specialized treatment and monitoring. However, most existing studies focus on mortality rates and hospital admissions during the first year of the pandemic, typically involving fewer than 1,000 individuals with schizophrenia who contracted COVID-19, and often neglecting other important measures of severity and care quality, such as length of stay and ICU admission. In many countries, most COVID-19 hospitalizations occurred after this initial period (e.g., see Supplementary Figure 1) [18]. Therefore, a study examining severe COVID-19 outcomes throughout the entire course of the pandemic is necessary to gain a more comprehensive understanding of potential health disparities impacting people with schizophrenia.

To address this gap, we conducted a study using administrative health data from Ontario, Canada, to determine whether severe outcomes and length of stay differed between individuals with and without schizophrenia between February 2020 and October 2023. Our primary

objective was to compare rates of severe outcomes, including in-hospital mortality and ICU admission, while adjusting for key confounding variables such as age, sex, vaccination status, and sociodemographic characteristics. Our secondary objective was to analyze the length of hospital stay, as it serves as an indicator of infection severity and the effectiveness of hospital care.

## Methods

### *Study design and data sources*

We used administrative health data from the Ontario Health Data Platform (OHDP) to conduct a retrospective population-based cohort study. OHDP is a federated high-performance computing environment for secure, accurate, and privacy-protective linkage of large health datasets and was funded by Ontario's agency for health system planning and implementation (Ontario Health) in 2021. We included all people hospitalized for COVID-19 between February 2020 and October 2023 aged 18 and older. Hospitalizations were identified based on admitting diagnosis codes related to COVID-19 (International Classification of Diseases (ICD)-10 codes: U07.10 or U07.12 or U07.14). A previous study of hospitalizations in Ontario found these codes to have a sensitivity of 97.8% and specificity of 99.5% [19]. We kept the first hospitalization for each patient for analysis as very few people had more than 1 COVID-19 related admission (< 4%). To identify people with schizophrenia, we used a validated case identification algorithm based on physician visits and inpatient hospitalizations that has a sensitivity of 80.1% and specificity of 68.0% [20]. People were classified as having schizophrenia if they had at least 3 ICD-9 or ICD-10 codes of schizophrenia or psychosis over a 36 month period or at least one inpatient hospitalization with that diagnosis code prior to the time of their COVID-19 hospital admission.

### *Outcome and covariate definitions*

We considered three outcomes measuring COVID-19 severity and effectiveness of hospital care: in-hospital mortality, admission to the ICU, and length of stay. We obtained several covariates describing our population, including age (<60, 60-75, >75 years), sex, Charlson Comorbidity Index (CCI) score, income quintile based on residential neighborhood which serves as a proxy for socioeconomic status, and vaccination status. People were considered fully vaccinated for COVID-19 if they had received their most recent dose that made them fully vaccinated (either 2 doses or 1 dose, depending on the vaccine) or a subsequent booster vaccine at least 14 days, but no more than 6 months, prior to hospital admission. In contrast, people were considered as unvaccinated if they had never received a vaccine, or if they received only the first dose of a 2-dose series vaccine less than 14 days before hospital admission, or the most recent dose they received was more than 6 months prior to hospital admission. Anyone who did not meet the criteria for fully vaccinated or unvaccinated was considered to be partially vaccinated [21].

### *Statistical analysis*

We summarized outcomes and covariates using descriptive statistics, including means for continuous or count variables and counts and percentages for categorical variables. We fit a series of regression models to understand the relationship between schizophrenia and each of the three outcomes. The first model (Model 1) was unadjusted for any covariates, the second model (Model 2) adjusted for age, sex, income quintile, vaccination status, CCI, and the third model (Model 3) adjusted for the same covariates as Model 2 and included an interaction term between age and schizophrenia. The interaction was used to determine if the relationship between schizophrenia and the outcomes varied by age as previous work has demonstrated a strong relationship between COVID-19 severity and age [22]. Logistic regression was used to model the two binary outcomes (in-hospital mortality and ICU admission) and negative binomial regression was used to model length of stay which was an overdispersed count variable. A significance threshold of  $p < .05$  was used. All analyses were performed in R (version 4.3.2).

### *Ethics*

Ethical approval was obtained from the North York General Hospital Research Ethics Board with approval #2023-0256-423.

## Results

### *Population characteristics*

During the study period, 66,959 people were admitted to the hospital for COVID-19 and 2,884 (4.3%) had schizophrenia (see Table 1). People with schizophrenia were more likely to be male (52.5% vs. 47.5%,  $p = .006$ ), younger (70 vs. 74 years,  $p < .001$ ), and be in the lowest income quintile (41.6% vs. 30.6%,  $p < .001$ ). They also had higher CCI scores (41.9% vs. 32.0% for a score of 2+,  $p < .001$ ), but were less likely to be unvaccinated (75.9% vs. 78.5%,  $p = .002$ ).

### *In-hospital mortality*

During the study period, a total of 9,894 (14.8%) patients died in-hospital due to COVID-19. 16.2% of people with schizophrenia died, while 14.7% of people without schizophrenia died (Model 1 unadjusted Odds Ratio (OR): 1.12; 95% CI: [1.01, 1.24]; see Table 2). This relationship is potentially explained by the confounding factors that we considered, including age, sex, CCI score, income quintile, and vaccination status, as the adjusted OR in Model 2 was not significant (Model 2 adjusted OR: 1.09; 95% CI: [0.98, 1.22]; Table 2). The relationship

between mortality and schizophrenia status was not modified by age and no significant interaction between age and schizophrenia was observed in Model 3 (Table 2).

### *Intensive care unit admission*

A total of 12,592 (18.8%) people were admitted to the ICU. People with schizophrenia were less likely to be admitted to the ICU: 16.1% of people with schizophrenia were admitted to the ICU compared to 18.9% of people without schizophrenia (Model 1 unadjusted OR: 0.82; 95% CI: [0.74, 0.91]; Table 2). This association remained significant in Model 2, which adjusted for confounding variables, suggesting that the observed difference in ICU admission cannot be explained by the sociodemographic and clinical factors considered in our study (Model 2 adjusted OR: 0.74; 95% CI: [0.67, 0.82]). Additionally, there was a significant interaction between age and schizophrenia that indicates the difference in ICU admission is more pronounced for people above 60 years of age. Relative to people under age 60 (Model 3 adjusted OR: 0.95; 95% CI: [0.79, 1.13]), the discrepancy in ICU admission for people between the ages of 60 and 75 is significant (Model 3 adjusted OR: 0.63; 95% CI: [0.47, 0.84]) and marginally significant for people over age 75 (Model 3 adjusted OR: 0.71; 95% CI: [0.51, 0.99]). This association is underscored by Figure 1 which shows the unadjusted relationship between ICU admission and schizophrenia stratified by age. People between the ages of 60 and 75 with schizophrenia were less likely to be admitted to the ICU relative to people without schizophrenia (18.4% vs. 26.5%,  $p < .001$ ) and a similar pattern existed for people over age 75 (8.2% vs. 11.1%,  $p = 0.004$ ).

### *Length of stay*

The overall average length of stay was 12.00 days. People with schizophrenia stayed an average of 15.39 days in hospital, while people without schizophrenia stayed an average of 11.85 days (Model 1 unadjusted RR: 1.30; 95% CI: [1.25, 1.35], Table 2). The relationship between length of stay and schizophrenia was significant after adjusting for all of the covariates (Model 2 adjusted RR: 1.25, 95% CI: [1.21, 1.30], Table 2). Similar to the mortality outcome, age did not modify the observed association between these two variables (Model 3, Table 2).

## Discussion

We conducted a population-based retrospective cohort study using administrative data from Ontario, Canada, and discovered notable health and healthcare disparities between individuals with and without schizophrenia who had COVID-19. Unlike previous research, our study spanned the first several years of the pandemic, included a much larger cohort of individuals with schizophrenia who were hospitalized for COVID-19, and considered outcomes related to both COVID-19 severity and care. The results of our regression analyses adjusted for key



clinical and sociodemographic variables showed people with schizophrenia (i) are no more likely to experience in-hospital mortality, (ii) have significantly longer hospital stays, but (iii) are much less frequently admitted to the ICU. Furthermore, the gap in ICU admission is particularly pronounced among people over age 60. Our findings regarding ICU admission align with a French study and suggest that people with schizophrenia may not be receiving the same level of care as people without schizophrenia [17].

Extensive research has explored the factors that may explain observed disparities in health and care outcomes between people with and without schizophrenia [23,24]. People with schizophrenia are considered a vulnerable population for many reasons, including risk behaviors, living conditions, barriers to healthcare access and preventative measures, and psychiatric and physical comorbidities. These factors can significantly affect their health outcomes. A recent study reported that individuals with schizophrenia have a higher likelihood of contracting COVID-19 due to reduced adherence to mask-wearing and stay-at-home orders, lower risk awareness, and living in crowded congregate settings [25]. Another study suggested that increased COVID-19 mortality among those with schizophrenia might be attributed to congregate living conditions rather than the illness itself [26]. Additionally, individuals with schizophrenia used outpatient services less frequently than those without, potentially leading to delays in COVID-19 diagnosis and treatment [27]. Among the many comorbidities affecting people with schizophrenia, cardiovascular disease is the leading cause of death [28]. It is well-established that individuals with cardiovascular disease face a higher risk of severe COVID-19 infection and mortality [29].

Several reasons may explain the differences in care observed in our study, particularly the differences in ICU admission between people with and without schizophrenia. In addition to having less access to care, people with schizophrenia can receive lower quality of care due to both patient (e.g., fear, cognitive limitations, socioeconomic disadvantage) and provider (e.g., discomfort, lack of training) factors. Additionally, as noted by Fond et al., our findings regarding ICU admission are an example of the conflict between utility-based and equity-based arguments in healthcare [17]. People with schizophrenia have some of the poorest prognosis factors that justify ICU admission, including functional status, do-not-resuscitate orders, and their referring facility [30]. Many of these factors are not modifiable and may explain why people with schizophrenia are less frequently admitted to ICU in spite of having longer lengths of stay [31]. It is well known that coordination challenges between hospital and psychiatric care teams can lead to delays in access to care, and that stigma and communication barriers further impact individuals with schizophrenia [32,33]. Further quantitative and qualitative research is needed to clarify how different factors contribute to the observed disparities in outcomes and care between individuals with and without schizophrenia.

## Limits and Perspectives

This study relied on data from the Ontario Health Data Platform, which is a novel administrative health database developed by the Ontario government in response to the COVID-19 pandemic. The data begins on January 1, 2010 and we therefore may have missed schizophrenia diagnoses that occurred before this date. While this could reduce the observed disparities, it is likely that individuals with schizophrenia who are missed by our case identification algorithm are sufficiently stable to avoid interaction with the healthcare system for mental health services and may not be at increased risk for severe infection. Our case identification algorithm likely missed some individuals with schizophrenia due to its inherent limitations. Lastly, since this study relies on observational health data, it cannot provide a complete picture of individuals' health status or account for all potential confounding variables. For example, we did not have information on the time between onset of COVID-19 infection and hospitalization. We also did not have information on psychotropic medications that may be contraindicated for some COVID-19 treatments nor data on immune response. It is also unclear if our findings generalize to other settings and future research in this direction is warranted.

## Conclusion

This study highlights disparities in severe outcomes and healthcare between people hospitalized for COVID-19 with and without schizophrenia. People with schizophrenia are more likely to have longer stays in hospital for COVID-19, but are less likely to be admitted to the ICU, particularly among older age groups. Our findings emphasize the importance of personalized clinical management and strategies for people with schizophrenia who are infected with COVID-19.

## Acknowledgements

The authors thank project team members M. Bianca Seaton, Lindsay Lustig, Krystle Amog, Angela Coderre-Ball, Maria Carla Lapadula, Ye Lennon Li, Dorsa Mohammadrezaei, Angela Ortigoza, Javier Silva Valencia, and Krishna Karthik Vemuri, who provided support with the following range of tasks: project management and coordination, data cleaning, methodological strategy, literature searches, and manuscript formatting.

## Data Availability/Sharing Statement

Data used in this study was from the Ontario Health Data Platform (OHDP), which consisted of record-level, coded and linkable health data sets from the population of Ontario, Canada. These data were held securely, privacy-protected for the benefit of individuals, and are not publicly available.



## Funding Statement

This study received funding from the Ontario Ministry of Health (MOH). Parts of this material are based on data and information compiled and provided by the Ontario Ministry of Health (Ontario Health Data Platform). However, the analyses, conclusions, opinions and statements expressed herein are those of the author, and not necessarily those of the Ministry.

The study also received funding from the Rathlyn Foundation Primary Care EMR Research and Discovery Fund.

This research was funded in whole or in part by the Province of Ontario. Parts of this material are based on data and information compiled and provided by the Province. However, the analyses, conclusions, opinions and statements expressed herein are those of the author, and not necessarily those of the Province.

## Disclaimer

DB, KT, AG, BO, JG and AT received financial support from the First Mover's Fund, Ontario Ministry of Health. DB, KT, and BO receive Research Investigator Awards from the Department of Family and Community Medicine at the University of Toronto. KT receives a Chair in Family and Community Medicine Research in Primary Care at University Health Network.

## References

1. Lee IJ, Ahmed NU. The Devastating Cost of Racial and Ethnic Health Inequity in the COVID-19 Pandemic. *J Natl Med Assoc.* 2021;113: 114–117.
2. Gibson B, Schneider J, Talamonti D, Forshaw M. The impact of inequality on mental health outcomes during the COVID-19 pandemic: A systematic review. *Canadian Psychology / Psychologie canadienne.* 2021;62: 101–126.
3. Hjorthøj C, Stürup AE, McGrath JJ, Nordentoft M. Years of potential life lost and life expectancy in schizophrenia: a systematic review and meta-analysis. *Lancet Psychiatry.* 2017;4: 295–301.
4. Wiersma D. Needs of people with severe mental illness. *Acta Psychiatr Scand Suppl.* 2006; 115–119.
5. Pardamean E, Roan W, Iskandar KTA, Prayangga R, Hariyanto TI. Mortality from coronavirus disease 2019 (Covid-19) in patients with schizophrenia: A systematic review, meta-analysis and meta-regression. *Gen Hosp Psychiatry.* 2022;75: 61–67.
6. Wang Q, Xu R, Volkow ND. Increased risk of COVID-19 infection and mortality in people with mental disorders: analysis from electronic health records in the United States. *World*

Psychiatry. 2021;20: 124–130.

7. Ji W, Huh K, Kang M, Hong J, Bae GH, Lee R, et al. Effect of Underlying Comorbidities on the Infection and Severity of COVID-19 in Korea: a Nationwide Case-Control Study. *J Korean Med Sci.* 2020;35: e237.
8. Tzur Bitan D, Krieger I, Kridin K, Komantscher D, Scheinman Y, Weinstein O, et al. COVID-19 Prevalence and Mortality Among Schizophrenia Patients: A Large-Scale Retrospective Cohort Study. *Schizophr Bull.* 2021;47: 1211–1217.
9. Fond G, Nemani K, Etchecopar-Etchart D, Loundou A, Goff DC, Lee SW, et al. Association Between Mental Health Disorders and Mortality Among Patients With COVID-19 in 7 Countries: A Systematic Review and Meta-analysis. *JAMA Psychiatry.* 2021;78: 1208–1217.
10. Toubasi AA, AbuAnzeh RB, Tawileh HBA, Aldebei RH, Alryalat SAS. A meta-analysis: The mortality and severity of COVID-19 among patients with mental disorders. *Psychiatry Res.* 2021;299: 113856.
11. Vai B, Mazza MG, Delli Colli C, Foiselle M, Allen B, Benedetti F, et al. Mental disorders and risk of COVID-19-related mortality, hospitalisation, and intensive care unit admission: a systematic review and meta-analysis. *Lancet Psychiatry.* 2021;8: 797–812.
12. Karaoulanis SE, Christodoulou NG. Do patients with schizophrenia have higher infection and mortality rates due to COVID-19? A systematic review. *Psychiatrike.* 2021;32: 219–223.
13. Goldberger N, Bergman-Levy T, Haklai Z, Yoffe R, Davidson M, Susser E, et al. COVID-19 and severe mental illness in Israel: testing, infection, hospitalization, mortality and vaccination rates in a countrywide study. *Mol Psychiatry.* 2022;27: 3107–3114.
14. Moreno-Juste A, Poblador-Plou B, Ortega-Larrode C, Laguna-Berna C, González-Rubio F, Aza-Pascual-Salcedo M, et al. Mental health and risk of death and hospitalization in COVID-19 patients. Results from a large-scale population-based study in Spain. *PLoS One.* 2024;19: e0298195.
15. Nemani K, Li C, Olfson M, Blessing EM, Razavian N, Chen J, et al. Association of Psychiatric Disorders With Mortality Among Patients With COVID-19. *JAMA Psychiatry.* 2021;78: 380–386.
16. Reilev M, Kristensen KB, Pottegård A, Lund LC, Hallas J, Ernst MT, et al. Characteristics and predictors of hospitalization and death in the first 11 122 cases with a positive RT-PCR test for SARS-CoV-2 in Denmark: a nationwide cohort. *Int J Epidemiol.* 2020;49: 1468–1481.
17. Fond G, Pauly V, Leone M, Llorca P-M, Orleans V, Loundou A, et al. Disparities in Intensive Care Unit Admission and Mortality Among Patients With Schizophrenia and COVID-19: A National Cohort Study. *Schizophr Bull.* 2021;47: 624–634.

18. Dong E, Ratcliff J, Goyea TD, Katz A, Lau R, Ng TK, et al. The Johns Hopkins University Center for Systems Science and Engineering COVID-19 Dashboard: data collection process, challenges faced, and lessons learned. *Lancet Infect Dis.* 2022;22: e370–e376.
19. Moura CS, Neville A, Liao F, Wen B, Razak F, Roberts S, et al. Validity of hospital diagnostic codes to identify SARS-CoV-2 infections in reference to polymerase chain reaction results: a descriptive study. *CMAJ Open.* 2023;11: E982–E987.
20. Kurdyak P, Lin E, Green D, Vigod S. Validation of a Population-Based Algorithm to Detect Chronic Psychotic Illness. *Can J Psychiatry.* 2015;60: 362–368.
21. Tenforde MW, Self WH, Adams K, Gaglani M, Ginde AA, McNeal T, et al. Association Between mRNA Vaccination and COVID-19 Hospitalization and Disease Severity. *JAMA.* 2021;326: 2043–2054.
22. Romero Starke K, Reissig D, Petereit-Haack G, Schmauder S, Nienhaus A, Seidler A. The isolated effect of age on the risk of COVID-19 severe outcomes: a systematic review with meta-analysis. *BMJ Glob Health.* 2021;6. doi:10.1136/bmjgh-2021-006434
23. Walker ER, McGee RE, Druss BG. Mortality in mental disorders and global disease burden implications: a systematic review and meta-analysis. *JAMA Psychiatry.* 2015;72: 334–341.
24. Eack SM, Newhill CE, Anderson CM, Rotondi AJ. Quality of life for persons living with schizophrenia: more than just symptoms. *Psychiatr Rehabil J.* 2007;30: 219–222.
25. Pinkham AE, Ackerman RA, Depp CA, Harvey PD, Moore RC. COVID-19-related psychological distress and engagement in preventative behaviors among individuals with severe mental illnesses. *NPJ Schizophr.* 2021;7: 7.
26. Kozloff N, Mulsant BH, Stergiopoulos V, Voineskos AN. The COVID-19 Global Pandemic: Implications for People With Schizophrenia and Related Disorders. *Schizophr Bull.* 2020;46: 752–757.
27. Zhu JM, Myers R, McConnell KJ, Levander X, Lin SC. Trends In Outpatient Mental Health Services Use Before And During The COVID-19 Pandemic. *Health Aff .* 2022;41: 573–580.
28. Olfson M, Gerhard T, Huang C, Crystal S, Stroup TS. Premature Mortality Among Adults With Schizophrenia in the United States. *JAMA Psychiatry.* 2015;72: 1172–1181.
29. Aggarwal G, Cheruiyot I, Aggarwal S, Wong J, Lippi G, Lavie CJ, et al. Association of Cardiovascular Disease With Coronavirus Disease 2019 (COVID-19) Severity: A Meta-Analysis. *Curr Probl Cardiol.* 2020;45: 100617.
30. Ruijs CDM, Kerkhof AJFM, van der Wal G, Onwuteaka-Philipsen BD. Depression and explicit requests for euthanasia in end-of-life cancer patients in primary care in the Netherlands: a longitudinal, prospective study. *Fam Pract.* 2011;28: 393–399.

31. Zelle H, Kemp K, Bonnie RJ. Advance directives in mental health care: evidence, challenges and promise. *World Psychiatry*. 2015;14: 278–280.
32. Murch R. Improving attitudes to mental health patients in ICU. *Nurs N Z*. 2016;22: 30–31.
33. Weare R, Green C, Olasoji M, Plummer V. ICU nurses feel unprepared to care for patients with mental illness: A survey of nurses' attitudes, knowledge, and skills. *Intensive Crit Care Nurs*. 2019;53: 37–42.

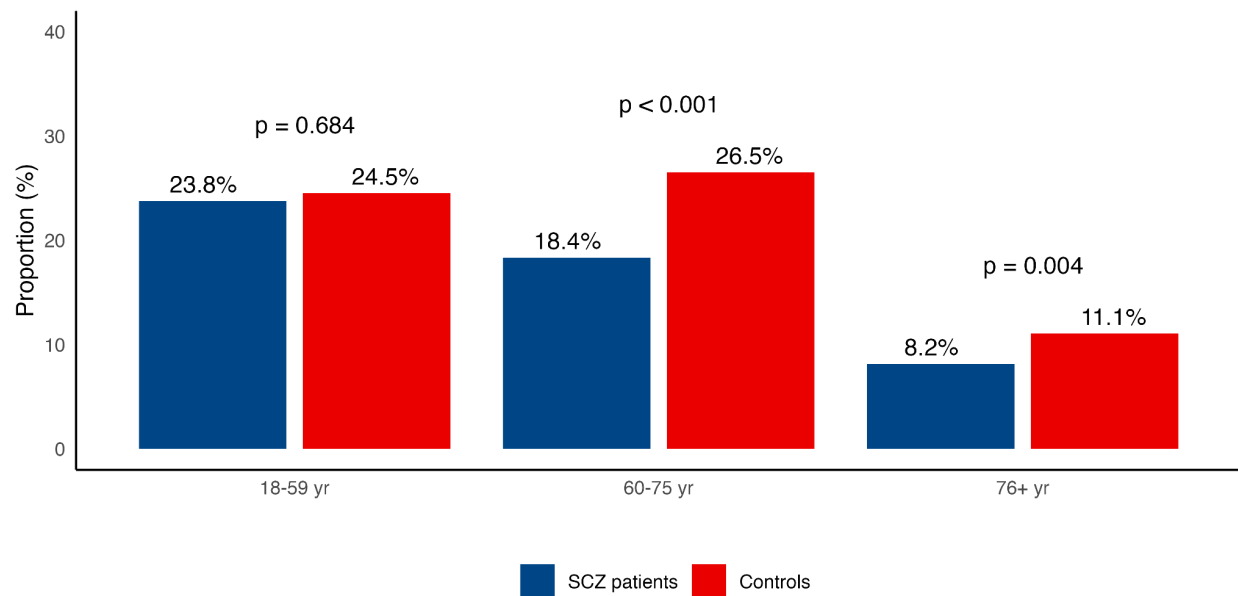
**Table 1:** Sociodemographic, clinical, and outcome variables used in our study among people with and without schizophrenia (SCZ).

Characteristics	Total	People with SCZ	People without SCZ	P value
	<i>n</i> = 66,959	<i>n</i> = 2,884	<i>n</i> = 64,075	
	<i>n</i> (%)	<i>n</i> (%)	<i>n</i> (%)	
<b>Sociodemographic data</b>				
Age				<b>&lt;.001</b>
<60	16,159(24.1%)	736(25.5%)	15,423(24.1%)	
60-75	20,302(30.3%)	1,106(38.3%)	19,196(30.0%)	
>75	30,498(45.5%)	1,042(36.1%)	29,456(46.0%)	
Sex				<b>.006</b>
Male	36,860(55.0%)	1,515(52.5%)	35,345(55.2%)	
Female	30,099(45.0%)	1,369(47.5%)	28,730(44.8%)	
Income				<b>&lt;.001</b>
First quintile	20,806(31.1%)	1,201(41.6%)	19,605(30.6%)	
Second quintile	15,098(22.5%)	645(22.4%)	14,453(22.6%)	
Third quintile	11,977(17.9%)	424(14.7%)	11,553(18.0%)	
Fourth quintile	10,267(15.3%)	330(11.4%)	9,937(15.5%)	
Fifth quintile	8,713(13.0%)	280(9.7%)	8,433(13.2%)	
<b>Clinical data at baseline</b>				
Charlson Comorbidity Index score				<b>&lt;.001</b>
0	32,599(48.7%)	1,134(39.3%)	31,465(49.1%)	
1	12,643(18.9%)	542(18.8%)	12,101(18.9%)	
≥2	21,717(32.4%)	1,208(41.9%)	20,509(32.0%)	
Vaccine	52,494(78.4%)	2,188(75.9%)	50,306(78.5%)	<b>.002</b>
Unvaccinated	1,962(2.9%)	87(3.0%)	1,875(2.9%)	
Partially vaccinated	12,503(18.7%)	609(21.1%)	11,894(18.6%)	
Fully vaccinated	54,367(81.2%)	2,421(83.9%)	51,946(81.1%)	
<b>Outcomes</b>				
In-hospital mortality				<b>.035</b>
No	57,065(85.2%)	2,418(83.8%)	54,647(85.3%)	
Yes	9,894(14.8%)	466(16.2%)	9,428(14.7%)	
ICU admission				<b>&lt;.001</b>
No	54,367(81.2%)	2,421(83.9%)	51,946(81.1%)	
Yes	12,592(18.8%)	463(16.1%)	12,129(18.9%)	
Length of Stay				<b>.856</b>
1	64,440(96.2%)	2,771(96.1%)	61,669(96.2%)	
2	2,401(3.6%)	107(3.7%)	2,294(3.6%)	
≥3	118(0.2%)	6(0.2%)	112(0.2%)	

**Table 2:** Regression modeling results for In-Hospital Mortality, ICU Admission, and Length of Stay among people admitted to the hospital admitted for COVID-19 ( $n = 66,959$ ).

	In-Hospital Mortality		ICU Admission		Length of Stay	
	OR (95% CI)	<i>P</i> value	OR (95% CI)	<i>P</i> value	RR (95% CI)	<i>P</i> value
Model 1	1.12 (1.01, 1.24)	<b>.033</b>	0.82 (0.74, 0.91)	<b>&lt;.001</b>	1.30 (1.25, 1.35)	<b>&lt;.001</b>
Model 2	1.09 (0.98, 1.22)	.095	0.74 (0.67, 0.82)	<b>&lt;.001</b>	1.25 (1.21, 1.30)	<b>&lt;.001</b>
Model 3	1.05 (0.77, 1.45)	.742	0.95 (0.79, 1.13)	.536	1.34 (1.25, 1.44)	<b>&lt;.001</b>
Interaction term						
age × SCZ						
60-75 years	1.12 (0.70, 1.82)	.632	0.63 (0.47, 0.84)	<b>.002</b>	1.25 (1.11, 1.40)	<b>&lt;.001</b>
>75 years	1.08 (0.67, 1.73)	.751	0.71 (0.51, 0.99)	<b>.046</b>	1.21 (1.07, 1.35)	<b>.002</b>

**Figure 1:** Frequency of ICU admission among people with and without schizophrenia (SCZ) stratified by age ( $n = 66,959$ ).



## Supplementary Materials

**Supplementary Figure 1:** Monthly count of COVID-19 hospitalizations between February, 2020 and October, 2023 in Ontario, Canada.

