

Study on the value of isolation and extraction of pathological positive cells to improve the detection rate: control trial

JianQuan Luo¹ JiaCheng Yang²

Sihui People's Hospital, Level 3A Hospital's Medical central laboratory (GuangDong province, CHINA 526200)

[ABSTRACT]

OBJECTIVE

The density of pathological positive cells was calculated by flow cytometry, and the target cells were isolated and extracted to improve the detection rate.

DESIGN

a case-control study.

SETTING

Hematology Department of Hospital

PARTICIPANTS

Selected from MDS 33 cases, 17 cases of malignant tumors, 29 cases of lupus erythematosus, 4 cases of plasmodium falciparum disease, a total of 76 cases as positive blood specimens.

MAIN OUTCOME MEASURES

Design Research group (group I) : Flow cytometry was used to analyze and calculate the density of various cell types, and then cell separation solution was used to accurately separate and extract target cells of the same density by adjusting the gradient of two different densities, that is, to collect pathologically positive blood cells of the same density. A control group (group II) was established: the whole blood samples of the same patient were compared and analyzed by direct push-film observation.

RESULTS

As shown in Figure 2AB-3AB-4AB-5AB, A large number of positive abnormal cells were extracted from group I, which improved the accuracy and specificity of diagnosis. In the control group (group II), only a few positive abnormal cells were found, which was very easy to misdiagnose and miss diagnosis. Data are analyzed from Table 3. According to the statistical results of group I, the positive detection rates were MDS=76%, malignant tumor cells =53%, lupus erythematosus cells =62%, Plasmodium falciparum =75%. In the control group (group II), the positive detection rate was MDS=27%, malignant tumor cells =11%, lupus erythematosus cells =33%, Plasmodium falciparum =25%. Chi-square test was used to compare the mean value of independent samples between groups, and the difference was statistically significant ($P<0.05$).

CONCLUSIONS

The density of pathologically positive blood cells can be measured by flow cytometry according to the specimens that need to be reviewed by microscopy as indicated by blood routine, and the target cells extracted can be accurately separated, that is, the same density of pathologically positive blood cells can be collected. Combined with the gold standard method of artificial microscopy, the detection rate was significantly improved, and the occurrence of misdiagnosis and missed diagnosis was reduced. For the difference in cell density of various forms in different types of specimens, it only needs to be distinguished from normal cell density, and abnormal pathological positive cells can be accurately extracted, which can help diagnose the positive detection rate of diseases, which is of great significance and value

[Keyword]: Pathological positive cells; Flow cytometry; Cell density; Stratified liquid; The detection rate.

Introduction

When a person develops symptoms of ill health, the first doctor will first consider doing routine blood tests to help analyze and diagnose the patient's health condition. In order to improve the diagnostic value of blood routine reports, in 2005, the International Consensus Expert Hematology Evaluation recommended 41 rules for the analysis of blood cells [1], aiming to prevent misdiagnosis and missed diagnosis of instrument measurement results.

Flow cytometry can detect various physical parameters of cells [2] and can analyze and calculate specific cell

population density.

According to the blood routine automatically prompts the need to review the blood film observation review of blood samples, The density of various types of cells was measured and calculated by flow cytometry, and then the target cells with the same density were accurately separated and extracted by adjusting the gradient of two different densities with cell separation solution, that is, the same density of pathologically positive blood cells were collected. The detection rate of pathology positive cells in blood smear was improved rapidly.

Methods

In this study, meet the same standards for ethics of experimentation and research integrity as the research study.
proof of ethics approval: Approval Number (ID Number): (Medical Review 2023 No. 61) 2023-061

This technique is used to extract target cells from blood samples of the same patient, analyze and diagnose the positive detection rate of pathological cells, and compare the detection rate with that of whole blood samples directly and automatically, so as to evaluate the application value of the technology of measuring and extracting pathological positive cells. The results of this study are reported as follows:

1. Materials and Methods

1.0 Materials and reagents

1.1 From January 2021 to December 2023 in our hospital, 33 patients with MDS, 17 patients with malignant tumor, 29 patients with SLE, and 4 patients with plasmodium infection were selected. A total of 76 patients with positive blood samples were included in the study group (group I). The diagnosis of confirmed cases is based on the Chinese Hematology (6th Edition) standard [3]. In the control group (group II), the whole blood samples of the same patients were applied to the automatic blood routine assembly line in the laboratory department of the hospital (result data analysis of Mindray CAL8000 automatic slide reading system) [4]. Abbreviated note [5] : myelodysplastic syndromes (MDS), malignant tumors are cases that can metastasize tumor cells in the blood, Systemic Lupus Erythematosus (SLE), Plasmodium-infected patients are malaria patients infected inside the red blood cells.

1.2 Use of reagents, principles, steps:

1.2.1 Follow the complete steps in flow chart 1 to measure the density of abnormal cells in the patient's blood by flow cytometry; When the cells pass through the laser beam, the detector detects the scattered light from the cells or particles; The FSC value is detected by a detector placed in the front; SSC values are detected by multiple detectors placed on the side. By combining forward scattering FSC and transverse scattering SSC data, cells can be grouped according to their size, shape, and complexity. Since the sample cells do not need to be labeled with any fluorescent compound conjugated antibodies, the FSC value and SSC value are two physical characteristics of cell size and particle size obtained by direct sample analysis. Unstained living cells do not suffer any damage and have characteristic light scattering to obtain density values easily [6]. Flow cytometry (FCM) software (Agilent New Cytometer Dx V6B5R3 USA) [7] was used to analyze relative cell size, relative cell particle density, and other techniques to calculate cell density values in the cell bank.

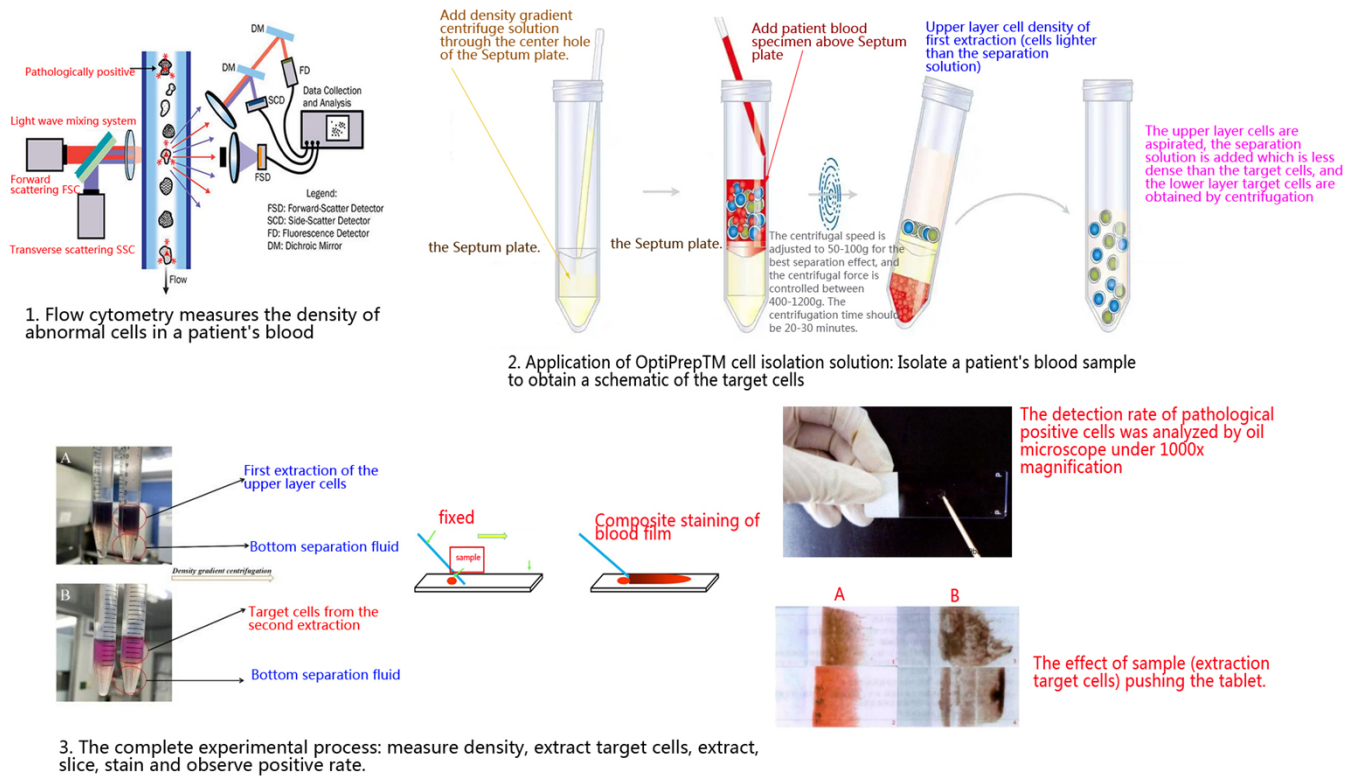


Figure 1 strobe flowchart.

1.2.2 How to obtain pathologically positive blood cells?

The application of "OptiPrep™" separation fluid (provided by Wuhan Emmetje Technology Co., LTD.) facilitates flotation of individual layer pools from dense load areas through continuous or discontinuous gradients or simple density barriers [8].

Refer to Table 1, according to the different densities of human blood cells, the cell density values in the cell library were calculated by comparative analysis [9], and pathological positive cells with the same density were distinguished.

category	Cells	density
Normal functional cell density	red blood cell	1.110
	Eosinophilic	1.095
	Neutrophilic	1.085
	Lymphoblastic cell	1.077
	T lymphocytes	1.076
	B lymphocytes	1.075
	Lymphocytes	1.073
	Natural killer cells	1.070
	monocyte	1.066
	platelet	1.030
Pathological positive cell density	MDS	1.064
	malignant cell	1.057
	SLE	1.051
	Plasmodium-infected cell	1.097

Table 1 Floating density of different blood cells in human body .

1.2.3 The proportion of the separation solution required is determined based on the density measurements of pathologically positive abnormal cells in the blood of different patients. Reference Table 2:

"OptiPrep™ "separation fluid		
density(g/ml)	solution process%(v/V)	Iodoxanol%(w/V)
1.076	35	10.4
1.062	25	7.4
1.056	20	5.9
1.049	15	4.5

Table 2: Reference table for preparation of stratified solutions

1.2.4 Separation step

According to the experimental design and reference Figure 1, samples from patients with different types of diseases were selected and measured by flow cytometry, and the cell density values of positive cells in the cell bank were calculated and analyzed. We formulated two kinds of layered liquid with high and low density and the density of the target cells in Table 1 according to the operation in Table 2. Using density gradient sedimentation, the only cells of the same type with the density of the separated liquid were densely packed on the interface of the separated liquid, and the upper layer cells were aspirated, and then the density of the separated liquid was adjusted so as to aspirate and expel the upper layer cells with a density smaller than that of the separated liquid.

The procedure is shown in Figure 1, where a blood sample is taken and added to a specialized anticoagulant tube. The blood cell density of the patient was calculated by flow cytometry following the steps in the flow chart in Figure 1. The centrifugal speed is adjusted to 50-100g for the best separation effect, and the centrifugal force is controlled between 400-1200g. The centrifugation time should be 20-30 minutes. After adding high density and low density stratified solutions and centrifuging horizontally twice, 98% of the same density cells can be obtained [10]. The pathologically positive abnormal cells with the same separation and purification density were coated on a slide by a special capillary suction method, and the blood film was pushed to air for drying. The cells were first fixed with a drop of methanol solution, then the blood film was stained, and then observed and analyzed with an oil microscope.

1.2.5 Blood membrane cell staining

According to Wright [10], eosin methylene blue is an acidic dye mainly used for microscopic staining, while composite Gilles staining is suitable for staining blood smear specimens, blood cells, plasmodium, Rickettsial, bone marrow cells, immunotumor cells, etc. Please refer to the operation manual for detailed steps.

1.3 Comparative Effectiveness of Column Grouping Studies

group I To improve the reliability of the results, we use a manual microscope to observe the diagnostic results. The control group (group II) was also treated with whole blood direct slide staining (automatic slide staining analysis by blood routine line system) to compare the quality and effect of detecting pathologically positive cells.

1.4 Statistical comparison methods

Statistical treatment was performed using SPSS version 23, and comparisons between group means were performed using the chi-square test for independent samples; the χ^2 test was used for count data. If $P < 0.05$, the difference was statistically significant.

2. Results

2.1 Diagnostic analysis of observation effect

Figure 2AB-3AB-4AB-5AB: Control effect analysis of positive detection rates of four types of diseases: Study group A (group I) and control Group B (Group II)

figure-2A

Group I: The effect of case-positive cell extraction from SLE patients.

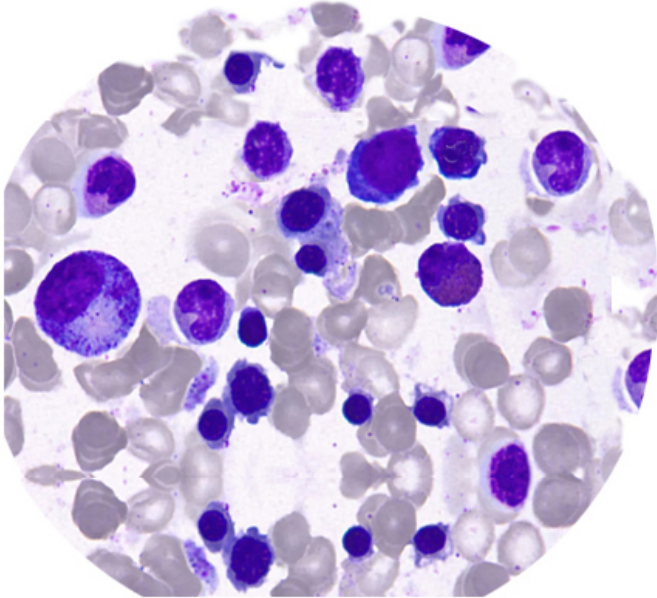


figure-2B

Group II: Effects of whole blood smears in the same patient.

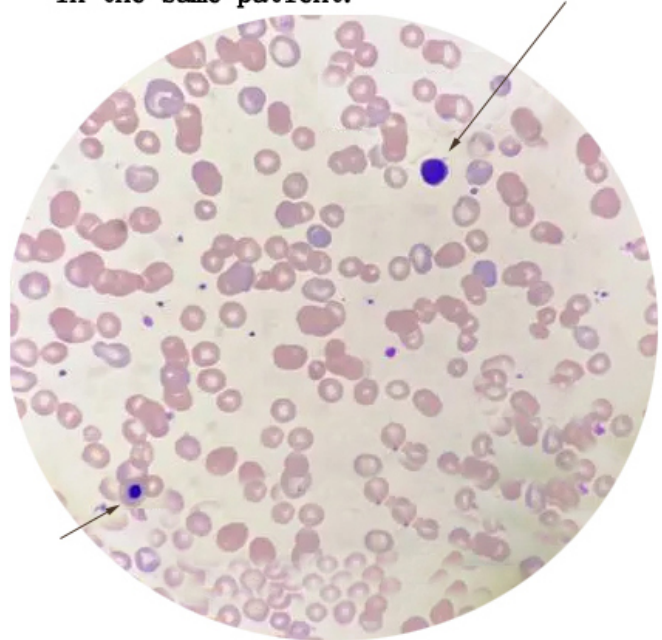


figure-3A

Group I: The effect of case-positive cell extraction from tumor patient specimens.

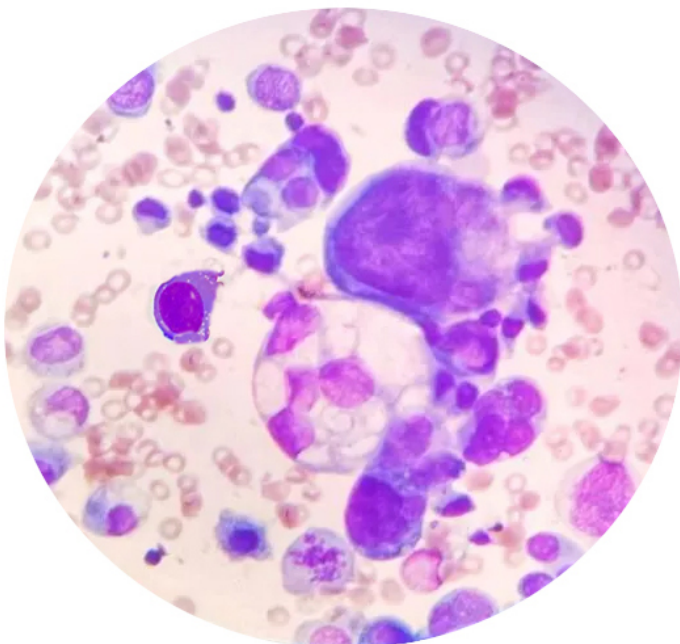


figure-3B

Group II: Effects of whole blood smears in the same patient.

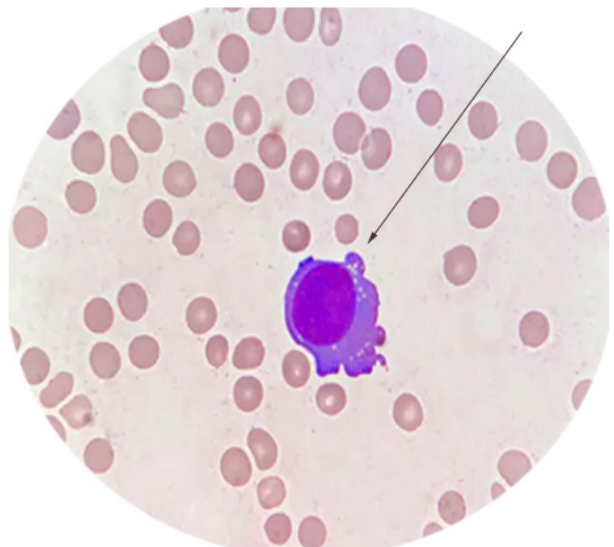


figure-4A

Group I: The effect of case-positive cell extraction from SLE patients.

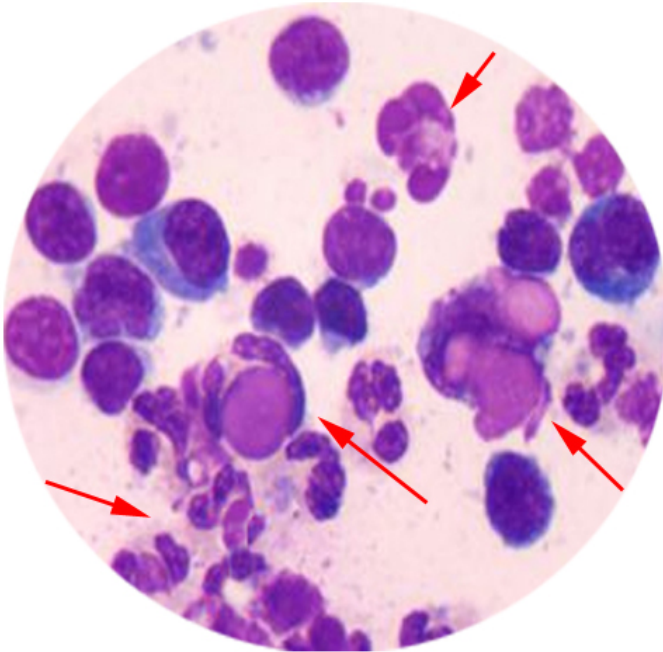


figure-4B

Group II: Effects of whole blood smears in the same patient.

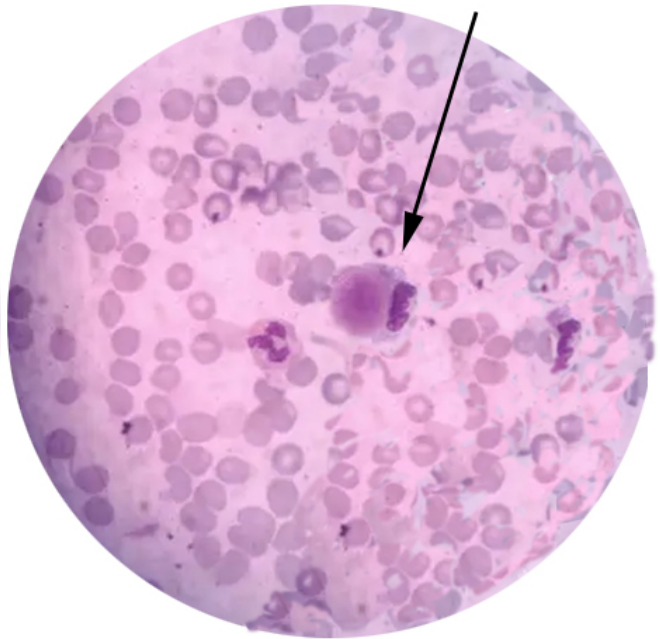


figure-5A

Group I: Effects of case-positive cell extraction from malaria patient specimens.

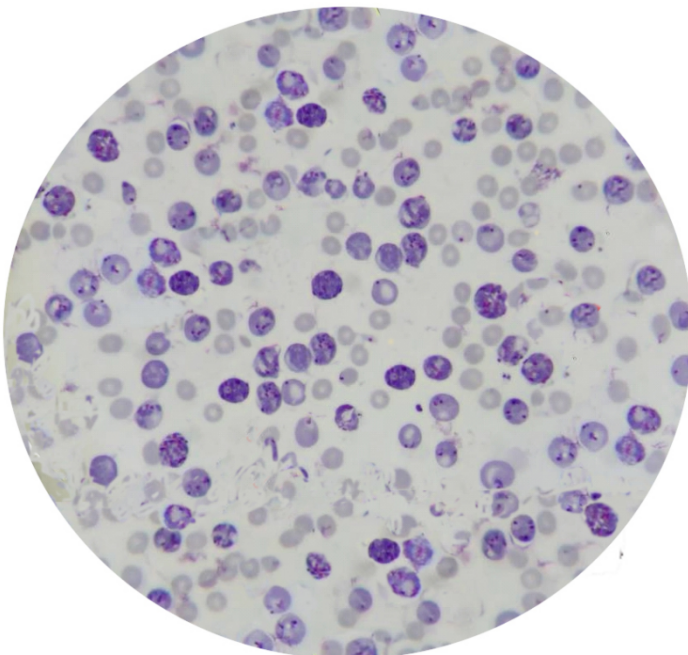
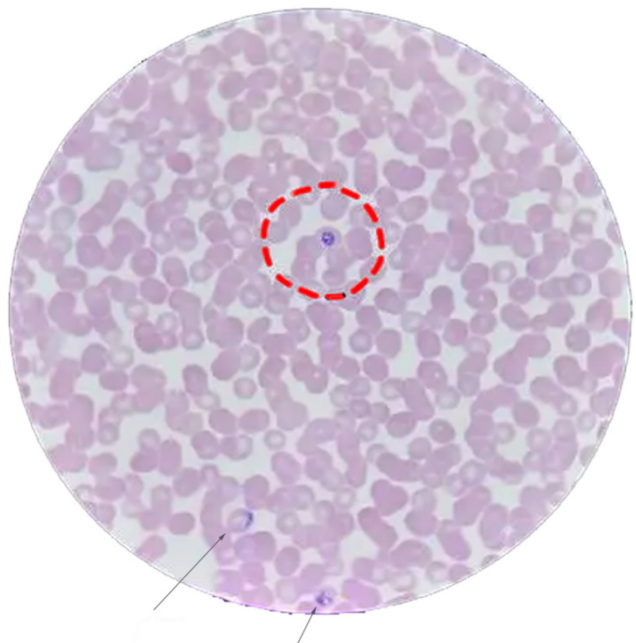


figure-5B

Group II: Effects of whole blood smears in the same patient.



2.2 Research Group I (Cell Separation, Extraction, and Purification Technology Research Group) and Control Group II (Direct review blood film of same patient) Comparison of positive detection rates of (Table 3):

category	Number of cases	Group 1	Group 2	χ^2	P
MDS	33	25 (76%)	9 (27%)	15.53	<0.001*
malignant cell	17	8 (46%)	2 (11%)	6.58	0.010*
SLE	29	17 (62%)	7 (33%)	4.27	0.009*
Plasmodium-infected cell	4	3 (75%)	1 (25%)	4.67	0.031*

Table 3:* Chi-square test was used for counting data, and $P < 0.05$ was used for comparison among groups, with statistical significance.

3. Discussions

Flow cytometry is used to detect and calculate various cell densities in confirmed patient samples. Based on Table 1, the accurate density values of pathological positive cells can be found. OptiPrep™ solution was used in the experiment to prepare two layers of solutions with different densities. The analysis results of the same patient sample in the control group were applied through the blood routine assembly line system to automatically create the rules for microscopic examination and review of blood film thin films, as a comparison of the original data of the control group (Group II).

As shown in Figure 2AB-3AB-4AB-5AB, the target cells of group I were purified, and there were A large number of abnormal positive cells, which improved the accuracy and specificity of diagnosis. Direct smear observation of whole blood samples of group II showed few abnormal positive cells (low detection rate), and the effect was relatively obvious, which was easy to be misdiagnosed and missed diagnosis.

Table 3 shows the data before and after comparison of a total of 76 case samples in the two groups. The statistical results of group I showed that the positive test was MDS=76%, malignant tumor cells =53%, lupus cells =62%, and Plasmodium falciparum =75%. In the control group (group II), the positive detection was MDS=27%, malignant tumor cells =11%, lupus cells =33%, and Plasmodium falciparum =25%. Chi-square test was used to compare the mean value of independent samples between groups, and the difference was statistically significant ($P < 0.05$).

Why is the positive detection rate of group I significantly higher than that of group II? This is because more than 98% of pathologically positive cells of the same density were extracted from the target cells for extraction and purification. Comparison (group II) is the automatic push and reading of whole blood samples, which only accounts for a very small part of the patient sample, about 2 microliters, and it is difficult to find the missed diagnosis results in the blood. However, the blood routine assembly line system can automate the efficiency of reprogradation relatively fast and simple, and has advantages [11].

Study group I also failed to achieve a 100 percent detection rate, It may be that the blood samples did not express pathologically positive cells, or there may be errors in experimental data.

In the experimental work, it was found that blood infection diseases first showed abnormal cell lesions, resulting in morphological changes and density reduction [12], which was significantly different from that of normal functioning blood cells. Based on the positive cell density values of different cases, we need to build a rich cell density library to ensure that flow cytometry can analyze and calculate. Characteristic parameters of pathologically positive cells. Therefore, it is easier to find evidence of pathogens, so that the best detection rate can be obtained.

Advantages and limitations of this study

Important advantages The technology of extracting target cells with separation liquid provides the best detection rate of positive cells, but the limitation is some time-consuming manual operation, and there is no automation to replace the two-step operation of manual cell separation twice.

Comparison of technical applications with other studies

Compared to the diagnostic techniques in this study, Tehreem Fatima, indicated that manual microscopy is considered the gold standard. Artificial intelligence needs to be further developed to read and analyze results, which can replace the tedious and time-consuming steps of manually observing results, and there is a growing consensus that it can improve diagnostic efficiency [13]. Corresponding to the morphological characteristics and density index values of tumor cells, Professor Susan Shyu, has studied the effect of selection method for separating human peripheral blood mononuclear lymphocytes, and compared it with our study of flow cytometry for differentiating lymphoma cell density technology to improve the detection rate of similar pathological cells, which can confirm the consistency of the view [14]. Chia-Hsing Liu, studied the cell density of various interstitial fluid, cerebrospinal fluid, body fluid, and body fluid as well as the tissue staining of positive cells extracted from the isolated fluid, and believed that the staining effect had an impact on the correctness of the results of purified and extracted cells [15].

Conclusions:

The density of pathologically positive blood cells can be measured by flow cytometry according to the specimens that need to be reviewed by microscopy as indicated by blood routine, and the target cells extracted can be accurately separated, that is, the same density of pathologically positive blood cells can be collected. Combined with the gold standard method of artificial microscopy, the detection rate was significantly improved, and the occurrence of misdiagnosis and missed diagnosis was reduced. For the difference in cell density of various forms in different types of specimens, it only needs to be distinguished from normal cell density, and abnormal pathological positive cells can be accurately extracted, which can help diagnose the positive detection rate of diseases, which is of great significance and value.

[References]

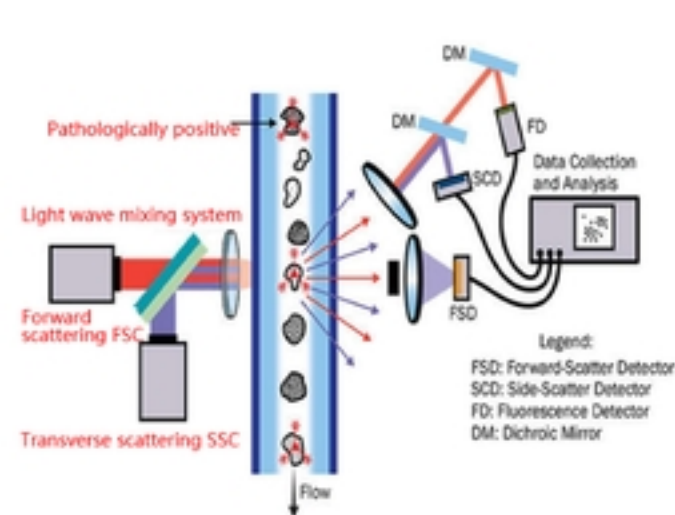
- [1]Marta Díaz-Navarro,et al; Understanding the diagnosis of catheter-related bloodstream infection: real-time monitoring of biofilm growth dynamics using time-lapse optical microscopy[J]Front Cell Infect Microbiol. 2023 Dec 6;13:1286527. doi: 10.3389/fcimb.2023.1286527. eCollection 2023.
- [2]Giovanna Panza,et al; Environmental Diagnosis through a Flow Cytometric Approach[J]Int J Mol Sci. 2024 Oct 15;25(20):11069. doi: 10.3390/ijms252011069.
- [3]Cao Zhijian,et al; Progress of hematological malignant tumors[J]Leukemia/lymphoma,2018 -01 -25 • DOI : 10.3760/cma.j.issn.1009-9921.2018.01.0
- [4] V Houyhongthong,et al; Automated nucleated red blood cell count using the Mindray BC-6800 hematology analyzer[J]Int J Lab Hematol,. 2018 Oct;40(5):611-616. doi: 10.1111/ijlh.12876. Epub 2018 Jun 21.
- [5] Fedor Lurie,et al; The 2020 update of the CEAP classification system and reporting standards[J]J Vasc Surg Venous Lymphat Disord. 2020 May;8(3):342-352. doi: 10.1016/j.jvsv.2019.12.075. Epub 2020 Feb 27.
- [6]Alexander G Luchinin,et al; Effect of scattering anisotropy on the properties of photon density waves[J] Appl Opt. 2021 Jan 1;60(1):33-40. doi: 10.1364/AO.412093.
- [7]Sebastiano Montante,et al; Flow cytometry data analysis: Recent tools and algorithms[J]Int J Lab Hematol. 2019 May;41 Suppl 1:56-62. doi: 10.1111/ijlh.13016.
- [8]Jack E Bramham, et al; Stability of a high-concentration monoclonal antibody solution produced by liquid-liquid phase separation[J]MAbs. 2021 Jan-Dec;13(1):1940666. doi: 10.1080/19420862.2021.1940666.
- [9]Hannah Viola,et al; A High-Throughput Distal Lung Air-Blood Barrier Model Enabled By Density-Driven Underside Epithelium Seeding[J]Adv Healthc Mater. 2021 Aug;10(15):e2100879. doi: 10.1002/adhm.202100879. Epub 2021 Jun 26.
- [10]Utku Goreke, et al; Size and density measurements of single sickle red blood cells using microfluidic magnetic levitation[J]Lab Chip. 2022 Feb 15;22(4):683-696. doi: 10.1039/d1lc00686j.
- [11]Mengchao Yan,et al; Tumor cell density dependent IL-8 secretion induces the fluctuation of tregs/CD8 + T cells infiltration in hepatocellular carcinoma: one prompt for the existence of density checkpoint[J]J Transl Med. 2023 Mar 17;21(1):202. doi: 10.1186/s12967-023-04060-3.
- [12]M C Lardone,et al; Leydig cell dysfunction is associated with post-transcriptional deregulation of CYP17A1 in men

with Sertoli cell-only syndrome[J]Mol Hum Reprod. 2018 Apr 1;24(4):203-210. doi: 10.1093/molehr/gay006.

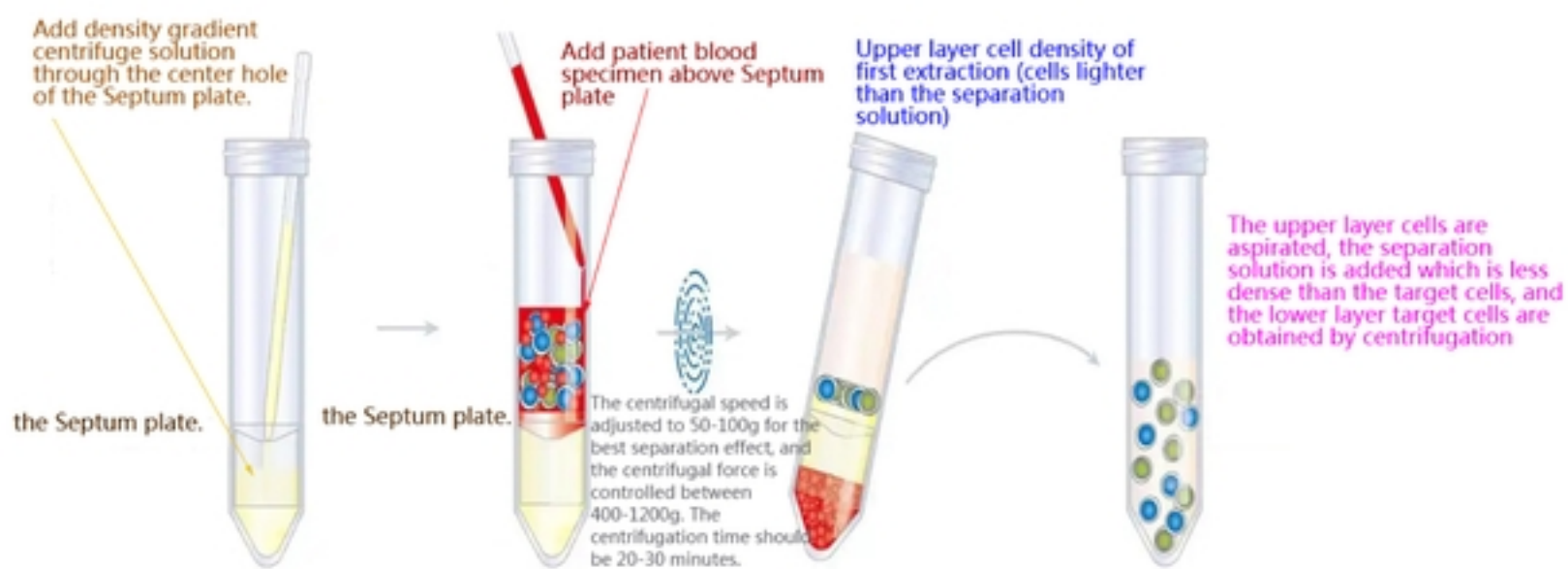
[13]Tehreem Fatima,et al; Automatic detection of Plasmodium parasites from microscopic blood images[J]J Parasit Dis. 2020 Mar;44(1):69-78. doi: 10.1007/s12639-019-01163-x. Epub 2019 Sep 20.

[14]Susan Shyu, et al; Cytomorphologic Features Found in Cerebrospinal Fluid Specimens of Hemophagocytic Lymphohistiocytosis Patients[J]Am J Clin Pathol. 2021 Aug 4;156(3):381-390. doi: 10.1093/ajcp/aqaa248.

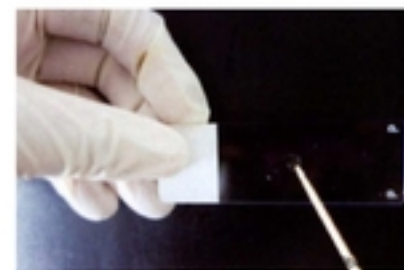
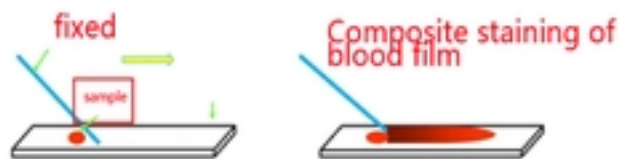
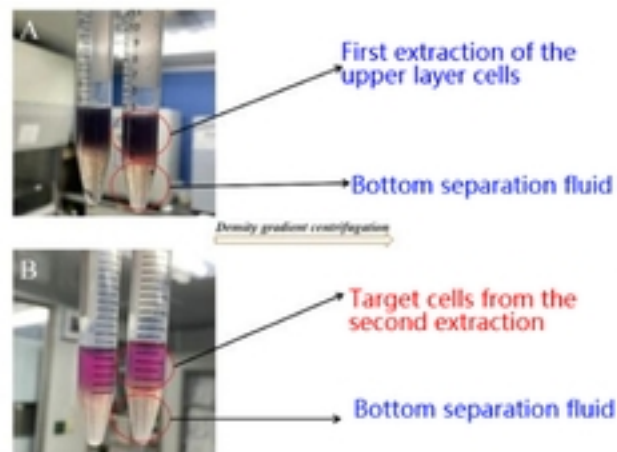
[15] Chia-Hsing Liu , et al;An Optimized Melanin Depigmentation Method for Histopathological and Immunohistochemical Staining of Formalin-Fixed Paraffin-Embedded Tissues[J]Int J Surg Pathol. 2024 Jun;32(4):679-683. doi: 10.1177/10668969231188892. Epub 2023 Jul 31.



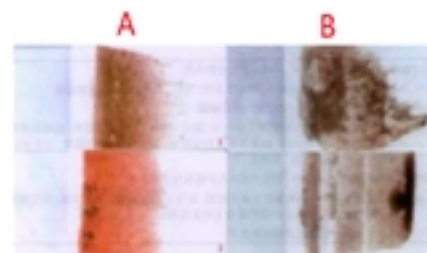
1. Flow cytometry measures the density of abnormal cells in a patient's blood



2. Application of OptiPrep™ cell isolation solution: Isolate a patient's blood sample to obtain a schematic of the target cells



The detection rate of pathological positive cells was analyzed by oil microscope under 1000x magnification



The effect of sample (extraction target cells) pushing the tablet.

3. The complete experimental process: measure density, extract target cells, extract, slice, stain and observe positive rate.

Figure

figure-2A

Group I: The effect of case-positive cell extraction from SLE patients.

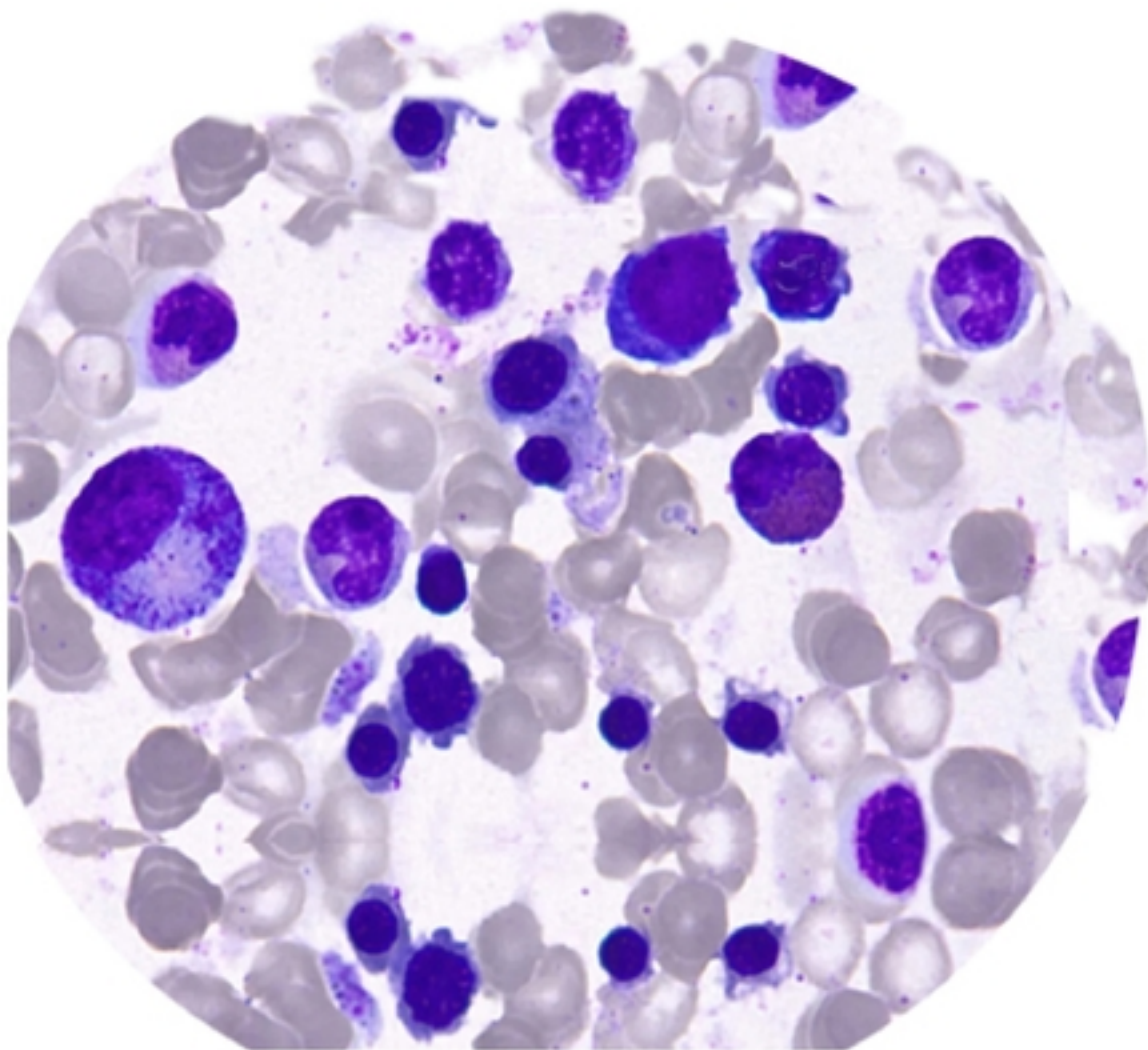


figure-2B

Group II: Effects of whole blood smears in the same patient.

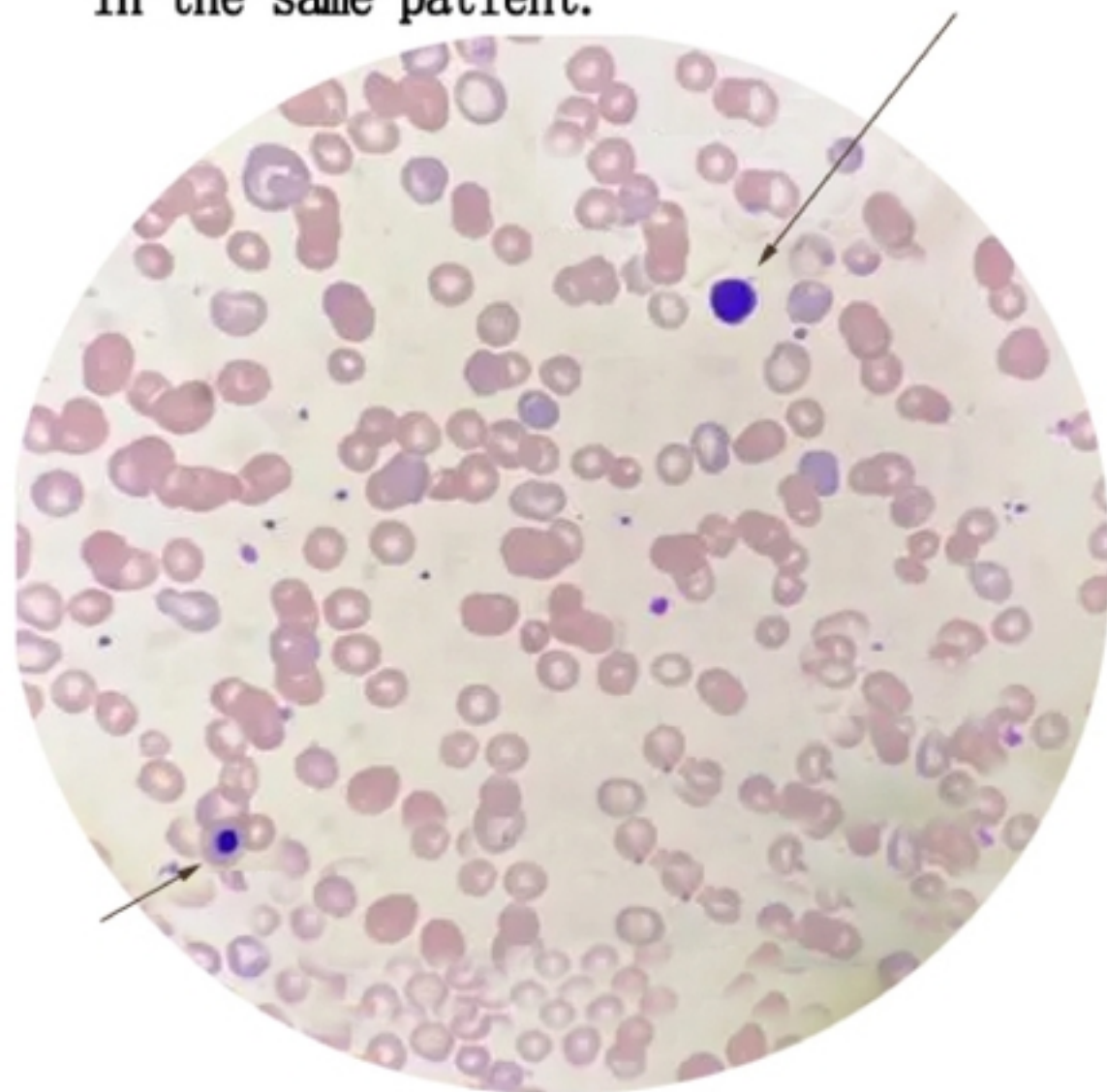


figure-3A

Group I: The effect of case-positive cell extraction from tumor patient specimens.

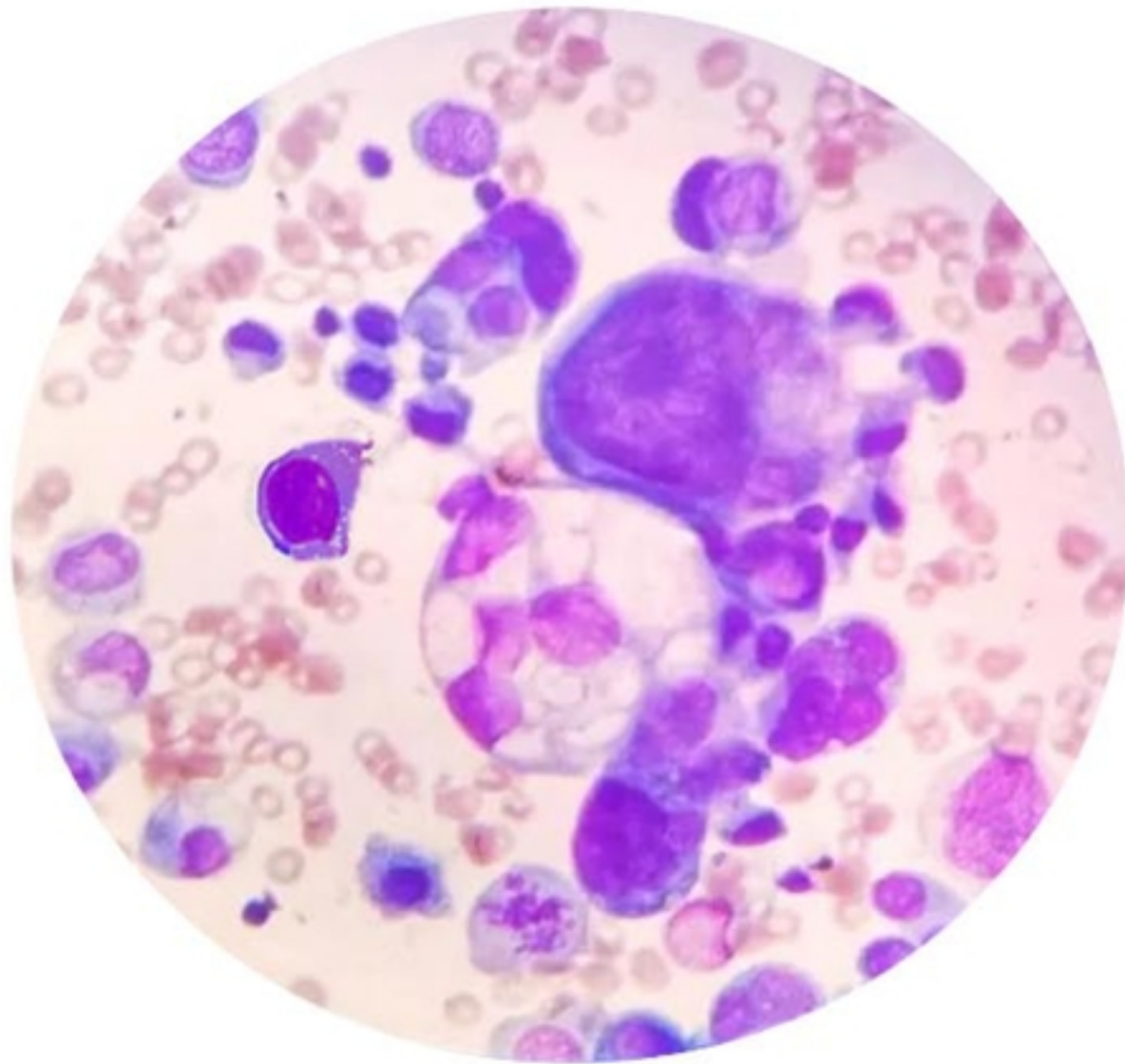


figure-3B

Group II: Effects of whole blood smears in the same patient.

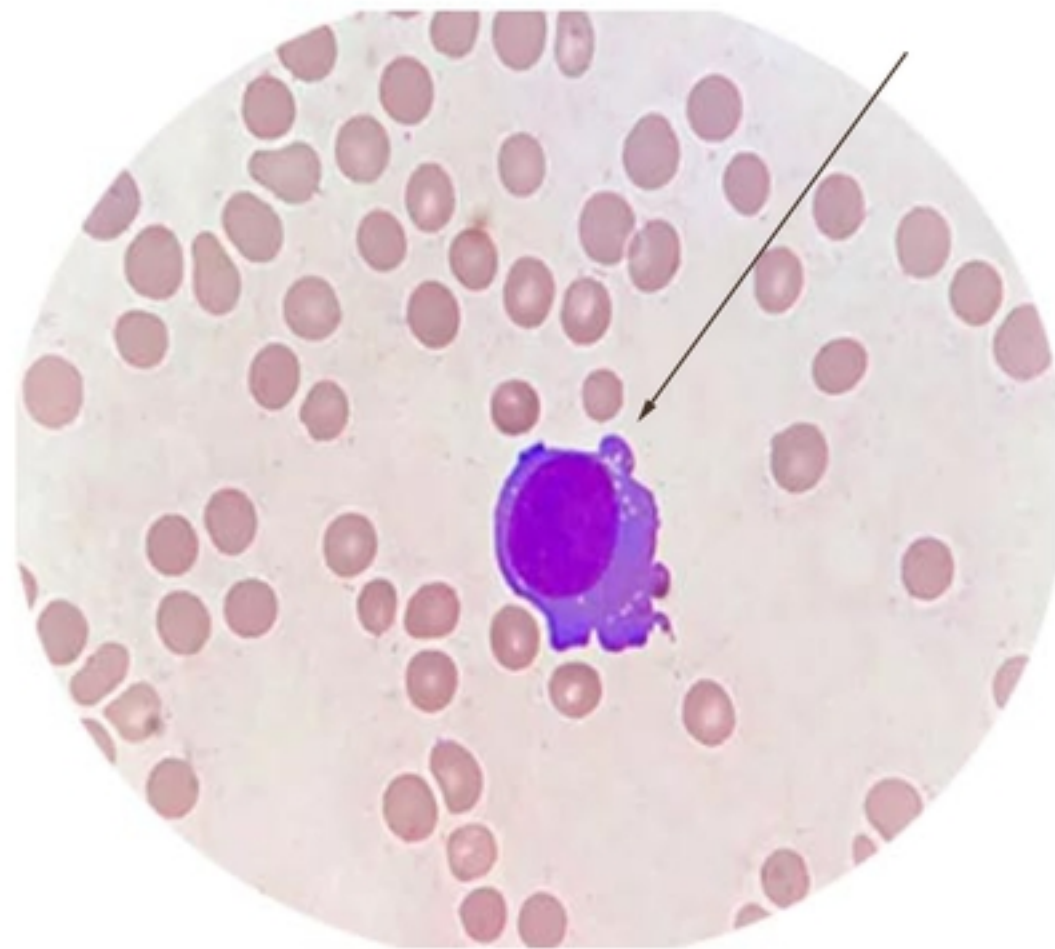


figure-4A

Group I: The effect of case-positive cell extraction from SLE patients.

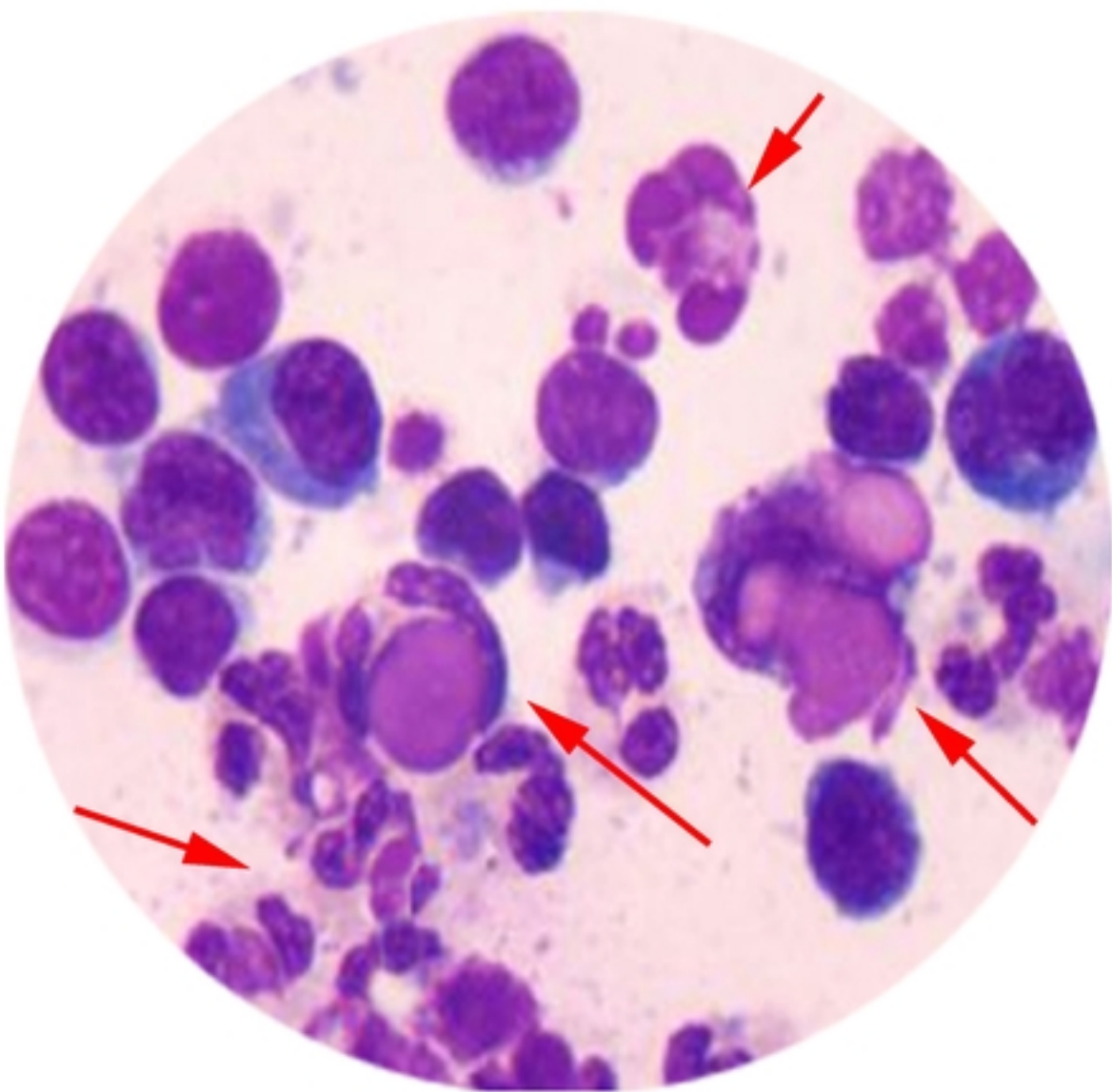


figure-4B

Group II: Effects of whole blood smears in the same patient.

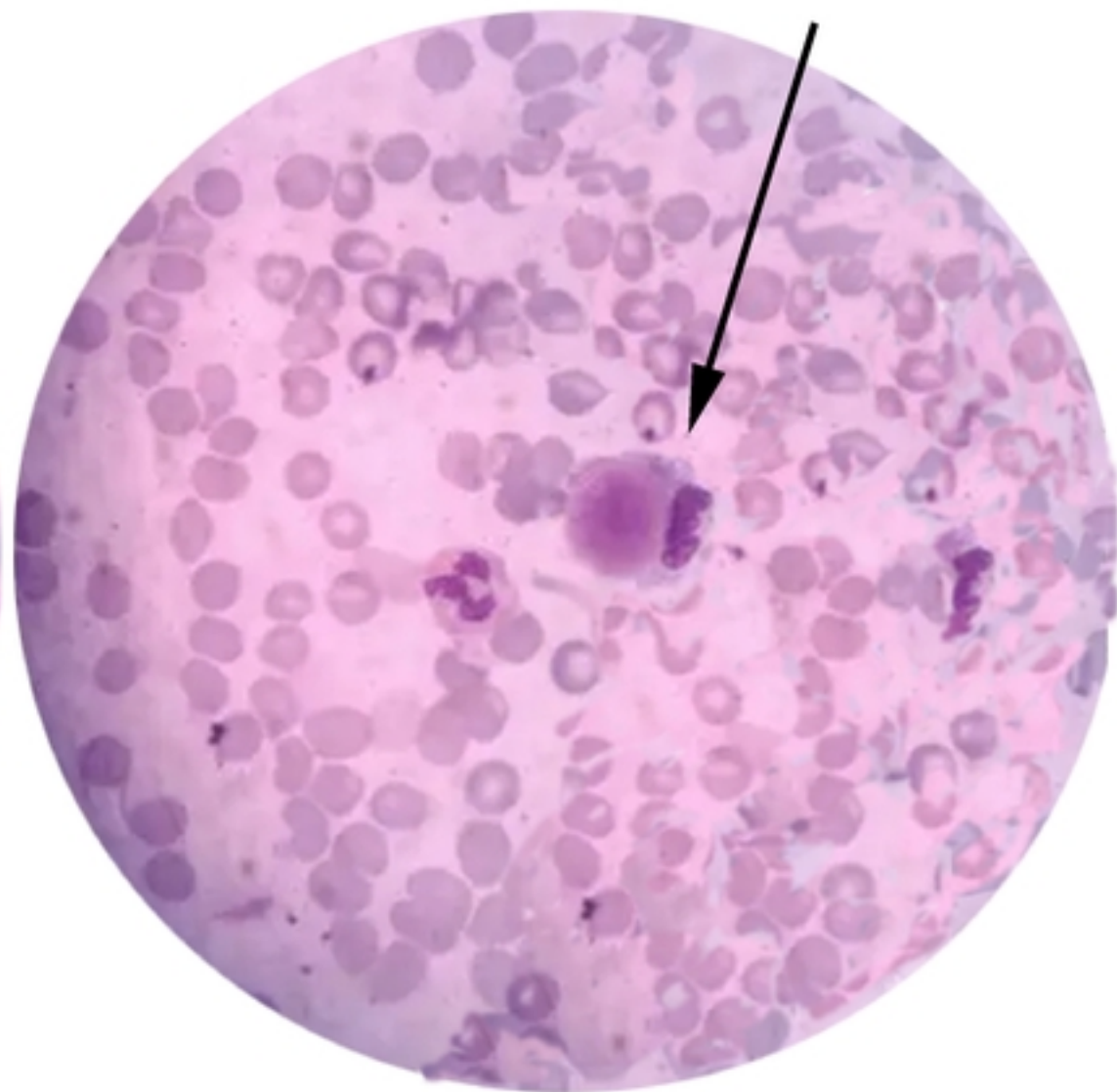


figure-5A

Group I: Effects of case-positive cell extraction from malaria patient specimens.

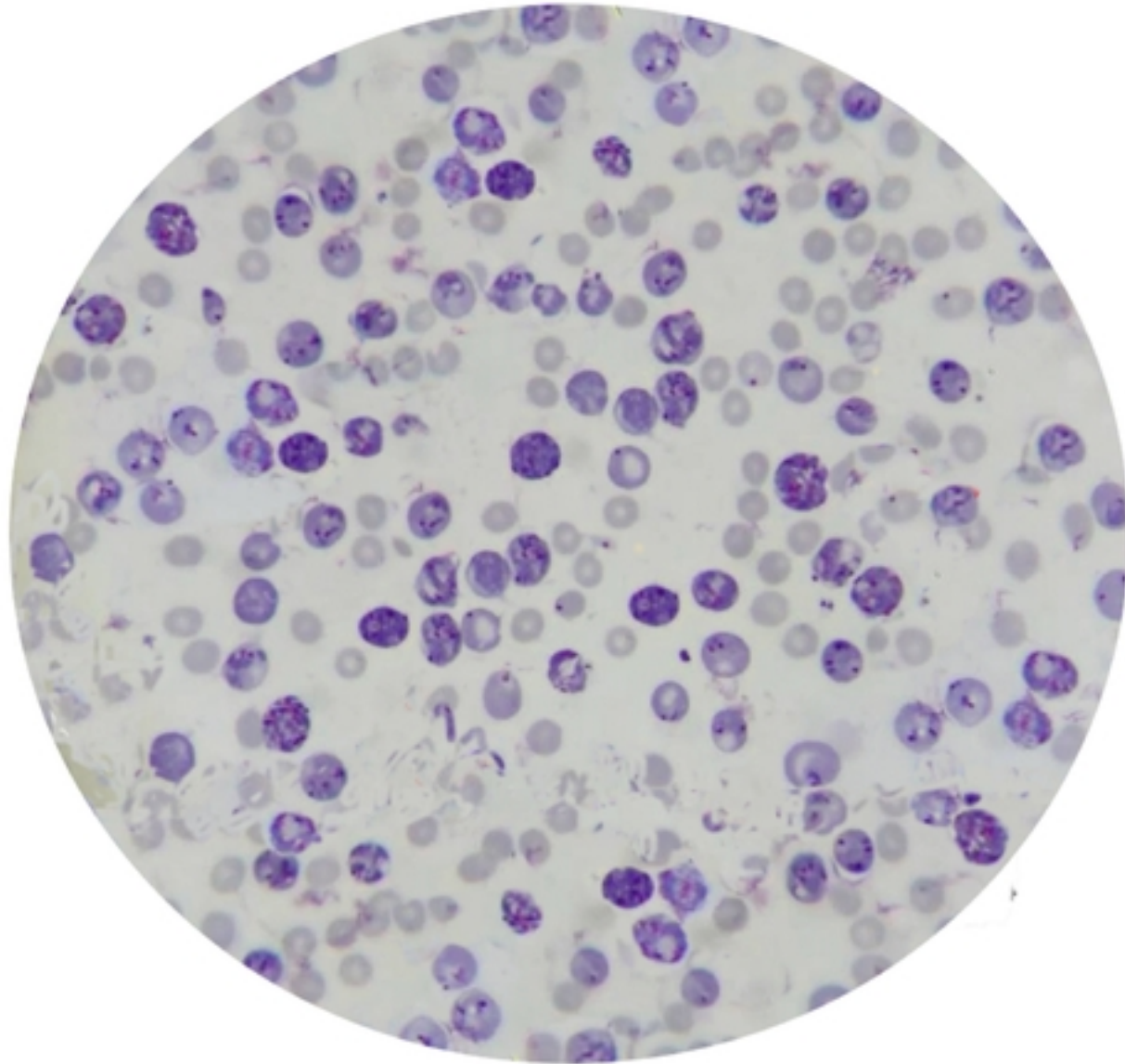


figure-5B

Group II: Effects of whole blood smears in the same patient.

