

1 **Association between epidural catheter tip malposition and anesthesiologists'**

2 **experience after graduation: a cross-sectional study using postoperative CT images**

3

4 Mitsuhiro Matsuo*, Natsumi Sakamoto, Mariko Takebe, Tomonori Takazawa

5 Department of Anesthesiology, University of Toyama, Toyama, Japan

6

7 *Corresponding author:

8 E-mail: mmatsuo@med.u-toyama.ac.jp

9 **Abstract**

10 **Objectives:** This study aimed to examine the incidence of epidural catheter tip
11 malposition using postoperative CT images, and investigated its relationship with
12 anesthesiologist and patient characteristics.

13 **Methods:** Patients who had undergone epidural anesthesia at our hospital during the
14 previous 18 years, and who had a thorax and abdominal CT scan within 5 days after
15 surgery were included. Malposition was defined if the tip of the catheter did not penetrate
16 the ligamentum flavum in postoperative CT images.

17 **Results:** Among 189 eligible patients (median age 71 years, range 15-89), 78 (41%) were
18 female. The median number of years of postgraduate experience of the physicians
19 inserting the epidural catheter was 5.7 years (range 2.0-35.4). All epidural catheters were
20 inserted using the paramedian approach in the left lateral decubitus position. The puncture
21 site was the middle (48%) or lower (49%) thoracic spine. Epidural catheter malposition
22 was observed in 24 patients (12.7%, 95% confidence interval [CI] 8.3-18.3). Among these
23 cases, catheter tips were located at the vertebrae (vertebral arches: 9, transverse processes:
24 2, spinous process: 1), in superficial soft tissue (erector spinae: 5, subcutaneous: 4), and
25 in deep soft tissue (intervertebral foramina: 2, subpleural space: 1). Anesthesiologists in
26 the malposition group had significantly more experience since graduation (median 10.1

27 years vs. 5.6 years, $P=0.010$). No other characteristics showed an association with
28 catheter malposition.

29 **Conclusions:** Analysis of postoperative CT images revealed that the epidural catheter
30 tip did not penetrate the ligamentum flavum in approximately 13% of cases. Our results
31 suggest that even experienced anesthesiologists should be vigilant regarding proper
32 catheter tip positioning.

33 **Background**

34 Epidural anesthesia is a challenging procedure for anesthesiologists aiming to
35 achieve adequate analgesia. Greater case experience is required for acquiring the skills
36 for successful catheter placement in the epidural space compared to other essential skills
37 needed by anesthesiologists, including orotracheal intubation and placement of arterial
38 catheters [1]. Indeed, anesthesiologists with greater experience reportedly have higher
39 initial successful puncture rates for neuraxial anesthesia [2,3]. Approximately 30% of
40 epidural anesthesia cases result in inadequate postoperative analgesia, and are considered
41 as failed procedures [4,5]. Anesthesiologists can implement strategies to improve the
42 success of epidural anesthesia procedures by identifying factors that contribute to these
43 failures. This study aimed to determine the incidence and factors contributing to epidural
44 catheter tip malposition.

45 Postoperative CT images are useful tools for analyzing the trajectory of the
46 epidural catheter from the skin to the ligamentum flavum [6]. Here, we used postoperative
47 CT images to retrospectively examine the incidence of epidural catheter tip malposition,
48 defined as cases in which the tip did not penetrate the ligamentum flavum. Further, we
49 explored the factors contributing to epidural catheter tip malposition, including patient-
50 and anesthesiologist-related characteristics.

51

52 **Methods**

53 **Study design**

54 This retrospective, cross-sectional study was conducted at Toyama University
55 Hospital, a Japanese academic and tertiary care institution. The study was approved by
56 the ethics committee of our hospital (Approval No. R2022221) on March 27, 2023, and
57 complied with the principles of the Declaration of Helsinki. Since this was a retrospective
58 study, the requirement for written informed consent was waived. Instead, an opt-out
59 consent document was presented on our website for patients who did not wish to
60 participate. We followed the Strengthening the Reporting of Observational Studies in
61 Epidemiology (STROBE) statement [7].

62 **Patient selection**

63 We included all cases in which general anesthesia with epidural anesthesia was
64 performed between January 1, 2005, and December 31, 2022. Among these patients,
65 those who underwent a chest and/or abdominal CT scan within five days after surgery,
66 including the day of surgery, were identified. Patients with no visible catheter tips or
67 duplicate cases were excluded. None of the patients declined study participation. The data
68 were analyzed anonymously.

69 **Measurements**

70 Data on patient characteristics, such as age, sex, height and weight, were
71 retrieved from their electronic medical records. Information on unscheduled analgesic use
72 within the first 24 hours after surgery was also extracted. Details of epidural anesthesia
73 techniques, including patient positioning and insertion technique, were collected from
74 their anesthesia records. The number of years of experience after graduation of the
75 anesthesiologists was determined by calculating the number of days since graduation
76 from medical school until the day the epidural anesthesia was administered. The vertebral
77 level was analyzed from postoperative CT images, identifying the vertebral body where
78 the catheter tip was located or the level just above the ligamentum flavum through which
79 the catheter penetrated.

80 **Epidural anesthesia procedure**

81 We used an 18-gauge Tuohy needle (B Braun, Tokyo) for performing epidural
82 punctures, along with a radiopaque nylon epidural catheter (Smith Medical Japan, Tokyo)
83 before 2012, and a radiopaque Perifix® catheter (B Braun, Tokyo) after 2012. Adhesive
84 tape (Fix Kit-Epi®, ALCARE Co., Ltd., Tokyo) was used to secure the catheter to the
85 skin. During surgery, continuous epidural infusion was initiated at the rate of 2 to 6 mL/h
86 using a patient-controlled epidural analgesia pump (DIB PCA system II; DIB

87 International Co., Ltd., Tokyo). Epidural local anesthetics included 0.2% ropivacaine or
88 0.25% levobupivacaine, with or without fentanyl at 2 to 5 µg/mL. Postoperatively, the
89 infusion rate was adjusted as part of routine care under the surgeon's supervision.

90 **Epidural catheter tip position**

91 Using postoperative CT images, we defined a normal catheter tip position in
92 cases in which the epidural catheter tip penetrated the ligamentum flavum. Catheter tip
93 malposition was defined when the tip did not penetrate the ligamentum flavum. If
94 malposition was indicated, the location of the tip was determined from the CT images.

95 **Statistical analysis**

96 Descriptive statistics are presented as frequencies (%) for categorical variables
97 and medians [range] for continuous variables. Comparisons between groups were
98 conducted using the chi-square and Mann-Whitney U tests. Logistic regression analysis
99 was performed with catheter tip malposition as the dependent variable and number of
100 postgraduate years as the independent variable. Results are reported with 95% confidence
101 intervals (CI). A two-sided p-value of less than 0.05 was considered statistically
102 significant. The receiver operating characteristic (ROC) curve defined the optimal cutoff
103 value, as the value for which the Youden index (Youden index = sensitivity + specificity
104 - 1) was maximized. Statistical analyses were conducted using EZR software, a graphical

105 user interface for R (The R Foundation for Statistical Computing, Vienna, Austria) [8].

106

107 **Results**

108 Between January 1, 2005, and December 31, 2022, 11,559 patients underwent
109 combined general and epidural anesthesia at our hospital. Among them, 189 patients with
110 postoperative CT images of the chest or abdomen with a visible epidural catheter tip were
111 analyzed (Fig. 1). All epidural catheters visible on CT images were radiopaque Perifix®
112 catheters.

113 Table 1 summarizes the characteristics of the patients and the epidural anesthesia
114 techniques. Median patient age was 71 years [15, 89] and 78 (41%) were female. Median
115 body mass index (BMI) was 22.6 kg/m² [13.6, 35.2]. All epidural catheter insertions were
116 performed using the paramedian approach in the left lateral decubitus position. Since
117 almost all the CT scans were taken after abdominal surgery, most catheters (97%) were
118 placed at the mid to lower thoracic level. In the 189 cases evaluated, epidural anesthesia
119 was administered by 50 different anesthesiologists with a median of 5.7 years of
120 postgraduate experience, ranging from 2.0 to 35.4 years (Fig. 2).

121 Epidural catheter malposition, i.e. when the epidural catheter tip did not
122 penetrate the ligamentum flavum, was found in 24 patients (12.7%, 95% CI 8.3-18.3%).

123 In the malposition group, catheter tips were on the vertebrae in 12 cases (vertebral arches:
124 9, transverse processes: 2, spinous process: 1), in superficial soft tissue in nine cases
125 (spinal erector spinae: 5, subcutaneous: 4), and in deep soft tissue in three cases
126 (intervertebral foramen: 2, subpleural space: 1) (Fig. 3). Analyses of the differences in
127 characteristics between the normal catheter position and malposition groups indicated no
128 significant differences in patient age, BMI, or puncture site. However, anesthesiologists
129 in the malposition group had significantly more years of postgraduate experience (Table
130 2).

131 Unscheduled analgesic use within 24 hours postoperatively was significantly
132 less frequent in the normal position group compared to the malposition group {69 (42%)
133 vs. 17 (71%), $P=0.009$ }. The pain medications administered included pentazocine in 62
134 cases, non-steroidal anti-inflammatory agents in 11 cases, acetaminophen in 10 cases, and
135 opioids in four cases.

136 Logistic regression analysis was conducted with catheter malposition as the
137 dependent variable and postgraduate years as the independent variable. The results
138 indicated a significantly greater incidence of malposition with greater anesthesiologist
139 experience, with an odds ratio of 1.08 (95% CI 1.02-1.15) per postgraduate year.

140 ROC analysis performed to evaluate the relationship between the number of

141 years post-graduation and catheter malposition (Fig. 4) showed an area under the curve
142 of 0.66 (95% CI 0.54-0.78). The optimal cutoff value was 11.3 years, with a specificity
143 of 78%, sensitivity of 50%, positive likelihood ratio of 2.24, and negative likelihood ratio
144 of 0.64.

145 For sensitivity analysis, the anesthesiologists who performed the most epidural
146 anesthesia procedures (n=13) and had the highest number of malpositions (n=4) were
147 excluded. Despite this exclusion, the number of postgraduate years of the
148 anesthesiologists in the malposition group remained significantly higher (p=0.005). Next,
149 anesthesiologists were divided into groups based on half-year post-graduation intervals.
150 The group with the most number of anesthesiologists was the 2.0-2.5 years' experience
151 group. (n=31). After excluding this group, sensitivity analysis demonstrated that the
152 malposition group still had significantly more years of postgraduate experience (p=0.022).

153

154 **Discussion**

155 In this study, we used postoperative CT images to determine the incidence of
156 epidural catheter tip malposition and the factors associated with malposition. Epidural
157 catheter malposition was found in 24 patients (12.7%). Unexpectedly, the postgraduate
158 experience of physicians was significantly greater in the malposition group. Logistic

159 regression analysis showed that each additional post-graduation year was associated with
160 a significantly higher incidence of malposition, with an odds ratio of 1.08 (95% CI 1.02-
161 1.15).

162 The reason for the increased incidence of malpositioning with increasing years
163 of experience is unclear. There are two possible causes of catheter tip malposition. The
164 first is primary malposition due to failure of catheter placement. Attending
165 anesthesiologists tend to have a lower rate of primary failure of epidural anesthesia than
166 do trainees [9]. However, the increased failure rate could be related to carelessness and
167 overconfidence associated with experience [10]. The second cause is secondary
168 malposition due to dislocation resulting from patient movement after catheter placement.
169 The epidural catheter is reportedly withdrawn a few centimeters from the skin by patient
170 movement [11]. Additionally, as anesthesiologists become more experienced, they might
171 not pay as much attention to securing the catheter to the skin. Regardless of the causes of
172 tip malposition, this study indicates that even experienced anesthesiologists need to pay
173 attention to proper catheter tip positioning. Further, our results highlight the importance
174 of continued vigilance and technique refinement, even among experienced
175 anesthesiologists, to ensure optimal outcomes in epidural anesthesia.

176 Not only anesthesiologist-related factors, but also patient-related factors are

177 important determinants of the success rate of epidural puncture. A previous prospective
178 observational study showed that the rate of failed punctures is 3.0 times higher when the
179 spinous process is not palpable [12]. In another prospective observational study, the
180 success rate of initial puncture for neuraxial anesthesia was dependent on palpability of
181 the spinous process (odds ratio 1.92) and the ease of adequate patient positioning (odds
182 ratio 3.84) [13].

183 This study has several limitations. First, as described above, it was impossible to
184 determine whether the postoperative catheter malposition was primary or secondary.
185 Second, penetration of the ligamentum flavum by the epidural catheter tip does not always
186 provide adequate analgesia. The spread of contrast medium within the epidural space is a
187 good indicator of anesthetic efficacy [14], and leakage of contrast medium from the
188 epidural space is associated with inadequate anesthetic outcomes [15]. Third, we used the
189 number of postgraduate years as a marker of anesthesiologists' experience, but did not
190 account for the number of epidural anesthesia cases performed since graduation. Fourth,
191 because our institution is a teaching hospital, the median years of experience was
192 relatively low, at 5.7 years. Fifth, due to a lack of data, we could not account for the
193 patient's body habitus, including factors such as the ease of palpating the spinous process
194 and positioning the patient.

195

196 **Conclusions**

197 Epidural catheter tip malposition determined by CT taken postoperatively
198 occurred in approximately 13% of the study cases. The greater the number of years since
199 graduation of the anesthesiologist who inserted the epidural catheter, the more likely was
200 the epidural catheter tip to be malpositioned. Even anesthesiologists with many years of
201 experience need to pay careful attention to proper catheter tip positioning.

202 References

- 203 1. Konrad C, Schüpfer G, Wietlisbach M, Gerber H. Learning manual skills in
204 anesthesiology: Is there a recommended number of cases for anesthetic procedures?
205 Anesth Analg. 1998;86:635-9.
- 206 2. de Filho GR, Gomes HP, da Fonseca MH, Hoffman JC, Pederneiras SG, Garcia JH.
207 Predictors of successful neuraxial block: a prospective study. Eur J Anaesthesiol.
208 2002;19:447-51.
- 209 3. Kim JH, Song SY, Kim BJ. Predicting the difficulty in performing a neuraxial
210 blockade. Korean J Anesthesiol. 2011;61:377-81.
- 211 4. Tran DQ, Van Zundert TC, Aliste J, Engsusophon P, Finlayson RJ. Primary Failure
212 of Thoracic Epidural Analgesia in Training Centers: The Invisible Elephant? Reg
213 Anesth Pain Med. 2016;41:309-13.
- 214 5. Parra MC, Washburn K, Brown JR, Beach ML, Yeager MP, Barr P, et al.
215 Fluoroscopic Guidance Increases the Incidence of Thoracic Epidural Catheter
216 Placement Within the Epidural Space: A Randomized Trial. Reg Anesth Pain Med.
217 2017;42:17-24.
- 218 6. Sakamoto N, Matsuo M, Takazawa T. Relationship between epidural catheter
219 migration beneath the skin and subcutaneous fat thickness assessed using

- 220 postoperative CT imaging: a retrospective cross-sectional study. *J Anesth.*
- 221 2024;38:674-680.
- 222 7. von Elm E, Altman DG, Egger M, Pocock SJ, Gøtzsche PC, Vandenbroucke JP;
223 STROBE Initiative. Strengthening the Reporting of Observational Studies in
224 Epidemiology (STROBE) statement: guidelines for reporting observational studies.
225 *BMJ.* 2007;335:806-8.
- 226 8. Kanda Y. Investigation of the freely available easy-to-use software ‘EZR’ for
227 medical statistics. *Bone Marrow Transplant.* 2013;48:452–8.
- 228 9. Tran Q, Booyesen K, Botha HJ. Primary failure of thoracic epidural analgesia:
229 revisited. *Reg Anesth Pain Med.* 2024;49:298-303.
- 230 10. Ružman T, Gulam D, Haršanji Drenjančević I, Venžera-Azenić D, Ružman N,
231 Burazin J. Factors associated with difficult neuraxial blockade. *Local Reg Anesth.*
232 2014;7:47-52.
- 233 11. Hamilton CL, Riley ET, Cohen SE. Changes in the position of epidural catheters
234 associated with patient movement. *Anesthesiology.* 1997;86:778-84.
- 235 12. Sprung J, Bourke DL, Grass J, Hammel J, Mascha E, Thomas P, et al. Predicting
236 the difficult neuraxial block: a prospective study. *Anesth Analg.* 1999;89:384-9.
- 237 13. de Filho GR, Gomes HP, da Fonseca MH, Hoffman JC, Pederneiras SG, Garcia JH.
238 Predictors of successful neuraxial block: a prospective study. *Eur J Anaesthesiol.*

239 2002;19:447-51.

240 14. Hogan Q. Epidural catheter tip position and distribution of injectate evaluated by
241 computed tomography. *Anesthesiology*. 1999;90:964-70.

242 15. Motamed C, Farhat F, Rémérand F, Stéphanazzi J, Laplanche A, Jayr C. An
243 analysis of postoperative epidural analgesia failure by computed tomography
244 epidurography. *Anesth Analg*. 2006;103:1026-32.

245 Table 1. Patient and procedural characteristics

Variables	Value (n=189)
Patient age, years	71 [15, 89]
Patient sex, female	78 (41%)
Patient body mass index, kg/m ²	22.6 [13.6, 35.2]
Insertion position	Left lateral decubitus: 189 (100%)
Insertion technique	Paramedian approach: 189 (100%)
Technique for identifying epidural space	Loss of resistance 189 (100%)
Vertebral level	1/2/6/34/49/41/23/18/10/4/0/1 T4/5/6/7/8/9/10/11/12/L1/2/3
Anesthesiologists' experience, years	5.7 [2.0, 35.4]
Anesthesiologist sex, female	106 (56%)
Postoperative day 0/1/2/3/4/5	0/20/35/88/44/2
Surgeon specialty, HBP/GI/Uro/ObGyn/Others	110/39/31/6/3

246 The data are presented as frequencies (%) and medians [range]. Postoperative day
247 indicates the day the CT image was taken. HBP, Hepatobiliary Pancreatic; GI,
248 Gastrointestinal; Uro, Urology; ObGyn, Obstetrics and Gynecology.

249 Table 2. Patient and procedural characteristics related to epidural catheter tip

250 malposition

	Normal position (n=165)	Malposition (n=24)	P value
Patient age, years	71 [15, 89]	70 [27, 86]	0.497
Patient sex, female	69 (42%)	9 (38%)	0.825
Patient body mass index, kg/m ²	22.9 [14.9, 35.2]	21.3 [13.6, 31.3]	0.286
Vertebral level	1/2/4/32/45/37/	0/0/2/2/4/4/	0.249
T4/5/6/7/8/9/10/11/12/	21/13/8/2/0/0	2/5/2/2/0/1	
L1/2/3			
Anesthesiologists' experience, years	5.6 [2.0, 35.4]	10.1 [2.1, 26.6]	0.010
Anesthesiologist sex, female	93 (56%)	13 (54%)	0.830
Postoperative day	0/17/30/75/41/2	0/3/5/13/3/0	0.253
0/1/2/3/4/5			

Length of epidural	5.0 [3.0, 7.0]	5.0 [4.0, 6.0]	0.624
catheter advanced			
after LOR, cm			

251 The data are presented as frequencies (%) and medians [range]. Postoperative day
252 indicates the day the CT image was taken. Comparisons between groups were conducted
253 using the chi-square and Mann-Whitney U tests. LOR, loss-of-resistance.

254 Figure legends

255 **Figure 1. Flow chart of study enrolment**

256 **Figure 2. Histogram of anesthesiologists' postgraduate experience**

257 The histogram shows the distribution of post-graduation years of experience of
258 the anesthesiologists who performed the 189 epidural anesthesia procedures.

259 **Figure 3. Spatial distribution of epidural catheter tip malposition**

260 Epidural catheter malposition, defined when the epidural catheter tip did not
261 penetrate the ligamentum flavum, was observed in 24 patients. The catheter tips were
262 found at various locations: on the vertebral arches (orange), on the transverse processes
263 (yellow), on the spinous process (bright yellow), in the spinal erector spinae (light blue),
264 in the subcutaneous tissue (dark blue), and in the intervertebral foramen or the subpleural
265 space (magenta).

266 **Figure 4. Receiver operating characteristic curves of anesthesiologists' postgraduate
267 experience for predicting epidural catheter tip malposition**

268 The results showed an area under the curve of 0.66 (95% CI: 0.54-0.78). The optimal
269 cutoff value, defined by the receiver operating characteristic curve as the value at which
270 the Youden index (Youden index = sensitivity + specificity - 1) was maximized, was 11.3
271 years. At this cutoff, the specificity was 78%, and sensitivity was 50%, as shown by the

272 closed circle. The dashed diagonal line represents the results of

Figure 1.

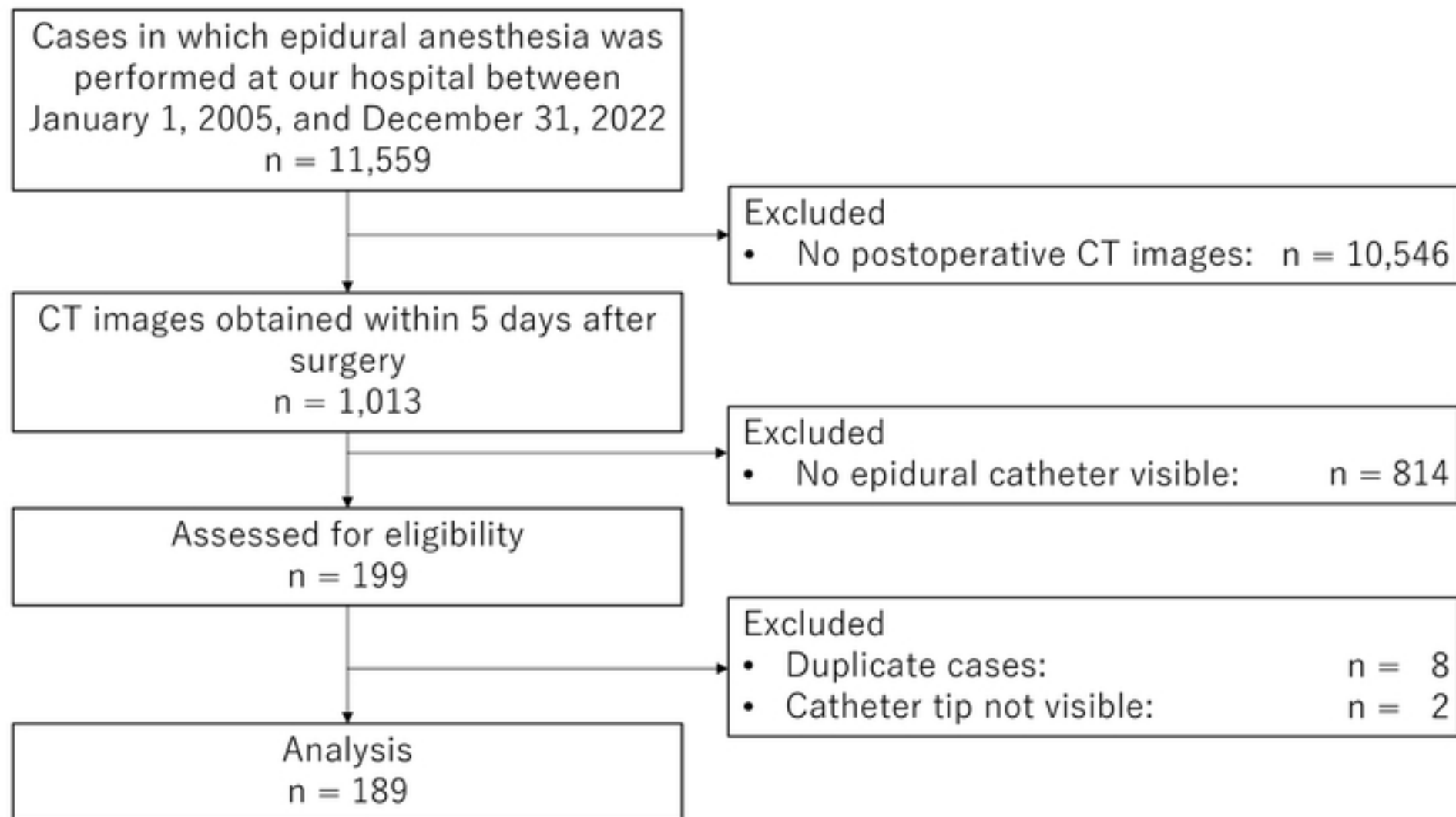


Figure 2.

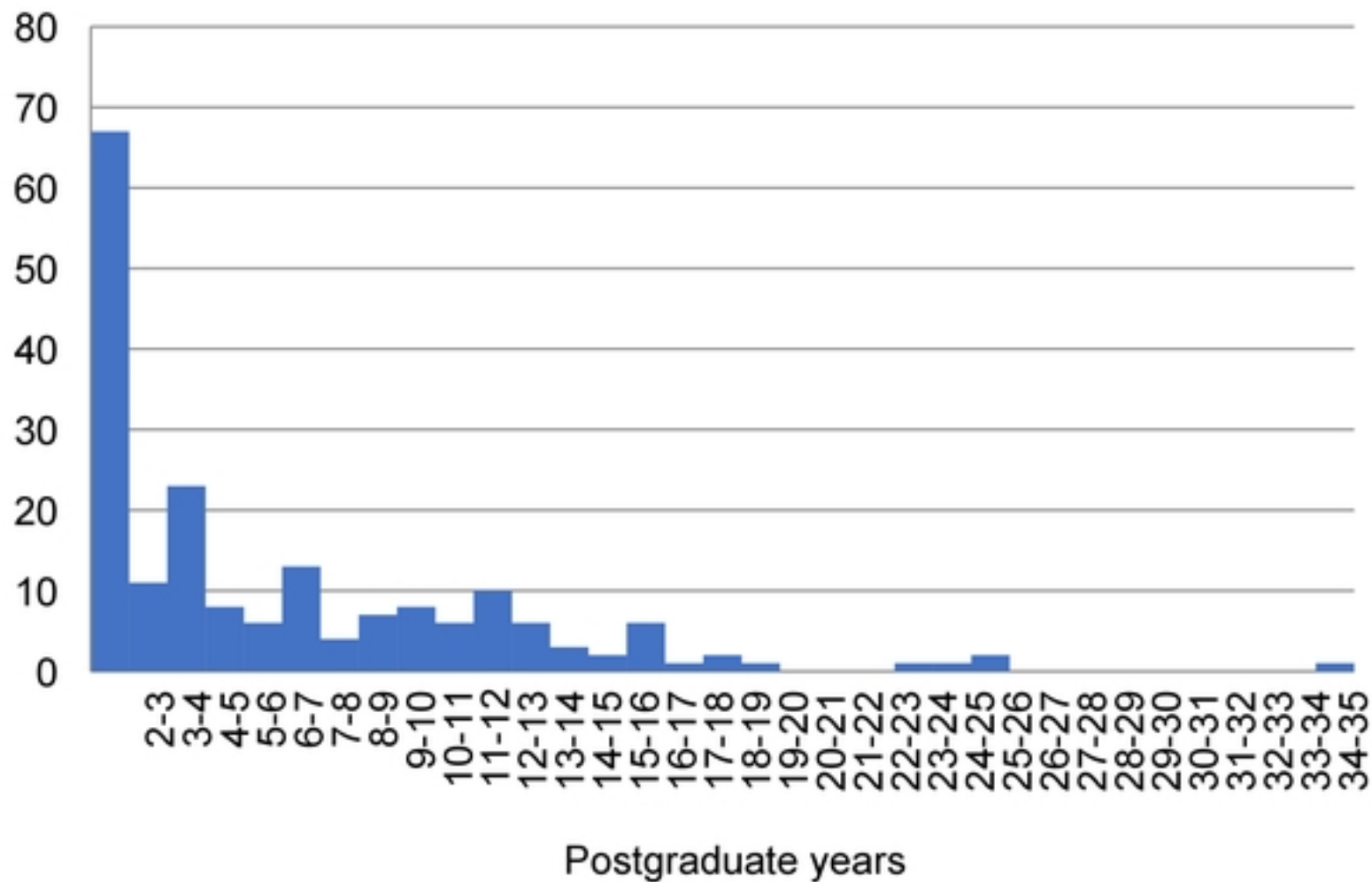


Figure 3.

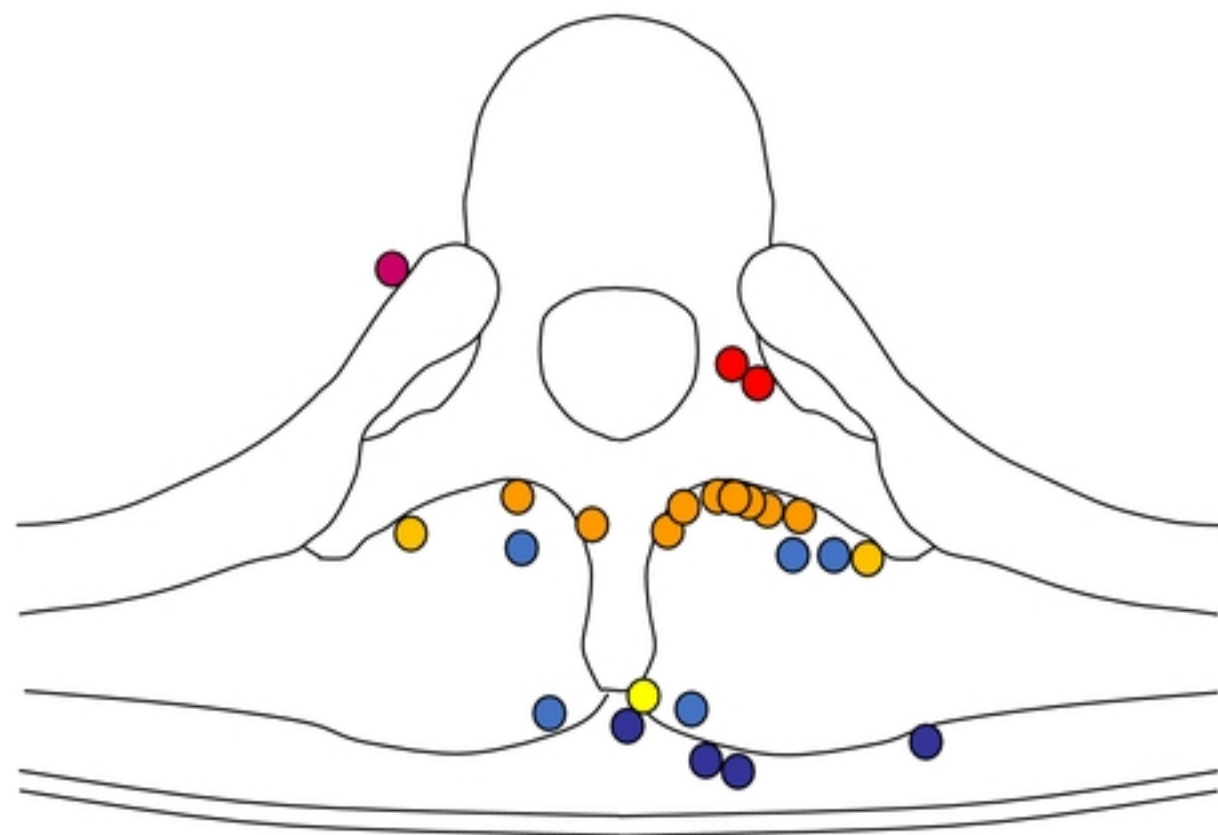


Figure 4.

