

1 **TITLE PAGE**

2
3 **Significant rise of *Chlamydia pneumoniae* diagnoses at Marseille University Hospitals,**
4 **2024, France**

5
6 **Running title: Dramatic rise of *Chlamydia pneumoniae* diagnoses**

7
8 **Authors list:** Sophie Edouard^{1,2,3*}, Rayane Attamna^{1,2}, Matthieu Million^{1,2,4}, Céline
9 Boschi^{1,2,4}, Jeremy Delerce^{1,3}, Aurélie Caputo^{1,3}, Didier Stoupan^{1,2}, Seydina Diene^{1,4}, Idir
10 Kacel^{1,3}, Claudia Andrieu^{1,2}, Anthony Levasseur^{1,3}, Hervé Chaudet^{1,2,3,5}, Jean-Marc
11 Rolain^{1,2,4}, Lucile Lesage⁶, Aurélie Morand^{6,7,8}, Pierre-Edouard Fournier^{1,2,3}, Jean-Christophe
12 Lagier^{1,2,4}, Florence Fenollar^{1,2,3}, Bernard La Scola^{1,2,4}, Philippe Colson^{1,2,4*}

13 **Affiliations:** ¹IHU Méditerranée Infection, Marseille, France; ²AP-HM, Marseille, France;
14 ³Aix Marseille Univ, RITMES, Marseille, France; ⁴Aix Marseille Univ, MEPHI, Marseille,
15 France; ⁵CESPA, Marseille, France; ⁶Service d'accueil des Urgences Pédiatriques, hôpital
16 Timone, AP-HM, 264 rue Saint-Pierre, 13005 Marseille, France; ⁷AP-HM, service de
17 Pédiatrie générale, Marseille, France; ⁸AP-HM, hôpital Nord, service d'accueil des Urgences
18 Pédiatriques, Marseille, France.

19 ***Corresponding authors:** Sophie Edouard (Orcid no. 0000-0002-7294-0558) and Philippe
20 Colson (Orcid no. 0000-0001-6285-0308), IHU Méditerranée Infection, 19-21 boulevard Jean
21 Moulin, 13005 Marseille, France. Tel.: +33 413 732 401, Fax: +33 413 732 402; email:
22 sophie.edouard@ap-hm.fr; philippe.colson@ap-hm.fr

23 .
24 **Word counts:** abstract: 50; main text: 1,197 words

25 **Figures:** 2; **Table:** 1

NOTE: This preprint reports new research that has not been certified by peer review and should not be used to guide clinical practice.

26 **Appendices:** Supplementary Methods; Supplementary Results; Supplementary Figure: 1;

27 Supplementary Table: 1

28

29

SUMMARY

30

31

32

33

34

35

We report a 19-fold increase in 2024 of qPCR diagnoses of *Chlamydia pneumoniae* infections in Marseille, Southern France, with 37 cases versus 10 between 2018-2023. These mostly affected children, and young adults. We obtained four *C. pneumoniae* genomes, all of serotype ST16, suggesting an epidemic circulation in our geographical area.

36

Keywords: *Chlamydia pneumoniae*; outbreak; respiratory infections, qPCR; genome

37

MAIN TEXT

38

39

40

41

42

43

44

Respiratory infections are a major cause of morbidity and mortality worldwide regardless of the geographic area. The SARS-CoV-2 pandemic profoundly changed the epidemiology of respiratory infections. This was the case in France, including in Marseille, Southeastern France, with a quasi-absence of influenza diagnoses during winter 2020-2021 or a shift of several months of the epidemic period of respiratory syncytial virus (RSV) in 2021 (1,2). In addition, such changes in the incidence of infections were also observed for microorganisms including some involved in respiratory diseases (3).

45

46

47

48

49

50

51

52

Recently, dramatic increases in the incidence of respiratory microbial infections, due to *Mycoplasma pneumoniae* (4) then *Bordetella pertussis* (5) have been observed in France in 2023-2024. *C. pneumoniae* is another bacterium associated with acute respiratory infections and causing from upper respiratory tract mild disease to pneumonia. It is implicated in <1.5% of cases of community-acquired respiratory infections and particularly affects children (6). It usually causes asymptomatic or mild infections but severe cases, asthma exacerbation and chronic respiratory illness can occur (7). Its diagnosis relies mainly on real-time PCR (qPCR). Here we describe a significant recent increase in qPCR diagnoses of *C. pneumoniae*

53 respiratory infections, and the epidemiological, microbiological, and genomic characteristics
54 of these infections.

55

56 **The study**

57 We detected in October 2024 an abnormally high number of *C. pneumoniae*
58 diagnoses. This rise triggered the implementation of an automatic daily report transmissible to
59 hospital biologists and clinicians through a basic mailing list and a configurable subscription.
60 We retrospectively analyzed *C. pneumoniae* qPCR results performed in the clinical
61 microbiology diagnosis laboratory of university/public hospitals of Marseille, Southern
62 France, on respiratory samples collected from patients between 01-Jan-2018 and 30-Oct-
63 2024. qPCR was either part from a multiplex syndromic panel (Biofire FilmArray Respiratory
64 panel 2, bioMérieux, Marcy-l'Etoile, France) used at point-of-care laboratories or was an in-
65 house simplex assay targeting the *omp2* gene (8) (see more detailed procedures in Appendix
66 Methods). Co-infection with other respiratory pathogens was assessed using results of the
67 Biofire assay or of the Fast Track Diagnosis Respiratory pathogens 21 assay (Fast Track
68 Diagnosis, Luxembourg). Next-generation sequencing (NGS) was performed on residues of
69 five samples with the lowest known qPCR cycle threshold values (Ct) using Oxford Nanopore
70 (Oxford Nanopore Technologies, Oxford, UK) and Illumina technologies (Illumina Inc., San
71 Diego, California, USA), on GridION, and MiSeq and NovaSeq 6000 instruments,
72 respectively. Bioinformatic analyses of NGS reads and phylogenomic analyses were
73 performed as detailed in Appendix Methods. OpenEpi version 3.01
74 (<https://www.openepi.com/>) was used for statistical analyses (p -values ≤ 0.05 were considered
75 significant).

76 Overall, 35,344 specimens collected from patients between 01-Jan-2018 and 30-Oct-
77 2024 had been tested, including 30,848 upper and 4,496 lower respiratory samples. Among

78 them, 19,504 samples were collected in men (55%). Median age of patients was 5-year-old
79 (range, 0-107). Overall incidence of *C. pneumoniae* qPCR-positivity was 0.13% (47/35,344
80 being positive). During 2018-2022, the number of samples tested for *C. pneumoniae* by qPCR
81 regularly increased, with a peak at 11,754 samples in 2022 (Figure 1a). However, only five
82 samples were positive during this time lapse. In 2023, Biofire assay use was restricted, which
83 was associated with a drop of the total number of *C. pneumoniae* qPCR tests to 4,294 and
84 5,795 samples in 2023 and 2024, respectively. Nonetheless, in 2024, 37 patients (0.64%) were
85 diagnosed compared to 5 (0.12%) in 2023 ($p < 0.0001$). Five cases occurred between January-
86 June, then six in July-August, 15 in September, and 6 in October 2024 (Figure 1b).

87 The 37 specimens positive in 2024 included 22 nasopharyngeal swabs, 11
88 nasopharyngeal aspirates and 4 sputums. Twenty-eight (76%) were initially diagnosed
89 positive using the Biofire assay. None of the 4,496 low respiratory samples tested positive.
90 Among the 37 patients, 19 (51%) were male; median age was 10-year-old (range, 0-44).
91 Twenty-seven (73%) patients were children <18-year-old and 10 (27%) were young adults.
92 Median age was 8 years (range, 2 months-15 years) in children and 34 (25-44) in adults.
93 Children <1 year, 6-10 years and 11-15 years were the age groups the most represented
94 among *C. pneumoniae* cases, comprising each between 19-22% of these cases (Table 1). No
95 patient >50 years was diagnosed in 2024. Thirteen patients were admitted in hospitalization,
96 including six for other reasons than severity of respiratory symptoms; no case was admitted in
97 intensive care unit or died. Fourteen (38%) of the 37 patients were coinfecting with ≥ 1 other
98 respiratory pathogen, including rhinovirus (n=9), SARS-CoV-2 (n=2), parainfluenza virus
99 (n=1), coronavirus-NL63 (n=1), adenovirus (n=1), coronavirus-HKU1 (n=1), and *Bordetella*
100 *pertussis* (n=1) (Figure 2).

101 Two *C. pneumoniae* whole circular genomes (1,231,868 and 1,232,097 base pair (bp)-
102 longs, in one scaffold) (GenBank Accession no. CP172581 and CP173416), two additional

103 near full-length genomes in 11 or 12 scaffolds (1,229,923 and 1,231,291 bp-longs) and one
104 partial genome in 65 scaffold (306,688 bp) were obtained by NGS directly from respiratory
105 samples (Appendices Results and Table 1). All four (near) full-length genomes were
106 classified as ST16 based on MultiLocus Sequencing Typing (Appendices Methods, Table 2),
107 suggesting the circulation of a single serotype in 2024. Only 19 other *C. pneumoniae* genomes
108 were available from GenBank (<https://www.ncbi.nlm.nih.gov/genbank/>), six being classified
109 as ST16. Phylogenomics indicated that the two full-length genomes obtained here were those
110 the most closely related with each other (Appendices Figures 1a,b).

111

112 **Conclusion**

113 Global systematic surveillance of diagnoses at our institution allowed detecting a *C.*
114 *pneumoniae* ST16 outbreak in 2024 in Marseille, France, which peaked in September. As
115 previously described for *M. pneumoniae* then *B. pertussis* (4,5), we observed that *C.*
116 *pneumoniae* qPCR positivity rate raised to a level never seen before in our center. Most cases
117 affected children and no severe case was reported. As commonly observed in other respiratory
118 infections, we found a high rate of coinfection of *C. pneumoniae* with other pathogens (2,4,6).

119 A resurgence of several respiratory pathogens was observed following the global
120 attenuation of the SARS-CoV-2 pandemic (1,3,4-6). Increase of positive *C. pneumoniae*
121 qPCR cases after the SARS-CoV-2 pandemic was previously observed in 2023 in Switzerland
122 (6); no genome sequencing was reported. *C. pneumoniae* epidemics were also described
123 before the SARS-CoV-2 pandemic, such as in a prison in Texas in 2014 (9) and among
124 children hospitalized with community-acquired pneumonia in Korea in 2016 (10).

125 The number of *C. pneumoniae* cases is likely underestimated in our study, particularly
126 because patients with mild symptoms are not systematically tested and *C. pneumoniae* is not
127 part of the respiratory syndromic qPCR panel used at our core laboratory. Indeed, samples

128 from \approx 2,000 patients presenting respiratory diseases and requiring routine diagnostic testing
129 between July-October 2024 were not specifically tested for *C. pneumoniae*. Moreover, the
130 amount of asymptomatic cases that may play a role in the epidemic is unknown. Here, we did
131 not consider *C. pneumoniae* serological results due to the lower sensitivity and specificity of
132 serology compared to qPCR and to serum unavailability for most case-patients.

133 Unexpectedly, the number of other *C. pneumoniae* genomes released in GenBank was
134 very few, considering the frequency and pathogenicity of this bacterium, and the sharp
135 interest of microbial genomic surveillance for epidemiology and clinics. Among the 19
136 previously available *C. pneumoniae* genomes, the most frequent genotype was ST17 (n=11)
137 followed by ST16 (n=6).

138 Overall, present data warrants surveying closely diagnoses of *C. pneumoniae*
139 infections at the local and country scales; and implementing genomic surveillance and
140 characterizing drug resistance for diagnosed cases.

141

142

143 **First author's short biographical sketch**

144 Dr. Sophie Edouard is a medical bacteriologist at the Microbiological Laboratory at IHU
145 Méditerranée Infection in Marseille, France. Her research interests focus on infectious
146 diseases and microbiology including intracellular bacteria and emerging pathogens.

147

148 **Acknowledgements**

149 We are very grateful to the technical team of the next-generation sequencing platform of the
150 IHU Méditerranée Infection.

151 **Data availability**

152 *Chlamydia pneumoniae* genomes in one scaffold analyzed here have been submitted to the
153 GenBank sequence database (<https://www.ncbi.nlm.nih.gov/genbank/>) (11) (GenBank
154 Accession no: CP172581 and CP173416).

155 **Author contributions**

156 Conceived and designed the experiments: SE, PC. Contributed materials, analysis tools: All
157 authors. Analyzed the data: SE, JD, AC, SD, PC. Writing—original draft preparation: SE, PC.
158 Writing—review and editing: All authors. All authors have read and agreed to the published
159 version of the manuscript.

160 **Conflicts of interest**

161 Authors have no conflicts of interest to declare. Funding sources had no role in the study
162 design and conduct, in the collection, management, analysis, and interpretation of the data, or
163 in the preparation, review, or approval of the manuscript.

164 **Funding**

165 This work was supported by the French Government under the “Investments for the Future”
166 programme managed by the National Agency for Research (ANR), Méditerranée Infection
167 10-IAHU-03 and by the French Ministry of Higher Education, Research and Innovation and
168 the French Ministry of Solidarity and Health.

169 **Ethics**

170 The present study involves data that have been registered on the Health Data Access Portal of
171 Marseille university and public hospitals (Assistance Publique-Hôpitaux de Marseille (AP-
172 HM)) under No. PADS24-337, and was approved by the AP-HM Ethics and Scientific
173 Committee.

174

175

176 **References**

- 177 1. Giraud-Gatineau A, Kaba L, Boschi C, Devaux C, Casalta JP, Gautret P, Chaudet H,
178 Colson P, Raoult D. Control of common viral epidemics but not of SARS-CoV-2
179 through the application of hygiene and distancing measures. *J Clin Virol.* 2022;150-
180 151:105163. doi: 10.1016/j.jcv.2022.105163.
- 181 2. Mantelli C, Colson P, Lesage L, Stoupan D, Chaudet H, Morand A, La Scola B, Boschi
182 C. Coinfections and iterative detection of respiratory viruses among 17,689 patients
183 between March 2021 and December 2022 in Southern France. *J Clin Virol.*
184 2024;175:105744. doi: 10.1016/j.jcv.2024.105744.
- 185 3. Kaba L, Giraud-Gatineau A, Jimeno MT, Rolain JM, Colson P, Raoult D, et al.
186 Consequences of the COVID-19 Outbreak Lockdown on Non-Viral Infectious Agents
187 as Reported by a Laboratory-Based Surveillance System at the IHU Méditerranée
188 Infection, Marseille, France. *J Clin Med.* 2021;10(15):3210. doi: 10.3390/jcm10153210.
- 189 4. Edouard S, Boughammoura H, Colson P, La Scola B, Fournier PE, Fenollar F. Large-
190 Scale Outbreak of *Mycoplasma pneumoniae* Infection, Marseille, France, 2023-2024.
191 *Emerg Infect Dis.* 2024;30(7):1481-4. doi: 10.3201/eid3007.240315.
- 192 5. Rodrigues C, Bouchez V, Soares A, Trombert-Paolantoni S, Aït El Belghiti F, Cohen
193 JF, et al. Resurgence of *Bordetella pertussis*, including one macrolide-resistant isolate,
194 France, 2024. *Euro Surveill.* 2024;29(31):2400459. doi: 10.2807/1560-
195 7917.ES.2024.29.31.2400459.
- 196 6. Tagini F, Opota O, Greub G. *Chlamydia pneumoniae* Upsurge at Tertiary Hospital,
197 Lausanne, Switzerland. *Emerg Infect Dis.* 2024;30(4):810-2. doi:
198 10.3201/eid3004.231610.
- 199 7. Hammerschlag MR, Kohlhoff SA, Gaydos CA. *Chlamydia pneumoniae*. In Mand
200 Douglas Bennetts *Princ Pract Infect Dis.*, 2014;2174; Eds Livingstone.

- 201 8. Morel AS, Dubourg G, Prudent E, Edouard S, Gouriet F, Casalta JP, Fenollar F,
202 Fournier PE, Drancourt M, Raoult D. Complementarity between targeted real-time
203 specific PCR and conventional broad-range 16S rDNA PCR in the syndrome-driven
204 diagnosis of infectious diseases. *Eur J Clin Microbiol Infect Dis*. 2015;34(3):561-70.
205 doi: 10.1007/s10096-014-2263-z.
- 206 9. Conklin L, Adjemian J, Loo J, Mandal S, Davis C, Parks S, Parsons T, McDonough B,
207 Partida J, Thurman K, Diaz MH, Benitez A, Pondo T, Whitney CG, Winchell JM,
208 Kendig N, Van Beneden C. Investigation of a *Chlamydia pneumoniae* outbreak in a
209 Federal correctional facility in Texas. *Clin Infect Dis*. 2013;57(5):639-47. doi:
210 10.1093/cid/cit357.
- 211 10 Han HY, Moon JU, Rhim JW, Kang HM, Lee SJ, Yang EA. Surge of *Chlamydia*
212 *pneumoniae* pneumonia in children hospitalized with community-acquired pneumonia
213 at a single center in Korea in 2016. *J Infect Chemother*. 2023;29(5):453-7. doi:
214 10.1016/j.jiac.2023.01.012.
- 215 11. Sayers EW, Cavanaugh M, Frisse L, Pruitt KD, Schneider VA, Underwood BA, Yankie
216 L, Karsch-Mizrachi I. GenBank 2025 update. *Nucleic Acids Res*. 2024;gkae1114. doi:
217 10.1093/nar/gkae1114.
218
219

220

FIGURES

221

222 **Figure 1.** Number of respiratory samples tested and positive by a *Chlamydia pneumoniae*

223 qPCR assay between 2018 and 2024 (a) and during Year 2024 (b)

224

225 **Figure 2.** Number of coinfections with other infectious agents for respiratory samples positive

226 by a *Chlamydia pneumoniae* qPCR assay in 2024

227

228

Fig. 1

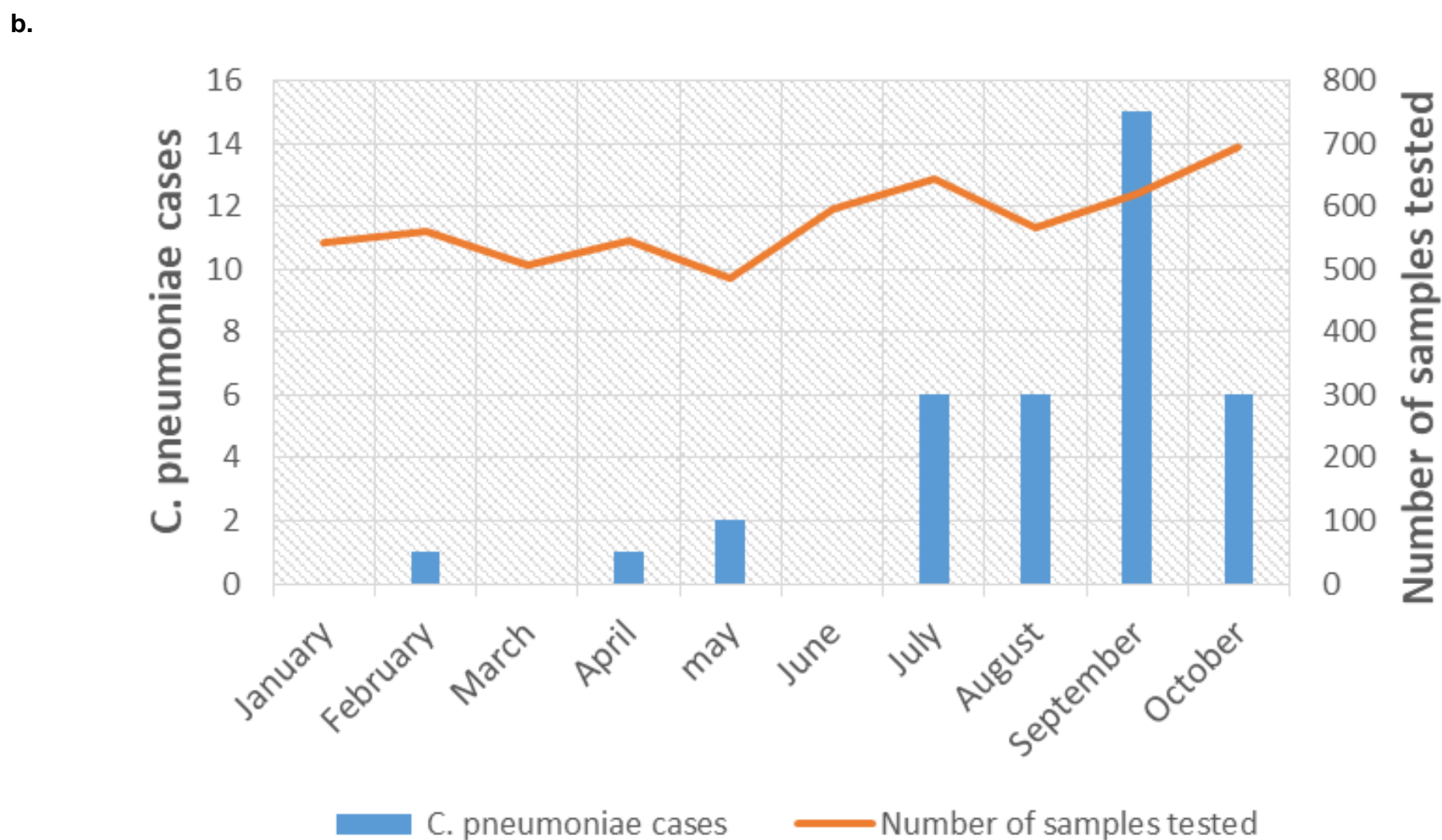
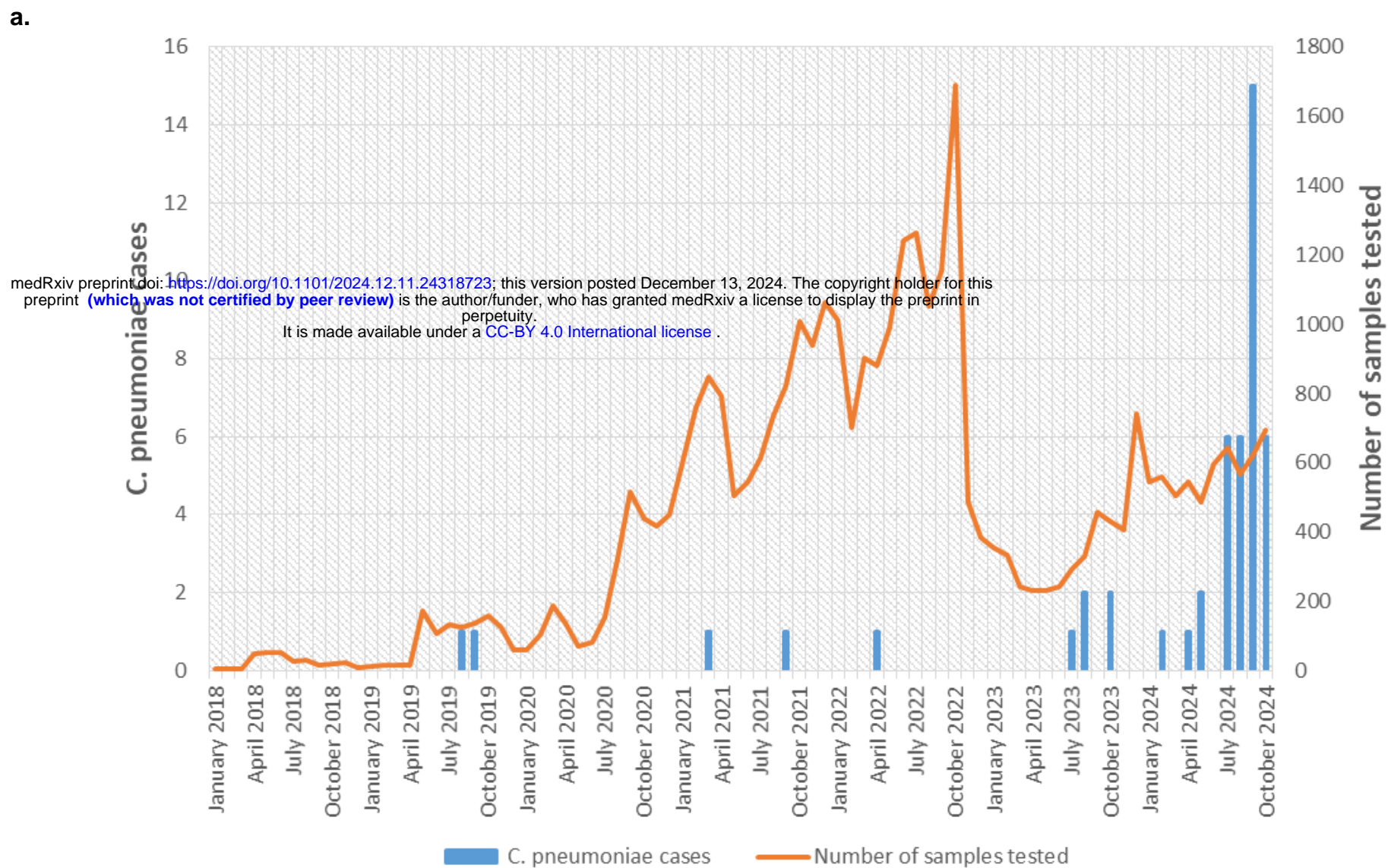
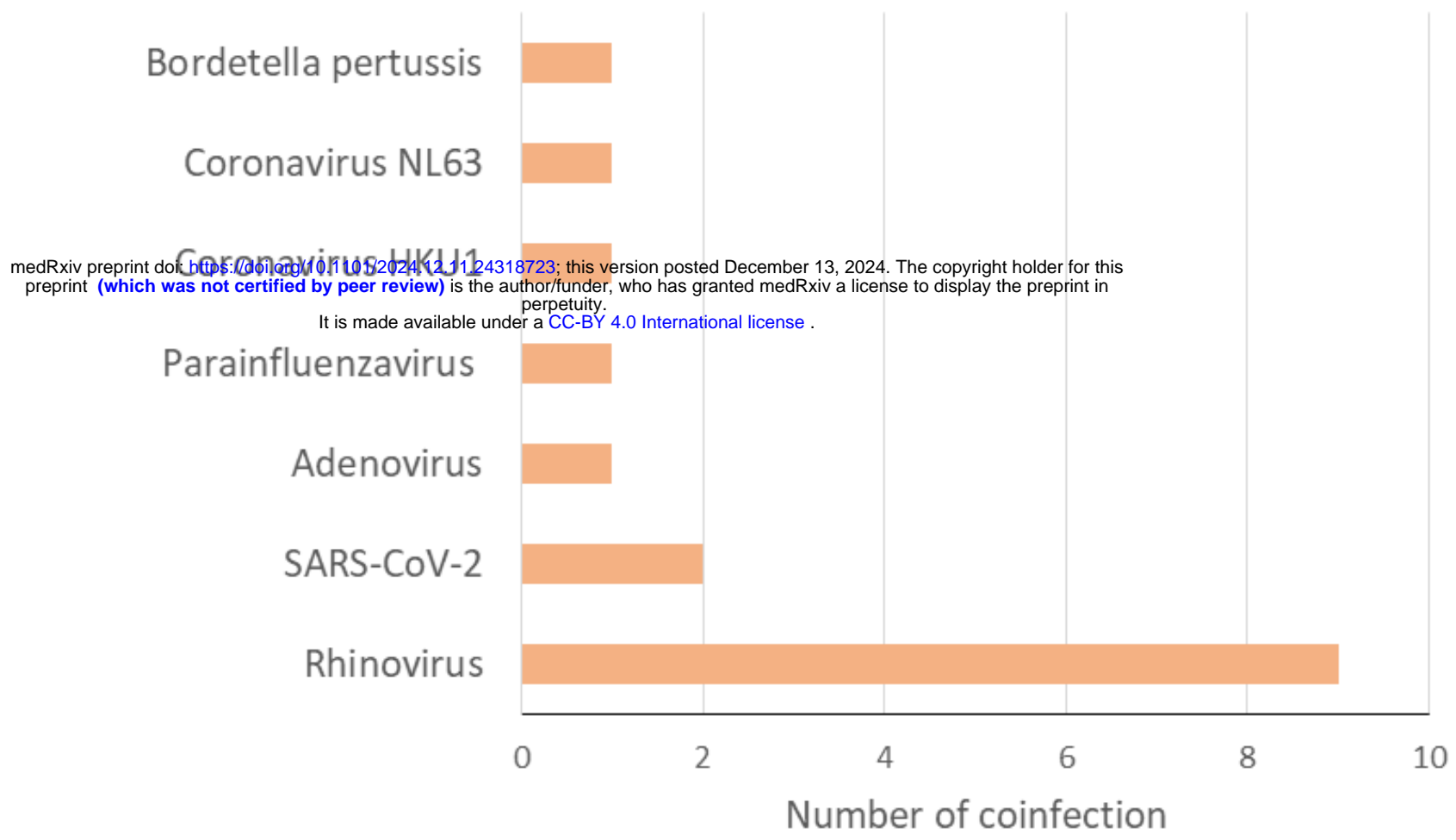


Fig. 2



229
230
231
232
233

TABLES

Table 1. Demographics characteristics and coinfections of the cases of *C. pneumoniae* infection diagnosed by qPCR in our center in 2024

Characteristics	n (%)
Incidence of <i>C. pneumoniae</i> cases	37/5795 (0.6)
<i>C. pneumoniae</i> cases	
Male	19/37 (51.4)
Female	18/37 (48.6)
Median age (years)	10
Age distribution (years)	
<1	7/37 (18.9)
1-5	4/37 (10.8)
6-10	8/37 (21.6)
11-15	8/37 (21.6)
16-20	0/37 (0.0)
21-35	6/37 (16.2)
36-50	4/37 (10.8)
> 50	0/37 (0.0)
Number of coinfection	14/37 (37.8)
Incidence of <i>C. pneumoniae</i> infections by age groups	
<1	7/11,215 (0.1)
1-5	4/7,074 (0.1)
6-10	8/1,669 (0.5)
11-15	8/1,075 (0.7)
16-20	0/606 (0.0)
21-35	6/1,943(0.3)
36-50	4/2,063 (0.2)
> 50	0/9,698 (0.0)

234
235

APPENDICES

for

Significant rise of *Chlamydia pneumoniae* diagnoses at Marseille University Hospitals, 2024, France

Authors list: Sophie Edouard^{1,2,3*}, Rayane Attamna^{1,2}, Matthieu Million^{1,2,4}, Céline Boschi^{1,2,4}, Jeremy Delerce^{1,3}, Aurélie Caputo^{1,3}, Didier Stoupan^{1,2}, Seydina Diene^{1,4}, Idir Kacel^{1,3}, Claudia Andrieu^{1,2}, Anthony Levasseur^{1,3}, Hervé Chaudet^{1,2,3,5}, Jean-Marc Rolain^{1,2,4}, Lucile Lesage⁶, Aurélie Morand^{6,7,8}, Pierre-Edouard Fournier^{1,2,3}, Jean-Christophe Lagier^{1,2,4}, Florence Fenollar^{1,2,3}, Bernard La Scola^{1,2,4}, Philippe Colson^{1,2,4*}

Affiliations: ¹IHU Méditerranée Infection, Marseille, France; ²AP-HM, Marseille, France; ³Aix Marseille Univ, RITMES, Marseille, France; ⁴Aix Marseille Univ, MEPHI, Marseille, France; ⁵CESPA, Marseille, France; ⁶Service d'accueil des Urgences Pédiatriques, hôpital Timone, AP-HM, 264 rue Saint-Pierre, 13005 Marseille, France; ⁷AP-HM, service de Pédiatrie générale, Marseille, France; ⁸AP-HM, hôpital Nord, service d'accueil des Urgences Pédiatriques, Marseille, France.

***Corresponding authors:** Sophie Edouard (Orcid no. 0000-0002-7294-0558) and Philippe Colson (Orcid no. 0000-0001-6285-0308), IHU Méditerranée Infection, 19-21 boulevard Jean Moulin, 13005 Marseille, France. Tel.: +33 413 732 401, Fax: +33 413 732 402; email: sophie.edouard@ap-hm.fr; philippe.colson@ap-hm.fr

APPENDIX, SUPPLEMENTARY METHODS

qPCR was either part from a multiplex syndromic panel (Biofire FilmArray Respiratory panel 2; bioMérieux, Marcy-l'Etoile, France) used at point-of-care laboratories operating 24/24 7/7 for urgent requests, or was an in-house simplex qPCR assay targeting the

26 *omp2* gene used at the core laboratory operating only on working days (1). Co-infections with
27 other respiratory pathogens were assessed using results of the Biofire FilmArray assay, or of
28 the Fast Track Diagnosis Respiratory pathogens 21 assay (Fast Track Diagnosis,
29 Luxembourg) performed at the core laboratory on working days.

30 Next-generation sequencing (NGS) was performed at the IHU Méditerranée Infection
31 clinical microbiology and virology laboratory on residues of samples with the lowest qPCR
32 cycle threshold values (Ct) using (i) Oxford Nanopore technology with the Ligation
33 Sequencing Kit (SQK-LSK109) and a SpotON flow cell Mk I, R9.4.1 on a GridION
34 instrument (Oxford Nanopore Technologies, Oxford, UK); and (ii) Illumina technology using
35 the classic Illumina loading procedure in XP mode on a MiSeq and a NovaSeq 6000
36 instruments (Illumina Inc., San Diego, California, USA), with a reading of 2x250 and 2x150,
37 respectively.

38 Nanopore reads were filtered with filtlong (v0.2.1) (<https://github.com/rrwick/Filtlong>)
39 while Illumina reads were filtered using fastp (v0.23.4) (2). Only the minimum read length
40 parameter was modified, to 1,000 bp for the Nanopore runs, and to 100 base pairs (bp) for the
41 Illumina runs. Cleaned reads were then classified with Kraken2 (v2.0.9-beta)
42 (<https://github.com/DerrickWood/kraken2>) (3) using the "standard" database from 2024-05-
43 06, with a confidence threshold of 0.02. Hits corresponding to taxon 83558 (including its
44 offspring) were extracted using KrakenTools (v1.2)
45 (<https://github.com/jenniferlu717/KrakenTools>) (4). Reads corresponding to *Chlamydia* spp.
46 were assembled using Unicycler (v0.5.1) (<https://github.com/rrwick/Unicycler>) (5), Raven
47 (<https://github.com/lbcb-sci/raven>) (6), and Polypolish (<https://github.com/rrwick/Polypolish>)
48 (7). The resulting genomes were annotated with Bakta (v1.9.4)
49 (<https://github.com/oschwengers/bakta>) (8) using the "5.1 full" database, and Roary
50 (<https://sanger-pathogens.github.io/Roary/>) (9). Pangenomic analysis was performed with

51 PIRATE (v1.0.5) (<https://github.com/SionBayliss/PIRATE>) (10) using the -a option to
52 generate the core alignment. The core genome phylogeny was inferred using IQ-TREE2
53 (<http://www.iqtree.org/>) (11) with the -m GTR+R option. The pangenome was visualized with
54 Phandango (<https://github.com/jameshadfield/phandango>) (12), and the phylogenetic tree,
55 including bootstrap values, was annotated with iTOL (<https://itol.embl.de/>) (13). The
56 MultiLocus Sequencing Typing (MLST) analysis was performed using the PubMLST web
57 application (<https://pubmlst.org/software/bigssdb>) (14) and its database for *Chlamydia* spp. *C.*
58 *pneumoniae* genomes were automatically annotated by the NCBI prokaryotic genome
59 annotation pipeline (15). Resistance genes were searched using the Arg-Annot tool (16).

60

61 **APPENDIX, SUPPLEMENTARY RESULTS**

62 The abnormally high number of *C. pneumoniae* diagnoses was detected in October
63 2024 in our institute. This was discussed during our daily diagnoses report meetings that
64 involve all medical biologists and medical biology residents of the clinical microbiology and
65 virology laboratory of Marseille university hospitals at IHU Méditerranée Infection, and
66 during our weekly meetings on epidemiological surveillance of infections based on the data of
67 this laboratory, to which attend medical biologists and clinicians from our infectious diseases
68 institute (17). Specific daily automated surveillance of new diagnoses of *C. pneumoniae* that
69 included the localization in clinical wards of hospitalized cases was newly implemented in
70 October 2024, and transmitted each day to medical biologists and clinicians from Marseille
71 university hospitals, and the rise in the *C. pneumoniae* diagnoses was reported to the regional
72 health agency.

73 Cycle threshold values (Ct) of our in-house qPCR were available for 28 of the 37 *C.*
74 *pneumoniae*-positive samples and ranged between 18 and 37. The overall incidence of *C.*
75 *pneumoniae* cases was higher in children between 11-15 years (8/1,075, 0.7%) and in children

76 between 6-10 years (8/1,669, 0.5%), compared to the other age groups (Main text Table 1).
77 Children <1 year were more frequently coinfecting (86%) with ≥ 1 other respiratory pathogen
78 compared to the other age groups (Main text Table 1).

79 *C. pneumoniae* genomes were obtained by NGS performed directly from respiratory
80 samples with Ct lower than or equal to 22 (range, 18-22). The two whole genomes in a
81 single scaffold were obtained from samples with a qPCR Ct of 21. They harbored between
82 1,098 and 1,101 genes. Genes encoding hypothetical proteins and DUF-domain containing
83 proteins were those the most frequent, in between 210 and 217 and 64 and 65 cases,
84 respectively. All five genomes obtained here belonged to ST16 based on MultiLocus
85 Sequencing Typing (Appendix Table 2), suggesting the circulation of a single serotype during
86 this 2024 outbreak. Only 19 other *C. pneumoniae* were available Phylogenomic analyses
87 based on mutations in core genes and conducted for the four (near) full-length *C. pneumoniae*
88 genomes (in between 1-12 scaffolds) obtained here and the 19 *C. pneumoniae* genomes
89 previously released in the GenBank NCBI nucleotide sequence database
90 (<https://www.ncbi.nlm.nih.gov/genbank/>) (18) indicated that the four (near) full-length
91 genomes obtained in our laboratory comprised a cluster, being those the most closely related
92 with each other (Appendices Figures 1a,b). Only 16 mutations differentiated the two whole *C.*
93 *pneumoniae* genomes in a single scaffold obtained here based on the alignment of core genes.
94 Six other genomes from GenBank were classified as of ST16, the most frequent serotype
95 being ST17 (n=11). Resistance gene search revealed the presence of a gene encoding an UDP-
96 N-acetylglucosamine 1-carboxyvinyltransferase (*murA*) potentially associated with
97 fosfomycine resistance, which was only described to our knowledge in *Chlamydia*
98 *trachomatis* genomes among *Chlamydia* spp. (19), and was shared by the other *C.*
99 *pneumoniae* genomes. No fluoroquinolone, macrolide or tetracycline resistance genes were
100 found.

101 **APPENDIX, SUPPLEMENTARY FIGURES**

102

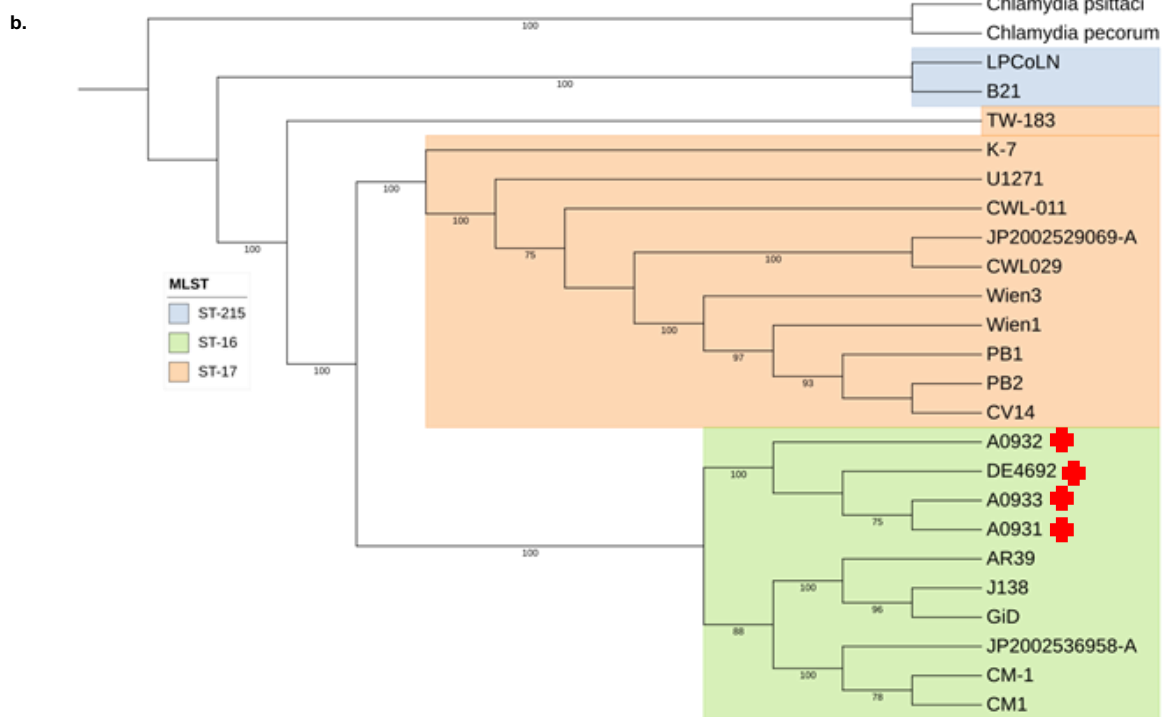
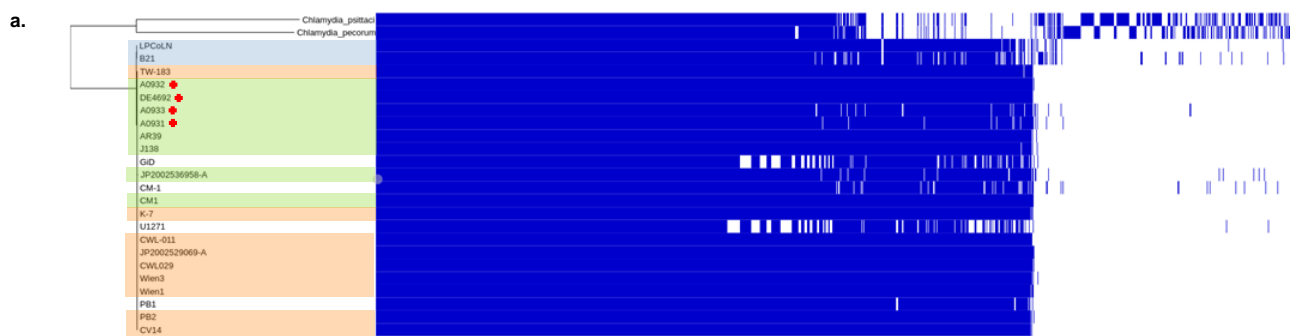
103 **Appendix, Figure 1.** Pangenome analysis showing the cladogram built based on mutations in

104 core genes for *C. pneumoniae* genomes with (a) or without (b) the representation of genes

105 b: genes are represented by blue vertical lines.

106 The four (near) full-length (in 1-12 scaffolds) genomes obtained here are indicated by a red

107 cross.



108

109

110 **APPENDIX, SUPPLEMENTARY TABLES**

111

112 **Table 1.** Results of the MultiLocus Sequencing Typing (MLST) analysis

113 The MLST analysis was performed using the PubMLST (<https://pubmlst.org/software/bigsgdb>)

114 web application

115

<i>Chlamydia pneumoniae</i> genomes	MLST serotype	Markers						
		gatA	oppA	hflX	gidA	enoA	hemN	fumC
Reference genomes for the MLST	ST16	4	7	5	6	5	3	4
	ST17	4	7	5	7	6	3	4
	ST18	4	7	5	7	7	3	4
	ST215	19	19	66	21	17	16	4
Genomes obtained in the present study								
IHUChlampneu_Mars1 (CP172581)	ST16	4	7	5	6	5	3	4
IHUChlampneu_Mars2 (CP173416)	ST16	4	7	5	6	5	3	4
IHUChlampneu_Mars3 (A0931)	ST16	4	7	5	6	5	3	4
IHUChlampneu_Mars4 (A0932)	ST16	4	7	5	6	5	3	4

116

117

118 **APPENDIX, REFERENCES**

119 1. Morel AS, Dubourg G, Prudent E, Edouard S, Gouriet F, Casalta JP, Fenollar F,

120 Fournier PE, Drancourt M, Raoult D. Complementarity between targeted real-time

121 specific PCR and conventional broad-range 16S rDNA PCR in the syndrome-driven

122 diagnosis of infectious diseases. *Eur J Clin Microbiol Infect Dis.* 2015;34(3):561-70.

123 doi: 10.1007/s10096-014-2263-z.

124 2. Chen S, Zhou Y, Chen Y, Gu J. fastp: an ultra-fast all-in-one FASTQ preprocessor.

125 *Bioinformatics.* 2018;34(17):i884-i890. doi: 10.1093/bioinformatics/bty560.

126 3. Wood DE, Lu J, Langmead B. Improved metagenomic analysis with Kraken 2. *Genome*

127 *Biol.* 2019;20(1):257. doi: 10.1186/s13059-019-1891-0.

- 128 4. Lu J, Rincon N, Wood DE, Breitwieser FP, Pockrandt C, Langmead B, Salzberg SL,
129 Steinegger M. Metagenome analysis using the Kraken software suite. *Nat Protoc.*
130 2022;17(12):2815-2839. doi: 10.1038/s41596-022-00738-y.
- 131 5. Wick RR, Judd LM, Gorrie CL, Holt KE. Unicycler: Resolving bacterial genome
132 assemblies from short and long sequencing reads. *PLoS Comput Biol.*
133 2017;13(6):e1005595. doi: 10.1371/journal.pcbi.1005595.
- 134 6. Vaser R, Šikić M. Time- and memory-efficient genome assembly with Raven. *Nat*
135 *Comput Sci.* 2021;1(5):332-336. doi: 10.1038/s43588-021-00073-4.
- 136 7. Wick RR, Holt KE. Polypolish: Short-read polishing of long-read bacterial genome
137 assemblies. *PLoS Comput Biol.* 2022;18(1):e1009802. doi:
138 10.1371/journal.pcbi.1009802.
- 139 8. Schwengers O, Jelonek L, Dieckmann MA, Beyvers S, Blom J, Goesmann A. Bakta:
140 rapid and standardized annotation of bacterial genomes via alignment-free sequence
141 identification. *Microb Genom.* 2021;7(11):000685. doi: 10.1099/mgen.0.000685.
- 142 9. Page AJ, Cummins CA, Hunt M, Wong VK, Reuter S, Holden MT, Fookes M, Falush
143 D, Keane JA, Parkhill J. Roary: rapid large-scale prokaryote pan genome analysis.
144 *Bioinformatics.* 2015;31(22):3691-3. doi: 10.1093/bioinformatics/btv421.
- 145 10. Bayliss SC, Thorpe HA, Coyle NM, Sheppard SK, Feil EJ. PIRATE: A fast and
146 scalable pangenomics toolbox for clustering diverged orthologues in bacteria.
147 *Gigascience.* 2019;8(10):giz119. doi: 10.1093/gigascience/giz119.
- 148 11. Minh BQ, Schmidt HA, Chernomor O, Schrempf D, Woodhams MD, von Haeseler A,
149 Lanfear R. IQ-TREE 2: New Models and Efficient Methods for Phylogenetic Inference
150 in the Genomic Era. *Mol Biol Evol.* 2020;37(5):1530-1534. doi:
151 10.1093/molbev/msaa015.

- 152 12. Hadfield J, Croucher NJ, Goater RJ, Abudahab K, Aanensen DM, Harris SR.
153 Phandango: an interactive viewer for bacterial population genomics. *Bioinformatics*.
154 2018;34(2):292-293. doi: 10.1093/bioinformatics/btx610.
- 155 13. Letunic I, Bork P. Interactive Tree of Life (iTOL) v6: recent updates to the phylogenetic
156 tree display and annotation tool. *Nucleic Acids Res*. 2024;52(W1):W78-W82. doi:
157 10.1093/nar/gkae268.
- 158 14. Jolley KA, Bray JE, Maiden MCJ. Open-access bacterial population genomics: BIGSdb
159 software, the PubMLST.org website and their applications. *Wellcome Open Res*.
160 2018;3:124. doi: 10.12688/wellcomeopenres.14826.1.
- 161 15. Tatusova T, DiCuccio M, Badretdin A, Chetvernin V, Nawrocki EP, Zaslavsky L,
162 Lomsadze A, Pruitt KD, Borodovsky M, Ostell J. NCBI prokaryotic genome annotation
163 pipeline. *Nucleic Acids Res*. 2016;44(14):6614-24. doi: 10.1093/nar/gkw569.
- 164 16. Gupta SK, Padmanabhan BR, Diene SM, Lopez-Rojas R, Kempf M, Landraud L,
165 Rolain JM. ARG-ANNOT, a new bioinformatic tool to discover antibiotic resistance
166 genes in bacterial genomes. *Antimicrob Agents Chemother*. 2014;58(1):212-20. doi:
167 10.1128/AAC.01310-13.
- 168 17. Abat C, Chaudet H, Colson P, Rolain JM, Raoult D. Real-Time Microbiology
169 Laboratory Surveillance System to Detect Abnormal Events and Emerging Infections,
170 Marseille, France. *Emerg Infect Dis*. 2015;21(8):1302-10. doi:
171 10.3201/eid2108.141419.
- 172 18. Sayers EW, Cavanaugh M, Frisse L, Pruitt KD, Schneider VA, Underwood BA, Yankie
173 L, Karsch-Mizrachi I. GenBank 2025 update. *Nucleic Acids Res*. 2024;gkae1114. doi:
174 10.1093/nar/gkae1114.
- 175 19. McCoy AJ, Sandlin RC, Maurelli AT. In vitro and in vivo functional activity of
176 *Chlamydia* MurA, a UDP-N-acetylglucosamine enolpyruvyl transferase involved in

177 peptidoglycan synthesis and fosfomycin resistance. J Bacteriol. 2003;185(4):1218-28.

178 doi: 10.1128/JB.185.4.1218-1228.2003.

179

180