

## Title page

### **Association between afterload-related cardiac performance and acute kidney injury in patients with sepsis: a retrospective cohort study**

Jie-zhao Zheng<sup>1#</sup>, MM; Ze-bin Guo<sup>1#</sup>, MM, Li Li<sup>2#</sup>, MD; Hong-xuan Zhou<sup>1</sup>, MM; Jun-yu Huang<sup>3</sup>, BM; Min Luo<sup>2</sup>, MM; Min-xuan Huang<sup>1</sup>, MM; Jia-xian Huo<sup>1</sup>, MM; Wen-xing Huang<sup>1</sup>, MM; Hao-ran Yuan<sup>3</sup>, BM; Hong-xi Chen<sup>3</sup>, BM; Zi-xin Jiang<sup>1\*</sup>, MM; Wei-yan Chen<sup>1\*</sup>, MD.

1. State Key Laboratory of Respiratory Disease, Department of Critical Care, the Second Affiliated Hospital, Guangzhou Medical University, Guangzhou, Guangdong, 510260, P.R.China.
2. Critical Care Medicine, Yue Bei People's Hospital, Shaoguan, Guangdong, 512026, P.R.China.
3. Guangzhou Medical University, Guangzhou, Guangdong, 510260, P.R.China.

(ORCID: Jie-zhao Zheng, 0000-0003-2679-1325; Wei-yan Chen, 0000-0002-5101-8839)

Short title: Association between ACP and SA-AKI.

\*Corresponding author: Wei-yan Chen, [sam11124@163.com](mailto:sam11124@163.com); Zi-xin Jiang, [jiangzixinicu@126.com](mailto:jiangzixinicu@126.com). Department of Critical Care, The Second Affiliated Hospital of Guangzhou Medical University, No. 250 Changgang East Road, Haizhu District, Guangzhou 510260, China.

#co-first author

Word count of manuscript: 5, 906

## **Abstract**

**Background:** It is believed that there is a complex bidirectional causal and pathophysiological relationship between heart and kidney in sepsis. Afterload-related cardiac performance (ACP) has been found to have a close association with cardiac function and prognosis in sepsis. The aim of this study was to explore its correlation with sepsis-associated acute kidney injury (SA-AKI).

**Methods:** 150 patients with sepsis who underwent PiCCO were included. Restricted cubic spline (RCS) and Cox proportional hazards regression were used to describe the relationship between ACP and SA-AKI. The receiver operating characteristic curve (AUROC) analysis was used to evaluate the predictive value of ACP for SA-AKI. A prediction model of SA-AKI occurrence probability within 7 days was presented by nomogram.

**Results:** 67.3% patients developed SA-AKI within 7 days. The RCS model demonstrated that the risk of SA-AKI increased with the decrease of ACP. Cox regression analyses also found an independent inverse association between them (HR 0.974, 95%CI 0.963 - 0.985,  $p < 0.001$ ). ACP showed significantly greater discrimination for SA-AKI than CI ( $p = 0.004$ ). Independent risk factors for SA-AKI within 7 days were history of hypertension, type of pathogens, SOFA score, serum potassium and ACP. The AUROC of the nomogram established by age and the above factors was 0.865 (95%CI 0.808 – 0.923,  $p < 0.001$ ) and the C-index was 0.800 (95%CI 0.753 - 0.847).

**Conclusions:** Low ACP was associated with an increased risk of SA-AKI within 7 days. ACP, which might be superior to CI, had the potential for early prediction of SA-AKI.

**Keywords:** Afterload-related cardiac performance, Sepsis, Acute kidney injury, Prediction, Cardiorenal syndrome

## Introduction

Acute kidney injury (AKI) is a common clinical syndrome characterized by a rapid decline in renal function within a short period of time<sup>[1]</sup>. Sepsis is the major cause of AKI in critical ill patients, accounting for 25% to 75% of all cases<sup>[2-4]</sup>. According to studies, sepsis-associated AKI (SA-AKI) is strongly associated with worse outcomes, including longer intensive care unit (ICU) and hospital stays, higher mortality, an increased risk of chronic kidney diseases (CKD) and reduced quality of life<sup>[5-8]</sup>. Therefore, early identification and intervention of SA-AKI are of great significance for improving the prognosis of patients.

Creatinine, as a classic indicator of renal function, has a long half-life and is influenced by a variety of factors, including muscle mass, physical activity, dietary habits and age, which can lead to delayed recognition of renal dysfunction<sup>[1, 9]</sup>. It is reported that numerous novel biomarkers such as neutrophil gelatinase associated lipocalin (NGAL) predict SA-AKI with high accuracy. However, the application of these forecasting biomarkers is still limited by the promotion of tests, costs and further validation of their clinical significance is needed<sup>[10-15]</sup>.

The pathogenesis of SA-AKI is complex. It is hypothesized that SA-AKI may be the result of a combination of mechanisms such as inflammatory injury, mitochondrial dysfunction, abnormal renal perfusion, microcirculatory dysfunction and abnormalities<sup>[1, 5, 16]</sup>. Besides, recent studies have shown that early renal function changes in sepsis (within the first 48 hours) appear to represent primarily a functional rather than a structural disease<sup>[17-19]</sup>. Avoidance of nephrotoxins, optimization of fluid and hemodynamic status are currently limited means to prevent the occurrence or progression of SA-AKI and to protect renal function<sup>[1]</sup>. This, in turn, suggests that the abnormality of renal perfusion may be the initiating factor of AKI, and early hemodynamic indicators may potentially signal the onset and progression of AKI at an earlier stage<sup>[18]</sup>.

The heart is also one of the most commonly involved organs in sepsis. Sepsis-induced

myocardial dysfunction (SIMD) can lead to more severe hemodynamic disorder, which subsequently leads to abnormal renal perfusion pressure (RPP) and an increase in the incidence of SA-AKI. Clinical studies have shown that some hemodynamic indicators, such as mean arterial pressure (MAP) and cardiac index (CI), are risk factors affecting the mortality of patients in ICU with AKI. While adequate RPP, MAP and cardiac output (CO) were related to the prevention of SA-AKI<sup>[20-22]</sup>. Therefore, there is a theoretical possibility to identify SA-AKI as early as possible through hemodynamic indicators.

Afterload-related cardiac performance (ACP), first introduced by Werdan et al. in 2011, is a ratio of measured CO to predicted CO, which presents the cardiac ability to increase its output when systemic vascular resistance (SVR) decreases in order to maintain a constant MAP<sup>[23]</sup>. Since it takes into account the influence of MAP, SVR on CO, it may be more advantageous in quantitatively measuring of SIMD and predicting SA-AKI.

Our study aims to investigate the relationship between ACP and SA-AKI, and further verify its predictive value, so as to provide a clinical method for the prediction of SA-AKI.

## **Methods**

### **Study population and setting**

This study was a retrospective cohort study involving adult Patients (aged  $\geq 18$  years) who were diagnosed with sepsis and underwent PiCCO during their ICU stay between June 2016 and December 2021. Sepsis was defined as organ dysfunction, identified by an acute change of  $\geq 2$  points in the total Sequential Organ Failure Assessment (SOFA) score, caused by the suspected or confirmed infection (Sepsis-3)<sup>[24]</sup>. Fluid resuscitation and antibiotic therapy had been administered according to guideline<sup>[25]</sup>. Moreover, SA-AKI was diagnosed by meeting the Kidney Disease: Improving Global Outcomes (KDIGO) criteria for AKI<sup>[26]</sup>, in the presence of sepsis<sup>[16]</sup>. Patients were excluded if

they met any of the following criteria: (1) repeat ICU admissions from the same hospital episode; (2) the length of ICU stay was less than 24 hours; (3) previous history of congenital heart disease, severe valvular heart disease; (4) history of CKD, or renal replacement has been performed; (5) AKI had occurred before or at the time of admission to the ICU; (6) main diagnoses directly related to myocardial dysfunction, such as acute myocardial infarction, myocarditis, or moderate-to-severe pericardial effusion; (7) post-cardiopulmonary resuscitation status.

### **Ethical approval**

The Clinical Research and Application Institutional Review Board of the Second Affiliated Hospital of Guangzhou Medical University have approved this study (number: 2023-hg-ks-07). Since the nature of the retrospective observational study and the data were anonymized at the time of collection which did not involve privacy, The need for individual informed consent was waived.

### **Afterload-related cardiac performance (ACP)**

ACP (%) was calculated using the formula previously described by Werdan et al.<sup>[23]</sup> and was described as  $CO_{\text{measured}} / CO_{\text{predicted as normal}} \times 100$ .  $CO_{\text{predicted as normal}}$  in the formula was calculated as  $[560.68 \times (\text{MAP} - \text{CVP}) \times 80 / CO_{\text{measure}}]^{-0.645}$ . CVP was an acronym for central venous pressure. ACP was classified as normal (> 80%), slight impairment (60-80%), moderate-severe impairment ( $\leq 60\%$ ) to distinguish cardiac function.

### **Data collection**

We extracted the following variables: demographic characteristics, vital signs, laboratory tests, interventions [using of mechanical ventilation, continuous renal replacement therapy (CRRT) during ICU stay] and history of comorbidities [chronic heart failure (CHF), atrial fibrillation (AF), hypertension and diabetics]. Primary diagnosis and pathogenic culture results were also collected. The severity of the diseases was estimated using SOFA scores, and acute physiology and chronic health

evaluation (APACHE) II score. If vasoactive drugs were used, the vasoactive inotropic score (VIS) was calculated based on the maximum dose on the first day of sepsis<sup>[27]</sup>. Parameters, such as CO, CI, cardiac power index (CPI), global end-diastolic volume index (GEDI), systemic vascular resistance index (SVRI), extravascular lung water index (ELWI), CVP and MAP, were recorded after PiCCO monitoring. RPP was calculated as  $(MAP - CVP)^{[28]}$ .

Variables missing more than 20% were removed from this analysis, and the remaining variables were imputed via the method of multiple imputation.

## **Outcomes**

The primary outcome was to investigate the association between ACP and risk of SA-AKI within 7 days, and further explore the value of ACP in predicting the 7-day SA-AKI occurrence probability.

## **Statistical analysis**

All patients were divided into three groups according to ACP classification of cardiac function. A descriptive analysis was performed. The chi-square test, One-Way ANOVA, Kruskal-Wallis test were conducted for group comparisons of categorical, normally distributed, and nonnormally distributed continuous variables, respectively.

A Model fitted with restricted cubic spline was conducted to test for linear or nonlinear shapes of the association between ACP and the probability of SA-AKI. Collinearity analysis was performed before multivariate Cox regression analysis, and variables with variance inflation factor (VIF)  $> 5$  were excluded. Cox proportional hazards regression analyses were used to evaluate the independent associations between ACP and SA-AKI after adjusting for confounding factors, and further establish a nomogram prediction model. Internal validation was performed using 500 bootstrap and calibration curves were drawn. The concordance index (C-index), area under the curve (AUC) and 95% confidence interval (95%CI) were calculated. The receiver operating characteristic

curve (ROC) was used to assess the efficacy of ACP in predicting the risk of SA-AKI, and then the predictive ability of ACP with CI, CPI and RPP for SA-AKI was tested by comparing the AUC. For survival analysis, Kaplan-Meier curves were depicted and compared by log-rank test.

A two-tailed test was performed and  $p < 0.05$  was considered statistically significant. All analyses were performed using the statistical software packages R. version 4.4.1 (R Foundation for Statistical Computing, Vienna, Austria) and Free Statistics software versions 1.9.

## **Results**

### **Baseline characteristics**

Between June 2016 and December 2021, a total of 1486 individuals with sepsis according to the Sepsis-3.0 criterion, of which 637 patients were underwent PiCCO in ICU, and 150 patients were finally enrolled in this study. The flow chart of the study participants selection was presented in Figure 1.

In this cohort, the predominant site of infection was the lungs, followed by the abdomen. Among these cases, 71.3% patients progressed to septic shock, with nearly all patients required ventilator support, and 67.3% patients developing AKI within 7 days following diagnosis of sepsis. Of the patients who developed SA-AKI, 68.3% patients received CRRT. patients with AKI had lower ACP compared to those without AKI ( $p < 0.001$ ) (Table 1). Upon grouping patients by ACP level, it was observed that patients with moderate-severe myocardial impairment were characterized by older, higher SOFA scores and VIS, higher level of CVP and serum lactate, lower MAP, and greater need for CRRT. Moreover, the incidence of AKI increased with the severity of cardiac functional impairment, and there was statistical difference between groups ( $p < 0.001$ , Table S1).

## **Predictive value of ACP, CI, CPI and RPP**

Our findings demonstrated that ACP, CI, CPI and RPP exhibited a high rate of identification of SA-AKI, with statistically significant differences ( $p < 0.001$ ) (Table 2). The AUC value of ACP at enrollment was the highest. ACP at enrollment significantly outperformed CI in predicting SA-AKI within 7 days ( $p = 0.004$ ) (Table S2). The AUC value of ACP, while not demonstrating a statistically significant improvement over that of CPI and RPP in predicting the occurrence of SA-AKI within 7 days, achieved the highest value at 0.777.

## **Correlation between ACP and SA-AKI**

To further investigate the association between ACP and SA-AKI, we employed restricted cubic splines flexible model to visualize the relationship between ACP and SA-AKI risk (Figure 2). The findings indicated that  $ACP < 75.8\%$  was identified as a risk factor for SA-AKI, and the risk of developing SA-AKI escalated rapidly with decreasing ACP levels, indicating a negative correlation between them.

To further investigate the independent association between them, Cox regression analysis was performed. Results showed that independent risk factors for SA-AKI within 7 days included history of hypertension, SOFA scores, types of pathogens, serum potassium and ACP at enrollment (Table S3-7). Considering the effects of age on renal function, we further included this variable in the multivariate Cox regression analysis. After adjusting for all covariates mentioned above, as a continuous variable, the risk of SA-AKI decreased by 2.1% for every 1% increase in ACP. In addition, as a categorized variable, patients with mild ( $80\% > ACP \geq 60\%$ ) and moderate-to-severe ( $ACP < 60\%$ ) cardiac impairment had a 1.822-fold and 2.364-fold increased risk of SA-AKI within 7 days compared with patients with normal cardiac function, respectively (Table 3).

Similarly, Cox regression analysis showed that following adjustment for relevant confounders, no matter as a continuous variable or a categorized variable, reduced CI,



CPI and RPP emerged as independent risk factors for SA-AKI, too (Table 3).

### **Establishment of predictive nomogram model**

Based on the multivariate Cox regression model, a nomogram model showing the probability of SA-AKI occurrence within 7 days was established with age, the history of hypertension, SOFA, serum potassium, types of pathogens and ACP at admission as predictors. According to Figure 3A, the cumulative score derived from the individual predictor can be utilized to predict the probability of AKI development in sepsis within a 7-day timeframe. The AUC value of this prediction model was 0.865 (95%CI 0.808 – 0.923,  $p < 0.001$ ) (Figure 3C), and the C-index was 0.800 (95%CI 0.753 - 0.847) (Figure 3B). Given that the majority of sepsis patients do not have pathogen type results at ICU admission, we opted to exclude this variable from the predictive model (Figure 4A). The AUC value of this prediction model was 0.815 (95%CI 0.749 – 0.881,  $p < 0.05$ ) (Figure 4C), and the C-index was 0.780 (95%CI 0.730 - 0.830) (Figure 4B).

### **Secondary outcome**

In the baseline comparison, we found that the hospital mortality increased with the aggravation of myocardial impairment, in addition, the patients with moderate to severe cardiac function impairment had the highest in-hospital mortality (65.5%) and the shortest length of ICU stay (Table S1). Kaplan-Meier curve showed that the patients in moderate-severe impairment had higher hospital mortality than patients in the normal group (Log-rank test:  $p < 0.05$ , Figure 5).

### **Discussion**

In fact, as early as 1951, Ledoux et al. have pointed out that cardiac insufficiency can cause impaired kidney function<sup>[29]</sup>. In 2008, Ronco et al. further emphasized the

interaction between heart and kidney, and proposed that cardiorenal syndrome (CRS) is a clinical syndrome in which acute or chronic dysfunction of one of the heart or kidney leads to acute or chronic impairment of the other organ<sup>[30]</sup>. Sepsis is the main and most common cause of acute Type 5 CRS, which has a high mortality. In our study cohort, 67.3% of patients with sepsis developed AKI. Patients with decreased ACP had a significantly higher incidence of SA-AKI within 7 days than those with normal ACP. Our study also suggested that the decrease of ACP is an independent risk factor for SA-AKI within 7 days. Therefore, our findings once again validate the interaction of cardio-renal function in sepsis.

The pathogenesis of Type 5 CRS is relatively complex. It is believed that it is related to renal hypoperfusion due to decreased cardiac output caused by cardiac insufficiency on the one hand, and increased renal venous pressure caused by continuous venous congestion on the other hand<sup>[31]</sup>. In recent years, ACP has been considered as a potential indicator for diagnosing cardiac function impairment and associated with the severity and short-term prognosis of patients with sepsis<sup>[32-36]</sup>. Our previous study has shown that a strong linear correlation between ACP and CI as well as CPI<sup>[37]</sup>. Moreover, the relevant measures used to calculate ACP are obtained from Pulse indicator continuous cardiac output (PiCCO), which have clinical utility. Therefore, the application of ACP in forecasting the occurrence of AKI had a theoretical basis.

In fact, previous studies have demonstrated the relationship between traditional indicator CI and AKI. Luo et al. showed that an improved CI was a protective factor for renal function in patients with septic shock<sup>[38]</sup>. However, several studies have found that patients with septic shock often exhibit pseudonormalization or even elevation of CI due to a dramatic decrease in SVR<sup>[39]</sup>. Therefore, only focusing on CI may lead to an underestimation of the risk of AKI occurrence. Our retrospective study also verified that CI had a low sensitivity in predicting the occurrence of SA-AKI within 7 days. The predictive value of ACP for SA-AKI within 7 days was significantly better than CI, with better specificity and sensitivity, and the cut-off value was also very close to the

threshold of 80% defined by cardiac function decline. Therefore, we believe that early monitoring of ACP is conducive to predicting the risk of SA-AKI.

CPI is considered to be an indicator that helps to identify the residual systolic reserve function in patients with heart failure<sup>[40]</sup>. It makes up for the deficiency of CI to a certain extent by modifying MAP, but there is limited studies on the relationship between CPI and AKI. Our study found that low CPI has a high sensitivity in predicting the occurrence of SA-AKI. RPP, which reflects renal blood perfusion, was less sensitive than ACP in predicting SA-AKI, but had a higher specificity (87.8%). RPP represents the transrenal pressure gradient and is the difference between inflow pressure (MAP) and out flow pressure [CVP or intra-abdominal pressure (IAP)]<sup>[28]</sup>. The predictive cut-off value of RPP was 60 mmHg, which led us to consider that for sepsis patients with a CVP > 5mmHg, maintaining a target MAP of 65mmHg may not be sufficient in preventing AKI occurrence.

From the clinical perspective, the nomogram model in this study has strong rationality and clinical practicability. The factors in this model are clinical data easy to obtain, and the application is relatively simple. Numerous studies have reported the effects of age and high blood pressure on kidney function. SOFA is an indicator of disease severity and has often been used in previous studies to predict AKI<sup>[41]</sup>. Blood potassium level may be a side reflection of renal excretion function. As for the relationship between fungal infection and AKI, there is no clear report at present, and further research is needed to confirm it. Statistically, the AUC of the nomogram model with pathogenic species was up to 0.865, indicating that the model had good differentiation. In addition, the C-index of the model reaches 0.800, which also indicates that the model has good calibration degree. Therefore, the SA-AKI prediction model established in this study not only has clinical practicability, but also has high accuracy.

Furthermore, our study demonstrated that patients with myocardial impairment (regardless of mild to severe) had a higher risk of in-hospital death than normal patients. As far as we know, ACP is associated with the prognosis of patients with sepsis<sup>[32, 34]</sup>,

and the results of this study are consistent with these findings.

It's is important to note that ACP has the limitation of not accounting for preload. Therefore, preload independence must be assessed correctly before standardizing ACP measurement. In our study, there was no significant difference in GEDI between the groups, suggesting that all patients had received early and adequate fluid resuscitation to minimize the impact of preload.

There were several limitations must be considered in our study. First, this was a retrospective observational cohort study. Some data were missing, such as troponin and brain natriuretic peptide, which could not be included in the analysis. However, we excluded patients with an acute myocardial infarction during the same hospitalization at the time of screening, and the small percentage of patients with chronic heart failure in our study, which minimized the bias in the results. Second, our finding was based on data obtained from patients undergoing PiCCO monitoring, which might lead to selection bias. Third, the sample size was small, and the confidence intervals of both tails of the fitting curve were large, and large prospective multicenter studies are needed to further verify the stability of the results. Finally, our study followed patients for a short time and did not pay much attention to the long-term prognosis.

## **Conclusions**

There was a negative correlation between ACP and the occurrence of SA-AKI. In addition, ACP, which may be superior to traditional cardiac function indicators, had the potential value of early prediction of SA-AKI. Decreased ACP might increase the risk of in-hospital mortality in patients with sepsis.

## **Supplementary materials**

The supplemental files contain the tables needed to be displayed in the result section.

## Acknowledgements

None.

## Sources of Funding

This work was supported by the Major clinical research project cultivation project of Guangzhou Medical University Scientific Research Capability Enhancement Plan (GMUCR2024-02001) and The National Natural Science Foundation of China (82202371).

## Disclosures

The authors declare that they have no competing interests.

## References:

- [1] Pickkers P, Darmon M, Hoste E, et al. Acute kidney injury in the critically ill: an updated review on pathophysiology and management[J]. *Intensive care medicine*, 2021,47(8):835-850. DOI: 10.1007/s00134-021-06454-7.
- [2] Hoste E A, Bagshaw S M, Bellomo R, et al. Epidemiology of acute kidney injury in critically ill patients: the multinational AKI-EPI study[J]. *Intensive Care Med*, 2015,41(8):1411-1423. DOI: 10.1007/s00134-015-3934-7.
- [3] Uchino S, Kellum J A, Bellomo R, et al. Acute renal failure in critically ill patients: a multinational, multicenter study[J]. *JAMA*, 2005,294(7):813-818. DOI: 10.1001/jama.294.7.813.
- [4] Kaddourah A, Basu R K, Bagshaw S M, et al. Epidemiology of Acute Kidney Injury in Critically Ill Children and Young Adults[J]. *N Engl J Med*, 2017,376(1):11-20. DOI: 10.1056/NEJMoa1611391.
- [5] Zarbock A, Nadim M K, Pickkers P, et al. Sepsis-associated acute kidney injury: consensus report of the 28th Acute Disease Quality Initiative workgroup[J]. *Nat Rev Nephrol*, 2023,19(6):401-417. DOI: 10.1038/s41581-023-00683-3.
- [6] Liu J, Xie H, Ye Z, et al. Rates, predictors, and mortality of sepsis-associated acute kidney

- injury: a systematic review and meta-analysis[J]. *BMC Nephrol*, 2020,21(1):318. DOI: 10.1186/s12882-020-01974-8.
- [7] Jiang L, Zhu Y, Luo X, et al. Epidemiology of acute kidney injury in intensive care units in Beijing: the multi-center BAKIT study[J]. *BMC Nephrol*, 2019,20(1):468. DOI: 10.1186/s12882-019-1660-z.
- [8] Schuler A, Wulf D A, Lu Y, et al. The Impact of Acute Organ Dysfunction on Long-Term Survival in Sepsis[J]. *Crit Care Med*, 2018,46(6):843-849. DOI: 10.1097/CCM.0000000000003023.
- [9] Singbartl K, Kellum J A. AKI in the ICU: definition, epidemiology, risk stratification, and outcomes[J]. *Kidney Int*, 2012,81(9):819-825. DOI: 10.1038/ki.2011.339.
- [10] Sun H, Jiang H, Eliaz A, et al. Galectin-3 in septic acute kidney injury: a translational study[J]. *Crit Care*, 2021,25(1):109. DOI: 10.1186/s13054-021-03538-0.
- [11] Wen Y, Parikh C R. Current concepts and advances in biomarkers of acute kidney injury[J]. *Crit Rev Clin Lab Sci*, 2021,58(5):354-368. DOI: 10.1080/10408363.2021.1879000.
- [12] Ostermann M, Zarbock A, Goldstein S, et al. Recommendations on Acute Kidney Injury Biomarkers From the Acute Disease Quality Initiative Consensus Conference: A Consensus Statement[J]. *JAMA Netw Open*, 2020,3(10):e2019209. DOI: 10.1001/jamanetworkopen.2020.19209.
- [13] Depret F, Hollinger A, Cariou A, et al. Incidence and Outcome of Subclinical Acute Kidney Injury Using penKid in Critically Ill Patients[J]. *Am J Respir Crit Care Med*, 2020,202(6):822-829. DOI: 10.1164/rccm.201910-1950OC.
- [14] de Geus H R, Betjes M G, Schaick R, et al. Plasma NGAL similarly predicts acute kidney injury in sepsis and nonsepsis[J]. *Biomark Med*, 2013,7(3):415-421. DOI: 10.2217/bmm.13.5.
- [15] Honore P M, Nguyen H B, Gong M, et al. Urinary Tissue Inhibitor of Metalloproteinase-2 and Insulin-Like Growth Factor-Binding Protein 7 for Risk Stratification of Acute Kidney Injury in Patients With Sepsis[J]. *Crit Care Med*, 2016,44(10):1851-1860. DOI: 10.1097/CCM.0000000000001827.
- [16] Peerapornratana S, Manrique-Caballero C L, Gomez H, et al. Acute kidney injury from sepsis: current concepts, epidemiology, pathophysiology, prevention and treatment[J]. *Kidney Int*, 2019,96(5):1083-1099. DOI: 10.1016/j.kint.2019.05.026.
- [17] Ma S, Evans R G, Iguchi N, et al. Sepsis-induced acute kidney injury: A disease of the microcirculation[J]. *Microcirculation*, 2019,26(2):e12483. DOI: 10.1111/micc.12483.
- [18] Bellomo R, Kellum J A, Ronco C, et al. Acute kidney injury in sepsis[J]. *Intensive Care Med*, 2017,43(6):816-828. DOI: 10.1007/s00134-017-4755-7.
- [19] Maiden M J, Otto S, Brealey J K, et al. Structure and Function of the Kidney in Septic Shock. A Prospective Controlled Experimental Study[J]. *Am J Respir Crit Care Med*, 2016,194(6):692-700. DOI: 10.1164/rccm.201511-2285OC.
- [20] Pickkers P, Darmon M, Hoste E, et al. Acute kidney injury in the critically ill: an updated review on pathophysiology and management[J]. *Intensive Care Med*, 2021,47(8):835-850. DOI: 10.1007/s00134-021-06454-7.
- [21] Deng J, Li L, Feng Y, et al. Comprehensive Management of Blood Pressure in Patients with Septic AKI[J]. *J Clin Med*, 2023,12(3). DOI: 10.3390/jcm12031018.
- [22] Brienza N, Giglio M T, Marucci M. Preventing acute kidney injury after noncardiac surgery[J]. *Curr Opin Crit Care*, 2010,16(4):353-358. DOI: 10.1097/MCC.0b013e32833a9ef5.

- [23] Werdan K, Oelke A, Hettwer S, et al. Septic cardiomyopathy: hemodynamic quantification, occurrence, and prognostic implications[J]. *Clin Res Cardiol*, 2011,100(8):661-668. DOI: 10.1007/s00392-011-0292-5.
- [24] Singer M, Deutschman C S, Seymour C W, et al. The Third International Consensus Definitions for Sepsis and Septic Shock (Sepsis-3)[J]. *JAMA*, 2016,315(8):801-810. DOI: 10.1001/jama.2016.0287.
- [25] Rhodes A, Evans L E, Alhazzani W, et al. Surviving Sepsis Campaign: International Guidelines for Management of Sepsis and Septic Shock: 2016[J]. *Intensive Care Med*, 2017,43(3):304-377. DOI: 10.1007/s00134-017-4683-6.
- [26] Khwaja A. KDIGO clinical practice guidelines for acute kidney injury[J]. *Nephron Clin Pract*, 2012,120(4):c179-c184. DOI: 10.1159/000339789.
- [27] Koponen T, Karttunen J, Musialowicz T, et al. Vasoactive-inotropic score and the prediction of morbidity and mortality after cardiac surgery[J]. *Br J Anaesth*, 2019,122(4):428-436. DOI: 10.1016/j.bja.2018.12.019.
- [28] Ostermann M, Hall A, Crichton S. Low mean perfusion pressure is a risk factor for progression of acute kidney injury in critically ill patients - A retrospective analysis[J]. *BMC Nephrol*, 2017,18(1):151. DOI: 10.1186/s12882-017-0568-8.
- [29] LEDOUX P. [Cardiorenal syndrome][J]. *Avenir Med*, 1951,48(8):149-153.
- [30] Ronco C, Haapio M, House A A, et al. Cardiorenal syndrome[J]. *J Am Coll Cardiol*, 2008,52(19):1527-1539. DOI: 10.1016/j.jacc.2008.07.051.
- [31] Ronco C, Bellasi A, Di Lullo L. Cardiorenal Syndrome: An Overview[J]. *Adv Chronic Kidney Dis*, 2018,25(5):382-390. DOI: 10.1053/j.ackd.2018.08.004.
- [32] Wilhelm J, Hettwer S, Schuermann M, et al. Severity of cardiac impairment in the early stage of community-acquired sepsis determines worse prognosis[J]. *Clin Res Cardiol*, 2013,102(10):735-744. DOI: 10.1007/s00392-013-0584-z.
- [33] Wu Y, Tian P, Liang L, et al. Afterload-related cardiac performance is a powerful hemodynamic predictor of mortality in patients with chronic heart failure[J]. *Therapeutic advances in chronic disease*, 2023,14:384220130. DOI: 10.1177/20406223231171554.
- [34] Zhao C C, Zhang L R, Liu L X, et al. Afterload-related cardiac performance predicts prognosis in critical ill patients with sepsis: A prospective observational pilot study[J]. *Medicine (Baltimore)*, 2021,100(38):e27235. DOI: 10.1097/MD.00000000000027235.
- [35] Carbone F, Liberale L, Preda A, et al. Septic Cardiomyopathy: From Pathophysiology to the Clinical Setting[J]. *Cells*, 2022,11(18). DOI: 10.3390/cells11182833.
- [36] Beesley S J, Weber G, Sarge T, et al. Septic Cardiomyopathy[J]. *Crit Care Med*, 2018,46(4):625-634. DOI: 10.1097/CCM.0000000000002851.
- [37] Chen W, Zhang Z, Tao L, et al. Afterload-related cardiac performance identifies cardiac impairment and associates with outcome in patients with septic shock: a retrospective cohort study[J]. *Journal of Intensive Care*, 2021,9(1):33. DOI: 10.1186/s40560-021-00549-5.
- [38] Luo J C, Qiu X H, Pan C, et al. Increased cardiac index attenuates septic acute kidney injury: a prospective observational study[J]. *BMC Anesthesiol*, 2015,15:22. DOI: 10.1186/s12871-015-0005-0.
- [39] Su W L, Shui H A, Lan C C, et al. Cardiovascular Parameters Associated With Troponin I as Indicators for 14-Day Mortality in Patients With Septic Shock[J]. *Am J Med Sci*, 2018,356(3):244-253. DOI: 10.1016/j.amjms.2018.05.008.

- [40] Hothi S S, Tan L B, Cotter G. Resting cardiac power index and prediction of prognosis in heart failure[J]. Eur J Heart Fail, 2015,17(7):642-644. DOI: 10.1002/ejhf.310.
- [41] Yue S, Li S, Huang X, et al. Machine learning for the prediction of acute kidney injury in patients with sepsis[J]. J Transl Med, 2022,20(1):215. DOI: 10.1186/s12967-022-03364-0.



**Table 1. Baseline characteristics of AKI and non-AKI patients.**

<b>Covariate</b>	<b>All patients</b>	<b>Non-AKI</b>	<b>AKI</b>	<b>P value</b>
N (%)	150	49 (32.7)	101 (67.3)	
Septic shock, n (%)	107 (71.3)	27 (55.1)	80 (79.2)	0.002
<b>Demographics</b>				
Age, mean $\pm$ SD, years	67.6 $\pm$ 15.7	63.0 $\pm$ 16.3	69.9 $\pm$ 14.9	0.011
Male, n (%)	77 (50.0)	25 (51.0)	52 (51.5)	0.957
BMI, mean $\pm$ SD, kg/m <sup>2</sup>	21.8 $\pm$ 4.6	21.4 $\pm$ 4.0	22.1 $\pm$ 4.4	0.330
<b>Infection site, n (%)</b>				0.940
Pulmonary infection	66 (44.0)	20 (40.8)	46 (45.5)	
Abdominal infection	49 (32.7)	16 (32.7)	33 (32.7)	
Bloodstream infection	17 (11.3)	6 (12.2)	13 (10.9)	
Urinary infection	9 (6.0)	4 (8.2)	5 (5.0)	
Other	9 (6.0)	3 (6.1)	6 (5.9)	
<b>Pathogen, n (%)</b>				0.030
Negative	58 (38.7)	19 (38.8)	39 (38.6)	
Non-resistant bacteria	56 (37.3)	23 (46.9)	33 (32.7)	
Resistant bacteria	15 (10.0)	5 (10.2)	10 (9.9)	
Co-fungal infection	21 (14.0)	2 (4.1)	19 (18.8)	
<b>Medical history, n (%)</b>				
Atrial fibrillation	4 (2.7)	2 (4.1)	2 (2.0)	0.455
Chronic heart failure	8 (5.3)	1 (2.0)	7 (6.9)	0.213
Hypertension	59 (39.3)	13 (26.5)	46 (45.5)	0.025
Diabetics	42 (28.0)	10 (20.4)	32 (31.7)	0.149
<b>Disease severity score, mean <math>\pm</math> SD or median (IQR)</b>				
APACHE-II	23.6 $\pm$ 9.3	21.4 $\pm$ 8.0	24.7 $\pm$ 9.8	0.039
SOFA	10.1 $\pm$ 3.9	8.2 $\pm$ 3.5	10.9 $\pm$ 3.8	< 0.001
<b>Vital signs, mean <math>\pm</math> SD or median (IQR)</b>				
Temperature, °C	37.2 $\pm$ 1.9	37.1 $\pm$ 2.0	37.2 $\pm$ 1.9	0.748

Heart rate, beats/min	118.1 ± 27.8	119.6 ± 26.4	117.3 ± 28.5	0.639
Respiratory rate, times/min	27.8 ± 10.1	27.8 ± 10.5	27.7 ± 10.0	0.967
MAP, mmHg	77.3 ± 11.6	83.0 ± 10.5	74.5 ± 11.0	< 0.001
<b>Laboratory test, mean ± SD or median (IQR)</b>				
WBC, ×10 <sup>9</sup> /L	12.4 ± 10.4	13.6 ± 12.0	11.8 ± 9.6	0.317
Hemoglobin, g/L	101.2 ± 29.3	100.2 ± 27.4	101.7 ± 30.3	0.762
Platelet, ×10 <sup>9</sup> /L	177.3 ± 136.4	183.4 ± 134.6	174.3 ± 137.9	0.701
Total bilirubin, μmol/L	17.9 (10.3 - 47.8)	14.0 (9.2 - 31.5)	24.0 (11.5 - 53.6)	0.038
Albumin, g/L	25.1 ± 5.6	24.6 ± 6.0	25.4 ± 5.4	0.392
P/F ratio	229.0 ± 130.0	237.3 ± 144.5	225.0 ± 123.0	0.589
Serum creatinine, μmol/L	77.6 ± 17.4	73.8 ± 19.0	79.5 ± 16.4	0.062
BUN, mmol/L	13.2 (7.6 - 22.0)	8.5 (5.9 - 14.2)	15.2 (10.2 - 23.8)	< 0.001
APTT, s	40.9 (31.9 - 53.5)	40.1 (30.1 - 47.3)	42.4 (33.3 - 57.2)	0.071
PT, s	16.0 (13.6 - 19.9)	14.6 (13.2 - 18.5)	16.6 (13.8 - 21.0)	0.030
D-dimer, mg/L	13.5 ± 25.4	12.0 ± 23.7	14.2 ± 26.3	0.622
Fibrinogen, g/L	3.7 ± 1.9	4.0 ± 2.0	3.6 ± 1.9	0.217
AT-III, %	60.6 ± 23.1	60.8 ± 26.5	60.6 ± 21.4	0.955
Sodium, mmol/L	139.7 ± 8.0	139.1 ± 8.8	140.1 ± 7.6	0.475
Potassium, mmol/L	3.9 ± 0.8	3.5 ± 0.7	4.1 ± 0.8	< 0.001
Bicarbonate, mmol/L	19.1 ± 6.4	20.3 ± 5.5	18.5 ± 6.8	0.098
Procalcitonin, ng/ml	8.2 (1.3 - 66.8)	4.2 (0.5 - 27.0)	11.0 (2.0 - 76.5)	0.010
Lactate, mmol/L	3.6 (2.1 - 7.8)	3.0 (2.0 - 5.3)	4.3 (2.3 - 10.0)	0.030
<b>Combined therapy, n (%) or mean ± SD</b>				
Mechanical ventilation	143 (95.3)	46 (93.9)	97 (96.0)	0.556
CRRT	69 (46.0)	0 (0)	69 (68.3)	< 0.001
Use of vasopressors	126 (84.0)	36 (73.5)	90 (89.1)	0.014
Day-1 fluid balance, ml	1313.8 ± 1759.7	686.3 ± 1497.5	1618.2 ± 1803.1	0.002
<b>PICCO data, mean ± SD or median (IQR)</b>				

CVP, cmH <sub>2</sub> O	14.2 ± 6.8	12.0 ± 5.8	15.3 ± 7.0	0.005
GEDI, ml/m <sup>2</sup>	715.6 ± 171.1	689.0 ± 168.1	728.5 ± 171.8	0.186
SVRI, dyn.s.cm <sup>-5</sup> .m <sup>2</sup>	2191.7 ± 1133.4	2122.9 ± 1026.3	2225.1 ± 1185.3	0.606
ELWI, ml/kg	11.9 ± 7.6	11.3 ± 7.6	12.1 ± 7.7	0.534
CI, L/min/m <sup>2</sup>	3.1 ± 1.2	3.5 ± 1.2	2.8 ± 1.2	0.001
CPI, W/m <sup>2</sup>	0.52 ± 0.22	0.65 ± 0.24	0.46 ± 0.19	< 0.001
RPP	63.1 ± 14.1	71.1 ± 11.1	59.2 ± 13.8	< 0.001
ACP, %	74.5 ± 16.4	85.0 ± 14.6	69.4 ± 14.8	< 0.001
<b>Echocardiographic parameters, mean ± SD</b>				
LVEF, %	58.6 ± 9.0	60.4 ± 8.0	57.8 ± 9.4	0.090
LVFS, %	31.0 ± 5.8	32.1 ± 5.5	30.4 ± 5.9	0.092
<b>Outcomes, n (%) or median (IQR)</b>				
Hospital mortality	78 (52.0)	10 (20.4)	68 (67.3)	< 0.001
ICU LOS, d	12.2 ± 13.1	12.1 ± 10.6	12.2 ± 14.2	0.949
Hospital LOS, d	22.3 ± 18.1	28.8 ± 18.0	19.1 ± 17.3	0.002

AKI: acute kidney injury; APACHE: acute physiology and chronic health evaluation; SOFA: sequential organ failure assessment; VIS: vasoactive inotropic score; SpO<sub>2</sub>: saturation of peripheral oxygen; MAP: mean arterial pressure; WBC: white blood cell; P/F ratio: PaO<sub>2</sub>/FiO<sub>2</sub> Ratio; BUN: blood urea nitrogen; CRRT: continuous renal replacement therapy; CVP: central venous pressure; GEDI: global end-diastolic volume index; SVRI: systemic vascular resistance index; ELWI: extravascular lung water index; CI: cardiac index; CPI: cardiac power index; RPP: renal perfusion pressure; ACP: afterload-related cardiac performance; LVEF: left ventricular ejection fraction; LVFS: left ventricular fractional shortening.

**Table 2. Discriminative abilities of different indicators to assess SA-AKI.**

<b>Variables</b>	<b>AUC</b>	<b>95%CI</b>	<b>Cut-off value</b>	<b>Sensitivity (%)</b>	<b>Specificity (%)</b>	<b>Accuracy (%)</b>	<b>P value</b>
<b>ACP-0h (%)</b>	0.777	0.696 - 0.857	78.6	74.3	71.4	73.3	<0.001
<b>ACP-6h (%)</b>	0.774	0.694 - 0.853	74.3	64.2	83.7	70.8	<0.001
<b>ACP-12h (%)</b>	0.725	0.638 - 0.811	77.0	58.1	87.2	68.4	<0.001
<b>ACP-18h (%)</b>	0.673	0.582 - 0.764	73.2	51.1	78.7	60.4	<0.001
<b>ACP-24h (%)</b>	0.706	0.617 - 0.794	77.7	62.4	78.7	68.2	<0.001
<b>CPI-0h (W/m<sup>2</sup>)</b>	0.738	0.650 - 0.826	0.58	76.2	65.3	72.7	<0.001
<b>CI-0h (L/min/m<sup>2</sup>)</b>	0.678	0.585 - 0.770	3.1	67.3	67.3	67.3	<0.001
<b>RPP-0h (mmHg)</b>	0.742	0.662 - 0.822	60.4	55.4	87.8	66.0	<0.001

ACP: Afterload-related cardiac performance; RPP: Renal perfusion pressure; CPI: Cardiac power index; CI: Cardiac index;

**Table 3. Cox proportional hazards regression analyses of SA-AKI according to ACP, CI, CPI and RPP.**

Variables	Crude model		Adjusted model 1		Adjusted model 2	
	HR (95% CI)	<i>P</i> value	HR (95% CI)	<i>P</i> value	HR (95% CI)	<i>P</i> value
<b>Continuous variables</b>						
ACP (%)	0.974 (0.963 - 0.985)	< 0.001	0.979 (0.967 – 0.991)	0.001	0.980 (0.968 – 0.991)	0.001
CI (L/min/m <sup>2</sup> )	0.774 (0.653 - 0.918)	0.003	0.828 (0.693 – 0.990)	0.038	0.815 (0.682 – 0.974)	0.024
CPI (W/m <sup>2</sup> )	0.128 (0.048 - 0.337)	< 0.001	0.207 (0.073 – 0.580)	0.003	0.190 (0.069 – 0.526)	0.001
RPP (mmHg)	0.973 (0.961 - 0.985)	< 0.001	0.978 (0.964 – 0.992)	0.002	0.980 (0.966 – 0.993)	0.003
<b>Categorized variables</b>						
ACP (%)				0.014		0.011
≥80%	1.00 (Ref.)		1.00 (Ref.)		1.00 (Ref.)	
60 - 80%	2.439 (1.503 - 3.959)	< 0.001	1.822 (1.092 – 3.040)	0.022	1.875 (1.134 – 3.100)	0.014
< 60%	2.941 (1.665 - 5.194)	< 0.001	2.364 (1.300 – 4.296)	0.005	2.368 (1.319 – 4.253)	0.004
CI (L/min/m <sup>2</sup> )						
≥ 3.0	1.00 (Ref.)		1.00 (Ref.)		1.00 (Ref.)	
< 3.0	1.98 (1.311 – 2.990)	0.001	1.642 (1.073 – 2.512)	0.022	1.721 (1.122 – 2.64)	0.013
CPI (W/m <sup>2</sup> )						
≥0.5	1.00 (Ref.)		1.00 (Ref.)		1.00 (Ref.)	
< 0.5	1.989 (1.33 – 2.974)	0.001	1.566 (1.026 – 2.390)	0.038	1.623 (1.069 – 2.464)	0.023
RPP (mmHg)						
≥60	1.00 (Ref.)		1.00 (Ref.)		1.00 (Ref.)	
< 60	2.272 (1.532-3.369)	< 0.001	1.966 (1.274 – 3.035)	0.002	1.884 (1.247 – 2.847)	0.003

Adjusted model 1: age, SOFA, serum potassium, history of hypertension, types of pathogens.

Adjusted model 2: age, SOFA, serum potassium, history of hypertension.

**Legends to figures:**

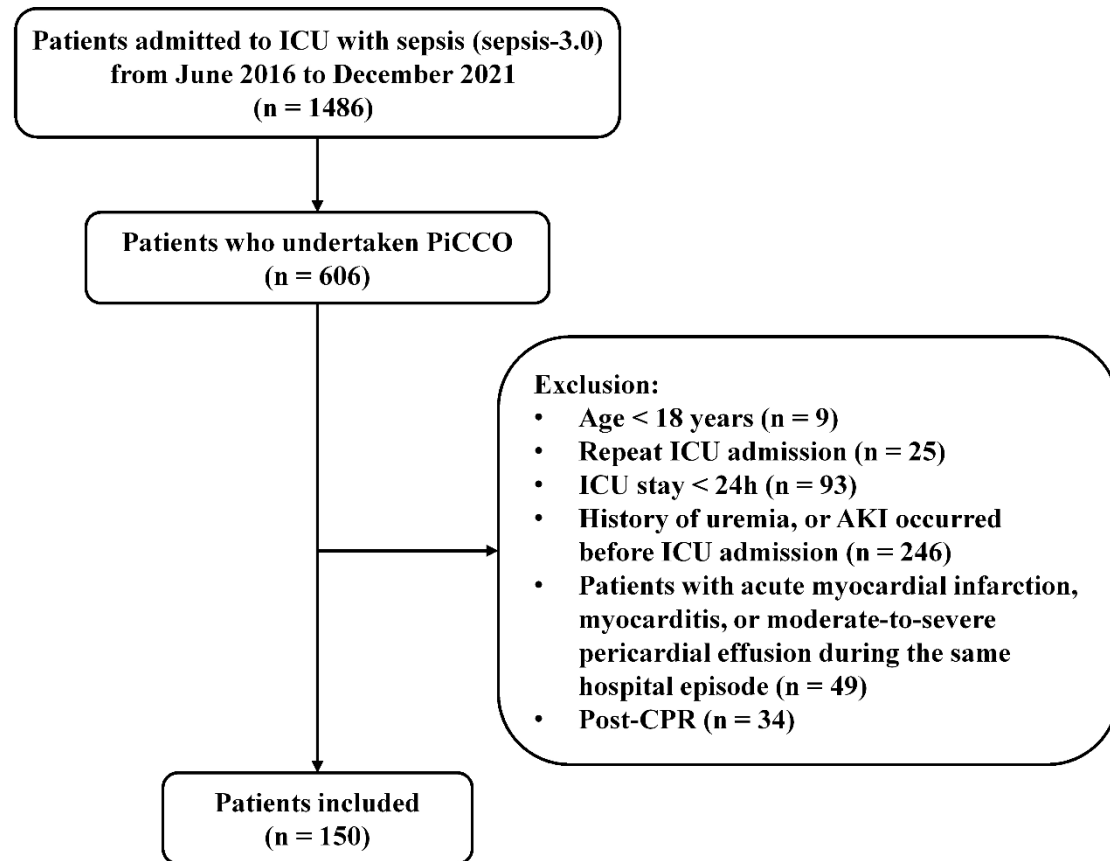


Figure 1. The flow chart of the study.

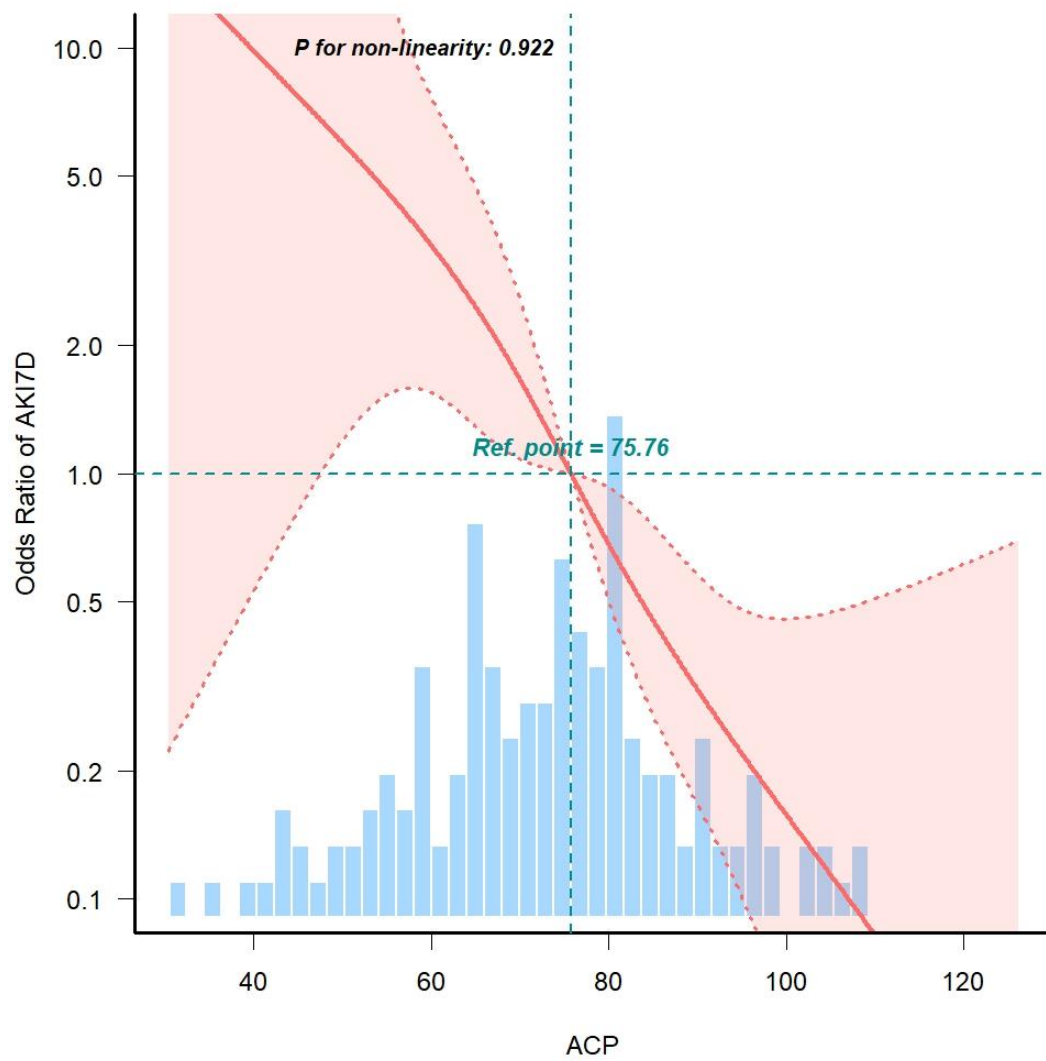


Figure 2. Cubic model of the association between ACP and the risk of SA-AKI.

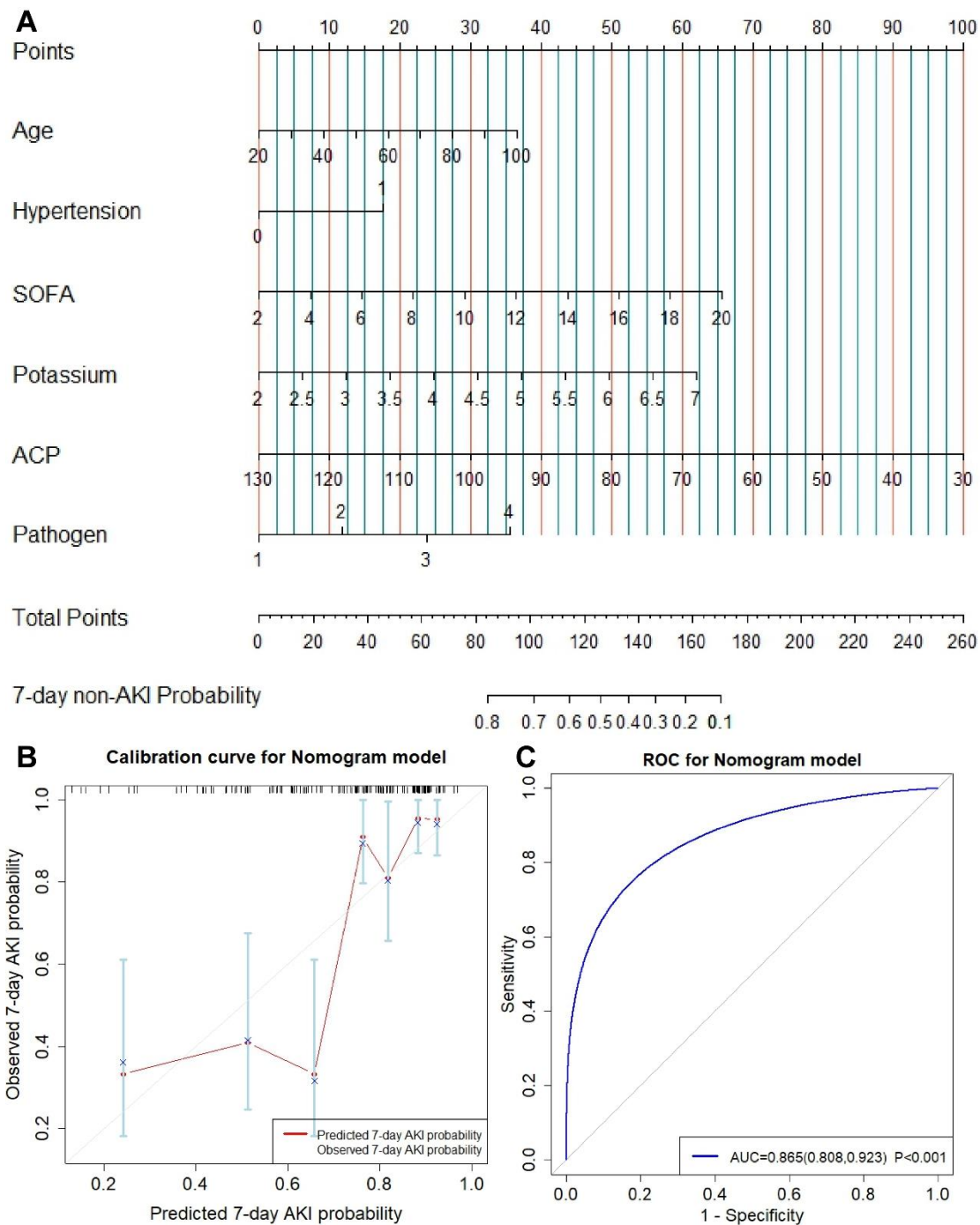


Figure 3. Nomogram model with pathogen types for predicting SA-AKI within 7 days.

A. The nomogram model; B. Graphical calibration curve of the nomogram model; C. The ROC curve of nomogram model to predict the incidence of SA-AKI within 7 days.



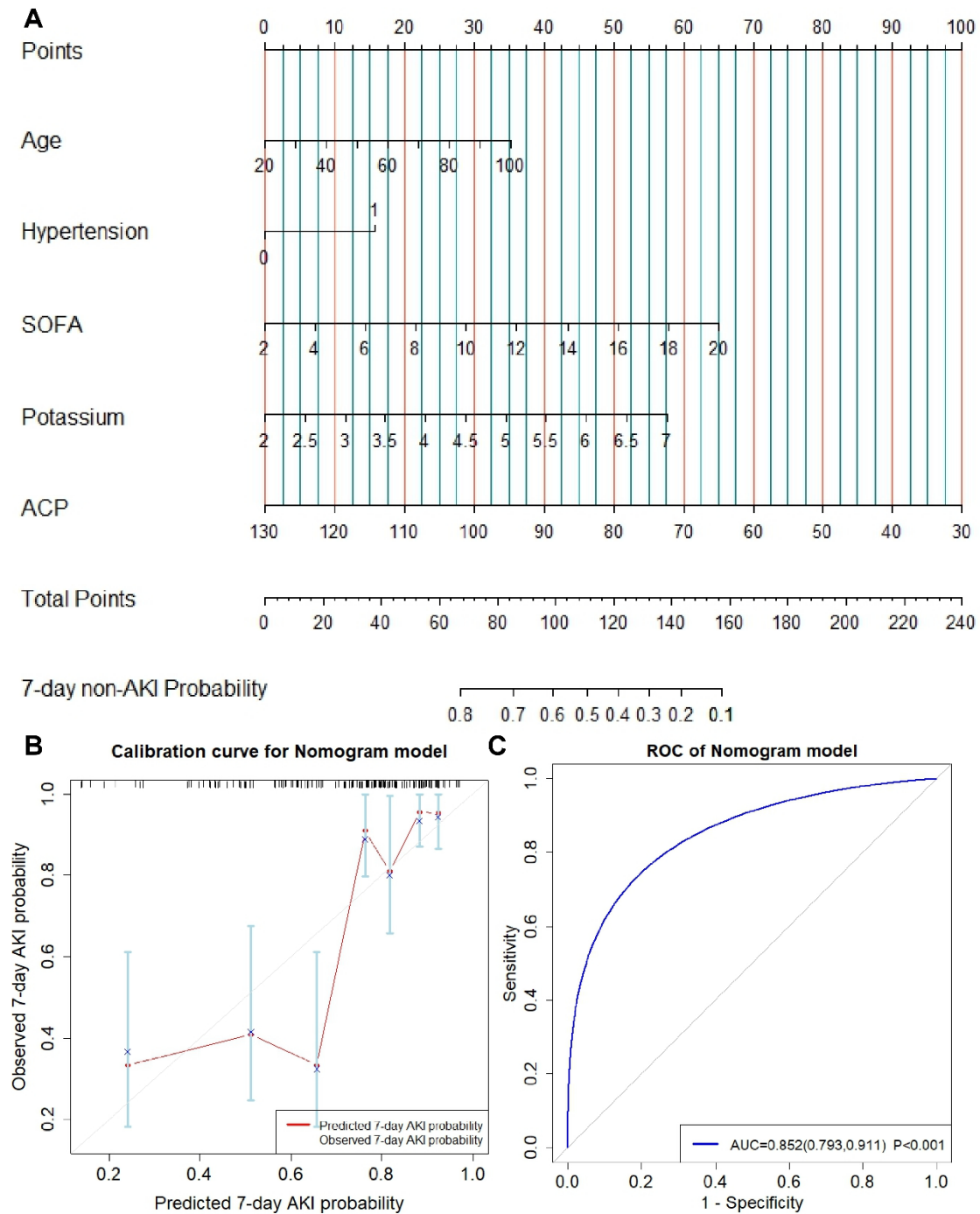


Figure 4. Nomogram model without pathogen types for predicting SA-AKI within 7 days.

A. The nomogram model; B. Graphical calibration curve of the nomogram model; C. The ROC curve of nomogram model to predict the incidence of SA-AKI within 7 days.

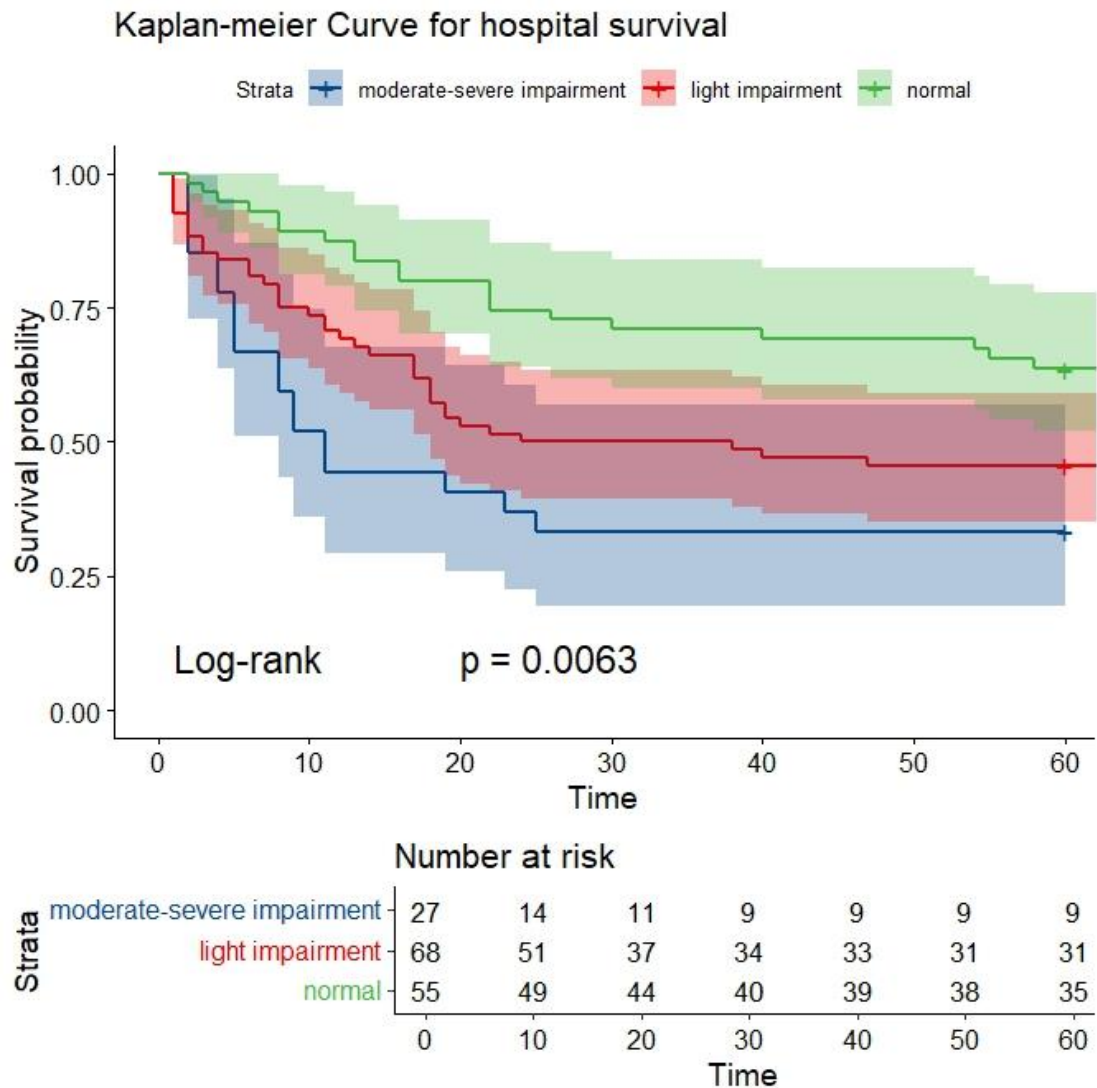


Figure 5. Kaplan-Meier Survival Curves of hospital mortality in patients with different degrees of cardiac function impairment.

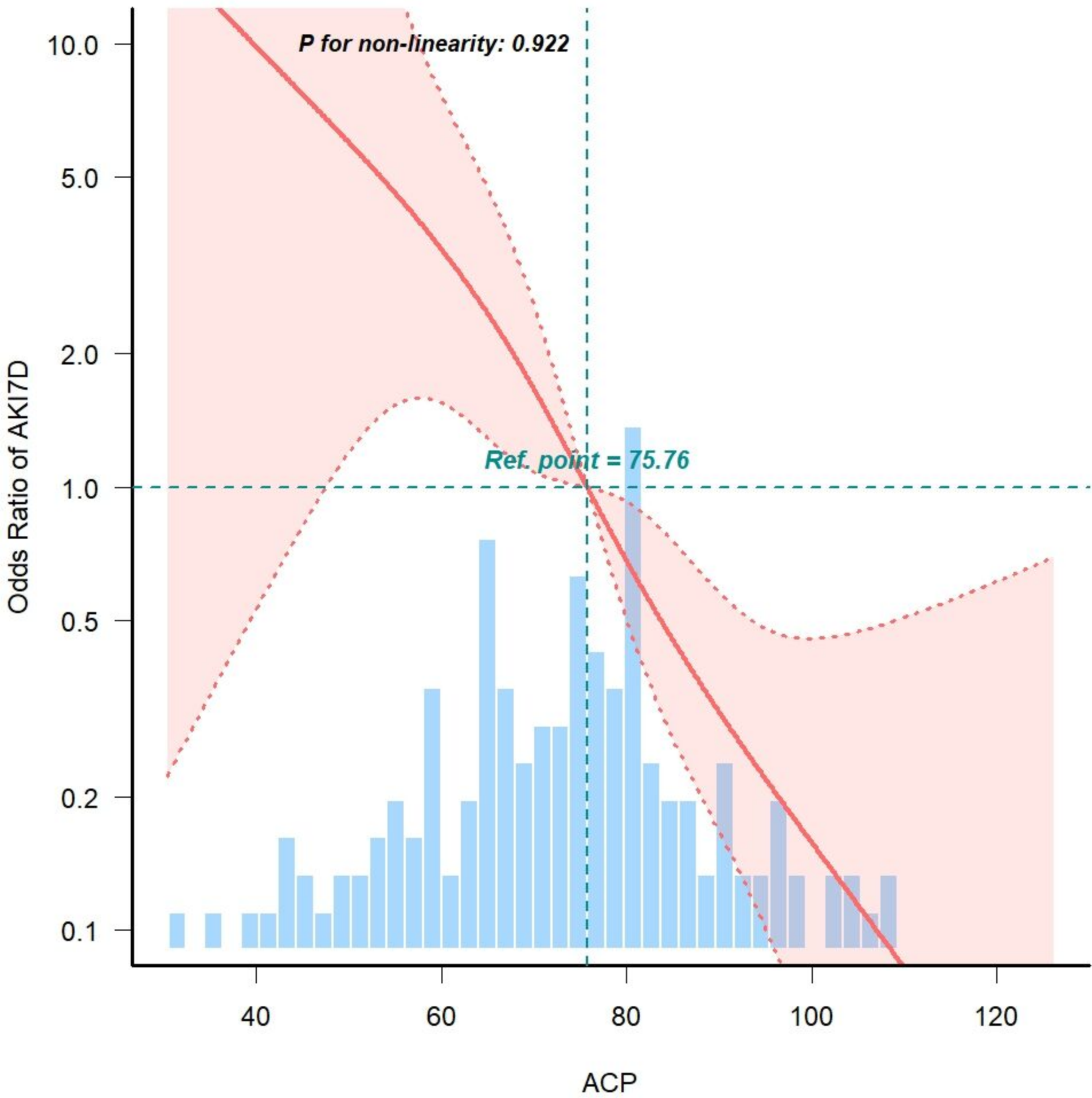
**Patients admitted to ICU with sepsis (sepsis-3.0)  
from June 2016 to December 2021  
(n = 1486)**

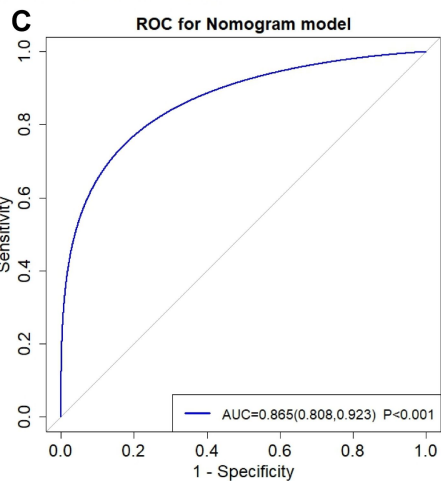
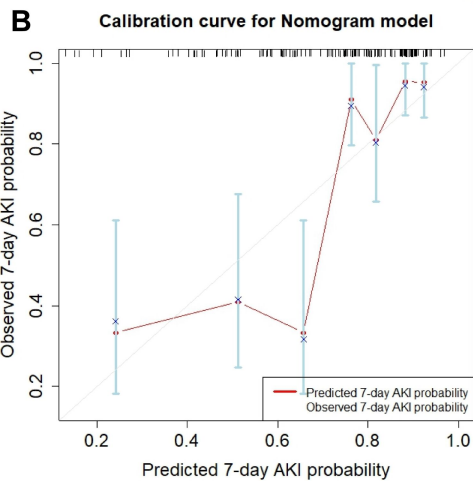
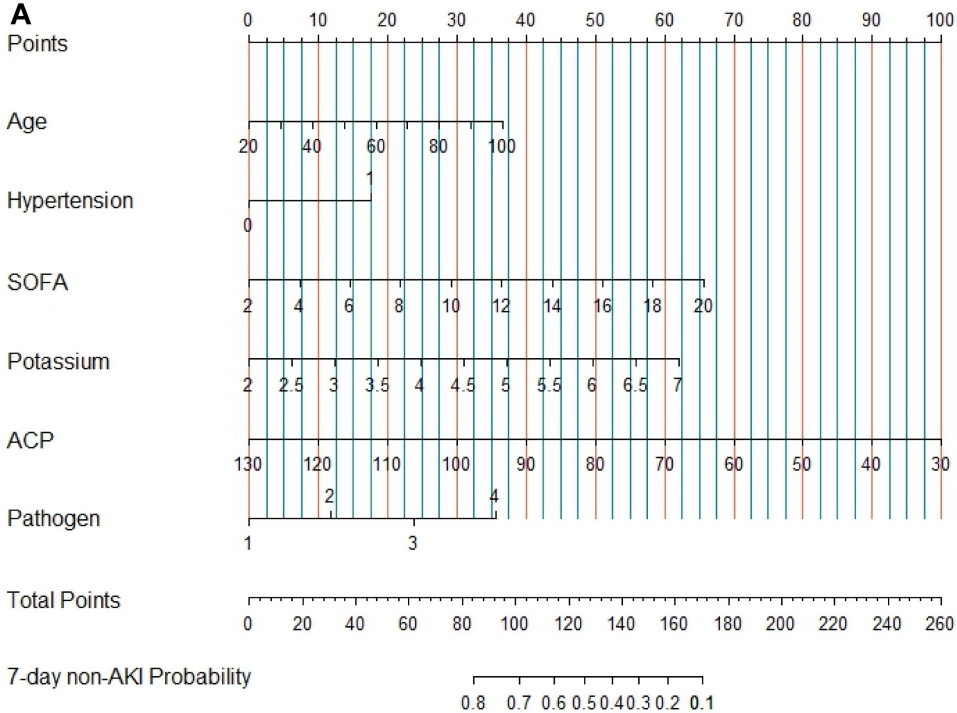
**Patients who undertaken PiCCO  
(n = 606)**

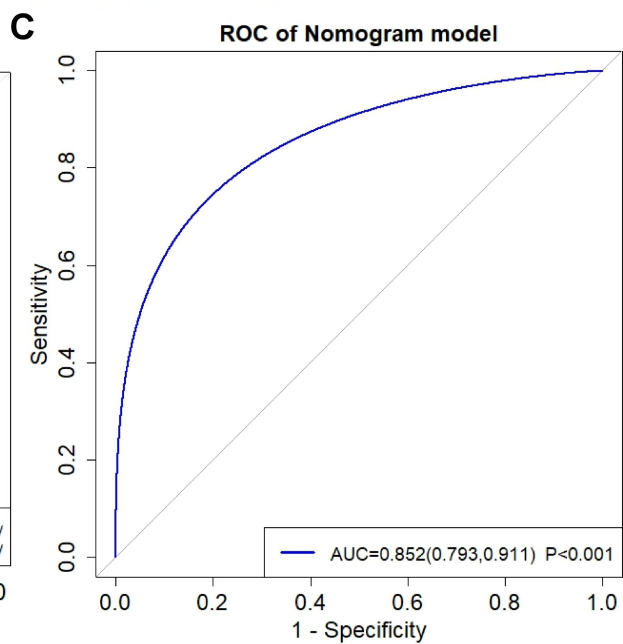
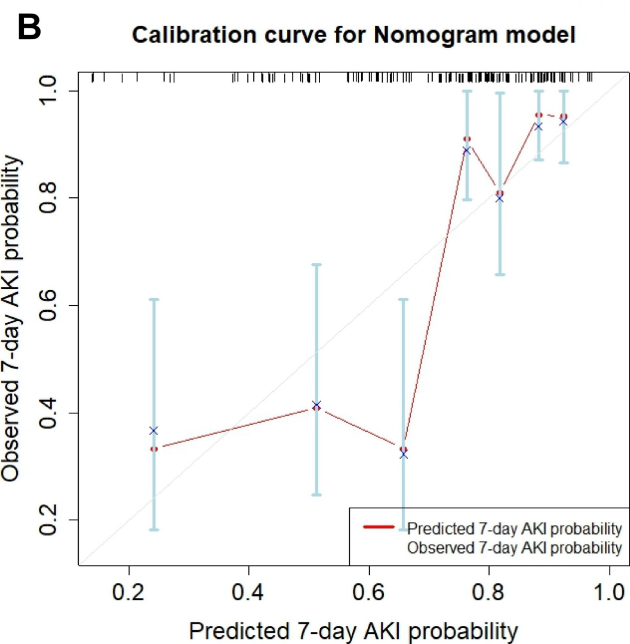
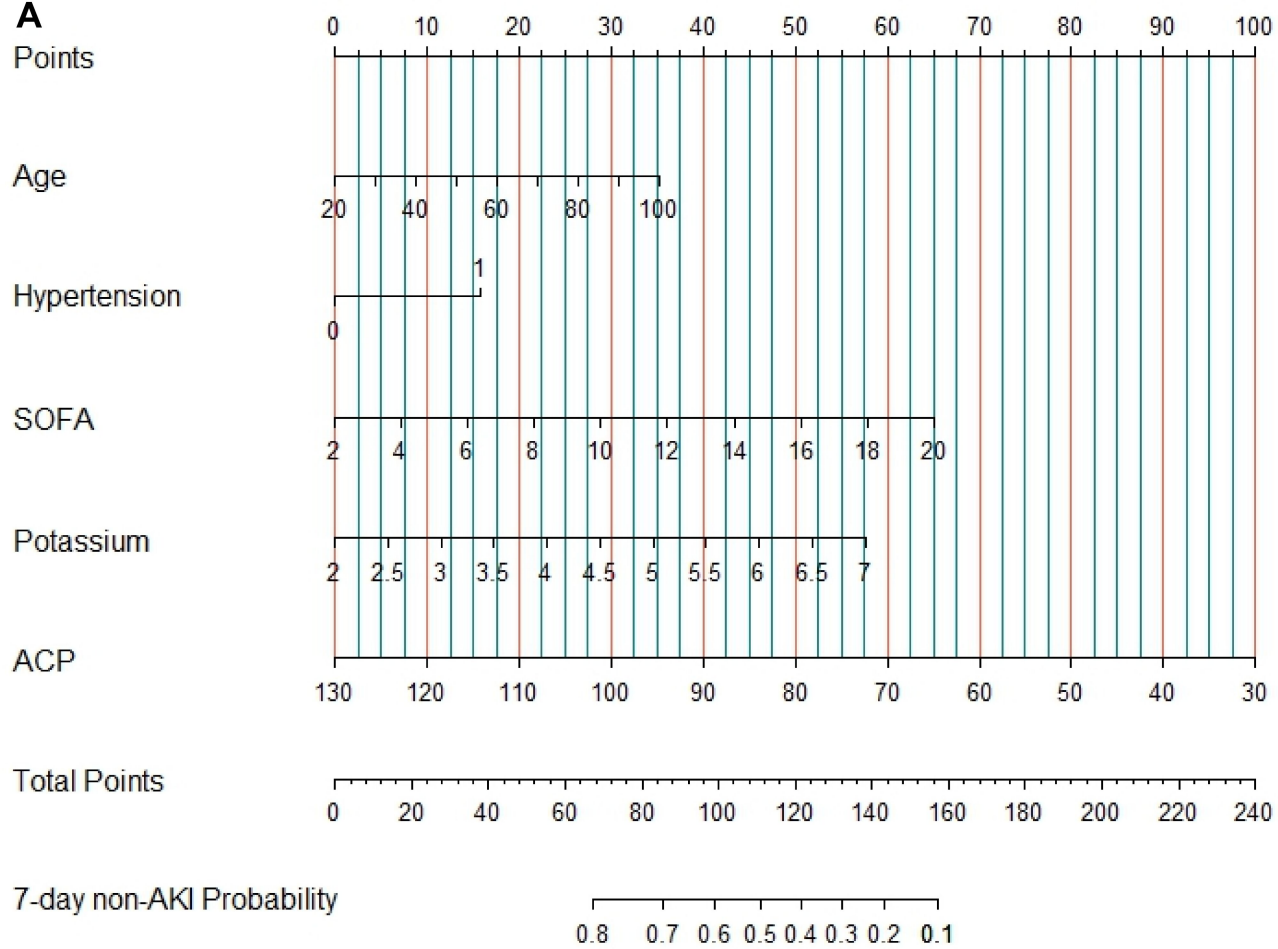
**Exclusion:**

- **Age < 18 years (n = 9)**
- **Repeat ICU admission (n = 25)**
- **ICU stay < 24h (n = 93)**
- **History of uremia, or AKI occurred before ICU admission (n = 246)**
- **Patients with acute myocardial infarction, myocarditis, or moderate-to-severe pericardial effusion during the same hospital episode (n = 49)**
- **Post-CPR (n = 34)**

**Patients included  
(n = 150)**

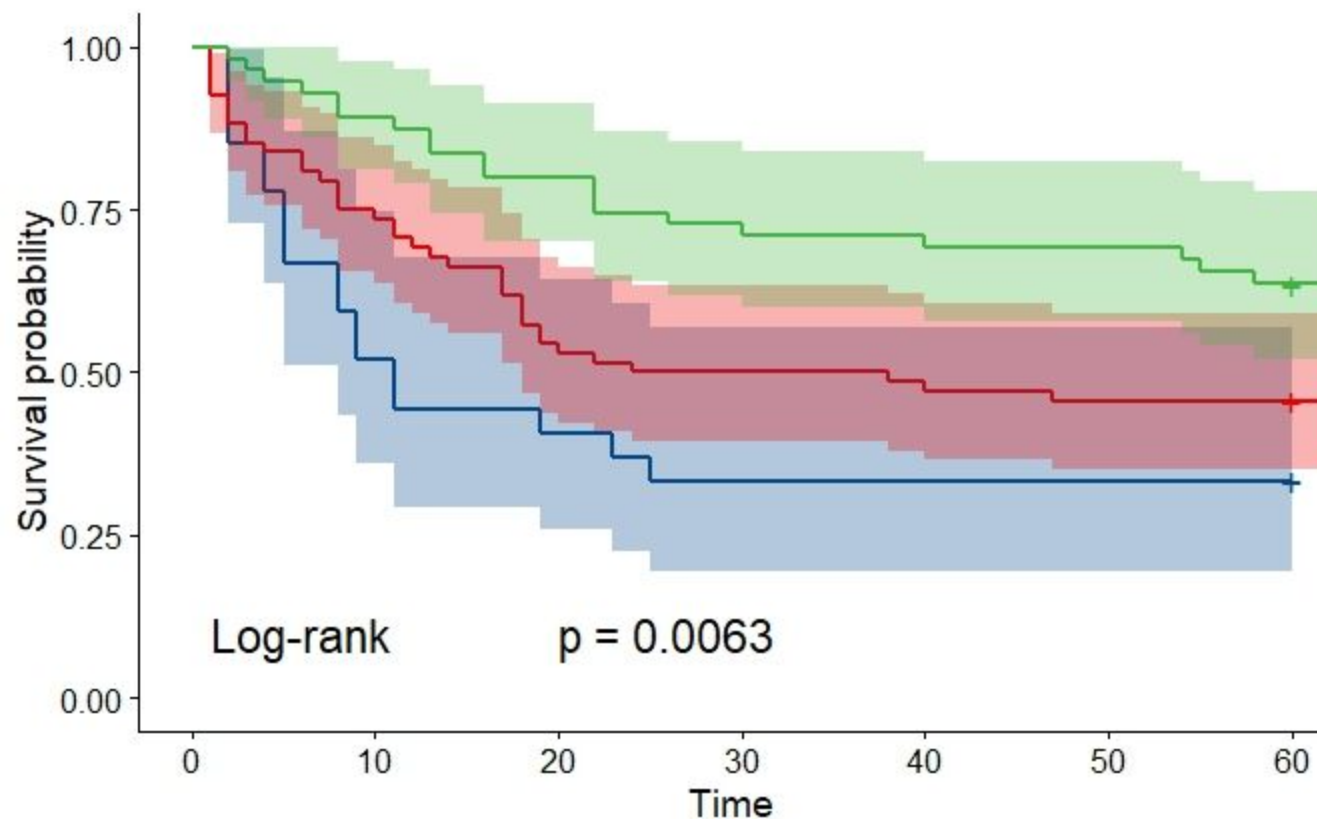






# Kaplan-meier Curve for hospital survival

Strata + moderate-severe impairment + light impairment + normal



## Number at risk

Strata	0	10	20	30	40	50	60
moderate-severe impairment	27	14	11	9	9	9	9
light impairment	68	51	37	34	33	31	31
normal	55	49	44	40	39	38	35