

# 1 Neutralizing antibody titers predict protection from virus transmission 2 in a cohort of household members with documented exposure to SARS- 3 CoV-2

4 Henrike Maaß<sup>1,2</sup>, Imke Hinrichs<sup>3</sup>, Martina Pavletic<sup>4,5</sup>, Manuela Harries<sup>6</sup>, Tatjana Prinke<sup>1,2</sup>, Najat Bdeir<sup>1,2</sup>,  
5 Richard Egelkamp<sup>7</sup>, Berit Lange<sup>6,8</sup>, Yannic C Bartsch<sup>3</sup>, Mate Lerga<sup>4,5,#</sup>, Luka, Cicin-Sain<sup>1,2,8,#,\*</sup>

6 <sup>1</sup> Department of Viral Immunology, Helmholtz Center for Infection Research, Braunschweig, Germany

7 <sup>2</sup> Centre for Individualised Infection Medicine (CiiM), a joint venture of Helmholtz Centre for Infection Research and Hannover  
8 Medical School, Hannover, Germany

9 <sup>3</sup> Laboratory of Anti-viral antibody-omics, TWINCORE-Institute for Experimental Infection Research, Helmholtz Center for  
10 Infection Research (HZI) and Medical School Hannover (MHH), Hannover, Germany.

11 <sup>4</sup> Emergency Department, Clinical Hospital Center Rijeka, Rijeka, Croatia

12 <sup>5</sup> Department for anesthesiology, reanimatology, emergency and intensive care medicine, Medical Faculty Rijeka, Rijeka, Croatia

13 <sup>6</sup> Department of Epidemiology, Helmholtz Center for Infection Research, Braunschweig, Germany

14 <sup>7</sup> Public Health Agency of Lower Saxony (NLGA), Hannover, Germany

15 <sup>8</sup> German Centre for Infection Research (DZIF), partner site Hannover/Braunschweig, Braunschweig, Germany

16 # These authors jointly supervised this work

17 \* Correspondence: luka.cicin-sain@helmholtz-hzi.de

## 18 **Abstract**

### 19 **Background**

20 While correlates of protection against symptomatic and severe breakthrough SARS-CoV-2 infections are  
21 well characterized, correlates of protection against virus transmission are incompletely understood.

### 22 **Methods**

23 We studied a Croatian cohort of individuals with documented household exposure to SARS-CoV-2 in  
24 December 2022. Sera were acquired prior to symptom onset, at the time of the COVID-19 diagnosis of  
25 the index cases, and comprehensively analyzed for correlates of protection against virus transmission. We  
26 monitored participants for 14 days and tested them with PCR at the end of the observation period to  
27 identify any virus transmission, including asymptomatic ones.

### 28 **Interpretation**

29 Out of nearly 200 tested serological parameters, 22 features were significantly different between the  
30 infected and the uninfected participants. Titers of variant-specific neutralizing antibody showed the  
31 biggest difference and were significantly higher in the uninfected subgroup. Some infected individuals  
32 with strong IgM responses to the spike antigen showed robust neutralization titers as well. Since IgM is  
33 likely an indication of recent antigenic exposure, data were reanalyzed by excluding such values. This

34 refined analysis showed a complete segregation of infected and uninfected individuals into groups with  
35 low and high variant-specific neutralization titers. Therefore, our data indicate that high neutralizing titers  
36 are correlates of protection against SARS-CoV-2 transmission in intense contacts among household  
37 members.

### 38 **Funding**

39 This research was funded by the Impulse and Networking fund of the Helmholtz Association through the  
40 grant PIE-0008 to LCS and VH-NG-19-28 to YCB and by the Deutsche Forschungsgemeinschaft (DFG,  
41 German Research Foundation) under Germany's Excellence Strategy - EXC 2155 - project number  
42 390874280 to LCS. BL and MH received funding within the RESPINOW project from the Federal  
43 Ministry of Education and Research under the grant number 031L0298A.

44

### 45 **Keywords**

46 SARS-CoV-2, COVID-19, vaccine, neutralizing antibodies, correlate of protection

47

## 48 **Research in Context**

### 49 **Evidence before this study**

50 Pre-existing immunity to SARS-CoV-2, whether from prior infections or vaccinations, has been shown to  
51 primarily protect against severe disease rather than preventing infection altogether. Many current studies  
52 examining this phenomenon focus on cohorts with breakthrough infections occurring a certain time after  
53 their last vaccination. However, these studies often lack precise information about when the individuals  
54 were infected and their serological status immediately before the infection.

### 55 **Added value of this study**

56 Unlike other studies, we focused on a cohort of individuals with a confirmed SARS-CoV-2-positive  
57 household member. Serum samples were collected before symptom onset, coinciding with the COVID-19  
58 diagnosis of the index cases. We analyzed various serum features to comprehensively assess their ability  
59 to protect not only against severe disease but also against virus transmission. Our findings revealed that  
60 individuals who remained uninfected had significantly higher concentrations of neutralizing antibodies  
61 compared to those who became infected.

### 62 **Implications of the available evidence**

63 This finding suggests that neutralizing antibodies serve as a correlate of protection against virus  
64 transmission and could inform booster strategies based not on a fixed timeline but on antibody levels  
65 dropping below a specific threshold. However, due to the limited sample size of our study, larger studies  
66 are needed to confirm these results and establish an exact threshold.

## 67 **1. Introduction**

68 The coronavirus disease that emerged in December of 2019 (COVID-19), caused by the Severe Acute  
69 Respiratory Syndrome Coronavirus 2 (SARS-CoV-2), has had a profound impact on public health,  
70 leading to widespread infections, disease and death. The establishment of herd immunity due to the  
71 spread of infections and global vaccine campaigns has led to a reduction in severe symptoms. However,  
72 infection with SARS-CoV-2 can still result in long-term complications, known as long COVID,  
73 regardless of the initial severity of the disease (1), and vulnerable populations, such as the  
74 immunocompromised or the elderly, remain at risk of severe disease courses. Anti-COVID vaccines  
75 prevent severe disease, yet their effectiveness against symptomatic infections and milder disease courses  
76 wane relatively quickly (2). As a result, vaccination recommendations are primarily focused on  
77 individuals at higher risk of developing severe COVID-19, such as the elderly, immunocompromised  
78 individuals, and those working with vulnerable populations (3). Preventing infections in general, not just  
79 severe disease, should remain important in light of the risk of long COVID, which is common even upon  
80 less severe acute episodes, as it has been shown that vaccination reduces the risk of long COVID as well  
81 (4).

82 Since the development of SARS-CoV-2 vaccines, correlates of protection (CoP) have been studied to  
83 assess vaccine efficacy. Early research identified neutralizing antibodies (nAbs) as key CoPs against  
84 symptomatic disease induced by both vaccination and infection (5-7). However, no CoP or threshold  
85 levels have been established to guide recommendations on protection against infection, and hence,  
86 transmission. Therefore, national advisory bodies provide widely divergent guidelines on booster  
87 vaccination schedules. Most studies investigating CoPs have merely provided estimates based on the time  
88 since last vaccination, without knowing the exact time or circumstances of participants' exposure to  
89 SARS-CoV-2 or objective criteria to quantify immune responses (8, 9). However, there are few studies  
90 assessing the role of serological parameters predicting the protection against virus transmission,  
91 especially in light of the rapidly evolving variants of SARS-CoV-2.

92 In this study, we examined households where one individual (the index case) tested positive for SARS-  
93 CoV-2 in the emergency department of the Clinical Hospital Center Rijeka, Croatia, during the winter of  
94 2022/2023 to estimate the protection of transmission within the household using serological parameters  
95 and neutralizing antibodies. Household members were tested at an initial time point shortly after the index  
96 case and again 14 days later, or earlier if they developed COVID-like symptoms within two weeks. Based  
97 on their SARS-CoV-2 status during this period, household members were categorized into SARS2  
98 positive and those that remained SARS2 negative throughout the analysis period and comprehensively  
99 analyzed to identify differences in serum parameters between those two groups. Variant specific nAbs,

100 along with various other serum features were the best predictor of protection against virus transmission,  
101 while vaccination status and the timing of the last immunogenic event were non-significant as predictors  
102 of protection against breakthrough infections.

## 103 2. Material and Methods

### 104 2.1 Study participants and Study design

105 This study included household members of individuals who tested positive for SARS-CoV-2. Citizen who  
106 experienced SARS-CoV-2-like symptoms were tested in the Emergency department of the Clinical  
107 Hospital Center Rijeka. Household members (older than 18 years) of people who appeared SARS-CoV-2  
108 positive in routine screenings were asked to visit the hospital within 48 h. Index (n=18) and household  
109 contacts (n=20) were tested via nasopharyngeal swab, by rapid test (Hangzhou AllTest Biotech Co., Ltd)  
110 as well as a fast RT-qPCR, essentially as described (10), to determine the SARS-CoV-2 status.  
111 Additionally, a blood sample was obtained. The household members who were SARS-CoV-2 negative at  
112 the first time-point (n=12 at 48 h) were asked to come back after 14-days or in between if they experience  
113 symptoms to get tested a second time. A schematic overview of the study design can be seen in Figure 1  
114 and Figure S1. The recruitment of participants occurred in December 2022.

### 115 2.2 Sample preparation

116 Nasal swab samples were either stored at 4°C for immediate usage or aliquoted and stored at -80°C. The  
117 variant by which the index person was infected was identified by next generation sequencing (NGS) using  
118 the NEBNext ARTIC SARS-CoV-2 FS Library Prep Kit for Illumina with VarSkip 2b primers (New  
119 England Biolabs, MA, USA. Paired-end sequencing was performed on an Illumina NextSeq 1000  
120 (Illumina, CA, USA). For assembly, CoVpipe v3.1.0 (Robert Koch-Institut, Germany;  
121 [https://www.gitlab.com/RKIBioinformaticsPipelines/ncov\\_minipipe](https://www.gitlab.com/RKIBioinformaticsPipelines/ncov_minipipe)) was used with standard parameters,  
122 while lineage assignment was done with pangolin v4.3 and pangolin-data v1.21 (11). Whole blood  
123 samples were incubated for 30-60 min at room temperature. Serum and blood clot were separated by  
124 centrifugation at 1500 g for 10 min. The supernatant was aliquoted and stored at -80 °C. The samples  
125 were shipped on dry ice to the Helmholtz Center for Infection Research in Braunschweig for further  
126 analyses.

### 127 2.3 Demographic data and outcomes

128 Demographic data of all participants is listed in Table 1. Data was obtained through questionnaires, which  
129 were asked at the first and second sampling date either in person or through follow-up phone calls.

### 130 2.4 Neutralization Assay

131 Neutralization assays were performed according to previously published protocol (12). The serum  
132 samples were heat inactivated at 56 °C and 500 rpm for 30 minutes and afterwards 1:10 diluted in DMEM  
133 (1% Penicillin-Streptomycin, 1% L-Glu, 5% FBS) and stored at 4 °C or -80 °C for long-term storage.  
134 Sera were two-fold diluted in a 96 well plate ranging from 1:100 to 1:102400 and incubated with pseudo-  
135 virus particles (600 pfu ± 30%) for one hour at 37°C. A control showing no inhibition by incubation in

136 the absence of serum was used. Serum-virus samples were transferred to a VeroE6 96 well plate (80%  
137 confluent) and further incubated at 37 °C for 24 hours after which the plates were fixed with 4%  
138 paraformaldehyde (PFA) and kept at 4 °C until readout. To count GFP<sup>+</sup> infected cells, the IncuCyte S3  
139 (Sartorius) was used by performing whole-well scans (4x magnification) in phase contrast and green  
140 fluorescence settings (300 ms exposure). The IncuCyte GUI software (version 2019B Rev1 and 2021B)  
141 performed automated counting of GFP fluorescent foci. The pseudo-virus neutralization titer 50  
142 (PVNT50) was calculated by non-linear regression model. The lower limit of confidence (LLOC) was set  
143 at a PVNT50 of 50. Non-responders were given a PVNT50 of 25 for visualization purposes.

#### 144 2.4.1 IgM depletion in serum samples

145 For certain experiments, only the IgG fraction of the nAbs was supposed to be measured. Therefore, IgM  
146 was depleted using beta-mercaptoethanol (2-ME) on heat-inactivated serum (13). Serum was incubated  
147 with 2-ME (final concentration of 140 mM) for 1h at room temperature and 300 rpm. Afterwards, the  
148 serum was diluted 1:10 with DMEM (1% Penicillin-Streptomycin, 1% L-Glu, 5% FBS) and immediately  
149 used for neutralization assays.

#### 150 2.4.2 SARS-CoV-2 specific IgM and IgG ELISA

151 To validate the efficiency of the IgM depletion by 2-ME, an enzyme-linked immunosorbent assay  
152 (ELISA) was performed. Therefore, serum was treated with 2-ME as explained before and the Human  
153 SARS-CoV-2 Spike (Trimer) IgM ELISA Kit (#BMS2324, Invitrogen, Waltham, United States) and  
154 Human SARS-CoV-2 Spike (Trimer) IgG ELISA Kit (#BMS2325, Invitrogen, Waltham, United States)  
155 were performed as per manufacturer's instructions. The assay was run on exemplary participants with  
156 high, medium and low IgM based on the Luminex assay, in technical duplicates. The Infinite® F50  
157 (Tecan, Männedorf, Switzerland) was used for readout of the ELISA plates.

#### 158 2.5 Detection of antigen-specific antibody isotypes and Fc-receptor binding

159 Human serum samples were profiled for antigen-specific antibody isotypes and binding of Fcγ receptors  
160 with a custom antigen panel as previously described (14). Recombinant antigens were obtained  
161 commercially (Sino Biological, Beijing, China). The custom antigen panel consisted of recombinant  
162 SARS-CoV-2 trimeric spikes (D614G, B1.1.529 and BA.4/BA.5/BA.5.2), receptor binding domain  
163 (RBD) (D614G, B1.1.529 and BA.4/BA.5/BA.5.2), N-terminal domain (NTD) (2019-nCoV),  
164 nucleocapsid (NC) (2019-nCoV), S1 (D614G) and S2 domains (2019-nCoV), the trimeric spike of the  
165 human coronaviruses HKU1 (N5) and OC43, and the respiratory syncytial virus (RSV) prefusion protein  
166 (preF). For the Luminex assay, 10 µg antigen were covalently coupled to 2 million carboxylated magnetic  
167 microspheres (Diasorin, Italy) by carboxy-coupling as described before (14).

168 Serum samples were diluted with assay buffer (PBS, 0.1% BSA) depending on detector to 1:500 for  
169 IgG1, 1:100 for IgG2-4, IgA1-2 and IgM, and 1:1000 for the Fc $\gamma$  receptors. In a 384-well plate, 5  $\mu$ L of  
170 diluted sample were incubated overnight with a pool of the antigen-coupled microspheres (1,000 beads  
171 per antigen per well) at 4 °C. Plates were washed three times with PBS-T (PBS, 0.05% Tween-20) and  
172 incubated for 1 h with 40  $\mu$ L of PE-conjugated secondary detector (1  $\mu$ g/ml) against IgG1  
173 (RRID: AB\_2796628), IgG2 (RRID: AB\_2796639), IgG3 (RRID: AB\_2796701), IgG4  
174 (RRID: AB\_2796693), IgM (RRID: AB\_2796577), IgA1 (RRID: AB\_2796656) and IgA2  
175 (RRID: AB\_2796664) (all Southern Biotech, AL, USA). To detect Fc receptor interaction, streptavidin-  
176 PE:biotin-coupled Fc $\gamma$ RIIa (H167), Fc $\gamma$ RIIa (R167), Fc $\gamma$ RIIb/c, Fc $\gamma$ RIIIa (F176), Fc $\gamma$ RIIIa (V176),  
177 Fc $\gamma$ RIIIb (NA1) and Fc $\gamma$ RIIIb (NA1) (all AcroBiosystems, DE, USA) were used (1  $\mu$ g/mL). Upon  
178 incubation, immune complexes were washed three times with PBS-T using the HydroSpeed automated  
179 plate washer (Tecan, Switzerland), resuspended in assay buffer and acquired at the ID7000 Spectral Cell  
180 Analyzer (Sony Biotechnology, CA, USA).

## 181 2.6 Biotinylation and bead-coupling of antigens

182 For antibody-dependent complement deposition (ADCD), antibody-dependent THP-1 cell-phagocytosis  
183 (ADCP) and antibody-dependent neutrophil-phagocytosis (ADNP), the spike trimers of wild-type SARS-  
184 CoV2 (D614G) and Omicron variant BA.4/5 were biotinylated using the NHS-Sulfo-LC-LC kit (Thermo  
185 Fisher, MA, USA) according to the manufacturer's instructions. After the reaction, excess biotin was  
186 removed by size exclusion using Zeba spin desalting columns with a 7 kDa cut-off (Thermo Fisher).  
187 10  $\mu$ g of biotinylated antigen was coupled to 10  $\mu$ l of 1.0  $\mu$ m NeutrAvidin-labelled microspheres for 2 h  
188 at 37 °C.

## 189 2.7 Antibody-dependent complement deposition (ADCD)

190 The ability of antigen-specific antibodies in the human serum samples to induce the complement cascade  
191 was assessed as described before (15). Briefly, immune complexes were formed in a 96-well round  
192 bottom plate by incubating antigen-coated microspheres with 10  $\mu$ L of 1:10 diluted human serum samples  
193 for 2 h at 37 °C. Reconstituted guinea-pig complement (Cedarlane, ON, Canada) was cleared by  
194 centrifugation, transferred to GVB++ buffer (Novateinbio, MA, USA) and incubated with washed  
195 immune complexes for 20 min at 37 °C and 5% CO<sub>2</sub>. Complexes were then washed once with 15 mM  
196 EDTA in PBS. Deposited C3 on beads was stained with 1:100 diluted anti-guinea pig C3a-FITC antibody  
197 (MP Biomedicals, CA, USA) and afterwards fixed with 4% paraformaldehyde (PFA). C3 deposition was  
198 then determined as mean fluorescent intensity (MFI) on an ID7000 Spectral Cell Analyzer (Sony  
199 Biotechnology).



## 200 2.8 Antibody-dependent neutrophil-phagocytosis (ADNP)

201 Neutrophil-mediated phagocytosis of serum antibodies was determined as previously described (16).  
202 Antigen-coated yellow-green fluorescent microspheres were incubated with 10  $\mu$ L of 1:50 diluted human  
203 serum for 2 h at 37 °C and 5% CO<sub>2</sub>. Primary neutrophils were obtained by lysis of whole blood with  
204 Ammonium-Chloride-Potassium (ACK) buffer (Biomol, Germany) and transferred to R10 media (RPMI  
205 1640, 10% FCS, 1x GlutaMax, 1x Penicillin-Streptomycin, 10 mM HEPES). The immune complexes  
206 were washed by centrifugation and incubated with 50,000 neutrophils for 1 h at 37 °C and 5% CO<sub>2</sub>. Next,  
207 neutrophils were stained with 1:100 diluted anti-human CD66b-Pacific Blue antibody (BioLegend, CA,  
208 USA, RRID: AB\_2563294) and fixed with 4% PFA for 20 min. Phagocytic activity of neutrophils was  
209 measured on an ID7000 Spectral Cell Analyzer (Sony Biotechnology). A phagocytosis score was  
210 calculated as product of frequency bead positive neutrophils and the MFI of bead positive neutrophils.

## 211 2.9 Antibody-dependent THP-1 cell-phagocytosis (ADCP)

212 The level of serum antibody-induced phagocytic activity of THP-1 monocytes was detected as previously  
213 described (5). In brief, antigen-coated yellow-green fluorescent microspheres were combined with 10  $\mu$ L  
214 of 1:100 diluted human serum in a 96-well round bottom plate and incubated for 2 h at 37 °C and 5%  
215 CO<sub>2</sub>. Next, 25,000 cultured THP-1 cells (#ACC 16, DSMZ, Germany) in R10 media were added and  
216 incubated overnight at 37 °C and 5% CO<sub>2</sub>. THP-1 cells were then fixed with 4% PFA for 20 min, washed  
217 and resuspended in PBS prior to acquisition on an ID7000 Spectral Cell Analyzer (Sony Biotechnology).  
218 A phagocytosis score was calculated for THP-1 monocytes in the same way as for neutrophils.

## 219 2.10 Antibody-dependent NK cell-activation (ADNKA)

220 To investigate antibody-mediated NK cell activation, 96-well flat bottom high-binding plates were coated  
221 with 50  $\mu$ L (3  $\mu$ g/mL) of either the spike trimer of wild-type SARS-CoV2 (D614G) or Omicron variant  
222 BA.4/5. After blocking with 5% BSA-PBS for 2 h, 50  $\mu$ L of 1:30 diluted human serum samples were  
223 added and incubated overnight at 4 °C. Primary NK cells were derived from leukocyte reduction cones of  
224 healthy donors using the RosetteSep NK cell enrichment kit (STEMCELL Technologies, MA, USA)  
225 according to the manufacturer's instructions followed by density gradient centrifugation. The enriched  
226 cells were then stimulated with 1 ng/mL of recombinant human IL-15 (BioLegend) overnight at 37 °C  
227 and 5% CO<sub>2</sub>. After washing the immune complexes three times, 50,000 NK cells were added to each well  
228 and incubated with 2  $\mu$ g Brefeldin A (Sigma Aldrich, MA, USA), 1:80 GolgiStop (BD Biosciences, NJ,  
229 USA) and 1:11 diluted anti-human CD107a-BV605 (BioLegend, RRID: AB\_2563851) for 5 h at 37 °C  
230 and 5% CO<sub>2</sub>. To define NK cells as CD3-CD56+, the cells were stained for 15 min with 1:40 diluted anti-  
231 human CD3-APC-Cy7 (BioLegend, RRID: AB\_830755) and 1:20 diluted anti-human CD56-PE-Cy7  
232 (BioLegend, RRID: AB\_2857328). After fixation and permeabilization with fixation medium  
233 (Invitrogen) and permeabilization medium (Invitrogen), respectively, NK cells were stained

234 intracellularly with 1:200 anti-human MIP-1 $\beta$ -BV421 (BD Biosciences, RRID: AB\_2737877) and 1:50  
235 anti-human IFN- $\gamma$ -PE (BioLegend, RRID: AB\_315440) for 15 min. Finally, samples were washed,  
236 resuspended in PBS and the MFI of extracellular and intracellular markers acquired on an ID7000  
237 Spectral Cell Analyzer (Sony Biotechnology).

## 238 2.11 Statistical analysis

239 Due to small sample size, all data was log<sub>10</sub>-transformed and analyzed using parametric tests. For group  
240 comparison, an unpaired t-test with Welch's correction was performed. Data representation and statistical  
241 analysis was done using R software v4.3.2 or GraphPad Prism v10.2.2 (GraphPad Software, CA, USA).

## 242 2.12 Ethical Considerations

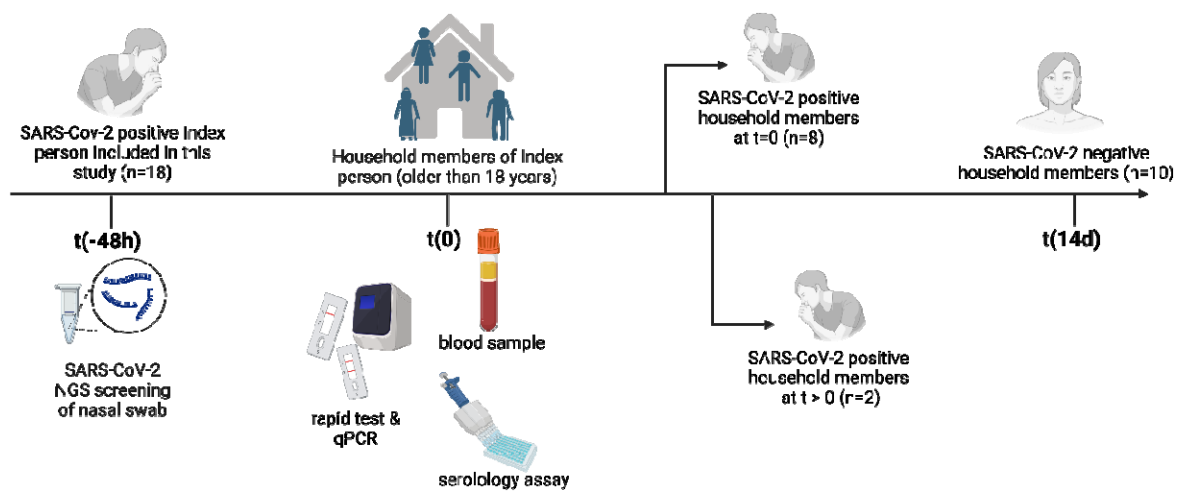
243 The Institutional Review Board of the Rijeka Clinical Hospital Center (2170-29-02/1-22-2) as well as the  
244 Hanover Medical School (10783\_BO\_K\_2023) approved this study. Written informed consent was  
245 obtained from all participants.

246

### 247 3. Results

#### 248 3.1 Demographic and clinical characteristics of study population

249 This study was conducted at the Clinical Hospital Center Rijeka, focusing on households in which one  
250 member tested positive for SARS-CoV-2 (from now on called index person). Household members  
251 donated a blood sample within 48 h after the index person was tested. The samples were analyzed,  
252 categorizing the household members based on whether they contracted the infection within 14 days after  
253 the initial sampling or remained uninfected. A schematic study overview can be seen in Figure 1 and  
254 Figure S1.



255

256 **Figure 1: Brief schematic study overview.** Household members of SARS-CoV-2 positive index persons donated a  
257 serum sample ( $t=0$ ) at the Clinical Hospital Center Rijeka, 48 h after confirmation of the infection of the index  
258 person. Within 14 days, the household members were asked to report if COVID-19 like symptoms appeared or were  
259 asked to come back after two weeks to be tested by rapid test and qPCR. Serology features were determined using  
260 various assays. Created with BioRender.com.

261 The study cohort consisted of 18 index people and 20 household members. Half of the household  
262 members (n=10) remained negative over the 14 day study period (from now on called not-infected or  
263 negative group). Eight household members were SARS-CoV-2 positive at the initial testing and two were  
264 infected within the 14 days (these 10 participants will be referred to as infected or positive group). Both  
265 groups presented similar characteristics, which can be seen in Table 1. In summary, both groups showed  
266 no significant differences in terms of number of vaccinations or days since last vaccination or latest  
267 immunogenic event (i.e., vaccination or natural infection). The non-infected group presented non-  
268 significantly higher number of participants with a previous COVID disease.

269 **Table 1: Demographic data of household members included in this study, separated by the 14 day SARS-**  
 270 **CoV-2 status.**

|  | Household members (n=20) |                   |                 |
|--|--------------------------|-------------------|-----------------|
| Number of household members [median]                                 | 2 (2-3)                  |                   |                 |
| COVID-19 qPCR Test   | Positive (n=10)          | Negative (n=10)   | p               |
| Female [%]   | 20                       | 30                | ns <sup>a</sup> |
| Number of Vaccinations [median, p25-75]                              | 2.5 (1.75-3)             | 2 (2-3)           | ns <sup>b</sup> |
| Days from latest vaccination until first test [median, p25-75]       | 374 [341-475.5]          | 409 [339-536.5]   | ns <sup>b</sup> |
| prior COVID-19 infection   | 4                        | 7                 | ns <sup>a</sup> |
| Days from latest immunogenic event until first test [median, p25-75] | 347 [338.5-387]          | 312 [192.5-425.5] | ns <sup>b</sup> |
| Number of comorbidities  | 1 [0-2.25]               | 0.5 [0-1.25]      | ns <sup>b</sup> |

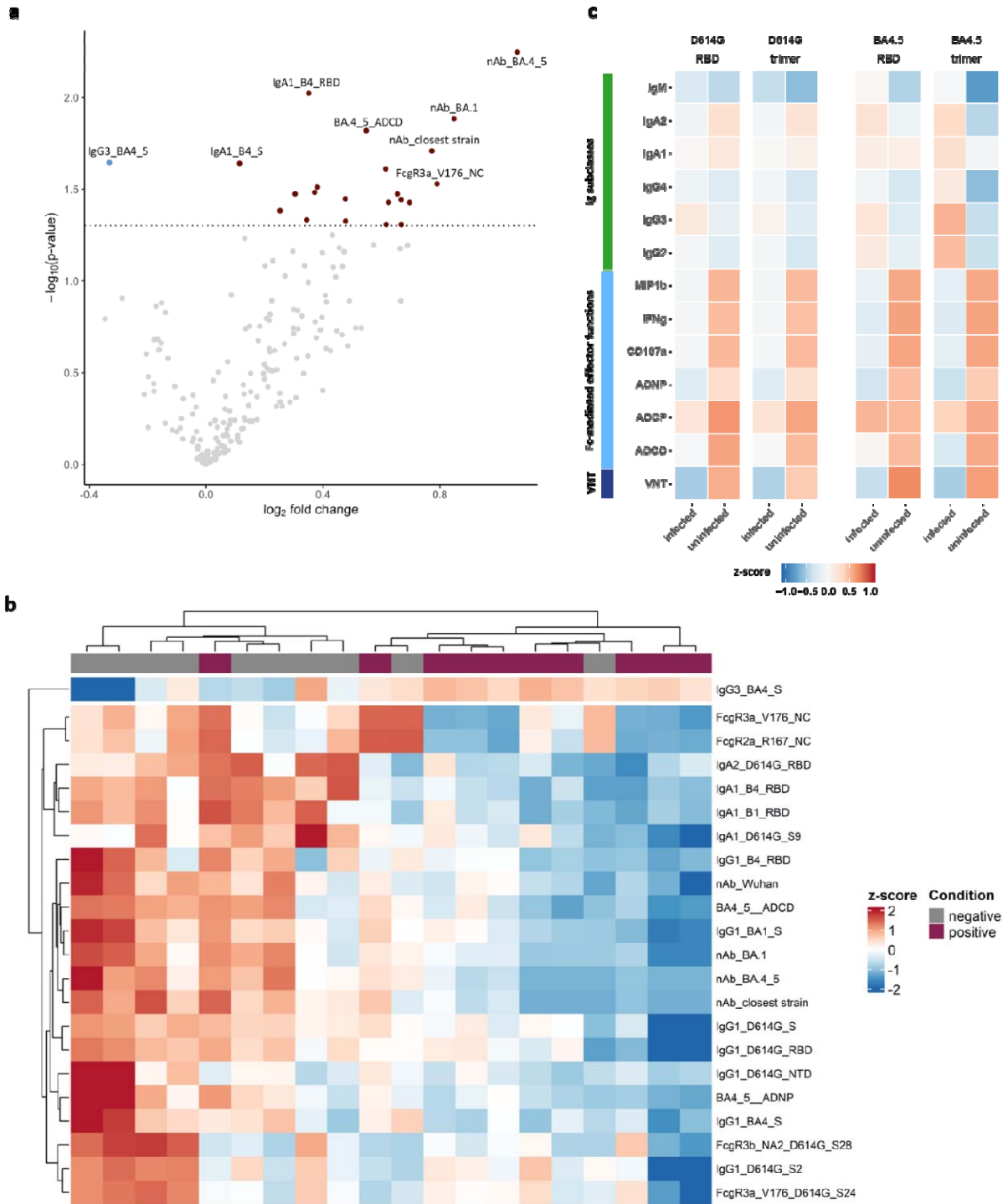
271 <sup>a</sup> Calculated by Fisher's exact test. <sup>b</sup> Calculated by unpaired t test. ns = non-significant

272 **3.2 Not-infected household members show multiple differently expressed features of**  
 273 **adaptive humoral immunity**  
 274

275 We quantified various features of spike-specific humoral immunity in the initial serum samples, including  
 276 a systems serology approach, levels of antibodies targeting different virus epitopes as well as different  
 277 SARS-CoV-2 variants and respiratory viruses like RSV (Table S1). Additionally, nAbs targeting different  
 278 SARS-CoV-2 spike strains were analyzed. Out of 198 features, 21 were significantly upregulated in the  
 279 negative group, compared to the positive and one downregulated in the negative group (Figure 2a).  
 280 Amongst those, seven features were IgG1 binding titers, targeting different SARS-CoV-2 epitopes or  
 281 strains and four were related to binding of IgA1 antibodies. Additionally, the nAb concentrations against  
 282 all tested SARS-CoV-2 strains were increased in the not-infected group. Figure 2b shows the log-  
 283 transformed levels of the 22 differently expressed features.

284 As some participants presented high IgG1 levels, which is usually the most dominant IgG subclass, we  
 285 normalized the data by the IgG1 signal of uninfected and infected groups to see whether there are  
 286 mechanistic differences in FcγR binding, Fc function or neutralization (Figure 2c). We identified Fc-  
 287 mediated effector functions and the virus neutralizing titers (VNT) to be more robust in uninfected

288 participants, which is in line with the findings of Figure 2b and c, and highlights the importance of nAbs  
 289 as CoP.



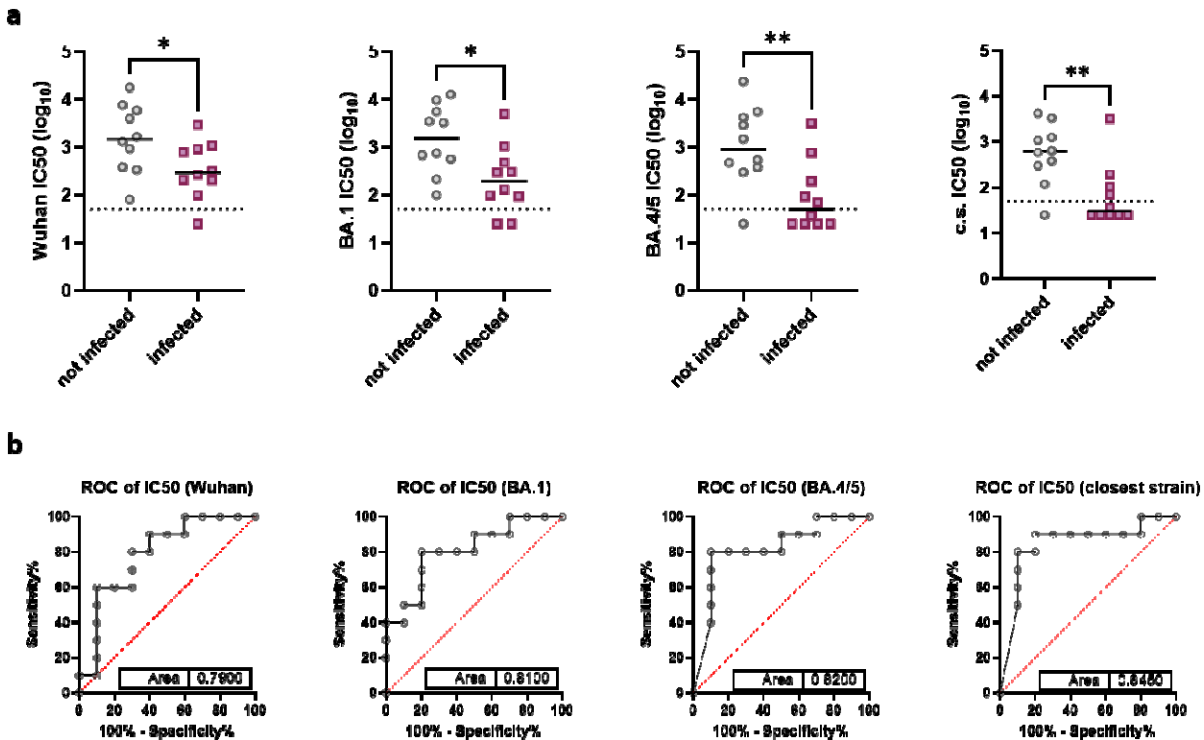
290  
 291 **Figure 2. Differentially expressed features in SARS-CoV-2 infected household members at initial sampling.** a)  
 292 This figure displays a volcano plot of differentially expressed features in household members who were or became  
 293 SARS-CoV-2 positive within 14 days after initial testing. The dotted line marks a  $p$ -value threshold of 0.05. Grey

294 dots represent non-significant features. Blue dots indicate features significantly upregulated in positive household  
295 members, while red dots represent features significantly upregulated in negative household members. b) A heatmap  
296 illustrating the significantly differentially expressed features identified in the volcano plot. Feature levels were log-  
297 transformed. Each column corresponds to a participant, and each row represents feature levels. Column annotations  
298 denote the condition of each participant. Clustering was performed based on Euclidean distance. c) Heatmaps of  
299 normalized average IgG1 corrected values (feature/IgG1) for each feature are shown for spike trimers and RBD of  
300 WT (D614G) and Omicron BA.4.5, comparing infected (n=10) to non-infected (n=10) individuals. Data from  
301 Luminex bead assays, ADCD and virus neutralization assays were log<sub>10</sub> transformed prior to IgG1 normalization.

302

### 303 3.3 nAb as correlate of protection

304 To further investigate the importance of nAbs, we individually analyzed their concentrations. All  
305 concentrations were elevated in participants who did not get infected (Figure 3a) even against the original  
306 Wuhan strain, which by the time of sampling was not present anymore. Interestingly, the closer the tested  
307 strains got to the strain by which the index person was infected and to the at that time circulation variant  
308 BA.4/5, the more prominent the difference appeared. By looking at their prognostic potential with a  
309 receiver operation characteristic (ROC) curve, all measured nAb concentrations showed significance  
310 (Wuhan  $p = 0.028$ ; BA.1  $p=0.0191$ ; BA.4/5  $p=0.0156$ ; closest strain (c.s.)  $p=0.0091$ ) (Figure 3b).



311

312 **Figure 3. Neutralizing antibody concentrations in household members at initial sampling.** a) Neutralizing  
313 antibody (nAb) concentrations were measured using pseudovirus neutralization assays against SARS-CoV-2 spike  
314 variants Wuhan, Omicron BA.1, and BA.4/5, as well as a relatively closely related strain. Participants were  
315 categorized as not infected (grey dots) or infected (purple squares). The dotted line indicates the limit of confidence.  
316 For analysis, the data was log-transformed and a t-test with Welch's correction was conducted. The black line

317 represents the median for each group. b) ROC analysis of nAb concentrations, with the area under the curve shown  
318 in the plot. \* =  $p < 0.05$ .

### 319 3.4 IgM-high participants screw protection potential of nAb

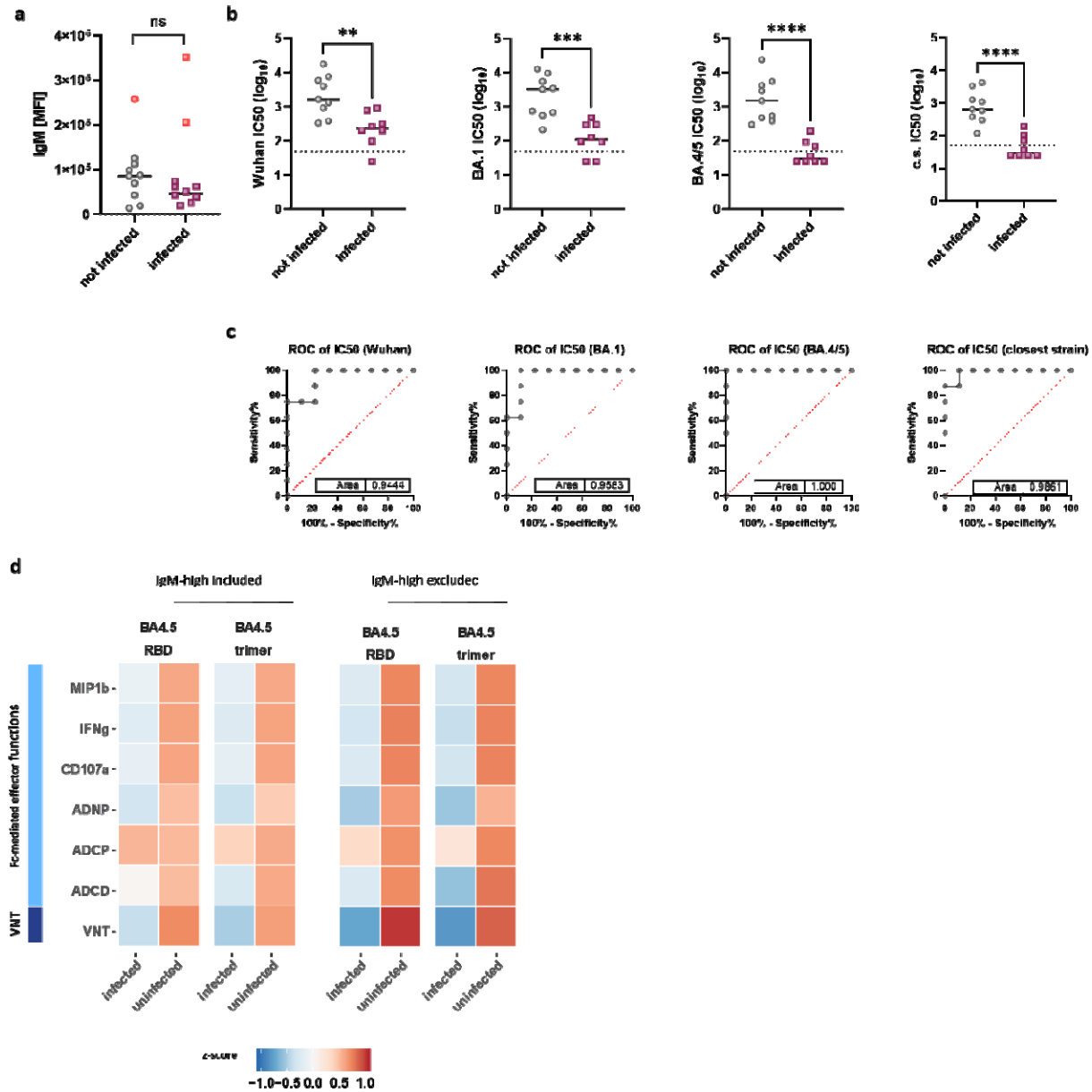
320 As the majority of our infected participants were already SARS-CoV-2 positive at the initial time point,  
321 we expected high IgM levels in some of them, limiting our ability to mainly analyze the nAb fraction  
322 which was present before the exposure. Hence, we checked the IgM levels targeting the nucleocapsid of  
323 the household members to identify outliers with very high IgM. In Figure 4 we show the levels being not  
324 significantly different between the two groups. Nevertheless, we identified three outliers (one in the non-  
325 infected, two in the infected) which had extremely elevated IgM in contrast to the rest of their respective  
326 group. We compared the neutralizing activity after excluding these participants with outlier IgM levels as  
327 they might have had a previous infection and their results would not be in line with the other participants.  
328 The significance of all variants increased drastically, separating the concentration of both groups clearly  
329 (Figure 4b). Moreover, the ROC analysis emphasize what impact those outliers have on the predictability  
330 of this feature (Wuhan  $p=0.0021$ ; BA.1  $p=0.0015$ ; BA.4/5  $p=0.0005$ ; c.s.  $p=0.0008$ ) (Figure 4c).

331 Additionally, by using 2-ME, we were able to eliminate IgM out of the serum (13). We validated the  
332 results by ELISA (Figure S2a) confirming that IgM was depleted with modest effect on IgG  
333 concentrations. Next, all pseudovirus neutralization assays were repeated with 2-ME treated serum  
334 (Figure S2b). However, the difference between the two groups did not drastically increase and in the case  
335 of the closest strain even decreased (ROC Wuhan  $p=0.0284$ ; BA.1  $p=0.0233$ ; BA.4/5  $p=0.0156$ ; c.s.  
336  $p=0.0233$ ). Interestingly, individuals with initial low neutralizing capacity showed increased neutralization  
337 upon IgM depletions.

338 Lastly, we repeated the normalization by IgG1 as shown before but excluded the three IgM high  
339 participants, and saw even more prominent Fc-mediated effector functions and VNT responses in  
340 uninfected participants (Figure 4d). This summarizes the overall finding of nAbs being one of the most  
341 important CoP.

342

It is made available under a [CC-BY 4.0 International license](https://creativecommons.org/licenses/by/4.0/).



343

344 **Figure 4. nAb concentration without IgM outliers.** a) IgM levels against the SARS-CoV-2 nucleocapsid were  
 345 measured using Luminex. Participants were categorized as not infected (grey dots) or infected (purple squares). One  
 346 participant in the not infected group (red dot) and two outlier in the infected group (red squares) presented a high  
 347 IgM level. A t-test with Welch's correction was conducted for analysis. b) Participants were categorized as not  
 348 infected (grey dots) or infected (purple squares), participants with high IgM were excluded for analysis. The  
 349 dotted line indicates the limit of confidence. For analysis, the data was log-transformed, and a t-test with Welch's  
 350 correction was conducted. The black line represents the median for each group. c) ROC analysis of nAb  
 351 concentrations, with the area under the curve shown in the plot. d) Heatmaps of normalized average IgG1 corrected  
 352 values (feature/IgG1) for each feature are shown for spike trimers and RBD of WT (D614G) and Omicron BA.4.5,  
 353 comparing normalization including IgM-high participants (left) to excluding IgM-high participants (right). Data from  
 354 Luminex bead assays, ADCD and virus neutralization assays were log10 transformed prior to IgG1 normalization.  
 355 MFI = median fluorescent intensity; \* =  $p < 0.05$ ; \*\* =  $p < 0.01$ ; \*\*\* =  $p < 0.001$ .

356



#### 357 **4. Discussion**

358 SARS-CoV-2 vaccination has been suggested to primarily protect against symptomatic or severe disease  
359 rather than preventing infection altogether (17). Consequently, vaccinations are mainly recommended for  
360 individuals at high risk for severe COVID-19, such as those over 60 years old, immunocompromised  
361 individuals, or healthcare workers interacting with high-risk groups (3). Previous studies with a similar  
362 aim, but no exposure documentation, have highlighted the importance of nAbs in disease prevention (18-  
363 20). This study aimed to determine whether any serological parameters of acquired immunity may predict  
364 protection from breakthrough infections. A previous study showed that healthcare workers with  
365 breakthrough SARS-CoV-2 infections has significantly lower IgG antibody titers, but showed substantial  
366 overlaps between groups (21). However, they did not document the exposure of study participants to the  
367 virus, it remained unclear if participants who remained negative were protected by their adaptive immune  
368 response or merely unexposed to the virus. Another study that was conducted in Israel in 2021 tested  
369 people exposed to a SARS-CoV-2-positive contact in their household during the Delta wave. This study  
370 identified nAb and IgG titers as CoPs against breakthrough infection, with some outliers that were  
371 infected even when antibody titers were rather high. However, that study tested only antibodies against  
372 the ancestral spike antigen, and not the Delta variants, which was in circulation at the time (22). We  
373 conducted our study with households containing a SARS-CoV-2 positive index person, who acted as the  
374 disease transmitter and assessed serology in a variant specific manner. Household members provided  
375 blood samples within 24 hours and were monitored for infection and symptoms for 14 days thereafter,  
376 upon which they donated a blood sample again. Serum features of targeted responses to ancestral,  
377 Omicron BA.1 or BA.5 spike antigen were performed, including nAbs.

378 The analysis of approximately 200 features in the serum samples from the early time point revealed 22  
379 significantly differentially expressed markers in our study. Half of these markers were related to Ig  
380 subtypes, as for instance IgG1 and IgA, or nAbs titers. A similar study conducted in Israel with 1,461  
381 household members in 2021, when the Delta variant was dominant, found results consistent with ours,  
382 identifying IgG titers and nAbs as correlates of protection against infection and disease severity (22).  
383 However, that study did not comprehensively address parameters of antibody responses in a virus variant  
384 specific manner. Hence, the ability of antibodies to neutralize the Delta variant were not assessed. Our  
385 study shows that neutralization assays against the ancestral variant are less accurate in predicting the  
386 protection against infection than those based on antigens from contemporary circulating virus variants.  
387 While antibodies against pre-Alpha spike antigen were still significantly upregulated in individuals who  
388 remained uninfected, the ROC analysis revealed that their predictive accuracy was inferior to those of  
389 closely related variants.

390 Importantly, both groups in our study were similar in terms of vaccination status or time elapsed since the  
391 last immunogenic event. This suggests that the time since the last vaccination is a rather crude predictor  
392 of protection against breakthrough infections. On the other hand, neutralizing titers against a close variant  
393 were a very robust correlate of protection, especially among people with no immunological evidence of a  
394 recent infection. We propose that our results argue for two important ideas. Firstly, our data argue that  
395 high neutralizing titers may protect against any breakthrough infection, and thus impede the transmission.  
396 Therefore, a high antibody titer induced by a fresh booster shot would prevent not only disease, but also  
397 break the chain of transmission. Secondly, our data provide evidence that eliciting high neutralizing titers  
398 among caregivers of immunocompromised people would limit the spread of the virus to the vulnerable  
399 and thus protect the population at risk. Consequently, we propose that regular assessments of neutralizing  
400 antibody titers of medical personnel and caregivers working in senior foster care would identify those  
401 who need additional booster shots to protect indirectly the very vulnerable population, whose immune  
402 system is weak and frequently subject to vaccine failure.

403 Since some participants were already infected at the initial time point, we investigated the impact of IgM  
404 on neutralization. We observed that IgM levels were elevated in several study participants, indicating  
405 recent exposure to the virus. Excluding the participants with high IgM levels from the analysis revealed a  
406 remarkably strong differentiation in nAb concentrations between positive and negative household  
407 members. This suggests that individuals with high IgM levels may skew the predictive value of nAbs as a  
408 correlate of protection. To explore this further, we also depleted IgM using 2-ME and repeated the  
409 neutralization assay (13). Overall, no significant differences were observed compared to the IgM-  
410 containing assays. This finding aligns with the results of Klingler *et al.*, who demonstrated that IgM and  
411 IgG are both important for virus neutralization (23). We propose that the participants with high IgM had  
412 high neutralization efficacy due to recent infections and that any serological diagnostics for CoP needs to  
413 include IgM testing to identify people with a recent exposure to the virus.

414 Our study has several limitations. We performed exhaustive immunological analyses on samples from a  
415 rather small cohort. In consequence, the statistical power was low and some of the features that were  
416 classified as non-significant may well differ between people who are protected against a household  
417 transmission and those who are not. The low statistical power also limits our ability to define quantitative  
418 thresholds in antibody titers needed for protection. Moreover, since we used a neutralization assay  
419 performed with pseudotyped viruses, the standardization of this assay for quantitative purposes may  
420 present technical challenges. We did not interview the household member about their behavior, such as  
421 isolation from the index case, and we did not perform PCR analyses on a daily basis, thus potentially  
422 omitting cases that resolved very rapidly. Additionally, our study was conducted in late 2022, during the

423 prevalence of the Omicron BA.4/5 variant, prior to the emergence of currently circulating variants.  
424 Hence, a similar study performed on samples from current and upcoming variants is required to solidify  
425 our conclusions.

426 Nevertheless, our findings demonstrate that nAb concentrations strongly correlate with protection against  
427 SARS-CoV-2 infection. Contrary to current vaccination recommendations, we propose that serology  
428 testing for nAbs and boosting those with low concentrations may prevent not only disease manifestations,  
429 but also effectively block transmission. Notably, testing with the variant that is currently prevalent  
430 provides high accuracy, eliminating the need for an index person-specific test and simplifying this  
431 diagnostic approach.

## 432 **Funding**

433 This research was funded by the Impulse and Networking fund of the Helmholtz Association through the  
434 grant PIE-0008 to LCS and VH-NG-19-28 to YCB and by the Deutsche Forschungsgemeinschaft (DFG,  
435 German Research Foundation) under Germany's Excellence Strategy - EXC 2155 - project number  
436 390874280 to LCS. BL and MH received funding within the RESPINOW project from the Federal  
437 Ministry of Education and Research under the grant number 031L0298A

## 438 **Acknowledgement**

439 We gratefully acknowledge Denise Clesle, Ayse Barut and Yuliia Polianska for technical support,  
440 Natascha Gödecke for administrative support with regulatory affairs and compliance and Henning  
441 Jacobsen for technical advice and discussions. IH was supported by the Hannover Biomedical Research  
442 School (HBRS) and the Center for Infection Biology (ZIB), Germany.

## 443 **Author contribution**

444 Conceptualization: H.M., M.L., M.H., B.L., M.P. and L.C.-S.; investigation: H.M., I.H., M.L., T.P., N.B.  
445 and R.E.; formal analysis: H.M., I.H. and L.C.-S.; resources: M.L. and M.P.; data curation: H.M. and  
446 L.C.-S.; writing – original draft preparation: H.M.; writing – review and editing: L.C.-S.; supervision:  
447 M.L. and L.C.-S.; funding acquisition: Y.B. and L.C.-S. All authors have read and agreed to the published  
448 version of the manuscript.

## 449 **Data availability**

450 The dataset used is available in the supplementary file and from the corresponding author on reasonable  
451 request.

## 452 **Competing interests**

453 BL is a member of the Expert Council 'Health and Resilience', Federal Chancellery, as well as a member  
454 of the Standing Vaccination Commission at the Robert Koch Institute. BL is the elected (Deputy)  
455 President of the German Society for Epidemiology (DGEpi), deputy in 2023 and 2026, president in 2024  
456 and 2025 and part of the pool of experts of the Federal Ministry of Education and Research (BMBF) for  
457 consultations on pandemic preparedness and the overall responsiveness of health research to health crises.  
458 BL is also a member of the Advisory Board for the Pact for Public Health (Pakt ÖGD), Federal Ministry  
459 of Health (BMG), an elected Speaker of the Modelling Network for Severe Infectious Diseases in  
460 Germany (MONID), a member of the DZIF Internal Advisory Board, and an elected member of the  
461 steering committee of TBNet. All other authors state that there is no competing interest.

## 462 **References**

- 463 1. Makhluaf H, Madany H, Kim K. Long COVID: Long-Term Impact of SARS-CoV2. *Diagnostics*  
464 (Basel). 2024;14(7).
- 465 2. Ssentongo P, Ssentongo AE, Voleti N, Groff D, Sun A, Ba DM, et al. SARS-CoV-2 vaccine  
466 effectiveness against infection, symptomatic and severe COVID-19: a systematic review and meta-  
467 analysis. *BMC Infect Dis*. 2022;22(1):439.
- 468 3. Health FMo. Information on coronavirus vaccination. 2024.
- 469 4. Catala M, Mercade-Besora N, Kolde R, Trinh NTH, Roel E, Burn E, et al. The effectiveness of  
470 COVID-19 vaccines to prevent long COVID symptoms: staggered cohort study of data from the UK,  
471 Spain, and Estonia. *Lancet Respir Med*. 2024;12(3):225-36.
- 472 5. Ackerman ME, Moldt B, Wyatt RT, Dugast AS, McAndrew E, Tsoukas S, et al. A robust, high-  
473 throughput assay to determine the phagocytic activity of clinical antibody samples. *J Immunol Methods*.  
474 2011;366(1-2):8-19.
- 475 6. Goldblatt D, Alter G, Crotty S, Plotkin SA. Correlates of protection against SARS-CoV-2  
476 infection and COVID-19 disease. *Immunol Rev*. 2022;310(1):6-26.
- 477 7. Khoury DS, Cromer D, Reynaldi A, Schlub TE, Wheatley AK, Juno JA, et al. Neutralizing  
478 antibody levels are highly predictive of immune protection from symptomatic SARS-CoV-2 infection.  
479 *Nature medicine*. 2021;27(7):1205-11.
- 480 8. Goguet E, Olsen CH, Meyer WA, 3rd, Ansari S, Powers JH, 3rd, Conner TL, et al. Immune and  
481 behavioral correlates of protection against symptomatic post-vaccination SARS-CoV-2 infection. *Front*  
482 *Immunol*. 2024;15:1287504.
- 483 9. Martin Perez C, Aguilar R, Jimenez A, Salmeron G, Canyelles M, Rubio R, et al. Correlates of  
484 protection and determinants of SARS-CoV-2 breakthrough infections 1 year after third dose vaccination.  
485 *BMC Med*. 2024;22(1):103.
- 486 10. Pavletic M, Mazor M, Lerga M, Mileta T, Zeleznjak J, Ruzic T, et al. Fast, Reliable, and Simple  
487 Point-of-Care-like Adaptation of RT-qPCR for the Detection of SARS-CoV-2 for Use in Hospital  
488 Emergency Departments. *Viruses*. 2021;13(12).
- 489 11. O'Toole Á, Scher E, Underwood A, Jackson B, Hill V, McCrone JT, et al. Assignment of  
490 epidemiological lineages in an emerging pandemic using the pangolin tool. *Virus Evolution*. 2021;7(2).
- 491 12. Katzmarzyk M, Clesle DC, van den Heuvel J, Hoffmann M, Garritsen H, Pöhlmann S, et al.  
492 Systematical assessment of the impact of single spike mutations of SARS-CoV-2 Omicron sub-variants  
493 on the neutralization capacity of post-vaccination sera. *Front Immunol*. 2023;14:1288794.
- 494 13. Capel PJ, Gerlag PG, Hagemann JF, Koene RA. The effect of 2-mercaptoethanol on IgM and IgG  
495 antibody activity. *J Immunol Methods*. 1980;36(1):77-80.
- 496 14. Brown EP, Licht AF, Dugast AS, Choi I, Bailey-Kellogg C, Alter G, et al. High-throughput,  
497 multiplexed IgG subclassing of antigen-specific antibodies from clinical samples. *J Immunol Methods*.  
498 2012;386(1-2):117-23.
- 499 15. Fischinger S, Fallon JK, Michell AR, Broge T, Suscovich TJ, Streeck H, et al. A high-throughput,  
500 bead-based, antigen-specific assay to assess the ability of antibodies to induce complement activation. *J*  
501 *Immunol Methods*. 2019;473:112630.
- 502 16. Karsten CB, Mehta N, Shin SA, Diefenbach TJ, Slein MD, Karpinski W, et al. A versatile high-  
503 throughput assay to characterize antibody-mediated neutrophil phagocytosis. *J Immunol Methods*.  
504 2019;471:46-56.
- 505 17. Zhong Y, Kang AYH, Tay CJX, Li HE, Elyana N, Tan CW, et al. Correlates of protection against  
506 symptomatic SARS-CoV-2 in vaccinated children. *Nat Med*. 2024;30(5):1373-83.
- 507 18. Atti A, Insalata F, Carr EJ, Otter AD, Foulkes S, Wu MY, et al. Antibody correlates of protection  
508 against Delta infection after vaccination: A nested case-control within the UK-based SIREN study. *J*  
509 *Infect*. 2023.

- 510 19. Martín Pérez C, Aguilar R, Jiménez A, Salmerón G, Canyelles M, Rubio R, et al. Correlates of  
511 protection and determinants of SARS-CoV-2 breakthrough infections 1 year after third dose vaccination.  
512 *BMC Medicine*. 2024;22(1):103.
- 513 20. Addetia A, Crawford KHD, Dingens A, Zhu H, Roychoudhury P, Huang ML, et al. Neutralizing  
514 Antibodies Correlate with Protection from SARS-CoV-2 in Humans during a Fishery Vessel Outbreak  
515 with a High Attack Rate. *J Clin Microbiol*. 2020;58(11).
- 516 21. Möhlendick B, Čiučiulkaitė I, Elsner C, Anastasiou OE, Trilling M, Wagner B, et al. Individuals  
517 With Weaker Antibody Responses After Booster Immunization Are Prone to Omicron Breakthrough  
518 Infections. *Front Immunol*. 2022;13:907343.
- 519 22. Regev-Yochay G, Lustig Y, Joseph G, Gilboa M, Barda N, Gens I, et al. Correlates of protection  
520 against COVID-19 infection and intensity of symptomatic disease in vaccinated individuals exposed to  
521 SARS-CoV-2 in households in Israel (ICoFS): a prospective cohort study. *Lancet Microbe*.  
522 2023;4(5):e309-e18.
- 523 23. Klingler J, Weiss S, Itri V, Liu X, Oguntuyo KY, Stevens C, et al. Role of IgM and IgA  
524 Antibodies in the Neutralization of SARS-CoV-2. *medRxiv*. 2020.

525