

1 Active case finding using mobile vans equipped with artificial intelligence aided
2 radiology tests and sputum collection for rapid diagnostic tests to reduce
3 tuberculosis prevalence in rural China: protocol for a pragmatic trial

4
5 Xiaolin Wei^{1¶*}, Dabin Liang^{2¶}, Zhitong Zhang¹, Kevin Thorpe¹, Lingyun Zhou²,
6 Jinming Zhao², Huifang Qin², Xiaoyan Liang², Zhezhe Cui², Yan Huang²,
7 Liwen Huang², Mei Lin^{2*}

8
9 ¹ Dalla Lana School of Public Health, University of Toronto, Toronto, ON,
10 Canada

11 ² Guangxi Zhuang Autonomous Region Center for Disease Control and
12 Prevention; Guangxi Key Laboratory of Major Infectious Disease Prevention
13 and Control and Biosafety Emergency Response, Nanning, Guangxi Zhuang
14 Autonomous Region, China

15
16 * Corresponding author

17 Email: xiaolin.wei@utoronto.ca (XW) and gmlinmei@126.com (ML)

18
19 ¶ These authors contributed equally to this work.

20
21
22 **NOTE: This preprint reports new research that has not been certified by peer review and should not be used to guide clinical practice.**

23 **Abstract**

24

25 **Background**

26 Tuberculosis (TB) remains a significant public health challenge, particularly in
27 rural areas of high-burden countries like China. Active case finding (ACF) and
28 timely treatment has been proved effective in reducing TB prevalence but it is
29 still unknown regarding the impact on TB epidemic when employing new
30 technologies in ACF. This study aims to evaluate the effectiveness of a
31 comprehensive ACF package utilizing mobile vans equipped with artificial
32 intelligence (AI)-aided radiology, and GeneXpert testing in reducing TB
33 prevalence among high-risk populations in rural Guangxi, China.

34

35 **Methods**

36 A pragmatic cluster randomized controlled trial will be conducted in two
37 counties of Guangxi, China. The trial will randomize 23 townships to
38 intervention or control groups at 1:1 ratio. The intervention group will receive a
39 single ACF campaign in Year 1, incorporating mobile vans, AI-based DR
40 screening, symptom assessment, and sputum collection for GeneXpert testing.
41 Control group participants will receive usual care. TB patients identified in Year
42 1 will be required to complete TB treatment in Year 2. The primary outcome is
43 the prevalence rate of bacteriologically confirmed TB among high-risk

44 populations in Year 3. Process evaluation will explore adaption, acceptability
45 and feasibility of the intervention. We will conduct incremental costing study to
46 inform future scale-up of the intervention in other settings.

47

48 **Discussion**

49 This study will provide valuable insights into the effectiveness and feasibility of
50 utilizing AI, mobile vans and GeneXpert for TB ACF to reduce TB prevalence
51 in rural settings. If successful, this model will contribute to possible solutions to
52 achieve the WHO End TB Strategy by 2035.

53

54 **Trial registration:** ClinicalTrials.gov Identifier -NCT06702774

55

56 **Keywords:** Tuberculosis, active case finding, mobile van, artificial intelligence,
57 cluster randomized controlled trial, China

58

59

60

61

62

63 **Introduction**

64

65 The United Nations passed the Resolution to end tuberculosis (TB) by 2035. TB
66 is the leading cause of death in infectious disease. In 2022, the world reported
67 7.5 million new TB cases and 1.3 million deaths caused by TB [1]. TB
68 incidence has declined by 2% a year between 2010 and 2020. However, the rate
69 has reverted to increase by 3.9% between 2020 and 2022 due to the COVID-19
70 pandemic [1]. To reach the END-TB resolution, global TB incidence has to be
71 reduced to less than 100 per million by 2035 [2]. The world is looking for
72 evidence of innovative approaches to eliminate TB in a relatively short time
73 frame [3].

74

75 The principle of “prevent, search, detect, treat” that has successfully reduced TB
76 prevalence in high-income countries in the last century [4]. Studies in high TB
77 burden countries also proved that active case finding (ACF) at the community
78 level would identify patients who are in their early stage of disease
79 development, or who may be delayed or missed in the routine passive case
80 finding at health facilities [4, 5]. A 2009 study in rural Zimbabwe showed both
81 mobile van and household-to-household sputum collection methods lowered TB
82 prevalence by 41% in three years, showing the potential of using mobile vans in
83 case finding [6]. Another study in rural Vietnam demonstrated that conducting

84 annual community screening based on a rapid molecular diagnostic tool
85 (GeneXpert) for three years could reduce 40% of TB prevalence in a high TB
86 burden setting [7]. However, GeneXpert costs around US\$15 per test, which is
87 prohibitive to be used as a large-scale screening tool.

88

89 More cost-effective active case-finding tools, such as computer-aided diagnostic
90 tools using artificial intelligence (AI) deep learning neural networks, have
91 shown satisfying sensitivity (86%) as a screening tool to reduce 66% of cases
92 needed for laboratory tests [8]. Operational studies revealed the feasibility and
93 effectiveness of using AI-facilitated X-ray and GeneXpert for community
94 screening and diagnosis [9]; however, most studies were pre-after comparisons
95 that were not properly designed to evaluate epidemiological impacts [10]. In
96 addition, two studies in Africa highlighted that the interventions were more
97 cost-effective when screening elders, close contacts with active TB patients, and
98 individuals with comorbidities such as diabetes and HIV [11, 12].

99

100 Here, we aim to implement and evaluate the feasibility and effectiveness of a
101 comprehensive intervention package in rural Guangxi, China, a high TB
102 prevalent setting, that employs the latest technologies for active case finding to
103 reduce TB epidemics among high-risk populations. The technologies include
104 employing a mobile van equipped with AI aided radiology screening and
105 GeneXpert test for community active case finding in communities. Our study is

106 designed as a pragmatic clustered randomized controlled trial to evaluate the
107 effectiveness of the comprehensive package in reducing TB prevalence over a
108 period of three years among high-risk populations.

109

110 **Methods**

111

112 This protocol is reported according to the Standard Protocol Items:
113 Recommendations for Interventional Trials (SPIRIT) guidelines (see S1 Table).

114

115 **Study status and timeline**

116 The lifespan of this study will be 42 months in total, including 36 months for
117 the main trial (Year 1-3). More details of trial timeline are included in the Fig 1.
118 The trial has been started since Nov 2021 and has been suspended for 3 months
119 due to COVID-19 control in Year 1, thus the progress was postponed
120 accordingly. Participant recruitment and data collection has been ongoing by the
121 time of submission of this protocol, which are estimated to be completed by end
122 of January 2025. The trial results will be disseminated through research articles
123 and policy briefs after the trial evaluation is completed after April 2025. We aim
124 to publish our results and findings in leading international medical journals and
125 present at national and international conferences.

126 **Fig 1. SPIRIT schedule of enrolment.**

127

128 **Study design and setting**

129 We will conduct a parallel two-group, cluster randomized controlled trial of a
130 comprehensive package of active case finding followed by timely treatment in
131 rural Guangxi China to evaluate whether the interventions could reduce the TB
132 epidemic compared to the usual care (Fig 2). Guangxi is located in southwest
133 China bordering with Vietnam. Guangxi reported 31,913 TB cases with
134 notification rate of 70/100,000 in 2020, representing the second highest TB
135 burden in China. Of the reported TB cases, 74% were from rural areas, and 30%
136 were elderly (≥ 65 years old). Mountainous areas in Guangxi had high TB
137 notification rates; for example, the two trial counties (Xincheng and Xiangzhou
138 of Laibin Prefecture) reported an average notification rate of 134/100,000,
139 which is two times the provincial average. In addition, the Covid-19 pandemic
140 has substantially delayed TB diagnosis and treatment, which would fuel up TB
141 transmission and exacerbate TB epidemic.

142 **Fig 2. Trial design flow chart.**

143

144 TB services in China is funded and delivered by the public health system at the
145 county, township and village levels. The TB free treatment policy requires basic
146 TB diagnosis tests and treatment should be free (for drug susceptible cases) or
147 supported by the health insurance schemes (for drug resistant cases). The
148 County Centre for Disease Control (CDC) is responsible for TB planning,

149 reporting and quality control, while TB clinical care is provided by the TB
150 Clinic at the County Hospital. Passive case finding is the practice of usual care,
151 where patients with chronic cough or other TB-related symptoms are self-
152 presented or referred to the County Hospital for subsequent diagnosis and
153 treatment. TB diagnosis is based on sputum smear, chest X-ray examinations,
154 and clinical assessments. Standard WHO DOTS treatment regimen is provided
155 for patients diagnosed of drug-susceptible TB. TB patients visit the County
156 Hospital monthly for medication renewals. Patients take their anti-TB
157 medications on a daily basis with the support of village doctors, who are
158 community health workers. In Guangxi, village doctors are semi-private who
159 receive 50% of income from the township hospitals for their public health work
160 such as maternal and child health, immunization, pap smear screening, and
161 disease management including TB, diabetes, and hypertension, while they earn
162 the other 50% income from clinical consultations under the rural health
163 insurance scheme. According to the National TB Guideline, village doctors are
164 responsible to visit TB patients weekly. The public health doctor in the
165 township hospital is required to supervise village doctors and visit patients
166 monthly. However, the actual frequency is far less and often substituted via
167 phone calls. In each village, there is a female social worker in the Village
168 Committee, who plays a major role in public education, maternal and child care,
169 and protecting women's rights. These female social workers have a strong
170 connection with villagers but have not been involved in TB care.

171

172 **Eligibility criteria**

173 **Clusters**

174 We have two levels of clustering in this trial. Township is treated as the cluster
175 of intervention. A township is an administrative unit with a township hospital
176 and consists of 7-12 villages. All townships in Xincheng and Xiangzhou county,
177 which provide their willingness to participate, will be included. Villages within
178 the participating township serve as sub-cluster in the survey that determines the
179 TB prevalence rate.

180

181 **Participants**

182 In each township, all residents who are 15 or older become eligible and defined
183 as high-risk populations if they: 1) are elderly (i.e., aged 65 and above), or 2)
184 been aged below 65 but with one of the following conditions: being patients
185 previously treated for TB or close contacts of a patient with a TB patient
186 diagnosed within the last three years; having been clinically diagnosed with
187 diabetes, HIV positive, or worked as a miner. All eligible participants who
188 signed informed consent form will be recruited to the study. Residents who
189 refuse participation will be excluded.

190

191 **Procedures**

192 **TB Care provided in both groups**

193 Routine TB care is provided per the China National TB Guideline to both
194 groups, where passive case finding is practiced. Patients self-present or are
195 referred to the TB clinic at the County Hospital when they seek care for TB
196 related symptoms. TB diagnosis is based on X-ray examination, sputum smears
197 and clinical assessment. Confirmed TB patients are treated in County Hospitals
198 based on the WHO DOTS regimens for drug-sensitive TB. Those who are
199 diagnosed with multi-drug resistant (MDR) TB are referred to prefecture TB
200 designated hospital.

201

202 **Usual care**

203 Usual care will be provided in the control group, and no active case finding
204 activities will be provided.

205

206 **Intervention**

207 In the intervention group, in addition to usual care, we will implement one
208 active case-finding campaign among all eligible participants in Year 1 (Fig 3).
209 Villagers will be informed of the screening through public information and
210 social workers. Prior to the visit, village social workers and village doctors will
211 conduct door-to-door visits to recruit participants and obtain their informed
212 consent. We will employ a mobile van equipped with the AI-facilitated digital
213 radiography (DR) machine and refrigerator to visit villages on a mutually

214 agreed date. On the day, all eligible participants will be invited to complete a
215 brief questionnaire regarding TB related symptoms, and then invited to have
216 their DR examined in the van. Those who are presumptive of TB based on
217 either DR examination or any TB related symptoms, including any chronic
218 cough over two weeks, hemoptysis, fever, night sweats, chest pain or
219 unexplained weight loss, will be asked to produce a single on-site sputum.
220 These villagers are also asked to take two specimen boxes for collection of
221 night and morning sputum. All staff are trained for good quality sputum sample
222 collection, storage and transportation. Medical nebulizer inhalation will be
223 provided to those who can not provide good quality sputum. Sputum samples,
224 either collected on the day or delivered by village doctors within 48 hours, will
225 be stored in the refrigerator of the mobile van and transported to the county
226 hospitals at daily basis for sputum smear, culture and GeneXpert using sample
227 mixed approach which method of mixing is published elsewhere [13].
228 Participants who are bacteriologically negative but have abnormal DR result or
229 TB symptoms will be referred to the county hospital for clinical assessment
230 based on China National TB guideline. All diagnosed TB patients, either
231 bacteriologically or clinically confirmed, will be notified by the village doctor
232 within 48 hours and referred to the County Hospital for standard WHO DOTS
233 regimens per national guideline.

234 **Fig 3. Algorithm of active TB case finding in intervention group.**

235 a. TB symptoms include chronic cough over 2 weeks, hemoptysis, fever, night
236 sweats, chest pain or unexplained weight loss.

237 TB= tuberculosis, DR= digital radiography

238

239 **Research activities apply to both groups:**

240 We will wait for a year (cleaning period) to ensure all TB patients identified in
241 Year 1 complete the treatment. We will conduct epidemiological prevalence
242 survey in both groups in Year 3 using cluster-random sampling methods
243 adopted from WHO [14], targeting high-risk populations in both intervention
244 and control groups, to compare the TB prevalence rates. Regarding the survey,
245 we will apply the same active case finding activities as outlined above to both
246 intervention and control groups. For feasibility reasons, we plan to conduct the
247 survey in Year 3 at the village (sub-cluster) levels in both groups.

248

249 **Outcomes**

250 Our primary outcome indicator is the prevalence rate of bacteriologically
251 positive TB in Year 3 among the high-risk populations, including those 65 and
252 older, those who are under 65 but have a history of tuberculosis treatment or
253 have been in close contact with a person diagnosed with TB within the past
254 three years, have been clinically diagnosed with diabetes, HIV, or have a
255 background of working as a miner. According to WHO definitions,
256 bacteriologically positive case is defined as having a positive test from any of

257 the three tests (i.e., GeneXpert, smear or culture). Prevalence is estimated using
258 a cluster-random survey among the high-risk populations that is conducted in
259 both the intervention and control groups in Year 3.

260

261 There is a list of secondary outcome indicators, which allow us to assess and
262 evaluate whether our interventions could bring positive impacts on TB epidemic
263 in the intervention and control groups: 1) prevalence rate of active TB,
264 including both bacteriologically positive and negative cases, among the high-
265 risk populations in Year 3. This indicator will also rely on estimates from the
266 epidemiological survey in Year 3; 2) notification rates of bacteriologically
267 positive TB cases among all populations in Year 3; and 3) notification rates of
268 active TB cases, including both bacteriologically positive and negative cases
269 among all populations in Year 3. Nominators of the two notification rates will
270 include TB cases identified from our epidemiological survey in Year 3 plus TB
271 cases reported from the National TB Program, while both denominators include
272 all adult residents (i.e., those of 15 years and older) in the intervention and
273 control groups.

274

275 We will also collect costs from patient, health system and societal perspectives
276 to conduct an incremental costing study. We will collect process indicators that
277 will including a) the proportion of bacteriologically positive cases identified by
278 active case finding in the intervention group; b) the yield rate of our

279 intervention, which is the number of bacteriologically positive cases per 100
280 persons screened using each strategy.

281

282 **Sample size**

283 The sample size is calculated for the investigation of the primary outcome, i.e.,
284 the prevalence rate of bacteriologically confirmed TB, that will be conducted in
285 Year 3. We estimated that the TB prevalence rate among the high-risk
286 populations in the trial area is about 300 per 100,000. We assume our
287 intervention will reduce the rate among the high-risk populations in the
288 intervention group by 50% (i.e., to 150 per 100,000) within 24 months, which
289 can be considered as a significant reduction at the population level. We estimate
290 that the intra-class correlation coefficient for TB prevalence was 0.001 [7]. The
291 average number of eligible participants is about 500 per village based on the
292 initial reports. We estimate that we would need 47 villages (that is,
293 approximately 23,500 participants) in each group to have 80% power to detect
294 the reduction estimated above, assuming $p < 0.05$.

295

296 **Recruitment, randomization and blinding**

297 There are 23 townships and 255 villages in Xincheng and Xiangzhou county of
298 Laibin city [15]. We will implement the active case finding intervention at the
299 township level to avoid contamination because township hospitals manage

300 village doctors. We seek to recruit all willing townships. After recruitment, the
301 study statistician will use a custom-written computer program to randomize all
302 recruited townships, stratified by county, assigning them to the control and
303 intervention group in an overall 1:1 ratio (12 intervention vs 11 control) [16].
304 Then township/village doctors and county hospital staff in the intervention
305 group will be invited to receive training about specific interventions in this
306 project. For the epidemiological survey in Year 3, the statistician will randomly
307 select 47 villages (sub-clusters) from each group stratified by county. We will
308 seek written informed consent from each participant before enrollment, as we
309 need to collect their health information, bio-sample (sputum) and test result for
310 research purpose.

311

312 Due to the nature of the intervention, neither single nor double blindness
313 procedure is applicable. However, we will blind the data analysts who process
314 the end-point data for outcome assessment.

315

316 **Data collection**

317 We will collect all types of field data produced during the trial, including
318 patients' basic information, disease history, health information, DR test result,
319 laboratory test result for TB and diagnosis, as well as routine TB reporting data.
320 All data will be entered into a data website designed for this project, accessible
321 only by designated researchers via local intranet with a password. Individual

322 data will be deidentified and stored for five years after the completion of the
323 trial. For research purpose, we will define all outcomes at the subcluster-level
324 and will calculate them from the individual-level data as single summary
325 outcome values, such as prevalence per cluster.

326

327 **Active screening**

328 During the active case screening, we will collect the information about
329 suspicious symptoms, including chronic cough for more than 2 weeks,
330 hemoptysis, blood sputum, fever, night sweats, chest pain or unexplained
331 weight loss, and TB risk factors (close contact history of tuberculosis patients,
332 diabetes, AIDS/HIV and dust exposure).

333

334 **Laboratory testing and clinical consultation**

335 The county hospitals will carry out laboratory testing according to the ‘TB
336 Laboratory Testing Protocol’. Sputum smear test, GeneXpert test and sputum
337 culture are carried out at the same time. Every five samples of sputum are mixed
338 for GeneXpert test to save costs. Those positive mixed sample will be tested
339 separately to confirm the positive case. County hospitals will distribute the
340 laboratory testing results to patients within 48 hours. All TB diagnoses will be
341 recorded in the ‘Register of Newly Diagnosed Patients’ (labelled with subject
342 number) in detail. Clinical diagnosis based on the clinical assessment is
343 performed by doctors in county hospitals according to the national TB

344 Classification Criteria (WS196-2017) and Diagnostic Criteria (WS288-2017)
345 [17, 18]. We will also collect TB cases diagnosed through the usual care in both
346 intervention and control groups through the three years.

347

348 **Primary and secondary outcomes**

349 The data collection approach in Year 3 for the outcome evaluation will be the
350 same as the active TB case finding in the intervention group in Year 1. As we
351 define most of our outcomes as single summary values at the subcluster-level,
352 such as prevalence and incidence, we will sample from both intervention and
353 control group, calculate and compare the outcomes following the trial period.
354 Take the primary outcome, the prevalence of bacteriologically positive TB, for
355 instance, we will sample all high-risk populations of selected villages (sub-
356 clusters) of the two groups, conduct a sputum smear, GeneXpert, sputum culture
357 test, and compare the calculated prevalence of bacteriologically positive TB. A
358 similar process also applies to measure secondary outcomes, such as prevalence
359 of active TB in two groups.

360

361 **Statistical analysis**

362 The results of this project will be reported according to the ‘Consolidated
363 Standards of Reporting Trials: Extension for Cluster Trials’ (CONSORT)
364 guidelines [19]. We will create a detailed statistical analysis plan. In the full
365 research paper, we will present appropriate descriptive statistics for the two

366 counties and all relevant participants before and during the trial. In addition,
367 using cluster-level methods of analysis, we can get a main set of estimates for
368 our primary and secondary outcomes after the trial, acting as the primary
369 evidence for determining the effectiveness of this trial. Appropriate summary
370 statistics and their associated 95% confidence interval for all differences
371 outcomes between the intervention group and the control group will be
372 calculated. No interim analyses are involved in this project.

373

374 For the primary outcome and all secondary proportion-based outcomes, the
375 statistical analysis will employ a mixed-effect logistic regression model
376 including random effects for township and village. The intervention effect will
377 be expressed as an odds ratio with 95% confidence intervals. Secondary
378 analyses of these outcomes will adjust for the following variables: age, sex, and
379 ethnicity.

380

381 For continuous secondary outcomes we will employ a linear mixed-effect model
382 with random effects for township and village. This model will also adjust for the
383 following variables: age, sex, and ethnicity. The intervention effect will be
384 expressed as the adjusted mean difference with 95% confidence intervals.

385

386 **Process evaluation**

387 Since our project contains multiple components, the process evaluation during
388 and after the trial is guided by the framework for design and evaluation of
389 complex interventions [20, 21]. Utilizing a combination of qualitative and
390 quantitative methods, process evaluation for the complex interventions in our
391 cRCT can explore the mechanism of achieving the intervention effects [22]. In
392 other words, we can get insights of a series questions such as ‘what
393 interventions are effective in which policies and implementation environments,
394 for whom and why?’. We will conduct around 30 in-depth semi-structured
395 interviews with leading personnel at all levels of health agencies, township and
396 village doctors, county hospital staffs, social workers, and trial participants in
397 the intervention group.

398

399 Our specific objectives for the process evaluation include: 1) to determine
400 intervention accessibility by the number of subjects receiving screening,
401 presented to county hospitals, and under treatment, as well as their feedbacks; 2)
402 to explore the intervention effectiveness (reasons for both effectiveness and
403 ineffectiveness), along with the relationship between interventions and expected
404 results; 3) to access the acceptance of intervention implementation at the
405 organization level and the staff level – any conflicts with existing management
406 or policies, and corresponding adjustment; 4) to report intervention fidelity, the
407 degree and quality of intervention completion, as well as challenges and
408 unexpected results, at both subcluster-level and individual level.

409

410 **Analysis of process evaluation**

411 All the recorded interviews will be transcribed and translated into English
412 before qualitative analysis. We will use NVivo 10 software to process and
413 analyze our qualitative data guided by a framework analysis as described by
414 Gale et al [23], to identify themes related to our process evaluation objectives.
415 The findings will be reported based on the Consolidated Criteria for Reporting
416 Qualitative Research (COREQ) guidelines [24].

417

418 **Costing study**

419 This study will measure the incremental cost-effectiveness of interventions
420 compared with conventional TB finding, using research data and literature to
421 evaluate both health system and social benefits. We will compare direct costs
422 and outcomes of the intervention group to those of the control group throughout
423 the 24-month trial. The objective of the costing study is to calculate the
424 incremental cost-effectiveness ratio (the increased costs required for each 1%
425 reduction in the prevalence of active TB among high-risk populations) using
426 data from the project's primary outcome.

427

428 **Data collection**

429 We will send out a questionnaire to directors of all recruited township or village
430 hospitals to collect health care resources used in the trial, along with their costs.

431 The data include: 1) average salaries, in RMB, for each level of staff in
432 designed hospitals who participated in this project; 2) average salaries, in RMB,
433 for township and village doctors who do not work in designated hospitals but
434 still participated in the project; 3) average salaries, in RMB, for social workers
435 and other personnel worked in the project implementation; 4) the duration of
436 consultations on mobile health vehicle and in county hospital); 5) the frequency
437 and duration of staff training and sequential meetings during the process; 7) cost
438 for TB screening (i.e. symptom screening, chest DR, mobile van operation,
439 sending samples to county hospitals) and laboratory test (e.g. sputum smear,
440 culture, and GeneXpert). To optimize the data quality, we will double-entry and
441 random-check the input data.

442

443 **Estimation of resources use and costs**

444 Healthcare resources in this case include resources used for TB detection and
445 diagnosis. The cost per patient is calculated as the sum of consultation,
446 screening and laboratory testing. The total costs is calculated for the main
447 analysis population as described in the Statistical Analysis section [25].

448

449 **Estimation of implementation costs**

450 The implementation costs are calculated separately and will not be accounted in
451 the cost-effectiveness analysis. The objective of this estimation is to inform
452 policy makers and stakeholder of the potential cost to facilitate their decision on

453 whether to implement the intervention at scale. For each cluster, the
454 implementation costs included the cost of training for personnel, the cost of
455 personnel to attend training, the costs for developing and printing the handbook
456 or guidelines per training attendee, operation cost of mobile van, driver cost,
457 setup cost of AI facilitated DR, the costs for producing symptom questionnaires
458 used in the project, and the costs of sending samples back to county hospitals.

459

460 **Trial management**

461 Guangxi CDC will lead this project and have full access to all the anonymized
462 data and information associated with the trial. We will establish a data
463 monitoring committee (DMC) to ensure all data are collected in conformity
464 with the agreed ethical guidelines, stored in Guangxi CDC properly and used
465 for research purposes only. Meanwhile, the DMC is also responsible for the
466 safety and privacy protection of all the subjects and providers participated in the
467 trial. Additionally, there will be a trial steering committee (TSC) lead by
468 external members to generate the progress of the trial. We will hold regular
469 online meetings with both DMC and TSC every 6 months to get updates and
470 discuss any protocol modifications, starting from the beginning of the study,
471 until it completes. If there are any changes or concerns needed to report or
472 discuss, the committees can meet on an ad hoc basis with the co-leaders as well.
473 Moreover, a trial management unit (TMU) will be established in consisting of

474 three local staff. The responsibility of the TMU is to better manage the day-to-
475 day activities of the trial according to the study protocol.

476

477 **Discussion**

478 This study aims to enhance the existing TB control protocol in an area of high
479 TB prevalence. As the location of implementation, Laibin is an ethnically
480 diverse area with the highest reported TB incidence rate in Guangxi region. In
481 other words, it has an urgent need to find a more effective way to manage its TB
482 epidemic. Given that about 27% of all reposted cases in Guangxi region are
483 from the elderly population, the interventions target the elderly and also pay
484 special attention to other populations who have high risk of TB infection [15,
485 26, 27].

486

487 The study has significant policy relevance to China and globally. The objective
488 of this study is to effectively reduce the TB epidemic in Guangxi and achieve
489 the WHO's End TB Strategy [2] milestones by 2024. If successful, the
490 prevalence of TB in the intervention areas will be reduced by more than 50%. It
491 aligns with the goal to build a healthy China as well. The successful
492 implementation of this study will yield a feasible TB control strategy that can be
493 replicated in other parts of China, which may provide a model for countries with
494 similar context to achieve to the WHO's goal to end TB by 2035 [2].

495

496 Furthermore, active screening interventions involve innovative technologies.

497 Since over 40% of areas in Laibin are mountainous, the mobile health vehicles

498 equipped with DR machines and refrigerators make active screening procedures

499 more convenient, and all the bio-samples can be properly stored and timely

500 transported to the county hospital. In addition, the AI-based diagnostic system

501 (above 90% sensitivity) offers axillary support to detect abnormalities in DR

502 images, increasing the test efficacy [28].

503

504 Nevertheless, there are some limitations in this study as well. First, TB-

505 suspected participants in the active screening intervention are required to collect

506 two sputum samples (one for morning and one for night sputum) and send them

507 to village doctors. Although specific equipment and instructions will be given,

508 there are still risks of improper sample collection or transportation, which may

509 affect laboratory results and TB diagnosis. We provide training for people

510 assumptive of TB in sputum collection to improve the quality. Secondly, due to

511 the limitation of funding and human resources, we are not able to conduct active

512 case finding among all populations in participating townships in Year 3.

513 Therefore, the trial cannot evaluate the impact of interventions on TB

514 prevalence in the general population. On the other side, a survey of the

515 population may not be feasible anyway because most people of working ages in

516 rural areas moved to urban areas as migrants during most time of the year, while

517 only elders, who comprise the majority of our high-risk population, and children
518 stay at home. Our active case-finding activity targeting high-risk populations
519 would significantly reduce TB in rural areas.

520

521 **List of abbreviations**

522 AI: Artificial Intelligence

523 AIDS: Acquired Immunodeficiency Syndrome

524 CDC: Center for Disease Prevention and Control

525 DMC: Data Monitoring Committee

526 DR: Digital Radiography

527 HIV: Human immunodeficiency Virus

528 MDR-TB: Multidrug-resistant Tuberculosis

529 NTP: National TB Program

530 RCT/cRCT: Randomised Controlled Trial/Cluster Randomised Controlled Trial

531 TB: Tuberculosis

532 TCS: Trial Steering Committee

533 TMU: Trial Management Unit

534 WHO: World Health Organization

535

536 **Acknowledgement**

537 We acknowledge Guangxi Laibin Prefectural Center for Disease Control and
538 Prevention, Xincheng and Xiangzhou County Centers for Disease Control and
539 Prevention as well as all the health providers and patients who participate in
540 discussions to develop the proposal.

541

542 **Data sharing statement**

543 Metadata won't be publicly available due to local policy. Clustered data can be
544 shared by email (Guangxi CDC, lxy530028@163.com) based on reasonable
545 request for research purpose only upon approval after January 1, 2027.

546

547 **Competing interests statement**

548 The authors declared no competing interests.

549

550 **Ethical approvals and consent to participate**

551 The study has obtained ethical approval from the Guangxi Institutional Review
552 Board of the Guangxi CDC on 26 August 2021 (Ref: GXIRB2021-0033).
553 Written informed consent form will be collected before any patient is recruited
554 into the study.

555

556 **Reference**

- 557 1. WHO. Global tuberculosis report 2023. Geneva: the World Health Organization,,
558 2023.
- 559 2. World Health Organization [WHO]. The End TB Strategy 2015 [cited 2022 Feb. 19];
560 2022(Feb. 19). Available from: [https://www.who.int/teams/global-tuberculosis-](https://www.who.int/teams/global-tuberculosis-programme/the-end-tb-strategy)
561 [programme/the-end-tb-strategy](https://www.who.int/teams/global-tuberculosis-programme/the-end-tb-strategy).
- 562 3. Lönnroth K, Castro KG, Chakaya JM, Chauhan LS, Floyd K, Glaziou P, et al.
563 Tuberculosis control and elimination 2010–50: cure, care, and social development. The
564 Lancet. 2010;375(9728):1814-29. doi: [https://doi.org/10.1016/S0140-6736\(10\)60483-7](https://doi.org/10.1016/S0140-6736(10)60483-7).
- 565 4. WHO. Systematic screening for active tuberculosis: Principles and
566 Recommendations. Geneva: World Health Organization; 2013.
- 567 5. Kranzer K, Afnan-Holmes H, Tomlin K, Golub JE, Shapiro AE, Schaap A, et al. The
568 benefits to communities and individuals of screening for active tuberculosis disease: a
569 systematic review. Int J Tuberc Lung Dis. 2013;17(4):432-46. Epub 2013/03/15. doi:
570 10.5588/ijtld.12.0743. PubMed PMID: 23485377.
- 571 6. Corbett EL, Bandason T, Duong T, Dauya E, Makamure B, Churchyard GJ, et al.
572 Comparison of two active case-finding strategies for community-based diagnosis of
573 symptomatic smear-positive tuberculosis and control of infectious tuberculosis in Harare,
574 Zimbabwe (DETECTB): a cluster-randomised trial. Lancet. 2010;376(9748):1244-53. Epub
575 2010/10/07. doi: 10.1016/s0140-6736(10)61425-0. PubMed PMID: 20923715; PubMed
576 Central PMCID: PMC2956882.
- 577 7. Marks GB, Nguyen NV, Nguyen PTB, Nguyen TA, Nguyen HB, Tran KH, et al.
578 Community-wide Screening for Tuberculosis in a High-Prevalence Setting. N Engl J Med.
579 2019;381(14):1347-57. Epub 2019/10/03. doi: 10.1056/NEJMoa1902129. PubMed PMID:
580 31577876.

- 581 8. Qin ZZ, Sander MS, Rai B, Titahong CN, Sudrungrot S, Laah SN, et al. Using artificial
582 intelligence to read chest radiographs for tuberculosis detection: A multi-site evaluation of
583 the diagnostic accuracy of three deep learning systems. *Sci Rep.* 2019;9(1):15000. Epub
584 2019/10/20. doi: 10.1038/s41598-019-51503-3. PubMed PMID: 31628424; PubMed Central
585 PMCID: PMCPMC6802077.
- 586 9. Zaidi SMA, Habib SS, Van Ginneken B, Ferrand RA, Creswell J, Khowaja S, et al.
587 Evaluation of the diagnostic accuracy of Computer-Aided Detection of tuberculosis on Chest
588 radiography among private sector patients in Pakistan. *Sci Rep.* 2018;8(1):12339. Epub
589 2018/08/19. doi: 10.1038/s41598-018-30810-1. PubMed PMID: 30120345; PubMed Central
590 PMCID: PMCPMC6098114.
- 591 10. Pande T, Cohen C, Pai M, Ahmad Khan F. Computer-aided detection of pulmonary
592 tuberculosis on digital chest radiographs: a systematic review. *Int J Tuberc Lung Dis.*
593 2016;20(9):1226-30. Epub 2016/08/12. doi: 10.5588/ijtld.15.0926. PubMed PMID:
594 27510250.
- 595 11. Kranzer K, Lawn SD, Meyer-Rath G, Vassall A, Radithalo E, Govindasamy D, et al.
596 Feasibility, Yield, and Cost of Active Tuberculosis Case Finding Linked to a Mobile HIV Service
597 in Cape Town, South Africa: A Cross-sectional Study. *PLOS Medicine.* 2012;9(8):e1001281.
598 doi: 10.1371/journal.pmed.1001281.
- 599 12. Sekandi JN, Dobbin K, Oloya J, Okwera A, Whalen CC, Corso PS. Cost-effectiveness
600 analysis of community active case finding and household contact investigation for
601 tuberculosis case detection in urban Africa. *PLoS One.* 2015;10(2):e0117009-e. doi:
602 10.1371/journal.pone.0117009. PubMed PMID: 25658592.
- 603 13. Qin H, Liang X, Zhou L, Lan Y, Lin M, Zhang Z, et al. Analysis on the effect of
604 GeneXpert MTB/RIF single test and mixed test on sputum samples for actively screening

- 605 tuberculosis in key population of Guangxi. Chinese Journal of Antituberculosis.
606 2023;45(9):880-4.
- 607 14. Bennett S, Woods T, Liyanage WM, Smith DL. A simplified general method for
608 cluster-sample surveys of health in developing countries. World Health Stat Q.
609 1991;44(3):98-106. PubMed PMID: 1949887.
- 610 15. National Bureau of Statistics. The seventh national population census. 2021.
- 611 16. Hothorn T, Everitt BS. A Handbook of Statistical Analyses Using R. 1st ed. ed. New
612 York: Chapman and Hall/CRC; 2006.
- 613 17. National Health and Family Planning Commission of China. Classification of
614 tuberculosis. 2017.
- 615 18. National Health and Family Planning Commission of China. Diagnosis for pulmonary
616 tuberculosis. 2017.
- 617 19. Campbell MK, Piaggio G, Elbourne DR, Altman DG. Consort 2010 statement:
618 extension to cluster randomised trials. BMJ : British Medical Journal. 2012;345:e5661. doi:
619 10.1136/bmj.e5661.
- 620 20. Campbell M, Fitzpatrick R, Haines A, Kinmonth AL, Sandercock P, Spiegelhalter D, et
621 al. Framework for design and evaluation of complex interventions to improve health. BMJ.
622 2000;321(7262):694-6. doi: 10.1136/bmj.321.7262.694. PubMed PMID: 10987780.
- 623 21. Grant A, Treweek S, Dreischulte T, Foy R, Guthrie B. Process evaluations for cluster-
624 randomised trials of complex interventions: a proposed framework for design and reporting.
625 Trials. 2013;14(1):15. doi: 10.1186/1745-6215-14-15.
- 626 22. Oakley A, Strange V, Bonell C, Allen E, Stephenson J, Team RS. Process evaluation in
627 randomised controlled trials of complex interventions. BMJ. 2006;332(7538):413-6. doi:
628 10.1136/bmj.332.7538.413. PubMed PMID: 16484270.

- 629 23. Gale NK, Heath G, Cameron E, Rashid S, Redwood S. Using the framework method
630 for the analysis of qualitative data in multi-disciplinary health research. BMC Medical
631 Research Methodology. 2013;13(1):117. doi: 10.1186/1471-2288-13-117.
- 632 24. Tong A, Sainsbury P, Craig J. Consolidated criteria for reporting qualitative research
633 (COREQ): a 32-item checklist for interviews and focus groups. International Journal for
634 Quality in Health Care. 2007;19(6):349-57. doi: 10.1093/intqhc/mzm042.
- 635 25. Hayes RJ, Moulton LH. Cluster Randomised Trials. 2nd ed. ed: Chapman and
636 Hall/CRC; 2017.
- 637 26. Zhang C, Wang L-x, Zhang H, Cheng J. Cost-effective study of different strategies for
638 pulmonary tuberculosis case finding in elderly people. Chinese Journal of Antituberculosis.
639 2013;35(10):794-8.
- 640 27. Technical Guidance Group of the Fifth National TB Epidemiological Survey, The Office
641 of the Fifth National TB Epidemiological Survey. The fifth national tuberculosis
642 epidemiological survey in 2010. Chinese Journal of Antituberculosis. 2012;34(8):485-508.
- 643 28. Qin ZZ, Ahmed S, Sarker MS, Paul K, Adel ASS, Naheyant T, et al. Tuberculosis
644 detection from chest x-rays for triaging in a high tuberculosis-burden setting: an evaluation
645 of five artificial intelligence algorithms. Lancet Digit Health. 2021;3(9):e543-e54. doi:
646 10.1016/s2589-7500(21)00116-3. PubMed PMID: 34446265.

647

648 **Supporting information**

649 S1 Table SPIRIT checklist

	STUDY PERIOD				
Year		1	2	3	
Month	1-3	4-15	16-27	28-39	40-42
Preparation					
Study design					
Research tools development					
Interventions					
Enrollment					
Intervention					
Control					
Cleaning Period					
Evaluation					
Epidemiological survey					
Trial data collection					
Process evaluation					
Economic evaluation					
Data analysis and result dissemination					

Fig 1

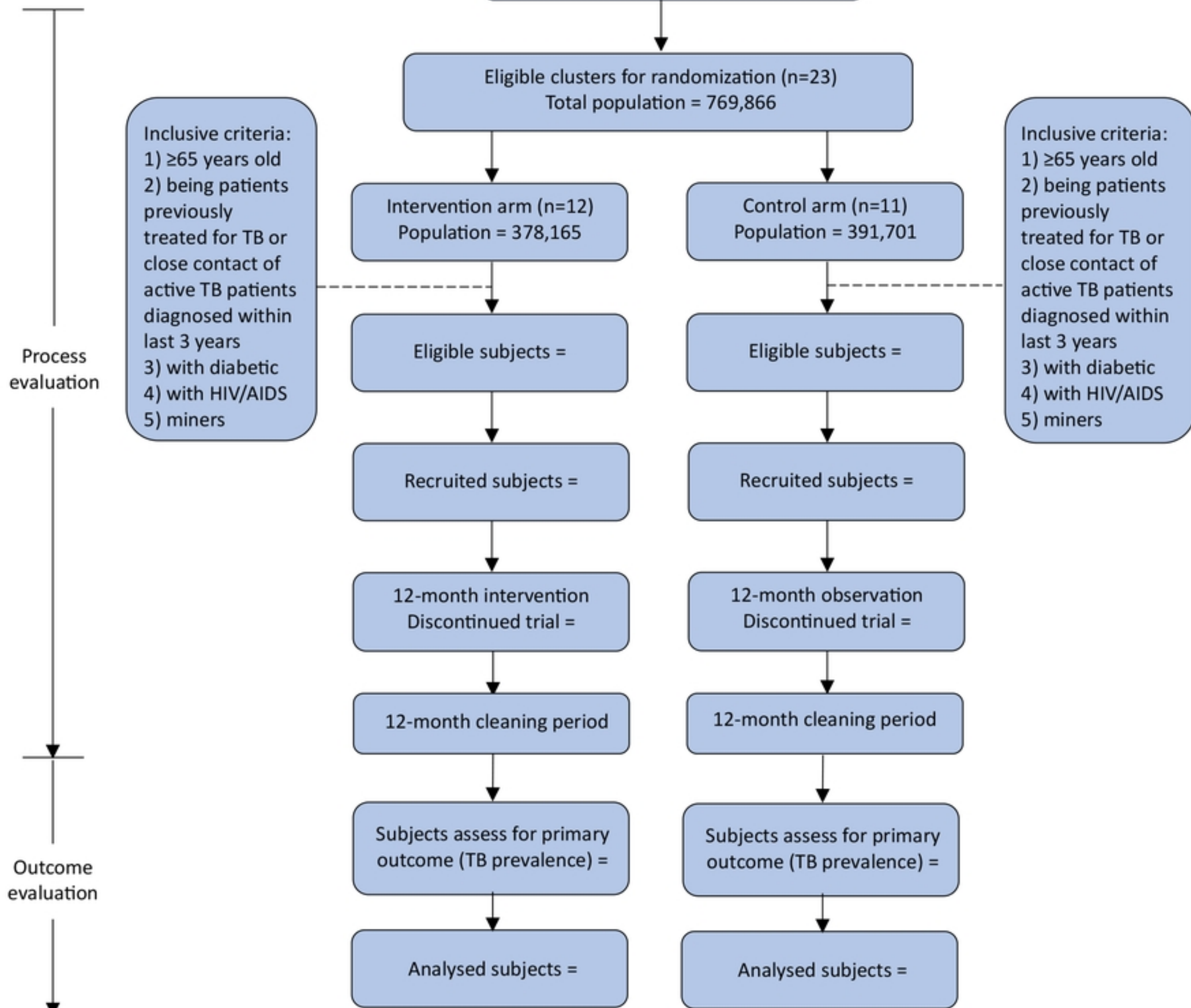


Fig 2

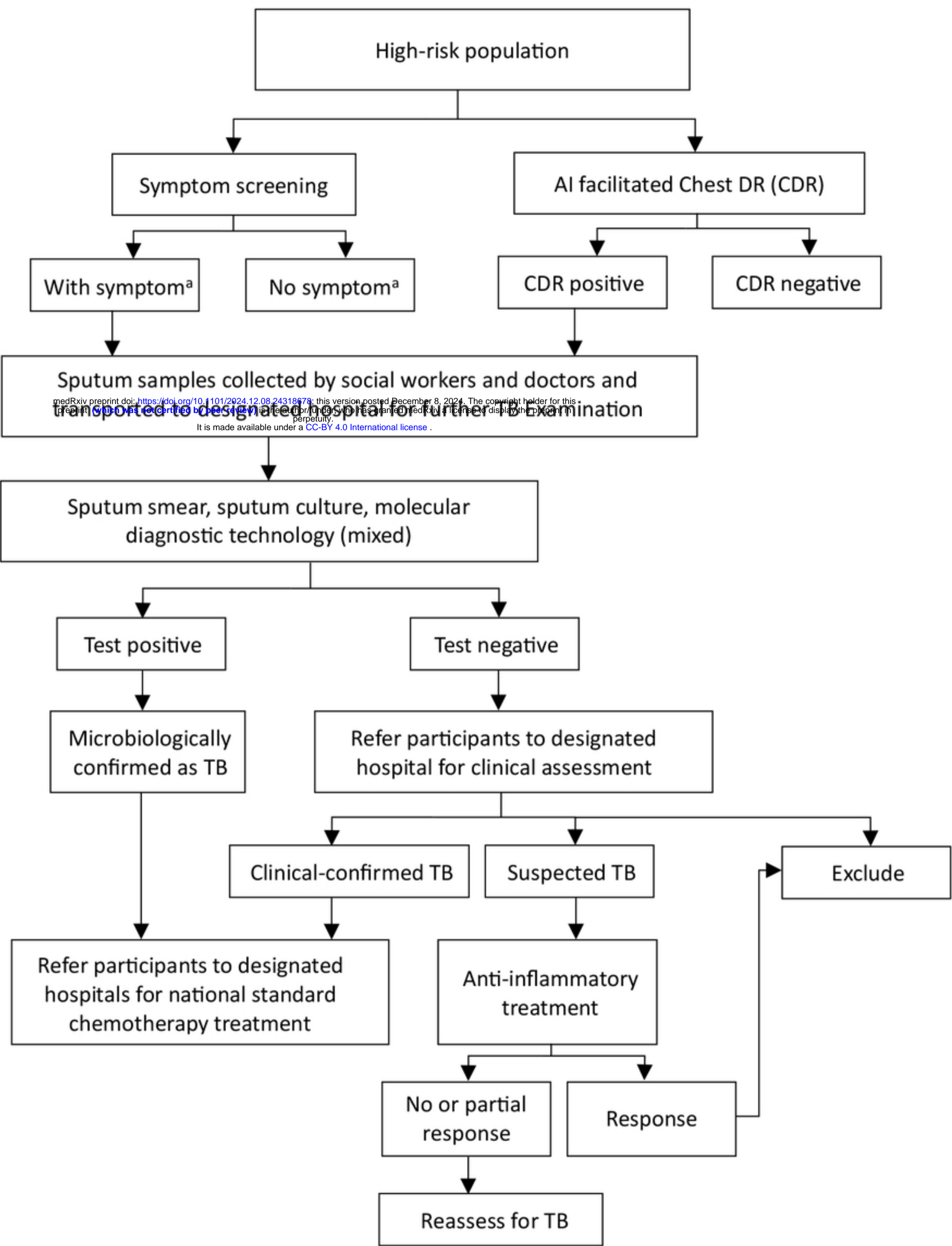


Fig 3