



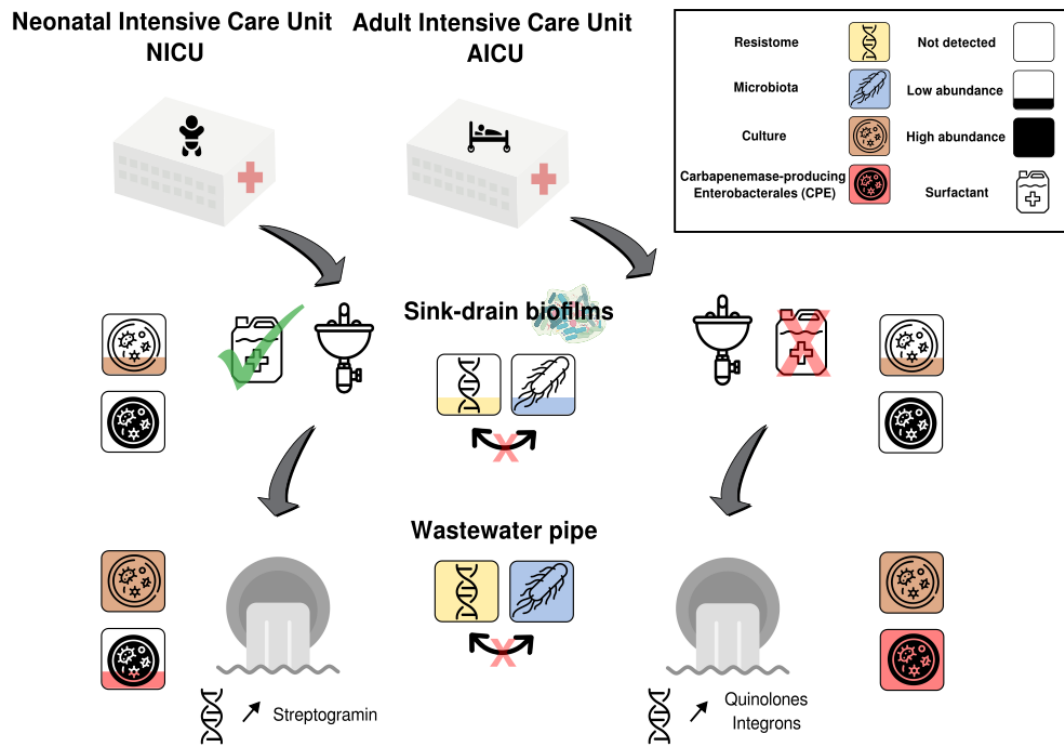
## 34 Abstract

35 In hospitals, the transmission of antibiotic-resistant bacteria (ARB) may occur via biofilms present in  
36 sink drains, which can lead to infections. Despite the potential role of sink drains in the transmission  
37 of ARB in nosocomial infections, routine surveillance of these drains is lacking in most hospitals. As a  
38 result, there is currently no comprehensive understanding of the transmission of ARB and the  
39 dissemination of antimicrobial resistance genes (ARGs) and associated mobile genetic elements  
40 (MGEs) via sink drains. This study employed a multifaceted approach to monitor the total aerobic  
41 bacterial flora as well as the presence of carbapenemase-producing *Enterobacterales* (CPEs), the  
42 microbiota and the resistome of sink drain biofilms (SDBs) and hospital wastewater (WW) of two  
43 separate intensive care units (ICUs) in the same healthcare facility in France. Samples of SDB and WW  
44 were collected on a monthly basis, from January to April 2023, in the neonatal (NICU) and the adult  
45 (AICU) ICUs of Grenoble Alpes University Hospital. In the NICU, sink drain disinfection with surfactants  
46 was performed routinely. In the AICU, however, routine disinfection is not carried out. No CPEs were  
47 isolated from SDBs in either ICU by bacterial culture. Culture-independent approaches revealed an  
48 overall distinct microbiota composition of the SDBs in the two units. The AICU SDBs were dominated  
49 by potential Gram-negative bacterial pathogens including *Pseudomonas*, *Stenotrophomonas*,  
50 *Staphylococcus*, and *Klebsiella*, while the NICU SDBs were dominated by the Gram-negative genera  
51 *Achromobacter*, *Serratia*, and *Acidovorax*, as well as the Gram-positive genera *Weisella* and  
52 *Lactiplantibacillus*. In contrast, the resistome of the SDBs exhibited no significant differences between  
53 the two units, indicating that the abundance of ARGs and MGEs is independent of microbiota  
54 composition and disinfection practices. Investigation of the WW that connected to the respective ICUs  
55 revealed that the WW from the AICU exhibited a more diverse aerobic flora than the WW from the  
56 NICU. In addition, the AICU WW yielded 15 CPEs, whereas the NICU WW yielded a single CPE. The  
57 microbiota of the NICU and AICU WW samples differed from their respective SDBs and exhibited  
58 distinct variations over the four-month period. It is noteworthy that the WW from the AICU contained  
59 a greater number of genes conferring resistance to quinolones and integron integrase genes, whereas  
60 the NICU exhibited a higher abundance of streptogramin resistance genes. The results of our study  
61 demonstrated that the resistome of the hospital SDBs in the two ICUs of the investigated healthcare  
62 institute is independent of the microbiota, the environment, and the local disinfection measures.  
63 However, a difference was observed in the prevalence of CPEs in the WW pipes collecting the waste  
64 from the investigated drains. These findings offer valuable insights into the resilience of resistance  
65 genes in SDBs in ICUs, underscoring the necessity for innovative strategies to combat antimicrobial  
66 resistance in clinical environments.

67 **Keywords:** antibiotic-resistant bacteria; carbapenemase-producing *Enterobacterales*; ICU sink drain  
68 biofilms; mobile genetic elements; resistome; waste water

69

70 **Graphical abstract:**



71

72

73

## 74 1. Introduction

75 In hospital settings, patient infections can occur via transmission of antibiotic resistant bacteria (ARB)  
76 from bacterial biofilms colonizing sink drains in patient rooms (De Geyter et al., 2021; Suleyman et al.,  
77 2018; van der Zwet et al., 2022). Sink drain biofilms (SDBs) can harbor nosocomial pathogens as well  
78 as highly resistant pathogens such as carbapenemase-producing *Enterobacterales* (CPEs), and  
79 glycopeptide-resistant Enterococci (GRE), which pose a significant threat to patients hospitalized in  
80 intensive care units (ICUs). The incidence of hospital-acquired infections linked to sink drains was  
81 shown to be reduced through the implementation of continuous or sporadic disinfection measures  
82 (Bourdin et al., 2024; Ledwoch et al., 2020) and was further shown to be significantly diminished in  
83 water-free healthcare settings (Hopman et al., 2017; Low et al., 2024). As a consequence, strict  
84 preventive measures in ICUs in some hospitals including screening and routine sink drain disinfection  
85 are implemented (Bourdin et al., 2024; de Jonge et al., 2019; van der Zwet et al., 2022). However, there  
86 is no consensus on the most effective strategies for controlling transmission of ARBs from sink drains  
87 to patients. Furthermore, the impact of disinfectants on the distribution and prevalence of microbial  
88 species (the microbiota), ARB, antibiotic resistance genes (ARGs), and associated mobile genetic  
89 elements (MGEs) in hospital sink drains and SDBs remains understudied (Catho et al., 2024; Ramos-  
90 Castaneda et al., 2020; Volling et al., 2021).

91 Biofilms are complex communities of microorganisms embedded in a self-produced extracellular  
92 matrix that facilitates their attachment to various surfaces, including sink drains and wastewater (WW)  
93 systems (Ledwoch et al., 2020; Maillard and Centeleghe, 2023; Wingender and Flemming, 2011).  
94 Biofilms are recognized as potential reservoirs of ARB and bacterial pathogens, which poses significant  
95 public health concerns (Balcazar et al., 2015; Maillard and Centeleghe, 2023). The extracellular matrix  
96 of biofilms provides protection against environmental stresses, including antibiotics and disinfectants,  
97 which makes eradication of biofilms challenging (Ledwoch et al., 2020; Wingender and Flemming,  
98 2011). Biofilms formed in sink drains have shown particular resistance to disinfection interventions  
99 (Bourdin et al., 2024; Ledwoch et al., 2020; Maillard and Centeleghe, 2023; Pirzadian et al., 2020).  
100 Biofilms are important hotspots for horizontal gene transfer (HGT) (Abe et al., 2020) favoring the  
101 potential emergence of ARB in SDBs. A high prevalence of ARB, pathogens, ARGs, and MGEs was also  
102 described in hospital WW systems that collect global WW from hospital buildings, including sink drains  
103 (Buelow et al., 2023, 2020, 2018; Rodriguez-Mozaz et al., 2015). Moreover, WW and WW biofilms  
104 (WWB) act as breeding grounds for the emergence of ARB and the dissemination of ARGs *via* MGEs in  
105 the wider environment (Buelow et al., 2023, 2020, 2018). However, to which degree hospital sink  
106 drains and their biofilm populations impact the hospital WW composition remains unexplored, and  
107 whether hospital WW reflects the SD and SDB population remains unclear. Furthermore, the dynamics

108 of the SDB microbiota and their resistome over time, particularly in response to hospital disinfection  
109 measures, remain largely unexplored.

110 A recent *in vitro* SDB model demonstrated the differential impact of various biocidal products on SDB  
111 microbiota, revealing reductions in bacterial counts limited to ~ four days. This underscores the need  
112 for continuous disinfection (Ledwoch et al., 2020). Nevertheless, the prevalence and the abundance of  
113 ARGs and MGEs have yet to be assessed in this context. A comprehensive understanding of the  
114 dynamics of the SDB resistome is crucial to assess accurately its potential role in the emergence of ARB  
115 and the efficacy of disinfection interventions.

116 In the neonatal ICU (NICU) of the Grenoble Alpes University Hospital, sink drain disinfection with  
117 surfactants is conducted on a regular basis. In contrast, the adult ICU (AICU) has not implemented  
118 routine disinfection. At present, there is no routine monitoring of SDBs or hospital WW for the  
119 presence of CPEs. Furthermore, the dynamics of the microbiota and resistome of SDBs in ICUs and  
120 their respective WW remain poorly understood.

121 The present study examines the prevalence of ARB, ARGs and MGEs in SDBs, as well as WW and WWB,  
122 in both ICUs over a four-month period. The studied ICUs (NICU and AICU) are located in different  
123 buildings of the Grenoble Alpes University Hospital, allowing for the first time, the study and  
124 comparison of WW collecting waste from different hospital environments including 2 ICUs that apply  
125 different sink drain disinfection protocols and which host different types of patients (neonates versus  
126 adults). We applied a culturing approach that was focused on the isolation of CPEs and GRE, while  
127 characterization of the microbiota was achieved through complete sequencing of the 16S rRNA genes.  
128 The resistome was assessed through high-throughput qPCR targeting 86 ARGs and MGEs, with the  
129 objective of elucidating the dynamics of the SDB and WW microbiota and their resistome in response  
130 to disinfection measures at the NICU.

131

132

## 133 2. Material and methods

134 **2.1. Location and setting.** Grenoble Alpes University Hospital is the reference university hospital of the  
135 Isère department (South-East region of France). It is distributed across various sites and serves a  
136 population of 675,000 inhabitants with 2,074 hospital beds and a total of 431,893 hospitalization days  
137 in 2022. There are 26 beds in the NICU (including 10 beds on level 3) and 20 beds in the medical AICU  
138 localized in two different buildings and sites. Single or double rooms are present in the NICU while  
139 there are only single rooms in the AICU.

140 The sink drains of the sinks analyzed in our study were located in both the NICU and the AICU patients'  
141 rooms. At both the NICU and the AICU, the patient surroundings and the room's sink are cleaned daily  
142 with diluted (10 mL into 4 L of water) Surfanios Premium detergent/disinfectant (Surfanios Premium,  
143 Laboratoires ANIOS) and floors are cleaned daily using water and a microfiber gauze. At the NICU, sink  
144 drains are disinfected daily with 20 mL of undiluted Surfanios Premium and sink traps are renewed  
145 every six months. At the AICU, sink drains are only disinfected (with 20 mL of undiluted Surfanios  
146 Premium) during the stay of a patient that is colonized or infected with a CPE or GRE and at the exit of  
147 a patient with contact precaution (Lepelletier et al., 2015).

148 Screening of patients for CPEs and GRE was carried out according to the following protocol: at the  
149 NICU, CPE carriers and contact patients *i.e.*, patients exposed to a CPE or GRE carrier, were screened  
150 by rectal swab. Upon admission to the AICU, patients with the following criteria are considered to be  
151 at risk of carrying CPE or GRE and are therefore screened by rectal swab: (i) patients with a history of  
152 abroad (foreign countries) hospitalization within the previous year; (ii) CPE or GRE carriers. Low risk  
153 patients are (i) patients that were hospitalized (> 24 h) at least once within the previous year; (ii)  
154 patients that were transferred from another hospital; (iii) patients that were transferred from nursing  
155 home, and (iv) contact patients *i.e.*, patients exposed to a CPE or GRE carrier.

156  
157 **2.2. Collection and preparation of the samples.** Biofilms and stagnant waters were sampled monthly  
158 from randomly selected sink drains of both wards (NICU and AICU): four SDBs were sampled from each  
159 ward at each sampling campaign. In addition, the same day of the sink drain sampling, hospital WW  
160 and hospital WWB were sampled from the outlets of both the NICU and the AICU. The WW pipes  
161 connected to the NICU also collect the WW from both the pediatric and the gynecologic units while  
162 the WW pipes connected to the AICU also collect the WW from surgical and neurosurgical ICUs, the  
163 emergency department, and the mortuary.

164 To collect the SDBs that formed along the sink drain walls, a Motin catheter (Peters Surgical) was  
165 introduced in the sink drain and used to detach the biofilm. Subsequently, the catheter was connected

166 to a 50 mL syringe (Penta Ferte) to aspire the stagnant water containing the detached biofilm of the  
167 sink drain. The water was transferred to a PEHD sodium thiosulfate bottle (Gosseling) and transported  
168 to the laboratory for subsequent sample processing.

169 WW samples were collected by inserting an opened 50 mL centrifuge tube (Corning) attached to a  
170 string directly into the WW pipes, and processed on the same day. WWB samples were collected by  
171 inserting a closed 50 mL sterile centrifuge tube (Corning) attached to a string into the WW pipes for  
172 one month to let the biofilm develop on it. Consecutively, the tube was recovered, and the biofilm was  
173 detached by scratching it from the surface of the tube using a cell scraper the same day SDB and WW  
174 samples were collected. The biofilm was then dispersed in 1X Phosphate Buffered Saline (PBS: 137 mM  
175 NaCl, 2.7 mM KCl, 10 mM Na<sub>2</sub>HPO<sub>4</sub>, 1.8 mM KH<sub>2</sub>PO<sub>4</sub>, pH 7.4).

176 All samples were transferred into 50 mL tubes (VWR® Ultra High-Performance Centrifuge Tubes) and  
177 centrifuged at 7,000 revolutions per minute (rpm) for 15 minutes. The supernatants were discarded,  
178 and the pellets were dispersed in 5 mL of PBS. The resulting solutions were dispatched into three 2-mL  
179 Eppendorf tubes: two of the tubes were subsequently used for DNA extraction and molecular analyses  
180 while the content of the third one (1 mL of the original sample) was mixed with 1 mL of 40% glycerol,  
181 stored at -80°C, and subsequently used for the bacterial culture analyses.

## 182 **2.3 Culture approach of the aerobic flora with focus on the isolation of CPE**

183 **2.3.1. Isolation of bacterial colonies from the samples.** Samples were cultured on non-selective  
184 chocolate agar plates supplemented with IsoVitalX (bioMérieux SA) to identify the total aerobic flora.  
185 Dilutions from 10<sup>-1</sup> to 10<sup>-7</sup> of each sample were prepared in 1X PBS, and 100 µL of the undiluted sample  
186 as well as 100 µL of each dilution were plated. The plates were incubated for 24 hours at 35°C under  
187 aerobic conditions, then for 24 hours at 22°C under aerobic conditions.

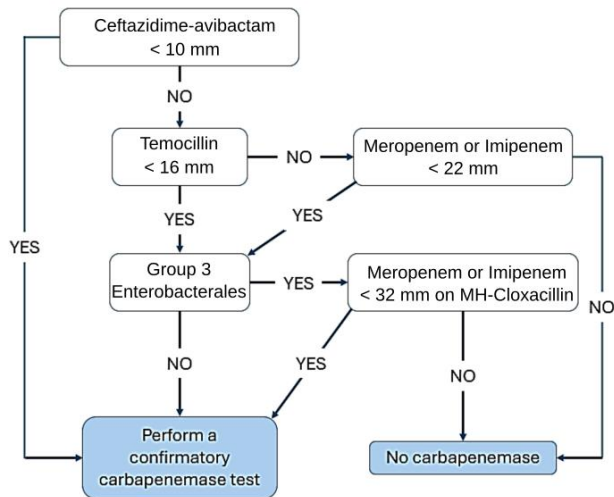
188 The samples were simultaneously cultured on selective media. To isolate *Pseudomonas aeruginosa*, 20  
189 µL of undiluted sample were plated on Cefrimide agar plates (bioMérieux SA). To isolate carbapenem-  
190 resistant *P. aeruginosa* and *Enterobacterales*, 20 µL of undiluted sample were plated on ChromID  
191 CARBA agar (bioMérieux SA) and ChromID OXA-48 agar plates (bioMérieux SA), respectively. To isolate  
192 glycopeptide-resistant *Enterococci*, 20 µL of undiluted sample were plated on a ChromID VRE agar  
193 plate (bioMérieux SA). Each plate was incubated for 48 hours at 35°C under aerobic conditions. All the  
194 colonies presenting different morphologies, as assessed visually from the selective and non-selective  
195 media, were identified using matrix-assisted laser desorption/ionization time-of-flight mass  
196 spectrometry (MALDI-TOF MS).



197 **2.3.2 Identification of the isolated strains by MALDI-TOF MS.** The colonies were picked from their  
198 respective agar plate using sterile pipette tips and spotted as thin films on their respective MALDI target  
199 positions (MSP 96 polished steel BC targets, Bruker Daltonics). Each bacterial film was overlaid with 1  
200  $\mu\text{L}$  of pre-portioned  $\alpha$ -cyano- 4-hydroxycinnamic acid (HCCA) matrix (Bruker Daltonics), dried, and  
201 analyzed in a Microflex LT/SH Biotyper (Bruker Daltonics). The resulting spectra displaying the mass-to-  
202 charge values on the x-axis and the intensities on the y-axis were compared to a database containing  
203 4,194 microorganism species (MBT IVD Library Resvison J, 2022, Bruker Daltonic), thus allowing the  
204 identification of the isolated strains based on their spectral matches to the reference profiles present  
205 in the database.

206 **2.3.3. Antibiotic susceptibility testing.** Antibiograms were performed on the *Enterobacterales* and *P.*  
207 *aeruginosa* identified on the CARBA or OXA-48 plates, using the Kirby-Bauer disc diffusion method on  
208 Mueller-Hinton agar (MHA) plates (bioMérieux SA) and MHA-cloxacillin (bioMérieux SA). Briefly,  
209 bacterial suspensions were calibrated at 0.5 McFarland (around  $1.5 \times 10^8$  colonies forming unit  
210 (CFU)/mL) and spread onto the surface of MHA and MHA cloxacillin plates. Discs impregnated with a  
211 known antibiotic at a precise concentration were placed on the agar surface. After 18-24 hours of  
212 incubation at 35°C, the growth inhibition diameters around the discs were measured to classify the  
213 bacteria as “susceptible”, “susceptible at increased exposure” or “resistant” to each tested antibiotic.  
214 Antibiotic susceptibility testing was performed according to the European guidelines (“**euca**st: **AST of**  
215 **bacteria,**” n.d.).

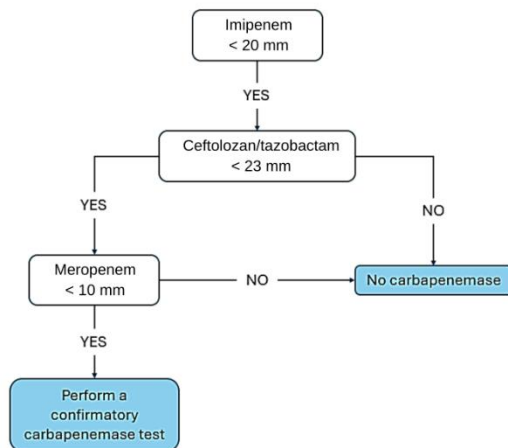
216 **2.3.4 Screening for CPE and carbapenemase producing *P. aeruginosa*.** Screening tests were performed  
217 to detect CPE, further following the European guidelines (**Figure 1**). Bacteria that presented an  
218 inhibition diameter to ceftazidime-avibactam less than 10 millimeters, to temocillin less than 16  
219 millimeters, or to meropenem or imipenem less than 22 millimeters were further tested to confirm  
220 their production of a carbapenemase. For *Serratia* spp., *Morganella* spp., and *Citrobacter freundii*, as  
221 wells as for *Enterobacter* spp. and *Providencia* spp., the inhibition diameter of meropenem or  
222 imipenem on MHA-cloxacillin plates must be less than 32 millimeters to eliminate the possibility of a  
223 resistance due to expression of the *ampC* gene that codes for a cephalosporinase.



224

225 **Figure 1:** Schematization of the phenotypic screening of carbapenemase-producing *Enterobacterales* according  
 226 to the 2023 recommendations from (“eucast: AST of bacteria,” n.d.).

227 Carbapenemase-producing *P. aeruginosa* strains were screened according to the French national  
 228 guidelines (**Figure 2**). Strains with an inhibition area to imipenem less than 20 millimeters and less than  
 229 23 millimeters to ceftolozan-tazobactam were selected (“Algorithme\_CARBA\_PA\_v2.pdf,” n.d.)



230

231 **Figure 2:** Schematization of the phenotypic screening of carbapenemase-producing *Pseudomonas aeruginosa*,  
 232 according to the French « Centre National de Référence de la Résistance aux Antibiotiques »  
 233 (“Algorithme\_CARBA\_PA\_v2.pdf,” n.d.).

234 For each selected strain, an immunochromatographic test (O.K.N.V.I resist-5 Coris test, Coris  
 235 BioConcept) was carried out to detect the presence of the five major families of carbapenemases: OXA-  
 236 48, *Klebsiella pneumoniae* carbapenemase (KPC), New-Delhi metallo- $\beta$ -lactamase (NDM), Verona  
 237 integron–encoded metallo- $\beta$ -lactamase (VIM) and imipenemase (IMP). If this test was negative, a  
 238 confirmation test *i.e.*, the colorimetric MAST CARBA PAcE assay (Mast Group) was performed to infirm  
 239 or confirm a carbapenemase activity.

240

## 241 **2.4. Culture-independent approaches**

242 **2.4.1. DNA extraction.** Samples that had been stored at -80°C were thawed at room temperature for  
243 10 min, centrifuged for 2 min at 20,800 g, room temperature, and the supernatant was discarded. The  
244 DNA extraction was performed using a FastDNA Spin kit for Soil (MP Biomedical's products) according  
245 to the manufacturer's instructions. Briefly, the pellets were transferred into 2 mL tubes containing  
246 lysing matrix E, a mixture of ceramic and silica particles designed to efficiently lyse soil organisms. Beat  
247 beating was performed for 5 min at the maximum speed (2,850 rpm) in a combination of lysing matrix  
248 E and sodium phosphate buffer pH 7.7, using a FastPrep instrument. The samples were then  
249 centrifuged for 15 min at 20, 800 g at room temperature. The DNA was purified from the supernatant  
250 with a silica-based GeneClean procedure using SPIN filters (MP Biomedicals). Concentrations of the  
251 eluted DNAs were determined by spectrophotometry using a NanoDrop 2000 apparatus (Thermo  
252 Scientific) and all the concentrations were adjusted to 50 ng/μL for subsequent quantitative PCR  
253 (qPCR) analysis.

254 **2.4.2. Microbiota analysis and full length 16S rRNA sequencing by PacBio.** The study of the microbial  
255 diversity aims at revealing the species abundance and the taxonomic diversity in a microbial  
256 community based on the investigation of genetic materials. Taking advantage of long-read sequencing  
257 technologies, these materials can be investigated by single-molecule real-time (SMRT) sequencing on  
258 PacBio platforms generating circular consensus sequences (CCSs). CCS reads are filtered, clustered,  
259 and de-noised to generate full-length amplicon tags for species annotation and abundance analysis.  
260 Full-length 16S rRNA gene sequencing was performed by BMKGENE (Biomarker Technologies (BMK  
261 GmbH). Construction of the library and sequencing were performed as described in the following. Total  
262 DNA was extracted from samples as mentioned previously. Specific primers with barcode were  
263 designed to target the full-length amplicon. PCR-amplified target sequences were purified, quantified,  
264 and homogenized to generate the SMRT bell library. Library quality control was performed on the  
265 libraries and the qualified ones were processed for sequencing on the PacBio Sequel II platform, which  
266 initially generated files in the bam format, then further converted in CCS files by smrtlink. The  
267 sequences were identified by barcode sequences, which resulted in a fastq sequences file for each  
268 sample. A total of 1,407,011 CCS reads were generated from 44 samples by barcode-based  
269 identification. A minimum of 2,416- and an average of 31,978 CCS reads were generated for each  
270 sample. One sample was excluded from the analysis due to low library quality.

271 **2.4.3 Bioinformatic analyses.** Processing of the CCS files included the following three steps: (i) CCSs'  
272 identification. CCS reads were identified based on barcode sequences by lima v1.7.0, generating raw-  
273 CCS files; (ii) CCSs' filtration. Primer sequences were identified and removed by cutadapt 1.9.1. In the

274 meantime, raw-CCSs were filtered based on their length (sequences between 1,200 and 1,650 bp were  
275 kept), which generated clean-CCSs; (iii) removal of chimeric sequences. Chimeric sequences were  
276 identified and removed by UCHIME v4.2, generating effective-CCSs. Bioinformatic analyses performed  
277 by BMKGENE included: (i) a feature identification OTUs/ASVs clustering; (ii) diversity analysis; (iii)  
278 differential analysis; (iv) correlation analysis and functional prediction.

279 **2.5. High-throughput qPCR for the characterization of the resistome composition and normalized**  
280 **abundance.** Nanoliter-scale quantitative PCRs were performed as described previously to quantify  
281 genes that confer resistance to antimicrobials (Buelow et al., 2023, 2020, 2018, 2017). We targeted 75  
282 genes grouped in 16 resistance gene classes. These targeted genes included ARGs that are prevalent  
283 in the gut microbiota of healthy individuals (Hu et al., 2013), clinically relevant ARGs (extended-  
284 spectrum  $\beta$ -lactamases (ESBLs)-, carbapenemases-, and vancomycin resistance genes), heavy metals  
285 and quaternary ammonium compounds resistance genes suggested to favor cross and co-selection of  
286 ARGs in the environment (Langsrud et al., 2004). We also targeted 11 other genes including common  
287 transposase gene families, and class 1, 2 and 3 integron integrase genes, that are important vectors  
288 for ARGs in the clinics and which are often used as proxy for anthropogenic pollution (Gillings et al.,  
289 2015). Together, these 86 genes constituted what we named the resistome (Buelow et al., 2023, 2020,  
290 2018, 2017). We also included primers targeting 16S rDNA. Primer design and validation prior to and  
291 after Biomark analysis was performed as described previously (Buelow et al., 2023, 2020, 2018, 2017).  
292 Real-time PCR analysis was performed using the 96.96 BioMark™ Dynamic Array for real-time PCR  
293 (Fluidigm Corporation, San Francisco, CA, U.S.A), as described previously. Thermal cycling and real-  
294 time imaging were performed at the INRAE Center of Research in Tours, France (UMR ISP1282, INRA  
295 Centre Val-de-Loire) and cycle threshold (Ct) values were calculated using the BioMark real-time PCR  
296 analysis software. Calculations for normalized and cumulative abundance of individual genes and  
297 allocated gene classes were performed as previously described (Buelow et al., 2023, 2020, 2018, 2017).

298 **2.6. Analysis of the infection rate.** Analysis of the infection rate at both the NICU and the AICU was  
299 performed between 01.01.2023 and 04.30.2023. All infants and adults hospitalized during this period  
300 were included in the analysis. Patients with a clinical sample and a microbiological identification of  
301 pathogenic bacteria were considered as infected. According to the French policy, patient consents  
302 were not required (retrospective study), and the data were declared to the Data Protection Officer of  
303 Grenoble Alpes University Hospital, France. The study protocol was reviewed by the clinical research  
304 direction of Grenoble Alpes University Hospital, France.

305 **2.7. Statistical analyses.** Normalized abundance of individual genes was accumulated per resistance  
306 gene class and Mann Whitney tests were performed with the scipy module v.1.13 to compare

307 normalized cumulative abundance of the resistome between the NICU and the AICU SDBs, WW and  
308 WWB. A python script (v. 3.9) was realized to obtain the boxplots.

309 Logarithmic and Hellinger transformations were performed in R (v. 4.2) to correct for outliers in  
310 microbiota and resistome data. Redundancy analysis with 999 Monte Carlo permutations were then  
311 performed to test whether the microbiota explains the variations observed in the SDBs or the WW  
312 biofilm resistomes and to test for a significant correlation between the microbiome and the resistome  
313 in the respective samples. Principal coordinate analysis (PCA) was also performed in R and visualized  
314 with ggbiplot.

315

### 316 3. Results

317 The culturing approach was employed to characterize the total aerobic flora of SDBs collected at the  
318 NICU and the AICU from Grenoble Alpes University Hospital as well as samples collected from their  
319 respective WW outlets. Additionally, we screened for CPEs and GRE in these samples.

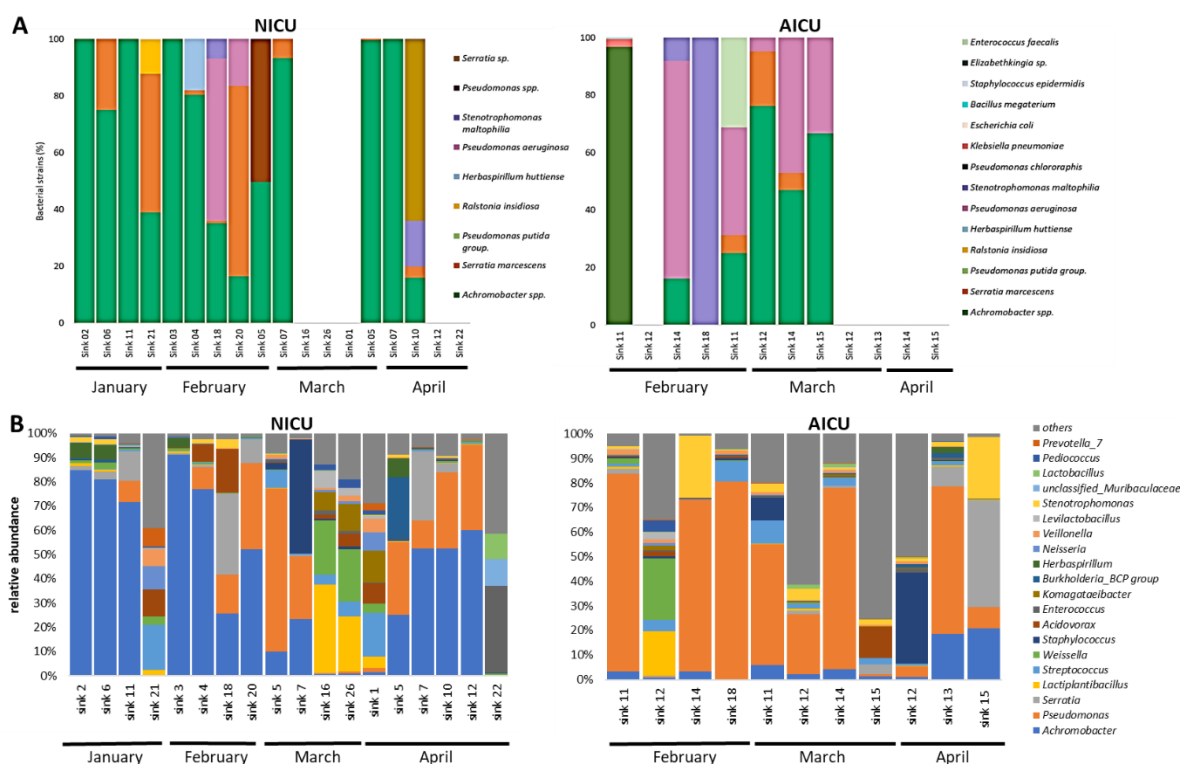
320 **3.1. Culture-based analyses revealed diverse genera of aerobic bacteria in hospital sink drain**  
321 **biofilms.** A total of 30 SDB samples were collected from both the NICU and the AICU. Over the four-  
322 month analysis period, a total of 18 SDB samples were collected at the NICU, including the sink drain  
323 of room #7, which was sampled twice. Twelve SDBs were collected from the AICU, including the sink  
324 drain of rooms 11 and 15, which were sampled twice, and the sink drain of rooms 12 and 14, which  
325 were sampled three times. Of the 18 SDB samples from the NICU, 72.2% (n = 13) were found to be  
326 contaminated with at least one bacterial species. Similarly, 58.3% (n = 7) of the 12 SDB samples from  
327 the AICU exhibited contamination. The bacterial cultures remained negative for the SDB samples from  
328 rooms 1, 12, 16, 22 and 26 of the NICU and for the SDB samples from rooms 12 (tested twice), 13, 14,  
329 and 15 of the AICU (**Figure 3A**). The aerobic flora cultivated from the SDBs using our culture approach  
330 exhibited low diversity, with an average of 3–6 (0–6) different bacterial species per SDB across the two  
331 ICUs. In both ICUs, the most frequently isolated genus was *Achromobacter* spp., identified in 72.2%  
332 (13/18) of the samples from the NICU and 50% (6/12) from the AICU (**Figure 3A**). Furthermore,  
333 *Achromobacter* spp. was the sole bacterial strain isolated from the SDBs of the NICU rooms 3 and 7  
334 (**Figure 3A**). In addition to *Achromobacter* spp., other genera were also isolated from the SDBs of the  
335 NICU. *Serratia marcescens* was isolated from 44.4% of the samples (8/18), while *Pseudomonas*  
336 *aeruginosa* was isolated from 16.7% (3/18) of the samples. Additionally, *Ralstonia insidiosa*,  
337 *Stenotrophomonas maltophilia*, *Herbaspirillum huttiense*, and other species of *Pseudomonas* and  
338 *Serratia* genera were isolated at low frequencies (**Figure 3A**).

339 With the exception of *Achromobacter* spp., the SDBs of the AICU demonstrated a higher diversity of  
340 the total aerobic flora compared with that of the NICU, with the presence of *P. aeruginosa* (41.7% of  
341 the sinks; 5/12), *S. marcescens* (25%; 3/12), *Klebsiella pneumoniae*, *Escherichia coli*, *S. maltophilia*,  
342 *Staphylococcus epidermidis*, *Enterococcus faecalis*, and *Bacillus megaterium* at low frequencies. This  
343 study did not yield any isolations of CPEs nor GRE from the sink drain samples (**Figure 3A**).

344

345 **3.2. The sink drain biofilm microbiota from the NICU differs from that of the AICU.** The results from  
346 16S rRNA gene sequencing (**Figure 3B**) were in strong agreement with those obtained from the cultures  
347 (**Figure 3A**), in particular for the NICU where the bacteria the most often encountered were  
348 *Achromobacter* spp. However, the sequencing approach revealed a greater diversity of bacterial

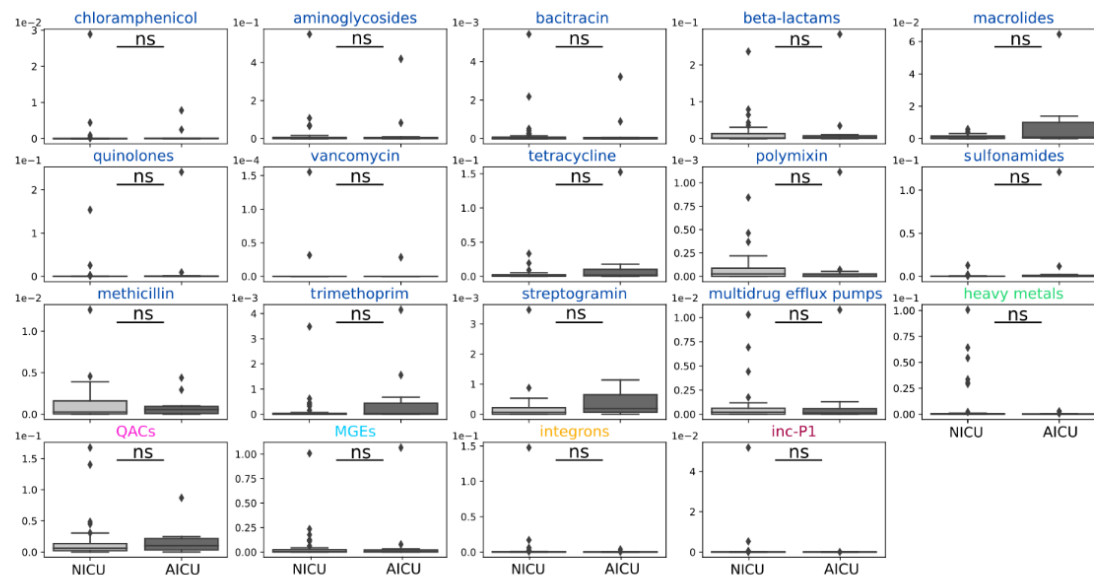
349 genera in the biofilms of the sink drains than those detected by the culture approach. In general, the  
 350 SDB microbiota of both the NICU and the AICU displayed a considerable degree of diversity between  
 351 samples. Furthermore, for the same sink drains sampled on multiple occasions (NICU sink drain 7; AICU  
 352 sink drains 1, 11, and 12), there was evidence of highly dynamic SDB communities. The microbiota of  
 353 the NICU was found to differ from that of the AICU, with the former being dominated by the Gram-  
 354 negative genera *Achromobacter*, *Serratia*, and *Acidovorax*, as well as the Gram-positive genera  
 355 *Weissella*, *Lactiplantibacillus*, and *Levilactbacillus*. In contrast, the AICU microbiota was dominated by  
 356 potential bacterial pathogens (Gram-positive and Gram-negative), including *Pseudomonas*,  
 357 *Stenotrophomonas*, *Staphylococcus*, and *Klebsiella* (Figure 3B and supplementary Figure 1).



358 **Figure 3: Comparison of the microbial species detected in sink drain biofilms of NICU versus AICU, as**  
 359 **revealed by culture of the aerobic flora (A) and full-length 16S rRNA gene sequencing (B). A.** The total  
 360 aerobic flora was assessed by culture approaches of sink drain biofilms collected in the NICU versus  
 361 the AICU over a 4-month period. Isolated bacterial strains were identified by MALDI-TOF-MS. CFUs/mL  
 362 were determined and were expressed as percentages per sink drain biofilm. **B.** The microbiota of sink  
 363 drain biofilms from the NICU versus the AICU was determined by full length 16S rRNA gene sequencing.  
 364 The most abundant 20 genera are depicted while the remaining genera were grouped as “others”.  
 365

366  
 367 **3.3 The sink drain biofilm resistome depends neither on the ICU nor on the disinfection protocol.** No  
 368 significant difference in normalized cumulative abundances was detected between the targeted gene  
 369 class families for the analyzed SDBs from both ICUs and over time (Figure 4). Despite the dissimilarities  
 370 in microbiota composition between the NICU and the AICU (Figure 3), no notable correlation was

371 observed between the microbiota composition and the respective resistomes of the sink drain biofilms  
 372 (Supplementary Table 1, Supplementary Figure 2, Figure 4). Furthermore, principal coordinate  
 373 analysis confirmed that the SDBs of the two distinct ICUs, one caring for premature patients and the  
 374 other for adults, exhibited a comparable resistome despite the disparate hygiene protocols in place  
 375 (Supplementary Figure 2).



376 **Figure 4: NICU versus AICU resistomes of sink drain biofilms.** Individual genes were grouped in gene  
 377 classes and cumulated normalized abundance per gene class was compared between the two ICUs  
 378 using Mann Whitney tests to assess statistical differences. Dark blue: antibiotic resistance genes;  
 379 green: heavy metals resistance genes; pink: resistance genes to quaternary ammonium compounds  
 380 (QACs); light blue: transposase genes (mobile genetic elements; MGEs); yellow: integron integrase  
 381 genes (class I, II and III); violet: IncP1 plasmid.

382

### 383 3.4. Culture-based analyses revealed the presence of a diverse range of aerobic bacteria in the WW

384 of the respective ICUs. A total of four WW (which had not undergone any treatment prior to collection)

385 and four WWB samples were collected at the NICU while four WW and only three WWB samples were

386 collected at the AICU between January and April 2023. The bacterial strains isolated and cultured from

387 the WW and WWB collected at both ICUs were more numerous and more diversified than those

388 isolated from the SDBs. The average number of bacterial species per sample was 13 (range 10–16). It

389 is noteworthy that *Aeromonas* spp. was isolated from all WW samples from the NICU as well as from

390 the AICU. The most prevalent bacterial species in the NICU WW and WWB samples were *E. coli*,

391 *Klebsiella oxytoca*, and *Pseudomonas* spp. (including *P. aeruginosa*), while the most prevalent species

392 at the AICU were *S. maltophilia*, *P. aeruginosa*, *S. marcescens*, and the *C. freundii* complex (Figure 5A).

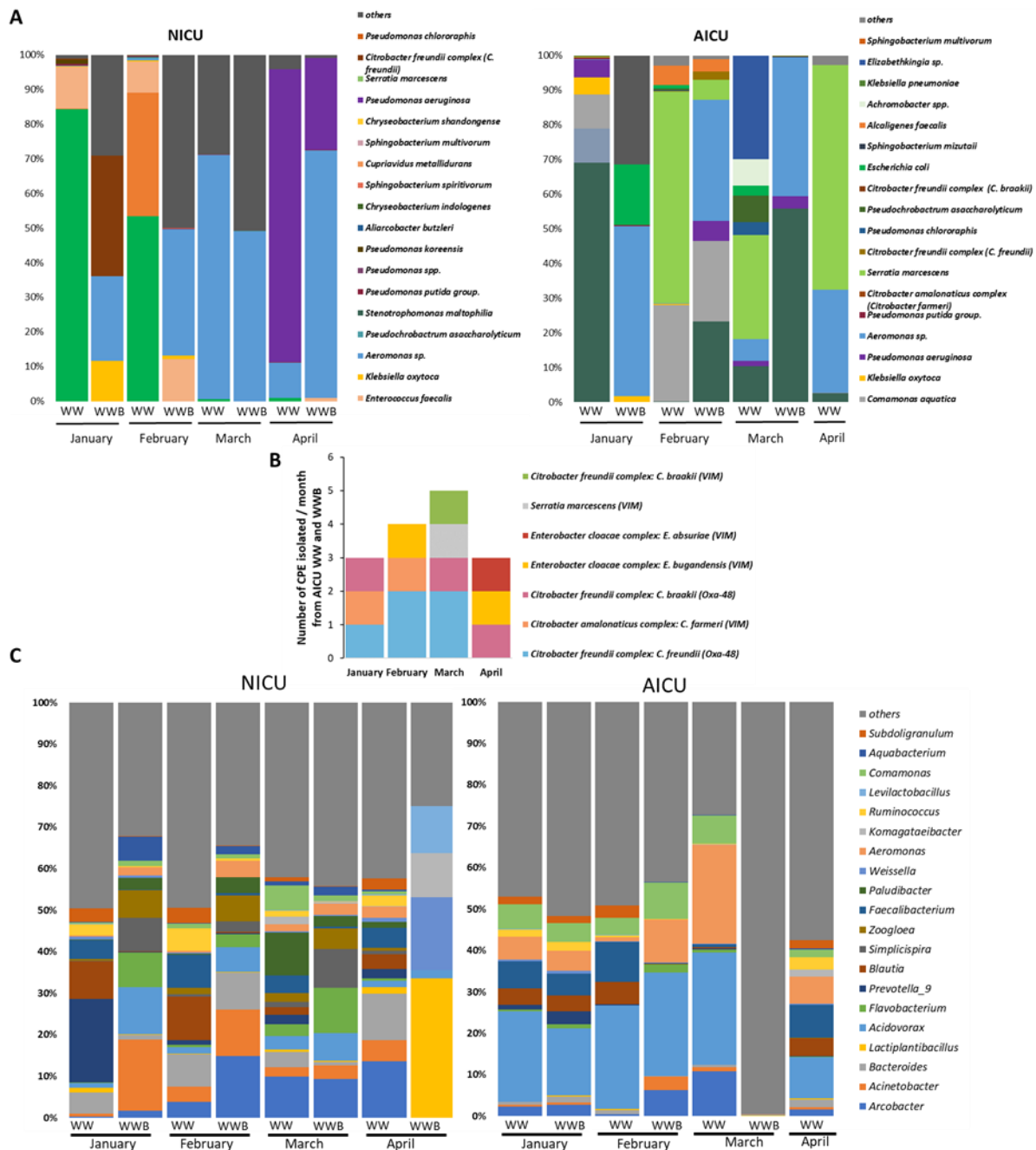
### 393 3.5. Carbapenemase-producing *Enterobacterales* were mainly isolated from waste water and waste

394 water biofilm samples from the AICU. We successfully isolated 25 strains of *P. aeruginosa* and



395 *Enterobacterales* suspected of carbapenemase production on selective culture plates, which were  
396 subsequently tested for carbapenemase production. In total, one CPE strain (*C. freundii* complex-OXA-  
397 48) and 15 CPE strains were isolated from either the WW or the WWBs collected from the WW  
398 drainpipes of the NICU and the AICU, respectively (**Figure 5B**). In the AICU, the majority of the CPE  
399 isolated strains (9/15) were belonging to the *Citrobacter freundii* complex. More precisely, we found:  
400 eight *Citrobacter freundii* complex carrying the OXA-48 carbapenemase, one *Citrobacter freundii* complex  
401 carrying the VIM carbapenemase. The remaining 6 CPE strains were two strains of the *Citrobacter*  
402 *amanilaticus* group carrying a VIM carbapenemase, three strains of the *Enterobacter cloacae* complex  
403 carrying VIM and one *Serratia marcescens* strain also carrying a VIM carbapenemase (**Figure 5B**).  
404 Together, these results demonstrated the presence of diverse CPEs in the WW collecting wastes from  
405 the AICU during the sample collection period.

406 **3.6. The microbiota from both the NICU and the AICU, as revealed by 16S rRNA gene sequencing,**  
407 **were highly dynamic over the 4-month period of analysis.** 16S rRNA gene sequencing revealed that  
408 the microbiota of the NICU WW and WWB was more diverse than that of the AICU WW and WWB, and  
409 was characterized by genera such as *Arcobacter*, *Acinetobacter*, *Bacteroidetes*, *Flavobacterium*, and  
410 *Zoogloea*. In contrast, the AICU WW and WWB microbiota were characterized by *Pseudomonas*,  
411 *Achromobacter*, *Acidovorax*, *Strenophomonas*, and *Aeromonas* (**Figure 5C** and **Supplementary Figure**  
412 **4**). While the NICU and AICU WW and WWB microbiota signatures were more distinctly separated than  
413 those observed in the respective sink drain microbiota (**Figure 3B** and **Supplementary Figure 1**), both  
414 NICU and AICU WW and WWB microbiota signatures demonstrated high dynamism between the  
415 different sampling time points (**Figure 5C** and **Supplementary Figure 4**). The microbiota signatures of  
416 WW and WWBs were thus found to be in agreement with the culture-based determined aerobic flora,  
417 while also revealing a large reservoir of anaerobic Gram-negative and Gram-positive bacteria that were  
418 not isolated nor detected by the culture approach.



419

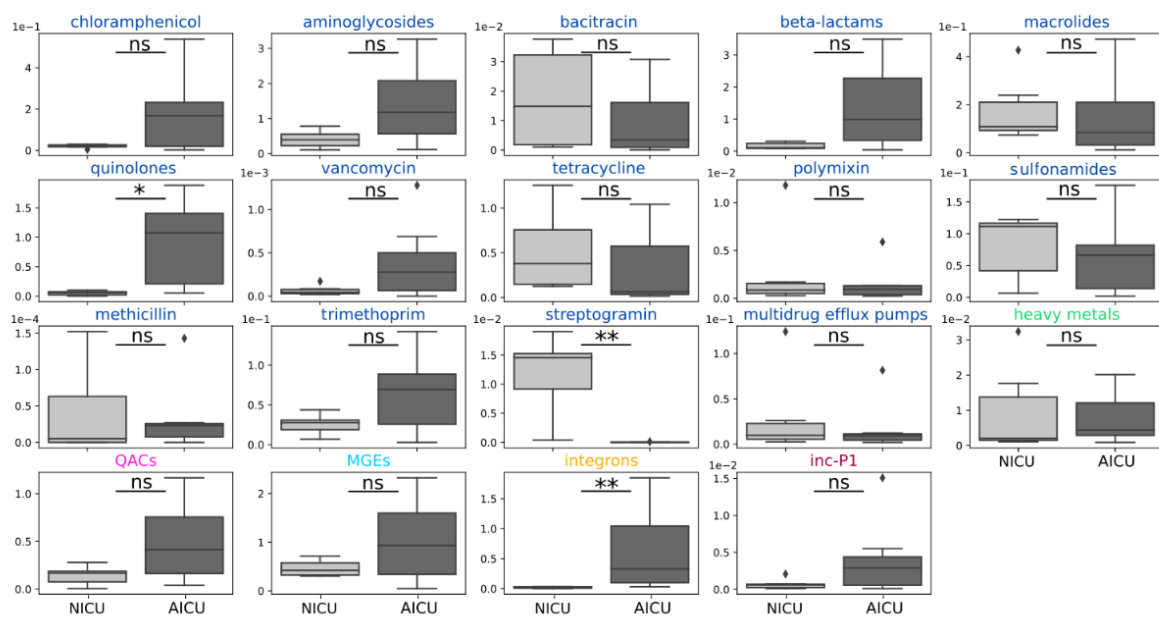
420 **Figure 5: Analysis of waste water and waste water biofilm samples from both the NICU and the AICU.**

421 **A.** Total aerobic flora assessed by culture approaches of waste water and waste water sink drain  
 422 biofilms from both the NICU and the AICU and sampled over a 4-month period (01-04.2023). Isolated  
 423 bacterial strains were identified by MALDI-TOF-MS. CFUs/mL were determined and expressed as  
 424 percentages per sink drain biofilm. The top 20 isolated species are depicted while the lesser abundant  
 425 species are grouped and referred to as “others”. **B.** Carbapenemase producing *Enterobacteriales*  
 426 isolated from AICU WW and WWB by conventional culture. Total numbers of strains isolated per  
 427 sampling time point (WW and WWB) and their respective identified carbapenemases. **C.** Microbiota of  
 428 WW and WW biofilms at both the NICU and the AICU, as identified by full length 16S rRNA gene  
 429 sequencing. The top 20 genera are depicted while the remaining genera are grouped and referred to  
 430 as “others”.

431

432 **3.7. The WW and WW biofilm resistome of the AICU contains more resistance genes than that of the**  
 433 **NICU.** Accumulated normalized abundances of genes conferring resistance to quinolones and integron  
 434 integrase genes were significantly higher in the AICU WW and WWB, compared to those from the NICU  
 435 WW and WWB, while accumulated normalized abundance of genes conferring resistance to  
 436 streptogramin, an antibiotic active against Gram-positive bacteria such as GRE or vancomycin-resistant  
 437 *Staphylococcus aureus* (Reissier and Cattoir, 2021), was higher in the NICU WW and WWB (**Figure 6**).  
 438 There was also a trend of higher accumulated normalized abundances of resistance genes to bacitracin,  
 439 tetracyclins, sulfonamides and methicillin in the NICU WW and WWB, while there was a trend of higher  
 440 accumulated normalized abundances of resistance genes to chloramphenicol, aminoglycosides,  $\beta$ -  
 441 lactams, vancomycin, trimethoprim, quaternary ammonium compounds, as well as MGEs and incP1  
 442 plasmid in the AICU WW and WWB (**Figure 6**). Importantly, no significant correlation was found  
 443 between the microbiota composition (**Figure 5C**) and the resistome in the NICU and AICU WW and  
 444 WWB samples (**Figure 6**). Moreover, redundancy analysis (RDA) revealed no clear constraints that  
 445 could explain the observed variance in the resistome dataset (**Supplementary Table 1**).

446



447

448 **Figure 6: NICU versus AICU resistomes from WW and WW biofilms.** Individual genes were grouped  
 449 into gene classes and accumulated normalized abundance per gene class was compared between the  
 450 two ICUs. To assess statistical differences, Mann Whitney tests were performed. The color code is the  
 451 following: blue color, class of antibiotic the targeted genes confer resistance to; green, heavy metals  
 452 resistance genes; pink, resistance genes to quaternary ammonium compounds (QACs); light blue,  
 453 transposase genes (mobile genetic elements; MGEs); yellow, integron integrase genes (class I, II and  
 454 II); violet, IncP1 plasmid. (\*,  $p < 0.05$ ; \*\*,  $p < 0.01$ ).

455

456 **3.8. Infection incidences in hospitalized patients in both ICUs during the period of study.** The number  
 457 of hospitalized patients in each ICU during the period of study as well as the infection incidences were  
 458 also recorded (**Table 1**). At the AICU, 29.2 % of hospitalized patients were infected with pathogenic  
 459 bacteria *versus* 8.6 % at the NICU. At the AICU, 28 patients were infected by *Enterobacterales* *versus* 5  
 460 neonates at the NICU between January and April 2023. No CPE were isolated from the patients that  
 461 were screened during the respective time period in both wards. Infections in patients at the AICU were  
 462 due to *Enterobacterales* (28 out of 71 patients), *Enterococcus* spp. (11 infected patients) or  
 463 *Pseudomonas* spp. (11 infected patients), while infections in neonates were due to *Enterobacterales*  
 464 in five neonates, six neonates were infected with *Enterococcus* spp., and none with *Pseudomonas* spp.  
 465 (**Table 1**). While the strains isolated from patients *versus* SDBs during our study could not be compared  
 466 for either ICU, the higher abundance of infections in patients due to *Enterobacterales*, *Enterococcus*  
 467 spp. or *Pseudomonas* spp. from the AICU SDBs compared to the NICU SDBs is notable and corresponds  
 468 to the overall higher rate of isolation of these pathogens in AICU patients during our study period  
 469 (**Table 1**).

Category	NICU (n = 243 patients)	AICU (n = 243 patients)
<b>Gender distribution</b>	131 boys (53.91%), 112 girls (46.09%)	163 men (67.08%), 80 women (32.92%)
<b>Median age</b>	N/A	62.77 years (IQR: 50.44–71.69)
<b>Median length of stay</b>	3.16 days (IQR: 1.23–10.50)	4.04 days (IQR: 1.98–8.70)
<b>Number of infected patients:</b>	21 (8.64%)	71 (29.22%)
<i>Enterobacterales</i>	5 (2.06%)	28 (11.52%)
<i>Enterococcus</i> spp.	6 (2.47%)	11 (4.57%)
<i>Pseudomonas</i> spp.	None	11 (4.57%)
GRE or CPE	None	None

470  
 471 **Table 1: Infection incidences in patients hospitalized in the NICU *versus* the AICU during the period**  
 472 **of our study.** IQR= interquartile.  
 473

474

#### 475 4. Discussion

476 The objective of this study was to examine the microbiota composition and the resistome of SDBs and  
477 WW systems in both the NICU and the AICU of the Grenoble Alpes University Hospital. The findings  
478 suggest a significant divergence in microbial flora between the NICU and the AICU settings, and also  
479 indicate an absence of correlation between the microbiota and the resistome profiles.

480 A culture-based analysis revealed that the SDBs in the NICU and the AICU harbored diverse genera of  
481 aerobic bacteria, with *Achromobacter* spp. being the most frequently isolated in both settings. It is  
482 notable that the NICU exhibited a lower diversity of bacterial species compared to the AICU, which  
483 demonstrated a greater prevalence of potential pathogens, including *Pseudomonas* and *Klebsiella*.  
484 These findings are consistent with those of previous studies which have indicated that intensive care  
485 environments can harbor significant microbial diversity, often dominated by antibiotic-resistant  
486 species (Aracil-Gisbert et al., 2024; Constantinides et al., 2020, 2020). However, while the SDBs from  
487 the AICU demonstrated a more varied microbiota, no CPEs were isolated from either the NICU or the  
488 AICU SDBs. Isolation of CPEs from environmental samples such as SDBs is challenging and our culture  
489 approach might have missed the presence of CPEs that may have a low MIC for carbapenems, or may  
490 carry carbapenem resistance genes on MGEs that were not expressed during our culture conditions  
491 (Dierikx et al., 2022). It is noteworthy that in the AICU, a total of 29.2% of the adults tested positive for  
492 infections caused by *Enterobacterales*, *Enterococcus* spp., and *Pseudomonas* spp. (**Table 1**). Notably,  
493 these pathogens were also isolated by our culture approach from the SDBs at the AICU. The presence  
494 of Gram-negative bacteria, particularly *S. marcescens* and *P. aeruginosa*, in the SDBs underscores two  
495 key concerns: firstly, the potential for transmission to vulnerable patients within healthcare facilities,  
496 and secondly, the importance of addressing this issue in infection control practices (Lalancette et al.,  
497 2017; Millán-Lou et al., 2021). Additional research is required to ascertain whether the strains isolated  
498 from the sinks are indeed the strains responsible for patient infections. For example, a recent study  
499 employing whole genome sequencing demonstrated that *P. aeruginosa* strains isolated from patients  
500 differed from those that colonized the sink drains in a hospital ICU (Couchoud et al., 2023). Overall,  
501 our findings indicate that the aerobic SDB microbiota identified by cultures seems indicative of the  
502 bacterial pathogens that are likely to infect and/or be carried by patients in the respective ICUs.  
503 Whether these strains are transmitted from patients to the SDBs or *vice versa* or not at all, will require  
504 further studies.

505 Our analysis of the resistome showed that there were no statistically significant differences in the  
506 abundance of resistance genes between the NICU and the AICU SDBs over time. This finding questions  
507 our initial hypothesis that disinfection protocols would result in a discernible impact on the resistome.

508 Biofilms provide protection to bacterial cells, rendering them resistant to the hostile environment  
509 created by detergent/disinfectant exposure. Our observations are consistent with previous studies  
510 that have reported the resilience of multispecies biofilm communities to various biocides, including  
511 chlorhexidine, benzalkonium chloride, peracetic acid, and chlorine (Kara et al., 2006; Schwering et al.,  
512 2013; van der Veen and Abee, 2011). The persistence of these biofilms despite the use of disinfectants,  
513 highlights the need for alternative strategies and approaches to effectively target and control biofilm-  
514 associated pathogens in healthcare settings (Karygianni et al., 2020, 2020; Maillard and Centeleghe,  
515 2023; Volling et al., 2021). The lack of difference in the normalized abundance of the resistome despite  
516 notable differences in the microbiota may be explained by the fact that the analyzed DNA for both  
517 resistome and microbiome analyses is not limited to that of live and intact bacterial cells, but also  
518 includes extracellular DNA (eDNA) from the biofilm matrix. eDNA has been identified as a source for  
519 ARGs and MGEs in biofilms (Hannan et al., 2010; Murray et al., 2022; Sivalingam et al., 2020).  
520 Moreover, it is not uncommon for ARGs to be carried by broad-host range MGEs, such as IncP1 and  
521 IncPromA plasmids, which can be harbored by both Gram-negative and Gram-positive bacteria  
522 (Klümper et al., 2015). The persistence of eDNA in our analyzed SDBs and MGEs associated with ARGs  
523 may explain why their normalized abundance remains unchanged despite differences in the relative  
524 abundance of bacterial genera. In light of these findings, it can be proposed that the mere presence of  
525 specific bacterial species in these environments does not necessarily dictate the abundance of  
526 resistance genes. Our findings additionally indicate that ARGs may persist in the environment  
527 independently of the bacteria that carry them, which could complicate the management of antibiotic  
528 resistance in clinical settings (Catho et al., 2024; Ramos-Castaneda et al., 2020). The relationship  
529 between microbiota and resistome is often intricate and susceptible to be influenced by a multitude  
530 of environmental factors, which may not be adequately represented in the available dataset. For  
531 instance, factors such as sink drain usage, antibiotic usage, patient characteristics, or hospital  
532 conditions may contribute to variations in the resistome, potentially obscuring direct correlations with  
533 microbiota composition.

534 A greater diversity of bacterial species was observed in the WW samples than in the SDBs, with a  
535 notable prevalence of CPEs, particularly at the AICU. The dynamic nature of the WW microbiota  
536 highlights the necessity for monitoring these environments, as they may serve as crucial reservoirs for  
537 ARB that can disseminate within hospital settings as well as the environment (Buelow et al., 2023; Dias  
538 et al., 2020; Snell et al., 2024). So far, monitoring and analysis of WW collecting wastes from different  
539 patient populations such as neonates *versus* adults with different health care protocols (including  
540 antibiotic and medical prescription practices), and which correspond to different sink drain disinfection  
541 protocols, has not been performed yet. The differences detected in the aerobic and total microbiota,

542 the overall resistome composition, and normalized abundances of resistance genes between the NICU  
543 and the ICU WW, as well as the presence or not of CPEs are likely to represent the very different clinical  
544 environments including the types of patients, and associated health care and hygiene protocols.  
545 Finally, identification of carbapenemase-producing strains in both WW and WWBs highlights the  
546 persistent challenge posed by ARB in hospital WW systems. Nevertheless, the question of whether  
547 WW can be used as an indicator for patient colonization with CPEs remains unanswered. Further  
548 investigation is required to determine whether the presence of these strains in WW indicates actual  
549 patient colonization or a risk of infection for patients with CPEs. In our study, at the NICU, patients  
550 were rarely screened for CPEs, and at the AICU this screening was also not performed systemically, but  
551 only for patients at risk, hence CPEs that were carried by patients during our study period might not  
552 have been detected. To address this question, a prospective study comparing different health care  
553 services should be performed to systematically screen all patients admitted to the NICU and the AICU  
554 for CPE and GRE and to perform a continuous SDB and WW screening using the ensemble of culture-  
555 dependent and culture-independent methods.

556 Together, our results indicate that, while disinfection protocols in the NICU may constrain the diversity  
557 of the SDB microbiota, they do not markedly influence the associated resistome. This prompts the  
558 need to re-examine the efficacy of current disinfection protocols and to consider the potential benefits  
559 of a more sophisticated approach to infection control that takes into account the complexities of  
560 microbial communities and their resistance profiles. Future studies should explore the potential for  
561 targeted disinfection strategies that can effectively reduce both the microbial diversity and the  
562 antibiotic resistance (the "resistome") in critical care environments, and further focus on WW as  
563 suitable surveillance tool for the prediction of bacterial pathogens' presence in the respective hospital  
564 environments.

565

## 566 **5. Conclusions**

567 - The microbiota composition of the NICU and the AICU SDBs were found to be distinct, while  
568 their resistome composition was similar.

569

570 - Disinfection does not affect the resistome at the NICU. Regular disinfection of NICU sink drains  
571 with surfactants did not significantly impact the overall resistome of SDBs compared to the  
572 resistome of SDBs from the AICU, which was not exposed to routine disinfection.

573

- 574 - The WW microbiota was very dynamic in both ICUs over time but significantly different  
575 between the NICU and the AICU.  
576
- 577 - The AICU WW samples exhibited a markedly higher abundance of genes conferring resistance  
578 to quinolones, and integron integrase genes, whereas the NICU WW samples demonstrated  
579 elevated levels of genes resistant to streptogramin. These observations indicate notable  
580 distinctions in the composition of the respective ICU WW resistomes.  
581
- 582 - No carbapenemase-producing *Enterobacterales* (CPEs) were isolated from SDBs. In contrast,  
583 15 CPE strains were identified in AICU WW, and one CPE strain was isolated from NICU WW,  
584 underscoring the necessity of WW monitoring for ARB.  
585
- 586 - The present study provides evidence that sink drain biofilms are resilient to disinfection  
587 interventions with quaternary ammonium compounds at the University Hospital Grenoble  
588 Alpes.  
589
- 590



591 **Acknowledgements:**

592 We would like to acknowledge (i) the hospital staff and nurses from the hygiene department, Nadia  
593 Kurtz, Gwenaellea Collard and Jennifer Charbonnier, for their assistance during collection of the  
594 samples; (ii) the technical team of the hospital Michel Gomez and Nicolas Blanc; (iii) the direction of  
595 the TIMC laboratory for supporting this research financially with the TIMC Emergence grant and the  
596 J.M.-R. student's gratification; and (iv) the Asposan executive board for the financial support of this  
597 study.

598

599 Authors contributions: **E.B.** and **C.L.** designed the study; **A.H.** and **J.M.-R.** performed the experiments,  
600 analyzed the data and wrote the manuscript's first draft; **M.R.M.** performed the statistical and  
601 bioinformatical analyses, and designed the figures; **C.T.M.** and **C.L.** allowed access to samples and the  
602 patients and hospital environment's information; **A.H.** and **M.M.** allowed access and guidance for  
603 bacterial cultures and analyses; **A.H., J.M.-R., P.M., M.M., C.M., C.L.,** and **E.B.** reviewed the data and  
604 edited the manuscript. **C.M., C.L., E.B.,** and **A.H.** supervised the student.

605

606 **Data availability:** Raw and assembled 16S rRNA sequences are available under accession number  
607 PRJEB83107.

608

609

610

611 **References:**

- 612 Abe, K., Nomura, N., Suzuki, S., 2020. Biofilms: hot spots of horizontal gene transfer (HGT) in aquatic  
613 environments, with a focus on a new HGT mechanism. *FEMS Microbiology Ecology* 96.  
614 <https://doi.org/10.1093/femsec/fiaa031>
- 615 *Algorithme\_CARBA\_PA\_v2.pdf*, n.d.
- 616 Aracil-Gisbert, S., Fernández-De-Bobadilla, M.D., Guerra-Pinto, N., Serrano-Calleja, S., Pérez-Cobas,  
617 A.E., Soriano, C., de Pablo, R., Lanza, V.F., Pérez-Viso, B., Reuters, S., Hasman, H., Cantón, R.,  
618 Baquero, F., Coque, T.M., 2024. The ICU environment contributes to the endemicity of the  
619 “*Serratia marcescens* complex” in the hospital setting. *mBio* 15, e03054-23.  
620 <https://doi.org/10.1128/mbio.03054-23>
- 621 Balcazar, J.L., Subirats, J., Borrego, C.M., 2015. The role of biofilms as environmental reservoirs of  
622 antibiotic resistance. *Front.Microbiol.* 6, 1216. <https://doi.org/10.3389/fmicb.2015.01216>
- 623 Bourdin, T., Benoit, M.-È., Prévost, M., Charron, D., Quach, C., Déziel, E., Constant, P., Bédard, E.,  
624 2024. Disinfection of sink drains to reduce a source of three opportunistic pathogens, during  
625 *Serratia marcescens* clusters in a neonatal intensive care unit. *PLoS One* 19, e0304378.  
626 <https://doi.org/10.1371/journal.pone.0304378>
- 627 Buelow, E., Bayjanov, J.R., Majoor, E., Willems, R.J.L., Bonten, M.J.M., Schmitt, H., van Schaik, W.,  
628 2018. Limited influence of hospital wastewater on the microbiome and resistome of wastewater  
629 in a community sewerage system. *FEMS Microbiol.Ecol.* <https://doi.org/10.1093/femsec/fiy087>
- 630 Buelow, E., Bello Gonzalez, T.D.J., Fuentes, S., de Steenhuijsen Piters, W.A.A., Lahti, L., Bayjanov, J.R.,  
631 Majoor, E.A.M., Braat, J.C., van Mourik, M.S.M., Oostdijk, E.A.N., Willems, R.J.L., Bonten, M.J.M.,  
632 van Passel, M.W.J., Smidt, H., van Schaik, W., 2017. Comparative gut microbiota and resistome  
633 profiling of intensive care patients receiving selective digestive tract decontamination and  
634 healthy subjects. *Microbiome* 5, 88-017-0309-z. <https://doi.org/10.1186/s40168-017-0309-z>
- 635 Buelow, E., Dauga, C., Carrion, C., Mathé-Hubert, H., Achaibou, S., Gaschet, M., Jové, T., Chesneau,  
636 O., Kennedy, S.P., Ploy, M.-C., Da Re, S., Dagot, C., 2023. Hospital and urban wastewaters shape  
637 the matrix and active resistome of environmental biofilms. *Water Research* 244, 120408.  
638 <https://doi.org/10.1016/j.watres.2023.120408>
- 639 Buelow, E., Rico, A., Gaschet, M., Lourenço, J., Kennedy, S.P., Wiest, L., Ploy, M.-C., Dagot, C., 2020.  
640 Hospital discharges in urban sanitation systems: Long-term monitoring of wastewater resistome  
641 and microbiota in relationship to their eco-exposome. *Water Research X* 7, 100045.  
642 <https://doi.org/10.1016/j.wroa.2020.100045>
- 643 Catho, G., Cave, C., Grant, R., Carry, J., Martin, Y., Renzi, G., Nguyen, A., Buetti, N., Schrenzel, J.,  
644 Harbarth, S., 2024. Controlling the hospital aquatic reservoir of multidrug-resistant organisms: a  
645 cross-sectional study followed by a nested randomized trial of sink decontamination. *Clinical*  
646 *Microbiology and Infection* 30, 1049–1054. <https://doi.org/10.1016/j.cmi.2024.05.008>
- 647 Constantinides, B., Chau, K.K., Quan, T.P., Rodger, G., Andersson, M.I., Jeffery, K., Lipworth, S.,  
648 Gweon, H.S., Peniket, A., Pike, G., Millo, J., Byukusenge, M., Holdaway, M., Gibbons, C., Mathers,  
649 A.J., Crook, D.W., Peto, T.E.A., Walker, A.S., Stoesser, N., 2020. Genomic surveillance of  
650 *Escherichia coli* and *Klebsiella spp.* in hospital sink drains and patients. *Microb Genom* 6,  
651 mgen000391. <https://doi.org/10.1099/mgen.0.000391>

- 652 Couchoud, C., Bertrand, X., Bourgeon, M., Piton, G., Valot, B., Hocquet, D., 2023. Genome-based  
653 typing reveals rare events of patient contamination with *Pseudomonas aeruginosa* from other  
654 patients and sink traps in a medical intensive care unit. *Journal of Hospital Infection* 134, 63–70.  
655 <https://doi.org/10.1016/j.jhin.2023.01.010>
- 656 De Geyter, D., Vanstokstraeten, R., Crombé, F., Tommassen, J., Wybo, I., Piérard, D., 2021. Sink drains  
657 as reservoirs of VIM-2 metallo- $\beta$ -lactamase-producing *Pseudomonas aeruginosa* in a Belgian  
658 intensive care unit: relation to patients investigated by whole-genome sequencing. *Journal of*  
659 *Hospital Infection* 115, 75–82. <https://doi.org/10.1016/j.jhin.2021.05.010>
- 660 de Jonge, E., de Boer, M.G.J., van Essen, E.H.R., Dogterom-Ballering, H.C.M., Veldkamp, K.E., 2019.  
661 Effects of a disinfection device on colonization of sink drains and patients during a prolonged  
662 outbreak of multidrug-resistant *Pseudomonas aeruginosa* in an intensive care unit. *J Hosp Infect*  
663 102, 70–74. <https://doi.org/10.1016/j.jhin.2019.01.003>
- 664 Dias, M.F., da Rocha Fernandes, G., Cristina de Paiva, M., Christina de Matos Salim, A., Santos, A.B.,  
665 Amaral Nascimento, A.M., 2020. Exploring the resistome, virulome and microbiome of drinking  
666 water in environmental and clinical settings. *Water Research* 174, 115630.  
667 <https://doi.org/10.1016/j.watres.2020.115630>
- 668 Dierikx, C., Börjesson, S., Perrin-Guyomard, A., Haenni, M., Norström, M., Divon, H.H., Ilag, H.K.,  
669 Granier, S.A., Hammerum, A., Kjeldgaard, J.S., Pauly, N., Randall, L., Anjum, M.F., Smialowska, A.,  
670 Franco, A., Veldman, K., Slette-meås, J.S., 2022. A European multicenter evaluation study to  
671 investigate the performance on commercially available selective agar plates for the detection of  
672 carbapenemase producing *Enterobacteriaceae*. *Journal of Microbiological Methods* 193, 106418.  
673 <https://doi.org/10.1016/j.mimet.2022.106418>
- 674 eucast: AST of bacteria [WWW Document], n.d. URL [https://www.eucast.org/ast\\_of\\_bacteria](https://www.eucast.org/ast_of_bacteria)  
675 (accessed 11.19.24).
- 676 Gillings, M.R., Gaze, W.H., Pruden, A., Smalla, K., Tiedje, J.M., Zhu, Y.G., 2015. Using the class 1  
677 integron-integrase gene as a proxy for anthropogenic pollution. *ISME J.* 9, 1269–1279.  
678 <https://doi.org/10.1038/ismej.2014.226>
- 679 Hannan, S., Ready, D., Jasni, A.S., Rogers, M., Pratten, J., Roberts, A.P., 2010. Transfer of antibiotic  
680 resistance by transformation with eDNA within oral biofilms. *FEMS Immunology & Medical*  
681 *Microbiology* 59, 345–349. <https://doi.org/10.1111/j.1574-695X.2010.00661.x>
- 682 Hopman, J., Tostmann, A., Wertheim, H., Bos, M., Kolwijck, E., Akkermans, R., Sturm, P., Voss, A.,  
683 Pickkers, P., vd Hoeven, H., 2017. Reduced rate of intensive care unit acquired gram-negative  
684 bacilli after removal of sinks and introduction of ‘water-free’ patient care. *Antimicrob Resist*  
685 *Infect Control* 6, 59. <https://doi.org/10.1186/s13756-017-0213-0>
- 686 Hu, Y., Yang, X., Qin, J., Lu, N., Cheng, G., Wu, N., Pan, Y., Li, J., Zhu, L., Wang, X., Meng, Z., Zhao, F.,  
687 Liu, D., Ma, J., Qin, N., Xiang, C., Xiao, Y., Li, L., Yang, H., Wang, J., Yang, R., Gao, G.F., Wang, J.,  
688 Zhu, B., 2013. Metagenome-wide analysis of antibiotic resistance genes in a large cohort of  
689 human gut microbiota. *Nat. Commun.* 4, 2151. <https://doi.org/10.1038/ncomms3151>;
- 690 Kara, D., Luppens, S.B.I., ten Cate, J.M., 2006. Differences between single- and dual-species biofilms  
691 of *Streptococcus mutans* and *Veillonella parvula* in growth, acidogenicity and susceptibility to  
692 chlorhexidine. *European Journal of Oral Sciences* 114, 58–63. [https://doi.org/10.1111/j.1600-](https://doi.org/10.1111/j.1600-0722.2006.00262.x)  
693 [0722.2006.00262.x](https://doi.org/10.1111/j.1600-0722.2006.00262.x)

- 694 Karygianni, L., Ren, Z., Koo, H., Thurnheer, T., 2020. Biofilm Matrixome: Extracellular Components in  
695 Structured Microbial Communities. *Trends in Microbiology* 28, 668–681.  
696 <https://doi.org/10.1016/j.tim.2020.03.016>
- 697 Klümper, U., Riber, L., Dechesne, A., Sannazzarro, A., Hansen, L.H., Sørensen, S.J., Smets, B.F., 2015.  
698 Broad host range plasmids can invade an unexpectedly diverse fraction of a soil bacterial  
699 community. *The ISME Journal* 9, 934–945. <https://doi.org/10.1038/ismej.2014.191>
- 700 Lalancette, C., Charron, D., Laferrière, C., Dolcé, P., Déziel, E., Prévost, M., Bédard, E., 2017. Hospital  
701 Drains as Reservoirs of *Pseudomonas aeruginosa*: Multiple-Locus Variable-Number of Tandem  
702 Repeats Analysis Genotypes Recovered from Faucets, Sink Surfaces and Patients. *Pathogens* 6,  
703 36. <https://doi.org/10.3390/pathogens6030036>
- 704 Langsrud, S., Sundheim, G., Holck, A.L., 2004. Cross-resistance to antibiotics of *Escherichia coli*  
705 adapted to benzalkonium chloride or exposed to stress-inducers. *J.Appl.Microbiol.* 96, 201–208.
- 706 Ledwoch, K., Robertson, A., Laurant, J., Norville, P., Maillard, J.-Y., 2020. It’s a trap! The development  
707 of a versatile drain biofilm model and its susceptibility to disinfection. *J Hosp Infect* 106, 757–  
708 764. <https://doi.org/10.1016/j.jhin.2020.08.010>
- 709 Lepelletier, D., Berthelot, P., Lucet, J.-C., Fournier, S., Jarlier, V., Grandbastien, B., National Working  
710 Group, 2015. French recommendations for the prevention of “emerging extensively drug-  
711 resistant bacteria” (eXDR) cross-transmission. *J Hosp Infect* 90, 186–195.  
712 <https://doi.org/10.1016/j.jhin.2015.04.002>
- 713 Low, J.M., Chan, M., Low, J.L., Chua, M.C.W., Lee, J.H., 2024. The impact of sink removal and other  
714 water-free interventions in intensive care units on water-borne healthcare-associated infections:  
715 a systematic review. *Journal of Hospital Infection* 150, 61–71.  
716 <https://doi.org/10.1016/j.jhin.2024.05.012>
- 717 Maillard, J.-Y., Centeleghe, I., 2023. How biofilm changes our understanding of cleaning and  
718 disinfection. *Antimicrobial Resistance & Infection Control* 12, 95.  
719 <https://doi.org/10.1186/s13756-023-01290-4>
- 720 Millán-Lou, M.I., López, C., Bueno, J., Pérez-Laguna, V., Lapresta, C., Fuertes, M.E., Rite, S., Santiago,  
721 M., Romo, M., Samper, S., Cebollada, A., Oteo-Iglesias, J., Rezusta, A., 2021. Successful control of  
722 *Serratia marcescens* outbreak in a neonatal unit of a tertiary-care hospital in Spain. *Enferm Infecc*  
723 *Microbiol Clin (Engl Ed)* S0213-005X(21)00186-5. <https://doi.org/10.1016/j.eimc.2021.05.003>
- 724 Murray, C.J., Ikuta, K.S., Sharara, F., Swetschinski, L., Aguilar, G.R., Gray, A., Han, C., Bisignano, C.,  
725 Rao, P., Wool, E., Johnson, S.C., Browne, A.J., Chipeta, M.G., Fell, F., Hackett, S., Haines-  
726 Woodhouse, G., Hamadani, B.H.K., Kumaran, E.A.P., McManigal, B., Agarwal, R., Akech, S.,  
727 Albertson, S., Amuasi, J., Andrews, J., Aravkin, A., Ashley, E., Bailey, F., Baker, S., Basnyat, B.,  
728 Bekker, A., Bender, R., Bethou, A., Bielicki, J., Boonkasidecha, S., Bukosia, J., Carvalheiro, C.,  
729 Castañeda-Orjuela, C., Chansamouth, V., Chaurasia, S., Chiurchiù, S., Chowdhury, F., Cook, A.J.,  
730 Cooper, B., Cressey, T.R., Criollo-Mora, E., Cunningham, M., Darboe, S., Day, N.P.J., Luca, M.D.,  
731 Dokova, K., Dramowski, A., Dunachie, S.J., Eckmanns, T., Eibach, D., Emami, A., Feasey, N., Fisher-  
732 Pearson, N., Forrest, K., Garrett, D., Gastmeier, P., Giref, A.Z., Greer, R.C., Gupta, V., Haller, S.,  
733 Haselbeck, A., Hay, S.I., Holm, M., Hopkins, S., Iregbu, K.C., Jacobs, J., Jarovsky, D., Javanmardi, F.,  
734 Khorana, M., Kisooson, N., Kobeissi, E., Kostyanev, T., Krapp, F., Krumkamp, R., Kumar, A., Kyu,  
735 H.H., Lim, C., Limmathurotsakul, D., Loftus, M.J., Lunn, M., Ma, J., Mturi, N., Munera-Huertas, T.,  
736 Musicha, P., Mussi-Pinhata, M.M., Nakamura, T., Nanavati, R., Nangia, S., Newton, P., Ngoun, C.,  
737 Novotney, A., Nwakanma, D., Obiero, C.W., Olivas-Martinez, A., Olliaro, P., Ooko, E., Ortiz-

- 738 Brizuela, E., Peleg, A.Y., Perrone, C., Plakkal, N., Ponce-de-Leon, A., Raad, M., Ramdin, T., Riddell,  
739 A., Roberts, T., Robotham, J.V., Roca, A., Rudd, K.E., Russell, N., Schnall, J., Scott, J.A.G.,  
740 Shivamallappa, M., Sifuentes-Osornio, J., Steenkeste, N., Stewardson, A.J., Stoeva, T., Tasak, N.,  
741 Thaiprakong, A., Thwaites, G., Turner, C., Turner, P., Doorn, H.R. van, Velaphi, S., Vongpradith, A.,  
742 Vu, H., Walsh, T., Waner, S., Wangrangsimaikul, T., Wozniak, T., Zheng, P., Sartorius, B., Lopez,  
743 A.D., Stergachis, A., Moore, C., Dolecek, C., Naghavi, M., 2022. Global burden of bacterial  
744 antimicrobial resistance in 2019: a systematic analysis. *The Lancet* 399, 629–655.  
745 [https://doi.org/10.1016/S0140-6736\(21\)02724-0](https://doi.org/10.1016/S0140-6736(21)02724-0)
- 746 Pirzadian, J., Harteveld, S.P., Ramdutt, S.N., van Wamel, W.J.B., Klaassen, C.H.W., Vos, M.C., Severin,  
747 J.A., 2020. Novel use of culturomics to identify the microbiota in hospital sink drains with and  
748 without persistent VIM-positive *Pseudomonas aeruginosa*. *Sci Rep* 10, 17052.  
749 <https://doi.org/10.1038/s41598-020-73650-8>
- 750 Ramos-Castaneda, J.A., Faron, M.L., Hyke, J., Bell-Key, D., Buchan, B.W., Nanchal, R., Pintar, P.,  
751 Graham, M.B., Huerta, S., Munoz-Price, L.S., 2020. How frequently should sink drains be  
752 disinfected? *Infect Control Hosp Epidemiol* 41, 358–360. <https://doi.org/10.1017/ice.2019.316>
- 753 Reissier, S., Cattoir, V., 2021. Streptogramins for the treatment of infections caused by Gram-positive  
754 pathogens. *Expert Rev Anti Infect Ther* 19, 587–599.  
755 <https://doi.org/10.1080/14787210.2021.1834851>
- 756 Rodriguez-Mozaz, S., Chamorro, S., Marti, E., Huerta, B., Gros, M., Sanchez-Melsio, A., Borrego, C.M.,  
757 Barcelo, D., Balcazar, J.L., 2015. Occurrence of antibiotics and antibiotic resistance genes in  
758 hospital and urban wastewaters and their impact on the receiving river. *Water Research* Volume  
759 69, 234–242.
- 760 Schwering, M., Song, J., Louie, M., Turner, R.J., Ceri, H., 2013. Multi-species biofilms defined from  
761 drinking water microorganisms provide increased protection against chlorine disinfection.  
762 *Biofouling* 29, 917–928. <https://doi.org/10.1080/08927014.2013.816298>
- 763 Sivalingam, P., Poté, J., Prabakar, K., 2020. Extracellular DNA (eDNA): Neglected and Potential  
764 Sources of Antibiotic Resistant Genes (ARGs) in the Aquatic Environments. *Pathogens* 9, 874.  
765 <https://doi.org/10.3390/pathogens9110874>
- 766 Snell, L.B., Prossomariti, D., Alcolea-Medina, A., Sasson, M., Dibbens, M., Al-Yaakoubi, N., Humayun,  
767 G., Charalampous, T., Alder, C., Ward, D., Maldonado-Barrueco, A., Abadioru, O., Batra, R.,  
768 Nebbia, G., Otter, J.A., Edgeworth, J.D., Goldenberg, S.D., 2024. The drainome: longitudinal  
769 metagenomic characterisation of wastewater from hospital ward sinks to characterize the  
770 microbiome and resistome and assess the effects of decontamination interventions. *Journal of*  
771 *Hospital Infection*. <https://doi.org/10.1016/j.jhin.2024.06.005>
- 772 Suleyman, G., Alangaden, G., Bardossy, A.C., 2018. The Role of Environmental Contamination in the  
773 Transmission of Nosocomial Pathogens and Healthcare-Associated Infections. *Curr Infect Dis Rep*  
774 20, 12. <https://doi.org/10.1007/s11908-018-0620-2>
- 775 van der Veen, S., Abee, T., 2011. Mixed species biofilms of *Listeria monocytogenes* and *Lactobacillus*  
776 *plantarum* show enhanced resistance to benzalkonium chloride and peracetic acid. *Int J Food*  
777 *Microbiol* 144, 421–431. <https://doi.org/10.1016/j.ijfoodmicro.2010.10.029>
- 778 van der Zwet, W.C., Nijsen, I.E.J., Jamin, C., van Alphen, L.B., von Wintersdorff, C.J.H., Demandt,  
779 A.M.P., Savelkoul, P.H.M., 2022. Role of the environment in transmission of Gram-negative

780 bacteria in two consecutive outbreaks in a haematology-oncology department. *Infect Prev Pract*  
781 4, 100209. <https://doi.org/10.1016/j.infpip.2022.100209>

782 Volling, C., Ahangari, N., Bartoszko, J.J., Coleman, B.L., Garcia-Jeldes, F., Jamal, A.J., Johnstone, J.,  
783 Kandel, C., Kohler, P., Maltezou, H.C., Maze dit Mieusement, L., McKenzie, N., Mertz, D., Monod,  
784 A., Saeed, S., Shea, B., Stuart, R.L., Thomas, S., Uleryk, E., McGeer, A., 2021. Are Sink Drainage  
785 Systems a Reservoir for Hospital-Acquired Gammaproteobacteria Colonization and Infection? A  
786 Systematic Review. *Open Forum Infectious Diseases* 8, ofaa590.  
787 <https://doi.org/10.1093/ofid/ofaa590>

788 Wingender, J., Flemming, H.C., 2011. Biofilms in drinking water and their role as reservoir for  
789 pathogens. *Int.J.Hyg.Envirn.Health* 214, 417–423. <https://doi.org/10.1016/j.ijheh.2011.05.009>

790