

# The Epidemiology of Scrub typhus in Thiruvarur, Tamil Nadu

SK Farhat<sup>1</sup>, Nataraj M<sup>2</sup>, Sujit Kumar Behara<sup>2</sup>, Rajalakshmi A<sup>1</sup>, Sweta S<sup>3</sup>, Sathya Jeevitha<sup>1</sup>, Binduja S<sup>1</sup>, Shanti S<sup>3</sup>, P.K. Srivastava<sup>4</sup>, Balachandar Vellingiri<sup>5</sup>, Mansi Malik<sup>6</sup> and Jayalakshmi Krishnan<sup>1\*</sup>

Corresponding Author: Dr Jayalakshmi Krishnan

Email Id: [jayalakshmi@cutn.ac.in](mailto:jayalakshmi@cutn.ac.in)

<sup>1</sup>Research Scholar, Vector Biology Research Laboratory, Department of Biotechnology, Central University of Tamil Nadu, Thiruvarur, 610005

<sup>1</sup>ICMR Research Associate, Vector Biology Research Laboratory, Department of Biotechnology, Central University of Tamil Nadu, Thiruvarur, 610005

<sup>1</sup>ICMR Project Assistant, Vector Biology Research Laboratory, Department of Biotechnology, Central University of Tamil Nadu, Thiruvarur, 610005

<sup>2</sup> Professor in Medicine, Government Thiruvarur Medical College Hospital, Tamil Nadu, 610005

<sup>2</sup> Assistant Professor, Department of Epidemiology and Public Health, Central University of Tamil Nadu, Thiruvarur, 610005

<sup>3</sup>Research Scholar, Department of Geography, Central University of Tamil Nadu, Thiruvarur, 610005

<sup>3</sup>Regional Entomologist, Zonal Entomological Team, Salem, Department of Public Health and Preventive Medicine, Tamil Nadu, 636005

<sup>4</sup> Ex Joint Director, National Vector-Borne Disease Control Programme, M/o Health & FW, Delhi - 110054

<sup>5</sup>Associate Professor, Department of Zoology, Central University of Punjab, Bathinda, 151401

<sup>6</sup>Research Scientist, Tata Institute for Genetics and Society, Bengaluru, Karnataka, 560065

<sup>1\*</sup>Assistant Professor, Department of Biotechnology, Central University of Tamil Nadu, Thiruvarur, 610005

51 **Abstract**

52

53 National Vector-Borne Disease Control Programme (NVBDCP) under the National Center for  
54 Vector Borne Diseases Control (NCVBDC), Govt. of India, Delhi has put forth efforts to  
55 combat diseases transmitted by vectors, under the overarching umbrella of the National Health  
56 Mission (NHM). NCVBDC focuses mainly on six Vector Borne Diseases (VBD) but at the  
57 state and district level the VBD officials have to deal with all the VBDs covered under  
58 NCVBDC or outside the purview of NCVBDC. The advancement in modern technologies has  
59 increased attention to neglected tropical diseases, emphasizing their importance in public  
60 health discussions. Scrub typhus, a rickettsial infection with a harmless bite of infected chigger  
61 mite on humans, transmits the gram-negative bacteria *Orientia tsutsugamushi* causing the  
62 infection with rising mortality and morbidity rates across the globe. The living environment of  
63 the people plays a pivotal role in scrub typhus disease transmission. Rodents are the major  
64 reservoirs carrying the vector mites with additionally the environment, sanitation and hygiene  
65 as a crucial factor in the spread of scrub typhus.

66 A study was conducted from December 2023- July 2024, in the delta district of Thiruvarur  
67 covering the household participants of 730 from both rural and urban households. The  
68 statistical analysis of both quantitative and categorical variables was done using the SPSS  
69 software Version 16.0. The spacio-temporal mapping of the household areas enhanced the  
70 study with the representation of the study participants who were exposed to the risk factors but  
71 were susceptible hosts to scrub typhus. The univariate analysis showed a significant association  
72 between scrub typhus exposure with the people working in the agricultural fields, location of  
73 toilets, kitchen, presence of animals in homes, barren land and paddy fields near living areas,  
74 lack of protective implements against rodents, drying clothes on bushes, walking barefoot with  
75 more chances of being bitten by insects, mites or ticks resulting in rashes or Eschars,  
76 hospitalization due to fever, sneezing and headache. The Multivariate regression analysis  
77 showed that the association between scrub typhus exposure to the kitchen located outdoors  
78 (aOR=3.768, CI: 1.036 - 13.699, p = 0.044), people living near paddy fields (aOR=2.140, CI:  
79 1.019- 4.492, p=0.044), the use of protective implements (aOR = 0.071 (CI: 0.034 - 0.147, p <  
80 0.001), drying clothes on bushes (aOR = 3.012 CI: 1.579 - 5.745, p = 0.001) showed strong  
81 association to exposure to scrub typhus.

82

83 **Keywords**

84 Scrub typhus, scrub typhus exposure, epidemiology, household survey, *Orientia*  
85 *tsutsugamushi*, risk factors

86

87

88

89

90

91

92

93

94

95

96

97

98

99

100

## 101 **1 Introduction**

102

103 Rickettsial infections with the spotted fever group, typhus group, and scrub typhus [1] are  
104 emerging in tropical and subtropical regions but remain neglected. Despite being not included  
105 on the official list of Neglected Tropical Diseases formed by the World Health Organization's  
106 report (WHO) [2] , rickettsial diseases is ought to remain a public health concern with scrub  
107 typhus cases affecting billions of people globally with a case fatality rate of 33.3% in  
108 India [3,4]. The cases of scrub typhus in India are reported from across the nation with the  
109 Southern states of Tamil Nadu, Kerala, Andhra Pradesh, and Karnataka, Northern states of  
110 Himachal Pradesh, Jammu and Kashmir, and Uttaranchal, Eastern states of Odisha, West  
111 Bengal, and Bihar, western states of Maharashtra and northeastern states of Nagaland[5] . The  
112 infected larval chigger mites with gram-negative obligate intracellular bacteria *Orientia*  
113 *tsutsugamushi* [6] are the key vectors of scrub typhus. Being the vectors for scrub typhus, these  
114 six-legged[7] tiny chiggers are found bloated into the rodent's and shrews' bodies, especially to  
115 their ears, and pinnacles [8] and gets inflated as clusters on leaves, grasses, twigs and on the  
116 soil surface [7] . The *Leptotrombidium deliense* species of chigger mites are the main vectors  
117 causing scrub typhus in India and only chiggers of these Leptotrombidium genera are known  
118 to carry the bacteria, thus transmitting the disease to humans as accidental hosts[9], except in  
119 Chile, where they have found the efficiency of *Herpetacarus antarctica* carrying *Candidatus*  
120 *Orientia chiloensis*, a vector for scrub typhus [10]. The disease with its unified sign of  
121 Eschar, with other common febrile symptoms are categorized under Pyrexia of Unknown  
122 Origin (PUO) with an undifferentiated and under-diagnosed illness[11–13]

123 For an illness to burn-up in the population, the risk factors act as a precursor by fueling up the  
124 disease. Thus, to study the in-depth on the infectious disease epidemiology, it is important to  
125 study the epidemiological triad [14] on the agent, host and environment to know about the  
126 disease transmission. The disease mainly affects the population living with low socioeconomic  
127 rural inhabitants with limited access to health care facilities[15]. The people living with  
128 exposure to poor hygiene and sanitation, limited access to healthcare facilities, and proximity  
129 to man-animal contact lead to the raise in prevalence of scrub typhus cases associated with the  
130 risk factors[16] . It is important to highlight the risk factors associated to scrub typhus and  
131 adopt a comprehensive approach for individuals vulnerable to all vector-borne diseases to  
132 lower the growing incidence of disease mortality and morbidity. The synanthropic exposure of  
133 humans to rodents bring individuals into close contact with chigger mites, and household  
134 surveys offer valuable insights into the environmental risks, socioeconomic status, and living  
135 conditions of participants susceptible to the targeted diseases[17,18].

136 Considering the above background, our study was conducted from December 2023- July 2024,  
137 in the delta district of Thiruvarur, with an objective of studying the exposure of risk factors  
138 from the case reported blocks with covering the household participants of 730 (with the mean  
139 age of 36-46 years) from both rural and urban areas. The statistical analysis of both quantitative  
140 and categorical variables were analyzed using the SPSS software Version 16.0. The spacio-  
141 temporal mapping of the household areas enabled us to emphasize on the representation about  
142 the various risk factors exposed by the study participants and were susceptible hosts to scrub  
143 typhus.

144

145

146

147

148

149

150

151 **2 Materials and methods**

152 This descriptive cross-sectional study was conducted from December 2023- July 2024 to access  
153 the exposure of human participants to scrub typhus in the delta district of Thiruvarur, Tamil  
154 Nadu.

155

156 **2.1 Sampling**

157 With mapping of secondary data of scrub typhus cases issued by the Directorate of Public  
158 Health (DPH), Chennai, out of the ten blocks of Thiruvarur district, five sampling blocks  
159 reporting highest number of cases of scrub typhus from 2018-2023 were included in our study  
160 **Fig 1**. The study sites were divided into different zones namely, North (Nannilam,  
161 Koradachery), South (Mannargudi), East (Thiruvarur) and West (Nedamangalam) shown in  
162 **Fig 2**.

163 We designed a cross-sectional population survey with cluster sampling design. The sample size  
164 730 was estimated using the STATCALC version 7.2.5.0 considering the sero prevalence of  
165 scrub typhus in India to be around 31.8% [16] with margin of error as 5%, and design effect of  
166 2 % [19]

167 Fourteen clusters were chosen and within each cluster, the houses were chosen randomly using  
168 random number generator. Within a household, one participant was chosen randomly at the  
169 time of the visit from December 2023- July 2024. A total of 50-70 participants were recruited  
170 from each cluster to get the final sample size of 730.

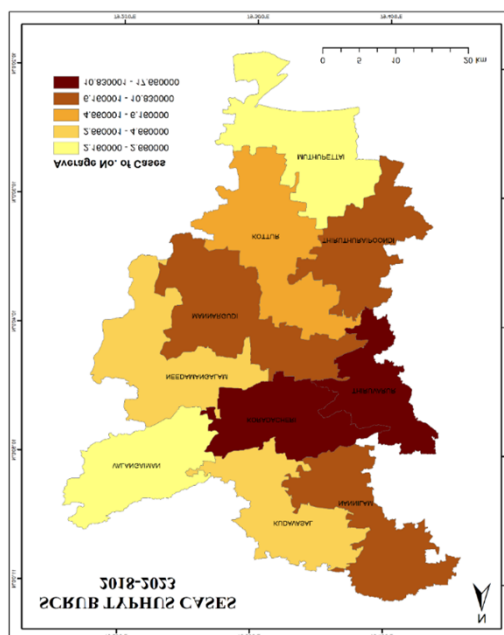
171

172

<i>Block</i>	<i>Villages</i>	<i>Number of houses covered</i>
<i>NannilamN</i>	Agarathirumalam (5270)	69
	Keelkudi (1213)	75
	Thirumeeachur (2917)	54
	Neelakudi (1194)	62
	Kottur (4853)	50
<i>NedamangalamW</i>	Kudithangicheri (1520)	50
	Annavasal (1821)	51
<i>KoradacheryN</i>	Perumalagaran (2123)	43
	Ammaiyappan (4616)	50
	Thiyagarapuram (1069)	22
<i>ThiruvarurE</i>	Pulivalam (7438)	30
	Thiruneiper (2753)	32
<i>MannargudiS</i>	Edayeremepthi (1048)	48
	Chitraiyur (1392)	94

173

174

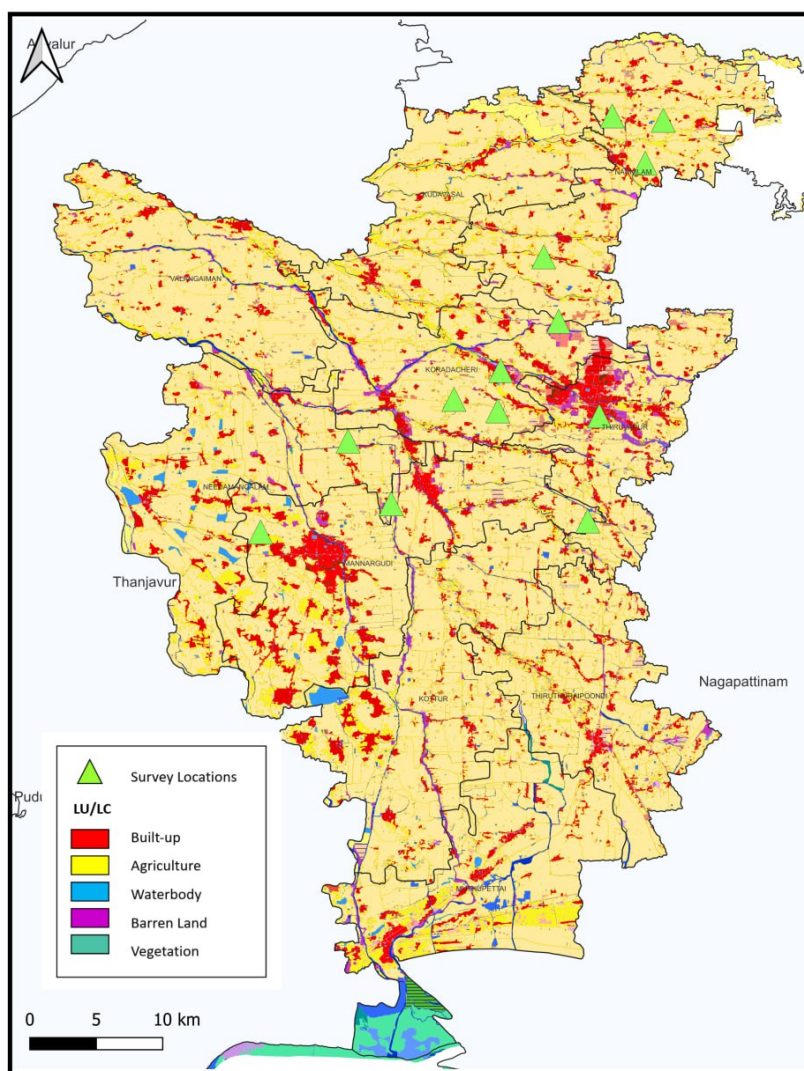


175  
176  
177  
178  
179  
180  
181  
182  
183  
184  
185  
186  
187  
188  
189  
190

**Fig 1: Average number of Scrub typhus cases of Thiruvarur district 2018-2023**

## 2.2 Data collection

A structured questionnaire format encompassing on exposure factors to scrub typhus among the chosen vulnerable human participants was developed. An information sheet with the study objectives and the consent form was distributed to the participants, choosing each participant from each household. The participants with informed consent filled out the questionnaire within 10-15 minutes. The illiterate participants were assisted by the researcher by dictating the questions and filling out the questionnaire based on their response. The participants of the age group above 12 were only included in our study.



191  
192 **Fig 2: Map showcasing the study locations surrounded by type of lands**  
193

### 194 **2.3 Variables of the Questionnaire**

195 The variables exposing to the risk factors for scrub typhus were included in the household  
196 survey. The questionnaire was divided into four parts with part I covering the “General  
197 information of the participants”, part II covering the “Assessment of residential area”, part III  
198 covering the “Occupational exposure”, part IV covering the “Health status of the participants”  
199 such as cardiorespiratory discomfort, and other respiratory illnesses if any. The validity of the  
200 questionnaire was tested by employing a pilot study in the sampling sites before rolling out the  
201 survey. Those respondents participated in the pilot study were excluded during final survey.  
202

#### 203 **Dependent variable**

204 The study used the exposure to scrub typhus as a dependent variable to study about how it is  
205 being affected by the independent variables.

#### 206 **Independent variables**

207 The independent variables used in this study were the socioeconomic factors, housing and  
208 infrastructure, environmental sanitation and hygiene, health and demographic factors, divided  
209 into different parts.  
210  
211

## 212 **2.4 Statistical Analysis**

213 The data was entered into the Excel sheet and was imported to the IBM statistical software,  
214 SPSS (Version 16.0), an analysis including the socio-demographic variables with their  
215 association to risk factors were carried out using the chi-square analysis.

216

## 217 **2.5 Ethics Statement**

218 The study was approved by the Institutional Human Ethics Review Board (**IHERB No:**  
219 **CUTN/IHERB/2023-045 R1**) and the Director of Public Health & Preventive Medicine  
220 Chennai (**R.No.011575/HEB/A2/2023**) for carrying out the household survey on selected  
221 blocks of the Thiruvarur district. A verbal consent was taken from the parents/guardians for  
222 those children below 18 years for their participation in the study.

223

224

## 225 **3.0 Results**

226

### 227 **3.1 Characteristics of Household Participants**

228

229 A total of 730 participants were enrolled in our study by filling up the questionnaire. The  
230 majority of the participants were females 455 (62.3%) of the age group 41-60 years 276  
231 (37.8%). The education was fairly balanced among the participants with 52.2% having primary  
232 education and 47.8% having secondary education. The study was conducted among the  
233 participants residing in the blocks of Thiruvarur district that reported scrub typhus cases from  
234 the past five years. The targeted village blocks (Nannilam, Nedamangalam, Koradachery,  
235 Thiruvarur, and Mannargudi) were further grouped into North, South, East, and West directions  
236 using the ArcGIS 10.4 software. Upon analyzing the general characters of the participants,  
237 **Table 1**, it was noted that over half of the population lives in Kutcha houses (55.3%), and most  
238 have outdoor toilets (82.1%) and indoor kitchens (87.5%). A significant portion of the  
239 population (58.4%) lived with animals, and 84.2% resided near barren land, primarily paddy  
240 fields (60.3%). Scrub typhus exposure showed affecting 76.8% of the population, yet only  
241 39.3% had protective measures in place. Half of the population walked barefoot, and 60%  
242 worked in agriculture or forestry-related fields. Health issues were common, with 28.1%  
243 reporting fever in the past month and 31.1% experiencing breathlessness, while conditions like  
244 body aches, chest discomfort, and eye irritation were also prevalent. Despite frequent illnesses,  
245 only 3.8% were hospitalized due to fever. Overall, the data reflects a population with significant  
246 environmental exposure and health challenges, particularly exposure to scrub typhus and other  
247 outdoor living conditions.

248

249 **Table 1: General Characteristics of Household Participants**

250

Characteristics	n	%
<b>Sex</b>		
Male	275	37.7
Female	455	62.3
<b>Age</b>		
12-20	54	7.4
21-40	252	34.5
41-60	276	37.8
61-80	148	20.3
<b>Education</b>		

Primary	381	52.2
Secondary	349	47.8
<b>Type of house</b>		
Kutchra	404	55.3
Pucca	326	44.7
<b>Where is the toilet located?</b>		
Indoor	131	17.9
Outdoor	599	82.1
<b>Where is the kitchen located?</b>		
Indoor	639	87.5
Outdoor	91	12.5
<b>Do you have animals in your home</b>		
Yes	426	58.4
No	304	41.6
<b>Is there any barren land close to your residence</b>		
Yes	615	84.2
No	115	15.8
<b>If yes specify the type of land (Barren/Paddy/Water bodies/NA)</b>		
Paddy	440	60.3
Water body	60	8.2
Barren land	134	18.4
NA	96	13.2
<b>Do you experience exposure to rodents?</b>		
Yes	561	76.8
No	169	23.2
<b>Do you have any implements in your home to protect from rodents</b>		
Yes	287	39.3
No	443	60.7
<b>Do you work in agricultural lands or in forestry-related?</b>		
Yes	438	60.0
No	292	40.0
<b>Do you walk barefoot?</b>		
Yes	369	50.5
No	361	49.5
<b>Do you dry clothes on bushes</b>		
Yes	221	30.3
No	509	69.7
<b>Have you ever been bitten by mites/ ticks/tiny insects?</b>		



Yes	297	40.7
No	433	59.3
<b>Developed Rashes/Eschars</b>		
Yes	195	26.7
No	535	73.3
<b>During the past one month have you had any illness such as Fever?</b>		
Yes	205	28.1
No	525	71.9
<b>What was that fever?</b>		
Common cold	195	26.7
Scrub typhus	3	27.1
Dengue	1	27.3
NA	531	72.7
<b>Hospitalization due to fever?</b>		
Yes	28	3.8
No	702	96.2
<b>Do you feel breathlessness?</b>		
Yes	227	31.1
No	503	68.9
<b>Body ache (Myalgia)</b>		
Yes	404	55.3
No	326	44.7
<b>Discomfort in chest?</b>		
Yes	190	26.0
No	540	74.0
<b>Irritation in eyes?</b>		
Yes	254	34.8
No	476	65.2
<b>Sneezing/Running nose?</b>		
Yes	341	46.7
No	389	53.3

251  
252  
253  
254  
255  
256  
257  
258  
259  
260  
261  
262  
263

### **3.2 Univariate Analysis of study participants**

**Table 2**, depicts the Univariate analysis with a significant difference noted for the variables including location of toilet with 78.8% people using outdoor toilets with exposure to scrub typhus, compared to indoor toilets ( $p=0.008$ ). The outdoor location of the kitchen in the households (96.7%) showed statistically significant difference to the exposure of scrub typhus ( $p<0.001$ ). The presence of animals in the home (79.6%) showed significant exposure to scrub typhus with ( $p=0.039$ ). The presence of barren land across the living habitats of the participants (78.5%) showed more exposure to scrub typhus with ( $p=0.012$ ) showing statistical significance with paddy fields showing the highest exposure of scrub typhus (85%), followed by the presence of water bodies (73.3%) and barren lands (61.2%) close to the proximity ( $p<0.001$ ). Upon investigating

264 on the usage of any rodent protective implements, it was noted that those using rodent  
 265 protections such as traps showed significant association to exposure to scrub typhus  
 266 (p<0.001). The practice of people drying clothes on bushes (93.2%) showed more  
 267 exposure to scrub typhus (p<0.001) compared to those who do not dry clothes on bushes  
 268 (69.7%). Walking barefoot participants, showed significant exposure to scrub typhus  
 269 (84.6%) (p<0.001) compared to those who use protective measures. The people  
 270 working in the fields, as agriculturalists, showed significant strong association to  
 271 exposure to scrub typhus (81.1%) with those non-workers (70.5%) (p=0.001). The  
 272 participants exposed to rodents had reported history of insect, mite or tick bite (84.8%)  
 273 (p<0.001). The health-related symptoms such as sneezing/running nose (p<0.001),  
 274 headache (p=0.002), and development of eschars/rashes (p=0.001) showed significant  
 275 association to scrub typhus. A borderline significant difference was noted in this study  
 276 with high exposure of rodent in participants hospitalized due to fever (85.7%)  
 277 (p=0.049). However, no statistical significance was seen between type of house,  
 278 household size, education, sex and other health conditions such as fever, body aches,  
 279 chest discomfort and breathlessness.  
 280  
 281

**Table 2: Univariate Analysis of Household Participants**

	<b>EXPOSURE TO SCRUB TYPHUS (561/730)</b>	<b>SIGNIFICANCE</b>
<b>Type of house</b>		
Kutchra (404)	315	0.424
Pucca (326)	246	
<b>Total member living in</b>		
2-3 (167)	125	0.099
4-5 (375)	300	
6-8 (188)	136	
<b>Education</b>		
Primary (381)	297	0.460
Secondary (349)	264	
<b>Sex</b>		
Male (275)	219	0.165
Female (455)	342	
<b>Toilet located</b>		
Indoor (131)	89	<b>0.008</b>
Outdoor (599)	472	
<b>Kitchen located</b>		
Indoor (639)	473	<b>0.000</b>
Outdoor (91)	88	
<b>Animals in home</b>		
Yes (426)	339	<b>0.039</b>
No (304)	222	
<b>Barren land close to the residence</b>		
Yes (615)	483	<b>0.012</b>
No (115)	78	

<b>Type of land closer to residence</b>		
Paddy (440)	374	<b>&lt; 0.001</b>
Water body (60)	44	
Barren (134)	82	
None of the above (96)	61	
<b>Use of any implements to protect from rodents</b>		
Yes (287)	278	<b>&lt;0.001</b>
No (443)	283	
<b>Drying clothes on bushes</b>		
Yes (221)	206	<b>&lt; 0.001</b>
No (509)	355	
<b>Walk Barefoot</b>		
Yes (369)	312	<b>&lt; 0.001</b>
No (361)	249	
<b>Work in Agricultural Fields</b>		
Yes (438)	355	<b>0.001</b>
No (292)	206	
<b>Bitten by Mites/Ticks/Insects</b>		
Yes (297)	252	<b>&lt; 0.001</b>
No (433)	309	
<b>Recent History of Fever</b>		
Yes (205)	161	0.499
No (525)	400	
<b>Hospitalization due to fever?</b>		
Yes (28)	24	<b>0.049</b>
No (702)	537	
<b>Development of Rashes/ Eschars</b>		
Yes (195)	166	<b>0.001</b>
No (535)	395	
<b>Sneezing/ Running Nose</b>		
Yes (341)	286	<b>&lt; 0.001</b>
No (389)	275	
<b>Irritation in the Eye</b>		
Yes (254)	203	0.151
No (476)	358	
<b>Discomfort in Chest</b>		
Yes (190)	149	0.550
No (540)	412	
<b>Breathlessness</b>		
Yes (227)	180	0.293
No (503)	381	

<b>Bodyache</b>		
Yes (404)	319	0.132
No (326)	242	
<b>Headache</b>		
Yes (330)	271	<b>0.002</b>
No (400)	289	

282

283

284

### **3.3 Multivariate Analysis**

285 The statistically significant variables in the Univariate analysis such as the location of toilet  
 286 and kitchen at home, presence of animals as pets at home, the type of barren land close to the  
 287 residence, the usage of any implements to protect from rodents, the practice of drying clothes  
 288 on bushes and walking barefoot with working in the fields of agriculture, often getting bitten  
 289 by mites, ticks and insects, hospitalization due to fever, development of rashes or eschars,  
 290 sneezing or runny nose and headache were included for further analysis in multiple regression  
 291 analysis since they showed low co-linearity.

292 The results showed a markedly significant association between the dependent variable of  
 293 exposure to scrub typhus, and the independent variables. The odds of having an exposure to  
 294 scrub typhus was found to be 3.768 times greater (aOR=3.768, CI: 1.036 - 13.699, p = 0.044)  
 295 in those households where kitchen was located outdoors compared to kitchen located inside.  
 296 The odds of having exposure to scrub typhus (aOR=2.140, CI: 1.019- 4.492, p=0.044) among  
 297 people living near paddy fields showed statistical significance **Fig 3**. The people living near  
 298 water bodies did not significantly affect exposure to scrub typhus (p > 0.05). The protective  
 299 implements with (aOR = 0.071 (CI: 0.034 - 0.147, p = 0.000) were strongly associated with  
 300 lower exposure of rodents (highly significant, p < 0.001). Drying clothes on bushes (aOR =  
 301 3.012 CI: 1.579 - 5.745, p = 0.001) showed significant increase for the exposure to scrub typhus  
 302 (p = 0.001).

303

304

305

306

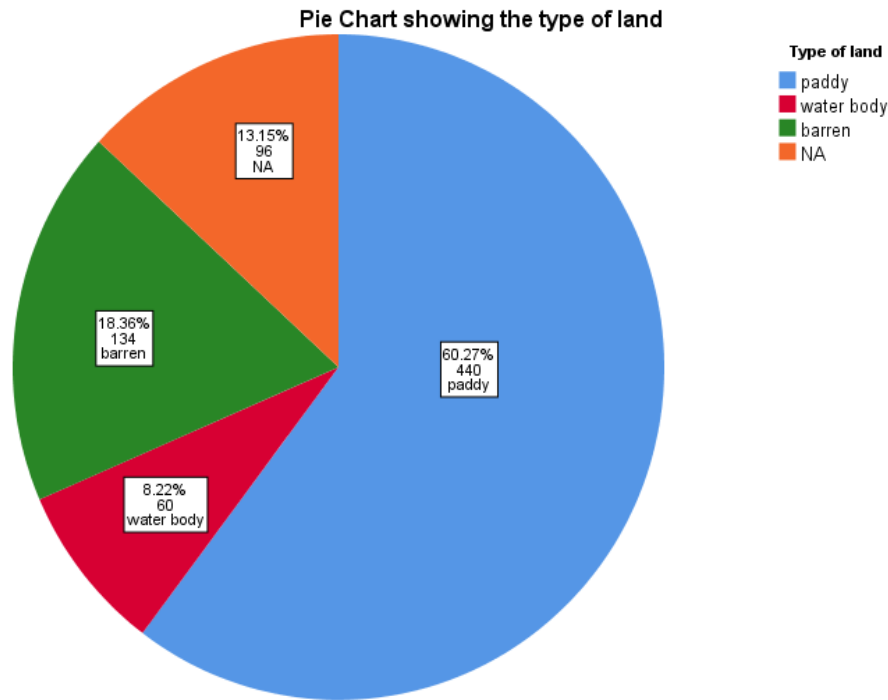
307

308

309

Variables		Unadjusted odds ratios (uOR)		Adjusted odds ratios (aOR)			
		Exp(β)	p-value*	Exp(β)	95%ConfidenceInterval		p-value*
					LowerBound	UpperBound	
<b>Toilet located</b>	Outdoor	.985	.938	1.375	0.832	2.271	0.214
	Indoor (Ref)	1		1			
<b>Kitchen located</b>	Outdoor	.285	<b>.000</b>	3.768	1.036	13.699	<b>.044*</b>
	Indoor (Ref)	1		1			
<b>Animals in home</b>	Yes	.746	.053	.887	.592	1.329	.561
	No (Ref)	1		1			

<b>Barren land close to the residence</b>	Yes	1.036	.861	.947	.259	3.456	.934
	No (Ref)	1		1			
<b>Type of land closer to residence</b>							
	Paddy	1.554	0.191	2.140	1.019	4.492	<b>.044</b>
	Water body	0.726	0.238	.647	.168	2.496	.527
	Barren	1		1			
<b>Use of any implements to protect from rodents</b>	Yes	1.824	<b>.000</b>	.071	.034	.147	<b>.000</b>
	No (Ref)	1		1			
<b>Drying clothes on bushes</b>	Yes	.551	<b>.000</b>	3.012	1.579	5.745	<b>.001</b>
	No (Ref)	1		1			
<b>Walk Barefoot</b>	Yes	1.732	<b>.000</b>	.702	.462	1.069	.099
	No (Ref)	1		1			
<b>Work in Agricultural Fields</b>	Yes	1.396	<b>.029</b>	.898	.581	1.388	.627
	No (Ref)	1		1			
<b>Bitten by Mites/Ticks/Insect</b>	Yes	1.326	.062	.723	.451	1.160	.179
	No (Ref)	1		1			
<b>Hospitalization due to fever?</b>	Yes	.840	.146	1.183	1.183	.656	.576
	No (Ref)	1		1			
<b>Development of Rashes/ Eschars</b>	Yes	.609	<b>.003</b>	.904	.530	1.543	.711
	No (Ref)	1		1			
<b>Sneezing/ Running Nose</b>	Yes	.830	.212	1.389	.906	2.129	.132
	No (Ref)	1		1			
<b>Headache</b>	Yes	1.205	<b>0.012</b>	1.277	.838	1.945	.255
	No (Ref)	1		1			



312  
313 **Fig 3: Pie chart showing the type of land occupied near to the living habitats of**  
314 **participants**

315  
316  
317  
318

#### 319 **4.0 Discussion**

320

321 The study emphasizing on population concerning the risk factors associated with scrub typhus,  
322 as a measure of preventive health approach was conducted among the 730 household  
323 participants of the Thiruvarur district using a questionnaire. Thiruvarur is known to be the “rice  
324 bowl of Tamil Nadu” with paddy fields covering many plains, of which 70% of the population  
325 is occupied in agriculture[20] were taken into consideration. Scrub typhus is a growing concern  
326 in the district of Thiruvarur with the number of reported cases to be 121 (DDHS, Thiruvarur)  
327 as of 2021, with the hotspots of areas in the district. The occurrence of disease in the district is  
328 quite prevalent with cases increasing every year. Henceforth, with an increasing trend of  
329 clinical cases of scrub typhus in the district, it was evident that the district is endemic to scrub  
330 typhus with the population being vulnerable to the risk factors.

331 In the present study, it is reported that the majority of the participants were females 455 (62.3%)  
332 of the age group 41-60 years, with over half of the population living in the Kutcha houses  
333 (55.3%), and most having outdoor toilets (82.1%) and indoor kitchens (87.5%). A significant  
334 portion of the population (58.4%) lived with animals, and 84.2% and 60.3% resided near barren  
335 land, paddy fields respectively. Rodent exposure affected 76.8% of the population, yet only  
336 39.3% had protective measures. Half of the population walked barefoot, and 60% worked in  
337 agriculture or forestry-related fields. Health issues were common, with 28.1% reporting fever  
338 in the past month and 31.1% experiencing breathlessness, while conditions like body aches,  
339 chest discomfort, and eye irritation were also reported. Despite frequent illnesses, only 3.8%  
340 were hospitalized due to fever.

341 The Multivariate regression analysis showed that the association between rodent exposure to  
342 the kitchen located outdoors (aOR=3.768, CI: 1.036 - 13.699, p = 0.044), people living near  
343 paddy fields (aOR=2.140, CI: 1.019- 4.492, p=0.044), the use of protective implements (aOR

344 = 0.071 (CI: 0.034 - 0.147,  $p < 0.001$ ), drying clothes on bushes (aOR = 3.012 CI: 1.579 -  
345 5.745,  $p = 0.001$ ) showed strong association to exposure to rodents.

346 The male population of Taiwan belonging to the age group of 40-69 years old with an  
347 occupation in the outdoors and military personnel were associated with a high incidence of  
348 scrub typhus disease, with more than 50% of cases reported [21].

349 A study conducted in Uttar Pradesh; India showed that children exposed to an outdoor  
350 environment with open defecation, cattle contact, indoor storing of firewood, and agricultural  
351 activities showed a higher risk of acquiring the disease[22]. Open defecation in a squatting  
352 position is the main leading etiology to scrub typhus infection-causing Eschar in the perennial  
353 area of the targeted accidental human hosts [23]. Considering the emerging cases of scrub  
354 typhus as a public health threat, a study at Vellore, on accessing the risk factors showed that  
355 the majority of the cases were the agricultural laborers living close to bushes and shrubs, with  
356 single-roomed homes [24]. Unstructured occupational health practices among people working  
357 in agricultural fields, especially in paddy and vegetable farms with exposure to scrub typhus,  
358 and domestic animals showed significant risk factors of having scrub typhus[25].  
359 Occupational exposure in the agricultural fields, animal husbandry, and armed personnel  
360 showed a significant association with scrub typhus cases in Taiwan [21]. The household  
361 participants with a nuisance to mice in their home, and with poor sanitation showed significant  
362 association to acquiring scrub typhus infection[26]. People working in croplands, with outdoor  
363 toiletries and pets, and sitting on grasses showed significant risk factors to developing scrub  
364 typhus (odds ratio 1,519;  $p < 0.001$ ) [27].

365 Our study showed results consistent with those of [28], who found a significant association  
366 between the location of the kitchen in outdoors to an increased risk of acquiring scrub typhus  
367 (OR 5.61; 95% CI: 1.51–23.01). Similarly, our findings also revealed a significant association  
368 between location of kitchens outdoor to exposure to scrub typhus (aOR = 3.768; 95% CI:  
369 1.036–13.699;  $p = 0.044$ ). Additionally, our study identified a significant risk associated with  
370 drying clothes on bushes (aOR = 3.012; 95% CI: 1.579–5.745;  $p = 0.001$ ), further increasing  
371 the likelihood of contracting the disease. In contrast, drying clothes on a clothesline, as reported  
372 by [28], demonstrated a protective effect, though it did not reach statistical significance (OR  
373 0.31; 95% CI: 0.08–1.08;  $p = 0.077$ ). Furthermore, the proximity of paddy fields to households  
374 was associated with a greater risk of scrub typhus (aOR = 2.140; 95% CI: 1.019–4.492;  $p =$   
375 0.044), compared to areas near water bodies. The use of protective measures significantly  
376 reduced exposure to scrub typhus (aOR = 0.071; 95% CI: 0.034–0.147;  $p < 0.001$ ), as  
377 highlighted by [5], suggesting these measures are an effective means of controlling scrub  
378 typhus.

379 Although the basic epidemiological characters like the demography, occupation, and  
380 environment were focused on the research studies conducted to study the etiology of scrub  
381 typhus [21,29], other factors like the temperature and rainfall were also found to be the  
382 contributing risk factors for scrub typhus [30]. Deforestation is also a leading cause of risk  
383 factor for scrub typhus with people being more exposed to rodents and animals with increasing  
384 cases of incidence of scrub typhus in South Korea [31].

385 The emerging trend of neglected tropical diseases has now put forth the limelight on their  
386 control and prevention. The various national health programs for communicable and non-  
387 communicable diseases by the government have strengthened the seriousness and ill effects of  
388 vector-borne diseases in the population. The active screening and surveillance of vectors with  
389 an aim of source reduction is the target to control and prevent vector-borne diseases.  
390 Eliminating the risk factors contributing to the disease at its primordial prevention will lower  
391 the disease burden. The policy makers along with the public health professionals should  
392 comprehensively evaluate the disease incidence and timely amendment of the programs as its  
393 necessity is required.

394 The basic knowledge about the disease scrub typhus and its transmission was assimilated by  
395 the study participants with the concept of health promotion and primordial disease prevention.  
396 With focusing on the impact of disease severity, the study participants were taught through ICT  
397 (Information and Communication Technologies) about basic sanitation and hygiene practices  
398 and to control rodent exposure in households.  
399

## 400 **5.0 Conclusion**

401  
402 The study reveals a statistical association between the risk factors and their impact on rising  
403 cases of scrub typhus across the globe thus flagging that it is a public health concern to control  
404 the disease at community level through individual approach. The need of having a National  
405 Programme focussing to control the rodent reservoirs carrying the vectors of scrub typhus and  
406 its vector control activities is of utmost importance. The appropriate vector control  
407 strategy such as using pyrethrum or allethrin aerosol bombs, rotenone or pyrethrum sprays,  
408 wiping the woods or furniture with cloth saturated with kerosene or any alternatives as kerosine  
409 is not available everywhere, and vacuum cleaners etc., is also crucial.

410 Information on scrub typhus, Education and Communication (IEC) and Communication  
411 Behavioral Impact (COMBI) are the most appropriate tools, as the people of the village still do  
412 practice open defecation, do dry their clothes on the bushes, walk bare foot as there is lack of  
413 awareness about the disease severity and its transmission.

414 An Eschar, which is the main symptom of scrub typhus must be diagnosed by the physicians  
415 early as they are found mostly in genital areas. The history of the patients need to be recorded  
416 properly. The vector control management should be initiated to control the vectors. The  
417 primordial prevention of the disease is very important to lower the incidence of cases and it  
418 acts as a protective shield towards acquiring any illness. Therefore, studies involving survey  
419 with participants will help grab attention to the disease burden and their transmission at the  
420 primordial level than letting the disease to enter into tertiary care.  
421

## 422 **Funding information**

423  
424 The authors declare that no funds, grants, or other support were received during the preparation  
425 of this manuscript.  
426

## 427 **CRedit authorship contribution statement**

428  
429 **Conceptualization-** Farhat, Jayalakshmi, Sujit  
430 **Formal analysis:** Farhat, Binduja, Swetha, Sathya Jeevitha  
431 **Writing– original draft:** Farhat, Sujit, Jayalakshmi  
432 **Writing– review & editing:** Rajalakshmi, Mansi, Blachander, Shanti, Natraj, PK Srivastava,  
433 Sujit  
434

## 435 **Declaration of competing interest**

436 None declared  
437

## 438 **Acknowledgment**

439 The authors acknowledge the invaluable contributions made by the respondents. We also  
440 extend our gratitude to the district health officials and other stakeholders for their significant  
441 support in conducting the research.  
442  
443  
444



445 **Financial support & Sponsorship**

446

447 The authors declare that no funds, grants, or other support were received during the preparation  
448 of this manuscript.

449

450 **Abbreviation**

451 aOR – Adjusted Odds Ratio

452 CI- Confidence Interval

453 WHO- World Health Organization

454 PUO- Pyrexia of Unknown Origin

455 IHERB- Institutional Human Ethics Review Board

456 COMBI- Communication Behavioral Impact

457 IEC- Information, Education, and Communication

458 ICT- Information and Communication Technologies

459 NVBDCP- National Vector Borne Disease Control Programs

460

461

462

463

464

465

466

467

468

469

470

471

472

473

474

475

476

477

478

479

480

481

482

483

484

485

486

487

488

489

490

491

492

493

494

495 **References**

- 496
- 497 1. Premaratna R. Rickettsial illnesses, a leading cause of acute febrile illness. *Clinical*
- 498 *Medicine*. 2022 Jan;22(1):2–5. 2.
- 499 2. Salje J, Weitzel T, Newton PN, Varghese GM, Day N. Rickettsial infections: A blind
- 500 spot in our view of neglected tropical diseases. *PLoS Negl Trop Dis*. 2021 May
- 501 13;15(5):e0009353.
- 502 3. Dasgupta S, Asish PR, Rachel G, Bagepally BS, Chethrapilly Purushothaman GK.
- 503 Global seroprevalence of scrub typhus: a systematic review and meta-analysis. *Sci*
- 504 *Rep*. 2024 Dec 1;14(1).
- 505 4. Xu G, Walker DH, Jupiter D, Melby PC, Arcari CM. A review of the global epidemiology
- 506 of scrub typhus. *PLoS Negl Trop Dis*. 2017;11(11):1–27.
- 507 5. Mohapatra RK, Al-Haideri M, Mishra S, Mahal A, Sarangi AK, Khatib MN, et al. Linking
- 508 the increasing epidemiology of scrub typhus transmission in India and South Asia: are
- 509 the varying environment and the reservoir animals the factors behind? *Frontiers in*
- 510 *Tropical Diseases*. 2024 May 14;5
- 511 6. Kuo CC, Lee PL, Chen CH, Wang HC. Surveillance of potential hosts and vectors of
- 512 scrub typhus in Taiwan. 2015 [cited 2022 Mar 14]; Available from:
- 513 <http://nidss.cdc.gov.tw/>
- 514 7. Elliott I, Pearson I, Dahal P, Thomas N V., Roberts T, Newton PN. Scrub typhus
- 515 ecology: a systematic review of *Orientia* in vectors and hosts. *Parasit Vectors*. 2019
- 516 Dec 4;12(1):513.
- 517 8. Govindarajan R, Rajamannar V, Krishnamoorthi R, Kumar A, Samuel PP. Distribution
- 518 pattern of chigger mites in south Tamil Nadu, India. *ENTOMON*. 2021 Oct
- 519 28;46(3):247–54.
- 520 9. Chakraborty S, Sarma N. Scrub typhus: An emerging threat. *Indian J Dermatol*.
- 521 2017;62(5):478.
- 522 10. Chaisiri K, Linsuwanon P, Makepeace BL. The chigger microbiome: big questions in a
- 523 tiny world. *Trends Parasitol*. 2023 Aug;39(8):696–707
- 524 11. Dorji K, Phuentshok Y, Zangpo T, Dorjee S, Dorjee C, Jolly P, et al. Clinical and
- 525 Epidemiological Patterns of Scrub Typhus, an Emerging Disease in Bhutan. *Trop Med*
- 526 *Infect Dis* [Internet]. 2019 Mar 29 [cited 2021 Oct 7];4(2):56. Available from:
- 527 </pmc/articles/PMC6631561/>
- 528 12. Pokhrel A, Rayamajhee B, Khadka S, Thapa S, Kapali S, Pun SB, et al.
- 529 Seroprevalence and Clinical Features of Scrub Typhus among Febrile Patients
- 530 Attending a Referral Hospital in Kathmandu, Nepal. *Trop Med Infect Dis* [Internet].
- 531 2021 [cited 2021 Oct 7];6(2). Available from: </pmc/articles/PMC8163188/>
- 532 13. Thapa S, Hamal P, Chaudhary NK, Sapkota LB, Singh JP. Original research: Burden
- 533 of scrub typhus among patients with acute febrile illness attending tertiary care hospital
- 534 in Chitwan, Nepal. *BMJ Open* [Internet]. 2020 Sep 17 [cited 2021 Oct 7];10(9).
- 535 Available from: </pmc/articles/PMC7500310/>
- 536 14. Musa TH, Ahmad T, Wana MN, Li W, Musa HH, Sharun K, et al. The epidemiology,
- 537 diagnosis and management of scrub typhus disease in China. *Hum Vaccin*
- 538 *Immunother*. 2021 Oct 3;17(10):3795–805.
- 539 15. Tasak N, Apidechkul T, Law ACK, Abdad MY, Srichan P, Perrone C, et al. Prevalence
- 540 of and factors associated with scrub typhus exposure among the hill tribe population
- 541 living in high incidence areas in Thailand: a cross-sectional study. *BMC Public Health*.
- 542 2023 Dec 1;23(1):2394.
- 543 16. Trowbridge P, Divya P, Premkumar PS, Varghese GM. Prevalence and risk factors for
- 544 scrub typhus in South India. *Tropical Medicine & International Health* [Internet]. 2017
- 545 May 1 [cited 2022 Oct 20];22(5):576–82. Available from:
- 546 <https://onlinelibrary.wiley.com/doi/full/10.1111/tmi.12853>

- 547 17. Finucane S, Renault<sup>2</sup> A, Hayden<sup>3</sup> MH, Ernst K, Yeo S. Developing and validating  
548 modular surveys for vector-borne diseases: a study protocol. Available from:  
549 <https://doi.org/10.1101/2024.09.12.24313529>  
550 18. Nigusie A, Gizaw Z, Gebrehiwot M, Destaw B. Vector-Borne Diseases and Associated  
551 Factors in the Rural Communities of Northwest Ethiopia: A Community-Based Cross-  
552 Sectional Study. *Environ Health Insights*. 2021 Jan 31;15.  
553 19. D’Cruz S, Perumalla SK, Yuvaraj J, Prakash JAJ. Geography and prevalence of  
554 rickettsial infections in Northern Tamil Nadu, India: a cross-sectional study. *Sci Rep*.  
555 2022 Dec 2;12(1):20798.  
556 20. Shukla A, Rajalakshmi A, Subash K, Jayakumar S, Arul N, Srivastava P, et al.  
557 Seasonal variations of dengue vector mosquitoes in rural settings of Thiruvavur district  
558 in Tamil Nadu, India. *J Vector Borne Dis*. 2020;57(1):63.  
559 21. Chang Y, Sun W, Lin J, Chen Y, Lai C, Lee C. Epidemiology and risk factors of scrub  
560 typhus in Taiwan: A nationwide database study from 1996 to 2014. *Zoonoses Public*  
561 *Health*. 2021 Dec 5;68(8):876–83  
562 22. Thangaraj JWV, Vasanthapuram R, Machado L, Arunkumar G, Sodha S V., Zaman K,  
563 et al. Risk Factors for Acquiring Scrub Typhus among Children in Deoria and  
564 Gorakhpur Districts, Uttar Pradesh, India, 2017. *Emerg Infect Dis*. 2018  
565 Dec;24(12):2364–7.  
566 23. Singh S. Seroprevalence trends of Scrub typhus among the febrile patients of Northern  
567 India: A prospective cross-sectional study Comparative evaluation of various  
568 diagnostic techniques, role of amoebic tRNA-linked short tandem repeats & host TLRs  
569 polymorphism in pathogenesis of amoebic liver abscess View project. 2021 [cited 2022  
570 Jan 26]; Available from: <https://www.researchgate.net/publication/351546193>  
571 24. Varghese G, Raj D, Francis M, Sarkar R, Trowbridge P, Muliylil J. Epidemiology &  
572 risk factors of scrub typhus in south India. *Indian Journal of Medical Research*.  
573 2016;144(1):76  
574 25. Abd Wahil MS, Mohd Ishak MF, Binti Mahmood NA, Azhar ZI, Jeffree MS, Syed Abdul  
575 Rahim SS, et al. Scrub Typhus and its Risk Factors in Asian Countries: A Meta-  
576 analysis. *Avicenna Journal of Clinical Microbiology and Infection*. 2021 Jun 29;8(2):74–  
577 80.  
578 26. Tran HTD, Hattendorf J, Do HM, Hoang TT, Hoang HTH, Lam HN, et al. Ecological  
579 and behavioural risk factors of scrub typhus in central Vietnam: a case-control study.  
580 *Infect Dis Poverty*. 2021 Dec 19;10(1):110.  
581 27. Zangpo T, Phuentshok Y, Dorji K, Dorjee C, Dorjee S, Jolly P, et al. Environmental,  
582 Occupational, and Demographic Risk Factors for Clinical Scrub Typhus, Bhutan.  
583 *Emerg Infect Dis*. 2023 May;29(5).  
584 28. Rose W, Kang G, Verghese VP, Candassamy S, Samuel P, Prakash JJA, et al. Risk  
585 factors for acquisition of scrub typhus in children admitted to a tertiary centre and its  
586 surrounding districts in South India: a case control study. *BMC Infect Dis*. 2019 Dec  
587 26;19(1):665.  
588 29. Wang Q, Ma T, Ding F, Lim A, Takaya S, Saraswati K, et al. Global and regional  
589 seroprevalence, incidence, mortality of, and risk factors for scrub typhus: A systematic  
590 review and meta-analysis. *International Journal of Infectious Diseases*. 2024  
591 Sep;146:107151.  
592 30. Lin FH, Chou YC, Chien WC, Chung CH, Hsieh CJ, Yu CP. Epidemiology and Risk  
593 Factors for Notifiable Scrub Typhus in Taiwan during the Period 2010–2019.  
594 *Healthcare*. 2021 Nov 23;9(12):1619.  
595 31. Min KD, Lee JY, So Y, Cho S II. Deforestation increases the risk of scrub typhus in  
596 Korea. *Int J Environ Res Public Health*. 2019 May 1;16(9).  
597