

Social determinants of cognitive aging trajectories across 39 countries

Victor Gilles^{1,2}, Syrine Salouhou^{1,2}, Rémi Vallée¹, Hugo Spiers³,
Michael Hornberger⁴, Antoine Garnier-Crussard^{2,5},
Antoine Coutrot^{1*}

¹CNRS, Ecole Centrale de Lyon, INSA Lyon, Université Claude Bernard
Lyon 1, Université Lumière Lyon 2, LIRIS, UMR5205, Lyon, France.

²Clinical and Research Memory Centre of Lyon, Hôpital des
Charpennes, Université Claude Bernard Lyon 1, Hospices Civils de
Lyon, Villeurbanne, France.

³IBN, University College London, London, England.

⁴Norwich Medical School, University of East Anglia, Norwich, England.

⁵Normandie Univ, UNICAEN, INSERM, U1237, PhIND
“Physiopathology and Imaging of Neurological Disorders”, Neuropresage
Team, Cyceron, Caen, France.

*Corresponding author(s). E-mail(s): antoine.coutrot@cnrs.fr;

Abstract

Distinguishing between normal and pathological cognitive aging is challenging because there is no typical older person. Some people in their eighties have cognitive abilities similar to many 30-year-olds, while others experience significant cognitive decline at a much younger age. The variation in age-related cognitive decline is not arbitrary. Several non-modifiable (e.g. genetic) and potentially modifiable (e.g. high blood pressure, smoking, and hearing loss) risk factors are associated with faster cognitive aging. Beyond these individual-level risk factors, a growing body of evidence has identified associations between cognitive impairment and social, economic, and environmental factors. These associations are even more pronounced in developing countries, notably because of greater disparities in education and socioeconomic status. However, people from these countries are rarely studied in scientific research: a citizen of a high-income country is 37 times more likely to appear in a study in top medical journals than a citizen of a low-income country. Here, we examine the association between sociodemographic factors and cognitive aging trajectories among 715,295 participants in 46

countries. Cognition is assessed using Sea Hero Quest, a spatial navigation video game that predicts spatial ability in the real world. We find that the social, economic, and environmental well-being of older adults, as measured by the Global AgeWatch Index (GAWI), is negatively associated with age-related decline in spatial ability. In particular, the GAWI Health and Environment subscores are strongly correlated with the effect of age on wayfinding performance. We also found that gender differences in spatial navigation skills increase with age, and even more so in countries with greater gender inequality, as estimated by the Gender Inequality Index. Our results show that cognitive aging must be understood as a dynamic, heterogeneous process that is strongly linked to potentially modifiable environmental and social factors.

Keywords: aging, cognitive decline, cross-country analysis, spatial abilities, gender, socio-demographic inequalities

Introduction

Population aging represents a unique demographic shift occurring globally for the first time. By 2030, one in six people worldwide will be aged 60 or older, and by 2050, the number of people in this age group will have doubled to 2.1 billion. The number of people aged 80 and older is expected to triple between 2020 and 2050, reaching 426 million [1]. This demographic shift is accompanied by a rise in age-related diseases: in 2017, the burden of age-related diseases represented 51.3% of the total global disease burden [2].

Dementia is one of the most prominent age-related diseases, marked by a considerable decline in cognitive abilities, which leads to dependence in daily activities [3]. Normal cognitive aging also involves a gradual cognitive decline. Distinguishing between normal and pathological cognitive aging is essential to optimize patient medical care, particularly for early identification of the disease before major neuronal damage occurs. This distinction is challenging, however, because there is no typical older person. Some individuals in their eighties have cognitive abilities similar to many 30-year-olds, while others experience a significant cognitive decline much younger.

The differences in age-related cognitive decline are not arbitrary. Several factors are associated with cognitive aging, including non-modifiable genetic predispositions and potentially modifiable risk factors such as hypertension, smoking, and hearing loss [4, 5]. Beyond these risk factors at the individual-level, a growing body of evidence has identified associations between cognitive disorders and social, economic and environmental factors [6–11]. For instance social isolation is a risk factor for dementia [12, 13], and social inequalities involving age, gender, ethnicity, purchasing power and overall health lead to major disparities in the development, diagnosis and treatment of cognitive disorders [14–22]. These inequalities are not only more frequent but also more pronounced in developing countries shaped by the interactions of lower education and socioeconomic status, a higher cardiovascular disease burden, and genetic

variability [23]. Most modifiable risk and protective factors for cognitive decline and dementia demonstrate sex/gender differences in their rate and/or risk expression, with these differences often being more pronounced in developing countries [24, 25]. For instance, country-level gender inequality is associated with brain structural differences [26], and with differences in cognitive performance [27].

Although population aging began in high-income countries (for example in Japan 30% of the population is already over 60 years old) low- and middle-income countries are now experiencing the greatest shift in age distribution. By 2050, over 65% of the world's population over 60 years will live in low- and middle-income countries. The combined impact of this demographic shift and these environmental risk factors underscores the importance of studying the effects of socioeconomic and environmental factors on cognitive aging, particularly in populations beyond the WEIRD (Western, Educated, Industrialized, Rich and Democratic) countries that are usually studied in scientific research [28]. A citizen of a WEIRD country is 37 times more likely to appear in a medical study from top medical journals than a citizen of a non-WEIRD country [29]. A notable exception to this population bias is a recent multi-centric study that analyzed functional Magnetic Resonance Imaging and electroencephalography data from 5,306 participants across 15 countries: 7 Latin American and Caribbean countries (LAC) and 8 non-LAC countries [30]. The authors investigated the discrepancies between brain age and chronological age and showed that structural socioeconomic inequality were influential predictors of increased brain-age gaps, especially in LAC.

In this study, we will investigate the association between demographic, social, economic and environmental well-being factors and cognitive aging among 715,295 participants in 46 countries. Cognitive aging will be assessed with Sea Hero Quest, a spatial navigation video game predictive of spatial ability in the real world [31, 32]. The Sea Hero Quest project has gathered one of the largest and most diverse behavioral dataset, including participants from every country and 150 000 participants above 50 y.o [27, 33]. Country-level socio-economic inequalities with aging will be assessed with the Global AgeWatch Index (GAWI) [34, 35], and gender inequality will be assessed with the Gender Inequality Index [36].

Results

Sea Hero Quest is a spatial navigation video game available on tablets and smartphones. It was designed to quantify the player's sense of direction through a series of tasks. Players were given the possibility to enter demographic information such as their age, gender, and nationality. Here we focus on wayfinding levels, where the player is asked to memorize a map of an aquatic environment with a set of ordered checkpoints. When the player is ready, the map disappears and they have to navigate as quickly as possible to the checkpoints, in the correct orders. The first two levels are tutorial levels as no sense of direction is required. To quantify spatial ability, we used the length of the trajectories in different levels: the shorter the trajectory, the better the spatial ability.



Fig. 1 Sea Hero Quest level and trajectory length | Top: Sea Hero Quest screenshots representing the map and a navigation scene for wayfinding level 11. Bottom: Trajectory length as a function of age for wayfinding (in blue) and training (in yellow) levels. Trajectory length is inversely proportional to performance. Data points represent the average trajectory lengths within five-year windows. Error bars correspond to standard errors.

Similarly to previously published studies based on the Sea Hero Quest dataset, to provide a reliable estimate of spatial navigation ability we only examined data from participants who completed at least 11 levels of the game (including the first 4 wayfinding levels: levels 6, 7, 8 and 11), and who entered their age, gender and nationality [37]. The focus of the current study being the differences in cognitive aging across countries, we only included participants from countries with at least 100 participants between 50 and 75 years old. This left us with 715,295 participants across 46 countries (320,876 females, mean age = 36.78 years, SD = 15.10 years). After a continuous decline in spatial ability with age, performance starts to re-increase after 78 y.o., see Figure 1. The first two levels did not require any spatial ability. They were designed to familiarize the participants with the game controls, and incidentally

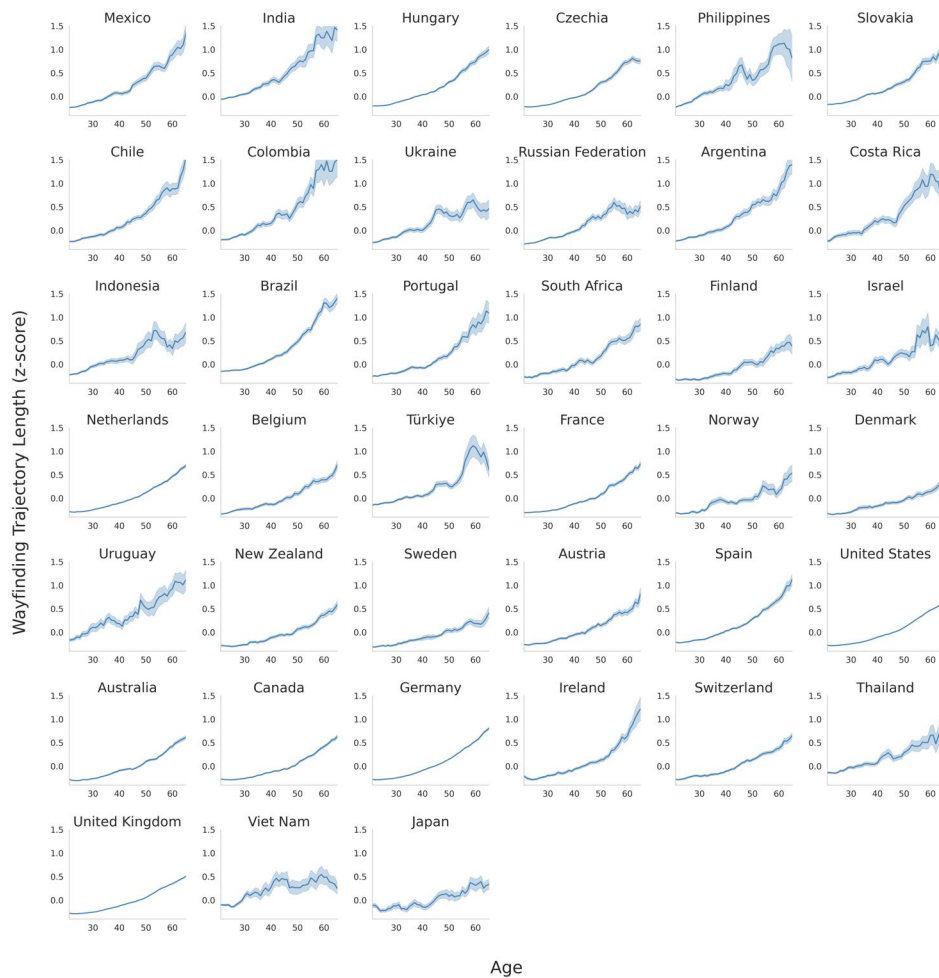


Fig. 2 Wayfinding trajectory length as a function of age in 39 countries | Z-scored wayfinding trajectory length from 20 to 65 y.o. Data points represent the average z-scored trajectory lengths within five-year windows. See Figure S1 for age range up to 95 y.o., and Figure S2 for the effect sizes between the older group (50-65 y.o.) and the younger group (20-35 y.o.). Error bars correspond to standard errors.

test their motor skills. Performance at these tutorial levels follow the same trends, but with a much weaker effect of age. To quantify these differences, we computed the effect size of age on motor and spatial ability. We used Hedge's g to contrast younger (20-35 y.o.) and older (50-65 y.o.) participants. We found $g = 0.94$ (95% CI = [0.93, 0.95]) for spatial ability, and $g = 0.23$ (95% CI = [0.22, 0.24]) for motor ability. We previously interpreted this counter-intuitive inflexion point as a strong selection bias, causing the performance of older participants to be substantially higher than would be expected in unselected participants of the same age [27, 37]. This pattern also exists for training performance, but to a much smaller scale. As shown in Supplementary Figure 1, this selection bias age varies between countries, from 48

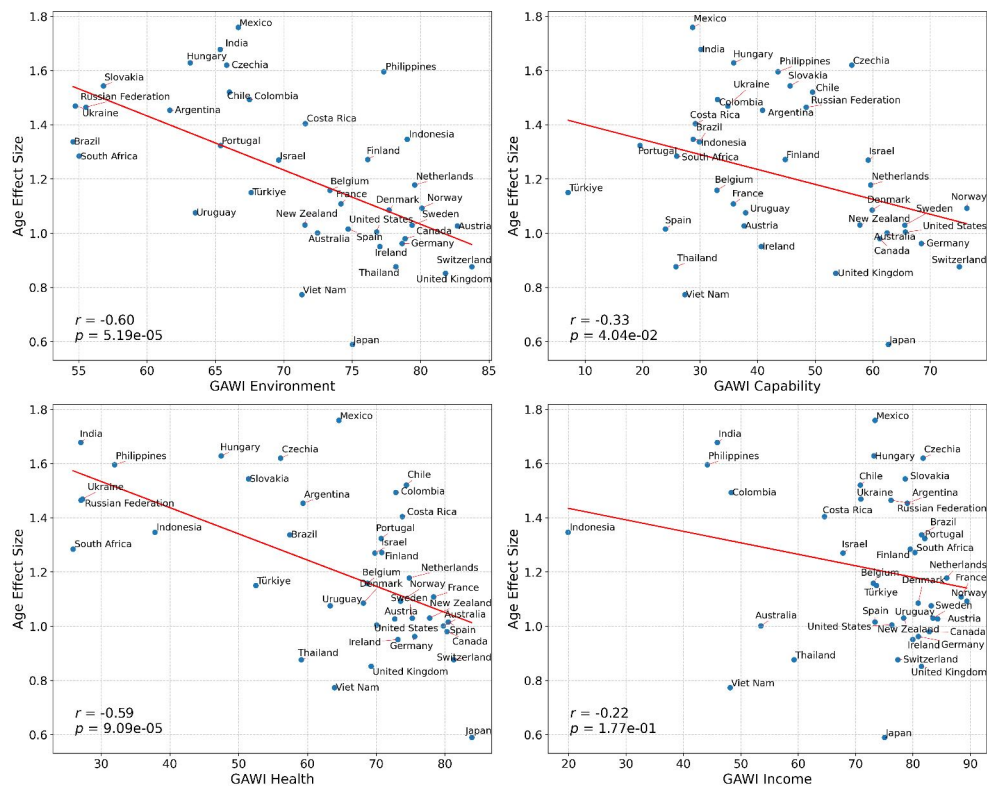


Fig. 3 Association between Age Effect Size and GAWI subscores | Positive age effect sizes indicate better wayfinding performance for younger participants. Larger GAWI values indicate better living condition for older participants. The red lines illustrate the strong negative correlations between the Health ($r = -0.59$, $p < 0.001$) and Environment ($r = -0.60$, $p < 0.001$) GAWI subscores and the age effect size.

y.o. in Uganda to 88 y.o. in Finland. To avoid biasing our aging estimates with this phenomenon, we decided to exclude countries where the selection bias age is under 65 y.o. We also excluded participants above 65 y.o. in the remaining countries, leading to a final dataset of 593,746 participants across 39 countries (268,708 females, mean age = 35.70 y.o., SD = 13.38 y.o.), see Table S1 and Figure 2. We defined a younger group with participants between 20 and 35 y.o. ($N = 289,762$, 43% females) and an older group with participants between 50 and 65 y.o. ($N = 118,132$, 53% females).

Cognitive aging trajectories and socio-economic inequalities

We observed a similar pattern of cognitive decline with age across all countries (Figure 2). However, the rate of this decline presents stark differences between countries. As previously we used Hedge's g to contrast younger (20-35 y.o.) and older (50-65 y.o.) participants, see Figure 2. Hedge's g ranged from 0.59 in Japan to 1.76 in Mexico, positive values indicating longer trajectories for older participants.

To better understand what are socio-economic inequalities associated with aging

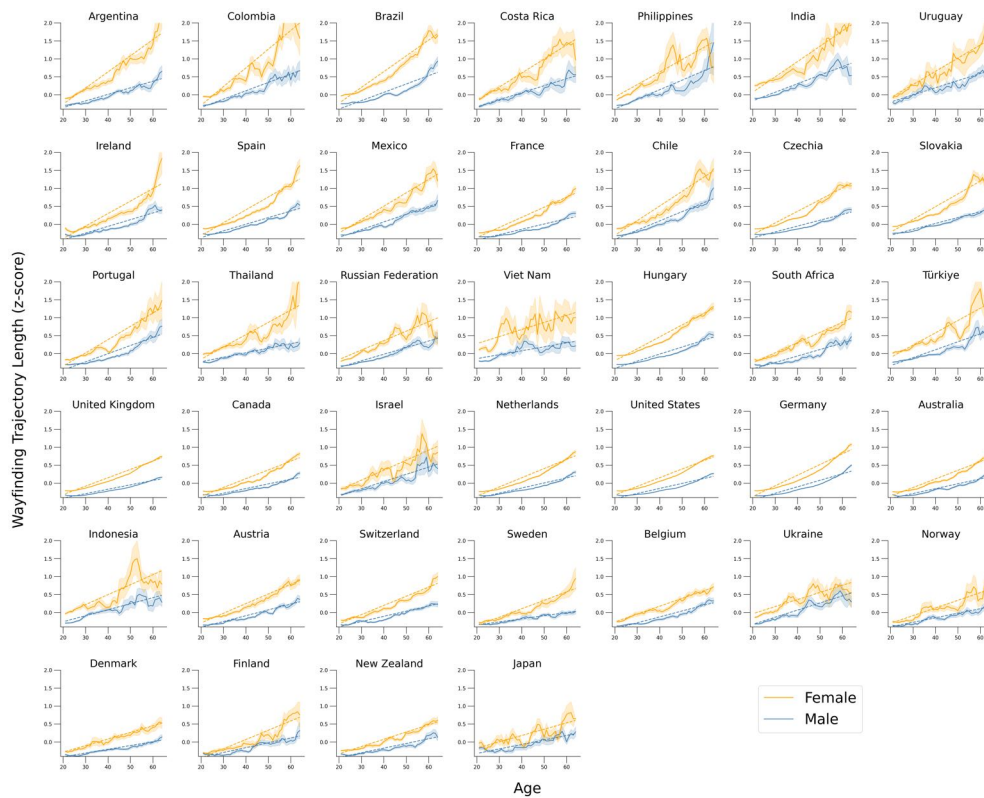


Fig. 4 Wayfinding trajectory length as a function of age, stratified by gender, in 39 countries | Countries are sorted according to the value of the age x gender interaction term clustered by country in a linear mixed model. Data points represent the average trajectory lengths within five-year windows. Error bars correspond to standard errors.

across the globe, the Global AgeWatch Index (GAWI) was developed in 2013 [34]. The most recent iteration, updated in 2015 [35], employs a four-category classification system, including Income Security, Health Status, Capability, and Enabling Environment (see Methods). We found a strong negative correlation between GAWI and the effect of age on wayfinding ability (Pearson's correlation $r = -0.57$, $p < 0.001$). Both Health and Environment GAWI subscores are strongly negatively correlated with the effect of age on wayfinding ability (Pearson's correlation $r = -0.59$ and $r = -0.60$ respectively, $p < 0.001$), see Figure 3. The Capability subscore was moderately correlated with the age effect ($r = -0.33$, $p = 0.04$) and the Income subscore was not significantly correlated with the age effect ($r = -0.22$, $p = 0.17$). To control whether these differences were not related to difference in age or gender distribution across countries, we computed a linear mixed model with trajectory length as the dependent variable, age, gender and their interaction as fixed effects, and age, gender and their interaction as random effects clustered by countries (see Methods). As with the Hedge's g , we obtained a strong correlation between the GAWI and the age slopes clustered by countries ($r = -0.56$, $p < 0.001$).

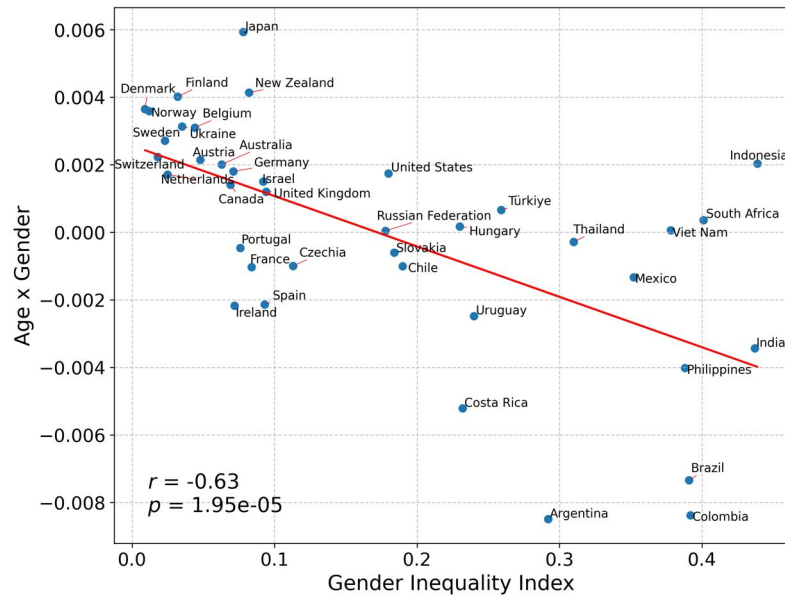


Fig. 5 Interaction between Age and Gender as a function of the Gender Inequality Index (GGI) | The Age x Gender interaction terms are calculated by a linear mixed model, with Trajectory Length as the response variable, Age, Gender and their interaction as fixed effects, and Age, Gender and their interaction as random effects clustered by countries. Negative Age x Gender interaction values correspond to gender differences increasing with age. Increasing GGI values correspond to larger gender differences within countries. We found a significant negative GGI correlation ($r = -0.63$, $p < 0.001$), indicating that in countries with greater gender inequality, females experience a more rapid cognitive decline than males.

Sex difference in cognitive aging

In Figure 4 we show the trajectory length as a function of age for males and females in each country. On average, males have better wayfinding performance than females. We showed in [27] that the gender effect size was correlated with a country-level metric of gender inequality: countries having a high level of gender inequality in their society also have a larger gender difference in Sea Hero Quest performance. Here we are interested in the difference in the cognitive slope across lifespan between male and female participants in the 39 included countries. As in the previous section, we computed a linear mixed model with trajectory length as the dependent variable, age, gender and their interaction as fixed effects, and age, gender and their interaction as random effects clustered by countries. We computed Pearson's correlation between the interaction coefficient clustered by countries and the Gender Inequality Index (GII). The GII is a country-level index for the measurement of gender inequality taking into account reproductive health, empowerment, and labor market participation [36]. We found a negative correlation (Figure 5, $r = -0.63$, $p < 0.001$), indicating that in countries with higher gender inequality, females have a faster cognitive decline in terms of wayfinding abilities compared to men.

Discussion

In this study, we investigate how age-related cognitive decline assessed using a spatial navigation video game varies in over 590 000 participants from 39 countries. We find that the social, economic and environmental well-being in older adults as measured by the Global AgeWatch Index (GAWI), is negatively associated with age-related decline in spatial ability. In particular, the Health and Environment GAWI subscores are strongly correlated with the effect of age on wayfinding performance. We also found that gender differences in spatial navigation skills increase with age, and even more so in countries with greater gender inequality, as estimated by the Gender Inequality Index. Our results show that the dynamics of cognitive aging vary considerably with socio-economic indicators at the country level. This is particularly true for health (life expectancy, psychological well-being) and environmental (social connections, physical safety, civic freedom, access to public transport) indicators. On the contrary, indicators of income (pension, poverty rate in older age, Gross National Income per capita) and capability (employment and educational status of older people) indicators are less associated with country differences in cognitive decline. These findings are consistent with previous work that have shown how environmental characteristics can affect individual and global health [8, 38–41]. For instance, more socially active older adults experience less cognitive decline in old age [42], and loneliness increase the risk for all-cause dementia by 30%, even when controlling for other modifiable risk factors [43]. Public policy such as age-friendly transportation (e.g. free public transport) could be used to improve cognitive health in older adults by promoting a less sedentary and more social behavior [44, 45].

While gender differences in some cognitive tasks have been shown to correlate with national indicators of gender equality [27, 46], the interaction between age and gender has rarely been analyzed (although see [22]). Our results suggest that the decline in spatial navigation skills is more pronounced in women over the course of the adult life. The gender difference in the slope of cognitive decline is correlated with the Gender Inequality Index (GII), indicating that in countries with lower gender inequality, males and females show smaller differences in cognitive aging. These differences can be interpreted in two ways. First, the acceleration of cognitive decline in women could be explained by a cumulative effect: the longer females live in an unequal environment, the greater the contrast with men. Second, cognitive gender differences could be greater for people in their sixties than in their twenties because they have not been exposed to the same inequalities, which tend to decrease with time [47]. In this way, differences between men and women at a particular age could be a snapshot of gender inequalities experienced by that generation.

There are several limitations to our study. First, the demographic profile of our participants is limited, as we only asked for general information such as their age, gender, and country of residence. Access to more precise information such as their socio-professional categories, level of education, reading or intellectual game habits would allow us to estimate their cognitive reserve, which is often associated with

cognitive decline trajectories [38, 48–50]. Similarly, knowledge of participants’ neighborhood at a finer scale would be helpful, as previous research has shown that greater access to green spaces from childhood through to adulthood can help to slow down the rate of cognitive decline in later life [51, 52].

Another limitation is the selection bias inherent in cross-sectional studies of unselected participants. A recent study showed that people with higher incomes and better computer skills are more likely to agree to participate in such scientific experiments [53]. As they get older, unselected participants are more likely to have above-average cognitive health, as shown by the inflection point in Figure 1. As our cognitive task is based on a video game, this selection bias is likely reinforced by the effect of digital exclusion, which particularly affects older people [54] and participants from less developed countries [55]. Digital device use has been positively associated with cognitive reserve and cognition [50, 56], in addition to general health [57, 58] and social connection [59–61] in older people. However, two results mitigate these concerns. First, the effect of age on pure motor skills, as assessed during the tutorial levels, was four times smaller than the effect of age on wayfinding skills. This indicates that the effects measured with SHQ and presented in this manuscript have a strong cognitive component and are not simply a matter of familiarity with digital technology. Second, we have previously reported that SHQ performance is predictive of performance at a similar task in the real world [31]. This result was recently replicated in a cohort of older adults (54-74 years old), but not for SHQ levels identified as either too easy or too difficult, which were not included in the current analysis [32].

We use spatial navigation as a proxy for cognition. Spatial navigation is particularly interesting because it involves many cognitive processes, including interpreting a map, planning a multi-stop route, remembering the route, monitoring progress along the route and updating the route plan, and transforming the bird’s eye view into an egocentric perspective [62]. It relies on different brain structures such as the hippocampus (episodic memory, map representations, place cells), the retrosplenial cortex (egocentric and allocentric translation), or the posterior cingulate cortex (landmark position and attention). All of these brain structures are affected by Alzheimer disease in preclinical and prodromal stages [63], and are therefore often implicated in age-related cognitive decline. However, other cognitive functions are not directly probed by our spatial navigation task, such as purely memory-based or executive functions, which are also often affected by age-related cognitive decline.

Conclusions

Our study highlights the diversity of cognitive aging trajectories in different countries across the five continents and their association with socioeconomic indicators and gender inequalities across the lifespan. The challenge of cognitive aging, with an exponential increase in cognitive impairment and dementia in the coming decades, is even more important to understand and prevent in countries of the global South, by addressing growing socioeconomic inequalities, in addition to traditional individual risk factors. Cognitive aging must be understood as a dynamic, heterogeneous process

that is strongly linked to environmental and social factors. From a prevention point of view, a better understanding of the drivers of these inequalities is a key point for preparing specific interventions in education, global health and social connectedness. These interventions need to be implemented at the neighborhood level, but also led by strong public policies at the national level, in order to better prepare for the challenges of aging populations around the world.

Methods

Data

The design and the data collection process for SHQ have been thoroughly described in previous manuscripts [27, 37]. The data has been collected between 2016 and 2019 with the mobile and tablet video game Sea Hero Quest, freely available on all app platforms.

Informed consent and ethics approval

This study has been approved by the UCL Ethics Research Committee. The ethics project ID number is CPB/2013/015. Participants were made aware of the purpose of the game within the opening screen. Demographics such as their age, gender and home country were provided by consenting participants. They were asked whether they were willing to share their data with us and were guided as to where they could opt out. The opt-out was always available in the settings.

Cognitive Task

In this study we used the wayfinding task in the video game Sea Hero Quest. At the beginning of each wayfinding level, participants were shown locations (checkpoints) to visit on a map. The map disappeared, and they had to navigate a boat through a virtual environment to find the different checkpoints. The checkpoints were typically not encountered in the order in which they were passed, but had to be navigated by returning from one checkpoint to another (Figure 1). The first two levels were tutorial levels to familiarize the participant with the game commands.

Participants A total of 3 881 449 participants played at least one level of the game; 60.8% of the participants provided basic demographics (age, gender, home country) and 27.6% provided more detailed demographics (home environment, level of education). To provide a reliable estimate of spatial navigation ability, we examined data only from participants who had completed a minimum of 11 levels of the game (including the first 4 wayfinding levels: levels 6, 7, 8 and 11) and who entered all their demographics. The focus of the current study being the differences in cognitive aging across countries, we only included participants from countries with at least 100 participants between 50 and 75 years old. This left us with 715 295 participants across 46 countries (320 876 females, mean age = 36.78 years, SD = 15.10 years). To avoid biasing our aging estimates with the selection bias (see in Results and Discussion), we decided to exclude participants from countries where the selection bias age is under 65 y.o. We also excluded participants above 65 y.o. in the remaining countries, leading to a final dataset of 593 746 participants across 39 countries (268 708 females, mean age = 35.70 y.o., SD = 13.38 y.o.), see Table S1.

Wayfinding performance

We collected the trajectory of each participant across levels 1, 2, 6, 7, 8 and 11. The coordinates of participants' trajectories were sampled at $F_s = 2$ Hz. As in previous studies [27, 37], we computed the trajectory length in pixels, defined as the sum of the Euclidean distance between the points of the trajectory. The first two levels only

reflected video gaming skill (motor dexterity with the game controls) as no sense of direction was required to complete them. For each level, we took the z-score of participants' trajectory length. This normalization leads to more interpretable results across levels, which all have different size. We defined the overall training trajectory length metric as the average between the z-scored trajectory lengths of training levels 1 and 2. We defined the overall wayfinding trajectory length metric as the average between the z-scored trajectory lengths of wayfinding levels 6, 7, 8, and 11. As this metric is based on the trajectory length, it varies as the opposite of the performance: the longer the trajectory length, the worse the performance.

Country-level indicators

To quantify socio-economic inequalities associated with aging across the globe, the Global AgeWatch Index (GAWI) was developed in 2013 [34]. The most recent iteration, updated in 2015 [35], employs a four-category classification system, including:

- **Income security:** pension income coverage, poverty rate in old age, relative welfare of older people, GNI per capita
- **Health status:** life expectancy at 60, Healthy life expectancy at 60, psychological well-being
- **Capability:** employment of older people, educational status of older people
- **Enabling environment:** social connections, physical safety, civic freedom, access to public transport.

Country-level gender inequality has been quantified with the Gender Inequality Index (GII), an indicator developed by the United Nations Development Programme available for more than 170 countries. [64, 65]. We used the latest available GII values (2022). This index is a composite measure to quantify the loss of achievement within a country due to gender inequality. It uses three dimensions to measure opportunity cost: reproductive health, empowerment, and labor market participation. This indicator has recently been used in a study comparing brain health across countries [25, 30].

Statistical Analysis

- LMM computation

We computed a linear mixed model with trajectory length as the dependent variable, age, gender and their interaction as fixed effects, and age, gender and their interaction as random effects clustered by countries:

$$\text{Trajectory length} \sim \text{age*gender} + (\text{age*gender} \mid \text{country})$$

To study the effect of age across countries we used the age random slopes clustered by countries. To study the sex differences in cognitive aging across countries we used the age x gender random interaction values clustered by countries

The parameters of the linear mixed models were estimated with the maximum likelihood method, and the covariance matrix of the random effects were estimated with the Cholesky parameterization.

- Hedge's g

Hedge's g between group 1 and group 2 is defined as :

$$g = \frac{(m_1 - m_2)}{s_{pooled}^*}$$

where m_i is the mean of group i , and s_{pooled}^* is the pooled and weighted standard deviation:

$$s_{pooled}^* = \sqrt{\frac{(n_1 - 1)s_1^2 + (n_2 - 1)s_2^2}{n_1 + n_2 - 2}}$$

with n_i the sample size of group i , and s_i the standard deviation of group i .

The 95% confidence intervals displayed in this manuscript are exact analytical confidence intervals based on iterative determination of noncentrality parameters of noncentral t or F distributions

Code and Data availability

The code and data necessary to reproduce the results presented in this manuscript are available at https://osf.io/e6tgk/?view_only=1890283b477b4f259f75e8a7c9117045.

We also set up a portal where researchers can invite a targeted group of participants to play SHQ and generate data about their spatial navigation capabilities. Those invited to play the game will be sent a unique participant key, generated by the SHQ system according to the criteria and requirements of a specific project. <https://dash.seahero.quest/wiki/> Access to the portal will be granted for non-commercial purposes.

Funding Information

This work was supported by a grant from the French National Research Agency as part of the "Investissements d'Avenir ExcellencES" program from France 2030 (SHAPE-Med@Lyon ; ANR-22-EXES-0012), and by the ANR project ACTSOMA (ANR-23-CE45-0023-01). The Sea Hero Quest initiative has originally been funded and supported by Deutsche Telekom. The video-game company Glitchers designed and produced the game.

References

- [1] World Health Organization.: Ageing and health. Accessed: Nov 2024. Available from: <https://www.who.int/news-room/fact-sheets/detail/ageing-and-health>.
- [2] Chang A, Skirbekk V, Tyrovolas S, Kassebaum N, Dieleman J. Measuring population ageing: an analysis of the Global Burden of Disease Study 2017. *The Lancet Public Health*. 2019 03;4:e159–e167. [https://doi.org/10.1016/S2468-2667\(19\)30019-2](https://doi.org/10.1016/S2468-2667(19)30019-2).

- [3] Dubois B, Villain N, Schneider L, Fox N, Campbell N, Galasko D, et al. Alzheimer disease as a clinical-biological construct—an International Working Group recommendation. *JAMA neurology*. 2024;.
- [4] Dintica CS, Yaffe K. Epidemiology and Risk Factors for Dementia. *Psychiatric Clinics of North America*. 2022 12;45(4):677–689. <https://doi.org/10.1016/j.psc.2022.07.002>.
- [5] Livingston G, Huntley J, Liu KY, Costafreda SG, Selbæk G, Alladi S, et al. Dementia prevention, intervention, and care: 2024 report of the Lancet standing Commission. *The Lancet*. 2024 8;404(10452):572–628. [https://doi.org/10.1016/S0140-6736\(24\)00064-X](https://doi.org/10.1016/S0140-6736(24)00064-X).
- [6] Besser LM, Hirsch JA, Galvin JE, Renne J, Park J, Evenson KR, et al. Associations between neighborhood park space and cognition in older adults vary by US location: The Multi-Ethnic Study of Atherosclerosis. *Health & Place*. 2020 11;66:102459. <https://doi.org/10.1016/j.healthplace.2020.102459>.
- [7] Cerin E, Rainey-Smith SR, Ames D, Lautenschlager NT, Macaulay SL, Fowler C, et al. Associations of neighborhood environment with brain imaging outcomes in the Australian Imaging, Biomarkers and Lifestyle cohort. *Alzheimer’s & Dementia*. 2017 4;13(4):388–398. <https://doi.org/10.1016/j.jalz.2016.06.2364>.
- [8] Finlay J, Esposito M, Langa KM, Judd S, Clarke P. Cognability: An Ecological Theory of neighborhoods and cognitive aging. *Social Science & Medicine*. 2022 9;309:115220. <https://doi.org/10.1016/j.socscimed.2022.115220>.
- [9] Clarke PJ, Weuve J, Barnes L, Evans DA, Mendes de Leon CF. Cognitive decline and the neighborhood environment. *Annals of Epidemiology*. 2015 11;25(11):849–854. <https://doi.org/10.1016/j.annepidem.2015.07.001>.
- [10] Wu YT, Prina AM, Jones AP, Barnes LE, Matthews FE, Brayne C, et al. Community environment, cognitive impairment and dementia in later life: results from the Cognitive Function and Ageing Study. *Age and Ageing*. 2015 11;44(6):1005–1011. <https://doi.org/10.1093/ageing/afv137>.
- [11] Weng PH, Chen JH, Chiou JM, Tu YK, Chen TF, Chiu MJ, et al. The effect of lifestyle on late-life cognitive change under different socioeconomic status. *PLoS One*. 2018;13(6):e0197676. <https://doi.org/10.1371/journal.pone.0197676>.
- [12] Evans IEM, Martyr A, Collins R, Brayne C, Clare L. Social Isolation and Cognitive Function in Later Life: A Systematic Review and Meta-Analysis. *Journal of Alzheimer’s Disease*. 2019;70(s1):S119–S144. <https://doi.org/10.3233/JAD-180501>.
- [13] Lyu C, Siu K, Xu I, Osman I, Zhong J. Social Isolation Changes and Long-Term Outcomes Among Older Adults. *JAMA Network Open*. 2024 7;7(7):e2424519.

<https://doi.org/10.1001/jamanetworkopen.2024.24519>.

- [14] Daly TP. Wealth as a determinant of brain health. *BMJ*. 2022;379(o2512).
- [15] Krishnamurthy S, Rollin FG. We must be clear that the root cause of racial disparities in Alzheimer's disease is racism. *Alzheimer's & Dementia*. 2023;19(11):5305–5306.
- [16] Daly T. The iceberg of dementia risk: empirical and conceptual arguments in favor of structural interventions for brain health. *Cerebral Circulation-Cognition and Behavior*. 2023;6:100193.
- [17] Ibáñez A, Legaz A, Ruiz-Adame M. Addressing the gaps between socioeconomic disparities and biological models of dementia. *Brain*. 2023;146(9):3561–3564.
- [18] Geraets AFJ, Schram MT, Jansen JFA, Köhler S, van Boxtel MPJ, Eussen SJPM, et al. The associations of socioeconomic position with structural brain damage and connectivity and cognitive functioning: The Maastricht Study. *Social Science & Medicine*. 2024 7;355:117111. <https://doi.org/10.1016/j.socscimed.2024.117111>.
- [19] Woo J, Yu R, Cheung K, Lai ETC. How Much Money Is Enough? Poverty and Health in Older People. *Journal of Nutrition, Health and Aging*. 2020;24(10):1111–1115. <https://doi.org/10.1007/s12603-020-1423-3>.
- [20] Ferrarini T, Nelson K, Sjöberg O. Decomposing the effect of social policies on population health and inequalities: An empirical example of unemployment benefits. *Scandinavian Journal of Public Health*. 2014 11;42(7):635–642. <https://doi.org/10.1177/1403494814546346>.
- [21] Reuben A, Richmond-Rakerd LS, Milne B, Shah D, Pearson A, Hogan S, et al. Dementia, dementia's risk factors and premorbid brain structure are concentrated in disadvantaged areas: National register and birth-cohort geographic analyses. *Alzheimer's & Dementia*. 2024 5;20(5):3167–3178. <https://doi.org/10.1002/alz.13210>.
- [22] Arenaza-Urquijo EM, Boyle R, Casaletto K, Anstey KJ, Vila-Castelar C, Colverson A, et al. Sex and gender differences in cognitive resilience to aging and Alzheimer's disease. *Alzheimer's & Dementia*. 2024;20(8):5695–5719. <https://doi.org/https://doi.org/10.1002/alz.13844>. <https://alz-journals.onlinelibrary.wiley.com/doi/pdf/10.1002/alz.13844>.
- [23] Alladi S, Hachinski V. World dementia: One approach does not fit all. *Neurology*. 2018 07;91:10.1212/WNL.0000000000005941. <https://doi.org/10.1212/WNL.0000000000005941>.

- [24] Ferretti MT, Martinkova J, Biskup E, Benke T, Gialdini G, Nedelska Z, et al. Sex and gender differences in Alzheimer’s disease: current challenges and implications for clinical practice. *European Journal of Neurology*. 2020;27(6):928–943. <https://doi.org/https://doi.org/10.1111/ene.14174>. <https://onlinelibrary.wiley.com/doi/pdf/10.1111/ene.14174>.
- [25] Baez S, Castro-Aldrete L, Britton G, Ibanez A, Santuccion-Chadha A. Enhancing brain health in the global south through a sex and gender lens. *Nature Mental Health*. 2024 10;.
- [26] Zugman A, Alliende LM, Medel V, Bethlehem RAI, Seidlitz J, Ringlein G, et al. Country-level gender inequality is associated with structural differences in the brains of women and men. *Proceedings of the National Academy of Sciences*. 2023;120(20):e2218782120. <https://doi.org/10.1073/pnas.2218782120>.
- [27] Coutrot A, Silva R, Manley E, Cothi W, Sami S, Bohbot V, et al. Global Determinants of Navigation Ability. *Current Biology*. 2018 08;28. <https://doi.org/10.1016/j.cub.2018.06.009>.
- [28] Henrich J, Heine SJ, Norenzayan A. The weirdest people in the world? *Behavioral and Brain Sciences*. 2010 6;33(2-3):61–83. <https://doi.org/10.1017/S0140525X0999152X>.
- [29] Gurven MD, Lieberman DE. WEIRD bodies: mismatch, medicine and missing diversity. *Evolution and human behavior : official journal of the Human Behavior and Evolution Society*. 2020;41 5:330–340.
- [30] Moguilner S, Baez S, Hernandez H, Migeot J, Legaz A, Gonzalez-Gomez R, et al. Brain clocks capture diversity and disparities in aging and dementia across geographically diverse populations. *Nature Medicine*. 2024;.
- [31] Coutrot A, Schmidt S, Coutrot L, Pittman J, Hong L, Wiener JM, et al. Virtual navigation tested on a mobile app is predictive of real-world wayfinding navigation performance. *PLOS ONE*. 2019 03;14(3):1–15. <https://doi.org/10.1371/journal.pone.0213272>.
- [32] Goodroe S, Fernandez Velasco P, Gahnstrom CJ, Wiener J, Coutrot A, Hornberger M, et al. Predicting real-world navigation performance from a virtual navigation task in older adults. *bioRxiv*. 2024;<https://doi.org/10.1101/2024.07.23.604766>.
- [33] Spiers HJ, Coutrot A, Hornberger M. Explaining World-Wide Variation in Navigation Ability from Millions of People: Citizen Science Project Sea Hero Quest. *Topics in Cognitive Science*. 2023;15(1):120–138. <https://doi.org/https://doi.org/10.1111/tops.12590>. <https://onlinelibrary.wiley.com/doi/pdf/10.1111/tops.12590>.

- [34] Global AgeWatch Index 2013: Purpose, Methodology and Results. HelpAge International; 2013. Available from: <https://www.helpage.org/global-agewatch/reports/global-agewatch-index-2013-purpose-methodology-and-results/>.
- [35] Global AgeWatch Index 2015: Insight Report. HelpAge International; 2015. Available from: <https://www.helpage.org/global-agewatch/reports/global-agewatch-index-2015-insight-report-summary-and-methodology/>.
- [36] Gaye A, Klugman J, Kovacevic M, Twigg S, Zambrano E. Measuring Key Disparities in Human Development: The Gender Inequality Index. United Nations Development Programme. 2010 12;.
- [37] Coutrot A, Manley E, Goodroe S, Gahnstrom C, Filomena G, Yesiltepe D, et al. Entropy of city street networks linked to future spatial navigation ability. *Nature*. 2022 4;604(7904):104–110. <https://doi.org/10.1038/s41586-022-04486-7>.
- [38] Stern Y. Cognitive reserve in ageing and Alzheimer’s disease. *Lancet Neurology*. 2012 11;11(11):1006–1012. [https://doi.org/10.1016/S1474-4422\(12\)70191-6](https://doi.org/10.1016/S1474-4422(12)70191-6).
- [39] Yuchi W, Sbihi H, Davies H, Tamburic L, Brauer M. Road proximity, air pollution, noise, green space and neurologic disease incidence: a population-based cohort study. *Environmental Health*. 2020 1;19(1):8. <https://doi.org/10.1186/s12940-020-0565-4>.
- [40] Chudyk AM, McKay HA, Winters M, Sims-Gould J, Ashe MC. Neighborhood walkability, physical activity, and walking for transportation: A cross-sectional study of older adults living on low income. *BMC Geriatrics*. 2017 4;17(1):82. <https://doi.org/10.1186/s12877-017-0469-5>.
- [41] Montine TJ, Cholerton BA, Corrada MM, Edland SD, Flanagan ME, Hemmy LS, et al. Concepts for brain aging: resistance, resilience, reserve, and compensation. *Alzheimer’s Research & Therapy*. 2019 3;11(1):22. <https://doi.org/10.1186/s13195-019-0479-y>.
- [42] James BD, Wilson RS, Barnes LL, Bennett DA. Late-life social activity and cognitive decline in old age. *Journal of the International Neuropsychological Society*. 2011;17(6):998–1005.
- [43] Luchetti M, Aschwanden D, Sesker AA, Zhu X, O’Súilleabháin PS, Stephan Y, et al. A meta-analysis of loneliness and risk of dementia using longitudinal data from 600,000 individuals. *Nature Mental Health*. 2024;p. 1–12.
- [44] Reinhard E, Carrino L, Courtin E, van Lenthe FJ, Avendano M. Public transportation use and cognitive function in older age: a quasiexperimental evaluation of the free bus pass policy in the United Kingdom. *American Journal of Epidemiology*. 2019;188(10):1774–1783.

- [45] Iso-Markku P, Aaltonen S, Kujala UM, Halme HL, Phipps D, Knittle K, et al. Physical activity and cognitive decline among older adults: a systematic review and meta-analysis. *JAMA Network Open*. 2024;7(2):e2354285.
- [46] Riley E, Okabe H, Germine L, Wilmer J, Esterman M, DeGutis J. Gender Differences in Sustained Attentional Control Relate to Gender Inequality across Countries. *PLOS ONE*. 2016 11;11(11):1–15. <https://doi.org/10.1371/journal.pone.0165100>.
- [47] United Nations Development Programme.: Human Development Reports. Accessed: 2024-10-10. Available from: <https://hdr.undp.org/data-center/documentation-and-downloads>.
- [48] Pettigrew C, Soldan A. Defining Cognitive Reserve and Implications for Cognitive Aging. *Current Neurology and Neuroscience Reports*. 2019 1;19(1):1. <https://doi.org/10.1007/s11910-019-0917-z>.
- [49] Liang C, Subramaniam P, Goh NSMR, Kok Wai T, Moustafa AA. Digital Device Use, Risk of Cognitive Impairment, and Cognition in Healthy Older Adults: The Role of Cognitive Reserve. *Healthcare*. 2023 1;11(21):2822. <https://doi.org/10.3390/healthcare11212822>.
- [50] Stern Y, Arenaza-Urquijo EM, Bartrés-Faz D, Belleville S, Cantilon M, Chetelat G, et al. Whitepaper: Defining and investigating cognitive reserve, brain reserve, and brain maintenance. *Alzheimer's & Dementia*. 2020 9;16(9):1305–1311. <https://doi.org/10.1016/j.jalz.2018.07.219>.
- [51] Cherrie MPC, Shortt NK, Mitchell RJ, Taylor AM, Redmond P, Thompson CW, et al. Green space and cognitive ageing: A retrospective life course analysis in the Lothian Birth Cohort 1936. *Social Science & Medicine*. 2018;196:56–65. <https://doi.org/https://doi.org/10.1016/j.socscimed.2017.10.038>.
- [52] Besser L. Outdoor green space exposure and brain health measures related to Alzheimer's disease: A rapid review. *BMJ Open*. 2021 05;11:e043456. <https://doi.org/10.1136/bmjopen-2020-043456>.
- [53] Stone A, Schneider S, Smyth J, Junghaenel D, Couper M, Wen CK, et al. A population-based investigation of participation rate and self-selection bias in momentary data capture and survey studies. *Current Psychology*. 2023 03;43:1–17. <https://doi.org/10.1007/s12144-023-04426-2>.
- [54] Oh SS, Kim KA, Kim M, Oh J, Chu SH, Choi J. Measurement of Digital Literacy Among Older Adults: Systematic Review. *Journal of Medical Internet Research*. 2021 02;23. <https://doi.org/10.2196/26145>.
- [55] Skare M, Riberio Soriano D. How globalization is changing digital technology adoption: An international perspective. *Journal of Innovation & Knowledge*.

- 2021;6(4):222–233. <https://doi.org/https://doi.org/10.1016/j.jik.2021.04.001>.
- [56] Liu X, Wang X, Zhang H, Pei M, Li N. Relationship between digital exclusion and cognitive impairment in Chinese adults. *Frontiers in Aging Neuroscience*. 2023 7;15. <https://doi.org/10.3389/fnagi.2023.1194348>.
- [57] Lu X, Yao Y, Jin Y. Digital exclusion and functional dependence in older people: Findings from five longitudinal cohort studies. *eClinicalMedicine*. 2022 12;54. <https://doi.org/10.1016/j.eclinm.2022.101658>.
- [58] Ekoh PC, George EO, Ezulike CD. Digital and Physical Social Exclusion of Older People in Rural Nigeria in the Time of COVID-19. *Journal of Gerontological Social Work*. 2021 9;64(6):629–642.
- [59] Mannheim I, Wouters EJM, Kottl H, van Boekel LC, Brankaert R, van Zaalén Y. Ageism in the Discourse and Practice of Designing Digital Technology for Older Persons: A Scoping Review. *The Gerontologist*. 2023 8;63(7):1188–1200.
- [60] Seifert A, Cotten SR, Xie B. A Double Burden of Exclusion? Digital and Social Exclusion of Older Adults in Times of COVID-19. *The Journals of Gerontology: Series B*. 2021 2;76(3):e99–e103.
- [61] Wale A, Everitt J, Ayres T, Okolie C, Morgan H, Shaw H, et al. A rapid review of the effectiveness of interventions for addressing digital exclusion in older adults;Details missing.
- [62] Jan M Wiener SJB, Hölscher C. Taxonomy of Human Wayfinding Tasks: A Knowledge-Based Approach. *Spatial Cognition & Computation*. 2009;9(2):152–165. <https://doi.org/10.1080/13875860902906496>.
<https://doi.org/10.1080/13875860902906496>.
- [63] Coughlan G, Laczó J, Hort J, Minihane AM, Hornberger M. Spatial navigation deficits — Overlooked cognitive marker for preclinical Alzheimer disease? *Nature Reviews Neurology*. 2018 07;14. <https://doi.org/10.1038/s41582-018-0031-x>.
- [64] World Health Organization.: Indicator Metadata Registry Details. Accessed: 2024-10-10. Available from: <https://www.who.int/data/gho/indicator-metadata-registry/imr-details/4669>.
- [65] World Health Organization.: Maternal mortality ratio (per 100 000 live births). Accessed: 2024-10-10. Available from: <https://www.who.int/data/gho/indicator-metadata-registry/imr-details/26>.

Supplementary Material

Country	N	Age ($M \pm SD$)	Females	>50 y.o.
Argentina	3151	31.79 \pm 12.02	0.38	0.12
Austria	4457	35.31 \pm 12.96	0.43	0.19
Australia	13932	37.48 \pm 13.86	0.51	0.24
Belgium	3075	36.39 \pm 13.90	0.40	0.23
Brazil	11283	31.46 \pm 12.05	0.43	0.12
Canada	16094	37.72 \pm 14.00	0.49	0.25
Switzerland	5050	38.95 \pm 13.62	0.43	0.27
Chile	2690	32.54 \pm 12.29	0.39	0.13
Colombia	2433	30.50 \pm 11.14	0.40	0.09
Costa Rica	963	33.30 \pm 12.28	0.43	0.14
Czech Republic	39264	29.01 \pm 9.92	0.43	0.05
Germany	63412	39.20 \pm 13.17	0.46	0.27
Denmark	2713	34.58 \pm 12.84	0.37	0.16
Spain	12598	35.71 \pm 12.56	0.39	0.17
Finland	1373	32.99 \pm 11.96	0.41	0.12
France	11821	34.78 \pm 13.11	0.40	0.18
United Kingdom	106354	41.20 \pm 13.37	0.46	0.32
Hungary	42519	29.04 \pm 9.93	0.41	0.04
Indonesia	3237	27.23 \pm 9.14	0.28	0.04
Ireland	2602	37.97 \pm 12.77	0.41	0.21
Israel	999	32.60 \pm 11.84	0.26	0.10
India	7536	26.33 \pm 8.03	0.17	0.03
Japan	686	36.19 \pm 12.82	0.36	0.18
Mexico	6456	28.79 \pm 10.56	0.37	0.07
Netherlands	31644	35.49 \pm 13.05	0.53	0.19
Norway	2006	32.33 \pm 11.83	0.42	0.10
New Zealand	3010	37.35 \pm 13.57	0.53	0.23
Philippines	3205	27.59 \pm 9.63	0.46	0.05
Portugal	3597	33.44 \pm 10.99	0.39	0.09
Russia	8268	28.06 \pm 8.98	0.34	0.04
Sweden	3591	32.11 \pm 12.10	0.39	0.11
Slovakia	18581	28.42 \pm 9.57	0.42	0.04
Thailand	3221	29.44 \pm 10.71	0.40	0.08
Turkey	4783	30.56 \pm 10.05	0.33	0.06
Ukraine	2229	28.41 \pm 9.65	0.32	0.06
United States	139817	37.45 \pm 13.80	0.51	0.24
Uruguay	724	35.74 \pm 13.35	0.38	0.20
Viet Nam	2274	25.72 \pm 9.01	0.31	0.05
South Africa	2098	35.39 \pm 12.91	0.42	0.18

Table S 1 For each country, number of participants included in the analysis (N), their mean age and standard deviation, the proportion of females, and the proportion of participants between 50 y.o. and 65 y.o.

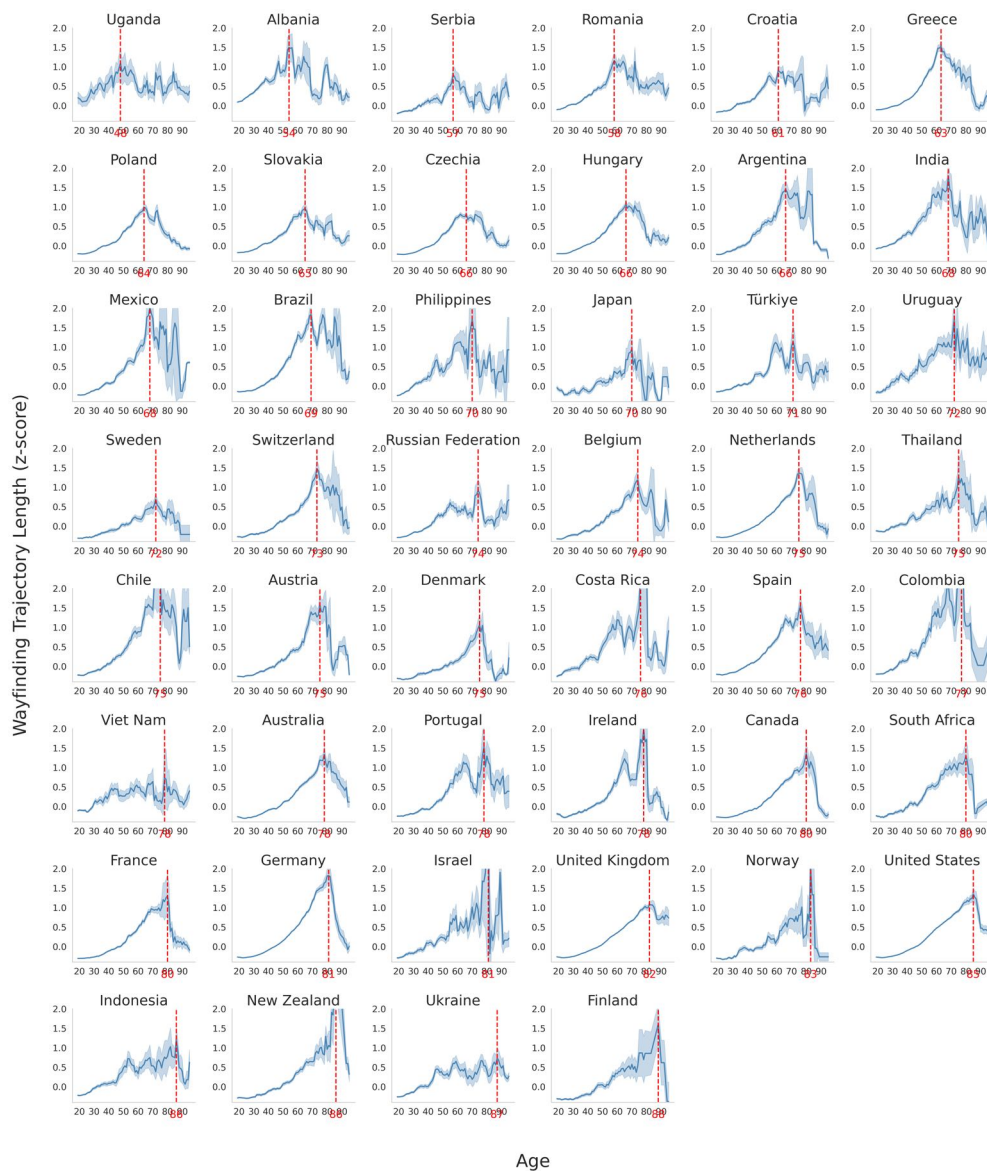


Fig. S 1 Wayfinding trajectory length as a function of age, in 46 countries — Z-scored wayfinding trajectory length from 20 to 95 years. The red vertical line represents the global maximum of each country curve. Countries are sorted according to this value. Data points represent the average trajectory lengths within five-year windows. Error bars correspond to standard errors.

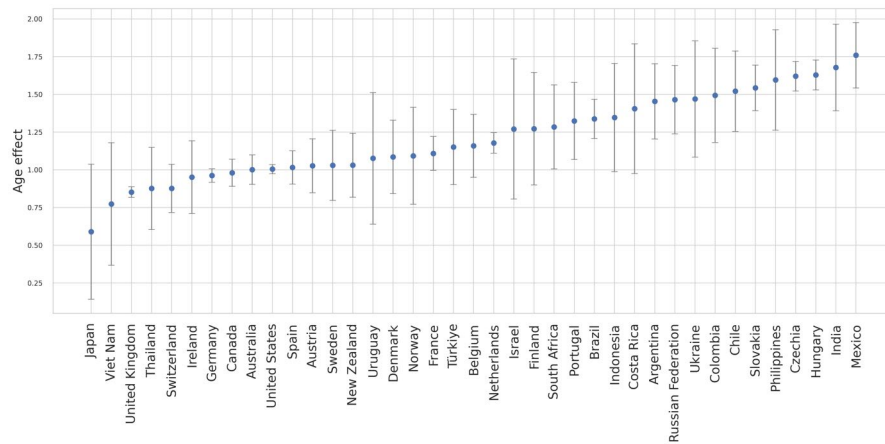


Fig. S 2 Effect size of age on wayfinding trajectory length in 39 countries | The effect size is the Hedge's g between the older group (50-65 y.o.) and the younger group (20-35 y.o.). Positive values indicate shorter wayfinding trajectories for younger participants. Error bars correspond to 95% Confidence Intervals.