

1 **Impacts of the COVID-19 pandemic on antibiotic use and resistance in hospitals: a**
2 **retrospective ecological analysis of French national surveillance data over 2019-2022**

3
4 Maylis Layan^{1,2,3,4}, David R M Smith⁵, Solen Kernéis^{6,7}, Loïc Simon⁸, Catherine Dumartin^{9,10}, Lory Dugravot⁸,
5 Amélie Jouzeau⁸, Sylvie Maugat¹¹, Laetitia Gambotti¹¹, Laurence Watier^{2,4}, Lulla Opatowski^{2,4‡}, Laura
6 Temime^{1,3‡}

7
8 ¹PACRI unit, Institut Pasteur, Conservatoire national des arts et métiers, Paris, France

9 ²Epidemiology and Modelling of Antibiotic Evasion (EMAE), Institut Pasteur, Université de Paris, Paris, France

10 ³Modélisation, épidémiologie et surveillance des risques sanitaires (MESuRS), Conservatoire national des arts et métiers, Paris,
11 France

12 ⁴CESP, Anti-infective evasion and pharmacoepidemiology team, Université Paris-Saclay, UVSQ, Inserm, Montigny-Le-
13 Bretonneux, France

14 ⁵Health Economics Research Centre, Nuffield Department of Population Health, University of Oxford, Oxford, UK

15 ⁶Université Paris Cité, INSERM, IAME, F-75018 Paris, France

16 ⁷Equipe de Prévention du Risque Infectieux (EPRI), AP-HP, Hôpital Bichat, Paris, France

17 ⁸CPIAS Grand-Est, CHRU Nancy, France

18 ⁹CPIAS Nouvelle-Aquitaine, CHU de Bordeaux, Bordeaux, France

19 ¹⁰Univ. Bordeaux, INSERM, BPH, U1219, Team AHead, Bordeaux, France

20 ¹¹French National Public Health Agency, Department of Infectious Diseases, Saint-Maurice, France

21 [‡]Contributed equally

22
23 **Corresponding author:**

24 Maylis Layan (m.layan@hotmail.fr)

25
26 **Keywords:** antibiotic resistance ; antibiotic use ; hospital ; COVID-19 ; temporal dynamics ; multivariate
27 count regression

28
29
30
31
32
33
34
35
36
37
38
39
40
41
42
43
44
45
46

47 **Summary**

48 **Background**

49 The COVID-19 pandemic led to major disruptions in healthcare services at the hospital and community
50 levels. The resulting impact on antibiotic resistance (ABR) in hospitals is difficult to predict.

51

52 **Methods**

53 We exploited data from the French national surveillance system over four years (2019-2022) including
54 414 hospitals across 12 French regions. We evaluated changes in annual antibiotic use compared to 2019
55 using multiple comparison tests. We also compiled a large dataset of 692,551 incident isolates for five
56 antibiotic-bacterium pairs. Using negative binomial regression models accounting for autocorrelation and
57 antibiotic use, we evaluated associations between resistant isolates incidence and COVID-19 indicators
58 (pandemic periods or intubated COVID-19 patient prevalence). We investigated how these associations
59 varied specifically in ICUs ($n=85$) and across geographical regions.

60

61 **Findings**

62 The use of some antibiotics, including azithromycin, imipenem and meropenem, significantly increased
63 between 2020 and 2022. Concomitantly, the incidence of methicillin-resistant *Staphylococcus aureus* (up
64 to 37%, 95% CI: 18-53%) and ESBL-producing *Escherichia coli* (up to 33%, 95% CI: 16-46%) isolates
65 significantly decreased in hospitals and ICUs during the pandemic. A transient decrease in ICUs was also
66 observed for ESBL-producing *Klebsiella pneumoniae* during periods of strong anti-COVID-19 interventions
67 in the community (24%, 95% CI: 6-38%). No significant changes for ESBL-producing *Enterobacter cloacae*
68 complex were observed. Very interestingly, the incidence of carbapenem-resistant *Pseudomonas*
69 *aeruginosa* isolates was associated with COVID-19 intubation prevalence in hospitals ($p<0.001$) and ICUs
70 ($p<0.001$), notably in the regions most affected by the pandemic.

71

72 **Interpretation**

73 Our results highlight strong modifications of antibiotic use and pathogen-specific global impacts of the
74 COVID-19 pandemic on ABR in hospitals. Even though the biological mechanisms underlying between-
75 species differences remain unclear, these results provide important insights into the potential impacts of
76 a viral pandemic on ABR and support the need for pandemic preparedness in healthcare facilities.

77

78 **Funding**

79 ANR-10-LABX-62-IBEID.

80

81

82

83

84

85

86

87

88

89

90

91

92 **Research in context**

93 **Evidence before this study**

94 We searched PubMed for articles in English published between Jan 1, 2020, and August 31, 2024 exploring
95 national-scale changes in antibiotic resistance (ABR) within healthcare settings during the COVID-19
96 pandemic. Search terms for titles and abstracts were (“antibiotic resistance” OR “antimicrobial resistance”
97 OR “bacterial resistance” OR “drug resistance” OR “MRSA” OR “ESBL” OR “carbapenem resistant”) AND
98 (“hospital” OR “healthcare”) AND (“COVID-19” OR “SARS-CoV-2”) AND (“national” OR “nationwide”). The
99 search yielded 94 results. We identified 12 relevant studies after filtering out articles referring to viruses,
100 parasites, or fungi, focusing on a single hospital, evaluating changes in antibiotic use only, assessing
101 healthcare workers’ practices, or using qualitative approaches. All studies used either national
102 surveillance data on antibiotic resistance or large multi-center cohorts of inpatients. Five studies showed
103 a significant increase in MRSA, at least during the first wave of the COVID-19 pandemic, while two studies
104 did not find changes at the national level compared to 2019. Interestingly, one study showed that the
105 abandonment of infection prevention and control strategies that specifically target hospital-acquired
106 MRSA infections was associated with an increase of these infections, regardless of COVID-19 admission
107 prevalence. One study in Spain showed decreased resistance of *P. aeruginosa* to all tested antibiotics in
108 2022 compared to 2017, using point prevalence survey results. Conversely, one study focusing on US
109 Veterans Affairs hospitals showed increased incidence and resistance of healthcare-associated
110 carbapenem-resistant *P. aeruginosa* (CR-PA) infections during the pandemic. Most studies used univariate
111 statistical approaches. Only two studies included COVID-19-related variables in their models; they found
112 no association with MRSA or extended-spectrum cephalosporin-resistant *E. coli* and *K. pneumoniae*.

113

114 **Added value of this study**

115 Here, we provide the first evaluation of the impact of the pandemic on antibiotic consumption and
116 resistance for five antibiotic-bacterium pairs (MRSA, CR-PA, ESBL-producing *E. coli*, ESBL-producing *K.*
117 *pneumoniae*, and ESBL-producing *E. cloacae* complex) in hospitals, at the national and regional scales. By
118 analyzing French surveillance data from the SPARES database including 414 hospitals that represent up to
119 14% of French hospitals, we evaluated annual changes in antibiotic use and quantified the impacts at the
120 weekly level of the COVID-19 pandemic on the incidence of five of the most prevalent resistant bacteria
121 in France. Accounting for autocorrelation and antibiotic use, factors that were not considered in previous
122 studies, we report a significant positive association between the weekly incidence of CR-PA isolates and
123 the prevalence of intubated COVID-19 patients in the preceding weeks. Carbapenem use and intubation
124 being risk factors of CR-PA infections, our results suggest a direct impact of the pandemic on CR-PA
125 epidemiology. Inversely, we show that the incidence of ESBL-producing *E. coli* and MRSA isolates
126 decreased after the start of the first pandemic wave at the hospital level but also in ICUs. The fine grain
127 analysis across 12 French administrative regions revealed regional heterogeneities, but highlighted
128 consistent associations in the regions most affected by the COVID-19 pandemic.

129

130 **Implications of all the available evidence**

131 Pandemics not only destabilize healthcare systems by adding pressure and changing healthcare worker
132 behaviors, but also influence the epidemiology of other infectious diseases as shown in our study. We
133 specifically highlight the contrasting effects of the COVID-19 pandemic on ABR in French hospitals,
134 associated with an increase in CR-PA isolate incidence but a general decrease in ESBL-producing *E. coli*
135 and MRSA. This work highlights how national-scale hospital surveillance systems such as SPARES that
136 collect data at the weekly level are key to capture the evolving impacts of pandemics. They also allow to
137 generate hypotheses on the potential mechanisms of action of the pandemic on ABR epidemiology, as
138 showcased by the analysis of CR-PA isolates incidence, and thereby participate in the improvement of
139 healthcare systems in pandemic context.

140
141
142
143
144
145
146
147
148
149
150
151
152
153
154
155
156
157
158
159
160
161
162
163
164
165
166
167
168
169
170
171
172
173
174
175
176
177
178
179
180
181
182
183
184
185

Introduction

Antibiotic resistance (ABR) is a leading health problem worldwide associated with an estimated 1·14 (1·00-1·28) million deaths in 2021.¹ Exceptional health events, such as pandemics, lead to major changes in care and hygiene practices in both the community and hospitals, which may modify ABR epidemiology. For instance, during the COVID-19 pandemic, social distancing measures² and reduced outpatient antibiotic prescription^{3,4} might have reduced ABR burden in hospitals. Healthcare workers (HCWs) also reported greater hand hygiene compliance and availability of alcohol-based hand rub.^{5,6} On the other hand, inpatient antibiotic use increased in France,⁷ probably related to the high proportion of COVID-19 patients receiving antibiotics as reported in several meta-analyses.^{8,9} In parallel, surges in COVID-19 patients in hospitals often exceeded bed capacity with a sicker patient-case mix.⁵ This generated higher workload and decreased the time that HCWs could allocate to antibiotic stewardship and infection prevention and control (IPC).⁵ A striking example is the increase of MRSA incidence in US Veterans Affairs hospitals with interrupted IPC during the pandemic.¹⁰ The combined impact of all these effects, at the community and hospital levels, is difficult to predict¹¹ and may have changed throughout the pandemic, which was notably marked by the improvement of COVID-19 patient management and treatment (e.g. reduction in antibiotic prescribing^{12,13} and mechanical ventilation¹⁴).

Several studies have attempted to quantify the impacts of the pandemic on ABR in hospitals, but the evidence remains conflicting.^{10,15,16} A meta-analysis estimated that MRSA incidence did not change during the pandemic, whereas there was a statistically insignificant trend for increased incidence of extended-spectrum β -lactamase (ESBL)-producing Enterobacterales and CR-PA.¹⁵ Heterogeneity in terms of settings, study design, and health outcomes, as well as heterogeneity in baseline epidemiological situations and local practices, might have undermined the statistical power of this meta-regression. A recent comprehensive study on antibiotic-resistant healthcare-associated infections in US Veterans Affairs hospitals also highlighted varying trends across antibiotic-bacterium combinations during the pandemic.¹⁶

Here, we aimed to assess the impacts of the pandemic on antibiotic use and antibiotic-resistant bacteria in French hospitals using large-scale surveillance data over 2019-2022. We evaluated changes in antibiotic use in hospitals compared to 2019 as a potential key mechanism of pandemic action on ABR epidemiology in hospitals. For five antibiotic-resistant bacteria of major importance in French hospitals (ESBL-producing *E. coli* - ESBL-EC, ESBL-producing *K. pneumoniae* - ESBL-KP, ESBL-producing *E. cloacae* complex - ESBL-ECC, MRSA, and CR-PA), we quantified the association between their incidence and the burden of severe COVID-19 patients, we investigated whether these associations were similar in the specific context of intensive care units (ICUs), and we evaluated how associations with the pandemic varied across geographical regions.

Methods

Data sources

Antibiotic resistance and antibiotic consumption in hospitals

186 We obtained ABR and antibiotic use data from the French National Surveillance Database on Antibiotic
187 Resistance in hospitals (SPARES). SPARES compiles data reported by participating hospitals on (i)
188 microbiological test results from clinical samples and (ii) annual antibiotic consumption by anatomical
189 therapeutic chemicals (ATC) class (Figure 1A).⁷ Consolidated data are only available from 2019 on. SPARES
190 provided us with microbiological test results and antibiotic use data from the 1st of January 2019 to the
191 31st of December 2022.

192
193 Clinical tests reported in SPARES encompass infection and colonization events. No information about the
194 source of acquisition (community or healthcare) is available. Clinical test results are interpreted according
195 to the EUCAST guidelines by participating hospitals.

196
197 Hospitals report their annual antibiotic consumption by ATC class in number of defined daily doses (DDD)
198 for 1,000 bed-days.

199
200 *Hospital stays*

201
202 We obtained data on occupied bed-days from the National Hospital Discharge Database (PMSI), a
203 database dedicated to hospital activity evaluation for budget allocation. As such, it documents for all
204 hospital stays their type, duration, associated diagnoses and medical procedures. We exploited this
205 database to extract the weekly number of occupied bed-days in acute care facilities between the 1st of
206 January 2019 and the 31st of December 2022. We also extracted the weekly number of intubated COVID-
207 19 patients' bed-days (appendix pp 6-7).

208
209 **Data selection procedure**

210
211 We explored ESBL-EC, ESBL-ECC, ESBL-KP, MRSA, and CR-PA dynamics since they are on the WHO priority
212 list¹⁷ and amongst the resistant bacteria with highest incidence in France.¹⁸ Of all available isolates in
213 SPARES ($n=2,370,650$), we selected the ones corresponding to the studied bacterial species that are tested
214 for the resistance of interest. Importantly, when multiple samples potentially corresponded to the same
215 acquisition episode and were performed within a 30-day period, we kept only the first sample as we were
216 interested in incident episodes (Figure 1B). Our selection procedure led to the inclusion of 692,551
217 episodes, 74,387 of which were resistant. Concerning antibiotics, only ATC-J01 antibiotics reported over
218 the four years of the study period were included (appendix pp 2-3).

219
220 Hospitals report their data to SPARES on a voluntary basis leading to non-exhaustive and possibly non
221 representative data collection. To ensure our analysis is based on a temporally stable database, we
222 restricted our analyses to hospitals that systematically reported their antibiotic consumption and clinical
223 tests results over the four years of the study period. Other exclusion criteria are listed in Figure 1C.
224 Selected hospitals ($n=414$) are distributed over the 12 administrative regions of hexagonal France (Figure
225 1D). We assessed the representativeness of our cohort in appendix pp 3-6.

226
227 **Outcomes**

228
229 We investigated the dynamics of the following outcomes at the national and/or regional levels and at the
230 hospital and/or ICU levels over the study period:

- 231 - Annual proportion of resistant episodes for each antibiotic-bacterium pair: annual number of
232 resistant episodes divided by annual number of total episodes.

- 233 - Weekly incidence of resistant bacterial isolates: weekly number of incident resistant episodes
234 divided by weekly number of occupied bed-days (from the PMSI) times 1,000.
235 - Annual consumption of antibiotics in DDD for 1,000 bed-days.

236
237 The hospital level included rehabilitation care, general medicine, surgery, gynecology-obstetrics, and ICU.

238 239 **Statistical analyses**

240 241 *Antibiotic consumption dynamics*

242
243 For each antibiotic class, we evaluated whether its consumption had changed over the study period by
244 comparing annual consumption distributions using Friedman tests (non-parametric alternative of the one-
245 way ANOVA for repeated measures). We then explored the evolution of antibiotic consumption using
246 2019 as a reference year by performing three pairwise Wilcoxon signed-rank tests. We applied a
247 Bonferroni correction for multiple testing, and reported adjusted p-values and 98.3% confidence intervals
248 (CIs) to account for the correction.

249 250 *Antibiotic-resistant episodes dynamics*

251
252 For each antibiotic-bacterium pair, we evaluated whether there was a linear trend in the annual
253 proportion of resistance in hospitals at the national level using the χ^2 test for trend in proportions. When
254 resistance proportions exhibited a significant increase or decrease between 2019 and 2022, we estimated
255 the slope of the linear trend using linear regression minimizing weighted least squares.

256
257 Then, for each bacterium pair, we investigated ABR and COVID-19 association using multivariate count
258 regression models. We modeled the incident number of resistant isolates of a bacterial species N_w during
259 week w in hospitals or ICUs as a negative binomial distribution to account for overdispersion. The
260 equations of the models are as follows:

$$261 \quad N_w \sim NB(\lambda_w, \phi)$$

$$262 \quad \log(\lambda_w) = \beta_0 + \log\left(\frac{n_w}{1000}\right) + \beta_1 \cdot \frac{N_{w-1}}{n_{w-1}} \cdot 1000 + \beta_2 \cdot \text{Antibiotic}_y$$

263
264
265
266 With ϕ the overdispersion parameter, β_0 the intercept, n_w the number of occupied bed-days at week w ,
 $\frac{n_w}{1000}$ the occupied bed-days permillage at week w (offset), $\frac{N_{w-1}}{n_{w-1}} \cdot 1000$ the incidence of resistant
267 bacterial isolates per 1,000 bed-days in the preceding week ($w - 1$) to account for autocorrelation, and
268 Antibiotic_y the consumption level (in DDD for 1,000 bed-days) of the main antibiotic class targeted by
269 the resistance during year y that includes week w . Target antibiotic classes correspond to
270 imipenem+meropenem for *P. aeruginosa*, 3GC for Enterobacterales, and penicillins for *S. aureus*. We
271 considered antibiotic consumption as a confusion factor, and investigated its impact in a sensitivity
272 analysis (appendix pp 22-25). We compared this baseline model to 6 distinct models accounting for
273 COVID-19-related variables (appendix p10-11). These variables were either the period of the pandemic (a
274 categorical variable indicating the pre-pandemic period, the first wave and periods marked by three levels
275 of anti-COVID-19 restrictions in the community), or COVID-19 intubation prevalence. The levels of anti-
276 COVID-19 restrictions in the community were based on Paireau and colleagues,² but we considered the
277

278 first wave separately as it was marked by a very specific context of care disorganization in hospitals. The
279 prevalence of intubated COVID-19 patients (weekly number of intubated COVID-19 patients' bed-days
280 divided by the weekly number of bed-days times 1,000) represented the burden of severe COVID-19
281 patients. For both COVID-19-related variables, we tested variables at week w , $w - 1$, and $w - 2$.
282 Continuous explanatory variables (prevalence of COVID-19 intubation, antibiotic consumption, resistant
283 isolate incidence at week $w - 1$) were on very different scales, so we standardized them to facilitate the
284 comparison of regression coefficients across explanatory variables, models and bacterial species.

285
286 We calculated the 95% CIs for the regression coefficients using a normal approximation to the distribution
287 of the maximum likelihood estimators. For each antibiotic-bacterium pair, we selected the model with the
288 lowest Akaike Information Criterion (AIC). Models were fitted by maximum likelihood using the `glm.nb`
289 function of the R package MASS ([appendix pp 10-19](#)).¹⁹

290
291 When the best model included COVID-19-related variables, we further explored how associations varied
292 across the 12 administrative regions by fitting the model selected in the national analysis to regional
293 hospital data separately for each region and accounting for overdispersion when necessary. We did not
294 investigate regional ICU data alone due to the limited number of episodes and absence of ICUs in some
295 regions ([Figure 1D](#)).

296
297 All statistical analyses were done with R, version 4.3.0. This study adheres to the Strengthening the
298 Reporting of Observational studies in Epidemiology (STROBE) reporting guideline.

299 300 **Role of the funding source**

301
302 The funders had no role in study design, data analysis, data interpretation, or writing of the paper.

303 304 305 **Results**

306 307 **Evolution of antibiotic use in hospitals during the pandemic in France**

308
309 Annual antibiotic consumption strongly varied across hospitals ($n=414$, gray lines) of our cohort and across
310 antibiotic classes, penicillins and quinolones being the most used ([appendix p20](#) and [Table 1](#)). Overall, a
311 median increase in total consumption of 7.5 DDD per 1,000 bed-days (98.3% CI: 2.7, 12.5) was found in
312 2020 compared to 2019 but it did not persist. For all antibiotic classes explored, significant changes in
313 annual consumption were found, with strong variations across classes ([Table 1](#)). Carbapenem
314 consumption, and more specifically imipenem and meropenem, showed a significant increase in 2020 and
315 2021, while cephalosporins increased until 2022. Interestingly, macrolide consumption significantly
316 increased only in 2020 (+1.71 DDD/1,000 bed-days, 98.3% CI: +0.9 to +2.6), while azithromycin
317 consumption significantly increased during the whole pandemic period.

318
319 Antibiotic use dynamics varied across regions ([Figure 2A](#) and [appendix p 21](#)). A significant increase of total
320 antibiotic use was observed in 2020 in Île-de-France (IDF), Grand-Est (GES) and Auvergne-Rhône-Alpes
321 (ARA). Interestingly, macrolide consumption significantly increased in four regions in 2020, especially
322 azithromycin whose consumption increased in seven regions ([Figure 2B](#)). Importantly, the increase of
323 azithromycin use persisted until 2022 in Hauts-de-France (HDF), Occitanie (OCC), and Provence-Alpes-
324 Côte d'Azur (PAC).

325
326 In ICUs ($n=85$), we observed higher antibiotic consumption levels ([appendix p20](#)) and changes of larger
327 magnitude compared to the overall hospital level ([Table 2](#)). Although we did not find a significant change
328 in total antibiotic consumption in these wards, we observed a significantly increased use of carbapenems,
329 cephalosporins, and macrolides in 2020. Imipenem and meropenem consumption remained significantly
330 higher until 2022 (+12.42 DDD/1,000 bed-days, 98.3% CI: +1.9 to +22.4), while carbapenem use decreased
331 to its 2019 level in 2022. Macrolide (+17.41 DDD/1,000 bed-days, 98.3% CI: +7.7 to +28.9) and
332 azithromycin (+12.69 DDD/1,000 bed-days, 98.3% CI: +5.8 to +20.5) consumption significantly increased
333 but only during the first year of the pandemic, contrary to the hospital level. Finally, penicillin consumption
334 significantly decreased in 2020 and 2021 compared to 2019.

335 336 **Contrasting impacts of the pandemic on ABR in French hospitals**

337
338 Among the 692,551 included isolates, *E. coli* was the most represented bacteria in our dataset with
339 376,685 isolates ([Figure 3A](#)). The evolution of annual resistance rates over 2019-2022 varied across
340 antibiotic-bacterium pairs. We found a significantly decreasing trend for MRSA ($p<0.001$), ESBL-EC
341 ($p<0.001$), ESBL-KP ($p<0.001$), and ESBL-ECC ($p=0.031$), but a significantly increasing trend for CR-PA
342 ($p<0.001$, [Figures 3B-C](#)). No clear variation of resistance proportion at the weekly level was observed
343 ([appendix p 8](#)).

344
345 In contrast, the analysis of weekly incidence of resistant isolates revealed interesting dynamics ([Figure](#)
346 [3D](#)). Comparing regression models that included or not COVID-19-related variables at the country level
347 led to the selection of distinct models depending on the antibiotic-bacterium pair. For ESBL-EC and MRSA,
348 the selected model included the pandemic periods. For CR-PA, the prevalence of intubated COVID-19
349 patients two weeks prior was selected. Incidence significantly decreased for ESBL-EC (up to 15% decrease,
350 95% CI: 11-19%) and MRSA (up to 26% decrease, 95% CI: 22-30%) after the first pandemic wave, while the
351 prevalence of intubated COVID-19 patients was significantly associated with higher incidence of CR-PA
352 isolates ($p<0.001$, [Figure 4A](#)).

353
354 Focusing on ICUs, we observed similar patterns with slight differences ([Figure 4A](#)). Notably, MRSA isolates
355 incidence significantly decreased from the first pandemic wave onwards (up to 37% decrease, 95% CI: 18-
356 53%) and the best model for ESBL-KP included the pandemic periods with a significant decrease in
357 incidence during the periods of strong anti-COVID-19 interventions (24% decrease, 95% CI: 6-38%).

358
359 At the regional level, we estimated that COVID-19 intubation prevalence was significantly associated with
360 an increased incidence of CR-PA isolates in IDF ($p=0.005$), GES ($p=0.006$), ARA ($p=0.008$), and PAC
361 ($p=0.004$, [Figure 4C](#)). Interestingly, these regions were amongst the most affected by the pandemic ([Figure](#)
362 [4E](#)). These results strengthen the evidence that the pandemic may have led to an increase in CR-PA isolate
363 incidence. For ESBL-EC and MRSA, associations between incidence and pandemic periods are highly
364 heterogeneous across administrative regions with evidence of a significant decrease in incidence after the
365 first pandemic wave in multiple regions ([Figure 4D](#)).

366 367 368 **Discussion**

369
370 Using national surveillance data in French hospitals between 2019 and 2022, we showed changes in
371 antibiotic use over the course of the pandemic, highlighting increasing use of azithromycin, imipenem,

372 and meropenem. We also found that the pandemic had contrasting impacts on ABR, that varied across
373 antibiotic-bacterium pairs and administrative regions, which could be due to differences in the modes of
374 transmission, spatiotemporal dynamics, and drivers of the five studied antibiotic-bacterium pairs. These
375 differences across pairs stress that ABR should not be regarded as a one-solution problem.

376
377 We estimated overall reductions in use of penicillins in hospitals over the study period, as observed in
378 2020 in the community in France,⁴ probably due to the reduction of common infections generally treated
379 with penicillins. They were probably replaced by cephalosporins and carbapenems for which we showed
380 an increased use. We also showed an increased use of macrolides, among which azithromycin, as
381 observed in the community.^{3,4} These changes are certainly due to the management of COVID-19 patients,
382 at least at the start of the pandemic, when COVID-19 patients represented most of the hospitalizations.
383 Indeed, cephalosporins, carbapenems, and azithromycin were the antibiotics most commonly prescribed
384 to COVID-19 patients.^{8,12,13} Importantly, we showed that azithromycin use in hospitals and imipenem and
385 meropenem use in ICUs remained high until 2022. These increases are concomitant with higher
386 carbapenem resistance in *P. aeruginosa* as shown here, and could have led to the increase of azithromycin
387 resistance,²⁰ or even other resistances.²⁰ Unfortunately, we could not evaluate azithromycin resistance
388 given the very limited number of bacterial isolates tested for this antibiotic. All these dynamics may have
389 changed selective pressures in hospitals and require careful attention. It is important to stress that we did
390 not assess antibiotic use dynamics in the community, which can also impact the selective pressure in
391 hospitals.

392
393 To the best of our knowledge, this is the first study evaluating the association between ABR and COVID-
394 19-related variables in hospitals using weekly level national surveillance data that also include antibiotic
395 use or autocorrelation terms.^{10,21} The results from our regression analysis suggest that CR-PA isolate
396 incidence increased with COVID-19 intubation prevalence, an association that we also quantified at the
397 regional level and that is certainly driven by ICUs ([appendix p 26](#)). We further confirmed this association
398 in a sensitivity analysis where likelihood ratio tests always selected the model with COVID-19 intubation
399 at $w - 2$ rather than COVID-19 intubation in the following weeks ($w + 1$, $w + 2$, and $w + 3$, [appendix](#)
400 [pp 26-27](#)). These results are in agreement with previous studies.^{15,16,22} A possible mechanism explaining
401 this association pertains to the increase of known risk factors of CR-PA infections, notably more frequent
402 intubation,²³ longer hospitalizations, and higher antibiotic use in COVID-19 patients.^{23,24} Interestingly,
403 when we did not account for imipenem and meropenem use in the hospital regression model, the AICs of
404 the models including the pandemic periods at week $w - 1$ or the prevalence of intubated COVID-19
405 patients at week $w - 2$ were equivalent. Still, we estimated an increased incidence compared to the pre-
406 pandemic period in the model with the pandemic periods at week $w - 1$ ([appendix pp 22-25](#)).

407
408 In contrast, our analysis shows that MRSA and ESBL-EC isolates incidence significantly decreased during
409 the pandemic. Previous reports have highlighted a steady decrease of MRSA incidence since 2003 in
410 France,²⁵ as well as a recent decrease of ESBL-EC between 2016 and 2018.²⁶ Thus, it is difficult to assess
411 whether the decrease that we observe is due to long-term trends only or whether the pandemic has
412 accelerated the decrease, for instance through higher adherence to hand hygiene,⁵ a known factor of
413 MRSA prevention.²⁷ Concerning ESBL-EC, we estimated a decrease in incidence after the first wave, but
414 our regression model does not explain incidence dynamics well during the first wave ([appendix p 19](#)).
415 According to a study in French ICUs during the first wave, COVID-19 patients were more frequently co-
416 infected with ESBL-EC than non-COVID-19 patients²⁸ and a meta-analysis highlighted a higher incidence
417 of ESBL-EC during the first year of the pandemic.¹⁵ It is therefore possible that the impacts of the pandemic
418 on ESBL-EC changed first with conditions that favored ESBL-EC infections, later followed by conditions that
419 prevented these infections. Again, our model did not account for the community and we also cannot rule

420 out the contribution of the evolution of ABR in the community on these dynamics. However, there is
421 scarce evidence of changes in ESBL-EC²⁹ and MRSA in the French community.

422
423 In parallel, our regression analysis suggests that there is transient association between COVID-19 and
424 ESBL-KP and no association between COVID-19 and ESBL-ECC. In our sensitivity analysis, we estimated
425 stronger changes in ESBL-KP isolate incidence at the start of the pandemic, but they did not persist and
426 concerned only ICUs ([appendix pp 18-19](#)). This is consistent with the literature that showed an
427 insignificant increase in the incidence of ESBL-producing Enterobacterales.^{15,16}

428
429 Several limitations of our study should be mentioned. As in any ecological study, we quantified changes
430 using data aggregated at the national or regional level, which hides hospital heterogeneity in terms of
431 size, hospital type, local practices, or degree to which they were affected by the COVID-19 pandemic. This
432 also prevents generalization to every French hospital. Secondly, the analyses were carried out on a
433 subsample of French hospitals, representing about 14% of all French hospitals (3,008 in 2019). While this
434 cohort is relatively representative in terms of healthcare-associated infections prevalence across regions,
435 it is not representative of the regional distribution of hospital activity or hospital number in France.
436 Besides, hospitals report their data on a voluntary basis. Consequently, we cannot rule out that there is a
437 selection bias in our cohort. For instance, the observed regional differences in antibiotic consumption and
438 CR-PA incidence may be due to missing university hospitals in some regions. Thirdly, the source of
439 acquisition, i.e. whether bacteria were acquired in the community or in the hospital, was not available.
440 Analyzed data thereby result from dynamics of both settings. Fourth, we did not stratify incidence by
441 specimen type (e.g. bloodstream, genital tract, respiratory tract, skin, body fluids, feces, and urine). We
442 might expect different temporal patterns over the year, notably for lower respiratory tract specimens.
443 Fifth, hospitals only report their antibiotic consumption annually, preventing us from exploring weekly
444 level associations with ABR incidence. Indeed, antibiotic use may display seasonal patterns as observed in
445 the community.³⁰ Finally, the national surveillance system of ABR changed in 2018, making it impossible
446 to have weekly time series of ABR prior to 2019. Due to this short history, we could not include seasonality
447 in the regression model or account for long-term trends, as previously discussed.

448
449 In conclusion, hospital antibiotic use and ABR epidemiology strongly varied during the COVID-19 pandemic
450 in France. The biological mechanisms underpinning the changes in ABR epidemiology likely vary across
451 the investigated antibiotic-bacterium pairs and remain to be elucidated. Continued surveillance efforts in
452 hospitals is pivotal and will help build healthcare facilities that are more resilient in pandemic contexts.

453
454

455 **Contributions**

456
457 ML, LT, LO, and LW designed the statistical analyses. ML, LT, LO, and SK interpreted the results. ML and
458 DRMS analyzed the data. LS, CD, LD, AJ, SM and LG provided support on data interpretation and analysis.
459 ML, LT, and LO wrote the manuscript. All authors had access to the processed data and reviewed the
460 manuscript. All authors take responsibility for the decision to submit for publication.

461 **Acknowledgments**

462
463
464 ML received funding from the National Clinical Research Program and the Investissement d’Avenir
465 program, Laboratoire d’Excellence “Integrative Biology of Emerging Infectious Diseases” (ANR-10-LABX-
466 62- IBEID). ML thanks the Fondation des Treilles for their support. The authors would like to thank

467 Christian Brun-Buisson for his helpful comments on bacterial sample selection, and Fanny Chéreau for the
468 very insightful discussions on national surveillance systems collecting hospitalizations of COVID-19
469 patients.

470

471 **Declaration of interests**

472

473 LW reports personal fees from Pfizer, Sanofi and Heva outside the submitted work. LO reports research
474 grants from Pfizer and Sanofi Pasteur through her institution outside the submitted work. The authors
475 report no other potential conflicts of interest.

476

477 **Data sharing statement**

478

479 PMSI and SPARES data are not publicly available. R codes to describe antibiotic consumption and quantify
480 the association between COVID-19-related variables and national or regional resistance data for the
481 antibiotic-bacterium pairs of interest are available online
482 (https://github.com/mlayan/abr_covid_in_french_hospitals).

483

484 **Ethics approval**

485

486 Because the analysis was performed using anonymized surveillance data, ethical consent was not required
487 according to the French Data Protection Act. The database was accredited by the French National Data
488 Protection Commission (CNIL no. 2211022 v 0), and the fully anonymized data waiver for informed
489 consent of patients was applied.

490

491 **References**

492

493 1 Naghavi M, Vollset SE, Ikuta KS, *et al.* Global burden of bacterial antimicrobial resistance 1990–2021: a
494 systematic analysis with forecasts to 2050. *The Lancet* 2024; **0**. DOI:10.1016/S0140-6736(24)01867-1.

495 2 Paireau J, Charpignon M-L, Larrieu S, *et al.* Impact of non-pharmaceutical interventions, weather,
496 vaccination, and variants on COVID-19 transmission across departments in France. *BMC Infect Dis* 2023;
497 **23**: 190.

498 3 Bara W, Brun-Buisson C, Coignard B, Watier L. Outpatient Antibiotic Prescriptions in France: Patients
499 and Providers Characteristics and Impact of the COVID-19 Pandemic. *Antibiotics* 2022; **11**: 643.

500 4 Weill A, Drouin J, Desplas D, Cuenot F, Dray-Spira R, Zureik M. Usage des médicaments de ville en
501 France durant l'épidémie de la Covid-19 – point de situation jusqu'au 25 avril 2021. Étude pharmaco-
502 épidémiologique à partir des données de remboursement du SNDS. EPI-PHARE (Groupement d'intérêt
503 scientifique ANSM-Cnam), 2021 [https://www.epi-phare.fr/rapports-detudes-et-publications/covid-](https://www.epi-phare.fr/rapports-detudes-et-publications/covid-19-usage-des-medicaments-rapport-6)
504 [19-usage-des-medicaments-rapport-6](https://www.epi-phare.fr/rapports-detudes-et-publications/covid-19-usage-des-medicaments-rapport-6).

505 5 Tomczyk S, Taylor A, Brown A, *et al.* Impact of the COVID-19 pandemic on the surveillance, prevention
506 and control of antimicrobial resistance: a global survey. *J Antimicrob Chemother* 2021; **76**: 3045–58.

507 6 Cole J, Barnard E. The impact of the COVID-19 pandemic on healthcare acquired infections with
508 multidrug resistant organisms. *Am J Infect Control* 2021; **49**: 653–4.

509 7 Dumartin C, Chabaud A, Couvé-Deacon E, *et al.* Consommation d'antibiotiques et résistances
510 bactériennes en établissement de santé. Données Spares 2019-2022. *Bull Epidémiologique Hebd* 2023;
511 : 465–72.

512 8 Langford BJ, So M, Raybardhan S, *et al.* Antibiotic prescribing in patients with COVID-19: rapid review

- 513 and meta-analysis. *Clin Microbiol Infect* 2021; **27**: 520–31.
- 514 9 Lansbury L, Lim B, Baskaran V, Lim WS. Co-infections in people with COVID-19: a systematic review and
515 meta-analysis. *J Infect* 2020; **81**: 266–75.
- 516 10 Evans ME, Simbartl LA, McCauley BP, *et al.* Active Surveillance and Contact Precautions for Preventing
517 Methicillin-Resistant Staphylococcus aureus Healthcare-Associated Infections During the COVID-19
518 Pandemic. *Clin Infect Dis* 2023; **77**: 1381–6.
- 519 11 Smith DRM, Shirreff G, Temime L, Opatowski L. Collateral impacts of pandemic COVID-19 drive the
520 nosocomial spread of antibiotic resistance: A modelling study. *PLOS Med* 2023; **20**: e1004240.
- 521 12 Cong W, Poudel AN, Alhusein N, Wang H, Yao G, Lambert H. Antimicrobial Use in COVID-19 Patients in
522 the First Phase of the SARS-CoV-2 Pandemic: A Scoping Review. *Antibiotics* 2021; **10**: 745.
- 523 13 Cong W, Stuart B, Alhusein N, *et al.* Antibiotic Use and Bacterial Infection in COVID-19 Patients in the
524 Second Phase of the SARS-CoV-2 Pandemic: A Scoping Review. *Antibiotics* 2022; **11**: 991.
- 525 14 Hermann B, Benghanem S, Jouan Y, Lafarge A, Beurton A, the ICU French FOXES (Federation Of
526 eXtremely Enthusiastic Scientists) Study Group. The positive impact of COVID-19 on critical care: from
527 unprecedented challenges to transformative changes, from the perspective of young intensivists. *Ann*
528 *Intensive Care* 2023; **13**: 28.
- 529 15 Langford BJ, Soucy J-PR, Leung V, *et al.* Antibiotic resistance associated with the COVID-19 pandemic:
530 a systematic review and meta-analysis. *Clin Microbiol Infect* 2023; **29**: 302–9.
- 531 16 Pham TM, Zhang Y, Nevers M, *et al.* Trends in infection incidence and antimicrobial resistance in the
532 US Veterans Affairs Healthcare System: a nationwide retrospective cohort study (2007–22). *Lancet*
533 *Infect Dis* 2024; published online Aug 13. DOI:10.1016/S1473-3099(24)00416-X.
- 534 17 WHO bacterial priority pathogens list, 2024: Bacterial pathogens of public health importance to guide
535 research, development and strategies to prevent and control antimicrobial resistance.
536 <https://www.who.int/publications/i/item/9789240093461> (accessed July 9, 2024).
- 537 18 Cassini A, Högberg LD, Plachouras D, *et al.* Attributable deaths and disability-adjusted life-years caused
538 by infections with antibiotic-resistant bacteria in the EU and the European Economic Area in 2015: a
539 population-level modelling analysis. *Lancet Infect Dis* 2019; **19**: 56–66.
- 540 19 Modern Applied Statistics with S, 4th ed. <https://www.stats.ox.ac.uk/pub/MASS4/> (accessed July 23,
541 2024).
- 542 20 Doan T, Worden L, Hinterwirth A, *et al.* Macrolide and Nonmacrolide Resistance with Mass
543 Azithromycin Distribution. *N Engl J Med* 2020; **383**: 1941–50.
- 544 21 Damonti L, Gasser M, Kronenberg A, Buetti N. Epidemiology of bloodstream infections caused by
545 extended-spectrum cephalosporin-resistant *Escherichia coli* and *Klebsiella pneumoniae* in Switzerland,
546 2015–2022: secular trends and association with the COVID-19 pandemic. *J Hosp Infect* 2024; **150**: 145–
547 52.
- 548 22 Kariyawasam RM, Julien DA, Jelinski DC, *et al.* Antimicrobial resistance (AMR) in COVID-19 patients: a
549 systematic review and meta-analysis (November 2019–June 2021). *Antimicrob Resist Infect Control*
550 2022; **11**: 45.
- 551 23 Voor in 't holt AF, Severin JA, Lesaffre EMEH, Vos MC. A Systematic Review and Meta-Analyses Show
552 that Carbapenem Use and Medical Devices Are the Leading Risk Factors for Carbapenem-Resistant
553 *Pseudomonas aeruginosa*. *Antimicrob Agents Chemother* 2014; **58**: 2626–37.
- 554 24 Labaste F, Grossac J, Bounes FV, *et al.* Risk factors for acquisition of carbapenem-resistance during
555 treatment with carbapenem in the intensive care unit: a prospective study. *Eur J Clin Microbiol Infect*
556 *Dis* 2019; **38**: 2077–85.
- 557 25 Ali Brandemeyer O, Dugravot L, Jouzeau A, *et al.* Surveillance de la consommation des antibiotiques et
558 des résistances bactériennes en établissement de santé. Mission Spares. Résultats synthétiques, année
559 2022. Saint-Maurice: Santé publique France, 2023.
- 560 26 Mission Spares. Bactéries multirésistantes en établissements de santé en 2018 Mission nationale

561 Spares, novembre 2019. Données 2018 du réseau BMR-Raisin. Saint-Maurice: Santé publique France,
562 2019.

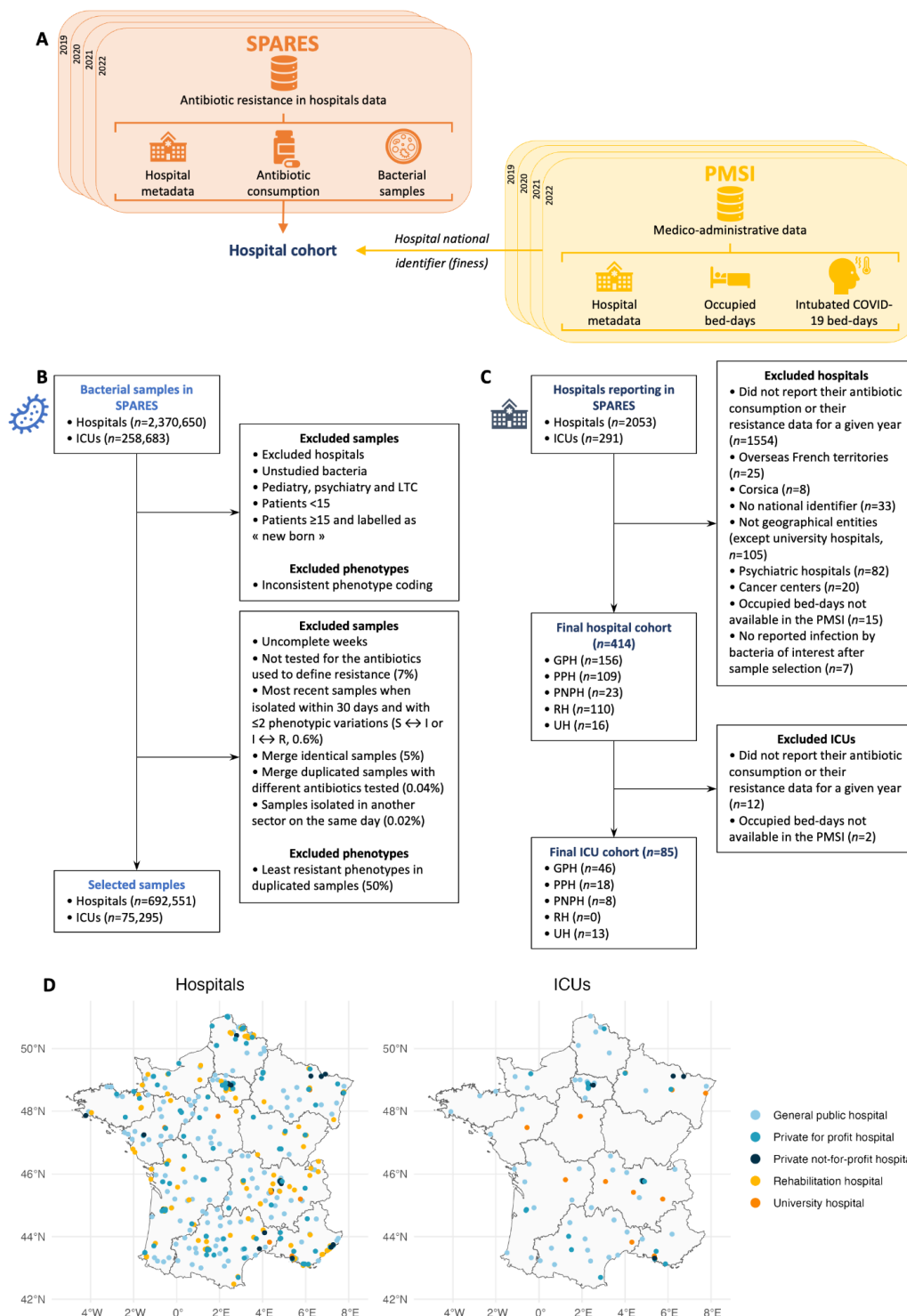
563 27 Popovich KJ, Aureden K, Ham DC, *et al.* SHEA/IDSA/APIC Practice Recommendation: Strategies to
564 prevent methicillin-resistant *Staphylococcus aureus* transmission and infection in acute-care hospitals:
565 2022 Update. *Infect Control Hosp Epidemiol* 2023; **44**: 1039–67.

566 28 Pichon M, Cremniter J, Burucoa C, *et al.* French national epidemiology of bacterial superinfections in
567 ventilator-associated pneumonia in patients infected with COVID-19: the COVAP study. *Ann Clin*
568 *Microbiol Antimicrob* 2023; **22**: 50.

569 29 Lemenand O, Thibaut S, Coëffic T, Caillon J, Birgand G. Resistance to third-generation cephalosporins,
570 carbapenems and fluoroquinolones in *Escherichia coli* urinary isolates in primary care: trends in France
571 2017–2021. *Bull Épidémiol Hebd* 2023; **22–23**: 458–64.

572 30 Sun DS, Kissler SM, Kanjilal S, Olesen SW, Lipsitch M, Grad YH. Analysis of multiple bacterial species and
573 antibiotic classes reveals large variation in the association between seasonal antibiotic use and
574 resistance. *PLOS Biol* 2022; **20**: e3001579.

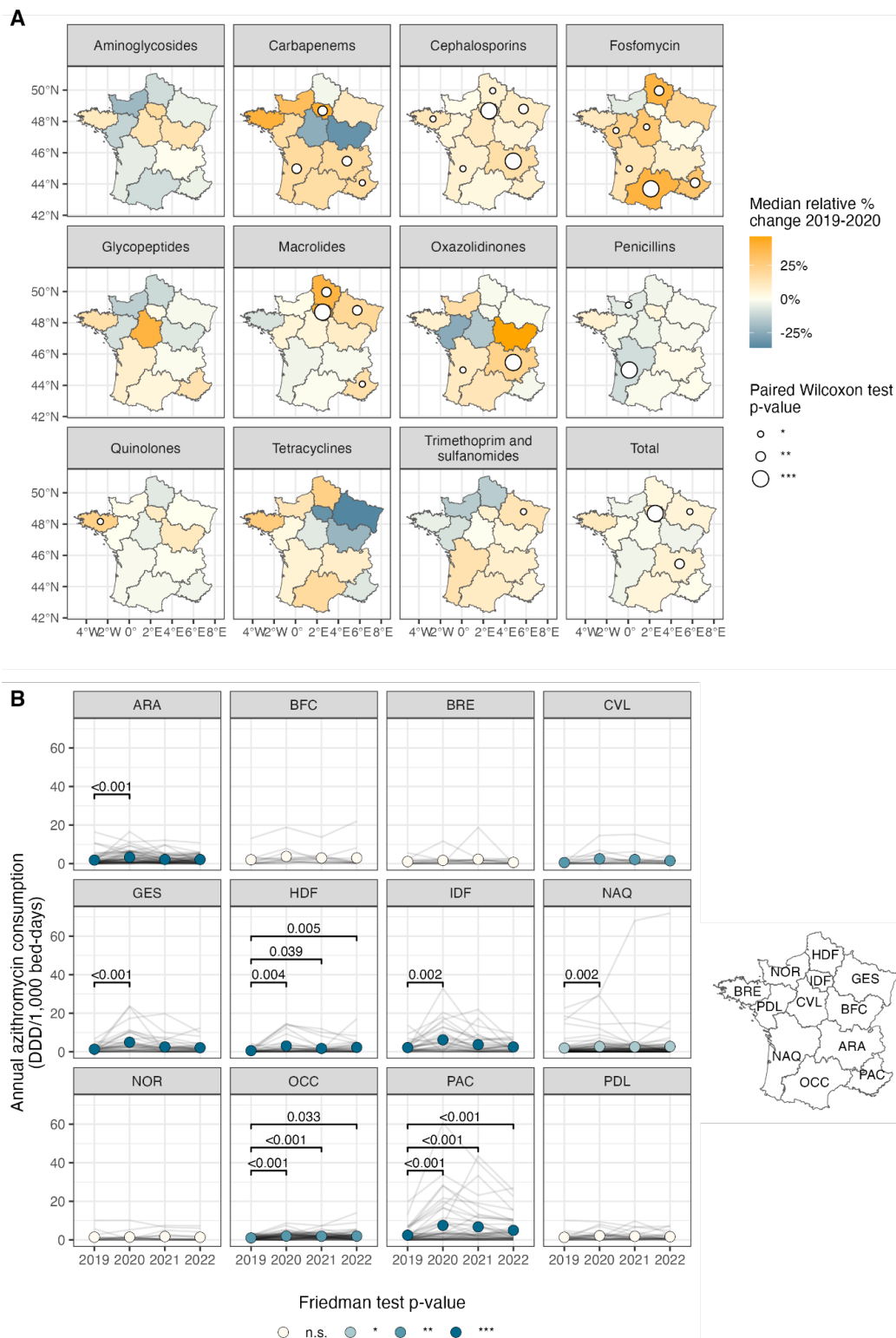
575
576
577
578
579
580
581
582
583
584
585
586
587
588
589
590
591
592
593
594
595
596
597
598
599
600
601
602
603
604
605
606
607
608



609
610 **Figure 1. Data sources and selection.** (A) Hospitals report their antibiotic resistance data in SPARES using either
611 their geographical identifier or their legal identifier, the latter generally grouping multiple geographical entities. We
612 excluded all hospitals that use their legal identifier, except for teaching hospitals that often host the most severe cases.
613 For teaching hospitals that report their data under their legal identifier, we retrieved occupied bed-days data from the
614 PMSI using the geographical identifiers of all relevant entities (see [appendix pp 3-6](#) for more details). (B) Flow
615 diagram of sample selection. We focused our investigations on meticillin-resistant *S. aureus*, ESBL-producing *E. coli*,
616 *K. pneumoniae*, and *E. cloacae* complex, and carbapenem-resistant *P. aeruginosa*. *E. cloacae* complex include

617 *Enterobacter cloacae*, *Enterobacter absuriae*, *Enterobacter hormaechei*, *Enterobacter kobei*, *Enterobacter ludwigii*,
618 and *Enterobacter nimipressuralis*. Among the duplicated samples with different phenotypes, we excluded the least
619 resistant phenotypes, meaning phenotypes S if R or I, and phenotypes I if R (2,219/4,442, 50%). In total, we selected
620 34% of isolates from the global database and 36% of samples isolated in intensive care units (ICUs). (C) Flow diagram
621 of hospitals and ICUs selection. Hospitals located in French overseas territories and Corsica were removed due to
622 specific epidemiological situations as well as low numbers that would decrease the statistical power of the regional
623 analyses. (D) Geographical distribution of hospitals and ICUs across the 12 regions of mainland France.
624 GPH: general public hospital; PPH: private for profit hospital; PNPH: private not-for-profit hospital; RH:
625 rehabilitation hospital; UH: university hospital.

626
627
628
629
630
631
632
633
634
635
636
637
638
639
640
641
642
643
644
645
646
647
648
649
650
651
652
653
654
655
656
657
658
659
660
661
662
663
664
665
666

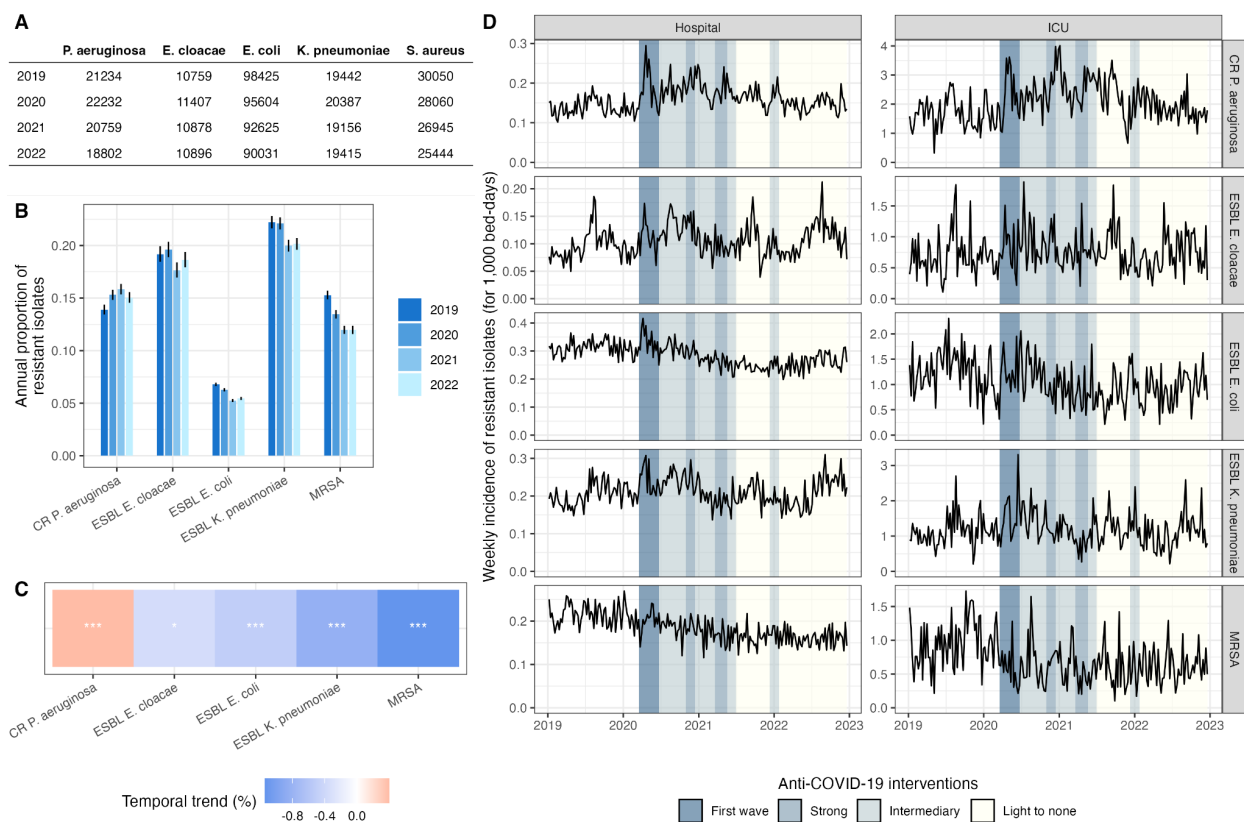


667
668
669
670
671
672

Figure 2. Regional heterogeneity in antibiotic consumption in French hospitals, 2019-2022. (A) Changes of antibiotic consumption across French regions between 2019 and 2020. Colors indicate the median percentage change of antibiotic consumption between 2019 and 2020. We excluded hospitals reporting no consumption in 2019 to calculate this metric. Dark blue colors indicate increased consumption and dark orange colors indicate decreased consumption. We also performed paired Wilcoxon signed-rank tests to compare regional distributions of antibiotic

673 consumption in 2019 and 2020. Circle size indicates the level of significance of the paired Wilcoxon signed-rank tests
674 when the p-value is ≤ 0.05 . **(B)** Dynamics of azithromycin consumption across French regions during the study period.
675 Each panel represents a French region whose geographical location is shown on the right. Gray lines correspond to
676 the trajectories of individual hospitals and colored circles to the average regional antibiotic consumption in defined
677 daily doses (DDD) for 1,000 occupied bed-days. Colors indicate the level of significance of the Friedman test which
678 is the non-parametric equivalent of one-way repeated measures ANOVA tests. We also indicate the corrected p-values
679 of the paired Wilcoxon signed-rank tests between 2019 and the other years of the study period when corrected p-
680 values are ≤ 0.05 . We used a Bonferroni correction.
681 n.s. : p-value > 0.05 ; * : p-value ≤ 0.05 ; ** : p-value ≤ 0.01 ; *** : p-value ≤ 0.001 .
682 ARA: Auvergne-Rhône-Alpes; BFC: Bourgogne-Franche-Comté; BRE: Bretagne; CVL: Centre-Val de Loire; GES:
683 Grand-Est; HDF: Hauts-de-France; IDF: Île-de-France ; NAQ: Nouvelle-Aquitaine; NOR: Normandie; OCC:
684 Occitanie; PAC: Provence-Alpes-Côte d'Azur; PDL: Pays de la Loire.

685
686
687
688
689
690
691
692
693
694
695
696
697
698
699
700
701
702
703
704
705
706
707
708
709
710
711
712
713
714
715
716
717
718
719
720
721
722
723
724
725
726
727

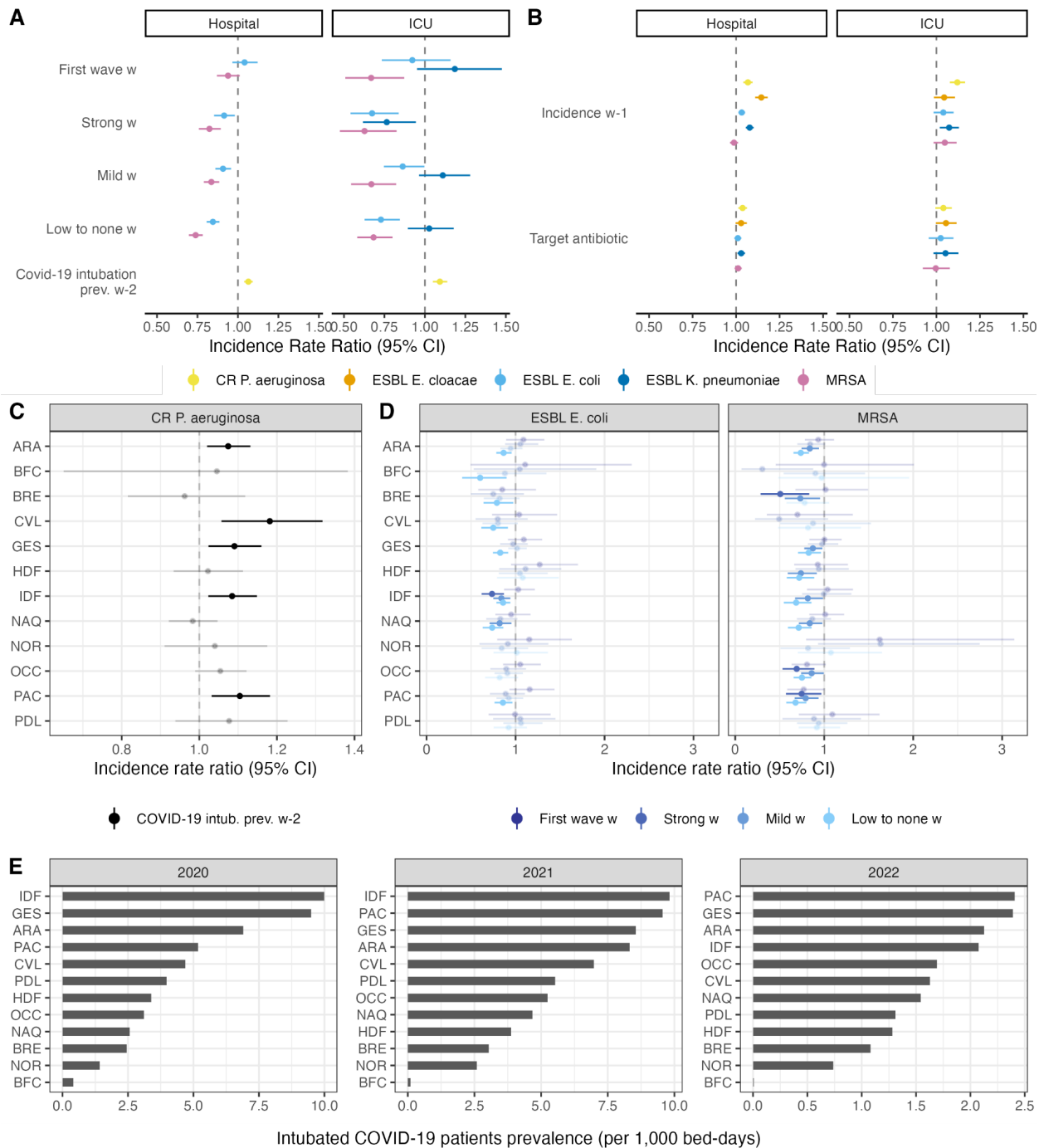


728
729
730
731
732
733
734
735
736
737
738
739
740
741
742
743
744
745
746
747
748
749
750
751
752
753
754
755
756

Figure 3. Antibiotic resistance in hospitals in France, 2019-2022. (A) Annual number of samples isolated in our hospital cohort ($n=414$ hospitals) between 2019 and 2022 and stratified by bacterial species. (B) Annual proportion of resistant bacterial isolates from 2019 to 2022 in our hospital cohort. Intervals indicate the 95% Wilson CIs. (C) Temporal trend of resistance proportions between 2019 and 2022. Stars indicate the level of significance of the χ^2 trend test for proportions. (D) Weekly incidence of resistant infections for 1,000 bed-days over the study period in hospitals and intensive care units (ICUs). The strips indicate the level of anti-COVID-19 interventions in the community.²

*: $p\text{-value} \leq 0.05$; **: $p\text{-value} \leq 0.01$; ***: $p\text{-value} \leq 0.001$.

ESBL *E. cloacae*: ESBL-producing *Enterobacter cloacae* complex; ESBL *E. coli*: ESBL-producing *Escherichia coli*; ESBL *K. pneumoniae*: ESBL-producing *Klebsiella pneumoniae*; CR *P. aeruginosa*: carbapenem-resistant *Pseudomonas aeruginosa*; MRSA: methicillin-resistant *Staphylococcus aureus*.



757
758
759
760
761
762
763
764
765
766
767
768

Figure 4. Results from the count regression analysis of resistant infections in French hospitals and intensive care units (ICUs). (A) Incidence rate ratios (IRRs) of COVID-19-related variables for the best selected regression models. For ESBL-producing *E. cloacae* in ICUs and hospitals and *K. pneumoniae* in hospitals, the best models did not include COVID-19-related variables, thus they do not appear on the forest plots. For the other cases, the best models included either the COVID-19-related periods at week *w*, or the COVID-19 intubation prevalence at week *w*-2. IRR estimates for the COVID-19-related periods are relative to the pre-pandemic period. (B) IRRs of best regression models for the autocorrelation term and antibiotic consumption. Here, “target antibiotic” refers to the antibiotic class targeted by the resistance of the pathogen considered, namely broad-spectrum penicillins for ESBL-producing Enterobacteriales, imipenem+meropenem for CR-PA, and narrow spectrum penicillins for MRSA. (C) IRRs by administrative region using the best model selected at the national level on carbapenem-resistant *P. aeruginosa* (CR-PA) isolate incidence including the prevalence of COVID-19 intubated patients. (D) IRRs by administrative region

769 using the best model at the national level on ESBL-producing *E. coli* (ESBL *E. coli*) and methicillin-resistant *S. aureus*
770 (MRSA) isolate incidence including the pandemic periods at week w . Shaded IRRs have a p-value > 0.05. Intervals
771 correspond to the 95% CIs of the point estimates. (E) Annual prevalence of intubated COVID-19 patients for 1,000
772 bed-days by region. Île-de-France (IDF), Grand-Est (GES), Provence-Alpes-Côte d'Azur (PAC), and Auvergne-
773 Rhône-Alpes (ARA) were the most affected regions during the first two years of the pandemic.
774 ESBL *E. cloacae*: ESBL-producing *Enterobacter cloacae* complex; ESBL *E. coli*: ESBL-producing *Escherichia coli*;
775 ESBL *K. pneumoniae*: ESBL-producing *Klebsiella pneumoniae*; CR *P. aeruginosa*: carbapenem-resistant
776 *Pseudomonas aeruginosa*; MRSA: methicillin-resistant *Staphylococcus aureus*.
777 ARA: Auvergne-Rhône-Alpes; BFC: Bourgogne-Franche-Comté; BRE: Bretagne; CVL: Centre-Val de Loire; GES:
778 Grand-Est; HDF: Hauts-de-France; IDF: Île-de-France ; NAQ: Nouvelle-Aquitaine; NOR: Normandie; OCC:
779 Occitanie; PAC: Provence-Alpes-Côte d'Azur; PDL: Pays de la Loire.

780
781
782
783
784
785
786
787
788
789
790
791
792
793
794
795
796
797
798
799
800
801
802
803
804
805
806
807
808
809
810
811
812
813
814
815
816
817

	Friedman test p-value	2019 vs 2020		2019 vs 2021		2019 vs 2022	
		Estimate (98·3% CI)	p-value ¹	Estimate (98·3% CI)	p-value ¹	Estimate (98·3% CI)	p-value ¹
Aminoglycosides	<0·001	0 (-0·2, 0·2)	1	-0·3 (-0·6, -0·1)	0·004	-0·7 (-1·0, -0·4)	<0·001
Carbapenems	<0·001	0·6 (0·3, 0·8)	<0·001	0·4 (0·2, 0·8)	<0·001	0·2 (-0·1, 0·5)	0·288
	Imipenem + Meropenem	0·5 (0·2, 0·7)	<0·001	0·4 (0·2, 0·7)	<0·001	0·2 (0, 0·5)	0·139
Cephalosporins	<0·001	3·7 (2·5, 5·2)	<0·001	3·4 (2·0, 4·9)	<0·001	2·6 (0·9, 4·4)	<0·001
Fosfomycin	<0·001	0·2 (0·1, 0·3)	<0·001	0·3 (0·2, 0·4)	<0·001	0·4 (0·3, 0·5)	<0·001
Glycopeptides	<0·001	0·1 (-0·1, 0·4)	0·864	-0·3 (-0·6, 0)	0·014	-1·0 (-1·4, -0·6)	<0·001
	Vancomycin	0·1 (-0·1, 0·3)	0·348	-0·2 (-0·4, 0)	0·074	-0·8 (-1·1, -0·5)	<0·001
Lipopeptides	<0·001	1·6 (1·1, 2·1)	<0·001	2·4 (1·8, 3·2)	<0·001	4·3 (3·3, 5·5)	<0·001
Macrolides	<0·001	1·7 (0·9, 2·6)	<0·001	-0·5 (-1·3, 0·4)	0·609	-0·8 (-1·7, 0)	0·062
	Azithromycin	1·3 (1·0, 1·7)	<0·001	0·6 (0·4, 0·8)	<0·001	0·5 (0·3, 0·8)	<0·001
Monobactams	<0·001	0·1 (0, 0·2)	<0·001	0·2 (0·1, 0·3)	<0·001	0·2 (0·1, 0·3)	<0·001
Oxazolidinones	<0·001	0·4 (0·2, 0·6)	<0·001	0·4 (0·2, 0·6)	<0·001	0·7 (0·4, 0·9)	<0·001
Penicillins	<0·001	-2·5 (-5·2, 0·2)	0·075	-6·4 (-9·3, -3·4)	<0·001	-0·8 (-4·2, 2·5)	1
Polymyxins	0·002	0·1 (0·1, 0·2)	<0·001	0·2 (0·1, 0·3)	<0·001	0 (0, 0·1)	0·816
Quinolones	<0·001	0·2 (-0·9, 1·4)	1	-1·3 (-2·7, 0·1)	0·068	-1·6 (-3·0, -0·1)	0·030
Tetracyclines	0·002	0·3 (-0·1, 0·7)	0·214	0·4 (0, 0·8)	0·057	0·5 (0, 0·9)	0·040
Trimethoprim ²	0·001	0·4 (0, 0·9)	0·031	0·4 (-0·1, 0·9)	0·146	0·7 (0·2, 1·2)	0·003
Total	0·001	7·5 (2·7, 12·5)	<0·001	-0·3 (-5·9, 5·3)	1	5·3 (-0·8, 11·4)	0·107

¹Adjusted p-value with Bonferroni correction

²Corresponds to trimethoprim and combinations of sulfanomides

818
819
820
821
822

Table 1. Changes in annual antibiotic consumption in French hospitals, 2019-2022. We report absolute differences in consumption at the hospital level for every antibiotic class, as well as imipenem and meropenem, vancomycin, and azithromycin specifically. Estimates correspond to the median of the differences of antibiotic consumption (in DDD per 1,000 bed-days) between two years of the study period, using 2019 as a reference year.

823 Positive values thereby indicate an increased consumption compared to 2019 and negative values indicate a reduced
824 consumption compared to 2019. For every pairwise comparison, we report the adjusted p-value of the paired Wilcoxon
825 signed-rank test using a Bonferroni correction and the associated 98.3% CI. Finally, we report Friedman tests p-values
826 that are the non-parametric equivalent of one-way repeated measures ANOVA tests to evaluate whether there are
827 changes in antibiotic use over the study period.

828
829
830
831
832
833
834
835
836
837
838
839
840
841
842
843
844
845
846
847
848
849
850
851
852
853
854
855
856
857
858
859
860
861
862
863
864
865
866
867
868
869
870

	Friedman test p-value	2019 vs 2020		2019 vs 2021		2019 vs 2022	
		Estimate (98.3% CI)	p-value ¹	Estimate (98.3% CI)	p-value ¹	Estimate (98.3% CI)	p-value ¹
Aminoglycosides	0.001	-4.0 (-11.1, 3.4)	0.639	-5.4 (-15.2, 5.1)	0.636	-11.3 (-19.3, -3.0)	0.004
Carbapenems	<0.001	12.2 (4.1, 19.4)	0.001	14.4 (4.5, 23.8)	0.004	10.1 (-0.9, 20.1)	0.078
	Imipenem + Meropenem	12.5 (4.7, 19.8)	<0.001	15.8 (6.7, 25.1)	<0.001	12.5 (1.9, 22.4)	0.018
Cephalosporins	0.011	24.5 (8.2, 38.9)	<0.001	19.4 (0.5, 37.6)	0.042	25.5 (6.8, 44.4)	0.003
Fosfomycin	0.351	0 (-0.6, 0.5)	1	0 (-0.6, 0.4)	1	-0.3 (-0.9, 0.1)	0.223
Glycopeptides	0.002	1.1 (-4, 5.3)	1	-5 (-10.6, 0.9)	0.13	-4.7 (-10.8, 0.7)	0.106
	Vancomycin	0.7 (-3.9, 5.1)	1	-4.3 (-9.9, 1.1)	0.166	-4.6 (-10.7, 0.8)	0.115
Lipopeptides	<0.001	8.8 (2.4, 15.1)	0.004	7.1 (0.4, 14.1)	0.033	16.9 (10.2, 24.2)	<0.001
Macrolides	<0.001	17.4 (7.7, 28.9)	<0.001	-4.2 (-14.0, 6.5)	0.942	-5.6 (-14.8, 3.9)	0.447
	Azithromycin	12.7 (5.8, 20.5)	<0.001	0.8 (-0.5, 2.7)	0.459	1.1 (-0.3, 2.7)	0.146
Monobactams	0.008	1.0 (0, 2.3)	0.04	1.3 (0, 3.0)	0.059	1.3 (0.4, 2.2)	0.003
Oxazolidinones	0.048	2.3 (-2.3, 7.3)	0.654	0.5 (-4.6, 6.2)	1	4.1 (-1.1, 8.7)	0.163
Penicillins	<0.001	-51.2 (-78.0, -27.1)	<0.001	-69.1 (-98.1, -39.9)	<0.001	-10.1 (-40.6, 19.6)	1
Polymyxins	0.009	1.3 (0, 2.7)	0.043	2.3 (0.7, 4.7)	0.003	0.3 (-0.6, 1.6)	1
Quinolones	0.003	-14.9 (-24.4, -5.7)	<0.001	-12.7 (-24.4, -1.6)	0.024	-14.3 (-26.5, -3.5)	0.007
Tetracyclines	0.619	-0.1 (-2.4, 1.9)	1	-0.1 (-2.8, 2.4)	1	0.9 (-1.5, 3.6)	0.987
Trimethoprim ²	0.065	-1.7 (-6.4, 3.1)	1	0.1 (-5.7, 5.6)	1	5.9 (0.9, 11.9)	0.017
Total	0.058	4.1 (-40.9, 49.4)	1	-41.0 (-105.5, 24.3)	0.456	24.1 (-29.7, 80.9)	0.780

¹Adjusted p-value with Bonferroni correction

²Corresponds to trimethoprim and combinations of sulfanamides

871
872 **Table 2. Changes in annual antibiotic consumption in French ICUs, 2019-2022.** We report absolute differences
873 in consumption at the ICU level for every antibiotic class, as well as imipenem and meropenem, vancomycin, and
874 azithromycin specifically. Estimates correspond to the median of the differences of antibiotic consumption (in DDD
875 per 1,000 bed-days) between two years of the study period, using 2019 as a reference year. Positive values thereby

876 indicate an increased consumption compared to 2019 and negative values indicate a reduced consumption compared
877 to 2019. For every pairwise comparison, we report the adjusted p-value of the paired Wilcoxon signed-rank test using
878 a Bonferroni correction and the associated 98·3% CI. Finally, we report Friedman tests p-values that are the non-
879 parametric equivalent of one-way repeated measures ANOVA tests to evaluate whether there are changes in antibiotic
880 use over the study period.
881