

1 **From community as data providers to community as data users: developing a community-led**
2 **research platform using program data in HIV/STI Program Science in Kenya**

3
4 Nancy Tahmo^{1,*}, Anthony Noah^{2,3}, Byron Odhiambo^{2,4}, Charles Kyalo^{2,4}, Elly Ondiek^{2,5}, Fortune
5 Ligare^{2,6}, Gilbert Asuri^{2,3}, Jedidah Wanjiku^{2,7}, John Alex Njenga^{2,8}, John Maina^{2,7}, Kennedy
6 Mwendwa^{2,6}, Kennedy Olango^{2,9}, Kennedy Ouma^{2,9}, Loice Nekesa^{2,7}, Pascal Macharia^{2,7}, Silvano
7 Tabbu^{2,5}, Kristy CY Yiu¹⁰, Robert Lorway¹¹, Parinita Bhattacharjee^{12,13}, Huiting Ma¹⁰, Lisa
8 Lazarus¹¹, Sharmistha Mishra^{10,14,15¶}, Jeffrey Walimbwa^{2,4,16*¶}, on behalf of the Health Reah
9 Intervention Kuthamini Afya Yetu Community-Led Research Initiative[^]

10 **Affiliations**

11 ¹Division of Epidemiology, Dalla Lana School of Public Health, University of Toronto, Toronto,
12 Ontario, Canada

13 ²Health Research Intervention Kuthamini Afya Yetu (HEKA), Kenya

14 ³An Empowered Just and Inclusive Society (AMKENI) Malindi, Kilifi, Kenya

15 ⁴ISHTAR, Nairobi, Kenya

16 ⁵Kenya Youth Development and Education Support Association (KYDESA), Nakuru, Kenya

17 ⁶HIV & AIDS People's Alliance (HAPA) Kenya, Mombasa, Kenya

18 ⁷Health Options for Young Men on HIV/AIDS & STI (HOYMAS), Nairobi, Kenya

19 ⁸Q-Initiative, Eldoret, Kenya

20 ⁹Men Against AIDS Youth Group (MAAYGO), Kisumu, Kenya

21 ¹⁰MAP Centre for Urban Health Solutions, St. Michael's Hospital, Toronto, Ontario, Canada

22 ¹¹Institute of Global Public Health, Department of Community Health Sciences, University of
23 Manitoba, Winnipeg, Manitoba, Canada

24 ¹²Institute of Global Public Health, University of Manitoba, Winnipeg, Manitoba, Canada

25 ¹³Partners for Health and Development in Africa, Nairobi, Kenya

26 ¹⁴Institute of Health Policy, Management and Evaluation, Dalla Lana School of Public Health,
27 University of Toronto, Toronto, Ontario, Canada

28 ¹⁵Department of Medicine and Institute of Medical Sciences, University of Toronto, Toronto,
29 Ontario, Canada

30 ¹⁶Community Research and Technical Support Hub, Nairobi, Kenya

31

32 [¶]Co-senior authors

33 *Corresponding author:

34 Email: jwalimbwa15@gmail.com (JW); nancy.tahmo@mail.utoronto.ca (NT)

35 **Abstract**

36 **Background:** Community-based organizations (CBOs) are critical in providing trusted and targeted
37 HIV/STI services to gay, bisexual, and other men who have sex with men (GBMSM). Despite
38 significant strides in CBOs' involvement in HIV/STI research, there remain gaps in meaningful
39 engagement, especially in quantitative research. This paper explores the development of HEKA, a
40 community-led research platform where community-based organizations build capacity and
41 leverage routinely collected program data to design research that aims to improve HIV/STI
42 programs. We share a collective reflection on the lessons learned in the process, the challenges that
43 emerged, and recommendations for facilitating community-based program science.

44 **Methodology:** Through a collaborative process, seven CBOs serving GBMSM in Kenya created
45 the HEKA Research Initiative and designed a framework of collaboration, through which we
46 assessed the technical gaps in quantitative research among staff, applied for funding, co-designed
47 capacity-building workshops with academic partners, and developed a research agenda. We
48 established a monthly meeting frequency and through collective reflection, documented the lessons
49 and challenges in the process.

50 **Outcomes:** With our successful grant, we organized an in-person workshop on quantitative
51 research methods and R programming. The team identified research questions and completed data
52 cleaning/harmonization of program data. HEKA was successful because we emphasized a co-
53 leadership framework (research direction evolved through shared/delegated leadership), and peer-
54 to-peer mentorship. Major challenges included: obtaining sustained funding for engagement;
55 ensuring the learning pace allows all individuals to be on the same page; confronting the socio-
56 political climate; long commutes between counties for in-person meetings; and the limitation in
57 using Excel files as primary tools for data capture.

58 **Conclusions:** HEKA demonstrates the potential for community-based and led research in the
59 HIV/STI field. The model we present can serve as a blueprint for other community-based
60 organizations aiming to lead collaborative or independent research and build capacity.

61

62 **Introduction**

63 Since the early days of the HIV epidemic, communities have demanded to play an active role in
64 HIV research(1). HIV activists have challenged the portrayal of people living with HIV as
65 “victims”, shifting the narrative to self-empowerment and community-led HIV research(2).
66 Community involvement has advanced HIV research, with prominent examples like the
67 Community Advisory Board of the Advancing Clinical Therapeutics Globally for HIV/AIDS and
68 Other Infections (formerly AIDS Clinical Trials Group)(3). In 2007, the Joint United Nations
69 Programme on HIV/AIDS developed the Good Participatory Practice framework rooted in
70 community-based participatory research and intended to foster power-balanced and transparent
71 community involvement within HIV biomedical prevention trials(4). There have been some strides
72 in collaboration within clinical research and the social sciences, such as the recently completed
73 polling booth survey where community members acted as data collectors(5). However, there
74 remains gaps in meaningful community engagement in many quantitative fields like mathematical
75 modeling of HIV/STI, with concerns surrounding community involvement as a checkbox(6).

76 A recent review revealed gaps in meaningful community and academic collaboration(7). This is
77 particularly so around alignment between academics’ research goals and the priorities of
78 community programs (“democratic deficit”), compensation for communities, and evaluation of the
79 effect of such collaborations on program delivery(7). Many reports on community engagement
80 provide a narrative of experiences and lessons learned (usually a researcher-curated viewpoint),
81 with fewer reports appraising their effectiveness in adding value to the delivery of community
82 programs and health outcomes (the community viewpoint)(4,7). Also, more often, the paternalistic
83 approach to research is such that a community identifies local issues and academic researchers
84 attempt to resolve them through research with communities (in which case, technical skills are often
85 attributed to the academic researchers). The problem with this approach is that the community
86 organizations fall behind in research capacity to conduct assessments using program data, adapt
87 program delivery, and independently secure competitive funding(8). The traditional solution has
88 been the use of short one-time training sessions with community program staff (mostly geared at
89 research partnerships with academics)(8). There have been attempts at developing community-led
90 research networks in Kenya focused on quantitative research, such as G10 through the International
91 AIDS Vaccine Initiative (IAVI). However, G10’s capacity has mostly been as an advisory board for
92 quantitative research(9).

93 Against this backdrop, the program science framework was developed to offer an innovative and
94 adaptive solution. Program science systematically encourages a bi-directional approach where
95 program implementers inform research, and research, in turn, informs program implementation and
96 policy in an iterative process(10). This framework has the potential to unify community-academic
97 researcher collaborations to inform the three pillars of program decisions: strategic planning (e.g.,
98 understanding socio-epidemiological drivers of transmission in epidemics of HIV and other
99 sexually transmitted infections [STI]); program implementation (e.g., prioritizing interventions and
100 reaching effective coverage); and program evaluation (e.g., monitoring for impact on health and
101 wellbeing). As such, program science also uniquely positions community-based organizations to
102 meet the hallmarks of community-led monitoring, an evolving area of HIV/STI prevention with
103 evidenced health outcome improvement(11). Community-led monitoring is an iterative process
104 where communities actively participate in co-designing how data is collected, analyzed, and
105 leveraged to improve the delivery of programs and improve health outcomes(12).

106 As in many countries in Southern and Eastern Africa, there is a high prevalence of HIV/STI in
107 Kenya(13). In this context, operationalizing HIV/STI program science and community-participatory

108 research in HIV/STI prevention and treatment in Kenya has largely been in social science and
 109 qualitative research(14,15). These include but are not limited to, building capacity in qualitative
 110 data collection such as project ethnography, developing, translating, and conducting interviews, and
 111 thematic analyses. When quantitative methods are used in program science, such as cross-sectional
 112 surveys or analyses of programmatic cohort data, community partners have been engaged through
 113 consultation to develop routine data collection tools and/or to design interventions(10). Often this
 114 takes the form of community advisory boards or community expert advisory groups and data
 115 collectors.

116 Yet in Kenya, as in many other settings, community-based organizations also implement programs
 117 providing front-line services for HIV/STI prevention and treatment. Box 1 summarizes the types of
 118 services provided by our community-based organizations. These programs also collect routine
 119 program data, guided by standardized tools developed by the Government of Kenya National AIDS
 120 and STI Control Programme. The program data comprise person-level indicators, with baseline
 121 registration information and longitudinal information on each program-client encounter (in clinic or
 122 at outreach). At each encounter, services may include HIV testing, STI testing or syndromic
 123 assessment, screening for experiences of violence, and risk reduction counseling. Data generated
 124 through these services are collected using tools categorized into Community Outreach, Clinical, and
 125 Programme-level tools, as shown in Table 1 (Figure 1 details the data flow from encounters with
 126 service users to governance and data use). To date, program data have been collected in Excel
 127 spreadsheets and submitted to funders and to the National AIDS and STI Control Programme for
 128 central data reporting as part of the national monitoring and evaluation system for HIV programmes
 129 in Kenya. Programs are starting the transition to electronic medical records (EMR), though some
 130 are advanced in the transition and some others beginning the process.

131 **Table 1. List of tools used for data collection and handling authorities**

Category	Name of tool	Handling responsibility
Community outreach tools	Contact form	Peer educator
	Peer educator outreach calendar	Peer educator
	Outreach worker’s summary sheet	Outreach worker
	Hotspot listing tool (key populations)	Outreach worker
	Peer educator follow-up tracking form	Peer educators
	Peer LTFU (lost to follow-up) register (key populations)	Peer educator
	Case management forms	Case navigator
	Referral register for social-protection services	Outreach supervisor
Clinical tools	Clinic enrolment form	Health care worker
	Clinic visit form	Health care worker
	Sexually transmitted infection (STI) treatment data collection form	Health care worker
	Alcohol abuse screening tool	Health care worker
	Patient Health Questionnaire-9 (PHQ-9) for depression screening	Health care worker

	HTS lab & linkage register	Health care worker
	HIV self-testing tracking log	Health care worker
	Partner notification tracking log	Health care worker
	People living with HIV tracker	Health care worker
	Link facility tracking form	Health care worker
	Post-exposure prophylaxis register	Health care worker
	Prep register	Health care worker
	Cervical cancer screening register	Health care worker
	Sex and gender-based violence register	Health care worker
	Treatment preparation register	Health care worker
	Clinical encounter green card	Health care worker
	Art and cohort register	Health care worker
	HIV daily activity register	Health care worker
	Tuberculosis register	Health care worker
	STI treatment tracker-electronic	Health care worker
	Isoniazid Preventive Therapy register	Health care worker
Programme-level tools	Violence reporting form	Programme officer/advocacy officer/community paralegals
	Training summary tool	Training officer
	Key population master register	Monitoring and evaluation officer
	Drop-in-centre register	Receptionist
	Key population cohort register	Monitoring and evaluation officer
<p>Note. Find the definitions of each data tool and respective variables here: Key populations programme data collection tools revised reference manual – 2019 (https://cquin.icap.columbia.edu/wp-content/uploads/2021/08/KP-Tools-Narrative_FINAL.pdf)</p>		

132

133 In 2022, a group of seven community-based organizations serving gay, bisexual, and other men
 134 who have sex with men (GBMSM) in Kenya came together to form a community-led research
 135 initiative to lead quantitative research for community-led program science, using their own program
 136 data. This article details the process undertaken by community members in developing HEKA:
 137 Health Research Intervention Kuthamini Afya Yetu). We share a collective reflection on the lessons
 138 learned in the process from the community perspective. Particularly, building community-academic
 139 trust; logistics and practical considerations; assessment of the influence of the collaborative process
 140 on program delivery; and based on facilitators or barriers that emerged, share pathways for
 141 community-led quantitative HIV/STIs research. The initiative paves the way for leveraging
 142 routinely collected programmatic data, which aligns with the WHO’s Consolidated guidelines on
 143 person-centered HIV strategic information. The WHO highlighted for the first time in 2022, the
 144 impact of using programmatic data, as it is reliable in tracking HIV indicators (prevention, testing,
 145 and treatment), enhancing timely decision-making, and linkage to STI services(16).

146 **Methodology**

147 **Site setting**

148 GBMSM in Kenya experience disproportionately high rates of HIV and STI(17–19). The existence
149 of regressive laws and resurgence in public discourse that reinforce discrimination against same-sex
150 sexual practices in Sub-Saharan Africa, and in Kenya particularly, amplifies disparities in health
151 and wellbeing. In Kenya, same-sex sexual practices can result in prison time of up to 14 years(20),
152 compounded by widespread socio-cultural beliefs that provide room for discrimination and violence
153 against GBMSM and sexual minorities. GBMSM report experiencing stigma and discrimination at
154 interpersonal and institutional levels, such as blackmail, constrained healthcare service access, and
155 experiences of violence(21,22). Qualitative studies show that GBMSM in Kenya feel more
156 comfortable utilizing community-based services, and community-based organizations have been
157 associated with effective/targeted approaches to addressing the HIV/STI epidemic(23,24). The
158 HEKA Research Initiative brings together seven community-based organizations that provide
159 HIV/STI prevention, testing, and treatment services to GBMSM in Kenya. Together, we serve six
160 counties: Mombasa, Kilifi, Kisumu, Nakuru, Nairobi, and Uasin Gishu, representing a mix of
161 moderate to high-priority counties(18,25). We came together to develop a collective research
162 platform, utilizing program data to inform our local programs.

163 **Guiding principles and authors' positionality**

164 The HEKA research initiative was founded in 2018 under the principles of GIPA/MIPA-
165 Greater/Meaningful Involvement of People Living with HIV/AIDS(26,27) and Community-based
166 Program Science – program coverage framework for HIV/STI research(10,15,28). GIPA/MIPA
167 highlights the importance of the meaningful involvement of people living with or affected by
168 HIV/AIDS in the HIV epidemic response. Complementary to that, community-based program
169 science in HIV/STI coverage emphasizes community collaboration in the iterative use of routine
170 program data to monitor and tailor program delivery.

171 The HEKA partnership included seven community-based organizations (CBOs): ISHTAR
172 (Nairobi County), HOYMAS (Nairobi), HAPA KENYA (Mombasa), AMKENI-Malindi (Kilifi),
173 KYDESA (Nakuru), Q INITIATIVE (Uasin Gishu and Trans-Nzoia), and MAAYGO (Kisumu).
174 Each CBO has a drop-in center and facilities that provide HIV/STI prevention and care, and
175 services like peer education, counseling, and socio-economic support. The organizations were
176 identified through the GBMSM HIV prevention network of organizations implementing HIV
177 programming in Kenya (GHPN-Ke). Twenty-one community program managers and monitoring
178 and evaluation staff from across the organizations constituted the team. The program managers and
179 monitoring and evaluation staff were included because they are directly involved in coordination
180 and data management in their organizations. Through our shared experiences as program staff—
181 some living with HIV, identifying as sexual/gender minorities, or closely connected to these
182 communities—we have progressively mobilized around program-to-program support. In 2019, the
183 HEKA collective reached out to the Mishra Lab through SM for technical support as an academic
184 collaborator with formal training in epidemiology and mathematical modeling.

185 SM is a clinician scientist working in the field of mathematical modeling of infectious disease
186 transmission, specifically focusing on HIV and other sexually transmitted diseases. LL, PB, and RL
187 are social scientists working on community-based research in the HIV/STI field, including in Kenya
188 and with some of the HEKA organizational partners. NT is an epidemiologist who has supported
189 HIV/STI programming in a public health department and is serving as the rapporteur for this paper.
190 NT, KCY, HM, RL, PB, LL, and SM have provided ongoing mentorship and support through
191 research and facilitating capacity-building for our community researchers.

192 **Ethics statement**

193 We have ethics approval through AMREF Health Africa (ESRC P1490/2023) and the University of
194 Toronto (RIS Human Protocol Number: 46631).

195 **HEKA Research Initiative collaborative process**

196 Figure 2 details the systematic process we are undertaking since establishing the research initiative.
197 At a national level, all sexual and reproductive health community-based organizations would meet
198 quarterly (peer assessment meeting) to foster peer-to-peer support across programs and enhance
199 program delivery, through sharing best practices and local advocacy. During one such meeting in
200 October 2019, the CBOs initiated conversations between our respective representatives. This
201 happened in the context of long-standing academic collaborations where we felt excluded from
202 some of the analysis-focused research components, and limited participation in key population
203 mathematical modeling working groups. We (CBOs) set up monthly meetings thereafter, where we
204 gathered information on the programmatic priorities of our organizations and assessed the baseline
205 research expertise in our respective programs. We recognized the need for sustainable and rigorous
206 capacity building within our research initiative, and as such, approached an academic colleague
207 (SM) to co-design a skill development plan. We decided to organize an in-person meeting with all
208 team members from respective CBOs to initiate skill development and set up a regular meeting
209 agenda.

210 Organizing in-person meetings with representatives from across the country required financial
211 resources, so we prioritized applying for funding. The COVID-19 pandemic brought our efforts to a
212 pause, though it provided us to reassess our in-house tools in program delivery. We had generated
213 routine or day-to-day person-level data through all the years of client contact. As such, we pursued
214 funding to align our goal of holding regular in-person and virtual program staff research skill
215 development with the use of routine programmatic data to guide our response along the HIV/STI
216 prevention and treatment cascade. In 2023, we submitted the proposal, “Characterizing the HIV
217 epidemic, prevention gaps, and opportunities among men who have sex with men in selected
218 counties in Kenya using routinely collected program data before, during, and after the COVID-19
219 pandemic: a community-based research initiative” to Amref Health Africa and NACOSTI (National
220 Commission for Science, Technology, and Innovation). The proposal was successful, and we
221 obtained pilot funding to support our regular meetings and initiate the implementation of the
222 proposed project.

223 At the center of the HEKA Research Initiative is that we provide optimum services and improve
224 health outcomes for the communities we serve. Through quantitative skill development, we aim to
225 use routine programmatic data to assess the needs of our communities (e.g., quantifying the client
226 population longitudinally); map program initiatives and resources to population size (resource
227 strategy); and use analytic tools to assess disease drivers and contextual factors influencing
228 population reach to improve uptake of services. The HEKA Research Initiative systematic process
229 is intended to be iterative.

230 **Collaborative meeting and outcomes**

231 With the pilot funding, we organized the first official in-person meeting in November 2023. Beyond
232 using this to set up our overall goal as a research group, we designed this as a three-day intensive
233 workshop. This included interactive teaching and hands-on exercises on research concepts and
234 methodology of quantitative analysis. The choice of three days and a mixture of didactic
235 information sessions, hands-on learning, and small group projects was based on prior collaborative
236 work and the Coordinating with Communities guidelines for improving community involvement in
237 HIV prevention (agenda included in the Supplemental file)(29). For the workshop, we co-designed
238 a skill development plan with our academic partners (NT, HM, and SM); this included an

239 introductory session on the use of R Programming Language, an intuitive and open-access tool that
 240 will be helpful to achieve our analytic goals. The didactic component included sessions on study
 241 designs, formulating a “good” research question, types of variables, and principles for generating
 242 research study data from routine program data. The hands-on component involved preparing data
 243 from Microsoft Excel files as wide and long data formats and learning to use R to import data, using
 244 a dummy dataset. The team was split into three small working groups where we formulated three
 245 research questions, and each small team presented their work to the whole group, before questions
 246 were refined and specific objectives included.

247 At the end of our three-day workshop, we had drafted the overarching research goals for HEKA,
 248 identified three pertinent research questions (see Table 2), and set up a regular online meeting
 249 schedule for once a month with continuous communication via a new WhatsApp group.

250 **Table 2. Preliminary HEKA research focus**

Sub-group research questions		
Program priority topic	Program-relevant research question	Counties
Sexually transmitted infections (STIs) and condom supply	How did condom stockouts impact rates of sexually transmitted infections (STIs) among MSM who receive services at the CBOs?	Nairobi
oral HIV pre-exposure prophylaxis (PrEP)	What are the factors affecting the initiation, re-initiation, and retention of HIV oral PrEP among MSM between 18-24 years old and 35+ years old within the coastal region?	Kilifi, Mombasa, Trans Nzoia, and Uasin Gishu
Mental health among MSM living with HIV	What are the effects of mental health on viral suppression amongst MSM living with HIV in Kisumu and Nakuru, Kenya?	Kisumu and Nakuru
Overarching HEKA research goals		
<ol style="list-style-type: none"> 1. Advance our scientific literacy in epidemiological research 2. Generate research questions and develop study designs 3. Learn the basics of an open-access software, R, to advance our data analysis & data visualization capacity 4. Develop a harmonized longitudinal study database using programmatic data 5. Develop a community of epidemiological research practice 6. Begin building expertise in community-based data science and community-based participatory mathematical modeling 7. Develop a research team entirely made up of and led by MSM living in Kenya 		
Notes. MSM: Men who have sex with men, CBO: Community-based organization, HEKA: <u>H</u> Health <u>R</u> esearch <u>I</u> ntervention <u>K</u> uthamini <u>A</u> fya <u>Y</u> etu		

251

252 **Discussion**

253 Since the initiation of our collective research initiative, we have informally engaged in reflective
254 conversation to gather thoughts on what lessons we have learned so far in the process and based on
255 challenges that have emerged, what our recommendations would be. After our first in-person
256 meeting, we formalized the different thoughts we had in writing; the draft was reviewed by team
257 members before final inclusion in this paper.

258 **Reflection on lessons learned**

259 **1. Co-leadership framework**

260 As community researchers, we often are token members of research teams, and so, would lead
261 within the confines of the research plan of our academic colleagues. The HEKA Research Initiative
262 has been uniquely successful because we have adopted a co-leadership framework where the
263 direction of our work evolves through shared and delegated leadership across all seven community
264 organizations. This way, we all feel equally engaged and create space for open conversation and
265 consensus building around the direction to take in achieving our research goals. *“We are moving
266 from data generators to also being data users.” “Let’s have a personal stake in this; I will renew
267 my commitment – when we are doing our virtual engagement, this is “our baby” as a team.”*

268 **2. Accompaniment approach to learning about quantitative methods and R 269 programming**

270 We learned about the fundamentals of quantitative methods in research, securing us with a link
271 between our intuition and observations and the standard terminologies that researchers use. This
272 provides us with the tools to engage on a more level playing field when it comes to co-designing
273 not only the research questions but also the analytic plans. The hands-on experience with data
274 cleaning, data checks, and data management in R using an accompaniment approach meant that we
275 were jointly learning, processing, and negotiating skills at every step. Often the needs of program
276 decisions and research are faster than the learning process, but our team balanced this by pausing at
277 each step to work out the data issues together. R is a language, like the language of communities,
278 and walking side by side with communities and academics is how we learned to communicate with
279 each other. *“Learning R has been a journey. It has been both physical workshops backed up by
280 constant weekly virtual meetings both as a whole team as well as one-on-one meetings. This has led
281 the team to continue being united, and hence the constant meetings have led to the process feeling
282 like on-job training.”*

283 **3. Program data and rethinking HIV/STI indicators**

284 Through direct interrogation of the data generated through programs, we are growing our ability to
285 understand the data and begin to think of ways to identify gaps, both research-wise and also in the
286 quality of the tools we currently use, in capturing relevant data, so as to make informed
287 recommendations. *“Through this process, community-based organizations are not only producers
288 of data to be consumed by researchers, but as we gain more skills, the researchers (coming from
289 these KP organizations) can be able to analyze and interpret the data from program
290 implementation and identify existing gaps in the program.” “This is a real capacity-building work –
291 improving us from where we were. I can say I am not in the same place I was when we started
292 doing this – especially with R. If we can continue the virtuals, this will continue to help my growth.
293 This means we can analyze our own data much easier and know and see the gaps – not the other
294 way around, where donors tell us what our gaps are and what to implement.”*

295 **4. Peer-to-peer mentorship and trust-building**

296 The research initiative has been structured around multi-organization small working groups, where
297 community-based organizations are grouped around common pertinent research questions. It was

298 inherently built-in to support each other to meet the deliverables to advance our collective goal,
299 such as co-learning and practicing R programming between sessions. This has fostered more peer-
300 to-peer check-ins and other collaborative support between our programs, thus aiding in building
301 trust, which is essential to our programs. *“I feel like everything is an opportunity for learning
302 within HEKA. Want to give my thanks to HEKA leaders who made sure we can continue to have
303 these experiences. This is also helping my organization improve, and I have been learning from
304 other organizations and putting into practice what other organizations are doing.”*

305 **Challenges and recommendations for facilitating integrated community-led HIV/STI research**

306 **1. Sustained engagement through funding**

307 Community researchers also have a responsibility to run community-based programs and as such,
308 go beyond to lead research in addition to work schedules. The HEKA Research Initiative has been a
309 success because we have prioritized the compensation of staff to cover the time spent, including
310 logistics for in-person meetings through small competitive grants from national agencies like
311 Amref. HEKA’s plan around resource mobilization is to ensure these virtual meetings and in-person
312 meetings are sustained all through the research period and beyond since there is limited funding and
313 timeframe for the research.

314 **2. Difference in learning pace according to community researcher engagement level**

315 Workshops are very few and limited to a few days; hence bringing the team together can be difficult
316 with members coming from different professional backgrounds with different exposures (roles
317 differ, for example, monitoring and evaluation staff and data clerks have more contact with data) to
318 different tools. As a result, there is a difference in the learning pace. Therefore, we recommend
319 allocating more days for these workshops as it would help ensure that all the team members can
320 confidently participate in the overall process.

321 **3. Socio-political climate**

322 Due to the rising, state-sanctioned anti-LGBTQI+ movements, the in-person meetings were at many
323 times disrupted or postponed to ensure the safety of our team. We leveraged virtual spaces such as
324 WhatsApp communications and Zoom sessions, though these were sometimes interrupted during
325 days when safety was a concern and staff could not make it to work. This was especially true for the
326 organizations in regions most affected by anti-LGBTQI+ protests. These protests also delayed
327 services and data collection and management.

328 **4. Long hours of travel**

329 Long hours of road travel during the physical meetings contributed to some of the members being
330 fatigued and hence less productive with the limited workshop days. With adequate funding, we
331 would recommend booking flights for the in-person collaborative meetings, especially for more
332 remotely-located team members.

333 **5. Data abstraction processes**

334 Different times in data capturing using Excel workbooks have limited community researchers in
335 data extracting/mining, which led to more time dedicated to data cleaning and harmonization. Due
336 to limited exposure to the analytical tools, time was spent learning the tools and additional virtual
337 meetings were required to troubleshoot and complete data abstraction and anonymization. We
338 recommend building in more workshop and mentorship hours.

339 **Conclusion**

340 This paper sets out to provide a novel example of community-led research using programmatic data,
341 with insights into steps taken, reflections, and practical perspectives on sustainable and successful
342 community-led collaborative research. We hope to inspire other community-based organizations in

343 the HIV/STI research field to see that it is possible for funding organizations to facilitate the
344 autonomy of community organizations to independently seek competitive grants towards the
345 ownership and utilization of their programmatic data to inform service delivery.

346 We acknowledge the challenges involved in developing a community-led research platform with
347 coordination across multiple geographically dispersed community organizations. The challenges we
348 presented are not unique to our research initiative. Nonetheless, community-led collaborative
349 research is a promising approach to mobilizing and addressing HIV/STI issues that are pertinent to
350 our communities. HEKA boasts of multiple contributions to community-based research in Kenya:

- 351 1. It is the first time our community-based organizations have come together to interrogate
352 quantitative data collected by our organizations to guide our response along the HIV/STI
353 prevention and treatment cascade.
- 354 2. This is the first time our community organizations have in-depth and hands-on training on
355 quantitative data analytic concepts and methods. Through co-designed skill development for
356 our program staff, we are better equipped to actualize program science in HIV/STI coverage
357 through the iterative use of routine program data to monitor and tailor program delivery and
358 adapt to the evolving nature of the ecology of community programs in Kenya (e.g., a
359 changing socio-political environment that shapes how we interact with service users and
360 funders).

361 With our collaborative work underway (research agenda developed), some of our next steps include
362 completing a scientific paper detailing the process we undertook in developing a harmonized
363 database from the program data, which will facilitate rapid programmatic, community-led
364 monitoring activities. HEKA demonstrates the potential for community-based and led research in
365 the HIV/STI field. The model we present can serve as a blueprint for other community-based
366 organizations aiming to lead collaborative or independent research and build capacity. As future
367 steps, we will conduct analyses to address the research questions: root-cause quantitative analyses
368 of mediators of new HIV and STI infections using a causal lens generated through lived experience;
369 exploration of patterns and predictors of initiation, persistence, and re-initiation of HIV pre-
370 exposure prophylaxis across diverse geographic regions within Kenya; exploring the impact of
371 disruption in the supply of commodities on STI diagnoses, condoms, and lubricants; and the
372 development of a group governance document (for sustainability). HEKA will also begin building
373 fundamental understanding of mathematical modeling, as we plan to implement community-based
374 participatory mathematical modeling.

375 **Acknowledgments**

376 We thank each of our respective community-based organizations for supporting the HEKA
377 initiative. We also thank the Kenya Key Population Consortium for encouraging the HEKA
378 initiative. NT is supported by the St. Michael's Foundation Angel's Den Doctoral Scholarship. SM
379 is supported by a Tier 2 Canada Research Chair in Mathematical Modeling and Program Science.
380 RL is supported by a Tier 2 Canada Research Chair in Global Intervention Politics and Social
381 Transformation.

382 **Funders**

383 Amref grant number P1490/2023

384 New Frontiers in Research Exploration Grant number NFRFE-2023-00436

385

387 References

- 388 1. Epstein S. Impure science: AIDS, activism, and the politics of knowledge. Reprint. Berkeley,
389 Calif.: Univ. of California Press; 20. 466 p. (Medicine and society).
- 390 2. Strauss RP, Sengupta S, Quinn SC, Goepfing J, Spaulding C, Kegeles SM, et al. The Role of
391 Community Advisory Boards: Involving Communities in the Informed Consent Process. *Am J*
392 *Public Health* [Internet]. 2001 Dec [cited 2024 Apr 6];91(12):1938–43. Available from:
393 <https://ajph.aphapublications.org/doi/full/10.2105/AJPH.91.12.1938>
- 394 3. National Institute of Allergy and Infectious Diseases. Advancing Clinical Therapeutics Globally
395 for HIV/AIDS and Other Infections (ACTG) | NIAID: National Institute of Allergy and
396 Infectious Diseases [Internet]. 2024 [cited 2024 Apr 6]. Available from:
397 <https://www.niaid.nih.gov/research/aids-clinical-trials-group>
- 398 4. Joint United Nations Programme on HIV/AIDS (UNAIDS), AIDS Vaccine Advocacy Coalition
399 (AVAC). Good participatory practice guidelines for biomedical HIV prevention trials [Internet].
400 UNAIDS; 2007 Nov [cited 2024 Apr 6]. Available from:
401 <https://digitallibrary.un.org/record/640775/files/HPP001600.pdf>
- 402 5. Bhattacharjee P, McClarty L, Isac S, Kimani J, Emmanuel F, Kabuti R, et al. Applying the
403 Effective Programme Coverage framework to assess gaps in HIV prevention programmes for
404 female sex workers and men who have sex with men in Nairobi, Kenya: findings from an
405 expanded Polling Booth Survey. *J Int AIDS Soc*. 2024 Jul;27 Suppl 2(Suppl 2):e26240.
- 406 6. Karris MY, Dube K, Moore AA. What Lessons it Might Teach Us! Community Engagement in
407 HIV Research. *Curr Opin HIV AIDS* [Internet]. 2020 Mar [cited 2024 Jan 21];15(2):142–9.
408 Available from: <https://www.ncbi.nlm.nih.gov/pmc/articles/PMC7374765/>
- 409 7. Ayala G, Sprague L, Van Der Merwe LLA, Thomas RM, Chang J, Arreola S, et al. Peer- and
410 community-led responses to HIV: A scoping review. Isaakidis P, editor. *PLoS ONE* [Internet].
411 2021 Dec 1 [cited 2024 Apr 6];16(12):e0260555. Available from:
412 <https://dx.plos.org/10.1371/journal.pone.0260555>
- 413 8. Collins C, Dolata J, Pike E, Sehgal A. Increasing research capacity in community organizations:
414 Findings from the Community Research Scholars Initiative. *Evaluation and Program Planning*
415 [Internet]. 2023 Feb [cited 2024 Jun 18];96:102189. Available from:
416 <https://linkinghub.elsevier.com/retrieve/pii/S0149718922001434>
- 417 9. African Research Nexus. G10 Research Advisory Committee [Internet]. 2024 [cited 2024 Nov
418 19]. Available from: <https://research-nexus.net/institution/>
- 419 10. Becker M, Mishra S, Aral S, Bhattacharjee P, Lorway R, Green K, et al. The contributions and
420 future direction of Program Science in HIV/STI prevention. *Emerg Themes Epidemiol*.
421 2018;15:7.
- 422 11. Baptiste S, Manouan A, Garcia P, Etya'ale H, Swan T, Jallow W. Community-Led Monitoring:
423 When Community Data Drives Implementation Strategies. *Curr HIV/AIDS Rep*. 2020
424 Oct;17(5):415–21.

- 425 12. Joint United Nations Programme on HIV/AIDS. Community-led monitoring in action:
426 Emerging evidence and good practice. 2023; Available from:
427 [https://www.unaids.org/sites/default/files/media_asset/JC3085E_community-led-monitoring-in-
action_en.pdf](https://www.unaids.org/sites/default/files/media_asset/JC3085E_community-led-monitoring-in-
428 action_en.pdf)
- 429 13. Joint United Nations Programme on HIV/AIDS. Kenya | UNAIDS [Internet]. 2023 [cited 2023
430 Oct 15]. Available from: <https://www.unaids.org/en/regionscountries/countries/kenya>
- 431 14. Odinga MM, Kuria S, Muindi O, Mwakazi P, Njraini M, Melon M, et al. HIV testing amid
432 COVID-19: community efforts to reach men who have sex with men in three Kenyan counties.
433 *Gates Open Res.* 2020;4:117.
- 434 15. Kombo BK, Thomann M, Musyoki H, Olango K, Kuria S, Kyana M, et al. From collaborator to
435 colleague: a community-based program science approach for engaging Kenyan communities of
436 gay, bisexual and other men who have sex with men in HIV research. *Critical Public Health*
437 [Internet]. 2023 Oct 20 [cited 2024 Oct 22];33(5):660–71. Available from:
438 <https://www.tandfonline.com/doi/full/10.1080/09581596.2023.2260935>
- 439 16. World Health Organization. Consolidated guidelines on HIV testing services, 2019 [Internet].
440 Geneva; 2019 [cited 2024 Feb 5]. Available from: [https://www.who.int/publications-detail-
redirect/978-92-4-155058-1](https://www.who.int/publications-detail-
441 redirect/978-92-4-155058-1)
- 442 17. National Syndemic Disease Control Council. Kenya National Multisectoral HIV Prevention
443 Acceleration Plan 2023 -2030 – National Syndemic Disease Control Council [Internet]. 2023
444 [cited 2024 Jan 11]. Available from: [https://nsdcc.go.ke/download/national-multisectoral-hiv-
prevention-acceleration-plan-2023-2030/](https://nsdcc.go.ke/download/national-multisectoral-hiv-
445 prevention-acceleration-plan-2023-2030/)
- 446 18. Waruru A, Wamicwe J, Mwangi J, Achia TNO, Zielinski-Gutierrez E, Ng’ang’a L, et al. Where
447 Are the Newly Diagnosed HIV Positives in Kenya? Time to Consider Geo-Spatially Guided
448 Targeting at a Finer Scale to Reach the “First 90.” *Front Public Health* [Internet]. 2021 Apr 23
449 [cited 2024 Apr 9];9:503555. Available from:
450 <https://www.frontiersin.org/articles/10.3389/fpubh.2021.503555/full>
- 451 19. Awuoche HC, Joseph RH, Magut F, Khagayi S, Odongo FS, Otieno M, et al. Prevalence and
452 risk factors of sexually transmitted infections in the setting of a generalized HIV epidemic—a
453 population-based study, western Kenya. *Int J STD AIDS* [Internet]. 2024 Jan 19 [cited 2024
454 Apr 9];09564624241226487. Available from:
455 <http://journals.sagepub.com/doi/10.1177/09564624241226487>
- 456 20. Kenya Law. Petition 150 & 234 of 2016 (Consolidated) [Internet]. Sect. CONSTITUTIONAL
457 AND HUMAN RIGHTS DIVISION May 24, 2019. Available from:
458 <https://kenyalaw.org/caselaw/cases/view/173946/>
- 459 21. Lewis KA, Jadwin-Cakmak L, Walimbwa J, Ogunbajo A, Jauregui JC, Onyango DP, et al.
460 “You’ll Be Chased Away”: Sources, Experiences, and Effects of Violence and Stigma among
461 Gay and Bisexual Men in Kenya. *IJERPH* [Internet]. 2023 Feb 5 [cited 2024 Apr 9];20(4):2825.
462 Available from: <https://www.mdpi.com/1660-4601/20/4/2825>

- 463 22. Walimbwa J, Macharia P, Wambua S, Lazarus L, Lorway R. Political homophobia and the
464 effect on GBMSM programmes in Kenya: The significance of a community-led rapid agency
465 assessment. *Glob Public Health*. 2023 Jan;18(1):2271989.
- 466 23. Bourne A, Carman M, Kabuti R, Nutland W, Fearon E, Liku J, et al. Experiences and
467 challenges in sexual health service access among men who have sex with men in Kenya. *Glob*
468 *Public Health*. 2022 Aug;17(8):1626–37.
- 469 24. Riehman KS, Kakietek J, Manteuffel BA, Rodriguez-García R, Bonnel R, N’Jie N, et al.
470 Evaluating the effects of community-based organization engagement on HIV and AIDS-related
471 risk behavior in Kenya. *AIDS Care* [Internet]. 2013 Jun 20 [cited 2024 Apr 9];25(sup1):S67–
472 77. Available from: <https://www.tandfonline.com/doi/full/10.1080/09540121.2013.778383>
- 473 25. National AIDS and STI Control Programme. Key Population Mapping and Size Estimation In
474 Selected Counties in Kenya: Phase 1 Key Finding [Internet]. Nairobi, Kenya; 2020 Apr [cited
475 2024 Feb 3]. (Phase 1). Available from: <https://www.nascop.or.ke/key-populations-downloads/>
- 476 26. UNAIDS. From Principle to Practice: Greater Involvement of People Living with or Affected
477 by HIV/AIDS (GIPA). Best Practice Collection - Key Material [Internet]. Joint United Nations
478 Programme on HIV/AIDS; 1999. Available from: [https://data.unaids.org/publications/irc-](https://data.unaids.org/publications/irc-pub01/jc252-gipa-i_en.pdf)
479 [pub01/jc252-gipa-i_en.pdf](https://data.unaids.org/publications/irc-pub01/jc252-gipa-i_en.pdf)
- 480 27. United A. AIDS United. 2021 [cited 2024 Oct 31]. Meaningful Involvement of People with
481 HIV/AIDS (MIPA). Available from: [https://aidsunited.org/meaningful-involvement-of-people-](https://aidsunited.org/meaningful-involvement-of-people-with-hiv-aids-mipa/)
482 [with-hiv-aids-mipa/](https://aidsunited.org/meaningful-involvement-of-people-with-hiv-aids-mipa/)
- 483 28. McClarty LM, Becker ML, García PJ, Garnett GP, Dallabetta GA, Ward H, et al. Programme
484 science: a route to effective coverage and population-level impact for HIV and sexually
485 transmitted infection prevention. *The Lancet HIV* [Internet]. 2023 Dec [cited 2024 Jun
486 18];10(12):e825–34. Available from:
487 <https://linkinghub.elsevier.com/retrieve/pii/S2352301823002242>
- 488 29. Greenall M. Coordinating with Communities Workshop Facilitation Notes [Internet].
489 International Council of AIDS Service Organizations (ICASO), the African Council of AIDS
490 Service Organizations (AfriCASO) and the International HIV/AIDS Alliance (the Alliance),
491 with funding and support from the Joint United Nations Programme on HIV/AIDS (UNAIDS);
492 2007 [cited 2024 Aug 6]. Available from: [https://ctb.ku.edu/en/table-of-](https://ctb.ku.edu/en/table-of-contents/structure/training-and-technical-assistance/workshops/main)
493 [contents/structure/training-and-technical-assistance/workshops/main](https://ctb.ku.edu/en/table-of-contents/structure/training-and-technical-assistance/workshops/main)
- 494
- 495
- 496

From community as data providers to community as data users: developing a community-led research platform using program data in HIV/STI Program Science in Kenya

Box 1. List of services offered by the community-based organizations

- HIV testing services
- HIV care and treatment
- Tuberculosis screening and referral
- Risk reduction counseling
- Provision of pre- and post-exposure prophylaxes
- Condom/lubricant education and distribution
- One-stop services, outreach HIV and sexual and reproductive health education and counseling.
- Referral for harm reduction services for key populations using drugs
- Support and referrals for paralegal services
- Sexually transmitted infection screening and treatment
- Psychosocial support groups
- Nutritional assessment and referral
- Mental health assessment and referral
- Gender-based violence assessment and referral
- In-house social activities to increase retention in care and treatment
- Crisis response
- Security and safety literacy
- Economic empowerment, financial literacy and skill-building
- Policy advocacy

medRxiv preprint doi: <https://doi.org/10.1101/2024.12.03.24318454>; this version posted December 6, 2024. The copyright holder for this preprint (which was not certified by peer review) is the author/funder, who has granted medRxiv a license to display the preprint in perpetuity. It is made available under a [CC-BY 4.0 International license](https://creativecommons.org/licenses/by/4.0/).

Figure 1. Data flow from service user encounter to governance and data use

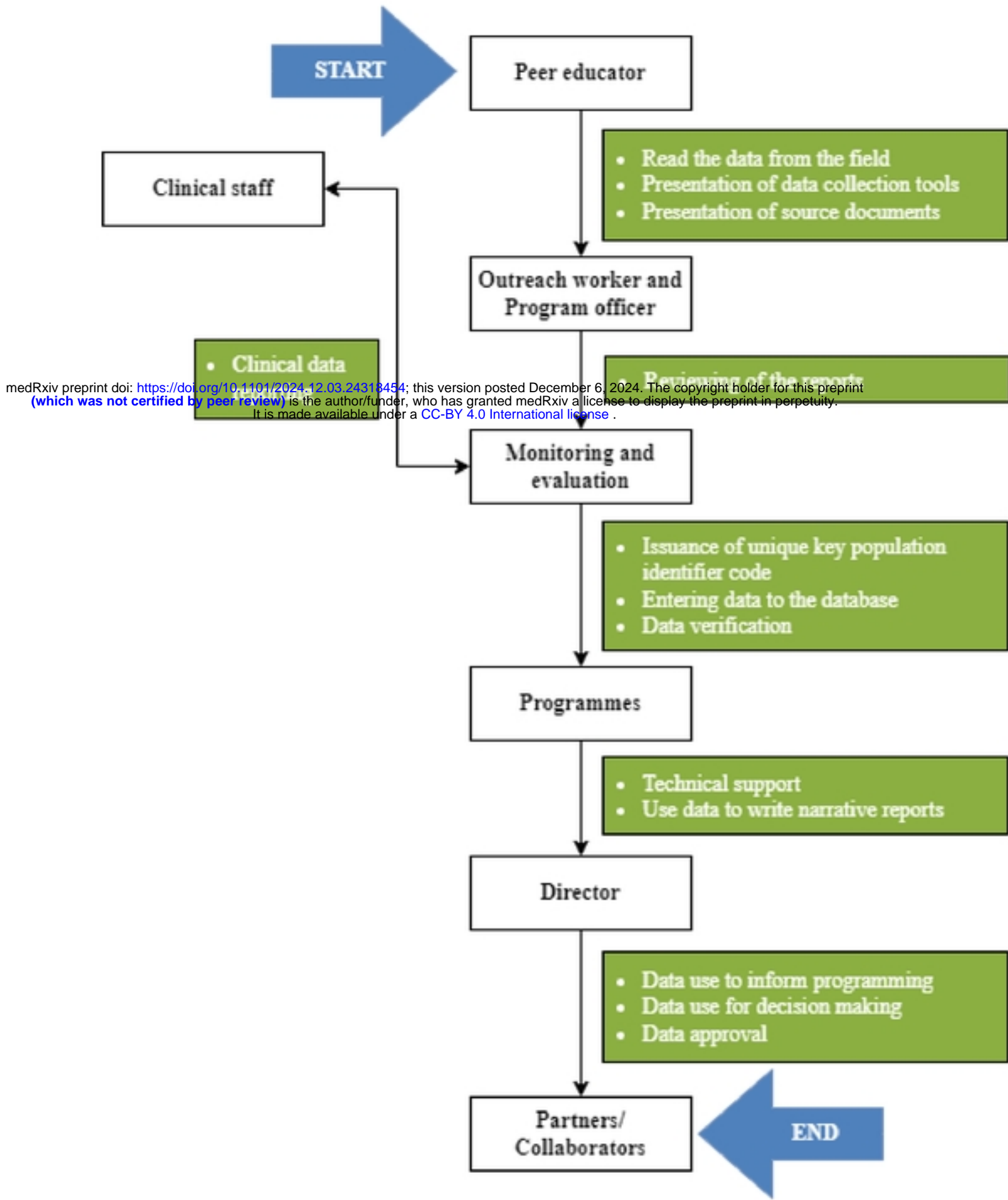
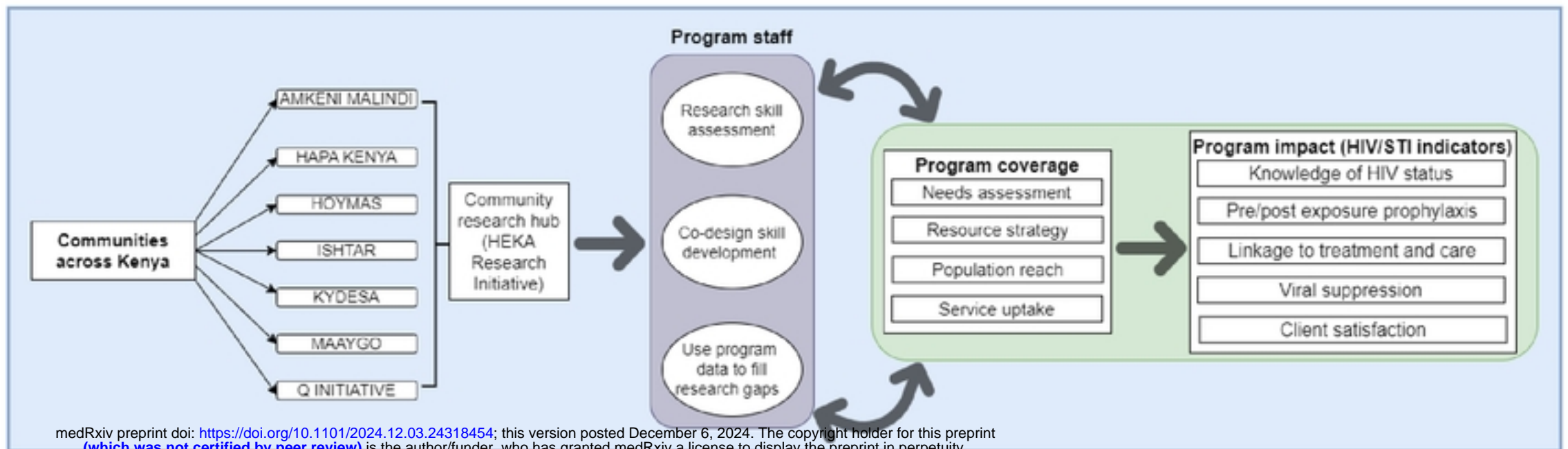


Figure 2. Systematic illustration of the HEKA Research Initiative collaborative process



medRxiv preprint doi: <https://doi.org/10.1101/2024.12.03.24318454>; this version posted December 6, 2024. The copyright holder for this preprint (which was not certified by peer review) is the author/funder, who has granted medRxiv a license to display the preprint in perpetuity. It is made available under a [CC-BY 4.0 International license](https://creativecommons.org/licenses/by/4.0/).