

Self-Assessment of amyotrophic lateral sclerosis functional rating scale on the patient's smartphone proves to be non-inferior to clinic data capture

Laura Steinfurth (1), Torsten Grehl (2), Ute Weyen (3), Dagmar Kettemann (1), Robert Steinbach (4), Annekathrin Rödiger (4,5), Julian Großkreutz (6), Susanne Petri (7), Matthias Boentert (8), Patrick Weydt (9,10), Sarah Bernsen (9,10), Bertram Walter (1), René Günther (11,12), Paul Lingor (13,14), Jan Christoph Koch (15), Petra Baum (16), Jochen H. Weishaupt (17), Johannes Dorst (18,19), Yasemin Koc (1), Isabell Cordts (13), Maximilian Vidovic (11), Jenny Norden (1), Peggy Schumann (1,20), Péter Körtvélyessy (1), Susanne Spittel (20), Christoph Münch (1,20), André Maier* (10), Thomas Meyer* (1,20)

- 1) Charité – Universitätsmedizin Berlin, Corporate Member of Freie Universität Berlin, Humboldt-Universität zu Berlin, and Berlin Institute of Health, Department of Neurology, Center for ALS and other Motor Neuron Disorders, Berlin, Germany
- 2) Alfried Krupp Krankenhaus, Department of Neurology, Center for ALS and other Motor Neuron Disorders, Essen, Germany
- 3) Berufsgenossenschaftliches Universitätsklinikum Bergmannsheil, Department of Neurology, Center for ALS and other Motor Neuron Disorders, Bochum, Germany
- 4) Jena University Hospital, Department of Neurology, Jena, Germany
- 5) Jena University Hospital, ZSE, Zentrum für Seltene Erkrankungen, Jena, Germany
- 6) Universitätsmedizin Schleswig-Holstein, Campus Lübeck, Department of Neurology, Lübeck, Germany
- 7) Hannover Medical School, Department of Neurology, Hannover, Germany
- 8) Münster University Hospital, Department of Neurology, Münster, Germany

- 9) Bonn University, Department for Neurodegenerative Disorders and Gerontopsychiatry,
Bonn, Germany
- 10) DZNE, Deutsches Zentrum für Neurodegenerative Erkrankungen, Research Site Bonn,
Germany
- 11) Technische Universität Dresden, University Hospital Carl Gustav Carus, Department
of Neurology, Dresden, Germany
- 12) DZNE, Deutsches Zentrum für Neurodegenerative Erkrankungen, Research Site
Dresden, Germany
- 13) Technical University of Munich, School of Medicine, Klinikum rechts der Isar,
Department of Neurology, Munich, Germany
- 14) DZNE, Deutsches Zentrum für Neurodegenerative Erkrankungen, Research Site
Munich, Germany
- 15) Universitätsmedizin Göttingen, Department of Neurology, Göttingen, Germany
- 16) University Hospital Leipzig, Department of Neurology, Leipzig, Germany
- 17) University Medicine Mannheim, Heidelberg University, Mannheim Center for
Translational Medicine, Neurology Department, Division for Neurodegenerative
Diseases, Mannheim, Germany
- 18) Ulm University, Department of Neurology, Ulm, Germany
- 19) DZNE, Deutsches Zentrum für Neurodegenerative Erkrankungen, Research Site Ulm,
Germany
- 20) Ambulanzpartner Soziotechnologie APST GmbH, Berlin, Germany

*Contributed equally

Corresponding author:

Thomas Meyer

Charité – Universitätsmedizin Berlin

Center for ALS and other Motor Neuron Disorders

Augustenburger Platz 1, 13353 Berlin, Germany

Mail: thomas.meyer@charite.de

Word count: 3080

Abstract: 249

Tables/Illustrations: 3 tables, 5 figures

References: 36

Abstract (249/250 words)

Objective: To investigate self-assessment of the amyotrophic lateral sclerosis functional rating scale–revised (ALSFRS-R) using the patient’s smartphone and to analyze non-inferiority to clinic assessment.

Methods: In an observational study, ALSFRS-R data being remotely collected on a mobile application (App-ALSFRS-R) were compared to ALSFRS-R captured during clinic visits (clinic-ALSFRS-R). ALS progression rate (ALSPR) – as calculated by the monthly decline of ALSFRS-R – and its intrasubject variability (ALSPR-ISV) between ratings were used to compare both cohorts. To investigate non-inferiority of App-ALSFRS-R data, a non-inferiority margin was determined.

Results: 691 ALS patients using the ALS-App, and 1895 patients with clinic assessments were included. Clinical characteristics for the App-ALSFRS-R and clinic-ALSFRS-R cohorts were as follows: Mean age 60.45 (SD 10.43) and 63.69 (SD 11.30) years ($p<0.001$), disease duration 38.7 (SD 37.68) and 56.75 (SD 54.34) months ($p<0.001$) and ALSPR 0.72 and 0.59 ($p<0.001$), respectively. A paired sample analysis of ALSPR-ISV was applicable for 398 patients with clinic as well as app assessments and did not show a significant difference (IQR 0.12 [CI 0.11, 0.14] vs 0.12 [CI 0.11, 0.14], $p=0.24$; Cohen’s $d=0.06$). CI of IQR for App-ALSFRS-R was below the predefined non-inferiority margin of 0.15 IQR, demonstrating non-inferiority.

Conclusions: Patients using a mobile application for remote digital self-assessment of the ALSFRS-R revealed younger age, earlier disease course and faster ALS progression. The finding of non-inferiority of App-ALSFRS-R assessments underscores, that data collection

using the ALS-App on the patient's smartphone can serve as additional source of ALSFRS-R in ALS research and clinical practice.

Keywords: amyotrophic lateral sclerosis, amyotrophic lateral sclerosis functional rating scale-revised; self-assessment, ALS-App, remote assessment

INTRODUCTION

The ALS Functional Rating Scale in its revised version (ALSFRS-R) is a severity score reflecting the course of ALS (1,2). The 12-item scale is disease-specific and was designed to assess bulbar symptoms, limb and trunk functions, respiratory symptoms and the need of ALS-related interventions such as percutaneous endoscopic gastrostomy, non-invasive ventilation or tracheostomy with invasive ventilation (3). The scale was primarily developed as an outcome parameter in clinical trials but evolved to the most widely applied rating scale in both clinical practice and ALS research (4).

The ALSFRS-R is commonly captured during clinic visits. However, clinic consultations can be burdensome for people with ALS, especially with progressing impairment. As the ALSFRS-R does not rely on physical examination, remote assessment via telephone as well as online was proposed (4–6). This aims to reduce the efforts of clinic assessment and to complement data gaps between clinic visits (7,8). The feasibility of the ALSFRS-R for self-rating in terms of a patient-reported outcome, paved the way for its remote digital assessment using online platforms and apps (4,9–12). Nowadays self-assessments and online questionnaires are becoming part of standard practice, using adapted versions of the ALSFRS-R. Furthermore, remote self-assessment may increase the efficiency of clinical studies if the rating of ALSFRS-R is moved to digital data capture (13,14). To support the concept of remote digital assessment, in 2022 a German consensus group developed an annotated German and English version of the ALSFRS-R scale that is self-explanatory and unambiguous (ALSFRS-R-SE) (15).

Despite its limitations (16–18), the ALSFRS-R serves as a meaningful clinical decision-making criterion in ALS care and established outcome parameter in clinical trials.

Furthermore, the ALSFRS-R is basis for calculating the ALS progression rate (ALSPR), that puts the total-score of the ALSFRS in relation to the disease duration. The ALSPR is recognized as an independent predictor of survival and was correlated with ALS phenotypes and the biomarker neurofilament light chain (19–22). In clinical trials, ALSPR was applied for patient selection, as well as stratification (21–24). Only recently, ALSPR – as assessed in clinic and remotely – was applied to quantify the treatment response to tofersen (25,26).

Given the increasing use of digital platforms and mobile applications, in particular the introduction of the “ALS-App” in Germany, Austria, and Switzerland, remotely captured ALSFRS-R data have become increasingly available. At the same time, there are uncertainties about the extent to which the data collected remotely is comparable with clinic assessments (27). Here, we report the investigation of remote digital assessment of ALSFRS-R by using a mobile application (ALS-App). The aims of the present study were 1) to assign and evaluate demographic and clinical characteristics to the cohorts of clinic and app assessments, 2) to compare the intrasubject variability of ALSPR of clinic and app data and 3) to investigate if non-inferiority of remote digital assessment using the ALS-App compared to clinic assessment of ALSPR can be proven.

METHODS

Study design

The observational study was conducted as a prospective, multicentre cohort study. The investigation was reported according to the STROBE criteria (28,29). The study was conducted from May 2020 until April 2024.

Participants

The participants met the following inclusion criteria: 1) diagnosis of ALS according to the Gold Coast criteria (28), (2) consent to electronic data capture using the research platform “APST”; 3) capture of at least two assessments of ALSFRS-R.

Setting

App assessment of ALSFRS-R using the ALS-App (App-ALSFRS-R)

Patients were offered a remote digital assessment of the ALSFRS-R on a mobile application (ALS-App), which may be used on smartphones or tablet devices and was available for iOS and Android devices (<https://www.ambulanzpartner.de/als-app/>). After obtaining informed consent, patients received an activation link for the digital data capture. For technical support, a telephone service and email contact were provided. All patients were requested to digitally complete the ALSFRS-R at least once a month. An email reminder was sent accordingly.

Clinic assessment of ALSFRS-R (clinic-ALSFRS-R)

16 multidisciplinary ALS centres in Germany and Austria participated in this study and provided ALSFRS-R data and clinical data, obtained during the regular visits. Those served as source data for this study (secondary use of existing data for research purposes). The evaluators consisted of neurologists, study nurses and coordinators, who were trained in ALSFRS-R assessment.

Description of cohorts

All participants who met the inclusion criteria formed the total study cohort. The “clinic-ALS-FRS-R cohort” included patients with ALSFRS-R assessments during clinic visits. The

“App-ALSFRS-R cohort” encompassed participants who performed remote digital assessment of ALSFRS-R using the ALS-App. The “combined ALSFRS-R cohort” included patients who provided at least two assessments in both settings, i.e. clinic and app assessment, at any time during the observation period (**Figure 1**).

Protocol approvals and registrations

The study protocol was approved by the Medical Ethics Committee of Charité – Universitätsmedizin Berlin, Germany under number EA1/219/15. A signed patient information and informed consent form was obtained from all the participating patients.

Variables

Demographic and clinical characteristics

The following demographic and clinical characteristics were collected: age, sex, onset of symptoms (**Table 1**).

ALSFRS-R

ALSFRS-R is a validated instrument to assess motor functions of the bulbar region, the extremities, the trunk including breathing abilities and the requirement for ventilatory support. It comprises 12 items with 5 rating options (0 to 4). The total range of the scale spans 0 (no function) to 48 scale points (full function). The ALSFRS-R was analyzed for all cohorts of this study.

ALSFRS-R-SE

The ALSFRS-R-SE includes instructions and explanations for each item, facilitating the assessment for healthcare professionals and patients (15). In this study, since May 9, 2022 the ALSFRS-R-SE replaced the ALSFRS-R on the ALS-App.

Classification of disease severity according to the ALSFRS-R total score

Disease severity was divided by four groups of disease severity according to ALSFRS-R total score: 48-37, 36-25, 24-13, 12-0 scale points.

ALS progression rate (ALSPR)

ALSPR was measured by the monthly change of ALSFRS-R scale points and calculated using the following formula: (48 minus ALSFRS-R total score divided by disease duration (months)).

Classification of ALSPR

ALSPR was divided in 3 groups: slower progressing ALS (<0.5 ALSFRS-R/month), intermediate progressing ALS (≥ 0.5 and ≤ 1.0 ALSFRS-R/month) and faster progressing ALS (> 1.0 ALSFRS-R/month).

Intrasubject variability (ISV) of ALSPR

ISV was assessed as variation of ALSPR: each patient with n ALSFRS-R assessments delivered n approximate ALSPR. To estimate the degree of variation, standard deviation (SD) or interquartile range (IQR) were considered. IQR was more robust against outliers and therefore chosen as the main comparative value.

Statistical methods

Descriptive statistics were used for the statistical analysis (mean, standard deviation in \pm and ranges).

Comparison of ISV of ALSPR

Null-hypothesis tests were applied to compare ISV of ALSPR for the App-ALSFRS-R and Clinic-ALSFRS-R cohorts, and to investigate whether or not significant differences could be found. For the total cohort a linear mixed model was applied, as some data met the criteria for dependency (combined ALSFRS-R cohort) and some patients were found solely in one cohort. The variation of ISV was determined as the target variable. Two-sample t-tests for paired samples were applicable to assess differences in ISV for the combined cohort.

Non-inferiority margin (δ)

To analyse non-inferiority a non-inferiority margin (δ) was determined. Results $<\delta$ would prove non-inferiority, as higher scores would indicate a higher ISV of ALSPR in App-ALSFRS-R data. Clinical reasoning and interpretation lead to defining δ as 0.15 IQR: a relatively high variability of the ALSFRS-R has been described before and was therefore anticipated (30). From clinical reasoning we determined, that a change in IQR of 0.15 ALSPR would still be acceptable.

Cohen's d

Cohen's d – or standardized mean difference – was determined to measure the effect size of the differences in ISV for the combined cohort. It was calculated as follows: The mean difference of IQR (mean IQR of App-ALSFRS-R minus mean IQR of clinic-ALSFRS-R) divided by SD for the statistical population. This allowed a standardized evaluation of the mean difference by relating it to standard deviation. The interpretation of the effect size

varies in the literature. A commonly used interpretation is based on benchmarks: trivial effect (0.0-0.19), small effect (d=0.2), medium effect (d=0.5) and large effect (d=0.8) (31).

$$d = \frac{\mu_1 - \mu_2}{\sigma}$$

The data were analysed using 'R' Core Team version 4.4.0 (2024-04-24), R Foundation for Statistical Computing, Vienna, Austria.

RESULTS

Number of patients in cohorts

The total cohort encompassed 2188 ALS patients. The App-ALSFRS-R cohort consisted of 691 participants whereas the clinic-ALSFRS-R cohort included 1895 patients. 398 patients were found in the combined ALSFRS-R-cohort. **Figure 1.**

Demographic and clinical characteristics

An overview of the demographic and clinical characteristics of the studied cohort is provided in **Table 1 and Table 2**. The clinical characteristics for the App-ALSFRS-R cohort and clinic-ALSFRS-R cohort were as follows: Mean age 60.45 (SD 10.43) and 63.69 (SD 11.3) years (p<0.001), mean disease duration 38.7 (SD 37.68) and 56.75 (SD 54.34) months (p<0.001), and mean ALSFRS-R 0.72 and 0.59 (p<0.001), respectively. The App-ALSFRS-R cohort included more patients with faster progressing ALS compared the clinic-ALSFRS-R cohort (22%, n=154 vs 17%, n=331, respectively). Further differences were found between slower progressing ALS (49%, n=337 vs 56%, n=1059), and intermediate progressing ALS (29%, n=200 vs 27%, n=505) **Figure 2.**

Intrasubject variability (ISV) of ALSPR

The comparison of ISV of ALSPR for the total cohort was done by linear mixed model analysis. The IQR of the App-ALSFRS-R was reported at 0.171 (CI: 0.150, 0.191) and of clinic-ALSFRS-R 0.129 (CI: 0.119, 0.140). The difference did show statistical significance ($p < 0.001$). **Table 3.**

The combined ALSFRS-R cohort was analysed separately. **Table 3.** The mean ISV of ALSPR in the App-ALSFRS-R cohort was 0.12 (IQR, CI: 0.11, 0.14), and in the clinic-ALSFRS-R at 0.12 alike (IQR, CI: 0.11, 0.14). A two-sample t-test for paired samples confirmed no significant difference in the IQR of ISV in both cohorts (t-test p-value: 0.242). The upper limit of CI of App-ALSFRS-R was below the predefined non-inferiority margin, demonstrating non-inferiority.

The mean difference in ISV of the ALSPR between App-ALSFRS-R and clinic-ALSFRS-R was 0 (IQR, SD 0.13). To further assess the effect size of this difference Cohen's d was determined. Cohen's d was 0.06 (IQR, CI: -0.14, 0.26), which is interpreted as a trivial effect of the difference in ISV (31). **Figure 3.**

ISV of ALSPR in groups of ALSPR

The ISV of three groups of ALSPR of the combined cohort were compared in a subgroup analysis, to assess a possible impact of different ALSPR on ISV. Although statistically not significant ($p = 0.141$), ISV of ALSPR of faster progressing ALS demonstrated a trend towards higher ISV in both, clinic-ALSFRS-R (IQR 0.217, 95% CI: 0.161, 0.292) and App-ALSFRS-R (IQR 0.246, 95% CI: 0.183, 0.332; $p = 0.419$) compared to slower progressing ALS with 0.035 (IQR, CI: 0.030, 0.041; $p = 0.201$) and 0.031 (IQR, CI: 0.027, 0.037) as well

as intermediate progressing ALS with 0.101 (IQR, CI: 0.080, 0.128) and 0.097 (IQR, CI: 0.077, 0.123; p=0.733), respectively. Significant differences in ISV between clinic-ALSFRS-R and App-ALSFRS-R were not found for any of the studied groups of ALSPR (**Figure 4 and 5a**).

ISV of ALSPR in groups of disease severity according to ALSFRS-R total score

The comparison between App-ALSFRS-R and clinic-ALSFRS-R did not show significant differences: ALSFRS-R 48-37: 0.051 (IQR, CI 0.043, 0.062) and 0.047 (IQR, CI 0.039, 0.057; p=0.362); ALSFRS-R 36-25: 0.042 (IQR, CI 0.035, 0.051) and 0.037 (IQR, CI 0.031, 0.045; p=0.197); ALSFRS-R 24-13: 0.033 (IQR, CI 0.022, 0.050) and 0.028 (IQR, CI 0.019, 0.043; p=0.494); ALSFRS-R 12-0: 0.053 (IQR, CI 0.015, 0.189) and 0.072 (IQR, CI 0.020, 0.257; p=0.651), respectively (**Figure 5b**).

DISCUSSION

The technological and methodological means for remote digital assessment of ALSFRS-R is on the rise for several years (7). This trend has been supported by previous reports on a strong correlation of on-site and online assessments (6,32,33). This study focussed specifically on ALSFRS-R data capture on the patient's smartphones and the open research question of its non-inferiority when compared to clinic assessment.

Patients' readiness to perform remote assessment of ALSFRS-R was shown before (7) and confirmed in this study. The large number of 691 ALS patients using the ALS-App, who completed at least two assessments of the ALSFRS-R, feature in the strength of this study. Remarkably, 293 patients remotely provided App-ALSFRS-R data, although they had only realized one clinic visit. Also, the large number of App-ALSFRS-R were generated – in

addition to the conventional source of ALSFRS-R data. Both findings contribute to the notion, that digital assessments increase the data density between visits, can potentially fill data gaps of missing visits or might extend information on the disease course, even when clinic visits are not possible anymore.

Previous studies consistently reported a higher ALSFRS-R total score in digital assessments when compared to clinic ALSFRS-R data capture (13,32–34). Even though we did not explicitly investigate the differences in total scores, this study confirmed those findings. In line with previous research on digital assessment of the ALSFRS-R, participants of remote assessment were younger and earlier in the course of ALS (7). This difference may be explained by a selection bias related to technical barriers as well as time efforts of using of digital and telemedicine devices (7,17,33–35). Thus, the ALS-App was commonly offered at the patient's first visit in the respective study centres. Patients with a very long disease course were possibly not considered by the recruiters. Furthermore, it is conceivable that patients in the earlier course of ALS were overrepresented as the ALS-App may have received more attention in patients with newly diagnosed ALS. Furthermore, the findings might point to barriers for patients with lower motor functional capacities. Future research must aim to apply patient-centred services, technical support and app design to warrant patient's access to digital assessment in all phases on the disease. It is worth mentioning though, that compared to other epidemiological data on ALS cohorts, the mean disease duration in this cohort was relatively long (36). A previously described difference in gender distribution vanished and female patients participated in digital assessment proportionally equal to male patients.

Patients using the ALS-App showed a more aggressive disease progression, as the mean ALSPR was higher, than in the clinic cohort. Correspondingly, faster progressing ALS was

overrepresented in the ALS-App cohort. This finding suggests that self-assessment of ALSFRS-R on a mobile device is feasible for patients even with faster progressing ALS and of importance when considering remote digital assessments in clinical trial settings. Also, in clinical practice, as a faster progression can make clinic visits more burdensome or even impossible, this observation supports the feasibility of the App-use in a wide clinical spectrum of ALS. The differences between faster and slower progressing ALS among ALS-App users can be discussed from a different angle – patients with a more aggressive disease course might perceive more relevance and need to report on the progression of ALS than patients with a slower disease course. At the same time, patients with slower disease and less changes in the ALSFRS-R over time might be less motivated to frequently and continuously provide self-ratings.

Inter- and intrarater variability of ALSFRS-R and ALSPR was in the focus of this investigation. Previous research showed contradicting results of a higher, but mostly lower variability of remote-self assessments (6,13,33,35). The clinic ALSFRS-R cohort was subject of both, inter- and intrarater variability, as the assessment during clinic visits was performed by variable raters that might have changed from visit to visit. In principle, in the ALS-App cohort only intrarater variability was assumed. However, it cannot certainly be excluded that some patients shared login data and authorized relatives to perform the assessment. In this unwanted constellation interrater variability was caused, which belongs to the limitations of the study.

The comparison between the clinic and app cohort as well as the investigation of non-inferiority was performed based on ALSPR, but not ALSFRS-R total score. When predicting the course of ALS in clinical practice and trials, ALSPR, commonly named 'slope' or 'delta

ALSFRS-R', is more informative than the total score (23). This study revealed no difference of ISV of ALSFRS-R between App-ALSFRS-R and clinic ALSFRS-R and CI below a predefined non-inferiority margin for the statistically robust combined cohort. Furthermore, the data indicated a trivial (as assessed by Cohen's d) difference. Overall, this study proved non-inferiority of App-ALSFRS-R compared to clinic ALSFRS-R. When we stratified the combined cohort for classes of ALSFRS-R we found, that the ISV increased from slower to faster progressing ALSFRS-R. Although this was not significant, a higher variability must be expected, when faster progressing ALSFRS-R is investigated.

This may also explain the lower ALSFRS-R-ISV of the total clinic-ALSFRS-R-cohort in comparison to the total App-ALSFRS-R-cohort, as the latter was characterized by a higher mean ALSFRS-R. Although reasons for differences in the total cohort can be various: e.g. the methodologically caused dependency on the onset date, the longer disease duration in the total clinic cohort compared to the total app cohort and overall different sample sizes.

An important limitation in the presented method is the dependency of the ALSFRS-R on the onset date which is based on the patient's recollection of the time of the start of dysarthria, dysphagia, limb paresis or (rarely) hypoventilation. The training of evaluators – and even more importantly of the patients – is crucial to define the onset date in a consented and therefore, harmonized manner.

The possible impact of disease severity, as measured by the total score of ALSFRS-R, was studied in the combined cohort and did not show significant difference in ISV of ALSFRS-R.

This observation underscored methodological feasibility of ALS-App use during the complete course of disease, including very progressed phases of ALS. On this basis, patients with progressed ALS and greater barriers for clinic visits can be offered to use the ALS-App

for digital assessment of ALSFRS-R, mainly to gain functional information and to support care related decision-making from remote. This conclusion comes with some limitation as a non-significant difference in ISV of ALSFRS-R was found in the group lowest motor function (0-12 points). In this stage of the disease, changes in respiratory items (items 10-12) become most relevant which is known to be subject of greatest variability (27). This emphasizes the need for training of evaluators, when assessing the ALSFRS-R and the potential benefits of self-explanatory ALSFRS-R-SE.

In summary, this observational study supported the concept of remote digital assessment of ALSFRS-R and proved non-inferiority of ALSFRS-R data being captured on the patient's smartphone – compared to the clinic assessments. Our findings suggest that app assessments can increase ALSFRS-R data density between clinic visits, might fill data gaps of missing onsite visits or allow the remote assessment of the ALSFRS-R in progressed phases of ALS, when clinic visits are burdensome and in protracted intervals.

Acknowledgements

The authors thank all the patients who gave their effort and valuable time to participate in this study. The authors wish to thank the Boris Canessa ALS Stiftung (Düsseldorf) for co-funding this work and continuous support.

Declaration of interest statement

TM has received grants, personal fees, non-financial support and research support from AL-S Pharma, Amylyx, Cytokinetics, Ferrer, Mitsubishi Tanabe, Sanofi, Orphazyme, and served on the advisory boards of Amylyx, Biogen, and ITF Pharma outside of the submitted work. TM and CM are founders and shareholders of the Ambulanzpartner Soziotechnologie APST GmbH, which makes the mobile application “ALS-App”. TG has received personal fees from ITF Pharma and served on the advisory boards of Amylyx and ITF Pharma outside of the submitted work. SP has received speaker fees, non-financial support and research support from Biogen, Roche, ALS Pharma, Amylyx, Cytokinetics, Ferrer, ITF Pharma, and Sanofi and served on advisory boards of Amylyx, Biogen, Roche, Zambon and ITF Pharma outside of the submitted work. PW has served on advisory boards of Biogen, ITF Pharma and Novartis outside of the submitted work. RG has received grants, personal fees, non-financial support and research support from Biogen and served on the advisory boards of Biogen, Roche, and ITF Pharma outside of the submitted work. MV received travel expenses and non-financial support from ITF Pharma outside of the submitted work. AM has received personal fees, non-financial support, and research support from ITF Pharma and Zambon outside the submitted work. PK received consulting fees from Biogen. PL reports grants from the Bundesministerium für Bildung und Forschung and the Deutsche Forschungsgemeinschaft; consulting fees from AbbVie, Amylyx, Bial,

Desitin, ITF Pharma, Novartis, Stadapharm, Raya Therapeutic, Woolsey

Pharmaceuticals, and Zambon; and is co-inventor on a patent for the use of fasudil in amyotrophic lateral sclerosis (EP 2825175 B1, US 9.980,972 B2), outside of the scope of the submitted work. The other authors declare no conflicts of interest.

Author's contribution

TM, LS and AM designed and conceptualized the study, analyzed and interpreted the data, and drafted the manuscript for intellectual content. BW had a major role in data collection and preparation of data. TG, UW, DK, RS, AR, JG, SP, MB, PW, SB, RG, PL, JCK, PB, JHW, JD, YK, IC, MV, JN, PS, PK, SSP and CM had a major role in data acquisition and revised the manuscript for intellectual content.

Data availability statement

The data that support the findings of this study are available from the corresponding author upon reasonable request.

Funding

This work was supported by the Boris Canessa ALS Stiftung (Düsseldorf).

References

1. Cedarbaum JM, Stambler N, Malta E, Fuller C, Hilt D, Thurmond B, u. a. The ALSFRS-R: a revised ALS functional rating scale that incorporates assessments of respiratory function. BDNF ALS Study Group (Phase III). J Neurol Sci. 31. Oktober 1999;169(1–2):13–21.
2. Voustianiouk A, Seidel G, Panchal J, Sivak M, Czaplinski A, Yen A, u. a. ALSFRS and appel ALS scores: discordance with disease progression. Muscle Nerve. Mai 2008;37(5):668–72.
3. The Amyotrophic Lateral Sclerosis Functional Rating Scale. Assessment of activities of daily living in patients with amyotrophic lateral sclerosis. The ALS CNTF treatment study (ACTS) phase I-II Study Group. Arch Neurol. Februar 1996;53(2):141–7.
4. Kaufmann P, Levy G, Montes J, Buchsbaum R, Barsdorf AI, Battista V, u. a. Excellent inter-rater, intra-rater, and telephone-administered reliability of the ALSFRS-R in a multicenter clinical trial. Amyotroph Lateral Scler Off Publ World Fed Neurol Res Group Mot Neuron Dis. Februar 2007;8(1):42–6.
5. Mannino M, Cellura E, Grimaldi G, Volanti P, Piccoli F, La Bella V. Telephone follow-up for patients with amyotrophic lateral sclerosis. Eur J Neurol. Januar 2007;14(1):79–84.
6. Maier A, Holm T, Wicks P, Steinfurth L, Linke P, Münch C, u. a. Online assessment of ALS functional rating scale compares well to in-clinic evaluation: a prospective trial.

Amyotroph Lateral Scler Off Publ World Fed Neurol Res Group Mot Neuron Dis.

Februar 2012;13(2):210–6.

7. Meyer T, Spittel S, Grehl T, Weyen U, Steinbach R, Kettemann D, u. a. Remote digital assessment of amyotrophic lateral sclerosis functional rating scale - a multicenter observational study. *Amyotroph Lateral Scler Front Degener.* Mai 2023;24(3–4):175–84.
8. Beukenhorst AL, Burke KM, Scheier Z, Miller TM, Paganoni S, Keegan M, u. a. Using Smartphones to Reduce Research Burden in a Neurodegenerative Population and Assessing Participant Adherence: A Randomized Clinical Trial and Two Observational Studies. *JMIR MHealth UHealth.* 4. Februar 2022;10(2):e31877.
9. Hobson EV, Baird WO, Bradburn M, Cooper C, Mawson S, Quinn A, u. a. Using telehealth in motor neuron disease to increase access to specialist multidisciplinary care: a UK-based pilot and feasibility study. *BMJ Open.* 22. Oktober 2019;9(10):e028525.
10. Helleman J, Kruitwagen ET, van den Berg LH, Visser-Meily JMA, Beelen A. The current use of telehealth in ALS care and the barriers to and facilitators of implementation: a systematic review. *Amyotroph Lateral Scler Front Degener.* Mai 2020;21(3–4):167–82.
11. van Eijk RPA, Beelen A, Kruitwagen ET, Murray D, Radakovic R, Hobson E, u. a. A Road Map for Remote Digital Health Technology for Motor Neuron Disease. *J Med Internet Res.* 22. September 2021;23(9):e28766.
12. Montes J, Levy G, Albert S, Kaufmann P, Buchsbaum R, Gordon PH, u. a. Development and evaluation of a self-administered version of the ALSFRS-R. *Neurology.* 10. Oktober 2006;67(7):1294–6.

13. Berry JD, Paganoni S, Carlson K, Burke K, Weber H, Staples P, u. a. Design and results of a smartphone-based digital phenotyping study to quantify ALS progression. *Ann Clin Transl Neurol.* Mai 2019;6(5):873–81.
14. Rutkove SB, Narayanaswami P, Berisha V, Liss J, Hahn S, Shelton K, u. a. Improved ALS clinical trials through frequent at-home self-assessment: a proof of concept study. *Ann Clin Transl Neurol.* Juli 2020;7(7):1148–57.
15. Maier A, Boentert M, Reilich P, Witzel S, Petri S, Großkreutz J, u. a. ALSFRS-R-SE: an adapted, annotated, and self-explanatory version of the revised amyotrophic lateral sclerosis functional rating scale. *Neurol Res Pract.* 15. Dezember 2022;4(1):60.
16. Rooney J, Burke T, Vajda A, Heverin M, Hardiman O. What does the ALSFRS-R really measure? A longitudinal and survival analysis of functional dimension subscores in amyotrophic lateral sclerosis. *J Neurol Neurosurg Psychiatry.* Mai 2017;88(5):381–5.
17. Boyce D, Robinson M, Cedarbaum JM, Shank LM, McDermott CJ, van Eijk RPA. A qualitative evaluation of the revised amyotrophic lateral sclerosis functional rating scale (ALSFRS-R) by the patient community: a web-based cross-sectional survey. *Amyotroph Lateral Scler Front Degener.* Mai 2023;24(3–4):272–80.
18. Hartmaier SL, Rhodes T, Cook SF, Schlusser C, Chen C, Han S, u. a. Qualitative measures that assess functional disability and quality of life in ALS. *Health Qual Life Outcomes.* 21. Januar 2022;20(1):12.
19. Meyer T, Salkic E, Grehl T, Weyen U, Kettemann D, Weydt P, u. a. Performance of serum neurofilament light chain in a wide spectrum of clinical courses of amyotrophic lateral sclerosis-a cross-sectional multicenter study. *Eur J Neurol.* Juni 2023;30(6):1600–10.

20. Meyer T, Dreger M, Grehl T, Weyen U, Kettemann D, Weydt P, u. a. Serum neurofilament light chain in distinct phenotypes of amyotrophic lateral sclerosis: A longitudinal, multicenter study. *Eur J Neurol*. September 2024;31(9):e16379.
21. Labra J, Menon P, Byth K, Morrison S, Vucic S. Rate of disease progression: a prognostic biomarker in ALS. *J Neurol Neurosurg Psychiatry*. Juni 2016;87(6):628–32.
22. Hannaford A, Byth K, Pavey N, Henderson RD, Mathers S, Needham M, u. a. Clinical and neurophysiological biomarkers of disease progression in amyotrophic lateral sclerosis. *Muscle Nerve*. Januar 2023;67(1):17–24.
23. Ludolph AC, Corcia P, Desnuelle C, Heiman-Patterson T, Mora JS, Mansfield CD, u. a. Categorization of the amyotrophic lateral sclerosis population via the clinical determinant of post-onset Δ FS for study design and medical practice. *Muscle Nerve*. Juli 2024;70(1):36–41.
24. Kollwe K, Mauss U, Krampfl K, Petri S, Dengler R, Mohammadi B. ALSFRS-R score and its ratio: a useful predictor for ALS-progression. *J Neurol Sci*. 15. Dezember 2008;275(1–2):69–73.
25. Meyer T, Schumann P, Weydt P, Petri S, Koc Y, Spittel S, u. a. Neurofilament light-chain response during therapy with antisense oligonucleotide tofersen in SOD1-related ALS: Treatment experience in clinical practice. *Muscle Nerve*. Juni 2023;67(6):515–21.
26. Meyer T, Schumann P, Weydt P, Petri S, Weishaupt JH, Weyen U, u. a. Clinical and patient-reported outcomes and neurofilament response during tofersen treatment in SOD1-related ALS-A multicenter observational study over 18 months. *Muscle Nerve*. September 2024;70(3):333–45.

27. Bakers JNE, de Jongh AD, Bunte TM, Kendall L, Han SS, Epstein N, u. a. Using the ALSFRS-R in multicentre clinical trials for amyotrophic lateral sclerosis: potential limitations in current standard operating procedures. *Amyotroph Lateral Scler Front Degener*. November 2022;23(7–8):500–7.
28. von Elm E, Altman DG, Egger M, Pocock SJ, Gøtzsche PC, Vandenbroucke JP, u. a. [The Strengthening the Reporting of Observational Studies in Epidemiology (STROBE) statement: guidelines for reporting of observational studies]. *Internist*. Juni 2008;49(6):688–93.
29. von Elm E, Altman DG, Egger M, Pocock SJ, Gøtzsche PC, Vandenbroucke JP, u. a. The Strengthening the Reporting of Observational Studies in Epidemiology (STROBE) statement: guidelines for reporting observational studies. *Lancet Lond Engl*. 20. Oktober 2007;370(9596):1453–7.
30. Din Abdul Jabbar MA, Guo L, Guo Y, Simmons Z, Pioro EP, Ramasamy S, u. a. Describing and characterising variability in ALS disease progression. *Amyotroph Lateral Scler Front Degener*. Februar 2024;25(1–2):34–45.
31. Lakens D. Calculating and reporting effect sizes to facilitate cumulative science: a practical primer for t-tests and ANOVAs. *Front Psychol*. 26. November 2013;4:863.
32. Chew S, Burke KM, Collins E, Church R, Paganoni S, Nicholson K, u. a. Patient reported outcomes in ALS: characteristics of the self-entry ALS Functional Rating Scale-revised and the Activities-specific Balance Confidence Scale. *Amyotroph Lateral Scler Front Degener*. November 2021;22(7–8):467–77.
33. Erb MK, Calcagno N, Brown R, Burke KM, Scheier ZA, Iyer AS, u. a. Longitudinal comparison of the self-administered ALSFRS-RSE and ALSFRS-R as functional

- outcome measures in ALS. *Amyotroph Lateral Scler Front Degener.* 19. März 2024;1–11.
34. Bakker LA, Schröder CD, Tan HHG, Vugts SMAG, van Eijk RPA, van Es MA, u. a. Development and assessment of the inter-rater and intra-rater reproducibility of a self-administration version of the ALSFRS-R. *J Neurol Neurosurg Psychiatry.* Januar 2020;91(1):75–81.
35. Johnson SA, Karas M, Burke KM, Straczekiewicz M, Scheier ZA, Clark AP, u. a. Wearable device and smartphone data quantify ALS progression and may provide novel outcome measures. *NPJ Digit Med.* 6. März 2023;6(1):34.
36. Longinetti E, Fang F. Epidemiology of amyotrophic lateral sclerosis: an update of recent literature. *Curr Opin Neurol.* Oktober 2019;32(5):771–6.

Table 1: Demographic and clinical characteristics of participants

Characteristics	Classification	Total cohort, n=2188	Clinic-ALSFRS-R cohort, n=1895	App-ALSFRS-R cohort, n=691	p- value
Sex	female, % (n)	41% (896)	41% (770)	40% (274)	0.686
	male, % (n)	59% (1292)	59% (1125)	60% (417)	
Age	at onset, years, mean (SD, R)	59.98 (11.84, 1.32 - 88.31)	60.14 (11.96, 1.32 - 87.34)	58.13 (10.89, 25.32 - 88.31)	<0.001
	at time of first assessment, years, mean (SD, R)	63.30 (11.25, 20.78 - 93.75)	63.69 (11.30, 20.78 - 93.75)	60.45 (10.43, 31.47 - 88.92)	<0.001
	at time of last assessment, years, mean (SD, R)	64.49 (11.18, 23.41 - 94.87)	64.87 (11.24, 23.41 - 94.87)	61.36 (10.34, 33.56 - 89.64)	<0.001
Disease duration	at time of last assessment, months, mean (SD, R)	54.06 (52.21, 3.41 - 560.66)	56.75 (54.34, 3.74 - 560.66)	38.70 (37.68, 3.41 - 560.66)	<0.001
ALS-PR	mean (SD, R)	0.63 (0.58, 0 - 4.94)	0.59 (0.52, 0 - 4.09)	0.72 (0.67, 0 - 4.94)	<0.001
Slower progressing ALS	(<0.5 ALSFRS-R /month), % (n)	54% (1178)	56% (1059)	49% (337)	
Intermediate progressing ALS	(≥0.5 ≤1.0 ALSFRS-R/month), % (n)	27% (596)	27% (505)	29% (200)	
Faster progressing ALS	(> 1.0 ALSFRS-R/month), % (n)	19% (414)	17% (331)	22% (154)	

Abbreviations: n = number of participants, SD = standard deviation, R = range, ALSFRS-R = Amyotrophic Lateral Sclerosis Functional Rating Scale Revised.

Table 2: Demographic and clinical characteristics of the 398 patients in the combined cohort

Characteristics		Classification		
Sex	female, % (n)	37 (148)		
	male, % (n)	63 (250)		
Age	at onset, years mean (SD, R)	57.5(10.76, 25.4-84.5)		
		App-ALSFRS-R	Clinic-ALSFRS-R	p-value
	at time of first assessment, years, mean (SD, R)	60.01 (10.33, 32.47-87.38)	59.92 (10.29, 32.47-87.33)	0.90
	at time of last assessment, years, mean (SD, R)	61.13 (10.27, 33.56-87.65)	61.11 (10.18, 33.36-87.66)	0.98
Disease duration	at time of last assessment, months, mean (SD, R)	43.29 (42.53, 5.61-560.66)	43.04 (43.44, 3.74-560.66)	0.93
Disease progression	ALSPR mean (SD, R)	0.59 (0.49, 0-3.23)	0.61 (0.48, 0-2.91)	0.41
Slower progressing ALS	(<0.5 ALSFRS-R/month), % (n)	54% (216)	53% (210)	
intermediate progressing ALS	(≥0.5 ≤1.0 ALSFRS-R/month), % (n)	30% (121)	29% (116)	
Faster progressing ALS	(> 1.0 ALSFRS-R/month), % (n)	15% (61)	18% (72)	

Abbreviations: n = number of participants, SD = standard deviation, R = range, ALSFRS-R = Amyotrophic Lateral Sclerosis Functional Rating Scale Revised, ALSPR = ALS progression rate.

Table 3: Comparison of intrasubject variability (ISV) of ALSPR

Classification	App mean (95% CI)	Clinic mean (95% CI)	p- value
Total cohort			
IQR	0.17 (0.15,0.91)	0.13 (0.12,0.14)	<0.001
Combined cohort			
IQR	0.12 (0.11, 0.14)	0.12 (0.11, 0.14)	0.242
slower progressing ALS (<0.5 ALSFRS-R/month)	0.04 (0.03, 0.04)	0.03 (0.03, 0.04)	0.201
intermediate progressing ALS ($\geq 0.5 \leq 1.0$ ALSFRS- R/month),	0.10 (0.08, 0.13)	0.10 (0.08, 0.12)	0.733
faster progressing ALS (> 1.0 ALSFRS-R/month)	0.25 (0.18, 0.33)	0.22 (0.16, 0.29)	0.419

Abbreviations: ALSPR = Amyotrophic lateral sclerosis progression rate, CI = confidence interval, IQR = interquartile range

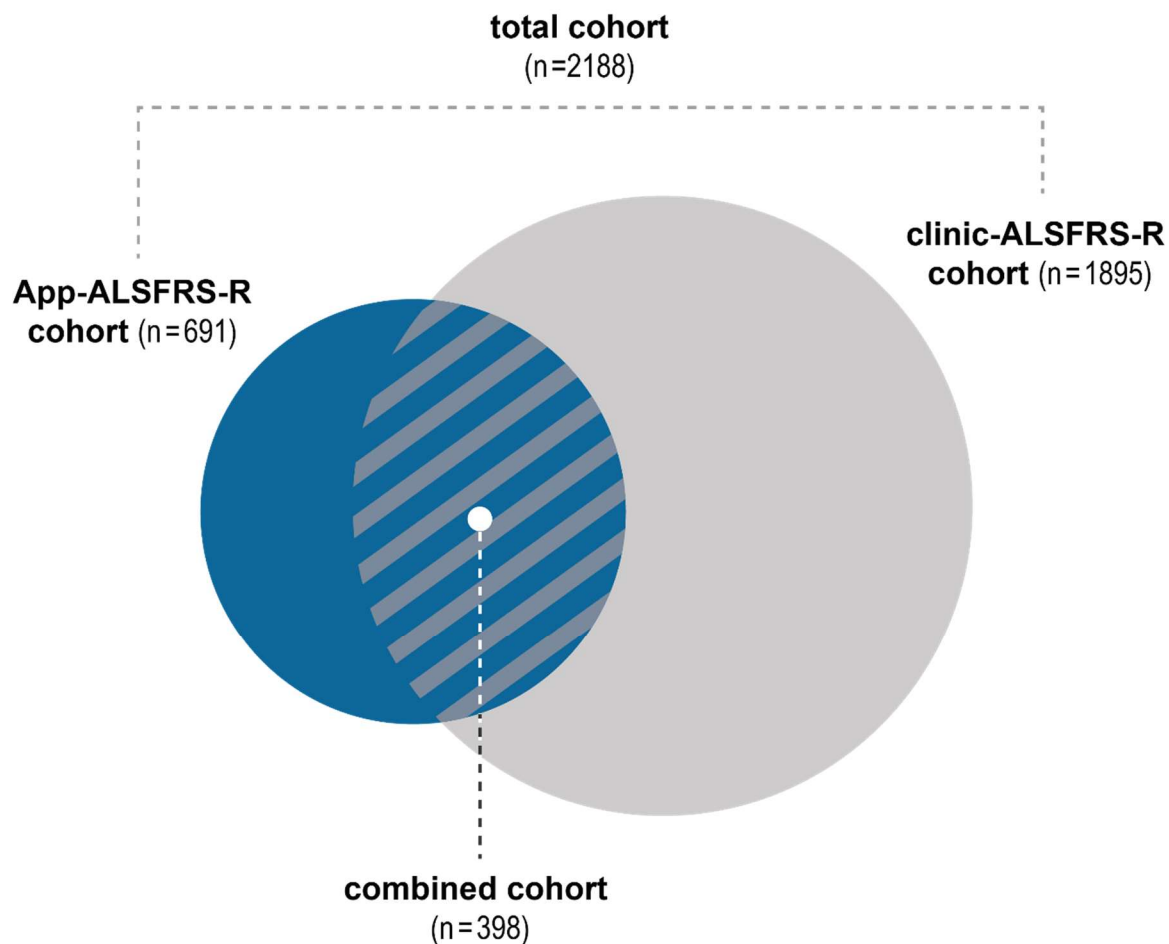


Figure 1. Overview of studied cohorts: remote digital assessment of the ALSFRS-R using the “ALS App” (App-ALSFRS-R) and the assessment during clinic visits (clinic-ALSFRS-R) were investigated. A sub-cohort performed both, ALSFRS-R assessment during clinic visits and remote rating via the “ALS App” (combined cohort). n=number of patients, ALSFRS-R=Amyotrophic Lateral Sclerosis Functional Rating Scale revised.

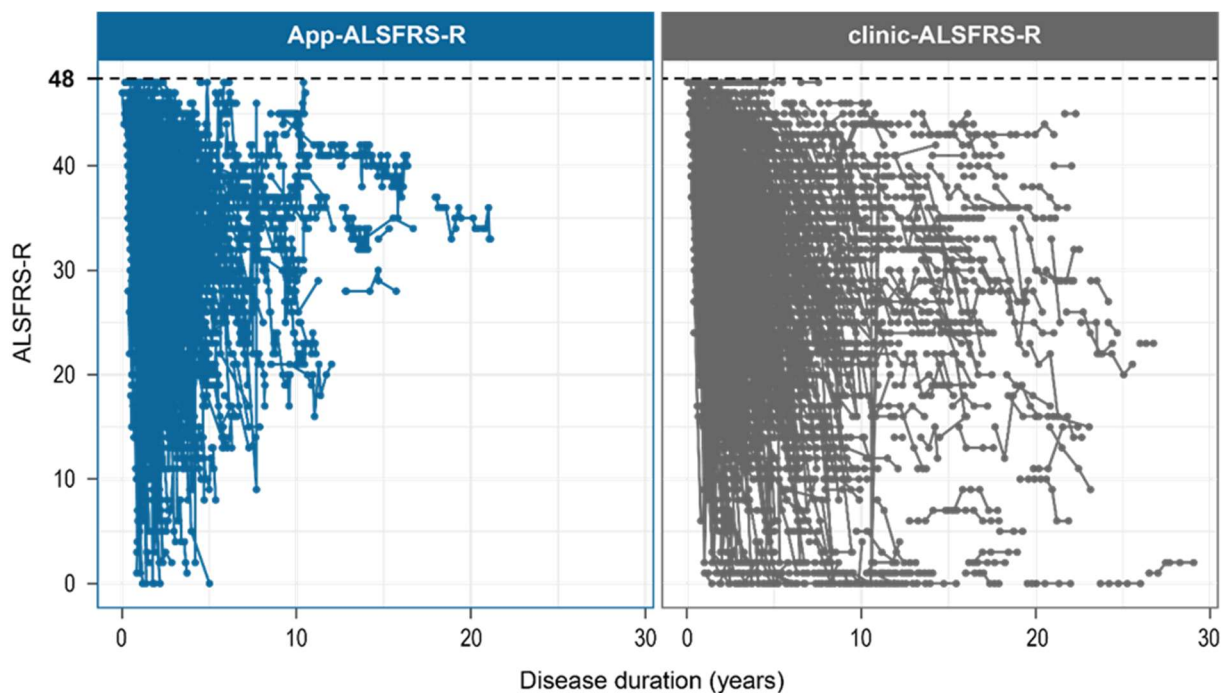


Figure 2. Overview of all App-ALSFRS-R and clinic-ALSFRS-R assessments based on the total score in comparison. Every dot represents one assessment. For depiction purposes, the disease duration was cut-off at 30 years. ALSFRS-R=Amyotrophic Lateral Sclerosis Functional Rating Scale revised, clinic-ALSFRS-R=ALSFRS-R assessed during clinic visits, App-ALSFRS-R=ALSFRS-R captured via self-assessment on patient's smartphone.

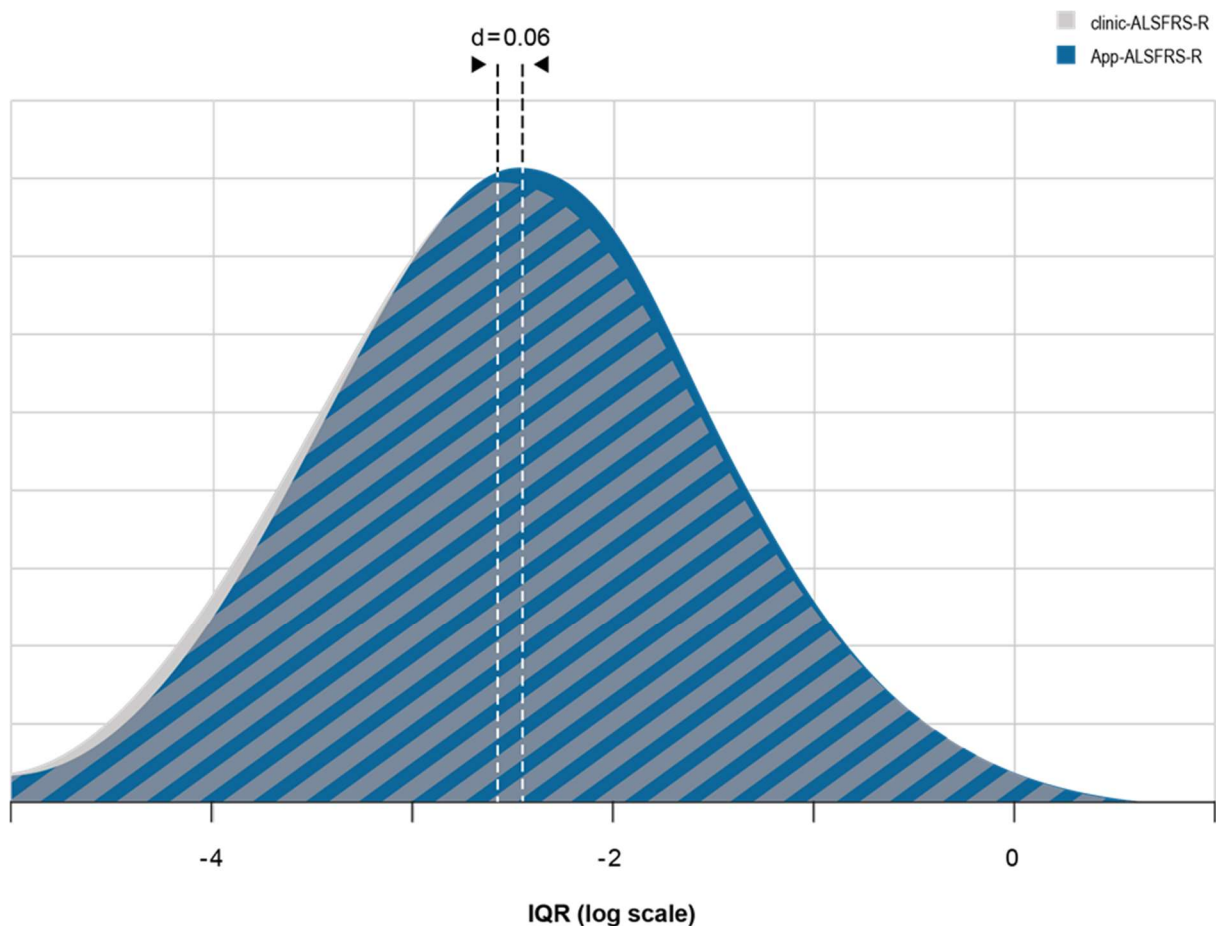


Figure 3. Visualization of Cohen's d. The effect size of the standardized mean difference in intrasubject variability of App-ALSFRS-R and clinic-ALSFRS-R, assessed as interquartile range (IQR), was determined. The result of 0.06 can be interpreted as a trivial effect, meaning the IQR showed an overlap 97.6% for the compared methods. d =Cohen's d , ALSFRS-R=Amyotrophic Lateral Sclerosis Functional Rating Scale revised, clinic-ALSFRS-R=ALSFRS-R assessed during clinic visits, App-ALSFRS-R=ALSFRS-R captured via self-assessment on patient's smartphone

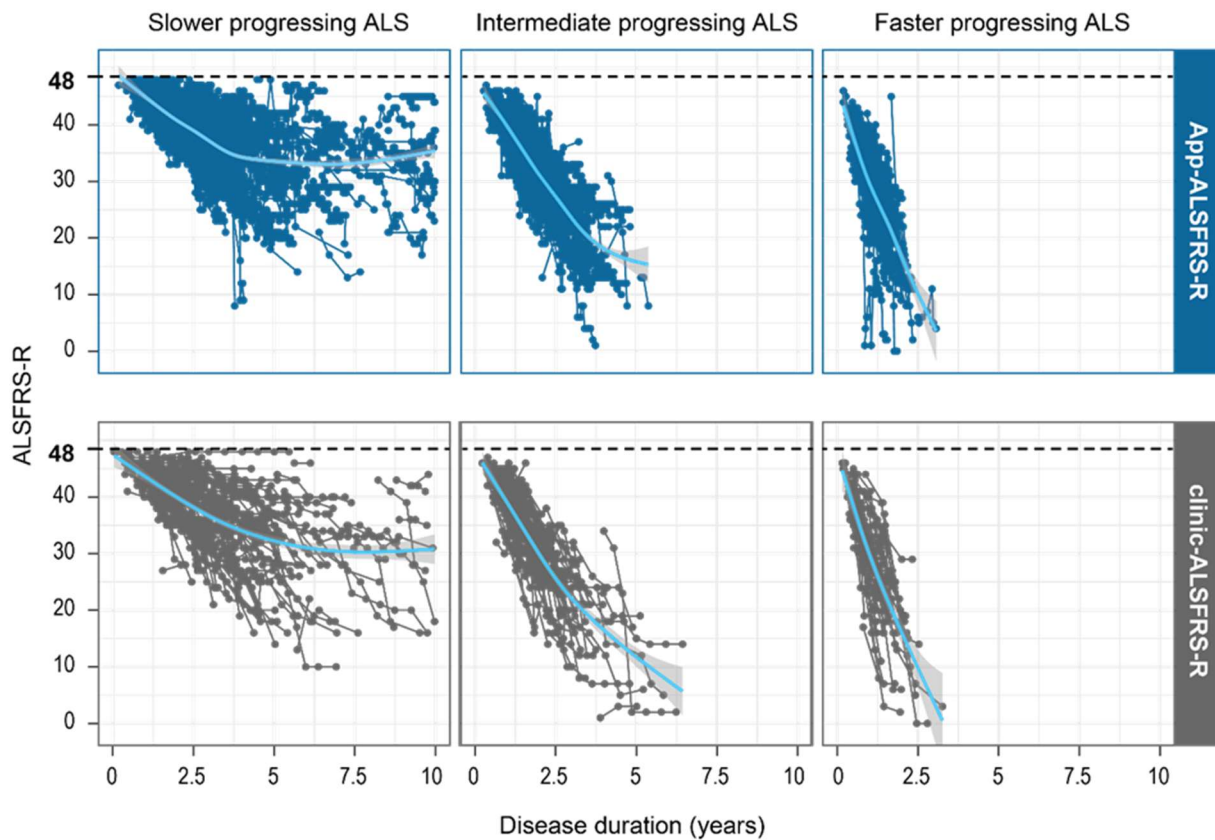


Figure 4. Comparison of clinic and remote assessment of the ALSFRS-R based on the total score. Overview of the assessments of App-ALS-FRS-R and clinic-ALS-FRS-R as analyzed in 3 groups of ALS progression rate (ALSPR), respectively: slower progressing ALS (<0.5 ALSFRS-R/month), intermediate progressing ALS (≥ 0.5 and ≤ 1.0 ALSFRS-R/month) and faster progressing ALS (> 1.0 ALSFRS-R/month). Every dot represents one assessment. The mean progression is shown in the blue graph and the shadow represents its variation. ALSFRS-R=Amyotrophic Lateral Sclerosis Functional Rating Scale revised, clinic-ALSFRS-R=ALSFRS-R assessed during clinic visits, App-ALSFRS-R=ALSFRS-R captured through self-assessment on patient's smartphone

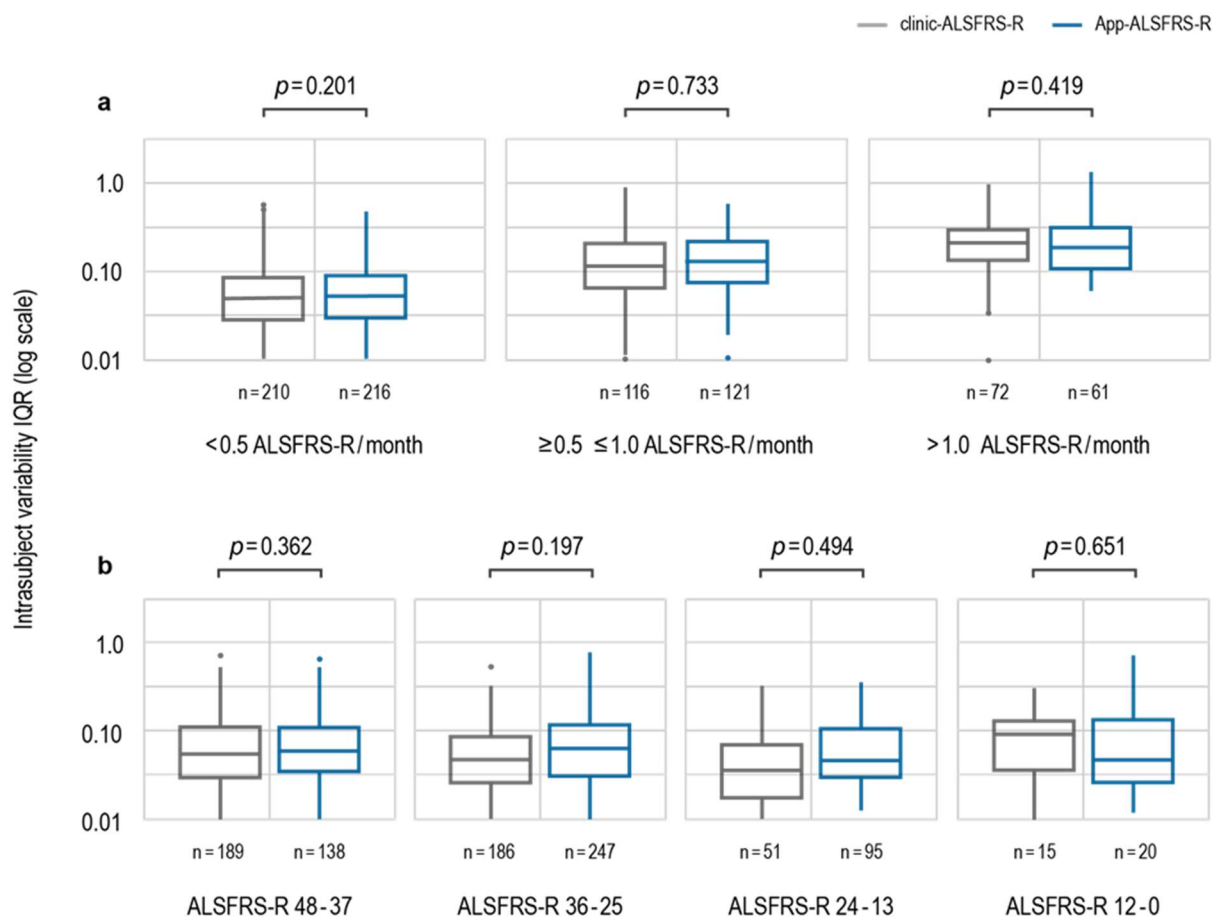


Figure 5. Comparison of clinic and remote assessment of the ALSFRS-R based on the ALS progression rate (ALSPR). The intrasubject variability (ISV) of the ALSPR – as calculated from the ALSFRS-R assessment – was investigated to compare the App-ALSFRS-R and clinic-ALSFRS-R. The analysis was stratified for a) three groups of ALSPR: slower, intermediate and faster progressing ALS based on the ALSPR and b) four groups of disease severity according to ALSFRS-R total score.

The numbers for each group exceed the total number of patients, as individuals contributed data in several groups of disease severity or ALSPR, respectively.

n=number of patients, IQR=Interquartile range, ALSFRS-R=Amyotrophic Lateral Sclerosis Functional Rating Scale revised, clinic-ALSFRS-R=ALSFRS-R assessed during clinic visits, App-ALSFRS-R=ALSFRS-R captured via self-assessment on patient's smartphone