

Exploring genetic confounding of the associations between excessive screen time and depressive symptoms in adolescence and early adulthood

Jiayao Xu^{1,2,*}, Jessie Baldwin^{3,4}, Amanda Hughes¹, Annie Herbert^{1,2}, Marcus R Munafo^{1,5,6}, Laura D Howe^{1,2}

¹ MRC Integrative Epidemiology Unit, Bristol Medical School, University of Bristol, Bristol, UK

² Population Health Sciences, Bristol Medical School, University of Bristol, UK

³ Department of Clinical, Educational and Health Psychology, Division of Psychology and Language Sciences, University College London, London, UK

⁴ Social, Genetic and Developmental Psychiatry Centre, Institute of Psychiatry, Psychology and Neuroscience, King's College London, London, UK

⁵ School of Psychological Science, University of Bristol, Bristol, UK

⁶ National Institute for Health Research Bristol Biomedical Research Centre, University Hospitals Bristol NHS Foundation Trust, University of Bristol, Bristol, UK

*Correspondence

Jiayao Xu, Population Health Sciences, Bristol Medical School, University of Bristol, Bristol, BS8 2BN, United Kingdom. Email: jiayao.xu@bristol.ac.uk

Acknowledgements

We are extremely grateful to all the families who took part in the ALSPAC study, the midwives for their help in recruiting them, and the whole ALSPAC team, which includes interviewers, computer and laboratory technicians, clerical workers, research scientists, volunteers, managers, receptionists, and nurses. The UK Medical Research Council and Wellcome (Grant ref: 217065/Z/19/Z) and the University of Bristol provide core support for ALSPAC. This publication is the work of the authors and will serve as guarantors for the contents of this paper. This study was supported by the Medical Research Council (MRC) Integrative Epidemiology Unit (MC_UU_00032/7). Annie Herbert was supported by the Wellcome Trust (Grant ref: 224114/Z/21/Z).

Abstract

Background

Digital devices have become a major aspect of children's life. Associations between screen time and mental health have been observed, but the causality remains unclear. This study aimed to investigate the associations between excessive screen time and later depressive symptoms, and to test the robustness of these associations when accounting for genetic confounding.

Methods

This study used data from the Avon Longitudinal Study of Parents and Children (ALSPAC), a prospective cohort of children born between 1991 and 1992 in the UK. Different forms of screen time and depressive symptoms at ages 16, 22 and 26 were assessed through self-completion questionnaires. Screen time > 2 hours per day was defined as excessive. Depressive symptoms at age 26 were measured using the Short Mood and Feelings Questionnaire (SMFQ). Polygenic scores for mental health problems were calculated. Linear regression models were used to examine the associations between screen time at ages 16, 22 and 26 and depressive symptoms at age 26, adjusting for sociodemographic confounders and polygenic scores. Genetic sensitivity analysis (Gsens) was used to test for genetic confounding in these associations.

Results

A total of 3,005 participants were included in analysis. Some, but not all, forms of excessive screen time were associated with higher SMFQ scores, e.g. more than 2 hours of television time per day at age 16 (β : 0.07 [95%CI 0.04, 0.11] for weekdays; β : 0.06 [0.02, 0.09] for weekends) and more than 2 hours of gaming time at age 22 (β : 0.07 [95%CI 0.03, 0.10] for weekdays; β : 0.07 [0.04, 0.11] for weekends). These associations persisted after adjusting for sociodemographic confounders and polygenic scores but were attenuated to the null in the genetic sensitivity analysis (β =0.02 [-0.02, 0.06] for the association with >2 hours of television time at age 16 on weekdays; β =-0.01 [-0.05, 0.03]) for >2 hours of gaming time at age 22 on weekdays).

Conclusions

For most measures of screen time, there were no associations with depressive symptoms. Where associations were seen, they were completely attenuated in genetic sensitivity analysis, implying genetic confounding is present in the relationship between excessive screen time and depressive

symptoms in adolescents and young adults.

Keyword: screen time, depression, genetic confounding, ALSPAC

Introduction

Digital technology has become a major aspect of children's lives, providing prospects for learning, entertainment, and social interaction [1, 2]. Nonetheless, the excessive and problematic use of digital devices has emerged as a prominent concern globally [3], as it is associated with negative health outcomes among children and adolescents, including mental health problems [3, 4]. Several national organisations have published recommendations that both adolescents and young adults limit their recreational screen time to no more than two hours per day [5-7], although data suggest many young people exceed this recommendation [6, 8].

Cross-sectional and longitudinal studies have indicated that excessive screen time is associated with worse mental health [8, 9]. A meta-analysis of observational studies reported dose-response associations between screen time and risk of depression in children and adolescents [10]. However, genome-wide association studies (GWAS) have indicated high genetic correlations between leisure screen time and neurological traits [11]. Young people with a higher genetic vulnerability to mental health problems are more likely to engage in excessive screen time based on the model of compensatory internet use (that people experiencing negative moods might turn to the digital world as an escape from real life [12]), as well as be more prone to developing depressive symptoms. Therefore, the associations between screen time and depressive symptoms could be inflated by genetic confounding.

A polygenic score (PGS) represents an estimation of an individual's genetic predisposition towards a specific trait [13, 14]. Polygenic scores are derived by summing up allelic counts of single nucleotide polymorphisms (SNPs), weighted by effect sizes from a GWAS [15]. Controlling for polygenic scores for mental health problems can help to account for potential genetic confounding when examining the associations between screen time and mental health [16]. However, polygenic scores only capture a small proportion of heritability in mental health outcomes, and thus do not fully account for genetic confounding [17]. This limitation can be addressed by conducting a genetic sensitivity analysis using a latent polygenic score, which captures additional genetic variance in mental health outcomes based on heritability [18]. This method was used in a twin study based on

the Twins Early Development Study (TEDS) [19], and genetic confounding in the association between media use and mental health was identified. However, the extent of genetic confounding may be overestimated due to the twin design [18]. Zhang and colleagues [20] identified genetic confounding in the association between screen time and parent-reported psychiatric problems using data from the Adolescent Brain Cognitive Development (ABCD) study. However, this study only examined the genetic confounding in the association between television watching time and mental health problems among 10-year-old children. The genetic confounding in the associations between different forms of screen time and mental health among adolescents across different age groups remained unclear. Different forms of screen exposure had varying associations with mental well-being [21-24]. In this study, we explored the genetic confounding in the associations between screen time and self-reported depressive symptoms using three waves of longitudinal data collected during adolescence and early adulthood.

We aimed to investigate the associations between excessive screen time and later self-reported depressive symptoms, and to test the robustness of these associations when accounting for genetic confounding, using three waves of data in adolescence and early adulthood from a UK birth cohort study.

Methods

Dataset

The Avon Longitudinal Study of Parents and Children (ALSPAC) is a longitudinal study that recruited about 15,000 mothers with expected dates of delivery between April 1, 1991, and December 31, 1992, in the former county of Avon, United Kingdom [25-27]. The initial number of pregnancies enrolled was 14,541 and 13,988 children who were alive at 1 year of age. The total sample size for analyses using any data collected after the age of seven is therefore 15,447 pregnancies and 14,901 children were alive at 1 year of age. Data on the children have been repeatedly collected through questionnaires and clinical assessments [28]. Please note that the study website contains details of all the data that is available through a fully searchable data dictionary and variable search tool: <http://www.bristol.ac.uk/alspac/researchers/our-data/>.

Ethics information

Ethical approval for the study was obtained from the ALSPAC Ethics and Law Committee and the

Local Research Ethics Committees. Informed consent for data collection and the use of data by approved researchers was obtained from participants in accordance with the recommendations of the ALSPAC Ethics and Law Committee at the time. Consent for the collection of biological samples was obtained in accordance with the Human Tissue Act [29]. Full details of ethics committee approval references for ALSPAC can be found online at <http://www.bristol.ac.uk/alspac/researchers/research-ethics/>.

Inclusion and exclusion criteria

We included ALSPAC children who were alive at one year of age, responded to at least 50% of the questions in the screen time assessments at ages 16, 22, and 26, and completed at least one questionnaire on depressive symptoms at ages 16, 22, or 26 (Supplementary Table S1). For families with twins or triplets, we included the child who was born first. Participants without genotype data that passed quality control were excluded (Figure 1).

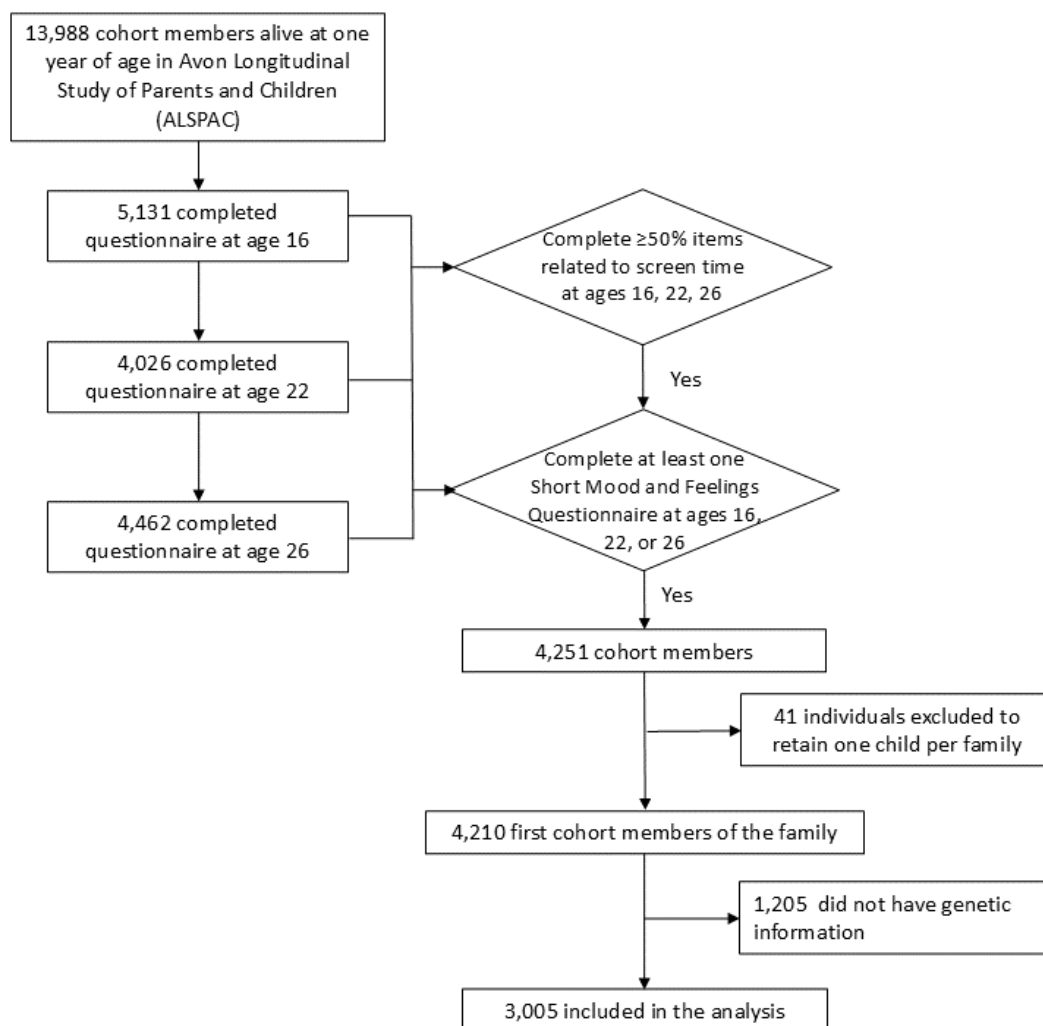


Figure 1 Flow diagram of the participants included in the analyses

Measurement

Screen time

Participants' self-reported screen time use was collected at three time points through a self-completion questionnaire during adolescence and early adulthood: at ages 16, 22, and 26. They were asked questions about screen time separately for a normal weekday and a weekend day. At age 16, they were asked about the amount of time spent watching television, using a computer, texting, and talking on a mobile phone. Response options included "Not at all," "Less than 1 hour," "1-2 hours," and "3 or more hours." At ages 22 and 26, they were asked about the amount of time spent watching television, playing video games on computers/laptops or game consoles, using a

computer/laptop for purposes other than gaming, and using a phone, tablet, or e-book (further details of derivation and definitions are in Supplementary Table S2). Response options included "None," "Less than 1 hour," "1-2 hours," "3-4 hours," "5-6 hours," "7-8 hours," and "9 or more hours" per day. Each subtype of screen time was categorised into "screen time > 2h per day" and "screen time ≤ 2h per day" based on recommendations from national organisations [5-7] and previous studies [8, 30, 31]. This was defined separately by types of screen time because different types of screen use have shown differential associations with mental health [21, 22, 32], and because the proportion of total screen time exceeding 2 hours per day was very high at these ages [6, 8].

Depressive symptoms

Depressive symptoms were assessed using the 13-item Short Mood and Feelings Questionnaire (SMFQ) at ages 16, 22 and 26 [33]. The total score ranged from 0 to 26, where higher scores suggest more depressive symptoms. The SMFQ was reported by participants themselves at ages 16, 22 and 26 (Supplementary Table S3). The SMFQ demonstrated good validity and reliability within the ALSPAC cohort [34].

Genotyping and polygenic scores

Detailed information about genotyping and quality control in the ALSPAC is provided elsewhere [35]. Samples were removed if they had discordant sex information, outlying heterozygosity, a high proportion of individual missingness, or due to relatedness or non-European population ancestry. We included polygenic scores for attention deficit hyperactivity disorder (ADHD), anxiety disorder, autism spectrum disorder, bipolar disorder, major depressive disorder, schizophrenia, neuroticism, and risk-taking behaviour [36-38]. All polygenic scores were generated using GWAS summary statistics (supplementary table S4). SNPs regardless of significance were included to create polygenic scores [13, 16]. Polygenic scores were derived in PRSice software [16, 39]. Firstly, SNPs from participants were matched with SNPs reported in the GWAS summary statistics for each phenotype. SNPs were clumped (with a clumping distance of 10,000 kb and $R^2=0.01$) so that the retained SNPs are largely independent of each other and thus their effects can be summed. Next, we summed the alleles associated with the phenotype and weighted them by their effect sizes reporting the corresponding GWAS, to compute polygenic scores. To control for population

stratification, we residualised polygenic scores for the first 10 principal components estimated from the genome-wide SNP data [40]. To facilitate interpretability, all polygenic scores were standardised to have a mean of 0 and standard deviation of 1.

Sociodemographic factors

Sociodemographic factors such as participants' sex at birth (females/ males), parental marital status during pregnancy (married/ remarried/ widowed/ single never married/ divorced/ legally separated), parental highest education levels (maternal and partner highest education qualifications (CSE / vocational/ O-level/ A-level/ degree)¹), and parental highest occupational social classes (I/ II/ III (non-manual)/ III (manual)/ IV/ V)² were included in the study. Parental marital status during pregnancy was combined into married/ remarried, never married, and divorced/ legally separated/ widowed. These factors were reported in questionnaires completed by the child's main caregiver (usually the mother) during pregnancy (Supplementary Table S5).

Missing data

Males and participants from socially disadvantaged families were less likely to participate in assessments at ages 16, 22, and 26 (Supplementary Table S6). To maximize the sample size and reduce selection bias due to attrition, we used multiple imputation to impute missing screen time, depressive symptoms and sociodemographic data (Supplementary Table S7). Missing data were imputed using the mice package in R version 3.6.1, under a missing at random assumption. Considering sex differences in screen time and depressive symptoms and possible interactions, females and males were imputed separately. Variables were imputed using 50 imputations with 30 iterations, the imputation model included all the variables in the analytic model (exposures,

1 Certificate of Secondary Education (CSE) was a qualification offered to students in the UK who were not taking O-level exams from the 1960s until the late 1980s; Vocational qualifications focus on skills and training for specific careers or industries rather than traditional academic subjects; O-level is equivalent to secondary education; A-level is a pre-university qualification; Degree is a post-secondary academic qualification.

2 National Statistics Socio-economic Classification (NS-SEC) in the UK: Class I refers to the higher managerial, administrative, and professional occupations; Class II refers to the intermediate managerial, administrative, and professional occupations; Class III (Non-manual) refers to the skilled non-manual occupations; Class III (Manual) refers to the skilled manual occupations; Class IV refers to the semi-skilled and routine occupations; Class V – unskilled occupations.

outcomes, covariates), and additional auxiliary variables that predict missingness or make the missing at random assumption more plausible (Supplementary Table S8).

Data analyses

Descriptive analyses were conducted. Associations between each type of screen time at ages 16, 22, and 26 and depressive symptoms at age 26 were estimated using linear regression. We examined the association between screen time and depressive symptoms using an unadjusted model (Model 1), a model adjusted for sociodemographic factors (Model 2), a model adjusted for both sociodemographic factors and polygenic scores for mental health traits (ADHD, anxiety disorder, autism spectrum disorder, bipolar disorder, major depressive disorder, schizophrenia, neuroticism, and risk-taking behaviour) (Model 3).

The genetic sensitivity analysis was conducted using the Gsens package (Model 4) [18]. We assessed the association between screen time and depressive symptoms, after estimating the genetic confounding effect. This involved deriving a latent polygenic score capturing SNP heritability in depressive symptoms and assessing the attenuation in the association between screen time and depressive symptoms after accounting for this latent polygenic score in a structural equation model (Figure 2). The genetic confounding effect is therefore calculated as the decrease in the association between screen time and depressive symptoms after accounting for the latent polygenic score. Additionally, we estimated the proportion of the attenuation in effect sizes due to genetic confounding. According to the existing literature, the SNP-based heritability estimates of the child-reported SMFQ for depressive symptoms at age 16.5 years, 18 years, and 18.5 years were 8%, 3%, and 5% [41-43], respectively. The heritability remained relatively stable after age 20 [41, 44].

We replicated the analyses to examine the associations between screen time at age 16 and depressive symptoms at ages 16 and 22, and the associations between screen time at age 22 and depressive symptoms at age 22.

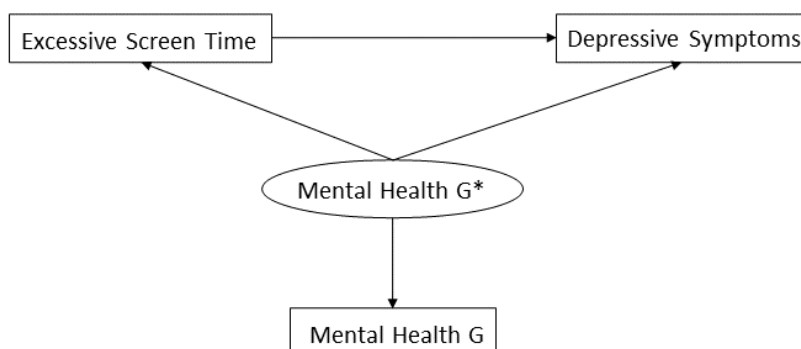


Figure 2 Genetic sensitivity analysis model. G refers to polygenic scores in this study; G* refers to latent polygenic scores that capture the heritability of the trait.

Results

Descriptive statistics

Of 3,005 participants, 1,938 (64.5%) were females; most of them (84.5%) were from families with married parents; 1,055 (35.1%) participants' parent/s had a degree (Table 1).

The proportions of different types of screen time for more than 2 hours during weekdays and weekends are shown in Table 2. At age 16, 32.8% of participants reported watching more than 2 hours of television, 35.7% reported using a computer for more than 2 hours, 21.8% reported texting for more than 2 hours, and 9.1% reported talking on a mobile phone for more than 2 hours during weekends (Table 2). During weekdays, these proportions were lower for television and computer (21.9% and 26.1%) and similar for texting and talking on a mobile phone (21.5% and 8.2%). Proportions generally increased at age 22, and even further at 26. The median SMFQ score was 4 (interquartile range, IQR: 2 to 9) at age 16, remained at 4 (IQR: 2 to 9) at age 22, and increased to 5 (IQR: 2 to 11) at age 26. Compared with participants excluded due to <50% data on screen time and depressive symptoms, those with ≥50% data on screen time and depressive symptoms were more likely to be female, from married or widowed families, and have parents with a higher education level (Supplementary Table S6).

Associations between screen time and depressive symptoms

Table 3 shows the results of associations between each type of screen time at ages 16, 22 and 26 and SMFQ score at age 26. Unadjusted models (Model 1) showed that some, but not all, types of screen time were associated with the SMFQ score. As the distribution of the SMFQ scores was skewed, we squared the SMFQ scores to achieve a normal distribution. In particular, more than 2 hours of television time at age 16 (β : 0.07 [95%CI 0.04, 0.11] for weekdays; β : 0.06 [0.02, 0.09] for weekends) and more than 2 hours of game time at age 22 (β : 0.07 [95%CI 0.03, 0.10] for weekdays; β : 0.07 [0.04, 0.11] for weekends) seem to be associated with depressive symptoms at age 26.

After adjusting for sociodemographic confounders (Model 2), including sex, parental marital status, parental highest education level, parental highest occupational social class, the existing associations between screen time and depressive symptoms in the unadjusted models remained similar. Likewise, further adjustment for polygenic scores (Model 3) did not attenuate the observed associations.

Associations between screen time and depressive symptoms after adjusting for latent polygenic scores capturing SNP heritability in mental health

In general, most of the associations were strongly attenuated in the genetic sensitivity analysis models that accounted for latent polygenic scores for mental health traits (Model4, Table 4). The attenuation in the effect sizes with the genetic sensitivity analysis ranged from 38% to 100% (mean = 79.8%). For example, in the genetic sensitivity analysis, the associations between watching television for more than 2 hours per day at age 16 and SMFQ scores at age 26 were as follows for weekdays and weekends: $\beta=0.02$ [-0.02, 0.06], proportion attenuation= 68%; $\beta=0.01$ [-0.02, 0.05], 70%.

The associations between screen time at age 16 and depressive symptoms at ages 16 and 22, and the associations between screen time at age 22 and depressive symptoms at age 22 in Models 1, 2, 3 and 4 are shown in Supplementary Table S9.

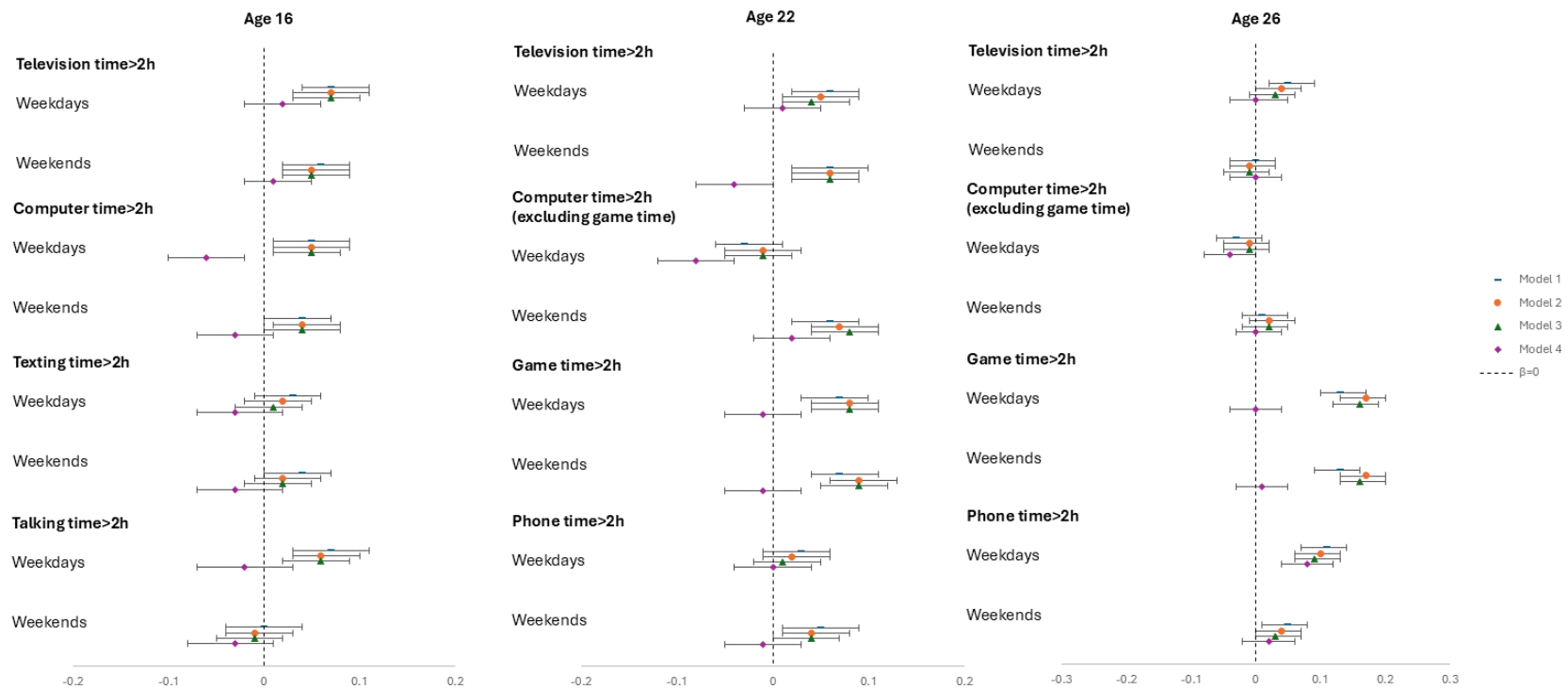


Figure 3 Associations between excessive screen time at ages 16, 22, and 26 and depressive symptoms at age 26. Model 1: unadjusted model; Model 2: adjusted for sex, parental marital status, parental highest education level, parental highest occupational social classes; Model 3: adjusted for sex, parental marital status, parental highest education level, parental highest occupational social classes, and polygenic scores for mental health traits; Model 4: genetic sensitivity analysis using Gsens model with polygenic scores

Discussion

Based on the large longitudinal dataset, we found some – but not all – measures of excessive screen time were associated with higher levels of depressive symptoms. In particular, more than 2 hours of television time at age 16 and more than 2 hours of gaming time at age 22 were associated with depressive symptoms at age 26. However, these associations between screen time and depressive symptoms were completely attenuated after accounting for genetic confounding. Due to the complex nature of genetic architecture, polygenic scores only captured a small proportion of total heritability [17]. We found that polygenic scores alone were insufficient to account for genetic confounding. Associations between excessive screen time and depressive symptoms persisted when including polygenic scores as covariates but were completely attenuated when using latent polygenic scores that incorporate information about SNP-based heritability.

Studies have suggested that genes played a role in both screen time [11] and mental health [45-47], providing potential for genetic confounding. However, most previous observational studies of mental health outcomes related to excessive screen time [48, 49], have not considered genetic confounding. Of the two studies that have considered genetic confounding using the Gsens analysis, one focused on television-watching time and psychiatric problems based on one-year follow-up data [20] and the other on media use and mental health measured at the same wave [19]. Both reached the same conclusion as this paper, i.e. that genetic confounding explained most or all of the association between screen time and mental health [19, 20]. In this study, we provide evidence when considering different types of screen time, using three waves of data collected during adolescence and early adulthood.

Based on a large longitudinal dataset, we explored the associations between different types of screen time and later depressive symptoms among UK adolescents and young adults. We investigated these associations using information on exposures and outcomes across multiple ages. We tested the associations between screen time and depressive symptoms using a range of approaches to interrogate genetic confounding. However, several limitations should be considered. First, we used self-reported screen time, which can lead to recall bias and social desirability bias. As the collected screen time data were ordinal variables rather than continuous, we were unable to calculate average screen time. However, we included all prospectively collected items related to

screen time in ALSPAC to test the robustness of our findings across different types of screen time and at multiple time points for the same individuals. Second, we only included data from participants with European ancestry to match the available GWAS data. Trans-ancestry GWASs are needed, and data on screen time, mental health, and genetic information among populations of non-European ancestry will be helpful to triangulate our findings. Third, the Gsens analysis using a genetic sensitivity model with latent polygenic scores might account for broader genetically related confounding (e.g., population stratification, assortative mating) rather than confounding arising solely from direct genetic effects [18].

Conclusions

We found that genetic confounding is likely to explain the association between excessive screen time and depressive symptoms in adolescents and young adults. There was limited evidence of associations between different types of excessive screen time on weekdays or weekends and depressive symptoms among adolescents and young adults after accounting for genetic confounding.

References

1. Stoilova M, L.S., Khazbak R, *Investigating Risks and Opportunities for Children in a Digital World: A rapid review of the evidence on children's internet use and outcomes*. 2021, UNICEF Office of Research: Innocenti, Florence.
2. Livingstone S, W.D., Saeed M, *Global Kids Online Comparative Report*, in *Innocenti Research Report*. 2019, UNICEF Office of Research: Innocenti, Florence.
3. Meng, S.Q., et al., *Global prevalence of digital addiction in general population: A systematic review and meta-analysis*. Clin Psychol Rev, 2022. **92**: p. 102128.
4. Berchtold, A., et al., *Daily internet time: towards an evidence-based recommendation?* Eur J Public Health, 2018. **28**(4): p. 647-651.
5. Physiology, C.S.f.E. *Canadian 24-hour movement guidelines: an integration of physical activity, sedentary behaviour, and sleep*. Available from: <https://csepguidelines.ca/>.
6. Reid Chassiakos, Y.L., et al., *Children and Adolescents and Digital Media*. Pediatrics, 2016. **138**(5).
7. NHS. *Screen time for your child: A guide for parents*. 2016; Available from: <https://nhsforhvalley.com/wp-content/uploads/2017/01/Screen-Time.pdf#:~:text=How%20much%20screen%20time%20is%20ok%20for%20my,on%20the%20time%20spent%20in%20front%20of%20screens>.
8. Dabravolskaj, J., et al., *The impact of 12 modifiable lifestyle behaviours on depressive and anxiety symptoms in middle adolescence: prospective analyses of the Canadian longitudinal COMPASS study*. Int J Behav Nutr Phys Act, 2023. **20**(1): p. 45.
9. Khouja, J.N., et al., *Is screen time associated with anxiety or depression in young people?*

- Results from a UK birth cohort.* BMC Public Health, 2019. **19**(1): p. 82.
10. Liu, M., L. Wu, and S. Yao, *Dose-response association of screen time-based sedentary behaviour in children and adolescents and depression: a meta-analysis of observational studies.* Br J Sports Med, 2016. **50**(20): p. 1252-1258.
 11. Wang, Z., et al., *Genome-wide association analyses of physical activity and sedentary behavior provide insights into underlying mechanisms and roles in disease prevention.* Nature Genetics, 2022. **54**(9): p. 1332-+.
 12. Kardefelt-Winther, D., *A conceptual and methodological critique of internet addiction research: Towards a model of compensatory internet use.* Computers in Human Behavior, 2014. **31**: p. 351-354.
 13. Jones, H.J., et al., *Phenotypic Manifestation of Genetic Risk for Schizophrenia During Adolescence in the General Population.* JAMA Psychiatry, 2016. **73**(3): p. 221-8.
 14. Purcell, S.M., et al., *Common polygenic variation contributes to risk of schizophrenia and bipolar disorder.* Nature, 2009. **460**(7256): p. 748-752.
 15. Choi, S.W., T.S. Mak, and P.F. O'Reilly, *Tutorial: a guide to performing polygenic risk score analyses.* Nat Protoc, 2020. **15**(9): p. 2759-2772.
 16. So, H.C. and P.C. Sham, *Exploring the predictive power of polygenic scores derived from genome-wide association studies: a study of 10 complex traits.* Bioinformatics, 2017. **33**(6): p. 886-892.
 17. Witte, J.S., P.M. Visscher, and N.R. Wray, *The contribution of genetic variants to disease depends on the ruler.* Nat Rev Genet, 2014. **15**(11): p. 765-76.
 18. Pingault, J.B., et al., *Genetic sensitivity analysis: Adjusting for genetic confounding in epidemiological associations.* PLoS Genet, 2021. **17**(6): p. e1009590.
 19. Ayorech, Z., et al., *Gene-environment correlations and genetic confounding underlying the association between media use and mental health.* Scientific Reports, 2023. **13**(1): p. 1030.
 20. Zhang, Y., et al., *Shared Genetic Risk in the Association of Screen Time With Psychiatric Problems in Children.* JAMA Netw Open, 2023. **6**(11): p. e2341502.
 21. George, M.J., et al., *Concurrent and Subsequent Associations Between Daily Digital Technology Use and High-Risk Adolescents' Mental Health Symptoms.* Child Dev, 2018. **89**(1): p. 78-88.
 22. Grontved, A., et al., *A prospective study of screen time in adolescence and depression symptoms in young adulthood.* Prev Med, 2015. **81**: p. 108-13.
 23. Plackett, R., J. Sheringham, and J. Dykxhoorn, *The Longitudinal Impact of Social Media Use on UK Adolescents' Mental Health: Longitudinal Observational Study.* J Med Internet Res, 2023. **25**: p. e43213.
 24. Song, K., et al., *Youth Screen Media Activity Patterns and Associations With Behavioral Developmental Measures and Resting-state Brain Functional Connectivity.* J Am Acad Child Adolesc Psychiatry, 2023. **62**(9): p. 1051-1063.
 25. Northstone, K., et al., *The Avon Longitudinal Study of Parents and Children (ALSPAC): an update on the enrolled sample of index children in 2019.* Wellcome Open Res, 2019. **4**: p. 51.
 26. Boyd, A., et al., *Cohort Profile: the 'children of the 90s'--the index offspring of the Avon Longitudinal Study of Parents and Children.* Int J Epidemiol, 2013. **42**(1): p. 111-27.

27. Fraser, A., et al., *Cohort Profile: the Avon Longitudinal Study of Parents and Children: ALSPAC mothers cohort*. Int J Epidemiol, 2013. **42**(1): p. 97-110.
28. Harris, P.A., et al., *Research electronic data capture (REDCap)--a metadata-driven methodology and workflow process for providing translational research informatics support*. J Biomed Inform, 2009. **42**(2): p. 377-81.
29. Act, H.T., *Human tissue act*. 2004, UK Parliament.
30. Atkin, A., et al., *International Children's Accelerometry Database (ICAD) Collaborators Prevalence and correlates of screen time in youth: An international perspective*. Am J Prev Med, 2014. **47**(6): p. 803-807.
31. Jin, Z., et al., *Interaction effect of screen time and sugar-sweetened beverages with depressive symptoms in adolescents: evidence from a large sample-based survey in China*. Eur Child Adolesc Psychiatry, 2024.
32. Lissak, G., *Adverse physiological and psychological effects of screen time on children and adolescents: Literature review and case study*. Environ Res, 2018. **164**: p. 149-157.
33. Kwong, A.S., *Examining the longitudinal nature of depressive symptoms in the Avon Longitudinal Study of Parents and Children (ALSPAC)*. Wellcome open research, 2019. **4**.
34. Broughton, T., et al., *Relative age in the school year and risk of mental health problems in childhood, adolescence and young adulthood*. J Child Psychol Psychiatry, 2023. **64**(1): p. 185-196.
35. Bristol, U.o. *GWAS Data Generation: Details as of 26/11/2012*. 2012; Available from: <https://www.bristol.ac.uk/media-library/sites/alspac/migrated/documents/gwas-data-generation.pdf?u07022013>.
36. Baldwin, J.R., et al., *A genetically informed Registered Report on adverse childhood experiences and mental health*. Nat Hum Behav, 2023. **7**(2): p. 269-290.
37. Schoeler, T., et al., *Multi-Polygenic Score Approach to Identifying Individual Vulnerabilities Associated With the Risk of Exposure to Bullying*. JAMA Psychiatry, 2019. **76**(7): p. 730-738.
38. Peel, A.J., et al., *Genetic and early environmental predictors of adulthood self-reports of trauma*. Br J Psychiatry, 2022. **221**(4): p. 613-620.
39. Euesden, J., C.M. Lewis, and P.F. O'Reilly, *PRSice: Polygenic Risk Score software*. Bioinformatics, 2015. **31**(9): p. 1466-8.
40. Price, A.L., et al., *Principal components analysis corrects for stratification in genome-wide association studies*. Nat Genet, 2006. **38**(8): p. 904-9.
41. Sallis, H., et al., *Genetics of depressive symptoms in adolescence*. BMC Psychiatry, 2017. **17**(1): p. 321.
42. Cheesman, R., et al., *Extracting stability increases the SNP heritability of emotional problems in young people*. Transl Psychiatry, 2018. **8**(1): p. 223.
43. Cheesman, R., et al., *Childhood behaviour problems show the greatest gap between DNA-based and twin heritability*. Translational Psychiatry, 2017. **7**(12): p. 1284.
44. Nivard, M.G., et al., *Stability in symptoms of anxiety and depression as a function of genotype and environment: a longitudinal twin study from ages 3 to 63 years*. Psychological Medicine, 2015. **45**(5): p. 1039-1049.
45. Chang, S., et al., *Shared polygenic risk for ADHD, executive dysfunction and other psychiatric disorders*. Transl Psychiatry, 2020. **10**(1): p. 182.

46. Nivard, M.G., et al., *Genetic Overlap Between Schizophrenia and Developmental Psychopathology: Longitudinal and Multivariate Polygenic Risk Prediction of Common Psychiatric Traits During Development*. Schizophrenia Bulletin, 2017. **43**(6): p. 1197-1207.
47. Demontis, D., et al., *Genome-wide analyses of ADHD identify 27 risk loci, refine the genetic architecture and implicate several cognitive domains*. Nature Genetics, 2023. **55**(2): p. 198-208.
48. Li, X., et al., *Screen Use and Mental Health Symptoms in Canadian Children and Youth During the COVID-19 Pandemic*. JAMA Netw Open, 2021. **4**(12): p. e2140875.
49. Zhu, X., et al., *Trajectories of Screen Time across Adolescence and Their Associations with Adulthood Mental Health and Behavioral Outcomes*. Journal of Youth and Adolescence, 2023. **52**(7): p. 1433-1447.