

1 **Efficacy of Melflufen in Patients with Relapsed/Refractory Multiple Myeloma and**  
2 **Mutated or Deleted *TP53***

3 Klara Acs,<sup>1\*</sup> Juho J. Miettinen,<sup>2\*</sup> Philipp Sergeev,<sup>2\*</sup> Tobias Heckel,<sup>3</sup> Yumei Diao,<sup>1</sup> Kristina Witt-  
4 Mulder,<sup>1</sup> Marcus Thureson,<sup>1</sup> Thorsten Bischler,<sup>3</sup> Maiju-Emilia Huppunen,<sup>2</sup> Jakob Obermüller,<sup>1</sup>  
5 Umair Munawar,<sup>4</sup> Ana Slipicevic,<sup>1i</sup> Ralf C. Bargou,<sup>4</sup> Fredrik Lehmann,<sup>1ii</sup> Stefan Svensson  
6 Gelius,<sup>1</sup> Stefan Norin,<sup>1</sup> Fredrik Schjesvold,<sup>5</sup> Pieter Sonneveld,<sup>6</sup> Thorsten Stühmer<sup>4</sup> and  
7 Caroline A. Heckman<sup>2†</sup>

8  
9 <sup>1</sup>Oncopeptides AB, Stockholm, Sweden; <sup>2</sup>Institute for Molecular Medicine Finland, Helsinki  
10 Institute of Life Science, iCAN Digital Precision Cancer Medicine Flagship, University of  
11 Helsinki, Helsinki, Finland; <sup>3</sup>Core Unit Systems Medicine, University of Würzburg, Würzburg,  
12 Germany; <sup>4</sup>Comprehensive Cancer Center Mainfranken, Würzburg, Germany; <sup>5</sup>Oslo  
13 Myeloma Center, Department of Hematology, Oslo University Hospital, Oslo,  
14 Norway; <sup>6</sup>Department of Hematology, Erasmus MC Cancer Institute, Rotterdam, The  
15 Netherlands

16  
17 \* – K.A., J.J.M and P.S. contributed equally to this study.

18 <sup>i</sup> – Recent address, One-carbon Therapeutics AB, Stockholm, Sweden.

19 <sup>ii</sup> – Recent address, Industrifonden, Stockholm, Sweden.

20 <sup>†</sup> – Corresponding author.

## 21 **ABSTRACT**

### 22 **Background**

23 Patients with relapsed/refractory multiple myeloma (RRMM) and high-risk genetic  
24 abnormalities such as del(17p) and *TP53* mutation have poor response to standard therapies  
25 and shorter survival compared to patients without these aberrations. Here, we investigated  
26 the activity and mechanism of action of peptide-drug conjugate melphalan flufenamide  
27 (melflufen) in *TP53* wild type (*TP53*wt) and mutant (*TP53*mut) myeloma models and assessed  
28 the efficacy of melflufen in patients with del(17p) and/or *TP53* mutation.

### 29 **Methods**

30 We evaluated melflufen activity *ex vivo* in 24 myeloma bone marrow (BM) samples  
31 and explored indicators of response from single cell RNA sequencing (scRNAseq) profiles.  
32 The efficacy of melflufen vs. control treatments was further investigated in *TP53*<sup>-/-</sup> and parental  
33 *TP53*wt myeloma cell lines. DNA damage, apoptosis kinetics, mitochondrial function, plus  
34 transcriptomic and metabolic data were analyzed to understand the mechanisms responsible  
35 for melflufen activity in the absence of p53. Patient outcome data from the OCEAN phase III  
36 clinical trial (NCT03151811), which investigated the clinical activity of melflufen in RRMM,  
37 were statistically analyzed to assess the impact of del(17p) and *TP53* mutation on clinical  
38 response.

### 39 **Results**

40 BM plasma cell (PC) response to melflufen was independent of *TP53* mutation status,  
41 with melflufen active in del(17p), *TP53*mut, and *TP53*wt samples. Differential analysis of  
42 scRNAseq data demonstrated that melflufen sensitive PCs had lower expression of p53 target  
43 genes and higher expression of genes associated with DNA damage repair and cell cycle  
44 checkpoints. Analysis of *TP53*<sup>-/-</sup> and *TP53*wt cell lines showed superior efficacy of melflufen  
45 in comparison to melphalan or cyclophosphamide. In the presence and absence of functional  
46 p53, melflufen robustly induced apoptosis, DNA damage, and mitochondrial dysfunction. In  
47 *TP53*<sup>-/-</sup> cells, melflufen treatment led to distinct changes in expression of genes associated

48 with cell cycle checkpoint and apoptosis, which were not observed with melphalan treatment.  
49 Notably, post-hoc analysis of the OCEAN trial del(17p) patient population demonstrated  
50 favorable progression free survival in the del(17p) subgroup treated with melflufen plus  
51 dexamethasone compared to the pomalidomide plus dexamethasone arm.

## 52 **Conclusions**

53 Our insights into the molecular mechanisms of melflufen activity in *TP53*mut myeloma  
54 support its clinical efficacy and application in the del(17p) and *TP53*mut patient population.

55

## 56 **Trial registration**

57 NCT03151811, registration 2017-05-09.

58

## 59 **Keywords:**

60 Melflufen, clinical efficacy, *TP53* mutation, del(17p), PFS, in vitro efficacy, SoC  
61 alkylators

## 62 BACKGROUND

63 The number of targeted therapies developed in the last decades has enormously  
64 increased the treatment possibilities for patients with multiple myeloma (MM) and has  
65 prolonged life expectancies.<sup>1-4</sup> However, after initial response to early line therapies, patients  
66 suffer from multiple relapses and eventually develop resistance as the disease progresses. In  
67 current clinical practice, therapy regimens that include proteasome inhibitors (PIs),  
68 immunomodulatory drugs (IMiDs), monoclonal antibodies (mAbs), and dexamethasone (Dex)  
69 are commonly used as early line treatments.<sup>5</sup> The development of resistance to these  
70 therapies has resulted in a patient population with heavily pre-treated relapsed/refractory MM  
71 (RRMM). As the disease progresses, patients develop enhanced clonal heterogeneity, with  
72 their tumor genome often accumulating more mutations and structural changes. Patients  
73 belonging to this population have benefited only modestly from the approval of novel targeted  
74 drugs and have very limited treatment options.<sup>6-9</sup>

75 The loss of parts of the short arm of chromosome 17 (del(17p)) in myeloma is one of  
76 the most important prognostic factors for patient response. The *TP53* gene is located at  
77 chromosome 17p13.1 and encodes the p53 tumor suppressor protein, which is important for  
78 maintaining genome integrity and initiation of apoptosis.<sup>10</sup> Patients with del(17p) are assigned  
79 high-risk status according to the International Myeloma Working Group (IMWG) and based on  
80 several studies.<sup>11-13</sup> In case a deletion of the chromosome 17 small arm is associated with  
81 *TP53* mutation on the remaining allele, the patients are grouped into the so-called “double-hit”  
82 population with very poor survival.<sup>14</sup> The reason for the worse outcome is that no functional  
83 p53 protein remains in the tumor cells of these patients. However, del(17p) alone also confers  
84 poor outcome compared with patients without this deletion, and del(17p) cytogenetics is  
85 considered as a prognostic indicator for poor outcome.<sup>14-21</sup>

86 Melphalan flufenamide (melflufen) is a novel peptide-drug conjugate recently approved  
87 by the European Medical Agency (EMA) for the treatment of RRMM.<sup>22</sup> The lipophilicity of  
88 melflufen facilitates rapid cellular uptake and the antineoplastic activity of the drug depends

89 on high expression of aminopeptidases in the malignant myeloma cells.<sup>23</sup> After hydrolysis by  
90 aminopeptidases, a robust increase of the alkylating metabolites occurs inside the tumor cells  
91 leading to induction of apoptosis with remarkably fast kinetics.<sup>22-27</sup>

92 In the OCEAN trial, a randomized, head-to-head, open-label, phase III clinical study,  
93 melflufen combined with dexamethasone (mfldex) or pomalidomide plus dexamethasone  
94 (pomdex) was studied in patients who had received 2-4 lines of previous treatments, were  
95 refractory to lenalidomide and their last treatment, and had not previously received  
96 pomalidomide treatment. The primary endpoint was progression free survival (PFS), and key  
97 secondary endpoints included overall survival (OS) and overall response rate (ORR). Results  
98 from the trial showed that patients on the melflufen arm had superior PFS compared to the  
99 pomalidomide arm patients.<sup>28,29</sup> In a post-hoc analysis, patients on the melflufen arm that  
100 either had no prior ASCT or progressed >36 months after a prior ASCT had a better PFS and  
101 OS than patients progressing <36 months after an ASCT.<sup>30</sup>

102 The robust cellular efficacy of melflufen led us to compare the mechanism of action in  
103 different myeloma models with or without a mutated *TP53* genetic background, including bone  
104 marrow (BM) CD138+ plasma cells (PCs) from RRMM patients positive for del(17p)/*TP53*  
105 mutation, isogenic myeloma cell lines with double-mutated *TP53*, and patients with the same  
106 background enrolled in the OCEAN trial.

107

## 108 **MATERIALS AND METHODS**

### 109 **Compounds and stock solutions**

110 Melflufen (Oncopeptides AB) was freshly prepared in DMSO before application.  
111 Melphalan (cat. no. M2011, Sigma-Aldrich) stock solution was prepared in acidified ethanol.  
112 Cyclophosphamide (N,N-bis(2-chloroethyl)-4-hydroperoxy-2-oxo-1,3,25-oxazaphosphinan-2-  
113 amine, TRC Canada) was freshly prepared in DMSO.

114

### 115 ***Ex vivo* drug sensitivity testing of myeloma bone marrow samples**

116 Viably cryopreserved BM mononuclear cell (BM-MNC) samples (n=24) from 23  
117 patients with MM were obtained from the Finnish Hematology Registry and Biobank (Table 1).  
118 The samples were collected after informed consent using approved protocols and in  
119 accordance with the Declaration of Helsinki. The study was approved by an ethical committee  
120 of the Helsinki University Hospital (Ethical Committee Statement 303/13/03/01/201, latest  
121 amendment 7 dated 15 June 2016; latest HUS study permit HUS/395/2018 dated 13 February  
122 2018; Permit numbers 239/13/03/00/2010, 303/13/03/01/2011). For *ex vivo* drug sensitivity  
123 testing, BM-MNCs were thawed, resuspended in conditioned medium from the HS-5 human  
124 BM stromal cell line, and seeded on 96-well plates. Resuspended drugs were added to the  
125 wells and cells incubated at 37°C for 72h. Labeled antibodies specific for CD138 and CD38  
126 (BD Biosciences) were used to detect plasma cells, while Annexin V and 7AAD (BD  
127 Biosciences) were used to detect apoptotic and dead cells, respectively. The cells were  
128 analyzed on the iQue PLUS flow cytometer (Sartorius). Additional details are included in the  
129 Supplementary Materials and Methods.

130

### 131 **Single-cell gene expression analysis**

132 For single cell RNA sequence (scRNAseq) analysis, the above-mentioned 24 BM-  
133 MNCs were sorted based on CD138+ expression and libraries prepared with 10x Genomics  
134 reagents and sequenced on the Illumina NovaSeq 6000 instrument. The samples were  
135 grouped based on *ex vivo* drug sensitivity to melflufen and melphalan. Cell clusters were  
136 identified based on gene expression patterns and differential gene expression (DGE) and  
137 gene set enrichment analysis (GSEA) performed on the plasma cell clusters of the highly  
138 sensitive and low sensitive samples for both drugs (see Supplementary Materials and  
139 Methods for details). Data link NCBI GEO (<http://www.ncbi.nlm.nih.gov/geo>) accession  
140 number GSE263201.

141

### 142 **Cell lines, cell culture, and cytotoxicity**

143 The AMO-1 cell line was obtained from DSMZ (Braunschweig, Germany). Generation  
144 and characterization of *TP53* deficient AMO-1 clones is described in Munawar et al., 2019.<sup>31</sup>  
145 Cell viability was determined after 72h incubation using the CellTiter-Glo® 2.0 assay  
146 (Promega) or AlamarBlue™ reagent (Invitrogen) according to the manufacturers' protocols.

147

#### 148 **DNA damage signaling and cell apoptosis analyses**

149 AMO-1 *TP53*<sup>wt</sup> and AMO-1 *TP53*<sup>-/-</sup> cells were treated with melflufen, melphalan or  
150 cyclophosphamide at the indicated concentrations and time points. H2AX phosphorylation at  
151 Ser139(γ-H2AX) for DNA damage signal was analyzed using flow cytometry. For apoptosis  
152 analysis cells were stained for Annexin V APC and PI (Invitrogen). All samples were analyzed  
153 with the FACSCanto II flow cytometer (BD Biosciences). Data were analyzed using FlowJo  
154 software (BD Biosciences).

155

#### 156 **JC-1 mitochondria membrane potential assay**

157 AMO-1 *TP53*<sup>wt</sup> and AMO-1 *TP53*<sup>-/-</sup> cells were treated with melflufen, melphalan or  
158 cyclophosphamide at the indicated concentrations and time points. The JC-1 mitochondrial  
159 membrane potential assay was performed according to the manufacturer's protocol  
160 (MitoProbe™ JC-1 Assay Kit for Flow Cytometry (M34152), Molecular Probes).

161

#### 162 **RNA preparation and RNA sequence analysis**

163 AMO1 *TP53*<sup>wt</sup> cells or the *TP53*<sup>-/-</sup> knock out clonal subline AMO-1 *TP53*<sup>-/-</sup> were treated  
164 with melphalan or melflufen at different concentrations and timepoints. RNA was isolated  
165 according to the RNeasy Plus protocol, quantified with Nanodrop (Thermo Scientific), and  
166 quality assessed with the Agilent 2100 Bioanalyzer. DNA libraries were prepared using the  
167 TruSeq Stranded mRNA Library Preparation Kit (Illumina) and sequencing performed on the  
168 NextSeq-500 platform (Illumina). Sequences were mapped to the human genome  
169 (GRCh38.p14) with STAR aligner and gene level based read counts generated with RefSeq.

170 Differential gene expression (DGE) analysis was performed using DESeq2 with log-fold  
171 change shrinkage using beta Prior. Cluster profiler was used for gene set enrichment analysis  
172 (GSEA) and for KEGG pathway analysis. R was applied to generate heatmaps. Data link NCBI  
173 GEO (<http://www.ncbi.nlm.nih.gov/geo>) accession number GSE254959.

174

### 175 **Statistical analyses of the OCEAN trial data**

176 Primary analysis of tumor response and progression-dependent endpoints of patients  
177 enrolled in the OCEAN trial (NCT03151811) were based on response assessments by an  
178 Independent Review Committee. All tumor response and progression-dependent endpoints  
179 were assessed using the IMWG Uniform Response Criteria (IMWG-URC). PFS was defined  
180 as time (months) from date of randomization to either confirmed disease progression or death  
181 due to any cause. ORR was defined as the proportion of patients for whom the best overall  
182 confirmed response was stringent complete response (sCR), complete response (CR), very  
183 good partial response (VGPR), or partial response (PR). Posthoc analyses were performed to  
184 examine associations between PFS and chromosome 17 deletion status and/or *TP53* gene  
185 mutation status. Furthermore, another post-hoc analysis was carried out to study the patient  
186 responder status in the chromosome 17 deletion population.

187

### 188 **Assessment of del(17p) status**

189 The del(17p) status had been determined from bone marrow at baseline level (entry)  
190 of the clinical study by interphase Fluorescence In-Situ Hybridization (iFISH) in accordance  
191 with Good Clinical Practice (GCP). No cutoff applied, all patients with del(17p) cytogenetics  
192 had been included into the analyses. The presence of del(17p) in plasma cells varied between  
193 8-90%. The del(17p) status of the patient samples used for the *ex vivo* drug sensitivity testing  
194 was determined using iFISH as previously described.<sup>32</sup>

195

### 196 **Assessment of *TP53* mutation status**



197 *TP53* mutation status of OCEAN trial patients was determined by next generation  
198 sequencing (NGS) using Almac Genomic Services. Briefly, DNA was extracted from BM  
199 derived CD138+ cells and processed using Illumina TruSeq Custom Amplicon Kit Dx. A  
200 custom *TP53* oligo panel detecting pan-cancer single nucleotide polymorphisms was applied  
201 and the samples sequenced on the Illumina MiSeq instrument. All detected single nucleotide  
202 variants classified. The *TP53* mutation status of the patient samples used for the *ex vivo* drug  
203 sensitivity testing was determined using exome sequencing of DNA from CD138+ cells as  
204 previously described.<sup>32</sup>

205

206 Detailed materials and methods are provided in the supplementary information.

207

## 208 **RESULTS**

### 209 **Melflufen targets MM plasma cells *ex vivo* regardless of *TP53* mutation status**

210 To assess the efficacy of melflufen in high-risk myeloma *ex vivo*, we conducted flow  
211 cytometry-based drug sensitivity testing of 24 myeloma BM-MNC samples obtained from 23  
212 patients with various clinical and molecular backgrounds (Figure 1A). The cohort included  
213 samples from newly diagnosed and relapsed patients. After treatment of the BM-MNCs with  
214 melflufen or control drugs for 72h, the viability of the CD138+CD38+ cells was assessed by  
215 Annexin V and 7AAD staining. All samples showed reduced viability after exposure to  
216 melflufen, but sensitivity varied between samples from extremely sensitive to less sensitive,  
217 which was reflective of the heterogeneity of the patients (Figure 1B). For subsequent analyses,  
218 the samples were divided into different melflufen sensitivity groups based on the melflufen  
219 DSS values of the samples: high (HS, DSS>40; n=8), intermediate (IS, 40<DSS<31; n=8),  
220 and low (LS, DSS>31; n=8). Confirming our earlier observations, a significant indicator of  
221 melflufen sensitivity was disease stage as all but one of the HS samples were from RRMM  
222 patients.<sup>26</sup> A gain of chromosome 1q (+1q) and loss of chromosome 13 (-13/-13q) were the  
223 most frequent abnormalities observed in 22/24 samples individually or in combination.

224 Statistical analysis showed tendencies of samples with +1q to have higher sensitivity to  
225 melflufen, and the opposite trend for samples with -13/-13q although significance was not  
226 obtained due to the limited sample number. In addition, 4 of the 8 LS samples and only 1 of  
227 the 8 HS samples had t(4;14), while 3 of the HS, 1 of the IS and 2 of the LS samples were  
228 positive for del(17p). *TP53* mutation status was available for 14 of the 24 tested samples. Of  
229 the 5 HS samples with *TP53* sequence data, 3 were mutation positive, while *TP53* mutations  
230 were not detected in any of the 5 LS samples with sequence information. These results  
231 suggested that melflufen was highly active despite the presence of *TP53* mutation or del(17p).  
232 At the same time, comparison of the *ex vivo* drug sensitivity of samples to melflufen,  
233 melphalan, and cyclophosphamide clearly showed the superior potency of melflufen in  
234 *TP53*wt, del17p, and del17p + *TP53*mut patient samples (Figure 1C). For instance, the  
235 sensitivity to melflufen was significantly higher in the *TP53*wt (melflufen: n = 8, melphalan: n  
236 = 8, cyclophosphamide: n = 2) and del(17p) + *TP53*mut groups (melflufen: n = 4, melphalan:  
237 n = 4, cyclophosphamide: n = 2). Although the threshold for statistical significance was not  
238 achieved in the del(17p) cohort (n = 2 for all drugs), the trend was similar.

239 To investigate molecular differences between groups with different sensitivity to  
240 melflufen, we analyzed the transcriptomic profiles of the plasma cell populations, obtained by  
241 scRNA sequencing, and conducted differential gene expression (DGE) and gene set  
242 enrichment (GSEA) analyses. GSEA of genes detected in HS and LS samples showed a  
243 decrease in p53 downstream pathways and targets in the HS group, and, at the same time,  
244 higher enrichment of pathways associated with DDR genes *BRCA1*, *ATM*, and *CHEK2* (Figure  
245 1D).

246

### 247 **Loss of *TP53* compromises multiple pathways**

248 To better understand the mechanisms responsible for the superior activity of melflufen  
249 compared to other standard of care alkylators observed from the *ex vivo* drug sensitivity testing  
250 analysis, we used the myeloma cell line AMO-1 with intact WT *TP53* or with deletion of both

251 alleles (*TP53*<sup>-/-</sup>). To validate the functional significance of these cell line models and their  
252 relevance with the patient samples, we investigated transcriptomic alterations caused by  
253 mutation of *TP53* by comparing baseline gene expression of *TP53*<sup>-/-</sup> vs. *TP53*<sup>wt</sup> patient  
254 samples and cell lines. This analysis yielded 1485 differentially expressed genes in patient  
255 samples (Supplementary Table S1) and 5357 of those in cell lines (Supplementary Table S2).  
256 In both comparisons, there were 252 similarly deregulated genes, such as *IL6R*, *JUN*, *DUSP5*,  
257 *AREG*, and *FOS* (Supplementary Table S3). Subsequently, gene set enrichment analysis  
258 (GSEA), when applied to these cohorts of genes, gave us multiple gene sets, associated with  
259 *TP53* and cell cycle progression, as well as pathways, associated with signaling and DNA  
260 damage (Supplementary Figure S1). These results confirmed a similar impact of *TP53*  
261 dysfunction in the patient samples and cell line models and illustrated the exploitability of *TP53*  
262 loss for treatment purposes by a drug such as melflufen.

263

#### 264 **Melflufen is cytotoxic and induces early apoptosis in cells without functional p53**

265 Earlier studies had demonstrated that deletion of one or both alleles of *TP53* in AMO-  
266 1 cells by CRISPR/Cas9 resulted in significant loss of sensitivity to melphalan or doxorubicin  
267 .<sup>31,33</sup> In support of the earlier report,<sup>33</sup> double mutant *TP53*<sup>-/-</sup> AMO-1 cells displayed profound  
268 loss of sensitivity to melphalan with EC50 values close to 20μM (Figure 2A, B, Supplementary  
269 Table S4). However, melflufen was highly active towards both *TP53*<sup>wt</sup> and *TP53*<sup>-/-</sup> AMO-1  
270 cells and compared to melphalan exhibited 30-fold more inhibition of cell viability with EC50  
271 0.6μM. Importantly, melflufen-induced apoptosis as measured by Annexin V was similar in  
272 *TP53*<sup>wt</sup> and *TP53*<sup>-/-</sup> cells (Figure 2B).

273 Earlier studies have shown that melflufen has more efficient kinetics compared to  
274 melphalan,<sup>34,35</sup> we therefore investigated the induction of apoptosis in *TP53*<sup>wt</sup> and *TP53*<sup>-/-</sup> cells  
275 after treatment with melflufen or melphalan. Even at 2h, induction of apoptosis was apparent  
276 in both *TP53*<sup>wt</sup> and *TP53*<sup>-/-</sup> cells after melflufen but not melphalan treatment (Figure 2C). At  
277 4h, early induction of apoptosis was as prominent in the mutant *TP53*<sup>-/-</sup> AMO-1 cells as in

278 *TP53*wt cells. In contrast to melflufen, melphalan and cyclophosphamide failed to induce early  
279 apoptosis (Figure 2D), although the apoptotic signal increased later and at higher IC50 values  
280 (55 $\mu$ M and 15 $\mu$ M, respectively) compared to melflufen (IC50 1 $\mu$ M) (Figure 2D). Overall, these  
281 results demonstrate that melflufen treatment resulted in complete inhibition of viability and  
282 induction of apoptosis at sub- to low micromolar concentrations, and indicate that, in contrast  
283 to melphalan, melflufen remains active despite compromised p53 function.

284

### 285 **Melflufen induces DNA damage and mitochondrial membrane disruption in *TP53*** 286 **deficient cells**

287 As the main cellular target for alkylating agents is genomic DNA, we aimed to gain  
288 insight into the kinetics of DNA damage induction for cells harboring *TP53*wt or *TP53*<sup>-/-</sup> cells.  
289 Cells were treated with either melflufen, melphalan or cyclophosphamide and induction of  
290 early DNA damage was measured by phosphorylation of H2AX ( $\gamma$ H2AX (ser139)). Melflufen  
291 treatment induced  $\gamma$ H2AX signal after 30 min in the *TP53*wt cells in a concentration dependent  
292 manner, while in the *TP53*<sup>-/-</sup> mutant cells maximal DNA damage induction occurred already at  
293 the lowest concentration. *TP53*<sup>-/-</sup> cells exhibited a higher baseline level of  $\gamma$ H2AX which is in  
294 line with loss of p53 protein function in the feed-back loops for DNA replication and repair  
295 protein functions.<sup>10</sup> Exposure to melphalan resulted in little induction of early DNA damage in  
296 *TP53*<sup>-/-</sup> cells while in *TP53*wt cells DNA damage induction was apparent only at a 10-fold  
297 higher concentration compared to melflufen. Similarly, there was little change in  $\gamma$ H2AX levels  
298 in *TP53*<sup>-/-</sup> cells treated with cyclophosphamide, and the  $\gamma$ H2AX signal induction by  
299 cyclophosphamide in the *TP53*wt cells appeared later in comparison to the other drugs (Figure  
300 3A).

301 We further investigated whether other cellular targets such as mitochondria<sup>27</sup> are  
302 affected by melflufen with similar efficacy in the *TP53*wt and *TP53*<sup>-/-</sup> cells. Mitochondrial  
303 functionality by membrane integrity measurements of the AMO-1 isogenic cell lines showed  
304 that melflufen induced a drop of membrane potential in the *TP53*wt cells within 2 hours after

305 treatment, and the effect on mitochondria function was even more pronounced in the mutant  
306 *TP53*<sup>-/-</sup> cells (Figure 3B). In contrast, melphalan and cyclophosphamide had no measurable  
307 effect on mitochondrial function in *TP53*<sup>-/-</sup> cells at the 4h treatment timepoint. Altogether, these  
308 data demonstrate that the activity of melflufen compared to other alkylators is associated with  
309 more efficient induction of cellular DNA damage and mitochondrial membrane disruption, and  
310 that melflufen can induce these processes with or without functional p53.

311

### 312 **Gene expression analysis reveals differences in *TP53*<sup>wt</sup> vs. *TP53*<sup>-/-</sup> cells after treatment** 313 **with melflufen and melphalan**

314 To understand if the rapid kinetics of melflufen intracellular accumulation and DNA  
315 damage induction uniquely influenced gene expression patterns compared to melphalan, RNA  
316 was collected from AMO-1 *TP53*<sup>wt</sup> and *TP53*<sup>-/-</sup> cells after 2h exposure to the IC90  
317 concentrations of melflufen or melphalan (Supplementary Table S4) and sequenced. Gene  
318 expression analysis showed distinct differences in the p53 pathway between melflufen and  
319 melphalan treatment of the *TP53*<sup>-/-</sup> AMO-1 cells that were not apparent in *TP53*<sup>wt</sup> cells (Figure  
320 4A). For example, melflufen treatment of the *TP53*<sup>-/-</sup> cells resulted in significant upregulation  
321 of genes including the cyclin dependent kinase inhibitor 1A (*CDKN1A*), cyclin G2 (*CCNG2*),  
322 and DNA damage inducible alpha, beta, and gamma genes (*GADD45A*, *B* and *G*), as well as  
323 upregulation of the apoptosis inducing *PMAIP1* (NOXA) gene. At the same time melflufen  
324 treatment caused significant downregulation in apoptosis inhibition and stress response genes  
325 including the well-known *BCL2* and *BCL2L1* genes. The primary target of alkylators is genomic  
326 DNA and treatment results in the upregulation of DNA damage repair (DDR) signaling as a  
327 cellular response to genomic stress. Importantly, the p53 protein is a key factor in the  
328 maintenance of DNA repair protein homeostasis<sup>10</sup>, and base excision repair (BER) and  
329 nucleotide excision repair (NER) are the main DNA repair pathways activated upon alkylator  
330 induced DNA damage.<sup>36</sup> We therefore investigated genes belonging to these pathways and  
331 analyzed their expression levels (Figure 4B and Supplementary Figure S2). In the DNA

332 replication pathway analysis, these genes tended to be upregulated in *TP53*<sup>-/-</sup> cells after  
333 melflufen treatment. Besides well-known replication guarding genes such as *RPA1*,  
334 *POLD1,3,4* and *POLE2,3*, the upregulation of a cluster of genes that includes several micro-  
335 chromosome maintenance genes (*MCM7*, *MCM3*, *MCM5*) was also observed. Importantly,  
336 BER associated genes such as *PARP1*, *PARP2*, *RCF4* and *XRCC1*, and NER pathway genes  
337 including the hallmark ERCC genes (*ERCC1,2,5*) and *RAD23A* were upregulated in *TP53*<sup>-/-</sup>  
338 cells after melflufen but not melphalan treatment. The differential gene expression patterns  
339 between melflufen and melphalan treated *TP53*<sup>-/-</sup> cells were also apparent after 12h incubation  
340 with drug (Supplementary Figure S2). In contrast, there was little difference in the gene  
341 expression patterns induced by melflufen and melphalan in *TP53*<sup>wt</sup> cells at 2 or 12h. The  
342 distinct gene expression patterns induced by melflufen in the *TP53*<sup>-/-</sup> cells compared to  
343 melphalan suggest a clear mechanistic difference between the two alkylators.

344

#### 345 **Patient PFS, OS and response in the del(17p) population**

346 To confirm our preclinical observations and determine if melflufen is active in patients  
347 with dysfunctional *TP53*, we conducted a post-hoc analysis of the OCEAN head-to-head open  
348 label clinical trial where the primary endpoint was PFS in the mfldex vs. pomdex treatment  
349 arms. Earlier, the PFS of 6.8 months in the mfldex group was shown to be significantly better  
350 than the PFS of 4.9 months in the pomdex group (stratified log-rank p value: p=0.03; HR 0.792  
351 [95% CI: 0.640, 0.981]).<sup>28</sup> In the post-hoc analysis for patient responder status in the  
352 chromosome 17 deletion population study, 70 patients characterized with del(17p) were  
353 included in this analysis from the total enrolled 495 patients in the OCEAN trial. Notably, the  
354 del(17p) patient population size from the OCEAN trial is in line with the published and  
355 commonly detected del(17p) cytogenetics rate where del(17p) is detected in ~10-15% from  
356 total MM trial populations.<sup>18,37,38</sup>

357 For PFS analysis of the del(17p) subpopulation, the patient distribution was as follows;  
358 in the mfldex arm 33 patients had del(17p) chromosomal aberration and 213 had no del(17p)

359 while in the pomdex arm 37 patients were del(17p) mutant and 212 patients had no deletion  
360 (Supplementary Table S5). In the del(17p) subpopulation there was a trend towards improved  
361 PFS in the mfldex group with 7.1 months vs. 2.9 months in the pomdex group (HR 0.45 [95%  
362 CI: 0.26, 0.79],  $p=0.006$ ) (Figure 5A). These data suggest that melflufen treatment is efficient  
363 in this high-risk subpopulation and can substantially prolong patient PFS. OS in the del(17p)  
364 subpopulation indicated a favourable OS in the pomdex arm versus mfldex arm, with 11.5  
365 months in the mfldex arm and 15.9 months in the pomdex arm (HR 1.31 [95% CI: 0.76, 2.26],  
366  $p=0.33$ ) (Figure 5B). The different PFS and OS outcomes between the treatment groups  
367 (mfldex arm vs. pomdex arm) might be explained based on post-hoc subgroup analyses which  
368 indicated that OS outcomes may have been driven primarily by patients who had received  
369 previously high-dose melphalan followed by an autologous haematopoietic stem-cell  
370 transplantation (ASCT).<sup>28</sup> These earlier post-hoc analyses determined that melflufen plus  
371 dexamethasone should be indicated for RRMM, but exclude patients with a prior ASCT, whose  
372 time to progression is less than 3 years from transplantation.<sup>39</sup>

373 Based on analysis of response to treatment in the del(17p) subgroup, the ORR results  
374 are as follows; the mfldex arm had 33.3% ORR (11 responders from 33 patients) vs. pomdex  
375 which had an ORR of 10.8% (4 responders from 37 patients) (33.3% vs 10.8%,  $p=0.028$ )  
376 (Figure 5C). The observed ORR data in the del(17p) population showed that the mfldex  
377 treatment arm had a significantly higher number of responders compared to the pomdex  
378 treatment arm and suggest that melflufen treatment can induce responses in this high-risk  
379 population. In addition, the ORR to melflufen treatment in the del(17p) population was  
380 comparable to the ORR in the general patient population of the OCEAN trial, which included  
381 heavily pre-treated R/R MM patients. In the OCEAN study, the ORR for mfldex was 33% (95%  
382 CI, 27-39) vs. an ORR of 27% (95% CI, 22-33) for pomdex.

383 The del(17p) aberration often co-occurs with other high-risk cytogenetic abnormalities,  
384 which may also impact patient response to treatment and outcome. The distribution of these  
385 other high-risk changes within the del(17p) population and the outcome of these del(17p)

386 subgroups are shown in Supplementary Table S6. The most common co-occurring high-risk  
387 cytogenetic abnormality with del(17p) was gain of 1q (+1q), which appeared to negatively  
388 impact response to both mfl dex and pom dex in the del(17p) population; however, statistical  
389 analysis of these further subdivided cytogenetic groups would have been underpowered.

390

391 **Melfufen shows favorable clinical efficacy in del(17p) and/or TP53 mutation patients**  
392 **from the OCEAN trial**

393 To better understand mfl dex clinical efficacy in the population with dysfunctional TP53,  
394 which included a mixed population of patients comprised of del(17p) and non-del(17p)  
395 patients, we performed a NGS exploratory study to determine TP53 gene mutation status for  
396 both mfl dex and pom dex treatment arms. For both arms, most sequenced patient samples  
397 contained silent single nucleotide polymorphism alterations to TP53 and thus retained p53  
398 function. From the mfl dex arm, 15 samples that were sequenced had del(17p) and/or  
399 contained a pathogenic mutation to TP53, while in the pom dex arms 18 patients were  
400 identified with del(17p) and/or pathogenic/loss-of-function mutation to TP53. Analyzing PFS  
401 in the sequenced population, the patient distribution was as follows; in the mfl dex arm, 62  
402 patients had no functional alteration to TP53, and 15 patients had either del(17p) and/or TP53  
403 pathogenic mutation. In the pom dex arm, 50 patients had no functional TP53 impairment, and  
404 18 patients displayed del(17p) and/or TP53 pathogenic mutation (Supplementary Table S7).  
405 The PFS analysis showed superiority of mfl dex treatment vs. pom dex (Figure 6A). In the  
406 impaired TP53 group (del(17p) and/or TP53mut) the PFS in the mfl dex group was 6.7 months  
407 vs. 4.7 months in the pom dex group (HR 0.57 [95% CI: 0.25, 1.29], p=0.2). These data indicate  
408 that in the OCEAN trial, mfl dex treatment resulted in a better PFS in the TP53 gene mutated  
409 patient population.

410 Additionally, OS analysis for the TP53 sequenced subpopulation indicated not  
411 significant but prolonged OS in the mfl dex arm vs. pom dex arm (Figure 6B) with 22.8 months  
412 vs. 19.9 months, respectively (HR 1.54 [95% CI: 0.69, 3.47], p=0.30).



413           Based on analysis of response to treatment in the *TP53* gene sequenced patient  
414 population, the ORR results are as follows; the mfldex arm had 33.3% ORR vs. pomdex which  
415 had an ORR of 11.1% (Figure 6C). The observed ORR data in the *TP53* gene sequenced  
416 population showed that the mfldex treatment arm had a higher number of responders  
417 compared to the pomdex treatment arm. Only 3 patients were double hit patient with del(17p)  
418 and *TP53* mutation. Their distribution was the following, 1 patient with partial response (PR)  
419 in the mfldex arm and 2 patients with no respond (stable disease (SD)) in the pomdex arm.

420           Notably, both post-hoc analyses (del(17p) population or the del(17p) and/or *TP53*  
421 mutation sequenced population) included the melflufen treatment target (>36 months post  
422 ASCT) and non-target populations (<36 months post ASCT).<sup>38</sup> Inclusion of both populations  
423 resulted in a less favorable outcome for the mfldex arm. However further dividing the del(17p)  
424 or the del(17p) and/or *TP53* sequenced populations would result in very small patient groups  
425 with very limited statistical power.

426

## 427 **DISCUSSION**

428           In myeloma, the sequential appearance of small mutations and larger chromosomal  
429 structural changes are acquired with treatment course and ultimately result in progressive  
430 disease driven by drug resistant clones. The deletion of chromosome 17p13 and mutation to  
431 *TP53* are the most deleterious aberrations described in myeloma and predict poor outcome  
432 and limited responses to most available therapies. Analysis of late line RRMM patients treated  
433 with lenalidomide and dexamethasone showed that del(17p) patients had low response rate  
434 and significantly shorter survival compared to patients without the deletion, indicating an  
435 unmet clinical need for this subpopulation of patients.<sup>40</sup>

436           Our earlier preclinical investigations of melflufen activity in myeloma indicated that  
437 plasma cells from relapsed/refractory patients were more sensitive than those from newly  
438 diagnosed patients.<sup>26</sup> We confirmed those observations in this study but also demonstrated  
439 that melflufen is active in patient-derived plasma cells with del(17p) and/or mutated *TP53*.

440 Although this cohort was too small to demonstrate statistical significance across all  
441 subpopulations, we found that melflufen was clearly more effective than standard of care  
442 alkylators melphalan and cyclophosphamide when tested against patient plasma cells with  
443 WT *TP53*, del(17p), or del(17p) plus mutated *TP53*. Although we lacked *TP53* mutation status  
444 for all the tested samples, comparative gene expression analysis showed decreased  
445 enrichment of gene sets associated with p53 downstream pathways and targets in samples  
446 highly sensitive to melflufen. These results indicated that melflufen retains its activity despite  
447 compromised p53 function.

448         Using isogenic myeloma cell lines with intact *TP53* or loss of both alleles, we were able  
449 to confirm our results from the patient samples and demonstrate that melflufen is highly  
450 effective in the presence or absence of functional p53. Although melflufen should have a  
451 similar mechanism of action as melphalan, our results showed that melflufen treatment  
452 resulted in rapid and robust induction of apoptosis in both *TP53*<sup>wt</sup> and *TP53*<sup>-/-</sup> cells compared  
453 to melphalan, which especially had reduced effect on *TP53*<sup>-/-</sup> cells. In addition, melflufen  
454 rapidly induced DNA damage and disrupted mitochondrial function. These results further  
455 strengthened the applicability of melflufen as an alkylating drug in the RRMM population as  
456 several studies indicate increased mitochondria number and function with myeloma disease  
457 progression.<sup>41-43</sup>

458         Although the fast kinetics of melflufen may be in part due to its lipophilic profile,<sup>22,24</sup>  
459 melflufen treatment was associated with unique differences in the gene expression profiles of  
460 treated cells. Notably, melflufen treatment of *TP53*<sup>-/-</sup> cells resulted in increased expression of  
461 genes associated with DNA replication and DNA repair and downregulation of cell cycle  
462 checkpoint and anti-apoptosis genes (e.g., *CHEK1*, *PTEN*, *BCL2*, *BCL2L1*). These changes  
463 were not observed in melphalan treated *TP53*<sup>-/-</sup> cells indicating distinct mechanistic differences  
464 between these drugs.

465         Our preclinical data were supportive of post-hoc analyses of the OCEAN trial. The  
466 original analyses of the OCEAN study cohort showed that RRMM patients treated with the

467 combination mflidx had a longer PFS compared to patients that received pomdex (6.8 months  
468 vs. 4.9 months).<sup>28</sup> In this follow-up study, a similar difference in PFS for the two treatment  
469 arms was reflected in high-risk patients with del(17p) cytogenetics, where PFS of the mflidx  
470 group was superior to the pomdex group. The del(17p) patients treated with mflidx also had  
471 a greater ORR (33%) compared to patients that received pomdex (ORR 10.8%). Furthermore,  
472 the PFS for the del(17p) and/or *TP53* gene mutated subgroup in the mflidx arm was 6.74  
473 months compared to 4.67 months for the pomdex arm. Although OS analyses showed  
474 prolonged survival of patients with *TP53* mutation who received mflidx compared to pomdex,  
475 the results were not statistically significant. In addition, OS was better for patients with del(17p)  
476 who had received pomdex compared to those receiving mflidx, but this also lacked  
477 significance. These analyses included all patients who had received high dose melphalan prior  
478 to ASCT, although the indication of the melflufen plus dexamethasone combination is for  
479 patients who progress >36 months after ASCT. Thus, inclusion of non-indicated patients who  
480 progressed <36 months after receiving high dose melphalan and ASCT could have affected  
481 the results. However, dividing the patients into even smaller subgroups would not have been  
482 statistically meaningful. Nevertheless, these results demonstrated that melflufen had superior  
483 efficacy in the del(17p) and *TP53* mutant patient population.

484         Although our preclinical studies did not include a comparison between melflufen and  
485 pomalidomide, we could demonstrate that melflufen had superior activity compared to that of  
486 the standard of care alkylators melphalan and cyclophosphamide, even without functional p53.  
487 In addition, the analyses of the OCEAN trial patient cohort have demonstrated better efficacy  
488 of the mflidx combination in heavily pretreated patients including those with del(17p) and  
489 *TP53* mutation. Future studies could investigate the impact of other genetic abnormalities or  
490 lines of treatment on response to melflufen.

491

492 **CONCLUSION**

493 Our findings underline melflufen's unique mechanism of action in which intracellular  
494 accumulation of the alkylating payload efficiently causes cytotoxic effects by rapid induction  
495 of DNA damage and mitochondrial dysfunction independent of *TP53* gene status and protein  
496 function. These results together with the post-hoc analysis of the OCEAN trial data  
497 demonstrate that melflufen is particularly effective in high-risk myeloma with del(17p) and/or  
498 *TP53* mutation.

499

## 500 **DECLARATIONS**

### 501 **Ethics approval and consent to participate**

502 Bone marrow (BM) aspirates were collected from multiple myeloma (MM) patients after  
503 informed consent using protocols approved by the ethical committee of Helsinki University  
504 Hospital (Ethical Committee Statement 303/13/03/01/201, latest amendment 7 dated 15 June  
505 2016; latest HUS study permit HUS/395/2018 dated 13 February 2018; Permit numbers  
506 239/13/03/00/2010, 303/13/03/01/2011) and in accordance with the Declaration of Helsinki.

507

### 508 **Consent for publication**

509 Not applicable.

510

### 511 **Availability of data and materials**

512 Bulk RNAseq data from AMO1 *TP53*<sup>wt</sup> cells and the *TP53*<sup>-/-</sup> knock out clonal subline  
513 AMO-1 *TP53*<sup>-/-</sup> is available at the NCBI GEO (<http://www.ncbi.nlm.nih.gov/geo>) accession  
514 number GSE254959. Single cell RNA sequencing data from multiple myeloma patient  
515 samples is available at the NCBI GEO (<http://www.ncbi.nlm.nih.gov/geo>) accession number  
516 GSE263201. All other data are available upon request from the corresponding author.

517

### 518 **Competing interests**

519 **K.A., Y.D., K.W.M., J.O., S.S.G.** are employees of and receives stock or stock options  
520 from Oncopeptides. **S.N.** is an employee of, has participated on a data safety monitoring board  
521 or advisory board for, and receives stock or stock options from Oncopeptides. **M.T.** is a  
522 consultant of and receives stock or stock options from Oncopeptides. **A.S., F.L.,** are former  
523 employees of and receive stock or stock options from Oncopeptides. **F.S.** has received grants  
524 or contracts from Celgene, GlaxoSmithKline, Janssen, Oncopeptides, Targovax, and Sanofi;  
525 payment or honoraria for lectures or speakers' bureau participation from AbbVie, Amgen,  
526 Bristol Myers Squibb, Daiichi Sankyo, GlaxoSmithKline, Janssen, Novartis, Oncopeptides,  
527 Pfizer, Sanofi, SkyliteDX, and Takeda; serving on a data safety monitoring or advisory board  
528 for AbbVie, Celgene, GlaxoSmithKline, Janssen, Oncopeptides, Sanofi, and Takeda; and  
529 stock or stock options from Nordic Nanovector. **P.So.** has received grants or contracts from  
530 Amgen, Celgene, Janssen, Takeda, and SkylineDx. **C.A.H.** has received research funding  
531 from Oncopeptides related to this work, and from IMI2 projects HARMONY and HARMONY  
532 PLUS, WntResearch, Orion, Kronos Bio, Novartis, Celgene, Zentalis Pharmaceuticals for  
533 unrelated work, plus honoraria or personal fees from Amgen and Autolus. The remaining  
534 authors declare no competing financial interests. The following authors have no conflicts of  
535 interest: **J.J.M., P.Se., T.H., T.B., M.E.H., U.M., R.C.B., T.S.**

536

### 537 **Funding**

538 The work done in this manuscript has been funded by Oncopeptides. **C.A.H.** and **F.S.**  
539 have received funding from Oncopeptides to support the study. **P.Se.:** Funding from University  
540 of Helsinki Doctoral programme of Biomedicine, Instrumentariumin Tiedesäätiö.

541

### 542 **Authors' contributions**

543 Conceptualization – K.A., J.J.M., T.S., S.N., C.A.H.

544 Data Curation – K.A., P.Se., J.J.M., T.S., T.B., T.H., J.O., M.T.

545 Formal Analysis – K.A., P.Se., J.J.M., T.H., T.B., T.S., J.O., M.T.

546 Funding Acquisition – S.N., T.S., C.A.H.  
547 Investigation – K.A., P.Se., J.J.M., M.-E.H., U.M., T.B., T.H.  
548 Methodology – K.A., P.Se., J.J.M., Y.D., K.W.-M., M.T., J.O., U.M.  
549 Project administration – K.A., C.A.H.  
550 Resources – K.A., C.A.H., T.S.  
551 Software – P.Se., T.B., J.O., M.T.  
552 Supervision – K.A., C.A.H.  
553 Validation – K.A., C.A.H., T.S., S.N.  
554 Visualization – K.A., P.Se., J.J.M., T.B.  
555 Writing (Original Draft Preparation) – K.A., P.Se., J.J.M., C.A.H.  
556 All authors participated in paper reviewing and editing.

557

#### 558 **Authors' information**

559 Klara Acs<sup>1</sup>

560 Oncopeptides AB, Stockholm, Sweden

561 [klara.acs@oncopeptides.com](mailto:klara.acs@oncopeptides.com)

562

563 Juho J. Miettinen<sup>2</sup>

564 Institute for Molecular Medicine Finland-FIMM, HiLIFE–Helsinki Institute of Life Science,

565 iCAN Digital Precision Cancer Medicine Flagship, University of Helsinki, Helsinki, Finland

566 [juho.miettinen@helsinki.fi](mailto:juho.miettinen@helsinki.fi)

567

568 Philipp Sergeev<sup>2</sup>

569 Institute for Molecular Medicine Finland-FIMM, HiLIFE–Helsinki Institute of Life Science,

570 iCAN Digital Precision Cancer Medicine Flagship, University of Helsinki, Helsinki, Finland

571 [philipp.sergeev@helsinki.fi](mailto:philipp.sergeev@helsinki.fi)

572

573 Tobias Heckel<sup>3</sup>

574 Core Unit Systems Medicine, University of Wuerzburg, Wuerzburg, Germany

575 [heckel.t@web.de](mailto:heckel.t@web.de)

576

577 Yumei Diao<sup>1</sup>

578 Oncopeptides AB, Stockholm, Sweden

579 [yumei.diao@oncopeptides.com](mailto:yumei.diao@oncopeptides.com)

580

581 Kristina Witt-Mulder<sup>1</sup>

582 Oncopeptides AB, Stockholm, Sweden

583 [kristina.witt-mulder@oncopeptides.com](mailto:kristina.witt-mulder@oncopeptides.com)

584

585 Marcus Thureson<sup>1</sup>

586 Oncopeptides AB, Stockholm, Sweden  
587 [marcus.thureson@oncopeptides.com](mailto:marcus.thureson@oncopeptides.com)  
588  
589 Thorsten Bischler<sup>3</sup>  
590 Core Unit Systems Medicine, University of Wuerzburg, Wuerzburg, Germany  
591 [thorsten.bischler@uni-wuerzburg.de](mailto:thorsten.bischler@uni-wuerzburg.de)  
592  
593 Maiju-Emilia Huppunen<sup>2</sup>  
594 Institute for Molecular Medicine Finland-FIMM, HiLIFE–Helsinki Institute of Life Science,  
595 iCAN Digital Precision Cancer Medicine Flagship, University of Helsinki, Helsinki, Finland  
596 [majju.huppunen@hotmail.com](mailto:majju.huppunen@hotmail.com)  
597  
598 Jakob Obermüller<sup>1</sup>  
599 Oncopeptides AB, Stockholm, Sweden  
600 [jakob.obermuller@oncopeptides.com](mailto:jakob.obermuller@oncopeptides.com)  
601  
602 Umair Munawar<sup>4</sup>  
603 Comprehensive Cancer Center Mainfranken, Wuerzburg, Germany  
604 [Munawar\\_U@ukw.de](mailto:Munawar_U@ukw.de)  
605  
606 Ana Slipicevic<sup>1l</sup>  
607 Oncopeptides AB, Stockholm, Sweden  
608 [ana.slipicevic@one-carbon.com](mailto:ana.slipicevic@one-carbon.com)  
609  
610 Ralf C. Bargou<sup>4</sup>  
611 Comprehensive Cancer Center Mainfranken, Wuerzburg, Germany  
612 [bargou\\_r@ukw.de](mailto:bargou_r@ukw.de)  
613  
614 Fredrik Lehmann<sup>1ll</sup>  
615 Oncopeptides AB, Stockholm, Sweden  
616 [fredrik.lehmann@otpharma.se](mailto:fredrik.lehmann@otpharma.se)  
617  
618 Stefan Svensson Gelius<sup>1</sup>  
619 Oncopeptides AB, Stockholm, Sweden  
620 [stefan.svensson.gelius@oncopeptides.com](mailto:stefan.svensson.gelius@oncopeptides.com)  
621  
622 Stefan Norin<sup>1</sup>  
623 Oncopeptides AB, Stockholm, Sweden  
624 [stefan.norin@oncopeptides.com](mailto:stefan.norin@oncopeptides.com)  
625  
626 Fredrik Schjesvold<sup>5</sup>  
627 Oslo Myeloma Center, Department of Hematology, Oslo University Hospital, Oslo, Norway  
628 [fredrikschjesvold@gmail.com](mailto:fredrikschjesvold@gmail.com)  
629  
630 Pieter Sonneveld<sup>6</sup>  
631 Department of Hematology, Erasmus MC Cancer Institute, Rotterdam, The Netherlands  
632 [p.sonneveld@erasmusmc.nl](mailto:p.sonneveld@erasmusmc.nl)  
633  
634 Thorsten Stühmer<sup>4</sup>  
635 Comprehensive Cancer Center Mainfranken, Wuerzburg, Germany  
636 [Stuehmer\\_T@ukw.de](mailto:Stuehmer_T@ukw.de)  
637  
638 Caroline A. Heckman<sup>2</sup>

639 Institute for Molecular Medicine Finland-FIMM, HiLIFE–Helsinki Institute of Life Science,  
640 iCAN Digital Precision Cancer Medicine Flagship, University of Helsinki, Helsinki, Finland  
641 [caroline.heckman@helsinki.fi](mailto:caroline.heckman@helsinki.fi)  
642  
643



## 644 REFERENCES

- 645 1. Rajkumar SV. Multiple myeloma: 2020 update on diagnosis, risk-stratification and  
646 management. *Am J Hematol.* 2020;95(5):548–67.
- 647 2. Goldschmidt H, Ashcroft J, Szabo Z, Garderet L. Navigating the treatment landscape  
648 in multiple myeloma: which combinations to use and when? *Ann Hematol.*  
649 2019;98(1):1–18.
- 650 3. Manier S, Ingegnere T, Escure G, et al. Current state and next-generation CAR-T  
651 cells in multiple myeloma. *Blood Rev.* 2022;54:100929.
- 652 4. Attal M, Harousseau JL, Stoppa AM, et al. A prospective, randomized trial of  
653 autologous bone marrow transplantation and chemotherapy in multiple myeloma.  
654 Intergroupe Français du Myélome. *N Engl J Med.* 1996;335(2):91–7.
- 655 5. Dimopoulos MA, Moreau P, Terpos E, et al. Multiple myeloma: EHA-ESMO Clinical  
656 Practice Guidelines for diagnosis, treatment and follow-up(dagger). *Ann Oncol.*  
657 2021;32(3):309–22.
- 658 6. Sonneveld P, Avet-Loiseau H, Lonial S, et al. Treatment of multiple myeloma with  
659 high-risk cytogenetics: a consensus of the International Myeloma Working Group.  
660 *Blood.* 2016;127(24):2955–62.
- 661 7. Manier S, Salem KZ, Park J, Landau DA, Getz G, Ghobrial IM. Genomic complexity  
662 of multiple myeloma and its clinical implications. *Nat Rev Clin Oncol.*  
663 2017;14(2):100–13.
- 664 8. Corre J, Cleyngen A, Robiou du Pont S, et al. Multiple myeloma clonal evolution in  
665 homogeneously treated patients. *Leukemia.* 2018;32(12):2636–47.
- 666 9. Moreau P, Kumar SK, San Miguel J, et al. Treatment of relapsed and refractory  
667 multiple myeloma: recommendations from the International Myeloma Working Group.  
668 *Lancet Oncol.* 2021;22(3):e105-e118.
- 669 10. Ho T, Tan BX, Lane D. How the other half lives: what p53 does when it is not being a  
670 transcription factor. *Int J Mol Sci.* 2019;21(1).
- 671 11. Palumbo A, Avet-Loiseau H, Oliva S, et al. Revised International Staging System for  
672 Multiple Myeloma: A Report from International Myeloma Working Group. *J Clin*  
673 *Oncol.* 2015;33(26):2863–9.
- 674 12. Avet-Loiseau H, Attal M, Moreau P, et al. Genetic abnormalities and survival in  
675 multiple myeloma: the experience of the Intergroupe Francophone du Myélome.  
676 *Blood.* 2007;109(8):3489–95.
- 677 13. Hebraud B, Magrangeas F, Cleyngen A, et al. Role of additional chromosomal  
678 changes in the prognostic value of t(4;14) and del(17p) in multiple myeloma: the IFM  
679 experience. *Blood.* 2015;125(13):2095–100.
- 680 14. Thakurta A, Ortiz M, Bleucia P, et al. High subclonal fraction of 17p deletion is  
681 associated with poor prognosis in multiple myeloma. *Blood.* 2019;133(11):1217–21.
- 682 15. Corre J, Perrot A, Caillot D, et al. del(17p) without TP53 mutation confers a poor  
683 prognosis in intensively treated newly diagnosed patients with multiple myeloma.  
684 *Blood.* 2021;137(9):1192–5.
- 685 16. Jovanović KK, Escure G, Demonchy J, et al. Deregulation and targeting of TP53  
686 pathway in multiple myeloma. *Front Oncol.* 2018;8:665.
- 687 17. Robiou du Pont S, Cleyngen A, Fontan C, et al. Genomics of multiple myeloma. *J Clin*  
688 *Oncol.* 2017;35(9):963–7.
- 689 18. Corre J, Avet-Loiseau H. Risk-based therapeutic strategies. *Cancer J.*  
690 2019;25(1):54–8.
- 691 19. Drach J, Ackermann J, Fritz E, et al. Presence of a p53 gene deletion in patients with  
692 multiple myeloma predicts for short survival after conventional-dose chemotherapy.  
693 *Blood.* 1998;92(3):802–9.
- 694 20. Flynt E, Bisht K, Sridharan V, Ortiz M, Towfic F, Thakurta A. Prognosis, biology, and  
695 targeting of TP53 dysregulation in multiple myeloma. *Cells.* 2020;9(2).

- 696 21. Walker BA, Mavrommatis K, Wardell CP, et al. A high-risk, double-hit, group of newly  
697 diagnosed myeloma identified by genomic analysis. *Leukemia*. 2019;33(1):159–70.  
698 22. Wickström M, Nygren P, Larsson R, et al. Melflufen—a peptidase-potentiated  
699 alkylating agent in clinical trials. *Oncotarget*. 2017;8(39):66641–55.  
700 23. Wickström M, Viktorsson K, Lundholm L, et al. The alkylating prodrug J1 can be  
701 activated by aminopeptidase N, leading to a possible target-directed release of  
702 melphalan. *Biochem Pharmacol*. 2010;79(9):1281–90.  
703 24. Gullbo J, Wickström M, Tullberg M, et al. Activity of hydrolytic enzymes in tumour  
704 cells is a determinant for anti-tumour efficacy of the melphalan-containing prodrug  
705 J1. *J Drug Target*. 2003;11(6):355–63.  
706 25. Lindberg J, Nilvebrant J, Nygren P, Lehmann F. Progress and future directions with  
707 peptide-drug conjugates for targeted cancer therapy. *Molecules*. 2021;26(19).  
708 26. Miettinen JJ, Kumari R, Traustadottir GA, et al. Aminopeptidase expression in  
709 multiple myeloma associates with disease progression and sensitivity to Melflufen.  
710 *Cancers (Basel)*. 2021;13(7).  
711 27. Westermarck U, Diao Y, Fath KJ, et al. A rapid intracellular enrichment of alkylating  
712 payload is essential for melphalan flufenamide potency and mechanism of action.  
713 *Biochem Biophys Res Commun*. 2023;656:122–30.  
714 28. Schjesvold FH, Dimopoulos MA, Delimpasi S, et al. Melflufen or pomalidomide plus  
715 dexamethasone for patients with multiple myeloma refractory to lenalidomide  
716 (OCEAN): a randomised, head-to-head, open-label, phase 3 study. *Lancet*  
717 *Haematol*. 2022;9(2): e98-e110.  
718 29. Schjesvold F, Robak P, Pour L, Aschan J, Sonneveld P. OCEAN: a randomized  
719 phase III study of melflufen + dexamethasone to treat relapsed refractory multiple  
720 myeloma. *Future Oncol*. 2020;16(11):631–41.  
721 30. Sonneveld P, Richardson PG, Ludwig H, et al. Benefit versus risk assessment of  
722 Melflufen and dexamethasone in relapsed/refractory multiple myeloma: analyses  
723 from longer follow-up of the OCEAN and HORIZON studies. *Clin Lymphoma*  
724 *Myeloma Leuk*. 2023;23(9):687–96.  
725 31. Munawar U, Roth M, Barrio S, et al. Assessment of TP53 lesions for p53 system  
726 functionality and drug resistance in multiple myeloma using an isogenic cell line  
727 model. *Sci Rep*. 2019;9(1):18062.  
728 32. Majumder MM, Silvennoinen R, Anttila P, et al. Identification of precision treatment  
729 strategies for relapsed/refractory multiple myeloma by functional drug sensitivity  
730 testing. *Oncotarget* 2017;8:56338-56350.  
731 33. Stühmer T, Chatterjee M, Hildebrandt M, et al. Nongenotoxic activation of the p53  
732 pathway as a therapeutic strategy for multiple myeloma. *Blood*. 2005;106(10):3609–  
733 17.  
734 34. Chauhan D, Ray A, Viktorsson K, et al. In vitro and in vivo antitumor activity of a  
735 novel alkylating agent, melphalan-flufenamide, against multiple myeloma cells. *Clin*  
736 *Cancer Res*. 2013;19(11):3019–31.  
737 35. Ray A, Ravillah D, Das DS, et al. A novel alkylating agent Melflufen induces  
738 irreversible DNA damage and cytotoxicity in multiple myeloma cells. *Br J Haematol*.  
739 2016;174(3):397–409.  
740 36. Kondo N, Takahashi A, Ono K, Ohnishi T. DNA damage induced by alkylating agents  
741 and repair pathways. *J Nucleic Acids*. 2010;2010:543531.  
742 37. Liu J, Yang H, Liang X, et al. Meta-analysis of the efficacy of treatments for newly  
743 diagnosed and relapsed/refractory multiple myeloma with del(17p). *Oncotarget*.  
744 2017;8(37):62435–44.  
745 38. Lakshman A, Painuly U, Rajkumar SV, et al. Impact of acquired del(17p) in multiple  
746 myeloma. *Blood Adv*. 2019;3(13):1930–8.  
747 39. Pepaxti Summary of Product Characteristics.  
748 [https://ec.europa.eu/health/documents/community-](https://ec.europa.eu/health/documents/community-register/2024/20240301161964/anx_161964_en.pdf)  
749 [register/2024/20240301161964/anx\\_161964\\_en.pdf](https://ec.europa.eu/health/documents/community-register/2024/20240301161964/anx_161964_en.pdf). Accessed 20 November 2024.

- 750 40. Reece D, Song KW, Fu T, et al. Influence of cytogenetics in patients with relapsed or  
751 refractory multiple myeloma treated with lenalidomide plus dexamethasone: adverse  
752 effect of deletion 17p13. *Blood*. 2009;114(3):522–5.  
753 41. Wallace DC. Mitochondria and cancer. *Nat Rev Cancer*. 2012;12(10):685–98.  
754 42. Porporato PE, Filigheddu N, Pedro JMB, Kroemer G, Galluzzi L. Mitochondrial  
755 metabolism and cancer. *Cell Res*. 2018;28(3):265–80.  
756 43. Guerra F, Arbini AA, Moro L. Mitochondria and cancer chemoresistance. *Biochim*  
757 *Biophys Acta Bioenerg*. 2017;1858(8):686–99.  
758  
759  
760

## 761 **FIGURE LEGENDS**

762 **Figure 1. Melflufen *ex vivo* drug sensitivity testing results from the 24 myeloma bone**  
763 **marrow samples. A)** Patient sample characteristics. **B)** Melflufen dose response curves for  
764 the 24 MM patient samples. Samples having both del(17p) and *TP53* mutation (black), having  
765 only del(17p) (red), having only *TP53* mutation (blue), other (grey). **C)** Drug sensitivity scores  
766 of samples with different molecular background for three alkylators – melflufen, melphalan,  
767 and cyclophosphamide. P-values are indicated above the brackets, with the corresponding  
768 comparison. \* –  $p < 0.05$ , \*\*\* –  $p < 0.001$ . **C)** Bar plot representing normalized enrichment scores  
769 for selected gene sets derived from the most differentially expressed genes in the plasma cell  
770 populations between the melflufen high sensitive (HS) and low sensitive (LS) groups.  
771

772 **Figure 2. Cytotoxicity and apoptosis detection in the AMO-1 *TP53* isogenic cell lines.**  
773 **A, B)** Melflufen and melphalan cytotoxicity dose effect curves in parental AMO-1 cells  
774 (*TP53*<sup>wt</sup>) and in its bi-allelic-double mutant *TP53* gene harbouring clonal cell line (*TP53*<sup>-/-</sup>)  
775 using either the alamarBlue metabolic activity assay (A) or the apoptosis measurement  
776 Annexin V/propidium iodide staining (B). The curves represent three independent  
777 experiments, error bars reflect standard deviations. **C)** Melflufen, melphalan or  
778 cyclophosphamide induced early apoptosis in AMO-1 *TP53*<sup>wt</sup> and AMO-1 *TP53*<sup>-/-</sup> isogenic cell  
779 lines. Cells were treated with the indicated drug concentrations and time points, melflufen  
780 (red), melphalan (green), or cyclophosphamide (blue). Early apoptosis was detected with  
781 Annexin V and PI staining using flow cytometry (Annexin V positive, PI negative). **D)** Both

782 early and late apoptosis were measured in AMO-1 *TP53*<sup>wt</sup> and AMO-1 *TP53*<sup>-/-</sup> isogenic cell  
783 lines after 24h treatment with the indicated drugs and drug concentrations (late apoptotic cells:  
784 Annexin V positive, PI positive).

785

786 **Figure 3. DNA damage and mitochondrial membrane potential detection in AMO-1**  
787 ***TP53*<sup>wt</sup> and *TP53* knock out cells. A)** Melflufen, melphalan or cyclophosphamide induced  
788 DNA damage in AMO-1 *TP53*<sup>wt</sup> and AMO-1 *TP53*<sup>-/-</sup> isogenic cell lines. Early DNA damage  
789 was detected as  $\gamma$ H2AX signal by flow cytometry after the indicated treatment concentrations  
790 and time points.  $\gamma$ H2AX: phosphorylated histone protein 2AX. **B)** Melflufen, melphalan or  
791 cyclophosphamide treatment induced mitochondrial dysfunction in AMO-1 *TP53* isogenic cell  
792 line. Melflufen, melphalan or cyclophosphamide treatment were applied in the indicated  
793 concentrations, and after 1, 2, 3 and 4h time points mitochondrial function of the treated cells  
794 was measured using JC-1 mitochondrial membrane potential assay. PI: propidium iodide.

795

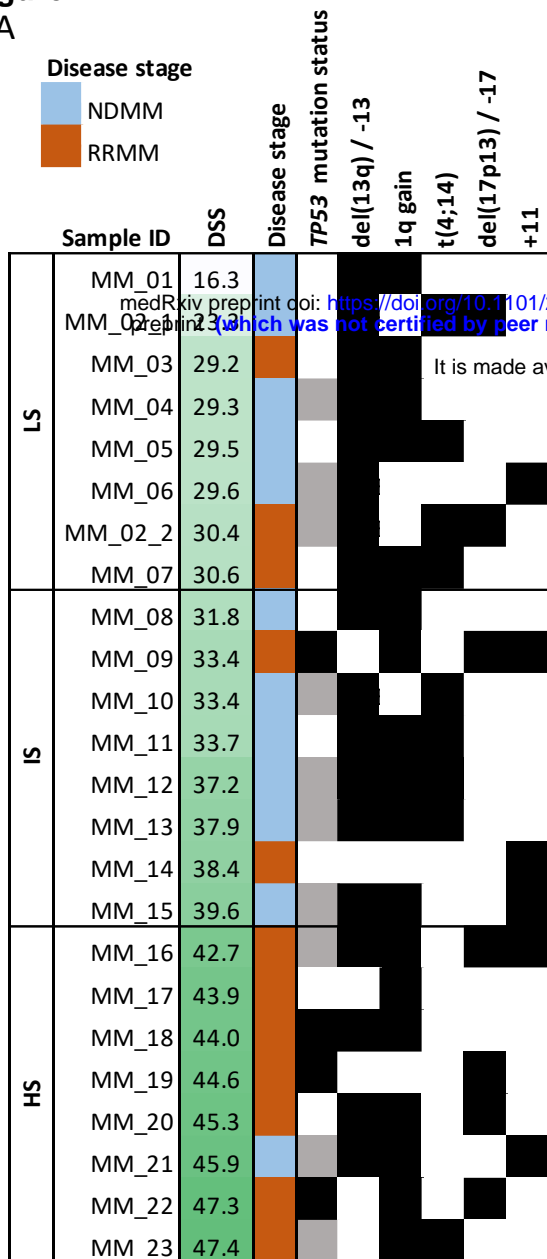
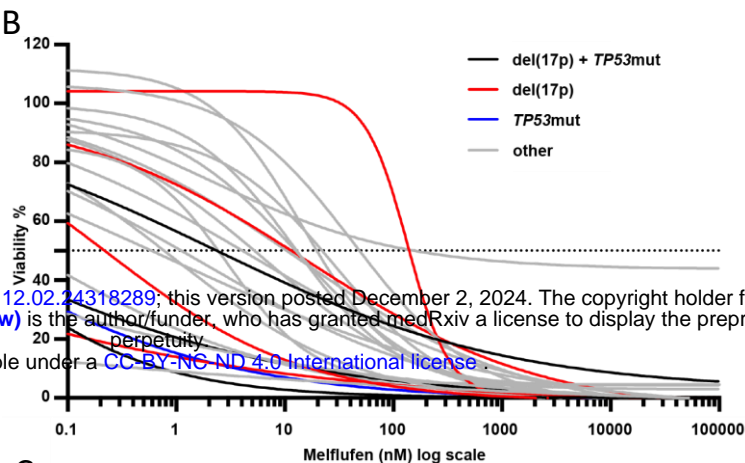
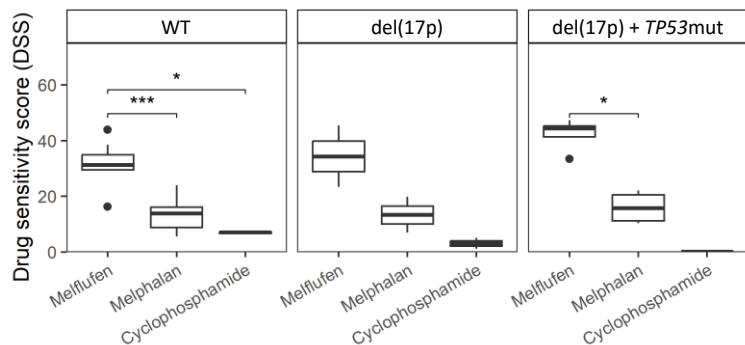
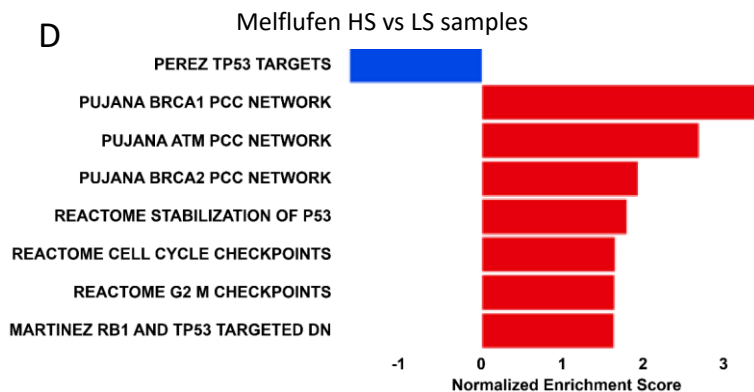
796 **Figure 4. Gene expression analysis in *TP53* wild type versus *TP53* mutant genetic**  
797 **background AMO-1 cells. A, B)** Heatmaps of gene expression of p53 signalling (A) and the  
798 Base Excision Repair (BER) DNA repair pathway (B) genes after 2h treatment of *TP53*<sup>wt</sup> or  
799 *TP53*<sup>-/-</sup> cells with 2.5  $\mu$ M melflufen versus 20  $\mu$ M melphalan, respectively.

800

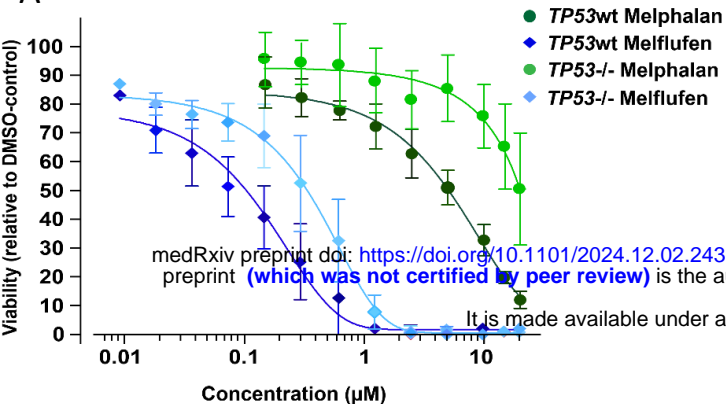
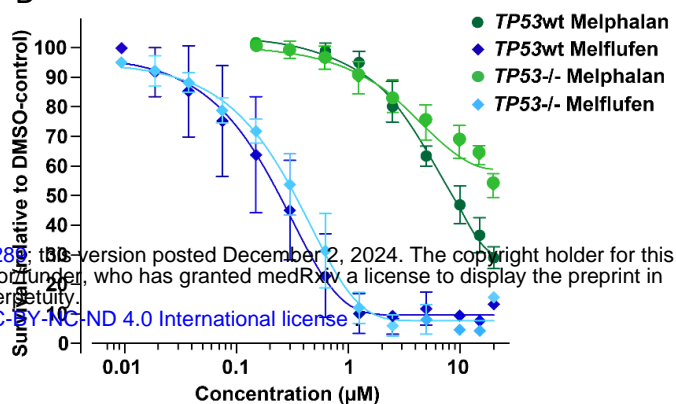
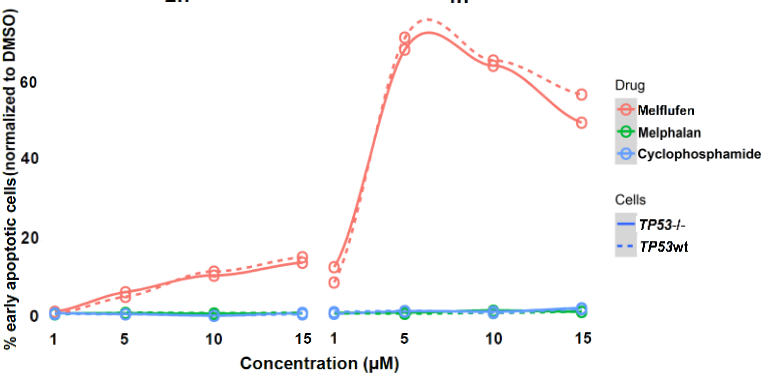
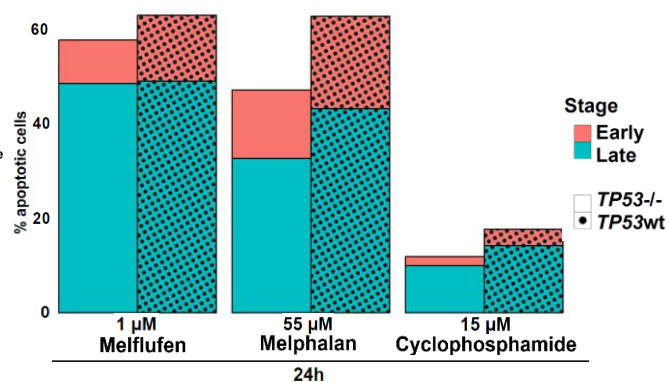
801 **Figure 5. Progression-free survival, overall survival, and overall response rate in**  
802 **del(17p) patient population from the OCEAN trial. A)** Kaplan-Meier progression-free  
803 survival curve, **B)** overall survival curve, and **C)** overall response rate for the investigator  
804 assessed all-treated del(17p) population. Analysis set of 70 del(17p) patients and 425 patients  
805 not harbouring del(17p). MflDex: melflufen + dexamethasone; PomDex: pomalidomide +  
806 dexamethasone; VGPR: very good partial response; PR: partial response; MR: minimal  
807 response; SD: stable disease; PD: progressive disease; NE: not evaluable

808

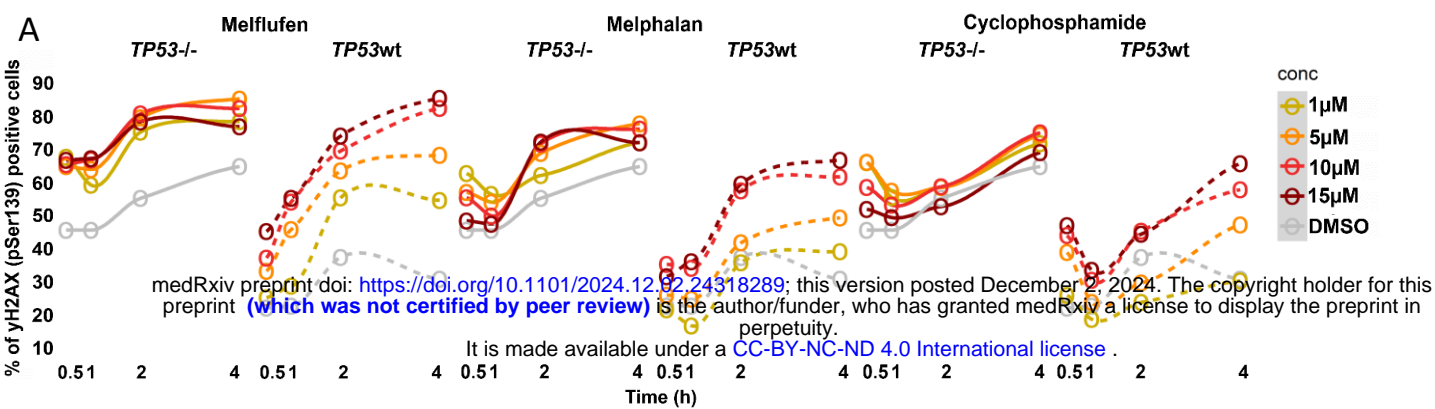
809 **Figure 6. Progression-free survival, overall survival and overall response rate in**  
810 **del(17p) and/or TP53 gene mutated patient population from the OCEAN trial. A) Kaplan-**  
811 **Meier progression-free survival curve, B) overall survival curve, and C) overall response rate**  
812 **for all del(17p) and/or TP53 gene sequenced population. Analysis set of 33 del(17p) and/or**  
813 **TP53 gene mutated patients and 112 patients not harbouring del(17p) or TP53 gene mutation.**  
814 **MflDex: melflufen + dexamethasone; PomDex: pomalidomide + dexamethasone; CR:**  
815 **complete response; VGPR: very good partial response; PR: partial response; MR: minimal**  
816 **response; SD: stable disease; PD: progressive disease; NE: not evaluable**

**Figure 1****A****B****C****D**

medRxiv preprint doi: <https://doi.org/10.1101/2024.12.02.24318289>; this version posted December 2, 2024. The copyright holder for this preprint (which was not certified by peer review) is the author/funder, who has granted medRxiv a license to display the preprint in perpetuity. It is made available under a [CC-BY-NC-ND 4.0 International license](https://creativecommons.org/licenses/by-nc-nd/4.0/).

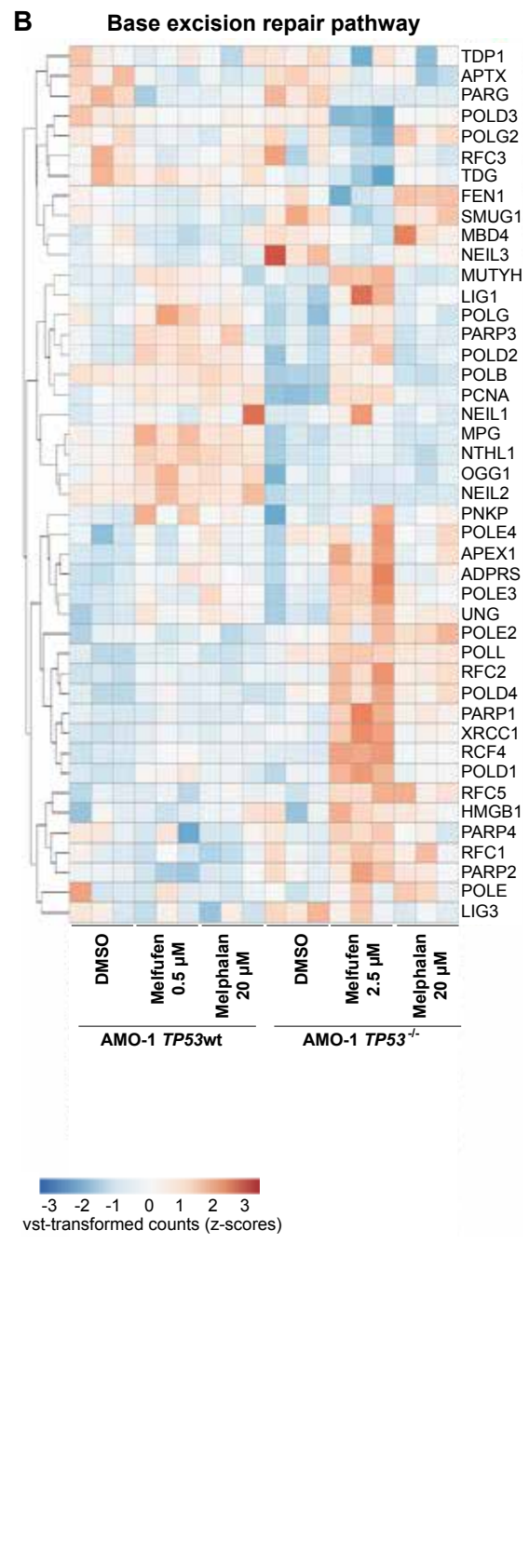
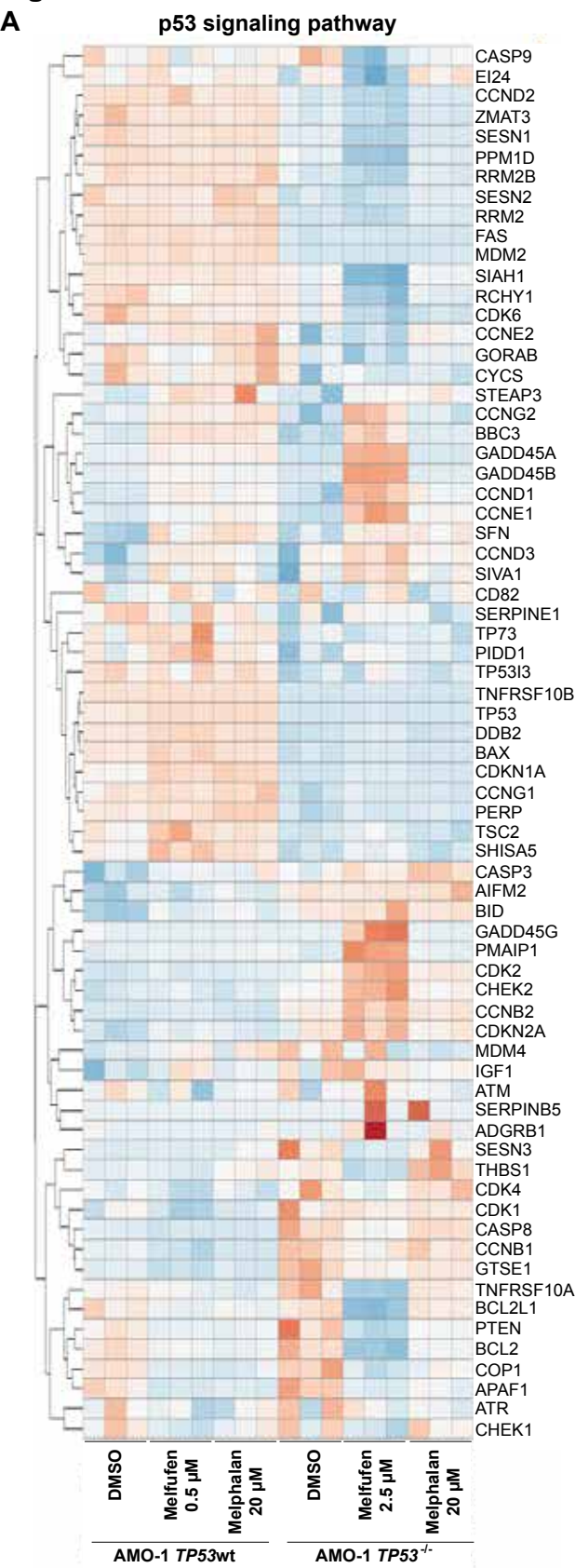
**Figure 2****A****B****C****D**

**Figure 3**



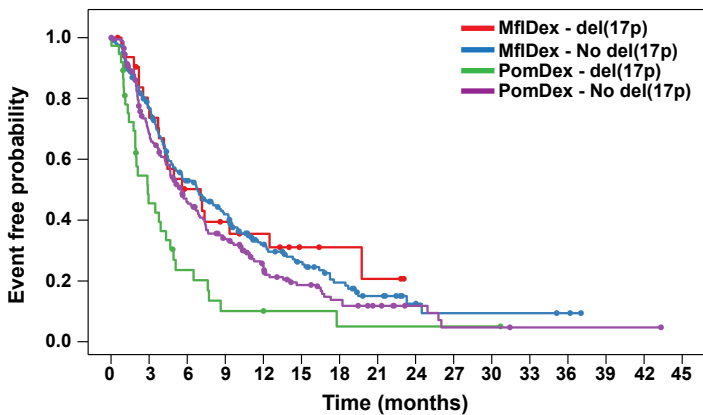


**Figure 4**



**Figure 5**

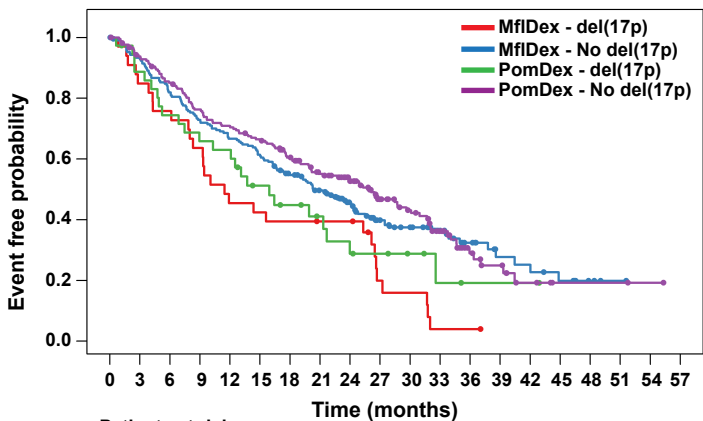
**A**



**Patients at risk**

MfiDex - del(17p)	33	23	14	10	8	4	3	2	0	0	0	0	0	0	0	0	0	0
MfiDex - No del(17p)	213	145	95	70	42	30	19	11	5	3	3	3	2	0	0	0	0	0
PomDex - del(17p)	37	15	7	3	3	2	1	1	1	1	1	0	0	0	0	0	0	0
PomDex - No del(17p)	212	135	83	55	34	21	14	9	5	2	2	1	1	1	1	1	1	0

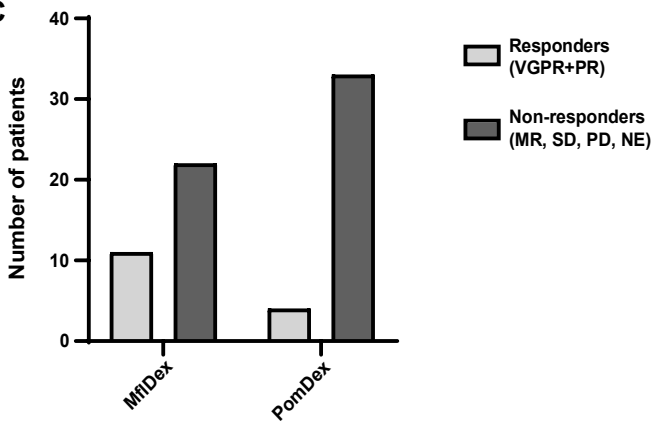
**B**



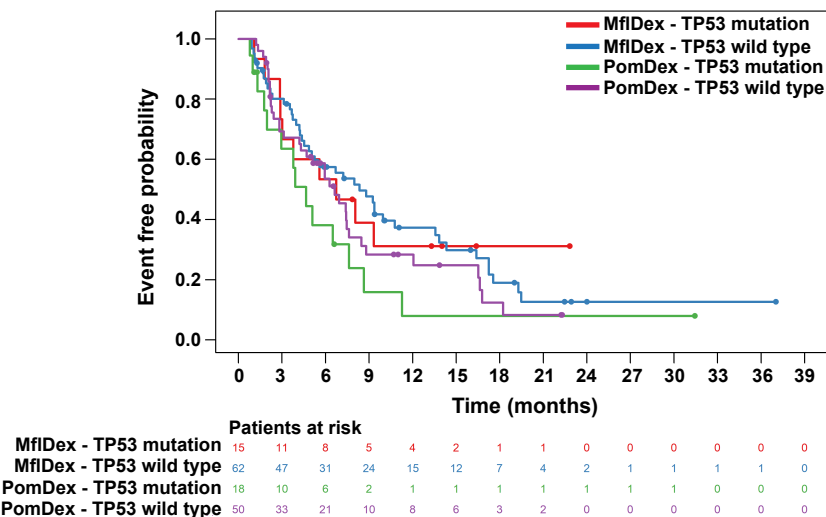
**Patients at risk**

MfiDex - del(17p)	33	28	25	21	15	14	13	12	12	5	4	1	1	0	0	0	0	0	0	0	
MfiDex - No del(17p)	213	195	172	153	140	129	111	95	73	52	42	31	18	11	10	7	3	1	0	0	
PomDex - del(17p)	37	31	26	23	22	16	13	10	7	6	4	2	1	1	1	0	0	0	0	0	
PomDex - No del(17p)	212	194	175	156	145	135	118	99	82	57	46	32	16	11	5	2	2	2	2	1	0

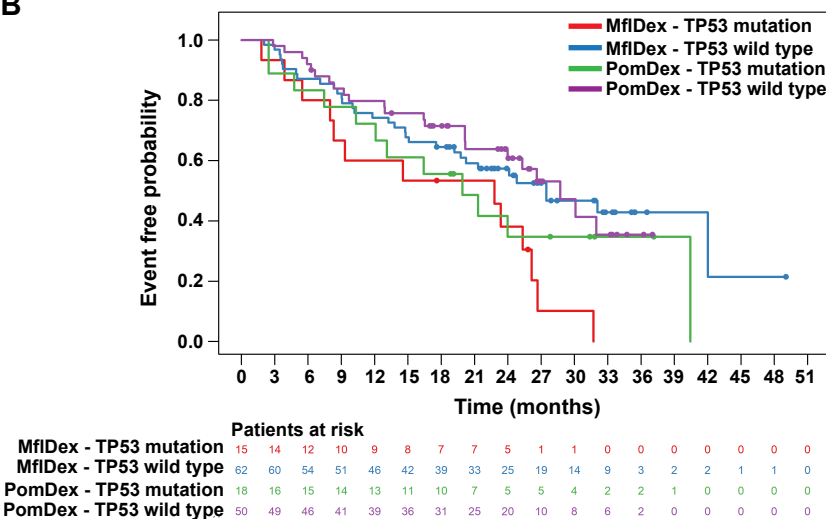
**C**



**A**



**B**



**C**

