

Association of the timing and type of acute symptomatic seizures with post-stroke epilepsy and mortality

Kai Michael Schubert MD PhD¹; Dominik Zieglgänsberger, MD³; Giulio Bicciato, MD¹; Laura Abaira, MD PhD²; Estevo Santamarina, MD²; José Álvarez-Sabín, PhD²; Carolina Ferreira-Atuesta, MD MSc^{4,5}; Mira Katan, MD MSc^{1,20}; Lucia Sinka, MD^{1,24}; Robert Terziev, MD¹; Nico Döhler, MD^{3,19}; Barbara Erdélyi-Canavese, MD³; Ansgar Felbecker, MD³; Philip Siebel, MD³; Michael Winklehner, MD²²; Tim J von Oertzen, MD FRCP⁶; Judith N. Wagner, MD^{6,21}; Gian Luigi Gigli, MD⁷; Annacarmen Nilo, MD⁷; Francesco Janes, MD PhD⁷; Giovanni Merlino, MD PhD⁷; Mariarosaria Valente, MD⁷; María Paula Zafra-Sierra, MD⁸; Luis Carlos Mayor-Romero, MD⁸; Julian Conrad, MD^{9,10}; Stefan Evers, MD PhD^{9,11}; Matias Alet, MD¹²; Kazuki Fukuma, MD PhD¹³; Masafumi Ihara, MD PhD¹³; Benjamin Landau, MD¹⁴; Piergiorgio Lochner, MD¹⁴; Frauke Roell, MD¹⁴; Francesco Brigo, MD¹⁵; Carla Bentes, PhD¹⁷; Ana Rita Peralta, MD¹⁷; Teresa Pinho e Melo, MD¹⁷; Mark R Keezer, MDCM PhD^{16,18}; John S Duncan, FRCP FMedSci⁴; Josemir W Sander, FRCP FMedSci^{4,16,23}; Barbara Tettenborn, MD³; Matthias J Koeppe, MD PhD⁴; Marian Galovic, MD PhD^{1,4}

¹ Department of Neurology, Clinical Neuroscience Center, University Hospital and University of Zurich, Zurich, Switzerland

² Epilepsy Unit, Department of Neurology, Vall d'Hebron Hospital Universitari, Barcelona; Universitat Autònoma de Barcelona, Bellaterra, Spain

³ Department of Neurology, Kantonsspital St. Gallen, St Gallen, Switzerland

⁴ Department of Clinical & Experimental Epilepsy, UCL Queen Square Institute of Neurology, London WC1N 3BG & Chalfont Centre for Epilepsy, Chalfont St Peter SL9 0RJ, United Kingdom

⁵ Department of Neurology, Icahn School of Medicine at Mount Sinai, New York, United States

⁶ Johannes Kepler University Linz, Kepler University Hospital, Department of Neurology, Altenberger Strasse. 69, 4040 Linz and Wagner-Jauregg Weg 15, 4020 Linz, Austria

⁷ Department of Medicine, University of Udine and Clinical Neurology, Udine University Hospital, Udine, Italy

⁸ Department of Neurology, Fundación Santa Fe de Bogotá, Universidad de Los Andes, Universidad del Bosque, Bogotá, Colombia

⁹ Department of Neurology, University of Muenster, Muenster, Germany

¹⁰ Division for Neurodegenerative Diseases, Department of Neurology, Universitätsmedizin Mannheim, University of Heidelberg

¹¹ Department of Neurology, Krankenhaus Lindenbrunn, Copenbrügge, Germany

¹² Centro Integral de Neurología Vascular, Fleni. Ciudad Autónoma de Buenos Aires, Argentina.

¹³ Department of Neurology, National Cerebral and Cardiovascular Center, Osaka, Japan

¹⁴ Department of Neurology, Saarland University Medical Center, Homburg, Germany

¹⁵ Department of Neurology, Hospital of Merano (SABES-ASDAA), Merano-Meran, Italy

¹⁶ **NOTE: This preprint reports new research that has not been certified by peer review and should not be used to guide clinical practice.** Stichting Epilepsie Instellingen Nederland –(SEIN), Heemstede 2103 SW, The Netherlands

¹⁷ Department of Neurosciences and Mental Health (Neurology), Hospital de Santa Maria-CHULN. Centro de Estudos Egas Moniz, Faculdade de Medicina, Universidade de Lisboa, Lisboa, Portugal

¹⁸ Centre Hospitalier de l'Université de Montréal, Montreal, QC, Canada

¹⁹ Specialist Clinic for Neurorehabilitation, Kliniken Beelitz, Beelitz-Heilstätten, Germany

²⁰ Department of Neurology, University Hospital and University of Basel, Basel, Switzerland

²¹ Department of Neurology, Evangelisches Klinikum Gelsenkirchen, Academic Hospital University Essen-Duisburg, Gelsenkirchen, Germany

²² Johannes Kepler University Linz, Kepler University Hospital, Department of Neurology, Altenberger Straße 69, 4040 Linz and Wagner-Jauregg Weg 15, 4020 Linz, Austria

²³ Department of Neurology, West China Hospital, Sichuan University, Chengdu 610041, China

²⁴ Department of Neurology, Schulthess Klinik, Zurich, Switzerland

Correspondence:

Marian Galovic
Department of Neurology
University Hospital Zurich
Frauenklinikstrasse 26
8091 Zurich
Switzerland
Tel: +41 43 253 0648
marian.galovic@usz.ch

Number of characters in the title: 104

Number of words in the Abstract: 243

Word count of the manuscript: 3393

Number of figures and tables in the manuscript: 4 figures, 3 tables

Abstract

Background: Acute symptomatic seizures (ASyS) increase the risk of epilepsy and mortality after a stroke. The impact of the timing and type of ASyS remains unclear.

Methods: This multicenter cohort study included data from nine centers between 2002 and 2018, with final analysis in February 2024. The study included 4,552 adults (2,005 female; median age 73 years) with ischemic stroke and no seizure history. We examined ASyS occurring within seven days after stroke. Main outcomes were all-cause mortality and epilepsy. Validation in three separate cohorts included 74 adults with ASyS.

Results: The ten-year risk of post-stroke epilepsy ranged from 41% to 94%, and mortality from 36% to 100%, depending on ASyS type and timing. ASyS on stroke onset day had a higher epilepsy risk (aHR 2.3, 95% CI 1.3-4.0, $p=0.003$) compared to later ASyS. Status epilepticus had the highest epilepsy risk (aHR 9.6, 95% CI 3.5-26.7, $p<0.001$), followed by focal to bilateral tonic-clonic seizures (aHR 3.4, 95% CI 1.9-6.3, $p<0.001$). Mortality was higher in those with ASyS presenting as focal to bilateral tonic-clonic seizures on day 0 (aHR 2.8, 95% CI 1.4-5.6, $p=0.004$) and status epilepticus (aHR 14.2, 95% CI 3.5-58.8, $p<0.001$). The novel SeLECT-ASyS model, available as an app, outperformed a previous model in the derivation cohort (concordance statistic 0.68 vs. 0.58, $p=0.02$) and in the validation cohort (0.70 vs. 0.50, $p=0.18$).

Conclusions: ASyS timing and type significantly affect epilepsy and mortality risk after stroke, improving epilepsy prediction and guiding patient counseling.

Introduction

Stroke is a major cause of epilepsy in older adults, contributing to over half of new-onset epilepsy cases in individuals aged 65 and above.¹ Post-stroke seizures are associated with an increased risk of mortality, poor functional outcome, disability, and dementia.^{2,3}

Post-stroke seizures are categorized into acute symptomatic (ASyS), occurring within the first 7 days after a stroke, and remote symptomatic (RSyS), which are unprovoked seizures occurring later.⁴ ASyS are considered provoked and do not qualify as epilepsy. In contrast, a single or multiple RSyS following ischemic stroke fulfill the International League Against Epilepsy (ILAE) practical definition of epilepsy due to a heightened, greater than 60% recurrence risk of seizures.⁵

ASyS are a major risk factor for epilepsy and mortality following ischemic stroke.^{3,6} Recent research underscores the heterogeneity among ASyS, suggesting certain subtypes confer higher risks than others.⁷ We have shown that ASyS presenting as status epilepticus carry a markedly elevated risk of epilepsy and mortality compared to short ASyS after ischemic stroke.³ However, there remains a knowledge gap regarding other characteristics of ASyS that may be associated with an increased risk of seizures or unfavorable outcomes.

We hypothesized that the timing and type of a short ASyS influence the risk of post-stroke epilepsy and mortality. We assessed this hypothesis using data from a large multicenter registry of post-stroke seizures. We implemented this knowledge in a novel prognostic model that improves the prediction of epilepsy following ASyS after ischemic stroke.

Methods

Participants

We analyzed both a derivation and a validation cohort of participants. The derivation cohort was drawn from a multicenter registry established as part of the SeLECT study,⁶ consisting of nine international cohorts (n=4,552) of adults with neuroimaging-confirmed acute ischemic

stroke. The validation cohort included participants with ASyS following ischemic stroke from three additional independent cohorts. We excluded individuals with transient ischemic attacks, a history of seizures or epilepsy, primary hemorrhagic stroke, re-infarction during follow-up, or potentially epileptogenic comorbidities (such as intracranial tumors, cerebral venous thrombosis, severe traumatic brain injury, or prior brain surgery). Detailed descriptions of the individual cohorts are provided in the Online Supplement.

Informed consent, obtained either in written or verbal form (four cohorts utilized written consent, while two cohorts employed both written and verbal consent), was acquired. In three cohorts consent requirements were waived by the regulatory authorities, as outlined in the online supplement.

Definitions

According to ILAE recommendations, seizures were classified as ASyS (occurring within 7 days after stroke) or RSyS (spontaneous unprovoked seizures more than 7 days after stroke).⁴ The occurrence of a RSyS was categorized as poststroke epilepsy due to its high seizure recurrence risk, exceeding the 60% risk required for the ILAE pragmatic definition of epilepsy.^{5,8} Status epilepticus was classified according to the revised ILAE definition.⁹ Electrographic status epilepticus was defined according to Salzburg and revised ACNS criteria.^{10,11} ASyS not qualifying as status epilepticus were defined as short ASyS and classified into subtypes (focal aware, focal with impaired awareness, focal to bilateral tonic clonic, or undetermined) based on the current ILAE nomenclature.¹² We dichotomized the timing of ASyS into those occurring on the same day as stroke onset (day 0) versus those occurring later because the majority of ASyS occurred on day 0. In individuals with multiple ASyS, we only considered the first reported ASyS. Further definitions are detailed in the eMethods in the Online Supplement.

Statistical analysis

Firstly, we used multivariable Cox proportional hazards regression to assess the relationship between the type and timing of ASyS and the time to post-stroke epilepsy or death, while adjusting for co-variables (age, sex, National Institutes of Health Stroke Scale [NIHSS] score at admission, cortical involvement, involvement of the middle cerebral artery [MCA] territory, stroke cause, reperfusion treatment, and antiseizure medication [ASM] treatment after acute symptomatic seizure). Cases were censored at the time of death, first RSyS, or last follow-up. Adjusted risk estimates for post-stroke epilepsy or death were obtained from these multivariable Cox regression models.

Secondly, we compared the performance of a previously described prognostic model for post-stroke epilepsy (SeLECT_{2.0})³ in stroke survivors with vs. without ASyS using the concordance (C) statistic. We also compared the observed risk of seizures in those with vs. without ASyS having a similar SeLECT_{2.0} score strata (3 to 4 points and 5 to 6 points) using Kaplan Meier estimate plots and logrank tests.

Next, we developed a novel prognostic model specifically for stroke survivors with ASyS with the goal to improve the prediction of post-stroke epilepsy in this particularly vulnerable population. Least Absolute Shrinkage and Selection Operator (LASSO) Cox-regression was employed initially for variable selection, utilizing a penalty function to refine the model.¹³ The regularization parameter lambda in the LASSO regression was selected using k-fold cross-validation (k=10). Following the LASSO selection, we employed Wald stepwise backward regression as an additional method to identify significant variables and compare them with those selected by LASSO. To account for death as a competing risk, we also employed competing risk regression based on Fine and Gray's subdistribution hazard model, which allowed us to calculate the cumulative incidence function for late seizures (see

Supplemental Table 4). We assigned integer values to the retained variables based on their adjusted hazards ratios (aHR, see **Supplemental Table 5**) to calculate a clinical risk score for each study individual.

To evaluate the novel model's discrimination, i.e. the ability to distinguish between high and low risk cases, we estimated the C statistic (95% CI). Recognizing that prognostic models derived from multivariable regression can exhibit optimism and potentially overestimate predictions when applied to new patient cohorts,¹⁴ we introduced a shrinkage factor. This factor was estimated through 1000 bootstrapped random samples to adjust the C statistic for overoptimism, a technique previously employed to enhance model generalizability.^{15,16} We also assessed model calibration, i.e. the agreement between predicted and observed risks, using calibration plots (see **Supplemental Figure 5**). Perfect calibration is represented by a 45° diagonal line, whereas relevant deviation above or below this line reflects under- or overprediction. We used a leave-one-cohort-out strategy for cross-validation of model performance.

Lastly, we computed the change of occurrence of a seizure in the next year (COSY), a parameter that may be relevant for assessing the fitness to drive in people with seizures, using the standard statistical definition of conditional risks¹⁷ as detailed previously (Schubert et al. 2023) (see **Supplemental Figure 2**). Previously proposed COSY thresholds are < 20-40% for private driving and < 2% for professional driving,^{18,19,20} although these may differ based on local regulations.

All analyses were conducted using R statistical software version 4.0.3 and SPSS version 26 (IBM) and followed the STROBE guidelines.

Results

The study included 4,552 individuals from nine centers. Their baseline characteristics are shown in **Supplemental Table 1**. ASyS occurred in 5% (n=233) of participants. The first ASyS presented on the same day as the stroke (day 0) in 55% (n=127, **Figure 1A** and **Supplemental Table 2**). The frequency of ASyS stratified by type and timing is shown in **Figure 1B**.

Risk of post-stroke epilepsy

ASyS on day 0 had a higher risk of post-stroke epilepsy (aHR 2.3, 95% CI 1.3-4.0, p=0.003, **Figure 1C**, **Table 1**) compared to ASyS occurring later after stroke. Other ASyS timing cut-offs did not yield relevant differences in the risk of post-stroke epilepsy (**Supplemental Figure 3**). Regarding seizure types, ASyS presenting as status epilepticus had the highest risk of post-stroke epilepsy (aHR 9.6, 95% CI 3.5-26.7, p<0.001), followed by FBTCs (aHR 3.4, 95% CI 1.9-6.3 p<0.001, **Figure 1D**, **Table 1**) compared to other ASyS types (**Supplemental Figure 4**). The full results of the multivariable model and other variables independently associated with post-stroke epilepsy (stroke severity, location, and etiology) are shown in **Table 1**.

Stroke survivors with a non-FBTC short acute symptomatic seizure occurring on day 1 or later after stroke had a 41% risk of developing post-stroke epilepsy 10 years after stroke, compared to a 69% risk in those having a FBTC short acute symptomatic seizure on day 0 after stroke and a 94% risk in those with acute symptomatic status epilepticus (**Figure 3A**, **Supplemental Table 2**). The 10-year risk of post-stroke epilepsy was 13% in stroke survivors without acute symptomatic seizures.

Mortality

A higher risk of all-cause mortality was observed in those with ASyS presenting as FBTCs on day 0 (aHR 2.8, 95% CI 1.4-5.6, $p=0.004$) and those with acute symptomatic status epilepticus (aHR 14.2, 95% CI 3.5-58.8, $p<0.001$). Other subtypes of acute symptomatic seizures were not associated with mortality (**Table 2**).

Individuals with a stroke and a non-FBTC short acute symptomatic seizure occurring on day 1 or later after stroke had a 49% risk of all-cause mortality 10 years after stroke, compared to a 66% risk in those having a FBTC short acute symptomatic seizure on day 0 after stroke and a 100% risk in those with acute symptomatic status epilepticus (**Figure 3B**). The overall 10-year risk of all-cause mortality was 32% in those without acute symptomatic seizures.

Prognostic modelling

We observed that the performance of a previously published prognostic model predicting the risk of post-stroke epilepsy (SeLECT_{2.0}) was low in individuals with ASyS (C statistic 0.58, 95%-CI 0.49-0.67, $n=233$) compared to a better performance in the overall cohort (C statistic 0.75, 95%-CI 0.72-0.78, $n=4,552$). The observed risk of post-stroke epilepsy in stroke survivors with ASyS was higher compared to those without ASyS who had a similar SeLECT_{2.0} score (**Figure 2**; SeLECT_{2.0} score 3 to 4, $p<0.001$; SeLECT_{2.0} score 5 to 6, $p=0.10$).

Thus, the SeLECT_{2.0} model may not adequately capture the risk of epilepsy in those with ASyS. To overcome these limitations, we aimed to develop a model specifically for those having ASyS after stroke and to implement the above findings on the risk of epilepsy according to ASyS type and timing.

We selected predictors using stepwise backward-elimination of a Cox regression model in stroke survivors with ASyS (**Supplemental Table 4**). The variables retained in the final model were timing and type of first ASyS, large-vessel atherosclerotic stroke etiology

stratified by sex and stroke involving the cerebral cortex. The calculation of the new model, termed SeLECT-ASyS and ranging from 0 to 7 points, is shown in **Table 3**. The SeLECT-ASyS model had a better discrimination for time to post-stroke epilepsy compared to the original SeLECT_{2.0} model (C statistic 0.68 [95%-CI 0.61-0.76] vs. 0.58 [95%-CI 0.49-0.67], $p=0.02$) in stroke survivors with ASyS. SeLECT-ASyS demonstrated better, near-optimal calibration for long-term outcomes compared to the less optimal calibration of the SeLECT_{2.0} model in those with ASyS, although the calibration curves indicated less accuracy for predicting the 1-year occurrence of post-stroke epilepsy and lacked data for lower probability outcomes (**Supplemental Figure 5**). We cross-validated the results using a leave-one-cohort-out strategy (**Supplemental Table 6**). To further support our findings, we evaluated a validation cohort of 74 adults with ASyS following ischemic stroke who met the eligibility criteria (Switzerland, $n=32$; Argentina, $n=23$; Japan, $n=19$). Baseline characteristics of these individuals are presented in **Supplemental Table 7**. In this validation cohorts, the SeLECT-ASyS model demonstrated superior discrimination with a C-statistic of 0.70 (95%-CI 0.57-0.83) compared to the SeLECT 2.0 model (C-statistic 0.59 [95%-CI 0.44-0.75], $p=0.18$), indicating better predictive accuracy for RSyS (**Supplemental Figure 6**).

The lowest score SeLECT-ASyS value (0 points) predicts a 26% risk (95% CI 9-39) of post-stroke epilepsy 10 years following stroke, compared with a 100% risk (95% CI 30-100) for the highest value (7 points, **Figure 4**). A comparison to the SeLECT_{2.0} values for patients without ASyS are shown in **Supplemental Figure 1**. In addition, we updated the values for COSY (**Supplemental Figure 2**), a parameter that may be helpful for assessing the risks for safe driving. The new SeLECT-ASyS model was implemented in the “SeLECT score” smartphone applications available for iOS and Android and in the web-based calculator.

Case Example

As an example, we considered a 65-year-old male patient admitted to the hospital because of acute ischemic stroke of atherosclerotic etiology affecting the posterior cerebral artery territory and not involving the cortex with 3 points on the NIHSS at admission, who had a focal to bilateral tonic-clonic seizure on the first day of admission. The SeLECT_{2.0} score for this case is 4 points, predicting a 19% risk (95% CI 8-28) of post-stroke epilepsy within 10 years after stroke. In contrast, the new model developed specifically for those with acute symptomatic seizures (SeLECT-ASyS, **Table 3**) is 4 points, predicting 87% (95% CI 63-95) risk of post-stroke epilepsy within 10 years.

Discussion:

In this study, we investigated the influence of both timing and type of ASyS on the risk of epilepsy and mortality after ischemic stroke. Our findings reveal substantial heterogeneity among ASyS, indicating that events occurring on the day of stroke onset (day 0) and those manifesting as FBTCS or status epilepticus had a higher risk of developing post-stroke epilepsy. FBTCS on day 0 and acute symptomatic status epilepticus had a high, $\geq 69\%$ risk of epilepsy and a $\geq 66\%$ risk of mortality (**Figure 3**).

We also showed that a current state-of-the-art model for predicting post-stroke epilepsy (SeLECT_{2.0}) underperformed in stroke survivors with ASyS and confirmed this finding in independent validation cohorts. We implemented our results on the role of timing and types of ASyS in a novel model (SeLECT-ASyS), tailored specifically for stroke survivors experiencing ASyS. This model accurately captures the elevated risks of post-stroke epilepsy in this subgroup and significantly outperforms the SeLECT_{2.0} model in those with ASyS.

We previously showed that acute symptomatic status epilepticus is a predictor of mortality and epilepsy after stroke³ and discussed the potential explanations for this observation. The estimated risks for epilepsy and mortality in the current study are slightly higher compared to our previous study³ because of the completion of long-term (60-month) follow-up in the second largest cohort in the registry (Switzerland (2)) that results in more robust estimates.

Building upon our prior research, we demonstrated in this study that ASyS presenting as FBTCS and occurring on day 0 also carry a higher risk of post-stroke epilepsy and mortality.

There are several potential explanations for this finding.

Firstly, individuals experiencing ASyS very early after stroke, i.e. on day 0, and ASyS presenting as FBTCS may have a higher predisposition for generating seizures. This genetic or acquired vulnerability,²¹ conceptualized as a low “seizure threshold”,²² may predispose these individuals to an earlier onset of ASyS and the propagation of seizure activity across

hemispheres. Such a low seizure threshold may also heighten the probability of subsequent RSyS during epileptogenesis.²²

Secondly, the occurrence of ASyS on day 0 and a bilateral spread of seizures could be indicative of a more pronounced proepileptic impact of the stroke. Our previous research suggested that more severe strokes due to large artery atherosclerosis, affecting the MCA territory, are more likely to result in post-stroke epilepsy.⁶ But, the present study's outcomes were adjusted for these variables, establishing independence from such factors. Other stroke characteristics warrant consideration. At a macroscopic level, the precise localization²³ and connectivity of stroke may contribute to acute seizures and epileptogenesis. Strokes highly connected to the basal ganglia and cerebellum were found to be more likely to cause epilepsy.²⁴ On a microscopic scale, cellular changes that are difficult to detect *in vivo* in humans, such as neurodegeneration, axonal and synaptic sprouting, blood-brain barrier damage, and inflammation,²¹ may promote acute seizures and epileptogenesis.

Thirdly, disparities between ASyS occurring on day 0 and those manifesting later may be associated with the time-dependent dynamics of pathological mechanisms following a stroke, such as neuroinflammatory changes and metabolic derangements.²⁵ Consequently, ASyS occurring early might be triggered by distinct mechanisms compared to those occurring later, potentially resulting in variations in the risk of post-stroke epilepsy.

Lastly, ASyS may directly or indirectly contribute to epileptogenesis. While this concept has been consistently demonstrated in animal models of status epilepticus, it is less well established for brief seizures.²⁶ Some experimental evidence suggests that brief convulsive seizures may also contribute to the process of epileptogenesis.^{26,27,28}

ASyS presenting as FBTCS on day 0 were independently associated with higher mortality after stroke. They may be a marker of significant macro- or microscopic neuronal disruption caused by stroke, as discussed above. Furthermore, convulsive seizures have been linked to

excitotoxic damage in animal models, potentially contributing to poor outcomes.²⁹

Convulsive seizures may also be associated with injuries, heightened metabolic demand, and aspiration leading to pneumonia, further impacting overall outcomes.

To translate these findings into clinical practice, we incorporated them into a novel prognostic model. Initially, we demonstrated that the current state-of-the-art prognostic model for post-stroke seizures, SeLECT_{2.0}, underestimates the risk of post-stroke epilepsy in the subset of stroke survivors with ASyS (**Figure 2**). Stroke survivors with ASyS represent a distinct group with unique predictors and a heightened risk of epilepsy compared to those without ASyS.³⁰ Subsequently, we developed and validated a novel prognostic model, SeLECT-ASyS, which exhibited superior discrimination and calibration compared to SeLECT_{2.0} in the ASyS subgroup. We also performed internal validation using optimism correction through bootstrapping and cross-validation (**Supplemental Table 6**). Furthermore, we also confirmed SeLECT_{2.0}'s underperformance in stroke survivors with ASyS in independent external validation cohorts. Consequently, SeLECT-ASyS emerges as the preferred model for prognostication in stroke survivors with ASyS.

The presented case example illustrates marked differences in estimated risks when utilizing SeLECT-ASyS as opposed to SeLECT_{2.0} for individuals with ASyS. These differences in risk are clinically meaningful and may have an impact on treatment considerations and the approach to follow-up in such cases. Risk estimates derived from the novel model consistently indicate moderate to high risks of post-stroke epilepsy following ASyS (**Figure 4**). These risks are realistic, as corroborated by the favorable calibration of the model (**Supplemental Figure 5**).

The most notable and practically relevant finding is a greater than 60% 10-year risk of epilepsy in stroke survivors with ASyS presenting as FBTCS on day 0 or status epilepticus (28% of all ASyS cases, **Figure 1B**) and those with SeLECT-ASyS scores ≥ 3 points. This

risk level aligns with the ILAE practical definition of epilepsy.⁵ But, it is crucial to acknowledge that this definition requires at least one unprovoked seizure occurrence and is, hence, not fully met in cases that suffered only an ASyS. Nevertheless, some clinicians may consider counselling these high-risk cases as if they had epilepsy, potentially recommending primary preventive treatment^{31,32} or extended follow-up. It is important to note, however, that the efficacy of primary preventive treatment after stroke remains unproven. Two ongoing antiepileptogenesis trials in stroke survivors may offer novel insights into the treatment of cases at high risk of post-stroke epilepsy.^{33,34} If such treatments become available, the accurate prediction of risk of post-stroke epilepsy in those with ASyS will become central for the selection of candidates for antiepileptogenic medications.

Our study has several strengths. We assessed one of the largest multicenter cohorts of post-stroke seizures. We translated our findings into a user-friendly prognostic model accessible through both a smartphone and web applications. The novel model outperforms the current state-of-the-art model and its clinical significance was underscored through an illustrative case.

Our study has limitations. Firstly, despite the inclusion of nine international cohorts, enhanced statistical power and generalisability of our results could be further achieved by incorporating data from North America, Asia, or Africa. Secondly, the practical constraints of performing continuous EEG in the entire multicenter registry limited our evaluation to clinically apparent seizures, not considering electrographic seizures. Thirdly, data collected in the registry did not differentiate between seizures occurring immediately at stroke onset and those on the same day as the stroke. However, existing studies^{35,36} suggest that the majority of seizures on day 0 align with the immediate onset of the stroke. Fourthly, patients with ASyS may receive ASM treatment which may impact the risk of subsequent unprovoked

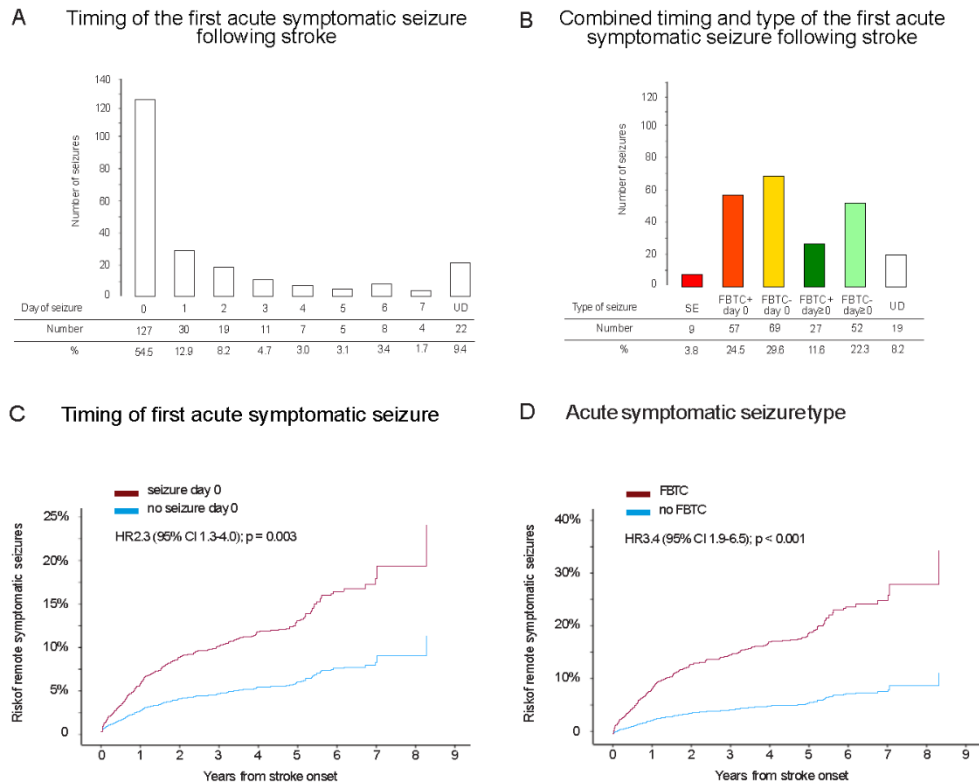
seizures. To address this, we corrected all results for ASM treatment. Lastly, the SeLECT registry did not consistently collect data on the cause of death and long-term disability.

Conclusions

We demonstrated varying mortality and epilepsy risks based on the type and timing of ASyS following stroke. We implemented these findings in a novel prognostic model (SeLECT-ASyS) that outperformed a previous model and is available as both smartphone and web application. The ten-year epilepsy risk in those with ASyS presenting as FBTCS on day 0 or status epilepticus and those with SeLECT-ASyS ≥ 3 points exceeded 60%, a cut-off used for the ILAE practical definition of epilepsy.⁵ These findings have the potential to inform counselling for stroke survivors with ASyS, particularly those with a high (>60%) risk for post-stroke epilepsy.

Figures and Tables:

Figure 1: Characterization of acute symptomatic seizure timing and type

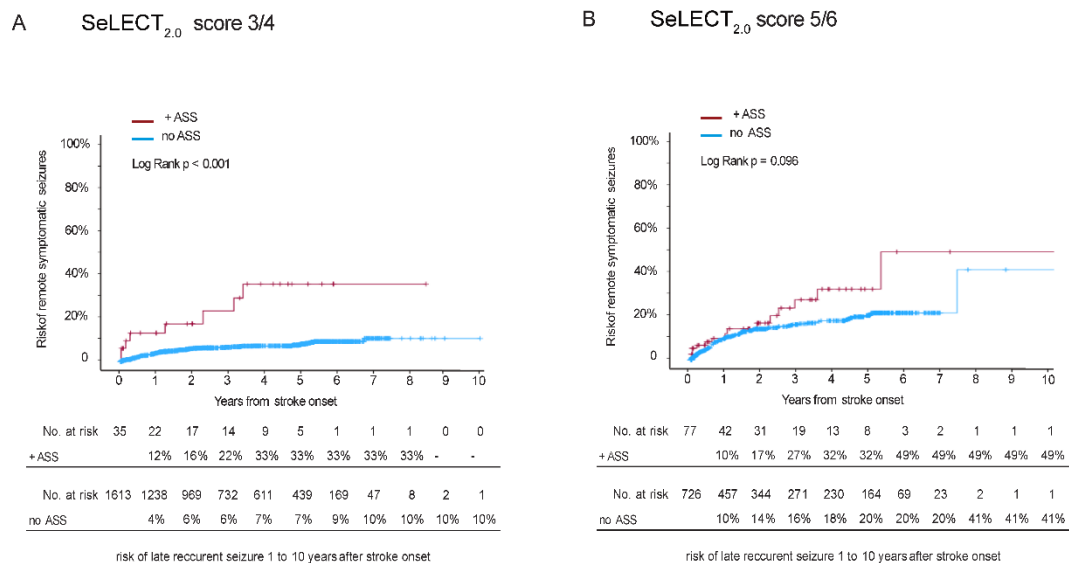


Acute symptomatic seizure, ASyS; UD, undetermined/unknown seizure timing.

Panel A and B: Distribution of the timing (Panel A) and stratification by type and timing (Panel B) of the first acute symptomatic seizure occurring after ischemic stroke. Color code in Panel B adapted to the stratification of ASyS in Figure 3.

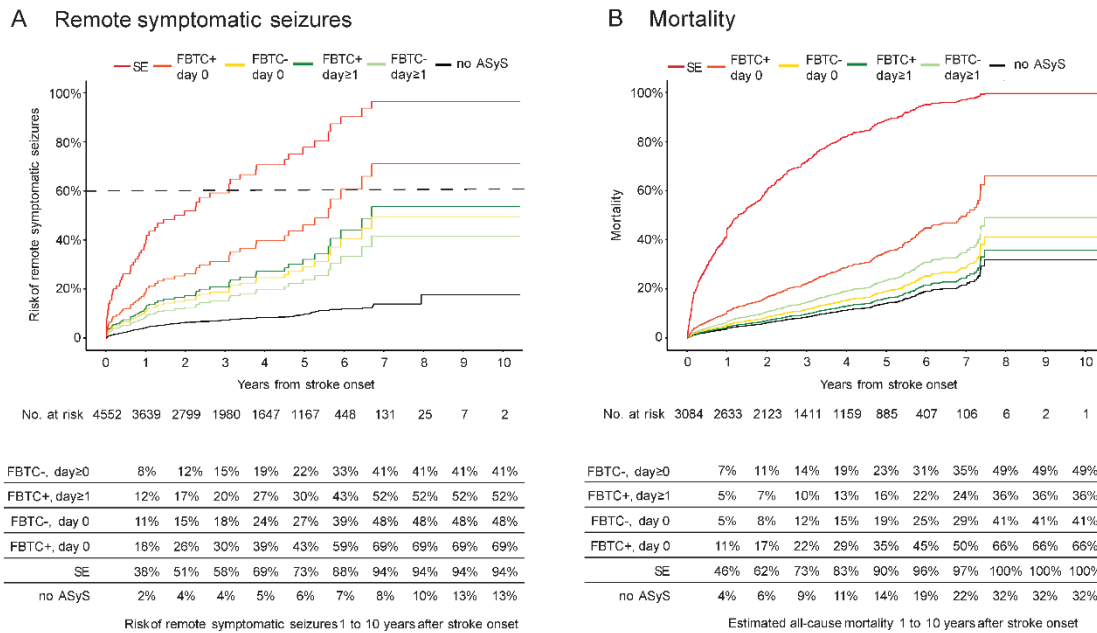
Panels C and D: Kaplan Meier estimates (n = 4552) of the time to post-stroke epilepsy stratified by acute symptomatic seizure timing (day 0 vs. day ≥ 1; Panel B) and type (FBTCS vs. other short seizure type; Panel C).

Figure 2: Risk of epilepsy in individuals with or without acute symptomatic seizures having a similar SeLECT_{2.0} score



Kaplan-Meier estimates ($n = 4552$) of the time to post-stroke epilepsy in those with a SeLECT_{2.0} score of 3 to 4 (Panel A) or 5 to 6 (Panel B) points. Separate curves are shown for individuals with (red) or without (blue) acute symptomatic seizures. Those with a SeLECT_{2.0} score of 3 to 4 who suffered acute symptomatic seizures had a higher risk of post-stroke epilepsy (higher risk of remote symptomatic seizures) compared to those without acute symptomatic seizures ($p < 0.001$). There was a similar but non-significant trend in individuals with a SeLECT_{2.0} score of 5 to 6 who had acute symptomatic seizures compared to those without ($p = 0.096$).

Figure 3: Risk of Post-Stroke Epilepsy or Mortality Following ASyS After Stroke



Data according to the type and timing of ASyS and association with RSySs (n = 4552, Panel A) and mortality (n= 3084, Panel B). The tables below each graph display the Kaplan-Meier estimates of the risk of RSySs 1 to 10 years after index stroke according to the type of ASyS. All results were obtained after adjusting for covariates (age, sex, National Institutes of Health Stroke Scale score at admission, cortical involvement, involvement of the middle cerebral artery territory, stroke cause, reperfusion treatment, and antiseizure medication treatment after ASyS). The dotted line denotes the 60% cutoff for the risk of unprovoked seizures used in the International League Against Epilepsy (ILAE) practical clinical definition of epilepsy. FBTC indicates focal to bilateral tonic-clonic seizure; no ASyS, no ASyS; SE, status epilepticus; and UD day, undetermined or unknown seizure day.

Table 1: Multivariable Cox regression model of time to first remote symptomatic seizure

Variable	aHR (95% CI)	P value
Demographics		
Age (<i>per 10 years</i>)	0.9 (0.9-1.0)	0.07
Male sex	1.0 (0.8-1.3)	0.91
Stroke severity at admission		
NIHSS 4-10	1.7 (1.2-2.5)	<0.001
NIHSS \geq 11	4.2 (3.0-5.9)	<0.001
Stroke location		
Middle cerebral artery territory involvement	1.5 (1.2-2.1)	0.02
Cortical involvement	2.2 (1.7-2.9)	<0.001
Stroke cause		
Small-vessel occlusion	1.0 (0.6-1.6)	0.90
Larger-artery atherosclerosis	1.6 (1.2-2.1)	0.003
Cardioembolic	0.9 (0.7-1.2)	0.51
Treatment		
Acute reperfusion treatment	0.8 (0.6-1.0)	0.05
Acute symptomatic seizure type		
Seizure occurring on day 0	2.3 (1.3-4.0)	0.003
Focal seizure with impaired awareness	1.6 (0.7-3.9)	0.28
Focal to bilateral tonic-clonic seizure	3.4 (1.9-6.3)	<0.001
Status epilepticus	9.6 (3.5-26.7)	<0.001
Undetermined or unknown seizure type	1.8 (0.7-4.1)	0.20

Data analyzed using a Cox proportional hazards model in the derivation cohort (n=4552).

Dependent variable was time to first remote seizure.

aHR, adjusted hazard ratio; NIHSS, National Institutes of Healthy Stroke Scale; ASM, anti-seizure medication; ASyS, acute symptomatic seizure.

Table 2: Multivariable Cox regression model of time to death

Variable	aHR (95% CI)	P value
Demographics		
Age (<i>per 10 years</i>)	2.2 (2.0-2.4)	<0.001
Male sex	1.2 (1.0-1.4)	0.05
Stroke severity at admission		
NIHSS 4-10	1.7 (1.3-2.1)	<0.001
NIHSS ≥ 11	2.4 (1.9-3.1)	<0.001
Stroke location		
Middle cerebral artery territory involvement	0.9 (0.8-1.2)	0.64
Cortical involvement	1.0 (0.9-1.3)	0.71
Stroke cause		
Small-vessel occlusion	0.6 (0.4-0.8)	<0.001
Larger-artery atherosclerosis	0.7 (0.5-0.9)	0.02
Cardioembolic	0.8 (0.7-1.0)	0.07
Treatment		
Acute reperfusion treatment	0.8 (0.7-1.0)	0.04
ASM treatment after ASyS	0.5 (0.3-0.9)	0.03
Acute symptomatic seizure type		
FBTC-, day > 0	1.8 (0.8-4.0)	0.18
FBTC+, day > 0	1.2 (0.4-3.7)	0.81
FBTC-, day 0	1.4 (0.7-2.6)	0.32
FBTC+, day 0	2.8 (1.4-5.6)	0.004
Status epilepticus	14.2 (3.5-58.8)	<0.001

Data analyzed using a Cox proportional hazards model in the derivation cohort (n=4552).

Dependent variable was time to death of any cause.

aHR, adjusted hazard ratio; NIHSS, National Institutes of Health Stroke Scale; ASM, anti-seizure medication; ASyS, acute symptomatic seizure; FBTC+, focal to bilateral tonic-clonic short seizure; FBTC-, other type of short seizure; day 0, same day as stroke onset.

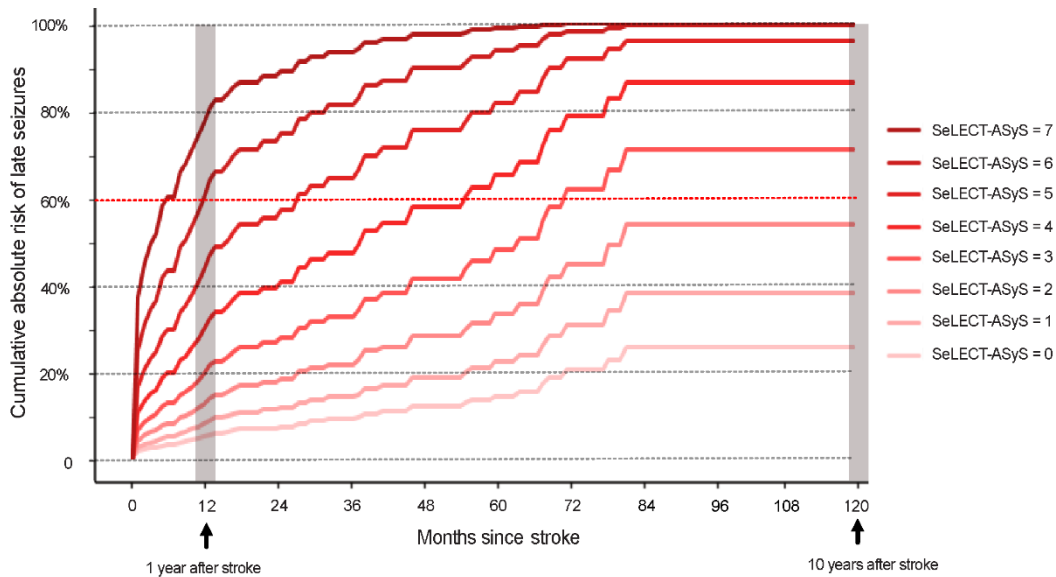
Table 3: *Calculation of the SeLECT-ASyS score.*

Variable	SeLECT-ASyS score (points)
Stroke location	
Cortical involvement	1
Stroke etiology and sex	
Large-artery atherosclerosis, female	1
Large-artery atherosclerosis, male	2
Acute symptomatic seizures type	
FBTC-, day \geq 1	0
FBTC+, day \geq 1	1
FBTC-, day 0	1
FBTC+, day 0	2
Status epilepticus	4

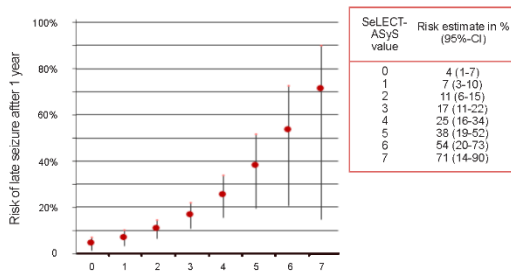
To calculate an individual's SeLECT-ASyS score, the points associated with each predictor can be added to obtain the total risk score. The total score ranges from 0 to 7 points. FBTC+, focal to bilateral tonic-clonic short seizure; FBTC-, other type of short seizure; day 0, same day as stroke onset.

Figure 4: Predicted Risk of Post-Stroke Epilepsy According to a new prognostic model in stroke survivors with acute symptomatic seizures

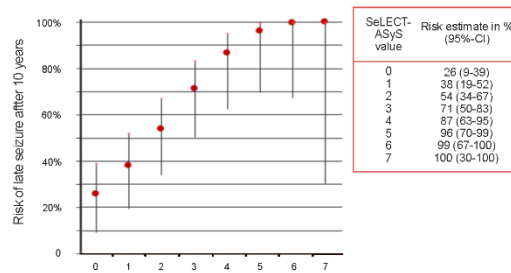
A Prediction plot



B Risk estimate chart after 1 year of stroke



C Risk estimate chart after 10 years of stroke



Panel A shows the predicted risk of post-stroke epilepsy (unprovoked remote symptomatic seizures) 0-120 months after stroke. Each curve represents the estimates for a SeLECT-ASyS value ranging from 0 to 6. Risk estimate charts of late seizures 1 year and 10 years after stroke according to SeLECT-ASyS score values are displayed in panels B and C, respectively. Vertical lines indicate 95% CIs.

Acknowledgements

JSD, JWS and MJK are based at the NIHR University College London Hospitals Biomedical Research Centre, which the UK Department of Health sponsors. JWS's current position is endowed by the UK Epilepsy Society and he receives research support from the Marvin Weil Epilepsy Research Fund and the Christelijke Vereniging voor de Verpleging van Lijders aan Epilepsie, Netherland.

Authors Contributions

KMS, DZ and MG conceptualized and designed the study. ND, BEC, AF, PS, NS, GB, JS, CFA, LI, MK, LA, ES, JAS, MW, TJO, JNW, GLG, AS, FJ, GM, MV, GG, JC, SE, PL, FR, FB, CB, ARP, TPM, BT, MRK, JSD, JWS, BT, MJK, MG contributed to the acquisition and analysis of the data. KMS and MG contributed to the interpretation of the data. KMS and MG drafted the manuscript and figures. All co-authors revised the manuscript for intellectual content.

Potential Conflicts of Interest

LA has received personal fees and travel support from UCB Pharma, Eisai, Esteve and Bial and personal fees from Sanofi outside the submitted work. ES has received grants and personal fees from UCB Pharma, personal fees from Eisai, personal fees from Esteve, and grants and personal fees from Bial, outside the submitted work. SE received honoraria for consulting and for lectures from from Allergan/Abbvie, Lilly, Lundbeck, Novartis, Perfood, Teva (past 3 years). FB received fees and travel support from Lusofarmaco, outside the submitted work. CB received a Grant from Sociedade Portuguesa do AVC (sponsor by Tecnifar), honoraria for lectures and support for scientific events from Bial, outside the submitted work. MK receives research support of the SNF((182267), (213471), DISTAL

(198783) and (204977)); grants from the Swiss Heart Foundation; participation on advisory boards and/or speaker honoraria for Medtronic, BMS Pfizer/Jansen and Astra Zeneca; in kind Contributions from Roche Diagnostics and Brahms Thermofisher Scientific.. MRK reports grants from UCB and Eisai, outside of the submitted work. BT reports personal fees from Biogen outside the submitted work. JWS reports grants and personal fees from UCB, grants from Netherland Epilepsy Funds; and personal fees from UCB and Angelini outside the submitted work. MG received fees and travel support from Arvelle, Advisis, Bial and Nestlé Health Science outside the submitted work. JNW received fees from Boehringer Ingelheim and UCB as well as travel grants from ROCHE, outside the submitted work. TJO reports personal fees from Angelini Pharma Österreich GmbH; Arvelle Therapeutics, Argenx, Biogen, Eisai GesmbH, GW Pharma, Jazz Pharmaceuticals, LivaNova, und von Zogenix GmbH, grants from Boehringer-Ingelheim, outside the submitted work. All other authors declare no competing interests.

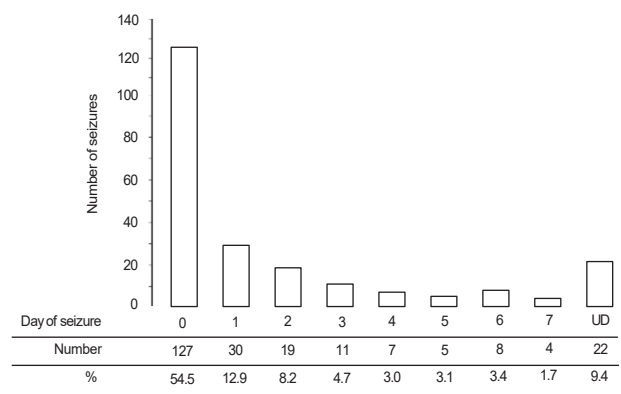
References

1. Hauser WA, Annegers JF, Kurland LT. Incidence of epilepsy and unprovoked seizures in Rochester, Minnesota: 1935-1984. *Epilepsia*. May-Jun 1993;34(3):453-68. doi:10.1111/j.1528-1157.1993.tb02586.x
2. Misra S, Kasner SE, Dawson J, et al. Outcomes in Patients With Poststroke Seizures: A Systematic Review and Meta-Analysis. *JAMA Neurol*. Nov 1 2023;80(11):1155-1165. doi:10.1001/jamaneurol.2023.3240
3. Sinka L, Abaira L, Imbach LL, et al. Association of Mortality and Risk of Epilepsy With Type of Acute Symptomatic Seizure After Ischemic Stroke and an Updated Prognostic Model. *JAMA Neurol*. Jun 1 2023;80(6):605-613. doi:10.1001/jamaneurol.2023.0611
4. Beghi E, D'Alessandro R, Beretta S, et al. Incidence and predictors of acute symptomatic seizures after stroke. *Neurology*. Nov 15 2011;77(20):1785-93. doi:10.1212/WNL.0b013e3182364878
5. Fisher RS, Acevedo C, Arzimanoglou A, et al. ILAE official report: a practical clinical definition of epilepsy. *Epilepsia*. Apr 2014;55(4):475-82. doi:10.1111/epi.12550
6. Galovic M, Dohler N, Erdelyi-Canavese B, et al. Prediction of late seizures after ischaemic stroke with a novel prognostic model (the SeLECT score): a multivariable prediction model development and validation study. *Lancet Neurol*. Feb 2018;17(2):143-152. doi:10.1016/S1474-4422(17)30404-0
7. Herzig-Nichtweiss J, Salih F, Berning S, et al. Prognosis and management of acute symptomatic seizures: a prospective, multicenter, observational study. *Ann Intensive Care*. Sep 15 2023;13(1):85. doi:10.1186/s13613-023-01183-0
8. Hesdorffer DC, Benn EK, Cascino GD, Hauser WA. Is a first acute symptomatic seizure epilepsy? Mortality and risk for recurrent seizure. *Epilepsia*. May 2009;50(5):1102-8. doi:10.1111/j.1528-1167.2008.01945.x
9. Trinka E, Cock H, Hesdorffer D, et al. A definition and classification of status epilepticus--Report of the ILAE Task Force on Classification of Status Epilepticus. *Epilepsia*. Oct 2015;56(10):1515-23. doi:10.1111/epi.13121
10. Leitinger M, Trinka E, Gardella E, et al. Diagnostic accuracy of the Salzburg EEG criteria for non-convulsive status epilepticus: a retrospective study. *Lancet Neurol*. Sep 2016;15(10):1054-62. doi:10.1016/S1474-4422(16)30137-5
11. Hirsch LJ, Fong MWK, Leitinger M, et al. American Clinical Neurophysiology Society's Standardized Critical Care EEG Terminology: 2021 Version. *J Clin Neurophysiol*. Jan 1 2021;38(1):1-29. doi:10.1097/WNP.0000000000000806
12. Fisher RS, Cross JH, French JA, et al. Operational classification of seizure types by the International League Against Epilepsy: Position Paper of the ILAE Commission for Classification and Terminology. *Epilepsia*. Apr 2017;58(4):522-530. doi:10.1111/epi.13670
13. Tibshirani R. The lasso method for variable selection in the Cox model. *Stat Med*. Feb 28 1997;16(4):385-95. doi:10.1002/(sici)1097-0258(19970228)16:4<385::aid-sim380>3.0.co;2-3
14. Harrell FE, Jr., Lee KL, Mark DB. Multivariable prognostic models: issues in developing models, evaluating assumptions and adequacy, and measuring and reducing errors. *Stat Med*. Feb 28 1996;15(4):361-87. doi:10.1002/(sici)1097-0258(19960229)15:4<361::Aid-sim168>3.0.Co;2-4
15. Schrag A, Siddiqui UF, Anastasiou Z, Weintraub D, Schott JM. Clinical variables and biomarkers in prediction of cognitive impairment in patients with newly diagnosed Parkinson's disease: a cohort study. *Lancet Neurol*. Jan 2017;16(1):66-75. doi:10.1016/s1474-4422(16)30328-3

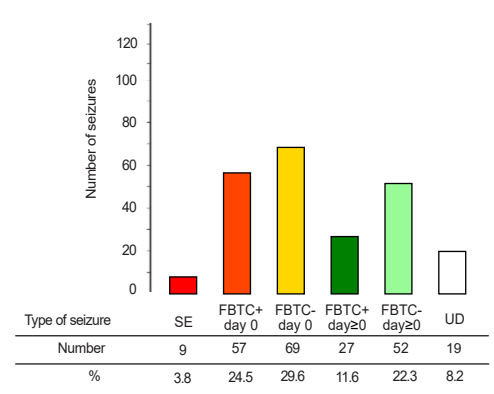
16. Backes D, Rinkel GJE, Greving JP, et al. ELAPSS score for prediction of risk of growth of unruptured intracranial aneurysms. *Neurology*. Apr 25 2017;88(17):1600-1606. doi:10.1212/wnl.0000000000003865
17. Zabor EC, Gonen M, Chapman PB, Panageas KS. Dynamic prognostication using conditional survival estimates. *Cancer*. Oct 15 2013;119(20):3589-92. doi:10.1002/cncr.28273
18. Bonnett LJ, Tudur-Smith C, Williamson PR, Marson AG. Risk of recurrence after a first seizure and implications for driving: further analysis of the Multicentre study of early Epilepsy and Single Seizures. *BMJ*. Dec 7 2010;341:c6477. doi:10.1136/bmj.c6477
19. Brown JW, Lawn ND, Lee J, Dunne JW. When is it safe to return to driving following first-ever seizure? *J Neurol Neurosurg Psychiatry*. Jan 2015;86(1):60-4. doi:10.1136/jnnp-2013-307529
20. Schmedding E, Darde JB, Gappmeier B, et al. *Epilepsy and driving in Europe*. 2005. https://road-safety.transport.ec.europa.eu/system/files/2021-07/epilepsy_and_driving_in_europe_final_report_v2_en.pdf
21. Pitkanen A, Roivainen R, Lukasiuk K. Development of epilepsy after ischaemic stroke. *Lancet Neurol*. Feb 2016;15(2):185-197. doi:10.1016/S1474-4422(15)00248-3
22. Engel J, Jr. Concepts of epilepsy. *Epilepsia*. 1995;36 Suppl 1:S23-9. doi:10.1111/j.1528-1157.1995.tb01648.x
23. Chou CC, Shih YC, Chiu HH, et al. Strategic infarct location for post-stroke seizure. *Neuroimage Clin*. 2022;35:103069. doi:10.1016/j.nicl.2022.103069
24. Schaper F, Nordberg J, Cohen AL, et al. Mapping Lesion-Related Epilepsy to a Human Brain Network. *JAMA Neurol*. Sep 1 2023;80(9):891-902. doi:10.1001/jamaneurol.2023.1988
25. Troscher AR, Gruber J, Wagner JN, Bohm V, Wahl AS, von Oertzen TJ. Inflammation Mediated Epileptogenesis as Possible Mechanism Underlying Ischemic Post-stroke Epilepsy. *Front Aging Neurosci*. 2021;13:781174. doi:10.3389/fnagi.2021.781174
26. Ben-Ari Y, Dudek FE. Primary and secondary mechanisms of epileptogenesis in the temporal lobe: there is a before and an after. *Epilepsy Curr*. Sep 2010;10(5):118-25. doi:10.1111/j.1535-7511.2010.01376.x
27. Kadam SD, White AM, Staley KJ, Dudek FE. Continuous electroencephalographic monitoring with radio-telemetry in a rat model of perinatal hypoxia-ischemia reveals progressive post-stroke epilepsy. *J Neurosci*. Jan 6 2010;30(1):404-15. doi:10.1523/jneurosci.4093-09.2010
28. Shen Y, Gong Y, Ruan Y, Chen Z, Xu C. Secondary Epileptogenesis: Common to See, but Possible to Treat? *Front Neurol*. 2021;12:747372. doi:10.3389/fneur.2021.747372
29. Chen TS, Huang TH, Lai MC, Huang CW. The Role of Glutamate Receptors in Epilepsy. *Biomedicines*. Mar 4 2023;11(3)doi:10.3390/biomedicines11030783
30. Ferreira-Atuesta C, Dohler N, Erdelyi-Canavese B, et al. Seizures after Ischemic Stroke: A Matched Multicenter Study. *Ann Neurol*. Nov 2021;90(5):808-820. doi:10.1002/ana.26212
31. Doerrfuss JI, Holtkamp M, Vorderwulbecke BJ. The SeLECT 2.0 Score-Significance of Treatment With Antiseizure Medication. *JAMA Neurol*. Nov 1 2023;80(11):1252. doi:10.1001/jamaneurol.2023.3371
32. Schubert KM, Sinka L, Galovic M. The SeLECT 2.0 Score-Significance of Treatment With Antiseizure Medication-Reply. *JAMA Neurol*. Nov 1 2023;80(11):1252-1253. doi:10.1001/jamaneurol.2023.3374
33. Koeppe MJ, Trinka E, Mah YH, et al. Antiepileptogenesis after stroke-trials and tribulations: Methodological challenges and recruitment results of a Phase II study with eslicarbazepine acetate. *Epilepsia Open*. Sep 2023;8(3):1190-1201. doi:10.1002/epi4.12735

34. Koeppe M, Trinka E, Loscher W, Klein P. Prevention of epileptogenesis - are we there yet? *Curr Opin Neurol*. Feb 13 2024;doi:10.1097/WCO.0000000000001256
35. Labovitz DL, Hauser WA, Sacco RL. Prevalence and predictors of early seizure and status epilepticus after first stroke. *Neurology*. Jul 24 2001;57(2):200-6. doi:10.1212/wnl.57.2.200
36. Cordonnier C, Henon H, Derambure P, Pasquier F, Leys D. Influence of pre-existing dementia on the risk of post-stroke epileptic seizures. *J Neurol Neurosurg Psychiatry*. Dec 2005;76(12):1649-53. doi:10.1136/jnnp.2005.064535

A Timing of the first acute symptomatic seizure following stroke



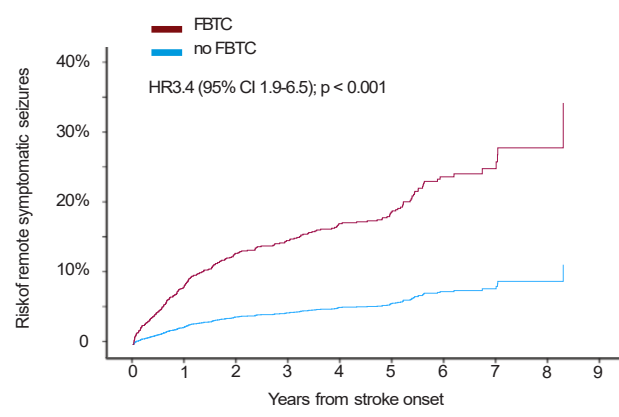
B Combined timing and type of the first acute symptomatic seizure following stroke



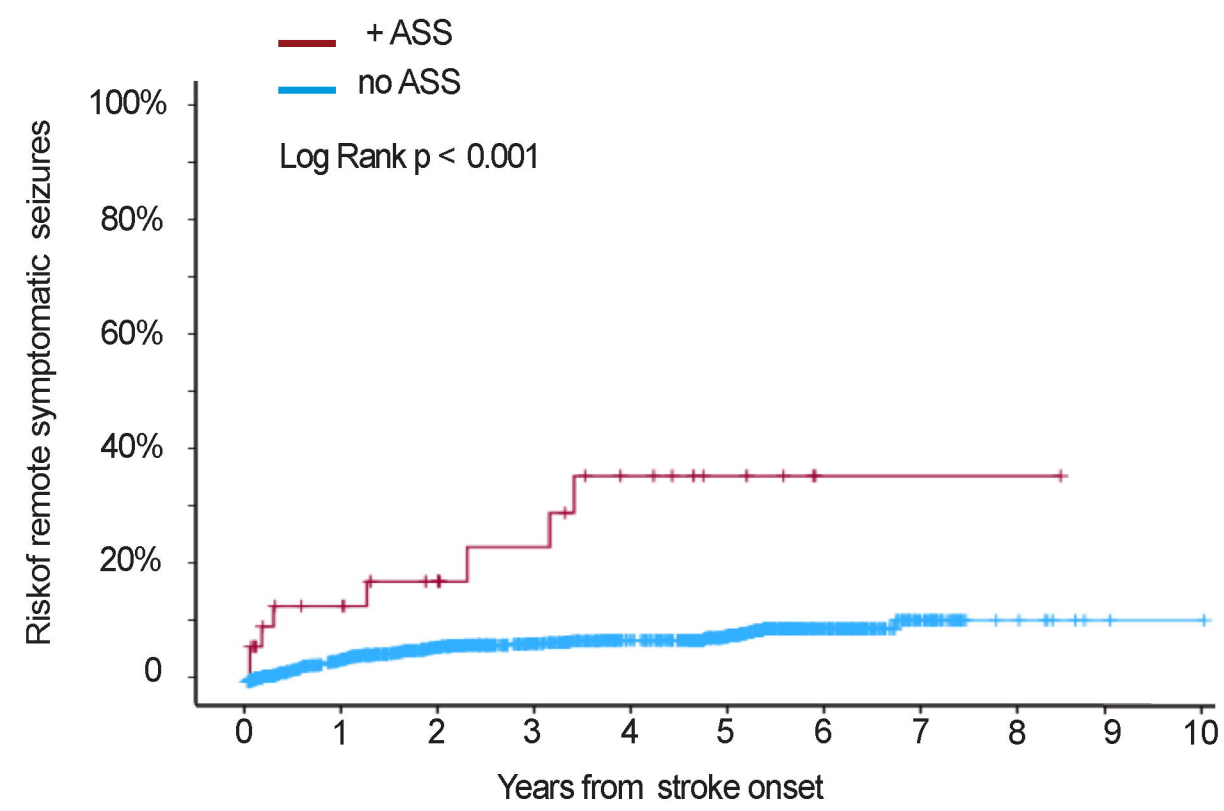
C Timing of first acute symptomatic seizure



D Acute symptomatic seizure type



A SeLECT_{2.0} score 3/4

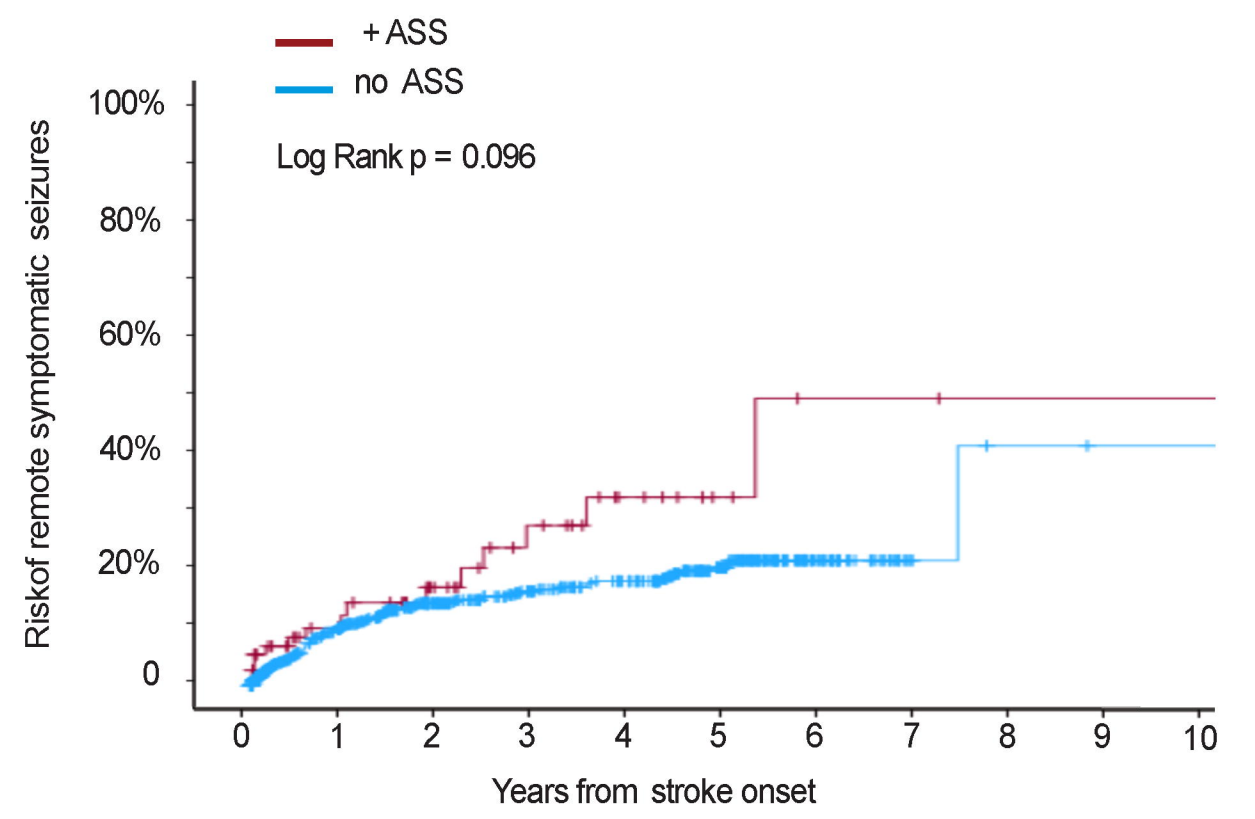


No. at risk	35	22	17	14	9	5	1	1	1	0	0
+ ASS		12%	16%	22%	33%	33%	33%	33%	33%	-	-

No. at risk	1238	969	732	511	434	169	77	42	1		
no ASS		4%	6%	6%	7%	7%	9%	10%	10%	10%	10%

risk of late recurrent seizure 1 to 10 years after stroke onset

B SeLECT_{2.0} score 5/6



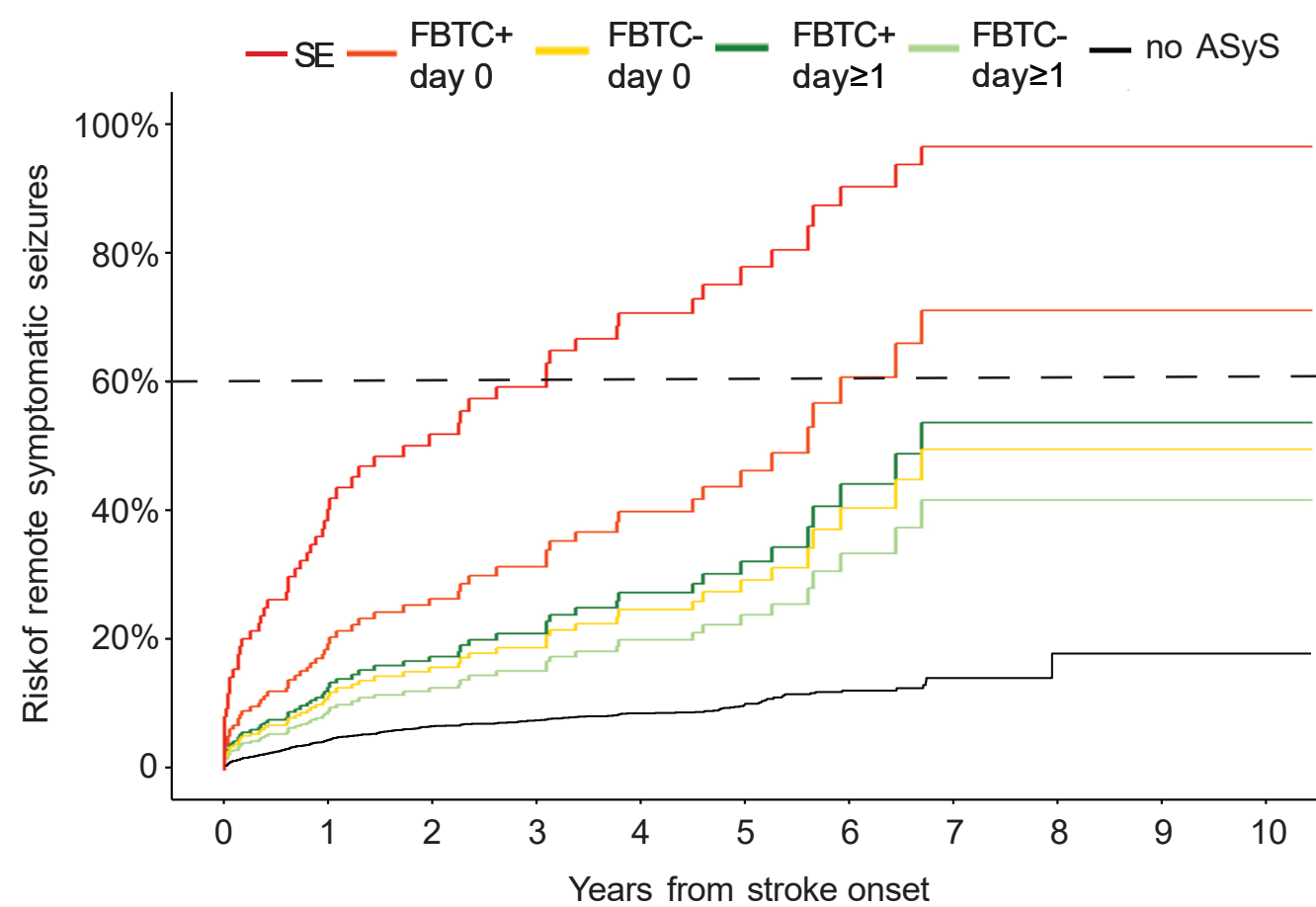
No. at risk	77	42	31	19	13	8	3	2	1	1	1
+ ASS		10%	17%	27%	32%	32%	49%	49%	49%	49%	49%

No. at risk	726	457	344	271	230	164	69	23	2	1	1
no ASS		10%	14%	16%	18%	20%	20%	20%	41%	41%	41%

risk of late recurrent seizure 1 to 10 years after stroke onset

medRxiv preprint doi: <https://doi.org/10.1101/2024.12.03.24318052>; this version posted December 3, 2024. The copyright holder for this preprint (which was not certified by peer review) is the author/funder, who has granted medRxiv a license to display the preprint in perpetuity. All rights reserved. No reuse allowed without permission.

A Remote symptomatic seizures

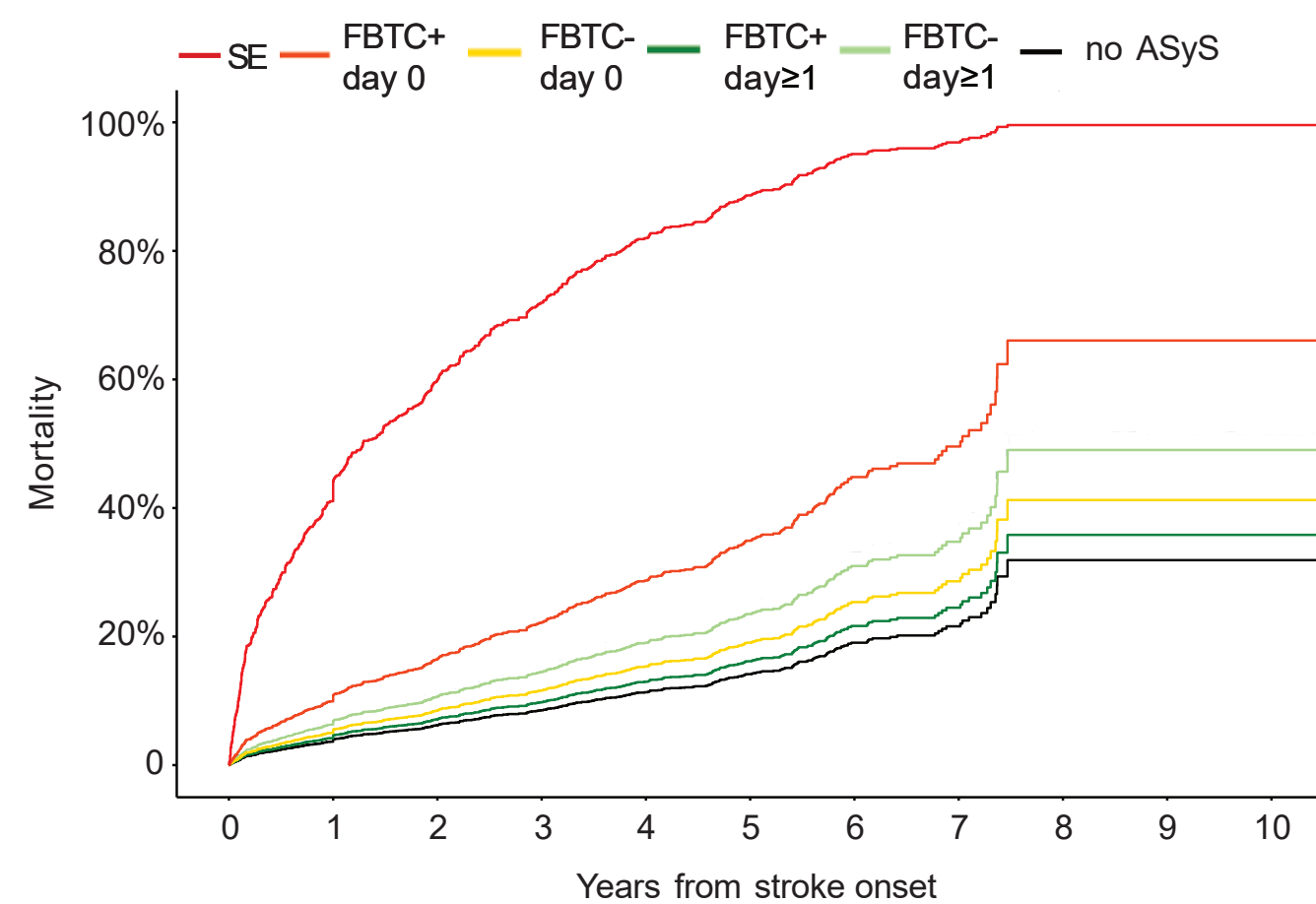


No. at risk 4552 3639 2799 1980 1647 1167 448 131 25 7 2

FBTC-, day≥0	8%	12%	15%	19%	22%	33%	41%	41%	41%	41%
FBTC+, day≥1	12%	17%	20%	27%	30%	43%	52%	52%	52%	52%
FBTC-, day 0	11%	15%	18%	27%	39%	48%	48%	48%	48%	48%
FBTC+, day 0	18%	26%	30%	39%	43%	59%	69%	69%	69%	69%
SE	38%	51%	58%	69%	73%	88%	94%	94%	94%	94%
no ASyS	2%	4%	4%	5%	6%	7%	8%	10%	13%	13%

Risk of remote symptomatic seizures 1 to 10 years after stroke onset

B Mortality

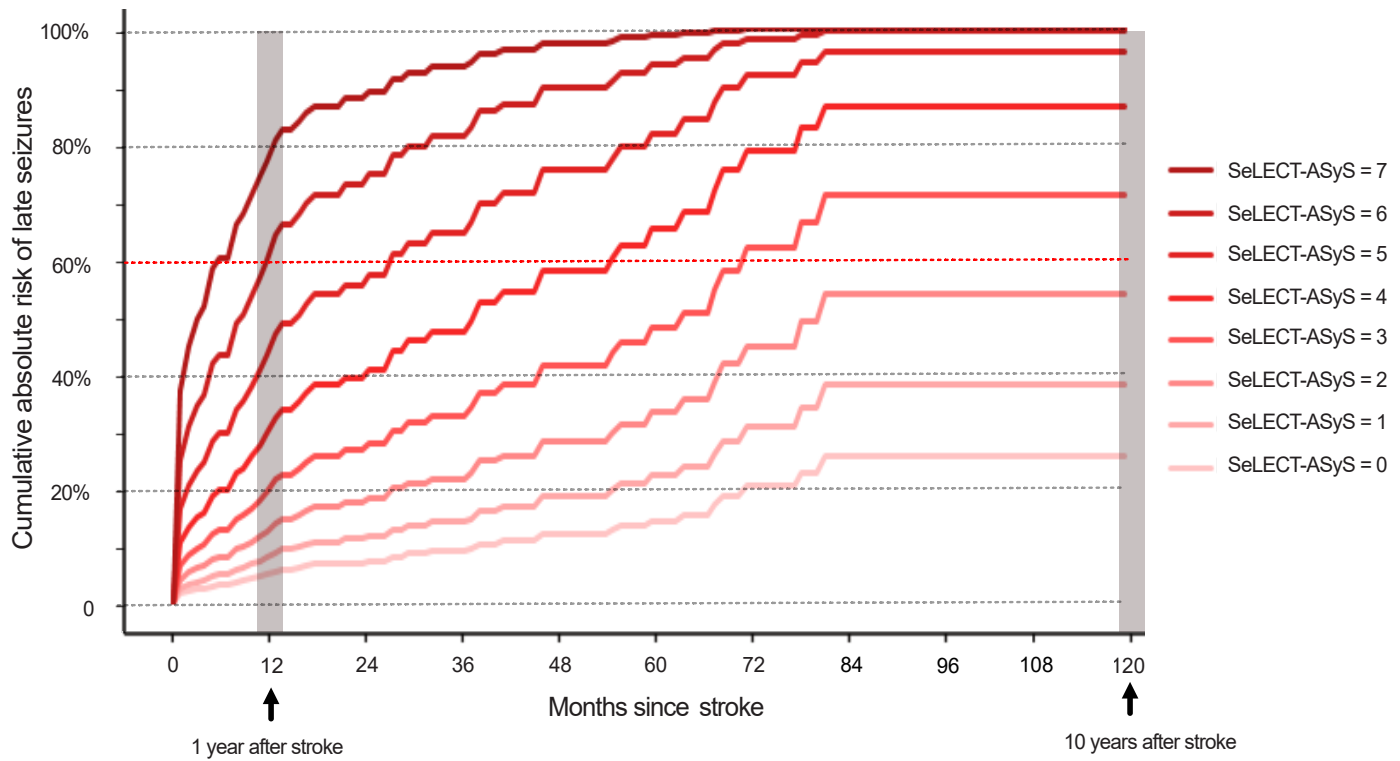


No. at risk 3084 2633 2123 1411 1159 885 407 106 6 2 1

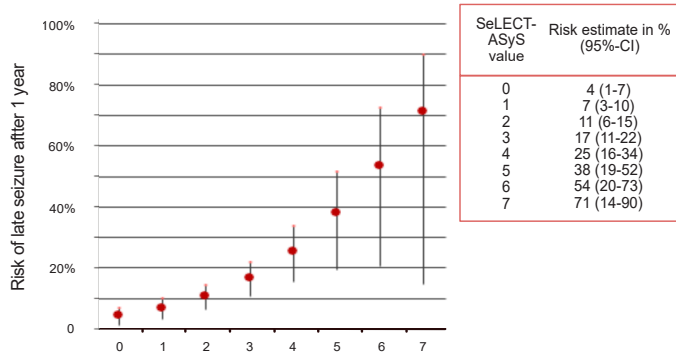
FBTC-, day≥0	7%	11%	14%	19%	23%	31%	35%	49%	49%	49%
FBTC+, day≥1	5%	7%	10%	13%	16%	22%	24%	36%	36%	36%
FBTC-, day 0	5%	8%	12%	15%	19%	25%	29%	41%	41%	41%
FBTC+, day 0	11%	17%	22%	29%	35%	45%	50%	66%	66%	66%
SE	46%	62%	73%	83%	90%	96%	97%	100%	100%	100%
no ASyS	4%	6%	9%	11%	14%	19%	22%	32%	32%	32%

Estimated all-cause mortality 1 to 10 years after stroke onset

A Prediction plot



B Risk estimate chart after 1 year of stroke



C Risk estimate chart after 10 years of stroke

