

Risk of Severe Outcomes From COVID-19 in Comorbid Populations in the Omicron Era: A Meta-analysis

Akvile Chapman¹, Dan H. Barouch², Gregory Y. H. Lip^{3,4,5}, Triantafyllos Pliakas^{6,7},
Eva Polverino^{8,9}, Harald Sourij¹⁰, Sultan Abduljawad¹¹

¹ *Maverex Market Access, Newcastle upon Tyne, UK*

² *Center for Virology and Vaccine Research, Beth Israel Deaconess Medical Center, Harvard Medical School, Boston, MA, USA*

³ *Liverpool Centre for Cardiovascular Science, University of Liverpool, Liverpool John Moores University and Liverpool Heart & Chest Hospital, Liverpool, UK*

⁴ *Danish Center for Health Services Research, Department of Clinical Medicine, Aalborg University, Aalborg, Denmark*

⁵ *Medical University of Bialystok, Bialystok, Poland*

⁶ *BioNTech SE, Mainz, Germany*

⁷ *Impact Epilysis, Thessaloniki, Greece*

⁸ *Department of Respiratory Medicine, Vall d'Hebron University Hospital, Vall d'Hebron Research Institute (VHIR), Universitat Autònoma de Barcelona (UAB), Barcelona, Spain*

⁹ *CIBER de Enfermedades Respiratorias (CIBERES), Instituto de Salud Carlos III, Madrid, Spain*

¹⁰ *Trials Unit for interdisciplinary Metabolic Medicine, Division of Endocrinology and Diabetology, Medical University of Graz, Graz, Austria*

¹¹ *BioNTech UK Ltd., London, UK*

Running header: Comorbidity and risk of severe outcomes from COVID-19

Correspondence to: Sultan Abduljawad

NOTE: This preprint reports new research that has not been certified by peer review and should not be used to guide clinical practice.

Key Points

Question: What are the risks of severe outcomes from COVID-19 in individuals with comorbidities during the Omicron era?

Findings: This systematic review and meta-analysis found increased risk of mortality and hospitalization among individuals with a range of comorbidities, including cerebrovascular/cardiovascular conditions, chronic lung diseases, and diabetes, with the highest risk in those with heart failure, versus those without. Risk of ICU admission was higher in individuals with obesity and diabetes.

Meaning: This study identified comorbid populations most at risk of severe outcomes from COVID-19. Targeting these populations with public health measures, such as vaccination, may be beneficial.

Abstract

Importance: This is the first meta-analysis to investigate risk of death and hospitalization in individuals with comorbidities, specifically during the Omicron era.

Objective: To assess the risk of mortality and hospitalization from COVID-19 in individuals with comorbidities in comparison with individuals without comorbidities during the Omicron era.

Data Sources: A systematic search of Embase, MEDLINE, PubMed, Europe PMC, Latin American and Caribbean Health Sciences Literature, Cochrane COVID-19 Study Register, and WHO COVID-19 Database was performed to identify studies published between 1 January 2022 and 13 March 2024.

Study Selection: Inclusion criteria were observational studies including people (all ages) with at least 1 of the following comorbidities: cardiovascular/ cerebrovascular disease, chronic lung conditions, diabetes, and obesity. In total, 72 studies were included in the review, of which 68 were meta-analyzed.

Data Extraction and Synthesis: Data were extracted by one reviewer and verified by a second. Studies were synthesized quantitatively (meta-analysis) using random-effect models. PRISMA guidelines were followed.

Main Outcomes and Measures: Evaluated outcomes were the risks of death, hospitalization, intensive care unit (ICU) admission, and any combination of these outcomes. Odds ratios, hazard ratios, and rate ratios were extracted; pooled relative risk (RR) and 95% confidence intervals (CI) were calculated.

Results: Minimum numbers of participants per comorbidity across included studies ranged from 328 870 for thrombosis to 13 720 480 for hypertension. Risks of death, hospitalization, and the combined outcome were increased in individuals with cerebrovascular disease, COPD, diabetes, respiratory diseases, heart disease, and heart failure versus those without (pooled RRs ranged from 1.27 [heart disease, hospitalization; 95% CI, 1.17-1.38, $P < .001$] to 1.78 [heart failure, death: 95% CI, 1.46-2.16, $P < .001$]). Individuals with diabetes and obesity had increased risk of ICU admission (RR: 1.20; 95% CI: 1.04-1.38, $P = .0141$ and RR: 1.32; 95% CI: 1.11-1.57, $P = .00158$, respectively).

Conclusions: During the Omicron era, risk of death and hospitalization from COVID-19 is increased amongst individuals with comorbidities including cerebrovascular/cardiovascular conditions, chronic lung diseases, and diabetes, with the highest risk in those with heart failure. Individuals with diabetes and obesity are at increased risk of ICU admission.

Key words: SARS-CoV-2, COVID-19, Omicron, Comorbidity

Introduction

At an early stage of the COVID-19 pandemic, individuals with comorbidities, including diabetes, obesity, respiratory, and cardiovascular diseases were more likely to experience adverse health outcomes caused by SARS-CoV-2 infection.^{1,2} Such populations may be at increased risk of death and hospitalization in comparison with the general population.¹⁻⁴

Patients infected with SARS-CoV-2 Omicron variants have exhibited milder infections and reduced hospitalization compared with the earlier Delta (B.1.617.2) variant.⁵⁻⁷ Despite this, Omicron (B.1.1.529) was classified as a variant of concern by the World Health Organization (WHO) in November 2021 due to a detrimental change in COVID-19 epidemiology.⁸ In particular, individuals with pre-existing comorbidities may still be at a higher risk of complications and death from SARS-CoV-2 infection in the current Omicron era than individuals in the general population.⁹ As SARS-CoV-2 Omicron variants evolve, understanding the impact and risk of infection on individuals with comorbidities is crucial for informed treatment and risk mitigation through vaccination or other preventative measures.

To our knowledge, this is the first systematic literature review (SLR) and meta-analysis aimed at assessing the risk of mortality and hospitalization from COVID-19 in individuals with comorbidities, including cardiovascular/cerebrovascular diseases, chronic lung conditions, diabetes, and obesity, during the Omicron era.

Methods

The SLR protocol is registered with PROSPERO (CRD42024501163). This SLR and meta-analysis adheres to the Preferred Reporting Items for Systematic Reviews and Meta-Analysis guidelines (PRISMA).

Search Strategy

The following databases were searched: Embase, MEDLINE, PubMed, Europe PMC (including MedRix and bioRxiv preprints), Latin American and Caribbean Health Sciences Literature, the Cochrane COVID-19 Study Register, and the WHO COVID-19 Database. Search strategies were structured using terms related to COVID-19 infection, risk, and burden of illness (**eMethods**).

Eligibility Criteria

Eligible studies included people (all ages) with at least 1 of the following comorbidities: cardiovascular/cerebrovascular disease, chronic lung conditions, diabetes, and obesity (**eTable 1**).

Individuals without the respective comorbidities or the general population were used as the comparator group. Evaluated outcomes were the risks of death, hospitalization (for any reason), intensive care unit (ICU) admission (for any reason), and the combined outcome (any combination of the other outcomes). COVID-19 outcomes were determined by including studies where either all patients had COVID-19 at the start of the study or all deaths and hospitalisations were related to COVID-19 (defined by the studies).

Included studies were observational (cohort, case-control, cross-sectional), published between 1 January 2022 and 13 March 2024, with full texts published in English.

Study Selection, Data Extraction, and Quality Assessment

Identified studies were first assessed at title and abstract level using the Rayyan tool¹⁰ by 2 independent reviewers to determine whether inclusion criteria were met, followed by full text screening of all studies found to be eligible. For details of data extraction and quality assessment, see **eMethods**.

Data Synthesis and Analysis

Qualitative Data Synthesis

All studies included in the review were assessed qualitatively to identify which studies could be combined in a meta-analysis. Comorbidities were grouped as follows, based on recommendations from clinical experts: asthma, cerebrovascular disease, COPD, diabetes, obesity, peripheral vascular disease (PVD), respiratory diseases (excluding asthma and COPD), atrial fibrillation, heart disease, heart failure, hypertension, and thrombosis.

Statistical Analysis

For the primary analyses, pairwise meta-analyses were performed for the risks of death, hospitalization, ICU admission, and the combined outcome for the comorbid populations, using the most adjusted reported outcome estimates. The robustness of the results was assessed using ‘Leave-1-out’,¹¹ ‘Least adjusted’, ‘Only adjusted’, and ‘Excluding studies for population overlap’ sensitivity analyses.

Subgroup analyses were conducted for the ‘Hospitalized’ or ‘General’ populations, which included only individuals who were or were not already hospitalized when they started the study, respectively. Additional subgroup analyses were performed for the ‘>50 years’ population, which included only participants older than 50 years, and the ‘COVID-19-related outcomes only’ population, which included only outcomes explicitly caused by COVID-19 (**eMethods**).

All statistical analyses were performed in R version 4.1.1 (R Foundation for Statistical Computing) using the meta package. A statistically significant ($P < .05$) result is referred to as significant thereafter.

Results

In total, 21 937 records were identified through searches and 1 study was identified via reference checking. Following elimination of duplicates, 11 593 remaining studies underwent title and abstract screening of which 3123 studies were assessed in full text screening. A total of 72 studies were selected for inclusion (**Figure 1**).

Study Characteristics

Study characteristics are summarized in **Table 1**. The studies were performed in 26 different countries, primarily in Europe (n = 15), China (n = 14), and the USA (n = 13). Most studies were retrospective cohort studies (n = 58), followed by prospective cohort (n = 7), cross-sectional (n = 6), and case-control (n = 1) studies. The ‘Death’, ‘Hospitalization’, ‘ICU admission’, and ‘Combined’ outcomes were reported in 45, 17, 20, and 17 studies, respectively. Most studies did not report Omicron subvariants, but in studies that did, BA.1 was the most common. Other reported subvariants included BA.2, BA.4, BA.5, BF.7, BQ.1, and XXB. **eTable 2** provides visualization of the Omicron period in the included studies.

Patient Characteristics

Patient characteristics are summarized in **Table 2**. Minimum numbers of participants included in analyses for each comorbidity across the included studies are reported in **Table 3**. Most studies (n = 42) included a ‘Hospitalized Population’, and the rest (n = 30) included ‘General Population’. These populations included individuals who were and were not hospitalized at the start of the study, respectively (**Table 2**). Diabetes was the most commonly reported comorbidity (n = 50 studies; **Table 3**) and

thrombosis the least commonly reported (n = 4 studies). The majority of studies (>50%) that reported vaccination status included fully vaccinated individuals.

Risk of Bias Assessment

Risk of bias (**eTable 3**) was assessed in all included studies (n = 72); 56 and 14 were found to be low and medium risk, respectively. Two studies^{12,13} were found to be high risk and were excluded from the analysis. Two additional studies were excluded from the analysis for not reporting confidence intervals (n = 1)¹⁴ and for conflicting interpretation of results within the study (n = 1).¹⁵

Meta-Analysis

The risk ratios for death, hospitalization, ICU admission, and combined outcomes among individuals with each comorbidity compared with individuals without comorbidities are shown in **Figure 2**.

Due to insufficient numbers of studies, meta-analysis was not conducted for the following outcomes and comorbid conditions: ICU admission for asthma, cerebrovascular diseases, COPD, and heart failure; all outcomes except the combined outcome for atrial fibrillation; and all outcomes for PVD and thrombosis (**Table 3**). These outcomes and comorbidities are excluded from the following meta-analysis but synthesized narratively in the supplement (**eResults**).

Risk of Death

Individuals with any of the comorbidities meta-analyzed, except asthma and obesity, had a significantly increased risk of death compared with individuals without the respective comorbidity (**Figure 2A**).

Statistical heterogeneity was considerable in all analyses except among the comorbid populations with heart failure and hypertension, which had substantial heterogeneity (**Figure 2A**). There was no statistical evidence of publication bias for any of the applicable comorbid populations analyzed, except diabetes (**eTable 4**).

All sensitivity analyses results had the same direction of effect and degree of significance as the main analysis for the risk of death outcome (**eTable 4**), indicating robustness of the main analysis results.

Subgroup analyses showed the direction of effect, versus the main analysis, changed for individuals with asthma in the 'Hospitalized' and '>50 years' subgroups (ie. these groups with asthma had significantly lower risk of death versus those without asthma) (**eTable 5**).

Risk of Hospitalization

For all meta-analyzed comorbid conditions, except asthma, individuals with the comorbidity had a significantly increased risk of hospitalization in comparison with individuals without the comorbidity (**Figure 2B**). Statistical heterogeneity was substantial or considerable for most comorbidities (7/9 applicable comorbid populations; **Figure 2B**). Publication bias was not assessed in any of the analyses due to the small number of studies, except in the comorbid group with diabetes, where no bias was found (**eTable 6**).

All sensitivity analyses results had the same direction of effect, and nearly all had the same degree of significance, as the main analyses for the risk of hospitalization outcome (**eTable 6**), indicating robustness of the main analysis results.

In all subgroup analyses, the direction of effect was the same compared with the main analysis, except individuals with asthma had (non-significantly) lower risk of hospitalization. In nearly all analyses the significance level remained unchanged (**eTable 7**).

Risk of ICU Admission

While all 5 meta-analyzed comorbidities had increased risk of ICU admission compared with individuals without the comorbidity, this risk was significant in diabetes and obesity only (**Figure 2C**).

Statistical heterogeneity ranged from not important to considerable across the analyses. Publication bias was not assessed in any of the analyses due to the small number of studies, except in the groups with diabetes and heart disease, in which no bias was found (**eTable 8**).

Four sensitivity analyses resulted in loss or gain of significance compared with the main analysis for risk of admission to ICU, although the direction of effect (ie, the higher risk of ICU admission) remained the same (**eTable 8**).

In the 'COVID-19 related only' subgroup, the increased risk of ICU admission for comorbid populations with respiratory diseases and heart disease was significant (**eTable 9**), while this relationship was non-significant in the main analysis.

Risk of the Combined Outcome (Death, Hospitalization or ICU Admission)

For all comorbid conditions, individuals with the comorbidity had significantly increased risk of the combined outcome in comparison with individuals without the comorbidity, except in individuals with asthma and hypertension, where the

increased risk was non-significant, and in individuals with obesity, who had lower (but non-significant) risk of the combined outcome in comparison with individuals without obesity (**Figure 2D**). For details of sensitivity and subgroup analyses for the combined outcome see **eResults** and **eTables 10** and **11**.

Individual meta-analyses for each comorbidity, stratified by outcome, can be found in the supplement (**eResults**).

Discussion

This SLR and meta-analysis examined the impact of SARS-CoV-2 on four outcomes in populations with comorbidities versus those without during the Omicron era. For those with cerebrovascular disease, COPD, diabetes, respiratory diseases (excluding COPD and asthma), heart disease, and heart failure, the pooled relative risks (RR) of death, hospitalization, and a combined outcome were significantly higher, ranging from 1.27 (95% CI, 1.17-1.38) to 1.78 (95% CI, 1.46-2.16). Individuals with hypertension had a significantly increased risk of death and hospitalization, with pooled RRs of 1.20 (95% CI, 1.09-1.32) and 1.48 (95% CI, 1.03-2.14), respectively. Those with obesity and atrial fibrillation demonstrated a significantly increased risk of hospitalization and combined outcomes, respectively, with pooled RRs of 1.39 (95% CI, 1.13-1.70) and 1.59 (95% CI, 1.34-1.90). Additionally, individuals with diabetes and obesity had a significantly increased risk of ICU admission, with pooled RRs of 1.20 (95% CI, 1.04-1.38) and 1.32 (95% CI, 1.11-1.57), respectively.

Of the meta-analyzed comorbid populations, individuals with heart failure had the greatest increase in pooled RRs of death at 1.78 (95% CI, 1.46-2.16), hospitalization at 1.61 (95% CI, 1.36-1.91), and the combined outcome at 1.63 (95% CI, 1.29-2.06). Individuals with asthma had a non-significant increase in risk of any severe outcome, but hospitalized individuals with asthma had a significantly lower pooled RR of death at 0.84 (95% CI, 0.75-0.95) compared with hospitalized individuals without asthma.

Cardiovascular and Cerebrovascular Disease

Individuals with cerebrovascular disease, heart disease, and heart failure had significantly higher risk of all severe outcomes from COVID-19, except ICU admission. This is consistent with several studies conducted prior to and during the Omicron era which reported longer time to recovery¹⁶ and greater risk of severe outcomes from COVID-19 in patients with cerebrovascular¹⁷⁻²⁰ and cardiovascular diseases.¹⁸⁻²¹ In the current study, individuals with hypertension had significantly higher risk of death and hospitalization, but not ICU admission or combined outcomes, consistent with a pre-Omicron meta-analysis,²² although this previous study also reported significantly higher risk of ICU admission. Individuals with atrial fibrillation had significantly higher risk of the combined outcome.

The underlying mechanisms for these outcomes are not well understood, but several have been proposed. For cerebrovascular disease, proinflammatory and hypercoagulable states associated with COVID-19 have been suggested.^{23,24} For heart disease, possible mechanisms include COVID-19–associated hypercoagulation, direct viral damage to cardiomyocytes, or pneumonia-induced gas exchange obstruction leading to cardiomyocyte injury and apoptosis.^{2,21} In heart failure and hypertension, viral uptake through increased angiotensin-converting enzyme 2 (ACE2) receptors may increase the risk of severe outcomes.^{22,25} Direct cardiac injury, increased coagulation abnormalities, thrombotic events, and stress cardiomyopathy increase the risk of severe outcomes in individuals with heart failure or atrial fibrillation.^{25,26}

Respiratory Diseases

Individuals with COPD and other respiratory diseases (including acute respiratory distress syndrome, interstitial lung disease, and chronic lung diseases excluding asthma), had significantly higher risks of death, hospitalization and the combined outcome, consistent with a pre-Omicron meta-analysis on COPD.²⁷

Micro-thrombosis, secondary bacterial infection and the effects of intrapulmonary shunting, have been proposed as potential mechanisms increasing the risk of severe outcomes from COVID-19 in COPD.²⁸ For all chronic respiratory diseases, reduced lung function at baseline may decrease tolerance to further lung injury from SARS-CoV-2 infection, resulting in poorer outcomes.²⁹ Additionally, individuals with chronic lung disease may experience impaired responses to vaccines, which may lead to increased risk of acquiring SARS-Cov-2 and developing severe complications.³⁰

The lack of association between asthma and severe outcomes from COVID-19 may be attributed to down-regulated ACE2 receptors in those with T2-high asthma, reducing susceptibility to SARS-CoV-2 infection.³¹ A previous meta-analysis found a similar protective effect of asthma; it is possible that controlling asthma symptoms by routine asthma treatment reduces worsening of symptoms and risk of hospitalization.³²

Diabetes

Risk of severe outcomes from COVID-19 was significantly increased in individuals with diabetes, consistent with pre-Omicron studies that reported increased risk of mortality.^{19,33} Cytokine storm, pulmonary and endothelial dysfunction, and

hypercoagulation have been attributed as potential mechanisms increasing the risk of severe outcomes.³⁴

Obesity

Risk of ICU admission and hospitalization were significantly increased in individuals with obesity, but there was no association with death and the combined outcome. A pre-Omicron SLR and meta-analysis found a similar pattern, with increased risk of COVID-19–related hospitalizations, but also death, unlike the current study.³⁵ The increased risk of severe disease may be explained by a hyperinflammatory response to SARS-CoV-2 infection linked to high blood levels of saturated fatty acids in patients with obesity,³⁶ as well as predisposition to immunopathological exaggeration of immuno-metabolic disorders.³⁷ A possible explanation for the protective effect from death observed in our study is that where ICU occupancy was reaching capacity within a hospital trust, individuals with obesity were explicitly prioritized in ICU admission decisions. This prioritization could be due to the difficulty in maintaining adequate oxygen levels without mechanical ventilation on a normal hospital ward.³⁸ Consequently, they may have received higher standard of care.³⁸

Quality of Evidence

To our knowledge, this is the first comprehensive SLR to assess severe outcomes from COVID-19 in people with comorbidities during the Omicron era. Most of the results included in the meta-analyses were adjusted for age and comorbidities, and main analyses were based on these most adjusted estimates, increasing confidence in the findings. In addition, several sensitivity and subgroup analyses were

performed, and most sensitivity analyses showed no change in significance from the main analyses, indicating that the pooled estimates are robust.

This study had several limitations. First, there was high clinical and statistical heterogeneity between the studies, due, in part, to variation in interpretation of outcome definitions. This was especially pronounced for the combined outcome as multiple different outcomes were included in its definition. In addition, different adjustments were used between studies: while most studies were adjusted for demographic characteristics, there were variations in adjustments of vaccination rate and comorbidities, reducing comparability of the studies.

Second, while studies included in this review cover wide geographical areas, inter-country differences, such as country-level income, are important predictors of COVID-19 control measures, which in turn affect COVID-19 rates and severity.^{39,40} However, analysis by geographical region was not performed due to the high between-study heterogeneity and small numbers of studies by region. Finally, due to lack of data, high between-study heterogeneity, and overlap in Omicron subvariant time periods, no sub-analyses were performed by time period, subvariant, vaccine type, or vaccination status. These can be important effect modifiers and should be investigated in future research.

Implications for Practice and Further Research

This study synthesizes data to enhance healthcare providers' understanding of COVID-19 disease burden in populations with comorbidities during the Omicron era and ensure targeted measures are implemented.

Vaccination is the most effective tool to reduce the risk and prevalence of COVID-19 disease, COVID-19-related hospitalization, ICU admission and death.^{4,41} Targeting vaccination and other public health measures for those patients at greatest risk due to comorbidity may help prevent or mitigate severe outcomes from COVID-19.

Due to lack of data for several comorbidities in the Omicron era, further high-quality prospective studies are needed to investigate severe outcomes from COVID-19 in the following populations: type 1 and type 2 diabetes, PVD, hypertension, and thrombosis. It would be valuable to investigate the effects of multi-morbidity and the severity of comorbidities on patient outcomes, as well as the reciprocal effect of COVID-19 on the underlying comorbidities.

Finally, further investigations into the impact of age, evolving variants, vaccination status and geographical region on comorbid individuals with COVID-19 in the Omicron era, are likely to provide more insight into disease epidemiology.

Conclusions

This SLR and meta-analysis on the burden of COVID-19 in individuals with comorbidities during the Omicron era demonstrated that those with cerebrovascular disease, COPD, diabetes, respiratory diseases, heart disease, heart failure, and hypertension are at increased risk of death and hospitalization, while individuals with diabetes and obesity are at increased risk of ICU admission, in comparison with those without the respective comorbidity. Of the meta-analyzed comorbid conditions, heart failure was associated with the greatest increase in risk of severe outcomes from COVID-19. Clinicians and policy makers should consider targeting public health measures, such as seasonal vaccination, toward these most at-risk groups to protect vulnerable populations with comorbidities who are at higher risk for developing severe outcomes following COVID-19 disease.

References

1. Nab L, Parker EPK, Andrews CD, et al. Changes in COVID-19-related mortality across key demographic and clinical subgroups in England from 2020 to 2022: a retrospective cohort study using the OpenSAFELY platform. *Lancet Public Health*. 2023;8(5):e364-e377.
2. Harrison SL, Buckley BJR, Rivera-Caravaca JM, Zhang J, Lip GYH. Cardiovascular risk factors, cardiovascular disease, and COVID-19: an umbrella review of systematic reviews. *Eur Heart J Qual Care Clin Outcomes*. 2021;7(4):330-339.
3. Chatterjee S, Nalla LV, Sharma M, et al. Association of COVID-19 with comorbidities: an update. *ACS Pharmacol Transl Sci*. 2023;6(3):334-354.
4. Ellis RJ, Moffatt CR, Aaron LT, et al. Factors associated with hospitalisations and deaths of residential aged care residents with COVID-19 during the Omicron (BA.1) wave in Queensland. *Med J Aust*. 2023;218(4):174-179.
5. Veneti L, Boas H, Brathen Kristoffersen A, et al. Reduced risk of hospitalisation among reported COVID-19 cases infected with the SARS-CoV-2 Omicron BA.1 variant compared with the Delta variant, Norway, December 2021 to January 2022. *Euro Surveill*. 2022;27(4):pii=2200077.
6. Maslo C, Friedland R, Toubkin M, et al. Characteristics and outcomes of hospitalized patients in South Africa during the COVID-19 Omicron wave compared with previous waves. *JAMA*. 2022;327(6):583–584.
7. Sheikh A, Kerr S, Woolhouse M, et al. Severity of omicron variant of concern and effectiveness of vaccine boosters against symptomatic disease in Scotland (EAVE II): a national cohort study with nested test-negative design. *Lancet Infect Dis*. 2022:959-966.
8. World Health Organization. Classification of Omicron (B.1.1.529): SARS-CoV-2 variant of concern. Updated November 26, 2021. [https://www.who.int/news/item/26-11-2021-classification-of-omicron-\(b.1.1.529\)-sars-cov-2-variant-of-concern](https://www.who.int/news/item/26-11-2021-classification-of-omicron-(b.1.1.529)-sars-cov-2-variant-of-concern). Accessed July 3, 2024.
9. Jose MM, Feng J, Nguyen HT, et al. The influence of comorbidities, general health status, and self-care self-efficacy on COVID-19 symptoms during the omicron wave. *Cureus*. 2023;15(11):e49176.
10. Ouzzani M, Hammady H, Fedorowicz Z, Elmagarmid A. Rayyan-a web and mobile app for systematic reviews. *Syst Rev*. 2016;5(1):210.
11. Viechtbauer W. Conducting meta-analyses in R with the metafor package. *J Stat Softw*. 2010;36(3):1-48.
12. Geng Y, Nie Q, Liu F, et al. Understanding clinical characteristics influencing adverse outcomes of Omicron infection: a retrospective study with propensity score matching from a Fangcang hospital. *Front Cell Infect Microbiol*. 2023;13:1115089.
13. Shakor ASaA, Samsudin EZ, Chen XW, Ghazali MH. Factors associated with COVID-19 brought-in deaths: a data-linkage comparative cross-sectional study. *J Infect Public Health*. 2023;16(12):2068-2078.
14. Morris CP, Eldesouki RE, Sachithanandham J, et al. Omicron subvariants: clinical, laboratory, and cell culture characterization. *Clin Infect Dis*. 2023;76(7):1276-1284.

15. Bao S, Lu G, Kang Y, et al. A diagnostic model for serious COVID-19 infection among older adults in Shanghai during the Omicron wave. *Front Med (Lausanne)*. 2022;9:1018516.
16. Oelsner EC, Sun Y, Balte PP, et al. Epidemiologic Features of Recovery From SARS-CoV-2 Infection. *JAMA Network Open*. 2024;7(6):e2417440-e2417440.
17. Ferrone SR, Sanmartin MX, Ohara J, et al. Acute ischemic stroke outcomes in patients with COVID-19: a systematic review and meta-analysis. *J Neurointerv Surg*. 2024;16(4):333-341.
18. Chen R, Liang W, Jiang M, et al. Risk Factors of Fatal Outcome in Hospitalized Subjects With Coronavirus Disease 2019 From a Nationwide Analysis in China. *Chest*. 2020;158(1):97-105.
19. Williamson EJ, Walker AJ, Bhaskaran K, et al. Factors associated with COVID-19-related death using OpenSAFELY. *Nature*. 2020;584(7821):430-436.
20. Wang L, He W, Yu X, et al. Coronavirus disease 2019 in elderly patients: Characteristics and prognostic factors based on 4-week follow-up. *J Infect*. 2020;80(6):639-645.
21. Mishra P, Parveen R, Bajpai R, Samim M, Agarwal NB. Impact of cardiovascular diseases on severity of COVID-19 patients: a systematic review. *Ann Acad Med Singap*. 2021;50(1):52-60.
22. Pranata R, Lim MA, Huang I, Raharjo SB, Lukito AA. Hypertension is associated with increased mortality and severity of disease in COVID-19 pneumonia: a systematic review, meta-analysis and meta-regression. *J Renin Angiotensin Aldosterone Syst*. 2020;21(2):1470320320926899.
23. Katz JM, Libman RB, Wang JJ, et al. Cerebrovascular complications of COVID-19. *Stroke*. 2020;51(9):e227-e231.
24. Ntaios G, Michel P, Georgiopoulos G, et al. Characteristics and outcomes in patients with COVID-19 and acute ischemic stroke: the global COVID-19 stroke registry. *Stroke*. 2020;51(9):e254-e258.
25. Bader F, Manla Y, Atallah B, Starling RC. Heart failure and COVID-19. *Heart Fail Rev*. 2021;26(1):1-10.
26. Li Z, Shao W, Zhang J, et al. Prevalence of atrial fibrillation and associated mortality among hospitalized patients with COVID-19: a systematic review and meta-analysis. *Front Cardiovasc Med*. 2021;8:720129.
27. Gerayeli FV, Milne S, Cheung C, et al. COPD and the risk of poor outcomes in COVID-19: a systematic review and meta-analysis. *EClinicalMedicine*. 2021;33:100789.
28. Singh D, Mathioudakis AG, Higham A. Chronic obstructive pulmonary disease and COVID-19: interrelationships. *Curr Opin Pulm Med*. 2022;28(2):76-83.
29. Russell CD, Lone NI, Baillie JK. Comorbidities, multimorbidity and COVID-19. *Nat Med*. 2023;29(2):334-343.
30. Liu H, Aviszus K, Zelarney P, et al. Vaccine-elicited B- and T-cell immunity to SARS-CoV-2 is impaired in chronic lung disease patients. *ERJ Open Res*. 2023;9(5):00400-02023.
31. Sunjaya AP, Allida SM, Di Tanna GL, Jenkins C. Asthma and risk of infection, hospitalization, ICU admission and mortality from COVID-19: systematic review and meta-analysis. *J Asthma*. 2022;59(5):866-879.
32. Shi L, Han X, Wang Y, Xu J, Yang H. Significant association between asthma and a lower risk of mortality among COVID-19 patients in Spain: A meta-analysis. *Qatar Med J*. 2024;2024(3):34.

33. Javid FA, Waheed FA, Zainab N, et al. COVID-19 and diabetes in 2020: a systematic review. *J Pharm Policy Pract.* 2023;16(1):42.
34. Erener S. Diabetes, infection risk and COVID-19. *Mol Metab.* 2020;39:101044.
35. Sawadogo W, Tsegaye M, Gizaw A, Adera T. Overweight and obesity as risk factors for COVID-19-associated hospitalisations and death: systematic review and meta-analysis. *BMJ Nutr Prev Health.* 2022;5(1):10-18.
36. Moraes-Vieira P. Immuno-metabolic regulation of macrophages in health and diseases. Presented at: FAPESP Week; June 29, 2024; Shenzhen, China. <https://fapesp.br/week/study-reveals-new-factor-associated-with-the-risk-of-severe-covid-19-in-people-with-obesity>
37. Khwatenge CN, Pate M, Miller LC, Sang Y. Immunometabolic Dysregulation at the Intersection of Obesity and COVID-19. Review. *Frontiers in Immunology.* 2021;12
38. Dana R, Bannay A, Bourst P, et al. Obesity and mortality in critically ill COVID-19 patients with respiratory failure. *Int J Obes (Lond).* 2021;45(9):2028-2037.
39. Durmuş V. Is the country-level income an important factor to consider for COVID-19 control? An analysis of selected 100 countries. *Int J Health Gov.* 2021;26(2):100-113.
40. Hopman J, Mehtar S. Country level analysis of COVID-19 policies. *EClinicalMedicine.* 2020;25:100500.
41. Whitaker HJ, Tsang RSM, Byford R, et al. COVID-19 vaccine effectiveness against hospitalisation and death of people in clinical risk groups during the Delta variant period: English primary care network cohort study. *Journal of Infection.* 2023;87(4):315-327.
42. Agrawal U, Bedston S, McCowan C, et al. Severe COVID-19 outcomes after full vaccination of primary schedule and initial boosters: pooled analysis of national prospective cohort studies of 30 million individuals in England, Northern Ireland, Scotland, and Wales. *Lancet.* 2022;400(10360):1305-1320.
43. AlBahrani S, AlBarrak A, Al-Musawi T, et al. COVID-19 vaccine had a significant positive impact on patients with SARS-COV-2 during the third (Omicron) wave in Saudi Arabia. *J Infect Public Health.* 2022;15(11):1169-1174.
44. Arbel R, Peretz A, Sergienko R, et al. Effectiveness of a bivalent mRNA vaccine booster dose to prevent severe COVID-19 outcomes: a retrospective cohort study. *Lancet Infect Dis.* 2023;23(8):914-921.
45. Arbel R, Sergienko R, Friger M, et al. Effectiveness of a second BNT162b2 booster vaccine against hospitalization and death from COVID-19 in adults aged over 60 years. *Nat Med.* 2022;28(7):1486-1490.
46. Bedston S, Almaghrabi F, Patterson L, et al. Risk of severe COVID-19 outcomes after autumn 2022 COVID-19 booster vaccinations: a pooled analysis of national prospective cohort studies involving 7.4 million adults in England, Northern Ireland, Scotland and Wales. *Lancet Reg Health Eur.* 2024;37:100816.
47. Benites-Godínez V, Mendoza-Cano O, Trujillo X, et al. Survival analysis and contributing factors among PCR-confirmed adult inpatients during the endemic phase of COVID-19. *Diseases.* 2023;11(3):119.
48. Beraud G, Bouetard L, Civljak R, et al. Impact of vaccination on the presence and severity of symptoms in hospitalized patients with an infection of the

- Omicron variant (B.1.1.529) of the SARS-CoV-2 (subvariant BA.1). *Clin Microbiol Infect.* 2023;29(5):642-650.
49. Briciu V, Topan A, Calin M, et al. Comparison of COVID-19 severity in vaccinated and unvaccinated patients during the Delta and Omicron wave of the pandemic in a Romanian tertiary infectious diseases hospital. *Healthcare.* 2023;11(3):373.
 50. Brosh-Nissimov T, Hussein K, Wiener-Well Y, et al. Hospitalized patients with severe coronavirus disease 2019 during the Omicron wave in Israel: benefits of a fourth vaccine dose. *Clin Infect Dis.* 2022;76(3):e234-e239.
 51. Bulgaresi M, Rivasi G, Tarantini F, et al. Impact of SARS-CoV2 infection on mortality and hospitalization in nursing home residents during the “Omicron era”. *Aging Clin Exp Res.* 2023;35(6):1393-1399.
 52. Chan M, Owens L, Gray ML, et al. Asthma and susceptibility to COVID-19 in Australian children during Alpha, Delta and Omicron waves of the COVID-19 pandemic. *J Asthma Allergy.* 2023;16(null):1139-1155.
 53. Chen CL, Teng CK, Chen WC, et al. Clinical characteristics and treatment outcomes among the hospitalized elderly patients with COVID-19 during the late pandemic phase in central Taiwan. *J Microbiol Immunol Infect.* 2024;57(2):257-268.
 54. Choi S-H, Choi JH, Lee JK, et al. Clinical characteristics and outcomes of children with SARS-CoV-2 infection during the Delta and Omicron variant-dominant periods in Korea. *J Korean Med Sci.* 2023;38(9):e65.
 55. de Prost N, Audureau E, Heming N, et al. Clinical phenotypes and outcomes associated with SARS-CoV-2 variant Omicron in critically ill French patients with COVID-19. *Nat Commun.* 2022;13(1):6025.
 56. Drummond PD, de Salles DB, de Souza NSH, et al. Profile and outcomes of hospitalized COVID-19 patients during the prevalence of the Omicron variant according to the Brazilian regions: a retrospective cohort study from 2022. *Vaccines.* 2023;11(10):1568.
 57. Elamin MY, Maslamani YA, Alsheikh FA, et al. Impact of vaccination on morbidity and mortality in adults hospitalized with COVID-19 during the Omicron wave in the Jazan Region, Saudi Arabia. *Saudi Med J.* 2024;45(2):179-187.
 58. Favia G, Barile G, Tempesta A, et al. Relationship between oral lesions and severe SARS-CoV-2 infection in intensive care unit patients. *Oral Dis.* 2024;30(3):1296-1303.
 59. Finkas LK, Ramesh N, Block LS, et al. Asthma and COVID-19 outcomes: a prospective study in a large health care delivery system. *J Asthma Allergy.* 2023;16:1041-1051.
 60. Flacco ME, Acuti Martellucci C, Soldato G, et al. Predictors of SARS-CoV-2 infection and severe and lethal COVID-19 after three years of follow-up: a population-wide study. *Viruses.* 2023;15(9):1794.
 61. Flisiak R, Zarębska-Michaluk D, Dobrowolska K, et al. Change in the clinical picture of hospitalized patients with COVID-19 between the early and late period of dominance of the Omicron SARS-CoV-2 variant. *J Clin Med.* 2023;12(17):5572.
 62. Gazit S, Saciuk Y, Perez G, et al. Short term, relative effectiveness of four doses versus three doses of BNT162b2 vaccine in people aged 60 years and older in Israel: retrospective, test negative, case-control study. *BMJ.* 2022;377:e071113.

63. Grannec F, Meddeb L, Tissot-Dupont H, Gentile S, Brouqui P. Pre-hospital management of patients with COVID-19 and the impact on hospitalization. *Medicina*. 2023;59(8):1440.
64. Griggs EP, Mitchell PK, Lazariu V, et al. Clinical epidemiology and risk factors for critical outcomes among vaccinated and unvaccinated adults hospitalized with COVID-19-VISION Network, 10 states, June 2021-March 2023. *Clin Infect Dis*. 2024;78(2):338-348.
65. Guo Y, Guo Y, Ying H, et al. In-hospital adverse outcomes and risk factors among chronic kidney disease patients infected with the omicron variant of SARS-CoV-2: a single-center retrospective study. *BMC Infect Dis*. 2023;23(1):698.
66. Helmy MA, Milad LM, Hasanin AM, et al. Parasternal intercostal thickening at hospital admission: a promising indicator for mechanical ventilation risk in subjects with severe COVID-19. *J Clin Monit Comput*. 2023;37(5):1287-1293.
67. Hippisley-Cox J, Khunti K, Sheikh A, Nguyen-Van-Tam JS, Coupland CAC. Risk prediction of covid-19 related death or hospital admission in adults testing positive for SARS-CoV-2 infection during the omicron wave in England (QCOVID4): cohort study. *BMJ*. 2023;381:e072976.
68. Jamaati H, Karimi S, Ghorbani F, et al. Effectiveness of different vaccine platforms in reducing mortality and length of ICU stay in severe and critical cases of COVID-19 in the Omicron variant era: a national cohort study in Iran. *J Med Virol*. 2023;95(3):e28607.
69. Karageorgou V, Papaioannou AI, Kallieri M, et al. Patients hospitalized for COVID-19 in the periods of Delta and Omicron variant dominance in Greece: determinants of severity and mortality. *J Clin Med*. 2023;12(18):5904.
70. Kim SH, Kim T, Choi H, Shin TR, Sim YS. Clinical outcome and prognosis of a nosocomial outbreak of COVID-19. *J Clin Med*. 2023;12(6):2279.
71. Klein EY, Fall A, Norton JM, et al. Severity outcomes associated with SARS-CoV-2 XBB variants, an observational analysis. *J Clin Virol*. 2023;165:105500.
72. Lee CM, Kim M, Park SW, et al. Clinical outcomes and immunological features of COVID-19 patients receiving B-cell depletion therapy during the Omicron era. *Infect Dis (Lond)*. 2024;56(2):116-127.
73. Lewnard JA, Hong VX, Patel MM, et al. Clinical outcomes associated with SARS-CoV-2 Omicron (B.1.1.529) variant and BA.1/BA.1.1 or BA.2 subvariant infection in Southern California. *Nat Med*. 2022;28(9):1933-1943.
74. Li D-J, Zhou C-C, Huang F, Shen F-M, Li Y-C. Clinical features of omicron SARS-CoV-2 variants infection associated with co-infection and ICU-acquired infection in ICU patients. *Front Public Health*. 2024;11:1320340.
75. Li H, Jia X, Wang Y, et al. Differences in the severity and mortality risk factors for patients hospitalized for COVID-19 pneumonia between the early wave and the very late stage of the pandemic. *Front Med (Lausanne)*. 2023;10:1238713.
76. Liu Y, Chen D, Li J, et al. Metabolic syndrome is associated with poor Omicron infection prognosis while inactivated vaccine improves the outcome of Coronavirus Disease 2019 among Chinese inhabitants: a retrospective observational study from a Chinese municipality. *Vaccines*. 2023;11(10):1554.
77. Liu Y, Qi Z, Bai M, et al. Combination of chest computed tomography value and clinical laboratory data for the prognostic risk evaluation of patients with COVID-19. *Int J Gen Med*. 2023;16:3829-3842.

78. Lu G, Zhang Y, Zhang H, et al. Geriatric risk and protective factors for serious COVID-19 outcomes among older adults in Shanghai Omicron wave. *Emerg Microbes Infect.* 2022;11(1):2045-2054.
79. Manchanda V, Mitra S, Rafique I, et al. Is Omicron really mild? – Comparative analysis of comorbidities and disease outcomes associated with SARS-CoV-2 Omicron (B.1.1.529) and Delta (B.1.617.2) variants. *Indian J Med Microbiol.* 2023;45:100391.
80. Mayer C, Woo MS, Brehm TT, et al. History of cerebrovascular disease but not dementia increases the risk for secondary vascular events during SARS-CoV-2 infection with presumed Omicron variant: a retrospective observational study. *Eur J Neurol.* 2023;30(8):2297-2304.
81. McNeil T, Zhang F, Moffatt S, Emeto TI, Tucker E. Nosocomial COVID-19 infection in the era of vaccination and antiviral therapy. *Intern Med J.* 2024;54(3):374-381.
82. Mendoza-Cano O, Trujillo X, Ríos-Silva M, et al. Association between vaccination status for COVID-19 and the risk of severe symptoms during the endemic phase of the disease. *Vaccines.* 2023;11(10):1512.
83. Mizrahi Reuveni M, Kertes J, Shapiro Ben David S, et al. Risk stratification model for severe COVID-19 disease: a retrospective cohort study. *Biomedicines.* 2023;11(3):767.
84. Mosallami Aghili SM, Khoshfetrat M, Asgari A, et al. Association of echocardiographic findings with in-hospital mortality of COVID-19 patients and their changes in one-month follow-up; a cohort study. *Arch Acad Emerg Med.* 2022;10(1):e85.
85. Mumtaz A, Rehman E, Rahaman MA, Rehman S. Inflammatory biomarkers and cardiac injury in COVID-19 patients. *Front Public Health.* 2022;10:1024535.
86. O'Leary AL, Wattengel BA, Carter MT, Drye AF, Mergenhagen KA. Risk factors associated with mortality in hospitalized patients with laboratory confirmed SARS-CoV-2 infection during the period of omicron (B.1.1.529) variant predominance. *Am J Infect Control.* 2023;51(6):603-606.
87. Parajuli P, Sabo R, Alsaadawi R, et al. Fibrosis-4 (FIB-4) index as a predictor for mechanical ventilation and 30-day mortality across COVID-19 variants. *J Clin Transl Sci.* 2023;7(1):e213.
88. Parra-Bracamonte GM, Lopez-Villalobos N, Velazquez MA, et al. Comparative analysis of risk factors for COVID-19 mortality before, during and after the vaccination programme in Mexico. *Public Health.* 2023;215:94-99.
89. Patton MJ, Orihuela CJ, Harrod KS, et al. COVID-19 bacteremic co-infection is a major risk factor for mortality, ICU admission, and mechanical ventilation. *Crit Care.* 2023;27(1):34.
90. Radhakrishnan N, Liu M, Idowu B, et al. Comparison of the clinical characteristics of SARS-CoV-2 Delta (B.1.617.2) and Omicron (B.1.1.529) infected patients from a single hospitalist service. *BMC Infect Dis.* 2023;23(1):747.
91. Russell SL, Klaver BRA, Harrigan SP, et al. Clinical severity of Omicron subvariants BA.1, BA.2, and BA.5 in a population-based cohort study in British Columbia, Canada. *J Med Virol.* 2023;95(1):e28423.
92. Sardinha DM, Ferreira ALdS, Guimarães RJdPSe, Lima KVB, Lima LNGC. Clinical characteristics and outcomes among vaccinated and unvaccinated

- patients with cardiovascular disease who were hospitalized for COVID-19 in Brazil: retrospective cohort. *Vaccines*. 2023;11(4):861.
93. Shi HJ, Yang J, Eom JS, et al. Clinical characteristics and risk factors for mortality in critical COVID-19 patients aged 50 years or younger during Omicron wave in Korea: comparison with patients older than 50 years of age. *J Korean Med Sci*. 2023;38(28):e217.
 94. Simmons AE, Amoako A, Grima AA, et al. Vaccine effectiveness against hospitalization among adolescent and pediatric SARS-CoV-2 cases between May 2021 and January 2022 in Ontario, Canada: a retrospective cohort study. *PLoS One*. 2023;18(3):e0283715.
 95. Skarbinski J, Wood MS, Chervo TC, et al. Risk of severe clinical outcomes among persons with SARS-CoV-2 infection with differing levels of vaccination during widespread Omicron (B.1.1.529) and Delta (B.1.617.2) variant circulation in Northern California: a retrospective cohort study. *Lancet Reg Health Am*. 2022;12:100297.
 96. Sonaglioni A, Lombardo M, Albin A, et al. Charlson comorbidity index, neutrophil-to-lymphocyte ratio and undertreatment with renin-angiotensin-aldosterone system inhibitors predict in-hospital mortality of hospitalized COVID-19 patients during the omicron dominant period. *Front Immunol*. 2022;13:958418.
 97. Stepanova M, Lam B, Younossi E, et al. The impact of variants and vaccination on the mortality and resource utilization of hospitalized patients with COVID-19. *BMC Infect Dis*. 2022;22(1):702.
 98. Tsujimoto Y, Kobayashi M, Oku T, et al. Outcomes in novel hospital-at-home model for patients with COVID-19: a multicentre retrospective cohort study. *Fam Pract*. 2023;40(5-6):662-670.
 99. Vo AD, La J, Wu JT, et al. Factors associated with severe COVID-19 among vaccinated adults treated in US veterans affairs hospitals. *JAMA Netw Open*. 2022;5(10):e2240037.
 100. Wang X, Zein J, Ji X, Lin DY. Impact of vaccination, prior infection, and therapy on Omicron infection and mortality. *J Infect Dis*. 2023;227(8):970-976.
 101. Ward IL, Robertson C, Agrawal U, et al. Risk of COVID-19 death in adults who received booster COVID-19 vaccinations in England. *Nat Commun*. 2024;15(1):398.
 102. Xin S, Chen W, Yu Q, Gao L, Lu G. Effect of the number of coronavirus disease 2019 (COVID-19) vaccination shots on the occurrence of pneumonia, severe pneumonia, and death in SARS-CoV-2-infected patients. *Front Public Health*. 2024;11:1330106.
 103. Yang H, Wang Z, Zhang Y, et al. Clinical characteristics and factors for serious outcomes among outpatients infected with the Omicron subvariant BF.7. *J Med Virol*. 2023;95(8):e28977.
 104. Ying-Hao P, Yuan-Yuan G, Hai-Dong Z, et al. Clinical characteristics and analysis of risk factors for disease progression of patients with SARS-CoV-2 Omicron variant infection: a retrospective study of 25207 cases in a Fangcang hospital. *Front Cell Infect Microbiol*. 2022;12:1009894.
 105. Zhang Y, Han J, Sun F, et al. A practical scoring model to predict the occurrence of critical illness in hospitalized patients with SARS-CoV-2 omicron infection. *Front Microbiol*. 2022;13:1031231.

106. Zhao Q, Zheng B, Han B, et al. Is azvudine comparable to nirmatrelvir-ritonavir in real-world efficacy and safety for hospitalized patients with COVID-19? a retrospective cohort study. *Infect Dis Ther.* 2023;12(8):2087-2102.
107. Zhu Z, Cai J, Tang Q, et al. Circulating eosinophils associated with responsiveness to COVID-19 vaccine and the disease severity in patients with SARS-CoV-2 omicron variant infection. *BMC Pulm Med.* 2023;23(1):177.

Tables and figures

Figure 1. PRISMA Flow Diagram

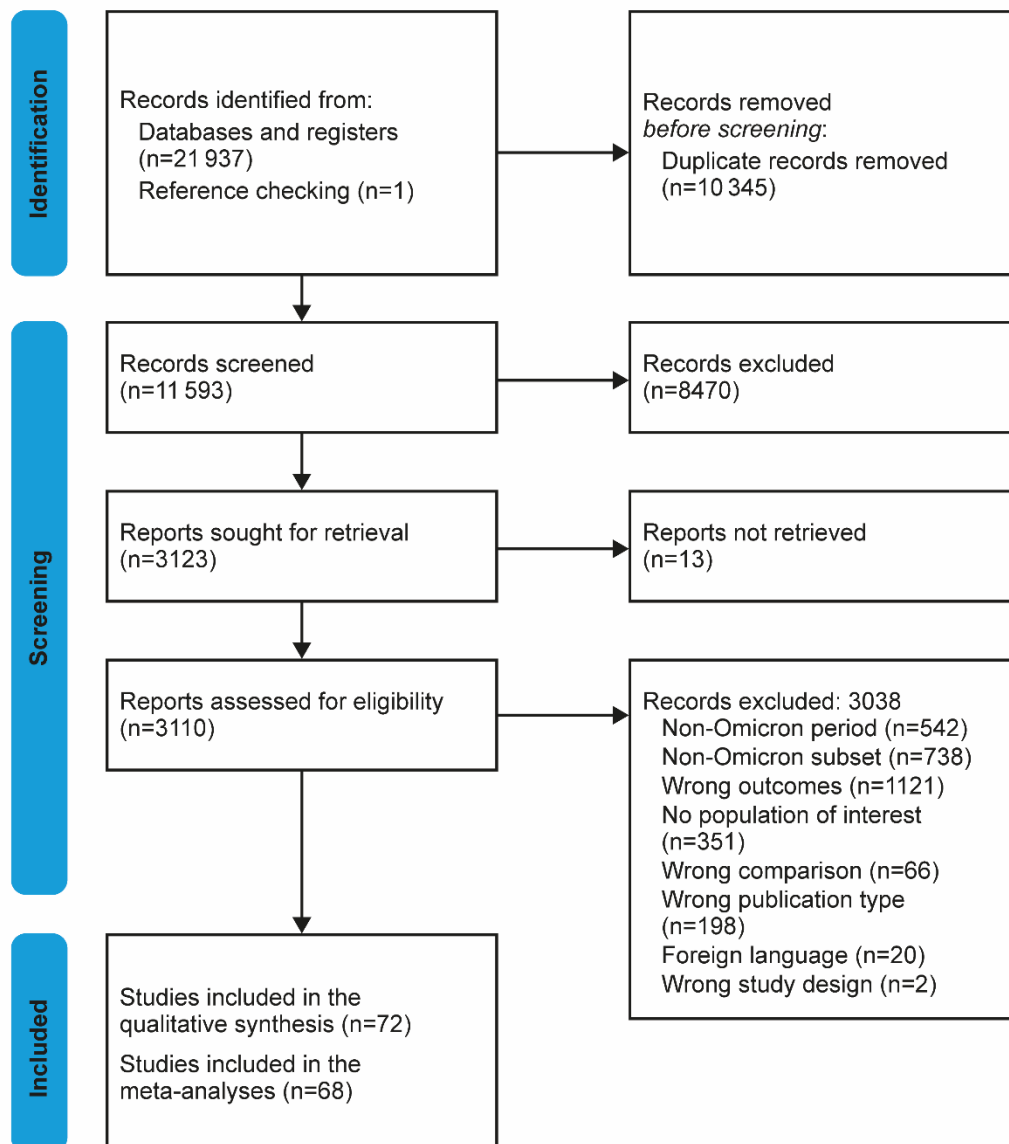
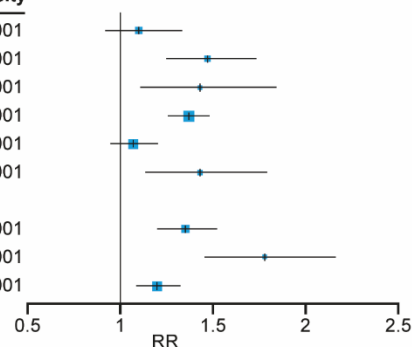


Figure 2. Forest Plots of the Risk of A) Death B) Hospitalization C) ICU Admission, and D) Combined Outcomes by Comorbid Population

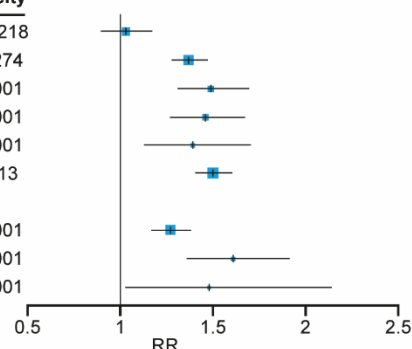
A: Death

Comorbidity	RR (95% CI)	P value	No. of subgroups	Heterogeneity
Asthma	1.1 (0.92, 1.33)	.302	12	93%, $P < .001$
Cerebrovascular	1.47 (1.25, 1.73)	$< .001$	11	90%, $P < .001$
COPD	1.43 (1.11, 1.84)	.00498	12	94%, $P < .001$
Diabetes	1.37 (1.26, 1.48)	$< .001$	40	91%, $P < .001$
Obesity	1.07 (0.95, 1.2)	.268	21	92%, $P < .001$
Respiratory diseases	1.43 (1.14, 1.79)	.00174	23	98%, $P < .001$
Cardiovascular diseases				
Heart disease	1.35 (1.2, 1.52)	$< .001$	29	98%, $P < .001$
Heart failure	1.78 (1.46, 2.16)	$< .001$	11	87%, $P < .001$
Hypertension	1.2 (1.09, 1.32)	$< .001$	23	78%, $P < .001$



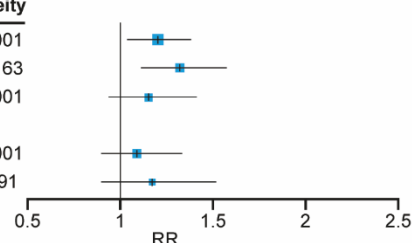
B: Hospitalization

Comorbidity	RR (95% CI)	P value	No. of subgroups	Heterogeneity
Asthma	1.03 (0.9, 1.17)	.693	5	65%, $P = .0218$
Cerebrovascular	1.37 (1.28, 1.47)	$< .001$	6	21%, $P = .274$
COPD	1.49 (1.31, 1.69)	$< .001$	8	91%, $P < .001$
Diabetes	1.46 (1.27, 1.67)	$< .001$	13	96%, $P < .001$
Obesity	1.39 (1.13, 1.7)	.00158	9	89%, $P < .001$
Respiratory diseases	1.5 (1.41, 1.6)	$< .001$	6	0%, $P = .413$
Cardiovascular diseases				
Heart disease	1.27 (1.17, 1.38)	$< .001$	8	74%, $P < .001$
Heart failure	1.61 (1.36, 1.91)	$< .001$	7	91%, $P < .001$
Hypertension	1.48 (1.03, 2.14)	.0341	5	90%, $P < .001$



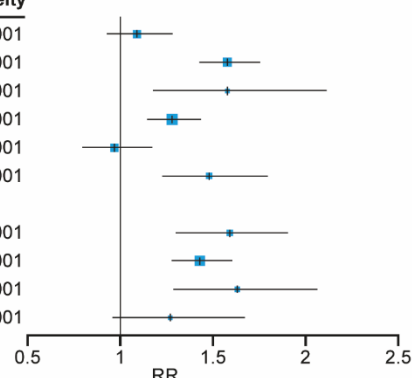
C: ICU Admission

Comorbidity	RR (95% CI)	P value	No. of subgroups	Heterogeneity
Diabetes	1.2 (1.04, 1.38)	.0141	13	72%, $P < .001$
Obesity	1.32 (1.11, 1.57)	.00158	6	37%, $P = .163$
Respiratory diseases	1.15 (0.94, 1.41)	.162	7	84%, $P < .001$
Cardiovascular diseases				
Heart disease	1.09 (0.9, 1.33)	.37	11	94%, $P < .001$
Hypertension	1.17 (0.9, 1.51)	.235	7	0%, $P = .791$



D: Combined Outcome

Comorbidity	RR (95% CI)	P value	No. of subgroups	Heterogeneity
Asthma	1.09 (0.93, 1.28)	.291	9	93%, $P < .001$
Cerebrovascular	1.58 (1.43, 1.75)	$< .001$	8	84%, $P < .001$
COPD	1.58 (1.18, 2.11)	.00229	9	99%, $P < .001$
Diabetes	1.28 (1.15, 1.43)	$< .001$	19	84%, $P < .001$
Obesity	0.97 (0.8, 1.17)	.714	7	84%, $P < .001$
Respiratory diseases	1.48 (1.23, 1.79)	$< .001$	10	78%, $P < .001$
Cardiovascular diseases				
Atrial fibrillation	1.59 (1.34, 1.9)	$< .001$	5	91%, $P < .001$
Heart disease	1.43 (1.28, 1.6)	$< .001$	17	92%, $P < .001$
Heart failure	1.63 (1.29, 2.06)	$< .001$	7	98%, $P < .001$
Hypertension	1.27 (0.96, 1.67)	.0945	17	98%, $P < .001$



Abbreviations: CI, confidence interval; COPD, chronic obstructive pulmonary disease; ICU, intensive care unit; RR, risk ratio.

Table 1. Characteristics of the Included Studies

Study	Country	Study design	Study setting	Study duration	Omicron period	Omicron subvariant
Agrawal 2022⁴²	UK	Prospective cohort study	Healthcare database	December 2021-February 2022	Omicron was dominant after 14 December 2021 (20 December 2021-28 February 2022)	NR
AlBahrani 2022⁴³	Saudi Arabia	Retrospective cohort study	Single center	December 2021-February 2022	25 December 2021-28 February 2022	NR
Arbel 2023⁴⁴	Israel	Retrospective cohort study	Healthcare database	September 2022-January 2023	Omicron predominant period (27 September 2022-25 January 2023)	BA.5 and BQ.1
Arbel 2022⁴⁵	Israel	Retrospective cohort study	Healthcare database	January 2022-February 2022	3 January-20 February 2022	B.1.1.529
Bao 2022^{15a}	China	Cross-sectional study	Single center	April 2022-May 2022	Shanghai Omicron pandemic (April-May 2022)	BA.2
Bedston 2024⁴⁶	UK	Prospective cohort study	Multi-center	September-December 2022	September-December 2022	NR

Study	Country	Study design	Study setting	Study duration	Omicron period	Omicron subvariant
Benites-Godínez 2023⁴⁷	Mexico	Retrospective cohort study	Healthcare database	May 2023-July 2023	Omicron predominant period (5 May-26 July 2023)	NR
Beraud 2023⁴⁸	Bulgaria, Croatia, France, Turkey	Retrospective cohort study	Multi-center	December 2021-March 2022	Omicron was the only circulating variant during the study period (1 December 2021-3 March 2022)	B.1.1.529 (subvariant BA.1)
Briciu 2023⁴⁹	Romania	Retrospective cohort study	Single center	September 2021-May 2022	Omicron Wave 5 (16 January-31 May 2022)	NR
Brosh-Nissimov 2023⁵⁰	Israel	Retrospective cohort study	Multi-center	15 - 31 January 2022	Omicron was the most common circulating variant during the study period (15-31 January 2022)	NR
Bulgaresi 2023⁵¹	Italy	Retrospective cohort study	Multi-center	December 2021-March 2022	Omicron era (24 December 2021-31 March 2022)	NR
Chan 2023⁵²	Australia	Cross-sectional study	Multi-center	January 2020-May 2022	Omicron BA.1 wave (November 2021-February 2022);	BA.1 and BA.2

Study	Country	Study design	Study setting	Study duration	Omicron period	Omicron subvariant
					Omicron BA.2 wave (March 2022-May 2022)	
Chen 2024 ⁵³	Taiwan	Retrospective cohort study	Single center	January 2022-August 2022	Omicron was prevalent variant during the study period (January-August 2022)	NR
Choi 2023 ⁵⁴	South Korea	Retrospective cohort study	Multi-center	August 2021-March 2022	Omicron variants accounted for >90% of sequenced isolates (January - March 2022)	NR
de Prost 2022 ⁵⁵	France	Prospective cohort study	Multi-center	December 2021-May 2022	Omicron predominant period (January-May 2022)	BA.1, BA.1.1, BA.2
Drummond 2023 ⁵⁶	Brazil	Retrospective cohort study	Healthcare database	January 2022-April 2023	Omicron and subvariants (January-December 2022)	BA.4/BA.5
Elamin 2024 ⁵⁷	Saudi Arabia	Retrospective cohort study	Multi-center	January 2022-June 2022	Peak period for Omicron wave in Jazan Region (January-June 2022)	NR

Study	Country	Study design	Study setting	Study duration	Omicron period	Omicron subvariant
Ellis 2023⁴	Australia	Retrospective cohort study	Multi-center	December 2021-January 2022	Omicron dominant period (December 2021 - January 2022)	BA.1 (predominant)
Favia 2023⁵⁸	Italy	Prospective cohort study	Single center	January 2022-March 2022	Omicron-1 variant period (January-March 2022)	NR
Finkas 2023⁵⁹	USA	Prospective cohort study	Healthcare database	March 2020-August 2022	January-August 2022	NR
Flacco 2023⁶⁰	Italy	Retrospective cohort study	Healthcare database	February 2020-February 2023	Omicron predominant period (1 January 2022-15 February 2023)	NR
Flisiak 2023⁶¹	Poland	Retrospective cohort study	Multi-center	January 2022-April 2023	Early Omicron phase (January-June 2022); Late Omicron phase (July 2022-April 2023)	BA.1 and BA.2 (dominant in early period); BA.5, BQ.1, XBB, XBB.1.5, and XBB.1.9 (dominant in later period)
Gazit 2022⁶²	Israel	Case-control study	Healthcare database	January-March 2022	10 January-13 March 2022	NR
Geng 2023^{12a}	China	Retrospective cohort study	Single center	April-May 2022	6 April-16 May 2022	NR

Study	Country	Study design	Study setting	Study duration	Omicron period	Omicron subvariant
Grannec 2023 ⁶³	France	Retrospective cohort study	Single center	February -March 2022	1 February-7 March 2022	NR
Griggs 2024 ⁶⁴	USA	Retrospective cohort study	Healthcare database	June 2021-March 2023	16 December 2021-29 March 2023	BA.1, BA.2, BA.4, BA.5, and Post-BA.4/BA.5
Guo 2023 ⁶⁵	China	Retrospective cohort study	Single center	March - May 2022	29 March - 17 May 2022	NR
Helmy 2023 ⁶⁶	Egypt	Prospective cohort study	Single center	NR	NR	NR
Hippisley-Cox 2023 ⁶⁷	England	Retrospective cohort study	Healthcare database	December 2021-June 2022	11 December 2021-March 2022	NR
Jamaati 2023 ⁶⁸	Iran	Retrospective cohort study	Multi-center	January 2022-April 2022	21 January-11 April 2022	NR
Karageorgou 2023 ⁶⁹	Greece	Retrospective cohort study	Multi-center	November 2021-June 2022	16 January-8 June 2022	NR
Kim 2023 ⁷⁰	South Korea	Retrospective cohort study	Single center	November 2021-April 2022	November 2021-April 2022	NR
Klein 2023 ⁷¹	USA	Retrospective cohort study	Multi-center	September 2022-February 2023	September 2022-February 2023	XBB or XBB.1.5
Lee 2023 ⁷²	South Korea	Retrospective cohort study	Single center	February 2022-January 2023	February 2022-January 2023	BA.1, BA.5

Study	Country	Study design	Study setting	Study duration	Omicron period	Omicron subvariant
Lewnard 2022 ⁷³	USA	Retrospective cohort study	Healthcare database	November 2021-March 2022	15 December 2021-17 March 2022	BA.1, BA.2
Li 2024 ⁷⁴	China	Retrospective cohort study	Single center	April 2020-March 2023	April-May 2022	NR
Li 2023 ⁷⁵	China	Cross-sectional study	Single center	December 2022-January 2023	8 December 2022-31 January 2023	NR
Liu 2023 ⁷⁶	China	Retrospective cohort study	Multi-center	8 January-7 February 2022	8 January-7 February 2022	NR
Liu 2023a ⁷⁷	China	Retrospective cohort study	Single center	December 2022-January 2023	December 2022-January 2023	NR
Lu 2022 ⁷⁸	China	Cross-sectional study	Multi-center	April-May 2022	April-May 2022	NR
Manchanda 2023 ⁷⁹	India	Retrospective cohort study	Single center	April 2021-January 2022	January 2022	B.1.1.529
Mayer 2023 ⁸⁰	Germany	Retrospective cohort study	Single center	December 2021-August 2022	20 December 2021-15 August 2022	NR
McNeil 2023 ⁸¹	Australia	Retrospective cohort study	Multi center	June 2022-November 2022	June-November 2022	NR
Mendoza-Cano 2023 ⁸²	Mexico	Retrospective cohort study	Healthcare database	May 2023-August 2023	May-August 2023	NR

Study	Country	Study design	Study setting	Study duration	Omicron period	Omicron subvariant
Mizrahi Reuveni 2023⁸³	Israel	Retrospective cohort study	Healthcare database	November 2021-January 2022	26 November 2021-18 January 2022	NR
Morris 2023^{14a}	USA	Retrospective cohort study	Multi-center	December 2021-July 2022	1 December 2021-17 July 2022	BA.1, BA.1.1, BA.2, BA.2.12.1 BA.4, BA.5
Mosallami Aghili 2022⁸⁴	Iran	Prospective cohort study	Single center	January 2022-July 2022	January-July 2022	NR
Mumtaz 2022⁸⁵	Pakistan	Retrospective cohort study	Multi-center	January- April 2022	16 January-18 April 2022	NR
Nab 2023¹	England	Retrospective cohort study	Healthcare database	March 2020-August 2022	15 December 2021-3 August 2022	B.1.1.529
O'Leary 2023⁸⁶	USA	Retrospective cohort study	Healthcare database	December 2021-February 2022	25 December 2021-2 February 2022	NR
Parajuli 2023⁸⁷	USA	Retrospective cohort study	Healthcare database	April 2020 - June 2022	20 December 2021 - 25 June 2022	NR
Parra-Bracamonte 2023⁸⁸	Mexico	Retrospective cohort study	Healthcare database	January 2020-October 2022	24 December 2021-24 October 2022	NR
Patton 2023⁸⁹	USA	Retrospective cohort study	Multi-center	January 2020-March 2022	February-March 2022	NR

Study	Country	Study design	Study setting	Study duration	Omicron period	Omicron subvariant
Radhakrishnan 2023⁹⁰	USA	Retrospective cohort study	Single center	December 2021-February 2022	8 January-15 February 2022	BA.1
Russell 2022⁹¹	Canada	Retrospective cohort study	Multi-center	December 2021-August 2022	23 December 2021-31 August 2022 (confirmed by whole genome sequencing)	BA.1, BA.2, or BA.5
Sardinha 2023⁹²	Brazil	Retrospective cohort study	Healthcare database	January 2022-February 2023	January-December 2022	NR
Shakor 2023^{13a}	Malaysia	Cross-sectional study	Healthcare database	February 2022-March 2023	14 February 2022-31 March 2023	NR
Shi 2023⁹³	South Korea	Retrospective cohort study	Multi-center	February 2022-April 2022	February-April 2022	NR
Simmons 2023⁹⁴	Canada	Retrospective cohort study	Healthcare database	May 2021-January 2022	23 December 2021-9 January 2022	NR
Skarbinski 2022⁹⁵	USA	Retrospective cohort study	Healthcare database	July 2021-January 2022	December 18, 2021-January 7, 2022	B.1.1.529
Sonaglioni 2022⁹⁶	Italy	Retrospective cohort study	Single center	January 2022-May 2022	1 January-15 May 2022	NR

Study	Country	Study design	Study setting	Study duration	Omicron period	Omicron subvariant
Stepanova 2022⁹⁷	USA	Retrospective cohort study	Multi-center	March 2020-February 2022	December 2021-February 2022	NR
Tsujimoto 2023⁹⁸	Japan	Retrospective cohort study	Multi-center	January 2022-March 2022	January-March 2022	BA.2
Vo 2022⁹⁹	USA	Retrospective cohort study	Healthcare database	December 2020-February 2022	16 December 2021-8 February 2023	NR
Wang 2023¹⁰⁰	USA	Retrospective cohort study	Healthcare database	October 2021-January 2022	19 December 2021-31 January 2022	NR
Ward 2024¹⁰¹	England	Retrospective cohort study	Healthcare database	September 2022-April 2023	1 September 2022-11 April 2023	NR
Xin 2024¹⁰²	China	Retrospective cohort study	Single center	December 2022-March 2023	5 December 2022-31 March 2023	NR
Yang 2023¹⁰³	China	Retrospective cohort study	Single center	December 2022-January 2023	19 December 2022-5 January 2023	BF.7
Ying-hao 2022¹⁰⁴	China	Retrospective cohort study	Single center	April 2022-May 2022	5 April-8 May 2022	NR
Zhang 2022¹⁰⁵	China	Retrospective cohort study	Single center	March 2022-May 2022	23 March-26 May 2022	NR
Zhao 2023¹⁰⁶	China	Retrospective cohort study	Single center	December 2022-February 2023	20 December 2022-31 January 2023	NR
Zhu 2023¹⁰⁷	China	Cross-sectional study	Multi-center	February 2022-May 2022	20 February-10 May 2022	BA.2

Abbreviations: BCDT, B-cell depletion therapy; BID, brought-in-dead; CeVD, pre-existing cerebrovascular disease; CKD, chronic kidney disease; CVD, cardiovascular disease; GP, general population; IPD, in-patient death; IQR, inter quartile range; NA, not applicable; NR, not reported; SD, standard deviation; SGTF, S gene target failure; USA, United States of America; UK, United Kingdom.

^a Not included in meta-analysis.

Table 2. Patient characteristics of the Included Studies

Study	Comorbidities for which outcome estimates reported	Population description (Hospitalized or General)	Sub-population for which patient characteristics reported	N	Age in years	Female, %	At least had initial COVID-19 vaccination
Agrawal 2022⁴²	Asthma	General	Boosted	13 836 390 ^a	18-49: 40.9%	52.8	100%
	Cerebrovascular disease				50-54: 9.8%		
	COPD				55-59: 10.3%		
	Diabetes				60-64: 9.2%		
	PVD				65-69: 8%		
	Respiratory diseases				70-74: 8.0%		
	Atrial fibrillation				75-79: 6.0%		
	Heart disease				≥80: 7.8%		
	Heart failure						
	Hypertension						
	Thrombosis						
	AlBahrani 2022⁴³	Diabetes	General		All		
Obesity							

Study	Comorbidities for which outcome estimates reported	Population description (Hospitalized or General)	Sub-population for which patient characteristics reported	N	Age in years	Female, %	At least had initial COVID-19 vaccination
	Respiratory diseases						
	Hypertension						
Arbel 2023⁴⁴	Asthma	General	Booster non-recipients	435 304	Mean (SD): 74.7 (7.4)	56.0	100%
	Cerebrovascular disease		Booster recipients	134 215	Mean (SD): 76.9 (7.5)	52.0	
	COPD						
	Diabetes						
	Obesity						
Arbel 2022⁴⁵	Asthma	General	Second booster	328 597	Mean (SD): 74.4 (8.4)	56.0	100%
	Cerebrovascular disease						
	COPD						
	Diabetes						
	Heart disease						
	Heart failure						
	Hypertension						

Study	Comorbidities for which outcome estimates reported	Population description (Hospitalized or General)	Sub-population for which patient characteristics reported	N	Age in years	Female, %	At least had initial COVID-19 vaccination
Bao 2022^{15b}	Cerebrovascular diseases ^c	Hospitalized	All	595	Median (IQR): 75 (69-85)	50.9	30.1%
Bedston 2024⁴⁶	Asthma	General	All	7 451 890	18-49 years: 12.3%	54.2	100%
	Cerebrovascular disease				50-64 years: 37.1%		
	COPD				65-79 years: 37.0%		
	Diabetes				≥80 years: 13.5%		
	PVD						
	Respiratory diseases						
	Atrial fibrillation						
	Heart disease						
	Heart failure						
	Hypertension						
	Thrombosis						
Benites-Godínez 2023⁴⁷	Diabetes	Hospitalized	Recovery	127	Median (IQR): 62 (42-76)	59.1	~19.7

Study	Comorbidities for which outcome estimates reported	Population description (Hospitalized or General)	Sub-population for which patient characteristics reported	N	Age in years	Female, %	At least had initial COVID-19 vaccination	
			Death	25	Median (IQR): 68 (59-81)	40.0		
Beraud 2023⁴⁸	Diabetes	Hospitalized	Vaccinated	746	Median (IQR): 74.0 (57.3-85.0)	45.6	61.4%	
	Obesity ^d		Unvaccinated	469	Median (IQR): 71.0 (55.0-83.0)	53.7		
	Respiratory diseases							
	Heart failure							
	Hypertension							
Briciu 2023⁴⁹	Asthma	Hospitalized	Not vaccinated	449	Median (IQR): 74 (60-83)	61.9	100%	
	Obesity		Vaccinated	431	Median (IQR): 67 (44.5-76.5)	57.1		
	Respiratory diseases							
	Heart disease							
Brosh-Nissimov 2023⁵⁰	Respiratory diseases	Hospitalized	All individuals	1049	Median (IQR): 80 (69-87)	49.0	GP ~61.6%	
			Unvaccinated (0/1 dose)	403	Median (IQR): 78 (67-86)	53.0		
			Received 3 doses	386	Median (IQR): 81 (70-88)	47.0		

Study	Comorbidities for which outcome estimates reported	Population description (Hospitalized or General)	Sub-population for which patient characteristics reported	N	Age in years	Female, %	At least had initial COVID-19 vaccination
			Received 4 doses	88	Median (IQR): 83 (74-88)	44.0	
Bulgaresi 2023⁵¹	COPD	General	Selected sample	457	Mean (SD): 81.8 (12.2)	72.0	92.3%
Chan 2023⁵²	Asthma ^e	Hospitalized	Omicron BA.1 total	5514	Mean (SD): 6.8 (4.8)	47.4	NA (vaccine was not rolled out for children under 12 years in Australia until February 2022)
			Omicron BA.1 asthma	304	Mean (SD): 8.9 (3.2)	43.4	
			Omicron BA.1 no-asthma	5210	Mean (SD): 6.7 (4.83)	47.6	
			Omicron BA.2 total	1661	Mean (SD): 5.2 (5.26)	45.0	
			Omicron BA.2 asthma	123	Mean (SD): 9.6 (3.87)	42.3	
			Omicron BA.2 no-asthma	1538	Mean (SD): 4.9 (5.20)	45.2	
Chen 2024⁵³	Asthma Cerebrovascular disease COPD	Hospitalized	All	797	Median (IQR): 79.1 (71.3-85.3)	43.9	55.1%

Study	Comorbidities for which outcome estimates reported	Population description (Hospitalized or General)	Sub-population for which patient characteristics reported	N	Age in years	Female, %	At least had initial COVID-19 vaccination
	Diabetes						
	Heart disease						
	Heart failure						
	Hypertension						
Choi 2023⁵⁴	Obesity ^e	Hospitalized	All	401	Median (IQR): 2.1 (0.6-8.1)	52.9	32.0%
	Respiratory diseases ^e						
de Prost 2022⁵⁵	Diabetes	Hospitalized	Omicron subgroup	148	Mean (SD): 63.9 (10.8)	28.4	60.1%
	Obesity						
	Respiratory diseases						
	Heart failure						
	Hypertension						
Drummond 2023⁵⁶	Asthma	Hospitalized	All	115 638	18-39 years: 10.1%	NR	78.0%,
	Diabetes				40-59 years: 16.7%		North region ~68%;
	Obesity						Northeast ~79.2%; Southeast

Study	Comorbidities for which outcome estimates reported	Population description (Hospitalized or General)	Sub-population for which patient characteristics reported	N	Age in years	Female, %	At least had initial COVID-19 vaccination
	Respiratory diseases				60-79 years: 39.9%		~84.5%; South ~86%; Midwest ~83.4%
	Heart disease				≥80 years: 33.3%		
Elamin 2024⁵⁷	Asthma	Hospitalized	All	634	Mean (SD): 62.4 (22.8)	50	52.4%
	Diabetes						
	Heart disease						
	Hypertension						
Ellis 2023⁴	Asthma	General	All	1071	NR	NR	80.6%
	Cerebrovascular disease		Not admitted to hospital	920	Median (IQR): 84 (78-90)	57.0	
	Diabetes		Admitted to hospital	151	Median (IQR): 84 (78-89)	46.0	
	Obesity		Not died	945	Median (IQR): 83 (77-89)	58.0	
	Respiratory diseases		Died	126	Median (IQR): 87 (82-91)	40.0	
	Atrial fibrillation						
	Heart failure						
	Hypertension						

Study	Comorbidities for which outcome estimates reported	Population description (Hospitalized or General)	Sub-population for which patient characteristics reported	N	Age in years	Female, %	At least had initial COVID-19 vaccination
Favia 2023⁵⁸	Diabetes	Hospitalized	All	103	Mean (SD): 69.94 (10.99)	46.6	49.3%
	Obesity						
	Respiratory diseases						
	Heart disease						
	Hypertension						
Finkas 2023⁵⁹	Asthma	General	Asthma	41 243	Mean (SD): 54.7 (15.6)	63.0	87.3%
			Control	41 243	Mean (SD): 54.7 (15.6)	63.0	74.4%
Flacco 2023⁶⁰	COPD	General	All	300 079	Mean (SD): 49.1 (20.9)	51.2	78.2%
	Diabetes						
	Heart disease						
	Hypertension						
Flisiak 2023⁶¹	Obesity	Hospitalized	Early Omicron	965	Mean (SD): 68.7 (18.2)	51.2	NR
			Late Omicron	897	Mean (SD): 73.7 (14.8)		

Study	Comorbidities for which outcome estimates reported	Population description (Hospitalized or General)	Sub-population for which patient characteristics reported	N	Age in years	Female, %	At least had initial COVID-19 vaccination
Gazit 2022 ⁶²	COPD	General	All	97 499	Mean (SD): 70.8 (8.02)	54.7	100%
	Diabetes						
	Obesity						
	Heart disease						
	Hypertension						
Geng 2023 ^{12b}	Diabetes ^c	Hospitalized	Severe	39	Median (IQR): 59 (47-73)	43.6	~59%
	Hypertension ^c		Non-severe	25 143	Median (IQR): 45 (33-54)	35	~80%
Grannec 2023 ⁶³	Obesity	General	All	545	Mean: 65.1 ^a	54.3 ^a	NR
			No Hospitalization	499	Mean (SD): 60.59 (14.5)	60.9	
			Hospitalization	46	Mean (SD): 69.74 (11.87)	44.3	
Griggs 2024 ⁶⁴	Asthma	Hospitalized	Omicron BA.1	14 869	Median (IQR): 67 (55-78)	48.0	~40% ^a
	Cerebrovascular disease		Omicron BA.2	3549	Median (IQR): 75 (63-83)	49.7	~70% ^a

Study	Comorbidities for which outcome estimates reported	Population description (Hospitalized or General)	Sub-population for which patient characteristics reported	N	Age in years	Female, %	At least had initial COVID-19 vaccination
	COPD		Omicron BA.4/BA.5	8655	Median (IQR): 74 (63-83)	50.2	~68% ^a
	Diabetes						
	Heart disease		Omicron Post-BA.4/ BA.5	9499	Median (IQR): 75 (65-84)	50.7	~70% ^a
	Heart failure						
	Hypertension						
Guo 2023⁶⁵	Diabetes	Hospitalized	Non-CKD group	1508	Median (IQR): 62 (47, 71)	54.6	30.7%
	Respiratory diseases		CKD group	470	Median (IQR): 73 (64, 86)	43.4	4.9%
	Heart disease						
	Hypertension						
Helmy 2023⁶⁶	Asthma	Hospitalized	All	50	Mean (SD): 54.8 (14.4)	46.0	NR
	Cerebrovascular disease						
	Diabetes						
	Atrial fibrillation						
	Heart disease						
	Hypertension						

Study	Comorbidities for which outcome estimates reported	Population description (Hospitalized or General)	Sub-population for which patient characteristics reported	N	Age in years	Female, %	At least had initial COVID-19 vaccination
Hippisley-Cox 2023⁶⁷	Cerebrovascular disease	General	All	9 526 580	Mean (SD): 47.22 (18.57)	49.9	78.9%
	COPD						
	Diabetes						
	PVD						
	Respiratory diseases						
	Atrial fibrillation						
	Heart disease						
	Heart failure						
	Thrombosis						
Jamaati 2023⁶⁸	Diabetes	Hospitalized	All	24 016	18-25 years: 2.0%	45.4	56.3 %
	Respiratory diseases				25-35 years: 4.4%		
	Heart disease				35-45 years: 6.4%		
	Hypertension				45-55 years: 8.7%		

Study	Comorbidities for which outcome estimates reported	Population description (Hospitalized or General)	Sub-population for which patient characteristics reported	N	Age in years	Female, %	At least had initial COVID-19 vaccination
					55-65 years: 15.6%		
					≥65 years: 62.9%		
Karageorgou 2023⁶⁹	Obesity	Hospitalized	Omicron group	546	Median (IQR): 70 (55-83)	44	44.9%
Kim 2023⁷⁰	Cerebrovascular disease Respiratory diseases	Hospitalized	All	167	Median (IQR): 69 (57-81)	37	73.7%
Klein 2023⁷¹	Cerebrovascular disease Diabetes Respiratory diseases Atrial fibrillation Heart disease Heart failure	General	All	2189	0-17 years: 25.7% 18-44 years: 27.7% 45-64 years: 20.8% 65-79 years: 16.2% ≥80 years: 9.6%	54.9	51.8%
Lee 2023⁷²	Diabetes	Hospitalized	BCDT group	93	Median (IQR): 61 (52-70)	43.0	~72% ^a

Study	Comorbidities for which outcome estimates reported	Population description (Hospitalized or General)	Sub-population for which patient characteristics reported	N	Age in years	Female, %	At least had initial COVID-19 vaccination
	Heart disease Hypertension		Non-BCDT group	145	Median (IQR): 61 (50-69)	37.2	
Lewnard 2022⁷³	Obesity	General	SGTF (Omicron)	222 688	<1 year: 0.5% 1-4 years: 3.0% 5-9 years: 5.5% 10-19 years: 12.8% 20-29 years: 17.0% 30-39 years: 20.3% 40-49 years: 16.9% 50-59 years: 13.1% 60-69 years: 7.1% 70-79 years: 2.7%	55.3	~65.2% ^a

Study	Comorbidities for which outcome estimates reported	Population description (Hospitalized or General)	Sub-population for which patient characteristics reported	N	Age in years	Female, %	At least had initial COVID-19 vaccination
					≥80 years: 0.7%		
			No SGTF (BA.2)	1905	<1 year: 2.8%	54.6	
					1-4 years: 5.5%		
					5-9 years: 4.7%		
					10-19 years: 11.4%		
					20-29 years: 10.3%		
					30-39 years: 16.5%		
					40-49 years: 14.2%		
					50-59 years: 14.3%		
					60-69 years: 12.1%		
					70-79 years: 5.4%		
					≥80 years: 2.0%		

Study	Comorbidities for which outcome estimates reported	Population description (Hospitalized or General)	Sub-population for which patient characteristics reported	N	Age in years	Female, %	At least had initial COVID-19 vaccination
			SGTF (BA.1)	12 756	<1 year: 1.2% 1-4 years: 4.8% 5-9 years: 7.1% 10-19 years: 11.2% 20-29 years: 10.9% 30-39 years: 19.0% 40-49 years: 16.4% 50-59 years: 12.7% 60-69 years: 9.7% 70-79 years: 5.0% ≥80 years: 1.7%	53.7	

Study	Comorbidities for which outcome estimates reported	Population description (Hospitalized or General)	Sub-population for which patient characteristics reported	N	Age in years	Female, %	At least had initial COVID-19 vaccination
Li 2024 ⁷⁴	Diabetes Respiratory diseases Heart disease Hypertension	Hospitalized	All	47	Median (IQR): 79.72 (74.00-89.00)	38.3	NR
Li 2023 ⁷⁵	Diabetes Respiratory diseases Heart disease Hypertension	Hospitalized	All	223	Median (IQR): 75.0 (60.0-85.0)	32.7	NR
Liu 2023 ⁷⁶	Diabetes Obesity ^d	Hospitalized	Total	316	Mean (SD): 46.7 (15.5)	57.3	~87.1%
Liu 2023a ⁷⁷	Heart disease Hypertension	Hospitalized	Survival group	307	≤60 years: 23.8% >60 years: 76.2%	39.1	55.7%
			Death group	86	≤60 years: 4.7% >60 years: 95.3%	18.6	34.9%

Study	Comorbidities for which outcome estimates reported	Population description (Hospitalized or General)	Sub-population for which patient characteristics reported	N	Age in years	Female, %	At least had initial COVID-19 vaccination
Lu 2022⁷⁸	Cerebrovascular disease Diabetes Respiratory diseases Heart disease Hypertension	Hospitalized	All	1377	Median (IQR): 76 (69-84)	53.4	~26.3%
Manchanda 2023⁷⁹	COPD Hypertension	Hospitalized	Omicron Hypertension Diabetes	100 34 27	Median: 47.5 <30 years: 10.7% 31-45 years: 21.1% 46-60 years: 44.4% >60 years: 57.7% <30 years: 3.6% 31-45 years: 10.5% 46-60 years:	43 47.1 40.7	NR

Study	Comorbidities for which outcome estimates reported	Population description (Hospitalized or General)	Sub-population for which patient characteristics reported	N	Age in years	Female, %	At least had initial COVID-19 vaccination
					25.9%		
					>60 years: 65.4%		
			Chronic obstructive pulmonary disease	11	<30 years: 0 31-45 years: 10.5% 46-60 years: 11.1% >60 years: 23.1%	36.0	
Mayer 2023⁸⁰	Cerebrovascular disease	Hospitalized	No CeVD	372	Mean (SD): 64.8 (18.6)	36.6	59.9%
	Diabetes		CeVD	93	Mean (SD): 64.8 (18.6)	35.5	60.2%
	Respiratory diseases		No dementia	144	Mean (SD): 66.4 (19.7)	61.1	41.7%
	Heart disease		All-cause dementia	36	Mean (SD): 67.0 (34.4)	58.3	38.9%
	Heart failure						
McNeil 2023⁸¹	Diabetes	Hospitalized	All	215	Median (IQR): 80 (68-88)	51.6	84%

Study	Comorbidities for which outcome estimates reported	Population description (Hospitalized or General)	Sub-population for which patient characteristics reported	N	Age in years	Female, %	At least had initial COVID-19 vaccination
Mendoza-Cano 2023⁸²	Asthma	General	Severe COVID-19	34	Median (IQR): 68 (59-76)	41.2	38.2%
	COPD		Non-severe COVID-19	612	Median (IQR): 43 (28-58)		
	Diabetes						
	Obesity						
	Heart disease						
Mizrahi Reuveni 2023⁸³	COPD	General	All	409 693	<18 years: 31.4%	54.9	3-4 doses: 65,430 (50.3%) ^a
	Diabetes				18-29 years: 16.7%		
	Obesity				30-44 years: 20.4%		
	Heart disease				45-59 years: 19.0%		
	Hypertension				60-74 years: 7.5%		
					≥75 years: 2.0%		
					Trial cohort (1/3rd of original)		
			18-29 years:				

Study	Comorbidities for which outcome estimates reported	Population description (Hospitalized or General)	Sub-population for which patient characteristics reported	N	Age in years	Female, %	At least had initial COVID-19 vaccination
					16.8% ^a		
					30-44 years: 20.4% ^a		
					45-59 years: 18.9% ^a		
					60-74 years: 7.5% ^a		
					≥75 years: 2.0% ^a		
Morris 2023 ^{14b}	Cerebrovascular disease ^c	General	Omicron BA.1	3285	Mean: 37.7	NR	~42%
	Diabetes ^c		Omicron BA.1.1	637	Mean: 37.9	NR	
	Respiratory diseases ^c		Omicron BA.2	1038	Mean: 39.7	NR	
	Atrial fibrillation		Omicron BA.2.12.1	1234	Mean: 38.7	NR	
	Heart disease ^c		Omicron BA.4	166	Mean: 36.2	NR	
	Heart failure ^c		Omicron BA.5	337	Mean: 43.6	NR	
	Hypertension ^c						
Mosallami Aghili 2022 ⁸⁴	Heart disease	Hospitalized	Survived	98	Mean (SD): 60.94 (16.68)	67.7	90.9%

Study	Comorbidities for which outcome estimates reported	Population description (Hospitalized or General)	Sub-population for which patient characteristics reported	N	Age in years	Female, %	At least had initial COVID-19 vaccination
			Non-survived	48	Mean (SD): 70.52 (14.10)	32.3	9.1%
Mumtaz 2022⁸⁵	Asthma	Hospitalized	All	2051	Median (IQR): 65 (53.0-78.0)	36	NR
	Cerebrovascular disease		With cardiac injury	623	Median (IQR): 72.0 (65.0-92.5)	31	
	Diabetes		Without cardiac injury	1428	Median (IQR): 62.0 (55.5-76.0)	38	
	Respiratory diseases						
	Heart disease						
	Hypertension						
Nab 2023¹	Asthma	General	Wave 4: Omicron from Dec 15, 2021, to April 29 2022	19 097 970	18-39: 35.1%	50.1	NR
	Cerebrovascular disease				Age 40-49: 16.2%		
	Diabetes				Age 50-59: 17.4%		
	Obesity				Age 60-69: 13.8%		
	Respiratory diseases				Age 70-79: 11.2%		

Study	Comorbidities for which outcome estimates reported	Population description (Hospitalized or General)	Sub-population for which patient characteristics reported	N	Age in years	Female, %	At least had initial COVID-19 vaccination
	Heart disease				Age ≥80: 6.3%		
	Hypertension		Wave 5: Omicron from June 24 to Aug 3, 2022	19 226 475	Age 18-39: 35.3% Age 40-49: 16.2% Age 50-59: 17.2% Age 60-69: 13.9% Age 70-79: 11.2% Age ≥80: 6.3%	50.1	
O'Leary 2023⁸⁶	Heart failure	Hospitalized	Death within 14 days	563	Mean (SD): 76.9 (10.03)	2.5	~54%
			Survival	12 373	Mean (SD): 68.1 (13.8)	6.1	
Parajuli 2023⁸⁷	Diabetes	Hospitalized	Initial Omicron	34 871	Mean (SD): 60.14 (17.91)	48.7	NR
	Obesity		Subsequent Omicron	6915	Mean (SD): 62.93 (18.91)	50.4	
	Respiratory diseases						

Study	Comorbidities for which outcome estimates reported	Population description (Hospitalized or General)	Sub-population for which patient characteristics reported	N	Age in years	Female, %	At least had initial COVID-19 vaccination
	Heart disease						
Parra-Bracamonte 2023⁸⁸	Asthma	General	All	2 948 695	0-4 years: 1.25%	56.9	NR
	COPD				5-9 years: 1.69%		
	Diabetes				10-14 years: 2.66%		
	Obesity				15-19 years: 3.44%		
	Heart disease				20-24 years: 9.78%		
	Hypertension				25-29 years: 12.89%		
					30-34 years: 12.79%		
					35-39 years: 11.36%		
					40-44 years: 10.38%		
					45-49 years: 9.71%		

Study	Comorbidities for which outcome estimates reported	Population description (Hospitalized or General)	Sub-population for which patient characteristics reported	N	Age in years	Female, %	At least had initial COVID-19 vaccination
					50-54 years: 8.14%		
					55-59 years: 5.91%		
					60-64 years: 3.73%		
					65-69 years: 2.39%		
					70-74 years: 1.56%		
					75-79 years: 1.04%		
					80-84 years: 0.66%		
					>84 years: 0.63%		
Patton 2023⁸⁹	COPD Diabetes Heart failure	Hospitalized	All	13 781	Mean (SD): 60 (17)	51.0	NR

Study	Comorbidities for which outcome estimates reported	Population description (Hospitalized or General)	Sub-population for which patient characteristics reported	N	Age in years	Female, %	At least had initial COVID-19 vaccination
Radhakrishnan 2023⁹⁰	Hypertension	Hospitalized	Omicron infected individuals	364	20-39 years: 11.3% 40-69 years: 48.9% ≥70 years: 39.8%	55.5	37.3%
Russell 2022⁹¹	Asthma	General	Omicron BA.1	19 096	Mean (SD): 40.9 (23.6)	56.5	~80%
	COPD		Omicron BA.2	15 764	Mean (SD): 54 (26.5)	59.0	
	Diabetes		Omicron BA.5	4377	Mean (SD): 57.5 (27.2)	56.1	
	Heart failure						
Sardinha 2023⁹²	Heart disease	Hospitalized	All	112 459	Median: 74	50.7	~81.5%
			CVD carriers	71 661	Median: 62	50.9	
			Non-CVD carriers	40 798	Median: 45	50.4	
Shakor 2023^{13b}	Asthma ^c	General	All	488	<18 years: 9 (1.8%)	39.8	72.1%
	Cerebrovascular disease ^c				≥18 years: 479 (98.2%)		

Study	Comorbidities for which outcome estimates reported	Population description (Hospitalized or General)	Sub-population for which patient characteristics reported	N	Age in years	Female, %	At least had initial COVID-19 vaccination
	COPD ^c		COVID-19 IPD	244	<18 years: 6 (66.7%)	52.1	
	Diabetes ^c				≥18 years: 238 (49.7%)		
	Obesity ^c						
	Heart disease ^c		COVID-19 BID	244	<18 years: 3 (33.3%)	47.9	
	Hypertension ^c				≥18 years: 241 (50.3%)		
Shi 2023⁹³	Diabetes	Hospitalized	Age >50 years group	142	Mean (SD): 73.91 (10.56)	42.3	~57%
	Obesity ^d		Age ≤50 years group	71	Mean (SD): 39.51 (8.92)	49.3	
	Respiratory diseases						
	Heart disease						
	Hypertension						
Simmons 2023⁹⁴	Asthma ^e	General	Hospitalized	62	4-5 years: 8.1%	51.6	16.1%
					6-7 years: 9.7%		
					8-9 years: 8.1%		
					10-11 years: 6.5%		

Study	Comorbidities for which outcome estimates reported	Population description (Hospitalized or General)	Sub-population for which patient characteristics reported	N	Age in years	Female, %	At least had initial COVID-19 vaccination
					12-13 years: 16.1%		
					14-15 years: 16.1%		
					16-17 years: 35.5%		
			Non-hospitalized	27,674	4-5 years: 7.6%	50.3	40.5%
					6-7 years: 9.4%		
					8-9 years: 10.9%		
					10-11 years: 12.0%		
					12-13 years: 17.0%		
					14-15 years: 18.4%		
					16-17 years: 24.6%		
Skarbinski 2022⁹⁵	COPD Diabetes	General	Omicron	48 101	Median (IQR): 37 (24-51)	57	75%

Study	Comorbidities for which outcome estimates reported	Population description (Hospitalized or General)	Sub-population for which patient characteristics reported	N	Age in years	Female, %	At least had initial COVID-19 vaccination
	Obesity						
	Heart disease						
Sonaglioni 2022⁹⁶	Diabetes	Hospitalized	Total	NA	Mean (SD): 80.0 (12.6)	54.1	GP: 62.1%
	Obesity		Dead	20	Mean (SD): 85.1 (10.6)	30	
	Hypertension		Alive	54	Mean (SD): 78.1 (13.1)	63	
Stepanova 2022⁹⁷	Obesity	Hospitalized	Omicron	1556	Mean (SD): 61.0 (19.9)	49.7	~21.6%
Tsujimoto 2023⁹⁸	Diabetes	General	All	348	Median (IQR): 44.5 (30.5-66)	56	~49%
	Obesity						
	Respiratory diseases						
	Atrial fibrillation						
	Hypertension						
Vo 2022⁹⁹	Asthma	General	Overall sub cohort during Omicron Period	78 379	>40 years: 10 702 (13.7%)	13.1	100%
	Diabetes				40-45 years:		

Study	Comorbidities for which outcome estimates reported	Population description (Hospitalized or General)	Sub-population for which patient characteristics reported	N	Age in years	Female, %	At least had initial COVID-19 vaccination
	Obesity				4968 (6.3%)		
	PVD				45-50 years: 4963 (6.3%)		
	Respiratory diseases				50-55 years: 7489 (9.6%)		
	Atrial fibrillation				55-60 years: 8088 (10.3%)		
	Heart disease				60-65 years: 9247 (11.8%)		
	Heart failure				65-70 years: 8441 (10.8%)		
	Hypertension				70-75 years: 11 485 (14.7%)		
					75-80 years: 7449 (9.5%)		
					≥80 years: 5547 (7.1%)		
Wang 2023¹⁰⁰	Respiratory diseases	General	All	295 691	<65 years: 75% ≥65 years: 25%	59	~54.7% ^f
Ward 2024¹⁰¹	Asthma	General	All	14 651 440	Mean (SD): 67.9 (10.9)	53.1	100%

Study	Comorbidities for which outcome estimates reported	Population description (Hospitalized or General)	Sub-population for which patient characteristics reported	N	Age in years	Female, %	At least had initial COVID-19 vaccination
	Cerebrovascular disease						
	COPD						
	Diabetes						
	PVD						
	Respiratory diseases						
	Atrial fibrillation						
	Heart disease						
	Heart failure						
	Thrombosis						
Xin 2024¹⁰²	Diabetes	Hospitalized	All	829	<71 years: 48.7%	45.0	NR
	Hypertension				≥71 years: 51.3%		
Yang 2023¹⁰³	Diabetes	General	All	770	Median (IQR): 59 (41-70)	50.6	72.1%
	Respiratory diseases						

Study	Comorbidities for which outcome estimates reported	Population description (Hospitalized or General)	Sub-population for which patient characteristics reported	N	Age in years	Female, %	At least had initial COVID-19 vaccination
	Heart disease Hypertension						
Ying-hao 2022 ¹⁰⁴	Asthma Diabetes Hypertension	Hospitalized	All individuals	25 207	Median (IQR): 45 (33-54)	35.0	81.1%
Zhang 2022 ¹⁰⁵	Cerebrovascular disease COPD Diabetes Heart disease Hypertension	Hospitalized	All	1721	Median (IQR): 64.0 (49.0-73.0)	51.8	26.4%
Zhao 2023 ¹⁰⁶	Diabetes Obesity ^d Respiratory diseases Heart disease	Hospitalized	Total population without missing values	387	Mean (SD): 76.7 (12.83)	37.7	NR
Zhu 2023 ¹⁰⁷	COPD	General	All	1157	Median (IQR):	46.5	70.6%

Study	Comorbidities for which outcome estimates reported	Population description (Hospitalized or General)	Sub-population for which patient characteristics reported	N	Age in years	Female, %	At least had initial COVID-19 vaccination
	Diabetes				Severe COVID-19 on admission: 62 (44.50-72.50)		
	Heart disease				Mild COVID-19 on admission: 33 (24-46)		
	Hypertension				Asymptomatic COVID-19 on admission: 30 (21.25-46.00)		

Abbreviations: BCDT, B-cell depletion therapy; BID, brought-in-dead; CeVD, pre-existing cerebrovascular disease; CKD, chronic kidney disease; COPD, chronic obstructive pulmonary disease; CVD, cardiovascular disease; GP, general population; IPD, in-patient death; IQR, inter quartile range; NA, not applicable; NR, not reported; PVD, peripheral vascular disease; SD, standard deviation; SGTF, S gene target failure; USA, United States of America; UK, United Kingdom.

^a Calculated by a reviewer.

^b Not included in meta-analysis.

^c Estimates reported, but not included in any of the analyses.

^d Estimates reported, but only included in 'Overweight+' sensitivity analysis.

^e Estimates reported, but only included in 'Including children' sensitivity analysis.

^f Includes Delta and Omicron.

Table 3. Number of Studies, Subgroups and Minimum Number of Participants Included in Each Comorbidity Population

Analysis

Comorbidity	Number of studies reporting comorbidity	Number of studies included in 'Main' meta-analysis	Number of subgroups ^a included in each 'Main' comorbidity population analysis by outcome				Minimum number of participants included in each comorbidity population analysis ^c
			Death	Hospitalization	ICU admission	Combined	
Asthma	23	20	12	5	3 ^b	9	10 348 017
Cerebrovascular diseases	20	17	11	6	3 ^b	8	2 071 755
COPD	21	20	12	8	3 ^b	9	1 466 035
Diabetes	50	47	40	13	13	19	6 740 188
Obesity	28	22	21	9	6	7	8 186 661
PVD	5	0	3 ^b	2 ^b	0 ^b	3 ^b	344 177
Respiratory diseases	30	28	23	6	7	10	1 798 041
Atrial fibrillation	10	5	4 ^b	4 ^b	2 ^b	5	1 507 834
Heart disease	39	37	29	8	11	17	4 994 559
Heart failure	17	16	11	7	3 ^b	7	821 376
Hypertension	38	35	23	5	7	17	13 720 480
Thrombosis	4	0	3 ^b	2 ^b	0 ^b	2 ^b	328 870

Abbreviations: COPD, chronic obstructive pulmonary disease; ICU, intensive care unit; PVD, peripheral vascular disease

^a Subgroups distinguish between the comorbidities of interest and may contain additional information that differentiates the comorbidity from another one included in the same meta-analysis by the same study (eg, 'men with stroke' and 'women with stroke'). Some studies reported multiple subgroups that are included in the same meta-analysis.

^b Meta-analyses were not conducted for analyses with fewer than 5 subgroups.

^c Breakdown of number of numbers of participants by outcome not provided as most studies included more than one outcome of interest.

Darker green indicates greater number of studies, subgroups or participants.

Acknowledgements

The authors would like to thank the individuals, their families and all investigators involved in this study.

Guidance through the review process as well as contributions to systematic review processes, such as screening, risk of bias assessment, and data extraction, were provided by Nick Pooley, PhD (Maverex Ltd), Masoumeh Kisomi, PhD (Maverex Ltd), and Megha Garg, MD (Maverex Ltd). Statistical support, including the design and running of the meta-analyses, was provided by Medha Shrivastava, MSc (Maverex Ltd). Kate Misso, MSc/MCLIP (Maverex Ltd), designed and performed the electronic searches in this systematic review.

Medical writing support, including assisting authors with development of the outline and initial draft, incorporation of comments, figure preparation, referencing, and data checking was provided by Rachel O'Meara, PhD, and editorial support, including formatting, proofreading, and submission was provided by Michelle Seddon, Dip Psychol, all of Paragon (a division of Prime, Knutsford, UK). The study was supported by BioNTech SE, Mainz, Germany, according to Good Publication Practice guidelines ([Link](#)). The sponsor was involved in the study design, analysis and interpretation of data in the manuscript as well as data checking of information provided in the manuscript. However, ultimate responsibility for opinions, conclusions, and data interpretation lies with the authors.

Disclosures / Conflicts of interest

SA is an employee of BioNtech UK Ltd.

DB has no conflicts of interest.

AC is an employee of Maverex Ltd., which received consulting fees from BioNTech SE.

GL is a consultant and speaker for BMS/Pfizer, Boehringer Ingelheim, Daiichi Sankyo, and Anthos. No fees were received personally. He is a National Institute for Health and Care Research (NIHR) Senior Investigator.

TP receives consulting fees from BioNTech SE, GlaxoSmithKline, UNAIDS, and USAID.

EP receives speaker and consultancy fees from Pfizer and Moderna.

HS receives consulting fees and speaker's honoraria from Amgen, Amarin, Bayer, Boehringer Ingelheim, Cancom, Daiichi Sankyo, Eli Lilly, NovoNordisk.

Funding

This study was funded by BioNTech SE, Mainz, Germany.

Author contributions

Term	Credit (contributor roles taxonomy) definition	Author initials
Conceptualization	Ideas; formulation or evolution of overarching research goals and aims	SA, HS
Methodology	Development or design of methodology; creation of models	AC
Software	Programming, software development; designing computer programs; implementation of the computer code and supporting algorithms; testing of existing code components	AC
Validation	Verification, whether as a part of the activity or separate, of the overall replication/reproducibility of results/experiments and other research outputs	AC, TP

Formal analysis	Application of statistical, mathematical, computational, or other formal techniques to analyze or synthesize study data	AC
Investigation	Conducting a research and investigation process, specifically performing the experiments, or data/evidence collection	AC
Resources	Provision of study materials, reagents, materials, individuals, laboratory samples, animals, instrumentation, computing resources, or other analysis tools	AC
Data curation	Management activities to annotate (produce metadata), scrub data and maintain research data (including software code, where it is necessary for interpreting the data itself) for initial use and later reuse	AC
Writing – original draft	Preparation, creation and/or presentation of the published work, specifically writing the initial draft (including substantive translation)	SA, DB, AC, GL, TP, EP, HS
Writing – review & editing	Preparation, creation and/or presentation of the published work by those from the original research group, specifically critical review, commentary, or revision – including pre-or post-publication stages	SA, DB, AC, GL, TP, EP, HS
Visualization	Preparation, creation and/or presentation of the published work, specifically visualization/data presentation	AC
Supervision	Oversight and leadership responsibility for the research activity planning and execution, including mentorship external to the core team	SA, TP
Project administration	Management and coordination responsibility for the research activity planning and execution	SA, TP
Funding acquisition	Acquisition of the financial support for the project leading to this publication	SA

Data sharing

The datasets generated during and/or analyzed during the current study are available from the corresponding author on reasonable request.