

1 **Mapping of the country-wide prevalence of non-malarial febrile illnesses in areas with**
2 **varying malaria transmission intensities in Mainland Tanzania**

3

4 Salehe S. Mandai¹, Angelina J. Kisambale¹, Daniel A. Petro², Catherine Bakari¹, Gervas A.
5 Chacha¹, Rule Budodo¹, Rashid A. Madebe¹, Dativa Pereus¹, Daniel P. Challe³, Ramadhani
6 Moshi¹, Ruth B. Mbwambo¹, Grace K. Kanyankole¹, Sijenunu Aaron⁴, Daniel Mbwambo⁴,
7 Stella Kajange⁵, Samwel Lazaro⁴, Ntuli Kapologwe⁶, Celine I. Mandara¹, Misago D. Seth^{1#*},
8 Deus S. Ishengoma^{1#}

9 #: Co-senior authors

10 ¹*National Institute for Medical Research, Dar es Salaam, Tanzania.*

11 ²*University of Dar es Salaam, Dar es Salaam, Tanzania*

12 ³*National Institute for Medical Research, Tanga Research Centre, Tanga, Tanzania*

13 ⁴*National Malaria Control Programme, Dodoma, Tanzania;*

14 ⁵*President's Office-Regional Administrative Local Government, Dodoma Tanzania;*

15 ⁶*Directorate of Preventive Services, Ministry of Health, Dodoma, Tanzania;*

16

17 **Keywords:** Malaria, Febrile illnesses, non-malaria febrile illness, *Plasmodium falciparum*,
18 Tanzania.

19 Word counts: Abstract (235 words), main text (5804 words)

20 The manuscript has 4 figures, 3 tables and one supplementary file.

21 *Corresponding author: sethmdj@gmail.com

22 **Abstract:**

23 Recent reports revealed a declining malaria burden, but non-malaria febrile illnesses (NMFIs)
24 have either remained unchanged or increased. This study assessed the country-wide prevalence
25 of NMFIs and their patterns across various malaria transmission settings in Mainland Tanzania.
26 A cross-sectional study recruited patients aged ≥ 6 months from 86 health facilities in all 26
27 regions of Tanzania. All patients were tested for malaria using rapid diagnostic tests (RDTs)
28 and the prevalence of NMFIs was determined for all patients with negative results. Logistic
29 regression was used to determine factors associated with NMFIs. Of the 18,568 patients tested,
30 8,273 (44.6%) had NMFIs due to negative RDT results. Higher prevalence of NMFIs occurred
31 in females (45.8%) than males (42.8%), adults (aged ≥ 15 years, with 50.6%) compared to
32 under-fives (42.6%) and school children (aged 5 -< 15 years, 34.3%), and in very low (71.5%)
33 compared to high transmission areas (33.9%). NMFIs were significantly more likely in females
34 than in males (aOR = 1.14, 95% CI = 1.07–1.22), in very low transmission areas (aOR = 4.85,
35 95% CI = 4.42–5.33), adults (aOR = 1.60, 95% CI = 1.46–1.75) and under-fives (aOR = 1.60,
36 95% CI = 1.47–1.76). The findings show high prevalence of NMFIs overall, and higher
37 prevalence and odds of NMFIs in females, under-fives and individuals from low and very low
38 transmission areas. These groups should be targeted with appropriate point-of-care tests and
39 treatment strategies.

40

41 **Introduction**

42 Although febrile illnesses are the most common reasons for seeking medical care
43 globally,^{1,2} diagnosis and management of these illnesses are challenging due to their diverse
44 causes and the general nature of their symptoms which are hard to distinguish clinically.^{3,4} In
45 malaria-endemic settings, most febrile cases are often considered to be malaria, due to

46 the similarity of their clinical presentation leading to under-reporting and mismanagement of
47 other causes of fevers.^{5,6} However, recent advancements in diagnostic technologies, along with
48 intensified control efforts, have shed new light on the broader landscape of febrile illnesses,
49 revealing a complex interplay of pathogens contributing to fevers in endemic areas.⁷ The
50 widespread use of malaria rapid diagnostic tests (RDTs) has been pivotal in this shift. These
51 tests swiftly and rapidly detect malaria parasites, aiding healthcare providers to make
52 confirmatory diagnoses, but they cannot distinguish malarial from non-malarial fevers.⁸ This
53 is because there are no point-of-care (POC) tests for other pathogens that cause non-malaria
54 fevers⁹, and this leads to poor management of cases without malaria, as well as a missed
55 opportunity to capture other fever-causing pathogens.¹⁰ With the recent decline of the malaria
56 burden in areas which were hyper-endemic for many years, failure to detect the different causes
57 of fevers in patients with negative RDT results is an emerging dilemma for service providers.
58 Thus, urgent actions are required to develop POC tests for multiple pathogens and algorithms
59 for their effective management.

60 In recent years, Tanzania, like many other endemic countries, has witnessed a
61 remarkable decline in malaria transmission and disease burden in different areas.¹¹ However,
62 the decline in malaria cases does not correspond to the decrease in febrile patients in areas of
63 different malaria endemicity. In some locations, the proportion of patients with fever but
64 without malaria parasites has remained unchanged or increased significantly.¹² This
65 discrepancy highlights the increasing recognition that many febrile illnesses previously treated
66 presumptively as malaria are actually of non-malarial origin. This is especially noticeable in
67 areas with low malaria transmission, where a large proportion of individuals with fever test
68 negative for malaria upon visiting health facilities. Conversely, in high transmission settings, a
69 positive RDT result does not always indicate that malaria is the only cause of fever,^{13,14} because
70 individuals may have developed naturally acquired immunity to malaria,^{15,16} and the presenting
71 symptoms may result from co-infections with different pathogens. Therefore, a comprehensive,

72 evidence-based strategy is urgently needed with a clear management algorithm for fevers not
73 caused by or occurring concurrently with malaria infections.

74 While it is challenging to determine whether there is an increase in NMFIs, more work
75 should be done to enhance our understanding of the epidemiology of these conditions and
76 pathogens causing NMFIs. Recent reviews revealed that NMFIs are widespread in Africa and
77 most of them are dominated by bacterial and viral aetiologies.¹⁷⁻¹⁹ A recent study in Nigeria
78 found that 37.0% of febrile cases were not caused by malaria. Among these cases, 54.7% were
79 due to viral infections, while bacterial infections caused 32.1% of the infections.²⁰ Similarly, a
80 study in Senegal identified other causes of fever in 23.0% of febrile cases.⁷ In another study
81 conducted in Guinea-Bissau, respiratory viruses were the most common pathogens, detected in
82 58.9% of non-malarial febrile cases, followed by bacteria which were found in 22.6% of the
83 cases.²¹

84 In contrast to malaria, other causes of febrile illnesses are frequently unnoticed in many
85 regions of Sub-Saharan Africa due to the lack of comprehensive guidelines for managing
86 febrile cases when malaria is not the cause.^{6,22} This neglect stems from limited human and
87 financial resources,²³ and a lack of understanding and insufficient appreciation of the public
88 health burden posed by NMFIs.²⁴ The limited awareness is further compounded by inadequate
89 training and diagnostic capacity, which hinders the ability of healthcare workers to correctly
90 identify and appropriately manage NMFIs.²⁵⁻²⁷ In many regions, diagnostic tools for these
91 illnesses are either unavailable or underutilised due to logistical challenges, leading to
92 presumptive treatment. As a result, authorities are compelled to prioritise diseases deemed
93 more threatening to public health, while NMFIs are overlooked due to insufficient evidence of
94 their true burden.²⁸ Subsequently, the lack of evidence-based information on the burden of
95 these illnesses further complicates the situation, leading to disregard for the potential threat of
96 NMFIs.²⁹ This cycle of neglect continues as limited data on NMFIs hampers the development

97 of effective policies and guidelines, and diminishing incentives to invest in diagnostic capacity.
98 In addition, the decline of malaria is found to be associated with an increase in antibiotic
99 prescriptions,^{30,31} highlighting the potential presumptive treatment of NMFI cases with
100 antibiotics, which is inappropriate and could result in antibiotic resistance, a growing global
101 concern.^{32,33}

102 Healthcare workers in Tanzania, like in other countries, face difficulties when
103 evaluating febrile patients, especially those with negative malaria RDT results, due to the
104 absence of a clear evidence-based management guideline for NMFIs. This situation
105 underscores the need for a comprehensive understanding of the country's epidemiology and the
106 burden of these illnesses. Although previous studies conducted in Tanzania focused on
107 identifying aetiological agents of NMFIs at selected sites, the extensive burden and distribution
108 patterns of NMFIs remain poorly understood. This study utilised the largest data generated by
109 the ongoing project on molecular surveillance of malaria in Mainland Tanzania (MSMT),^{34–36}
110 and aimed to map the country-wide prevalence and distribution patterns of NMFIs across
111 various regions located in different malaria transmission strata. The findings from this study
112 will inform future research and healthcare planning, and potentially improve the diagnosis and
113 management of febrile illnesses beyond malaria, in areas of varying endemicity in the context
114 of the ongoing epidemiological transition of malaria transmission intensities.

115 **Materials and methods**

116 **Study design**

117 This was a health facility-based cross-sectional study which was conducted in all 26
118 regions of Mainland Tanzania from January to August 2023. The survey was conducted under
119 the MSMT project which focuses on mapping parasite populations, and drug and diagnostic
120 resistance (by detecting the status of histidine-rich protein 2/3 (*hrp2/3*) gene deletions) as
121 described elsewhere.^{34–38}

122 **Selection of study sites in all 26 regions of Mainland Tanzania**

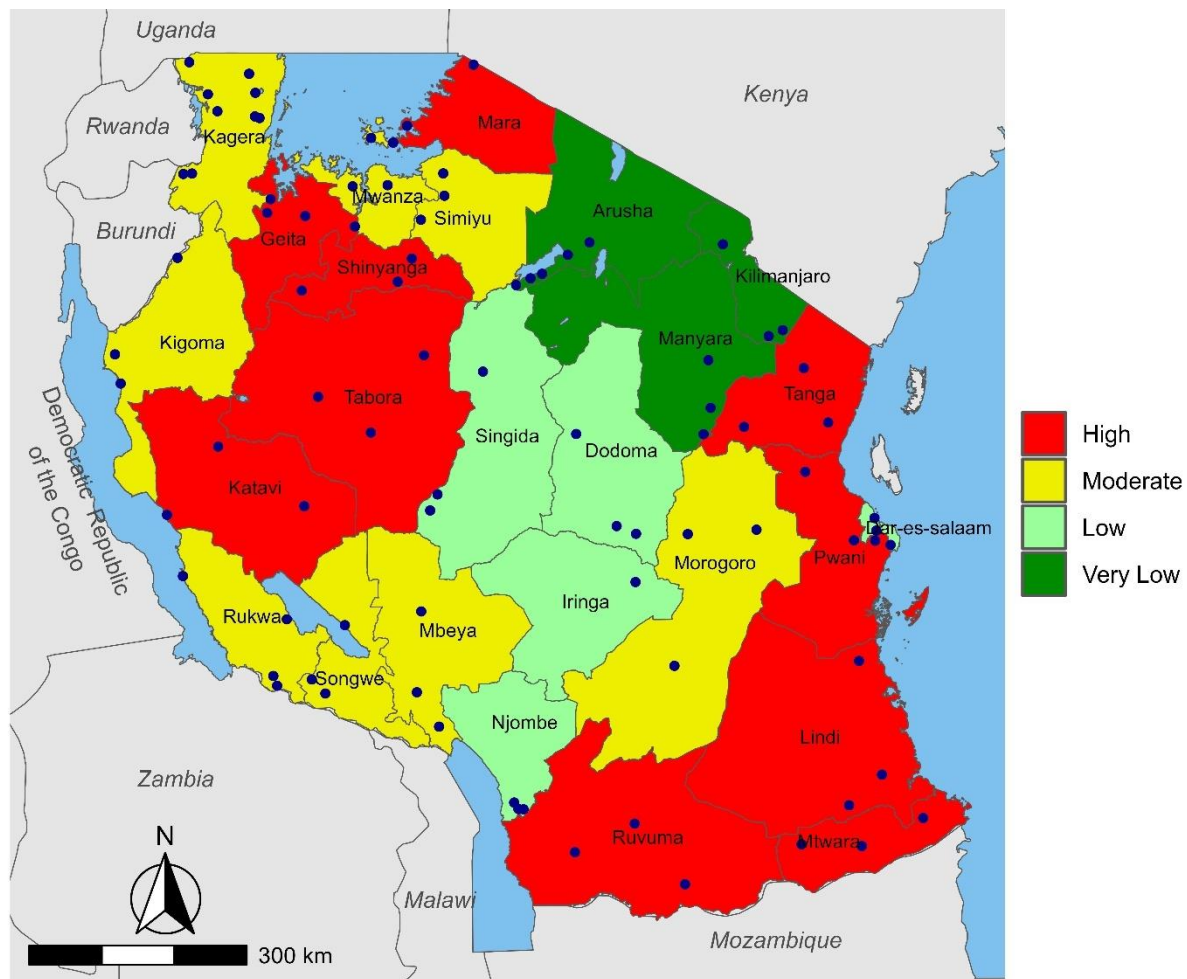
123 This was the first-ever survey of the MSMT to cover all 26 regions of Mainland
124 Tanzania and it was conducted at HFs compared to national community surveys such as school
125 parasitological surveys,³⁹ malaria indicator surveys^{40–42} and demographic and health surveys.¹¹
126 The regions which were covered included Arusha, Dar es Salaam, Dodoma, Geita, Iringa,
127 Kagera, Katavi, Kigoma, Kilimanjaro, Lindi, Manyara, Mara, Mbeya, Morogoro, Mtwara,
128 Mwanza, Njombe, Pwani, Rukwa, Ruvuma, Shinyanga, Simiyu, Singida, Songwe, Tabora, and
129 Tanga (**Figure 1**). Based on the 2022 malaria stratification by the National Malaria Control
130 Programme, the regions were categorised into four strata high (10 regions), moderate (8
131 regions), low (5 regions) and very low malaria transmission intensities (3 regions) (NMCP,
132 unpublished data). In the high transmission stratum, the regions included Geita, Katavi, Lindi,
133 Mara, Mtwara, Pwani, Ruvuma, Shinyanga, Tabora and Tanga. The regions in the moderate
134 stratum were Kagera, Kigoma, Mbeya, Morogoro, Mwanza, Rukwa, Simiyu and Songwe while
135 the low transmission stratum had Dar es Salaam, Dodoma, Iringa, Njombe and Singida, and
136 the very low transmission stratum had Arusha, Kilimanjaro, and Manyara region (**Figure 1**).

137 In all 26 regions, 86 health facilities (HFs) were selected and involved in this study. In
138 the 10 regions (Dar es Salaam, Dodoma, Kagera, Kilimanjaro, Manyara, Mara, Mtwara,
139 Njombe, Songwe and Tanga) which were covered by the MSMT project in 2021, the selection
140 was made within the 10 HFs which were sampled in 2021. Out of these 10 HFs, three facilities
141 were purposively selected for the 2023 survey, with a preference to the facilities which were
142 also covered in 2022. The process of selecting the HFs which were covered by the MSMT
143 surveys in 2021 has been previously described.^{34,38}

144 In each of the remaining 16 regions, three HFs from preferably three administrative
145 councils were purposively selected to represent the diverse parts of the region and to ensure
146 the region was appropriately represented. The selection process was done with the support of

147 the teams from the regional and district medical officers. Initially, the data of each region was
148 assembled from the District Health Information System 2 (DHIS2) and assessed to determine
149 councils and HFs which reported a minimum of 50 malaria patients per month between
150 December 2022 and April 2023. These were considered to have the capacity to recruit the
151 required number of patients (which was 100 patients) within three months. After selecting the
152 councils and HFs with a sufficient number of patients, the target councils were selected to
153 ensure their distribution forms a triangular spread across the region. The selection of HFs in
154 the region/council also considered the location of facilities which were selected in the
155 neighbouring region to avoid over-sampling in a similar geographic area in case selection was
156 already done in other regions close to it. Thereafter, the HFs were selected by considering the
157 availability of sufficient staff to ensure participation in the project did not impact the provision
158 of health services to their clients. The HFs were finally selected if they were reachable by road
159 especially during the rainy season because the study was done before, during and after the long
160 rainy season which normally occurs between March and June.

161 In all regions, three councils (with one facility in each council) were involved in the
162 survey, except for Kagera (7 Councils and 10 HFs), Kilimanjaro, Manyara and Singida region
163 (two councils/region), and Iringa and Arusha (one council in each region). The low number of
164 councils in Arusha, Iringa, Kilimanjaro, Manyara and Singida was due to low transmission
165 intensities of malaria. Therefore, very few HFs in these regions were capable of recruiting a
166 minimum sample of 100 patients with RDT positive results which was an important
167 requirement for a site to be selected by the MSMT project. The inclusion of more councils and
168 HFs in Kagera was due to intensive surveillance which is currently going on in the region
169 following the detection and confirmation of artemisinin partial resistance (ART-R).⁴³⁻⁴⁵



170

171 **Figure 1: Map showing the 26 regions of Mainland Tanzania, malaria transmission strata**
172 **and the health facilities (blue dots) where the data were collected.**

173

174 **Study population and participant enrolment**

175 The study recruited outpatients aged 6 months and above who presented at the HFs and
176 were suspected to have uncomplicated malaria based on a history of fever in the past 48 hours
177 or fever at presentation (with axillary temperature $\geq 37.0^{\circ}\text{C}$). The inclusion criteria included
178 febrile illnesses which were suspected to be uncomplicated malaria based on a history of fever
179 within 48 hours before the survey or fever at presentation, age ≥ 6 months, and residence in an
180 area covered by selected HF under the study. Before recruitment, health facility staff who were
181 involved in the survey provided information about the study to all outpatients and asked eligible
182 patients for their consent to participate. All patients who met the inclusion criteria were invited

183 to meet the study staff who obtained informed consent and finalised the enrolment process.
184 Consenting was done as previously described³⁸ and patients who did not consent to participate
185 or were not residents of the study area were excluded. In addition, patients with life-threatening
186 illnesses such as severe malaria and other conditions that required immediate care were
187 excluded from the study.

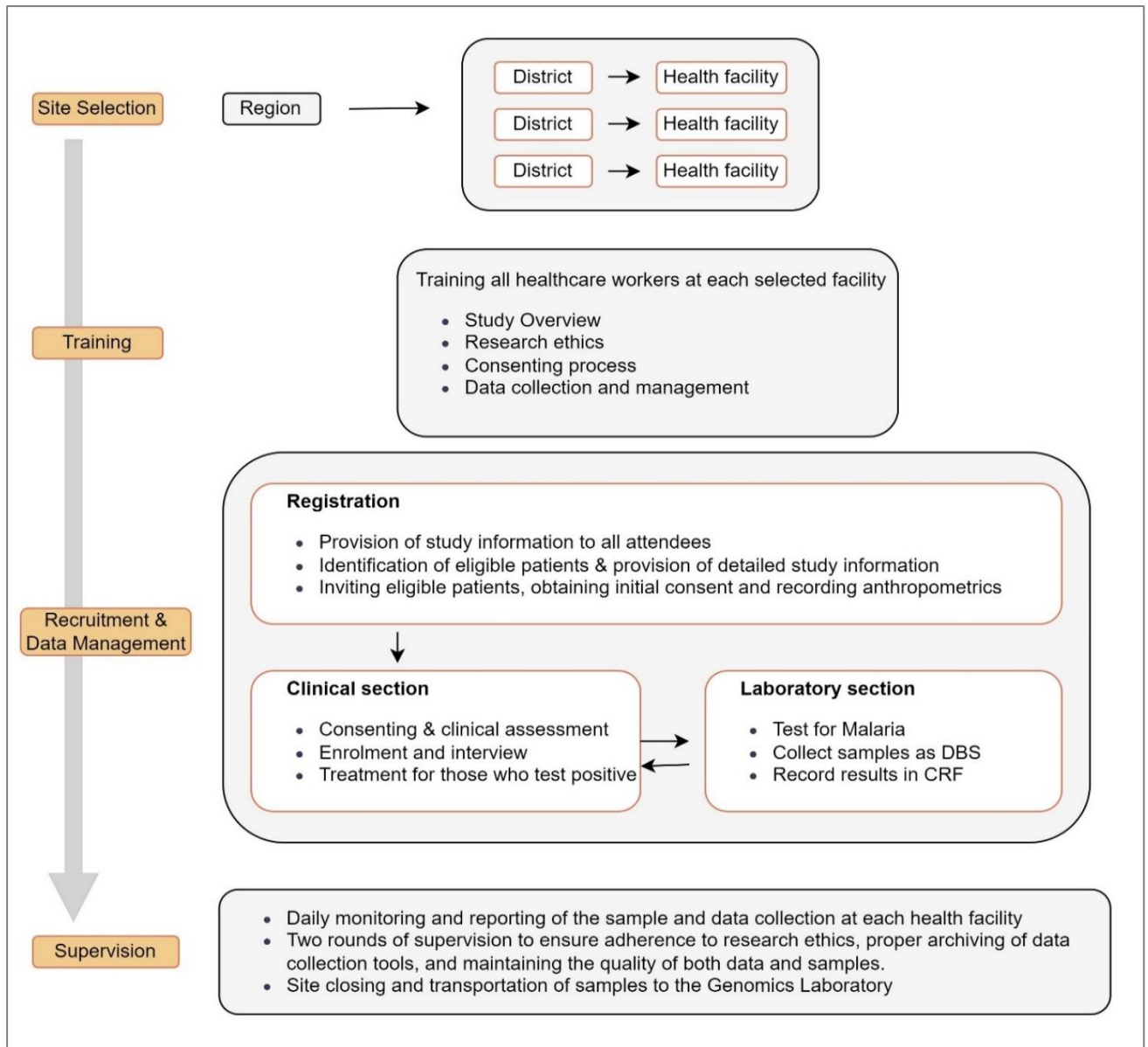
188 **Data collection**

189 For this study, all febrile patients who were recruited at the HFs while seeking care and
190 tested RDT-negative for malaria were considered to have NMFIs. For all eligible patients,
191 demographic, anthropometric, and parasitological data were collected after consenting as
192 shown in Figure 2. The data were collected by trained staff who participated in the 2021 or
193 2022 surveys of the MSMT project in the 10 regions of Dar es Salaam, Dodoma, Kagera,
194 Kilimanjaro, Manyara, Mara, Mtwara, Njombe, Songwe and Tabora. All the staff received a
195 refresher training for 2-3 days before initiation of the survey. In the 16 regions which took part
196 in the MSMT project for the first time, all staff members from the selected HFs were trained
197 by the project team. The training team included an experienced clinician and a laboratory
198 expert. The training was done for 3 days and covered the study protocol, study documents such
199 as informed consent forms (ICFs), case report forms (CRFs) and study logs. It also covered the
200 basics of good clinical practices (GCP), good clinical laboratory practices (GCLP) and standard
201 operating procedures (SOPs) of the project. After the training, HF staff conducted the
202 enrolment of patients which included providing study information, obtaining informed consent,
203 performing clinical assessment of all eligible patients, filling the ICFs and CRFs, performing
204 a laboratory test and collecting samples as dried blood spots on filter papers (DBS).

205 The data collected included basic demographics (such as residence, age and weight),
206 axillary temperature, weight, history of fever in the past 48 hours, history of travel in the past
207 30 days and history of antimalarial medication in the past 14 days. Testing for malaria was

208 done for all enrolled patients using RDTs and three brands were used in different
209 regions/councils. All RDTs were Pf/Pan malaria and included Bioline™ Malaria Ag P.f/Pan
210 (Abbott Diagnostics Korea, Inc., Gyeonggi-do, Korea), First Response (Premier Medical
211 Corporation Pvt. Ltd., Gujarat, India), and SD Bioline (Standard Diagnostic Inc, Suwon,
212 Korea). The testing process was done following routine procedures for outpatients per the
213 manufacturer's instructions. All the information, including RDT results, was recorded on
214 CRFs. Each HF provided a daily report to the project team through a WhatsApp group that was
215 set up for all HFs in the region. The report presented the number of patients screened and
216 enrolled daily and the number of patients with positive results who were recruited. The report
217 also presented the status and progress of the survey and the challenges encountered if any. In
218 case the staff at the HF had critical problems such as a limited understanding of study
219 procedures which limited the progress of the survey, they were re-trained virtually or visited
220 by the project team.

221 Quality control processes included daily and weekly reviews of the data collected at
222 each HF by the local team itself or with the support of the MSMT team (virtually). This was
223 done to ensure the study documents (ICF, CRF and logs) were appropriately and correctly
224 filled, and the documents were properly stored. To further ensure high-quality data and samples
225 were collected, each HF was supervised by the MSMT team at least twice after the training.
226 The supervision was done before the HF team collected half of the target samples and during
227 the closure of the survey, once all the samples were collected. During supervision, the project
228 team assessed the progress of the survey to ensure compliance with the protocol, GCP/GCLP
229 and SOPs. The study team assessed all study documents and samples, identifying and resolving
230 any discrepancies. The storage of samples and data was also evaluated, along with stock levels,
231 to ensure sufficient materials were available at the facility. In case poor samples or data were
232 collected, they were rejected, and the team was retrained and advised to restart the sample and
233 data collection process.



234

235 **Figure 2: Schematic presentation of the selection of districts, health facilities and data**
 236 **collection process.**

237

238 **Data management and statistical analysis**

239 Data were collected using paper questionnaires (the CRF) and double-entered into a
 240 Microsoft® Access® LTSC MSO (Version 2403) database. Data cleaning involved exporting
 241 raw data to the Microsoft® Excel® LTSC MSO (Version 2403), removing duplicate entries,
 242 and handling missing values. Cleaned data were processed and analysed using STATA
 243 Software version 13 (StataCorp LP, College Station, TX, USA) and R Software version 4.3.2

244 (The R Foundation for Statistical Computing, Vienna, Austria). A descriptive analysis
245 including median, frequencies, and proportions was done to understand the data's basic
246 patterns and distributions. Inferential statistics involved chi-square and logistic regression to
247 determine the statistical association between NMFI and risk variables such as sex, age group
248 and transmission strata of malaria. All variables with p-value < 0.25 in the univariate logistic
249 regression were included in the multivariate regression model to understand their individual
250 and combined effects while controlling for potential confounding factors. The association
251 between variables were presented as crude (cORs) and adjusted odds ratios (aORs), with 95%
252 confidence intervals (CIs), and a p-value of ≤ 0.05 was considered significant.

253 **Results**

254 **Baseline characteristics of study patients**

255 A total of 18,568 patients were recruited from 86 HFs in all 26 regions of Mainland
256 Tanzania. The majority (57.8%, n = 10,724/18,568) of the patients were females while 42.2%,
257 (n = 7,844/18,568) were males, and this pattern was observed in all regions except in Iringa
258 region where 50.5% (n = 48/95) were male and 49.5% (n = 47/95) were female. The median
259 age (interquartile range) of the patients was 9.0 (3 – 26) years, with a high number of patients
260 aged ≥ 15 years old (41.8%, n = 7,762/18,568), followed by under-fives (41.4%, n =
261 7,684/18,568), and school children (aged 5 - < 15 years) (16.8%, n = 3,122/18,568). The
262 average number of patients per region was 714, but Dar es Salaam, Kagera, Kilimanjaro, and
263 Tabora regions contributed over 30.0% of the study patients with $\geq 1,004$ patients per region.
264 All the remaining regions had over 400 patients except Iringa region which had 95 patients
265 only (recruitment was done by one HF due to a lack of facilities with a sufficient number of
266 patients). Based on the strata of malaria transmission intensities, 17.8% (n = 3,311/18,568) of
267 the patients were from very low, 16.0% (n = 2,979/18,568) from low, 31.8% (n = 5,906/18,568)

268 from moderate and 34.3% (n = 6,372/18,568) were from regions located within the high
269 transmission strata (**Table 1**).

270 **Table 1: Demographic characteristics of the study patients**

Region/transmission strata	N	Male	Female	< 5 years	5 -<15 years	≥ 15 years
		n (%)	n (%)	n (%)	n (%)	n (%)
Very low						
Arusha	561	259 (46.2)	302 (53.8)	198 (35.3)	94 (16.8)	269 (47.9)
Kilimanjaro	2,154	882 (40.9)	1,272 (59.1)	308 (14.3)	238 (11.1)	1,608 (74.6)
Manyara	596	261 (43.8)	335 (56.2)	165 (27.7)	113 (18.9)	318 (53.4)
Sub-Total	3,311	1,402 (42.3)	1,909 (57.7)	671 (20.3)	445 (13.4)	2,195 (66.3)
Low						
Dar-es-salaam	1,117	558 (50.0)	559 (50.0)	340 (30.4)	161 (14.4)	616 (55.2)
Dodoma	841	359 (42.7)	482 (57.3)	320 (38.1)	138 (19.4)	383 (44.5)
Iringa	95	48 (50.5)	47 (49.5)	44 (46.3)	26 (27.4)	25 (26.3)
Njombe	402	177 (44.0)	225 (56.0)	102 (25.4)	104 (25.9)	196 (48.7)
Singida	524	226 (43.1)	298 (56.9)	341 (65.1)	51 (9.7)	132 (25.2)
Sub-Total	2,979	1,368 (45.9)	1,611 (54.1)	1,147(38.5)	480 (16.1)	1,352 (45.4)
Moderate						
Kagera	2,352	992 (42.2)	1,360 (57.8)	1,333 (56.7)	328 (13.9)	691 (29.4)
Kigoma	460	199 (43.3)	261 (56.7)	240 (52.2)	60 (13.0)	160 (34.8)
Mbeya	560	228 (40.7)	332 (59.3)	208 (37.1)	82 (14.6)	270 (48.2)
Morogoro	476	161 (33.8)	315 (66.2)	184 (38.7)	98 (20.6)	194 (40.7)
Mwanza	455	204 (44.8)	251 (55.2)	222 (48.8)	106 (23.3)	127 (27.9)
Rukwa	662	265 (40.0)	397 (60.0)	267 (40.3)	150 (26.7)	245 (37.0)
Simiyu	477	171 (35.8)	306 (64.2)	250 (52.4)	74 (15.5)	153 (32.1)
Songwe	464	195 (42.0)	269 (58.0)	156 (33.6)	118 (25.4)	190 (40.0)
Sub-Total	5,906	2,215 (40.9)	3,491 (59.1)	2,860 (48.4)	1,016 (17.2)	2,030 (34.4)
High						
Geita	461	200 (43.4)	261 (56.6)	245 (53.2)	95 (20.6)	121 (26.3)
Katavi	578	201 (34.8)	377 (65.2)	201 (34.8)	107 (18.5)	270 (46.7)
Lindi	426	175 (41.1)	251 (58.9)	269 (63.2)	49 (11.5)	108 (25.3)
Mara	907	382 (42.1)	525 (57.9)	246 (27.1)	270 (29.8)	391 (43.1)
Mtwara	820	348 (42.1)	472 (57.6)	522 (63.7)	78 (9.5)	220 (26.8)
Pwani	667	287 (43.0)	380 (57.0)	315 (47.2)	121 (18.1)	231 (34.6)
Ruvuma	526	246 (46.8)	280 (53.2)	245 (46.6)	122 (23.2)	159 (30.2)
Shinyanga	430	180 (41.9)	250 (58.1)	219 (50.9)	97 (22.6)	114 (26.5)
Tabora	1,004	435 (43.3)	569 (56.7)	605 (60.2)	1015 (10.1)	273 (29.7)
Tanga	553	205 (37.1)	348 (62.9)	139 (25.1)	141 (25.5)	273 (49.4)
Sub-Total	6,372	2,659 (41.7)	3,713 (58.3)	3,006 (47.2)	1,181 (18.5)	2,185 (34.3)
Grand total	18,568	7,844 (42.2)	10,724 (57.8)	7,684 (41.4)	3,122 (16.8)	7,762 (41.8)

271

272 **Prevalence of non-malarial febrile illnesses**

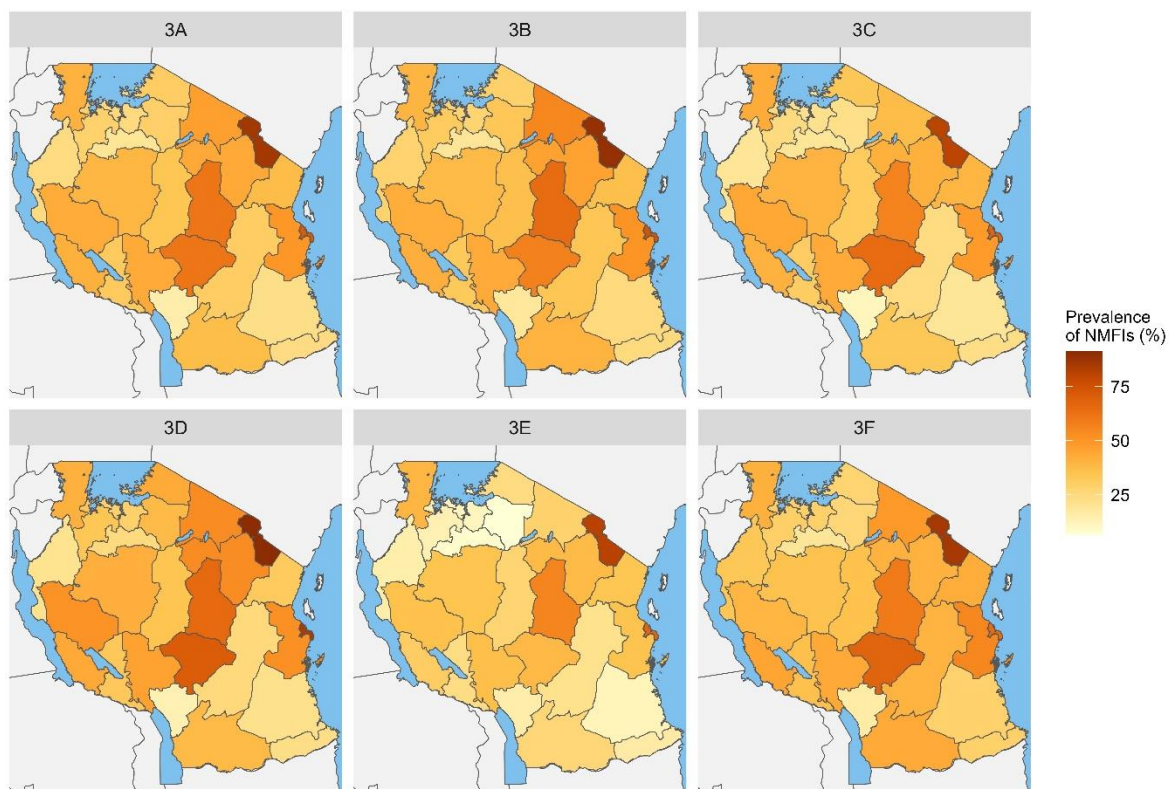
273 Of the 18,568 patients tested, 8,273 (44.6%) had a negative test for malaria by RDT
274 and were considered to have NMFIs (**Table 2**). Of all regions, Dar-es-salaam and Kilimanjaro
275 had the highest prevalence of NMFIs (70.9%, $n = 792/1,117$ and 85.6%, $n = 1,844/2,154$,
276 respectively) while Njombe had the lowest prevalence with 15.4% ($n = 62/402$) (**Figure 3A**).
277 The prevalence of NMFIs was significantly higher in females (45.8%, $n = 4,913/10,724$) than
278 in males (42.8%, $n = 3,360/7,844$). This pattern was observed in all regions except in Iringa
279 where the prevalence was higher in males (64.6%, $n = 31/48$) than in females (57.5%, $n =$
280 $27/47$). The proportion of NMFI was significantly higher in adults (50.6%, $n = 3,927/7,762$)
281 compared to under-fives and school children (42.6%, $n = 3,276/7,684$ and 34.3%, $n =$
282 $1,070/3,122$, respectively). In the male population, the high prevalence was observed in
283 Kilimanjaro (80.4%, $n = 709/882$), Dar-es-Salaam (68.1%, $n = 380/558$), and Iringa (64.6%, n
284 $= 31/48$), while Kigoma, Shinyanga, Lindi and Njombe regions had lower prevalence with
285 19.6% ($n = 39/199$), 19.4% ($n = 35/180$) 19.4% ($n = 34/173$) and 11.3% ($n = 20/177$),
286 respectively. Among females, Kilimanjaro (89.2%, $n = 1,135/1,272$), Dar-es-Salaam (73.7%,
287 $n = 412/559$), and Dodoma (64.7%, $n = 312/482$) also had a high prevalence of NMFIs,
288 reflecting the trend observed in males. Regions such as Lindi (24.7%, $n = 62/251$), Mtwara
289 (24.6%, $n = 116/472$), Shinyanga (19.6%, $n = 49/250$), and Njombe (18.7%, $n = 42/225$) had
290 lower prevalence in the female population (**Figure 3B and 3C**).

291 **Table 2: Prevalence of NMFI by sex, age group and malaria transmission strata.**

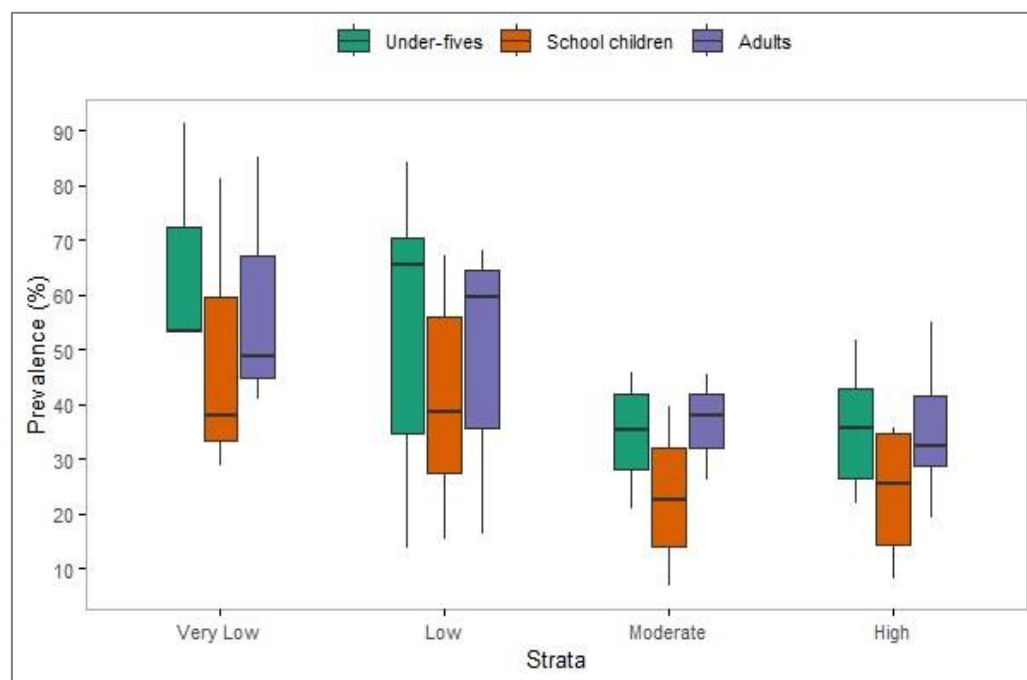
Variable	Febrile patients tested for malaria	Patients with negative malaria tests	Proportion of NMFI (%)	P-value
Overall prevalence	18,568	8,273	44.6	
Sex				
Male	7,844	3,360	42.8	< 0.001
Female	10,724	4,913	45.8	< 0.001
Age group				
< 5 years	7,684	3,276	42.6	< 0.001
5 -< 15 years	3,122	1,070	34.3	< 0.001
≥ 15 years	7,762	3,927	50.6	< 0.001
Transmission strata				
Very Low	3,311	2,368	71.5	< 0.001
Low	2,979	1,605	53.9	< 0.001
Moderate	5,906	2,140	36.2	< 0.001
High	6,372	2,160	33.9	< 0.001

292

293 In under-fives, the regions of Kilimanjaro (91.2%, n = 281/308), Dar-es-Salaam
 294 (84.1%, n = 286/340), Iringa (70.5%, n = 31/44) and Dodoma (65.3%, n = 209/320) had a
 295 higher prevalence of NMFIs, indicating a significant burden of NMFIs among young children.
 296 On the contrary, regions like Njombe (13.7%, n = 14/102), Kigoma (20.8%, n = 50/240), and
 297 Lindi (21.9%, n = 59/269) had a lower prevalence of NMFIs in under-fives. Among school
 298 children, Kilimanjaro (81.1%, n =193/238) and Dar-es-Salaam (67.1%, n = 108/161) had a
 299 higher prevalence of NMFIs, while Simiyu (6.8%, n = 5/74), Shinyanga (11.3%, n = 8/97), and
 300 Mwanza (11.3%, n = 12/106) had lower prevalence in this age group. In the adult population,
 301 the highest prevalence was observed in Kilimanjaro region (85.2%, n = 1,370/1,608), while
 302 Njombe (16.3%, n = 32/196) had the lowest prevalence (**Figure 3D-F** and **Supplementary**
 303 **Table 1**). The proportion of NMFI was significantly lower in the high transmission stratum
 304 (33.9%) compared to the very low transmission stratum (71.5%) as shown in **Figure 4**.



305
306 **Figure 3: Spatial distribution of non-malarial febrile illness prevalence in six**
307 **demographic groups: (3A) all patients, (3B) females, (3C) males, (3D) under-fives, (3E)**
308 **school children, and (3F) adults. Each panel highlights the variation in NMFI prevalence**
309 **across the study region for the specified subgroup.**
310



311
312 **Figure 4: Boxplots showing the prevalence of NMFI among patients of different age**
313 **groups in the strata with different malaria transmission intensities.**

314 **Predictors/risk factors of non-malarial illnesses**

315 In the univariate analysis, sex, age group, and malaria transmission strata were
 316 significantly associated with the occurrence of NMFI ($p < 0.001$). When all these factors were
 317 simultaneously included in a multivariate model, the odds of getting NMFI were significantly
 318 higher in females compared to males (adjusted odds ratio [aOR] = 1.14, 95% CI = 1.07 - 1.22,
 319 $p < 0.001$). Compared to school children, the odds of getting NMFI were significantly higher
 320 in under-fives (aOR = 1.60, 95% CI = 1.47 - 1.76, $p < 0.001$) and adults (aOR = 1.60, 95% CI
 321 = 1.46 - 1.75, $p < 0.001$). Moreover, the odds of having NMFI were significantly higher in
 322 individuals living in settings with moderate (aOR = 1.10, 95% CI = 1.02 - 1.19, $p < 0.011$),
 323 low (aOR = 2.28, 95% CI = 2.09 - 2.50, $p < 0.001$) and very low transmission intensities of
 324 malaria (aOR = 4.85, 95% CI = 4.42 - 5.33, $p < 0.001$); compared to those living in the settings
 325 transmission with higher transmission intensities. The odds increased significantly across the
 326 strata, with the highest odds in the stratum with very low transmission of malaria transmission
 327 intensities as shown in **Table 3**.

328 **Table 3: Demographic factors associated with NMFI**

Variable	Crude OR	95% CI	P value	Adjusted OR	95% CI	P value
Sex						
Female	1.13	1.06 - 1.20	< 0.001	1.14	1.07 - 1.22	< 0.001
Male	Reference			Reference		
Age group						
< 5 years	1.43	1.31 - 1.55	< 0.001	1.61	1.47 - 1.76	< 0.001
5 -< 15 years	Reference			Reference		
≤ 15 years	1.96	1.80 - 2.14	< 0.001	1.57	1.46 - 1.75	< 0.001
Transmission strata						
Very Low	4.9	4.47 - 5.37	< 0.001	4.85	4.42 - 5.33	< 0.001
Low	2.28	2.08 - 2.49	< 0.001	2.28	2.09 - 2.50	< 0.001
Moderate	1.11	1.03 - 1.19	0.007	1.1	1.02 - 1.19	0.011
High	Reference			Reference		

329 **DISCUSSION**

330 This was the first health facility-based cross-sectional study involving symptomatic
331 patients suspected of uncomplicated malaria to be conducted by the MSMT project covering
332 all 26 regions of Mainland Tanzania. Unlike community surveys which are routinely
333 implemented either in school children,³⁹ or under-fives,^{11,40-42} it provides the largest scan of
334 malaria in HF settings in the entire country. The data have also been utilised to assess the
335 prevalence and patterns of NMFIs in Tanzania and provide useful information for guiding
336 policy and decisions for controlling different pathogens associated with NMFIs. The study
337 found that more than 40.0% of the febrile patients had NMFI and there was a high prevalence
338 of NMFIs with spatial heterogeneity across different regions with varying malaria transmission
339 intensities in Mainland Tanzania. Occurrence and the odds of NMFIs were higher in females
340 than males, and in under-fives compared to older age groups. School children had the lowest
341 prevalence and correspondingly, the odds of getting NMFIs. NMFIs varied inversely to malaria
342 transmission intensities, with the lowest prevalence in the regions located in the stratum with
343 high transmission intensities and the highest prevalence was in the stratum with very low
344 transmission intensities of malaria. The findings provide country-wide scans of NMFIs with
345 varying prevalence which suggest that more studies are urgently needed to further characterise
346 the burden of NMFI, and develop POC tests and the guidelines/recommendations for managing
347 these illnesses alongside malaria.

348 The findings showed that the prevalence of NMFIs in the different regions of Mainland
349 Tanzania increased with decreasing transmission intensities of malaria. This may or may not
350 represent a direct association between the occurrence of NMFIs and the transmission intensity
351 of malaria. In areas with high malaria transmission, the rate of individuals harbouring malaria
352 parasites is high compared to areas with low transmission. However, most of the people in high
353 transmission tend to have high acquired immunity due to high rates of exposure to infective

354 bites by mosquitoes.⁴⁶ Thus, in high transmission areas, not all malaria infections cause
355 symptoms as some individuals may remain asymptomatic even when an individual have high
356 parasitaemia.⁴⁷ When such individuals develop symptoms, they will test positive for malaria
357 while malaria may potentially not be the direct cause of the symptoms.¹³ As a result, any
358 individual who tests positive for malaria by RDT will be considered not to have NMFIs (based
359 on the criteria used in this study) resulting in a low prevalence of NMFIs. On the contrary, in
360 areas with low malaria burden, most of the febrile patients will test negative for malaria thus
361 reducing the masking effect of malaria infections and resulting in high NMFI prevalence.
362 Therefore, while it may be true that in some areas where the prevalence of NMFIs is high and
363 the burden of malaria is low, co-infections with malaria which is common in areas of high
364 transmission intensities may introduce bias and act as a confounder. Thus, other causes of fever
365 should always be investigated even in malaria-positive individuals, particularly in high
366 malaria-burden regions although this may be challenging under clinical conditions.¹³

367 This study showed high variations in NMFI prevalence among patients with different
368 age groups, with adults exhibiting the highest prevalence than under-fives and school children.
369 The increased prevalence in adults suggests that the adult population may be more exposed to
370 febrile illnesses due to increased mobility, occupational exposure, and sometimes
371 immunosenescence. Taking more responsibility, adults may be exposed to multiple and higher
372 doses of infectious agents than younger children. Increased exposure frequently raises the
373 chance of contracting an infection, but there is no apparent evidence linking this risk to the
374 findings of this study.⁴⁸ The observed higher prevalence in under-fives could be due to the
375 vulnerability of this group to infections. These findings are similar to those reported in Malawi
376 where 72.0% of under-fives and 77.0% of adults had NMFIs.^{44,49,50} The low prevalence of
377 NMFIs among school children could be attributed to the high prevalence of malaria in this
378 group as previously reported by other studies,^{44,49,50} since febrile patients were excluded from

379 NMFI analysis if they tested positive for malaria by RDT. Additionally, the low prevalence of
380 NMFI among school children could be attributed to their relatively stronger immunity acquired
381 through repeated antigenic exposure. It may also be because, at the age of 5 - 15, the immune
382 system is just starting to mature. As a result, most infections can be prevented by the immune
383 system, making this group less susceptible to most NMFI-causing pathogens.^{51,52} This is
384 consistent with previous research conducted elsewhere, where school children had the lowest
385 prevalence of NMFI compared to under-fives and adults.^{44,49} The pattern observed in this study
386 is similar to what was reported by other studies on malaria-related fevers, where school children
387 typically showed a higher prevalence making them have NMFIs in the absence of tests for other
388 pathogens.^{44,49} This results in a low prevalence of non-malarial fevers since a large proportion
389 of the fevers is parasitologically attributed to malaria even if there is no evidence of clinical
390 association unless multiple tests are done to rule out any other infections by fever-causing
391 pathogens.

392 The slightly higher NMFI prevalence observed in females compared to males may be
393 attributed to a variety of social, biological, and healthcare-seeking behaviours. In many
394 settings, women are more likely to seek healthcare services, leading to higher detection rates
395 of febrile illnesses. Additionally, biological differences such as immune response variations
396 between sexes may also contribute to this observation.^{44,49,50} Due to social and biological
397 factors, the prevalence of malaria is usually high in males compared to females,^{44,49,50} which
398 results in the exclusion of more males than females in the NMFI analysis, since the potential
399 for malaria co-infection with other febrile aetiologies was not pursued in this study. However,
400 further research is needed to fully understand the underlying causes of this disparity. The
401 findings of higher odds of NMFIs are consistent with what was reported by other studies which
402 showed a higher prevalence of NMFIs in females (70.0%) compared to males (68.0%).²⁹

403 The key strength of the study is its extensive coverage, utilising a large number of
404 samples from all 26 regions of Mainland Tanzania, thus providing a comprehensive
405 representation of the country's diverse population and transmission settings. However, this
406 study had some limitations. Being a cross-sectional study, the data may not be a true
407 representation of the actual prevalence of NMFIs in a given area because the study only
408 captured a single time point and, hence had a limited temporal scope. Also, the data for this
409 study were collected as part of the MSMT project whose sites were purposively selected to
410 maximise the recruitment of patients with malaria based on the detection of RDT-positive
411 results. Therefore, the sites may be biased towards high transmission areas even in low
412 transmission regions given the current heterogeneous nature of malaria in Mainland
413 Tanzania^{56,57}. Thus, future studies should consider inclusive sampling covering areas of
414 different levels of malaria burden, preferably using DHIS2 data for a more comprehensive
415 mapping of NMFIs country-wide. Additionally, this study could not explore the specific causes
416 of NMFIs because it was not designed to offer POC or laboratory tests for other pathogens.
417 However, it has highlighted the magnitude of this problem in the entire country, with a higher
418 burden of NMFIs particularly in areas of low transmission intensities as previously reported by
419 other studies.¹³ Analysis to address this issue will need to be performed and reported in future
420 studies to appropriately inform policy and decisions for appropriately targeting and better case
421 management and the control of NMFIs.

422 **Conclusion**

423 Non-malarial febrile illnesses were fairly common and their burden and distribution
424 patterns varied significantly across regions and malaria transmission strata. Females, under-
425 fives and individuals from areas with low and very low transmission intensities of malaria had
426 a higher prevalence of NMFIs and an increased likelihood of experiencing non-malarial fevers
427 compared to males, adults, school children and individuals living in settings with high malaria

428 transmission intensities. These findings have important implications for healthcare planning,
429 offering critical insights to enhance the diagnosis and management of febrile illnesses beyond
430 malaria. The results further suggest that the identified groups of patients should be
431 appropriately targeted with POC tests and treatment strategies. By country-wide mapping of
432 NMFI, this research contributes to a better understanding of the local epidemiology of NMFI
433 and supports the development of more effective management and control strategies.
434 Addressing the gaps in evidence-based information on NMFI will ultimately lead to improved
435 patient outcomes and better healthcare delivery in regions with varying endemicity of malaria
436 and other fever-causing pathogens.

437

438 **Acknowledgements**

439 The authors wish to thank all patients and parents/guardians of all the children who participated
440 in the survey. We acknowledge the contributions of the following project staff and other
441 colleagues who participated in the data collection: Hussein Semboja, Sharifa Hassan, Ezekiel
442 Malecela, Godwin Gaudin, Ildephonc Mathias, Kusa Mchaina, Oswald Oscar, and Tilaus
443 Gustav. Many thanks to the finance, administrative and logistic support team at NIMR:
444 Christopher Masaka, Millen Meena, Beatrice Mwampeta, Gracia Sanga, Neema Manumbu,
445 Arison Ekoni, Twalipo Mponzi, Alfred Sezary, Sadiki Yusuph, and Rodrick Ulomi. The
446 authors also extend their gratitude to the management of NIMR, NMCP and PO-RALG
447 (including the regional administrative secretaries of the 26 regions and district officials), and
448 staff from all 86 health facilities. Authors received and appreciate the technical and logistics
449 support from partners at Brown University, the University of North Carolina at Chapel Hill,
450 the CDC Foundation and the Bill and Melinda Gates Foundation team.

451 **Financial support**

452 This work was supported in full by the Bill & Melinda Gates Foundation [grant number INV.
453 002202 and INV. 067322]. Under the grant conditions of the Foundation, a Creative Commons
454 Attribution 4.0 Generic License has already been assigned to the Author Accepted Manuscript
455 version that might arise from this submission.

456

457 **Disclosures regarding real or perceived conflicts of interest.**

458 The authors declare that they have no competing interests.

459 **Author's current addresses**

460 Salehe S. Mandai, National Institute for Medical Research, Dar es Salaam, Tanzania, Email:

461 salehemandai@gmail.com

462 Angelina J. Kisambale, National Institute for Medical Research, Dar es Salaam, Tanzania,

463 Email: angelinajulius00@gmail.com

464 Daniel A. Petro, University of Dar es Salaam, Dar es Salaam, Tanzania, Email:

465 petroldaniel945@gmail.com

466 Catherine Bakari, National Institute for Medical Research, Dar es Salaam, Tanzania, Email:

467 cathybkr3@gmail.com

468 Gervas A. Chacha, National Institute for Medical Research, Dar es Salaam, Tanzania, Email:

469 gervasalexander807@gmail.com

470 Rule Bododo, National Institute for Medical Research, Dar es Salaam, Tanzania, Email:

471 rulebudodo@gmail.com

472 Rashid A. Madebe, National Institute for Medical Research, Dar es Salaam, Tanzania, Email:

473 ramadebe11@gmail.com

474 Dativa Pereus, National Institute for Medical Research, Dar es Salaam, Tanzania, Email:

475 dativapereus12@gmail.com

- 476 Daniel P. Challe, National Institute for Medical Research, Tanga Research Center, Tanga,
477 Tanzania, Email: danielchalle77@yahoo.co.uk
- 478 Ramadhani Moshi, National Institute for Medical Research, Dar es Salaam, Tanzania, Email:
479 moshingamba@gmail.com
- 480 Ruth A. Mbwambo, National Institute for Medical Research, Dar es Salaam, Tanzania, Email:
481 boniface.ruth@yahoo.com
- 482 Grace Kiiza Kanyankole, National Institute for Medical Research, Dar es Salaam, Tanzania,
483 Email: kanyankolegrace11@gmail.com
- 484 Sijenunu Aaron, National Malaria Control Programme, Dodoma, Tanzania, Email:
485 sijenunu@gmail.com
- 486 Daniel Mbwambo, National Malaria Control Programme, Dodoma, Tanzania, Email:
487 dannymbwambo@yahoo.com
- 488 Stella Kajange, President's Office-Regional Administrative Local Government, Dodoma
489 Tanzania, Email: kajangestella@yahoo.com
- 490 Samwel Lazaro, National Malaria Control Programme, Dodoma, Tanzania, Email:
491 snhiga000@gmail.com
- 492 Ntuli Kapologwe, Directorate of Preventive Services, Ministry of Health, Dodoma, Tanzania,
493 Email: nkapologwe2002@gmail.com
- 494 Celine I. Mandara, National Institute for Medical Research, Dar es Salaam, Tanzania, Email:
495 drcline2010@gmail.com
- 496 Misago D. Seth, National Institute for Medical Research, Dar es Salaam, Tanzania, Email:
497 sethmdj@gmail.com
- 498 Deus S. Ishengoma, National Institute for Medical Research, Dar es Salaam, Tanzania, Email:
499 deusishe@yahoo.com

500 References

- 501 1. Shrestha P, Dahal P, Ogbonnaa-Njoku C, Das D, Stepniowska K, Thomas NV, Hopkins
502 H, Crump JA, Bell D, Newton PN, Ashley EA, Guérin PJ., 2020. Non-malarial febrile
503 illness: a systematic review of published aetiological studies and case reports from
504 Southern Asia and South-eastern Asia, 1980-2015. *BMC Med* 18: 299
- 505 2. Chandna A, Chew R, Shwe Nwe Htun N, Peto TJ, Zhang M, Liverani M, Brummaier T,
506 Phommasone K, Perrone C, Pyae Phyo A, Sattabongkot J, Roobsoong W, Nguitragee W,
507 Sen A, Ibna Zaman S, et al., 2021. Defining the burden of febrile illness in rural South
508 and Southeast Asia: an open letter to announce the launch of the Rural Febrile Illness
509 project. *Wellcome Open Res* 6: 64
- 510 3. Halliday JEB, Carugati M, Snavely ME, Allan KJ, Beamesderfer J, Ladbury GAF, Hoyle
511 DV, Holland P, Crump JA, Cleaveland S, Rubach MP., 2020. Zoonotic causes of febrile
512 illness in malaria-endemic countries: a systematic review
- 513 4. Chew R, Painter C, Pan-Ngum W, Day NPJ, Lubell Y., 2024. Cost-effectiveness analysis
514 of a multiplex lateral flow rapid diagnostic test for acute non-malarial febrile illness in
515 rural Cambodia and Bangladesh. *Lancet Reg Health Southeast Asia* 23: 100389
- 516 5. Okiro EA, Snow RW., 2010. The relationship between reported fever and *Plasmodium*
517 *falciparum* infection in African children. *Malar J* 9
- 518 6. Maze MJ, Bassat Q, Feasey NA, Mandomando I, Musicha P, Crump JA., 2018. The
519 epidemiology of febrile illness in sub-Saharan Africa: implications for diagnosis and
520 management
- 521 7. Levine ZC, Sene A, Mkandawire W, Deme AB, Ndiaye T, Sy M, Gaye A, Diedhiou Y,
522 Mbaye AM, Ndiaye IM, Gomis J, Ndiop M, Sene D, Faye Paye M, MacInnis BL, et al.,
523 2024. Investigating the etiologies of non-malarial febrile illness in Senegal using
524 metagenomic sequencing. *Nat Commun* 15: 747

- 525 8. Aidoo M, Incardona S., 2021. Ten years of universal testing: How the rapid diagnostic
526 test became a game changer for malaria case management and improved disease reporting.
527 *Am J Trop Med Hyg* 106: 29–32
- 528 9. Decuypere S, Maltha J, Deborggraeve S, Rattray NJW, Issa G, Bérenger K, Lompo P,
529 Tahita MC, Ruspasinghe T, McConville M, Goodacre R, Tinto H, Jacobs J, Carapetis JR.,
530 2016. Towards improving point-of-care diagnosis of non-malaria febrile illness: A
531 metabolomics approach. *PLoS Negl Trop Dis* 10: e0004480
- 532 10. McDonald CR, Weckman A, Richard-Greenblatt M, Leligdowicz A, Kain KC., 2018.
533 Integrated fever management: Disease severity markers to triage children with malaria
534 and non-malarial febrile illness. *Malar J* 17
- 535 11. Ministry of Health (MoH) [Tanzania Mainland], Ministry of Health (MoH) [Zanzibar],
536 National Bureau of Statistics (NBS), Office of the Chief Government Statistician (OCGS),
537 and ICF., 2022. *Tanzania Demographic and Health Survey and Malaria Indicator Survey*
538 *2022 Final Report*. Dodoma, Tanzania, and Rockville, Maryland, USA: MoH, NBS,
539 OCGS, and ICF
- 540 12. Rutta ASM, Francis F, Mmbando BP, Ishengoma DS, Sembuche SH, Malecela EK, Sadi
541 JY, Kamugisha ML, Lemnge MM., 2012. Using community-owned resource persons to
542 provide early diagnosis and treatment and estimate malaria burden at community level in
543 north-eastern Tanzania. *Malar J* 11: 152
- 544 13. Dalrymple U, Cameron E, Arambepola R, Battle KE, Chestnutt EG, Keddie SH, Twohig
545 KA, Pfeffer DA, Gibson HS, Weiss DJ, Bhatt S, Gething PW., 2019. The contribution of
546 non-malarial febrile illness co-infections to Plasmodium falciparum case counts in health
547 facilities in sub-Saharan Africa. *Malar J* 18: 195
- 548 14. Plucinski MM, Candrinho B, Dimene M, Smith T, Thwing J, Colborn J, Rogier E, Zulliger
549 R., 2020. Estimation of Malaria-Attributable Fever in Malaria Test-Positive Febrile
550 Outpatients in Three Provinces of Mozambique, 2018. *Am J Trop Med Hyg* 102: 151–155

- 551 15. Doolan DL, Dobaño C, Baird JK., 2009. Acquired immunity to malaria. *Clin Microbiol*
552 *Rev* 22: 13–36, Table of Contents
- 553 16. Barry A, Hansen D., 2016. Naturally acquired immunity to malaria. *Parasitology* 143:
554 125–128
- 555 17. Elven J, Dahal P, Ashley EA, Thomas NV, Shrestha P, Stepniewska K, Crump JA,
556 Newton PN, Bell D, Reyburn H, Hopkins H, Guérin PJ., 2020. Non-malarial febrile
557 illness: A systematic review of published aetiological studies and case reports from Africa,
558 1980-2015
- 559 18. Wainaina M, Vey da Silva DA, Dohoo I, Mayer-Scholl A, Roesel K, Hofreuter D, Roesler
560 U, Lindahl J, Bett B, Al Dahouk S., 2022. A systematic review and meta-analysis of the
561 aetiological agents of non-malarial febrile illnesses in Africa. *PLoS Negl Trop Dis* 16
- 562 19. Fernandes JF, Held J, Dorn M, Lalremruata A, Schaumburg F, Alabi A, Agbanrin MD,
563 Kokou C, Ben Adande A, Esen M, Eibach D, Adegnika AA, Agnandji ST, Lell B, Eckerle
564 I, et al., 2020. Causes of fever in Gabonese children: a cross-sectional hospital-based
565 study. *Sci Rep* 10: 2080
- 566 20. Orimadegun AE, Dada-Adegbola HO, Michael OS, Adepoju AA, Funwei RE, Olusola FI,
567 Ajayi IO, Ogunkunle OO, Ademowo OG, Jegede AS, Baba E, Hamade P, Webster J,
568 Chandroman D, Falade CO., 2022. Non-Malaria Causes of Fever among under-5 Children
569 with Negative Results for Malaria Rapid Diagnostic Test in South-Western Nigeria. *J*
570 *Trop Pediatr* 68
- 571 21. Gutierrez R, Landa M, Sambou M, Bassane H, Dia N, Djalo AS, Domenichini C, Fall G,
572 Faye M, Faye O, Fernandez-Garcia M-D, Flevaud L, Loko J, Mediannikov O, Mize V, et
573 al., 2024. Aetiology of non-malaria acute febrile illness fever in children in rural Guinea-
574 Bissau: a prospective cross-sectional investigation. *Front Epidemiol* 4: 1309149

- 575 22. Nyaoke BA, Mureithi MW, Beynon C., 2019. Factors associated with treatment type of
576 non-malarial febrile illnesses in under-fives at Kenyatta National Hospital in Nairobi,
577 Kenya. *PLoS One* 14
- 578 23. Nooh F, Chernet A, Reither K, Okuma J, Brattig NW, Utzinger J, Probst-Hensch N, Paris
579 DH, Dreyfus A., 2023. Prevalence of fever of unidentified aetiology in East African
580 adolescents and adults: a systematic review and meta-analysis. *Infect Dis Poverty* 12: 55
- 581 24. Mdetele D, Seth M., 2015. Challenges in diagnosis of febrile illnesses in Tanzania in the
582 era of declining Malaria Epidemiology
- 583 25. Chipwaza B, Mugasa JP, Mayumana I, Amuri M, Makungu C, Gwakisa PS., 2014.
584 Community Knowledge and Attitudes and Health Workers' Practices regarding Non-
585 malaria Febrile Illnesses in Eastern Tanzania. *PLoS Negl Trop Dis* 8
- 586 26. Johansson EW, Kitutu FE, Mayora C, Awor P, Peterson SS, Wamani H, Hildenwall H.,
587 2016. It could be viral but you don't know, you have not diagnosed it: health worker
588 challenges in managing non-malaria paediatric fevers in the low transmission area of
589 Mbarara District, Uganda. *Malar J* 15: 197
- 590 27. Hooft AM, Ripp K, Ndenga B, Mutuku F, Vu D, Baltzell K, Masese LN, Vulule J,
591 Mukoko D, LaBeaud AD., 2017. Principles, practices and knowledge of clinicians when
592 assessing febrile children: a qualitative study in Kenya. *Malar J* 16: 381
- 593 28. Kiemde F, Tahita MC, Lompo P, Rouamba T, Some AM, Tinto H, Mens PF, Schallig
594 HDFH, van Hensbroek MB., 2018. Treatable causes of fever among children under five
595 years in a seasonal malaria transmission area in Burkina Faso. *Infect Dis Poverty* 7: 60
- 596 29. Kapito-Tembo A, Mathanga D, Bauleni A, Nyirenda O, Pensulo P, Ali D, Valim C, Taylor
597 TE, Laufer MK., 2020. Prevalence and clinical management of non-malarial febrile
598 illnesses among outpatients in the era of universal malaria testing in Malawi. *Am J Trop*
599 *Med Hyg* 103

- 600 30. Hopkins H, Bruxvoort KJ, Cairns ME, Chandler CIR, Leurent B, Ansah EK, Baiden F,
601 Baltzell KA, Björkman A, Burchett HED, Clarke SE, DiLiberto DD, Elfving K, Goodman
602 C, Hansen KS, et al., 2017. Impact of introduction of rapid diagnostic tests for malaria on
603 antibiotic prescribing: analysis of observational and randomised studies in public and
604 private healthcare settings. *BMJ* 356: j1054
- 605 31. Saweri OPM, Hetzel MW, Mueller I, Siba PM, Pulford J., 2017. The treatment of non-
606 malarial febrile illness in Papua New Guinea: findings from cross sectional and
607 longitudinal studies of health worker practice. *BMC Health Serv Res* 17: 10
- 608 32. Vaughn VM, Flanders SA, Snyder A, Conlon A, Rogers MAM, Malani AN, McLaughlin
609 E, Bloemers S, Srinivasan A, Nagel J, Kaatz S, Osterholzer D, Thyagarajan R, Hsaiky L,
610 Chopra V, et al., 2019. Excess antibiotic treatment duration and adverse events in patients
611 hospitalized with pneumonia: A multihospital cohort study: A multihospital cohort study.
612 *Ann Intern Med* 171: 153–163
- 613 33. Acam J, Kuodi P, Medhin G, Makonnen E., 2023. Antimicrobial prescription patterns in
614 East Africa: a systematic review. *Syst Rev* 12: 18
- 615 34. Juliano JJ, Giesbrecht DJ, Simkin A, Fola AA, Lyimo BM, Pereus D, Bakari C, Madebe
616 RA, Seth MD, Mandara CI, Popkin-Hall ZR, Moshi R, Mbwambo RB, Niaré K, MacInnis
617 B, et al., 2024. Prevalence of mutations associated with artemisinin partial resistance and
618 sulfadoxine-pyrimethamine resistance in 13 regions in Tanzania in 2021: a cross-sectional
619 survey. *Lancet Microbe* 5: 100920
- 620 35. Popkin Hall ZR, Seth MD, Madebe RA, Budodo R, Bakari C, Francis F, Pereus D,
621 Giesbrecht DJ, Mandara CI, Mbwambo D, Aaron S, Lusasi A, Lazaro S, Bailey JA,
622 Juliano JJ, et al., 2023. Malaria species positivity rates among symptomatic individuals
623 across regions of differing transmission intensities in Mainland Tanzania. *J Infect Dis*
- 624 36. Seth MD, Popkin-Hall ZR, Madebe RA, Budodo R, Bakari C, Lyimo BM, Giesbrecht D,
625 Moshi R, Mbwambo RB, Francis F, Pereus D, Mbata D, Challe DP, Mandai SS, Chacha

- 626 GA, et al., 2024. Prevalence of subpatent *Plasmodium falciparum* infections in regions
627 with varying transmission intensities and implications for malaria elimination in Mainland
628 Tanzania
- 629 37. Rogier E, Bakari C, Mandara CI, Chiduo MG, Plucinski M, Nace D, Battle N, Chacky F,
630 Rumisha SF, Molteni F, Mandike R, Mkude S, Njau R, Mohamed A, Udhayakumar V, et
631 al., 2022. Performance of antigen detection for HRP2-based malaria rapid diagnostic tests
632 in community surveys: Tanzania, July--November 2017. *Malar J* 21
- 633 38. Rogier E, Battle N, Bakari C, Seth MD, Nace D, Herman C, Barakoti A, Madebe RA,
634 Mandara CI, Lyimo BM, Giesbrecht DJ, Popkin-Hall ZR, Francis F, Mbwambo D,
635 Garimo I, et al., 2024. Plasmodium falciparum p_{fh}rp2 and p_{fh}rp3 gene deletions among
636 patients enrolled at 100 health facilities throughout Tanzania: February to July 2021. *Sci*
637 *Rep* 14: 8158
- 638 39. Chacky F, Runge M, Rumisha SF, MacHafuko P, Chaki P, Massaga JJ, Mohamed A,
639 Pothin E, Molteni F, Snow RW, Lengeler C, Mandike R., 2018. Nationwide school
640 malaria parasitaemia survey in public primary schools, the United Republic of Tanzania.
641 *Malar J* 17: 1–16
- 642 40. Ministry of Health, Community Development, Gender, Elderly and Children
643 (MoHCDGEC) [Tanzania Mainland], Ministry of Health (MoH) [Zanzibar], National
644 Bureau of Statistics (NBS), Office of the Chief Government Statistician (OCGS), and
645 ICF., 2017. *Tanzania Malaria Indicator Survey 2017*. Dar es Salaam, Tanzania, and
646 Rockville, Maryland, USA: MoHCDGEC, MoH, NBS, OCGS, and ICF
- 647 41. Tanzania Commission for AIDS (TACAIDS), Zanzibar AIDS Commission (ZAC),
648 National Bureau of Statistics (NBS), Office of the Chief Government Statistician (OCGS),
649 and ICF International., 2013. *Tanzania HIV/AIDS and Malaria Indicator Survey, 2011-*
650 *12*. Dar es Salaam, Tanzania: TACAIDS, ZAC, NBS, OCGS, and ICF International.

- 651 42. Tanzania Commission for AIDS (TACAIDS), Zanzibar AIDS Commission (ZAC),
652 National Bureau of Statistics (NBS), Office of the Chief Government Statistician (OCGS),
653 and Macro International Inc., 2008. *Tanzania HIV/AIDS and Malaria Indicator Survey*
654 *2007-08*. Dar es Salaam, Tanzania: TACAIDS, ZAC, NBS, OCGS, and Macro
655 International Inc
- 656 43. Ishengoma DS, Mandara CI, Bakari C, Fola AA, Madebe RA, Seth MD, Francis F, Buguzi
657 CC, Moshi R, Garimo I, Lazaro S, Lusasi A, Aaron S, Chacky F, Mohamed A, et al.,
658 2024. Evidence of artemisinin partial resistance in northwestern Tanzania: clinical and
659 molecular markers of resistance. *Lancet Infect Dis* 24: 1225–1233
- 660 44. Mandai SS, Francis F, Challe DP, Seth MD, Madebe RA, Petro DA, Budodo R, Kisambale
661 AJ, Chacha GA, Moshi R, Mbwambo RB, Pereus D, Bakari C, Aaron S, Mbwambo D, et
662 al., 2024. High prevalence and risk of malaria among asymptomatic individuals from
663 villages with high prevalence of artemisinin partial resistance in Kyerwa district of Kagera
664 region, north-western Tanzania. *Malar J* 23: 197
- 665 45. Petro DA, Shaban N, Aaron S, Chacky F, Lazaro S, Boni MF, Ishengoma DS., 2024.
666 Geospatial analysis of malaria burden in Kagera region, northwestern Tanzania using
667 health facility and community survey data. *Open Forum Infect Dis* 11: ofae609
- 668 46. Barua P, Beeson JG, Maleta K, Ashorn P, Rogerson SJ., 2019. The impact of early life
669 exposure to *Plasmodium falciparum* on the development of naturally acquired immunity
670 to malaria in young Malawian children. *Malar J* 18: 11
- 671 47. Lindblade KA, Steinhardt L, Samuels A, Kachur SP, Slutsker L., 2013. The silent threat:
672 asymptomatic parasitemia and malaria transmission. *Expert Rev Anti Infect Ther* 11: 623–
673 639
- 674 48. Glynn JR, Moss PAH., 2020. Systematic analysis of infectious disease outcomes by age
675 shows lowest severity in school-age children. *Sci Data* 7

- 676 49. Chacha GA, Francis F, Mandai SS, Seth MD, Madebe RA, Challe DP, Petro DA, Pereus
677 D, Moshi R, Budodo R, Kisambale AJ, Mbwambo RB, Bakari C, Aaron S, Mbwambo D,
678 et al., 2024. Prevalence and drivers of malaria infections among asymptomatic individuals
679 from selected communities in five regions of Mainland Tanzania with varying
680 transmission intensities
- 681 50. Challe DP, Francis F, Seth MD, Tupa JB, Madebe RA., 2024. Prevalence and risk factors
682 associated with malaria infections at a micro-geographic level in three villages of Muheza
683 district, north-eastern Tanzania. *medRxiv*
- 684 51. London School of Hygiene & Tropical Medicine., 2020. Young adults face higher risk of
685 severe disease from infections than school-age children
- 686 52. Simon AK, Hollander GA, McMichael A., 2015. Evolution of the immune system in
687 humans from infancy to old age. *Proc Biol Sci* 282: 20143085
- 688 53. Okore BO, Ayodo G, O.K'Oloo A, Okonji JA., 2024. Age group shift of fever as a
689 predictor of malaria as transmission decreases in Western Kenya. *Int J Res Stud Med*
690 *Health Sci* 8: 09–18
- 691 54. van Lunzen J, Altfeld M., 2014. Sex differences in infectious diseases-common but
692 neglected. *J Infect Dis* 209 Suppl 3: S79-80
- 693 55. Klein SL, Flanagan KL., 2016. Sex differences in immune responses. *Nat Rev Immunol*
694 *16*: 626–638
- 695 56. Thawer SG, Golumbeanu M, Lazaro S, Chacky F, Munisi K, Aaron S, Molteni F, Lengeler
696 C, Pothin E, Snow RW, Alegana VA., 2023. Spatio-temporal modelling of routine health
697 facility data for malaria risk micro-stratification in mainland Tanzania. *Sci Rep* 13
- 698 57. Thawer SG, Golumbeanu M, Munisi K, Aaron S, Chacky F, Lazaro S, Mohamed A,
699 Kisoka N, Lengeler C, Molteni F, Ross A, Snow RW, Pothin E., 2022. The use of routine
700 health facility data for micro-stratification of malaria risk in mainland Tanzania. *Malar J*
701 *21*: 345