

1 Alterations in the plasma metabolome associated with maternal  
2 smoking during the first trimester

3 Wadzanai Masvosva <sup>1</sup>, Taija Voutilainen <sup>1</sup>, Marko Lehtonen <sup>1</sup>, Retu Haikonen <sup>2</sup>, Seppo  
4 Auriola <sup>1</sup>, Leea Keski-Nisula <sup>3,4</sup>, Jaana Rysä <sup>1</sup>, Olli Kärkkäinen <sup>1</sup>

5

6 Affiliations:

7 <sup>1</sup> School of Pharmacy, University of Eastern Finland

8 <sup>2</sup>Institute of Public Health and Clinical Nutrition, University of Eastern Finland, Kuopio,  
9 Finland

10 <sup>3</sup>Institute of Clinical Medicine, School of Medicine, University of Eastern Finland, Finland

11 <sup>4</sup>Department of Obstetrics and Gynecology, Kuopio University Hospital, Finland

12

13 **Correspondence:** Dr. Olli Kärkkäinen, School of Pharmacy, University of Eastern Finland,  
14 Yliopistonrinne 3, 70210 Kuopio, Finland; [olli.karkkainen@uef.fi](mailto:olli.karkkainen@uef.fi)

15

16 **Plain language summary**

17 Tobacco smoking during pregnancy has been associated with an increased risk of adverse  
18 outcomes like low birth weight. In this study, we measured changes in the circulating  
19 metabolome linked to maternal smoking in the first trimester and correlated these  
20 changes to the growth of the fetus. Maternal smoking during the first trimester of  
21 pregnancy was associated with an altered metabolite profile linked to endocrine disruption  
22 and increased oxidative stress. Furthermore, some these changes were associated with  
23 reduced growth of the fetus.

24 **Abstract**

25 Tobacco smoking during pregnancy has been associated with an increased risk of adverse  
26 outcomes like low birth weight. This study determined changes in the circulating  
27 metabolome linked to maternal smoking in the first trimester and correlated these  
28 changes to the growth of the fetus. The circulating metabolome was examined from first  
29 trimester plasma samples by non-targeted liquid chromatography mass spectrometry  
30 based metabolite profiling of 227 pregnant women (99 smokers and 117 non-smokers)  
31 from the Kuopio Birth Cohort Study. Tobacco smoking was self-reported through a  
32 questionnaire and verified with cotinine measurements from plasma samples. In summary,  
33 64 significant differences were observed between the groups after correction for multiple  
34 testing e.g. in metabolites indicating endocrine disruption (e.g., dehydroepiandrosterone  
35 sulfate [DHEA-S], VIP=2.70, d=0.68, p<0.0001), metabolites associated with oxidative stress  
36 (e.g., bilirubin, VIP=2.00, d=0.50, p<0.0001) and lipid metabolism (e.g., LysoPC 16:1,  
37 VIP=2.07, d=0.51, p<0.0001). Some of these metabolites, e.g., DHEA-S and bilirubin,  
38 correlated with low birth weight, and some, e.g. LysoPC 16:1, correlated with small head  
39 circumference at birth. In conclusion, maternal smoking during the first trimester of  
40 pregnancy was associated with an altered metabolite profile linked to endocrine disruption  
41 and increased oxidative stress.

42 **Keywords:** tobacco, smoking, pregnancy, metabolome, metabolomics

43

44

45 **Introduction**

46 Smoking has been recognized as the most important preventable cause of mortality in the  
47 world<sup>1</sup>. Approximately 10% of women worldwide smoke during pregnancy, although the  
48 rate varies greatly between regions and countries<sup>2</sup>. Smoking during pregnancy exposes the  
49 fetus to the harmful effects of tobacco.

50

51 Nicotine is the main psychoactive ingredient in tobacco, and it can easily cross the placental  
52 barrier. Nicotine concentrations in fetal circulation have been reported to be even 15%  
53 higher than those detected in the maternal circulation<sup>3</sup>. Nicotine causes a general  
54 constriction of blood vessels, decreasing the delivery of nutrients to the developing fetus.

55 Carbon monoxide is another harmful chemical present in tobacco smoking; it binds avidly  
56 to hemoglobin and subsequently reduces the amount of oxygen being carried to the fetus  
57 thus increasing the risk for hypoxia<sup>4</sup>. During pregnancy, even low levels of tobacco smoking  
58 have been associated with an increased risk of adverse outcomes like low birth weight<sup>5</sup>,  
59 sudden infant death syndrome<sup>6</sup>, behavioral and neurodevelopmental impairments<sup>7</sup> and  
60 asthma and obesity<sup>8</sup>. The effects of maternal tobacco smoking during pregnancy may be  
61 permanent and not just be evident from childhood but also last into adulthood, for  
62 example, leading to elevated blood pressure, endothelial dysfunction, and even changes in  
63 renal structure<sup>9</sup>.

64

65 Only a limited number of studies have investigated changes in the metabolite profile  
66 associated with smoking during pregnancy. Gray et al. (2010) observed metabolic  
67 differences in the umbilical venous samples taken at birth between smoking exposed and  
68 non-exposed neonates<sup>10</sup>. For example, they reported lower concentrations of  
69 lysophosphatidylcholine (LysoPC) 16:0, LysoPC18:0, and LysoPC 18:1 in the umbilical  
70 venous samples from smoking exposed newborns. Indeed, low lysophosphatidylcholine  
71 levels have been associated with a lowered birth weight in the newborns<sup>11</sup>. Furthermore,  
72 Rolle-Kampczyk et al. (2016) examined the impact of maternal smoking on endogenous  
73 metabolites in 40 maternal and umbilical blood samples. They revealed significant  
74 alterations in several metabolites, including sphingomyelin SM 26:0 and several  
75 phosphatidylcholines (PCs), in both mothers and children within the smoking-exposed  
76 group<sup>12</sup>. In their evaluation of urine samples from the first and second antenatal visit of  
77 105 pregnant Afro-American women, Tan et al. (2022) revealed that 47 metabolites that  
78 have been linked with increased inflammation and decreased oxidation of amino acids  
79 were associated with high cotinine levels. These detected metabolites also have potential  
80 health-related effects during gestation with the possibility to influence several  
81 pathophysiological pathways causing adverse birth outcomes<sup>13</sup>. However, to our  
82 knowledge, there have been no studies investigating tobacco smoking associated  
83 alterations in the metabolite profiles during the first trimester, which is a crucial time  
84 during pregnancy since it is the period of organogenesis<sup>14</sup>.

85

86 Therefore, here we wanted to examine the changes in the maternal metabolome  
87 associated with smoking in the first trimester to increase our understanding of the  
88 metabolic consequences of gestational smoking. In this nested case-control study, our aim  
89 was to identify cigarette smoking-induced changes in the circulating metabolome by  
90 applying a non-targeted metabolomics approach in the evaluation of first trimester plasma  
91 samples of women in the Kuopio Birth Cohort (KuBiCo). In addition, we aimed to  
92 investigate how these changes in the metabolome could be associated with fetal growth.

93

## 94 **Methods**

### 95 Study Cohort.

96 This study is part of Kuopio Birth Cohort (KuBiCo), which is a joint research effort between  
97 the University of Eastern Finland (UEF), Kuopio University Hospital (KUH), and National  
98 Institute for Health and Welfare (THL)<sup>15</sup>. The KuBiCo study was approved by the Research  
99 Ethics Committee, Hospital District of Central Finland in 15.11.2011 and all participants  
100 have given their written electronic consent. The study was conducted in accordance with  
101 the Basic & Clinical Pharmacology & Toxicology policy for experimental and clinical  
102 studies<sup>16</sup>.

103

104 The cohort consists of women from Finnish Northern Savo county expected to have  
105 delivery at KUH. The participants were recruited during their first trimester routine  
106 antenatal visit by a health care nurse, during weeks 6-9 of gestation mainly from the

107 outpatient maternity clinics. Additionally, these women filled in several questionnaires  
108 which evaluated their background risk for ongoing pregnancy in the Pikku-Haikara system  
109 designed in the Kuopio University Hospital for pregnant women. The information on  
110 gestational smoking/tobacco exposure was gathered via standardized questionnaires.  
111 Between the years 2012 and 2020, approximately 5000 first trimester plasma samples were  
112 collected routinely for the KuBiCo study at the same time with the first trimester fetal  
113 screening samples. This study utilizes these collected first trimester plasma samples, which  
114 were kept at -80°C until the metabolomics analysis <sup>15</sup>.

115

116 To allow the samples to be used for this study, the subjects of interest should be pregnant  
117 with a parity of six or less, with the preference to use samples from their first pregnancies.  
118 Participants' self-reported tobacco use gathered in an online questionnaire was used to  
119 evaluate tobacco smoking during pregnancy <sup>17</sup>. Tobacco smoking was defined as taking any  
120 tobacco products after conception. There was no limitation on the number of cigarettes  
121 smoked per day. The smokers were compared against controls who recorded not having  
122 smoked at all during pregnancy. Since it is evident that self-reported data is not 100%  
123 reliable, we initially selected more controls than tobacco smokers. After liquid  
124 chromatography mass spectrometry (LC-MS) analysis, we excluded seven subjects from the  
125 control group as they had elevated levels of nicotine or cotinine in their blood sample.  
126 This led to the selection of two study groups: a control group with 117 samples of women  
127 who had not smoked during pregnancy and a study group with 99 samples of women who

128 had smoked during their pregnancy but did not report any alcohol use during pregnancy.

129 We excluded alcohol users, since alcohol use during pregnancy is more common in those

130 who smoke and is known to influence the metabolome during pregnancy<sup>18</sup>. The analysis

131 order of the samples was randomized using a random number generation algorithm.

132

133 This study used the following descriptive characteristics collected from the KUH birth

134 registry: maternal age, height and weight, body mass index (BMI; kg/m<sup>2</sup>), parity, gravidity,

135 duration of pregnancy at birth, length of maternal hospital stay after birth, relationship

136 status, and in the smoking women, the daily amount of cigarettes before and during

137 pregnancy to allow the estimation of the smoking index. Additionally, in the newborns, data

138 was collected on gender, birthweight, head circumference, placental weight, APGAR scores

139 (1 and 5 minutes), need for special or neonatal intensive care, ventilation assistance or

140 intubation, need for postnatal antibiotic treatment or phototherapy, and the presence of

141 any congenital malformations.

142

### 143 Non-targeted LC-MS based metabolite profiling

144 The metabolomics analysis was performed according to previously released guidelines with

145 some modifications<sup>19</sup>. In brief, sample preparation was done by thawing plasma samples in

146 ice-cold water; the samples were maintained in ice-cold water during all waiting periods

147 before they were transferred for sample preparation into 96 well plates (Thermo Scientific

148 Nunc) embedded on wet ice and covered with a filter plate (Captiva ND filter Plate 0.2 um  
149 PP 5/pk, Part no. A5969002, 732-2669). Then, 320 µL of cold acetonitrile (HPLC LC-MS Grade  
150 83640.320, VWR) were dispensed into the filter plate well. The plasma samples were then  
151 vortexed for 10 seconds at maximum speed and subsequently 80 µL of the plasma  
152 samples were added to the same well with acetonitrile. The Andrew Alliance robot with a  
153 Microplate shaker (519.4004.14HAK, Vacuum + 518.6093.160UY, 8-ch 1200) was used for  
154 sample preparation. Preparation of the quality control sample (QC) was done by adding 10  
155 µL of each sample to the same clean microcentrifuge tube and mixing. These QC samples  
156 were injected at the beginning of the analysis to stabilize the liquid chromatography (LC)  
157 column. QC samples were also tested after every 12<sup>th</sup> sample in the analysis runs to assess  
158 batch and drift correction and data quality analysis, as well as in the tandem mass  
159 spectrometry analyses. The samples were precipitated by centrifuging the plate for 5  
160 minutes at 700xg at 4 °C after which, the filter plate was sealed tightly to avoid sample  
161 evaporation prior to the following metabolomics analysis

162  
163 The metabolomics analysis used ultrahigh performance liquid chromatography (UPLC) with  
164 a Thermo Q Exactive Hybrid quadrupole-orbitrap mass spectrometer (MS). Samples were  
165 analyzed using two chromatographic techniques, reversed phase (RP) and hydrophilic  
166 interaction (HILIC), in both positive and negative polarities. The RP chromatography column  
167 was Zorbax Eclipse XDB-C18. The mobile phase A was H<sub>2</sub>O + 0.1 % HCOOH, mobile phase B  
168 was MeOH + 0,1 % HCOOH with a 16.5 min gradient and a flow rate of 0.4 ml/min. The  
169 HILIC chromatographic set-up used an Acquity BEH amide column, Mobile phase A: 50%



170 Acetonitrile + 20 mM ammonium formate buffer, B: 90 % acetonitrile + 20 mM ammonium  
171 formate buffer, 12.5 min gradient, 0,6 ml/min.

172 Both negative and positive electrospray ionization (ESI) were used in both analytical modes.  
173 ESI settings were spray voltage 3.5 kV for positive and 3.0 kV for negative, max spray current  
174 100, flow rates 40 for sheath gas, 10 for auxiliary gas, and 2 for spare gas (as arbitrary units  
175 for ion source), S-lens RF level 50 V, capillary and probe heater temperature 300 °C. A full  
176 scan range from m/z 60 to 700 in the HILIC modes and 120 to 1200 in the RP modes with a  
177 resolution of 70 000 ( $m/\Delta m$ , full width at half maximum at 200 u) and an automated  
178 injection time and gain control targeted at 1 000 000 ions. In the tandem mass  
179 spectrometry (MS/MS), three peaks with apex triggers ranging from 0.2 up to 3 s were  
180 selected for MS/MS fragmentation with 15 s dynamic exclusion. A normalized collision  
181 energy at 20, 30, and 40%, was used in MS/MS with a mass resolution of 17 500 ( $m/\Delta m$ , full  
182 width at half maximum at 200 u), an automated gain targeted at 50 000, and an isolation  
183 window of 1.5 m/z.

184  
185 Data analysis was done using MS-dial software 4.90 version for peak picking, peak  
186 alignment, and metabolite identification. Data collection had an MS1 tolerance of 0.005 and  
187 an MS2 tolerance of 0.025. The retention time for parameters started at 0.5 minutes and  
188 stopped at 100 minutes with a mass range and MS/MS mass range of 50 Da up to 2000 Da.  
189 Peak detection parameters had a minimum peak height of 300,000 with an amplitude  
190 smoothing level of 3 scans, minimum peak width of 8 scans, and a mass slice width of 0.1  
191 Da. Deconvolution parameters had a sigma window value of 0.5 with 0 as the amplitude

192 cut-off. The identification was performed against the University of Eastern Finland in-house  
193 database with accurate mass tolerance of MS1 0.008 Da and MS2 0.025 Da. Automatic  
194 identifications were verified and corrected manually. Adduct ion settings of [M+H]<sup>+</sup>,  
195 [M+NH<sub>4</sub>]<sup>+</sup>, [M+Na]<sup>+</sup>, [M+K]<sup>+</sup>, [M+Li]<sup>+</sup>, [M+ACN+H]<sup>+</sup>, [M+H-H<sub>2</sub>O]<sup>+</sup>, [M+H-2H<sub>2</sub>O]<sup>+</sup>, [2M+H]<sup>+</sup>  
196 were utilized in positive polarity and [M-H]<sup>-</sup>, [M-H<sub>2</sub>O-H]<sup>-</sup>, [M+Na-2H]<sup>-</sup>, [M+Cl]<sup>-</sup>, [M+FA-H],  
197 [M+Hac-H]<sup>-</sup>, [2M-H]<sup>-</sup> when we applied negative polarity. The alignment parameters settings  
198 had a retention time of 0.05 mins with MS1 tolerance 0.015 for molecular features detected  
199 in at least 30% of the samples in one of the groups with a gap-filling by compulsion.

200

201 Preprocessing of the data (data quality analysis, drift and batch effect correction,  
202 imputation of missing values), and statistical analyses were done using the R-package  
203 notame<sup>19</sup>.

204

205 The identification of metabolites focused on those molecular features with p-values <0.05.  
206 The molecular features were grouped into 4 levels according to the community  
207 guidelines<sup>20</sup>. Level 1 identification included those compounds confirmed by matching to  
208 exact mass, isotope pattern, retention time, and MS2 fragmentation with chemical  
209 standards from the in-house library. Level 2 identification comprised putatively annotated  
210 compounds, identified by matching to exact mass and MS2 spectra against public libraries.  
211 Level 3 identification referred to the compounds identified at the chemical group level but  
212 lacking an exact compound identification, while level 4 consisted of unknown compounds.

213 Statistical analysis.

214 Differences between background characteristics were evaluated with Welch's t-test and  
215 Chi<sup>2</sup> test. With respect to the metabolomics data, univariate analysis was done with Cohen's  
216 d effect sizes with p-values being calculated using Welch's t-test. Since molecular features  
217 in metabolomics analysis are not independent, the number of principal components  
218 needed to explain 95% of the variance in the metabolomics data in the principal  
219 component analysis (PCA) was used and to account for multiple testing the Bonferroni  
220 method was applied. Here, 184 PCs were needed to explain 95% of the variation in the  
221 metabolomics data, therefore the  $\alpha$  level was adjusted to 0.0003. Findings with p-values  
222 between 0.05 and 0.0003 were considered to be trends. Additionally, we used partial-least-  
223 squares discriminant analysis (PLS-DA) to identify the variables that contributed most  
224 extensively to the variation between smoking and nonsmoking pregnant women in a  
225 multivariate analysis. Cross-validation was done by splitting the dataset into 7 subsets.  
226 Variable importance to the projection (VIP) values from PLS-DA are reported for each  
227 variable. Correlations between molecular features and birth weight or head circumference  
228 were calculated using linear regression. We used SIMCA 17.0 for multivariate data analysis  
229 solution, whereas we utilized the notame (version 0.3.0) R-package for the calculation of  
230 univariate statistics for metabolomics data<sup>19</sup>. JASP (version 0.17) software was used to  
231 calculate statistics related to the background characteristics between the non-smoking and  
232 smoking groups. Figures were made using Prism (GraphPad software Inc. version 10.0) and  
233 SIMCA version 17.0.

234 **Results**

235 The characteristics of the pregnant women and their newborns women are shown in Table  
 236 1. Smokers had a significantly lower parity, higher BMI values, pre-pregnancy weights and  
 237 were less likely to be in a relationship when compared to the nonsmoking controls. On  
 238 average, the newborns of smokers had a lower birth weight and head circumference when  
 239 compared to control newborns. Furthermore, they needed more antibiotic therapy and  
 240 treatment in the intensive care unit than the controls.

241

242

243 **Table 1:** Background characteristics of the study women.

| <b>Maternal characteristics</b>                                       |                       |                             |                   |                             |                               |
|---|-----------------------|-----------------------------|-------------------|-----------------------------|-------------------------------|
|   | <b>Controls n=117</b> |                             | <b>Cases n=99</b> |                             | <b>p value</b>                |
| Maternal age (years, mean; $\pm$ SD)                                  | 28.4                  | $\pm$ 5.7                   | 27.4              | $\pm$ 5.7                   | 0.192 <sup>a</sup>            |
| Maternal height (cm, mean; $\pm$ SD)                                  | 163.9                 | $\pm$ 5.6                   | 165.3             | $\pm$ 5.5                   | 0.077 <sup>a</sup>            |
| <b>Maternal weight, kg (pre-pregnancy) (mean; <math>\pm</math>SD)</b> | <b>64.2</b>           | <b><math>\pm</math>14.0</b> | <b>69.5</b>       | <b><math>\pm</math>13.8</b> | <b>0.006<sup>a</sup></b>      |
| <b>Maternal BMI kg/m<sup>2</sup> (mean; <math>\pm</math>SD)</b>       | <b>23.8</b>           | <b><math>\pm</math>4.9</b>  | <b>25.5</b>       | <b><math>\pm</math>5.1</b>  | <b>0.020<sup>a</sup></b>      |
| <b>Parity (N, mean; SD)</b>   | <b>1.7</b>            | <b><math>\pm</math>2.2</b>  | <b>1.2</b>        | <b><math>\pm</math>1.2</b>  | <b>0.026<sup>a</sup></b>      |
| Gravidity (N, mean; SD)   | 3.3                   | $\pm$ 2.8                   | 3.1               | $\pm$ 1.9                   | 0.522 <sup>a</sup>            |
| Duration of pregnancy at birth (days, mean; SD)                       | 278                   | $\pm$ 11                    | 277               | $\pm$ 15                    | 0.566 <sup>a</sup>            |
| Hospital stay after birth, days (mean; SD)                            | 3.3                   | $\pm$ 1.7                   | 3.7               | $\pm$ 2.7                   | 0.152 <sup>a</sup>            |
| <b>In a relationship (n, %)</b>                                       | <b>108</b>            | <b>92%</b>                  | <b>62</b>         | <b>63%</b>                  | <b>&lt;0.0001<sup>b</sup></b> |

|  |             |             |             |              |                               |
|--|-------------|-------------|-------------|--------------|-------------------------------|
| <b>Cigarettes per day before pregnancy (mean; ±SD)</b>           | <b>0</b>    | <b>±0</b>   | <b>15.2</b> | <b>±6.3</b>  | <b>&lt;0.0001<sup>a</sup></b> |
| <b>Cigarettes per day during pregnancy (mean; ±SD)</b>           | <b>0</b>    | <b>±0</b>   | <b>6.3</b>  | <b>±4.0</b>  | <b>&lt;0.0001<sup>a</sup></b> |
| <b>Smoking Index (mean; SD)</b>                                  | <b>0</b>    | <b>±0</b>   | <b>2.4</b>  | <b>±0.9</b>  | <b>&lt;0.0001<sup>a</sup></b> |
| <b>Characteristics of the newborns</b>                           |             |             |             |              |                               |
| Female (n, %)  | 57          | 49%         | 43          | 43%          | 0.438 <sup>b</sup>            |
| <b>Birth weight (g, mean ±SD)</b>                                | <b>3552</b> | <b>±513</b> | <b>3397</b> | <b>±534</b>  | <b>0.032</b>                  |
| <b>Head circumference (cm, mean; ±SD)</b>                        | <b>35.2</b> | <b>±1.4</b> | <b>34.7</b> | <b>±1.6</b>  | <b>0.020<sup>a</sup></b>      |
| Placenta weight (grams, mean; ±SD)                               | 618.6       | ±141.4      | 605.5       | ±135.0       | 0.489 <sup>a</sup>            |
| APGAR scores 1 min (mean; ±SD)                                   | 8.8         | ±1.0        | 8.          | ±1.1         | 0.615 <sup>a</sup>            |
| APGAR scores 5 min (mean; ±SD)                                   | 8.9         | ±1.3        | 9.0         | ±0.8         | 0.611 <sup>a</sup>            |
| <b>Child's special care after birth (n, %)</b>                   | <b>13</b>   | <b>11%</b>  | <b>21</b>   | <b>21%</b>   | <b>0.042<sup>b</sup></b>      |
| <b>Need for treatment in Neonatal Intensive Care Unit (n, %)</b> | <b>10</b>   | <b>8.5%</b> | <b>21</b>   | <b>21%</b>   | <b>0.008<sup>b</sup></b>      |
| Ventilation assistance (n, %)                                    | 0           | 0%          | 1           | 1%           | 0.276 <sup>b</sup>            |
| Intubation (%)   | 0           | 0%          | 1           | 1%           | 0.276 <sup>b</sup>            |
| <b>Postnatal antibiotic treatment (n, %)</b>                     | <b>4</b>    | <b>3.4%</b> | <b>13</b>   | <b>13.1%</b> | <b>0.008<sup>b</sup></b>      |
| Phototherapy (%)   | 5           | 4.3%        | 5           | 5%           | 0.787 <sup>b</sup>            |
| Malformations (%)  | 1%          | 0.9%        | 0           | 0%           | 0.357 <sup>b</sup>            |

244 Legend: <sup>a</sup> Welch's t test; <sup>b</sup> Chi<sup>2</sup> test.

245

246

247 A total of 9600 molecular features were observed in the non-targeted metabolomics  
248 analysis (Supplementary table 1). The PCA analysis revealed that 184 principal components  
249 were required to explain 95% of the overall variance in the metabolomics data. These  
250 results were used to adjust the  $\alpha$  level to 0.0003 to account for multiple testing using  
251 Bonferroni correction after which a total of 1109 molecular features had a p-value  $< 0.05$ ,  
252 and 193 molecular features had a p-value  $< 0.0003$  (Figure 1). The PLS-DA model also  
253 revealed a difference between the first trimester plasma samples of nonsmokers and  
254 smokers (6 components, cum R2Y = 0.99, Q2 = 0.70) (Figure 1, Supplementary table 1).

255

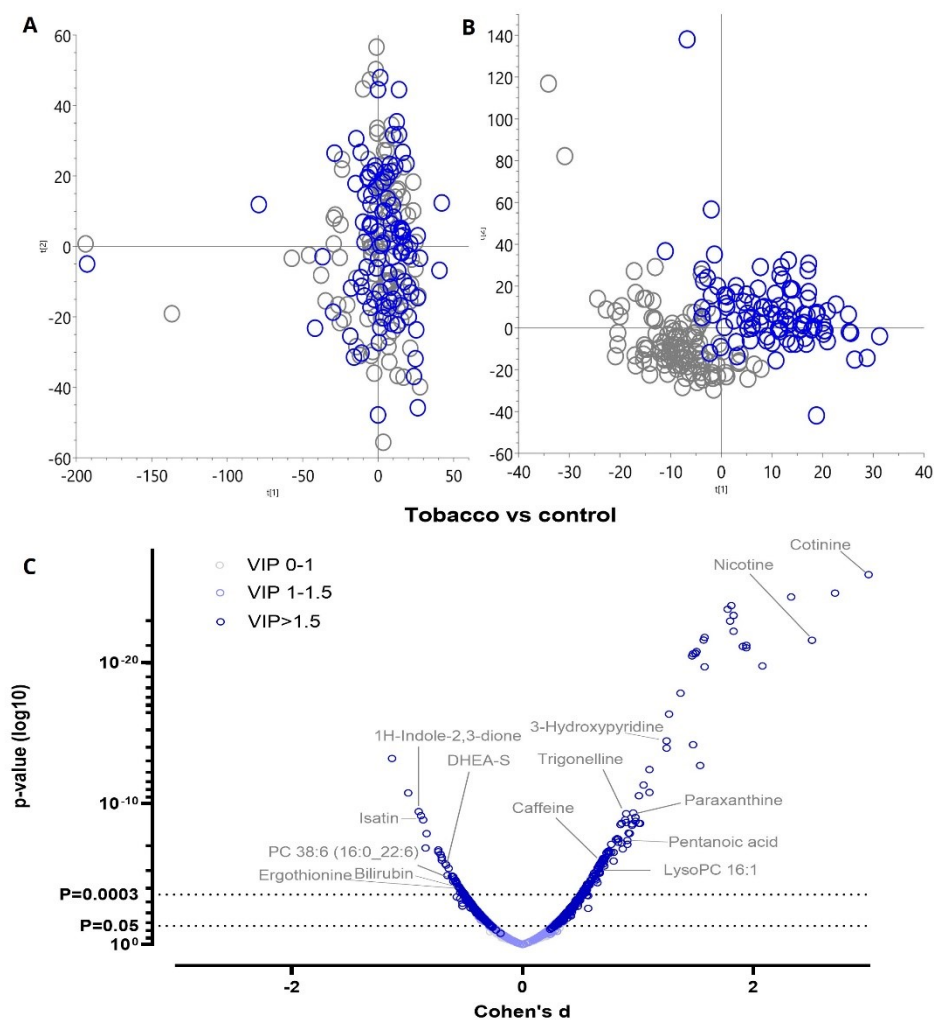
256 Our results showed that the circulating metabolite profiles from the first trimester plasma  
257 samples of smoking pregnant women were different from the nonsmoking controls (Figure  
258 1). The identified metabolites were grouped according to the human metabolome database  
259 (HMDB)<sup>21</sup>. For example, smokers had significantly lower levels of bilirubin and biliverdin,  
260 and significantly higher levels of dehydroepiandrosterone sulfate (DHEA-S) (Figure 2). High  
261 levels were also evident for several exogenous compounds e.g. cotinine, nicotine, and  
262 trigonelline along with xanthines like caffeine, paraxanthine, and theophylline in the  
263 smokers when compared to the controls.

264

265 The correlation analysis indicated that birth weight was also positively associated with the  
266 levels of biliverdin ( $r = 0.20$ ,  $p = 0.0029$ ), creatine ( $r = 0.15$ ,  $p = 0.0029$ ) and PC38:6

267 (16:0\_22:6) ( $r = 0.14$ ,  $p = 0.0035$ ) and negatively associated with those of cotinine ( $r = -0.18$ ,  
268  $p = 0.00096$ ), Asp-Phe ( $r = -0.15$ ,  $p = 0.0026$ ), DHEA-S ( $r = -0.15$ ,  $p = 0.0265$ ) and AC14:1 ( $r = -$   
269  $0.13$ ,  $p = 0.0049$ ). Head circumference was negatively associated with the levels of 7a-  
270 hydroxy-3-oxo-4-cholestenoic acid ( $r = -0.18$ ,  $p = 0.001$ ), cotinine ( $r = -0.17$ ,  $p = 0.0013$ ), LysoPC  
271 16:1 (16:1/0:0) ( $r = -0.16$ ,  $p = 0.0019$ ), LysoPC 16:1 (0:0/16:1) ( $r = -0.15$ ,  $p = 0.0028$ ), AC 06:0 ( $r$   
272  $= -0.15$ ,  $p = 0.0037$ ) and lenticin ( $r = -0.14$ ,  $p = 0.0043$ ). These results are shown graphically  
273 in Figure 3 and Figure 4.

274

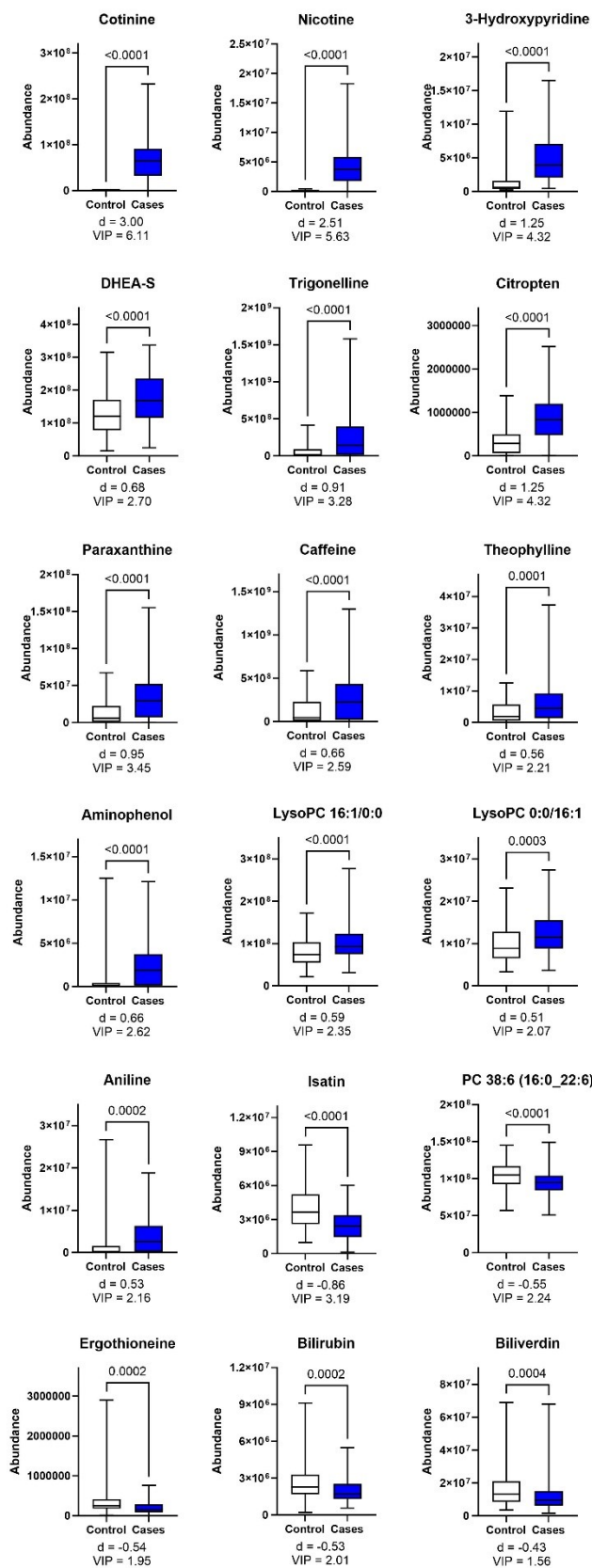


275

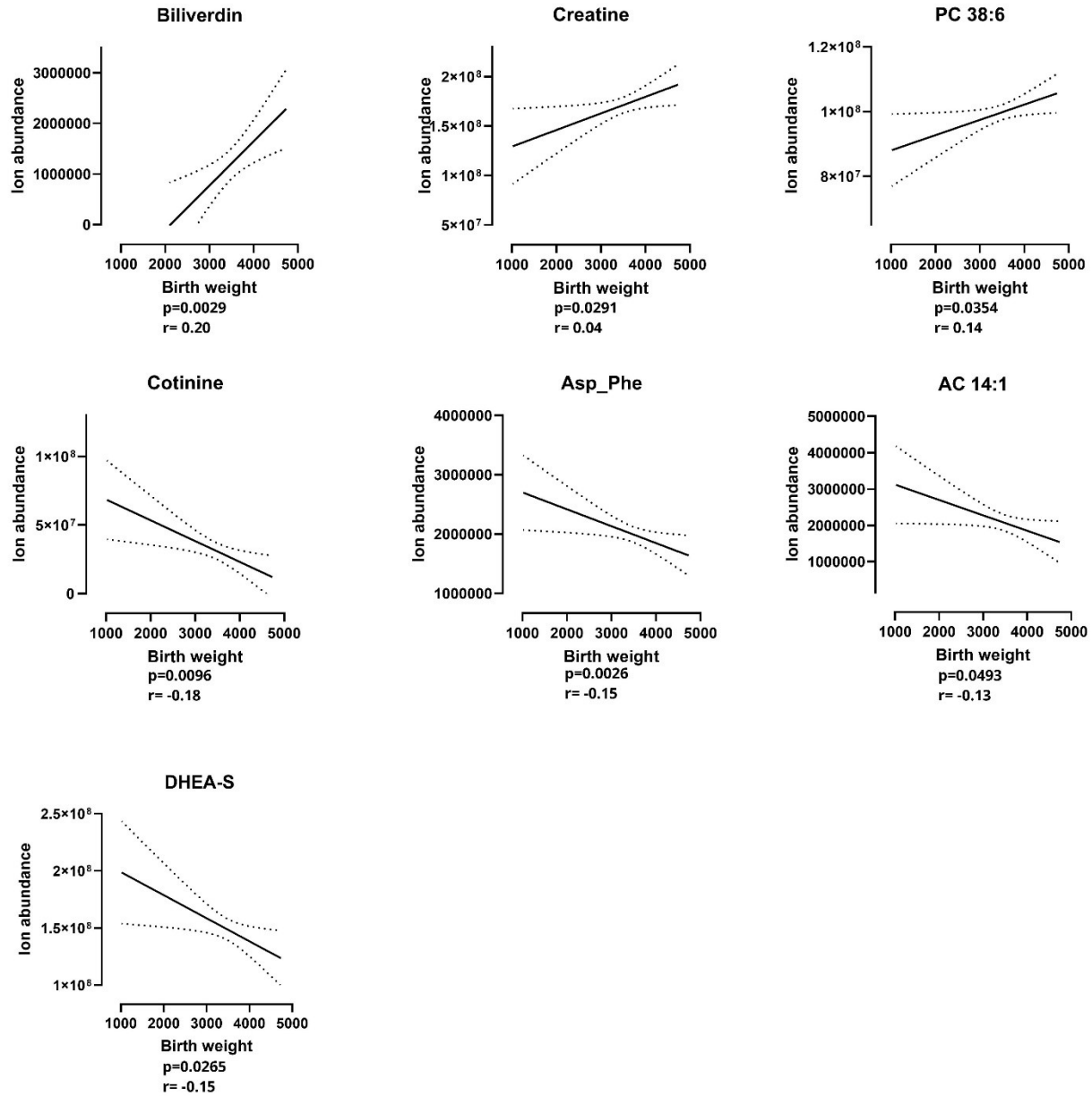
276 **Figure 1:** Overview of metabolite profiling from the first trimester maternal plasma  
277 samples. A total of 9600 molecular features were observed from the chosen samples. Panel  
278 **A** shows the outcomes of the principal component analysis (PCA). A total of 184  
279 components were needed to account for 95% of the variance in the data. PC1 (t1) explained  
280 4.5 % of the variation in the data, and PC2 (t2) explained 4.3% of the data. Panel **B** shows  
281 partial least squares discriminant analysis (PLS-DA) which illustrates the good separation  
282 between the study groups (6 components, cum R2Y = 0.99, Q2 = 0.70). Panel **C** shows the p  
283 values (Welch's t-test), Cohen's d effect sizes, and VIP values from the PLS-DA) of all of the  
284 relevant molecular features. A total of 193 molecular features were significantly altered  
285 between the smokers' and nonsmokers' samples (adjusted  $\alpha$  level= 0.0003, Bonferroni's  
286 correction).

287





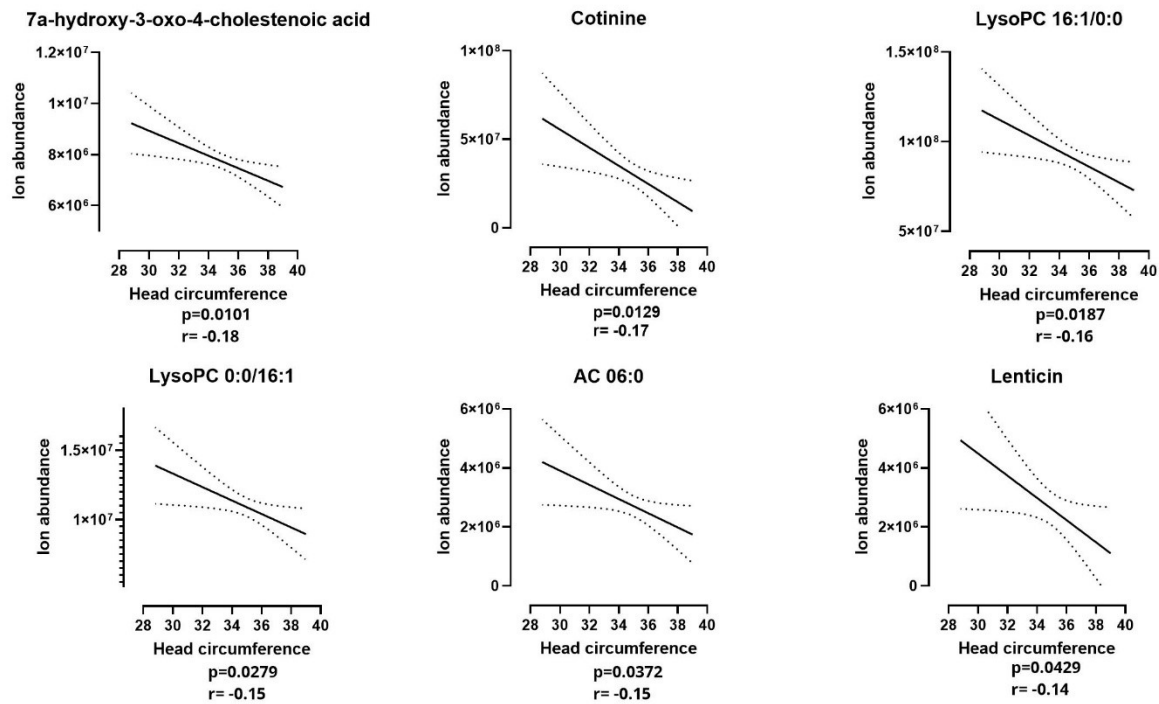
**Figure 2:** Smokers show altered metabolite profile in the first-trimester plasma samples when compared to nonsmoking controls. Box plots with whiskers (min and max) are shown with p-value from a Welch's t-test (multiple testing adjusted  $\alpha$  level was 0.0003). Biliverdin result should be considered a trend. Abbreviations: DHEA-S, dehydroepiandrosterone sulfate; PC, phosphatidylcholine.



289

290 **Figure 3:** Association between the birth weight of the newborn and metabolite levels in the  
291 first trimester of pregnancy. Three metabolites were positively associated with birth weight  
292 and four were negatively associated with birth weight. Abbreviations: AC 14:1:  
293 tetradecenoylcarnitine; Asp\_Phe: Aspartyl-phenylalanine; PC: phosphatidylcholine; p: p-  
294 value, r: Pearson correlation coefficient

295



296

297

298 **Figure 4:** Correlations between the head circumference of the newborn and first trimester  
299 levels of metabolites. Six metabolites were negatively associated with differences in the  
300 head circumference between the groups. Abbreviations: AC 06:0, Hexanoylcarnitine;  
301 LysoPC: lysophosphatidylcholine, p: p-value, r: Pearson correlation coefficient

302

303 **Discussion**

304

305 We demonstrated that the profiles of the first trimester circulating metabolites of smoking  
306 pregnant women were different from those of non-smoking controls. Furthermore, some  
307 of these differences were associated with the known unfavorable effects of smoking such  
308 as low birth weight and smaller head circumference. Key differences in the metabolite  
309 profiles of smoking pregnant women were detected in several factors e.g., elevated levels  
310 of DHEA-S and reduced levels of bilirubin and ergothioneine, as well as in certain specific  
311 small molecules which are linked directly to the tobacco smoking (nicotine, cotinine, 3-  
312 hydroxypyridine) and a higher coffee intake (caffeine, paraxanthine, trigonelline). This  
313 finding is in line with the published literature that there is an association between higher  
314 nicotine/ cotinine levels and unfavorable fetal/ neonatal effects like low birth weight <sup>22</sup>.  
315 However, this study expands these findings by linking also other metabolites such as  
316 DHEA-S and bilirubin to fetal and neonatal growth.

317

318 We found that pregnant women who were smokers had high levels of DHEA-S in the first  
319 trimester plasma samples, and that these were further associated with the lower birth  
320 weight. DHEA-S is as a metabolic intermediate in the biosynthesis of sex steroids <sup>23</sup>.  
321 Smoking has been shown to influence adrenal hormone production by upregulating the  
322 adrenal  $\beta$ -arrestin 1 enzyme, which is involved in the development of hyperaldosteronism  
323 and consequently to higher basal levels of DHEA-S<sup>24,25</sup>. The elevated DHEA-S levels are  
324 evidence of an endocrine disorder attributable to maternal smoking and it has been

325 reported that endocrine disturbances can be linked to growth retardation and neurological  
326 impairments in the newborn<sup>26</sup>.

327

328 Moreover, smokers displayed lowered plasma levels of ergothioneine, which is a  
329 microbiota-associated antioxidant. Earlier studies have shown that low levels of  
330 ergothioneine during pregnancy are associated with negative pregnancy outcomes like pre-  
331 eclampsia<sup>27</sup>. Conversely, high ergothioneine levels are associated with health benefits like  
332 protection against cardiovascular diseases<sup>28</sup>, and this seems to be the case for biliverdin  
333 and bilirubin<sup>29</sup>, implying that this protective mechanism has become impaired in smokers.  
334 Smokers had low levels of two endogenous antioxidant biomarkers i.e., bilirubin and  
335 biliverdin, when compared to the controls, a finding which is in line with previous  
336 reports<sup>30,31</sup>. Biliverdin is a metabolite formed from the breakdown of hemoproteins; it is  
337 further reduced to bilirubin by biliverdin reductase<sup>32</sup>. Low levels of bilirubin have been  
338 associated not only with smoking-related respiratory diseases<sup>30</sup>, but also with autoimmune  
339 diseases like lupus and rheumatoid arthritis<sup>33</sup>. Thus, the low levels ergothioneine, biliverdin  
340 and bilirubin indicate that the pregnant women who smoke have a reduced antioxidative  
341 capacity while being subjected to increased oxidative stress; these types of changes could  
342 well trigger unfavorable outcomes like growth restrictions<sup>5</sup>. In line, we observed that the  
343 presence of low biliverdin levels in the first trimester plasma samples was associated with  
344 low birth weights in the newborns.

345

346 Additionally, our study showed a lower abundance of isatin (1H-indole-2,3-dione) in the  
347 smoking group when compared to the control group. The levels of isatin have been  
348 reported to be lower in smokers due to the impact of monoamine oxidase activity and  
349 oxidative stress since monoamine oxidase is the enzyme that metabolizes isatin<sup>34</sup>. An  
350 increased level of oxidative stress has been reported to alter the regulation of isatin in the  
351 body, where it acts as a neuroprotective agent<sup>35</sup>. It would be enlightening to clarify if low  
352 isatin levels would be associated with neurological impairments in newborns.

353

354 Moreover, the metabolomics analysis also showed that the levels of three metabolites  
355 linked to tobacco smoking, namely nicotine, cotinine, 3-hydroxypyridine, were significantly  
356 increased in blood samples of the tobacco-exposed mothers. Here, cotinine exhibited a  
357 significant negative correlation to birth weight and head circumference. Interestingly,  
358 previous studies have shown that the metabolism of nicotine is accelerated during  
359 pregnancy; this was assessed by measuring the nicotine metabolite ratio at different  
360 gestational weeks<sup>36</sup>.

361

362 Furthermore, the observed high levels of metabolites associated with caffeinated products  
363 (caffeine, theophylline, paraxanthine and trigonelline) are in line with previous studies that  
364 found that smoking pregnant women consume more caffeinated products compared to  
365 their nonsmoking pregnant counterparts<sup>37</sup>. It is recognized that the metabolism of  
366 compounds present in coffee is reduced during pregnancy<sup>38</sup>, and additionally, after

367 crossing the placental barrier, caffeine's metabolism is decreased possibly leading to  
368 prolonged effects in the fetus<sup>39</sup>. Previously, an increased coffee intake has been associated  
369 with a low birth weight<sup>40</sup>, although here we did not observe correlations between birth  
370 weight and the levels of coffee metabolites.

371

372 Additionally, we detected significant alterations in the concentrations of lipids; higher levels  
373 (e.g., LysoPC 16:1), and lower levels (e.g., PC 38:6) in the tobacco smoking group.

374 Disturbances in lipid levels have been associated with negative developmental effects in  
375 the newborns' brains and retinas<sup>41</sup>. Also here, the high levels of LysoPC 16:1 were

376 associated with a small head circumference whereas low levels of PC 38:6 were linked with  
377 a reduced body weight at birth.

378

379 The limitations of the current study include the self-reported use of tobacco smoking by  
380 the pregnant women. Although we had access to nicotine and cotinine levels which made it  
381 possible to detect current users, there might be some cases of pregnant women who were  
382 infrequent smokers as the blood samples were taken as a part of routine visits during the  
383 first trimester. We also observed some limitations of self-reporting, i.e., there were 7  
384 controls that had to be excluded from the study because of high cotinine levels in these  
385 samples. Another limitation is the sample size, which was relatively small and limited the  
386 statistical power. For example, with a higher sample size, differences in the levels of sterols

387 and lipids could have reached statistical significance (Supplementary table 1). In addition,  
388 the population used for this study was mostly from the Northern Savo area of Finland,  
389 likely with similar lifestyle factors such as their diet. This could explain the increased  
390 abundance of metabolites like paraxanthine which might not be evident in other  
391 populations that do not consume as many caffeinated products. Therefore, a similar study  
392 would need to be done with a different target population. Additionally, for the correlation  
393 analysis, the time between the 1<sup>st</sup> trimester samples collection and its linkage to the health  
394 of the newborns, means that many positive and negative changes could have taken place  
395 in the remaining months of the pregnancy. The maternal metabolite profile may have  
396 significantly altered during this time, and this would be reflected in the attained results<sup>42</sup>.

397  
398 In conclusion, the current study successfully compared the differences between smoking  
399 and nonsmoking pregnant women in the circulating metabolome as analyzed from plasma  
400 samples taken in the first trimester. Tobacco smoking during early pregnancy was  
401 associated with alterations in metabolites associated with a disruption of endocrine  
402 functions and increased oxidative stress and linked with a restricted growth of the fetus.  
403 Further studies will need to be conducted in several different populations in order to widen  
404 the generalizability of these results.

405



## 406 **Acknowledgements**

407 This work was supported by the Finnish Ministry of Social Affairs and Health for the  
408 VAURAS project, and the Finnish Foundation for Alcohol Studies. This paper belongs to the  
409 studies carried out by the Kuopio Birth Cohort consortium ([www. KuBiCo.fi](http://www.KuBiCo.fi)) and we thank  
410 our colleagues who are responsible for the design and conduct of the KuBiCo. We want to  
411 thank Essi Järvelä for assistance with sample collection, Miia Reponen and Juulia Kuparinen  
412 for technical assistance with the mass spectrometry analyses, Ewen MacDonald for proof-  
413 reading, and the staff of the Department of Obstetrics and Gynecology in Kuopio University  
414 Hospital. The authors also want to thank Biocenter Finland and Biocenter Kuopio for  
415 supporting the core LC-MS laboratory facility.

## 416 **Conflict of interest**

417 O.K. is a co-founder of Afekta Technologies Ltd. a company providing metabolomics  
418 analysis services. W.M, T.V, M.L, R.H, S.A, L.K-N, J.R declare no conflicts of interest.

## 419 **Data Sharing Statement**

420 The data that support the findings of this study are available on request from the  
421 corresponding author, OK. The study plan approved by the ethical committee and the  
422 participant consent terms preclude public sharing of these sensitive data, even in  
423 anonymized form.

## 424 References

- 425 1. Reitan T, Callinan S. Changes in Smoking Rates Among Pregnant Women and the General  
426 Female Population in Australia, Finland, Norway, and Sweden. *Nicotine Tob Res.*  
427 2017;19(3):282-289. doi:10.1093/ntr/ntw188
- 428 2. Havard A, Chandran JJ, Oei JL. Tobacco use during pregnancy. *Addiction.* 2022;117(6):1801-  
429 1810. doi:10.1111/add.15792
- 430 3. Wickström R. Effects of nicotine during pregnancy: human and experimental evidence. *Curr*  
431 *Neuropharmacol.* 2007;5(3):213-222. doi:10.2174/157015907781695955
- 432 4. Kubista E. [Smoking in pregnancy]. *Wien Med Wochenschr.* 1994;144(22-23):529-531.
- 433 5. Rumrich I, Vähäkangas K, Viluksela M, Gissler M, de Ruyter H, Hänninen O. Effects of maternal  
434 smoking on body size and proportions at birth: a register-based cohort study of 1.4 million  
435 births. *BMJ Open.* 2020;10(2):e033465. doi:10.1136/bmjopen-2019-033465
- 436 6. Anderson TM, Lavista Ferres JM, Ren SY, et al. Maternal Smoking Before and During Pregnancy  
437 and the Risk of Sudden Unexpected Infant Death. *Pediatrics.* 2019;143(4):e20183325.  
438 doi:10.1542/peds.2018-3325
- 439 7. Wehby GL, Prater K, McCarthy AM, Castilla EE, Murray JC. The Impact of Maternal Smoking  
440 during Pregnancy on Early Child Neurodevelopment. *J Hum Cap.* 2011;5(2):207-254.  
441 doi:10.1086/660885
- 442 8. Ino T, Shibuya T, Saito K, Ohtani T. Effects of maternal smoking during pregnancy on body  
443 composition in offspring. *Pediatr Int.* 2011;53(6):851-857. doi:10.1111/j.1442-  
444 200X.2011.03383.x
- 445 9. Banderali G, Martelli A, Landi M, et al. Short and long term health effects of parental tobacco  
446 smoking during pregnancy and lactation: a descriptive review. *J Transl Med.* 2015;13:327.  
447 doi:10.1186/s12967-015-0690-y
- 448 10. Peacock JL, Palys TJ, Halchenko Y, et al. Assessing tobacco smoke exposure in pregnancy from  
449 self-report, urinary cotinine and NNAL: a validation study using the New Hampshire Birth  
450 Cohort Study. *BMJ Open.* 2022;12(2):e054535. doi:10.1136/bmjopen-2021-054535
- 451 11. LaBarre JL, Puttabyatappa M, Song P XK, et al. Maternal lipid levels across pregnancy impact  
452 the umbilical cord blood lipidome and infant birth weight. *Sci Rep.* 2020;10(1):14209.  
453 doi:10.1038/s41598-020-71081-z
- 454 12. Rolle-Kampczyk UE, Krumsiek J, Otto W, et al. Metabolomics reveals effects of maternal  
455 smoking on endogenous metabolites from lipid metabolism in cord blood of newborns.  
456 *Metabolomics.* 2016;12:76. doi:10.1007/s11306-016-0983-z

- 457 13. Tan Y, Barr DB, Ryan PB, et al. High-resolution metabolomics of exposure to tobacco smoke  
458 during pregnancy and adverse birth outcomes in the Atlanta African American maternal-child  
459 cohort. *Environ Pollut.* 2022;292(Pt A):118361. doi:10.1016/j.envpol.2021.118361
- 460 14. Donovan MF, Cascella M. Embryology, Weeks 6-8. In: *StatPearls*. StatPearls Publishing; 2024.  
461 Accessed October 14, 2024. <http://www.ncbi.nlm.nih.gov/books/NBK563181/>
- 462 15. Huuskonen P, Keski-Nisula L, Heinonen S, et al. Kuopio birth cohort - design of a Finnish joint  
463 research effort for identification of environmental and lifestyle risk factors for the wellbeing of  
464 the mother and the newborn child. *BMC Pregnancy Childbirth.* 2018;18(1):381.  
465 doi:10.1186/s12884-018-2013-9
- 466 16. Tveden-Nyborg P, Bergmann TK, Jessen N, Simonsen U, Lykkesfeldt J. BCPT 2023 policy for  
467 experimental and clinical studies. *Basic Clin Pharmacol Toxicol.* 2023;133(4):391-396.  
468 doi:10.1111/bcpt.13944
- 469 17. Voutilainen T, Keski-Nisula L, Rysä J, Kärkkäinen O. Parental cigarette smoking before and  
470 during pregnancy in a cohort of 21 472 pregnancies. *Basic Clin Pharmacol Toxicol.*  
471 2024;134(4):543-555. doi:10.1111/bcpt.13987
- 472 18. Lehikoinen AI, Kärkkäinen OK, Lehtonen MAS, Auriola SOK, Hanhineva KJ, Heinonen ST.  
473 Alcohol and substance use are associated with altered metabolome in the first trimester  
474 serum samples of pregnant mothers. *Eur J Obstet Gynecol Reprod Biol.* 2018;223:79-84.  
475 doi:10.1016/j.ejogrb.2018.02.004
- 476 19. Klåvus A, Kokla M, Noerman S, et al. “notame”: Workflow for Non-Targeted LC-MS Metabolic  
477 Profiling. *Metabolites.* 2020;10(4):135. doi:10.3390/metabo10040135
- 478 20. Sumner LW, Amberg A, Barrett D, et al. Proposed minimum reporting standards for chemical  
479 analysis Chemical Analysis Working Group (CAWG) Metabolomics Standards Initiative (MSI).  
480 *Metabolomics.* 2007;3(3):211-221. doi:10.1007/s11306-007-0082-2
- 481 21. Wishart DS, Guo A, Oler E, et al. HMDB 5.0: the Human Metabolome Database for 2022.  
482 *Nucleic Acids Res.* 2022;50(D1):D622-D631. doi:10.1093/nar/gkab1062
- 483 22. Tappin DM, Ford RP, Schluter PJ. Smoking during pregnancy measured by population cotinine  
484 testing. *NZ Med J.* 1997;110(1050):311-314.
- 485 23. Nenezic N, Kostic S, Strac DS, et al. Dehydroepiandrosterone (DHEA): Pharmacological Effects  
486 and Potential Therapeutic Application. *Mini Rev Med Chem.* 2023;23(8):941-952.  
487 doi:10.2174/1389557522666220919125817
- 488 24. Baron JA, Comi RJ, Cryns V, Brinck-Johnsen T, Mercer NG. The effect of cigarette smoking on  
489 adrenal cortical hormones. *J Pharmacol Exp Ther.* 1995;272(1):151-155.
- 490 25. Cora N, Ghandour J, Pollard CM, et al. Nicotine-induced adrenal beta-arrestin1 upregulation  
491 mediates tobacco-related hyperaldosteronism leading to cardiac dysfunction. *World J Cardiol.*  
492 2020;12(5):192-202. doi:10.4330/wjc.v12.i5.192

- 493 26. Yan Y, Guo F, Liu K, Ding R, Wang Y. The effect of endocrine-disrupting chemicals on placental  
494 development. *Front Endocrinol (Lausanne)*. 2023;14:1059854.  
495 doi:10.3389/fendo.2023.1059854
- 496 27. Kenny LC, SCOPE Consortium, Brown LW, Ortea P, Tuytten R, Kell DB. Relationship between  
497 the concentration of ergothioneine in plasma and the likelihood of developing pre-eclampsia.  
498 *Biosci Rep*. 2023;43(7):BSR20230160. doi:10.1042/BSR20230160
- 499 28. Smith E, Ottosson F, Hellstrand S, et al. Ergothioneine is associated with reduced mortality and  
500 decreased risk of cardiovascular disease. *Heart*. 2020;106(9):691-697. doi:10.1136/heartjnl-  
501 2019-315485
- 502 29. Hinds TD, Stec DE. Bilirubin, a Cardiometabolic Signaling Molecule. *Hypertension*.  
503 2018;72(4):788-795. doi:10.1161/HYPERTENSIONAHA.118.11130
- 504 30. Kodal JB, Çolak Y, Kobylecki CJ, Vedel-Krogh S, Nordestgaard BG, Afzal S. Smoking Reduces  
505 Plasma Bilirubin: Observational and Genetic Analyses in the Copenhagen General Population  
506 Study. *Nicotine Tob Res*. 2020;22(1):104-110. doi:10.1093/ntr/nty188
- 507 31. Kim NH, Kim HC, Lee JY, Lee JM, Suh I. Active and Passive Smoking and Serum Total Bilirubin in  
508 a Rural Korean Population. *Nicotine Tob Res*. 2016;18(5):572-579. doi:10.1093/ntr/ntv251
- 509 32. Weaver L, Hamoud AR, Stec DE, Hinds TD. Biliverdin reductase and bilirubin in hepatic  
510 disease. *Am J Physiol Gastrointest Liver Physiol*. 2018;314(6):G668-G676.  
511 doi:10.1152/ajpgi.00026.2018
- 512 33. Koh M, Ahmad I, Ko Y, et al. A short ORF-encoded transcriptional regulator. *Proc Natl Acad Sci*  
513 *U S A*. 2021;118(4):e2021943118. doi:10.1073/pnas.2021943118
- 514 34. Hamaue N. [Pharmacological role of isatin, an endogenous MAO inhibitor]. *Yakugaku Zasshi*.  
515 2000;120(4):352-362. doi:10.1248/yakushi1947.120.4\_352
- 516 35. Buneeva OA, Kapitsa IG, Kazieva LS, Vavilov NE, Zgoda VG. Quantitative changes of brain  
517 isatin-binding proteins of rats with the rotenone-induced experimental parkinsonism. *Biomed*  
518 *Khim*. 2023;69(3):188-192. doi:10.18097/PBMC20236903188
- 519 36. Bowker K, Lewis S, Coleman T, Cooper S. Changes in the rate of nicotine metabolism across  
520 pregnancy: a longitudinal study. *Addiction*. 2015;110(11):1827-1832. doi:10.1111/add.13029
- 521 37. Qian J, Chen Q, Ward SM, Duan E, Zhang Y. Impacts of Caffeine during Pregnancy. *Trends*  
522 *Endocrinol Metab*. 2020;31(3):218-227. doi:10.1016/j.tem.2019.11.004
- 523 38. Yu T, Campbell SC, Stockmann C, et al. Pregnancy-induced changes in the pharmacokinetics  
524 of caffeine and its metabolites. *J Clin Pharmacol*. 2016;56(5):590-596. doi:10.1002/jcph.632
- 525 39. Hey E. Coffee and pregnancy. *BMJ*. 2007;334(7590):377. doi:10.1136/bmj.39122.395058.80

- 526 40. Jin F, Qiao C. Association of maternal caffeine intake during pregnancy with low birth weight,  
527 childhood overweight, and obesity: a meta-analysis of cohort studies. *Int J Obes (Lond)*.  
528 2021;45(2):279-287. doi:10.1038/s41366-020-0617-4
- 529 41. Huffman SL, Harika RK, Eilander A, Osendarp SJM. Essential fats: how do they affect growth  
530 and development of infants and young children in developing countries? A literature review.  
531 *Matern Child Nutr*. 2011;7 Suppl 3(Suppl 3):44-65. doi:10.1111/j.1740-8709.2011.00356.x
- 532 42. Jääskeläinen T, Kärkkäinen O, Jokkala J, et al. A non-targeted LC-MS metabolic profiling of  
533 pregnancy: longitudinal evidence from healthy and pre-eclamptic pregnancies. *Metabolomics*.  
534 2021;17(2):20. doi:10.1007/s11306-020-01752-5
- 535