

1 Investigation of locomotive syndrome improvement by
2 total hip arthroplasty in patients with hip osteoarthritis: a
3 before-after comparative study focusing on 25-question
4 geriatric locomotive function scale

5

6 Short title:

7 Investigation of locomotive syndrome improvement by THA in hip osteoarthritis
8 individuals

9

10 Shigeaki Miyazaki ^{1 *}, Kurumi Tsuruta ², Saori Yoshinaga ³, Yoshinori Fujii ⁴, Amy
11 Hombu ⁵, Taro Funamoto ⁶, Takero Sakamoto ⁶, Takuya Tajima ⁶, Yoshihiro Nakamura ⁶,
12 Hideki Arakawa ¹, Jun Nakatake ¹, Etsuo Chosa ⁷

13

14 ¹ Rehabilitation Unit, University of Miyazaki Hospital, 5200 Kihara Kiyotake Miyazaki,
15 Miyazaki 889-1692, Japan

16 ² Department of Nursing, Faculty of Human Health Sciences, Shunan University, 843-4-
17 2 Gakuendai, Shunan, Yamaguchi 745-8566, Japan

18 ³ School of Nursing, Faculty of Medicine, University of Miyazaki, 5200 Kihara Kiyotake
19 Miyazaki, Miyazaki 889-1692, Japan

20 ⁴ Department of Mathematics Education, Faculty of Education, University of Miyazaki,
21 1-1 Gakuen Kibanadai-nishi, Miyazaki, Miyazaki 889-2192, Japan

22 ⁵ Center for Language and Cultural Studies, Lecturer, University of Miyazaki, 1-1 Gakuen

NOTE: This preprint reports new research that has not been certified by peer review and should not be used to guide clinical practice.

23 Kibanadai-nishi, Miyazaki, Miyazaki 889-2192, Japan

24 ⁶Department of Orthopaedic Surgery, Faculty of Medicine, University of Miyazaki, 5200

25 Kihara Kiyotake Miyazaki, Miyazaki 889-1692, Japan

26 ⁷Community Medical Center, University of Miyazaki Hospital, 1-6-2 Minamihara Tano

27 Miyazaki, Miyazaki 889-1704, Japan

28

29

30 * Corresponding author

31 E-mail: 03-5-23@med.miyazaki-u.ac.jp (SM)

32

33

34

35

36

37

38

39

40

41

42

43

44

45

46

47 **Abstract**

48 **Background**

49 The 25-Question Geriatric Locomotive Function Scale (GLFS-25) is one of the tests used
50 to assess the risk of locomotive syndrome (LS). It is a comprehensive tool to measure LS
51 improvement after total hip arthroplasty (THA) and provides beneficial information for
52 rehabilitation after THA. This study aims to investigate the effectiveness of LS
53 improvement three months after THA in patients who underwent THA for hip
54 osteoarthritis (OA) by using the total clinical decision limits (CDL) 3-stage scale to
55 identify specific trends in LS improvement based on the GLFS-25.

56 **Methods**

57 The participants of this study were 273 patients who underwent primary THA for hip OA.
58 LS was evaluated using the stand-up test, two-step test, and GLFS-25 before receiving
59 THA and three months after THA.

60 **Results**

61 The total CDL was improved by THA in 132 patients (improvement rate: 48.4%). There
62 were 15 questions out of 25 in the GLFS-25 showed improvements in more than 60% of
63 the patients. The question Q13, “To what extent has it been difficult to walk briskly?”
64 revealed the highest improvement rate, followed by Q12, “To what extent has it been
65 difficult to go up and down stairs?”, and Q3, “Did you have any pain (including
66 numbness) in your lower limbs?”.

67 **Conclusions**

68 At three months after THA, approximately half of the patients showed improvement in
69 LS. Furthermore, improvement in locomotion movements was identified as the most
70 significant area of progress among motor functions.

71

72 **Introduction**

73 The aging population is a significant issue around the world. The number of people aged
74 60 and over reached 1 billion in 2019. This number is expected to reach 1.4 billion by
75 2030 and 2.1 billion by 2050. This increase will continue to accelerate in the coming
76 decades, especially in developing countries [1]. The number of elderly people requiring
77 nursing care is expanding due to motor dysfunction [2]. Ensuring the elderly can maintain
78 a good quality of life (QOL) can benefit both individuals and society.

79 Locomotive syndrome (LS) was introduced by the Japanese Orthopedic
80 Association (JOA) in 2007 to evaluate motor functions due to locomotive organ
81 impairment [3]. LS leads to the risk of requiring future long-term health care [4-6]. In
82 2013, JOA developed the LS risk tests consisting of a stand-up test, two-step test, and 25-
83 Question Geriatric Locomotive Function Scale (GLFS-25) to assess LS [7]. Additionally,
84 in 2015, JOA implemented clinical decision limits (CDL) as criteria for determining the
85 risks of LS [8]. The CDL classifies the LS into stage 1 or stage 2 [7]; in 2020, stage 3 was
86 added, making CDL a three-stage evaluation instrument [9,10].

87 Total hip arthroplasty (THA) is a surgical treatment to regain hip joint function,
88 relieve pain, and improve the limitations of activities of daily living (ADL) in patients
89 with hip osteoarthritis (OA). THA has shown effectiveness in enhancing QOL, including
90 walking function [11], sports activities [12], and cardiopulmonary function [13], which

91 leads to early reintegration into society. Larsen et al. [14] reported that early perioperative
92 care and rehabilitation can significantly shorten hospital stay and improve QOL three
93 months after THA. Furthermore, Miyazaki et al. [9] reported that the improvement rate
94 in total CDL three months after THA was 46.7%, indicating that patients could recover
95 to independent walking three months after THA. The demonstration of the effectiveness
96 in improving LS based on the short-term results due to THA is clinically significant.

97 The GLFS-25, one of the LS risk tests, was developed as a screening instrument
98 for elderly patients with motor dysfunctions [15, 16]. A comprehensive consideration of
99 LS improvement after THA using the GLFS-25 provides beneficial information for
100 implementing after THA rehabilitation. Regarding the effect of THA on improving the
101 GLFS-25, previous studies reported that 90% of patients with severe hip joint disorders
102 required nursing care before THA. This percentage dropped to 30% three months after
103 THA [17]. Unfortunately, up to date, no short-term results at three months after THA in
104 hip OA patients have been reported concerning the effect of LS improvement using the
105 total CDL stages 1 to 3. Furthermore, there is no study to examine the trend or degree of
106 progress for each question in the GLFS-25. This study aims to investigate the
107 effectiveness of LS improvement at three months after THA in patients who underwent
108 THA for hip OA by using the total CDL 3-stage scale to identify specific trends in LS
109 improvement based on the GLFS-25.

110

111 **Materials and Methods**

112 **Study design and ethical statement**

113 This before-after comparative study was approved by the Research Ethics Committee of
114 the University of Miyazaki, School of Medicine (Approval No. O-0783). It was carried
115 out in compliance with the Ethical Guidelines for Medical and Biological Research
116 Involving Human Subjects at the Department of Rehabilitation Medicine, University of
117 Miyazaki Affiliated Hospital. The participants of this study were patients who underwent
118 primary THA for hip OA between October 2018 and May 2024. Approval for this study
119 was obtained from the Research Ethics Committee in September 2020. Therefore, data
120 collected before obtaining approval from the Research Ethics Committee were
121 categorized as a retrospective study, while data collected after obtaining approval were
122 categorized as a prospective study. All data used in the retrospective study were fully
123 anonymized prior to access. As it was not feasible to contact participants in the
124 retrospective study and because the information was initially collected for clinical
125 purposes, the opt-out method was applied in accordance with ethical guidelines.
126 Information regarding the conduct of the research including the objectives was disclosed
127 and the research participants were provided an opportunity to refuse inclusion in the
128 research.

129

130 **Patient selection**

131 The participants of this study were patients who underwent primary THA for hip OA.
132 The target patients agreed to participate in both before THA and three months after THA
133 evaluations. Patients with femoral head necrosis, trauma, rheumatoid arthritis, infection,
134 and patients with incomplete outcome measure data sets were excluded from the study.
135 As a result of careful selection and rigorous screening, 273 patients were included in this

136 study (Fig 1). The breakdown of the total CDL stages was: 0 patients of stage 0, 1 patients
137 of stage 1, 27 patients of stage 2, and 245 patients of stage 3. The cohort in this study
138 included patients with polyarticular disease and those who have undergone arthroplasty
139 in other joints.

140

141 **Fig 1. Flowchart of the included patients.**

142 The participants of this study were patients who underwent primary THA for hip OA
143 between October 2018 and May 2024. Patients with femoral head necrosis, trauma,
144 rheumatoid arthritis, infection, and patients with incomplete outcome measure data sets
145 were excluded from the study.

146

147 All cases in this study underwent THA using the anterior minimally invasive
148 surgery (AMIS) approach or transgluteal approach performed by experienced orthopedic
149 surgeons at the hospital of the authors' affiliated institution. Rehabilitation after THA
150 started the day after THA for three months. Patients received one-on-one rehabilitation
151 twice a day for 60 to 80 minutes during hospitalization. Outpatients received one-on-one
152 rehabilitation for 20 to 40 minutes two to three times a week.

153

154 **Outcome measures**

155 The three LS risk tests proposed by JOA, the stand-up test, two-step test, GLFS-25, and
156 total CDL stage, were adopted as outcome measures in this before-after comparative
157 study [7]. For evaluation, the CDL and total CDL results of each test were classified into

158 stages 0 to 3. All measures were performed both before and three months after THA. Data
159 were collected as previously described in Miyazaki et al. [10].

160 1. For the stand-up test, following the JOA guidelines, four different stool heights
161 were used: 40 cm, 30 cm, 20 cm, and 10 cm. First, a patient was asked to stand up from
162 the sitting position starting at the highest stool of 40 cm. After being able to stand up with
163 both legs, the next step was to stand up with one leg. After that, the test continues using
164 stools at different heights. The evaluation employed a 9-point scale [7]: 0 points (unable
165 to stand); 1, 2, 3, and 4 points (stand on both legs from heights of 40 cm, 30 cm, 20 cm,
166 and 10 cm, respectively); 5, 6, 7, and 8 points (stand on one leg from heights of 40 cm,
167 30 cm, 20 cm, and 10 cm, respectively). Scores <2 , <3 , and <5 were classified as CDL
168 stages 3, 2, and 1, respectively. The instructions to quantify motion were given. (1) Fold
169 arms in front of the chest at a sitting position. (2) Place feet shoulder-width apart. (3)
170 Position lower legs at an angle of approximately 70° to the floor. (4) Stand up without
171 gaining momentum. (5) Maintain the standing posture for 3 seconds.

172 2. The two-step test is used to evaluate stride length. A patient was asked to take
173 two steps with the longest possible stride, and the stride length of these two steps was
174 measured. The test score was calculated by dividing the stride length of these two steps
175 by the patient's height. Scores <0.9 , ≥ 0.9 to <1.1 , and ≥ 1.1 to <1.3 were classified into
176 CDL stages 3, 2, and 1, respectively. The instructions to quantify motion were given. (1)
177 Align toes at the starting line with a stationary standing position. (2) Take two of the
178 longest possible steps forward, then align toes together in a stationary standing position.
179 (3) If the subject loses balance, start over. (4) Measure the stride length of the two steps.
180 (5) Perform two times and adopt the better score.

181 3. The GLFS-25 [15] is a self-administered assessment of 25 questions. This test
182 consists of four questions measuring physical pain, 16 questions measuring ADL, three
183 questions measuring social functions, and two questions measuring mental health in the
184 past month before the test. These 25 questions are rated on a 5-point scale ranging from
185 no functional impairment (0 points) to severe functional impairment (4 points), and a total
186 score is calculated (minimum 0 points, maximum 100 points). Scores ≥ 24 , ≥ 16 to < 24 ,
187 and ≥ 7 to < 16 were classified into CDL stages 3, 2, and 1, respectively.

188 4. The total CDL was determined based on the results of the stand-up test, two-step
189 test, and GLFS-25. As a result, the most advanced stage of mobility impairment can be
190 determined based on the CDL stages.

191

192 **Statistical Analysis**

193 The following statistical analyses were performed.

194 1. Evaluation of LS improvement: The Wilcoxon signed-rank test was used to
195 compare the distribution of the CDL stages for the three LS risk tests and the total CDL
196 stages.

197 2. Changes in each of the LS test scores and each of the GLFS-25 questions before
198 THA and three months after THA were examined using a Paired t-test.

199 This is an observational study with a longitudinal design. At the time of applying
200 for ethical approval, we could not predict how many cases we would have over the 6-year
201 period. As a result, we had 273 participants eligible for this study, all of whom underwent
202 primary THA at the hospital during the study period, excluding those who did not meet
203 the patient selection criteria. All statistical analyses were performed using IBM SPSS

204 27.0 (IBM Corp., Released 2020. Armonk, NY, USA). The statistical significance was
205 set at $p < .05$.

206

207 **Results**

208 Table 1 shows the age, sex, height, weight, and BMI. The participants were 273 patients
209 comprising 52 males and 221 females, and the mean age was 67.4 years (standard
210 deviation SD: 9.3 years). The mean BMI was 24.4 kg/m² (standard deviation SD: 3.8
211 kg/m²).

212

213

Table 1. Characteristics of the patients.		
Characteristic	Total (n = 273)	
Age (years)	67.4 ± 9.3	
Sex: male/female	52 / 221	
Height (cm)	154.3 ± 7.6	
Weight (kg)	58.4 ± 11.0	
Body mass index (BMI) (kg/m ²)	24.4 ± 3.8	
BMI, body mass index.		
214 Age, height, weight, and BMI values are means ± standard deviation.		

215

216 Table 2 shows the participants' medical information. Among the participants in this
217 study, 53 patients (19.4%) had primary hip OA, and 220 (80.6%) patients had secondary
218 hip OA. Regarding THA, 217 (79.5%) patients were unilateral, and 56 (20.5%) patients
219 were bilateral. Regarding the surgical procedure, 156 (57.1%) patients had the AMIS
220 approach, and 117 (42.9%) patients had the transgluteal approach. Regarding the stage

221 on the non-operated side, in the order of stages 0 to 4, the details were 39 (14.3%), 52
222 (19.0%), 39 (14.3%), 35 (12.8%), and 45 (16.5%) patients, respectively, and 63 (23.1%)
223 were after THA. On the operated side, in the order of stages 0 to 4, the details were 0
224 (0%), 0 (0%), 0 (0%), 33 (12.1%), and 240 (87.9%) patients, respectively.

Table 2. Patients' medical information.			n = 273	
Item	Category	Frequency	%	
Diagnosis	Primary hip osteoarthritis	53	19.4	
	Secondary hip osteoarthritis	220	80.6	
THA	Unilateral	217	79.5	
	Bilateral	56	20.5	
Surgical procedure	AMIS approach	156	57.1	
	Transgluteal approach	117	42.9	
JOA staging (non-operated side)	Stage 0	39	14.3	
	Stage 1	52	19.0	
	Stage 2	39	14.3	
	Stage 3	35	12.8	
	Stage 4	45	16.5	
	After THA	63	23.1	
	Stage 4	240	87.9	
JOA staging (operated side)	Stage 0	0	0	
	Stage 1	0	0	
	Stage 2	0	0	
	Stage 3	33	12.1	
	Stage 4	240	87.9	

THA, total hip arthroplasty; AMIS, anterior minimally invasive surgery; JOA, Japanese Orthopedic Association.

226 Table 3 shows the distributions of the CDL stages for the three LS tests and the
227 total CDL stages for all participants. There was a significant change in the percentage of
228 participants in each CDL stage from before THA to three months after THA ($p < .001$).
229 At three months, the percentage of participants with total CDL stage 3 decreased, while
230 the percentage of participants with total CDL stages 2, 1, and 0 increased. The same trend
231 was detected in the distribution for each of the three tests in LS.

Table 3. Distribution of the CDL stage for the three LS tests and the total CDL stages (n = 273).										
		Stage 0		Stage 1		Stage 2		Stage 3		Wilcoxon signed-rank test
		N	%	N	%	N	%	N	%	<i>p</i> -value
Stand-up test	Before THA	7	2.6	84	30.8	82	30.0	100	36.6	< 0.001***
	3 months after THA	16	5.9	98	35.9	92	33.7	67	24.5	
Two-step test	Before THA	3	1.1	36	13.2	101	37.0	133	48.7	< 0.001***
	3 months after THA	14	5.1	80	29.3	115	42.1	64	23.4	
GLFS-25	Before THA	0	0.0	5	1.8	34	12.5	234	85.7	< 0.001***
	3 months after THA	32	11.7	91	33.3	65	23.8	85	31.1	
Total CDL stage	Before THA	0	0.0	1	0.4	27	9.9	245	89.7	< 0.001***
	3 months after THA	2	0.7	51	18.7	93	34.1	127	46.5	
CDL, clinical decision limits; LS, locomotive syndrome; THA, total hip arthroplasty; GLFS-25, 25-Question Geriatric Locomotive Function Scale.										
Significantly different: *** <i>p</i> < .001										

233 Table 4 shows the changes observed in total CDL due to THA. THA improved the
234 total CDL in 132 patients with an improvement rate of 48.4%. Before THA, 27 patients
235 were in LS stage 2, of which seven (25.9%) improved to LS stage 1, and one (3.7%) to
236 LS stage 0 after THA. Similarly, among 246 patients who were LS stage 3 before THA,
237 80 (32.5%) improved to LS stage 2, 43 (17.5%) to LS stage 1, and one (0.4%) to LS stage
238 0.

Table 4. Changes in the total CDL stage by THA.										
Before THA \ 3 months after THA	Stage 0		Stage 1		Stage 2		Stage 3		Total	
	N	%	N	%	N	%	N	%	N	%
Stage 2	1	3.7	7	25.9	13	48.2	6	22.2	27	100
Stage 3	1	0.4	43	17.5	80	32.5	122	49.6	246	100
Total	2	0.7	50	18.3	93	34.1	128	46.9	273	100
Highlighted numbers indicate improvements (132 patients, 48.4% improvement rate)										
CDL, clinical decision limits; THA, total hip arthroplasty.										

240

241 Table 5 shows the significant differences ($p < .001$) observed in the scores for all
242 cases in the three LS risk tests (stand-up test, two-step test, and GLFS-25) between before
243 THA and three months after THA. The scores of the stand-up test and the two-step test
244 were significantly higher at three months after THA. The GLFS-25 score was
245 significantly lower at three months after THA.

Table 5. Changes in the three LS test scores and each functional parameter from before to 3 months after THA (n = 273).

	Before THA (mean ± SD)	3 months after THA (mean ± SD)	Paired <i>t</i> -test <i>p</i> -value		
Stand-up test	2.06 ± 1.21	2.36 ± 1.17	< 0.001***		
Two-step test	0.88 ± 0.22	1.01 ± 0.20	< 0.001***		
GLFS-25	40.9 ± 16.0	19.3 ± 12.4	< 0.001***		
LS, locomotive syndrome; THA, total hip arthroplasty; SD, standard deviation;					
GLFS-25, 25-Question Geriatric Locomotive Function Scale.					
Significantly different: *** <i>p</i> < .001					

246

247

248 The differences in the GLFS-25 scores before THA and three months after THA are
249 shown using a scatter plot (Fig 2). There is a negative correlation between the GLFS-25
250 score before THA and the change in the GLFS-25 score (three months after THA minus
251 before THA), and the change in the GLFS-25 score increased in proportion to the GLFS-
252 25 score before THA. As a result of regression analysis, the regression coefficient was -
253 0.723 and the coefficient of determination (R^2) was 0.498 ($p < .001$).

254

255 **Figure 2. Scatter plot graph of GLFS-25 score.**

256 The scatter plot shows the correlation between the GLFS-25 score before THA and the
257 change in the GLFS-25 score (three months after THA minus before THA).

258

259 Table 6 shows the average score difference between before and three months after
260 THA for each GLFS-25 question and the percentage of patients who improved in three
261 months after THA compared to the before THA evaluation. For all questions, there was
262 a significant difference between the scores before THA and three months after THA; in
263 other words, the scores three months after THA were lower than before THA.
264 Furthermore, the percentage of patients who improved was over 60% for 15 out of the 25
265 questions, and the question with the highest percentage of patients who improved was
266 Q13 (80.2%). This was followed by Q12 (76.9%), Q3 (76.2%), Q4 (74.7%), Q7 (72.5%),
267 and Q21 (70.7%). On the other hand, the question with the lowest improvement rate was
268 Q8 (24.5%).

Table 6. Changes in GLFS-25 and the improvement rate.

Items	Before THA (mean ± SD)	3 months after THA (mean ± SD)	Difference (mean ± SE)	Improvement rate (%)
Q1. Did you have any pain (including numbness) in your neck or upper limbs?	0.78 ± 0.92	0.66 ± 0.82	0.12 ± 0.06*	30.8
Q2. Did you have any pain in your back, lower back or buttocks?	1.32 ± 1.08	0.90 ± 0.92	0.42 ± 0.07 ***	46.2
Q3. Did you have any pain (including numbness) in your lower limbs?	2.23 ± 1.06	0.89 ± 0.83	1.33 ± 0.08 ***	76.2
Q4. To what extent has it been painful to move your body in daily life?	2.09 ± 0.92	0.82 ± 0.78	1.27 ± 0.07 ***	74.7
Q5. To what extent has it been difficult to get up from a bed or lie down?	1.29 ± 0.99	0.43 ± 0.65	0.85 ± 0.07 ***	60.4
Q6. To what extent has it been difficult to stand up from a chair?	1.35 ± 0.99	0.44 ± 0.62	0.91 ± 0.06 ***	60.4
Q7. To what extent has it been difficult to walk inside the house?	1.36 ± 0.95	0.34 ± 0.58	1.03 ± 0.06 ***	72.5
Q8. To what extent has it been difficult to put on and take off shirts?	0.41 ± 0.77	0.14 ± 0.39	0.27 ± 0.05 ***	24.5
Q9. To what extent has it been difficult to put on and take off trousers and pants?	1.80 ± 0.96	0.76 ± 0.65	1.04 ± 0.06 ***	68.5
Q10. To what extent has it been difficult to use the toilet?	0.87 ± 0.90	0.21 ± 0.44	0.66 ± 0.06 ***	50.5
Q11. To what extent has it been difficult to wash your body in the bath?	1.11 ± 0.97	0.47 ± 0.62	0.65 ± 0.06 ***	49.1
Q12. To what extent has it been difficult to go up and down stairs?	2.37 ± 0.99	1.06 ± 0.84	1.31 ± 0.07 ***	76.9
Q13. To what extent has it been difficult to walk briskly?	2.62 ± 1.02	1.16 ± 0.89	1.46 ± 0.07 ***	80.2
Q14. To what extent has it been difficult to keep yourself neat?	1.01 ± 0.94	0.34 ± 0.57	0.67 ± 0.06 ***	50.9
Q15. How far can you keep walking without rest?	2.67 ± 1.12	1.52 ± 1.16	1.14 ± 0.08 ***	69.2
Q16. To what extent has it been difficult to go out to visit neighbors?	1.44 ± 1.09	0.40 ± 0.66	1.04 ± 0.07 ***	67.8
Q17. To what extent has it been difficult to carry objects weighing approximately 2 kilograms?	1.73 ± 1.23	0.82 ± 0.93	0.90 ± 0.08 ***	60.8
Q18. To what extent has it been difficult to go out using public transportation?	2.00 ± 1.26	0.86 ± 0.98	1.14 ± 0.08 ***	66.7

Q19. To what extent have simple tasks and housework been difficult?	1.13 ± 0.95	0.39 ± 0.63	0.74 ± 0.06 ***	57.9
Q20. To what extent have load-bearing tasks and housework been difficult?	1.81 ± 1.17	0.92 ± 0.89	0.89 ± 0.07 ***	60.1
Q21. To what extent has it been difficult to perform sports activity?	2.93 ± 1.03	1.70 ± 1.16	1.23 ± 0.08 ***	70.7
Q22. Have you been restricted from meeting your friends?	1.36 ± 1.32	1.00 ± 1.18	0.36 ± 0.08 ***	38.1
Q23. Have you been restricted from joining social activities ?	2.29 ± 1.46	1.66 ± 1.48	0.63 ± 0.10***	48.0
Q24. Have you ever felt anxious about falls in your house?	1.30 ± 1.05	0.76 ± 0.77	0.54 ± 0.07 ***	44.3
Q25. Have you ever felt anxious about being unable to walk in the future?	1.68 ± 1.16	0.64 ± 0.76	1.04 ± 0.08 ***	64.8
Improvement rate is the comparison of before THA and 3 months after THA				
GLFS-25, 25-Question Geriatric Locomotive Function Scale; THA, total hip arthroplasty; SD, standard deviation; SE, standard error.				
Paired <i>t</i> -test, Significantly different: * <i>p</i> < .05, *** <i>p</i> < .001				

270

271 **Discussion**

272 This study evaluated patients with hip OA who underwent primary THA for each CDL
273 stage and total CDL stage of LS risk tests before and three months after THA to assess
274 the effectiveness of THA. In addition, the specific trends of LS improvement in motor
275 function based on the GLFS-25 were examined. To the best of our knowledge, there have
276 been no short-term evaluations at three months after THA in hip OA patients, including
277 evaluation by total CDL stage 1 to 3 or evaluation of LS improvement after THA based
278 on the GLFS-25. Therefore, this study is the first to clarify the therapeutic effects of THA
279 on LS and the motor function questions related to LS improvement from the GLFS-25,
280 focusing on three months after THA. The most important findings from this study were
281 that total CDL improved in 48.4% of patients three months after THA; 15 out of 25 (60%)
282 GLFS-25 questions revealed an improvement rate of over 60% in patients.

283 THA has been a well-received surgery that rebuilds hip joint function and improves
284 pain and restrictions in ADL due to locomotive organ impairment. Previous studies
285 reported implant survival rates exceeding 20 years after surgery [18, 19]. Consequently,
286 it is rather crucial to clarify the improvement rate of total CDL after THA. In a cohort
287 study examining the effects of THA in hip OA patients, the improvement rate in total
288 CDL stage 1 and stage 2 evaluation was 57% at six months and 65% at one year after
289 THA [20]. In a 2-year post-THA cohort study, the improvement rate in total CDL stage
290 1 and stage 2 evaluation was 56.8% [21]. In addition, a cohort study examining the short-
291 term effects of THA reported that the improvement rate when evaluating total CDL stage
292 3 alone was 46.7% at three months after THA [9]. Our study is the first to evaluate total
293 CDL in all stages, 1 to 3. Although it is not realistic to conduct a simple comparison with

294 previous reports due to the time frame differences, our total CDL improvement rate three
295 months after THA was 48.4% which was in line with other studies. Regarding the
296 improvement change by total CDL stage, the improvement rate from stage 3 to stage 2,
297 1, or 0 was 50.4%, and some patients did show an improvement from stage 3 to 0. The
298 improvement rate from stage 2 to 1 or 0 was 29.6%. This is to say that THA due to hip
299 OA can improve LS within a short period of time after surgery.

300 In the present study, we investigated the specific trends of improvement by THA
301 using the GLFS-25. The results showed that there was a negative correlation between the
302 GLFS-25 score pre-THA and the change in the GLFS-25 score (three months after THA
303 minus before THA). The changes seen in the scores toward the negative direction (-)
304 indicate improvement in most patients. Furthermore, the higher the GLFS-25 score before
305 THA and the higher the difficulty in ADL, the greater the improvement in score.
306 Regarding the improvement effect of THA on the GLFS-25, Maezawa et al. [17] reported
307 that the GLFS-25 improved from 55.4 points before THA to 19.1 points three months
308 after THA. Our present study showed that the CDL stage in the GLFS-25 significantly
309 decreased from 234 (85.7%) patients with CDL stage 3 before THA to 85 (31.1%)
310 patients three months after THA. A significant improvement in the GLFS-25 score was
311 also observed by 21.6 points (40.9 points before THA minus 19.3 points three months
312 after THA).

313 The GLFS-25 assesses the following four categories: pain-related (Q1 to 4), ADL-
314 related (Q5 to 20), social function-related (Q21 to 23), and mental health-related (Q24,
315 25) [15]. Both Q3 and Q4 correspond to hip joint pain-related. The score for both Q3 and
316 Q4 was improved from two points (moderate pain) or higher before THA to less than one
317 point (little pain) three months after THA, and the improvement rate revealed was over

318 70% in patients. Consequently, many improvement cases in hip joint pain were observed
319 three months after THA. Regarding ADL-related, the improvement rate was 55% and
320 higher in 12 questions except Q8, Q10, Q11, and Q14. These four questions mainly
321 evaluate upper limb functions that have no substantial influence on THA. The scores
322 before THA were 0.41 (not difficult) to 1.11 (slightly difficult), which were low to begin
323 with, so the percentage of patients who improved their scores tended to be low. All other
324 questions in this category evaluate locomotion movements. There were many
325 improvements observed due to THA and rehabilitation. Regarding questions related to
326 mental health, both Q24 (anxiety about falling) and Q25 (anxiety about difficulty in
327 walking) were less than one point (slightly anxious) after three months of THA, indicating
328 significant improvement. Q21 (sports activities) is one of the questions regarding social
329 functions. It indicates the most active mobility of ADL, which is the most difficult part
330 for hip OA patients. The score for Q21 was 2.93, at the level of “quite difficult” before
331 THA, the highest of all questions. Three months after THA, the score decreased to 1.70,
332 indicating a high improvement rate of 70.7%. The above results suggest that pain
333 reduction and improved mobility have alleviated the anxiety of falling and difficulty in
334 walking, which has led to improvement in sports activities.

335 Seichi et al. [15] reported that the questions of the GLFS-25 reflect the existence
336 of multidimensional and interrelated structures in clusters. According to their study, based
337 on seven questions (Q12, 13, 15, 16, 17, 19, 20), one cluster was formed consisting of
338 questions associated with physical functions of ADL (walking and housework activities).
339 This cluster presents significant relationships with other clusters and is demonstrated to
340 be a key domain. The results from our present study revealed that the improvement rate
341 for all seven questions was 55% and higher. Among them, the improvement rate for

342 questions related to walking and stair climbing (Q12, 13, 15, 16, 17) ranged from 60.8%
343 to 80.2%. For questions related to household activities (Q19, 20), the improvement rate
344 remained at 57.9% and 60.1%. These results indicate that, among motor functions,
345 locomotion movements showed improvements ahead of housework activities three
346 months after THA.

347 The present study has two limitations that need to be considered. Firstly, both
348 unilateral and bilateral hip OA were included in the study. Secondly, both AMIS and
349 transgluteal surgical procedures were included. Therefore, in our further research, it is
350 necessary to investigate whether these factors may have an impact on the improvement
351 effect of LS.

352

353 **Conclusions**

354 In this study of 273 patients who underwent unilateral primary THA due to hip OA, 132
355 patients (improvement rate 48.4%) demonstrated improvement in their total CDL stage
356 three months after THA. Additionally, 15 out of 25 in the GLFS-25 showed
357 improvements in over 60% of the patients. Based on these results, approximately half of
358 the patients showed improvement in LS three months after THA. These findings
359 underscore the significant impact of THA on improving LS, particularly in improving
360 locomotion movements. The results emphasize the pivotal role of postoperative
361 rehabilitation, suggesting the need to set target rehabilitation goals for enhancing motor
362 function after THA in hip OA patients.

363

364 **Acknowledgments**

365 The authors would like to thank Masaru Ochiai, Tsubasa Kawaguchi, Aya Unoki,
366 Wakaba Iha, Akari Nagatomo, Kensuke Okamura and Mami Kanno for their assistance
367 in recruiting the participants and for useful advice.

368

369 **Funding**

370 This work was supported by the Japan Society for the Promotion of Science Grants-in-
371 Aid for Scientific Research (Grant No. 24K20438). The funders had no role in study
372 design, data collection and analysis, decision to publish, or preparation of the manuscript.
373 There was no additional external funding received for this study.

374

375 **References**

- 376 1. World Health Organization, Health topics: Ageing. [https://www.who.int/health-](https://www.who.int/health-topics/ageing#tab=tab_1)
377 [topics/ageing#tab=tab_1](https://www.who.int/health-topics/ageing#tab=tab_1). Accessed 10 Sept 2023.
- 378 2. Mitani G, Nakamura Y, Miura T, Harada Y, Sato M, Watanabe M. Evaluation of the
379 association between locomotive syndrome and metabolic syndrome. *J Orthop Sci.*
380 2018;23:1056-62. doi: 10.1016/j.jos.2018.07.004.
- 381 3. Nakamura K. Locomotive syndrome: disability-free life expectancy and locomotive
382 organ health in a "super-aged" society. *J Orthop Sci.* 2009;14:1-2. doi:
383 10.1007/s00776-008-1302-y.
- 384 4. Ishibashi H. Locomotive syndrome in Japan. *Osteoporos Sarcopenia.* 2018;4:86-94.
385 doi: 10.1016/j.afos.2018.09.004.
- 386 5. Nakamura K. A "super-aged" society and the "locomotive syndrome". *J Orthop Sci.*

- 387 2008;13:1-2. doi: 10.1007/s00776-007-1202-6.
- 388 6. Nakamura K, Ogata T. Locomotive syndrome: definition and management. Clin Rev
389 Bone Miner Metabol. 2016;14:56-67. doi: 10.1007/s12018-016-9208-2.
- 390 7. Ogata T, Muranaga S, Ishibashi H, Ohe T, Izumida R, Yoshimura N et al.
391 Development of a screening program to assess motor function in the adult population:
392 a cross-sectional observational study. J Orthop Sci. 2015;20:888-95. doi:
393 10.1007/s00776-015-0737-1.
- 394 8. Yoshimura N, Muraki S, Oka H, Tanaka S, Ogata T, Kawaguchi H et al. Association
395 between new indices in the locomotive syndrome risk test and decline in mobility:
396 third survey of the ROAD study. J Orthop Sci. 2015;20:896-905. doi:
397 10.1007/s00776-015-0741-5.
- 398 9. Miyazaki S, Tsuruta K, Yoshinaga S, Yamaguchi Y, Fujii Y, Arakawa H et al. Effect
399 of total hip arthroplasty on improving locomotive syndrome in hip disease patients:
400 A prospective cohort study focused on total clinical decision limits stage 3. J Orthop
401 Sci. 2022;27:408-13. doi: 10.1016/j.jos.2020.12.028.
- 402 10. Miyazaki S, Yoshinaga S, Tsuruta K, Hombu A, Fujii Y, Arakawa H et al. Total
403 Knee Arthroplasty Improved Locomotive Syndrome in Knee Osteoarthritis Patients:
404 A Prospective Cohort Study Focused on Total Clinical Decision Limits Stage 3.
405 Biomed Res Int. 2021;3919989. doi: 10.1155/2021/3919989.
- 406 11. Bahl JS, Nelson MJ, Taylor M, Solomon LB, Arnold JB, Thewlis D. Biomechanical
407 changes and recovery of gait function after total hip arthroplasty for osteoarthritis: a
408 systematic review and meta-analysis. Osteoarthritis Cartilage. 2018;26:847-63. doi:

- 409 10.1016/j.joca.2018.02.897.
- 410 12. Huch K, Müller KA, Stürmer T, Brenner H, Puhl W, Günther KP. Sports activities 5
411 years after total knee or hip arthroplasty: the Ulm Osteoarthritis Study. *Ann Rheum*
412 *Dis.* 2005;64:1715-20. doi: 10.1136/ard.2004.033266.
- 413 13. Ries MD, Philbin EF, Groff GD, Sheesley KA, Richman JA, Lynch F Jr. Effect of
414 total hip arthroplasty on cardiovascular fitness. *J Arthroplasty.* 1997;12:84-90. doi:
415 10.1016/s0883-5403(97)90052-8.
- 416 14. Larsen K, Sørensen OG, Hansen TB, Thomsen PB, Søballe K. Accelerated
417 perioperative care and rehabilitation intervention for hip and knee replacement is
418 effective: a randomized clinical trial involving 87 patients with 3 months of follow-
419 up. *Acta Orthop.* 2008;79:149-59. doi: 10.1080/17453670710014923.
- 420 15. Seichi A, Hoshino Y, Doi T, Akai M, Tobimatsu Y, Iwaya T. Development of a
421 screening tool for risk of locomotive syndrome in the elderly: the 25-question
422 Geriatric Locomotive Function Scale. *J Orthop Sci.* 2012;17:163-72. doi:
423 10.1007/s00776-011-0193-5.
- 424 16. Akai M, Doi T, Seichi A, Okuma Y, Ogata T, Iwaya T. Locomotive Syndrome:
425 Operational Definition Based on a Questionnaire, and Exercise Interventions on
426 Mobility Dysfunction in Elderly People. *Clin Rev Bone Miner Metab.* 2016;14:119-
427 30. doi: 10.1007/s12018-016-9210-8.
- 428 17. Maezawa K, Nozawa M, Yuasa T, Sato H, Gomi M, Kaneko K. Early clinical results
429 of total hip arthroplasty assessed with the 25-question Geriatric Locomotive Function
430 Scale and muscle strength testing. *J Orthop Sci.* 2018;23:538-41. doi:

431 10.1016/j.jos.2018.02.012.

432 18. McLaughlin JR, Lee KR. Total hip arthroplasty with an uncemented tapered femoral
433 component in patients younger than 50 years of age: a minimum 20-year follow-up
434 study. *J Arthroplasty*. 2016;31:1275-8. doi: 10.1016/j.arth.2015.12.026.

435 19. Ateschrang A, Weise K, Weller S, Stöckle U, de Zwart P, Ochs BG. Long-term
436 results using the straight tapered femoral cementless hip stem in total hip
437 arthroplasty: a minimum of twenty-year follow-up. *J Arthroplasty*. 2014;29:1559-65.
438 doi: 10.1016/j.arth.2014.02.015.

439 20. Ohmori T, Kabata T, Kato S, Takagi T, Kajino Y, Inoue D et al. The efficacy of total
440 hip arthroplasty on locomotive syndrome and its related physical function in patients
441 with hip osteoarthritis. *J Orthop Sci*. 2021;26:389-95. doi: 10.1016/j.jos.2020.04.011.

442 21. Taniguchi N, Jinno T, Endo H, Wako M, Tatsuno R, Ochiai S et al. Improvement of
443 locomotive syndrome after total hip arthroplasty: A two-year longitudinal cohort
444 study. *Mod Rheumatol*. 2021;31:1050-8. doi: 10.1080/14397595.2020.1823552.

445

446 **Supporting information**

447 **S1 File. Raw data**

448 **S2 File. Codebook**

449 **S3 File. STROBE Statement**

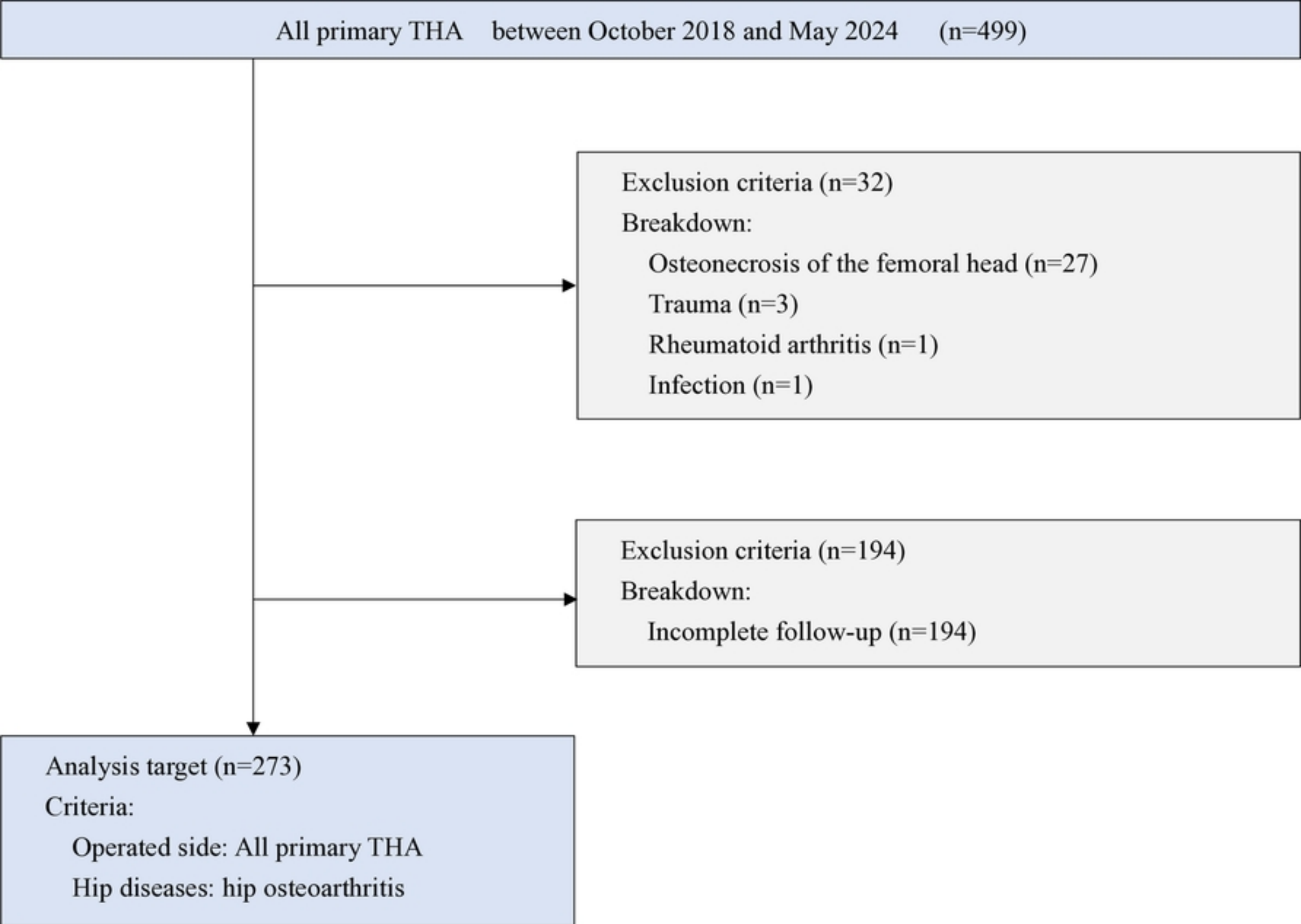


Figure 1

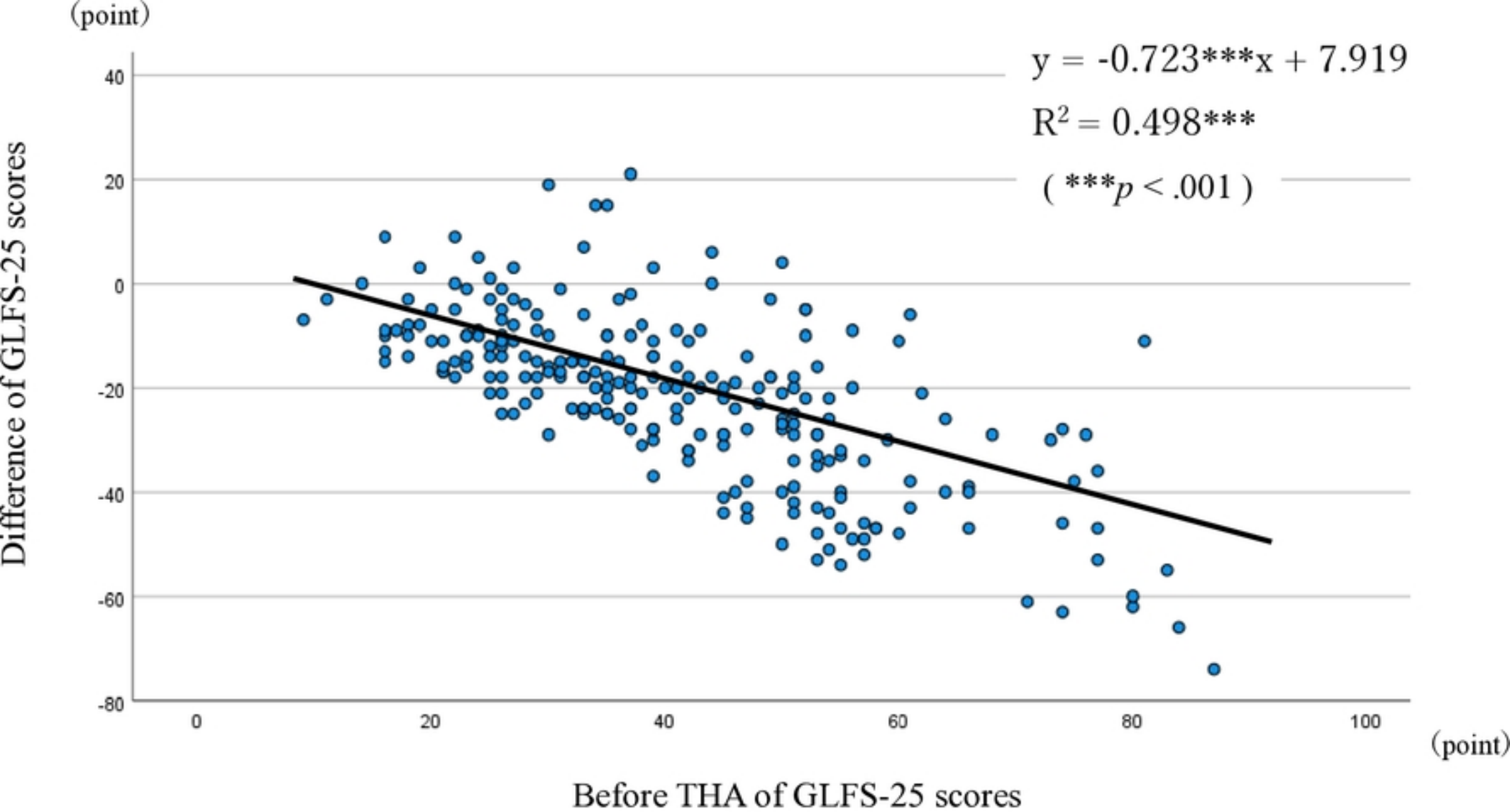


Figure 2