

1 **Title:** Long-term Outcomes of Poor-grade Aneurysmal Subarachnoid Haemorrhage: A Multicentre
2 Observational Cohort Study

3 **Authors:**

4 Bangyue Wang^{1,2†},MD, Tianxing Li^{1†},MD, Yan Zhao^{1†},MD, Tian Zhou³,MD, Ruyi Wang⁴,MD, Yang
5 Li¹,MD, Xiuhu An¹,MD, Jiheng Hao^{5*},MD, Kaijie Wang^{6*},MD, and Xinyu Yang^{1*},PhD

6 †Bangyue Wang, Tianxing Li, and Yan Zhao contributed equally and are co-first authors.

7 *Correspondence:

8 Jiheng Hao, Email: haojiheng@163.com

9 Kaijie Wang, Email: lwapple168168@sina.cn

10 Xinyu Yang, Email: yangxinyu@tmu.edu.cn. Tianjin Medical University General Hospital, No. 154
11 An-Shan Road, Tianjin 300052, China

12 1 Department of Neurosurgery, Tianjin Medical University General Hospital, Tianjin, 300070, China.

13 2 Department of Neurosurgery, The Second Affiliated Hospital of Anhui Medical University, Hefei,
14 230601, China.

15 3 Department of Neurosurgery, Affiliated Jinhua Hospital, Zhejiang University School of Medicine,
16 Jinhua, 321000, Zhejiang, China.

17 4 Department of Emergency Surgery, The First Affiliated Hospital of Bengbu Medical University,
18 Bengbu, 233030, Anhui, China.

19 5 Department of Neurosurgery, Liaocheng People's hospital, Liaocheng, 252000, Shandong, China.

20 6 Department of Neurosurgery, Tangshan Gongren Hospital, Tangshan, 063000, Hebei, China.

21

22 **Abstract:**

23 **BACKGROUND:**

24 Despite advancements in neurosurgery and intensive care that reduce overall mortality,
25 poor-grade aneurysmal subarachnoid haemorrhage (aSAH) (World Federation of Neurosurgical
26 Societies [WFNS] grades IV and V) remains a significant clinical challenge and is associated with
27 persistently high mortality rates. The aim of this study was to assess the long-term outcomes of
28 poor-grade aSAH and to identify factors influencing patient prognosis to guide clinical management.

29 **METHODS:**

30 A multicentre, observational cohort study was conducted across 12 regional centres in northern
31 China. The study included patients with poor-grade aSAH admitted from 2017 to 2020. The baseline
32 data included demographics, clinical presentation, aneurysm characteristics, and treatment modalities.
33 Outcome data, including survival status, mortality along with its associated causes and timing, and
34 modified Rankin scale (mRS) scores, were collected prospectively at the last medical follow-up.
35 Changes in case fatality over time were quantified with weighted linear regression. Survival analysis
36 was performed to estimate survival and hazard ratios for death. Binary logistic regression was
37 performed to estimate the odds ratio for dependency (mRS=3-5).

38 **RESULTS:**

39 Among the 1,589 enrolled patients, 1,339 were successfully followed, with an average follow-up
40 of 26.37 months. Among them, 61.5% (824/1,339) were dependent or died. The overall mortality rate
41 was 51% (684/1,339), and 21.3% (140/655) of the survivors were dependent. The risk factors for
42 mortality included age ≥ 65 years, previous history of stroke, and WFNS grade V. Additionally,

43 conservative treatment and endovascular treatment were identified as risk factors and protective
44 factors, respectively, compared with surgical treatment. WFNS grade V and middle cerebral artery
45 aneurysms are independent risk factors for dependency.

46 **CONCLUSIONS:**

47 Although there has been a downward trend in recent years, the long-term mortality rate for
48 poor-grade aSAH has remained significantly high at 51%, with 21.3% of survivors being dependent.
49 Active aneurysm treatment, to the extent possible, is crucial for improving the prognosis of these
50 patients.

51 **KEYWORDS:** aneurysm; subarachnoid haemorrhage; outcome; poor-grade aSAH; survival analysis

52

53 INTRODUCTION

54 The mortality and disability rates associated with aneurysmal subarachnoid haemorrhage (aSAH)
55 are exceedingly high, with the mortality rate reaching approximately 35%¹. However, with the
56 progress in modern neurosurgical techniques and the proliferation of neurointensive care units, there
57 has been a significant reduction in the overall mortality rate of aSAH²⁻⁶. Despite this encouraging
58 trend, the mortality rate for poor-grade (World Federation of Neurosurgical Societies [WFNS] grade
59 IV and V) aSAH patients remains high. Although poor-grade aSAH accounts for only approximately
60 18–30% of all aSAH cases⁷⁻⁹, it contributes to more than half of aSAH-related deaths¹⁰⁻¹², and the
61 management of these patients remains a clinical challenge. Previous studies have demonstrated that
62 more than 60% of these patients die or are left with disabilities^{9, 13, 14}, imposing a significant burden on
63 society and families^{15, 16}. Therefore, describing the long-term prognosis of poor-grade cases and
64 analysing their influencing factors are crucial for guiding the management of patients with poor-grade
65 aSAH in clinical practice and preventing the occurrence of adverse events in the long term. To the best
66 of our knowledge, current reports on the long-term prognosis of poor-grade aSAH are mostly based on
67 small sample sizes and are single-centre retrospective studies¹⁷, which are not able to fully reflect the
68 epidemiological characteristics and long-term prognosis of the poor-grade aSAH population. In this
69 study, we used the Chinese Multicentre Cerebral Aneurysm Database to analyse long-term outcomes
70 and additional survival data of poor-grade aSAH patients to provide clinical evidence that could help
71 enhance the understanding of patient prognosis and assist in providing informed and reasonable
72 management for this challenging subgroup.

73 METHODS

74 **Patients**

75 This prospective, multicentre, observational cohort study (chictr.org.cn, ID: ChiCTR2200065083)
76 was approved by the Ethics Committee (the Ethics Committee of Tianjin Medical University General
77 Hospital (IRB2021-YX-178-01)) and was performed in accordance with the Declaration of Helsinki.
78 The requirement for informed consent was waived by the ethics committee because of the
79 observational design of this study.

80 This study utilised the Chinese Multicentre Cerebral Aneurysm Database, which consecutively
81 enrolled patients from 12 regional centres across 4 provinces in northern China. Data from all patients
82 with aneurysmal subarachnoid haemorrhage (SAH) admitted from 2017 to 2020 were entered into the
83 Chinese Multicentre Aneurysm Database (CMAD).

84 The inclusion criteria for the present study were all consecutive adult patients (≥ 18 years)
85 admitted to the neuro-intensive care unit (ICU) or neurosurgical department because of the first
86 diagnosis of poor-grade SAH, defined as WFNS grades IV and V with an aneurysmal cause. The
87 noninclusion criteria were aSAH rehospitalization, poor echogenicity or inability to obtain inpatient
88 medical records, baseline characteristics or telephone number. Among the 5837 aSAH patients in the
89 database, 1589 eligible patients admitted with WFNS grades IV and V were identified.

90 **Study design and data collection**

91 For eligible patients included in the study, baseline demographic data, WFNS grade, and Fisher
92 grading scale score were directly obtained by neurosurgeons at each centre upon admission and
93 recorded from admission to discharge. In addition, the size of the aneurysm, aneurysm multiplicity,
94 aneurysm location, and aneurysm treatment methods were recorded. The diagnosis of SAH was

95 confirmed by head computed tomography (CT) or lumbar puncture. Evidence of aneurysms was
96 verified by neuroradiologists through computed tomography angiography (CTA), digital subtraction
97 angiography (DSA), or magnetic resonance angiography (MRA). The clinical management of patients
98 and the indications for different aneurysm treatment strategies were determined by an interdisciplinary
99 neurovascular team on the basis of aneurysm treatment guidelines after discussion with family
100 members. The final treatment methods included surgical treatment, endovascular treatment, or
101 conservative treatment. Conservative treatment was defined as not performing surgical repair for
102 ruptured aneurysms. In addition to medication, these patients may have undergone simple external
103 drainage surgery, simple haematoma removal, or decompressive craniectomy, which are interventions
104 taken for patients with gradually declining consciousness due to hydrocephalus or intracerebral
105 haemorrhage (ICH).

106 **Outcome measures**

107 Survival analysis data were collected starting on the day of ictus. The follow-up evaluation was
108 accomplished primarily via standardized telephone surveys with the patients or close relatives. The
109 final follow-up period was from June 1, 2023, to June 1, 2024. The outcome measures included
110 survival and mortality status at discharge and at the time of follow-up, as well as the modified Rankin
111 scale (mRS) score. Additionally, the primary outcome was death, and the secondary outcome was
112 dependent living status (dependency), defined as an mRS score of 3–5 (indicating an inability to walk
113 unassisted) at the time of follow-up. The patient characteristics analysed included sex, age, living area
114 (rural/urban), hypertension, diabetes, hyperlipidaemia, smoking, alcohol consumption, previous
115 history of stroke, aneurysm multiplicity, aneurysm location, WFNS grade, Fisher grading scale on

116 admission, presence of ICH or intraventricular haemorrhage (IVH) on admission, aneurysm size,
117 admission delay, intervention delay (surgical and endovascular treatment), length of hospital stay,
118 cause of death, and general information on treatment (surgical, endovascular, or conservative
119 treatment; use of lumbar puncture or external ventricular drainage). The causes of death are classified
120 as follows: (1) direct effect of the primary haemorrhage, (2) aneurysm rebleeding, (3) refractory
121 cerebral oedema leading to brainstem herniation, (4) withdrawal of life-sustaining treatment for
122 patients in a persistent vegetative state, (5) infection, (6) multiple organ dysfunction syndrome
123 (MODS), (7) hydrocephalus, (8) cardiac disease, (9) other cerebrovascular disease (e.g., intracerebral
124 haemorrhage, cerebral infarction), (10) cancer, (11) pulmonary embolism, (12) accidents (e.g., car
125 accidents), and (13) unknown.

126 **Statistical methods**

127 Continuous data are described using the mean (SD) or median (interquartile range), depending on
128 their distribution. Categorical data are described as counts (percentages). Multiple imputation methods
129 are used to address missing data issues. The fully conditional specification method is employed to
130 estimate missing values of covariates via iterative Markov chain Monte Carlo methods. Kaplan–Meier
131 curves were plotted for survival analysis of different groups and the overall population. Cox
132 proportional hazard regression models were used to estimate the hazard ratio (HR) of death after
133 poor-grade aSAH. Binary logistic regression models were used to identify factors impacting
134 dependent living (defined as mRS 3-5) after poor-grade aSAH. The variables for multivariate analysis
135 included sex, age, and variables with $p < 0.2$ in the univariate analysis. The p value and 95%
136 confidence interval (CI) were calculated. On this basis, the cumulative mortality rates at various time

137 points for the overall risk factor and each risk factor are summarized. Linear regression, weighted by
138 the inverse of the standard error of the case fatality rate for each study, was used to quantify the
139 relationship between the case fatality rate and the mid-central year of the study. Continuous variables
140 were tested via t tests or Wilcoxon tests as appropriate. Pearson's chi-square analysis was used to test
141 for differences in the stratified distributions of various factors. All analyses were conducted via SPSS
142 version 27.0 (SPSS Inc., Chicago, IL) or R version 4.0.3(<https://www.R-project.org/>).

143 **RESULTS**

144 **Baseline characteristics**

145 From 2017–2020, a total of 9,826 eligible intracranial aneurysm patients were included, 5,837 of
146 whom with subarachnoid haemorrhage (SAH) met the criteria, and a total of 1,589 eligible
147 consecutive poor-grade aSAH patients were included (Figure S1). In our study, they accounted for
148 27.2% of the overall SAH cases. Among the 1,589 poor-grade aSAH patients included in this study,
149 the average age (SD) of the patients was 62.31 years (11.57), with 67.7% being female. There were
150 1,005 WFNS Grade IV patients and 584 WFNS Grade V patients. The location of the aneurysm was
151 missing for 12 (0.08%) patients, with the most common location being the internal carotid artery (ICA,
152 39.5%). Data on the maximum diameter of the aneurysm were missing for 269 (20%) patients, with
153 the most common size being 4–6.9 mm, totalling 344 (35.5%) patients. The treatments included
154 surgical, endovascular, and conservative treatment, with 670 (42.1%) patients receiving surgical
155 treatment, 539 (49.2%) patients receiving endovascular treatment, and 380 (23.9%) patients receiving
156 conservative treatment (Table 1).

157 **Table 1** Baseline characteristics table of 1,589 poor-grade subarachnoid haemorrhage patients grouped

158 by WFNS grade at admission

Variable	Missing, n(%)	WFNS IV grade(n=1005)	WFNS V grade(n=584)	Overall(n=1589)
Age, years , mean±SD, median(IQR)	0(0%)	62.18±11.67,64(54;70)	62.55±12.41,63(55;70)	62.31±11.57, 64(55;70)
Female, n(%)	0(0%)	712(70.8%)	365(62.5%)	1077(67.7%)
Living area, n(%)	0(0%)			
Urban	0(0%)	289(28.7%)	182(31.1%)	471(29.6%)
Rural	0(0%)	716(71.2%)	402(68.8%)	1118(70.3%)
Medical history				
Hypertension, n(%)	0(0%)	638(63.4%)	398(68.1%)	1036(65.1%)
Diabetes, n(%)	0(0%)	83(8.2%)	34(5.8%)	117(7.3%)
Hyperlipidemia, n(%)	0(0%)	19(1.8%)	5(0.8%)	24(1.5%)
Previous stroke history, n(%)	0(0%)	129(12.8%)	89(15.2%)	218(13.7%)
Behavioural history				
Drinking, n(%)	0(0%)	85(8.4%)	49(8.3%)	134(8.4%)
Smoking, n(%)	0(0%)	116(11.5%)	70(11.9%)	186(11.7%)
Aneurysm characteristics				
Multiple, n(%)	0(0%)	196(19.5%)	102(17.4%)	298(18.7%)
Location of the largest aneurysm, n(%)	12(0.08%)			
ICA		427(42.4%)	202(34.5%)	629(39.5%)
MCA		169(16.8%)	135(23.1%)	304(18.1%)
ACA		286(28.4%)	159(27.2%)	445(28.0%)
PCircA		112(11.1%)	77(13.1%)	189(11.8%)
Size of the largest aneurysm, n(%)	269(20%)			
<4.0 mm		207(25%)	96(17%)	303(22.6%)
4.0-6.9 mm		309(37.3%)	167(32.6%)	476(35.5%)
7-9.9 mm		114(13.7%)	78(15.2%)	192(14.3%)
≥10mm		48(5.7%)	51(9.9%)	99(7.3%)
Clinical assessment				
Fisher scale	0(0%)			
II		405(40.2%)	122(20.8%)	527(33.1%)
III		291(28.9%)	123(21%)	414(26.0%)
IV		305(30.7%)	339(58.0%)	648(40.7%)
Presence with ICH/IVH, n(%)	0(0%)	305(30.7%)	339(58.0%)	648(40.7%)
Treatment	0(%)			
Endovascular		495(49.2%)	51(28.9%)	539(33.9%)

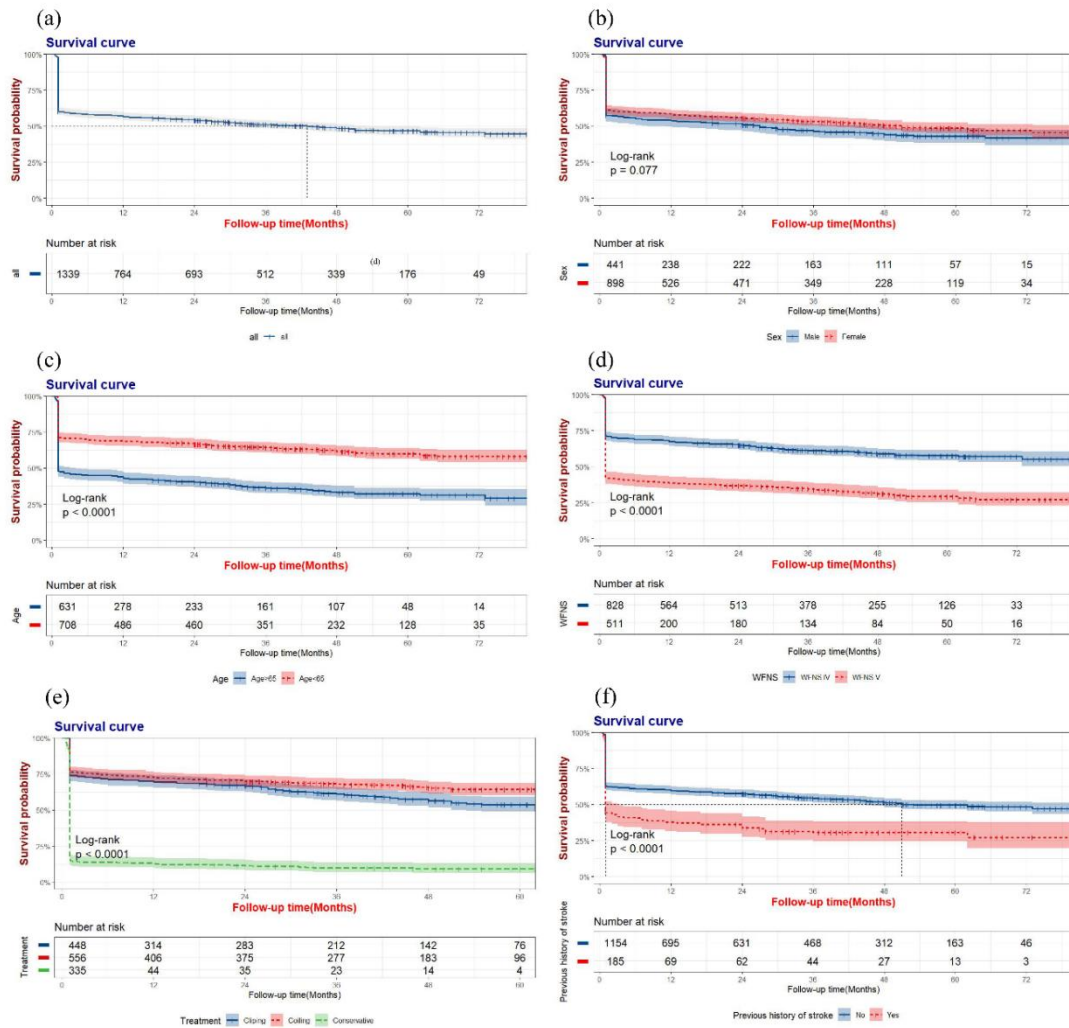
treatment, n(%)				
Surgical treatment, n(%)		323(32.1%)	61(24.1%)	670(42.1%)
Conservative treatment, n(%)		187(18.6%)	99(46.9%)	380(23.9%)
External ventricular drainage, n(%)		109(10.8%)	38(18%)	230(14.4%)
Lumbar cistern drainage, n(%)		273(27.2%)	39(18.4%)	391(24.6%)
Intervention delay (endovascular and surgical treatment), h, median(IQR)	0(0%)	15(4;31)	6(3;20)	12(3;26.25)
Admission delay, h, median(IQR)	0(0%)	5(3;13)	4(3;8)	5(3;10)
Length of stay, d, median(IQR)	0(0%)	16(8;24.5)	10(2;24)	15(5;24)
mRS at discharge	0(0%)			
0-2		519(51.6%)	23(10.9%)	597(39.7%)
3-5		486(48.4%)	188(89%)	847(60.2%)
In-hospital deaths, n(%)	0(0%)	50(4.9%)	49(23.2%)	145(9.2%)

159 ICA, internal carotid artery; MCA, middle cerebral artery; ACA, anterior cerebral artery; PCircA,

160 posterior circulatory artery

161 **Survival analysis**

162 In this study, we used the Kaplan–Meier method to generate time–survival-related survival
 163 curves on the basis of associated factors, as shown in Figure 1. A total of 1,339 out of 1,589 patients
 164 were included in the survival analysis, accounting for 2,942.83 follow-up years, with an average
 165 follow-up of 26.37 months (range, 0.5–88 months). During the follow-up, a total of 61.5% (824 out of



166 1,339) of the patients either died or survived with dependency status.

167 **Figure. 1** Probability of survival by risk factors.(a), Kaplan-Meier curves of the complete cohort, (b-f)

168 stratified by sex (b),age (c),WFNS grade (d),treatment (e) and previous history of stroke (f).

169 There were 684 (51%) patients with poor-grade aSAH who died from all causes, while 655 (49%)
 170 patients were still alive at the time of follow-up. Figure S2 illustrates the distribution of causes of
 171 death, whereas Table S1 elaborates on their temporal distribution. The survival rates at various time
 172 points related to various influencing factors are shown in Table 2. Of these rates, 145 patients died in
 173 the hospital.

174 **Table 2** Cumulative 3-year survival probability rate (95% CI) according to different associated factors

	1mo(95% CI)	3mo(95% CI)	6mo(95% CI)	1y(95% CI)	2y(95% CI)	3y(95% CI)
All	60.3% (57.8%-63.0%)	59.1% (56.5%-61.8%)	58.0% (55.4%-60.7%)	56.5 (53.9%-59.2%)	54.1% (51.5%-56.8%)	51.1% (48.5%-53.9%)
Age \geq 60	53.6% (50.3%-57.0%)	51.8% (48.6%-55.3%)	50.8% (47.5%-54.2%)	48.9% (45.6%-52.4%)	46.1% (42.9%-49.6%)	42.7% (39.5%-46.2%)
Female	61.7% (58.6%-65.0%)	60.2% (57.1%-63.5%)	59.4% (56.2%-62.7%)	57.8% (54.7%-61.1%)	55.6% (52.5%-59.0%)	53.3% (50.2%-56.7%)
Hypertension	56.1% (52.9%-59.5%)	54.8% (51.6%-58.2%)	53.7% (50.5%-57.1%)	51.9% (48.7%-55.3%)	49.0% (46.3%-53.0%)	47.1% (43.9%-50.5%)
Previous history of stroke	44.9% (38.2%-52.6%)	41.6% (35.0%-49.3%)	40.5% (34.0%-48.2%)	37.8% (31.4%-45.4%)	33.8% (27.6%-41.4%)	30.6% (24.5%-38.1%)
Presence of ICH/IVH	54.6% (50.5%-58.9%)	53.30% (49.3%-57.6%)	51.80% (47.8%-56.2%)	50.50% (46.5%-54.9%)	48.10% (44.1%-52.5%)	45.10% (41.1%-49.6%)
WFNS V grade	42.5% (38.4%-47.0%)	41.5% (37.4%-46.0%)	40.1% (36.1%-44.6%)	38.7% (34.7%-43.2%)	36.8% (32.8%-41.2%)	34.6% (30.7%-39.1%)
7-9.9 mm	53.6% (47.4%-60.6%)	52.7% (46.5%-59.7%)	52.3% (46.1%-59.3%)	50.0% (43.8%-57.0%)	47.6% (41.4%-54.7%)	44.6% (38.4%-51.9%)
\geq 10mm	59.4% (50.8%-69.6%)	57.5% (48.9%-67.8%)	57.5% (48.9%-67.8%)	55.7% (47.0%-66.0%)	51.9% (43.2%-62.3%)	49.7% (41.0%-60.3%)
Surgical treatment	73.9% (69.9%-78.1%)	72.5% (68.5%-76.8%)	71.0% (66.9%-75.3%)	69.% (65.5%-74.0%)	66.70% (62.5%-71.2%)	61.0% (56.6%-65.8%)
Endovascular treatment	76.3% (72.8%-79.9%)	75.5% (72.0%-79.2%)	74.1% (70.5%-77.8%)	72.3% (68.0%-76.1%)	69.7% (66.0%-73.7%)	68.0% (64.2%-72.0%)
Conservative treatment	15.8% (12.4%-20.3%)	13.7% (10.5%-18.0%)	13.7% (10.5%-18.0%)	12.8% (9.7%-17.0%)	11.3% (8.4%-15.3%)	9.7% (7.0%-13.6%)

175 In the Cox regression analysis, age \geq 65 years (HR (95% CI): 1.677 (1.423-1.976), $p < 0.001$),

176 previous history of stroke (HR (95% CI): 1.280 (1.051-1.557), p=0.014), WFNS grade V (HR (95%
 177 CI): 1.566 (1.330-1.845), p<0.001), and conservative treatment (HR (95% CI): 2.580 (2.123-3.136),
 178 p<0.001) were identified as risk factors for death in poor-grade aSAH patients, whereas being female
 179 (HR (95% CI): 0.822 (0.700-0.966), p=0.017) and the use of endovascular treatment compared with
 180 surgical treatment (HR (95% CI): 0.810 (0.661-0.994), p=0.044) were protective factors (Table 3).

181 **Table 3** Univariate and multivariable cox proportional hazards analysis of factors associated with
 182 primary outcome

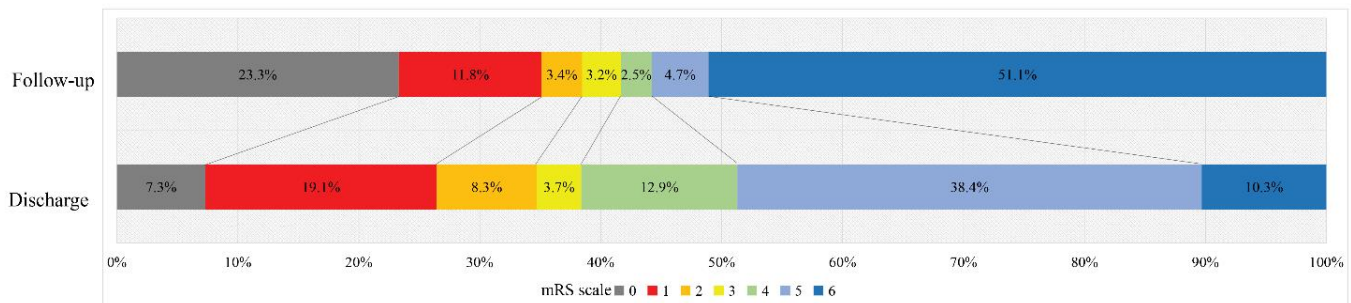
Variable	Univariate analysis		Multivariate analysis	
	P-value	HR (95% CI)	P-value	HR (95% CI)
Age≥65	<0.001	1.982(1.699-2.312)	<0.001	1.677(1.423-1.976)
Female	0.135	0.887(0.759-1.038)	0.017	0.822(0.700-0.966)
Living area (reference to rural)	0.530	0.949(0.806-1.117)		
Hypertension	<0.001	1.411(1.195-1.666)	0.052	1.184(0.999-1.402)
Diabetes	0.342	1.143(0.868-1.506)		
Previous stroke history	<0.001	1.635(1.349-1.983)	0.014	1.280(1.051-1.557)
Current alcohol use	0.427	0.894(0.677-1.180)		
Current smoker	0.899	1.015(0.805-1.280)		
Presence of ICH/IVH	<0.001	1.294(1.113-1.504)	0.349	1.079(0.920-1.265)
WFNS V grade (reference to IV grade)	<0.001	1.930(1.659-2.244)	<0.001	1.566(1.330-1.845)
Multiple	0.386	1.087(0.900-1.313)		
Location of the largest aneurysm (reference to ICA)				
MCA	0.892	1.015(0.824-1.249)		
ACA	0.513	0.940(0.780-1.132)		
PirCA	0.211	1.162(0.918-1.470)		
Size of the largest aneurysm (reference to<4 mm)				
4.0-6.9 mm	0.377	1.086(0.905-1.303)	0.186	1.131(0.942-1.359)
7-9.9 mm	0.044	1.263(1.006-1.586)	0.780	1.033(0.821-1.300)
≥10mm	0.193	1.215(0.906-1.603)	0.558	1.093(0.812-1.473)
Treatment (reference to surgical treatment)				
Endovascular treatment	0.010	0.768(0.628-0.939)	0.044	0.810(0.661-0.994)
Conservative treatment	<0.001	3.124(2.593-3.764)	<0.001	2.589(2.131-3.146)
Admission delay, h	0.196	1.001(1.000-1.001)	0.218	1.001(1.000-1.001)

183 ICA, internal carotid artery; MCA, middle cerebral artery; ACA, anterior cerebral artery; PCirCA,

184 posterior circulatory artery

185 **Assessment of functional outcomes**

186 Information on outcomes was available for 1,589 patients at discharge and for 1,399 patients after
187 follow-up. Among them, 36.8% (515/1399) had favourable outcomes (mRS 0-2), and 10.1%
188 (140/1399) were dependent (mRS 3-5) (Table S2). The distribution of mRS scores is shown in Figure
189 2. Among the 655 patients who were alive, 78.6% (515) had favourable outcomes, and 21.3% (140)
190 were dependent. Binary logistic regression analysis of the mRS score at the time of follow-up (Table
191 S3, Figure S3) revealed that WFNS grade V (OR [95% CI]: 3.593 [2.354–5.484], $p < 0.001$) and
192 aneurysms in the middle cerebral artery (OR [95% CI]: 1.815 [1.053–3.127], $P = 0.032$) were



193 significantly associated with a greater risk of dependency.

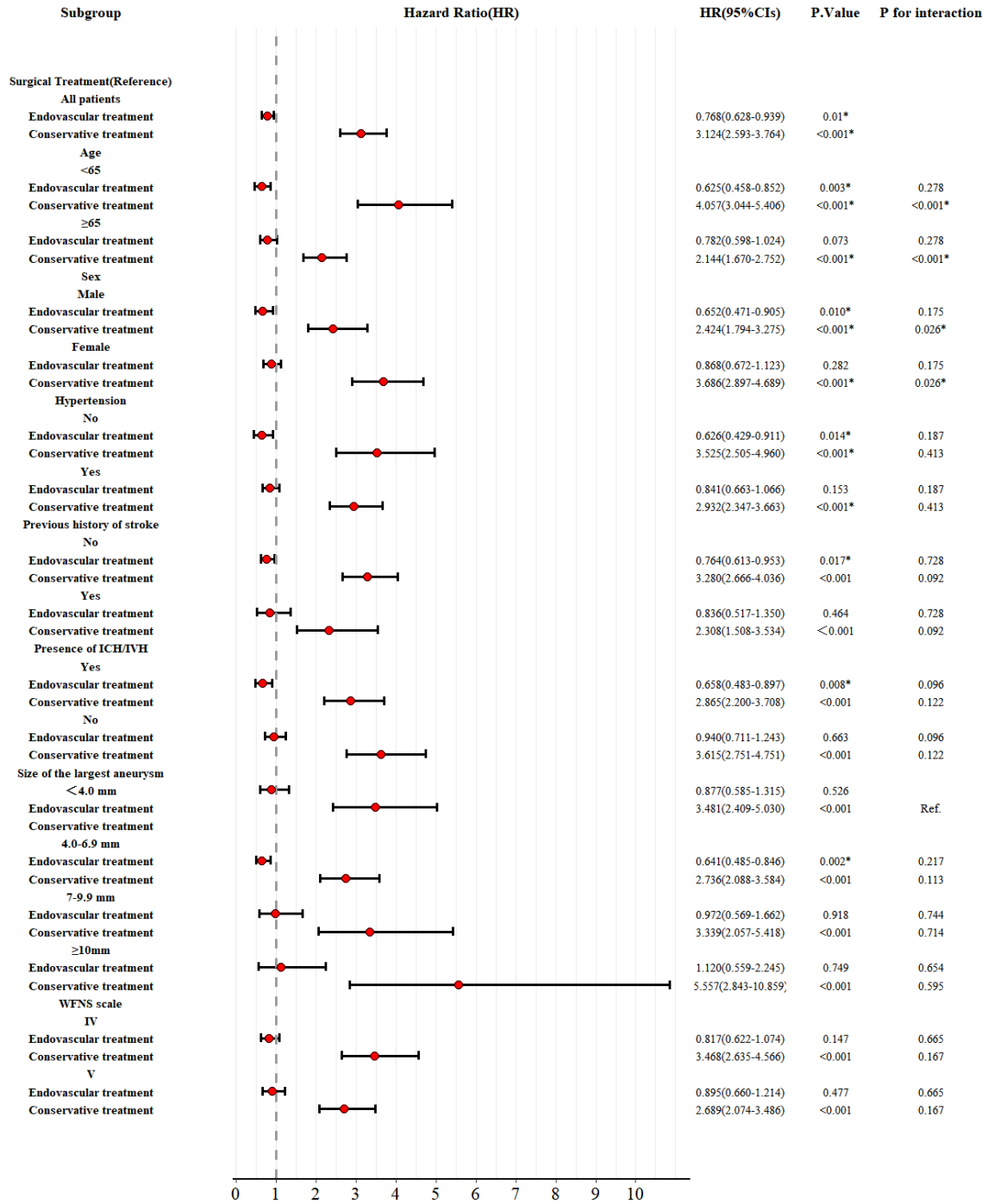
194 **Figure.2** Distribution of modified Rankin Scale (mRS) scores at discharge and at the time of
195 follow-up.

196 **Subgroup analysis**

197 Figure 3 and Table S4 present subgroup analyses of the associations between the three types of
198 treatment modalities and the risk of death. Compared with surgical treatment, conservative treatment
199 was associated with a greater risk of death in all subgroups ($P < 0.05$). Compared with surgical

200 treatment, endovascular treatment was associated with significantly better outcomes in patients under
201 65 years of age and those who were male, nonhypertensive, without a previous history of stroke,
202 without the coexistence of ICH/IVH, and with medium-sized aneurysms of 4–6.9 mm. Notably, the
203 WFNS grade may not influence the choice between surgical and endovascular treatment ($p>0.05$).
204 Interaction analysis indicated that conservative treatment may be safer for patients over 65 years old
205 or males than for those under 65 years old or females.

It is made available under a [CC-BY-NC 4.0 International license](https://creativecommons.org/licenses/by-nc/4.0/) .



206 **Figure. 3** Subgroup analyses for the association between the treatment modality and death (surgical
 207 treatment is the reference for analysis)

208 **DISCUSSION**

209 To our knowledge, the current analysis represents the largest prospective, multicentre registry of
210 consecutive patients presenting with poor-grade aSAH. A total of 61.5% of the patients either died or
211 became dependent on survival. Our results indicate that the long-term mortality rate for poor-grade
212 aSAH in the Chinese population is 51%, and even among those who survived, 21.8% of the patients
213 were left with dependency status. Additionally, we estimated the risk factors contributing to death and
214 dependency. Our findings have important implications for evaluating the prognosis and management
215 of poor-grade aSAH.

216 In this study, we observed that the long-term all-cause mortality rate for severe aSAH patients
217 was 51.1%, with all-cause mortality rates at 3 months, 1 year, and 3 years being 40.9%, 43.5%, and
218 48.9%, respectively. de Oliveira Manoel retrospectively analysed 23 cohorts of unselected poor-grade
219 SAH patients treated from 1977 to 2014 in 10 countries and reported that the mortality rate was
220 approximately 60%¹⁷. This study reflects the mortality rate of poor-grade aSAH prior to 2014, which
221 was higher than the mortality rate in our study, with patients admitted between 2017 and 2020.
222 Furthermore, we performed a review of population-based case fatality after poor-grade aSAH to assess
223 whether case fatality had changed. After excluding studies with evident selection bias and those with
224 follow-up times of less than three months, a weighted linear regression analysis of the 19 studies
225 (including the present study) evaluating mortality revealed that the case fatality rate decreased by 0.6%
226 per year (95% CI 0.14 to 0.97), which, according to the model, corresponded to a 23% (6 to 40)
227 decrease in case fatality over the 30 years studied (Table S5). This trend is consistent with the
228 declining overall mortality rates of subarachnoid haemorrhage in recent years^{2,3}. Therefore, not only
229 the overall mortality rate but also the mortality rate of poor-grade aSAH is believed to decrease over

230 time; this is potentially due to early treatment (resulting from improved logistics and national health
231 system coverage), recent improvements in neurocritical care, the widespread use of cerebrospinal fluid
232 (CSF) drainage to buffer the massive increase in intracranial pressure (ICP) during rebleeding¹⁸, the
233 application of continuous electroencephalography, invasive brain multimodality monitoring, and the
234 use of nimodipine in the treatment of cerebral vasospasm^{5, 12, 19}. Furthermore, advancements in
235 aneurysm repair techniques, including the maturation of surgical treatment and the widespread use of
236 endovascular treatment, have also led to some improvement in the mortality rate after poor-grade
237 aSAH. Although the mortality rate has declined in recent years, it was relatively higher in the present
238 study than in other countries in recent years, which may be related to a greater proportion of patients
239 being treated conservatively. This phenomenon may reflect the particularity of China's medical
240 environment, including special medical policies and conservative treatment choices under family
241 interventions²⁰.

242 Survival analysis revealed that age \geq 65 years, previous history of stroke, WFNS grade V, and
243 conservative treatment were risk factors for poor-grade aSAH. Age \geq 65 years, WFNS grade V,
244 previous history of stroke, and conservative treatment as risk factors for poor-grade aSAH have been
245 repeatedly mentioned in previous studies²¹⁻²³. We found that endovascular treatment is a protective
246 factor compared with surgical treatment, which is consistent with recent research findings²².
247 Interestingly, female sex is a protective factor against poor-grade aSAH, possibly because of regional
248 and hormonal factors¹⁵.

249 Through subgroup analysis of treatment methods, similar to previous studies, conservative
250 treatment had a worse prognosis in all subgroups compared with surgical or endovascular treatment.

251 In addition, in the subgroup analysis for treatment, we discovered that endovascular treatment is
252 superior to surgical treatment in the subgroup of patients who are under 65 years old, male,
253 nonhypertensive, without a history of stroke, without coexisting ICH/IVH, and with aneurysm
254 diameters between 4–6.9 mm. Overall, endovascular treatment is better than surgical treatment and is
255 now widely used in clinical practice with good outcomes. Interaction tests revealed that the
256 disadvantage of conservative treatment is more pronounced in the younger group (aged <65) than in
257 the older group (aged ≥65), even though conservative treatment is often more severe conditions. The
258 results of this study suggest that providing the most aggressive treatment may be an effective way to
259 reduce mortality. Interestingly, although being female is a protective factor in this study, interaction
260 tests revealed that untreated female patients have a greater risk than male patients, which may imply
261 that a natural course is still a risk factor for poor prognosis in poor-grade aSAH patients. This
262 observation suggested that as much active treatment as possible should be provided to female patients.

263 During follow-up, 21.3% of the surviving patients were dependent on survival (mRS: 3–5)
264 (140/655). The proportion of patients with favourable outcomes (mRS: 0-2) among all the patients
265 was 36.8% (515/1,399), which was not significantly different from the approximately 39.7% reported
266 at discharge (597/1,589). Wang et al.²² reported that the overall proportion of patients with favourable
267 outcomes at 6 months was approximately 36.5%. Zhao et al.²⁴, Robert M. Starke et al.²⁵, and J Mocco
268 et al.²⁶ reported that the proportion of patients with favourable outcomes (mRS 0-2) at 12 months
269 among total poor-grade aSAH patients ranged from 33% to 42%, which is similar to our results.
270 Binary logistic regression analysis revealed that WFNS grade V is a significant predictor of
271 dependency in patients with poor-grade aSAH, which is consistent with previous research¹⁷. Notably,

272 middle cerebral artery aneurysm is an important risk factor for dependency in living patients, possibly
273 because when middle cerebral artery aneurysms rupture, the haematoma near the basal ganglia causes
274 destruction. In addition, cerebral vasospasm after haemorrhage can lead to ischaemia in the basal
275 ganglia area, thus affecting the motor system and causing patients to have dependency status.
276 Although this study revealed that different aneurysm treatment modalities could affect the long-term
277 mortality of patients, they are not risk factors for dependency. This phenomenon is consistent with the
278 conclusion of our research group that the dependency of 2-year survivors of aSAH among elderly
279 patients is not affected by the treatment modality²⁷.

280 This study has several limitations. First, the results of this study are subject to the well-known
281 methodological limitations of retrospectively analysed cohorts, although we collected follow-up data
282 prospectively. Second, this study analysed multicentre data, and differences in treatment strategies
283 between centres may have introduced biases. However, all the centres were eligible cerebrovascular
284 centres in China, and operators in both groups were well trained. Third, there were missing data in this
285 study, and the database did not include complete imaging data. Finally, this study was limited to the
286 Chinese population, and ethnicity differences should be considered.

287 **CONCLUSION**

288 Our study revealed that among patients with poor-grade aSAH, 61.5% either died or became
289 dependent. Although there has been a downward trend in recent years, the long-term mortality rate for
290 poor-grade aSAH has reached 51%, and even among those who survived, 21.3% were dependent. The
291 mortality rate significantly increased for patients who were WFNS Grade V, were older, had a
292 previous history of stroke, and who received conservative treatment. Compared with surgical

293 treatment, endovascular treatment is often more effective in reducing the mortality rate of poor-grade
294 aSAH patients. WFNS grade V and middle cerebral artery aneurysms are independent risk factors for
295 dependency. This study elucidates the long-term survival and dependency among poor-grade aSAH
296 patients, contributing clinical evidence to inform prognostic evaluations and treatment strategies.

297 **Affiliations**

298 Department of Neurosurgery, Tianjin Medical University General Hospital, Tianjin, 300070, China.

299 Department of Neurosurgery, The Second Affiliated Hospital of Anhui Medical University, Hefei,
300 230601, China.

301 Department of Neurosurgery, Affiliated Jinhua Hospital, Zhejiang University School of Medicine,
302 Jinhua, 321000, Zhejiang, China.

303 Department of Emergency Surgery, The First Affiliated Hospital of Bengbu Medical University,
304 Bengbu, 233030, Anhui, China.

305 Department of Neurosurgery, Liaocheng People's hospital, Liaocheng, 252000, Shandong, China.

306 Department of Neurosurgery, Tangshan Gongren Hospital, Tangshan, 063000, Hebei, China.

307 **Acknowledgments**

308 We would like to express our sincere gratitude to all of the patients and their relatives as well as to the
309 professors from the Chinese Multicentre Aneurysm Database (CMAD) group.

310 **Sources of Funding**

311 This study was supported by the Natural Science Foundation of Tianjin, China (Grant No.
312 20JCZDJC00300), Tianjin Medical University Clinical Research Program (Grant No. 2018kylc008),
313 the Tianjin Medical University General Hospital Clinical Research Program (Grant No.

314 22ZYLLCCG07), and The Second Affiliated Hospital of Anhui Medical University Science and
315 Technology Emerging Talents Enhancement Program (Grant No. 2024PY07). The authors have
316 disclosed that they do not have any potential conflicts of interest.

317 **Disclosures**

318 None.

319 **Supplemental Material**

320 Table S1-S5

321 Figure S1-S3

322 **REFERENCES**

- 323 1. Rinkel GJE, Algra A. Long-term outcomes of patients with aneurysmal subarachnoid
324 haemorrhage. *The Lancet Neurology*. 2011;10:349-356
- 325 2. Lv B, Lan J-X, Si Y-F, Ren Y-F, Li M-Y, Guo F-F, et al. Epidemiological trends of
326 subarachnoid hemorrhage at global, regional, and national level: A trend analysis study
327 from 1990 to 2021. *Military Medical Research*. 2024;11
- 328 3. Nieuwkamp DJ, Setz LE, Algra A, Linn FH, de Rooij NK, Rinkel GJ. Changes in case
329 fatality of aneurysmal subarachnoid haemorrhage over time, according to age, sex, and
330 region: A meta-analysis. *Lancet Neurol*. 2009;8:635-642
- 331 4. Thilak S, Brown P, Whitehouse T, Gautam N, Lawrence E, Ahmed Z, et al. Diagnosis and
332 management of subarachnoid haemorrhage. *Nature communications*. 2024;15:1850
- 333 5. de Oliveira Manoel AL, Goffi A, Marotta TR, Schweizer TA, Abrahamson S, Macdonald RL.
334 The critical care management of poor-grade subarachnoid haemorrhage. *Critical care*
335 *(London, England)*. 2016;20:21
- 336 6. Al-Mufti F, Mayer SA, Kaur G, Bassily D, Li B, Holstein ML, et al. Neurocritical care
337 management of poor-grade subarachnoid hemorrhage: Unjustified nihilism to reasonable
338 optimism. *The neuroradiology journal*. 2021;34:542-551
- 339 7. Steiner T, Juvela S, Unterberg A, Jung C, Forsting M, Rinkel G. European stroke
340 organization guidelines for the management of intracranial aneurysms and subarachnoid
341 haemorrhage. *Cerebrovascular diseases (Basel, Switzerland)*. 2013;35:93-112

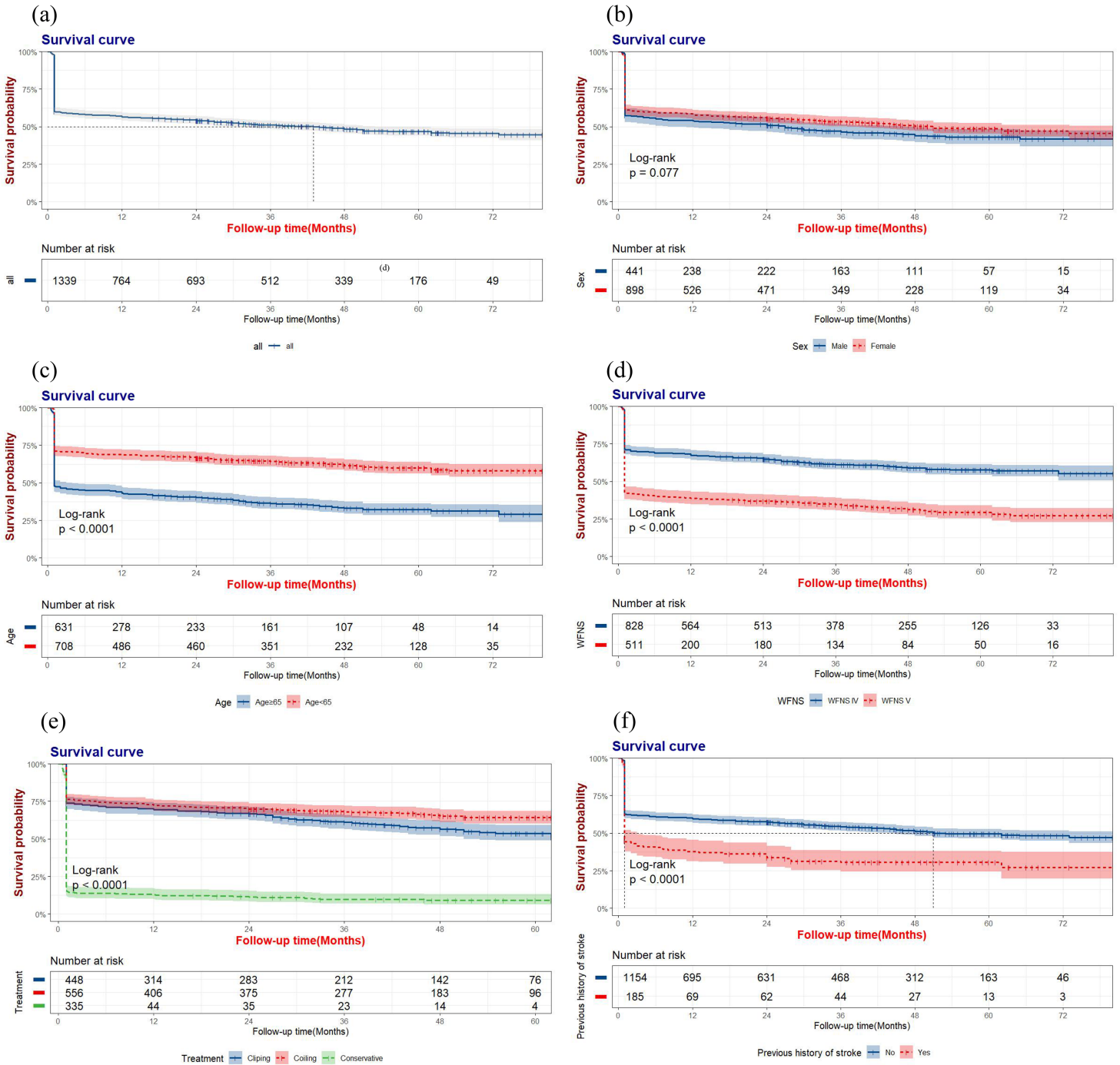
- 342 8. Schuss P, Hadjiathanasiou A, Borger V, Wispel C, Vatter H, Güresir E. Poor-grade
343 aneurysmal subarachnoid hemorrhage: Factors influencing functional outcome--a
344 single-center series. *World Neurosurg.* 2016;85:125-129
- 345 9. Shen J, Yu J, Huang S, Mungur R, Huang K, Pan X, et al. Scoring model to predict
346 functional outcome in poor-grade aneurysmal subarachnoid hemorrhage. *Frontiers in*
347 *neurology.* 2021;12:601996
- 348 10. Stauning AT, Eriksson F, Benndorf G, Holst AV, Hauerberg J, Stavngaard T, et al.
349 Mortality among patients treated for aneurysmal subarachnoid hemorrhage in eastern
350 denmark 2017-2019. *Acta Neurochir (Wien).* 2022;164:2419-2430
- 351 11. Schatlo B, Fung C, Stienen MN, Fathi AR, Fandino J, Smoll NR, et al. Incidence and
352 outcome of aneurysmal subarachnoid hemorrhage: The swiss study on subarachnoid
353 hemorrhage (swiss sos). *Stroke.* 2021;52:344-347
- 354 12. Lantigua H, Ortega-Gutierrez S, Schmidt JM, Lee K, Badjatia N, Agarwal S, et al.
355 Subarachnoid hemorrhage: Who dies, and why? *Critical care (London, England).*
356 2015;19:309
- 357 13. Hoogmoed J, Coert BA, van den Berg R, Roos Y, Horn J, Vandertop WP, et al. Early
358 treatment decisions in poor-grade patients with subarachnoid hemorrhage. *World*
359 *Neurosurg.* 2018;119:e568-e573
- 360 14. Liu J, Xiong Y, Zhong M, Yang Y, Guo X, Tan X, et al. Predicting long-term outcomes after
361 poor-grade aneurysmal subarachnoid hemorrhage using decision tree modeling.

- 362 *Neurosurgery*. 2020;87:523-529
- 363 15. Wilby MJ, Sharp M, Whitfield PC, Hutchinson PJ, Menon DK, Kirkpatrick PJ.
364 Cost-effective outcome for treating poor-grade subarachnoid hemorrhage. *Stroke*.
365 2003;34:2508-2511
- 366 16. Komotar RJ, Schmidt JM, Starke RM, Claassen J, Wartenberg KE, Lee K, et al.
367 Resuscitation and critical care of poor-grade subarachnoid hemorrhage. *Neurosurgery*.
368 2009;64:397-410; discussion 410-391
- 369 17. de Oliveira Manoel AL, Mansur A, Silva GS, Germans MR, Jaja BN, Kouzmina E, et al.
370 Functional outcome after poor-grade subarachnoid hemorrhage: A single-center study
371 and systematic literature review. *Neurocritical care*. 2016;25:338-350
- 372 18. Bailes JE, Spetzler RF, Hadley MN, Baldwin HZ. Management morbidity and mortality of
373 poor-grade aneurysm patients. *Journal of neurosurgery*. 1990;72:559-566
- 374 19. Panni P, Riccio L, Cao R, Pedicelli A, Marchese E, Caricato A, et al. Clinical impact and
375 predictors of aneurysmal rebleeding in poor-grade subarachnoid hemorrhage: Results
376 from the national pogash registry. *Neurosurgery*. 2023;93:636-645
- 377 20. Yang Y, Wang B, Ge X, Lu W, Peng C, Zhao Y, et al. Natural course of ruptured but
378 untreated intracranial aneurysms: A multicenter 2-year follow-up study. *Stroke*.
379 2023;54:2087-2095
- 380 21. de Winkel J, Cras TY, Dammers R, van Doormaal PJ, van der Jagt M, Dippel DWJ, et al.
381 Early predictors of functional outcome in poor-grade aneurysmal subarachnoid

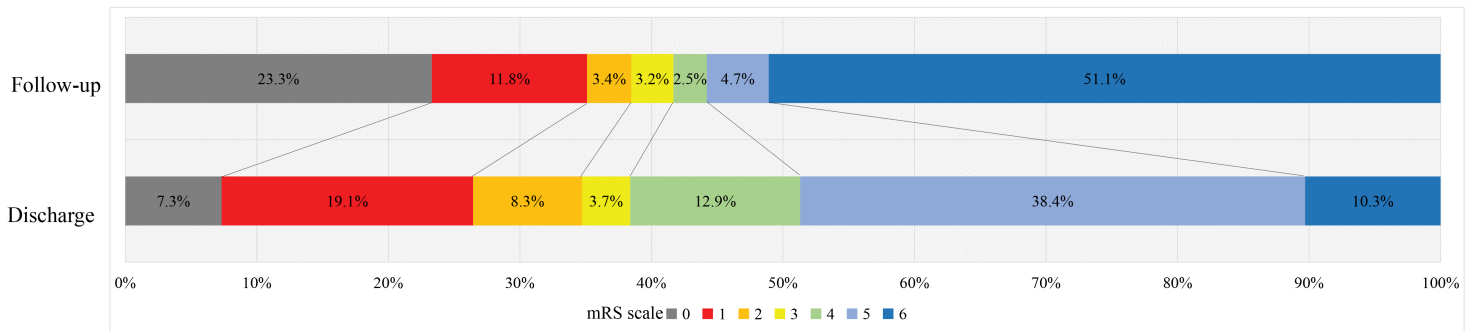
- 382 hemorrhage: A systematic review and meta-analysis. *BMC neurology*. 2022;22:239
- 383 22. Wang X, Han C, Xing D, Wang C, Ding X. Early management of poor-grade aneurysmal
384 subarachnoid hemorrhage: A prognostic analysis of 104 patients. *Clinical neurology and*
385 *neurosurgery*. 2019;179:4-8
- 386 23. Chen C, Guo X, Chen Y, Zheng K, Zhou J, Wang H, et al. Predictors of poor-grade
387 aneurysmal subarachnoid hemorrhage caused by anterior communicating artery
388 aneurysm. *World Neurosurg*. 2021;148:e340-e345
- 389 24. Zhao B, Fan Y, Xiong Y, Yin R, Zheng K, Li Z, et al. Aneurysm rebleeding after poor-grade
390 aneurysmal subarachnoid hemorrhage: Predictors and impact on clinical outcomes.
391 *Journal of the neurological sciences*. 2016;371:62-66
- 392 25. Starke RM, Komotar RJ, Kim GH, Kellner CP, Otten ML, Hahn DK, et al. Evaluation of a
393 revised glasgow coma score scale in predicting long-term outcome of poor grade
394 aneurysmal subarachnoid hemorrhage patients. *Journal of clinical neuroscience : official*
395 *journal of the Neurosurgical Society of Australasia*. 2009;16:894-899
- 396 26. Mocco J, Ransom ER, Komotar RJ, Sergot PB, Ostapkovich N, Schmidt JM, et al.
397 Long-term domain-specific improvement following poor grade aneurysmal subarachnoid
398 hemorrhage. *Journal of neurology*. 2006;253:1278-1284
- 399 27. Wang BY, Peng C, Jiang HS, Yang ZH, Zhao Y, Song YF, et al. The survival and outcome
400 of older patients with primary aneurysmal subarachnoid haemorrhage: A 2-year follow-up,
401 multi-centre, observational study. *Age and ageing*. 2023;52

402

It is made available under a [CC-BY-NC 4.0 International license](https://creativecommons.org/licenses/by-nc/4.0/).



It is made available under a [CC-BY-NC 4.0 International license](https://creativecommons.org/licenses/by-nc/4.0/) .



It is made available under a [CC-BY-NC 4.0 International license](https://creativecommons.org/licenses/by-nc/4.0/) .

