

# Predicting Unintended Pregnancy in Senegal by using Machine Learning Models: Evidence from Senegal DHS 2023

## Authors and co-authors with affiliations

Mushfiqur Rahman Khan Majlish<sup>1</sup>, Sultanul Arafean Tawhid<sup>1¶</sup>, Gulam Kibria<sup>1¶</sup>, Nazmus Sakib<sup>2</sup>

<sup>1</sup> Department of Statistics, University of Dhaka, Dhaka-1000, Bangladesh

<sup>2</sup> Department of Applied Statistics and Data Science, Jahangirnagar University, Savar, Dhaka-1342, Bangladesh

\*Corresponding author

Email: [mushfiqurrahman6947@gmail.com](mailto:mushfiqurrahman6947@gmail.com) (MRKM)

¶ These authors contributed equally to this work.

## Abstract

Unintended pregnancy refers to a pregnancy that is either mistimed or unwanted at the time of conception. Such pregnancies can have harmful effects, including negative impacts on maternal and child health, economic hardship, and strained relationships. This study aims to assess the effectiveness of machine learning algorithms in forecasting unintended pregnancies in Senegal and identifying the key factors that significantly impact them. The study utilized data from the 2023 Senegal Demographic and Health Survey, focusing on pregnant women. A final sample of 885 respondents was analyzed after handling missing values and six machine learning models namely Logistic Regression, Random Forest, K-Nearest Neighbors, Support Vector Machine, Naïve Bayes

and Extra Tree Classifier was used. The Random Forest algorithm emerged as the best predictive model due to its highest AUC value (80.45%), surpassing all other machine learning algorithms used in this study. Total birth, currently residing with husband/partner, respondent's education level, number of living children, Husband/partner's occupation, residence type, Respondent can refuse sex and intention of contraceptive use are identified as contributing factors in that predict unintended pregnancy. The study's results suggest that machine learning models, particularly Random Forest, can significantly enhance predictive accuracy for unintended pregnancies, helping public health initiatives in Senegal target at-risk populations. By identifying women at risk of unplanned pregnancies, targeted interventions and support services can be implemented, ultimately improving maternal health outcomes.

**Keywords:** Machine Learning, Unintended Pregnancy, Senegal, DHS

## Introduction

An unintended pregnancy is defined as a pregnancy that occurs when it is either unwanted (when no more children are desired) or mistimed (occurring earlier than desired). This classification highlights the distinction between pregnancies that are not planned at all and those that happen sooner than expected [1]. Globally, between 2010 and 2014, approximately 44% of all pregnancies were considered unplanned. In developed regions, the incidence of unintended pregnancies saw a significant decline of 30%, dropping from 64 per 1,000 women aged from 15 to 44 in 1990 to 1994 to 45 in 2010 to 2014. Conversely, in developing regions, the decline was less pronounced, with the rate decreasing by 16%, from 77 to 65 per 1,000 women in the same age group. The reduction in unintended pregnancies in developed regions was closely associated with a decrease in abortion rates, while in developing regions, the reduction was more strongly tied to

a decrease in unintended births. Between 2010 and 2014, approximately 59% of unintended pregnancies in developed regions and 55% in developing regions resulted in abortion [2].

In Asia, the rate of unintended pregnancies was approximately 54 per 1,000 women aged 15 to 44, resulting in an estimated 53.8 million unintended pregnancies annually during this period [3]. Meanwhile, the global rate of unintended pregnancies in Europe and North America was about 35 per 1,000 women aged 15 to 49. However, in sub-Saharan Africa, the rate was significantly higher, at 91 per 1,000 women [4]. These figures underscore the ongoing disparities in reproductive health across different regions of the world.

Unintended pregnancy exerts a profound influence on various aspects of contemporary life, encompassing social, economic, and cultural dimensions. It is essential to understand the potential repercussions associated with unintended pregnancies. In the United States, nearly half of all unintended pregnancies result in abortion, making it one of the most significant outcomes of unintended pregnancy [5]. Moreover, scholars have explored the potential link between unintended pregnancy and adverse birth outcomes, such as low birthweight, defined as less than 2,500 grams [6]. Low birthweight infants often require extensive resources to support their cognitive, emotional, and relational development, which is crucial for ensuring their overall health and proper development. These needs highlight the long-term impact unintended pregnancies can have, not only on individuals but also on healthcare systems and social services [5]. Limited research exists on the impact of unintended childbearing when . The few studies that have explored adolescent fatherhood and educational attainment have suggested a correlation between teenage fatherhood and an increased likelihood of dropping out of high school. However, these studies have not conclusively determined whether academic difficulties lead to early fatherhood, or if early fatherhood itself contributes to the decision to leave school. This gap in research highlights the

need for further investigation into the specific challenges faced by young fathers and how unintended childbearing may affect their educational and life trajectories [5,7].

Prior researchers have found a few common factors associated with unintended pregnancy in Senegal are wealth index, maternal education, intention of contraceptive use [8]. Another critical factor is whether the respondent can refuse physical intimacy. Women who fail to refuse sex with their partners are at higher risk of unintended pregnancy [9]. Another significant predictor is the age of the woman when she had first birth [7]. Moreover, women who made family planning decisions on their own were less likely to have an unintended pregnancy [10]. Women age group tend to influence unintended pregnancy to a great extent [11,12]. These previous studies show that unintended pregnancy is a major concern regarding maternal health which also coincides with many factors. Hence, studying this factor greatly influences future health decisions.

To help reduce unwanted pregnancies, the following suggestions are made: making contraception more widely available; educating people about the significance of motivation, attitudes, and feelings in using contraception and preventing unintended pregnancies; creating and carefully assessing a range of community programs; and promoting research to develop new contraceptives. The new abortion care guideline also suggests simple primary care interventions, such as guaranteeing access to medical abortion pills, making sure that everyone who needs it has access to accurate information, raising the standard of abortion care provided to women and girls, and encouraging task-sharing among a larger range of healthcare professionals [13,14].

This study aligns with the Sustainable Development Goals (SDG) Goal 3: Ensure healthy lives and promote well-being for all at all ages [15]. Which can be essential to achieve SDG goals by creating awareness among women. Traditional approaches to studying unintended pregnancy

have primarily relied on descriptive statistics and regression models to identify risk factors (16). While these methods have provided valuable insights, they may fail to capture complex interactions between variables and emerging patterns within large datasets. With the advent of machine learning (ML) techniques, researchers now have the opportunity to leverage advanced analytical tools that can process vast amounts of data and uncover nuanced relationships that may not be immediately apparent through conventional methods [7].

In this study, we apply machine learning techniques to analyze unintended pregnancy in Senegal as unintended pregnancy is highly prevalent there. Between 2015 and 2019 in Senegal, there were approximately 703,000 pregnancies each year. Out of these, 232,000 were unintended pregnancies, and 57,900 of unintended pregnancies resulted in abortion [17]. Moreover, studies had been conducted in Senegal which used classical statistical analysis to understand the correlates of unintended pregnancy [18]. Therefore, machine learning algorithm was utilized to predict unintended pregnancy in this study. By utilizing various machine learning algorithms, we aim to identify key predictors of unintended pregnancy and assess their relative importance. The use of ML allows us to explore intricate associations between demographic, socioeconomic, and behavioral variables while providing more accurate predictions of unintended pregnancy outcomes [19].

This research builds upon existing literature by introducing a data-driven approach to understanding unintended pregnancy in Senegal. Through the application of ML models, we seek to offer more precise and actionable insights that can inform public health policies and programs aimed at reducing unintended pregnancies in the region. Ultimately, our goal is to contribute to improving reproductive health outcomes and empowering women in Senegal to make informed choices about their reproductive lives.

## Methods

### Data Source and Population

This research utilized nationally representative secondary data from the 2023 Senegal Demographic and Health Survey which was conducted from February 2023 to August 2023. The Demographic Health Survey Authority employed a two-stage stratified sampling method. The data was collected from 14 regions namely: Dakar, Ziguinchor, Diourbel, Saint-Louis, Tambacounda, Kaolack, Thies, Louga, Fatick, Kolda, Matam, Kaffrine, Kedougou and Sedhiou. Extensive data were collected from 8423 households, 16583 female respondents who were aged between 15 to 49, and 6321 male respondents who were aged between 15 to 59, covering a wide range of topics. These included adult and childhood morbidity and mortality, awareness and attitudes toward HIV/AIDS, fertility and fertility preferences, marriage, knowledge and use of family planning methods, and various aspects of reproductive health, among other significant public health concerns. This study was used conducted on the women who were pregnant at the time of conducting the survey and the number of respondents was 1065 persons.

### Study Variables

The dependent variable was whether the respondent was pregnant at the time of the survey which had three (3) type of responses: Then, Later and Not at all. To evaluate respondent's pregnancy intentions, the responses were recoded as:

1. 'Then' for 'Intended' which was codes as zero (0).
2. 'Later' and 'Not at all' for 'Unintended' which as coded as one (1)

The explanatory variables that were used in this study are respondent's age group (15 to 19, 20 to 24, 25 to 29, 30 to 49), region (Dakar, Ziguinchor, Diourbel, Saint-Louis, Tambacounda, Kaolack, Thies, Louga, Fatick, Kolda, Matam, Kaffrine, Kedougou, Sedhiou), residence type (urban, rural), respondent's education level (No education, Primary education, Secondary and higher), wealth index (poor, middle, rich), number of living children (0, 1-2, 3+), total birth (0, 1-2, 3+), intention of contraceptive use (Intended to use, Unintended to use), currently residing with husband/partner (living with partner, staying elsewhere), Respondent can refuse sex (Yes, No), age at first cohabitation (<18, ≥18), Ideal number of children (<6, ≥6), Husband/partner's education level (No education, Primary education, Secondary and higher), Husband/partner's occupation (Not employed, Employed, Don't know) and Respondent occupation (Not, employed, Employed).

## Data Processing and Analysis

The number of missing values were less than 5% (<5%) and hence the observations were deleted for those missing values. The final dataset had reduced observations of 885 respondents. A basic descriptive analysis followed by a bivariate analysis was performed in the study. The descriptive analysis was used to outline the frequency and percentage distribution of the data. We then employed bivariate analysis to explore the association and correlation. Six different supervised machine learning algorithms were used to predict the outcome variable and assessed their performance using various model evaluation metrics. The machine learning models are namely Logistic Regression (LR), Random Forest (RF), K-Nearest Neighbors (KNN), Support Vector Machine (SVM), Naïve Bayes (NB) and Extra Tree Classifier (ETC). Data processing was conducted in SPSS version 23 and Python. **Figure 1** displays the theoretical framework of the entire analysis procedure.

**Logistic Regression (LR):** Specifically created for "classification" tasks, logistic regression (LR) is a "statistical learning" approach that falls under the "supervised" machine learning (ML) category. To estimate the parameters of interest, the maximum likelihood estimation approach is utilized [20]. The logistic regression equation models the probability  $p$  of a binary outcome (e.g., 0 or 1) as a function of predictor variables  $X$ . It is represented as:

$$\text{Ln}\left(\frac{p}{1-p}\right) = \beta_0 + \beta_1 X_1 + \dots + \beta_n X_n \quad (1)$$

Where,  $p$  is the probability of the dependent variable (unintended pregnancy),  $\beta_0, \beta_1, \dots, \beta_n$  are the coefficients of predictor variables and  $X_1, \dots, X_n$  are the predictor variables.

**Random Forest (RF):** One of the well-known supervised learning methods is the Random Forest algorithm. This machine learning technique can be applied to both classification and regression problems. It is based on the concept of ensemble learning, which involves combining multiple classifiers to address complex issues and improve the model's performance [21].

**K-Nearest Neighbors (KNN):** A non-parametric supervised learning classifier, the k-nearest neighbors (KNN) technique uses the proximity of data points to classify or predict which category a given data point belongs to [22]. KNN finds the distance between the query point  $X_q$  and all other points in the dataset. The most common distance metric is the Euclidean distance which is a measure of the true straight-line distance between two points in Euclidean space [23]. This distance is measured given by the formula:

$$d(X_q, X_i) = \sqrt{\sum_{j=1}^n (X_{qj} - X_{ij})^2} \quad (2)$$



Where  $d(X_q, X_i)$  is the Euclidean distance between the query point  $X_q$  and the  $i$ -th point  $X_i$ ,  $n$  is the number of features (dimensions) and  $X_{qj}$  and  $X_{ij}$  are the values of the  $j$ -th feature for the query point and the  $i$ -th data point, respectively.

**Support Vector Machine (SVM):** Strong machine learning algorithms like Support Vector Machine (SVM) are utilized for tasks including regression, outlier identification, and linear or nonlinear classification. Because SVMs can handle high-dimensional data and nonlinear relationships, they are versatile and effective in a wide range of applications [24].

**Naïve Bayes (NB):** A group of classification algorithms based on Bayes' Theorem are known as Naive Bayes classifiers. It is not a single algorithm, but rather a collection of algorithms that are united by a basic principle: each pair of features being classed stands alone. Bayes' Theorem calculates the likelihood of an event happening based on the probability of a related event that has already taken place [25]. Mathematically, it is expressed as:

$$P(C | X) = \frac{P(B | A).P(A)}{P(B)} \quad (3)$$

Where  $P(C|X)$  is the posterior probability of class ( $C$ , target) given predictor ( $X$ , attributes).  $P(C)$  is the prior probability of class,  $P(X|C)$  is the likelihood which is the probability of the predictor given class,  $P(X)$  is the prior probability of the predictor.

**Extra Tree Classifier (ETC):** Extra Tree Classifier is an ensemble machine learning technique that trains multiple decision trees and then combines their output to produce a forecast which can be used to build classification model or regression models [26]. This can be expressed as:

$$y = \frac{1}{M} \sum_{i=1}^M T_i(X) \quad (4)$$

Where  $y$  is the predicted class for input  $X$ ,  $T_i(X)$  is the prediction made by the  $i$ -th tree for input  $X$  and  $M$  is the total number of trees in the ensemble.

## Feature Selection

Ranking and prioritizing the most significant predictors in the dataset is the aim of feature selection. The information gain values for each of the chosen variables are computed to determine this. The amount of knowledge a feature in a classification problem offers about a class is measured as information gain. Decision tree algorithms is used to find the most informative features for data splitting. When predicting the class labels of newly discovered data instances, features with a high information gain hold greater significance. The information gain, which varies from 0 (no gain) to 1 (highest gain), is computed using the entropy of the class distribution both before and after the split [27].

We have selected the top 8 variables according to information gain value for machine learning algorithms. The ranked variables are displayed in **Figure 2**. The features that were selected according to information gain value for machine learning algorithms are total birth, currently residing with husband/partner, respondent's education level, number of living children, Husband/partner's occupation, residence type, Respondent can refuse sex and intention of contraceptive use.

## Data split

The dataset is randomly split into two sections for machine learning approaches: a training dataset, which is used to train the model, and a test dataset, which is used to predict the response variable and determine if the predicted results match the actual results. In this study, 70% of the total dataset was taken as training dataset and the remaining 30% was taken as testing dataset. On the training set, we employed 10-fold repeated cross-validation and assessed the performance on the testing dataset.

## Handling Imbalance Dataset

The dataset which had been used for the purpose of the study was heavily imbalanced. There were 885 respondents on the final dataset in which 763 (86.2%) respondents had intended pregnancy and the remaining 122 (13.8%) respondents had unintended pregnancy. Because an imbalanced dataset tends to be skewed towards the majority class and results in low performance on the minority class, it was necessary to balance the classes. For the minority class, this may lead to great accuracy but poor precision and recall [28].

In this work, the Synthetic Minority Oversampling Technique (SMOTE) was utilized to maintain a balance between the majority and minority classes. Through the use of oversampling imbalanced datasets, SMOTE is a pre-processing technique for learning algorithms that effectively addresses class imbalance. It creates a new sample by randomly layering a few samples linearly on top of their neighbors [29]. **Figure 3** represents the balancing of classes before and after applying SMOTE.

## Performance Evaluation for Machine Learning Algorithms

Every model's performance is evaluated and compared to other models after training. The performance of the prediction models was evaluated using the accuracy, precision, recall, specificity, F1-score, and area under the curve (AUC-Receiver Operating Characteristic) were applied in this investigation to assess the performance of the model.

**Accuracy:** Accuracy is an assessment parameter used in machine learning that measures how well a model predicts the future overall. It shows the proportion of accurately predicted cases, true positives and true negatives, to all instances in the dataset [30].

$$Accuracy = \frac{\text{True Positive} + \text{True Negative}}{\text{True Positive} + \text{True Negative} + \text{False Positive} + \text{False Negative}} \quad (5)$$

**Precision:** The precision is the percentage of all positive classifications made by the model that are true positives [31]. It is mathematically defined as:

$$Precision = \frac{\text{True Positive}}{\text{True Positive} + \text{False Positive}} \quad (6)$$

**Recall:** Recall is determined by dividing the total number of Positive samples by the number of Positive samples that were accurately categorized as Positive. The recall gauges how well the model can identify positive samples. Positive samples are found in greater numbers the higher the recall [32].

$$Recall = \frac{\text{True Positive}}{\text{True Positive} + \text{False Negative}} \quad (7)$$

**F1-Score:** An alternative machine learning evaluation statistic called the F1 score elaborates on a model's performance within a class, as opposed to evaluating the model's overall performance based on accuracy. The F1 score integrates a model's precision and recall ratings, two conflicting criteria [33].

$$F1\ Score = \frac{2 * Recall * Precision}{Recall + Precision} \quad (8)$$

**Specificity:** The ability of an algorithm or model to accurately anticipate a true negative for every category that exists is measured by machine learning specificity. In academic settings, the term "true negative rate" is frequently used [34]; its formal calculation is:

$$Specificity = \frac{True\ Negative}{True\ Negative + False\ Positive} \quad (9)$$

**AUC Value:** The area under the Receiver Operating Characteristic curve is represented by the AUC curve, which stands for Area Under the Curve. It measures the binary classification model's overall effectiveness. The area will always lie between 0 and 1, since both TPR and FPR vary from 0 to 1. A higher AUC value indicates better model performance [35].

## Results

### Sociodemographic Characteristics

Table 1 provides an overview of the background characteristics of participants with unintended pregnancies. The highest percentage of respondents were from Matam (12.9%), while the lowest percentage were from Ziguinchor (2.6%). A significant portion of the participants (35.1%) fell within the 30-49 age group, which encompasses a broader age range. Additionally,

27.5% of participants were aged between 20-24 years. The majority of respondents resided in rural areas (67.1%).

**Table 1: Background characteristics of the study participants.**

Variable	Category	Frequency	Percent (%)
Region	Sedhiou	44	5
	Dakar	43	4.9
	Ziguinchor	23	2.6
	Diourbel	61	6.9
	Saint-Louis	54	6.1
	Tambacounda	89	10.1
	Kaolack	66	7.5
	Thiès	54	6.1
	Louga	59	6.7
	Fatick	60	6.8
	Kolda	62	7
	Matam	114	12.9
	Kaffrine	103	11.6
	Kedougou	53	6
Age Category	15-19	132	14.9
	20-24	243	27.5
	25-29	199	22.5
	30-49	311	35.1

Residence	Urban	291	32.9
	Rural	594	67.1
Education Category	No education	486	54.9
	Primary	160	18.1
	Secondary and higher	239	27
Wealth Index	Poor	506	57.2
	Middle	167	18.9
	Rich	212	24
Living Children	No living children	212	24
	1 to 2 living children	352	39.8
	3 or above living children	321	36.3
Total Born Children	No children ever born	197	22.3
	1 to 2 children ever born	352	39.8
	3 or above children ever born	336	38
Unintended Pregnancy	Intended	763	86.2
	Unintended	122	13.8
Respondent Can Refuse	No	679	76.7
Sex	Yes	206	23.3
Cohabitation Category	Less than 18	439	49.6
	18 and above	446	50.4

Husband Education Level	No education	608	68.7
	Primary	109	12.3
	Secondary and higher	168	19
Ideal Number of Children	Less than 6	444	50.2
	6 and above	441	49.8
Husband Occupation	Not employed	62	7
	Employed	671	75.8
	Don't Know	152	17.2
Respondent Occupation	Not employed	596	67.3
	Employed	289	32.7
Contraceptive Use	Intend to use	359	40.6
	Does not intend to use	526	59.4

Regarding education, most participants had no formal education (54.9%). In terms of socioeconomic status, a majority of respondents were categorized as poor (57.2%), while middle-class respondents represented the smallest proportion. Notably, the incidence of unintended pregnancy was relatively low at 13.8%. In most cases (76.7%), respondents reported that they were unable to refuse sex. It is also concerning that the majority of respondents' husbands lacked formal education, with 68.7% having received no education. Moreover, 75.8% of the husbands were employed whereas only 32.7% of the respondents were employed. Majority of the respondents (59.4%) does not intend to use contraceptive.



**Table 2: Percentage distribution and association between selected covariates and women’s pregnancy intentions in Bangladesh.**

Variable	Category	Intended	Unintended	P-value
Region	Sedhiou	90.9%	9.1%	<b>.001</b>
	Dakar	86.0%	14.0%	
	Ziguinchor	95.7%	4.3%	
	Diourbel	95.1%	4.9%	
	Saint-Louis	81.5%	18.5%	
	Tambacounda	93.3%	6.7%	
	Kaolack	84.8%	15.2%	
	Thiès	75.9%	24.1%	
	Louga	93.2%	6.8%	
	Fatick	80.0%	20.0%	
	Kolda	95.2%	4.8%	
	Matam	77.2%	22.8%	
	Kaffrine	82.5%	17.5%	
Kedougou	88.7%	11.3%		
Age Category	15-19	90.9%	9.1%	.088
	20-24	85.6%	14.4%	
	25-29	88.9%	11.1%	
	30-49	83.0%	17.0%	
Residence	Urban	89.3%	10.7%	.059
	Rural	84.7%	15.3%	

Education Category	No education	84.6%	15.4%	.239
	Primary	86.9%	13.1%	
	Secondary and higher	89.1%	10.9%	
Wealth Index	Poor	84.0%	16.0%	<b>.043</b>
	Middle	86.8%	13.2%	
	Rich	91.0%	9.0%	
Living Children	No living children	96.2%	3.8%	<b>&lt;0.001</b>
	1 to 2 living children	86.4%	13.6%	
	3 or above living children	79.4%	20.6%	
Total Born Children	No children ever born	96.4%	3.6%	<b>&lt;0.001</b>
	1 to 2 children ever born	86.9%	13.1%	
	3 or above children ever born	79.5%	20.5%	
Respondent Can Refuse Sex	No	86.2%	13.8%	.927
	Yes	86.4%	13.6%	
Cohabitation Age	Less than 18	85.9%	14.1%	.772
	18 and above	86.5%	13.5%	
Husband Education Level	No education	86.0%	14.0%	.456
	Primary	83.5%	16.5%	
	Secondary and higher	88.7%	11.3%	

Ideal Number of Children	Less than 6	85.4%	14.6%	.495
	6 and above	87.1%	12.9%	
Husband Occupation	Not employed	90.3%	9.7%	.497
	Employed	86.3%	13.7%	
	Don't Know	84.2%	15.8%	
Respondent Occupation	Not employed	87.9%	12.1%	<b>.035</b>
	Employed	82.7%	17.3%	
Contraceptive Use	Intend to use	83.3%	16.7%	<b>0.037</b>
	Does not intend to use	88.2%	11.8%	

\*All the significant variables are given in bold format

Table 2 presents the prevalence of unintended pregnancy in relation to various background characteristics and highlights the significance of these associations. Region significantly influences the likelihood of pregnancy intention, with Ziguinchor exhibiting the highest percentage of intended pregnancies (95.7%, p-value = .001). However, age categories do not show a significant impact on unintended pregnancy rates. The residence variable is significantly associated with unintended pregnancy (p-value = .059). Other factors, such as education level, the respondent's ability to refuse sex, cohabitation age, husband's education level, ideal number of children, and husband's occupation, do not significantly influence unintended pregnancy.

Additionally, the data reveal that women with a higher economic status (rich) have a lower unintended pregnancy rate (91.0%). Women with no living children show the lowest rate of unintended pregnancy (96.2%, p-value < .001). Furthermore, non-employed women (87.9%, p-value = .035) and those who do not intend to use contraceptives (88.2%, p-value = .037) also exhibit lower rates of unintended pregnancy.

## Implementation of Machine Learning

In this study, the data were divided into 70:30 ratio where 70% of the data was the training dataset and the remaining (30%) was the testing dataset. In order to categorize the women in the test dataset into intended and unexpected pregnancies, six distinct machine learning algorithms were employed. AUC value, sensitivity, specificity, accuracy, precision and F1 score were utilized as performance metrics to compare the prediction performance of these algorithms. Table 3 and Figure 3 display the prediction output together with performance metrics for each machine learning algorithm.

**Table 3: Performance of Machine Learning Algorithms**

	LR	RF	KNN	SVM	NB	ETC
Accuracy	0.7064	0.7339	0.5727	0.6041	0.6998	0.7392
(95% CI)	(0.67, 0.73)	(0.72, 0.74)	(0.55, 0.59)	(0.57, 0.63)	(0.67, (0.72)	(0.72, 0.75)
Precision	0.6901	0.6939	0.7244	0.5780	0.6816	0.7013
Recall	0.7562	0.8388	0.2308	0.7695	0.7509	0.8349
F1-Score	0.7204	0.7589	0.3478	0.6568	0.7141	0.7618
Specificity	0.6565	0.6290	0.9147	0.4392	0.6487	0.6435
AUC Value	0.7646	0.8045	0.6787	0.6453	0.7557	0.7920

LR = Logistic Regression, RF = Random Forest, KNN = K-Nearest Neighbors, SV = Support Vector Machine, NB = Naïve Bayes,

ETC = Extra Tree Classifier, CI = Confidence Interval

In Table 3, the accuracy for Random Forest (RF) classifier and Extra Tree Classifier (ETC) is 73.39% and 73.92% which means these two models are 73% correct for predicting unintended pregnancy. Logistic Regression (LR) classifier has an accuracy of 70.64% and the remaining three

machine learning algorithms (K-Nearest Neighbors, Support Vector Machine and Naïve Bayes) have accuracy below 70%. In case of precision, K-Nearest Neighbors have the highest precision (72.44%) and Extra Tree Classifier has 70.13% precision. The remaining four algorithm have precision less than 70%. The recall value for Random Forest and Extra Tree Classifier are 83.88% and 83.49% respectively which are higher than the remaining four algorithms. Similarly, Random Forest and Extra Tree Classifier have higher F1 Scores, 75.89% and 76.18% respectively, and the remaining classifiers have less than 75% F1 Scores. K-Nearest Neighbors has the highest specificity value, 91.47%, which is highest among all six machine learning algorithms. On the other hand, Random Forest algorithm has the highest AUC value which is 80.45%. The remaining five machine learning algorithm has lower than 80% AUC value.

Among all six machine learning algorithms, Random Forest and Extra Tree Classifier have the highest accuracy. According to ROC (Receiver Operating Characteristic) Curve and AUC value displayed in **Figure 4**, Random Forest algorithm has the highest AUC value and hence it was selected as the best algorithm for predicting unintended pregnancy in Senegal.

## **Tuning Random Forest Classifier with Grid Search CV**

This study used hyperparameter tuning to compare the optimal model with the default hyperparameter tuning once the best model was chosen. **Figure 5** demonstrates that the default hyperparameter tuning performed better than the hyperparameter tuning with the Random Forest Classifier. As per the findings, the Random Forest with adjusted hyperparameters performed less effectively than the Random Forest model with the default hyperparameter.

From Figure 4, it is seen that the accuracy, recall, AUC, F1 score and precision are higher for the default Random Forest model than that of the tuned Random Forest model. However, in case of specificity, the default Random Forest model has 62.90% specificity which is lower than that of tuned Random Forest model (65.74%). The Random Forest model with default hyperparameter tuning obtained the highest AUC score and accuracy, indicating that it correctly detected unintended pregnancy. Hence, the default parameter Random Forest model was selected as the best model for predicting unintended pregnancy in Senegal.

## **Discussion**

There have studies related to unintended pregnancy in Senegal. However, to our knowledge, this is the first study in Senegal which have utilized machine learning algorithms to predict unintended pregnancy and also identify the potential factors. Machine learning algorithms are proven to be more efficient and accurate for prediction performance than classical statistical analysis [36]. The purpose of this study was to identify potential risk factors for unintended pregnancy and making predictions using six different machine learning algorithms among Senegalese women. Six well-known machine learning algorithms which were applied to meet the

research purpose are Logistic Regression, Random Forest, K-Nearest Neighbor, Support Vector Machine, Naive Bayes, and Extra Tree Classifier and these algorithms are widely renowned for their classification tasks. The Senegal Demographic and Health Survey 2023 data was used to conduct the entire analysis and research.

The prediction performance of these six machine learning methods is compared based on the curve value area or AUC value and accuracy. The dataset was divided into training dataset (70%) and testing dataset (30%). The classifiers were trained on the training data using a stratified 10-fold cross-validation approach. According to accuracy, the best machine learning algorithm was Random Forest and Extra Tree Classifier as they both had almost similar accuracy, 73.39% and 73.92%, Extra Tree Classifier having a slightly higher accuracy than Random Forest. On the contrary, Random Forest have a higher AUC value than Extra Tree Classifier, 80.45% and 79.20% which clearly made Random Forest the best predictive model among all six machine learning algorithms.

The results of our study are similar to that of another study conducted in Missouri where Random Forest algorithm had the highest AUC value and was selected as the best model for predicting unintended pregnancy [37]. On the contrary, Extra Tree Classifier was selected as the best algorithm for predicting unintended pregnancy in Ethiopia as it had higher performance evaluation metrics than other models [19]. A similar study conducted among Bangladeshi women identified Elastic Net Regression (ENR) as the best model for predicting unintended pregnancy in Bangladesh [7]. In a different setting, a study conducted on predicting pregnancy outcome following IVF (In Vitro Fertilization) treatment suggested that Support Vector Machine (SVM), Random Forest (RF) and Multilayer Perceptron (MLP) yielded better results than all other machine learning algorithms [38]. Random Forest performed best in another study regarding the prediction

of adverse pregnancy outcomes in pregnant women with systemic lupus erythematosus, A chronic autoimmune inflammatory disease that involves multiple organs and predominantly affects women of reproductive age in China [39]. Moreover, Random Forest algorithm had the least prediction error in a study related to the utilization of machine learning methods for pregnancy and childbirth risk management in Russia [40]. However, LASSO logistic regression achieved the best performance in predicting the occurrence of pregnancy induced hypertension in first trimester in a study conducted in China [41].

This study also identified the key influencing factors for unintended pregnancy using Information Gain in Senegal. The top 10 predictors that are highly associated with unintended pregnancy in Senegal are total birth, currently residing with husband/partner, respondent's education level, number of living children, husband/partner's occupation, residence type, respondent can refuse sex and intention of contraceptive use. A similar study conducted in Ethiopia regarding unintended pregnancy prediction revealed total birth, respondent's education and refusal sex as important features for unintended pregnancy which aligns with our study [19]. In case of chi square association, region, wealth index, number of living children, total birth, respondent's occupation and contraceptive use became significantly associated in our study and a similar study in Bangladesh also had the same findings [7]. Respondent's age, respondent's education, husband's education level, age at first cohabitation became insignificant in chi square association test which differs with the above-mentioned study of Bangladesh. Moreover, logistic regression was used to identify the factors influencing the unintended pregnancy in 29 Sub-Saharan African countries where it was revealed that residence, respondent's education level and contraceptive intention were significant features for unintended pregnancy which agreed with our study [42]. Associated factors of unintended pregnancy among six South Asian countries using multivariable



logistic regression where it was found that currently residing with husband, respondent's education level, number of living children, residence type and intention of contraceptive use were significant features for unintended pregnancy and our study also agrees with it [3].

The research demonstrates that machine learning techniques can effectively pinpoint predictive factors associated with unintended pregnancies. These methods prove valuable in identifying the most critical indicators for predicting unplanned pregnancies in Senegal. Our model holds promise for addressing the significant public health challenge of detecting and addressing unintended pregnancies. These predictions support the provision of comprehensive services and extended working hours for women. By enhancing predictive modeling, we can improve the quality of medical care and boost maternal survival rates. Consequently, the prediction models for unintended pregnancy developed in our study could play a significant role in identifying women at risk of unplanned pregnancies and implementing effective supportive interventions, such as training or information dissemination. This approach may reduce misunderstandings by offering quantitative, objective, and research-based models for risk classification, prediction, and care planning.

## **Limitation**

This study has several limitations. The predictive model cannot access additional information about other associated parameters when it is constructed using DHS cross-sectional data. The combination of these variables may improve AUC and predicted accuracy. But this research demonstrates that machine learning algorithms can forecast unintended births based on broad risk variables, which can aid in the creation of treatments to enhance planned pregnancies and family planning among Senegalese married couples. Moreover, machine learning model's

result lacks a coefficient and odds ratio, in contrast to the statistical model, making it difficult to assess the degree and direction to which different factors influence the outcome.

## **Conclusion**

In this study, we evaluated six machine learning algorithms to predict the likelihood of a woman experiencing an unintended pregnancy. Random Forest Classifier produced the best results and the quite accurate classification among the algorithms tested for predicting unplanned pregnancy in Senegalese women. By using Information Gain in order to select the best features related to unintended pregnancy, it was revealed that total birth, currently residing with husband/partner, respondent's education level, number of living children, husband/partner's occupation, residence type, respondent can refuse sex and intention of contraceptive use were the significant predictors of unintended pregnancy. In order to improve key policy initiatives, this paper highlights the application of machine learning algorithms to forecast and better understand the most relevant unplanned pregnancy predictor variables.

## **Acknowledgements**

Not applicable

## **Authors' contributions**

MRKM, SAT and GK generated the study idea, formed the research team, and designed the study and conducted the initial literature review. SAT wrote the introduction, SAT and GK wrote the methodology and MRKM analyzed the data. MRKM wrote the initial draft of the manuscript. NS supervised the study, reviewed the manuscript for intellectual purposes while

MRKM, SAT and GK amended the manuscript according to the feedback and created the final draft of the manuscript. All authors contributed to the intellectual content of the manuscript and read and approved the final version of the manuscript.

## **Funding**

The author(s) received no financial support for the research, authorship, and/or publication of this article.

## **Ethics approval and consent to participate**

As the data was obtained from an open source of Official Website of DHS (<https://dhsprogram.com/>), the ethical approval and consent to participate are not applicable for this study.

## **Consent for publication**

As the study does not contain any individual and institutional data in any form (including any individual details, images, or videos), the consent for publication is not applicable for this study.

## **Availability of data and materials**

The dataset, analyzed in this study, was obtained from the open source of Official Website of DHS program (Weblink: <https://www.dhsprogram.com/Data/>). The Senegal Demographic and Health Survey 2023 dataset was availed from website for this study (Link: <https://dhsprogram.com/methodology/survey/survey-display-611.cfm>)

## References

1. Centers for Disease Control and Prevention. Unintended Pregnancy | Reproductive Health | CDC [Internet]. 2024 [cited 2024 Sep 22]. Available from: <https://www.cdc.gov/reproductive-health/hcp/unintended-pregnancy/index.html>
2. Bearak J, Popinchalk A, Alkema L, Sedgh G. Global, regional, and subregional trends in unintended pregnancy and its outcomes from 1990 to 2014: estimates from a Bayesian hierarchical model. *Lancet Glob Health*. 2018 Apr 1;6(4):e380–9. [http://dx.doi.org/10.1016/S2214-109X\(18\)30029-9](http://dx.doi.org/10.1016/S2214-109X(18)30029-9)
3. Sarder A, Islam SMS, Maniruzzaman, Talukder A, Ahammed B. Prevalence of unintended pregnancy and its associated factors: Evidence from six south Asian countries. *PLoS One*. 2021 Feb 1;16(2 February). <https://doi.org/10.1371/journal.pone.0245923>
4. Ayalew HG, Liyew AM, Tessema ZT, Worku MG, Tesema GA, Alamneh TS, et al. Prevalence and factors associated with unintended pregnancy among adolescent girls and young women in sub-Saharan Africa, a multilevel analysis. *BMC Womens Health*. 2022 Dec 1;22(1). <https://doi.org/10.1186/s12905-022-02048-7>
5. Institute of Medicine (US) Committee on Unintended Pregnancy. Consequences of Unintended Pregnancy. In: Brown SS, Eisenberg L, editors. *The Best Intentions: Unintended Pregnancy and the Well-Being of Children and Families*. Washington (DC): National Academies Press (US); 1995 [cited 2024 Sep 22]. Available from: <https://www.ncbi.nlm.nih.gov/books/NBK232137/>
6. World Health Organization. Low birth weight [Internet]. 2024 [cited 2024 Sep 22]. Available from: <https://www.who.int/data/nutrition/nlis/info/low-birth-weight>
7. Hossain MI, Habib MJ, Saleheen AAS, Kamruzzaman M, Rahman A, Roy S, et al. Performance Evaluation of Machine Learning Algorithm for Classification of Unintended Pregnancy among Married Women in Bangladesh. *J Healthc Eng*. 2022;2022. <https://doi.org/10.1155/2022/1460908>

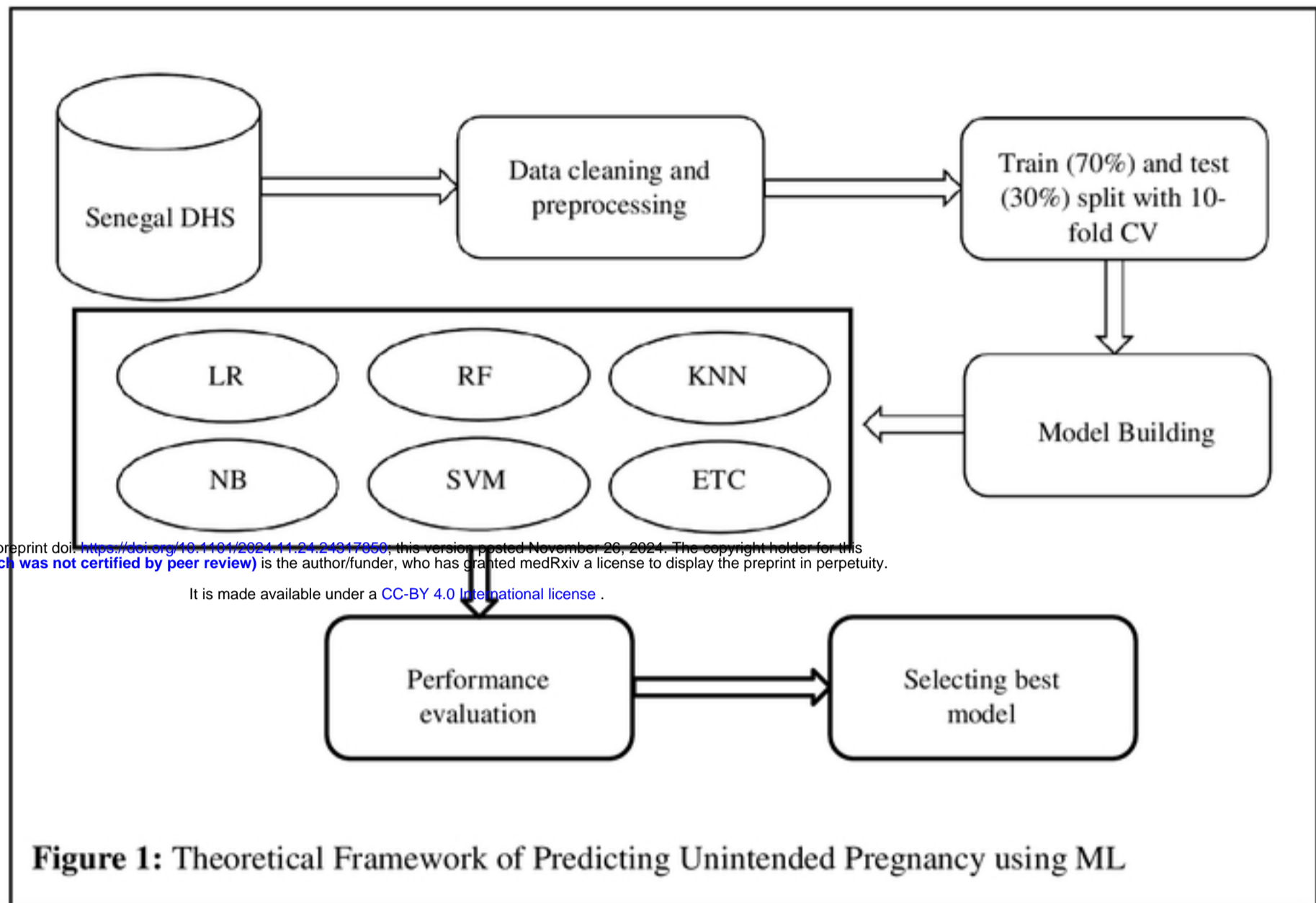
8. Klima CS. Unintended pregnancy. Consequences and solutions for a worldwide problem. *J Nurse Midwifery*. 1998 Nov-Dec;43(6):483-91. doi: 10.1016/s0091-2182(98)00063-9. PMID: 9871381. [https://doi.org/10.1016/s0091-2182\(98\)00063-9](https://doi.org/10.1016/s0091-2182(98)00063-9)
9. Tusiime S, Musinguzi G, Tinkitina B, Mwebaza N, Kisa R, Anguzu R, et al. Prevalence of sexual coercion and its association with unwanted pregnancies among young pregnant females in Kampala, Uganda: A facility based cross-sectional study. *BMC Womens Health*. 2015 Sep 24;15(1). <https://doi.org/10.1186/s12905-015-0235-9>
10. Nigussie K, Degu G, Chanie H, Edemealem H. Magnitude of unintended pregnancy and associated factors among pregnant women in Debre Markos Town, East Gojjam Zone, Northwest Ethiopia: A cross-sectional study. *Int J Womens Health*. 2021;13:129–39. <https://doi.org/10.2147/IJWH.S275346>
11. Bekele H, Dheressa M, Mengistie B, Sintayehu Y, Fekadu G. Unintended pregnancy and associated factors among pregnant women attending antenatal care at Bako Tibe District Public Health Facility, Oromia Region, Ethiopia. *J Pregnancy*. 2020;2020. <https://doi.org/10.1155/2020/3179193>
12. Barrow A, Jobe A, Barrow S, Touray E, Ekholuenetale M. Prevalence and factors associated with unplanned pregnancy in The Gambia: findings from 2018 population-based survey. *BMC Pregnancy Childbirth*. 2022 Dec 1;22(1). <https://doi.org/10.1155/2020/3179193>
13. Brown SS, Eisenberg L, editors. *The Best Intentions: Unintended Pregnancy and the Well-Being of Children and Families*. Washington (DC): National Academies Press (US); 1995 [cited 2024 Sep 22]; Available from: <https://pubmed.ncbi.nlm.nih.gov/25121228/>
14. World Health Organization. Abortion care guideline [Internet]. 2022 [cited 2024 Sep 22]. Available from: <https://www.who.int/publications/i/item/9789240039483>
15. United Nations Department of Economic and Social Affairs. Goal 3 | Ensure healthy lives and promote well-being for all at all ages [Internet]. 2024 [cited 2024 Sep 22]. Available from: <https://sdgs.un.org/goals/goal3>
16. Rajula HSR, Verlato G, Manchia M, Antonucci N, Fanos V. Comparison of conventional statistical methods with machine learning in medicine: Diagnosis, drug development, and

- treatment. Medicina (Lithuania). 2020 Sep 1;56(9):1–10. <https://doi.org/10.3390/medicina56090455>
17. Guttmacher Institute. Senegal [Internet]. 2024 [cited 2024 Sep 22]. Available from: <https://www.guttmacher.org/regions/africa/senegal>
  18. Faye CM, Speizer IS, Fotso JC, Corroon M, Koumtingue D. Unintended pregnancy: magnitude and correlates in six urban sites in Senegal. 2013. Available from: <http://www.reproductive-health-journal.com/content/10/1/59>
  19. Mamo DN, Gebremariam YH, Adem JB, Kebede SD, Walle AD. Machine learning to predict unintended pregnancy among reproductive-age women in Ethiopia: evidence from EDHS 2016. BMC Womens Health. 2024 Dec 1;24(1). <https://doi.org/10.1186/s12905-024-02893-8>
  20. Spiceworks. Everything you need to know about logistic regression [Internet]. 2024 [cited 2024 Sep 22]. Available from: <https://www.spiceworks.com/tech/artificial-intelligence/articles/what-is-logistic-regression/>
  21. Javatpoint. Machine learning random forest algorithm [Internet]. 2024 [cited 2024 Sep 22]. Available from: <https://www.javatpoint.com/machine-learning-random-forest-algorithm>
  22. IBM. What is the k-nearest neighbors algorithm? [Internet]. 2024 [cited 2024 Sep 22]. Available from: <https://www.ibm.com/topics/knn>
  23. KDnuggets. Most popular distance metrics used in KNN and when to use them [Internet]. 2020 [cited 2024 Sep 22]. Available from: <https://www.kdnuggets.com/2020/11/most-popular-distance-metrics-knn.html>
  24. GeeksforGeeks. Support vector machine (SVM) algorithm [Internet]. 2024 [cited 2024 Sep 22]. Available from: <https://www.geeksforgeeks.org/support-vector-machine-algorithm/>
  25. GeeksforGeeks. Naive Bayes classifiers [Internet]. 2024 [cited 2024 Sep 22]. Available from: <https://www.geeksforgeeks.org/naive-bayes-classifiers/>

26. Thankachan K. What? When? How?: ExtraTrees classifier [Internet]. 2020 [cited 2024 Sep 22]. Available from: <https://towardsdatascience.com/what-when-how-extratrees-classifier-c939f905851c>
27. Kaggle. Feature selection using information gain [Internet]. 2024 [cited 2024 Sep 22]. Available from: <https://www.kaggle.com/code/vickysen/feature-selection-using-information-gain>
28. Encord. Balanced and imbalanced datasets in machine learning: Full introduction [Internet]. 2024 [cited 2024 Sep 22]. Available from: <https://encord.com/blog/an-introduction-to-balanced-and-imbalanced-datasets-in-machine-learning/>
29. Zhou R, Yin W, Li W, Wang Y, Lu J, Li Z, et al. Prediction model for infectious disease health literacy based on synthetic minority oversampling technique algorithm. *Comput Math Methods Med*. 2022;2022. <https://doi.org/10.1155/2022/8498159>
30. ArtsylTech. The importance of accuracy in machine learning: A comprehensive guide [Internet]. 2024 [cited 2024 Sep 22]. Available from: <https://www.artsyltech.com/blog/Accuracy-In-Machine-Learning>
31. Google for Developers. Classification: accuracy, recall, precision, and related metrics [Internet]. 2024 [cited 2024 Sep 22]. Available from: <https://developers.google.com/machine-learning/crash-course/classification/accuracy-precision-recall>
32. Javatpoint. Precision and recall in machine learning [Internet]. 2024 [cited 2024 Sep 22]. Available from: <https://www.javatpoint.com/precision-and-recall-in-machine-learning>
33. V7 Labs. F1 score in machine learning: intro & calculation [Internet]. 2024 [cited 2024 Sep 22]. Available from: <https://www.v7labs.com/blog/f1-score-guide>
34. Giskard. Sensitivity and specificity in machine learning [Internet]. 2024 [cited 2024 Sep 22]. Available from: <https://www.giskard.ai/glossary/sensitivity-and-specificity-in-ml>
35. GeeksforGeeks. AUC ROC curve in machine learning [Internet]. 2024 [cited 2024 Sep 22]. Available from: <https://www.geeksforgeeks.org/auc-roc-curve/>

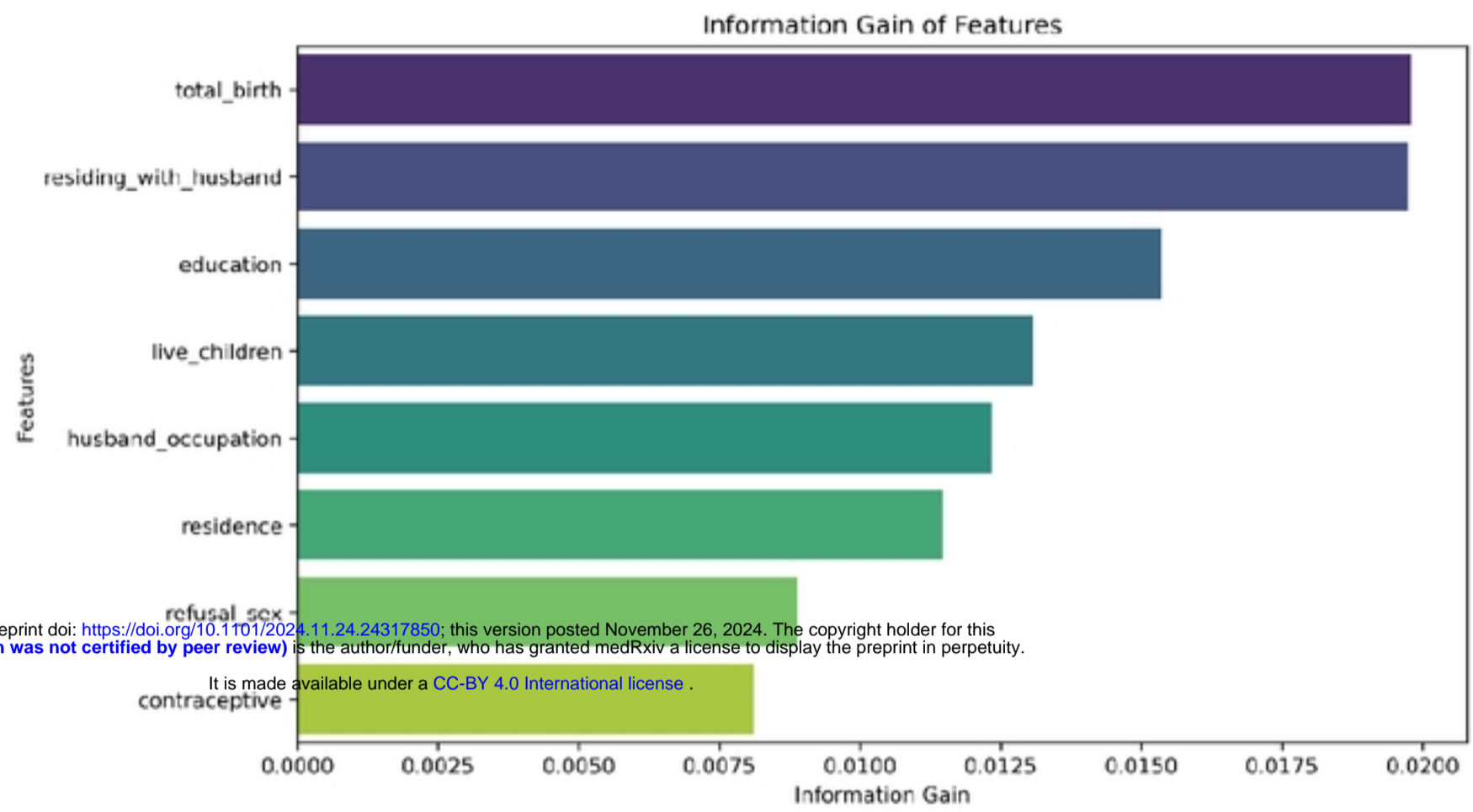
36. Bzdok, D., Altman, N. & Krzywinski, M. Statistics versus machine learning. *Nat Methods* 15, 233–234 (2018). <https://doi.org/10.1038/nmeth.4642>
37. Kranker K, Bardin S, Lee Luca D, O’Neil S (2020) Estimating the incidence of unintended births and pregnancies at the sub-state level to inform program design. *PLOS ONE* 15(10): e0240407. <https://doi.org/10.1371/journal.pone.0240407>
38. Hassan, M.R., Al-Insaif, S., Hossain, M.I. et al. A machine learning approach for prediction of pregnancy outcome following IVF treatment. *Neural Comput & Applic* 32, 2283–2297 (2020). <https://doi.org/10.1007/s00521-018-3693-9>
39. Hao, X.; Zheng, D.; Khan, M.; Wang, L.; Hämäläinen, T.; Cong, F.; Xu, H.; Song, K. Machine Learning Models for Predicting Adverse Pregnancy Outcomes in Pregnant Women with Systemic Lupus Erythematosus. *Diagnostics* 2023, 13, 612. <https://doi.org/10.3390/diagnostics13040612>
40. Kopanitsa, G.; Metsker, O.;Kovalchuk, S. Machine LearningMethods for Pregnancy andChildbirth Risk Management. *J. Pers.Med.* 2023,13, 975. <https://doi.org/10.3390/jpm13060975>
41. Chen Y, Huang X, Wu S, Guo P, Huang J, Zhou L, Tan X. Machine-learning predictive model of pregnancy-induced hypertension in the first trimester. *Hypertens Res.* 2023 Sep;46(9):2135-2144. doi: 10.1038/s41440-023-01298-8. Epub 2023 May 9. PMID: 37160966. <https://doi.org/10.1038/s41440-023-01298-8>
42. Ameyaw EK, Budu E, Sambah F, Baatiema L, Appiah F, Seidu A-A, et al. (2019) Prevalence and determinants of unintended pregnancy in sub-Saharan Africa: A multi-country analysis of demographic and health surveys. *PLoS ONE* 14(8): e0220970. <https://doi.org/10.1371/journal.pone.0220970>





medRxiv preprint doi: <https://doi.org/10.1101/2024.11.21.2417858>; this version posted November 26, 2024. The copyright holder for this preprint (which was not certified by peer review) is the author/funder, who has granted medRxiv a license to display the preprint in perpetuity. It is made available under a [CC-BY 4.0 International license](https://creativecommons.org/licenses/by/4.0/).

LR = Logistic Regression, RF = Random Forest, KNN = K-Nearest Neighbors, SV = Support Vector Machine, NB = Naïve Bayes, ETC = Extra Tree Classifier, CV= Cross Validation

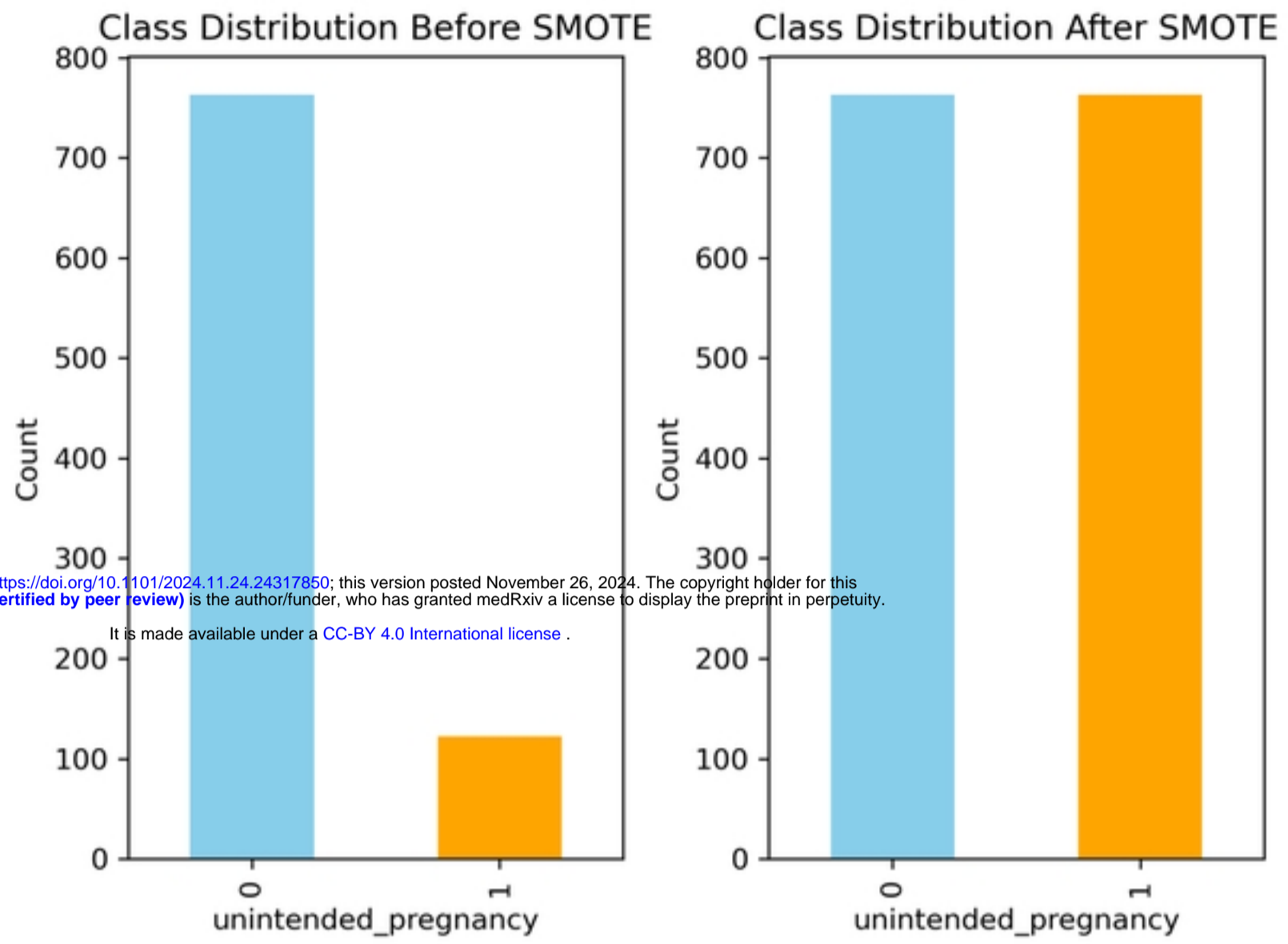


medRxiv preprint doi: <https://doi.org/10.1101/2024.11.24.24317850>; this version posted November 26, 2024. The copyright holder for this preprint (which was not certified by peer review) is the author/funder, who has granted medRxiv a license to display the preprint in perpetuity.

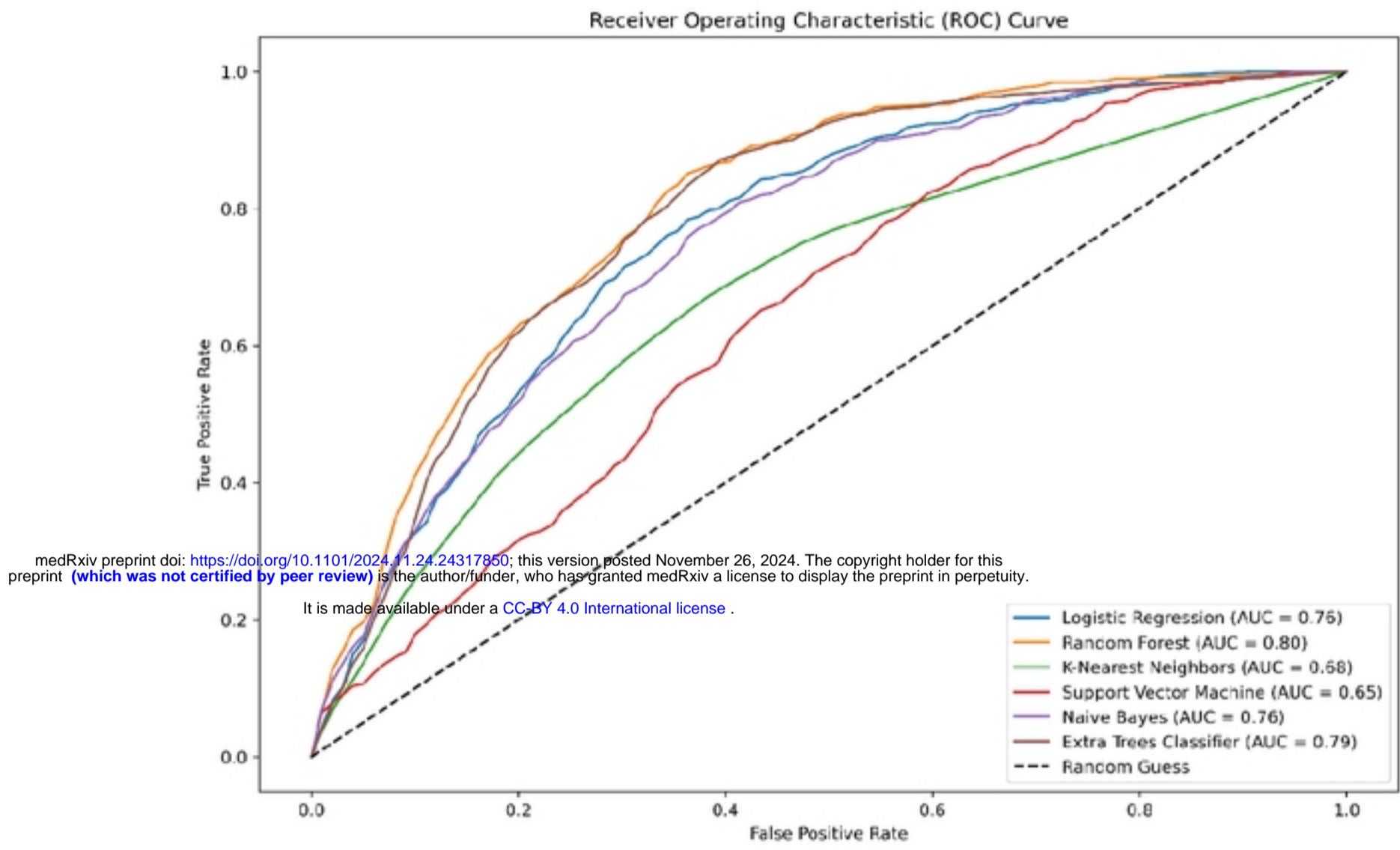
It is made available under a [CC-BY 4.0 International license](https://creativecommons.org/licenses/by/4.0/).

**Figure 2:** Variables Ranked according to their Information Gain

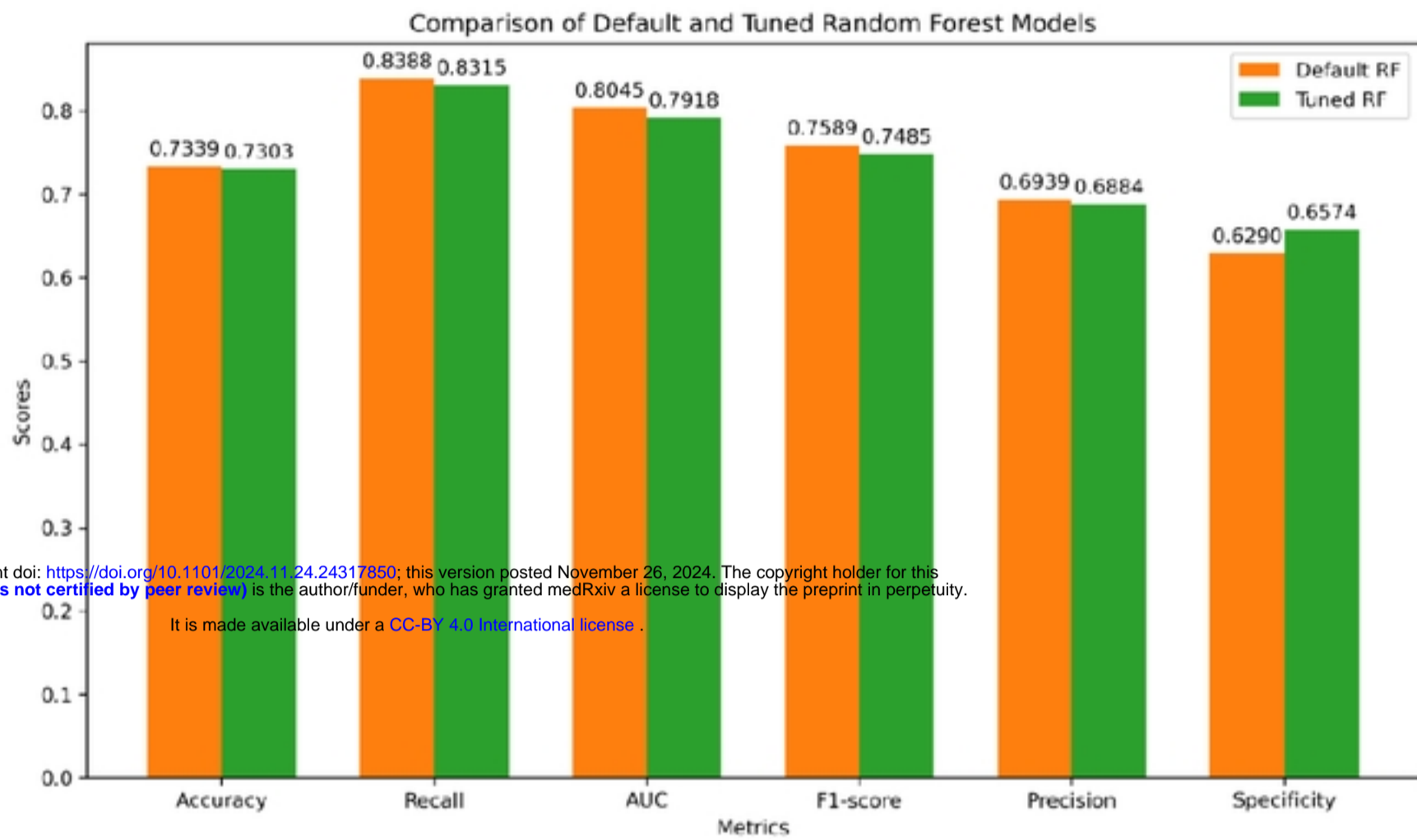
medRxiv preprint doi: <https://doi.org/10.1101/2024.11.24.24317850>; this version posted November 26, 2024. The copyright holder for this preprint (which was not certified by peer review) is the author/funder, who has granted medRxiv a license to display the preprint in perpetuity. It is made available under a [CC-BY 4.0 International license](https://creativecommons.org/licenses/by/4.0/).



**Figure 3:** Class Distribution Before and after SMOTE



**Figure 4:** ROC Curve for Six Machine Learning Algorithms



**Figure 5:** Comparison of Tuned and Default Hyperparameters of Random Forest Algorithm