

# 1 Trends and inequalities in statin use for the primary and secondary prevention of 2 cardiovascular disease between 2009 and 2021 in England

3 **Authors:** Rutendo Muzambi<sup>ab</sup>, Krishnan Bhaskaran<sup>a</sup>, Helen Strongman<sup>a</sup>, Tjeerd van  
4 Staa<sup>c</sup>, Liam Smeeth<sup>b</sup>, Emily Herrett<sup>a</sup>

## 5 **Affiliations:**

6 <sup>a</sup> Faculty of Epidemiology and Population Health, London School of Hygiene and  
7 Tropical Medicine, London, WC1E 7HT, UK

8 <sup>b</sup> Faculty of Epidemiology and Biostatistics, School of Public Health, Imperial College  
9 London, London, W12 0BZ, UK

10 <sup>c</sup>Centre for Health Informatics, Division of Informatics, Imaging and Data Science,  
11 Faculty of Biology, Medicine and Health, School of Health Sciences, The University of  
12 Manchester, Manchester Academic Health Science Centre, Vaughan House, Manchester,  
13 M13 9PL, UK.

14

## 15 **Abstract**

16 **Objective** To investigate trends and inequalities in statin use for the primary and  
17 secondary prevention of cardiovascular disease (CVD)

18 **Design** Repeated cross-sectional and historical cohort study designs

19 **Setting** English primary care electronic health records from the Clinical Practice  
20 Research Datalink (CPRD Aurum) linked to Hospital Episode Statistics Admitted Patient  
21 Care

22 **Participants** 5 million adults aged 25 years and older randomly sampled from CPRD  
23 Aurum between 1<sup>st</sup> April 2009 and 31<sup>st</sup> December 2021.

24 **Outcome measures** Monthly proportion of current statin users; adjusted odds ratios  
25 (aOR) for statin initiation; adjusted hazard ratios (aHR) for cardiovascular risk  
26 assessment, statin discontinuation and statin re-initiation and number of CVD events  
27 prevented with optimal statin use and estimated costs saved.

## 28 **Results**

29 The overall monthly proportion of individuals prescribed statins for primary prevention  
30 increased from 22.3% in 2009 to 35.6% in 2021 among those aged 70+ years, and was  
31 stable in other age groups. The proportion of eligible individuals receiving a statin for  
32 secondary prevention was higher in all age groups (e.g. increasing from 68.1% to 73.7%  
33 over the same period, in those aged 70+). Overall prevalence of statin use was lowest  
34 among women, 25-39 age group, and black, mixed, and other ethnic groups for both  
35 primary and secondary prevention. Monthly proportion of CVD risk assessment, among  
36 those eligible, increased from 13.7% in May 2009 to 31.8% by November 2021. 79.0%  
37 of individuals were initiated statins within 60 days of a CVD event. Women (aOR 0.70;  
38 95% CI, 0.68 – 0.72) and people of black ethnicity (aOR 0.71; 95% CI, 0.65-0.77) were  
39 less likely to be initiated statins compared to those of white ethnicity while people of  
40 south Asian ethnicity (aOR 1.53; 95% CI, 1.42-1.64) were more likely to be initiated  
41 statins than white people for secondary prevention. Statin discontinuation was most

NOTE: This preprint reports new research that has not been certified by peer review and should not be used to guide clinical practice.

42 likely among women (aHR 1.08, 95% CI; 1.06–1.11) black people (aHR 1.76, 95% CI,  
43 1.65–1.89) and the most deprived group (aHR 1.08, 95% CI; 1.04–1.12) compared to  
44 men, white people and the least deprived group, respectively, for primary prevention  
45 with similar associations seen for secondary prevention for ethnicity and deprivation.  
46 With optimal statin treatment, over 150,000 cardiovascular events could be prevented  
47 in the next 10 years for primary prevention and 5 years for secondary prevention  
48 resulting in a potential saving to the health service of over £400 million in those eligible  
49 for statins.

## 50 **Conclusion**

51 Statin use remains suboptimal and inequalities particularly among women, people of  
52 black ethnicity and those in the most deprived socioeconomic groups persist across  
53 multiple stages of statin use for both primary and secondary prevention. To reduce  
54 these inequalities and avoid missed opportunities to prevent cardiovascular events and  
55 costs to the NHS, strategies are needed specifically targeting these patient groups to  
56 reduce the burden of CVD.

57

58

59

## Summary box

60

### 61 **Section 1: What is already known on this topic**

62 • Previous studies have shown that statins are under-prescribed and under-used  
63 in both primary and secondary prevention of cardiovascular disease (CVD)  
64 resulting in missed opportunities to reduce CVD burden.

65 • Few studies have examined trends in statin use in recent years, including during  
66 the pandemic period.

67 • Inequalities in statin use based on age, gender, ethnicity and deprivation have  
68 been identified previously, however it is unclear where, along the pathway from  
69 identification of eligible patients to initiation and continuation of statins, these  
70 inequalities manifest.

### 71 **Section 2: What this study adds**

72 • Levels of CVD risk assessment were suboptimal throughout the study period: a  
73 modest increase in the proportion of eligible individuals with a CVD risk  
74 assessment from 14% in May 2009 to 35% in February 2020 was followed by a  
75 decline during the COVID-19 pandemic.

76 • Prevalence of statin use increased between 2009 and 2021 but remained  
77 suboptimal throughout, and with important sociodemographic disparities.  
78 Women and people of black ethnicity were less likely to initiate statins for  
79 secondary prevention compared to men and the white ethnic group while people  
80 of south Asian ethnicity and the 60-69 age group were more likely to initiate  
81 statins compared to people of white ethnicity and the 25-39 age group,  
82 respectively.

- 83       • Statin discontinuation was higher among women than men (secondary  
84       prevention only), black ethnic groups compared to white ethnic groups, and the  
85       most deprived socioeconomic groups compared to the least deprived for both  
86       primary and secondary prevention.
- 87       • We estimated that over 100,000 cardiovascular events could be prevented in the  
88       next 10 years if the observed missed opportunities for statin use in primary CVD  
89       prevention among eligible individuals were fully addressed, and a further 50,000  
90       events could be prevented over 5 years for secondary prevention. The  
91       consequent potential saving to the health service was estimated to be over £400  
92       million.

93

94

95

96

## Summary of main results

### Overall prevalence of statin use

There was a small increase in the overall monthly prevalence of statin users between May 2009 and November 2021 ranging from 8.5% to 10.7% and 67.4 to 71.8% for primary prevention and secondary prevention, respectively. Monthly prevalence of statins was lowest among the Black, Mixed and Other ethnicity groups and among those in the most deprived socioeconomic groups (primary prevention only).

### Sociodemographic disparities along the pathway of statin use

#### CVD risk assessment

South Asian (HR 1.39, 95% CI:1.38-1.40), Black (HR 1.28, 95% CI:1.27-1.29) and Mixed (HR 1.15, 95% CI:1.13-1.17) ethnic groups, as well as individuals in the most deprived socioeconomic groups (HR 1.23, 95% CI:1.22-1.24), were more likely to receive a CVD risk assessment compared to the White ethnic group and least deprived socioeconomic group.

#### Initiation

For secondary prevention, statin initiation was least likely among the Black ethnic group compared to the White group (OR 0.71, 95% CI: 0.65-0.77) and women compared to men (OR 0.70, 95% CI, 0.68 – 0.72). Statin initiation was highest among the South Asian group compared to the White group (OR 1.53, 95% CI, 1.42-1.64). Among those with a recorded risk score above threshold, statin initiation was least likely in the 70+ age group than the 40-49 age group (OR 0.75, 95% CI, 0.72 – 0.79) and people of black ethnicity than white ethnicity (OR 0.82, 95% CI: 0.77 – 0.88).

#### Discontinuation

For primary prevention, the Black ethnic group (HR 1.76, 95% CI: 1.65-1.89) and those in the most deprived socioeconomic group (HR 1.08, 95% CI: 1.04-1.12) were more likely to discontinue statins compared to the White group and those in the least deprived group, respectively. In secondary prevention, these associations were also observed and in addition women were more likely to discontinue statins compared to men (HR 1.08, 95% CI: 1.06-1.11).

#### Reinitiation

Black and South Asian ethnic groups, those in the most deprived socioeconomic group and the 70+ age group were more likely to re-initiate statins compared to the White ethnic group, least deprived group and the 25-39 age group, respectively, for both primary and secondary prevention. Women were less likely to re-initiate statins compared to men, particularly in secondary prevention HR 0.87 (95% CI, 0.85 – 0.90).

## 115 **Introduction**

116 Cardiovascular disease (CVD) is the leading cause of morbidity and mortality  
117 worldwide, accounting for 32% of all global deaths in 2019 and a quarter of all deaths in  
118 the UK.(1, 2) Statins have been proven to be effective in reducing cardiovascular events  
119 and are widely prescribed, with atorvastatin the most commonly dispensed medication  
120 in England between 2022 and 2023. (3-5)

121 Despite National Institute for Health and Care Excellence (NICE) guidelines  
122 recommending the use of statins in those at risk of CVD and to all individuals with a  
123 prior CVD event, evidence suggests that statins are under-prescribed, with previous  
124 studies showing that only 30-50% of adults at high risk of CVD in the UK were receiving  
125 statins.(6-9) Coverage of CVD risk assessment is low and studies investigating trends in  
126 CVD risk assessment in more recent years including during the COVID-19 pandemic are  
127 lacking and evidence on inequalities in risk assessment is limited.(10)

128 Disparities in statin prescribing in terms of age, gender, ethnicity and deprivation have  
129 been highlighted previously.(7, 11-17) However, it is unclear where along the pathway  
130 from identification of eligible patients, statin initiation and continued statin use these  
131 inequalities manifest. Missed opportunities for treatment are associated with worsening  
132 of clinical outcomes, mortality and higher healthcare costs.(14, 18, 19)

133 Therefore, we examined trends and factors (age, gender, ethnicity, and deprivation)  
134 associated with statin prevalence, cardiovascular risk scoring, initiation (among those  
135 with an above threshold CVD risk score for primary prevention or existing CVD event  
136 for secondary prevention), discontinuation, and re-initiation of statins between 1<sup>st</sup> April  
137 2009 and 31<sup>st</sup> December 2021. We also estimated the number of cardiovascular events  
138 that could be prevented and healthcare cost savings with optimal statin use.

139 **Methods**

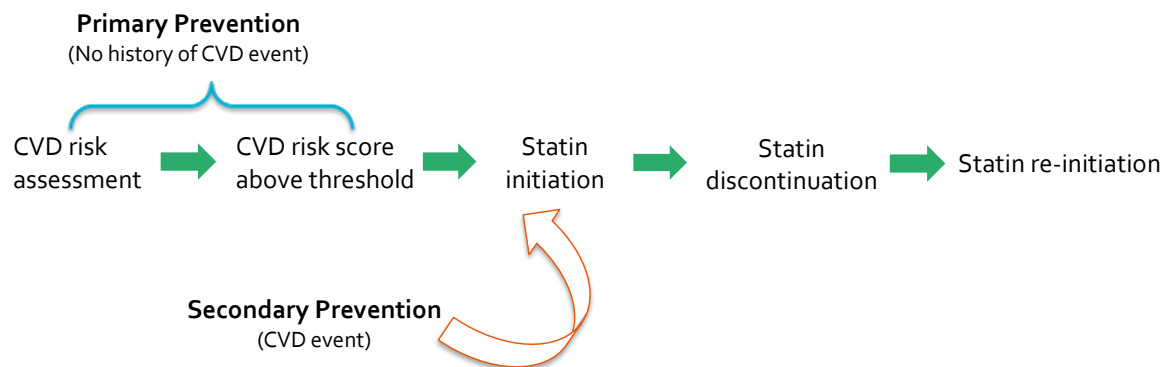
140 **Data and participants**

141 We conducted a several cross-sectional and historical cohort studies using data from  
142 the Clinical Practice Research Datalink (CPRD Aurum) linked to Hospital Episode  
143 Statistics (HES) Admitted Patient Care.(20, 21) CPRD Aurum database consists of  
144 pseudonymous electronic health records from UK primary care practices using the EMIS  
145 general practice (GP) electronic health record software. The CPRD Aurum January 2022  
146 build was used to extract the cohort for this study. CPRD Aurum contained over 40  
147 million individuals and 1,489 GP practices.(22) The database includes information on  
148 patient and practice demographics, diagnoses and symptoms, medication prescriptions,  
149 and referrals. Our study followed the Reporting of Studies Conducted Using  
150 Observational Routinely Collected Data reporting guidelines.(23)

151 Our overall study population included 16,650,277 individuals aged 25 years and older  
152 between 1st April 2009 and 31st December 2021 eligible for HES linkage and at least 12  
153 months research standard follow up in CPRD Aurum (Supplementary Figure 1). From  
154 this population, we extracted data from a random sample of 5 million individuals and  
155 details of the random sample can be found in the Supplementary Methods and  
156 Supplementary Table 1. Our study period was from April 2009 as this corresponds to  
157 when NHS health checks, which assess CVD risk and can inform statin prescribing, were  
158 first introduced.(24) Start of follow up for the overall cohort was defined as the latest of  
159 1<sup>st</sup> April 2009, 25<sup>th</sup> birthday and 12 months after current registration in the CPRD  
160 practice. End of follow-up was the earliest of 31<sup>st</sup> December 2021, death date or end of  
161 follow-up in CPRD.

162 We used SNOMED codes in CPRD and ICD-10 codes in HES to identify CVD diagnoses  
163 and covariates. Statin prescription information was obtained in CPRD using Dictionary  
164 of Medicines and Devices (dm+d) codes.

165 **Figure 1. Conceptual figure depicting typical pathway of statin use**



166 Figure 1 shows a conceptual figure of the pathway of statin use. The overall prevalence  
167 of statin use for primary and secondary prevention is the result of identification of  
168 eligible individuals, initiation and continued use of statins. Our study seeks to determine  
169 where, and in whom, along this pathway are there inequalities in statin treatment and  
170 thus are opportunities for CVD prevention being missed.

171 Our subpopulation cohorts are described below.

## 172 **Study population and statistical analyses**

### 173 **CVD risk scoring**

174 We included individuals without a CVD diagnosis aged between 25-84 years old. We  
175 described the characteristics of individuals formally risk scored by their GP using all  
176 available CVD risk assessment tools (QRISK, QRISK2, Framingham, Joint British Society,  
177 ASSIGN, or unspecified).(25-28) Then, we described the monthly proportion of  
178 individuals with a recorded cardiovascular risk score in the last 5 years, between May  
179 2009 and December 2021, and stratified by CVD risk tool, CVD risk category as assessed



180 by the GP (<10%, 10-19% and 20%), age, gender, ethnicity, and deprivation. Individuals  
181 were excluded from a monthly denominator when they were diagnosed with a CVD  
182 event, became ineligible for CVD risk assessment (e.g. CKD, T1DM or familial  
183 hypercholesterolaemia diagnosis) or were initiated on statins. Individuals were defined  
184 as having a current CVD risk record if they had a risk record in the last 5 years  
185 (corresponding to the recommended frequency of CVD risk assessment).(24) If  
186 individuals had multiple CVD risk scores on the same date, we kept the highest score.  
187 To determine which individuals were eligible for CVD risk assessment, we included  
188 individuals aged 40-74 years (in accordance with the NHS health check age criteria),  
189 with no history of CVD, chronic kidney disease (CKD), type 1 diabetes mellitus (T1DM),  
190 familial hypercholesterolaemia and no contraindications to statins. Cox proportional  
191 hazards regression models, with the start of follow up as the time scale, were used to  
192 estimate hazard ratios (HRs) for the association between demographic variables (age at  
193 start of follow up, gender, ethnicity, and deprivation) and receiving a CVD risk score  
194 from the GP. Start of follow up was defined as the latest of 1<sup>st</sup> April 2009, 40<sup>th</sup> birthday  
195 and 12 months after current registration in CPRD. Individuals were followed until the  
196 earliest of CVD risk assessment, 75<sup>th</sup> birthday, CVD event or ineligibility for CVD risk  
197 assessment. We adjusted for demographic variables mentioned above as these factors  
198 are likely to be fixed. We had insufficient time-updated information to adjust for time-  
199 dependent variables.

## 200 **Statin prevalence**

201 To describe the prevalence of statin use for primary CVD prevention, we included  
202 individuals without prior CVD (e.g. past or current history of myocardial infarction,  
203 angina, revascularisation procedures, stroke, transient ischaemic attack, or peripheral

204 arterial disease). For secondary prevention, our cohort included individuals with  
205 existing CVD. We excluded individuals contraindicated to statins (using SNOMED codes  
206 for liver disease or codes explicitly stating statin contraindication) in both cohorts. An  
207 individual was defined as a current statin user if they had an ongoing statin prescription  
208 based on the number of days prescribed, allowing for a grace period of 28 days between  
209 prescriptions.

210 We described the proportion of individuals with a current statin prescription each  
211 calendar month for primary and secondary prevention. In subgroup analyses, monthly  
212 prevalence was stratified by age (25-39, 40-49, 50-59, 60-69, 70-79, 80+), gender (men  
213 and women), ethnicity, (white, South Asian, black, mixed and other), deprivation (using  
214 linked patient-level Townsend deprivation scores, categorised into quintiles) and CVD  
215 subtype (for secondary prevention). Individuals left both prevalence cohorts when they  
216 had a statin contraindication and left the primary prevention cohort when they were  
217 diagnosed with a CVD event.

## 218 **Statin initiation**

219 To assess initiation of statins for primary prevention, we included individuals aged 40-  
220 74 who were eligible for the NHS health check and had a recorded CVD risk score above  
221 the threshold for statin initiation, with no history of CVD, CKD, T1DM or familial  
222 hypercholesterolaemia. We included the first recorded CVD risk score, within follow-up,  
223 that was eligible for statin initiation where there was no previous statin prescription.  
224 Consistent with NICE guidelines, those with a 20% or higher 10-year risk of CVD before  
225 2014 and a 10% or higher 10-year risk of CVD after 2014, were considered above the  
226 treatment threshold and eligible for statin initiation. (29) Statin initiation was defined as

227 having a first statin prescription within 28 days of a first recorded CVD risk score above  
228 treatment threshold.

229 Our secondary prevention initiation cohort comprised individuals with a CVD event  
230 who remained alive and under follow-up within 60 days of a CVD event and with no  
231 statin contraindications. Statin initiation was defined as having a first statin  
232 prescription within 60 days of a CVD event. We chose a 60-day grace period between  
233 the first cardiovascular event and subsequent statin prescription to account for  
234 individuals who may be initiated statins in secondary care and may wait until they have  
235 completed their prescription before obtaining a statin prescription in primary care.

236 We used Kaplan Meier curves to examine the time from first CVD risk score above  
237 threshold to statin initiation (primary prevention) or time from CVD event to statin  
238 initiation (secondary prevention). These curves were stratified by age, gender, ethnicity,  
239 deprivation, CVD risk score (primary prevention only) or CVD subtype (secondary  
240 prevention only). Individuals were censored at end of follow up (including death), CVD  
241 event (primary prevention only) and statin contraindication (e.g. liver disease). We  
242 used logistic regression to examine the factors associated with initiating a statin for  
243 primary and secondary prevention within 28 days of becoming eligible. We adjusted for  
244 age at risk assessment (primary prevention) or age at CVD diagnosis (secondary  
245 prevention), gender, ethnicity, deprivation, Body Mass Index (BMI, kg/m<sup>2</sup>)  
246 (underweight, normal weight, overweight, obese or morbidly obese), smoking status  
247 (non-smoker, current smoker and former smoker), treated hypertension (defined as  
248 antihypertensives prescribed on the date of or after hypertension diagnosis), type II  
249 diabetes mellitus (T2DM), atrial fibrillation and rheumatoid arthritis. We did not adjust  
250 for HDL, LDL, total cholesterol, and systolic and diastolic blood pressure due to

251 moderate/high levels of missingness (Supplementary Table 2) and chronic kidney  
252 disease (in primary prevention analyses) as CVD risk assessment is not recommended  
253 in this population for primary prevention.

#### 254 **Statin discontinuation**

255 We included all individuals aged 25 years and older who had initiated statins for  
256 primary prevention (all individuals without pre-existing CVD event) and secondary  
257 prevention (all individuals with a first CVD event during the study period). After  
258 individuals reached the end of their prescription based on the date of prescription, dose  
259 and quantity prescribed, statin cessation was defined as reaching the end of a 90-day  
260 grace period without a new statin prescription, to allow time for those with overlapping  
261 prescriptions to use their excess supply.

262 We used Kaplan Meier curves to examine the time from statin initiation to  
263 discontinuation stratified by age, gender, ethnicity, deprivation, CVD risk category  
264 (primary prevention) or CVD subtype (secondary prevention). Cox proportional  
265 hazards regression models, with date of statin initiation as the time scale, were used to  
266 estimate hazard ratios (HRs) for the association between demographic variables (age at  
267 statin initiation, gender, ethnicity, and deprivation) and statin discontinuation, adjusted  
268 for these demographic variables.

#### 269 **Statin re-initiation**

270 Our re-initiation cohort included all individuals who had discontinued statins based on  
271 criteria mentioned above. For our primary prevention cohort, we additionally excluded  
272 individuals with a CVD diagnosis prior to statin cessation. Statin re-initiation was  
273 defined as receiving a subsequent statin prescription after a 90-day period without a

274 statin prescription, starting from the time when the last prescription ran out (estimated  
275 based on date of previous prescription, dose and quantity of tablets prescribed).

276 We used Kaplan Meier curves to examine time from statin discontinuation to first  
277 subsequent statin prescription. We stratified by age at discontinuation date, gender,  
278 ethnicity, deprivation, CVD risk category or CVD subtype. We used Cox proportional  
279 hazards regression models, with date of statin discontinuation as the time scale, to  
280 estimate hazard ratios (HRs) for the association of age, gender, ethnicity, and  
281 deprivation with statin discontinuation, adjusting for these demographic variables.

## 282 **Healthcare costs**

283 We used the National Schedule of NHS (National Health Service) costs to calculate the  
284 cost of CVD events for the year of 2021-22 for all NHS trusts and NHS foundation trusts  
285 and all healthcare resource groups (Supplementary Table 3). (30) We also used the  
286 prescription cost analysis dataset for the financial year 2021-22 which includes the  
287 costs of medications dispensed in the community in England (Supplementary Table  
288 4).(31)

289 To calculate the number of additional cardiovascular events avoided over 10 years with  
290 optimal statin use for each risk category, we calculated the 10-year total number of  
291 expected events from the CVD risk, based on the recorded risk scores among those with  
292 a CVD risk assessment, and number of individuals not taking statins, and applied a 25%  
293 risk reduction due to statins for those without vascular disease.(32) For secondary  
294 prevention, we calculated the number of cardiovascular events avoided over 5 years  
295 with optimal statin use for each CVD event among those eligible but not taking statins,  
296 using a 10% absolute benefit.(4) We then scaled these analyses to the English  
297 population using data from the 2021 census of adults aged 25 years and older

298 (N=40,017,720).(33) We calculated the total cost of recommended statin dose for  
299 primary and secondary prevention (atorvastatin 20mg and atorvastatin 80mg)  
300 according to the British National Formulary using the total population not prescribed  
301 statins, total quantity, and cost per quantity from the 2021/22 English prescription cost  
302 analysis dataset. (31)

### 303 **Additional secondary and sensitivity analyses**

304 We performed a range of secondary and sensitivity analyses. First, we stratified our  
305 initiation, discontinuation, and re-initiation analyses by the pre-pandemic (before  
306 01/03/2020) and pandemic period (from 01/03/2020) to examine the effect of the  
307 COVID-19 pandemic. Second, we expanded our definition for statin initiation from a first  
308 statin prescription within 28 days after above threshold risk score to 90 days for  
309 primary prevention and from a statin prescription within 60 days after first CVD event  
310 to 90 days for secondary prevention. The rationale for this was to minimise  
311 misclassification of statin initiators. Third, to minimise misclassification of statin  
312 discontinuation, we expanded our definition of cessation from a 90-day grace period to  
313 180 days.

### 314 **Model Checking**

315 We found evidence of non-proportionality when we tested the Cox proportional hazards  
316 assumption using Schoenfeld residuals test and log-log plots for our analyses on factors  
317 associated with receiving a CVD risk score, statin discontinuation and statin re-  
318 initiation. To deal with this, we performed sensitivity analyses in which we added  
319 interaction terms between non-proportional demographic factors and time.

320 All analyses were conducted in R Studio, version 4.3.2. Numerical estimates of monthly  
321 proportions of statin users and individuals with CVD risk assessments as well as  
322 number of people at risk and events for the Kaplan Meier plots can be found on Github:  
323 [https://github.com/RutendoMuzambi/trends\\_statin\\_use](https://github.com/RutendoMuzambi/trends_statin_use).

## 324 **Patient and Public Involvement Statement**

325 No patients were involved in setting the research question or outcome measures, or the  
326 design or implementation of this study.

## 327 **Results**

328 In our random subsample of 5 million individuals aged 25 years and older from a total  
329 population of 16.6 million individuals eligible for inclusion into the present study  
330 (Supplementary Figures 2 and 3), 4,606,274 and 416,431 individuals were included in  
331 the primary and secondary prevention cohorts specifically on statin use, respectively  
332 (Table 1A and 1B). Overall, individuals included in the primary prevention cohort were  
333 younger (median: 39.0 years [IQR, 29.0 to 53.0] vs 70.0 years [IQR, 59.0 to 79.0] and  
334 there was a higher proportion of women (50.8% vs 43.1%) than in the secondary  
335 prevention cohorts. We also present characteristics of individuals included in four sub-  
336 cohorts for prevalence, initiation, discontinuation, and re-initiation analyses in Table 1A  
337 and 1B. Of the 303,292 and 122,743 people in total who initiated statins during the  
338 study, 116,468 (38.4%) and 27,257 (22.2%) discontinued statins for primary and  
339 secondary prevention respectively (Supplementary Figures 2 and 3). Of these, 115,043  
340 (79.5%) and 24,876 (91.3%) re-initiated statins for primary and secondary prevention  
341 respectively. Baseline characteristics of individuals included in the CVD risk assessment  
342 sub-cohorts on monthly prevalence of individuals with a CVD risk assessment and  
343 factors associated with a CVD risk assessment are presented in Supplementary Table 5.

344 **Table 1A and 1B**

345 **Trends across time in statin prevalence**

346 Between May 2009 and November 2021, there was a small increase in the monthly  
347 proportion of statin users over time, ranging from 8.5% - 10.7% and 67.4-71.8% for  
348 primary prevention and secondary prevention, respectively (Figure 2). The increase in  
349 statin prevalence for primary prevention appears to be driven largely by the 70+ age  
350 group whose monthly proportion of statin users increased from 22.3% - 35.6% between  
351 May 2009 and November 2021. During this period an increase in this age-group from  
352 68.1% to 73.7% was seen for secondary prevention. In both cohorts, the monthly  
353 proportion of statin users was lowest among women, 25-39 age group, in those of black,  
354 mixed, and other ethnic groups, the most deprived group (primary prevention only) but  
355 highest in those with a history of myocardial infarction (secondary prevention only).

356 **Figure 2**

357 **Trends across time in cardiovascular risk scoring**

358 The monthly proportion of individuals with a GP recorded CVD risk assessment,  
359 regardless of eligibility for risk assessment, rose steadily from 13.7% in May 2009 to  
360 35.3% in February 2020 and declined to 31.8% by November 2021 (Supplementary  
361 Figure 4). The proportion of CVD risk assessments, performed by GPs, was highest in  
362 the 40-74 age group and among those with less than 10% CVD risk score. Figure 3  
363 shows that CVD risk assessment was most likely among the 70-74 age group compared  
364 to 40-49 age group adjusted HR 2.62 (95% CI, 2.60 – 2.65) and those of South Asian  
365 ethnicity adjusted HR 1.39 (95% CI, 1.38 – 1.40), Black ethnicity adjusted HR 1.28 (95%  
366 CI, 1.27-1.29) and Mixed ethnicity adjusted HR 1.15 (95% CI, 1.13-1.17) compared to



367 white ethnicity. While there was no apparent trend across 4 lowest quintiles of  
368 deprivation, the most deprived group was more likely to receive a CVD risk assessment  
369 than the least deprived group adjusted HR 1.23 (95% CI, 1.22 – 1.24).

### 370 **Figure 3**

#### 371 **Initiation**

372 11.5% (n=49,877) of individuals with recorded risk score above the threshold initiated  
373 a statin within 28 days (primary prevention) while 79.0% (n=115,968) of individuals  
374 with a CVD diagnosis were initiated statins within 60 days of first CVD event (secondary  
375 prevention. Figure 4 shows that among individuals with an above threshold recorded  
376 CVD risk score, statin initiation was least likely in the 70+ age group than the 40-49 age  
377 group (adjusted OR 0.75, 95% CI, 0.72 – 0.79), people of black ethnicity than white  
378 ethnicity (adjusted OR 0.82, 95% CI: 0.77 – 0.88) but statin initiation was more likely in  
379 those in the most deprived group than in the least deprived group (adjusted OR 1.16,  
380 95% CI; 1.12 – 1.20) and among women compared to men (adjusted OR 1.06, 95% CI;  
381 1.04 – 1.08). In contrast, for secondary prevention, statin initiation within 60 days of a  
382 first CVD event was highest among the 60-69 age group than the 25-39 age group  
383 (adjusted OR 3.19, 95% CI; 3.02 – 3.38) and among people of south Asian ethnicity  
384 compared to those of white ethnicity (adjusted OR 1.53, 95% CI, 1.42-1.64). On the  
385 other hand, statin initiation was less likely among women compared to men (adjusted  
386 OR 0.70, 95% CI, 0.68 – 0.72) and in the black group compared to the white group  
387 (adjusted OR 0.71, 95% CI, 0.65-0.77). We also found that the factors associated with  
388 initiation were similar across CVD subtypes (Supplementary Figure 5).

### 389 **Figure 4**

## 390 **Discontinuation**

391 Among people who initiated a statin for primary prevention, 26.3% and 37.2% had  
392 discontinued statins by 1 year and 5 years of initiation, respectively. For secondary  
393 prevention, 10.0% and 19.9% had discontinued statins by 1 year and 5 years of  
394 initiation, respectively. We found that statin discontinuation was least likely in the 70+  
395 year age group compared to the 25-39 age group (adjusted HR 0.65, 95% CI; 0.63 –  
396 0.67) and slightly less likely among women compared to men (adjusted HR 0.97, 95%  
397 CI; 0.95 – 0.98) after adjusting for age, gender, ethnicity, and deprivation in the primary  
398 prevention cohort (Figure 5). Conversely, statin discontinuation was higher in the black  
399 group than the white group (adjusted HR 1.63, 95% CI; 1.59 – 1.68) and in the most  
400 deprived group compared with the least deprived group (adjusted HR 1.16, 95% CI;  
401 1.14 – 1.18). In line with primary prevention findings, statin discontinuation among  
402 those with a history of CVD was most likely among people of black ethnicity compared  
403 to those of white ethnicity (adjusted HR 1.76, 95% CI; 1.65 – 1.89) and the most  
404 deprived group compared to the least deprived group (HR 1.08, 95% CI; 1.04 – 1.12)  
405 however women were also more likely to discontinue than men (HR 1.08, 95% CI; 1.06  
406 – 1.11). Findings were also consistent with those according to CVD subtypes  
407 (Supplementary Figure 6). Kaplan Meier curves in Supplementary Figures 7 and 8 show  
408 that the time to statin discontinuation for primary and secondary prevention was  
409 shortest among the youngest age-groups, those of Black ethnicity, the most deprived  
410 socioeconomic groups, those with a CVD risk score below threshold (primary  
411 prevention only) and those with peripheral arterial disease (secondary prevention  
412 only). In addition, the curves were steepest for those with CVD risk score below  
413 threshold for initiation (primary prevention only) and for peripheral arterial disease  
414 (secondary prevention only).

415

## Figure 5

### 416 Re-initiation

417 For both primary and secondary prevention, older people particularly those in the 70+  
418 age group compared to 25-39 group, people of South Asian, black and mixed ethnicity  
419 compared to white people and people in the most deprived groups compared to the  
420 least deprived groups were most likely to restart statins with statin re-initiation highest  
421 in the 70+ age group compared to 25-39 age group adjusted HR 1.39 (95% CI, 1.25 –  
422 1.55) for secondary prevention(Supplementary Figure 9). Women were less likely to re-  
423 initiate statins compared to men particularly for secondary prevention HR 0.87 (95%  
424 CI, 0.85 – 0.90). Similar associations were seen for all CVD subtypes except peripheral  
425 arterial disease (Supplementary Figure 10) and Kaplan-Meier curves depicting time  
426 from statin discontinuation to re-initiation are presented in Supplementary Figures 11  
427 and 12).

428

## Table 2

### 429 Number of CVD events prevented with optimal statin use and healthcare costs 430 saved

431 Table 2 depicts the number of cardiovascular events that could be avoided based on  
432 current and 100% statin prevalence among those eligible for primary and secondary  
433 prevention. For primary prevention, 102,306 additional cardiovascular events would be  
434 prevented over 10 years if all eligible individuals were taking statins across England.  
435 For secondary prevention, 51,495 additional cardiovascular events could be prevented  
436 in England over 5 years if all individuals eligible were taking statins. If all CVD events  
437 from people currently not taking statins are avoided, £265.6 million, including the net

438 cost of statins, can be saved for the NHS for primary prevention and £139.8 million can  
439 be saved for secondary prevention (Supplementary Table 6).

#### 440 **Additional secondary and sensitivity analyses**

441 In additional secondary analyses, we stratified our main analyses by pre-pandemic and  
442 pandemic periods as shown in Supplementary Figures 13-16. These findings were  
443 broadly similar in the pre-pandemic and pandemic periods with larger confidence  
444 levels, owing to the smaller sample size, seen in the pandemic periods. Our sensitivity  
445 analyses were consistent with our main analyses as we observed minimal changes to  
446 our effect estimates (Supplementary Figures 17 and 18). Due to evidence of non-  
447 proportionality (Schoenfeld residuals test,  $p < 0.05$ ) for our Cox proportional hazards  
448 analyses on the association of demographic variables and risk of receiving a CVD risk  
449 assessment, statin discontinuation and statin initiation, we performed additional  
450 sensitivity analyses shown in Supplementary Tables 7-10. We found that risk of  
451 receiving a CVD was higher in the first 5 years from the start of follow up while  
452 individuals were less like to receive a CVD risk assessment more than 5 years after start  
453 of follow up. Statin discontinuation was less likely in the first 6 months of statin  
454 initiation in older age groups compared to more than 6 months and statin  
455 discontinuation was more likely among ethnic minority groups in the first 6 months  
456 than after 6 months for primary prevention with similar findings seen for secondary  
457 prevention. Analyses on re-initiation were consistent with our primary analysis.

458

459

## 460 **Discussion**

461 In our comprehensive population-based cohort study of 5 million adults in England, we  
462 report the following key findings: 1) between May 2009 and November 2021, we saw an  
463 increase in statin prevalence for primary and secondary prevention among the 70+ age  
464 group while CVD risk assessment rose steadily over time from 15% to 32%, 2) the  
465 monthly prevalence of statins was lowest among black, mixed and other ethnicity and  
466 those in the most deprived socioeconomic quintile, however these groups, including  
467 people of south Asian ethnicity were more likely to receive a CVD risk assessment  
468 compared to the white ethnic group and least deprived groups, respectively, 3) 79.0%  
469 of individuals were initiated statins within 60 days of a CVD event. Statin initiation for  
470 secondary prevention was highest among people of South Asian ethnicity compared to  
471 those of white ethnicity but least likely among the black ethnic group compared to  
472 white ethnic group and among women compared to men, 4) 26.3% and 10.0% of  
473 individuals had discontinued statins within a year of statin initiation for primary and  
474 secondary prevention, respectively. Black people, the most deprived socioeconomic  
475 group and women (secondary prevention only) were most likely to discontinue statins  
476 compared to white people, least deprived groups, and men, respectively. These same  
477 groups including people of south Asian ethnicity and the 70+ age group compared to the  
478 white and 25-39 groups, respectively, were most likely to re-initiate statins for both  
479 primary and secondary prevention, 5) with optimal statin use among those eligible,  
480 around 100,000 additional cardiovascular events would be prevented over 10 years for  
481 primary prevention and 50,000 additional events over 5 years for secondary  
482 prevention. This would result in NHS healthcare cost savings of over £400 million.

## 483 **Comparison with other studies**

484 Our prevalence estimates are in line with a UK primary care study which observed a  
485 slowed rate of increase in statin prescription rates from 2007 onwards.(34)  
486 Cardiovascular risk scoring increased over time in our study, consistent with previous  
487 studies, however we observed a decline in recorded risk scores during the pandemic  
488 period.(7, 35) The COVID-19 pandemic severely impacted primary care services, with a  
489 substantial reduction in primary care contacts for CVD after the introduction of  
490 population-wide restrictions.(36) In agreement with our findings, between 2019/20  
491 and 2020/21, the proportion of people invited for an NHS Health Check declined by  
492 82% with the proportion of people taking up an NHS Health Check invite also declining  
493 by 84%, leading to a backlog and suboptimal care. (37-39) Prior to the pandemic,  
494 findings from a systematic review showed inequalities in the NHS health check with  
495 coverage and uptake higher among older age groups and females between 2009 and  
496 2016.(40) Similarly, we found that women and older age groups were more likely to  
497 receive a CVD risk assessment, which is part of the NHS health check. Inequalities in  
498 CVD risk assessment have implications for statin use as receiving a CVD risk assessment  
499 increases the likelihood of a statin prescription.(10)

500 We found that statin initiation was less likely in older age groups compared to the 40-49  
501 age group, in our primary prevention cohort among people with a recorded CVD risk  
502 score. This finding is in conflict with an English study using The Health Improvement  
503 Network (THIN) primary care data which found that statin initiation rate increased with  
504 age up to 70-74 years old. (41) Unlike our study, the THIN study did not restrict the  
505 study population to those with a CVD risk score above threshold for statin initiation.  
506 Conditioning on statin eligibility threshold in our study may have resulted in other  
507 factors associated with statin initiation being more predictive of initiation than age  
508 which may explain the differences in findings. Among people with CVD, our findings

509 were consistent with other studies which found that women and black people were less  
510 likely to initiate lipid-lowering drugs than men and white people, respectively, while the  
511 south Asian ethnic group is more likely to initiate statins compared to the white  
512 group.(42, 43) Previous studies have shown that statins are less likely to be prescribed  
513 in black ethnic groups compared to white ethnic groups. (44, 45) Similarly, our  
514 secondary prevention results of a lack of association between deprivation and statin  
515 initiation is consistent with another UK study.(42)

516 We found that a high proportion of those who discontinued statins re-initiated which is  
517 in agreement with a Scottish CPRD study that found that 72% and 75% of those who  
518 discontinued for primary and secondary prevention, respectively, also re-initiated  
519 statins. Consistent with our findings, the authors also reported that women and black,  
520 south Asian and other ethnic minority groups were more likely to discontinue statins  
521 compared to men and the white ethnic group, respectively.(46) For statin re-initiation,  
522 the study also found that women were less likely to re-initiate statins for secondary  
523 prevention than men while black and Asian groups were more likely to re-initiate  
524 statins than white group.(46)

525 Ethnic differences observed in our study may be a result of residual confounding as we  
526 were unable to account for factors such as cholesterol levels due to high level of  
527 missingness or understand the reasons for under-prescribing and discontinuation of  
528 statins. A previous UK study found that most patients initiated on statins had no  
529 previous CVD risk score. In the absence of a CVD risk score, cholesterol levels were  
530 found to be the main predictor of statin initiation.(7, 47) Prior studies have reported  
531 that people of black ethnicity are associated with lower than expected rates of access to  
532 and use of NHS cardiovascular care.(48) Evidence suggests that healthcare

533 professionals experience considerable uncertainty in supporting ethnically diverse  
534 patients which leads to hesitance and contributes to ethnic health care inequalities.(49)  
535 Structural racism, discrimination and distrust have also been identified as key factors  
536 that negatively impact healthcare.(50) Deprivation has also been associated with CVD,  
537 with people living in the most deprived areas four times more likely to die prematurely  
538 from cardiovascular diseases.(51)

539 Statin discontinuation could have been affected by statin intensity as high-intensity  
540 statins could potentially increase the risk of side effects. However, a recent study in  
541 Scotland found that discontinuation was less likely in those treated with high intensity  
542 statins compared to moderate intensity.(52) Further studies are needed to explore this  
543 link in England. Additionally, concerns on the risks and benefits of statins, particularly  
544 following media coverage, may have contributed to an increase in statin  
545 discontinuation.(53)

## 546 **Strengths and Limitations**

547 Our large cohort of 5 million individuals is the first to comprehensively assess  
548 inequalities across all stages of statin use in England for primary and secondary  
549 prevention to the best of our knowledge. Other strengths of our study include a long  
550 follow-up period of 13 years and the use of linked primary and secondary electronic  
551 records broadly representative of the UK population in terms of age, gender, ethnicity  
552 and geographical location and well recorded GP prescription data.(54)

553 There were several limitations in our study. Firstly, in our cardiovascular risk  
554 assessment, discontinuation, and re-initiation analyses, we did not adjust for non-fixed  
555 covariates such as BMI and smoking status due to a lack of time-updated information on  
556 these factors. Furthermore, data on cholesterol and blood pressure measurements had a



557 high proportion of missing data thus these factors were not adjusted for in our initiation  
558 analyses. As a result, we cannot rule out residual confounding. Secondly, low intensity  
559 statins can be purchased over the counter and thus we were not able to capture  
560 information on statin use outside of primary care. Third, the reasons for statin  
561 discontinuation are not well captured in primary care records thus we were unable to  
562 explore this. Fourth, there is no data on whether individuals actually collected their  
563 statin prescription or took their medication thus misclassification of statin  
564 discontinuation is possible as we cannot be certain of when they discontinued statins.  
565 Fifth, estimates on the number of cardiovascular events prevented and costs reduced  
566 rely on assumptions such as the cardiovascular risk and cost of hospitalisations  
567 remaining constant over time. Sixth, although we assessed changes in statin prescribing,  
568 we did not investigate whether there was a change in the incidence of cardiovascular  
569 events over time particularly during the COVID-19 pandemic though this has recently  
570 been reported.(36) We assessed this for primary prevention by observing changes in  
571 CVD risk category over the 13-year study period.

## 572 **Conclusion**

573 We observed inequalities by age, gender, ethnicity and deprivation across multiple  
574 stages of statin use including statin prevalence, CVD risk scoring, initiation,  
575 discontinuation and re-initiation. Optimising statin use among those eligible, could lead  
576 to over 150,000 reduced CVD events leading to substantial NHS savings of over £400  
577 million. Further research is needed to understand the reasons for under prescribing and  
578 discontinuation of statins particularly among women, black ethnic groups and the most  
579 deprived socioeconomic groups.

580 Our study suggests that there is an opportunity to optimise statin treatment through  
581 improving CVD risk assessment. Reductions in CVD risk assessment during the COVID-  
582 19 pandemic highlights the urgent need to improve uptake of routine CVD risk  
583 assessment to minimise missed opportunities for statin treatment thereby reducing  
584 preventable CVD events and additional costs to the NHS. This also has implications for  
585 pandemic planning to ensure important health services can be maintained during  
586 periods of reduced in person contact. Future qualitative studies are also needed to  
587 explore drivers of variation in statin adherence to understand which groups of patients  
588 are less likely to adhere to treatment and thus should be specifically targeted through  
589 education and prescribing strategies to reduce preventable CVD events in these groups.

590 **Contributors:** All authors contributed to the conception and/or design of this study.  
591 RM analyses the data and wrote the first draft of the manuscript. All authors were  
592 involved in the data interpretation and revision of the manuscript.

593 **Funding:** This study was funded by the British Heart Foundation (PG/19/71/34632).

594 **Ethical approval:** Our study protocol was approved via CPRD's Research Data  
595 Governance (RDG) process (study ID 22\_001872). Ethical approval was also obtained  
596 from the London School of Hygiene and Tropical Medicine research ethics committee  
597 (reference: 28002)

598 **Data sharing:** Study protocol, analysis codes, codelists and additional results for this  
599 study can be accessed at [https://github.com/RutendoMuzambi/trends\\_statin\\_use](https://github.com/RutendoMuzambi/trends_statin_use). Data  
600 were obtained from the CPRD and are not publicly available. Access to CPRD data is  
601 dependent upon approval of a study protocol via CPRD's RDG process (details at  
602 <https://cprd.com/research-applications>)

603 **Transparency:**

604 The lead author affirms that this manuscript is an honest, accurate, and transparent  
605 account of the study being reported; that no important aspects of the study have been  
606 omitted; and that any discrepancies from the study as planned (and, if relevant,  
607 registered) have been explained.

608

609 **References**

- 610 1. World Health Organization. Cardiovascular diseases (CVDs) 2021 [02/04/2024]. Available  
611 from: [https://www.who.int/news-room/fact-sheets/detail/cardiovascular-diseases-\(cvds\)](https://www.who.int/news-room/fact-sheets/detail/cardiovascular-diseases-(cvds)).
- 612 2. British Heart Foundation. Facts and Figures 2024 [Available from:  
613 <https://www.bhf.org.uk/what-we-do/news-from-the-bhf/contact-the-press-office/facts-and-figures#:~:text=Heart%20and%20circulatory%20diseases%20cause,men%20and%203.6%20million%20women>.  
614 [20women](https://www.bhf.org.uk/what-we-do/news-from-the-bhf/contact-the-press-office/facts-and-figures#:~:text=Heart%20and%20circulatory%20diseases%20cause,men%20and%203.6%20million%20women).  
615
- 616 3. Baigent C, Blackwell L, Emberson J, Holland LE, Reith C, Bhalra N, et al. Efficacy and safety of  
617 more intensive lowering of LDL cholesterol: a meta-analysis of data from 170,000 participants in 26  
618 randomised trials. *Lancet*. 2010;376(9753):1670-81.
- 619 4. Collins R, Reith C, Emberson J, Armitage J, Baigent C, Blackwell L, et al. Interpretation of the  
620 evidence for the efficacy and safety of statin therapy. *Lancet*. 2016;388(10059):2532-61.
- 621 5. NHSBA. Prescription Cost Analysis – England – 2022-23 [Available from:  
622 [https://www.nhsbsa.nhs.uk/statistical-collections/prescription-cost-analysis-england/prescription-  
623 cost-analysis-england-2022-23](https://www.nhsbsa.nhs.uk/statistical-collections/prescription-cost-analysis-england/prescription-cost-analysis-england-2022-23).
- 624 6. Tjeerd-Pieter van S, Liam S, Edmond SWN, Ben G, Martin G. The efficiency of cardiovascular  
625 risk assessment: do the right patients get statin treatment? *Heart*. 2013;99(21):1597.
- 626 7. Finnikin S, Ryan R, Marshall T. Statin initiations and QRISK2 scoring in UK general practice: a  
627 THIN database study. *Br J Gen Pract*. 2017;67(665):e881-e7.
- 628 8. Ueda P, Lung TW-C, Lu Y, Salomon JA, Rahimi K, Clarke P, Danaei G. Treatment gaps and  
629 potential cardiovascular risk reduction from expanded statin use in the US and England. *PLOS ONE*.  
630 2018;13(3):e0190688.
- 631 9. Homer K, Boomla K, Hull S, Dostal I, Mathur R, Robson J. Statin prescribing for primary  
632 prevention of cardiovascular disease: a cross-sectional, observational study. *Br J Gen Pract*.  
633 2015;65(637):e538-44.
- 634 10. Chang KC, Soljak M, Lee JT, Woringer M, Johnston D, Khunti K, et al. Coverage of a national  
635 cardiovascular risk assessment and management programme (NHS Health Check): Retrospective  
636 database study. *Prev Med*. 2015;78:1-8.
- 637 11. Millett C, Gray J, Saxena S, Netuveli G, Khunti K, Majeed A. Ethnic disparities in diabetes  
638 management and pay-for-performance in the UK: the Wandsworth Prospective Diabetes Study. *PLoS  
639 medicine*. 2007;4(6):e191.
- 640 12. Ashworth M, Lloyd D, Smith RS, Wagner A, Rowlands G. Social deprivation and statin  
641 prescribing: a cross-sectional analysis using data from the new UK general practitioner 'Quality and  
642 Outcomes Framework'. *Journal of public health (Oxford, England)*. 2007;29(1):40-7.

- 643 13. Homer K, Boomla K, Hull S, Dostal I, Mathur R, Robson J. Statin prescribing for primary  
644 prevention of cardiovascular disease: a cross-sectional, observational study. *The British journal of*  
645 *general practice : the journal of the Royal College of General Practitioners*. 2015;65(637):e538-e44.
- 646 14. Wu J, Zhu S, Yao GL, Mohammed MA, Marshall T. Patient Factors Influencing the Prescribing  
647 of Lipid Lowering Drugs for Primary Prevention of Cardiovascular Disease in UK General Practice: A  
648 National Retrospective Cohort Study. *PLOS ONE*. 2013;8(7):e67611.
- 649 15. Finnikin S, Willis BH, Ryan R, Evans T, Marshall T. Factors predicting statin prescribing for  
650 primary prevention: a historical cohort study. *The British journal of general practice : the journal of*  
651 *the Royal College of General Practitioners*. 2021;71(704):e219-e25.
- 652 16. Millett C, Saxena S, Ng A, Mainous A, 3rd, Majeed A. Socio-economic status, ethnicity and  
653 diabetes management: an analysis of time trends using the health survey for England. *Journal of*  
654 *public health (Oxford, England)*. 2007;29(4):413-9.
- 655 17. Murphy C, Bennett K, Fahey T, Shelley E, Graham I, Kenny RA. Statin use in adults at high risk  
656 of cardiovascular disease mortality: cross-sectional analysis of baseline data from The Irish  
657 Longitudinal Study on Ageing (TILDA). *BMJ Open*. 2015;5(7):e008017.
- 658 18. Aubert RE, Yao J, Xia F, Garavaglia SB. Is there a relationship between early statin compliance  
659 and a reduction in healthcare utilization? *Am J Manag Care*. 2010;16(6):459-66.
- 660 19. Thompson W, Morin L, Jarbøl DE, Andersen JH, Ernst MT, Nielsen JB, et al. Statin  
661 Discontinuation and Cardiovascular Events Among Older People in Denmark. *JAMA Network Open*.  
662 2021;4(12):e2136802-e.
- 663 20. Wolf A, Dedman D, Campbell J, Booth H, Lunn D, Chapman J, Myles P. Data resource profile:  
664 Clinical Practice Research Datalink (CPRD) Aurum. *International Journal of Epidemiology*.  
665 2019;48(6):1740-g.
- 666 21. Herbert A, Wijlaars L, Zylbersztejn A, Cromwell D, Hardelid P. Data Resource Profile: Hospital  
667 Episode Statistics Admitted Patient Care (HES APC). *Int J Epidemiol*. 2017;46(4):1093-i.
- 668 22. CPRD. CPRD Aurum January 2022 Dataset 2023 [Available from: [https://cprd.com/cprd-](https://cprd.com/cprd-aurum-january-2022-dataset)  
669 [aurum-january-2022-dataset](https://cprd.com/cprd-aurum-january-2022-dataset)].
- 670 23. Nicholls SG, Langan SM, Sørensen HT, Petersen I, Benchimol EI. The RECORD reporting  
671 guidelines: meeting the methodological and ethical demands of transparency in research using  
672 routinely-collected health data. *Clin Epidemiol*. 2016;8:389-92.
- 673 24. John R, Isabel D, Aziz S, Sandra E, Vichithranie M, Chris G, et al. The NHS Health Check in  
674 England: an evaluation of the first 4 years. *BMJ Open*. 2016;6(1):e008840.
- 675 25. Hippisley-Cox J, Coupland C, Vinogradova Y, Robson J, May M, Brindle P. Derivation and  
676 validation of QRISK, a new cardiovascular disease risk score for the United Kingdom: prospective  
677 open cohort study. *Bmj*. 2007;335(7611):136.
- 678 26. Hippisley-Cox J, Coupland C, Vinogradova Y, Robson J, Minhas R, Sheikh A, Brindle P.  
679 Predicting cardiovascular risk in England and Wales: prospective derivation and validation of QRISK2.  
680 *Bmj*. 2008;336(7659):1475-82.
- 681 27. Lloyd-Jones DM, Wilson PW, Larson MG, Beiser A, Leip EP, D'Agostino RB, Levy D.  
682 Framingham risk score and prediction of lifetime risk for coronary heart disease. *Am J Cardiol*.  
683 2004;94(1):20-4.
- 684 28. de la Iglesia B, Potter JF, Poulter NR, Robins MM, Skinner J. Performance of the ASSIGN  
685 cardiovascular disease risk score on a UK cohort of patients from general practice. *Heart*.  
686 2011;97(6):491-9.
- 687 29. NICE. Cardiovascular disease: risk assessment and reduction, including lipid modification  
688 [Available from: <https://www.nice.org.uk/guidance/cg181>].
- 689 30. England N. National Cost Collection for the NHS 2022 [Available from:  
690 <https://www.england.nhs.uk/costing-in-the-nhs/national-cost-collection/>].
- 691 31. NHSBA. Prescription Cost Analysis - England - 2021/22 2022 [Available from:  
692 [https://www.nhsbsa.nhs.uk/statistical-collections/prescription-cost-analysis-england/prescription-](https://www.nhsbsa.nhs.uk/statistical-collections/prescription-cost-analysis-england/prescription-cost-analysis-england-202122)  
693 [cost-analysis-england-202122](https://www.nhsbsa.nhs.uk/statistical-collections/prescription-cost-analysis-england/prescription-cost-analysis-england-202122)].

- 694 32. Armitage J, Baigent C, Barnes E, Betteridge DJ, Blackwell L, Blazing M, et al. Efficacy and  
695 safety of statin therapy in older people: a meta-analysis of individual participant data from 28  
696 randomised controlled trials. *The Lancet*. 2019;393(10170):407-15.
- 697 33. Office for National Statistics. Census 2023 [Available from: <https://www.ons.gov.uk/census>.  
698 34. O'Keeffe AG, Nazareth I, Petersen I. Time trends in the prescription of statins for the primary  
699 prevention of cardiovascular disease in the United Kingdom: a cohort study using The Health  
700 Improvement Network primary care data. *Clin Epidemiol*. 2016;8:123-32.
- 701 35. Pate A, Emsley R, Staa Tv. Impact of lowering the risk threshold for statin treatment on statin  
702 prescribing: a descriptive study in English primary care. *British Journal of General Practice*.  
703 2020;70(700):e765-e71.
- 704 36. Mansfield KE, Mathur R, Tazare J, Henderson AD, Mulick AR, Carreira H, et al. Indirect acute  
705 effects of the COVID-19 pandemic on physical and mental health in the UK: a population-based  
706 study. *Lancet Digit Health*. 2021;3(4):e217-e30.
- 707 37. Public Health England. NHS Health Check - Data - People invited for an NHS Health Check per  
708 year 2024 [Available from: [https://fingertips.phe.org.uk/profile/nhs-health-check-  
709 detailed/data#page/4/gid/1938132726/pat/159/par/K02000001/ati/15/are/E92000001/iid/91733/a  
710 ge/219/sex/4/cat/-1/ctp/-1/yrr/1/cid/4/tbm/1/page-options/tre-do-0](https://fingertips.phe.org.uk/profile/nhs-health-check-detailed/data#page/4/gid/1938132726/pat/159/par/K02000001/ati/15/are/E92000001/iid/91733/age/219/sex/4/cat/-1/ctp/-1/yrr/1/cid/4/tbm/1/page-options/tre-do-0).
- 711 38. Public Health England. NHS Health Check - Data - People taking up an NHS Health Check  
712 invite per year 2024 [Available from: [https://fingertips.phe.org.uk/profile/nhs-health-check-  
713 detailed/data#page/4/gid/1938132726/pat/159/par/K02000001/ati/15/are/E92000001/iid/91735/a  
714 ge/219/sex/4/cat/-1/ctp/-1/yrr/1/cid/4/tbm/1/page-options/tre-do-0](https://fingertips.phe.org.uk/profile/nhs-health-check-detailed/data#page/4/gid/1938132726/pat/159/par/K02000001/ati/15/are/E92000001/iid/91735/age/219/sex/4/cat/-1/ctp/-1/yrr/1/cid/4/tbm/1/page-options/tre-do-0).
- 715 39. Levene LS, Seidu S, Greenhalgh T, Khunti K. Pandemic threatens primary care for long term  
716 conditions. *BMJ*. 2020;371:m3793.
- 717 40. Martin A, Saunders CL, Harte E, Griffin SJ, MacLure C, Mant J, et al. Delivery and impact of  
718 the NHS Health Check in the first 8 years: a systematic review. *British Journal of General Practice*.  
719 2018;68(672):e449-e59.
- 720 41. O'Keeffe AG, Petersen I, Nazareth I. Initiation rates of statin therapy for the primary  
721 prevention of cardiovascular disease: an assessment of differences between countries of the UK and  
722 between regions within England. *BMJ Open*. 2015;5(3):e007207.
- 723 42. Mathur R, Badrick E, Boomla K, Bremner S, Hull S, Robson J. Prescribing in general practice  
724 for people with coronary heart disease; equity by age, sex, ethnic group and deprivation. *Ethnicity &  
725 Health*. 2011;16(2):107-23.
- 726 43. Carey IM, DeWilde S, Shah SM, Harris T, Whincup PH, Cook DG. Statin use after first  
727 myocardial infarction in UK men and women from 1997 to 2006: Who started and who continued  
728 treatment? *Nutrition, Metabolism and Cardiovascular Diseases*. 2012;22(5):400-8.
- 729 44. Millett C, Gray J, Wall M, Majeed A. Ethnic disparities in coronary heart disease management  
730 and pay for performance in the UK. *J Gen Intern Med*. 2009;24(1):8-13.
- 731 45. Eastwood SV, Mathur R, Sattar N, Smeeth L, Bhaskaran K, Chaturvedi N. Ethnic differences in  
732 guideline-indicated statin initiation for people with type 2 diabetes in UK primary care, 2006–2019: A  
733 cohort study. *PLOS Medicine*. 2021;18(6):e1003672.
- 734 46. Vinogradova Y, Coupland C, Brindle P, Hippisley-Cox J. Discontinuation and restarting in  
735 patients on statin treatment: prospective open cohort study using a primary care database. *BMJ*.  
736 2016;353:i3305.
- 737 47. Finnikin S, Willis BH, Ryan R, Evans T, Marshall T. Factors predicting statin prescribing for  
738 primary prevention: a historical cohort study. *Br J Gen Pract*. 2021;71(704):e219-e25.
- 739 48. Asthana S, Moon G, Gibson A, Bailey T, Hewson P, Dibben C. Inequity in cardiovascular care  
740 in the English National Health Service (NHS): a scoping review of the literature. *Health & Social Care  
741 in the Community*. 2018;26(3):259-72.
- 742 49. Kai J, Beavan J, Faull C, Dodson L, Gill P, Beighton A. Professional uncertainty and  
743 disempowerment responding to ethnic diversity in health care: a qualitative study. *PLOS Med*.  
744 2007;4(11):e323.

- 745 50. Danso A, Danso Y. The complexities of race and health. *Future Healthc J.* 2021;8(1):22-7.  
746 51. Public Health England. Health Inequalities Dashboard: statistical commentary, March 2021  
747 2021 [Available from: [https://www.gov.uk/government/statistics/health-inequalities-dashboard-](https://www.gov.uk/government/statistics/health-inequalities-dashboard-march-2021-data-update/health-inequalities-dashboard-statistical-commentary-march-2021)  
748 [march-2021-data-update/health-inequalities-dashboard-statistical-commentary-march-2021](https://www.gov.uk/government/statistics/health-inequalities-dashboard-statistical-commentary-march-2021).  
749 52. Rezende Macedo do Nascimento RC, Mueller T, Godman B, MacBride Stewart S, Hurding S,  
750 de Assis Acurcio F, et al. Real-world evaluation of the impact of statin intensity on adherence and  
751 persistence to therapy: A Scottish population-based study. *British Journal of Clinical Pharmacology.*  
752 2020;86(12):2349-61.  
753 53. Matthews A, Herrett E, Gasparrini A, Staa TV, Goldacre B, Smeeth L, Bhaskaran K. Impact of  
754 statin related media coverage on use of statins: interrupted time series analysis with UK primary  
755 care data. *BMJ.* 2016;353:i3283.  
756 54. Shiekh SI, Harley M, Ghosh RE, Ashworth M, Myles P, Booth HP, Axson EL. Completeness,  
757 agreement, and representativeness of ethnicity recording in the United Kingdom's Clinical Practice  
758 Research Datalink (CPRD) and linked Hospital Episode Statistics (HES). *Population Health Metrics.*  
759 2023;21(1):3.

760

761

762

## 763 TABLES AND FIGURES

764 Table 1A: Baseline Characteristics of individuals included in the prevalence, initiation, discontinuation and re-initiation cohorts for  
765 primary prevention

	Total Cohort	Prevalence	Initiation	Discontinuation	Re-initiation
<b>Total (N)</b>	4606274	4597500	432686	303292	116468
<b>Median Age (years, IQR)</b>	39.0 (29.0 to 53.0)	39.0 (29.0 to 53.0)	59.0 (52.0 to 64.0)	57.0 (48.0 to 65.0)	56.0 (47.0 to 64.0)
<b>Mean Age (years)</b>	43.1 (16.3)	43.1 (16.3)	58.1 (8.5)	56.4 (12.0)	55.3 (12.1)
<b>Age Group (years)</b>					
25-39	2438046 (52.9)	2437488 (53.0)	11617 (2.7)	30503 (10.1)	13814 (11.9)
40-49	826872 (18.0)	825401 (18.0)	73928 (17.1)	65955 (21.7)	27651 (23.7)
50-59	577159 (12.5)	574625 (12.5)	159485 (36.9)	88711 (29.2)	33158 (28.5)
60-69	406956 (8.8)	404167 (8.8)	162679 (37.6)	82383 (27.2)	29803 (25.6)
70-79	223390 (4.8)	222263 (4.8)	24977 (5.8)	29727 (9.8)	10460 (9.0)
80+	133851 (2.9)	133556 (2.9)	0 (0.0)	6013 (2.0)	1582 (1.4)
<b>Gender</b>					
Men	2266027 (49.2)	2261032 (49.2)	270384 (62.5)	160423 (52.9)	62833 (53.9)
Women	2340247 (50.8)	2336468 (50.8)	162302 (37.5)	142869 (47.1)	53635 (46.1)
<b>Ethnicity</b>					
White	3466710 (75.3)	3459201 (75.2)	373497 (86.3)	257561 (84.9)	93676 (80.4)
South Asian	355343 (7.7)	354653 (7.7)	30719 (7.1)	23054 (7.6)	11823 (10.2)
Black	212500 (4.6)	212261 (4.6)	11791 (2.7)	10293 (3.4)	5809 (5.0)
Mixed	69483 (1.5)	69402 (1.5)	2601 (0.6)	2340 (0.8)	1166 (1.0)
Other	143355 (3.1)	143206 (3.1)	4577 (1.1)	3896 (1.3)	1815 (1.6)
Missing	358883 (7.8)	358777 (7.8)	9501 (2.2)	6148 (2.0)	2179 (1.9)
<b>Deprivation</b>					
1. Least deprived	824622 (17.9)	823082 (17.9)	96920 (22.4)	63781 (21.0)	22290 (19.1)
2	823305 (17.9)	821586 (17.9)	91634 (21.2)	62264 (20.5)	22118 (19.0)
3	836752 (18.2)	834935 (18.2)	80348 (18.6)	58161 (19.2)	21530 (18.5)
4	905218 (19.7)	903485 (19.7)	75344 (17.4)	56091 (18.5)	22125 (19.0)
5. Most Deprived	1209860 (26.3)	1207909 (26.3)	88034 (20.3)	62719 (20.7)	28312 (24.3)
Missing	6517 (0.1)	6503 (0.1)	406 (0.1)	276 (0.1)	93 (0.1)
<b>Baseline BMI, kg/m<sup>2</sup></b>					
Underweight (<18.5)	103178 (2.2)	103099 (2.2)	3254 (0.8)	2387 (0.8)	863 (0.7)
Normal weight (18.5–24.9)	1785114 (38.8)	1783078 (38.8)	119720 (27.7)	82732 (27.3)	31483 (27.0)

Overweight (25.0–29.9)	1297608 (28.2)	1294388 (28.2)	172946 (40.0)	116778 (38.5)	45303 (38.9)
Obese or morbidly obese (≥30.0)	825131 (17.9)	821795 (17.9)	130797 (30.2)	96878 (31.9)	37375 (32.1)
Missing	595243 (12.9)	595140 (12.9)	5969 (1.4)	4517 (1.5)	1444 (1.2)
<b>Smoking Status</b>					
Non-smoker	1588277 (34.5)	1586733 (34.5)	88802 (20.5)	66595 (22.0)	25303 (21.7)
Current smoker	1399899 (30.4)	1396575 (30.4)	150028 (34.7)	101446 (33.4)	40840 (35.1)
Former smoker	1463110 (31.8)	1459214 (31.7)	192658 (44.5)	134624 (44.4)	50170 (43.1)
Missing	595243 (12.9)	154978 (3.4)	1198 (0.3)	627 (0.2)	155 (0.1)
<b>Systolic blood pressure</b>	125.6 (15.9)	125.6 (15.9)	134.4 (15.0)	134.0 (15.6)	133.6 (15.9)
<b>Diastolic blood pressure</b>	76.3 (9.9)	76.3 (9.9)	80.6 (9.2)	80.4 (9.5)	80.5 (9.6)
<b>HDL</b>	1.4 (0.4)	1.4 (0.4)	1.4 (0.4)	1.4 (0.4)	1.4 (0.4)
<b>LDL</b>	3.0 (1.0)	3.0 (1.0)	3.2 (1.0)	3.6 (0.9)	3.6 (0.9)
<b>TCHL</b>	5.1 (1.1)	5.1 (1.1)	5.3 (1.1)	5.7 (1.0)	5.8 (1.1)
<b>THDL</b>	3.8 (1.3)	3.8 (1.3)	4.2 (1.3)	4.4 (1.3)	4.5 (1.3)
<b>Hypertension</b>	592472 (12.9)	588428 (12.8)	142163 (32.9)	89459 (29.5)	32695 (28.1)
<b>Treated Hypertension</b>	374491 (8.1)	371753 (8.1)	92290 (21.3)	51628 (17.0)	18692 (16.0)
<b>Type II diabetes mellitus</b>	183683 (4.0)	182246 (4.0)	42879 (9.9)	21432 (7.1)	8880 (7.6)
<b>Atrial Fibrillation</b>	55364 (1.2)	54847 (1.2)	7941 (1.8)	6408 (2.1)	2081 (1.8)
<b>Chronic kidney disease</b>	121868 (2.6)	121206 (2.6)	5501 (1.3)	13361 (4.4)	4712 (4.0)
<b>Rheumatoid Arthritis</b>	36486 (0.8)	36293 (0.8)	7828 (1.8)	4873 (1.6)	1839 (1.6)
The prevalence cohort includes individuals aged 25 years and older without pre-existing cardiovascular disease who are alive on or after 30/04/2009. This allowed for a grace period of 28 days between prescriptions in order to define a current statin user as having an ongoing statin prescription based on the number of days prescribed.					

766

767 **Table 1B: Baseline Characteristics of individuals included in the prevalence, initiation, discontinuation and re-initiation cohorts for**  
768 **secondary prevention**

	<b>Total</b>	<b>Prevalence</b>	<b>Initiation</b>	<b>Discontinuation</b>	<b>Re-initiation</b>
<b>Total (N)</b>	416431	406746	146811	122743	27257
<b>Median Age (years, IQR)</b>	70.0 (59.0 to 79.0)	70.0 (59.0 to 79.0)	63.0 (53.0 to 73.0)	63.0 (53.0 to 72.0)	61.0 (51.0 to 70.0)
<b>Mean Age (years)</b>	68.5 (14.1)	68.6 (14.1)	62.9 (13.7)	62.4 (12.9)	60.9 (12.6)
<b>Age Group (years)</b>					
25-39	12870 (3.1)	12537 (3.1)	7995 (5.4)	5591 (4.6)	1447 (5.3)
40-49	35598 (8.5)	34515 (8.5)	21298 (14.5)	18331 (14.9)	4745 (17.4)



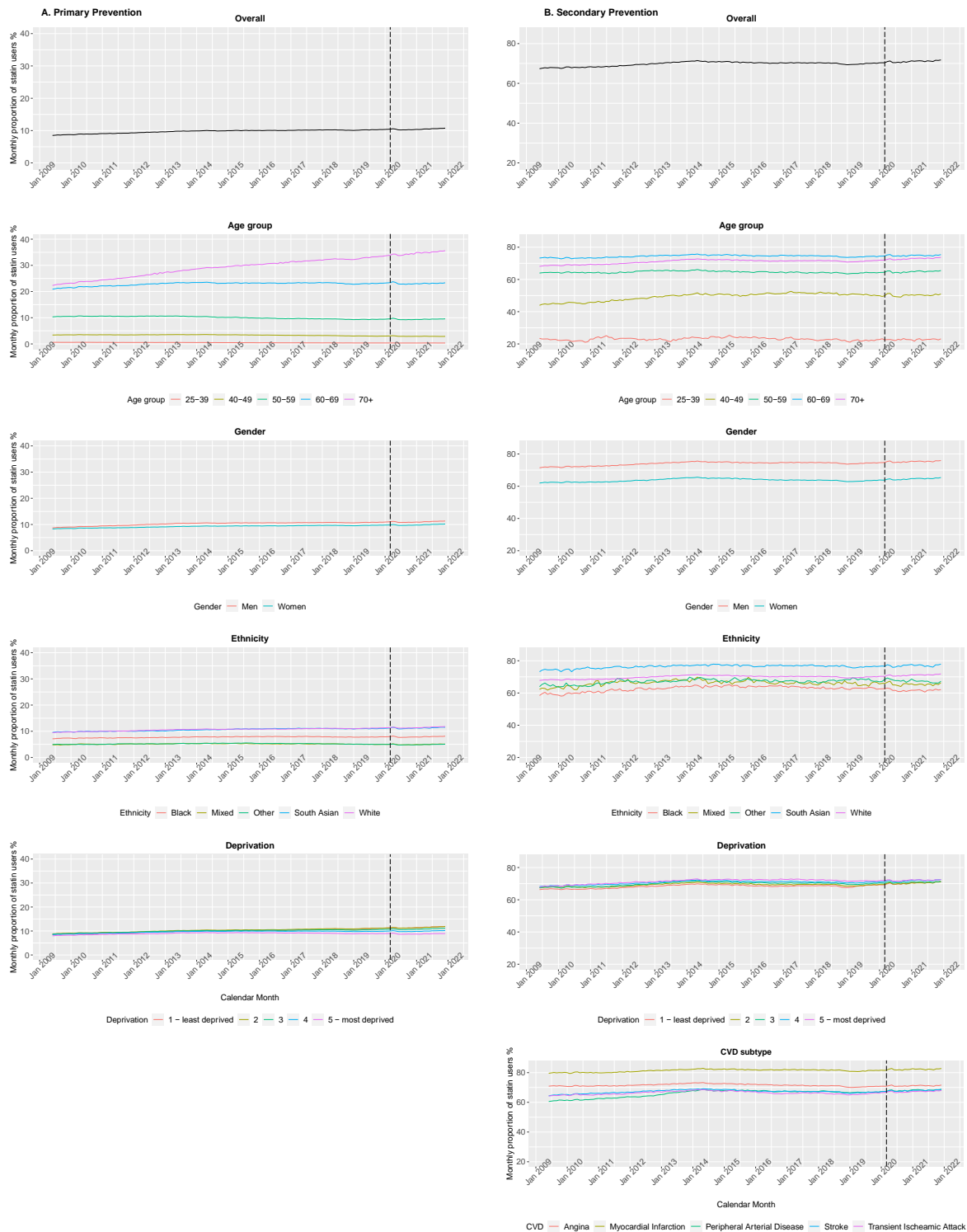
50-59	67340 (16.2)	65377 (16.1)	32368 (22.0)	29006 (23.6)	6800 (24.9)
60-69	102060 (24.5)	99424 (24.4)	38993 (26.6)	34557 (28.2)	7521 (27.6)
70-79	108820 (26.1)	106328 (26.1)	31229 (21.3)	25738 (21.0)	5329 (19.6)
80+	89743 (21.6)	88565 (21.8)	14928 (10.2)	9520 (7.8)	1415 (5.2)
<b>Gender</b>					
Men	236791 (56.9)	231886 (57.0)	84143 (57.3)	73375 (59.8)	16372 (60.1)
Women	179640 (43.1)	174860 (43.0)	62668 (42.7)	49368 (40.2)	10885 (39.9)
<b>Ethnicity</b>					
White	378677 (90.9)	369887 (90.9)	132765 (90.4)	110629 (90.1)	23956 (87.9)
South Asian	19333 (4.6)	18828 (4.6)	7410 (5.0)	6720 (5.5)	1793 (6.6)
Black	8469 (2.0)	8269 (2.0)	3301 (2.2)	2657 (2.2)	889 (3.3)
Mixed	2010 (0.5)	1961 (0.5)	805 (0.5)	665 (0.5)	167 (0.6)
Other	3238 (0.8)	3152 (0.8)	1191 (0.8)	997 (0.8)	265 (1.0)
Missing	4704 (1.1)	4649 (1.1)	1339 (0.9)	1075 (0.9)	187 (0.7)
<b>Deprivation</b>					
1. Least deprived	89102 (21.4)	87074 (21.4)	32581 (22.2)	26950 (22.0)	5626 (20.6)
2	89132 (21.4)	87139 (21.4)	31807 (21.7)	26453 (21.6)	5710 (20.9)
3	84599 (20.3)	82633 (20.3)	29476 (20.1)	24526 (20.0)	5414 (19.9)
4	79045 (19.0)	77214 (19.0)	27114 (18.5)	22817 (18.6)	5158 (18.9)
5. Most Deprived	73960 (17.8)	72102 (17.7)	25687 (17.5)	21887 (17.8)	5323 (19.5)
Missing	593 (0.1)	584 (0.1)	146 (0.1)	110 (0.1)	26 (0.1)
<b>Baseline BMI, kg/m2</b>					
Underweight (<18.5)	8111 (1.9)	7984 (2.0)	2050 (1.4)	1430 (1.2)	346 (1.3)
Normal weight (18.5–24.9)	120889 (29.0)	118335 (29.1)	43665 (29.7)	35052 (28.6)	8030 (29.5)
Overweight (25.0–29.9)	153583 (36.9)	150061 (36.9)	56271 (38.3)	48256 (39.3)	10606 (38.9)
Obese or morbidly obese (≥30.0)	115987 (27.9)	112663 (27.7)	41079 (28.0)	35602 (29.0)	7822 (28.7)
Missing	17861 (4.3)	17703 (4.4)	3746 (2.6)	2403 (2.0)	453 (1.7)
<b>Smoking Status</b>					
Non-smoker	78143 (18.8)	76470 (18.8)	27563 (18.8)	21603 (17.6)	4425 (16.2)
Current smoker	131105 (31.5)	127689 (31.4)	52726 (35.9)	45535 (37.1)	11021 (40.4)
Former smoker	205381 (49.3)	200795 (49.4)	66239 (45.1)	55450 (45.2)	11791 (43.3)
Missing	1802 (0.4)	1792 (0.4)	283 (0.2)	155 (0.1)	20 (0.1)
<b>Systolic blood pressure</b>	134.1 (16.6)	134.0 (16.6)	136.1 (16.2)	136.3 (15.9)	136.3 (16.5)
<b>Diastolic blood pressure</b>	76.5 (10.2)	76.5 (10.2)	79.2 (9.9)	79.4 (9.8)	80.0 (10.0)

<b>HDL</b>	1.4 (0.4)	1.4 (0.4)	1.4 (0.4)	1.4 (0.4)	1.4 (0.5)
<b>LDL</b>	2.6 (1.0)	2.6 (1.0)	3.1 (1.0)	3.1 (1.0)	3.2 (1.0)
<b>TCHL</b>	4.7 (1.2)	4.7 (1.2)	5.2 (1.2)	5.2 (1.2)	5.4 (1.2)
<b>THDL</b>	3.7 (1.2)	3.7 (1.2)	4.0 (1.3)	4.1 (1.4)	4.2 (1.4)
<b>Hypertension</b>	248691 (59.7)	242841 (59.7)	69240 (47.2)	57956 (47.2)	12444 (45.7)
<b>Treated Hypertension</b>	185192 (44.5)	181085 (44.5)	43617 (29.7)	36874 (30.0)	7684 (28.2)
<b>Type II diabetes mellitus</b>	83906 (20.1)	81394 (20.0)	21737 (14.8)	19495 (15.9)	4255 (15.6)
<b>Atrial Fibrillation</b>	55709 (13.4)	54771 (13.5)	10701 (7.3)	7718 (6.3)	24435 (89.6)
<b>Chronic kidney disease</b>	86709 (20.8)	84909 (20.9)	17721 (12.1)	13897 (11.3)	2822 (10.4)
<b>Rheumatoid Arthritis</b>	10677 (2.6)	10396 (2.6)	3426 (2.3)	2677 (2.2)	615 (2.3)
<b>CVD Subtype</b>					
Myocardial Infarction	71813 (17.2)	70554 (17.3)	27700 (18.9)	26342 (21.5)	4670 (17.1)
Stroke	78550 (18.9)	76253 (18.7)	33291 (22.7)	26798 (21.8)	5130 (18.8)
Angina	70555 (16.9)	69182 (17.0)	18760 (12.8)	15316 (12.5)	3742 (13.7)
Peripheral Arterial Disease	44043 (10.6)	42565 (10.5)	17725 (12.1)	13998 (11.4)	4015 (14.7)
Transient Ischaemic Attack	38758 (9.3)	37718 (9.3)	17770 (12.1)	14542 (11.8)	3696 (13.6)
Cerebrovascular procedures	211 (0.1)	210 (0.1)	95 (0.1)	85 (0.1)	22 (0.1)
The prevalence cohort includes individuals aged 25 years and older with prior CVD who are alive on or after 30/04/2009.					

769

770

771 **Figure 2. Monthly proportion of statin users for primary and secondary prevention**



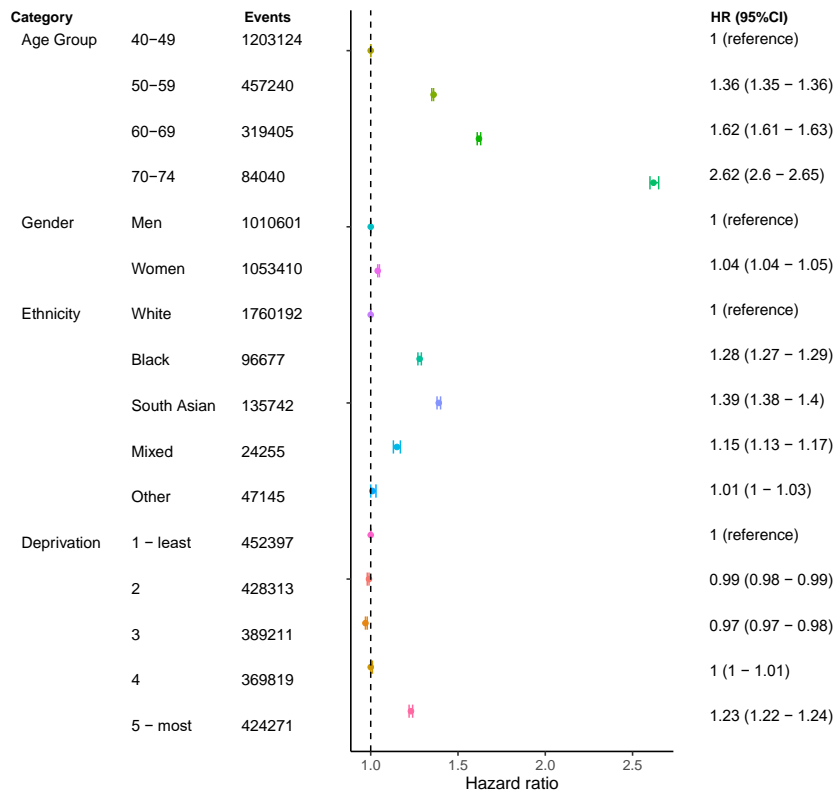
772

773

Monthly proportion of statin users from May 2009 to November 2021 for primary and secondary prevention of cardiovascular disease. **A.** represents the primary prevention population and the denominator for this cohort are individuals without a history of cardiovascular disease. **B.** represents the secondary prevention population and the denominator for this cohort are individuals a cardiovascular disease diagnosis.

774 **Figure 3. Adjusted hazard ratios for factors associated with receiving a recorded CVD risk**  
 775 **assessment**

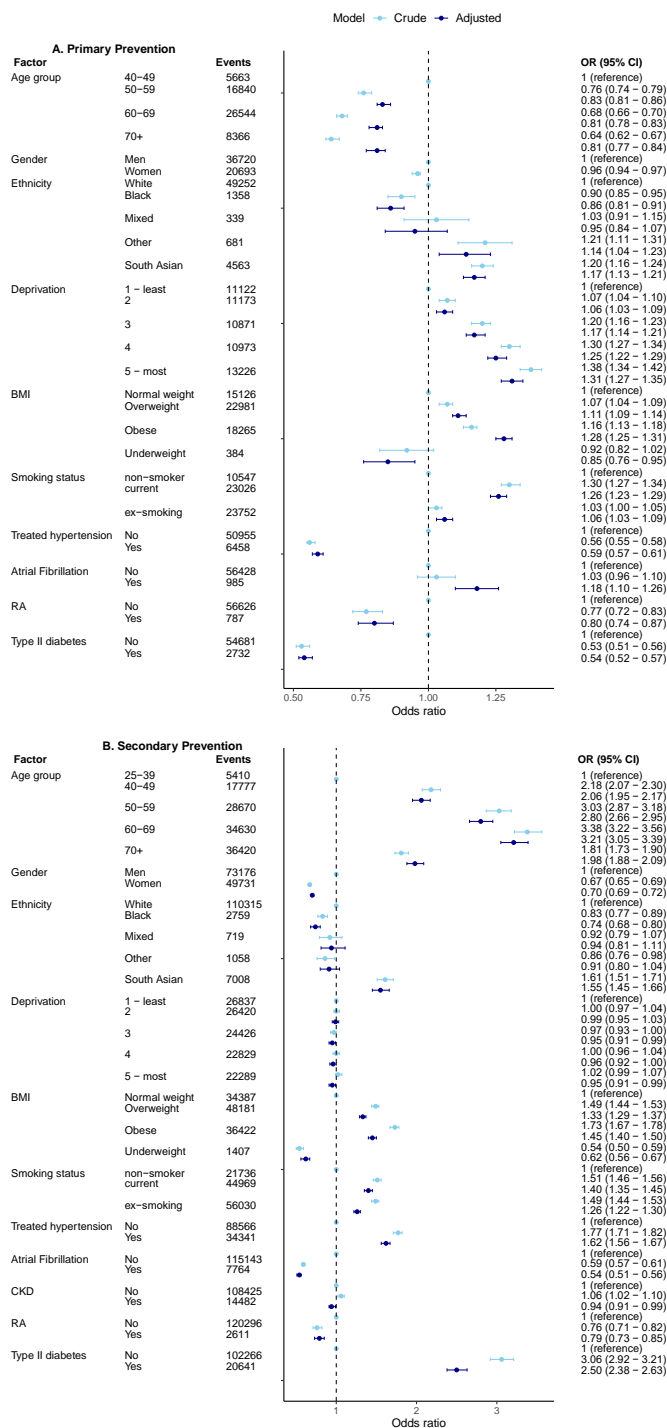
776



777

Hazard ratios from Cox proportional hazards regression model for the association between demographic factors and receiving a cardiovascular risk assessment, adjusted for gender, ethnicity and deprivation with age as the underlying time scale. Abbreviations: CI, confidence interval; HR, Hazard Ratio.

781 **Figure 4: Odds ratios for the factors associated with statin initiation for primary and**  
 782 **secondary prevention**

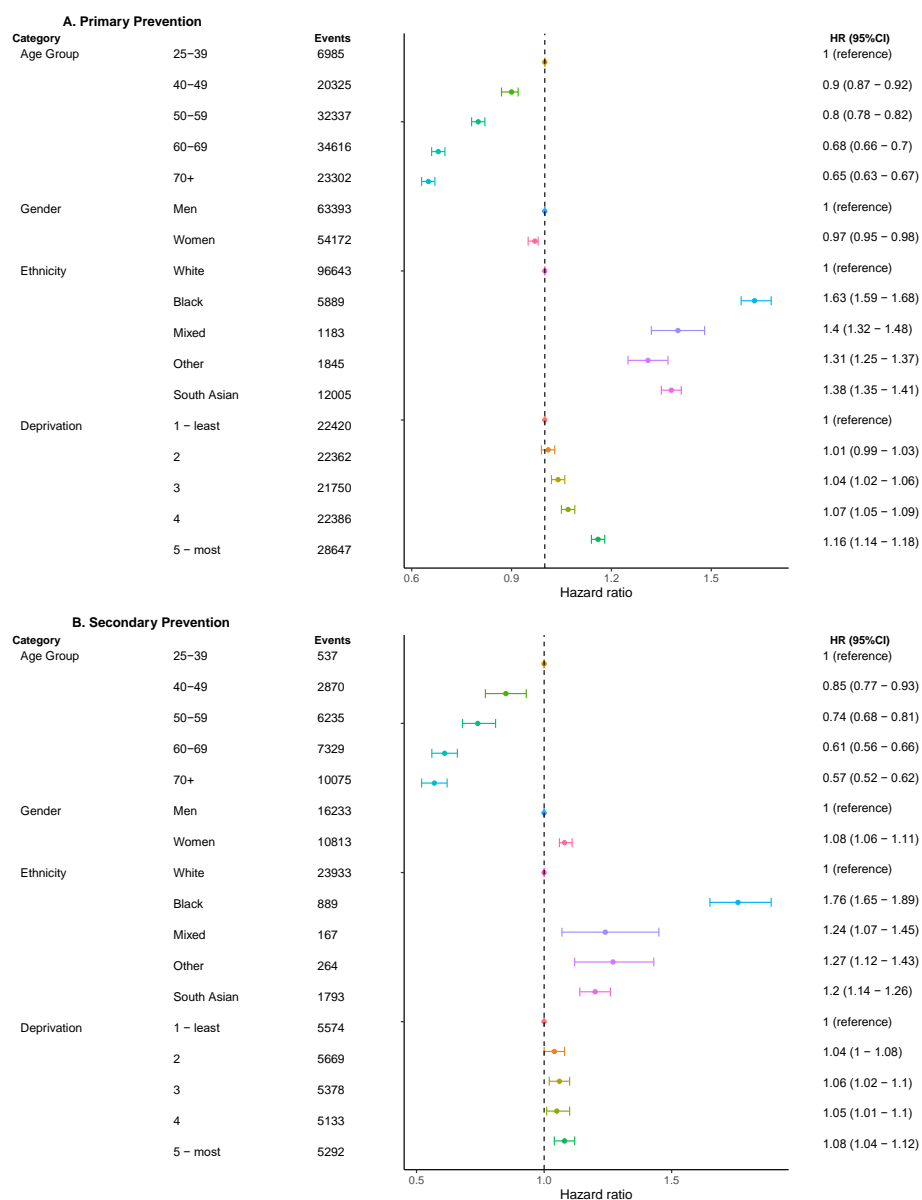


783

784

Odds ratios for factors associated with statin initiation for primary and secondary prevention. A. Primary prevention population which includes individuals with an above threshold GP recorded CVD risk score with statin initiation defined as having a statin prescription within 28 days of CVD risk score. B. Secondary prevention population comprising of individuals with a first CVD diagnosis during study period with statin initiation defined as having a statin prescription within 60 days of CVD diagnosis.

785 **Figure 5. Adjusted Hazard Ratios for factors associated with statin discontinuation for**  
 786 **primary and secondary CVD prevention.**



787

788

Hazard ratios from cox proportional hazards regression models for the association between demographic factors and statin discontinuation (defined as reaching the end of a 90-day grace period without a new prescription) adjusted for gender, ethnicity and deprivation with age as the underlying time scale. **A.** represents the primary prevention cohort which includes individuals aged 25 years and older who initiated statins without history of cardiovascular disease. Analyses are stratified by pre-pandemic period (before 1<sup>st</sup> March 2020 and pandemic period (1<sup>st</sup> March 2020 onwards). **B.** represents the cohort with a history of cardiovascular disease who initiated statins. Abbreviations: CI, confidence interval; HR, Hazard Ratio.

789

790 **Table 2.** Number of CVD events that can be prevented with optimal statin use

**Primary Prevention based on 25% risk reduction<sup>a</sup>**

GP recorded Risk category	Number of patients eligible	Current Statin Prevalence	Total number of expected events based on risk score	Events avoided over 10 years based on current prevalence	Events avoided over 10 years based on 100% prevalence	Additional events avoided based on 100% prevalence	Scaled to English population
10-19%	384980	43%	53660	13415	5828	7587	60726
20-29%	144948	65%	34928	8732	5719	3013	24113
30+%	84656	73%	32855	8214	6032	2182	17466
Total	614584	53%	88588	30361	17578	12783	102306

**Secondary Prevention based on 10% absolute risk benefit over 5 years<sup>b</sup>**

CVD subtype	Number of patients eligible	Current Statin Prevalence	Events avoided over 5 years based on current prevalence	Events avoided over 5 years based on 100% prevalence	Additional events avoided based on 100% prevalence	Scaled to English population
MI	73855	88%	6464	7386	922	7379
Angina	71783	80%	5734	7178	1445	11565
TIA	39052	77%	3009	3905	896	7171
Stroke	44492	76%	3402	4449	1047	8380
PAD	81278	74%	6004	8128	2124	17000
Total	310460	79%	24612	31046	6434	51495

**a.** risk reduction over 10 years for non-vascular disease derived from Collins R, Reith C, Emberson J, Armitage J, Baigent C, Blackwell L, et al. Interpretation of the evidence for the efficacy and safety of statin therapy. *Lancet*. 2016;388(10059):2532-61. **b.** 10% absolute risk benefit over 5 years derived from Armitage J, Baigent C, Barnes E, Betteridge DJ, Blackwell L, Blazing M, et al. Efficacy and safety of statin therapy in older people: a meta-analysis of individual participant data from 28 randomised controlled trials. *The Lancet*. 2019;393(10170):407-15. MI; Myocardial Infarction, TIA; Transient Ischaemic Attack, PAD; Peripheral Arterial Disease

791

792