

Index microvascular resistance (IMR)-guided management of heart transplantation (IMR-HT study): Study Protocol

Ainhoa Pérez-Guerrero ^{1,2,3}, Jean Paul Vilchez-Tschischke ⁴, Luis Almenar Bonet ^{4,5}, Jose Luis Diez Gil ^{4,5}, Teresa Blasco Peiró ¹, Salvatore Brugaletta ⁶, Josep Gomez-Lara ⁷, José González Costello ^{5,7}, Paula Antuña ⁸, Vanesa Alonso Fernández ⁸, Fernando Sarnago Cebada ⁹, María Dolores García-Cosío ^{5,9}, Francisco Hidalgo Lesmes ¹⁰, Amador López Granados ¹⁰, Ramón López-Palop ¹¹, Iris Paula Garrido ¹¹, Rosa María Cardenal Piris¹², Diego Rangel Sousa ¹², Georgina Fuertes Ferre ^{1,3}

Ainhoa Pérez Guerrero and Georgina Fuertes Ferre are equal contributors to this work.

Affiliation:

- 1 Miguel Servet University Hospital. Zaragoza. Spain.
- 2 Clínico Lozano Blesa University Hospital. Zaragoza. Spain.
- 3 Aragon Health Research Institute (IIS Aragon). Zaragoza. Spain,
- 4 La Fe University Hospital, Valencia. Spain.
- 5 Center for cardiovascular biomedical research (CIBER-CV). Madrid. Spain.
- 6 Hospital Clínic, Cardiovascular Clinic Institute, Institut d'Investigacions Biomèdiques August Pi i Sunyer (IDIBAPS), University of Barcelona; Barcelona, Spain.
- 7 Bellvitge University Hospital, IDIBELL, University of Barcelona. L'Hospitalet de Llobregat, Barcelona, Spain.
- 8 Asturias Central University Hospital. Oviedo. Spain.
- 9 12 Octubre University Hospital, Imas12, Madrid. Spain.
- 10 Reina Sofía de Córdoba University Hospital. Córdoba. Spain.
- 11 Virgen de la Arrixaca University Hospital. Murcia. Spain
- 12 Virgen del Rocío University Hospital. Sevilla. Spain.

Short Running Title: IMR-Heart Transplant Study

NOTE: This preprint reports new research that has not been certified by peer review and should not be used to guide clinical practice.

Address for correspondence:

Georgina Fuertes Ferre, MD PhD

Interventional Cardiology Department

Miguel Servet University Hospital. Zaragoza, Spain

Telephone: 0034 646 323 423. e-mail: georginaff@hotmail.com

ABBREVIATIONS

AAR: acute allograft rejection

ACR: acute cellular rejection

CAV: cardiac allograft vasculopathy

CFR: coronary flow reserve

EMB: endomyocardial biopsy

FFR: fractional flow reserve

HT: heart transplant

IMR: index of microcirculatory resistance

IST: immunosuppressive therapy

MVD: microvascular dysfunction

Pa: aortic pressure

Pah: aortic pressure at hyperemia

Pd: distal coronary pressure

Pdh: distal coronary pressure at hyperemia

RFR: resting full-cycle-ratio

Tmnh: mean transit time at hyperemia

Tmnr: mean transit time at rest

ABSTRACT

Background

Acute allograft rejection (AAR) is an important cause of morbi-mortality in heart transplant (HT) patients, particularly during the first year. Endomyocardial biopsy (EMB) is the "gold standard" to guide post- heart transplantation treatment. However, it is associated with complications that can be potentially serious. Index of microvascular resistance (IMR) is a specific physiological parameter to measure microvascular function. An increased IMR measured early after HT has been associated with acute cellular rejection (ACR), higher all-cause mortality and adverse cardiac events. As far as we know, no study has evaluated IMR impact on post-HT management (number of EMB performed). Our aim will be to assess if post-HT patient management may be modified based on IMR value.

Study design

The IMR-HT study (NCT 06656065) is a multicenter, prospective study that will include post-HT consecutive stable patients undergoing coronary physiological assessment in the first three months and one year. Depending on IMR values the physician will be able to reduce the number of biopsies established in each center protocol.

Conclusions

Management after heart transplant (number of biopsies) could be modified depending on IMR values.

INTRODUCTION

Acute allograft rejection (AAR) is an important cause of morbi-mortality after heart transplant (HT), particularly within the first year (1-3). Advances in immunosuppression, donor heart evaluation, surgical techniques, and post-transplantation care have led to a gradual reduction in AAR and improved survival after HT over time. Endomyocardial biopsy (EMB) is the gold standard method to guide post-HT treatment, as it represents the best tool to identify rejection in orthotopic HT (4-5). However, it is usually repeated up to 5 times during the first year - with some variations depending on each center protocol - and it is potentially associated with serious complications.

Several studies have presented the association between AAR, microvasculopathy and cardiac allograft epicardial vasculopathy (CAV) (6-9). Index of microcirculatory resistance (IMR) measured early after heart transplantation has been significantly associated with the risk of acute cellular rejection (ACR), and patients with $IMR \geq 15$ have higher risk of AAR during 2 years follow-up (10).

The aim of our study is to evaluate if the use of IMR measured at baseline may be useful in guiding care of patients after HT.

METHODS

RATIONALE AND DESIGN

The IMR-HT study is a multicenter, prospective study aimed to guide post-HT management based on IMR. It will enroll consecutive eligible patients who undergo HT in each participation center.

Patient selection

Patients undergoing HT will be screened for enrollment. To maximize patient inclusion, we apply broad inclusion criteria and strict exclusion criteria, as specified in **Table 1**. Eligible patients will be informed about the study and will have to provide written informed consent prior to being included. The recruitment begins on May 23rd, 2023 and the recruitment period of the study is two years. This study adhered to the principles outlined in the Declaration of Helsinki. The approval was granted by the Ethics Committee for Investigation of Aragon (CEICA). The study has been registered at Clinical-Trials.gov (NCT 06656065).

Table 1. Eligibility criteria

Inclusion criteria

Patients ≥ 18 years old who undergo heart transplantation in participant's centers.

Informed consent received and signed for study enrollment.

Exclusion criteria

Patients with hemodynamic instability after HT, including cardiogenic shock or severe coagulopathy.

Patients with acute cellular rejection before intracoronary physiological assessment.

Patients with bronchial asthma or bronchopathy with a positive bronchodilation test, which contraindicate the use of adenosine.

Patients with epicardial coronary lesions with a resting physiological index ≤ 0.89 or in hyperemia ≤ 0.80 .

Patients unlikely to cooperate in the study or with inability or unwillingness to give informed consent.

The schedule of enrolment, interventions and assessments and the timeline and of the study are detailed in **Fig 1**.

Clinical conditions, laboratory findings and clinical events will be assessed at one month and one year. Follow up will be extended for up to five years.

Figure 1. Schedule of enrolment, interventions, and assessments.

Invasive physiological evaluation of the coronary microcirculation

Patients included will undergo a coronary angiography between the first and third month after HT. This coronary angiography is part of the follow-up protocol in most centers also including EMB (**Fig 2**).

Figure 2. Coronary function test and endomyocardial biopsy between the first and third month after heart transplant.

Assessment of IMR, coronary flow reserve (CFR) and fractional flow reserve (FFR) will be performed using the standard technique (11-13). The left anterior descending coronary artery will be evaluated in all patients. Circumflex or right coronary artery could be additionally evaluated at operator's discretion. An intracoronary pressure and temperature sensor-tipped guidewire (Pressure Wire TM X guide-wire 0.014', Abbott, IL, USA) will be used to perform the measurements. The tip pressure sensor will be advanced into the mid-to-distal portion of the evaluated vessel (50 to 60 mm of the ostium of selected coronary artery) . Baseline aortic pressure (Pa) and distal

intracoronary pressure (Pd) will be obtained to calculate the resting index Pd/Pa. To measure the mean transit time (Tmn) under basal conditions, intracoronary administration of 3 mL of room-temperature saline will be manually injected three times in succession (3 mL/s). Then maximal hyperemia will be induced using adenosine iv (140 to 180 mg/kg/min) and three additional intracoronary room temperature saline boluses of 3 ml will be administered to determine the mean transit time at hyperemia (Tmnh). Deviations >10% in some of the individual Tmn values will force their repetition. Both at rest and in hyperemia, the mean of the three individual determinations will be used for the calculations. Finally, fractional flow reserve (FFR), coronary flow reserve (CFR) and IMR will be calculated using the software Coroventis Coroflow (*Coroventis Abbott, Uppsala, Sweden*). Physiological indexes are listed in **Table 2**.

Table 2. Calculation FFR, IMR and CFR

$$\text{FFR} = \text{Pdh} / \text{Pah}$$

FFR: fractional flow reserve

Pdh: distal coronary pressure at hyperemia

Pah: aortic pressure at hyperemia

$$\text{IMR} = \text{Pd} \times \text{Tmnh}$$

IMR: index of microcirculatory resistance

Pd: distal coronary pressure

Tmnh: mean transit time at hyperemia

$$\text{CFR} = \text{CFR} = 1 / (\text{Tmnh} / \text{Tmnr})$$

CFR: Coronary flow reserve

Tmnh: mean transit time at hyperemia

Tmnr: mean transit time at rest

- FFR is defined as the ratio of maximal coronary blood flow in a diseased artery to maximal coronary blood flow in the same artery without stenosis. FFR is a surrogate marker of inducible myocardial ischemia caused by epicardial coronary stenosis.

- CFR is the ratio of hyperemic to baseline flow and is a marker of the integrity of both epicardial and microvascular coronary circulation. Therefore, CFR represents the microvascular status when there is no significant epicardial disease.

- IMR is the minimum achievable coronary microcirculatory resistance and a more specific marker of the coronary microcirculation. It is calculated as the ratio of distal coronary pressure to coronary flow at hyperemia and presented in mmHg.s units.

The physiological study assessing IMR, CFR and FFR will be repeated again one year after HT.

Biopsies and immunosuppressive treatment

Based on the IMR results, the following treatment protocol will be followed:

- If the IMR is less than 15, the number of biopsies could be reduced or kept the same in accordance with the patient's clinical status and the rest of complementary tests. No immunosuppressive therapy changes would be made. Of note, there may be some physicians that decide not to reduce the number of biopsies despite a low IMR value.

- If the IMR is 15 or greater, immunosuppressive therapy could be intensified or maintained the same. Number of biopsies would be performed as usual per protocol.

The study flowchart is shown in **Fig 3**. Participating centers are listed in **Supplementary Table 1**.

Figure 3. Study Flowchart.

Data collection

Sociodemographic, clinical, laboratory and follow-up data of each patient will be included in a database specifically designed for the study. All variables will be included in the online data collection platform Redcap (Research Electronic Data Capture). Each patient will be assigned a number; their identity will not be revealed in any case. All shared information will be anonymized.

Study endpoints

The main objective of the study is to evaluate IMR values and number of EMB performed in the first year after HT.

Secondary endpoints are detailed in **Table 3**. End-points will be evaluated at 1 year and annually thereafter for up to 5 years. Definition of events is detailed in **Table 4**.

Table 3. Clinical endpoints

Primary endpoint

Number of endomyocardial biopsies obtained in both groups at 1-year.

Secondary endpoints

Analyze the relationship between acute cellular rejection and IMR.

Analyze the relationship between cardiovascular and all-cause mortality and IMR.

Analyze the relationship between graft vasculopathy and IMR.

Analyze the relationship between the variation in the IMR value in the first two months and one year and cardiovascular events.

Analyze the relationship between a combined objective of ACR, heart failure, re-transplantation, cardiovascular mortality, all-cause mortality and IMR.

Assessment of immunosuppressive treatment after the IMR results.

Table 4. Definition of events

Acute cellular rejection (ACR)

Grade $\geq 2R$ by the 2010 ISHLT grading system. Finding in the endomyocardial biopsy of two or more foci of infiltrates associated with myocyte damage. Diffuse infiltration with multifocal myocyte damage with/without edema, hemorrhage or vasculitis.

Cardiovascular mortality

Caused by cardiovascular disease or unknown death.

Cardiac allograft vasculopathy (CAV)

Accelerated fibroproliferative process characterized by a diffuse, concentric and longitudinal thickening of the intima of the vascular tree of the graft, affecting everything from the great epicardial arteries to the coronary microvasculature

Combined safety endpoint

Acute cellular rejection, heart failure, re-transplantation and cardiovascular mortality.

Statistical analysis and sample size considerations

The characteristics of the study population will be summarized through standard descriptive statistics. Continuous variables will be expressed as mean (\pm standard deviation) or median [interquartile range (IQR)], as appropriate. Discrete variables will be presented as absolute numbers and percentages. For the comparison of means, the Student's t test for independent measures or the non-parametric Mann-Whitney U test (in the case of dichotomous qualitative variables) and the ANOVA or non-parametric Kruskal test will be used as a hypothesis test. Wallis (in the case of non-dichotomous qualitative variables). For the bivariate analysis of the qualitative variables, the Chi-square test or Fisher's exact test will be used. Events will be compared between groups by using Kaplan-Meier curves. Cox regression analysis will be performed to adjust for confounding factors and to evaluate independent predictors of clinical events. A two-tailed p-value of 0.05 will be considered statistically significant. All statistical analyses will be performed by SPSS software version 20.

In 2023, around 325 heart transplants were performed in Spain (3). Given a median of 10-15 HT per center and considering that eight centers that routinely perform invasive coronary physiology are participating, data will be analyzed when 100 patients have completed first year follow-up.

DISCUSSION

Heart transplant is considered the treatment of choice in patients with advanced heart failure refractory to medical treatment or devices (1-2). AAR plays an important role in determining prognosis: up to 20% of HT patients experience at least one episode of ACR in the first year post-transplant (1). The immune response is classified into ACR when it is mediated by T lymphocytes and humoral rejection when the main mechanism

involves B lymphocytes and antibody production (4-5, 14). Advances in immunosuppressive therapy (IST), donor heart evaluation, surgical techniques and post-HT care have led to a reduction in ACR, improving survival over time (4). Post-transplant IST includes three basic components: a calcineurin inhibitor (currently preferred Tacrolimus), an antiproliferative agent (mycophenolate mofetil), and steroids. On the other hand, proliferation signal inhibitor (mTOR) drugs (everolimus and sirolimus) are primarily used for CAV (15). CAV is the main cause of mortality after the first year of transplantation. It is characterized by diffuse intimal thickening affecting both coronary epicardial and microcirculation (4,15).

The vast majority of ACR occur asymptotically, presenting normal ventricular function, and thus being detected through the routine EMB surveillance protocol (4). The graduation of the RAC is detailed in the 2005 review of the ISHLT (14). Due to intra- and inter-observer variabilities in determining different degrees of slight-moderate rejection, an update was published in the 2010 document. In the International Society of Heart and Lung Transplantation (ISHLT) guidelines, EMB was made a IIaC recommendation for the detection of rejection (16). EMB is repeatedly performed during the first year after HT and is associated with complications that, despite infrequent, can be potentially serious, such is the case of cardiac perforation. Moreover, EMB diagnostic yield is wide, with a high variability between observers and a non-negligible rate of false positives and negatives (17).

In order to avoid the inconveniences of EMB, non-invasive techniques have been studied to detect rejection, with some positive results. However, none of these techniques has been able to replace EMB (18,19).

IMR is a quantitative and specific index for coronary microcirculation. An increased IMR in the graft has been associated with higher all-cause mortality and adverse cardiac events regardless of epicardial vasculopathy. Several IMR cut-off (from 15 to >25) have been associated with ACR within the first year after HT. Patients in whom IMR decreases or does not change one year after HT have a higher event-free rate than those patients in whom the IMR increases (8-10, 20-21). However, no study has evaluated IMR impact on post-HT management. In presence of a low IMR value, EMB could be performed less frequently; on the other hand, if the IMR value is high, immunosuppression therapy could be modified by an earlier administration of mTor-inhibiting drugs or prescribing calcium antagonists, which are known to improve microvascular function.

Our aim will be to assess the number of biopsies performed in the first year after baseline IMR results. We believe the results of this trial could be very important for the guidance of future randomized studies.

CONCLUSIONS

The IMR is a quantitative physiological parameter to evaluate coronary microcirculation. High IMR values have been associated with acute cellular rejection in heart transplant patients. Management after heart transplant (number of biopsies) could be modified depending on IMR values.

ACKNOWLEDGMENTS

We would like to thank Dr. Mailen Guerrero, from the Anatomical Pathology Department for her contribution to this project.

SUPPORTING INFORMATION

S1. SPIRIT checklist

S2. Table. Site centers and investigators

REFERENCES

- 1- Lund LH, Edwards LB, Kucheryavaya AY. The registry of the International Society for Heart and Lung Transplantation: thirty-second official adult heart transplantation report 2015; focus theme: early graft failure. *J Heart Lung Transplant*. 2015;1244–54.
- 2- Khush KK, Cherikh WS, Chambers DC. The International Thoracic Organ Transplant Registry of the International Society for Heart and Lung Transplantation: Thirty-Sixth Adult Heart Transplantation Report-2019; focus theme: donor and recipient size match. *J Heart Lung Transplant*. 2019;38:1056–66.
- 3- González Vílchez F, Almenar-Bonet L, Mitroi C, Crespo-Leiro MG, López-Granados A, Valero M Delgado-Jiménez JF, Mirabet-Pérez S, Sobrino-Márquez JM, García-Romero E. *Rev Esp Cardiol*. 2024; 77(11) :926–935.
- 4- The International Society of Heart and Lung Transplantation Guidelines for the care of heart transplantation recipients. Task Force 2: Immunosupresion and Rejection. *J Heart Lung Transplant*. 2010 ;29:914-956.
- 5- Marboe CC, Billingham M, Eisen H. Nodular endocardial infiltrates (Quilty lesions) cause significant variability in diagnosis of ISHLT 2 Grade 2 and 3A rejection ic cardiac allograft recipients. *J Heart Lung Transplant*. 2005;24:S219–26.
- 6- Harmann NE, Wellnhofer E, Knosalia C. Prognostic impact of microvasculopathy on survival after heart transplantation: evidence from 9713 endomyocardial biopsies. *Circulation*. 2007;116:1274–82.
- 7- Fearon WF, Balsam LB, Farouque HMO, Caffarelli AD, Robbins RC, Fitzgerald PJ, et al. Novel index for invasively assessing the coronary microcirculation. *Circulation*. 2003;107(25):3129–32.

- 8- Ahn J-M, Zimmermann FM, Gullestad L, Angerås O, Karason K, Russell K, et al. Microcirculatory resistance predicts allograft rejection and cardiac events after heart transplantation. *J Am Coll Cardiol*. 2021;78(24):2425–35.
- 9- Okada K, Honda Y, Luikart H, et al. Early invasive assessment of the coronary microcirculation predicts subsequent acute rejection after heart transplantation. *Int J Cardiol*. 2019;290:27–32.
- 10- Lee JM, Mo KH, Cho JO. Coronary Microcirculatory Dysfunction and Acute Cellular Rejection After Heart Transplantation Circulation. 2021;144:1459–72.
- 11- Kunadian V, Chieffo A, Camici PG, Berry C, Escaned J, Maas AHEM, et al. An EAPCI expert consensus document on ischaemia with non-obstructive coronary arteries in collaboration with European society of cardiology working group on coronary pathophysiology & microcirculation endorsed by coronary vasomotor disorders international study group. *EuroIntervention*. 2021;16(13):1049–69.
- 12- Pijls N, De Bruyne B, Smith L. Coronary Thermodilution to Assess Flow Reserve. *Circulation*. 2002;105.
- 13- Fearon WF, Kobayashi Y. Invasive assessment of the coronary microvasculature: The index of microcirculatory resistance: The index of microcirculatory resistance. *Circ Cardiovasc Interv*. 2017;10(12).
- 14- Stewart S, Winters GL, Fishbein MC, Tazelaar HD, Kobashigawa J, Abrams J, et al. Revision of the 1990 working formulation for the standardization of nomenclature in the diagnosis of heart rejection. *J Heart Lung Transplant*. 2005;24(11):1710–20.
- 15- Lee F, Nair V, Chih S. Cardiac allograft vasculopathy: Insights on pathogenesis and therapy. *Clin Transplant*. 2020;34(3):e13794.

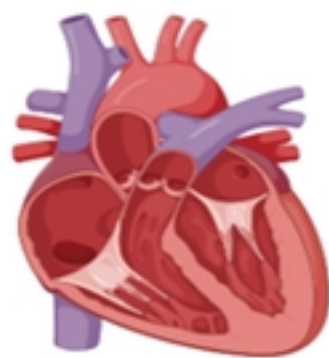
- 16- Costanzo MR, Dipchand A, Starling R. The International Society of Heart and Lung Transplantation guidelines for the care of heart transplant recipients. *J Heart Lung Transplant.* 2010;29:914–56.
- 17- Saraiva F, Matos V, Gonçalves L, Antunes M, Providência LA. Complications of endomyocardial biopsy in heart transplant patients: a retrospective study of 2117 consecutive procedures. *Transplant Proc.* 2011;43(5):1908–12.
- 18- Khachatoorian Y, Khachadourian V, Chang E, Sernas ER, Reed EF, Deng M, et al. Noninvasive biomarkers for prediction and diagnosis of heart transplantation rejection. *Transplant Rev.* 2021;35(1):100590
- 19- Khush KK, Patel J, Pinney S, et al. Noninvasive detection of graft injury after heart transplant using donor-derived cell-free DNA: A prospective multicenter study. *Am J Transplant.* 2019;19(10):2889–2899.
- 20- Yang HM, Khush K, Luikart H, et al. Invasive assessment of coronary physiology predicts late mortality after heart transplantation. *Circulation.* 2016;133:1945–1950.
- 21- Dec GW, Narula J. Probing the microvasculature for long-term gains in heart transplant recipients. *J Am Coll Cardiol.* 2021;78(24):2436–8.

TIMEPOINT**	STUDY PERIOD							Close-out
	Enrolment	Allocation	Post-allocation					
	$-t_1$	0	t_1	t_2	t_3	t_4	<i>etc.</i>	t_x
ENROLMENT:								
Eligibility screen	X	-						
Informed consent	X	-						
<i>[List other procedures]</i>	X	-						
INTERVENTIONS:								
<i>[Intervention A]</i>	N/A							
<i>[Intervention B]</i>	N/A							
<i>[List other study groups]</i>	N/A							
ASSESSMENTS:								
<i>[List baseline variables]</i>	X	-						
<i>[List outcome variables]</i>	X	-						
<i>[List other data variables]</i>	X	-						

medRxiv preprint doi: <https://doi.org/10.1101/2024.11.22.24317768>; this version posted November 22, 2024. The copyright holder for this preprint (which was not certified by peer review) is the author/funder, who has granted medRxiv a license to display the preprint in perpetuity. It is made available under a [CC-BY 4.0 International license](https://creativecommons.org/licenses/by/4.0/).

*Recommended content can be displayed using various schematic formats. See SPIRIT 2013 Explanation and Elaboration for examples from protocols.

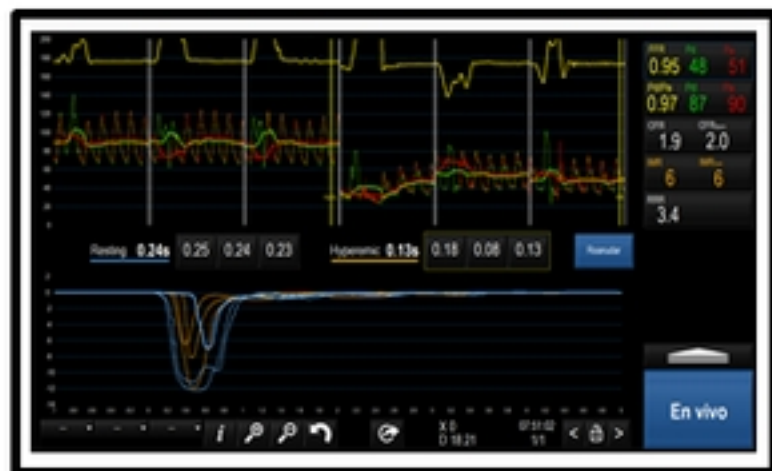
**List specific timepoints in this row.



**HEART
TRANSPLANT**



Coronary Function Test-IMR



Endomyocardial Biopsy

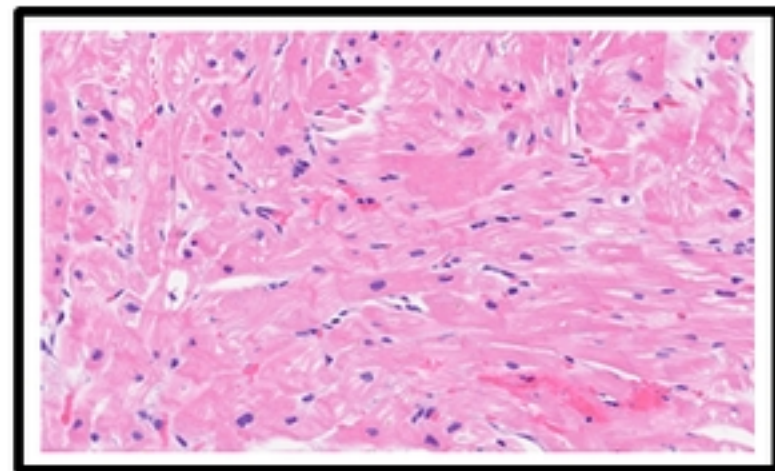
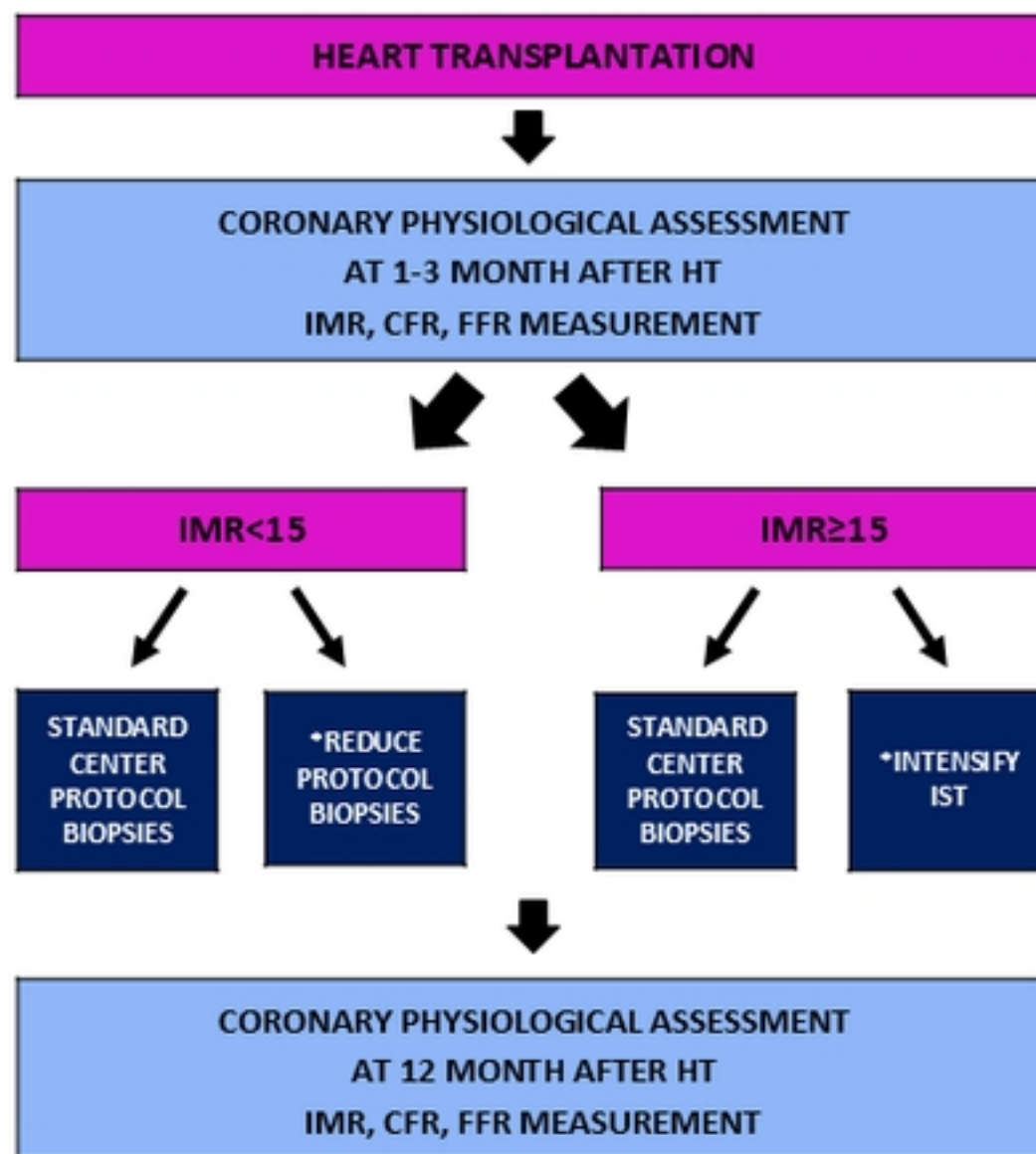


Figure2



*At the physician's discretion considering patient clinical condition and other complementary tests.

Figure3