

1 **Exercise intensity shapes acute and prolonged immune and extracellular vesicle responses in**  
2 **older adults**

3 Alejandra P. Garza<sup>1</sup>, Lorena Morton<sup>1</sup>, Anna-Lena Motsch<sup>1</sup>, Christian Puta<sup>2,3,4</sup>, Marvin Stiebler<sup>5</sup>, Yves  
4 Lading<sup>5</sup>, Stefanie Schreiber<sup>6,7,8,9</sup>, Rüdiger Braun-Dullaes<sup>5</sup>, Patrick Müller<sup>5,8,10,11,12</sup> & Ildiko R.  
5 Dunay\*<sup>1,6,10,11,#</sup>

6  
7 <sup>1</sup> Institute of Inflammation and Neurodegeneration, Otto-von-Guericke University, Germany

8 <sup>2</sup> Department of Sports Medicine and Health Promotion, Friedrich-Schiller-University Jena, Jena,  
9 Germany

10 <sup>3</sup> Department for Internal Medicine IV (Gastroenterology, Hepatology and Infectious Diseases), Jena  
11 University Hospital, Jena, Germany

12 <sup>4</sup> Center for Sepsis Control and Care (CSCC), Jena University Hospital/Friedrich-Schiller-University  
13 Jena, Jena, Germany

14 <sup>5</sup> Department of Cardiology and Angiology, University Hospital Magdeburg, Magdeburg, Germany

15 <sup>6</sup> Center for Behavioral Brain Sciences (CBBS), Magdeburg, Germany

16 <sup>7</sup> Department of Neurology, University Hospital Magdeburg, Magdeburg, Germany

17 <sup>8</sup> German Center for Neurodegenerative Diseases (DZNE) Magdeburg

18 <sup>9</sup> Department of Neurology, Heinrich Heine University Düsseldorf, Düsseldorf, Germany.

19 <sup>10</sup> German Center for Mental Health (DZPG), Magdeburg, Germany

20 <sup>11</sup> Centre for Intervention and Research on Adaptive and Maladaptive Brain Circuits Underlying  
21 Mental Health (C-I-R-C), Magdeburg, Germany

22 # *Contributed equally*

23

24

25

26

27

28

29 **\*Corresponding author:**

30 Prof. Dr. rer. nat. habil. Ildiko Rita Dunay

31 <https://orcid.org/0000-0002-9900-8605>

32 Institute of Inflammation and Neurodegeneration

33 Faculty of Medicine, Otto-von-Guericke University

34 Leipziger Str. 44 39120 Magdeburg, Germany

35 Phone: + 49 391 67 13088

36 Fax: + 49 391 67 130979

37 **NOTE: This preprint reports new research that has not been certified by peer review and should not be used to guide clinical practice.**  
Email: [ildiko.dunay@med.ovgu.de](mailto:ildiko.dunay@med.ovgu.de)

38 **Keywords:**

39 *exercise, immunology, healthy aging, inflammaging, extracellular vesicles, exercise-induced*  
40 *immunomodulation, sex differences, aging and immune function, plasma biomarkers, cytokine*  
41 *response, personalized exercise.*

42

43 **Table of contents category:**

44 *Exercise*

45

46 **Author Contribution:**

47 APG drafted the manuscript, conducted all experiments and analyses, and created the figures. APG and  
48 LM interpreted and visualized the data. ALM performed and helped analyze experiments. MS and YL  
49 recruited participants and conducted the exercise interventions. SS, CP, RBD, and LM contributed to  
50 manuscript preparation. PM designed the study, supervised the intervention, project administration, and  
51 revised the manuscript. IRD supervised the experiments, project administration, and the manuscript  
52 preparation. Each author is accountable for the work and for addressing any questions related to  
53 accuracy or integrity. All authors have reviewed and approved the final submitted version, meet  
54 authorship criteria, and contributed to manuscript revisions.

55

56 **Funding:**

57 This work was supported by the following grants: German Center for Mental Health (DZPG) (funded  
58 by BMBF (to PM & ID), European Regional Development Fund (EFRE) (ZS/2024/02/184014, to  
59 RBD, SS, ID & PM), Graduate scholarship from the Novartis Foundation (to PM), Polycarp-Leporin-  
60 Program (PLP23/5, to PM).

61

62 **Ethical approval:**

63 The study protocol was approved by the Ethics Committee of the Medical Faculty at Otto-von-Guericke  
64 University in Magdeburg, Germany (reference number: 07/20). All the procedures were conducted in  
65 accordance with the ethical standards outlined in the Declaration of Helsinki. Prior to participation,  
66 each individual provided written informed consent following a comprehensive explanation of the study,  
67 and all queries were addressed satisfactorily.

68

69 **Key points summary:**

- 70 • Diminished immune function upon aging is increasing disease risk. This study examines how  
71 tailored acute exercise interventions stimulate immune regulation in older adults addressing  
72 age-related inflammatory challenges.

- 73
- Acute continuous moderate and intense exercise elicit distinct immune responses in elderly
- 74 individuals with marked differences between sexes. Interestingly, IL-6 levels increased 30 min
- 75 moderate exercise exclusively in females.
- Exercise promotes the release of extracellular vesicles (EVs) and modulates peripheral
- 76 immunity, suggesting a potent mechanism by which physical activity supports immune
- 77 resilience in aging.
- Tailored acute exercise regimens for older adults may enhance immune health, mitigating age-
- 78 related inflammatory risks and enhancing resilience.
- This study emphasizes the need for further research on exercise-driven modulation focusing on
- 79 sex differences and their implications for targeted interventions upon aging.
- 80
- 81
- 82
- 83
- 84

85 **Abstract**

86 Regular physical activity is a cornerstone of healthy aging, offering a wide range of benefits, including  
87 the modulation of immune regulation and reduction of chronic inflammation. With aging closely linked  
88 to persistent, low-grade inflammation, i.e. inflammaging, the effects of exercise intensity on acute  
89 immune responses in older adults remain not fully understood. In this study, we explored how moderate  
90 and intense acute continuous exercise impact immune cell activation, cytokine production and large  
91 extracellular vesicle (IEV) release in healthy elderly individuals. Fourteen participants completed a  
92 moderate continuous exercise intervention (60%  $\text{VO}_{2\text{max}}$  for 30 minutes), while nineteen engaged in an  
93 intense continuous exercise session until exhaustion. Blood samples were collected at baseline, and at  
94 1- and 24-hours post-exercise. Immune cell characterization by flow cytometry revealed distinct  
95 changes in monocyte subsets and NK cells activation across both exercise intensities. Intense exercise  
96 was associated with elevated proinflammatory  $\text{TNF}\alpha$  levels, accumulation of circulating plasma-  
97 derived IEV and changes in their surface marker expression after 24 hours. Additionally, we identified  
98 sex-specific differences, including distinct activation profiles in innate immunity, alterations in EV  
99 release from  $\text{CD4}^+$  and  $\text{HLA}^+$  cells, and an exercise-induced increase in IL-6 observed exclusively in  
100 females. These findings suggest that moderate continuous acute exercise enhances immune cell  
101 activation without altering cell counts, while intense continuous exercise triggers acute  
102 proinflammatory immune response. Further research should clarify the long-term implications and  
103 fundamental mechanisms of exercise-induced immune modulation in aging populations.

## 104 **Introduction**

105 Aging is characterized by a progressive decline in physiological function and increased susceptibility  
106 to chronic diseases such as cardiovascular (e.g., heart failure, chronic coronary syndrome), metabolic  
107 (e.g., Diabetes Mellitus 2) and neurodegenerative (e.g., dementia) diseases, as well as cancer<sup>1-5</sup>. Age-  
108 related immune changes, or immunosenescence, contribute to heightened disease vulnerability and  
109 impaired infection response<sup>6</sup>. Chronic low-grade inflammation, or *inflammaging*, is a hallmark of aging  
110 and contributes to the pathogenesis of age-related diseases<sup>7,8</sup>. As the global population ages,  
111 understanding the complex interplay between exercise, immune function, inflammation, and aging is  
112 essential to promote healthy aging and reduce the burden of age-related diseases<sup>9</sup>.

113 Physical activity confers numerous health benefits and is essential for promoting healthy aging. While  
114 evidence supports that exercise positively impacts outcomes and prognoses across numerous diseases  
115 in the elderly<sup>10</sup>, the underlying mechanisms of exercise-induced release, uptake, and communication of  
116 bioactive factors in older adults remain incompletely understood. This is especially true regarding sex-  
117 specific responses as males and females may exhibit distinct immune adaptations to exercise. Regular  
118 exercise modulates immune function by reducing systemic inflammation markers and attenuates age-  
119 related increases in proinflammatory cytokine levels, making it a powerful approach for combating  
120 inflammaging and mitigate chronic disease risk in older adults<sup>7,9,11-14</sup>. Importantly, sex-specific  
121 differences in immune function suggest that personalized exercise regimens could optimize immune  
122 responses and overall health outcomes, highlighting the need for targeted approaches in exercise  
123 prescriptions for aging populations<sup>15</sup>.

124 Age-related immune changes include alterations in immune cell composition and function,  
125 dysregulation of cytokine signaling, and impaired immune surveillance<sup>16-20</sup>. While the benefits of  
126 physical exercise on immune function are well-documented, the precise mechanisms driving these  
127 effects, particularly in the elderly population, remain incompletely understood.

128

129 In recent years, extracellular vesicles (EVs), particularly those released in response to exercise  
130 (ExerVs), have emerged as a subject of significant interest due to their role in facilitating intercellular  
131 communication. By transporting proteins, lipids, and microRNAs to distant organs, EVs act as carriers  
132 of bioactive molecules potentially mediating exercise-induced benefits across the organism. Evidence  
133 suggests that exercise modulates EV release into circulation pointing towards a pathway through which  
134 physical activity may influence immune responses in aging populations<sup>21-26</sup>.

135

136 Despite growing recognition of the importance of physical exercise in healthy aging, major gaps remain  
137 in our understanding of the mechanisms underlying its effects on immune function, inflammation, and  
138 aging, along with sex-related discrepancies<sup>7,13,27</sup>. Thus, our research aimed to investigate these gaps by

139 examining the effects of acute continuous moderate and intense exercise interventions on immune  
140 responses, cytokine levels, and the release of ExerVs release in older adults. Furthermore, we aimed to  
141 examine the importance of sex-specific responses, focusing on how tailored exercise interventions may  
142 promote immune resilience and health in aging populations.

143

## 144 **Methods**

145

146 **Study population.** A cohort of 33 healthy individuals (subproject 1: 14 participants, subproject 2: 19  
147 participants), recruited through the University Hospital Magdeburg, participated in this study. The  
148 inclusion criteria were age > 55 years and the ability to move freely. Participants with a history of  
149 cardiovascular, endocrinological, neurological, neoplastic, or psychiatric disorders were excluded.

150

### 151 **Intervention**

152 **Subproject 1:** Fourteen healthy adults (median age: 68 years, 57 % female) underwent a moderate acute  
153 continuous exercise intervention on a bicycle ergometer (30 minutes, 60 %  $VO_{2max}$ ). Blood was  
154 collected before and 30 minutes after exercise intervention (Figure 1A). Individual cardiorespiratory  
155 fitness was prior assessed using cardiopulmonary exercise testing.

156 **Subproject 2:** Nineteen healthy adults (median age: 67 years, 47 % female) performed a  
157 cardiopulmonary exercise test until exhaustion on a bicycle ergometer. The incremental step test  
158 included a three-minute unloaded pedaling at 0 W, following the resistance increased by 25 W every  
159 three minutes. During the incremental cycling test, breath-by-breath pulmonary gas-exchange data  
160 (MetaSoft, Studio: Cortex Biophysik GmbH Leipzig, Germany), heart rate (Custo med 100, custo med  
161 GmbH, Ottobrunn, Germany) and lactate levels (Lactate Scout 4, EKF Diagnostic, Barleben, Germany)  
162 were assessed. Perceived exertion was assessed at the end of each step using Borg-Scale (Borg, 1970).  
163 The cardiopulmonary exercise testing (CPET) concluded when (i) the respiratory exchange ratio was  
164 above 1.10, (ii) a plateau in  $VO_2$  occurred (despite increasing workload) or (iii) the rating of perceived  
165 exertion was 18 or higher on the Borg Scale. Safety criteria's for premature termination of CPET were  
166 in the case of major electrocardiographic abnormalities, excessive blood pressure increase ( $\geq 230$   
167 mmHg systolic and/or  $\geq 110$  mmHg diastolic), or individual request<sup>28</sup>. Blood samples were collected  
168 at baseline, 30 min and 24 hours post-intervention. (Figure 2A).

169

170 **Blood collection and processing.** Whole blood was obtained from the antecubital area via venipuncture  
171 using a 21G butterfly needle in sterile BD Vacutainer blood collection tubes containing 1 mL Acid  
172 Citrate Dextrose/Glucose (ACD). Samples were processed within 1 h of collection. Whole blood (100  
173  $\mu$ L) was lysed using 1X Red Blood Cell Lysis Buffer (BioLegend, 10X) following the manufacturer's  
174 instructions. After lysis, cells were centrifuged at  $400 \times g$  for 5 min at room temperature. The  
175 supernatant was discarded, and two washing steps were performed using PBS. Cells were resuspended

176 in 300  $\mu$ L of FACS buffer (1X PBS, 2 % FBS, 2 mM EDTA, and 2 mM NaN<sub>3</sub>), and 100  $\mu$ L was added  
177 to a 5 mL round-bottom polystyrene tube. Samples were incubated in 5  $\mu$ L of Human TruStain FcX  
178 (BioLegend) for 10 min to avoid nonspecific antibody binding. Each sample was stained with the  
179 following antibodies: anti-human CD16 (FITC), anti-human HLA-DR (Peridinin chlorophyll protein-  
180 Cyanine5.5), anti-human CD86 (Allophycocyanin), anti-human CD3 (Alexa Fluor 700), anti-human  
181 CD66b (Alexa Fluor 700), anti-human CD19 (Alexa Fluor 700), anti-human CD56 (Alexa Fluor 700),  
182 anti-human CD36 (Allophycocyanin-Cyanine 7), anti-human CD163 (Brilliant Violet 421), anti-human  
183 CD15 (Brilliant Violet 510), anti-human HLA-ABC (Brilliant Violet 605), anti-human CCR2  
184 (Phycoerythrin), anti-human CD62L (Phycoerythrin -Dazzle 594), anti-human CD15 (Phycoerythrin-  
185 Cyanine5), anti-human CX3CR1 (Phycoerythrin-Cy7), anti-human CD14 (Alexa Fluor 700), anti-  
186 human CD15 (APC), anti-human CD4 (Allophycocyanin-Cyanine 7), anti-human HLA-DR (Brilliant  
187 Violet 421), anti-human CD3 (Brilliant Violet 510), anti-human CD19 (Brilliant Violet 605), anti-  
188 human CD16 (Brilliant Violet711), anti-human CD45 (FITC), anti-human CD56 (Phycoerythrin), CD8  
189 (Phycoerythrin-Dazzle 594) and anti-human CD20 (Peridinin chlorophyll protein-Cyanine5.5). After  
190 an incubation period of 30 min, the samples were washed twice and resuspended in 210  $\mu$ L of FACS  
191 buffer. Samples were acquired using an Attune NxT flow cytometer (Thermo Fisher Scientific) and  
192 further analyzed using Flowjo (v10.10.0).

193

194 **Cytokine assay.** Plasma was separated from whole blood by centrifugation at 1,500 g for 10 min. Plasma  
195 (1 mL) was transferred to clean Eppendorf tubes and centrifuged at 400  $\times$  g for 10 min at 4 °C to remove  
196 debris. Analytes were assessed using the Human LEGENDplex Multiplex Assay (BioLegend)  
197 following the manufacturer's instructions. The assay utilizes allophycocyanin-coated beads conjugated  
198 with surface antibodies that allow the specific binding of the analyte of interest. After incubation of the  
199 capture beads with the plasma sample, biotinylated detection antibodies were added to create a bead-  
200 analyte-detection antibody sandwich, which was further stained with streptavidin-phycoerythrin.  
201 Samples were measured using an Attune NxT flow cytometer and analyzed using the LEGENDplex  
202 Data Analysis Online Software Suit. Half of the limit of detection (LOD) was used as a constant value  
203 when the predicted concentrations were below the LOD.

204

205 **Extracellular vesicles.** Plasma samples from the intense exercise intervention group were centrifuged  
206 twice at 2,500 g for 20 min. Large-sized vesicles (IEVs) were separated by differential centrifugation,  
207 and thirty-seven EV surface epitopes were studied using the MACSPlex Human Exosome Kit  
208 (Miltenyi) following the manufacturer's instructions, as previously described<sup>1,2</sup>. In short, this assay  
209 employs phycoerythrin and fluorescein isothiocyanate-labelled polystyrene capture beads that capture  
210 plasma IEVs during overnight incubation. Subsequently, allophycocyanin-labelled anti-CD9, anti-  
211 CD63, and anti-CD81 antibodies were added to positively select for IEVs. This results in the formation  
212 of a structure encompassing capture beads, IEVs, and detection antibodies, facilitating event detection

213 and identification of surface epitopes. Samples were measured using an Attune NxT flow cytometer,  
214 further analyzed using Flowjo (v10.10.0) and median fluorescence intensity (MFI) values were exported  
215 for statistical evaluation.

216

217 **Statistical analyses.** Statistical analyses were performed using GraphPad Prism 10 (v10.1.1(270)). Data  
218 distribution was assessed with D'Agostino & Pearson and Shapiro-Wilk tests. Differences between two  
219 timepoints were assessed using the Wilcoxon matched pairs signed rank test. Mixed-effects analysis,  
220 with Geisser-Greenhouse correction and Tukey's multiple comparison test was performed for the  
221 comparison of three time points. Sex-specific analyses were conducted to determine whether the  
222 changes observed in the overall population were also present when analyzed separately by sex.  
223 Graphical data representations were created using GraphPad Prism 9 and BioRender. An alpha value of  
224  $p < 0.05$  was used for all statistical tests. Statistical significance was set at  $p \leq 0.05$  and marked with  
225 asterisks as follows: \*  $p \leq 0.05$ , \*\*  $p \leq 0.001$ , and \*\*\*  $p \leq 0.0001$ . Data are presented as the arithmetic  
226 mean and corresponding standard error of the mean (SEM).

227

## 228 **Results**

229

### 230 ***Subproject 1***

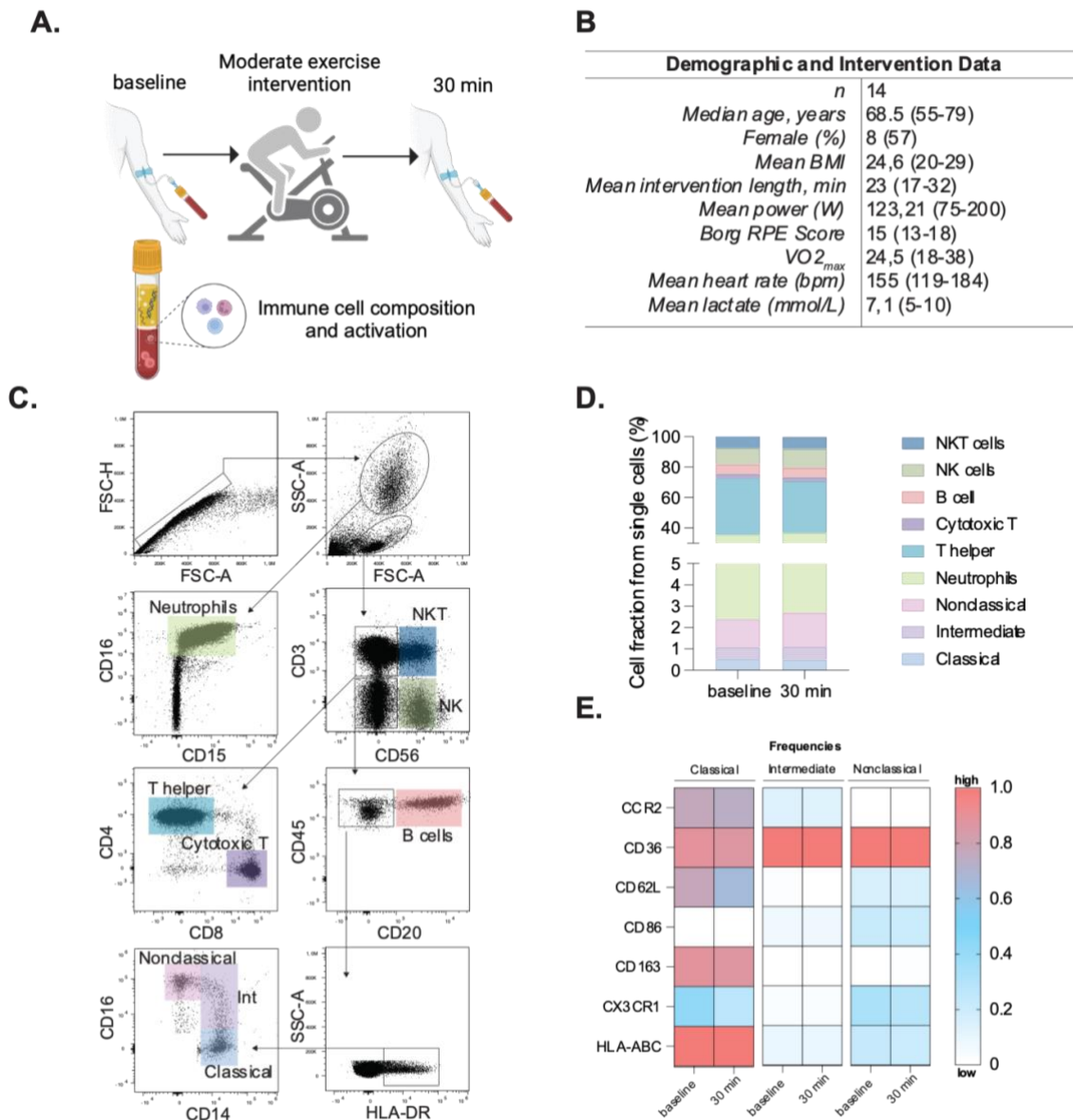
231 ***Acute moderate continuous exercise intervention affects monocyte activation 30 min post exercise in***  
232 ***elderly individuals.*** To investigate the acute effect of moderate exercise (60 %  $VO_{2max}$  for 30 min), 14  
233 participants were assessed before and 30 min after a moderate exercise intervention (Figure 1A-B).  
234 Flow cytometric analysis of whole blood revealed no significant alterations in cell composition or  
235 frequency of adaptive or innate immune populations following acute continuous moderate-intensity  
236 exercise (Figure 1C-D and Table 1). However, specific changes were observed in the monocyte subsets.  
237 Classical monocytes exhibited increased frequency of CD86 (pre,  $20.12 \pm 2.83$  %; post,  $26.97 \pm 2.70$   
238 %,  $p = 0.0105$ ) and decreased CX3CR1 expression post-intervention (pre,  $54.27 \pm 2.37$  %; post,  $46.81$   
239  $\pm 3.30$  %,  $p = 0.0345$ ). Intermediate monocytes displayed decreased CX3CR1 expression (pre,  $80.12 \pm$   
240  $3.11$  %; post,  $73.40 \pm 4.52$  %,  $p = 0.0345$ ) and reduced HLA-ABC levels (pre,  $100 \pm 0.11$  %; post,  $99.36$   
241  $\pm 0.19$  %,  $p = 0.0219$ ). No discernible changes in the nonclassical subset were observed (Figure 1E).  
242 Inflammatory cytokines showed no significant differences between baseline and post-intervention  
243 groups (Supplementary Figure 1).

244

245 ***Sex specific activation of monocyte subsets and IL-6 post exercise response.*** Due to the scarcity of  
246 sex-disaggregated data on exercise interventions in healthy elderly populations, we aimed to investigate  
247 potential sex-specific differences in the immune response. While overall immune cell counts between  
248 male and female participants did not differ significantly, when examining the activation of monocyte



249 subsets, our results showed sex-specific variations following moderate exercise (Figure 7A). Male  
 250 participants exhibited a notable decrease in CCR2 expression in classical monocytes and a significant  
 251 increase in CX3CR1 levels in intermediate monocytes. In contrast, female participants displayed  
 252 reduced CD62L expression in intermediate monocytes. Additionally, only female participants exhibited  
 253 an increase in circulating IL-6 levels post-exercise indicating a sex-specific inflammatory response to  
 254 moderate exercise (Figure 7B).



255  
 256 **Figure 1. Study design and immune cell activation changes following acute continuous moderate**  
 257 **exercise.** Clinical and experimental study design and analytical processes for moderate exercise  
 258 intervention. Peripheral blood was assessed at baseline and 30 min after the session (A). Demographic  
 259 and intervention data of all participants (B). Representative gating strategy to identify single cells,  
 260 followed by granulocytes and mononuclear cells based on size and granularity (SSC-A vs FSC-A).  
 261 Neutrophils were gated based on FSC and SSC, followed by their expression of CD16 and CD15.

262 Mononuclear cells were gated on the expression of CD3 and CD56, to obtain NKT cells (CD56<sup>+</sup>, CD3<sup>+</sup>),  
 263 NK cells (CD56<sup>+</sup>, CD3<sup>-</sup>). From the double negative population (CD56<sup>-</sup>, CD3<sup>-</sup>), we assessed the presence  
 264 of CD20 to represent B cells, and the CD20<sup>-</sup> cells, were further gated based on their surface expression  
 265 of CD16 and CD14, where classical monocytes were defined as CD14<sup>+</sup>, CD16<sup>-</sup>; intermediate monocytes  
 266 were CD14<sup>+</sup>, CD16<sup>low</sup>; and nonclassical monocytes as CD16<sup>++</sup>, CD14<sup>low</sup> (C). Bar charts showing cell  
 267 fractions of all investigated immune cell populations at baseline and 30 min after the intervention (D).  
 268 Heatmaps showing the normalized frequency of key activation markers of monocyte subsets (CCR2,  
 269 CD36, CD62L, CD86, CD163, CX3CR1 and HLA-ABC) (E). Statistical evaluations using non-  
 270 parametric student's t-test. P values: \* for  $p \leq 0.05$ ; \*\* for  $p \leq 0.001$ ; \*\*\* for  $p \leq 0.0001$ . Panel A was  
 271 created in BioRender. Garza, AP. (2024) <https://BioRender.com/o96f904>.

272

273 **Table 1. Whole blood events per microliter for every cell type studied before and after the exercise**  
 274 **intervention.** Values are presented in events/uL, showing mean and standard error of the mean (SEM)  
 275 per cell group within each group. Statistical evaluation was performed using student's t test, *p* values  
 276 are shown within the table.

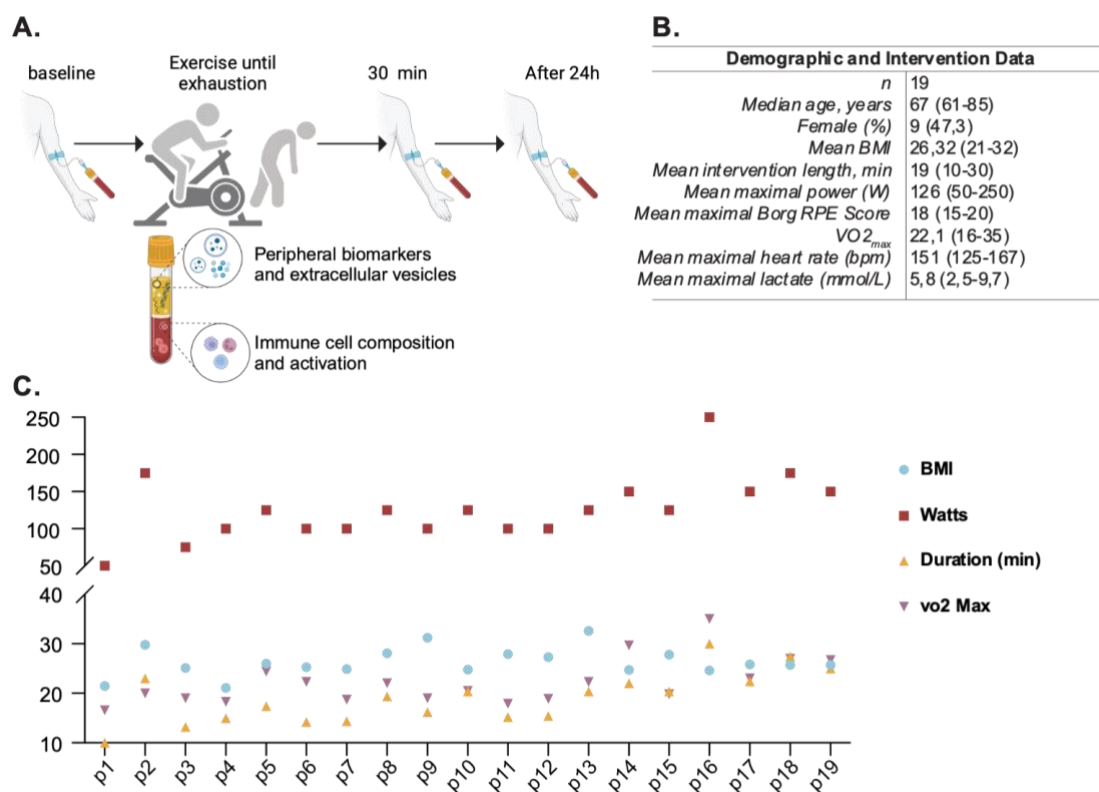
<i>n</i>	<i>baseline</i>	<i>30 min</i>	<i>t-test</i>
	<i>14</i>	<i>14</i>	
	<i>mean of events per ul (SEM)</i>		<i>p-value</i>
<i>NKT cells</i>	33.25 (4.5)	34.03 (5.4)	<i>0.9598</i>
<i>NK cells</i>	46.74 (5.2)	53.4 (6.9)	<i>0.4879</i>
<i>B cells</i>	27.2 (3.4)	26.0 (3.0)	<i>0.8036</i>
<i>Cytotoxic T cells</i>	12.1 (1.5)	11.7 (5.3)	<i>0.9189</i>
<i>T helper cells</i>	163.7 (23.8)	145.9 (17.3)	<i>0.6027</i>
<i>Neutrophils</i>	146.9 (15.4)	146.6 (8.6)	<i>0.3380</i>
<i>Classical Monocytes</i>	2.3 (0.2)	2.14 (0.2)	<i>0.4542</i>
<i>Intermediate Monocytes</i>	2.51 (0.3)	2.59 (0.3)	<i>0.8300</i>
<i>Nonclassical Monocytes</i>	5.71 (0.4)	6.87 (0.7)	<i>0.3064</i>

277

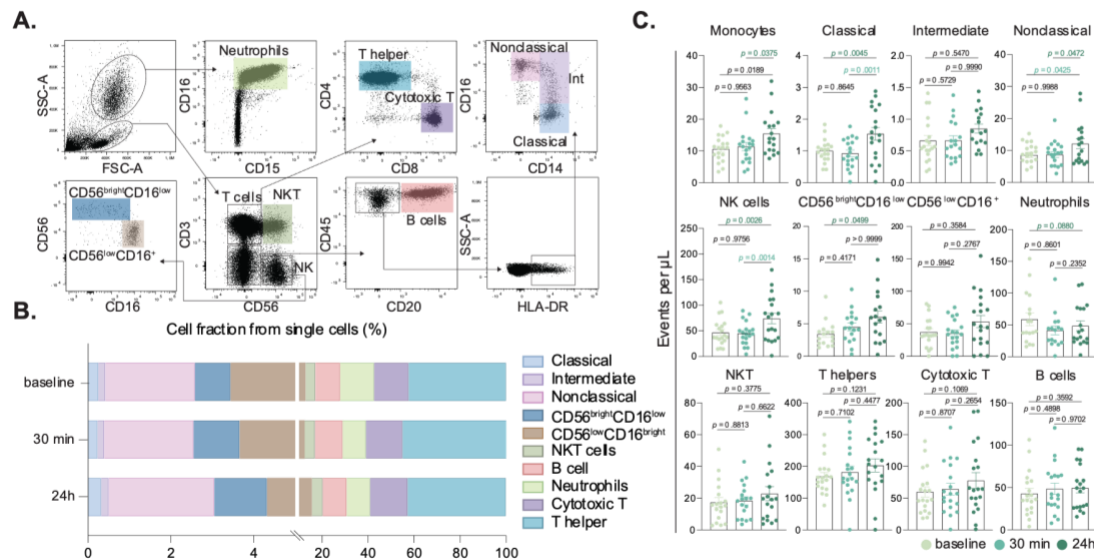
## 278 **Subproject 2**

279 **Acute high-intensity exercise intervention affects monocyte, NK cell and neutrophil changes 24 h**  
 280 **post exercise in elderly individuals.** To evaluate the effects of an acute high intensity exercise session,  
 281 19 healthy participants, with a median age of 67 years and a near-equal distribution of sex (47.3%  
 282 females), underwent a maximum-intensity cardiopulmonary exercise test (CPET). The acute high-  
 283 intensive exercise intervention was designed to push participants to their physical limits, enabling the  
 284 assessment of immune responses and extracellular vesicle release under maximal stress conditions  
 285 (Figure 2A). Participants exhibited a mean BMI of 24.6 and a mean power output of 126 Watts (ranging  
 286 from 50-250W) during the intervention, which displayed substantial inter-individual variability (Figure

287 2B). The exercise duration and  $VO_{2max}$  displayed notable similarities among participants, revealing the  
 288 diverse fitness levels within the cohort (Figure 2C). All participants performed same CPET protocol.  
 289 To evaluate the impact of intense exercise on immune cell populations, we conducted flow cytometric  
 290 analysis was performed on blood samples collected at baseline, 30 minutes post-intervention and 24 h  
 291 post-exercise (Figure 2A). This gating strategy allowed for detailed examination of neutrophils, T  
 292 helper cells, cytotoxic T cells, NK cells, B cells, and monocyte subsets (Figure 3A). Our results revealed  
 293 significant changes in the cellular fractions at the different time points, with the most prominent  
 294 difference observed at 24 h post-intervention (Figure 3B). Specifically, our findings indicated a  
 295 significant increase in classical and nonclassical monocytes, along with a rise in NK cells driven by  
 296  $CD56^{bright}$  and  $CD16^{low}$  NK cells contributing to the increase (Figure 3C). In contrast, neutrophil counts  
 297 declined 24 h after the intervention, while components of the adaptive immunity remained unchanged  
 298 (Figure 3C). Further sex-disaggregated analysis revealed that the increase in classical monocytes and  
 299 NK cells was predominantly driven by the male participants, whereas no significant changes were  
 300 observed in the female subgroup (Figure 7C).



301  
 302 **Figure 2. Study design and participant characteristics for intense exercise intervention.** Clinical  
 303 and experimental study design and analytical processes for moderate exercise intervention. Peripheral  
 304 blood was assessed at baseline, 30 min, and 24 h after the intervention (A). Demographic and  
 305 intervention data of all participants (B). Individual datapoints showing relevant variables in the cohort  
 306 including body mass index (BMI), Watts reached, duration of the intervention in minutes,  $VO_{2max}$  and  
 307 age (C). Panel A was created in BioRender. Garza, AP. (2024) <https://BioRender.com/c87a107>.



308

309

310

311

312

313

314

315

316

317

318

319

320

321

322

323

324

325

326

327

328

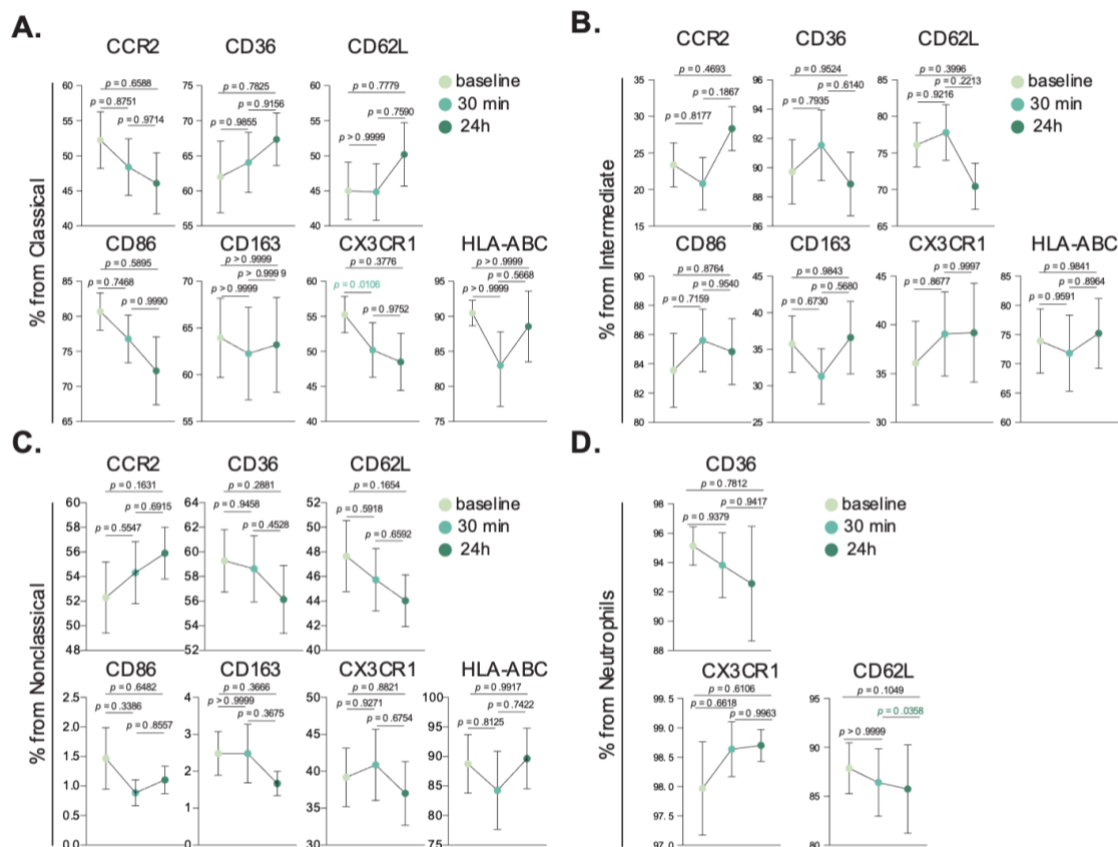
329

330

331

**Figure 3. Peripheral immune cell subset alterations induced by intense exercise.** Representative gating strategy to identify single cells, followed by granulocytes and mononuclear cells based on size and granularity (SSC-A vs FSC-A). Neutrophils were gated based on FSC and SSC, followed by their expression of CD16 and CD15. Mononuclear cells were gated on the expression of CD3 and CD56, to obtain NKT cells (CD56<sup>+</sup>, CD3<sup>+</sup>), NK cells (CD56<sup>+</sup>, CD3<sup>-</sup>). Further, NK cells were gated on the intensity of CD16 and CD56 expression, to subdivide them in CD56<sup>bright</sup>, CD16<sup>low</sup> NK cells and CD56<sup>low</sup>, CD16<sup>+</sup> NK cells. From the double negative population (CD56<sup>-</sup>, CD3<sup>-</sup>), we assessed the presence of CD20 to represent B cells, and the CD20<sup>-</sup> cells, were further gated based on their surface expression of CD16 and CD14, where classical monocytes were defined as CD14<sup>+</sup>, CD16<sup>-</sup>; intermediate monocytes were CD14<sup>+</sup>, CD16<sup>low</sup> and, nonclassical monocytes as CD16<sup>+</sup>, CD14<sup>low</sup> (A). Bar charts showing cell fractions of all investigated immune cell populations at baseline (mint green), 30 min (turquoise) and 24 h (dark green) after the intervention (C). Statistical tests were performed using mixed-effects analysis, with Geisser-Greenhouse correction and Tukey's multiple comparison test. *p* values are shown in figure.

**Monocyte and neutrophil activation after acute intense exercise.** Monocyte and neutrophil activation after acute intense exercise was investigated to determine if their activation status was influenced by the intervention. The expression levels of key activation markers including CCR2, CD36, CD62L, CD86, CD163, CX3CR1, and HLA-ABC were evaluated across each monocyte subset. In classical monocytes (Figure 4A), CX3CR1 expression was significantly reduced 30 min post intervention. In contrast, intermediate (Figure 4B) and nonclassical (Figure 4C) monocytes did not exhibit significant changes in the studied markers. For neutrophils, a significant decrease in CD62L expression was observed between the 30 min and 24 h time points (Figure 4D).



332

333 **Figure 4. Activation dynamics of innate immune cell subsets following intense exercise.** Bar charts  
 334 showing cell fractions of all investigated activation markers in classical monocytes (A), intermediate  
 335 monocytes (B), nonclassical monocytes (C) and, neutrophils (D), at baseline (mint green), 30 min  
 336 (turquoise) and 24 h (dark green) after the intervention (C). Statistical tests analyzed using a mixed-  
 337 effects analysis, with Geisser-Greenhouse correction and Tukey's multiple comparison test. *p* values  
 338 are shown in figure.

339

340 **Elevated proinflammatory cytokine levels following acute high intensity exercise.** Aging is linked to  
 341 elevated levels of inflammatory cytokines, creating an environment conducive to age-related diseases<sup>29</sup>.  
 342 Additionally, it has been shown that intense acute exercise in young individuals typically triggers a  
 343 surge in canonical proinflammatory cytokines<sup>30</sup>, and we aimed to determine if similar responses occur  
 344 in an elderly cohort. Therefore, to assess the inflammatory impact of high-intensity exercise, we  
 345 measured various cytokines and regulatory biomolecules at baseline, 30 minutes and 24 hours post-  
 346 intervention (Table 2). Our study revealed that high-intensity exercise significantly increased peripheral  
 347 TNF $\alpha$  levels immediately post-exercise (5.32 pg/mL) compared to baseline (2.68 pg/mL, *p* = 0.0470),  
 348 and remained elevated 24 h post-intervention (4.23 pg/mL), evidencing a sustained inflammatory  
 349 response (Table 2). IL-6 levels did not show significant changes across time points, although a slight  
 350 decrease was observed at 24 h post-intervention. Other cytokines and biomarkers, including BDNF, IL-

351 23, IL-1 $\beta$ , and IL-12p70, did not show significant fluctuations post-exercise. Similarly, markers  
 352 associated with vascular and brain health, such as sRAGE, sTREM2, and  $\beta$ -NGF, did not exhibit  
 353 significant changes. However, a separate analysis showed a significant correlation of BDNF levels with  
 354 age 24 h after the continuous acute intense exercise intervention (Figure 5). Anti-inflammatory cytokine  
 355 IL-10 showed a transient non-significant decrease immediately post-intervention returning to baseline  
 356 levels by 24 h (Table 2).

357

358 **Table 2.**

359 **Circulating cytokine levels in the intense exercise intervention.** Values are presented in pg/mL,  
 360 showing median and inter-quartile range (IQR) per analyte within each group. Statistical evaluation was  
 361 performed using mixed-effects analysis, with Geisser-Greenhouse correction and Tukey's multiple  
 362 comparison test, was performed for the comparison of baseline, 30 min, and 24 h after the intense  
 363 exercise intervention.

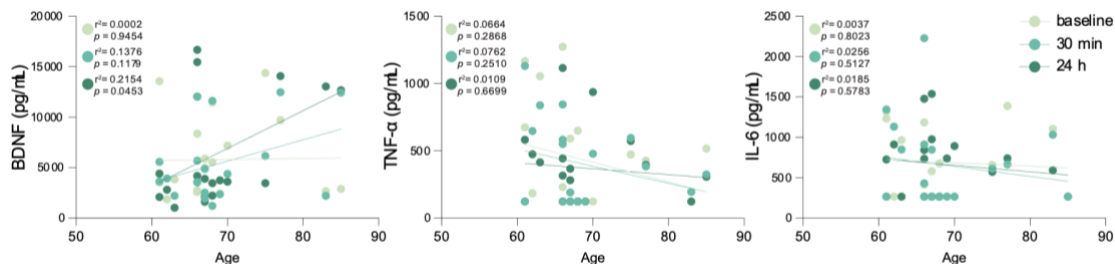
<i>n</i>	<i>baseline</i>	<i>30 min</i>	<i>24 h</i>	<i>ANOVA</i>
	<i>19</i>	<i>19</i>	<i>19</i>	
	<i>pg/mL (m, IQR)</i>			<i>p-value</i>
<i>TNF<math>\alpha</math></i>	2.68 (0.23)	5.32 (43.14)	4.23 (11.57)	<i>0.0470</i>
<i>IL-6</i>	4.96 (6.74)	4.63 (8.42)	2.64 (3.5)	<i>0.0927</i>
<i>VEGF</i>	3.79 (11.53)	4.16 (10.69)	8.1 (26.13)	<i>0.1154</i>
<i>BDNF</i>	252.8 (392)	325.7 (499.6)	276.7 (244)	<i>0.1322</i>
<i>IL-23</i>	3.95 (6.18)	9.66 (18.68)	7.00 (11.59)	<i>0.1694</i>
<i>IL-1b</i>	0.33 (3.79)	0 (0.79)	0 (0.17)	<i>0.1881</i>
<i>sRAGE</i>	2536 (4082.3)	1988 (2140)	2414 (3240)	<i>0.2236</i>
<i>IL-12p70</i>	4.72 (4.52)	5.87 (10.80)	3.77 (7.27)	<i>0.2349</i>
<i>IL-18</i>	191.7 (76.7)	199.5 (154.9)	202.4 (122)	<i>0.3974</i>
<i>IL-10</i>	5.90 (16.69)	3.23 (6.57)	4.49 (6.43)	<i>0.4509</i>
<i>IFN-<math>\alpha</math>2</i>	3.08 (5.36)	4.45 (9.17)	4.24 (7.14)	<i>0.5177</i>
<i>sTREM2</i>	3736 (3489)	4484 (3133)	4450 (3890)	<i>0.5390</i>
<i>IFN-<math>\gamma</math></i>	0.74 (1.88)	0.65 (1.14)	0.97 (2.77)	<i>0.6022</i>
<i><math>\beta</math>-NGF</i>	2.25 (6.73)	1.25 (1.19)	2.67 (4.30)	<i>0.6374</i>
<i>CX3CL1</i>	731.9 (965.6)	836 (1331.5)	1121 (1135.6)	<i>0.7603</i>
<i>IL-33</i>	100.8 (89.1)	109 (143.9)	95.65 (171)	<i>0.7603</i>
<i>VILIP-1</i>	27.05 (212.32)	20.95 (46.35)	88.65 (157.37)	<i>0.8102</i>
<i>IL-17A</i>	0.93 (1.34)	0.75 (1.49)	1.02 (1.23)	<i>0.8487</i>
<i>MCP-1</i>	24.7 (22.83)	25.57 (24.11)	27.22 (25.6)	<i>0.9071</i>
<i>IL-8</i>	8.34 (44.18)	6.54 (30.36)	0.50 (49.81)	<i>0.9081</i>
<i>sTREM1</i>	44.56 (90.76)	29.29 (51.62)	46.17 (118.55)	<i>0.9161</i>

364

365 **Increased extracellular vesicle release is a key response to intense exercise.** Following the evaluation  
366 of immune cell populations, their activation status, and peripheral cytokine levels, we examined the  
367 impact of high-intensity exercise on the release of EVs. Plasma-derived IEVs were quantified at  
368 baseline, 30 minutes and 24 h post-intervention. Flow cytometric analysis demonstrated a general  
369 increase in the concentration of plasma-derived EVs after 24 hours, as indicated by increased levels of  
370 tetraspanin markers CD9, CD63, and CD81 (Figure 6A-B). Notably, CD63 and CD81 displayed  
371 significant increases in median fluorescence intensity (MFI) at 24 h compared to 30 minutes post-  
372 intervention, while CD9 levels remained unchanged.

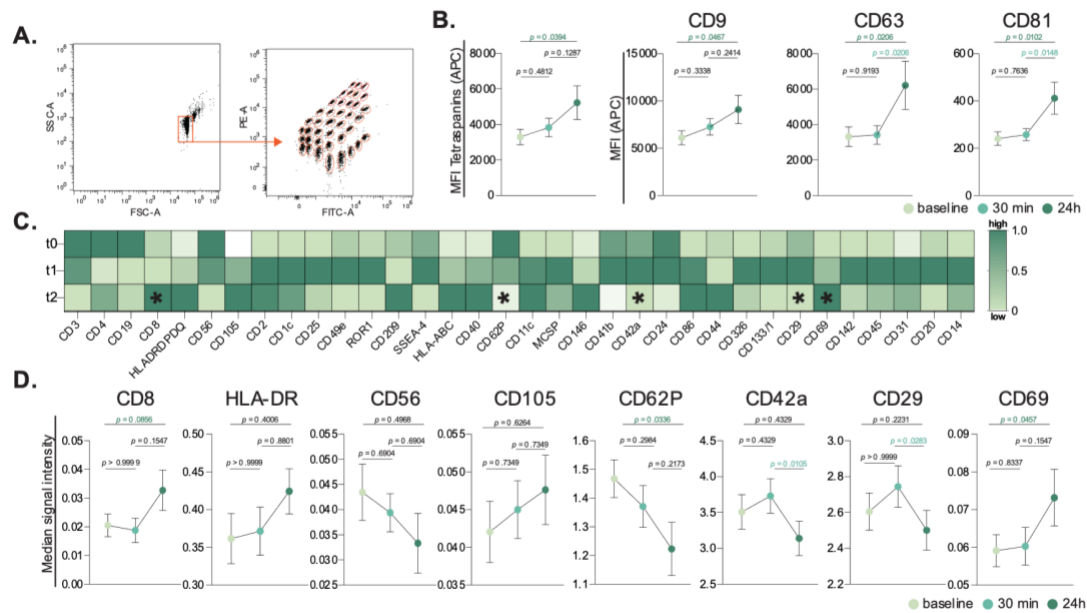
373 A detailed examination of 37 exosomal surface epitopes revealed a significant increase in surface CD69  
374 expression after 24 h post-intervention (Figure 6C). This increase in CD69, a marker of cellular  
375 activation, was accompanied by a significant reduction in CD62P, CD42a, and CD29 markers on IEVs  
376 at 24 h post-intervention. Other markers including CD8, CD56, and CD105, did not show significant  
377 changes across the time points (Figure 6D). Sex-specific differences were also observed in IEV profiles.  
378 While the total circulating IEV count did not differ between sexes, females exhibited a significant  
379 increase in CD4+ IEVs and a decrease in CD62P+ IEVs 24 hours post-exercise. In contrast, male  
380 participants showed a marked increase in HLA-ABC+ IEVs following the intense exercise intervention  
381 (Figure 6D).

382



383

384 **Figure 5. Peripheral BDNF levels positively correlate with age in elderly participants 24h**  
385 **following acute continuous intensive exercise.** Scatter plots displaying peripheral levels of brain-  
386 derived neurotrophic factor (BDNF), tumor necrosis factor-alpha (TNF-α), and interleukin-6 (IL-6) in  
387 relation to age across the three studied time points: baseline (mint green), 30 min post-exercise  
388 (turquoise), and 24 h post-exercise (dark green). Data points represent individual participants, with  
389 green hues indicating different time points as specified.  $r^2$  and  $p$  values are shown in plot; statistical  
390 analysis was performed using simple linear regression.



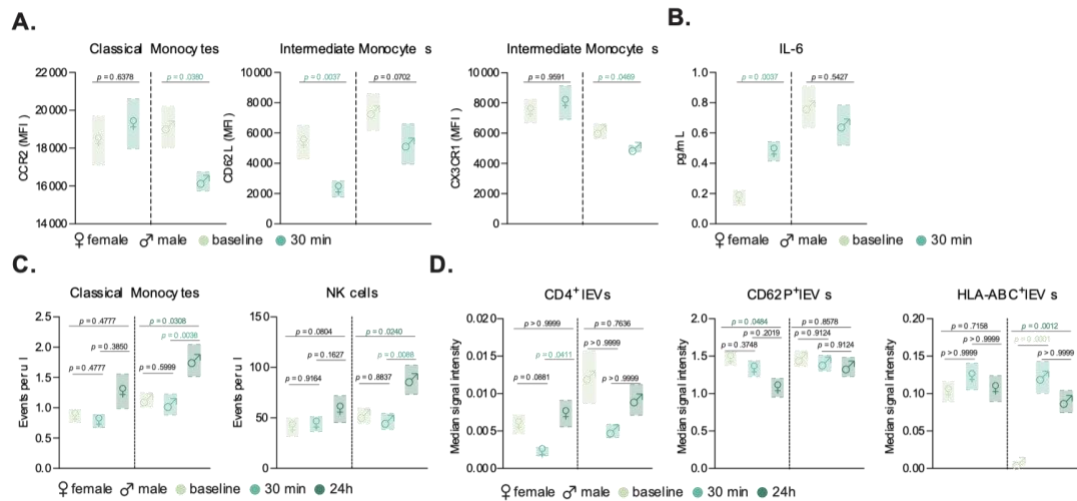
391

392 **Figure 6. Extracellular vesicles release in response to acute continuous intensive exercise.**

393 Representative gating strategy of the bead-based extracellular vesicle assay, showing the bead size  
 394 selection (left) and the 37 different dye-labeled capture beads against 37 different EV surface antigens  
 395 based on FITC and PE fluorescence (right) (A). Column plot showing mean and SEM of the tetraspanin  
 396 signal (CD9, CD63 and CD81) (left) and individualized representation of CD9, CD63 and CD81 in  
 397 each timepoint studied (right) (B). Heatmap showing CD9-CD63-CD81 normalized MFI in all  
 398 individual samples, showing 34 differentially expressed surface markers in our cohort before, 30 min  
 399 and 24 h after the intervention (C). Column plots showing mean and SEM of signal intensity of  
 400 lymphocytes and leukocytes (CD8, HLA, CD56), endothelial cells (CD105), platelets (CD62P, CD42a)  
 401 and, immune cell activation (CD29, CD69) after detection of CD9, CD63 and CD81. Statistical tests  
 402 analyzed using a mixed-effects analysis, with Geisser-Greenhouse correction and Tukey's multiple  
 403 comparison test (D). *p* values are shown in figure.

404





405

406

407

408

409

410

411

412

413

414

415

416

417

418

**Figure 7. Sex-specific immune and EV responses to exercise in older adults.** Floating bar charts showing sex-disaggregated (female symbol on the left and male symbol on the right) mean and SEM of activation markers in monocyte subsets after a moderate exercise intervention (**A**) and circulating IL-6 levels in pg/mL (**B**) comparing baseline and 30 min after the intervention. Flowing bar chart showing sex-disaggregated data (female symbol on the left and male symbol on the right) mean and SEM of events per microliter of classical monocytes (left) and NK cells (right) (**C**), and median signal intensity of CD4<sup>+</sup>, CD62P<sup>+</sup> and HLA-ABC<sup>+</sup> ExerVs (**D**) at baseline, 30 min and 24 h after the intense exercise intervention. Statistical evaluations for the moderate intervention comparing two timepoints was performed using non-parametric student's t-test (n=14), and for the intense exercise intervention data, comparing three timepoints a mixed-effects analysis, with Geisser-Greenhouse correction and Tukey's multiple comparison test was performed (n=19). *p* values are shown in figure.

## 418 Discussion

419

420

421

422

423

424

425

426

427

In recent years, the *Exercise as Medicine* approach has been increasingly recognized for its multifaceted benefits beyond disease prevention. Exercise acts as a modulator of immune function and inflammation, key elements in aging and disease processes<sup>27,31,32</sup>. Therefore, our study aimed to explore the interplay between exercise and the immune response, revealing alterations in immune cell populations and cytokine levels following both acute continuous moderate and intense exercise interventions in elderly individuals. Furthermore, we examined exercise induced release and selective surface marker modulation of ExerVs as potential mediators of systemic immune response, contributing to a growing body of evidence that exercise plays a vital role in promoting healthy aging and preventing age-related diseases.

428

429

430

**Monocyte subsets activation after moderate exercise.** In the initial phase of our study, we sought to investigate the impact of a single session of acute continuous moderate exercise on the peripheral innate immune system of healthy elderly individuals. While no significant changes were detected in peripheral

431 cell numbers or distribution, distinct alterations emerged in the activation of monocyte subsets. Previous  
432 studies indicate that monocyte subset activation in response to exercise depends on the exercise  
433 intensity<sup>33</sup>. Our findings align with this, as classical (CD14<sup>+</sup>CD16<sup>-</sup>) monocytes, representing an early  
434 differentiation stage are strongly recruited into circulation during long-term aerobic exercise (in our  
435 study acute continuous moderate exercise: 30 minutes, 60 % VO<sub>2max</sub>, subproject 1). In contrast, mature  
436 subtypes (non-classical and intermediate monocytes, CD14<sup>+</sup>CD16<sup>+</sup>) increase with high intensity  
437 exercise above the individual anaerobic threshold (subproject 2). Given that aging is associated with  
438 chronic innate immune activation – particularly a higher frequency of CD16<sup>+</sup> monocyte subpopulations  
439 – exercise emerges as a primary intervention target for healthy aging<sup>34</sup>.

440

441 Classical monocytes, which are primarily responsible for phagocytosis and the initiation and mediation  
442 of leukocyte recruitment, displayed an increase in CD86 and a decrease in CX3CR1 expression. CD86  
443 is a co-stimulatory molecule that is rapidly upregulated upon stimulation, as it is present in a reservoir  
444 in monocytes and dendritic cells, which in this context allows for quick deployment to the cell surface  
445 for enhanced co-stimulatory function<sup>35</sup>. Chemokine receptor CX3CR1, which binds to CX3CL1, has  
446 been demonstrated to play a role in regulating monocyte differentiation and migration. Research has  
447 revealed that CX3CL1 levels are elevated in human skeletal muscle following physical activity, which  
448 is believed to facilitate the creation of a regenerative microenvironment post-exercise<sup>36</sup>. Intermediate  
449 monocytes also exhibited decreased CX3CR1 levels post-exercise. This decrease has been associated  
450 with the differentiation process that monocytes can go through in the periphery, which is also evidenced  
451 in our cohort by increasing levels of intermediate and nonclassical monocytes compared to classical  
452 monocytes levels after the intervention<sup>37</sup>. Furthermore, our study documented a significant reduction in  
453 the surface expression of monocyte chemokine receptor 2 (CCR2) among classical monocytes in male  
454 participants following exercise. CCR2, a chemokine receptor critical for monocyte recruitment, has  
455 shown sex-specific expression patterns in previous studies with younger females exhibiting higher  
456 expression levels compared to males after a single instance of physical activity<sup>38,39</sup>. Consistent with this  
457 finding, our study revealed higher baseline CCR2 levels in elderly females compared to their male  
458 counterparts. Specifically, our results evidenced a considerable reduction in CCR2 expression following  
459 exercise exclusively in elderly males. This sex-specific modulation of CCR2 accentuates inherent  
460 biological differences, potentially influenced by hormonal factors, significantly modulating the immune  
461 system responses to exercise between elderly men and women. This finding presents the potential value  
462 for personalized regimens of exercise to optimize immune health in the aging population.

463 Our analysis of intermediate monocytes revealed a concomitant decrease in the expression levels of  
464 CX3CR1 and HLA-ABC following moderate exercise. HLA-ABC, also known as the major  
465 histocompatibility complex class I antigen (MHC-I), plays a crucial role in antigen presentation and has  
466 been demonstrated to increase its microglial expression with age, suggesting that the immune response  
467 in the elderly may be subject to modification, consequently increasing their susceptibility to structural

468 brain changes<sup>40,41</sup>. However, in the peripheral monocyte subpopulation, the observed decrease in HLA-  
469 ABC levels after moderate exercise in the elderly suggests a possible transient period of heightened  
470 susceptibility to infections. Moreover, our results indicated a notable reduction in the expression of  
471 CD62L, an adhesion molecule critical in the recruitment of monocytes to sites of inflammation through  
472 endothelial adhesion and subsequent tissue migration<sup>42,43</sup>. Prior studies have reported higher expression  
473 of CD62L on peripheral blood mononuclear cells (PBMCs) in older individuals as compared to younger  
474 cohorts<sup>44</sup>. Interestingly, in our study, this reduction in CD62L levels was observed only in female  
475 participants following moderate exercise. This finding suggests shedding of CD62L from the monocyte  
476 surface as a consequence of a more efficient monocyte adhesion and transmigration to sites of  
477 inflammation potentially enhancing their acute inflammatory response in the surrounding tissues. In  
478 contrast, the relatively stable CD62L levels observed in male participants suggest that their monocytes  
479 may be less efficient in transitioning from rolling to firm adhesion and transmigration under acute  
480 inflammatory conditions. This may contribute to a higher chronic inflammatory state, potentially  
481 explaining the higher incidence of cardiovascular disease observed in men compared to women.

482

483 **Circulating pro-inflammatory cytokines after one moderate session of exercise in the elderly.** Prior  
484 research demonstrates that acute engagement in moderate-intensity physical activity can result in an  
485 increase in proinflammatory cytokines, including interleukin-6 (IL-6) and tumor necrosis factor-alpha  
486 (TNF- $\alpha$ )<sup>30,45,46</sup>. Contrary to these studies, we did not observe significant increases in proinflammatory  
487 cytokines immediately after post-moderate exercise, possibly due to the participants' familiarity with  
488 moderate activity or the timing of the assessment. According to the Borg RPE Scale, the participants  
489 reported an average score of 15 (ranging from 13 to 18), indicating that the perceived exertion level  
490 ranged from somewhat hard to very hard, which should have been sufficient, theoretically, to induce a  
491 transient proinflammatory state<sup>47</sup>. We hypothesize that this finding could be explained by the fact that  
492 the assessment was conducted 30 minutes after the intervention, which did not provide sufficient time  
493 for the signaling, production, and release of proinflammatory markers. However, this could also be due  
494 to the participants' tolerance to moderate exercise, as most of them reported engaging in regular physical  
495 activity and were not sedentary individuals.

496

497 We detected elevated IL-6 exclusively in the female cohort. Previous research indicates that younger  
498 and middle-aged women with ischemic heart disease tend to exhibit higher IL-6 concentrations than  
499 men with the same condition, particularly in response to stress, a difference potentially influenced by  
500 testosterone<sup>48</sup>. In aging populations, plasma IL-6 levels are negatively correlated with muscle strength  
501 in both men and women. However, men with better muscle condition show higher levels of IL-6 than  
502 women with poorer muscle condition, indicating a sex-specific disparity in IL-6 as a predictive marker  
503 for sarcopenia<sup>49</sup>. Our findings revealed that moderate aerobic exercise led to a substantial increase in  
504 plasma IL-6 among females, suggesting that this exercise intervention may elicit different inflammatory

505 responses in elderly women versus men. This sex-specific IL-6 response could have important  
506 implications for inflammation regulation and health outcomes in aging populations.

507

508 **Intense exercise modifies the innate immune response in the aging population in comparison to**  
509 **acute moderate continuous exercise.** Exercise-induced leukocyte mobilization is well documented,  
510 and it is postulated that cortisol release during the intervention facilitates the exit of leukocytes from  
511 the bone marrow<sup>50,51</sup>. We hypothesized that a single session of intense exercise would provoke a more  
512 pronounced effect in the peripheral immune system compared to moderate exercise. Early studies  
513 indicate that NK cells are the first and most affected immune cell subset after exercise<sup>30,52–55</sup>. Consistent  
514 with these studies, we confirmed an enhanced innate immune response, particularly in the levels of NK  
515 cells and monocytes 24 hours after the intervention. Furthermore, we conducted a study analyzing the  
516 expression of CD56 and CD16 in mature natural killer (NK) cells, specifically focusing on the CD56<sup>bright</sup>  
517 and CD16<sup>low</sup> subsets, which were found to be the main contributors to the increased NK cell count 24  
518 hours after exercise. Unlike moderate exercise, which did not alter proinflammatory cytokine levels in  
519 the elderly population, intense exercise led to a significant increase in TNF $\alpha$ . This rise in TNF $\alpha$  is likely  
520 attributed to a specific subset of NK cells, known for their elevated proinflammatory cytokine  
521 production which aligns with our data on heightened TNF $\alpha$  levels sustained for up to 24 hours post-  
522 intervention<sup>56,57</sup>. These data indicate that intense exercise triggers a pronounced acute inflammatory  
523 response in aging individuals, particularly through elevated TNF $\alpha$  levels, while other cytokines display  
524 trends that suggest additional underlying immunological effects. Further studies with larger cohorts are  
525 needed to fully elucidate the broader immunological impact of intense physical activity in elderly  
526 individuals.

527 Our results demonstrate a significant increase in the levels of classical and nonclassical monocytes 24  
528 h post-intense exercise. Analysis of activation markers revealed a decline in CX3CR1 expression on  
529 classical monocytes, mirroring the decreased observed after moderate exercise. CX3CR1 decrease in  
530 this context could hint towards a shift towards a more proinflammatory phenotype in response to intense  
531 exercise. As expected, there was a reduction in the number of neutrophils observed at the 24-hour  
532 timepoint. This decrease is thought to be a result of neutrophils being recruited to muscle tissue in  
533 response to exercise-induced tissue damage<sup>58,59</sup>. This aligns with previous findings by Nunes-Silva et  
534 al. who reported that exhaustive treadmill exercise in mice induced rolling, adhesion, and transmigration  
535 of neutrophils into muscle tissue<sup>60</sup>. Consistently, our cohort showed increased expression of CX3CR1  
536 in neutrophils a mechanism that has been shown in mice to facilitate neutrophil recruitment to active  
537 muscles during exercise<sup>61</sup>.

538

539 Research has consistently shown that physical exercise has a significant impact on BDNF levels. Both  
540 acute (single session) and regular (long-term) exercise have been demonstrated to increase BDNF  
541 levels, which is associated with cognitive improvements<sup>62</sup>. Furthermore, it has been shown, that acute

542 exercise modulates BDNF and pro-BDNF Protein content in immune cells<sup>63</sup>. Aerobic exercise has been  
543 shown to increase peripheral BDNF levels in elderly adults<sup>64</sup>, and in our cohort, BDNF levels exhibited  
544 a slight increase 30 min after the intense exercise intervention, with levels nearly returning to baseline  
545 by the 24 h timepoint, which is consistent with prior findings. Notably, when we examined the  
546 correlation between BDNF levels and age, we observed no significant correlation at baseline or 30 min  
547 post-intervention. However, a significant positive correlation emerged at the 24 h timepoint. This  
548 finding indicate that the sustained elevation of BDNF levels 24 h after intense exercise is more  
549 pronounced with increasing age, suggesting an age-dependent response in BDNF dynamics post-  
550 exercise. This could be driven by age-related differences in the sensitivity of BDNF production and  
551 release in response to exercise stress over time. Alternatively, older individuals might exhibit prolonged  
552 BDNF elevation as a compensatory neuroprotective mechanism in response to the demands of intense  
553 exercise. Whether the delayed BDNF response correlates with improved recovery or neuroplasticity in  
554 older individuals needs to be further explored.

555

556 **Extracellular vesicle release after exercise in the elderly.** EVs are crucial in mediating the beneficial  
557 effects of physical activity by transporting proteins, lipids, metabolites, and nucleic acids into the  
558 circulation. These vesicles facilitate communication with recipient cells and modulate intercellular  
559 communication and metabolic processes<sup>65-68</sup>. In 2019, Brahmer et al. investigated the release and origin  
560 of circulating EVs following exercise in a cohort of healthy male athletes. Their findings revealed a  
561 significant increase in the number of EVs released during exercise, primarily attributed to lymphocytes,  
562 monocytes, platelets, endothelial cells, and MHC-II+ cells<sup>69</sup>.

563 In our elderly cohort, both males and females exhibited an increased release of ExerVs from  
564 lymphocytes and leukocytes (CD8, CD14, HLA, CD86), platelets (CD62P, CD42a, CD41b), and  
565 endothelial cells (CD105, CD31). This finding aligns with previous research conducted exclusively on  
566 younger, healthy participants, emphasizing the relevance of understanding ExerV dynamics in older  
567 adults and their potential implications for immune function and health in aging populations<sup>69,70</sup>.  
568 Furthermore, we observed a significant increase in CD69 expression 24 hours post-exercise. CD69  
569 expression is upregulated upon activation in leukocytes, including NK cells and monocytes, which  
570 coincide with their increased numbers found in circulation<sup>71</sup>. Additionally, an increase in platelet  
571 marker expression (CD62P, CD42a) on ExerVs was observed 30 min after exercise, but showed a  
572 significant reduction at the 24-hour time point. This observation suggests that exercise induces acute  
573 platelet activation leading to the release of ExerVs and could indicate that the transient increase in  
574 platelet-derived ExerVs may contribute to the exercise adaptive response and support recovery  
575 processes post-exercise in aging individuals.

576 While no differences were observed in the total amount of ExerVs release between females and males  
577 in our cohort, sex-specific analyses revealed distinct patterns. In females, a significant increase in T  
578 cell-derived ExerVs (CD4+) was detected, whereas males exhibited a significant increase in MHC-I  
579 ExerVs (HLA-ABC+) 24 hours after the exercise intervention. These findings suggest adaptive  
580 immunity alterations that had gone unnoticed at a cellular level potentially influenced by hormonal  
581 factors. Estrogen for example, could potentially enhance CD4+ T cell activation leading to higher levels  
582 of CD4+ EVs in females, while testosterone may promote antigen presentation and cytotoxic  
583 responses<sup>72</sup>, as reflected by the increase of HLA-ABC+ ExerVs in males. Additionally, sex-specific  
584 physiological adaptations to exercise could contribute, with females exhibiting a stronger immune  
585 modulation response and males focusing on recovery and inflammation resolution. Nevertheless,  
586 whether these differences stem from hormone-dependent effects, muscle fitness, or metabolic  
587 mechanisms, remains to be determined. Our findings indicate that adaptive immune responses to  
588 exercise-induced ExerVs release may vary in a sex-dependent matter, warranting further research to  
589 explore those mechanisms.

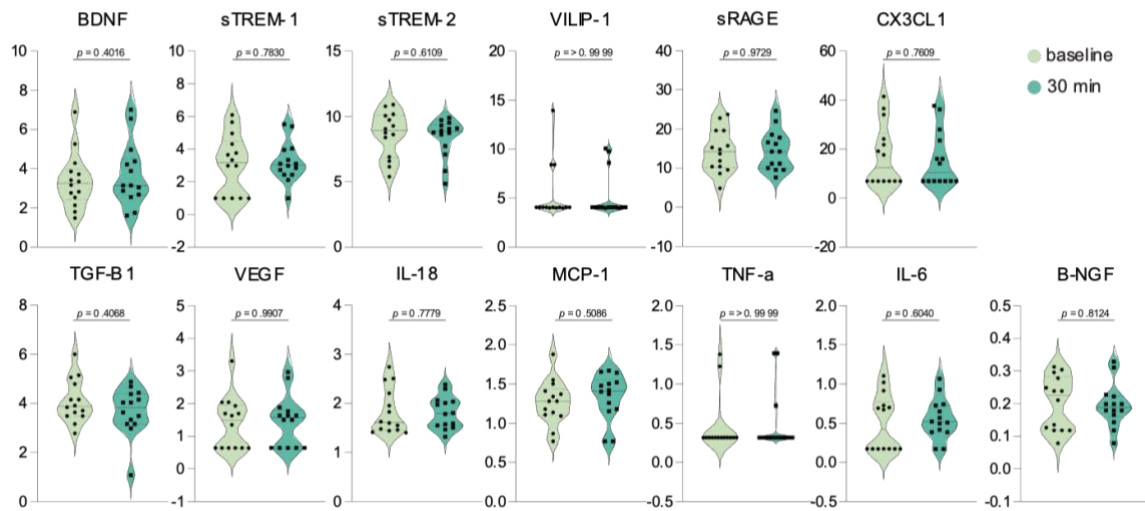
## 590 **Conclusion**

591 Physical exercise impacts several physiological systems beyond solely skeletal muscle engagement<sup>9,73</sup>.  
592 Due to its pivotal role in human health and disease management, exercise has garnered substantial  
593 attention for its numerous beneficial effects, particularly its role in promoting healthy aging. As the  
594 global population ages, addressing the challenges of healthy aging becomes crucial not only from an  
595 individual health perspective but also from economic and societal standpoints<sup>74</sup>. Regular physical  
596 activity has been demonstrated to delay the onset of age-related disorders such as cardiovascular  
597 diseases, atherosclerosis, arterial hypertension and dementia<sup>75-78</sup>. Since physical inactivity correlates  
598 with an increase in health care costs, regular exercise is a cost-effective method to reduce the financial  
599 and resource burden on the health care system and improve the individual's quality of life<sup>79</sup>.

600 In summary, our study further defines the complex interplay between exercise and immune function in  
601 elderly individuals, demonstrating significant alterations in immune cell populations, cytokine  
602 production, and EV release in response to both moderate and intense exercise. These findings point  
603 towards the necessity for tailored exercise prescriptions that consider individual physiological  
604 responses, optimizing health outcomes within aging populations. Notably, the increase concentration  
605 of plasma-derived EVs and variations in surface marker expression suggest a multifaceted signaling  
606 network that influences innate immune modulation, platelet function, and the body's adaptability to  
607 physical activity. Our results position EVs not only as biomarkers of exercise-induced physiological  
608 changes but also as potential targets for therapeutic interventions. As the *Exercise as Medicine* paradigm  
609 continues to evolve, our research advocates for a deeper understanding of exercise's role in enhancing  
610 immune function and resilience against age-related inflammation, paving the way for innovative health

611 strategies in the aging population. The data indicate that both moderate and intense exercise induce  
612 significant changes in immune cell activation and cytokine levels in this healthy elderly population.  
613 Given the compelling data supporting the multifaceted benefits of regular physical activity, we  
614 recommend the integration of exercise into daily routines, especially for the elderly. Considering sex-  
615 specific physiological differences when tailoring exercise regimens may further enhance health  
616 outcomes and optimize immune responses. Future research should continue to explore the process of  
617 exercise-induced immune modulation and explore the potential therapeutic applications of exercise in  
618 managing aging-related health challenges.

619 **Supplementary data**



620

621 **Supplementary Figure 1. Peripheral cytokine levels 30 minutes following acute continuous**

622 **moderate exercise.** Violin plots display plasma concentrations of selected cytokines in elderly adults,

623 measured at baseline and 30 minutes after a session of moderate-intensity exercise. Plots showing the

624 central line representing the median value, and thinner lines above and below the median mark the

625 interquartile range (IQR). Statistical evaluation was performed using student's t test, *p* values are shown

626 in figure.



627 **References**

- 628 1. Hiam-Galvez, K. J., Allen, B. M. & Spitzer, M. H. Systemic immunity in cancer. *Nature Reviews Cancer*  
629 *2021 21:6 21, 345–359* (2021).
- 630 2. Lutshumba, J., Nikolajczyk, B. S. & Bachstetter, A. D. Dysregulation of Systemic Immunity in Aging  
631 and Dementia. *Front Cell Neurosci* *15, 652111* (2021).
- 632 3. Zmora, N., Bashiardes, S., Levy, M. & Elinav, E. The Role of the Immune System in Metabolic Health  
633 and Disease. *Cell Metab* *25, 506–521* (2017).
- 634 4. Boyalla, V., Gallego-Colon, E. & Spartalis, M. Immunity and inflammation in cardiovascular disorders.  
635 *BMC Cardiovasc Disord* *23, 148* (2023).
- 636 5. Morton, L. *et al.* Spatio-temporal dynamics of microglia phenotype in human and murine cSVD: impact  
637 of acute and chronic hypertensive states. *Acta Neuropathol Commun* *11, (2023)*.
- 638 6. Wang, Y., Dong, C., Han, Y., Gu, Z. & Sun, C. Immunosenescence, aging and successful aging. *Front*  
639 *Immunol* *13, 942796* (2022).
- 640 7. Ferrucci, L. & Fabbri, E. Inflammageing: chronic inflammation in ageing, cardiovascular disease, and  
641 frailty HHS Public Access. (2018) doi:10.1038/s41569-018-0064-2.
- 642 8. Ginaldi, L., Di Benedetto, M. C. & De Martinis, M. Osteoporosis, inflammation and ageing. *Immunity*  
643 *and Ageing* *2, 1–5* (2005).
- 644 9. Müller, P., Stiebler, M., Schwarck, S., Haghikia, A. & Düzel, E. Physical activity, aging and brain health.  
645 *Dtsch Z Sportmed* *72, 327–334* (2021).
- 646 10. Galloza, J., Castillo, B. & Micheo, W. Benefits of Exercise in the Older Population. *Phys Med Rehabil*  
647 *Clin N Am* *28, 659–669* (2017).
- 648 11. Estruel-Amades, S., Camps-Bossacoma, M., Massot-Cladera, M., Pérez-Cano, F. J. & Castell, M.  
649 Alterations in the innate immune system due to exhausting exercise in intensively trained rats. *Scientific*  
650 *Reports* *2020 10:1 10, 1–12* (2020).
- 651 12. Lesnak, J. B., Berardi, G. & Sluka, K. A. Influence of routine exercise on the peripheral immune system  
652 to prevent and alleviate pain. *Neurobiology of Pain* *13, 100126* (2023).
- 653 13. Weyh, C., Krüger, K. & Strasser, B. Physical activity and diet shape the immune system during aging.  
654 *Nutrients* vol. 12 Preprint at <https://doi.org/10.3390/nu12030622> (2020).
- 655 14. Paolucci, E. M., Loukov, D., Bowdish, D. M. E. & Heisz, J. J. Exercise reduces depression and  
656 inflammation but intensity matters. *Biol Psychol* *133, 79–84* (2018).
- 657 15. Klein, S. L. & Flanagan, K. L. Sex differences in immune responses. *Nature Reviews Immunology* *2016*  
658 *16:10 16, 626–638* (2016).
- 659 16. Papp, G. *et al.* Regular Exercise May Restore Certain Age-Related Alterations of Adaptive Immunity and  
660 Rebalance Immune Regulation. *Front Immunol* *12, (2021)*.
- 661 17. van der Geest, K. S. M. *et al.* Changes in peripheral immune cell numbers and functions in octogenarian  
662 walkers - an acute exercise study. *Immunity and Ageing* *14, 1–13* (2017).
- 663 18. Teissier, T., Boulanger, E. & Cox, L. S. Interconnections between Inflammageing and Immunosenescence  
664 during Ageing. *Cells* *2022, Vol. 11, Page 359 11, 359* (2022).
- 665 19. Wang, L., Mao, L., Xiao, W. & Chen, P. Natural killer cells immunosenescence and the impact of lifestyle  
666 management. *Biochem Biophys Res Commun* *689, 149216* (2023).
- 667 20. Duggal, N. A., Niemi, G., Harridge, S. D. R., Simpson, R. J. & Lord, J. M. Can physical activity  
668 ameliorate immunosenescence and thereby reduce age-related multi-morbidity? *Nature Reviews*  
669 *Immunology* *2019 19:9 19, 563–572* (2019).
- 670 21. Bei, Y. *et al.* Exercise-induced circulating extracellular vesicles protect against cardiac ischemia-  
671 reperfusion injury. doi:10.1007/s00395-017-0628-z.
- 672 22. McIlvenna, L. C. & Whitham, M. Exercise, healthy ageing, and the potential role of small extracellular  
673 vesicles. *Journal of Physiology* *601, 4937–4951* (2023).
- 674 23. Chong, M. C. *et al.* Acute exercise-induced release of innate immune proteins via small extracellular  
675 vesicles changes with aerobic fitness and age. *Acta Physiologica* e14095 (2024)  
676 doi:10.1111/APHA.14095.
- 677 24. Frühbeis, C., Helmig, S., Tug, S., Simon, P. & Krämer-Albers, E. M. Physical exercise induces rapid  
678 release of small extracellular vesicles into the circulation. *J Extracell Vesicles* *4, 28239* (2015).
- 679 25. Whitehead, M., Antonazzi, M. & Shanahan, C. M. Extracellular vesicles: the key to unlocking  
680 mechanisms of age-related vascular disease? *The Journal of Cardiovascular Aging* *4, null-null* (2024).
- 681 26. Darragh, I. A. J. *et al.* The separation and identification of circulating small extracellular vesicles from  
682 endurance-trained, strength-trained and recreationally active men. *J Physiol* *601, 5075–5091* (2023).
- 683 27. Simpson, R. J. *et al.* Exercise and the aging immune system. *Ageing Research Reviews* vol. 11 404–420  
684 Preprint at <https://doi.org/10.1016/j.arr.2012.03.003> (2012).
- 685 28. Klingenheben, T., Löllgen, H., Bosch, R. & Trappe, H. J. Manual on the clinical use of ergometry.  
686 *Kardiologe* vol. 12 342–355 Preprint at <https://doi.org/10.1007/s12181-018-0265-2> (2018).

- 687 29. Michaud, M. *et al.* Proinflammatory Cytokines, Aging, and Age-Related Diseases. *J Am Med Dir Assoc*  
688 14, 877–882 (2013).
- 689 30. Bernecker, C. *et al.* Evidence for an exercise induced increase of TNF- $\alpha$  and IL-6 in marathon runners.  
690 *Scand J Med Sci Sports* 23, 207–214 (2013).
- 691 31. Simpson, R. J. *et al.* Can exercise affect immune function to increase susceptibility to infection? *Exerc*  
692 *Immunol Rev* 26, (2020).
- 693 32. Via, J., Reid, J. & Oehlert, G. Pedalling toward a deeper understanding of exercise effects on immune  
694 function. *J Physiol* 602, 4705–4707 (2024).
- 695 33. Gabriel, H. & Kindermann, W. *The Acute Immune Response to Exercise: What Does It Mean? J. Sports*  
696 *Med* vol. 18.
- 697 34. Hearps, A. C. *et al.* Aging is associated with chronic innate immune activation and dysregulation of  
698 monocyte phenotype and function. *Aging Cell* 11, 867–875 (2012).
- 699 35. Smyth, C. M. *et al.* Differential subcellular localization of CD86 in human PBMC-derived macrophages  
700 and DCs, and ultrastructural characterization by immuno-electron microscopy. *Int Immunol* 17, 123–132  
701 (2005).
- 702 36. Strömberg, A. *et al.* CX3CL1--a macrophage chemoattractant induced by a single bout of exercise in  
703 human skeletal muscle. *Am J Physiol Regul Integr Comp Physiol* 310, R297–R304 (2016).
- 704 37. Panek, C. A. *et al.* Differential expression of the fractalkine chemokine receptor (CX3CR1) in human  
705 monocytes during differentiation. *Cellular & Molecular Immunology* 2015 12:6 12, 669–680 (2014).
- 706 38. She, S. *et al.* Functional Roles of Chemokine Receptor CCR2 and Its Ligands in Liver Disease. *Front*  
707 *Immunol* 13, (2022).
- 708 39. Blanks, A. M., Pedersen, L. N., Bohmke, N., Mihalick, V. L. & Franco, R. L. Sex differences in monocyte  
709 CCR2 expression and macrophage polarization following acute exercise. *Life Sci* 299, (2022).
- 710 40. Ginaldi, L. *et al.* Changes in the expression of surface receptors on lymphocyte subsets in the elderly:  
711 Quantitative flow cytometric analysis. *Am J Hematol* 67, 63–72 (2001).
- 712 41. Lazarczyk, M. J. *et al.* Major Histocompatibility Complex class I proteins are critical for maintaining  
713 neuronal structural complexity in the aging brain. *Scientific Reports* 2016 6:1 6, 1–13 (2016).
- 714 42. Ivetic, A., Green, H. L. H. & Hart, S. J. L-selectin: A major regulator of leukocyte adhesion, migration  
715 and signaling. *Front Immunol* 10, 451997 (2019).
- 716 43. Merah-Mourah, F., Cohen, S. O., Charron, D., Mooney, N. & Haziot, A. Identification of Novel Human  
717 Monocyte Subsets and Evidence for Phenotypic Groups Defined by Interindividual Variations of  
718 Expression of Adhesion Molecules. *Sci Rep* 10, (2020).
- 719 44. Cao, Y. *et al.* Phenotypic and functional alterations of monocyte subsets with aging. *Immun Ageing* 19,  
720 (2022).
- 721 45. Docherty, S. *et al.* The effect of exercise on cytokines: implications for musculoskeletal health: a narrative  
722 review. *BMC Sports Science, Medicine and Rehabilitation* 2022 14:1 14, 1–14 (2022).
- 723 46. Shobeiri, P. *et al.* IL-6 and TNF- $\alpha$  responses to acute and regular exercise in adult individuals with  
724 multiple sclerosis (MS): a systematic review and meta-analysis. *Eur J Med Res* 27, 185 (2022).
- 725 47. Borg, G. Psychophysical scaling with applications in physical work and the perception of exertion. *Scand*  
726 *J Work Environ Health* 16, 55–58 (1990).
- 727 48. Sullivan, S. *et al.* Young Women With Coronary Artery Disease Exhibit Higher Concentrations of  
728 Interleukin-6 at Baseline and in Response to Mental Stress. *J Am Heart Assoc* 7, (2018).
- 729 49. Mikó, A. *et al.* Gender difference in the effects of interleukin-6 on grip strength - a systematic review and  
730 meta-analysis. *BMC Geriatr* 18, (2018).
- 731 50. Hansen, J. B., Wilsgård, L. & Østerud, B. Biphasic changes in leukocytes induced by strenuous exercise.  
732 *Eur J Appl Physiol Occup Physiol* 62, 157–161 (1991).
- 733 51. Neves, P. R. D. S. *et al.* Acute effects of high- and low-intensity exercise bouts on leukocyte counts. *J*  
734 *Exerc Sci Fit* 13, 24–28 (2015).
- 735 52. Pedersen, L. *et al.* Voluntary running suppresses tumor growth through epinephrine- and IL-6-dependent  
736 NK cell mobilization and redistribution. *Cell Metab* 23, 554–562 (2016).
- 737 53. Lin, M. L. *et al.* Exercise Training Improves Mitochondrial Bioenergetics of Natural Killer Cells. *Med*  
738 *Sci Sports Exerc* 54, 751–760 (2022).
- 739 54. Koivula, T. *et al.* The effect of acute exercise on circulating immune cells in newly diagnosed breast  
740 cancer patients. *Scientific Reports* 2023 13:1 13, 1–12 (2023).
- 741 55. Quintana-Mendias, E. *et al.* The Effect of Acute Physical Exercise on Natural Killer Cells Populations  
742 and Cytokine Levels in Healthy Women. *Sports* 11, (2023).
- 743 56. Cooper, M. A., Fehniger, T. A. & Caligiuri, M. A. The biology of human natural killer-cell subsets. *Trends*  
744 *Immunol* 22, 633–640 (2001).
- 745 57. Poli, A. *et al.* CD56bright natural killer (NK) cells: an important NK cell subset. *Immunology* 126, 458–  
746 465 (2009).

- 747 58. Pyne, D. B. Regulation of neutrophil function during exercise. *Sports Med* 17, 245–258 (1994).  
748 59. Suzuki, K. *et al.* Effects of exhaustive endurance exercise and its one-week daily repetition on neutrophil  
749 count and functional status in untrained men. *Int J Sports Med* 17, 205–212 (1996).  
750 60. Nunes-Silva, A. *et al.* Treadmill Exercise Induces Neutrophil Recruitment into Muscle Tissue in a  
751 Reactive Oxygen Species-Dependent Manner. An Intravital Microscopy Study. *PLoS One* 9, e96464  
752 (2014).  
753 61. Nyasha, M. R. *et al.* Effects of CX3CR1 and CXCR2 antagonists on running-dependent intramuscular  
754 neutrophil recruitments and myokine upregulation. *Am J Physiol Endocrinol Metab* 324, E375–E389  
755 (2023).  
756 62. Szuhany, K. L., Bugatti, M. & Otto, M. W. A meta-analytic review of the effects of exercise on brain-  
757 derived neurotrophic factor. *J Psychiatr Res* 60, 56–64 (2015).  
758 63. Brunelli, A. *et al.* Acute exercise modulates BDNF and pro-BDNF protein content in immune cells. *Med*  
759 *Sci Sports Exerc* 44, 1871–1880 (2012).  
760 64. Müller, P. *et al.* Evolution of neuroplasticity in response to physical activity in old age: The case for  
761 dancing. *Front Aging Neurosci* 9, (2017).  
762 65. Lisi, V., Senesi, G. & Balbi, C. Converging protective pathways: Exploring the linkage between physical  
763 exercise, extracellular vesicles and oxidative stress. *Free Radic Biol Med* 208, 718–727 (2023).  
764 66. McIlvenna, L. C. *et al.* Single vesicle analysis reveals the release of tetraspanin positive extracellular  
765 vesicles into circulation with high intensity intermittent exercise. *J Physiol* 601, 5093–5106 (2023).  
766 67. Iijima, H. *et al.* Exercise-primed extracellular vesicles improve cell-matrix adhesion and chondrocyte  
767 health. *Res Sq* (2023) doi:10.21203/RS.3.RS-2958821/V1.  
768 68. Maggio, S. *et al.* Modulation of the Circulating Extracellular Vesicles in Response to Different Exercise  
769 Regimens and Study of Their Inflammatory Effects. *Int J Mol Sci* 24, 3039 (2023).  
770 69. Brahmer, A. *et al.* Platelets, endothelial cells and leukocytes contribute to the exercise-triggered release  
771 of extracellular vesicles into the circulation. *J Extracell Vesicles* 8, 1615820 (2019).  
772 70. Frühbeis, C., Helmig, S., Tug, S., Simon, P. & Krämer-Albers, E. M. Physical exercise induces rapid  
773 release of small extracellular vesicles into the circulation. *J Extracell Vesicles* 4, 28239 (2015).  
774 71. Cibrián, D. & Sánchez-Madrid, F. CD69: from activation marker to metabolic gatekeeper. *Eur J Immunol*  
775 47, 946 (2017).  
776 72. Papapavlou, G. *et al.* Differential effects of estradiol and progesterone on human T cell activation in vitro.  
777 *Eur J Immunol* 51, 2430–2440 (2021).  
778 73. Stiebler, M., Müller, P., Bock, M., Lechner, B. & Lechner, K. Turning back the clock on aging? A  
779 perspective on selected mechanisms and therapeutic avenues. *Dtsch Z Sportmed* 72, 335–343 (2021).  
780 74. Cylus, J. & Al Tayara, L. Health, an ageing labour force, and the economy: Does health moderate the  
781 relationship between population age-structure and economic growth? *Soc Sci Med* 287, (2021).  
782 75. Lin, T. W. *et al.* Running exercise delays neurodegeneration in amygdala and hippocampus of  
783 Alzheimer's disease (APP/PS1) transgenic mice. *Neurobiol Learn Mem* 118, 189–197 (2015).  
784 76. Ahmed, H. M., Blaha, M. J., Nasir, K., Rivera, J. J. & Blumenthal, R. S. Effects of Physical Activity on  
785 Cardiovascular Disease. *Am J Cardiol* 109, 288–295 (2012).  
786 77. Bassuk, S. S. & Manson, J. A. E. Physical activity and the prevention of cardiovascular disease. *Curr*  
787 *Atheroscler Rep* 5, 299–307 (2003).  
788 78. Giallauria, F. *et al.* Exercise Training: The Holistic Approach in Cardiovascular Prevention. *High Blood*  
789 *Pressure & Cardiovascular Prevention* 2021 28:6 28, 561–577 (2021).  
790 79. Duijvestijn, M., de Wit, G. A., van Gils, P. F. & Wendel-Vos, G. C. W. Impact of physical activity on  
791 healthcare costs: a systematic review. *BMC Health Serv Res* 23, (2023).  
792