

1 The UK Biobank Mental Health Enhancement 2022: Methods and 2 Results

3 Katrina A.S. Davis. (i) King's College London (ii) South London and Maudsley NHS Trust

4 Jonathan R.I. Coleman. (i) King's College London (ii) South London and Maudsley NHS Trust

5 Mark Adams. University of Edinburgh

6 Gerome Breen. (i) King's College London (ii) South London and Maudsley NHS Trust

7 Na Cai. (i) Helmholtz Pioneer Campus, Helmholtz Munich, Neuherberg, Germany (ii) Computational Health

8 Centre, Helmholtz Munich, Neuherberg, Germany (iii) School of Medicine and Health, Technical University of

9 Munich, Munich, Germany

10 Helena Davies. (i) Copenhagen University Hospital – Mental Health Services CPH, Denmark (ii) Mental Health

11 Center Sct. Hans, Mental Health Services Copenhagen, Roskilde, Denmark (iii) King's College London, Institute

12 of Psychiatry Psychology and Neuroscience

13 Kelly Davies. (i) University of Oxford (ii) UK Biobank

14 Alexandru Dregan. King's College London, Institute of Psychiatry Psychology and Neuroscience

15 Thalia C. Eley. (i) King's College London, Institute of Psychiatry Psychology and Neuroscience (ii) South London

16 and Maudsley

17 Elaine Fox. University of Adelaide

18 Jo Holliday. (i) University of Oxford (ii) UK Biobank

19 Christopher Huebel. (i) King's College London (ii) Aarhus University (iii) German Red Cross Clinics, Berlin,

20 Germany

21 Ann John. (i) Swansea University (ii) Public Health Wales NHS Trust

22 Aliyah S. Kassam. King's College London

23 Matthew J. Kempton. King's College London

NOTE: This preprint reports new research that has not been certified by peer review and should not be used to guide clinical practice.

- 24 William Lee. Cornwall Partnership NHS Foundation Trust
- 25 Danyang Li. King's College London
- 26 Jared Maina. King's College London
- 27 Rose McCabe. City St George's, University of London
- 28 Andrew M. McIntosh. University of Edinburgh
- 29 Sian Oram. King's College London
- 30 Marcus Richards. University College London
- 31 Megan Skelton. King's College London
- 32 Fenella Starkey. (i) University of Oxford (ii) UK Biobank
- 33 Abigail R ter Kuile. (i) King's College London (ii) University College London
- 34 Laura M Thronton. University of North Carolina
- 35 Rujia Wang. King's College London
- 36 Zhaoying Yu. King's College London
- 37 Johan Zvrskovec. (i) King's College London (ii) South London and Maudsley NHS Trust
- 38 Matthew Hotopf. (i) King's College London (ii) South London and Maudsley NHS Trust

39

40 Acknowledgements:

41 This paper represents independent research funded by the NIHR Maudsley Biomedical Research Centre at
42 South London and Maudsley NHS Foundation Trust and King's College London. The views expressed are those
43 of the author(s) and not necessarily those of the NIHR or the Department of Health and Social Care

44

45 Conflicts of interest:

46 AJ received a fee to talk at the centenary of the Scottish Action for Mental Health (SAMH). The other authors
47 declare no conflict of interest.

48

49 Word counts: 361 (abstract), 5314 (article)

50 6 figures (inline), 4 tables (end), supplementary material (separate file)

51

52 Abstract:

53 Background: This paper introduces the UK Biobank (UKB) second mental health questionnaire
54 (MHQ2), describes its design, the respondents and some notable findings. UKB is a large cohort study
55 with over 500,000 volunteer participants aged 40-69 years when recruited in 2006-2010. It is an
56 important resource of extensive health, genetic and biomarker data. Enhancements to UKB enrich
57 the data available. MHQ2 is an enhancement designed to enable and facilitate research with
58 psychosocial and mental health aspects.

59 Methods: UKB sent participants a link to MHQ2 by email in October-November 2022. The MHQ2 was
60 designed by a multi-institutional consortium to build on MHQ1. It characterises lifetime depression
61 further, adds data on panic disorder and eating disorders, repeats 'current' mental health measures
62 and updates information about social circumstances. It includes established measures, such as the
63 PHQ-9 for current depression and CIDI-SF for lifetime panic, as well as bespoke questions. Algorithms
64 and R code were developed to facilitate analysis.

65 Results: At the time of analysis, MHQ2 results were available for 169,253 UKB participants, of whom
66 111,275 had also completed the earlier MHQ1. Characteristics of respondents and the whole UKB
67 cohort are compared. The major phenotypes are lifetime: depression (18%); panic disorder (4.0%); a
68 specific eating disorder (2.8%); and bipolar affective disorder I (0.4%). All mental disorders are found
69 less with older age and also seem to be related to selected social factors. In those participants who
70 answered both MHQ1 (2016) and MHQ2 (2022), current mental health measure showed that fewer
71 respondents have harmful alcohol use than in 2016 (relative risk 0.84), but current depression (RR
72 1.07) and anxiety (RR 0.98) have not fallen, as might have been expected given the relationship with
73 age. We also compare lifetime concepts for test-retest reliability.

74 Conclusions: There are some drawbacks to UKB due to its lack of population representativeness, but
75 where the research question does not depend on this, it offers exceptional resources that any
76 researcher can apply to access. This paper has just scratched the surface of the results from MHQ2

77 and how this can be combined with other tranches of UKB data, but we predict it will enable many

78 future discoveries about mental health and health in general.

79 Key words: Mental health; Psychiatry; UK Biobank; Cohort

80

81 Background:

82 Mental health disorders cause considerable suffering for a substantial portion of the population.

83 There is still a lot about mental health and disorder that we do not understand, and there is an

84 urgent need for research to improve our ability to promote good mental health or treat disordered

85 mental health (1, 2). Early mortality of people with severe mental disorders from physical health

86 conditions is likely part of a reciprocal relationship between poor physical and mental health, which

87 reinforces the importance of considering mental health in wider medical research (3-5).

88 The UK Biobank (UKB) cohort study was established with the scale and depth to help researchers

89 grapple with complex questions about conditions that are life-threatening or disabling in adults (6,

90 7). Such conditions seldom have a single cause; instead, their onsets and prognoses are associated

91 with many risk factors, including genetic variants at multiple loci, exposures at any time from

92 conception onwards, and interactions between them (8). Many conditions also tend to cluster,

93 causing further problems in investigating specific causal mechanisms (9). These features of high

94 complexity are true for most mental disorders (10-12). Traditional epidemiological designs of modest

95 sample sizes and limited data capture are not well suited to these challenges (13). The very large

96 sample size and detail of data in UKB offers great potential for investigating many facets of mental

97 disorders in adults.

98 UKB recruited over half a million individuals aged 40-69 between 2006 and 2010. The baseline

99 assessment was extensive, with physical measures, biological sample collection (blood and urine in

100 all, saliva in 100,000), a touchscreen questionnaire and an interview that gathered information on

101 early life and current behaviour, as detailed on their website (14). An impressive list of potential

102 biomarkers has been established, and participants' approximate addresses have been used to

103 provide measures such as area deprivation, access to green spaces and air pollution (15). A subset of

104 participants has been characterised even further through 'enhancements', including via multimodal

105 imaging (including neuroimaging), activity/sleep monitoring, and cognitive testing. Further data,
106 including information on health outcomes, have been obtained through consented linkage to
107 routinely collected information, including hospital in-patient statistics, cancer registry, COVID-19
108 vaccination data, death certification, and data from the primary care electronic health records for a
109 subset of the cohort (16).

110 To realise the potential of UKB for mental health research, and mental aspects of physical health, a
111 mental health outcomes (MHO) consortium was created, which made recommendations for an
112 online questionnaire about current and past mental disorders and associated features. In 2016-17
113 participants were invited via email and postal newsletter to complete this first web-based
114 questionnaire (MHQ1), leading to responses from over 157,000 individuals by July 2017 (17). The
115 core of the questionnaire was an assessment of lifetime depression and generalised anxiety status,
116 which allowed genome-wide association studies (GWAS) for these disorders (18, 19), but also
117 facilitated non-genetic studies, touching on many other aspects of mental health research, as
118 detailed in a recent review of the use of UKB for mental health research (20).

119 Recognising the changeability of mental health and the limitations of a single questionnaire to
120 capture complex diagnoses, the MHO consortium proposed a second mental health questionnaire
121 (MHQ2). Alterations were made to reflect the changing priorities of research following the COVID-19
122 pandemic. Like its predecessor, MHQ2 was not a distinct entity, but a collection of ‘modules’ that
123 contained measures on a particular diagnostic or exposure topic. When choosing measures,
124 consideration was given to comparability and complementarity with other cohort studies in the UK
125 (21) and elsewhere (22), and experiences of using MHQ1 data. Scales on current depression, anxiety
126 and alcohol use were repeated from MHQ1 to allow examination of possible fluctuation of these
127 symptoms. MHQ2 also aimed to:

- 128 • Enrich the lifetime depression phenotype including treatment response

129 • Investigate new disorders: panic disorder and eating disorders

130 • Update aspects of participants' social circumstances.

131

132 Methods:

133 Aim

134 This paper outlines the content of the MHQ2 questionnaire, describes the cohort, and gives an
135 overview of participant responses. We compare responses to MHQ1 and MHQ2 to look for changes
136 in the mental health of the cohort, as well as the consistency of measures that aim to report lifetime
137 phenotypes.

138

139 UK Biobank

140 UKB invited people aged 40-69 years living close to one of 22 assessment centres in England,
141 Scotland, and Wales between 2006-2010 to take part, 503,309 (5.5%) agreed, and 91% remain in the
142 cohort. Three main sources of data in UKB are: baseline assessment and samples; linkages such as
143 hospital inpatient records; and 'enhancements' such as imaging and the MHQs. UKB data can be
144 accessed by submitting a research protocol for approval. Over 4,000 research proposals had been
145 approved by January 2024.

146 Linkage and enhancements have variable coverage and have been conducted at various timepoints,
147 so caution is needed in the analysis and interpretation of such data, as shown in a recent timeline
148 (20). Participants in UKB differ from the wider UK population by more likely being female, having
149 higher educational attainment, and living in areas with less deprivation, though more urban than
150 average (23). The ethnicity of participants is predominantly White British, with small numbers of
151 participants from other ethnicities (24). The health and health behaviours of the UKB participants are
152 better than average, with less smoking, lower incidence of cancer and lower mortality (23, 25).

153

154 Questionnaire administration

155 UKB participants who had a valid email address on record were sent an invitation email in October to
156 November 2022, which included a hyperlink to a personalised questionnaire. If there was no
157 response, a reminder email was sent two weeks after the initial invitation. Respondents who started,
158 but did not complete, the questionnaire were sent a reminder two weeks after they last accessed it.
159 Finally, a second invitation was sent to non-responders two months after their previous one (around
160 January 2023). All participants were also able to access the online questionnaire via the UKB
161 participant website, as explained in annual postal newsletters (sent to people with no email address).
162 Respondents were asked to enter their date of birth as an identity check, and the data for any
163 respondents whose entered date of birth did not match the information previously provided are not
164 released. We define someone as having completed the MHQ2 if they completed the mental health
165 modules shown in Table 1 (there was also a COVID-19 module) and their MHQ2 data was available,
166 which excludes any participants who failed the identity check or withdrew their data between
167 answering the questionnaire and our data access. This means that ‘non-completed’ includes a few
168 participants who have answered some or all of the modules.

169

170 Questionnaire development

171 The questionnaire domains were agreed upon by the consortium after a prioritisation survey and
172 feedback from the Psychiatric Genomics Consortium (PGC) leads (26). Measures were discussed
173 internally and with investigators who had experience with several other studies, including Genetic
174 Links to Anxiety and Depression (GLAD) (27), The Scottish Health Research Register & Biobank
175 (SHARE) (28), English Longitudinal Study of Ageing (ELSA) (29), the Eating Disorders Genetics
176 Initiative (EDGI) (30), and the Adult Psychiatric Morbidity Survey (APMS, or Survey of Mental Health
177 and Wellbeing) (31).

178 The measures chosen are provided in Figure 1, which shows how some modules were repeated
 179 exactly from MHQ1, and some were changed. For example, MHQ1 asks participants if they had been
 180 diagnosed with “panic attacks or panic disorder”, but in MHQ2, people are separately asked whether
 181 they have been diagnosed with “panic attacks” and then “panic disorder” to discriminate between
 182 them. Such changes mean some sections were not exactly equivalent, so were labelled ‘repeated
 183 with changes’ in Figure 1. To maximise the acceptability of the questionnaire length, some of the
 184 measures from MHQ1 were not repeated. These choices were made according to the relative
 185 support in the consortium for inclusion. The modules are also shown in Table 1, which shows in
 186 greater detail the measures used in each domain and the phenotypes that could be derived from
 187 these measures. A more detailed explanation is available on the UKB data showcase (32) or the OSF
 188 site for this project (33).

Domain	Not repeated in MHQ2	Repeated exactly from MHQ1	Repeated from MHQ1 with changes	Repeated from other questionnaires	New to MHQ2
Depression	-	Current depression: PHQ-9 Lifetime depression: CIDI-SF Manic symptoms	-	-	Depression subtypes Depression treatment
Anxiety and Stress-Related	Lifetime generalised anxiety disorder: CIDI-SF PTSD: PCL-S	Current anxiety: GAD-7	-	-	Lifetime panic disorder: CIDI-SF
Substance Use and Eating Disorders	Addictions	Alcohol use: AUDIT Cannabis use	-	-	Eating Disorders
Reported Events	-	Adverse events in childhood: CTS-5	Adverse events in adult life	Social situation	Brief resilience scale Loneliness: abbreviated UCLA
Transdiagnostic	Unusual experiences	-	Self-reported Clinician diagnosis Self-harm and suicidal thoughts	Quality of Life	Family History

189

190 *Figure 1 Summary of the topics included in MHQ1 and MHQ2, illustrating the overlap*

191

192 *Table 1 Modules of the MHQ2 – see end of manuscript*

193

194 Algorithms and Code in R

195 Symptoms, questionnaire scores, experiences and (probable) diagnostic status that can be derived
196 from the questionnaire are generically termed ‘phenotypes’ (with no assumption of genetic
197 causation). For each module or group of modules, small groups of MHO members with expertise in
198 those subjects produced algorithms to derive these phenotypes from questionnaire responses.
199 These were then checked and edited to create a consistent style and circulated to the whole
200 consortium for comments.

201 A team of coders, including members of the MHO and junior colleagues, worked in small groups to
202 render the algorithms for each module in R code, with a check by another coder outside of that
203 module subgroup. Lastly, an over-arching script was created that brought the code from all the
204 modules’ subgroups together, including a final few definitions that required responses from multiple
205 modules. The algorithms and code for processing MHQ1 and MHQ2 are available on our OSF and
206 GitHub pages (33, 34).

207 A clinical diagnosis is informed by diagnostic criteria, including the lack of alternative explanations
208 and the presence of impact on the patient. However, when we use questionnaires, we are unable to
209 take wider issues into account. The criteria we use for the “lifetime depression” phenotype, for
210 example, are therefore referred to as quasi-diagnostic because they are informed by diagnostic
211 criteria, but fail to fully examine a participant. When we refer to a group with “lifetime depression”,
212 we mean only that they met the criteria for lifetime depression on our measure, not that they were
213 fully assessed.

214

215 Ethical permission

216 UKB operates inside the ethical framework of the UK Health Research Authority. Participants gave
217 consent for their data to be used and can withdraw at any time, with an option to withdraw their
218 existing data from future analysis. Research Ethics Committee opinion has been sought for UKB and
219 each enhancement from the North West - Haydock Research Ethics Committee, including November
220 2022 (21/NW/0157, amendment 07).

221 The data in this paper were accessed through UKB-approved research number 82087, downloaded
222 23/10/2023, with withdrawals downloaded 11/06/2024 (except for the participation numbers, which
223 were provided by UKB's scientific team with a censoring date of 11/06/2024).

224

225 Availability of data and materials

226 Data are available subject to UK Biobank procedures (14). Resources that the consortium has
227 produced to help future researchers using MHQ2 data, including a document outlining
228 recommended scoring and algorithms, and R code to facilitate implementation of those algorithms,
229 can be found on the Open Science Framework (OSF) site for this project (33).

230

231 Analysis

232 We planned a descriptive summary of the questionnaire respondents and responses, considering:

- 233 • Participants: Compare participants in the 2022 MHQ2 wave against the 2016 MHQ1 wave
234 and the full original UKB cohort.

- 235 • Major phenotypes: Present numbers with lifetime mental health disorders in MHQ2 and
236 compare personal characteristics between groups.
- 237 • Social factors: Present selected social data - social isolation, loneliness, resilience and health-
238 related quality of life - stratified by lifetime mental disorder phenotypes.
- 239 • Current mental health: Describe and visualise current mental disorders for the 2022 MHQ2
240 wave against the 2016 MHQ1 wave.
- 241 • Test-retest reliability: Look at the consistency of lifetime disorder status between the 2022
242 wave and the 2016 wave.

243 For a comparison of ‘current’ mental health, we looked at the proportions of respondents meeting
244 case criteria according to PHQ-9 (depression), GAD-7 (anxiety) and AUDIT (harmful alcohol use),
245 restricting to those who answered in both waves. Age- and sex-specific proportions are given, with
246 the age groups in seven-year blocks, which reflects the amount of time between the two waves. This
247 was designed such that most participants moved one age block between MHQ1 and MHQ2, although
248 this was not exact. Line graphs illustrate the distributions in the two waves. The relative risk of
249 depression, anxiety and harmful alcohol use between 2016 and 2022 overall and in age and sex
250 groups were calculated.

251 For a comparison of ‘lifetime’ status in depression ever (CIDI-SF lifetime), bipolar ever (adapted CIDI),
252 self-harm ever (self-report), cannabis ever (self-report) and any clinician diagnosis (self-report), we
253 report percentage agreement and Cohen’s kappa, with kappa being agreement corrected for
254 agreement by chance (35).

255 Age at MHQ2 was defined for those who completed it as their age when completing the last module,
256 similarly age at MHQ1 was age at completion. For those who did not complete the questionnaire
257 (e.g., when using all UKB participants as a comparison group), we took the age they would have been

258 at the median date of MHQ2 questionnaire completion. This includes the age someone would have
259 been if they had not already died. We excluded any participants who had missing data in the
260 variables used to define age (n=2). Except where stated, we include respondents of MHQ2 regardless
261 of whether they participated in MHQ1.

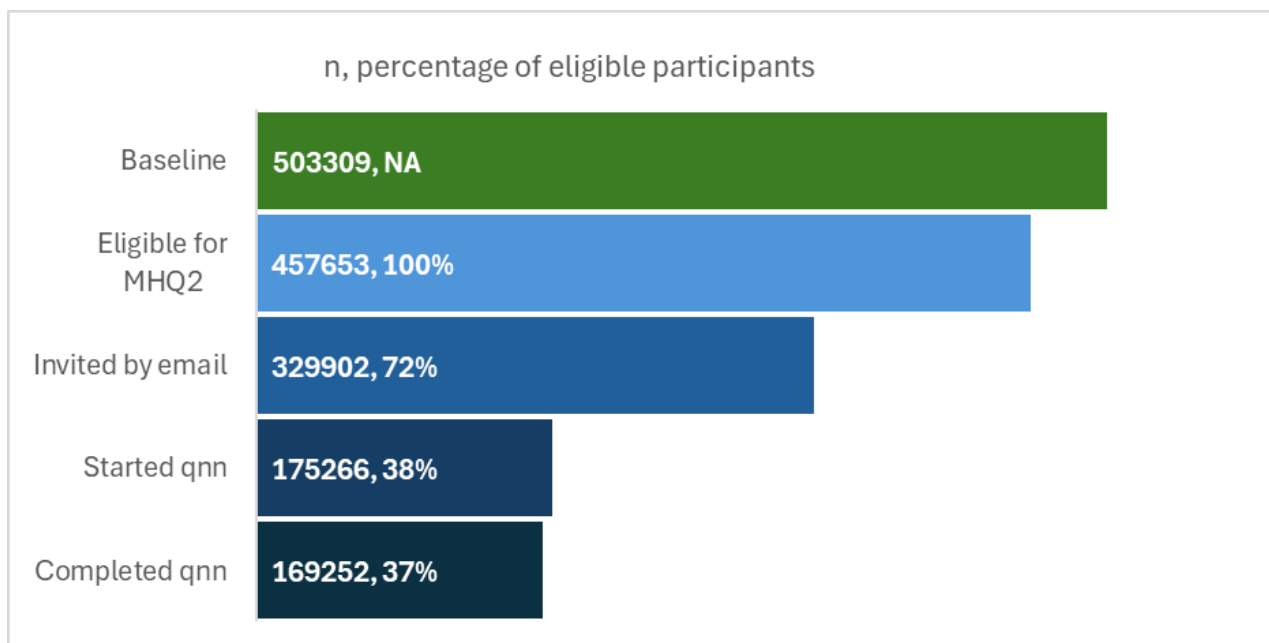
262 We refer to the proportion of cases in the respondents. Due to the issues with representativeness,
263 we do not attempt to make inferences about population prevalence, so hence do not include
264 confidence intervals. Percentages are given in whole percentage points unless under 10% when one
265 decimal place is used, as recommended for clarity (36). Where rare disorders and detailed
266 breakdown of age or ethnicity intersected to make a cell size of less than 10 participants we have
267 merged fields out of caution for confidentiality (37).

268

269 Results:

270 Sample.

271 Data provided by UKB's scientific team showed that, after accounting for deaths and withdrawals,
272 457,653 participants were eligible to complete the MHQ2 (Figure 2). Of these, UKB was able to invite
273 329,902 (72%) participants by email, and 53% of those contacted answered at least one module of
274 the questionnaire, alongside a small number (n=530) who accessed the questionnaire through their
275 participant website. 175,266 participants completed at least one module with 169,252 completing all
276 the mental health modules in the questionnaire (97% of those who started). The response dates
277 cluster around early November 2022 (approx. 80%), when most emails went out, with a smaller peak
278 in approximately January 2023 when reminder emails were sent. The data available to researchers
279 may vary due to late completion, quarantine of questionnaires when the identity check was failed
280 (approx. 0.3% of respondents) and participants withdrawing from UKB asking for no further analysis.



281 Participants could participate in questionnaire without being invited.

282 Started qnn = all respondents who completed at least one module on MHQ2;

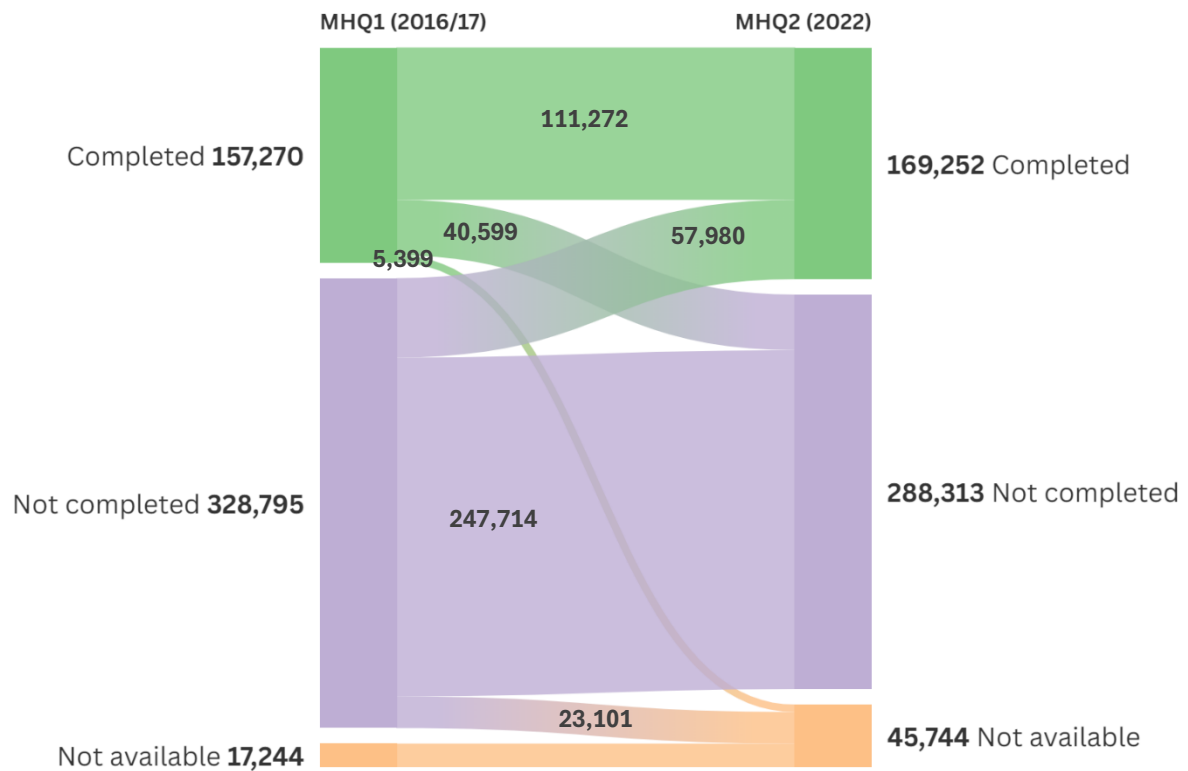
283 Completed qnn = respondents who completed all mental health modules in MHQ2

284 **Figure 2** Number of UKB participants invited, starting and completing the MHQ2 questionnaire, as a proportion of those
285 eligible for the questionnaire.

286

287

288 Figure 3 shows that the 169,252 UKB participants who completed MHQ2 consisted of 111,272 who
 289 had also completed MHQ1 plus 57,980 who had not. This gives a sample of 111,272 who have
 290 longitudinal data (both waves), and a sample of 215,250 who have data for either MHQ.



291 Completed MHQ2 = completed all 12 mental health modules;
 292 Not completed MHQ2 = available but didn't start MHQ2, started but didn't finish, or failed their identity check;
 293 Not available = died or withdrew from the cohort prior to MHQ1 / MHQ2, or withdrew with no further access between
 294 MHQ2 and data access.
 295

296 **Figure 3** The flow of participants illustrating those who have data from completing the first and second mental health
 297 questionnaires, the cross-over and participants who have died or withdrawn.
 298
 299

300 Sample Characteristics

301 Data available to researchers was of 169,253 respondents. The characteristics of the respondents in
 302 the MHQ2 wave are shown in Table 2. Compared to those for whom we have data from MHQ1, they
 303 are an average of five years older (after an interval between MHQ1 and 2 of approximately six years),
 304 and very similar in sex, ethnicity, and the distribution of selected social factors. The comparison of
 305 the MHQ2 wave with the UKB cohort showed that respondents are less likely to be deprived (4.6

306 percentage points less likely to live in a deprived area), report longstanding illness (5.6 percentage
307 points less likely to have reported a longstanding illness) or be from a minority ethnic group (2.8
308 percentage points more likely to be White) than the cohort from which they are drawn. Table 2
309 shows the MHQ1/2 waves particularly under-represent people from Black and Asian ethnicities.

310

311 *Table 2 Characteristics of the respondents to each of the mental health questionnaires with comparison to the UK Biobank*
312 *cohort (available to analyse in 2024) – see end of manuscript*

313

314 Disorders

315 In Table 3 and the UPSET plot Supplementary Figure 1, participants are categorised by lifetime
316 disorder status based on symptom-based definitions for depression, panic disorder, eating disorders
317 and bipolar type I. Participants were most likely to be positive for lifetime depression (18%), followed
318 by panic disorder (4.0%), any specific eating disorder (2.8%), and bipolar affective disorder type I
319 (0.4%). Seventy-one percent of the MHQ2 respondents did not meet the criteria for any of the
320 studied lifetime disorders.

321 The symptom-based definition of panic disorder was included for the first time in the MHQ2 wave.
322 Self-reported clinician diagnosis of panic disorder was much lower (0.2%) than the symptom-based
323 definition (4.0%), although 4.5% reported a clinician diagnosis of a panic *attack*. For context, in the
324 MHQ1, the symptom-based definition of lifetime generalised anxiety disorder (GAD) was met by 7%.

325 Within the eating disorders category were four specific disorders, and respondents could fall into
326 more than one in their lifetime. The most common eating disorder was anorexia nervosa (1.7% of
327 respondents), followed by purging disorder (0.9%), bulimia nervosa (0.4%), and binge-eating disorder

328 (0.2%). Self-report of an eating disorder diagnosis was somewhat rarer, for example, self-report of
329 anorexia nervosa was 0.5% compared with 1.7% identified by the symptom-based definition.
330 The proportion with any lifetime disorder (symptom-based definition) is patterned by age, ethnicity
331 and sex: higher in younger age (45-64: 34%) rather than old (75-84: 14%); higher in those of Mixed
332 ethnicity at 30%, than White (21%) or Asian (15%); higher in female (27%) than male (14%). The
333 increased proportion in female respondents was particularly marked in eating disorders (F: 4.6%, M:
334 0.4%).

335

336 *Table 3 Characteristics of participants according to symptom-based criteria. Characteristics from baseline (BL) or MHQ2 (Q2)*
337 *– see end of manuscript*

338

339 Supplementary Figure 1 shows the degree of comorbidity between the phenotypes in Table 3 with
340 the addition of self-harm ever. The lifetime self-harm phenotype includes 7765 (4.6%) participants,
341 most (57%) also meeting the criteria for another phenotype, most commonly depression. Of those
342 with lifetime depression, 29% also have one or more other phenotype, most commonly self-harm.

343

344 Social Factors

345 The distributions of social factors are shown in Table 3, with the results in female participants in
346 Supplementary Table 1 and male participants in Supplementary Table 2. The variables assessed at
347 baseline were area-level deprivation, education ('degree educated'), housing tenure ('rents home'),
348 longstanding illness, smoking, physical activity, and neuroticism – of which area-level deprivation,
349 renting a home and smoking seemed to be particularly related to lifetime disorder. The group of
350 respondents that met the criteria for eating disorders and panic disorder have similar characteristics

351 to those respondents with depression and bipolar, although those with lifetime eating disorders are
352 more likely to have a degree qualification (eating disorder 53%; depression 46%; no mental disorder
353 44%).

354 Adverse events in childhood were reported by 42% and adverse events in their adult life by 22%. In
355 the group that met no symptom-based definition in the MHQ2, 38% reported a childhood event,
356 increasing to 58% in those with lifetime depression, and rising further for rarer disorders – with the
357 same pattern for events in adult life. The pattern of adverse childhood event report stratified by
358 major phenotypes is the same in both men and women, Supplementary Tables 1 and 2.

359 Resilience was ‘low’ on the brief resilience scale in 10% of the group that met no symptom-based
360 definition in the MHQ2 but 34% to 56% in those who met at least one symptom-based definition for
361 a lifetime disorder. Those with at least one lifetime disorder had a slightly higher frequency of social
362 isolation and loneliness than those who met no symptom-based definitions but were less marked
363 than the pattern for low resilience.

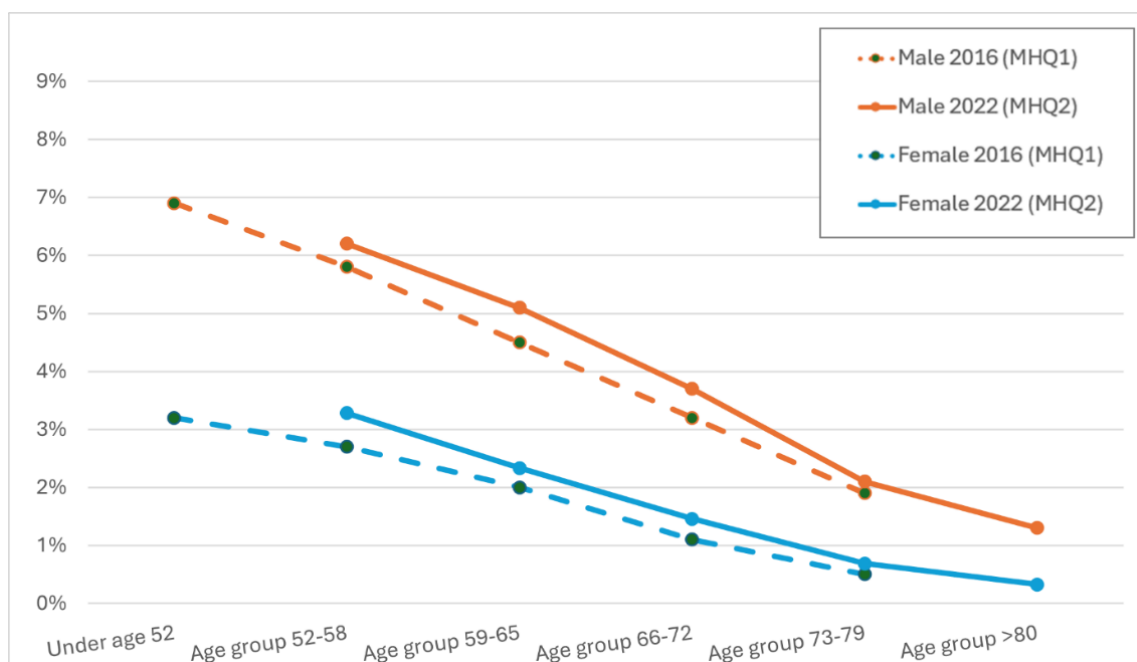
364 Self-rated health was taken from the EQ-5D-5L visual analogue scale, where respondents rate their
365 health ‘today’ using a slider from 0 to 100 (38). This rating was an average of 88 for people with no
366 lifetime criteria, 80 for those with depression and eating disorder history, 75 for those with panic
367 disorder and 70 for those with bipolar disorder. More than a quarter of those with lifetime bipolar
368 disorder had marked their health as below 50 on the scale.

369

370 [Current Mental Health between 2016 \(MHQ1\) and 2022 \(MHQ2\)](#)

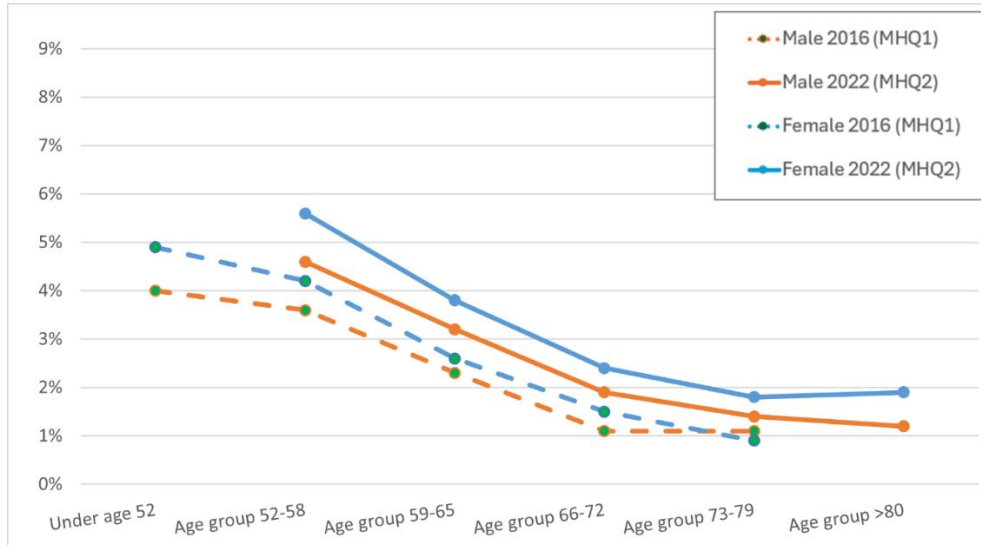
371 Three measures of current mental health were included in both questionnaires: AUDIT for harmful
372 alcohol use, PHQ-9 for depression, GAD-7 for generalised anxiety (AUDIT “in the last year”, PHQ-9
373 and GAD-7 “in the last two weeks”). Restricting to people with data from both the MHQ1 and MHQ2

374 waves, Supplementary Tables 3 and Figures 4 - 6 show the comparison of proportions meeting the
 375 criteria, stratified by age and sex, using six-year age bands so that most respondents moved to the
 376 next age band between waves. Supplementary Table 4 shows the relative risk of meeting these
 377 criteria in 2022 versus 2016 in each age-sex group and overall. The figures show that, within each
 378 wave, the slope of proportion with depression, generalised anxiety and harmful alcohol use by age is
 379 downwards, indicating current mental disorder is less with increasing age. Between questionnaires,
 380 harmful alcohol use decreased along lines predicted for the older cohort (Figure 4), with a relative
 381 risk of harmful use for all respondents being 0.84 in 2022 compared to 2016. This does not occur for
 382 depression (Figure 5) or generalised anxiety (Figure 6), where the curve shifts, and the respondents
 383 overall have approximately the same risk of having current depression or anxiety in 2022 as they had
 384 in 2016 (relative risk depression = 1.07, anxiety = 0.98) despite the increasing age of respondents.
 385 The largest relative risk increase in age and sex-stratified groups was in the women aged 73-79
 386 category, with double the risk of depression, a 40% higher risk of generalised anxiety and harmful
 387 alcohol use, although absolute risk remained fairly low (depression = 1.8%, anxiety = 3.7%, alcohol =
 388 0.7%).



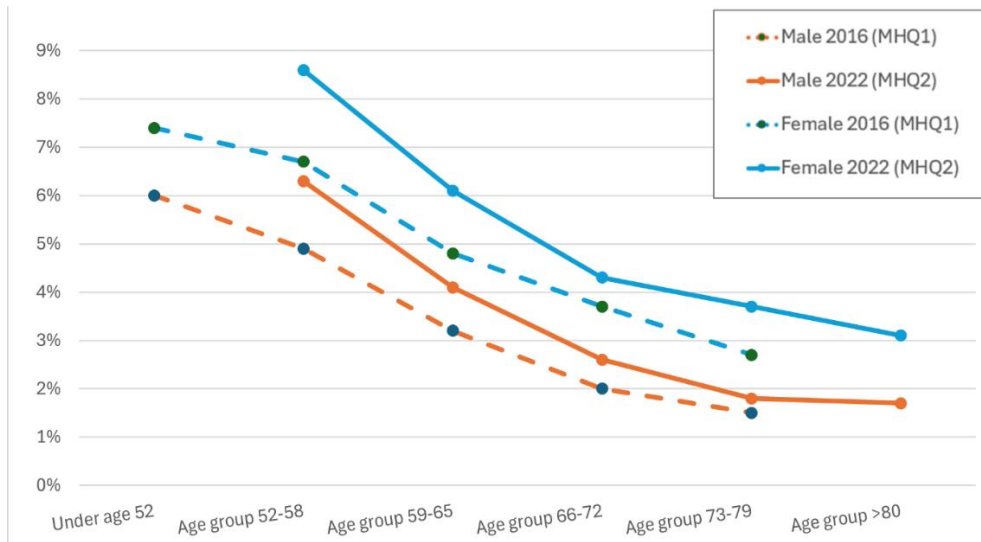
389 **Figure 4** Proportion in each age group (at completion of relevant questionnaire) with harmful alcohol use according to
 390 AUDIT by sex and wave MHQ1=2016 and MHQ2=2022
 391

392



393
394 **Figure 5** Proportion in each age group (at completion of relevant questionnaire) with 'PHQ-9-derived current depression'
395 outcome by sex and wave MHQ1=2016 and MHQ2=2022

396



397
398 **Figure 6** Proportion in each age group (at completion of relevant questionnaire) with generalised anxiety disorder according
399 to 'GAD-7-derived current anxiety' by sex and wave MHQ1=2016 and MHQ2=2022

400

401 Table 4 shows the difference in results from measures that report lifetime phenotypes: two
402 symptom-based definitions of lifetime disorder (depression and bipolar), two lifetime behaviours
403 (self-harm and cannabis use), and self-report of any clinician diagnosis, in those who completed both
404 MHQ1 and MHQ2. Across these phenotypes, people were more likely to meet the criteria in MHQ1
405 than in MHQ2, except for self-harm. Kappa values show poorer agreement for the two symptom-
406 based definitions (depression 0.53, bipolar 0.30) compared with the others (any clinician diagnosis
407 0.66, self-harm 0.67, cannabis 0.81). The lack of agreement between the questionnaire waves may in

408 part be because of new-onset cases that started after completing MHQ1. However, after taking into
409 account onsets after MHQ1 (including unknown onsets), between 75% to 93% of the test-retest
410 variation in direction 'Met 2 not 1' and all in direction 'Met 1 not 2' remains unexplained.
411 Supplementary Table 5 and 6 show the sex-stratified results, and they are similar; for example, self-
412 harm reporting in women had a kappa of 68%, and in men 65%.

413

414 *Table 4 Comparison of lifetime phenotypes, based on meeting criteria in MHQ1 and MHQ2 in those participants who*
415 *completed both questionnaires – see end of manuscript*

416

417 *Discussion:*

418 This paper introduced UK Biobank's second mental health questionnaire. The original MHQ was one
419 of the largest mental health surveys ever reported. This second wave gives an even larger sample
420 size, more detail, and coverage of broader aspects of mental health. 169,253 UK Biobank participants
421 completed the MHQ2, which brings to 215,252 the number who have at least one wave of the
422 mental health questionnaire that can be analysed. We have selected a few notable features to
423 describe, which we hope will stimulate interest in this resource. These were: the characteristics of
424 MHQ2 wave participants; lifetime disorders categories; and selected social factors. We also explored
425 changes in current disorder status and agreement of lifetime phenotypes between wave MHQ1 and
426 MHQ2.

427 There was a substantial overlap of participants who completed the previous wave, and participant
428 characteristics of the two waves were similar. As shown in the previous paper (17) the biases in
429 completion of the mental health questionnaires resembled and amplified the biases in recruitment
430 to UKB. The respondents to MHQ2 were less likely to be deprived or have a chronic illness than the
431 overall UKB cohort, and 97% were from a White ethnic group.

432 Depression was the most common lifetime disorder at 18% in the MHQ2 wave, although this is less
433 than the 24% reported in the MHQ1 wave. Next in this questionnaire was panic disorder (4.0%) and
434 eating disorder (2.8%) with bipolar type I (0.4%) the least common. All four disorders have similar
435 findings in social and health characteristics: increased adverse child events; more difficult and
436 deprived personal circumstances; and poorer perceived health. This pattern is more pronounced
437 with rarer disorders, such that deprivation and self-rated health are least adverse in the group with
438 depression, worst in the group with bipolar, and the groups with panic disorder or eating disorders
439 are in-between.

440 The finding that those with lifetime disorders score worse on self-rated health is unsurprising, as
441 health may be poorer both because of the mental disorders themselves and the greater risk of
442 developing physical illness. Conversely, people with physical disorders are at higher risk of developing
443 a mental disorder (9). UK Biobank is a valuable data source for studying these issues, and repeated
444 measures to give longitudinal data will help. For instance, four questions from the PHQ-9 were asked
445 at baseline and have been repeated in several enhancements (sleep, cognitive testing, imaging visits,
446 MHQ1 and MHQ2) and the EQ-5D-5L (health-related quality of life) reported here from MHQ2 was
447 also asked in the UKB pain questionnaire in 2019, and is due to be repeated.

448 *Repeated measures*

449 In the MHQ1 wave, both lifetime and current mental health disorders appeared to be rarer in old
450 age. This could be an age effect (mental health gets better as people age) or a cohort effect (people
451 born earlier have better mental health). Using repeated current mental disorder scales, we found
452 that the frequency of alcohol use disorder had decreased over six years, suggesting an age effect, but
453 depression and anxiety levels had stayed fairly unchanged as the cohort aged, suggesting a cohort
454 effect. Another possibility is that 2022 was an era of higher anxiety and depression due to the COVID
455 pandemic and knock-on effects, for example, prolonged health service disruption, which may make it
456 difficult for any age-related improvement in mental health to be demonstrated at this time. The
457 short-term deviation of mental distress from the COVID pandemic has been well-documented (for
458 example,(39)), but the long-term mental health outcomes of the period are still unknown (40), and
459 may merit monitoring.

460 We investigated the test-retest consistency for phenotypes that we would expect to be similar
461 between waves: lifetime depression, bipolar affective disorder type I, self-harm, cannabis use and
462 self-report of any clinician diagnosis. In all cases, there was high agreement on phenotype status
463 (from 84% for depression to 99% for bipolar), although kappa (which corrects for agreement by
464 chance) revealed that lifetime depression and lifetime bipolar statuses were somewhat inconsistent

465 (0.53 for depression, 0.30 for bipolar), and this was not accounted for by new-onset. To meet criteria
466 for depression and bipolar, several criteria needed to be met, frequently hinging on a dichotomous
467 scoring of a Likert-like scale. For instance: “How much did these problems interfere with your life or
468 activities? – A lot / Somewhat / A little / Not at all”. To meet the criteria for lifetime depression
469 participants needed to endorse “A lot” or “Somewhat”. We can speculate that a person’s appraisal
470 could change from “Somewhat” to “A little” over time, perhaps to a more positive interpretation as
471 they age. Therefore, a change from meeting criteria may occur with only modest changes in
472 symptom reporting. To meet the criteria for bipolar, participants had to meet criteria for both
473 depression and mania. The definition for ever self-harm and cannabis consisted of a few yes/no
474 questions. For yes/no questions, and when talking about behaviours rather than feelings, there
475 would be less reappraisal. It is not clear why the recall of self-report clinician diagnosis might be
476 inconsistent, perhaps it hinges on recall of whether a disorder was diagnosed, rather than merely
477 discussed or mentioned. These inconsistencies may complicate the interpretation of some of these
478 outcomes, but it is possible they reflect the underlying uncertain boundaries between health and
479 disorder (41, 42).

480 In this investigation, we also noted those who told us their disorder did not start before MHQ1 (i.e.
481 new or unknown onset), which included 1,502 people with depression (4.7% of those with
482 depression in MHQ1 or 2, or 1.6% of respondents) and 410 people who have self-harmed (6.1% of
483 those with self-harm in MHQ1 or 2, or 0.4% of respondents). These are a small group, but those with
484 late-onset mental disorders are a group that is potentially important to consider in this cohort of
485 ageing.

486 *Strengths and limitations*

487 UK Biobank is a valuable resource for investigating mental health, but it also presents challenges. The
488 cohort consists of a convenience sample, and the non-representativeness observed at baseline
489 assessments is exacerbated in the voluntary enhancements (such as the MHQs). The multiple

490 enhancements with different samples and timings can complicate planning and interpreting analyses.
491 Because of non-representativeness, researchers should not make population inferences based solely
492 on UK Biobank data. We have not tested what effect the non-representativeness of the sample has
493 had on our ascertainment of mental disorders and the pattern with social factors.

494 We have designed the UKB MHQ1 and MHQ2 with researchers familiar with large cohorts and clinical
495 academics – leading to the use of widely accepted measures and clinically relevant outcomes. The
496 completion of the questionnaire was also high once started, assisted by reminder emails. However,
497 the MHQs are reliant on self-report, frequently of an episode of psychopathology that may have
498 been many years ago. This may result in some inconsistencies, such as seen in the test-retest
499 statistics – which we suggest is due to inconsistent recall and indistinct boundaries in mental
500 disorders, which have no diagnostic tests.

501 Our approach to developing this paper and facilitating further research using MHQ2 has incorporated
502 quality assurance processes when developing algorithms and code, which we are sharing with the
503 wider research community. We enhance transparency by sharing resources, however, errors are still
504 inevitable in such projects (43) so we encourage caution when using these resources, and feedback
505 from others if they suspect any problems. This paper is just the beginning, which we hope will
506 encourage other researchers to investigate more deeply. Further advice for people considering using
507 UKB for mental health research is available in a recent review paper (20).

508 Conclusion

509 The mental health questionnaires enhance UKB with large amounts of data on common mental
510 disorders (particularly depression), and also on disorders that have not received much research in an
511 older population, such as panic disorder and eating disorders, and update social factors a decade
512 after baseline. Importantly, the UKB now has included transdiagnostic symptoms (self-harm, body
513 weight/shape preoccupation, psychotic experiences) and psychological constructs (resilience,

514 loneliness and neuroticism) that are infrequently or never available from clinical data. Repeated
515 measures for items such as depressive symptoms and health-related quality of life, along with
516 linkage to routine health data for follow-up, allow longitudinal and causal analyses. UKB offers a large
517 sample size, extensive genetic information, biomarkers and imaging data, alongside detailed mental
518 health data, which we hope will be used to help us understand more about mental health, and how
519 we might prevent and treat poor mental health in the future.

520

521

522 Abbreviations

523 AUDIT: Alcohol Use Disorder Identification Tool

524 CIDI-SF: Composite International Diagnostic Interview Short Form

525 DSM-IV: Diagnostic and Statistical Manual of Mental Disorders 4th ed.

526 EQ-5D-5L: EuroQol questionnaire of 5 dimensions and 5 levels, plus VAS

527 GAD-7: Generalised Anxiety Disorder scale (for current GAD)

528 MHO: Mental Health Outcomes [consortium]

529 MHQ: Mental health questionnaire

530 OSF: Open Science Framework

531 PHQ-9: Patient Health Questionnaire (for current depression)

532 R: Statistical software

533 UKB: UK Biobank

534 VAS: Visual Analogue Scale (used in EQ-5D-5L)

535

536 **Declarations**

537 Ethics approval and consent to participants:

538 UK Biobank has received favourable ethical opinion from North West - Haydock Research Ethics

539 Committee 21/NW/0157, and this project has received approval from the UK Biobank access

540 committee. All participants consented to participate.

541

542 Consent for publication:

543 Not applicable

544

545 Availability of data and materials:

546 Data are available subject to UK Biobank procedures [https://www.ukbiobank.ac.uk/enable-your-](https://www.ukbiobank.ac.uk/enable-your-research)

547 [research](https://www.ukbiobank.ac.uk/enable-your-research) (14). Resources that the consortium has produced to help future researchers using MHQ2

548 data, including a document outlining recommended scoring and algorithms, and R code to facilitate

549 implementation of those algorithms, can be found on the Open Science Framework (OSF) site for this

550 project <https://osf.io/c65t7> (33).

551

552 Competing interests:

553 AJ received a fee to talk at the centenary of the Scottish Action for Mental Health (SAMH). The other

554 authors declare no conflict of interest.

555

556 Funding:

557 See acknowledgements

558

559 Authors' contributions:

560 Conceptualisation: KASD, AD, AM, AJ, MR, EF, FS, GB, JH, RM, SO, TE, WL and MH.

561 Data curation: JC, MA, CH, HD, AK, DL, JM, RW, ZY and JZ.

562 Formal analysis: KASD, JC and KD.

563 Writing – original draft preparation: KD, JC and MH.

564 Writing – review and editing: All authors.

565

566 Acknowledgements:

567 This paper represents independent research funded by the NIHR Maudsley Biomedical Research
568 Centre at South London and Maudsley NHS Foundation Trust and King’s College London. The views
569 expressed are those of the author(s) and not necessarily those of the NIHR or the Department of
570 Health and Social Care

571

572 Figure and Table Captions

573 **Figures (inline)**

574 Figure 1: Summary of the topics included in MHQ1 and MHQ2, illustrating the overlap

575 Figure 2 Number of UKB participants invited, starting and completing the MHQ2 questionnaire, as a
576 proportion of those eligible for the questionnaire

577 Figure 3 The flow of participants illustrating those who have data from completing the first and
578 second mental health questionnaires, the cross-over and participants who have died or withdrawn.

579 Figure 4 Percentage in each age group depressed according to 'PHQ-9-derived current depression'
580 outcome by sex and age at completing questionnaires in 2016 and 2022

581 Figure 5 Percentage in each age group having generalised anxiety disorder according to 'GAD-7-
582 derived anxiety' by sex and age at completing questionnaires in 2016 and 2022

583 Figure 6 Percentage in each age group with harmful alcohol use according to AUDIT outcome by sex
584 and age at completing questionnaires in 2016 and 2022

585

586 **Tables (following pages)**

587 Table 1 Modules of the MHQ2

588 Table 2 Characteristics of the respondents to each of the mental health questionnaires (available to
589 analyse in 2024) with comparison to the UK Biobank cohort

590 Table 3 Characteristics of participants according to symptom-based criteria for lifetime disorders.
591 Characteristics from baseline (BL) or MHQ2 (Q2).

592 Table 4 Comparison of lifetime phenotype status in MHQ1 and MHQ2 in those participants who
593 completed both questionnaires (n=111,275)

594

595 **Supplementary Materials (separate file)**

596 ST1: Characteristics of people meeting criteria for mental disorder **Female only**

597 ST2: Characteristics of people meeting criteria for mental disorder **Male only**

598 ST3: Age- and sex-stratified results for cases of depression, anxiety and harmful alcohol use in those
599 who completed both questionnaires according to measures of current mental health

600 ST4: Relative risks of being a case on current mental health outcomes in 2022 compared to 2016 in
601 age* and sex specific groups in 2022 in people who completed both MHQs. See ST3 for sample size
602 by age and sex.

603 ST5 Comparison of lifetime conditions by participants, based on meeting criteria in MHQ1 and
604 MHQ2, **Female only**

605 ST6 Comparison of lifetime conditions by participants, based on meeting criteria in MHQ1 and
606 MHQ2, **Male only**

607 SFigure 1 Occurrence and co-occurrence of the studied mental disorder categories with the ten most
608 common intersections shown

609

610 *Table 1 Modules of the MHQ2.*

Module	Domain	Source/tool	Selected phenotypes defined N = new, R = repeated, R' = repeated with change
<i>Mental Health</i>	Screening	MHO consortium	Any self-report (SR) diagnosis [R']
	Family history	MHO consortium, based on other studies	Known family history of mental health conditions [N]
<i>Depression</i>	Current depression	Patient Health Questionnaire 9-item version (PHQ-9)(44)	PHQ-9 total score (symptoms) [R] PHQ-9 derived depression [R] - Algorithm-based Current depression case [R] - Requires case on both PHQ9 (current) and CIDI-SF (lifetime) depression algorithms
	Lifetime depression	Composite International Diagnostic Interview – Short Form (CIDI-SF) (45) depression module, lifetime version (46) PLUS subtype questions	Depression ever [R] ...with melancholic features [N] ... with atypical features [N]
	Antidepressant and therapy response	MHO consortium, based on other studies	Medication helped [N] Non-medication therapy helped [N]
<i>Mood change</i>	Lifetime manic symptoms	UKB baseline questionnaire (based on CIDI questions mapping to DSM-IV) (47)	Hypomania/mania ever (symptoms) [R] Bipolar affective disorder type I [R]
<i>Anxiety and panic</i>	Current anxiety disorder	Generalised Anxiety Disorder Questionnaire - 7 item (GAD-7) (44)	GAD-7 total score (symptoms) [R] GAD-7 derived anxiety disorder [R'] - As CIDI-SF for GAD not repeated, not able to require positive for lifetime GAD
	Lifetime anxiety disorder (panic)	CIDI-SF (45) panic disorder, lifetime version	Panic attack ever (symptoms) [N] Panic disorder ever [N]
<i>Adverse life events</i>	Adverse events in childhood	Childhood Trauma Screener – 5 item (CTS-5) (48)	Childhood adverse events [R]
	Adverse events in adulthood	MHO consortium, based on APMS and National Crime Survey (49)	Adult abuse events [N] Adverse events 12 months [R']
<i>Alcohol use</i>	Alcohol use disorder	Alcohol Use Disorders Identification Test (AUDIT) (50)	AUDIT total score [R] Harmful drinking (12 month) [R]
<i>Cannabis use</i>	Cannabis use	MHO consortium	Cannabis use ever [R] Daily cannabis use ever [R]
<i>Harm behaviours</i>	Self-harm and suicidal thoughts	MHO consortium and service-user group	Harm to self ever [R] Suicide attempt ever [R]
<i>Eating patterns</i>	Eating disorders	MHO consortium, based on other studies	Anorexia nervosa [N] Bulimia nervosa [N] Binge-eating disorder [N] Purging disorder [N]
<i>General health</i>	General health and functioning	EuroQoL 5 dimensions 5 levels (EQ-5D-5L) plus visual-analogue scale (VAS) (38)	VAS score [R]

<i>Social situation</i>	Social situation	UKB baseline questionnaire. Includes cohabitation, social contact, employment status	Social isolation [R] Virtually connected [N]
	Loneliness	Abbreviated UCLA loneliness scale (51)	Short scale UCLA Loneliness total score [N]
<i>General wellbeing</i>	Resilience	Brief Resilience Scale (52)	Brief Resilience total score [N]
	Subjective wellbeing	MHO consortium	QoL total score [R]

611 Algorithms to define 'phenotypes' are available on OSF (33)

612

613 *Table 2 Characteristics of the respondents to each of the mental health questionnaires with comparison to the UK Biobank*
 614 *cohort (available to analyse in 2024)*

Characteristic	MHQ2 wave (2022)		MHQ1 wave (2016)		UKB full cohort		Absolute Difference	
	169,253	%	157,274	%	502,177	%	MHQ2 vs MHQ1	MHQ2 vs UKB
Demographics from baseline								
Age¹								
45-54	1,577	1%	23,449	15%	5,254	1%	-14%	-0.1%
55-64	44,319	26%	51,830	33%	122,298	24%	-6.8%	+1.8%
65-74	70,462	42%	70,122	45%	174,121	35%	-3.0%	+7.0%
75-84	52,572	31%	11,873	8%	198,269	39%	+24%	-8.4%
>84	323	0%	0	0%	2,235	0%	+0.2%	-0.3%
Median	70		65		72		+5y	-2y
Sex								
Female	97,646	58%	89,048	57%	273,184	54%	+1.1%	+3.3%
Male	71,607	42%	68,226	43%	228,993	46%	-1.1%	-3.3%
Ethnicity								
White	163,795	96.8%	152,063	96.7%	471,837	94.0%	+0.1%	+2.8%
Black	1,123	0.7%	1,146	0.7%	8,022	1.6%	-0.1%	-0.9%
Asian	1,448	0.9%	1,336	0.8%	9,829	2.0%	0.0%	-1.1%
Chinese	375	0.2%	364	0.2%	1,573	0.3%	0.0%	-0.1%
Mixed	863	0.5%	819	0.5%	2,902	0.6%	0.0%	-0.1%
Other	902	0.5%	876	0.6%	4,553	0.9%	0.0%	-0.4%
Missing	747	0.4%	670	0.4%	3,461	0.7%	0.0%	-0.2%
Social factors from baseline								
Relative deprivation ²	20,015	12%	19,281	12%	82,263	16%	-0.4%	-4.6%
Degree educated	75,311	44%	70,940	45%	161,019	32%	-0.6%	+12%
Rents home ³	7,909	5%	7,939	5%	46,403	9%	-0.4%	-4.6%
Self-reports illness >1y	44,296	26%	43,420	28%	159,800	32%	-1.4%	-5.6%
Smoker	11,861	7%	11,330	7%	52,940	11%	-0.2%	-3.5%
Physically active ⁴	62,371	37%	57,788	37%	169,109	34%	+0.1%	+3.2%
Neuroticism score, mean (sd) ⁵	3.87 (3.16)		3.87 (3.17)		4.12 (3.27)		0.0pt	-0.25pt

615 (1) Age at MHQ2 is at date of completion of MHQ2
 616 (2) Based on Townsend Deprivation Score of residence, where deprived $\geq +2$ (where 0 is average, and higher scores are more deprived,
 617 (23))
 618 (3) Private or social rented accommodation at baseline
 619 (4) Reported at least 20 mins moderate exercise 3 x week at baseline
 620 (5) Eysenck neuroticism scale
 621

Table 3 Characteristics of participants according to symptom-based criteria for lifetime disorders. Characteristics from baseline (BL) or MHQ2 (Q2).

Characteristic	Overall		No lifetime criteria			Depression			Panic Disorder			Any eating disorder			Bipolar type I		
	N	% item	N.	% item	% no dx	N.	% item	% dep'n	N.	% item	% panic dx	N.	% item	% eating dx	N.	% item	% bp I
N	169,253	100%	132,975	NA	79%	31,243	NA	18%	6,703	NA	4.0%	4,762	NA	2.8%	721	NA	0.4%
Age²	-	-	-	-		-	-		-	-		-	-		-	-	
45-54	1,577	0.9%	1,041	0.8%	66%	444	1.4%	28%	133	2.0%	8.4%	99	2.1%	6.3%	15	2.1%	1.0%
55-64	44,319	26%	30,781	23%	69%	11,488	37%	26%	2,880	43%	6.5%	2,238	47%	5.0%	337	47%	0.8%
65-74	70,462	42%	55,443	42%	79%	12,962	41%	18%	2,642	39%	3.7%	1,899	40%	2.7%	264	37%	0.4%
75+	52,895	31%	45,710	34%	86%	6,349	20%	12%	1,048	16%	2.0%	526	11%	1.0%	105	0	0.2%
Median	70	-	71	-		67	-		66	-		65	-		65	-	
Sex	-	-	-	-		-	-		-	-		-	-		-	-	
Female	97,646	58%	71,372	54%	73%	22,169	71%	23%	4,913	73%	5.0%	4,447	93%	4.6%	473	66%	0.5%
Male	71,607	42%	61,603	46%	86%	9,074	29%	13%	1,790	27%	2.5%	315	7%	0.4%	248	34%	0.3%
Ethnicity	-	-	-	-		-	-		-	-		-	-		-	-	
White	163,795	97%	128,605	97%	79%	30,306	97%	19%	6,493	97%	4.0%	4,598	97%	2.8%	682	95%	0.4%
Black	1,123	0.7%	921	0.7%	82%	176	0.6%	16%	43	0.6%	3.8%	NA ¹	NA ¹	NA ¹	NA ¹	NA ¹	NA ¹
Asian	1,448	0.9%	1,232	0.9%	85%	184	0.6%	13%	38	0.6%	2.6%	NA ¹	NA ¹	NA ¹	NA ¹	NA ¹	NA ¹
Chinese	375	0.2%	319	0.2%	85%	49	0.2%	13%	11	0.2%	2.9%	NA ¹	NA ¹	NA ¹	NA ¹	NA ¹	NA ¹
Mixed	863	0.5%	603	0.5%	70%	223	0.7%	26%	56	0.8%	6.5%	NA ¹	NA ¹	NA ¹	NA ¹	NA ¹	NA ¹
Other	902	0.5%	713	0.5%	79%	164	0.5%	18%	36	0.5%	4.0%	NA ¹	NA ¹	NA ¹	NA ¹	NA ¹	NA ¹
Missing	747	0.4%	582	0.4%	78%	141	0.5%	19%	26	0.4%	3.5%	NA ¹	NA ¹	NA ¹	NA ¹	NA ¹	NA ¹
[Combined] ¹	NA	NA	NA	NA	NA	NA	NA	NA	NA	NA	NA	164	3.4%	3.0%	39	5.4%	0.7%
Degree educated (BL)	75,311	44%	58,565	44%	78%	14,280	46%	19%	2,818	42%	3.7%	2,522	53%	3.3%	340	47%	0.5%

Resides in deprived area (BL) ³	20,015	12%	14,659	11%	73%	4,629	15%	23%	1,156	17%	5.8%	848	18%	4.2%	165	23%	0.8%
Rents home (BL) ⁴	7,909	4.7%	5,249	3.9%	66%	2,365	7.6%	30%	641	10%	8.1%	394	8.30%	5.0%	110	15%	1.4%
Self-report illness for >1y (BL)	44,296	26%	32,101	24%	72%	10,847	35%	24%	2,513	37%	5.7%	1,392	29%	3.1%	394	55%	0.9%
Smoker (BL)	11,861	7.0%	8,396	6.3%	71%	3,024	10%	25%	751	11%	6.3%	464	10%	3.9%	116	16%	1.0%
Physically active (BL) ⁵	62,371	37%	48,899	37%	78%	11,741	38%	19%	2,513	37%	4.0%	1,538	32%	2.5%	263	36%	0.4%
Childhood adverse experience (Q2) ⁶	71,049	42%	50,170	38%	71%	18,067	58%	25%	4,280	64%	6.0%	3,019	63%	4.2%	536	74%	0.8%
Adult adverse experience (ever) (Q2)	38,027	22%	23,584	18%	62%	12,465	40%	33%	3,124	47%	8.2%	2,425	51%	6.4%	399	55%	1.0%
Low resilience (Q2) ⁷	26,367	16%	13,103	10%	50%	11,944	38%	45%	3,127	47%	12%	1,640	34%	6.2%	406	56%	1.5%
Social isolation (Q2) ⁸	17,365	10%	12,099	9.1%	70%	4,675	15%	27%	1,077	16%	6.2%	706	15%	4.1%	119	17%	0.7%
Loneliness score, median (IQR) (Q2) ⁹	3	3–5	3	3–4		4	3–6		5	3–6		5	3–6		5	3–7	
Self-rated health median (IQR) (Q2) ¹⁰	83	72–90	85	75–91		79	65–89		75	60–85		80	65–90		70	49–83	
Neuroticism score, mean (sd) (BL) ¹¹	4	-3.16	3	-2.93		6	-3.34		7	-3.36		6	-3.35		7.03	-3.42	

BL = based on answers to baseline questions; Q2 = based on answers to MHQ2 questions

(1) To preserve participant privacy, non-White and missing ethnicities are collapsed to a single value ("Other") if one cell size is smaller than 10.

(2) Age at MHQ2 is at date of completion of MHQ2

(3) Based on Townsend Deprivation Score of residence, where deprived $\geq +2$ (where 0 is average, and higher scores are more deprived, (23))

(4) Any domain positive on the Childhood Trauma Screener

- (5) Brief Resilience Scale, low = 1 to 2.99, where scale is 1-5
- (6) Scores on at least two of three isolation questions
- (7) Loneliness score from 3 to 9 points, with 3 being least lonely
- (8) EQ-5D visual analogue scale, from 0 to 100, higher indicating better health

Table 4 Comparison of lifetime phenotype status in MHQ1 and MHQ2 in those participants who completed both questionnaires (n=111,275)

Case criteria	Met 1 & 2	Met 1 not 2	Met 2 not 1	Met Neither	Agree (%)	Kappa	New onset (% Met 2 not 1)
Depression	14,612	11,670	5,947	79,046	84%	0.53	1,502 (25%)
Bipolar	157	448	279	110,391	99%	0.30	29 (10%)
Self-harm	3,498	1,411	1,788	104,578	97%	0.67	410 (23%)
Cannabis use	21,630	4,015	3,393	82,237	93%	0.81	254 (7.5%)
Any SR clinician diagnosis	25,701	11,678	4,286	69,610	86%	0.66	NA

Met 1 = met criteria for lifetime phenotype in MHQ1

Met 2 = met criteria for lifetime phenotype in MHQ2

New = Of those who met criteria in 2 and not 1, how many reported that their first episode was either after the MHQ1 questionnaire or reported unknown year of first episode.

References

1. GBD 2019 Mental Disorders Collaborators. Global, regional, and national burden of 12 mental disorders in 204 countries and territories, 1990–2019: a systematic analysis for the Global Burden of Disease Study 2019. *The Lancet Psychiatry*. 2022;9(2):137-50.
2. Arango C, Díaz-Caneja CM, McGorry PD, Rapoport J, Sommer IE, Vorstman JA, et al. Preventive strategies for mental health. *The Lancet Psychiatry*. 2018;5(7):591-604.
3. Prince M, Patel V, Saxena S, Maj M, Maselko J, Phillips MR, et al. No health without mental health. *The lancet*. 2007;370(9590):859-77.
4. Firth J, Siddiqi N, Koyanagi A, Siskind D, Rosenbaum S, Galletly C, et al. The Lancet Psychiatry Commission: a blueprint for protecting physical health in people with mental illness. *The Lancet Psychiatry*. 2019;6(8):675-712.
5. Ohrnberger J, Fichera E, Sutton M. The dynamics of physical and mental health in the older population. *The Journal of the Economics of Ageing*. 2017;9:52-62.
6. Sudlow C, Gallacher J, Allen N, Beral V, Burton P, Danesh J, et al. UK Biobank: An Open Access Resource for Identifying the Causes of a Wide Range of Complex Diseases of Middle and Old Age. *PLOS Medicine*. 2015;12(3):e1001779.
7. Allen NE, Lacey B, Lawlor DA, Pell JP, Gallacher J, Liam S, et al. Prospective study design and data analysis in UK Biobank. *Science Translational Medicine*. 2024;16(729).
8. Wu H, Eckhardt CM, Baccarelli AA. Molecular mechanisms of environmental exposures and human disease. *Nature Reviews Genetics*. 2023;24(5):332-44.
9. Ronaldson A, Arias de la Torre J, Prina M, Armstrong D, Das-Munshi J, Hatch S, et al. Associations between physical multimorbidity patterns and common mental health disorders in

middle-aged adults: A prospective analysis using data from the UK Biobank. *Lancet Reg Health Eur*. 2021;8:100149.

10. Martins J, Yusupov N, Binder EB, Brückl TM, Czamara D. Early adversity as the prototype gene × environment interaction in mental disorders? *Pharmacology Biochemistry and Behavior*. 2022;215:173371.

11. Consortium TB, Anttila V, Bulik-Sullivan B, Finucane HK, Walters RK, Bras J, et al. Analysis of shared heritability in common disorders of the brain. *Science*. 2018;360(6395):eaap8757.

12. Uher R, Zwickler A. Etiology in psychiatry: embracing the reality of poly-gene-environmental causation of mental illness. *World Psychiatry*. 2017;16(2):121-9.

13. Burton PR, Hansell AL, Fortier I, Manolio TA, Khoury MJ, Little J, et al. Size matters: just how big is BIG?: Quantifying realistic sample size requirements for human genome epidemiology. *International Journal of Epidemiology*. 2008;38(1):263-73.

14. UK Biobank Website [Available from: www.ukbiobank.ac.uk].

15. Mamouei M, Zhu Y, Nazarzadeh M, Hassaine A, Salimi-Khorshidi G, Cai Y, et al. Investigating the association of environmental exposures and all-cause mortality in the UK Biobank using sparse principal component analysis. *Scientific Reports*. 2022;12(1):9239.

16. UK Biobank. Health Outcomes Overview v.2. <https://biobank.ndph.ox.ac.uk/showcase/refer.cgi?id=596>; 2024. Contract No.: Resource 596.

17. Davis KAS, Coleman JRI, Adams M, Allen N, Breen G, Cullen B, et al. Mental health in UK Biobank – development, implementation and results from an online questionnaire completed by 157 366 participants: a reanalysis. *BJPsych Open*. 2020;6(2):e18.

18. Coleman JRI, Peyrot WJ, Purves KL, Davis KAS, Rayner C, Choi SW, et al. Genome-wide gene-environment analyses of major depressive disorder and reported lifetime traumatic experiences in UK Biobank. *Molecular Psychiatry*. 2020;25(7):1430-46.

19. Purves KL, Coleman JR, Meier SM, Rayner C, Davis KA, Cheesman R, et al. A major role for common genetic variation in anxiety disorders. *Molecular psychiatry*. 2020;25(12):3292-303.
20. Davis KAS, Mirza L, Clark SR, Coleman JRI, Kassam AS, Mills NT, et al. The role of UK Biobank in mental health research: a review and commentary. *OSF Preprints*
<https://doi.org/10.31219/osf.io/bsywk>. 2024.
21. Catalogue of Mental Health Measures. www.catalogumentalhealth.ac.uk2024 [Available from: www.catalogumentalhealth.ac.uk].
22. Psychiatric Genomics Consortium. About Us <https://pgc.unc.edu/about-us/2024> [Available from: <https://pgc.unc.edu/about-us/>].
23. Fry A, Littlejohns TJ, Sudlow C, Doherty N, Adamska L, Sprosen T, et al. Comparison of sociodemographic and health-related characteristics of UK Biobank participants with those of the general population. *American journal of epidemiology*. 2017;186(9):1026-34.
24. Carress H, Lawson DJ, Elhaik E. Population genetic considerations for using biobanks as international resources in the pandemic era and beyond. *BMC Genomics*. 2021;22(1):351.
25. Schoeler T, Speed D, Porcu E, Pirastu N, Pingault J-B, Kutalik Z. Participation bias in the UK Biobank distorts genetic associations and downstream analyses. *Nature Human Behaviour*. 2023;7(7):1216-27.
26. Sullivan PF, Agrawal A, Bulik CM, Andreassen OA, Børghlum AD, Breen G, et al. Psychiatric Genomics: An Update and an Agenda. *American Journal of Psychiatry*. 2018;175(1):15-27.
27. Davies MR, Kalsi G, Armour C, Jones IR, McIntosh AM, Smith DJ, et al. The Genetic Links to Anxiety and Depression (GLAD) Study: Online recruitment into the largest recontactable study of depression and anxiety. *Behaviour Research and Therapy*. 2019;123:103503.

28. Iveson MH, Ball EL, Doherty J, Pugh C, Vashishta S, Palmer CNA, et al. Cohort profile: The Scottish SHARE Mental Health (SHARE-MH) cohort – linkable survey, genetic and routinely collected data for mental health research. *BMJ Open*. 2024;14(1):e078246.
29. closer. English Longitudinal Study of Ageing 2024 [Available from: <https://closer.ac.uk/study/english-longitudinal-study-of-ageing/>].
30. Bulik CM, Thornton LM, Parker R, Kennedy H, Baker JH, MacDermod C, et al. The eating disorders genetics initiative (EDGI): study protocol. *BMC psychiatry*. 2021;21:1-9.
31. Catalogue of Mental Health Measures. Adult Psychiatric Morbidity Survey (APMS) 2019 [Available from: <https://www.catalogumentalhealth.ac.uk/?content=study&studyid=APMS>].
32. UK Biobank. Mental well-being web questionnaire 2023 [Available from: <https://biobank.ndph.ox.ac.uk/showcase/refer.cgi?id=2800>].
33. Davis KAS, Coleman JRI, UKB Mental Health Outcomes Consortium. UKB 2nd Mental Health Questionnaire Open Science Framework Home 2024 [Available from: <https://osf.io/c65t7/>].
34. Coleman J. R code for UKB MHQ2 algorithms github2024 [Available from: <https://github.com/ColemanResearchGroup/MHQ2>].
35. Byrt T, Bishop J, Carlin JB. Bias, prevalence and kappa. *Journal of Clinical Epidemiology*. 1993;46(5):423-9.
36. Cole TJ. Too many digits: the presentation of numerical data. *Arch Dis Child*. 2015;100(7):608-9.
37. UK Biobank. Reporting small numbers in results in research outputs using UK Biobank data. <https://www.ukbiobank.ac.uk/media/ydilu0ug/numbers-for-publications-uncommon-and-geographical-variables.pdf>; 2023.

38. Herdman M, Gudex C, Lloyd A, Janssen M, Kind P, Parkin D, et al. Development and preliminary testing of the new five-level version of EQ-5D (EQ-5D-5L). *Qual Life Res.* 2011;20(10):1727-36.
39. Ahmed N, Barnett P, Greenburgh A, Pemovska T, Stefanidou T, Lyons N, et al. Mental health in Europe during the COVID-19 pandemic: a systematic review. *The Lancet Psychiatry.* 2023;10(7):537-56.
40. Patel V, Fancourt D, Furukawa TA, Kola L. Reimagining the journey to recovery: The COVID-19 pandemic and global mental health. *PLOS Medicine.* 2023;20(4):e1004224.
41. Borse C. The Meaning of Clinical Normality. *Medical Research Archives.* 2022;10(7).
42. Stein DJ, Palk AC, Kendler KS. What is a mental disorder? An exemplar-focused approach. *Psychological Medicine.* 2021;51(6):894-901.
43. Bishop DV. Fallibility in science: Responding to errors in the work of oneself and others. *Advances in Methods and Practices in Psychological Science.* 2018;1(3):432-8.
44. Kroenke K, Spitzer RL, Williams JB, Löwe B. The patient health questionnaire somatic, anxiety, and depressive symptom scales: a systematic review. *General Hospital Psychiatry.* 2010;32(4):345-59.
45. Kessler RC, Andrews G, Mroczek D, Ustun B, Wittchen HU. The World Health Organization composite international diagnostic interview short-form (CIDI-SF). *Int J Methods Psychiatr Res.* 1998;7(4):171-85.
46. Levinson D, Potash J, Mostafavi S, Battle A, Zhu X, Weissman M. Brief assessment of major depression for genetic studies: validation of CIDI-SF screening with SCID interviews. *European Neuropsychopharmacology.* 2017;27:S448.
47. Smith DJ, Nicholl BI, Cullen B, Martin D, Ul-Haq Z, Evans J, et al. Prevalence and characteristics of probable major depression and bipolar disorder within UK biobank: cross-sectional study of 172,751 participants. *PLoS One.* 2013;8(11):e75362.

48. Glaesmer H, Schulz A, Häuser W, Freyberger HJ, Brähler E, Grabe H-J. [The childhood trauma screener (CTS)-development and validation of cut-off-scores for classificatory diagnostics].

Psychiatrische Praxis. 2013;40(4):220-6.

49. Office for National Statistics. Crime in England and Wales: year ending September 2019.

<https://www.ons.gov.uk/peoplepopulationandcommunity/crimeandjustice/bulletins/crimeinenglandandwales/yearendingseptember2019>; 2019.

50. Babor TF, Higgins-Biddle JC, Saunders JB, Monteiro MG, World Health Organization. AUDIT: The alcohol use disorders identification test: Guidelines for use in primary health care. 2001.

51. Demakakos P, Nunn S, Nazroo J. 10. Loneliness, relative deprivation and life satisfaction. In: English Longitudinal Study of Ageing, editor. Retirement, health and relationships of the older population in England (ELSA Wave 2). 297: The Institute for Fiscal Studies; 2006.

52. Smith BW, Dalen J, Wiggins K, Tooley E, Christopher P, Bernard J. The brief resilience scale: assessing the ability to bounce back. International journal of behavioral medicine. 2008;15(3):194-200.