

1 **A rapid CRISPR/Cas12a-based assay for the detection of HIV-1 Indian Clade-C infections**

2
3 Anjali Gaur^{1*}, Harsh Bhakhri^{1*}, Nitesh Mishra^{1,4§}, Shaifali Sharma^{1§}, Tanu Bansal¹, Mani
4 Kalaivani⁶, Megha Brijwal⁵, Bimal Kumar Das², Rakesh Lodha³, Subrata Sinha^{1#}, Kalpana
5 Luthra^{1#}

6 Affiliation:

- 7 1. Department of Biochemistry, All India Institute of Medical Sciences, New Delhi, India 110029.
- 8 2. Department of Microbiology, All India Institute of Medical Sciences, New Delhi, India
9 110029.
- 10 3. Department of Pediatrics, All India Institute of Medical Sciences, New Delhi, India 110029.
- 11 4. Department of Immunology and Microbiology, The Scripps Research Institute, La Jolla, CA,
12 United States.
- 13 5. Virology Section, Department of Microbiology, All India Institute of Medical Sciences, New
14 Delhi, India 110029.
- 15 6. Department of Biostatistics, All India Institute of Medical Sciences, New Delhi, India 110029.

16 * These authors contributed equally (shared first authors).

17 § These authors contributed equally (shared second authors)

18 # Corresponding Authors: sub_sinha@hotmail.com, kalpanaluthra@gmail.com

19

20 **Abstract**

21
22
23 Early detection of HIV-1 infection is crucial to initiate anti-retroviral therapy (ART) to suppress
24 viremia and disease progression. Herein, we developed a CRISPR/Cas12a-based HIV-1 detection
25 assay by optimizing components for a coupled isothermal preamplification by recombinase
26 polymerase amplification (RPA). The HIV-1 Indian Clade-C-specific conserved pol region was
27 targeted by crRNA designed for Clade-specific detection. The CRISPR/Cas12a cleavage of the
28 viral cDNA input is displayed as a single visually detectable outcome due to the collateral cleavage
29 of the ssDNA-FAM-BQ reporter, enabling the rapid detection of HIV-1. The performance of the
30 assay was evaluated by testing sera of 41 Indian Clade C HIV-1 seropositive individuals, which
31 included 28 HIV-1 infected infant samples, HIV-1 Indian clade C genome plasmid, viral disease
32 control DNA/RNA samples (Influenza, RSV, Parvovirus, HPIV, CMV, and HBV), and 31 healthy
33 donor sera samples. With 96% sensitivity and 92.65% specificity for HIV-1C detection, with
34 fluorescence and visual readout, and a capability of detection using lateral flow dipsticks, our
35 CRISPR/Cas12a-based HIV-1 C detection assay demonstrates the potential to be developed into a
36 robust point-of-care molecular diagnostic test for HIV-1C. Moreover, it may serve as a potential
37 rapid NAT alternative in detecting mother-to-child transmission (MCT) of HIV-1C in infants (<2
38 years of age), where rapid antibody-based serology tests are rendered ineffective due to the
39 presence of maternal antibodies.

40 Introduction

41 Human immunodeficiency virus (HIV-1) is an infectious entity that can lead to the development
42 of acute immunodeficiency syndrome (AIDS) in an infected individual. According to the UNAIDS
43 global HIV-1 statistics, 39 million people globally were living with HIV-1. In 2022, 6,30,000
44 people died from AIDS-related illness (1). HIV-1 Clade C, being responsible for half of the global
45 infections, accounts for 97% of HIV-1 infections in India (2). HIV-1 infections remain to be one
46 of the global public health issues, with an effective vaccine still elusive, lifelong adherence to
47 antiretroviral drugs is required for the effective management of the disease (3). Hence, early
48 detection of HIV-1 is crucial for treatment initiation, prevention of transmission, and disease
49 progression in perinatally infected infants, children, and adults (4).

50 The quantitative reverse transcriptase-polymerase chain reaction (qRT-PCR) is one of the sensitive
51 nucleic acid tests to detect HIV-1 in samples with low viral RNA copies. Its high sensitivity and
52 specificity have been considered a “gold standard” for disease diagnostics, with several approved
53 qRT-PCR tests for HIV-1 (5–9). However, this method is not cost-effective for HIV-1 detection in
54 resource-limited settings. In recent decades, several isothermal amplification methods, such as
55 loop-mediated isothermal amplification (LAMP), have been developed as attractive alternatives to
56 conventional PCR methods because of their simplicity, rapidity, and low cost. However, deploying
57 LAMPs as efficient POC diagnostics for clinical applications is still challenging due to complex
58 assay design and primer set optimizations requiring a trained professional (10). For the diagnosis
59 of HIV-1 infection in infants and children less than 18 months of age, National AIDS Control
60 Organization (NACO, India) recommends the use of a Total Nucleic Acid PCR test on a Dried
61 Blood spot (DBS) sample of the infant to detect viral nucleic acid for diagnosis of HIV-1 infection
62 during infancy. Serology testing is not preferred in infants and children of this age group due to
63 plausible interference by the transplacental passage of maternal antibodies in the infant (11–13)
64 .

65 With advances in CRISPR/Cas-based technology, its cost-effectiveness, high sensitivity, and
66 specificity for its target sequence provides a platform for using the CRISPR/Cas-based systems in
67 molecular diagnostics (14). Recently, RNA-guided CRISPR/Cas nuclease-based nucleic acid
68 detection has shown great promise for developing next-generation molecular diagnostics
69 technology due to its high sensitivity, specificity, and reliability. For example, some Cas nucleases
70 (e.g., Cas12a, Cas12b, and Cas13a) perform intense collateral cleavage activities in which a
71 crRNA-target binding activated Cas can indiscriminately cleave surrounding non-target single-
72 stranded nucleic acids (15–18). By combining with a sensitive isothermal preamplification at 37°C
73 using recombinase polymerase amplification (RPA) (19–21), Cas13 and Cas12a have,
74 respectively, been used to develop SHERLOCK (Specific High-sensitivity Enzymatic Reporter
75 UnLOCKing) system and DETECTR (DNA Endonuclease-Targeted CRISPR Trans Reporter)
76 system for highly sensitive nucleic acid detection (22,23). Apart from the RPA method, some
77 CRISPR-Cas-based nucleic acid sensors utilized the LAMP and PCR approaches, such as the
78 CRISPR-Cas12b-assisted HOLMESv2 platform (24,25). The CRISPR/Cas systems, such as the

79 CRISPR/Cas9, CRISPR/Cas12, and CRISPR/Cas13, are described for the detection of various
80 viral nucleic acids viz, Zika virus, Ebola virus, Dengue virus, SARS-CoV2, and HBV (26–33).
81 In the present study, we developed a sensitive CRISPR/Cas12a-based assay for rapid and specific
82 detection of HIV-1 Indian clade C, being the most prevalent infecting HIV-1 clade in India. A
83 crRNA targeting the conserved pol regions in the HIV-1 Indian clade C genome was used for the
84 specific detection. The assay components were optimized for isothermal nucleic acid amplification
85 by RPA and CRISPR/Cas12a-based cleavage reaction to occur in a single tube at 39 °C for 45 min,
86 thereby eliminating the need for an intermediate nucleic acid purification step. The assay is
87 adaptable for versatile detection modes, such as visual (UV transilluminator), Fluorescence
88 intensity readout, and Lateral flow dipstick-based readout. Herein, we have developed a rapid and
89 sensitive CRISPR/Cas12a-based HIV-1 C detection assay that demonstrates the ability to detect
90 HIV-1 infection in infants, with the potential to be developed into a sensitive lateral flow-based
91 point-of-care molecular diagnostic test for HIV-1 Clade-C.

92 **Material and methods**

93 **Clinical samples and ethical statement**

94 A total of 41 HIV-1 positive donor sera (including 28 infant sera) and 31 healthy donor sera,
95 separated from blood samples that were collected from the Department of Pediatrics and
96 Department of Microbiology, AIIMS New Delhi, India, were included in this study. All the donors
97 were ART-naïve at the time of diagnosis and were not showing symptoms of AIDS progression.
98 The detailed demographics and immunological profile (Table S1) were obtained from the
99 Department of Microbiology, AIIMS New Delhi, India. Written informed consent was obtained
100 from the parent/LAR of the infants/children. The study was reviewed and approved by the
101 Institutional Ethics Committee (IEC) of All India Institute of Medical Sciences (IEC-
102 114/06.03.2020), RP-47/2020. The demographic profile of the study participants was recorded
103 systematically. DNA/RNA samples of Influenza, Respiratory syncytial virus (RSV), Parvovirus,
104 Human Parainfluenza virus (HPIV), and Cytomegalovirus (CMV) were obtained from the
105 Virology Testing Laboratory, Department of Microbiology, AIIMS New Delhi and used as disease
106 controls. The HIV-1 genome plasmid 93IN999 and 93IN905(positive control) and HIV-1 Clade B
107 infected donor sera samples (disease control) were obtained from the NIH AIDS reagent program.
108

109 **HIV-1 RNA extraction and cDNA synthesis**

110 Viral RNA was extracted from 140 µl of serum using the QIAamp Viral RNA Mini Kit according
111 to the manufacturer's instructions. Immediately after RNA extraction, reverse transcription was
112 performed using the gene-specific primer OFM19 (5'-
113 GCACTCAAGGCAAGCTTTATTGAGGCTTA-3') and Superscript IV reverse transcriptase
114 (Thermo Scientific). The procedure of viral extraction to cDNA preparation using Superscript IV
115 reverse transcriptase was performed within a one-hour duration.
116

117 **crRNA and RPA primer designing**

118 crRNA sequence for HIV-1 clade C viruses in the pol region was designed. A total of 86 HIV-1
119 Clade C sequences were obtained from the HIV database
120 (<https://www.hiv.lanl.gov/content/sequence/HIV/mainpage.html>). The sequences obtained were
121 aligned on MEGAX to generate a multiple sequence alignment (MSA). The Consensus maker tool
122 at the LANL HIV database was used to create the consensus sequence of the pol region (Figure
123 S1). The consensus sequences within the pol region were scanned across the MSA of Indian pol
124 using the Analyse-ALIGN tool at LANL HIV database for maximum conserved regions. Regions
125 with maximum conservation were used as crRNA target sequences. One consideration for crRNA
126 design for CRISPR/Cas12a-based detection assay is the lack of overlap with RPA amplicon
127 primers, as overlap with primers may result in false positives. The identified conserved region was
128 picked as the crRNA target, and along with a Cas12a adaptor sequence, the crRNA was synthesized
129 from IDT (Integrated DNA Technologies). The flanking conserved regions were identified to
130 design RPA primers with optimal conditions: size range within 30-35 and Tm range between 37°C-
131 42°C. A primer pair was designed to amplify 183 bp RPA amplicon, which carries the crRNA target

132 sequence RPA_Forward (5'-ACAGGRGCAGATGATACAGTATTAGAAGA-3') and
133 RPA_Reverse (5'-CCAATTATGTTGAYAGGTGTDGGTCC-3').

134

135 **Probe design for fluorescence and lateral flow-based detection:**

136 The ssDNA-FAM-BQ reporter, a five-nucleotide oligonucleotide (5'-TTATT-3') labelled by a 5'
137 6-FAM (Fluorescein) fluorophore and a 3' Iowa Black® FQ quencher- ssDNA-FAM-BQ probe
138 (IDT) was designed and synthesized for fluorescence/visual readout. Upon the detection of the
139 HIV-1 pol sequence by the CRISPR/Cas12a complex, the collateral cleavage activity cleaves the
140 ssDNA-FAM-BQ, which releases the FAM molecule from the quencher, and the signal generated
141 was detected using a UV transilluminator/lamp and fluorescence reader. The ssDNA probe with
142 the same sequence as for fluorescence readout was used with 5' FAM, and 3' Biotin was designed
143 and synthesized for lateral flow strip-based assay readout.

144

145 **The CRISPR/Cas12a-based assay reaction**

146 The RPA reactions were performed using the TwistAmp Basic kit (TwistDx) as instructed by the
147 manufacturer. For the CRISPR/Cas12a reaction, purified LbaCAs12a (IDT) was used. The assay
148 was set up with RPA reagents with optimized concentrations (Figure S3 and S4):1X rehydrated
149 Master mix, RPA primers (IDT) (168nM), and 14 mM MgOAc) and CRISPR/Cas12a cleavage
150 reaction reagents: LbaCas12a (0.64µM), crRNA(0.64µM), 1X Cas12 activity Buffer (IDT),
151 ssDNA-FAM-BQ fluorescent probe (8 µM) into a single tube. The reaction was incubated at 39°C
152 for 45 min.

153

154 **Visual, fluorescence, and lateral flow dipstick-based readouts of the assay**

155 The end-point fluorescence signal detection was done using a UV lamp/transilluminator (visual
156 detection) and fluorescence detection by a fluorometer. The emission was recorded as AFU
157 (Arbitrary fluorescence unit) at excitation at 488nm and emission at 520nm. For adapting the assay
158 as a lateral flow strip-based CRISPR/Cas12a detection assay, the same reaction was set up with
159 the ssDNA-FAM-Biotin probe with the optimized concentration (0.009 µM) such that there is no
160 non-specific detection at the test line (Figure S6). Post incubation, 10µl the reaction mix was
161 applied to the lateral flow dipsticks (HybriDetect - Universal Lateral Flow Assay Kit). The
162 dipsticks were dipped into 100µl of the HybriDetect assay buffer provided with the kit. The assay
163 buffer was allowed to adsorb for 2-3mins and colour development on the test and control line was
164 observed to determine a positive or negative reaction.

165

166 **Statistical analysis**

167 All the statistical analyses were performed using Python (version 3.9). The sensitivity and
168 specificity of the diagnostic assay were calculated using the scikit-learn library. To distinguish
169 between positive and negative HIV-1 detection using the assay, the optimal AFU threshold value
170 for the fluorescence readout was determined by plotting the ROC curve and calculating AUC and
171 Youden's Index by using the 'roc_curve' and 'auc' function of the 'scikit-learn' library. The

172 percentage sensitivity and specificity of the assay were computed using the ‘confusion_matrix’
173 function of the scikit-learn library. The Clopper-Pearson confidence intervals for specificity and
174 sensitivity percentages were calculated using the ‘binom’ function by fitting a binomial distribution
175 for 95% confidence. Cohen’s Kappa coefficient was also calculated to assess the agreement
176 between the assay results and the true labels, accounting for chance agreement, using the
177 ‘cohen_kappa_score’ function from the same library. Data plotting was performed using the
178 GraphPad Prism software (Version 9.0; La Jolla, CA, USA).

179

180 **Data availability**

181 All the data to support the findings of the study are available within the paper and supplementary
182 information. Any additional information can be requested from the corresponding authors. The
183 source data for the endpoint fluorescence readout and assay performance evaluation are provided
184 as Source Data File of this paper.

185 **Results**

186 **The CRISPR/Cas12a-based assay system.**

187 In this study, we developed and evaluated a CRISPR/Cas12a-based assay system for the rapid
188 detection of HIV-1 Clade C viral nucleic acid in serum samples. In the assay, the preamplification
189 step by recombinase polymerase amplification (RPA) and cleavage by CRISPR/Cas12a
190 recognition and subsequent cleavage of ssDNA-FAM-BQ reporter to give a detectable
191 fluorescence signal as output was standardized to work as a coupled reaction in a single tube
192 (Figure 1a). The assay utilized a crRNA that targeted a conserved HIV-1 C pol region within the
193 RPA amplicon (Figure 1b). The cas12a and crRNA were added into the reaction solution
194 containing the RPA primers, recombinase, single-stranded DNA binding protein (SSB), strand-
195 displacement DNA polymerase, single-stranded DNA fluorophore-quencher (ssDNA-FAM-BQ)
196 reporter and target template. During the incubation of the assay reaction at 39°C for 45 minutes,
197 the RPA amplification was initiated, and the activity of the strand displacement DNA polymerase
198 determined the target sites for the cas12a-crRNA complex. The binding of the Cas12a-crRNA
199 complexes with the target sites on the amplified viral DNA led to activation of the collateral
200 cleavage activity of Cas12a endonuclease and cleavage of the ssDNA-FAM-BQ reporter
201 molecules, generating a strong fluorescence signal. Thus, the amplified target sequences generated
202 during the RPA triggered CRISPR/Cas12a-based collateral cleavage activity in this assay.
203 Previous studies have demonstrated that the collateral cleavage activity of the CRISPR/Cas12a
204 system is independent of target strand cleavage, showing that the collateral cleavage of ssDNA-
205 FAM-BQ reporters by the Cas12a nuclease is triggered by the binding of crRNA to target sites
206 (16,17). The fluorescence signal from the cleaved ssDNA-FAM-BQ reporter was detected using a
207 UV transilluminator for a rapid qualitative assertion of the assay results or by taking the
208 fluorescence readout as arbitrary fluorescence units (AFU) by a fluorescence reader at an
209 excitation of 488nm and emission of 520nm, for a more accurate/semi-quantitative assertion of
210 assay results and distinguish between a positive or negative CRISPR/Cas12a based cleavage
211 reaction, hence presence or absence of HIV-1 clade C nucleic acid in the sample evaluated (Figure
212 1a).

213

214 **Design and optimization of the CRISPR/Cas12a-based assay system.**

215 Various components were designed for the CRISPR/Cas12a-based detection assay to work in sync
216 with the coupled isothermal RPA reaction, and concentrations were optimized for distinct positive
217 vs. negative results. Firstly, the crRNA was designed to target the HIV-1 clade C sequence. The
218 crRNA in the assay was designed to target the most conserved region of the HIV-1 Indian Clade
219 C sequences. Upon multiple sequence alignment of 86 Indian Clade C sequences, we identified
220 the Pol region of the HIV-1 genome as the most conserved region (Figure S1a-b). The crRNA was
221 designed by taking 21bps of the conserved region sequence (2453-2475 HXB2 coordinate)
222 downstream to the PAM sequence (TTTV) along with the Cas12a binding adaptor sequence
223 (Figure S2a-b). To detect the specific region by Cas12a cleavage, preamplification by RPA was
224 done by designing RPA primers using the conserved regions to amplify a 183bp RPA amplicon

225 (Figure S3a), which lies in the Pol gene sequence at the location from 2328 to 2509 in the HXB2
226 genome map (Los Alamos). The primers were designed by keeping the range of the number of
227 nucleotides within 30-35 and T_m in between 37°C-42°C (Figure 1b). Further, we optimized the
228 RPA reaction for various parameters: reaction time, primer concentration, and sample cDNA
229 amount. Multiple reactions were set up to determine the optimal time for RPA by incubation at
230 different time points from 20 minutes to 40 minutes, with an increment of 5 minutes. An incubation
231 of 30-40 mins was optimal for amplifying the HIV-1 amplicon (Figure S3b). RPA reactions with
232 a gradient of primer concentrations were performed to determine the optimal primer concentration.
233 Optimal amplification was observed at a primer concentration of 168nM (Figure S2c). To
234 determine the patient's cDNA dilution to perform RPA, an HIV-infected infant donor cDNA
235 sample of AIIMS748 was tested from neat to 1:20 cDNA dilutions. Low amplicon band intensity
236 was observed at neat and 1:5 cDNA dilution, with a darker band intensity at 1:10 and 1:20 cDNA
237 dilution depicting hindrance of cDNA component at lower dilution with optimal detection at a
238 higher cDNA dilution (Figure S3d). The CRISPR/Cas12a-based cleavage assay was optimized for
239 the detection of HIV-1 in clinical samples. The ssDNA-FAM-BQ reporter concentration (8 μM)
240 and the ratio of crRNA to cas12a (0.64nM) (1:1) were used for the CRISPR/Cas12a-based
241 cleavage reaction (29). For a coupled RPA and CRISPR/Cas12a-based cleavage for detection of
242 HIV-1 target sequence, all the above-optimized assay components were incubated at 39°C for 45
243 minutes for all the amplified sequences to be cleaved simultaneously. The CRISPR/Cas12a-based
244 HIV-1 detection assay was performed for HIV-1 clade C genome plasmids 93IN999 and 93IN905
245 (10 ng each), and multiple cDNA dilutions from one HIV-1 positive infant donor AIIMS748 were
246 used for the optimization of the assay. Corroborating with the RPA amplification of patient viral
247 cDNA, a cDNA dilution of 1:10 yielded a better detectable fluorescence and visual readout signal
248 (UV transilluminator) (Figure 2a-b). Hence, all the HIV-positive patients' viral cDNA
249 samples were tested at a minimum of 1:10 cDNA dilution.

250

251 **Evaluation of sensitivity and specificity of the CRISPR/Cas12a-based HIV-1 C detection** 252 **assay in clinical samples.**

253 The high sensitivity and specificity of an assay are a testament to its effectiveness. We evaluated
254 the sensitivity and specificity of our assay using 'True Positives' and 'True Negatives' as test
255 samples. True positives comprised of the cDNA samples from 41 HIV-1 positive donor sera and 9
256 replicate samples of HIV-1 genome plasmid 93IN999 and 93IN905. True negatives comprised of
257 cDNA samples from 31 healthy donor sera, viral DNA/RNA samples of 15 viral disease controls
258 (1-Influenza, 1-RSV, 1-Parvovirus, 1-HPIV, 3-CMV, and 5-HBV genome plasmids), and 25 non-
259 template control (NTCs) replicates (Figure 3a). Firstly, the Receiver operating characteristic
260 (ROC) curves using the arbitrary fluorescence unit (AFU) values for the various samples tested
261 were plotted to distinguish between the positive and negative results of the assay and determine
262 the optimal AFU threshold values. The ROC curves were plotted separately for positive and
263 different negative sample groups: positive vs healthy controls, positive vs negative controls
264 (NTCs), positive vs healthy and negative controls, and positive vs disease controls. The area under
265 the curve (AUC) and Youden's Index were calculated for each ROC curve to determine the optimal

266 AFU threshold values of fluorescence readout above which any sample tested can be classified as
267 positive for the assay. Optimal AFU threshold values to determine test positivity in the context of
268 the different controls; 341 (positive vs healthy-AUC 1.00), 725 (positive vs NTCs-AUC 0.992),
269 596 (positive vs healthy and NTCs-AUC 0.996) and 800 (positive vs disease controls-AUC 0.958)
270 (Figure 2c-f). Since we observed an overlap between some of the positive samples with the lowest
271 AFU and that of the highest AFU of a few negative samples, we defined the sensitivity and
272 specificity of the assay by taking into account all the different AFU threshold values obtained. The
273 AFU threshold of 725 yielded a maximum sensitivity and specificity of 94% and 97.03%,
274 respectively, that led to 3 false negatives (FN) and 2 false positives (FP) (Figure 3d). The AFU
275 threshold of 596 yielded 96% sensitivity and 92.65% specificity, with 2 FNs and 5 FPs (Figure
276 3e). The lowest and highest AFU threshold values, 341 and 800, result in compromised specificity
277 and sensitivity, respectively (Figure 3c, 3f). Using the AFU threshold of 341 yielded 0 FNs but 15
278 FPs, mostly from viral disease controls and NTCs values, suggesting that this threshold value could
279 serve as a good baseline for screening for HIV-1C in a population. Also, AFU threshold of 800
280 yielded 0 FPs but 6 FNs, and could serve as an ideal AFU threshold, as any value above this
281 threshold may confirm the presence of HIV-1C nucleic acid. Based on these observations, we
282 defined a range of AFU threshold of 341-800, with AFU values of test samples <341 and >800
283 would be described as negative and positive for the assay respectively, while samples with AFU
284 values between 341-800 would be reported as inconclusive, with a need for reassessment and
285 validation (Figure 3b).

286 To evaluate the assay performance and determine the sensitivity and specificity, an AFU threshold
287 of 596 was selected, as it yielded the least FNs with high specificity and sensitivity values of 96%
288 and 92.65%, respectively, and a significant kappa value of 0.879 (Table 1). The viral cDNA
289 samples of 41 HIV-1 positive sera from clade C-infected infants/children and adults were tested in
290 the assay. Of the 41 samples, 22/41 were of known viral load, determined by qRT-PCR, and 19/41
291 were seropositive for HIV-1 IgG/IgM (with viral load not determined), which were included to
292 broaden the evaluation of the assay (Table S1). 35/41 positive clinical samples were tested positive,
293 and 6/41 positive samples were reported as inconclusive for the assay using the AFU threshold
294 range established (Figure S4a). Our findings demonstrated that the HIV-1C detection assay
295 developed herein possesses high sensitivity and specificity, affirming its effectiveness. The
296 CRISPR/Cas12a-based assay tested positive for the lowest viral load sample with 117000
297 copies/ml at a cDNA dilution of 1:10 from the donor AIIMS744 (Figure S4a, Table S1). Of the 41
298 cDNA samples of HIV-1 seropositive individuals tested, 28 were from infants (<2 years) (Table
299 S1). With 27/28 HIV-1 positive infant samples tested positive using this assay and only 1/28 as
300 result inconclusive, the assay yielded a sensitivity of 96.43%, demonstrating the ability to
301 effectively detect HIV-1 in infant sera samples (Figure S4b). Serology-based methods are not
302 suitable for testing HIV-1 in infant samples due to the presence of maternal antibodies. No visual
303 or fluorescence signal for the assay was observed in 31/31 cDNA samples from healthy controls
304 demonstrating high specificity (Figure 4c). Furthermore, the specificity of the assay was validated
305 using viral disease control DNA/RNA samples from Influenza, Respiratory syncytial virus (RSV),
306 Parvovirus, Human Parainfluenza virus (HPIV), Cytomegalovirus (CMV), and Hepatitis B virus
307 (HBV). While the UV transilluminator did not show a significant signal, the fluorescence readout
308 showed an AFU value in the range of 341-800 for most of the samples tested, hence falling in

309 result inconclusive criteria (Figure 4a). This depicts that with the presence of other viral nucleic
310 acid, there is an increase in the background fluorescence. Hence, while distinguishing between
311 HIV-1C and other viral diseases, samples with tested AFU value between 341-800 should be
312 retested by RT-PCR prior to reporting for HIV-1 and other viral diseases. Further, we evaluated the
313 assay for the ability to discriminate HIV-1 Indian clade C from clade B HIV-1. The assay showed
314 specific detection of HIV-1 clade C in positive plasmid and HIV-1 positive donor cDNA sample
315 AIIMS748, with no detection in 7 different clade B donor sera (Figure 4b). A positive signal for
316 HIV-1 clade C and no signal for HIV-1 clade B sequences demonstrates that the assay specifically
317 detects the major infecting HIV-1 Clade in India. Thus, our CRISPR-based HIV-1 Clade C
318 detection assay offers a simple, rapid, and visual approach to HIV-1 Clade C detection.

319

320 **Adaptation of the CRISPR/Cas12a-based HIV-1 clade C detection assay as Lateral Flow** 321 **Assay (LFA) for point-of-care diagnosis**

322 The potential for point-of-care diagnostics is a promising aspect of our CRISPR/Cas12a-based
323 assay. Hence, the assay was adapted for the lateral flow dipstick-based detection of the cleaved
324 probe molecules. The ssDNA-FAM-Biotin probe has a 5'FAM molecule and 3'Biotin molecule;
325 all the probe molecules are captured at the control line via streptavidin-biotin interaction if there
326 is no collateral cleavage of the probe, while upon collateral cleavage of the probe in the presence
327 of target sequence, the FAM molecule is released and captured by the rabbit anti-FAM Ab gold
328 nanoparticles and sequestered on the test line via anti-rabbit antibodies leading to colour
329 development (Figure 5a). Firstly, the ssDNA-FAM-Biotin probe concentration was optimized to
330 prevent any spillage of the probe onto the test line for a false positive detection. Using negative
331 control reactions (non-template controls (NTCs)), the concentration of the ssDNA-FAM-Biotin
332 probe was optimized using various dilutions, initially with a broad range of concentrations from
333 1.00 μ M to 0.00005 μ M. The concentration range of 0.0124 M to 0.0042 M showed the least non-
334 specific detection at the test line (Figure S5a). A narrow range probe concentration between 0.0124
335 μ M to 0.0042 μ M was tested, and 0.0124M to 0.008 M showed the least non-specific test line
336 detection (Figure S5b). Furthermore, the non-specific detection was minimized by adding 5%
337 PEG6000 (based on the manufacturer's suggestions) (Figure S5c). The HIV-1 genome plasmid
338 (93IN999) was detected using probe concentrations of 0.0124 μ M and 0.009 μ M with 5%
339 PEG6000. The most optimal detection of the cleaved probe on the test line in a positive reaction
340 with minimal nonspecific detection in the NTC reaction was observed using 0.009 μ M ssDNA-
341 FAM-Biotin (Figure 5b, S5d). Overall, our study suggests the potential of the CRISPR/Ca12a-
342 based HIV-1 clade C detection assay to be developed into point-of-care diagnostics of HIV-1,
343 instilling optimism about its future application.

344 Discussion

345 Early detection of viral infections aids in the effective management of the disease by allowing
346 timely interventions and preventing the spread. Major clinical laboratory tests for diagnosis of viral
347 infection are based on principles of immune assays, detection of viral antigens or specific
348 antibodies in the test sample or on the principles of nucleic acid amplification and detection of
349 specific viral nucleic acid. Serology immune assays are rapid, point-of-care, and cost-effective
350 tests but are not highly specific and sensitive; hence, they majorly serve the purpose of rapid
351 screening (34). Whereas Nucleic acid amplification tests (NAAT) such as PCR, quantitative PCR
352 (qPCR), reverse transcriptase PCR (RT-PCR) and reverse transcriptional loop-mediated isothermal
353 amplification (RT-LAMP) are robust, highly specific, and sensitive. Hence, they are reliable
354 confirmatory diagnostic methods but are costly and require sophisticated equipment (thermal
355 cycler) and a trained technician, which is not practical in low-resource settings (10,35,36).

356 HIV-1 infections are one of the major global health concerns, with no known cure or vaccine and
357 lifetime adherence to anti-retroviral therapy being the only effective management strategy. The
358 diagnostic strategies for HIV-1 involve the use of serum immune assays for rapid screening of
359 HIV-1 antigen or host antibodies, which is further confirmed by a qualitative PCR and viral load
360 determination by qPCR for early initiation of ART and prevention of disease progression (5,8,37).
361 Although the 4th generation antibody and p24 antigen or combination laboratory immunoassays
362 are highly sensitive and evaluated and widely deployed, but in cases of acute HIV-1 infections,
363 antibody-based immunoassays may not be effective as seroconversion in case of HIV-1 may take
364 2-3 weeks. Although the patients show detectable levels of HIV-1 RNA and p24 during this period,
365 they remain negative for immunoassays. This leads to erroneous detections during this period as
366 the patients may have a high viral load, which leads to an increased risk of transmission (38–40).
367 Hence, NAAT-based laboratory diagnosis plays an important role in the detection of acute HIV in
368 combination with p24 and immunoassays. While these highly sensitive immunoassays and NAATs
369 for HIV-1 require a sophisticated laboratory setup, with costly equipment and trained technicians,
370 the surveillance and prevention of HIV-1 becomes less efficacious in low and middle-income
371 countries. There are emergence of various FDA-approved point-of-care rapid HIV-1 screening
372 tests, which detect anti-HIV IgG and IgM but fail in detecting acute HIV-1, with a 100% failure
373 rate in case of NAAT positive/seronegative samples (41). Hence, developing a rapid point-of-care
374 assay for HIV-1 NAAT assay, which is specific, sensitive, and cost-effective, may aid in robust
375 HIV-1 detections and decrease the risk of spread.

376 Moreover, mother-to-child transmission (MCT) is even more difficult to diagnose efficiently. It is
377 reported that the occurrence of bNAbs is more frequent in infants (>40%) (42,43) and children
378 (44) as compared to adults, where bNAbs development occurs in a rare subset of chronically
379 infected individuals. A potent protective antibody response in infants is governed by multivariant
380 infections in perinatally acquired HIV-1 (42), with an improvement in bNAb response upon
381 initiation of combined antiretroviral therapy (cART) (45). Hence, early detection of MCT is
382 essential for the initiation of cART in perinatal HIV-1 infections. Standard serology tests such as
383 ELISA and Western blot are not suitable for detecting HIV-1 infection in infants (below the age of
384 18 months), as the circulating maternal antibodies could lead to erroneous interpretation.

385 In this study, we have developed a CRISPR/Cas12a-based assay for rapid, sensitive, and specific
386 detection of HIV-1 clade C. Herein, all assay components are optimized for setting up the
387 preamplification by isothermal RPA and CRISPR/Cas12a based cleavage reaction in a single tube
388 at 39°C for 45 mins, without the need of any intermediate purification or extraction step, thus
389 enabling robust molecular detection of HIV-1. The UV visual readout, fluorescence-based readout,
390 and adaptability into a lateral flow dipstick-based detection assay demonstrate the versatility and
391 employability of the CRISPR/Cas12a-based HIV-1 detection assay developed as a potential point-
392 of-care diagnostic test. High mutagenesis in HIV-1 is attributed to high genetic variation, which
393 makes it difficult to target using the CRISPR/Cas12a system. Conserved regions (pol) in the HIV-
394 1 genome were identified by aligning 86 HIV-1 sequences from Indian clade C infections. A
395 crRNA targeting a highly conserved region in the Pol gene of the HIV-1 genome was designed and
396 utilized in the assay for efficient detection of HIV-1. The assay was evaluated for its ability to
397 distinguish the presence or absence of HIV-1 nucleic acid by testing various HIV-1 positive (patient
398 cDNA and HIV genome plasmids) and HIV-1 negative samples (healthy controls, viral disease
399 controls, and NTCs) and AFU threshold range was established using ROC curve. A range of AFU
400 threshold value between 341-800 was used to distinguish positives from negatives efficiently, with
401 any AFU values of the test samples less than 341 and greater than 800 determined as negative or
402 positive for the assay, respectively, and AFU values of the test samples in between 341-800 are
403 classified as result inconclusive. Samples with AFU readouts between 341-800 should be
404 reassessed using RT-PCR. Evaluating the assay performance with an optimal AFU threshold of
405 596 with an ROC AUC of 0.996 yielded 96% sensitivity and 92.65% specificity, implying that the
406 assay is efficient in the detection of HIV-1C in the tested samples. However, on testing disease
407 control samples (of Influenza, RSV, Parvovirus, Parainfluenza, CMV, and HBV), our assay yielded
408 AFU values between 341-800, suggesting an increase in nonspecific background fluorescence.
409 This implies that test samples (including those with viral infection other than HIV-1) with a tested
410 AFU value between 341-800 should be validated by RT-PCR to confirm the presence of HIV-1C
411 and or other viral nucleic acid. Further, our assay specifically detects HIV-1 Indian Clade-C and
412 not Clade B, which is the other major infecting clade of HIV-1 worldwide, hence shows that clade-
413 specific crRNA could be designed for HIV-1, which may aid in screening for HIV-1 clade
414 distinction in a geographical location.

415 With 96.43% sensitivity (27/28) in the detection of HIV-1 in infants, the assay may serve as a
416 potential alternative to the serology tests, which are inefficient to test perinatal HIV-1 infection.
417 Although the whole nucleic acid PCR/qRT-PCR in dried blood spots (DBS) from heel prick is one
418 of the widely employed methods for HIV-1 detection in infants, it is less sensitive as compared to
419 direct sera detection and requires a 2-3 hours nucleic acid extraction procedure followed by 2-3
420 hours of qRT-PCR reaction (46). Hence, a high turnaround time and difficulty in extracting nucleic
421 acid from DBS leads to false positives and may require multiple sampling for validation of test in
422 infants. On the contrary, our assay requires 200-300µl of whole blood sample for viral RNA
423 extraction and cDNA preparation. The steps are the same as those in the DBS-qRT-PCR method,
424 of 1 hour duration. The cDNA extracted can be directly used to detect HIV-1 in the test samples
425 using the assay developed with a turnaround time of 45 minutes, hence involving fewer steps and
426 time.

427 Similar CRISPR/Cas12a-based HIV-1 detection assays have been developed for the specific
428 detection of Chinese clade B and circulating recombinant forms (CRFs) (47), that target a distantly
429 conserved pol region compared to the Indian clade C pol gene conserved sequence used in our
430 assay. There are a few limitations of our assay, such as the viral RNA needs to be prior converted
431 to cDNA as additional steps before the assay, since the template for the CRISPR-Cas12a based
432 assay reaction is cDNA and the limit of detection of the assay remains to be determined in terms
433 of least number of detectable HIV-1 copies in the clinical test samples. There is scope to further
434 simplify the steps in the present CRISPR/Cas12a-based HIV-1 detection assay and overcome the
435 requirement of an additional step of viral cDNA synthesis by optimizing an all-in-one RT CRISPR-
436 Cas12a assay using MMLV reverse transcriptase, that can operate at 37-40°C (hence compatible
437 to the assay conditions), to directly detect HIV-1 RNA targets using sera as starting material. Thus,
438 such CRISPR/Cas12a-based detection assay systems demonstrate the potential to be developed
439 into true, handheld, point-of-care nucleic acid tests.

440 In summary, we have developed a robust CRISPR/Cas12a-based detection assay for clade C HIV-
441 1. Further testing of a large number of clinical samples using this lateral flow-based detection
442 method is warranted to evaluate the potential of the assay for point-of-care HIV-1 C molecular
443 diagnostics in resource-limited settings.

444 **Acknowledgments**

445 We are thankful to all the study subjects who participated in this study. We thank the NIH AIDS
446 Reagent program for providing HIV-genome-carrying IMCs plasmids. This work was funded by
447 the Department of Biotechnology (DBT), India (Project Code BT/GET/119/SP31652/2020). The
448 Junior Research Fellowship (December 2021–December 2023) and Senior Research Fellowship
449 (December 2023–Present) to H.B. was supported by the Department of Biotechnology (DBT),
450 India.

451

452 **Author contributions**

453 A.G. performed the experiments and assay standardizations and finalized the manuscript.

454 H.B. performed the experiments and assay standardizations, analyzed the data, and finalized the
455 manuscript.

456 N.M. conceptualized the study, designed the crRNAs, and provided inputs for troubleshooting
457 throughout the study.

458 S.S. conceptualized the study, prepared the cDNA from the patient sera, and helped with assay
459 troubleshooting.

460 T.B. helped with assay troubleshooting.

461 M.K. helped with the statistical analysis.

462 M.B. provided the viral disease control samples to test the specificity of the assay.

463 B.K.D. provided the immunological data of the HIV-1-infected infants.

464 R.L. provided the samples of HIV-1 infected infants and provided patient care and management.

465 Su.S and K.L. conceptualized and designed the study, edited, revised, and finalized the manuscript.

466

467 **Competing interests**

468 The authors declare no competing interests.

469 **References**

- 470 1. Global HIV & AIDS statistics — Fact sheet [Internet]. Available from:
471 <https://www.unaids.org/en/resources/fact-sheet>
- 472 2. Hemelaar J, Gouws E, Ghys PD, Osmanov S. Global and regional distribution of HIV-1 genetic
473 subtypes and recombinants in 2004. *AIDS Lond Engl*. 2006 Oct 24;20(16):W13-23.
- 474 3. Kim J, Vasan S, Kim JH, Ake JA. Current approaches to HIV vaccine development: a narrative review. *J*
475 *Int AIDS Soc*. 2021 Nov;24(S7):e25793.
- 476 4. Gandhi RT, Bedimo R, Hoy JF, Landovitz RJ, Smith DM, Eaton EF, et al. Antiretroviral Drugs for
477 Treatment and Prevention of HIV Infection in Adults: 2022 Recommendations of the International
478 Antiviral Society—USA Panel. *JAMA*. 2023 Jan 3;329(1):63.
- 479 5. Yilmaz G. Diagnosis of HIV infection and laboratory monitoring of its therapy. *J Clin Virol Off Publ Pan*
480 *Am Soc Clin Virol*. 2001 Jun;21(3):187–96.
- 481 6. Yamazaki S, Kondo M, Sudo K, Ueda T, Fujiwara H, Hasegawa N, et al. Qualitative Real-Time PCR
482 Assay for HIV-1 and HIV-2 RNA. *Jpn J Infect Dis*. 2016 Sep 21;69(5):367–72.
- 483 7. Noorbazargan H, Nadji SA, Samiee SM, Paryan M, Mohammadi-Yeganeh S. New design,
484 development, and optimization of an in-house quantitative TaqMan Real-time PCR assay for HIV-1
485 viral load measurement. *HIV Clin Trials*. 2018 Apr;19(2):61–8.
- 486 8. Technical Update for HIV Nucleic Acid Tests Approved for Diagnostic Purposes [Internet]. Available
487 from: <https://www.cdc.gov/hiv/guidelines/recommendations/technical-update-for-hiv.html>
- 488 9. National Guidelines for HIV Testing [Internet]. National AIDS Control Organization; Available from:
489 https://naco.gov.in/sites/default/files/National_Guidelines_for_HIV_Testing_21Apr2016.pdf
- 490 10. Nagamine K, Hase T, Notomi T. Accelerated reaction by loop-mediated isothermal amplification using
491 loop primers. *Mol Cell Probes*. 2002 Jun;16(3):223–9.
- 492 11. Zhao J, Chang L, Wang L. Nucleic acid testing and molecular characterization of HIV infections. *Eur J*
493 *Clin Microbiol Infect Dis Off Publ Eur Soc Clin Microbiol*. 2019 May;38(5):829–42.
- 494 12. Manual on Paediatric HIV Care and Treatment for District Hospitals: Addendum to the Pocket Book
495 of Hospital Care of Children. Geneva: World Health Organization; 2011. 6, Diagnosis of HIV infection
496 in infants and children. [Internet]. World Health Organization; Available from:
497 <https://www.ncbi.nlm.nih.gov/books/NBK304129/>
- 498 13. Ceffa S, Luhanga R, Andreotti M, Brambilla D, Erba F, Jere H, et al. Comparison of the Cepheid
499 GeneXpert and Abbott M2000 HIV-1 real time molecular assays for monitoring HIV-1 viral load and
500 detecting HIV-1 infection. *J Virol Methods*. 2016 Mar;229:35–9.
- 501 14. Amitai G, Sorek R. CRISPR-Cas adaptation: insights into the mechanism of action. *Nat Rev Microbiol*.
502 2016 Feb;14(2):67–76.

- 503 15. Li SY, Cheng QX, Wang JM, Li XY, Zhang ZL, Gao S, et al. CRISPR-Cas12a-assisted nucleic acid
504 detection. *Cell Discov.* 2018;4:20.
- 505 16. Li SY, Cheng QX, Liu JK, Nie XQ, Zhao GP, Wang J. CRISPR-Cas12a has both cis- and trans-cleavage
506 activities on single-stranded DNA. *Cell Res.* 2018 Apr;28(4):491–3.
- 507 17. Chen JS, Ma E, Harrington LB, Da Costa M, Tian X, Palefsky JM, et al. CRISPR-Cas12a target binding
508 unleashes indiscriminate single-stranded DNase activity. *Science.* 2018 Apr 27;360(6387):436–9.
- 509 18. Feng Z, Kong D, Jin W, He K, Zhao J, Liu B, et al. Rapid detection of isocitrate dehydrogenase 1
510 mutation status in glioma based on Crispr-Cas12a. *Sci Rep.* 2023 Apr 7;13(1):5748.
- 511 19. Lobato IM, O’Sullivan CK. Recombinase polymerase amplification: Basics, applications and recent
512 advances. *Trends Anal Chem TRAC.* 2018 Jan;98:19–35.
- 513 20. Daher RK, Stewart G, Boissinot M, Bergeron MG. Recombinase Polymerase Amplification for
514 Diagnostic Applications. *Clin Chem.* 2016 Jul;62(7):947–58.
- 515 21. Chen J, Huang Y, Xiao B, Deng H, Gong K, Li K, et al. Development of a RPA-CRISPR-Cas12a Assay for
516 Rapid, Simple, and Sensitive Detection of *Mycoplasma hominis*. *Front Microbiol.* 2022 Apr
517 8;13:842415.
- 518 22. Kellner MJ, Koob JG, Gootenberg JS, Abudayyeh OO, Zhang F. SHERLOCK: nucleic acid detection with
519 CRISPR nucleases. *Nat Protoc.* 2019 Oct;14(10):2986–3012.
- 520 23. Broughton JP, Deng X, Yu G, Fasching CL, Servellita V, Singh J, et al. CRISPR-Cas12-based detection of
521 SARS-CoV-2. *Nat Biotechnol.* 2020 Jul;38(7):870–4.
- 522 24. Fozouni P, Son S, Díaz de León Derby M, Knott GJ, Gray CN, D’Ambrosio MV, et al. Amplification-free
523 detection of SARS-CoV-2 with CRISPR-Cas13a and mobile phone microscopy. *Cell.* 2021 Jan
524 21;184(2):323–333.e9.
- 525 25. Li L, Li S, Wu N, Wu J, Wang G, Zhao G, et al. HOLMESv2: A CRISPR-Cas12b-Assisted Platform for
526 Nucleic Acid Detection and DNA Methylation Quantitation. *ACS Synth Biol.* 2019 Oct 18;8(10):2228–
527 37.
- 528 26. Wang J, Cai K, He X, Shen X, Wang J, Liu J, et al. Multiple-centre clinical evaluation of an ultrafast
529 single-tube assay for SARS-CoV-2 RNA. *Clin Microbiol Infect Off Publ Eur Soc Clin Microbiol Infect Dis.*
530 2020 Aug;26(8):1076–81.
- 531 27. Yin L, Man S, Ye S, Liu G, Ma L. CRISPR-Cas based virus detection: Recent advances and perspectives.
532 *Biosens Bioelectron.* 2021 Dec 1;193:113541.
- 533 28. Bahrulolum H, Tarrahimofrad H, Rouzbahani FN, Nooraei S, Sameh MM, Hajizade A, et al. Potential
534 of CRISPR/Cas system as emerging tools in the detection of viral hepatitis infection. *Virol J.* 2023 May
535 8;20(1):91.
- 536 29. Ding X, Yin K, Li Z, Lalla RV, Ballesteros E, Sfeir MM, et al. Ultrasensitive and visual detection of SARS-
537 CoV-2 using all-in-one dual CRISPR-Cas12a assay. *Nat Commun.* 2020 Sep 18;11(1):4711.

- 538 30. Chen C, Li XN, Li GX, Zhao L, Duan SX, Yan TF, et al. Use of a rapid reverse-transcription recombinase
539 aided amplification assay for respiratory syncytial virus detection. *Diagn Microbiol Infect Dis*. 2018
540 Feb;90(2):90–5.
- 541 31. Ding R, Long J, Yuan M, Zheng X, Shen Y, Jin Y, et al. CRISPR/Cas12-Based Ultra-Sensitive and Specific
542 Point-of-Care Detection of HBV. *Int J Mol Sci*. 2021 May 3;22(9):4842.
- 543 32. Low SJ, O’Neill MT, Kerry WJ, Krysiak M, Papadakis G, Whitehead LW, et al. Rapid detection of
544 monkeypox virus using a CRISPR-Cas12a mediated assay: a laboratory validation and evaluation
545 study. *Lancet Microbe*. 2023 Oct;4(10):e800–10.
- 546 33. Sun Y, Yu L, Liu C, Ye S, Chen W, Li D, et al. One-tube SARS-CoV-2 detection platform based on RT-RPA
547 and CRISPR/Cas12a. *J Transl Med*. 2021 Feb 16;19(1):74.
- 548 34. Souf S. Review article Recent advances in diagnostic testing for viral infections. *Biosci Horiz*. 2016;9.
- 549 35. Ahn SJ, Baek YH, Lloren KKS, Choi WS, Jeong JH, Antigua KJC, et al. Rapid and simple colorimetric
550 detection of multiple influenza viruses infecting humans using a reverse transcriptional loop-
551 mediated isothermal amplification (RT-LAMP) diagnostic platform. *BMC Infect Dis*. 2019
552 Dec;19(1):676.
- 553 36. Tomita N, Mori Y, Kanda H, Notomi T. Loop-mediated isothermal amplification (LAMP) of gene
554 sequences and simple visual detection of products. *Nat Protoc*. 2008 May;3(5):877–82.
- 555 37. Centers for Disease Control and Prevention (U.S.), Bernard M. B, Association of Public Health
556 Laboratorie, S. Michele O, Laura G. W, Berry B, et al. Laboratory testing for the diagnosis of HIV
557 infection : updated recommendations [Internet]. Centers for Disease Control and Prevention; 2014
558 Jun [cited 2024 Nov 15]. Available from: <http://stacks.cdc.gov/view/cdc/23447>
- 559 38. Bui TI, Farnsworth CW, Anderson NW. Evaluation of a point-of-care rapid HIV antibody test with
560 insights into acute HIV symptomatology in a population with low prevalence. Theel ES, editor. *J Clin*
561 *Microbiol*. 2024 Sep 11;62(9):e00620-24.
- 562 39. Krasowski MD, Wier D, Smith S, Riedel A, Lauseker-Hao Y, Kelner M, et al. Real-World Clinical
563 Performance Evaluation of a Fourth-Generation HIV Antigen/Antibody Differentiation Test. *J Appl Lab*
564 *Med*. 2021 Nov 1;6(6):1417–32.
- 565 40. Guiraud V, Ciczora Y, Cardona M, Defer C, Gréaume S, Nogues D, et al. Sensitivity and specificity of
566 the new Bio-Rad HIV screening test, Access HIV combo V2. Hayden R, editor. *J Clin Microbiol*. 2024
567 May 8;62(5):e00095-24.
- 568 41. Patel P, Bennett B, Sullivan T, Parker MM, Heffelfinger JD, Sullivan PS. Rapid HIV screening: Missed
569 opportunities for HIV diagnosis and prevention. *J Clin Virol*. 2012 May;54(1):42–7.
- 570 42. Mishra N, Makhdoomi MA, Sharma S, Kumar S, Dobhal A, Kumar D, et al. Viral Characteristics
571 Associated with Maintenance of Elite Neutralizing Activity in Chronically HIV-1 Clade C-Infected
572 Monozygotic Pediatric Twins. Sundquist WI, editor. *J Virol*. 2019 Sep;93(17):e00654-19.

- 573 43. Goo L, Chohan V, Nduati R, Overbaugh J. Early development of broadly neutralizing antibodies in
574 HIV-1-infected infants. *Nat Med*. 2014 Jun;20(6):655–8.
- 575 44. Makhdoomi MA, Khan L, Kumar S, Aggarwal H, Singh R, Lodha R, et al. Evolution of cross-neutralizing
576 antibodies and mapping epitope specificity in plasma of chronic HIV-1-infected antiretroviral
577 therapy-naïve children from India. *J Gen Virol*. 2017 Jul;98(7):1879–91.
- 578 45. Kumar S, Batra H, Singh S, Chawla H, Singh R, Katpara S, et al. Effect of combination antiretroviral
579 therapy on human immunodeficiency virus 1 specific antibody responses in subtype-C infected
580 children. *J Gen Virol*. 2020 Dec;101(12):1289–99.
- 581 46. Rutstein SE, Kamwendo D, Lugali L, Thengolose I, Tegha G, Fiscus SA, et al. Measures of viral load
582 using Abbott RealTime HIV-1 Assay on venous and fingerstick dried blood spots from provider-
583 collected specimens in Malawian District Hospitals. *J Clin Virol Off Publ Pan Am Soc Clin Virol*. 2014
584 Aug;60(4):392–8.
- 585 47. Zhao J, Ao C, Wan Z, Dzakah EE, Liang Y, Lin H, et al. A point-of-care rapid HIV-1 test using an
586 isothermal recombinase-aided amplification and CRISPR Cas12a-mediated detection. *Virus Res*. 2021
587 Oct 2;303:198505.
- 588

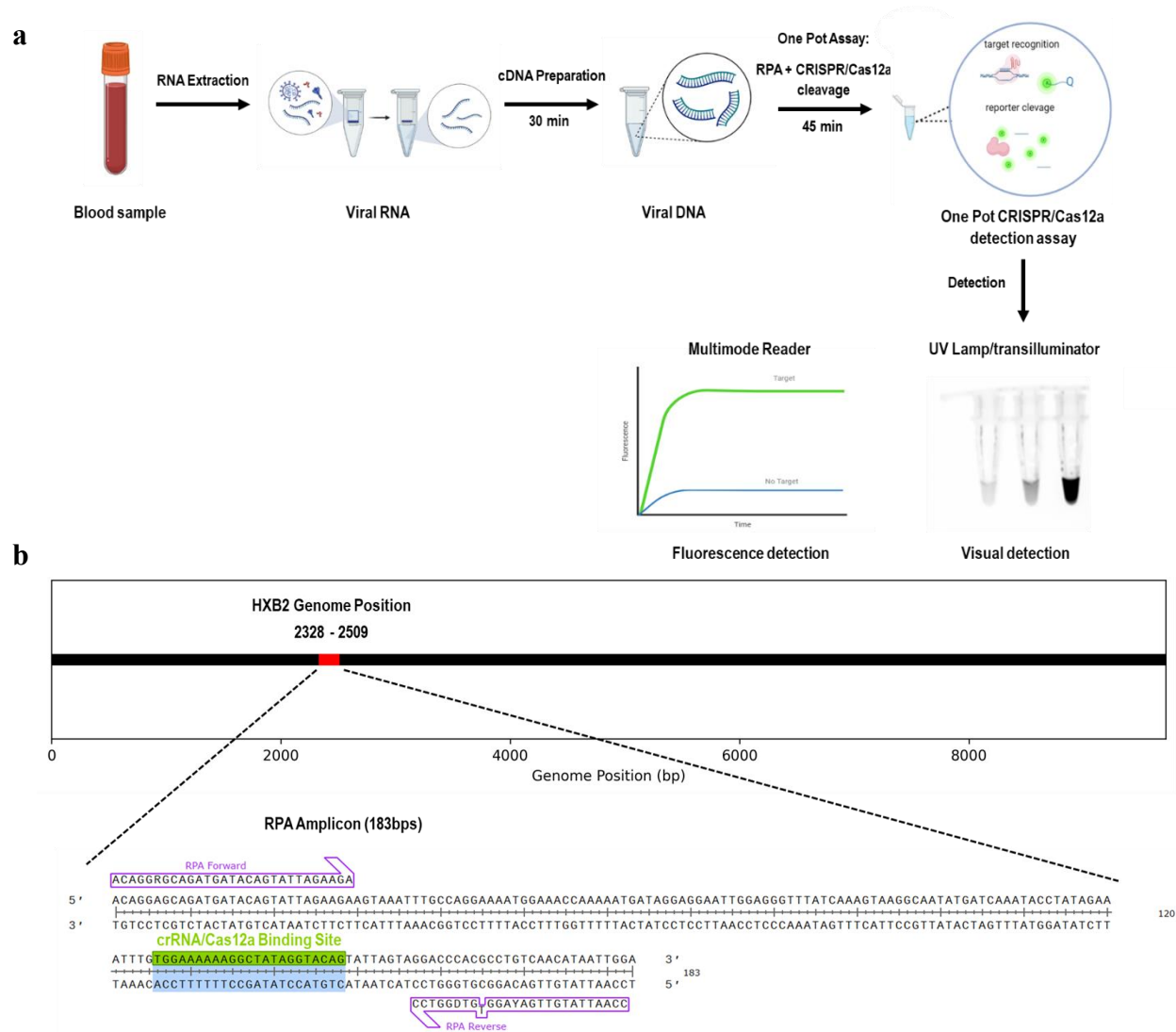


Figure 1: The CRISPR/Cas12a-based HIV-1 detection assay. **a)** Schematic of the CRISPR/Cas12a-based assay workflow. Viral RNA extraction followed by cDNA preparation from the serum samples yields the target nucleic acid for the assay. The RPA and CRISPR/Cas12a cleavage reaction co-occur in a single tube to aid in the detection of target nucleic acid. Cleaved reporter signal can be detected by UV lamp/transilluminator (visual detection) and multimode fluorescence reader (fluorescence detection for semi-quantitation of the assay). **b)** HIV-1 Genome map depicting the RPA amplicon region carrying the crRNA sequence. The region marked in red represents the RPA amplicon (183bps) with HXB2 coordinates 2328-2509 bps; RPA primers labelled in the purple and green region represent the crRNA sequence.

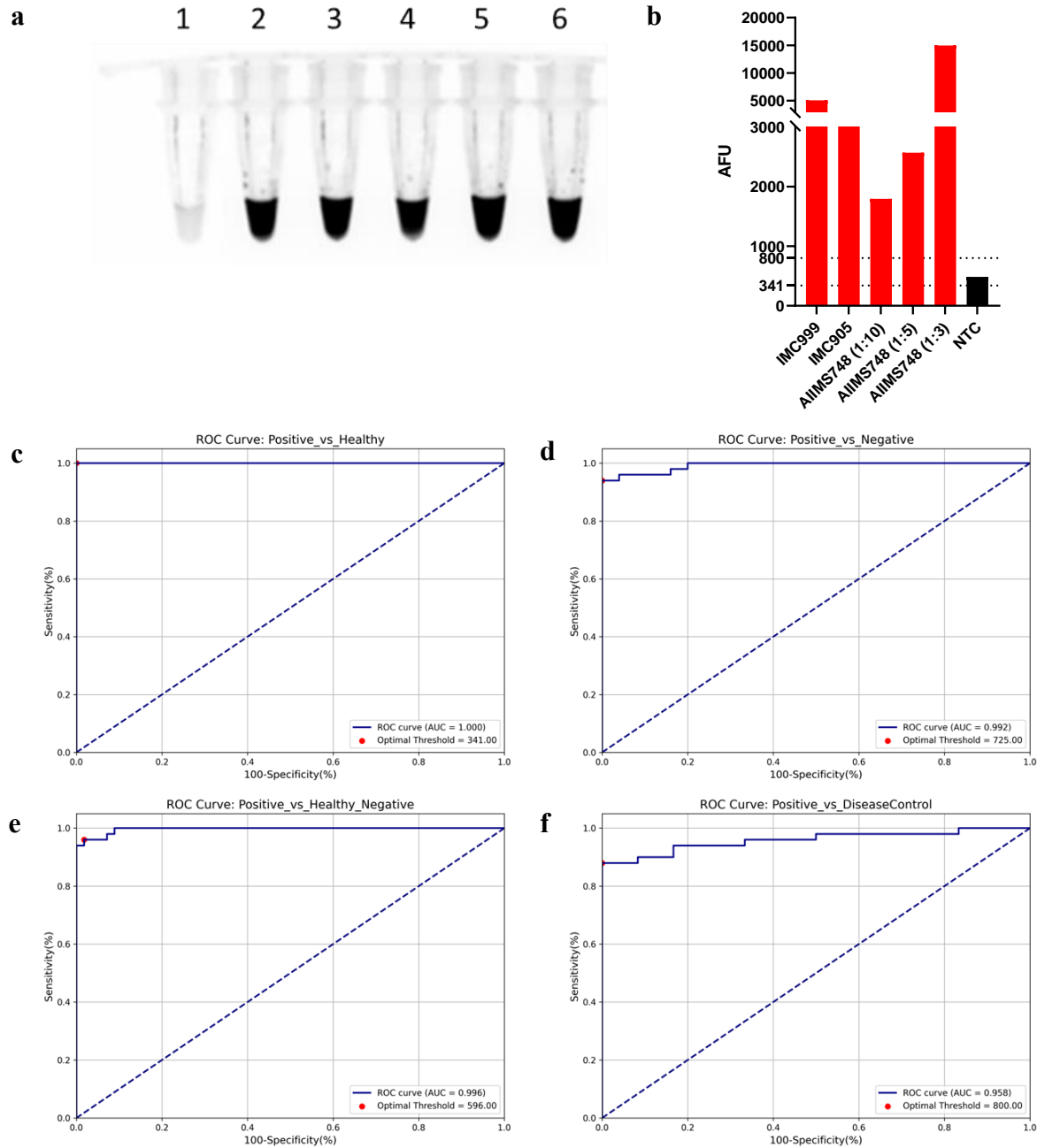


Figure 2: Evaluation of the CRISPR/Cas12a-based assay for detecting the HIV-1 Indian Clade C in clinical samples. The CRISPR/Cas12a-based HIV-1 clade C detection assay was validated using positive controls. **a)** UV transilluminator image and **b)** fluorescence readout of the assay performed for the AIIMS748 (HIV-1 positive donor) cDNA at different dilutions and in the HIV-1 genome plasmids (93IN999 and 93IN905). Lane 1- NTC, lane 2- 93IN999, lane 3 - 93IN905, lane 4- AIIMS748(1:10) dilution, lane 5-AIIMS748(1:5) dilution, lane 6- AIIMS748(1:3) dilution. The CRISPR/Cas12a-based assay results were recorded using visual (UV transilluminator) and fluorescence (AFU) readout. The fluorometer readings of fluorescence emission were recorded as AFU (Arbitrary fluorescence unit) at excitation at 488nm and emission

at 520nm. **c-f)** The ROC curves are plotted for the evaluation of the assay performance and to determine optimal AFU threshold values for distinguishing between an HIV-positive and negative sample. The ROC analysis was done between clinical samples groups; Positive vs Healthy (AUC-1.000), Positive vs Negative (AUC-0.992), Positive vs Healthy and Negative (0.996), Positive vs DiseaseControl (AUC-0.958) to determine the optimal threshold by Youden's index as 341, 725, 596 and 800 respectively. The optimal AFU obtained from ROC curves from the respective groups were used to evaluate the sensitivity and specificity of the assay.

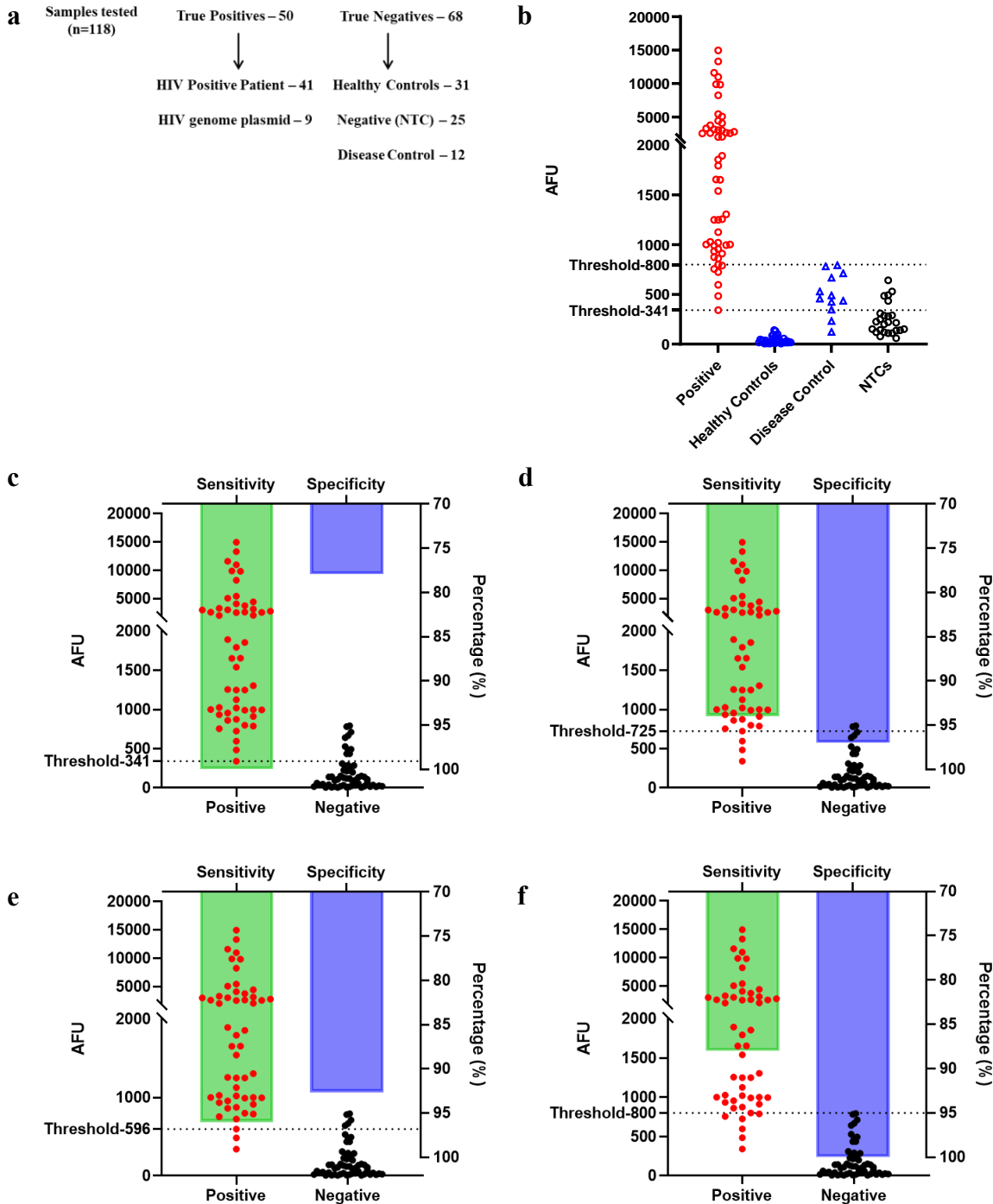


Figure 3: Performance of the CRISPR/Cas12a-based assay in clinical samples. a) Schematic of assay performance evaluation using true positives-50 (41 HIV positive plasma, 9 HIV-1 genome plasmid 93IN999 replicates) and true negatives- 68 (25 NTC replicates, 31 healthy donor plasma samples, 12 viral disease control DNA/RNA samples), total-118 samples, to plot an ROC curve and determine the optimal AFU threshold and evaluate the sensitivity and specificity of the assay in detecting HIV-1C in clinical samples. **b)** Comparison of the AFU values for the different clinical samples tested for the presence of HIV-1 using the CRISPR/Cas12a-based detection assay. AFU

threshold values 800 (highest) and 341(lowest), determined using the ROC curve, were used to distinguish the positive and negative results of the assay. **c-f)** The sensitivity and specificity of the assay were evaluated to determine the positive and negative samples efficiently using the different AFU threshold values obtained from the ROC curve analysis. AFU threshold values of 341, 725, 596, and 800 were used to evaluate the sensitivity and specificity of the assay, respectively. The positive group includes HIV-1 positive clinical samples and positive genome plasmid replicates, and the negative group consists of the healthy controls, NTCs, and viral disease controls. Dots represent the AFU values plotted against the left y-axis, and Bars represent the sensitivity or specificity values plotted against the right y-axis.

CRISPR Cas12a-based assay results (Fluorescence readout)	ROC Curve		Confusion Matrix (All Samples)		Performance Metric			
	AUC	Optimal AFU Threshold (Youden's Index)	Tested\True	qRT-PCR/Serology		Sensitivity (% , 95% CI)	Specificity (% , 95% CI)	Kappa Value
				Positive	Negative			
Positive vs Healthy Controls	1.000	341.00	Positive	50	0	100.00 (100.00-100.00)	77.94 (67.65-86.76)	0.75
			Negative	15	53			
Positive vs Negative Controls (NTCs)	0.992	725.00	Positive	47	3	94.00 (86.00-100.00)	97.03 (92.65-100.00)	0.913
			Negative	2	66			
Positive vs Healthy + Negative Controls	0.996	596.00	Positive	48	2	96.00 (90.00-100.00)	92.65 (85.29-98.53)	0.879
			Negative	5	63			
Positive vs Disease Controls	0.958	800.00	Positive	44	6	88 (78.00-96.00)	100.00 (100.00-100.00)	0.894
			Negative	0	68			

Table 1: Performance characteristics of the CRISPR/Cas12a-based HIV-1 C detection assay.

It is made available under a [CC-BY-NC-ND 4.0 International license](https://creativecommons.org/licenses/by-nc-nd/4.0/).

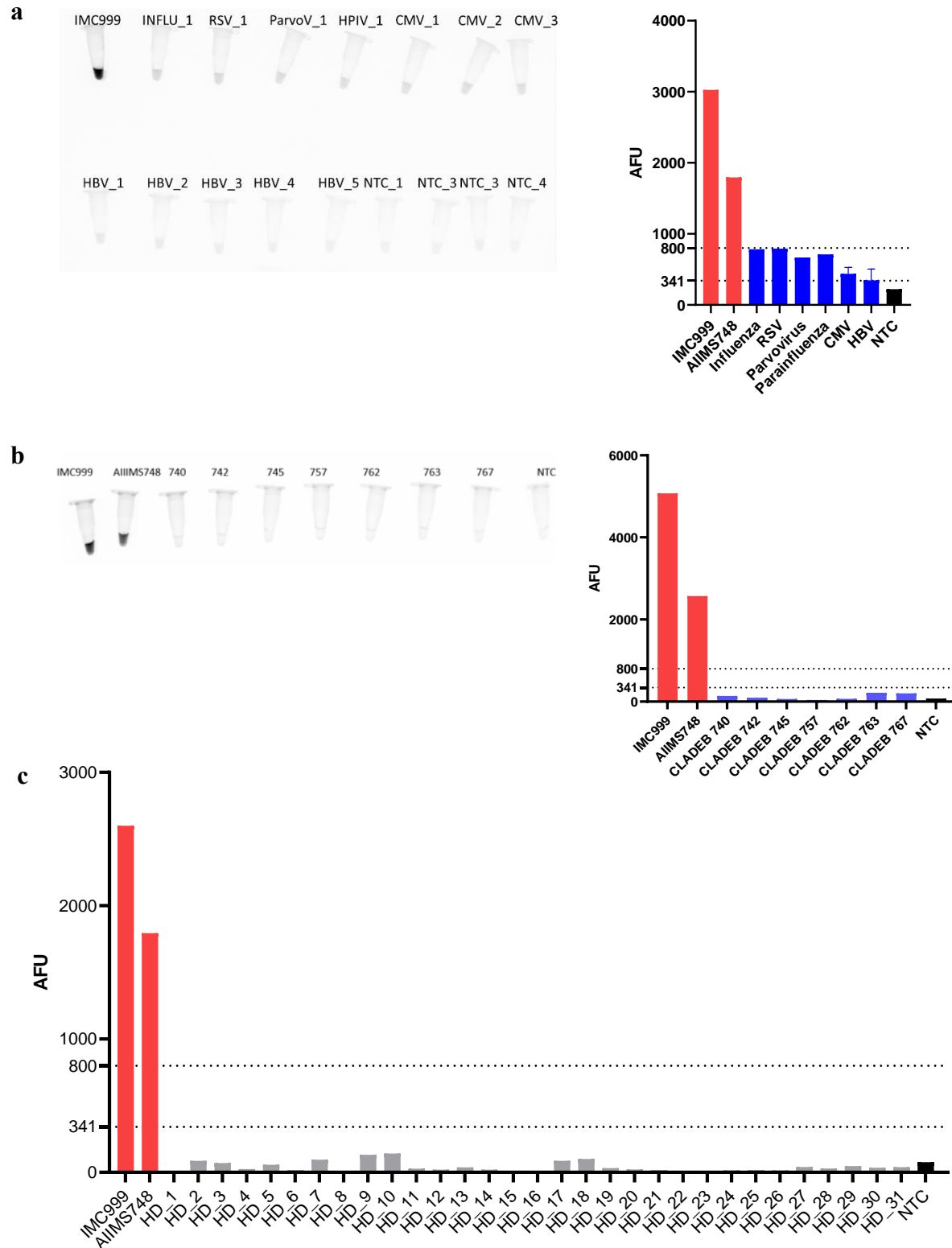


Figure 4: Specificity of the CRISPR/Cas12a-based assay for detecting HIV-1 Indian clade C.

The specificity of the assay was evaluated against different HIV-1 negative biological samples, and the output in the form of UV transilluminator (visual) readout and fluorescence detector

readout AFU (Arbitrary fluorescence unit) was compared across all samples. **a)** Evaluation of assay specificity using viral disease control samples n=15; Influenza virus RNA sample from patient plasma, Respiratory syncytial virus (RSV) RNA sample from patient plasma, Parvovirus positive DNA sample from patient plasma, Human Parainfluenza virus (HPIV) RNA sample from patient plasma, CMV positive DNA sample from patient plasma and HBV genome plasmid replicates. **b)** Evaluation of clade specificity of the detection assay in distinguishing HIV-1 Indian clade C infections using n=7 HIV-1 clade B serum samples. **c)** Evaluation of assay specificity using n=31 Healthy donor serum samples. The assay specificity was validated by using positive controls (HIV-1 Indian clade C genome carrying plasmid 93IN999 and serum sample of Indian clade C infected patient AIIMS748) for HIV-1 Indian clade C detection along with the different negative controls tested. The fluorometer readings of fluorescence emission were recorded as AFU (Arbitrary fluorescence unit) at excitation at 488nm and emission at 520nm. AFU threshold values 800 (highest) and 341(lowest) were used to distinguish positive and negative results of the assay.

It is made available under a [CC-BY-NC-ND 4.0 International license](https://creativecommons.org/licenses/by-nc-nd/4.0/).

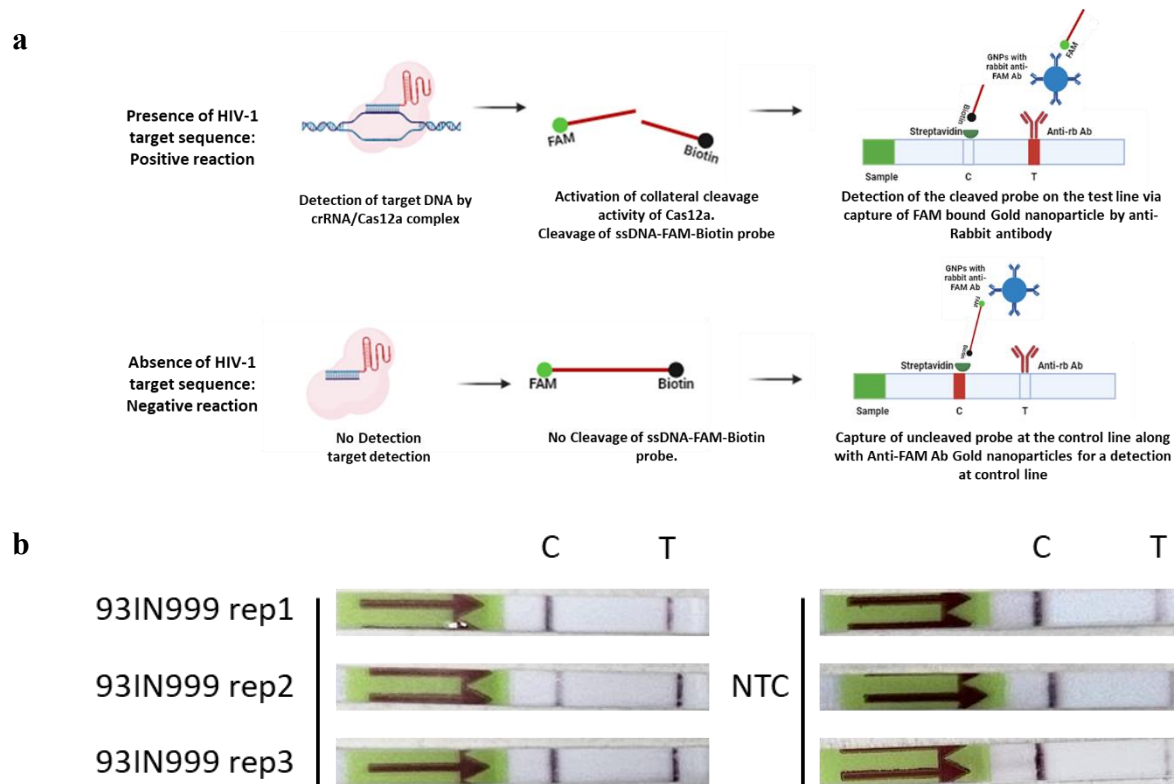


Figure 5: The lateral flow CRISPR/Cas12a-based HIV-1C detection assay. a) Schematic of Lateral flow strip-based detection of the CRISPR/Cas12a assay. ssDNA-FAM-Biotin reporter, upon activation of collateral cleavage activity of Cas12a in the presence of HIV-1 target sequence, releases the FAM molecule, which is bound by anti-FAM Gold nanoparticles and is captured by anti-rabbit antibody on the test line. In the absence of an HIV-1 target sequence, the uncleaved probe gets captured at the control line via streptavidin-biotin interaction. **b)** Detection of HIV by the CRISPR/Cas12a-based detection assay using lateral flow strips to optimize the assay into a point-of-care CRISPR/Cas12a-based lateral flow assay (LFA). HIV genome plasmid 93IN999 was used to optimize lateral flow strip-based readout of the assay with $0.009\mu\text{M}$ ssDNA-FAM-biotin probe concentration. A dark band on the test line represents a positive detection with no detection on the test line in the corresponding NTC strip.