

1 **Environmental detection of *Burkholderia pseudomallei* and associated melioidosis risk: a**  
2 **molecular detection and case-control cohort study**

3  
4 Sukritpong Pakdeerat<sup>1</sup> BSc\*; Chalita Chomkatekaew<sup>1,2</sup> MSc\*; Phumrapee Boonklang<sup>1,3</sup> MPhil\*;  
5 Arin Wongprommoon<sup>1,3</sup> PhD; Kesorn Angchagun<sup>1</sup> BSc; Yaowaret Dokket<sup>1</sup> BSc; Areeya Faosap<sup>1</sup>  
6 BSc; Gumphol Wongsuwan<sup>1</sup> MSc; Premjit Amornchai<sup>1</sup> MSc; Vanaporn Wuthiekanun<sup>1</sup> BSc;  
7 Jirameth Changklom<sup>4</sup> PhD; Suwatthiya Siriboon<sup>5</sup> MD; Parinya Chamnan<sup>6</sup> PhD; Sharon J  
8 Peacock<sup>7</sup> PhD; Jukka Corander<sup>3,8</sup> PhD; Nicholas PJ Day<sup>1,9</sup> DM, Nicholas R Thomson<sup>3</sup> PhD;  
9 Chayasith Uttamapinant<sup>10</sup> PhD; Somsakul Pop Wongpalee<sup>11</sup> PhD; Claire Chewapreecha<sup>1,3,12</sup>  
10 PhD on behalf of the BurkHostGEN study

11  
12 **Affiliations:**

- 13 1. Mahidol Oxford Tropical Medicine Research Unit (MORU), Faculty of Tropical  
14 Medicine, Mahidol University, Bangkok, Thailand
- 15 2. Department of Veterinary Medicine, University of Cambridge, Cambridge, UK
- 16 3. Wellcome Sanger Institute, Hinxton, UK
- 17 4. Faculty of Engineering, Kasetsart University, Bangkok, Thailand
- 18 5. Department of Infectious Medicine, Sunpasitthiprasong Regional Hospital, Ubon  
19 Ratchathani, Thailand
- 20 6. Cardiometabolic Research Group, Department of Social Medicine,  
21 Sunpasitthiprasong Regional Hospital, Ubon Ratchathani, Thailand
- 22 7. Department of Medicine, University of Cambridge, Cambridge, UK
- 23 8. Institute of Basic Medical Science, University of Oslo, Oslo, Norway
- 24 9. Centre for Tropical Medicine and Global Health, Nuffield Department of Medicine,  
25 University of Oxford, Oxford, UK
- 26 10. School of Biomolecular Science and Engineering, Vidyasirimedhi Institute of  
27 Science and Technology (VISTEC), Rayong, Thailand
- 28 11. Department of Microbiology, Faculty of Medicine, Chiangmai University, Chiang Mai,  
29 Thailand
- 30 12. Department of Clinical Tropical Medicine, Faculty of Tropical Medicine, Mahidol  
31 University, Bangkok, Thailand

32  
33 \*Contributed equally

34  
35 Correspondence to:

36 Claire Chewapreecha, Mahidol-Oxford Tropical Medicine Research Unit (MORU), Faculty of  
37 Tropical Medicine, Mahidol University, Bangkok Thailand 10400, [claire@tropmedres.ac](mailto:claire@tropmedres.ac)  
38 (+66(0)952743357)

39  
40 BurkHostGEN study group (other members): Salwaluk Panapipat, Thatsanun Ngernseng,  
41 Naomi Waithira, Steve Walton, Direk Limmathurotsakul, Anoree Surawong, Narisara  
42 Chantratita, Susie Dunachie, Emma E Davenport, Julian Knight, and Julian Parkhill

43 **Summary**

44 **Background**

45 Environmental acquisition of *Burkholderia pseudomallei* can cause melioidosis, a life-  
46 threatening yet underreported disease. Understanding environmental exposure is essential for  
47 effective public health interventions, yet existing tools are limited in their ability to quantify  
48 exposure risks.

49

50 **Methods**

51 We conducted two complementary studies across a 15,118 km<sup>2</sup> area of northeast Thailand to  
52 improve detection methods and investigate risk factors for melioidosis. In the first study, we  
53 compared a newly developed, equipment-light CRISPR-based assay (CRISPR-BP34) with  
54 conventional culture methods using both spiked samples and real water samples from  
55 household and community sources (November 2020 - November 2021). The second study  
56 involved a case-control analysis of 1,135 participants (October 2019 - January 2023) to evaluate  
57 the association between environmental exposure to *B. pseudomallei* (detected in Study 1) and  
58 melioidosis risk.

59

60

61 **Findings**

62 The CRISPR-BP34 assay demonstrated improved sensitivity (93.52% vs 19.44% for  
63 conventional methods) and specificity (100% vs 97.98%), allowing for more accurate detection  
64 of *B. pseudomallei* and exposure risk quantification. Environmental exposure to *B. pseudomallei*  
65 in water sources within a 10 km radius of participants' households was significantly associated  
66 with increased melioidosis risk (OR: 2.74 [95% CI 1.38-5.48]). This risk was also heightened by  
67 known factors: occupational exposure among agricultural workers (4.46 [2.91-6.91]), and health  
68 factors like elevated hemoglobin A1c, indicating diabetes (1.35 [1.19-1.31]).

69

70 **Interpretation**

71 Our findings underscore the impact of environmental contamination on melioidosis risk. The  
72 robust association between contaminated water sources, including piped water systems, and  
73 clinical cases highlights the urgent need for improved water sanitation to mitigate melioidosis  
74 risk.

75

76 **Funding**

77 Wellcome Trust

## 78 **Evidence before this study**

79 We conducted a PubMed search, without language restrictions from database inception to 11  
80 September 2024, using the following search terms: (“*Burkholderia pseudomallei*” AND  
81 “environment\* sampl\*”) or (“*Burkholderia pseudomallei*” AND “spatial”), yielding 172 research  
82 and review articles. Several studies attempted to link the detection of *B. pseudomallei* in the  
83 environment with melioidosis risk through case-control and case-only designs. However, none  
84 demonstrated a statistically significant relationship between environmental presence of *B.*  
85 *pseudomallei* and infection risk (case-control) or clinical severity (case-only). The main  
86 challenges included low detection rates in environmental samples, inconsistent sampling  
87 methodologies, and outdated guidelines, which restricted the use of individual analyses or meta-  
88 analyses across combined studies. While soil is widely considered the natural reservoir for *B.*  
89 *pseudomallei*, its distribution varies significantly across soil textures, moisture levels, and  
90 depths, often leading to inconsistent or inconclusive data. These variations complicate efforts to  
91 establish a reliable link between soil contamination and melioidosis risk. Water sampling has  
92 been suggested as a viable alternative due to its more homogenous nature and simpler  
93 collection methods. Water also directly reflects human exposure risk, as people are regularly in  
94 contact with natural water bodies and treated water systems. However, detecting *B.*  
95 *pseudomallei* in water is challenging due to its low abundance. Molecular techniques such as  
96 PCR, following an enrichment process, have shown the highest sensitivity for detecting *B.*  
97 *pseudomallei*. The enrichment step enhances *B. pseudomallei* growth while suppressing  
98 competing microorganisms. For example, in a study conducted in a disease hotspot in Laos,  
99 positive detection rates improved from a median of 50% (IQR 42.5 - 53.8%) using conventional  
100 culture inspection methods, to 55% using PCR alone, and 75% with PCR following enrichment.  
101 While this approach is promising, it requires access to PCR equipment, which is often  
102 unavailable in resource-limited, melioidosis-endemic regions. These challenges create gaps in  
103 current detection methods and hinder the ability to accurately quantify environmental exposure  
104 risks and identify high-risk areas.

## 105 **Added value of this study**

106 Our study addressed these gaps by developing an equipment-light device capable of detecting  
107 *B. pseudomallei* in environmental samples after enrichment. This approach eliminates the need  
108 for complex PCR equipment while maintaining high sensitivity and specificity, comparable to  
109 qPCR. Our findings established a statistically significant link between environmental exposure to  
110 *B. pseudomallei* within a 10 km radius of households and 2.74-fold increased odds [95% CI:  
111 1.38-5.48] of acquiring melioidosis. This risk remains significant even after adjusting for  
112 confounding factors such as underlying health conditions (e.g. diabetes) and occupational  
113 exposures.

## 114 **Implications of all the available evidence**

115 Our results confirm that *B. pseudomallei* can be detected in both natural water reservoirs and  
116 publicly treated piped water systems in endemic regions, and that its presence is positively  
117 associated with the occurrence of melioidosis. The detection of *B. pseudomallei* in treated water  
118 systems emphasises the urgent need for improved water sanitation measures. These results  
119 highlight the importance of environmental monitoring and targeted interventions to reduce  
120 melioidosis risks in the endemic areas.  
121  
122

## 123 **Introduction**

124 Infectious diseases caused by environmental pathogens pose a significant and growing public  
125 health threat, particularly in resource-constrained settings where inadequate access to clean  
126 water and sanitation exacerbates health risk<sup>1-3</sup>. Melioidosis, a neglected tropical disease caused  
127 by the environmental bacterium *Burkholderia pseudomallei*, exemplifies this issue<sup>4,5</sup>. The  
128 disease is endemic in tropical and subtropical regions, including northern Australia, South and  
129 Southeast Asia, Africa, and Central and South America, many of which are LMICs<sup>6</sup>. Infections  
130 typically occur through skin inoculation, inhalation, or ingestion of contaminated soil or water,  
131 with rare human-to-human transmission<sup>6</sup>. Agricultural workers are at higher risk of infection due  
132 to their frequent exposure to contaminated environments<sup>7</sup>. Melioidosis results in an approximate  
133 165,000 cases and 89,000 deaths worldwide each year<sup>8</sup>. In Thailand, a known hotspot for  
134 melioidosis, projections estimate 7,572 cases and 2,838 deaths annually; yet reported cases  
135 are significantly lower<sup>9</sup>, suggesting potential underreporting and misdiagnosis. This disparity  
136 highlights a gap in surveillance efforts, which primarily focuses on clinical diagnosis - a stage  
137 where patients often present too late for effective disease prevention or accurate estimation of  
138 the true burden of melioidosis.

139  
140 Environmental surveillance offers a proactive approach to detect *B. pseudomallei*, which is  
141 essential for melioidosis prevention<sup>10,11</sup> and intervention<sup>5</sup>. Water plays a vital role in daily  
142 hygiene and agriculture, making it a key indicator of human exposure to pathogens. Monitoring  
143 water samples from various sources from natural water reservoirs<sup>11,12</sup> to public<sup>10,13</sup> or  
144 private<sup>4,14,15</sup> water systems used in households offers insights into *B. pseudomallei* distribution  
145 and potential human exposure across extensive areas. Current surveillance practices<sup>16</sup> involve  
146 collecting water samples and using selective media<sup>17</sup> for bacterial detection. However, the rising  
147 antibiotic resistance of other environmental microbes complicates the differentiation of *B.*  
148 *pseudomallei*. While molecular methods like PCR enhance detection rates<sup>18</sup>, they require  
149 complex equipment that is often unavailable in resource-limited settings, many of which are  
150 endemic to melioidosis.

151  
152 This study introduces a sampling protocol called CRISPR-BP34<sup>19,20</sup>, an equipment-light and  
153 highly sensitive assay to detect *B. pseudomallei* in water, and applies it to samples from public  
154 systems, groundwater (boreholes), ponds, lakes, and rivers in northeast Thailand, covering a  
155 15,118 km<sup>2</sup> area in Ubon Ratchathani and surrounding provinces. We examine whether  
156 individuals in areas with higher environmental *B. pseudomallei* occurrence were at increased  
157 risk of developing melioidosis. Our enhanced detection methods provided an improved  
158 assessment of *B. pseudomallei* presence and exposure risk, supporting the need for improved  
159 access to clean water and better sanitation.

160

## 161 **Methods**

### 162 **Study design**

163 We conducted two inter-related studies to improve *B. pseudomallei* detection sensitivity in  
164 environmental samples and to assess the link between environmental presence and melioidosis  
165 clinical incidence (Figure 1).

166

167 **Study 1** evaluated the performance of CRISPR-BP34 against a conventional approach, with  
168 two qPCR assays as the a reference standard. A total of 356 water samples were collected  
169 between November 2020 and November 2021 from households and nearby natural water  
170 sources of 243 participants (Figure 2 & Appendix pp 10-13), who were part of the case-control  
171 cohort from **Study 2** in Ubon Ratchathani and nearby provinces in northeast Thailand, areas

172 known to be endemic for melioidosis. This study adhered to the Standards for Reporting of  
173 Diagnostic Accuracy (STARD) guideline.

174  
175 **Study 2** investigated the association between the presence of *B. pseudomallei* in water  
176 samples and the incidence of melioidosis in households of cases and controls. From October  
177 2019 to January 2023, 1,135 participants were recruited from a melioidosis cohort. This cohort  
178 consisted of 439 melioidosis patients, 190 patients with other community-acquired infections,  
179 and 506 non-infection controls. Melioidosis and other infectious cases were recruited  
180 immediately after a culture-confirmed diagnosis at Sunpasitthiprasong Hospital, using hospital  
181 computer records. Controls were selected from blood donors or non-infectious outpatients at the  
182 same hospital. After obtaining informed consent, demographic information such as age, sex,  
183 ethnicity and underlying health conditions was extracted from medical records, while  
184 participants provided details about their exposure risks and household locations (Appendix pp  
185 20-21).

186  
187 The participants whose water samples were collected in Study 1 included 70 melioidosis  
188 patients, 69 patients with other infections, and 104 non-infectious controls from Study 2. To  
189 address sample variability, multiple water samples were collected from the household and  
190 surrounding areas of 80 participants, including 74 cross-seasonal samples to account for  
191 seasonal fluctuations (Appendix pp 14-15). This study received ethical approval from the  
192 Sunpasitthiprasong Hospital Ethical Review Board (015/62C) and the Oxford Tropical Research  
193 Ethics Committee (OxTREC 25-19). The full study protocol is described in <sup>21</sup> and followed the  
194 Strengthening the Reporting of Observational Studies in Epidemiology (STROBE) guideline.

#### 195 196 **Environmental sample collection and processing**

197 Five-litre water samples were collected from each household, except during the peak of SARS-  
198 CoV-2 outbreaks, when nearby water reservoirs were sampled due to visitation restrictions.  
199 Participants' water sources included pipe water, boreholes, ponds, lakes, canals or rivers  
200 (Appendix pp 10-11). Samples were transported in sterile plastic bags to the laboratory within  
201 three hours and processed promptly. Each sample was filtered (0.45- $\mu$ m cellulose, Sartorius,  
202 Germany), and cultured on Ashdown<sup>17</sup> agar to promote *B. pseudomallei* growth. Plates were  
203 incubated at 40 C, and inspected daily for four days; plates with fungal overgrowth were  
204 discarded (Appendix pp 3-5). For conventional screening, colonies showing typical *B.*  
205 *pseudomallei* morphologies (Appendix pp 12-13) were confirmed using monoclonal antibody-  
206 based assays<sup>22,23</sup>. For the CRISPR-BP34 and qPCR tests, microbial lawn, including both visible  
207 and non-visible *B. pseudomallei*, were collected from the plates and preserved in glycerol stock  
208 (20% v/v, VWR, Belgium) at -80 °C for subsequent DNA extraction. All procedures were  
209 conducted in an enhanced biosafety level 2 laboratory but with biosafety level 3 practices. For  
210 each type of screening, the personnel performing the tests were blinded to the results of the  
211 other methods.

#### 212 213 **Bacterial DNA extraction**

214 Microbes were revived from glycerol stocks for each sample. A loop of colonies was used for  
215 bacterial DNA extraction with QIAGEN Genomic-tips [Cat#10243, Germany] to preserve high  
216 molecular-weight pan-microbial DNA and minimise DNA shearing (Appendix pp 3-5). The  
217 extracted DNA had an average concentration of 278.42 ng/ $\mu$ L (IQR 181.00 - 433.23) and an  
218 A260/A280 purity score ranging from 1.68 and 1.94, ensuring high yield and low impurities,  
219 suitable for CRISPR-BP34 and qPCR detection.

#### 220 221 **PCR detection and determination of *B. pseudomallei* positive environmental samples**

222 PCR was used as the reference test to detect *B. pseudomallei* (Figure 3), employing two  
223 independent primer sets, TTS1<sup>24</sup> and BPSS1386<sup>25</sup> (Appendix p 22), collectively referred to as  
224 double-qPCR. These primers were screened to ensure high sequence coverage for *B.*  
225 *pseudomallei* population (Appendix pp 18-19). Each sample was tested in duplicate for both  
226 sets. QPCR reactions were performed in a 20- $\mu$ L volumes using Maxima SYBR Green/ROX  
227 qPCR Master Mix (Cat#K0221, ThermoFisher Scientific) on a QuantStudio 6 Flex (Applied  
228 Biosystems). The protocol included an initial denaturation step at 95 C for 10 minutes, followed  
229 by 40 cycles of denaturation at 95 C at 15 seconds, with annealing temperature at 61 C for  
230 TTS1 and 64 C for BPSS1386 primers. Samples were processed in batches alongside known  
231 positive and negative controls. The cycle threshold (Ct) values were recorded for each sample.  
232 A sample was classified as positive if qPCR amplification occurred for both primers and the  
233 melting temperatures were consistent with the expected values. Samples were classified as  
234 inconclusive if amplification with correct melting temperature was observed with only one  
235 primer. Samples were considered negative if no amplification was detected or if amplification  
236 occurred with incorrect melting temperatures.

237  
238

### 239 **CRISPR-BP34 detection**

240 The extracted DNA samples were amplified using the Recombinase Polymerase Amplification  
241 (RPA) method with TwistAmp® Basic (Cat#TABAS03KIT, TwistDx, Maidenhead, UK). RPA  
242 primers (Appendix pp 22-23) were used at a final concentration of 0.48 nM, and 2 - 6  $\mu$ L of  
243 genomic DNA were added to a 30- $\mu$ L RPA reaction, which was incubated at 39 °C for 30  
244 minutes. The resulting amplicons were added to CRISPR reaction containing 1x HOLMES  
245 buffer, 200 nM LbCas12a enzyme, 100 nM crBP34, and 100 nM FAM-biotin probes in 50-  
246  $\mu$ L reaction and incubated at 37 °C for 60 minutes (Appendix pp 3-5). A HybriDetect universal  
247 lateral flow assay kit (Cat#MGHD1, Milenia Biotec, Giessen, Germany) was dipped into the  
248 CRISPR reaction for 5 minutes. Results from the lateral flow kit were observed visually and  
249 interpreted without reference to the results of other tests.

250

### 251 **Determination of molecular sensitivity for qPCR and CRISPR-BP34**

252 We conducted a spiking experiment where we introduced varying concentrations of *B.*  
253 *pseudomallei* DNA (0, 2.5, 5, 10, 20, 50, and 250 copies/ $\mu$ L) into a 2  $\mu$ L volume of pan-microbial  
254 DNA background (Figure 2c). This background DNA was derived from common bacterial  
255 species<sup>26</sup> identified in water sources including *Escherichia coli*, *Klebsiella pneumoniae*,  
256 *Enterobacter cloacae*, *Serratia odorifera*, *Citrobacter freundii*, and *Leclercia adecarboxylata*.  
257 The pan-microbial DNA was prepared at a final concentration of 278 ng/ $\mu$ L, representative of  
258 the range observed in our actual samples. This setup mimicked the mixed microbial  
259 environment of the water samples and enabled us to evaluate the minimum concentration of *B.*  
260 *pseudomallei* detectable by both the qPCR and CRISPR-BP34 methods.

261

### 262 **Statistical analysis**

263 For study 1, the minimum sample size was calculated using the formula  $n = z^2 \times p \times (1-p)/d^2$ ,  
264 with “z” as the 95% confidence interval at 1.96; “p” representing the prevalence at 0.5; and “d”  
265 as the margin of error at 0.1. At least 96 positive and 96 negative environmental samples were  
266 needed to validate the conventional approach and CRISPR-BP34. Sensitivity and specificity  
267 were computed using double-PCR results as the reference, with the 95% confidence interval  
268 estimated based on a binomial assumption. McNemar’s test was used to compare detection  
269 performance with paired data.

270

271 For study 2, the proportion of *B. pseudomallei* positive samples per area was calculated for  
272 each method (double-PCR, CRISPR-BP34, and conventional) by determining the number of

273 positive samples relative to the total collected within the radii of 1 km to 10 km from participant  
274 households. This measure is referred to as the positivity rate in neighbourhood water reservoirs.  
275 Distances were computed based on each participant's geolocation using the R package  
276 "geosphere". The association between *B. pseudomallei* in household and neighbourhood water  
277 reservoirs, participants' occupations, risk behaviours, and disease status were analysed using  
278 univariable (Appendix pp 23-24) and multivariable logistic regression models (Figure 4,  
279 Appendix pp 25-26). All tests were two-sided with a significance level of 0.05, and analyses  
280 were conducted using R (version 4.3.2), including data visualisation.

281  
282 Sensitivity analyses were conducted to evaluate the robustness of the results under various  
283 conditions. First, we restricted the study population to the actual water sampling period from  
284 November 2020 to November 2021. Second, we expanded the study period to include data from  
285 October 2019 to January 2024. Third, we assessed the geographical ranges of exposure by  
286 using different radius distances from each household (Appendix pp 16-17). Additionally, we  
287 analysed the data by season (Appendix pp 14-15) to account for observed bacterial persistence  
288 in the environment across different seasons and the potential latency period, which may span  
289 several years before melioidosis develops<sup>6</sup>.

290

291

## 292 **Role of the funding source**

293 The funders of the study had no role in study design, data collection, data analysis, data  
294 interpretation, or writing of the report.

295

## 296 **Results**

297

### 298 **Improved detection of *B. pseudomallei* from the environment**

299 Between November 2020 and November 2021, 356 water samples were collected (Appendix pp  
300 10-11), filtered and cultured on Ashdown agar (Figure 2a). Of these, 21 were discarded due to  
301 fungal overgrowth, while 335 samples exhibited mixed fungal and bacterial growth or mixed  
302 bacterial growth alone. Among these 335 samples, visual inspection identified 87 samples with  
303 colonies resembling *B. pseudomallei*, of which 23 tested positive using monoclonal antibody  
304 assays<sup>22,23</sup>. However, this conventional method has significant limitations. *B. pseudomallei* at  
305 low abundance can be outcompeted by dominant species, and visual inspection alone may lead  
306 to misidentification. To address these issues, we implemented CRISPR-BP34 alongside qPCR  
307 with two independent primers to provide a more accurate identification of *B. pseudomallei* and  
308 estimate the potential for under-detection with the conventional method.

309

310 Pan-microbial DNA was successfully extracted from 333 of the 335 successfully cultured  
311 samples. CRISPR-BP34 and qPCR target distinct DNA sequences: TSS1 and BPSS1386 by  
312 qPCR, and crBP34 by CRISPR-BP34 (Figure 2b, Appendix pp 18-19 & 22). To assess detection  
313 limits, we spiked known concentration of *B. pseudomallei* DNA into a mixed DNA medium of  
314 microbial species from the water samples. qPCR detected *B. pseudomallei* DNA at 5 copies/μl  
315 with the TSS1 primer and 10 copies/μl with the BPSS1386 primer, while CRISPR-BP34  
316 detected it at 20 copies/μl using dipstick readouts (Figure 2c-d). Based on higher sensitivity of  
317 qPCR, we classified 108 samples as positive based on consistent results from both primers  
318 (referred to as double-PCR positive), 27 as inconclusive where the primers disagreed, and 198  
319 as negative when neither primer detected *B. pseudomallei* (Figure 2d). This enabled a  
320 comparison between CRISPR-BP34 and the conventional method, with qPCR as the reference  
321 test (Table 1). CRISPR-BP34 demonstrated higher sensitivity, detecting 101 out of 108 positive  
322 samples (93.52%, 95% CI: 87.10-97.35), compared to 21 out of 108 samples (19.44%, 95% CI:  
323 12.46-28.17) detected by the conventional method. CRISPR-BP34 also showed higher

324 specificity, correctly identifying all 198 negative samples (100%, 95% CI: 98.15-100.00), versus  
325 194 out of 198 (97.98%, 95% CI: 94.91-99.45) with the conventional method. This highlights the  
326 significant number of positive samples (McNemar's test comparing CRISPR-BP34 to  
327 conventional method p-value =  $5.83 \times 10^{-8}$ ), and thus the true environmental burden of  
328 melioidosis that the conventional approach would have missed.

329

### 330 **The true prevalence of *B. pseudomallei* in the environment**

331 Based on double-PCR classification, we next examined the distribution of *B. pseudomallei* in the  
332 environment across different water sources and seasons (Figure 3). *B. pseudomallei* was  
333 detected in all sampled water types, including public piped water, surface water from still bodies  
334 (ponds and lakes), surface water from running bodies (canals and rivers), and groundwater from  
335 boreholes. Boreholes had the highest positivity rate with 11 (73.3%) out of 15 samples testing  
336 positive. This finding is consistent with previous reports indicating that high *B. pseudomallei*  
337 prevalence is closely correlated with moisture levels, especially in groundwater. Unlike surface  
338 water, which can dry up during the dry season, groundwater remains saturated year-round, with  
339 water persistence reaching nearly 100%. Heavy rains and flooding can bring *B. pseudomallei*  
340 from deeper soil layers to surface<sup>27,28</sup>, or increase surface runoff<sup>29</sup> which transport bacteria from  
341 contaminated soils into water sources. Consistent with this, we observed a higher positive rate  
342 of *B. pseudomallei* in water samples during the rainy or flood season compared to the dry  
343 season for non-groundwater sources (Figure 3b). Specifically, 56 (38.9%) out of 144 surface  
344 water samples from ponds, lakes, canals and rivers tested positive in the rainy or flood season,  
345 whereas none of the 23 samples (0%) from the dry season were positive ( $\chi^2$  p-val =  $5.75 \times 10^{-4}$ ).  
346 Similarly, public piped water systems showed an increase in positivity with 37 (45.1%) out of 82  
347 samples testing positive during the rainy or flood season, compared to 4 (6.3%) out of 63  
348 samples in the dry season ( $\chi^2$  p-val <  $2.2 \times 10^{-16}$ ). Participants reported using public piped water  
349 systems and boreholes for daily activities, including cooking and hygiene (**Figure 3c**). Both  
350 sources were found to contain *B. pseudomallei*, highlighting significant public health concerns.

351

### 352 **Association between the detection of *B. pseudomallei* and the incidence of melioidosis**

353 We investigated the association between the presence of *B. pseudomallei* in household and  
354 neighbourhood water reservoirs and the incidence of melioidosis among participants. A total of  
355 243 participants had water samples collected within three months of disease onset or  
356 enrollment (2020-2021), providing a snapshot closely aligned with the timing of disease  
357 incidence. An additional 889 participants, recruited either before or after this sampling period  
358 (2019-2020 or 2022-2023), lived in the same geographical areas and were likely exposed to the  
359 same environmental sources of *B. pseudomallei* (Figure 4 a-b). For participants with direct  
360 water sampling, we observed a higher prevalence of *B. pseudomallei* in water samples from the  
361 households of melioidosis patients (36 [51.4%] out of 70 participants) compared to non-infected  
362 controls (34 [32.7%] out of 104 participants; Fisher's exact test p-val = 0.040) (Appendix pp 16-  
363 17). However, this prevalence was not significantly different from that observed in patients with  
364 other infections (30 [43.5%] out of 69 participants; Fisher's exact test p-val = 0.61). Further  
365 analysis indicated distinct underlying health conditions such as diabetes and occupational risks  
366 between melioidosis patients and those with other infections (Appendix pp 20-21). This led us to  
367 investigate whether these conditions and risks might drive the observed cases of melioidosis.

368

369 To address these potential confounders, we expanded our analysis by aggregating data from all  
370 participants recruited between 2019-2023. We assessed whether the environmental density of  
371 *B. pseudomallei* within radii of 1 to 10 km from participants' households increased the risk of  
372 melioidosis, adjusting for risk factors such as diabetes and agricultural work. At a 10 km radius,  
373 which corresponds to the average household distance in our dataset (Figure 4d, Appendix pp  
374 25-26), we found that the detection of *B. pseudomallei* in households and neighbourhood water



375 reservoir significantly increased the likelihood of developing melioidosis (Figure 4e, OR 2.74  
376 [95% CI: 1.38-5.48]). Other established risk factors<sup>7</sup>, including diabetes (OR 1.35 [1.19-1.31])  
377 and agricultural work (OR 4.46 [2.91-6.91]), the latter of which likely heightens exposure to  
378 environmental *B. pseudomallei*, were also strongly associated with an elevated risk of infection.

379

## 380 Discussion

381 Our work demonstrates that linking environmental exposure to disease relies on having high-  
382 resolution to accurately detect species of interest. Few studies have connected the presence of  
383 environmental pathogens to the likelihood of developing disease, and none have statistically  
384 done so for melioidosis. For melioidosis, conventional assays used in this study (Figure 4e, OR  
385 1.03 [95% CI: 0.28 -3.79]) and other case-control cohort<sup>7</sup> fall short in capturing this relationship.  
386 In contrast, molecular methods such as double-PCR assays (OR 2.74 [1.38-5.48]) and  
387 CRISPR-BP34 (OR 2.56 [1.31-5.04]) successfully establish this connection. Our study highlights  
388 the limitations of conventional methods, which often lead to high rates of false negatives when  
389 detecting *B. pseudomallei* in the environment (Appendix pp 4 & 12-13). The equipment-light and  
390 efficient CRISPR-BP34 shows great promise for environmental surveillance, offering reliable  
391 pathogen detection and enhancing our ability to monitor their presence.

392

393 Given the lack of up-to-date protocols for environmental surveillance of *B. pseudomallei*, our  
394 study still has certain technical and logistic limitations. First, the initial culture selection process  
395 resulted in the loss of some samples due to fungal overgrowth on the plates. While this issue  
396 could be mitigated by bypassing the selective culture step and directly testing for nucleic acids,  
397 we were concerned about the poorer detection performance without this treatment<sup>18</sup>.  
398 Additionally, nucleic acids from dead microbial cells - potentially due to chlorine or other water  
399 treatments - might also be detected. This could create a false correlation between  
400 environmental exposure and disease incidence, as dead pathogens as such do not cause  
401 illness. Therefore, we chose to include a culture enrichment step to promote the growth of viable  
402 *B. pseudomallei* strains.

403

404 Second, the reported inconclusive cases from double PCR assays may present false negatives  
405 due to imperfect primer design. However, considering the uncertain presence of *B.*  
406 *pseudomallei* and the possibility of DNA fragments being exchanged among environmental  
407 microbes in the same niche, we opted for precision in identifying *B. pseudomallei* by confirming  
408 their presence through two independent genomic regions. This approach reduces false positives  
409 and enhances the robustness of our analysis.

410

411 Third, we acknowledge a gap in water sample collection, as samples were obtained from 243  
412 out of 1,135 participants in the cohort. This limitation was due to travel restrictions related to  
413 SARS-CoV-2 during the study period and the lack of resources. As a result, we infer that the *B.*  
414 *pseudomallei* detected between 2020 and 2021 may represent a bacterial population that  
415 persisted in deep soil or groundwater, contributing to both surface and untreated, leaking or  
416 contaminated pipe water in the studied area. This contamination likely contributed to melioidosis  
417 cases observed in the region from 2019-2023. Additionally, the latency of infection suggests that  
418 some patients may have been exposed to *B. pseudomallei* well before their diagnosis.

419

420 Despite these limitations, our study is the first to statistically link the presence of *B.*  
421 *pseudomallei* in the living environment with clinical cases of melioidosis. Our findings highlight  
422 potential sources of *B. pseudomallei* in water sources used by participants for daily activities,  
423 particularly piped water, and underscore the urgent need for further investigation. This alarming  
424 issue likely stems from inadequate water treatment practices, such as insufficient chlorine  
425 dosing that fails to eradicate pathogens effectively. Moreover, leaks, pipe breaks and poor

426 maintenance may allow pathogens to infiltrate the water supply. We have reported this situation  
427 to Thailand Provincial Waterworks Authority, ensuring that relevant authorities are aware of this  
428 matter.

429  
430 Our study highlights significant occupational risks that increase exposure to *B. pseudomallei*,  
431 particularly among individuals with underlying health conditions such as diabetes, which further  
432 elevate the risk of melioidosis. In Thailand, agriculture continues to play a vital role in the  
433 economy. Simultaneously, there has been a concerning rise in diabetes cases within the  
434 population<sup>30</sup>. This situation underscores the need for timely interventions and robust public  
435 health measures to protect vulnerable populations with specific health issues and occupational  
436 hazards. We have communicated these findings to the Provincial Ministry of Public Health who  
437 will discuss strategies to strengthen protective measures for communities in this melioidosis  
438 endemic area.

#### 439 440 **Contributors**

441 SP, CCho and PB contributed equally. CChe, NPJD and NRT conceived the cohort study. CChe  
442 and JCo conceived the additional water sample activities. CChe, SPW and CU conceived the  
443 CRISPR- study. CChe and SP secured funding. CChe, SPW, CU, NRT, NPJD, SJP, DL, PC  
444 and SS designed the study. SP, CCho, PB, KA, and CChe collected water samples. SP, CCho,  
445 PB, YD, AF, GW, and PA processed water samples. GW, PA, and VW provided conventional  
446 detection methods. SPW and CU provided molecular detection methods. SP, KA, AW prepared  
447 data for the analysis. CChe did the analysis. SP, CCho, PB, AW, SJP, JCh, JCo, CU, SPW,  
448 CChe interpreted the data. JCh communicated with Thailand Provincial Waterwork Authorities  
449 and proposed engineering resolutions to reduce risks. SP, CCho, PB, AW, and CChe assessed  
450 and verified underlying data of the study. All authors had full access to all data in the study and  
451 had final responsibility for the decision to submit for publication. CChe wrote the first draft. All  
452 authors read and approved the manuscript.

#### 453 454 **Data sharing**

455 De-identified participant data that underlie the results reported in the Article will be made  
456 available on request. Proposals should be directed to the corresponding author,  
457 [claire@tropmedres.ac](mailto:claire@tropmedres.ac). Proposals will be reviewed on the basis of compliance with the informed  
458 consent and scientific merit. Rain and flood data in Ubon Ratchathani are publicly available from  
459 Thailand Royal Irrigation Department (<https://www.rid.go.th/index.php/th/>). Temperature data  
460 are publicly available from the Google Earth Engine.

#### 461 462 **Declaration of interests**

463 We declare no competing interests.

#### 464 465 **Acknowledgements**

466 CChe was funded by the Wellcome International Intermediate Fellowship (216457/Z/19/Z), the  
467 Sanger International Fellowship, and the University of Oxford Nuffield Department of Medicine  
468 Career Development Scheme. This research was funded in part by the Wellcome Trust [220211  
469 and 206194] and Thailand Science Research and Innovation, Fundamental Fund 2024  
470 [FRB670026/0457, to CU]. For the purpose of Open Access, the author has applied a CC BY  
471 public copyright license to any Author Accepted Manuscript version arising from this  
472 submission. The funders had no role in study design, data collection and analysis, decision to  
473 publish, or preparation of the manuscript.

#### 474 475 **Figure legends**

476 **Figure 1** The study flow chart and data distribution.

477 (a) Cohort study design, including participants with water samples collected directly between  
478 November 2020 and November 2021, as well as participants from the circumscribed area who  
479 were likely exposed to the same environment, recruited between 2019-2023. (b) Detection of  
480 *Burkholderia pseudomallei* in water samples from the above cohort, categorised by different  
481 assay types.

482  
483 **Figure 2** Detection method and molecular sensitivity.

484 (a) Workflow diagram illustrating the sample collection and processing steps for both  
485 conventional methods and nucleic acid-based detection techniques (PCR and CRISPR-BP34).  
486 (b) Overview of the target sequences used in the nucleic acid-based detection methods. (c)  
487 Molecular sensitivity of the CRISPR-BP34 detection method. (d) Molecular sensitivity of the  
488 PCR detection method using two different primers. (e) Performance comparison of the  
489 conventional method, CRISPR-BP34 test, and double PCR reference test for detecting  
490 *Burkholderia pseudomallei* in water samples.

491  
492 **Figure 3** Water types and seasonal fluctuations in positive detection rates.

493 (a) Diagram showing the types of water samples, including groundwater (boreholes), surface  
494 water (ponds, lakes, canals, and rivers), and treated piped water. (b) Proportion of samples  
495 testing positive, inconclusive and negative for *B. pseudomallei*, with variation observed across  
496 different seasons. (c) Proportion of participants reporting the use of public water systems and  
497 boreholes for their daily activities.

498  
499 **Figure 4** Association between the presence of *B. pseudomallei* in the household water supplies  
500 or neighbourhood reservoirs and the incidence of melioidosis.

501 (a) Geographical landscape of Ubon Ratchathani, illustrating the water terrain. (b) Map showing  
502 participant households, including those with directly collected water samples and those without  
503 samples but residing in close proximity. (c) Positive correlation between the number of water  
504 samples collected and population density per district. (d) average distance (in kilometres)  
505 between participant households in the cohort. (e) Odds ratios from multivariable logistic  
506 regression showing factors contributing to melioidosis based on *B. pseudomallei* detection using  
507 double-PCR, CRISPR-BP, and conventional approach. Districts are abbreviated: Buntharik  
508 (BTR), Don Mot Daeng (DMD), Det Udom (DUD), MSS, Khong Chiam (KC), Kut Khaopun  
509 (KKP), Khemarat (KMR), Khuang Nai (KN), Lao Suea Kok (LSK), Mueang (M), Muang Sam Sip  
510 (MSS), Na Chaluai (NCL), Nam Khun (NK), Na Tan (NT), Na Yia (NYi), Nam Yuen (NYu),  
511 Phibun Mangsahan (PBM), Pho Sai (PS), Samrong (SR), Sawang Wirawong (SWW), Sirindhorn  
512 (SRD), Si Mueang Mai (SMM), Trakan Phuet Phon (TPP), Tan Sum (TS), Thung Si Udom  
513 (TSU), Warin Chamrap (WRC)

514

515  
516  
517  
518

**Table 1 Improved sensitivity offered by CRISPR-BP34 compared to conventional approach**

	Sensitivity (percent, 95% confidence interval)	Specificity (percent, 95% confidence interval)
Conventional plate inspection	21 of 108 (19.44%, 12.46-28.17)	194 of 198 97.98% (94.91-99.45)
CRISPR-BP34	101 of 108 (93.52%, 87.10-97.35)	198 of 198 (100%, 98.15-100.00)

519

## 520 References

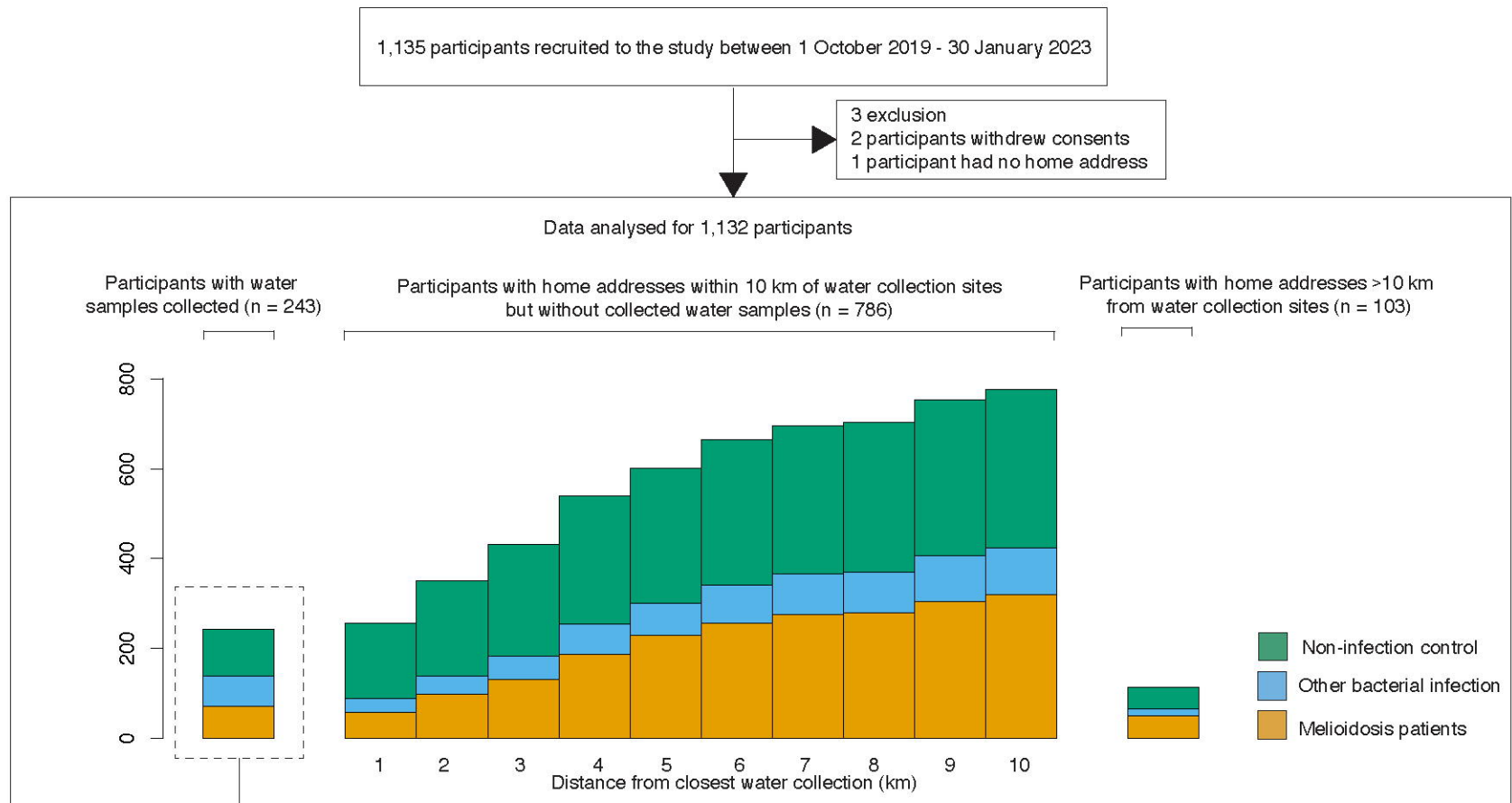
- 521 1Ikuta KS, Swetschinski LR, Robles Aguilar G, *et al.* Global mortality associated with 33  
522 bacterial pathogens in 2019: a systematic analysis for the Global Burden of Disease Study  
523 2019. *The Lancet* 2022; **400**: 2221–48.
- 524 2Wolf J, Hubbard S, Brauer M, *et al.* Effectiveness of interventions to improve drinking water,  
525 sanitation, and handwashing with soap on risk of diarrhoeal disease in children in low-income  
526 and middle-income settings: a systematic review and meta-analysis. *The Lancet* 2022; **400**:  
527 48–59.
- 528 3Pinto Jimenez CE, Keestra S, Tandon P, *et al.* Biosecurity and water, sanitation, and hygiene  
529 (WASH) interventions in animal agricultural settings for reducing infection burden, antibiotic  
530 use, and antibiotic resistance: a One Health systematic review. *The Lancet Planetary Health*  
531 2023; **7**: e418–34.
- 532 4Petras JK, Elrod MG, Ty MC, *et al.* Locally Acquired Melioidosis Linked to Environment -  
533 Mississippi, 2020-2023. *N Engl J Med* 2023; **389**: 2355–62.
- 534 5Tantirat P, Chantarawichian Y, Taweewiyakarn P, *et al.* Melioidosis in Patients with COVID-  
535 19 Exposed to Contaminated Tap Water, Thailand, 2021. *Emerg Infect Dis* 2024; **30**: 791–4.
- 536 6Meumann EM, Limmathurotsakul D, Dunachie SJ, Wiersinga WJ, Currie BJ. Burkholderia  
537 pseudomallei and melioidosis. *Nat Rev Microbiol* 2024; **22**: 155–69.
- 538 7Limmathurotsakul D, Kanoksil M, Wuthiekanun V, *et al.* Activities of Daily Living Associated  
539 with Acquisition of Melioidosis in Northeast Thailand: A Matched Case-Control Study. *PLoS*  
540 *Negl Trop Dis* 2013; **7**: e2072.
- 541 8Limmathurotsakul D, Golding N, Dance DAB, *et al.* Predicted global distribution of  
542 Burkholderia pseudomallei and burden of melioidosis. *Nat Microbiol* 2016; **1**: 15008.

- 543 9 Hantrakun V, Kongyu S, Klaytong P, *et al.* Clinical Epidemiology of 7,126 Melioidosis Patients  
544 in Thailand and the Implications for a National Notifiable Diseases Surveillance System. *Open*  
545 *Forum Infectious Diseases* 2019; : ofz498.
- 546 10 Limmathurotsakul D, Wongsuvan G, Aanensen D, *et al.* Melioidosis caused by  
547 *Burkholderia pseudomallei* in drinking water, Thailand, 2012. *Emerg Infect Dis* 2014; **20**: 265–  
548 8.
- 549 11 Zimmermann RE, Ribolzi O, Pierret A, *et al.* Rivers as carriers and potential sentinels for  
550 *Burkholderia pseudomallei* in Laos. *Sci Rep* 2018; **8**: 8674.
- 551 12 Baker AL, Warner JM. *Burkholderia pseudomallei* is frequently detected in groundwater  
552 that discharges to major watercourses in northern Australia. *Folia Microbiol* 2016; **61**: 301–5.
- 553 13 Thaipadungpanit J, Chierakul W, Pattanaporkrattana W, *et al.* *Burkholderia*  
554 *pseudomallei* in water supplies, southern Thailand. *Emerg Infect Dis* 2014; **20**: 1947–9.
- 555 14 Webb JR, Mayo M, Rachlin A, *et al.* Genomic Epidemiology Links *Burkholderia*  
556 *pseudomallei* from Individual Human Cases to *B. pseudomallei* from Targeted Environmental  
557 Sampling in Northern Australia. *J Clin Microbiol* 2022; **60**: e01648-21.
- 558 15 Tran QTL, Phan PH, Bui LNH, *et al.* Child Melioidosis Deaths Caused by *Burkholderia*  
559 *pseudomallei*-Contaminated Borehole Water, Vietnam, 2019. *Emerg Infect Dis* 2022; **28**:  
560 1689–93.
- 561 16 Limmathurotsakul D, Dance DAB, Wuthiekanun V, *et al.* Systematic review and  
562 consensus guidelines for environmental sampling of *Burkholderia pseudomallei*. *PLoS Negl*  
563 *Trop Dis* 2013; **7**: e2105.
- 564 17 Ashdown LR. An improved screening technique for isolation of *Pseudomonas*  
565 *pseudomallei* from clinical specimens. *Pathology* 1979; **11**: 293–7.
- 566 18 Knappik M, Dance DAB, Rattanavong S, *et al.* Evaluation of Molecular Methods To  
567 Improve the Detection of *Burkholderia pseudomallei* in Soil and Water Samples from Laos.  
568 *Appl Environ Microbiol* 2015; **81**: 3722–7.
- 569 19 Wongpalee SP, Thananchai H, Chewapreecha C, *et al.* Highly specific and sensitive  
570 detection of *Burkholderia pseudomallei* genomic DNA by CRISPR-Cas12a. *PLoS Negl Trop*  
571 *Dis* 2022; **16**: e0010659.
- 572 20 Pakdeerat S, Boonklang P, Angchagun K, *et al.* Benchmarking CRISPR-BP34 for point-  
573 of-care melioidosis detection in low-income and middle-income countries: a molecular  
574 diagnostics study. *The Lancet Microbe* 2024; **5**: e379–89.
- 575 21 Angchagun K, Boonklang P, Chomkatekaew C, *et al.* BurkHostGEN: a study protocol for  
576 evaluating variations in the *Burkholderia pseudomallei* and host genomes associated with  
577 melioidosis infection. *Wellcome Open Res* 2023; **8**: 347.
- 578 22 Anuntagool N, Naigowit P, Petkanchanapong V, Aramsri P, Panichakul T, Sirisinha S.  
579 Monoclonal antibody-based rapid identification of *Burkholderia pseudomallei* in blood culture  
580 fluid from patients with community-acquired septicaemia. *J Med Microbiol* 2000; **49**: 1075–8.

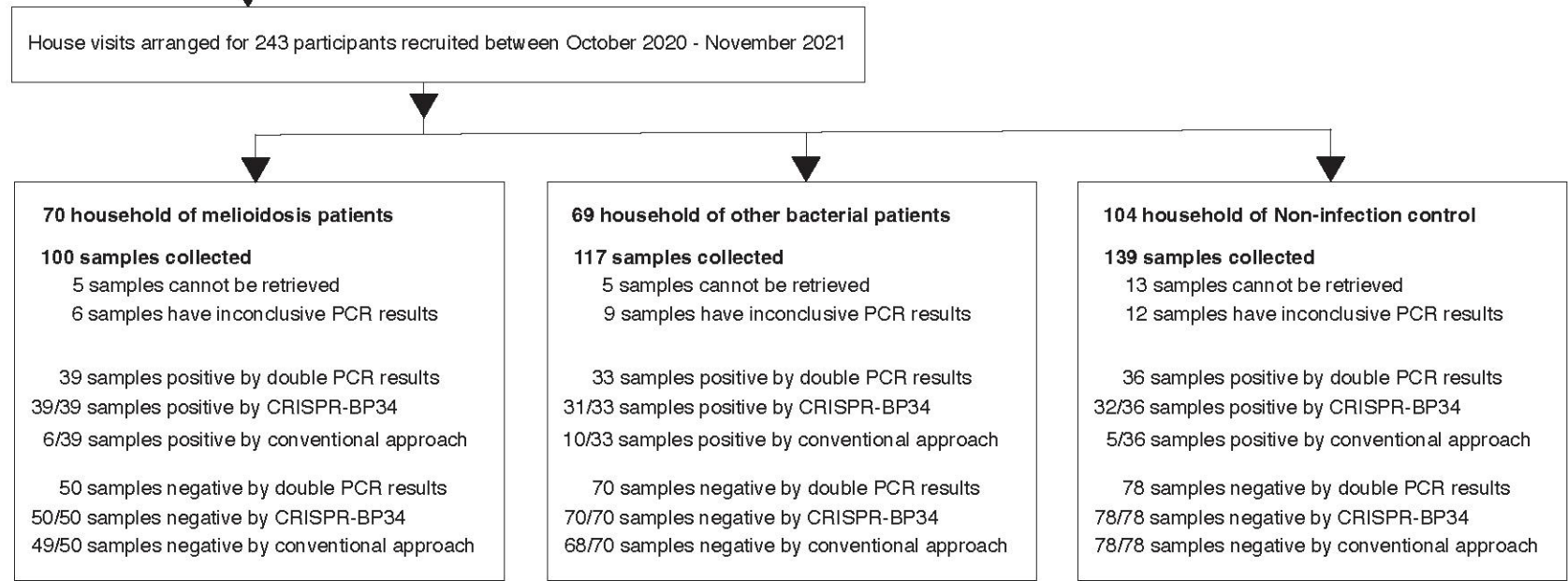
- 581 23 Chantratita N, Tandhavanant S, Wongsuvan G, *et al.* Rapid detection of Burkholderia  
582 pseudomallei in blood cultures using a monoclonal antibody-based immunofluorescent assay.  
583 *Am J Trop Med Hyg* 2013; **89**: 971–2.
- 584 24 Novak RT, Glass MB, Gee JE, *et al.* Development and evaluation of a qPCR assay  
585 targeting the type III secretion system of Burkholderia pseudomallei. *J Clin Microbiol* 2006; **44**:  
586 85–90.
- 587 25 Lowe W, March JK, Bunnell AJ, O’Neill KL, Robison RA. PCR-based Methodologies  
588 Used to Detect and Differentiate the Burkholderia pseudomallei complex: B. pseudomallei, B.  
589 mallei, and B. thailandensis. *Curr Issues Mol Biol* 2014; **16**: 23–54.
- 590 26 Amornchai P, Wuthiekanun V, Langla S, *et al.* Prevalence of extended-spectrum  $\beta$ -  
591 lactamase-producing Enterobacterales in edible ice in Thailand. *Int Health* 2024; : ihae050.
- 592 27 Kaestli M, Grist EPM, Ward L, Hill A, Mayo M, Currie BJ. The association of melioidosis  
593 with climatic factors in Darwin, Australia: A 23-year time-series analysis. *J Infect* 2016; **72**:  
594 687–97.
- 595 28 Bulterys PL, Bulterys MA, Phommason K, *et al.* Climatic drivers of melioidosis in Laos  
596 and Cambodia: a 16-year case series analysis. *Lancet Planet Health* 2018; **2**: e334–43.
- 597 29 Rachlin A, Luangraj M, Kaestli M, *et al.* Using Land Runoff to Survey the Distribution and  
598 Genetic Diversity of Burkholderia pseudomallei in Vientiane, Laos. *Appl Environ Microbiol*  
599 2021; **87**: e02112-20, AEM.02112-20.
- 600 30 The Lancet Regional Health – Southeast Asia. Preventing diabetes in the southeast Asia  
601 region. *The Lancet Regional Health - Southeast Asia* 2023; **18**: 100326.
- 602

**Figure 1**

**a**



**b**

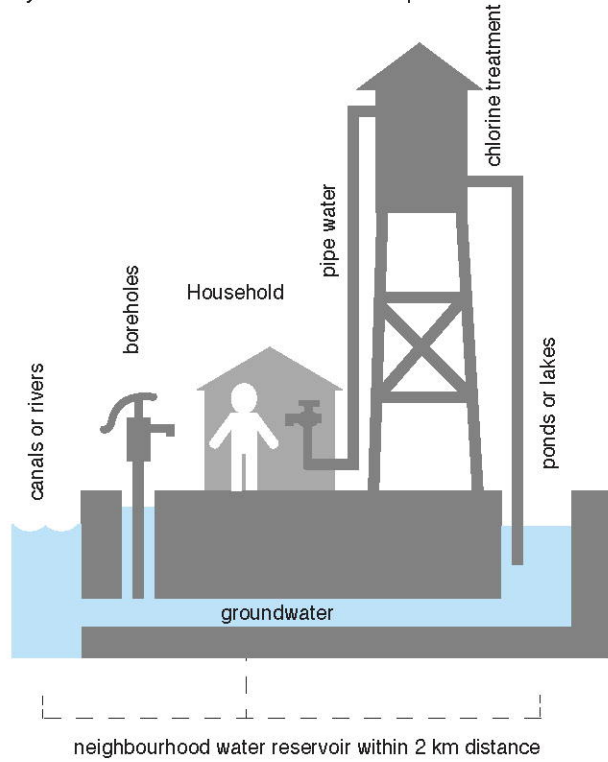




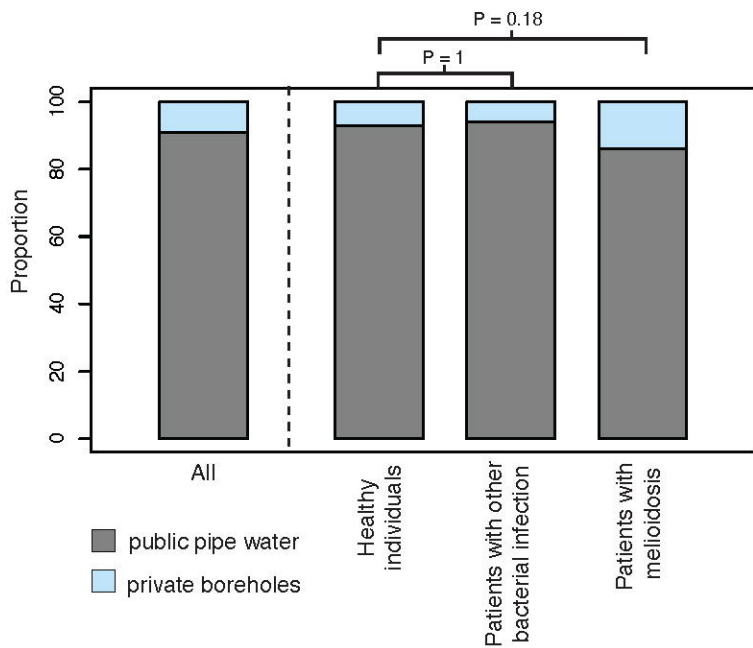


**Figure 3**

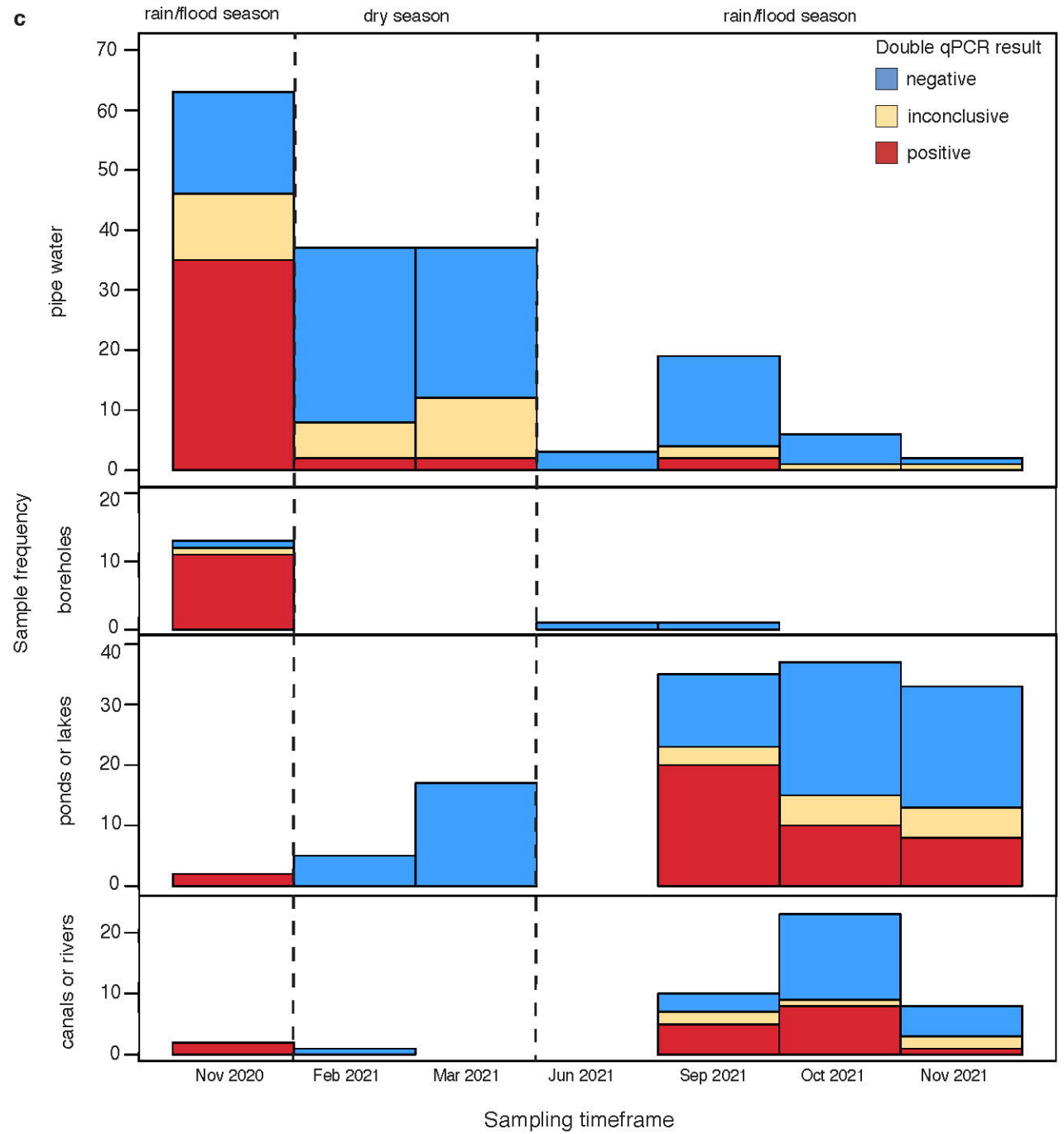
**a** Likely source of bacterial environmental exposure



**b** Type of water used for consumption in each household



**c**



**Figure 4**

