

1 **School-aged *Schistosoma mansoni* infection levels after long-term programmatic control**  
2 **show failure to meet control programme targets and evidence of a persistent hotspot:**  
3 **evaluation of the FibroScHot trial baseline data**

4 **Short title: Persistent schistosomiasis hotspot in FibroScHot trial baseline data**

5 Fred Besigye<sup>1</sup>, Rowel Candia<sup>1</sup> Moses Adriko<sup>1</sup>, Fredrick Muyodi<sup>2</sup>, John Joseph Kisakye<sup>2</sup>, Rosemary  
6 Nalwanga<sup>2</sup>, Birgitte J Vennervald<sup>3</sup>, Fred Nuwaha<sup>4</sup>, Edridah M. Tukahebwa<sup>1</sup> and Shona Wilson<sup>5\*</sup>

- 7 1. Vector Control Division, Ministry of Health, 15 Bombo Road, PO Box 1661, Kampala, Uganda  
8 2. Department of Zoology, Entomology and Fisheries Sciences, College of Natural Sciences,  
9 Makerere University. PO. Box 7062, Kampala, Uganda  
10 3. Department of Parasitology and Aquatic Pathobiology, University of Copenhagen,  
11 Dyrølægevej 100, 1870 Frederiksberg C, Denmark  
12 4. School of Public Health, College of Health Sciences, Makerere University. New Mulago Hil,  
13 Mulago Road, Mulago, Kampala, Uganda  
14 5. Department of Pathology, University of Cambridge, Tennis Court Road Cambridge, CB2 1QP,  
15 United Kingdom

16 \*Corresponding author [sw320@cam.ac.uk](mailto:sw320@cam.ac.uk)

17

18

## 19 **Abstract**

20 **Background:** Treatment guidelines for schistosomiasis recommend increasing frequency of  
21 preventative chemotherapy (PC) administration of praziquantel to twice per annum in persistent  
22 hotspots of transmission, in combination with integrated control strategies. FibroScHot was an  
23 individual randomised superiority trial designed to examine twice per annum and four times per  
24 annum treatment frequency. It was conducted in two primary schools, Buhirigi and Kaiso, in  
25 Hoima District Uganda – a designated *Schistosoma mansoni* high transmission area in which PC  
26 is targeted at children and adults. The baseline parasitology data was assessed against  
27 international control programme thresholds of success and the criteria for persistent hotspots.  
28 Further, the study also assessed the potential for integrated control strategies within the  
29 surrounding communities.

30 **Methodology/Principal Findings:** The prevalence of infection, heavy infection and the infection  
31 intensity were derived for 700 participants from Kato-Katz examination of one stool sample.  
32 Neither school met the threshold of morbidity control (<5% with heavy infection). A strong  
33 school effect was observed in models of prevalence and prevalence of heavy infection, with these  
34 being greater in Kaiso. By prevalence, Kaiso was a high transmission area and Buhirigi a moderate  
35 transmission area. Kaiso but not Buhirigi met the definition of a persistent hotspot. Persistent  
36 hotspot classification did not change when intensity of infection was used. Intermediate snail  
37 hosts were collected at both Kaiso landing site and from the River Hoimo in Buhirigi, though in  
38 smaller numbers in the latter. Questionnaire data indicates that reliance on water collection  
39 from transmission sites and open defecation occurs more frequently in Kaiso than in Buhirigi.

40 **Conclusions:** The criteria for persistent hotspots were met in the high transmission but not the  
41 moderate transmission community despite neither community meeting the threshold of  
42 morbidity control. This disconnect indicates that endemic communities exist in which control  
43 has not been achieved but increased frequency of treatment is currently not recommended.  
44 FibroScHot will be able to inform on whether widening the current recommendation of increased  
45 treatment frequency to these communities will achieve improved control. Evidence provided  
46 also indicates scope for the integrated control strategies of vector control and WASH  
47 improvements in both the participating communities.

## 48 **Authors Summary**

49 Schistosomiasis is a highly significant parasitic disease. Control programmes administering the  
50 drug praziquantel on an annual basis to school age children, and to adults in areas of high-risk,  
51 aimed primarily to prevent severe morbidity through significant reduction of the burden of  
52 infection (morbidity control). Despite success in many communities, it has been systematically  
53 shown that infection persists in others despite good treatment coverage rates by the control  
54 programmes. These communities are known as persistent hotspots. In response WHO  
55 recommends increasing treatment frequency to twice per annum; though caveats of limited  
56 evidence both in the definition used for hotspot detection, and in the likely success of the twice  
57 per annum strategy, particularly for *Schistosoma mansoni*, exist. The FibroScHot trial aimed to  
58 assess this twice per annum strategy but also a more intensive 4x per annum strategy. Crucial to  
59 interpretation of the trial results will be establishment of whether or not the trial was undertaken  
60 in persistent hotspots. Evidence presented here indicates that one trial site but not the second  
61 meets the current definition of a persistent hotspot, despite neither having met the threshold of  
62 morbidity control.

63

## 64 **Introduction**

65 Schistosomiasis is a highly significant Neglected Tropical Disease (NTD), endemic in 72 countries.  
66 The NTD Roadmap for 2021 – 2030 aims to eliminate the disease as a public health problem  
67 (EPHP; defined as <1% with heavy infections) in all endemic countries by 2030 (1). Prior to this  
68 the commitment was to control schistosomiasis morbidity (defined as <5% with heavy infections  
69 (2). Morbidity control was to be achieved by implementing preventive chemotherapy (PC)  
70 through mass drug administration (MDA), targeted at 75-100% of school going children (SAC) and  
71 adults at risk, with the anti-helminthic praziquantel (3). The latest Roadmap calls for integration  
72 with hygiene and sanitation health promotion, water and sanitation (WASH) infrastructure  
73 improvement and intermediate snail host control in order to meet the tougher aim; and  
74 treatment guidelines released in 2022 call for expanded treatment-based strategies in consort  
75 with these integrated strategies (4).

76 Operational hotspots in which infection levels fail to respond to PC due to implementation issues  
77 occur, but also biological hotspots in which parasite and host factors drive transmission despite  
78 good treatment coverage (5). Control of infection in biological hotspots is essential if EPHP is to  
79 be achieved. The expanded guidelines recognise this with a specific recommendation to increase  
80 treatment frequency to twice per annum in *persistent* biological hotspots (4). Crucial to targeting  
81 this increased treatment effectively is a clear strategy by which persistent hotspots can be  
82 identified. Persistent hotspots are difficult to detect from baseline data, a process not  
83 significantly improved for *S. mansoni* using machine learning and secondary environmental data  
84 (6), so field surveys are required. Calculating relative changes in prevalence rather than absolute  
85 prevalence data have come to prominence, largely through the Schistosomiasis Consortium for  
86 Operational Research and Evaluation (SCORE) consortium (7). Initially, a failure to decrease in

87 prevalence by ~35% after a lengthy 5-years of  $\geq 75\%$  MDA coverage was used to classify  
88 persistent hotspots (8), but analysis shows they can predicted by year 3 (9), from which the  
89 following 4-criteria definition have arisen: i) a baseline prevalence of  $\geq 10\%$ ; ii) at least 2 rounds  
90 of PC conducted; iii) coverage at  $\geq 75\%$  of targeted population; iv) a reduction in prevalence of  
91  $>1/3$ .

92 In Uganda, schistosomiasis is a common neglected tropical disease (10), present in 43 of 73  
93 districts (11,12). Intestinal schistosomiasis caused by *S. mansoni* is predominant, with 5.4 million  
94 individuals estimated to be infected and 13.9 million are at risk of acquiring the infections.  
95 Uganda was at the forefront of PC control programme implementation, starting in highly endemic  
96 lake shore communities in 2003 (13) and success on a macro country-wide scale in gaining  
97 morbidity control has been established (14). However, the national infection prevalence remains  
98 high, estimated at 25.6% in 2018 (15) and studies in Lakeshore communities pre- and post-  
99 control programme implementation suggest that they are highly likely to be persistent hotspots  
100 (16–19).

101 FibroScHot was a phase IV open label individual randomised superiority trial designed to  
102 determine whether 2x per annum, or a more intensive 4x per annum PC for SAC, can provide a  
103 treatment strategy for controlling schistosomiasis morbidity. It has been conducted in two  
104 contrasting communities in Hoima District, Western Uganda. Here we present the baseline  
105 parasitology findings, compare them with WHO definitions of transmission areas, control  
106 programme success and by utilising the findings of a 2016 monitoring exercise, determine  
107 whether the communities are classifiable as persistent hotspots. This information that will be  
108 crucial in the interpretation of the FibroScHot trial but also informs on the applicability of the

109 current definition of persistent hotspots. We also provide evidence for integrated control  
110 strategies for the two communities.

## 111 **Methods**

### 112 **Ethics Statement**

113 The FibroScHot research programme received ethical approval from the Vector Control Division  
114 Research Ethics Committee (VCDREC110), the University of Cambridge Human Biology Research  
115 Ethics Committee (HBREC.2018.32) and the Uganda National Council for Science and Technology  
116 (UNCST HS2625). Clinical trial approval and certification was obtained from the Uganda National  
117 Drug Authority (CTC 0122). The trial was prospectively registered with the International Standard  
118 Randomized Controlled Trial Number (ISRCTN) Registry (ISRCTN 16994599;  
119 <https://doi.org/10.1186/ISRCTN16994599>). Parental/guardian consent and participant assent  
120 was obtained for all participants.

### 121 **Study area**

122 The trial was conducted in Kaiso and Buhirigi Primary Schools located in the Hoima District sub-  
123 counties of Buseruka and Kigorobyia, respectively. Kaiso is on the lake shore, while Buhirigi is  
124 located above the escarpment approximately 30km from Kaiso as the crow flies (figure 1). The  
125 schools were selected on four criteria: 1) representative of high infection intensity schools as  
126 determined from pre-MDA monitoring in October 2016; 2) stability of residence, assessed using  
127 place of birth data, coupled with teacher reported stability of the pupil population; 3) school  
128 enrolment numbers and 4) proximity to each other.

129 Prior to 2020 a total of 11 rounds of MDA targeting SAC and adults had been conducted in Hoima  
130 District. Coverage rates are recorded in the Expanded Special Project for Elimination of Neglected  
131 Tropical Diseases (ESPEN; <https://espen.afro.who.int>) from 2014 onwards and in all years >75%  
132 of the targeted SAC were treated, with the exception of 2014 when 74.6% were treated. This is  
133 corroborated by internal data held by the Uganda Ministry of Health. There is no treatment data  
134 recorded in ESPEN for 2016, but the internal Ministry of Health data indicates that MDA was  
135 conducted with 81.8% of targeted SAC treated. A twelfth round of MDA, recorded in ESPEN for  
136 2019 only targeted SAC. This round was actually conducted in June 2020 due to delayed receipt  
137 of praziquantel in Uganda and the COVID-19 pandemic.

### 138 **Study design and participants**

139 The trial aimed for a sample number of 600 study participants entering the treatment phase. To  
140 be eligible children were aged 6-14 years of age at enrolment, had been born or resident within  
141 the community for a minimum of 2 years and voluntary parent/guardian consent and participant  
142 assent obtained. Children who had a history of facial oedema after treatment with praziquantel  
143 or known neurocysticercosis or intraocular cysticercosis were excluded. Enrolment into the trial  
144 was conducted on an all-comers basis, with initial recruitment from the P2 and P3 classes, with  
145 later expansion into other classes. Enrolment was split between 2020 and 2021 due to a pause  
146 caused by the COVID-19 pandemic. To ensure that sample numbers were maintained, catch up  
147 enrolment was conducted in 2021, resulting in baseline parasitology data for 700 participants.  
148 All parasitology sampling for Kaiso Primary was conducted in 2021, parasitology sampling for  
149 Buhirigi Primary was split between 2020 and 2021. The round of MDA conducted in June 2020  
150 occurred between the split baseline visits. As it would have been unethical to withhold



151 participants from this treatment, the 2020 examinations occurred 18-months and the 2021  
152 examinations 9-months after the previous round of MDA.

153 *Schistosoma mansoni* infection data for the schools in 2016 were available from an internal  
154 monitoring exercise conducted by the Uganda Ministry of Health under their remit to monitor  
155 infection and morbidity in response to control programme implementation.

### 156 **Sample collection and processing**

157 For trial purposes multiple stool samples were collected and processed using the Kato Katz (KK)  
158 method (20,21), with two slides prepared from each sample where possible. Here, in order to  
159 compare baseline results with WHO recommendations for control programme monitoring  
160 activities, results were restricted to the egg counts obtained from the first stool sample. Raw egg  
161 counts were converted into eggs per gramme of faeces (epg) prior to analysis.

### 162 **Status of WASH infrastructure**

163 The 2018 Core questions on the household drinking-water and sanitation from the joint  
164 monitoring programme (JMP) for water supply and sanitation questionnaire developed by WHO  
165 and UNICEF (22) was adopted and translated into Alur (the main local language). It was  
166 implemented in November 2019. Parents/guardians of children attending P2 class in each school  
167 were invited to participate and were identified by asking a parent/guardian of every 4<sup>th</sup> child on  
168 the register. Fifty parents/guardians from Kaiso and 48 parents/guardians from Buhirigi  
169 participated. They were provided with a study code that was not linked to their child.

## 170 **Malacology**

171 Three 30-minute malacology sweeps at a depth of 0.5-1m were conducted at four sampling sites  
172 at the Kaiso landing site on Lake Albert and three on River Hoimo in Buhirigi community.  
173 Collected snails were sorted to the genus *Biomphalaria* and identified to species (23) prior to  
174 counting. Individual snails were then exposed to indirect natural light for a minimum of 30  
175 minutes and up to a maximum of 2 hours and screened for shedding of human schistosome  
176 cercariae. The cercariae present were identified by general morphological/anatomical  
177 appearance using standard taxonomic keys (24) and the species of each shedding *Biomphalaria*  
178 snail recorded.

## 179 **Data analysis**

180 The following demographic data: sex; age divided into 6-8, 9 – 11 and 12 – 14 years of age; and  
181 length of residence divided into 2 – 4 years and > 4-years; were compared between school  
182 attended, and for Buhirigi Primary only, the year of baseline examination, using Chi-square  
183 testing. Age as a continuous variable was compared by t-test.

184 Egg count data was analysed as a linear variable, but also collapsed into two binomial variables,  
185 one representing yes/no infected (prevalence of infection) and one representing non-heavy and  
186 heavy infection according to the WHO definition of >400 epg of faeces being a heavy infection  
187 (prevalence of heavy infection). Prevalence data was compared to WHO definitions of  
188 transmission for control programme implementation design: high transmission ( $\geq 50\%$  amongst  
189 SAC); moderate transmission ( $\geq 10\%$  but  $<50\%$  amongst SAC) and the relative reduction in  
190 prevalence and infection intensity from the 2016 monitoring was calculated in line with the WHO  
191 treatment guidelines [4]. Prevalence of heavy infection was compared directly with the WHO

192 programmatic thresholds of <5% - morbidity control, and <1% - EPHP [1]. Demographic  
193 predictors of prevalence and prevalence of heavy infection were analysed by logistic regression.  
194 To examine predictors of intensity of *S. mansoni* infection amongst those with a detectable  
195 infection, linear regression models were built with the log transformed egg count data as the  
196 dependent variable.

197

198 Categorical data from the WASH questionnaire with less than five responses were collapsed into  
199 “alternative” for analysis. Chi-squared analysis was conducted to determine significant  
200 differences between the two communities in recorded replies. The number of households  
201 sharing sanitation facilities was analysed using a Man-Whitney test and estimated time spent  
202 collecting water was analysed by t-test. Descriptive results only are presented for the malacology  
203 data. In all analysis an alpha of 5% ( $p < 0.05$ ) was considered significant.

## 204 **Results**

### 205 **Demography of participants**

206 The demographics by school and by year are shown in table 1. For Buhirigi, those recruited in  
207 2021 were significantly younger ( $t = 2.450$ ,  $p = 0.016$ ) and were significantly more likely to have  
208 lived in the community for 2-4 years rather than >4-years than those recruited in 2020 ( $\chi^2 =$   
209  $298.23$ ,  $p < 0.001$ ). Participants from Kaiso Primary were younger than participants from Buhirigi  
210 ( $t = 2.568$ ,  $p = 0.010$ ), but the actual mean age difference is negligible at less than 5-months of age.

211 **Table 1: Baseline demographic characteristics and parasitology summary statistics by school and year**  
212 **of examination**

<b>2016 Monitoring Exercise</b>						
			<b>Buhirigi</b>	<b>Kaiso</b>		
			<b>(n=50)</b>	<b>(n=51)</b>		
<b><i>S. mansoni</i></b> <b>Prevalence</b>	Negative		16	34		
	(n (%))		(32.7)	(39.2)		
	Negative		33	31		
	(n (%))		(67.3)	(60.8)		
<b>Prevalence of</b> <b>heavy</b> <b><i>S. mansoni</i></b> <b>infections</b>	No/Light/ Moderate		43	34		
	(n, (%))		(87.8)	(66.7)		
	Heavy		6	17		
	(n, (%))		(12.2)	(33.3)		
<b><i>S. mansoni</i> infection intensity</b>			26.12epg	40.60		
<b>(epg(geometric mean ( ± 95% C.I.))</b>			(11.99,	(16.30,		
			55.65)	99.04)		
<b>Baseline examinations</b>						
			<b>Buhirigi</b>	<b>Buhirigi</b>	<b>Buhirigi</b>	<b>Kaiso</b>
			<b>2020</b>	<b>2021</b>	<b>combined</b>	
			<b>(n=323)</b>	<b>(n=91)</b>	<b>(n=414)</b>	<b>(n=286)</b>
<b>Sex</b>	Female		149	49	198	117
	(n, (%))		(46.13)	(53.85)	(47.83)	(40.9)

	Male	174	42	216	169
	(n, (%))	(53.87)	(46.15)	(52.17)	59.1)
<b>Age</b>	Mean	10.29	9.57	10.13	9.70
	(± 2 S.E.)	(0.23)	(0.54)* <sup>1</sup>	(0.22)	(0.25)* <sup>2</sup>
<b>Age Group</b>	6-7 (n, (%))	77	35	112	87
<b>(years)</b>		(23.84)	(38.46)	(27.05)	(30.42)
	8-10 (n, (%))	132	30	162	128
		(40.87)	(32.97)	(39.13)	(44.76)
	11-14 (n, (%))	114	26	140	71
		(35.29)	(28.57)* <sup>1</sup>	(33.82)	(24.83)* <sup>2</sup>
<b>Residency (years)</b>	2-4	1	72	73	42
	(n, (%))	(0.31)	(79.1)	(17.63)	(14.69)
	>4	322	19	341	244
	(n (%))	(99.69)	(20.88)* <sup>***1</sup>	(82.37)	(85.31)
<b>Prevalence of S.</b>	Negative	187	67	254	58
<b><i>mansoni</i></b>	(n, (%))	(57.9)	(73.6)	(61.4)	(20.3)
<b>infections</b>	Positive	136	24	160	228
	(n, (%))	(42.1)	(26.4)	38.6%	(79.7)
<b>Prevalence of</b>	No/Light/	285	86	371	213
<b>heavy</b>	Moderate	(88.2)	(94.5)	(89.6)	(74.5)
	(n, (%))				

<b><i>S. mansoni</i></b>	Heavy	38	5	43	73
<b>infections</b>	(n, (%))	(11.8)	(5.49)	(10.4)	(25.5)
<b><i>S. mansoni</i> infection intensity</b>		6.64	2.23	5.33	63.47
<b>(epg(geometric mean ( ± 95% C.I.; maximum))).</b>		(4.77, 9.13; 3228)	(1.10, 4.00; 1116)	(3.97, 7.06; 3228)	(47.70, 84.36; 3588)

213 \* p<0.05, \*\*\*p<0.001. <sup>1</sup>Comparison with Buhirigi 2020, <sup>2</sup>Comparison with Buhirigi combined. The 2016  
 214 monitoring was conducted in October immediately prior to MDA implementation.

215

216 ***Schistosoma mansoni* infection levels**

217 The prevalence of infection, prevalence of heavy infection and the infection intensities for the  
 218 2016 monitoring exercise and the trial baseline are shown in table 1.

219 *Prevalence of S. mansoni infection*

220 Given the prevalence at trial baseline, Kaiso can be characterised as a high prevalence setting;  
 221 whilst regardless of year of examination, Buhirigi Primary meets the definition of a moderate  
 222 prevalence setting. For Buhirigi, overall, there was a 42.6% reduction in prevalence since the 2016  
 223 monitoring. For those examined in 2020 the reduction was 37.4% and for those examined in  
 224 2021 the reduction was 60.8%. For Kaiso, there was a 31% increase in prevalence since the 2016  
 225 monitoring. Kaiso can therefore be considered a persistent hotspot under WHO criteria while  
 226 this is not the case for Buhirigi. In logistic regression analysis conducted to determine the  
 227 demographic predictors of having a detectable *S. mansoni* infection, school and age group were  
 228 the only two significant predictors, with prevalence increasing with age group. The school effect  
 229 is of considerable magnitude. Year of examination was of borderline significance (table 2).

230 **Table 2: Logistic Regression analysis of *S. mansoni* infection detectable by parasitological**  
231 **method**

Variable	Odds Ratio (95% CI)	p-value
<b>Age 9-11 years</b>	1.740 (1.154, 2.635)	0.008
<b>Age 12-14 years</b>	2.829 (1.812, 4.459)	<0.001
<b>Sex</b>	0.838 (0.597, 1.173)	0.304
<b>School at enrolment</b>	12.699 (6.388, 26.739)	<0.001
<b>Residency</b>	0.909 (0.455, 1.727)	0.779
<b>Year of examination</b>	0.491 (0.226, 1.013)	0.062

232 Reference groups are: Aged 6-8 years, Females, Buhirigi Primary, 2-4 years residency and  
233 examined in 2020.

234

235 *Intensity of S. mansoni infection*

236 Overall, in Buhirigi, a relative reduction in infection intensity of 79.5% since 2016 was recorded;  
237 among participants enrolled in 2020 the relative reduction was 74.8% and for participants  
238 enrolled in 2021 it was 91.5%. In Kaiso a relative increase of 56.3% in infection intensity since  
239 2016 was recorded. Regardless of school and year of examination, there was a significant  
240 proportion of participants with detectable *S. mansoni* infections whose infection intensity was  
241 classifiable as moderate or heavy (figure 2). In a linear regression model no demographic factors  
242 were found to be predictive of the intensity of infection amongst those infected (data not shown).

243 *Prevalence of heavy S. mansoni infection*

244 The threshold of morbidity control (<5% with a heavy infection) was not met in either school,  
245 regardless of year of examination (table 1). Logistical regression analysis shows that being in the  
246 oldest age group (12-14years) and attending Kaiso Primary were significantly associated with  
247 having a heavy infection (table 3).

248 **Table 3: Logistic Regression analysis of heavy *S. mansoni* infection detectable by**  
249 **parasitological method**

Variable	Odds Ratio (95% CI)	p-value
Age 9-11 years	1.234 (0.730, 2.123)	0.439
Age 12-14 years	2.010 (1.165, 3.531)	0.013
Sex	1.208 (0.797, 1.842)	0.378
School at enrolment	6.479 (2.411, 20.906)	<0.001
Residency	0.873 (0.433, 1.834)	0.712
Year of examination	0.418 (0.122 1.205)	0.129

250 Reference groups are: Aged 6-8 years, Females, Buhirigi Primary, 2-4 years residency and  
251 examined in 2020.

## 252 Sources and treatment of drinking water

253 The sources of water differed significantly between the two communities ( $\chi^2 = 41.626, p < 0.001$ ).  
254 Amongst respondents from Buhirigi community the most common source of water was  
255 boreholes (table 4), whereas in the Kaiso community the most common source of water was  
256 “other”. Observation and anthropological investigation reported elsewhere indicate that this  
257 “other” is the lake (25). The participants from Buhirigi community reported more time spent in



258 collecting water from the source (mean = 32.10 minutes, 95%CI: 27.87, 36.33) compared to those  
259 from Kaiso community (mean = 24.54 minutes, 95% CI: 19.42, 29.62; t=2.835, p=0.006). However  
260 there was no significant difference in who collected water, with 93.6% of respondents in Buhirigi  
261 and 92% of respondents in Kaiso reporting that water was collected by adult females ( $\chi^2 = 0.095$ ,  
262  $p = 0.758$ ). The remaining individuals all reported that water was collected by females under the  
263 age of 15. Replies regarding if and how this water was treated indicated that safe water practices  
264 were more common in Buhirigi (Supplementary figure 1).

265 **Table 4: Reported water sources in Buhirigi and Kaiso Communities**

Water Sources	Buhirigi	Kaiso	Total
Borehole	23 (47.9%)	3 (6%)	26 (26.5%)
Reported as “Other”	2 (4.2 %)	24 (48%)	26 (26.5%)
Standpipe	5 (10.4 %)	4 (8%)	9 (9.2%)
Surface water	9 (18.8 %)	9 (18%)	18 (18.4%)
Unprotected spring	0 (0.0%)	8 (16%)	8 (8.2%)
Alternative source*	9 (18.8 %)	2 (4%)	11 (11.2%)
<b>Total</b>	<b>48 (100%)</b>	<b>50 (100%)</b>	<b>98 (100%)</b>

266 \*Sources reported by < 5 individuals in both communities were grouped as an “alternative  
267 source”.

## 268 **Sanitation use in Buhirigi and Kaiso communities**

269 Open defecation was reported by 5 (10%) of those in Kaiso community, but by none in Buhirigi  
270 community. The sharing of latrines with other households was more common in Buhirigi (41  
271 (68.3%)) than in Kaiso (19 (31.7%);  $\chi^2=20.658$ ,  $p < 0.001$ ). However, when latrines were shared,  
272 the number of households reported to be using each latrine was less in Buhirigi community  
273 (Range 1-15 HH, median = 6) than in Kaiso community (Range = 2-20 HH, median = 7;  $U=267.5$ ,  
274  $p=0.009$ ). Forty-one (85.6%) respondents from Buhirigi community and 40 (80%) respondents  
275 from Kaiso community had infants below three years of age ( $\chi^2 = 0.501$ ,  $p = 0.479$ ). Participants  
276 in the two communities reported different ways of disposing of their infants' fecal waste. In  
277 Buhirigi only one reported disposing off their infant's faeces by burying them in ground, with  
278 92.5% reporting rinsing them into toilet/latrine. By contrast, in Kaiso 19 (47.5%) respondents  
279 reported burying the faeces ( $\chi^2 = 25.806$ ,  $p < 0.001$ ; Fig. 3).

## 280 **Intermediate host population numbers and patent infections**

281 Permissive intermediate host snail species of the genus *Biomphalaria* were collected at all seven  
282 sites sampled. In total 1566 snails of the *Biomphalaria* genus were collected; their distribution by  
283 community and site is shown in table 5. Amongst the Kaiso collections, seven snails were found  
284 to shed human infective cercariae. Three were *B. sudanica* collected from site C and site D; three  
285 were *B. pfeifferi*, all collected from site C and the seventh was of the species *B. stanleyi* and was  
286 collected from site D. No *Biomphalaria* spp snails collected from the River Hoimo in Buhirigi  
287 were found to shed human infective *Schistosoma* spp. cercariae.

## 288 **Table 5: Abundance of intermediate hosts at collection sites on the River Hoimo in Buhirigi**

## 289 **Community and Lake Albert in Kaiso Community**

Village	Site	<i>B. sudanica</i>	<i>B. stanleyi</i>	<i>B. pfeifferi</i>	Total
<b>Kaiso</b>	A	0	4	0	4
	B	12	2	17	31
	C	535	42	705	1282
	D	12	67	35	114
<b>Sub-Total</b>		<b>559</b>	<b>115</b>	<b>757</b>	<b>1431</b>
<b>Buhirigi</b>	A	0	0	114	114
	B	0	0	2	2
	C	0	0	19	19
<b>Sub-Total</b>		<b>0</b>	<b>0</b>	<b>135</b>	<b>135</b>
<b>TOTAL</b>		<b>559</b>	<b>115</b>	<b>892</b>	<b>1566</b>

290

## 291 Discussion

292 The guideline to increase frequency of praziquantel treatment of schistosomiasis to twice per  
293 annum in hotspots has been provided on a “conditional” basis reflecting uncertainty in persistent  
294 hotspot classification (4). Here, we assessed the baseline parasitology data from the FibroScHot  
295 trial to establish whether the participating communities met the current criteria for persistent  
296 hotspots. The 4-criteria definition was clearly met for Kaiso Primary. In fact, prevalence increased  
297 since the 2016 monitoring and was comparable with an ESPEN record from 2011 (79.6%),

298 indicating little to no impact of control on prevalence of infection in the decade from 2011 –  
299 2020. This is despite examinations in Kaiso taking place only 9-months after the previous PC  
300 treatment. For Buhirigi Primary, a  $>1/3$  relative reduction in prevalence between the 2016  
301 monitoring and the 2020/21 baseline was observed. It cannot be ascertained whether this  
302 reduction would have been achieved after 2-years of treatment as set-out as minimum in the  
303 WHO definition, as three treatment rounds had been conducted (including the 2016 round not  
304 recorded in ESPEN). Due to the complexity of identifying persistent hotspots, consideration of  
305 relative differences in intensity in combination with those in prevalence has been called for (5).  
306 For both Kaiso and Buhirigi, the additional use of relative changes in intensity of infection would  
307 have made no difference to classification. Given that Kaiso and Buhirigi are only 30km apart and  
308 are within the same district, these differences in classification highlight the need to determine  
309 the geographical scale of persistent hotspots to obtain optimal benefits from the finite resources  
310 available to national control programmes; a recognised need that has resulted in a change of  
311 implementation unit from the District to sub-district level for PC programmes (26).

312 One caveat is the selection criteria for the schools; chosen to be representative of high infection  
313 intensity schools, they were less likely to have reached control programme thresholds and more  
314 likely to be considered hotspots for schistosomiasis. It should also be noted that coverage rates  
315 in ESPEN were available at the District level and could vary at the village level. Although the  
316 Ugandan reporting unit is scheduled to be changed to sub-district, this illustrates a potential  
317 logistical difficulty in applying criteria related to treatment coverage to the identification of  
318 persistent hotspots. This is particularly true for lake shore communities that are characterized  
319 by unstable populations (27). In Lake Victoria fishing villages in Mayuge District, Uganda,  
320 treatment coverage levels as low as 52.6% have been recorded, with age not being a significant

321 predictor of receipt of treatment (28). That said, Mayuge and Hoima District adopt differing  
322 targeting strategies, with Mayuge conducting community targeting and Hoima conducting  
323 combined school and community targeting of treatment, likely increasing the coverage in the  
324 target demographic of in-school SAC most commonly used in PC monitoring.

325 The abundance of fresh water intermediate hosts of schistosomiasis plays a very big role in  
326 maintaining the transmission cycle of *S. mansoni* parasites (29). The higher abundance  
327 of *Biomphalaria* species in Kaiso sites compared to those of Buhirigi, is likely attributable to the  
328 presence of lentic water flooded lake areas with water hyacinth providing suitable habitat for  
329 *Biomphalaria sudanica* and *Biomphalaria pfeifferi* (30,31), while higher abundance  
330 of *Biomphalaria stanleyi* at site C in Kaiso community is explainable by presence of submerged  
331 *Vallisneria* plants (30). Only at site A on the River Hoimo were similar habitats observed and  
332 here *Biomphalaria pfeifferi* was relatively abundant. Direct transmission from the River Hoimo  
333 could be one reason for Buhirigi not reaching the threshold of morbidity control, but also the  
334 frequent oscillation of people, including children between the landing sites and Buhirigi to buy  
335 fish and visit relatives.

336 Some studies have shown that adequate sanitation and proper use of latrines lowers *S.*  
337 *mansoni* infections (32,33), although evidence for its impact on schistosomiasis control success  
338 is not as strong as that for snail control (4). Despite this, WASH strategies including improved  
339 sanitation are included in the integrated strategies proposed for the elimination of *S. mansoni* by  
340 2030 (1) due to the wider health benefits. Our results indicate inequality in access to good, safe  
341 sanitation between the Lake Albert riparian community and the nearby rural agricultural area of  
342 Buhirigi. A significant proportion of respondents in Kaiso admitted to open defecation and a

343 significant proportion of those with infants reported burying their faeces rather than safe  
344 disposal, pertinent given the known infection of pre-school children in Lake Albert shoreline  
345 communities (34,35). Such poor sanitary conditions are not peculiar to Kaiso but a common  
346 feature of Ugandan water bodies landing sites (19,36–38). The rates of open defecation were  
347 lower than reported in these other studies, however, the questionnaire was applied with answers  
348 being exclusive of each other and subtleties of both latrine use and open defecation may not  
349 have been recorded. Qualitative analysis of micro and macro-transmission risks in the area does  
350 indicate that open defecation is very common in Kaiso (25).

351 Buhirigi has a variety of water sources while lake water was predominantly used in Kaiso.  
352 Infection levels on a micro-geographical scale can be associated with closeness to the permanent  
353 water body that acts as the source of domestic water (39–41) and on Lake Albert this is  
354 compounded by the interaction between snail host numbers, the snail species present and  
355 human host behaviour (42). The reduced average time taken by the respondents from the Kaiso  
356 to collect water implies that the people walk shorter distances and potentially collect water more  
357 frequently than the people in Buhirigi community; reflecting both an unwillingness by the  
358 inhabitants to walk much greater distances to obtain safe water, or a lack of viable safe water  
359 options within a walkable distance (25). Therefore, health education on water collection  
360 techniques and the significance of water treatment for home use, including bathing, may help  
361 reduce infection.

362 Finally, the recently published monitoring and evaluation framework for schistosomiasis control  
363 programmes incorporates an additional definition for “potential” hotspots (26). These are  
364 communities of  $\geq 10\%$  prevalence where frequent water contact, low coverage of WASH and

365 environmental risk result in potential for normal control measure being insufficient to control  
366 morbidity. In Buhirigi, despite the known decrease in infection, given that a) the morbidity  
367 control threshold has not been met, b) moderate infections that are associated with clinical  
368 morbidity (43) were prevalent and C) that we have established behavioural, WASH and  
369 environmental risk factors (25), the outcome of the FibroScHot trial in assessing the impact of  
370 increased treatment frequency on morbidity and infection levels in this community will be  
371 highly informative as to whether similar “potential” hotspots should be considered “persistent”  
372 hotspots and provided with twice per annum treatment when possible.

### 373 **Conclusion**

374 We have established that the control programme threshold for morbidity control has not been  
375 met in either of our communities despite PC programmes having been administered for more  
376 than 15 years. The intermediate snail host collections and the WASH questionnaire results show  
377 that integrated approaches will likely be crucial for attainment of elimination as a public health  
378 problem in these communities. Assessing the intensity of infection did not alter the persistence  
379 status for either community, indicating that prevalence alone was sufficient to determine hotspot  
380 status for these communities. The FibroScHot trial will be able to inform on whether increased  
381 frequency of treatment with praziquantel in a *S. mansoni* persistent hotspot and in an area of  
382 moderate transmission that has failed to meet morbidity control thresholds will be advantageous  
383 in attainment of control programme targets.

384

385

386 **Author contributions:** Conceptualisation (BJV, EMT, SW), data curation (SW), formal analysis (FB,  
387 SW), funding acquisition (BJV, EMT, SW), investigation (FB, RC, MA), project administration (MA,  
388 BJV, EMT, SW), supervision (FM, JJK, RN, SW), visualisation (FB, SW), writing – original draft  
389 preparation (FB); all authors contributed to writing – reviewing and editing.

390 **Acknowledgements:** The authors would like to thank the FibroScHot participants and their  
391 families. They would also like to thank the head teachers and teachers of Kaiso and Buhirigi  
392 Primary Schools for all the assistance provided throughout the study. The FibroScHot trial was  
393 co-ordinated by the Cambridge Clinical Trials Unit (CCTU) and the authors thank them for the  
394 curation and release of the baseline parasitology data that is used in this manuscript. We also  
395 thank Dr H. Curtis Kariuki for providing training in snail identification and cercarial shedding.

396 **Funding:** Data collection and authors FB, MA, BJV, EMT and SW were funded by the FibroScHot  
397 project which is part of the EDCTP2 programme supported by the European Union (RIA2017NIM-  
398 1842-FibroScHot). The funders had no role in the study design, data collection and analysis,  
399 decision to publish, or preparation of the manuscript.



## 400 References

- 401 1. WHO. Ending the neglect to attain the Sustainable Development Goals. A roadmap for neglected  
402 tropical diseases 2021 - 2030. [Internet]. Geneva, Switzerland; 2021. Available from:  
403 <https://www.who.int/publications/i/item/9789240010352>
- 404 2. WHO. Accelerating work to overcome the global impact of neglected tropical diseases - A  
405 roadmap for implementation [Internet]. 2012. Available from:  
406 <https://www.who.int/publications/i/item/WHO-HTM-NTD-2012.1>
- 407 3. WHO. Preventive chemotherapy in human helminthiasis - coordinated use of anthelmintic drugs  
408 in control interventions: a manual for health professionals and programme managers. [Internet].  
409 World Health Organization; 2006. 62 p. Available from:  
410 <https://www.who.int/publications/i/item/9241547103>
- 411 4. WHO. WHO Guideline on control and elimination of human schistosomiasis [Internet]. 2022  
412 [cited 2024 Jan 9]. Available from: <https://www.who.int/publications/i/item/9789240041608>
- 413 5. Lim RM, Arme TM, Pedersen AB, Webster JP, Lamberton PHL. Defining schistosomiasis hotspots  
414 based on literature and shareholder interviews. *Trends Parasitol.* 2023 Dec;39(12):1032–49.
- 415 6. Singer BJ, Coulibaly JT, Park HJ, Andrews JR, Bogoch II, Lo NC. Development of prediction models  
416 to identify hotspots of schistosomiasis in endemic regions to guide mass drug administration.  
417 *Proceedings of the National Academy of Sciences.* 2024 Jan 9;121(2).
- 418 7. Colley DG, Fleming FM, Matendehero SH, Knopp S, Rollinson D, Utzinger J, et al. Contributions of  
419 the Schistosomiasis Consortium for Operational Research and Evaluation (SCORE) to  
420 Schistosomiasis Control and Elimination: Key Findings and Messages for Future Goals,  
421 Thresholds, and Operational Research. *Am J Trop Med Hyg.* 2020 Jul 9;103(1\_Suppl):125–34.
- 422 8. Kittur N, Binder S, Campbell CH, King CH, Kinung'hi S, Olsen A, et al. Defining Persistent Hotspots:  
423 Areas That Fail to Decrease Meaningfully in Prevalence after Multiple Years of Mass Drug  
424 Administration with Praziquantel for Control of Schistosomiasis. *Am J Trop Med Hyg* [Internet].  
425 2017 [cited 2017 Oct 19];98:1397–402. Available from:  
426 [http://www.ajtmh.org/docserver/fulltext/10.4269/ajtmh.17-  
427 0368/tpmd170368.pdf?expires=1508405616&id=id&accname=guest&checksum=9BC40A881B1E  
428 BE1AC13946AC6A1E2BFA](http://www.ajtmh.org/docserver/fulltext/10.4269/ajtmh.17-0368/tpmd170368.pdf?expires=1508405616&id=id&accname=guest&checksum=9BC40A881B1E BE1AC13946AC6A1E2BFA)
- 429 9. Shen Y, Sung MH, King CH, Binder S, Kittur N, Whalen CC, et al. Modeling Approaches to  
430 Predicting Persistent Hotspots in SCORE Studies for Gaining Control of Schistosomiasis Mansoni  
431 in Kenya and Tanzania. *Journal of Infectious Diseases.* 2020 Feb 18;221(5):796–803.
- 432 10. Chitsulo L, Engels D, Montresor A, Savioli L. The global status of schistosomiasis and its control.  
433 *Acta Trop.* 2000 Oct;77(1):41–51.
- 434 11. Loewenberg S. Uganda's struggle with schistosomiasis. *The Lancet.* 2014 May;383(9930):1707–8.
- 435 12. Uganda Ministry of Health. Uganda Master Plan for National Neglected Tropical Diseases  
436 Programmes. Kampala; 2014.

- 437 13. Zhang Y, Koukounari A, Kabatereine N, Fleming F, Kazibwe F, Tukahebwa E, et al. Parasitological  
438 impact of 2-year preventive chemotherapy on schistosomiasis and soil-transmitted helminthiasis  
439 in Uganda. *BMC Med* [Internet]. 2007 Dec 3 [cited 2017 Oct 19];5(1):27. Available from:  
440 <http://bmcmmedicine.biomedcentral.com/articles/10.1186/1741-7015-5-27>
- 441 14. Deol AK, Fleming FM, Calvo-Urbano B, Walker M, Bucumi V, Gwandou I, et al. Schistosomiasis —  
442 Assessing Progress toward the 2020 and 2025 Global Goals. *New England Journal of Medicine*.  
443 2019 Dec 26;381(26):2519–28.
- 444 15. Exum NG, Kibira SPS, Ssenyonga R, Nobili J, Shannon AK, Ssempebwa JC, et al. The prevalence of  
445 schistosomiasis in Uganda: A nationally representative population estimate to inform control  
446 programs and water and sanitation interventions. *PLoS Negl Trop Dis*. 2019 Aug  
447 14;13(8):e0007617.
- 448 16. Dee DP, Lam G, Edielu A, Anguajibi V, Webb EL, Wamboko A, et al. A cross-sectional pilot  
449 household study of *Schistosoma mansoni* burden and associated morbidities in Lake Albert,  
450 Uganda. *Tropical Medicine & International Health*. 2024 Apr 15;29(4):334–42.
- 451 17. Tukahebwa EM, Magnussen P, Madsen H, Kabatereine NB, Nuwaha F, Wilson S, et al. A Very High  
452 Infection Intensity of *Schistosoma mansoni* in a Ugandan Lake Victoria Fishing Community Is  
453 Required for Association with Highly Prevalent Organ Related Morbidity. Brooker S, editor. *PLoS*  
454 *Negl Trop Dis* [Internet]. 2013 Jul 25 [cited 2017 Oct 16];7(7):e2268. Available from:  
455 <http://dx.plos.org/10.1371/journal.pntd.0002268>
- 456 18. Kabatereine NB, Kemijumbi J, Ouma JH, Kariuki HC, Richter J, Kadzo H, et al. Epidemiology and  
457 morbidity of *Schistosoma mansoni* infection in a fishing community along Lake Albert in Uganda.  
458 *Trans R Soc Trop Med Hyg*. 2004 Dec;98(12):711–8.
- 459 19. Moses A, Adriko M, Kibwika B, Tukahebwa EM, Faust CL, Lamberton PHL. Residence Time, Water  
460 Contact, and Age-driven *Schistosoma mansoni* Infection in Hotspot Communities in Uganda. *Am J*  
461 *Trop Med Hyg*. 2021 Dec 1;105(6):1772–81.
- 462 20. Katz N, Chaves A, Pellegrino J. A simple device for quantitative stool thick-smear technique in  
463 *Schistosomiasis mansoni*. *Rev Inst Med Trop Sao Paulo*. 1972;14:397–400.
- 464 21. WHO. Basic laboratory methods in medical parasitology [Internet]. Geneva; 1991. Available from:  
465 <https://iris.who.int/handle/10665/40793>
- 466 22. WHO/UNICEF. Core questions on water, sanitation and hygiene for household surveys-2018  
467 update Core questions on water, sanitation and hygiene for household surveys WHO/UNICEF  
468 Joint Monitoring Programme for Water Supply, Sanitation and Hygiene [Internet]. 2018 [cited  
469 2024 Sep 24]. Available from: <https://washdata.org/monitoring/methods/core-questions>
- 470 23. Mandahl-Barth G. Key to the identification of East and Central African freshwater snails of  
471 medical and veterinary importance. *Bulletin of the World Health Organisation*. 1962;27:135.
- 472 24. Frandsen F, Christensen N. An introductory guide to the identification of cercariae from African  
473 freshwater snails with special reference to cercariae of trematode species of medical and  
474 veterinary importance. *Acta Trop*. 1984;41:181–202.
- 475 25. Odoi P, Neema S, Bateganya F, Vennervald B, Wilson S. “Ich-Mupong”, a swollen stomach: An  
476 ethnographic study of the daily lived experiences of schoolchildren in schistosomiasis high

- 477 transmission areas along Lake Albert, Hoima District. MedRxiv [Internet]. 2024; Available from:  
478 <https://doi.org/10.1101/2024.09.17.24313804>
- 479 26. WHO. Assessing schistosomiasis and soil-transmitted helminthiasis control programmes:  
480 monitoring and evaluation framework. World Health Organization. [Internet]. 2024 [cited 2024  
481 Nov 5]. Available from: <https://iris.who.int/handle/10665/379352>
- 482 27. dUdine F, Kyasiimire B, Hammill A, Crawford A. Migration and Conservation in the Lake Albert  
483 Ecosystem [Internet]. 2015 [cited 2024 Sep 24]. Available from:  
484 <https://www.iisd.org/publications/report/migration-and-conservation-lake-albert-ecosystem#:~:text=Migration%20is%20playing%20a%20significant,region%20by%20the%20economic%20opportunities.>
- 487 28. Chami GF, Kontoleon AA, Bulte E, Fenwick A, Kabatereine NB, Tukahebwa EM, et al. Profiling  
488 Nonrecipients of Mass Drug Administration for Schistosomiasis and Hookworm Infections: A  
489 Comprehensive Analysis of Praziquantel and Albendazole Coverage in Community-Directed  
490 Treatment in Uganda. *Clinical Infectious Diseases*. 2016 Jan 15;62(2):200–7.
- 491 29. Mutuku MW, Laidemitt MR, Beechler BR, Mwangi IN, Otiato FO, Agola EL, et al. A Search for  
492 Snail-Related Answers to Explain Differences in Response of *Schistosoma mansoni* to  
493 Praziquantel Treatment among Responding and Persistent Hotspot Villages along the Kenyan  
494 Shore of Lake Victoria. *Am J Trop Med Hyg*. 2019 Jul 3;101(1):65–77.
- 495 30. Kazibwe F, Makanga B, Rubaire-Akiiki C, Ouma J, Kariuki H, Kabatereine N, et al. Ecology of  
496 *Biomphalaria* (Gastropoda: Planorbidae) in Lake Albert, Western Uganda: snail distributions,  
497 infection with schistosomes and temporal associations with environmental dynamics.  
498 *Hydrobiologia*. 2006;568:433–44.
- 499 31. Utzinger J, Tanner M. Microhabitat preferences of *Biomphalaria pfeifferi* and *Lymnaea natalensis*  
500 in a natural and a man-made habitat in Southeastern Tanzania. *Mem Inst Oswaldo Cruz*. 2000  
501 Jun;95(3):287–94.
- 502 32. Grimes JET, Croll D, Harrison WE, Utzinger J, Freeman MC, Templeton MR. The Relationship  
503 between Water, Sanitation and Schistosomiasis: A Systematic Review and Meta-analysis. *PLoS*  
504 *Negl Trop Dis*. 2014 Dec 4;8(12):e3296.
- 505 33. Freeman MC, Garn J V., Sclar GD, Boisson S, Medicott K, Alexander KT, et al. The impact of  
506 sanitation on infectious disease and nutritional status: A systematic review and meta-analysis. *Int*  
507 *J Hyg Environ Health*. 2017 Aug;220(6):928–49.
- 508 34. Kibira SPS, Ssempebwa JC, Ssenyonga R, Radloff S, Makumbi FE. Schistosomiasis infection in pre-  
509 school aged children in Uganda: a qualitative descriptive study to identify routes of exposure.  
510 *BMC Infect Dis*. 2019 Dec 14;19(1):165.
- 511 35. Stothard JR, Sousa-Figuereido JC, Betson M, Adriko M, Arinaitwe M, Rowell C, et al. *Schistosoma*  
512 *mansoni* Infections in Young Children: When Are Schistosome Antigens in Urine, Eggs in Stool and  
513 Antibodies to Eggs First Detectable? *PLoS Negl Trop Dis*. 2011 Jan 4;5(1):e938.
- 514 36. Fergus CA, Ozunga B, Okumu N, Parker M, Kamurari S, Allen T. Shifting the dynamics:  
515 implementation of locally driven, mixed-methods modelling to inform schistosomiasis control  
516 and elimination activities. *BMJ Glob Health*. 2022 Feb 2;7(2):e007113.

- 517 37. Kinawa M. Households' Latrine Status in Fishing Communities of Malongo and Jagusi Sub  
518 Counties, Mayuge District [MSc]. [Nkozi]: Uganda Martyrs University; 2018.
- 519 38. Opio S. Community perceptions and practices towards waste management and effects on water  
520 quality in landing sites along lake Albert: a case of Kitebere landing site, Kagadi district [MSc].  
521 [Kampala]: Kyambogo University; 2021.
- 522 39. Handzel T, Karanja D, Addiss D, Hightower A, Rosen D, Colley D, et al. Geographic distribution of  
523 schistosomiasis and soil-transmitted helminths in Western Kenya: implications for anthelmintic  
524 mass treatment. *Am J Trop Med Hyg.* 2003;69:318–23.
- 525 40. Lamberti O, Kabatereine NB, Tukahebwa EM, Chami GF. *Schistosoma mansoni* infection risk for  
526 school-aged children clusters within households and is modified by distance to freshwater  
527 bodies. *PLoS One.* 2021 Nov 4;16(11):e0258915.
- 528 41. Woodhall DM, Wiegand RE, Wellman M, Matey E, Abudho B, Karanja DMS, et al. Use of  
529 Geospatial Modeling to Predict *Schistosoma mansoni* Prevalence in Nyanza Province, Kenya. *PLoS*  
530 *One.* 2013 Aug 14;8(8):e71635.
- 531 42. De Moira AP, Fulford AJC, Kabatereine NB, Kazibwe F, Ouma JH, Dunne DW, et al.  
532 Microgeographical and tribal variations in water contact and *Schistosoma mansoni* exposure  
533 within a Ugandan fishing community. *Tropical Medicine and International Health.*  
534 2007;12(6):724–35.
- 535 43. Wiegand RE, Secor WE, Fleming FM, French MD, King CH, Montgomery SP, et al. Control and  
536 Elimination of Schistosomiasis as a Public Health Problem: Thresholds Fail to Differentiate  
537 Schistosomiasis Morbidity Prevalence in Children. *Open Forum Infect Dis.* 2021 Jul 1;8(7).  
538
- 539

## 540 **Figure Legends**

541 **Figure 1. Study Site.** Location of the two schools participating in the study in relation to  
542 Kampala, Hoima Town and Lake Albert. A: Buhirigi Primary, B: Kaiso Primary and C: Kigorobya  
543 Town where the FibroScHot trial facility for document and drug storage was situated.

544 **Figure 2. *Schistosoma mansoni* infection intensities.** The distribution of the infection intensities  
545 (violin plots) is shown for participants who had an infection detectable by parasitological method  
546 within the two schools, and for Buhirigi by year of examination. Solid lines across the violin plots  
547 show the median infection intensity, boxplots display the interquartile ranges and grey circles  
548 the outliers. A closed blue circle indicating the geometric mean and 95% confidence intervals are  
549 shown within the boxplots. The two grey dotted lines indicate the thresholds for moderate and  
550 heavy infections according to WHO definitions.

551 **Figure 3: Ways by which infants' faecal material were disposed of in Buhirigi and Kaiso**  
552 **communities.** Shown are the percentage of individuals reporting each way of faecal disposal  
553 from amongst those who answered "yes" to having children < 3 years. Only answers with >5% of  
554 respondents in either community are displayed, with other responses grouped as "other".

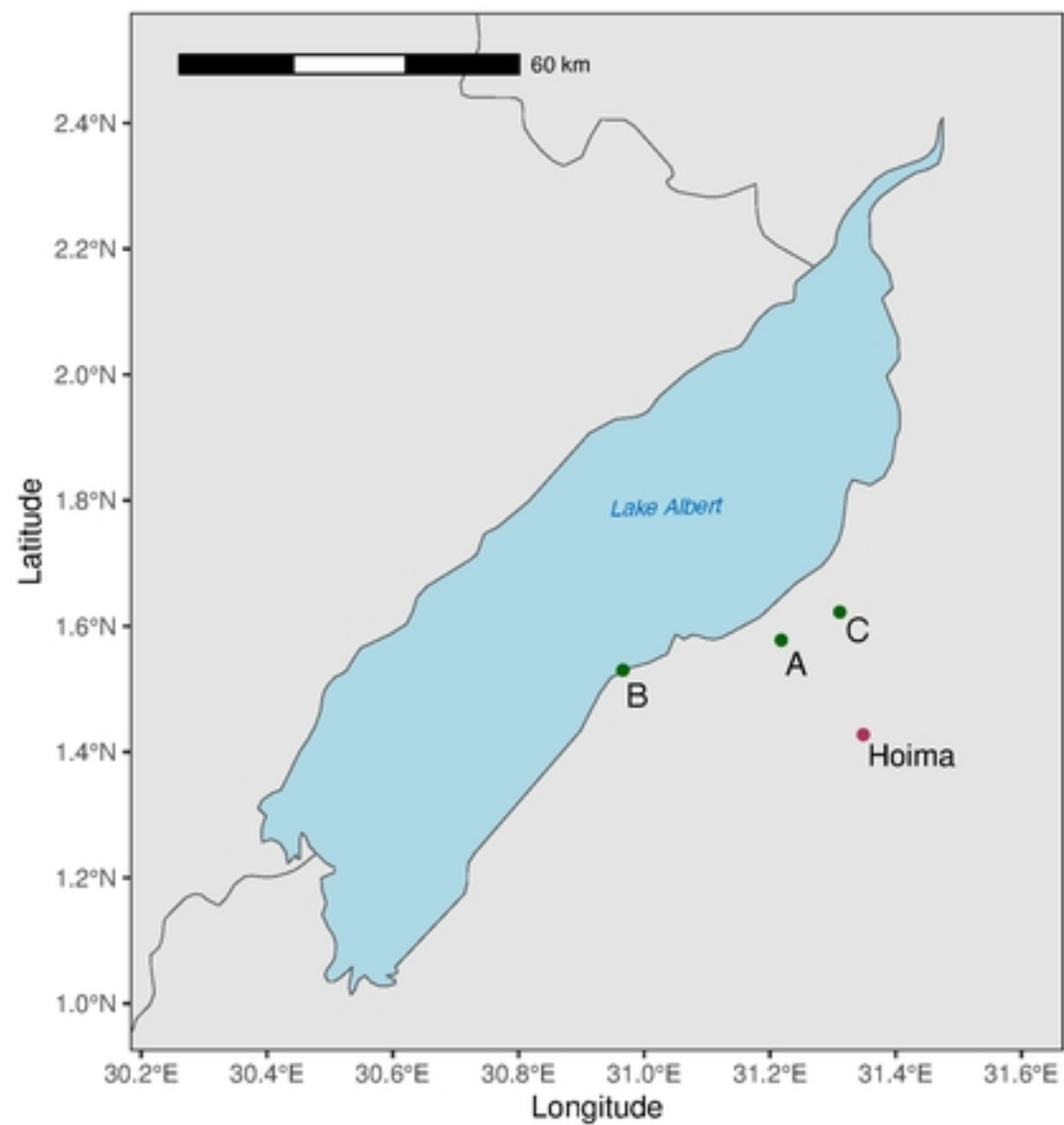
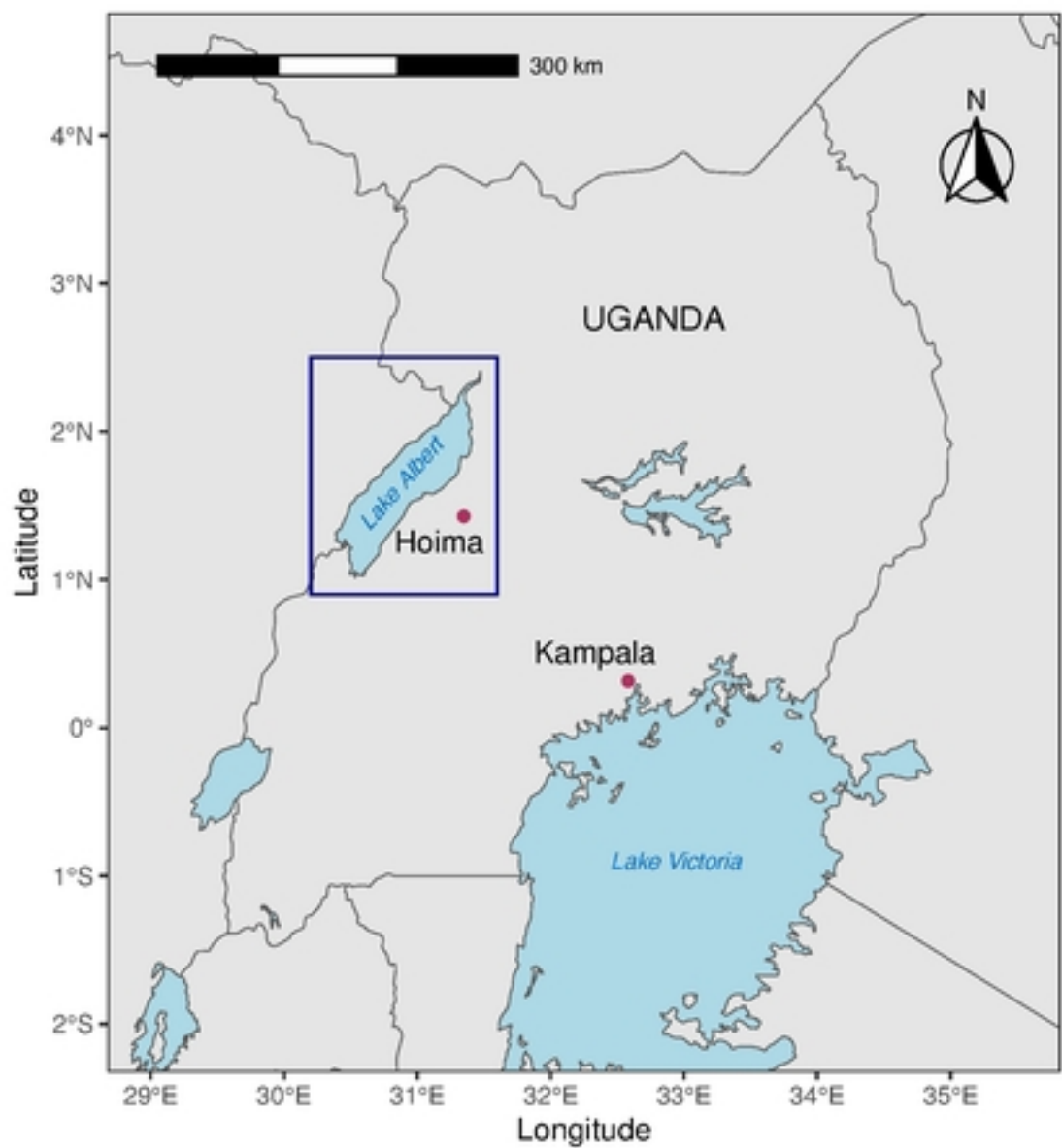


Figure 1

*S. mansoni* infection intensity (epg)

4000  
3000  
2000  
1000  
0

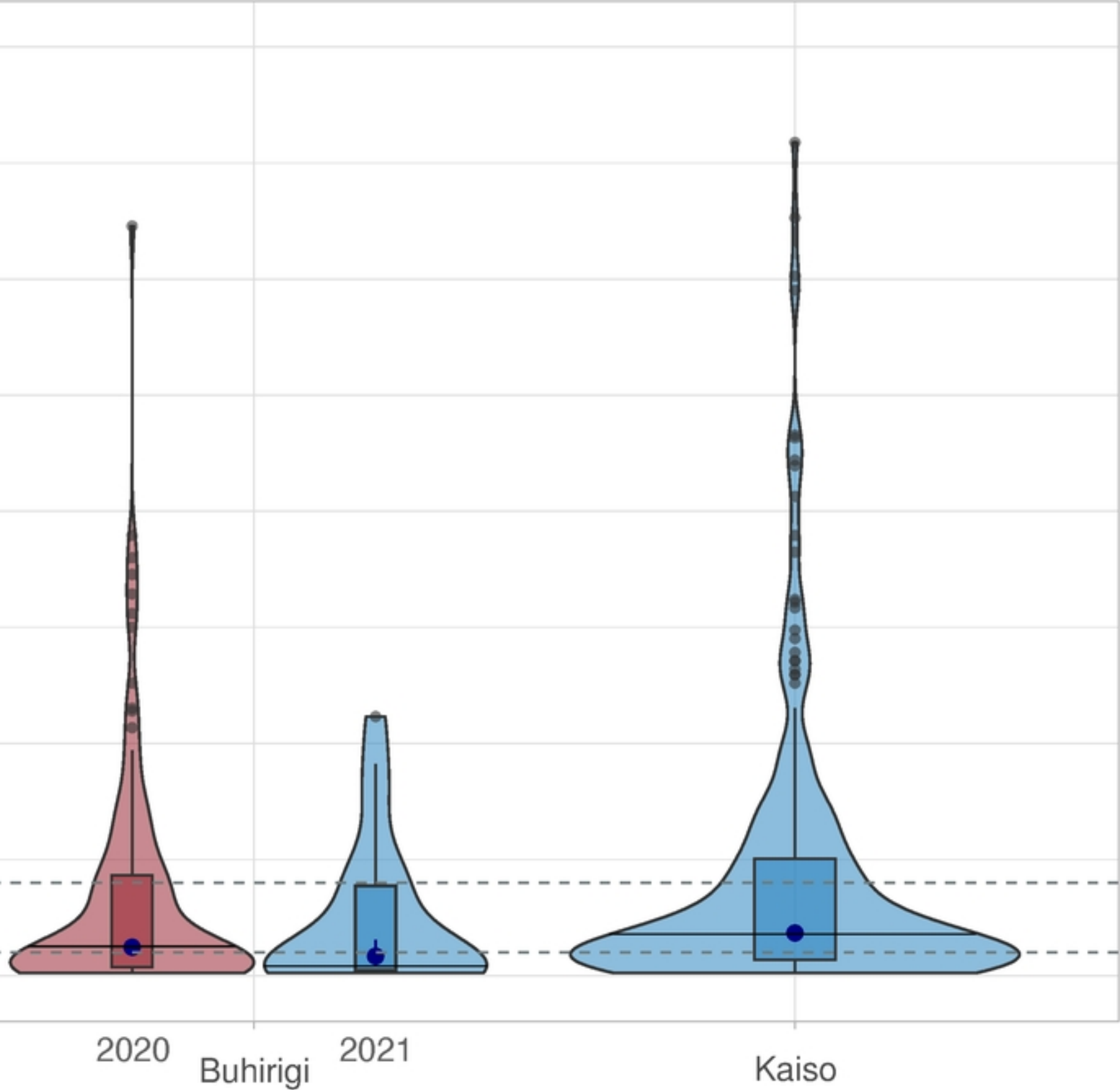


Figure 2

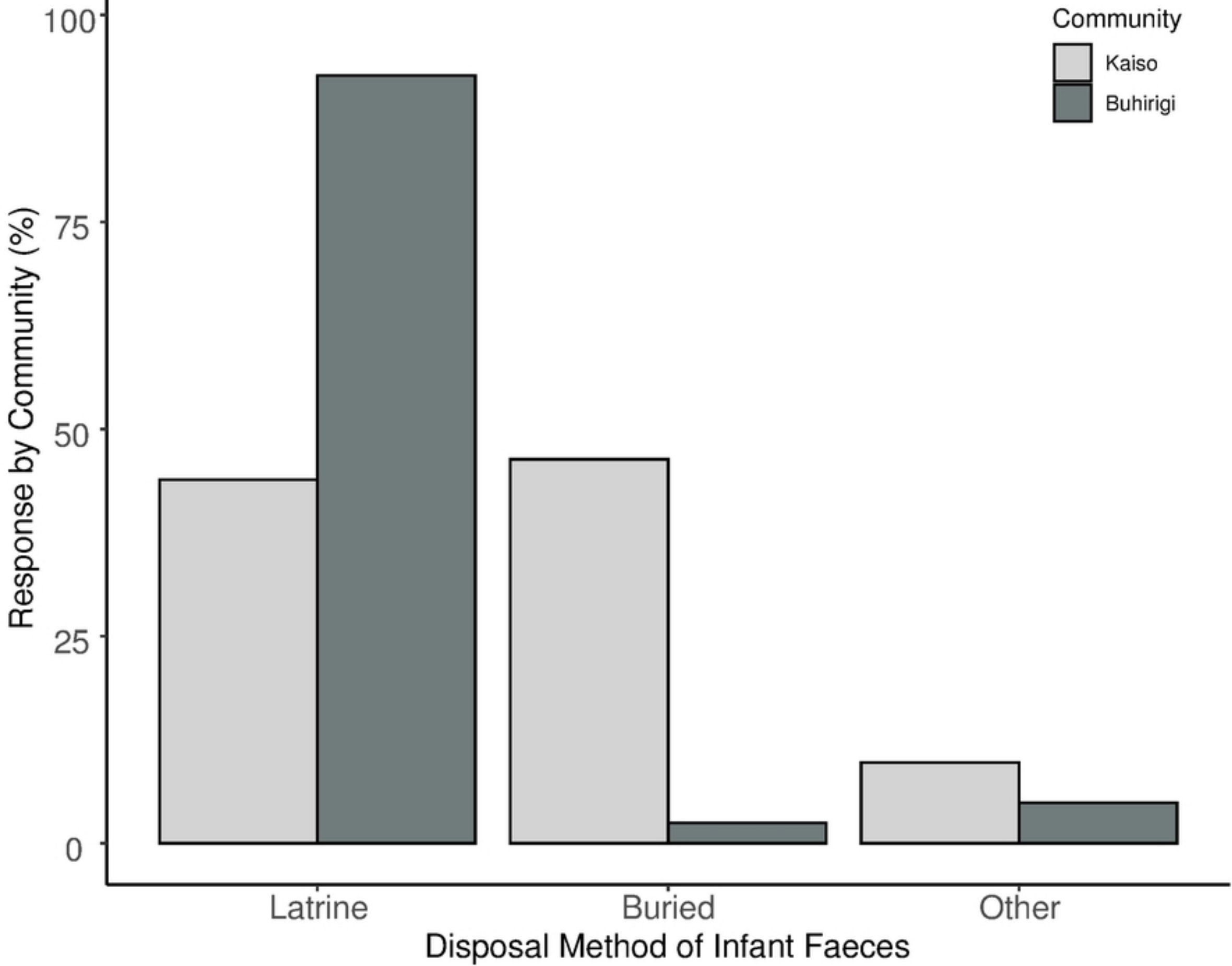


Figure3