

1 ***Novel multiplex tools in an epidemic panel improve prediction of RSV infection dynamics***
2 ***and disease burden – a RESPINOW analysis***

3

4 Manuela Harries^{1 *}, Carolina J. Klett-Tammen^{1 *}, Isti Rodiah¹, Alex Dulovic², Veronika K
5 Jaeger³, Jessica Krepel¹, Sebastian Contreras⁴, Katrin Maak¹, Patrick Marsall², Annette
6 Möller¹, Jana-Kristin Heise¹, Stefanie Castell¹, RESPINOW study group, Nicole Schneiderhan-
7 Marra², André Karch^{3§}, Berit Lange^{1,5§}

8 *shared first authorship

9 § shared last authorship

10 **Corresponding author:**

11 Manuela Harries
12 Helmholtz Centre for Infection Research
13 Department of Epidemiology
14 Inhoffenstraße 7
15 38124 Braunschweig
16 Germany
17 E-Mail: Manuela.Harries@helmholtz.de
18 Phone: +49(0)531-6181-3126

19

20 ¹ Helmholtz Centre for Infection Research, Department of Epidemiology, Braunschweig,
21 Germany

22 ² NMI Natural and Medical Sciences Institute at the University of Tübingen (NMI), Reutlingen,
23 Germany

24 ³ Institute of Epidemiology and Social Medicine, University of Münster, Münster, Germany

25 ⁴ Max Planck Institute for Dynamics and Self-Organization, Göttingen, Germany

26 ⁵ German Centre for Infection Research (DZIF), TI BBD, Braunschweig, Germany

27

28 **Abstract**

29 Respiratory Syncytial Virus (RSV) is one of the leading causes of morbidity and mortality
30 among infants and adult risk groups worldwide. Substantial case-underdetection and gaps in
31 the understanding of reinfection dynamics of RSV limit reliable projection estimates.

32 Here, we use a novel RSV multiplex serological assay in a population-based panel to estimate
33 season and age-specific probability of reinfection and combine it with sentinel and
34 notification data to parameterize a mathematical model tailored to project RSV dynamics in
35 Germany from 2020 to 2023.

36 Our reinfection estimates, based on a 20% post-F and a 45% N antibody increase in the assay
37 over consecutive periods, were 5·7% (95%CI: 4·7-6·9) from 2020 to 2022 and 12·7% (95%CI:
38 10·5-15·2) from 2022 to 2023 in adults. In 2021, 30-39 year olds had a higher risk of
39 reinfection, whereas in 2022, all but the 30-39 age group had an increased risk of
40 reinfection. This suggests age-differential infection acquisition in the two seasons, e.g. due
41 to still stronger public health measures in place in 2021 than in 2022.

42 Model-based projections that include the population-based reinfection estimations
43 predicted the onset and peak for the 23/24 RSV season better than those only based on
44 surveillance estimates.

45 Rapid, age-specific reinfection assessments and models incorporating this data will be critical
46 for understanding and predicting RSV dynamics, especially with changing post-pandemic
47 patterns and new prevention strategies e.g. monoclonal antibody.

48 Helmholtz Association, EU Horizon 2020 research and innovation program, Federal Ministry
49 of Education and Research, and German Research supported this work.

50 Introduction

51 Respiratory syncytial virus (RSV) is one of the leading causes of severe respiratory disease in
52 infants and adults^{1,2}. RSV causes only partial immunity, so that reinfections are an important
53 part of transmission dynamics^{3,4}. Typically, the primary infection in young children causes
54 severe disease, leading to an estimated 245,244 annual hospital cases in Europe, with most
55 of them being infants (under 1 years)⁵. Reinfections are typically not as severe. However,
56 among the elderly (60+), they led to approximately 470,000 hospitalizations and 33,000
57 deaths in high-income countries in 2019¹. Despite these high numbers, RSV has only recently
58 been categorized as a notifiable disease in the majority of EU/EEA countries⁶, e.g. since July
59 2023 in Germany⁷. While this will result in an increase in publicly accessible data, without
60 targeted efforts to correct systematic biases like health care seeking behavior, usability of
61 this data for dynamic modelling remains limited due to age- and season differential
62 underdetection⁸.

63 Changes in post-pandemic RSV patterns and the roll-out of new preventive strategies are
64 expected to substantially affect RSV dynamics in the upcoming years.

65 Prior the COVID-19 pandemic, RSV infections peaked in early January in many European
66 countries⁹. However, from 2020 to 2022, the dynamics of RSV infections and hospitalizations
67 shifted. This change was partly influenced by the implementation of non-pharmaceutical
68 interventions (NPIs), which impacted all respiratory pathogens¹⁰⁻¹³.

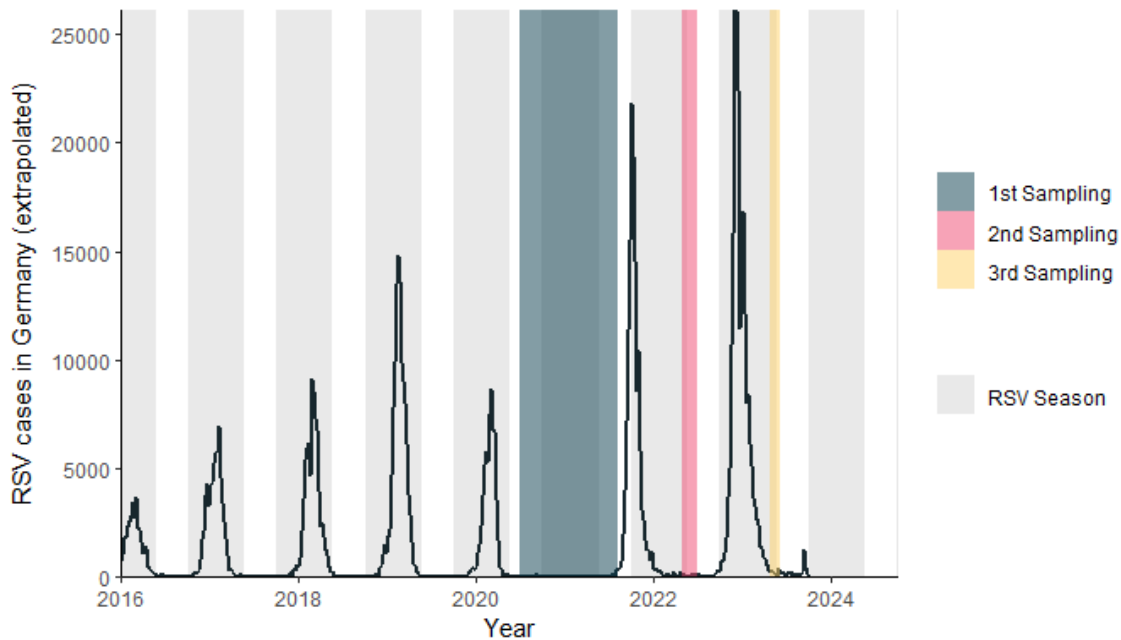
69 As novel prevention strategies two vaccines have been approved in Europe for the elderly
70 (GSK, RSVPreF3) and pregnant women (Pfizer, PF-06928316)^{14,15}; moreover, two monoclonal
71 antibodies are licensed for (preterm) newborns and infants (under 8 months). Real-world
72 evidence from the population-wide implementation of these prevention strategies shows
73 high potential for reducing disease burden¹⁶. As a consequence, several European countries
74 have defined implementation strategies¹⁷⁻¹⁹.

75 Current understanding of RSV transmission dynamics relies partly on seroprevalence
76 studies²⁰, which are often non-continuous and lack real-time and season-specific estimates.
77 This makes them insufficient for reliable age-group projections. More importantly,
78 transmission dynamics after early childhood and the effects of prior infections on secondary
79 infections are mostly unknown²¹. In this study, we used data from an RSV multiplex
80 serological assay in an infectious disease focussed population-based cohort (MuSPAD) to
81 estimate adult age and season-specific reinfection probability. We combined this
82 information with sentinel and RSV notification datasets to improve predictions from a
83 mathematical model for RSV trends in Germany.

84 **Methods**

85 **Study design**

86 We re-invited MuSPAD (Multilocal and Serial Prevalence Study of Antibodies against
87 Infectious Diseases in Germany²²) participants from three (June-July 2022) and four (April-
88 June 2023) regions²³ (fig S1). Using a multiplex-based serological assay, we measured RSV
89 IgG antibody titres changes to RSV post-F protein from 2020 to 2023. The antigen-derived
90 9-plex immunoassay measures antibody titres towards post-F, Nucleoprotein (N), G proteins
91 and subtype A or subtype B G antibodies that allowed classification as a prior infection with
92 either subtype A or subtype B²⁴. We evaluated different cut offs for reinfection definition
93 (post-F Δ 20-40%). We measured antibody titres at three intervals: baseline 2020/21, June-
94 July 2022 and April-June 2023 representing RSV seasons 2021/2022 and 2022/2023 (figure
95 1).



96

97 Figure 1: Weekly extrapolated numbers of confirmed RSV cases (notifications of RSV was limited to the state of
98 Saxony) in Germany (light grey area RSV season CW40-20) from 2016-2023 including sampling periods of the
99 MuSPAD participants (1st sampling 2020/21 n= 32,561(dark grey shaded area), 2nd sampling 2022 n=1,754 (red
100 shaded area), 3rd sampling 2023 n=2,832 (yellow shaded area). Enrolment of 836 participants with three
101 sampling points.

102 We collected data on age, sex, household composition, sociodemographic, and health
103 factors. Prior SARS-CoV-2 infection was detected by IgG antibodies against the Nucleocapsid
104 (NC) antigen.

105 We provided a description of the study population and analysed Δ titre changes of two
106 proteins (cut off value of 20% post-F and additionally 45% N-protein for quality assurance) to
107 identify RSV reinfections in age groups (18-29, 30-39, 40-49, 50-59, 60-69, 70-79 and 80+
108 years). We assume Δ 2020-2022 represents the 2021/22 RSV season and Δ 2022-2023 the
109 2022/23 RSV season, since few cases were reported between 2020 and 2021.

110 We used logistic regression to explore how age, children under 14 in the household, and
111 SARS-CoV-2 serology affect reinfection risk each season. We adjusted for household size,
112 SARS-CoV-2 vaccination status, age, chronic lung disease, contacts, and children under 14
113 living in the household, study region, and sex/gender. Additional variables were based on
114 peer-reviewed Directed Acyclic Graphs (Supplement DAG). Adjusted relative risks (RR) and
115 their 95% confidence intervals (CIs) were computed from the information provided in the
116 respective logistic model fits (Supplement).

117 We determined the probability of reinfection for each age group independently for 2021-
118 2022 and 2022-2023. This probability is calculated using the two fitted logistic regression
119 models. The statistical analyses were performed using R Version 4.0.2 and STATA/IC 14.2.

120 **Additional data sources**

121 We used publicly accessible data. Details are in supplement, but in short for RSV
122 notifications (2017-2023) we used notification data from Saxony from the public database
123 on reportable diseases (SurvStat@RKI). We extrapolated Saxony's age-specific data using
124 national population statistics to estimate figures for Germany. Country-wide notification of
125 RSV cases was only fully implemented in Germany in 2023.

126 We extracted weekly data on acute respiratory infections (ARI) and influenza-like illness (ILI)
127 from 2016 to 2023 using two sources: Arbeitsgemeinschaft Influenza (AGI) and GrippeWeb.
128 AGI is a sentinel surveillance system testing for various respiratory infections, and
129 GrippeWeb is a citizen science platform. GrippeWeb users report regularly online ARI or ILI
130 symptoms. We applied the positive RSV proportion from the AGI to the GrippeWeb users to
131 estimate RSV infections for each age group, and projected this for Germany. This dataset is
132 used in the estimation of age- and year specific underdetection factors.

133 For hospitalizations we used the RSV proportion of the hospital sentinel ICOSARI (ICD-10
134 code-based hospital surveillance of severe acute respiratory infections (SARI)) surveillance
135 from the AGI. We extrapolated these to nationwide estimates to generate the RSV
136 hospitalization rates for Germany.

137 **Age-specific SEIRS model**

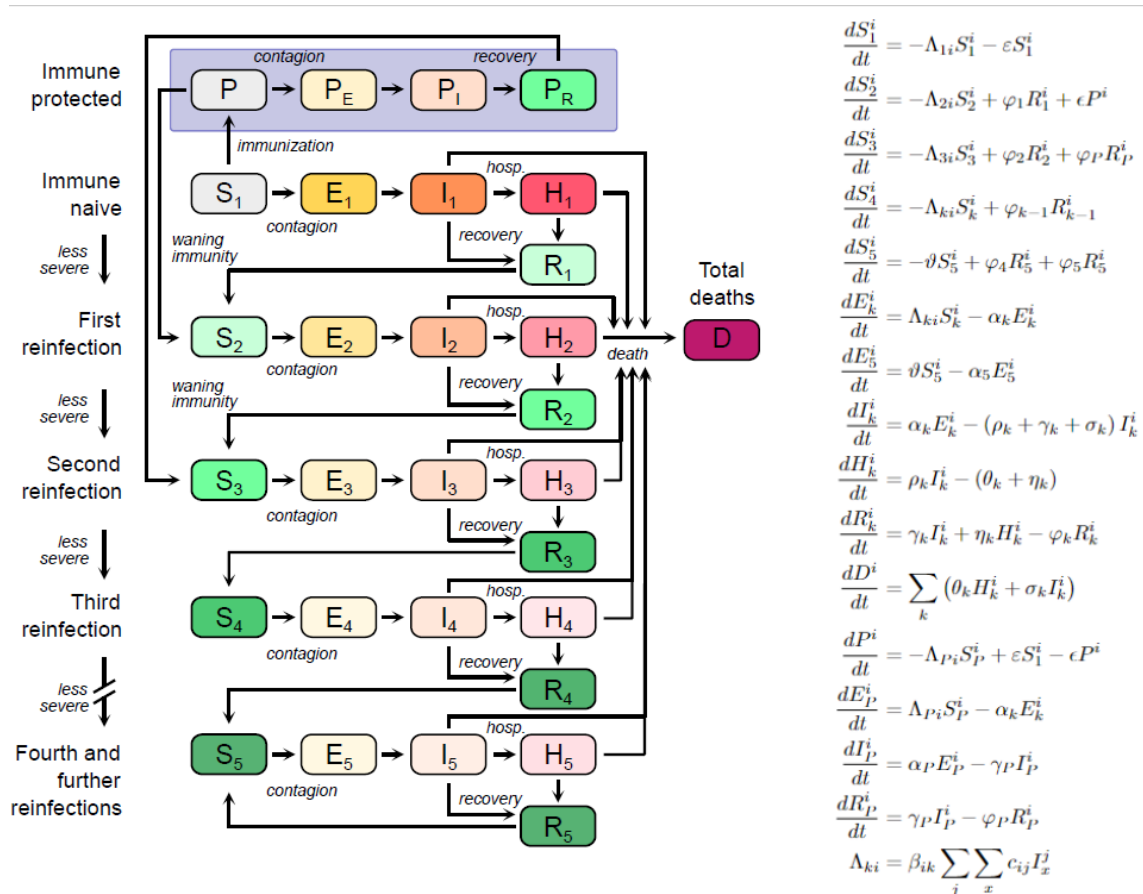
138 We specified an age-specific ODE (Ordinary Differential Equation) compartmental model to
139 study the dynamics of RSV. The model incorporates epidemiological parameters, including
140 age and sex/gender. We calibrated our model parameters to the measured age-specific titre
141 changes and test different assumptions about the number of susceptible children. We
142 considered the following compartments: immune protected (e.g. maternal or vaccinated),
143 susceptible individuals (subdivided in classes accounting for reinfection potential), infected
144 but not yet infectious (exposed) individuals, infectious, hospitalized, recovered, and dead.
145 The model assumes repeated RSV reinfections increase partial immunity. In contrast to full
146 immunity, partial immunity allows reinfection to occur at a reduced rate. We assumed that
147 susceptible under 15 years have had up to three prior RSV infections. Those above 15 years
148 are assumed to be susceptible individuals with four or more previous RSV infections. Table 1
149 outlines our assumptions of susceptibility levels to reinfection, ranging from 0% to 80%
150 protection against reinfection.

151 Table 1: Assumption of estimated immunity level for SEIR (Susceptible-Exposed-Infected-
152 Recovered) Model

Compartment	Immunity
S_1 (susceptible)	No protection
S_2	25% protection against reinfection in that year
S_3	50% protection against reinfection in that year
S_4	75% protection against reinfection in that year
S_5	80% protection against reinfection in that year but for persons older 15 years
P (protection, e.g. vaccinated/maternal/passive immunity)	50% protection against reinfection in that year

153

154 We estimated the proportion of reinfections per age group in the model using publicly
155 available data from notifications, AGI, and SARI. We formalized the protection compartment
156 only for those 0-1 year old due to maternal/passive immunity as immunisation strategies
157 with vaccines and monoclonal antibodies had not yet been implemented in Germany up to
158 2023. Figure 2 illustrates the model structure and differential equations (table S1).



159

160 *Figure 2: Structure and formula of the models. The compartments are classified either as susceptible (S),*
161 *exposed (E), infectious (I), hospitalized (H), recovered (R), dead (D), protected (P: vaccination /passive*
162 *protection), exposed after protection (P_E), infectious after protection (P_I), recovered after protection (P_R). The*
163 *formula includes the following components: c: Social contact rate; β: The risk of infection; α: The inverse of the*
164 *incubation period (5 days); ρ: The proportion of infected individuals requiring hospitalization; γ: The inverse of the*
165 *time an infected individual recovers (7 days); η: The inverse of the time a hospitalized patient recovers (4*
166 *days); ε: The proportion of susceptible individuals gaining full protection; ϖ: The probability of protected*
167 *individuals losing full immunity; φ: The probability of recovered individuals losing full immunity; σ: The*
168 *proportion of infected individuals who will die; θ: The proportion of hospitalized patients who will die; ϖ: The*
169 *proportion of reinfection in adults (table S1). The detailed equations are provided in the Supplement.*
170

171 We implemented this model with three RSV datasets (figure 3). For each dataset, parameter
172 fitting using an ordinary least squares methodology was two-staged. First, the model was
173 fitted to case data. The parameters obtained here were used as initial guess for the fit to
174 hospitalization data.

175 1. RSV notification model

176 The model was calibrated with extrapolated notification case data, yielding time-dependent
177 infection parameters and reinfection proportions stratified by age groups. Subsequently, the
178 model was fitted to extrapolated SARI hospital data of RSV specific hospitalizations to derive
179 the corresponding hospitalization parameters from 2016 to 2022.

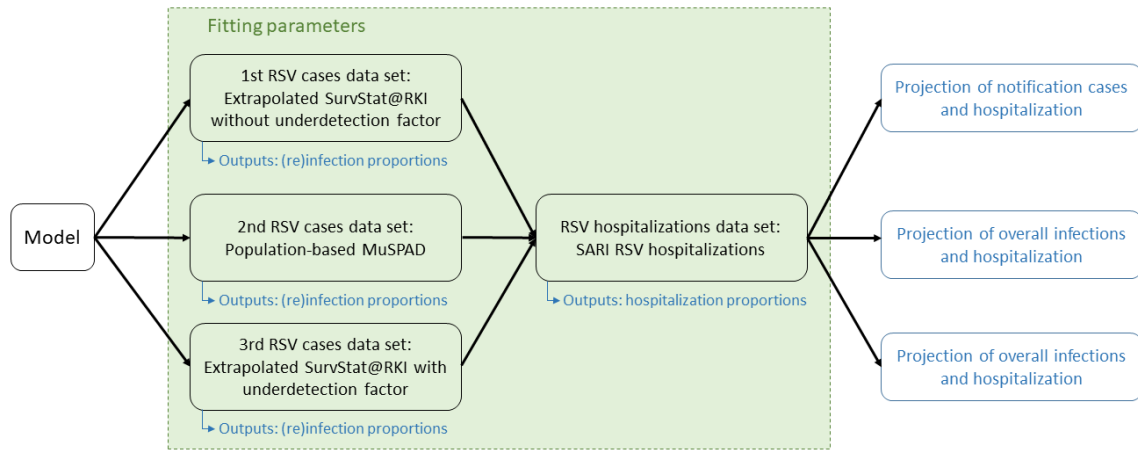
180 2. RSV population-based model

181 The population-based model was parameterized using pre-pandemic RSV notification data,
182 with results informing assumptions regarding the proportion of susceptible children and the
183 incidence of reinfection in 2021 and 2022. The revised proportion of reinfection for adults
184 was performed according to MuSPAD data for simulation parameters. We calibrated the
185 model using the extrapolated SARI RSV hospitalization data to derive the parameters related
186 to hospitalization.

187 3. RSV notification model incorporating underreporting factor

188 For the notification model we incorporated the data with an age-specific underreporting
189 factor. We calculated underreporting ratios by dividing the extrapolated notification
190 numbers with our estimated case numbers for each age group (Supplement Calculation).

191 Using the same methodology for model fitting, we estimated model-based proportions of
192 reinfections across age groups to Germany. We derived the hospitalization parameters by
193 fitting the model to the SARI RSV hospitalizations.



194

195 *Figure 3: Model simulation process incorporates the integration of three RSV cases datasets and a single*
196 *hospitalization dataset. The outcomes derived from the model are presented herein (blue).*
197

198 Results

199 We collected from three respectively four study sites 13,861 (Aachen, Magdeburg, Hannover
200 and Greifswald 2021), 3,034 (Aachen, Magdeburg, Hannover 2022) and 2,832 (Aachen,
201 Magdeburg, Hannover and Greifswald 2023) blood samples. Among these, there was an
202 overlap of 1,754 individuals with samples from both 2020/21 and 2022, and 836 individuals
203 with samples from 2020/21, 2022, and 2023. The median age was 55 years (IQR 40-67) in
204 2022 (2023: 56 year IQR 41-68) and 60% (2023: 61%) were female (table 2). Among the
205 participants who experienced reinfection in 2021/22, 40% (40/100) have had a previous
206 COVID-19. Subtype analysis using multiplex serology showed that among the 106
207 participants reinfected in 2023, of whom 11 (10.4%) were subtype A, 55 (51.9%) subtype B,
208 and 40 (37.7%) were unclear.

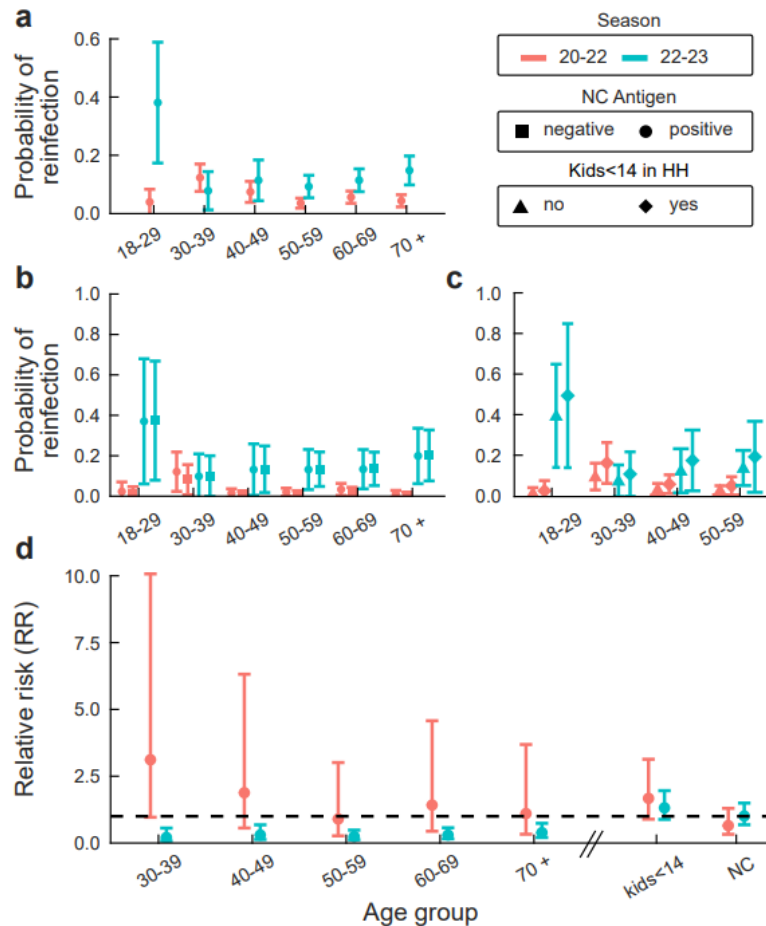
209 Table 2: MuSPAD participant characteristics stratified by RSV reinfection status; sampling in
 210 season Δ 2021/2022 and Δ 2022/2023; Reinfection is defined as a titre increase of 20% in
 211 post-F-protein and 45% in N-protein between two sampling points (full overview table S1)

	Δ 2020/21-2022		Δ 2022-2023	
	Overall with two sampling points	Reinfected	Overall with three sampling points	Reinfected
Characteristics (total n)	N=1,754	N=100 (5.7%, 95% CI: 4.7-6.9)	N=836	N=106 (12.7%, 95% CI: 10.5-15.2)
Sex				
female	1,050 (59.9%)	53 (5.1 %)	511 (61.1%)	62 (12.1%)
male	704 (40.1%)	47 (6.7%)	325 (38.9%)	44 (13.5%)
Age (age in 2022)				
18-29	76 (4.3%)	<6 (3.0%)	23 (2.8%)	9 (39.1%)
30-39	188 (10.7%)	23 (12.2%)	67 (8.0%)	<6 (4.7%)
40-49	202 (11.5%)	15 (7.4%)	87 (10.4%)	9 (10.3%)
50-59	451 (25.7%)	16 (3.6%)	231 (27.6%)	25(10.8%)
60-69	467 (26.6%)	27 (5.8%)	254 (30.8%)	29 (11.4%)
70-79	278 (15.9%)	13 (4.7%)	140 (16.8%)	23 (16.4%)
80+	92 (5.3%)	<6 (3.0%)	34 (4.1%)	6 (17.6%)
Self-reported current comorbidities				
Cancer	27 (1.5%)	<6 (1.0%)	12 (1.5%)	<6 (0.1%)
Cardiovascular disease	123 (7.0%)	<6 (5.0%)	66 (7.9%)	10 (15.2%)
Diabetes Type I & II	86 (5.8%)	<6 (5.0%)	42 (5.0%)	<6 (0.1%)
Hypertension	444 (25.3%)	19 (4.8%)	238 (28.5%)	32 (13.5%)
Immunodeficiency disease	82 (4.7%)	<6 (4.0%)	44 (5.3%)	6 (13.6%)
Chronic lung disease	120 (6.8%)	6 (6.0%)	52 (6.2%)	9 (17.3%)
Household with children under 14				
No	1,135 (65.0%)	54 (4.8%)	652 (78.0%)	117 (17.9%)
Yes	247 (14.1%)	22 (8.9%)	71 (8.5%)	14 (19.7%)
SARS-CoV-2 Nucleocapsid detection(prior infection)				
negative	1,125 (64.1%)	60 (5.3%)	198 (23.7%)	23 (11.6%)
positive	629 (35.9%)	40 (6.4%)	623 (74.5%)	81 (13.0%)
Household (HH) size				
Median number of HH members (IQR)	2 (2-3)	2 (2-3)	2 (2-3)	2 (2-2)
Household and Non-household contacts				
Median contact number (IQR)	5 (2-9)	6 (3-13)	4 (1-8)	5 (1-10)

212

213 RSV Reinfection by age groups

214 We use three adjustment sets accounting for prior SARS-CoV-2 infection (NC), children <14
215 years in household and age. The probability of reinfection is higher for all age groups in
216 season 2022-23 compared to 2021-22 (figure 4). Within season 2022-23, the youngest age
217 group shows the highest probability, followed by the oldest age group (figure 4a). Predicted
218 probabilities for positive and negative SARS-CoV-2 NC antibody responses remain unchanged
219 within the age groups (figure 3b). Having children under 14 in the household increases the
220 predicted probability of reinfection for the 2022/23 season (figure 4c). The age group 30-39
221 years exhibited a higher adjusted risk ratio (aRR; Supplement DAG) during 2021-2022 season
222 (aRR: 3.11 95%CI 0.96-10.07) compared to 2022-2023 season (aRR: 0.21 95%CI 0.08-0.56)
223 (figure 4d, table S2).



224

225 *Figure 4:* a) Predicted probability of reinfection over age groups regarding RSV season 2020/21-2022 (red dots)
226 and 2022-2023 (blue dots; upper panel); as b) exposure SARS-CoV-2 prior infection (Nucleocapsid (NC); positive
227 NC=circle and negative NC=square; middle left panel) and c) exposure children under 14 years living in the
228 household (HH) no=triangle and yes=diamante; middle right panel) based on three different models and their
229 adjustment sets. d) Adjusted relative risk (RR=1 (black dashed line; bottom panel) for adjustment set see
230 Supplement DAG)

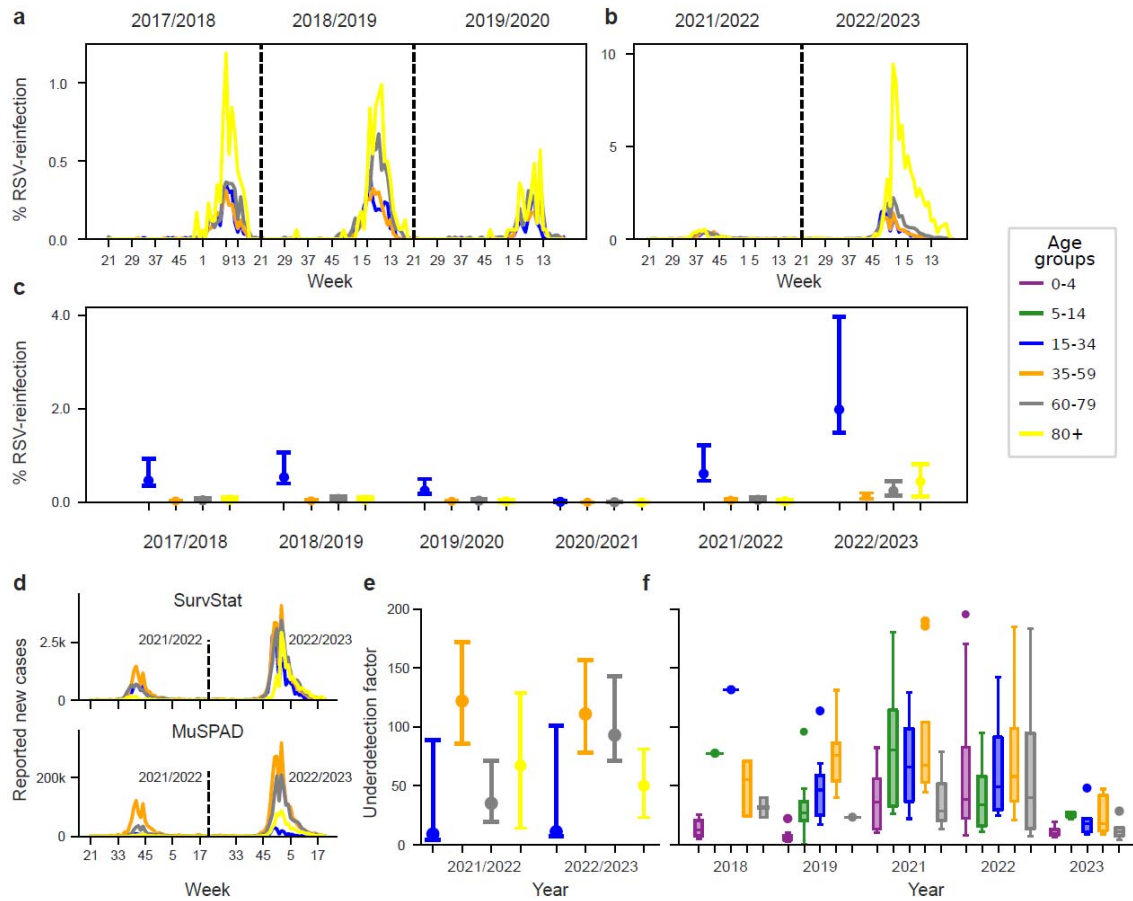
231 The number of household contacts (figure S2) increased the likelihood of having a
232 reinfection in 2020/21-2022 (OR 4.22; 95%CI 0.61-22.20), but not in the 2022/2023 season.
233 The number of non-household contacts did not have an effect on the odds ratios (OR 0.98;
234 95%CI 0.89-1.03).

235 **Model-based RSV reinfection proportions**

236 We fitted the parameters of our model for RSV using extrapolated data for weekly reports in
237 Germany. With this we estimated the weekly RSV reinfection proportions for pre- and post-
238 pandemic seasons by dividing the total infections predicted by our model by the overall
239 population for each season. Model-based reinfection estimates were consistently lower than
240 population-study based reinfection estimates. In pre-pandemic seasons, the pattern and
241 proportion of RSV reinfections in each age group were similar, ranging from 0% to 1.2%
242 (figure 5a). In the 2021/22 season, there was a drop in reinfections, while 2022/23 we saw a
243 sharp increase to 10% in the oldest age group (figure 5b). The mean trends on RSV
244 reinfection consistently mark the importance of the 15-34 age group, leading the dynamics
245 (figure 5c).

246 By comparing the proportion of RSV reinfection from the MuSPAD data and the estimated
247 new notification cases based on SurvStat@RKI, we calculated an underdetection factor for
248 adult RSV reinfection by adult age group for seasons 2021/22 and 2022/23 (figure 5e), with
249 high underdetection seen in the 15-34 age group. T (figure 5f).

It is made available under a [CC-BY-NC-ND 4.0 International license](https://creativecommons.org/licenses/by-nc-nd/4.0/).



250

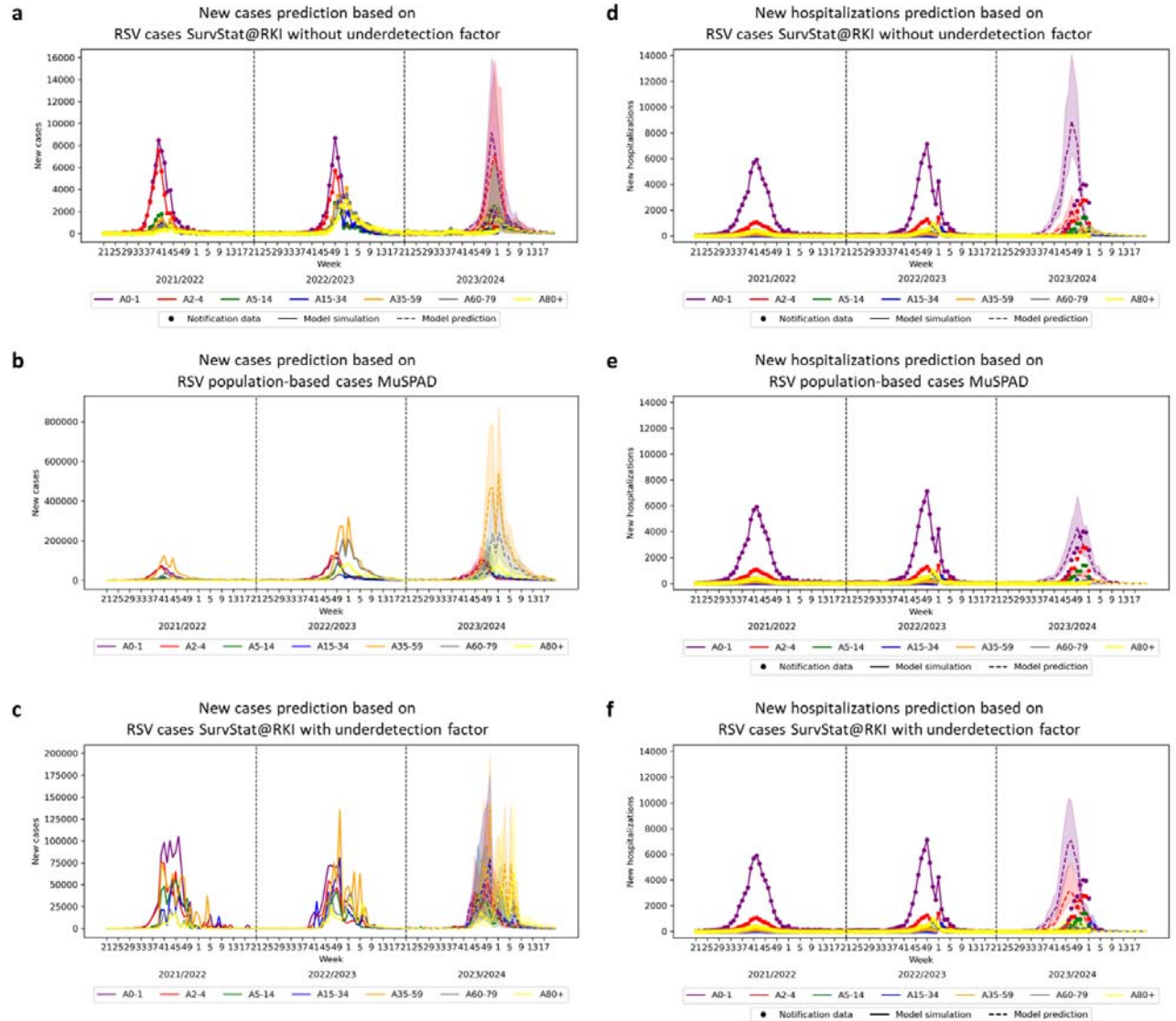
251 *Figure 5: Estimated and extrapolated weekly proportion of RSV reinfection by age group based on*
252 *SurvStat@RKI data over calendar weeks of (a) 2017-2020 and (b) 2021-2023. (c) Estimated proportion of RSV*
253 *reinfection extrapolated by age group based on SurvStat@RKI data from 2017-2023. (d) Estimated RSV*
254 *infections by age group based on SurvStat@RKI data and population-based MuSPAD data for the seasons*
255 *2021/2022 and 2022/2023 by age group and calendar week. Please be aware of the different scales of the y-*
256 *axis. (e) Underdetection factor for RSV reinfection by age group, estimated by comparing the RSV reinfections*
257 *in MuSPAD with SurvStat@RKI. (f) Underdetection factor of extrapolated reported cases, defined by calculated*
258 *cases using GrippeWeb and ARI surveillance stratified by age group over the 2018-2023. Unexplained outliers*
259 *were deleted to ensure validity.*

260 | [Projection of RSV cases and hospitalizations](#)

261 Using SurvStat@RKI data from only Saxony without an underdetection factor, we predicted
262 extrapolated RSV cases for 2023/2024 (figure 6a). We also used population-based data
263 (figure 6b) and SurvStat@RKI data with an estimated underdetection factor (figure 6c) for
264 overall predictions. Although the onset matches previous predictions, predicted cases,
265 except for those 80+, are higher due to the underdetection factor in population-based data.

266 We predicted new RSV hospitalizations using SARI hospitalization data and three sources:
267 SurvStat@RKI without underdetection factor (figure 6d), population-based (MuSPAD (figure
268 6e), and SurvStat@RKI with underdetection factor (figure 6f). The peaks in RSV
269 hospitalizations are predicted from week 45 to 49 for season 2022/23 and 2023/24. The
270 model with population-based data predicts fewer new RSV hospitalizations than
271 SurvStat@RKI data, regardless of the underdetection factor. The inclusion of the
272 underdetection factor in SurvStat@RKI data shows higher hospitalization numbers,
273 especially in the 2-4 years age group, compared to data without it (figure 6d; figure 6f).
274 However, for the 0-1 year age group, the peak in new RSV hospitalizations is slightly lower
275 with underdetection than without it.

276 Regarding the prediction of new hospitalizations for the 2023/2024 season, there is a peak
277 delay of about four weeks. Overall the prediction using population-based reinfection
278 estimates is closer in all age-groups to the actual trajectory of cases than the surveillance
279 based predictions. In the 0-1 year age group, the peak predictions in the MuSPAD data
280 (n=4,326) is almost as close as the absolute numbers seen in the SARI RSV hospitalization
281 data (n=3,994). In addition, when compared to the previous two seasons, there was a
282 notable increase in the number of RSV hospitalizations for children aged 2-4 years. The peak
283 predictions in the SurvStat@RKI data with an underdetection factor of 2-4 years of age is
284 nearly the same as the absolute numbers seen in the SARI RSV hospitalization data.



285

286 Figure 6: (a) RSV reported (points), model simulated (solid line) and predicted (dashed line) new cases by age
 287 group based on SurvStat@RKI data **without** underdetection factor and 95%CI (shaded area). (b) RSV model
 288 simulated (solid line) and predicted (dashed line) new cases by age group based on MuSPAD data with 95%CI
 289 (shaded area). (c) RSV model simulated (solid line) and predicted (dashed line) new cases for 2023/2024 by age
 290 group based on SurvStat@RKI **with** underdetection factor from sentinel data with 95%CI (shaded area). (d)
 291 Prediction (points) of new RSV hospitalizations for 2023/2024 by age group based on infected cases
 292 SurvStat@RKI data **without** underdetection. (e) Prediction of new RSV hospitalizations for 2023/2024 by age
 293 group based on MuSPAD data. (f) Prediction of new RSV hospitalizations for 2023/2024 by age group based on
 294 from SurvStat@RKI data **with** underdetection factor from sentinel (AGI and GrippeWeb) data.
 295

296 Discussion

297 In this work, we used longitudinal serological population-based MuSPAD data and publicly
 298 available sentinel and notification data to parametrize an RSV ODE model to project the RSV
 299 dynamics in Germany for the 2023/24 season. We published these projections in a common
 300 statement by the modelling network for severe infectious diseases MONID in 2023²⁵, and

301 evaluated their accuracy here, retrospectively. We show a qualitatively adequate forecast
302 with minor deviations from the actual season, in particular using the reinfection estimators
303 provided by serological indicators from the population-based cohort. This lays a necessary
304 foundation for future efforts to model RSV, including with incoming prevention strategies
305 and underscores the necessity of using estimates from population cohorts combined with
306 population-scalable multiplex serological assays.

307 Our results indicate that the dynamics of RSV reinfections in the adult population are season
308 specific. While in the 2021/22 season reinfection estimates were lower in most age groups
309 apart from the 30-39 year olds than in pre-pandemic periods they were higher in the
310 2022/23 season²⁶. Young adults (30-39 years) were more likely to be reinfected in 2021/22,
311 and there was a tendency for an association of reinfection risk with having children (<14y) in
312 the household were evident from 2020-2022, but not during 2022-2023.

313 Population-based reinfection estimates for 2021/2022 and 2022/2023 respiratory season
314 help investigate post-pandemic trends, which are not obvious from sentinel and notification
315 data in Germany. Cai et al.²⁷ have described the characteristics of these seasons for children,
316 highlighting how they differ from average pre-pandemic seasons. They show that in both
317 seasons hospitalizations for children over two were 3-4 times higher than pre-pandemic
318 levels (1.5-2 times in those <2 years). Our cohort does not include children. However, the
319 higher number of affected older children align with our finding of a higher-than-usual
320 proportion of reinfected adults aged of 30-39 who are likely the parents of these children.
321 This reflects the dynamic effects of an increased infection frequency in the population. In
322 addition to different RSV subtypes being responsible for the seasons (A in 21/22 and B in
323 22/23), this suggests differential infection acquisition in the two seasons. In the 21/22
324 season infections were more likely acquired via children in the household whereas in the
325 22/23 season this was more likely via non-household contacts or adult family members. This
326 agrees well with our findings that in the 21/22 season the number of household contacts
327 was associated with reinfection risk.

328 Comparing reinfection estimates from population-based data with surveillance data we
329 found a mean underdetection factor of 33.8 for RSV infection in the notification data in
330 Germany from 2018 and 2023, although we used a conservative approach to minimise false
331 positive classification, meaning that the reinfection might be even higher. Expectedly, in line
332 with disease severity risk, we found underdetection to be especially high in the 35-59 and
333 15-34 age groups.

334 Our ODE model effectively captured dynamic patterns in previous seasons and, when
335 combined with population-based surveillance data, predicted for 2023/2024 a similar

336 pattern as in 2022. Interestingly, the simulation taking into account population-based
337 estimates also yielded results closer to actual dynamics in those age-groups (the children)
338 where no population-based estimates were available. While estimates for this age group
339 would enhance accuracy, this emphasizes the need for estimates of age groups not typically
340 at risk for severe disease²⁸. We integrated protection compartments to our model able to
341 mirror the prevention strategies currently being implemented. To assess these a thorough
342 comprehension of the current RSV dynamics at the population level is necessary.

343 Our study has limitations. First, although we demonstrated the robustness of our results
344 with regard to the thresholds in post-F and N-protein antibodies there is no gold-standard
345 available for this yet. Although a less stringent cut-off has been used in previous studies in
346 specific sub-groups²⁹, our sensitivity analyses showed more reliable results with this more
347 conservative approach. The duration between infection and the evaluation of the post-F-
348 protein varied among the participants. Here, due to a lack of previous evidence we did not
349 include assumptions for titre waning in our calculations, although this data was included as
350 part of the RSV immunoassay validation²⁴. We also did not include assumptions for the
351 proportion of same-season reinfections and did not investigate those persons (4) with
352 serological indication of reinfection in both season further. And while we found no relation
353 between previous SARS-CoV-2 infection and RSV reinfection, we did not assess disease
354 severity, so our findings do not contradict findings of other groups showing a higher risk of
355 notified or clinically apparent RSV infections in those with (recent) SARS-CoV-2 infection.

356 The nationwide mandatory RSV reporting system in Germany from 2023 onwards will have
357 similar detection biases as the previous system in Saxony. Physicians due to the lack of a
358 therapeutic consequence do not normally test patients with mild to moderate ARI or ILI
359 symptoms. Also, not everyone with such symptoms visits a physician, and not all RSV cases
360 show symptoms. Therefore, our approach combining the surveillance system with
361 population-based and additional data sources aids in monitoring the effectiveness of
362 prevention strategies. This would be in particular beneficial in combination with in-depth ARI
363 sentinel systems from day-cares and paediatricians of single federal states, as already in
364 place in some European regions³⁰. With post-pandemic dynamic changes and incoming
365 prevention strategies, appropriate capacities must now be established to provide model-
366 usable data for accurate projections, build up models able to integrate these data and with
367 that evaluate continuously the effectiveness of prevention strategies so that these may be
368 adapted. We plan to integrate our 2023/24 data projections into MONID and publish them
369 on www.respinow.de as soon as possible.

370 **Acknowledgements:**

371 We sincerely thank all the participants from Aachen, Hannover, Magdeburg and Greifswald
372 for endorsing our study. We are grateful to Kim Busch and Sabine Pape for answering the
373 participant's questions and concerns. We thank our colleagues in Osnabrück laboratories for
374 the laboratory work. We thank Daniela Gornyk and Pilar Hernandez to have built the initial
375 study population (MuSPAD), and Julia Ortmann and Max Hassenstein for the initial data
376 cleaning, and Daniel Alexander Schulze for study assistance and the whole MuSPAD study
377 group (Stefanie Castell, Pilar Hernandez, Monike Schlüter, Gerhard Bojara, Kristin Frank,
378 Knut Grubbe, Torsten Tronn, Oliver Kappert, Winfried Kern, Thomas Illig, Norman Klopp,
379 Gottfried Roller, Michael Ziemons, Daniela Gornyk, Manuela Harries, Stephan Glöckner,
380 Jana-Kristin Heise, Yvonne Kemmling, Barbora Kessel, Gérard Krause, Berit Lange, Henrike
381 Maaß, Julia Ortmann, Monika Strengert, Tobias Kerrines).

382 **Funding:**

383 The Helmholtz Association, European Union's Horizon 2020 research and innovation
384 program [grant number 101003480], the Federal Ministry of Education and Research (BMBF)
385 as part of the Network University Medicine (NUM) via the egePan Unimed project (grant
386 number: 01KX2021), the IMMUNEBRIDE project (grant number: 01KX2121) and the
387 PREPARED project (grant number: 01KX2121), the Federal Ministry of Education and
388 Research (BMBF) via the RESPINOW (grant number: HZI MV2021-012, NMI FKZ031L0298B)
389 and OptimAgent (grant number: MV2021-014) projects, by the German Research Foundation
390 (DFG) via the SpacelImpact (grant number: KA 5361/7-1), and Epiadaptdiag (grant number:
391 KA 5361/1-1) projects as well as by intramural HZI funds supported this work as well as the
392 initial funding for the MuSPAD Study from the Initiative and Networking Fund of the
393 Helmholtz Association of German Research Centres Grand number SO-96. The NAKO is
394 funded by the Federal Ministry of Education and Research (BMBF) [project funding reference
395 numbers: 01ER1301A/B/C, 01ER1511D, 01ER1801A/B/C/D and 01ER2301A/B/C], federal
396 states of Germany and the Helmholtz Association, the participating universities and the
397 institutes of the Leibniz Association. The NMI receives funding from the Baden-Württemberg
398 Ministry of Economic Affairs, Labor and Tourism (Germany).

399 **Data sharing statement:**

400 We will share anonymized data utilized in this study with other academic researchers upon
401 request. The variables can include study site information, assay information, bio sample

402 type, demographic information, and test results. For further information, please contact
403 muspad@helmholtz-hzi.de. Additionally, all links to publicly available data sources are in the
404 supplement.

405 Authors' contributions

406 Conceptualization: B.L.

407 Data quality: A.M., J.K., M.H., CJ.KT., MA.K., V.J.;

408 Formal analyses: A.M., CJ.KT., M.H., I.R., J.K.;

409 Visualization: A.M., I.R., CJ.KT., M.H., J.K. S.C.;

410 Project administration: M.H., B.L., CJ.KT.;

411 Laboratory analysis: A.D., P.M, N.S.;

412 Writing-original draft: M.H., CJ.KT., B.L., I.R. J.K. A.M. S.C.;

413 Funding acquisition: B.L., A.K., N.S, St Ca;

414 Writing-review & editing: CJ.KT., M.H., I.R., J.K., A.M.,V.J., MA.K, B.L., A.K., P.M., A.D., N.S.,

415 S.C. St Ca.; JK.H. RESPINOW study group;

416 All authors have read and agreed to the published version of the manuscript.

417

418 References

- 419 1. Savic M, Penders Y, Shi T, Branche A, Pircon JY. Respiratory syncytial virus disease
420 burden in adults aged 60 years and older in high-income countries: A systematic literature
421 review and meta-analysis. *Influenza Other Respir Viruses* 2023; **17**(1): e13031.
- 422 2. Ambrosch A, Lubber D, Klawonn F, Kabesch M. Focusing on severe infections with the
423 respiratory syncytial virus (RSV) in adults: Risk factors, symptomatology and clinical course
424 compared to influenza A / B and the original SARS-CoV-2 strain. *J Clin Virol* 2023; **161**:
425 105399.
- 426 3. Bont L, Versteegh J, Swelsen WT, et al. Natural reinfection with respiratory syncytial
427 virus does not boost virus-specific T-cell immunity. *Pediatric research* 2002; **52**(3): 363-7.
- 428 4. Hall CB, Walsh EE, Long CE, Schnabel KC. Immunity to and frequency of reinfection
429 with respiratory syncytial virus. *Journal of Infectious Diseases* 1991; **163**(4): 693-8.
- 430 5. Del Riccio M, Spreuuenberg P, Osei-Yeboah R, et al. Defining the Burden of Disease
431 of RSV in the European Union: estimates of RSV-associated hospitalisations in children under
432 5 years of age. A systematic review and modelling study. *J Infect Dis* 2023.
- 433 6. Control ECfDPa. Intensified circulation of respiratory syncytial virus (RSV) and
434 associated hospital burden in the EU/EEA. 2023.
- 435 7. Justiz) BBd. Infektionsschutzgesetz - IfSG §7. 2023.
- 436 8. Teirlinck AC, Johannesen CK, Broberg EK, et al. New perspectives on respiratory
437 syncytial virus surveillance at the national level: lessons from the COVID-19 pandemic. *Eur*
438 *Respir J* 2023; **61**(4).
- 439 9. Robert-Koch-Institut. RSV notifications for Saxony. 2021 (accessed accessed 09/2021).
- 440 10. Koltai M, Krauer F, Hodgson D, et al. Determinants of RSV epidemiology following
441 suppression through pandemic contact restrictions. *Epidemics* 2022; **40**: 100614.
- 442 11. Juhn YJ, Wi CI, Takahashi PY, et al. Incidence of Respiratory Syncytial Virus Infection in
443 Older Adults Before and During the COVID-19 Pandemic. *JAMA Netw Open* 2023; **6**(1):
444 e2250634.
- 445 12. Eden JS, Sikazwe C, Xie R, et al. Off-season RSV epidemics in Australia after easing of
446 COVID-19 restrictions. *Nat Commun* 2022; **13**(1): 2884.
- 447 13. Fricke LM, Glöckner S, Dreier M, Lange B. Impact of non-pharmaceutical interventions
448 targeted at COVID-19 pandemic on influenza burden - a systematic review. *J Infect* 2021;
449 **82**(1): 1-35.
- 450 14. EMA. Arexvy. Recombinant respiratory syncytial virus pre-fusion F protein,
451 adjuvanted with AS01E. 2023.
452 <https://www.ema.europa.eu/en/medicines/human/EPAR/arexvy> (accessed 05.09.2023).
- 453 15. Kampmann B, Madhi SA, Munjal I, et al. Bivalent Prefusion F Vaccine in Pregnancy to
454 Prevent RSV Illness in Infants. *N Engl J Med* 2023; **388**(16): 1451-64.
- 455 16. Martínón-Torres F, Mirás-Carballal S, Durán-Parrondo C. Early lessons from the
456 implementation of universal respiratory syncytial virus prophylaxis in infants with long-acting
457 monoclonal antibodies, Galicia, Spain, September and October 2023. *Eurosurveillance* 2023;
458 **28**(49): 2300606.
- 459 17. ECDC. Vaccine Scheduler: RSV: Recommended vaccinations. 2023. [https://vaccine-](https://vaccine-schedule.ecdc.europa.eu/Scheduler/ByDisease?SelectedDiseaseId=53&SelectedCountryIdByDisease=-1)
460 [schedule.ecdc.europa.eu/Scheduler/ByDisease?SelectedDiseaseId=53&SelectedCountryIdBy](https://vaccine-schedule.ecdc.europa.eu/Scheduler/ByDisease?SelectedDiseaseId=53&SelectedCountryIdByDisease=-1)
461 [Disease=-1](https://vaccine-schedule.ecdc.europa.eu/Scheduler/ByDisease?SelectedDiseaseId=53&SelectedCountryIdByDisease=-1) (accessed 27.05 2024).
- 462 18. Bundesministerium Soziales G, Pflege und Konsumentenschutz. Impfplan Österreich
463 2023/2024. 2024. [https://www.sozialministerium.at/Themen/Gesundheit/Impfen/Impfplan-](https://www.sozialministerium.at/Themen/Gesundheit/Impfen/Impfplan-%C3%96sterreich.html)
464 [%C3%96sterreich.html](https://www.sozialministerium.at/Themen/Gesundheit/Impfen/Impfplan-%C3%96sterreich.html) (accessed 27.05 2024).

- 465 19. Council SH. Vaccination against RSV (adults). Brussels, 2023.
- 466 20. Nakajo K, Nishiura H. Age-dependent risk of respiratory syncytial virus infection: A
467 systematic review and hazard modeling from serological data. *J Infect Dis* 2023.
- 468 21. Kaler J, Hussain A, Patel K, Hernandez T, Ray S. Respiratory Syncytial Virus: A
469 Comprehensive Review of Transmission, Pathophysiology, and Manifestation. *Cureus* 2023;
470 **15**(3): e36342.
- 471 22. Gornyk D, Harries M, Glockner S, et al. SARS-CoV-2 Seroprevalence in Germany. *Dtsch*
472 *Arztebl Int* 2021; **118**(48): 824-31.
- 473 23. Harries M, Jaeger VK, Rodiah I, et al. Bridging the gap-estimation of 2022/2023 SARS-
474 CoV-2 healthcare burden in Germany based on multidimensional data from a rapid epidemic
475 panel. *International Journal of Infectious Diseases* 2024; **139**: 50-8.
- 476 24. Marsall P, Fandrich M, Griesbaum J, et al. Development and validation of a
477 respiratory syncytial virus multiplex immunoassay. *Infection* 2024; **52**(2): 597-609.
- 478 25. Calero Valdez AC, Tim; Greiner, Wolfgang; Karch, André; Kheifetz, Yuri; Kirsten,
479 Holger; Kretzschmar, Mirjam; Kühn, Martin; Kuhlmann, Alexander; Lange, Berit; Leithäuser,
480 Neele; Mikolajczyk, Rafael; Mohring, Jan; Nagel, Kai; Priesemann, Viola; Rehmann, Jakob;
481 Rodiah, Isti; Scholz, Markus; Schütte, Christof; Steinmann, Maren. Szenarien zur Belastung
482 der Bevölkerung und des Gesundheitswesens durch SARS-CoV-2-Infektionen im Winter
483 2023/24 und Einschätzungen zur Belastung durch andere Atemwegsinfektionen. *Zenodo*
484 2023.
- 485 26. van Summeren J, Meijer A, Aspelund G, et al. Low levels of respiratory syncytial virus
486 activity in Europe during the 2020/21 season: what can we expect in the coming summer
487 and autumn/winter? *Eurosurveillance* 2021; **26**(29): 2100639.
- 488 27. Cai W, Köndgen S, Tolksdorf K, et al. Atypical age distribution and high disease
489 severity in children with RSV infections during two irregular epidemic seasons throughout
490 the COVID-19 pandemic, Germany, 2021 to 2023. *Eurosurveillance* 2024; **29**(13): 2300465.
- 491 28. Rodiah I, Vanella P, Kuhlmann A, et al. Age-specific contribution of contacts to
492 transmission of SARS-CoV-2 in Germany. *European Journal of Epidemiology* 2023; **38**(1): 39-
493 58.
- 494 29. Capella C, Chaiwatpongsakorn S, Gorrell E, et al. Prefusion F, postfusion F, G
495 antibodies, and disease severity in infants and young children with acute respiratory
496 syncytial virus infection. *The Journal of infectious diseases* 2017; **216**(11): 1398-406.
- 497 30. NLGA. [Respiratory diseases /Influenza] Atemwegserkrankungen / Influenza. 2023.
498 <https://www.nlga.niedersachsen.de/are/uebersicht-205132.html>.

499