

It is made available under a [CC-BY-NC-ND 4.0 International license](https://creativecommons.org/licenses/by-nc-nd/4.0/) .

Authors:

Madeleine Carbonneau (National Heart Lung & Blood Institute)
Yi Li (Boston University School of Public Health)
Yishu Qu (Northwestern University Feinberg School of Medicine)
Yinan Zheng (Northwestern University Feinberg School of Medicine)
Alexis Wood (Baylor College of Medicine)
Mengyao Wang (Boston University School of Public Health)
Chunyu Liu (Boston University School of Public Health)
TianXiao Huan (National Heart, Lung, and Blood Institute)
Roby Joehanes (Population Sciences Branch, National Heart, Lung, and Blood Institute, National Institutes of Health, Bethesda, Maryland and the Framingham Heart Study, Framingham, Massachusetts, USA)
Xiuqing Guo (Harbor-UCLA Medical Center)
Jie Yao (The Lundquist Institute for Biomedical Innovation)
Kent Taylor (The Lundquist Institute)
Russell Tracy (University of Vermont)
Durda Peter (University of Vermont Larner College of Medicine)
Yongmei Liu (Duke University)
W. Craig Johnson (University of Washington)
Wendy Post (Johns Hopkins University School of Medicine)
Thomas Blackwell (University of Michigan)
Jerome I. Rotter (The Lundquist Institute for Biomedical Innovation at Harbor-UCLA Medical Center)
Stephen S. Rich (University of Virginia)
Susan Redline (Brigham and Women's Hospital)
Myriam Fornage (University of Texas Health Science Center)
Jun Wang (Northwestern University Feinberg School of Medicine)
Hongyan Ning (Northwestern University Feinberg School of Medicine)
Lifang Hou (Northwestern University Feinberg School of Medicine)
Donald Lloyd-Jones (Northwestern University Feinberg School of Medicine)
Kendra Ferrier (University of Colorado Anschutz Medical Campus)
Yuan-I Min (University of Mississippi Medical Center)
April Carson (University of Mississippi Medical Center)
Laura Raffield (University of North Carolina at Chapel Hill)
Alexander Teumer (University Medicine Greifswald)
Hans Grabe (University Medicine Greifswald)
Henry Volzke (University Medicine Greifswald)
Matthias Nauck (University Medicine Greifswald)
Marcus Dörr (University Medicine Greifswald)
Arce Domingo-Relloso (Columbia University Mailman School of Public Health)
Amanda Fretts (University of Washington)
Maria Tellez-Plaza (National Center for Epidemiology, Carlos III Health Institute)
Shelley Cole (Texas Biomedical Research Institute)
Ana Navas-Acien (Columbia University)
Meng Wang (Tufts University)
Joanne Murabito (Boston University School of Medicine)
Nancy Heard-Costa (Boston University)
Brenton Prescott (Boston University School of Medicine)
Vanessa Xanthakis (Boston University School of Medicine)
Dariush Mozaffarian (Friedman School of Nutrition Science & Policy, Tufts University)
Daniel Levy (National Heart Lung and Blood Institute)
Jiantao Ma (Tufts University Friedman School of Nutrition Science and Policy)

Title: DNA Methylation Signatures of Cardiovascular Health Provide Insights into Diseases

Authors: Madeleine Carbonneau 1,2, Yi Li 3, Yishu Qu 4, Yinan Zheng 4, Alexis C. Wood 5, Mengyao Wang 3, Chunyu Liu 3, Tianxiao Huan 1,2, Roby Joehanes 1,2, Xiuqing Guo 6, Jie Yao 6, Kent D. Taylor 6, Russell P. Tracy 7, Durda Peter 7, Yongmei Liu 8, W Craig Johnson 9, Wendy S. Post 10, Tom Blackwell 11, Jerome I. Rotter 6, Stephen S. Rich 12, Susan Redline 13, 14, 15, Myriam Fornage 16, Jun Wang 4, Hongyan Ning 4, Lifang Hou 4, Donald Lloyd-jones 4, Kendra Ferrier 17, Yuan-I. Min 18, April P. Carson 18, Laura M. Raffield 19, Alexander Teumer 20,21, Hans J. Grabe 20, 22, Henry Völzke 21,23, Matthias Nauck 21,24, Marcus Dörr 21,25, Arce Domingo-Relloso 26,27, Amanda Fretts 28, Maria Tellez-Plaza 29, Shelley Cole 30, Ana Navas-Acien 27, Meng Wang 31, Joanne M. Murabito 2,32, Nancy L. Heard-Costa 32, Brenton Prescott 33, Vanessa Xanthakis 2,3,33, Dariush Mozaffarian 31, Daniel Levy *,1,2, Jiantao Ma *,31

Affiliation:

1. Population Sciences Branch, Division of Intramural Research, National Heart, Lung, and Blood Institute, National Institutes of Health, Bethesda, MD
2. Framingham Heart Study, Framingham, MA
3. Department of Biostatistics, Boston University School of Public Health, Boston, MA
4. Department of Preventive Medicine, Northwestern University Feinberg School of Medicine, 680 N Lake Shore Drive, Chicago, IL 60611, USA
5. United States Department of Agriculture (USDA)/ARS Children's Nutrition Research Center, Baylor College of Medicine, TX, USA
6. The Institute for Translational Genomics and Population Sciences, Department of Pediatrics, The Lundquist Institute for Biomedical Innovation at Harbor-UCLA Medical Center, 1124 W. Carson Street, Torrance, CA 90502, USA.
7. Department of Pathology & Laboratory Medicine, University of Vermont Larner College of Medicine, 360 South Park Drive, Colchester, VT 05446, USA.
8. Duke Molecular Physiology Institute, Duke University, Durham, NC, USA.
9. Department of Biostatistics, University of Washington, Seattle, WA, USA.
10. Division of Cardiology, Department of Medicine, The Johns Hopkins University School of Medicine, Baltimore, USA.
11. Department of Biostatistics, School of Public Health, University of Michigan, Ann Arbor, MI.
12. Department of Genome Sciences, University of Virginia School of Medicine, 1200 Jefferson Park Avenue, Charlottesville, VA 22903, USA
13. Division of Sleep and Circadian Disorders, Departments of Medicine and Neurology, Brigham & Women's Hospital & Harvard Medical School, Boston, MA, 02115, USA.
14. Department of Medicine, Brigham and Women's Hospital, Boston, MA, USA.
15. Department of Medicine, Harvard Medical School, Boston, MA, USA.

16. Brown Foundation Institute of Molecular Medicine, McGovern Medical School, University of Texas Health Science Center at Houston, 1825 Pressler Street, Houston, TX 77030, USA.
17. Department of Medicine, University of Colorado Anschutz Medical Campus, Aurora, Aurora, CO 80045, USA.
18. Department of Medicine, University of Mississippi Medical Center, 350 W. Woodrow Wilson Avenue, Suite 701, Jackson, MS 39213, USA.
19. Department of Genetics, University of North Carolina at Chapel Hill, 120 Mason Farm Road, Chapel Hill, NC 27599, USA.
20. Department of Psychiatry and Psychotherapy, University Medicine Greifswald, Greifswald, Germany
21. DZHK (German Centre for Cardiovascular Research), Partner Site Greifswald, Greifswald, Germany
22. German Centre for Neurodegenerative Diseases (DZNE), Partner Site Rostock/Greifswald, Greifswald, Germany
23. Department SHIP/Clinical-Epidemiological Research, Institute for Community Medicine, University Medicine Greifswald, Greifswald, Germany
24. Institute of Clinical Chemistry and Laboratory Medicine, University Medicine Greifswald, Greifswald, Germany
25. Department of Internal Medicine B, University Medicine Greifswald, Greifswald, Germany
26. Department of Biostatistics, Columbia University Mailman School of Public Health, New York, NY, USA
27. Department of Environmental Health Sciences, Columbia University Mailman School of Public Health, New York, NY, USA
28. Department of Epidemiology, Cardiovascular Health Research Unit, University of Washington, Seattle, Washington, USA
29. Department of Chronic Diseases Epidemiology, National Center for Epidemiology, Carlos III Health Institute, Madrid, Spain
30. Population Health Program, Texas Biomedical Research Institute, San Antonio, TX, USA
31. Nutrition Epidemiology and Data Science, Friedman School of Nutrition Science and Policy, Tufts University, Boston, MA
32. Department of Medicine, Section of General Internal Medicine Boston University Chobanian & Avedisian School of Medicine, Boston, MA and Boston Medical Center, Boston, MA
33. Section of Preventive Medicine and Epidemiology, Boston University School of Medicine, Boston, MA

*** These authors contributed equally.**

Correspondence to:

1. Jiantao Ma, PhD, Nutrition Epidemiology and Data Science, Friedman School of Nutrition Science and

Policy, Tufts University. Email: jjantao.ma@tufts.edu

2. Daniel Levy, MD, Framingham Heart Study, Framingham, MA, and the Population Sciences Branch, National Heart, Lung, and Blood Institute, National Institutes of Health, Bethesda, MD. Email:

levyd@nhlbi.nih.gov

Disclaimer: The views and opinions expressed in this manuscript are those of the authors and do not necessarily represent the views of the National Heart, Lung, and Blood Institute, the National Institutes of Health, or the U.S. Department of Health and Human Services.

Data availability: The datasets analyzed in the present study are available at the dbGAP repository phs000285.v3.p2 for CARDIA (https://www.ncbi.nlm.nih.gov/projects/gap/cgi-bin/study.cgi?study_id=phs000285.v3.p2), phs000007.v33.p14 for FHS (https://www.ncbi.nlm.nih.gov/projects/gap/cgi-bin/study.cgi?study_id=phs000007.v33.p14), phs000209.v13.p3 for MESA (https://www.ncbi.nlm.nih.gov/projects/gap/cgi-bin/study.cgi?study_id=phs000209.v13.p3), phs000286.v7.p2 for JHS (https://www.ncbi.nlm.nih.gov/projects/gap/cgi-bin/study.cgi?study_id=phs000286.v7.p2), phs000580.v1.p1 (https://www.ncbi.nlm.nih.gov/projects/gap/cgi-bin/study.cgi?study_id=phs000580.v1.p1).

Funding: The Framingham Heart Study (FHS) was supported by NIH contracts N01-HC-25195, HHSN268201500001I, and 75N92019D00031. DNA methylation assays were supported in part by the Division of Intramural Research (D. Levy, Principal Investigator) and an NIH Director's Challenge Award (D. Levy, Principal Investigator). The analytical component of this project was funded by the NHLBI Division of Intramural Research (D. Levy, Principal Investigator). Whole genome sequencing for the TransOmics in Precision Medicine (TOPMed) program was supported by the NHLBI. Core support including centralized genomic read mapping and genotype calling, along with variant quality metrics and filtering were provided by the TOPMed Informatics Research Center (3R01HL-117626-02S1; contract HHSN268201800002I). Core support including phenotype harmonization, data management, sample identity QC, and general program coordination were provided by the TOPMed Data Coordinating Center (R01HL-120393; U01HL-120393; contract HHSN268201800001I). J. Ma is supported by NIH grants, K22HL135075 and R01AA028263.

The Multi-Ethnic Study of Atherosclerosis (MESA) Lung Study was supported by NHLBI (NIH) grants R01-HL077612, R01-HL093081, and RC1-HL100543. Whole genome sequencing (WGS) for the TransOmics in Precision Medicine (TOPMed) program was supported by the National Heart, Lung and Blood Institute (NHLBI). MESA and the MESA SHARe project are conducted and supported by the National Heart, Lung, and Blood Institute (NHLBI) in collaboration with MESA investigators. The provision of genotyping data was supported in part by the National Center for Advancing Translational Sciences, CTSI grant UL1TR001881, and the National Institute of Diabetes and Digestive and Kidney Disease Diabetes Research Center (DRC) grant DK063491 to the Southern California Diabetes Endocrinology Research Center. Funding for SHARe genotyping was provided by NHLBI Contract N02-HL-64278. WGS for "NHLBI TOPMed: Multi-Ethnic Study of Atherosclerosis (MESA)" (phs001416.v3.p1) was performed at the Broad Institute of MIT and Harvard (3U54HG003067-13S1). Centralized read mapping and genotype calling, along with variant quality metrics and filtering were provided by the TOPMed Informatics Research Center (3R01HL-117626-02S1). Phenotype harmonization, data management, sample-identity QC, and general study coordination, were provided by the TOPMed Data Coordinating Center (3R01HL-120393-02S1). Support for the Multi-Ethnic Study of Atherosclerosis (MESA) projects are conducted and supported by the National Heart, Lung, and Blood Institute (NHLBI) in collaboration

with MESA investigators. Support for MESA is provided by contracts 75N92020D00001, HHSN268201500003I, N01-HC-95159, 75N92020D00005, N01-HC-95160, 75N92020D00002, N01-HC-95161, 75N92020D00003, N01-HC-95162, 75N92020D00006, N01-HC-95163, 75N92020D00004, N01-HC-95164, 75N92020D00007, N01-HC-95165, N01-HC-95166, N01-HC-95167, N01-HC-95168, N01-HC-95169, UL1-TR-000040, UL1-TR-001079, UL1-TR-001420, UL1TR001881, DK063491, and R01HL105756. The authors thank the other investigators, the staff, and the participants of the MESA study for their valuable contributions. A full list of participating MESA investigators and institutes can be found at <http://www.mesa-nhlbi.org>.

The Coronary Artery Risk Development in Young Adults Study (CARDIA) is conducted and supported by the National Heart, Lung, and Blood Institute (NHLBI) in collaboration with the University of Alabama at Birmingham (75N92023D00002 & 75N92023D00005), Northwestern University (75N92023D00004), University of Minnesota (75N92023D00006), and Kaiser Foundation Research Institute (75N92023D00003). The DNA methylation laboratory work and data processing were funded by the American Heart Association (17SFRN33700278 and 14SFRN20790000, Northwestern University, to Dr. Hou) and NHLBI TOPMed (MPIs: Drs. Hou and Lloyd-Jones).

The Strong Heart Study (SHS) was supported by grants from the National Heart, Lung, and Blood Institute contracts 75N92019D00027, 75N92019D00028, 75N92019D00029, and 75N92019D00030; previous grants R01HL090863, R01HL109315, R01HL109301, R01HL109284, R01HL109282, and R01HL109319; and cooperative agreements U01HL41642, U01HL41652, U01HL41654, U01HL65520, and U01HL65521; and by National Institute of Environmental Health Sciences grants R01ES021367, R01ES025216, R01ES032638, P42ES033719, and P30ES009089. We thank all the Strong Heart Study participants and Tribal Nations that made this research possible. The authors declare they have no competing interests.

SHIP is part of the Community Medicine Research net of the University of Greifswald, Germany, which is funded by the Federal Ministry of Education and Research (grants no. 01ZZ9603, 01ZZ0103, and 01ZZ0403), the Ministry of Cultural Affairs as well as the Social Ministry of the Federal State of Mecklenburg-West Pomerania, and the network ‘Greifswald Approach to Individualized Medicine (GANI_MED)’ funded by the Federal Ministry of Education and Research (grant 03IS2061A). DNA methylation data have been supported by the DZHK (grant 81X3400104). The University of Greifswald is a member of the Caché Campus program of the InterSystems GmbH. The SHIP authors are grateful to Paul S. DeVries for his support with the EWAS pipeline. H.J.G. has received travel grants and speakers’ honoraria from Fresenius Medical Care, Neuraxpharm, Servier and Janssen Cilag, as well as research funding from Fresenius Medical Care. All other authors have no conflict to declare.

The Jackson Heart Study (JHS) is supported and conducted in collaboration with Jackson State University (HHSN268201800013I), Tougaloo College (HHSN268201800014I), the Mississippi State Department of Health (HHSN268201800015I) and the University of Mississippi Medical Center (HHSN268201800010I, HHSN268201800011I and HHSN268201800012I) contracts from the National Heart, Lung, and Blood Institute (NHLBI) and the National Institute on Minority Health and Health Disparities (NIMHD). The authors also wish to thank the staffs and participants of the JHS.

Conflicts of interest: HJG has received travel grants and speakers honoraria from Neuraxpharm, Servier, Indorsia and Janssen Cilag.

Abstract

Background: The association of overall cardiovascular health (CVH) with changes in DNA methylation (DNAm) has not been well characterized.

Methods: We calculated the American Heart Association's Life's Essential 8 (LE8) score to reflect CVH in five cohorts with diverse ancestry backgrounds. Epigenome-wide association studies (EWAS) for LE8 score were conducted, followed by bioinformatic analyses. DNAm loci significantly associated with LE8 score were used to calculate a CVH DNAm score. We examined the association of the CVH DNAm score with incident CVD, CVD-specific mortality, and all-cause mortality.

Results: We identified 609 CpGs associated with LE8 score at false discovery rate (FDR) < 0.05 in the discovery analysis and at Bonferroni corrected $P < 0.05$ in the multi-cohort replication stage. Most had low-to-moderate heterogeneity (414 CpGs [68.0%] with $I^2 < 0.2$) in replication analysis. Pathway enrichment analyses and phenome-wide association study (PheWAS) search associated these CpGs with inflammatory or autoimmune phenotypes. We observed enrichment for phenotypes in the EWAS catalog, with 29-fold enrichment for stroke ($P = 2.4e-15$) and 21-fold for ischemic heart disease ($P = 7.4e-38$). Two-sample Mendelian randomization (MR) analysis showed significant association between 141 CpGs and ten phenotypes (261 CpG-phenotype pairs) at FDR < 0.05. For example, hypomethylation at cg20544516 (*MIR33B*; *SREBF1*) associated with lower risk of stroke ($P = 8.1e-6$). In multivariable prospective analyses, the CVH DNAm score was consistently associated with clinical outcomes across participating cohorts, the reduction in risk of incident CVD, CVD mortality, and all-cause mortality per standard deviation increase in the DNAm score ranged from 19% to 32%, 28% to 40%, and 27% to 45%, respectively.

Conclusions: We identified new DNAm signatures for CVH across diverse cohorts. Our analyses indicate that immune response-related pathways may be the key mechanism underpinning the association between CVH and clinical outcomes.

INTRODUCTION

Cardiovascular disease (CVD) remains the most frequent cause of death in the US and globally.¹ To promote cardiovascular health (CVH) prior to onset of clinical CVD, the American Heart Association (AHA) has developed a new CVH metric, Life's Essential 8 (LE8),² which includes the four health factors: BMI, blood lipids, blood glucose, and blood pressure and the four health behaviors: dietary habits, physical activity, smoking, and sleep. Several recent studies have shown that a favorable CVH score is associated with lower risk of CVD and mortality.³⁻⁶ The maximum CVH score is 100; but over 80% of US adults have low (<50, 17.9% of adults) or moderate (50-79, 62.5%) scores of CVH; only 19.6% have ideal CVH (scores of 80-100).⁷ Attaining ideal CVH is challenging, partly because promoting healthy behaviors is not a trivial task, e.g., public health efforts to improve diet quality and physical activity have been met with limited success.⁸ Identifying omics biomarkers of CVH has the potential to uncover key molecular mechanisms and biological pathways linking poor CVH to increased risk of CVD and mortality. With this insight, we may be able to design more precise and effective prevention and intervention strategies to improve CVH.

DNA methylation (DNAm) occurs predominantly on cytosine residues of the dinucleotide sequence (i.e., CpGs).^{9, 10} In large-scale observational studies, DNAm marks are often measured using blood samples because of the minimal invasiveness and accessibility, as well as the critical role of blood-derived DNAm in crosstalk with other tissues. Differential DNAm patterns have been associated with CVH components and CVD risk.¹¹⁻¹⁷ Furthermore, genetic instruments (e.g., Mendelian randomization [MR] analysis) suggest that DNAm at several CpGs are causally related to CVD.^{16, 18} These findings suggest that DNAm biomarkers provide promise for better understanding the epigenetic pathways and molecular mechanisms of both CVH and CVD. We have shown that Life's Simple 7 (LS7), the AHA's CVH score prior to LE8, was associated with a DNAm signature.¹⁵ Recently, we also demonstrated that the AHA's LE8 score was associated with DNAm-based biological age;¹⁹ and that DNAm age markers may explain up to 40% of the association of the LE8 score with incident CVD.¹⁹ However, previous studies linking CVH, DNAm,

and onset of clinical CVD have been limited by moderate sample size or lack of external validation. To better characterize the DNAm signature of CVH and its clinical implications, we conducted an epigenome-wide association study (EWAS) of CVH with accompanying pathway enrichment analyses, phenome-wide association study (PheWAS), MR analyses, and prospective investigation of incident CVD and mortality across six large and diverse cohorts. We hypothesized that we could identify specific DNAm signatures and corresponding molecular mechanisms underlying the relationship between CVH and CVD and mortality.

METHODS

Study populations. This investigation leverages participant-level data from the Framingham Heart Study (FHS),²⁰ Coronary Artery Risk Development in Young Adults Study (CARDIA),²¹ Multi-Ethnic Study of Atherosclerosis (MESA),²² The Study of Health in Pomerania (SHIP),²³ Strong Heart Study (SHS),^{24, 25} and Jackson Heart Study (JHS).²⁶ Additional information on each cohort is provided in the **Supplemental**

Materials. Protocols and procedures for the study cohorts were approved by the Institute Review Board of each cohort. The current study was approved by the Institutional Review Board at Tufts University.

LE8 score calculation. We calculated the CVH score (i.e., the LE8 score) using the approach proposed by the AHA,² with modifications to accommodate data availability in five cohorts (CARDIA, FHS, MESA, SHIP, and SHS). Procedures used to calculate LE8 scores for each cohort are detailed in **Supplemental Table 1**. Briefly, each component was scored separately from 0 to 100. The LE8 score was calculated as the unweighted mean of all individual component scores. In FHS, CARDIA, and SHIP, the LE8 score was calculated using all eight components, while this score was calculated based on seven components in MESA (no data for sleep health) and six components in SHS (no data for sleep health and diet). We tested and confirmed that the correlation between the LE8 score with all components and the score calculated with missing components was high (**Supplemental Table 2**).

DNA methylation (DNAm) measurement. DNAm levels were measured based on whole blood samples in all cohorts. Details of DNA collection and assessment of DNAm have been described in the **Supplemental Materials**. Briefly, Illumina MethylationEPIC BeadChip array (EPIC array) was used in all cohorts except FHS, which used the Illumina HumanMethylation450 BeadChip array (450K array). Cohort-specific quality control and normalization had been performed following standard protocols. The 450K array targets 485,512 CpGs and the EPIC array targets 866,836 CpGs; ~93% of CpGs in the 450K array are covered by the EPIC array.²⁷ Because FHS was our largest participating cohort, we primarily analyzed CpGs that are common to both arrays. We also excluded probes on the X and Y chromosomes to avoid potential sex bias. The methylation level at each CpG was quantified as a β value, i.e., the proportion of methylated CpGs over the sum of methylated and unmethylated CpGs.

Clinical outcome ascertainment. Prospective outcomes analyzed were incident CVD, CVD-specific mortality, and all-cause mortality. In each participating study, these clinical events were adjudicated by physicians using medical and hospital records, death certificates, and next-of-kin interviews.²⁸ CVD definition by studies was reported in **Supplemental Table 3**. Participants with CVD identified at baseline (i.e., prevalent CVD cases) were removed before analysis for incident CVD and CVD-specific mortality.

Statistical analysis. We performed three main analyses (**Figure 1**), including 1) conducting an EWAS and meta-analysis for cross-sectional associations of the LE8 score and DNAm, 2) using various bioinformatic tools to explore potential biological and clinical implications for LE8 score-associated CpGs, and 3) creating a LE8 DNAm score and testing its prospective association with clinical outcomes.

EWAS of LE8 score and DNAm. Due to its large sample size and homogenous study sample, we first performed discovery EWAS in FHS. For CpGs reaching significance, i.e., those with false discovery rate (FDR) < 0.05, in the discovery analysis, we performed validation analysis using meta-analysis of EWAS results from four independent cohorts (CARDIA, MESA, SHIP, and SHS). In FHS, to remove potential

batch effects, DNAm β values for 443,238 autosomal CpGs were residualized by regressing on surrogate variables²⁹ using linear regression models.¹¹ We then used linear mixed models to examine associations of the LE8 score with DNAm residuals as the dependent variable and LE8 score as the independent variable. Covariates were sex, age, and leukocyte composition estimated using the Houseman method.²⁹ Familial relatedness in FHS participants was considered as a random-effect factor. In each replication cohort, we also residualized DNAm β values and performed ancestry-specific LE8 score-CpG associations analysis using linear regression models with adjustment for the same covariates as those included in FHS. In SHS, to achieve more stable inference, an empirical Bayes method (in *limma* R package³⁰) was used to moderate the standard errors. In CARDIA, a Bayesian method (in *bacon* R package³¹) was used to adjust the standard errors based on estimation of the empirical null distribution. We performed random-effect meta-analysis to calculate pooled effect size, standard errors, *P* values, and heterogeneity³² (I^2) in replication cohorts. We considered CpGs replicable if the association direction was same to those in FHS and meta-analysis *P* reached < 0.05 after a Bonferroni correction by the number of significant CpGs in FHS. All replicated CpGs were annotated to genes using the Illumina Methylation array annotation files.

Pathway enrichment analyses. We examined whether LE8-associated CpGs were enriched in any biological pathways. In this analysis, we searched gene symbols annotated to the LE8-associated CpGs in two platforms, the Database for Annotation, Visualization and Integrated Discovery (DAVID)^{33,34} and the Functional Mapping and Annotation of Genome-Wide Association Studies (FUMA)³⁵. Multiple gene sets such as the gene ontology (GO)³⁶ terms of biological function, Kyoto Encyclopedia of Genes and Genomes (KEGG),³⁷ Molecular Signatures Databases (MSigDB),³⁸ WikiPathways,³⁹ and GWAS catalog reported genes⁴⁰ were examined. Fisher's exact test was used to calculate enrichment *P* values, and a test with FDR < 0.05 was considered statistically significant. We visualized the networks of enriched pathways (i.e., clusters) using the R package *FGNet*.⁴¹

Overlap with EWAS catalog. LE8 and its subcomponents have been suggested to be associated with a

wide range of phenotypes across the life course.^{2, 42, 43} We therefore mined EWAS catalog, a database for CpGs associated with various traits (<https://www.ewascatalog.org>),¹⁷ for prior evidence of disease related associations for the replicated LE8-associated CpGs. By overlap of these CpGs with those reported in EWAS catalog, we examined whether LE8-associated CpGs were linked with major diseases such as CVD, neurodegenerative diseases, and cancer. We filtered out EWAS catalog CpGs with $P > 1e-6$ and CpGs identified in studies with sample size < 500 individuals in this catalog. Fisher's exact tests were performed to determine if LE8-associated CpGs were enriched with EWAS catalog CpGs for disease phenotypes. A test with FDR < 0.05 was considered statistically significant.

Phenome-wide association study (PheWAS) catalog analysis. We further searched the PheWAS catalog (<https://phewascatalog.org>) for disease phenotypes that may be associated with LE8-associated CpGs. The PheWAS catalog included 1,358 phenotypes based on electronic medical records of 13,835 individuals of European ancestry in the eMERGE Network.⁴⁴ We searched this catalog using DNAm quantitative trait loci (meQTL) single nucleotide polymorphisms (SNPs) in the Genetics of DNA Methylation Consortium (GoDMC) meQTL database (<http://mqtl.db.godmc.org.uk>)⁴⁵ for LE8-associated CpGs. We focused on *cis*-meQTL SNPs (defined as SNPs residing within 1Mb from the corresponding CpG with $P < 1e-8$) in GoDMC database and SNPs that were also reported in the GWAS catalog.⁴⁰ We considered SNPs with $P < 3.7e-5$ ($0.05/1,358$) significant in the PheWAS catalog. For significant SNPs, we further performed PheWAS search in the IEU OpenGWAS database.⁴⁶ We included ten batches of GWAS summary datasets such as UK Biobank phenotypes for up to 3,873 phenotypes (<https://gwas.mrcieu.ac.uk/datasets>; **Supplemental Table 4**). We reported SNP-phenotype association with P values $< 1.3e-5$ ($0.05/3,837$) in the IEU OpenGWAS database.⁴⁶

Mendelian randomization (MR) analysis. To further explore the relationship between LE8-associated CpGs with CVD and other disease phenotypes, we used the *TwoSampleMR* R package⁴⁷ to test the putative causal association of LE8-associated CpGs with the 14 phenotypes, including stroke, heart

failure, atrial fibrillation , coronary arterial calcification (CAC), COPD, C-reactive protein (CRP), % lymphocytes, % monocytes, % neutrophils, preeclampsia, gestational hypertension, Alzheimer's disease, lung cancer, and breast cancer.⁴⁸⁻⁵⁶ We used independent *cis*-meQTL SNPs from the GoDMC database, after linkage disequilibrium (LD) pruning based on $R^2 < 0.01$, as instruments. We extracted effect sizes (regression coefficients and standard errors) from both the GoDMC *cis*-meQTL database⁵⁷ and the GWAS summary results for the 14 phenotypes (**Supplemental Table 5**). We performed the primary analysis using the inverse variance weighted (IVW) method and sensitivity analysis using the MR-Egger method when we identified three or more instrumental SNPs. CpGs with phenotype-specific FDR < 0.05 were considered significant.

CVH DNAm score. We developed the CVH DNAm score based on FHS and CARDIA EWAS results because the LE8 score was calculated using all eight components with large sample size. Also, this design eliminated the potential overfitting in analysis for the association between CVH DNAm score and clinical outcomes in other participating cohorts (MESA, SHS, and JHS). We first selected CpGs with FDR < 0.05 in FHS and Bonferroni corrected *P* values < 0.05 in CARDIA (i.e., corrected by the number of CpGs with FDR < 0.05 in FHS). Using participant-level data from FHS, we performed further CpG selection using elastic-net regression.⁵⁸ For individuals with missing values for certain CpGs, cohort median values were assigned. Notably, the proportion of missingness was very low (0.01%), and the impact of missingness was negligible. Before entering the elastic-net regression model, we calculated CpG residuals using linear regression models with adjustment for sex, age, estimated leukocyte composition, laboratories for DNAm measurements, and DNAm batch variables. To tune the hyperparameter λ , we performed 10-fold cross-validation with default tuning grid (i.e., $\alpha = 0.1, 0.55, \text{ and } 1$) using R package *caret*⁵⁹ and *glmnet*.⁶⁰ Elastic-net regression selected CpGs were aggregated into a single sum score, with weights applied reflecting regression coefficients in the meta-analysis of FHS and CARDIA. The same selected CpGs and weights were also applied to derive CVH DNAm scores in other participating studies.

Prospective association of the CVH DNAm score and clinical outcomes. Cox models were used to examine the prospective association between the CVH DNAm score and incident CVD, CVD-specific mortality, and all-cause mortality in each cohort. Mixed Cox models were used to account for familial relationships in FHS. To reduce potential model overfitting in this prediction analysis in CARDIA, we used DNAm data measured five years (i.e., at Year 15) prior to those used for LE8 EWAS (i.e., at Year 20). Two sets of covariates were examined, including 1) sex, age, estimated leukocyte composition, cohort-specific covariates such as research centers, and self-reported race/ethnicity and 2) model 1 covariates plus education levels. Harrell's C statistic was calculated to evaluate the model concordance.⁶¹ The proportional hazards assumption for a Cox regression model fit was examined based on weighted residuals, using the `cox.zph` function in *survival* R package.⁶² Two-sided *P* values < 0.05 were considered as significant in this analysis.

RESULTS

Participant characteristics. **Table 1** displays participant characteristics for all six cohorts included in this study. The study sample for the CVH EWAS and DNAm score analysis included 9,390 and 10,581 participants, respectively. CARDIA participants were generally younger than those in other cohorts. The mean age of CARDIA participants at year 15 and year 20 were ~38 years and ~43 years. Mean age ranged 51 to 61 years in the other cohorts. About half (51.3%) of study participants were of European ancestry; and the remainder of Native American (18.6%) and African (27.6%), Hispanic (2%), and Chinese (0.5%) ancestry.

EWAS identified 609 LE8-associated CpGs. We performed association analyses between the LE8 score and 443,238 CpGs in FHS. We also calculated the associations and performed meta-analysis for 783,289 CpGs with complete DNAm data in all four replication cohorts (CARDIA, MESA, SHIP, and SHS). QQ plots of FHS EWAS and meta-analysis of the replication cohorts are shown in **Supplemental Figure 1**. Out of the 443,238 CpGs, associations for 397,905 (89.8%) CpGs were included in the validation

analysis. At $FDR < 0.05$, we observed that the LE8 score was associated with DNAm levels at 5,605 CpGs in FHS, and of these, 5,223 (83.2%) were available in the replication cohort meta-analysis. After Bonferroni correction for 5,223 tests, 609 CpGs were statistically significant (i.e., $P < 0.05/5,223$) in the replication cohorts (**Supplemental Table 6**). For each of these 609 CpGs, the direction of the association in FHS was the same as that in the replication cohorts. In the combined meta-analysis of all five cohorts (783,289 CpGs; **Figure 2**), the majority of the 609 CpGs had $P < 0.05/783,289$ (501 CpGs [82.3%]) and low to moderate heterogeneity (553 CpGs [90.8%] with $I^2 < 0.5$; 414 CpGs [68.0%] with $I^2 < 0.2$).

Enrichment analysis demonstrated multiple biological pathways. We observed enrichment for 80 GO terms involved with biological processes (level 3) at $FDR < 0.05$. The top three significant GO terms were single-organism transport (GO:0044765; $P = 1.2E-07$; $FDR = 2.9E-05$), cellular response to chemical stimulus (GO:0070887; $P = 1.4E-07$; $FDR = 2.9E-05$), and regulation of cell communication (GO:0023051; $P = 1.4E-07$; $FDR = 2.9E-05$). Our GO network analysis further showed clustering of the GO terms (**Figure 3**). We observed nine clusters for 76 GO terms (**Supplemental Table 7**), e.g., those related to cell communication and signaling (Cluster 2), cellular immune response (Cluster 5), and development and cellular differentiation (Cluster 3).

In FUMA analysis, we also observed enrichment in a variety of gene sets at $FDR < 0.05$. The largest number of gene sets was 145 immunologic signature gene sets (MsigDB c7; **Supplemental Table 8**), which represent cell states and perturbations within the immune system. For example, the top gene set in this collection was GSE40666 (UNTREATED-VS-IFNA-STIM-EFFECTOR-CD8-TCELL-90MIN-UP), which included 22 genes annotated to 29 CpGs, $P = 8.8e-11$.⁶³ Other enriched gene sets (**Supplemental Table 9 to 16**) included 11 hallmark sets (MsigDB h), 71 chemical and genetic perturbation (MsigDB c2), 27 microRNA targets (MsigDB c3), 9 TF targets (MsigDB c3), 5 cancer gene modules (MsigDB c4), 4 oncogenic signatures (MsigDB c6), 13 WikiPathways, and 33 GWAS catalog reported genes.

EWAS catalog analysis linked LE8-associated CpGs with a broad range of disease phenotypes.

Among the 609 LE8-associated CpGs, 575 CpGs were reported to be associated with a variety of traits in the EWAS catalog.¹⁷ We identified 10 major phenotypes, including ischemic heart disease, stroke, chronic kidney disease, Alzheimer's disease, chronic obstructive pulmonary disease, lung function (FEV1 and FEV1/FVC), chronic pain, rheumatoid arthritis, C-reactive protein, and pregnancy complications (hypertensive disorders of pregnancy, preeclampsia, and gestational diabetes mellitus). LE8-associated CpGs were enriched for all these 10 disease phenotypes (**Table 2**), e.g., 29-fold enrichment for stroke ($P = 2.4e-15$), 21-fold for ischemic heart disease ($P = 7.4e-38$), 22-fold for CKD ($P = 1.3e-16$), 6-fold for Alzheimer's disease ($P = 2.4e-6$), and 7-fold for pregnancy complications ($P = 1.5e-13$). The phenotype with the largest number of overlapping CpGs was CRP; 562 of the 609 CpGs have been found to be associated with C-reactive protein ($P = 1e-300$). Lung function was the phenotype with largest fold enrichment in this analysis, 71-fold enrichment ($P = 1.3e-14$).

We also searched for the association between LE8-associated CpGs and LE8 components in the EWAS catalog. We found that 452 CpGs have been associated with at least one of the six LE8 components (we found no overlap for physical activity associated CpGs and there was no study on sleep in the EWAS catalog). A Venn diagram for these 452 CpGs is provided in **Supplemental Figure 2**. The majority of these CpGs were associated with blood glucose (339 CpGs), smoking (213 CpGs), and/or BMI (116 CpGs) related phenotypes. We also found nine CpGs associated with diet, 16 CpGs with blood pressure, and 37 CpGs associated with blood lipids.

PheWAS analysis highlights association of *cis*-meQTL SNPs with autoimmune diseases. Out of the 609 LE8 associated CpGs, 382 CpGs had at least one *cis*-meQTL SNP in the GoDMC database.⁴⁵ We explored the associations between these SNPs and 1,358 phenotypes in the PheWAS of GWAS catalog SNPs.⁴⁴ After Bonferroni correction (i.e., $P < 0.05/1,358$), we found 107 SNP-phenotype pairs (39 *cis*-meQTL SNPs for 11 CpGs; **Supplemental Figure 3**). In the 39 SNPs, 27 SNPs (*cis*-meQTLs for five

CpGs) reside in the human leukocyte antigen (HLA) region of chromosome 6 (**Supplemental Table 17**).

In addition, we observed that 31 SNPs (*cis*-meQTLs for eight CpGs) were linked with inflammatory or autoimmune disorders, e.g., gout, celiac disease, multiple sclerosis, type 1 diabetes, and rheumatoid arthritis (**Supplemental Table 18**). We further performed a PheWAS search for the 39 SNPs in the IEU OpenGWAS database; 35 SNPs were associated with at least one phenotype (range: 1 to 338; median: 13 phenotypes; **Supplemental Table 19**). Inflammatory or autoimmune disorders were also observed in the latter analysis. For example, consistent with the findings in the PheWAS catalog (**Supplemental Figure 4**), rs3135338 (*cis*-meQTL for cg00124375; annotated to *HLA-DRA*) was associated with type 1 diabetes ($P = 1e-300$),⁶⁴ multiple sclerosis ($P = 3.7e-294$),⁶⁵ and rheumatoid arthritis ($P = 1e-200$)⁶⁶ in large GWAS.

MR analysis suggests causal relationship of LE8-associated CpGs with multiple disease phenotypes.

We performed two-sample MR analysis for the 382 CpGs with *cis*-meQTL SNPs and 14 phenotypes related to diseases identified by our EWAS catalog analysis. We observed 261 significant CpG-phenotype pairs for 141 unique CpGs at $FDR < 0.05$ (**Supplemental Table 20**). Overall, we found no strong evidence of horizontal pleiotropy or heterogeneity. Based on MR-Egger intercept, no CpG-phenotype pair had an intercept $P < 1e-3$. At $P < 1e-3$, heterogeneity was observed for 16 CpGs with four phenotypes (24 pairs). The majority of phenotypes are leukocyte composition (22 pairs). Nonetheless, leukocyte composition (% neutrophils, % monocytes, and % lymphocytes) were phenotypes with the largest numbers of significant CpGs; the number of associated CpGs were 57, 74, and 78, respectively (**Supplemental Table 21**).

We further examined the directions of associations from the LE8 EWAS and the MR analysis. That is, if the LE8 score was positively associated with DNAm levels at a CpG (i.e., hypermethylation), we expected that hypermethylation at this CpG was associated with a lower risk of disease phenotypes in the MR analysis, or vice versa. We highlighted 10 CpGs in **Table 3** (full significant MR findings for all

CpGs are presented in **Supplemental Table 21**). We showed four CpGs (of the 10 CpGs) with consistent associations in the two analyses. For example, we found that LE8 score was associated with hypomethylation at cg20544516 (*MIR33B*; *SREBF1*; $P = 5.2e-10$) and hypomethylation at this CpG was associated with lower risk of stroke ($P = 8.1e-6$). Similarly, we found that the LE8 score was associated with hypermethylation at cg26403580 (*PRDX3*; $P = 4.8e-11$) and hypermethylation at this CpG was associated with lower risk of stroke ($P = 1.6e-4$). However, we also observed inconsistent associations, e.g., the LE8 score was associated with hypomethylation at cg04379041 (*ZGPAT*; $P = 2.0e-12$) and hypomethylation at this CpG was associated with higher risk of heart failure ($P = 6.2e-4$).

CVH DNAm score predicts incident clinical outcomes. Of the 5,605 CpGs with $FDR < 0.05$ in the FHS, 1,326 CpGs were verified in CARDIA. Further, the elastic-net regression model selected 141 CpGs that were used to derive the CVH DNAm score in each cohort. This DNAm score was moderately associated with the LE8 score, e.g., Pearson r was 0.39 in FHS and 0.24 in MESA. The DNAm score by LE8 score deciles and density plot of the two scores in FHS and MESA are depicted in **Supplemental Figure 5**.

In FHS (**Table 4**), each standard deviation (SD) increase of the DNAm score was associated with striking risks of clinical outcomes. This included 34% (95% CI: 27%, 41%; $P = 2.8e-14$) lower risk of incident CVD, 29% (95% CI: 11%, 43%; $P = 3.3e-3$) lower CVD-specific mortality, and 35% (95% CI: 30%, 40%; $P = 1.2e-16$) lower all-cause mortality, adjusted for model 2 covariates. These associations were consistently observed in each of the other cohorts of diverse populations. The reduction in the risk of incident CVD, CVD mortality, and all-cause mortality per SD increase in the DNAm score ranged from 19% to 32%, 28% to 40%, and 27% to 45% (model 2 analyses), respectively. Compared to models with adjustment for sex, age, education, and leukocyte composition, adding the DNAm score increased the C statistic by average of 0.2 (**Supplemental Table 22**). The model 2 C statistic was 0.68, 0.84, and 0.79 in MESA and 0.72, 0.83, and 0.81 in JHS for incident CVD, CVD mortality, and all-cause mortality,

respectively. Associations between the DNAm score and clinical outcomes in meta-analysis were similar with or without FHS are shown in **Figure 4**, without apparent cross-cohort heterogeneity.

DISCUSSION

In this new investigation including over 11,000 individuals with diverse ancestry and sociodemographic backgrounds, we identified an epigenetic signature comprising 609 CpGs consistently associated with the CVH as defined by the LE8 score. Enrichment analyses suggested these LE8-associated CpGs reflect a variety of specific biological pathways, particularly related to immune responses. EWAS catalog and PheWAS catalog analyses further demonstrated that these CpGs may be involved in the development of a range of interrelated diseases, showing the relevance of the health and behavioral factors that define good CVH in other disease pathways and overall health. Furthermore, utilizing genetic variants of the LE8-associated CpGs, we demonstrated that many of these CpGs were putatively causal for CVD phenotypes. Finally, we showed that an epigenetic CVH score could increase prediction for CVD, CVD-specific mortality, and all-cause mortality. Cumulatively, our study provides powerful new evidence that DNAm is a key mechanism to facilitate a better understanding of the underlying biology of CVD (and likely related conditions), informing future efforts for prevention and intervention of CVD.

Some earlier research has identified a limited number of DNAm sites associated with CVH. Primarily using CARDIA (n=1,085), Zheng et al. identified 45 CVH-associated CpGs.¹⁵ The present study builds on and greatly expands this prior work by evaluating the new AHA CVH metric, LE8, and substantially increasing the sample size and ancestry diversity of the population—ultimately identifying approximately ten times more CVH-associated CpGs. Importantly, the diversity of our study sample allowed us to identify CpGs shared across multiple ancestral populations. Beyond the advantage of guard against false positive signals due to minimizing population stratification-related confounding,^{67, 68} our multiethnic analysis increases both generalizability and public health relevance of our findings.

Our EWAS catalog analysis suggests that blood glucose, BMI, and smoking may be the major driving components for our LE8 EWAS findings. In addition, EWAS catalog enrichment, PheWAS, and MR analyses all showed that the LE8-associated CpGs are linked to several interrelated phenotypes. Although we did not directly examine the association between the LE8 score and all of these phenotypes, our observations suggest that LE8-associated phenotypes span more than just CVD. For example, we demonstrated enrichment of Alzheimer's disease, which was consistent with recent studies showing that a higher LE8 score was associated with lower risk of dementia in UK Biobank.⁶⁹ These findings highlight the foundational role of LE8 for promoting overall health.

One MR analysis finding regarding the association between hypomethylation at cg20544516 (*MIR33B*; *SREBF1*) and a lower risk of stroke was consistent with a recent study that found a relation of higher LE8 score to lower risk of stroke, supporting a putative causal relationship from LE8 to DNAm and then to stroke.⁷⁰ To perform MR analyses, we used genetic variants that were identified by a large meQTL analysis in 32,851 individuals of European ancestry.⁴⁵ This meQTL database, together the large GWAS databases for phenotypes of interest, provides a robust set of genetic variants to ensure the validity of our MR analysis. Nonetheless, we also observed some inconsistencies between our expectations and these empirical data, such as the association between hypomethylation at cg04379041 and increased risk of heart failure. One potential cause of bias may be reverse causality due to the cross-sectional design of the CVH EWAS. In this case, differential DNAm may lead to the onset of a disease phenotype, which then alters an individual's CVH status, rather than CVH status leading to DNAm change and the disease phenotype. Our results support the need for future studies using longitudinal design with repeated DNAm measurements to provide additional evidence on the causal relationships between LE8, DNAm, and clinical outcomes.

Among the CpGs that were significant in the PheWAS analysis, many were annotated to genes that fall on the HLA region at chromosome 6.⁵² We showed the *cis*-meQTLs of these CpGs were associated with a

variety of autoimmune diseases such as type 1 diabetes, rheumatoid arthritis, and celiac disease. CRP was the phenotype with the largest number of overlapping CpGs in EWAS catalog enrichment analysis, while leukocyte composition was the phenotype with the largest number of significant MR findings. These observations are consistent with prior studies reporting significant associations between LE8 components and inflammatory markers.⁷¹⁻⁷⁴ Together with these prior reports, our analyses support a key role of immune response related mechanisms in mediating the relationship between LE8 and disease endpoints. Future experimental studies and clinical trials should consider and aim to confirm our observations.

This study included a diverse group of participants from six different cohorts, each well-established with rich data describing participants' lifestyle, genetic, and clinical information. Although not all cohorts had complete data to calculate the LE8 score, we found high correlations of scores missing sleep or diet, as well as consistent results for the DNAm score and disease phenotypes across cohorts. While we evaluated six diverse cohorts with a range of ancestries, most were US-based, and future refinement and broader validation of our findings are needed in other world regions, including low- and middle-income nations where CVD is increasing most rapidly. Potential limitations should be considered. The behavioral components in LE8 scored were based on self-reported data using different instruments in different cohorts. Future use of more objective measurements of behaviors could further increase the strength of observed findings and associations. Heterogeneity in lifestyle and health factor assessment, as well as race/ethnicity, could also explain the relatively moderate EWAS replication rate (609 out of 5,223 CpGs). Better DNAm and LE8 data harmonization may improve statistical power for the remaining CpGs. DNAm data in the present EWAS was based on a single measurement; and repeated measures may reduce measurement error due to changes over time as well as allow assessment of temporal relationships. On the other hand, to-date empirical data on longitudinal change in DNAm is not well established.

Overall, we demonstrated that CVH, measured by LE8 score, was associated with strong DNAm signatures that can be observed across cohorts with diverse sociodemographic and ancestry backgrounds.

Our study suggests that regulating immune response may be the key mechanism underpinning the association between LE8 and clinical outcomes. Future studies with large diverse study samples and longitudinal DNAm measurements are needed to better understand the causal relations between LE8 and DNAm, as well as their clinical consequences.

References

1. Virani SS, Alonso A, Benjamin EJ, Bittencourt MS, Callaway CW, Carson AP, Chamberlain AM, Chang AR, Cheng S, Delling FN, Djousse L, Elkind MSV, Ferguson JF, Fornage M, Khan SS, Kissela BM, Knutson KL, Kwan TW, Lackland DT, Lewis TT, Lichtman JH, Longenecker CT, Loop MS, Lutsey PL, Martin SS, Matsushita K, Moran AE, Mussolino ME, Perak AM, Rosamond WD, Roth GA, Sampson UKA, Satou GM, Schroeder EB, Shah SH, Shay CM, Spartano NL, Stokes A, Tirschwell DL, VanWagner LB, Tsao CW, American Heart Association Council on E, Prevention Statistics C, Stroke Statistics S. Heart Disease and Stroke Statistics-2020 Update: A Report From the American Heart Association. *Circulation*. 2020;141(9):e139-e596. Epub 20200129. doi: 10.1161/CIR.0000000000000757. PubMed PMID: 31992061.
2. Lloyd-Jones DM, Allen NB, Anderson CAM, Black T, Brewer LC, Foraker RE, Grandner MA, Lavretsky H, Perak AM, Sharma G, Rosamond W, American Heart A. Life's Essential 8: Updating and Enhancing the American Heart Association's Construct of Cardiovascular Health: A Presidential Advisory From the American Heart Association. *Circulation*. 2022;146(5):e18-e43. Epub 20220629. doi: 10.1161/CIR.0000000000001078. PubMed PMID: 35766027; PMCID: PMC10503546.
3. Rempakos A, Prescott B, Mitchell GF, Vasani RS, Xanthakis V. Association of Life's Essential 8 With Cardiovascular Disease and Mortality: The Framingham Heart Study. *J Am Heart Assoc*. 2023;12(23):e030764. Epub 20231128. doi: 10.1161/JAHA.123.030764. PubMed PMID: 38014669; PMCID: PMC10727315.
4. Sun J, Li Y, Zhao M, Yu X, Zhang C, Magnussen CG, Xi B. Association of the American Heart Association's new "Life's Essential 8" with all-cause and cardiovascular disease-specific mortality: prospective cohort study. *BMC Med*. 2023;21(1):116. Epub 20230329. doi: 10.1186/s12916-023-02824-8. PubMed PMID: 36978123; PMCID: PMC10053736.
5. Huang L, Wang A, Wu Z, Chen S, Zheng Y, Wu S, Gao X. Life's essential 8 and risk of all-cause mortality in individuals with cardiovascular diseases: A prospective community-based study. *Clin Cardiol*. 2024;47(2):e24119. Epub 20231123. doi: 10.1002/clc.24119. PubMed PMID: 37994466; PMCID: PMC10823447.
6. Song C, Cheng X, Bai Y. Association of change in cardiovascular health based on life's essential 8 with incident cardiovascular disease. *Am J Prev Cardiol*. 2024;18:100668. Epub 20240405. doi: 10.1016/j.ajpc.2024.100668. PubMed PMID: 38646020; PMCID: PMC11033071.
7. Lloyd-Jones DM, Ning H, Labarthe D, Brewer L, Sharma G, Rosamond W, Foraker RE, Black T, Grandner MA, Allen NB, Anderson C, Lavretsky H, Perak AM. Status of Cardiovascular Health in US Adults and Children Using the American Heart Association's New "Life's Essential 8" Metrics: Prevalence Estimates From the National Health and Nutrition Examination Survey (NHANES), 2013 Through 2018. *Circulation*. 2022;146(11):822-35. Epub 20220629. doi: 10.1161/CIRCULATIONAHA.122.060911. PubMed PMID: 35766033.
8. Eckel RH, Jakicic JM, Ard JD, de Jesus JM, Houston Miller N, Hubbard VS, Lee IM, Lichtenstein AH, Loria CM, Millen BE, Nonas CA, Sacks FM, Smith SC, Jr., Svetkey LP, Wadden TA, Yanovski SZ, American College of Cardiology/American Heart Association Task Force on Practice G. 2013 AHA/ACC guideline on lifestyle management to reduce cardiovascular risk: a report of the American College of Cardiology/American Heart Association Task Force on Practice Guidelines. *J Am Coll Cardiol*. 2014;63(25 Pt B):2960-84. Epub 2013/11/19. doi: 10.1016/j.jacc.2013.11.003. PubMed PMID: 24239922.
9. Bird A. DNA methylation patterns and epigenetic memory. *Genes Dev*. 2002;16(1):6-21. Epub 2002/01/10. doi: 10.1101/gad.947102. PubMed PMID: 11782440.
10. Wu H, Zhang Y. Reversing DNA methylation: mechanisms, genomics, and biological functions. *Cell*. 2014;156(1-2):45-68. Epub 2014/01/21. doi: 10.1016/j.cell.2013.12.019. PubMed PMID: 24439369; PMCID: PMC3938284.
11. Ma J, Rebholz CM, Braun KVE, Reynolds LM, Aslibekyan S, Xia R, Biligowda NG, Huan T, Liu C, Mendelson MM, Joeannes R, Hu EA, Vitolins MZ, Wood AC, Lohman K, Ochoa-Rosales C, van

- Meurs J, Uitterlinden A, Liu Y, Elhadad MA, Heier M, Waldenberger M, Peters A, Colicino E, Whitsel EA, Baldassari A, Gharib SA, Sotoodehnia N, Brody JA, Sitlani CM, Tanaka T, Hill WD, Corley J, Deary IJ, Zhang Y, Schottker B, Brenner H, Walker ME, Ye S, Nguyen S, Pankow J, Demerath EW, Zheng Y, Hou L, Liang L, Lichtenstein AH, Hu FB, Fornage M, Voortman T, Levy D. Whole Blood DNA Methylation Signatures of Diet Are Associated With Cardiovascular Disease Risk Factors and All-Cause Mortality. *Circ Genom Precis Med*. 2020;13(4):e002766. Epub 20200611. doi: 10.1161/CIRCGEN.119.002766. PubMed PMID: 32525743; PMCID: PMC7442697.
12. Joehanes R, Just AC, Marioni RE, Pilling LC, Reynolds LM, Mandaviya PR, Guan W, Xu T, Elks CE, Aslibekyan S, Moreno-Macias H, Smith JA, Brody JA, Dhingra R, Yousefi P, Pankow JS, Kunze S, Shah SH, McRae AF, Lohman K, Sha J, Absher DM, Ferrucci L, Zhao W, Demerath EW, Bressler J, Grove ML, Huan T, Liu C, Mendelson MM, Yao C, Kiel DP, Peters A, Wang-Sattler R, Visscher PM, Wray NR, Starr JM, Ding J, Rodriguez CJ, Wareham NJ, Irvin MR, Zhi D, Barrdahl M, Vineis P, Ambatipudi S, Uitterlinden AG, Hofman A, Schwartz J, Colicino E, Hou L, Vokonas PS, Hernandez DG, Singleton AB, Bandinelli S, Turner ST, Ware EB, Smith AK, Klengel T, Binder EB, Psaty BM, Taylor KD, Gharib SA, Swenson BR, Liang L, DeMeo DL, O'Connor GT, Herceg Z, Ressler KJ, Conneely KN, Sotoodehnia N, Kardia SL, Melzer D, Baccarelli AA, van Meurs JB, Romieu I, Arnett DK, Ong KK, Liu Y, Waldenberger M, Deary IJ, Fornage M, Levy D, London SJ. Epigenetic Signatures of Cigarette Smoking. *Circ Cardiovasc Genet*. 2016;9(5):436-47. Epub 20160920. doi: 10.1161/CIRCGENETICS.116.001506. PubMed PMID: 27651444; PMCID: PMC5267325.
13. Mendelson MM, Marioni RE, Joehanes R, Liu C, Hedman AK, Aslibekyan S, Demerath EW, Guan W, Zhi D, Yao C, Huan T, Willinger C, Chen B, Courchesne P, Multhaup M, Irvin MR, Cohain A, Schadt EE, Grove ML, Bressler J, North K, Sundstrom J, Gustafsson S, Shah S, McRae AF, Harris SE, Gibson J, Redmond P, Corley J, Murphy L, Starr JM, Kleinbrink E, Lipovich L, Visscher PM, Wray NR, Krauss RM, Fallin D, Feinberg A, Absher DM, Fornage M, Pankow JS, Lind L, Fox C, Ingelsson E, Arnett DK, Boerwinkle E, Liang L, Levy D, Deary IJ. Association of Body Mass Index with DNA Methylation and Gene Expression in Blood Cells and Relations to Cardiometabolic Disease: A Mendelian Randomization Approach. *PLoS Med*. 2017;14(1):e1002215. Epub 20170117. doi: 10.1371/journal.pmed.1002215. PubMed PMID: 28095459; PMCID: PMC5240936.
14. Richard MA, Huan T, Ligthart S, Gondalia R, Jhun MA, Brody JA, Irvin MR, Marioni R, Shen J, Tsai PC, Montasser ME, Jia Y, Syme C, Salfati EL, Boerwinkle E, Guan W, Mosley TH, Jr., Bressler J, Morrison AC, Liu C, Mendelson MM, Uitterlinden AG, van Meurs JB, Consortium B, Franco OH, Zhang G, Li Y, Stewart JD, Bis JC, Psaty BM, Chen YI, Kardia SLR, Zhao W, Turner ST, Absher D, Aslibekyan S, Starr JM, McRae AF, Hou L, Just AC, Schwartz JD, Vokonas PS, Menni C, Spector TD, Shuldiner A, Damcott CM, Rotter JI, Palmas W, Liu Y, Paus T, Horvath S, O'Connell JR, Guo X, Pausova Z, Assimes TL, Sotoodehnia N, Smith JA, Arnett DK, Deary IJ, Baccarelli AA, Bell JT, Whitsel E, Dehghan A, Levy D, Fornage M. DNA Methylation Analysis Identifies Loci for Blood Pressure Regulation. *Am J Hum Genet*. 2017;101(6):888-902. Epub 20171130. doi: 10.1016/j.ajhg.2017.09.028. PubMed PMID: 29198723; PMCID: PMC5812919.
15. Zheng Y, Joyce BT, Hwang SJ, Ma J, Liu L, Allen NB, Krefman AE, Wang J, Gao T, Nannini DR, Zhang H, Jacobs DR, Jr., Gross MD, Fornage M, Lewis CE, Schreiner PJ, Sidney S, Chen D, Greenland P, Levy D, Hou L, Lloyd-Jones DM. Association of Cardiovascular Health Through Young Adulthood With Genome-Wide DNA Methylation Patterns in Midlife: The CARDIA Study. *Circulation*. 2022;146(2):94-109. Epub 20220602. doi: 10.1161/CIRCULATIONAHA.121.055484. PubMed PMID: 35652342; PMCID: PMC9348746.
16. Agha G, Mendelson MM, Ward-Caviness CK, Joehanes R, Huan T, Gondalia R, Salfati E, Brody JA, Fiorito G, Bressler J, Chen BH, Ligthart S, Guarrera S, Colicino E, Just AC, Wahl S, Gieger C, Vandiver AR, Tanaka T, Hernandez DG, Pilling LC, Singleton AB, Sacerdote C, Krogh V, Panico S, Tumino R, Li Y, Zhang G, Stewart JD, Floyd JS, Wiggins KL, Rotter JI, Multhaup M, Bakulski K, Horvath S, Tsao PS, Absher DM, Vokonas P, Hirschhorn J, Fallin MD, Liu C, Bandinelli S, Boerwinkle E, Dehghan A, Schwartz JD, Psaty BM, Feinberg AP, Hou L, Ferrucci L, Sotoodehnia N, Matullo G, Peters A, Fornage M, Assimes TL, Whitsel EA, Levy D, Baccarelli AA. Blood Leukocyte DNA

- Methylation Predicts Risk of Future Myocardial Infarction and Coronary Heart Disease. *Circulation*. 2019;140(8):645-57. Epub 20190819. doi: 10.1161/CIRCULATIONAHA.118.039357. PubMed PMID: 31424985; PMCID: PMC6812683.
17. Battram T, Yousefi P, Crawford G, Prince C, Sheikhal Babaei M, Sharp G, Hatcher C, Vega-Salas MJ, Khodabakhsh S, Whitehurst O, Langdon R, Mahoney L, Elliott HR, Mancano G, Lee MA, Watkins SH, Lay AC, Hemani G, Gaunt TR, Relton CL, Staley JR, Suderman M. The EWAS Catalog: a database of epigenome-wide association studies. *Wellcome Open Res*. 2022;7:41. Epub 20220531. doi: 10.12688/wellcomeopenres.17598.2. PubMed PMID: 35592546; PMCID: PMC9096146.
 18. Huan T, Joehanes R, Song C, Peng F, Guo Y, Mendelson M, Yao C, Liu C, Ma J, Richard M, Agha G, Guan W, Almlil LM, Conneely KN, Keefe J, Hwang SJ, Johnson AD, Fornage M, Liang L, Levy D. Genome-wide identification of DNA methylation QTLs in whole blood highlights pathways for cardiovascular disease. *Nat Commun*. 2019;10(1):4267. Epub 20190919. doi: 10.1038/s41467-019-12228-z. PubMed PMID: 31537805; PMCID: PMC6753136.
 19. Carbonneau M, Li Y, Prescott B, Liu C, Huan T, Joehanes R, Murabito JM, Heard-Costa NL, Xanthakis V, Levy D, Ma J. Epigenetic Age Mediates the Association of Life's Essential 8 With Cardiovascular Disease and Mortality. *J Am Heart Assoc*. 2024:e032743. Epub 20240529. doi: 10.1161/JAHA.123.032743. PubMed PMID: 38808571.
 20. Mahmood SS, Levy D, Vasani RS, Wang TJ. The Framingham Heart Study and the epidemiology of cardiovascular disease: a historical perspective. *Lancet*. 2014;383(9921):999-1008. Epub 20130929. doi: 10.1016/S0140-6736(13)61752-3. PubMed PMID: 24084292; PMCID: PMC4159698.
 21. Friedman GD, Cutter GR, Donahue RP, Hughes GH, Hulley SB, Jacobs DR, Jr., Liu K, Savage PJ. CARDIA: study design, recruitment, and some characteristics of the examined subjects. *J Clin Epidemiol*. 1988;41(11):1105-16. doi: 10.1016/0895-4356(88)90080-7. PubMed PMID: 3204420.
 22. Bild DE, Bluemke DA, Burke GL, Detrano R, Diez Roux AV, Folsom AR, Greenland P, Jacob DR, Jr., Kronmal R, Liu K, Nelson JC, O'Leary D, Saad MF, Shea S, Szklo M, Tracy RP. Multi-Ethnic Study of Atherosclerosis: objectives and design. *Am J Epidemiol*. 2002;156(9):871-81. doi: 10.1093/aje/kwf113. PubMed PMID: 12397006.
 23. Volzke H. [Study of Health in Pomerania (SHIP). Concept, design and selected results]. *Bundesgesundheitsblatt Gesundheitsforschung Gesundheitsschutz*. 2012;55(6-7):790-4. doi: 10.1007/s00103-012-1483-6. PubMed PMID: 22736157.
 24. Lee ET, Welty TK, Fabsitz R, Cowan LD, Le NA, Oopik AJ, Cucchiara AJ, Savage PJ, Howard BV. The Strong Heart Study. A study of cardiovascular disease in American Indians: design and methods. *Am J Epidemiol*. 1990;132(6):1141-55. doi: 10.1093/oxfordjournals.aje.a115757. PubMed PMID: 2260546.
 25. Navas-Acien A, Domingo-Relloso A, Subedi P, Riffo-Campos AL, Xia R, Gomez L, Haack K, Goldsmith J, Howard BV, Best LG, Devereux R, Tauqeer A, Zhang Y, Fretts AM, Pichler G, Levy D, Vasani RS, Baccarelli AA, Herreros-Martinez M, Tang WY, Bressler J, Fornage M, Umans JG, Tellez-Plaza M, Fallin MD, Zhao J, Cole SA. Blood DNA Methylation and Incident Coronary Heart Disease: Evidence From the Strong Heart Study. *JAMA Cardiol*. 2021;6(11):1237-46. doi: 10.1001/jamacardio.2021.2704. PubMed PMID: 34347013; PMCID: PMC8340006.
 26. Wilson JG, Rotimi CN, Ekunwe L, Royal CD, Crump ME, Wyatt SB, Steffes MW, Adeyemo A, Zhou J, Taylor HA, Jr., Jaquish C. Study design for genetic analysis in the Jackson Heart Study. *Ethn Dis*. 2005;15(4 Suppl 6):S6-30-7. PubMed PMID: 16317983.
 27. Pidsley R, Zotenko E, Peters TJ, Lawrence MG, Risbridger GP, Molloy P, Van Djik S, Muhlhauser B, Stirzaker C, Clark SJ. Critical evaluation of the Illumina MethylationEPIC BeadChip microarray for whole-genome DNA methylation profiling. *Genome Biol*. 2016;17(1):208. Epub 20161007. doi: 10.1186/s13059-016-1066-1. PubMed PMID: 27717381; PMCID: PMC5055731.
 28. Wilson PW, D'Agostino RB, Levy D, Belanger AM, Silbershatz H, Kannel WB. Prediction of coronary heart disease using risk factor categories. *Circulation*. 1998;97(18):1837-47. doi: 10.1161/01.cir.97.18.1837. PubMed PMID: 9603539.

29. Leek JT, Johnson WE, Parker HS, Jaffe AE, Storey JD. The sva package for removing batch effects and other unwanted variation in high-throughput experiments. *Bioinformatics*. 2012;28(6):882-3. Epub 20120117. doi: 10.1093/bioinformatics/bts034. PubMed PMID: 22257669; PMCID: PMC3307112.
30. Ritchie ME, Phipson B, Wu D, Hu Y, Law CW, Shi W, Smyth GK. limma powers differential expression analyses for RNA-sequencing and microarray studies. *Nucleic Acids Res*. 2015;43(7):e47. Epub 20150120. doi: 10.1093/nar/gkv007. PubMed PMID: 25605792; PMCID: PMC4402510.
31. van Iterson M, van Zwet EW, Consortium B, Heijmans BT. Controlling bias and inflation in epigenome- and transcriptome-wide association studies using the empirical null distribution. *Genome Biol*. 2017;18(1):19. Epub 20170127. doi: 10.1186/s13059-016-1131-9. PubMed PMID: 28129774; PMCID: PMC5273857.
32. Guido Schwarzer JRC, Gerta Rücker. *Meta-Analysis with R (Use-R!)*. Switzerland: Springer International Publishing; 2015.
33. Huang da W, Sherman BT, Lempicki RA. Systematic and integrative analysis of large gene lists using DAVID bioinformatics resources. *Nat Protoc*. 2009;4(1):44-57. doi: 10.1038/nprot.2008.211. PubMed PMID: 19131956.
34. Sherman BT, Hao M, Qiu J, Jiao X, Baseler MW, Lane HC, Imamichi T, Chang W. DAVID: a web server for functional enrichment analysis and functional annotation of gene lists (2021 update). *Nucleic Acids Res*. 2022;50(W1):W216-W21. doi: 10.1093/nar/gkac194. PubMed PMID: 35325185; PMCID: PMC9252805.
35. Watanabe K, Taskesen E, van Bochoven A, Posthuma D. Functional mapping and annotation of genetic associations with FUMA. *Nat Commun*. 2017;8(1):1826. Epub 20171128. doi: 10.1038/s41467-017-01261-5. PubMed PMID: 29184056; PMCID: PMC5705698.
36. Thomas PD, Hill DP, Mi H, Osumi-Sutherland D, Van Auken K, Carbon S, Balhoff JP, Albou LP, Good B, Gaudet P, Lewis SE, Mungall CJ. Gene Ontology Causal Activity Modeling (GO-CAM) moves beyond GO annotations to structured descriptions of biological functions and systems. *Nat Genet*. 2019;51(10):1429-33. doi: 10.1038/s41588-019-0500-1. PubMed PMID: 31548717; PMCID: PMC7012280.
37. Kanehisa M, Goto S. KEGG: kyoto encyclopedia of genes and genomes. *Nucleic Acids Res*. 2000;28(1):27-30. doi: 10.1093/nar/28.1.27. PubMed PMID: 10592173; PMCID: PMC102409.
38. Subramanian A, Tamayo P, Mootha VK, Mukherjee S, Ebert BL, Gillette MA, Paulovich A, Pomeroy SL, Golub TR, Lander ES, Mesirov JP. Gene set enrichment analysis: a knowledge-based approach for interpreting genome-wide expression profiles. *Proc Natl Acad Sci U S A*. 2005;102(43):15545-50. Epub 20050930. doi: 10.1073/pnas.0506580102. PubMed PMID: 16199517; PMCID: PMC1239896.
39. Agrawal A, Balci H, Hanspers K, Coort SL, Martens M, Slenter DN, Ehrhart F, Digles D, Waagmeester A, Wassink I, Abbassi-Daloui T, Lopes EN, Iyer A, Acosta JM, Willighagen LG, Nishida K, Riutta A, Basaric H, Evelo CT, Willighagen EL, Kutmon M, Pico AR. WikiPathways 2024: next generation pathway database. *Nucleic Acids Res*. 2024;52(D1):D679-D89. doi: 10.1093/nar/gkad960. PubMed PMID: 37941138; PMCID: PMC10767877.
40. Sollis E, Mosaku A, Abid A, Buniello A, Cerezo M, Gil L, Groza T, Gunes O, Hall P, Hayhurst J, Ibrahim A, Ji Y, John S, Lewis E, MacArthur JAL, McMahon A, Osumi-Sutherland D, Panoutsopoulou K, Pendlington Z, Ramachandran S, Stefancsik R, Stewart J, Whetzel P, Wilson R, Hindorff L, Cunningham F, Lambert SA, Inouye M, Parkinson H, Harris LW. The NHGRI-EBI GWAS Catalog: knowledgebase and deposition resource. *Nucleic Acids Res*. 2023;51(D1):D977-D85. doi: 10.1093/nar/gkac1010. PubMed PMID: 36350656; PMCID: PMC9825413.
41. Aibar S, Fontanillo C, Droste C, De Las Rivas J. Functional Gene Networks: R/Bioc package to generate and analyse gene networks derived from functional enrichment and clustering. *Bioinformatics*. 2015;31(10):1686-8. Epub 20150118. doi: 10.1093/bioinformatics/btu864. PubMed PMID: 25600944; PMCID: PMC4426835.

42. Liang K, Zhang X. Association between Life's Essential 8 and cognitive function: insights from NHANES 2011-2014. *Front Aging Neurosci.* 2024;16:1386498. Epub 20240404. doi: 10.3389/fnagi.2024.1386498. PubMed PMID: 38650867; PMCID: PMC11034366.
43. Chen H, Tang H, Huang J, Luo N, Zhang X, Wang X. Life's Essential 8 and Mortality in US Adults with Chronic Kidney Disease. *Am J Nephrol.* 2023;54(11-12):516-27. Epub 20230817. doi: 10.1159/000533257. PubMed PMID: 37591229.
44. Denny JC, Bastarache L, Ritchie MD, Carroll RJ, Zink R, Mosley JD, Field JR, Pulley JM, Ramirez AH, Bowton E, Basford MA, Carrell DS, Peissig PL, Kho AN, Pacheco JA, Rasmussen LV, Crosslin DR, Crane PK, Pathak J, Bielinski SJ, Pendergrass SA, Xu H, Hindorff LA, Li R, Manolio TA, Chute CG, Chisholm RL, Larson EB, Jarvik GP, Brilliant MH, McCarty CA, Kullo IJ, Haines JL, Crawford DC, Masys DR, Roden DM. Systematic comparison of phenome-wide association study of electronic medical record data and genome-wide association study data. *Nat Biotechnol.* 2013;31(12):1102-10. doi: 10.1038/nbt.2749. PubMed PMID: 24270849; PMCID: PMC3969265.
45. Min JL, Hemani G, Hannon E, Dekkers KF, Castillo-Fernandez J, Luijk R, Carnero-Montoro E, Lawson DJ, Burrows K, Suderman M, Bretherick AD, Richardson TG, Klughammer J, Iotchkova V, Sharp G, Al Khleifat A, Shatunov A, Iacoangeli A, McArdle WL, Ho KM, Kumar A, Soderhall C, Soriano-Tarraga C, Giralt-Steinhauer E, Kazmi N, Mason D, McRae AF, Corcoran DL, Sugden K, Kasela S, Cardona A, Day FR, Cugliari G, Viberti C, Guarrera S, Lerro M, Gupta R, Bollepalli S, Mandaviya P, Zeng Y, Clarke TK, Walker RM, Schmoll V, Czamara D, Ruiz-Arenas C, Rezwani FI, Marioni RE, Lin T, Awaloff Y, Germain M, Aissi D, Zwamborn R, van Eijk K, Dekker A, van Dongen J, Hottenga JJ, Willemsen G, Xu CJ, Barturen G, Catala-Moll F, Kerick M, Wang C, Melton P, Elliott HR, Shin J, Bernard M, Yet I, Smart M, Gorrie-Stone T, Consortium B, Shaw C, Al Chalabi A, Ring SM, Pershagen G, Melen E, Jimenez-Conde J, Roquer J, Lawlor DA, Wright J, Martin NG, Montgomery GW, Moffitt TE, Poulton R, Esko T, Milani L, Metspalu A, Perry JRB, Ong KK, Wareham NJ, Matullo G, Sacerdote C, Panico S, Caspi A, Arseneault L, Gagnon F, Ollikainen M, Kaprio J, Felix JF, Rivadeneira F, Tiemeier H, van IMH, Uitterlinden AG, Jaddoe VVW, Haley C, McIntosh AM, Evans KL, Murray A, Raikkonen K, Lahti J, Nohr EA, Sorensen TIA, Hansen T, Morgen CS, Binder EB, Lucae S, Gonzalez JR, Bustamante M, Sunyer J, Holloway JW, Karmaus W, Zhang H, Deary IJ, Wray NR, Starr JM, Beekman M, van Heemst D, Slagboom PE, Morange PE, Tregouet DA, Veldink JH, Davies GE, de Geus EJC, Boomsma DI, Vonk JM, Brunekreef B, Koppelman GH, Alarcon-Riquelme ME, Huang RC, Pennell CE, van Meurs J, Ikram MA, Hughes AD, Tillin T, Chaturvedi N, Pausova Z, Paus T, Spector TD, Kumari M, Schalkwyk LC, Visscher PM, Davey Smith G, Bock C, Gaunt TR, Bell JT, Heijmans BT, Mill J, Relton CL. Genomic and phenotypic insights from an atlas of genetic effects on DNA methylation. *Nat Genet.* 2021;53(9):1311-21. Epub 20210906. doi: 10.1038/s41588-021-00923-x. PubMed PMID: 34493871; PMCID: PMC7612069.
46. Elsworth B, Lyon M, Alexander T, Liu Y, Matthews P, Hallett J, Bates P, Palmer T, Haberland V, Smith GD, Zheng J, Haycock P, Gaunt TR, Hemani G. The MRC IEU OpenGWAS data infrastructure. *bioRxiv.* 2020:2020.08.10.244293. doi: 10.1101/2020.08.10.244293.
47. Hemani G, Zheng J, Elsworth B, Wade KH, Haberland V, Baird D, Laurin C, Burgess S, Bowden J, Langdon R, Tan VY, Yarmolinsky J, Shihab HA, Timpson NJ, Evans DM, Relton C, Martin RM, Davey Smith G, Gaunt TR, Haycock PC. The MR-Base platform supports systematic causal inference across the human phenome. *Elife.* 2018;7. Epub 20180530. doi: 10.7554/eLife.34408. PubMed PMID: 29846171; PMCID: PMC5976434.
48. Levin MG, Tsao NL, Singhal P, Liu C, Vy HMT, Paranjpe I, Backman JD, Bellomo TR, Bone WP, Biddinger KJ, Hui Q, Dikilitas O, Satterfield BA, Yang Y, Morley MP, Bradford Y, Burke M, Reza N, Charest B, Regeneron Genetics C, Judy RL, Puckelwartz MJ, Hakonarson H, Khan A, Kottyan LC, Kullo I, Luo Y, McNally EM, Rasmussen-Torvik LJ, Day SM, Do R, Phillips LS, Ellinor PT, Nadkarni GN, Ritchie MD, Arany Z, Cappola TP, Margulies KB, Aragam KG, Haggerty CM, Joseph J, Sun YV, Voight BF, Damrauer SM. Genome-wide association and multi-trait analyses characterize the common genetic architecture of heart failure. *Nat Commun.* 2022;13(1):6914. Epub 20221114. doi: 10.1038/s41467-022-34216-6. PubMed PMID: 36376295; PMCID: PMC9663424.

49. Roselli C, Chaffin MD, Weng LC, Aeschbacher S, Ahlberg G, Albert CM, Almgren P, Alonso A, Anderson CD, Aragam KG, Arking DE, Barnard J, Bartz TM, Benjamin EJ, Bihlmeyer NA, Bis JC, Bloom HL, Boerwinkle E, Bottinger EB, Brody JA, Calkins H, Campbell A, Cappola TP, Carlquist J, Chasman DI, Chen LY, Chen YI, Choi EK, Choi SH, Christophersen IE, Chung MK, Cole JW, Conen D, Cook J, Crijns HJ, Cutler MJ, Damrauer SM, Daniels BR, Darbar D, Delgado G, Denny JC, Dichgans M, Dorr M, Dudink EA, Dudley SC, Esa N, Esko T, Eskola M, Fatkin D, Felix SB, Ford I, Franco OH, Geelhoed B, Grewal RP, Gudnason V, Guo X, Gupta N, Gustafsson S, Gutmann R, Hamsten A, Harris TB, Hayward C, Heckbert SR, Hernessniemi J, Hocking LJ, Hofman A, Horimoto A, Huang J, Huang PL, Huffman J, Ingelsson E, Ipek EG, Ito K, Jimenez-Conde J, Johnson R, Jukema JW, Kaab S, Kahonen M, Kamatani Y, Kane JP, Kastrati A, Kathiresan S, Katschnig-Winter P, Kavousi M, Kessler T, Kietselaer BL, Kirchhof P, Kleber ME, Knight S, Krieger JE, Kubo M, Launer LJ, Laurikka J, Lehtimäki T, Leineweber K, Lemaitre RN, Li M, Lim HE, Lin HJ, Lin H, Lind L, Lindgren CM, Lokki ML, London B, Loos RJF, Low SK, Lu Y, Lyytikäinen LP, Macfarlane PW, Magnusson PK, Mahajan A, Malik R, Mansur AJ, Marcus GM, Margolin L, Margulies KB, Marz W, McManus DD, Melander O, Mohanty S, Montgomery JA, Morley MP, Morris AP, Muller-Nurasyid M, Natale A, Nazarian S, Neumann B, Newton-Cheh C, Niemeijer MN, Nikus K, Nilsson P, Noordam R, Oellers H, Olesen MS, Orho-Melander M, Padmanabhan S, Pak HN, Pare G, Pedersen NL, Pera J, Pereira A, Porteous D, Psaty BM, Pulit SL, Pullinger CR, Rader DJ, Refsgaard L, Ribases M, Ridker PM, Rienstra M, Risch L, Roden DM, Rosand J, Rosenberg MA, Rost N, Rotter JI, Saba S, Sandhu RK, Schnabel RB, Schramm K, Schunkert H, Schurman C, Scott SA, Seppala I, Shaffer C, Shah S, Shalaby AA, Shim J, Shoemaker MB, Siland JE, Sinisalo J, Sinner MF, Slowik A, Smith AV, Smith BH, Smith JG, Smith JD, Smith NL, Soliman EZ, Sotoodehnia N, Stricker BH, Sun A, Sun H, Svendsen JH, Tanaka T, Tanriverdi K, Taylor KD, Teder-Laving M, Teumer A, Theriault S, Trompet S, Tucker NR, Tveit A, Uitterlinden AG, Van Der Harst P, Van Gelder IC, Van Wagener DR, Verweij N, Vlachopoulou E, Volker U, Wang B, Weeke PE, Weijs B, Weiss R, Weiss S, Wells QS, Wiggins KL, Wong JA, Woo D, Worrall BB, Yang PS, Yao J, Yoneda ZT, Zeller T, Zeng L, Lubitz SA, Lunetta KL, Ellinor PT. Multi-ethnic genome-wide association study for atrial fibrillation. *Nat Genet.* 2018;50(9):1225-33. Epub 20180611. doi: 10.1038/s41588-018-0133-9. PubMed PMID: 29892015; PMCID: PMC6136836.
50. Mishra A, Malik R, Hachiya T, Jurgenson T, Namba S, Posner DC, Kamanu FK, Koido M, Le Grand Q, Shi M, He Y, Georgakis MK, Caro I, Krebs K, Liaw YC, Vaura FC, Lin K, Winsvold BS, Srinivasasainagendra V, Parodi L, Bae HJ, Chauhan G, Chong MR, Tomppo L, Akinyemi R, Roshchupkin GV, Habib N, Jee YH, Thomassen JQ, Abedi V, Carcel-Marquez J, Nygaard M, Leonard HL, Yang C, Yonova-Doing E, Knol MJ, Lewis AJ, Judy RL, Ago T, Amouyel P, Armstrong ND, Bakker MK, Bartz TM, Bennett DA, Bis JC, Bordes C, Borte S, Cain A, Ridker PM, Cho K, Chen Z, Cruchaga C, Cole JW, de Jager PL, de Cid R, Endres M, Ferreira LE, Geerlings MI, Gasca NC, Gudnason V, Hata J, He J, Heath AK, Ho YL, Havulinna AS, Hopewell JC, Hyacinth HI, Inouye M, Jacob MA, Jeon CE, Jern C, Kamouchi M, Keene KL, Kitazono T, Kittner SJ, Konuma T, Kumar A, Lacaze P, Launer LJ, Lee KJ, Lepik K, Li J, Li L, Manichaikul A, Markus HS, Marston NA, Meitinger T, Mitchell BD, Montellano FA, Morisaki T, Mosley TH, Nalls MA, Nordestgaard BG, O'Donnell MJ, Okada Y, Onland-Moret NC, Ovbiagele B, Peters A, Psaty BM, Rich SS, Rosand J, Sabatine MS, Sacco RL, Saleheen D, Sandset EC, Salomaa V, Sargurupremraj M, Sasaki M, Satizabal CL, Schmidt CO, Shimizu A, Smith NL, Sloane KL, Sutoh Y, Sun YV, Tanno K, Tiedt S, Tatlisumak T, Torres-Aguila NP, Tiwari HK, Tregouet DA, Trompet S, Tuladhar AM, Tybjaerg-Hansen A, van Vugt M, Vibo R, Verma SS, Wiggins KL, Wennberg P, Woo D, Wilson PWF, Xu H, Yang Q, Yoon K, Consortium C, Consortium I, Dutch Parelinoer Initiative Cerebrovascular Disease Study G, Estonian B, Consortium PQ, FinnGen C, Network NSG, Consortium M, Consortium S, China Kadoorie Biobank Collaborative G, Program VAMV, International Stroke Genetics C, Biobank J, Consortium C, Consortium G, Millwood IY, Gieger C, Ninomiya T, Grabe HJ, Jukema JW, Rissanen IL, Strbian D, Kim YJ, Chen PH, Mayerhofer E, Howson JMM, Irvin MR, Adams H, Wassertheil-Smoller S, Christensen K, Ikram MA, Rundek T, Worrall BB, Lathrop GM, Riaz M, Simonsick EM, Korv J, Franca PHC, Zand R, Prasad K, Frikke-Schmidt R, de Leeuw FE, Liman T, Haeusler KG, Ruigrok YM, Heuschmann PU, Longstreth WT,

Jung KJ, Bastarache L, Pare G, Damrauer SM, Chasman DI, Rotter JI, Anderson CD, Zwart JA, Niiranen TJ, Fornage M, Liaw YP, Seshadri S, Fernandez-Cadenas I, Walters RG, Ruff CT, Owolabi MO, Huffman JE, Milani L, Kamatani Y, Dichgans M, Debette S. Stroke genetics informs drug discovery and risk prediction across ancestries. *Nature*. 2022;611(7934):115-23. Epub 20220930. doi: 10.1038/s41586-022-05165-3. PubMed PMID: 36180795; PMCID: PMC9524349.

51. Kavousi M, Bos MM, Barnes HJ, Lino Cardenas CL, Wong D, Lu H, Hodonsky CJ, Landsmeer LPL, Turner AW, Kho M, Hasbani NR, de Vries PS, Bowden DW, Chopade S, Deelen J, Benavente ED, Guo X, Hofer E, Hwang SJ, Lutz SM, Lyytikainen LP, Slenders L, Smith AV, Stanislawski MA, van Setten J, Wong Q, Yanek LR, Becker DM, Beekman M, Budoff MJ, Feitosa MF, Finan C, Hilliard AT, Kardia SLR, Kovacic JC, Kral BG, Langefeld CD, Launer LJ, Malik S, Hoesein F, Mokry M, Schmidt R, Smith JA, Taylor KD, Terry JG, van der Grond J, van Meurs J, Vliegenthart R, Xu J, Young KA, Zilhao NR, Zweiker R, Assimes TL, Becker LC, Bos D, Carr JJ, Cupples LA, de Kleijn DPV, de Winther M, den Ruijter HM, Fornage M, Freedman BI, Gudnason V, Hingorani AD, Hokanson JE, Ikram MA, Isgum I, Jacobs DR, Jr., Kahonen M, Lange LA, Lehtimaki T, Pasterkamp G, Raitakari OT, Schmidt H, Slagboom PE, Uitterlinden AG, Vernooij MW, Bis JC, Franceschini N, Psaty BM, Post WS, Rotter JI, Bjorkegren JLM, O'Donnell CJ, Bielak LF, Peyser PA, Malhotra R, van der Laan SW, Miller CL. Multi-ancestry genome-wide study identifies effector genes and druggable pathways for coronary artery calcification. *Nat Genet*. 2023;55(10):1651-64. Epub 20230928. doi: 10.1038/s41588-023-01518-4. PubMed PMID: 37770635; PMCID: PMC10601987.

52. Ligthart S, Vaez A, Vosa U, Stathopoulou MG, de Vries PS, Prins BP, Van der Most PJ, Tanaka T, Naderi E, Rose LM, Wu Y, Karlsson R, Barbalic M, Lin H, Pool R, Zhu G, Mace A, Sidore C, Trompet S, Mangino M, Sabater-Lleal M, Kemp JP, Abbasi A, Kacprowski T, Verweij N, Smith AV, Huang T, Marzi C, Feitosa MF, Lohman KK, Kleber ME, Milanesechi Y, Mueller C, Huq M, Vlachopoulou E, Lyytikainen LP, Oldmeadow C, Deelen J, Perola M, Zhao JH, Feenstra B, LifeLines Cohort S, Amini M, Group CIW, Lahti J, Schraut KE, Fornage M, Suktitipat B, Chen WM, Li X, Nutile T, Malerba G, Luan J, Bak T, Schork N, Del Greco MF, Thiering E, Mahajan A, Marioni RE, Mihailov E, Eriksson J, Ozel AB, Zhang W, Nethander M, Cheng YC, Aslibekyan S, Ang W, Gandin I, Yengo L, Portas L, Kooperberg C, Hofer E, Rajan KB, Schurmann C, den Hollander W, Ahluwalia TS, Zhao J, Draisma HHM, Ford I, Timpson N, Teumer A, Huang H, Wahl S, Liu Y, Huang J, Uh HW, Geller F, Joshi PK, Yanek LR, Trabetti E, Lehne B, Vozzi D, Verbanck M, Biino G, Saba Y, Meulenbelt I, O'Connell JR, Laakso M, Giulianini F, Magnusson PKE, Ballantyne CM, Hottenga JJ, Montgomery GW, Rivadineira F, Rueedi R, Steri M, Herzig KH, Stott DJ, Menni C, Franberg M, St Pourcain B, Felix SB, Pers TH, Bakker SJL, Kraft P, Peters A, Vaidya D, Delgado G, Smit JH, Grossmann V, Sinisalo J, Seppala I, Williams SR, Holliday EG, Moed M, Langenberg C, Raikonen K, Ding J, Campbell H, Sale MM, Chen YI, James AL, Ruggiero D, Soranzo N, Hartman CA, Smith EN, Berenson GS, Fuchsberger C, Hernandez D, Tiesler CMT, Giedraitis V, Liewald D, Fischer K, Mellstrom D, Larsson A, Wang Y, Scott WR, Lorentzon M, Beilby J, Ryan KA, Pennell CE, Vuckovic D, Balkau B, Concas MP, Schmidt R, Mendes de Leon CF, Bottinger EP, Kloppenburg M, Paternoster L, Boehnke M, Musk AW, Willemssen G, Evans DM, Madden PAF, Kahonen M, Kutalik Z, Zoledziewska M, Karhunen V, Kritchevsky SB, Sattar N, Lachance G, Clarke R, Harris TB, Raitakari OT, Attia JR, van Heemst D, Kajantie E, Sorice R, Gambaro G, Scott RA, Hicks AA, Ferrucci L, Standl M, Lindgren CM, Starr JM, Karlsson M, Lind L, Li JZ, Chambers JC, Mori TA, de Geus E, Heath AC, Martin NG, Auvinen J, Buckley BM, de Craen AJM, Waldenberger M, Strauch K, Meitinger T, Scott RJ, McEvoy M, Beekman M, Bombieri C, Ridker PM, Mohlke KL, Pedersen NL, Morrison AC, Boomsma DI, Whitfield JB, Strachan DP, Hofman A, Vollenweider P, Cucca F, Jarvelin MR, Jukema JW, Spector TD, Hamsten A, Zeller T, Uitterlinden AG, Nauck M, Gudnason V, Qi L, Grallert H, Borecki IB, Rotter JI, Marz W, Wild PS, Lokki ML, Boyle M, Salomaa V, Melbye M, Eriksson JG, Wilson JF, Penninx B, Becker DM, Worrall BB, Gibson G, Krauss RM, Ciullo M, Zaza G, Wareham NJ, Oldehinkel AJ, Palmer LJ, Murray SS, Pramstaller PP, Bandinelli S, Heinrich J, Ingelsson E, Deary IJ, Magi R, Vandenput L, van der Harst P, Desch KC, Kooner JS, Ohlsson C, Hayward C, Lehtimaki T, Shuldiner AR, Arnett DK, Beilin LJ, Robino A, Froguel P, Pirastu M, Jess T, Koenig W, Loos RJF, Evans DA, Schmidt H, Smith GD, Slagboom PE, Eiriksdottir G, Morris

- AP, Psaty BM, Tracy RP, Nolte IM, Boerwinkle E, Visvikis-Siest S, Reiner AP, Gross M, Bis JC, Franke L, Franco OH, Benjamin EJ, Chasman DI, Dupuis J, Snieder H, Dehghan A, Alizadeh BZ. Genome Analyses of >200,000 Individuals Identify 58 Loci for Chronic Inflammation and Highlight Pathways that Link Inflammation and Complex Disorders. *Am J Hum Genet.* 2018;103(5):691-706. doi: 10.1016/j.ajhg.2018.09.009. PubMed PMID: 30388399; PMCID: PMC6218410.
53. Jurgens SJ, Pirruccello JP, Choi SH, Morrill VN, Chaffin M, Lubitz SA, Lunetta KL, Ellinor PT. Adjusting for common variant polygenic scores improves yield in rare variant association analyses. *Nat Genet.* 2023;55(4):544-8. Epub 20230323. doi: 10.1038/s41588-023-01342-w. PubMed PMID: 36959364; PMCID: PMC11078202.
54. Honigberg MC, Truong B, Khan RR, Xiao B, Bhatta L, Vy HMT, Guerrero RF, Schuermans A, Selvaraj MS, Patel AP, Koyama S, Cho SMJ, Vellarikkal SK, Trinder M, Urbut SM, Gray KJ, Brumpton BM, Patil S, Zollner S, Antopia MC, Saxena R, Nadkarni GN, Do R, Yan Q, Pe'er I, Verma SS, Gupta RM, Haas DM, Martin HC, van Heel DA, Laik T, Natarajan P. Polygenic prediction of preeclampsia and gestational hypertension. *Nat Med.* 2023;29(6):1540-9. Epub 20230529. doi: 10.1038/s41591-023-02374-9. PubMed PMID: 37248299; PMCID: PMC10330886.
55. Bellenguez C, Kucukali F, Jansen IE, Kleindam L, Moreno-Grau S, Amin N, Naj AC, Campos-Martin R, Grenier-Boley B, Andrade V, Holmans PA, Boland A, Damotte V, van der Lee SJ, Costa MR, Kuulasmaa T, Yang Q, de Rojas I, Bis JC, Yaqub A, Prokic I, Chapuis J, Ahmad S, Giedraitis V, Aarsland D, Garcia-Gonzalez P, Abdelnour C, Alarcon-Martin E, Alcolea D, Alegret M, Alvarez I, Alvarez V, Armstrong NJ, Tsolaki A, Antunez C, Appollonio I, Arcaro M, Archetti S, Pastor AA, Arosio B, Athanasiu L, Bailly H, Banaj N, Baquero M, Barral S, Beiser A, Pastor AB, Below JE, Benckek P, Benussi L, Berr C, Besse C, Bessi V, Binetti G, Bizarro A, Blesa R, Boada M, Boerwinkle E, Borroni B, Boschi S, Bossu P, Brathen G, Bressler J, Bresner C, Brodaty H, Brookes KJ, Brusco LI, Buiza-Rueda D, Burger K, Burholt V, Bush WS, Calero M, Cantwell LB, Chene G, Chung J, Cuccaro ML, Carracedo A, Cecchetti R, Cervera-Carles L, Charbonnier C, Chen HH, Chillotti C, Ciccone S, Claassen J, Clark C, Conti E, Corma-Gomez A, Costantini E, Custodero C, Daian D, Dalmasso MC, Daniele A, Dardiotis E, Dartigues JF, de Deyn PP, de Paiva Lopes K, de Witte LD, Dobbie S, Deckert J, Del Ser T, Denning N, DeStefano A, Dichgans M, Diehl-Schmid J, Diez-Fairen M, Rossi PD, Djurovic S, Duron E, Duzel E, Dufouil C, Eiriksdottir G, Engelborghs S, Escott-Price V, Espinosa A, Ewers M, Faber KM, Fabrizio T, Nielsen SF, Fardo DW, Farotti L, Fenoglio C, Fernandez-Fuertes M, Ferrari R, Ferreira CB, Ferri E, Fin B, Fischer P, Fladby T, Fliessbach K, Fongang B, Fornage M, Fortea J, Foroud TM, Fostinelli S, Fox NC, Franco-Macias E, Bullido MJ, Frank-Garcia A, Froelich L, Fulton-Howard B, Galimberti D, Garcia-Alberca JM, Garcia-Gonzalez P, Garcia-Madrona S, Garcia-Ribas G, Ghidoni R, Giegling I, Giorgio G, Goate AM, Goldhardt O, Gomez-Fonseca D, Gonzalez-Perez A, Graff C, Grande G, Green E, Grimmer T, Grunblatt E, Grunin M, Gudnason V, Guetta-Baranes T, Haapasalo A, Hadjigeorgiou G, Haines JL, Hamilton-Nelson KL, Hampel H, Hanon O, Hardy J, Hartmann AM, Hausner L, Harwood J, Heilmann-Heimbach S, Helisalmi S, Heneka MT, Hernandez I, Herrmann MJ, Hoffmann P, Holmes C, Holstege H, Vilas RH, Hulsman M, Humphrey J, Biessels GJ, Jian X, Johansson C, Jun GR, Kastumata Y, Kauwe J, Kehoe PG, Kilander L, Stahlbom AK, Kivipelto M, Koivisto A, Kornhuber J, Kosmidis MH, Kukull WA, Kuksa PP, Kunkle BW, Kuzma AB, Lage C, Laukka EJ, Launer L, Lauria A, Lee CY, Lehtisalo J, Lerch O, Lleo A, Longstreth W, Jr., Lopez O, de Munain AL, Love S, Lowemark M, Luckcuck L, Lunetta KL, Ma Y, Macias J, MacLeod CA, Maier W, Mangialasche F, Spallazzi M, Marquie M, Marshall R, Martin ER, Montes AM, Rodriguez CM, Masullo C, Mayeux R, Mead S, Mecocci P, Medina M, Meggy A, Mehrabian S, Mendoza S, Menendez-Gonzalez M, Mir P, Moebus S, Mol M, Molina-Porcel L, Montreal L, Morelli L, Moreno F, Morgan K, Mosley T, Nothen MM, Muchnik C, Mukherjee S, Nacmias B, Ngandu T, Nicolas G, Nordestgaard BG, Olaso R, Orellana A, Orsini M, Ortega G, Padovani A, Paolo C, Papenberg G, Parnetti L, Pasquier F, Pastor P, Peloso G, Perez-Cordon A, Perez-Tur J, Pericard P, Peters O, Pijnenburg YAL, Pineda JA, Pinol-Ripoll G, Pisanu C, Polak T, Popp J, Posthuma D, Priller J, Puerta R, Quenez O, Quintela I, Thomassen JQ, Rabano A, Rainero I, Rajabli F, Ramakers I, Real LM, Reinders MJT, Reitz C, Reyes-Dumeyer D, Ridge P, Riedel-Heller S, Riederer P, Roberto N, Rodriguez-Rodriguez E, Rongve A, Allende IR, Rosende-Roca M, Royo JL, Rubino E, Rujescu D, Saez ME, Sakka P, Saltvedt

- I, Sanabria A, Sanchez-Arjona MB, Sanchez-Garcia F, Juan PS, Sanchez-Valle R, Sando SB, Sarnowski C, Satizabal CL, Scamosci M, Scarmeas N, Scarpini E, Scheltens P, Scherbaum N, Scherer M, Schmid M, Schneider A, Schott JM, Selbaek G, Seripa D, Serrano M, Sha J, Shadrin AA, Skrobot O, Slifer S, Snijders GJL, Soininen H, Solfrizzi V, Solomon A, Song Y, Sorbi S, Sotolongo-Grau O, Spalletta G, Spottke A, Squassina A, Stordal E, Tartan JP, Tarraga L, Tesi N, Thalamuthu A, Thomas T, Tosto G, Traykov L, Tremolizzo L, Tybjaerg-Hansen A, Uitterlinden A, Ullgren A, Ulstein I, Valero S, Valladares O, Broeckhoven CV, Vance J, Vardarajan BN, van der Lugt A, Dongen JV, van Rooij J, van Swieten J, Vandenberghe R, Verhey F, Vidal JS, Vogelgsang J, Vyhnaek M, Wagner M, Wallon D, Wang LS, Wang R, Weinhold L, Wiltfang J, Windle G, Woods B, Yannakoulia M, Zare H, Zhao Y, Zhang X, Zhu C, Zulaica M, Eadb, Gr@Ace, Degesco, Eadi, Gerad, Demgene, FinnGen, Adgc, Charge, Farrer LA, Psaty BM, Ghanbari M, Raj T, Sachdev P, Mather K, Jessen F, Ikram MA, de Mendonca A, Hort J, Tsolaki M, Pericak-Vance MA, Amouyel P, Williams J, Frikke-Schmidt R, Clarimon J, Deleuze JF, Rossi G, Seshadri S, Andreassen OA, Ingelsson M, Hiltunen M, Slegers K, Schellenberg GD, van Duijn CM, Sims R, van der Flier WM, Ruiz A, Ramirez A, Lambert JC. New insights into the genetic etiology of Alzheimer's disease and related dementias. *Nat Genet.* 2022;54(4):412-36. Epub 20220404. doi: 10.1038/s41588-022-01024-z. PubMed PMID: 35379992; PMCID: PMC9005347.
56. McKay JD, Hung RJ, Han Y, Zong X, Carreras-Torres R, Christiani DC, Caporaso NE, Johansson M, Xiao X, Li Y, Byun J, Dunning A, Pooley KA, Qian DC, Ji X, Liu G, Timofeeva MN, Bojesen SE, Wu X, Le Marchand L, Albanes D, Bickeboller H, Aldrich MC, Bush WS, Tardon A, Rennert G, Teare MD, Field JK, Kiemeny LA, Lazarus P, Haugen A, Lam S, Schabath MB, Andrew AS, Shen H, Hong YC, Yuan JM, Bertazzi PA, Pesatori AC, Ye Y, Diao N, Su L, Zhang R, Brhane Y, Leigh N, Johansen JS, Mellemegaard A, Saliba W, Haiman CA, Wilkens LR, Fernandez-Somoano A, Fernandez-Tardon G, van der Heijden HFM, Kim JH, Dai J, Hu Z, Davies MPA, Marcus MW, Brunnstrom H, Manjer J, Melander O, Muller DC, Overvad K, Trichopoulou A, Tumino R, Doherty JA, Barnett MP, Chen C, Goodman GE, Cox A, Taylor F, Woll P, Bruske I, Wichmann HE, Manz J, Muley TR, Risch A, Rosenberger A, Grankvist K, Johansson M, Shepherd FA, Tsao MS, Arnold SM, Haura EB, Bolca C, Holcatova I, Janout V, Kontic M, Lissowska J, Mukeria A, Ognjanovic S, Orłowski TM, Scelo G, Swiatkowska B, Zaridze D, Bakke P, Skaug V, Zienolddiny S, Duell EJ, Butler LM, Koh WP, Gao YT, Houlston RS, McLaughlin J, Stevens VL, Joubert P, Lamontagne M, Nickle DC, Obeidat M, Timens W, Zhu B, Song L, Kachuri L, Artigas MS, Tobin MD, Wain LV, SpiroMeta C, Rafnar T, Thorgeirsson TE, Reginsson GW, Stefansson K, Hancock DB, Bierut LJ, Spitz MR, Gaddis NC, Lutz SM, Gu F, Johnson EO, Kamal A, Pikielny C, Zhu D, Lindstrom S, Jiang X, Tyndale RF, Chenevix-Trench G, Beesley J, Bosse Y, Chanock S, Brennan P, Landi MT, Amos CI. Large-scale association analysis identifies new lung cancer susceptibility loci and heterogeneity in genetic susceptibility across histological subtypes. *Nat Genet.* 2017;49(7):1126-32. Epub 20170612. doi: 10.1038/ng.3892. PubMed PMID: 28604730; PMCID: PMC5510465.
57. Sanderson E, Glymour MM, Holmes MV, Kang H, Morrison J, Munafo MR, Palmer T, Schooling CM, Wallace C, Zhao Q, Smith GD. Mendelian randomization. *Nat Rev Methods Primers.* 2022;2. doi: 10.1038/s43586-021-00092-5. PubMed PMID: 37325194; PMCID: PMC7614635.
58. Hughey JJ, Butte AJ. Robust meta-analysis of gene expression using the elastic net. *Nucleic Acids Res.* 2015;43(12):e79. Epub 20150331. doi: 10.1093/nar/gkv229. PubMed PMID: 25829177; PMCID: PMC4499117.
59. Kuhn M. Building Predictive Models in R Using the caret Package. *Journal of Statistical Software.* 2008;28(5). doi: 10.18637/jss.v028.i05.
60. Friedman J, Tibshirani R, Hastie T. Regularization Paths for Generalized Linear Models via Coordinate Descent. *Journal of Statistical Software.* 2010;33(1). doi: 10.18637/jss.v033.i01.
61. Harrell FE, Jr., Califf RM, Pryor DB, Lee KL, Rosati RA. Evaluating the yield of medical tests. *JAMA.* 1982;247(18):2543-6. PubMed PMID: 7069920.
62. GRAMBSCH PM, THERNEAU TM. Proportional hazards tests and diagnostics based on weighted residuals. *Biometrika.* 1994;81(3):515-26. doi: 10.1093/biomet/81.3.515.

63. Gil MP, Ploquin MJ, Watford WT, Lee SH, Kim K, Wang X, Kanno Y, O'Shea JJ, Biron CA. Regulating type 1 IFN effects in CD8 T cells during viral infections: changing STAT4 and STAT1 expression for function. *Blood*. 2012;120(18):3718-28. Epub 20120911. doi: 10.1182/blood-2012-05-428672. PubMed PMID: 22968462; PMCID: PMC3488885.
64. Chiou J, Geusz RJ, Okino ML, Han JY, Miller M, Melton R, Beebe E, Benaglio P, Huang S, Korgaonkar K, Heller S, Kleger A, Preissl S, Gorkin DU, Sander M, Gaulton KJ. Interpreting type 1 diabetes risk with genetics and single-cell epigenomics. *Nature*. 2021;594(7863):398-402. Epub 20210519. doi: 10.1038/s41586-021-03552-w. PubMed PMID: 34012112; PMCID: PMC10560508.
65. International Multiple Sclerosis Genetics C, Beecham AH, Patsopoulos NA, Xifara DK, Davis MF, Kempainen A, Cotsapas C, Shah TS, Spencer C, Booth D, Goris A, Oturai A, Saarela J, Fontaine B, Hemmer B, Martin C, Zipp F, D'Alfonso S, Martinelli-Boneschi F, Taylor B, Harbo HF, Kockum I, Hillert J, Olsson T, Ban M, Oksenberg JR, Hintzen R, Barcellos LF, Wellcome Trust Case Control C, International IBDGC, Agliardi C, Alfredsson L, Alizadeh M, Anderson C, Andrews R, Sondergaard HB, Baker A, Band G, Baranzini SE, Barizzone N, Barrett J, Bellenguez C, Bergamaschi L, Bernardinelli L, Berthele A, Biberacher V, Binder TM, Blackburn H, Bomfim IL, Brambilla P, Broadley S, Brochet B, Brundin L, Buck D, Butzkueven H, Caillier SJ, Camu W, Carpentier W, Cavalla P, Celius EG, Coman I, Comi G, Corrado L, Cosemans L, Cournu-Rebeix I, Cree BA, Cusi D, Damotte V, Defer G, Delgado SR, Deloukas P, di Sapio A, Dilthey AT, Donnelly P, Dubois B, Duddy M, Edkins S, Elovaara I, Esposito F, Evangelou N, Fiddes B, Field J, Franke A, Freeman C, Frohlich IY, Galimberti D, Gieger C, Gourraud PA, Graetz C, Graham A, Grummel V, Guaschino C, Hadjixenofontos A, Hakonarson H, Halfpenny C, Hall G, Hall P, Hamsten A, Harley J, Harrower T, Hawkins C, Hellenthal G, Hillier C, Hobart J, Hoshi M, Hunt SE, Jagodic M, Jelcic I, Jochim A, Kendall B, Kermode A, Kilpatrick T, Koivisto K, Konidari I, Korn T, Kronsbein H, Langford C, Larsson M, Lathrop M, Lebrun-Frenay C, Lechner-Scott J, Lee MH, Leone MA, Leppa V, Liberatore G, Lie BA, Lill CM, Linden M, Link J, Luessi F, Lycke J, Macciardi F, Mannisto S, Manrique CP, Martin R, Martinelli V, Mason D, Mazibrada G, McCabe C, Mero IL, Mescheriakova J, Moutsianas L, Myhr KM, Nagels G, Nicholas R, Nilsson P, Piehl F, Pirinen M, Price SE, Quach H, Reunanen M, Robberecht W, Robertson NP, Rodegher M, Rog D, Salvetti M, Schnetz-Boutaud NC, Sellebjerg F, Selter RC, Schaefer C, Shaunak S, Shen L, Shields S, Siffrin V, Slee M, Sorensen PS, Sorosina M, Sospedra M, Spurkland A, Strange A, Sundqvist E, Thijs V, Thorpe J, Ticca A, Tienari P, van Duijn C, Visser EM, Vucic S, Westerlind H, Wiley JS, Wilkins A, Wilson JF, Winkelmann J, Zajicek J, Zindler E, Haines JL, Pericak-Vance MA, Ivinson AJ, Stewart G, Hafler D, Hauser SL, Compston A, McVean G, De Jager P, Sawcer SJ, McCauley JL. Analysis of immune-related loci identifies 48 new susceptibility variants for multiple sclerosis. *Nat Genet*. 2013;45(11):1353-60. Epub 20130929. doi: 10.1038/ng.2770. PubMed PMID: 24076602; PMCID: PMC3832895.
66. Okada Y, Wu D, Trynka G, Raj T, Terao C, Ikari K, Kochi Y, Ohmura K, Suzuki A, Yoshida S, Graham RR, Manoharan A, Ortmann W, Bhangale T, Denny JC, Carroll RJ, Eyler AE, Greenberg JD, Kremer JM, Pappas DA, Jiang L, Yin J, Ye L, Su DF, Yang J, Xie G, Keystone E, Westra HJ, Esko T, Metspalu A, Zhou X, Gupta N, Mirel D, Stahl EA, Diogo D, Cui J, Liao K, Guo MH, Myouzen K, Kawaguchi T, Coenen MJ, van Riel PL, van de Laar MA, Guchelaar HJ, Huizinga TW, Dieude P, Mariette X, Bridges SL, Jr., Zernakova A, Toes RE, Tak PP, Miceli-Richard C, Bang SY, Lee HS, Martin J, Gonzalez-Gay MA, Rodriguez-Rodriguez L, Rantapaa-Dahlqvist S, Arlestig L, Choi HK, Kamatani Y, Galan P, Lathrop M, consortium R, consortium G, Eyre S, Bowes J, Barton A, de Vries N, Moreland LW, Criswell LA, Karlson EW, Taniguchi A, Yamada R, Kubo M, Liu JS, Bae SC, Worthington J, Padyukov L, Klareskog L, Gregersen PK, Raychaudhuri S, Stranger BE, De Jager PL, Franke L, Visscher PM, Brown MA, Yamanaka H, Mimori T, Takahashi A, Xu H, Behrens TW, Siminovitch KA, Momohara S, Matsuda F, Yamamoto K, Plenge RM. Genetics of rheumatoid arthritis contributes to biology and drug discovery. *Nature*. 2014;506(7488):376-81. Epub 20131225. doi: 10.1038/nature12873. PubMed PMID: 24390342; PMCID: PMC3944098.
67. Magi R, Horikoshi M, Sofer T, Mahajan A, Kitajima H, Franceschini N, McCarthy MI, Cogent-Kidney Consortium TDGC, Morris AP. Trans-ethnic meta-regression of genome-wide association studies accounting for ancestry increases power for discovery and improves fine-mapping resolution. *Hum Mol*

Genet. 2017;26(18):3639-50. Epub 2017/09/16. doi: 10.1093/hmg/ddx280. PubMed PMID: 28911207; PMCID: PMC5755684.

68. Li YR, Keating BJ. Trans-ethnic genome-wide association studies: advantages and challenges of mapping in diverse populations. *Genome Med.* 2014;6(10):91. Epub 2014/12/05. doi: 10.1186/s13073-014-0091-5. PubMed PMID: 25473427; PMCID: PMC4254423.

69. Zhou R, Chen HW, Li FR, Zhong Q, Huang YN, Wu XB. "Life's Essential 8" Cardiovascular Health and Dementia Risk, Cognition, and Neuroimaging Markers of Brain Health. *J Am Med Dir Assoc.* 2023;24(11):1791-7. Epub 20230624. doi: 10.1016/j.jamda.2023.05.023. PubMed PMID: 37369360.

70. Wu S, Wu Z, Yu D, Chen S, Wang A, Wang A, Gao X. Life's Essential 8 and Risk of Stroke: A Prospective Community-Based Study. *Stroke.* 2023;54(9):2369-79. Epub 20230719. doi: 10.1161/STROKEAHA.123.042525. PubMed PMID: 37466001.

71. Soltani S, Chitsazi MJ, Salehi-Abargouei A. The effect of dietary approaches to stop hypertension (DASH) on serum inflammatory markers: A systematic review and meta-analysis of randomized trials. *Clin Nutr.* 2018;37(2):542-50. Epub 20170302. doi: 10.1016/j.clnu.2017.02.018. PubMed PMID: 28302405.

72. Mullington JM, Simpson NS, Meier-Ewert HK, Haack M. Sleep loss and inflammation. *Best Pract Res Clin Endocrinol Metab.* 2010;24(5):775-84. doi: 10.1016/j.beem.2010.08.014. PubMed PMID: 21112025; PMCID: PMC3548567.

73. Liqiang S, Fang-Hui L, Minghui Q, Haichun C. Threshold effect and sex characteristics of the relationship between chronic inflammation and BMI. *BMC Endocr Disord.* 2023;23(1):175. Epub 20230816. doi: 10.1186/s12902-023-01396-1. PubMed PMID: 37582770; PMCID: PMC10428651.

74. Collier B, Dossett LA, May AK, Diaz JJ. Glucose control and the inflammatory response. *Nutr Clin Pract.* 2008;23(1):3-15. doi: 10.1177/011542650802300103. PubMed PMID: 18203960.

Table 1: Participant characteristics by participating studies

	FHS	CARDIA (Y15)	CARDIA (Y20)	MESA	SHIP	SHS	JHS
Total Participants (N)	3688	2381	2438	724	476	2064	1724
Mean Age, years (SD)	58 (13)	40 (4)	45 (4)	61 (10)	51 (14)	56 (8)	56 (12)
Sex, % Female	2008 (54%)	1406 (59%)	1401 (57%)	332 (46%)	217 (46%)	1205 (58%)	1080 (63%)
Smoking status, n (%)							
Never	2489 (68%)	1471 (62%)	1504 (62%)	402 (56%)	186 (39%)	667 (32%)	1115 (65%)
Former	890 (24%)	451 (19%)	502 (21%)	321 (44%)	167 (35%)	606 (29%)	356 (21%)
Current	309 (8%)	459 (19%)	431 (18%)	1 (0.1%)	123 (26%)	791 (38%)	243 (14%)
NA			1 (0.04%)				10 (0.6%)
Race/Ethnicity							
AA		987 (41%)	1068 (44%)	123 (17%)			1724 (100%)
EA	3688 (100%)	1394 (59%)	1370 (56%)	317 (44%)	476 (100%)		
HA				224 (31%)			
CHN				60 (8%)			
American Indian						2064 (100%)	
DASH diet score (or cohort-specific diet quality score) (SD)	24 (6)		68 (12) *	41 (11)	14 (3)		
Physical activity score (SD)	36 (6)	345 (275)	341 (280)	1665 (2423) *	2 (1)	2 (2)	
Sleep, hours (SD)	7.3 (1.1)	6.5 (1.2)	6.7 (1.6)		7 (1.2)		
BMI, kg/m ² (SD)	28 (5.4)	28.6 (6.8)	29.3 (6.7)	28.6 (5.1)	27.3 (4.2)	29.7 (2)	32.0 (7.4)
Systolic blood pressure, mm Hg (SD)	123 (17)	112 (14)	116 (15)	123 (20)	124 (17)	124 (6)	128 (16)
Diastolic blood pressure, mm Hg, (SD)	74 (10)	74 (11)	73 (11)	71 (10)	76 (9)	76 (4)	76 (9)
Hypertension meds, n (%)	1326 (36%)	168 (7%)	406 (17%)	253 (35%)	145 (31%)	411 (20%)	934 (54%)
Total cholesterol, mg/dL (SD)	186 (35)	185 (35)	185 (35)	193 (33)	211 (43)	193 (13)	199 (41)
Triglyceride, mg/dL (SD)	115 (72)	105 (92)	110 (81)	126 (63)	123 (66)	119 (26)	107 (70)
HDL, mg/dL (SD)	58 (18)	51 (14)	54 (17)	51 (14)	57 (14)	44 (5)	51 (15)
Lipid lowering meds, n (%)	1255 (34%)	47 (2%)	228 (9%)	122 (17%)	60 (13%)		237 (14%)
Blood glucose, mg/dL (SD)	102 (21)	94 (18)	99 (25)	94 (23)	97 (11)	110 (18)	91 (9)
HbA1c, % (SD)	5.6 (0.6)		5.5 (0.9)		5.2 (0.5)	5.4 (0.7)	6.1 (1.4)
Diabetic meds, n (%)	240 (7%)	36 (2%)	109 (5%)	51 (7%)	0 (0%)		306 (18%)

* In CARDIA, diet was evaluated based on healthy eating index (HEI) at Year 20 exam

* In MESA, physical activity level: (hours of intense activity or metabolic equivalent (METs) for sedentary, light, moderate, and intense activities)

Table 2: Phenotype enrichment analysis in EWAS Catalog

Phenotype	Sub-Phenotypes	EWAS Catalog CpG counts	Overlapping CpGs	Fold enrichment	+/-	Enrichment P
Stroke	Incident Stroke & Self-Reported Prevalent Stroke	339	13	28.8	+	2.4E-15
Heart diseases	Incident Ischemic Heart Disease, Self-Reported Prevalent Ischemic Heart Disease	1412	39	20.8	+	7.4E-38
Lung function	FEV1, FEV1/FVC	95	9	71.2	+	1.3E-14
Chronic obstructive pulmonary disease	Incident COPD & Self-Reported Prevalent COPD	38896	303	5.9	+	1.6E-155
Chronic kidney disease	Chronic kidney disease, estimated glomerular filtration rate (eGFR), Incident Chronic Kidney Disease, urinary-albumin-creatinine ratio (UACR)	557	16	21.6	+	1.3E-16
Alzheimer's disease	Alzheimer's disease Braak stage, APOE e2 vs e4	1328	11	6.2	+	2.4E-06
Pregnancy complications	Hypertensive disorders of pregnancy, Preeclampsia, gestational diabetes mellitus, very early preterm birth (<28 weeks)	2504	24	7.2	+	1.5E-13
Chronic pain	Incident Chronic Pain	152	4	19.8	+	5.7E-05
CRP	C-reactive protein	64063	562	6.6	+	1.0E-300
Rheumatoid Arthritis	Rheumatoid Arthritis & Prevalent Rheumatoid Arthritis	52085	49	0.7	-	9.0E-03

Table 3: Selected MR analyses results for LE8-associated CpGs

CpG	Counts of MR traits	CHR	Gene	(random-effect) Meta-analysis of LE8 EWAS				MR				Consistency with expectation	
				Beta	SE	P	I2	Trait	Beta	SE	P		FDR
cg20544516	2	17	MIR33B; SREBF1	-0.00014	0.00002	5.2E-10	0.00	Stroke	0.162	0.036	8.1E-06	0.002	Yes
								% Monocyte	0.034	0.012	3.2E-03	0.026	Yes
cg26403580	1	10	PRDX3	0.00013	0.00002	4.8E-11	0.00	Stroke	-0.082	0.022	1.6E-04	0.020	Yes
cg18262201	1	10	PFKFB3	0.00041	0.00009	7.8E-06	0.44	% Monocyte	-0.011	0.002	1.4E-05	0.000	Yes
								CRP	0.025	0.006	2.2E-05	0.001	Yes
cg27454412	3	7	C7orf50	-0.00032	0.00004	1.8E-12	0.00	% Lymphocyte	-0.011	0.002	6.4E-07	0.000	Yes
								% Neutrophil	0.008	0.002	3.0E-04	0.003	Yes
								% Monocyte	0.038	0.008	4.2E-06	0.000	No
cg21794222	3	6	CCR6	0.00016	0.00003	2.8E-10	0.00	% Neutrophil	-0.031	0.012	7.9E-03	0.043	Yes
								Lung cancer	-0.257	0.044	6.8E-09	0.000	Yes
								COPD	0.158	0.048	9.5E-04	0.043	No
cg25953130	2	10	ARID5B	0.00069	0.00011	8.8E-10	0.48	Preeclampsia	-0.419	0.090	3.6E-06	0.001	Yes
								CRP	-0.097	0.023	2.7E-05	0.001	No
cg07467649	3	7	BAZ1B	-0.00016	0.00002	2.5E-10	0.00	% Monocyte	0.089	0.007	4.4E-42	0.000	Yes
								% Neutrophil	-0.047	0.007	6.1E-12	0.000	No
								Atrial fibrillation	-0.102	0.025	6.0E-05	0.003	No
cg00124375	3	6	DDAH2	-0.00028	0.00006	1.2E-05	0.54	CAC	0.196	0.046	2.0E-05	0.008	Yes
								% Monocyte	-0.120	0.029	4.0E-05	0.001	No
								Heart failure	-0.053	0.016	6.2E-04	0.039	No
cg04379041	4	20	ZGPAT	-0.00021	0.00003	2.0E-12	0.00	% Lymphocyte	0.045	0.010	8.7E-06	0.000	No
								% Neutrophil	-0.040	0.008	1.2E-06	0.000	No
								Preeclampsia	-0.168	0.039	2.0E-05	0.004	No
								% Lymphocyte	0.022	0.005	6.6E-06	0.000	No
cg09286468	3	6	LY6G6E- LY6G6D	-0.0003	0.00004	1.5E-15	0.00	% Neutrophil	-0.027	0.004	3.9E-10	0.000	No
								Preeclampsia	-0.106	0.027	6.9E-05	0.009	No

Table 4: Hazard ratios showing risk reduction for standard deviation increase in LE8 DNAm score

Cohort	N	Events	M1			M2		
			HR	95% CI	P	HR	95% CI	P
Incident CVD								
FHS	3675	391	0.65	(0.59, 0.72)	2.9E-15	0.66	(0.59, 0.73)	2.8E-14
CARDIA	2609	168	0.65	(0.56, 0.76)	4.6E-08	0.68	(0.58, 0.80)	1.9E-06
MESA	926	125	0.81	(0.68, 0.96)	2.0E-02	0.81	(0.67, 0.97)	2.0E-02
JHS	1326	177	0.72	(0.63, 0.84)	1.4E-05	0.73	(0.62, 0.85)	6.7E-05
SHS	2064	901	0.67	(0.24, 0.73)	3.7E-21	0.68	(0.24, 0.74)	7.0E-19
CVD Death								
FHS	3679	91	0.71	(0.57, 0.89)	3.2E-03	0.71	(0.57, 0.89)	3.3E-03
CARDIA	2609	18	0.58	(0.37, 0.93)	2.4E-02	0.6	(0.36, 0.98)	4.3E-02
MESA	926	53	0.63	(0.48, 0.83)	9.9E-04	0.65	(0.49, 0.86)	2.0E-03
JHS	1326	74	0.65	(0.52, 0.81)	1.1E-04	0.72	(0.56, 0.91)	6.9E-03
SHS	2064	399	0.6	(0.21, 0.68)	1.6E-15	0.62	(0.22, 0.71)	4.9E-13
All-cause mortality								
FHS	4123	683	0.64	(0.60, 0.69)	1.0E-50	0.65	(0.60, 0.70)	1.0E-50
CARDIA	2632	108	0.54	(0.44, 0.65)	9.3E-11	0.55	(0.45, 0.67)	4.1E-09
MESA	926	159	0.71	(0.61, 0.83)	2.0E-05	0.73	(0.62, 0.86)	1.4E-04
JHS	1724	346	0.68	(0.61, 0.75)	2.8E-13	0.69	(0.61, 0.77)	3.6E-10
SHS	2064	1292	0.61	(0.22, 0.66)	8.8E-43	0.64	(0.23, 0.68)	3.5E-35

Covariates in M1 included sex, age, estimated leukocyte composition, cohort-specific covariates such as research centers, and self-reported race/ethnicity. Covariates in M2 included M1 covariates and education levels. Covariates in M3 included M2 covariates and LE8 score.

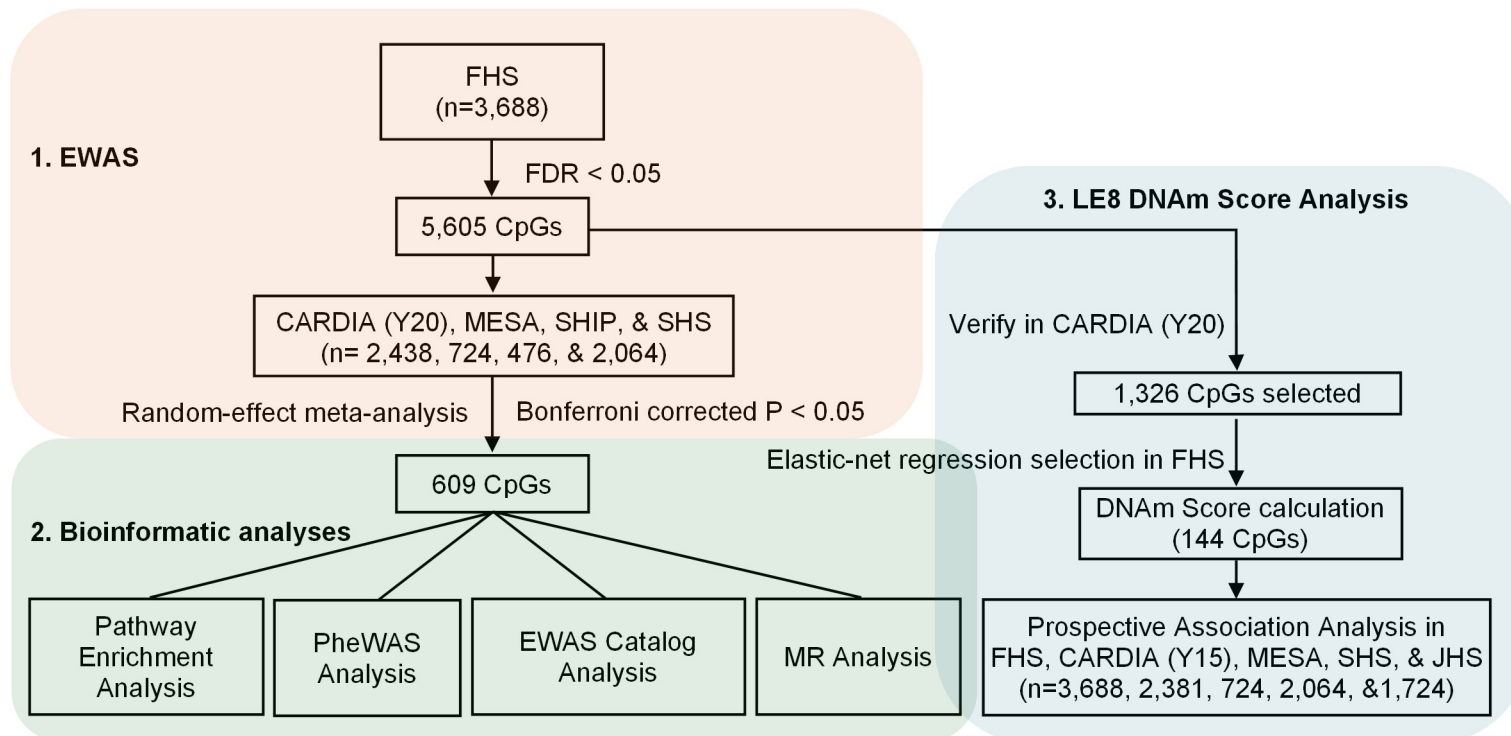


Figure 1. Study design flow-chart. EWAS: epigenome-wide association study, PheWAS: phenome-wide association study, DNAm: DNA methylation, MR: Mendelian randomization, FHS: Framingham Heart Study, CARDIA: Coronary Artery Risk Development in Young Adults Study, MESA: Multi-Ethnic Study of Atherosclerosis, SHIP: The Study of Health in Pomerania, SHS: Strong Heart Study, JHS: Jackson Heart Study

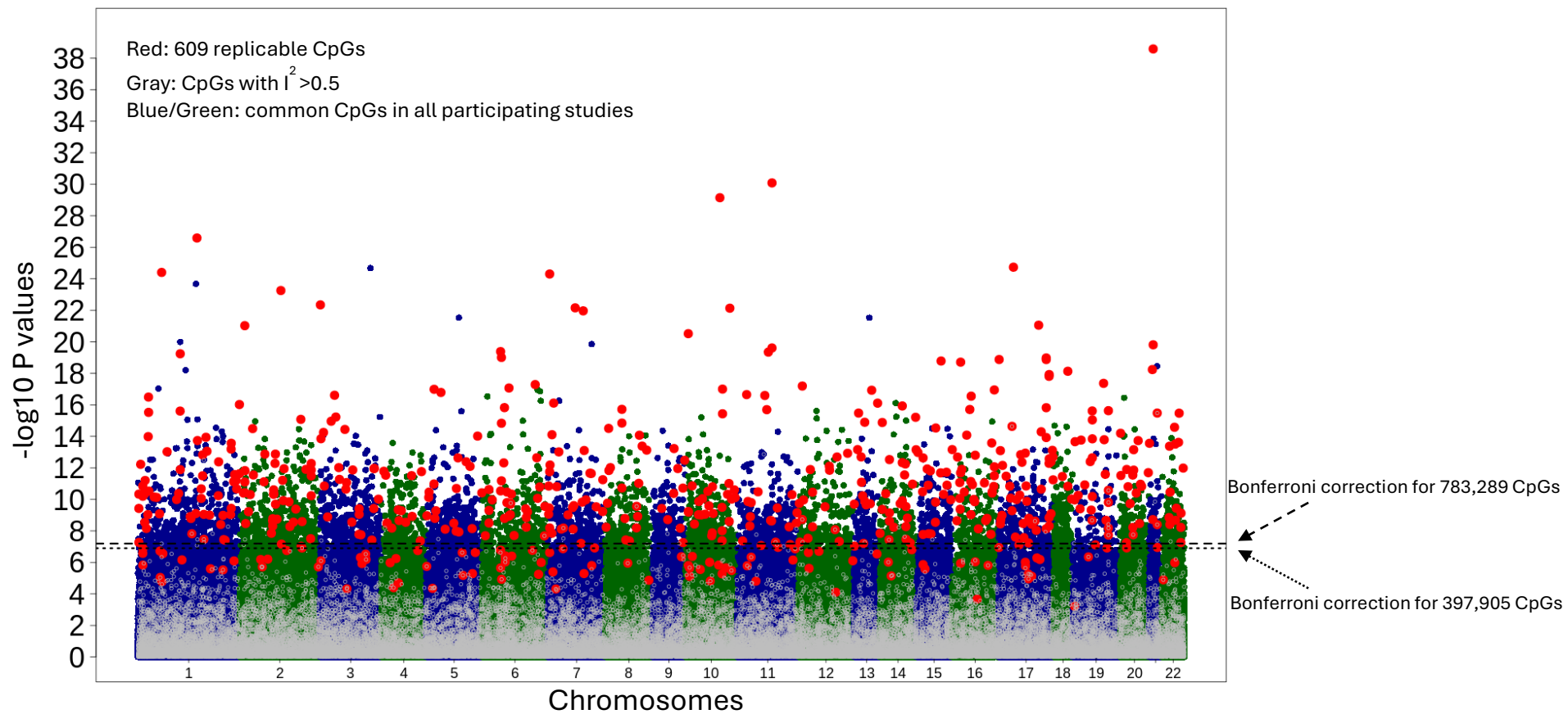


Figure 2. Manhattan plot for LE8 EWAS. Plot was generated using data from combined analysis of all five cohorts (FHS, CARDIA, MESA, SHIP, and SHS). The number of common CpGs in all five cohorts was 397,905 and the number of common CpGs in replication cohorts were 783,289.

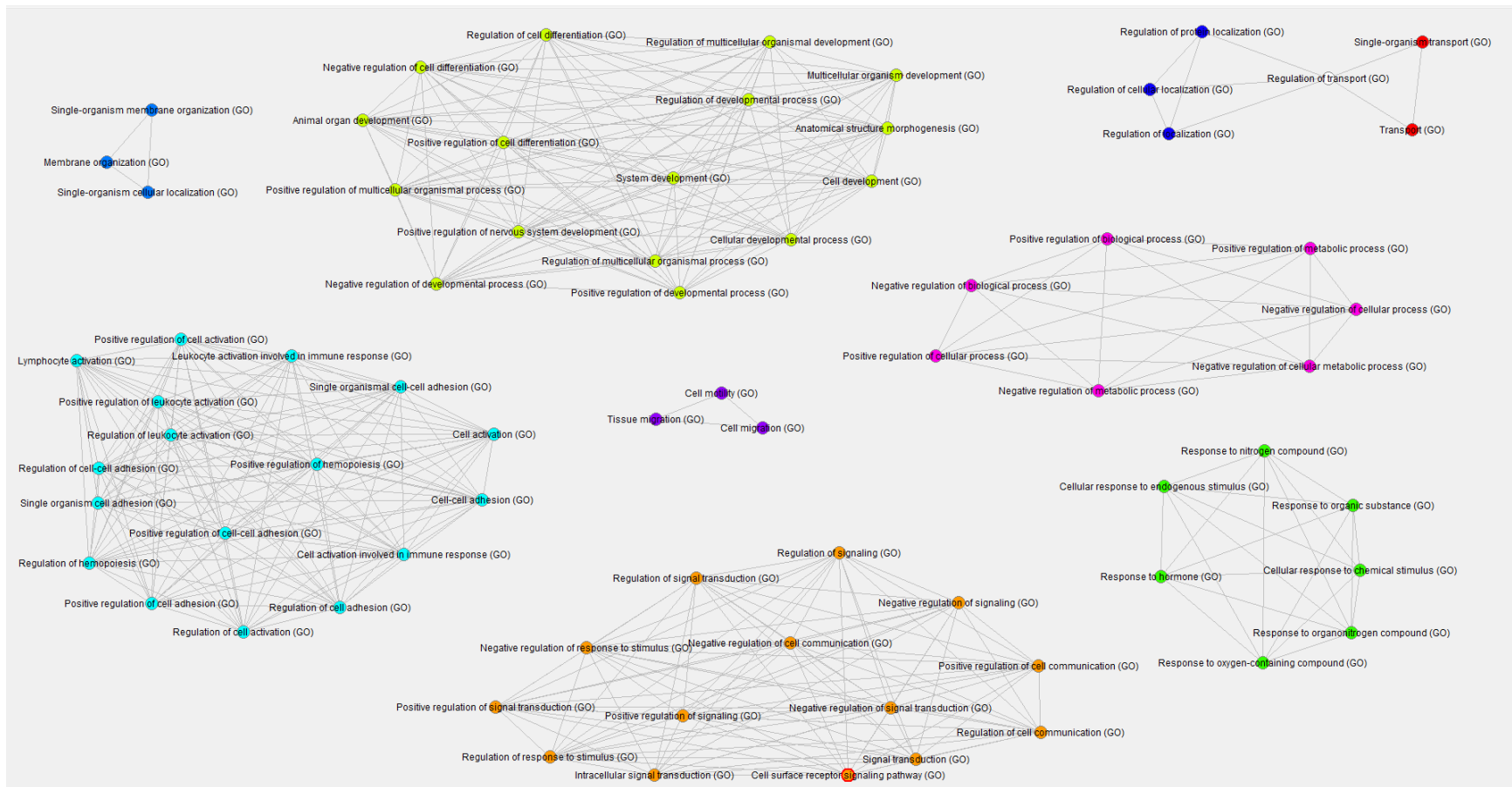


Figure 3. GO term network analysis. Biological process GO terms (level 3) clustered based on shared gene annotations. Nodes were only included if they belonged to a cluster of at least three terms and if they had an FDR < 0.05.

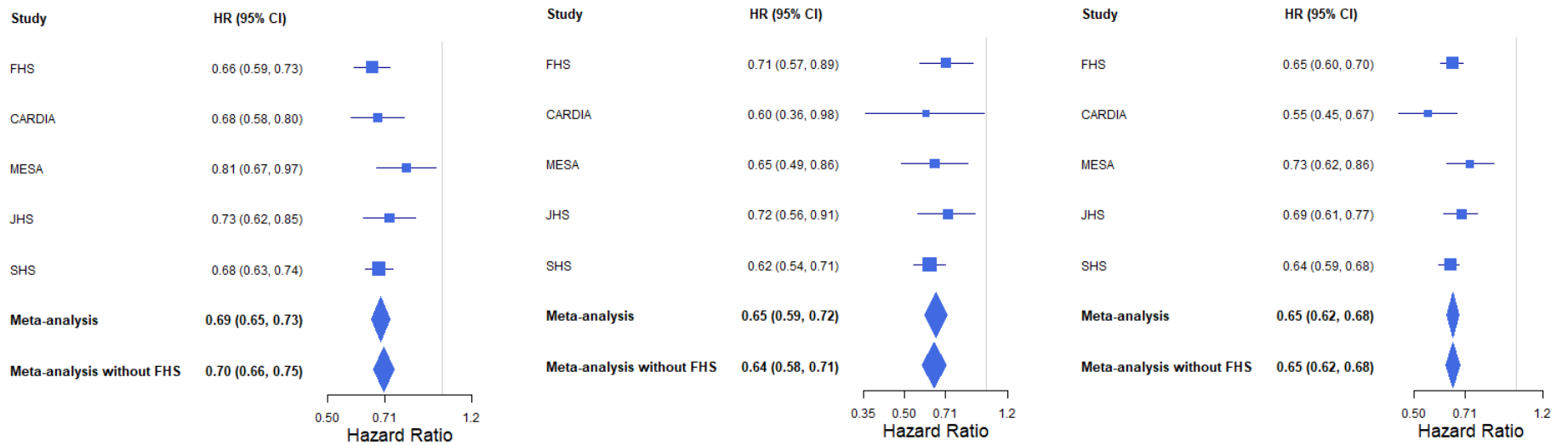


Figure 4: Hazard ratios for DNAm LE8 score for incident CVD, CVD mortality, and all-cause mortality. Hazard ratios are relative to one standard deviation increase in DNAm LE8 score. Model adjusted for sex, age, estimated leukocyte composition, cohort-specific covariates such as research centers, self-reported race/ethnicity, and education levels.