

1 **Unveiling the Hidden Syndrome: The Enigma of Anti-Transcobalamin Receptor**

2 **Autoantibodies**

3

4 Kazuki M. Matsuda, MD, PhD,¹ Hirohito Kotani, MD, PhD,¹ Shinichi Sato, MD, PhD,¹

5 Ayumi Yoshizaki, MD, PhD^{1*}

6

7 1. Department of Dermatology, The University of Tokyo Graduate School of

8 Medicine, Tokyo, Japan

9

10 *** Corresponding author**

11 Ayumi Yoshizaki, MD, PhD

12 Department of Dermatology, The University of Tokyo Graduate School of Medicine, 7-

13 3-1, Hongo, Bunkyo-ku, Tokyo, Japan, 1138655

14 Phone: +81-3-3815-5411

15 E-mail: ayuyoshi@me.com

16

17 **Abstract**

18 The transcobalamin receptor (CD320) functions as a critical mediator for
19 vitamin B12 uptake in cells, with emerging evidence linking autoantibodies against
20 CD320 to various autoimmune conditions. Pluinage *et al.*'s recent study identified
21 anti-CD320 autoantibodies as a cause of autoimmune vitamin B12 central deficiency,
22 specifically affecting the central nervous system while sparing peripheral nerves. Their
23 findings align with our previous work showing anti-CD320's role in cutaneous arteritis.
24 Both studies identified overlapping CD320 epitopes targeted by autoantibodies and
25 demonstrated the therapeutic efficacy of high-dose vitamin B12 supplementation in
26 mitigating symptoms by reducing CD320 expression on the surface of vascular
27 endothelial cells. Expanding on these findings, we observed anti-CD320 autoantibodies
28 in systemic sclerosis, systemic lupus erythematosus, and other inflammatory disorders,
29 suggesting a broader clinical relevance. The work by Pluinage *et al.* and our group
30 supports the concept of an "anti-CD320-associated syndrome," with high-dose B12
31 supplementation as a promising treatment strategy. Further research is needed to fully
32 elucidate the tissue-specific mechanisms and pathophysiology underlying these
33 autoimmune conditions.

34 **Introduction**

35 Cutaneous arteritis (CA), or cutaneous polyarteritis nodosa (PN), is a
36 single-organ vasculitis marked by necrotizing inflammation in small to medium-sized
37 arteries, similar to PN.(1) While PN impacts multiple organs, CA is confined to the skin
38 and nearby joints, muscles, and peripheral nerves.(2) Diagnosis typically relies on skin
39 biopsy, a procedure that can be burdensome for both patients and clinicians. Treatment
40 often involves systemic corticosteroids and immunosuppressants,(3) though responses
41 vary among patients.(4) There is a need for easily measurable biomarkers to aid in
42 diagnosis and prognosis, along with a deeper understanding of the disease's
43 pathophysiology to develop targeted therapies.

44 In our previous work, we reported the presence of autoantibodies targeting the
45 extracellular domain of CD320 in 24% of patients with cutaneous arteritis (CA).(5)
46 Transcobalamin receptor (CD320), a single-pass transmembrane protein, functions as
47 the cell uptake receptor for vitamin B12 (VB12).(6) Patients with positive anti-CD320
48 antibodies (Abs) were spared from peripheral neuropathy compared to those with
49 negative anti-CD320 Abs. Immunohistochemical analysis revealed CD320 expression in
50 the endothelium of arterioles in CA-affected skin, suggesting a direct role for
51 anti-CD320 in CA pathogenesis. Notably, we demonstrated that anti-CD320 can induce

52 an autocrine loop of interleukin-6 via internalization into human dermal vascular
53 endothelial cells through endocytosis *in vitro*, leading to periarterial inflammation in
54 murine skin *in vivo*. Furthermore, we demonstrated that methylcobalamin (MetCbl), one
55 of active form of vitamin B12 (VB12) which has been widely used in clinics for the
56 treatment of peripheral neuropathy and megaloblastic anemia, ameliorates anti-CD320
57 Ab-induced inflammation through internalization of CD320 on the cell surface of
58 endothelial cells.

59 We were profoundly intrigued by the recent publication by Pluvinage *et al.*
60 detailing the role of autoantibodies against CD320 in the etiology of autoimmune
61 vitamin B12 central deficiency (ABCD).(7) Using programmable phage display,
62 Pluvinage *et al.* identified anti-CD320 antibodies in some patients with central nervous
63 system (CNS) deficits and neuropsychiatric lupus. These antibodies impaired the
64 cellular uptake of VB12 *in vitro* by depleting CD320 from the cell surface.
65 Immunosuppressive therapy and high-dose systemic VB12 supplementation were linked
66 to increased VB12 levels in the cerebrospinal fluid and clinical improvement.
67 Interestingly, ABCD cases with anti-CD320 Abs showed no hematologic signs of VB12
68 deficiency. A genome wide CRISPR screen revealed that the low-density lipoprotein
69 receptor (LDLR) provides an alternative VB12 uptake pathway in hematopoietic cells.

70 In addition, recent case reports have demonstrated anti-CD320 Ab positivity not only in
71 CA but also in other conditions, such as systemic sclerosis (SSc).(8,9) This works have
72 collectively expanded the potential scope of anti-CD320 Ab-associated pathology in
73 humans.

74 In this study, we present our work on epitope mapping of anti-CD320 Abs and
75 the hematological features in CA, discussing the alignment between findings in CA and
76 ABCD. We also utilized publicly available single-cell RNA sequencing data to examine
77 *CD320* expression in human endothelial cells across various tissues, exploring the
78 tissue-specific nature of anti-CD320 Ab-associated pathology. Additionally, we
79 highlight our latest research on proteome-wide autoantibody screening (PWAbS) across
80 multiple human disorders, mapping the landscape of autoimmunity targeting CD320.
81 Our aim is to compare the findings of Pluvinae *et al.* with our own, providing a
82 comprehensive overview of the "anti-CD320-associated syndrome" in humans. We seek
83 to highlight critical areas for future research and deepen the understanding of this
84 condition.

85

86 **Materials and Methods**

87 *Human subjects*

88 We enrolled CA patients visited our clinic from April 2020 to November 2022,
89 whose sera were available from our sample stock. All the patients fulfilled the
90 diagnostic criteria suggested by Nakamura T et al. in 2009.(2) We also recruited patients
91 with systemic sclerosis (SSc) from autoantigenome database named “autoantibody
92 comprehensive database (UT-ABCD)”.(10) Clinical data were collected by retrospective
93 review of electric medical records. The demographics of the participants have been
94 described previously.(5) We gathered laboratory findings from the closest time point
95 from the date of serum collection. This study has been approved by The University of
96 Tokyo Ethical Committee (Approval number 2023051G). Written informed consent has
97 been obtained from all the participants.

98

99 *Epitope mapping*

100 We conducted epitope mapping for anti-CD320 Abs in CA cases utilizing wet
101 protein arrays (WPAs) as previously described.(5,11,12) In brief, we synthesized
102 truncated forms of CD320 protein from our entry clone (NCBI Reference Sequence:
103 NM_016579.2) with GST and FLAG tags and linkers added on their N-terminus,

104 utilizing a wheat germ cell-free system.(13) The synthesized proteins were attached to
105 96-well plates coated with glutathione by its affinity with GST tags. The antigen-coated
106 plates were reacted with Alexa Fluor 647-conjugated anti-FLAG Ab (MBL, Tokyo,
107 Japan) diluted by 1:3000 for 1 hour at room temperature. After washing the plate,
108 fluorescence was measured by a fluorescence imager (Typhoon FLA 9500). Next, the
109 plates were washed again and treated with human serum diluted by 1:150 for 1 hour at
110 room temperature, and subsequently with Alexa Fluor 647-conjugated goat anti-human
111 IgG (H+L) Ab (Thermo Fisher Scientific). After washing the plates, fluorescence was
112 measured by a fluorescence imager (Typhoon FLA 9500). Fluorescence measurements
113 obtained from each well were corrected by the following formula.

$$Autoantibody\ level\ [AU] = \frac{F_{construct} - F_{negative\ control}}{(F_{positive\ control} - F_{negative\ control}) \times F_{Flag}} \times 10^5$$

114 *AU*: arbitrary unit

115 $F_{construct}$: fluorescent intensity of a spot coated by each construct

116 $F_{negative\ control}$: fluorescent intensity of a null spot as a negative control

117 $F_{positive\ control}$: fluorescent intensity of a spot coated by IgG as a positive control

118

119 *Database search*

120 Expression of *CD320* in endothelial cells across multiple human tissues, as

121 measured by single-cell RNA-sequencing, was referenced from the Tabula Sapiens
122 project.(14) Serum levels of anti-CD320 Abs in various conditions including COVID-19,
123 atopic dermatitis (AD), anti-neutrophil cytoplasmic antibody-associated vasculitis
124 (AAV), systemic lupus erythematosus (SLE), SSc, and healthy controls (HCs) were
125 cited from UT-ABCD.(10)

126

127 *Data visualization*

128 The heatmap was visualized using GraphPad Prism. Box plots were made by R
129 as follows: the middle line corresponds to the median; the lower and upper hinges
130 correspond to the first and third quartiles; the upper whisker extends from the hinge to
131 the largest value no further than 1.5 times the interquartile range (IQR) from the hinge;
132 and the lower whisker extends from the hinge to the smallest value at most 1.5 times the
133 IQR of the hinge.

134

135 *Statistical analysis*

136 Statistical analyses were performed using R. P values were calculated by Mann
137 Whitney U test.

138

139 **Results**

140 *Epitope mapping*

141 We have previously identified the major epitope of anti-CD320 Abs in CA as
142 Thr¹⁶⁹-Tyr²²⁹ employing WPAs.(5) Herein we conducted further mapping by displaying
143 truncated forms of CD320 (**Figure 1A**) on the same WPA system, narrowing the epitope
144 into Ser¹⁸⁹-Thr¹⁹⁸ (**Figure 1B**). We also performed epitope mapping on
145 anti-CD320-positive sera from patients with SSc, revealing identical epitopes to those
146 found in CA. This key epitope closely matched the one identified by Pluvinage *et al.*,
147 using a combination of phage display, sequential alanine mutagenesis, and
148 immunoprecipitation, spanning Pro¹⁸³-Thr¹⁹⁷.(7)

149

150 *Hematological features of CA*

151 Our clinical data on CA patients showed no association between anti-CD320
152 positivity and hematological abnormalities, excluding lower platelet counts within
153 standard range ($31.3 \times 10^4 \pm 7.4 \times 10^4$ vs $24.2 \times 10^4 \pm 3.9 \times 10^4$, $P = 0.01$; **Figure 1C**).

154

155 *Single cell transcriptome analysis*

156 While single-cell RNA sequencing analysis by Pluvinage *et al.* indicated

157 elevated *CD320* expression in CNS endothelium, we have confirmed *CD320* expression
158 in the endothelium of subcutaneous adipose tissue, the primary locus of CA, utilizing
159 the Tabula Sapiens (**Figure 1D**).⁽¹⁴⁾ Expression levels of *CD320* seemed to be similar
160 between arteries and veins, and relatively low in capillaries.

161

162 *Anti-CD320 seropositivity in various conditions*

163 We referred to our latest work involving PWAbS targeting a total of 284 human
164 subjects with various inflammatory disorders, which unveiled the presence of
165 anti-CD320 Abs in a wide range of conditions including SLE, SSc, and COVID-19, as
166 well as in HCs (**Figure 1E**).⁽¹⁰⁾

167

168 **Discussion**

169 In this study, we identified that the major epitope of anti-CD320 Abs in CA and
170 SSc lies within Ser¹⁸⁹-Thr¹⁹⁸ (**Figure 1A and 1B**). No significant association was found
171 between anti-CD320 seropositivity and hematological abnormalities in CA, except for
172 low platelet counts within standard range (**Figure 1C**). Single-cell RNA sequencing
173 data revealed that *CD320* is expressed in subcutaneous adipose tissue, arteries, and
174 veins (**Figure 1D**). Additionally, data from UT-ABCD showed that anti-CD320
175 seropositivity is widely observed in various human conditions beyond CA, including
176 COVID-19, SSc, SLE, and even in healthy individuals (**Figure 1E**).

177 Our findings align with those of Pluvinaige *et al.* in several key aspects. First,
178 the CD320 epitope targeted by autoantibodies in both studies was nearly identical
179 (**Figure 1A and 1B**). The consistency of these major epitopes across different patient
180 populations and detection methods reinforces the robustness of the identified epitope
181 and its significance in human pathology. Second, in both CA and ABCD, the peripheral
182 nervous system was unaffected in cases positive for anti-CD320 Abs. Pluvinaige *et al.*
183 proposed a model suggesting that anti-CD320 Abs specifically target the CNS because
184 the CNS depends on CD320-mediated VB12 uptake beyond the blood-brain barrier,
185 while peripheral nerves receive VB12 through passive transport.(7) Third, MetCbl

186 showed a protective effect against anti-CD320 antibody-associated pathology in both
187 studies by inducing internalization of CD320, thereby preventing it from being targeted
188 by autoantibodies on the cell surface.(5,7) As a water-soluble vitamin, MetCbl rarely
189 causes hypervitaminosis, and its safety in high doses has been confirmed in clinical
190 trials for amyotrophic lateral sclerosis (ALS).(15) It has recently been approved in
191 Japan as a treatment for early-stage ALS. The effectiveness of VB12 administration in
192 both studies supports the pathogenic role of anti-CD320 Abs by binding to CD320 and
193 suggests that VB12 supplementation could serve as a highly safe, targeted therapeutic
194 strategy. Further validation through clinical interventional studies is needed as
195 previously mentioned.(5)

196 There were also notable differences between the findings of Pluvinage *et al.*
197 and our own. While Pluvinage *et al.* reported no hematological abnormalities in ABCD
198 cases, in our CA cohort, anti-CD320 seropositivity was associated with low platelet
199 counts, though still within the standard range (**Figure 1C**). It is important to note that
200 isolated thrombocytopenia has been recognized as an uncommon clinical presentation of
201 VB12 deficiency.(16) Additionally, Pluvinage *et al.* focused exclusively on a
202 granulocyte-lineage leukemia cell line in their study,(7) suggesting that further
203 investigation is required in other hematopoietic cell lineages.

204 Our analysis of the single-cell RNA sequencing data revealed that CD320
205 expression on endothelial cells is not limited to the CNS but is also found in
206 subcutaneous adipose tissue, arteries, and veins (**Figure 1D**). This suggests that
207 anti-CD320 Abs could potentially trigger both CA and ABCD even in the same
208 individual. In fact, we recently reported a case with anti-CD320 seropositivity who
209 experienced CA along with cranial nerve impairments of unknown etiology.(9)
210 Moreover, some cases with CNS deficits presented by Pluvinage *et al.* showed focal
211 neurological symptoms and brain imaging findings,(7) which are uncommon in typical
212 VB12 deficiency but are often seen in CNS vasculitis.(17,18) These findings indicate
213 that the coexistence of B12 deficiency and vasculitis, driven by anti-CD320 Abs, cannot
214 be excluded, even in the cases described by Pluvinage *et al.*(7)

215 It is also important to highlight that both studies found some healthy
216 individuals to be seropositive for anti-CD320 Abs (**Figure 1E**). The clinical significance
217 of anti-CD320 Abs in healthy individuals, or in conditions other than CA and ABCD,
218 remains unclear. To determine whether these autoantibodies play a direct role in disease
219 development, exacerbate existing pathology, or are incidental, future studies should
220 focus on prospective recruitment and longitudinal observation of seropositive patients.
221 These findings suggest that the clinical relevance of anti-CD320 Abs may extend to a

222 broader spectrum of conditions.

223 The tissue selectivity of CA and ABCD also remains a mystery, as it cannot be
224 fully explained by the expression pattern of CD320 across different tissues. One
225 hypothesis is the "two-hit theory," which posits that both the presence of autoantibodies
226 and antigen exposure are necessary for disease manifestation. The major CD320 epitope
227 we identified is rich in serine, threonine, and asparagine residues (**Figure 1A**), which
228 are highly glycosylated in the human body.(19) Notably, the antigen expression systems
229 used by both Pluvinage *et al.* and our team involved non-human cells,(5,7) meaning that
230 proper glycosylation of the protein was not replicated. There is evidence that
231 autoantibody seropositivity can depend on post-translational modifications like
232 glycosylation.(20) Therefore, further investigation into how post-translational
233 modifications, particularly glycosylation, affect the pathogenesis of anti-CD320
234 autoantibody-associated conditions is warranted.

235 Collectively, the research by Pluvinage *et al.* has made significant strides in
236 understanding the role of anti-CD320 autoantibodies in VB12 deficiency, particularly
237 within the CNS.(7) Their findings, in line with our own research,(5) highlight the
238 potential of these autoantibodies in contributing to a spectrum of autoimmune
239 conditions. Both studies suggest "anti-CD320-associated syndrome" as a novel disease

240 concept. This idea provides new insights into the pathogenesis of autoimmune disorders
241 in humans and highlights the potential of high-dose B12 supplementation as a novel,
242 pathophysiology-oriented treatment with high safety and efficacy. The selectivity of the
243 targeted tissues and the molecular mechanisms linking the autoantibodies to
244 pathogenesis should be further investigated in depth.
245

246 **References**

- 247 1. Guillevin L, Hagen EC, Hoffman GS, Jayne DR, Kallenberg CGM, Lamprecht P.
248 2012 Revised International Chapel Hill Consensus Conference Nomenclature of
249 Vasculitides. *Arthritis Rheum.* 2013;65(1):1–11.
- 250 2. Nakamura T, Kanazawa N, Ikeda T, Yamamoto Y, Nakabayashi K, Ozaki S, et al.
251 Cutaneous polyarteritis nodosa: revisiting its definition and diagnostic criteria.
252 *Arch Dermatol Res.* 2009;301(1):117–21.
- 253 3. Papachristodoulou E, Kakoullis L, Tiniakou E, Parperis K. Therapeutic options
254 for cutaneous polyarteritis nodosa: a systematic review. *Rheumatology (Oxford).*
255 2021 Sep;60(9):4039–47.
- 256 4. Matsuda KM, Yoshizaki A, Kotani H, Kuzumi A, Fukayama M, Ebata S, et al.
257 Development of a prediction model of treatment response in patients with
258 cutaneous arteritis: Insights from a cohort of 33 patients. *J Dermatol.*
259 2021;48:1021–6.
- 260 5. Matsuda KM, Kotani H, Yamaguchi K, Okumura T, Fukuda E. Significance of
261 anti-transcobalamin receptor antibodies in cutaneous arteritis revealed by
262 proteome-wide autoantibody screening. *J Autoimmun.*
263 2023;135(January):102995.

- 264 6. Alam A, Woo JS, Schmitz J, Prinz B, Root K, Chen F, et al. Structural basis of
265 transcobalamin recognition by human CD320 receptor. *Nat Commun.*
266 2016;7(May):1–9.
- 267 7. Pluvinage J V., Ngo T, Fouassier C, McDonagh M, Holmes BB, Bartley CM, et
268 al. Transcobalamin receptor antibodies in autoimmune vitamin B12 central
269 deficiency. *Sci Transl Med.* 2024;16(753).
- 270 8. Kuzumi A, Yoshizaki A, Matsuda K, Nagai K, Sato S. Coexistence of systemic
271 sclerosis and cryopyrin-associated periodic syndrome. *J Dermatol.* 2024 Jun;
- 272 9. Hasegawa A, Matsuda KM, Kotani H, Kuzumi A, Yoshizaki-Ogawa A,
273 Yoshizaki A, et al. A case of anti-CD320 antibody-positive cutaneous arteritis
274 accompanied by multiple cranial nerve symptoms. *Rheumatology (Oxford).*
275 2024 Sep;
- 276 10. Matsuda KM, Kawase Y, Iwadoh K, Kurano M, Yatomi Y, Okamoto K, et al.
277 Proteome-wide autoantibody screening and holistic autoantigenomic analysis
278 unveil COVID-19 signature of autoantibody landscape. *medRxiv.* 2024 Jan
279 1;2024.06.07.24308592.
- 280 11. Matsuda KM, Kotani H, Yamaguchi K, Ono C, Okumura T, Ogawa K, et al.
281 Autoantibodies to nuclear valosin-containing protein-like protein: systemic

- 282 sclerosis-specific antibodies revealed by in vitro human proteome. *Rheumatology*
283 (Oxford). 2024 Jan;
- 284 12. Kotani H, Matsuda KM, Yamaguchi K, Ono C, Ogawa K, Kobayashi Y, et al.
285 Diversity and epitope spreading of anti-RNA polymerase α antibodies in
286 systemic sclerosis: a potential biomarker for skin and lung involvement. *Arthritis*
287 *Rheumatol*. 2024;in press.
- 288 13. Sawasaki T, Ogasawara T, Morishita R, Endo Y. A cell-free protein synthesis
289 system for high-throughput proteomics. *Proc Natl Acad Sci U S A*.
290 2002;99(23):14652–7.
- 291 14. The Tabula Sapiens Consortium. The Tabula Sapiens: A multiple-organ,
292 single-cell transcriptomic atlas of humans. *Science* (80-). 2022;376:eabl4896.
- 293 15. Kaji R, Imai T, Iwasaki Y, Okamoto K, Nakagawa M, Ohashi Y, et al.
294 Ultra-high-dose methylcobalamin in amyotrophic lateral sclerosis: A long-term
295 phase II/III randomised controlled study. *J Neurol Neurosurg Psychiatry*.
296 2019;90(4):451–7.
- 297 16. Khan MAN, Ghani U, Surani S, Aftab A. Vitamin B12 Deficiency, a Rare Cause
298 of Isolated Thrombocytopenia in Adults. Vol. 15, *Cureus*. United States; 2023. p.
299 e44162.

- 300 17. Briani C, Dalla Torre C, Citton V, Manara R, Pompanin S, Binotto G, et al.
301 Cobalamin deficiency: clinical picture and radiological findings. *Nutrients*. 2013
302 Nov;5(11):4521–39.
- 303 18. Matsuda KM, Koguchi A, Toyama T, Sakuishi K, Kobayashi M, Miura S, et al.
304 Concurrence of polyarteritis nodosa and multiple sclerosis. *J Eur Acad*
305 *Dermatology Venereol*. 2020;34(4):e188–91.
- 306 19. E. V. Quadros, Sai P., P. S. Rothenberg. Characterization of the Human Placental
307 Membrane Receptor for Transcobalamin II-Cobalamin. *Arch Biochem Biophys*.
308 1994;308(1):192–9.
- 309 20. Corzana F, Asín A, Eguskiza A, De Tomi E, Martín-Carnicero A,
310 Martínez-Moral MP, et al. Detection of Tumor-Associated Autoantibodies in the
311 Sera of Pancreatic Cancer Patients Using Engineered MUC1 Glycopeptide
312 Nanoparticle Probes. *Angew Chemie Int Ed*. 2024 Sep 9;63(37):e202407131.
313
314

315 **Acknowledgements**

316 We thank Ms. Maiko Enomoto and her colleagues for their secretarial work.

317 We appreciate K. Yamaguchi, T. Okumura, C. Ono, and N. Goshima from ProteoBridge

318 Corporation for preparing the WPAs. We acknowledge R. Uchino, Y. Murakami, and H.

319 Matsunaka from TOKIWA Pharmaceuticals Co. Ltd. for providing technical assistance

320 with autoantibody measurement. We also thank E. Fukuda and A. Kuno from National

321 Institute of Advanced Industrial Science and Technology for their valuable advice on

322 protein glycosylation.

323 **Author Contributions**

324 KM Matsuda primarily engaged in autoantibody measurement, collecting
325 serum samples and clinical data, data analysis, visualization, and writing the first draft
326 of the manuscript. H Kotani oversaw epitope mapping. S Sato conceptualized and
327 supervised the study. A Yoshizaki conceptualized and supervised this study and was
328 involved in revising the manuscript.

329

330 **Conflict-of-interest statement**

331 A Yoshizaki belongs to the Social Cooperation Program, Department of
332 Clinical Cannabinoid Research, The University of Tokyo Graduate School of Medicine,
333 Tokyo, Japan, supported by Japan Cosmetic Association and Japan Federation of
334 Medium and Small Enterprise Organizations. The remaining authors declare that the
335 research was conducted in the absence of any commercial or financial relationships that
336 could be construed as a potential conflict of interest.

337

338 **Figure legends**

339 **Figure 1.**

340 (A) Truncated forms of CD320 prepared for epitope mapping in detail. The amino acid
341 sequence of identified major epitopes (magenta) is shown below. The epitope was rich
342 in potential O-linked (aqua) or N- linked (red) glycosylation sites

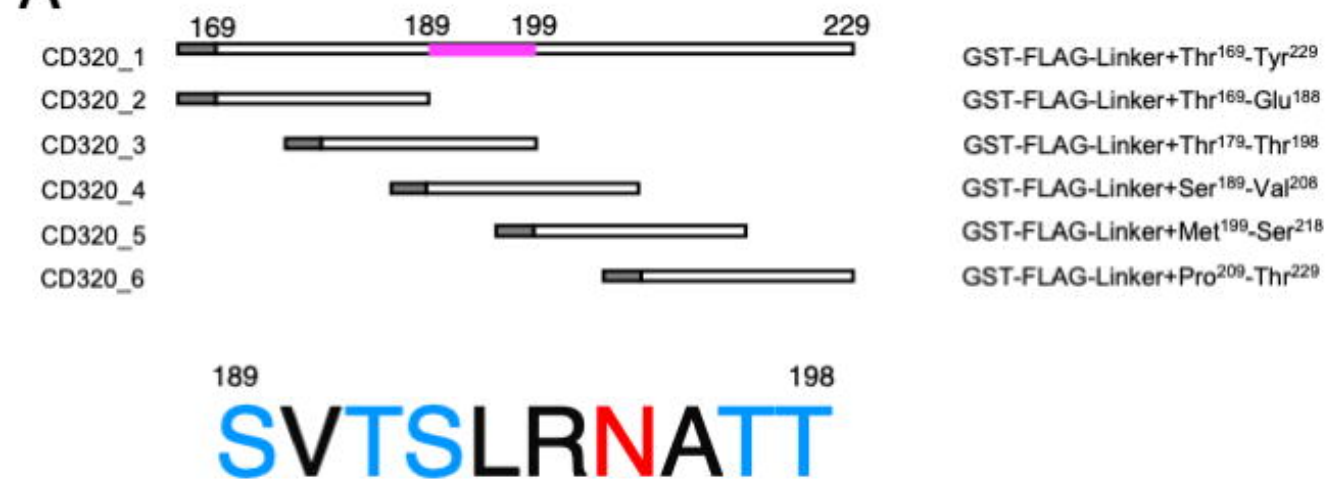
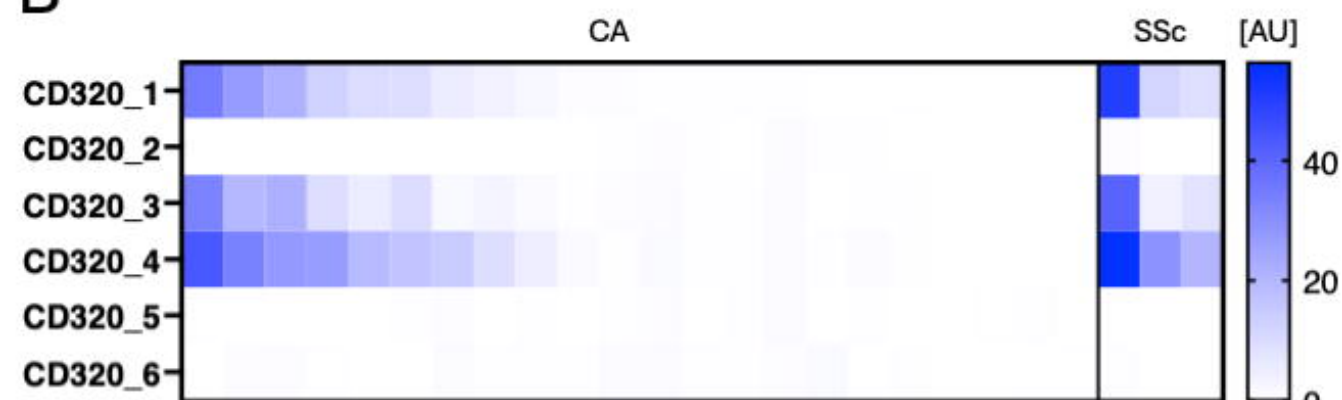
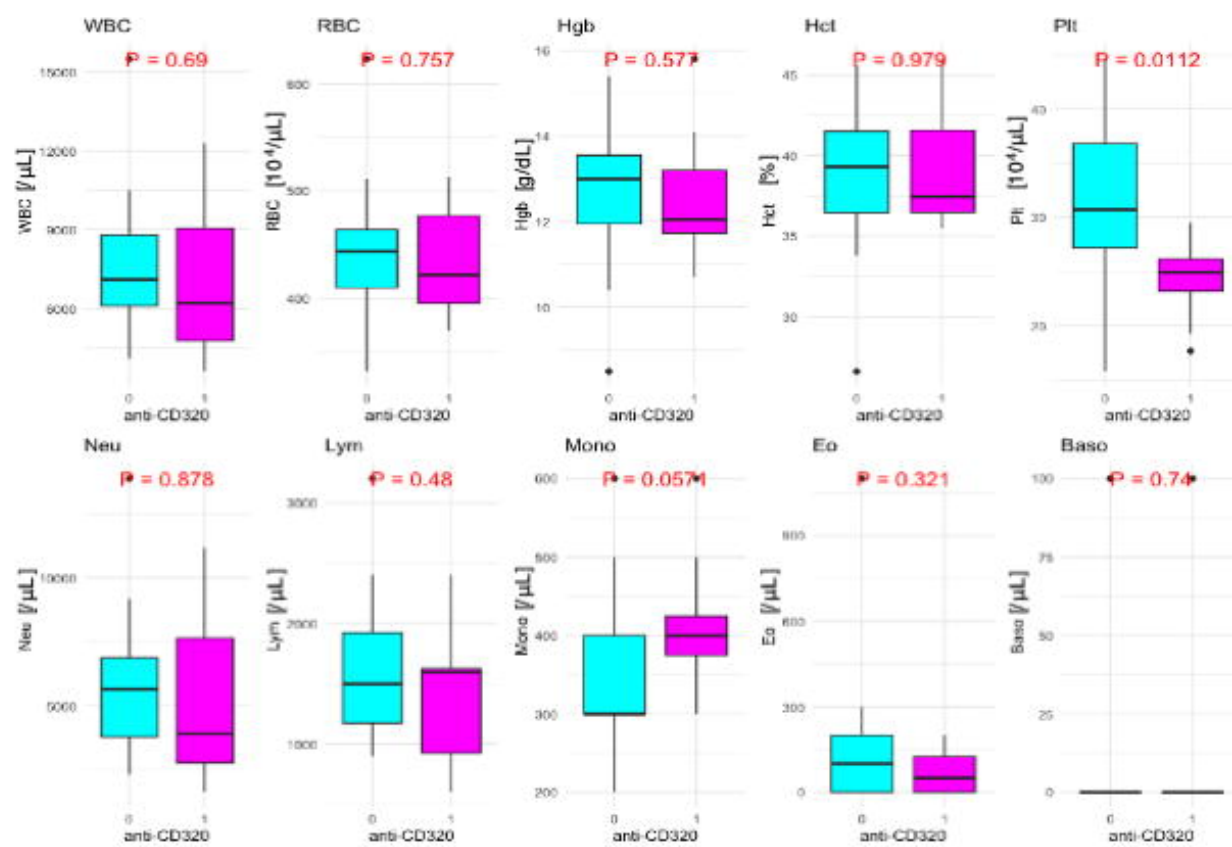
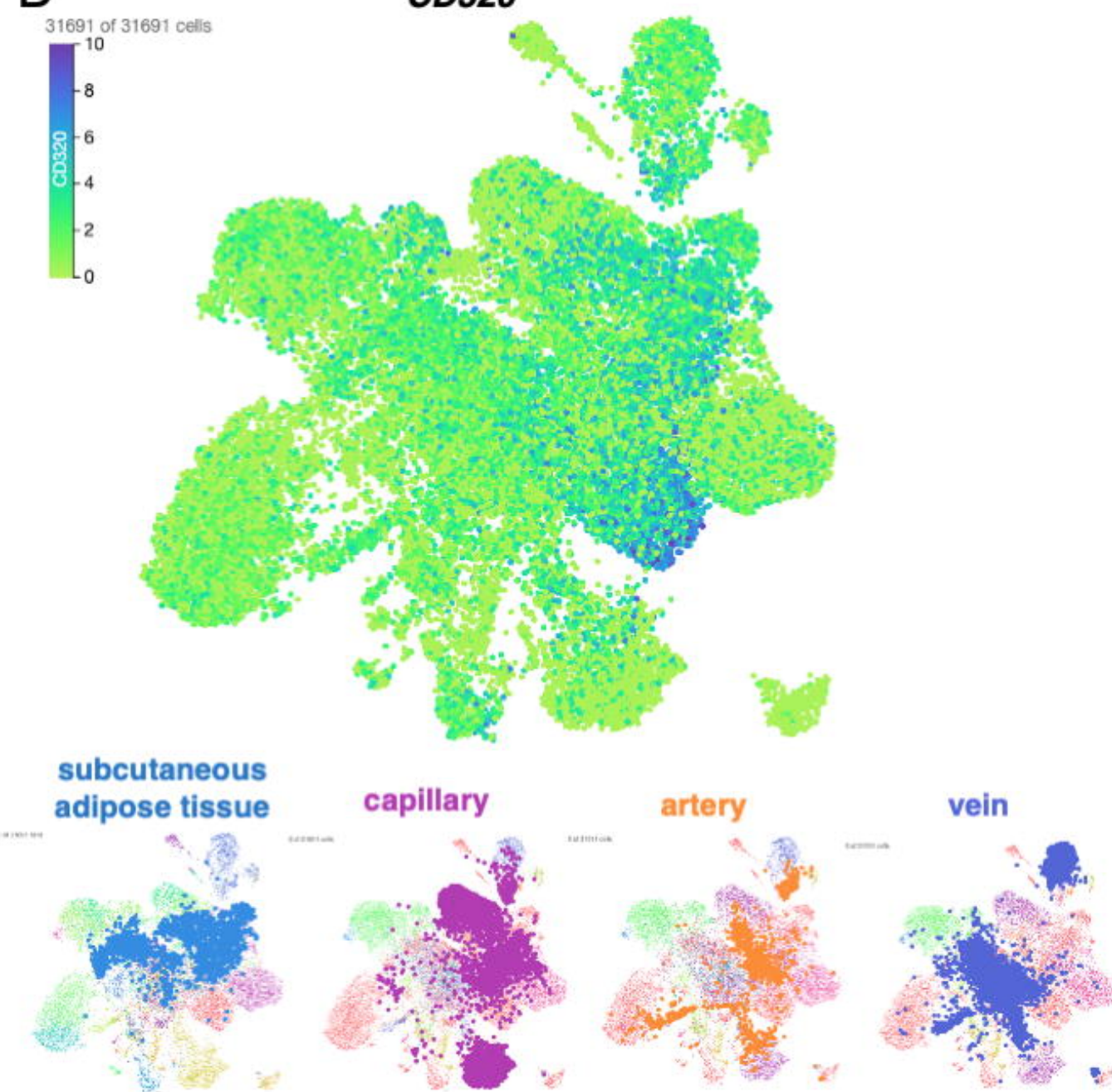
343 (B) Heat map illustrating signal strength from each spot upon wet protein arrays
344 displaying truncated forms of CD320 treated with serum samples and
345 fluorescence-conjugated secondary antibody. Each column represents a different human
346 subject. AU: arbitrary unit.

347 (C) Hematological features of CA patients by serum anti-CD320 seropositivity. WBC:
348 white blood cell, RBC: red blood cell, Hgb: hemoglobin, Hct: hematocrit, Plt: platelet,
349 Neu: neutrophil, Lym: lymphocyte, Mono: monocyte, Eo: eosinophil, Baso: basophil. P
350 values are calculated by Mann-Whitney's U test.

351 (D) Expression levels of *CD320* at single-cell resolution in human endothelial cells
352 from the Tabula Sapiens. Cell type and tissue annotations are also shown.

353 (E) Serum levels of anti-CD320 Abs in various conditions as reported in UT-ABCD.

354

A**B****C****D****E**