

# A novel method to assess motor planning deficits in patients with Parkinson's disease and mild cognitive impairment

<sup>1</sup>Natalie J Maffitt, <sup>2</sup>Sattwika Banerjee, <sup>2</sup>Subhajit Sarkar, <sup>2</sup>Suchismita Majumdar, <sup>2</sup>Supriyo Choudhury, <sup>2</sup>Hrishikesh Kumar, <sup>1</sup>Demetris S Soteropoulos, <sup>1</sup>Alexander Kraskov\*

<sup>1</sup>Biosciences Institute, Newcastle University, Newcastle Upon Tyne, United Kingdom

<sup>2</sup>Institute of Neurosciences Kolkata, Kolkata, India

\* Corresponding author: [sasha.kraskov@newcastle.ac.uk](mailto:sasha.kraskov@newcastle.ac.uk)

Running title: Motor planning deficits in Parkinson's disease

**Number of:**

Pages - 22

Figures - 8

Tables - 0

Multimedia - 0

3D models - 0

Words in:

Abstract - 150

Introduction - 798

Discussion - 1790

## Conflict of interest

All authors declare no financial or non-financial competing interests.

## Acknowledgements

This work was supported by grants BB/P006027/1 (AK), BB/Y000625/1 (AK), Newcastle Neuroscience Fund (NJM). The funders had no role in study design, data collection or interpretation, nor in the decision to submit the work for publication. The authors thank Mr Norman Charlton for mechanical engineering of the experimental setup, and Prof. Stuart Baker for designing the contact circuit and initial Sequencer scripts.

**NOTE: This preprint reports new research that has not been certified by peer review and should not be used to guide clinical practice.**

27

## Author Contribution

28 NJM, HK, SC, DSS and AK designed the study. NJM, DSS and AK programmed the behavioural paradigm.

29 NJM collected and processed data, performed analyses, prepared all figures and wrote the manuscript.

30 SB, SS and SM collected data. AK performed analyses. SC, HK, DSS and AK provided resources. DSS and

31 AK edited the manuscript and supervised. All authors read and approved the final manuscript.

32

## Data Availability

33 All data generated or analysed during this study are available from the corresponding author upon

34 reasonable request.

35

36

## Abstract

37 It is well established that patients with Parkinson's disease (PD) show deficits with movement  
38 execution, however experiences of motor planning dysfunction, and how they relate to the severity of  
39 motor symptoms, remains unclear. To investigate motor planning in PD, we designed a novel precision-  
40 grip task. PD patients showed significantly higher uncertainty in task performance compared to healthy  
41 controls, indicative of motor planning deficits. Performance of PD patients did not correlate with  
42 indicators of disease severity or subtype, yet patients on a higher daily levodopa dosage showed  
43 reduced motor planning deficits. Interestingly, these deficits were present even in recently diagnosed  
44 patients, implying that this measure may have potential as an early marker of motor planning  
45 impairment. These results suggest that the motor planning deficits revealed by our task may arise from  
46 separate pathological processes to that of motor execution dysfunction in PD, though can be alleviated  
47 with higher treatment dosages.

48

## Keywords

49 Parkinson's disease; Motor planning; Grasping; Ambiguity; Mild cognitive impairment; Dopamine.

50

51

## Introduction

52 Whilst the defining characteristics of patients with motor disorders are difficulties in generating and  
53 controlling movement, additional features of cognitive dysfunction are also commonly experienced.  
54 For patients with Parkinson's disease (PD), this can range from minimal cognitive impairment in, for  
55 example, mood regulation or executive function, to extreme clinical pictures of severe dementia <sup>1</sup>. Of  
56 these deficits, impairments in motor planning can have consequences for successful interaction with  
57 our environment in how they perform day to day physical tasks, yet such impairments have  
58 comparatively received much less focus.

59 Our understanding of motor planning deficits in PD initially developed within the context of action  
60 imitation tasks. Sharpe, Cermak and Sax (1983), showed that when asked to perform either familiar  
61 gestures from memory or unfamiliar gestures post observation, PD patients only make greater spatial  
62 errors compared to controls when performing unfamiliar gestures <sup>2</sup>. It has been suggested that such  
63 errors are a consequence of defective encoding and processing of visuospatial information, since the  
64 neural mechanisms needed to perform successful action imitation rely more heavily on the accuracy  
65 of visuospatial encoding than when an individual is responding to verbal command <sup>3,4</sup>. Yet, these spatial  
66 errors could also be influenced by memory recall deficits; PD patients show greater impairment when  
67 imitating movement sequences compared to single actions <sup>3</sup>. Thus, the motor planning performance  
68 of individuals with PD when intending to enact their own self-chosen movement, rather than one  
69 rehearsed from memory or by way of imitation (i.e. less reliant on successful visuospatial encoding or  
70 recall), remains to be explored.

71 Additional evidence for the presence of motor planning abnormalities in PD has been implied from  
72 reaction time (RT) tasks. For simple RT tasks, whereby the subject knows in advance the target location  
73 or required action but is instructed to wait for a go signal before initiating movement, consistent  
74 slowing of RT is observed in comparison to healthy controls (e.g. <sup>5,6</sup>. There have been suggestions that  
75 this delay may not solely be a manifestation of bradykinesia, but rather could reflect problems in  
76 releasing motor commands or in the pre-programming of them <sup>7,8</sup>. Contrastingly, in choice RT tasks,  
77 several actions are presented and the one required is only revealed at the time of the go cue. Not only,  
78 however, do reported deficits in choice RT tasks remain controversial due to the seemingly task-  
79 dependency nature of the findings, but visual processing time, which has been shown to be hindered  
80 in PD, is consistently an uncontrolled factor in both forms of RT tasks <sup>9-12</sup>.

81 In this study, we used the context of motor ambiguity in a reach-to-grasp task as a method to  
82 investigate motor planning capabilities in patients with PD, in a task adapted from Stelmach *et al.*, 1994  
83 <sup>13</sup>. In this context, motor ambiguity can be described as situations whereby the motor action (i.e. wrist

84 posture) performed upon a target object is variable, despite the visual-spatial properties of the object  
85 remaining the same. For a healthy person, the decided motor action for a task, such as picking up an  
86 object with the wrist pronated, is decided by individualised comfort preferences, leading to an  
87 optimised and consistent action choice based on previous learned experience. However, some motor  
88 ambiguity will nevertheless persist when the optimal preference cannot be identified and therefore  
89 planned. We hypothesised that when performing a reach-to-grasp task, patients with PD would show  
90 greater ambiguity in wrist posture selection as a consequence of impaired motor planning in  
91 comparison to healthy controls.

92 Given that the characteristics of PD consist of both motor and non-motor deficits, it was of interest to  
93 also investigate motor planning performance in individuals who experience cognitive dysfunction  
94 without motor execution deficits. We therefore recruited patients diagnosed with mild cognitive  
95 impairment (MCI), a cohort that experience cognitive deficits in memory, language and other cognitive  
96 domains, though without significant daily disruption to be classified as dementia and notably absent  
97 of any basic motor deficits<sup>14</sup>. It has been shown previously that MCI patients may also experience  
98 visual-motor difficulties when their cognitive load is high: they are slower to plan movements and have  
99 difficulties integrating visual perception with motor action, though in simpler cognitive tasks such as  
100 standard reach-to-grasp, performance and planning deficits are less pronounced<sup>15-17</sup>. In this study, we  
101 explored the possibility that in pre-dementia, the extent of motor ambiguity may reflect the weight of  
102 cognitive load induced by our grasping task and thus reveal any impairments in motor planning; we  
103 hypothesised any such deficits will occur to a minimal extent given the predictive cognitive simplicity  
104 of the task.

105 We reveal not only that motor planning is affected in both PD and MCI in comparison to healthy  
106 controls, but also that for PD patients it can be influenced by daily treatment dosage with levodopa,  
107 suggestive of a therapeutic influence of dopamine on motor planning.

108

109

## Methods

### 110 Participants

111 This study was conducted in a total of 60 participants within the Neurology Outpatient Department of  
112 a tertiary care referral centre in Eastern India. Ethical approval was obtained from the Institutional  
113 Research Ethics Committee of the Institute of Neurosciences, Kolkata; written informed consent was  
114 taken from all volunteers. This study was performed in accordance with the guidelines established in  
115 the Declaration of Helsinki, except that the study was not preregistered in a database. Healthy  
116 volunteers were selected from the care givers of the patients attending the Neurology Outpatient  
117 Department; all had normal cognition (MOCA  $\geq 26$ ), and no apparent neurological disease. PD patients  
118 were diagnosed using UK Brain Bank diagnostic criteria for PD; exclusion criteria for participation in  
119 this study included presence of dyskinesia, severe cognitive impairment (MOCA  $< 10$ ), and profound  
120 physical impairment (Hoehn & Yahr stage  $> 4$ ) or an inability to perform prehension movements.  
121 Inclusion criteria for the MCI cohort consisted of a MOCA score indicating mild cognitive impairment  
122 at the time of assessment (MOCA  $< 26$  and  $> 10$ ) and a complete absence of any signs of motor  
123 execution dysfunction. All participants were right-handed and naïve to the experiment and its  
124 predictions.

125 Due to low trial counts ( $< 50\%$  complete), 7 participants (6 PD, 1 Control) were excluded from analysis.  
126 Remaining in the study were 15 healthy controls (8 females;  $51.8 \pm 9.6$  years STD), 27 patients  
127 diagnosed with idiopathic PD (IPD; 12 females;  $60.9 \pm 10.7$  years), and 11 MCI patients (5 females,  $63.5$   
128  $\pm 7.5$  years). All PD patients were receiving regular levodopa treatment (mean daily levodopa  
129 equivalent dosage (LED)  $511.0 \pm 278.6$  mg) and assessed in their ON state. Conversion formulae for  
130 LED calculation were in accordance with widely accepted proposals<sup>18</sup>.

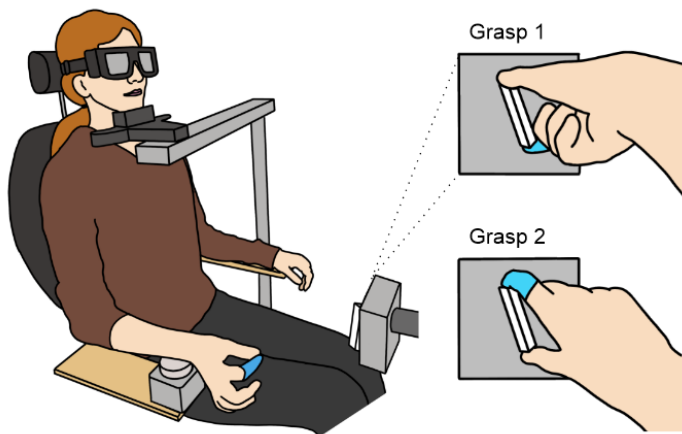
### 131 Clinical scoring

132 The disease severity of each patient was assessed using standard disease severity scales: for MCI, the  
133 Montreal Cognitive Assessment (MOCA); for PD, the Movement Disorders Society Unified Parkinson's  
134 Disease Rating Scale-III (MDS UPDRS III) and MOCA. The MOCA and/or UPDRS assessment were  
135 performed immediately preceding or following the main task by a trained professional.

### 136 Task set-up

137 The experimental paradigm required participants to perform a precision grip movement on a triangular  
138 prism block (6 cm long by 2 cm wide, see Figure 1 and previous paper<sup>19</sup>) with their right-hand upon  
139 hearing a go cue (auditory beep 500 Hz, lasting 50 ms). The target object was designed with the  
140 intention to afford only one possible grasp: the thumb and finger at opposing ends of the prism block  
141<sup>13</sup>. The object was mounted onto a grey rectangular stage and connected to a stepper motor to enable

142 rotation in steps of 0.9° angles - the stepper motor was driven by an Arduino UNO R3 and motor shield  
143 R3, and controlled by custom written Arduino scripts. Thin triangular metal plates were glued to each  
144 end of the prism block and connected to a custom made circuit that allowed detection of skin contact  
145 by a change in impedance. By placing a glove onto the index finger to impede contact with the object,  
146 hand orientation selection could be recorded in terms of thumb placement, either 'Grasp 1' whereby  
147 the thumb was placed on the left or top end of the object or 'Grasp 2' whereby the index finger was  
148 used instead (Figure 1). Previously studies have referred to these two grasp postures as 'thumb-  
149 left'/'supination' or 'thumb-right'/'pronation' respectively (e.g. Stelmach et al., 1994; Wood and  
150 Goodale, 2011), however given both of these nomenclatures lose validity at certain positions we opted  
151 for Grasp 1/ Grasp 2.



152  
153 *Figure 1. Experimental set-up. Participant is seated with LCD goggles covering their visual field and*  
154 *head placed on a chin rest. Their right wrist is used to press the home-pad button to initiate trial*  
155 *sequence. A latex glove on the index finger impedes touch with the contact circuit on the target object,*  
156 *allowing detection of wrist posture (Grasp 1 or Grasp 2) on a trial-by-trial basis.*

157 Participants were seated in a chair with their wrist positioned on a circular 'home-pad' button (6 cm  
158 in diameter) as the starting location. The target object was positioned 31 cm anterior to the centre of  
159 the home pad and 14.5 cm superior, with its rotation occurring in the frontal plane. This resulted in  
160 the object lying 27 cm to the right of the body's midline.

161 As comfort and therefore choice of grasp has been shown to be sensitive to body and head posture <sup>20</sup>,  
162 a chin rest was used to mitigate any postural shifting that could introduce unwanted variability to  
163 behaviour. Participants wore LCD goggles (PLATO goggles; Translucent Technologies, Toronto, Canada)  
164 to occlude their vision between trials until the object had rotated into place at the target angle. The

165 transition time from opaque to visible was 4 ms. In cases where participants wore visual correction  
166 glasses, the goggles were placed over the top and secured with a headband.

#### 167 Task procedure

168 Beginning each trial with their wrist in mid-pronation to press down on the home-pad, participants  
169 were asked to lightly pinch their index finger and thumb together until the go cue. This wait time was  
170 uniformly varied randomly from trial to trial (1000-1300 ms) to prevent participants acting on  
171 anticipation of the go cue. Synchronous with an auditory beep, the goggles became transparent and  
172 participants were asked to reach out as quick as possible and comfortably grasp the target object  
173 between their thumb and index finger, pinching it lightly. After object contact, they returned to the  
174 home-pad to initiate the next trial sequence. If the home-pad was released too early (i.e. prior to the  
175 go cue), an error tone would sound (200 ms, 200 Hz) to indicate the subject should return to the start  
176 button. A total of 162 trials across 27 unique angles spaced by 4.5° (spanning 127.8°) were carried out  
177 in a randomised sequence with equal incidence per angle.

#### 178 Data and statistical analysis

179 Grasp choice data were gathered using the custom designed contact circuit and sampled at 5 kHz (CED  
180 Micro 1401, Cambridge Electronic Design) using Spike2 software. All data analyses and statistics were  
181 performed using custom written MATLAB scripts. Analysis resulted in three measures – the halfwidth  
182 (as described below), reaction time (RT), measured as time from go cue to home pad release, and  
183 movement time (MT), measured as time from release of home pad to contact with the target object.  
184 Trials for which RT was shorter than 150 ms were excluded from analysis; MTs had no explicit cut-off.  
185 For both RT and MT analysis, remaining values were log transformed, with any trials outside the mean  
186  $\pm 3$  SD excluded - this exclusion process was then repeated recursively until no more trials could be  
187 excluded. On average across all participants, 3.3 % of the trials were discarded due to extremes of RT  
188 and 0.91 % for extremes in MT.

189 Choice of grasp was coded with reference to which edge of the target object the thumb made contact  
190 with. The probability of using a 'Grasp 2' wrist posture was calculated for each target angle and a  
191 logistic regression curve was fitted to the data using the function below, where  $x_0$  is the subject's switch  
192 point between the two choices, and  $k$  is a scaling parameter.

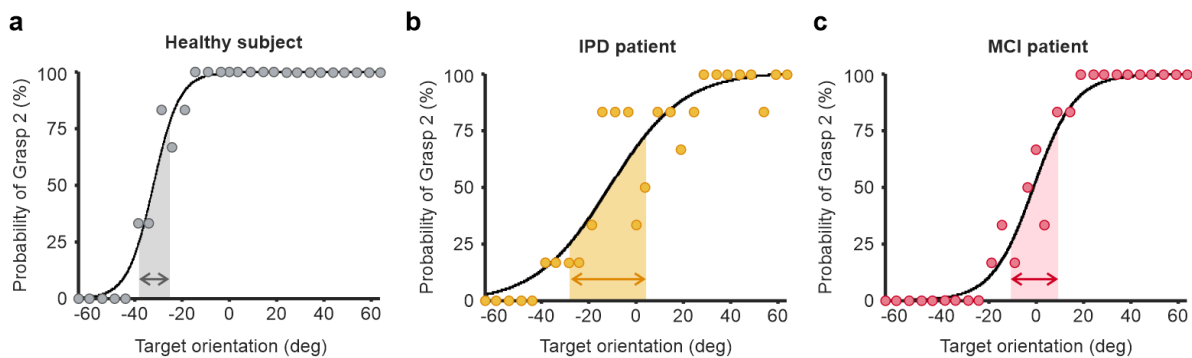
$$193 \quad f(x) = \frac{1}{1 + e^{-k(x-x_0)}}$$

194 This sigmoid fitting allowed the 'halfwidth' to be calculated - a measure of switch sharpness, calculated  
195 as the difference between target angles for the 75% and 25% choice probabilities ( $= 2\ln(3)/k$ ). This was  
196 used as an indicator of subject uncertainty across the task as a whole.



197 Across each group population, numerical values were described using mean ( $\pm$  SD) and compared using  
198 one-way ANOVA with post hoc Tukey's test. The strength of correlation was estimated with Pearson's  
199 correlation coefficient  $R^2$ . For all three variables (HW, RT, MT), receiver operating characteristic (ROC)  
200 curves were constructed and the area under the curve (AUC) calculated. An AUC of 0.5 indicates an  
201 identical distribution of the measure in patients and controls; an AUC of 1.0 occurs if the distributions  
202 are completely non-overlapping. Thus, a higher AUC value indicates greater utility of the measure as a  
203 diagnostic tool. Comparison of AUC values was performed using DeLong's test.

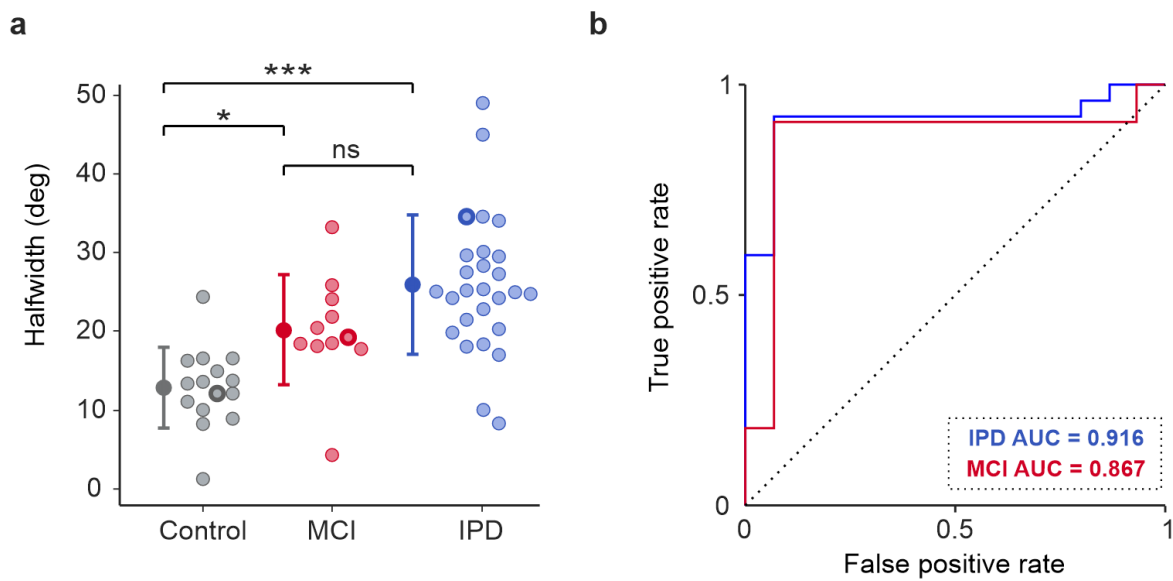
## 204 Results



205  
206 **Figure 2. Example psychophysics curves from an individual from each cohort. Shaded areas indicate**  
207 **the range of angles for which the probability of using a Grasp 2 posture over Grasp 1 is between 25**  
208 **and 75%, yielding the measure 'Halfwidth'. IPD, idiopathic Parkinson's disease; MCI, mild cognitive**  
209 **impairment.**

210 Figure 2 shows the average decisions in grasp choice for each target angle from single representative  
211 subjects of each cohort, which illustrate the first main finding of our study. As previously reported,  
212 when the target object is rotated across a range of angles, a typical healthy subject transitioned from  
213 consistently using one grasp posture to using the other across a relatively narrow range, following a  
214 sigmoid pattern (Figure 2a). The steepness to the sigmoid slope in this healthy subject is a consequence  
215 of minimal variability in grasp choice across most angles, yielding a halfwidth value (indicated by  
216 arrows) of 12.1°. By contrast, for the individual with IPD, there are greater target angles for which grasp  
217 choice is not consistent, leading to a wide ambiguity zone with a halfwidth value of 34.6° (Figure 2b).  
218 Similarly for the single subject with MCI (Figure 2c), variability in grasp choice occurs over a wider  
219 range of angles, yielding a larger halfwidth value (19.3°) than the example healthy control.

220



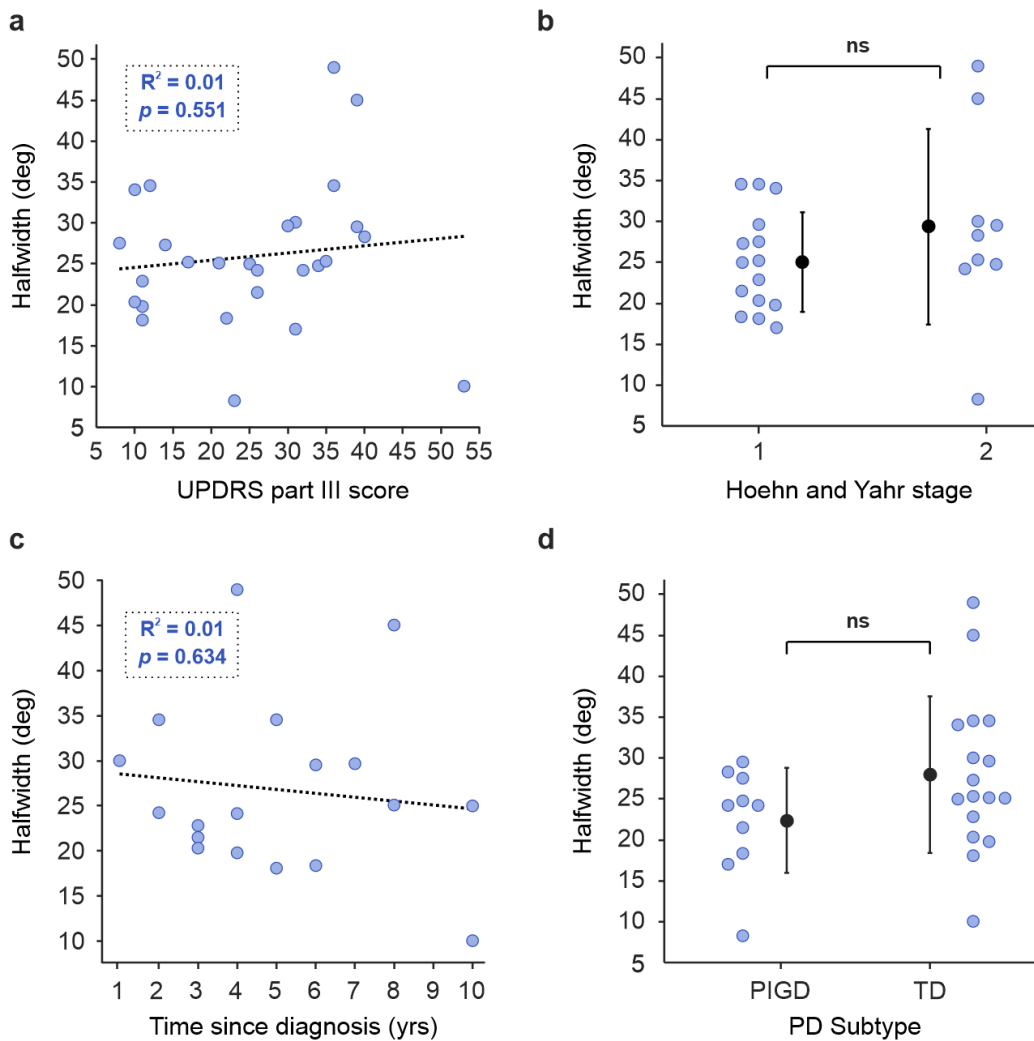
221

222 **Figure 3. Halfwidth values and receiver operating characteristic (ROC) curves for control, PD, and**  
223 **MCI subjects.** a) Halfwidth values for every participant in each cohort. The example data shown in  
224 Figure 2 is highlighted here by thicker outline on the individuals' data point. b) ROC curves confirming  
225 that halfwidth can effectively separate healthy controls from both PD and MCI patients. Dotted  
226 diagonal line indicates the expected result if halfwidth did not discriminate between groups. IPD,  
227 idiopathic Parkinson's disease; MCI, mild cognitive impairment. Error bars represent mean  $\pm$  1 STD. \*  $P$   
228  $< 0.05$ ; \*\*\*  $P < 0.0001$ ; ns, not significant.

229 For all subjects within each group, the halfwidth of the sigmoid curve was calculated, shown by each  
230 individual dot in Figure 3a. The healthy control cohort had a lower mean halfwidth value than each  
231 patient group (Figure 3a; Control mean =  $12.86 \pm 5.09^\circ$ ; IPD mean =  $25.90 \pm 8.84^\circ$ ; MCI mean =  $21.76$   
232  $\pm 7.04^\circ$ ; ANOVA  $p < 0.0001$ ). Post-hoc t-tests between the healthy control group and both IPD and MCI  
233 patient groups indicated significant differences in halfwidth (IPD  $p < 0.0001$ ; MCI  $p = 0.049$ ), however  
234 there was no significance difference between the IPD and MCI cohorts ( $p = 0.098$ ).

235 Given halfwidth was significantly different between each patient group and healthy controls, it was of  
236 interest to investigate whether this difference was significantly robust to distinguish motor planning  
237 pathology from health. This is explored in Figure 3b, which presents receiver operating characteristic  
238 (ROC) curves for both IPD and MCI cohorts. The area under the ROC curve for HW was 0.916 and 0.867  
239 for IPD and MCI cohorts respectively; both values were significantly higher than 0.5, the value  
240 associated with entirely overlapping distributions, ( $p < 0.005$  for both, Monte Carlo test, 10,000  
241 iterations).

242

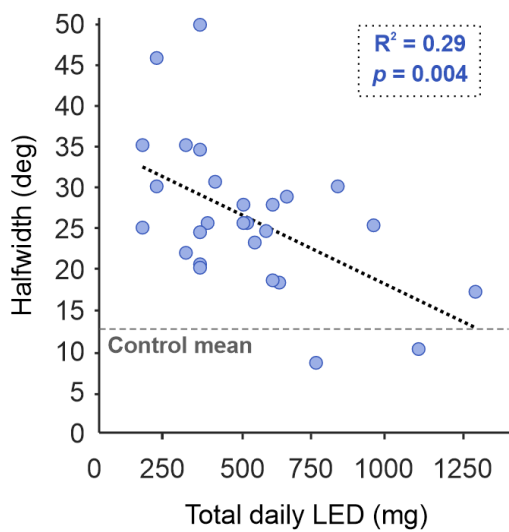


243

244 **Figure 4. Severity scales and clinical subtype for PD patients.** Data is unavailable for four PD patients  
 245 for Hoehn and Yahr stage, and eight for time since diagnosis. Clinical subtype is categorised based on  
 246 UPDRS scoring. IPD; idiopathic Parkinson's disease; TD: tremor dominant; PIGD: postural and gait  
 247 instability dominant; ns: no significance. Error bars represent mean  $\pm$  1 STD.

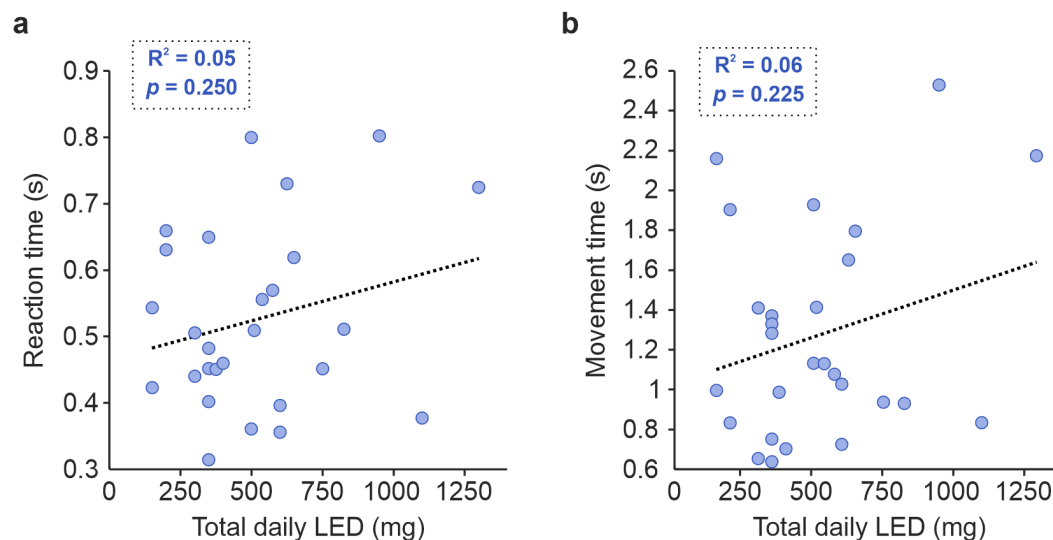
248 To explore whether the observed difference in PD patients from controls was related to disease  
 249 severity or clinical subtype, UPDRS assessment was carried out. Interestingly, there was no significant  
 250 correlation between UPDRS part III score and sigmoid halfwidth (Figure 4a;  $R^2 = 0.014$ ,  $p = 0.551$ ).  
 251 Similarly, there was no correlation between halfwidth and time since diagnosis (Figure 4c;  $R^2 = 0.01$ ,  $p$   
 252  $= 0.634$ ). Furthermore, there was no significant difference in halfwidth between those of Hoehn and  
 253 Yahr stage 1, and those of stage 2 (Figure 4b; Stage 1 mean =  $25.04 \pm 6.09$ ; Stage 2 mean =  $29.38 \pm$   
 254  $11.93$ ; unpaired t-test  $p = 0.248$ ). Nor did the clinical subtype of PD (tremor dominant – TD, versus

255 postural and gait instability dominant - PIGD) have any significant bearing on halfwidth (Figure 4d;  
256 PIGD mean =  $22.37 \pm 6.40$ ; TD mean =  $27.98 \pm 9.57$ ; unpaired t-test  $p = 0.112$ ).



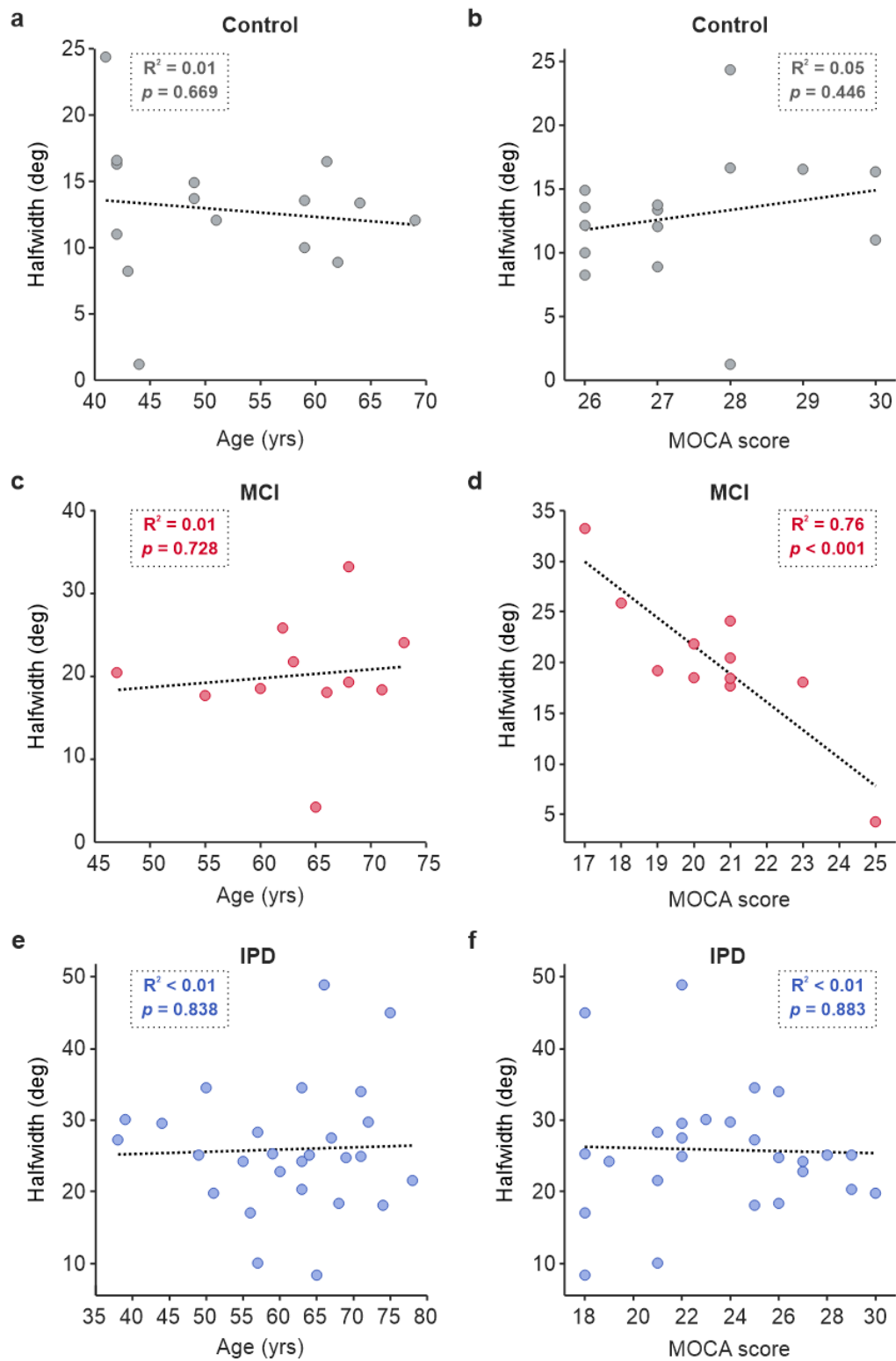
257  
258 **Figure 5. Effect of levodopa on halfwidth for PD patients.** Total daily levodopa equivalent dosage (LED)  
259 was calculated for each subject receiving treatment.

260 Despite finding no correlation between severity of motor symptoms and halfwidth, surprisingly for PD  
261 patients there was a significant effect of daily levodopa equivalent dosage (LED) on sigmoid halfwidth  
262 (Figure 5;  $R^2 = 0.29$ ,  $p = 0.004$ ). Interestingly, the higher the daily treatment dosage, the lower the  
263 halfwidth value and closer to the mean healthy control value (dashed grey line) subjects became.



264  
265 **Figure 6. Effect of levodopa on reaction and movement times for PD patients.** Total daily levodopa  
266 equivalent dosage (LED) was calculated for each subject receiving treatment. RT, reaction time; MT,  
267 movement time.

268 Though LED correlated with our halfwidth measure, it did not correlate with RT (Figure 6a;  $R^2 = 0.05$ ,  
269  $p = 0.250$ ) or MT (Figure 6b; IPD  $R^2 = 0.06$ ,  $p = 0.225$ ).

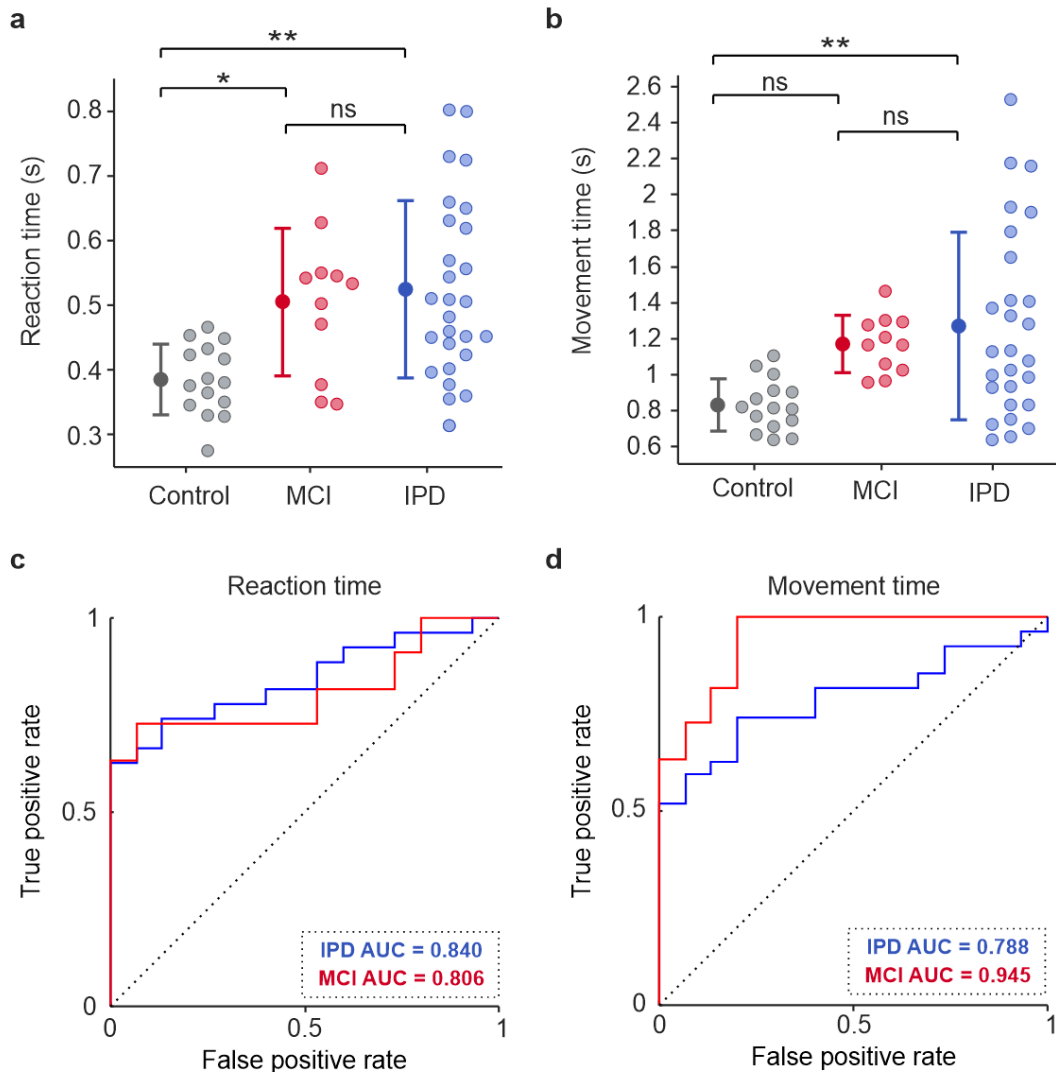


270

271 **Figure 7. Effect of age and cognition on halfwidth for all cohorts.** IPD, idiopathic Parkinson's disease;

272 MCI, mild cognitive impairment; MOCA, Montreal cognitive assessment.

273 The effect of global cognitive score and age on halfwidth are shown in Figure 7a-c and 7d-f respectively.  
 274 The age of the subject had no significant influence on their grasp choices for any cohort (Figure 7a-c;  
 275 IPD  $R^2 < 0.01$ ,  $p = 0.838$ ; MCI  $R^2 = 0.01$ ,  $p = 0.728$ ; Controls  $R^2 = 0.01$ ,  $p = 0.669$ ). Notably, for MCI  
 276 patients, there was a significant correlation between MOCA score and halfwidth (Figure 7d;  $R^2 = 0.76$ ,  
 277  $p < 0.001$ ), with a higher MOCA score (i.e. stronger cognitive abilities) increasing the likelihood of a  
 278 smaller halfwidth value. However, for both the PD cohorts and healthy controls this relationship was  
 279 not found (Figures 7f, 7a; IPD  $R^2 < 0.01$ ,  $p = 0.883$ ; Control  $R^2 = 0.05$ ,  $p = 0.446$ ).



280

281 **Figure 8. Reaction time (RT) and movement time (MT) values and receiver operating characteristic**  
 282 **(ROC) curves for control, PD, and MCI subjects. a-b) RTs and MTs of all control, PD, and MCI subjects.**  
 283 *c-d) ROC curves confirming that RT and MT can effectively separate healthy controls from both PD and*  
 284 *MCI patients. Dotted diagonal line indicates the expected result if halfwidth did not discriminate*  
 285 *between groups. IPD, idiopathic Parkinson’s disease; MCI, mild cognitive impairment. Error bars*  
 286 *represent mean  $\pm 1$  STD. \*  $P < 0.05$ ; \*\*  $P < 0.005$ ; ns, not significant.*

287 As expected, healthy controls were quicker to release the home-pad upon receiving the go-cue  
288 compared to all other patient groups (Figure 8a; healthy mean RT =  $0.39 \pm 0.05$  s; MCI mean RT =  $0.51$   
289  $\pm 0.11$  s; IPD mean RT =  $0.52 \pm 0.14$  s). An ANOVA indicated a significant effect of group (healthy, MCI,  
290 IPD;  $p = 0.002$ ) on RT, with post-hoc t-tests indicating significant difference between healthy controls  
291 and both IPD ( $p = 0.001$ ) and MCI ( $p = 0.029$ ) patient groups. No significant difference in RT between  
292 IPD and MCI was found ( $p = 0.883$ ).

293 Healthy subjects were also quicker to move from the home-pad to make contact with the target object  
294 compared to the patient groups (Figure 8b; healthy mean MT =  $0.83 \pm 0.14$  s; IPD mean MT =  $1.27 \pm$   
295  $0.52$  s; MCI mean MT =  $1.17 \pm 0.16$  s). An ANOVA indicated a significant effect of group (healthy, MCI,  
296 IPD;  $p = 0.004$ ) on MT, with post-hoc t-tests indicating significant difference between healthy controls  
297 and the IPD patient group (IPD  $p = 0.003$ ), but not MCI ( $p = 0.082$ ). In addition, no significant difference  
298 in MT was found between IPD and MCI ( $p = 0.759$ ).

299 To assess the capabilities of RT and MT as diagnostic indicators, ROC curves were compiled, shown in  
300 Figure 8c-d. The area under the ROC curve for RT was 0.840 and 0.806, and for MT was 0.788 and  
301 0.945 for IPD and MCI patients respectively. All values were significantly higher than 0.5, the value  
302 associated with entirely overlapping distributions, ( $p < 0.005$  for all, Monte Carlo test, 10,000  
303 iterations). For comparison, there was no significant difference in AUC value between HW and RT  
304 either cohort (IPD  $Z = 1.30$ ,  $p = 0.193$ ; MCI  $Z = 0.38$ ,  $p = 0.702$ ; DeLong's test), nor between HW and  
305 MT (IPD  $Z = 1.57$ ,  $p = 0.116$ ; MCI  $Z = -0.81$ ,  $p = 0.419$ ; DeLong's test).

306 Furthermore, there was no significant correlation between RT and halfwidth for any cohort (Control  
307  $R^2 = 0.10$ ,  $p = 0.261$ ; IPD  $R^2 = 0.05$ ,  $p = 0.278$ ; MCI  $R^2 = 0.09$ ,  $p = 0.365$ ), nor between MT and halfwidth  
308 (Control  $R^2 = 0.02$ ,  $p = 0.646$ ; IPD  $R^2 = 0.01$ ,  $p = 0.639$ ; MCI  $R^2 = 0.02$ ,  $p = 0.71$ ).

309

310

## Discussion

311 In this study we introduced a novel approach for assessing motor planning capabilities in patients with  
312 Parkinson's disease and mild cognitive impairment. Here, the presentation of a target object at varying  
313 degrees of ambiguity in a simple reach-to-grasp task allowed us to probe motor planning uncertainty  
314 by measuring grasp selection, an output of distinct motor plans. In agreement with previous studies,  
315 we observed significant deficits in patients' task performance relative to healthy controls suggestive of  
316 impairments in motor planning, in our case measured by the degree of uncertainty in wrist posture  
317 selection. However, unlike previous studies, the context of motor ambiguity in our task allowed the  
318 assessment of motor planning capabilities without reliance on action imitation, memory recall, or

319 rapid visual inspection, skills that have been required in previous motor planning assessments <sup>2,3,11,12</sup>.  
320 This, combined with evidence that greater uncertainty is present even in patients with a more recent  
321 diagnosis and with relatively minor cognitive impairment, suggests that grasp uncertainty is a sensitive  
322 measure of motor planning impairment that could have utility as an early disease marker.

323 We found that the degree of uncertainty did not correlate with Hoehn and Yahr stage or UPDRS (Part  
324 III) score, both established scales of PD disease progression scored by the extent of the severity of  
325 motor symptoms. It is therefore likely that grasp uncertainty, rather than being a direct consequence  
326 of motor execution impairment, actually captures a more cognitive deficit, specifically motor planning.  
327 This is further evidenced by the lack of any significant difference in planning uncertainty between  
328 tremor dominant, and postural and gait dominant clinical phenotypic subtypes. Cognitive dysfunction  
329 is frequently documented in PD patients at all stages of the disease, yet correlations with objective  
330 motor symptom scoring can be highly variable. For example, UPDRS (Part III) is often found to be a  
331 weak or non-existent correlate to both global and specific measures of cognitive impairment <sup>21-25</sup>. In  
332 addition, the lack of correlates between cognitive scoring and objective measures of motor control  
333 functioning <sup>23,26-28</sup>, and the presence of prodromal non-motor deficits prior to diagnostic motor  
334 symptoms <sup>29,30</sup>, all exemplify the occurrence of cognitive deficits and their independence from other  
335 pathological changes in PD.

336 The consequences of disease pathology likely consist of a multitude of cortical and subcortical network  
337 changes that lead to further impairment beyond basic motor dysfunction, varying both between  
338 individuals and over time. Non-motor symptoms can arise not only independent from the severity of  
339 basic motor dysfunction as described above, but also independent from each other <sup>31-33</sup>. While deficits  
340 in memory, attention, executive and visuospatial function are common, there exists a large  
341 heterogeneity to the profile of cognitive dysfunction in PD patients <sup>34</sup>. Our finding of the lack of  
342 correlation between motor planning deficits and MOCA scores, a measure of global cognitive function  
343 <sup>35</sup>, is therefore not unique, but instead builds towards an argument for distinct dysfunctional neural  
344 circuitry or neurochemical systems <sup>23</sup>. Depending on what elements of network circuitry become  
345 impaired and the nature of interactions between them, different combinations of behavioural deficits  
346 could emerge to different extents, hence yielding the absence of correlation between our measure  
347 and MOCA or UPDRS.

348 Despite the lack of correlation with disease severity scoring, patients who were receiving a higher total  
349 daily treatment dosage showed reduced motor planning deficits compared to those on lower dosages.  
350 Given that dosage is determined by the clinician primarily on the basis of the severity of motor  
351 symptoms <sup>36</sup>, one could initially interpret LED as a disease severity indicator. However, this would be



352 presumptuous given that dosage can fluctuate based on other clinical considerations such as the  
353 severity of negative side effects<sup>37</sup>. Alternatively, another interpretation of this relationship between  
354 LED and uncertainty could be that lower dosages of levodopa are insufficient to reduce motor planning  
355 deficits, meanwhile higher dosages are able to restore impaired processing. This amelioration may  
356 occur to a separate extent than that of improvements to motor function, as implied by the lack of  
357 correlation between dosage and MT.

358 Evidence for a cortical influence of levodopa administration has been accumulated based on drug  
359 induced behavioural changes in PD since soon after its introduction as a therapeutic drug<sup>38</sup>.  
360 Hypomania, impulse control disorder, personality changes, and hallucinations are but a few examples  
361 of the common negative side effects of levodopa, however the pathophysiology remains unclear<sup>39</sup>.  
362 Though cortical deficits in PD are typically treated with cholinesterase inhibitors acting on  
363 acetylcholine<sup>29</sup>, further evidence for levodopa having a cortical effect has manifested in studies  
364 showing improved cognitive performance across a range of clinical assessment scales<sup>40-42</sup>, although  
365 benefits are not always universal<sup>43</sup>. Nevertheless, these studies have primarily focussed on ON/OFF  
366 states rather than comparative dosing effects. As the latter remains unknown, it could be speculated  
367 that, based on our findings, some dysfunctional neural networks may require higher dosages of  
368 levodopa to correct compared to basic motor circuitry. This could be attributed to differences in  
369 dopamine receptor density between cortical and subcortical regions; there are far fewer D<sub>1</sub> and D<sub>2</sub>  
370 receptors present in the frontal cortex compared to the basal ganglia<sup>44,45</sup>. Still, further exploration,  
371 both with patients receiving higher dosages, and on-off experimental design are required to investigate  
372 this speculative hypothesis.

373 For patients presenting with only mild cognitive impairment without any basic motor deficits,  
374 uncertainty in motor planning was also observed, although to a slightly lesser degree than the PD  
375 cohort. This adds to the suggestion that the planning deficits measured in PD are unlikely to be a  
376 consequence of basic motor pathology, which is absent in these MCI patients. The MCI cohort also  
377 showed significant prolongation of RT but only minor, insignificant delays of MT compared to healthy  
378 controls. This is in agreement with indications from previous studies that the prolonging of RT in this  
379 task is not solely a consequence of bradykinesia, but instead inclusive of motor planning deficits or  
380 slowness in information processing<sup>9</sup>. To separate out contributions to RT prolongation, the lack of  
381 correlation between our motor planning measure and RT across all cohorts becomes of particular  
382 interest. This result suggests that, at least in our task, RT is not merely an output measure reflecting  
383 the severity of motor planning deficits, but the prolongation observed is likely also influenced by  
384 slowness in other cortical processes, potentially visuospatial circuitry<sup>46,47</sup>.

385 A key difference to highlight between previous work on simple and choice RT tasks and our study is  
386 the freedom of the participant to choose their own grasp, as opposed to the enforcement of an  
387 instructed action. Therefore one cannot directly compare RT measurements between such tasks and  
388 our study. Of course, the process of motor planning may continue beyond home-pad release and thus  
389 our measure of RT alone may not capture the full duration of motor planning. Consequently, the  
390 prolongation of MT seen with patient groups in this task likely does not solely reflect the time to  
391 execute the reach-to-grasp movement but may incorporate a fraction of planning time as well, perhaps  
392 explaining the insignificant but slight delay for MCI patients<sup>48</sup>. Kinematic comparisons between patient  
393 groups of hand and digit posture over the course of the reach flight trajectory would yield a more  
394 accurate measurement of planning time and aid elucidation in future work.

395 Notably, our halfwidth measure did correlate with disease severity for MCI patients, with a lower global  
396 cognitive score relating to worsened task performance – indicative of a more globally unified  
397 pathology. Provided that, as mentioned previously, motor planning deficits are seemingly only  
398 observed in MCI patients for tasks of higher cognitive load<sup>16</sup>, it could be implied that those patients  
399 who have more severe global impairment might be more sensitive to task difficulty, and despite the  
400 physical action of the task being simple, the added ambiguous context and choice freedom might  
401 provide sufficient cognitive load to induce minor deficits.

402 The pathological neural circuitry underlying the observed deficits in our task could be driven by several  
403 mechanisms. The underlying deficits driving motor planning impairment in MCI patients could be  
404 wide-ranging across the cortex given the non-specific inclusion criteria used in this study, limiting any  
405 mechanistic conclusions for this cohort. For PD, the wide range of erroneous cortical processes are  
406 primarily associated with dysfunctional cortico-striatal-thalamic networks<sup>49</sup>, resulting from  
407 progressive loss of dopaminergic neurons in the substantia nigra pars compacta (SNc). By the point of  
408 motor symptom onset and thus diagnosis, around half the dopaminergic neurons in the SNc are  
409 degenerated<sup>50</sup>, having already resulted in various prodromal non-motor symptoms. This initial  
410 degeneration is associated with significant loss of cortico-cortical projecting pyramidal neurons in the  
411 pre-supplementary motor area (pre-SMA)<sup>51</sup>, an area vital for the selection of and preparation for  
412 movements required, potentially explaining the impairments observed in our study. Furthermore,  
413 early disease evolution in the prodromal phase is also associated with alterations to motor cortical  
414 excitability and plasticity. Specifically, loss of long-term potentiation and depression, reduced  
415 intracortical inhibition, and enhanced plasticity induced by paired associative stimulation<sup>52,53</sup>. In  
416 keeping with previous discussion points, the extent of alterations have inconsistent correlations with  
417 UPDRS scoring<sup>52</sup>. These changes could be explained by dopamine deficiency decreasing thalamo-  
418 cortical output<sup>52</sup>; such mechanisms might also influence pre-SMA functioning. However, it is important

419 to consider that cellular vulnerability, induced by dopamine depletion/dysregulation, glutamate  
420 excitotoxicity, protein aggregation, or neuroinflammation, are also credible mechanisms of pre-SMA  
421 dysfunction<sup>51,54</sup>.

422 On another note, one of the essential parts of motor planning is reliance upon successful sensory  
423 feedback. For a task whereby grasp action is driven by comfort preferences<sup>55,56</sup>, one might expect that  
424 after performing a less comfortable movement, feedback would facilitate adaptive planning over the  
425 course of the experiment<sup>57,58</sup>, illustrated by a reduction in uncertainty over time. One contributor to  
426 the deficits observed in our task might therefore be attributed to impaired proprioceptive sensory  
427 feedback; precedent for the presence of sensory deficits in PD comes predominantly from freezing of  
428 gait and reaching studies<sup>59-62</sup>. Furthermore, altered perception of their own movements<sup>59,63</sup> or of the  
429 target object itself<sup>64,65</sup>, would lead to suboptimal motor planning for the task at hand<sup>66</sup>. It remains to  
430 be explored whether those patients who show greater sensory deficits would consequently perform  
431 worse at motor planning in ambiguous contexts.

432 Our approach in assessing motor planning deficits in a reach-to-grasp task demonstrated that patients  
433 with Parkinson's disease show greater uncertainty in ambiguous contexts compared to healthy  
434 controls. Furthermore, our finding that disease severity was not an influencing factor, revealed the  
435 independency of pathological motor planning circuitry from basic motor dysfunction. The robust  
436 performance of our measure as a pathology classifier for those in the earlier stages of disease  
437 progression showcases the utility of it as a potential diagnostic marker, aiding the formation of a wider  
438 clinical picture of the manifestations of Parkinson's disease.

439

## References

- 440 1 Ding, W., Ding, L. J., Li, F. F., Han, Y. & Mu, L. Neurodegeneration and cognition in Parkinson's  
441 disease: a review. *Eur Rev Med Pharmacol Sci* **19**, 2275-2281 (2015).
- 442 2 Sharpe, M. H., Cermak, S. A. & Sax, D. S. Motor planning in Parkinson patients.  
443 *Neuropsychologia* **21**, 455-462, doi:[https://doi.org/10.1016/0028-3932\(83\)90002-7](https://doi.org/10.1016/0028-3932(83)90002-7) (1983).
- 444 3 Goldenberg, G., Wimmer, A., Auff, E. & Schnaberth, G. Impairment of motor planning in  
445 patients with Parkinson's disease: evidence from ideomotor apraxia testing. *J Neurol*  
446 *Neurosurg Psychiatry* **49**, 1266-1272, doi:10.1136/jnnp.49.11.1266 (1986).
- 447 4 Bowen, F. P., Hoehn, M. M. & Yahr, M. D. Parkinsonism: Alterations in spatial orientation as  
448 determined by a route-walking test. *Neuropsychologia* **10**, 355-361,  
449 doi:[https://doi.org/10.1016/0028-3932\(72\)90027-9](https://doi.org/10.1016/0028-3932(72)90027-9) (1972).
- 450 5 Evarts, E. V., Teräväinen, H. & Calne, D. B. Reaction time in Parkinson's disease. *Brain* **104**,  
451 167-186, doi:10.1093/brain/104.1.167 (1981).
- 452 6 Kutukcu, Y., Marks, W. J., Goodin, D. S. & Aminoff, M. J. Simple and choice reaction time in  
453 Parkinson's disease. *Brain Research* **815**, 367-372, doi:[https://doi.org/10.1016/S0006-](https://doi.org/10.1016/S0006-8993(98)01060-9)  
454 [8993\(98\)01060-9](https://doi.org/10.1016/S0006-8993(98)01060-9) (1999).
- 455 7 Sanes, J. N. Information processing deficits in Parkinson's disease during movement.  
456 *Neuropsychologia* **23**, 381-392, doi:[https://doi.org/10.1016/0028-3932\(85\)90024-7](https://doi.org/10.1016/0028-3932(85)90024-7) (1985).

- 457 8 Fasano, A., Mazzoni, A. & Falotico, E. Reaching and Grasping Movements in Parkinson's  
458 Disease: A Review. *Journal of Parkinson's Disease* **12**, 1083-1113, doi:10.3233/JPD-213082  
459 (2022).
- 460 9 Johnson, A. M. *et al.* Visual inspection time in Parkinson's disease: deficits in early stages of  
461 cognitive processing. *Neuropsychologia* **42**, 577-583,  
462 doi:10.1016/j.neuropsychologia.2003.10.011 (2004).
- 463 10 Brown, R. G., Jahanshahi, M. & Marsden, C. D. Response choice in Parkinson's disease. The  
464 effects of uncertainty and stimulus-response compatibility. *Brain* **116 ( Pt 4)**, 869-885,  
465 doi:10.1093/brain/116.4.869 (1993).
- 466 11 Jahanshahi, M., Brown, R. G. & Marsden, C. D. Simple and choice reaction time and the use  
467 of advance information for motor preparation in Parkinson's disease. *Brain* **115 ( Pt 2)**, 539-  
468 564, doi:10.1093/brain/115.2.539 (1992).
- 469 12 Sheridan, M. R., Flowers, K. A. & Hurrell, J. Programming and execution of movement in  
470 Parkinson's disease. *Brain* **110 ( Pt 5)**, 1247-1271, doi:10.1093/brain/110.5.1247 (1987).
- 471 13 Stelmach, G. E., Castiello, U. & Jeannerod, M. Orienting the finger opposition space during  
472 prehension movements. *J Mot Behav* **26**, 178-186, doi:10.1080/00222895.1994.9941672  
473 (1994).
- 474 14 Petersen, R. C. Mild cognitive impairment as a diagnostic entity. *J Intern Med* **256**, 183-194,  
475 doi:10.1111/j.1365-2796.2004.01388.x (2004).
- 476 15 Tippett, W. J. & Sergio, L. E. Visuomotor integration is impaired in early stage Alzheimer's  
477 disease. *Brain Res* **1102**, 92-102, doi:10.1016/j.brainres.2006.04.049 (2006).
- 478 16 Salek, Y., Anderson, N. D. & Sergio, L. Mild cognitive impairment is associated with impaired  
479 visual-motor planning when visual stimuli and actions are incongruent. *Eur Neurol* **66**, 283-  
480 293, doi:10.1159/000331049 (2011).
- 481 17 Kluger, A. *et al.* Patterns of Motor Impairment in Normal Aging, Mild Cognitive Decline, and  
482 Early Alzheimer' Disease. *The Journals of Gerontology: Series B* **52B**, P28-P39,  
483 doi:10.1093/geronb/52B.1.P28 (1997).
- 484 18 Schade, S., Mollenhauer, B. & Trenkwalder, C. Levodopa Equivalent Dose Conversion Factors:  
485 An Updated Proposal Including Opicapone and Safinamide. *Movement Disorders Clinical*  
486 *Practice* **7**, 343-345, doi:<https://doi.org/10.1002/mdc3.12921> (2020).
- 487 19 Maffitt, N. J., Cairns, E. G., Wozna, J., Soteropoulos, D. S. & Kraskov, A. Grasp Orientation in  
488 Ambiguous Settings is Sensitive to Prior Object Motion. *bioRxiv*, 2023.2011.2020.567846,  
489 doi:10.1101/2023.11.20.567846 (2024).
- 490 20 Wood, D. K. & Goodale, M. A. Selection of wrist posture in conditions of motor ambiguity.  
491 *Exp Brain Res* **208**, 607-620, doi:10.1007/s00221-010-2509-7 (2011).
- 492 21 Chen, J. *et al.* Predictors of cognitive impairment in newly diagnosed Parkinson's disease with  
493 normal cognition at baseline: A 5-year cohort study. *Front Aging Neurosci* **15**, 1142558,  
494 doi:10.3389/fnagi.2023.1142558 (2023).
- 495 22 Kawasaki, T. *et al.* Motor planning error in Parkinson's disease and its clinical correlates. *PLoS*  
496 *One* **13**, e0202228, doi:10.1371/journal.pone.0202228 (2018).
- 497 23 Schneider, J. S., Sendek, S. & Yang, C. Relationship between Motor Symptoms, Cognition, and  
498 Demographic Characteristics in Treated Mild/Moderate Parkinson's Disease. *PLOS ONE* **10**,  
499 e0123231, doi:10.1371/journal.pone.0123231 (2015).
- 500 24 Choudhury, S. *et al.* Slowed Movement Stopping in Parkinson's Disease and Focal Dystonia is  
501 Improved by Standard Treatment. *Sci Rep* **9**, 19504, doi:10.1038/s41598-019-55321-5 (2019).
- 502 25 Gauggel, S., Rieger, M. & Feghoff, T. Inhibition of ongoing responses in patients with  
503 Parkinson's disease. *Journal of Neurology, Neurosurgery & Psychiatry* **75**, 539-544 (2004).
- 504 26 Moriyasu, S., Shimizu, T., Honda, M., Ugawa, Y. & Hanajima, R. Motor cortical plasticity and  
505 its correlation with motor symptoms in Parkinson's disease. *eNeurologicalSci* **29**, 100422,  
506 doi:<https://doi.org/10.1016/j.ensci.2022.100422> (2022).

- 507 27 Domellöf, M. E., Elgh, E. & Forsgren, L. The relation between cognition and motor  
508 dysfunction in drug-naive newly diagnosed patients with Parkinson's disease. *Movement*  
509 *Disorders* **26**, 2183-2189, doi:<https://doi.org/10.1002/mds.23814> (2011).
- 510 28 Huber, S. J., Christy, J. A. & Paulson, G. W. Cognitive heterogeneity associated with clinical  
511 subtypes of Parkinson's disease. *Cognitive and Behavioral Neurology* **4**, 147-157 (1991).
- 512 29 Armstrong, M. J. & Okun, M. S. Diagnosis and Treatment of Parkinson Disease: A Review.  
513 *Jama* **323**, 548-560, doi:10.1001/jama.2019.22360 (2020).
- 514 30 Berg, D. *et al.* MDS research criteria for prodromal Parkinson's disease. *Movement Disorders*  
515 **30**, 1600-1611, doi:<https://doi.org/10.1002/mds.26431> (2015).
- 516 31 Wallace, E. R., Segerstrom, S. C., van Horne, C. G., Schmitt, F. A. & Koehl, L. M. Meta-Analysis  
517 of Cognition in Parkinson's Disease Mild Cognitive Impairment and Dementia Progression.  
518 *Neuropsychology Review* **32**, 149-160, doi:10.1007/s11065-021-09502-7 (2022).
- 519 32 Kehagia, A. A., Barker, R. A. & Robbins, T. W. Neuropsychological and clinical heterogeneity of  
520 cognitive impairment and dementia in patients with Parkinson's disease. *The Lancet*  
521 *Neurology* **9**, 1200-1213 (2010).
- 522 33 Roheger, M., Kalbe, E. & Liepelt-Scarfone, I. Progression of Cognitive Decline in Parkinson's  
523 Disease. *Journal of Parkinson's Disease* **8**, 183-193, doi:10.3233/JPD-181306 (2018).
- 524 34 Aarsland, D. *et al.* Mild cognitive impairment in Parkinson disease: a multicenter pooled  
525 analysis. *Neurology* **75**, 1062-1069 (2010).
- 526 35 Nasreddine, Z. S. *et al.* The Montreal Cognitive Assessment, MoCA: a brief screening tool for  
527 mild cognitive impairment. *Journal of the American Geriatrics Society* **53**, 695-699 (2005).
- 528 36 Lees, A. Levodopa substitution: the gold standard. *Clinical Neuropharmacology* **17**, S1-S6  
529 (1994).
- 530 37 Balestrino, R. & Schapira, A. H. V. Parkinson disease. *European Journal of Neurology* **27**, 27-  
531 42, doi:<https://doi.org/10.1111/ene.14108> (2020).
- 532 38 Barbeau, A. L-dopa therapy in Parkinson's disease: a critical review of nine years' experience.  
533 *Can Med Assoc J* **101**, 59-68 (1969).
- 534 39 Beaulieu-Boire, I. & Lang, A. E. Behavioral effects of levodopa. *Movement Disorders* **30**, 90-  
535 102, doi:<https://doi.org/10.1002/mds.26121> (2015).
- 536 40 Gul, A. & Yousaf, J. Effect of levodopa on frontal-subcortical and posterior cortical functioning  
537 in patients with Parkinson's disease. *Singapore Med J* **60**, 414-417,  
538 doi:10.11622/smedj.2018116 (2019).
- 539 41 Funkiewiez, A. *et al.* Effects of levodopa and subthalamic nucleus stimulation on cognitive  
540 and affective functioning in Parkinson's disease. *Mov Disord* **21**, 1656-1662,  
541 doi:10.1002/mds.21029 (2006).
- 542 42 Catalán, M. J. *et al.* Levodopa infusion improves impulsivity and dopamine dysregulation  
543 syndrome in Parkinson's disease. *Movement Disorders* **28**, 2007-2010,  
544 doi:<https://doi.org/10.1002/mds.25636> (2013).
- 545 43 Kiani, M. M., Heidari Beni, M. H. & Aghajan, H. Aberrations in temporal dynamics of cognitive  
546 processing induced by Parkinson's disease and Levodopa. *Sci Rep* **13**, 20195,  
547 doi:10.1038/s41598-023-47410-3 (2023).
- 548 44 Cortes, R., Gueye, B., Pazos, A., Probst, A. & Palacios, J. Dopamine receptors in human brain:  
549 autoradiographic distribution of D1 sites. *Neuroscience* **28**, 263-273 (1989).
- 550 45 Camps, M., Cortes, R., Gueye, B., Probst, A. & Palacios, J. Dopamine receptors in human  
551 brain: autoradiographic distribution of D2 sites. *Neuroscience* **28**, 275-290 (1989).
- 552 46 Nguyen, V. Q., Gillen, D. L. & Dick, M. B. Memory for unfamiliar faces differentiates mild  
553 cognitive impairment from normal aging. *Journal of Clinical and Experimental*  
554 *Neuropsychology* **36**, 607-620, doi:10.1080/13803395.2014.919992 (2014).
- 555 47 Chehrehnegar, N. *et al.* Early detection of cognitive disturbances in mild cognitive  
556 impairment: a systematic review of observational studies. *Psychogeriatrics* **20**, 212-228,  
557 doi:<https://doi.org/10.1111/psyg.12484> (2020).



- 558 48 Dijkerman, H. C., McIntosh, R. D., Schindler, I., Nijboer, T. C. & Milner, A. D. Choosing between  
559 alternative wrist postures: action planning needs perception. *Neuropsychologia* **47**, 1476-  
560 1482, doi:[10.1016/j.neuropsychologia.2008.12.002](https://doi.org/10.1016/j.neuropsychologia.2008.12.002) (2009).
- 561 49 Foffani, G. & Obeso, J. A. A Cortical Pathogenic Theory of Parkinson's Disease. *Neuron* **99**,  
562 1116-1128, doi:<https://doi.org/10.1016/j.neuron.2018.07.028> (2018).
- 563 50 Fearnley, J. M. & Lees, A. J. AGEING AND PARKINSON'S DISEASE: SUBSTANTIA NIGRA  
564 REGIONAL SELECTIVITY. *Brain* **114**, 2283-2301, doi:[10.1093/brain/114.5.2283](https://doi.org/10.1093/brain/114.5.2283) (1991).
- 565 51 MacDonald, V. & Halliday, G. M. Selective loss of pyramidal neurons in the pre-  
566 supplementary motor cortex in Parkinson's disease. *Movement Disorders* **17**, 1166-1173,  
567 doi:[10.1002/mds.10258](https://doi.org/10.1002/mds.10258) (2002).
- 568 52 Kishore, A., Joseph, T., Velayudhan, B., Popa, T. & Meunier, S. Early, severe and bilateral loss  
569 of LTP and LTD-like plasticity in motor cortex (M1) in de novo Parkinson's disease. *Clinical*  
570 *Neurophysiology* **123**, 822-828, doi:<https://doi.org/10.1016/j.clinph.2011.06.034> (2012).
- 571 53 Kojovic, M. *et al.* Functional reorganization of sensorimotor cortex in early Parkinson disease.  
572 *Neurology* **78**, 1441-1448, doi:[10.1212/WNL.0b013e318253d5dd](https://doi.org/10.1212/WNL.0b013e318253d5dd) (2012).
- 573 54 Dexter, D. T. & Jenner, P. Parkinson disease: from pathology to molecular disease  
574 mechanisms. *Free Radical Biology and Medicine* **62**, 132-144,  
575 doi:<https://doi.org/10.1016/j.freeradbiomed.2013.01.018> (2013).
- 576 55 Mark, L. S. *et al.* Postural dynamics and the preferred critical boundary for visually guided  
577 reaching. *J Exp Psychol Hum Percept Perform* **23**, 1365-1379, doi:[10.1037//0096-](https://doi.org/10.1037//0096-1523.23.5.1365)  
578 [1523.23.5.1365](https://doi.org/10.1037//0096-1523.23.5.1365) (1997).
- 579 56 Stasik, S. & Mark, L. S. in *Studies in perception and action VIII* 23-26 (Psychology Press,  
580 2005).
- 581 57 Henriques, D. Y. P. & Cressman, E. K. Visuomotor Adaptation and Proprioceptive  
582 Recalibration. *Journal of Motor Behavior* **44**, 435-444, doi:[10.1080/00222895.2012.659232](https://doi.org/10.1080/00222895.2012.659232)  
583 (2012).
- 584 58 Shadmehr, R., Smith, M. A. & Krakauer, J. W. Error Correction, Sensory Prediction, and  
585 Adaptation in Motor Control. *Annual Review of Neuroscience* **33**, 89-108,  
586 doi:<https://doi.org/10.1146/annurev-neuro-060909-153135> (2010).
- 587 59 Silveira, C. R. *et al.* Disentangling perceptual judgment and online feedback deficits in  
588 Parkinson's freezing of gait. *J Neurol* **262**, 1629-1636, doi:[10.1007/s00415-015-7759-7](https://doi.org/10.1007/s00415-015-7759-7)  
589 (2015).
- 590 60 Gorst, T., Marsden, J. & Freeman, J. Lower Limb Somatosensory Discrimination Is Impaired in  
591 People With Parkinson's Disease: Novel Assessment and Associations With Balance, Gait, and  
592 Falls. *Mov Disord Clin Pract* **6**, 593-600, doi:[10.1002/mdc3.12831](https://doi.org/10.1002/mdc3.12831) (2019).
- 593 61 Behroozmand, R. & Johari, K. Sensorimotor Impairment of Speech and Hand Movement  
594 Timing Processing in Parkinson's Disease. *Journal of Motor Behavior* **51**, 561-571,  
595 doi:[10.1080/00222895.2018.1528204](https://doi.org/10.1080/00222895.2018.1528204) (2019).
- 596 62 Konczak, J. *et al.* Proprioception and motor control in Parkinson's disease. *J Mot Behav* **41**,  
597 543-552, doi:[10.3200/35-09-002](https://doi.org/10.3200/35-09-002) (2009).
- 598 63 Koop, M. M., Hill, B. C. & Bronte-Stewart, H. M. Perceptual errors increase with movement  
599 duration and may contribute to hypokinesia in Parkinson's disease. *Neuroscience* **243**, 1-13,  
600 doi:[10.1016/j.neuroscience.2013.03.026](https://doi.org/10.1016/j.neuroscience.2013.03.026) (2013).
- 601 64 Armstrong, R. A. Visual signs and symptoms of Parkinson's disease. *Clinical and Experimental*  
602 *Optometry* **91**, 129-138, doi:<https://doi.org/10.1111/j.1444-0938.2007.00211.x> (2008).
- 603 65 Armstrong, R. A. Oculo-Visual Dysfunction in Parkinson's Disease. *J Parkinsons Dis* **5**, 715-  
604 726, doi:[10.3233/jpd-150686](https://doi.org/10.3233/jpd-150686) (2015).
- 605 66 Diederich, N. J., Raman, R., Leurgans, S. & Goetz, C. G. Progressive worsening of spatial and  
606 chromatic processing deficits in Parkinson disease. *Arch Neurol* **59**, 1249-1252,  
607 doi:[10.1001/archneur.59.8.1249](https://doi.org/10.1001/archneur.59.8.1249) (2002).

608