

1 **Autoantibodies Targeting Angiotensin Converting Enzyme 2 Are Prevalent and Not Induced by**
2 **SARS-CoV-2 Infection**
3
4
5

6 Yannick Galipeau ¹, Nicolas Castonguay ¹, Pauline S. McCluskie ¹, Mayra Trentin Sonoda², Alexa
7 Keeshan^{3,4}, Erin Collins ^{3,4}, Corey Arnold¹, Martin Pelchat^{1,8}, Kevin Burns^{5,6}, Curtis Cooper ^{3,6,7}, and
8 Marc-André Langlois ^{1,8*}

9
10
11
12
13 ¹ Department of Biochemistry, Microbiology & Immunology, Faculty of Medicine, University of Ottawa,
14 Ottawa, Canada.

15
16 ² Faculty of Medicine, University of Ottawa, Ottawa, Ontario, Canada
17

18 ³ School of Epidemiology and Public Health, Faculty of Medicine, University of Ottawa, Ottawa, Ontario,
19 Canada
20

21 ⁴ Clinical Epidemiology, Ottawa Hospital Research Institute, Ottawa, Ontario, Canada
22

23 ⁵ Division of Nephrology, Department of Medicine, University of Ottawa, Ottawa, Ontario, Canada
24

25 ⁶ Ottawa Hospital Research Institute, Ottawa, Ontario, Canada
26

27 ⁷ Division of Infectious Diseases, Department of Medicine, University of Ottawa, Ottawa, Ontario,
28 Canada
29

30 ⁸ University of Ottawa Centre for Infection, Immunity and Inflammation (CI3)
31
32
33
34

35 *Corresponding author
36
37
38
39
40

41 Correspondence should be addressed to: langlois@uottawa.ca
42
43

Galipeau *et al.* 2024

1 **Abstract**

2
3 Clinical outcomes resulting from SARS-CoV-2 infection vary widely, ranging from asymptomatic cases
4 to the development of mild to severe respiratory illness, and in some instances, chronic lingering disease
5 and mortality. The underlying biological mechanisms driving this wide spectrum of pathogenicity among
6 certain individuals and demographics remain elusive. Autoantibodies have emerged as potential
7 contributors to the severity of COVID-19. Although preliminary reports have suggested the induction of
8 antibodies targeting Angiotensin-Converting Enzyme II (ACE2) post-infection, this assertion lacks
9 confirmation in large-scale studies. In this study, our objective is to comprehensively characterize and
10 quantify the prevalence and expression levels of autoantibodies directed against ACE2 in a sizable cohort
11 (n = 434). Our findings reveal that ACE2-reactive IgM antibodies are the most prevalent, with an overall
12 seroprevalence of 18.8%, followed by IgG at 10.3% and IgA at 6.3%. Longitudinal analysis of individuals
13 with multiple blood draws showed stable ACE2 IgG and IgA levels over time. Upon stratifying
14 individuals based on molecular testing for SARS-CoV-2 or serological evidence of past infection, no
15 significant differences were observed between groups. Functional assessment of ACE2 autoantibodies
16 demonstrated that they are non-neutralizing and failed to inhibit spike-ACE2 interaction or affect the
17 enzymatic activity of ACE2. Our results highlight that ACE2 autoantibodies are prevalent in the general
18 population and were not induced by SARS-CoV-2 infection in our cohort. Notably, we found no
19 substantiated evidence supporting a direct role for ACE2 autoantibodies in SARS-CoV-2 pathogenesis.

20
21
22
23
24 **Key words:** COVID-19, SARS-CoV-2, autoantibodies, ACE2 antibodies, angiotensin converting enzyme
25 2.

26
27

Galipeau *et al.* 2024

1 **Lay Summary**

2

3 This study examined the natural presence and function of autoantibodies targeting ACE2, the receptor for
4 SARS-CoV-2, to determine if they influence COVID-19 severity. Using a cohort of over 400 individuals,
5 including those with prior SARS-CoV-2 infection, we assessed the prevalence of ACE2-reactive IgM,
6 IgG, and IgA antibodies in the general population. ACE2-reactive IgM antibodies were most common,
7 found in approximately 18.8% of participants, followed by IgG at 10.3% and IgA at 6.3%.

8

9 Longitudinal analysis showed stable levels of IgG and IgA, with fluctuations in IgM over time.
10 Importantly, no significant difference in ACE2 antibody levels was observed between individuals with or
11 without SARS-CoV-2 infection, suggesting these autoantibodies were not induced by COVID-19.
12 Functional tests showed that these ACE2 autoantibodies did not inhibit the virus's spike-ACE2 interaction
13 or alter ACE2's enzymatic activity, indicating they are non-neutralizing.

14

15 We conclude that ACE2 autoantibodies are commonly present in the general population, independent of
16 SARS-CoV-2 exposure, and are unlikely to play a role in COVID-19 severity. Further research is
17 required to explore any potential physiological or pathological significance of ACE2 autoantibodies.

18

1
2
3
4
5
6
7
8
9
10
11
12
13
14
15
16
17
18
19
20
21
22
23
24
25
26
27
28
29
30
31
32
33
34
35

Introduction

SARS-CoV-2 has profoundly impacted our day-to-day lives, in part through socio-economic impacts and excess mortality but also through morbidity associated with post-COVID-19 conditions (i.e., Long-COVID, PASC, PCC)(1). Although the scientific and medical communities have been intensely focusing on understanding SARS-CoV-2 pathogenesis, biological factors and mechanisms driving the heterogeneity of disease severity remain unclear. Several studies have highlighted that autoimmunity could be a factor impacting SARS-CoV-2 infection severity and recovery (2-4).

Links between viral infection and autoimmunity have been extensively documented. For example, Epstein-Barr virus (EBV) infection was recently linked with a 32-fold increased risk of developing multiple sclerosis (MS). While no causal or mechanistic evidence exists, as of today, EBV is thought to be the leading driver of MS (5). While evidence of autoimmune disease development following SARS-CoV-2 infections is currently anecdotal, several studies have reported the high prevalence of autoantibodies in COVID-19 patients. These autoantibodies include antinuclear antibodies, anti-cytokines antibodies, anti-phospholipid autoantibodies and others (6-11). Whilst some autoantibodies may have an important role in homeostasis and are not associated with specific diseases (i.e., natural autoantibodies) (12), most autoantibodies have been studied in the context of autoimmune pathologies. Interestingly, one group has shown that anti-IFN antibodies are detected in individuals with severe COVID-19, whereas none of the mild or asymptomatic individuals had anti-IFN autoantibodies in circulation in their cohort. These autoantibodies were able to neutralize type 1 IFNs, preventing their antiviral functions (8), thereby suggesting a role for autoantibodies in SARS-CoV-2 pathogenesis. These autoantibodies may represent a physiologically significant mechanism for regulating aberrant or excessive cytokine responses (13-15).

ACE2's role in the renin-angiotensin system pathway has been extensively described. Briefly, ACE catalyzes the formation of angiotensin-II from the removal of two amino acids from the precursor angiotensin-I. ACE2 further enzymatically removes the carboxy-terminal phenylalanine from angiotensin-II, yielding angiotensin-(1-7), with both having downstream effects that are important for maintaining blood pressure, electrolyte balance and fluid homeostasis. Of note, ACE2 can also generate angiotensin-(1-9) (16, 17). ACE2 is expressed across several organ systems from the intestinal tract, kidneys, heart, lungs, and several others (18). In addition, ACE2 has also been identified as the cognate receptor for three coronaviruses, SARS-CoV, SARS-CoV-2, and NL63 (19-21). Given the relevance of ACE2 in viral entry of SARS-CoV-2, some have suggested that autoantibodies targeting ACE2 could impact COVID-19 severity (3). In a small cohort, Arthur *et al.* reported that 81% of previously SARS-

Galipeau *et al.* 2024

1 CoV-2 infected individuals expressed antibodies targeting ACE2. These autoantibodies were found in
2 93% of hospitalized individuals with SARS-CoV-2 but were undetected in the control cohort (22). In
3 another cohort, Casciola *et al.* found an association between anti-ACE2 IgM autoantibodies and severe
4 COVID-19, with the ability to activate the complement and impact the vascular endothelial environment
5 (23).

6
7 While studies found corroborating evidence of ACE2 autoantibodies in individuals with COVID-19 (24,
8 25), others did not. For example, in a screen by Chang *et al.*, ACE2 autoantibodies were detected in only
9 one individual of the study cohort despite the identification of numerous other autoantibodies in several
10 other individuals (9). The implication of ACE2 autoantibodies in SARS-CoV-2 pathogenesis remains
11 unclear as ACE2 autoantibodies have been detected and associated with other medical conditions (i.e.,
12 Parkinson's disease, vasculopathy, rheumatoid arthritis and others) independently of prior SARS-CoV-2
13 infection (26-30). In addition, the limited size of the control cohorts in studies involving SARS-CoV-2
14 infected individuals impedes proper statistical interpretation of the results.

15
16 Here we performed an in-depth characterization of ACE2 autoantibodies (IgG, IgA, and IgM) in the sera
17 of 464 individuals, including 131 individuals with a history of prior SARS-CoV-2 infection. In addition,
18 we functionally characterized anti-ACE2 autoantibodies, notably whether they were able to inhibit ACE2
19 enzymatic activity or block ACE2 and SARS-CoV-2 spike interactions.

20

21

22 **Results**

23

24 *Identification of previous SARS-CoV-2 infections in a cross-sectional cohort*

25

26 To study ACE2 autoantibodies following SARS-CoV-2 infection, serum samples of individuals enrolled
27 in Stop the Spread Ottawa study were used (31, 32). This community-based prospective cohort study on
28 immune responses to SARS-CoV-2 infection and vaccination recruited individuals with a previous
29 history of, or were at risk for, SARS-CoV-2 infection. Individuals with at least one blood draw by
30 December 2021 with corresponding consent and demographic information were included in this study. In
31 total, 464 individuals between ages 18-74 were included in this study with an average age of 43.5 years
32 (Sd=13.5 years) among which 67.2% were female and the majority were Caucasian (89.7%). Within the
33 cohort, 131 individuals were identified as having been infected by SARS-CoV-2 previously (Table 1,
34 Supp. Fig.1 and 2). SARS-CoV-2 infections were either self-reported to the study coordinators following
35 a positive PCR test, diagnosed by a physician, or identified by a positive result by rapid antigen testing.

Galipeau *et al.* 2024

1 Additionally, any individuals with IgG antibodies against the nucleocapsid (N) and Spike (S) above
2 seroprevalence positivity thresholds were also identified as having been infected by SARS-CoV-2. This
3 allowed the inclusion of asymptomatic and unreported infections. Our seropositivity threshold based on N
4 and S dual positivity, reported and used previously (32-34), was set at a 3% false discovery rate of the
5 density distribution of a large set of pre-pandemic sera. A sensitivity analysis was also performed utilizing
6 a more stringent definition of SARS-CoV-2 infection, only considering 88 individuals with serological
7 evidence of previous SARS-CoV-2 infection (Supp. Fig. 3).

8
9 *Measurement and seroprevalence of ACE2 autoantibodies*

10
11 IgG, IgA, and IgM antibodies able to bind recombinant ACE2 were measured using a chemiluminescent
12 direct ELISA platform that has been used and validated extensively for populational-based serological
13 studies (32, 33, 35-38). Sera dilution used to measure ACE2 antibodies was validated and optimized to
14 minimize background signal. For setting a seropositivity threshold, a systematic approach as described
15 before was used (39). To establish cut-offs for IgG and IgA, values over 2 standard deviations of the
16 mean were excluded, the new mean was recalculated, and a final threshold was set at 2 standard
17 deviations. IgM seropositivity threshold was similarly established by excluding any values over 2
18 standard deviations of the mean and by recalculating the new mean, but the final threshold was set at 1
19 standard deviation given the spread of IgM values. The cut-off thresholds were inspected for robustness
20 (Figure 1). Any samples with a signal-to-threshold ratio of 1 or under were presumed negative. This
21 allowed an evaluation of the relative seroprevalence of all main isotypes of antibodies able to recognize
22 ACE2 in sera of a large adult cohort (Table 1). ACE2-IgM antibodies were the most common with a
23 seroprevalence of 18.8%. IgA seroprevalence in the overall cohort was the lowest at around 6.3%
24 followed by IgG at 10.3%. Only a small fraction of the individuals with ACE2 autoantibodies
25 simultaneously had all three isotypes present. The most common combination was IgG and IgM being
26 detected together in 7.8% of the individuals with ACE2 antibodies. Less than 3% of individuals with
27 ACE2 autoantibodies had either IgG/IgA or IgA/IgM detected simultaneously (Figure 1).

28
29 *Clinical association and kinetics of ACE2 autoantibodies*

30
31 Demographic and clinical data were available and matched to samples included in this study. The impact
32 of several variables such as age, sex, co-morbidities, and diagnosed conditions on ACE2 autoantibody
33 seroprevalence and levels was explored. No differences were seen for anti-ACE2 IgG and IgA between
34 sexes, whereas levels of ACE2-IgM were elevated in the females in our cohort ($p=0.00041$) (Supp. Fig 4).
35 For comparison of age, individuals were stratified into groups: ages 18-30, 31-40, 41-50, 51-60 and 60-

Galipeau *et al.* 2024

1 74. No differences in the levels of anti-ACE2 IgG and IgA were observed between age groups. For anti-
2 ACE2 IgM, individuals in the 18-30 group had elevated levels compared to the 41-50, 51-60, and 60-74
3 groups. Individuals in the 31-40 group also had higher levels when compared to the 60-74 group (Supp.
4 Fig 5). While some age-related differences are statistically significant, the biological differences between
5 groups are small. The association between seroprevalence of ACE2 autoantibodies seroprevalence and
6 sex was assessed. Anti-ACE2 IgM seroprevalence was positively associated with female sex (OR 1.95
7 (1.12 - 3.38)) whereas males were associated with a lower seroprevalence of anti-ACE2 IgM (OR 0.51
8 (0.30 - 0.89)) (Figure 2, Supp. Table 1). A higher seroprevalence of anti-ACE2 IgG was observed for
9 individuals with neurological conditions ((OR 5.48 (1.27 - 23.69)). This association was not seen with
10 anti-ACE2 IgA or IgM. No other comorbidity or medical condition correlated with a higher or lower
11 seroprevalence of ACE2 autoantibodies across all isotypes. During the study period, a subset of
12 individuals provided one or two follow-up serum samples enabling us to investigate the kinetics of the
13 various anti-ACE2 isotypes across time (Figure 3). Levels of IgG antibodies remained relatively stable
14 over time (one individual displayed a strong increase at both subsequent sample collections).
15 Interestingly, IgA levels remained relatively stable, with a few individuals showing a slight decay over
16 time. As expected, anti-ACE2 IgM levels display a high degree of variability over time, likely due to the
17 intrinsic half-life of IgM antibodies.

18
19 *Absence of association between previous SARS-CoV-2 infection and levels of ACE2 autoantibodies.*

20
21 Individuals in the overall cohort with previous SARS-CoV-2 infections were identified to investigate
22 whether ACE2 autoantibodies are induced by COVID-19. To identify SARS-CoV-2 convalescent
23 individuals, we employed 1) an inclusive definition of participants who self-reported a SARS-CoV-2
24 infection as well as participants with serological markers of previous SARS-CoV-2 infection, and 2) a
25 stringent definition of participants that only had serological markers of previous infection. The levels of
26 anti-ACE2 antibodies for each isotype were compared between individuals with no history of SARS-
27 CoV-2 infection and individuals identified with previous SARS-CoV-2 infection using the inclusive
28 definition (Figure 3) and individuals who only displayed serological markers of previous infection (Supp.
29 Fig. 3). In both groups, no differences in anti-ACE2 IgG or IgA levels were detected. In both analysis
30 groups, anti-ACE2 IgM antibodies were elevated in individuals with no history of previous infection in
31 contrast to either convalescent group ($p=0.006$ & 0.0028). Likewise, prior history of SARS-CoV-2 was
32 not associated with a higher or lower seroprevalence of IgA and IgG ACE2 autoantibodies. IgM ACE2
33 autoantibodies were associated with a lower seroprevalence in individuals with prior SARS-CoV-2
34 infections (OR 0.51 (0.29 - 0.92)) (Figure 2). Global analysis of ACE2 autoantibodies by PCA failed to
35 identify convalescent individuals based on their levels of ACE2 autoantibodies (Supp. Fig 6). To

Galipeau *et al.* 2024

1 investigate whether ACE2 autoantibody levels were associated with the intensity of humoral responses to
2 recent SARS-CoV-2 infections we explored the association of IgG, IgA, and IgM ACE2 autoantibodies to
3 the levels of IgG antibodies against SARS-CoV-2 nucleocapsid (Supp. Fig. 7). There was no association
4 between ACE2 autoantibodies levels and nucleocapsid IgG intensity ($R^2 < 0.005$). In this cohort, there is
5 no evidence that prior SARS-CoV-2 infection results in a higher seroprevalence or levels of ACE2
6 autoantibodies in sera.

7
8

9 *ACE2 autoantibodies fail to inhibit ACE2 enzymatic activity or ACE2-spike interaction.*

10

11 While ACE2 autoantibodies are not elevated in levels or prevalence following SARS-CoV-2 infection in
12 this cohort, their capacity to impact ACE2 either enzymatically or as a viral entry receptor was further
13 investigated. A first subset of individuals (n=103) displaying variable levels of ACE2 autoantibodies were
14 selected to investigate the ability of serum ACE2 autoantibodies to inhibit ACE2 enzymatic activity
15 (Figure 4, Supp. Table 3). No differences in enzymatic activity were detected between sera positive for
16 ACE2 autoantibodies (p=0.52) (Figure 4B). Interestingly, individuals who had a previous history of
17 SARS-CoV-2 infection showed an elevated ACE2 enzymatic activity (p=0.00043) (Figure 4C). We next
18 explored the potential of ACE2 autoantibodies to block SARS-CoV-2 spike and ACE2 interactions, as
19 previous research has demonstrated the potential of using anti-ACE2 antibodies to block SARS-CoV-2
20 viral entry in vitro (40, 41). By modifying a previously developed protein-based surrogate neutralization
21 assay (33), we measured the ability of sera from individuals with varying levels of ACE2 antibodies to
22 inhibit ACE2/spike interaction (Figure 4D). Given that 65.5% of the samples were convalescent sera
23 which contained antibodies against the spike protein (Supp. Table 3), these antibodies would confound
24 our ability to measure the neutralizing contribution of ACE2 autoantibodies. As such, a series of depletion
25 steps were performed by incubating sera in wells with recombinant SARS-CoV-2 spike protein to remove
26 spike-reactive antibodies with potential ACE2-spike neutralizing capacity (Figure 4E). While this
27 approach significantly reduced the levels of anti-spike antibodies, some samples retained relatively high
28 levels of antibodies post-depletion, likely due to a high initial titer of anti-spike. The percent of inhibition
29 of the interaction between SARS-CoV-2 spike and ACE2 was measured pre- and post-depletion (Figure
30 4F). A reduction in the ability of sera to inhibit ACE2/spike interactions was measured post-depletion
31 confirming that anti-spike antibodies were a key source of neutralization. However, a few individuals
32 displayed inhibition levels above 50% post-depletion. To understand if this was due to anti-ACE2
33 antibodies as opposed to anti-spike antibodies in samples where levels of anti-spike antibodies post-
34 depletion remained elevated, post-depletion ACE2/spike inhibition levels were classified by ACE2
35 autoantibody seroprevalence (Figure 4G). No differences in inhibition were detected, regardless of

Galipeau *et al.* 2024

1 whether or not samples had detectable levels of ACE2 autoantibodies. Rather, inhibition capacity of
2 serum correlated with the levels of anti-spike antibodies post-depletion (Figure 4H). In addition, given
3 that over 65% of the samples were from convalescent individuals, there is nothing to suggest that ACE2
4 autoantibodies from convalescent individuals differ (Supp. Table 3). The sera used in this assay was
5 minimally diluted (1:1) with the assay buffer, with no neutralization detected. This contrasts SARS-CoV-
6 2 antibodies which in our experience, on average can completely inhibit ACE2 and spike interaction at
7 1:25 to 1:125 in those same assay conditions. Overall, these results suggest that ACE2 autoantibodies at
8 biological concentrations found in serum are unable to inhibit ACE2 and SARS-CoV-2 spike interaction.

9
10

11 **Discussion**

12

13 ACE2 autoantibodies have been described in numerous studies prior to SARS-CoV-2 emergence (28).
14 Previously, ACE2 autoantibodies have been linked with various health conditions such as Parkinson's
15 disease, systemic sclerosis, and rheumatoid arthritis (26, 27, 29). Given the role of ACE2 as the cognate
16 receptor of SARS-CoV-2, scientific interest in ACE2 autoantibodies has resurfaced. Several studies have
17 recently investigated ACE2 autoantibodies in small control and SARS-CoV-2 convalescent cohorts.
18 These cohorts describing ACE2 autoantibodies have not simultaneously described the seroprevalence of
19 all three main isotypes of antibodies (IgG, IgM, IgA) and the study sample sizes were small. By using the
20 serum of individuals enrolled in the *Stop the Spread Ottawa Study* (31) we were able to generate a cross-
21 sectional cohort of 333 healthy control individuals and 131 individuals with a laboratory-confirmed and
22 self-reported history of previous SARS-CoV-2 infection thereby addressing sample size concerns (Table
23 1, Supp. Fig.1 and 2).

24

25 There are currently no recognized or standardized negative controls to establish seroprevalence to ACE2,
26 and as such, the thresholds for this study were established by excluding high responders and setting the
27 threshold from the presumed negative distribution of samples (Figure 1). We found that overall, nearly 1
28 in 5 individuals had detectable levels of ACE2-IgM. This echoes observations in a Japanese cohort that
29 reported an ACE-IgM seroprevalence of 15% (30). For anti-ACE2 IgG antibodies, we estimated a
30 seroprevalence of 10.3 %. A previous report of ACE2 IgG seroprevalence in a cohort of 20 control
31 individuals was estimated at around 8.7% (29). Simultaneous IgM and IgG reactivity to ACE2 in
32 individuals with detectable levels of ACE2 autoantibodies was estimated at 7.8% in our cohort, and a
33 previous study had estimated this parameter at 6% (30). To our knowledge, we are the first group to
34 measure IgA antibodies targeting ACE2. In our cohort, the seroprevalence of ACE2-IgA was 6.3%, with

Galipeau *et al.* 2024

1 less than 3% of individuals simultaneously positive for ACE2 IgG, IgA and IgM autoantibodies. Overall,
2 the percentage of individuals who had ACE2 autoantibodies of any isotype in our cohort was 30.4%.

3
4 Demographic information and co-morbidity data were collected alongside serum samples, which we
5 leveraged to investigate how various factors may influence ACE2 autoantibody seroprevalence or their
6 abundance intensity. Females had a higher seroprevalence and higher levels of ACE2-IgM. Stratifying by
7 age, only significant differences in autoantibody levels were seen for ACE2-IgM, with older individuals
8 displaying lower levels. Several types of autoantibodies including anti-nuclear antibodies and anti-
9 cardiolipin antibodies have been shown to increase with age (42-44). Perhaps surprisingly, individuals
10 aged between 60-74 had significantly lower ACE2-IgM than younger individuals (Supp. Fig 5). The
11 impact of co-morbidities on anti-ACE2 antibody prevalence and levels was assessed. Conditions
12 including hypertension, dyslipidemia, allergies, immunocompromised status, asthma, medication, cardiac
13 conditions, and endocrine conditions were not associated with higher or lower seroprevalence of ACE2
14 autoantibodies (Figure 2 and Supp. Table 1). Obesity was marginally associated with a lower
15 seroprevalence of ACE2-IgM, but this was limited to the IgM isotype. Interestingly, a higher
16 seroprevalence of ACE2-IgG antibodies was associated with neurological conditions, but the low
17 numbers of individuals with neurological conditions in our cohort impede further conclusions. While
18 ACE2 has been linked with other health conditions, our cohort was sampled from the general population
19 which limits our ability to measure associations with rare pathologies. When looking at the longitudinal
20 trend of ACE2 autoantibodies for individuals with one or two follow-up serum collections, IgA and IgG
21 antibodies remained relatively stable over time, whereas IgM fluctuated (Figure 3). While it is unclear
22 what triggers the production of ACE2 autoantibodies, the increased rate of decay of IgM compared to IgG
23 and IgA is most likely due to its intrinsic shorter half-life, and inability to bind FcRn (key receptor for
24 IgG recycling) (45-47).

25
26 Several groups have previously reported that ACE2 autoantibodies could be induced by SARS-CoV-2
27 infection. For example, a small cohort study found that 81% of convalescent individuals (n=32) and 93%
28 of hospitalized acute SARS-CoV-2 infection (n=15) had detectable ACE2 autoantibodies which were
29 undetectable in their control group (n=13). Other groups have found similar observations (23, 24). To
30 explore whether SARS-CoV-2 induced or correlated with ACE2 autoantibodies in our cohort, we
31 identified two cohorts of convalescent individuals. The first cohort included individuals who had
32 substantial levels of IgG against the N and S protein (i.e., the serological marker of a previous infection)
33 of SARS-CoV-2 and/or declared having been infected by SARS-CoV-2 to our study coordinators. The
34 inclusion of self-reported infection addresses concerns of misidentifying convalescent individuals in

Galipeau *et al.* 2024

1 which anti-N or anti-S decayed beyond our seropositivity threshold over time. The second cohort of
2 convalescent individuals included only individuals who had serological and/or laboratory evidence of
3 prior infection, hereby constituting a stringent cohort eliminating subjective assessment of SARS-CoV-2
4 infection and patient bias. Principal component analysis failed to find clusters of convalescent individuals
5 based on ACE2 autoantibody levels (Supp. Fig 6). In line with this, levels of IgG, IgA, and IgM ACE2
6 autoantibodies were not more elevated in the convalescent group (Fig 3). In fact, it appears that ACE2
7 IgM was elevated in non-convalescent individuals. These data demonstrate that ACE2 antibodies are not
8 more prevalent, or present at a higher titer in SARS-CoV-2 convalescent sera. Furthermore, we asked if
9 antibody titers against the N protein correlate with ACE2 autoantibodies. This could suggest a disease
10 severity-dependent relationship. We found no association or association clusters between either ACE2
11 autoantibody isotype or SARS-CoV-2 N antibody levels (Supp. Fig 7). This further suggests that while
12 we may not detect ACE2 autoantibody induction shortly after an infection, as shown by some groups, we
13 show that ACE2 antibodies are decoupled with SARS-CoV-2 antibodies, and if induced in some cases,
14 short-lived.

15
16 Our observations are in contrast with several previous studies. It is possible that high disease severity
17 could impact ACE2 autoantibodies levels. Indeed, most studies have been focused on hospitalized or
18 severe COVID-19 infections (22, 24). For example, a recent study found higher median ACE2 IgG
19 intensity in moderate/severe cases of COVID-19 in contrast to mild convalescent individuals (48).
20 However, it is important to mention that the overall seroprevalence was similar between convalescent
21 individuals vs pre-COVID-19 sera. Other studies also found that ACE2 autoantibodies were increased in
22 those with severe COVID-19 infection (49, 50). While severity scores for most convalescent individuals
23 were not measured for all the serum samples, to our knowledge none had to be admitted to the ICU,
24 suggesting mostly asymptomatic and mild-moderate COVID-19 infections. However, the link with
25 disease severity is not obvious. In fact, in a large protein array screen of severe COVID-19 infections,
26 ACE2 autoantibodies were only detected in one individual while several individuals had autoantibodies to
27 numerous other proteins such as cytokines (9). Moreover, in a recent study that screened 1139
28 convalescent individuals for ACE2-IgG, the authors found that the majority of individuals who had
29 ACE2-IgG did not require hospitalization following SARS-CoV-2 infection (51). It remains possible that
30 severe infection can induce ACE2 autoantibodies. It was reported that severe SARS-CoV-2 infection can
31 induce low selection pressure of B cells which was associated with *de novo* autoreactivity (52). In this
32 study, we show that ACE2 autoantibodies are not exclusive to SARS-CoV-2 convalescent individuals but
33 are common in the general population concordant with observations of these antibodies with other
34 pathologies and in healthy populations (28, 30). These ACE2 autoantibodies may have an important

Galipeau *et al.* 2024

1 regulatory role, however no data currently exist to support this hypothesis. Some studies have also
2 suggested that ACE2 autoantibodies could arise from molecular mimicry or from spike/ACE2 aggregates
3 making their way to germinal centers. One study noticed an increase in ACE2-IgG following vaccination
4 (48). In the small subset of individuals vaccinated against SARS-CoV-2 in our cohort, we did not observe
5 this effect (Supp. Fig. 8). Others have proposed anti-idiotypic antibodies as a possible explanation.
6 However, given that the seroprevalence did not differ in vaccinated or in convalescent individuals in
7 relation to our control cohort, the data does not currently support this hypothesis. It is also possible that
8 ACE2 autoantibodies occur as the result of molecular mimicry of another pathogen. However, there is no
9 evidence in support.

10
11 The function, if any, of autoantibodies targeting ACE2 remains unclear. Some groups have shown data
12 that ACE2 enzymatic activity could be inhibited by these antibodies (22), while others showed the
13 contrary (50). We used a subset of our cohort to investigate if ACE2 enzymatic activity is impacted by the
14 presence of plasma containing various levels of ACE2 autoantibody (Figure 4). We found that ACE2
15 antibodies did not impact enzymatic activity. We found that ACE2 enzymatic activity was higher in
16 individuals with a history of previous SARS-CoV-2 infection. This could be explained by a higher
17 amount of soluble ACE2 previously reported in convalescent individuals resulting in higher baseline
18 enzymatic activity in our assay (53). We also explored the possibility that ACE2 autoantibodies may be
19 protective by neutralizing SARS-CoV-2 by preventing ACE2/Spike interactions. This effect is difficult to
20 measure in convalescent individuals given that antibodies against the spike protein would
21 overwhelmingly contribute to the neutralization of SARS-CoV-2. As such, we depleted serum samples of
22 antibodies that could bind to the spike protein. In some cases, the depletion process was incomplete,
23 likely due to the initially very high titer of anti-spike antibodies. The depleted sera were then used in a
24 protein-based neutralization assay to measure the interaction between the spike and ACE2. While some
25 individuals still had neutralization ability, these were linked with samples with incomplete anti-spike
26 depletion (Figure 4). In samples with no residual spike antibodies, the neutralization ability of the sera
27 was lost, suggesting that ACE2 autoantibodies are not able to block these interactions. This suggests that
28 either these anti-ACE2 antibodies recognize epitopes on ACE2 that do not interfere with the ACE2/spike
29 binding or the concentration and affinity of ACE2 antibodies in sera are not able to outcompete the
30 affinity of the spike protein for ACE2.

31
32 This study is focused on the detection of ACE2 autoantibodies in individuals who did not require
33 hospitalization for SARS-CoV-2 infection. In addition, we were not able to longitudinally monitor ACE2
34 levels continuously prior to and post-SARS-CoV-2 infection as the prevalence of SARS-CoV-2 infection

Galipeau *et al.* 2024

1 in the Ottawa region in late 2020 was low. Furthermore, we did not investigate the presence of ACE2
2 autoantibodies at mucosal surfaces, such as the upper respiratory tract. We focused our understanding of
3 ACE2 autoantibodies in their role in SARS-CoV-2 pathogenesis, however, ACE2 autoantibodies may
4 play a role in other physiological processes independently of infection which were beyond the scope of
5 this work.

6
7

Galipeau *et al.* 2024

1 **Conclusion**

2
3 This is the first large cohort study to report the simultaneous seroprevalence of IgG, IgA and IgM
4 antibodies in sera able to bind ACE2. We found no evidence that ACE2 autoantibodies were induced by
5 SARS-CoV-2 infection and were rather common in SARS-CoV-2 naïve individuals. We also demonstrate
6 that these autoantibodies are not able to inhibit SARS-CoV-2 spike and ACE2 interactions, or able to
7 block ACE2 enzymatic activity. The relevance of ACE2 autoantibodies in homeostasis, health, or disease
8 remains unclear.

9

10

11 **Methods**

12

13 *Participant recruitment and sample processing*

14

15 Individuals for this study were recruited from the ongoing Stop the Spread Ottawa (SSO) study(31).
16 Individuals 18 years and older with a history of SARS-CoV-2 infection or at risk of infection were
17 recruited. Individuals having at least one blood draw by December 2021 with corresponding participant
18 questionnaire were included in this study. Serum collection was performed according to current standard
19 phlebotomy procedures and samples were de-identified prior to reception at the SARS-CoV-2 High
20 Throughput Serology and Diagnostics Facility located at the University of Ottawa, Faculty of Medicine.
21 Sera was stored short-term at 4°C, or frozen long-term at -80°C. Approval was granted by The Ottawa
22 Health Science Network Research Ethics Board (Certificates: H-09-20-6135 and H-07-20-6009).
23 Informed consent was obtained from all participants.

24

25 *SARS-CoV-2 and ACE2 antibody measurements*

26

27 Antibodies against SARS-CoV-2 were measured using a high-throughput direct chemiluminescent
28 ELISA (full methods described previously) (33). ACE2 autoantibodies were measured using a similar
29 method on the same platform used for SARS-CoV-2 antibodies with minor modifications. Briefly,
30 recombinant ACE2 protein (generously provided by Dr. Yves Durocher, National Research Council of
31 Canada (NRC), Montréal) was diluted in PBS (5ug/mL working concentration) and was coated in a
32 384well high-binding polystyrene Nunc plate (Thermo Fisher Scientific, #460372) to a final amount of
33 50ng of protein per well. Coated plates were briefly centrifuged to evenly distribute ACE2 solution and
34 incubated overnight at 4°C. Plates were then blocked for 1 h to remove non-specific binding using 80uL
35 of 3% w/v skim milk powder dissolved in 100uL of PBS + 1% Tween (PSB-T). Samples were diluted 1
36 in 80 in 1% w/v skim milk powder dissolved in PBS-T, 10uL was added to respective wells, and
37 incubated for 2h.10uL of HRP-labeled secondary antibody was added to each well and incubated for 1h.

Galipeau *et al.* 2024

1 Secondary antibodies used were anti-Human IgG#5-HRP (fusion-HRP construct) (Dr. Yves Durocher,
2 NRC) diluted 1 in 5400; Anti-human IgA-HRP (Jackson ImmunoResearch Labs, 109-035-011) diluted 1
3 in 8000; and anti-human IgM-HRP (Jackson ImmunoResearch Labs, 109-035-129) diluted 1 in 9600. To
4 detect bound secondary antibodies, 10uL of ELISA Pico Chemiluminescent Substrate (Thermo Fisher
5 Scientific #37069) diluted 1:2 in ddH₂O was added to each well and incubated for 5 minutes.
6 Luminescence was measured on a Synergy NEO2 plate reader (Agilent) at 20ms/well at a read height of
7 1.0mm. Relative luminescence units (RLU) were blank-subtracted and used for subsequent analysis. Plate
8 wells were washed 4x following each incubation (except the final 5 min incubation) with 100uL of PBS +
9 1% Tween (PSB-T) using a 405 TS/LS LHC2 plate washer (Biotek Instruments)

10

11 *ACE2 Enzymatic Activity*

12

13 To investigate whether endogenous ACE2 antibodies were able to inhibit ACE2 activity, a neutralization
14 reaction was performed. 2uL of serum samples (negative control, surveillance, convalescent, McG) were
15 added to 0.1 ug/mL of recombinant human ACE2 (rhACE2, R&D systems, Minnesota, MN, USA, cat.
16 933-ZN) for 30 min at room temperature under agitation. 10uL of neutralized samples were transferred to
17 96-well black plates containing 15 uM of fluorogenic ACE2 substrate Mca-APK(Dnp) (Anaspec,
18 Fremont, CA, USA, cat. AS-60757), to a final concentration of 11.25 uM (54). Samples were assayed in
19 duplicates without ACE2 inhibitor and in singles with 10⁻⁵ M ACE2 inhibitor MLN-4760 (Calbiochem,
20 San Diego, CA, cat. 530616). Following a 30-min incubation at room temperature, fluorescence was
21 measured in a FLUOstar Galaxy fluorometer (BMG Labtech, Ortenberg, Germany), detecting emission at
22 405 nm and excitation at 320 nm. Data are presented as Relative Fluorescence Units (RFU) baseline-
23 subtracted using samples with MLN-4760 and normalized by volume of input serum (RFU/uL).

24

25 *Depletion of SARS-CoV-2 spike antibodies in sera*

26

27 To measure ACE2 autoantibody impact on ACE2 and SARS-CoV-2 spike interaction, serum samples
28 were first depleted of spike-reactive antibodies. 100ng /well of spike protein (NRC) was coated in a high-
29 binding polystyrene Nunc plate (Thermo Fisher Scientific, #460372) in a final volume of 10uL in PBS.
30 Plates were briefly centrifuged to ensure even coating and incubated at 4°C overnight. The next day,
31 plates were washed as described previously and blocked using 80uL of 3% w/v skim milk powder
32 dissolved in PBST for 1 h. Plates were washed, and selected serum samples were mixed with 1:1 with
33 1% w/v skim milk powder dissolved in PBST (final of 50uL) and applied to the wells. The diluted
34 samples were incubated for 2h with shaking, transferred to a new blocked plate coated with SARS-CoV-2
35 spike and incubated for another 2h. Samples were transferred once more and incubated overnight at 4°C
36 to be used in the spike binding assay the next day.

Galipeau *et al.* 2024

1
2
3
4
5
6
7
8
9
10
11
12
13
14
15
16
17
18
19
20
21
22
23
24
25
26
27
28
29
30

Spike and ACE2 binding assay

This protein-based assay was modified from a previously published surrogate neutralization assay(33). First, recombinant SARS-CoV-2 spike protein (generously provided by Dr. Yves Durocher, National Research Council of Canada (NRC), Montréal) was diluted in PBS and was coated in a 384 well high-binding polystyrene Nunc plate (Thermo Fisher Scientific, #460372) at 50ng/well with a final volume of 10uL/well. The plates were then centrifuged at 216xg and incubated overnight at 4°C. The plates were then washed four times with 100uL of PBS-T using a 405 TS/LS LHC2 plate washer (Biotek Instruments). The wells were then blocked with 80uL of 3% w/v skim milk powder dissolved in PBST for 1h and then washed (as described before). Samples that were not depleted were diluted 1 in 2 in 1% w/v skim milk powder dissolved in PBST. Previously depleted samples were already diluted 1 in 2. 20uL of each sample was added to the plate and incubated for 2h with shaking. The plates were washed once more as described previously and 6.5ng/well of recombinant biotinylated ACE2 (NRC) was added to each well in a final volume of 20uL and incubated for one hour. The plates were washed once more and bound ACE2 was detected by adding 5.2ng/well in a final volume of 20uL/well of streptavidin-peroxidase polymer (Thermo Fisher #N200), diluted in 1% w/v skim milk powder dissolved in PBST. After a 1h incubation, the plates were then washed and developed with the addition of 20uL of ELISA Pico Chemiluminescent Substrate (Thermo Fisher Scientific #37069), diluted 1:2 in MilliQ H₂O. After a 5-minute incubation, plates were read on a Neo2 plate reader (BioTek Instruments) at 20ms/well and a read height of 1.0mm. Luminescence values were adjusted to the blank (serum-free, no ACE2 condition) and the average maximal signal of the plate was established using the serum-free with ACE2 condition. Percentage inhibition was then established by measuring the reduction in spike / ACE2 interaction (0% inhibition; maximal ACE2-Spike binding).

Data analysis

Data, statistical analyses, and figures were processed in R (4.2.3). BioVenn was used to generate quantitative Venn diagrams.

Galipeau *et al.* 2024

1 **Acknowledgements**

2

3 **Author contributions** YG and M-A.L designed the study. YG developed the assays and performed the
4 experiments together with NC, PM. CC, EC, AK, recruited participants, coordinated sample collection
5 and collected participant data. MTS and KB performed and analyzed the ACE2 enzymatic activity assay.
6 MP, CA analyzed COVID-19 serology. YG performed the data analysis. YG and M-A.L wrote and
7 formatted the manuscript. All authors have read, edited and approved the manuscript.

8

9 **Conflict of interest disclosures:** The authors declare no conflict of interest relevant to the present
10 manuscript.

11

12

13 **Funding / Support :** This work was supported by a Canadian Institute of Health Research (CIHR) grant
14 (VR2-172722) and from a supplement by the COVID-19 Immunity Task Force (CITF) to M-A.L.
15 Additionally, YG is supported by a Charles Best and Frederick Banting CGS-D from CIHR (476885).
16 M.-A.L. holds a Faculty of Medicine Chair of Excellence in Pandemic Viruses and Preparedness
17 Research.

18

19 **Role of the Funder / sponsor:** The funding sources played no role in the study design, data collection,
20 analysis, writing of the manuscript, and decision to publish.

21

22 **Additional information:**

23

24 We acknowledge the involvement of previous and current members of the University of Ottawa Serology
25 and Diagnostics High Throughput Facility including: Danielle Dewar-Darch, Justino Hernandez Soto,
26 Abishek Xavier, Nicholas Bradette, Klaudia Baumann, Gwendoline Ward, Yuchu Dou and Lynda
27 Rocheleau. We also acknowledge everyone involved in the Stop the Spread Ottawa study including
28 participants. Production of COVID-19 reagents was financially supported by NRC's Pandemic Response
29 Challenge Program.

30

31

1
2
3
4
5
6
7
8
9
10
11
12
13
14
15
16
17
18
19
20
21
22
23
24
25
26
27
28
29
30
31
32
33
34
35
36
37
38
39
40
41
42
43
44
45

References

1. Wang H, Paulson KR, Pease SA, Watson S, Comfort H, Zheng P, et al. Estimating excess mortality due to the COVID-19 pandemic: a systematic analysis of COVID-19-related mortality, . *The Lancet*. 2022;399(10334):1513-36.
2. Anaya J-M, Herrán M, Beltrán S, and Rojas M. Is post-COVID syndrome an autoimmune disease? *Expert Review of Clinical Immunology*. 2022;18(7):653-66.
3. McMillan P, Dexhiemer T, Neubig RR, and Uhal BD. COVID-19—A Theory of Autoimmunity Against ACE-2 Explained. *Frontiers in Immunology*. 2021;12.
4. Mobasheri L, Nasirpour MH, Masoumi E, Azarnaminy AF, Jafari M, and Esmaeili S-A. SARS-CoV-2 triggering autoimmune diseases. *Cytokine*. 2022;154:155873.
5. Bjornevik K, Cortese M, Healy BC, Kuhle J, Mina MJ, Leng Y, et al. Longitudinal analysis reveals high prevalence of Epstein-Barr virus associated with multiple sclerosis. *Science*. 2022;375(6578):296-301.
6. Gazzaruso C, Carlo Stella N, Mariani G, Nai C, Coppola A, Naldani D, et al. High prevalence of antinuclear antibodies and lupus anticoagulant in patients hospitalized for SARS-CoV2 pneumonia. *Clin Rheumatol*. 2020;39(7):2095-7.
7. Lerma LA, Chaudhary A, Bryan A, Morishima C, Wener MH, and Fink SL. Prevalence of autoantibody responses in acute coronavirus disease 2019 (COVID-19). *J Transl Autoimmun*. 2020;3:100073.
8. Bastard P, Rosen LB, Zhang Q, Michailidis E, Hoffmann H-H, Zhang Y, et al. Autoantibodies against type I IFNs in patients with life-threatening COVID-19. *Science*. 2020;370(6515):eabd4585.
9. Chang SE, Feng A, Meng W, Apostolidis SA, Mack E, Artandi M, et al. New-onset IgG autoantibodies in hospitalized patients with COVID-19. *Nature Communications*. 2021;12(1):5417.
10. Helms J, Tacquard C, Severac F, Leonard-Lorant I, Ohana M, Delabranche X, et al. High risk of thrombosis in patients with severe SARS-CoV-2 infection: a multicenter prospective cohort study. *Intensive Care Med*. 2020;46(6):1089-98.
11. Xiao M, Zhang Y, Zhang S, Qin X, Xia P, Cao W, et al. Antiphospholipid Antibodies in Critically Ill Patients With COVID-19. *Arthritis Rheumatol*. 2020;72(12):1998-2004.
12. Siloși I, Siloși CA, Boldeanu MV, Cojocaru M, Biciușcă V, Avrănescu CS, et al. The role of autoantibodies in health and disease. *Rom J Morphol Embryol*. 2016;57(2 Suppl):633-8.
13. Bergman R, Ramon M, Wildbaum G, Avitan-Hersh E, Mayer E, Shemer A, et al. Psoriasis patients generate increased serum levels of autoantibodies to tumor necrosis factor-alpha and interferon-alpha. *J Dermatol Sci*. 2009;56(3):163-7.
14. Sjöwall C, Ernerudh J, Bengtsson AA, Sturfelt G, and Skogh T. Reduced anti-TNFalpha autoantibody levels coincide with flare in systemic lupus erythematosus. *J Autoimmun*. 2004;22(4):315-23.
15. Morimoto AM, Flesher DT, Yang J, Wolslegel K, Wang X, Brady A, et al. Association of endogenous anti-interferon- α autoantibodies with decreased interferon-pathway and disease activity in patients with systemic lupus erythematosus. *Arthritis Rheum*. 2011;63(8):2407-15.

Galipeau *et al.* 2024

- 1 16. Ni W, Yang X, Yang D, Bao J, Li R, Xiao Y, et al. Role of angiotensin-converting
2 enzyme 2 (ACE2) in COVID-19. *Critical Care*. 2020;24(1):422.
- 3 17. Donoghue M, Hsieh F, Baronas E, Godbout K, Gosselin M, Stagliano N, et al. A novel
4 angiotensin-converting enzyme-related carboxypeptidase (ACE2) converts angiotensin I
5 to angiotensin 1-9. *Circ Res*. 2000;87(5):E1-9.
- 6 18. Hikmet F, Méar L, Edvinsson Å, Micke P, Uhlén M, and Lindskog C. The protein
7 expression profile of ACE2 in human tissues. *Mol Syst Biol*. 2020;16(7):e9610.
- 8 19. Li W, Moore MJ, Vasilieva N, Sui J, Wong SK, Berne MA, et al. Angiotensin-converting
9 enzyme 2 is a functional receptor for the SARS coronavirus. *Nature*.
10 2003;426(6965):450-4.
- 11 20. Shang J, Ye G, Shi K, Wan Y, Luo C, Aihara H, et al. Structural basis of receptor
12 recognition by SARS-CoV-2. *Nature*. 2020;581(7807):221-4.
- 13 21. Hofmann H, Pyrc K, van der Hoek L, Geier M, Berkhout B, and Pöhlmann S. Human
14 coronavirus NL63 employs the severe acute respiratory syndrome coronavirus receptor
15 for cellular entry. *Proc Natl Acad Sci U S A*. 2005;102(22):7988-93.
- 16 22. Arthur JM, Forrest JC, Boehme KW, Kennedy JL, Owens S, Herzog C, et al.
17 Development of ACE2 autoantibodies after SARS-CoV-2 infection. *PLOS ONE*.
18 2021;16(9):e0257016.
- 19 23. Casciola-Rosen L, Thiemann DR, Andrade F, Trejo-Zambrano MI, Leonard EK,
20 Spangler JB, et al. IgM anti-ACE2 autoantibodies in severe COVID-19 activate
21 complement and perturb vascular endothelial function. *JCI Insight*. 2022;7(9).
- 22 24. Rodriguez-Perez AI, Labandeira CM, Pedrosa MA, Valenzuela R, Suarez-Quintanilla JA,
23 Cortes-Ayaso M, et al. Autoantibodies against ACE2 and angiotensin type-1 receptors
24 increase severity of COVID-19. *J Autoimmun*. 2021;122:102683.
- 25 25. Lai Y-C, Cheng Y-W, Chao C-H, Chang Y-Y, Chen C-D, Tsai W-J, et al. Antigenic
26 Cross-Reactivity Between SARS-CoV-2 S1-RBD and Its Receptor ACE2. *Frontiers in*
27 *Immunology*. 2022;13.
- 28 26. Khajeh Pour S, Scoville C, Tavernier SS, and Aghazadeh-Habashi A. Plasma angiotensin
29 peptides as biomarkers of rheumatoid arthritis are correlated with anti-ACE2 auto-
30 antibodies level and disease intensity. *Inflammopharmacology*. 2022;30(4):1295-302.
- 31 27. Labandeira CM, Pedrosa MA, Quijano A, Valenzuela R, Garrido-Gil P, Sanchez-
32 Andrade M, et al. Angiotensin type-1 receptor and ACE2 autoantibodies in Parkinson's
33 disease. *npj Parkinson's Disease*. 2022;8(1):76.
- 34 28. Takahashi Y, Haga S, Ishizaka Y, and Mimori A. Autoantibodies to angiotensin-
35 converting enzyme 2 in patients with connective tissue diseases. *Arthritis Research &*
36 *Therapy*. 2010;12(3):R85.
- 37 29. Miziołek B, Sieńczyk M, Grzywa R, Łupicka-Słowik A, Kucharz E, Kotyla P, et al. The
38 prevalence and role of functional autoantibodies to angiotensin-converting-enzyme-2 in
39 patients with systemic sclerosis. *Autoimmunity*. 2021;54(4):181-6.
- 40 30. Mecoli CA, Yoshida A, Paik JJ, Lin CT, Danoff S, Hanaoka H, et al. Presence and
41 Implications of Anti-Angiotensin Converting Enzyme-2 Immunoglobulin M Antibodies
42 in Anti-Melanoma-Differentiation-Associated 5 Dermatomyositis. *ACR Open Rheumatol*.
43 2022;4(5):457-63.
- 44 31. Collins E, Galipeau Y, Arnold C, Bosveld C, Heiskanen A, Keeshan A, et al. Cohort
45 profile: Stop the Spread Ottawa (SSO)—a community-based prospective cohort study on

Galipeau *et al.* 2024

- 1 antibody responses, antibody neutralisation efficiency and cellular immunity to SARS-
2 CoV-2 infection and vaccination. *BMJ Open*. 2022;12(9):e062187.
- 3 32. Keeshan A, Galipeau Y, Heiskanen A, Collins E, McCluskie PS, Arnold C, et al. Results
4 of the Stop the Spread Ottawa (SSO) cohort study: a Canadian urban-based prospective
5 evaluation of antibody responses and neutralisation efficiency to SARS-CoV-2 infection
6 and vaccination. *BMJ Open*. 2023;13(10):e077714.
- 7 33. Colwill K, Galipeau Y, Stuble M, Gervais C, Arnold C, Rathod B, et al. A scalable
8 serology solution for profiling humoral immune responses to SARS-CoV-2 infection and
9 vaccination. *Clinical & Translational Immunology*. 2022;11(3):e1380.
- 10 34. Collins E, Galipeau Y, Arnold C, Bhéreur A, Booth R, Buchan AC, et al. CLINICAL
11 AND SEROLOGICAL PREDICTORS OF POST COVID-19 CONDITION –
12 FINDINGS FROM A CANADIAN PROSPECTIVE COHORT STUDY. *medRxiv*.
13 2023:2023.07.29.23293334.
- 14 35. Costiniuk CT, Singer J, Lee T, Langlois MA, Arnold C, Galipeau Y, et al. COVID-19
15 vaccine immunogenicity in people with HIV. *Aids*. 2023;37(1):F1-f10.
- 16 36. Bhatt M, Plint AC, Tang K, Malley R, Huy AP, McGahern C, et al. Household
17 transmission of SARS-CoV-2 from unvaccinated asymptomatic and symptomatic
18 household members with confirmed SARS-CoV-2 infection: an antibody-surveillance
19 study. *CMAJ Open*. 2022;10(2):E357-E66.
- 20 37. Cholette F, Fabia R, Harris A, Ellis H, Cachero K, Schroeder L, et al. Comparative
21 performance data for multiplex SARS-CoV-2 serological assays from a large panel of
22 dried blood spot specimens. *Heliyon*. 2022;8(9):e10270.
- 23 38. Whelan M, Galipeau Y, White-Al Habeeb N, Konforte D, Abou El Hassan M, Booth RA,
24 et al. Cross-sectional Characterization of SARS-CoV-2 Antibody Levels and Decay
25 Rates Following Infection of Unvaccinated Elderly Individuals. *Open Forum Infectious
26 Diseases*. 2023;10(8).
- 27 39. Galipeau Y, Siragam V, Laroche G, Marion E, Greig M, McGuinty M, et al. Relative
28 Ratios of Human Seasonal Coronavirus Antibodies Predict the Efficiency of Cross-
29 Neutralization of SARS-CoV-2 Spike Binding to ACE2. *eBioMedicine*. 2021;74.
- 30 40. Chaouat AE, Brizic I, Kucan Brlic P, Atari N, Kliker L, Alfi O, et al. Anti-human ACE2
31 antibody neutralizes and inhibits virus production of SARS-CoV-2 variants of concern.
32 *iScience*. 2022;25(9):104935.
- 33 41. Chen Y, Zhang Y-N, Yan R, Wang G, Zhang Y, Zhang Z-R, et al. ACE2-targeting
34 monoclonal antibody as potent and broad-spectrum coronavirus blocker. *Signal
35 Transduction and Targeted Therapy*. 2021;6(1):315.
- 36 42. Vadasz Z, Haj T, Kessel A, and Toubi E. Age-related autoimmunity. *BMC Medicine*.
37 2013;11(1):94.
- 38 43. Manoussakis MN, Tzioufas AG, Silis MP, Pange PJ, Goudevenos J, and Moutsopoulos
39 HM. High prevalence of anti-cardiolipin and other autoantibodies in a healthy elderly
40 population. *Clin Exp Immunol*. 1987;69(3):557-65.
- 41 44. Andersen-Ranberg K, HØier-Madsen M, Wiik A, Jeune B, and Hegedus L. High
42 prevalence of autoantibodies among Danish centenarians. *Clin Exp Immunol*.
43 2004;138(1):158-63.
- 44 45. Schroeder HW, Jr., and Cavacini L. Structure and function of immunoglobulins. *J
45 Allergy Clin Immunol*. 2010;125(2 Suppl 2):S41-52.

Galipeau *et al.* 2024

- 1 46. Barth WF, Wochner RD, Waldmann TA, and Fahey JL. Metabolism of human gamma
2 macroglobulins. *The Journal of Clinical Investigation*. 1964;43(6):1036-48.
- 3 47. Pyzik M, Rath T, Lencer WI, Baker K, and Blumberg RS. FcRn: The Architect Behind
4 the Immune and Nonimmune Functions of IgG and Albumin. *J Immunol*.
5 2015;194(10):4595-603.
- 6 48. Tsoi JYH, Cai J, Situ J, Lam WJ, Shun EHK, Leung JKY, et al. Autoantibodies against
7 angiotensin-converting enzyme 2 (ACE2) after COVID-19 infection or vaccination.
8 *Journal of Medical Virology*. 2023;95(12):e29313.
- 9 49. Geanes ES, McLennan R, LeMaster C, and Bradley T. Autoantibodies to ACE2 and
10 immune molecules are associated with COVID-19 disease severity. *Commun Med*
11 (*Lond*). 2024;4(1):47.
- 12 50. Lebedin M, García CV, Spatt L, Ratswohl C, Thibeault C, Ostendorf L, et al.
13 Discriminating promiscuous from target-specific autoantibodies in COVID-19. *Eur J*
14 *Immunol*. 2023;53(5):e2250210.
- 15 51. Hallmann E, Sikora D, Poniedziałek B, Szymański K, Kondratiuk K, Żurawski J, et al.
16 IgG autoantibodies against ACE2 in SARS-CoV-2 infected patients. *Journal of Medical*
17 *Virology*. 2023;95(1):e28273.
- 18 52. Woodruff MC, Ramonell RP, Haddad NS, Anam FA, Rudolph ME, Walker TA, et al.
19 Dysregulated naive B cells and de novo autoreactivity in severe COVID-19. *Nature*.
20 2022;611(7934):139-47.
- 21 53. Lundström A, Ziegler L, Havervall S, Rudberg AS, von Meijenfeldt F, Lisman T, et al.
22 Soluble angiotensin-converting enzyme 2 is transiently elevated in COVID-19 and
23 correlates with specific inflammatory and endothelial markers. *J Med Virol*.
24 2021;93(10):5908-16.
- 25 54. Xiao F, and Burns KD. Measurement of Angiotensin Converting Enzyme 2 Activity in
26 Biological Fluid (ACE2). *Methods Mol Biol*. 2017;1527:101-15.
- 27
- 28
- 29
- 30

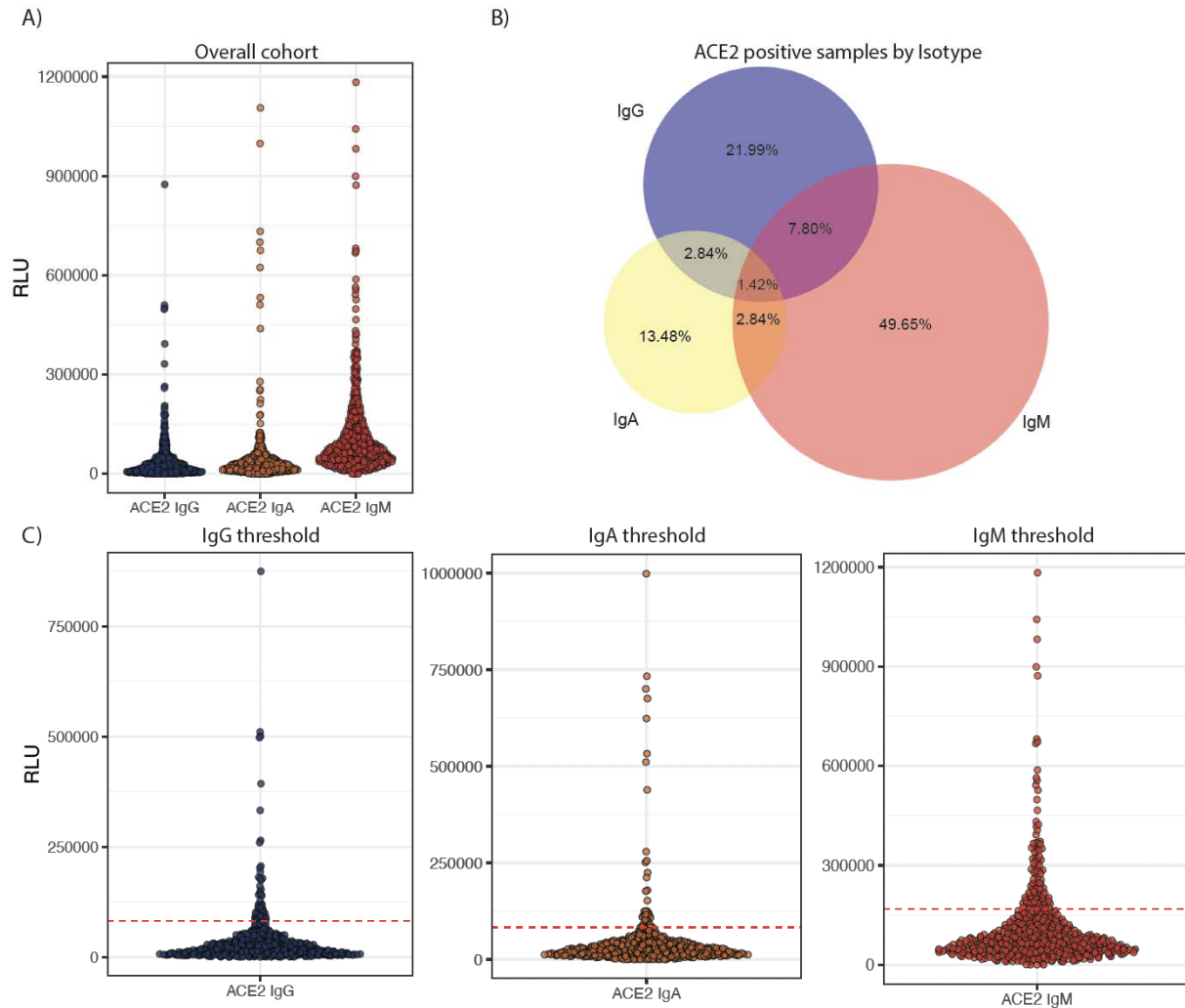
Galipeau *et al.* 2024

1 **Table 1. Participant demographics and health characteristics based on SARS-CoV-2 infection**
 2 **history.** Individuals who reported SARS-CoV-2 infection whether following a positive PCR test or
 3 confirmation by a medical professional, and individuals who had serological markers of prior infection
 4 (anti-N & anti-S IgG) were classified as individuals with a previous history of SARS-CoV-2 infection.
 5
 6

		Combined (n= 464)	Previous history of SARS- CoV-2 infection (n=131)	No history of SARS-CoV-2 infection (n=333)
Age (y.)				
	Mean (SD)	43.5(13.5)	46.5(15.4)	42.3(12.5)
	Median	42.5	45.0	42.0
	Range	18-74	21-74	18-74
Sex				
	Female Nb.(%)	312(67.2)	75(57.3)	237(71.2)
Ethnicity Nb (%)				
	White	416(89.7)	116(88.5)	300(90.0)
	Aboriginal	8(1.7)	1(0.8)	7(2.1)
	Arab	9(1.9)	2(1.5)	7(2.1)
	Black	5(1.1)	3(2.3)	2(0.6)
	South Asian	5(1.1)	3(2.3)	2(0.6)
	Other	21(4.5)	6(4.6)	15(4.5)
BMI				
	Nb. with BMI Info	222	58	164
	Mean (SD)	27.8	28.5	27.6
	Median	26.7	27.5	26.4
	Range	17.6 - 53.2	21.8 - 41.5	17.6 - 53.2
SARS-CoV-2 diagnosis Nb (%)				
	Self-reported	121(26.1)	121(92.4)	-
	Serology	87(18.8)	87(66.4)	-
Vaccinated Nb (%)				
		19(4.1)	4(3.1)	15(4.5)
ACE2 seroprevalence (%)				
	IgG	10.3	6.1	12.0
	IgA	6.3	7.6	5.7
	IgM	18.8	12.2	21.3
	IgG and/or IgA and/or IgM	30.4	22.9	33.3

7
 8
 9

1



2

3

4 **Figure 1. Overview of ACE2 serology results and establishment of seropositivity thresholds.** A)

5 overall view of anti-ACE2 IgG, IgA, and IgM antibodies of the full cohort including longitudinal

6 sampling. B) Quantitative Venn diagram representation of the distribution between IgM, IgA, and IgG

7 ACE2 autoantibodies in the overall cohort of ACE2-positive individuals. C) IgG, IgA, and IgM anti-

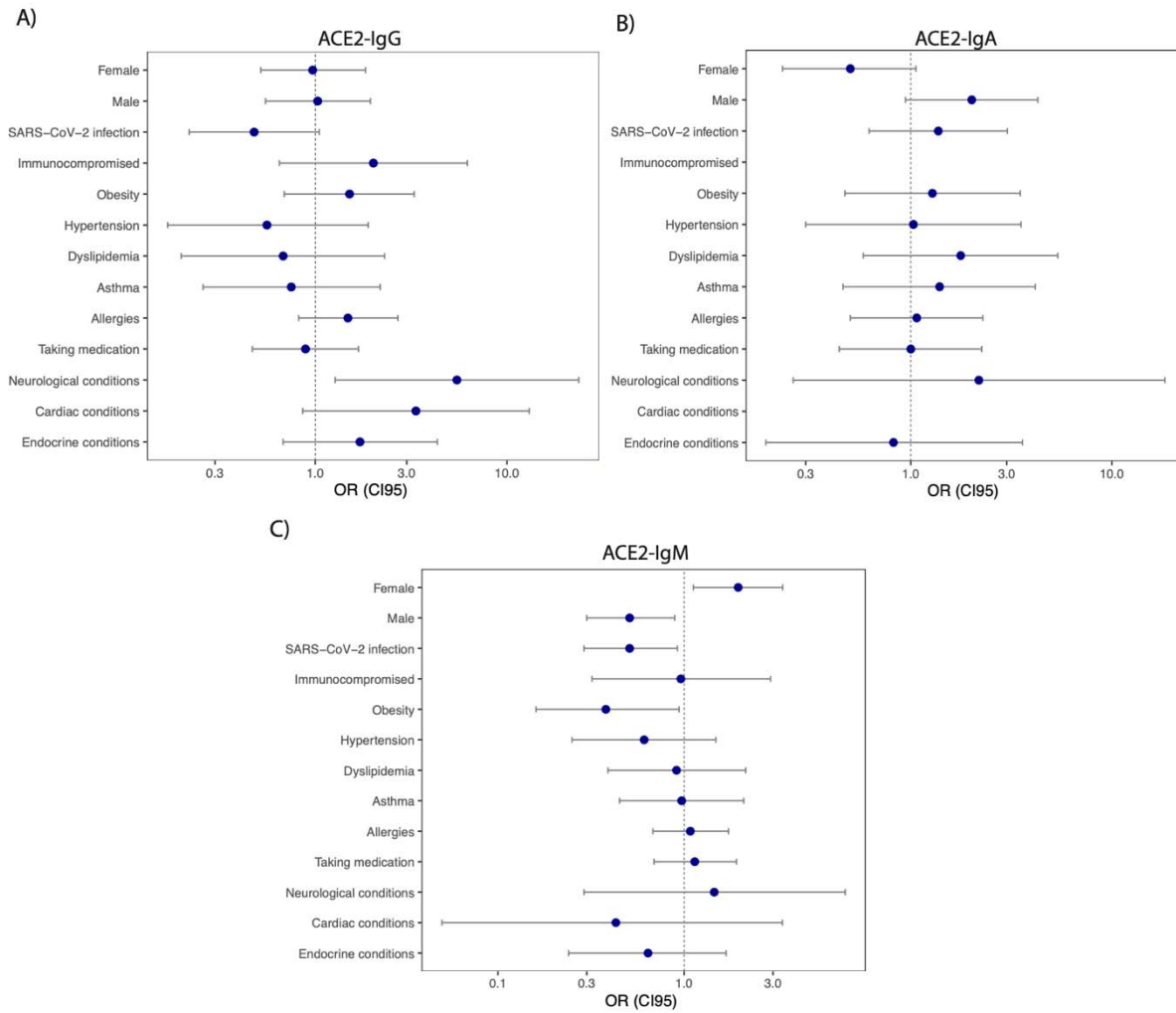
8 ACE2 antibodies and associated threshold. IgG and IgA threshold was set at two cycles of 2 standard

9 deviations (SD) from the mean of the presumed negative distribution. IgM threshold was set by a first

10 cycle at 2SD and a second at 1SD from the mean of the presumed negative distribution.

11

1



2

3

4

5

6

7

8

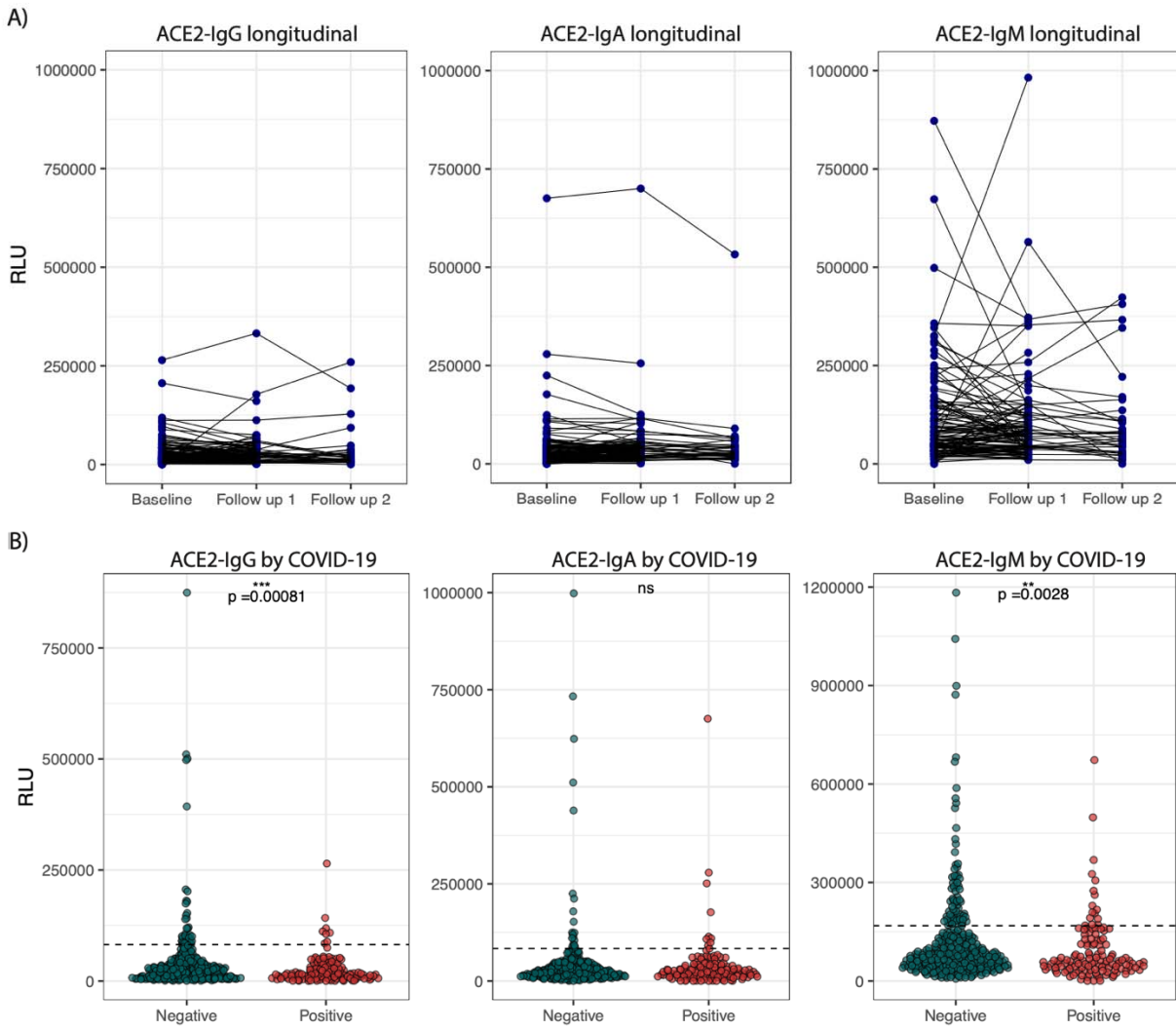
9

10

11

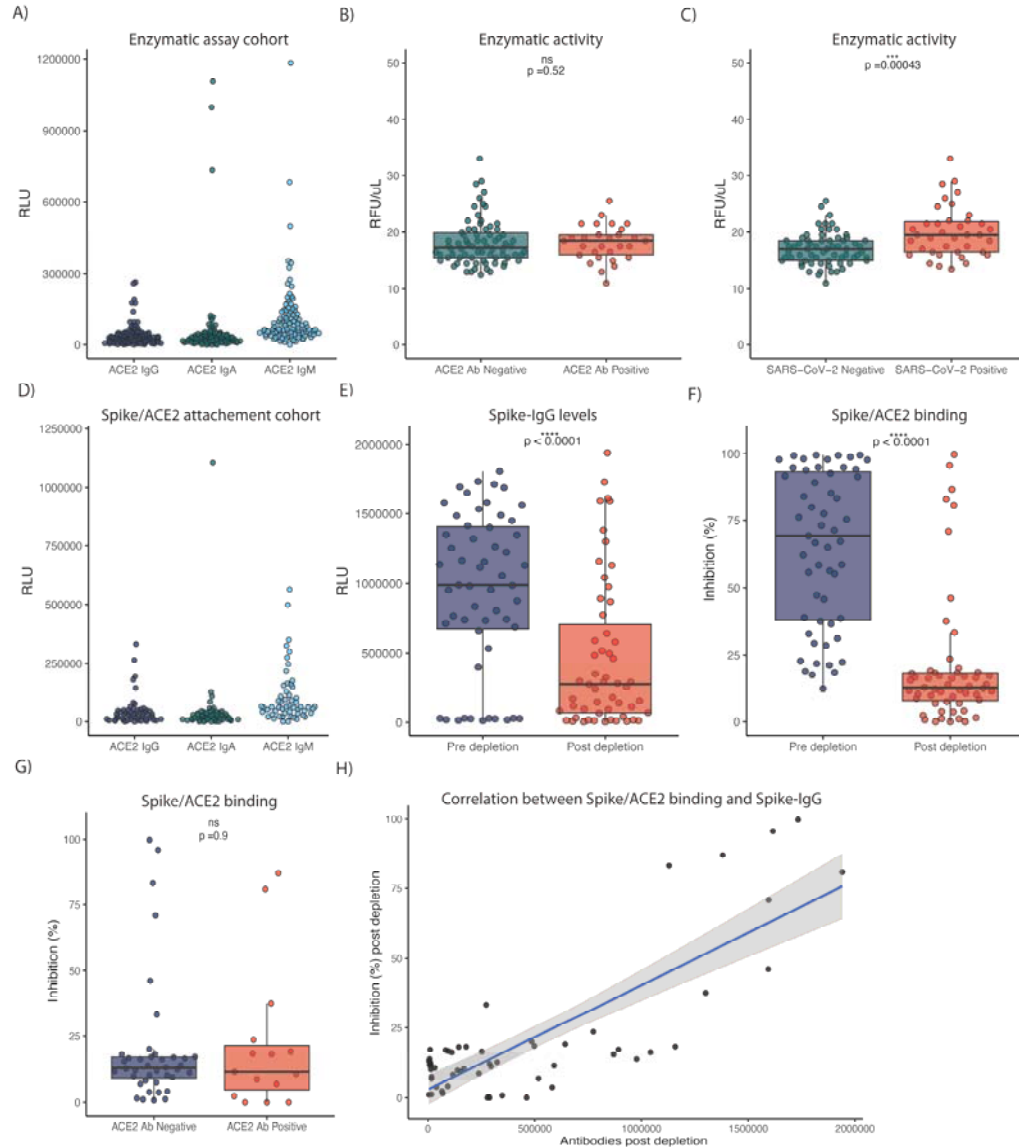
Figure 2. Influence of clinical features and demographic characteristics on ACE2 autoantibodies prevalence. Odd ratios (OR) and 95% confidence interval (CI) were calculated for demographic characteristics and clinical features for individuals in relation to A) IgG, B) IgA and C) IgM ACE2 autoantibodies. A table with a complete list of OR and 95% CI is available in the supplementary material (Supp. Table 1). The OR (CI95) are shown here on a log10 formatted axis.

1
2



3
4
5
6
7
8
9
10
11
12
13
14
15

Figure 3. Persistence of autoantibodies in serum over time and association with previous SARS-CoV-2 infection. A) Some individuals had one or two follow-up samples. ACE2 IgG, IgA, IgM is shown longitudinally (Follow up 1 (n=120), median time between draws (SD) = 35 days (10), Follow up 2 (n=35), median time between draws (SD) = 37 days (6)). B) IgG, IgA, IgM ACE2 autoantibodies levels are shown for individuals who never had SARS-CoV-2 and for individuals who had serological markers of SARS-CoV-2 infection and/or self-reported a SARS-CoV-2 infection. Unpaired two-sided Wilcoxon test was used to establish statistical significance (n=464), * p< 0.05, ** p< 0.01, ***p<0.001, ****p<0.0001.



1
2 **Figure 4. Effect of ACE2 autoantibodies on ACE2 enzymatic activity and SARS-CoV-2 spike-ACE2**
3 **binding.** A) ACE2 autoantibodies levels (IgG, IgA, IgM) in a subset of samples for which ACE2
4 enzymatic activity was assessed. B) Levels of ACE2 enzymatic activity in individuals who had IgG
5 and/or IgA and/or IgM ACE2 autoantibodies in contrast to the individuals who had no detectable ACE2
6 autoantibodies. C) Levels of ACE2 enzymatic activity in individuals who self-reported a SARS-CoV-2
7 infection and/or had serological markers of previous infection. D) ACE2 autoantibodies levels in a subset
8 of samples in which ACE2 and spike interaction was assessed. E) Anti-Spike IgG antibodies levels pre-
9 and post-depletion in sera. F) % inhibition representing the ability of the sera to inhibit Spike and ACE2
10 interaction pre- and post-depletion. G) % inhibition representing the ability of the sera to inhibit Spike
11 and ACE2 interaction in individuals who had IgG and/or IgA and/or IgM ACE2 autoantibodies above
12 threshold in contrast to the individuals who had no detectable ACE2 autoantibodies. H) Linear correlation
13 between the ability of sera to inhibit Spike and ACE2 binding and the levels of Spike IgG antibodies in
14 depleted sera. Unpaired two-sided Wilcoxon test was used to establish statistical significance where
15 applicable, * p < 0.05, ** p < 0.01, *** p < 0.001, **** p < 0.0001.