

Epidemiological and Clinical Features of Mpox during the Clade Ib Outbreak in South-Kivu, Democratic Republic of the Congo: a Prospective Cohort Study

Authors

Isabel Brosius^{1#}, Emmanuel Hasivirwe Vakaniaki^{1,2#}, Guy Mukari³, Papy Munganga⁴, Jean Claude Tshomba⁵, Elise De Vos¹, Eugene Bangwen^{1,6}, Yves Mujula², Achilleas Tsoumanis¹, Christophe Van Dijck¹, Aimé Alengo Odud⁷, Léandre Mutimbwa-Mambo⁸, Franklin Mweshi Kumbana⁹, Jenestin Babingwa Muunga⁹, Divin Mazambi Mambo⁹, Jems Wakilongo Zangilwa⁹, Steeven Bilembo Kitwanda⁹, Sarah Houben¹, Nicole A. Hoff¹⁰, , Jean-Claude Makangara-Cigolo^{2,11}, Eddy Kinganda-Lusamaki^{2, 12}, Martine Peeters¹², Anne W. Rimoin¹⁰, Jason Kindrachuk¹³, Nicola Low¹¹, Patrick DMC. Katoto^{14,15}, Espoir Bwenge Malembaka^{14,16}, John H. Amuasi^{17,18}, Olivier Tshiani-Mbaya², Dally Muamba Kambaji¹⁹, Richard Kojan¹⁹, Cris Kacita²⁰, Daniel Mukadi-Bamuleka^{2,5,21}, Steve Ahuka-Mundeke^{2,21}, Koen Vercauteren¹, Tony Wawina-Bokalanga^{1,2,21}, Jean-Jacques Muyembe-Tamfum^{2,21}, Sabin Sabiti Nundu^{1,2*}, Laurens Liesenborghs^{1,6*§}, Placide Mbala-Kingebeni^{2,21*§}

Contributed equally

* Supervised jointly and contributed equally

§ Corresponding authors:

Laurens Liesenborghs, MD, PhD, Institute of Tropical Medicine, Nationalestraat 155, 2000 Antwerp, Belgium; email: lliesenborghs@itg.be

Placide Mbala Kingebeni, MD, PhD, Institut National de Recherche Biomédicale (INRB), Av. De la Démocratie N°5345, Kinshasa – Gombe, Democratic Republic of the Congo; email: placide.mbala@inrb.cd

Author affiliations

¹ Department of Clinical Sciences, Institute of Tropical Medicine, Antwerp, Belgium

² Institut National de Recherche Biomédicale (INRB), Democratic Republic of the Congo

³ National Program for HIV/AIDS, Ministry of Public Health, Kinshasa, Democratic Republic of the Congo

⁴ National Police Hospital, Goma, Democratic Republic of the Congo

⁵ *Rodolphe Mérieux Institut National de Recherche Biomédicale, Goma Laboratory, Goma, Democratic Republic of the Congo*

⁶ *Department of Microbiology, Immunology and Transplantation, KU Leuven, Leuven, Belgium*

⁷ *Division Provinciale de la Santé, South Kivu, DRC*

⁸ *Kamituga Health Zone, South Kivu, DRC*

⁹ *Kamituga General Hospital, South Kivu, DRC*

¹⁰ *Department of Epidemiology, Jonathan and Karin Fielding School of Public Health, University of California, Los Angeles, California, USA*

¹¹ *Institute of Social and Preventive Medicine, University of Bern, Bern, Switzerland*

¹² *TransVIHMI (Recherches Translationnelles sur le VIH et les Maladies Infectieuses), Université de Montpellier, Institut de Recherche pour le Développement (IRD), Institut National de Santé et de Recherche Médicale (INSERM), Montpellier, France*

¹³ *University of Manitoba, Winnipeg, Manitoba, Canada*

¹⁴ *Center for Tropical Diseases and Global Health, Catholic University of Bukavu, Bukavu, Democratic Republic of the Congo*

¹⁵ *Cochrane South Africa, Medical Research Council of South Africa, Division of Epidemiology and Biostatistics, Department of Global Health, Faculty of Medicine, Stellenbosch University, South Africa*

¹⁶ *Department of Epidemiology, Johns Hopkins Bloomberg School of Public Health, Johns Hopkins University, Baltimore, Maryland, United States of America.*

¹⁷ *Global Health and Infectious Diseases Research Group, Kumasi Center for Collaborative Research in Tropical Medicine, Kwame Nkrumah University of Science and Technology, Kumasi, Ghana*

¹⁸ *Research Group Global One Health, Department of Implementation Research, Bernhard Nocht Institute for Tropical Medicine, Hamburg, Germany*

¹⁹ *The Alliance for International Medical Action, Goma, Democratic Republic of the Congo*

²⁰ *National Program for Monkeypox and Viral Hemorrhagic Fevers, Ministry of Health, Kinshasa, Democratic Republic of the Congo*

²¹ *Service de Microbiologie, Département de Biologie Médicale, Cliniques Universitaires de Kinshasa, Université de Kinshasa, Kinshasa, Democratic Republic of the Congo*

1 **ABSTRACT**

2 **BACKGROUND**

3 Clade Ib, a new strain of the Clade I monkeypox virus, emerged in Eastern Democratic
4 Republic of the Congo, sparking an international outbreak. Comprehensive studies are
5 needed to assess its transmission dynamics and clinical presentation.

6 **METHODS**

7 We conducted a prospective observational cohort study at Kamituga General Hospital in
8 South Kivu, DRC, between May 2 and October 9, 2024. Sociodemographic, exposure and
9 clinical data were collected from mpox suspected cases. Cases confirmed by Xpert® Mpox
10 PCR were presumed Clade Ib infections (awaiting Clade confirmation) and followed through
11 hospitalization and on days 29 and 59 post-diagnosis to assess clinical progression and
12 outcomes.

13 **FINDINGS**

14 Of 511 included suspected cases, 431 (84%) tested PCR positive; with 205 being women
15 (47%). Age distribution was bimodal, with 279 (65%) individuals aged 15-34 years, and 63
16 (15%) children under five. Most cases (59%) reported contact with a suspected or confirmed
17 mpox case; among adults, this was primarily a spouse, colleague or sexual partner, while for
18 children, the primary contacts were parents or siblings. Comorbidities were rare (4%),
19 including six (1%) HIV infections. Prodromal symptoms were present in 346 (88%) patients,
20 active skin lesions in 414 (96%), mucosal lesions in 338 (82%), and lymphadenopathy in 295
21 (71%). In adults, lesions were more concentrated in the genital area, with 90% of adults
22 presenting lesions in this region. In contrast, only 39% of children had genital lesions, with
23 lesions more frequently found elsewhere on the body. Among 427 hospitalized patients,
24 two deaths (0.5%) occurred. Among 315 patients with detailed hospital follow-up,
25 complications were primarily genito-urinary (55%) or cutaneous (40%). Four of six pregnant
26 women with recorded outcome (67%) had adverse pregnancy outcomes. Significant
27 sequelae at days 29 and 59 were rare.

28 **INTERPRETATION**

29 Clade Ib MPXV infections presented differently from previously reported Clade Ia and Clade
30 IIb infections. In adults, the disease primarily affected the genito-urinary system, compatible
31 with sexual transmission, while children mostly manifested extragenital lesions.

32 **FUNDING**

33 European & Developing Countries Clinical Trials Partnership (EDCTP2 and EDCTP3); Belgian
34 Directorate-General Development Cooperation and Humanitarian Aid; Research Foundation
35 – Flanders

36

37 INTRODUCTION

38 Mpox is a disease caused by monkeypox virus (MPXV). Until recently, human mpox was
39 considered an endemic zoonosis, linked to contact with wildlife infected with MPXV Clade I
40 in Central Africa or MPXV Clade II in West Africa.¹ However, in recent years, two distinct
41 lineages of MPXV capable of sustained human-to-human transmission have emerged,
42 leading to major international outbreaks.²

43 In 2017, a subclade of Clade II, named Clade IIb began to circulate in Nigeria through
44 human-to-human transmission, including through sexual contact.³ The subsequent
45 international spread of Clade IIb culminated in the 2022 global outbreak, with over 100,000
46 documented mpox cases to date. The outbreak overwhelmingly affected adult men – often
47 identifying as men-who-have-sex-with-men (MSM) – , who predominantly presented with
48 relatively mild disease and predominantly anogenital or oral lesions.^{1,4} The overall case
49 fatality rate (CFR) was below 0.1%.²

50 A similar scenario is currently unfolding with Clade I in the Democratic Republic of the
51 Congo (DRC). The country notified a substantial increase in Clade I MPXV infections over
52 multiple decades, primarily in remote rural areas, where outbreaks are largely due to
53 zoonotic spillover and predominantly impact children.^{5,6} Historically, Clade I infections have
54 been associated with a generalized papulopustular rash, with potentially severe outcomes
55 and a reported CFR of 2.9% among suspect cases.^{5,7,8}

56 In September 2023, however, a new lineage of Clade I MPXV emerged in a densely
57 populated urban and previously unaffected region in South Kivu, DRC.⁹⁻¹¹ Phylogenomically,
58 the lineage constitutes a distinct cluster, named Clade Ib, distinct from other Clade I
59 lineages that are now denoted Clade Ia.¹⁰ The subsequent rapid human-to-human spread of
60 Clade Ib in South Kivu resulted in the notification of 2,672 confirmed mpox cases between
61 January 1 and October 20, 2024. Of these, 157 samples were sequenced, with 156 showing
62 Clade Ib.^{12,13} From South Kivu, Clade Ib spread to other provinces within the country and
63 cross-border to neighboring countries. Consequently, in August 2024, both the Africa Center
64 for Disease Control (CDC) and the World Health Organization (WHO) issued emergency
65 declarations.¹⁴

66 Unlike Clade Ia, early reports about Clade Ib mpox suggested that mainly adolescents and
67 young adults were affected, with lower disease severity and predominantly genital
68 lesions.^{10,11,13} Clade Ib, therefore, exhibits notable similarities with Clade IIb mpox. However,
69 robust clinical data are lacking.

70 Large prospective studies are needed to characterize the ongoing Clade Ib mpox outbreak,
71 given apparent changes in affected populations, clinical presentation, disease outcome, and
72 transmission dynamics. This manuscript describes the epidemiological and clinical
73 characteristics of the Clade Ib mpox outbreak in South Kivu, DRC.

74 MATERIAL AND METHODS

75 STUDY DESIGN, SITE AND PARTICIPANTS

76 The Mpox Biology, Outcome, Transmission, and Epidemiology - Kamituga (MBOTE -
77 Kamituga) study is a prospective observational cohort study of Clade Ib MPXV-infected
78 individuals (clinicaltrials.gov: NCT06652646). Participants were enrolled at Kamituga
79 General Hospital (KGH), which hosts a large mpox treatment center for Kamituga and
80 surrounding health zones. Kamituga Health Zone, the initial epicenter of the Clade Ib mpox
81 outbreak, is an urbanized region in South-Kivu province, eastern DRC, with a population
82 estimated at 242,000 people.¹⁵ On-site diagnostic testing capacity for mpox was installed,
83 and a new isolation unit was set up with an admission capacity of 37 beds.

84 All individuals suspected of having mpox who presented to the hospital for diagnostic
85 testing and care, and who provided written informed consent were included in the study.
86 Participants were enrolled prior to diagnostic testing and underwent a baseline
87 investigation. Only individuals who tested positive via Mpox Xpert® PCR were subsequently
88 followed up longitudinally.

89 PROCEDURES AND DATA COLLECTION

90 A baseline standardized case report form (CRF), programmed into a REDCap™ database
91 (Vanderbilt University, Nashville, TN), was completed by a study physician. The CRF
92 captured data on exposure, behaviors, socio-demographic profile, medical history including
93 HIV and smallpox vaccination status, as well as presence and onset date of symptoms.
94 Questions about sexual behaviors were restricted to people over 12 years old. Physical
95 examination findings at enrolment included lesion count, lymphadenopathy, and presence
96 or absence of complications.

97 Skin lesions and oropharyngeal swabs were taken for on-site diagnostic testing with Xpert®
98 Mpox cartridges on the 4-module GeneXpert system (Cepheid, Sunnyvale, California CA,
99 USA). This automated real-time PCR detects non-variola Orthopoxvirus (OPXV) and MPXV
100 Clade II DNA.¹⁶ A sample was considered positive for MPXV Clade I, if non-variola OPXV
101 DNA was detected with a cycle threshold value below 39 and MPXV Clade II PCR was

102 negative, following guidelines from the DRC laboratory working group led by WHO. At the
103 time of preprint publication, Clade Ib confirmation is ongoing.

104 Individuals with a positive lesion or oropharyngeal sample were admitted to KGH for
105 isolation and medical care and followed-up by the study team. The evolution of symptoms,
106 signs, and complications was documented in a CRF. Patients received supportive care,
107 consisting of symptomatic therapy (analgesia, antipyretics), nutritional support, skin care,
108 correction of hypovolemia, antibacterial and antimalarial treatment where indicated. No
109 MPXV-specific antivirals were available. Malaria and HIV rapid diagnostic tests, hemoglobin
110 assays, point-of-care glucometry, and HCG dipstick tests were performed at the discretion
111 of the treating physician. Testing for other sexually transmitted infections, Varicella,
112 bacterial infections, and biochemical analyses were not available. Patients were discharged
113 at the discretion of the treating physician team.

114 After discharge, participants were invited for follow-up visits on days 29 and 59 post- mpox
115 diagnosis to record data on residual or new signs and symptoms. Pregnant women were
116 advised to return to KGH for any pregnancy-related complications, or at the start of labor.
117 Pregnancy related outcomes were captured in a dedicated CRF.

118 **STATISTICAL ANALYSIS**

119 Demographic, clinical and behavioral characteristics were described using medians and
120 interquartile ranges (IQR) for continuous variables and counts and percentages for
121 categorical variables. For the representation of the clinical data, participants were
122 categorized into three age groups based on expected physiological and exposure
123 differences: children under five years, children aged five to 14 years, and individuals aged 15
124 years and older. The latter group will be referred to as adults throughout the manuscript.
125 The association between sociodemographic and exposure characteristics and MPXV-PCR
126 test results among mpox suspected cases was tested using Fisher exact test for categorical
127 characteristics and Mann-Whitney non-parametric test for continuous variables. The
128 resulting p-values were corrected for multiple testing using the Benjamini-Hochberg
129 method. The time from symptom and lesion onset to resolution were calculated and the
130 results were presented using survival Kaplan-Meier curves. Data were analyzed using R
131 statistical software, version 4.3.1.

132 **ETHICAL CONSIDERATIONS**

133 The study was approved by the Ethics Committee of the University of Kinshasa (approval ID
134 ESP/CE/78/2024) and the Ethics Committee of the University Hospital Antwerp (ID 6383).
135 Written consent was obtained prior to all study procedures from participants aged 18 years
136 and older, and from parents or guardians for minors. Children from 12 to 17 years old
137 received age-appropriate information and signed an assent form. Pictures for publication
138 were taken with additional written consent. All participants received reimbursement of
139 transportation costs for visits and free care and nutrition.

140 RESULTS

141 Between May 2 and October 9, 2024, 511 people with suspected mpox were enrolled in the
142 study (Supplementary figure 1) of which 431 (84%) tested positive on Xpert® PCR.

143 DEMOGRAPHICS, EXPOSURE AND RISK FACTORS

144 Of all 431 confirmed cases, 205 (47.6%) were women (Table 1). The median age was 22 (IQR
145 17-29, range 1 week to 79 years). Individuals aged 15-34 accounted for 65% of all infections,
146 while children aged 10-14, 5-9, and under five years represented 3%, 4%, and 15%,
147 respectively. (Figure 1A) The most reported occupations were mine worker (100, 24%) and
148 sex worker (53, 13%).

149 Among confirmed cases, 59% (n=253) reported contact with one or more suspected or
150 confirmed mpox cases in the three weeks before diagnosis. Among the 57 children with this
151 exposure, potential infectors were primarily household members (n=75, 83%). These
152 household contacts were predominantly parents (47%) or siblings (53%). Similarly, the 197
153 adults with known contact, most frequently reported household members (n=91, 37%) as
154 potential infectors, with spouses being the most common household contact (56/91, 62%).
155 Other frequently mentioned potential infectors among adults were colleagues (n=81, 33%)
156 and sexual partners outside the household (n=50, 21%). The most common exposure types
157 were skin-to-skin contact (n=246, 97%), prolonged conversation (>15 min) (n=243, 96%),
158 shared meals or utensils (n=227, 90%), and shared bedding (n=176, 70%), with 42% (n=107)
159 reporting sexual exposure.

160 Of the 348 confirmed mpox patients aged 12 years or older questioned on sexual behavior,
161 293 (84%) reported having sex in the previous three weeks. Among these, 127 (43%)
162 reported having more than one sexual partner and 135 (42%) having engaged in
163 transactional sex. Only 16% (n=59) of confirmed cases reported contact with wild animals
164 through hunting, handling, or consumption.

165 Comparing people with suspected mpox who tested positive with those who tested
166 negative, we observed an older age distribution (median age 22 vs 17, p=0.034), and a
167 higher proportion of sex workers (although statistically not significant, 13% vs 5%, p=0.117)
168 and mine workers (24% vs 8%, p=0.005) among the confirmed cases. Compared with non-

169 infected individuals, confirmed cases more often reported having sexual intercourse (84% vs
170 57%, $p=0.001$), including transactional sex (42% vs 16%, $p=0.003$), and more often reported
171 contact with another mpox case in the three weeks preceding their diagnosis. (59% vs 41%,
172 $p=0.015$).

173 **MEDICAL HISTORY AND CLINICAL PRESENTATION AT ADMISSION**

174 Only 18 (4%) mpox patients reported comorbidities, including malnutrition ($n=10$), HIV
175 ($n=6$), tuberculosis ($n=1$) and chronic liver disease ($n=1$). (Table 2) Seven (2%) MPXV-infected
176 participants reported smallpox vaccination during childhood. Twenty-one infected women
177 (10%) were pregnant at the time of inclusion.

178 Mpox-confirmed patients presented at the study site a median of seven (IQR 5 – 10) days
179 after the onset of symptoms and five (IQR 4-7) days after the appearance of skin lesions
180 (Table 2). Prodromal symptoms preceded the rash in 346 (88%) of patients. Systemic
181 symptoms such as fatigue, malaise and myalgia were highly prevalent, affecting 384 (90%),
182 320 (75%) and 301 (71%) of patients, respectively. The lesions commonly caused itching
183 (92%) or pain (78%). Eye pain and visual problems were reported in 20% and 10% of cases
184 respectively, mostly among adults. Adult mpox patients often had genital pain ($n=116$, 53%),
185 dysuria ($n=166$, 50%), or rectal pain ($n=45$, 14%). Anogenital symptoms rarely occurred
186 among children.

187 At inclusion, 21 (5%) of mpox cases had a temperature above 38°C (Table 2). Active skin
188 lesions were present in 414 (96%) patients. The median total lesion count at admission was
189 42 (IQR 17-94, range 1-1420). Most participants ($n=326$, 79%) had a combination of
190 different lesion types, including vesicles ($n=291$, 70%), papules ($n= 222$, 54%) and small
191 pustules ($n=178$, 43%). Umbilicated pustules were observed in 156 participants (38%), ulcers
192 in 94 (23%) and macules in 62 (15%). Children up to 14 years old, however, mostly
193 presented with papules ($n=66$, 73%) and umbilicated pustules were rare ($n=14$, 16%).

194 One third ($n=141$, 34%) of patients had generalized rash, defined as lesions on at least eight
195 out of ten body regions (Table 2). Less than half of patients had lesions on the palms of the
196 hands ($n=167$, 42%) or on the soles of the feet ($n=100$, 20%). Adults more often had genital
197 skin lesions than children (90% vs 41%, $p<0.001$). (Figure 1B, Table 2) The genital area made

198 up > 50% of total lesion count in 27% of adults and was the only localization of lesions in
199 11% of adults (vs 2 and 1%, respectively, in children). Among adults, the genital area had the
200 highest lesion density, while in children, lesions were more concentrated on the abdomen,
201 thorax, arms, and genital area (Figure 1C).

202 Complex lesions, defined as large (> 2cm in diameter), confluent or necrotic lesions were
203 present in 98 (24%) mostly adult patients (n=94), of whom 93 (95%) reported these lesions
204 in the genital region (Table 2). Mucosal lesions (n=338, 82% for any mucosal lesion) were
205 common across age groups, although genital mucosal lesions were more prevalent in adults
206 compared to children up to 14 years old (82% vs 33%, p<0.001). Lymphadenopathy differed
207 significantly over age groups (p<0.001). While common in adults (n=264, 82%) and children
208 aged 5-14 years (n=22, 69%), lymphadenopathy was less frequent in children under five
209 years old (n=9, 16%). In adults, the inguinal nodes were primarily affected, whereas in
210 children, the submandibular nodes were more commonly involved.

211 **OUTCOME AND COMPLICATIONS DURING HOSPITALIZATION**

212 Of the 431 MPXV-infected participants, all but four confirmed participants (99%) accepted
213 to be hospitalized, of which 17 discharged themselves against medical advice. Two children
214 under five years old died during hospitalization, giving an in-hospital mortality 0.5% (95% CI
215 [0.1%, 1.7%]).

216 Detailed longitudinal follow-up data were available for 315 (73%) hospitalized patients.
217 (Table 3) Among those, the median duration of hospitalization was six (IQR 5-9) days. The
218 total lesion count increased during hospitalization in 148 (34.3%) participants. The median
219 maximum lesion count was 59 (IQR 23-139, range 1-1420) and occurred a median of 7 days
220 (IQR 5-9) after the onset of lesions. Based on maximum lesion count and according to the
221 WHO clinical severity score, 78 (25%) patients had mild disease (<25 lesions), 127 (41%) had
222 moderate disease (25-99 lesions), 60 (19%) had severe disease (100-249 lesions) and 47
223 (15%) had grave disease. The median time from onset to resolution of lesions was 14 (95%
224 CI 14-16) days, and of symptoms overall was 18 (95% CI 17-19) days. (Figure 1E and F)

225 Overall, 200 (64%) of the 315 hospitalized patients experienced complications during
226 observation, including genital oedema or urethritis (n=121, 38%, each), complex mucosal

227 lesions (n=120, 38%), complex skin lesions (n=102, 32%), secondary bacterial infections
228 (n=57, 18%) or abscess formation (n=21, 7%) (Table 3). Other complications were rare (<
229 10%).

230 **PERSISTENT SYMPTOMS AT FOLLOW-UP**

231 In total, 208 cases (43%) returned for assessment on day 29 and 103 cases (24%) on day 59.
232 (Table 4) At follow-up on day 29, 2 (1%), participants reported a decline in general health
233 compared to before the onset of mpox. No one reported a decline in general health on day
234 59.

235 A total of 78 (38%) participants experienced residual symptoms on day 29, and 38 (37%) on
236 day 59. Skin-related symptoms were the most common, affecting 40 (19%) participants on
237 day 29 and 15 (15%) on day 59. Eye symptoms were reported by 22 (11%) participants on
238 day 29 and 18 (18%) on day 59. Five participants described reduced visual acuity on day 29
239 (2%) and day 59 (5%), and one person reported blindness on day 59 (1%). Other symptoms
240 occurred in < 10% of participants on days 29 and 59. (Table 4)

241 On day 29, 153 (74%) participants had scars and five (2%) had active skin lesions in the form
242 of ulcers. However, upon follow-up at day 59, only 51 (50%) still had discernible scars
243 (Figure 1D), and one (1%) participant still had an unresolved genital ulcer. Residual mucosal
244 lesions were noted in six (3%) participants on day 29 and one participant (1%) on day 59.
245 (Table 4)

246 **PREGNANCY OUTCOMES**

247 Among the 21 pregnant women in the cohort, no adverse pregnancy outcomes occurred
248 during hospitalization. Following the initial admission, the final pregnancy outcomes were
249 recorded for six participants, where 4/6 (67%) experienced an adverse pregnancy outcome.
250 Two women suffered spontaneous abortions, during first trimester and second trimester,
251 respectively. Additionally, two women showed evidence of vertical transmission of MPXV to
252 their neonates. One fetus died in utero near the end of the second trimester, requiring
253 induction of labor. Mpox skin lesions were discernible on the head upon delivery. The other
254 child was born full term via Caesarean section due to prolonged labor complicated by
255 uterine rupture. This infant also presented with characteristic mpox skin lesions, suffered

256 from asphyxia, and died shortly after birth. The remaining two women delivered healthy
257 full-term babies.

258 **DISCUSSION**

259 This study provides a prospective, detailed characterization of patient profiles in the
260 emerging Clade Ib outbreak. Reflecting the evolving transmission pattern of Clade Ib, mpox
261 predominantly affected adolescents and young adults, though not exclusively. Exposure
262 data indicate that sexual contact is a significant driver of transmission within this group, as
263 corroborated by the prevalent genital presentations among adults. Most patients
264 experience mild to moderate disease, with complications that are primarily genito-urinary in
265 nature, and clinically significant sequelae other than scars are rare. Approximately one-fifth
266 of cases, however, were children, who typically present with more extragenital disease.

267 This study was conducted in a remote area of Eastern DRC, where access to high-quality
268 healthcare is limited. However, through collaboration with the health authorities, and
269 humanitarian organizations, we enhanced the treatment facilities and level of care provided
270 to mpox patients. This enabled the study to be conducted within an ethically sound
271 framework and created a suitable environment for high-quality data collection.

272 Nevertheless, working in resource-limited settings comes with inherent limitations. Firstly,
273 while the on-site diagnostic platform allowed for the detection of OPXV DNA, point-of-care
274 Clade-specific confirmation is currently unavailable. Given that Kamituga is situated at the
275 original epicenter of the Clade Ib outbreak and has no history of Clade Ia outbreaks, it is
276 highly probable that all study participants are infected with Clade Ib. At the time of this
277 preprint's publication, Clade confirmation is underway for a subset of participants. Secondly,
278 despite implementing a broad testing strategy, recruitment relied on passive case detection,
279 and the PCR positivity rate remained consistently high throughout the study (around 80%).
280 This suggests that a significant proportion of cases in the community may have gone
281 undetected. If these undetected cases involve individuals with atypical presentations, very
282 mild symptoms, or severe illness (including community deaths), their absence from the
283 study could introduce bias into the results. Additionally, the study had a large sample size,
284 but there was substantial loss to follow-up in the consecutive visits, which could impact the
285 representativeness of the data for the long-term outcomes. Finally, resource limitations
286 restricted our ability to perform additional diagnostic testing, including for HIV, other

287 sexually transmitted infections, Varicella, hematological and biochemical analyses, as well as
288 assessments for complications like bacterial superinfections and sepsis.

289 Despite these limitations, our findings allow for a comprehensive comparison between this
290 Clade Ib outbreak and other mpox outbreaks. While Clade Ia outbreaks in endemic regions
291 in the DRC are typically driven by zoonotic spillover,⁶ exposure to wild animals - and thus a
292 potential animal reservoir - was rare in our cohort. In contrast, 59% of patients recalled
293 contact with an index case, of which 42% included sexual contact. Additionally, the
294 overrepresentation of occupations such as sex workers and mine workers (who make up
295 most of their clientele) and the higher levels of sexual activity and more frequent
296 transactional sex among PCR-positive mpox cases compared to PCR-negative suspects, point
297 toward sexual contact as one of the drivers of transmission, similar to patterns observed in
298 Clade IIb.⁴ However, in contrast to the global Clade IIb outbreak,⁴ the equal gender
299 distribution among mpox cases in our study suggests that transmission predominantly
300 occurred through heterosexual contact rather than male-to-male sexual contact. However,
301 because of cultural sensitivities, we did not collect information on the gender of sexual
302 partners.

303 Similar to Clade IIb infections, distinct anogenital manifestations were observed in adults
304 with Clade Ib mpox.^{1,4,17} Up to one-third of adults presented with predominantly genital
305 lesions, and over three-quarters exhibited involvement of the genital mucosa and/or
306 inguinal lymphadenopathy. In contrast, most previous Clade Ia studies reported genital
307 lesions in less than 30% of cases, typically showing a more generalized lesion
308 distribution.^{8,18-20} These findings suggest that the mode of MPXV transmission might
309 determine disease presentation. Interestingly, despite similarities in disease presentation
310 between Clades Ib and IIb, Clade Ib infections in adults appear to be somewhat more
311 severe. While only 12% of Clade IIb patients had over 20 lesions and 0-4% had more than
312 100, in our cohort, 66% had more than 25 lesions, and 24% exceeded 100 lesions.¹ This
313 could be caused by differences in the affected populations or in virulence between clades.

314 Conversely, children under 15 years exhibited a more typical clinical presentation featuring
315 widespread lesions in a centrifugal distribution, though with a low frequency of lesions on
316 the palms and soles.¹⁸⁻²² In contrast to Clade Ia outbreaks, where they typically make up

317 three-quarters of cases,^{5,8,20} children represented only a minority of cases in our study.
318 Transmission dynamics in children remain unclear; however, our data suggest that they
319 were primarily infected within the household. Household transmission was rarely reported
320 during the global Clade IIb outbreak, although in a Nigerian cohort up to 16% were children
321 under 18 years old.²³ Moreover, in other health zones in South Kivu affected by the Clade Ib
322 outbreak and parts of neighboring Burundi, children constitute the majority of confirmed
323 mpox cases.^{2,24} Since our study was limited to a single health zone, caution is advised in
324 generalizing these findings. Further studies on transmission dynamics are essential.

325 A final important point of comparison with previously documented outbreaks are the
326 outcomes and complications of mpox. Long-term follow-up revealed few severe sequelae
327 other than scars among Clade Ib infected individuals, although one patient suffered from
328 blindness.^{18,19} Of particular concern though, are adverse pregnancy outcomes; in our study,
329 four out of six women with recorded pregnancy outcomes lost their child, consistent with
330 findings from Clade Ia.^{7,25} In Clade IIb, no cases of presumed or confirmed vertical
331 transmission have been reported.²⁶ To better understand the impact of MPXV infection on
332 fetal development and perinatal morbidity and mortality, larger prospective cohorts of
333 pregnant women are essential.

334 In-hospital mortality in our cohort was low at 0.5%, with all deaths recorded in children
335 under five. This mortality rate is higher than the 0.2% observed during the global Clade IIb
336 outbreak in 2022—though rates as high as 6% have been reported in Nigeria²³ — but lower
337 than the 1.4% to 17% reported for Clade Ia.^{7,10,18,19,27,28} Factors such as viral virulence,
338 transmission mode, reporting bias, population age structure, underlying comorbidities, and
339 healthcare access may all contribute to these observed differences in mortality.

340 This study provides a comprehensive overview of the Clade Ib outbreak in South Kivu,
341 highlighting shifts in transmission dynamics, clinical presentation, and patient outcomes
342 that differ from previous Clade I and II outbreaks. Future public health interventions – such
343 as enhanced surveillance, integrated patient management, infection control policies,
344 contact tracing and other targeted active case detection strategies – should reflect these
345 evolving patterns of mpox presentation. Our findings will also guide and help prioritize
346 further research initiatives.

347 **ACKNOWLEDGMENTS**

348 We thank all patients who agreed to be included in this cohort and particularly those who
349 provided additional consent for publication of their deidentified images. We acknowledge
350 the dedicated staff of KGH and ALIMA for their continuing expert patient care. We also
351 acknowledge the support of the Health Zone and the Provincial Health Department to
352 facilitate setting up of the study and the KGH for generously disposing the study team of
353 necessary infrastructure to pursue study activities. Finally, we thank our colleagues Inge Van
354 Cauwenberg, Marie Stéphanie Smet, Lydia Lunda, Alliance Mbandu, and Plamedi Fatouma
355 from ITM Kinshasa office administrative and logistical support.

356 **FUNDING**

357 This work was funded by the Belgian Directorate-General Development Cooperation and
358 Humanitarian Aid and the European & Developing Countries Clinical Trials
359 Partnership EDCTP3 (grant number 101195465). Additional support was provided by the
360 Research Foundation – Flanders (FWO, grant number G096222N to EBo, LL, JJM and
361 12B1M24N to CVD) and through the African coalItion for Epidemic Research, Response and
362 Training (ALERRT) network. ALERRT is part of the EDCTP2 Programme supported by the
363 European Union under grant agreement RIA2016E-1612. ALERRT is also supported by the
364 United Kingdom National Institute for Health Research. EBa, EDV, and IB are members of
365 the Institute of Tropical Medicine’s Outbreak Research Team, financially supported by the
366 Department of Economy, Science, and Innovation of the Flemish government (EWI). The
367 funders had no role in the conceptualization of the study, data acquisition or interpretation,
368 writing of the manuscript, or publication of the findings.

369 **CONFLICT OF INTEREST STATEMENT**

370 LL has consulted for BioNtech and received research funding from Sanofi, both not relevant
371 for this work. All other authors declare no conflict of interest.

372 **AUTHOR CONTRIBUTIONS**

373 Conceptualized the study and wrote the protocol: IB, EHV, EDV, EB, YM, SSN, LL, PMK.
374 Participant inclusion, investigation and data collection: GM, PM, JCT, LMM, FMK. Conducted
375 data analysis: IB, EHV, EDV, AT, CVD, SSN, LL. Data management: SH, YM. Secured funding:
376 PKM, LL, JJMT, DM, EBM, PK, NL, AR, JA. Supervision study proceedings: LMM, FMK, CK, DM,

377 SA, JJMT, SSn, LL, PMK. Supervised laboratory procedures: JCT, EKL, JCMC, TW, KV, DM, SA.
378 Writing of the initial manuscript: IB, EHV, NL, SSN, LL, PMK. Reviewed the manuscript: IB,
379 EHV, GM, PM, JCT, EDV, EB, YM, AT, CVD, EA, LMM, FMK, SH, NH, EKL, JCMC, AR, JK, NL, PK,
380 EBM, JA, OT, RK, KV, TW, CK, DM, SA, JJMT, SSN, LL, PMK. Had full access to the data: IB,
381 EHV, AT, SSN, LL, PMK. All authors contributed to review and approved the final version of
382 the manuscript.

383 **DATA SHARING**

384 De-identified participant data collected for the study will be made available from the
385 corresponding author upon reasonable request (i.e., when ethically viable without violating
386 the protection of participants or other valid ethical, privacy, or security concerns).

387

388 REFERENCES

- 389 1. Mitjà O, Ogoina D, Titanji BK, Galvan C, Muyembe JJ, Marks M, et al.
390 Monkeypox. *The Lancet*. 2023 Jan 7;401(10370):60–74.
- 391 2. 2022-24 Mpox (Monkeypox) Outbreak: Global Trends [Internet]. [cited 2024
392 Sep 24]. Available from:
393 [https://worldhealthorg.shinyapps.io/mpx_global/#43_Case_profile_\(overall\)](https://worldhealthorg.shinyapps.io/mpx_global/#43_Case_profile_(overall))
- 394 3. Yinka-Ogunleye A, Aruna O, Dalhat M, Ogoina D, McCollum A, Disu Y, et al.
395 Outbreak of human monkeypox in Nigeria in 2017–18: a clinical and
396 epidemiological report. *Lancet Infect Dis*. 2019 Aug 1;19(8):872.
- 397 4. Thornhill JP, Barkati S, Walmsley S, Rockstroh J, Antinori A, Harrison LB, et al.
398 Monkeypox Virus Infection in Humans across 16 Countries - April-June 2022. *N*
399 *Engl J Med*. 2022 Aug 25;387(8):679–91.
- 400 5. Bangwen E, Diavita R, De Vos E, Hasivirwe Vakaniaki E, Nundu SS, Mutombo A,
401 et al. Mpox in the Democratic Republic of Congo: Analysis of National
402 Epidemiological and Laboratory Surveillance Data, 2010 - 2023. 2024 [cited
403 2024 Oct 23]; Available from: <https://papers.ssrn.com/abstract=4954317>
- 404 6. Kinganda-Lusamaki E, Amuri-Aziza A, Fernandez-Nuñez N, Makangara-Cigolo
405 JC, Pratt C, Vakaniaki EH, et al. Clade I mpox virus genomic diversity in the
406 Democratic Republic of the Congo, 2018–2024: Predominance of zoonotic
407 transmission. *Cell*. 2024 Oct;0(0).
- 408 7. Pittman PR, Martin JW, Kingebeni PM, Tamfum JJM, Mwema G, Wan Q, et al.
409 Clinical characterization and placental pathology of mpox infection in
410 hospitalized patients in the Democratic Republic of the Congo. *PLoS Negl Trop*
411 *Dis*. 2023 Apr 1;17(4).
- 412 8. Whitehouse ER, Bonwitt J, Hughes CM, Lushima RS, Likafi T, Nguete B, et al.
413 Clinical and Epidemiological Findings from Enhanced Monkeypox Surveillance
414 in Tshuapa Province, Democratic Republic of the Congo During 2011–2015. *J*
415 *Infect Dis*. 2021 Jun 4;223(11):1870–8.

- 416 9. McCollum AM, Nakazawa Y, Ndongala GM, Pukuta E, Karhemere S, Lushima RS,
417 et al. Human Monkeypox in the Kivus, a Conflict Region of the Democratic
418 Republic of the Congo. *Am J Trop Med Hyg.* 2015 Oct 1;93(4):718–21.
- 419 10. Vakaniaki EH, Kacita C, Kinganda-Lusamaki E, O’Toole Á, Wawina-Bokalanga T,
420 Mukadi-Bamuleka D, et al. Sustained human outbreak of a new MPXV clade I
421 lineage in eastern Democratic Republic of the Congo. *Nat Med.* 2024;
- 422 11. Masirika LM, Udahemuka JC, Schuele L, Ndishimye P, Otani S, Mbiribindi JB, et
423 al. Ongoing mpox outbreak in Kamituga, South Kivu province, associated with
424 monkeypox virus of a novel Clade I sub-lineage, Democratic Republic of the
425 Congo, 2024. *Eurosurveillance.* 2024 Mar 14;29(11).
- 426 12. Nextstrain / groups / inrb-mpox / clade-I [Internet]. [cited 2024 Nov 7].
427 Available from: [https://nextstrain.org/groups/inrb-mpox/clade-](https://nextstrain.org/groups/inrb-mpox/clade-I?c=date_submitted&f_clade_membership=clade%20Ib&f_division=Sud%20Kivu)
428 [I?c=date_submitted&f_clade_membership=clade%20Ib&f_division=Sud%20Kiv](https://nextstrain.org/groups/inrb-mpox/clade-I?c=date_submitted&f_clade_membership=clade%20Ib&f_division=Sud%20Kivu)
429 [u](https://nextstrain.org/groups/inrb-mpox/clade-I?c=date_submitted&f_clade_membership=clade%20Ib&f_division=Sud%20Kivu)
- 430 13. Murhula Masirika L, Claude Udahemuka J, Schuele L, Nieuwenhuijse DF,
431 Ndishimye P, Boter M, et al. Mapping and sequencing of cases from an ongoing
432 outbreak of Clade Ib monkeypox virus in South Kivu, Eastern Democratic
433 Republic of the Congo between September 2023 to June 2024. *medRxiv.* 2024
434 Sep 19;2024.09.18.24313835.
- 435 14. WHO Director-General declares mpox outbreak a public health emergency of
436 international concern [Internet]. [cited 2024 Sep 24]. Available from:
437 [https://www.who.int/news/item/14-08-2024-who-director-general-declares-](https://www.who.int/news/item/14-08-2024-who-director-general-declares-mpox-outbreak-a-public-health-emergency-of-international-concern)
438 [mpox-outbreak-a-public-health-emergency-of-international-concern](https://www.who.int/news/item/14-08-2024-who-director-general-declares-mpox-outbreak-a-public-health-emergency-of-international-concern)
- 439 15. Ministère de la santé publique hygiène et prévention P du SKDP de la santé.
440 Pyramide sanitaire des zones de sante 2024. 2024.
- 441 16. Damhorst GL, McLendon K, Morales E, Solis ZM, Fitts E, Bowers HB, et al.
442 Performance of the XpertTM Mpox PCR assay with oropharyngeal, anorectal,
443 and cutaneous lesion swab specimens. *J Clin Virol.* 2024 Apr 1;171.

- 444 17. Català A, Clavo-Escribano P, Riera-Monroig J, Martín-Ezquerria G, Fernandez-Gonzalez
445 P, Revelles-Peñas L, et al. Monkeypox outbreak in Spain: clinical and epidemiological
446 findings in a prospective cross-sectional study of 185 cases. *British Journal of*
447 *Dermatology*. 2022 Nov 1;187(5):765–72.
- 448 18. Ježek Z, Szczeniowski M, Paluku KM, Mutombo M. Human Monkeypox: Clinical
449 Features of 282 Patients. *J Infect Dis*. 1987 Aug 1;156(2):293–8.
- 450 19. Jezek Z, Grab B, Szczeniowski M, Paluku KM, Mutombo M. Clinico-epidemiological
451 features of monkeypox patients with an animal or human source of infection. *Bull*
452 *World Health Organ*. 1988;66(4):459.
- 453 20. Osadebe L, Hughes CM, Shongo Lushima R, Kabamba J, Nguete B, Malekani J, et al.
454 Enhancing case definitions for surveillance of human monkeypox in the Democratic
455 Republic of Congo. *PLoS Negl Trop Dis*. 2017 Sep 11;11(9).
- 456 21. Hoff NA, Morier DS, Kisalu NK, Johnston SC, Doshi RH, Hensley LE, et al. Varicella
457 Coinfection in Patients with Active Monkeypox in the Democratic Republic of the
458 Congo. *Ecohealth*. 2017 Sep 1;14(3):564–74.
- 459 22. Hughes CM, Liu L, Davidson WB, Radford KW, Wilkins K, Monroe B, et al. A tale of two
460 viruses: Coinfections of monkeypox and varicella zoster virus in the democratic
461 republic of congo. *American Journal of Tropical Medicine and Hygiene*. 2021 Feb
462 1;104(2):604–11.
- 463 23. Ogoina D, Dalhat MM, Denué BA, Okowa M, Chika-Igwenyi NM, Yusuff HA, et al.
464 Clinical characteristics and predictors of human mpox outcome during the 2022
465 outbreak in Nigeria: a cohort study. *Lancet Infect Dis*. 2023 Dec 1;23(12):1418–28.
- 466 24. Nizigiyimana A, Ndikumwenayo F, Houben S, Manirakiza M, van Lettow M,
467 Liesenborghs L, et al. Epidemiological analysis of confirmed mpox cases, Burundi, 3
468 July to 9 September 2024. *Euro Surveill*. 2024 Oct 17;29(42).
- 469 25. Mbala PK, Huggins JW, Riu-Rovira T, Ahuka SM, Mulembakani P, Rimoin AW, et al.
470 Maternal and Fetal Outcomes among Pregnant Women with Human Monkeypox

471 Infection in the Democratic Republic of Congo. *Journal of Infectious Diseases*. 2017
472 Nov 1;216(7):824–8.

473 26. Sanchez Clemente N, Coles C, Paixao ES, Brickley EB, Whittaker E, Alfven T, et al.
474 Paediatric, maternal, and congenital mpox: a systematic review and meta-analysis.
475 *Lancet Glob Health*. 2024 Apr 1;12(4):e572–88.

476 27. Breman JG, Kalisa-Ruti, Steniowski M V., Zanotto E, Gromyko AI, Arita I. Human
477 monkeypox, 1970-79. *Bull World Health Organ*. 1980;58(2):165.

478 28. Hutin YJF, Williams RJ, Malfait P, Pebody R, Loparev VN, Ropp SL, et al. Outbreak of
479 Human Monkeypox, Democratic Republic of Congo, 1996 to 1997. *Emerg Infect Dis*.
480 2001 Jun;7(3):434–8.

481
482

483 **TABLES**

484

	All suspected cases (n = 511)	MPXV positive (n = 431)	MPXV negative (n = 80)	Adjusted p value
Demographics	
Age, years - median (IQR)	22 (14-29)	22 (17-29)	17 (4-31)	0.034
Age group – n (%)	0.005
0-4 years	84/511 (16%)	63/431 (15%)	21/80 (26%)	..
5-9 years	24/511 (5%)	18/431 (4%)	6/80 (8%)	..
10-14 years	22/511 (4%)	14/431 (3%)	8/80 (10%)	..
15-34 years	311/511 (61%)	279/431 (65%)	32/80 (40%)	..
35-49 years	58/511 (11%)	52/431 (12%)	6/80 (8%)	..
≥ 50 years	12/511 (2%)	5/431 (1%)	7/80 (9%)	..
Female– n (%)	241/511 (47%)	205/431 (47%)	36/80 (45%)	0.871
Occupation – n (%)	0.005
Sex worker	57/498 (11%)	53/419 (13%)	4/79 (5%)	..
Mine worker	106/498 (21%)	100/419 (24%)	6/79 (8%)	..
Healthcare worker	4/498 (1%)	4/419 (1%)	0/79 (0%)	..
Barman	6/498 (1%)	6/419 (1%)	0/79 (0%)	..
Teacher	3/498 (1%)	2/419 (1%)	1/79 (1%)	..
Student	53/498 (11%)	40/419 (2%)	13/79 (17%)	..
Services	87/498 (18%)	70/419 (17%)	8/79 (10%)	..
Manual worker	42/498 (8%)	35/419 (8%)	7/79 (9%)	..
Unemployed	6/498 (1%)	2/419 (1%)	4/79 (5%)	..
Exposure
Exposure to animal reservoir [£] – n (%)	63/441 (14%)	58/366 (16%)	5/75 (7%)	0.105
Sex in the previous 3 weeks – n (%)	324/402 (81%)	293/348 (84%)	31/54 (57%)	0.001
# of partners – median (IQR)	1 (1-3)	1 (1-3)	1 (1-1)	0.055
Engaged in transactional sex	143/369 (39%)	135/318 (42%)	8/51 (16%)	0.003
Consistent use of condoms [§]	13/311 (4%)	12/280 (4%)	1/31 (3%)	1.000
Contact with suspected or confirmed case – n (%)	286/510 (56%)	253/430 (59%)	33/80 (41%)	0.015
contacts per participant, n – median (IQR)	1 (1-2)	1 (1-2)	1 (1-2)	1.000
Multiple or continuous exposure	255/270 (94%)	225/239 (94%)	30/31 (97%)	1.000
Time since last exposure, days – median (IQR)	4 (1-10)	4 (1-10)	1 (1-5)	0.006
Relation with the contact [#] – n (%)	0.020
Family (same household)	144/279 (52%)	121/247 (49%)	23/32 (72%)	..
Family (different household)	12/279 (4%)	7/247 (3%)	5/32 (16%)	..
Neighbor	19/279 (7%)	17/247 (7%)	2/32 (6%)	..
Colleague	88/279 (32%)	81/247 (33%)	7/32 (22%)	..
Sexual	50/279 (18%)	50/247 (20%)	0/32 (0%)	..
Sexual partner	11/279 (4%)	11/247 (5%)	0/32 (0%)	..
Client of sex worker	17/279 (6%)	17/247 (7%)	0/32 (0%)	..
Sex worker	21/279 (8%)	21/247 (9%)	0/32 (0%)	..
Patient of the participant	2/279 (1%)	2/247 (1%)	0/32 (0%)	..

It is made available under a [CC-BY-NC-ND 4.0 International license](https://creativecommons.org/licenses/by-nc-nd/4.0/) .

Other	5/279 (2%)	5/247 (2%)	0/32 (0%)	..
Type of exposure§ – n (%)
Prolonged (> 15 min) discussion	274/286 (96%)	243/253 (96%)	31/33 (94%)	0-809
Direct skin to skin contact	279/286 (98%)	246/253 (97%)	33/33 (100%)	1-000
Sexual contact	114/286 (40%)	107/253 (42%)	7/33 (21%)	0-058
Care giving	67/286 (23%)	57/253 (23%)	10/33 (30%)	0-562
Sharing meals and/or eating utensils	254/286 (89%)	227/253 (90%)	27/33 (82%)	0-363
Sharing bed and/or bedlinen	197/286 (69%)	176/253 (70%)	21/33 (64%)	0-733
Sharing clothes	36/286 (13%)	29/253 (12%)	7/33 (21%)	0-258

Data are median and IQR for numeric variables and n/N (%) for categorical variables. N signifies the number of included individuals with available data. [‡]Exposure to animal reservoir is defined as involvement in activities such as hunting, capturing, or consuming rodents, eating bushmeat, or handling or consuming animals found dead. [§]Consistent use of condoms means the use of condoms for (nearly) all sexual contact. [#]Spouses were reported as family members. The sum exceeds 100% because the relationship is defined per index case, 1 participant can have > 1 index case. [‡]Multiple answers per participant are possible, the numerator indicates the number of participants that had the specific exposure type with at least one index case.

Abbreviations: IQR = interquartile range, min = minutes, MPXV = monkeypox virus

Table 1: Demographic profile and exposure risk of suspect mpox cases in Kamituga, DRC, by infection status

485

486

487

488

	All confirmed cases (n = 431)	Per age category (years)		
		0-4 (n = 63)	5-14 (n = 32)	≥15 (n = 336)
Medical history
Childhood smallpox vaccination – n (%)	7/308 (2%)	7/308 (2%)
Previous mpox* – n (%)	2/420 (1%)	0/62 (0%)	0/32 (0%)	2/326 (1%)
Comorbidities – n (%)	18/422 (4%)	0/61 (0%)	2/32 (6%)	16/329 (5%)
HIV	6/422 (1%)	0/61 (0%)	1/32 (3%)	5/329 (2%)
Under ART	3/6 (60%)	..	1/1 (100%)	2/4 (50%)
Tuberculosis	5/431 (1%)	0/63 (0%)	1/32 (3%)	4/336 (1%)
Diabetes	1/431 (0%)	0/63 (0%)	0/32 (0%)	1/336 (0%)
Chronic liver disease	1/431 (0%)	0/63 (0%)	1/32 (3.1)	0/336 (0%)
Chronic pulmonary disease	3/431 (1%)	0/63 (0%)	0/32 (0%)	3/336 (1%)
Rheumatic disease	1/431 (0%)	0/63 (0%)	0/32 (0%)	1/336 (0%)
Arterial hypertension	2/431 (1%)	0/63 (0%)	0/32 (0%)	2/336 (1%)
Malnutrition# – n (%)	10/375 (3%)	5/56 (9%)	3/28 (11%)	2/291 (1%)
Moderate malnutrition	9/375 (2%)	4/56 (7%)	3/28 (11%)	2/291 (1%)
Severe malnutrition	1/375 (0%)	1/56 (2%)	0/28 (0%)	0/291 (0%)
Pregnancy – n (%)	21/205 (10%)	0 (0%)	0 (0%)	21/161 (13%)
1st trimester	5/20 (25%)	5/20 (25%)
2nd trimester	10/20 (50%)	10/20 (50%)
3rd trimester	5/20 (25%)	5/20 (25%)
Clinical presentation
Symptoms onset, days – median (IQR)
Any symptom	7 (5-10)	6 (3-8)	5 (4-7)	8 (6-10)
Lesions	5 (4-7)	4 (3-6)	3 (3-4)	5 (4-7)
Prodromal phase [‡] – n (%)	346/395 (88%)	40/52 (77%)	23/29 (79%)	283/314 (90%)
Symptoms – n (%)
Fatigue	384/429 (90%)	53/62 (86%)	28/32 (88%)	303/335 (90%)
Malaise	320/428 (75%)	34/61 (56%)	26/32 (81%)	260/335 (78%)
Myalgia	301/423 (71%)	31/57 (54%)	21/31 (68%)	249/335 (74%)
Pain associated with lesions	333/426 (78%)	40/59 (68%)	26/32 (81%)	267/335 (80%)
Itching	390/426 (92%)	52/59 (88%)	31/32 (97%)	307/335 (92%)
Cough	150/427 (35%)	30/61 (49%)	9/32 (28%)	111/334 (33%)
Shortness of breath	59/428 (14%)	12/61 (20%)	0/32 (0%)	47/335 (14%)
Anorexia	244/429 (57%)	22/62 (36%)	22/32 (69%)	200/335 (60%)
Throat ache / dysphagia	233/426 (55%)	11/59 (19%)	23/32 (72%)	199/335 (59%)
Abdominal pain	128/424 (30%)	7/58 (12%)	10/32 (31%)	111/334 (33%)
Nausea / vomiting	97/428 (23%)	7/61 (12%)	9/32 (28%)	81/335 (24%)
Diarrhea	54/428 (13%)	7/61 (12%)	3/32 (9%)	44/335 (13%)
Headache	249/422 (59%)	2/56 (4%)	18/32 (56%)	229/334 (69%)
Confusion	12/428 (3%)	1/61 (2%)	2/32 (6%)	9/335 (3%)
Convulsions	1/429 (0%)	1/62 (2%)	0/32 (0%)	0/335 (0%)
Eye pain	85/426 (20%)	0/60 (0%)	4/32 (13%)	81/334 (24%)

It is made available under a [CC-BY-NC-ND 4.0 International license](https://creativecommons.org/licenses/by-nc-nd/4.0/) .

Visual problems	42/426 (10%)	0/60 (0%)	0/31 (0%)	42/335 (13%)
Rectal pain	46/424 (11%)	1/59 (2%)	0/31 (0%)	45/334 (14%)
Dysuria	168/425 (40%)	1/58 (2%)	1/32 (3%)	166/335 (50%)
Hematuria	22/428 (5%)	1/61 (2%)	0/32 (0%)	21/335 (6%)
Genital pain	117/229 (51%)	1/58 (2%)	0/32 (0%)	116/221 (53%)
Vital signs – n (%)
Temperature > 38 °C	21/424 (5%)	4/62 (7%)	2/32 (6%)	15/330 (5%)
Tachycardia [¶]	59/416 (14%)	5/56 (9%)	13/31 (42%)	41/329 (13%)
Tachypnea [¶]	110/365 (30%)	23/54 (43%)	12/25 (48%)	75/286 (26%)
MAP < 60 mmHg	5/397 (1%)	2/35 (6%)	2/31 (7%)	1/331 (0%)
Oxygen saturation < 94%	9/417 (2%)	2/61 (3%)	1/32 (3%)	6/324 (2%)
Capillary refill > 2 sec	18/400 (5%)	3/59 (5%)	3/28 (11%)	12/313 (4%)
Skin lesions – n (%)	417/428 (97%)	59/62 (95%)	32/32 (100%)	326/334 (98%)
Active lesions [‡]	414/431 (96%)	58/63 (92%)	32/32 (100%)	324/336 (96%)
Rash pattern
Generalized [‡]	141/414 (34%)	14/58 (24%)	11/32 (34%)	116/324 (36%)
Predominantly genital [‡]	89/413 (22%)	1/58 (2%)	1/32 (3%)	87/323 (27%)
Only genital	37/414 (9%)	1/58 (2%)	0/32 (0%)	36/324 (11%)
Lesion distribution
Head and neck	298/431 (78%)	48/63 (83%)	26/32 (81%)	224/336 (69%)
Chest	228/431 (61%)	31/63 (53%)	24/32 (75%)	173/336 (53%)
Abdomen	241/431 (62%)	36/63 (62%)	22/32 (69%)	183/336 (57%)
Back	270/431 (71%)	46/63 (79%)	23/32 (72%)	201/336 (62%)
Arms	329/431 (83%)	48/63 (83%)	28/32 (88%)	253/336 (78%)
Palms of the hands	167/431 (42%)	19/63 (33%)	17/32 (53%)	131/336 (40%)
Legs	288/431 (74%)	43/63 (74%)	26/32 (81%)	219/336 (68%)
Soles of the feet	100/431 (20%)	11/63 (19%)	5/32 (16%)	84/336 (26%)
Genital	328/431 (61%)	17/63 (29%)	20/32 (63%)	291/336 (90%)
Anal	136/431 (29%)	14/63 (25%)	9/32 (28%)	113/336 (35%)
Type
Macule	62/414 (15%)	15/58 (26%)	4/32 (13%)	43/324 (13%)
Papule	222/414 (54%)	42/58 (72%)	24/32 (75%)	156/324 (48%)
Vesicle	291/414 (70%)	27/58 (47%)	15/32 (47%)	249/324 (77%)
Small pustule	178/414 (43%)	23/58 (40%)	11/32 (34%)	144/324 (44%)
Umbilicated pustule	156/414 (38%)	6/58 (10%)	8/32 (25%)	142/324 (44%)
Ulcer	94/414 (23%)	2/58 (3%)	3/32 (9%)	89/324 (28%)
Crust	162/414 (39%)	15/58 (26%)	5/32 (16%)	142/324 (44%)
Scar	51/414 (12%)	5/58 (9%)	2/32 (6%)	44/324 (14%)
Monomorphic [‡]	88/414 (21%)	22/58 (38%)	14/32 (44%)	52/324 (16%)
Complex lesions [‡]	98/411 (24%)	1/58 (2%)	3/32 (9%)	94/321 (29%)
Total lesion count – median (IQR)	42 (17-94)	50 (30-108)	103 (27-186)	38 (16-83)
Mucosal lesions – n (%)	338/414 (82%)	25/58 (43%)	26/32 (81%)	287/324 (89%)
Oral	102/412 (25%)	11/58 (19%)	12/32 (38%)	79/322 (25%)
Tonsillar	187/410 (46%)	13/57 (23%)	19/32 (59%)	155/321 (48%)
Penile	149/215 (69%)	9/31 (29%)	6/16 (38%)	134/168 (80%)

It is made available under a [CC-BY-NC-ND 4.0 International license](https://creativecommons.org/licenses/by-nc-nd/4.0/) .

Vaginal	144/195 (74%)	6/26 (23%)	8/15 (53%)	130/154 (84%)
Lymphadenopathy – n (%)	295/414 (71%)	9/58 (16%)	22/32 (69%)	264/324 (82%)
Retro-auricular	48/414 (12%)	5/58 (9%)	8/32 (25%)	35/324 (11%)
Submandibular	90/414 (22%)	8/58 (14%)	15/32 (47%)	67/324 (21%)
Cervical	27/414 (7%)	1/58 (2%)	2/32 (6%)	24/324 (7%)
Supra clavicular	2/414 (1%)	0/58 (0%)	0/32 (0%)	2/324 (1%)
Axillar	23/414 (6%)	0/58 (0%)	1/32 (3%)	22/324 (7%)
Inguinal	260/414 (63%)	4/58 (7%)	10/32 (31%)	246/324 (76%)

Data are median and IQR for numeric variables and n/N (%) for categorical variables. N signifies the number of individuals with available data. *Previous mpox refers to suspected or confirmed MPXV infection, diagnosed at least 4 weeks prior to presentation. ±Prodromal phase refers to onset of other symptoms prior to onset of lesions. #Nutritional status is evaluated by age: severe malnutrition is defined as MUAC < 11.5 cm for children under 5 years old, BMI for age below -3 SD for children 5 to 19 years old and as BMI below 16 kg/m² for adults over 19 years old, moderate malnutrition is defined as MUAC 11.5 to 12.5 cm for children under 5 years old, BMI for age -2 to -3 SD for children 5 to 19 years old and as BMI 16 to 18 kg/m² for adults over 19 years old ¶Tachycardia is defined in relation to age: > 190 bpm for newborns 0 to 1 month, > 160 bpm for infants 1 to 11 months, > 140 bpm for 1 to 2 years, > 120 bpm for 3 to 7 years, > 100 bpm for older children, teens and adults. μTachypnea is defined in relation to age: > 40 brpm for newborns and infants 0 to 1 year, > 30 brpm for 1 to 7 years, > 25 brpm for older children to 12 years, > 20 brpm for teens and adults. £Active lesions are skin lesions that have not evolved to a crust or scar. €Generalized rash are skin lesions that are present on at least 8 out of ten body regions: head and neck, chest, abdomen, back, arms, palms of the hands, legs, soles of the feet, genital or anal. \$Predominantly genital rash means that the number of skin lesions on the genitals represent > 50% of the total lesion count. §Monomorphic refers to skin lesions of the same size and appearance. LComplex lesions refers to lesions that are confluent, greater than 2 cm along the largest diameter and/or necrotizing.

Abbreviations: ART = antiretroviral therapy, BMI = body mass index, bpm = beats per minute, brpm = breaths per minute, HIV = human immunodeficiency virus, IQR = interquartile range, MAP = mean arterial pressure, MPXV = monkeypox virus, MUAC = mid upper arm circumference, SD = standard deviation, WHO = world health organization

Table 2: Medical history and clinical presentation of confirmed mpox cases in Kamituga, DRC (2024) in relation to age categories

489

490

491

492

	All confirmed cases (n=315)	Per age category (years)		
		0-4 (n=39)	5-14 (n=19)	≥15 (n=257)
Duration of hospitalization – median (IQR)	6 (5-9)	5 (4-7)	4.5 (4-5)	7 (5-9)
Maximum lesion count – median (IQR)	59 (23-139)	54 (14-227)	100 (48-167)	58 (23-121)
WHO severity score – n (%)
Mild (< 25 lesions)	78/311 (25%)	12/38 (32%)	3/19 (16%)	63/254 (25%)
Moderate (25-99 lesions)	126/311 (41%)	10/38 (26%)	6/19 (32%)	110/254 (43%)
Severe (100-250 lesions)	60/311 (19%)	8/38 (21%)	9/19 (47%)	43/254 (17%)
Grave (> 250 lesions)	47/311 (15%)	8/38 (21%)	1/19 (5%)	38/254 (15%)
Any Complications – n (%)	200/315 (64%)	9/39 (23%)	6/19 (32%)	185/257 (72%)
Cutaneous Complications – n (%)	125/315 (40%)	4/39 (10%)	6/19 (32%)	115/257 (45%)
Superinfection – n (%)	57/315 (18%)	3/39 (8%)	3/19 (16%)	51/257 (20%)
Abscess – n (%)	21/315 (7%)	1/39 (3%)	1/19 (5%)	19/257 (7%)
Complex lesion _‡ – n (%)	102 (32%)	2 (5%)	3 (16%)	97 (38%)
Lymph node abscess– n (%)	6/315 (2%)	0/39 (0%)	0/19 (0%)	6/257 (2%)
Genito-urinary complications – n (%)	173/315 (55%)	1/39 (3%)	1/19 (5%)	171/257 (67%)
Complex lesions _‡ of genital mucosa	120/315 (38%)	0/39 (0%)	1/19 (5%)	119/257 (46%)
Urinary retention	24/315 (8%)	1/39 (3%)	0/19 (0%)	23/257 (9%)
Urethritis	121/315 (38%)	1/39 (3%)	0/19 (0%)	120/257 (47%)
Genital edema	121/315 (38%)	1/39 (3%)	1/19 (5%)	119/257 (46%)
Paraphimosis	2/315 (1%)	0/39 (0%)	0/19 (0%)	2/257 (1%)
Proctitis	15/315 (5%)	0/39 (0%)	0/19 (0%)	15/257 (6%)
Cardio-pulmonary complications – n (%)	13/315 (4%)	7/39 (18%)	0/19 (0%)	6/257 (2%)
Hemodynamic instability	3/315 (1%)	2/39 (5%)	0/19 (0%)	1/257 (0%)
Dehydration	11/315 (4%)	7/39 (18%)	0/19 (0%)	4/257 (2%)
Hypervolemia	1/315 (0%)	0/39 (0%)	0/19 (0%)	1/257 (0%)
Respiratory distress	2/315 (1%)	2/39 (5%)	0/19 (0%)	0/257 (0%)
Neuro-ophthalmic complications – n (%)	9/315 (3%)	2/39 (5%)	0/19 (0%)	7/257 (3%)
Meningitis or encephalitis	2/315 (1%)	2/39 (5%)	0/19 (0%)	0/257 (0%)
Conjunctivitis or uveitis	8/315 (3%)	1/39 (3%)	0/19 (0%)	7/257 (3%)
Vision loss or reduced	0/315 (0%)	0/39 (0%)	0/19 (0%)	0/257 (0%)
Metabolic [#] complications – n (%)	0/315 (0%)	0/39 (0%)	0/19 (0%)	0/257 (0%)

Data are median and IQR for numeric variables and n/N (%) for categorical variables. N signifies the number of individuals with available data. ‡ Complex lesions refers to lesions that are confluent, greater than 2 cm along the largest diameter and/or necrotizing. #Registered metabolic complications include hypoglycemia and icterus.

Table 3. Complications at any timepoint during hospitalization for mpox treatment in Kamituga, DRC (2024)

493

494

495

496 Table 4

	Day 29 (n =208)	Day 59 (n = 102)
Deterioration of general health since mpox – n (%)	2/206 (1%)	0/102 (0%)
Medical care for ongoing health issues – n (%)	11/81 (14%)	3/38 (8%)
Persistent symptoms
Any – n (%)	78/208 (38%)	38/103 (37%)
Constitutional – n (%)	20/208 (10%)	9/103 (9%)
Fatigue	9/207 (4%)	4/103 (4%)
Malaise	5/207 (2%)	0/103 (0%)
Myalgia	6/207 (3%)	0/103 (0%)
Headache	11/206 (5%)	5/100 (5%)
Anorexia	2/208 (1%)	2/102 (2%)
Skin – n (%)	40/208 (19%)	15/102 (15%)
Pain associated with lesions	5/208 (2%)	0/102 (0%)
Itching	36/207 (17%)	15/101 (15%)
Psychiatric – n (%)	13/208 (6%)	6/103 (6%)
Depression	1/208 (1%)	0/103 (0%)
Anxiety	13/208 (6%)	6/102 (6%)
Respiratory – n (%)	9/208 (4%)	6/103 (6%)
Cough	7/208 (3%)	6/103 (6%)
Shortness of breath	2/208 (1%)	0/103 (0%)
Gastro-intestinal – n (%)	11/208 (5%)	2/103 (2%)
Throat ache / dysphagia	5/208 (2%)	0/102 (0%)
Abdominal pain	5/206 (2%)	1/101 (1%)
Nausea / vomiting	2/208 (1%)	1/103 (1%)
Diarrhea	3/208 (1%)	0/103 (0%)
Rectal pain	1/208 (1%)	0/103 (0%)
Pain on defecation	2/207 (1%)	0/103 (0%)
Genito-urinary – n (%)	15/208 (7%)	4/103 (4%)
Dysuria	5/208 (2%)	0/103 (0%)
Genital pain	3/172 (2%)	1/87 (1%)
Dyspareunia	4/159 (3%)	2/86 (2%)
Vaginal discharge	4/84 (5%)	2/41 (5%)
Vaginal dryness	6/82 (7%)	4/41 (10%)
Adhesions of the foreskin	1/107 (1%)	0/52 (0%)
Painful erection	2/87 (2%)	0/45 (0%)
Eye – n (%)	22/207 (11%)	18/102 (18%)
Eye pain	9/204 (4%)	4/101 (4%)
Photophobia	14/203 (7%)	11/100 (11%)
Itching	15/206 (7%)	12/102 (12%)
Foreign body sensation	8/203 (4%)	9/99 (9%)
Reduced visual acuity	5/206 (2%)	5/101 (5%)
Blindness	0/207 (0%)	1/101 (1%)
Persistent lesions
Active skin lesions – n (%)	5/206 (2%)	1/103 (1%)
Scars – n (%)	153/208 (74%)	51/103 (50%)
Eye – n (%)	9/208 (4%)	2/103 (2%)
Eye lid edema	1/207 (1%)	1/102 (1%)

It is made available under a [CC-BY-NC-ND 4.0 International license](https://creativecommons.org/licenses/by-nc-nd/4.0/) .

Palpebral lesion	1/207 (1%)	1/102 (1%)
Conjunctival lesion	1/207 (1%)	2/102 (2%)
Conjunctivitis / uveitis	8/207 (4%)	2/102 (2%)

Data are n/N (%), with N representing the number of individuals with available data.

Table 4. Clinical sequelae at day 29 and day 59 after mpox diagnosis in Kamituga, DRC (2024)

497

498

499

500

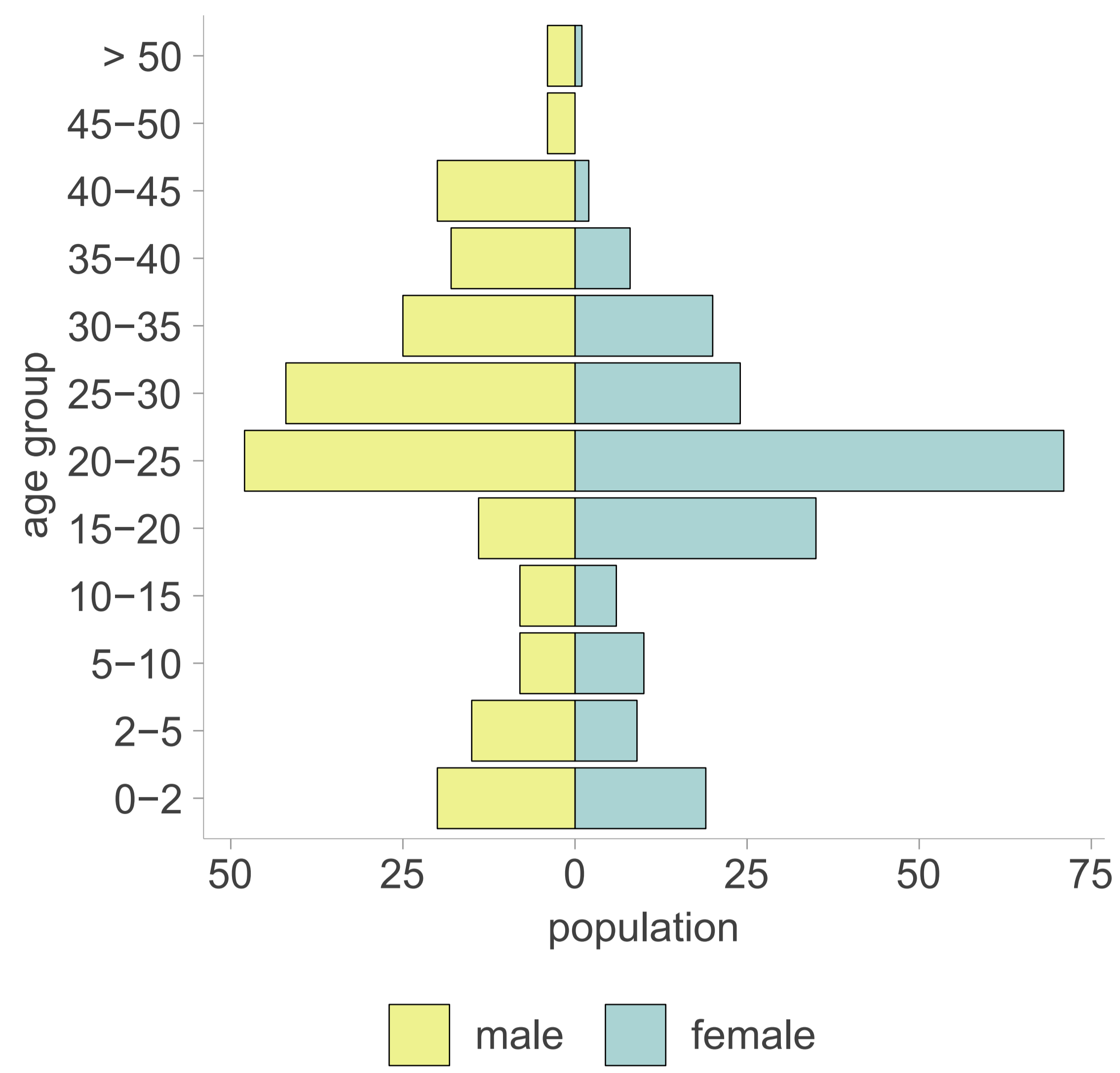
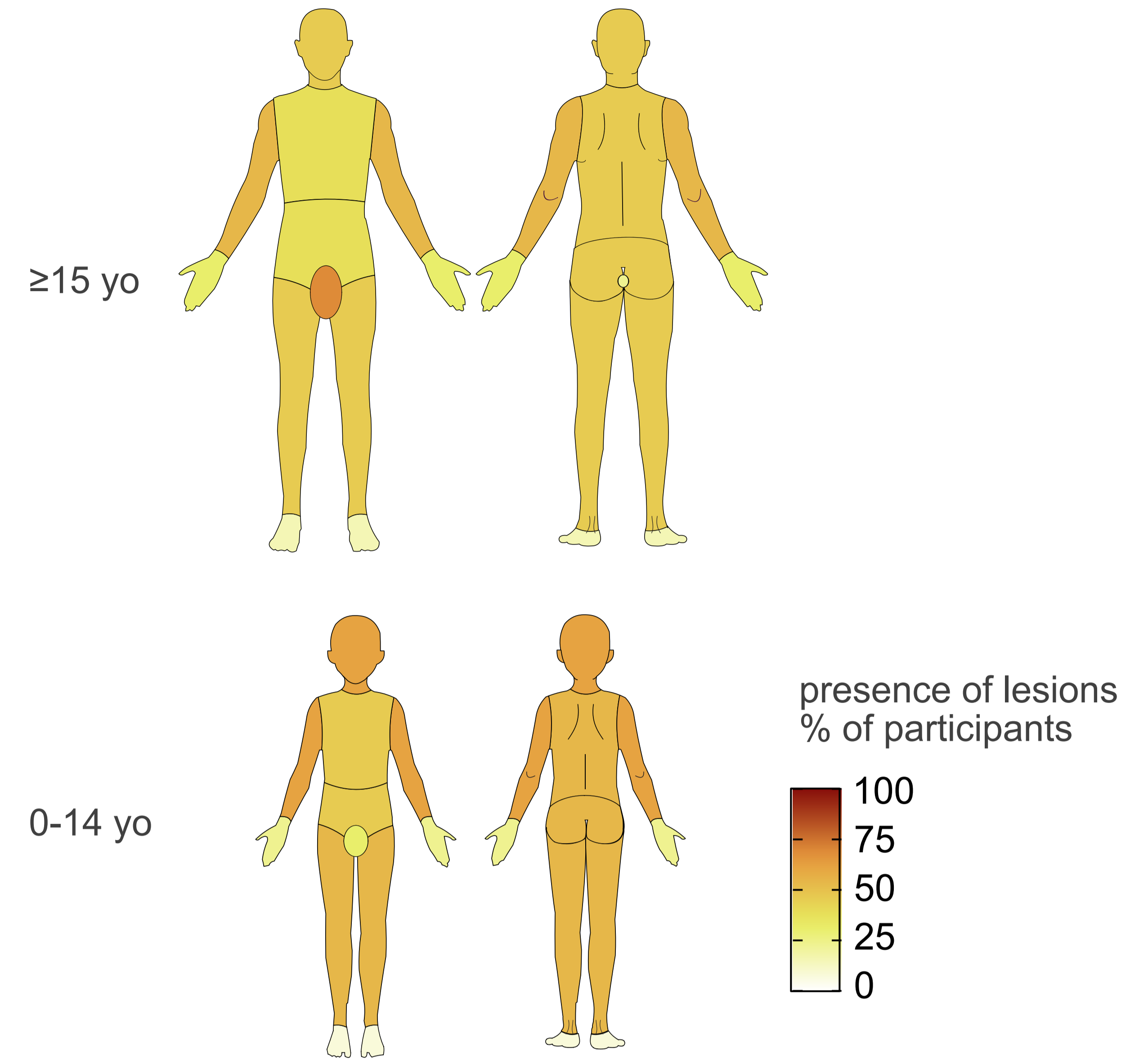
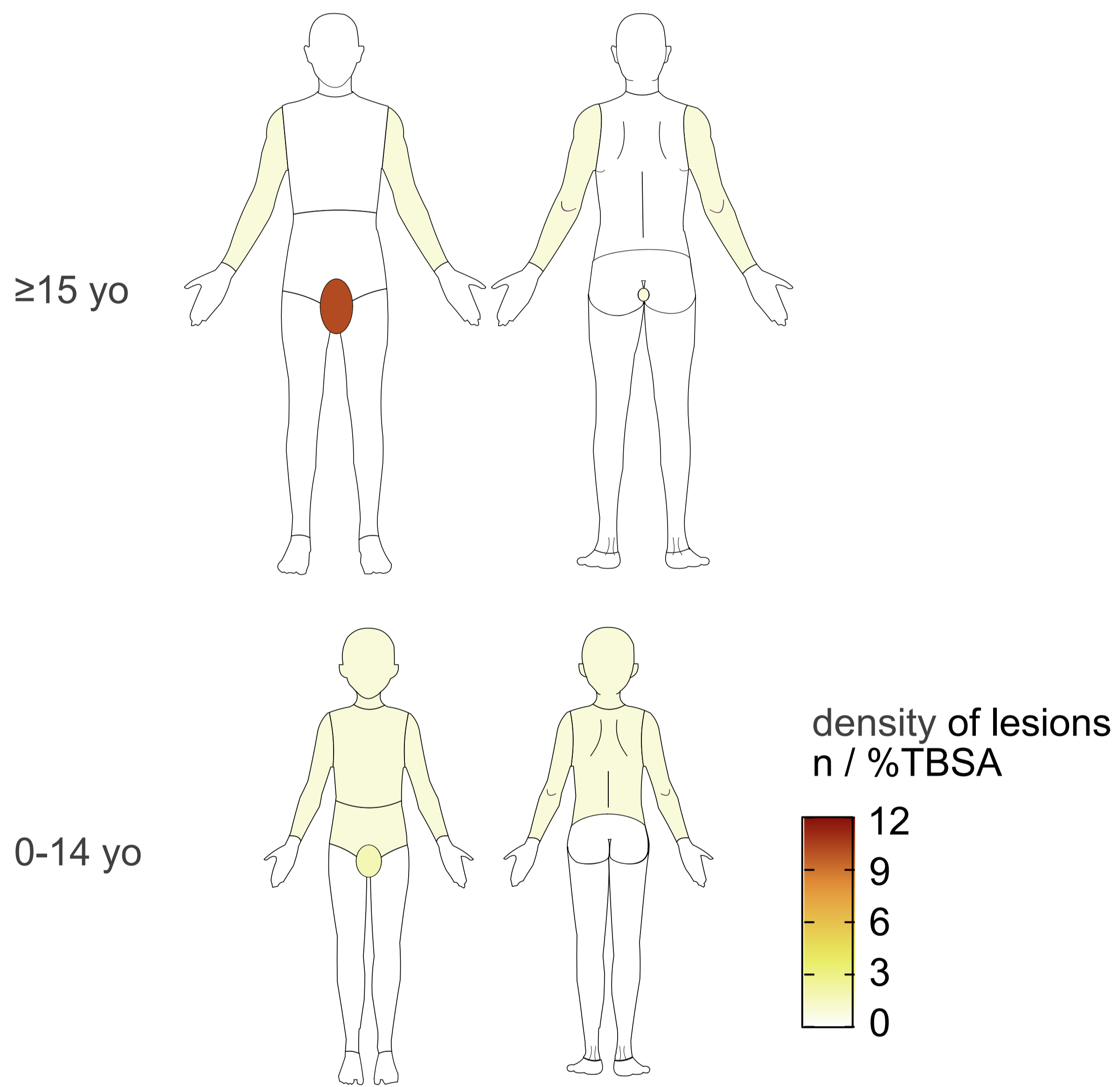
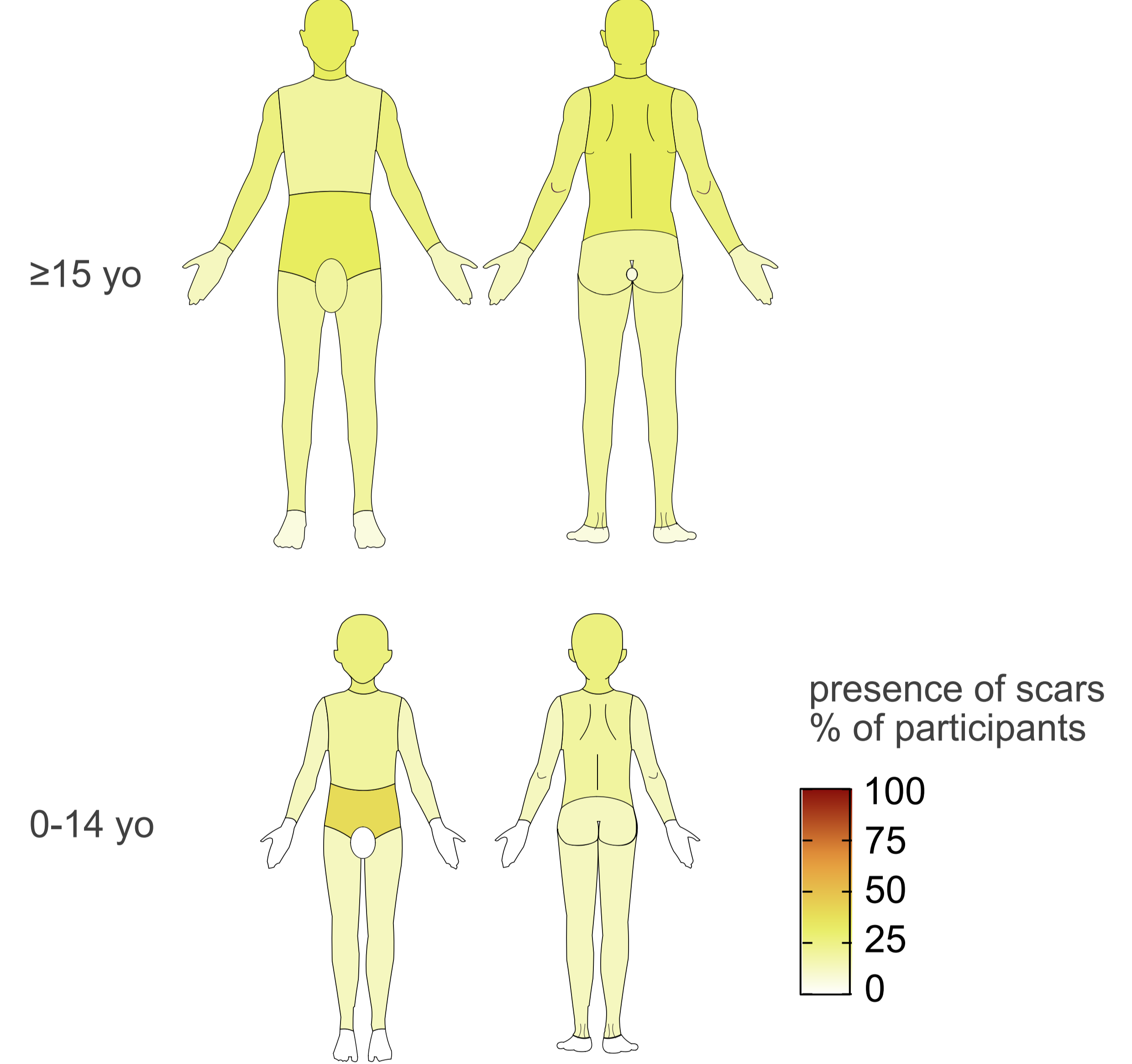
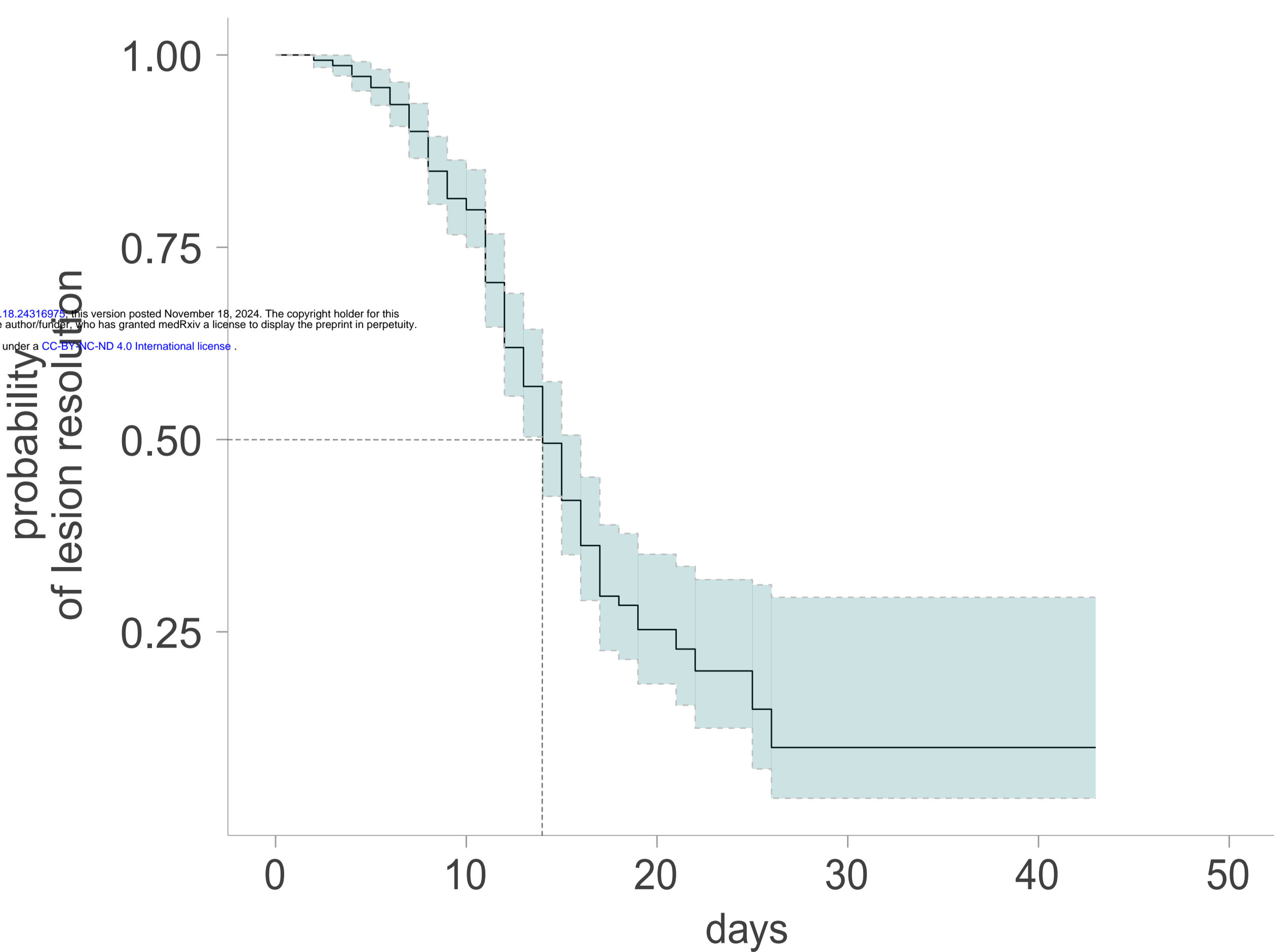
501 **FIGURES LEGENDS**

502

503 **Figure 1. Demographics, Clinical Presentation and Evolution of Clade 1b mpox, South-Kivu,**
504 **DRC** (A) Age and sex distribution of confirmed mpox participants, (B) Body map indicating
505 the proportion of participants with lesions in a given body region at inclusion for adults (\geq
506 15 years) and children 0-14 years. (C) Body map indicating density of skin lesions per body
507 region for individuals of 15 years old and above, and children aged 0 to 14 years old ,
508 expressed as mean number of lesions (n) per percentage of total body surface area (TBSA)
509 according to a modified Lund-Browder chart for estimated TBSA. (D) Body map indicating
510 the proportion of participants with scars in a given body region on day 59 after diagnosis
511 for adults (\geq 15 years) and children 0-14 years. (E) Kaplan-Meier estimates for time from
512 onset of active lesions to resolution, with 95% confidence interval. (F) Kaplan-Meier
513 estimates for time from onset of symptoms to resolution of all symptoms, with 95%
514 confidence Interval.

515

516 **Figure 2. Clinical images of skin and genital mpox lesions** (A) Papular, umbilicated and
517 ulcerated lesions on the hand. (B)Complex skin and genital mucosal lesion with labial
518 edema, surrounded by papules and umbilicated genital skin lesions in adult female. (C)
519 Complex genital skin lesion in adult female. (D) Umbilicated lesions with high lesion density
520 on the head and neck. (E) Genital mpox complicated with Fourniers gangrene in an adult
521 male. (F) Ulcerated and necrotic lesions on the penis and upper thigh in adult male.

A**B****C****D****E****F**