

Word count: 6196

Tables: 5

Figures: 5

The MobiliseMe study: A randomised controlled efficacy trial of a cognitive behavioural therapy smartphone application (ClearlyMe®) for reducing depressive symptoms in adolescents.

Bridianne O’Dea^{1,2}

Sophie H. Li²

Mirjana Subotic-Kerry²

Melinda R. Achilles²

Andrew J. Mackinnon²

Philip J. Batterham³

Helen Christensen^{2,4}

Anna Roberts²

Komal Nagendraprasad²

Zoe Dudley²

Benjamin Gillham²

Aliza Werner-Seidler²

1. Flinders University Institute for Mental Health and Wellbeing, College of Education, Psychology and Social Work, Flinders University, Adelaide, South Australia, Australia.
2. Black Dog Institute, University of New South Wales, Sydney, New South Wales, Australia.

NOTE: This preprint reports new research that has not been certified by peer review and should not be used to guide clinical practice.

THE MOBILISEME STUDY

3. Centre for Mental Health Research, Australian National University, Canberra, Australian Capital Territory, Australia.
4. Discipline of Psychiatry and Mental Health, Faculty of Medicine and Health, University of New South Wales, Sydney, New South Wales, Australia.

Corresponding author

Bridianne O’Dea

Flinders University Institute for Mental Health and Wellbeing, Flinders University, Adelaide, South Australia, Australia, 5042, Email: bridianne.odea@flinders.edu.au, P: +61 8 8201 2318

Declaration of funding and/or competing interests.

The ClearlyMe® app was developed and is owned by the Black Dog Institute, with the design and developed co-funded by a philanthropic donation from the Goodman Foundation. The MobiliseMe study was also supported by philanthropic funding from the Goodman Foundation and the National Health and Medical Research Council (NHMRC) Investigator Grants (BOD grant number MRF1197249, AWS grant number: GNT2008839, HC grant number GNT115614).

Author contributions.

BOD, AWS, HC, MRA, MSK conceived the project and were awarded funding. SHL, MRA, MSK and BOD designed the intervention. BOD, AWS, HC, PJB, AJM, SHL, MRA, MSK, PJB and AJM designed the trial and study protocol. SHL, MSK, MRA, AR coordinated trial recruitment and trial operations including the provision of guided and technical support, overseen by BOD and AWS. SHL and AWS provided clinical supervision to the trial. AJM

THE MOBILISEME STUDY

was the trial statistician and conducted all analyses. MRA, MSK, KN, ZD, BG conducted the qualitative analyses. BOD, MRA and MSK prepared the manuscript, and all authors reviewed.

Acknowledgements.

The authors would like to acknowledge the involvement of the adolescents in the trial. The authors would also like to acknowledge the Trial Data Safety and Monitoring Board members including Professor Jill M. Newby, Associate Professor Alexis E. Whitton, Associate Professor Michelle Tye, and Professor Andrew J. Mackinnon. The authors also acknowledge Dr Ashleigh Ticknell for providing administrative support in the guided use condition, as well as the clinical psychologists, Dr Samantha Tang, Dr Joanne Beames, Emily Upton and Britt Corkish who assisted with the trial safety protocols.

THE MOBILISEME STUDY

ABSTRACT

Aim: This trial evaluated the efficacy of a CBT smartphone application (ClearlyMe[®]) for reducing depressive symptoms in adolescents when delivered with and without guidance and when compared to an active control.

Design: An online three-arm, parallel-group randomised controlled trial. Ethical approval was provided by the University of New South Wales Human Research Ethics Committee.

Methods: Adolescents in Australia aged 12 to 17 years with mild to moderate depressive symptoms as measured by the Patient Health Questionnaire-9 Adolescent version (PHQ-A) who were not receiving treatment or experiencing recent or severe suicidality, had access to a smartphone, and parental consent were randomly allocated to receive (i) self-directed use of ClearlyMe[®], (ii) ClearlyMe[®] with SMS-guided support, or the active control (SMS-delivered psychoeducation content) for six weeks. Participants were not directly informed of their allocation and the statistician was blinded for analysis. Outcomes were assessed at baseline, post intervention (primary endpoint: 6-weeks post baseline) and follow-up (secondary endpoint: 4-months post baseline). Primary outcome was change in depressive symptoms from baseline to post intervention as measured by the PHQ-A. Intention-to-treat analyses used multilevel linear modelling.

Results: 569 adolescents (Mean age: 15.89, SD: 1.26, 74.2% female) were included in the analyses. The declines in depressive symptoms post intervention in the self-directed ($d=0.35$, 95%CI: -0.57 – -0.12) and guided conditions ($d=0.33$, 95%CI: -0.55 – -0.10) were significantly greater than the control. The effects of self-directed and guided were comparable. There were no differences between the conditions at follow-up for any outcomes. Secondary outcomes followed a similar pattern of change at both endpoints, although there were no differential effects for anxiety symptoms. The risk of adverse events

THE MOBILISEME STUDY

was almost double in the control when compared to the self-directed (IRR: 1.73, 95%CI: 1.15 – 2.62, $P=.009$) and guided conditions (IRR: 1.98 (95%CI: 1.27 – 3.08, $P=.002$).

Conclusions: ClearlyMe[®], when delivered with or without SMS-guided support, was efficacious for short term reductions in depressive symptoms in adolescents when compared to SMS-delivered psychoeducation.

Trial registration: Australian New Zealand Clinical Trials Registry

(ACTRN12622000131752). Universal Trial Number: U1111-1271-8519

Trial funding: The trial operations were funded by a philanthropic donation from the Goodman Foundation and investigators were funded by National Health and Medical Research Council Investigator Grants (BOD grant number MRF1197249, AWS grant number GNT2008839, HC grant number GNT115614).

KEYWORDS: Depression; Adolescent; Smartphone; Cognitive behaviour therapy; mobile health, mobile application, digital technology.

THE MOBILISEME STUDY

1. INTRODUCTION

Up to one third of adolescents (aged 10 to 19 years) worldwide experience elevated depressive symptoms and nearly one in ten have Major Depressive Disorder (MDD) ¹. Adolescent depression is associated with poorer outcomes in all domains of health, education, employment, and social functioning ²⁻⁴. The Internet can provide immediate and private access to evidence-based interventions, which can facilitate help-seeking, positive coping, and symptom reduction in adolescents with depression ^{5 6}. Digital Cognitive Behavioural Therapy (dCBT) is one type of Internet intervention that offers first-line psychological treatment for depressed adolescents ^{7 8}. To date, most dCBT has been delivered via sequential web-based programs on computer devices. Several clinical trials have endorsed the effectiveness of web-based CBT for reducing depressive symptoms in young people, with small effect sizes ⁹⁻¹². However, many of these programs have not had wide-scale uptake and reach among young people. Rapid shifts in personal device use and ownership have led to researchers and developers adapting dCBT for delivery via smartphone applications ¹³.

While smartphones may be superior to computers for accessibility, there are variations in user experience, design, and formatting that may impact the self-administration of effective CBT on these devices ¹⁴. There is evidence to support the feasibility of various smartphone-based interventions for improving mental health outcomes in adolescents, however, there are few trials confirming the efficacy of CBT-based apps for reducing depressive symptoms specifically ¹⁵⁻¹⁹. A meta-analysis of 12 trials of various smartphone-based interventions for adolescent mental health found small but significant effects for reducing symptoms of internalising disorders and CBT was the most common therapeutic approach within these apps ²⁰. In contrast, a meta-analysis of 36 trials of various types of smartphone apps that targeted depressive symptoms in adolescents found uncertain evidence of effects and very few of clinical importance, although, the two CBT-based apps led to significant short-term

THE MOBILISEME STUDY

improvements in depression ²¹. Similarly, another meta-analysis of 12 trials of smartphone apps for adolescent depression concluded there is insufficient evidence to support the use of these interventions, including the apps that used CBT principles ²². Few trials have been able to demonstrate symptom reductions at follow-up timepoints and few of the apps examined in trials have been disseminated publicly ²³. Together, the findings indicate that the design and content of many existing smartphone apps targeting depressive symptoms may be suboptimal ²².

The uptake of commercial or publicly accessible mental health apps for depression and anxiety has also been low. Over half of the top searched mental health apps have no active monthly users ²⁴ and CBT apps have had very low levels of market reach when compared to other mental health apps such as mindfulness ²⁵. This may be due to the lack of adolescents involved in the co-design of mental health apps ^{26 27}. Furthermore, depressive symptoms such as anhedonia and fatigue likely interfere with depressed adolescents' motivation to expend effort on self-directed treatments and their perceptions of value and reward in this process ²⁸. The role of guided support in facilitating uptake, engagement and positive treatment effects for smartphone apps in adolescents has also not yet been fully explored, with most prior trials examining only self-directed apps ^{23 29}. A meta-review on digital mental interventions for young people found that human-support tended to lead to greater effectiveness and adherence, although the review was not focused on smartphone apps specifically ³⁰. Thus, the potential of smartphone apps for offering effective early intervention for adolescent depression and the role of guided support in this process remains unclear.

1.1.Objectives of the current trial

This trial evaluated the efficacy of a CBT-based smartphone app (ClearlyMe[®]) for reducing depressive symptoms in adolescents by comparing self-directed with guided use and

THE MOBILISEME STUDY

an attention-matched control. The primary hypothesis was that relative to the control, participants who received ClearlyMe® (self-directed or guided) would have greater reductions in self-reported depressive symptoms between baseline and 6-weeks post baseline (primary endpoint), and from baseline to 4-month follow-up (secondary endpoint). Clinical importance was assessed by examining changes in clinical caseness of MDD across the conditions. This trial also examined the secondary effects of ClearlyMe® on anxiety symptoms, psychological distress, emotional well-being, quality of life, rumination, emotion regulation, and CBT skill acquisition. It was hypothesized that relative to the control condition, participants who received the ClearlyMe® app (self-directed or guided) would report greater improvements in the secondary outcomes at 6-weeks post baseline, and at 4-month follow-up. Finally, this trial examined participants' engagement with ClearlyMe®. It was hypothesised that participants who received guided support would have higher levels of engagement with the app than those who did not. The trial also included analyses to explore whether the efficacy of ClearlyMe® was moderated by baseline depression status, gender, and openness to smartphone delivered therapies. Together, the findings will establish the efficacy, safety, and potential utility of ClearlyMe® for disseminating first-line psychological treatment to English-speaking adolescents without clinician support.

2. METHODS

2.1 Design

A three-arm, parallel-group randomized controlled trial (RCT) with an equal allocation ratio was conducted. The reporting follows the CONSORT checklist for RCTs³¹ and the CONSORT extension for E-Health trials³². Outcomes were assessed at baseline, post intervention (primary endpoint: 6-weeks post baseline), and follow-up (secondary endpoint: 4-months post baseline). The sponsor for the trial was University of New South Wales

THE MOBILISEME STUDY

(UNSW) Sydney. Ethical approval was obtained from UNSW Human Research Ethics Committee (HC#210889). The trial protocol was prepared using SPIRIT guidelines and published prior to recruitment³³. The trial was prospectively registered with the Australian New Zealand Clinical Trials Registry (ACTRN12622000131752) and allocated a UTN U1111-1271-8519. All participants reached the primary endpoint by May 2023, and the secondary endpoint by July 2023.

2.2 Participants

Eligible participants were Australian-residing adolescents aged between 12 to 17 years old who had access to a smartphone and the Internet; an active email address and mobile phone number; could read English at Grade 7-8 level; consent from a parent or guardian; and self-reported mild to moderately-severe depressive symptoms at screening (i.e., total score on the Patient Health Questionnaire-9 for Adolescents [PHQ-A] ranged from 5 to 19). Participants who were receiving or planning to initiate psychological treatment for symptoms of depression or anxiety by a mental health professional; taking or planning to start prescribed medication for symptoms of depression or anxiety; reported current severe suicidal ideation (scoring ≥ 2 on item 9 of the PHQ-A at screening) or responded 'yes' to questions about serious thoughts or intentions of self-harm or suicide attempts within the past month were excluded.

2.3 Sample Size

The required sample size was 489 based on $\alpha=0.05$, power=0.8, small to medium within-group effect sizes for the conditions (psychoeducation $d=0.10$)³⁴, self-directed CBT ($d=0.35$)³⁵, and guided CBT ($d=0.65$)^{10 11}, and an attrition rate of 20% between baseline and primary endpoint.

THE MOBILISEME STUDY

2.4 Randomisation and blinding

Randomisation adhered to the International Council for Harmonisation guidelines³⁶. Participants were randomised after baseline to one of three trial conditions using an automated computerized randomization procedure within the Black Dog Institute Research Engine. A stratified randomization approach (1:1 ratio) with a block size of 6 ensured balance across age (12 to 14 years vs. 15 to 17 years) and symptom severity (mild [total score of ≤ 9 on the PHQ-A] vs. moderate to moderately-severe [total score of ≥ 10 on the PHQ-A]). Participants who withdrew from the trial or could not engage in the intervention were discontinued. While participants were not directly informed of their allocation, they may have deduced it from differences in the interventions. The statistician was blinded to participants' allocations for the primary outcome analyses and was unblinded for the intervention completion rates and exploratory moderator analyses. Staff who provided the guided support or trial safety procedures were unblinded to participant allocations but were not involved in data analysis.

2.5 Recruitment

Recruitment was active between May 2022 and March 2023 and consisted of paid adverts on social media (85% of participants recruited via Facebook, Instagram, TikTok and Snapchat), Google, posts on the Black Dog Institute's website (6% of participants), word of mouth (12%), email flyers to schools, other Australian mental health organisations and Black Dog Institute mailing lists (0%).

2.6 Procedure

THE MOBILISEME STUDY

The trial was completed entirely online. Interested adolescents were directed to the study webpage to complete the eligibility screener. Eligible participants then completed the Adolescent Participant Information and Consent Form (A-PICF). Ineligible participants were provided with information on mental health services. Upon the provision of consent, adolescents were asked to register to the Black Dog Institute Research Engine by providing their full name, email, mobile phone number, date of birth, and account password. Adolescents were then provided with the Parent Participant Information and Consent Form (P-PICF), which required their parents' contact details and electronic signature. The P-PICF was required to be completed within one week and three reminders were sent. When an invalid parent email address was provided, researchers contacted the adolescent to confirm the parent's details. Consented adolescents were to complete the baseline assessment within 7 days. Those who failed to provide parent consent or complete baseline within this time were withdrawn from the study and not randomised. Once baseline was completed, participants were randomized to one of three study conditions and received instructions via email and Short Message Service (SMS). At the primary and secondary endpoints, participants were invited via email and SMS to complete the study assessments. Each assessment took approximately 20 minutes, was available for 7 days, and could be completed on any Internet device. Participants received two reminders and were reimbursed 10AUD for each assessment completed (maximum total 30AUD). Participants in the guided condition received an additional 25AUD upon randomisation to the SMS costs. All participants were instructed to use the Get Help section in the app if additional mental health support was required during the trial, and this was not monitored by staff.

2.7 Conditions

THE MOBILISEME STUDY

Self-directed intervention condition. ClearlyMe[®] is a free, self-directed and non-sequential CBT-based smartphone app designed to provide therapeutic content and self-management strategies for symptoms of depression. The app was created by researchers at the Black Dog Institute, UNSW Sydney, through an extensive human-centred co-design process with adolescents, clinicians, and parents³⁷. The app delivers CBT-based content through 37 ultra-brief activities (i.e., lessons) that each take less than 10 minutes to complete. These lessons provide psychoeducation, cognitive restructuring, emotion awareness, activity scheduling, relaxation, mindfulness, and other psychological strategies. Lessons were curated into 9 psychological themes (i.e., collections) that focus on specific symptoms or therapy goals. Each collection takes approximately 20 minutes to complete. Other psychological therapy features within the app including mood tracking (MoodCheck), in-the-moment coping strategies (MindHacks), and stories (pre-recorded video content created by adolescents with lived experience of mental health problems). Engagement features included in-app reminders, saving and favouriting functions. The app also included a “Get Help” section that directed users to additional mental health support services and information (see Supplementary Material 1 for more detail). Participants were instructed to complete at least one collection per week for 6 weeks. Participants could complete the collections in any order. All participants received a weekly SMS reminder (total of 6) to promote adherence to these instructions. Programmed in-app notifications also prompted participants to reengage with the app after 7 days of inactivity, but notifications were only sent to participants who had enabled these during onboarding. Participants who failed to download the app within 7 days of randomisation were sent one email and one SMS reminder. No additional contact from the research team was provided unless technical support was requested.

Guided support intervention condition. Participants in this condition were provided with the same instructions and expectations for use and app access as the self-directed

THE MOBILISEME STUDY

condition. However, these participants also received a weekly guided support chat session delivered by SMS. All SMS chats were delivered by non-clinical research staff using a standard script and decision flow chart. The SMS chats were designed to encourage participants to comply with the instructions for use and complete one collection per week. As such, the chats focused on technical support with low-intensity motivational coaching to overcome potential barriers to use. The chat sessions were designed to be completed in one sitting, lasting approximately 20 minutes, and to cease according to the chat script and decision flow chart. Chat sessions occurred between 3:30pm and 7pm Mondays to Thursday AEST. Staff initiated one additional chat attempt within two days if there was no response by participants to the initial SMS. The weekly chats were initiated regardless of prior participant responsiveness. All sessions and adherence to the script were recorded and had oversight from experienced clinical psychologists.

Control condition. This study utilised an active attention-matched control condition consisting of 6 digital psychoeducation PDF flyers that were delivered weekly via SMS. The flyer content was adapted from information used in past adolescent mental health trials³⁴ and focused on common mental health problems, self-care activities, and included links to Australian mental health organisations. No additional contact from the research team was provided unless technical support was requested. Participants in the control condition were granted six weeks of access to ClearlyMe[®] after completion of the 4-month follow-up.

2.8 Outcomes

Depressive symptoms. Change in depressive symptoms as measured by total scores (range: 0 to 27) on the 9-item self-report PHQ-A, which has been validated for use in adolescents was the pre-specified primary outcome variable. Likely cases of Major Depressive Disorder (MDD) are indicated by the total score cut point of 15.

THE MOBILISEME STUDY

Generalized anxiety symptoms. Anxiety symptoms were assessed using total scores (range: 0 to 21) on the 7-item self-report Generalized Anxiety Disorder-7 scale (GAD-7), which has been validated for use in adolescents (trial $\alpha = .79$).

Psychological Distress. This was assessed using total scores (range: 5 to 25) on 5-item self-report Distress Questionnaire-5 (DQ-5), which has been validated to assess the frequency of psychological distress in adolescents in the past 30 days (trial $\alpha = .70$)³⁸.

Emotional wellbeing. This was assessed using total scores (range: 7 to 35) on the 7-item self-report Short Warwick-Edinburgh Mental Wellbeing Scale (SWEMWBS), which has been validated to assess adolescents' wellbeing in the past 14 days (trial $\alpha = .73$).

Quality of life. This was assessed using total scores (range: 9 to 45) on the 9-item self-reported Child Health Utility 9D (CHU-9D), which has been validated to assess health-related quality of life in adolescents across nine domains: worry, sadness, pain, tiredness, annoyance, schoolwork/homework, sleep, daily routine, and ability to join activities on the day they completed the survey (trial $\alpha = .77$).

Rumination. This was assessed using the 10-item self-report Ruminative Responses Scale – short version (RRS), which is validated to assess how adolescents typically react when feeling down, sad or depressed. The scale comprises two subscales: reflection and brooding. Items were summed to generate two sub-totals and an overall score (range: 10 to 40, trial $\alpha = .74$).

Emotion regulation. The 10-item Emotion Regulation Questionnaire for Children and Adolescents (ERQ-CA) evaluated the use of cognitive reappraisal (6-items) and expressive suppression (4-items) as emotion regulation strategies. Subscale items were summed to produce a cognitive reappraisal score (range: 6 to 30, trial $\alpha = .83$) and expressive suppression score (range: 4 to 20, trial $\alpha = .67$). Higher scores indicate greater utilisation of each emotion regulation strategy.

THE MOBILISEME STUDY

CBT skill acquisition. The 16-item Cognitive Behavioural Therapy Skills Questionnaire (CBTSQ) assessed the utilisation of cognitive behavioural skills. The measure consists of two subscales: cognitive restructuring (9-items, range: 9 to 45) and behavioural activation (7-items, range: 7 to 35). Higher scores indicate greater utilisation of CBT skills (trial $\alpha = .84$).

Engagement with ClearlyMe®. Uptake was measured by the proportion of participants in the self-directed and guided conditions who downloaded the ClearlyMe® app. Adherence was measured by the number of collections (out of 9) completed within the six weeks of allocated use. The number of lessons completed (out of 37) was also measured. The 6-item self-reported Digital Working Alliance Inventory (DWAI) was used to assess three core domains of digital technology use (goals, tasks and bond) across the two intervention conditions. Items were summed to generate a total score (range: 6 to 42) with higher scores indicating greater alliance (trial $\alpha = .88$). This was measured in the ClearlyMe® conditions post intervention only.

Program satisfaction and barriers to use. Assessed post intervention using a purpose-built 11-item measure of participants' satisfaction, experience and perceived helpfulness of their allocated intervention^{34 39}. The first 8 items prompted participants to agree or disagree with statements assessing satisfaction and experience with the intervention. Participants also rated the overall helpfulness of their allocated intervention on a 5-point Likert scale. Two free response questions examined the helpful aspects of the digital program (e.g., In what ways did the intervention help you?) and suggestions for improvement (e.g., What would make the intervention better?). The Digital Program Barriers questionnaire^{34 39} assessed participants' experiences of various barriers to the allocated interventions post intervention, including technical issues, accessibility, and individual factors (answered 'yes' or 'no').

THE MOBILISEME STUDY

Background characteristics. Date of birth, gender (female, male, non-binary, different identity, free response option), Aboriginal or Torres Strait Islander identity (yes, no, prefer not to say) and/or Lesbian, Gay, Bisexual, Transgender, Queer and/or Intersex identity (yes, no, I'd prefer not to say), home state or territory, categorical descriptor of home location (metropolitan, regional, or rural/remote), and school grade. Participants were asked whether they had (i) been diagnosed with depression and/or anxiety by a health professional, (ii) received psychological treatment for a mental health problem or mental illness from a health professional, (iii) taken prescribed medication for a mental health problem or mental illness like depression or anxiety, (iv) felt like they needed help for a mental health issue like depression or anxiety. Participants were asked to report whether they have ever used any mobile app to help with their emotional wellbeing or mental health (yes, no, I'd rather not say), and if yes, whether they found it helpful (yes, no). Participants were asked to rate their openness to smartphone applications for emotional wellbeing using a 5-point scale ranging from not at all (1) to extremely (5).

2.9 Data collection and analysis

Trial data was collected on the Black Dog Institute Research Engine. The final sample for analysis included all participants regardless of whether they accessed their allocated intervention. All statistical analyses were conducted in Stata. The primary analysis was by intention-to-treat. For the primary outcome, a mixed model repeated measures ANOVA was conducted to account for missing data and to include all available data for participants analysed in the trial. This approach was used to yield unbiased estimates of intervention effects in the assumption that data were missing at random. The continuous secondary outcomes were examined using the same approach. To determine changes in likely cases of major depressive disorder, baseline PHQ-A scores were dichotomised (i.e., PHQ-A scores

THE MOBILISEME STUDY

<15 vs. ≥ 15) to reflect probable cases. Mixed logistic regression with a random participant intercept was used to model these binary responses. To explore the potential effects of high baseline depressive scores, an exploratory analysis was conducted with the sample restricted to only those with baseline scores indicative of probable MDD cases. To explore the effects of participants' openness towards app therapy on primary outcome, the openness item was dichotomised as "high levels of openness to mobile apps for mental health" (scores ≥ 3) versus "low levels of openness" (scores ≤ 2). A series of models explored the relationship between condition and number of collections completed. A series of models of increasing complexity explored the relationship between condition (self-directed vs. guided) on the number of activities completed. A zero-inflated negative binomial model with a constant inflation component (i.e., not a function of condition) fitted the data better than Poisson and negative binomial models without zero inflation. Allowing inflation to differ between conditions did not significantly improve model fit. The Supplementary Material 2 outlines the exploratory analyses examining the relationship between app engagement and the primary outcome. The harms analysis was conducted using descriptive statistics and logistic regressions with relative risk ratios.

2.10 Role of funding source

The ClearlyMe® app was developed and is owned by the Black Dog Institute. The MobiliseMe trial was supported by philanthropic funding from the Goodman Foundation and chief investigators were supported by National Health and Medical Research Council (NHMRC) Grants (BOD, grant number MRF1197249, AWS, grant number GNT1197074).

3. RESULTS

3.1 Sample

THE MOBILISEME STUDY

Shown in Figure 1, 665 adolescents completed baseline and were allocated. A total of 569 were retained in the final baseline sample. Reasons for removal included fraudulent or duplicate responses, technical errors, or active withdrawals (see Figure 1). A total of 75.6% of the baseline sample ($n=430/569$) were retained at post intervention.

In the final sample, the majority were female ($n=422/569$; 74.2%), aged 15-17 years ($n=477/569$; 83.8%) and currently attending secondary school ($n=536/569$; 94.2%). Table 1 outlines the participants' characteristics at baseline.

THE MOBILISEME STUDY

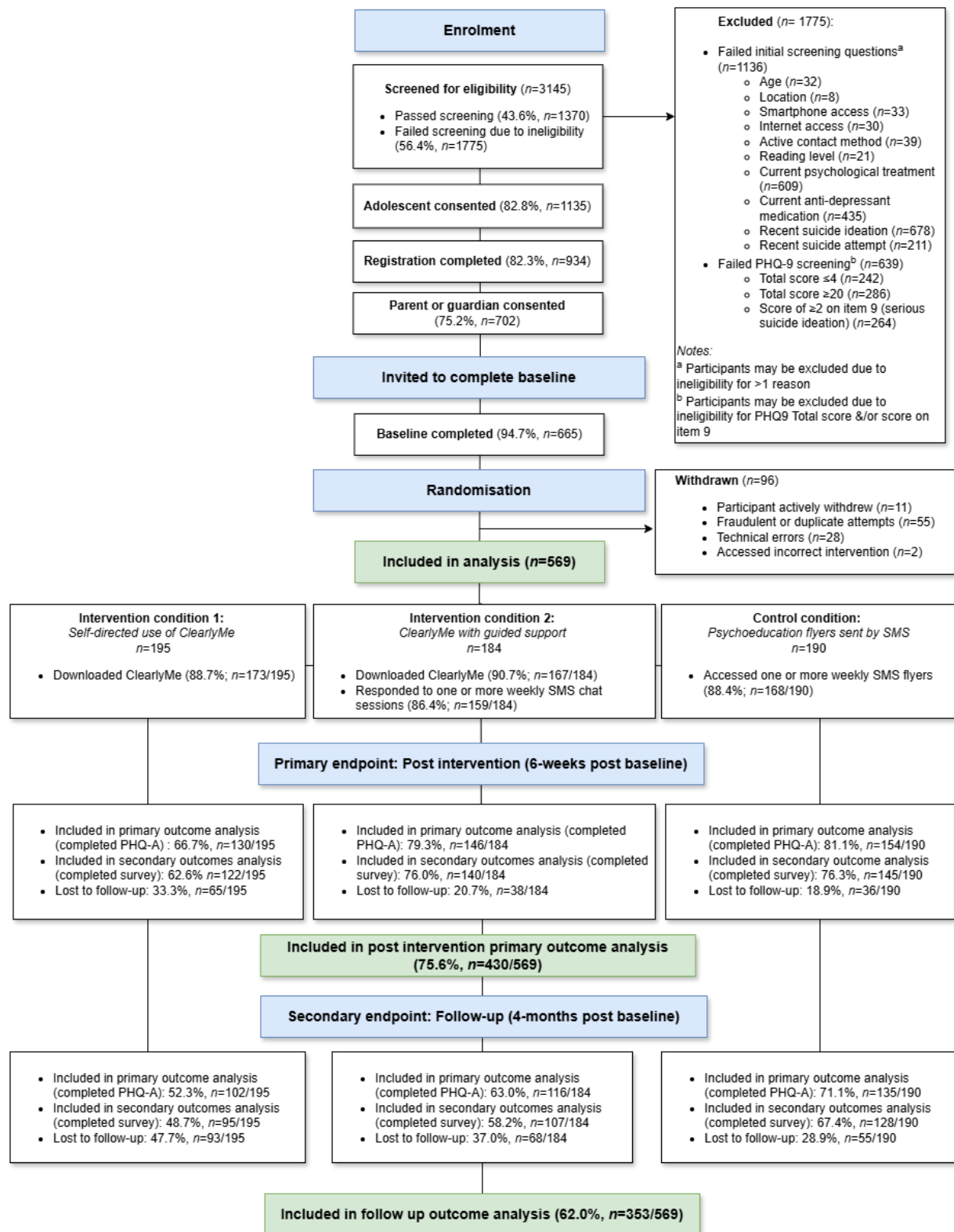


Figure 1. CONSORT diagram showing the flow of participants in the MobiliseMe trial

THE MOBILISEME STUDY

Table 1. Participant characteristics at baseline (N=569).

	Total sample (N=569)		ClearlyMe® self-directed (n=195)		ClearlyMe® guided support (n=184)		Control (n=190)	
	M	SD	M	SD	M	SD	M	SD
Continuous measures								
Age (years)	15.89	1.26	15.89	1.30	15.83	1.30	15.94	1.17
Depressive symptoms (PHQ-A)	12.23	4.00	12.34	4.05	11.97	4.09	12.36	3.88
Anxiety symptoms (GAD-7)	10.94	4.33	10.74	4.48	10.79	4.47	11.27	4.02
Distress (DQ5)	16.67	3.40	16.51	3.49	16.79	3.46	16.72	3.26
Wellbeing (SWEMWBS)	18.92	3.94	18.98	3.82	19.15	4.15	18.65	3.87
Quality of Life (CHU-9D)	24.97	6.45	24.48	6.47	25.27	6.74	25.19	6.61
Rumination (RRS-SF)	25.89	5.32	25.88	5.46	25.74	5.39	26.05	5.11
Reflection	11.36	3.33	11.31	3.26	11.29	3.42	11.49	3.32
Brooding	14.53	3.30	14.57	3.27	14.45	3.41	14.56	3.23
Emotion Regulation (ERQ-CA)								
Cognitive Reappraisal	16.72	4.13	17.01	4.07	16.65	4.27	16.49	4.07
Expressive Suppression	13.68	3.04	13.75	2.85	13.92	3.12	13.38	3.16
CBT Skills (CBTSQ)	40.41	9.87	40.73	9.50	40.64	10.51	39.87	9.62
Cognitive Restructuring	22.15	6.75	22.49	6.65	22.12	7.10	21.84	6.51
Behavioural Activation	18.26	4.71	18.24	4.60	18.52	4.74	18.03	4.80
Categorical measures	<i>n</i>	%	<i>n</i>	%	<i>n</i>	%	<i>n</i>	%

THE MOBILISEME STUDY

Gender								
Female	422	74.2	148	75.9	135	73.4	139	73.2
Male	99	17.4	33	16.9	35	19.0	31	16.3
Non-binary	30	5.3	8	4.1	10	5.4	12	6.3
Different identity	18	3.2	6	3.1	4	2.2	8	4.2
Sexuality and/or gender diverse ^a	236	41.5	75	38.5	74	40.2	87	45.8
Aboriginal and/or Torres Strait Islander	30	5.3	10	5.1	12	6.5	8	4.2
In secondary schooling	536	94.2	182	93.3	178	96.7	176	92.6
Location								
Metropolitan	272	47.8	104	53.3	88	47.8	80	42.1
Regional	237	41.7	70	35.9	79	42.9	88	46.3
Rural/ remote	60	10.5	21	10.8	17	9.2	22	11.6
Mental health history								
Previous diagnosis of depression and/or anxiety	211	37.1	68	34.9	63	34.2	80	42.1
Previously received psychological therapy	290	51.0	98	50.3	93	50.5	99	52.1
Previously taken medication	95	16.7	31	15.9	29	15.8	35	18.4
Previously used a mobile app for mental health	333	58.5	111	56.9	113	61.4	109	57.4

THE MOBILISEME STUDY

Those who found prior app use to be helpful ^b	109	32.7	32	16.4	46	25.0	31	16.3
Mobile phone type								
IOS (e.g., Apple)	401	70.5	137	70.3	130	70.7	134	70.5
Android (e.g., Samsung)	162	28.5	55	28.2	51	27.7	56	29.5

Notes: ^a Identifies as either lesbian, gay, bisexual, transgender, queer, intersex, and/or other sexuality and gender diversity, LGBTQI+. ^b Percentage of those that have previously used a mobile app for emotional wellbeing or mental health. ^c Respondents were able to choose multiple options from the provided list, resulting in the cumulative percentages exceeding 100%.

3.2 Changes in depressive symptoms (primary outcome).

Shown in Table 2 and Figure 2, the depressive symptoms of participants in the self-directed and guided conditions declined from their baseline means by a significantly greater amount than the control condition post intervention, with small effects ($d=0.33$ to 0.35). These differential declines were not significant at follow-up.

When examining the effects in those who were likely cases of MDD at baseline, the pattern of outcomes was generally the same as the whole sample. However, the significant effects were more robust and effect sizes substantially larger post intervention ($d=0.65$ for guided use vs control, $d=0.71$ for self-directed vs control).

Table 2. Change in depressive symptoms (PHQ-A, primary outcome) and MDD cases from baseline to post intervention and follow-up.

THE MOBILISEME STUDY

	Guided vs. Control		Self-directed vs. Control		Guided vs. Self-directed	
Outcome:	Effect Size [†]	P value [‡]	Effect Size [†]	P value [‡]	Effect Size [†]	P value [‡]
<i>Change in PHQ-A scores for all participants</i>						
Post intervention	-0.33 (-0.55 – -0.10)	.030	-0.35 (-0.57 – -0.12)	.004	0.02 (-0.21 – 0.25)	.460
Follow-up	-0.26 (-0.50 – -0.02)	.136	-0.20 (-0.45 – 0.05)	.134	-0.06 (-0.31 – 0.20)	.964
<i>Change in PHQ-A scores in those who were baseline MDD cases (≥ 15)</i>						
Post intervention	-0.65 (-1.06 – -0.25)	.003	-0.71 (-1.13 – -0.29)	.002	0.06 (-0.36 – 0.47)	.795
Follow-up	-0.30 (-0.75 – 0.16)	.257	-0.25 (-0.71 – 0.20)	.356	-0.05 (-0.52 – 0.43)	.839
<i>Changes in MDD caseness (<15 indicate nil case versus 15+ indicates case)</i>						
Post intervention	0.66 (0.30 – 1.47)	.309	0.29 (0.12 – 0.68)	.005	2.30 (0.95 – 5.55)	.065
Follow-up	0.55 (0.23 – 1.36)	.195	0.39 (0.16 – 1.00)	.050	1.40 (0.52 – 3.75)	.502

Notes: † Estimated standard mean difference for continuous measures, Relative odds for binary outcomes. ‡ Test of difference in change from baseline to endpoint between groups.

THE MOBILISEME STUDY

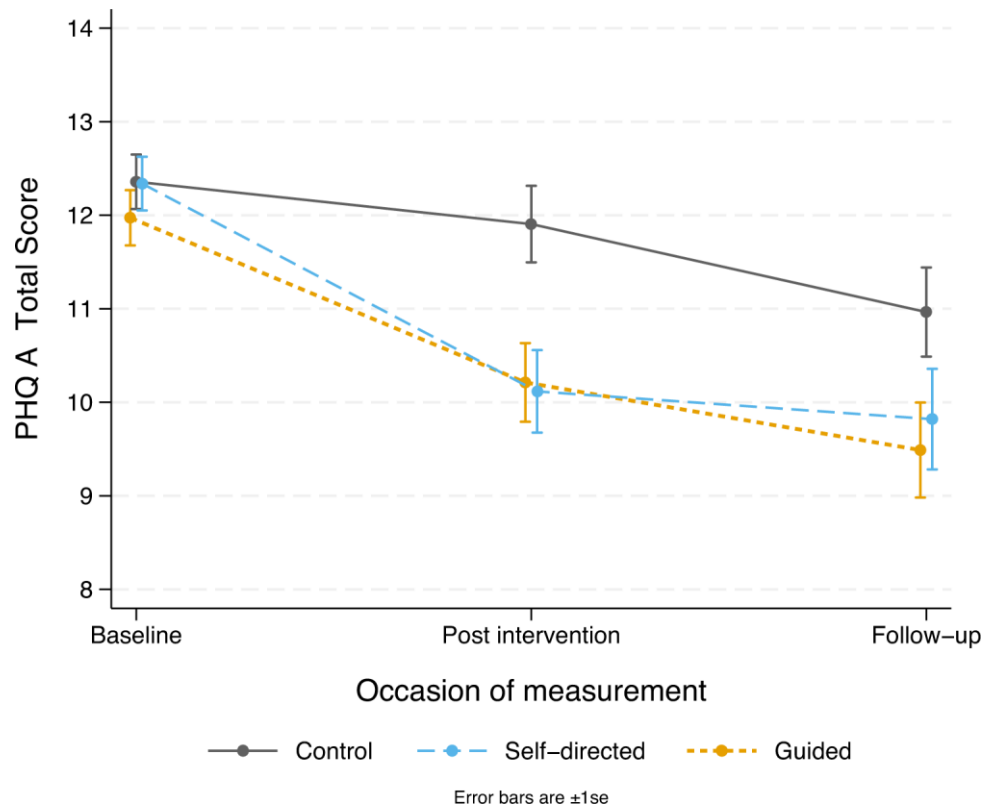


Figure 2. Estimated marginal means for depressive symptoms (PHQ-A, primary outcome) for the conditions on each occasion of measurement.

The number of likely cases of MDD was relatively stable in the control condition post intervention and the decline from baseline was not statistically significant (see Figure 3). The reduction in MDD cases post intervention for the self-directed condition was substantially larger than for the guided condition. When compared to the control condition, the relative odds of change in cases post intervention were statistically significant for the self-directed condition but not the guided condition (see Table 2). This was, in part, attributable to the slightly higher baseline case rate in the self-directed condition. Likely caseness rates converged by follow-up.

THE MOBILISEME STUDY

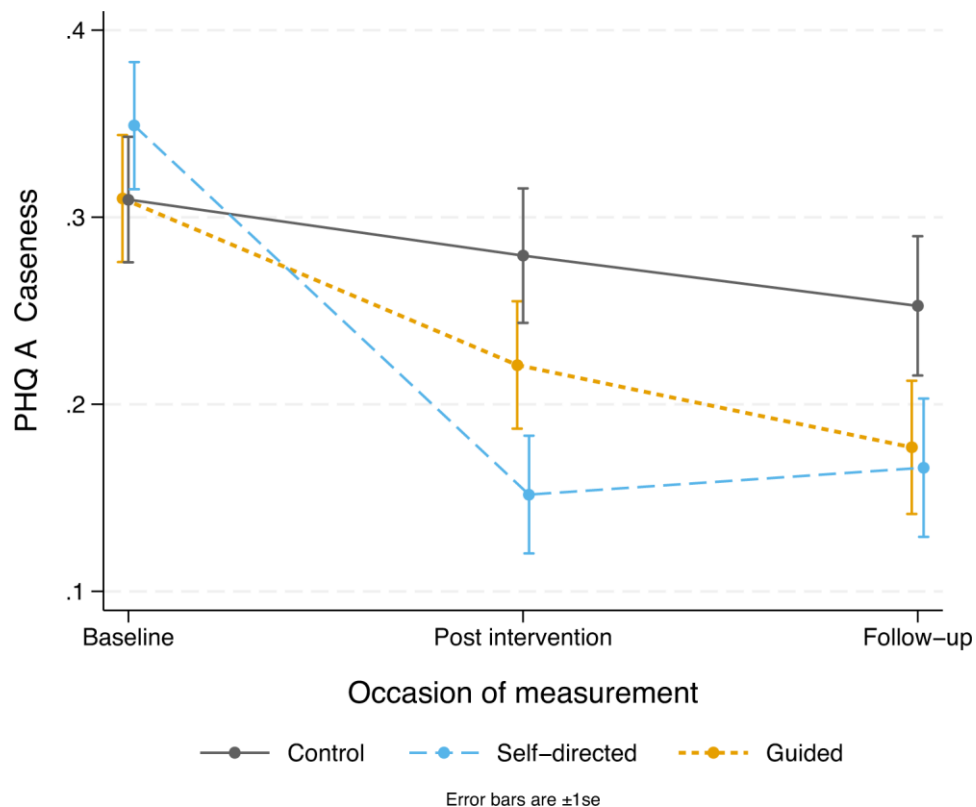


Figure 3. Predicted proportions of likely cases of Major Depressive Disorder (PHQ-A score ≥ 15) for the conditions on each occasion of measurement.

The exploratory subgroup analysis for gender effects (males versus females) on the primary outcome yielded similar patterns as the whole sample. This is likely due to nearly three quarters of the sample (74.2%) identifying as female with only 99 participants (17.4%) identifying as male. However, change over time in depressive symptoms post intervention was not significantly different between conditions for males alone, and the pattern of outcomes for males was different to the whole sample. The mean PHQ-A scores for females and the total sample diverged post intervention and converged at follow-up, however, the reverse occurred for males. For males, depressive symptoms in the control condition remained stable whereas symptoms in the guided and self-directed conditions declined. In cross-sectional comparisons, this difference was nearly significant at follow-up ($P=.053$) with

THE MOBILISEME STUDY

a moderate effect size of $d=0.58$ (95%CI: -0.001 – 1.16) for guided vs control and was significant ($P=.026$) for self-directed vs control with a large effect size ($d=0.70$, 95%CI: 0.09 – 1.31).

Shown in Figure 4, changes in depressive symptoms from baseline to post intervention was significant in both the self-directed and guided conditions in participants with high levels of openness to receiving smartphone therapy ($P=.009$, $d=0.34$, 95%CI: 0.06 – 0.63 and $P=.013$, $d=0.39$, 95%CI: 0.11 – 0.66 respectively). However, the effect remained significant at follow-up in the guided condition only ($P=.015$, $d=0.42$, 95%CI: 0.12 – 0.71).

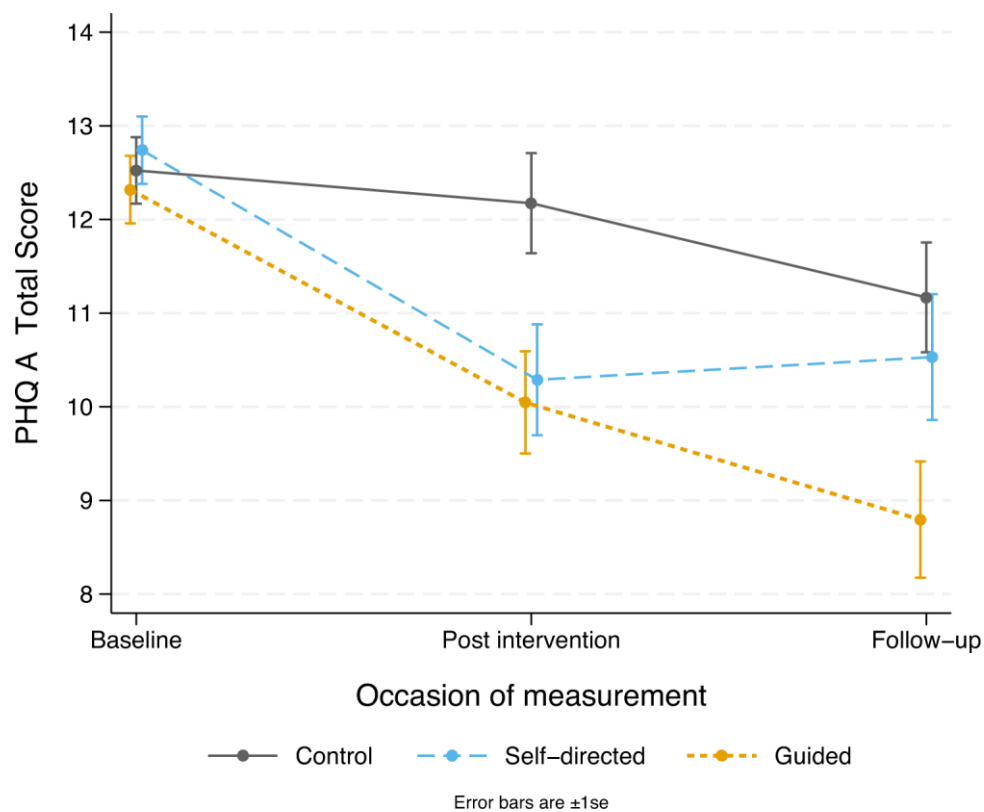


Figure 4. Reductions in depressive symptoms (PHQ-A) among participants with high levels of openness to smartphone therapy at baseline for the conditions at each occasion of measurement.

THE MOBILISEME STUDY

In participants with low levels of openness to smartphone therapy, there were no significant differences in depressive symptom change at any time point in the self-directed or guided conditions when compared to the control condition (all $P > .05$, see Figure 5).

Depressive symptoms in the self-directed condition declined at follow-up in comparison to means in the guided condition, which converged to baseline ($P = .051$).

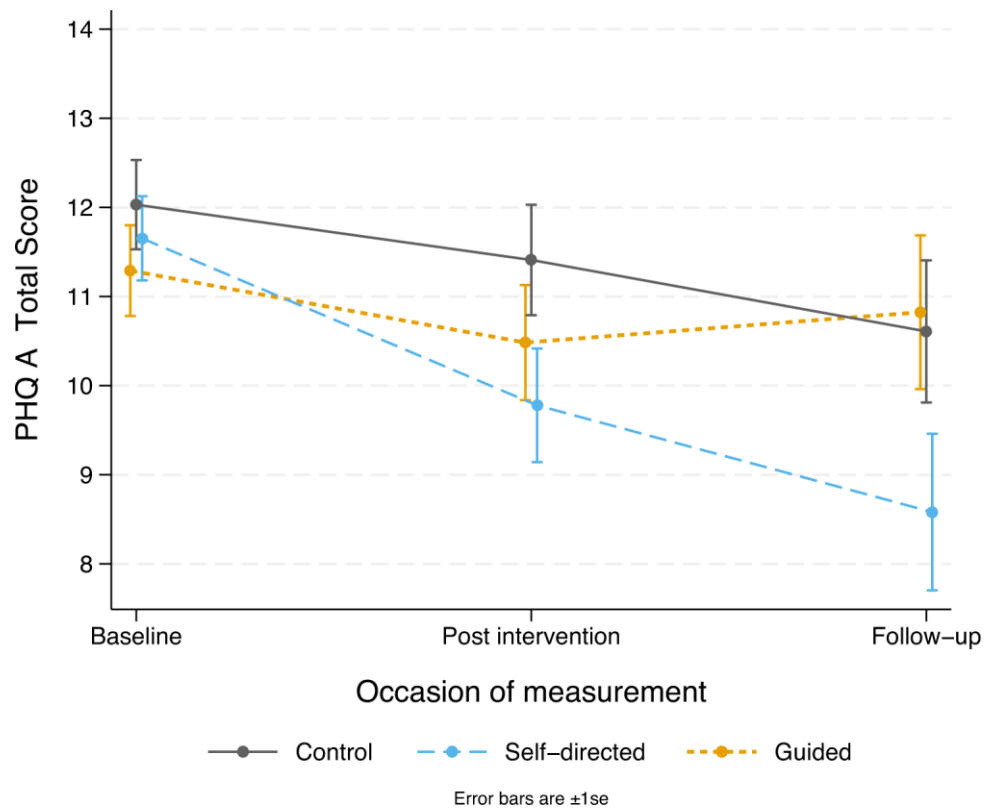


Figure 5. Reductions in depressive symptoms (PHQ-A) among participants with low levels of openness to smartphone therapy at baseline for the conditions at each occasion of measurement.

3.3 Secondary outcomes

THE MOBILISEME STUDY

Shown in Table 3, changes in the secondary outcomes post intervention were comparable to the primary outcome, although some of the differences were smaller and less robustly significant. For psychological distress, emotional wellbeing and quality of life, the patterns of effects between conditions and over time were similar to the primary outcome. However, anxiety symptoms decreased over time in all conditions with only modest and non-significant differential change. This may be due to differences in response in participants with higher baseline anxiety scores compared to those with lower scores. There were no significant differences at follow-up for any of the outcome measures.

Table 3. Direction of effect and statistical significance for differences in change from baseline at each occasion of measurement for each condition for primary and secondary outcomes.

	Post intervention			Follow-up		
	Self-directed (A) vs Control (C)	Guided (B) vs Control (C)	Self-directed (A) vs. Guided (B)	Self-directed (A) vs Control (C)	Guided (B) vs Control (C)	Self-directed (A) vs. Guided (B)
<i>Primary outcome</i>						
Depressive symptoms (PHQ-A) (↓)	- **	- *	-	-	-	-

THE MOBILISEME STUDY

<i>Secondary outcomes</i>						
GAD-7 (↓)	–	– #	–	–	–	–
DQ5 (↓)	– *	– **	–	–	–	–
SWEMWBS (↑)	+ *	+ *	+	–	+	+
CHU9D (↑)	+ *	+ *	+	NA	NA	NA
CBTSQ Total (↑)	+ *	+ *	+	–	+	+
CBTSQ Behavioural Activation (↑)	+ *	+	–	+	+	+
BTSQ Cognitive Restructuring (↑)	+ #	+ *	+	–	+	+
ERQCA Reappraisal (↑)	+	+	+	+	+ *	+
ERQCA Suppress (↓)	– *	– **	–	–	–	+
RRSSF Total (↓)	–	–	+	+	–	–
RRSSF Brood (↓)	–	– #	–	–	–	–
RRSSF Reflect (↓)	–	+	+	+	–	–

Table notes:

↓ Lower score is better outcome:

– : Mean decline Self-directed > Control, Guided > Control, Self-directed > Guided.

+ : Mean decline Self-directed < Control, Guided < Control, Self-directed < Guided.

↑ Higher score is better outcome:

+ : Mean increase Self-directed > Control, Guided > Control, Self-directed > Guided.

– : Mean increase Self-directed < Control, Guided < Control, Self-directed < Guided.

$P < 0.10$, * $P < 0.05$, ** $P < 0.01$, * $P < 0.001$.

THE MOBILISEME STUDY

3.4 Engagement with ClearlyMe[®] and digital working alliance in the intervention conditions post intervention.

There was no significant difference in the uptake of ClearlyMe[®] between the self-directed (88.7%, $n=173/195$) and guided conditions (90.8%, $n=167/184$, OR: 1.02, 95% CI: 0.96 – 1.10, $\chi^2 = 0.43$, $df=1$, $P=.513$). Participants in the self-directed and guided conditions completed an average of 2.09 (SD: 2.82, Mdn: 1, IQR: 3) and 2.80 (SD: 2.84, Mdn: 2, IQR: 5) collections, respectively. A substantial percentage of participants in each group completed no collections. Condition was a significant predictor of completing no collections (OR: 2.93, $P=.009$, 95% CI: 1.31 – 6.55) but was not associated with the total number completed (IRR: 1.03, $P=.818$, 95% CI: .80 – 1.32). Significantly more participants undertook at least one collection in the guided condition (72.5%) compared to the self-directed condition (55.8%, relative likelihood: 1.31, $P=.001$, 95% CI: 1.11 – 1.54). However, those in the guided condition (M: 3.86, SD: 2.66) did not go on to complete significantly more collections than those in the self-directed condition (M: 3.77, SD: 2.83, IRR: 1.02, $P=.807$, 95% CI: 0.85 – 1.23). Shown in the Supplementary Material 2, there was mixed evidence of a significant difference in the number of activities completed between conditions with one analysis suggesting guided (M: 13.31, SD: 9.43, Mdn: 12, IQR: 15) was superior to self-directed (M: 10.80, SD: 10.08, Mdn: 8, IQR: 15) for increasing activities completed. When examining the effects of app engagement on primary outcomes among those who completed the post intervention survey, the results suggested a degree of expectancy effect as demonstrated by the emerging symptom improvements in participants who completed no activities and the small dose effect in both conditions. The guided condition reported significantly higher total digital working alliance scores than the self-directed condition (see Table 4, $t(249)=-3.14$, $P=.002$).

THE MOBILISEME STUDY

Table 4. Digital working alliance (DWA) scores across the active intervention conditions post intervention.

	ClearlyMe® self-directed (<i>n</i> = 116)		ClearlyMe® guided (<i>n</i> =135)	
	M	SD	M	SD
Total DWA Score	30.46	5.86	32.77	5.80
Goals score	9.84	2.12	10.53	2.21
Tasks score	10.94	1.87	11.59	1.90
Bond score	9.67	2.47	10.64	2.29
% who agreed with the statements	<i>n</i>	%	<i>n</i>	%
I trusted the app to guide me towards my personal goals	74	63.8	101	74.8
I agree that the tasks within the app were important for my goals	82	70.7	103	76.3
I believed the app tasks helped me address my problems	78	67.2	107	79.3
The app was easy to use and operate	110	94.8	126	93.3
The app encouraged me to accomplish tasks and make progress	76	65.5	104	77.0
The app supported me to overcome challenges	75	64.7	100	74.1

Notes: *n* is the participants who downloaded the app.

THE MOBILISEME STUDY

3.5 Program satisfaction and barriers to use

Shown in Table 5, high levels of satisfaction were reported for all three conditions, indicating that both ClearlyMe[®] and the flyers were easy to use, understand, interesting and enjoyable. The helpfulness scores for all three conditions were also similar (self-directed condition M: 3.61, SD: 0.76, guided condition M: 3.89, SD: 0.67, control conditions M: 3.64, SD: 0.83). The most common barrier to use across the three conditions was forgetfulness. Lack of time and low motivation were also commonly reported by participants who received ClearlyMe[®] but less so in the control condition. Generally, participants in the SMS-supported condition reported fewer barriers to use than participants in the self-directed condition. Technical and user experience barriers were the least commonly endorsed barriers (<5%) across all three conditions. The qualitative analysis of free response items revealed that participants found ClearlyMe[®] helpful for learning strategies to understand and change their thoughts, feelings and behaviours, as well as feel supported and connected in an easily accessible and safe space. Suggested improvements to the app included greater personalisation, more inclusive content, improved navigation, and additional features such as reminders and progress trackers. See Supplementary Material 2 for more detail.

Table 5. Program satisfaction and barriers to use across the three conditions

	ClearlyMe [®] self-directed (n=114)		ClearlyMe [®] guided (n=135)		Control (n=133)	
	n	%	n	%	n	%
Satisfaction						
Easy to use	111	97.4	132	97.8	128	96.2
Easy to understand	111	97.4	133	98.5	125	94.0
Interesting to use	98	86.0	129	95.6	122	91.7

THE MOBILISEME STUDY

Enjoyed using	98	86.0	128	94.8	110	82.7
Would recommend to a friend	92	80.7	113	83.7	114	85.7
Would use again in future	84	73.7	120	88.9	95	71.4
Helped me to feel in control of my feelings	78	68.4	105	77.8	68	51.1
Learnings helped me in everyday life	73	64.0	111	82.2	85	63.9
	ClearlyMe [®] self-directed (n=122)		ClearlyMe [®] guided (n=141)		Control (n=145)	
Barriers to use	<i>n</i>	%	<i>n</i>	%	<i>n</i>	%
Forgetfulness	91	74.6	94	66.7	79	54.5
Lack of time	60	49.2	73	51.8	47	32.4
Couldn't be bothered	55	45.1	42	29.8	40	27.6
Felt it wasn't what was needed	43	35.2	33	23.4	51	35.2
Took too long to read	43	35.2	20	14.2	55	37.9
Felt too worried or too down	36	29.5	28	19.9	39	26.9
Limited screentime	10	8.2	7	5.0	8	5.5
Lack of trust	10	8.2	4	2.8	6	4.1
Made them feel worse	6	4.9	3	2.1	8	5.5
Too hard to read on phone	5	4.1	5	3.5	18	12.4

THE MOBILISEME STUDY

Used up too much phone data	3	2.5	7	5.0	7	4.8
Difficulty navigating	3	2.5	4	2.8	2	1.4
Glitching, crashing and/or freezing	3	2.5	3	2.1	7	4.8
Didn't have a smartphone device	2	1.6	4	2.8	1	0.7

Notes: For the satisfaction scores, *n* are participants who downloaded the apps or accessed the flyers at least once and completed the post intervention surveys. For the barriers to use, *n* are participants who completed the post intervention surveys.

3.5 Harms analysis

A total of 102 (17.9%) participants reported one or more expected adverse events (total of 171 events) throughout the trial. The relative risk of reporting an expected adverse event post baseline was almost double in the control condition when compared to self-directed and guided conditions with IRR of 1.73 (95%CI: 1.15 – 2.62, $P=.009$) and 1.98 (95%CI: 1.27 – 3.08, $P=.002$), respectively. Most of the expected adverse events (93 events, 54% of total events) were the presence of suicidal ideation with 77 participants reporting scores ≥ 2 on item 9 of the PHQ-A post baseline (13.5%). The relative risk of reporting suicidality was nearly double in the control condition (20.5%) when compared to self-directed (8.7%) and guided (11.4%) conditions with IRR of 2.35 (95%CI: 1.38 – 4.02, $P=.002$) and 1.80 (95%CI: 1.10 – 2.94, $P=.019$), respectively. Mental health hospitalisations accounted for 18 events (17.6%). Throughout the trial, there was 13 requests for a clinician call back but only 6 were taken by participants. Only one participant who received

THE MOBILISEME STUDY

ClearlyMe[®] reported that they perceived the app activities had made their mental health worse.

4. DISCUSSION

ClearlyMe[®], when delivered with or without SMS-guided support, was efficacious for reducing depressive symptoms in adolescents aged 12 to 17 years after six weeks of use when compared to SMS-delivered psychoeducation. The effect sizes were small yet comparable to prior research²⁰. ClearlyMe[®] was also significantly more efficacious than SMS-delivered psychoeducation for reducing likely cases of MDD, reducing psychological distress, improving wellbeing, and enhancing quality of life at six weeks. There were no differential effects between self-directed and guided use of ClearlyMe[®] for any secondary outcomes at six weeks or follow-up. Contrary to the hypotheses, there were no differential effects between the conditions at follow-up for any outcomes. The positive effects of ClearlyMe[®] on mental health outcomes, quality of life, CBT skill acquisition and the low level of reported harms confirmed that this digital approach is superior to SMS-delivered psychoeducation for improving short-term outcomes in adolescents with mild to moderate depressive symptoms.

The results indicated that adolescents with mild to moderate depressive symptoms may not require guided support to engage with or experience short-term treatment effects from ClearlyMe[®] when delivered under trial conditions. Contrary to the hypothesis, guided support did not facilitate sustained engagement with ClearlyMe[®] as measured by the number of collections completed. In both conditions, the number of collections completed was low. These results were surprising given that the instructions for use and weekly chat scripts focused on collections specifically. The collections may have had low appeal to adolescents in this trial, which is further supported by some of the qualitative feedback. However, the positive treatment effects in both intervention conditions provides evidence that the co-

THE MOBILISEME STUDY

design³⁷ and user experience within ClearlyMe[®] may have successfully encouraged adolescents to use the broad range of therapeutic content and features within the app in ways that matched their diverse needs. Nonetheless, there was evidence that guided support positively impacted other aspects of engagement. Adolescents who received guided support were more likely to complete at least one collection, had higher levels of activity completions, reported fewer barriers to use and higher levels of therapeutic alliance than the self-directed condition. Future trials should further examine whether guided support is particularly effective for initiating uptake in adolescents who have low levels of openness to smartphone therapies. Guided support may also have greater benefit for enhancing engagement of apps in ‘real-world’ settings, given the poor uptake of many publicly released apps^{24 25}. However, the incremental benefits of guided support may need to be weighed against the greater resources required to implement and sustain. Thus, future research should experiment with the types and intensity of remote, automated motivational SMS to help identify the most effective messaging for increasing engagement in CBT apps among depressed youth. ClearlyMe[®] may also be enhanced by including activities that have a specific focus on internal motivation as it has been found to moderate the effectiveness of self-directed approaches⁴⁰. Future research should continue to explore the components of motivation that are impaired in depressed adolescents as the causes of motivational deficits may provide insight into how to improve and reduce young people’s barriers to completing self-directed digital interventions.

The findings provide important evidence to inform the development of targeted dissemination strategies for ClearlyMe[®]. A key advantage of smartphone apps for mental health is the relatively low cost and opportunity for broad and rapid dissemination “direct-to-consumer” via app stores. While the results confirm the safety and utility of ClearlyMe[®] for improving depressive symptoms in adolescents and thus support its public release, the

THE MOBILISEME STUDY

exploratory analyses are notable. First, in contrast to the group-level results, the positive intervention effect on males was not evident until follow-up. This finding may further signify that males use mental health and wellbeing apps differently to females⁴¹. As this trial was not powered to test sex or gender differences, further research is needed before ClearlyMe[®] is targeted at adolescent males with depressive symptoms. Second, the findings confirm that not all adolescents with depressive symptoms are open to receiving psychological therapy via smartphone apps⁴² and those with low levels of openness are less likely to experience positive treatment effects. Therefore, ClearlyMe[®] may only be appropriate for adolescents who are open to this approach and alternative services are needed for those who are not. Conversely, marketing materials for ClearlyMe[®] may need to target adolescents' mental health literacy and their perceived quality of the digital therapeutic relationship in apps as these factors have been found to influence their decision to engage in treatment⁴³. While social media advertisements were an effective recruitment strategy in the trial and likely to be effective for dissemination in the wild⁴⁴, adverts may be strengthened by including educational content to improve adolescents' openness to this type of support. The credibility and authenticity of dissemination strategies may be increased by harnessing the voices of lived experience as adolescents reflected that they found the peer stories to be particularly powerful in supporting their use of the app⁴⁵. Lastly, the lack of differential effects at follow-up indicate that some adolescents will require additional treatment for their mental health in the months after they cease using the app. Future research should determine how to support adolescents to re-engage with the app or take up other types of treatment. Together, these efforts will help to maximise the positive impact of ClearlyMe[®] on adolescent depression.

Limitations

The informativeness of this trial may be limited by the exclusion of depressed adolescents with severe suicidal ideation or recent suicidal behaviours. Future trials should

THE MOBILISEME STUDY

endeavour to test the effectiveness of ClearlyMe[®] among depressed youth with higher levels of suicidality, given that our results indicated low risk of harms from the intervention and trial protocol. Furthermore, 2 out of 5 adolescents were deemed ineligible to participate due to elevated suicidal ideation. This demonstrates the significant need and demand for digital interventions in this subgroup. Continued exclusion of suicidality in these trials will further exacerbate inequities in health access and potentially lead to the release of products that have not been tested in relevant ‘real world’ use cases⁴⁶. Future trials should also endeavour to recruit more adolescent males, those not in school, and younger adolescents, given that the low numbers of participation in these subgroups limit the generalisability of our results. This trial was strengthened by its inclusion of gender and/or sexuality diverse youth. The diversity rates are similar to those in other mental health trials in adolescents in Australia³⁹ but are somewhat higher than the general population of adolescents⁴⁷. This may reflect the increased need for mental health treatment and support among gender and sexuality diverse adolescents⁴⁷ and the allyship of the Black Dog Institute for these adolescents in Australia. Lastly, the lack of differential effects for anxiety symptoms warrants further attention given that it contrasts to the findings of prior trials of dCBT¹⁰. Future trials may benefit from adopting co-primary outcomes to ensure that trials are adequately designed and powered to detect smaller effects on anxiety symptoms, given its co-morbidity with depression in adolescents.

Conclusion

ClearlyMe[®], whether used independently or with SMS-guided support, was efficacious for reducing depressive symptoms in adolescents. The results indicated that this approach has promise for improving short-term outcomes in adolescents with mild to moderate depressive symptoms, significantly surpassing the effects of SMS-delivered psychoeducation. Future research should examine the utility of ClearlyMe[®] for reducing depressive symptoms in subgroups of depressed adolescents that were under-represented in

THE MOBILISEME STUDY

this trial, including those with suicidality, adolescent males, and adolescents not in schooling.

Future translational efforts should account for adolescents' attitudes towards mental health

apps given that the effects of ClearlyMe[®] appeared to be moderated by one's openness to

receiving care via this modality. This will ensure that ClearlyMe[®] is being used by youth who

are most likely to benefit.

THE MOBILISEME STUDY

References

1. Shorey S, Ng ED, Wong CHJ. Global prevalence of depression and elevated depressive symptoms among adolescents: A systematic review and meta-analysis. *Br J Clin Psychol* 2022;61(2):287-305. doi: 10.1111/bjc.12333
2. Pozuelo JR, Desborough L, Stein A, et al. Systematic Review and Meta-analysis: Depressive Symptoms and Risky Behaviors Among Adolescents in Low- and Middle-Income Countries. *J Am Acad Child Adolesc Psychiatry* 2022;61(2):255-76. doi: 10.1016/j.jaac.2021.05.005
3. Copeland WE, Alaie I, Jonsson U, et al. Associations of Childhood and Adolescent Depression With Adult Psychiatric and Functional Outcomes. *J Am Acad Child Adolesc Psychiatry* 2021;60(5):604-11. doi: 10.1016/j.jaac.2020.07.895
4. Wickersham A, Sugg HVR, Epstein S, et al. Systematic Review and Meta-analysis: The Association Between Child and Adolescent Depression and Later Educational Attainment. *J Am Acad Child Adolesc Psychiatry* 2021;60(1):105-18. doi: 10.1016/j.jaac.2020.10.008
5. Park E, Kwon M. Health-Related Internet Use by Children and Adolescents: Systematic Review. *J Med Internet Res* 2018;20(4):e120. doi: 10.2196/jmir.7731
6. Pretorius C, Chambers D, Coyle D. Young People's Online Help-Seeking and Mental Health Difficulties: Systematic Narrative Review. *J Med Internet Res* 2019;21(11):e13873. doi: 10.2196/13873
7. Bevan Jones R, Hussain F, Agha SS, et al. Digital technologies to support adolescents with depression and anxiety: review. *BJPsych Advances* 2023;29(4):239-53. doi: 10.1192/bja.2022.3

THE MOBILISEME STUDY

8. Malhi GS, Bell E, Bassett D, et al. The 2020 Royal Australian and New Zealand College of Psychiatrists clinical practice guidelines for mood disorders. *Aust N Z J Psychiatry* 2021;55(1):7-117. doi: 10.1177/0004867420979353
9. Wickersham A, Barack T, Cross L, et al. Computerized Cognitive Behavioral Therapy for Treatment of Depression and Anxiety in Adolescents: Systematic Review and Meta-analysis. *J Med Internet Res* 2022;24(4):e29842. doi: 10.2196/29842
10. Christ C, Schouten MJ, Blankers M, et al. Internet and Computer-Based Cognitive Behavioral Therapy for Anxiety and Depression in Adolescents and Young Adults: Systematic Review and Meta-Analysis. *J Med Internet Res* 2020;22(9):e17831. doi: 10.2196/17831
11. Ebert DD, Zarski A-C, Christensen H, et al. Internet and Computer-Based Cognitive Behavioral Therapy for Anxiety and Depression in Youth: A Meta-Analysis of Randomized Controlled Outcome Trials. *PLoS One* 2015;10(3):e0119895. doi: 10.1371/journal.pone.0119895
12. Pennant ME, Loucas CE, Whittington C, et al. Computerised therapies for anxiety and depression in children and young people: A systematic review and meta-analysis. *Behaviour Research and Therapy* 2015;67:1-18. doi: 10.1016/j.brat.2015.01.009
13. K. S. Most US teens who use cellphones do it to pass time, connect with others, learn new things.: Pew Research Center, 2020.
14. Liverpool S, Mota CP, Sales CMD, et al. Engaging Children and Young People in Digital Mental Health Interventions: Systematic Review of Modes of Delivery, Facilitators, and Barriers. *J Med Internet Res* 2020;22(6):e16317. doi: 10.2196/16317
15. Grist R, Croker A, Denne M, et al. Technology Delivered Interventions for Depression and Anxiety in Children and Adolescents: A Systematic Review and Meta-analysis. *Clin Child Fam Psychol Rev* 2019;22(2):147-71. doi: 10.1007/s10567-018-0271-8

THE MOBILISEME STUDY

16. Wright M, Reitegger F, Cela H, et al. Interventions with Digital Tools for Mental Health Promotion among 11–18 Year Olds: A Systematic Review and Meta-Analysis. *J Youth Adolesc* 2023;52(4):754-79. doi: 10.1007/s10964-023-01735-4
17. Melbye S, Kessing LV, Bardram JE, et al. Smartphone-Based Self-Monitoring, Treatment, and Automatically Generated Data in Children, Adolescents, and Young Adults With Psychiatric Disorders: Systematic Review. *JMIR Ment Health* 2020;7(10):e17453. doi: 10.2196/17453
18. Peake E, Miller I, Flannery J, et al. Preliminary Efficacy of a Digital Intervention for Adolescent Depression: Randomized Controlled Trial. *J Med Internet Res* 2024;26:e48467. doi: 10.2196/48467
19. Kulikov VN, Crosthwaite PC, Hall SA, et al. A CBT-based mobile intervention as an adjunct treatment for adolescents with symptoms of depression: a virtual randomized controlled feasibility trial. *Front Digit Health* 2023;5:1062471. doi: 10.3389/fdgth.2023.1062471
20. Buttazzoni A, Brar K, Minaker L. Smartphone-Based Interventions and Internalizing Disorders in Youth: Systematic Review and Meta-analysis. *J Med Internet Res* 2021;23(1):e16490. doi: 10.2196/16490
21. Magwood O, Saad A, Ranger D, et al. Mobile apps to reduce depressive symptoms and alcohol use in youth: A systematic review and meta-analysis. *Campbell Systematic Reviews* 2024;20(2):e1398. doi: 10.1002/cl2.1398
22. Lee C-HJ, Bazan M, Wong J, et al. The efficacy of mobile applications for reducing depression in adolescents and young adults: A meta-analysis of randomized control trials. *J Telemed Telecare* 2024:1357633X241273032. doi: 10.1177/1357633X241273032

THE MOBILISEME STUDY

23. Leech T, Dorstyn D, Taylor A, et al. Mental health apps for adolescents and young adults: A systematic review of randomised controlled trials. *Child Youth Serv Rev* 2021;127:106073. doi: 10.1016/j.chilyouth.2021.106073
24. Wasil AR, Gillespie S, Shingleton R, et al. Examining the Reach of Smartphone Apps for Depression and Anxiety. *Am J Psychiatry* 2020;177(5):464-65. doi: 10.1176/appi.ajp.2019.19090905
25. Wasil AR, Gillespie S, Patel R, et al. Reassessing evidence-based content in popular smartphone apps for depression and anxiety: Developing and applying user-adjusted analyses. *J Consult Clin Psychol* 2020;88(11):983-93. doi: 10.1037/ccp0000604
26. Greene Barker T, O'Higgins A, Fonagy P, et al. A systematic review and meta-analysis of the effectiveness of co-designed, in-person, mental health interventions for reducing anxiety and depression symptoms. *J Affect Disord* 2024;350:955-73. doi: 10.1016/j.jad.2023.12.080
27. Malloy J, Partridge SR, Kemper JA, et al. Co-design of digital health interventions with young people: A scoping review. *DIGITAL HEALTH* 2023;9:20552076231219117. doi: 10.1177/20552076231219117
28. Horne SJ, Topp TE, Quigley L. Depression and the willingness to expend cognitive and physical effort for rewards: A systematic review. *Clin Psychol Rev* 2021;88:102065. doi: 10.1016/j.cpr.2021.102065
29. Bernstein EE, Weingarden H, Wolfe EC, et al. Human Support in App-Based Cognitive Behavioral Therapies for Emotional Disorders: Scoping Review. *J Med Internet Res* 2022;24(4):e33307. doi: 10.2196/33307
30. Lehtimaki S, Martic J, Wahl B, et al. Evidence on Digital Mental Health Interventions for Adolescents and Young People: Systematic Overview. *JMIR Ment Health* 2021;8(4):e25847. doi: 10.2196/25847

THE MOBILISEME STUDY

31. Cuschieri S. The CONSORT statement. *Saudi J Anaesth* 2019;13(Suppl 1):S27-s30. doi: 10.4103/sja.SJA_559_18
32. Eysenbach G. CONSORT-EHEALTH: Improving and Standardizing Evaluation Reports of Web-based and Mobile Health Interventions. *J Med Internet Res* 2011;13(4):e126. doi: 10.2196/jmir.1923
33. Li SH, Achilles MR, Subotic-Kerry M, et al. Protocol for a randomised controlled trial evaluating the effectiveness of a CBT-based smartphone application for improving mental health outcomes in adolescents: the MobiliseMe study. *BMC Psychiatry* 2022;22(1):746. doi: 10.1186/s12888-022-04383-3
34. O'Dea B, Subotic-Kerry M, King C, et al. A cluster randomised controlled trial of a web-based youth mental health service in Australian schools. *The Lancet Regional Health – Western Pacific* 2021;12 doi: 10.1016/j.lanwpc.2021.100178
35. Karyotaki E, Efthimiou O, Miguel C, et al. Internet-Based Cognitive Behavioral Therapy for Depression: A Systematic Review and Individual Patient Data Network Meta-analysis. *JAMA Psychiatry* 2021;78(4):361-71. doi: 10.1001/jamapsychiatry.2020.4364
36. Lewis JA. Statistical principles for clinical trials (ICH E9): an introductory note on an international guideline. *Stat Med* 1999;18(15):1903-42. doi: 10.1002/(sici)1097-0258(19990815)18:15<1903::aid-sim188>3.0.co;2-f
37. Li SH, Achilles MR, Spanos S, et al. A cognitive behavioural therapy smartphone app for adolescent depression and anxiety: co-design of ClearlyMe. *The Cognitive Behaviour Therapist* 2022;15:e13. doi: 10.1017/S1754470X22000095
38. Batterham PJ, Werner-Seidler A, O'Dea B, et al. Psychometric properties of the Distress Questionnaire-5 (DQ5) for measuring psychological distress in adolescents. *J Psychiatr Res* 2024;169:58-63. doi: 10.1016/j.jpsychires.2023.11.004

THE MOBILISEME STUDY

39. O'Dea B, Han J, Batterham PJ, et al. A randomised controlled trial of a relationship-focussed mobile phone application for improving adolescents' mental health. *J Child Psychol Psychiatry* 2020;61(8):899-913. doi: 10.1111/jcpp.13294
40. Hanano M, Rith-Najarian L, Gong-Guy E, et al. Motivational Variables as Moderating Effects of a Web-Based Mental Health Program for University Students: Secondary Analysis of a Randomized Controlled Trial. *JMIR Form Res* 2024;8:e56118. doi: 10.2196/56118
41. Antezana G, Venning A, Smith D, et al. Do young men and women differ in well-being apps usage? Findings from a randomised trial. *Health Informatics Journal* 2022;28(1):14604582211064825. doi: 10.1177/14604582211064825
42. Buck B, Kadakia A, Larsen A, et al. Digital interventions for people waitlisted for mental health services: A needs assessment and preference survey. *Practice Innovations* 2024:No Pagination Specified-No Pagination Specified. doi: 10.1037/pri0000250
43. Roberts M, Jones J, Garcia L, et al. Adolescents' perceptions of barriers and facilitators to engaging in mental health treatment: A qualitative meta-synthesis. *J Child Adolesc Psychiatr Nurs* 2022;35(2):113-25. doi: 10.1111/jcap.12354
44. Batterham PJ, Gulliver A, Kurz E, et al. The Effect of Dissemination Pathways on Uptake and Relative Costs for a Transdiagnostic, Self-guided Internet Intervention for Reducing Depression, Anxiety, and Suicidal Ideation: Comparative Implementation Study. *J Med Internet Res* 2022;24(5):e34769. doi: 10.2196/34769
45. Bettis AH, Vaughn-Coaxum RA, Lawrence HR, et al. Key Challenges and Potential Strategies for Engaging Youth with Lived Experience in Clinical Science. *J Clin Child Adolesc Psychol* 2024;53(5):733-46. doi: 10.1080/15374416.2023.2264389

THE MOBILISEME STUDY

46. Iltis AS, McCall WV, Deria R. Suicidality, Depression, and the FDA: Health Inequities

and the Ethical Conduct of Research. *J Clin Psychiatry* 2020;81(2) doi:

10.4088/JCP.19m13050

47. Werner-Seidler A, Maston K, Calear AL, et al. The Future Proofing Study: Design,

methods and baseline characteristics of a prospective cohort study of the mental

health of Australian adolescents. *Int J Methods Psychiatr Res* 2023;32(3):e1954. doi:

10.1002/mpr.1954