

1 **PDE5 inhibition and Alzheimer's disease risk: a mendelian randomisation study**

2 **Authors:** Marta Alcalde-Herraz<sup>1</sup>, Benjamin Woolf<sup>2,3,4</sup>, Junqing Xie<sup>1</sup>, Emma Anderson<sup>5</sup>,  
3 Dipender Gill<sup>6</sup>, Ioanna Tzoulaki<sup>6,7,8</sup>, Laura M Winchester<sup>9</sup>, James Yarmolinsky<sup>6</sup>, Daniel  
4 Prieto-Alhambra<sup>1,10</sup>, Danielle Newby<sup>1</sup>

5

6 <sup>1</sup>Centre for Statistics in Medicine and NIHR Biomedical Research Centre Oxford,  
7 NDORMS, University of Oxford, Oxford, UK

8 <sup>2</sup>School of Psychological Science, University of Bristol, Bristol, United Kingdom

9 <sup>3</sup>MRC Integrative Epidemiology Unit, University of Bristol, Bristol, United Kingdom

10 <sup>4</sup>MRC Biostatistics Unit, University of Cambridge, Cambridge, United Kingdom

11 <sup>5</sup>Division of Psychiatry, University College of London, London, UK

12 <sup>6</sup>Department of Epidemiology and Biostatistics, School of Public Health, Imperial  
13 College London, London, UK

14 <sup>7</sup>MRC-PHE Centre for Environment, School of Public Health, Imperial College London,  
15 London, UK

16 <sup>8</sup>Department of Hygiene and Epidemiology, University of Ioannina Medical School,  
17 Ioannina, Greece

18 <sup>9</sup>Department of Psychiatry, Warneford Hospital, Oxford, UK

19 <sup>10</sup>Department of Medical Informatics, Erasmus University Medical Centre, Rotterdam,  
20 the Netherlands

21 Corresponding author:

22 - Prof. Daniel Prieto-Alhambra

23 - Botnar Research Centre, Windmill Road, OX37LD, Oxford, United Kingdom

24 - Email : [daniel.prietoalhambra@ndorms.ox.ac.uk](mailto:daniel.prietoalhambra@ndorms.ox.ac.uk)

## 25 Abstract

26 **INTRODUCTION:** While preclinical studies suggest that Phosphodiesterase 5 (PDE5)  
27 inhibition may reduce cognitive impairment, findings from observational studies on  
28 whether PDE5 inhibitors reduce Alzheimer’s disease (AD) risk have been inconsistent.

29 **METHODS:** A two-sample *cis*-Mendelian Randomisation (MR) analysis was conducted  
30 to estimate the causal effect of PDE5 inhibition on AD risk. The analysis was performed  
31 across four different genome-wide association studies (GWAS) of AD to enhance  
32 evidence reliability through triangulation. Additionally, a sex-stratified MR analysis using  
33 data from UK Biobank was performed to assess potential sex-specific effects.

34 **RESULTS:** No evidence of a causal association between PDE5 inhibition and AD risk  
35 was found in the main analyses or sex-stratified analysis.

36 **DISCUSSION:** MR findings suggest that PDE5 inhibitors are unlikely to decrease the  
37 risk of AD. Further research is needed to thoroughly understand the impact of PDE5  
38 inhibitors on the risk of Alzheimer’s disease.

## 39 Keywords

40 Alzheimer’s disease, Mendelian randomisation, PDE-5, Phosphodiesterase-5,  
41 dementia, sildenafil.

## 42 1. BACKGROUND

43 Alzheimer's disease (AD) is a progressive neurodegenerative disorder and the most  
44 common cause of dementia. It is characterised by the accumulation of beta-amyloid  
45 plaques and neurofibrillary tangles in the brain, leading to a gradual deterioration of  
46 cognitive function and memory<sup>1</sup>. With the global increase in life expectancy, AD is  
47 rapidly emerging as a significant public health thread worldwide<sup>2</sup>.

48

49 Recently, the Medicines and Healthcare products Regulatory Agency (MHRA) in the UK  
50 approved Lecanemab for treating adults in the early stages of AD<sup>3</sup>. While the treatment  
51 has been shown effective for slowing the disease progression, the National Institute for  
52 Health and Care Excellence (NICE) has not recommended its availability on the NHS,  
53 arising concerns about its cost-effectiveness<sup>4</sup>. There is therefore still a scarcity of drugs  
54 that can effectively treat or prevent AD.

55

56 Several studies have identified numerous modifiable risk factors that may be associated  
57 with AD<sup>5</sup>, offering the potential opportunity for intervention through drug repurposing  
58 strategies<sup>6</sup>. This strategy aims to identify new therapeutic uses for existing drugs that  
59 have already been approved. In terms of cost-effectiveness, reduced drug-development  
60 time, and lower risk of failure, repurposing presents a highly advantageous strategy.  
61 Within this context, antihypertensive and related medications have been previously  
62 highlighted as promising candidates for AD prevention<sup>7</sup>. Specifically,  
63 Phosphodiesterase 5 (PDE5) inhibitors have gained growing interest due to their  
64 potential neuroprotective effects<sup>8</sup>.

65

66 PDE5 inhibitors (i.e., sildenafil, vardenafil, tadalafil, and avanafil) are mainly used for the  
67 treatment of erectile dysfunction (ED) and pulmonary arterial hypertension (PAH)<sup>9,10</sup>.

68 PDE5 is an enzyme present in smooth muscle cells whose inhibition has been shown to  
69 induce vascular smooth relaxation and vasodilatation. Simultaneously, this results in a  
70 reduction of diastolic blood pressure<sup>11</sup>. Some preclinical models have also highlighted  
71 the potential of PDE5 inhibitors on improving memory function<sup>12</sup>, although these results  
72 were not observed in subsequent clinical studies.

73

74 Conflicting results have also been reported in observational studies<sup>13,14</sup>, where  
75 confounding, time-related bias or reverse causation can play a key role. Alternatively,  
76 Mendelian randomisation (MR) can offer a robust approach to investigate causal  
77 relationships overcoming some of the limitations of observational research, as well as  
78 allowing for triangulation of evidence<sup>15,16</sup>. Specifically, drug target MR is an analytical  
79 method that uses genetic variants within or near the gene encoding the risk factor (*cis*-  
80 variants) as instruments to proxy the exposure<sup>15,17</sup>. Since alleles are randomly allocated  
81 during meiosis, this approach can minimise the risk of confounding that typically affects  
82 traditional observational studies, provided that all underlying MR assumptions are met.

83

84 In this study, we performed a two-sample *cis*-MR analysis to estimate the causal effect  
85 of genetically proxied PDE5 inhibition and the risk of AD. To investigate this, we have  
86 used diastolic blood pressure as a surrogate biomarker. Furthermore, we also

87 conducted a stratified by sex MR analysis, where we used UK Biobank (UKB) to identify  
88 AD cases.

## 89 2. METHODS

### 90 2.1. Study design

91 We performed a two-step *cis*-Mendelian Randomisation analysis to estimate the causal  
92 effect between genetically proxied PDE5 inhibition and AD risk. We scaled the effect of  
93 PDE5 inhibition based on a surrogate biomarker -diastolic blood pressure<sup>15,18</sup>. We used  
94 four different genome-wide association study (GWAS) of AD, each one differing by the  
95 sample size, heritability value, and the use of by-proxy cases. Additionally, we  
96 performed a sex-stratified analysis using UKB dataset to identify AD cases. Figure 1  
97 summarises the study design.

### 98 2.2. Data sources

#### 99 2.2.1. Variant-risk factor estimates

100 Variant-exposure estimates were extracted from a GWAS of diastolic blood pressure<sup>19</sup>.  
101 We used diastolic blood pressure (DBP) instead of systolic blood pressure (SBP) as  
102 PDE5 inhibition is known to have a greater impact on the former<sup>11</sup>. Evangelou *et al.*  
103 GWAS meta-analysed 77 cohorts (n = 757,601) participating in the International  
104 Consortium for Blood Pressure Genome (ICBP)<sup>20</sup> and UKB<sup>21</sup>. Blood pressure for each  
105 individual in the participating cohorts was measured in mmHg using either manual or  
106 automated readings. All participating cohorts adjusted for age, age<sup>2</sup>, sex, body mass  
107 index, and study-specific covariates. UKB cohort further corrected BP measures for  
108 those with self-reported medication use. Further information about study design,

109 participants, and genotype quality control of this GWAS can be found in the original  
110 publication

111  
112 GWAS estimates were measured in mmHg change per effect allele, and SNPs positions  
113 were reported in hg19/GRCh37 coordinates.

## 114 **2.2.2. Variant-outcome estimates**

115 Genetic variant-outcome associations were derived from the AD GWAS published by  
116 Lambert *et al.*<sup>22</sup> which conducted a two-stage meta-analysis of GWAS in individuals of  
117 European ancestry. We used estimates from stage 1, which consisted of 54,162  
118 participants (17,008 AD cases and 37,154 controls) containing 7,055,881 genotyped  
119 and imputed variants. Further details of the databases included in this meta-analysis  
120 can be found in Supplement (Note 1 and Table 1). As secondary outcomes, we used  
121 three different AD GWAS: Rojas *et al.*<sup>23</sup> (N = 409,435), Bellenguez *et al.*<sup>24</sup> (N =  
122 487,511) and Wightman *et al.*<sup>25</sup> (N = 398,108). All of them included only European  
123 participants. More details about the study populations can be found in the respective  
124 original publications and in supplementary (Note 1 and Table 1).

125  
126 We included these additional AD GWAS as secondary outcomes to validate our main  
127 study results. We did this due to the following reasons: (1) although they have bigger  
128 sample sizes, these AD GWAS have smaller SNP-based heritability value compared to  
129 Lambert AD GWAS; (2) the AD GWAS conducted by Rojas and Bellenguez contain a  
130 proportion of by-proxy-cases for AD; and, 3) Rojas and Bellenguez GWAS included

131 UKB, as well as Evangelou blood pressure GWAS, and we wanted to avoid sample  
132 overlap as can lead to biased results in the presence of weak instruments<sup>26</sup>.

133

134 All GWAS estimates were reported on the  $\log(\text{OR})$  scale. SNP coordinates were in  
135 hg19/GRCh37 assembly, except Rojas *et al.* GWAS, which was in the hg38/GRCh38  
136 assembly. We aligned the coordinates of this GWAS from hg38/GRCh38 to  
137 hg19/GRCh37 using LiftOver<sup>27</sup>.

138

139 In the sex-specific analysis, we used UKB<sup>21</sup> to estimate the variant-outcome effects.

140 UKB is a large population-based cohort study of over 500,000 participants aged 40 to

141 69 at recruitment (2006 and 2010). UKB collected lifestyle data and biological samples

142 for genotyping<sup>28</sup>. Genotyping, performed by Affymetrix, includes 784,256 autosomal

143 variants. Imputation was done using the Haplotype Reference Consortium and UK10K

144 panels, covering 93 million SNPs. Health outcomes, including dementia and AD, were

145 ascertained using validated algorithms combining baseline data and linked hospital and

146 death records, with follow-up data until December 2022

147 (<https://biobank.ndph.ox.ac.uk/showcase/refer.cgi?id=460>). In total, there are around

148 10,000 of dementia cases recorded in UKB.

## 149 **2.3. Statistical analysis**

### 150 **2.3.1. Instrument selection**

151 Instrumental variables used in MR must (1) be associated with the exposure, (2) not be

152 associated with the outcome through confounding pathways, and (3) not affect the

153 outcome except via the exposure<sup>29</sup>. Instrumental variables to proxy PDE5 inhibition

154 were obtained from a previous study that also targeted PDE5 inhibition<sup>30</sup>. This study  
155 selected five *cis*-genetic variants within the PDE5 gene (chromosome 4, position in  
156 GRCh37/hg19 120,415,550-120,550-146). These variants were associated with PDE5  
157 gene expression in blood at genome-wide significance ( $P\text{-Value} < 5 \cdot 10^{-8}$ ) and clumped  
158 using the P-Values of their associations with diastolic blood pressure ( $r^2 < 0.35$ , window =  
159 10,000 kilobases). Instruments from this study were validated using two positive control  
160 outcomes (erectile dysfunction and pulmonary hypertension).

161  
162 These five variants extracted from Woolf *et al.* study were used as instruments for this  
163 study (Table 1). The variant with strongest association (i.e., lowest P-Value) was  
164 rs66887589 (Beta = -0.16 respect allele T, 95%CI = -0.2 to -0.12). Variant rs17355550  
165 was the one with weakest association with DBP (Beta = -0.14 respect allele C, 95%CI =  
166 -0.23 to -0.04).

167

### 168 **2.3.2. Main analysis**

169 Mendelian randomisation estimates were calculated using the inverse-variance  
170 weighted method accounting for correlation between variants<sup>31</sup>. We used the linkage  
171 disequilibrium matrix corresponding to European ancestry participants with the 1000  
172 Genomes reference panel phase 3. Exposure alleles and outcome alleles were  
173 harmonised with respect to the linkage disequilibrium matrix. All MR estimates were  
174 reported as OR. We scaled our estimates to represent a daily 100mg dose of sildenafil,  
175 knowing that this amount decreases 5.5mmHg DBP.

176



### 177 **2.3.3. Sex-stratified analysis**

178 As AD is more prevalent in women compared to men<sup>32</sup>, we repeated the main analysis  
179 separately in females and males. We used the same variant-risk factor GWAS as in the  
180 main analysis (described in section Methods/Data sources/Variant-risk factor  
181 estimates), as previous research showed that SNP effects were identical for both, the  
182 mixed and the specific sex analysis<sup>33</sup>. We used UKB to calculate genetic variants-AD  
183 associations separately for both females and males.

184

185 We used the algorithmically-defined dementia types to restrict our UK Biobank cohort to  
186 participants without other forms of dementia (frontotemporal, vascular, or all cause of  
187 dementia – including only those with AD-). AD cases were classified as those with an  
188 AD report, whereas AD controls were those without one. All UKB variable fields IDs  
189 used in the study can be found in Supplementary Table 2.

190

191 We estimated the effect size of the genetic instruments on the algorithmically defined  
192 AD (separately for each sex) using a logistic regression. We used age at first  
193 assessment, the genetic batch, and the first 10 genetic principal components as  
194 covariates in the model. Beta coefficients obtained from the two different regressions  
195 were used later for computing the MR estimates.

196

197 MR effects were reported as OR per 5.5mmHg decrease in DBP.

## 198 2.4. Sensitivity analysis

### 199 2.4.1. Two-Step *cis*-Mendelian randomization

200 To account for any potential horizontal pleiotropic effects, we performed two-step *cis*-  
201 MR. This approach employs a two-step mediation strategy to account for potential  
202 pleiotropic pathways by adjusting variant-outcome associations<sup>34</sup>. Hence, this approach  
203 is used to adjust our MR estimates for any effect mediated by other related traits.

204

205 We adjusted our analysis for body mass index (BMI), as its inclusion as a covariate in  
206 the DBP GWAS can induce collider bias<sup>35</sup>.

### 207 2.4.2. Leave-one-out analysis

208 To assess whether the results from the main analysis were driven by a single  
209 instrument, we performed leave-one-out analysis<sup>36</sup>. In this approach, one SNP from the  
210 instrumental set is removed and the estimate causal effect is re-calculated. We  
211 performed this analysis for each one of the AD GWAS included in this study.

## 212 2.5. Software and implementation

213 We used R (version 3.2) for this study. The main packages used included  
214 *TwoSampleMR*<sup>37</sup>, *TwoStepCisMR*<sup>34</sup>, *coloc*<sup>38</sup>, *liftOver*<sup>27</sup>, *dplyr*<sup>39</sup>, and *ggplot2*<sup>40</sup>. This  
215 manuscript was written according to the STROBE-MR reporting guidelines<sup>41</sup>.

216

217 All the analytical code can be found in the public GitHub repository:

218 [https://github.com/oxford-pharmacoepi/PDE5\\_AD\\_MendelianRandomisation](https://github.com/oxford-pharmacoepi/PDE5_AD_MendelianRandomisation)

## 219 3. RESULTS

### 220 3.1. Main analysis

221 We found little evidence of an association between genetically proxied PDE5 inhibition  
222 and AD risk using Lambert's *et al.* GWAS (OR = 1.00, 95% confidence interval 0.96 to  
223 1.04, P-Value = 0.96). These results were consistent when using the other AD GWAS  
224 data (Figure 2).

225

226 Refer to Supplementary Table 3 to see the linkage disequilibrium matrix employed.  
227 Harmonised variant-risk factor and variant-outcome effects can be found in  
228 Supplementary Table 4. SNPs effect on the exposure against SNPs effects on the  
229 outcome (Lambert's *et al*) can be found in Supplementary Figure 1.

### 230 3.2. Sex-stratified analysis

231 From the 502,230 participants in UKB, we excluded 6,153 participants because they  
232 were diagnosed with vascular dementia, frontotemporal dementia or other forms of  
233 dementia (Supplementary Figure 2). After further restricting to individuals with  
234 genotyped data, we obtained a cohort of 262,037 females with 2,030 AD cases, and a  
235 cohort of 220,352 males with 1,722 cases. Baseline characteristics of the respective  
236 cohorts can be found in Supplementary Table 5.

237

238 MR results for both sex were consistent with the main analysis (Supplementary Figure  
239 3), showing no association between genetically proxied PDE5 inhibition and AD risk  
240 (Male: scaled OR = 1.04, 95%CI = 0.97 to 1.11, P-Value = 0.3; Female: scaled OR =  
241 0.95, 95%CI = 0.88 to 1.03, P-Value = 0.2).

### 242 3.3. Sensitivity analyses

#### 243 3.3.1. Two-Step *cis*-Mendelian randomization

244 Results from the two-step *cis*-MR were consistent with the main findings  
245 (Supplementary Table 6), suggesting that BMI did not induce bias to our results.

#### 246 3.3.2. Leave-one-out

247 There was little evidence to suggest that any of the instruments was driven to the  
248 obtained results was found in the leave-one-out analysis. All results were consistent  
249 with the main findings (Supplementary Table 7).

250

## 251 4. DISCUSSION

252 In this study, we used drug target MR to investigate the association between genetically  
253 proxied PDE5 inhibition and the risk of AD. Using DBP to scale PDE5 inhibition, our  
254 analysis showed little evidence of an effect of PDE5 inhibition on AD risk using a variety  
255 of AD GWAS datasets. Results stratifying by sex also showed no evidence of a causal  
256 association.

257

258 PDE5 is an enzyme responsible for degrading cyclic guanosine monophosphate  
259 (cGMP)<sup>42</sup>, a molecule that activates protein kinase G (PKG). PKG plays a key role in the  
260 regulation of smooth muscle relaxation, particularly in blood vessels. In addition to its  
261 vascular effects, the cGMP/PKG signalling have also been shown to play a role in  
262 neuronal plasticity<sup>43-45</sup>. Animal models have shown the potential of sildenafil enhancing  
263 memory and cognitive function<sup>46-49</sup> while having other neuroprotective effects, such as

264 improving synaptic plasticity<sup>50</sup>, or reducing amyloid burden<sup>46</sup>. However, clinical studies  
265 results' regarding sildenafil efficacy to enhance cognition have not been yet  
266 conclusive<sup>12</sup>, although it has been recently shown to improve brain blood flow<sup>8</sup>.

267

268 Interestingly, observational studies have also found contradictory results. In 2021, Fang  
269 *et al.*<sup>13</sup> developed an endophenotype network analysis where sildenafil was identified as  
270 a candidate drug in AD. They further conducted an observational study that suggested a  
271 reduction of 69% the risk of AD among sildenafil users compared to nonusers. This  
272 result was not aligned with a new-user active comparator cohort study conducted by  
273 Desai *et al.* (2022)<sup>14</sup>, where they did not find any evidence of an association between  
274 sildenafil and endothelin receptor antagonist users in people with PAH. Strengths,  
275 limitations and differences between the previous two observational studies have been  
276 extensively discussed elsewhere<sup>14,51,52</sup>, mainly pointing to issues regarding the target  
277 population and the study design.

278

279 Our study presents genetic evidence that supports Desai *et al.*'s results. However, there  
280 are significant differences in the interpretation of both studies. First, Desai and  
281 colleagues included other dementias (vascular dementia, senile, pre-senile, or  
282 unspecified dementia) rather than AD to define the outcome, which can bias the results  
283 to the null if sildenafil has only impact on AD. In our study, we used different GWAS  
284 studies for AD, each one with different definition. For example, the main study outcome  
285 (Lambert's *et al.*<sup>22</sup>) did include (although in small proportion) participants with mixed AD  
286 and vascular dementia (Supplementary Note 1) to define AD, as well as Bellenguez *et*

287 *al.*<sup>24</sup> definition. However, Wightman<sup>25</sup> and De Rojas<sup>23</sup> used a more specific definition for  
288 AD. Second, they restricted the study population to participants with PAH to minimise  
289 the risk of confounding by indication, reducing significantly the study population sample  
290 size. This can result in a lack of statistical power and generalisability to the general  
291 population, not only because of the sample size but also because, given the high  
292 mortality rate among medicated PAH patients, it can be that participants did not live  
293 long enough to develop AD. However, in our study we used Mendelian randomisation,  
294 which assumes that alleles are randomised at meiosis, we could study the impact of  
295 genetically proxied PDE5 inhibition, instrumented in a wider European population. Third,  
296 whereas they studied the impact of sildenafil usage on AD, our study did not assess  
297 that. Instead, we studied the effect of having lower levels of PDE5 in a lifelong time.

298  
299 AD has been reported to be more prevalent in women<sup>32</sup>, whereas sildenafil is mainly  
300 prescribed to men. Hence, we performed a sex-stratified analysis using data from UKB  
301 to estimate the variant-outcome associations independently for males and females. Our  
302 findings indicated that genetically proxied PDE5 inhibition was not associated with a  
303 reduced risk of AD in either sex. However, both analyses were influenced by a  
304 significant case-control imbalance ratios, with only around 0.8% of participants being  
305 classified as cases. Hence, our sex-stratified analysis can be underpowered to detect  
306 any association.

307  
308 A previous observational study conducted only in men diagnosed with ED had identified  
309 an association between the use of PDE5 inhibitors and decrease risk of AD<sup>53</sup>. The

310 cohort study compared users of PDE5 inhibitors with non-users, based on the  
311 assumption that patients continued the treatment after the initial prescription. However,  
312 PDE5 inhibitors for ED are typically taken when required rather than regularly. This  
313 intermittent use challenges the assumption that participants consistently followed up  
314 with the treatment once prescribed, potentially impacting the study's conclusions.

315

316 Our study has several strengths that enhance the robustness of our findings. Firstly, we  
317 used MR to triangulate evidence from previous observational evidence, which is known  
318 to be less susceptible to unobserved confounding and reverse causation, compared to  
319 traditional observational studies<sup>15,17</sup>. Second, we used instrumental variables that have  
320 been previously tested and validated using positive control outcomes, enhancing their  
321 reliability. Third, we included different AD definitions, each one prone to different bias, in  
322 the main analysis and obtained consistent evidence, ensuring the robustness of our  
323 results. Additionally, we further performed a two-step *cis*-MR to adjust for potential  
324 pleiotropic effect, where results were also consistent with the main analysis.

325

326 There are some limitations that must be considered when interpreting our results. First,  
327 by using MR, we are studying the effect of small lifelong effects of lower PDE5 levels on  
328 AD. However, PDE5 inhibitors are typically administered for a shorter time, in higher  
329 doses and at a specific point in time. Thus, the effect estimates from this study should  
330 not be interpreted as the effect of the pharmacological intervention, but as an  
331 approximation of the direction of the causal effects. Second, we only included European  
332 populations in our study (although in the sex-specific analysis we did not restrict to

333 increase the sample size, the proportion of non-white individuals was much smaller  
334 compared to white individuals). Therefore, our results are potentially not generalisable  
335 to other populations. Third, our model assumes that the effects of PDE5 inhibition are  
336 linear across the dose-response range. Forth, although we included different AD GWAS  
337 with different sources of bias, all of them relied on clinical diagnostic rather than  
338 postmortem autopsy (which is known to be the gold standard to detect the underlying  
339 cause of dementia). Hence, heterogeneity in our outcome might influence the results, as  
340 different types of dementia can have different risk factors<sup>54</sup>.

341  
342 Our study provides genetic evidence that PDE5 inhibitors are unlikely to decrease the  
343 risk of AD. Findings from this study have significant implications for our understanding  
344 of AD pathophysiology and the identification of PDE5 inhibitors potential therapeutic  
345 targets.

## 346 5. Data availability

347 All GWAS used are publicly available (see references to original publications and  
348 Supplementary Table 1). UK Biobank individual-level source data can be accessed by  
349 applying for access at <http://ukbiobank.ac.uk/register-apply/>. This research has been  
350 conducted using the UK Biobank Resource under Application Number 98358.

## 351 6. Acknowledgements

352 The authors express sincere gratitude to all individuals who generously participated in  
353 each one of the GWAS we have included in this study, as well as UK Biobank



354 participants. This work uses data provided by patients and collected by the NHS as part  
355 of their care and support.

356

## 357 7. Conflicts of interest

358 DG is the Chief Executive Officer of Sequoia Genetics, a private limited company that  
359 works with investors, pharma, biotech, and academia by performing research that  
360 leverages genetic data to help inform drug discovery and development. DG has  
361 financial interests in several biotechnology companies. DPA receives funding from the  
362 UK National Institute for Health and Care Research (NIHR) in the form of a senior  
363 research fellowship. DPA's group received partial support from the Oxford NIHR  
364 Biomedical Research Centre. DPA's department has received grant/s from Amgen,  
365 Chiesi-Taylor, Lilly, Janssen, Novartis, and UCB Biopharma. His research group has  
366 received consultancy fees from AstraZeneca and UCB Biopharma. Amgen, Astellas,  
367 Janssen, Synapse Management Partners, and UCB Biopharma have funded or  
368 supported training programmes organised by DPA's department. All other authors  
369 report no conflicts of interest.

370

371

372

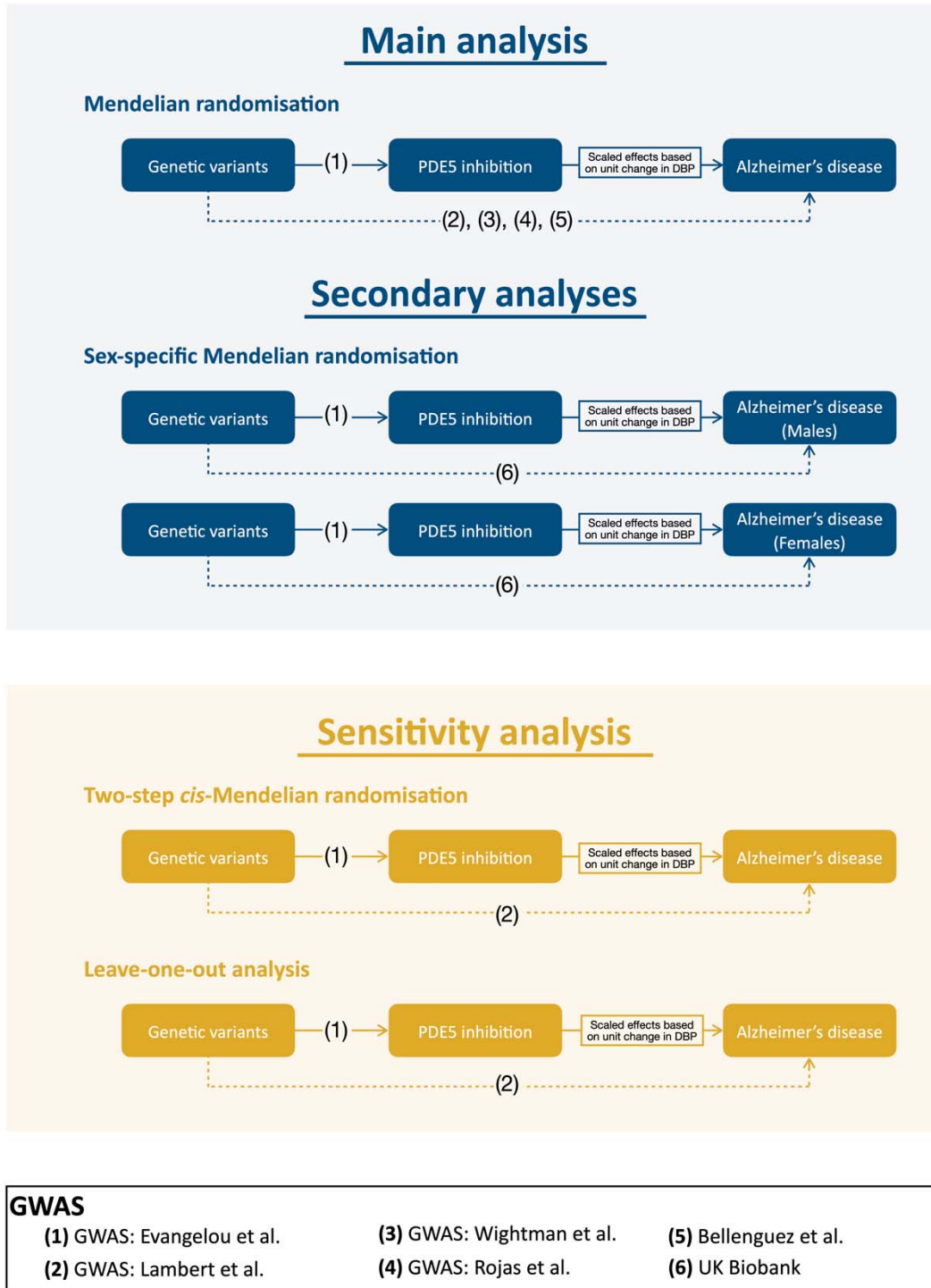
373 **Table 1: Single nucleotide polymorphisms employed as instruments for the Mendelian randomisation analysis.**

374 Note: SNP = Single nucleotide polymorphism, SE = Standard error, EAF = effect allele frequency.

375

SNP	Effect allele	Other allele	EAF	Diastolic blood pressure (N = 757,601)				eQTL (N = 31,684)	
				Beta (mm Hg)	SE	P-Value	Sample size	F-statistic	P-Value
rs66887589	C	T	0.48	0.16	0.02	2e-20	754,581	86	1.9e-40
rs10050092	C	T	0.34	-0.13	0.02	9e-13	754,583	51	1.5e-18
rs12646525	T	C	0.22	-0.10	0.02	7e-06	746,319	20	1.5e-9
rs80223330	A	G	0.14	0.10	0.03	0.0001	749,960	15	2.1e-34
rs17355550	C	T	0.03	-0.14	0.05	0.004	746,320	8	3.5e-8

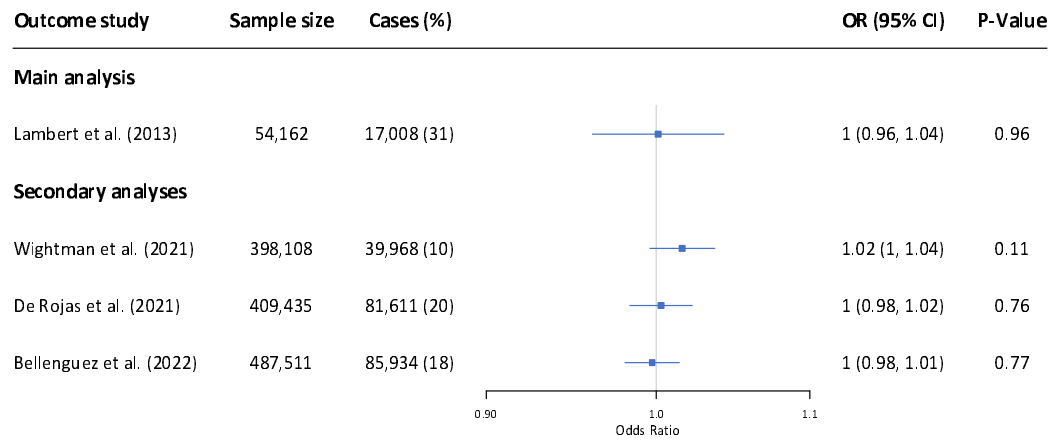
376



377

378 **Fig. 1: Scheme of the study design.** GWAS = Genome wide association study.

379



380

381 **Fig. 2: Results from the Mendelian randomization.** Odds ratio is scaled to represent  
382 100mg dose of sildenafil (which reduces 5mmHg diastolic blood pressure). Note: OR =  
383 Odds ratio, CI = Confidence interval.

384

385

## 386 References

- 387 1. NHS. Alzheimer's disease. 2024; [https://www.nhs.uk/conditions/alzheimers-](https://www.nhs.uk/conditions/alzheimers-disease/)  
388 [disease/](https://www.nhs.uk/conditions/alzheimers-disease/), 2024.
- 389 2. Alzheimer's A. 2016 Alzheimer's disease facts and figures. *Alzheimers Dement*.  
390 2016;12(4):459-509.
- 391 3. GOV.UK. Lecanemab licensed for adult patients in the early stages of  
392 Alzheimer's disease. 2024; [https://www.gov.uk/government/news/lecanemab-](https://www.gov.uk/government/news/lecanemab-licensed-for-adult-patients-in-the-early-stages-of-alzheimers-disease#:~:text=Lecanemab%20is%20a%20monoclonal%20antibody,the%20pro)  
393 [licensed-for-adult-patients-in-the-early-stages-of-alzheimers-](https://www.gov.uk/government/news/lecanemab-licensed-for-adult-patients-in-the-early-stages-of-alzheimers-disease#:~:text=Lecanemab%20is%20a%20monoclonal%20antibody,the%20pro)  
394 [disease#:~:text=Lecanemab%20is%20a%20monoclonal%20antibody,the%20pro](https://www.gov.uk/government/news/lecanemab-licensed-for-adult-patients-in-the-early-stages-of-alzheimers-disease#:~:text=Lecanemab%20is%20a%20monoclonal%20antibody,the%20pro)  
395 [gression%20of%20the%20disease](https://www.gov.uk/government/news/lecanemab-licensed-for-adult-patients-in-the-early-stages-of-alzheimers-disease#:~:text=Lecanemab%20is%20a%20monoclonal%20antibody,the%20pro), 2024.
- 396 4. NICE. Benefits of new Alzheimer's treatment lecanemab are too small to justify  
397 the cost to the NHS. 2024; [https://www.nice.org.uk/news/articles/benefits-of-new-](https://www.nice.org.uk/news/articles/benefits-of-new-alzheimer-s-treatment-lecanemab-are-too-small-to-justify-the-cost-to-the-nhs)  
398 [alzheimer-s-treatment-lecanemab-are-too-small-to-justify-the-cost-to-the-nhs](https://www.nice.org.uk/news/articles/benefits-of-new-alzheimer-s-treatment-lecanemab-are-too-small-to-justify-the-cost-to-the-nhs),  
399 2024.
- 400 5. Livingston G, Huntley J, Liu KY, et al. Dementia prevention, intervention, and  
401 care: 2024 report of the Lancet standing Commission. *Lancet*.  
402 2024;404(10452):572-628.
- 403 6. Pushpakom S, Iorio F, Eyers PA, et al. Drug repurposing: progress, challenges  
404 and recommendations. *Nat Rev Drug Discov*. 2019;18(1):41-58.
- 405 7. Hughes D, Judge C, Murphy R, et al. Association of Blood Pressure Lowering  
406 With Incident Dementia or Cognitive Impairment: A Systematic Review and Meta-  
407 analysis. *JAMA*. 2020;323(19):1934-1944.
- 408 8. Webb AJS, Birks JS, Feakins KA, et al. Cerebrovascular Effects of Sildenafil in  
409 Small Vessel Disease: The OxHARP Trial. *Circ Res*. 2024;135(2):320-331.
- 410 9. Barnett CF, Machado RF. Sildenafil in the treatment of pulmonary hypertension.  
411 *Vasc Health Risk Manag*. 2006;2(4):411-422.
- 412 10. Levine SB. Pharmacologic treatment of erectile dysfunction. *BMJ*.  
413 2004;329(7459):E310-311.
- 414 11. Kloner RA. Cardiovascular effects of the 3 phosphodiesterase-5 inhibitors  
415 approved for the treatment of erectile dysfunction. *Circulation*.  
416 2004;110(19):3149-3155.
- 417 12. Zuccarello E, Acquarone E, Calcagno E, et al. Development of novel  
418 phosphodiesterase 5 inhibitors for the therapy of Alzheimer's disease. *Biochem*  
419 *Pharmacol*. 2020;176:113818.
- 420 13. Fang J, Zhang P, Zhou Y, et al. Endophenotype-based in silico network medicine  
421 discovery combined with insurance record data mining identifies sildenafil as a  
422 candidate drug for Alzheimer's disease. *Nat Aging*. 2021;1(12):1175-1188.
- 423 14. Desai RJ, Mahesri M, Lee SB, et al. No association between initiation of  
424 phosphodiesterase-5 inhibitors and risk of incident Alzheimer's disease and  
425 related dementia: results from the Drug Repurposing for Effective Alzheimer's  
426 Medicines study. *Brain Commun*. 2022;4(5):fcac247.
- 427 15. Schmidt AF, Finan C, Gordillo-Maranon M, et al. Genetic drug target validation  
428 using Mendelian randomisation. *Nat Commun*. 2020;11(1):3255.

- 429 16. Smith GD, Ebrahim S. 'Mendelian randomization': can genetic epidemiology  
430 contribute to understanding environmental determinants of disease? *Int J*  
431 *Epidemiol.* 2003;32(1):1-22.
- 432 17. Gill D, Georgakis MK, Walker VM, et al. Mendelian randomization for studying  
433 the effects of perturbing drug targets. *Wellcome Open Res.* 2021;6:16.
- 434 18. Schmidt AF, Hingorani AD, Finan C. Human Genomics and Drug Development.  
435 *Cold Spring Harb Perspect Med.* 2022;12(2).
- 436 19. Evangelou E, Warren HR, Mosen-Ansorena D, et al. Publisher Correction:  
437 Genetic analysis of over 1 million people identifies 535 new loci associated with  
438 blood pressure traits. *Nat Genet.* 2018;50(12):1755.
- 439 20. Wain LV, Vaez A, Jansen R, et al. Novel Blood Pressure Locus and Gene  
440 Discovery Using Genome-Wide Association Study and Expression Data Sets  
441 From Blood and the Kidney. *Hypertension.* 2017;70(3):e4-e19.
- 442 21. Sudlow C, Gallacher J, Allen N, et al. UK biobank: an open access resource for  
443 identifying the causes of a wide range of complex diseases of middle and old  
444 age. *PLoS Med.* 2015;12(3):e1001779.
- 445 22. Lambert JC, Ibrahim-Verbaas CA, Harold D, et al. Meta-analysis of 74,046  
446 individuals identifies 11 new susceptibility loci for Alzheimer's disease. *Nat*  
447 *Genet.* 2013;45(12):1452-1458.
- 448 23. de Rojas I, Moreno-Grau S, Tesi N, et al. Common variants in Alzheimer's  
449 disease and risk stratification by polygenic risk scores. *Nat Commun.*  
450 2021;12(1):3417.
- 451 24. Bellenguez C, Kucukali F, Jansen IE, et al. New insights into the genetic etiology  
452 of Alzheimer's disease and related dementias. *Nat Genet.* 2022;54(4):412-436.
- 453 25. Wightman DP, Jansen IE, Savage JE, et al. Author Correction: A genome-wide  
454 association study with 1,126,563 individuals identifies new risk loci for  
455 Alzheimer's disease. *Nat Genet.* 2021;53(12):1722.
- 456 26. Sadreev II, Elsworth BL, Mitchell RE, et al. Navigating sample overlap, winner's  
457 curse and weak instrument bias in Mendelian randomization studies using the  
458 UK Biobank. *medRxiv.* 2021:2021.2006.2028.21259622.
- 459 27. Hinrichs AS, Karolchik D, Baertsch R, et al. The UCSC Genome Browser  
460 Database: update 2006. *Nucleic Acids Res.* 2006;34(Database issue):D590-598.
- 461 28. Bycroft C, Freeman C, Petkova D, et al. The UK Biobank resource with deep  
462 phenotyping and genomic data. *Nature.* 2018;562(7726):203-209.
- 463 29. Burgess S, Davey Smith G, Davies NM, et al. Guidelines for performing  
464 Mendelian randomization investigations: update for summer 2023. *Wellcome*  
465 *Open Res.* 2019;4:186.
- 466 30. Woolf B, Rajasundaram S, Cronje HT, Yarmolinsky J, Burgess S, Gill D. A drug  
467 target for erectile dysfunction to help improve fertility, sexual activity, and  
468 wellbeing: mendelian randomisation study. *BMJ.* 2023;383:e076197.
- 469 31. Burgess S, Zuber V, Valdes-Marquez E, Sun BB, Hopewell JC. Mendelian  
470 randomization with fine-mapped genetic data: Choosing from large numbers of  
471 correlated instrumental variables. *Genet Epidemiol.* 2017;41(8):714-725.
- 472 32. Andersen K, Launer LJ, Dewey ME, et al. Gender differences in the incidence of  
473 AD and vascular dementia: The EURODEM Studies. EURODEM Incidence  
474 Research Group. *Neurology.* 1999;53(9):1992-1997.



- 475 33. Woolf B, Mason A, Zagkos L, Sallis H, Munafo MR, Gill D. MRSamePopTest:  
476 introducing a simple falsification test for the two-sample mendelian randomisation  
477 'same population' assumption. *BMC Res Notes*. 2024;17(1):27.
- 478 34. Woolf B, Zagkos L, Gill D. TwoStepCisMR: A Novel Method and R Package for  
479 Attenuating Bias in cis-Mendelian Randomization Analyses. *Genes (Basel)*.  
480 2022;13(9).
- 481 35. Hartwig FP, Tilling K, Davey Smith G, Lawlor DA, Borges MC. Bias in two-  
482 sample Mendelian randomization when using heritable covariable-adjusted  
483 summary associations. *Int J Epidemiol*. 2021;50(5):1639-1650.
- 484 36. Davies NM, Holmes MV, Davey Smith G. Reading Mendelian randomisation  
485 studies: a guide, glossary, and checklist for clinicians. *BMJ*. 2018;362:k601.
- 486 37. Hemani G, Zheng J, Elsworth B, et al. The MR-Base platform supports  
487 systematic causal inference across the human phenome. *Elife*. 2018;7.
- 488 38. Giambartolomei C, Vukcevic D, Schadt EE, et al. Bayesian test for colocalisation  
489 between pairs of genetic association studies using summary statistics. *PLoS*  
490 *Genet*. 2014;10(5):e1004383.
- 491 39. *dplyr: A Grammar of Data Manipulation* [computer program]. Version R package  
492 version 1.1.4, <https://github.com/tidyverse/dplyr2023>.
- 493 40. *ggplot2: Elegant Graphics for Data Analysis* [computer program]. 2016.
- 494 41. Skrivankova VW, Richmond RC, Woolf BAR, et al. Strengthening the reporting of  
495 observational studies in epidemiology using mendelian randomisation (STROBE-  
496 MR): explanation and elaboration. *BMJ*. 2021;375:n2233.
- 497 42. Tropea MR, Gulisano W, Vacanti V, Arancio O, Puzzo D, Palmeri A. Nitric  
498 oxide/cGMP/CREB pathway and amyloid-beta crosstalk: From physiology to  
499 Alzheimer's disease. *Free Radic Biol Med*. 2022;193(Pt 2):657-668.
- 500 43. Bollen E, Puzzo D, Rutten K, et al. Improved long-term memory via enhancing  
501 cGMP-PKG signaling requires cAMP-PKA signaling. *Neuropsychopharmacology*.  
502 2014;39(11):2497-2505.
- 503 44. Ota KT, Pierre VJ, Ploski JE, Queen K, Schafe GE. The NO-cGMP-PKG  
504 signaling pathway regulates synaptic plasticity and fear memory consolidation in  
505 the lateral amygdala via activation of ERK/MAP kinase. *Learn Mem*.  
506 2008;15(10):792-805.
- 507 45. Prickaerts J, Sik A, van Staveren WC, et al. Phosphodiesterase type 5 inhibition  
508 improves early memory consolidation of object information. *Neurochem Int*.  
509 2004;45(6):915-928.
- 510 46. Puzzo D, Staniszewski A, Deng SX, et al. Phosphodiesterase 5 inhibition  
511 improves synaptic function, memory, and amyloid-beta load in an Alzheimer's  
512 disease mouse model. *J Neurosci*. 2009;29(25):8075-8086.
- 513 47. Cuadrado-Tejedor M, Hervias I, Ricobaraza A, et al. Sildenafil restores cognitive  
514 function without affecting beta-amyloid burden in a mouse model of Alzheimer's  
515 disease. *Br J Pharmacol*. 2011;164(8):2029-2041.
- 516 48. Hosseini-Sharifabad A, Ghahremani MH, Sabzevari O, et al. Effects of protein  
517 kinase A and G inhibitors on hippocampal cholinergic markers expressions in  
518 rolipram- and sildenafil-induced spatial memory improvement. *Pharmacol*  
519 *Biochem Behav*. 2012;101(3):311-319.

- 520 49. Prickaerts J, van Staveren WC, Sik A, et al. Effects of two selective  
521 phosphodiesterase type 5 inhibitors, sildenafil and vardenafil, on object  
522 recognition memory and hippocampal cyclic GMP levels in the rat. *Neuroscience*.  
523 2002;113(2):351-361.
- 524 50. Palmeri A, Privitera L, Giunta S, Loreto C, Puzzo D. Inhibition of  
525 phosphodiesterase-5 rescues age-related impairment of synaptic plasticity and  
526 memory. *Behav Brain Res*. 2013;240:11-20.
- 527 51. Newby D. Are phosphodiesterase Type 5 inhibitors potential therapies for  
528 Alzheimer's disease and related dementias? *Brain Commun*. 2022;4(5):fcac260.
- 529 52. Her QL, Kahrs JC, Sturmer T. Comparator choices in pharmacoepidemiology  
530 studies of Alzheimer's disease. *Nat Aging*. 2023;3(7):791-792.
- 531 53. Adesuyan M, Jani YH, Alsugeir D, et al. Phosphodiesterase Type 5 Inhibitors in  
532 Men With Erectile Dysfunction and the Risk of Alzheimer Disease: A Cohort  
533 Study. *Neurology*. 2024;102(4):e209131.
- 534 54. Anderson EL, Davies NM, Korologou-Linden R, Kivimaki M. Dementia  
535 prevention: the Mendelian randomisation perspective. *J Neurol Neurosurg*  
536 *Psychiatry*. 2024;95(4):384-390.
- 537