

1 The Impact of Fontan Circulatory Failure on Heart Transplant Survival: A 20 Center
2 Retrospective Cohort Study

3
4 Kurt R Schumacher¹, David N Rosenthal², Adriana Batazzi¹, Sunkyung Yu¹, Garrett
5 Reichle¹, Maria Bano³, Shriprasad R Deshpande⁴, Matthew O'Connor⁵, Humera
6 Ahmed⁵, Sharon Chen², Lydia K. Wright⁷, Steven J Kindel⁸, Anna Joong⁹, Michelle
7 Ploutz⁶, Brian Feingold¹⁰, Justin Godown¹¹, Chad Y Mao¹², Angela Lorts¹³, Kathleen E.
8 Simpson¹⁴, Aecha Ybarra¹⁵, Marc E Richmond¹⁶, Shahnawaz Amdani¹⁷, Jennifer
9 Conway¹⁸, Elizabeth D Blume¹⁹, Melissa K Cousino¹

- 10 1. Congenital Heart Center, Department of Pediatrics, University of Michigan Medical
11 School, Ann Arbor, MI
12 2. Department of Pediatrics, Stanford University, Palo Alto, CA
13 3. Department of Pediatrics, Division of Cardiology, Children's Health, UT Southwestern,
14 Dallas, TX
15 4. Pediatric Cardiology, Children's National Hospital, George Washington University,
16 Washington, District of Columbia
17 5. The Children's Hospital of Philadelphia, Philadelphia, PA
18 6. Department of Pediatrics, University of Utah, Salt Lake City, UT
19 7. Nationwide Children's Hospital, Columbus, OH
20 8. Children's Wisconsin Herma Heart Institute, Department of Pediatrics, Medical
21 College of Wisconsin, Milwaukee, WI
22 9. Division of Pediatric Cardiology, Ann & Robert Lurie Children's Hospital of Chicago,
23 Northwestern University Feinberg School of Medicine, Chicago, IL
24 10. Pediatrics and Clinical and Translational Science, University of Pittsburgh,
25 Pittsburgh, PA
26 11. Vanderbilt University Medical Center, Division of Pediatric Cardiology, Nashville, TN
27 12. Children's Healthcare of Atlanta, Emory University, Atlanta, GA
28 13. Department of Pediatrics, The Heart Institute, Cincinnati Children's Hospital Medical
29 Center, University of Cincinnati College of Medicine, Cincinnati, OH
30 14. Division of Pediatric Cardiology, Children's Hospital of Colorado, University of
31 Colorado Anschutz Medical Campus
32 15. Washington University School of Medicine, Division of Pediatric Cardiology
33 16. Division of Pediatric Cardiology, Columbia University Vagelos College of Physicians
34 & Surgeons, New York, NY
35 17. Division of Cardiology & Cardiovascular Medicine, Children's Institute Department of
36 Heart Vascular & Thoracic, Cleveland, Ohio
37 18. Stollery Children's Hospital, Department of Pediatrics, University of Alberta,
38 Edmonton, AB
39 19. Division of Advanced Cardiac Therapies, Boston Children's Hospital
40

41 Short Title: The impact of Fontan circulatory failure on heart transplant

42

43 Corresponding Author: Kurt Schumacher.

44 kurts@med.umich.edu

45 1540 E Hospital Dr.

46 C.S. Mott Children's Hospital, Congenital Heart Center

47 Ann Arbor, MI 48109

48

49 Total Word Count: 5500

50

51

52

53

54

55

56

57

58

59

60

61

62

63

64

65

66 **Abstract**

67 **Background:** Fontan circulatory failure (FCF) is a chronic state in palliated single

68 ventricle heart disease with high morbidity and mortality including heart failure,

69 multisystem end-organ disease, and need for heart transplant. Specific FCF morbidities
70 have not been rigorously defined, limiting study of how FCF morbidities impact pre- and
71 post-HT outcomes. We hypothesized that FCF-related morbidities affect survival from
72 heart transplant waitlisting through 1-year post-heart transplant.

73 **Methods:** This 20-center, retrospective cohort study collected demographic,
74 medical/surgical history, waitlist data, and peri- and post-heart transplant data, and a
75 *priori* defined FCF-specific morbidities in Fontan patients who were listed for heart
76 transplant from 2008-2022. Univariate 2-group statistics compared surviving individuals
77 with those who 1) died anytime from waitlisting to 1-year post-heart transplant, 2) died
78 on the waitlist, 3) underwent transplant and died within 1-year post-transplant. Using
79 covariates from both univariate analyses, multivariable logistic regression determined
80 the primary study outcome of independent FCF risk factors for mortality between waitlist
81 and 1-year post-heart transplant

82 **Results:** Of 409 waitlisted patients, 24 (5.9%) died on the waitlist. Of the 341 (83.4%)
83 who underwent HT, 27 (8.5%) did not survive to 1-year. Univariate risk factors for
84 waitlist death included higher aortopulmonary collateral burden, > 1 hospitalization in
85 prior year, younger age, sleep apnea, higher NYHA class, non-enrollment in school or
86 work, and single-parent home. Risk factors for 1-year post-heart transplant mortality
87 included hypoplastic left heart syndrome diagnosis, patent fenestration, anatomic
88 Fontan obstruction, clinical cyanosis (pulse oximetry < 90%), polycythemia, portal
89 variceal disease, mental health condition requiring treatment, and higher HLA class II
90 PRA. Of the patients not surviving from waitlisting to 1-year post-heart transplant,

91 independent risk factors for mortality included >1 hospitalization in the year prior to
92 waitlisting (adjusted odds ratio 2.0, p=0.05) and clinical cyanosis (adjusted odds ratio
93 5.0, p=0.002).

94 **Conclusions:** Patients with Fontan palliation selected for heart transplant have
95 significant mortality from waitlisting through transplant. Among FCF specific morbidities,
96 cyanosis is associated with worsened survival and necessitates further study. Clinical
97 morbidity of any type requiring repeated hospital admission also should prompt
98 consideration of heart transplant.

99

100

101

102

103

104

105

106

107 **Clinical Perspective**

108 *What is new?*

109 • Survival through heart transplant in patients with Fontan physiology selected for
110 waitlisting has increased from previous reports, but this patient group still has
111 significant risk of mortality.

112 • Risk factors for waitlist mortality and post-transplant mortality are different.

113 • Cyanosis and repeated hospitalizations prior to listing are independent risk
114 factors for mortality between waitlisting and 1-year post-heart transplant.

115 *What are the clinical implications?*

116 • To successfully manage a patient through the entire transplant process, attention
117 to mitigating different risks in the waitlist and post-transplant phase is necessary.

118 • Repeated hospitalization or significant cyanosis in a patient with Fontan
119 physiology should prompt consideration of heart transplant.

120

121

122

123

124

125

126 **Introduction**

127 Fontan circulatory failure (FCF) is a multisystem syndrome directly resulting from the
128 physiologic ramifications of staged surgical palliation to total cavopulmonary

129 anastomosis, or the Fontan palliation, for single ventricle type congenital heart diseases
130 (CHD). Fontan palliation offers individuals born with single ventricle CHD long-term
131 survival with the alleviation of cyanosis, but it also results in lifelong venous
132 hypertension which may be accompanied by compromise in cardiac output and other
133 cardiovascular abnormalities. Since every organ is exposed to this abnormal circulation,
134 unique and Fontan-specific multisystem abnormalities have been described in the
135 recent era. These abnormalities do not occur in isolation, making FCF effectively a
136 systemic disease that is associated with poor long-term survival [1, 2].

137 In an individual with Fontan circulation, heart transplant removes Fontan physiology and
138 restores normal biventricular circulation, thus it is used as a definitive therapy for FCF.
139 Unfortunately, individuals with FCF have reported post-heart transplant mortality that
140 exceeds that of most other types of heart disease [3, 4]. This is likely impacted by the
141 residual systemic implications of Fontan physiology as well as uncertainty surrounding
142 optimal timing for heart transplant evaluation referral in this lifelong chronic disease
143 state [5]. The differential survival between FCF and non-FCF patients is seen in the
144 early post-heart transplant period. For patients who survive the first-year, outcomes are
145 similar or superior to those with other heart diseases undergoing heart transplant ([4].
146 The risk of mortality being most pronounced perioperatively and early post-HT suggests
147 that pre-operative FCF characteristics influence outcome. Attempts to study the FCF-
148 transplant interaction have been limited by inadequate sample size or datasets with
149 marked lack of FCF-specific, granular data. A recent multicenter study in adults with
150 Fontan suggest FCF states may be important but did not fully characterize the unique,

151 Fontan-specific multisystem effects of FCF [6]. As a result of these limitations, it
152 remains unclear which FCF disease states affect outcomes.

153 This retrospective study aimed to fully characterize patients with FCF who were
154 waitlisted for heart transplant by applying FCF-specific morbidity definitions, which were
155 developed via Delphi methodology and previously described [7], to a large, multicenter
156 sample. It was hypothesized that FCF-specific morbidities would affect survival from
157 heart transplant waitlisting through 1-year post-heart transplant.

158 **Methods**

159 *Study Design and Population*

160 This is a retrospective cohort study of patients with Fontan-palliated single ventricle
161 CHD who underwent waitlisting for heart transplant between 2008 and 2022 at twenty
162 congenital heart transplant centers in the United States and Canada. Both pediatric
163 patients and adults were eligible for inclusion. Multi-organ transplant patients were also
164 eligible for inclusion. Patients who were evaluated for transplant but never active on the
165 waitlist were not included as retrospective center capture of this population was variable
166 and incomplete. The study was approved by the Institutional Review Board at the
167 primary coordinating center at the University of Michigan as well as the Institutional
168 Review Boards of all 20 participating centers.

169 *Data Extraction*

170 De-identified patient-level data were extracted through medical chart review and
171 entered in HIPPA-compliant REDCap. Demographic data included sex, race, age,

172 congenital heart disease diagnosis, and surgical history. At time of waitlisting, extracted
173 data included NYHA class, history of hospitalizations in the year prior to waitlisting,
174 multiple serum laboratories, and clinical testing data (e.g., echocardiogram, cardiac
175 MRI, cardiac catheterization, cardiopulmonary exercise testing, 6-minute walk testing
176 results). Data were also extracted on events that occurred during the waitlisting period
177 including initiation of new vasoactive treatments, invasive ventilation, new ventricular
178 assist device placement, support with extracorporeal membrane oxygenation, and
179 waitlist actions including removal from the waitlist and reason for removal. Mortality at
180 any point following listing and major post-transplant morbidities including rejection and
181 infection in the first post-transplant year were also collected.

182 *Defining FCF-Specific Morbidities*

183 Previously described FCF morbidity definitions developed via modified Delphi
184 methodology were applied to the extracted dataset [7]. Although the published
185 definitions included graded severities for each morbidity, each morbidity was treated
186 dichotomously as ‘present’ or ‘absent’ at the time of waitlisting for the purpose of this
187 initial study due to the high number of variables in addition to FCF morbidities already
188 being considered in the analysis.

189 *Outcomes*

190 The primary outcome was death at any time between waitlisting and 1-year post-heart
191 transplant. Secondary outcomes included death prior to heart transplant (which included
192 patients removed from the waitlist due to deterioration in clinical status) and death in a
193 transplanted patient within 1-year post-transplant.

194 *Statistical Analysis*

195 Data are reported as frequency and percentage (%) for categorical variables and
196 median with interquartile range (IQR) or mean \pm standard deviation (SD) for continuous
197 variables. Univariate associations of patient and clinical characteristics including a *priori*
198 defined FCF-specific morbidities with each of the study outcomes (waitlist death, death
199 within 1-year post-transplant, and death at any time between waitlisting and 1-year post-
200 heart transplant) were examined using Chi-square test or Fisher's exact for categorical
201 variables and Wilcoxon rank-sum test or two-sample t-test for continuous variables. Due
202 to the limited number of cases of either waitlist mortality or 1-year post-transplant
203 mortality, multivariable analyses for those outcomes were not feasible. Specifically,
204 because of the study's *a priori* intent to define risk of both post-waitlist and post-
205 transplant death as a single, unique outcome, multivariable logistic regression was used
206 to assess independent risk factors associated with mortality between waitlisting and 1-
207 year post-transplant after excluding individuals still on the waitlist or de-listed from the
208 analysis. Factors found to be associated with mortality between waitlisting and 1-year
209 post-transplant in univariate analysis ($p < 0.15$) were further considered and included in
210 multivariable analyses. Due to the limited number of outcomes, the final model was
211 compiled after a series of prior models, each analyzing a limited number of covariates,
212 were explored to aid in variable selection and avoid overfitting. Multicollinearity among
213 candidate variables for multivariable analysis was examined using Variance Inflation
214 Factor. Adjusted odds ratios (aORs) with 95% confidence intervals from multivariable
215 logistic regression were reported. Kaplan-Meier curves were used to estimate survival
216 from waitlist to transplant, survival in the first-year post-transplant, and overall survival

217 since waitlisting. All analyses were performed using SAS Version 9.4 (SAS Institute Inc.,
218 Cary, NC), with statistical significance set at a p-value < 0.05 using a two-sided test.
219 Authors KRS and MKC had full access to all data in the study and take responsibility for
220 its integrity and the data analysis.

221 **Results**

222 In total, 409 individuals with Fontan listed for heart transplant were included in the study
223 cohort. The cohort's demographic and prior surgical characteristics are presented in
224 Table 1 as well as a consort diagram of the cohort (Figure 1)

225 *Fontan patient characteristics at waitlisting and waitlist outcomes*

226 The median total follow-up time post-waitlisting for the cohort was 4.2 years (IQR 2-7.3).
227 Individual and testing characteristics at waitlisting are shown in Table 2. Additionally,
228 cPRA data was available for 310 (75.8%) patients of the cohort; the majority did not
229 exhibit serum anti-HLA antibodies but there was significant variation. The median total
230 cPRA was 0% with IQR of 0-22% and a total range of 0-100%. The median class I
231 cPRA was 0%, IQR 0-14%, total range 0-100%, and the median class II cPRA was 0%,
232 IQR 0-10%, range 0-100%.

233 FCF-related morbidity characteristics of the cohort are shown in Table 3. The variation in
234 FCF presentation within the cohort was broad. The median number of unique FCF-
235 related morbidities present was 5 (IQR of 3-8 and a range of 0-15 morbidities),
236 demonstrating significant heterogeneity in FCF presentation and triggers for heart
237 transplant evaluation and waitlisting.

238 Clinical status changed in a significant proportion of patients during the waitlisting
239 period. Vasoactive infusions were initiated in 247 (60.4%) of patients prior to heart
240 transplant and continued until the time of heart transplant or death in 82.6% of those
241 patients. Mechanical ventilation was necessary in 57 (13.9%) patients after waitlisting
242 and continued until transplant or death in 45.6% of ventilated patients. A new ventricular
243 assist device was placed after waitlisting in 45 (11.0%) patients and remained in place
244 in 91.1% of patients until transplant or death. Extracorporeal membrane oxygenation
245 was used in 20 (4.9%) patients and continued until death or transplant in 50.0% of those
246 patients.

247 Twenty-four (5.9%) patients died while waiting and 20 (4.9%) patients were removed
248 from the waitlist. Of those removed from the waitlist, 4 were removed because they were
249 deemed to have too much morbidity/illness to remain a transplant candidate.

250 Additionally, 8 patients' status improved to no longer needing transplant at the time, and
251 8 patients' families requested to be removed from the waitlist or otherwise were unable
252 to continue with transplant listing for reasons other than clinical status (these patients
253 were censored from further analysis).

254 Figure 2 demonstrates the overall survival of waitlist patients. Notably, 24 (5.9%)
255 patients remained on the waitlist for more than 1-year at the time of data collection. The
256 following factors were associated with waitlist death in univariate analysis: higher grade
257 (2+ or greater) of AP collaterals (28.6% vs. 15.3%, $p=0.01$), higher number of
258 hospitalizations in the year preceding listing (hospitalization at the time of listing counted
259 as 1 hospitalization; median 2 vs. 1, $p=0.048$), younger age at transplant evaluation
260 (median 5.2 years vs. 13.1 years, $p=0.003$), sleep apnea (16.7% vs. 4.7%, $p=0.04$),

261 higher NYHA class (class IV; 41.7% vs. 23.2%, $p=0.01$), non-enrollment in school or
262 non-employment (45.8% vs. 17.9%, $p=0.002$), and single parent home at time of
263 evaluation (37.5% vs. 20.5%, $p=0.04$).

264 *Post-heart transplant survival and transplant morbidities*

265 In the 341 (83.4%) patients undergoing heart transplant, the median post-transplant
266 follow-up time was 4.2 years (IQR 1.9-7.2). Dual organ transplant occurred in 3.8%
267 (N=13) of the cohort including 12 heart-liver transplants and 1 heart-kidney transplant;
268 due to the low number of patients undergoing dual-organ transplant they were included
269 in the overall cohort and not analyzed separately. A total of 27 (7.9%) patients died in
270 the first-year post-transplant. An additional 5 individuals (1.7%) died between 1 and 3-
271 years post-transplant. Survival in the first-year post-transplant is demonstrated in
272 Figure 3. Those who died in the first post-transplant year were more likely to have a
273 diagnosis of hypoplastic left heart syndrome as the type of single ventricle CHD (81.5%
274 vs. 61.9%, $p=0.04$), normal systolic function on echocardiogram (55.6% vs. 33.1%,
275 $p=0.03$), a patent fenestration (74.1% vs. 42.9%, $p=0.002$), a lower oxygen saturation
276 (85.0 ± 5.7 vs. 88.9 ± 6.3 , $p=0.003$), a supplemental oxygen requirement (44.4% vs.
277 24.4%, $p=0.02$), a higher class II PRA (median 3% vs. 0%, $p=0.03$), Fontan pathway or
278 pulmonary artery obstruction (44.4% vs. 23.5%, $p=0.02$), clinical cyanosis defined as a
279 resting arterial oxygen saturation $< 90\%$ (88.9% vs. 56.4%, $p=0.001$), higher grade
280 portal variceal disease (25.9% vs. 8.0%, $p=0.01$), polycythemia (25.9% vs. 9.7%,
281 $p=0.02$), and a mental health condition requiring treatment (51.9% vs. 28.0%, $p=0.04$).

282 In the first-year post-transplant, 38.9% of the cohort had allograft rejection requiring an
283 adjustment in immunosuppressive therapy; 27.5% had cellular-mediated rejection and

284 22.8% had antibody-mediated rejection (non-exclusive). Neither type of rejection, nor
285 rejection overall, was associated with 1-year mortality (25.9% in deaths vs 40.1% in
286 survivors, $p=0.14$). Bacterial infection requiring parenteral antibiotics occurred in 22.2%
287 of the cohort in the first-year post-transplant; 37.0% of the patients that died had an
288 infection compared to 20.8% of survivors ($p=0.06$). Fungal infections were rarer but
289 occurred in 5.7% of the cohort including 18.5% of those who died vs 4.5% of survivors
290 ($p=0.01$). Post-transplant bacterial infections were more likely to have occurred in those
291 who also had recurrent or severe bacterial infections prior to transplant (55.3% vs.
292 19.4%; $p<0.0001$).

293 *Overall survival from time of waitlisting to 1-year post-heart transplant*

294 For the primary outcome of survival from waitlist to 1-year post-transplant, 316 patients
295 met an outcome of either 1-year survival ($n=289$) or mortality ($n=27$). At the time of data
296 analysis, 24 were still on the waitlist at last follow-up, 25 were alive but had less than 1-
297 year post-HT follow-up, and 20 were censored at the time of removal from the waitlist
298 for reasons other than clinical deterioration. Among the 15.0% ($n=27$) of individuals who
299 died, after seeing independent risk factors for mortality included >1 hospitalization in the
300 year prior to waitlisting (aOR 2.0, $p=0.05$) and clinical cyanosis (aOR 5.0, $p=0.002$)
301 (Figure 4). Overall survival (including beyond 1-year post-transplant) since waitlisting
302 for the cohort is demonstrated in Figure 5.

303 **Discussion**

304 This study provides the largest, most comprehensive FCF-specific report of waitlist and
305 post-heart transplant outcomes in individuals with Fontan physiology. Survival of

306 Fontan patients selected for transplant both on the waitlist and early post-transplant
307 among expert congenital heart centers was notably higher in this recent era cohort than
308 previously seen which suggests significant gains in outcomes and improved
309 understanding of this population as a field. Compared to other multicenter reports of
310 transplant listing, waitlist mortality has improved to 5.9 % from previously reported 12-
311 26%, and 1-year post transplant survival has improved to 92.1% from previously
312 reported 76%-89% [3, 4, 8, 9] . However, there remains significant mortality from the
313 time of waitlist to 1-year post-transplant that may still be improved upon, and unique risk
314 factors were determined via this study to help guide referral and treatment.

315 Risk factors for death on the waitlist and death post-transplant were remarkably
316 different. Patients who died while waiting were more likely to have worsened classical
317 symptoms of heart failure as evidenced by higher NYHA class. This may be
318 exacerbated by worsened AP collateralization, also a risk factor, that can complicate
319 systemic cardiac output and oxygen delivery. They were also more likely to admitted to
320 the hospital repeatedly in the year prior to transplant, again likely driven by acute
321 symptoms. In contrast, those surviving the waiting period but dying early post-transplant
322 were more likely to have normal ventricular function by echo and less severe typical
323 heart failure symptoms but instead had other clinical findings that reflect the more
324 indolent and slowly progressive failure of the Fontan pathway and dysfunction from
325 chronically elevated central venous pressures. They were more likely to have Fontan
326 pathway obstruction, increased cyanosis, and portal varices. These findings suggest
327 chronic, lifetime changes that are not immediately reversed by transplantation impact
328 outcome even after restoration of biventricular physiology which is consistent with other

329 phenotypic characterizations of Fontan patients undergoing advanced therapies [10].

330 When waitlist and post-transplant risk factors are viewed together, they present a

331 complex picture for evaluation and monitoring in the Fontan patient. However, one can

332 conclude from this study, that acute new symptoms as well as progression of chronic

333 effects of Fontan circulation must both be continually assessed and when present,

334 referral to advanced heart failure teams should be considered.

335 While cyanosis has been invoked as an association with worsened outcomes in some

336 non-transplant-oriented studies [11, 12], its independent association with overall

337 mortality after listing for transplant in this study is novel and pronounced. While the only

338 other independent risk factor for mortality, multiple hospitalizations, may be a catch-all

339 for many severe forms of rarer FCF presentation, cyanosis is a single, easily

340 measurable clinical finding. It is not immediately clear why cyanosis is associated with

341 impaired survival. Cyanosis may be a marker of more deranged Fontan physiology. It

342 may be that chronic cyanosis causes systemic changes that lead to multiorgan disease

343 or predispose to perioperative morbidity such as bleeding. Potentially cyanosis also

344 leads to lifetime exercise impairment and deconditioning that affects ability to survive

345 the physical challenges of transplantation. Further, ongoing post-transplant cyanosis

346 may have direct effects on the graft. The causes that lead to cyanosis at time of

347 waitlisting being an independent risk factor warrants further study.

348 This study also serves as a detailed characterization FCF itself in a large cohort. In

349 short, FCF and its clinical presentation are remarkably heterogeneous. The median

350 number of unique FCF factors in the cohort was 5 with an IQR of 3 to 8 factors. This

351 illustrates the challenges clinicians face in monitoring patients with Fontan physiology.

352 These individuals develop multiple clinical abnormalities all of which may change or
353 worsen over time. How FCF morbidities should be tracked and what thresholds or
354 combinations of factors should trigger transplant require additional study. In the future,
355 we plan to study this cohort in detail to assess combinations of FCF morbidities and
356 overall disease burden to look for presentation patterns that may help to guide
357 surveillance testing, referral, and evaluation for advanced heart failure therapies.

358 Finally, the impact of both psychosocial factors and social drivers of health must be
359 acknowledged. Both single parent household and non-enrollment in school or
360 employment were risk factors for waitlist mortality but neither were associated with post-
361 transplant mortality. It is unclear whether this finding is related to the individual's degree
362 of heart failure or not. We fully recognize that these chart-based variables are not
363 comprehensive measures of social drivers of health, however, they may serve as an
364 indicator of possible inequities in access to care or historical marginalization. Similarly to
365 others who have discerned race-based and socio-economic disparities in waitlist
366 outcomes [13-15], these findings underscore the importance of prioritizing early
367 identification of and referral for heart failure therapy particularly among patients from
368 disadvantaged communities.

369 Notably, the presence of mental health condition(s) requiring treatment as indicated in
370 the medical chart was found to negatively impact post-transplant survival. In fact, the
371 risk of post-transplant mortality was almost doubled in those with mental health
372 conditions requiring treatment. Given the higher rates of mental health diagnoses
373 among the Fontan-palliated heart disease population [16-18] coupled with established
374 associations between mental health comorbidity and post-transplant treatment

375 adherence [19], regular surveillance and early referral for mental health care needs are
376 as important as physical FCF morbidity monitoring. While several FCF morbidities are
377 less modifiable to intervention, mental health represents a risk factor that can be
378 prevented or mitigated to improve post-transplant outcomes. Prevention-focused and
379 integrated psychosocial care is critical for the patient with Fontan-palliation and should
380 be prioritized at institutional and program levels to improve outcomes in this higher risk
381 group.

382 This study has several limitations. First, this is a retrospective cohort study and while
383 care was taken to collect data that could be obtained from chart review, many FCF
384 morbidities and other information may not be completely available from chart review.
385 Relatedly, some chart-based variables, such as single parent household and presence
386 of a mental health condition, do not fully capture the complexity of these constructs,
387 such as additional social drivers of health or type of mental health condition impacting
388 outcomes. Second, despite 20 centers and more than 400 patients, the overall mortality
389 was relatively low which compromises power to detect risk factors that may be still
390 important. Further, although 20 centers were included, they were chosen specifically as
391 centers with significant Fontan transplant volume and experience and the findings may
392 not be generalizable. Additionally, some findings, such as PRA, echocardiographic, and
393 angiographic findings may have site specific measures without real normalization of
394 values. There is also no information provided by this study regarding initial patient
395 selection for waitlisting; data regarding patients who were declined for transplant is not
396 present and our understanding of this group remains very limited. Finally, other markers
397 of overall physical and mental health, such as physical frailty or psychological resilience

398 are commonly gauged as part of patient evaluation for advanced therapies. Those
399 indicators representing an individual's overall response to illness may be as or more
400 predictive than any individual morbidity.

401 These limitations inform the next phase in this critically important field of research given
402 the growing number of Fontan transplants. The severity of individual FCF morbidities
403 requires further study. Further, some patient factors, such as collateral vessels, may be
404 modifiable, but whether modification affects outcome is unknown. Specific evaluation of
405 frailty and resilience, both of which may be modified to improve outcomes in other
406 disease states, is of significant interest.

407 **Conclusion**

408 Though improved compared to previous reports, Fontan-palliated patients selected for
409 transplant continue to have high mortality from waitlisting through transplant. Among
410 FCF specific morbidities, cyanosis is associated with worsened survival. The
411 presentation of FCF is very heterogeneous and warrants continued study to determine
412 specific Fontan patient surveillance and referral.

413

414 **Acknowledgements:**

415 Data collected by the Pediatric Cardiac Critical Care Consortium and Western Canadian
416 Single Ventricle Registry were used for this manuscript with permission from each
417 organization. The authors would also like to acknowledge the research staff at each
418 center that assisted in this effort.

419

420 **Sources of funding:**

421 This research was supported by a grant from the Additional Ventures and Enduring
422 Hearts organizations and a gift from the Van Hooser family.

423

424

425 REFERENCES

- 426 1. Allen, K.Y., et al., *Effect of Fontan-Associated Morbidities on Survival With Intact*
427 *Fontan Circulation*. Am J Cardiol, 2017. **119**(11): p. 1866-1871.
- 428 2. Goldberg, D.J., et al., *The failing Fontan: etiology, diagnosis and management*.
429 *Expert Rev Cardiovasc Ther*, 2011. **9**(6): p. 785-93.
- 430 3. Bernstein, D., et al., *Outcome of listing for cardiac transplantation for failed*
431 *Fontan: a multi-institutional study*. Circulation, 2006. **114**(4): p. 273-80.
- 432 4. Simpson, K.E., et al., *Fontan Patient Survival After Pediatric Heart*
433 *Transplantation Has Improved in the Current Era*. Ann Thorac Surg, 2017.
434 **103**(4): p. 1315-1320.
- 435 5. Chen, S., et al., *Outcomes after initial heart failure consultation in Fontan*
436 *patients*. Cardiol Young, 2024. **34**(5): p. 989-996.
- 437 6. Lewis, M.J., et al., *Clinical Outcomes of Adult Fontan-Associated Liver Disease*
438 *and Combined Heart-Liver Transplantation*. J Am Coll Cardiol, 2023. **81**(22): p.
439 2149-2160.

- 440 7. Schumacher, K.R., et al., *Achieving Consensus: Severity-Graded Definitions of*
441 *Fontan-Associated Complications to Characterize Fontan Circulatory Failure.* J
442 Card Fail, 2024.
- 443 8. Kovach, J.R., et al., *Comparison of risk factors and outcomes for pediatric*
444 *patients listed for heart transplantation after bidirectional Glenn and after Fontan:*
445 *an analysis from the Pediatric Heart Transplant Study.* J Heart Lung Transplant,
446 2012. **31**(2): p. 133-9.
- 447 9. Kulshrestha, K., et al., *The majority of pediatric Fontan patients have excellent*
448 *post-transplant survival.* J Thorac Cardiovasc Surg, 2024. **167**(6): p. 2193-2203.
- 449 10. Dykes, J.C., et al., *Clinical and hemodynamic characteristics of the pediatric*
450 *failing Fontan.* J Heart Lung Transplant, 2021. **40**(12): p. 1529-1539.
- 451 11. Schafstedde, M., et al., *Persisting and reoccurring cyanosis after Fontan*
452 *operation is associated with increased late mortality.* Eur J Cardiothorac Surg,
453 2021. **61**(1): p. 54-61.
- 454 12. Egbe, A.C., et al., *Predictors of procedural complications in adult Fontan patients*
455 *undergoing non-cardiac procedures.* Heart, 2017. **103**(22): p. 1813-1820.
- 456 13. Bansal, N., et al., *Impact of race and health coverage on listing and waitlist*
457 *mortality in pediatric cardiac transplantation.* J Heart Lung Transplant, 2023.
458 **42**(6): p. 754-764.
- 459 14. Amdani, S., A. Tang, and J.D. Schold, *Children from socioeconomically*
460 *disadvantaged communities present in more advanced heart failure at the time of*
461 *transplant listing.* J Heart Lung Transplant, 2023. **42**(2): p. 150-155.

- 462 15. Singh, T.P., et al., *Association of race and socioeconomic position with outcomes*
463 *in pediatric heart transplant recipients*. Am J Transplant, 2010. **10**(9): p. 2116-23.
- 464 16. DeMaso, D.R., et al., *Psychiatric Disorders in Adolescents With Single Ventricle*
465 *Congenital Heart Disease*. Pediatrics, 2017. **139**(3).
- 466 17. McCormick, A.D., et al., *Psychological functioning in paediatric patients with*
467 *single ventricle heart disease: a systematic review*. Cardiol Young, 2022. **32**(2): p.
468 173-184.
- 469 18. Gonzalez, V.J., et al., *Mental Health Disorders in Children With Congenital Heart*
470 *Disease*. Pediatrics, 2021. **147**(2).
- 471 19. Killian, M.O., et al., *Psychosocial predictors of medication non-adherence in*
472 *pediatric organ transplantation: A systematic review*. Pediatr Transplant, 2018.
473 **22**(4): p. e13188.

474
475
476
477
478
479
480
481
482

Table 1. Demographics and Surgical information (N=409)

Male sex	253 (61.9)
Race	
White/Caucasian	293 (71.6)
Black/African American	61 (14.9)

	Asian	16 (3.9)
	Native American	6 (1.5)
	Native Pacific Islander	0 (0.0)
	None of the above	27 (6.6)
	Unknown	12 (2.9)
Ethnicity		
	White Non-Hispanic	266 (65.0)
	Black Non-Hispanic	59 (14.4)
	Hispanic	49 (12.0)
	Other	35 (8.6)
Primary cardiac diagnosis		
	HLHS	254 (62.1)
	Tricuspid Atresia	32 (7.8)
	DILV	28 (6.8)
	Unbalanced AVSD	38 (9.3)
	PA/IVS	8 (2.0)
	Other	49 (12.0)
Heterotaxy syndrome		52 (12.7)
Age at Fontan, years		3.1 (2.3-4.0)
Type of Fontan		
	ECC	250 (61.1)
	Lateral tunnel	141 (34.5)
	Other	18 (4.4)
Fenestration used at Fontan		318 (77.8)
Fontan revision ever		51 (12.5)
Thoracic duct ligation ever		23 (5.6)
Pleurodesis ever		14 (3.4)
History of lymphatic intervention		18 (4.4)
Tracheostomy ever		9 (2.2)
Permanent pacemaker in place		116 (28.4)

* Data are presented as N (%) for categorical variables and Median (interquartile range) for continuous variable.

Table 2. Transplant listing and Pre-transplant testing characteristics (N=409)

Age at Listing, years	(N=407)	13.0 (6.5-16.6)
Time from Fontan to listing, years	(N=399)	9.2 (2.8-13.1)
Status at listing		
1A		153 (37.4)
1B		130 (31.8)
2		77 (18.8)
Adult listing		33 (8.1)
Canadian listing		16 (3.9)
NYHA class		
I		28 (6.8)
II		119 (29.1)
III		143 (35.0)
IV		90 (22.0)
Unknown		29 (7.1)
Insurance type at time of evaluation		
None		2 (0.5)
Public		211 (51.6)
Private		170 (41.6)
Unknown		26 (6.4)
Patient enrolled in school or employed at time of evaluation		307 (75.1)
Single parent home at time of evaluation		91 (22.2)
Parent/caregiver has a mental health history of any of the following (anxiety, mood, trauma, or substance use disorder)		74 (18.1)
History of child protective service involvement		32 (7.8)
Number of hospitalizations in the year prior to transplant listing		1 (0-3)
0		101 (24.7)
1		105 (25.7)
2-3		103 (25.2)
4-5		43 (10.5)
6+		11 (2.7)
Unknown		46 (11.2)
Weight-for-age z-score at time of evaluation (N=360 for 2 < age < 20 years)		-1.0 ± 1.6
Height-for-age z-score at time of evaluation (N=359 for 2 < age < 20 years)		-1.5 ± 1.5
BMI at time of evaluation, kg/m ² (N=397 for age >		18.3 (16.2-

2 years)		21.2)
O ₂ saturation at time of evaluation, %	(N=384)	88.4 ± 6.1
Supplemental oxygen at time of evaluation		98 (24.1)
Cardiac MRI findings		N=94 (23.1%)
Systemic ventricular function		
Normal		28 (29.8)
Mildly or Mild-Moderately depressed		18 (19.1)
Moderately or Moderate-Severely depressed		22 (23.4)
Severely depressed		25 (26.6)
Missing/Not reported		1 (1.1)
Ejection Fraction, %	(N=84)	38.8 ± 14.4
Atrioventricular valve regurgitation		
None		20 (21.3)
Mild or Mild-Moderate		28 (29.8)
Moderate or Moderate-Severe		28 (29.8)
Severe		16 (17.0)
Missing/Not reported		2 (2.1)
Fenestration present		51 (54.3)
Cardio-pulmonary exercise testing		N=83 (20.4%)
O ₂ saturation at resting baseline, %	(N=69)	88.9 ± 5.5
Max VO ₂ , mL/kg/min	(N=72)	22.4 ± 9.9
VO ₂ at AT, mL/kg/min	(N=38)	20.8 ± 15.0
Ve/VCO ₂		40.8 ± 7.4
(N=44)		
RER	(N=41)	1.1 ± 0.13
6-minute walk test		N=65 (16.0%)
Distances walked, meters		375 (263-459)
(N=63)		
Lowest reported oxygen saturation, %	(N=61)	84.6 ± 8.3
Cardiac catheterization data		N=362
		(88.9%)
Ventricular End diastolic pressure, mmHg		10 (8-14)
(N=318)		
Fontan pressure, mmHg		16 (14-19)
(N=339)		

Pulmonary vascular resistance, Woods-Units x m ² (N=315)	2.0 (1.3-2.7)
Qp indexed, L/min/m ² (N=314)	2.5 ± 0.96
Qs indexed, L/min/m ² (N=329)	3.0 ± 1.1

Data are presented as N (%) for categorical variables and Median (interquartile range) or Mean ± Standard deviation for continuous variables.

486
487
488
489
490
491
492

Table 3. FCF-specific morbidities	Not present	Present	Unknown
Fontan Function			
Anatomic Fontan pathway or pulmonary artery obstruction	288 (70.4)	113 (27.6)	8 (2.0)
Clinical cyanosis/hypoxia	163 (39.9)	240 (58.7)	6 (1.5)
Systemic venous abnormalities as a result of venous insufficiency	282 (68.9)	60 (14.7)	67 (16.4)
Arrhythmia			
Atrial arrhythmia	290 (70.9)	108 (26.4)	11 (2.7)
Ventricular arrhythmia	329 (80.4)	70 (17.1)	10 (2.4)
Bradycardia	325 (79.5)	71 (17.4)	13 (3.2)

Chronic fluid overload states and lymphatic diseases

Chronic pleural effusions	296 (72.4)	107 (26.2)	6 (1.5)
Chronic ascites	256 (62.6)	149 (36.4)	4 (1.0)
Protein Losing Enteropathy	262 (64.1)	139 (34.0)	8 (2.0)
Plastic Bronchitis	371 (90.7)	31 (7.6)	7 (1.7)

Disorders of the airway and respiratory system

Hemoptysis/Bronchopulmonary hemorrhage	382 (93.4)	13 (3.2)	14 (3.4)
Sleep apnea	300 (73.3)	27 (6.6)	82 (20.0)

Disorders of the liver and GI tract

Fontan-Associated Liver Disease (FALD)	180 (44.0)	197 (48.2)	32 (7.8)
Portal/Hepatic Variceal Disease	286 (69.9)	50 (12.2)	73 (17.8)

Disorders of the Kidney

Acute Kidney Injury in last 12 months	311 (76.0)	87 (21.3)	11 (2.7)
---------------------------------------	------------	-----------	----------

Disorders of the Blood

Polycythemia	347 (84.8)	44 (10.7)	18 (4.4)
Thrombotic disease	317 (77.5)	68 (16.6)	24 (5.9)

Disorders of the Immune System

Recurrent or severe bacterial infection	354 (86.6)	44 (10.8)	11 (2.7)
---	------------	-----------	----------

Disorders of the Musculoskeletal System

Osteopenia/Osteoporosis	159 (38.9)	34 (8.3)	216 (52.8)
-------------------------	------------	----------	---------------

Disorders of the Skin

Skin Atrophy	292 (71.4)	30 (7.3)	87 (21.3)
--------------	------------	----------	-----------

Disorders of the Endocrine System

Adrenal insufficiency	330 (80.7)	30 (7.3)	49 (12.0)
-----------------------	------------	----------	-----------

Nervous system			
History of stroke	328 (80.2)	67 (16.4)	14 (3.4)

Psychiatric (Mood/Behavior)			
Mental health disorders	236 (57.7)	130 (31.8)	43 (10.5)

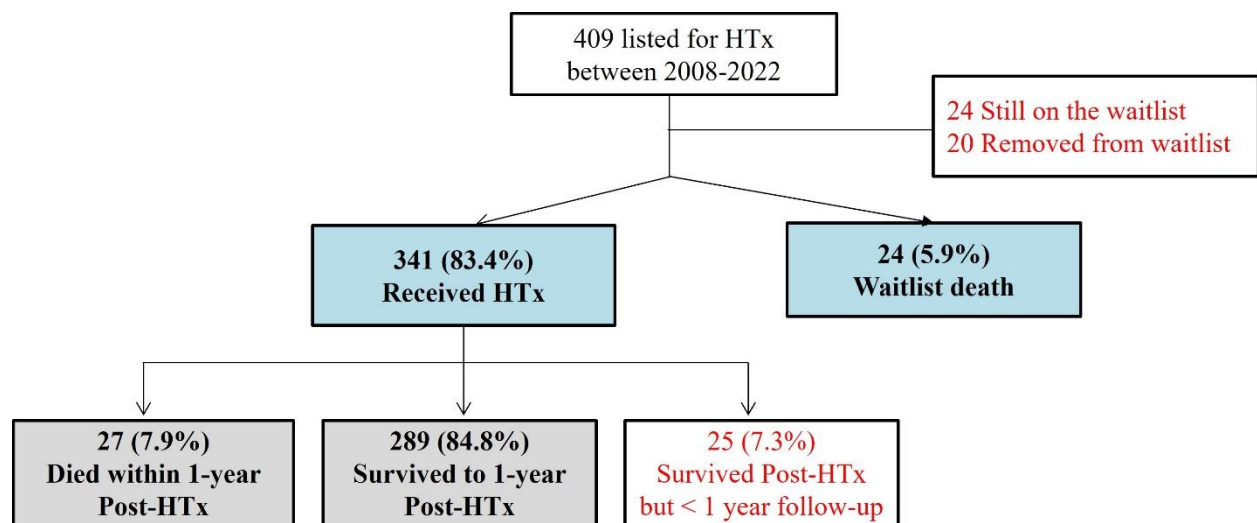
Neurodevelopment			
Neurodevelopmental disorders	243 (59.4)	122 (29.8)	44 (10.8)

* Data are presented as N (%)

493
494
495
496
497
498
499
500

501 Figure 1. CONSORT diagram for the cohort.

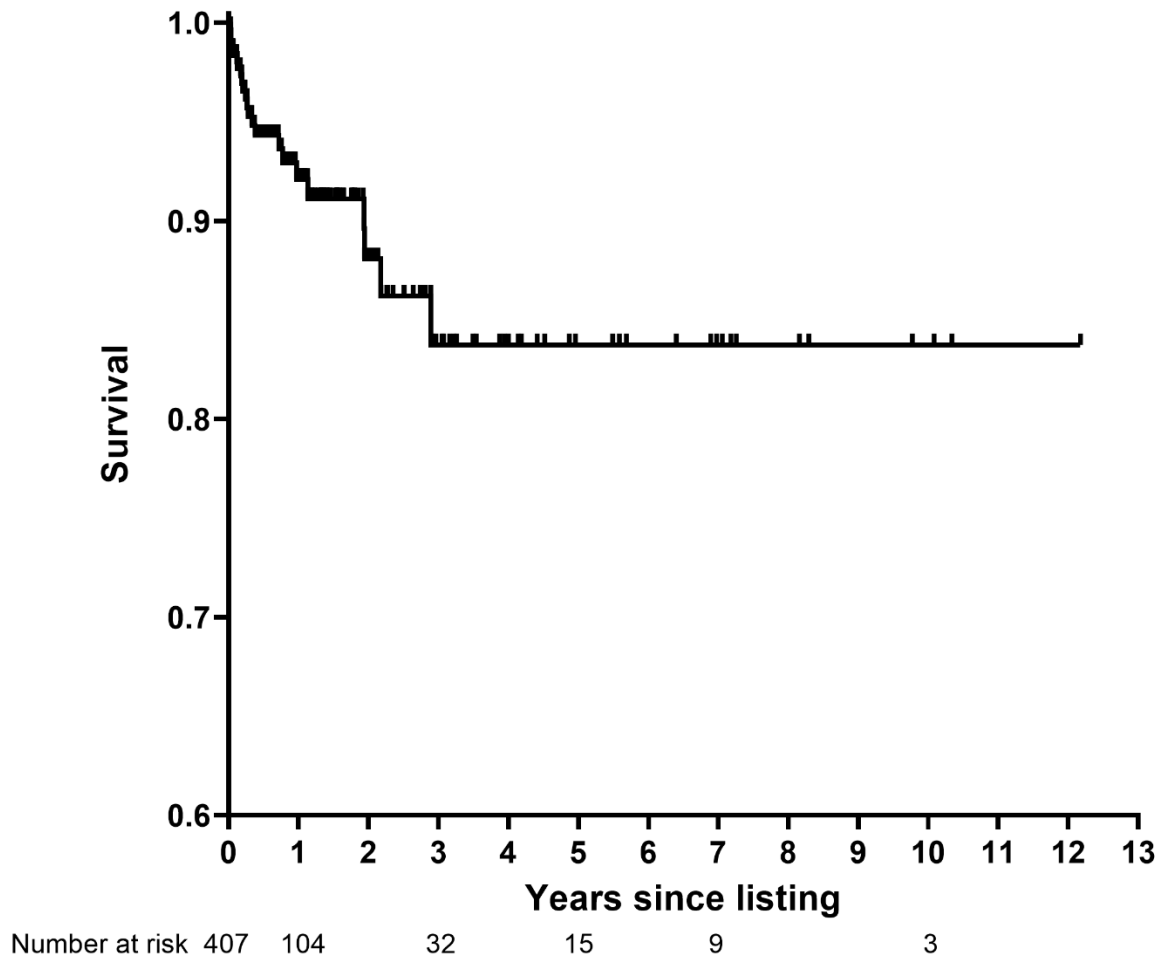
502



503

504
505
506
507
508
509
510
511
512
513
514
515
516
517
518
519
520
521
522
523
524

Figure 2. Waitlist survival censored at time of transplant or removal from the transplant waitlist for reasons other than being too ill for transplant candidacy. * Two patients with unknown date of listing were not included.



525

526

527

528

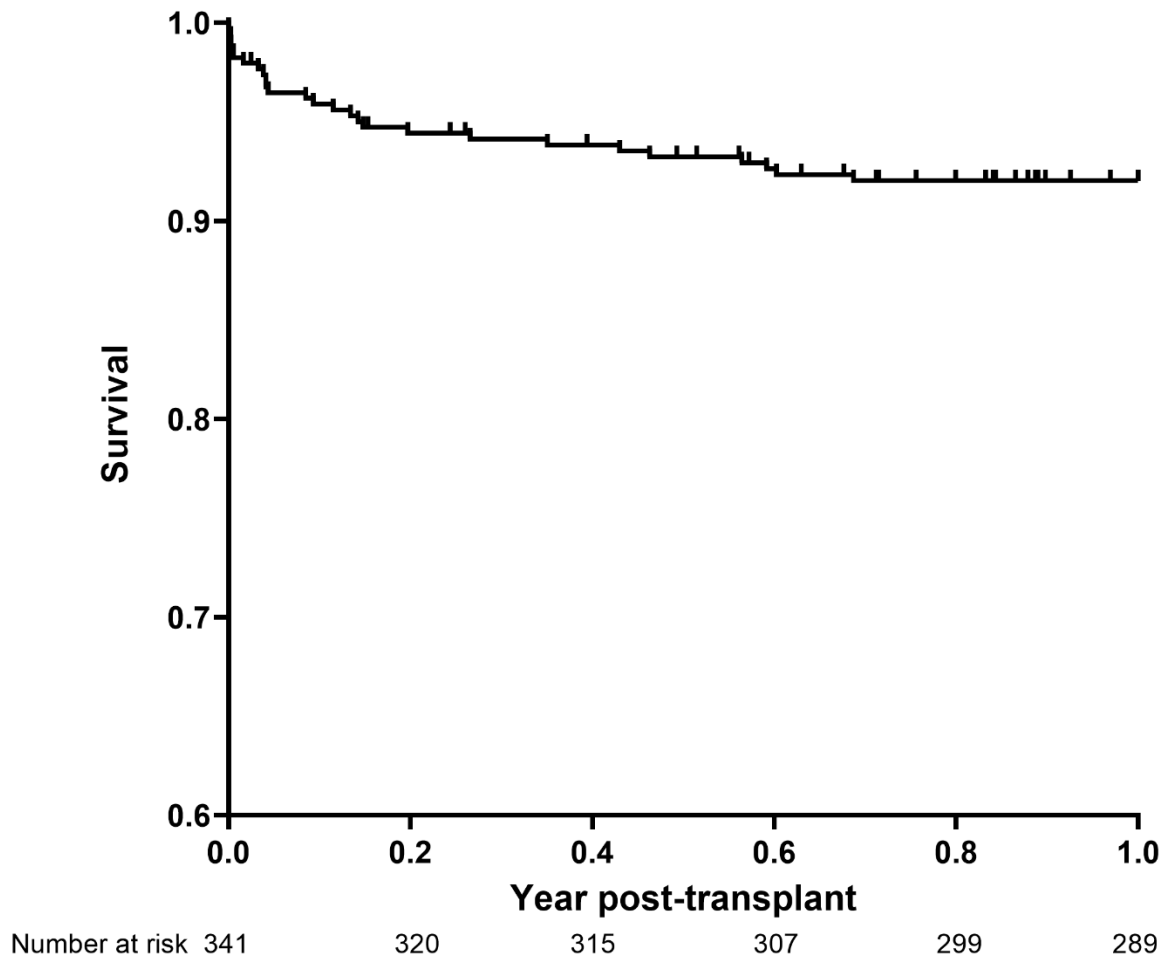
529

530

531

532 Figure 3. Survival to 1-year post-transplant conditional on survival to transplant.

533



534

535

536

537

538

539

540

541

542

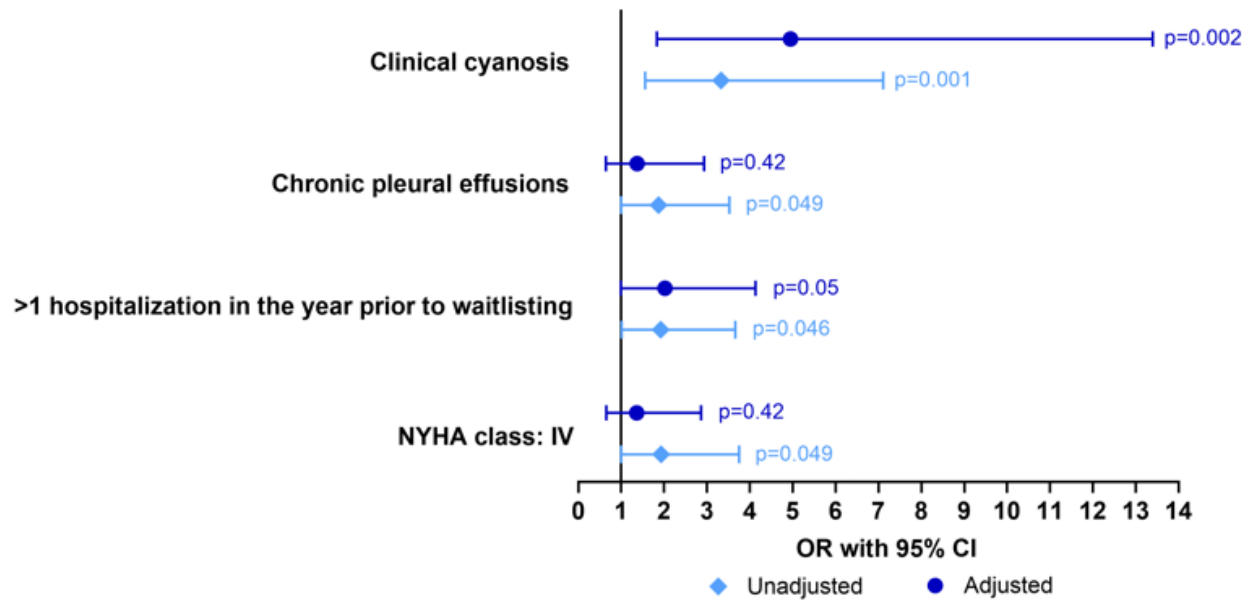
543

544 Figure 4. Forest plot comparison of risk factors in the final multivariable model for non-

545 survival from transplant to 1-year post-operative with factors affecting survival from

546 waitlisting until 1-year post-transplant.

547



548

549

550

551

552

553

554

555

556

557

558

559

560

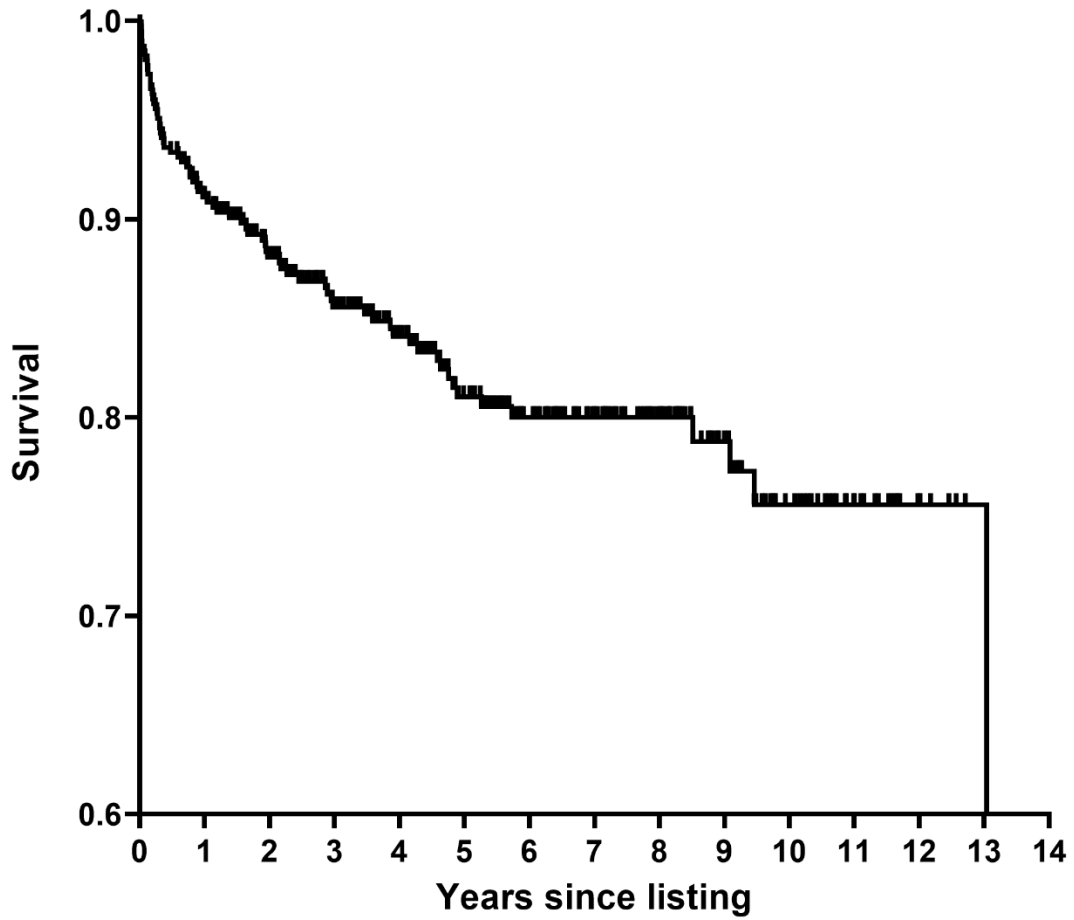
561

562

563

564 Figure 5. Overall survival since waitlisting. * Two patients with unknown date of listing
565 were not included.

566



Number at risk 407 356 269 170 114 35

567

568

569

570

571

572

573

574

575

576