

1 **N-of-1 analysis of circadian data reveals potential for precision chrono-**
2 **medicine approach of concomitant exercise and metformin recommendations.**

3 Katy Lyons^{1,2}, Brenda Peña Carrillo^{1,3}, Lara Talia Dasar^{1,3}, Odiaka Philippa Ifeyinwa^{3,4},
4 Brendan M. Gabriel^{1,3*}

5 ¹*Aberdeen Cardiovascular and Diabetes Centre, School of Medicine, Medical*
6 *Sciences & Nutrition, University of Aberdeen, Aberdeen, UK*

7 ²*Cellular Medicine, School of Medicine, University of Dundee, Dundee, UK*

8 ³*The Rowett Institute, School of Medicine, Medical Sciences & Nutrition, University of*
9 *Aberdeen, Aberdeen, UK*

10 ⁴*University of Nigeria Teaching Hospital, Ituku-Ozalla, Enugu State, Nigeria*

11

12 *Corresponding author: Dr B.M. Gabriel, The Rowett Institute, University of Aberdeen,
13 Ashgrove Rd W, Aberdeen AB25 2ZD, UK.

14

15 Katy Lyons ORCID- 0009-0002-7609-2012

16 Brenda J. Peña Carrillo ORCID-0000-0001-8975-8798

17 Lara T. Dasar ORCID-0009-0006-8634-6812

18 Odiaka Ifeyinwa Philippa ORCID- 0009-0009-2126-7381

19 Brendan M. Gabriel ORCID-0000-0001-6878-8779

20

21 **Abstract**

22 The integration of chrono-medicine into disease management has potential for cost-
23 effective improvements, particularly in type 2 diabetes care. While both exercise and
24 metformin are effective in lowering glycaemia, their combined effect is non-additive.
25 Individual circadian rhythms suggest that personalised timing of interventions may
26 optimise outcomes. This study aims to investigate the heterogeneity in response to
27 the timing of exercise and metformin intake using an n-of-1 approach within a
28 randomised crossover trial, thereby exploring the potential for individualised chrono-
29 medicine strategies.

30 A previously published 16-week randomised crossover study was conducted to
31 explore the potential therapeutic effects of prescribed moderate exercise timings in
32 participants undergoing metformin monotherapy. Physical activity, heart rate, sleep,
33 and glucose levels were tracked using wearable technology and continuous glucose
34 monitors. Data were collected during baseline, and throughout the intervention
35 periods. Analysis focused on individual responses to the timing of exercise and
36 metformin intake.

37 Morning exercise significantly lowered 24-hour post-exercise blood glucose levels
38 compare to evening exercise. Both exercise timings reduced mean blood glucose
39 levels, but morning exercise had a greater effect (mean difference: -0.63 mmol/L,
40 p<0.001) than evening exercise (mean difference: -0.34 mmol/L, p=0.016).

NOTE: This preprint reports new research that has not been certified by peer review and should not be used to guide clinical practice.

41 Individual responses varied, with some participants displaying a substantial reduction
42 in glucose levels in response to morning or evening exercise, while others did not
43 benefit from either exercise intervention. Pre-breakfast metformin intake significantly
44 lowered area under the curve (AUC) glucose values in response to morning exercise
45 compared to post-breakfast, an effect not observed with evening exercise.

46 Morning exercise combined with pre-breakfast metformin intake is the most effective
47 strategy for lowering blood glucose levels in the greatest number of participants with
48 type 2 diabetes. However, individual response heterogeneity suggests that chrono-
49 medicine approaches must be personalised. Further research is needed to
50 understand the underlying mechanisms of individual variability in response to
51 exercise and medication timing.

52

53 **Keywords**

54 Type 2 Diabetes, chrono-medicine, chronobiology, circadian, physical activity,
55 exercise, metformin, n-of-1, personalised medicine, glycaemic control

56

57 **Research in Context**

58 *What is already known about this subject?*

- 59 • Exercise prescription and metformin treatment are both effective in lowering
60 glycaemia but their combined effect is non-additive.
- 61 • It is unknown how individual circadian rhythmicity interacts with these diabetes
62 treatment strategies.

63

64 *What is the key question?*

- 65 • Is there potential for personalisation of a chrono-medicine approach to
66 diabetes management?

67

68 *What are the new findings?*

- 69 • Morning exercise combined with pre-breakfast metformin intake is the most
70 effective strategy for lowering blood glucose levels in the greatest number of
71 participants with type 2 diabetes.
- 72 • Further research is needed to understand the underlying mechanisms of
73 individual variability in response to exercise and medication timing.

74

75 *How might this impact on clinical practice in the foreseeable future?*

- 76 • Our study shows that integrating chrono-medicine into disease management
77 has potential for cost-effective improvements, particularly in type 2 diabetes
78 care.

79 **Introduction**

80 Identifying cost-effective strategies for disease management is crucial. An
81 underexplored area is chrono-medicine, especially pertinent now with wearable
82 devices which can monitor circadian patterns of glucose, heart rate, and physical
83 activity. Growing evidence supports the integration of chrono-medicine into lifestyle
84 and pharmaceutical interventions for disease management (Gabriel & Zierath, 2021).
85 The NHS spends around £10 billion a year on diabetes – around 10% of its entire
86 budget - and it has been suggested that chrono-medicine is a promising approach for
87 cost-effective improvements in type 2 diabetes care (Gabriel & Zierath, 2021).

88 Exercise and nutritional interventions are well-established as vital and effective
89 methods to manage type 2 diabetes. Several pharmacological treatments are also
90 highly effective and well-tolerated. Metformin, for example, has long been a common
91 intervention and was first used clinically in the 1960s. While metformin is safe and
92 generally well-tolerated, it interacts with lifestyle interventions like exercise, leading
93 to some non-additive outcomes. For instance, both metformin and exercise effectively
94 lower glycaemia when used independently, but the literature suggests that a
95 combinative approach offers no additional improvement (Sharoff *et al.*, 2010; Boulé
96 *et al.*, 2011; Abdalhk *et al.*, 2020). Exercise improves glycaemic regulation partly by
97 enhancing skeletal muscle glucose uptake and has additional benefits such as
98 improving cardiovascular health and reducing cancer risk (Cartee *et al.*, 2016). One
99 of the main mechanisms by which exercise promotes beneficial health outcomes is
100 by remodelling skeletal muscle to improve mitochondrial oxidation, for example by
101 increasing total activity of enzymes such as citrate synthase (Leek *et al.*, 2001) and
102 therefore improving lipid and glucose oxidation (Gabriel *et al.*, 2017; Alhindi *et al.*,
103 2019). However, many of the improved substrate handling effects of exercise appear
104 to be acute, with studies suggesting that some beneficial effects of acute exercise
105 disappear within 48 hours (Gabriel *et al.*, 2013). However, many people with type 2
106 diabetes, including those on metformin, are less likely to exercise regularly (Krug *et*
107 *al.*, 1991). Metformin can reduce exercise capacity and alter perceptions of exercise
108 intensity (Das *et al.*, 2018; Kristensen *et al.*, 2019), creating a barrier to exercise
109 adherence. Additionally, metformin may interfere with skeletal muscle remodelling
110 after exercise (Konopka *et al.*, 2019), potentially hindering beneficial health
111 adaptations. For these reasons, finding ways to encourage exercise adherence and
112 optimise its benefits alongside metformin is essential for improving type 2 diabetes
113 healthcare strategies.

114 Circadian rhythms are heterogeneous between individuals (Vitaterna *et al.*, 2019) and
115 therefore, lifestyle interventions must consider the holistic diurnal environment in
116 which a given individual resides. Thus, when considering the application of precision
117 timing, researchers must consider factors including nutritional intake, physical activity,
118 medicine intake, sleep, and occupation. Researchers have traditionally used
119 observational, cross-sectional, and parallel-group randomised trials to study circadian
120 biology and disease management strategy efficacy. However, these trials may not
121 always outline the most effective treatment for specific subgroups or individual
122 patients. To address the inherent variability in treatment response among clinical
123 populations, n-of-1 trials can be employed (Vieira *et al.*, 2017; Samuel *et al.*, 2023).
124 These personalised trials contribute to the ultimate aim of all biomedical research,
125 which is to enhance the care provided to individual patients.

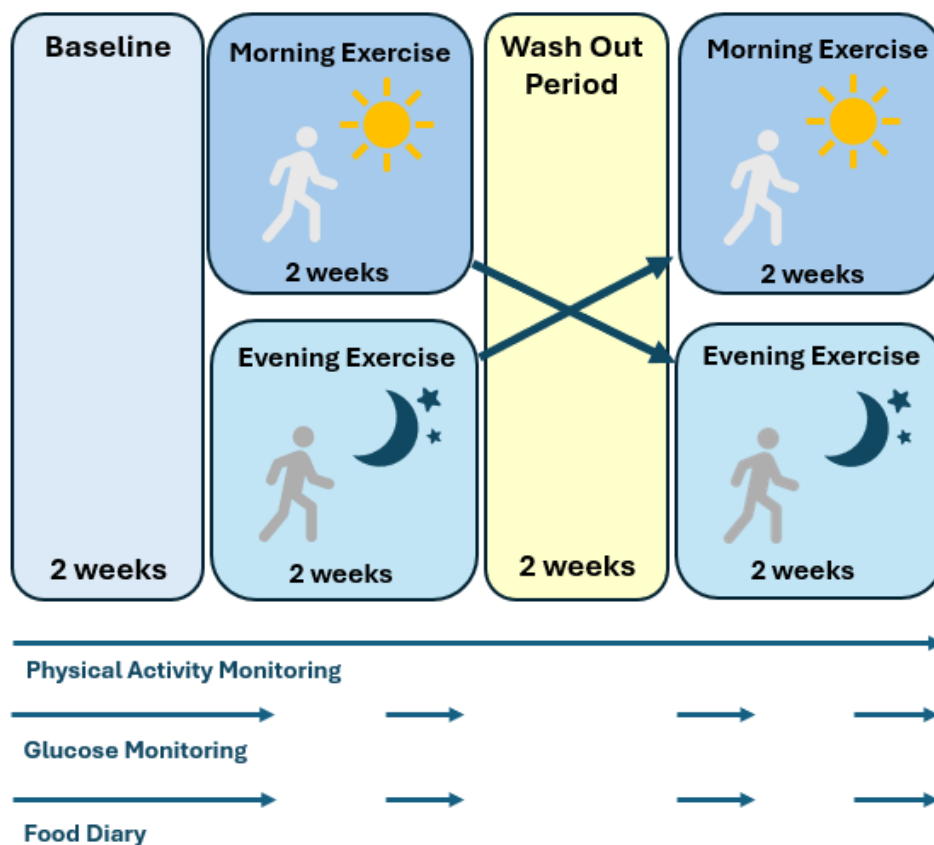
126 Circadian biology presents an excellent area for the application of n-of-1 study
127 designs due to the nature of data collection. The use of wearable technology and
128 repeated time point sampling is a standard procedure across circadian trials and
129 therefore, the statistical design of n-of-1 analysis is appropriate. Therefore, we have
130 used a previously published circadian biology randomised cross-over trial from our

131 laboratory to investigate the heterogeneity of response to our intervention using an n-
132 of-1 approach. We aim to determine the potential for an individual-centred approach
133 when applying chrono-medicine disease management strategies. Our hypothesis is
134 that there are inter-individual glycaemic responses to exercise timing with opposite
135 directionality in people with Type 2 Diabetes being prescribed metformin
136 monotherapy.

137 **Methods**

138 **Original Study Design**

139 In order to test this hypothesis, we re-analysed data from a previously published study
140 (Carrillo *et al.*, 2024). The original study design is described in the previously
141 published paper (Carrillo *et al.*, 2024). The study was conducted following ethical
142 approval from the UK Health Research Authority's Integrated Research Application
143 System (IRAS), and via the London Centre Research Ethics Committee (REC
144 reference: 20/PR/0990; IRAS project ID: 292015) and in accordance with the
145 principles of the Declaration of Helsinki as revised in 2008. Informed written consent
146 was obtained from participants during recruitment. The trial was preregistered –
147 Research Registry Unique Identifying Number: researchregistry6311. Following a
148 randomised, cross-over, two-arm design shown in Figure 1, the trial used Garmin
149 smartwatches and the associated mobile application, Garmin Connect (Garmin Ltd.
150 Olathe, KS, US) to measure physical activity (step count), heart rate and sleep
151 parameters. FreeStyle Libre 2 sensors LibreView software and the LibreLink mobile
152 application were used to record and collect glucose readings in 15-minute intervals.
153 Participants were randomised between exercise intervention groups
154 (morning/evening) Glucose data was collected 2 weeks prior to the start of the first
155 exercise intervention (baseline) and during the first 2 (weeks 1-2) and last 2 (weeks
156 5-6) of each exercise intervention period. Daily step count, heart rate and sleep were
157 measured throughout the study period. A 4-day food diary was also kept by
158 participants when glucose monitors were worn, and timing and dosage of metformin
159 was recorded. A 2-week wash-out period was included between each intervention
160 period. In the winter cohort of participants, the wash-out period was extended to 4
161 weeks to avoid crossover into the Christmas holidays. All data sets released for this
162 secondary n-of-1 analysis were de-identified following the principles of GCP (Good
163 Clinical Practice) and GDPR (General Data Protection Regulations).



180 **Figure 1 – Original Study Design of Trial:** *n=18 (9 male, 9 female), n=8*
181 *morning/evening, n=10 evening/morning. Exercise consisted of 30 mins of moderate*
182 *intensity walking at 70% max HR every other day. Morning exercise was completed*
183 *anytime between 7-10am and evening exercise was completed anytime between 4-*
184 *7pm. Physical activity, heart rate and sleep data were collected throughout the whole*
185 *study period whereas glucose data was only collected 2 weeks prior (baseline) and*
186 *the first and last 2 weeks of each intervention (week 1-2 and week 5-6).*

187 **N-of-1 Data Analysis**

188 The analysis of the extracted data incorporates a series of 18 individual n-of-1
189 analysis which have been used to visualise data in a time-series manner and analyse
190 the optimal timing of metformin intake and exercise routine for each participant (Vieira
191 *et al.*, 2017). Participant characteristics, metformin timings, glucose readings, and
192 exercise intervention were extracted from the original randomised cross-over trial. All
193 analysis was carried out on R software 4.3.1 (RStudio 2023.06.2.56) or GraphPad
194 Prism (Version 10.1.12). Exercise intervention periods and control baseline were time
195 matched, setting the first point of the 24-hour day to the start of each exercise period,
196 indicated by the time point '0 minutes.' '0 minutes' corresponds to 7am during the
197 morning exercise intervention and 4pm for the evening exercise intervention.

198 Time-Series analysis used data from the first 24-hours of each glucose monitoring
199 period (baseline and weeks 1-2 and 5-6 of each exercise intervention) to show each
200 participant's glucose profile over 24 hours. Missing data was corrected using linear
201 imputation on Microsoft Excel when appropriate. Mean difference meta-analysis was
202 performed firstly on aggregated and averaged data from all participants to analyse
203 the mean difference between daily glucose readings at each 15-minute interval
204 throughout the 24-hours period post-exercise. This analysis was performed to
205 compare each exercise intervention to its time matched baseline period. Secondly,
206 mean difference meta-analysis was used to analyse overall daily mean glucose for
207 each participant, comparing the effect of each exercise intervention and time-matched
208 baseline period. Area Under the Curve (AUC) values were calculated using GraphPad
209 Prism to further compare metformin intake and exercise interventions. Paired student
210 t-tests were performed to test for any statistical significance throughout this study with
211 significance set at p-value<0.05.

212 **Results**

213 **Summary Characteristics of Study Cohort**

214 A summary of baseline characteristics of the study cohort is shown in Table 1. A total
215 of 18 participants were included in the analysis, with an equal split of male and female
216 participants.

217 **Table 1 – Baseline Study Cohort Characteristics:** *Baseline Characteristics were*
218 *taken from the original study. SEM (Standard Error of the Mean), BMI (Body Mass*
219 *Index), T2D (type 2 diabetes).*

Characteristic	Mean +/- SEM
<i>Age (years)</i>	61 +/- 1.9
<i>Sex (Male)</i>	9
<i>Sex (Female)</i>	9
<i>BMI (Kg/m²)</i>	30.7 +/- 0.8
<i>HbA1c (%)</i>	8.0 +/- 0.3
<i>Time since T2D diagnosis (years)</i>	8.2 +/- 1.7
<i>Time on Metformin (years)</i>	5.2 +/- 1.0
<i>Dose of Metformin (mg)</i>	1312.5 +/- 134.6

<i>Average number of Daily Steps (Baseline)</i>	6797.6 +/- 594.6
---	------------------

220

221 **Time-course of individual glycaemia**

222 Time-series plots show the changes in individual blood glucose levels over the first
223 24 hours of baseline, morning exercise intervention and evening exercise
224 intervention. 10.06% of all first 24-hour data was missing (Figures 2-3). Of this
225 missing data, 40.75% was appropriately corrected by linear imputation. The
226 remaining 59.25% of missing data was not included in the analysis. Participant 9 and
227 Participant 1 had no data for week 5-6 of evening exercise intervention.

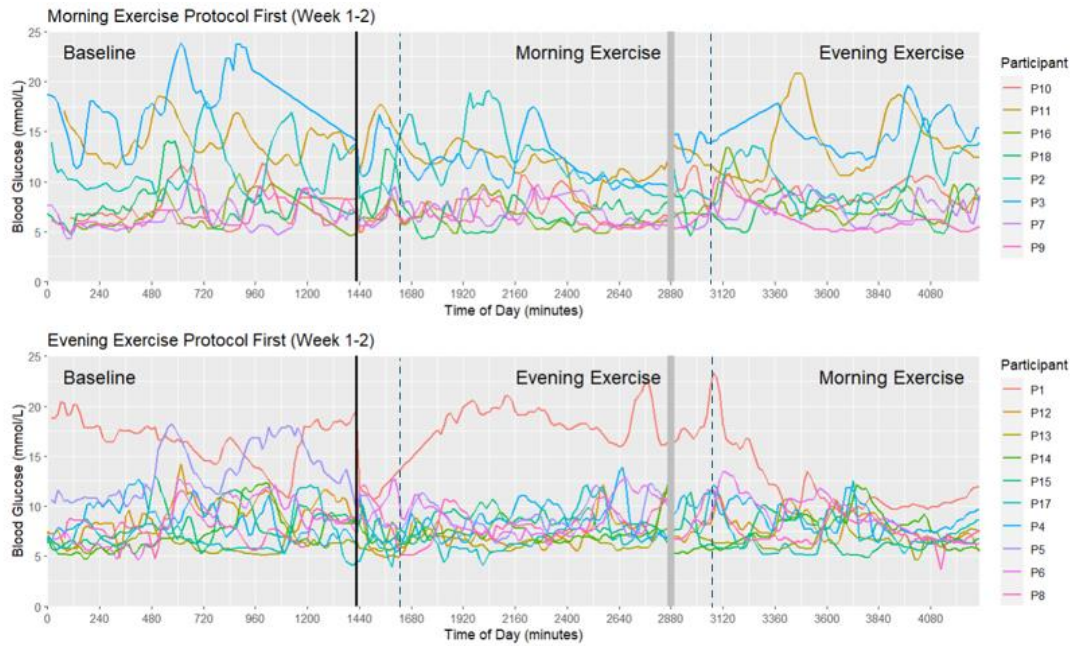
228 **Effect of Exercise on Mean Blood Glucose**

229 Both morning and evening exercise lowered mean blood glucose compared to
230 baseline. Figures 4-5 demonstrate that morning exercise has a greater effect in
231 lowering blood glucose levels over the 24-hour period post-exercise compared to
232 evening exercise. This effect was present over a standard 24-hour period (Figure 4),
233 and also a Zeit-time normalised period (Figure 5), where exercise is classed as Zeit-
234 time 0, 24-hour blood glucose is included from the starting point of exercise. The
235 mean difference meta-analysis presented in figure 6 and figure 7 supports this finding,
236 showing that both morning and evening exercise reduce overall mean levels of blood
237 glucose.

238 Morning exercise compared to baseline had an overall mean difference in AUC
239 glycaemia (and 95% confidence intervals) of -0.63 (-0.68, -0.58) mmol/L per time, with
240 paired t-tests showing statistical significance, $t(94) = 28.18$, $p < 0.001$. Evening
241 exercise compared to baseline also showed statistical significance with a paired t-test
242 of $t(95) = 2.44$, $p = 0.016$ and a mean difference and 95% confidence interval of -0.34
243 (-0.41, -0.27) mmol/L per time. The mean difference between baseline and exercise
244 in the evening intervention is lower than the morning intervention. It is also interesting
245 to note that at no point in the day do glucose levels of the morning exercise
246 intervention rise to similar or higher values recorded in baseline intervention. Our data
247 demonstrates that 88% of participants recorded lower daily average glucose with
248 morning exercise compared to evening exercise (57% week 1-2 of morning
249 intervention and 43% week 5-6 of morning intervention). The results also show that
250 some individuals respond more effectively to exercise intervention and metformin
251 intake compared to others.

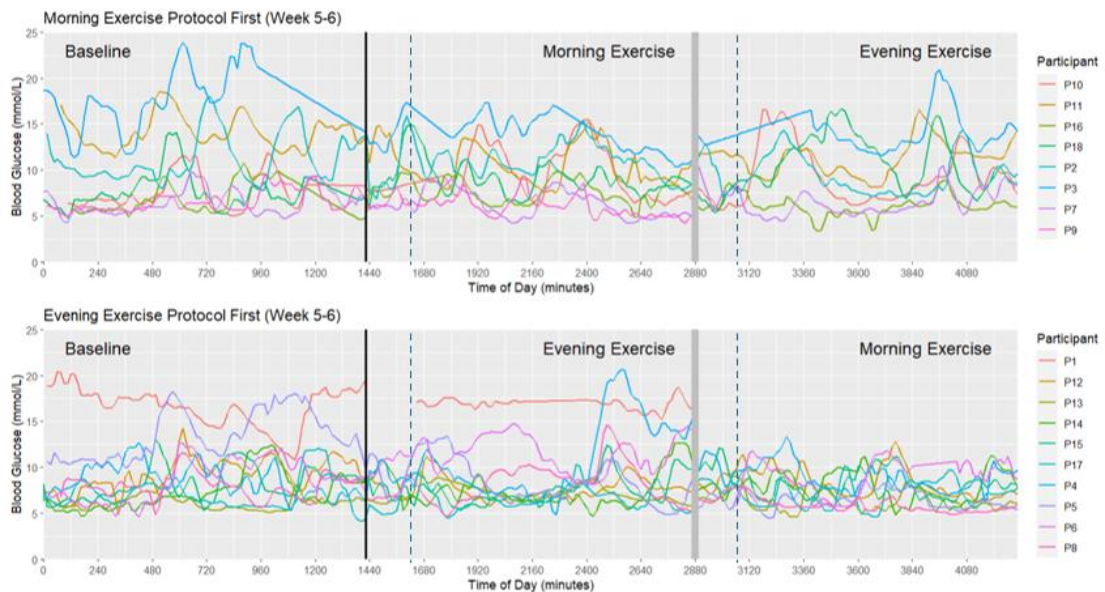
252

253



254

255 **Figure 2 - 24-Hour Time-Series Plot Showing Week 1-2 of Both Morning and**
 256 **Evening Exercise Intervention:** The black line at time point 1440 minutes
 257 represents the end of baseline period and grey bar after the first exercise intervention
 258 at timepoint 2880 minutes represents the washout period, where no data was
 259 collected. Baseline sections follow 24-hour timescale of midnight to midnight, morning
 260 exercise from 7am to 7am and evening exercise from 4pm to 4pm. The dash line on
 261 plots represents the end of the exercise period. Missing data was corrected by linear
 262 imputation where appropriate.



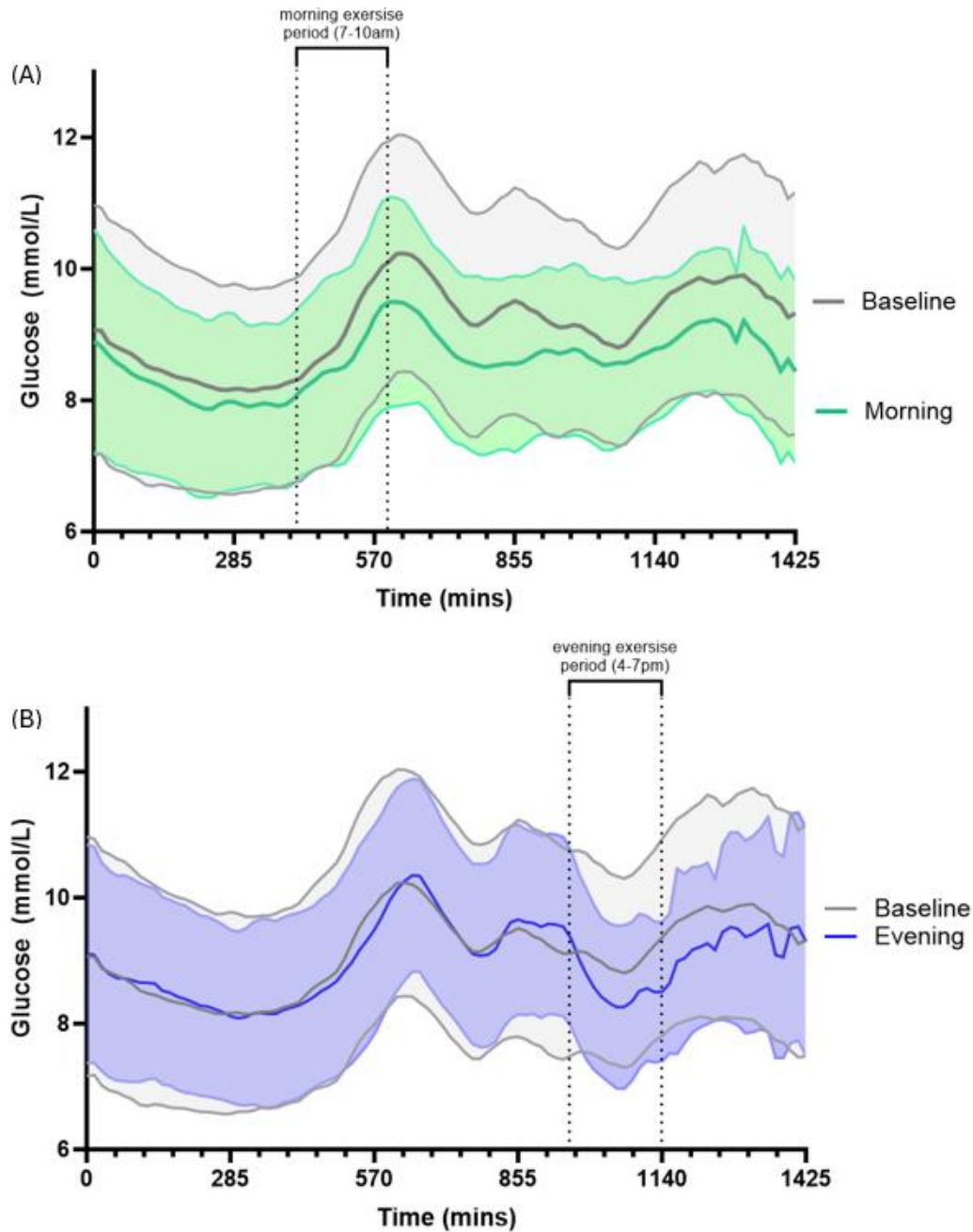
263

264 **Figure 3 – 24-hour Time-Series Plot Showing Week 5-6 of Both Morning and**
 265 **Evening Exercise Intervention:** The black line at time point 1440 minutes
 266 represents the end of baseline period and grey bar after the first exercise intervention
 267 at timepoint 2880 minutes represents the washout period, where no data was
 268 collected. Baseline sections follow 24-hour timescale of midnight to midnight, morning
 269 exercise from 7am to 7am and evening exercise from 4pm to 4pm. The dash line on
 270 plots represents the end of the exercise period. Missing data was corrected by linear
 271 imputation were appropriate. Participant 9 (P9) had no data present for evening

272 exercise intervention and Participant 1 (P1) was missing data for morning exercise
273 intervention.

274

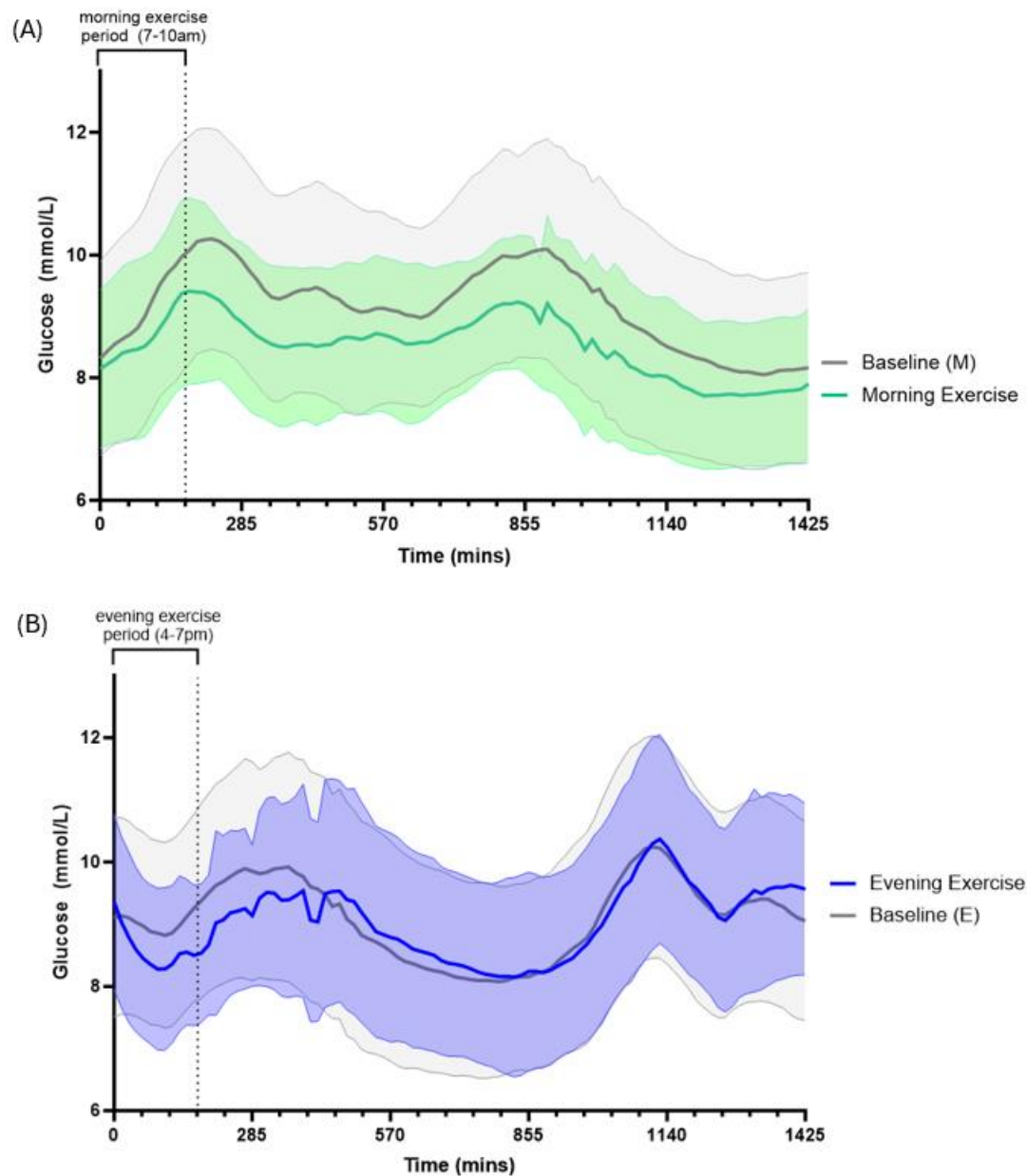
275



276

277 **Figure 4 - Average Daily Glucose over a 24-hour clock period for each exercise**
278 **intervention versus baseline:** Average blood glucose levels over 24-hour period for
279 each exercise intervention compared to baseline, shown as mean with 95% CI. (A)
280 Morning Exercise Intervention Period: The dash line indicates the window for exercise
281 (7am-10am). (B) Evening Exercise Intervention Period: The dash lines indicate the
282 window for exercise (4pm-7pm). Time 0 mins = 12am and time 1425 mins = 11:45pm.

283

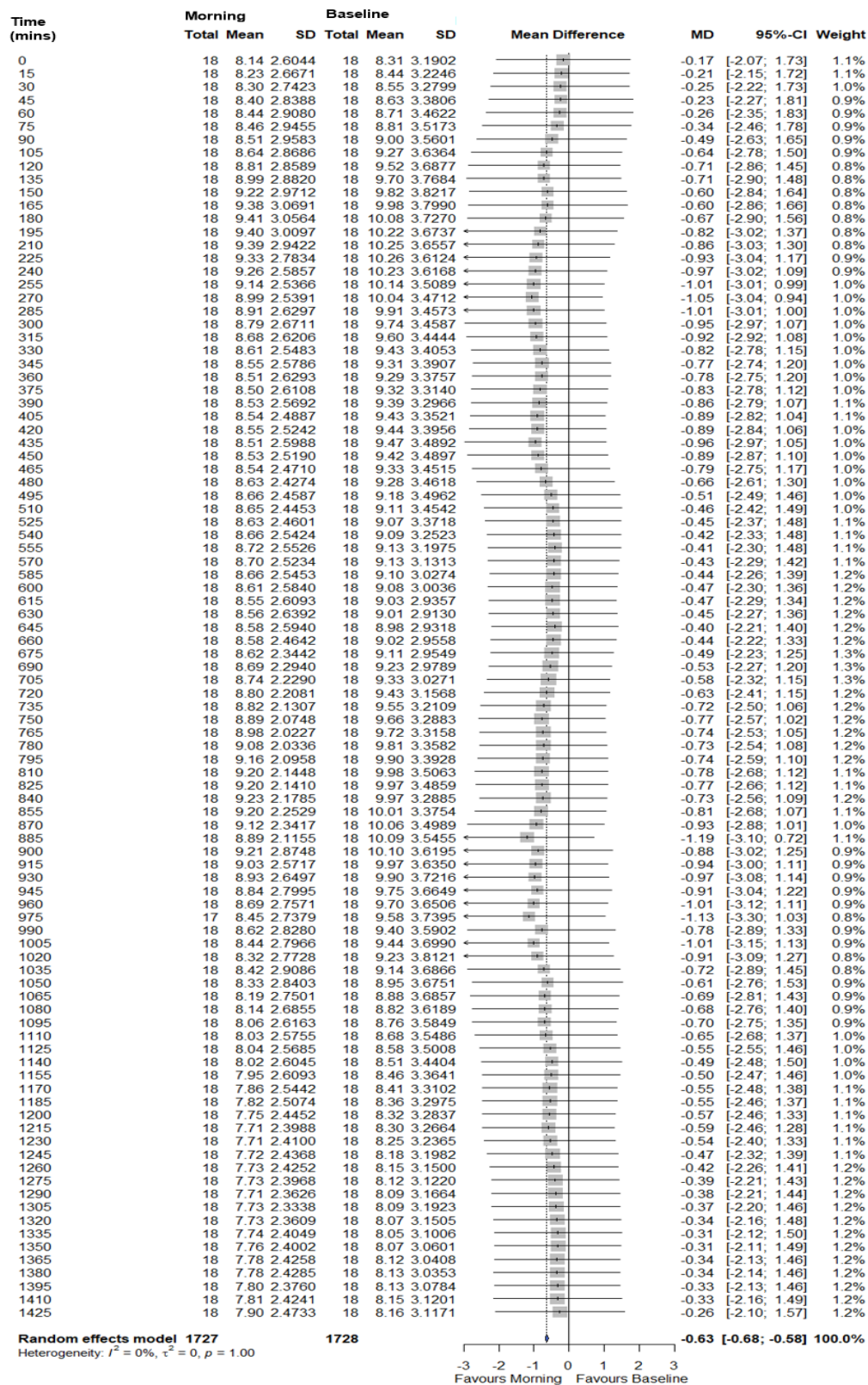


284

285

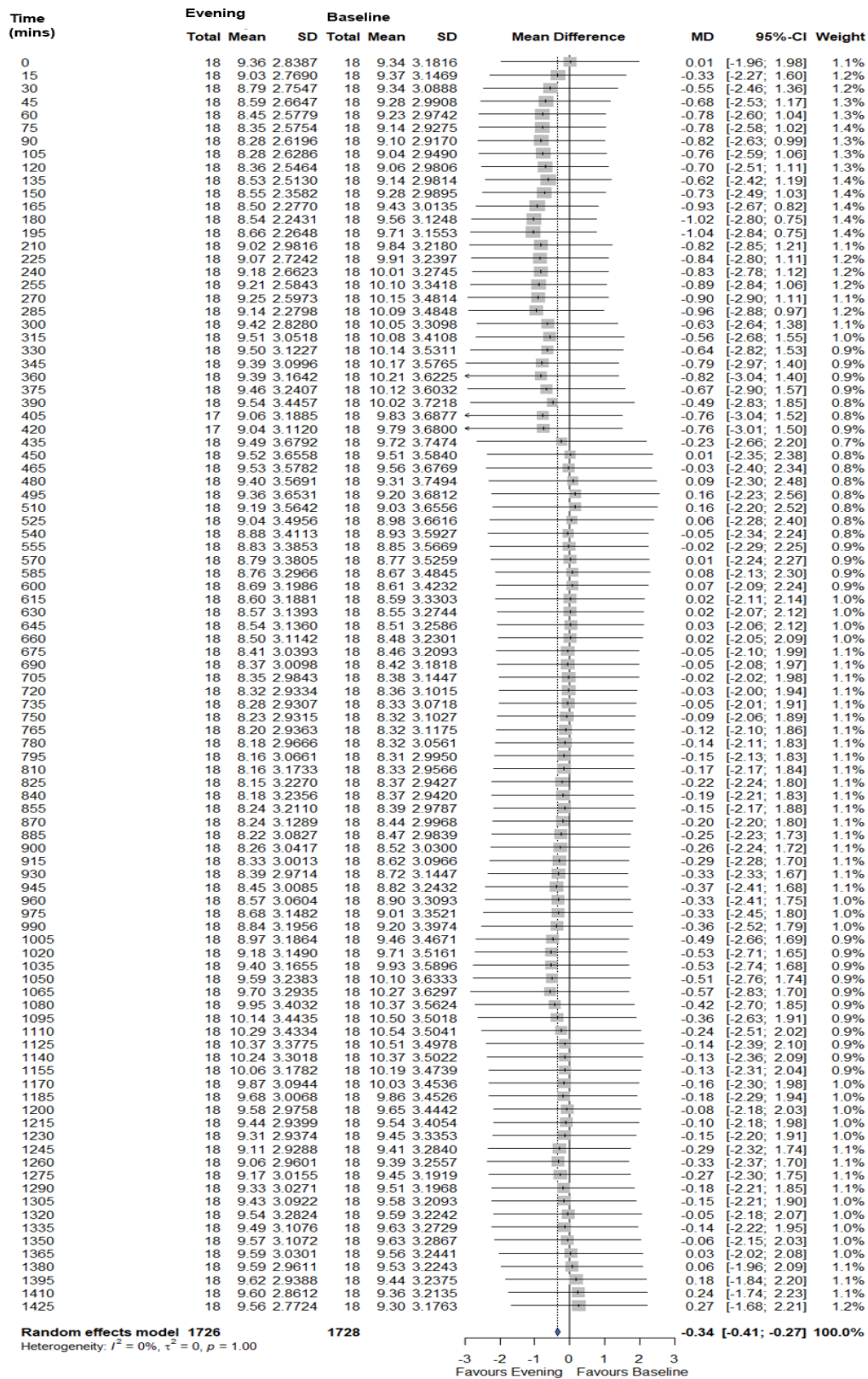
286 **Figure 5. Zeit-time normalised timing of Metformin and the Effect on Individual**
287 **Average Daily Glycaemic Values.** Average blood glucose levels over 24-hour period
288 for each exercise intervention compared to baseline, shown as mean with 95% CI.
289 (A) Morning Exercise Intervention Period: The dash line indicates the window for
290 exercise (7am-10am). (B) Evening Exercise Intervention Period: The dash lines
291 indicate the window for exercise (4pm-7pm).

292



294 **Figure 6 – Mean Difference Meta-Analysis Comparing Baseline and Morning**
 295 **Exercise Intervention: 24-hour period is split into 15-minute intervals. Baseline is**
 296 **time matched to morning exercise intervention, therefore 0 mins=7am. Morning**

297 *exercise period ends at 10am (180 mins). A negative MD favours morning and*
 298 *positive MD favours baseline. SD (standard Deviation), MD (Mean Difference).*



324 **Figure 7 – Mean Difference Meta-Analysis Comparing Baseline and Evening**
 325 **Exercise Intervention: 24-hour period is split into 15-minute intervals. Here, baseline**
 326 **is time matched to evening exercise intervention therefore 4pm = 0 mins. Evening**

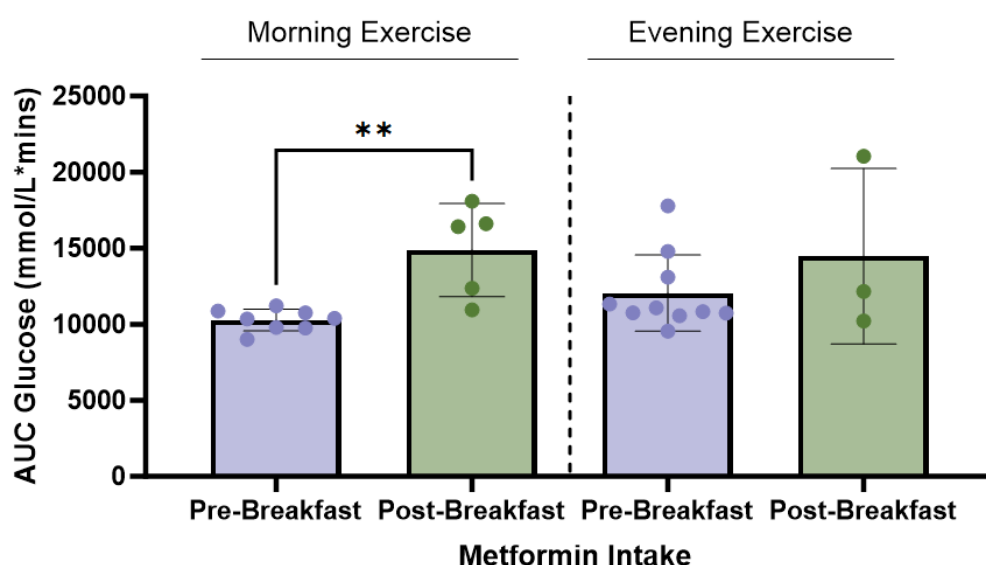
327 exercise period ends at 7pm (180 mins). A negative MD favours evening and positive
328 MD favours baseline. SD (standard Deviation), MD (Mean Difference).

329 Interaction Between Metformin Intake and Exercise

330 Figure 8 shows the mean value of AUC glucose for those who recorded their
331 metformin intake in both morning and evening exercise interventions. Unpaired t-tests
332 showed there was a significant difference between the AUC values of those who took
333 metformin pre-breakfast rather than post-breakfast during morning exercise
334 intervention ($t(11) = 4.188, p=0.002$). The same significant difference was not seen
335 between pre and post-breakfast intake of metformin with evening exercise ($t(11) =$
336 $1.101, p=0.295$).

337

338



339

340

341 **Figure 8 – Difference in AUC values between different metformin intake routine**
342 **during morning and evening exercise:** Mean plotted with standard deviation
343 showing the difference in AUC (Area Under Curve) values when metformin intake was
344 recorded pre-breakfast and post-breakfast in both morning and evening exercise
345 interventions. ** denotes significance of P-value < 0.01.

346 Table 2 records when each participant took metformin dose in each exercise
347 intervention and during baseline.

348 56% of participants remained consistent in their timings of metformin intake
349 throughout the study and 22% of participants altered their metformin timings between
350 pre and post-breakfast for morning and evening exercise. 22% did not specify the
351 timing of metformin intake.

352

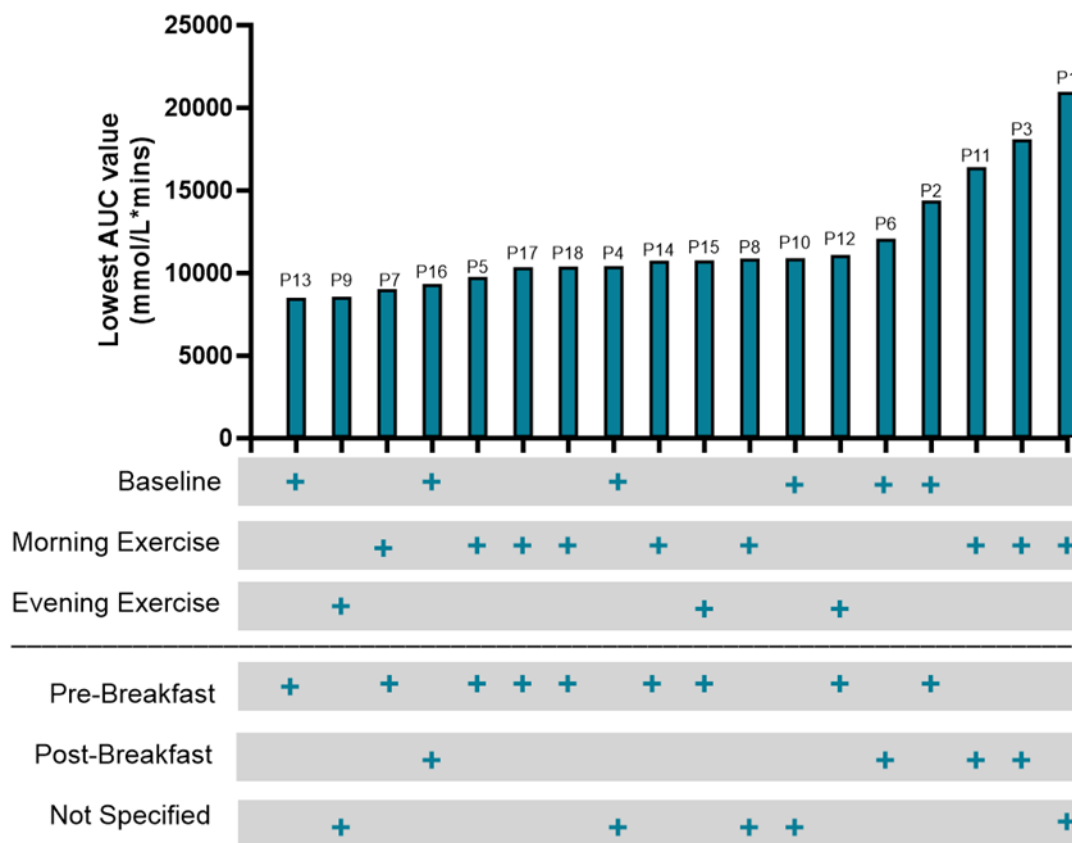
353 **Table 2 – Timing of Metformin Intake during each Intervention Period:** Table
354 highlights if metformin was taken pre-breakfast or post-breakfast during each
355 exercise intervention for each participant. The grey boxes indicate when metformin
356 intake timings were not specified by the participant.

357

Participant	Baseline	Morning Exercise	Evening Exercise
Participant 1			
Participant 2	Pre-breakfast	Post-breakfast	Pre-breakfast
Participant 3	Post-Breakfast	Post-breakfast	Post-Breakfast
Participant 4			
Participant 5	Pre-breakfast	Pre-breakfast	Pre-breakfast
Participant 6	Post-breakfast	Post-breakfast	Post-breakfast
Participant 7	Pre-breakfast	Pre-breakfast	Pre-breakfast
Participant 8			
Participant 9			
Participant 10		Post-Breakfast	Pre-breakfast
Participant 11	Post-breakfast	Post-Breakfast	Pre-breakfast
Participant 12	Pre-breakfast	Pre-breakfast	Pre-breakfast
Participant 13	Pre-breakfast	Pre-breakfast	Post-breakfast
Participant 14	Pre-breakfast	Pre-breakfast	Pre-breakfast
Participant 15	Pre-breakfast	Pre-breakfast	Pre-breakfast
Participant 16	Post-breakfast		Post-Breakfast
Participant 17	Pre-breakfast	Pre-breakfast	Pre-breakfast
Participant 18	Pre-breakfast	Pre-breakfast	Pre-breakfast

358

359 Figures 9-10 show the timing of exercise and metformin associated with an
360 individual's lowest recorded AUC 24-hours glycaemic value. Overall, 67% of the
361 cohort recorded a lower AUC 24-hours glycaemic value in response to exercise, and
362 33% had a lower AUC 24-hours glycaemic value during the baseline period. Among
363 those with a lower AUC value in response to exercise, 75% had a lower AUC value
364 with morning exercise compared to 25% with evening exercise. 50% of the cohort
365 recorded a lower AUC value with pre-breakfast metformin intake. The combination of
366 pre-breakfast metformin with morning exercise resulted in an optimal glucose
367 response in 5 participants, the most of any combination.



368

369

370 **Figure 9 – Optimal Exercise timing and metformin intake which gives the lowest**
 371 **AUC value for each participant:** Lowest area under the curve (AUC) value obtained
 372 from table 2 is matched to the intervention period and recorded metformin intake
 373 obtained from table 3.

374

375

376

377

378

379

380

381

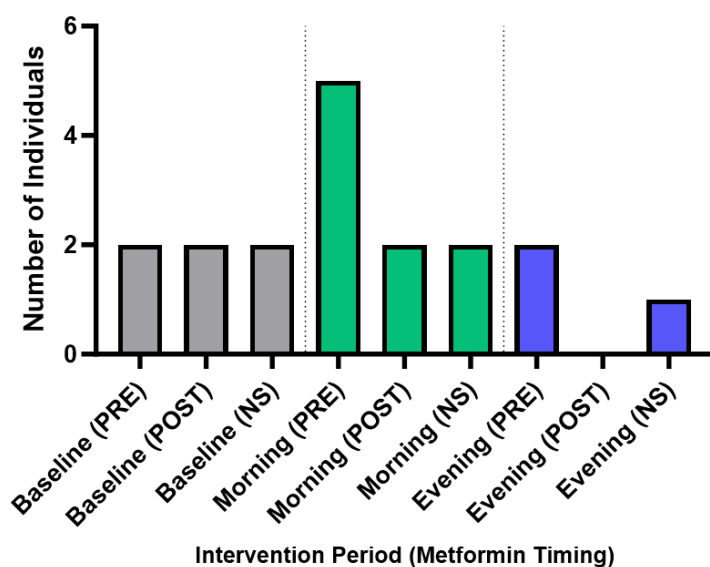
382

383

384

385

386



387 **Figure 10 – Number of Individuals with optimal glucose response in each**
388 **intervention period with metformin timing: Summary of results obtained from**
389 **figure 9, highlighting the number of individuals with optimal responses to each**
390 **exercise treatment and metformin timing. Pre-Breakfast (PRE), Post-Breakfast**
391 **(POST), Not Specified (NS). Graph made on GraphPad Prism.**

392

393 **Discussion**

394 Researchers have typically employed observational, cross-sectional, and parallel-
395 group randomized trials to study circadian biology and disease management, but
396 these approaches may not reliably identify the most effective treatments for specific
397 individuals or subgroups. We have used a n-of-1 approach to analyse a previously
398 published circadian cross-over trial performed in people with type 2 diabetes. This 16-
399 week randomised crossover study was designed to investigate glycaemic outcomes
400 in response to moderate intensity exercise at different times of the day in people with
401 Type 2 Diabetes also being prescribed metformin monotherapy. Secondary outcomes
402 included total physical activity, medication timing, diet and sleep. The trial was
403 designed to determine if it is possible to optimise timing of concomitant metformin and
404 exercise in people with type 2 diabetes. An n-of-1 approach has allowed us to reveal
405 heterogeneity within this cohort and identify individuals that appear to respond more
406 beneficially to one or both arms of the exercise intervention. This approach has also
407 allowed identification of individuals that responded to concomitant timings of
408 metformin intake in relation to meal timing.

409 The findings indicate that morning exercise is more effective than evening exercise in
410 lowering blood glucose levels over a 24-hour period post-exercise in people with type
411 2 diabetes who are being prescribed metformin monotherapy. Both morning and
412 evening exercise reduced overall mean blood glucose levels, but morning exercise
413 had a significantly larger effect. During the first two weeks, morning exercise had a
414 greater impact on reducing glucose levels than in weeks five to six. Most participants
415 experienced lower daily average glucose levels with morning exercise compared to
416 evening exercise. Individual responses varied, with some participants consistently
417 showing large reductions in glucose levels with both morning and evening exercise,
418 while others only showed this response to one. Improvements to glucose levels in
419 response to exercise was not apparent for some participants whose glucose levels
420 were optimal at baseline. Participants self-reported when they consumed metformin
421 which allowed us to analyse the most optimal timing for metformin dosage in relation
422 to exercise and dietary intake timing. Most participants remained consistent in their
423 metformin intake timings throughout the trial. Similar to our previous findings (Carrillo
424 *et al.*, 2024), taking metformin before breakfast combined with morning exercise
425 significantly lowered AUC glucose values, an effect not seen with evening exercise.
426 When analysing individuals across the study overall, the optimal combination for the
427 lowest AUC values appeared to be the combination of morning exercise and pre-
428 breakfast metformin intake, which was the most effective combination for 5
429 participants, the most of any combination. A significant portion of the cohort
430 responded best to morning exercise, while a smaller percentage displayed a more
431 optimal response with evening exercise or during the baseline period. Our data also
432 reveals that regardless of Zeit-time normalisation i.e. whether glucose time-courses
433 are analysed by time-of-day, or with exercise as the start of a 24 time-course (Zeit-
434 time normalised), morning exercise lowers glycaemia more efficaciously than evening
435 exercise across this cohort. Zeit-time normalisation analysis removes confounding
436 factors such as lag-time of beneficial effects of exercise upon glycaemic regulation.
437 Previous studies have not employed this normalisation technique when assessing
438 time-of-day exercise outcomes (Savikj *et al.*, 2019; Mancilla *et al.*, 2021; Moholdt *et*

439 *al.*, 2021; van der Velde *et al.*, 2023; Qian *et al.*, 2023). It will be beneficial for future
440 work that assesses diurnal exercise outcomes to analyse data using a standard time-
441 of-day comparison, in addition to a Zeit-time normalised analysis to mitigate against
442 confounding factors.

443 A limitation of the study is that it was not originally designed in a n-of-1 format.
444 However, due to the nature of the crossover design and the inclusion of continuous
445 data monitoring in the form of continuous glucose monitors, the study is suitable for
446 post-hoc analysis of this kind. Remote monitoring is common practice in n-of-1 studies
447 however, the use of wearable technology increases participant burden. Individual
448 exercise intervention adherence may play a role in the differential responses found in
449 this study. Adherence was monitored in real-time and participant data was excluded
450 from the final data analysis if they met any of the following criteria: missing >4 exercise
451 windows in less than 2 weeks, no glucose readings for >4 days, or if participants had
452 a heart rate discrepancy of >15% during exercise. Despite these adherence criteria,
453 we cannot rule out the possibility that individual differences in adherence influence
454 our findings.

455 The biology that underlies circadian heterogeneity in metabolism is not fully
456 understood. The molecular clock influences various aspects of circadian metabolism
457 at the cellular level and helps regulate metabolite uptake by peripheral tissues,
458 including glucose (Gabriel & Zierath, 2021). Exercise has the ability to reset the
459 molecular clock in peripheral tissues (Wolff & Esser, 2012), and molecular clock
460 mutations are found in individuals with irregular circadian rhythms, such as those with
461 familial delayed sleep phase disorder (Patke *et al.*, 2017). Thus, disturbances to the
462 molecular clock caused by morning or evening exercise may partly explain the
463 individual variability in glycaemic outcomes observed in this study. Skeletal muscle is
464 responsible for the majority of postprandial glucose uptake and plays a major role in
465 regulating glycaemia (DeFronzo & Tripathy, 2009). It has been observed that people
466 with type 2 diabetes have less robust intrinsic skeletal muscle circadian rhythms at
467 the molecular clock and mitochondrial levels (Gabriel *et al.*, 2021). These ablated
468 circadian rhythms may lead to increased heterogeneity in diurnal exercise responses
469 in this group, since differences in diurnal exercise glycaemic responses appear to be
470 of a smaller magnitude in people with normal glucose tolerance (Tanaka *et al.*, 2021).

471 In this study we have investigated the heterogeneity in response to the timing of
472 exercise and metformin intake using an n-of-1 approach within a randomised
473 crossover trial. This analysis technique may allow for individualised chrono-medicine
474 strategies. We have shown that morning exercise combined with pre-breakfast
475 metformin intake is the most effective strategy for lowering blood glucose levels in the
476 greatest number of participants with type 2 diabetes in both a real-time and Zeit-time
477 normalised analysis. However, individual response heterogeneity may benefit from a
478 personalised strategy via chrono-medicine. Furthermore, a holistic approach to
479 chrono-medicine is necessary for optimal health outcomes, including assessment of
480 the diurnal environment in which an individual exists.

481

482 **Acknowledgements**

483 N/A

484

485 **Author contributions**

486 K.L., B.J.P.C., and B.M.G contributed to the conception or design of the work. K.L.,
487 B.J.P.C., L.T.D., O.P.I, and B.M.G contributed to acquisition, analysis or interpretation

488 of data. All authors contributed to drafting the work or revising it critically for important
489 intellectual content. All authors have read and approved the final version of this
490 manuscript and agree to be accountable for all aspects of the work in ensuring that
491 questions related to the accuracy or integrity of any part of the work are appropriately
492 investigated and resolved. All persons designated as authors qualify for authorship,
493 and all those who qualify for authorship are listed.

494

495 **Funding**

496 B.M.G. was also supported by a fellowship from the Novo Nordisk Foundation
497 (NNF19OC0055072). B.J.P.C. was supported by a Mexican CONACyT PhD
498 Studentship. L.T.D. was supported by a PhD studentship from the BBSRC-EASTBIO
499 doctoral training programme.

500

501 **Data availability**

502 Raw data underlying the original manuscript have been deposited publicly
503 <https://doi.org/10.6084/m9.figshare.24081417>.

504 Code used to re-analyse these data have been publicly deposited at
505 <https://github.com/kmlyons13/N-of-1-Analysis-on-Circadian-Data>.

506

507 **Competing interests**

508 The authors declare they have no competing interests.

509

510 **References**

511 Abdalhk D, Riddell MC, Swayze S & Kuk JL (2020). Association between metformin and
512 physical activity with glucose control in adults with type 2 diabetes. *Endocrinol*
513 *Diabetes Metab*; DOI: 10.1002/EDM2.206.

514 Alhindi Y, Vaanholt LM, Al-Tarrah M, Gray SR, Speakman JR, Hambly C, Alanazi BS,
515 Gabriel BM, Lionikas A & Ratkevicius A (2019). Low Citrate Synthase Activity Is
516 Associated with Glucose Intolerance and Lipotoxicity. *J Nutr Metab* **2019**,
517 8594825.

518 Boulé NG, Robert C, Bell GJ, Johnson ST, Bell RC, Lewanczuk RZ, Gabr RQ & Brocks DR
519 (2011). Metformin and exercise in type 2 diabetes: examining treatment modality
520 interactions. *Diabetes Care* **34**, 1469–1474.

521 Carrillo BJP, Cope E, Gurel S, Traslosheros A, Kenny A, Michot-Duval O, Mody N,
522 Delibegovic M, Philip S, Thies F, Blana D & Gabriel BM (2024). Morning exercise
523 and pre-breakfast metformin interact to reduce glycaemia in people with type 2
524 diabetes: a randomized crossover trial. *The Journal of physiology*; DOI:
525 10.1113/JP285722.

526 Cartee GD, Hepple RT, Bamman MM & Zierath JR (2016). Exercise Promotes Healthy
527 Aging of Skeletal Muscle. *Cell Metab* **23**, 1034–1047.

- 528 Das S, Behera SK, Srinivasan A, Xavier AS, Selvarajan S, Kamalanathan S, Sahoo JP &
529 Nair NS (2018). Effect of metformin on exercise capacity: A meta-analysis.
530 *Diabetes Research and Clinical Practice* **144**, 270–278.
- 531 DeFronzo RA & Tripathy D (2009). Skeletal Muscle Insulin Resistance Is the Primary
532 Defect in Type 2 Diabetes. In *Diabetes Care*, pp. S157-63. From the University of
533 Texas Health Science Center, San Antonio, Texas.
- 534 Gabriel BM et al. (2021). Disrupted circadian oscillations in type 2 diabetes are linked
535 to altered rhythmic mitochondrial metabolism in skeletal muscle. *Sci Adv*; DOI:
536 10.1126/SCIADV.ABI9654.
- 537 Gabriel BM, Al-Tarrach M, Alhindi Y, Kilikevicius A, Venckunas T, Gray SR, Lionikas A &
538 Ratkevicius A (2017). H55N polymorphism is associated with low citrate synthase
539 activity which regulates lipid metabolism in mouse muscle cells. *PLoS ONE*; DOI:
540 10.1371/journal.pone.0185789.
- 541 Gabriel BM, Pugh J, Pruneta-Delocche V, Moulin P, Ratkevicius A & Gray SR (2013). The
542 effect of high intensity interval exercise on postprandial triacylglycerol and
543 leukocyte activation--monitored for 48 h post exercise. *PLoS One* **8**, e82669.
- 544 Gabriel BM & Zierath JR (2021). Zeitgebers of skeletal muscle and implications for
545 metabolic health. *The Journal of Physiology*; DOI:
546 <https://doi.org/10.1113/JP280884>.
- 547 Konopka AR, Laurin JL, Schoenberg HM, Reid JJ, Castor WM, Wolff CA, Musci R V,
548 Safairad OD, Linden MA, Biela LM, Bailey SM, Hamilton KL & Miller BF (2019).
549 Metformin inhibits mitochondrial adaptations to aerobic exercise training in older
550 adults. *Aging Cell* **18**, e12880.
- 551 Kristensen JM, Lill Lund C, Kjobsted R, Birk JB, Andersen NR, Nybo L, Mellberg K,
552 Balendran A, Richter EA & Wojtaszewski JFP (2019). Metformin does not
553 compromise energy status in human skeletal muscle at rest or during acute
554 exercise: A randomised, crossover trial. *Physiol Rep* **7**, e14307.
- 555 Krug LM, Haire-Joshu D & Heady SA (1991). Exercise habits and exercise relapse in
556 persons with non-insulin-dependent diabetes mellitus. *Diabetes Educ* **17**, 185–
557 188.
- 558 Leek BT, Mudaliar SRD, Henry R, Mathieu-Costello O & Richardson RS (2001). Effect of
559 acute exercise on citrate synthase activity in untrained and trained human
560 skeletal muscle. *American journal of physiology Regulatory, integrative and*
561 *comparative physiology*; DOI: 10.1152/AJPREGU.2001.280.2.R441.
- 562 Mancilla R, Brouwers B, Schrauwen-Hinderling VB, Hesselink MKC, Hoeks J &
563 Schrauwen P (2021). Exercise training elicits superior metabolic effects when
564 performed in the afternoon compared to morning in metabolically compromised
565 humans. *Physiological Reports*; DOI: 10.14814/phy2.14669.
- 566 Moholdt T, Parr EB, Devlin BL, Debik J, Giskeødegård G & Hawley JA (2021). The effect of
567 morning vs evening exercise training on glycaemic control and serum metabolites
568 in overweight/obese men: a randomised trial. *Diabetologia* **64**, 2061–2076.

- 569 Patke A, Murphy PJ, Onat OE, Krieger AC, Ozcelik T, Campbell SS & Young MW (2017).
570 Mutation of the Human Circadian Clock Gene CRY1 in Familial Delayed Sleep
571 Phase Disorder. *Cell* **169**, 203-215.e13.
- 572 Qian J, Xiao Q, Walkup MP, Coday M, Erickson ML, Unick J, Jakicic JM, Hu K, Scheer
573 FAJL & Middelbeek RJW (2023). Association of Timing of Moderate-to-Vigorous
574 Physical Activity With Changes in Glycemic Control Over 4 Years in Adults With
575 Type 2 Diabetes From the Look AHEAD Trial. *Diabetes care*; DOI: 10.2337/DC22-
576 2413.
- 577 Samuel JP, Wootton SH & Tyson JE (2023). N-of-1 trials: The epitome of personalized
578 medicine? *Journal of Clinical and Translational Science* **7**, 161–162.
- 579 Savikj M, Gabriel BM, Alm PS, Smith J, Caidahl K, Björnholm M, Fritz T, Krook A, Zierath
580 JR & Wallberg-Henriksson H (2019). Afternoon exercise is more efficacious than
581 morning exercise at improving blood glucose levels in individuals with type 2
582 diabetes: a randomised crossover trial. *Diabetologia* **62**, 233–237.
- 583 Sharoff CG, Hagobian TA, Malin SK, Chipkin SR, Yu H, Hirshman MF, Goodyear LJ &
584 Braun B (2010). Combining short-term metformin treatment and one bout of
585 exercise does not increase insulin action in insulin-resistant individuals. *Am J*
586 *Physiol Endocrinol Metab*; DOI: 10.1152/AJPENDO.00517.2009.
- 587 Tanaka Y, Ogata H, Park I, Ando A, Ishihara A, Kayaba M, Yajima K, Suzuki C, Araki A,
588 Osumi H, Zhang S, Seol J, Takahashi K, Nabekura Y, Satoh M & Tokuyama K (2021).
589 Effect of a single bout of morning or afternoon exercise on glucose fluctuation in
590 young healthy men. *Physiological Reports* **9**, e14784.
- 591 van der Velde JHPM, Boone SC, Winters-van Eekelen E, Hesselink MKC, Schrauwen-
592 Hinderling VB, Schrauwen P, Lamb HJ, Rosendaal FR & de Mutsert R (2023).
593 Timing of physical activity in relation to liver fat content and insulin resistance.
594 *Diabetologia* **66**, 461–471.
- 595 Vieira R, McDonald S, Araújo-Soares V, Sniehotta FF & Henderson R (2017). Dynamic
596 modelling of n-of-1 data: powerful and flexible data analytics applied to
597 individualised studies. *Health psychology review* **11**, 222–234.
- 598 Vitaterna MH, Shimomura K & Jiang P (2019). Genetics of Circadian Rhythms.
599 *Neurologic clinics* **37**, 487.
- 600 Wolff G & Esser KA (2012). Scheduled exercise phase shifts the circadian clock in
601 skeletal muscle. *Med Sci Sports Exerc* **44**, 1663–1670.
- 602