

# **Monovalent mRNA XBB.1.5 vaccine effectiveness against COVID-19 hospitalization in Quebec, Canada: impact of variant replacement and waning protection during 10-month follow-up**

Sara Carazo, MD PhD<sup>1,2,3</sup> – Danuta M. Skowronski, MD FRCPC<sup>4</sup> – Nicholas Brousseau, MD MSc<sup>1,2,3</sup> – Charles-Antoine Guay, MD M.Sc. FRCPC<sup>2,5,6</sup> – Chantal Sauvageau, MD<sup>1,2,3</sup> – Étienne Racine, MD<sup>1,2,3</sup> – Denis Talbot, PhD<sup>2,3</sup> – Iulia Gabriela Ionescu, MSc<sup>1</sup> – Judith Fafard, MD<sup>7</sup> – Rodica Gilca, MD PhD<sup>1,2,3</sup> – Jonathan Phimmasone, MSc<sup>1</sup> – Philippe De Wals, MD PhD<sup>1,2,3</sup> – Gaston De Serres, MD PhD<sup>2</sup>

<sup>1</sup>Biological risks unit. Institut national de santé publique du Québec, Quebec City, Quebec, Canada

<sup>2</sup>Social and preventive medicine department, Faculty of medicine, Laval University, Quebec City, Quebec, Canada

<sup>3</sup>Centre Hospitalier Universitaire (CHU) de Québec–Université Laval Research Center, Quebec City, Quebec, Canada

<sup>4</sup>Communicable Diseases and Immunization Services, BC Centre for Disease Control, Vancouver, British Columbia, Canada

<sup>5</sup>Centre de Recherche de l'Institut Universitaire de Cardiologie et de Pneumologie de Québec, Quebec City, Quebec, Canada

<sup>6</sup>Département des sciences de la santé communautaire, Faculté de médecine et des sciences de la santé, Université de Sherbrooke, Sherbrooke, Canada.

<sup>7</sup>Laboratoire de Santé Publique du Québec, Institut national de santé publique du Québec, Sainte-Anne-de-Bellevue, Quebec, Canada

## **Corresponding author:**

Sara Carazo

Institut national de santé publique du Québec

945, Avenue Wolfe, Québec, Québec, G1V 5B3, Canada

+1 418 650 5115

[sara.carazo@inspq.qc.ca](mailto:sara.carazo@inspq.qc.ca)

## **40-word summary**

Based on a population-based test-negative study, XBB.1.5-vaccine effectiveness against COVID-19 hospitalizations was 30% from October 2023 to August 2024 among  $\geq 60$ -year-olds. By subvariant period, effectiveness was 54% (XBB-period), 23% (JN-period) and 0% (KP-period), with no protection past 5-6 months post-XBB-vaccination.

Abstract word count: 250

Main text word count: 2987

## Abstract

**Background.** We evaluated mRNA COVID-19 vaccine effectiveness (VE) for the XBB.1.5 formulation against COVID-19 hospitalizations among adults aged  $\geq 60$  years during a ten-month follow-up period.

**Methods.** We conducted a test-negative case-control study using Quebec population-based administrative data. Specimens collected from individuals aged  $\geq 60$  years tested at an acute-care hospital from October 2023 to August 2024 were considered test-positive cases if hospitalized for COVID-19, or controls if test-negative for SARS-CoV-2. Vaccination was defined by receipt of at least one mRNA XBB-vaccine (autumn or spring) dose. Multivariate logistic regression analyses estimated VE relative to several comparator groups, primarily those last-vaccinated in 2022, by subvariant predominant period (XBB, JN and KP), by time since XBB-vaccination and by number of XBB-vaccine doses (KP period).

**Results.** Participants overall and by XBB, JN and KP periods included: 5532 (4.9%) test-positive cases (1321, 1838 and 1372, respectively) and 108473 (95.1%) test-negative controls (12881, 53414 and 28595, respectively); 14584 specimens were collected during periods of subvariant cocirculation. By subvariant period, 3322 (25.8%), 27041 (50.6%) and 15401 (53.9%) controls, respectively, were considered XBB-vaccinated. Overall VE was 30% (95%CI:24–35) and by XBB, JN or KP period: 54% (95%CI:46–62), 23% (95%CI:13–32) and 0% (95%CI:-18–15), respectively. During each subvariant period, the hospitalization risk was reduced only during the first four months post-vaccination.

**Conclusions.** Among individuals aged  $\geq 60$  years, mRNA XBB-vaccination provided meaningful, albeit limited and short-term, protection against COVID-19 hospitalization due to XBB, JN and KP subvariants in. Better vaccines are needed to effectively reduce COVID-19 disease burden.

**Keywords.** SARS-CoV-2; COVID-19; vaccine effectiveness; waning protection

## 1 INTRODUCTION

2 SARS-CoV-2 viruses continue to evolve, leading to unpredictable worldwide transitions  
3 in lineage predominance, mainly driven by emerging subvariants with features of higher  
4 transmissibility and/or immune escape [1]. Vaccine formulations targeting  
5 contemporaneous subvariants have been developed to respond to virus evolution.  
6 Updated monovalent COVID-19 vaccines targeting the Omicron XBB.1.5 variant (XBB-  
7 vaccines) were approved in Canada and the USA in September 2023 [2,3] and  
8 administered during 2023 autumn and 2024 spring vaccination campaigns in the  
9 province of Quebec, Canada.

10 Studies evaluating XBB-vaccination have reported early incremental effectiveness  
11 (compared to not receiving the XBB-vaccine) of 50-70% to reduce COVID-19  
12 hospitalization risk, but lower protection of 23-54% following replacement of XBB  
13 descendants by the Omicron JN.1 sublineage [4–9]. These studies, however, only  
14 included the first three to five months following vaccination campaigns and could not  
15 inform duration of protection thereafter. In addition, none assessed vaccine  
16 effectiveness (VE) against severe outcomes associated with subsequently emergent  
17 Omicron KP.2 and KP.3 subvariants, which became the predominant circulating  
18 lineages by May 2024 [10].

19 Using Quebec population-based administrative data, we evaluated effectiveness of  
20 mRNA XBB.1.5 vaccination (XBB-vaccination) against hospitalizations for COVID-19  
21 from October 2023 to August 2024 among adults aged  $\geq 60$  years overall, by period of  
22 subvariant predominance, and by time since XBB-vaccination.

23

## 24 METHODS

### 25 Study design and population

26 This population-based test-negative case-control study utilizing specimens tested for  
27 SARS-CoV-2 at any acute-care hospital in the province of Quebec, compared the XBB-  
28 vaccination status of test-positive cases (COVID-19 hospitalizations) with test-negative  
29 controls (hospitalized or not). Tests were included if conducted among adults aged  $\geq 60$

30 years who presented with COVID-19 symptoms from October 29, 2023 (epi-week 2023-  
31 44) to August 17, 2024 (epi-week 2024-33). Analyses are specimen-based: individuals  
32 could contribute multiple tests to the analysis.

### 33 **Procedures**

34 In Quebec, a dose of mRNA XBB-vaccine was recommended for adults aged  $\geq 60$  years  
35 and other high-risk groups during the autumn campaign commencing September 29,  
36 2023, for long-term care facilities (LTCF) and other congregate living facilities and  
37 October 10, 2023 for general population [11]. Influenza and COVID-19 vaccines were  
38 offered simultaneously to individuals targeted for both vaccines. A 2024 spring dose of  
39 XBB-vaccine (available from April 1, 2024) was recommended for persons aged  $\geq 80$   
40 years, those living in LTCF or private homes for older people and immunocompromised  
41 individuals [12].

42 Subvariant identification during the study period was based on whole-genome  
43 sequencing of randomly selected specimens among all SARS-CoV-2 positive nucleic  
44 acid amplification tests (NAAT). We defined subvariant periods based on  $>60\%$   
45 predominance reported by these laboratories [13]. In general, XBB subvariants replaced  
46 BQ.1 subvariants and were predominant in Quebec starting February 2023. Accordingly,  
47 the XBB period spanned from epi-week 2023-44 to 2023-48, during which 69% to 91%  
48 of weekly sequenced specimens were XBB and subvariants (18% to 34%) or EG.5 and  
49 subvariants (49% to 60%). The JN period spanned from epi-week 2023-52 to 2024-17,  
50 during which weekly-sequenced specimens that were identified as BA.2.86, JN.1 or  
51 subvariants represented 64% to 100% of all specimens. The KP period spanned from  
52 epi-week 2024-20 to 2024-33 (end of the study), during which 61% to 80% of weekly-  
53 sequenced specimens were KP.2 and subvariants (5% to 19%), or KP.3 and  
54 subvariants (38% to 69%) (Figure 1).

55 As previously described [14], information on all NAATs for SARS-CoV-2 is centralized in  
56 Quebec's provincial laboratory database. For each NAAT, the reason for testing is  
57 documented and, despite some evolution in reporting instructions over time, the code for  
58 tests conducted in acute-care hospitals (emergency room or inpatient) due to symptoms  
59 compatible with COVID-19 has remained unchanged since 2020. Using a unique

60 personal identifier, we merged this provincial laboratory database with the population-  
61 based provincial immunization registry, the hospitalization administrative database and  
62 the provincial chronic disease surveillance database [15]. Data were extracted on  
63 August 26, 2024.

64 The primary exposure was defined as receipt of at least one dose of XBB-vaccine  
65 administered at any time throughout the study period (autumn and/or spring campaigns).  
66 During the KP period, exposure could include one (autumn or spring) or two (autumn  
67 and spring) XBB-vaccine doses, assessed in primary analysis combined but also  
68 explored separately stratifies by number of XBB-vaccine doses. Three comparison  
69 groups were used: a) latest vaccination with an ancestral mRNA monovalent or bivalent  
70 vaccine dose received during Quebec's prior vaccination campaign from July to  
71 December 2022 (MV/BV-vaccinated); b) non-XBB vaccination, regardless of the number  
72 or timing of previous doses, but excluding individuals having received a non-XBB dose  
73 less than 182 days prior to specimen collection (non-XBB-vaccinated); or c)  
74 unvaccinated individuals (unvaccinated).

75 Prior infection was defined as a documented positive SARS-CoV-2 NAAT before  
76 October 20, 2023, and  $\geq 90$  days before the specimen collection date. We did not have  
77 information on the results of rapid antigen detection tests, broadly used since 2022.

78 COVID-19 hospitalization was defined as a hospital admission during  $\geq 24$  hours within 0  
79 to 6 days after a positive SARS-CoV-2 NAAT performed due to COVID-19-compatible  
80 symptoms, with COVID-19 being the main reason for admission.

81 We excluded tests from individuals living in a LTCF because their hospital referral  
82 criteria differ from those in the general population, and from immunocompromised  
83 individuals identified in the chronic disease surveillance database. We additionally  
84 excluded tests: a) of specimens collected within seven days prior to a positive test  
85 (probable false negative results), or within 90 days after a positive test (compatible with  
86 prolonged SARS-CoV-2 shedding); b) with negative results collected within 15 days  
87 after a negative test, to include a single test by respiratory episode; c) of individuals with  
88 XBB-vaccination  $< 7$  days or non-XBB vaccination  $< 182$  days before specimen  
89 collection; d) of individuals with invalid vaccination dates or intervals, or who received

90 more than seven vaccine doses or were vaccinated only with non-mRNA vaccines; and  
91 e) positive tests done in the emergency room that were not followed by hospital  
92 admission.

### 93 **Statistical analyses**

94 We used logistic regression models to derive adjusted odds ratios (OR) and their 95%  
95 confidence intervals (95% CI) comparing the odds of XBB-vaccination among positive-  
96 test hospitalized cases versus negative-test controls. Estimated VE was calculated as  $(1$   
97  $- \text{adjusted OR}) * 100$ . We estimated incremental XBB-VE when the comparator was the  
98 MV/BV-vaccinated group (main analysis) or alternatively the non-XBB-vaccinated group.  
99 Absolute XBB-VE was estimated when the comparator was the unvaccinated group.

100 All models were adjusted for sex, age group (60-69, 70-79 and  $\geq 80$  years), residence  
101 (home, private homes for older people), epi-week of specimen collection, chronic  
102 respiratory disease, chronic heart disease, cancer, obesity, neurological disease and  
103 multimorbidity (at least two chronic diseases) [15].

104 Waning and subvariant-specific estimates were examined by stratifying by subvariant  
105 period, time since XBB-vaccination (one- and two-month intervals) and by four-week  
106 calendar periods. Other stratified analyses explored the effect of age, the number of  
107 XBB doses during the KP period and hybrid prior infection.

108 Statistical analyses were performed using SAS (version 9.4).

### 109 **Ethical considerations.**

110 This study was conducted under the legal mandate of the Quebec National Director of  
111 Public Health and was approved by the ethics committee of the Centre de Recherche du  
112 Centre Hospitalier Universitaire du Québec-Université Laval.

113

## 114 **RESULTS**

### 115 **Study population**

116 From the 167373 NAAT performed among adults aged  $\geq 60$  years at acute-care hospitals  
117 during the study period, 53368 (31.9%) tests were excluded: 3575 (2.1%) for individuals

118 living in LTCF and 10863 (6.5%) for immunocompromised, 7621 (4.6%) specimens  
119 collected within seven days prior or 90 days after a positive test, 17672 (10.6%) within  
120 15 days after a negative test, and 6058 (3.6%) with an excluded vaccination-test  
121 interval, more than seven doses, non-mRNA vaccines or invalid dates  
122 ([Supplementary\\_Figure 1](#)). We also excluded 7579 (4.5%) positive-test cases because  
123 not hospitalized after ER consultation.

124 Among the 114005 NAAT included, 5532 (4.9%) were from COVID-19 hospitalized  
125 cases: 1321 (23.9%) during the XBB period, 1838 (33.2%) during the JN period, 1372  
126 (24.8%) during the KP period and 1001 (18.1%) during periods of subvariant  
127 cocirculation.

128 Among cases, 2665 (48.2%) were female, the median age was 80 years (interquartile  
129 range (IQR): 73-87), 2895 (52.3%) were 80 years or older, and 4230 (76.5%) had  
130 multimorbidity. Among controls, 55861 (51.5%) were female, the median age was 77  
131 years (interquartile range (IQR): 69-84), 43790 (40.4%) were 80 years or older, and  
132 77444 (71.4%) presented with multimorbidity. Sex, age and multimorbidity distribution by  
133 case and control status were similar in each subvariant period ([Table 1](#)).

134 By successive XBB, JN and KP subvariant period, 3322 (25.8%), 27041 (50.6%) and  
135 15401 (53.9%) controls were XBB-vaccinated, respectively. Vaccination was associated  
136 with older age and multimorbidity ([Table 1](#), [Supplementary\\_Tables 1-3](#)). Among  
137 controls, median time since XBB-vaccination increased by successive subvariant period,  
138 from 22 days (IQR: 15-32), to 3 months (IQR: 2-5), to 7 months (IQR: 6-8), respectively.  
139 Control XBB-vaccine coverage during the last week of March 2024, before the 2024  
140 spring XBB-vaccination campaign, was 52.8% overall: 37.5%, 53.5% and 61.9%,  
141 respectively, for 60-69, 70-79 and  $\geq 80$  years. The latter estimates are comparable to  
142 population vaccine coverage on April 1, 2024 among Quebec adults: 36.4%, 54.2% and  
143 60.7%, respectively, for 60-69, 70-79 and  $\geq 80$  years ([Figure 1](#)) [16]. Control vaccine  
144 coverage of the spring dose at the end of the study period (August 2024, week 33) was  
145 10.4%, among whom 70.7% had also received an autumn XBB-vaccine dose. A similar  
146 proportion of XBB-vaccinated cases (1636 (77.0%)) and controls (40463 (77.6%)) had  
147 also received an influenza vaccine ([Supplementary\\_Tables 1-3](#)).



148 In each subvariant period, a higher proportion of controls than cases had a documented  
149 NAAT-confirmed SARS-CoV-2 infection prior to the study period ([Table 1](#)). A recent  
150 documented infection that occurred between May and October 2023 was more frequent  
151 among MV/BV-vaccinated (16%) than among XBB-vaccinated participants (7%),  
152 suggesting a possible association between recent infection and delayed vaccination  
153 ([Supplementary\\_Figure 2](#)).

#### 154 **Estimated VE**

155 Relative to MV/BV-vaccination, global XBB-VE against COVID-19 hospitalization was  
156 30% (95%CI:24–35): highest during the XBB period at 54% (95%CI:46–62), lower during  
157 the JN period at 23% (95%CI:13–32), and with no protection observed during the KP  
158 period (VE=0%; 95%CI:-17–15), when 9.7% of XBB-vaccinated had received 2 doses  
159 ([Table 2](#)). Estimated VE was similar when compared with non-XBB-vaccinated or with  
160 unvaccinated participants, suggesting lack or low residual protection from vaccination  
161 prior to the 2023 autumn campaign.

162 Stratification for time since XBB-vaccination showed that significant protection against  
163 hospitalization was only observed during the first four months post-vaccination for each  
164 subvariant period ([Figure 2, Supplementary\\_Table 4](#)). It was higher during the first two  
165 months post-vaccination during XBB (VE=55%; 95%CI:46–62), JN (VE=23%; 95%CI:9-  
166 36) and KP periods (VE=60%; 95%CI:39–74). As XBB predominance ended epi-week  
167 2023-48, time-since-vaccination beyond two months could not be evaluated. During the  
168 JN period, observed VE was 17% (95%CI:-9-36) at five to six months and -5% (95%CI:-  
169 160-57) at seven months post-vaccination. During the KP period, effectiveness  
170 decreased with time reaching 3% at seven to eight months post-vaccination. After  
171 standardisation for time since vaccination during the KP period, a second XBB-dose was  
172 associated with similar protection to a single XBB-vaccination through the 4<sup>th</sup> month  
173 post-vaccination, mainly reflecting spring doses ([Table 3](#)).

174 When stratifying by calendar time, XBB-vaccination was associated with a 50%  
175 reduction in COVID-19 hospitalization risk during the first eight weeks of the study  
176 period (November and December 2023), decreasing to 30% in January 2024 and to no  
177 protection from February to August 2024 ([Figure 3](#)). This rapid loss of protection was

178 contemporaneous with increased median time since vaccination, subvariant  
179 replacement, and low uptake of the spring dose ([Figure 1](#)).

180 In subgroup analyses, XBB-vaccination among individuals with prior NAAT-confirmed  
181 infection compared to MV/BV-vaccinated regardless prior infection was associated with  
182 higher point estimates of VE than main global estimates during each subvariant period  
183 (74%, 41% and 6% vs. 54%, 23% and 0%, respectively) ([Supplementary\\_Table 5](#)).

184 Overall and subvariant-specific VE estimates were unexpectedly lower for 60- to 69-  
185 year-olds than for older groups, but differences decreased in analyses restricted to the  
186 first two months post-XBB-vaccination ([Supplementary\\_Table 6](#)).

187

## 188 **DISCUSSION**

189 During a ten-month period of follow-up, XBB-vaccinated adults aged 60 years or older  
190 had an estimated 30% reduction in their risk of COVID-19 hospitalization. Restricted to  
191 the first two months post-vaccination, VE was 55% during the XBB period, 23% during  
192 the JN period and 60% during the KP period, but effectiveness waned over time, with  
193 minimal to no protection demonstrated beyond fourth months, regardless of the  
194 subvariant.

195 Prior published studies have reported relative XBB-VE of 53% to 67% against  
196 hospitalization related to XBB lineages. These estimates mostly reflect short-term  
197 protection, as XBB/EG.5 subvariant predominance was overtaken by JN subvariants by  
198 the end of 2023 [5,6,8,10,17,18]. Studies evaluating VE against hospitalizations during  
199 both XBB and JN periods showed lower relative protection of 35% to 54% against JN  
200 sublineages [4,5,9,19], persisting when comparing similar intervals since vaccination.  
201 Waning protection during the JN period was not observed in most studies reporting a  
202 four- or five-month post-vaccination follow-up [7,9,20,21], while one study reported  
203 waning protection against JN-lineage hospitalization from 33% at <3 months post-  
204 vaccination to 23% at 3-5 months [5].

205 Our data are consistent with the literature for XBB and early JN periods, but our ten-  
206 month follow-up spanning the spring 2024 dose allowed us to show that shortly after

207 vaccination, VE was similarly high against XBB (55%) and KP (60%) sublineages, with  
208 lower estimate against JN (23%) sublineage. It declined over the following few months  
209 with no protection found past five to six months post-XBB-vaccination. This suggests  
210 that waning of vaccine immunity and not sublineage shift accounts for most of the  
211 observed loss of protection over time. The similarity of XBB-VE estimates with each of  
212 the three comparator groups (MV/BV-vaccinated, non-XBB-vaccinated and  
213 unvaccinated) also suggests that there was absence or little residual protection in  
214 individuals vaccinated >6 months prior to the autumn 2023 campaign, as reported in  
215 studies from the USA and England [8,19].

216 Our study has several limitations. The lack of individual-level genome sequencing might  
217 have led to some misclassification in the sublineage-specific estimates, mainly during  
218 the KP period where 20% to 30% of analyzed specimens were JN sublineages.  
219 Residual confounding is possible if unmeasured determinants of vaccine-seeking  
220 behaviour are associated with COVID-19 testing and hospitalization risk. Among our  
221 participants with documented prior infection (~20%), a SARS-CoV-2 infection in  
222 September or October 2023 was twice as frequent among MV/BV-vaccinated than  
223 among XBB-vaccinated. VE would be underestimated if individuals with increased  
224 immunity due to a recent SARS-CoV-2 infection had delayed or avoided XBB-  
225 vaccination [22]. Its impact should be small in the context of limited proportion with  
226 recent infections and myriad other reasons for non-vaccination but may partially explain  
227 the unexpected high VE within two months post-vaccination during the KP period, where  
228 delayed (spring) XBB-vaccine receipt as first XBB-dose might have been associated  
229 with a recent prior infection. Hybrid immunity conferred by prior infection and vaccination  
230 have been previously associated with the highest protection against COVID-19 severe  
231 outcomes [14,23]. In the context where most mild COVID-19 infections are no longer  
232 documented or NAAT-confirmed, and most people have experienced at least one prior  
233 infection, our overall results reflect the incremental XBB-VE over the current (but  
234 unknown) population immunity conferred by prior infection. We adjusted for the main  
235 determinants of COVID-19 hospitalizations, but we did not have information on factors  
236 such as ritonavir-boosted nirmatrevil use, frailty, race and ethnicity which might influence  
237 vaccination uptake and disease severity. Depletion-of-susceptible bias may arise when

238 infection rates differ between vaccinated and unvaccinated populations, potentially  
239 creating a spurious decrease in VE over time [24]. Although vaccination status might  
240 influence contacts especially within certain high-risk groups, the impact of this bias alone  
241 could not explain the observed waning, as shown in previous epidemiological studies  
242 [25]. XBB and influenza vaccine coadministration might potentially underestimate XBB-  
243 VE in test-negative designs [26,27]. Even if we did not have information on influenza  
244 results to evaluate its impact, the circulation of SARS-CoV-2 and influenza overlapped  
245 only during the JN period in Quebec [28], and we found a similar proportion of influenza-  
246 vaccinated among XBB-vaccinated cases and controls, suggesting a limited impact of  
247 this bias on our conclusions. Despite these limitations, our conclusions seem robust as  
248 shown by results using different comparators and by the time-dependant waning  
249 gradient for both JN and KP periods acknowledging wide CI.

250 This end-of-season study presents a comprehensive portrait of the evolution of the  
251 protection conferred by XBB-vaccination at a population level, first reporting sublineage-  
252 specific estimates during predominant KP circulation and the first VE estimates  
253 associated with two XBB-vaccine doses. Our results align with other reported XBB-VE  
254 estimates up to five-months post-vaccination [4,5,7,19] and extends them to a ten-month  
255 follow-up including three predominant circulating sublineages finding minimal to no  
256 protection beyond the fourth post-vaccination month. Further studies will be necessary  
257 to corroborate our conclusions. Moreover, our study leads to several important public  
258 health considerations related to ongoing COVID-19 vaccination programs including their  
259 timing; their likelihood of success in the context of suboptimal VE, short duration of  
260 protection, and ultimately vaccination fatigue; and the need to pursue better COVID-19  
261 vaccines. Unlike influenza, COVID-19 is not a seasonal winter disease. Worldwide, each  
262 new COVID-19 wave is linked to a variant shift regardless of the time of the year [1,10].  
263 Therefore, timing COVID-19 vaccination campaigns along that for influenza might be  
264 operationally preferable, but not yet optimal with respect to impact. With only short-  
265 lasting protection, vaccination only once per year leaves individuals unprotected for  
266 much of the time, but more doses lead to vaccine fatigue, with current vaccine coverage  
267 as low as 14% for the spring dose among  $\geq 80$ -year-olds [16]. Finally, despite their high  
268 VE and remarkable impact at the beginning of the pandemic, we are now at a stage

269 where mRNA vaccines are showing only modest protection lasting a few months against  
270 even severe outcomes like hospitalization, with a recurring need for update to address  
271 the emergence of new variants. While exploring the reasons for this dramatic change in  
272 the performance of mRNA vaccines we urgently need to determine if other vaccine  
273 technologies may yield better and longer-lasting benefits in the current context.

274 In the meantime, we conclude from our observations that the XBB formulation of mRNA  
275 COVID-19 vaccines provided meaningful, albeit limited and short-lived, protection  
276 against hospitalization due to XBB, JN and KP sublineages in individuals aged  $\geq 60$   
277 years.

## ACKNOWLEDGMENTS

We would like to thank Ella Diendere (Institut national de santé publique du Québec) for her support to provide data on SARS-CoV-2 lineages circulation in Québec.

**Financial support.** This work was supported by the Ministère de la santé et des services sociaux du Québec.

**Author contributions.** All authors had full access to all of the data in the study and take responsibility for the integrity of the data and the accuracy of the data analysis. **Concept and design:** SC, DMS, GDS. **Acquisition, analysis, or interpretation of data:** All authors. **Drafting of the manuscript:** SC. **Critical revision of the manuscript for important intellectual content:** All authors. **Statistical analysis:** SC, JP. **Supervision:** GDS

**Conflict of interest.** SC, IGI and JP report funding from the Ministère de la santé et des services sociaux du Québec to conduct this work, paid to their institution. DMS reports funding from Public Health Agency of Canada and British Columbia Center for Diseases Control Foundation for Public Health for influenza and COVID-19 studies but not pertaining to the current study; from Michael Smith Foundation for Health Research and from Canadian Institutes of Health Research for COVID-19 studies but not pertaining to the current study; all grants were paid to her institution. All other authors report no potential conflicts.

**Data availability.** Individual data not publicly available

## REFERENCES

1. Markov PV, Ghafari M, Beer M, et al. The evolution of SARS-CoV-2. *Nat Rev Microbiol* **2023**; 21:361–379.
2. Health Canada. Health Canada authorizes Pfizer-BioNTech COVID-19 vaccine targeting the Omicron XBB.1.5 subvariant. Available at: <https://www.canada.ca/en/health-canada/news/2023/09/health-canada-authorizes-pfizer-biontech-covid-19-vaccine-targeting-the-omicron-xbb15-subvariant.html>. Accessed 9 October 2024.
3. U.S. Food and Drug Administration. FDA takes action on updated mRNA COVID-19 vaccines to better protect against currently circulating variants. Available at: <https://www.fda.gov/news-events/press-announcements/fda-takes-action-updated-mrna-covid-19-vaccines-better-protect-against-currently-circulating>. Accessed 9 October 2024.
4. Lin D-Y, Du Y, Xu Y, Paritala S, Donahue M, Maloney P. Durability of XBB.1.5 Vaccines against Omicron Subvariants. *N Engl J Med* **2024**; 390:2124–2127.
5. Ma KC, Surie D, Luring AS, et al. Effectiveness of Updated 2023–2024 (Monovalent XBB.1.5) COVID-19 Vaccination Against SARS-CoV-2 Omicron XBB and BA.2.86/JN.1 Lineage Hospitalization and a Comparison of Clinical Severity—IVY Network, 26 Hospitals, October 18, 2023–March 9, 2024. *Clin Infect Dis* **2024**; ciae405.
6. Monge S, Humphreys J, Nicolay N, et al. Effectiveness of XBB.1.5 Monovalent COVID-19 Vaccines During a Period of XBB.1.5 Dominance in EU/EEA Countries, October to November 2023: A VEBIS-EHR Network Study. *Influenza Other Respir Viruses* **2024**; 18(4):e13292.
7. Tartof SY, Slezak JM, Puzniak L, et al. Effectiveness of BNT162b2 XBB Vaccine Against XBB and JN.1 Sublineages. *Open Forum Infect Dis* **2024**; 11(7):ofae370.
8. Tartof SY, Slezak JM, Frankland TB, et al. Estimated Effectiveness of the BNT162b2 XBB Vaccine Against COVID-19. *JAMA Intern Med* **2024**; 184(8):932–940.
9. Caffrey AR, Appaneal HJ, Lopes VV, et al. Effectiveness of BNT162b2 XBB vaccine in the US Veterans Affairs Healthcare System. medRxiv 2024.04.05.24305063 [Preprint]. April 07, 2024 [cited 2024 June 13]. Available from: <https://www.medrxiv.org/content/10.1101/2024.04.05.24305063v1>.
10. GISAID, via CoVariants.org (2024) – with major processing by Our World in Data. SARS-CoV-2 sequences by variant, Aug 24, 2024. Available at: <https://ourworldindata.org/grapher/covid-variants-bar>. Accessed 9 October 2024.
11. Comité sur l’immunization du Québec. Administration de doses de rappel du vaccin contre la COVID-19: recommandations pour l’automne 2023. Quebec, QC: Canada. Institut national de santé publique du Québec, 2023. Available at: [https://www.inspq.qc.ca/sites/default/files/2023-08/3367\\_doses-rappel-vaccin-covid-19-automne-2023.pdf](https://www.inspq.qc.ca/sites/default/files/2023-08/3367_doses-rappel-vaccin-covid-19-automne-2023.pdf). Accessed 15 September 2024.
12. Comité sur l’immunisation du Québec. Vaccination contre la COVID-19: recommandations pour le printemps 2024. Quebec, QC: Canada. Institut national de santé publique du Québec,

2024. Available at: <https://www.inspq.qc.ca/sites/default/files/2024-03/3471-vaccination-covid-19-printemps-2024.pdf>. Accessed 15 September 2024.

13. Institut national de santé publique du Québec. Données sur les variants du SRAS-CoV-2 au Québec. Available at: <https://www.inspq.qc.ca/covid-19/donnees/variants>. Accessed 9 October 2024.
14. Carazo S, Skowronski DM, Brisson M, et al. Effectiveness of previous infection-induced and vaccine-induced protection against hospitalisation due to omicron BA subvariants in older adults: a test-negative, case-control study in Quebec, Canada. *Lancet Healthy Longev* **2023**; 4(8):e409–e420.
15. Simard M, Boiteau V, Fortin É, et al. Impact of chronic comorbidities on hospitalization, intensive care unit admission and death among adult vaccinated and unvaccinated COVID-19 confirmed cases during the Omicron wave. *J Multimorb Comorb* **2023**; 13:26335565231169567.
16. Institut national de santé publique du Québec. Données de vaccination contre la COVID-19 au Québec. Available at: <https://www.inspq.qc.ca/covid-19/donnees/vaccination>. Accessed 9 October 2024.
17. DeCuir J, Payne AB, Self WH, et al. Interim Effectiveness of Updated 2023–2024 (Monovalent XBB.1.5) COVID-19 Vaccines Against COVID-19–Associated Emergency Department and Urgent Care Encounters and Hospitalization Among Immunocompetent Adults Aged ≥18 Years — VISION and IVY Networks, September 2023–January 2024. *MMWR Morb Mortal Wkly Rep* **2024**; 73(8):180–188.
18. Lee JA, Jang H, Ahn SM, et al. Estimates of vaccine effectiveness of the updated monovalent XBB.1.5 COVID-19 vaccine against symptomatic SARS-CoV-2 infection, hospitalization, and receipt of oxygen therapy in South Korea - October 26 to December 31, 2023. *Int J Infect Dis* **2024**; 148:107249.
19. Kirsebom FCM, Stowe J, Bernal JL, Allen A, Andrews N. Effectiveness of autumn 2023 COVID-19 vaccination and residual protection of prior doses against hospitalisation in England, estimated using a test-negative case-control study. *J Infect* **2024**; 89(1):106177.
20. Nunes B, Humphreys J, Nicolay N, et al. Monovalent XBB.1.5 COVID-19 vaccine effectiveness against hospitalisations and deaths during the Omicron BA.2.86/JN.1 period among older adults in seven European countries: A VEBIS-EHR Network Study. *medRxiv* 2024.07.04.24309832 [Preprint]. July 07, 2024 [cited 2024 Oct 14]. Available from: <https://www.medrxiv.org/content/10.1101/2024.07.04.24309832v1>.
21. Nguyen J, Mitratza M, Volkman H, et al. Effectiveness of the BNT162b2 XBB.1.5-Adapted Vaccine Against COVID-19 Hospitalization Related to the JN.1 Variant in Europe: A Test-Negative Case-Control Study Using the id.Drive Platform. SSRN 4859538 [Preprint]. June 11, 2024 [cited 2024 Oct 14]. Available from: <https://www.ssrn.com/abstract=4859538>.
22. Horne EM, Hulme WJ, Keogh RH, et al. Challenges in estimating waning effectiveness of two doses of BNT162b2 and ChAdOx1 COVID-19 vaccines beyond six months: an OpenSAFELY cohort study using linked electronic health records. *medRxiv* 2023.01.04.22283762 [Preprint].



January 05, 2023 [cited 2024 Oct 14]. Available from:  
<https://www.medrxiv.org/content/10.1101/2023.01.04.22283762v1>.

23. Bobrovitz N, Ware H, Ma X, et al. Protective effectiveness of previous SARS-CoV-2 infection and hybrid immunity against the omicron variant and severe disease: a systematic review and meta-regression. *Lancet Infect Dis* **2023**; 23(5):556–567.
24. Lipsitch M, Goldstein E, Ray GT, Fireman B. Depletion-of-susceptibles bias in influenza vaccine waning studies: how to ensure robust results. *Epidemiol Infect* **2019**; 147:e306.
25. Andrejko KL, Pry JM, Myers JF, et al. Waning of two-dose BNT162b2 and mRNA-1273 vaccine effectiveness against symptomatic SARS-CoV-2 infection is robust to depletion-of-susceptibles bias. *Am J Epidemiol* **2023**; 192(6):895-907.
26. Doll MK, Pettigrew SM, Ma J, Verma A. Effects of Confounding Bias in Coronavirus Disease 2019 (COVID-19) and Influenza Vaccine Effectiveness Test-Negative Designs Due to Correlated Influenza and COVID-19 Vaccination Behaviors. *Clin Infect Dis* **2022**; 75(1):e564–e571.
27. Skowronski DM, Zhan Y, Kaweski SE, et al. 2023/24 mid-season influenza and Omicron XBB.1.5 vaccine effectiveness estimates from the Canadian Sentinel Practitioner Surveillance Network (SPSN). *Euro Surveill* **2024**; 29(7):2400076.
28. Institut national de santé publique du Québec. Surveillance de l'influenza et des infections respiratoires virales. Available at:  
<https://www.inspq.qc.ca/sites/default/files/documents/influenza/20232024/2024-34.pdf?rapport=34>. Accessed 9 October 2024.

## FIGURE LEGENDS

**Figure 1.** Provincial respiratory viruses and SARS-CoV-2 subvariant circulation, doses of XBB-vaccine administered among study participants, and SARS-CoV-2 tests performed in acute-care hospitals by epidemiological week

Abbreviations: V3-XBB to V7-XBB, XBB-vaccine administered as dose 3 to dose 7

Note 1: Subvariants included as XBB/EG.5 detection: XBB, XBB.1.16, XBB.1.5, XBB.1.9, EG.5.1, HK.3, HV.1; as JN.1 detection: JN.1, BA.2.86; as KP.2/3 detection: KP.2, KP.3, KP.3.1.1, KP.3.1.4

Note 2: XBB-vaccine coverage represents at least one dose of XBB-vaccine among test-negative controls

**Figure 2:** XBB-vaccine effectiveness against COVID-19 hospitalization relative to monovalent or bivalent vaccination in 2022, by time since XBB-vaccination and variant period

Note: Logistic regression model comparing XBB-vaccinated participants at two-month intervals from vaccination with participants last vaccinated with an ancestral monovalent or a bivalent vaccine from July to December 2022 and adjusted for sex, age group, chronic conditions, place of residence and epi-week (2-week periods for the time since vaccination analyses)

**Figure 3:** XBB-vaccine effectiveness against COVID-19 hospitalization relative to monovalent or bivalent vaccination in 2022, by calendar time (four epi-week periods)

\* XBB, XBB.1.5, XBB.1.9, XBB.1.16, eG.5.1, HK.3, HV.1

\*\* JN.1, BA.2.86

\*\*\* KP.2, KP.3, KP.3.1.1, KP.3.1.4

Note: Logistic regression model comparing XBB-vaccinated participants with participants last vaccinated with an ancestral monovalent or a bivalent vaccine from July to December 2022 and adjusted for sex, age group, chronic conditions, place of residence and two epi-week periods

## TABLES

**Table 1.** Characteristics of test-participants included in each period analysis

Characteristic	XBB period		JN period		KP period	
	Cases	Controls	Cases	Controls	Cases	Controls
<b>N</b>	1321	12881	1838	53414	1372	28595
<b>Sex</b>						
Female	645 (48.8)	6668 (51.8)	854 (46.5)	27612 (51.7)	689 (50.2)	14563 (50.9)
Male	676 (51.2)	6213 (48.2)	984 (53.5)	25802 (48.3)	683 (49.8)	14032 (49.1)
<b>Age, years</b>						
Median (IQR)	81 (74-87)	77 (69-84)	79 (73-86)	77 (69-84)	80 (74-87)	77 (69-84)
60-69	185 (14.0)	3438 (26.7)	302 (16.4)	14091 (26.4)	192(14.0)	7344 (25.7)
70-79	415 (31.4)	4223 (32.8)	623 (33.9)	17626 (33.0)	444 (32.4)	9860 (34.5)
≥80	721 (54.6)	5220 (40.5)	913 (49.7)	21697 (40.6)	736 (53.6)	11391 (39.8)
<b>Place of residence</b>						
Home	966 (73.1)	10150 (78.8)	1488 (81.0)	42591 (79.7)	1118 (81.5)	23457 (82.0)
Private homes for older people	336 (25.4)	2462 (19.1)	316 (17.2)	9678 (18.1)	236 (17.2)	4543 (15.9)
Other	19 (1.4)	269 (2.1)	34 (1.8)	1145 (2.1)	18 (1.3)	595 (2.1)
<b>Chronic conditions</b>						
Multimorbidity <sup>a</sup>	1029 (77.9)	9360 (72.7)	1377 (74.9)	38166 (71.5)	1055 (76.9)	20180 (70.6)
Chronic heart disease	694 (52.5)	5970 (46.3)	879 (47.8)	23847 (44.6)	663 (48.3)	12517 (43.8)
Chronic lung disease	474 (35.9)	4722 (36.7)	649 (35.3)	19837 (37.1)	479 (34.9)	10442 (36.5)
Cancer	275 (20.8)	2606 (20.2)	374 (20.3)	10563 (19.8)	283 (20.6)	5855 (20.5)
Neurologic disease / dementia	245 (18.5)	1823 (14.2)	299 (16.3)	6984 (13.1)	206 (15.0)	3444 (12.0)
Obesity	146 (11.1)	1549 (12.0)	197 (10.7)	6015 (11.3)	162 (1.8)	3143 (11.0)
<b>Documented infection prior to vaccination campaign</b>	218 (16.5)	2760 (21.4)	317 (17.2)	12042 (22.5)	250 (18.2)	6740 (23.6)
<b>Number of booster doses received (total vaccine doses)</b>						
None (V0-V2)	142 (10.7)	1463 (11.4)	212 (11.5)	5738 (10.7)	120 (8.7)	2996 (10.5)
One (V3)	231 (17.5)	2336 (18.1)	310 (16.9)	8467 (15.9)	204 (14.9)	4430 (15.5)
Two (V4)	270 (20.4)	2769 (21.5)	313 (17.0)	8511 (15.9)	195 (14.2)	4360 (15.2)
Three (V5)	439 (33.2)	3588 (27.9)	388 (21.1)	11756 (22.0)	291 (21.2)	5806 (20.3)
Four (V6)	206 (15.6)	2369 (18.4)	501 (27.3)	15858 (29.7)	417 (30.4)	8527 (29.8)
Five (V7)	33 (2.5)	356 (2.8)	114 (6.2)	3084 (5.8)	145 (10.6)	2476 (8.7)
<b>Type of last booster dose (total vaccine doses)</b>						
Ancestral monovalent (V3-V6)	482 (36.5)	4425 (34.4)	494 (26.9)	12959 (24.3)	313 (22.8)	6543 (22.9)
Bivalent (BA.1 or BA.4/5) (V3-V7)	496 (37.5)	3671 (28.5)	318 (17.3)	7676 (14.4)	158 (11.5)	3655 (12.8)
Monovalent XBB.1.5 (V3-V7)	201 (15.2)	3322 (25.8)	814 (44.3)	27041 (50.6)	781 (56.9)	15401 (53.9)
<b>Interval in months between last dose and specimen collection, median (IQR)</b>						
Any vaccine type	13.4 (10-19)	13.1 (1-19)	12.2 (3-21)	5.6 (3-21)	9.1 (8-23)	9.0 (7-25)
Ancestral monovalent / Bivalent	13.2 (12-14)	13.2 (12-14)	15.4 (14-17)	16.3 (15-18)	20.9 (20-22)	20.6 (19-22)
Monovalent XBB 1.5	0.6 (0-1)	0.7 (0-1)	2.5 (2-4)	3.3 (2-5)	8.0 (7-9)	7.2 (6-8)
<b>2023/24 seasonal influenza vaccination (≥14 days before specimen collection)</b>	165 (12.5)	2549 (19.8)	796 (43.3)	25414 (47.6)	731 (53.3)	13997 (48.9)

Abbreviations: IQR, interquartile range; V0 to V7, vaccine dose 0 to 7

<sup>a</sup> At least two chronic conditions among the following: chronic respiratory disease, hypertension, cardiovascular disease, neurological disorder, anaemia, diabetes, hypothyroidism, fluid and electrolyte disorders, cancer, kidney disease, obesity, psychosis, liver disease, coagulopathy, weight loss, drug abuse, alcohol abuse, ulcer, paralysis.

Note: Data are n and column percentage except otherwise indicated

**Table 2.** XBB-vaccine effectiveness against COVID-19 hospitalization relative to different comparison groups, by subvariant period

Variant period and comparison groups	Cases	Controls	Unadjusted VE (95% CI)	Adjusted VE (95% CI)
<b>Global (W2023-44 to W2024-33)</b>				
XBB-vaccinated	2126	52135		
vs MV\BV-vaccinated in 2022	1356	20343	38.8 (34.4 to 43.0)	29.9 (24.4 to 35.0)
vs non-XBB vaccinated	3406	56338	32.5 (28.7 to 36.2)	29.6 (25.3 to 33.6)
vs unvaccinated	263	4273	33.7 (24.4 to 41.9)	35.8 (26.3 to 44.1)
<b>XBB period (W2023-44 to W2023-48)</b>				
XBB-vaccinated	201	3322		
vs MV\BV-vaccinated in 2022	556	4384	52.3 (43.6 to 59.6)	54.4 (45.9 to 61.6)
vs non-XBB vaccinated	1120	9559	48.4 (39.7 to 55.8)	54.0 (46.1 to 60.7)
vs unvaccinated	62	562	45.2 (26.1 to 59.3)	53.8 (37.3 to 66.0)
<b>JN period (W2023-52 to W2024-17)</b>				
XBB-vaccinated	814	27041		
vs MV\BV-vaccinated in 2022	363	9069	24.8 (14.7 to 33.7)	22.7 (12.1 to 32.0)
vs non-XBB vaccinated	1024	26373	22.5 (14.9 to 29.4)	25.2 (17.5 to 32.1)
vs unvaccinated	87	2055	28.9 (10.9 to 43.3)	30.8 (12.7 to 45.1)
<b>KP period (W2024-20 to W2024-33)</b>				
XBB-vaccinated	781	15401		
vs MV\BV-vaccinated in 2022	204	4299	-6.9 (-25.1 to 8.7)	-0.5 (-16.7 to 15.2)
vs non-XBB vaccinated	591	13194	-13.2 (-26.3 to -1.5)	-0.7 (-12.8 to 10.1)
vs unvaccinated	52	1088	-6.1 (-41.4 to 20.4)	7.4 (-24.2 to 30.9)

Abbreviations: CI, confidence interval; MV/BV, ancestral monovalent or bivalent booster dose received between July and December 2022; VE, vaccine effectiveness; W, week

Note: Logistic regression model adjusted for sex, age group, chronic conditions, place of residence and epi-week

**Table 3.** XBB vaccine effectiveness against COVID-19 hospitalization relative to monovalent or bivalent vaccination in 2022, by number of XBB-doses during the KP period

<b>Number of XBB-vaccines and time since last XBB vaccination</b>	Cases	Controls	Spring dose (% among XBB-vac)	Unadjusted VE (%) (95% CI)	Adjusted VE (%) (95% CI)
<b>One / two XBB-vaccines</b>	781	15401	2215 (13.7)	-6.9 (-25.1 to 8.7)	0.5 (-16.7 to 15.2)
vs M\BV-vaccinated in 2022	204	4299	NA	Reference	Reference
<b>Time since XBB-vaccination</b>					
7-60d (months 1-2)	28	1358	1380 (99.6)	56.5 (35.2 to 70.9)	60.2 (38.9 to 74.0)
61-121d (months 3-4)	45	942	823 (83.4)	-0.7 (-40.1 to 27.2)	33.2 (3.6 to 53.7)
122-182d (months 5-6)	49	1545	12 (0.8)	33.2 (8.2 to 51.3)	13.6 (-22.1 to 38.9)
183-243d (months 7-8)	272	6620	0 (0.0)	13.4 (-4.2 to 28.1)	3.2 (-18.0 to 20.5)
244-304d (months 9-10)	369	4534	0 (0.0)	-71.5 (-104.5 to -43.8)	-20.0 (-45.6 to 1.0)
<b>One XBB-vaccine</b>	728	13880	649 (4.4)	-10.5 (-29.6 to 5.7)	-3.5 (-21.5 to 11.8)
vs M\BV-vaccinated in 2022	204	4299	NA	Reference	Reference
<b>Time since XBB-vaccination</b>					
7-60d (months 1-2)	6	395	396 (98.8)	68.0 (27.4 to 85.9)	70.1 (31.4 to 86.9)
61-121d (months 3-4)	14	393	248 (60.9)	24.9 (-30.3 to 56.7)	37.8 (-9.6 to 64.6)
122-182d (months 5-6)	49	1536	5 (0.3)	32.8 (7.7 to 51.0)	12.3 (-24.2 to 38.0)
183-243d (months 7-8)	272	6620	0 (0.0)	13.4 (-4.2 to 28.1)	3.2 (-18.0 to 20.5)
244-304d (months 9-10)	369	4534	0 (0.0)	-71.5 (-104.5 to 43.8)	-20.0 (-45.6 to 1.0)
<b>Two XBB-vaccines</b>	53	1521	1566 (99.5)	26.5 (0.1 to 46.0)	38.6 (13.6 to 56.4)
vs M\BV-vaccinated in 2022	204	4299	NA	Reference	Reference
<b>Time since XBB-vaccination</b>					
7-60d (months 1-2)	22	963	984 (99.9)	51.9 (24.8 to 69.2)	57.1 (31.0 to 73.4)
61-121d (months 3-4)	31	549	575 (99.1)	-19.0 (-75.4 to 19.3)	32.0 (-5.1 to 56.0)
122-182d (months 5-6)	0	9	7 (77.8)	NE	NE

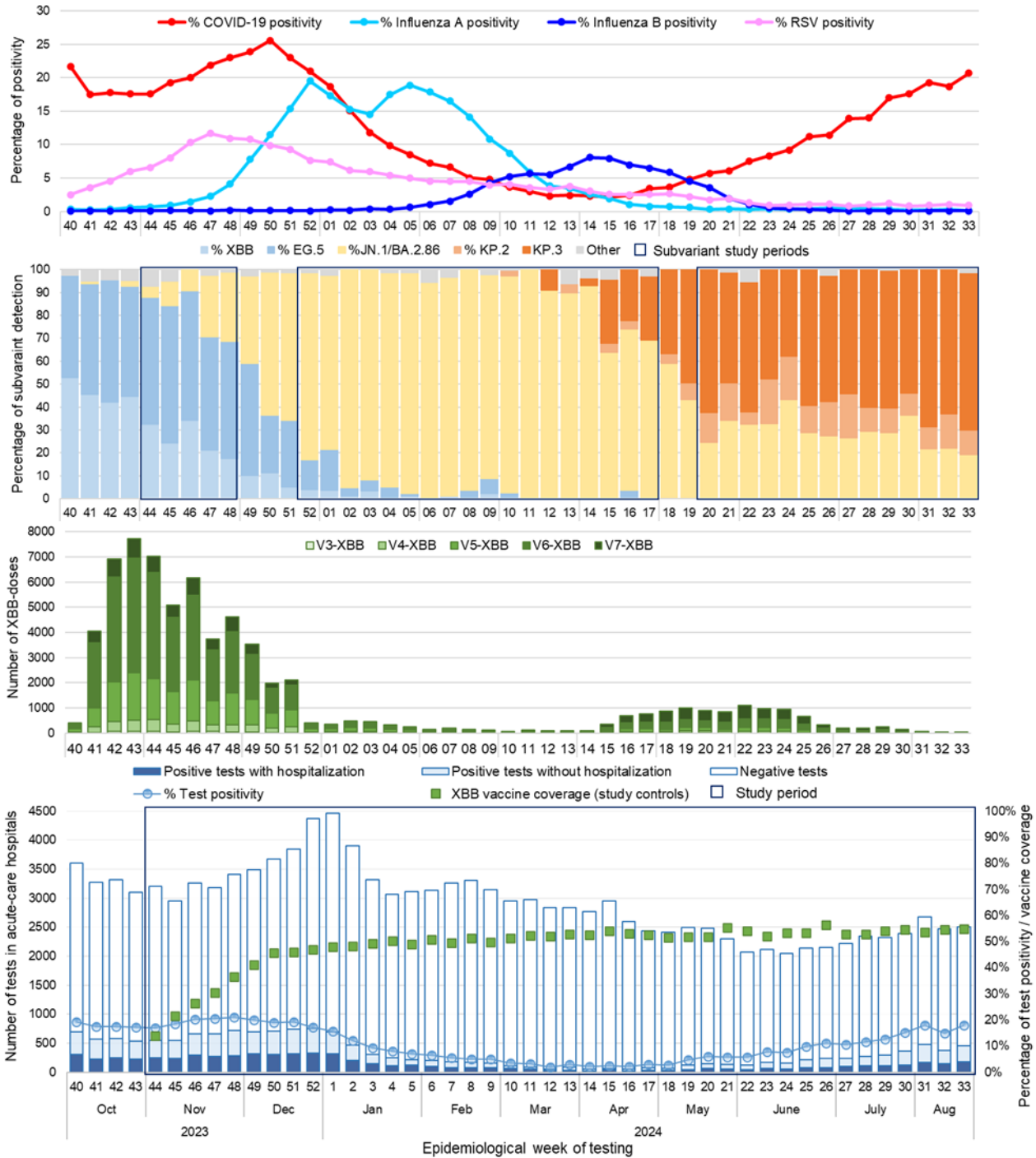
Abbreviations: CI, confidence interval; d, days; NA, not applicable; NE, not estimable; VE, vaccine effectiveness.

Note 1: Logistic regression model comparing XBB-vaccinated participants by number of XBB doses (global or at two-month intervals from vaccination) with participants last vaccinated with ancestral monovalent or bivalent vaccines from July to December 2022, and adjusted for sex, age group, chronic conditions, place of residence and epi-week (2-week periods)

Note 2: Spring dose is considered any XBB-vaccination administered from April 1, 2024, till the end of the study period

## FIGURES

**Figure 1.** Provincial respiratory viruses and SARS-CoV-2 subvariant circulation, doses of XBB-vaccine administered among study participants, and SARS-CoV-2 tests performed in acute-care hospitals by epidemiological week



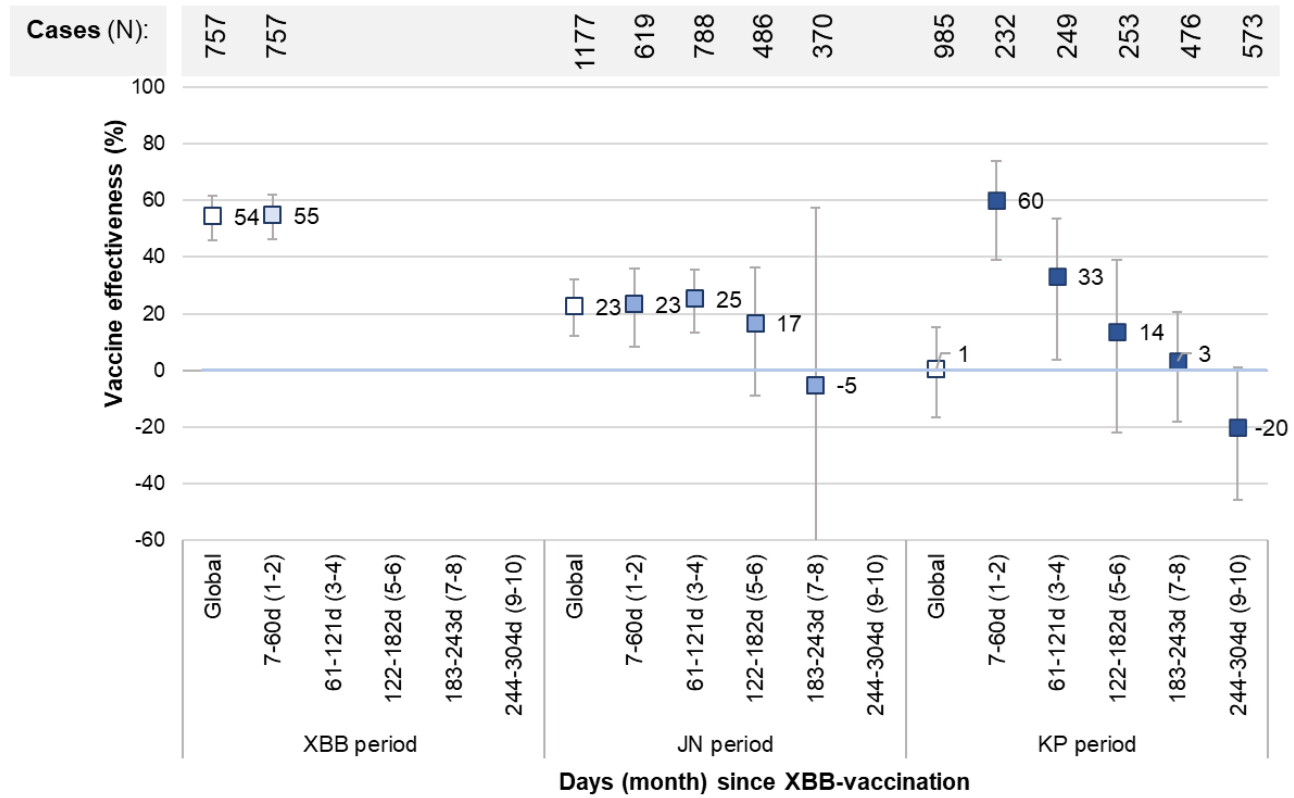
Abbreviations: V3-XBB to V7-XBB, XBB-vaccine administered as dose 3 to dose 7

Note 1: Subvariants included as XBB/EG.5 detection: XBB, XBB.1.16, XBB.1.5, XBB.1.9, EG.5.1, HK.3, HV.1; as JN.1 detection: JN.1, BA.2.86; as KP.2/3 detection: KP.2, KP.3, KP.3.1.1, KP.3.1.4

It is made available under a [CC-BY-NC-ND 4.0 International license](#) .

Note 2: XBB-vaccine coverage represents at least one dose of XBB-vaccine among test-negative controls

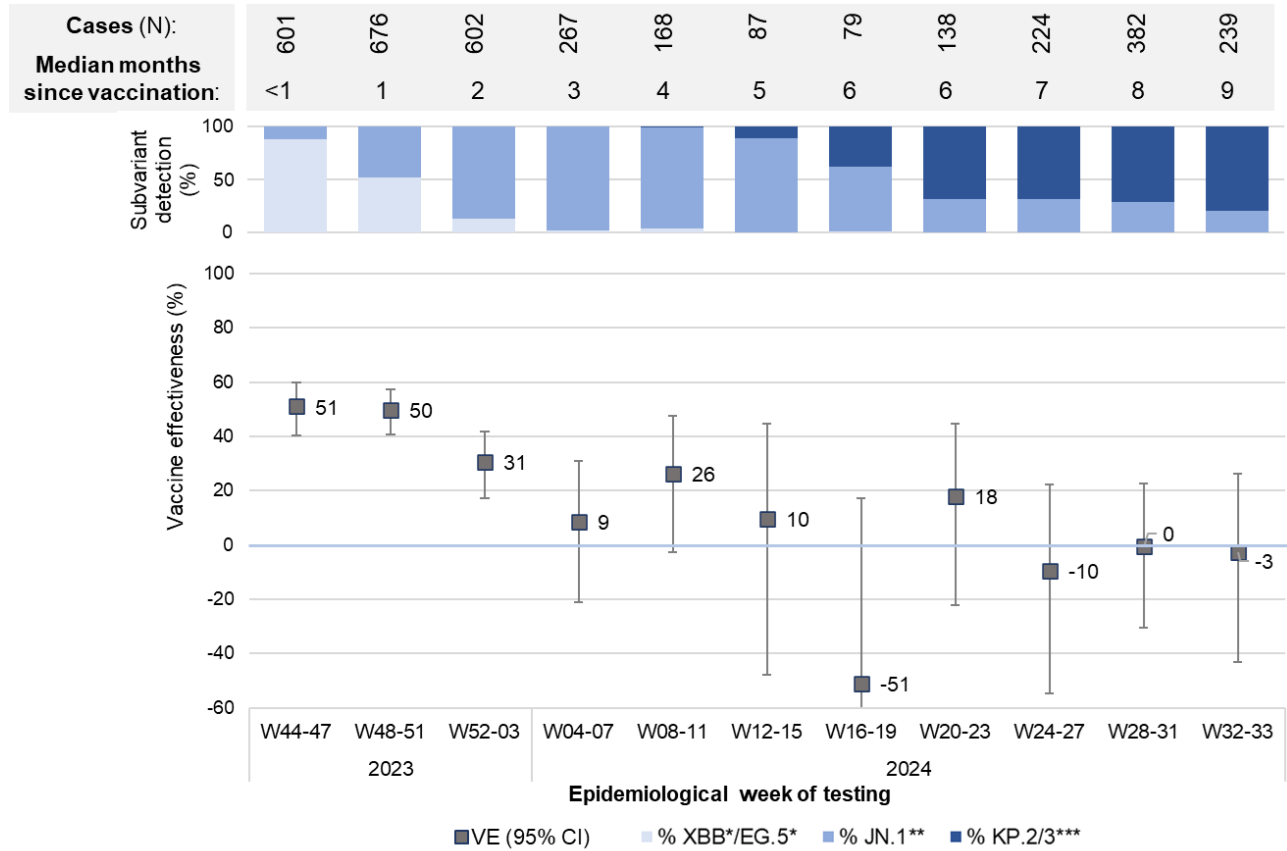
**Figure 2:** XBB-vaccine effectiveness against COVID-19 hospitalization relative to monovalent or bivalent vaccination in 2022, by time since XBB-vaccination and variant period



Note: Logistic regression model comparing XBB-vaccinated participants at two-month intervals from vaccination with participants last vaccinated with an ancestral monovalent or a bivalent vaccine from July to December 2022 and adjusted for sex, age group, chronic conditions, place of residence and epi-week (2-week periods for the time since vaccination analyses)



**Figure 3: XBB-vaccine effectiveness against COVID-19 hospitalization relative to monovalent or bivalent vaccination in 2022, by calendar time (four epi-week periods)**



\* XBB, XBB.1.5, XBB.1.9, XBB.1.16, eG.5.1, HK.3, HV.1

\*\* JN.1, BA.2.86

\*\*\* KP.2, KP.3, KP.3.1.1, KP.3.1.4

Note: Logistic regression model comparing XBB-vaccinated participants with participants last vaccinated with an ancestral monovalent or a bivalent vaccine from July to December 2022 and adjusted for sex, age group, chronic conditions, place of residence and two epi-week periods