

# Genome-wide association study of borderline personality disorder identifies six loci and highlights shared risk with mental and somatic disorders

Fabian Streit\* 1, 2, 3, 4, Swapnil Awasthi\* 5, Alisha SM Hall 6, 7, Maria Niarchou 8, Eirini Marouli 9, Oladapo Babajide 9, Alice Braun 5, 10, Josef Frank 3, Lea Zillich 3, 4, 11, 12, Carolin Callies 3, 13, Diana Avetyan 3, Eric Zillich 3, Joonas Naamanka 1, 2, 14, Zouhair Aherrahrou 15, 16, 17, Zain-UI-Abideen Ahmad 18, Helga Ask 19, 20, 21, Anthony Batzler 22, Michael E Benros 23, 24, Odette M Brand-de Wilde 25, Søren Brunak 26, Mie T Bruun 27, Lea AN Christoffersen 28, 29, Lucía Colodro-Conde 30, 31, Brandon J Coombes 22, Elizabeth C Corfield 19, 32, Norbert Dahmen 33, Maria Didriksen 34, 35, Khoa M Dinh 35, 36, Srdjan Djurovic 37, 38, Joseph Dowsett 35, Ole Kristian Drange 39, 40, Helene Dukal 3, Susanne Edelman 41, 42, Christian Erikstrup 6, 36, Mariana K Espinola 3, Eva Fassbinder 43, Annika Faucon 8, Diana S Ferreira de Sá 44, Jerome C Foo 3, 45, 46, 47, Maria Gilles 2, Alfonso Gutiérrez-Zotes 48, 49, Thomas F Hansen 50, 51, Magnus Haraldsson 52, R. Patrick Harper 53, Alexandra Havdahl 19, 21, 32, Urs Heilbronner 54, Stefan Herms 55, 56, Henrik Hjalgrim 24, 57, Christopher Hübel 58, 59, 60, 61, Gitta A Jacob 62, Bitten Aagaard 63, Anders Jorgensen 24, 64, Martin Jungkunz 65, Nikolaus Kleindienst 66, Nora Knoblich 41, Stefanie Koglin 67, Julia Kraft 68, Kristi Krebs 69, Christopher W Lee 70, Yuhao Lin 58, 59, Stefanie Lis 66, 71, Amanda Lisoway 72, 73, Ioannis A Malogiannis 74, Amy Martinsen 75, 76, 77, Tolou Maslahati 67, Katharina Merz 78, Andreas Meyer-Lindenberg 2, Susan Mikkelsen 36, Christina Mikkelsen 35, Arian Mobascher 33, Gerard Muntané 48, 49, 79, Asmundur Oddson 80, Sisse R Ostrowski 24, 35, Teemu Palviainen 81, Ole BV Pedersen 24, 28, Geir Pedersen 82, 83, Liam Quinn 28, Matthias A Reinhard 78, 84, Florian A Ruths 85, Sandra Sanchez-Roige 8, 86, 87, Björn H Schott 88, 89, 90, Michael Schredl 91, Emanuel Schwarz 1, 2, 4, Cornelia E Schwarze 92, Michael Schwinn 35, Tabea Send 2, Engilbert Sigurdsson 52, 93, Katja Simon-Keller 3, Joaquim Soler 94, 95, 96, Anne Sonley 97, 98, Erik Sørensen 35, Hreinn Stefansson 80, Peter Straub 8, Jaana Suvisaari 99, Martin Tesli 100, 101, Jacob Træholt 35, Henrik Ullum 102, Maja P Völker 3, G Bragi Walters 80, Rujia Wang 58, 59, Christian C Witt 103, 103, Gerhard Zarbock 104, Peter Zill 78, John-Anker Zwart 75, 76, 77, Estonian Biobank Research Team 105, the GLAD Study 106, HUNT All-In Psychiatry 107, Ole A Andreassen 108, 109, 110, Arnoud Arntz 111, Joanna M Biernacka 112, Martin Bohus 66, Gerome Breen 58, 59, Alexander L Chapman 113, 114, Sven Cichon 115, 116, 117, Lea K Davis 8, 118, Michael Deuschle 2, 4, Sebastian Euler 119, Sabine C Herpertz 4, 120, Benjamin Hummelen 82, Andrea Jobst 78, Jaakko Kaprio 81, James L Kennedy 72, 73, 98, Kelli Lehto 69, Klaus Lieb 33, Lourdes Martorell 48, 49, Shelley McMain 98, 121, Richard Musil 78, 122, Vanessa Nieratschker 41, 42, Markus M Nöthen 123, 124, Frank Padberg 78, 84, Aarno Palotie 81, 125, 126, Juan C Pascual 94, 95, 96, Nader Perroud 127, Josep A Ramos-Quiroga 49, 128, 129, 130, Ted Reichborn-Kjennerud 19, 131, Marta Ribases 49, 128, 129, 132, Stefan Roepke 67, 133, Dan Rujescu 134, Claudia Schilling

**91, Christian Schmahl 4, 66, Kari Stefansson 80, 135, Thorgeir E Thorgeirsson 80, Gustavo Turecki 136, Elisabet Vilella 48, 49, Thomas Werge 24, 29, Bendik S Winsvold 75, 77, 137, Johannes Wrege 138, Marcella Rietschel\* 3, Stephan Ripke\* 68, 139, 140, Stephanie H Witt\* 3, 4**

- 1, Hector Institute for Artificial Intelligence in Psychiatry, Central Institute of Mental Health, Medical Faculty Mannheim, Heidelberg University, Mannheim, Germany
- 2, Department of Psychiatry and Psychotherapy, Central Institute of Mental Health, Medical Faculty Mannheim, Heidelberg University, Mannheim, Germany
- 3, Department of Genetic Epidemiology in Psychiatry, Central Institute of Mental Health, Medical Faculty Mannheim, Heidelberg University, Mannheim, Germany
- 4, German Center for Mental Health (DZPG), Partner Site Mannheim - Heidelberg - Ulm, Germany
- 5, Department of Psychiatry and Psychotherapy, Charité - Universitätsmedizin Berlin, Berlin, Germany
- 6, Department of Clinical Medicine, Aarhus University, Aarhus, Denmark
- 7, Department of Affective Disorders, Aarhus University Hospital - Psychiatry, Aarhus, Denmark
- 8, Department of Medicine, Division of Genetic Medicine, Vanderbilt University Medical Center, Nashville, TN, USA
- 9, William Harvey Research Institute, Faculty of Medicine and Dentistry, Queen Mary University London, London, UK
- 10, Stanley Center for Psychiatric Research, Broad Institute of MIT and Harvard, Cambridge, MA, USA
- 11, Hector Institute for Translational Brain Research, Central Institute of Mental Health, Medical Faculty Mannheim, Heidelberg University, Mannheim, Germany
- 12, Department of Psychiatry and Psychotherapy, Medical Center - University of Freiburg, Faculty of Medicine, University of Freiburg, Freiburg, Germany
- 13, Health Psychology, School of Social Sciences, University of Mannheim, Mannheim, Germany
- 14, SleepWell Research Program, Faculty of Medicine, University of Helsinki, Helsinki, Finland
- 15, Institute for Cardiogenetics, University of Lübeck, Lübeck, Germany
- 16, DZHK (German Research Centre for Cardiovascular Research), partner site Hamburg/Lübeck/Kiel, Lübeck, Germany
- 17, University Heart Center Lübeck, Lübeck, Germany
- 18, Social, Genetic and Developmental Psychiatry Centre, Institute of Psychology, Institute of Psychology, Psychiatry and Neuroscience, King's College London, London, UK
- 19, PsychGen Centre for Genetic Epidemiology and Mental Health, Norwegian Institute of Public Health, Oslo, Norway
- 20, Department of Child Health and Development, Norwegian Institute of Public Health, Oslo, Norway
- 21, PROMENTA Research Center, Department of Psychology, University of Oslo, Oslo, Norway
- 22, Department of Quantitative Health Sciences, Division of Computational Biology, Mayo Clinic, Rochester, MN, USA
- 23, Copenhagen Research Centre for Biological and Precision Psychiatry, Mental Health Centre Copenhagen, Copenhagen University Hospital, Copenhagen, Denmark
- 24, Department of Clinical Medicine, Faculty of Health and Medical Sciences, University of Copenhagen, Copenhagen, Denmark
- 25, Netherlands Institute for Personality Disorders, PO Box 15933, Halsteren, Netherlands
- 26, Novo Nordisk Foundation Center for Protein Research, Faculty of Health and Medical Sciences, University of Copenhagen, Copenhagen, Denmark
- 27, Clinical Immunology Research Unit, Department of Clinical Immunology, Odense University Hospital, Odense, Denmark
- 28, Department of Clinical Immunology, Zealand University Hospital, Køge, Denmark
- 29, Institute of Biological Psychiatry, Mental Health Services, University of Copenhagen, Copenhagen, Denmark
- 30, Brain and Mental Health Research Program, QIMR Berghofer Medical Research Institute, Brisbane, QLD, Australia
- 31, School of Psychology, The University of Queensland, Brisbane, QLD, Australia

- 32, Nic Waals Institute, Lovisenberg Diaconal Hospital, Oslo, Norway
- 33, Department of Psychiatry and Psychotherapy, University Medical Center, University of Mainz, Mainz, Germany
- 34, Department of Neuroscience, Faculty of Health and Medical Sciences, University of Copenhagen, Copenhagen, Denmark
- 35, Department of Clinical Immunology, Copenhagen University Hospital, Rigshospitalet, Copenhagen, Denmark
- 36, Department of Clinical Immunology, Aarhus University Hospital, Aarhus, Denmark
- 37, Department of Medical Genetics, Oslo University Hospital, Oslo, Norway
- 38, Department of Clinical Science, University of Bergen, Bergen, Norway
- 39, NORMENT Centre, Institute of Clinical Medicine, University of Oslo, Oslo, Oslo, Norway
- 40, Department of psychiatry, Sørlandet hospital, Kristiansand, Agder, Norway
- 41, Department of Psychiatry and Psychotherapy, University Hospital Tübingen, Tübingen, Germany
- 42, German Center for Mental Health (DZPG), partner site Tübingen, Tübingen, Germany
- 43, Department of Psychiatry and Psychotherapy, Christian-Albrechts-Universität zu Kiel, Kiel, Germany
- 44, Department of Psychology, Division of Clinical Psychology and Psychotherapy, Saarland University, Saarbrücken, Germany
- 45, Institute for Psychopharmacology, Central Institute of Mental Health, Medical Faculty Mannheim, Heidelberg University, Mannheim, Germany
- 46, Department of Psychiatry, College of Health Sciences, University of Alberta, Edmonton, AB, Canada
- 47, Neuroscience and Mental Health Institute, University of Alberta, Edmonton, AB, Canada
- 48, Hospital Universitari Institut Pere Mata (HUIPM), Institut d'Investigació Sanitària Pere Virgili (IISPV-CERCA), Universitat Rovira i Virgili (URV), Reus, Spain
- 49, Biomedical Network Research Centre on Mental Health (CIBERSAM), Instituto de Salud Carlos III, Madrid, Spain
- 50, Neurogenomic, Translational Research Centre, Copenhagen University Hospital, Glostrup, Denmark
- 51, Danish Headache Center, Copenhagen University Hospital, Rigshospitalet, Copenhagen, Denmark
- 52, Landspítali University Hospital, Reykjavík, Iceland
- 53, Bradford District Care NHS Foundation Trust, Bradford, UK
- 54, Institute for Psychiatric Phenomics and Genomics (IPPG), LMU University Hospital, LMU Munich, Munich, Germany
- 55, Human Genomics Research Group, Department of Biomedicine, University of Basel, Basel, Switzerland
- 56, Institute of Human Genetics, University of Bonn, School of Medicine & University Hospital Bonn, Bonn, Germany
- 57, Danish Cancer Institute, Denmark
- 58, Social, Genetic and Developmental Psychiatry Centre, Institute of Psychology, Psychiatry and Neuroscience, King's College London, London, UK
- 59, UK National Institute for Health Research (NIHR) Biomedical Research Centre, South London and Maudsley Hospital and King's College London, London, UK
- 60, National Centre for Register-based Research, Aarhus University, Aarhus, Denmark
- 61, Clinic for Child and Adolescent Psychiatry, German Red Cross Hospitals Westend, Berlin, Germany
- 62, Institute for Psychology, Department of Clinical Psychology and Psychotherapy, University of Freiburg, University of Freiburg, Germany
- 63, Department of Clinical Immunology, Aalborg University Hospital, Aalborg, Denmark
- 64, Psychiatric Center Copenhagen, Denmark
- 65, National Center for Tumor Diseases (NCT), NCT Heidelberg, a partnership between DKFZ and Heidelberg University Hospital, German Cancer Research Center (DKFZ) Heidelberg, Heidelberg, Germany

- 66, Department of Psychosomatic Medicine and Psychotherapy, Central Institute of Mental Health, Medical Faculty Mannheim, Heidelberg University, Mannheim, Germany
- 67, Department of Psychiatry and Neurosciences, Charité – Universitätsmedizin Berlin, corporate member of Freie Universität Berlin and Humboldt- Universität zu Berlin, Campus Benjamin Franklin, Berlin, Germany
- 68, Department of Psychiatry and Psychotherapy, Charité Universitätsmedizin Berlin, Berlin, Germany
- 69, Estonian Genome Centre, Institute of Genomics, University of Tartu, Tartu, Estonia
- 70, Faculty of Health and Medical Sciences, University of Western Australia, Perth, Western Australia, Australia
- 71, Department of Clinical Psychology, Central Institute of Mental Health, Medical Faculty Mannheim, Heidelberg University, Mannheim, Germany
- 72, Molecular Brain Science, Campbell Family Mental Health Research Institute, Centre for Addiction and Mental Health, Toronto, Ontario, Canada
- 73, Institute of Medical Science, University of Toronto, Toronto, Canada
- 74, First Department of Psychiatry, Eginition Hospital Medical School, National and Kapodistrian University of Athens, Athens, Greece
- 75, Department of Research and Innovation, Division of Clinical Neuroscience, Oslo University Hospital, Oslo, Norway
- 76, Institute of Clinical Medicine, Faculty of Medicine, University of Oslo, Oslo, Norway
- 77, HUNT Center for Molecular and Clinical Epidemiology, Department of Public Health and Nursing, Faculty of Medicine and Health Sciences, Norwegian University of Science and Technology, Trondheim, Norway
- 78, Department of Psychiatry and Psychotherapy, LMU University Hospital Munich, University of Munich, Munich, Germany
- 79, Institut de Biologia Evolutiva (UPF-CSIC), Department of Medicine and Life Sciences, Universitat Pompeu Fabra, Parc de Recerca Biomèdica de Barcelona, Barcelona, Spain
- 80, deCODE genetics / AMGEN, Reykjavik, Iceland
- 81, Institute for Molecular Medicine Finland (FIMM), HiLIFE, University of Helsinki, Helsinki, Finland
- 82, Department of Research and Innovation, Division of Mental Health and Addiction, Oslo University Hospital, Oslo, Norway
- 83, Institute of Basic Medical Sciences, Faculty of Medicine, University of Oslo, Oslo, Norway
- 84, German Center for Mental Health (DZPG), Partner Site Munich-Augsburg, Germany
- 85, South London and Maudsley NHS Foundation Trust, London, UK
- 86, Institute for Genomic Medicine, University of California San Diego, La Jolla, CA, USA
- 87, Department of Psychiatry, University of California San Diego, La Jolla, CA, USA
- 88, Department of Psychiatry and Psychotherapy, University Medical Center Göttingen, Göttingen, Germany
- 89, German Center for Neurodegenerative Diseases (DZNE), Göttingen, Germany
- 90, Leibniz Institute for Neurobiology, Magdeburg, Germany
- 91, Department of Psychiatry and Psychotherapy, Sleep Laboratory, Central Institute of Mental Health, Medical Faculty Mannheim, Heidelberg University, Mannheim, Germany
- 92, Department of Clinical Psychology and Psychotherapy, University of Heidelberg, Heidelberg, Germany
- 93, Faculty of Medicine, Department of Psychiatry, School of Health Sciences, University of Iceland, Reykjavik, Iceland
- 94, Centro de Investigación Biomédica en Red de Salud Mental (CIBERSAM), Institut de Recerca Biomèdica Sant Pau (IIB-Sant Pau), Barcelona, Spain
- 95, Department of Psychiatry, Hospital de la Santa Creu i Sant Pau, Barcelona, Spain
- 96, Department of Psychiatry and Forensic Medicine & Institute of Neurosciences, Universitat Autònoma de Barcelona, Bellaterra, Spain
- 97, Borderline Personality Disorder Clinic, Centre for Addiction and Mental Health, Toronto, Ontario, Canada

- 98, Department of Psychiatry, University of Toronto, Toronto, Canada
- 99, Finnish Institute for Health and Welfare (THL), Helsinki, Finland
- 100, Mental health and suicide, Norwegian Institute of Public Health, Oslo, Norway
- 101, Division of Mental Health and Addiction, Oslo University Hospital, Oslo, Norway
- 102, Statens Serum Institut, Copenhagen, Denmark
- 103, Department of Anaesthesiology and Operative Intensive Care, University Hospital Mannheim, Medical Faculty Mannheim/Heidelberg University, Mannheim, Germany
- 104, IVAH, Institut für Verhaltenstherapie-Ausbildung Hamburg, gemeinnützige GmbH, Hamburg, Germany
- 105, Members of the Estonian Biobank Research Team are listed in the Supplementary Methods, Estonian Genome Centre, Institute of Genomics, University of Tartu, Tartu, Estonia
- 106, Members of the the GLAD Study are listed in the Supplementary Methods
- 107, Members of HUNT All-In Psychiatry are listed in the Supplementary Methods
- 108, NORMENT Centre, Division of Mental Health and Addiction, Oslo University Hospital, Oslo, Norway
- 109, KG Jebsen Centre for Neurodevelopmental Disorders, University of Oslo, Oslo, Norway
- 110, NORMENT Centre, Institute of Clinical Medicine, University of Oslo, Oslo, Norway
- 111, Department of Clinical Psychology, University of Amsterdam, Amsterdam, Netherlands
- 112, Department of Quantitative Health Sciences, Department of Psychiatry & Psychology, Division of Computational Biology, Mayo Clinic, Rochester, MN, USA
- 113, Department of Psychology, Faculty of Arts and Social Sciences, Simon Fraser University, Vancouver, British Columbia, Canada
- 114, DBT Centre of Vancouver, Vancouver, British Columbia, Canada
- 115, Department of Biomedicine, University of Basel, Basel, Switzerland
- 116, Medical Genetics, Institute of Medical Genetics and Pathology, University Hospital Basel, Basel, Switzerland
- 117, Institute of Neuroscience and Medicine (INM-1), Research Center Juelich, Juelich, Germany
- 118, Vanderbilt Genetics Institute, Vanderbilt University Medical Center, Nashville, TN, USA
- 119, Department of Consultation Psychiatry and Psychosomatics, University Hospital Zurich, Zurich, Switzerland
- 120, Department of General Psychiatry, University Hospital Heidelberg, Heidelberg University, Heidelberg, Germany
- 121, Borderline Personality Disorder Clinic, General Adult Psychiatry and Health Systems Division, Centre for Addiction and Mental Health, Toronto, Ontario, Canada
- 122, Oberberg Fachkliniken for Psychiatry, Psychosomatics and Psychotherapy, Bad Tölz, Germany
- 123, Institute of Human Genetics, University of Bonn, Bonn, Germany
- 124, Department of Genomics, Life&Brain Center, University of Bonn, Bonn, Germany
- 125, Analytic and Translational Genetics Unit, Department of Medicine, Department of Neurology and Department of Psychiatry, Massachusetts General Hospital, Boston, MA, USA
- 126, The Stanley Center for Psychiatric Research and Program in Medical and Population Genetics, The Broad Institute of MIT and Harvard, Cambridge, MA, USA
- 127, Department of Psychiatric, University Hospitals of Geneva, Geneva, Switzerland
- 128, Psychiatric Genetics Unit, Group of Psychiatry, Mental Health and Addiction, Vall d'Hebron Research Institute (VHIR), Universitat Autònoma de Barcelona, Barcelona, Spain
- 129, Department of Psychiatry, Hospital Universitari Vall d'Hebron, Barcelona, Spain
- 130, Department of Psychiatry and Forensic Medicine, Universitat Autònoma de Barcelona (UAB), Barcelona, Spain
- 131, Institute of Clinical Medicine, University of Oslo, Oslo, Norway
- 132, Department of Genetics, Microbiology, and Statistics, Faculty of Biology, Universitat de Barcelona, Barcelona, Spain
- 133, Department of Psychiatry, Oberberg Fachkliniken for Psychiatry, Psychosomatics and Psychotherapy, Wendisch Rietz, Germany



134, Department of Psychiatry, University of Halle, Halle, Germany

135, Faculty of Medicine, University of Iceland, Reykjavik, Iceland

136, Douglas Institute, Department of Psychiatry, McGill University, Montreal, Canada

137, Department of Neurology, Oslo University Hospital, Oslo, Norway

138, Medical Faculty, University of Basel, Basel, Switzerland

139, Analytic and Translational Genetics Unit, Massachusetts General Hospital, Boston, MA, USA

140, Stanley Center for Psychiatric Research, Broad Institute of MIT and Harvard, Cambridge, MA, USA

\*the authors contributed equally

## Abstract

Environmental and genetic risk factors contribute to the development of borderline personality disorder (BPD). We conducted the largest GWAS of BPD to date, meta-analyzing data from 12,339 cases and 1,041,717 controls of European ancestry, and identified six independent associated genomic loci, and nine risk genes in the gene-based analysis. We observed a single-nucleotide polymorphism (SNP) heritability of 17.3% and derived polygenic scores (PGS) predicted 4.6% of the phenotypic variance in BPD case-control status. BPD showed the strongest positive genetic correlations with GWAS of posttraumatic stress disorder, depression, attention deficit hyperactivity disorder, antisocial behavior, and measures of suicide and self-harm. Phenome-wide association analyses using BPD-PGS confirmed these associations and revealed associations of BPD risk with general medical conditions including obstructive pulmonary disease and diabetes. The present genetic analyses highlight BPD as a polygenic disorder, with the genetic risk showing substantial overlap with psychiatric and physical health conditions.

## Main text

Borderline Personality Disorder (BPD) is a mental disorder characterized by pervasive instability in emotions, interpersonal relationships, and self-image, and by impulsive behavior<sup>1,2</sup>. BPD has a prevalence of 0.92–1.90% in Western countries<sup>3</sup>, with symptom onset typically occurring during adolescence. Women are more frequently diagnosed with BPD than men by a ratio of ~3:1, for which a substantial contribution of diagnostic as well as selection bias has been postulated<sup>4,5</sup>. Individuals with BPD display high rates of self-harm, suicidal ideation, and suicide attempts. Furthermore, comorbidity with other mental illnesses and general medical conditions is common<sup>6</sup>. While some psychotherapies are effective in treating BPD<sup>7</sup>, no psychopharmacological treatment has been shown to improve BPD symptoms with high certainty<sup>8</sup>. Overall, BPD represents a high burden for patients, family members, and the healthcare system.

In addition to environmental risk factors such as early interpersonal trauma<sup>9,10</sup>, studies suggest that genetic factors also substantially contribute to disorder risk. Twin and family studies estimate the heritability of BPD to be 46–69%<sup>11,12</sup>. For many other mental disorders, genome-wide association studies (GWAS) meta-analyzing genetic data from tens or hundreds of thousands of cases and controls have successfully identified up to hundreds of genetic risk loci<sup>13</sup>.

However, genetic research on BPD lags far behind<sup>14</sup>: In the so far, only GWAS of BPD conducted in a German sample of 998 cases and 1,545 controls and published in 2017<sup>15</sup>, no single genome-wide significant variant was identified. However, we observed significant genetic correlations ( $r_g$ ) of BPD with bipolar disorder (BIP;  $r_g=0.28$ ), schizophrenia (SCZ;  $r_g=0.34$ ), and major depressive disorder ( $r_g=0.57$ )<sup>15</sup>. Furthermore, a polygenic score (PGS) derived from a GWAS of borderline personality traits in 7,125 subjects from the general population<sup>16</sup> showed a positive association with neuroticism in an independent sample<sup>17</sup>. While these findings indicate the potential of using genetic approaches to investigate the etiology of BPD, research based on those results is still limited by the large uncertainties in the estimated effect sizes. Larger GWAS of BPD are needed to address these issues with sufficient statistical power.

The aims of the present study were to a) increase the power to identify novel genetic risk loci for BPD to improve the understanding of the underlying molecular mechanisms, and b) systematically assess the shared genetic risk between BPD and a broad range of traits and disorders, including measures of mental and physical health as well psychological, social, and lifestyle factors.

For this purpose, we conducted the largest GWAS meta-analysis of BPD to date, increasing the sample size to 12,339 cases and 1,041,717 controls. This increase was

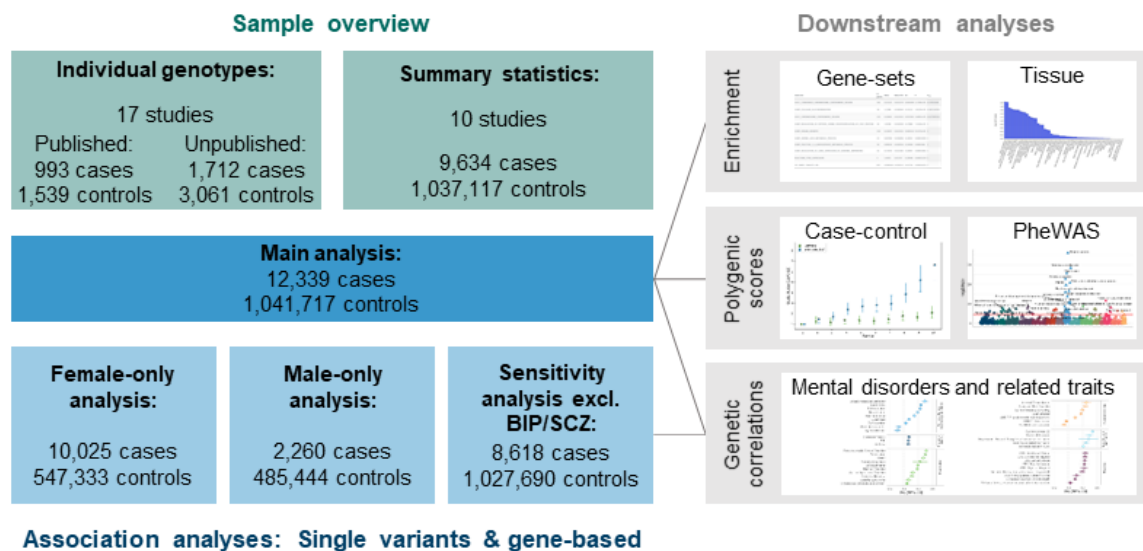
achieved by combining data from clinical studies specifically carried out to investigate BPD with data from biobank and cohort studies, where BPD was ascertained using electronic health records or self-report measures.

## Results

### Genome-wide association study

We performed a GWAS meta-analysis including 6,043,895 genetic markers in 12,339 BPD cases and 1,041,717 controls of European ancestry (overview Fig. 1). In total, 17 studies contributed individual-level data for a total of 2,705 cases meeting DSM-IV criteria for BPD and 4,600 controls, which were combined into five datasets. Additionally, we included data from 10 external large-scale biobank or cohort studies that provided summary statistics from GWAS of BPD ( $N_{\text{cases}}=9,634$ ,  $N_{\text{controls}}=1,037,117$  controls). In these studies, BPD status was assessed using ICD codes except for the Genetic Links to Anxiety and Depression (GLAD) study, which used a self-reported diagnosis. Details on ascertainment, inclusion, and exclusion criteria for cases and controls of each study are documented in Supplementary Table S1. A summary of the sample sizes, the total number of tested single-nucleotide polymorphisms (SNPs), as well as quality control, imputation, and analysis details specific to studies sharing summary statistics, are provided in Supplementary Table S2 and the Supplementary Methods. In addition to the main meta-analysis, we performed meta-analyses stratified by sex (female-only; male-only) as well as a sensitivity analysis for which subjects with a history of BIP or SCZ were excluded from the cases in the studies providing summary statistics (Supplementary Tables S3–S5).

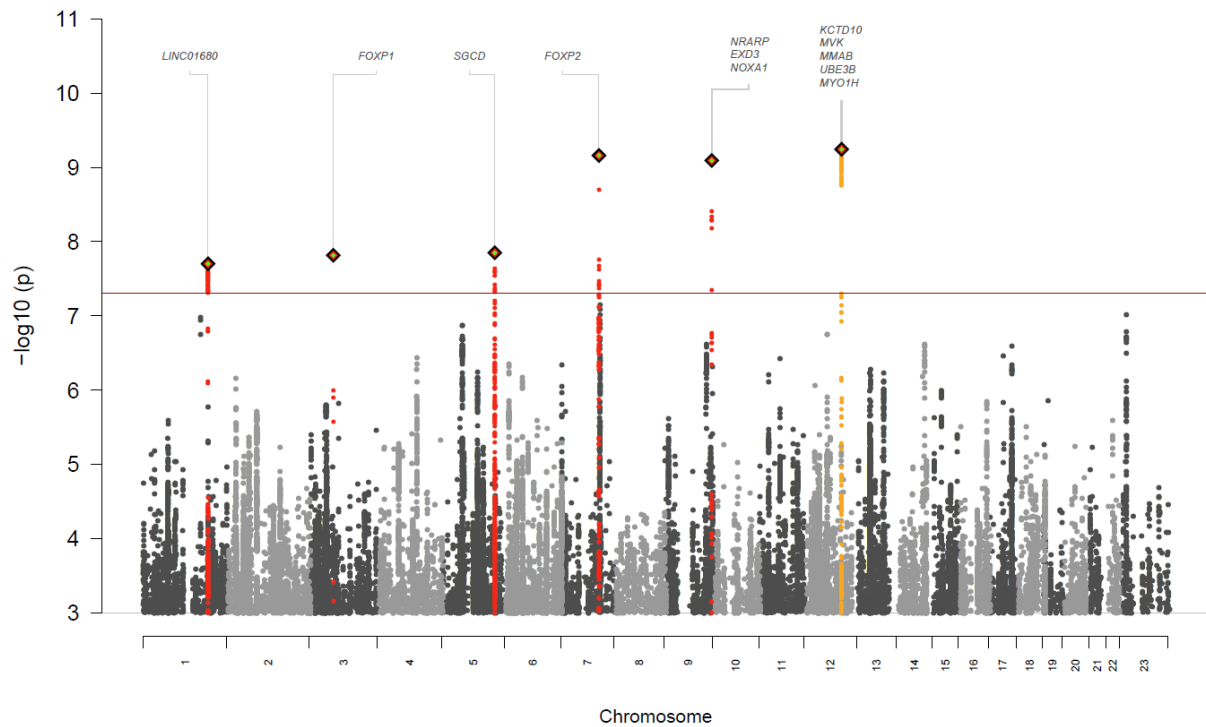




**Figure 1: Schematic overview of the genome-wide association study (GWAS) of borderline personality disorder (BPD).** A total of 17 studies providing individual-level data (analyzed in 5 datasets: see text) and 10 studies providing summary statistics were included in the meta-analysis. Genetic associations were tested at the single-variant and gene level. Gene enrichment analyses were applied to test for enrichment in gene-sets and tissue-specific gene expression in 53 human tissues. Polygenic scores were calculated to assess the prediction of BPD case-control status in the analysis datasets with available individual-level data and to test the association of the genetic liability for BPD in phenome-wide association studies (PheWAS) with phecodes in two biobanks (BioVU, UK Biobank). Genetic correlations were calculated between the results of the GWAS of BPD and the GWAS of 50 disorders and traits of interest. BIP=bipolar disorder; SCZ=schizophrenia.

Linkage disequilibrium score regression (LDSC) was used to estimate SNP heritability and genetic correlations<sup>18</sup>. We observed an SNP-heritability ( $h_{\text{SNP}}^2$ ) of 28.4% (95% confidence interval (CI) [24.9%, 31.8%]), corresponding to an SNP heritability of 17.2% (95%-CI [15.2%, 19.4%]) on the liability scale (assuming a population prevalence of 1.5%)<sup>3</sup>. The LDSC intercept was 1.03, and we observed a genomic inflation factor ( $\lambda_{\text{GC}}$ ) of 1.22 ( $\lambda_{1000}=1.01$ ). There was a high genetic correlation between the studies with individual-level data and those providing summary statistics ( $r_g=0.85$ , 95%-CI [0.68, 1.03]).

SNP association analysis revealed six independent genome-wide significant loci ( $p < 5 \times 10^{-8}$ , Fig. 2; Table 1; Supplementary Figs. S1–S13; Supplementary Table S6), and no marker showed significant heterogeneity between studies.



**Figure 2: Manhattan plot of the genome-wide association study (GWAS) of borderline personality disorder (BPD) ( $N_{cases}=12,339$ ,  $N_{controls}=1,041,717$ ).** The  $-\log_{10} p$ -value for each single nucleotide polymorphism (SNP) is indicated on the y-axis (chromosomal position shown on the x-axis). The red line indicates genome-wide significance ( $p < 5 \times 10^{-8}$ ). Index SNPs representing independent genome-wide significant associations are highlighted in diamonds, and SNPs in linkage disequilibrium with the index SNPs are highlighted in red and orange.

**Table 1: Lead 6 genome-wide significant SNPs associated ( $p < 5 \times 10^{-8}$ ) with BPD**

| Locus | CHR | SNP        | BP        | Locus (start..stop)  | A1/A2 | OR   | s.e.  | $p$                    | Mapped Genes   |
|-------|-----|------------|-----------|----------------------|-------|------|-------|------------------------|--|
| 1     | 1   | rs9970854  | 191125935 | 191005935..191148335 | G/A   | 0.92 | 0.015 | $1.99 \times 10^{-8}$  | <i>LINC01680</i> (14.4)  |
| 2     | 3   | rs6549383  | 71266885  | 71261185..71267720   | T/C   | 1.09 | 0.015 | $1.53 \times 10^{-8}$  | <i>FOXP1</i> (0.0)   |
| 3     | 5   | rs2135029  | 155856538 | 155743538..155868438 | A/G   | 0.92 | 0.014 | $1.41 \times 10^{-8}$  | <b><i>SGCD</i></b> (0.0)   |
| 4     | 7   | rs4727799  | 114110568 | 114963595..115112695 | T/C   | 1.10 | 0.015 | $6.92 \times 10^{-10}$ | <b><i>FOXP2</i></b> (0.0)  |
| 5     | 9   | rs73581580 | 140251458 | 140242728..140278158 | G/A   | 0.89 | 0.019 | $8.09 \times 10^{-10}$ | <i>NRARP</i> (-4.8),<br><b><i>EXD3</i></b> (0.0),<br><i>NOXA1</i> (16.4)   |
| 6     | 12  | rs7304862  | 109988891 | 114021868..114224568 | G/T   | 1.09 | 0.014 | $5.71 \times 10^{-10}$ | <i>KCTD10</i> (-23.5),<br><b><i>MVK</i></b> (0.0),<br><b><i>MMAB</i></b> (0.0),<br><i>UBE3B</i> (0.0),<br><i>MYO1H</i> (-52.7) |

Variants are sorted by chromosomal position. CHR=chromosome; Locus (start..stop)=start and end of the boundaries of the region within  $r^2$  of 0.6 of the index SNP; A=allele; BP=base pair position; OR=odds ratio; s.e.=standard error; SNP=single nucleotide polymorphism; BPD=borderline personality disorder; Mapped genes=genes within  $r^2$  of 0.6 and 50 kb of the index SNP (distance to the lead SNP in kb is indicated in brackets); Genes in bold were also identified by the gene-based association tests.

Gene-based associations were tested using MAGMA (version 1.07)<sup>19</sup> as implemented in FUMA (version 1.5.2)<sup>20</sup> and indicated nine genes, including *PCYT1B*; *CCDC71*; *DEPDC1B*; and *BPTF*, in addition to *SGCD*, *FOXP2*, *EXD3*, *MVK*, and *MMAB* already indicated by the genome-wide SNP associations (Supplementary Figs. S14–S15; Supplementary Table S7).

Among the genes implicated by proximity to lead SNPs or by the gene-based MAGMA analysis, the highest Polygenic Priority Scores (PoPS)<sup>21</sup> were reported for *FOXP2* (score=0.96, rank=1), and *SGCD* (score=0.74, rank=2), with *FOXP1* and *DEPDC1B* also ranking in the top 1% (Supplementary Table S8).

### Sex-stratified GWAS

To investigate the sex-specific association signal, we carried out sex-stratified GWAS meta-analyses for male ( $N_{\text{cases}}=2,260$ ,  $N_{\text{controls}}=485,444$ ) and female subjects ( $N_{\text{cases}}=10,025$ ,  $N_{\text{controls}}=547,333$ ) (Supplementary Tables S3&S4). There was a high genetic correlation between the two analyses ( $r_g=0.80$ , 95%-CI [0.53, 1.07]).

The female-only analysis identified two genome-wide significant risk loci, one on chromosome 9 (rs73581580;  $p=2.83\times 10^{-8}$ ), corresponding to locus 5 identified in the main analysis (*EXD3*), and a second locus on chromosome 7 (rs10227454,  $p=4.99\times 10^{-8}$ ), at approximately one megabase distance from locus 4 (*FOXP2*,  $R^2=0.005$ ,  $D'=0.25$ ; Supplementary Figs. S16–S21, Supplementary Table S9). The gene-based analysis identified four genome-wide associations for *DEPDC1B*, *SGCD*, *MVK*, and *MMAB*, which were all significant in the main analysis (Supplementary Figs. S22–S23).

The male-only analysis identified two genome-wide significant risk loci that were not genome-wide significant in the main analysis: one on chromosome 2 (rs17757829,  $p=1.02\times 10^{-8}$ ) and one on chromosome 20 (rs6032676,  $p=9.55\times 10^{-9}$ ) (Supplementary Figs. S24–S29, Supplementary Table S10). The gene-based analysis did not identify any significant genes (Supplementary Figs. S30–S31).

The six lead SNPs identified in the single-variant associations of the main GWAS all showed comparable effects in the same direction and at least nominal significance in the smaller, and therefore lower-powered, sex-stratified analyses (Supplementary Table S11; Supplementary Fig. S32). The nine genes significant in the gene-based analysis of the main GWAS all showed nominal significance in the female-only analysis (all  $p_{\text{female}}<8.15\times 10^{-5}$ ), whereas *CCDC71*, *DEPDC1B*, and *SGCD* were not significant in the male-only analysis (Supplementary Table S12).

## Sensitivity analysis excluding BIP&SCZ

In the sensitivity analysis using summary statistics excluding cases with BIP or SCZ diagnoses, locus 4 in *FOXP2* (rs4727799) and locus 5 in *EXD3* (rs73581580) from the main analysis were the only genome-wide significant associations (Supplementary Figs. S33–S38, Supplementary Table S13). All six lead SNPs identified in the main GWAS showed comparable effects in the same direction (all  $p_{\text{sensitivity}} < 3.32 \times 10^{-5}$ ; Supplementary Table S11; Supplementary Fig. S32). Of the nine significant genes in the gene-based analysis of the main analysis, all were nominally significant in the sensitivity analysis ( $p_{\text{sensitivity}} < 0.0021$ ; Supplementary Table S12) with *FOXP2*, *EXD3*, *MMAB*, *MVK* reaching genome-wide significance, and *ZNF626* being the only additional genome-wide significant gene (Supplementary Figs. S39–S40).

## Enrichment analysis

Enrichment of gene-sets and tissue expression using Genotype-Tissue Expression (GTEx; version 8) data for 53 tissue types<sup>22</sup> was tested using MAGMA (version 1.07) as implemented in FUMA (version 1.5.2)<sup>20</sup>. One significant gene-set was identified by MAGMA gene-set analysis after correction for multiple testing: the S1P-S1P3 (Sphingosine-1-phosphate - sphingosine-1-phosphate receptor 3) pathway<sup>23</sup> (Supplementary Table S14). Tissue expression enrichment analysis revealed nominally significant enrichment in several tissues, with the most significant enrichment observed in the cerebellum, and cerebellar hemisphere. However, no association was significant after correction for multiple testing (Supplementary Fig. S41, Supplementary Table S15).

## Drug target analysis

We investigated a total of 16 genes identified in the main GWAS meta-analysis either via proximity to the 6 GWAS loci or in the gene-based MAGMA test for potential drug repurposing using Open Targets, the Genome for REPositioning drugs (GREP; <https://github.com/saorisakaue/GREP>) pipeline, and the Drug Gene Interaction Database (DGIdb). None of the 16 prioritized genes were highlighted as drug targets by Open Targets. However, several showed potential tractability, *i.e.*, the potential to be modulated by a drug (Supplementary Fig. S42). GREP revealed no significant enrichment for drug targets across any ICD or ATC category. Finally, DGIdb highlighted drug-gene interactions for *MYO1H*, *MVP*, and *PCYT1B*. Briefly, *PCYT1B* showed an interaction with the unapproved substances CT-2584 and SPHINGOSINE. DGIdb also listed an interaction of *MVK* with ALENDRONATE

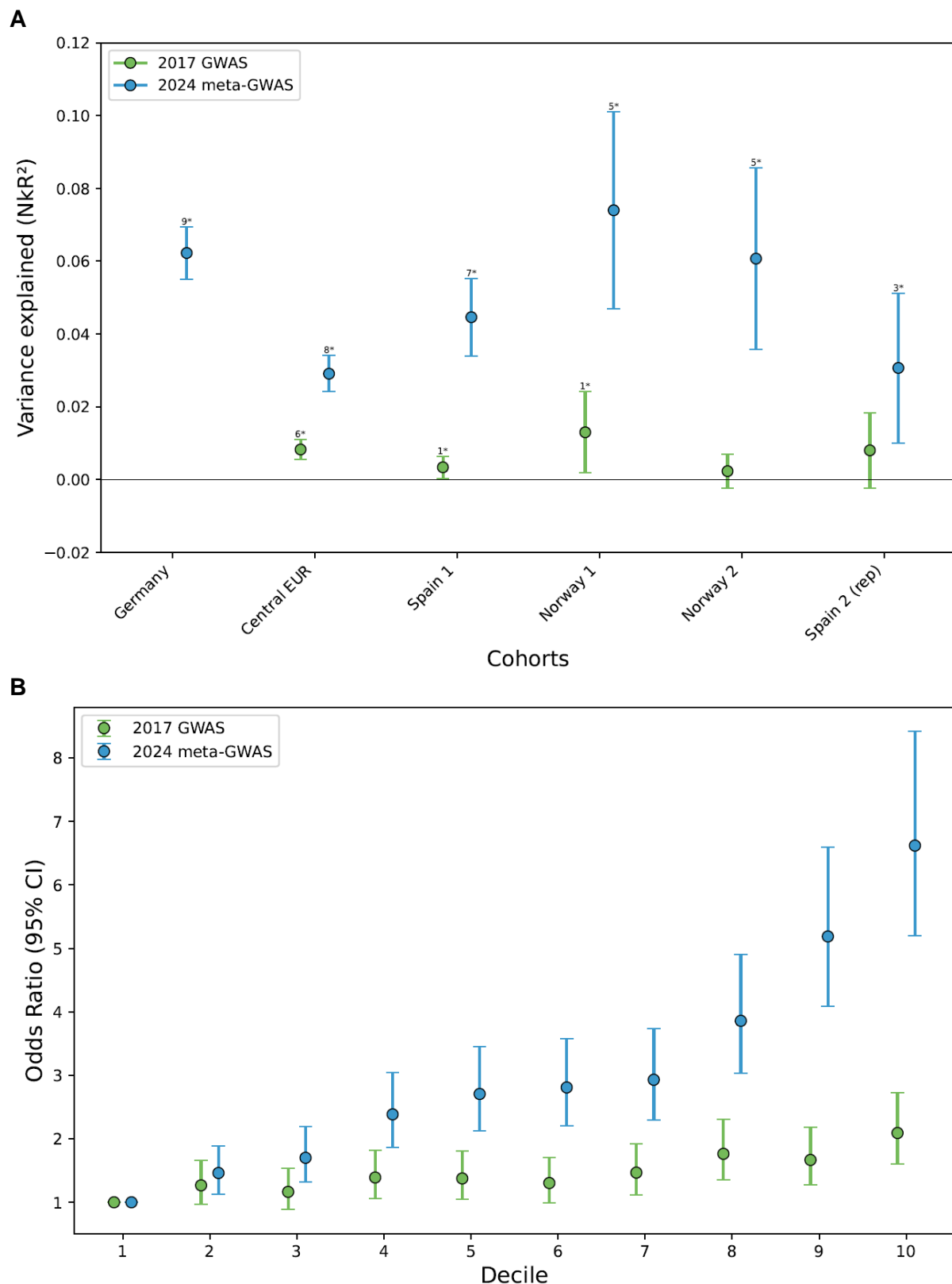
SODIUM and *MYO1H* with lithium. *MYO1H* has been identified as the nearest gene to the index SNP rs7959663 in the International Consortium on Lithium Genetics GWAS<sup>24</sup>.

## Polygenic scoring

To assess the prediction of BPD case-control status by the identified genetic association signal, PGS were calculated using the current meta-analysis as discovery sample. PGS were calculated using PRS-CS<sup>25</sup> in the datasets where individual-level genotype information was available using leave-one-out summary statistics, excluding the respective sample from the discovery GWAS. In addition, we calculated PGS for an independent target sample not included in the GWAS meta-analysis (Spain 2 repl.; Online Methods). For a comparison with PGS based on the current meta-analysis, PGS were calculated based on the first BPD GWAS from 2017<sup>15</sup>.

The leave-one-out analyses revealed a significant association of BPD-PGS with BPD case-control status (Fig. 3, Supplementary Table S16). PGS explained a weighted average of 4.6% (AUC=66.0%) of the phenotypic variance in the five datasets included in the meta-analysis. In the independent target sample, PGS explained 3.1% of the variance ( $p=0.0041$ , AUC=62.4%). The odds ratio for BPD case-control status comparing the highest PGS decile to the lowest decile was OR=6.62 for PGS based on the current meta-analysis, compared to OR=2.09 for PGS based on the first 2017 GWAS.





**Figure 3: Polygenic score (PGS) analysis. A) The proportion of variance in case-control status explained by the PGS (y-axis; Nagelkerke's  $R^2$ ) B) Odds ratio for BPD by PGS deciles, with decile 1 as reference.** Leave-one-out PGS were calculated for the datasets where individual-level genotype data was available, and in an additional independent PGS target sample (Spain2 (rep.)), sample information in Supplementary Tables S1&S2) using PRS-CS. For each prediction, the respective dataset was excluded from the used discovery genome-wide association study (GWAS) meta-analysis.

PGS in the independent target dataset were based on the complete current GWAS meta-analysis (in blue: 2024 meta-GWAS). To visualize the increase in variance explained by the PGS, we also calculated PGS based on the first published BPD GWAS, consisting of the Germany sample (in green: 2017 GWAS)<sup>15</sup>. Significance: 1\*:  $p < 0.05$ ; 2\*:  $p < 0.01$ ; 3\*:  $p < 0.005$ ; 4\*:  $p < 0.001$ ; 5\*:  $p < 1 \times 10^{-4}$ ; 6\*:  $p < 1 \times 10^{-8}$ ; 7\*:  $p < 1 \times 10^{-12}$ , 8\*:  $p < 1 \times 10^{-20}$ , \*:  $p < 1 \times 10^{-30}$

## Genetic correlations

### Correlations with disorders and traits of interest

In a targeted approach, we calculated genetic correlations with a selection of 50 GWAS of other disorders and traits relevant to BPD, including mental disorders, suicide, self-harm, trauma, substance use, physical health, pain, sleep, personality traits (Big Five GWAS including data from 23andMe, Inc.), and cognition. After Bonferroni correction for multiple testing ( $\alpha = 0.05/50 = 0.001$ ), BPD showed significant genetic correlations with 43 of the 50 tested phenotypes. BPD showed a positive genetic correlation with all tested mental disorders except Tourette's syndrome and obsessive-compulsive disorder, with the strongest correlations observed with post-traumatic stress disorder (PTSD) ( $r_g = 0.77$ ), depression ( $r_g = 0.74$ ), and attention deficit hyperactivity disorder (ADHD) ( $r_g = 0.67$ ). In the other domains, substantial genetic correlations with  $|r_g| > 0.5$  included material deprivation, chronic pain, broad antisocial behavior, loneliness, externalizing traits, measures of suicide, self-harm, and trauma. Lower but significant genetic correlations ( $r_g < 0.18$ ) were observed for the somatic disorders type 2 diabetes and asthma, and body mass index. The genetic correlations are shown in Fig. 4 and listed in Supplementary Table S17.



#### **Figure 4: Genetic correlations of borderline personality disorder (BPD) with other phenotypes**

Genetic correlations of BPD (total  $N_{\text{cases}}=12,339$ ,  $N_{\text{controls}}=1,041,717$ ) with 50 disorders and traits: within each group, disorders, and traits are sorted by their genetic correlation. White dot:  $p<0.05$ ; White star:  $p<0.001$  (0.05/50 tested correlations). 95% CI: 95% confidence interval; ADHD: attention deficit hyperactivity disorder; AUDIT: Alcohol Use Disorders Identification Test; BMI: body mass index; CTS: Childhood Trauma Screener; PTSD: post-traumatic stress disorder.

The genetic correlations of the sensitivity meta-analysis excluding subjects with SCZ/BIP showed broadly comparable genetic correlations (Supplementary Fig. S43, Supplementary Table S18) with the 50 disorders and traits. Notably, lower but still substantial genetic correlations were observed with BIP ( $r_g=0.35$  vs.  $r_g=0.47$ ) and SCZ ( $r_g=0.36$  vs.  $r_g=0.48$ ). The genetic correlation of the main meta-analysis and the sensitivity analysis excluding SCZ/BIP showed a genetic correlation of  $r_g=1.00$  (95%-CI [0,98-1,02]).

## Phenome-wide association studies (PheWAS)

To characterize the genetic signal identified in the BPD GWAS, we performed two phenome-wide association studies (PheWAS). We tested the association of BPD-PGS with “phecodes”, *i.e.*, medical phenotypes based on International Classification of Disease (ICD) diagnoses documented in the electronic health records (EHR). PheWAS were calculated using data from the Vanderbilt University Medical Center Biobank (BioVU)<sup>26</sup> (66,325 subjects) and Hospital Episode Statistics (HES) in the UK Biobank (UKB) (316,635 subjects). PGS were calculated using PRS-CS<sup>25</sup> and were based on summary statistics excluding the respective target sample from the discovery meta-analysis.

### **PheWAS in BioVU (EHR data)**

In the PheWAS analysis in the BioVU sample, 69 of the 1,431 tested diagnoses showed an association with BPD-PGS after Bonferroni correction (Supplementary Table S19). BPD-PGS showed the strongest associations with codes from the mental disorders category (Supplementary Fig. S44), including mood disorders, substance use disorders, anxiety and PTSD, and suicidal ideation or attempt. Associations were also observed in other categories, including neurological (*e.g.*, epilepsy) and somatic disorders (*e.g.*, type 2 diabetes, chronic airway obstruction, hypertension), and pain disorders and symptoms.

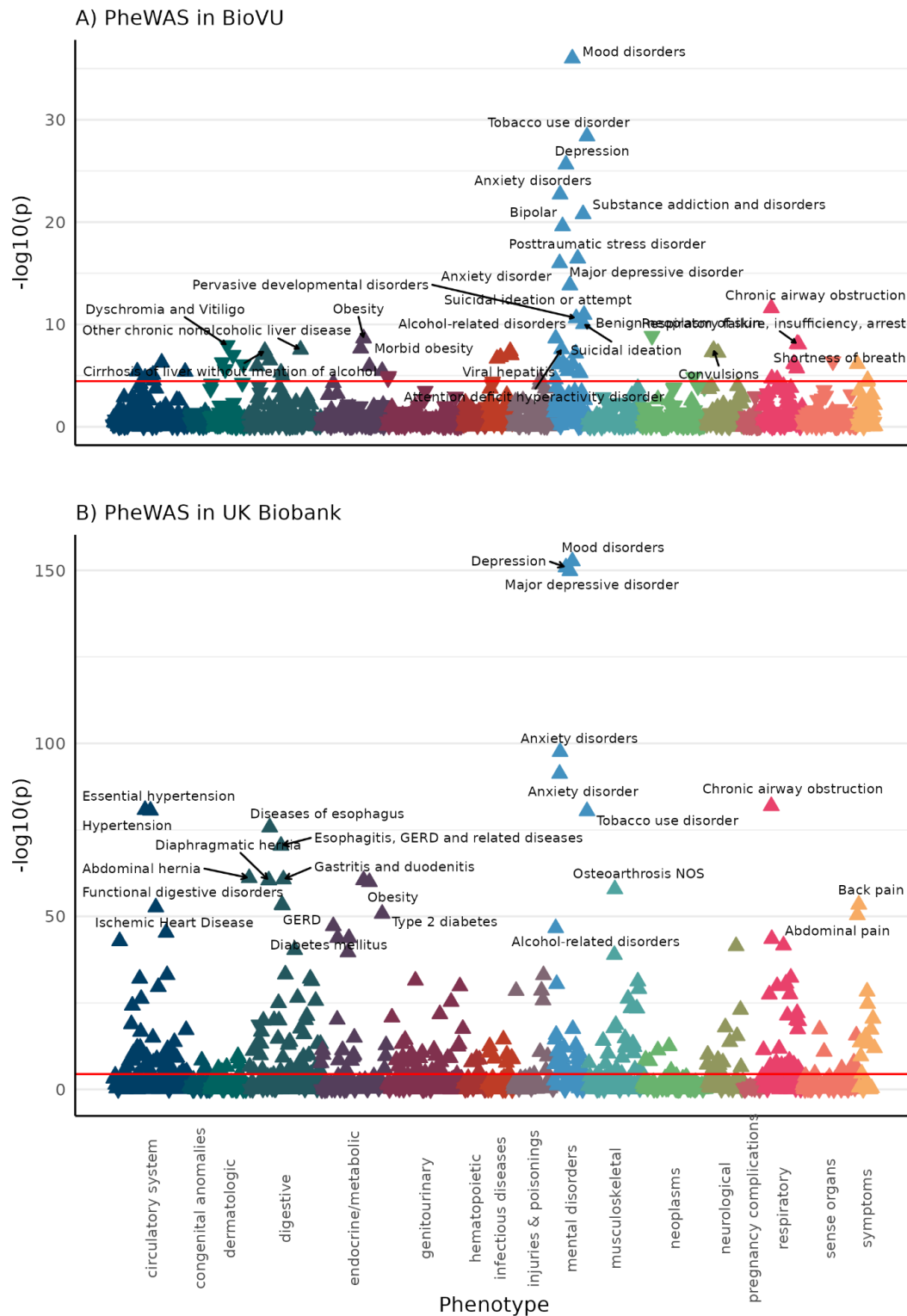
### **PheWAS in UKB (HES data)**

In the PheWAS analysis of HES codes in the UKB sample, 317 of the 1,250 tested diagnoses showed an association with BPD-PGS after Bonferroni correction (Supplementary Table S20). BPD-PGS showed the strongest associations with codes from the mental disorders category (Supplementary Fig. S45), including mood disorders, tobacco use disorders, and anxiety

disorders. As in BioVU, significant associations after Bonferroni correction were observed in other categories, including respiratory (e.g., chronic airway obstruction), digestive (e.g., esophagus, gastroesophageal reflux disease), circulatory, endocrine/metabolic, and neurological diagnoses, and pain disorders and symptoms.

Of the 69 diagnoses that were significant in the BioVU, 56 were also present with sufficient case numbers in the UKB. Of these, 51 showed effects in the same direction and 41 also reached significance after correction for multiple testing in the UKB ( $p < 0.05/1,225 = 4.08 \times 10^{-5}$ ). In both the BioVU and the UKB PheWAS, the phecode 301.20 (“*antisocial/borderline personality disorder*”) showed the strongest effect size with the BPD-PGS ( $OR_{\text{BioVU}}=1.41$ ;  $OR_{\text{UKB}}=1.54$ ).





**Figure 5: PheWAS of borderline personality disorder polygenic scores (BPD-PGS) in A) BioVU, and B) UKB: Association of BPD-PGS with 1,431 tested phecodes in BioVU and 1,250 Hospital Episode Statistics (HES) phecodes in UKB. Statistical significance ( $-\log_{10}(p)$ ) is plotted on the y-axis and diagnoses are grouped by category. The red line indicates the significance threshold for Bonferroni correction for the tested phecodes (BioVU:  $0.05/1,431=3.49 \times 10^{-5}$ ; UKB:  $0.05/1,250=4.00 \times 10^{-5}$ ). The top 25 associations of each PheWAS are annotated. Upward-pointing triangles indicate positive associations, and downward-pointing triangles indicate negative associations.**

## Discussion

Here we report the results of a GWAS meta-analysis including 12,339 BPD cases and 1,041,717 controls which identified six independent genetic loci significantly associated with BPD, revealed a substantial SNP heritability, and considerably improved the predictive value of derived PGS. This increase in sample size was achieved using a strategy combining studies with different ascertainment strategies. We included clinical studies that had explicitly recruited BPD patients, collected biomaterial, and provided individual-level data, as well as biobank and cohort studies that shared GWAS summary statistics for the meta-analysis, which mainly linked diagnoses from electronic health records to genetic data. The high genetic correlation between the two subsets suggests that this approach was able to capture a largely identical genetic architecture and is, therefore, a feasible approach to increasing the sample size for studying the genetic factors underlying BPD.

The results indicate that a substantial proportion of the heritability observed in family and twin studies (46–69%)<sup>11,12</sup> can be explained by common genetic variation, as reflected by the estimated SNP heritability of 17%. This is consistent with GWAS in other psychiatric disorders, where SNP heritability is often approximately a third of the estimates from twin and family studies<sup>13</sup>. The substantial contribution of common genetic variation to BPD is also supported by the leave-one-out PGS analyses, in which the PRS-CS predicted a weighted average of 4.6% of the variance on the liability scale.

In terms of identifying genetic risk variants and genes, the present study is the first to identify six genome-wide loci associated with BPD. The genetic risk loci were located in or near genes including *SGCD*, *EXD3*, *FOXP1*, and *FOXP2*, and one locus mapped to several genes: *MVK*, *MMAB*, and *UBE3B*. *SGCD* encodes sarcoglycan delta, a component of the sarcoglycan complex, and mutations have been associated with muscular and cardiovascular disorders<sup>27</sup>. Common variation in *SGCD* has also been associated with several mental disorders, such as SCZ<sup>28,29</sup> and PTSD<sup>30</sup>, substance use phenotypes, i.e. alcohol consumption and smoking<sup>31–33</sup>, and measures of quality of life<sup>34</sup>. Converging findings in rodents and humans further suggest that the sarcoglycan complex is expressed in the CNS in both neurons and astrocytes<sup>35,36</sup> and may be involved in GABAergic neurotransmission<sup>35</sup> and cerebrovascular function<sup>37</sup>. Among the genes mapped to genes by proximity to the lead SNPs or in the MAGMA gene-based analysis, the highest PoPS scores were observed for *SGCD*, *FOXP2*, *FOXP1*, and *DEPDC1B*. *FOXP1* and *FOXP2* are both members of the Forkhead-box (FOX) transcription factor family that are expressed in the brain and are both associated with speech and language development<sup>38</sup>. The *FOXP2* gene has shown significant associations with externalizing behavior<sup>39,40</sup> and related traits or disorders such as substance use disorders<sup>41–44</sup>, broad antisocial behavior<sup>45</sup>, and ADHD<sup>46</sup> in several recent GWAS. Observed associations

with childhood maltreatment<sup>47</sup> and PTSD<sup>30,48,49</sup> further suggest a trauma-related pathway for BPD, while a recent GWAS of the Big Five personality traits showed an association of *FOXP2* with agreeableness<sup>50</sup>.

Drug target analysis highlighted *MYO1H*, located close to locus 6, as a potential target of interest, which has been associated with the response to treatment with lithium, a mood stabilizer that has also been suggested to reduce the risk of suicide attempts<sup>51</sup>. However, it should be noted that the gene was indicated by proximity in the lithium GWAS, and no other gene prioritization methods were used<sup>24</sup>. The drug target analysis also suggested *PCYT1B* as a target of sphingosines. Sphingosine-1-phosphate receptor 3 (S1PR3) is known to regulate various cellular processes including inflammation, migration, angiogenesis, differentiation, and proliferation in peripheral tissue when bound to its ligand Sphingosine-1-phosphate (S1P). In our gene-set analysis, S1P-S1P3 was the only gene-set to remain significant after correction for multiple testing. Notably, S1PR3 has been implicated in stress resilience in animal studies and was found to be downregulated in PTSD patients<sup>52</sup>.

We confirmed the genetic correlations observed in the previous BPD GWAS<sup>15</sup> with depression, BIP, SCZ<sup>15</sup>, neuroticism, openness to experience<sup>53</sup>, and loneliness<sup>54</sup>. Concerning the Big Five, the results highlight the increased power of the present BPD GWAS to test genetic correlations. We now additionally observe negative genetic correlations with agreeableness and conscientiousness, which is consistent with the profiles of the Big Five personality dimensions observed in cases with BPD<sup>55-57</sup>, and with data from twin models<sup>58,59</sup>, suggesting that the genetic factors underlying variation in personality traits in the general population contribute to the risk for BPD. Of the 50 tested disorders and traits, 86% showed a significant correlation with BPD after correction for multiple testing. Among mental disorders, BPD showed the strongest genetic correlations with PTSD, depression, ADHD, and anxiety. Notably, these disorders are frequently observed as preceding or comorbid conditions and share clinical features with BPD<sup>5,60,61</sup>. The associations with suicide and self-harm are consistent with the clinical presentation of BPD<sup>62</sup>, the positive correlations with trauma phenotypes highlight the role these experiences play in BPD<sup>9</sup>, and the strong correlation of BPD with disorders from the internalizing/externalizing spectrum disorders suggests that BPD risk is influenced by the liability for both dimensions<sup>62,63</sup>.

In both PheWAS samples, and consistent with the genetic correlation results, the BPD-PGS were significantly associated with mood disorders, anxiety disorders, PTSD, substance use disorders, as well as suicidal ideation or suicide attempts. The observation that in both PheWAS samples the strongest effect was observed for the phecode “*antisocial/borderline personality disorder*” supports the specificity of the GWAS signal for BPD. BPD-PGS were also associated with a range of physical health phenotypes, including chronic airway obstruction, type 2 diabetes, obesity, and hypertension, for which an increased risk in BPD

patients has been previously described<sup>61</sup>. The relatively small number of BPD cases in the PheWAS target samples makes it likely that these associations are driven by shared genetic risk, and not solely by comorbidities of BPD patients in the target samples. The results of these approaches provide a promising starting point for the investigation of the shared genetic risks of BPD and somatic health, which is highly relevant as a large share of the reduced life expectancy of people with BPD is related to physical health problems<sup>64</sup>. Further research is needed to understand the mechanisms by which inter-individual differences in genetic risk for BPD influence the risk for different disorders, e.g., via biological mechanisms such as inflammatory pathways or health-related behaviors such as physical activity or smoking.

In the present analysis, we explored the genetic associations of BPD in sex-stratified GWAS meta-analyses. While the direction of the identified SNPs in the main GWAS showed the same direction and similar effect sizes in both sexes, and the genetic correlation of the sex-stratified GWAS was high, it must be noted that the sex-stratified analyses had limited statistical power, particularly the male-only analysis. In the future, sex-stratified analyses may help to elucidate sex-specific risk factors of BPD<sup>65</sup>. Notably, for the first time, we analyzed genetic variation on the X chromosome regarding personality disorders and found that the gene encoding choline-phosphate cytidyltransferase B (*PCYT1B*) is associated with BPD. *PCYT1B* has not been previously reported to be associated with mental health phenotypes, but many previous GWAS analyses have not reported X chromosome data<sup>65</sup>.

The present analyses cannot dissect to what degree comorbidities and the overlap of symptoms might have contributed to the observed genetic correlations<sup>66</sup>. Additionally, we cannot estimate to what degree potential diagnostic misclassifications might have influenced our results. While we addressed the potential overlap with BIP and SCZ, more fine-grained analyses are needed. In BPD, comorbidity with other mental disorders is the rule rather than the exception<sup>1,5</sup>. Restricting GWAS cases to those without psychiatric comorbidity would reduce the number of available subjects and limit the analysis to a less representative (and drastically smaller) subset. Therefore, we consider it a strength of the present analysis that the biobank and cohorts providing summary statistics performed the main analysis without excluding subjects with psychiatric comorbidity. To assess the impact of this strategy, additional analyses were performed excluding subjects with either a diagnosis of BIP or SCZ, which are common exclusion criteria for dedicated BPD studies, accounting for 30% of the cases. At the level of the single-variant associations that reached significance in the main analysis, we observed comparable effect sizes in the sensitivity analysis. We, therefore, consider it unlikely that SCZ or BIP comorbidity substantially biased the GWAS hits. Additionally, when we compare the genetic correlation of the two iterations of the BPD GWAS with the GWAS of BIP and SCZ, we see that there is an attenuated but still substantial genetic

correlation of  $\sim 0.35$  in the sensitivity analysis, suggesting shared genetic risk factors that go beyond the co-occurrence of the disorders with BPD.

The present study has several limitations. While it represents substantial progress in the identification of the genetic factors underlying BPD, with a more than 12-fold increase in the number of cases compared to the last GWAS<sup>15</sup>, the sample size is still relatively small compared to those of other mental disorders<sup>13</sup>. As with other mental disorders, the inclusion of additional samples will likely lead to a substantial increase in the number of loci identified<sup>67,68</sup>. Furthermore, the present analysis was limited to European ancestry. Expanding the analyses to other ancestries is necessary to improve the understanding of the underlying genetic architecture and to facilitate the generalizability of the results<sup>69,70</sup>. Additionally, the GWAS was limited to common variants. As shown for other mental disorders<sup>71</sup>, rare variants can explain further variance in the phenotype and provide additional insight into the underlying biology. Future analyses should follow up on the present results with family-based designs to differentiate between direct and indirect genetic effects. In this study, we investigated BPD as a categorical diagnosis, as it is also commonly used in the clinical context. However, the diagnosis can be heterogeneous and might differ between cohorts. Future studies should consider the heterogeneity of the disorder, and examine clinical BPD at a more fine-grained level, e.g., by examining individual symptoms or symptom clusters<sup>72,73</sup>, also with regard to the dimensional models conceptualizing personality disorders as maladaptive personality traits introduced in the latest versions of the ICD and DSM<sup>2</sup>. In addition, functional dimensions such as RDoC<sup>74</sup> and classification systems such as HiTop<sup>75,76</sup> as well as borderline personality traits in patient samples and the general population<sup>14,16</sup> should be incorporated.

In summary, the present GWAS meta-analysis represents a major step forward towards a genetic understanding of the etiology of BPD. It is the first GWAS of a personality disorder to identify genome-wide significant risk loci, highlight several risk genes, and demonstrate that BPD, like other mental disorders, is a complex polygenic disorder. The results will serve as a resource for the investigation of the genetic architecture of BPD and its relationship to risk factors and other disorders and traits.

## Online methods

### Sample description

An overview of the analyses performed can be found in Fig. 1. We conducted a GWAS meta-analysis, including 1,054,056 participants of European ancestry ( $N_{\text{cases}}=12,339$ ,  $N_{\text{controls}}=1,041,717$ , effective sample size ( $N_{\text{eff}}=2 \times 21,617$ ). In total, 17 studies contributed individual-level data ( $N_{\text{cases}}=2,705$ ,  $N_{\text{controls}}=4,600$  controls). This included data from the prior



BPD GWAS<sup>15</sup>, and data from an additional 1,712 cases and 3,061 controls (meeting DSM-IV criteria for BPD). Furthermore, we included data from 10 large-scale biobank or cohort studies that provided summary statistics from GWAS of BPD ( $N_{\text{cases}}=9,634$ ,  $N_{\text{controls}}=1,037,117$  controls). Of those, nine cohorts identified BPD status following ICD codes (ICD-10: F60.3, ICD-9: 3018D/301.83, and ICD-8: 3013), while in the GLAD study, a self-reported diagnosis was used.

Details on ascertainment, inclusion and exclusion criteria for cases and controls, and country of origin for each sample are documented in Supplementary Table S1. A detailed description of the study design, ascertainment of cases and controls, and genotyping array for each study, as well as quality control and imputation specific to studies sharing summary statistics are provided in Supplementary Table S2 and the Supplementary Methods. All subjects gave informed consent, and the studies were approved by the respective ethical committees.

## Genotyping, quality control, and imputation

Samples providing genotype data at the individual level were grouped into datasets based on array and ancestry, resulting in five datasets (Supplementary Table S2). Quality control and imputation were carried out using the RICOPILI pipeline<sup>77</sup>. A detailed description can be found in the Supplementary Methods.

## Genome-wide association study (GWAS)

For the studies providing genotype data at the individual level, GWAS were carried out within each dataset using an additive logistic regression model using PLINK (v1.9)<sup>78</sup> for imputed genetic dosage data with the relevant ancestry principal components (PCs; details in Supplementary Methods) included as covariates. Details on the association analyses for the cohorts providing summary statistics can be found in Supplementary Table S2 and Supplementary Methods. In addition to the main analysis, we performed sex-stratified analyses. Furthermore, as a sensitivity analysis, association analyses were performed excluding subjects with a history of BIP or SCZ from the case group in the studies providing summary statistics (Supplementary Tables S3–S5).

## Meta-analysis

Meta-analysis of all samples providing either individual-level data or summary statistics was conducted using the inverse variance weighting method in METAL<sup>79</sup> as implemented in RICOPILI<sup>77</sup> with a genome-wide significance threshold of  $5 \times 10^{-8}$ . This procedure excluded

single-nucleotide polymorphisms (SNPs) with minor allele frequency (MAF)<1% or an imputation quality score (INFO)<0.60. SNPs were translated to the HG19 genomic build (Human build GRCh37) when necessary, and both SNPs and SNP alleles were aligned to the haplotype reference consortium (HRC) reference genome to ensure standardization for the meta-analysis. To ensure a robust analysis with highly credible SNP sets, we excluded SNPs with highly significant heterogeneity *p*-values and SNPs with an effective sample size of less than 85%. X chromosome markers were included in the meta-analysis for all samples except the Norwegian Mother, Father and Child Cohort Study (MoBa), where data were not available at the time of analysis. To assess the similarity between the five datasets of studies providing individual-level data and the 10 studies providing summary statistics, separate meta-analyses were calculated for the two subsets.

SNP heritability was estimated using linkage disequilibrium score regression <sup>18</sup>, both as the observed SNP heritability and as the SNP heritability converted to the liability scale, assuming a population prevalence of 1.5% <sup>3</sup>.

## Gene-based and gene-set tests

Gene-based, gene-set, and tissue enrichment tests were carried out using MAGMA (version 1.07) <sup>19</sup> as implemented in FUMA (version 1.5.2) <sup>20</sup>. Gene-based tests were performed using the summary statistics of the GWAS meta-analysis for a total of 19,843 genes, with SNPs assigned to genes based on their physical position. SNPs were included in the analysis using boundaries of 35 kilobases (kb) upstream and 10kb downstream of the genes. Gene-sets were tested by analyzing a total of 17,012 gene-sets. For both gene-based and gene-set tests, a Bonferroni *p*-value threshold, corrected for the number of respective tests, was applied (gene-based  $\alpha=0.05/19,843=2.5\times 10^{-6}$ ; gene-set  $\alpha=0.05/17,012=2.9\times 10^{-6}$ ).

Additionally, Polygenic Priority Scores (PoPS) <sup>21</sup> were calculated, which prioritize genes at GWAS loci using MAGMA gene-level association tests and over 57,000 gene features such as cell-type specific expression gene expression, biological pathways, and protein-protein interactions. PoPS scores were available for 17,702 autosomal genes, and PoPS scores and ranks are reported. Tissue enrichment expression was carried out using Genotype-Tissue Expression (GTEx; version 8) data for 53 tissue types <sup>22</sup> as implemented in FUMA (version 1.5.2) <sup>20</sup>.

## Drug target analysis

For the drug target analysis, we prioritized genes that either mapped to the genome-wide risk loci (Table 1) or were significant in the gene-based analysis. To identify drug targets among

the prioritized genes, we extracted data from the Open Targets platform using the GraphSGL API. The information provided by Open Targets is based on the ChEMBL database <sup>80</sup>. Additionally, we performed a tractability analysis to assess small molecule binding, the presence of accessible epitopes for antibody-based therapy, relevant data for using Proteolysis Targeting Chimeras (PROTACs), and the presence of compounds in clinical trials with modalities other than small molecules or antibodies. Databases were queried on 2024-06-24. Furthermore, we used the Genome for REPositioning drugs (GREP; <https://github.com/saorisakaue/GREP>) pipeline to test for drug target enrichment across clinical ATC or ICD categories <sup>81</sup>. Finally, we queried the Drug Gene Interaction Database (DGIdb) <sup>82</sup>.

## Polygenic scores

We applied polygenic scoring (PGS) to predict case-control status in the datasets where individual-level genotype information was available. Polygenic scores were calculated using PRS-CS, a method that uses Bayesian regression to calculate updated (posterior) effect sizes by applying continuous shrinkage to the initial (prior) effect sizes from the discovery dataset using linkage disequilibrium (LD) information <sup>25</sup>. The posterior effect sizes account for the LD between SNPs using external LD reference panels constructed from the 1000 Genomes Project Phase 3 European samples. PGS were calculated based on both the present meta-analysis and also the prior BPD GWAS from 2017 (consisting of the Germany dataset) <sup>15</sup> for comparison. Using leave-one-out results of the present meta-analysis (2024 meta-GWAS), where the respective target dataset was always left out of the meta-analysis, we calculated PGS for all datasets with individual-level genotype information (Germany, Central Europe, Spain 1, Norway 1, and Norway 2 as well as Spain 2 (rep), an independent PGS target sample of 46 cases and 435 controls (Supplementary Tables S1&S2)). Similarly, we used the results of the prior BPD GWAS (2017 GWAS) to calculate PGS for the datasets not included in that analysis (Central Europe, Spain 1, Norway 1, Norway 2, and Spain 2 (rep)).

As an effect measure of the association between BPD-PGS and case-control status, *Nagelkerke-pseudo-R<sup>2</sup>* (*NkR<sup>2</sup>*) was calculated, comparing the *R<sup>2</sup>* of the full model including PGS and covariates (ancestry principal components) as predictors to the reduced (null) model including the covariates only. The resulting *NkR<sup>2</sup>* was then converted to the liability scale <sup>83</sup> of the population assuming a lifetime disease risk of 1.5% <sup>3</sup>. Additionally, the area under the receiver operator characteristic curve (AUC) was calculated for each target dataset. Average *NkR<sup>2</sup>* and AUC were calculated across the five target datasets and weighted by the effective sample size of the respective target samples.

To calculate the odds ratio of the deciles of the PGS distribution, PRS-CS were normalized to have a mean of 0 and unit variance before combining them into two sets of scores for comparison: one based on Witt 2017 ( $N_{\text{controls}}=3,496$ ;  $N_{\text{cases}}=1,758$ ) and the other on BPD-meta 2024 ( $N_{\text{controls}}=5,035$ ;  $N_{\text{cases}}=2,751$ ). Using the normalized PRS-CS, we categorized the data into ten deciles through quantile binning, assigning each observation a decile number ranging from 1 (lowest PRS-CS) to 10 (highest PRS-CS). We then created dummy variables by coding observations within each decile as cases, while those outside that decile were coded as controls. The dummy variable ranged from deciles 2 (Q2) to 10 (Q10), with decile 1 (Q1) serving as the reference category.

To assess the association between the deciles based on PRS-CS and the actual case and control status, we conducted logistic regression analyses using the decile-based dummy variables for Q2 to Q10. The odds ratios (OR) for each decile were calculated by exponentiating the coefficients from the logistic regression model, controlling for PCs (1, 2, 3, 4, 5, 6, 8, 10, 12, 14, 15, and 20). For the reference comparison (Q1/Q1), an odds ratio of 1 was assigned, indicating no effect. The odds ratios for each of the remaining deciles (Q2 to Q10) were computed accordingly  $OR_{Q1/Qj}=\exp(\beta_j)$  for  $j=2,3,\dots,10$ . Additionally, 95%-CI for the odds ratios were calculated using the standard errors of the coefficients ( $CI_{\text{lower}}=\exp(\beta_j-1.96\times SE_j)$ ;  $CI_{\text{upper}}=\exp(\beta_j+1.96\times SE_j)$ ).

## Genetic correlations

Genetic correlations between subsets and with other disorders and traits were calculated using LD score regression<sup>18</sup>. Calculations were carried out with a free intercept and the 1000 Genomes dataset (EUR) as a reference LD structure panel<sup>84</sup>.

In a targeted approach, genetic correlations were calculated with a selection of 50 GWAS of a range of other disorders and traits relevant to BPD, including mental disorders, suicide, self-harm, trauma, substance use, physical health, pain, sleep, personality traits (Big Five GWAS including data from 23andMe, Inc.), and cognition (Supplementary Table S17). A Bonferroni p-value threshold, corrected for the number of respective tests was applied ( $\alpha=0.05/50=1\times 10^{-3}$ )

## Phenome-wide association studies (PheWAS)

### PheWAS in BioVU (EHR data)

Data from the Vanderbilt University Medical Center Biobank (BioVU)<sup>26</sup> were used to test the association of BPD-PGS with medical phenotypes based on two or more International Classification of Disease (ICD) diagnoses (“phecodes”) documented in the electronic health

records (EHR). PGS were calculated in 66,325 unrelated subjects of European genetic ancestry based on summary statistics excluding the BioVU samples from the discovery meta-analysis (12,024 cases; 1,038,567 controls). PGS were computed using a continuous shrinkage prior (CS) to SNP effect sizes using PRS-CS<sup>25</sup> and standardized to have a mean of 0 and a standard deviation of 1. Phecodes were tested for association with BPD-PGS when at least 100 cases were available using logistic regression models with sex (defined as sex reported at birth from the EHR), age, and the first 10 genetic PCs as covariates. 1,431 phecodes were included, and a Bonferroni-corrected threshold of  $\alpha=0.05/1,431=3.49\times 10^{-5}$  tests was applied.

### **PheWAS in UKB**

An additional PheWAS analysis was carried out using data from the UK Biobank (UKB). Here, PGS for BPD were calculated using PRS-CS based on summary statistics excluding the UKB samples from the discovery meta-analysis (12,157 cases; 1,039,897 controls) generated by excluding the UKB. The PheWAS was calculated using phecodes based on diagnoses recorded in Hospital Episode Statistics (HES) in a maximum sample of 316,635 subjects. A total of 1,250 phecodes with at least 100 cases were tested for association using a Bonferroni-corrected threshold of  $\alpha=0.05/1,250=4.00\times 10^{-5}$  tests.

## **Data availability statement**

Individual-level data are not publicly available due to privacy or ethical restrictions. The results of the meta-analysis data will be publicly available for download upon publication of the manuscript.

The GWAS summary statistics of other traits and disorders used for analyses in this study are publicly available. In case they include data from 23andMe (e.g., Big Five personality traits), they can be made available to qualified investigators, if they enter into an agreement with 23andMe that protects participant confidentiality.

## **Acknowledgments**

We thank all research participants and all researchers and clinicians who collected, generated, or processed the data used in this study. We thank all research participants and employees of 23andMe for making this work possible. Fabian Streit is supported by a 2023 NARSAD Young Investigator Grant (#31537) from the Brain & Behavior Research Foundation with support from the Families for Borderline Personality Disorder Research. Björn H Schott receives funding from the German Research Foundation (DFG CRC 1436, SP A05). Alice

Braun was supported by the European Union's Horizon program grant 101057454 - "PsychSTRATA", by the German Research Foundation grant 402170461 - "TRR265", and the Berlin Institute of Health at Charité. Elizabeth C Corfield was supported by the RCN (#274611) and the South-Eastern Norway Regional Health Authority (Helse Sør-Øst; #2021045). Ted Reichborn-Kjennerud was supported by the RCN (#274611). Urs Heilbronner was supported by the European Union's Horizon 2020 Research and Innovation Program (PSY-PGx, grant agreement No 945151) and the Deutsche Forschungsgemeinschaft (DFG, German Research Foundation, project number 514201724).

Søren Brunak received funding from the Novo Nordisk Foundation (grants NNF17OC0027594 and NNF14CC0001). Ole Kristian Drange was supported by funding from the Research Council of Norway (RCN #223273, #324499).

## Conflicts of Interest

Ole A Andreassen is a consultant to Cortechs.ai and Precision Health and has received speaker's honoraria from Lundbeck, Janssen, Sunovion, and Otsuka.

Søren Brunak has ownerships in Intomics A/S, Hoba Therapeutics Aps, Novo Nordisk A/S, Lundbeck A/S, ALK abello A/S, Eli Lilly and Co and managing board memberships in Proscion A/S and Intomics A/S.

James L Kennedy is a Scientific Advisory Board member of Myriad Neuroscience.

Richard Musil has received financial research support from Böhringer-Ingelheim and Otsuka Pharmaceuticals. He has received speakers' honoraria from Otsuka Pharmaceuticals and Lundbeck and is a member of the advisory board of Böhringer-Ingelheim.

Frank Padberg is a member of Scientific Advisory Boards of Brainsway Inc., Jerusalem, Israel, and of Sooma, Helsinki, Finland. He has received speaker's honoraria from Mag&More GmbH, the neuroCare Group, Munich, Germany, and Brainsway Inc.

J. Antoni Ramos-Quiroga was on the speakers' bureau and/or acted as a consultant for Biogen, Idorsia, Casen-Recordati, Janssen-Cilag, Novartis, Takeda, Bial, Sincrolab, Neuraxpharm, Novartis, BMS, Medice, Rubió, Uriach, Technofarma and Raffo in the last 3 years. He also received travel awards (air tickets + hotel) for taking part in psychiatric meetings from Idorsia, Janssen-Cilag, Rubió, Takeda, Bial, and Medice. The Department of Psychiatry chaired by him received unrestricted educational and research support from the following companies in the last 3 years: Exeltis, Idorsia, Janssen-Cilag, Neuraxpharm, Oryzon, Roche, Probitas, and Rubió.

Claudia Schilling received lecturer fees from Idorsia Pharmaceuticals GmbH (2024).



## References

1. Bohus, M. *et al.* Borderline personality disorder. *The Lancet* vol. 398 1528–1540  
Preprint at [https://doi.org/10.1016/s0140-6736\(21\)00476-1](https://doi.org/10.1016/s0140-6736(21)00476-1) (2021).
2. Leichsenring, F. *et al.* Borderline personality disorder: a comprehensive review of diagnosis and clinical presentation, etiology, treatment, and current controversies. *World Psychiatry* **23**, 4–25 (2024).
3. Volkert, J., Gablonski, T.-C. & Rabung, S. Prevalence of personality disorders in the general adult population in Western countries: systematic review and meta-analysis. *Br. J. Psychiatry* **213**, 709–715 (2018).
4. Skodol, A. E. & Bender, D. S. Why are women diagnosed borderline more than men? *Psychiatr. Q.* **74**, 349–360 (2003).
5. Grant, B. F. *et al.* Prevalence, correlates, disability, and comorbidity of DSM-IV borderline personality disorder: results from the Wave 2 National Epidemiologic Survey on Alcohol and Related Conditions. *J. Clin. Psychiatry* **69**, 533–545 (2008).
6. Schneider, F., Erhart, M., Hewer, W., Loeffler, L. A. & Jacobi, F. Mortality and Medical Comorbidity in the Severely Mentally Ill. *Dtsch. Arztebl. Int.* **116**, 405–411 (2019).
7. Storebø, O. J. *et al.* Psychological therapies for people with borderline personality disorder. *Cochrane Database Syst. Rev.* **5**, CD012955 (2020).
8. Stoffers-Winterling, J. M. *et al.* Pharmacological interventions for people with borderline personality disorder. *Cochrane Database Syst. Rev.* **11**, CD012956 (2022).
9. Kleindienst, N., Vonderlin, R., Bohus, M. & Lis, S. Childhood adversity and borderline personality disorder. Analyses complementing the meta-analysis by Porter *et al.* (2020). *Acta Psychiatr. Scand.* **143**, 183–184 (2021).
10. Porter, C. *et al.* Childhood adversity and borderline personality disorder: a meta-analysis. *Acta Psychiatr. Scand.* **141**, 6–20 (2020).
11. Skoglund, C. *et al.* Familial risk and heritability of diagnosed borderline personality disorder: a register study of the Swedish population. *Mol. Psychiatry* **26**, 999–1008

- (2021).
12. Torgersen, S. *et al.* A twin study of personality disorders. *Compr. Psychiatry* **41**, 416–425 (2000).
  13. Andreassen, O. A., Hindley, G. F. L., Frei, O. & Smeland, O. B. New insights from the last decade of research in psychiatric genetics: discoveries, challenges and clinical implications. *World Psychiatry* **22**, 4–24 (2023).
  14. Streit, F., Colodro-Conde, L., Hall, A. S. M. & Witt, S. H. Genomics of borderline personality disorder. in *Personalized Psychiatry* 227–237 (Elsevier, 2020).
  15. Witt, S. H. *et al.* Genome-wide association study of borderline personality disorder reveals genetic overlap with bipolar disorder, major depression and schizophrenia. *Transl. Psychiatry* **7**, e1155 (2017).
  16. Lubke, G. H. *et al.* Genome-wide analyses of borderline personality features. *Mol. Psychiatry* **19**, 923–929 (2014).
  17. Gale, C. R. *et al.* Pleiotropy between neuroticism and physical and mental health: findings from 108 038 men and women in UK Biobank. *Transl. Psychiatry* **6**, e791 (2016).
  18. Bulik-Sullivan, B. K. *et al.* LD Score regression distinguishes confounding from polygenicity in genome-wide association studies. *Nat. Genet.* **47**, 291–295 (2015).
  19. de Leeuw, C. A., Mooij, J. M., Heskes, T. & Posthuma, D. MAGMA: generalized gene-set analysis of GWAS data. *PLoS Comput. Biol.* **11**, e1004219 (2015).
  20. Watanabe, K., Taskesen, E., van Bochoven, A. & Posthuma, D. Functional mapping and annotation of genetic associations with FUMA. *Nat. Commun.* **8**, 1826 (2017).
  21. Weeks, E. M. *et al.* Leveraging polygenic enrichments of gene features to predict genes underlying complex traits and diseases. *Nat. Genet.* **55**, 1267–1276 (2023).
  22. GTEx Consortium. Human genomics. The Genotype-Tissue Expression (GTEx) pilot analysis: multitissue gene regulation in humans. *Science* **348**, 648–660 (2015).
  23. Schaefer, C. F. *et al.* PID: the Pathway Interaction Database. *Nucleic Acids Res.* **37**, D674–9 (2009).

24. International Consortium on Lithium Genetics (ConLi+Gen) *et al.* Association of Polygenic Score for Schizophrenia and HLA Antigen and Inflammation Genes With Response to Lithium in Bipolar Affective Disorder: A Genome-Wide Association Study. *JAMA Psychiatry* **75**, 65–74 (2018).
25. Ge, T., Chen, C.-Y., Ni, Y., Feng, Y.-C. A. & Smoller, J. W. Polygenic prediction via Bayesian regression and continuous shrinkage priors. *Nat. Commun.* **10**, 1776 (2019).
26. Roden, D. M. *et al.* Development of a large-scale de-identified DNA biobank to enable personalized medicine. *Clin. Pharmacol. Ther.* **84**, 362–369 (2008).
27. Vainzof, M., Souza, L. S., Gurgel-Giannetti, J. & Zatz, M. Sarcoglycanopathies: an update. *Neuromuscul. Disord.* **31**, 1021–1027 (2021).
28. Goes, F. S. *et al.* Genome-wide association study of schizophrenia in Ashkenazi Jews. *Am. J. Med. Genet. B Neuropsychiatr. Genet.* **168**, 649–659 (2015).
29. Trubetskoy, V. *et al.* Mapping genomic loci implicates genes and synaptic biology in schizophrenia. *Nature* **604**, 502–508 (2022).
30. Maihofer, A. X. *et al.* Enhancing Discovery of Genetic Variants for Posttraumatic Stress Disorder Through Integration of Quantitative Phenotypes and Trauma Exposure Information. *Biol. Psychiatry* **91**, 626–636 (2022).
31. Liu, M. *et al.* Association studies of up to 1.2 million individuals yield new insights into the genetic etiology of tobacco and alcohol use. *Nat. Genet.* **51**, 237–244 (2019).
32. Zhou, H. *et al.* Genome-wide meta-analysis of problematic alcohol use in 435,563 individuals yields insights into biology and relationships with other traits. *Nat. Neurosci.* **23**, 809–818 (2020).
33. Saunders, G. R. B. *et al.* Genetic diversity fuels gene discovery for tobacco and alcohol use. *Nature* **612**, 720–724 (2022).
34. Adjei, A. A. *et al.* Genetic Variations and Health-Related Quality of Life (HRQOL): A Genome-Wide Study Approach. *Cancers* **13**, (2021).
35. Cutroneo, G. *et al.* Sarcoglycans and gaba(a) receptors in rat central nervous system: an immunohistochemical study. *Ital. J. Anat. Embryol.* **120**, 105–116 (2015).

36. Anastasi, G. *et al.* Expression of sarcoglycans in the human cerebral cortex: an immunohistochemical and molecular study. *Cells Tissues Organs* **196**, 470–480 (2012).
37. Boulay, A.-C. *et al.* The Sarcoglycan complex is expressed in the cerebrovascular system and is specifically regulated by astroglial Cx30 channels. *Front. Cell. Neurosci.* **9**, 9 (2015).
38. den Hoed, J., Devaraju, K. & Fisher, S. E. Molecular networks of the FOXP2 transcription factor in the brain. *EMBO Rep.* **22**, e52803 (2021).
39. Baselmans, B. *et al.* The Genetic and Neural Substrates of Externalizing Behavior. *Biol Psychiatry Glob Open Sci* **2**, 389–399 (2022).
40. Karlsson Linnér, R. *et al.* Multivariate analysis of 1.5 million people identifies genetic associations with traits related to self-regulation and addiction. *Nat. Neurosci.* **24**, 1367–1376 (2021).
41. Johnson, E. C. *et al.* A large-scale genome-wide association study meta-analysis of cannabis use disorder. *Lancet Psychiatry* **7**, 1032–1045 (2020).
42. Levey, D. F. *et al.* Multi-ancestry genome-wide association study of cannabis use disorder yields insight into disease biology and public health implications. *Nat. Genet.* **55**, 2094–2103 (2023).
43. Xu, H. *et al.* Identifying genetic loci and phenomic associations of substance use traits: A multi-trait analysis of GWAS (MTAG) study. *Addiction* **118**, 1942–1952 (2023).
44. Deak, J. D. *et al.* Genome-wide association study in individuals of European and African ancestry and multi-trait analysis of opioid use disorder identifies 19 independent genome-wide significant risk loci. *Mol. Psychiatry* **27**, 3970–3979 (2022).
45. Tielbeek, J. J. *et al.* Uncovering the genetic architecture of broad antisocial behavior through a genome-wide association study meta-analysis. *Mol. Psychiatry* **27**, 4453–4463 (2022).
46. Rajagopal, V. M. *et al.* Differences in the genetic architecture of common and rare variants in childhood, persistent and late-diagnosed attention-deficit hyperactivity disorder. *Nat. Genet.* **54**, 1117–1124 (2022).

47. Dalvie, S. *et al.* Genomic influences on self-reported childhood maltreatment. *Transl. Psychiatry* **10**, 38 (2020).
48. Wendt, F. R. *et al.* Using phenotype risk scores to enhance gene discovery for generalized anxiety disorder and posttraumatic stress disorder. *Mol. Psychiatry* **27**, 2206–2215 (2022).
49. Stein, M. B. *et al.* Genome-wide association analyses of post-traumatic stress disorder and its symptom subdomains in the Million Veteran Program. *Nat. Genet.* **53**, 174–184 (2021).
50. Gupta, P. *et al.* A genome-wide investigation into the underlying genetic architecture of personality traits and overlap with psychopathology. *Nat. Hum. Behav.* 1–15 (2024).
51. Del Matto, L. *et al.* Lithium and suicide prevention in mood disorders and in the general population: A systematic review. *Neurosci. Biobehav. Rev.* **116**, 142–153 (2020).
52. Corbett, B. F. *et al.* Sphingosine-1-phosphate receptor 3 in the medial prefrontal cortex promotes stress resilience by reducing inflammatory processes. *Nat. Commun.* **10**, 3146 (2019).
53. Streit, F. *et al.* Borderline Personality Disorder and the Big Five: Molecular genetic analyses indicate shared genetic architecture with Neuroticism and Openness. *Research Square* (2021) doi:10.21203/rs.3.rs-958220/v1.
54. Schulze, A. *et al.* Evidence for a shared genetic contribution to loneliness and Borderline Personality Disorder. *bioRxiv* (2023) doi:10.1101/2023.03.16.23286984.
55. Lynam, D. R. & Widiger, T. A. Using the five-factor model to represent the DSM-IV personality disorders: An expert consensus approach. *J. Abnorm. Psychol.* **110**, 401–412 (2001).
56. Samuel, D. B. & Widiger, T. A. A meta-analytic review of the relationships between the five-factor model and DSM-IV-TR personality disorders: a facet level analysis. *Clin. Psychol. Rev.* **28**, 1326–1342 (2008).
57. Trull, T. J. The Five-Factor Model of personality disorder and DSM-5. *J. Pers.* **80**, 1697–1720 (2012).

58. Czajkowski, N. *et al.* A Twin Study of Normative Personality and DSM-IV Personality Disorder Criterion Counts: Evidence for Separate Genetic Influences. *Am. J. Psychiatry* **175**, 649–656 (2018).
59. Kendler, K. S., Myers, J. & Reichborn-Kjennerud, T. Borderline personality disorder traits and their relationship with dimensions of normative personality: a web-based cohort and twin study. *Acta Psychiatr. Scand.* **123**, 349–359 (2011).
60. Garcia-Argibay, M. *et al.* Attention-Deficit/Hyperactivity Disorder and Major Depressive Disorder: Evidence From Multiple Genetically Informed Designs. *Biol. Psychiatry* (2023) doi:10.1016/j.biopsych.2023.07.017.
61. Hastrup, L. H., Jennum, P., Ibsen, R., Kjellberg, J. & Simonsen, E. Borderline personality disorder and the diagnostic co-occurrence of mental health disorders and somatic diseases: A controlled prospective national register-based study. *Acta Psychiatr. Scand.* **149**, 124–132 (2024).
62. Bozzatello, P., Bellino, S., Bosia, M. & Rocca, P. Early Detection and Outcome in Borderline Personality Disorder. *Front. Psychiatry* **10**, 710 (2019).
63. Eaton, N. R. *et al.* Borderline personality disorder co-morbidity: relationship to the internalizing-externalizing structure of common mental disorders. *Psychol. Med.* **41**, 1041–1050 (2011).
64. Temes, C. M., Frankenburg, F. R., Fitzmaurice, G. M. & Zanarini, M. C. Deaths by Suicide and Other Causes Among Patients With Borderline Personality Disorder and Personality-Disordered Comparison Subjects Over 24 Years of Prospective Follow-Up. *J. Clin. Psychiatry* **80**, (2019).
65. Merikangas, A. K. & Almasy, L. Using the tools of genetic epidemiology to understand sex differences in neuropsychiatric disorders. *Genes Brain Behav.* **19**, e12660 (2020).
66. Martin, J., Taylor, M. J. & Lichtenstein, P. Assessing the evidence for shared genetic risks across psychiatric disorders and traits. *Psychol. Med.* **48**, 1759–1774 (2018).
67. Kendall, K. M. *et al.* The genetic basis of major depression. *Psychol. Med.* **51**, 2217–2230 (2021).



68. Visscher, P. M. *et al.* 10 Years of GWAS Discovery: Biology, Function, and Translation. *Am. J. Hum. Genet.* **101**, 5–22 (2017).
69. Peterson, R. E. *et al.* Genome-wide Association Studies in Ancestrally Diverse Populations: Opportunities, Methods, Pitfalls, and Recommendations. *Cell* **179**, 589–603 (2019).
70. Fatumo, S. *et al.* A roadmap to increase diversity in genomic studies. *Nat. Med.* **28**, 243–250 (2022).
71. Owen, M. J., Legge, S. E., Rees, E., Walters, J. T. R. & O'Donovan, M. C. Genomic findings in schizophrenia and their implications. *Mol. Psychiatry* (2023)  
doi:10.1038/s41380-023-02293-8.
72. Wright, A. G. C. *et al.* Clarifying interpersonal heterogeneity in borderline personality disorder using latent mixture modeling. *J. Pers. Disord.* **27**, 125–143 (2013).
73. Bornovalova, M. A., Levy, R., Gratz, K. L. & Lejuez, C. W. Understanding the heterogeneity of BPD symptoms through latent class analysis: initial results and clinical correlates among inner-city substance users. *Psychol. Assess.* **22**, 233–245 (2010).
74. Koudys, J. W., Traynor, J. M., Rodrigo, A. H., Carcone, D. & Ruocco, A. C. The NIMH Research Domain Criteria (RDoC) Initiative and Its Implications for Research on Personality Disorder. *Curr. Psychiatry Rep.* **21**, 37 (2019).
75. Michelini, G., Palumbo, I. M., DeYoung, C. G., Litzman, R. D. & Kotov, R. Linking RDoC and HiTOP: A new interface for advancing psychiatric nosology and neuroscience. *Clin. Psychol. Rev.* **86**, 102025 (2021).
76. Shields, A. N., Giljen, M., España, R. A. & Tackett, J. L. The p factor and dimensional structural models of youth personality pathology and psychopathology. *Curr Opin Psychol* **37**, 21–25 (2021).
77. Lam, M. *et al.* RICOPILI: Rapid Imputation for COnsortias PIpeLIne. *Bioinformatics* (2019) doi:10.1093/bioinformatics/btz633.
78. Chang, C. C. *et al.* Second-generation PLINK: rising to the challenge of larger and richer datasets. *Gigascience* **4**, 7 (2015).

79. Willer, C. J., Li, Y. & Abecasis, G. R. METAL: fast and efficient meta-analysis of genomewide association scans. *Bioinformatics* **26**, 2190–2191 (2010).
80. Gaulton, A. *et al.* ChEMBL: a large-scale bioactivity database for drug discovery. *Nucleic Acids Res.* **40**, D1100–7 (2012).
81. Sakaue, S. & Okada, Y. GREP: genome for REPositioning drugs. *Bioinformatics* **35**, 3821–3823 (2019).
82. Freshour, S. L. *et al.* Integration of the Drug-Gene Interaction Database (DGIdb 4.0) with open crowdsourcing efforts. *Nucleic Acids Res.* **49**, D1144–D1151 (2021).
83. Lee, S. H., Goddard, M. E., Wray, N. R. & Visscher, P. M. A better coefficient of determination for genetic profile analysis. *Genet. Epidemiol.* **36**, 214–224 (2012).
84. 1000 Genomes Project Consortium *et al.* A global reference for human genetic variation. *Nature* **526**, 68–74 (2015).