

# 1 Long-term serum spike protein persistence but no 2 correlation with post-COVID syndrome

## 3 Authors:

4 Annick Fehrer<sup>1\*</sup>, Franziska Sotzny<sup>1</sup>, Friederike Hoheisel<sup>1</sup>, Elisa Stein<sup>1</sup>, Laura Kim<sup>1</sup>, Claudia  
5 Kedor<sup>1</sup>, Helma Freitag<sup>1</sup>, Cornelia Heindrich<sup>1</sup>, Sandra Bauer<sup>1</sup>, Rebekka Rust<sup>1,2</sup>, Martina  
6 Seifert<sup>1,3</sup>, Patricia Grabowski<sup>1</sup>, Nina Babel<sup>1,3,4</sup>, Carmen Scheibenbogen<sup>1</sup>, Kirsten Wittke<sup>1</sup>

## 7 Affiliations:

8 <sup>1</sup> Institute for Medical Immunology, Charité – Universitätsmedizin Berlin, corporate member of Freie Universität  
9 Berlin and Humboldt Universität zu Berlin; Berlin, Germany

10 <sup>2</sup> Experimental and Clinical Research Center and Neuro Science Clinical Research Center, Charité -  
11 Universitätsmedizin Berlin, corporate member of Freie Universität Berlin, Humboldt Universität zu Berlin; Berlin,  
12 Germany

13 <sup>3</sup> Berlin Institute of Health (BIH) Center for Regenerative Therapies (BCRT), Charité-Universitätsmedizin Berlin;  
14 Berlin, Germany

15 <sup>4</sup> Center for Translational Medicine and Immune Diagnostics Laboratory, University Hospital of the Ruhr-University  
16 Bochum; Herne, Germany

17 \*Corresponding author. Email: [annick.fehrer@charite.de](mailto:annick.fehrer@charite.de)

18

19 **One sentence summary:** Our study identified serum spike protein in a subset of patients after  
20 SARS-CoV-2 infection without evidence for a role in the pathogenesis of PCS.

## 21 Abstract

22 According to the World Health Organization (WHO) and the Centers for Diseases Control and  
23 Prevention (CDC), currently an estimated 3 – 6 % of people suffer from post-COVID condition  
24 or syndrome (PCS). A subset meets diagnostic criteria for myalgic encephalomyelitis/chronic  
25 fatigue syndrome (ME/CFS). Several studies have reported persistence of SARS-CoV-2  
26 proteins or RNA in serum or tissues of both recovered individuals and PCS patients.

27 In this exploratory study, we investigated whether serum spike protein is associated with PCS  
28 and whether it correlates with symptom severity and laboratory biomarkers. We analyzed  
29 serum spike protein levels in 121 PCS patients following mild-to-moderate COVID-19, 72 of  
30 whom met diagnostic criteria for ME/CFS (post-COVID ME/CFS, pcME/CFS). Pre-pandemic

NOTE: This preprint reports new research that has not been certified by peer review and should not be used to guide clinical practice.

31 seronegative healthy controls (ppHC, n = 32) and post-COVID recovered healthy controls  
32 (pcHC, n = 37) after SARS-CoV-2 infection were also included in the study.

33 We found persistent serum SARS-CoV-2 spike protein in a subset of pcHC (11 %), PCS non-  
34 ME/CFS patients (2 %), and pcMECFS patients (14 %). There was no significant association  
35 with disease severity, symptoms, or laboratory markers. The spike protein concentration was  
36 independent of the time since last spike exposure (infection or vaccination). In five spike-  
37 positive out of a total of 22 patients who underwent immunoglobulin depletion via  
38 immunoadsorption (IA), spike protein was reduced or completely removed after treatment,  
39 indicating binding to immunoglobulins.

40 In summary, our study identified serum spike protein in a subset of patients after SARS-CoV-2  
41 infection without evidence for a role in the pathogenesis of PCS.

42 **Key words:** COVID-19, Chronic fatigue syndrome, Long COVID, Post-COVID syndrome,  
43 Spike protein, SARS-CoV-2, Viral persistence

44

## 45 **1 Introduction**

46 Post-COVID syndrome (PCS) refers to persistent symptoms that occur within three months of  
47 a severe acute respiratory syndrome coronavirus type 2 (SARS-CoV-2) infection and last for  
48 more than two months according to the World Health Organization (WHO) definition (1). It  
49 affects individuals across a broad demographic spectrum but is particularly prevalent among  
50 young and middle-aged women. PCS is a major burden for health care, economics, and society  
51 with an estimated 3 - 6% of patients suffering from chronic and often debilitating illness and no  
52 causal therapy so far (1-4).

53 PCS is multisystemic, affects various bodily functions, and presents with a variety of symptoms  
54 that include fatigue, exercise intolerance with post-exertional malaise (PEM), cognitive  
55 impairments, headaches, muscle pain, and autonomic dysfunction among others. The clinical  
56 trajectory can be persistent, relapsing, or fluctuating, significantly impairing the quality of life

57 and work capacity for many affected individuals. A subset of PCS patients meets the Canadian  
58 consensus (CCC) or Institute of Medicine (IOM) criteria for the diagnosis of myalgic  
59 encephalomyelitis/chronic fatigue syndrome (ME/CFS) (5-7).

60 Although the exact pathomechanisms remain unclear, there are numerous studies providing  
61 evidence for inflammation, antibody-mediated autoimmunity, vascular inflammation and  
62 circulatory dysfunction, Epstein-Barr-Virus (EBV) reactivation, as well as SARS-CoV-2  
63 persistence in PCS (8, 9).

64 While in the majority of individuals infected with SARS-CoV-2 the virus is successfully cleared  
65 from the respiratory tract and blood within one to two weeks in correspondence with resolution  
66 of clinical symptoms, a subset of patients experience a prolonged viral persistence or  
67 reactivation (10). In these patients, recurrent episodes of viral shedding, as well as persisting  
68 viral RNA or spike antigen are believed to contribute to continued activation of immune  
69 responses, possibly inducing persistent tissue inflammation (10, 11). Contrary to common  
70 perception of coronavirus disease 2019 (COVID-19) as a respiratory disease, SARS-CoV-2  
71 cell tropism was not only identified in lungs and trachea but also in the kidneys, pancreas,  
72 brain, heart, skin, blood vessels, and small intestines (12). Apart from primary infection of  
73 respiratory epithelium via angiotensin converting enzyme 2 (ACE-2) and co-receptor  
74 transmembrane protease serine subtype 2 (TMPRSS2), other cell types like gastrointestinal  
75 epithelia, endothelial cells, and neurons may also be susceptible to infection (10).  
76 SARS-CoV-2 RNA was detected in non-respiratory tissues, including the brain, up to several  
77 months after infection (13, 14). Furthermore, several studies report a persistent gastrointestinal  
78 viral reservoir in some patients with and without persistent symptoms for up to 2 years (15-17).  
79 Spike protein subunit 1 (S1) was found in CD16+ monocytes of PCS patients up to 15 months  
80 after acute COVID-19 (11). Peluso et al. showed persistence of SARS-CoV-2 antigen and most  
81 commonly spike protein in plasma for more than one year after infection in about 9.2 % of  
82 specimens, but longitudinal symptoms were not documented in this study (18). Others reported  
83 persistent spike protein in the plasma of PCS patients for up to twelve months after infection  
84 with a prevalence of up to 60 %, while no spike protein was detected in 26 recovered controls

85 in one study (19) or less frequent in recovered controls in another study (20). Haddad et al.  
86 recently reported an ongoing immune response against SARS-CoV-2 antigens evident from  
87 newly activated antibody-secreting cells, suggesting viral persistence or reactivation in 40 %  
88 of 61 analyzed PCS patients and none of 25 analyzed recovered controls studied (21).  
89 However, these studies did not explicitly match time points of SARS-CoV-2 infection or  
90 vaccination of their study groups and did not document potential reinfections in the time frame  
91 investigated. In addition, studies often lack comprehensive patient characterization and  
92 classification as well as correlation with clinical data, or they do not include sufficient controls  
93 to contextualize results and verify assay specificity (17-23).

94 To this date, the relationship between PCS and viral persistence is not resolved. Here, we  
95 quantified spike protein in serum of PCS patients, as well as pre-pandemic and recovered  
96 healthy controls, and analyzed a potential correlation of viral persistence with clinical  
97 manifestation and symptom severity. In addition, we investigated the effect of immunoglobulin  
98 depletion via immunoabsorption (IA) on serum spike protein in 22 post-COVID ME/CFS  
99 (pcMECFS) patients treated in our study as reported elsewhere (24, 25).

100

## 101 **2 Results**

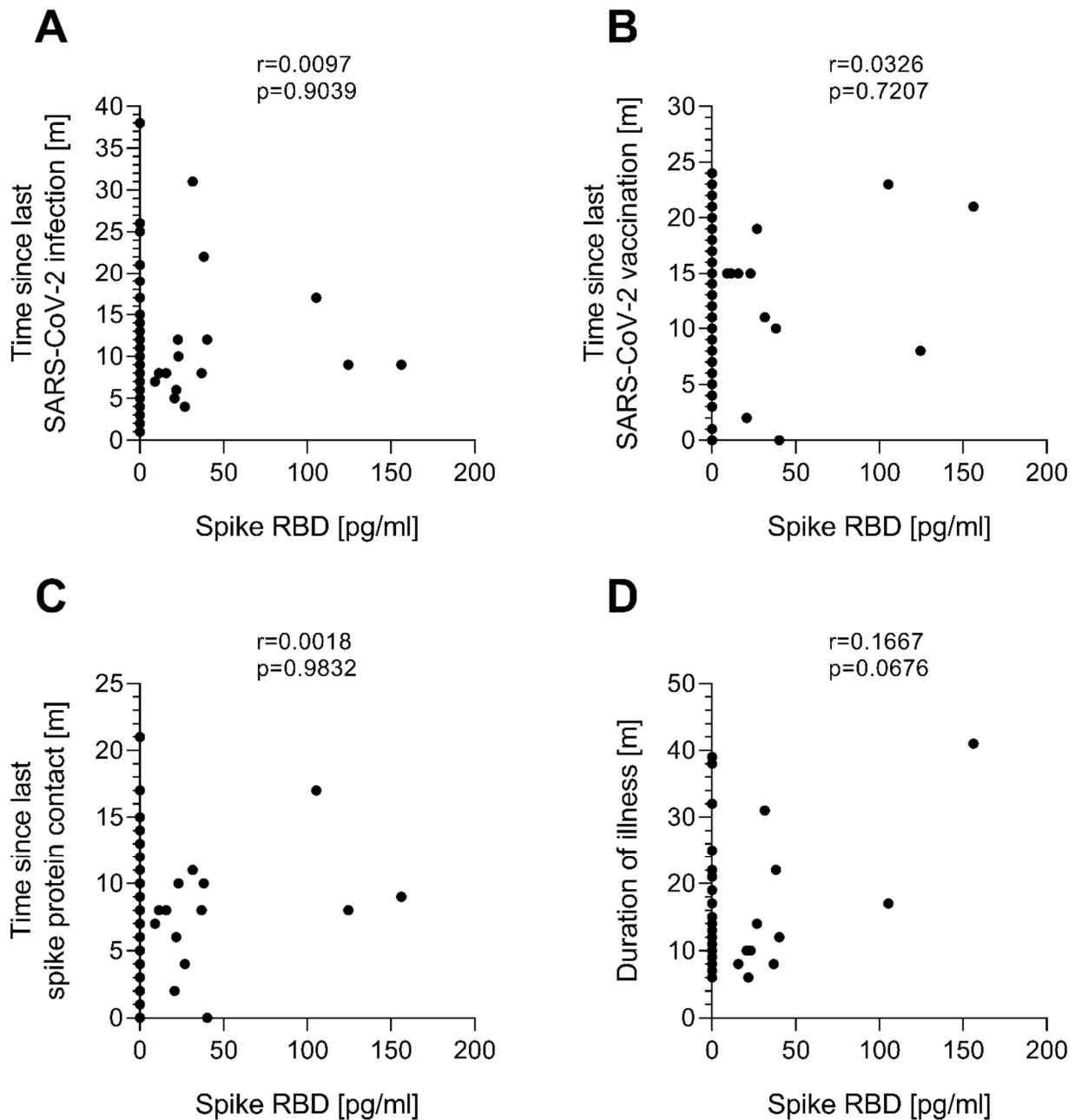
### 102 **2.1 Persistent spike protein is detectable in serum of individuals after**

#### 103 **SARS-CoV-2 infection**

104 SARS-CoV-2 spike receptor-binding domain (RBD) was quantified by ELISA in serum of three  
105 post-COVID cohorts: 37 post-COVID recovered healthy controls (pcHC), and 121 PCS  
106 patients, of whom 72 met ME/CFS diagnostic criteria (pcMECFS), 1 to 38 months after their  
107 last SARS-CoV-2 infection. Additionally, a cohort of 32 pre-pandemic healthy controls (ppHC)  
108 was analyzed to validate assay specificity (Fig. 1). While all ppHC serum samples tested  
109 negative for SARS-CoV-2 spike protein, 11 % of the pcHC serum samples, 2 % of PCS non-  
110 ME/CFS serum samples, and 14 % of the pcMECFS serum samples were positive (Fig. 1A).



128 SARS-CoV-2 vaccination (Fig. 2B), nor time since last spike protein contact by either infection  
129 or vaccination (Fig. 2C) correlated with the serum spike protein concentration. Furthermore,  
130 there was no correlation between time since illness-triggering SARS-CoV-2 infection and  
131 serum spike protein concentration in PCS and pcMECFS patients (Fig. 2D). Two out of ten  
132 spike-positive pcMECFS patients were vaccinated against SARS-CoV-2 shortly before their  
133 visit (three and 13 weeks respectively). Among the spike-negative individuals, five pcMECFS  
134 and four PCS patients were vaccinated within six weeks before their visit, and four pcMECFS  
135 and four PCS patients within 16 weeks before their visit. Two spike-negative patients had a  
136 SARS-CoV-2 infection seven or twelve weeks prior.



137

138 **Fig. 2. Correlation analysis of spike RBD in serum of post-COVID study groups with time**

139 **since SARS-CoV-2 infection or vaccination.** Spike RBD concentration in serum of pCHC

140 (n=37), PCS patients (n=49), and pcMECFs patients (n=72) was correlated with **(A)** the time

141 since last SARS-CoV-2 infection, **(B)** the time since the last SARS-CoV-2 vaccination, **(C)** the

142 time since the last contact with spike protein either during SARS-CoV-2 infection or

143 vaccination, and **(D)** the duration of illness for patients. Correlation was assessed using

144 Spearman's rank-order correlation.

## 145 **2.3 Serum spike protein is not associated with pcMECFS disease and** 146 **symptom severity**

147 Persistent viral reservoirs in PCS is presumed to be associated with inflammation and  
148 hypercoagulability, which may contribute to impaired blood flow, endothelial dysfunction, and  
149 PCS symptoms (8, 10, 26). To evaluate the possible effect of viral persistence in pcMECFS,  
150 we investigated a potential association between persisting serum spike protein and severity of  
151 disease and key symptoms comparing ten spike-positive and 62 spike-negative pcMECFS  
152 patients. We observed no significant difference in severity of disability, assessed by Bell and  
153 Short Form Health Survey 36 (SF-36) physical function scores, nor in PEM score, severity of  
154 fatigue, pain, cognitive, immune, or autonomic symptoms, as assessed by Composite  
155 Autonomic Symptom Score 31 (COMPASS-31), between spike-positive and spike-negative  
156 pcMECFS patients (Table 1). The 49 PCS patients were not analyzed as there was only one  
157 spike-positive patient in this study group.

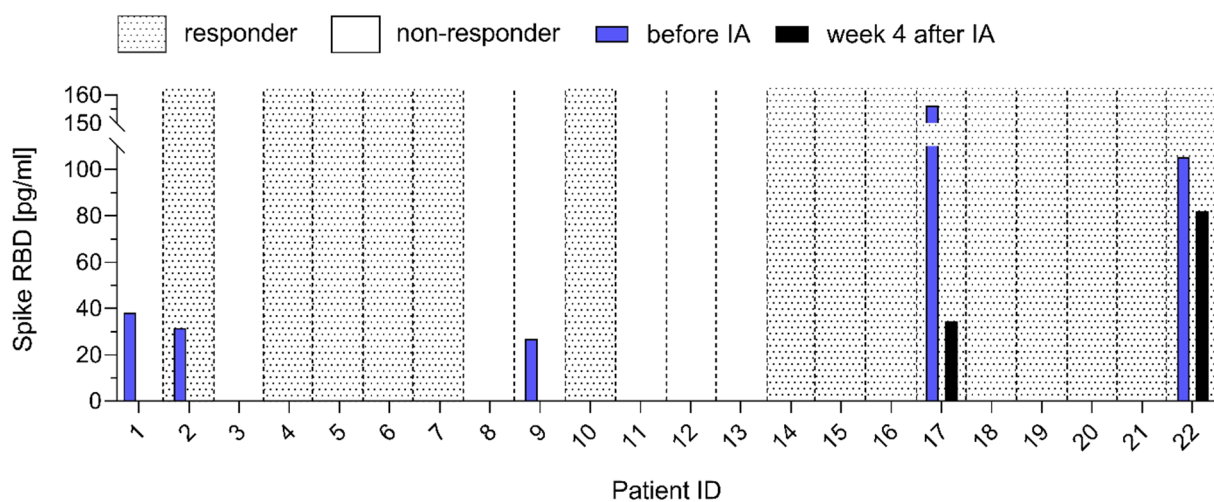
158 A subset of pcMECFS patients had elevated interleukin-8 (IL-8) and a few had elevated  
159 D-dimer, platelet count, or mean platelet volume (MPV) as potential markers of endothelial  
160 inflammation or hypercoagulation. Levels of these markers were not associated with serum  
161 spike persistence in our study cohort (Table 2A). Patients who were treated within the IA study  
162 had elevated levels of  $\beta$ 2 adrenergic receptor autoantibodies ( $\beta$ 2-AdR-AABs). We did not find  
163 significant differences in levels of  $\beta$ 2-AdR-AABs between spike-positive and spike-negative  
164 pcMECFS, nor in levels of anti-S1-IgG (Table 2B). In six of 21 pcMECFS patients we had  
165 evidence for endothelial dysfunction assessed by reactive hyperemia index (RHI) using  
166 postocclusive reactive hyperaemia peripheral arterial tonometry (RH-PAT), but no association  
167 with spike persistence was observed (Table 2C).

## 168 **2.4 Serum spike protein is reduced by IA and not associated with IA** 169 **response**

170 Twenty-two of the pcMECFS patients studied here were treated with IA for immunoglobulin  
171 depletion (IA-pcMECFS) as reported elsewhere (24, 25). Levels of SARS-CoV-2 spike protein



172 were measured before and four weeks after IA (Fig. 3). Interestingly, in all five patients with  
173 detectable serum spike protein, levels were either reduced in two or no longer detectable in  
174 three patients four weeks after IA. Patient #17 had a SARS-CoV-2 infection immediately before  
175 the four weeks after IA visit. Three of the five spike-positive IA patients were responders and  
176 two were non-responders as defined by improvement in their physical function (SF-36) four  
177 weeks after IA (24, 25). Thus, we have no evidence that there is an association between spike  
178 protein serum persistence and clinical response to immunoglobulin depletion.



179  
180 **Fig. 3. Spike RBD concentration in serum of post-COVID ME/CFS (pcMECFS) patients**  
181 **before immunoadsorption (IA) (IA-pcMECFS) and four weeks after IA.** Patients who  
182 responded to IA are indicated by dotted black and those who did not by white background  
183 based on the improvement in SF-36 physical function four weeks after therapy. Spike RBD  
184 concentration [pg/ml] in patients' serum was determined before (blue bar) and four weeks after  
185 IA (black bar).

### 186 187 **3 Discussion**

188 Our study shows persistence of spike protein in serum up to 31 months after infection in a  
189 subset of PCS patients and pcHC. We found neither an association with PCS nor with severity

190 of disease and symptoms in the pcMECFS subgroup. Moreover, we found no link to markers  
191 of endothelial dysfunction, inflammation, or hypercoagulation.

192 The finding from our and other studies of absence of viral proteins in pre-pandemic samples  
193 provides strong evidence for the specificity of the detection of viral proteins after SARS-CoV-2  
194 infection in a subset of individuals. The prevalence of antigen persistence in serum in our study  
195 is consistent with a previous study by Peluso et al. reporting 9.2 % positivity in 660 pandemic-  
196 era plasma samples up to 14 months after SARS-CoV-2 infection (18). Other studies report  
197 lower or higher levels of viral antigen persistence in serum or plasma ranging from no  
198 detectable antigen in both PCS and pHC study groups to a prevalence of approximately 60 %  
199 in PCS patients and 0-30 % in pHCs (19, 20, 22, 27, 28). A recent study reported an  
200 association between persistence of SARS-CoV-2 RNA and PCS symptoms up to four months  
201 after COVID-19 (29). Other studies suggested that tissue viral persistence is associated with  
202 PCS symptoms (17, 30). Notably, our study shows no association between persistent spike  
203 protein and symptom severity in pcMECFS patients 2-38 months after their last SARS-CoV-2  
204 infection. We found spike protein in only 2 % of PCS patients with a significant difference to  
205 pcMECFS patients. However, as we detected spike protein in 11 % of pHC, we consider it  
206 more likely to be a random rather than a pathomechanistically relevant finding.

207 Spike protein can promote microvascular inflammation and thrombogenic processes (31, 32),  
208 but our study did not find a correlation between endothelial dysfunction, thromboinflammatory  
209 markers, and spike protein persistence in pcMECFS patients. In line with our findings, others  
210 didn't observe a link between SARS-CoV-2 persistent shedding in saliva and PCS  
211 development or symptoms (33). The heterogeneity of findings in the various studies may be  
212 related to the generally low levels of viral proteins, potential cross-reactivity with other proteins  
213 and different tests that were used.

214 The hypothesis of viral persistence playing a role in the pathomechanism of PCS is currently  
215 used as a rationale for antiviral treatment studies. Paxlovid, a drug consisting of the antiviral  
216 agents nirmatrelvir and ritonavir, has been shown to be effective in preventing a severe course

217 of COVID-19 (34), which is associated with an increased risk of PCS (35, 36). Findings from a  
218 study using a large dataset of >281,000 participants from the US Department of Veterans  
219 Affairs suggested a protective effect of Paxlovid treatment during acute COVID-19 also for the  
220 development of PCS (37), while other smaller studies couldn't reproduce these findings (38,  
221 39). A first randomized placebo-controlled trial of 155 PCS patients in the STOP-PASC study  
222 showed no significant effect of 15 days of Paxlovid treatment on persistent symptoms (40).  
223 However, in this study viral particles were not assessed; thus, it is not possible to draw  
224 conclusions about the subgroup of patients with evidence of viral persistence.

225 In addition, our data show a reduction or removal of serum spike protein after immunoglobulin  
226 depletion via IA. This suggests that spike protein is bound to anti-spike IgG. However, it cannot  
227 be excluded that there is an unspecific binding of spike protein with the antibody-specific  
228 sepharose gel matrix used for the IA procedure. The presence or reduction of serum spike  
229 protein was not associated with treatment response. This further suggests that persistent spike  
230 protein is not causing symptoms in these pcMECFS patients.

231 The present study has some limitations that need to be addressed. It is a cross-sectional study,  
232 that provides a snapshot of serum spike persistence. Temporal profiling of SARS-CoV-2  
233 antigens in the plasma of PCS patients shows fluctuating concentration profiles of both spike  
234 and nucleocapsid protein over a time period of up to twelve months after infection (19). Regular  
235 blood sampling within a defined time frame and interval would be necessary to shed further  
236 light on the mechanisms of viral persistence and its temporal detectability in serum.

237 We determined the concentration of spike protein RBD in the serum. This is worth mentioning,  
238 as a previous study reported discrepancies between e.g. S1 and full spike protein detection  
239 (19). In addition, spike protein may not only be present in a soluble form, but may also be  
240 transported in extracellular vesicles, as previously reported (20, 41). Other studies have shown  
241 persistence of viral RNA in tissues (13-17). This should be taken into account for interpretation  
242 of the results presented here.

243 As PCS is a highly heterogeneous disease, viral persistence may play a role only in the  
244 pathogenesis of certain subtypes of PCS. Our study focused on a subgroup of patients with

245 ME/CFS or similar symptom complexes. Further research is needed to elucidate potential  
246 differences in spike persistence in clinically and immunologically distinct PCS subtypes and its  
247 potential relevance for the diagnosis and treatment of patients.

248 In conclusion, despite the limitations described, our study provides evidence for serum spike  
249 persistence in a subset of individuals after SARS-CoV-2 infection without an association with  
250 PCS.

251

## 252 **4 Material and Methods**

### 253 **4.1 Study design, study cohorts, and symptom assessment**

254 We conducted an exploratory, cross-sectional study investigating serum spike persistence in  
255 individuals with and without PCS symptoms up to 38 months after SARS-CoV-2 infection. The  
256 study aimed to determine whether serum spike protein is associated with PCS symptoms or  
257 correlates with disease severity and selected laboratory markers.

258 Serum samples and clinical data from 121 PCS patients suffering from moderate to severe  
259 fatigue and exertion intolerance following mostly mild COVID-19 were collected between  
260 October 2020 and January 2024 at the ME/CFS outpatient clinic of the Institute of Medical  
261 Immunology, Charité, Berlin. From these, 72 met the CCC for diagnosis of ME/CFS  
262 (pcMECFS) (42, 43). Relevant cardiac, respiratory, neurological, or psychiatric comorbidities  
263 were excluded. We analyzed 22 pcMECFS patients who had participated in an observational  
264 study of immunoglobulin depletion via IA (IA-pcMECFS) (24, 25). Of these, serum samples at  
265 timepoints before and four weeks after IA were analyzed.

266 Additionally, serum samples from 37 pcHC five to twelve months after their last SARS-CoV-2  
267 infection were obtained between January 2023 and October 2023. pcHCs did not suffer from  
268 a disease with relevant impairment or take regular medication, and had no infection or  
269 vaccination within the last four weeks. To control for assay specificity, 32 pre-pandemic serum  
270 samples from ppHC, collected between January 2019 and October 2019, were analyzed.

271 Cohort characteristics are listed in Table 3. The IA-pcMECFS study group differed significantly  
272 from the other study groups due to a longer disease duration, as well as longer time after  
273 SARS-CoV-2 infection and vaccination. Severity of disease and symptoms were quantified  
274 using questionnaires. PEM was assessed according to Cotler et al. 2018 with scores ranging  
275 from 0 to 46 (no to frequent, severe, long lasting PEM) (44). Functional ability was scored using  
276 the Bell Disability Scale ranging from 0 to 100 (total loss of self-dependence to no restrictions)  
277 (45). Daily physical activities were assessed using the SF-36 ranging from 0 to 100 (greatest  
278 to no restrictions) (46). The severity of the cardinal symptoms fatigue, cognitive impairment,  
279 immune symptoms, and pain were quantified using a Likert scale (1 = no symptoms to 10 =  
280 most severe symptoms). Symptoms of autonomic dysfunction were assessed using the  
281 COMPASS-31 ranging from 0 to 100 (no to strongest symptoms) (47). As evident from the Bell  
282 score, patients with pcMECFS suffered from more severe disease compared to PCS non-  
283 ME/CFS patients, while clinical presentation of pcMECFS and IA-pcMECFS study groups were  
284 comparable (Table 3). Ethical Committee approval for this project was obtained in accordance  
285 with the 1964 Declaration of Helsinki and its later amendments (EA2/066/20 and EA2/067/20).  
286 All study participant signed informed consent before study inclusion.

## 287 **4.2 Quantification of serum spike RBD and anti-S1 IgG**

288 Whole blood samples from participants were allowed to clot at room temperature for at least  
289 30 min and then centrifuged at 2000 x g for 10 min at room temperature. Serum was collected  
290 and stored at -80°C. Serum concentration of the SARS-CoV-2 spike RBD was determined  
291 using Human SARS-CoV-2 RBD ELISA Kit purchased from Thermo Fisher Scientific  
292 (EH492RB) and conducted according to manufacturer's instructions. Serum anti-S1 IgG was  
293 quantified using anti-SARS-CoV-2 QuantiVac ELISA (IgG) purchased from Euroimmun (EI  
294 2606-9601-10 G) and conducted according to manufacturer's instructions. Obtained arbitrary  
295 units (AU) were converted into the WHO International Standard (IS) for anti-SARS-CoV-2  
296 immunoglobulin binding activity (Binding Antibody Units, BAU) by multiplying by a factor of 3.2.

### 297 **4.3 Assessment of routine laboratory and functional parameters**

298 D-Dimer, platelet count, MPV, and IL-8 (post erythrocyte lysis) were determined at the Charité  
299 diagnostics laboratory Labor Berlin GmbH (Berlin, Germany). Autoantibodies (AABs) against  
300 the G protein coupled receptor (GPCR)  $\beta$ 2 adrenergic receptor ( $\beta$ 2-AdR), were determined by  
301 CellTrend GmbH (Luckenwalde, Germany) using indirect ELISA technology.

302 Peripheral endothelial function was assessed in IA-pcMECFS patients by the RHI using RH-  
303 PAT (endoPAT2000, Itamar Medical Ltd., Caesarea, Israel) as previously described (48).

### 304 **4.4 Data Collection and Management**

305 Study data, including clinical and routine laboratory parameters, were collected and managed  
306 using REDCap electronic data capture tools hosted at Charité—Universitätsmedizin Berlin (49,  
307 50).

### 308 **4.5 Statistical analysis**

309 Study data are presented as median with range or interquartile range (IQR) for each study  
310 group (n = number of individuals in the study group) as indicated. Nonparametric statistical  
311 methods were used. Univariate comparisons of two independent groups were done using the  
312 Mann-Whitney-U test and of multiple independent groups using the Kruskal–Wallis test with  
313 Benjamini-Hochberg correction of multiple comparisons. Distribution of categorical data was  
314 compared using chi-square test. Correlation was assessed using Spearman’s rank-order  
315 correlation. A two-tailed p value <0.05 was considered significant. Microsoft Excel 2016 was  
316 used for data analysis and GraphPad Prism 9 was used for statistical analysis and graphical  
317 presentation.

318

## 319 **5 Acknowledgements**

320 We would like to thank the patients who participated in this study, as well as Anja Hagemann,  
321 Silvia Thiel, and Beate Follendorf for their work in patient care and data management.

322 **Funding:** This study was funded by the ME/CFS Research foundation and the Lost Voices  
323 foundation. AF received a scholarship from the Fridericus foundation.

324 **Author contributions:** AF conducted the laboratory work and data analysis of the study. ES,  
325 LK, CK, RR, PG, KW, and CS diagnosed and enrolled the patients, and collected the  
326 biosamples. AF, FH, and SB collected biosamples of healthy controls and processed all  
327 biosamples. FS, HF, and CH managed clinical and routine laboratory data. FS, KW, and CS  
328 provided concept, resources, and supervision. AF, FS, and CS interpreted and discussed the  
329 results. AF, FS, MS, NB, CS, and KW provided scientific insights. AF, FS, and CS wrote the  
330 manuscript. All authors have read, revised, and approved the final version of the manuscript.

331 **Competing interests:** The authors declare no conflict of interest.

332 **Data and materials availability:** All data associated with this study are present in the paper.

333 Correspondence and requests should be addressed to AF ([annick.fehrer@charite.de](mailto:annick.fehrer@charite.de)).

## 334 6 References

- 335 1. J. B. Soriano, S. Murthy, J. C. Marshall, P. Relan, J. V. Diaz, A clinical case definition  
336 of post-COVID-19 condition by a Delphi consensus. *Lancet Infect Dis* **22**, e102-e107  
337 (2022).
- 338 2. E. J. Thompson, D. M. Williams, A. J. Walker, R. E. Mitchell, C. L. Niedzwiedz, T. C.  
339 Yang, C. F. Huggins, A. S. F. Kwong, R. J. Silverwood, G. Di Gessa, R. C. E. Bowyer,  
340 K. Northstone, B. Hou, M. J. Green, B. Dodgeon, K. J. Doores, E. L. Duncan, F. M. K.  
341 Williams, A. Steptoe, D. J. Porteous, R. R. C. McEachan, L. Tomlinson, B. Goldacre,  
342 P. Patalay, G. B. Ploubidis, S. V. Katikireddi, K. Tilling, C. T. Rentsch, N. J. Timpson,  
343 N. Chaturvedi, C. J. Steves, Long COVID burden and risk factors in 10 UK longitudinal  
344 studies and electronic health records. *Nat Commun* **13**, 3528 (2022).
- 345 3. N. D. Ford, D. Slaughter, D. Edwards, A. Dalton, C. Perrine, A. Vahratian, S. Saydah,  
346 Long COVID and Significant Activity Limitation Among Adults, by Age - United States,  
347 June 1-13, 2022, to June 7-19, 2023. *MMWR Morb Mortal Wkly Rep* **72**, 866-870  
348 (2023).
- 349 4. A. Iba, M. Hosozawa, M. Hori, Y. Muto, I. Muraki, R. Masuda, N. Tamiya, H. Iso,  
350 Prevalence of and Risk Factors for Post-COVID-19 Condition during Omicron BA.5-  
351 Dominant Wave, Japan. *Emerg Infect Dis* **30**, 1380-1389 (2024).
- 352 5. C. Kedor, H. Freitag, L. Meyer-Arndt, K. Wittke, L. G. Hanitsch, T. Zoller, F. Steinbeis,  
353 M. Haffke, G. Rudolf, B. Heidecker, T. Bobbert, J. Spranger, H. D. Volk, C. Skurk, F.  
354 Konietschke, F. Paul, U. Behrends, J. Bellmann-Strobl, C. Scheibenbogen, A  
355 prospective observational study of post-COVID-19 chronic fatigue syndrome following  
356 the first pandemic wave in Germany and biomarkers associated with symptom severity.  
357 *Nat Commun* **13**, 5104 (2022).
- 358 6. R. Twomey, J. DeMars, K. Franklin, S. N. Culos-Reed, J. Weatherald, J. G. Wrightson,  
359 Chronic Fatigue and Postexertional Malaise in People Living With Long COVID: An  
360 Observational Study. *Phys Ther* **102**, 1-12 (2022).



- 361 7. E. R. Unger, J. S. Lin, L. E. Wisk, H. Yu, M. L'Hommedieu, H. Lavretsky, J. C. C.  
362 Montoy, M. A. Gottlieb, K. L. Rising, N. L. Gentile, M. Santangelo, A. K. Venkatesh, R.  
363 M. Rodriguez, M. J. Hill, R. E. Geyer, E. R. Kean, S. Saydah, S. A. McDonald, R.  
364 Huebinger, A. H. Idris, J. Dorney, B. Hota, E. S. Spatz, K. A. Stephens, R. A. Weinstein,  
365 J. G. Elmore, Myalgic Encephalomyelitis/Chronic Fatigue Syndrome After SARS-CoV-  
366 2 Infection. *JAMA Netw Open* **7**, e2423555 (2024).
- 367 8. H. E. Davis, L. McCorkell, J. M. Vogel, E. J. Topol, Long COVID: major findings,  
368 mechanisms and recommendations. *Nat Rev Microbiol* **21**, 133-146 (2023).
- 369 9. Y. Su, D. Yuan, D. G. Chen, R. H. Ng, K. Wang, J. Choi, S. Li, S. Hong, R. Zhang, J.  
370 Xie, S. A. Kornilov, K. Scherler, A. J. Pavlovitch-Bedzyk, S. Dong, C. Lausted, I. Lee,  
371 S. Fallen, C. L. Dai, P. Baloni, B. Smith, V. R. Duvvuri, K. G. Anderson, J. Li, F. Yang,  
372 C. J. Duncombe, D. J. McCulloch, C. Rostomily, P. Troisch, J. Zhou, S. Mackay, Q.  
373 DeGottardi, D. H. May, R. Taniguchi, R. M. Gittelman, M. Klinger, T. M. Snyder, R.  
374 Roper, G. Wojciechowska, K. Murray, R. Edmark, S. Evans, L. Jones, Y. Zhou, L.  
375 Rowen, R. Liu, W. Chour, H. A. Algren, W. R. Berrington, J. A. Wallick, R. A. Cochran,  
376 M. E. Micikas, T. Wrin, C. J. Petropoulos, H. R. Cole, T. D. Fischer, W. Wei, D. S. B.  
377 Hoon, N. D. Price, N. Subramanian, J. A. Hill, J. Hadlock, A. T. Magis, A. Ribas, L. L.  
378 Lanier, S. D. Boyd, J. A. Bluestone, H. Chu, L. Hood, R. Gottardo, P. D. Greenberg, M.  
379 M. Davis, J. D. Goldman, J. R. Heath, Multiple early factors anticipate post-acute  
380 COVID-19 sequelae. *Cell* **185**, 881-895.e820 (2022).
- 381 10. B. Chen, B. Julg, S. Mohandas, S. B. Bradfute, R. M. P. T. Force, Viral persistence,  
382 reactivation, and mechanisms of long COVID. *eLife* **12**, e86015 (2023).
- 383 11. B. K. Patterson, E. B. Francisco, R. Yogendra, E. Long, A. Pise, H. Rodrigues, E. Hall,  
384 M. Herrera, P. Parikh, J. Guevara-Coto, T. J. Triche, P. Scott, S. Hekmati, D. Maglinte,  
385 X. Chang, R. A. Mora-Rodríguez, J. Mora, Persistence of SARS CoV-2 S1 Protein in  
386 CD16+ Monocytes in Post-Acute Sequelae of COVID-19 (PASC) up to 15 Months Post-  
387 Infection. *Frontiers in Immunology* **12**, 746021 (2022).

- 388 12. J. Liu, Y. Li, Q. Liu, Q. Yao, X. Wang, H. Zhang, R. Chen, L. Ren, J. Min, F. Deng, B.  
389 Yan, L. Liu, Z. Hu, M. Wang, Y. Zhou, SARS-CoV-2 cell tropism and multiorgan  
390 infection. *Cell Discovery* **7**, 17 (2021).
- 391 13. S. R. Stein, S. C. Ramelli, A. Grazioli, J.-Y. Chung, M. Singh, C. K. Yinda, C. W.  
392 Winkler, J. Sun, J. M. Dickey, K. Ylaya, S. H. Ko, A. P. Platt, P. D. Burbelo, M. Quezado,  
393 S. Pittaluga, M. Purcell, V. J. Munster, F. Belinky, M. J. Ramos-Benitez, E. A. Boritz, I.  
394 A. Lach, D. L. Herr, J. Rabin, K. K. Saharia, R. J. Madathil, A. Tabatabai, S. Soherwardi,  
395 M. T. McCurdy, A. L. Babyak, L. J. Perez Valencia, S. J. Curran, M. E. Richert, W. J.  
396 Young, S. P. Young, B. Gasmi, M. Sampaio De Melo, S. Desar, S. Tadros, N. Nasir, X.  
397 Jin, S. Rajan, E. Dikoglu, N. Ozkaya, G. Smith, E. R. Emanuel, B. L. Kelsall, J. A.  
398 Olivera, M. Blawas, R. A. Star, N. Hays, S. Singireddy, J. Wu, K. Raja, R. Curto, J. E.  
399 Chung, A. J. Borth, K. A. Bowers, A. M. Weichold, P. A. Minor, M. A. N. Moshref, E. E.  
400 Kelly, M. M. Sajadi, T. M. Scalea, D. Tran, S. Dahi, K. B. Deatrick, E. M. Krause, J. A.  
401 Herrold, E. S. Hochberg, C. R. Cornachione, A. R. Levine, J. E. Richards, J. Elder, A.  
402 P. Burke, M. A. Mazzeffi, R. H. Christenson, Z. A. Chancer, M. Abdulmahdi, S. Sopha,  
403 T. Goldberg, Y. Sangwan, K. Sudano, D. Blume, B. Radin, M. Arnouk, J. W. Eagan, R.  
404 Palermo, A. D. Harris, T. Pohida, M. Garmendia-Cedillos, G. Dold, E. Saglio, P. Pham,  
405 K. E. Peterson, J. I. Cohen, E. de Wit, K. M. Vannella, S. M. Hewitt, D. E. Kleiner, D.  
406 S. Chertow, N. C.-A. Consortium, SARS-CoV-2 infection and persistence in the human  
407 body and brain at autopsy. *Nature* **612**, 758-763 (2022).
- 408 14. J. Matschke, M. Lütgehetmann, C. Hagel, J. P. Sperhake, A. S. Schröder, C. Edler, H.  
409 Mushumba, A. Fitzek, L. Allweiss, M. Dandri, M. Dottermusch, A. Heinemann, S.  
410 Pfefferle, M. Schwabenland, D. Sumner Magruder, S. Bonn, M. Prinz, C. Gerloff, K.  
411 Püschel, S. Krasemann, M. Aepfelbacher, M. Glatzel, Neuropathology of patients with  
412 COVID-19 in Germany: a post-mortem case series. *The Lancet Neurology* **19**, 919-929  
413 (2020).
- 414 15. C. Gaebler, Z. Wang, J. C. C. Lorenzi, F. Muecksch, S. Finkin, M. Tokuyama, A. Cho,  
415 M. Jankovic, D. Schaefer-Babajew, T. Y. Oliveira, M. Cipolla, C. Viant, C. O. Barnes,

- 416 Y. Bram, G. Breton, T. Hägglöf, P. Mendoza, A. Hurley, M. Turroja, K. Gordon, K. G.  
417 Millard, V. Ramos, F. Schmidt, Y. Weisblum, D. Jha, M. Tankelevich, G. Martinez-  
418 Delgado, J. Yee, R. Patel, J. Dizon, C. Unson-O'Brien, I. Shimeliovich, D. F. Robbiani,  
419 Z. Zhao, A. Gazumyan, R. E. Schwartz, T. Hatzioannou, P. J. Bjorkman, S. Mehandru,  
420 P. D. Bieniasz, M. Caskey, M. C. Nussenzweig, Evolution of antibody immunity to  
421 SARS-CoV-2. *Nature* **591**, 639-644 (2021).
- 422 16. A. Natarajan, S. Zlitni, E. F. Brooks, S. E. Vance, A. Dahlen, H. Hedlin, R. M. Park, A.  
423 Han, D. T. Schmidtke, R. Verma, K. B. Jacobson, J. Parsonnet, H. F. Bonilla, U. Singh,  
424 B. A. Pinsky, J. R. Andrews, P. Jagannathan, A. S. Bhatt, Gastrointestinal symptoms  
425 and fecal shedding of SARS-CoV-2 RNA suggest prolonged gastrointestinal infection.  
426 *Med* **3**, 371-387.e379 (2022).
- 427 17. M. J. Peluso, D. Ryder, R. R. Flavell, Y. Wang, J. Levi, B. H. LaFranchi, T.-M. Deveau,  
428 A. M. Buck, S. E. Munter, K. A. Asare, M. Aslam, W. Koch, G. Szabo, R. Hoh, M.  
429 Deswal, A. E. Rodriguez, M. Buitrago, V. Tai, U. Shrestha, S. Lu, S. A. Goldberg, T.  
430 Dalhuisen, J. J. Vasquez, M. S. Durstenfeld, P. Y. Hsue, J. D. Kelly, N. Kumar, J. N.  
431 Martin, A. Gambhir, M. Somsouk, Y. Seo, S. G. Deeks, Z. G. Laszik, H. F. VanBrocklin,  
432 T. J. Henrich, Tissue-based T cell activation and viral RNA persist for up to 2 years  
433 after SARS-CoV-2 infection. *Science Translational Medicine* **16**, eadk3295 (2024).
- 434 18. M. J. Peluso, Z. N. Swank, S. A. Goldberg, S. Lu, T. Dalhuisen, E. Borberg, Y. Senussi,  
435 M. A. Luna, C. Chang Song, A. Clark, A. Zamora, M. Lew, B. Viswanathan, B. Huang,  
436 K. Anglin, R. Hoh, P. Y. Hsue, M. S. Durstenfeld, M. A. Spinelli, D. V. Glidden, T. J.  
437 Henrich, J. D. Kelly, S. G. Deeks, D. R. Walt, J. N. Martin, Plasma-based antigen  
438 persistence in the post-acute phase of COVID-19. *The Lancet Infectious Diseases* **24**,  
439 e345-e347 (2024).
- 440 19. Z. Swank, Y. Senussi, Z. Manickas-Hill, X. G. Yu, J. Z. Li, G. Alter, D. R. Walt, Persistent  
441 Circulating Severe Acute Respiratory Syndrome Coronavirus 2 Spike Is Associated  
442 With Post-acute Coronavirus Disease 2019 Sequelae. *Clin Infect Dis* **76**, e487-e490  
443 (2023).

- 444 20. V. Craddock, A. Mahajan, L. Spikes, B. Krishnamachary, A. K. Ram, A. Kumar, L.  
445 Chen, P. Chalise, N. K. Dhillon, Persistent circulation of soluble and extracellular  
446 vesicle-linked Spike protein in individuals with postacute sequelae of COVID-19. *J Med*  
447 *Viro* **95**, e28568 (2023).
- 448 21. N. S. Haddad, A. Morrison-Porter, H. Quehl, V. Capric, P. A. Lamothe, F. Anam, M. C.  
449 Runnstrom, A. D. Truong, A. N. Dixit, M. C. Woodruff, A. Chen, J. Park, D. C. Nguyen,  
450 I. Hentenaar, C. Y. Kim, S. Kyu, B. Stewart, E. Wagman, H. Geoffroy, D. Sanz, K. S.  
451 Cashman, R. P. Ramonell, M. Cabrera-Mora, D. N. Alter, J. D. Roback, M. C. Horwath,  
452 J. B. O'Keefe, A. W. Dretler, R. Gripaldo, S. M. Yeligar, T. Natoli, V. Betin, R. Patel, K.  
453 Vela, M. R. Hernandez, S. Usman, J. Varghese, A. Jalal, S. Lee, S. N. Le, R. T. Amoss,  
454 J. L. Daiss, I. Sanz, F. E. Lee, MENSA, a Media Enriched with Newly Synthesized  
455 Antibodies, to Identify SARS-CoV-2 Persistence and Latent Viral Reactivation in Long-  
456 COVID. *medRxiv*, DOI:10.1101/2024.1107.1105.24310017 (2024).
- 457 22. N. Kanberg, A. Grahn, E. Stentoft, D. Bremell, A. Yilmaz, M. Studahl, S. Nilsson, M.  
458 Schöll, J. M. Gostner, K. Blennow, H. Zetterberg, N. Padmanabhan, R. Cohen, S.  
459 Misaghian, D. Romero, C. Campbell, A. Mathew, M. Wang, G. Sigal, M. Stengelin, A.  
460 Edén, M. Gisslén, COVID-19 Recovery: Consistent Absence of Cerebrospinal Fluid  
461 Biomarker Abnormalities in Patients With Neurocognitive Post-COVID Complications.  
462 *The Journal of Infectious Diseases* **229**, 493-501 (2023).
- 463 23. A. Zollner, R. Koch, A. Jukic, A. Pfister, M. Meyer, A. Rössler, J. Kimpel, T. E. Adolph,  
464 H. Tilg, Postacute COVID-19 is Characterized by Gut Viral Antigen Persistence in  
465 Inflammatory Bowel Diseases. *Gastroenterology* **163**, 495-506.e498 (2022).
- 466 24. E. Stein, C. Heindrich, K. Wittke, C. Kedor, L. Kim, H. Freitag, A. Krüger, M. Tölle, C.  
467 Scheibenbogen, Observational Study of Repeat Immunoabsorption (RIA) in Post-  
468 COVID ME/CFS Patients with Elevated  $\beta$ 2-Adrenergic Receptor Autoantibodies-An  
469 Interim Report. *J Clin Med* **12**, 6428 (2023).
- 470 25. E. Stein, C. Heindrich, K. Wittke, C. Kedor, R. Rust, H. Freitag, F. Sotzny, A. Krüger,  
471 M. Tölle, P. Grabowski, C. Scheibenbogen, L. Kim, Efficacy of Repeat

- 472 Immunoadsorption in Post-COVID ME/CFS Patients with Elevated  $\beta$ 2-Adrenergic  
473 Receptor Autoantibodies: a Prospective Cohort Study. *Available at SSRN:*  
474 <https://ssrn.com/abstract=4911576>, (2024).
- 475 26. I. Katsoularis, O. Fonseca-Rodríguez, P. Farrington, H. Jerndal, E. H. Lundevaller, M.  
476 Sund, K. Lindmark, A. M. Fors Connolly, Risks of deep vein thrombosis, pulmonary  
477 embolism, and bleeding after covid-19: nationwide self-controlled cases series and  
478 matched cohort study. *Bmj* **377**, e069590 (2022).
- 479 27. S. M. Menezes, M. Jamouille, M. P. Carletto, L. Moens, I. Meyts, P. Maes, J. Van  
480 Weyenbergh, Blood transcriptomic analyses reveal persistent SARS-CoV-2 RNA and  
481 candidate biomarkers in post-COVID-19 condition. *The Lancet Microbe* **5**, 100849  
482 (2024).
- 483 28. A. Rahmati, S. Shahbaz, M. Osman, J. W. C. Tervaert, S. Elahi, Blood transcriptomic  
484 analyses do not support SARS-CoV-2 persistence in patients with post-COVID-19  
485 condition with chronic fatigue syndrome. *The Lancet Microbe* **0**, 101012 (2024).
- 486 29. W. Zuo, D. He, C. Liang, S. Du, Z. Hua, Q. Nie, X. Zhou, M. Yang, H. Tan, J. Xu, Y.  
487 Yu, Y. Zhan, Y. Zhang, X. Gu, W. Zhu, H. Zhang, H. Li, W. Sun, M. Sun, X. Liu, L. Liu,  
488 C. Cao, R. Li, J. Li, Y. Zhang, Y. Zhang, J. Guo, L. Zhao, C.-P. Zhang, H. Liu, S. Wang,  
489 F. Xiao, Y. Wang, Z. Wang, H. Li, B. Cao, The persistence of SARS-CoV-2 in tissues  
490 and its association with long COVID symptoms: a cross-sectional cohort study in China.  
491 *The Lancet Infectious Diseases* **24**, 845-855 (2024).
- 492 30. G. D. de Melo, F. Lazarini, S. Levallois, C. Hautefort, V. Michel, F. Larrous, B. Verillaud,  
493 C. Aparicio, S. Wagner, G. Gheusi, L. Kergoat, E. Kornobis, F. Donati, T. Cokelaer, R.  
494 Hervocho, Y. Madec, E. Roze, D. Salmon, H. Bourhy, M. Lecuit, P. M. Lledo, COVID-  
495 19-related anosmia is associated with viral persistence and inflammation in human  
496 olfactory epithelium and brain infection in hamsters. *Sci Transl Med* **13**, eabf8396  
497 (2021).
- 498 31. L. Perico, M. Morigi, A. Pezzotta, M. Locatelli, B. Imberti, D. Corna, D. Cerullo, A.  
499 Benigni, G. Remuzzi, SARS-CoV-2 spike protein induces lung endothelial cell

- 500 dysfunction and thrombo-inflammation depending on the C3a/C3a receptor signalling.  
501 *Scientific Reports* **13**, 11392 (2023).
- 502 32. A. C. Montezano, L. L. Camargo, S. Mary, K. B. Neves, F. J. Rios, R. Stein, R. A.  
503 Lopes, W. Beattie, J. Thomson, V. Herder, A. M. Szemiel, S. McFarlane, M. Palmarini,  
504 R. M. Touyz, SARS-CoV-2 spike protein induces endothelial inflammation via ACE2  
505 independently of viral replication. *Scientific Reports* **13**, 14086 (2023).
- 506 33. M. J. Peluso, A. N. Deitchman, L. Torres, N. S. Iyer, S. E. Munter, C. C. Nixon, J.  
507 Donatelli, C. Thanh, S. Takahashi, J. Hakim, K. Turcios, O. Janson, R. Hoh, V. Tai, Y.  
508 Hernandez, E. A. Fehrman, M. A. Spinelli, M. Gandhi, L. Trinh, T. Wrin, C. J.  
509 Petropoulos, F. T. Aweeka, I. Rodriguez-Barraquer, J. D. Kelly, J. N. Martin, S. G.  
510 Deeks, B. Greenhouse, R. L. Rutishauser, T. J. Henrich, Long-term SARS-CoV-2-  
511 specific immune and inflammatory responses in individuals recovering from COVID-19  
512 with and without post-acute symptoms. *Cell Reports* **36**, 109518 (2021).
- 513 34. J. Hammond, H. Leister-Tebbe, A. Gardner, P. Abreu, W. Bao, W. Wisemandle, M.  
514 Baniecki, V. M. Hendrick, B. Damle, A. Simón-Campos, R. Pypstra, J. M. Rusnak, Oral  
515 Nirmatrelvir for High-Risk, Nonhospitalized Adults with Covid-19. *New England Journal*  
516 *of Medicine* **386**, 1397-1408 (2022).
- 517 35. Y. Xie, B. Bowe, Z. Al-Aly, Burdens of post-acute sequelae of COVID-19 by severity of  
518 acute infection, demographics and health status. *Nat Commun* **12**, 6571 (2021).
- 519 36. E. L. Hill, H. B. Mehta, S. Sharma, K. Mane, S. K. Singh, C. Xie, E. Cathey, J. Loomba,  
520 S. Russell, H. Spratt, P. E. DeWitt, N. Ammar, C. Madlock-Brown, D. Brown, J. A.  
521 McMurry, C. G. Chute, M. A. Haendel, R. Moffitt, E. R. Pfaff, T. D. Bennett, Risk factors  
522 associated with post-acute sequelae of SARS-CoV-2: an N3C and NIH RECOVER  
523 study. *BMC Public Health* **23**, 2103 (2023).
- 524 37. Y. Xie, T. Choi, Z. Al-Aly, Association of Treatment With Nirmatrelvir and the Risk of  
525 Post-COVID-19 Condition. *JAMA Internal Medicine* **183**, 554-564 (2023).
- 526 38. M. S. Durstenfeld, M. J. Peluso, F. Lin, N. D. Peyser, C. Isasi, T. W. Carton, T. J.  
527 Henrich, S. G. Deeks, J. E. Olgin, M. J. Pletcher, A. L. Beatty, G. M. Marcus, P. Y.

- 528 Hsue, Association of nirmatrelvir for acute SARS-CoV-2 infection with subsequent  
529 Long COVID symptoms in an observational cohort study. *J Med Virol* **96**, e29333  
530 (2024).
- 531 39. S. Congdon, Z. Narrowe, N. Yone, J. Gunn, Y. Deng, P. Nori, K. Cowman, M. Islam, S.  
532 Rikin, J. Starrels, Nirmatrelvir/ritonavir and risk of long COVID symptoms: a  
533 retrospective cohort study. *Sci Rep* **13**, 19688 (2023).
- 534 40. L. N. Geng, H. Bonilla, H. Hedlin, K. B. Jacobson, L. Tian, P. Jagannathan, P. C. Yang,  
535 A. K. Subramanian, J. W. Liang, S. Shen, Y. Deng, B. J. Shaw, B. Botzheim, M. Desai,  
536 D. Pathak, Y. Jazayeri, D. Thai, A. O'Donnell, S. Mohaptra, Z. Leang, G. Z. M.  
537 Reynolds, E. F. Brooks, A. S. Bhatt, R. W. Shafer, M. G. Miglis, T. Quach, A. Tiwari, A.  
538 Banerjee, R. N. Lopez, M. De Jesus, L. R. Charnas, P. J. Utz, U. Singh, Nirmatrelvir-  
539 Ritonavir and Symptoms in Adults With Postacute Sequelae of SARS-CoV-2 Infection:  
540 The STOP-PASC Randomized Clinical Trial. *JAMA Intern Med* **184**, 1024-1034 (2024).
- 541 41. Z. Troyer, N. Alhusaini, C. O. Tabler, T. Sweet, K. I. L. de Carvalho, D. M. Schlatzer, L.  
542 Carias, C. L. King, K. Matreyek, J. C. Tilton, Extracellular vesicles carry SARS-CoV-2  
543 spike protein and serve as decoys for neutralizing antibodies. *J Extracell Vesicles* **10**,  
544 e12112 (2021).
- 545 42. B. M. Carruthers, A. K. Jain, K. L. De Meirleir, D. L. Peterson, N. G. Klimas, A. M.  
546 Lerner, A. C. Bested, P. Flor-Henry, P. Joshi, A. C. P. Powles, J. A. Sherkey, M. I. van  
547 de Sande, Myalgic Encephalomyelitis/Chronic Fatigue Syndrome. *Journal of Chronic*  
548 *Fatigue Syndrome* **11**, 7-115 (2003).
- 549 43. L. A. Jason, M. Evans, N. Porter, M. Brown, A. Brown, J. Hunnell, V. Anderson, A.  
550 Lerch, K. De Meirleir, F. Friedberg, The Development of a Revised Canadian Myalgic  
551 Encephalomyelitis Chronic Fatigue Syndrome Case Definition. *American Journal of*  
552 *Biochemistry and Biotechnology* **6**, 120-135 (2010).
- 553 44. J. Cotler, C. Holtzman, C. Dudun, L. A. Jason, A Brief Questionnaire to Assess Post-  
554 Exertional Malaise. *Diagnostics (Basel)* **8**, 66 (2018).

- 555 45. D. S. Bell, *The doctor's guide to chronic fatigue syndrome: understanding, treating, and*  
556 *living with Cfids*. (Reading, Mass., Addison-Wesley Pub. Co., 1994).
- 557 46. J. E. Ware, Jr., C. D. Sherbourne, The MOS 36-item short-form health survey (SF-36).  
558 I. Conceptual framework and item selection. *Med Care* **30**, 473-483 (1992).
- 559 47. D. M. Sletten, G. A. Suarez, P. A. Low, J. Mandrekar, W. Singer, COMPASS 31: a  
560 refined and abbreviated Composite Autonomic Symptom Score. *Mayo Clin Proc* **87**,  
561 1196-1201 (2012).
- 562 48. M. Haffke, H. Freitag, G. Rudolf, M. Seifert, W. Doehner, N. Scherbakov, L. Hanitsch,  
563 K. Wittke, S. Bauer, F. Konietzschke, F. Paul, J. Bellmann-Strobl, C. Kedor, C.  
564 Scheibenbogen, F. Sotzny, Endothelial dysfunction and altered endothelial biomarkers  
565 in patients with post-COVID-19 syndrome and chronic fatigue syndrome (ME/CFS). *J*  
566 *Transl Med* **20**, 138 (2022).
- 567 49. P. A. Harris, R. Taylor, R. Thielke, J. Payne, N. Gonzalez, J. G. Conde, Research  
568 electronic data capture (REDCap)--a metadata-driven methodology and workflow  
569 process for providing translational research informatics support. *J Biomed Inform* **42**,  
570 377-381 (2009).
- 571 50. P. A. Harris, R. Taylor, B. L. Minor, V. Elliott, M. Fernandez, L. O'Neal, L. McLeod, G.  
572 Delacqua, F. Delacqua, J. Kirby, S. N. Duda, The REDCap consortium: Building an  
573 international community of software platform partners. *J Biomed Inform* **95**, 103208  
574 (2019).

575

576



577 **7 Tables**

578 **Table 1. Comparative analysis of disease and symptom severity in pcMECFS patients**  
579 **with (Spike+) or without (Spike-) persistent serum spike RBD.**

Parameter	Spike+ (n=10)	Spike- (n=62)	p-value
	median	median	
	(range)	(range)	
	n	n	
<b>Severity of disability and PEM</b>			
	30.00	30.00	
Bell Disability Scale	(20.00-40.00)	(10.00-60.00)	0.7380
	n=10	n=61	
	25.00	35.00	
SF-36 Physical Functioning	(5.00-50.00)	(0.00-70.00)	0.1021
	n=10	n=61	
	36.00	34.00	
PEM score	(29.00-46.00)	(19.00-46.00)	0.5707
	n=9	n=58	
<b>Symptom scores</b>			
	8.25	8.00	
Fatigue score	(6.25-10.00)	(5.5-10.00)	0.8686
	n=9	n=59	

	6.67 (1.67-9.33) n=9	7.00 (2.33-10.00) n=60	0.9265
Cognitive score			
	2.67 (1.00-7.33) n=8	3.67 (1.00-8.67) n=58	0.2961
Immune score			
	6.00 (1.00-10.00) n=9	6.50 (1.00-10.00) n=60	0.5623
Headache			
	6.00 (1.00-10.00) n=9	7.00 (1.00-10.00) n=60	0.6602
Muscle pain			
	6.00 (1.00-9.00) n=9	5.00 (1.00-10.00) n=60	0.8496
Joint pain			
<b>Assessment of autonomic dysfunction</b>			
	41.51 (11.55-58.24) n=10	38.25 (2.68-76.23) n=59	0.4045
COMPASS-31 total			

580 Mann-Whitney U rank-sum test was performed to test the statistical significance of the  
581 difference in numerical data between the study groups. SF-36=Short Form Health Survey 36,  
582 PEM=post-exertional malaise, COMPASS-31=Composite Autonomic Symptom Score 31.  
583

584 **Table 2. Comparative analysis of routine laboratory and functional markers of pcMECFS**  
585 **patients with (Spike+) or without (Spike-) persistent serum spike RBD.**

Parameter	Reference Range	Spike+ (n=10) median (IQR) n(out of reference range)/n	Spike- (n=62) median (IQR) n(out of reference range)/n	p-value
<b>A) Thrombotic and inflammatory markers</b>				
IL-8 [pg/ml]	<150.00	126.80 (94.60-132.10) 1/7	131.00 (106.20-176.90) 18/55	0.2705
D-Dimer [mg/l]	<0.50	0.21 (0.19-0.34) 0/5	0.23 (0.19-0.38) 3/39	0.5863
Platelets [/nl]	150.00-370.00	258.50 (244.50-277.00) 0/8	265.50 (220.75-308.50) 3/60	0.9513
MPV [fl]	7.00-12.00	10.90 (10.45-11.55) 1/8	10.70 (10.20-11.60) 4/60	0.5273
<b>B) <math>\beta</math>2-AdR-AAB and anti-S1 IgG</b>				
$\beta$ 2-AdR-AAB [a.u.]	<14.00	24.15 (10.2-34.79) 6/10	15.63 (8.51-24.50) 31/59	0.2613

	1953.51	838.33	1185.01	
anti-S1 IgG [BAU/ml]	(1034.04-3265.13)	(447.05-1957.15)	(547.86-1944.94)	0.7382
median, (IQR), n	n=16*	n=10	n=32	

<b>C) Markers of endothelial dysfunction</b>				
		1.78	2.08	
RHI	>1.67	(1.41-2.19)	(1.70-2.37)	0.4531
		2/4	4/17	

586 \*Median (IQR) of 16 pCHC. Mann-Whitney U rank-sum test was performed to test the statistical  
 587 significance of the difference in numerical data between the study groups. IQR= interquartile  
 588 range, NA=not assessed, MPV=mean platelet volume,  $\beta$ 2-AdR=  $\beta$ 2 adrenergic receptor,  
 589 AAB=autoantibody, S1=spike protein subunit 1, BAU=Binding Antibody Units, RHI= reactive  
 590 hyperemia index.

591

592 **Table 3. Cohort characteristics**

Study group	ppHC	pcHC	PCS	pcMECFS	IA-pcMECFS	p-values
n	32	37	49	50	22	NA
						p1=0.2463
						p2=0.1484
Age [y],	29	34	37	40.5	40	p3=0.0824
median	(21-54)	(23-56)	(23-62)	(21-59)	(31-59)	p4=0.6535
(range)						p5=0.3027
						p6=0.4243
Female sex [%]	77.14	78.38	79.59	80.00	68.18	p=0.8230
Duration of						p4=0.3443
illness [m],	NA	NA	9	9	20	<b>p5&lt;0.0001</b>
median			(6-14)	(6-17)	(8-41)	<b>p6&lt;0.0001</b>
(range)						
Time after last						p1=0.0679
SARS-CoV-2						p2=0.3034
infection [m],	NA	10	8	9	14	p3=0.2233
median		(5-12)	(1-13)	(5-12)	(2-38)	p4=0.2819
(range)						<b>p5=0.0055</b>
						p6=0.0504
Time after last						<b>p1=0.0032</b>
SARS-CoV-2		16	9	11.5	17	p2=0.0955
vaccination [m],	NA	(4-22)	(0-20)	(0-24)	(0-24)	p3=0.3700
median		0 unvacc.	9 unvacc.	6 unvacc.	1 unvacc.	p4=0.1049
(range)		n=24	n=47	n=49	n=20	<b>p5=0.0004</b>
						<b>p6=0.0133</b>

---

Bell Disability						<b>p4&lt;0.0001</b>
Scale,			50	30	30	
median	NA	NA	(30-90)	(10-60)	(20-40)	<b>p5&lt;0.0001</b>
(range)						p6=0.4806

---

593 Kruskal-Wallis rank-sum test or Mann-Whitney U rank-sum test were performed to test the  
594 statistical significance of the difference in numerical data between multiple or two of the post-  
595 COVID cohort groups (pcHC, PCS, pcMECFS) respectively. Distribution of categorical data  
596 was compared using chi-square test. p1=PCS vs. pcHC, p2=pcMECFS vs pcHC, p3=IA-  
597 pcMECFS vs pcHC, p4=PCS vs pcMECFS, p5=PCS vs IA-pcMECFS, p6=pcMECFS vs IA-  
598 pcMECFS. ppHC=pre-pandemic healthy control, pcHC=post-COVID healthy control,  
599 PCS=PCS non-ME/CFS, pcMECFS=post-COVID ME/CFS, IA-pcMECFS=Immunoabsorption  
600 pcMECFS (pcMECFS subcohort before IA), unvacc.=unvaccinated, y=years, m=months.  
601 Significant differences are highlighted in bold.