

1 **Title**

2 Evaluating the effects of Toronto’s supervised consumption sites on crime: multiple baseline interrupted  
3 time series analyses with and without synthetic controls

4 **Authors**

5 Dimitra Panagiotoglou<sup>1</sup>, PhD; Jihoon Lim<sup>1</sup>, PhD; Geoff Ingram<sup>1</sup>, BA; Mariam El Sheikh<sup>1</sup>, MScPH; Imen  
6 Farhat<sup>1</sup>, MS; Xander Bjornsson<sup>1</sup>, BSc; Maximilian Schaefer<sup>1</sup>, MScPH

7 <sup>1</sup> Department of Epidemiology, Biostatistics and Occupational Health, McGill University, Montreal,  
8 Québec, Canada

9 **Corresponding Author**

10 Dimitra Panagiotoglou, PhD  
11 2001 McGill College Avenue  
12 Montreal, QC  
13 H3A 1G1

14 Tel: 514-398-8451

15 Email: dimitra.panagiotoglou@mcgill.ca

16 **Current word count:** 3579

17 **Abstract (241 words)**

18 **Background:** Between 2017 and 2018, nine overdose prevention sites and supervised consumption sites  
19 (OPS/SCS) began operating in Toronto, Canada. This paper aimed to evaluate the effects of the OPS/SCS  
20 on incidence and rates of crime (i.e., assault, auto theft, break and enter, robbery, theft over \$5000, bicycle  
21 theft, and theft from motor vehicle) and mental health act apprehensions.

22 **Methods:** Primary analyses used multiple baseline interrupted time series to compare outcome incidences  
23 within 100m, 200m and 500m of each OPS/SCS pre- vs. post-implementation. Secondary analyses  
24 compared rates of outcomes in treated vs. synthetic control neighbourhoods. We used exclusively publicly  
25 available confirmed incidents that occurred within city boundaries between 1 January 2014 and 30 June  
26 2024.

27 **Results:** Within 100m of OPS/SCS, incidents of assaults (61%, 95%CI: 10 to 134%), robberies (62%,  
28 95%CI: 10 – 138%), and break and enters (47%, 95%CI: 6 – 104%) increased following sites’  
29 implementation; but monthly incident trends for robberies (-2%, 95%CI: -3 – 0%) and break and enters (-  
30 2%, 95%CI: -3 – -1%) declined. At 200m and 500m, there were no observed level effects in incidents of  
31 assault or robberies, but level effects persisted for break and enters. Further, thefts from motor vehicles (-  
32 2%, 95%CI: -3% – -1%) declined faster post-implementation. Our secondary analysis revealed rates of  
33 assaults increased faster (1%, 95%CI: 0 – 1%;  $p=0.003$ ) in treated neighbourhoods compared with  
34 synthetic controls.

35 **Conclusions and relevance:** The effects of Toronto’s OPS/SCS on crime were complex; with immediate  
36 effects being attenuated or reversed over time.

37

38 **Introduction (476 words)**

39 Like much of North America, Canada's largest city, Toronto, has been hit hard by the ongoing opioid  
40 crisis. Since 2016 there have been over 3,251 opioid-related deaths; and in 2021 the death rate exceeded  
41 19.4 deaths per 100,000,<sup>1</sup> putting it on par with cities like San Diego, New York, Houston, Las Vegas, and  
42 Seattle.<sup>2</sup>

43 As part of the city's harm reduction strategy, nine overdose prevention sites (OPS) and supervised  
44 consumption sites (SCS) were implemented between 2017 and 2018. Despite evidence demonstrating the  
45 health benefits of OPS/SCS for people who use unregulated drugs,<sup>3,4</sup> these sites remain controversial.  
46 Critics argue OPS/SCS may increase local crime by attracting drug-related activity such as theft, assault  
47 and open drug use.<sup>5</sup> In February 2024, a class action lawsuit was filed against one of the city's SCS  
48 attributing it to the neighbourhood's deterioration. The lawsuit included reports of 'the sale and use of  
49 illicit drug[s], assault, theft, vandalism, property damage and trespass[ing]' and the death of Karolina  
50 Huebner-Makurat from a stray bullet months earlier.<sup>6,7</sup>

51 Early evidence following the implementation of Vancouver's Insite in 2003, and Sydney's Kings Cross  
52 site in 2001 found no changes in police-recorded thefts or robberies, drug possession, drug dealing, open  
53 drug use or assaults.<sup>8-10</sup> More recently, a study examining the effects of an unsanctioned SCS in the  
54 United States reported assault, burglary, larceny theft, robbery and drug related incidents declined in the  
55 treated neighbourhood but remained the same in two control communities.<sup>11</sup> Similarly, a study comparing  
56 crime near New York's two overdose prevention sites with the city's syringe service programs observed  
57 no significant effects on counts of violent or property crimes in aggregate.<sup>12</sup> However, the study did reveal  
58 a 30.4% (95% CI: 10.4, 54.0%) increase in aggravated assaults, and a 69.1% (95% CI: 18.3, 141.7%)  
59 increase in vehicle thefts offset by the 34.9% (95% CI: -54.0, -7.8%) decline in robberies. Meanwhile, a  
60 second study of New York's sites found differential effects of the SCS owing to plausible moderating  
61 factors including a 'target of opportunity' for petty larceny near one site but not the other.<sup>13</sup>

62 While studies indicate SCS do not increase neighbourhood crime and may reduce public drug use,  
63 differences in the methods used and their respective limitations may explain the variations in the  
64 outcomes reported. These include short observation periods and the inability to detect meaningful  
65 differences in crime trends over time, aggregating crimes to improve statistical power but losing nuance  
66 in the results reported, and not adjusting for local population demographics. Further, many of the studies  
67 dominating the literature are specific to well-resourced sites and, in the case of Vancouver's Insite, set up  
68 as a pilot to demonstrate feasibility and impact.<sup>14</sup> Given the ongoing equipoise, and local arguments

69 opposed to the continued operation of Toronto’s sites, we evaluated the effects of the city’s nine OPS/SCS  
70 on neighbourhood crime and mental health act apprehensions using publicly available data.

## 71 **Method (1222 words)**

### 72 *Study design*

73 We used a multiple baseline interrupted time series study design with and without synthetic controls.

### 74 *Setting*

75 Between 2011 and 2021, the population of Toronto grew from 2.6 million to 2.8 million.<sup>15</sup> The city is  
76 ethno-racially diverse with 52% of residents self-identifying as visible minorities, and just under half the  
77 population comprised of immigrants.<sup>16</sup> Between 1990 and 2022, the city was divided into 140  
78 neighbourhoods with unique demographics and social service needs. Each neighbourhood is comprised of  
79 multiple, contiguous Statistics Canada census tracts – and no census tract crosses neighbourhood  
80 boundaries.<sup>17</sup> Although some neighbourhoods were redefined to reflect demographic and density change  
81 in spring 2022, we refer to the original 140 neighbourhood boundaries in our study.

82 While heat maps of opioid-poisoning calls from as early as 2017 demonstrate poisonings occurred across  
83 the city, the majority of events have been concentrated in the downtown core.<sup>18</sup> In response, the Overdose  
84 Prevention Society opened the first unsanctioned OPS in Moss Park in August 2017 and within a year,  
85 nine OPS/SCS were in operation (Supplemental Table 1).

### 86 *Data*

87 We used data from four publicly available datasets collected and maintained by Toronto Police Service:  
88 Major Crime Indicators (MCI), Bicycle Thefts, Theft from Motor Vehicle, and Mental Health Act  
89 Apprehensions. The MCI included records for five major crimes: assault, auto theft, break and enter,  
90 robbery, and theft over \$5000. Assaults included the direct or indirect application, and attempt, of force to  
91 another person. Auto thefts were limited to acts of taking another person’s vehicle and excluded attempts.  
92 Break and enters were acts of entering places with the *intent* to commit indictable offenses. Robbery  
93 included acts of taking property from a person or business using force or intimidation in the presence of a  
94 victim. Theft over \$5000 excluded auto theft, while bicycle thefts and theft from motor vehicle included  
95 all confirmed bikes stolen or vehicles broken into for the purposes of retrieving items. Finally, mental  
96 health act apprehensions included all police apprehensions of persons identified as a risk to themselves or  
97 others for the provision of medical care and up to 72 hours of observation. Across all four datasets, each  
98 incident record included a unique identifier, date of occurrence, and the name and numeric identifier of

99 the neighbourhood. Apart from mental health act apprehensions, the remaining three datasets also  
100 included geo-coordinates of the intersection closest to the event location.

101 We restricted analyses to founded crimes that occurred between 1 January 2014 and 30 June 2024; and  
102 fall under two types of offences within Canada’s Criminal Code: offences against rights of property (e.g.,  
103 theft) and crimes against persons. Unlike other criminal systems, there is no formal distinction between  
104 ‘petty’ and ‘grand’ theft, except by way of penalty, using \$5000 as the threshold. We considered bicycle  
105 theft and theft from vehicle as petty theft, motor vehicle theft and theft over \$5000 as grand theft, and  
106 assault and robbery as crimes against persons given the presence of a victim.<sup>19</sup> Break and enters are also  
107 offences against property but were not categorized as grand or petty theft.

### 108 *Analysis*

109 We conducted two sets of analyses to overcome the limitations observed in other studies. For our primary  
110 analysis, we used a multiple baseline interrupted time series study design with negative binomial  
111 regression to test for level and trend changes on counts of crimes within 100m, 200m and 500m of the  
112 nine OPS/SCS:  $outcome_{jt} = \beta_0 + \beta_1 \cdot time_t + \beta_2 \cdot level_j + \beta_3 \cdot trend_{jt} + \epsilon_{jt}$ , where  $\beta_1$  is the underlying trend in  
113 the outcome across time,  $\beta_2$  captures the level effect immediately post-implementation, and  $\beta_3$  represents  
114 the trend effect following the implementation of the local SCS/OPS relative to the underlying trend.  
115 Because some sites opened within the radii of observation of previously implemented sites (e.g., Fred  
116 Victor site opened within 500m of the Moss Park site), to avoid double counting crimes/apprehensions,  
117 we only assigned events that occurred outside the first site’s radius to the new site. We set the month of  
118 implementation as time zero, and restricted our observation periods to monthly intervals where all sites  
119 contributed to that month’s count. To account for data heteroscedasticity and autocorrelation, we used  
120 Newey-West standard errors and set our lag to 3. As a sensitivity analysis, we repeated our analysis using  
121 a donut hole approach to test for a potential displacement effect (i.e., event incidents rose in the  
122 immediate proximity of sites but dissipated elsewhere in the neighbourhood, for a net neutral effect) by  
123 excluding events that occurred within 100m for our two other distances (i.e., >100 – 200m, and >100 –  
124 500m).

125 For our secondary analysis, we used a multiple baseline interrupted time series study design comparing  
126 outcome rates in neighbourhoods with OPS/SCS to rates in synthetic control neighbourhoods. For the  
127 neighbourhood level analyses, we linked Toronto Police Service records with 2011, 2016, and 2021  
128 census tract profiles using their respective year of incidence and boundary files for point-in-polygon  
129 spatial joins and created a synthetic control from the pool of neighbourhoods that never implemented an  
130 OPS/SCS during our observation period using Abadie et al.’s approach.<sup>20</sup> This allowed us to control for

131 underlying trends in outcomes observed elsewhere in the city and for demographic differences within  
132 neighbourhoods. To create the synthetic controls, we first created demographic profiles of each  
133 neighbourhood by weighting the census tracts that fell within each neighbourhood's boundaries.<sup>21</sup> We  
134 excluded from the pool of potential controls neighbourhoods whose boundaries were within the 500m  
135 radius of the OPS/SCS and accounted for population size and density, proportion of females, distribution  
136 of age (0-14, 15-64, and 65+) and average age, average household size, median income, prevalence of  
137 low-income households after tax, unemployment rate, and proportion of lone-parent households,  
138 immigrants, visible minorities, and individuals without high school diploma or equivalent certificate  
139 when creating synthetic controls.

140 We used controlled interrupted time series analysis and segmented regression to compare the level and  
141 trends of crime and mental health act apprehension rates observed in treated vs. synthetic control  
142 neighbourhoods post-implementation:  $outcome_{jkt} = \beta_0 + \beta_1 \cdot time_t + \beta_2 \cdot group_k + \beta_3 \cdot group_k \cdot time_t + \beta_4 \cdot$   
143  $level_{jt} + \beta_5 \cdot trend_{jt} + \beta_6 \cdot level_{jt} \cdot group_k + \beta_7 \cdot trend_{jt} \cdot group_k + \varepsilon_{jkt}$  where  $\beta_1$  is the underlying trend in the  
144 outcome observed in the synthetic control group,  $\beta_2$  is the level difference pre-intervention between the  
145 synthetic control and treated group,  $\beta_3$  represents the difference in trend between the treated and synthetic  
146 control group *before* the intervention is implemented,  $\beta_4$  is the level change in the synthetic control group  
147 post-implementation compared with immediately before the intervention's implementation,  $\beta_5$  is the trend  
148 change for the synthetic control post-implementation,  $\beta_6$  is the level change of the treated group *relative to*  
149 the synthetic control group change observed post-implementation, and  $\beta_7$  is the trend change in the treated  
150 group *relative to* the synthetic control group post-implementation. As with the primary analysis, we  
151 centred on month of implementation for each treated-synthetic control dyad. Since our outcome was rates  
152 per 100,000 population, as before, we used negative binomial regressions, with Newey-West standard  
153 errors.

154 All data preparation and analyses were conducted using R version 4.3.1 in R studio, with packages  
155 geosphere, AICcmodavg, tidyverse, sf, Synth, crsuggest, cancensus, foreign, tsModel, lmtest, Epi, splines,  
156 vcd, sandwich, reshape2, SCTools, janitor, gdata, rlang, tidysselect, car, and nlme.

### 157 *Ethics*

158 This study used publicly available data and was exempt from ethics review by McGill's institutional  
159 review board.

160

## 161 **RESULTS (605 words)**

162 After removing duplicates, errors, and incidents that occurred outside city boundaries, 172,681 assaults,  
163 56,414 auto thefts, 71,255 break and enters, 26,180 robberies, 12,528 thefts over \$5000, 29,128 bicycle  
164 thefts, 92,803 thefts from motor vehicles, and 110,387 mental health act apprehensions occurred within  
165 Toronto during the observation period. Of these, 21,705 (12.57%) assaults, 1,805 (3.20%) auto thefts,  
166 6,808 (9.55%) break and enters, 4,103 (15.67%) robberies, 1,085 (8.66%) thefts over \$5000, 5,586  
167 (19.18%) bicycle thefts, and 8,286 (8.93%) thefts from motor vehicles occurred within 500m of the  
168 OPS/SCS locations.

169 Table 1 summarizes the results of our primary analysis and its accompanying sensitivity analysis.

170 Within 100m of OPS/SCS, there were no statistically significant level or trend effects in incidents of auto  
171 theft or thefts over \$5000. Counts of assaults rose 61% (1.61, 95% CI: 1.10 to 2.34;  $p=0.013$ ), break and  
172 enters increased 47% (1.47, 95% CI: 1.06 to 2.04;  $p=0.019$ ), and robberies jumped 62% (1.62, 95% CI:  
173 1.10 to 2.38;  $p=0.015$ ) immediately following sites' implementation; while monthly incidence trends  
174 declined 2% for break and enters (0.98, 95% CI: 0.97 to 0.99;  $p=0.004$ ) and robberies (0.98, 95% CI: 0.97  
175 to 1.00;  $p=0.021$ ). We did not detect a statistically significant change in trend for assaults following  
176 implementation (1.00, 95% CI: 0.99 to 1.01;  $p=0.653$ ). In absolute terms, these level and trend differences  
177 translate to an estimated 5.96 more assaults, 2.72 fewer break and enters, and 1.19 fewer robberies five  
178 years of site openings.

179 Within 200m of OPS/SCS, the lack of observed level or trend effects for auto theft and theft over \$5000  
180 persisted. There was also no level effect observed for assaults (1.05, 95% CI: 0.92 to 1.19;  $p=0.452$ ) or  
181 robberies (0.93, 95% CI: 0.66 to 1.32;  $p=0.700$ ). However, break and enters increased 70% (1.70, 95%  
182 CI: 1.39 to 2.07;  $p<0.001$ ) immediately following sites' implementations. Monthly trends for assaults  
183 (0.99, 95% CI: 0.99 to 1.00;  $p=0.001$ ), break and enters (0.99, 95% CI: 0.98 to 1.00,  $p=0.014$ ), and  
184 robberies (0.98, 95% CI: 0.97 to 0.99;  $p=0.002$ ) declined. Further, thefts from motor vehicle declined  
185 faster (0.98, 95% CI: 0.97 to 0.99;  $p=0.002$ ). At five years post-implementation, there were an estimated  
186 15.2 fewer assaults, 0.11 fewer break and enters, 13.0 fewer robberies, and 6.7 fewer thefts from motor  
187 vehicles.

188 Within 500m of sites, all level and trend effects observed within 200m of sites persisted; except trends for  
189 theft from motor vehicle were no longer significant (0.99, 95% CI: 0.98 to 1.00;  $p=0.072$ ). In absolute  
190 terms there were approximately 72.6 fewer assaults, 17.7 fewer break and enters, 34.8 fewer robberies,  
191 and 19.3 fewer thefts from motor vehicles than expected five years after OPS/SCS began to operate  
192 (Figure 1).

193 [Insert Figure 1 here]

194 Results from our sensitivity analyses revealed that crime displacement may explain the level effects we  
195 observed within 100m of sites for assaults and robberies, but not break and enters.

196 Our secondary analysis found assault rates were lower (0.84, 95% CI: 0.79 to 0.89;  $p < 0.001$ ) and were  
197 increasing slower (1.00, 95% CI: 0.99 to 1.00;  $p = 0.040$ ) in treated compared with synthetic control  
198 neighbourhoods, pre-implementation. We also found robbery rates increased slower (0.99, 95% CI: 0.99  
199 to 1.00;  $p = 0.045$ ) in treated neighbourhoods compared with synthetic controls, pre-implementation. We  
200 observed no statistically significant differences pre-implementation for the rest of our treated-control  
201 neighbourhood dyads. After controlling for trend and level changes in synthetic control neighbourhoods,  
202 treated neighbourhoods did not experience a level increase for any rates of crime or mental health act  
203 apprehensions. Rates of auto theft declined faster (0.99, 95% CI: 0.99 to 1.00;  $p = 0.038$ ), while rates of  
204 assault rose faster (1.01, 95% CI: 1.00 to 1.01;  $p = 0.003$ ) in treated compared with synthetic control  
205 neighbourhoods (Table 2, Figure 2).

206 [Insert Figure 2 here]

207

## 208 **DISCUSSION (1157 words)**

209 Our analyses revealed that OPS/SCS did not have a level or trend effect on counts of grand theft across all  
210 modes of analysis; and a protective effect on trends in petty theft within 500m. Although we observed  
211 significant increases in the level of crimes against persons within 100m and break and enters up to 500m,  
212 the level effects diminished with time. A lack of effect on grand theft may reflect the absence or non-  
213 differential presence of organized criminal activity near OPS/SCS.<sup>22</sup> Grand theft relies on concerted  
214 criminal networks targeting high value items; and is less sensitive to small sociodemographic changes at  
215 the community-level such as increases in people who use unregulated drugs.<sup>23</sup> Conversely, changes in  
216 crimes against persons, and break and enters indicate an increase in spontaneous crimes and may be a  
217 consequence of coupling desire with the opportunity to execute said crimes.

218 Our results echo others' observations that, *in aggregate*, OPS/SCS did not contribute to increases in  
219 crimes.<sup>8,11-13,24</sup> Further, these findings conflict with city-wide increases in the volume and severity of  
220 police-reported crimes.<sup>25</sup> To contextualize our results, we consider the plausibility of three alternate  
221 explanations for our findings: the 'honey-pot' effect, increased policing, and changes in data collection.

222 The 'honey-pot' effect describes the phenomenon where an intervention attracts people and/or behaviours,  
223 and may explain why counts of assaults, break and enters, and robberies increased within 100m of  
224 OPS/SCS immediately following implementation.<sup>5</sup> However, this phenomenon cannot explain why the  
225 initial increases in incidents did not persist. One reason may be that between March 2020 and August

226 2021 the city engaged in a massive displacement of people experiencing homelessness and/or clients of  
227 OPS/SCS as part of its COVID-19 public health response. During this time, the city rented three large  
228 hotels (i.e., the Bond Hotel in Downtown Yonge East, Edward Village Hotel in Henry Farm, and Novotel  
229 Hotel in St. Lawrence – East Bayfront – The Islands) to provide temporary emergency shelter –  
230 effectively moving approximately 1000 people to other neighbourhoods. Meanwhile, the enforcement of  
231 stringent social distancing measures scaled down OPS/SCS services.<sup>26</sup> The dispersing of clients to other  
232 neighbourhoods might explain the decline in incidents of spontaneous crimes. However, when measures  
233 were lifted and shelters closed, crime near OPS/SCS did not rebound despite a return to pre-pandemic  
234 rates of service use<sup>27</sup> – weakening the claim that the honey-pot effect explains our observations.

235 Similarly, while increased police presence near OPS/SCS may explain some of the decline in spontaneous  
236 crimes, this posits a paradox. Previous studies noted police presence can undermine the social  
237 acceptability of harm reduction interventions for people who use unregulated drugs.<sup>28</sup> However, outside  
238 COVID-19 restrictions, there was no notable decline in client visits. Further, as far back as 2018, police  
239 budgets grew slower and the workforce decreased.<sup>29,30</sup> A possible explanation reconciling the shortages in  
240 the police workforce with improvements in crime is the Toronto Police Service’s Mental Health and  
241 Addictions strategy launched in 2019. The strategy was developed under the guidance of a Mental Health  
242 and Addictions Advisory Board, including people with lived experience, in response to a report critical of  
243 police use of force.<sup>31</sup> It is possible by improving policing *quality*, incidents of crimes against persons,  
244 petty theft, and break and enters decreased with minimal effect on OPS/SCS patronage – and warrants  
245 further investigation.

246 Finally, changes in the reporting or collecting of data may explain the decline in outcomes over time. In  
247 2017, police services and Statistics Canada worked together to amend the definition of ‘founded’ criminal  
248 incidents to include events for which there was no credible evidence the incident *did not* take place.<sup>32</sup> This  
249 victim-centred approach first came into effect 1 January 2018; and studies have associated it with 4 –  
250 12% increases in counts of assault, petty theft, and fraud in subsequent years.<sup>33</sup> While it is possible, the  
251 public *reported* fewer crimes against persons near OPS/SCS – this, too, seems unlikely when looking at  
252 city-wide reporting patterns.<sup>25</sup>

253 In short, alternate explanations for our findings do not sufficiently explain the neutral to modest positive  
254 effects observed in communities with OPS/SCS. Realistically, our results may reflect a combination of  
255 factors including changes in data capture and policing quality that occurred over time; as well as the  
256 impacts of the sites themselves.

257 *Limitations*



258 We did not include all OPS/SCS operating during the observation period. We excluded Casey House and  
259 shelters that provided services to residents only. Casey House became the first hospital to offer supervised  
260 consumption services to inpatients in August 2021, and expanded services to outpatients in April 2022.  
261 Because of differences in clientele, scope, duration of operation, and proximity to other sites – we opted  
262 to exclude Casey House to minimize potentially biasing our analyses. Similarly, we did not include  
263 shelters which provided overdose prevention services to their residents, including the three temporary  
264 housing units implemented during COVID-19 social distancing efforts. The agglomeration of services  
265 along with the displacement of populations is a qualitatively different intervention from traditional  
266 OPS/SCS and should be the subject of a separate study.

267 Further, our primary analyses did not account for changes in population size or demographics over time  
268 and assumed pre-intervention temporal trends would have otherwise continued. We supplemented this  
269 work with neighbourhood-level analysis. On their own, neighbourhood-level analysis could obfuscate the  
270 hyper-localized effects of OPS/SCS. However, by presenting the results of both approaches, we aimed to  
271 triangulate the true impact of sites using contemporary methods, examine potential spillover effects, and  
272 address methodological limitations which may influence the effect size and interpretability of results.

273 Lastly, we did not investigate the effects of OPS/SCS on public drug use, needle and syringe debris,  
274 graffiti or public defecation – concerns repeatedly mentioned by opponents of OPS/SCS.<sup>34</sup> While we  
275 explored the possibility of including 311 calls as an alternate dataset to enable the inclusion of these  
276 outcomes in our study, we determined the quality of data insufficient and prone to reporting bias.

### 277 *Strengths*

278 To our knowledge, this was the first study to evaluate the effects of multiple OPS/SCS implemented  
279 across a large metropolitan area. Owing to the number of sites and time elapsed since their  
280 implementation, we were sufficiently powered to examine the effects of OPS/SCS on a variety of  
281 measures separately, over time, and within close proximity to sites. Further, by using a multiple baseline  
282 approach, we reduced the potential for an unmeasured contemporaneous biasing our results. Our synthetic  
283 controls were well matched to treated neighbourhoods and only demonstrated small deviations in trends  
284 for assaults and robbery pre-intervention in aggregate. While we did not use Bonferroni correction,  
285 readers have complete access to the results of our analyses, including statistical tests, to aid in their  
286 interpretation of our findings. Nevertheless, we encourage readers to look beyond tests of statistical  
287 significance when considering the evidence. Further, by using exclusively open access data, and  
288 providing our code, we minimized the possibility for data preparation or analytic errors and increased the

289 transparency of our work. Lastly, we considered other explanations for our observed effects and found the  
290 available evidence did not support these alternate narratives.

291 **PUBLIC HEALTH IMPACTS (121 words)**

292 Our analyses revealed the implementation of Toronto’s OPS/SCS had complex effects on  
293 neighbourhoods. While the interventions’ impacts were neutral to positive over time, this does not negate  
294 the initial increases in spontaneous crimes. Our work suggests efforts to improve crime while encouraging  
295 use of OPS/SCS are possible. Still, local communities may perceive OPS/SCS as harmful, associating  
296 them with disorder and increased drug use in public spaces.<sup>35</sup> This tension needs to be addressed to ensure  
297 the long term acceptability and utility of OPS/SCS. Efforts to establish relationships with local  
298 community stakeholders and to work collectively through challenges can build goodwill and trust  
299 between OPS/SCS operators, clients and the public. Meanwhile, efforts to dismiss or negate  
300 apprehensions can undermine the public health intervention.

Table 1. Results from primary analysis: Level and trend changes to crime incidence (counts) following the implementation of overdose prevention sites / supervised consumption sites by reportable crime and distance from site

Assault	100 metres		200 metres				500 metres			
	Primary	p-value	Primary	p-value	Sensitivity	p-value	Primary	p-value	Sensitivity	p-value
Intercept	5.49 (4.07 – 7.42)	< 0.0001	35.80 (32.97 – 38.87)	< 0.0001	30.32 (26.61-34.54)	< 0.0001	164.50 (163.56 – 175.65)	< 0.0001	164.00 (157.63 – 170.63)	< 0.0001
Time	1.00 (0.99 – 1.01)	0.7176	1.01 (1.00 – 1.01)	< 0.0001	1.01 (1.00-1.01)	0.0009	1.01 (1.01 – 1.01)	< 0.0001	1.01 (1.01 – 1.01)	< 0.0001
Level	<b>1.61</b> <b>(1.10 – 2.34)</b>	0.0131	1.05 (0.92 – 1.19)	0.4515	0.95 (0.80-1.13)	0.5776	1.07 (0.99 – 1.17)	0.0846	1.06 (0.97 – 1.15)	0.18
Trend	1.00 (0.99 – 1.01)	0.5630	<b>0.99</b> <b>(0.99-1.00)</b>	0.0014	<b>0.99</b> <b>(0.99-1.00)</b>	<b>0.0032</b>	<b>0.99</b> <b>(0.99 – 1.00)</b>	< 0.0001	<b>0.99</b> <b>(0.99 – 1.00)</b>	< 0.0001
<b>Auto theft</b>										
Intercept	0.52 (0.27 – 1.03)	0.0393	1.77 (1.26 – 2.49)	0.0011	1.25 (0.83 – 1.89)	0.2855	10.65 (8.32 – 13.65)	< 0.0001	10.14 (7.67 – 13.39)	< 0.0001
Time	1.00 (0.98-1.02)	0.9146	1.00 (0.99 – 1.02)	0.5863	1.01 (0.98 – 1.03)	0.6109	1.00 (1.00 – 1.01)	0.3288	1.00 (1.00 – 1.01)	0.36
Level	1.18 (0.50 – 2.79)	0.7019	1.35 (0.76 – 2.41)	0.3028	1.43 (0.68 – 2.99)	0.3477	1.35 (0.96 – 1.90)	0.0858	1.36 (0.93 – 1.98)	0.10
Trend	1.00 (0.97 – 1.03)	0.8602	1.00 (0.98 – 1.02)	0.8955	1.00 (0.97 – 1.02)	0.8249	1.00 (0.99 – 1.01)	0.7681	1.00 (0.99 – 1.01)	0.80
<b>Break and enter</b>										
Intercept	2.20 (1.67 – 2.90)	< 0.0001	7.45 (6.61 – 8.39)	< 0.0001	5.30 (4.51 – 6.23)	< 0.0001	47.83 (42.04 – 54.42)	< 0.0001	45.65 (39.39 – 52.89)	< 0.0001
Time	1.01 (1.00 – 1.02)	0.0098	1.00 (1.00 – 1.01)	0.6387	1.00 (0.99 – 1.01)	0.5512	1.01 (1.00 – 1.01)	0.0083	1.01 (1.00 – 1.01)	0.025
Level	<b>1.47</b> <b>(1.06 – 2.04)</b>	<b>0.0194</b>	<b>1.70</b> <b>(1.39 – 2.07)</b>	< <b>0.0001</b>	<b>1.77</b> <b>(1.40 – 2.24)</b>	< <b>0.0001</b>	<b>1.48</b> <b>(1.21 – 1.81)</b>	<b>0.0001</b>	<b>1.48</b> <b>(1.19 – 1.84)</b>	<b>0.0001</b>
Trend	<b>0.98</b> <b>(0.97 – 0.99)</b>	<b>0.0039</b>	<b>0.99</b> <b>(0.98 – 1.00)</b>	<b>0.0136</b>	0.99 (0.99 – 1.00)	0.1432	<b>0.99</b> <b>(0.98 – 0.99)</b>	<b>0.0001</b>	<b>0.99</b> <b>(0.98 – 0.99)</b>	<b>0.0001</b>

<b>Robbery</b>										
Intercept	1.41 (1.13 – 1.75)	0.0020	10.55 (7.88 – 14.11)	< 0.0001	9.12 (6.81 – 12.21)	< 0.0001	40.18 (34.57 – 46.70)	< 0.0001	38.78 (33.33 – 45.12)	< 0.0001
Time	1.01 (1.00 – 1.02)	0.0791	1.01 (1.00 – 1.02)	0.1088	1.01 (1.00 – 1.02)	0.1286	1.01 (1.00 – 1.01)	0.1127	1.01 (1.00 – 1.01)	0.1300
Level	<b>1.62</b> <b>(1.10 – 2.38)</b>	<b>0.0148</b>	0.93 (0.66 – 1.32)	0.6996	0.83 (0.58 – 1.19)	0.3048	1.08 (0.87 – 1.35)	0.4608	1.07 (0.86 – 1.32)	0.5575
Trend	<b>0.98</b> <b>(0.97 – 1.00)</b>	<b>0.0206</b>	<b>0.98</b> <b>(0.97 – 0.99)</b>	<b>0.0023</b>	<b>0.98</b> <b>(0.97 – 0.99)</b>	<b>0.0036</b>	<b>0.98</b> <b>(0.97 – 0.99)</b>	<b>0.0001</b>	<b>0.98</b> <b>(0.97 – 0.99)</b>	<b>0.0001</b>
<b>Theft &gt; \$5000</b>										
Intercept	0.19 (0.06 – 0.65)	0.0081	0.95 (0.48 – 1.88)	0.8880	0.78 (0.41 – 1.48)	0.4435	8.29 (6.12 – 11.24)	< 0.0001	8.12 (6.13 – 10.76)	< 0.0001
Time	0.99 (0.94 – 1.04)	0.6331	1.00 (0.97 – 1.04)	0.8319	1.01 (0.98 – 1.04)	0.4604	1.01 (1.00 – 1.02)	0.2581	1.01 (1.00 – 1.02)	0.1769
Level	3.19 (0.38 – 26.55)	0.2829	2.09 (0.82 – 5.32)	0.1201	1.78 (0.88 – 3.59)	0.1089	1.21 (0.81 – 1.79)	0.3559	1.16 (0.81 – 1.66)	0.4246
Trend	1.00 (0.95 – 1.07)	0.8988	0.99 (0.96 – 1.02)	0.5139	0.98 (0.96 – 1.01)	0.2090	0.99 (0.98 – 1.00)	0.1878	0.99 (0.98 – 1.00)	0.1337
<b>Bicycle thefts</b>										
Intercept	2.09 (1.39 – 3.16)	0.0004	10.22 (7.67 – 13.63)	< 0.0001	8.15 (6.19 – 10.72)	< 0.0001	51.25 (40.59 – 64.72)	< 0.0001	49.19 (39.10 – 61.89)	< 0.0001
Time	1.00 (0.99 – 1.02)	0.6734	1.01 (0.99 – 1.02)	0.4695	1.01 (0.99 – 1.02)	0.4253	1.01 (1.00 – 1.02)	0.1472	1.01 (1.00 – 1.02)	0.1270
Level	0.75 (0.45 – 1.26)	0.2778	0.87 (0.53 – 1.43)	0.5886	0.90 (0.54 – 1.51)	0.6964	0.91 (0.63 – 1.33)	0.6346	0.92 (0.63 – 1.33)	0.6621
Trend	1.00 (0.98 – 1.02)	0.9296	0.99 (0.97 – 1.01)	0.3162	0.99 (0.97 – 1.01)	0.2264	0.99 (0.98 – 1.00)	0.1477	0.99 (0.98 – 1.00)	0.1257
<b>Thefts from vehicle</b>										
Intercept	1.64 (0.85 – 3.15)	0.1400	12.62 (9.66 – 16.48)	< 0.0001	11.03 (8.34 – 14.57)	< 0.0001	69.25 (51.00 – 94.02)	< 0.0001	67.61 (51.12 – 89.40)	< 0.0001
Time	0.99 (0.97 – 1.01)	0.2729	1.00 (0.99 – 1.01)	0.9300	1.00 (0.99 – 1.01)	0.6602	1.00 (0.99 – 1.01)	0.6879	1.00 (0.99 – 1.01)	0.7002
Level	1.45 (0.72 – 2.90)	0.2981	1.20 (0.85 – 1.71)	0.2964	1.16 (0.77 – 1.74)	0.4667	1.36 (0.97 – 1.93)	0.0782	1.36 (0.98 – 1.89)	0.0619
Trend	1.00 (0.98 – 1.02)	0.9814	<b>0.98</b> <b>(0.97 – 0.99)</b>	<b>0.0022</b>	<b>0.98</b> <b>(0.97 – 0.99)</b>	<b>0.0007</b>	0.99 (0.98 – 1.00)	0.0716	<b>0.99</b> <b>(0.98 – 1.00)</b>	<b>0.0471</b>

Table 2. Results from secondary analysis: Differences in level and trend changes in rates of crimes in treated vs. synthetic control neighbourhoods following the implementation of overdose prevention sites / supervised consumption sites

	Assault		Auto Theft		Break and Enter	
	Rate (95% CI)	p-value	Rate (95% CI)	p-value	Rate (95% CI)	p-value
Intercept	110.44 (105.72-115.37)	< 0.0001	7.05 (6.20-8.01)	< 0.0001	33.51 (27.39-41.01)	< 0.0001
Time	1.00 (1.00-1.01)	0.0058	1.00 (0.99-1.00)	0.6252	1.00 (0.99-1.01)	0.9326
Group	<b>0.84 (0.79-0.89)</b>	<b>&lt; 0.0001</b>	1.07 (0.92-1.24)	0.4138	0.97 (0.77-1.21)	0.7715
Group×Time	<b>1.00 (0.99-1.00)</b>	<b>0.0401</b>	1.00 (1.00-1.01)	0.7575	1.00 (0.99-1.01)	0.9944
Level	0.99 (0.87-1.12)	0.8690	<b>1.24 (1.03-1.48)</b>	<b>0.0201</b>	<b>1.37 (1.06-1.78)</b>	<b>0.0166</b>
Trend	<b>0.99 (0.99-1.00)</b>	<b>0.0019</b>	<b>1.01 (1.01-1.02)</b>	<b>&lt; 0.0001</b>	1.00 (0.99-1.00)	0.1940
Group×Level	1.10 (0.95-1.27)	0.1965	0.91 (0.69-1.21)	0.5203	1.19 (0.85-1.68)	0.3076
Group×Trend	<b>1.01 (1.00-1.01)</b>	<b>0.0029</b>	<b>0.99 (0.99-1.00)</b>	<b>0.0380</b>	1.00 (0.99-1.00)	0.3927
	Robbery		Theft > \$5000		Bicycle Theft	
Intercept	16.28 (14.78-17.94)	< 0.0001	6.46 (5.75-7.25)	< 0.0001	37.95 (30.74-46.85)	< 0.0001
Time	1.00 (1.00-1.01)	0.0316	1.00 (1.00-1.01)	0.2833	1.00 (0.99-1.01)	0.8867
Group	0.92 (0.79-1.07)	0.2716	0.98 (0.81-1.19)	0.8363	0.96 (0.65-1.43)	0.8482
Group×Time	<b>0.99 (0.99-1.00)</b>	<b>0.0452</b>	1.00 (0.99-1.01)	0.7910	1.00 (0.99-1.02)	0.6296
Level	0.94 (0.81-1.10)	0.4534	1.09 (0.82-1.44)	0.5660	1.13 (0.77-1.66)	0.5337
Trend	<b>0.99 (0.98-0.99)</b>	<b>0.0001</b>	1.00 (0.99-1.01)	0.5679	1.00 (0.98-1.01)	0.3389
Group×Level	1.21 (0.97-1.50)	0.0853	1.00 (0.63-1.59)	0.9845	1.00 (0.58-1.71)	0.9945
Group×Trend	1.01 (1.00-1.01)	0.1898	1.00 (0.98-1.01)	0.5628	0.99 (0.98-1.01)	0.3512
	Thefts from motor vehicles		Mental health apprehensions			
Intercept	34.34 (29.57-39.88)	< 0.0001	55.42 (52.00-59.07)	< 0.0001		
Time	0.99 (0.99-1.00)	0.0096	1.00 (1.00-1.01)	0.0003		
Group	1.28 (0.98-1.67)	0.0685	1.10 (1.02-1.18)	0.0118		
Group×Time	0.99 (0.98-1.01)	0.3300	1.00 (1.00-1.00)	0.6988		
Level	<b>1.45 (1.18-1.78)</b>	<b>0.0004</b>	1.08 (0.98-1.18)	0.1197		
Trend	1.00 (0.99-1.01)	0.9480	<b>1.00 (0.99-1.00)</b>	<b>0.0006</b>		
Group×Level	0.86 (0.59-1.24)	0.4084	1.12 (0.98-1.28)	0.0839		
Group×Trend	1.00 (0.99-1.01)	0.9238	1.00 (1.00-1.00)	0.9833		

## REFERENCE LIST

1. Ontario Agency for Health Protection and Promotion (Public Health Ontario). *Interactive Opioid Tool*. 2024. Accessed 18 September 2024. <https://www.publichealthontario.ca/en/data-and-analysis/substance-use/interactive-opioid-tool>
2. Niamatullah S, Auchincloss A, Livengood K. *Data Brief: Drug Overdose Deaths in Big Cities*. 2022. August 2022. Accessed 4 October 2024. [https://drexel.edu/~media/Files/uhc/briefs/BCHC\\_DrugOverdoseDeaths.ashx?la=en](https://drexel.edu/~media/Files/uhc/briefs/BCHC_DrugOverdoseDeaths.ashx?la=en)
3. Lim J, Panagiotoglou D. The effect of Montreal's supervised consumption sites on injection-related infections among people who inject drugs: An interrupted time series. *PLoS One*. 2024;19(8):e0308482. doi:10.1371/journal.pone.0308482
4. Rammohan I, Gaines T, Scheim A, Bayoumi A, Werb D. Overdose mortality incidence and supervised consumption services in Toronto, Canada: an ecological study and spatial analysis. *The Lancet Public Health*. 2024;9(2):e79-e87. doi:10.1016/S2468-2667(23)00300-6
5. Kolla G, Strike C, Watson TM, Jairam J, Fischer B, Bayoumi AM. Risk creating and risk reducing: Community perceptions of supervised consumption facilities for illicit drug use. *Health, Risk & Society*. 2017/02/17 2017;19(1-2):91-111. doi:10.1080/13698575.2017.1291918
6. Staff. Ontario reviewing supervised consumption sites after Toronto shooting death. *Global News*. 17 August 2023. Accessed 18 September 2024. <https://globalnews.ca/news/9902169/ontario-reviewing-supervised-consumption-sites-after-toronto-shooting-death/>
7. Finkle D. Neighbours suing supervised injection site linked to fatal shooting of Toronto mother. *National Post*. 16 February 2024. Accessed 18 September 2024. <https://nationalpost.com/news/toronto-supervised-injection-site-class-action-lawsuit>
8. Wood E, Tyndall MW, Lai C, Montaner JS, Kerr T. Impact of a medically supervised safer injecting facility on drug dealing and other drug-related crime. *Subst Abuse Treat Prev Policy*. 2006;8(1):13.
9. Fitzgerald J, Burgess M, Snowball L. *Trends in property and illicit drug crime around the medically supervised injecting centre in Kings Cross: An update*. 2010. *Crime and Justice Statistics*. August 2010. <https://bocsar.nsw.gov.au/documents/publications/bb/bb01-100/bb51.pdf>
10. Kral AH, Davidson PJ. Addressing the Nation's Opioid Epidemic: Lessons from an Unsanctioned Supervised Injection Site in the U.S. *American journal of preventive medicine*. 2017;53(6):919-922. doi:10.1016/j.amepre.2017.06.010

11. Davidson PJ, Lambdin BH, Browne EN, Wenger LD, Kral AH. Impact of an unsanctioned safe consumption site on criminal activity, 2010–2019. *Drug and alcohol dependence*. 2021/03/01/ 2021;220:108521. doi:<https://doi.org/10.1016/j.drugalcdep.2021.108521>
12. Chalfin A, del Pozo B, Mitre-Becerril D. Overdose Prevention Centers, Crime, and Disorder in New York City. *JAMA Network Open*. 2023;6(11):e2342228-e2342228. doi:10.1001/jamanetworkopen.2023.42228
13. Hall JJ, Ratcliffe JH. Assessing the impact of safe consumption sites on neighborhood crime in New York City: a synthetic control approach. *Journal of Experimental Criminology*. 2024/07/09 2024;doi:10.1007/s11292-024-09630-z
14. Urban Health Research Initiative. *Findings from the evaluation of Vancouver's Pilot Medically Supervised Safer Injecting Facility - Insite*. 2009. Accessed 18 September 2024. [https://www.bccsu.ca/wp-content/uploads/2016/10/insite\\_report-eng.pdf](https://www.bccsu.ca/wp-content/uploads/2016/10/insite_report-eng.pdf)
15. City of Toronto. *2021 Census: Population and Dwelling Counts*. 2022. Accessed 23 September 2024. <https://www.toronto.ca/wp-content/uploads/2022/02/92e3-City-Planning-2021-Census-Backgrounder-Population-Dwellings-Backgrounder.pdf>
16. Toronto Public Health. *T.O. Health Check*. 2019. Accessed 23 September 2024. [https://www.toronto.ca/wp-content/uploads/2019/11/92ef-TOHealthCheck\\_2019.pdf](https://www.toronto.ca/wp-content/uploads/2019/11/92ef-TOHealthCheck_2019.pdf)
17. City of Toronto. About Toronto Neighbourhoods. City of Toronto. Accessed 23 September 2024, <https://www.toronto.ca/city-government/data-research-maps/neighbourhoods-communities/neighbourhood-profiles/about-toronto-neighbourhoods/>
18. Surveillance & Epidemiology. Toronto Overdose Information System. Toronto Public Health. Accessed 27 September 2024, [https://public.tableau.com/app/profile/tphseu/viz/TOISDashboard\\_Final/ParamedicResponse](https://public.tableau.com/app/profile/tphseu/viz/TOISDashboard_Final/ParamedicResponse)
19. Statistics Canada. Classification of common offence. Accessed 26 September 2024, <https://www23.statcan.gc.ca/imdb/p3VD.pl?Function=getVD&TVD=257740&CVD=257742&CPV=1.1&CST=01012015&CLV=1&MLV=3&D=1>
20. Abadie A, Diamond A, Hainmueller J. Synthetic Control Methods for Comparative Case Studies: Estimating the Effect of California's Tobacco Control Program. *Journal of the American Statistical Association*. 2010;105(490)
21. Statistics Canada. Find 2021 Census data. Statistics Canada. Accessed 4 October 2024, <https://www12.statcan.gc.ca/census-recensement/index-eng.cfm>
22. Criminal Intelligence Service Canada. Organized Crime Involvement in Vehicle Theft in Canada. Accessed 27 September 2024, <https://www.cisc-scrs.gc.ca/media/2023/2023-12-15-eng.htm>

23. Campana P, Meneghini C. Organised crime movement across local communities: A network approach. *Trends in Organized Crime*. 2024/09/01 2024;27(3):286-313.  
doi:10.1007/s12117-024-09531-7
24. Freeman K, Jones CG, Weatherburn DJ, Rutter S, Spooner CJ, Donnelly N. The impact of the Sydney Medically Supervised Injecting Centre (MSIC) on crime. *Drug Alcohol Rev*. Mar 2005;24(2):173-84. doi:10.1080/09595230500167460
25. Toronto Police Service. Major Crime Indicators Dashboard. Toronto Police Service. Accessed 9 October 2024, <https://www.tps.ca/data-maps/data-analytics/major-crime-indicators/>
26. Panagiotoglou D, Lim J. Using synthetic controls to estimate the population-level effects of Ontario's recently implemented overdose prevention sites and consumption and treatment services. *The International journal on drug policy*. Dec 2022;110:103881.  
doi:10.1016/j.drugpo.2022.103881
27. Statistics Canada. Supervised consumption sites Dashboard. Accessed 27 September 2024, <https://health-infobase.canada.ca/supervised-consumption-sites/>
28. Bardwell G, Strike C, Altenberg J, Barnaby L, Kerr T. Implementation contexts and the impact of policing on access to supervised consumption services in Toronto, Canada: a qualitative comparative analysis. *Harm reduction journal*. 2019;16(1):30-30.  
doi:10.1186/s12954-019-0302-x
29. Lee-Shanok P. Police budge held at \$1B for second year but TPS could cut more, critics say. *CBC News*. 26 October 2017. <https://www.cbc.ca/news/canada/toronto/2018-police-budget-held-at-billion-dollars-1.4374220>
30. Gillis W. Proposed city budget poses 'unacceptable risks,' Toronto police cheif warns. *Toronto Star*. 18 January 2024. <https://www.cbc.ca/news/canada/toronto/2018-police-budget-held-at-billion-dollars-1.4374220>
31. Toronto Police Service Board. Mental Health and Addictions Advisory Panel (MHAAP). Accessed 30 September 2024, <https://www.tpsb.ca/advisory-panels?view=article&id=100&catid=24#objectives>
32. Moreau G. Police-reported crime statistics in Canada, 2018. Statistics Canada. Accessed 4 October 2024, <https://www150.statcan.gc.ca/n1/pub/85-002-x/2019001/article/00013-eng.htm>
33. Moreau G, Jaffray B, Armstrong A. Police-reported crime statistics in Canada, 2019. Statistics Canada. Accessed 4 October 2024, <https://www150.statcan.gc.ca/n1/pub/85-002-x/2020001/article/00010-eng.htm#a4>

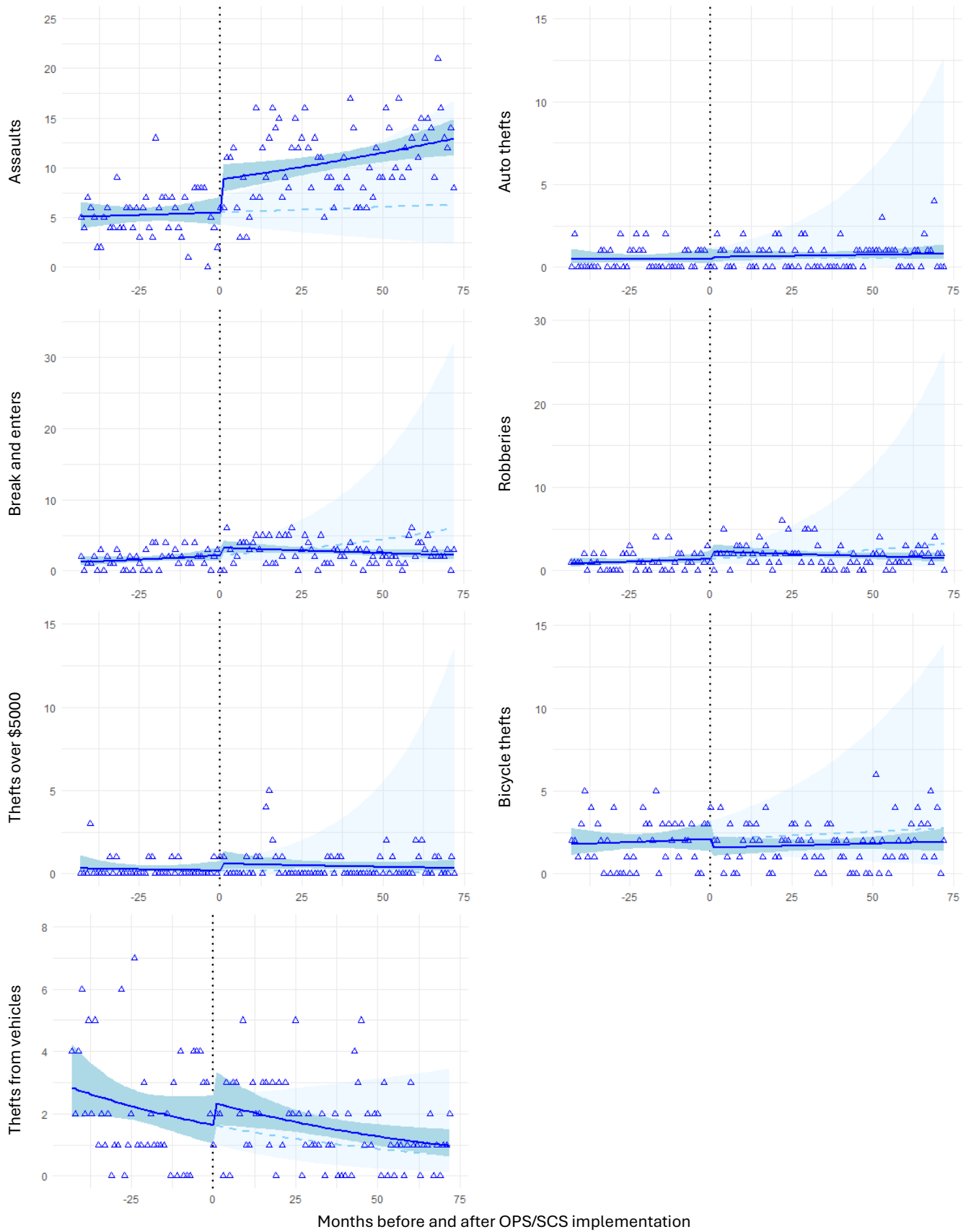


34. Jones RP, Martin S. Kensington Market split over drug consumption site's future. *CBC News*. 1 October 2024. Accessed 2 October 2024.

<https://www.cbc.ca/news/canada/toronto/supervised-consumption-site-kensington-market-1.7335968>

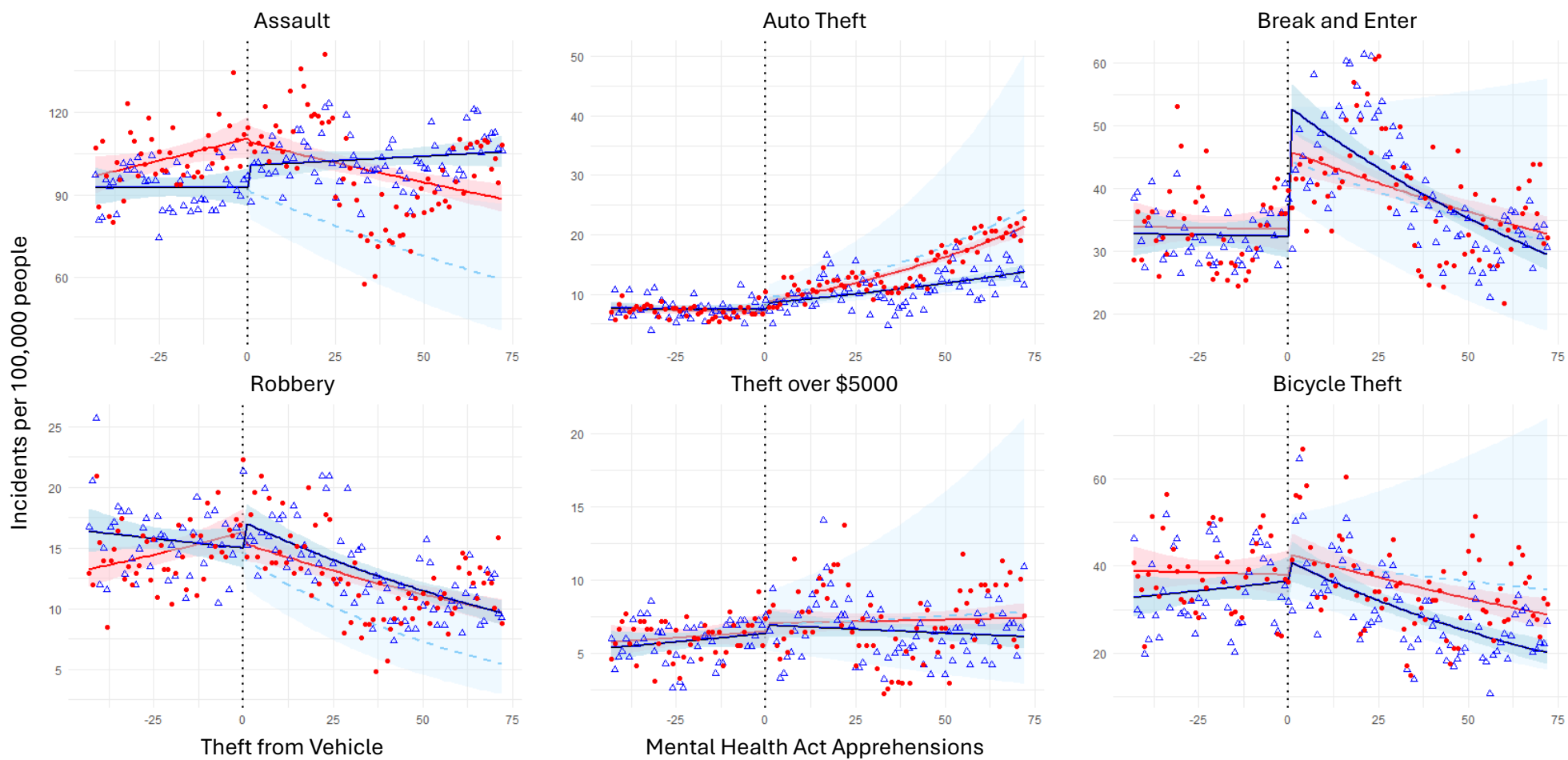
35. Côté-Lussier C, Rodrigues P. The public health impacts of supervised injection sites in Canada: Moving beyond social acceptability and impacts on crime. *Canadian Journal of Public Health*. 2024/06/01 2024;115(3):468-471. doi:10.17269/s41997-024-00874-w

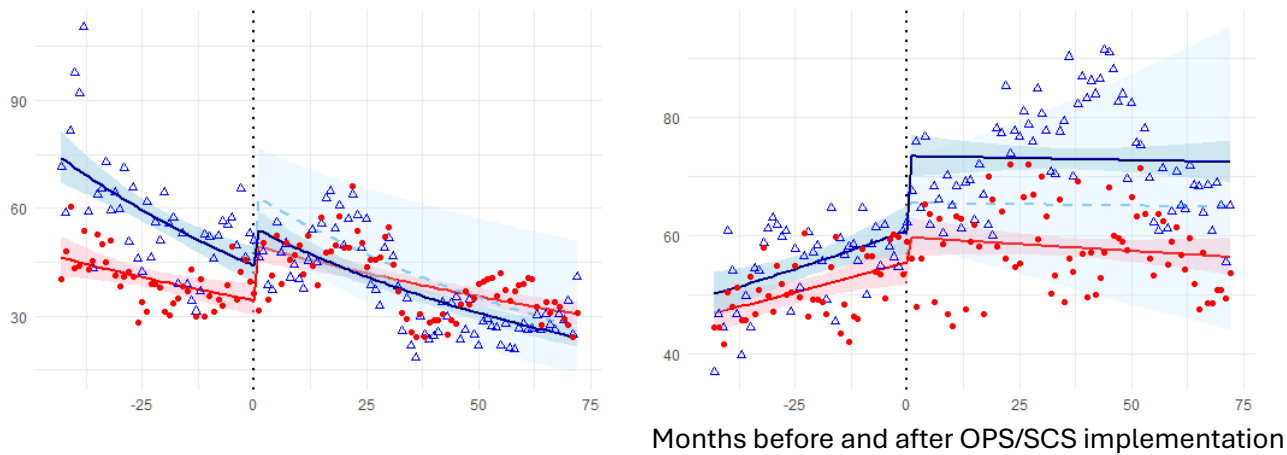
Figure 1. Aggregate number of public safety events that occurred within 100m of overdose prevention sites and supervised consumption sites, per month



Legend: The black dashed line represents time zero (i.e., month when local overdose prevention site or supervised consumption site (OPS/SCS) began operating). Negative time represents time before site implementation and positive time represents time since sites began operating. Blue triangles are the aggregate sum of incidents that occurred for the given month within 100m of OPS/SCS locations. Solid blue line is the result of the interrupted time series (ITS) negative binomial regression with a break at time zero. The blue ribbon around the segmented regression captures the 95% confidence interval (CI) for the ITS estimates. Light blue dashed line extends pre-intervention trends and represents the counterfactual where no change in level or trend is observed post-implementation. The light blue ribbon captures the 95% CI for the counterfactual.

Figure 2: Crime rates pre- and post-opening of overdose prevention sites/supervised consumption sites in treated vs. synthetic control neighbourhoods





Legend: The black dashed line represents time zero (i.e., month when overdose prevention site or supervised consumption site (OPS/SCS) began operating in treated neighbourhood). Negative time represents time before site implementation and positive time represents time since sites began operating. Red circles represent the aggregate rate of incidents in synthetic control neighbourhoods for the given month. The red line captures the trend and level changes observed pre- vs. post-implementation time for synthetic controls. The red ribbon captures the 95% confidence interval (CI) around the observed level and trends for synthetic controls. Blue triangles are the aggregate rate of incidents that occurred for the given month in treated neighbourhoods. The blue line represents the trend and level changes observed pre- vs. post-implementation time for treated neighbourhoods. The blue ribbon captures the 95% CI around the observed level and trends for treated neighbourhoods. The light blue dashed line represents the counterfactual for the treated neighbourhoods accounting for the observed level and trend changes in the synthetic controls post-implementation. The light blue ribbon captures the 95% CI for the counterfactual.