

1 **Post-discharge mortality in suspected pediatric sepsis: insights from rural and**
2 **urban healthcare settings in Rwanda**

3 Christian Umuhoza*^{1,2}, Aneka Hooft*³, Cherri Zhang⁴, Jessica Trawin⁴, Cynthia
4 Mfuranziza⁵, Emmanuel Uwiragiye⁶, Vuong Nguyen⁴, Aaron Kornblith³, Nathan
5 Kenya Mugisha⁷, J Mark Ansermino⁴, and Matthew O. Wiens^{4,7,8}

6 *Authors contributed equally

7

8 **Affiliations:** ¹University Teaching Hospital of Kigali Department of Pediatrics,

9 ²University of Rwanda Department of Pediatrics, ³University of California San

10 Francisco Departments of Emergency Medicine and Pediatrics, ⁴Institute for Global

11 Health, BC Childrens' and Womens' Hospital, Vancouver, Canada, ⁵Rwanda

12 Pediatric Association, ⁶Ruhengeri Regional Referral Hospital, ⁷Walimu (Uganda),

13 ⁸Department of Anesthesiology, Pharmacology and Therapeutics, University of

14 British Columbia

15

16 **Corresponding author:** Christian Umuhoza, christian.umuhoza@chuk.rw, Matthew

17 Wiens, mowiens@outlook.com.

18

19 **Short title: Post-discharge Mortality in Pediatric Sepsis: A Rwandan Study**

20

21 **Author contributions:** AH and CU were primarily responsible for the study design,

22 data collection, interpretation of results, and manuscript writing. JT, CM, and EU

23 assisted with the data collection, review of results, interpretation of results, and

24 manuscript editing. CZ and VN cleaned and analyzed all data and assisted with the

25 interpretation of the results and manuscript editing. AK contributed to the study

26 design, interpretation of the results, and manuscript editing. NKM and JMA assisted
27 with interpretation of the results and manuscript editing. MW was responsible for the
28 study oversight, data collection, directing analysis, interpretation of results, and
29 manuscript writing and editing.

30 **Data access statement:** Study materials (protocol, consent forms, data
31 collection tools, and metadata) are publicly available through the Pediatric
32 Sepsis Data CoLaboratory's (Sepsis CoLab) Dataverse on Borealis, the Canadian
33 Dataverse Repository [1]. Due to the sensitive nature of clinical data and the
34 potential risk for re-identification of research participants, the de-identified
35 dataset is available through moderated access on the Sepsis CoLab Dataverse [2].
36 Access to these data will be granted on a case-by-case basis following approval
37 from the authors and Data Governance Committees.

38 **Abstract**

39 Post-discharge death is increasingly recognized as an important contributor to
40 pediatric mortality in sub-Saharan Africa. To address morbidity and mortality during
41 this period, a representative evidence base is needed to inform resource prioritization,
42 policy, and guideline development. To date, no studies have been conducted in
43 Rwanda, limiting understanding of post-discharge mortality in this region. We
44 conducted a prospective cohort study of children ages 0-60 months in two Rwandan
45 hospitals, one rural (Ruhengeri) and one urban (Kigali), from May 2022 to February
46 2023. We collected clinical, laboratory, and sociodemographic data on admission and
47 follow-up data on vital statistics at 2-, 4-, and 6-months post-discharge. Of 1218
48 children enrolled, 115 (9.4%) died, with half occurring in-hospital (n=57, 4.7%) and
49 half after discharge (n=58, 4.7%). Post-discharge mortality was lower in the 6-60-
50 month cohort (n=30, 3.5%) than in the 0-6-month cohort (10%) and higher in Kigali
51 (n=37, 10.3%) vs. Ruhengeri (n=21, 2.7%). Median time to post-discharge death was
52 38 days (IQR: 16-97.5) in the 0-6-month cohort and 33 days (IQR: 12-76) in the 6-
53 60-month cohort. In the 0-6 months cohort, malnutrition (weight-for-age z-score <-3)
54 was associated with increased odds of post-discharge death (aOR 3.31, 95% CI 1.28-
55 8.04), while higher maternal education was protective (aOR 0.15, 95% CI 0.03-0.85).
56 Significant factors associated with post-discharge death in the 6-60-month cohort
57 included an abnormal Blantyre Coma Scale (aOR 3.28, 95% CI 1.47-7.34), travel
58 time to care >1 hour (aOR 3.54, 95% CI 1.26-9.93), and referral for higher levels of
59 care (aOR 4.13, 95% CI 1.05-16.27). Children aged <2 months exhibited the highest
60 cumulative mortality risk. Post-discharge mortality among Rwandan children remains
61 a significant burden, necessitating targeted interventions for post-discharge care and
62 follow up to reduce mortality.

63 **Introduction**

64 Pediatric mortality following hospital discharge is often overlooked aspect of child
65 health in Sub-Saharan Africa (SSA). Despite significant decreases in in-hospital
66 mortality rates in pediatric patients in SSA, the early post-discharge period is an
67 especially vulnerable time marked by an increased risk of death, primarily within the
68 first six months [3–5]. An in-depth understanding of the many complex factors
69 contributing to pediatric post-discharge mortality is a critical first step in the design
70 and implementation of effective targeted interventions to reduce the burden of sepsis
71 and improve outcomes in low-resource settings.

72 Existing research from low- and middle-income country (LMIC) settings has provided
73 valuable insights into the epidemiology and risk factors associated with post-
74 discharge mortality in children. The multi-county Child Health and Mortality
75 Prevention Surveillance Network (CHAIN) study, evaluated the causal structure of
76 post-discharge mortality, outlining its complex nature, as it pertains to social,
77 nutritional, and illness-related vulnerability, and identified the importance of
78 malnutrition in post-discharge mortality [6]. In Uganda, the Smart Discharges studies
79 have emphasized that clinical, socioeconomic, behavioral, and lab-based risk factors
80 present on admission can be used for risk stratification of children to inform a more
81 personalized approach to post-discharge care [5,7]. These risk factors have been used
82 to create predictive algorithms to identify children at highest risk of post-discharge
83 death, in whom low-cost interventions based on this individual risk can be applied to
84 reduce mortality [5,8]

85 Like most of sub-Saharan Africa, Rwanda has seen dramatic reductions in child
86 mortality, likely a cumulative result of several different, national-level interventional
87 programs [9]. These include interventions such as introduction of community health

88 insurance, performance-based pay for providers [10], geographical accessibility
89 improvements [11], health system strengthening partnerships [12], nurse mentorship
90 programs [13], community health workers programs [14], and data-driven quality
91 improvement initiatives [15]. Despite a growing body of evidence describing the risks
92 and burden of post-discharge death in children treated for infections [3], its
93 epidemiology in Rwanda has not yet been evaluated.

94 With the complex interplay of health systems, population-, and individual-level risk
95 factors, Rwanda not only provides a unique setting for investigating post-discharge
96 mortality among children [14]. Given the existing healthcare infrastructure
97 improvements in Rwanda, a better understanding of disparities in post-discharge
98 mortality may further enhance their efficacy. This study aimed to investigate the
99 epidemiology of post-discharge mortality in children admitted with suspected sepsis
100 in Rwanda and to identify the key risk factors.

101

102 **Materials and Methods**

103 *Study Design and Setting*

104 This prospective cohort study was conducted at two Rwandan hospitals. Situated in
105 the Northern Province, Ruhengeri Referral Hospital operates as the main referral
106 center and the only district hospital in Musanze District, serving a largely rural
107 population with a catchment area nearing 500,000. The hospital has four total ICU
108 beds and no pediatric-specific ICU capacity. The second, the University Teaching
109 Hospital of Kigali (CHUK), located in Nyarugenge District, Kigali City, is the largest
110 hospital in the country and serves as Rwanda's primary referral center, with a capacity
111 of 483 beds. It also serves as a teaching hospital and center for clinical research for

112 multiple medical schools and provides technical assistance to the surrounding district
113 hospitals.

114

115 *Participant Recruitment and Selection Criteria*

116 We enrolled a cohort of children ages 0-60 months between May 2022 and February
117 2023. These groups were stratified into 0-6 months and 0-60 month sub-cohorts given
118 prior variability in risk predictors and model development specific to these age groups
119 informed by prior studies [16,17]. Inclusion criteria included: any child within this
120 age group admitted with suspected sepsis, defined as suspected or proven infection by
121 treating clinical team. We excluded children living outside the hospital service area,
122 admitted for short-term observation (less than 24 h), or treated for trauma or non-
123 infectious illness. Previous research in similar settings in Uganda demonstrated that
124 90% of children admitted with a confirmed or suspected infection met the
125 International Pediatric Sepsis Consensus Conference criteria for sepsis [5,18], Written
126 informed consent was obtained from the parents or legal guardians of all participants.
127 Children whose parents or caregivers refused to participate were excluded from the
128 study.

129

130 *Data Collection Procedures*

131 Data were collected at admission, discharge, and at 2, 4, and 6-months post-discharge.
132 A research nurse collected information on clinical history and evaluation, laboratory
133 findings, and sociodemographic characteristics, which mirrored the methodologies
134 used in a similar study conducted in Uganda, ensuring consistency and comparability
135 across studies [5]. All data collection instruments are accessible via the Smart
136 Discharges study dataverse [1]. Data were gathered directly at the point of care using

137 encrypted study tablets and subsequently uploaded to a Research Electronic Data
138 Capture (REDCap) system [19]. We used a combination of telephone interviews and
139 home visits by research field officers for follow-up visits. These follow-ups focused
140 on vital status, health-seeking behaviors, and any readmissions.

141

142 *Variables and Measurements*

143 Clinical information collected included vital signs, anthropometric measurements to
144 determine malnutrition status, basic laboratory tests (such as glucose levels, malaria
145 and HIV rapid diagnostic tests [RDTs], hematocrit, and lactate), observed clinical
146 signs and symptoms, comorbidities, and healthcare history, including any prior
147 hospital admissions. We evaluated nutritional status using weight-for-age z-scores
148 based on the World Health Organization (WHO) growth standards [20].

149 Sociodemographic data included maternal and household details, such as mother's
150 age, education level, HIV status, household size, use of bed nets, proximity to the
151 health facility, and availability of clean drinking water. Information on the child's sex
152 was obtained from medical records. At the time of discharge, the study nurses
153 recorded the discharge status (categorized as routine discharge, referral for higher-
154 level care, or unplanned discharge) and feeding status, which were subjectively
155 assessed as feeding well or feeding poorly. Discharge diagnoses were also retrieved
156 from medical records. Field officers contacted caregivers by telephone at 2-, 4-, and
157 6-months post-discharge to assess the child's vital status, any instances of seeking
158 medical care after leaving the hospital and details of any readmissions. In cases where
159 contact was lost, we conducted in-person visits to gather this information. In instances
160 where a child passed away following hospital discharge, we performed verbal
161 autopsies to determine the likely cause of death.

162

163 *Statistical Analysis*

164 We performed descriptive statistics to characterize baseline clinical, social/maternal,
165 and discharge variables, stratified by age cohort using medians with interquartile
166 ranges for continuous variables and counts with percentages for categorical variables.
167 Multivariate logistic regression models were used to determine risk factors for post-
168 discharge mortality by estimating the odds ratios adjusted for age, sex, and site of
169 enrollment. Post-discharge mortality was treated as a binary outcome, and the site of
170 enrollment was included as a fixed effect because only two sites were included. We
171 also examined the secondary outcome, readmission post-discharge, using descriptive
172 statistics. We estimated the cumulative hazard for mortality and readmission after
173 discharge with Kaplan-Meier survival curves at four predefined age strata (0–<2
174 months, 2–6 months, >6–24 months, and >24–60 months). We had minimal missing
175 data and addressed these using k-nearest neighbor imputation to ensure the robustness
176 and validity of the results. We conducted all statistical analyses using Stata/MP
177 version 15.0 (StataCorp, College Station, TX, USA), R version 4.1.3, and RStudio
178 version 2022.2.3 (RStudio, Boston, MA, USA).

179

180 *Ethical Considerations*

181 The study was approved by several institutional review boards: The University of
182 California, San Francisco (UCSF) on October 8, 2021 (No. 21-34663); the University
183 of British Columbia (UBC) on January 28, 2022 (No. H21-02795), University of
184 Rwanda on December 30, 2021 (No. 411), and University Teaching Hospital of
185 Kigali on January 14, 2022 (No. 005). Informed consent was obtained from the
186 parents or legal guardians of all participants in Kinyarwanda. This manuscript adheres

187 to the STrengthening the Reporting of OBservational studies in Epidemiology
188 (STROBE) statement for cohort studies [21].

189

190 **Results**

191 We enrolled 1,218 children over the 9-month study period, of whom 1,161 survived to
192 hospital discharge and 1,127 completed follow up at 6 months' post-discharge. There
193 were 115 (9.4%) deaths, evenly split between in-hospital (n=57, 4.7%) and the post-
194 discharge period (n=58, 4.7%) (**Figure 1**). Median age of participants was 13.5
195 months (IQR 6.1-24.7) with 60% of the cohort being male (n=676) (**Table S1**).
196 Severe malnutrition was common, with 9.1% (n=103) having a weight-for-age z-score
197 (waz) below -3, although this differed significantly between the 0-6 month and 6-60
198 month age groups (**Table S1, Table 1**). Fewer than half of the children (44.4%, n =
199 500) had a measured fever on presentation (temperature > 37.5 °C), while 18%
200 (n=208) had measured hypothermia (temperature <36.5 °C). An abnormal Blantyre
201 Coma Scale (BCS) score indicating impaired consciousness was observed in 17.2% of
202 patients (n=194). Only 1.5% (n=17) were malaria positive and 0.3% (n=3) tested
203 positive for HIV. Anemia, defined as Hemoglobin level <11 g/dL was present in
204 36.8% (n=415) (**Table S1**). By disposition, 97.3% of all admitted children were
205 routinely discharged, 1.9% and 0.8% referred to higher care and left against medical
206 advice, respectively (**Table S1**). Characteristics of all enrolled children are detailed in
207 **Table S1**, and the characteristics of the two primary age categories are described in
208 **Table 1**.

209 **Figure 1: Study flowchart stratified by age group**

210 **Table 1:** Cohort characteristics and disposition, stratified by ages 0-6 months and
211 ages 6-60 months.

	0m to 6m (n=274)	6m to 60m (n=853)
--	------------------	-------------------

Variable	N (%) / Median (IQR)	aOR (95% CI)	N (%) / Median (IQR)	aOR (95% CI)
Demographics				
Site, n (%)				
Kigali	110 (40.2)	reference	251 (29.4)	reference
Ruhengeri	164 (59.9)	0.33 (0.15-0.75)	602 (70.6)	0.21 (0.10-0.46)
Sex, n (%)				
Female	112 (40.9)	reference	339 (39.7)	reference
Male	162 (59.1)	0.73 (0.33-1.63)	514 (60.3)	0.87 (0.41-1.86)
Age, months*	1.4 (0.6-3.6)	0.91 (0.72-1.14)	17.9 (11.3-29.8)	0.98 (0.95-1.01)
Admission anthropometry				
MUAC (mm)*¹	120 (104-140)	0.98 (0.96-1.00)	150 (140-160)	0.98 (0.97-1.00)
<110/<115	83 (30.3)	2.27 (0.65-7.88)	26 (3.1)	2.69 (0.70-10.31)
110-120/115-125	70 (25.6)	3.05 (1.14-8.16)	42 (4.9)	2.48 (0.68-9.05)
>120/ >125	121 (44.2)	reference	785 (92.0)	reference
Weight for age z-score	-0.9 (-2.2-0.02)	0.75 (0.62-0.90)	-0.6 (-1.6-0.3)	0.61 (0.50-0.74)
<-3	47 (17.2)	3.21 (1.28-8.04)	56 (6.6)	6.52 (2.63-16.16)
-3 to -2	24 (8.8)	2.22 (0.64-7.66)	92 (10.8)	3.17 (1.17-8.61)
>-2	203 (74.1)	reference	705 (82.7)	reference
Admission clinical assessment				
SpO₂, %*	95 (88-98)	0.97 (0.92-1.02)	94 (88-97)	0.99 (0.95-1.04)
Heart rate	150 (137-162)	1.02 (1.00-1.04)	140 (125-154)	0.99 (0.98-1.01)
Respiratory rate*	46 (40-55)	1.01 (0.98-1.04)	40 (34-46)	1.01 (0.98-1.05)
Temperature*	36.9 (36.5-37.9)		37.4 (36.7-38.2)	
< 36.5	63 (23.0)	1.01 (0.38-2.71)	145 (17.0)	0.40 (0.09-1.82)
36.5-37.5	123 (44.9)	reference	296 (34.7)	Reference
>37.5	88 (32.1)	0.53 (0.20-1.43)	412 (48.3)	0.83 (0.38-1.80)
Abnormal BCS*	74 (27.0)	1.05 (0.44-2.54)	120 (14.1)	3.28 (1.47-7.34)
HIV positive*	1 (0.4)	-	2 (0.2)	11.42 (0.67-194.83)
Positive malaria test	3 (1.1)	-	14 (1.6)	-
Hemoglobin, g/dl*	12 (10.7-13.5)	0.83 (0.71-0.97)	11.3 (10.2-12)	0.84 (0.71-1.00)
No anemia: ≥ 11 g/dL	192 (70.1)	reference	520 (61.0)	reference
Anemia: <11g/dL	82 (29.9)	1.91 (0.83-4.38)	333 (39.0)	2.04 (0.93-4.48)
Referral	241 (88.0)	6.41 (0.82-50.11)	769 (90.2)	1.44 (0.46-4.48)
Prior antibiotic use	90 (32.9)	2.13 (0.73-6.22)	333 (39.0)	1.50 (0.58-3.86)
Prior antimalarial use	4 (1.5)	2.48 (0.23-26.81)	29 (3.4)	1.78 (0.48-6.67)
Respiratory distress	66 (24.1)	1.20 (0.49-2.92)	162 (19.0)	1.62 (0.72-3.62)
Maternal and Social Characteristics				
Time to reach hospital*				
< 30m	112 (40.9)	reference	341 (40.0)	reference
30 min - 1h	88 (32.1)	1.49 (0.55-4.09)	350 (41.0)	1.36 (0.48-3.90)
>1h	74 (27.0)	0.90 (0.31-2.63)	162 (19.0)	3.54 (1.26-9.93)
Water source*				
Municipal water/tap	182 (66.4)	reference	533 (62.5)	reference
Other sources	92 (33.6)	0.84 (0.36-1.96)	320 (37.5)	2.01 (0.94-4.32)
Boil/disinfect/filter water*	94 (34.3)	0.21 (0.06-0.72)	347 (40.7)	0.74 (0.34-1.62)

Maternal education²				
No school or ≤P3	33 (12.0)	reference	118 (13.8)	reference
P4 to P6	114 (41.6)	0.47 (0.17-1.31)	343 (40.2)	0.41 (0.15-1.09)
S1 to S6	103 (37.6)	0.10 (0.03-0.40)	325 (38.1)	0.38 (0.14-1.02)
> S6	23 (8.4)	0.15 (0.03-0.83)	65 (7.6)	0.09 (0.01-0.76)
Discharge Characteristics				
Discharge status				
Routine discharge	264 (96.4)	reference	833 (97.7)	reference
Referred to higher level of care	5 (1.8)	1.38 (0.14-13.49)	16 (1.9)	4.13 (1.05-16.27)
Unplanned discharge	5 (1.8)	2.40 (0.24-24.39)	4 (0.5)	-
Length of stay				
	6 (3-9)	1.04 (1.01-1.08)	4 (2-7)	1.08 (1.05-1.12)
Variables collected only for 0-6-month				
Fontanelle*	5 (1.8)	1.73 (0.17-17.19)	-	-
Neonatal jaundice*	15 (5.5)	2.42 (0.63-9.23)	-	-
Sucking well when breastfeeding*	117 (42.7)	0.32 (0.13-0.81)	-	-
Duration of present illness*				
< 48h	134 (48.9)	reference	-	-
48h-7d	104 (38.0)	2.13 (0.78-5.84)	-	-
>7d	36 (13.1)	3.57 (1.05-12.18)	-	-

212 * variables used previously in Smart Discharge prediction models; ¹ small number represents cutoff for under 6
 213 months; ² 3 participants reported unknown level of education
 214 Abbreviations: OR = odds ratio; IQR = interquartile range; BCS = Blantyre Coma scale; HIV = human
 215 immunodeficiency virus; SpO₂ = oxygen saturation
 216

217 *Post-discharge mortality*

218 The overall rate of post-discharge mortality among those discharged alive was 5.2%
 219 (n=58), with a higher cumulative mortality hazard among younger children (**Figure**
 220 **2**). Post-discharge deaths occurred at a median of 38 days (IQR 16-97.5) and 33 days
 221 (IQR 12-76) in the 0–6-and 6–60 months groups, respectively, with most deaths
 222 occurring in the hospital (57.1% [n=16] and 70.0% [n=21], respectively) (**Table 2**).
 223 For the 0–6 months group, a waz below -3 (aOR 3.31, 95% CI 1.28-8.04) was
 224 associated with increased risk of mortality, while higher maternal education (aOR
 225 0.15, 95% CI 0.03-0.85) and use of clean drinking water (aOR 0.21, 95% CI 0.06-
 226 0.72) were protective (**Table 1**). In the 6–60 months group, a waz below -3 was
 227 associated with significantly increased risk of mortality (aOR 6.52, 95% CI 2.63-

228 16.16), along with an abnormal coma score (aOR 3.28, 95% CI 1.47-7.34), travel time
 229 over 1 hour to a healthcare facility (aOR 3.54, 95% CI 1.26-9.93), and the need for
 230 referral to higher care (aOR 4.13, 95% CI 1.05-16.27). Higher maternal education was
 231 also protective in the 6–60 months group, reducing mortality risk (aOR 0.09, 95% CI
 232 0.01-0.76) (**Table 1**).

233 **Figure 2: Hazard curves for post-discharge mortality, stratified by age**

234 **Table 2: Secondary endpoint and characteristics of post-discharge deaths**

	0m to 6m (n=274)	6m to 60m (n=853)	Total (N=1127)
Outcome	N (%) / Median (IQR)		
Readmission			
Never	228 (83.2)	686 (80.4)	914 (81.1)
Once	36 (13.2)	112 (13.1)	148 (13.1)
Twice	8 (2.9)	35 (4.1)	43 (3.8)
More than twice	2 (0.7)	20 (2.3)	22 (2.0)
Number of days from discharge to 1st readmission	45 (8-125)	53 (25-98)	53 (24-108)
Number of days from discharge to death	38 (16-97.5)	33 (12-76)	29 (16-90)
Location of death			
At home	8 (28.6)	8 (26.7)	16 (27.6)
In-transit	4 (14.3)	1 (3.3)	5 (8.6)
In hospital	16 (57.1)	21 (70.0)	37 (63.8)

235 Note: IQR = interquartile range

236

237 *Post-discharge readmission*

238 The overall rate of post-discharge readmission was 18.9% (n=213), with 5.8% (n=65)
 239 of children experiencing multiple readmissions (**Table 2**). The median time to first
 240 readmission was 45 days (IQR 8-125) and 53 days (IQR 25-98) for the 0–6 and 6–60
 241 month groups, respectively. Unlike post-discharge mortality, readmission was not
 242 significantly affected by age, although there was a trend suggesting that those younger
 243 than 2 months may have a lower risk of readmission (**Figure 3**).

244 **Figure 3: Hazard curves for first readmission, stratified by age**

245

246 **Discussion**

247 In our prospective observational study of children under five admitted with suspected
248 or confirmed infections in Rwanda, nearly 1 in 20 children died after discharge,
249 similar to the rate of mortality during the index hospital admission. We found key
250 clinical and socio-behavioral factors are associated with higher odds of post-discharge
251 mortality, including, for both age groups, severe malnutrition (WAZ < -3); and, for
252 children aged 6–60 months, malnutrition, abnormal coma scores, long travel times to
253 healthcare, and the need for referral to higher-level of care. Infants aged < 2 months
254 had the highest risk of death.

255 These results as well as the risk factors identified are largely in line with previous
256 studies conducted in Uganda and elsewhere in East Africa [3,22,23]. The negative
257 health effects of malnutrition are well known and include reduced immune
258 competence [24,25] and deficiencies in macro- and micronutrients [26,27], leading to
259 a cycle of recurrent infections and deteriorating nutritional status, which further
260 increases the risk of post-discharge mortality [28]. We also found higher post-
261 discharge mortality rates in urban Kigali (9%) than in rural Ruhengeri (3%), in
262 contrast to the typical rural-urban health disparity in many LMICs, where patients in
263 rural areas typically fare worse due to limited healthcare access and resources [29].
264 We hypothesize that elevated mortality rates in Kigali are likely due to CHUK’s role
265 as a tertiary care hospital admitting the most critically ill pediatric patients
266 nationwide, including referrals of severe and complex cases from Ruhengeri, which
267 does not have ICU capacity.

268 Rwanda has already implemented programs to improve child health and is one of the
269 few countries in sub-Saharan Africa to have achieved the Millennium Development
270 Goal (MDG) related to under-5 mortality [30]. With several key health systems

271 measures already well established in Rwanda, the use of simple models to identify the
272 “at risk” child could be leveraged towards an effective solutions to address the high
273 rates of post-discharge mortality [31]. These include programs such as the well-
274 established Community Health Worker (CHW) program for follow-up care [32],
275 “Mutuelle de Santé,” a community-based health insurance program, which lowers
276 financial barriers to potentially improve access to post-discharge services [33], a
277 unified Health Management Information System (HMIS) to facilitate patient tracking
278 and widespread integration of risk-based prediction models [34], and the Mentoring
279 and Enhanced Supervision at Health Centers (MESH) for healthcare providers that
280 could be used for training and implementation of system-wide post-discharge care and
281 education packages[35]. These systems argue that more immediate implementation of
282 discharge education and community-based interventions may have substantial effects
283 [36–38] on outcomes. Other public health campaigns and community-based
284 programs, increased access to quality education, nutritional supplementation,
285 expanded access to healthcare, and improved socioeconomic conditions, would also
286 help reduce both post-discharge and overall child mortality in Rwanda [39].

287

288 **Limitations**

289 The limitations of this study include a small sample from only two hospitals,
290 potentially limiting its generalizability to other regions in Rwanda or similar settings,
291 and a six-month observation period possibly missing longer-term effects. The primary
292 data collection method and interviews may have introduced recall bias and
293 inaccuracies. Despite this, the study provided detailed information on the severity of
294 the children's conditions and comorbidities. The study did not fully explore all
295 socioeconomic and environmental factors, healthcare quality, disease severity,

296 concurrent illnesses, genetic influences, and healthcare-seeking behaviors affecting
297 post-discharge mortality. Future research should address these limitations by using a
298 larger, more diverse sample, extending the follow-up period, and conducting a
299 comprehensive analysis of the relevant factors.

300

301 **Conclusions**

302 This study identified a significant burden of post-discharge mortality among pediatric
303 patients in Rwanda, particularly affecting infants and those who are socially
304 vulnerable, including those with malnutrition. These findings underscore the need for
305 targeted interventions to address risk factors, improve healthcare access, and enhance
306 care during the post-discharge period. This study also calls for more longitudinal
307 research to identify additional factors influencing post-discharge mortality and the
308 development of interventions and implementation strategies. A comprehensive
309 approach that combines improvements in the health system with broader
310 socioeconomic initiatives is needed to reduce post-discharge mortality and improve
311 pediatric health outcomes.

312

313 **Acknowledgements**

314 We would like to acknowledge all past and present members of the Smart Discharges
315 Research program for their efforts in data collection, administration, logistics support,
316 and all study activities, including but not limited to: Godefroid Rucinga, Esperance
317 Umulisa, Didas Mugambinumwe, Jeanne d’Arc Mazimpaka, Claudine Uwingabiye,
318 Theogene Bizimungu, Juliette Unyuzumutima, Peter Lewis, and Martina Knappett.

319

320

321 References

- 322 1. Smart Discharges to improve post-discharge health outcomes in children
323 in Rwanda - Smart Discharges - Study Protocols & Supplementary
324 Materials [Internet]. [cited 2024 Nov 1]. Available from:
325 <https://borealisdata.ca/dataset.xhtml?persistentId=doi:10.5683/SP3/NT>
326 [NTZX](https://borealisdata.ca/dataset.xhtml?persistentId=doi:10.5683/SP3/NTZX)
- 327 2. Umuhoza C, Zhang C, Hooft A, Trawin J, Uwiragiye E, Mfuranziza CG, et al.
328 Epidemiology of pediatric post-discharge mortality in Rwanda. 2024 Apr
329 18 [cited 2024 Nov 1]; Available from:
330 <https://borealisdata.ca/dataset.xhtml?persistentId=doi:10.5683/SP3/60D>
331 [TRF](https://borealisdata.ca/dataset.xhtml?persistentId=doi:10.5683/SP3/60DTRF)
- 332 3. Knappett M, Nguyen V, Chaudhry M, Trawin J, Kabakyenga J, Kumbakumba
333 E, et al. Pediatric post-discharge mortality in resource-poor countries: a
334 systematic review and meta-analysis. *EClinicalMedicine* [Internet]. 2024
335 Jul;67:102380. Available from:
336 <http://www.thelancet.com/article/S2589537023005576/fulltext>
- 337 4. Menon K, Schlapbach LJ, Akech S, Argent A, Biban P, Carrol ED, et al.
338 Criteria for Pediatric Sepsis—A Systematic Review and Meta-Analysis by
339 the Pediatric Sepsis Definition Taskforce*. *Crit Care Med* [Internet]. 2022
340 Jan 1 [cited 2024 Jan 30];50(1):21. Available from:
341 [/pmc/articles/PMC8670345/](https://pubmed.ncbi.nlm.nih.gov/3670345/)
- 342 5. Wiens MO, Bone JN, Kumbakumba E, Businge S, Tagoola A, Sherine SO, et
343 al. Mortality after hospital discharge among children younger than 5 years
344 admitted with suspected sepsis in Uganda: a prospective, multisite,
345 observational cohort study. *Lancet Child Adolesc Health* [Internet]. 2023
346 Aug 1 [cited 2024 Jan 21];7(8):555–66. Available from:
347 <http://www.thelancet.com/article/S2352464223000524/fulltext>
- 348 6. Bassat Q, Blau DM, Ogbuanu IU, Samura S, Kaluma E, Bassey IA, et al.
349 Causes of Death among Infants and Children in the Child Health and
350 Mortality Prevention Surveillance (CHAMPS) Network. *JAMA Netw Open*.
351 2023;6(7).
- 352 7. Wiens MO, Kisson N, Kabakyenga J. Smart hospital discharges to address
353 a neglected epidemic in sepsis in low- and middle-income countries
354 [Internet]. Vol. 172, *JAMA Pediatrics*. American Medical Association; 2018.
355 p. 213–4. Available from: <https://pubmed.ncbi.nlm.nih.gov/29379956/>
- 356 8. Wiens MO, Nguyen V, Bone JN, Kumbakumba E, Businge S, Tagoola A, et al.
357 Prediction models for post-discharge mortality among under-five children
358 with suspected sepsis in Uganda: A multicohort analysis. *PLOS Global*
359 *Public Health*. 2024 Jul;4(4):e0003050.
- 360 9. Sayinzoga F, Bijlmakers L. Drivers of improved health sector performance
361 in Rwanda: A qualitative view from within. *BMC Health Serv Res*
362 [Internet]. 2016 Apr 8 [cited 2024 Jan 22];16(1):1–10. Available from:
363 [https://bmchealthservres.biomedcentral.com/articles/10.1186/s12913-](https://bmchealthservres.biomedcentral.com/articles/10.1186/s12913-016-1351-4)
364 [016-1351-4](https://bmchealthservres.biomedcentral.com/articles/10.1186/s12913-016-1351-4)
- 365 10. Logie DE, Rowson M, Ndagije F. Innovations in Rwanda’s health system:
366 looking to the future. *The Lancet*. 2008;372(9634).

- 367 11. Huerta Munoz U, Källestål C. Geographical accessibility and spatial
368 coverage modeling of the primary health care network in the Western
369 Province of Rwanda. *Int J Health Geogr.* 2012;11.
- 370 12. Drobac PC, Basinga P, Condo J, Farmer PE, Finnegan KE, Hamon JK, et al.
371 Comprehensive and integrated district health systems strengthening: The
372 Rwanda Population Health Implementation and Training (PHIT)
373 Partnership. *BMC Health Serv Res.* 2013;13(SUPPL.2).
- 374 13. Anatole M, Magge H, Redditt V, Karamaga A, Niyonzima S, Drobac P, et al.
375 Nurse mentorship to improve the quality of health care delivery in rural
376 Rwanda. *Nurs Outlook.* 2013;61(3).
- 377 14. Abbott P, Sapsford R, Binagwaho A. Learning from Success: How Rwanda
378 Achieved the Millennium Development Goals for Health. *World Dev*
379 [Internet]. 2017 [cited 2024 Jan 22];92(ISSN 0305-750X):103–16.
380 Available from: <http://dx.doi.org/10.1016/j.worlddev.2016.11.013>
- 381 15. Wagenaar BH, Hirschhorn LR, Henley C, Gremu A, Sindano N, Chilengi R, et
382 al. Data-driven quality improvement in low-and middle-income country
383 health systems: Lessons from seven years of implementation experience
384 across Mozambique, Rwanda, and Zambia. *BMC Health Serv Res.* 2017;17.
- 385 16. Wiens MO, Nguyen V, Bone JN, Kumbakumba E, Businge S, Tagoola A, et al.
386 Prediction models for post-discharge mortality among under-five children
387 with suspected sepsis in Uganda: A multicohort analysis. *PLOS Global*
388 *Public Health.* 2024 Apr 29;4(4):e0003050.
- 389 17. Wiens MO, Bone JN, Kumbakumba E, Businge S, Tagoola A, Sherine SO, et
390 al. Mortality after hospital discharge among children younger than 5 years
391 admitted with suspected sepsis in Uganda: a prospective, multisite,
392 observational cohort study. *Lancet Child Adolesc Health.* 2023 Aug
393 1;7(8):555–66.
- 394 18. Wiens MO, Larson CP, Kumbakumba E, Kisson N, Ansermino JM, Singer J,
395 et al. Application of Sepsis Definitions to Pediatric Patients Admitted With
396 Suspected Infections in Uganda. *Pediatr Crit Care Med* [Internet]. 2016
397 May 1 [cited 2024 Sep 2];17(5):400–5. Available from:
398 <https://pubmed.ncbi.nlm.nih.gov/27043996/>
- 399 19. Harris PA, Taylor R, Minor BL, Elliott V, Fernandez M, O’Neal L, et al. The
400 REDCap Consortium: Building an International Community of Software
401 Platform Partners. *J Biomed Inform* [Internet]. 2019 Jul 1 [cited 2024 Sep
402 2];95:103208. Available from: [/pmc/articles/PMC7254481/](https://pubmed.ncbi.nlm.nih.gov/31222004/)
- 403 20. WHO Multicentre Growth Reference Study Group. WHO Child Growth
404 Standards based on length/height, weight and age. *Acta Paediatr Suppl.*
405 2006;450.
- 406 21. Elm E von, Altman DG, Egger M, Pocock SJ, Gøtzsche PC, Vandenbroucke JP.
407 Strengthening the reporting of observational studies in epidemiology
408 (STROBE) statement: guidelines for reporting observational studies. *BMJ*:
409 *British Medical Journal* [Internet]. 2007 Oct 10 [cited 2024 Sep
410 30];335(7624):806. Available from: [/pmc/articles/PMC2034723/](https://pubmed.ncbi.nlm.nih.gov/17540587/)
- 411 22. Wiens MO, Pawluk S, Kisson N, Kumbakumba E, Ansermino JM, Singer J,
412 et al. Pediatric Post-Discharge Mortality in Resource Poor Countries: A
413 Systematic Review. *PLoS One* [Internet]. 2013 Jul;8(6). Available from:
414 <https://pubmed.ncbi.nlm.nih.gov/23825556/>

- 415 23. Nemetchek B, English L, Kissoon N, Ansermino JM, Moschovis PP,
416 Kabakyenga J, et al. Paediatric postdischarge mortality in developing
417 countries: A systematic review [Internet]. Vol. 8, *BMJ Open*. BMJ Publishing
418 Group; 2018. p. 23445. Available from:
419 <https://europepmc.org/articles/PMC6318528>
420 24. Jones KD, Thitiri J, Ngari M, Berkley JA. Childhood malnutrition: Toward an
421 understanding of infections, inflammation, and antimicrobials. *Food Nutr*
422 *Bull*. 2014;35.
423 25. Rytter MJH, Kolte L, Briend A, Friis H, Christensen VB. The immune system
424 in children with malnutrition - A systematic review. Vol. 9, *PLoS ONE*.
425 2014.
426 26. Elmadfa I, Meyer AL. The Role of the Status of Selected Micronutrients in
427 Shaping the Immune Function. *Endocr Metab Immune Disord Drug*
428 *Targets*. 2019;19(8).
429 27. Gombart AF, Pierre A, Maggini S. A review of micronutrients and the
430 immune system—working in harmony to reduce the risk of infection.
431 *Nutrients*. 2020;12(1).
432 28. Tam E, Keats EC, Rind F, Das JK, Bhutta ZA. Micronutrient supplementation
433 and fortification interventions on health and development outcomes
434 among children under-five in low-and middleincome countries: A
435 systematic review and meta-analysis. Vol. 12, *Nutrients*. 2020.
436 29. Sidze EM, Wekesah FM, Kisia L, Abajobir A. Inequalities in Access and
437 Utilization of Maternal, Newborn and Child Health Services in sub-Saharan
438 Africa: A Special Focus on Urban Settings. Vol. 26, *Maternal and Child*
439 *Health Journal*. 2022.
440 30. Nyandekwe M, Kakoma JB, Nzayirambaho M. The health-related
441 Millennium Development Goals (MDGs) 2015: Rwanda performance and
442 contributing factors. *PAMJ* 2018; 31:56 [Internet]. 2018 [cited 2024 Sep
443 30];31(56). Available from: [https://www.panafrican-med-](https://www.panafrican-med-journal.com//content/article/31/56/full)
444 [journal.com//content/article/31/56/full](https://www.panafrican-med-journal.com//content/article/31/56/full)
445 31. Hooft A, Umuhoza C, Trawin J, Mfuranziza C, Uwiragiye E, Zhang C, et al.
446 Validation of a risk-prediction model for pediatric post-discharge
447 mortality after hospital admission in Rwanda. *medRxiv*. 2024 Oct
448 27;2024.10.25.24316146.
449 32. Haver J, Brieger W, Zoungrana J, Ansari N, Kagoma J. Experiences engaging
450 community health workers to provide maternal and newborn health
451 services: Implementation of four programs. *International Journal of*
452 *Gynecology and Obstetrics*. 2015;130(S2).
453 33. Makaka A, Breen S, Binagwaho A. Universal health coverage in Rwanda: a
454 report of innovations to increase enrolment in community-based health
455 insurance. *The Lancet*. 2012;380.
456 34. Amoroso CL, Nisingizwe MP, Rouleau D, Thomson DR, Kagabo DM,
457 Bucyana T, et al. Next wave of interventions to reduce under-five mortality
458 in Rwanda: A cross-sectional analysis of demographic and health survey
459 data. *BMC Pediatr*. 2018;18(1).
460 35. Manzi A, Mugunga JC, Iyer HS, Magge H, Nkikabahizi F, Hirschhorn LR.
461 Economic evaluation of a mentorship and enhanced supervision program
462 to improve quality of integrated management of childhood illness care in
463 rural Rwanda. *PLoS One*. 2018;13(3).

- 464 36. Pratley P. Associations between quantitative measures of women's
465 empowerment and access to care and health status for mothers and their
466 children: A systematic review of evidence from the developing world. Vol.
467 169, *Social Science and Medicine*. 2016.
- 468 37. Karra M, Fink G, Canning D. Facility distance and child mortality: A multi-
469 country study of health facility access, service utilization, and child health
470 outcomes. *Int J Epidemiol*. 2017;46(3).
- 471 38. Mohamad Fadli K., Muhamad Hanafiah J., Rosliza AM. Spatial Accessibility
472 of Primary Healthcare in Rural Population: A Review. *International Journal*
473 *of Public Health and Clinical Sciences*. 2018;5(6).
- 474 39. Niragire F, Achia TNO, Lyambabaje A, Ntaganira J. Child mortality
475 inequalities across Rwanda districts: A geospatial continuous-time
476 survival analysis. *Geospat Health*. 2017;12(1).
- 477
- 478
- 479

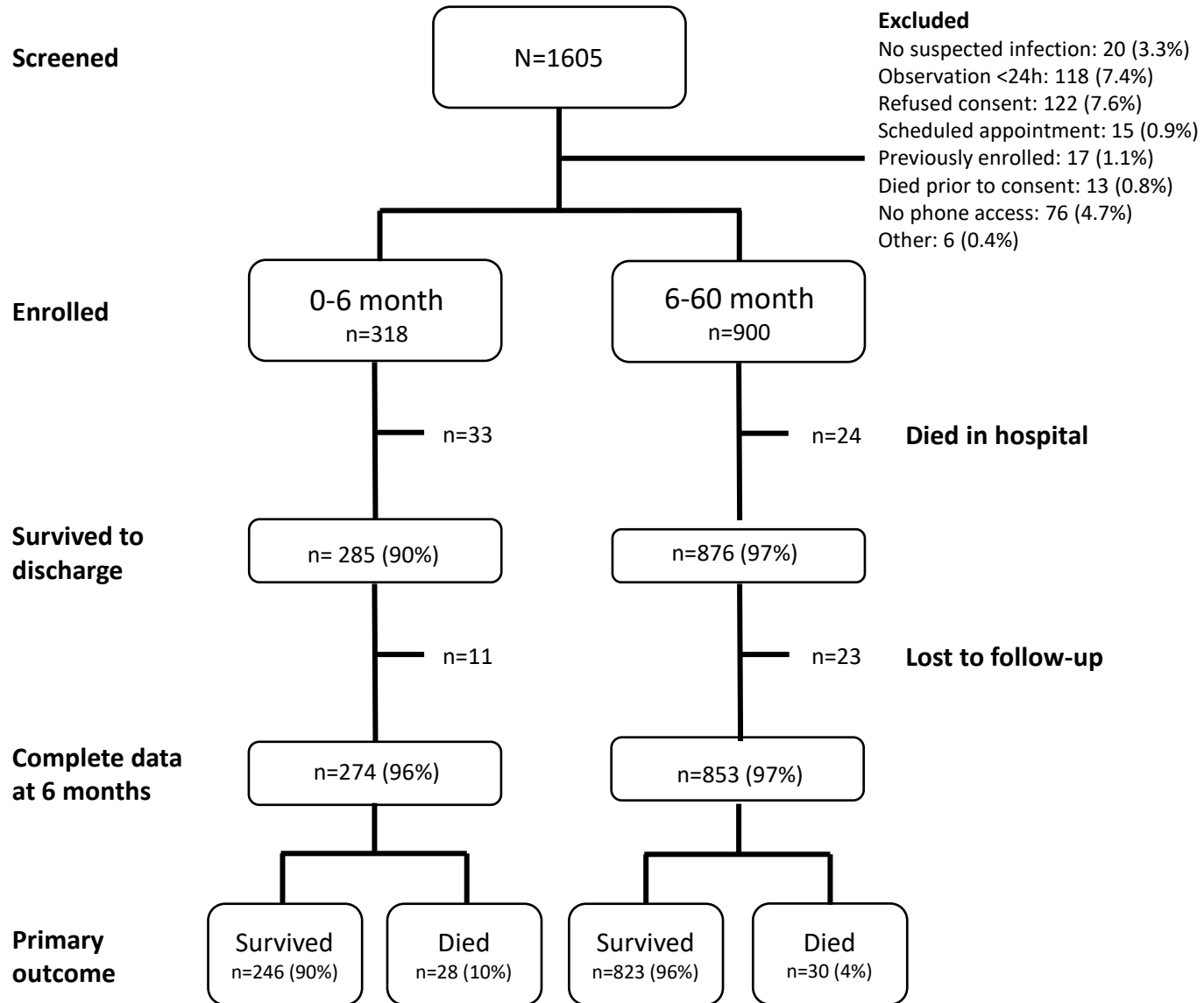
480 **Supplementary Files**

481 **Table S1:** Supplementary Table 1, Overall demographics and cohort characteristics

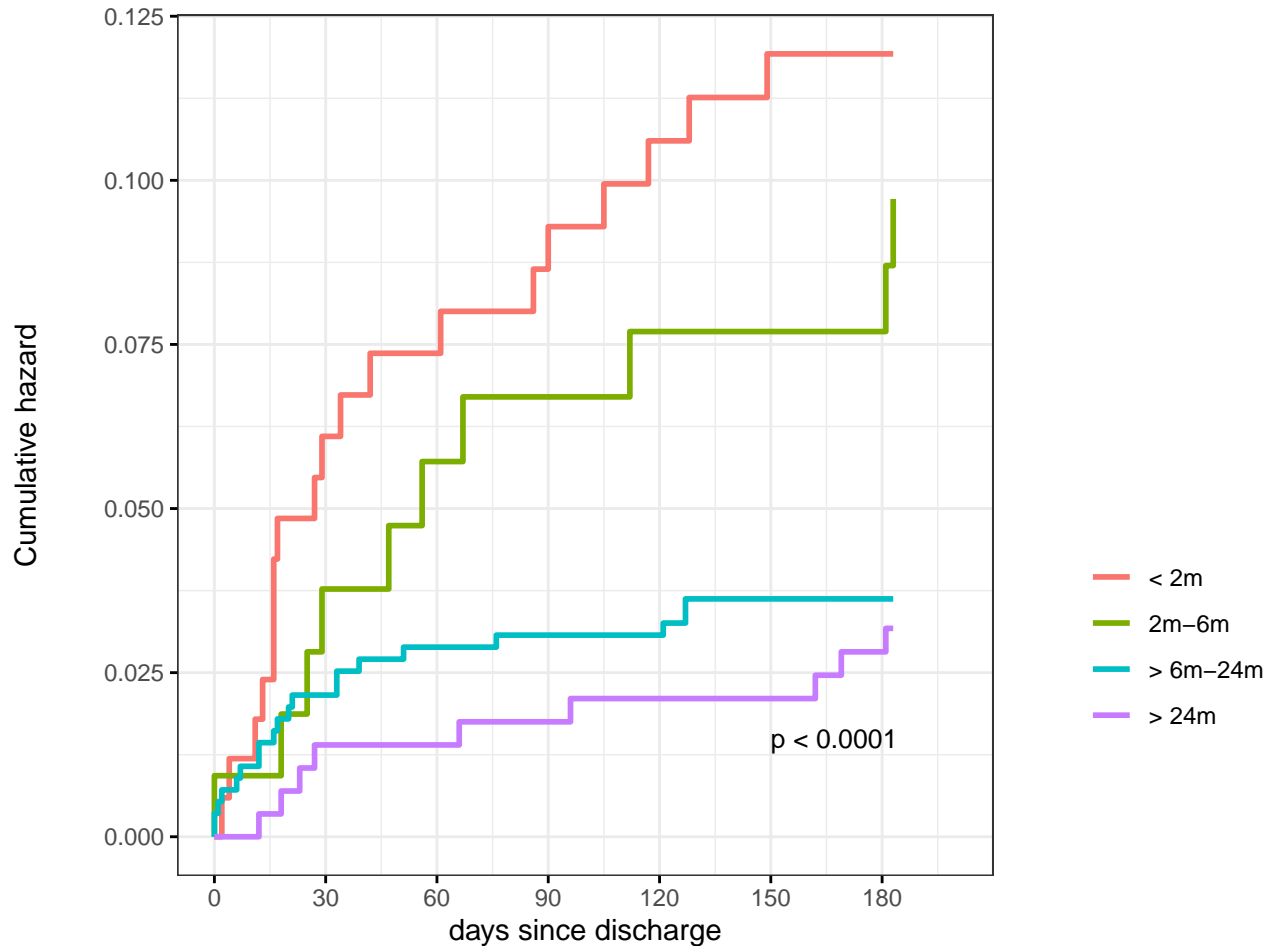
	N = 1127	
Variables	N (%) / Median (IQR)	aOR* (95% CI)
Site, n (%)		
Kigali	361 (32.3)	reference
Ruhengeri	766 (68.0)	0.24 (0.14-0.43)
Male (ref=female)	676 (60.0)	0.81 (0.47-1.39)
Age, months	13.5 (6.1-24.7)	0.96 (0.94-0.99)
MUAC (mm)¹		
<110/<115	109 (9.7)	2.69 (1.19-6.08)
110-120/115-125	112 (9.9)	3.01 (1.47-6.17)
>120/ >125	906 (80.4)	reference
Weight for age z-score		
<-3	103 (9.1)	4.63 (2.42-8.85)
-3 to -2	116 (10.3)	2.62 (1.22-5.65)
>-2	908 (80.6)	reference
SpO₂, %	95 (88-97)	0.98 (0.95-1.02)
Heart rate	142 (128-157)	1.00 (0.99-1.02)
Respiratory rate	41 (35-49)	1.01 (0.99-1.03)
Temperature		
< 36.5	208 (18.5)	0.75 (0.34-1.66)
36.5-37.5	419 (37.2)	reference
>37.5	500 (44.4)	0.67 (0.37-1.22)
Abnormal BCS	194 (17.2)	1.93 (1.06-3.52)
HIV positive	3 (0.3)	4.04 (0.35-46.89)
Positive malaria test	17 (1.5)	-
Haemoglobin, g/dl		
No anemia: ≥ 11	712 (63.2)	reference
Anemic: < 11	415 (36.8)	1.74 (1.00-3.00)
Respiratory distress	228 (20.2)	1.37 (0.76-2.48)
Referral	1010 (89.6)	2.37 (0.90-6.24)
Prior antibiotic use	423 (37.5)	1.58 (0.80-3.11)
Prior antimalarial use	33 (2.9)	1.98 (0.63-6.23)
Maternal and Social Characteristics		
Time to reach hospital		
<30 min	453 (40.2)	reference
30 min - 1h	438 (38.9)	1.28 (0.63-2.60)
>1h	236 (20.9)	1.88 (0.91-3.88)
Maternal education²		
No school or ≤P3	151 (13.4)	reference
P4 to P6	457 (40.6)	0.46 (0.23-0.91)
S1 to S6	428 (38.0)	0.24 (0.11-0.52)
> S6	88 (7.8)	0.13 (0.04-0.49)
Water source		
Municipal water/tap	715 (63.4)	reference
Other sources	412 (36.6)	1.33 (0.76-2.30)
Boil/disinfect/filter water	441 (39.1)	0.46 (0.24-0.88)
Discharge Characteristics		

Discharge status		
Routine discharge	1097 (97.3)	reference
Referred to higher level of care	21 (1.9)	2.77 (0.85-9.01)
Unplanned discharge	9 (0.8)	1.57 (0.18-13.50)
Length of stay		
	4 (3-8)	1.06 (1.04-1.09)

482 Note: *adjusted for age, sex, and site. ¹small number represents cutoff for under 6 months; ²3 participants
483 reported unknown level of education
484 Abbreviations: OR = odds ratio; IQR = interquartile range; BCS = Blantyre Coma scale; HIV = human
485 immunodeficiency virus; SpO₂ = oxygen saturation
486



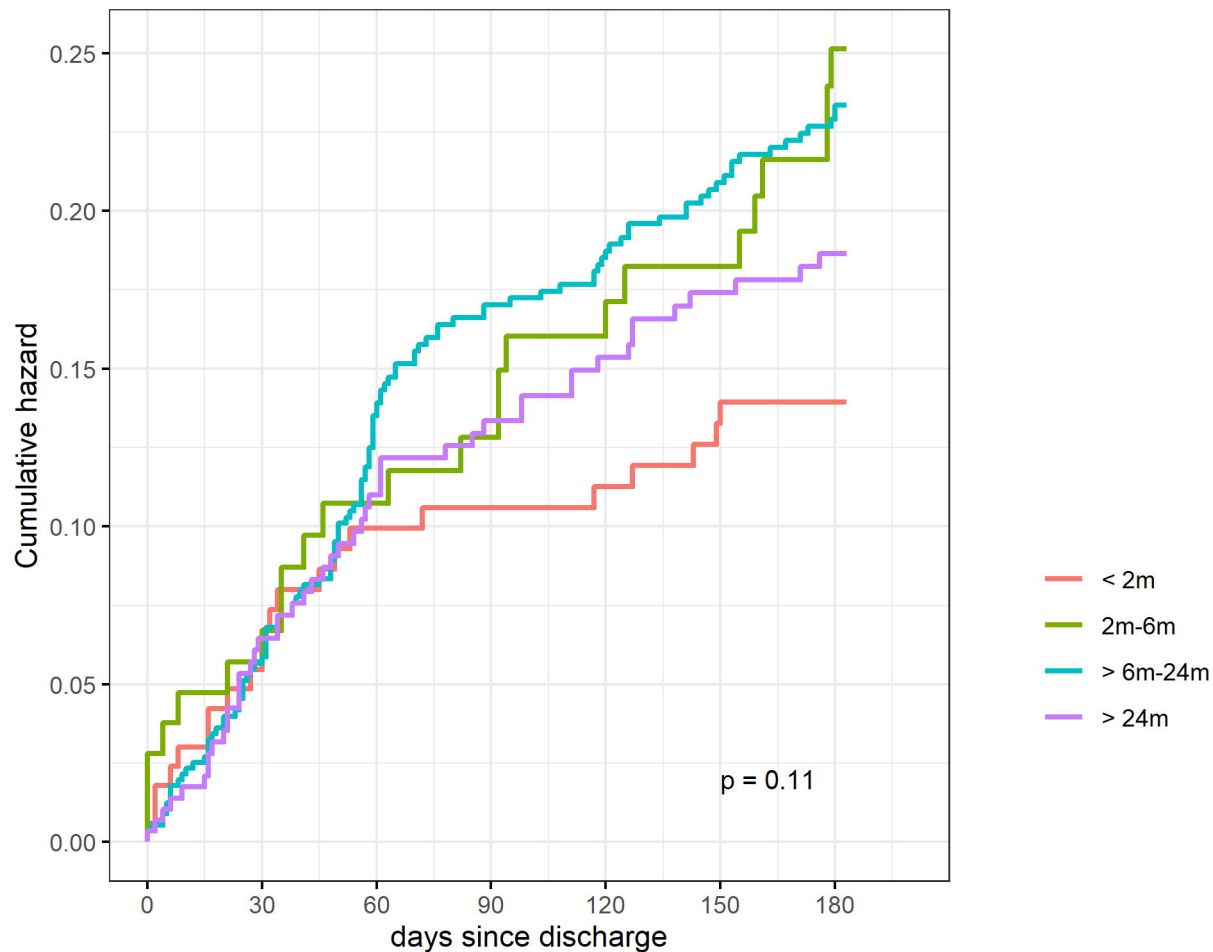
Hazard curves for post-discharge mortality



Number at risk

< 2m	169	159	157	155	152	150	150
2m-6m	108	104	102	101	100	100	100
> 6m-24m	562	550	546	545	545	542	542
> 24m	288	284	284	283	282	282	280
	0	30	60	90	120	150	180
	days since discharge						

Hazard curves for first readmission



Number at risk

	0	30	60	90	120	150	180
< 2m	169	160	153	152	151	148	147
2m-6m	108	102	97	95	92	90	84
> 6m-24m	562	531	491	474	467	456	447
> 24m	288	270	258	252	247	242	239

days since discharge