

1 **Fear, Stigma and Uncertainty: The short and long-term effects of Ebola on survivors,**
2 **affected families, and community in Bundibugyo, Western Uganda**

3
4 Shamilah Namusisi^{1*}, Jacinta Mukulu Waila², Sarah J. Hoffman³, Cheryl.Roberston³, Katey
5 Pelican⁴ and Michael. Mahero⁵,

6 ¹Makerere University, Kampala, Uganda, ²Heidelberg Institute of Global Health, University of
7 Heidelberg, Germany ³School of Nursing, University of Minnesota, ⁴Department of Veterinary
8 Population Medicine, University of Minnesota, Saint Paul USA, ⁵University of Tennessee College
9 of Veterinary Medicine, ⁵Department of Veterinary Population Medicine, University of Minnesota,
10 Saint Paul USA

11
12 **Abstract,**

13 In 2014, Uganda was identified as a high-risk country for Ebola Virus Disease (EVD), with
14 a series of outbreaks recorded since 2000. In 2007, the second outbreak in Bundibugyo district
15 resulted in 149 reported cases and 37 confirmed Ebola deaths. Through the outbreak response, a
16 new strain of the Ebola virus (*Bundibugyo ebolavirus*) was discovered. Although much is known
17 about the nature of Ebola, including disease signs and symptoms, transmission and management,
18 there is limited understanding of the short and long-term sociocultural impacts of the disease in
19 communities. The study team conducted a focused ethnography in Bundibugyo District 10 years
20 after the 2007 outbreak. Data collection included a review of archival data, participant observation,
21 field notes and 19 in-depth interviews with survivors and affected families. Results underscored
22 time-limited social, cultural and economic disruptions caused by the outbreak. We interpreted
23 findings through an Eco-health framework with an emphasis on ways that underlying stigma
24 accentuated detrimental long-term effects of the outbreak. Affected women, particularly widows,
25 experienced social exclusion, and economic strain, and acknowledged loss of opportunity for a
26 better life for their orphaned children. Deepening fear of the possible recurrence of Ebola resulted
27 in ethnic tension driven by speculations on the 2007 outbreak source. Survivors reported varying
28 persistent health effects including impaired vision and general body weakness. Community
29 members reported positive changes in health seeking behaviors. Health care workers described
30 high levels of alert for early clinical signs of Ebola, a critical factor for early outbreak detection at
31 the community level. Our findings can inform future Ebola response and recovery interventions,
32 particularly those targeting community re-integration and a mitigation of the fear and stigma
33 associated with survivorship.

34 **Keywords:** *Affected families; Bundibugyo; community; Ebola; ethnography; survivors;*

35 *Corresponding

36 E-mail: shamilahnamusisi@gmail.com(SN)

37 Author

38 Authors' Contribution

39 &These authors contributed equally to this work.

44

45 **Introduction**

46 Since the identification of the Ebola virus in 1976, Africa has suffered the highest number
47 of outbreaks globally [1]. It is generally estimated that the number of outbreaks are going to
48 increase across Sub-Saharan Africa as habitats for Ebola aggregate [2]. Over the last two decades,
49 two major outbreaks have been recorded, in West Africa (2013-2016) the largest and deadliest,
50 and in Eastern part of Democratic Republic of Congo (DRC), causing 11,310 cases and 2,287
51 deaths [3,4] respectively. The outbreak in DRC is believed to be the second largest and most
52 complicated to date due to conflict, political instability, poor infrastructure and socio-economic
53 weaknesses [3,5,6]. Ebola disproportionately impacts people living in rural communities in low
54 income countries causing disruption of various economic activities [7,8]. The origin of Ebola
55 outbreaks in Africa has tended to be rural and among impoverished communities, including the
56 West Africa outbreak that started in rural Guinea and expanded to the level of an epidemic [9–
57 11]. Ebola places a burden on communities and nations through loss of money and economic
58 activities and capital, an increase in unemployment and brain drain, slowdown or closure of health
59 facilities, disruption of internal and external trade, decrease in tourism and travel activity, and an
60 increase in social and cultural barriers [3,11].

61 EVD outbreaks affect many aspects of life at individual, household and community
62 levels [12]. The outbreak in West Africa further highlights the outbreak's impact on the population,
63 health care system and economy of affected countries [13]. Previous studies primarily focused on
64 the disease's spread, clinical signs, diagnostics, prevention, and more recently, vaccine and drug
65 development [14]. However, this alone cannot comprehensively explain the devastating
66 consequences the disease has had in the lives of those diagnosed with EVD and their families
67 [15,16]. Studies of mental health effects in West Africa have found high prevalence of symptoms
68 related to depression, anxiety and psychological distress due to stigma [12,17].

69 The stigmatization of survivors, affects the ability to establish effective response strategies
70 following an outbreak [18]. Disease-related stigma and its sequelae have been documented
71 previously in the context of EVD. The 2000-2001 outbreak in the Gulu, Masindi, and Mbarara
72 districts of Uganda resulted in social rejection, harassment, and discrimination of Ebola survivors
73 [19]. During the 1995 EVD outbreak in Kikwit, Zaire (renamed Democratic Republic of the
74 Congo), EVD survivors returned to their communities' post-recovery to find their homes and
75 belongings had been burned, and many times spouses had fled [20]. Community members refused
76 to buy market goods from EVD survivors post-return, influencing economic status and position in
77 the societal hierarchy [21]. The sociocultural effects of disease-related stigma can have dramatic
78 effects on housing, criminal activity, meaningful relationships, and individual wellbeing [3,22].
79 These effects also drive larger, collective factors such as food insecurity, displacement and
80 environmental degradation, which are directly relevant to human interaction with the environment
81 [22].

82 Uganda has experienced several outbreaks of Ebola virus disease (EVD) and the most
83 recent outbreak in Uganda started in September 2022 in Mubende district, spreading to other
84 neighboring districts [23,24]. The country's first and largest outbreak occurred in the Northern
85 district of Gulu in 2000 [25,26]. This was followed by several other outbreaks: 2007 in
86 Bundibugyo district, 2011 in Luwero (single case, one death) and the 2012 outbreak in Kibale

87 [27]. On 29 November 2007, the Uganda Ministry of Health (MoH) and the World Health
88 Organization (WHO) confirmed an outbreak of EHF in Bundibugyo District, western Uganda and
89 On 20 February 2008, the outbreak concluded with 93 putative and 56 laboratory-confirmed
90 cases[28]. There were 37 case fatalities in an outbreak that saw the discovery of a new strain of
91 Ebola (*Bundibugyo ebolavirus*) (CDC, 2007). Notably, the 2012 outbreak in Isiro, Democratic
92 Republic of Congo was retrospectively attributed to the same strain *Bundibugyo ebolavirus*
93 [28,29]. The majority of cases (36%) in the Bundibugyo outbreak were subsistence farmers and
94 12% were health workers [30]).

95 A characterization of short and long term impacts of Ebola outbreaks is a more recent area
96 of focus in research [13,17,31,32]. Apart from the immediate health effects, the disease also
97 instigates a breakdown in social and cultural values or norms that have long been known as major
98 survival strategies among resource-limited communities such as those in Bundibugyo [3,26,29] .
99 Survivors and affected communities experience short and long-term consequences of Ebola
100 [12,32]. The short-term psychological effects among survivors include the traumatic disease
101 course and the physiological trauma associated with fear of death and proximity to others dying
102 [27,30]. Survivors report feelings of shame or guilt and stigma or blame from others [29,33]. These
103 are compounded by a change in cultural practices surrounding many of the traditions that long held
104 communities together [16,29]. At the community level, there is an immediate sense of grief due to
105 loss of community members and shifting family structures due to loss of parents, primary income
106 earners, health workers, community leaders and other social services provision professionals[34].
107 The United Nations Development Program (2014) predicted an orphan crisis and disruption of
108 longstanding traditional community support in West Africa caused by the Ebola outbreak [8].
109 However, no parallel studies describe the Ugandan context.

110 **Purpose**

111 The aim of this study was to understand socio-economic and cultural effects of Ebola among
112 survivors, affected families and communities post-outbreak in Bundibugyo district, Uganda. The
113 findings are important in the design of recovery programs targeting Ebola affected individuals and
114 communities. Moreover, our findings add to the emerging body of literature describing the short
115 and long-term impacts of epidemic/pandemic courses in affected communities.

116

117 **Conceptual Framework**

118 We used an Eco-health approach integrated with perspectives on disease-related stigma to
119 design the study and interpret reported individual, familial, and community experiences on EVD
120 survivorship in the ten years since the Bundibugyo outbreak. In studies involving zoonotic
121 diseases, where there are fundamental connections between human, health, and environmental
122 systems, examining factors that potentiate vulnerable points in these relationships offers a greater
123 understanding of the phenomenon as well as potential mechanisms for intervention (Ecohealth).
124 Based on our work and the work of others in the social, cultural, and economic intersections of
125 zoonoses, we framed our analysis through the perspective of Ecohealth and stigma. Stigma is a
126 collective, negative social reaction to an individual attribute that is specific to time and place
127 (Miles, 1981). Depending on contextual factors, enduring disease-related stigma is associated with
128 social rejection, violence, long term inequities in the distribution of income, housing, and health,
129 and significant, negative psychosocial effects of survivorship [32,34,35]. In the context of an

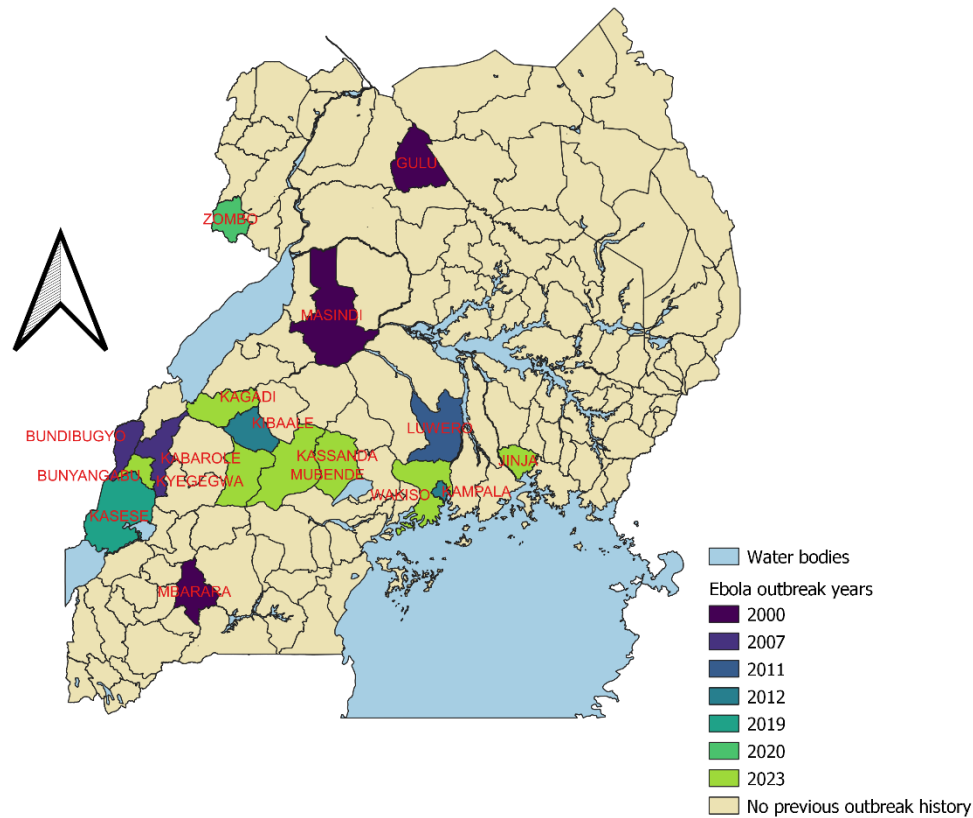
130 outbreak, stigma and resulting discrimination are potentially more damaging than the pathology
131 of the disease itself [34].

132

133 **METHODS**

134 **Study area:** This study was conducted in Bundibugyo district and data were collected over a
135 period of three months from October to December 2015. The district lies in western Uganda
136 bordering the DRC and is the only district west of the Rwenzori Mountains. It is bordered by
137 Ntoroko District to the northeast, Kibaale District to the east, Kabarole District to the south, and
138 the DRC to the west and north. The district headquarters at Bundibugyo town council are located
139 approximately 32 kilometers (20 miles), by road, west of Fort Portal. Though part of the Nile basin,
140 Bundibugyo district is ecologically and culturally part of Central Africa with similar customs to
141 those of eastern DRC. The study took place in Bundibugyo town council and Kikyoo, about 25
142 kilometers apart. Kikyoo, the epicenter of the outbreak, is characterized geographically by low
143 lying and mountainous areas rising to about 6200-8900ft above sea level. Its rainfall distribution
144 enables agriculture to take place throughout the year. It is also surrounded by swamps, rivers like
145 Humya, Kirumya forest (Semuliki) that harbors wild species like monkeys, chimpanzees, buffalos
146 among others. The communities adjacent to the forest practice subsistence agriculture and use the
147 forests to supplement their livelihoods. Some of the forest products include bush meat, herbal
148 medicines, fruits, vegetables, fuel in form of firewood and charcoal, and construction materials
149 such as timber and vines for making ropes. Therefore, the forest is of great social-economic
150 importance to the local communities. Land for agricultural production is steadily shrinking due to
151 an increase in population and the fact that this area is sandwiched between the Semuliki national
152 park and North Rwenzori Forest Reserve.

153 **Map showing Ebola Outbreak Areas in Uganda**



154

155

156 **Study design:** We conducted a focused ethnographic inquiry collecting data through: in-depth
157 interviews with survivors, affected families and community members, participant observation,
158 extensive field note documentation and archival data review. The study team consisted of five
159 scholars with veterinary and nursing backgrounds led by an expert in ethnographic research
160 methods.

161 **Participant sampling:** Initially, purposive sampling and subsequently snowball sampling
162 techniques were used to identify interview participants. All study participants were 18 years and
163 older and included survivors and affected families and community members that were residents in
164 the area at the time of the outbreak. Survivors were adults who self-reported laboratory confirmed
165 EVD infection, and who were hospitalized and discharged after laboratory confirmed negative
166 status. Affected families were those who had a member suffer from EVD regardless of whether
167 they survived or succumbed to the disease. The community refers to residents of the study area
168 who were present at the time of the outbreak.

169 **Data collection procedures**

170 **In-depth interviews:** Interviews were conducted either in English or local languages with the aid
171 of an interpreter who was a trained qualitative research assistant and a native of the area, fluent in
172 Rubwisi and Rukonzo (the two major local languages in Bundibugyo) and highly proficient in
173 English. An in-depth interview guide provided the interview framework. All interviews were audio

174 recorded with participant consent and written notes were taken during the interviews. A total of 19
175 interviews were conducted.

176 **Archival data:** The team reviewed medical records of patients admitted with Ebola at Bundibugyo
177 hospital. These records showed who was affected, the area of residence, ethnicity, religious
178 affiliation, sex, age, dates of admission. Treatment received and whether recovered or died

179 **Participant observation:** Data collectors recorded community observation, including activities
180 being carried out, the general home environment, how people interacted with each other, and key
181 issues emerging out of the conversations besides the interviews. All data was collected between
182 November 1 and December 20, 2015.

183 **Data management:** Verbatim transcription of the audio files was performed and the interviews
184 that were conducted in local languages translated into English. Investigators reviewed the
185 transcripts with the study interpreter after the translation was complete. Independent verification
186 of all translated transcripts was done by a second study team member who was not involved in the
187 original translation and fluent in one of the local languages and English. Finally, all transcripts
188 were subjected to quality checks against the audio recordings and compared with the hand written
189 notes by the translator and the investigators.

190 **Data Analysis:** Thematic qualitative analysis was performed in close collaboration with the
191 research assistant who did interpretation during data collection. Two researchers with expertise in
192 qualitative methods independently read at least six transcripts and developed a list of codes through
193 open descriptive coding. The codebooks were then merged into a single codebook through review,
194 discussion, and consensus. The codebook was then applied to manually analyze the data using
195 Microsoft Word. Analysts constructed a table that included all codes where excerpts of texts from
196 the transcripts that corresponded to the codes were copied and pasted into the table. After coding
197 seven transcripts together revising the codebook iteratively, the two analysts then divided the 12
198 remaining transcripts equally to complete coding, meeting after every three transcripts to review
199 and integrate new codes into the coding frame and back code when appropriate. Once coding was
200 complete, the codes were then grouped together into categories guided by similarity in content
201 after which the categories were further collapsed into themes. The field notes and archival data
202 were used during data analysis to give context to participants' narrations, aiding with
203 interpretation.

204 Trustworthiness was established through analytic procedures, that included maintenance of an
205 audit trail of audio files, close collaboration with a consistent study interpreter, memoing, and other
206 methodological procedures like field note review, rich description of participant observation, and
207 the cross-referencing of findings across the categories of respondents

208 **Funding information**

209 The study was conducted with funding support from University of Minnesota as a capacity
210 building grant for the then One Health residents under the USAID first funded program of
211 Emerging Pandemic Threats (EPT1).

212 **Ethical considerations**

213 We received ethical approval to conduct this study from the Joint Clinical Research Center in
214 Uganda and the University of Minnesota Institutional Review Board (IRB Code Number:

215 1502S62201). Written informed consent was obtained from all study participants. Additionally,
216 Bundibugyo local government, through the office of Chief administrative officer granted the study
217 team permission for community entry. The medical superintendent approved access to medical
218 records and this facilitated the recruitment of study participants.

219 Findings

220 Characteristics of study participants

221 Table 1 describes the characteristics of the key informants. The age of participants ranged between
222 32 and 52 years with the mean and median being 43 years. Majority of the participants were male
223 (74%) while females were about a quarter (26%). All participants reported attaining some level of
224 education ranging from primary school to graduate levels. Whereas men engaged in various
225 income generating activities, all women were engaged with unpaid work in the home. Among male
226 participants, paid employment varied by education level whereby college graduates worked as
227 district technical leaders (16%), health workers (16%) and social workers (11%). Most of those
228 educated below post-secondary level worked as farmers (32%). All participants reported being
229 affiliated to various religious groups with the majority (90%) identifying as Seventh Day
230 Adventists (SDA).

231 Table 1. Summary of respondents

232 Descriptive statistics (n=19)

Variable	
Location	
Bundibugyo- urban	9 (47%)
Kikyo- rural	10 (53%)
Category	
Affected community survivor	6 (32%)
Affected family	9 (47%)
	4 (21%)
Marital status	
Married	13 (68%)
Single	2 (11%)
Widow	4 (21%)
Sex	
Female	5 (26%)
Male	14 (74%)
Education level	
Post-secondary	7(37%)
Primary	9 (47%)
Secondary	3 (16%)
Religious affiliation	
Christian (SDA)	17 (90%)
Christian (Protestant)	1 (5%)
Moslem	1 (5%)
Age	
Mean (SD); Median (IQR)	43 (2.4); 43 (32-52)

233 **Occupation**

234	Boda boda rider	2 (11%)
235	Business man	1 (5%)
236	District leaders	3 (16%)
237	Farmer	6 (32%)
238	Health worker	3 (16%)
239	Market vendor	1 (5%)
240	Social worker	2 (11%)
241	VHT	1 (5%)

240

241 **Description of general life before the Ebola outbreak**

242 Participants described their lives before the outbreak as being “normal”, men and women went
243 about their daily routine activities of providing for the families and caring for the children
244 respectively. Community gatherings went on without any restrictions (freedom of association),
245 children went to school and non-governmental organizations were present to offer humanitarian
246 aid to address various challenges in the community. Cocoa farming, the main cash crop in the area,
247 was the major economic activity undertaken by most residents. The area faced the challenge of
248 poor road infrastructure and the main road to Bundibugyo from the neighboring districts was as
249 poor as the road network within the district. Bundibugyo district hospital was the main health
250 facility serving the population supported by other health facilities of lower levels, including Kikyo
251 health center III, where the first Ebola cases were reported.

252 **Emerging themes**

253 Three major themes emerged during data analysis; i) The Ebola outbreak, ii) The effects of the
254 outbreak, and iii) Life after the outbreak, as described below. Quotes are identified using the
255 interview number and the category of the participant (survivor, affected family or community
256 member). The acronym ‘CHW’ is used for Community Health Workers, ‘HSP’ is used for health
257 service providers such as nurses, clinical officers, and medical doctors.

258 **Theme 1: The outbreak**

259 This theme presents the community experiences during the Ebola outbreak from the detection of
260 the viral disease to its containment. It has two main subthemes:

261 **Subtheme 1a: The health care system response** including the challenges with diagnosis and
262 management of an unusual health situation are presented under this subtheme.

263 **The Strange Disease:** Around August 2007, participants reported that community members began
264 falling ill from what was described as a strange disease. To the health workers and the community
265 members alike, this strange disease has signs and symptoms like those of malaria and was managed
266 as such.

267 *“The clinical officer who was very instrumental in diagnosing...had some disease that he*
268 *called strange of course...A fever, diarrhea and vomiting so anyone would have thought*
269 *that this was possibly what? Malaria. So he started I think managing, managing, managing*
270 *but at the end people were not improving.” - IDI002-HSP*

271 *“Ebola started with our dad and it was the first family to get affected. We first heard of it*
272 *in a place called Kikyo. That malaria has come to Kikyo.”- IDI004-Survivor&HSP*

273 To bring the situation under control, health workers exchanged information among themselves,
274 although EVD suspicion was very low partly because none of the health workers had prior clinical
275 experience with such a disease.

276 *“When the disease occurred in Kikyo for 2 months...a nurse in Kikyo called me and*
277 *explained to me what was happening and I felt that it could be a Hemorrhagic Fever*
278 *(HF)..” – IDI001- HSP*

279 The characteristic symptom of bleeding from body openings was only observed in a few of the
280 cases, further eluding the suspicion of hemorrhagic fever.

281 *“People had no knowledge about Ebola. Of course, people had heard...during the Gulu*
282 *outbreak but had never had knowledge to know how it spreads, how it looks, of course we*
283 *used to hear may be on news on how it spreads but being in Gulu which is far away from*
284 *Bundibugyo.” – IDI003-NGO worker*

285 *“.....the way it came was not really not typical...people will start thinking of Ebola*
286 *when you have bleeding from anywhere...the kind of presentation that was here that would*
287 *possibly be the latest sign.” - IDI002-HSP*

288 Health care workers at Kikyo health center, the epicenter, reported cases to the district and the
289 Ministry of Health in Kampala, appealing for support to diagnose the strange disease.

290 *“...People are not improving...at a certain point, the district reported, even officials from the*
291 *ministry came, they went to Kikyo down at the ground and tried to investigate, took samples and*
292 *things of that kind.” – IDI002-HSP*

293 **Complicating factors for the outbreak:** Some participants expressed concerns that the imminent
294 hosting of the Commonwealth Heads of Government meeting of November, 2007 by Uganda
295 somehow delayed the detection and declaration of the outbreak. Similarly, during that same time,
296 the district had an ongoing typhoid fever outbreak which masked the fact that something new was
297 coming up.

298 *“So, within that period of typhoid fever also Ebola came in so the whole thing was just*
299 *happening I think at one time some of those patients ended in theater thinking that*
300 *maybe they have gotten perforated gut and they were opened up maybe to find inside there*
301 *is nothing happening.” – IDI002-HSP*

302 **Ebola confirmation, fear and panic during response:** Amidst the confusion of a strange disease
303 with associated death, the Ministry of Health sent a technical team to assess the situation and
304 samples were taken which finally confirmed it was Ebola.

305 *“It began in August in Kikyo and started getting cases in the last week of September and*
306 *managed cases in the hospital until 30th October when it was announced as Ebola.”*
307 *IDI001- HSP*

308 Having heard about the devastating nature of Ebola from the Gulu outbreak, the declaration that
309 the strange disease was Ebola sent waves of panic across the entire community. Health workers

310 experienced as much fear as lay community members and this fear led to disruption of healthcare
311 service delivery.

312 *“Most of the staff in the ward and even patients fled due to fear..... That experience was*
313 *really terrible for me and my colleague. Even my family members often pestered me to*
314 *leave unit/hospital but I told them no. What I know is that God kept me for a purpose and*
315 *He knows it. The entire time I did not step home until Bundibugyo was declared Ebola-*
316 *free.” – IDI001- HSP*

317 *“The professional health workers had fled the hospital but for us as volunteers we would*
318 *not leave our community. – IDI018-CHW, boda boda rider & burial team member*

319 Similarly, other social and economic activities were also affected:

320 *“The bank was the only way to get...support in terms of funds to run these activities. But*
321 *you are going to the bank, the bank manager, everybody in the bank they are scared.” –*
322 *IDI003-NGO worker*

323 *“So indeed, there was stampede so to say...every person packed and left the district including even*
324 *government workers those who were not from here. They packed and left.” – IDI014-Government*
325 *official*

326 **Subtheme 1b: The affected communities’ response:** This subtheme expounds on how local
327 community members reacted to the emergence of a strange disease which the healthcare system
328 was unable to diagnose.

329 **Suspected witchcraft:** With no clarity on what was happening, community members speculated
330 to explain the unusual occurrences. For some families, it was an act of witchcraft. The concern
331 was, why people from the same family experiencing the same signs? If the problem was medical,
332 why were medical workers failing to diagnose and or treat the disease?

333 *“Partly the witchcraft issue came before the declaration was made, people were not aware*
334 *of what was killing.” – IDI003-NGO worker*

335 *“People were thinking that maybe there are some charms and there was a story somewhere*
336 *that someone there is a witch doctor so people were thinking that maybe because he was*
337 *getting some people from Congo coming for those herbal medicines.”- IDI008- Survivor*
338 *&HSP*

339 **Act of sacrifice:** In one of the villages where six people died in a family, community members
340 thought that it was an act of sacrifice by one young man, a member of the same village, to get
341 richer. At one of the burials, he was attacked and almost beaten to death causing him and his family
342 to migrate to Kasese district.

343 *“One home in Butholya six people died at once. There was a young rich man in that*
344 *village, they thought he is the one sacrificing them, even on the burial people had to beat*
345 *him. It was after the death of the 5th person and people thought that maybe he is*
346 *getting.....he wanted to get money using “mayembe” (local charms), up to now that man*
347 *shifted to Kasese and said he will never come back, he hates the whole clan and the family.”*
348 *- IDI018- HSP*

349 **Suspected poisoning and tribal conflict:** Though tribal tensions between the Bakonzo and
350 Bamba ethnic groups in this area existed long before the Ebola outbreak, the confusion surrounding
351 ‘the strange disease’ seemed to have rekindled the rift between the two tribes. Most of the initial
352 cases of ‘the strange disease’ were reported in mountainous areas among the Bakonzo. There
353 emerged a confusing narrative that the Bamba who live at the foot of the mountain had poisoned
354 the water source causing death of the Bakonzo. This claim resolved after ‘the strange disease’ was
355 confirmed to be Ebola.

356 *“I remember at first there was general complaint that there is a strange disease and it is*
357 *killing people. You know here we having majorly like two or three tribes; the Bakonzo, the*
358 *Bamba, the Babwisi and this strange disease was in the area dominated by the Bakonzo.*
359 *So, I remember they came to our office, the CAO’s office complaining that, the Bakonzo*
360 *have been poisoned, you know.” – IDI014-Government official*

361 **Acceptance and compliance:** Following the official declaration of an Ebola outbreak, community
362 attention shifted to a positive response to an outbreak situation, highly influenced by what they
363 had heard about previous Ebola outbreaks. The immediate reaction was that of acceptance and
364 compliance to the situation and fear for one’s self.

365 *“We’ve heard of Ebola in Sudan; we had heard of Ebola in Congo so the moment people*
366 *heard this is Ebola there was no one like to contest it. People knew this was Ebola the only*
367 *problem now was everyone was starting to fear for him/herself” – IDI002-HSP*

368 Community members exhibited heightened levels of suspicion which motivated cooperation with
369 the outbreak response teams evidenced by reporting suspected cases to health workers to facilitate
370 prompt isolation and treatment.

371 *“.....he used to work in the taxi park, he vomited in the park and since vomiting was one*
372 *of the major signs of Ebola and everyone knew it, they ran away. Now that there was this*
373 *surveillance and mobile team with ambulances ever ready, they came for him and he was*
374 *running because he knew that he had no Ebola, he had just taken a lot of waragi(local*
375 *alcohol drink) that’s why he vomited.” – IDI019-Affected family*

376 **Use of dangerous remedies:** Communities adopted various strategies to ensure their safety
377 including excessive use of chemicals like sodium hypochlorite (JIK) causing hand burns to some
378 and abdominal pains among those who attempted to drink it.

379 *“People were even starting to take JIK thinking it is something that can, you know people*
380 *were saying, now if you take JIK you... so people were even washing hands with JIK and*
381 *people got some burns.” – IDI003-NGO worker*

382 Additionally, people resorted to high consumption of *waragi*, a local alcoholic drink. The
383 assumption was that the alcohol would cleanse the system off the “Ebola germs”. High
384 consumption of *waragi* was also supported by the community observation that some of the people
385 who were recovering from the disease, were those that practiced daily consumption of alcohol.

386 *“There were three beliefs (about the relationship between waragi and Ebola); if someone was a*
387 *drunkard, he could not die of Ebola, because it’s only those who had never tasted alcohol that*
388 *died and only those who were known drunkards survived. Waragi being a spirit helps to clear the*
389 *stomach and Ebola was associated with taking dirty things. and lastly that drinking makes people*

390 *not to move, so you stay in the same place reducing the risk of getting outside.*” – IDI019-Affected
391 family

392 **Theme 2: The effects of the outbreak**

393 The outbreak disrupted normal activities, amplifying fear, and stigmatizing affected individuals
394 and their families. Media messages, the exodus of non-locals, and the shunning of people from
395 Bundibugyo wherever they went heightened this stigma. In efforts to control the outbreak,
396 various regulations were implemented, impacting life in multiple spheres and to varying degrees.
397 This theme explores the short-term effects of the Ebola outbreak on the community at different
398 levels

399 **Subtheme 2a: At the social level:** Various containment measures that were put in place affected
400 the social lives of the community members.

401 **Social gatherings’ restriction** meant ceremonies like weddings and prayer gatherings were
402 completely put off:

403 *“Completely no, you couldn’t do a wedding. Those are the things you could not talk about.*
404 *What was here was basically fighting the disease and looking for what to eat. These other*
405 *social issues, we would not talk about them”*– IDI014-Government official

406 *“Well, I should say of course when something like this was declared, then the local*
407 *government, the central government, the political wing of course they put lots of*
408 *regulations like they already started restricting gatherings. I can say people started shying*
409 *going to church because when in church you are going to sit together, shake hands and so*
410 *some people started shunning some of these functions”* – IDI002-HSP

411 **Rejection by community members:** Those who came into contact with or were associated with
412 Ebola patients faced rejection from the rest of the community. Transport operators, especially *boda*
413 *boda* riders who transported Ebola patients and the bodies of victims, bore the brunt of this
414 rejection

415 *“We used to carry patients, but we didn’t know which disease they were suffering from.*
416 *Then people started dying, only to hear that its Ebola. One day one of the patients died and*
417 *everyone was fearing to carry the body. For me I decided I would do it after all the body*
418 *was already in the coffin. My other friend also did the same on a different day and then*
419 *people started fearing us that those ones carry Ebola, saying that’s the one who carried*
420 *Ebola he is going to affect us, they would run away whenever they would see us at a*
421 *distance. We used to go to restaurants and they would refuse to give us food because we*
422 *carried bola patients and dead bodies.”* – IDI015-Boda boda rider

423 **Stigma and trauma** suffered by Ebola survivors and their families driven by fear among
424 community members that survivors were still infectious.

425 *“We came back to our home in town...It took long time for people to get used to, before*
426 *they could come near us to even touch us. You know people before they trust that you don’t*
427 *have the disease, it takes a person time about a month or two. We spent about two months*
428 *in the community to fit in the community.”* – IDI004-Survivor

429 *“There was a day I came to town to cut my hair and when the people scampered away*
430 *saying I am an Ebola patient. People used to run away from us.” – IDI006-Survivor*

431 *“But people feared us, whenever they could see us at a distance, they would run away*
432 *[laughing]it was a bad period for me.” – IDI010-Survivor*

433 A breastfeeding mother described what she and her baby went through when she returned from
434 hospital after surviving Ebola

435 *“It was the father who used to take care of the baby. I did not have anyone else to take care*
436 *of me. He used to carry the baby while putting on gloves. He would take the baby and bring*
437 *him at a time of breast feeding. My husband had to take that risk as a parent; he couldn’t*
438 *throw me away – IDI017-Survivor*

439 **Subtheme 2b: Cultural changes:** Burial ceremonies and funeral rites suffered major disruptions.

440 Death and grief were experienced by the entire community but the effects were more at the family
441 level with some losing several of their members to Ebola.

442 *“Very many people died. You know where there is death, it is a disaster...some families*
443 *where both a father and a mother died, some families a father died, some families a mother*
444 *died, so as you know where there is death there automatically must be some challenges*
445 *which are negative to the lives and of course being that the end of it all who are the victims*
446 *of such a situation? There are the children. Most children were left orphan and now they*
447 *had no people to look after them.” – IDI003-NGO worker*

448 There were no children reported to have caught or died from the disease even though one woman
449 continued to breastfeed when she was suffering from Ebola and after recovery.

450 *“They used to bring the baby in the evening, and we sleep together, and they come for him*
451 *very early in the morning and baby didn’t get the disease. I would breast feed him very*
452 *early in the morning then they take him the whole day. They would give him porridge and*
453 *milk during daytime. He was like 3 months old that’s why I had to breast feed him.” –*
454 *IDI017-Survivor*

455 **Burial teams and sites:** Most families were given the opportunity to bury their dead in their homes
456 under the supervision of burial teams except for a few categories of people like health workers and
457 the religious leaders who were buried at the hospital and churches respectively. However, since
458 the usual burial ritual were not conducted, their loved ones were left devastated.

459 *“He (my husband) was not buried in the normal way, they did not wash him, they just*
460 *brought him from the hospital after they had wrapped and put him in the coffin direct into*
461 *the grave, they did not perform any rituals. Too bad but there was nothing to do, it was*
462 *touching, because I could not bury him in the normal way.” - IDI005-Survivor*

463 *“You know when someone dies here there are so many practices, you wash the body, you*
464 *want to bury your person, you want to mourn him very grievously but all those things*
465 *because laws were in place, they changed ideally because like in this case no family was*
466 *allowed to bury its own person. This is against culture but I think people allowed, people*
467 *accepted because at the end people heeded to what the government had said and started*

468 *allowing their people to be buried by the authorities so ideally so many things changed.*
469 *You cannot just expect it to be like that that your person dies and you just give the corpse*
470 *to other people to go and bury for you that's not acceptable in cultures but they accepted*
471 *and so they allowed the burial teams to move around looking at who has died, they collect,*
472 *either if you didn't they of course meant decisions.” - IDI002-HSP*

473 For those who came from the hills, communities in the lowlands offered land for burial to avoid
474 carrying dead bodies for long distances without motorized transport which would increase the
475 chances of disease transmission.

476 *“People were scared. Others would be buried on the way if a vehicle can't reach your*
477 *home. They would request any relative who has land where a vehicle can reach to bury*
478 *there. People would feel bad but there was nothing to do, because we feared the disease,*
479 *no one could be blamed.” – IDI016-Survivor*

480 **Hunting practices:** Another major cultural shift was suspension of the hunting because of the
481 widely disseminated message that EVD was associated with hunting of wild animals like monkeys
482 and gorillas. Overall, these cultural shifts were temporary, with people quick to reverting to their
483 usual practices once the outbreak was declared over.

484 *“People forget easily, our communities forget easily, because if somebody must have eaten*
485 *a monkey, I should say at this time you cannot stop him if he is still living, if he is a hunter,*
486 *he is still hunting...Even the animals in the bush were like, why are we not being hunted*
487 *this time because there was negativity because of the constant information people had to*
488 *change their way of living.” – IDI003-NGO worker*

489 **Subtheme 2c: At family level:** Interactions among family members were restricted more
490 especially among Ebola survivors and persons who were high risk such as healthcare providers.

491 **Being cut off from families:** This especially affected healthcare workers in the frontline of case
492 management. For some people, they also lost friends and significant others due to the outbreak.

493 *“I was cut off from the family because now as I recovered the third week I joined the*
494 *isolation. I couldn't even go home I was just at the isolation site. Then after that aha 21*
495 *days they monitored me at least that one I went home” – IDI008-Survivor&HSP*

496 Men in polygamous family set ups also stuck to one wife as a means of protecting their loved ones.

497 *“I told you that I have two wives. At the time of Ebola I stayed with one woman, I didn't*
498 *go to the other wife's home. I first stayed with one wife & the children were young. I stayed*
499 *with the wife with the young children. I stayed there until the end of three months that when*
500 *I went to the other home.” – IDI006-Survivor*

501 *“No. strictly I had stopped sleeping at my homes. I think it took around 4 to 5 months. I*
502 *could not. But I was with one of my wives here and my children.” – IDI014-Government*
503 *official*

504 Sexual restrictions among couples and in cases where one of the partners was a survivor, was
505 another effect that families had to deal with.

506 *“There was a little bit challenge came on the issue sex part where of course we would*
507 *encourage partners to take a little bit long for 2 months, not having sex, Then, they would*
508 *say, oh! If now you say we should take this long without having sex that means that the*
509 *person is still dangerous, so that was also again a little bit challenging” – IDI003-NGO*
510 *worker*

511 *They said that I had to spend three months without sleeping with my wife. I was put in a*
512 *separate room. So from there I was give some condoms so that if I feel that the situation*
513 *was unbearable, I should use a condom. – IDI006-Survivor*

514 **Family breakups/abandonment:** In some cases, people separated from their spouses. One *boda*
515 *boda* rider explained that one of his friends died of Ebola at Bundibugyo district hospital, and
516 because the body was already in the coffin, he decided to carry the body home, something that his
517 wife did not take lightly.

518 *“My own wife run away. I decided to leave her because you go when am not sick, what will*
519 *happen if I became sick? It means you can’t take care of me, we had to separate. I have*
520 *never even got another one I decided to leave women, that woman made me leave women.”*
521 *– IDI015-Boda boda rider*

522 **Subtheme 2d: Economic disruptions:** The economic disruptions affected production, sale and
523 consumption of goods and services.

524 **Cocoa cash crop:** Generally, Bundibugyo is a cocoa growing district and many households
525 depend on the crop for income. Harvesting of the crop usually takes place around October /
526 November. This was the time the outbreak took place, disrupting business activities. The district
527 was cut off even from the neighboring one, where not only were Bundibugyo residents shunned
528 or denied entry, but trade in produce and general merchandize was severely restricted, despite the
529 need for resources to control the outbreak

530 *“The economy... there was no business, everywhere business came to a standstill of course*
531 *who would buy? People were just at home, everybody was scared. You know people would*
532 *even think that by merely moving, one would probably contract Ebola, but also once you*
533 *move a head of household would tell you, whoever moves should not come back here, just*
534 *stay there, so there was no movement, no business.” – IDI003-NGO worker*

535 *It came at a time when you know this place has a major cash crop called cocoa and there*
536 *is a season actually that is when it begins from around September, October, November,*
537 *December, January that’s when the season is peaking. – IDI002-HSP*

538 **Local businesses/Retailers:** At the family level, economic effects varied depending on gender,
539 occupation, role in the community, family size, and infection status. Men, who traditionally are
540 the bread winners, who worked in the business and transport were most affected. One businessman
541 who survived Ebola narrated how difficult it was for him to look after his family during and after
542 the outbreak.

543 *“My customers first feared me. It took me about six months and my business was really*
544 *slow. People used to say they fear me, I still have Ebola....It (business) was closed because*
545 *if my wife had opened, they would not have given her money, she was also feared & all my*
546 *people at that time. They feared my family as well...Almost if we could add the months that*

547 *I spent in the hospital without working, plus the time I spent home, it's almost three years.*
548 *The three years were difficult.*” – IDI006-Survivor

549 **Theme 3: Life after the outbreak**

550 This theme presents how the affected community has readjusted to life after the disruptions
551 associated with the outbreak including long-term effects of the outbreak.

552 **Subtheme 3a: Deepening tribal conflict:** The two main communities, the Bakonzo and Bamba,
553 still traded blame long after the outbreak.

554 *“Okay, as I talk even now there still those clashes on small scale between the Bakonzo and*
555 *the Bamba. Other people claim the district is theirs, others claim to be from Kasese so*
556 *there is no real rich understanding of the point”.*- IDI008- Survivor&HSP

557 **Insults linked to bush meat consumption:** The Bamba ethnic group still believed that the rival
558 Bakonzo tribe who live in the mountains were responsible for the Ebola outbreak and its associated
559 devastation.

560 *“The ethnic group which was more affected were Bakonzo...After the ministry of health*
561 *declared some causes of Ebola disease that it was caused by eating some monkeys and*
562 *...because of neighboring the Rwenzori mountains where the monkeys stay that it was due*
563 *to that, they are hunters that's why they were affected, such a kind of statements are painful*
564 *– IDI012-CHW*

565 **Subtheme 3b: The road to recovery:** The recovery process varied from one individual to another
566 and from one family to another and was determined by whether the person was a survivor, affected
567 family or community.

568 *“The widows still manifest some kind of sadness. Especially one widow has never come*
569 *back to the normal life. When you look at her she still has some sadness. She is somebody*
570 *who was depending on her husband and she explains that she has lost that relationship*
571 *and her way of life has not come back to normal.”.* – IDI001-HSP

572 **Psychosocial support:** To support recovery, immediate psychosocial and material support was
573 provided to the survivors and affected families. Efforts were made, through open discussions, to
574 facilitate understanding, the value of supporting survivors, and that survivors did not possess any
575 risk of spreading the virus. Once the communities understood this, they embraced survivors, a
576 factor that contributed to the reintegration and recovery.

577 *“People started knowing that although it is a deadly disease, we can manage. Each one*
578 *had different feelings. Especially those who lost relatives were grieved for a long time and*
579 *wondered if they would be compensated. The hardest thing was the psychological trauma...*
580 *they were very sad and lived with no hope for a long time.”* – IDI001-HSP

581 *“In the first days and weeks, some of the families feared their fellows after discharge and*
582 *it took time for them to accept or be in contact with them. After some time, they realized*
583 *that these people were not contagious. In fact, if you go to the affected homes, you wouldn't*
584 *know them not unless they tell you.”* – IDI001-HSP

585 However, despite the support, some families felt they had not been compensated while some
586 survivors suffered prejudice:

587 *“I have been getting some complaints from affected families especially survivors saying*
588 *that they have not been compensated. The government compensated the health workers*
589 *only. Their properties were burnt after discharge and communities complain that they were*
590 *not compensated.” – IDI001-HSP*

591 *“We lost him (husband) ... we are suffering, I am suffering, I am taking care of myself and*
592 *the kids and I don't have any support.” – IDI009-Affected family*

593 *“My daughter left me with her two school-going children and we did not get any assistance.*
594 *I am weak”. – IDI005 -Survivor*

595 **Chronic health conditions:** For the survivors, the recovery process was complicated by the
596 trauma they faced while in the isolation ward.

597 *“I just knew that I am already dead. You can imagine another patient dying when you are*
598 *just seeing and you are suffering from the same disease! We were not allowed to get out of*
599 *the ward, they would keep it closed all the time. I couldn't think that I can survive.”*
600 *IDI016-Survivor*

601 *“Very many people died...you are seeing and another, then another.... the whites would*
602 *come and wrap the body with buvera (polythene bags), spray and they take the body out.”*
603 *– IDI004-Survivor*

604 Some of the other effects described by survivors include general body weakness, headache,
605 hypertension, pneumonia, diabetes, and impaired vision.

606 *“The way I see since I got hypertension & diabetes because of too much thinking...I used*
607 *to think that am dead, am no longer among the live ones. That's how I think Ebola changed*
608 *my life. Otherwise, am okay.” – IDI006-Survivor*

609 *“I have some eye problems, in the morning hours I don't read very well, that was a after*
610 *the disease, so I use some glasses to read properly. Then periodically I normally get, we*
611 *call it lobe pneumonia, its normally one side so that one comes at least every month at the*
612 *beginning of the month I experience that thing.” – IDI008-Survivor&HSP*

613 **Improved emergency preparedness and health-seeking behavior** whereby healthcare workers
614 adhere to infection control measures and community members are keen to seek medical attention
615 for unknown or suspicious health conditions.

616 *“Before Ebola, some health workers took the use of gloves for granted but now they know*
617 *the importance of hand washing and use of protective equipment. We have some protective*
618 *gadgets in the store awaiting any events. Before Ebola we had traditional healers, even*
619 *now they are there. Some of the patients were rushed to the traditional healers. Whereas*
620 *they are there, when the community suspects that the disease is unknown, they bring the*
621 *patient to the hospital.”- IDI001-HSP*

622 *“So on the basis of this Ebola outbreak, there are so many people who went to study and*
623 *they are going to come back. I know even of recent there is someone who we just connected*
624 *to go and study medicine and surgery in Mbarara and he is in 3rd year so doctors went to*
625 *school just because of the outbreak”. – IDI002-HSP*

626 The outbreak also led to healthier decisions by individuals:

627 *“When I fell sick of Ebola I realized that anytime I could die. I realized that now I need to*
628 *plan for my future because I reached the extent of death. I used to take alcohol before*
629 *Ebola but after I returned from hospital, after my dad died I sat down and asked myself,*
630 *nobody gave me medicine to leave alcohol. I asked myself a question, “I have been taking*
631 *this alcohol for long, what Have I benefited?”. I replied myself and decided to quit*
632 *alcohol.” – IDI004-Survivor*

633 **Subtheme 3c: The unanswered questions:** Most of the participants had vivid memories of the
634 situation during the outbreak and had questions regarding the viral disease emphasizing the need
635 for more research.

636 **Are survivors immune to Ebola?** Survivors expressed desire to know whether they had acquired
637 natural immunity and were safe to participate in helping others in case of a future outbreak

638 *“Like me I would have loved that when you do such research to find out that among us who*
639 *suffered from Ebola, can’t we catch it again? I want you to do research in that area*
640 *because another disaster might happen and we go there saying we survived let’s help*
641 *others & end up getting the disease again. Do research on that if a person who suffered*
642 *Ebola cannot catch the disease again. Do research on that.” – IDI006-Survivor*

643 **Where and how did Ebola start?** To many people this was indeed strange given that the
644 community had never experienced such an event before. Some believed the disease’s origin to be
645 a hunting community near the forest, since all affected members from a family living near the
646 forest perished. A competing theory was that a traditional healer worked with a patient from
647 Congo. However, there is still confusion as to where and how the disease started, resulting in fear
648 that the disease could strike the community again.

649 *“It has been difficult to establish the origin but it started in Kasitu Sub county currently*
650 *Ngamba Sub county. There are many versions about the origin. Some people say there is*
651 *a family that ate a monkey and another story in Ngamba then was that a family where the*
652 *family leader is a traditional healer had a patient who came from Congo and was managed*
653 *and died.” - IDI001-HSP*

654 *“Some people ate bush meat but these are all speculations...They used to tell us during*
655 *their campaigns here that Ebola is not airborne and I think that is what they say. Isn’t it?*
656 *That you will not get it by someone sneezing on you...you get by contact with someone*
657 *body fluids.... they just think ...” – IDI002-HSP*

658 Several years since the outbreak, most people have generally returned to normal life except those
659 that lost family members and the survivors. Ebola is now as well-known as malaria. When asked
660 what they feel when they hear the word ‘Ebola,’ responses varied from that of no fear to fearful
661 expressions with emotions associated with loss of many people. Participants also had varied
662 reactions to the potential of another outbreak in the future.

663 *“I would not fear Ebola so much, no. Because I have been there and I have seen but I fear*
664 *for people who don’t know how the disease spreads.” – IDI006-Survivor*

665 *“I feel shocked, it’s like death, that people will die again the way it happened, it was not*
666 *an easy situation. It is not easy disease” and to others “A dragon monster again because*
667 *of all the people who have come for research, they have told us that they have not come up*
668 *with medicine to treat Ebola. So, it is a scaring word once you hear Ebola then that’s a*
669 *scaring word because it’s something that cannot be treated.” –IDI013-Administrator &*
670 *affected family*

671 To some this is the worst experience they have ever gone through and would not want to go through
672 the same experience ever again.

673 *“This time if they say that Ebola has come, I will leave boda boda business, eeh! The truth is*
674 *that the disease is dangerous. Every part of the body blood is coming out eeh! They give glove to*
675 *touch someone, I still fear the disease. I saw the other man the brother to ... who died in*
676 *Ngamba, every part of his body was bleeding but the brother survived he works at the kikyoo*
677 *health center. I carried him from kikyoo health center after being referred Bundibugyo.” –*
678 *IDI015-Boda boda rider*

679

680

681 **Discussion**

682 Over ten years down the line, communities in Bundibugyo still live with the experience
683 of the 2007 Ebola outbreak that occurred in their area. This study examined the socio-cultural
684 and economic effects of an Ebola outbreak on survivors, affected families and communities in
685 Bundibugyo and at the time of the study, the outbreak in West Africa was on-going. Three
686 major themes emerged during data analysis; i) The Ebola outbreak, ii) The effects of the
687 outbreak iii) Life after the outbreak.

688 Host–parasite interactions are a key driver of infectious disease emergence and
689 transmission. For human hosts these interactions transcend biological factors to include the social
690 cultural environment. Ebola is a disruptive disease that occurs at the intersection of culture and
691 public health[36]. Its therefore important that we include social science approaches to explain the
692 cultural, social and the economic impacts of such outbreaks. Studies have shown that there are
693 many social, cultural and economic changes that occur during and after the outbreak placing a
694 significant burden on the lives of affected people [8,35] Although this outbreak was caused by a
695 mild strain[37], the community had never witnessed people dying in large numbers before. The
696 community response in this outbreak was driven by fear, shaping the response mechanisms before
697 and after the confirmation of the outbreak. Fear, panic and anxiety in the community was attributed
698 to the overall crisis communication management that was used, initially inadequate due to the
699 strange nature of disease as studies have indicated [38]. This affected the social cultural fabric
700 and by extension the disease dynamics particularly during the outbreak. There is fear that
701 communities in Bundibugyo continue to live with, the fear that the disease could strike again,
702 pushing them to continually seek for a proper answer to what caused the disease. This experience
703 is similar to what has been described in the Kibale Ebola outbreak, where constant fear and
704 lingering pain of the experience has been described[39]. Therefore this calls for the long-term
705 investment in research and engagement with communities to try and understand the origin of the
706 disease, factors that could potentially lead to outbreaks and how best to support long term
707 community recovery. However, just like in many other Ebola outbreaks in West Africa, DRC
708 including the most recent outbreak in Uganda, the origin remains unknown [24,40].

709 Several studies have linked hunting and bushmeat consumption to Ebola outbreaks
710 [41,42]. Human contact with wildlife species, both direct and indirect, is undoubtedly an important
711 factor in the transmission and emergence of new human pathogens from wildlife [36]. This contact
712 is further exacerbated by the conflict with the land tenure system[43,44]. However, communities
713 in Bundibugyo continue to hunt, eat, and trade in bushmeat and have highlighted several health
714 and economic benefits that accrue from this practice. This finding is similar to findings in Western
715 Uganda [45]. This is further highlighted by rejection of messaging that unilaterally stressed the
716 health risk posed by wild meat that contradicted the experiences of target publics in West Africa
717 Ebola outbreak, who consume wild meat without incident [41]. The communities in Bundibugyo
718 are asking for explanations as to why hunting and bushmeat consumption are risk factors for
719 spillover now and not before, since these are practices that have been going on for generations. It's
720 important to note that risk perception among such communities remains low [46], this this calls
721 for concerted efforts among stakeholders to involve communities in the management of zoonotic
722 diseases for early detection of such outbreaks [47].

723 Outbreak detection can also be enhanced by availability of in country diagnostic facilities,
724 a key response function of the healthcare system. In the Bundibugyo outbreak, Ebola samples
725 were tested in the USA and so what was identified as a strange disease was treated as malaria
726 because of similarity in the presentation of the disease until confirmatory diagnosis was arrived at
727 [48,49]. Communities also tried to seek for alternative treatment for the strange disease using
728 witchcraft and acts of sacrifice were sighted. Tribal conflicts also played a role as Bakonzo accused
729 the Bamba of poisoning their water source. However, these (witchcraft, acts of sacrifice and tribal
730 accusation) resolved when the Ebola outbreak was confirmed and communities united to confront
731 a common enemy, Ebola. This is contrary to what has been reported in the West Africa Ebola
732 outbreak, where there was conflict between health workers and the community due to violation
733 of cultural beliefs that are usually contradictory to prevention measures, demonstrating the value
734 of continuous community engagement in the management of such outbreaks [50]. Lessons from
735 COVID-19 further indicate that, heavy-handed bans risk numerous unintended consequences and
736 tend to fail if they lack legitimacy or clash with people's values [51].

737 During the outbreak, communities' response mechanisms also involved consumption of
738 alcohol and jik to prevent the disease. The consumption of alcohol for example was supported by
739 community observation that some survivors were alcohol users and most of those that died, were
740 non-alcohol users because of their religious belief. Communities believed that alcohol was a
741 cleanser for the "Ebola germ" and offered protection to consumers. There were reports of people
742 sustaining serious burns from jik and although many participants believed the consumption of
743 alcohol was helpful in preventing the disease, it remains a speculation. This highlights ongoing
744 community learning process with detrimental or beneficial effects, that is rarely documented in
745 such outbreaks. It also highlights opportunity for partnership between local communities and use
746 of their local observations that could be a source of insight into protective or beneficial strategies
747 that can be taken advantage of in the battle against such emerging infectious diseases [44]. For
748 example, in most rural communities' consumption of alcohol is accompanied by copious
749 consumption of meat as well [52]. Perhaps the differential health outcomes between the alcohol
750 and non-alcohol users who are exposed to the Ebola virus could be tied to this varied access to
751 protein between the two groups.

752 Overall, the effects on survivors, affected families and community varied from side effects,
753 a sense of loss, physical and psychosocial effects among survivors and deepening tribal conflict

754 persisting for years in some cases as already found [30]. Many survivors reported some positive
755 outcomes such as improvement in personal hygiene and protection practices, self-awareness and
756 health seeking behavior. However, the negative impacts were more. They include self-isolation,
757 stigmatization, shame and embarrassment and loss of close relatives similar to what has been
758 reported in West Africa and DRC [32]. Most significant is the impact on widows who lost their
759 husbands. The young widows felt a great sense of loss and burden to support their children to be
760 able to go through school. On the other hand, the older widows were haunted by the fact that their
761 spouses did not get a decent burial and many reported withdrawing from community related
762 activities (Self-isolation). Disease response measures can interrupt education in the short and long
763 term. During the 2014 Ebola epidemic in West Africa and the 2018 Ebola outbreak in DRC,
764 schools were closed, or parents were reluctant to send their children to school, due to fear of
765 contagion, Additionally, widowed women after the loss of their spouses...struggled to take care
766 of their children's school needs , widows were also barred from 'accessing their deceased
767 husband's land because of discriminatory inheritance laws [53], further revealing the pernicious
768 long term effect of the disease. Effects that transcend the epidemiological triad and have far-
769 reaching negative impacts on the social fabric of these communities.

770 **Conclusions**

771 Our study has highlighted important insights into the silent epidemic of stigma and social
772 disruption that persists long after the last contact has been traced and the infectious force of the
773 epidemic died down. Through our focused ethnography we have shown the important role social
774 sciences play in responding to both the short- and long-term needs of communities hit by these
775 emerging infectious diseases. Our findings can inform future Ebola response and recovery
776 interventions, particularly those targeting community re-integration and a mitigation of the fear
777 and stigma associated with survivorship.

778

779 **References**

- 780 1. Jacob ST, Crozier I, Fischer WA, Hewlett A, Kraft CS, Vega M-A de L, et al. Ebola virus disease. Nat Rev
781 Dis Primers [Internet]. 2020 [cited 2024 Mar 23];6:1–31. Available from:
782 <https://www.nature.com/articles/s41572-020-0147-3>
- 783 2. Balakrishnan VS. Africa's lessons of resiliency and preparedness after Ebola. The Lancet Infectious
784 Diseases [Internet]. 2024 [cited 2024 Mar 23];24:128. Available from:
785 [https://www.thelancet.com/journals/laninf/article/PIIS1473-3099\(24\)00017-3/abstract](https://www.thelancet.com/journals/laninf/article/PIIS1473-3099(24)00017-3/abstract)
- 786 3. Mukadi-Bamuleka D, Nkuba-Ndaye A, Mbala-Kingebeni P, Ahuka-Mundeke S, Muyembe-Tamfum J-J.
787 Impact of Ebola epidemics on the daily operation of existing systems in Eastern Democratic Republic of
788 the Congo: a brief review. Journal of Medical Economics [Internet]. 2024 [cited 2024 Mar 23];27:184–92.
789 Available from: <https://doi.org/10.1080/13696998.2024.2305009>
- 790 4. Vossler H, Akilimali P, Pan Y, KhudaBukhsh WR, Kenah E, Rempała GA. Analysis of individual-level data
791 from 2018–2020 Ebola outbreak in Democratic Republic of the Congo. Sci Rep [Internet]. 2022 [cited
792 2024 Mar 27];12:5534. Available from: <https://www.nature.com/articles/s41598-022-09564-4>

- 793 5. Cnops, L., De Smet, B., Mbala-Kingebeni, P., van... - Google Scholar [Internet]. [cited 2019 Nov 5].
794 Available from:
795 https://scholar.google.com/scholar?hl=en&as_sdt=0%2C5&q=Cnops%2C+L.%2C+De+Smet%2C+B.%2C+Mbala-Kingebeni%2C+P.%2C+van+Griensven%2C+J.%2C+Ahuka-Mundeke%2C+S.%2C+%26+Ariën%2C+K.+K.+%282019%29.+Where+are+the+Ebola+diagnostics+from+last+time%3F.&btnG=
798
- 799 6. Challenges to Ebola preparedness during an ongoing outbreak: An analysis of borderland livelihoods
800 and trust in Uganda | PLOS ONE [Internet]. [cited 2024 Mar 27]. Available from:
801 <https://journals.plos.org/plosone/article?id=10.1371/journal.pone.0230683>
- 802 7. Coltart CEM, Lindsey B, Ghinai I, Johnson AM, Heymann DL. The Ebola outbreak, 2013-2016: old
803 lessons for new epidemics. *The Ebola outbreak*. 2017;2013–6.
- 804 8. Obeng-Kusi M, Martin J, Abraham I. The economic burden of Ebola virus disease: a review and
805 recommendations for analysis. *Journal of Medical Economics* [Internet]. 2024 [cited 2024 Mar
806 23];27:309–23. Available from: <https://doi.org/10.1080/13696998.2024.2313358>
- 807 9. Coltart CEM, Lindsey B, Ghinai I, Johnson AM, Heymann DL. The Ebola outbreak, 2013-2016: old
808 lessons for new epidemics. *The Ebola outbreak*. 2017;372:2013–6.
- 809 10. Frerichs R. *Disease Maps, History, and More*. 2017;
- 810 11. Alexander KA, Sanderson CE, Marathe M, Lewis BL, Rivers CM, Shaman J, et al. What Factors Might
811 Have Led to the Emergence of Ebola in West Africa? *PLOS Neglected Tropical Diseases* [Internet]. 2015
812 [cited 2024 Mar 28];9:e0003652. Available from:
813 <https://journals.plos.org/plosntds/article?id=10.1371/journal.pntd.0003652>
- 814 12. Schindell BG, Kangbai JB, Shaw SY, Kindrachuk J. Stigmatization of Ebola virus disease survivors in
815 2022: A cross-sectional study of survivors in Sierra Leone. *Journal of Infection and Public Health*
816 [Internet]. 2024 [cited 2024 Mar 23];17:35–43. Available from:
817 <https://www.sciencedirect.com/science/article/pii/S1876034123003611>
- 818 13. Lötsch F, Schnyder J, Goorhuis A, Grobusch MP. Neuropsychological long-term sequelae of Ebola
819 virus disease survivors – A systematic review. *Travel Medicine and Infectious Disease* [Internet]. 2017
820 [cited 2024 Mar 28];18:18–23. Available from:
821 <https://www.sciencedirect.com/science/article/pii/S1477893917300728>
- 822 14. [cited 2024 Mar 27]. Available from:
823 <https://journals.plos.org/plospathogens/article?id=10.1371/journal.ppat.1000212>
- 824 15. Okware SI, Omaswa FG, Zaramba S, Opio A, Lutwama JJ, Kamugisha J, et al. An outbreak of Ebola in
825 Uganda. *Tropical Med Int Health* [Internet]. 2002 [cited 2024 Mar 27];7:1068–75. Available from:
826 <https://onlinelibrary.wiley.com/doi/10.1046/j.1365-3156.2002.00944.x>
- 827 16. Tabata RC. Thin-layer chromatography. *Forensic Science* [Internet]. [cited 2024 Mar 27];981.
828 Available from: <http://ndl.ethernet.edu.et/bitstream/123456789/44715/1/215.pdf#page=1001>

- 829 17. Jalloh MF, Li W, Bunnell RE, Ethier KA, O’Leary A, Hageman KM, et al. Impact of Ebola experiences
830 and risk perceptions on mental health in Sierra Leone, July 2015. *BMJ Global Health* [Internet]. 2018
831 [cited 2024 Mar 28];3:e000471. Available from: <https://gh.bmj.com/content/3/2/e000471>
- 832 18. Barry H, Belmont HB-, Thomson Calif., 2008 undefined. *Ebola, Culture and Politics: The*
833 *Anthropology of Emerging Disease*.
- 834 19. Cultural Contexts of Ebola in Northern Uganda | 35 | *Health Psychology* [Internet]. [cited 2024 Mar
835 28]. Available from: [https://www.taylorfrancis.com/chapters/edit/10.4324/9781315664033-35/cultural-](https://www.taylorfrancis.com/chapters/edit/10.4324/9781315664033-35/cultural-contexts-ebola-northern-uganda-barry-hewlett-richard-amola)
836 [contexts-ebola-northern-uganda-barry-hewlett-richard-amola](https://www.taylorfrancis.com/chapters/edit/10.4324/9781315664033-35/cultural-contexts-ebola-northern-uganda-barry-hewlett-richard-amola)
- 837 20. De Roo A, Ado B, Rose B, Guimard Y, Fonck K, Colebunders R. Survey among survivors of the 1995
838 Ebola epidemic in Kikwit, Democratic Republic of Congo: their feelings and experiences. *Tropical*
839 *Medicine & International Health* [Internet]. 1998 [cited 2024 Apr 28];3:883–5. Available from:
840 <https://onlinelibrary.wiley.com/doi/abs/10.1046/j.1365-3156.1998.00322.x>
- 841 21. Kinsman J. “A time of fear”: local, national, and international responses to a large Ebola outbreak in
842 Uganda. *Global Health* [Internet]. 2012 [cited 2024 Mar 27];8:15. Available from:
843 <http://globalizationandhealth.biomedcentral.com/articles/10.1186/1744-8603-8-15>
- 844 22. Agaba J. Impact of Landslides on Smallholder Famers’ Livelihoods in Bubukwanga Sub County,
845 Bundibugyo District [Internet] [Thesis]. 2019 [cited 2024 Mar 27]. Available from:
846 <http://dissertations.mak.ac.ug/handle/20.500.12281/6747>
- 847 23. Wanyana MW, Akunzirwe R, King P, Atuhaire I, Zavuga R, Lubwama B, et al. Performance and impact
848 of contact tracing in the Sudan virus outbreak in Uganda, September 2022-January 2023. *International*
849 *Journal of Infectious Diseases* [Internet]. 2024 [cited 2024 Mar 28];141:106959. Available from:
850 <https://www.sciencedirect.com/science/article/pii/S1201971224000274>
- 851 24. Kiggundu T. Notes from the Field: Outbreak of Ebola Virus Disease Caused by Sudan ebolavirus —
852 Uganda, August–October 2022. *MMWR Morb Mortal Wkly Rep* [Internet]. 2022 [cited 2024 Mar 29];71.
853 Available from: <https://www.cdc.gov/mmwr/volumes/71/wr/mm7145a5.htm>
- 854 25. Okware SI, Omaswa FG, Zaramba S, Opio A, Lutwama JJ, Kamugisha J, et al. An outbreak of Ebola in
855 Uganda. *Tropical Medicine and International Health*. 2002;7:1068–75.
- 856 26. Omaswa FG, Okware SI, Kiguli-Malwadde E. Strategies from the 2000–01 Ebola outbreak in Uganda.
857 *The Lancet Global Health*. 2015;3:S29.
- 858 27. Okware SI. Three ebola outbreaks in Uganda 2000–2011. 2015 [cited 2024 Mar 28]; Available from:
859 <https://bora.uib.no/bora-xmlui/handle/1956/9239>
- 860 28. Ebola Hemorrhagic Fever Associated with Novel Virus Strain, Uganda, 2007–2008 - PMC [Internet].
861 [cited 2024 Mar 29]. Available from: <https://www.ncbi.nlm.nih.gov/pmc/articles/PMC3321896/>
- 862 29. Kratz T, Borchert M, De La Rosa O, Pou D, Jeffs B, Roddy P, et al. Bundibugyo Ebola virus disease:
863 symptoms, treatment and outcomes in the Ebola Treatment Centre, Isiro, Democratic Republic of
864 Congo, 2012.

- 865 30. Clark DV, Kibuuka H, Millard M, Wakabi S, Lukwago L, Taylor A, et al. Long-term sequelae after Ebola
866 virus disease in Bundibugyo, Uganda: a retrospective cohort study. *The Lancet Infectious Diseases*
867 [Internet]. 2015 [cited 2024 Mar 27];15:905–12. Available from:
868 [https://www.thelancet.com/journals/laninf/article/PIIS1473-3099\(15\)70152-0/fulltext](https://www.thelancet.com/journals/laninf/article/PIIS1473-3099(15)70152-0/fulltext)
- 869 31. Economic and Social Burden of the 2014 Ebola Outbreak in West Africa | *The Journal of Infectious*
870 *Diseases* | Oxford Academic [Internet]. [cited 2024 Mar 27]. Available from:
871 https://academic.oup.com/jid/article/218/Supplement_5/S698/5129071
- 872 32. Van Bortel T, Basnayake A, Wurie F, Jambai M, Koroma AS, Muana AT, et al. Psychosocial effects of
873 an Ebola outbreak at individual, community and international levels. *Bulletin of the World Health*
874 *Organization* [Internet]. 2016 [cited 2024 Mar 27];94:210. Available from:
875 <https://www.ncbi.nlm.nih.gov/pmc/articles/PMC4773931/>
- 876 33. James PB, Wardle J, Steel A, Adams J. Post-Ebola psychosocial experiences and coping mechanisms
877 among Ebola survivors: a systematic review. *Tropical Medicine & International Health* [Internet]. 2019
878 [cited 2024 Mar 28];24:671–91. Available from:
879 <https://onlinelibrary.wiley.com/doi/abs/10.1111/tmi.13226>
- 880 34. Elston JWT, Cartwright C, Ndumbi P, Wright J. The health impact of the 2014–15 Ebola outbreak.
881 *Public Health* [Internet]. 2017 [cited 2024 Mar 28];143:60–70. Available from:
882 <https://www.sciencedirect.com/science/article/pii/S0033350616303225>
- 883 35. Ryan C. 'Understanding Lived Experiences and Contextual Realities of Ebola Outbreaks: A Case
884 Studies Approach in Western Uganda' [Internet]. February; 2018 [cited 2024 Mar 27]. Available from:
885 http://www.tara.tcd.ie/bitstream/handle/2262/82673/Caroline%20Ryan_Thesis_2018.pdf?sequence=1
- 886 36. LaBrunda M, Amin N. The Emerging Threat of Ebola. In: Masys AJ, Izurieta R, Reina Ortiz M, editors.
887 *Global Health Security: Recognizing Vulnerabilities, Creating Opportunities* [Internet]. Cham: Springer
888 International Publishing; 2020 [cited 2024 Mar 31]. p. 103–39. Available from:
889 https://doi.org/10.1007/978-3-030-23491-1_6
- 890 37. Towner JS, Sealy TK, Khristova ML, Albariño CG, Conlan S, Reeder SA, et al. Newly discovered ebola
891 virus associated with hemorrhagic fever outbreak in Uganda. *PLoS pathogens* [Internet]. 2008 [cited
892 2024 Mar 27];4:e1000212. Available from:
893 <https://journals.plos.org/plospathogens/article?id=10.1371/journal.ppat.1000212>
- 894 38. Muzaale T, Basheka BC, Auriacombe CJ. The Efficacy of Crisis Communication in the Management of
895 Ebola Fever in the Bundibugyo District, Uganda - 2007/2008. *Administratio Publica* [Internet]. 2018
896 [cited 2024 Mar 29];26:42–57. Available from: [https://journals.co.za/doi/abs/10.10520/ejc-adminpub-](https://journals.co.za/doi/abs/10.10520/ejc-adminpub-v26-n1-a3)
897 [v26-n1-a3](https://journals.co.za/doi/abs/10.10520/ejc-adminpub-v26-n1-a3)
- 898 39. Matua GA, Wal DMV der. Living Under the Constant Threat of Ebola: A Phenomenological Study of
899 Survivors and Family Caregivers During an Ebola Outbreak. *Journal of Nursing Research* [Internet]. 2015
900 [cited 2024 Apr 20];23:217. Available from: [https://journals.lww.com/jnr-](https://journals.lww.com/jnr-twna/FullText/2015/09000/Living_Under_the_Constant_Threat_of_Ebola__A.9.aspx)
901 [twna/FullText/2015/09000/Living_Under_the_Constant_Threat_of_Ebola__A.9.aspx](https://journals.lww.com/jnr-twna/FullText/2015/09000/Living_Under_the_Constant_Threat_of_Ebola__A.9.aspx)

- 902 40. James PB, Lane R, Bah AJ. Social Sciences in Emerging Infectious Disease. Handbook of Social
903 Sciences and Global Public Health [Internet]. Springer, Cham; 2023 [cited 2024 Apr 12]. p. 1–12.
904 Available from: https://link.springer.com/referenceworkentry/10.1007/978-3-030-96778-9_71-1
- 905 41. Bonwitt J, Dawson M, Kandeh M, Ansumana R, Sahr F, Brown H, et al. Unintended consequences of
906 the ‘bushmeat ban’ in West Africa during the 2013–2016 Ebola virus disease epidemic. Social Science &
907 Medicine [Internet]. 2018 [cited 2024 Apr 12];200:166–73. Available from:
908 <https://www.sciencedirect.com/science/article/pii/S027795361730758X>
- 909 42. Bonwitt J, Kandeh M, Dawson M, Ansumana R, Sahr F, Kelly AH, et al. Participation of women and
910 children in hunting activities in Sierra Leone and implications for control of zoonotic infections. PLoS
911 Neglected Tropical Diseases [Internet]. 2017 [cited 2024 Apr 3];11:e0005699. Available from:
912 <https://journals.plos.org/plosntds/article?id=10.1371/journal.pntd.0005699>
- 913 43. Human–Wildlife Interactions Predict Febrile Illness in Park Landscapes of Western Uganda |
914 EcoHealth [Internet]. [cited 2024 May 22]. Available from:
915 <https://link.springer.com/article/10.1007/s10393-017-1286-1>
- 916 44. “There are many fevers”: Communities’ perception and management of Febrile illness and its
917 relationship with human animal interactions in South-Western Uganda | PLOS Neglected Tropical
918 Diseases [Internet]. [cited 2024 Apr 3]. Available from:
919 <https://journals.plos.org/plosntds/article?id=10.1371/journal.pntd.0010125>
- 920 45. A descriptive study of zoonotic disease risk at the human-wildlife interface in a biodiversity hot spot
921 in South Western Uganda | PLOS Neglected Tropical Diseases [Internet]. [cited 2024 Apr 3]. Available
922 from: <https://journals.plos.org/plosntds/article?id=10.1371/journal.pntd.0008633>
- 923 46. Assessment of community perceptions and risk to common zoonotic diseases among communities
924 living at the human-livestock-wildlife interface in Nakuru West, Kenya: A participatory epidemiology
925 approach | PLOS Neglected Tropical Diseases [Internet]. [cited 2024 Apr 3]. Available from:
926 <https://journals.plos.org/plosntds/article?id=10.1371/journal.pntd.0011086>
- 927 47. Awareness and Community Engagement in Zoonotic Disease Management. IJAB [Internet]. 2023
928 [cited 2024 Apr 13];470–85. Available from: [https://uniquescientificpublishers.com/wp-](https://uniquescientificpublishers.com/wp-content/uploads/2023/zon-v1/470-485.pdf)
929 [content/uploads/2023/zon-v1/470-485.pdf](https://uniquescientificpublishers.com/wp-content/uploads/2023/zon-v1/470-485.pdf)
- 930 48. Hartley M-A, Young A, Tran A-M, Okoni-Williams HH, Suma M, Mancuso B, et al. Predicting Ebola
931 infection: A malaria-sensitive triage score for Ebola virus disease. PLOS Neglected Tropical Diseases
932 [Internet]. 2017 [cited 2024 Mar 31];11:e0005356. Available from:
933 <https://journals.plos.org/plosntds/article?id=10.1371/journal.pntd.0005356>
- 934 49. Kratz T, Roddy P, Oloma AT, Jeffs B, Ciruelo DP, Rosa O de la, et al. Ebola Virus Disease Outbreak in
935 Isiro, Democratic Republic of the Congo, 2012: Signs and Symptoms, Management and Outcomes. PLOS
936 ONE [Internet]. 2015 [cited 2024 Mar 31];10:e0129333. Available from:
937 <https://journals.plos.org/plosone/article?id=10.1371/journal.pone.0129333>
- 938 50. Wilkinson A, Parker M, Martineau F, Leach M. Engaging ‘communities’: anthropological insights from
939 the West African Ebola epidemic. Phil Trans R Soc B [Internet]. 2017 [cited 2024 Mar 31];372:20160305.
940 Available from: <https://royalsocietypublishing.org/doi/10.1098/rstb.2016.0305>

- 941 51. Cawthorn D-M, Kennaugh A, Ferreira SM. The future of sustainability in the context of COVID-19.
942 *Ambio* [Internet]. 2021 [cited 2024 Apr 13];50:812–21. Available from: [https://doi.org/10.1007/s13280-](https://doi.org/10.1007/s13280-020-01430-9)
943 020-01430-9
- 944 52. Bardosh K, Inthavong P, Xayaheuang S, Okello AL. Controlling parasites, understanding practices: The
945 biosocial complexity of a One Health intervention for neglected zoonotic helminths in northern Lao PDR.
946 *Social Science & Medicine* [Internet]. 2014 [cited 2024 Jun 15];120:215–23. Available from:
947 <https://www.sciencedirect.com/science/article/pii/S0277953614005978>
- 948 53. 756_Secondary_impacts_of_major_disease_outbreak__20in_low_income_countries-libre.pdf
949 [Internet]. [cited 2024 Apr 13]. Available from:
950 [https://d1wqtxts1xzle7.cloudfront.net/80585626/756_Secondary_impacts_of_major_disease_outbreak__20in_low_income_countries-libre.pdf?1644574098=&response-content-](https://d1wqtxts1xzle7.cloudfront.net/80585626/756_Secondary_impacts_of_major_disease_outbreak__20in_low_income_countries-libre.pdf?1644574098=&response-content-disposition=inline%3B+filename%3DSecondary_Impacts_of_Major_Disease_Outbr.pdf&Expires=1713035043&Signature=VKPFWoAesVfoGGuMVTlfeEb54W8AdeUdnuytSC62DGF4cU~7GaFZ27Lmmm16OVeNVqIVK2fOI76nqoOP13i2y-PLHq-KNmGEpJgXgzpljG~j2z0Dw88hDZFuWuZVbXsa2RDL6kXSKEpt-IVxDPcai8iDG1S2nTmUXxXjfwvcho5xgPIodi1Vsb~7w4QVs9HNh02AhFi45i8hbQW1HPoaPXYvuYTqqxva07qQBIZ3c7-LksfDn3loK1rNtWrRjIAwtKpfo59quycc4MWr6HIG0jCfsw6LRtbrUWMBwMt-VMOrUy-YUrHi62cHxXJwMIFaU9iGgfj1pMqfoh1XfZZOw__&Key-Pair-Id=APKAJLOHF5GGSLRBV4ZA)
951 [disposition=inline%3B+filename%3DSecondary_Impacts_of_Major_Disease_Outbr.pdf&Expires=171303](https://d1wqtxts1xzle7.cloudfront.net/80585626/756_Secondary_impacts_of_major_disease_outbreak__20in_low_income_countries-libre.pdf?1644574098=&response-content-disposition=inline%3B+filename%3DSecondary_Impacts_of_Major_Disease_Outbr.pdf&Expires=1713035043&Signature=VKPFWoAesVfoGGuMVTlfeEb54W8AdeUdnuytSC62DGF4cU~7GaFZ27Lmmm16OVeNVqIVK2fOI76nqoOP13i2y-PLHq-KNmGEpJgXgzpljG~j2z0Dw88hDZFuWuZVbXsa2RDL6kXSKEpt-IVxDPcai8iDG1S2nTmUXxXjfwvcho5xgPIodi1Vsb~7w4QVs9HNh02AhFi45i8hbQW1HPoaPXYvuYTqqxva07qQBIZ3c7-LksfDn3loK1rNtWrRjIAwtKpfo59quycc4MWr6HIG0jCfsw6LRtbrUWMBwMt-VMOrUy-YUrHi62cHxXJwMIFaU9iGgfj1pMqfoh1XfZZOw__&Key-Pair-Id=APKAJLOHF5GGSLRBV4ZA)
952 [5043&Signature=VKPFWoAesVfoGGuMVTlfeEb54W8AdeUdnuytSC62DGF4cU~7GaFZ27Lmmm16OVeNV](https://d1wqtxts1xzle7.cloudfront.net/80585626/756_Secondary_impacts_of_major_disease_outbreak__20in_low_income_countries-libre.pdf?1644574098=&response-content-disposition=inline%3B+filename%3DSecondary_Impacts_of_Major_Disease_Outbr.pdf&Expires=1713035043&Signature=VKPFWoAesVfoGGuMVTlfeEb54W8AdeUdnuytSC62DGF4cU~7GaFZ27Lmmm16OVeNVqIVK2fOI76nqoOP13i2y-PLHq-KNmGEpJgXgzpljG~j2z0Dw88hDZFuWuZVbXsa2RDL6kXSKEpt-IVxDPcai8iDG1S2nTmUXxXjfwvcho5xgPIodi1Vsb~7w4QVs9HNh02AhFi45i8hbQW1HPoaPXYvuYTqqxva07qQBIZ3c7-LksfDn3loK1rNtWrRjIAwtKpfo59quycc4MWr6HIG0jCfsw6LRtbrUWMBwMt-VMOrUy-YUrHi62cHxXJwMIFaU9iGgfj1pMqfoh1XfZZOw__&Key-Pair-Id=APKAJLOHF5GGSLRBV4ZA)
953 [qIVK2fOI76nqoOP13i2y-PLHq-KNmGEpJgXgzpljG~j2z0Dw88hDZFuWuZVbXsa2RDL6kXSKEpt-](https://d1wqtxts1xzle7.cloudfront.net/80585626/756_Secondary_impacts_of_major_disease_outbreak__20in_low_income_countries-libre.pdf?1644574098=&response-content-disposition=inline%3B+filename%3DSecondary_Impacts_of_Major_Disease_Outbr.pdf&Expires=1713035043&Signature=VKPFWoAesVfoGGuMVTlfeEb54W8AdeUdnuytSC62DGF4cU~7GaFZ27Lmmm16OVeNVqIVK2fOI76nqoOP13i2y-PLHq-KNmGEpJgXgzpljG~j2z0Dw88hDZFuWuZVbXsa2RDL6kXSKEpt-IVxDPcai8iDG1S2nTmUXxXjfwvcho5xgPIodi1Vsb~7w4QVs9HNh02AhFi45i8hbQW1HPoaPXYvuYTqqxva07qQBIZ3c7-LksfDn3loK1rNtWrRjIAwtKpfo59quycc4MWr6HIG0jCfsw6LRtbrUWMBwMt-VMOrUy-YUrHi62cHxXJwMIFaU9iGgfj1pMqfoh1XfZZOw__&Key-Pair-Id=APKAJLOHF5GGSLRBV4ZA)
954 [IVxDPcai8iDG1S2nTmUXxXjfwvcho5xgPIodi1Vsb~7w4QVs9HNh02AhFi45i8hbQW1HPoaPXYvuYTqqxva0](https://d1wqtxts1xzle7.cloudfront.net/80585626/756_Secondary_impacts_of_major_disease_outbreak__20in_low_income_countries-libre.pdf?1644574098=&response-content-disposition=inline%3B+filename%3DSecondary_Impacts_of_Major_Disease_Outbr.pdf&Expires=1713035043&Signature=VKPFWoAesVfoGGuMVTlfeEb54W8AdeUdnuytSC62DGF4cU~7GaFZ27Lmmm16OVeNVqIVK2fOI76nqoOP13i2y-PLHq-KNmGEpJgXgzpljG~j2z0Dw88hDZFuWuZVbXsa2RDL6kXSKEpt-IVxDPcai8iDG1S2nTmUXxXjfwvcho5xgPIodi1Vsb~7w4QVs9HNh02AhFi45i8hbQW1HPoaPXYvuYTqqxva07qQBIZ3c7-LksfDn3loK1rNtWrRjIAwtKpfo59quycc4MWr6HIG0jCfsw6LRtbrUWMBwMt-VMOrUy-YUrHi62cHxXJwMIFaU9iGgfj1pMqfoh1XfZZOw__&Key-Pair-Id=APKAJLOHF5GGSLRBV4ZA)
955 [7qQBIZ3c7-LksfDn3loK1rNtWrRjIAwtKpfo59quycc4MWr6HIG0jCfsw6LRtbrUWMBwMt-VMOrUy-](https://d1wqtxts1xzle7.cloudfront.net/80585626/756_Secondary_impacts_of_major_disease_outbreak__20in_low_income_countries-libre.pdf?1644574098=&response-content-disposition=inline%3B+filename%3DSecondary_Impacts_of_Major_Disease_Outbr.pdf&Expires=1713035043&Signature=VKPFWoAesVfoGGuMVTlfeEb54W8AdeUdnuytSC62DGF4cU~7GaFZ27Lmmm16OVeNVqIVK2fOI76nqoOP13i2y-PLHq-KNmGEpJgXgzpljG~j2z0Dw88hDZFuWuZVbXsa2RDL6kXSKEpt-IVxDPcai8iDG1S2nTmUXxXjfwvcho5xgPIodi1Vsb~7w4QVs9HNh02AhFi45i8hbQW1HPoaPXYvuYTqqxva07qQBIZ3c7-LksfDn3loK1rNtWrRjIAwtKpfo59quycc4MWr6HIG0jCfsw6LRtbrUWMBwMt-VMOrUy-YUrHi62cHxXJwMIFaU9iGgfj1pMqfoh1XfZZOw__&Key-Pair-Id=APKAJLOHF5GGSLRBV4ZA)
956 [YUrHi62cHxXJwMIFaU9iGgfj1pMqfoh1XfZZOw__&Key-Pair-Id=APKAJLOHF5GGSLRBV4ZA](https://d1wqtxts1xzle7.cloudfront.net/80585626/756_Secondary_impacts_of_major_disease_outbreak__20in_low_income_countries-libre.pdf?1644574098=&response-content-disposition=inline%3B+filename%3DSecondary_Impacts_of_Major_Disease_Outbr.pdf&Expires=1713035043&Signature=VKPFWoAesVfoGGuMVTlfeEb54W8AdeUdnuytSC62DGF4cU~7GaFZ27Lmmm16OVeNVqIVK2fOI76nqoOP13i2y-PLHq-KNmGEpJgXgzpljG~j2z0Dw88hDZFuWuZVbXsa2RDL6kXSKEpt-IVxDPcai8iDG1S2nTmUXxXjfwvcho5xgPIodi1Vsb~7w4QVs9HNh02AhFi45i8hbQW1HPoaPXYvuYTqqxva07qQBIZ3c7-LksfDn3loK1rNtWrRjIAwtKpfo59quycc4MWr6HIG0jCfsw6LRtbrUWMBwMt-VMOrUy-YUrHi62cHxXJwMIFaU9iGgfj1pMqfoh1XfZZOw__&Key-Pair-Id=APKAJLOHF5GGSLRBV4ZA)
957

958

959 **Acknowledgement**

960 This project was funded by University of Minnesota as part of the capacity building under the one
961 health work force and I would like to thank Associate Professor Katey Pelican and Chery
962 Robertson for all the support and time they have invested in us and for maturing us into the
963 scientists that we are today.

