

1 **Time-restricted eating and exercise training before and during pregnancy for people with**
2 **increased risk of gestational diabetes: the BEFORE THE BEGINNING randomised controlled**
3 **trial**

4 Sujan MAJ*, doctoral student^{1,2} (0000-0002-5505-3623),
5 Skarstad HMS*, doctoral student¹ (0009-0001-2277-6390),
6 Rosvold G, research assistant¹ (0009-0001-3879-8199),
7 Fougner SL, associate professor and senior endocrinologist^{3,4} (0000-0003-1626-4169),
8 Follestad T, associate professor⁵ (0000-0002-9686-6452),
9 Salvesen KÅ, head of department and professor^{2,3} (0000-0002-1788-4063),
10 Moholdt T**, research scientist^{1,2*} (0000-0003-1024-8088)

11

12 ¹Department of Circulation and Medical Imaging, Norwegian University of Science and
13 Technology, Trondheim, Norway

14 ²Department of Women's Health, St. Olavs Hospital, Trondheim University hospital,
15 Trondheim, Norway

16 ³Department of Clinical and Molecular Medicine, Norwegian University of Science and
17 Technology, Trondheim, Norway

18 ⁴Department of Endocrinology, St. Olavs Hospital, Trondheim University hospital,
19 Trondheim, Norway

20 ⁵Department of Public Health and Nursing, Norwegian University of Science and Technology,
21 Trondheim, Norway

22

23 *Shared first author

24 **Correspondence to: Moholdt T, trine.moholdt@ntnu.no

25 Postal address: NTNU, Faculty of Medicine and Health Sciences, Department of Circulation
26 and Medical Imaging, Postbox 8905, 7491 Trondheim, Norway

27 E-mail addresses: MAJS: md.a.j.sujan@ntnu.no, HMSS: hanna.s.skarstad@ntnu.no, GR:
28 guro.rosvold@ntnu.no, SLF: stine.fougner@ntnu.no, TF: turid.follestad@ntnu.no, KÅS:
29 pepe.salvesen@ntnu.no, TM: trine.moholdt@ntnu.no

30

31

32

33

34

35

36

37

38

39

40

41

42 **Abstract**

43 **Objective** To determine the effect of a pre-pregnancy lifestyle intervention on glucose
44 tolerance in people at higher risk of gestational diabetes mellitus (GDM).

45

46 **Design** Randomised controlled trial.

47

48 **Setting** University hospital in Trondheim, Norway.

49

50 **Participants** 167 people with at least one risk factor for GDM who contemplated pregnancy.

51

52 **Intervention** The participants were randomly allocated (1:1) to a lifestyle intervention or a
53 standard care control group. The intervention consisted of exercise training and time-
54 restricted eating, started pre-pregnancy and continued throughout pregnancy. Exercise
55 volume was set using a physical activity metric that translates heart rate into a score
56 (Personal Activity Intelligence, PAI), with the goal of ≥ 100 weekly PAI-points. Time-
57 restricted eating involved consuming all energy within ≤ 10 hours/day, ≥ 5 days per week.

58

59 **Main outcome measures** 2-hour plasma glucose level in an oral glucose tolerance test
60 (OGTT) in gestational week 28. The primary analysis used an intention-to-treat principle.

61

62 **Results**

63 From 02.10.2020 to 12.05.2023, we included 167 participants: 84 in intervention and 83 in
64 control, out of whom 111 became pregnant (56 in intervention and 55 in control). One
65 participant in the intervention group was excluded from the analysis because of pre-
66 pregnancy diabetes. Pregnancy data from one participant in the control group were
67 excluded from the analysis because of twin pregnancy. Time to pregnancy was 112 days (SD
68 105) in the intervention (INT) group and 83 days (SD 69) in the control (CON) group ($p =$
69 $.087$). The intervention had no significant effect on 2-hour plasma glucose level in an OGTT
70 in gestational week 28 (mean difference, 0.48 mmol/L, 95% confidence interval [CI], -0.05 to
71 1.01, $p = .077$). There was no evidence of between-group differences in other measures of
72 glycaemic control before or during pregnancy. The intervention did not significantly
73 influence GDM prevalence rates in gestational week 12 (INT 5.5%, CON 5.6%, $p = 1.000$) or
74 gestational week 28 (INT 14.5%, CON 11.1%, $p = .592$). In gestational week 28, the
75 intervention group had gained less weight (2.0 kg, 95% CI, -3.3 to -0.8, $p = .002$) and fat mass
76 (-1.5 kg, 95% CI, -2.5 to -0.4, $p = .008$) than the control group. Participants could adhere to
77 the ≤ 10 -hour eating window and maintain ≥ 100 PAI per rolling week pre-pregnancy, but
78 adherence to both intervention components decreased during pregnancy.

79

80 **Conclusions**

81 A combination of time-restricted eating and exercise training started before and continued
82 throughout pregnancy had no significant effect on glycaemic control in late pregnancy, but
83 our findings suggest that the intervention lowered gestational weight and fat mass gain in
84 people with increased risk of GDM.

85

86 **Trial registration** [ClinicalTrials.gov NCT04585581](https://clinicaltrials.gov/ct2/show/study/NCT04585581)

87

88 Abstract word count: 426

89

90 Keywords: insulin resistance, time-restricted eating, exercise training, glycaemic control,
91 diet

92

93

94

95

96

97

98

99 Introduction

100 Gestational diabetes mellitus (GDM) is defined as hyperglycaemia first diagnosed during
101 pregnancy and affects approximately one out of seven live births globally.(1) Risk factors for
102 GDM include having a high body mass index (BMI) and excessive gestational weight gain,
103 older age, GDM in a previous pregnancy, a family history of diabetes, and non-European
104 ethnicity.(1) Chronic insulin resistance as a result of a complex interplay of these genetic,
105 environmental, and behavioural risk factors aggravates physiological insulin resistance in the
106 second half of pregnancy leading to pancreatic β -cell dysfunction, elevated glucose levels,
107 and eventually GDM.(2) Although the hyperglycaemia usually resolves after delivery, GDM is
108 associated with an increased risk for several adverse consequences later in life, including
109 recurrence of GDM in later pregnancies, type 2 diabetes, metabolic syndrome, and
110 cardiovascular diseases.(3–6) Children of mothers with GDM are at increased risk of cardiac
111 dysfunction at birth, childhood obesity, and future diabetes mellitus, thus continuing the
112 intergenerational cycle of obesity and diabetes.(7–11)

113 Conventional lifestyle recommendations in pregnancy include moderate-intensity
114 exercise for at least 150 minutes per week and a healthy diet.(12) However, many pregnant
115 individuals fail to meet these recommendations and it may be difficult to change lifestyle
116 because of biological changes in pregnancy and due to concerns about the effects on the
117 growing fetus.(13–15) Most clinical trials of lifestyle interventions in pregnancy have
118 initiated the intervention around 16-20 weeks of gestation, leaving a missed window of
119 opportunity to implement lifestyle changes and improve glycaemic control.(16) Since pre-
120 pregnancy patterns of physical activity are associated with exercise during pregnancy(17)
121 and pre-pregnancy healthy dietary habits are associated with a lower risk of GDM,(18) the
122 pre-pregnancy period can be a “teachable moment” to make favourable changes that can
123 improve maternal and fetal outcomes. Over the last years, several systematic reviews and
124 meta-analyses have concluded that pre-pregnancy lifestyle interventions are necessary to
125 improve adherence and reduce the risk of GDM and related short- and longer-term adverse
126 outcomes.(19–21) However, the evidence on the specific components of pre-pregnancy
127 interventions and their effectiveness remains scarce. Alternative diet-exercise intervention
128 strategies, such as time-restricted eating (TRE) and high-intensity interval training (HIIT)
129 improve glycaemic control, and cardiometabolic outcomes in non-pregnant people with
130 cardiometabolic disorders.(22–26) The data on the effects of TRE in pregnancy are scarce.
131 We recently showed that it was feasible to consume all energy within maximum 10 h/day
132 for 5 weeks in the second and third trimesters of pregnancy, albeit without effect on the
133 measured cardiometabolic outcomes.(27) However, observational data indicate that longer
134 night-fasting duration is associated with improved fasting glucose in pregnant
135 individuals.(28) Recent publications show that HIIT is safe and enjoyable, as well as relatively
136 easy to adhere to, during pregnancy.(29–31) In the BEFORE THE BEGINNING trial, we
137 hypothesised that combined TRE and exercise training commenced pre-pregnancy and
138 continued throughout pregnancy, would improve maternal glucose tolerance in gestational
139 week 28 in people at increased risk of GDM.

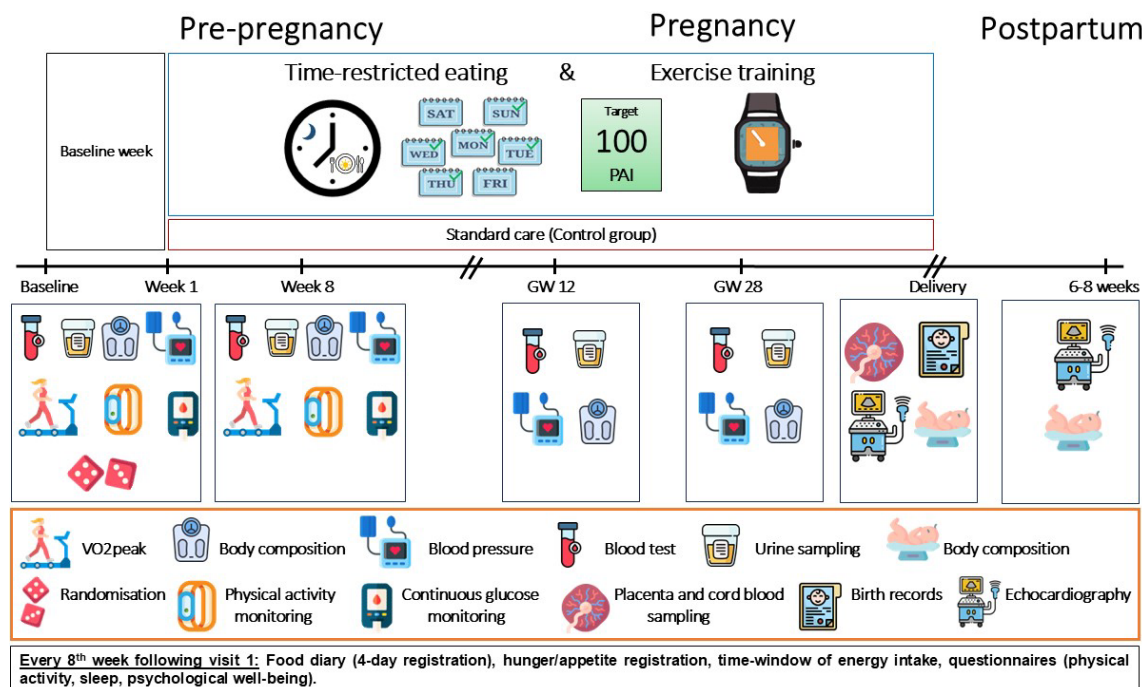
140

141 **Methods**

142 **Study design**

143 BEFORE THE BEGINNING was a single-centre randomised controlled trial with two parallel
 144 groups: an intervention group and a control group (Figure 1). The trial was undertaken at
 145 the Norwegian University of Science and Technology (NTNU) in Trondheim, Norway, in
 146 collaboration with the St. Olav's Hospital, Trondheim, Norway. The trial was registered in
 147 ClinicalTrials.gov (NCT04585581) on 25.09.2020. A detailed study protocol has been
 148 published previously.(32)

149



150

151 **Figure 1. Study design**

152 After baseline assessments, the participants were randomly allocated (1:1) to a lifestyle intervention or a
 153 standard care control group. The intervention consisted of exercise training and time-restricted eating, started
 154 pre-pregnancy, and continued throughout pregnancy. The amount of exercise was set using a heart rate-based
 155 physical activity metric (Personal Activity Intelligence, PAI), with the goal of ≥ 100 weekly PAI-points. Time-
 156 restricted eating involved consuming all energy within ≤ 10 hours/day, ≥ 5 days per week. Further assessments
 157 were performed 8 weeks after baseline in the pre-pregnancy period, and in gestational weeks 12 and 28.
 158 Pregnancy and birth outcomes were collected from hospital records after delivery. Neonatal outcomes were
 159 assessed within 72 hours after birth and 6-8 weeks after birth. GW = gestational week

160

161 **Recruitment and participants**

162 We advertised the trial on social media, hospital and university websites, local stores, and
 163 public places. Moreover, we sent electronic invitations to the trial to all females aged 20-35
 164 years in Trondheim and the surrounding area using information obtained from the national
 165 population register. We included females who were 18-39 years old and contemplating
 166 pregnancy within the next 6 months, who understood oral and written Norwegian or English

167 and who had at least one of the following risk factors: BMI ≥ 25 kg/m², GDM in a previous
168 pregnancy, close relative with diabetes (parents, siblings, or children with diabetes), fasting
169 plasma glucose > 5.3 mmol/L, previous newborn > 4.5 kg, or non-European ethnicity (one or
170 both parents originating from an area outside Europe). Exclusion criteria were ongoing
171 pregnancy, trying to conceive ≥ 6 cycles at study entry, known diabetes (type 1 or 2), shift
172 work that included night shifts > 2 days/week, previous hyperemesis, known cardiovascular
173 diseases, high-intensity exercise > 2 times/week in the last 3 months, habitual eating
174 window ≤ 12 hours/day, bariatric surgery, or any other reason which according to the
175 researchers made the potential participant ineligible.

176

177 **Randomisation and blinding**

178 Baseline assessments were performed before we randomly allocated the participants (1:1)
179 to the intervention or a standard care control group, stratified by GDM in a previous
180 pregnancy (yes/no). The study personnel used WebCRF3, a computer random number
181 generator developed and administered at The Clinical Research Unit (Klinforsk), NTNU/St.
182 Olav's Hospital, Trondheim, Norway to randomly allocate participants using various block
183 sizes. The randomisation sequence was concealed until interventions were assigned. Neither
184 participants nor study personnel were blinded.

185

186 **Intervention and adherence**

187 The intervention consisted of TRE and exercise training and spanned from inclusion pre-
188 pregnancy and throughout pregnancy. We counselled the participants in the intervention
189 group to restrict their daily time-window of energy intake to ≤ 10 hours, ending no later
190 than 19:00 hours, for minimum 5 days per week throughout the study period. On the "off"
191 days, the participants could choose their time-window for energy intake. We gave no advice
192 about dietary composition or the amount of energy the participants should consume, and
193 they could consume non-energy drinks outside the time-window.

194 The exercise programme was based on Personal Activity Intelligence (PAI), which is a
195 physical activity metric that translates heart rate during physical activity into a score.(33)
196 We instructed the participants to obtain ≥ 100 weekly PAI-points throughout the study
197 period since this amount of physical activity is associated with higher cardiorespiratory
198 fitness and a decreased cardiovascular disease risk.(33,34) High-intensity exercise and thus
199 higher heart rates give substantially more PAI-points than low-to-moderate-intensity
200 exercise. The participants in the intervention group wore smartwatches (Amazfit GTS and/or
201 Polar Ignite 2) throughout the study period. These watches shared PAI data with the
202 research team.

203 The exercise training consisted of endurance exercise with the aim of high intensity
204 and was mainly unsupervised. We provided participants in the intervention group with a
205 brochure suggesting various HIIT sessions to complete at home (Supplementary file 1). The
206 participants were free to choose whether to exercise indoors or outdoors, and if they
207 wanted to use any cardio machines (e.g., treadmill, stationary bike). Once pregnant, we

208 advised the participants to choose between short work-bouts (30 seconds) at high intensity
209 with low-to-moderate intensity periods in-between, or longer work periods with an
210 intensity up to 85% of heart rate maximum. The participants were invited for supervised
211 exercise sessions twice after baseline: after 2 and 4 weeks. Additionally, participants could
212 ask for extra support and more supervised sessions at any time during the intervention
213 period. The supervised sessions were undertaken on a treadmill or a stationary bike in our
214 training facility. Participants in the control group received standard care and were asked to
215 continue with their habitual physical activity and dietary intake.

216 We asked all participants to report their daily time-window of energy intake for 4
217 days (three weekdays and one weekend day) every 8th week in a printed study handbook.
218 We categorised participants in the intervention group as adherent to TRE if they reported a
219 ≤ 10 -hour time window for energy intake on ≥ 2 of these 4 days and as adherent to exercise
220 training if they earned and maintained ≥ 75 PAI per rolling week. We sent reminders to all
221 participants via text messages to complete dietary reporting and contacted the participants
222 in the intervention group to offer additional supervised exercise sessions if they were not
223 reaching the PAI target.

224

225 **Experimental procedures and outcome measures**

226 Assessments of the participants were undertaken twice during pre-pregnancy and twice
227 during pregnancy. The first week after allocation to groups consisted of baseline recordings,
228 followed by visits in the laboratory after 8 weeks, and in gestational weeks 12 and 28.
229 Participants who did not become pregnant within 6 months of inclusion were excluded from
230 the study, but their pre-pregnancy data were included in the intention-to-treat analysis
231 (changed from 12 months, see modifications to the protocol after trial commencement). In
232 cases of spontaneous abortions, we adjusted the period to allow the participants to
233 continue in the study by a 4-weeks extension added to the number of weeks the
234 participants were pregnant before abortion.

235

236 ***Primary outcome measure***

237 The primary outcome measure was 2-hour plasma glucose concentration in a 75 g oral
238 glucose tolerance test (OGTT) in gestational week 28. After an overnight fast (≥ 10 hours)
239 and no exercise for ≥ 24 hours, the participants consumed a premade drink of 75 g glucose
240 diluted in 250 mL water (Glucosepro, Finnmedical, Finland) within 5 minutes. Using an
241 indwelling catheter, we collected venous blood before the OGTT, with subsequent
242 collections at 30, 60, 90, and 120 minutes after ingestion of glucose.

243

244 ***Secondary outcome measures***

245 The trial has several secondary outcomes, as specified in the study protocol.(32) Here we
246 report the main secondary maternal cardiometabolic outcomes and will report the
247 remaining secondary outcomes in separate publications. Secondary outcome measures
248 were assessed twice during pre-pregnancy (at baseline and after 8 weeks) and twice during

249 pregnancy (in gestational weeks 12 and 28), if not otherwise specified. Fasting plasma
250 glucose, blood lipids, and glycated haemoglobin (HbA1c) were analysed immediately after
251 blood sampling at St. Olavs Hospital laboratory, following local standardised procedures.
252 GDM was recorded in gestational weeks 12 and 28, and diagnosed according to the WHO
253 2013 criteria: fasting plasma glucose 5.1-6.9 mmol/L and/or 2-hour plasma glucose 8.5-11.0
254 mmol/L after a 75-g glucose load.(35) We measured fasting, 30-minute, and 120-minute
255 insulin concentrations in thawed serum samples with enzyme-linked immunosorbent assay
256 (ELISA, IBL-International, Hamburg, Germany) according to the manufacturer's protocol
257 using a DS2 ELISA processing system (Dynex technologies, Virginia, USA) at the research
258 laboratories at the Department of Circulation and Medical Imaging, NTNU. The area under
259 the curve (AUC) and incremental AUC (iAUC) from glucose concentrations were calculated
260 from venous blood sampling obtained every 30 minutes during the OGTT.(36) We calculated
261 homeostasis model assessment of insulin resistance (HOMA2-IR) and pancreatic beta cell
262 function (HOMA2- β) using the online HOMA2 calculator:
263 <https://www.dtu.ox.ac.uk/homacalculator/index.php> (37) We also estimated the Insulin
264 Sensitivity Index ($ISI_{0,120}$)(38), insulinogenic index during the first 30 minutes of the
265 OGTT(39), and beta cell function (AUC_{ins}/AUC_{glu})(40).

266 Weight and body composition were estimated in the morning after overnight fasting
267 using bioelectrical impedance analysis (Inbody 720, Biospace CO, Korea), with participants
268 wearing light clothes and standing barefoot. Additionally, waist circumference was
269 measured using a measuring tape at the level of the navel, in a standing position. We used
270 an automatic blood pressure device (Welch Allyn, Germany) to measure blood pressure and
271 resting heart rate on the participants' left arm after they had rested in a seated position for
272 15 minutes. The average of three measurements taken 1 minute apart is reported. We
273 asked the participants to register their diet in an online food diary (Fatsecret app) intake for
274 4 days (three weekdays and one weekend day) every 8th week. They also completed the
275 International Physical Activity Questionnaire(41) every 8th week throughout the study
276 period.

277

278 ***Modifications to the protocol after trial commencement***

279 From November 2022, we started identifying eligible participants using population data
280 from the Norwegian Tax Administration and sending out electronic participant invitations to
281 reach a broader target population. Concurrently, we added 'bariatric surgery' and 'any other
282 reason which according to the researchers makes the potential participant ineligible' to
283 undergo either or both interventions (e.g., traumatic foot injury, anorexia/bulimia) as
284 exclusion criteria. From December 2022, we removed 'planned assisted fertilisation with
285 female factor reason' from the exclusion criteria. The changes in the inclusion criteria were
286 made to account for challenges that arose during the screening process. Also in December
287 2022, we changed the maximum time before pregnancy from 12 months to 6 months to
288 allow for the trial to be terminated in time for us to analyse the data within the project
289 period. In March 2023, the required number of total participants was reduced from 260 to

290 200 based on the revised sample size calculation described below. In June 2023, we changed
291 from Amazfit GTS (Huami, China) to Polar Ignite 2 (Polar, Finland) smartwatch and from
292 Zepp and Memento to Polar Flow and Mia app to improve recording of PAI-points.

293

294 **Sample size**

295 The primary outcome measure was 2-hour plasma glucose level in a 75 g OGTT in
296 gestational week 28. We considered a difference between the intervention group and the
297 control group of 1.0 mmol/L as the minimally clinically relevant difference, based on findings
298 from the HAPO study,(7) and have used the observed standard deviation (SD) in 2-hour
299 plasma glucose concentrations during the OGTT from HAPO in the calculations. Sample size
300 calculation for a two-sided t-test to detect a 1.0 mmol/L difference between the groups,
301 using an SD of 1.3, a power of .90, and a significance level of .05, yields 37 participants in
302 each group in gestational week 28. To allow for an expected exclusion from the study due to
303 not conceiving within the study period (~50%)(42) yielding 74 per group, further drop-out
304 during the study period (10-20%), yielding 93 per group, and to increase statistical power for
305 secondary analyses, we initially wanted to include 260 participants in the trial. However, we
306 concluded participant recruitment after reaching 167 participants, because we at that point
307 had more than 45 participants per group in gestational week 12, which allowed for an
308 anticipated 20% dropout during pregnancy.

309

310 **Statistical analysis**

311 We analysed data from 166 participants in the intention-to-treat analyses (excluding one
312 participant in the intervention group because of pre-pregnancy diabetes). For the analysis of
313 pregnancy-specific data, we used data obtained from 109 pregnant participants (data
314 obtained during pregnancy from one participant in the control group were excluded from
315 the analysis because of twin pregnancy). We used linear mixed models to estimate
316 differences in primary and secondary continuous outcomes between groups, with time and
317 the interaction between time and group as fixed effects variables, and subject (participant
318 ID) as random effect.(43) Since no systematic baseline differences between the groups are
319 expected in randomised controlled trials, the main effect of group was not included, such
320 that the means at baseline were constrained to be equal in these models. We report
321 estimated effects in the intervention group compared with the control group, with
322 corresponding 95% confidence intervals and *p*-values. For outcomes obtained only during
323 the pregnancy period (variables using data from the OGTT at gestational week 12 and 28),
324 we included the main effect of group in the linear mixed model.

325 We checked the normality of residuals by visually inspecting QQ-plots. For variables
326 that were not normally distributed, bias-corrected and accelerated bootstrap confidence
327 intervals (CIs) based on 3000 bootstrap samples were calculated. Additionally, we used
328 Fisher's exact test to compare GDM prevalence in gestational week 12 and chi-square test in
329 gestational week 28, and Student's t-test to compare time to pregnancy between groups.
330 For our primary outcome measure, we considered a *p*-value < .05 to indicate statistically

331 significant results. For the secondary outcome measures, we used a significance level of .01
332 to give some protection against false positives due to multiple comparisons. We also
333 performed pre-specified per-protocol analyses, in which we included only the participants in
334 the intervention group who obtained ≥ 75 weekly PAI-points and reported a ≤ 10 -hour time
335 window for energy intake on ≥ 2 out of 4 days in the handbook pre-pregnancy. The
336 statistical analyses were performed using IBM SPSS Statistics 29.0 and STATA MP version 18.

337

338 **Patient and public involvement**

339 In the planning phase, we invited users to discuss the study 1 month before applying to the
340 regional ethical committee for approval. We arranged a 1-hour interactive digital workshop
341 with participant representatives (reproductive-aged females with overweight/obesity) to
342 discuss relevant topics or issues related to participation and long-term adherence. Among
343 the topics we discussed were potential barriers to participation in diet-exercise
344 interventions, how to engage participants and keep them engaged, how to increase
345 motivation, use of digital methods to collect exercise- and diet data, and recruitment
346 strategies. Four months after including the first participant, we organised another
347 interactive workshop in which we discussed how to increase participant recruitment and
348 adherence. Based on input from the participant representatives, we established a Facebook
349 group for planning exercise sessions together with other participants. Additionally, we
350 offered supervised exercise training for interested participants at our training facilities via
351 the Facebook group. Participant representatives were not involved in the recruitment
352 process. In February 2023, we had another interactive meeting with participants who
353 completed the study to discuss their views on exercise training during pregnancy and follow-
354 up before and during pregnancy.

355

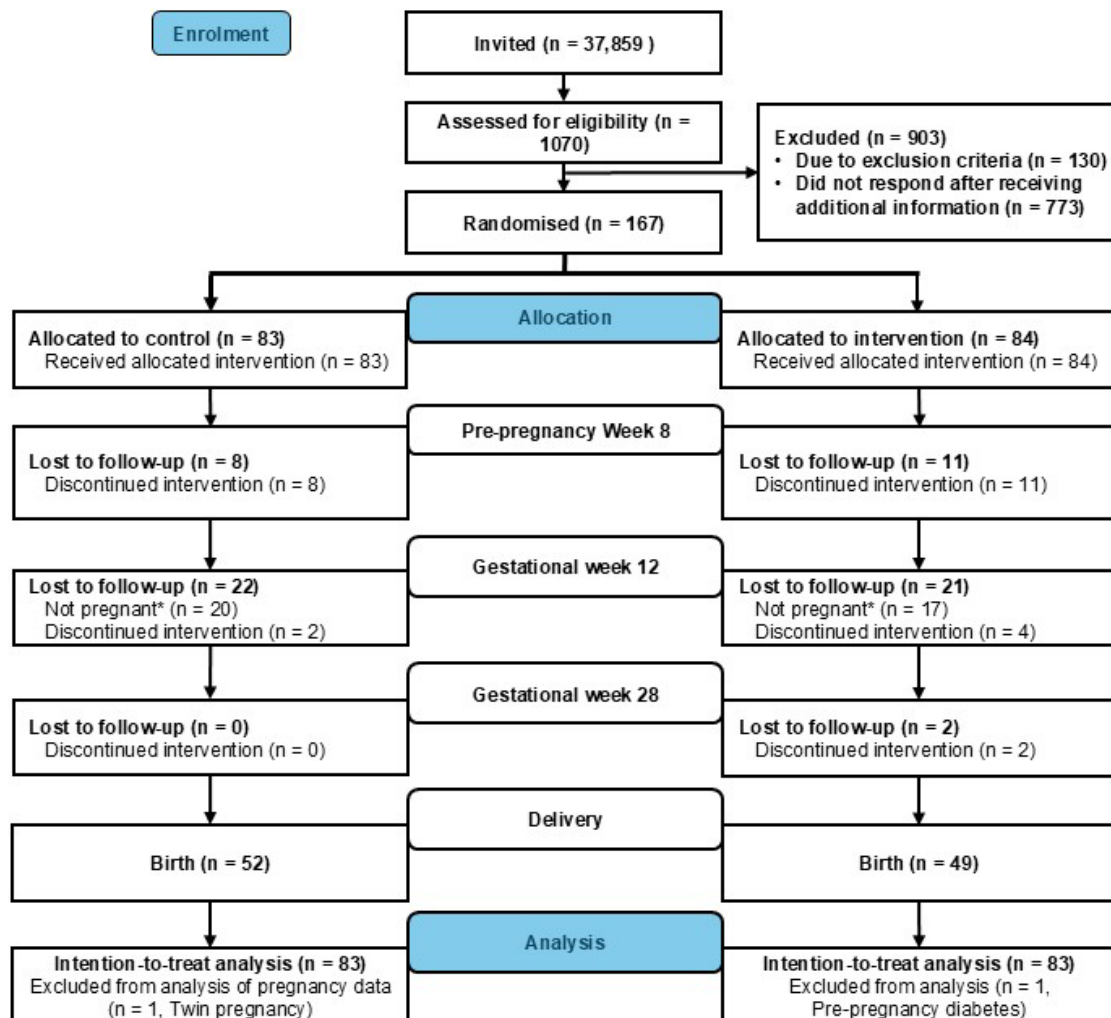
356 **Results**

357 **Participants**

358 We randomised 167 participants (Intervention, $n = 84$ and Control, $n = 83$) between October
359 2nd 2020 and May 12th 2023 (Figure 2). We ended inclusion of new participants when 45
360 participants in each group reached gestational week 12, as per our sample size calculations.
361 We excluded one participant in the intervention group because of pre-pregnancy diabetes,
362 leaving data from 166 participants in the intention-to-treat analyses. Within the specified
363 time, 111 participants became pregnant (Intervention, $n = 56$, Control, $n = 55$). Pregnancy
364 data from one participant in the control group were excluded from the analysis because of
365 twin pregnancy (Figure 2). Time to pregnancy did not differ significantly between groups,
366 with mean of 112 days (SD 105) in the intervention group and 83 days (SD 69) in the control
367 group ($p = .087$). Table 1 shows the baseline characteristics of the participants.

368

369



370
371 **Figure 2. Flowchart of participants**

372 * Participants who did not conceive within the specified time were excluded from further participation in the
373 trial, but their pre-pregnancy data were included.

374
375
376
377
378
379
380
381
382
383
384
385
386

387 **Table 1. Baseline characteristics of participants, according to group allocation.**

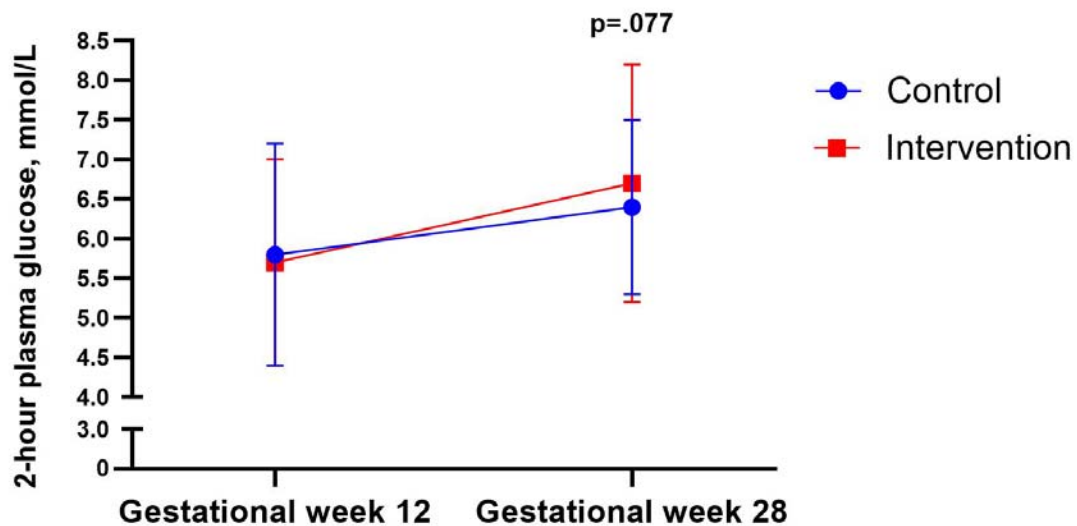
	Control (n = 83)	Intervention (n = 83)
Age, years	30.3 (3.2)	30.2 (3.1)
Weight, kg	81.5 (13.2)	81.1 (16)
Body mass index, kg/m ²	29.1 (4.5)	29.2 (4.9)
Waist circumference, cm	94.5 (11.8)	93.0 (12.3)
Muscle mass, kg	27.7 (3.6)	27.9 (4.3)
Fat mass, kg	31.7 (9.9)	30.8 (11)
Fat percentage, %	37.9 (7.2)	37.0 (7.6)
Visceral fat area, cm ²	153 (52)	146 (56)
Systolic blood pressure, mmHg	121 (10)	118 (8)
Diastolic blood pressure, mmHg	79 (7)	79 (6)
Resting heart rate, bpm	72 (11)	71 (11)
HbA1c, mmol/mol	34.3 (3.1)	34.1 (2.8)
Fasting glucose, mmol/L	5.0 (0.4)	4.9 (0.4)
Total cholesterol, mmol/L	4.5 (0.7)	4.6 (0.8)
HDL cholesterol, mmol/L	1.4 (0.3)	1.4 (0.3)
LDL cholesterol, mmol/L	3.0 (0.9)	3.1 (0.8)
Triglycerides, mmol/L	1.0 (0.5)	1.0 (0.5)
Fasting insulin, μ U/mL	19.1 (11.7)	17.1 (10.4)
HOMA2-IR	2.4 (1.4)	2.2 (1.2)
HOMA2-B	168.2 (59.2)	164.9 (69.2)
Parity, total number of births, n (%)		
0	45 (55)	47 (58)
1	30 (37)	30 (37)
2	7 (9)	4 (5)
Education level, n (%)		
Compulsory schooling	0 (0)	1 (1)
Completed upper secondary school	8 (10)	10 (12)
Completed university education, less than 4 years	28 (34)	23 (28)
Completed university education, 4 years or more	46 (56)	47 (58)
Ethnic origin, n (%)		
Europe	74 (89)	72 (87)
Africa and Middle East	3 (4)	1 (1)
Asia	4 (5)	6 (7)
North America	1 (1)	1 (1)
Latin America	1 (1)	3 (4)
Reason for inclusion*, n (%)		
Body mass index \geq 25 kg/m ²	74 (89)	68 (82)
GDM in a previous pregnancy	1 (1)	2 (2)
Family history of diabetes, <i>n</i>	20 (24)	24 (29)
Previous newborn > 4.5 kg, <i>n</i>	1 (1)	1 (1)

388 Data are presented as means of observed values with standard deviation (SD) or number (n) and percentage
389 (%) of participants. Missing: number of participants with missing data in each group is 0 to 3 for all variables
390 except for waist circumference, where 5 are missing in the intervention group and 8 in the control group.

391 HbA1c = Glycated haemoglobin, HDL = High-density lipoprotein cholesterol, LDL = Low-density lipoprotein
 392 cholesterol, HOMA2-IR = Homeostatic model assessment of insulin resistance, HOMA2-B = Homeostatic model
 393 assessment of beta cell function, GDM = Gestational diabetes mellitus.
 394

395 **Primary outcome and secondary glycaemic outcomes in pregnancy**

396 There was no statistically significant difference between the intervention and control groups
 397 in 2-hour plasma glucose concentrations during a 75 g OGTT (mean difference 0.48 mmol/L,
 398 95% CI -0.05 to 1.01, $p = .077$) in gestational week 28 (Table 2, Figure 3). The intervention
 399 did not significantly improve secondary glycaemic outcomes (fasting glucose, fasting insulin,
 400 HbA1c, HOMA2-IR, and HOMA2-B) compared with control. No statistically significant
 401 between-group differences were found in glycaemic outcomes obtained only during
 402 pregnancy (AUC, iAUC, insulinogenic index during the first 30 minutes of OGTT and $ISI_{0,120}$)
 403 (Supplementary file 2). In gestational week 12, three participants in each group fulfilled the
 404 criteria for GDM diagnosis (INT 5.5%, CON 5.6%, $p = 1.000$). The corresponding numbers in
 405 gestational week 28 were eight participants (14.5%) in the intervention group and six
 406 participants (11.1%) in the control ($p = .776$) (Supplementary file 2).
 407



408
 409 **Figure 3.** Plasma glucose 2 hours after a 75-g oral glucose tolerance test in gestational weeks 12 and 28,
 410 according to group. Data are observed means and standard deviations for the intention-to-treat population.
 411 The p -value was calculated for a test of between-group differences, using a linear mixed model.
 412

413 **Secondary outcomes**

414 The estimated mean weight gain in the intervention group in gestational week 28 was 2.0 kg
 415 lower (95% CI -3.3 to -0.8, $p = .002$), and fat mass gain was 1.5 kg lower (95% CI to -2.5 to -
 416 0.4, $p = .008$), than in the control group (Table 2). There was little or no evidence of other
 417 between-group differences during pregnancy.
 418

419 **Table 2. Intention-to-treat analyses.**

420 Data are observed means and standard deviations (SD) at baseline, in pre-pregnancy week 8, gestational week
 421 12, and gestational week 28 for *n* participants in each group. Results from linear mixed model analyses are
 422 presented as estimated mean difference (Est. effect) in the intervention group compared with the control
 423 group, with corresponding 95% confidence interval (CI) and *p*-values. *95% CI and *p*-values are from bias-
 424 corrected and accelerated confidence intervals based on bootstrap with 3000 samples, due to non-normally
 425 distributed residuals.
 426

		Control (<i>n</i> = 54)	Intervention (<i>n</i> = 55)	Difference (intervention - control)		
Outcome	Time	Mean (SD)	Mean (SD)	Est. effect	95% CI	<i>p</i>
Primary outcome						
2-hour plasma glucose during OGTT, mmol/L	Gestational week 12	5.8 (1.4)	5.7 (1.3)			
	Gestational week 28	6.4 (1.1)	6.7 (1.5)	0.48	-0.05 to 1.01	.077
Secondary outcomes						
		Control (<i>n</i> = 83)	Intervention (<i>n</i> = 83)	Difference (intervention – control)		
Outcome	Time	Mean (SD)	Mean (SD)	Est. effect	95% CI	<i>p</i>
Fasting blood glucose, mmol/L	Baseline	5.0 (0.4)	4.9 (0.4)			
	Pre-pregnancy week 8	5.1 (0.4)	5.0 (0.3)	0.0	-0.2 to 0.1	.392
	Gestational week 12	4.5 (0.3)	4.5 (0.3)	0.0	-0.1 to 0.1	.640
	Gestational week 28	4.5 (0.4)	4.5 (0.5)	0.0	-0.1 to 0.2	.427
HbA1c, mmol/mol	Baseline	34.3 (3.1)	34.1 (2.8)			
	Pre-pregnancy week 8	34.5 (3.2)	33.9 (2.5)	-0.4	-1.1 to 0.2	.205
	Gestational week 12	32.7 (2.3)	33.3 (2.4)	0.5	-0.2 to 1.2	.140
	Gestational week 28	32.3 (2.8)	32.0 (3.19)	-0.2	-0.9 to 0.5	.516
Fasting insulin, µU/mL*	Baseline	19.1 (11.7)	17.1 (10.4)			
	Pre-pregnancy week 8	19.3 (9.7)	16.3 (8.6)	-2.0	-4.4 to 0.5	.123
	Gestational week 12	12.8 (10.7)	12.3 (9.1)	0.1	-3.8 to 4.0	.960
	Gestational week 28	19.4 (12.2)	18.6 (11.0)	-0.8	-5.0 to 3.4	.716
HOMA2-B*	Baseline	167.8 (58.9)	164.9 (69.2)			
	Pre-pregnancy week 8	171.2 (59.2)	155.0 (51.6)	-13.8	-30.1 to 2.5	.097
	Gestational week 12	153.8 (81.4)	155.8 (68.7)	4.6	-24.1 to 33.2	.755
	Gestational week 28	212.4 (84.9)	205.2 (70.0)	-7.7	-35.1 to 19.6	.579
HOMA2-IR*	Baseline	2.4 (1.4)	2.2 (1.2)			
	Pre-pregnancy week 8	2.4 (1.2)	2.1 (1.1)	-0.2	-0.5 to 0.1	.213
	Gestational week 12	1.6 (1.2)	1.5 (1.1)	0.1	-0.4 to 0.5	.787
	Gestational week 28	2.3 (1.4)	2.3 (1.3)	0.0	-0.5 to 0.5	.878
Total Cholesterol, mmol/L	Baseline	4.6 (0.7)	4.6 (0.8)			
	Pre-pregnancy week 8	4.5 (0.7)	4.7 (0.8)	0.3	0.0 to 0.5	.027
	Gestational week 12	4.4 (0.7)	4.4 (0.8)	0.0	-0.3 to 0.2	.811
	Gestational week 28	5.9 (1.2)	5.8 (1.1)	-0.1	-0.3 to 0.2	.574
LDL cholesterol, mmol/L	Baseline	3.0 (0.9)	3.1 (0.8)			
	Pre-pregnancy week 8	2.9 (0.8)	3.1 (0.8)	0.2	0.0 to 0.4	.089
	Gestational week 12	2.8 (0.7)	2.8 (0.8)	0.0	-0.3 to 0.2	.844

	Gestational week 28	3.9 (1.2)	3.9 (1.1)	-0.1	-0.4 to 0.1	.398
HDL cholesterol, mmol/L	Baseline	1.4 (0.3)	1.4 (0.3)			
	Pre-pregnancy week 8	1.4 (0.3)	1.5 (0.3)	0.0	0.0 to 0.1	.376
	Gestational week 12	1.6 (0.4)	1.6 (0.2)	0.0	-0.1 to 0.1	.494
	Gestational week 28	1.8 (0.4)	1.8 (0.3)	0.0	-0.1 to 0.1	.816
Triglycerides, mmol/L	Baseline	1.0 (0.5)	0.9 (0.5)			
	Pre-pregnancy week 8	1.0 (0.5)	0.9 (0.4)	0.0	-0.2 to 0.1	.826
	Gestational week 12	1.1 (0.4)	1.1 (0.4)	0.0	-0.1 to 0.2	.545
	Gestational week 28	2.0 (0.7)	1.9 (0.6)	0.0	-0.2 to 0.1	.738
Weight, kg	Baseline	81.5 (13.2)	81.1 (16.0)			
	Pre-pregnancy week 8	81.6 (12.5)	78.9 (14.8)	-0.9	-2.0 to 0.3	.145
	Gestational week 12	79.5 (12.9)	78.8 (15.2)	-0.9	-2.2 to 0.3	.152
	Gestational week 28	86.8 (12.3)	85.1 (15.4)	-2.0	-3.3 to -0.8	.002
Fat mass, kg	Baseline	31.6 (9.8)	30.8 (11.0)			
	Pre-pregnancy week 8	31.2 (9.5)	28.8 (9.7)	-0.8	-1.8 to 0.2	.103
	Gestational week 12	30.6 (9.5)	29.5 (10.7)	-0.5	-1.5 to 0.6	.410
	Gestational week 28	34.2 (9.0)	32.5 (10.8)	-1.5	-2.5 to -0.4	.008
Fat percentage, %	Baseline	37.9 (7.2)	37.0 (7.6)			
	Pre-pregnancy week 8	37.6 (7.0)	35.7 (6.6)	-0.6	-1.4 to 0.2	.144
	Gestational week 12	37.7 (7.0)	36.5 (7.4)	-0.2	-1.0 to 0.7	.734
	Gestational week 28	38.8 (6.0)	37.4 (7.2)	-0.7	-1.5 to 0.2	.139
Visceral fat area, cm ²	Baseline	153.6 (52)	146 (57)			
	Pre-pregnancy week 8	151 (50)	135 (50)	-5.1	-10.9 to 0.7	.086
	Gestational week 12	148 (51)	136 (54)	-2.3	-8.6 to 4.1	.483
	Gestational week 28	165 (47)	153 (54)	-6.2	-12.5 to 0.1	.054
Muscle mass, kg	Baseline	27.7 (3.6)	27.9 (4.3)			
	Pre-pregnancy week 8	28.0 (3.6)	27.8 (4.2)	0.0	-0.3 to 0.3	.855
	Gestational week 12	27.0 (3.2)	27.2 (4.1)	-0.2	-0.5 to 0.2	.316
	Gestational week 28	29.1 (3.1)	29.1 (4.2)	-0.3	-0.7 to 0.0	.061
Waist circumference, cm	Baseline	94.5 (11.8)	93.0 (12.3)			
	Pre-pregnancy week 8	93.9 (11.2)	92.0 (11.5)	-0.5	-2.9 to 1.8	.663
	Gestational week 12	95.1 (11.5)	94.9 (12.1)	0.6	-1.8 to 3.1	.610
	Gestational week 28	107.3 (8.4)	105.9 (10.6)	-1.5	-4.0 to 1.0	.243
Systolic blood pressure, mmHg	Baseline	121 (10)	118 (8)			
	Pre-pregnancy week 8	119 (8)	117 (8)	0.2	-2.4 to 2.7	.901
	Gestational week 12	114 (10)	110 (8)	-2.2	-5.0 to 0.6	.122
	Gestational week 28	110 (9)	110 (11)	0.6	-2.3 to 3.4	.688
Diastolic blood pressure, mmHg	Baseline	79 (7)	79 (6)			
	Pre-pregnancy week 8	77 (6)	77 (6)	0.0	-2.1 to 2.0	.973
	Gestational week 12	71 (8)	70 (6)	-0.9	-3.1 to 1.3	.414
	Gestational week 28	69 (8)	70 (8)	0.5	-1.7 to 2.8	.647
Resting heart rate, beats per minute	Baseline	72 (11)	71 (11)			
	Pre-pregnancy week 8	69 (9)	67 (10)	-1.7	-4.8 to 1.4	.288
	Gestational week 12	71 (11)	69 (15)	-1.9	-5.4 to 1.5	.275
	Gestational week 28	78 (12)	77 (13)	-0.9	-4.3 to 2.6	.629

427 OGTT = Oral glucose tolerance test, HbA1c = Glycated haemoglobin, HOMA2-B = Homeostatic model
428 assessment of beta cell function, HOMA2-IR = Homeostatic model assessment of insulin resistance, HDL =
429 High-density lipoprotein cholesterol, LDL = Low-density lipoprotein cholesterol.

430

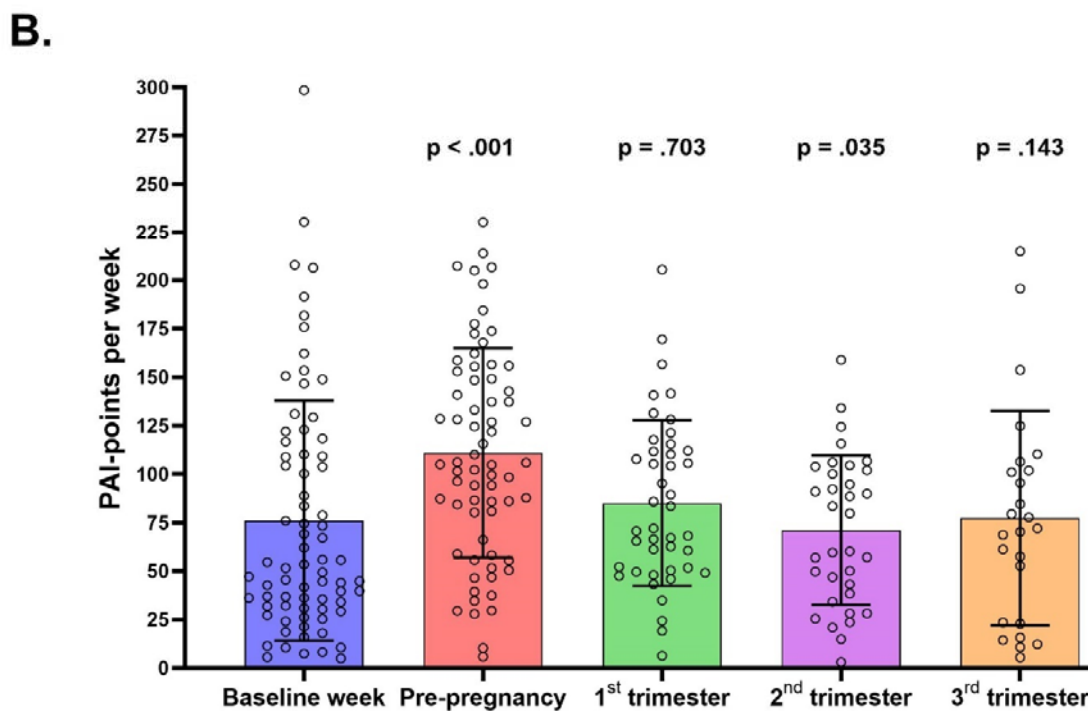
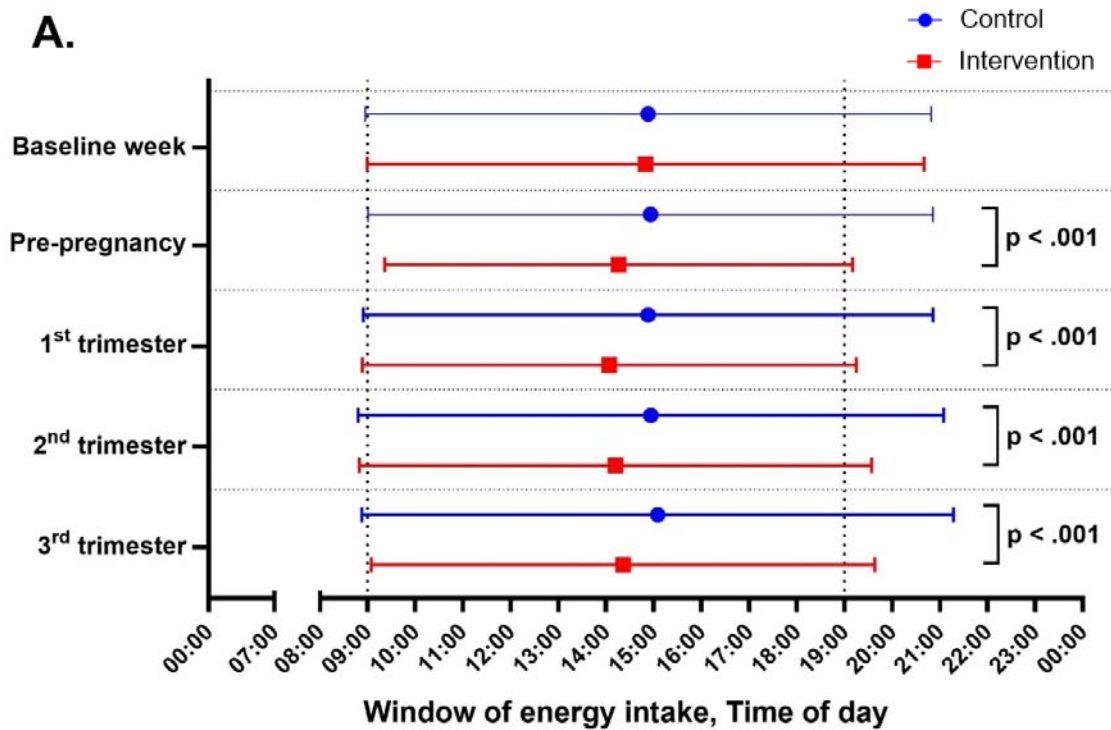
431 ***Adherence***

432 At baseline, the average daily eating window for all participants was 11.9 (SD 1.7) hours. The
433 eating window was shorter in the intervention group during the rest of the study period,
434 compared with the control group (Figure 4). In the pre-pregnancy period, the intervention
435 group had an average eating window of 9.9 (SD 1.2) hours, which increased during
436 pregnancy (Figure 4 and Supplementary file 2). The intervention group significantly
437 increased their activity levels during the pre-pregnancy phase compared with baseline. The
438 average weekly PAI-points decreased throughout pregnancy and their physical activity levels
439 during pregnancy did not differ significantly from baseline (Figure 4 and Supplementary file
440 2).

441

442

443



444
445
446
447
448
449
450
451
452

Figure 4. Adherence to the intervention.

(A) Time-window of energy intake during the baseline week, pre-pregnancy period, and 1st, 2nd, and 3rd trimesters of pregnancy, according to group. The horizontal lines represent the daily duration of energy intake, with the left and right ends indicating means of the time of first and last energy intake for the intention-to-treat population. The p -values were calculated for a test of between-group differences in the window of energy intake, using linear mixed model. (B) Personal Activity Intelligence (PAI)-points earned per rolling week during baseline week, pre-pregnancy period, and first, second and third trimesters of pregnancy, in the intervention group. The bars show mean PAI-points per week, error bars show standard deviation, and

453 symbols show individual data. The p -values were calculated for within-group differences from baseline,
454 estimated by a linear mixed model.

455

456 ***Per protocol analyses***

457 In the per-protocol analyses, we included only the participants in the intervention group
458 who obtained ≥ 75 weekly PAI-points and reported a ≤ 10 -hour time window for energy
459 intake on ≥ 2 out of 4 days in the handbook in the pre-pregnancy period. Thirty-one (37%)
460 participants satisfied both criteria and were included in the analyses. The results from the
461 per-protocol analyses were similar to those from the intention-to-treat analyses, except for
462 time to pregnancy which was significantly longer in the intervention group (49 days, 95% CI
463 16 to 82, $p = .004$) (Supplementary File 3).

464

465 ***Dietary intake and physical activity***

466 There was no statistically significant difference in self-reported total energy intake in the
467 intervention group compared with the control group pre-pregnancy (-57.0 kcal/day, 95% CI -
468 183.9 to 69.9, $p = .378$) or during the first trimester (41.2 kcal/day, 95% CI -92.6 to 175.1, $p =$
469 .545), second trimester (39.7 kcal/day, 95% CI -101.4 to 180.9, $p = .580$), or third trimester
470 (-110.3 kcal/day, 95% CI -248.0 to 27.3, $p = .116$). Nor were there any significant differences
471 in the distribution of macronutrients in the intervention group compared with the control
472 group before or during pregnancy (Supplementary file 2). Self-reported physical activity
473 level did not differ significantly between groups before or during pregnancy (Supplementary
474 file 2).

475

476 ***Adverse events***

477 No serious adverse events were reported during the study. Minor events included some
478 participants feeling dizzy and/or nauseous during fasting blood sampling and OGTT. Water
479 intake and fresh air solved this problem for most participants, although some discontinued
480 blood sampling. Some participants experienced local skin irritation from wearing a
481 continuous glucose monitor, requiring premature removal. Others reported local skin
482 irritation from the physical activity monitor armbands and smartwatches, which was
483 resolved by repositioning the monitors or switching to metal wristwatch armbands.

484

485 **Discussion**

486 ***Main findings***

487 The BEFORE THE BEGINNING study is to our knowledge the first to implement a
488 combination of TRE and exercise training before conception and throughout pregnancy in
489 people at increased risk of developing GDM. Contrary to our hypothesis, we found no
490 significant between-group differences in 2-hour plasma glucose level after a 75 g glucose
491 load in gestational week 28, or in secondary outcome measures of glycaemic control at any
492 time-points before or during pregnancy. Despite that the intervention reduced body weight
493 and fat mass gain in gestational week 28, there was no significant effect on GDM incidence.

494 The participants were able to adhere to the ≤ 10 -hour TRE intervention pre-pregnancy, with
495 a slight increase in the time-window of energy intake during pregnancy. While participants
496 in the intervention group earned more than 100 PAI during pre-pregnancy, their activity
497 levels declined during pregnancy, and there were no significant between-group differences
498 in self-reported energy intake or physical activity throughout the study period.

499

500 ***Strengths and limitations***

501 The main strengths of the BEFORE THE BEGINNING trial are the randomised controlled
502 design and longitudinal measurements throughout the pre-pregnancy and pregnancy
503 periods. The study had a high pregnancy rate (66% in both groups), and a low dropout rate
504 during pregnancy (7% in both groups). Still, the study has several limitations. Most
505 participants were highly educated, potentially resulting in healthy volunteer bias as they
506 were likely knowledgeable about their health and well-being.(44) Most of our participants
507 were also white and thus it is difficult to generalize our findings to other ethnicities.
508 However, recruitment via social media is thought to give a better representation of the
509 general population than other recruitment methods.(45) Since we had a low number of
510 participants ($n = 3$) with previous GDM, adjustment for stratification variable (GDM) was not
511 included in the analyses. Despite good adherence to TRE and exercise training in the pre-
512 pregnancy period, we did not observe any improvements in cardiometabolic outcomes
513 compared with the control group. One possible reason for this could be the variable length
514 of the pre-pregnancy period, as the time to pregnancy varied greatly among participants.
515 Additionally, the number of PAI-points earned during the baseline week also varied greatly
516 within the participants in the intervention group and some of the participants had already a
517 high physical activity level at baseline. Self-reported activity levels did not differ significantly
518 between groups, suggesting that the level of physical activity in the control group was
519 similar as in the intervention group.

520

521 ***Comparisons with other studies***

522 Most lifestyle interventions for GDM prevention begin during pregnancy, missing the crucial
523 window of opportunity in the pre-pregnancy period to improve cardiometabolic health
524 outcomes in at-risk individuals.(46) Systematic reviews and meta-analyses have highlighted
525 the lack of randomised controlled trials focusing on pre-pregnancy lifestyle interventions in
526 this population.(47,48) To date, only a handful of studies have investigated the role of pre-
527 pregnancy lifestyle intervention continued throughout pregnancy on cardiometabolic
528 outcomes.(49–53) We found no significant effect of the intervention on glucose tolerance in
529 gestational week 28, or on any other glycaemic indices. In contrast to our hypothesis, we
530 estimated a *higher* mean 2-hour plasma glucose concentration in the intervention group in
531 gestational week 28 according to both the ITT and the per-protocol analysis (0.48 and 0.64
532 mmol/L, respectively), compared with the control group. However, the estimated mean
533 differences were smaller than what was considered a clinically relevant difference (1.0

534 mmol/L). A slight, non-significant, increase in 2-hour plasma glucose concentration (0.2
535 mmol/L) was also observed after a 5-week TRE intervention during pregnancy.(27)

536 In contrast to our findings, Price et al.(50) reported that a 12-week pre-pregnancy
537 very low-energy diet intervention significantly reduced 2-hour glucose during a 75 g OGTT
538 by 0.8 mmol/L compared with a standard diet intervention group among women with BMI
539 between 30 and 55 kg/m². In that study, the participants in the intervention group
540 consumed approximately 800 kcal/day for 12 weeks, followed by a maintenance period of
541 energy expenditure-matched energy intake throughout the pre-pregnancy period, while
542 also being advised to remain physically active (> 10,000 steps/day). The 12-week pre-
543 pregnancy intervention induced a 9.2-kg weight loss compared with the standard diet, but
544 gestational weight gain remained unaffected.(50) Based on the findings from Price et al.(50)
545 and our study, it seems likely to conclude that a pre-pregnancy intervention must induce a
546 substantial weight loss to impact glucose tolerance in pregnancy. Our trial, along with
547 others(49–51,53), did not find any significant effect of pre-pregnancy lifestyle interventions
548 on GDM incidence in gestational week 28. Despite being at higher risk of GDM, with 86% of
549 the participants having BMI above 25 kg/m² and 27% having a family history of diabetes,
550 only 12% of our participants were diagnosed with GDM in gestational week 28. The GDM
551 incidence in our trial was substantially lower than in the RADIEL study (60% in the control
552 group and 54% in the intervention group)(49) and in the study by Phelan et al. (40% in the
553 control group and 25% in the intervention group).(53) The low incidence of GDM observed
554 in our study may be attributed to the high education level (87%) and mostly white
555 participants (89%)(54). Importantly, all our participants included in the analyses were
556 normoglycaemic at baseline, which may help explain the lack of effect since individuals with
557 impaired glucose metabolism benefit the most from TRE.(55)

558 The intervention group had significantly lower body weight gain (2.0 kg) in
559 gestational week 28, compared with the control group, but there were no significant
560 differences between groups in the pre-pregnancy period or the first trimester of pregnancy.
561 In contrast, some of the previous pre-pregnancy lifestyle interventions induced pre-
562 pregnancy weight loss, but did not affect weight gain during pregnancy.(49,50,52,53) In the
563 PREPARE study, the intervention group lost weight before pregnancy, followed by a greater
564 weight gain in late pregnancy.(52) The addition of exercise training to the TRE intervention
565 in our study may have prevented lean mass loss which is common in TRE interventions.(25)
566 Although not statistically significant, the estimated mean visceral fat area was lower in the
567 intervention group compared with the control group both before and during pregnancy. The
568 amount of visceral fat in early pregnancy has been shown to better predict GDM than pre-
569 pregnancy BMI.(56) However, the observed changes in body composition may not have
570 been large enough to improve the other cardiometabolic outcomes in our study.

571 There were no significant between-group differences in total energy intake or
572 macronutrient distribution before or during pregnancy, which probably partly explain the
573 neutral effect of the intervention on most outcome measures. In contrast, Haganes et
574 al.(23) reported that 7 weeks of combined TRE and HIIT induced a reduction in energy intake

575 of approximately 200 kcal/day compared with the control group, along with improvements
576 in several cardiometabolic outcomes, among reproductive-aged women with
577 overweight/obesity. Correspondingly, the combination of TRE and high-intensity functional
578 training for 12 weeks resulted in a 175 kcal/day reduction in total energy intake among
579 women with obesity.(57) In BEFORE THE BEGINNING, we chose a modified TRE regimen,
580 allowing for unrestricted intake on 2 days per week. Even if such a regimen allows for more
581 flexibility and potentially improved long-term adherence than a stricter TRE intervention,
582 our TRE intervention was not sufficiently potent to reduce energy intake. Participants in
583 dietary interventions often underreport their total energy intake(58), including when using
584 the electronic application that we used.(59) Still, there is no reason to believe that such
585 under-reporting would be different between the intervention and control group.

586 There is thus far little research on the safety and acceptability of TRE during
587 pregnancy, and only one previous randomised controlled trial on the effects of TRE on
588 glycaemic control.(27) In a recent online survey study, only around half of the participants
589 agreed that a TRE pattern is safe during pregnancy and 23.7% would be willing to try TRE
590 during pregnancy to improve their health.(60) There was a gradual decrease in the
591 adherence to TRE in our study, from pre-pregnancy and throughout pregnancy. In our
592 previous study of TRE in pregnancy,(27) the participants could adhere to a 10-hour TRE
593 intervention on ~ 5 days/week for 5 weeks in the second or third trimester of pregnancy.
594 However, in that study, the trial period was markedly shorter, and the participants were
595 already pregnant at inclusion, thus likely less bothered by nausea and other barriers to TRE
596 than in the BEFORE THE BEGINNING study. Collectively, the experimental evidence to date
597 on TRE during pregnancy indicates that there is no positive effect on maternal glycaemic
598 control.

599 HIIT is now considered safe and feasible during pregnancy.(29–31) However, the
600 long-term adherence to HIIT interventions during pregnancy remains to be explored. In our
601 study, the participants in the intervention group significantly increased their physical activity
602 levels in the pre-pregnancy period with a decrease during pregnancy, suggesting suboptimal
603 adherence to the exercise component of the intervention. Only 43% of the participants in
604 the intervention group met the goal of 100 weekly PAI-points pre-pregnancy, decreasing
605 gradually to 10% of participants during the third trimester. Although self-reported physical
606 activity levels did not differ significantly between the groups, the reported physical activity
607 levels were higher in the intervention group throughout the study. Adherence to exercise
608 training is typically lower in unsupervised compared with supervised situations.(61) The
609 declining adherence to exercise during the study period was likely due to a combination of
610 the unsupervised nature of the intervention, pregnancy-related side effects (e.g., nausea,
611 pelvic pain), and decreasing motivation over a long study period. Overall, adherence to
612 lifestyle interventions in pregnancy remains a significant challenge, especially in real-life
613 settings without close supervision.

614

615 ***Conclusion and implications for clinicians and policymakers***

616 The combination of TRE and exercise training, initiated before and continued throughout
617 pregnancy, had limited effects on glucose tolerance in late pregnancy among people with an
618 increased risk of GDM. Despite the challenges with adherence to the intervention, the
619 intervention group had lower weight and fat mass gain in gestational week 28. Emerging
620 evidence highlights that the pre-pregnancy period is an ideal time to intervene in people at
621 high risk of cardiometabolic diseases and it is critical to find optimal strategies to improve
622 adherence to lifestyle interventions in this population.

623

624 ***Unanswered questions and future research***

625 We experienced challenges with adherences to the intervention, particularly to the exercise
626 training component in pregnancy. Future studies should assess whether more organised
627 high-intensity exercise training during pregnancy lead to better long-term exercise
628 adherence. Using more interactive digital health technology (e.g., smartphone apps,
629 automatically delivered daily reminders, weekly goals) should also be explored. The per-
630 protocol analysis indicated longer time to pregnancy in the intervention group, which should
631 be further investigated. Not all participants in our study had high BMI (some were included
632 based on the other risk factors), and therefore, there were variations in body composition
633 and cardiometabolic markers. Future studies should also determine whether interventions
634 based on single risk factors (e.g., high BMI, previous GDM) to avoid large within-group
635 variations, lead to better cardiometabolic outcomes.

636

637 ***What is already known on this topic***

- 638 - High pre-pregnancy BMI and excessive gestational weight gain are associated with a
639 greater risk of developing GDM and adverse pregnancy and neonatal outcomes.
- 640 - Systematic reviews and meta-analyses suggest that pre-pregnancy lifestyle
641 interventions are necessary to improve maternal and fetal cardiometabolic
642 outcomes.
- 643 - Existing guidelines on diet and physical activity for pregnant individuals are
644 insufficient to achieve clinically significant cardiometabolic benefits.

645

646 ***What this study adds***

- 647 - The BEFORE THE BEGINNING trial is the first trial to investigate the effect of
648 combined TRE and exercise training before and during pregnancy in people at high
649 risk of GDM.
- 650 - The intervention did not result in significantly improved glycaemic outcomes.
- 651 - There was some evidence of lower weight and fat mass gain in gestational week 28
652 in the intervention group compared with the control group.

653

654 **Ethical approval:** The Regional Committees for Medical and Health Research Ethics in
655 Norway approved the study (REK 143756).

656

657 **Data availability statement:** Data reported in this paper can be shared by the corresponding
658 author upon request.

659

660 **Acknowledgements:** We are thankful to all the participants for their valuable contributions.
661 NeXt Move, Norwegian University of Science and Technology (NTNU) provided the
662 equipment and lab facilities for cardiorespiratory fitness testing, and the clinical
663 measurements are obtained at the Clinical Research Facility, St. Olavs Hospital. We used
664 eFORSK, a stand-alone form-based information and communications technology solution for
665 electronic data collection, developed by Central Norway Regional Health Authority for
666 sending invitations to the study.

667

668 **Footnotes:** TM, KÅS, TF, and SLF conceived and contributed to the study design and data
669 analysis plans. GR, MAJS, and HMSS coordinated the study, performed measurements,
670 monitored participants, and supervised the exercise training. MAJS and HMSS drafted the
671 manuscript with equal contribution. All authors provided feedback and approved the final
672 manuscript.

673

674 **Funding:** The trial is funded by the Novo Nordisk Foundation (NNF19SA058975), The Liaison
675 Committee for education, research, and innovation in Central Norway, and The Joint
676 Research Committee between St. Olavs Hospital and the Faculty of Medicine and Health
677 Sciences, NTNU (FFU). The sponsors have no role in study design, data collection, analysis,
678 and publication of results.

679

680 **Declaration of interests:** The authors declare that they have no competing interests.

681

682 **Transparency:** The authors confirm that this manuscript is an honest, accurate, and
683 transparent account of the study being reported; that no important aspects of the study

684 have been omitted; and that any discrepancies from the study as planned and registered
685 have been explained.

686

687 **Dissemination to participants and related patient and public communities:** We plan to
688 disseminate all the results to study participants and patient organisations as soon as the
689 study is published. The result of this trial will be presented at relevant national and
690 international conferences.

691

692 Reference

- 693 1. International Diabetes Federation, Brussels, Belgium. IDF Diabetes Atlas 2021 10th
694 edition [Internet]. 2021. Available from: <https://diabetesatlas.org/atlas/tenth-edition/>
- 695 2. Angueira AR, Ludvik AE, Reddy TE, Wicksteed B, William L Lowe J, Layden BT. New
696 Insights Into Gestational Glucose Metabolism: Lessons Learned From 21st Century
697 Approaches. *Diabetes*. 2015 Jan 13;64(2):327.
- 698 3. Nguyen B, Tselovalnikova T, Drees BM. Gestational Diabetes Mellitus and Metabolic
699 Syndrome: A Review of the Associations and Recommendations. *Endocr Pract*. 2024 Jan
700 1;30(1):78–82.
- 701 4. Yu Y, Soohoo M, Sørensen HT, Li J, Arah OA. Gestational Diabetes Mellitus and the
702 Risks of Overall and Type-Specific Cardiovascular Diseases: A Population- and Sibling-
703 Matched Cohort Study. *Diabetes Care*. 2022 Jan 1;45(1):151–9.
- 704 5. Hahn S, Körber S, Gerber B, Stubert J. Prediction of recurrent gestational diabetes
705 mellitus: a retrospective cohort study. *Arch Gynecol Obstet*. 2023 Mar 1;307(3):689–97.
- 706 6. Vounzoulaki E, Khunti K, Abner SC, Tan BK, Davies MJ, Gillies CL. Progression to type
707 2 diabetes in women with a known history of gestational diabetes: systematic review and
708 meta-analysis. *BMJ*. 2020 May 13;369:m1361.
- 709 7. Lowe WL, Lowe LP, Kuang A, Catalano PM, Nodzenski M, Talbot O, et al. Maternal
710 glucose levels during pregnancy and childhood adiposity in the Hyperglycemia and
711 Adverse Pregnancy Outcome Follow-up Study. *Diabetologia*. 2019 Apr;62(4):598–610.
- 712 8. Mantzorou M, Papandreou D, Pavlidou E, Papadopoulou SK, Tolia M, Mentzelou M,
713 et al. Maternal Gestational Diabetes Is Associated with High Risk of Childhood Overweight
714 and Obesity: A Cross-Sectional Study in Pre-School Children Aged 2–5 Years. *Medicina*
715 (Mex). 2023 Feb 24;59(3):455.
- 716 9. Blotsky AL, Rahme E, Dahhou M, Nakhla M, Dasgupta K. Gestational diabetes
717 associated with incident diabetes in childhood and youth: a retrospective cohort study.
718 *CMAJ*. 2019 Apr 15;191(15):E410–7.
- 719 10. Holder T, Giannini C, Santoro N, Pierpont B, Shaw M, Duran E, et al. A low disposition
720 index in adolescent offspring of mothers with gestational diabetes: a risk marker for the
721 development of impaired glucose tolerance in youth. *Diabetologia*. 2014 Nov
722 1;57(11):2413–20.
- 723 11. Clausen TD, Mathiesen ER, Hansen T, Pedersen O, Jensen DM, Lauenborg J, et al.
724 High Prevalence of Type 2 Diabetes and Pre-Diabetes in Adult Offspring of Women With
725 Gestational Diabetes Mellitus or Type 1 Diabetes: The role of intrauterine hyperglycemia.
726 *Diabetes Care*. 2008 Feb 1;31(2):340–6.

- 727 12. American Diabetes Association. Diabetes Care. 2017 [cited 2024 Mar 13].
728 Management of Diabetes in Pregnancy. Available from:
729 https://diabetesjournals.org/care/article/40/Supplement_1/S114/36877/13-
730 Management-of-Diabetes-in-Pregnancy
- 731 13. Peña A, Miller AM, Campbell AG, Holden RJ, Scifres CM. Mapping Lifestyle
732 Interventions for Gestational Diabetes Prevention: A Scoping Review. *Curr Diab Rep*
733 [Internet]. 2024 Feb 17 [cited 2024 Mar 13]; Available from:
734 <https://doi.org/10.1007/s11892-024-01535-5>
- 735 14. Phelan S. Windows of Opportunity for Lifestyle Interventions to Prevent Gestational
736 Diabetes Mellitus. *Am J Perinatol*. 2016 Nov;33(13):1291–9.
- 737 15. Cha E, Smart MJ, Braxter BJ, Faulkner MS. Preconception Care to Reduce the Risks of
738 Overweight and Obesity in Women of Reproductive Age: An Integrative Review. *Int J*
739 *Environ Res Public Health*. 2021 Apr 26;18(9):4582.
- 740 16. Sparks JR, Ghildayal N, Hivert MF, Redman LM. Lifestyle interventions in pregnancy
741 targeting GDM prevention: looking ahead to precision medicine. *Diabetologia*. 2022
742 Nov;65(11):1814–24.
- 743 17. Gaston A, Cramp A. Exercise during pregnancy: A review of patterns and
744 determinants. *J Sci Med Sport*. 2011 Jul 1;14(4):299–305.
- 745 18. Tobias DK, Zhang C, Chavarro J, Bowers K, Rich-Edwards J, Rosner B, et al.
746 Prepregnancy adherence to dietary patterns and lower risk of gestational diabetes
747 mellitus. *Am J Clin Nutr*. 2012 Aug 1;96(2):289–95.
- 748 19. Sampathkumar S, Parkhi D, Ghebremichael-Weldeselassie Y, Sukumar N, Saravanan
749 P. Effectiveness of pre-pregnancy lifestyle in preventing gestational diabetes mellitus—a
750 systematic review and meta-analysis of 257,876 pregnancies. *Nutr Diabetes*. 2023 Nov
751 16;13:22.
- 752 20. Raab R, Michel S, Günther J, Hoffmann J, Stecher L, Hauner H. Associations between
753 lifestyle interventions during pregnancy and childhood weight and growth: a systematic
754 review and meta-analysis. *Int J Behav Nutr Phys Act*. 2021 Jan 7;18(1):8.
- 755 21. Lim S, Takele WW, Vesco KK, Redman LM, Hannah W, Bonham MP, et al. Participant
756 characteristics in the prevention of gestational diabetes as evidence for precision
757 medicine: a systematic review and meta-analysis. *Commun Med*. 2023 Oct 5;3:137.
- 758 22. Che T, Yan C, Tian D, Zhang X, Liu X, Wu Z. Time-restricted feeding improves blood
759 glucose and insulin sensitivity in overweight patients with type 2 diabetes: a randomised
760 controlled trial. *Nutr Metab*. 2021 Oct 7;18(1):88.
- 761 23. Haganes KL, Silva CP, Eyjólfssdóttir SK, Steen S, Grindberg M, Lydersen S, et al. Time-
762 restricted eating and exercise training improve HbA1c and body composition in women
763 with overweight/obesity: A randomized controlled trial. *Cell Metab*. 2022 Oct
764 4;34(10):1457-1471.e4.
- 765 24. Khalafi M, Ravasi AA, Malandish A, Rosenkranz SK. The impact of high-intensity
766 interval training on postprandial glucose and insulin: A systematic review and *meta-*
767 *analysis*. *Diabetes Res Clin Pract*. 2022 Apr 1;186:109815.
- 768 25. Kotarsky CJ, Johnson NR, Mahoney SJ, Mitchell SL, Schimek RL, Stastny SN, et al.
769 Time-restricted eating and concurrent exercise training reduces fat mass and increases
770 lean mass in overweight and obese adults. *Physiol Rep*. 2021 May;9(10):e14868.
- 771 26. Wilkinson MJ, Manoogian ENC, Zadourian A, Lo H, Fakhouri S, Shoghi A, et al. Ten-
772 hour time-restricted eating reduces weight, blood pressure, and atherogenic lipids in
773 patients with metabolic syndrome. *Cell Metab*. 2020 Jan 7;31(1):92-104.e5.

- 774 27. Skarstad HMS, Haganes KL, Sujan MAJ, Gellein TM, Johansen MK, Salvesen KÅ, et al.
775 A randomized feasibility trial of time-restricted eating during pregnancy in people with
776 increased risk of gestational diabetes. *Sci Rep.* 2024 Sep 28;14(1):22476.
- 777 28. Loy SL, Chan JKY, Wee PH, Colega MT, Cheung YB, Godfrey KM, et al. Maternal
778 Circadian Eating Time and Frequency Are Associated with Blood Glucose Concentrations
779 during Pregnancy. *J Nutr.* 2017 Jan;147(1):70–7.
- 780 29. Anderson J, Pudwell J, McAuslan C, Barr L, Kehoe J, Davies GA. Acute fetal response
781 to high-intensity interval training in the second and third trimesters of pregnancy. *Appl*
782 *Physiol Nutr Metab.* 2021 Dec;46(12):1552–8.
- 783 30. Beetham KS, Giles C, Noetel M, Clifton V, Jones JC, Naughton G. The effects of
784 vigorous intensity exercise in the third trimester of pregnancy: a systematic review and
785 meta-analysis. *BMC Pregnancy Childbirth.* 2019 Aug 7;19(1):281.
- 786 31. Wowdzia JB, Hazell TJ, Davenport MH. Glycemic response to acute high-intensity
787 interval versus moderate-intensity continuous exercise during pregnancy. *Physiol Rep.*
788 2022 Sep;10(18):e15454.
- 789 32. Sujan MAJ, Skarstad HMS, Rosvold G, Fougner SL, Nyrnes SA, Iversen AC, et al.
790 Randomised controlled trial of preconception lifestyle intervention on maternal and
791 offspring health in people with increased risk of gestational diabetes: study protocol for
792 the BEFORE THE BEGINNING trial. *BMJ Open.* 2023 Oct 4;13(10):e073572.
- 793 33. Nes BM, Gutvik CR, Lavie CJ, Nauman J, Wisløff U. Personalized Activity Intelligence
794 (PAI) for Prevention of Cardiovascular Disease and Promotion of Physical Activity. *Am J*
795 *Med.* 2017 Mar 1;130(3):328–36.
- 796 34. Zisko N, Skjerve KN, Tari AR, Sandbakk SB, Wisløff U, Nes BM, et al. Personal Activity
797 Intelligence (PAI), Sedentary Behavior and Cardiovascular Risk Factor Clustering – the
798 HUNT Study. *Prog Cardiovasc Dis.* 2017 Jul 1;60(1):89–95.
- 799 35. World Health Organization. Diagnostic criteria and classification of hyperglycaemia
800 first detected in pregnancy. World Health Organization; 2013.
- 801 36. Floch JPL, Escuyer P, Baudin E, Baudon D, Perlemuter L. Blood Glucose Area Under
802 the Curve: Methodological Aspects. *Diabetes Care.* 1990 Feb 1;13(2):172–5.
- 803 37. Wallace TM, Levy JC, Matthews DR. Use and Abuse of HOMA Modeling. *Diabetes*
804 *Care.* 2004 Jun 1;27(6):1487–95.
- 805 38. Gutt M, Davis CL, Spitzer SB, Llabre MM, Kumar M, Czarnecki EM, et al. Validation of
806 the insulin sensitivity index (ISI(0,120)): comparison with other measures. *Diabetes Res*
807 *Clin Pract.* 2000 Mar;47(3):177–84.
- 808 39. Phillips DI, Clark PM, Hales CN, Osmond C. Understanding oral glucose tolerance:
809 comparison of glucose or insulin measurements during the oral glucose tolerance test
810 with specific measurements of insulin resistance and insulin secretion. *Diabet Med J Br*
811 *Diabet Assoc.* 1994 Apr;11(3):286–92.
- 812 40. Stumvoll M, Mitrakou A, Pimenta W, Jenssen T, Yki-Järvinen H, Van Haeften T, et al.
813 Use of the oral glucose tolerance test to assess insulin release and insulin sensitivity.
814 *Diabetes Care.* 2000 Mar;23(3):295–301.
- 815 41. Craig CL, Marshall AL, Sjöström M, Bauman AE, Booth ML, Ainsworth BE, et al.
816 International physical activity questionnaire: 12-country reliability and validity. *Med Sci*
817 *Sports Exerc.* 2003 Aug;35(8):1381–95.
- 818 42. Mikkelsen EM, Riis AH, Wise LA, Hatch EE, Rothman KJ, Sørensen HT. Pre-gravid oral
819 contraceptive use and time to pregnancy: a Danish prospective cohort study. *Hum*
820 *Reprod Oxf Engl.* 2013 May;28(5):1398–405.

- 821 43. J T, L B, T H, J R, M W, M H. Different ways to estimate treatment effects in
822 randomised controlled trials. *Contemp Clin Trials Commun.* 2018 Jun;10:80–5.
- 823 44. Brayne C, Moffitt TE. The limitations of large-scale volunteer databases to address
824 inequalities and global challenges in health and aging. *Nat Aging.* 2022 Sep;2(9):775–83.
- 825 45. Whitaker C, Stevelink S, Fear N. The Use of Facebook in Recruiting Participants for
826 Health Research Purposes: A Systematic Review. *J Med Internet Res.* 2017 Aug
827 28;19(8):e290.
- 828 46. Phelan S. Windows of Opportunity for Lifestyle Interventions to Prevent Gestational
829 Diabetes Mellitus. *Am J Perinatol.* 2016 Nov;33(13):1291–9.
- 830 47. Takele WW, Vesco KK, Josefson J, Redman LM, Hannah W, Bonham MP, et al.
831 Effective interventions in preventing gestational diabetes mellitus: A systematic review
832 and meta-analysis. *Commun Med.* 2024 Apr 20;4(1):1–15.
- 833 48. Quotah OF, Andreeva D, Nowak KG, Dalrymple KV, Almubarak A, Patel A, et al.
834 Interventions in preconception and pregnant women at risk of gestational diabetes; a
835 systematic review and meta-analysis of randomised controlled trials. *Diabetol Metab
836 Syndr.* 2024 Jan 4;16(1):8.
- 837 49. Rönö K, Stach-Lempinen B, Eriksson JG, Pöyhönen-Alho M, Klemetti MM, Roine RP,
838 et al. Prevention of gestational diabetes with a prepregnancy lifestyle intervention -
839 findings from a randomized controlled trial. *Int J Womens Health.* 2018;10:493–501.
- 840 50. Price SAL, Sumithran P, Nankervis AJ, Permezel M, Prendergast LA, Proietto J. Impact
841 of preconception weight loss on fasting glucose and pregnancy outcomes in women with
842 obesity: A randomized trial. *Obesity.* 2021;29(9):1445–57.
- 843 51. LeBlanc ES, Smith NX, Vesco KK, Hillier TA, Stevens VJ. Weight Loss Prior to
844 Pregnancy and Early Gestational Glycemia: Prepare, a Randomized Clinical Trial. *J Clin
845 Endocrinol Metab.* 2021 Nov 19;106(12):e5001–10.
- 846 52. LeBlanc ES, Smith NX, Vesco KK, Paul IM, Stevens VJ. Weight loss prior to pregnancy
847 and subsequent gestational weight gain: Prepare, a randomized clinical trial. *Am J Obstet
848 Gynecol.* 2021 Jan;224(1):99.e1-99.e14.
- 849 53. Phelan S, Jelalian E, Coustan D, Caughey AB, Castorino K, Hagobian T, et al.
850 Randomized controlled trial of prepregnancy lifestyle intervention to reduce recurrence
851 of gestational diabetes mellitus. *Am J Obstet Gynecol.* 2023 Aug 1;229(2):158.e1-158.e14.
- 852 54. Waage CW, Toftemo I, Brænd AM, Sletner L, Sommer C, Birkeland KI, et al. Cohort
853 profile update: the Norwegian STORK Groruddalen (STORK G) pregnancy and birth
854 cohort—the role of ethnicity and causal pathways for obesity, type 2 diabetes,
855 cardiovascular disease and other health issues. *BMJ Open.* 2023 Oct 1;13(10):e076251.
- 856 55. Kang J, Ratamess NA, Faigenbaum AD, Bush JA, Beller N, Vargas A, et al. Effect of
857 Time-Restricted Feeding on Anthropometric, Metabolic, and Fitness Parameters: A
858 Systematic Review. *J Am Nutr Assoc.* 2022;41(8):810–25.
- 859 56. Alves JG, Souza ASR, Figueiroa JN, Araújo CAL de, Guimarães A, Ray JG. Visceral
860 Adipose Tissue Depth in Early Pregnancy and Gestational Diabetes Mellitus - a Cohort
861 Study. *Sci Rep.* 2020 Feb 6;10:2032.
- 862 57. Ameur R, Maaloul R, Tagougui S, Neffati F, Kacem FH, Najjar MF, et al. Unlocking the
863 power of synergy: High-intensity functional training and early time-restricted eating for
864 transformative changes in body composition and cardiometabolic health in inactive
865 women with obesity. *PLOS ONE.* 2024 May 1;19(5):e0301369.
- 866 58. Park Y, Dodd KW, Kipnis V, Thompson FE, Potischman N, Schoeller DA, et al.
867 Comparison of self-reported dietary intakes from the Automated Self-Administered 24-h

- 868 recall, 4-d food records, and food-frequency questionnaires against recovery biomarkers.
869 Am J Clin Nutr. 2018 Jan 1;107(1):80–93.
- 870 59. Tosi M, Radice D, Carioni G, Vecchiati T, Fiori F, Parpinel M, et al. Accuracy of
871 applications to monitor food intake: Evaluation by comparison with 3-d food diary. Nutr
872 Burbank Los Angel Cty Calif. 2021 Apr;84:111018.
- 873 60. Flanagan EW, Kebbe M, Sparks JR, Redman LM. Assessment of Eating Behaviors and
874 Perceptions of Time-Restricted Eating During Pregnancy. J Nutr. 2022 Feb 1;152(2):475–
875 83.
- 876 61. Santos A, Braaten K, MacPherson M, Vasconcellos D, Vis-Dunbar M, Lonsdale C, et al.
877 Rates of compliance and adherence to high-intensity interval training: a systematic
878 review and Meta-analyses. Int J Behav Nutr Phys Act. 2023 Nov 21;20(1):134.

879

880

881