

Exploratory Blood Biomarker Patterns in a Mixed Dementia Cohort

Haşim Gezegen^{†1}, Merve Alaylıoğlu², Erdi Şahin¹, Owen Swann³, Elena Veleva³, Gamze Güven⁴, Umran Yaman⁵, Derviş A. Salih^{3,5}, Başar Bilgiç¹, Haşmet Hanağası¹, Hakan Gürvit¹, Murat Emre¹, Duygu Gezen-Ak², Erdinç Dursun², Henrik Zetterberg^{3,5,6,7,8,9}, John Hardy^{3,5,8}, Amanda Heslegrave^{3,5}, Maryam Shoai^{†3,5}, Bedia Samancı¹

[†] Corresponding authors

Abstract

Alzheimer's disease (AD) diagnosis is challenging due to overlapping symptoms with other dementias. Current diagnostic methods are invasive and costly, highlighting the need for accessible biomarkers. This study investigates the diagnostic performance and pathophysiological implications of a novel plasma biomarker panel in a mixed dementia cohort, aiming to enhance diagnosis and elucidate underlying pathogenic mechanisms.

120 plasma biomarkers were analyzed using the NULISA™ platform in a well-characterized mixed dementia cohort. CSF biomarkers were measured via ELISA. Statistical analyses employed ANOVA, and Kruskal-Wallis tests for group comparisons. Spearman correlations assessed relationships between CSF and plasma biomarkers. Diagnostic accuracy was evaluated using regression models and ROC curves. Feature importance and selection were performed using random forest analysis. Protein interactions assessed with GO enrichment analysis.

We evaluated 248 subjects (130 females, 118 males) with 117 AD, 50 MCI, 39 FTD, 25 DLB, and 17 other dementias. Plasma pTau were significantly elevated in AD compared to other groups, and in DLB compared to MCI. Plasma Aβ42 was highest in DLB, while NfL was highest in FTD. Plasma GFAP was highest in AD and elevated in DLB compared to MCI and FTD.

Plasma pTau levels showed a negative correlation with CSF Aβ42 and a positive correlation with CSF pTau in the entire cohort. CSF and plasma NfL levels were also highly correlated. These correlations were stronger in DLB and amyloid-positive MCI groups but weaker or absent in the AD group. Plasma pTau, GFAP, and NfL were negatively correlated with MMSE in AD, while GFAP showed a negative correlation with MMSE in FTD and DLB.

Plasma pTau217 demonstrated the best diagnostic accuracy for AD, DLB, FTD diagnosis and CSF amyloid positivity (AUCs 0.9, 0.84, 0.79, and 0.87, respectively). pTau181, pTau217, pTau231, total-tau and GFAP had lower odds in DLB and FTD compared to AD. AGRN, CXCL1, SCN2B, TEK, and UCHL1 had higher odds in DLB compared to AD. SNAP25 had lower odds ratio in FTD compared to AD and DLB. pTau181, pTau217, pTau231, GFAP, MAPT, SNAP25 and PGF is related to AD progression.

Random forest analysis incorporating all plasma biomarkers, age, and gender yielded an AUCs of 0.85 for AD, 0.84 for FTD, and 0.75 for DLB. Refining the model by including biomarkers identified as significant in regression model improved performance, resulting in AUCs of 0.88 for AD, 0.87 for FTD, and 0.81 for DLB. This demonstrates potential for enhancing diagnostic accuracy through targeted biomarker panel refinement.

Author affiliations:

1. Behavioural Neurology and Movement Disorders Unit, Department of Neurology, Istanbul Faculty of Medicine, Istanbul University, Istanbul, Turkey
2. Brain and Neurodegenerative Disorders Research Laboratories, Department of Neuroscience, Institute of Neurological Sciences, Istanbul University-Cerrahpasa, Istanbul, Turkey
3. Department of Neurodegenerative Disease, UCL Institute of Neurology, Queen Square, London, UK
4. Department of Genetics, Aziz Sancar Institute of Experimental Medicine, Istanbul University, Istanbul, Turkey
5. UK Dementia Research Institute at UCL, London, UK
6. Department of Psychiatry and Neurochemistry, Institute of Neuroscience and Physiology, the Sahlgrenska Academy at the University of Gothenburg, Mölndal, Sweden
7. Clinical Neurochemistry Laboratory, Sahlgrenska University Hospital, Mölndal, Sweden
8. Hong Kong Center for Neurodegenerative Diseases, Clear Water Bay, Hong Kong, China
9. Wisconsin Alzheimer's Disease Research Center, University of Wisconsin School of Medicine and Public Health, University of Wisconsin-Madison, Madison, WI, USA

Correspondence to: Haşim Gezegen and Maryam Shoai

E-mail: hasimgezegen@hotmail.com and m.shoai@ucl.ac.uk

Department of Neurology, Istanbul Faculty of Medicine, Istanbul University, Millet Cad
34390, Capa, Istanbul, Turkey

Running title: Blood Biomarker Patterns in Dementia

Keywords: Blood biomarker; NULISA; dementia

Introduction

Alzheimer's disease (AD) is the most prevalent age-related neurodegenerative dementia, affecting 60-80% of dementia patients and posing a significant threat to the aging population. Other common dementia types include dementia with Lewy bodies (DLB) and frontotemporal dementia (FTD), which often exhibit overlapping symptoms and pathology with AD¹, leading to misdiagnosis rates as high as 30%². Early and accurate diagnosis is crucial for effective disease management and therapeutic intervention. However, the current diagnostic landscape for AD and related dementias is complex. Clinical diagnosis based on symptoms alone is often inaccurate, with up to a third of clinically diagnosed AD cases lacking AD neuropathological changes post-mortem² highlighting the need for reliable biomarkers.

Cerebrospinal fluid (CSF) and neuroimaging biomarkers are valuable tools in diagnosing AD. Established AD CSF biomarkers like A β 42 (or A β 42/40), phosphorylated tau (pTau) and total tau (tTau) reflect key aspects of AD pathology, such as senile plaque pathology and neurofibrillary tangle formation, and axonal degeneration³. Although valuable for early AD diagnosis and clinical settings⁴, these markers inadequately capture AD's biological diversity and struggle to differentiate AD from other dementias with overlapping pathologies^{5,6}. Comprehensive CSF proteome analysis offers the potential to reveal novel markers, providing a deeper understanding of AD's complex pathophysiology and aiding in the identification of therapeutic targets⁷.

Diagnostic challenges also extend to other neurodegenerative diseases like DLB. α -synuclein pathology, a hallmark of DLB, is also present in over 40% of AD cases, complicating differentiation⁸. Core CSF biomarkers for AD show limited accuracy in distinguishing DLB from AD due to frequent co-occurrence of AD pathology in DLB patients⁹⁻¹¹. Identifying co-pathologies is crucial as they can worsen clinical outcomes. In DLB/AD co-pathology, this manifests as a more severe clinical presentation with decreased memory, heightened delusions and hallucinations, and accelerated disease progression^{12,13}. Co-pathologies with FTD are possible even in mixed AD and DLB patients, exacerbating neurodegeneration and complicating diagnosis and treatment¹⁴.

AD-related pathophysiological changes can be accurately detected through various methods: CSF analysis for alterations in A β 42, pTau, and tTau levels; PET imaging for amyloid plaque and tau neurofibrillary tangle distribution; and structural MRI for brain atrophy assessment¹⁵. However, their widespread use in primary care is limited by invasiveness (CSF), radiation/cost (PET), and accessibility/cost-effectiveness, especially in resource-limited settings where dementia incidence is rising¹⁶⁻¹⁸. This lack of reliable and accessible biomarkers poses a significant challenge, made more urgent by the emergence of disease-modifying treatments.

Plasma biomarkers offer a promising avenue for improving AD diagnosis, disease understanding, and clinical management¹⁶. These biomarkers could facilitate the evaluation of therapeutic interventions and enable the assessment of future disease risk in asymptomatic individuals, as well as longitudinal monitoring of symptomatic patients¹⁹. Compared to CSF or neuroimaging biomarkers, they have the potential to be simpler, more cost-effective, and easier to implement^{20,21}. Plasma pTau and amyloid biomarkers, in particular, have shown strong associations with AD pathology and cognitive decline²²⁻²⁴. Additionally, plasma GFAP and NfL have emerged as potential biomarkers for AD and other neurodegenerative diseases, further expanding the potential of blood-based diagnostics^{25,26}.

The initiation of monoclonal antibody therapy for early AD, such as lecanemab, requires confirmation of AD pathology via biomarker testing, reflecting a shift towards prevention and preclinical treatment²⁷. Given the high AD prevalence, increasing demand for therapies, and the need for clinical trials, innovative models for connecting individuals with resources are crucial. Routine blood draws as a primary care triage tool for anti-amyloid therapy hold promise for expedited diagnosis, treatment access, and clinical trial enrolment. Despite current limitations, the pursuit of AD blood-based biomarkers remains vital for enhanced screening, diagnosis, and disease management.

NUcleic acid Linked Immuno-Sandwich Assay (NULISA), a platform using antibody-based measurements with a sequencing output, offers advantages such as low sample volume requirements and high multiplexing capacity²⁸. Its CNS panel encompasses traditional AD biomarkers, synaptic, microglial, neuroinflammation, and emerging neurodegeneration biomarkers, and has demonstrated effectiveness in biomarker detection and accuracy compared to traditional immunoassays²⁹.

In this study, we used NULISA™ to analyse 120 plasma biomarkers across diverse biological mechanisms in a well-characterized cohort, including patients with mild cognitive impairment (MCI), AD, DLB, and FTD from a single referral memory center. The study had two main objectives: First, to evaluate this novel technology, validate known diagnostic biomarkers, and identify new ones that could improve diagnostic accuracy. Second, to uncover novel plasma proteomic alterations driving the pathogenesis of AD, DLB, and FTD, thereby identifying promising new biomarker candidates for future research.

Material and methods

Patients

Patients were recruited from Behavioural Neurology and Movement Disorders Unit, Department of Neurology, Istanbul Faculty of Medicine, Istanbul University, a referral center for cognitive disorders. The study was conducted in accordance with the ethical standards of

the Declaration of Helsinki and approved by the Istanbul University Ethics Committee (approval number 2023/1191, granted 22/06/2023).

The study encompassed a comprehensive assessment of participants, including medical history, physical and neurological examinations, psychiatric screening, clinical laboratory tests, and, cranial magnetic resonance imaging. The neuropsychological battery included the Mini-Mental Status Examination³⁰ and the Clinical Dementia Rating Scale³¹. Also a subset of patients completed a comprehensive neuropsychological assessment at baseline.

Experienced clinicians made diagnoses based on established criteria^{15,32-35}, which included progressive cognitive complaints corroborated by an informant, clinically observed cognitive impairment as previously described, clinical laboratory tests and MRI findings that excluded other potential causes of impairment as well as CSF draw. Genetic causes were excluded for the FTD group.

Inclusion criteria for the study were age 55 years or older and signed informed consent for biological sample extraction and storage. Exclusion criteria included major systemic or psychiatric illness, significant sensory deprivation, and contraindications for the required complementary tests. Patients who underwent CSF examination between June 23, 2023, and March 25, 2024, and met the inclusion criteria were included in the study.

CSF Biomarkers and NULISA Measurements

All participants underwent a lumbar puncture (LP) to measure A β 42, pTau181, tTau, and NfL levels, as well as blood sample collection.

Following an overnight fast, LP was performed at 09.00 am using a 25-G needle. Ten mL of CSF, collected in four polypropylene tubes, was kept on ice for up to one hour before centrifugation at 2000 g for 10 minutes at 4°C. Previously mentioned biomarkers were run on the same day. Aliquots (250 μ L) were stored in 1-mL polypropylene tubes at -80°C until analysis.

Blood samples, collected concurrently with LP, were processed within one hour. Plasma was obtained by collecting 10 mL of blood into EDTA tubes, inverting five times, and centrifuging at 2000 g for 10 minutes at 4°C. Aliquots (250 μ L) were stored in 1-mL polypropylene tubes at -80°C.

The CSF levels of A β 42, pTau181, tTau, and NfL were measured at Brain and Neurodegenerative Disorders Laboratory, Department of Neuroscience, Institute of Neurological Sciences, Istanbul University-Cerrahpasa, which is an active member of The Alzheimer's Association Quality Control (AAQC) program³⁶. The measurements were done with INNOTEST β -AMYLOID (1-42) ELISA kit (81576, FUJIREBIO), INNOTEST PHOSPHO-TAU (181P) ELISA Kit (81574, FUJIREBIO), INNOTEST hTAU Ag ELISA Kit (81572, FUJIREBIO) and NF-light ELISA kit (10-7001, UmanDiagnostics) respectively. All measurements were

performed according to the manufacturer's assay protocol, and each sample and standard were tested in duplicate.

Plasma biomarkers were measured using the NULISA platform, developed by Alamar Biosciences, following the protocol established in²⁸.

Statistical analysis

All analyses were performed in R 4.2.2. Data were log₂-transformed and tested for normality (NPQ values from NULISA were already log₂ transformed and no additional transformation was used). One-way ANOVA or Welch's ANOVA was used for normally distributed data, and Kruskal-Wallis test for non-normally distributed data. Head-to-head comparisons between CSF and plasma biomarkers were performed using Spearman correlations with FDR correction. Scatter plots with linear regression lines investigated the relationship between CSF and plasma biomarkers.

To evaluate diagnostic accuracy, the dataset was divided into training and testing sets. A repeated 10-fold cross-validation was employed. All models adjusted for age and gender. Predictive performance comparison for biomarkers were performed by using ROC curves and calculating the AUC. Differences between AUC values were tested with the DeLong test. Cut-off values maximising Youden indices were used for sensitivity and specificity. The analysis was conducted with *caret* and *pROC* packages.

Multinomial logistic regression assessed the association between plasma biomarkers and diagnostic categories. A separate model was fitted for each biomarker. Odds Ratios (OR) were calculated to quantify the likelihood of a specific diagnosis relative to the biomarker levels. Adjusted p-values were computed using the FDR method. We performed an age and sex adjusted ordinal regression model to assess the associations between plasma biomarkers and disease stage in the AD continuum. These models were conducted using *nnet* and *MASS* packages.

Random forest analyses were conducted with all biomarkers and biomarkers that differed between diagnosis based on multinomial logistic regression and calculated the importance of all features. All features were tested with ten-fold cross-validation and mean AUC was used as the performance metric. The model was trained with the method argument set to "*rf*". The analysis was conducted using *caret* package.

The Gene Ontology (GO) enrichment analyses were performed on multinomial logistic regression results, and the findings were visualized with the *clusterProfiler* package.

Results

Clinical and Demographical Features

We analysed data from 248 subjects (130 females, 118 males) with a mean age of 66.7 (\pm 9.1) years and an MMSE of 21.7 (\pm 7.1). Diagnoses included 117 AD, 50 MCI, 39 FTD, 25 DLB, and 17 other dementias. Other dementias consisted of NPH (normal pressure hydrocephalus), CBS (corticobasal syndrome), PSP (progressive supranuclear palsy) and MND (motor neuron disease) without dementia. **Table 1** details MMSE, CDR, and CSF amyloid (A), tau (T), and neurodegeneration (N) group distribution by diagnosis, showing no gender differences. The DLB and FTD groups differ from other groups for age and the MCI group differed from other groups for MMSE. **Table 2** presents demographics for AD continuum patients.

Diagnostic and differential diagnosis performance of plasma biomarkers

The mean NPQ (NULISA Protein Quantification) values of pTau217 showed significant differences between AD and the other groups, with a very large effect size ($p < 0.001$; $\eta^2 p = 0.45$). DLB patients had 1.3 times higher pTau217 NPQ values than MCI patients ($p = 0.03$). The NPQ values of pTau181 and pTau231 between AD patients and other groups was also significantly different ($p < 0.001$; $\eta^2 p = 0.30$ with a 95% CI (0.22–1) and $p < 0.001$; $\eta^2 p = 0.37$ with a 95% CI (0.29–1), respectively). Like pTau217, pTau181 and pTau231 were significantly higher in DLB patients compared to MCI ($p = 0.003$ and $p = 0.001$ respectively). Also FTD patients' mean NPQ values of pTau231 were slightly higher than MCI patients ($p = 0.04$).

Plasma mean A β 42 NPQ values was highest in the DLB group with a moderate effect size ($p = 0.002$; $\eta^2 p = 0.07$ with a 95% CI (0.02–1), p values for DLB vs AD was 0.009, DLB vs MCI 0.008, DLB vs FTD 0.002).

The median NfL NPQ value was highest in FTD patients with relatively large effect size ($p < 0.001$; $\epsilon^2 = 0.2$ with a 95% CI (0.12–1)). AD and DLB group's median NfL levels were higher than the MCI group's (1.5 times difference with $p < 0.001$ and 5 times difference with $p < 0.001$, respectively).

The mean plasma GFAP NPQ value was highest in the AD group with a large effect size ($p < 0.001$; $\eta^2 p = 0.28$ with a 95% CI (0.19–1). Also it was higher in the DLB group compared to the MCI and FTD groups (1.5 times difference with $p = 0.004$ and 1.5 times difference with $p = 0.009$ respectively)(**Figure 1**).

We evaluated the ability of different plasma markers to detect amyloid pathological change (A+) defined by CSF and diagnosis. When assessing the potential of plasma pTau217 values to differentiate between A+ and A- status, AUC was 0.87 (95%CI 0.83–0.92) with 0.82 sensitivity and 0.83 specificity. Accuracy was 0.82 PPV (positive predictive value) 0.89 and NPV (negative predictive value) 0.72 (**Figure 2**).

Plasma pTau217 value showed the best performance for predicting AD (AUC 0.9 [95%CI 0.86–0.94], 0.87 sensitivity and 0.8 specificity with accuracy 0.79, PPV 0.81 and NPV 0.78),

DLB (AUC 0.84 [95%CI 0.76–0.91], 0.8 sensitivity and 0.8 specificity with accuracy 0.9, PPV 0.5 and NPV 0.9) and FTD diagnosis (AUC 0.79 [95%CI 0.72–0.86], 0.79 sensitivity and 0.74 specificity with accuracy 0.83, PPV 0 and NPV 0.84). ORs of these models are shown in **Supplementary table 1**.

Next, we studied how the combination of different markers predicted amyloid status. Adding GFAP to pTau217 increased the AUC to 0.89 (95%CI 0.84–0.93) but there were no differences between models ($p=0.12$). Also adding A β 40, A β 42 or A β 42/40 data didn't improve the model.

FABP3 (fatty acid-binding protein) had a similar performance as pTau217 for DLB diagnosis (AUC 0.83 [95%CI 0.76–0.90], 0.84 sensitivity and 0.75 specificity). When FABP3 was added pTau217 the AUC was 0.87 (95%CI 0.8–0.94) but this did not improve the model ($p=0.08$). Also GFAP in DLB showed a similar performance for diagnosis (AUC 0.82 [95%CI 0.75–0.89]).

When adding NfL data to pTau217 for FTD diagnosis the AUC increased to 0.88 (95% CI 0.83–0.92) with 0.97 sensitivity and 0.67 specificity ($p<0.01$).

Plasma and CSF biomarker correlation

In the overall cohort, CSF A β 42 negatively correlated with plasma pTau, with a slight improvement for plasma pTau/A β 42. CSF pTau181 and tTau positively correlated with plasma pTau, with a correction for CSF A β 42 enhancing these relationships. MMSE moderately correlated with plasma pTau and NfL (**Figure 3**).

When analysed by diagnosis, CSF A β 42 positively correlated with plasma A β 42 in DLB and FTD, and with plasma A β 40 only in DLB. In AD, CSF A β 42 negatively correlated with plasma pTau217. Correcting plasma pTau for A β 42 strengthened the correlations in FTD and DLB. The strongest CSF-plasma pTau correlations were observed in DLB, with a further improvement after A β 42 correction. Notably, A+TxN- (CSF amyloid +, Tau + or -, and neurodegeneration -) MCI showed markedly increased CSF pTau181 and plasma pTau correlations. CSF pTau181 correlated with the A β 42/A β 40 ratio in DLB. CSF tTau correlated with plasma pTau in AD and DLB, with the strongest correlations in A+TxN- MCI for plasma pTau181. CSF NfL consistently correlated with plasma NfL across all groups (**Supplementary Fig. 1**).

All plasma pTau biomarkers correlated with CSF pTau181/A β 42 in DLB and AD, with stronger correlations in DLB. While correlations for CSF and plasma biomarkers were low in AD patients, their trajectories through the AD continuum displayed a similar pattern (**Supplementary Fig. 2**).

Regarding CSF AT status, CSF A β 42 moderately correlated with plasma A β 42/A β 40 only in A-T+. It negatively correlated with plasma pTau biomarkers in A-T- and A-T+ groups, with no correlations in A-T- or A+T+. Correcting plasma pTau for A β 42 improved A-T- and A-T+ correlations and revealed correlations in A+T+ group (**Supplementary Fig. 3**).

CSF A β 42 negatively correlated with GFAP in DLB. CSF NFL correlated with plasma GFAP in AD, and negatively correlated with plasma GFAP/NfL in AD, DLB, and FTD. CSF NfL also correlated with plasma tTau and FABP3 in DLB, and with FABP3 in FTD. CSF tTau correlated with plasma total Tau and FABP3 in DLB, and with tTau and GFAP in A+TxN- MCI. MMSE was negatively correlated with all plasma pTau with the strongest correlation observed for pTau217 ($r = -0.51$, $p < 0.01$). Additionally, MMSE negatively correlated with plasma GFAP, tTau, and NfL in this group. In the DLB group MMSE is negatively correlated with plasma GFAP and tTau. And MMSE is negatively correlated with GFAP in the FTD group.

Plasma HTT, SNCA, SOD1 and TARDBP biomarkers were highly correlated with each other (HTT vs SNCA $r = 0.89$, HTT vs SOD1 $r = 0.87$, HTT vs TARDBP $r = 0.93$, SNCA vs SOD1 $r = 0.9$, SNCA vs TARDBP $r = 0.87$, SOD1 vs TARDBP $r = 0.83$; all adjusted p values < 0.001) (**Supplementary Fig. 4**). And all of them were highly correlated with FGF2, ARSA, ANXA5, IL18, MDH1, PGK1, RUVBL2 ($r = 0.64-0.92$). These high correlations persisted or even increased, when subdividing different disease groups.

Biomarker Differentiation Across Neurodegenerative Diseases and AD Stages

In comparison with the AD group, plasma pTau181, pTau217 and pTau231 had significantly lower odds for DLB (OR 0.21, 95% CI: 0.08–0.53, $p = 0.005$; OR 0.14, 95% CI: 0.05–0.4, $p = 0.001$ and OR 0.18, 95% CI: 0.07–0.47, $p = 0.003$, respectively) and for FTD group (OR 0.13, 95% CI: 0.05–0.32, $p < 0.001$; OR 0.08, 95% CI: 0.05–0.35, $p < 0.001$ and OR 0.14, 95% CI: 0.05–0.35, $p < 0.001$, respectively), controlling for age and gender (**Figure 4**). Total tau and GFAP also had showed lower odds for both DLB (OR 0.32 and 0.25) and FTD (OR 0.2 and 0.18) groups.

In comparison with the AD group, SCNB, TEK and TREM1 had higher odds ratios for the DLB group. When comparing with AD; BACE1, CST3, GDI1, IGFBP7, IL15, PTN and SNAP25 had lower odds for the FTD group. The DLB group also had lower odds for SNAP25.

In the analysis of biomarkers across the AD continuum, PGF was significantly associated with disease stage, with an OR of 5.7 (95% CI: 1.8-18, $p = 0.002$), indicating a 5.7-fold increase in odds for more advanced stages per unit increase in PGF levels. Similarly, pTau217 (OR=4.2, CI: 2.4-7.3, $p < 0.001$), pTau181 (OR=4.2, CI: 2.2-8.2, $p < 0.001$), pTau231 (OR=4.1, CI: 2.3-7.5, $p < 0.001$), SNAP25 (OR=3.9, CI: 3.2-4.8, $p < 0.001$), tTau (OR=2.9, CI: 1.5-5.6, $p = 0.002$), GFAP (OR=2.6, CI: 1.6-4.4, $p < 0.001$) and NfL (OR=2.4, CI: 1.5-3.7, $p < 0.001$) showed a significant association with disease progression (**Figure 5**).

We extracted all plasma biomarkers with age and gender into the RF classification model and calculated feature importance. ROC analysis for the diagnosis of AD, FTD and DLB and the top 20 features are shown in **Figure 6**. Accuracy of this model was 0.73.

ROC-AUC of all features for distinguishing AD from other groups was 0.85 [95% CI: 0.81–0.88], FTD from other groups was 0.83 [95% CI: 0.79–0.88] and DLB from other groups was 0.75 [95% CI: 0.69–0.82] (**Supplementary Fig. 5**). The first 10 important biomarkers for AD, FTD and DLB are shown in **Supplementary Fig. 6-8**.

When we took the biomarkers that we find significant in multinomial logistic regression model our random forest model improved for all categories. AUC for AD was 0.88 [95% CI: 0.84–0.91], FTD was 0.87 [95% CI: 0.83–0.91], and DLB was 0.81 [95% CI: 0.76–0.86]. Accuracy for whole model was 0.76. (**Supplementary Fig. 9-13**).

Gene Ontology Pathway Enrichment

GO analysis of differentially measured biomarkers across AD, DLB, and FTD revealed a significant enrichment in biological processes related to cell and neuron projection development, modulation of chemical synaptic transmission, and regulation of trans-synaptic signalling. Cellular components primarily involved in these processes included the neuronal cell body, endoplasmic reticulum lumen, and glial cell projection (**Supplementary Fig. 14**). In terms of molecular functions integrin binding was a significant function associated with GFAP, PTN and CX3CL1.

Discussion

In the present study, we investigated plasma biomarkers related to different aspects of neurodegeneration. We assessed their diagnostic accuracy, correlation with established CSF biomarkers, and conducted exploratory analyses within a mixed cohort of patients with MCI, AD, DLB, FTD, and other dementias. We found that plasma pTau217 has the highest diagnostic accuracy for AD, DLB and FTD diagnosis as well as CSF amyloid status. Also we found novel plasma proteomic alterations for different dementia types and therefore promising biomarker candidates for future research.

Consistent with the previous literature, all three plasma pTau forms and GFAP exhibited the highest normalized protein expression quantification (NPQ) values in the AD group, while A β 42 was highest in the DLB group³⁷. Across the entire cohort, plasma pTau217, pTau181, and pTau231 showed strong correlations with CSF A β 42, pTau181, and tTau. These correlations were further enhanced when pTau values were adjusted for A β 42 in both CSF and plasma. Additionally, CSF and plasma NfL demonstrated a high degree of correlation.

In our mixed dementia cohort, plasma pTau217 demonstrated the best performance for diagnosing AD, DLB, and FTD, as well as for predicting CSF amyloid positivity (AUC 0.9, 0.84, 0.79, and 0.87, respectively). This finding aligns with a recent study employing thirty-three different p-tau biomarker assays, which reported superior fold-changes, discriminative accuracies for detecting AD pathology, and inter-platform agreement for plasma pTau217 measurements compared to other plasma pTau variants³⁸. Plasma pTau217, evaluated on the NULISA platform, achieved an AUC of 0.91 for amyloid PET positivity³⁹. These recent

studies collectively highlight plasma pTau biomarkers, particularly pTau217, as the most sensitive plasma biomarkers for AD diagnosis, even in its early stages⁴⁰.

The observed association between disease progression and pTau217, pTau181, pTau231, tTau, NfL, and GFAP aligns with the literature⁴¹⁻⁴⁴. Our findings also support recent studies indicating the involvement of another neurodegeneration biomarker SNAP25⁴⁵ and PGF, a VEGF family member, in disease progression⁴⁶. Within our cohort, the addition of NfL to pTau217 significantly improved the ROC AUC for FTD (from 0.79 to 0.88), similar to previous reports^{43,47}. Although plasma GFAP and FABP3 levels exhibited comparable performance to pTau217, their inclusion to the model did not significantly enhance AUC⁴⁸⁻⁵⁰.

In line with previous research, plasma pTau and NfL showed a negative correlation with MMSE scores specifically within the AD group⁴¹. Additionally, plasma GFAP levels were negatively correlated with MMSE scores across AD, FTD, and DLB groups^{51,52}. The predictive value of CSF and plasma pTau for future cognitive decline has yielded conflicting results in previous studies^{41,42,53}, likely due to variations in study populations. To establish a reliable cutoff for predicting cognitive decline, longitudinal studies are necessary.

In the DLB group, GFAP and pTau levels were elevated compared to the MCI group, and CSF A β 42 was negatively correlated with GFAP. Furthermore, all three plasma pTau forms correlated with CSF pTau181, and pTau217 and this effectively discriminated the DLB group from other diagnostic categories.

These results align with a study that evaluated amyloid and tau PET imaging alongside plasma biomarkers in the DLB continuum⁴⁸. This study reported the highest accuracy of plasma pTau181 in detecting abnormal amyloid PET in DLB patients. Although the study did not directly examine correlations with A β 42, it did not find any significant associations between amyloid PET and plasma A β 42/A β 40 ratios. Similarly, another study found no differences in plasma A β 42/A β 40 levels between PET-A β negative and PET-A β -positive DLB cases⁵⁴. In contrast to the AD group, our analysis revealed a correlation between CSF A β 42 and plasma A β 40 and A β 42 in the DLB group.

When stratified by diagnosis, correlations between plasma pTau and CSF biomarkers diminished in AD, with no significant correlation with CSF pTau. Plasma pTau217 exhibited a slight negative correlation with CSF A β 42 ($r=-0.21$), and plasma pTau217, pTau181, and pTau231 showed weak positive correlations with CSF tTau. Notably, no significant correlations were observed with CSF pTau.

This data aligns with prior research showing weak correlations between plasma and CSF pTau in AD^{55,56}, and a dissociation between tau PET and CSF pTau in AD patients^{44,53}. A recent study that employing thirty-three different pTau biomarker assays found no correlations between plasma and CSF pTau levels within the AD group³⁸. These findings suggest fluid and imaging biomarkers capture distinct aspects of tau pathophysiology, reflected in the updated ATN classification (T1: CSF/plasma, T2: tau PET/oligomeric Tau)¹⁵.

Imaging studies suggest soluble pTau is a better reflection of A β 42 plaque concentration than PET-measured tau⁵⁷. CSF tau levels are elevated even before symptom onset in individuals with A β + pathology, coinciding with amyloid deposition and preceding PHF-tau detection by PET. This suggests that CSF tau increases in response to A β pathology, even without significant PHF-tau accumulation⁵⁸. This relationship is further supported by studies showing correlation between increased CSF tau production and brain amyloid levels⁵⁹, and by the absence of increased CSF pTau in individuals with MAPT mutations and tau pathology but no amyloid⁵⁸. Additionally, the presence of tau within amyloid plaques suggests that initial tau deposits occur near A β plaques⁶⁰⁻⁶³. Animal models, exhibiting A β plaques but not NFTs, show elevated CSF tau, further support the link between A β pathology and CSF tau increases^{64,65}. While tau PET imaging strongly correlates with neurofibrillary tangles⁶⁶, CSF tau biomarkers show a weaker correlation with postmortem tau aggregates^{67,68}.

Our findings, consistent with others, demonstrate the strongest CSF/plasma pTau correlation in amyloid-positive MCI^{16,58}, and a weakening of this correlation in later AD stages. This aligns with the observation that pTau-NFT correlation weakens in AD dementia and late Braak stages^{69,70}.

CSF and plasma biomarkers in AD exhibit similar trajectories, with pTau and NfL levels initially increasing with disease severity, then plateauing and declining (**Figure 3**). This pattern reflects the early increase and subsequent decrease of CSF pTau in symptomatic AD^{69,71-73}. Soluble pTau peaks during maximal amyloid load and declines, likely due to sequestration within NFTs⁷⁴⁻⁷⁶, mirroring animal models where CSF pTau tracks A β deposition⁶⁵. However, tau PET signal may continue to increase⁷⁷, likely driven by oligomeric and conformational tau, as pTau staining plateaus but conformational and oligomeric tau staining increases⁷⁸. The early co-localization of soluble tau and A β pathology suggests a close relationship preceding mature NFT emergence^{78,79}.

Based on the evidence presented and existing literature, Tau accumulation initiates around amyloid plaques, with tau release and phosphorylation triggered by A β deposition. CSF amyloid and plasma pTau levels correlate in amyloid+ MCI, but this weakens in AD, suggesting pTau reflects amyloid pathology early on. As PHF formation progresses, pTau correlation weakens despite concentration increases, implying pTau, initially sequestered as dystrophic neurites, later becomes a substrate for PHF formation, explaining the nonlinear variation of pTau levels across AD stages. This aligns with our DLB findings, where pTau maintains its amyloid correlation, unlike in AD. Although both AD and DLB have amyloid plaques, their composition differs, with DLB plaques containing minimal A β 40 and showing a broader reduction in amyloid-beta species^{63,80,81}.

In our study, CSF pTau correlated with plasma pTau only in A+T- individuals, particularly in A+T- MCI patients, consistent with studies showing significance in A+ MCI⁸² and cognitively normal A+ individuals⁸³.

We also found a correlation between CSF pTau/A β 42 ratio and plasma pTau, even without a direct CSF-plasma pTau correlation in AD. The pTau/A β 42 ratio enhanced correlations with DLB, FTD, and amyloid-positive MCI, consistent with its utility in discriminating AD and predicting amyloid PET positivity⁸⁴⁻⁸⁷. These findings suggest pTau levels accompany amyloid pathology, with the pTau/A β 42 ratio offering improved correlation and diagnostic potential.

While we found high correlations for HTT (huntingtin), SNCA (α -synuclein), SOD1 (superoxide dismutase-1), TARDBP (TAR DNA-binding protein 43), and other biomarkers, these are not typically correlated with CSF and have non-brain sources⁸⁸⁻⁹¹. Further investigation is needed to determine whether these correlations are due to peripheral origins, shared enzymatic alterations, or truly informative significant associations.

AGRN (agrin), CX3CL1 (fractalkine), SNCB (β -synuclein), TEK (tyrosine kinase), and TREM1 (Triggering receptor expressed on myeloid cells-1) are elevated in DLB patients compared to AD. TEK inhibitors decrease CSF α -synuclein and clinical trials are currently investigating TEK inhibitors for DLB treatment⁹². TREM1 is elevated in CSF of individuals with AD compared to those with MCI. However, no significant difference in CSF TREM1 levels has been observed between AD and DLB⁹³. To date, there is a lack of sufficient research examining and comparing TREM1 levels in the plasma of AD and DLB patients.

CX3CL1, a chemokine primarily expressed by neurons, plays a crucial role in modulating microglial activity and mediating neuron-microglia communication. Pre-clinical studies have demonstrated the dual effects of fractalkine signalling on PD-related inflammation and degeneration. While clinical evidence remains limited, fractalkine may be implicated in PD progression⁹⁴. However, research on fractalkine's role in DLB patients is not yet sufficient to draw conclusions.

CSF β -synuclein levels were found to be elevated only in patients with AD, but not in those with PD or DLB⁹⁵. The absence of β -synuclein expression in blood cells highlights its potential as a peripheral blood biomarker⁹⁶. Further investigation is needed due to the limited research in this area.

Multiple studies have detected agrin in AD plaques, cerebrovascular A β deposits, and neurofibrillary tangles⁶¹. While in vitro studies and animal models have shown conflicting results regarding the potential impact of agrin on A β accumulation, its influence on brain A β deposition is evident⁹⁷. Agrin also induces conformational changes in α -synuclein, enhances its insolubility, and accelerates protofibril formation. Additionally, it colocalizes with α -synuclein in neuronal Lewy bodies within the substantia nigra of PD brains⁹⁸. To our knowledge, this study is the first to report elevated plasma agrin levels in DLB compared to AD.

Also we found elevated levels of BACE1 (beta-secretase-1), CST3 (cystatin C), GDI1 (GDP dissociation inhibitor-1), GFAP, IGFBP7 (insulin-like GF-binding protein-7), IL15, tTau, PGF

(Placental Growth Factor), pTau, PTN (pleiotrophin), SLIT2 (slit guidance ligand 2), and SNAP25 (synaptosomal-associated protein-25) in AD patients compared to FTD patients.

GFAP, tTau, and all three pTau biomarkers were also increased in AD compared to DLB, with no differences observed between DLB and FTD patients for these biomarkers. These results align with previously discussed literature. BACE1, CST3, GDI1, IGFBP7, and IL15 are biomarkers associated with amyloid pathology and AD⁹⁹⁻¹⁰³.

PGF levels in CSF have been found to be higher in FTD than in AD¹⁰⁴, but no plasma comparisons are available in literature. PTN is elevated in the CSF of AD patients compared to both cognitively normal individuals and those with other neurodegenerative disorders, and it correlates with tTau, pTau, and amyloid¹⁰⁵. Also in our GO analysis PTN, CX3CL1 and GFAP were found to be related to integrin binding. PTN is known for its role in neuronal growth and survival, CX3CL1 for mediating neuron-microglia communication. GFAP is a marker of astrocyte activation suggesting that integrin-mediated pathways could play a role in the progression and differentiation of these diseases, particularly through cellular adhesion, signalling mechanisms and, neuroinflammation. This finding aligns with previous research indicating that integrin pathways may be potential therapeutic targets in neurodegeneration¹⁰⁶.

SLIT2 was first identified as an axonal driver in the development of the CNS and appears to be involved in amyloid pathology, inflammation and blood-brain barrier integrity^{107,108}. SNAP25 is elevated in the CSF of AD patients compared to DLB and FTD¹⁰⁹, and in plasma compared to cognitively unimpaired individuals⁴⁵. To our knowledge, no studies have compared plasma SNAP25 levels between AD and other dementia types.

These findings align with our GO analysis, which revealed that differentially expressed biomarkers between diseases were involved in processes such as the regulation of neuron projection development, modulation and regulation of synaptic transmission, and trans-synaptic signalling.

Random forest analysis reveals that the overall importance is primarily driven by pTau and amyloid-related biomarkers. Among the top 20 important biomarkers, pTau217, NfL, tTau, pTau181, A β 40, GFAP, and A β 42 have been previously discussed. CALB2 (calretinin) has been identified as a hub gene in AD pathogenesis¹¹⁰. UCHL1 has been reported to play a crucial role in PD and DLB, accelerating α -synuclein aggregation¹¹¹. Previous research has demonstrated decreased CSF levels and increased plasma levels of UCHL1 in PD patients, as well as reduced UCHL1 expression in the substantia nigra of DLB patients^{111,112}. To our knowledge, this study is the first to report elevated UCHL1 levels in DLB compared to AD. Furthermore, within our cohort, UCHL1 levels remained elevated in DLB patients relative to MCI patients. GDI1 and FABP3 are associated with microglial activation and are found to be increased in AD CSF and can differentiate between AD and genetic FTD patients¹¹³. In

response to decreased FOLR1 in CSF, brain folate supply to the cerebral cortex shifts from normal astrocytes to GFAP-positive astrocytes ¹¹⁴.

ICAM1 (CD200) is negatively correlated with neurofibrillary tangle, pTau, and amyloid plaque density in the brain tissue of DLB patients ¹¹⁵. A study measuring CSF proteomes to explore their association with known AD pathology found that YWHAZ (14-3-3 zeta/delta), SMOC1 (SPARC-related modular calcium-binding protein-1), FABP, CHI3L1, and BASP1 (brain acid soluble protein-1), all identified in our RF analysis, are related to amyloid or pTau ¹¹⁶.

VEGFD, associated with oligodendrocytes, increases with β -amyloid load and, unlike other VEGF receptors, is primarily involved in lymphangiogenesis ¹¹⁷. SMOC1 is elevated in the AD brain. Studies of autosomal dominant AD patients have shown that SMOC1 levels begin to rise 30 years before symptom onset ¹¹⁸ and correlate with NFT and amyloid pathology in numerous studies ¹¹⁹. However, no differences in SMOC1 levels were found between CU and AD serum samples. ANXA5 (annexin A5) is associated with familial late-onset AD ¹²⁰ and exhibits higher plasma levels in AD and DLB cases compared to controls ¹²¹.

When evaluating synaptic dysfunction biomarkers in CSF, it was demonstrated that SNAP25, 14-3-3 zeta/delta, and NPTX2 (neuronal pentraxin), in various combinations, can discriminate AD from other neurodegenerative diseases ¹²²⁻¹²⁴. IL33 appears to be linked to tau pathology and microglial activation ¹²⁴ and is closely associated with FTD ¹²⁵. CHI3L1 (Chitinase-3-like protein-1 or YKL-40) is increased in the brain of sporadic FTD, while UCHL1 is increased in CSF, and NPTX1 and 2 are decreased in CSF in both sporadic and genetic FTD ¹²⁶. PRDX6 (peroxiredoxin-6), an enzymatic protein unique to astrocytes in the CNS, regulates glial toxicity in tau-mediated neurodegeneration in AD and dopaminergic neurodegeneration in PD ^{1,127}. CALB2 and other calcium-binding protein-expressing cortical neurons are not affected in DLB ¹²⁸. MSLN (mesothelin), a tumor-associated antigen overexpressed on various malignant tumor cells, shows decreased mRNA levels in DLB patients compared to CU ¹²⁹.

Despite the growing body of plasma proteomics research, few studies have examined the AD spectrum or compared AD to other common dementia types (FTD and DLB). This limits our understanding of AD-specific biomarkers and hinders progress toward differential diagnosis. Our findings suggest that there are distinct and diverse biological processes that are dysregulated in the different dementia types.

Limitations

Our study is limited by the absence of data from healthy controls, which is crucial for assessing the utility of this technique in differentiating normal and pathological states and monitoring disease progression. But the patients were consecutively recruited, and the cohort composition reflects the characteristics commonly observed in memory clinic

practice. Future longitudinal community-based studies should include both asymptomatic and symptomatic individuals to evaluate the real-world impact of plasma markers in clinical practice. Additionally, positive and negative predictive values should be assessed, considering the prevalence of AD pathology across age groups and the general population, to determine the screening potential of these markers.

The presence of positive AD CSF biomarker profile in 20–30% of patients clinically diagnosed with non-AD dementias raises the possibility of co-pathologies¹³⁰, another study limitation. Furthermore, the relatively young age of our AD group limits understanding of plasma pTau performance in older populations.

Conclusion

The sensitivity and specificity of Tau PET, CSF and plasma pTau to identify abnormalities in tau metabolism differ. Integrating plasma biomarkers into clinical practice could revolutionize neurodegenerative disease diagnostics, improving accuracy, tracking progression, and monitoring treatment response. They may also uncover shared or specific pathways underlying different dementia types. However, further research is needed for validation in diverse cohorts and standardization for clinical use.

Data availability

The data from this study will be made available in de-identified format to researchers upon request.

Table 1. Demographics of the cohort

Variable	Overall N = 248	AD N = 117	MCI N = 50	FTD N = 39	DLB N = 25	Other N = 17	p-value ¹
Age, mean (SD)	66.7 (9.1)	66.5 (8.5)	66.2 (9.6)	61.9 (8.6)	74.7 (5.6)	68.9 (8.9)	<0.001
Female n (%)	118 (48%)	53 (45%)	25 (50%)	16 (41%)	16 (64%)	8 (47%)	0.4
MMSE, mean (SD)	21.7 (7.1)	20.4 (7.1)	27.5 (2.0)	19.8 (7.9)	20.3 (6.5)	19.3 (8.9)	<0.001
CDR, range (median)	0-3 (0.5)	0-3 (0.5)	0-0.5 (0.5)	0-3 (1)	0.5-2 (0.5)	0.5-2 (1)	
ATN, n (%)							
A-T-N-	46 (19%)	0 (0%)	20 (40%)	12 (31%)	9 (36%)	5 (29%)	
A-T-N+	5 (2.0%)	0 (0%)	2 (4.0%)	3 (7.7%)	0 (0%)	0 (0%)	
A-T+N-	11 (4.4%)	0 (0%)	8 (16%)	1 (2.6%)	1 (4.0%)	1 (5.9%)	
A-T+N+	27 (11%)	0 (0%)	12 (24%)	10 (26%)	2 (8.0%)	1 (5.9%)	

Variable	Overall N = 248	AD N = 117	MCI N = 50	FTD N = 39	DLB N = 25	Other N = 17	p-value ¹
A+T-N-	40 (16%)	5 (4.3%)	5 (10%)	11 (28%)	10 (40%)	9 (53%)	
A+T-N+	2 (0.8%)	1 (0.9%)	0 (0%)	0 (0%)	1 (4.0%)	0 (0%)	
A+T+N-	7 (2.8%)	5 (4.3%)	2 (4.0%)	0 (0%)	0 (0%)	0 (0%)	
A+T+N+	110 (44%)	106 (91%)	1 (2.0%)	2 (5.1%)	2 (8.0%)	1 (5.9%)	

AD: Alzheimer dementia, MCI: Mild cognitive impairment, FTD: Frontotemporal dementia, DLB: Dementia with Lewy bodies, Other: NPH (normal pressure hydrocephalus), CBS (corticobasal syndrome), PSP (progressive supranuclear palsy) and MND (motor neuron disease) without dementia

¹Kruskal-Wallis rank sum test; Pearson's Chi-squared test

Table 2. Demographics of AD Stages

Variable	Overall N = 102	Stage 2 N = 8	Stage 3 N = 15	Stage 4 N = 34	Stage 5 N = 31	Stage 6 N = 14	p-value ¹
Age, mean (SD)	66.1 (9.0)	67.6 (13.1)	69.7 (6.0)	66.7 (8.4)	65.4 (9.7)	61.5 (8.0)	0.12
Gender, female (%)	53 (52%)	2 (25%)	9 (60%)	17 (50%)	19 (61%)	6 (43%)	0.4
MMSE, mean (SD)	21.0 (7.1)	28.3 (2.1)	28.2 (1.3)	24.6 (2.8)	18.0 (1.9)	8.2 (3.8)	<0.001
CDR, range (median)	0-3 (0.5)	0	0.5	0-1(0.5)	0.5-2(1)	1-3 (2)	
ATN, n (%)							
A+T-N-	9 (8.8%)	5 (63%)	4 (27%)	0 (0%)	0 (0%)	0 (0%)	
A+T-N+	1 (1.0%)	0 (0%)	0 (0%)	0 (0%)	1 (3.2%)	0 (0%)	
A+T+N-	6 (5.9%)	2 (25%)	2 (13%)	1 (2.9%)	0 (0%)	1 (7.1%)	
A+T+N+	86 (84%)	1 (13%)	9 (60%)	33 (97%)	30 (97%)	13 (93%)	

MMSE: Mini-mental State Examination, CDR: Clinical Dementia Rating, A: CSF amyloid β 42, T: CSF phosphorylated Tau181, N: CSF total tau

¹Kruskal-Wallis rank sum test; Fisher's exact test

Funding

The study is supported by the Scientific and Technological Research Council of Turkey-TUBITAK (Project No. 22AG017 – APYOK2. Grant Recipient: Erdinc Dursun). HZ is a Wallenberg Scholar and a Distinguished Professor at the Swedish Research Council supported by grants from the Swedish Research Council (#2023-00356, #2022-01018 and #2019-02397), the European Union's Horizon Europe research and innovation programme under grant agreement No 101053962, Swedish State Support for Clinical Research (#ALFGBG-71320), the Alzheimer Drug Discovery Foundation (ADDF), USA (#201809-2016862), the AD Strategic Fund and the Alzheimer's Association (#ADSF-21-831376-C, #ADSF-21-831381-C, #ADSF-21-831377-C, and #ADSF-24-1284328-C), the European Partnership on Metrology, co-financed from the European Union's Horizon Europe Research and Innovation Programme and by the Participating States (NEuroBioStand, #22HLT07), the Bluefield Project, Cure Alzheimer's Fund, the Olav Thon Foundation, the Erling-Persson Family Foundation, Familjen Rönströms Stiftelse, Stiftelsen för Gamla Tjänarinnor, Hjärnfonden, Sweden (#FO2022-0270), the European Union's Horizon 2020 research and innovation programme under the Marie Skłodowska-Curie grant agreement No 860197 (MIRIADe), the European Union Joint Programme – Neurodegenerative Disease Research (JPND2021-00694), the National Institute for Health and Care Research University College London Hospitals Biomedical Research Centre, and the UK Dementia Research Institute at UCL (UKDRI-1003). J.H., D.A.S., and U.Y. are supported by the UK Dementia Research Institute [award numbers UK DRI-1009] through UK DRI Ltd, principally funded by the Medical Research Council. J.H., M.S., and D.A.S. are supported by the Dolby Foundation, and by the National Institute for Health Research University College London Hospitals Biomedical Research Centre. J.H. also received funding from Cure Alzheimer's Fund.

Conflicts of interest

HZ has served at scientific advisory boards and/or as a consultant for Abbvie, Acumen, Alector, Alzinova, ALZpath, Amylyx, Annexon, Apellis, Artery Therapeutics, AZTherapies, Cognito Therapeutics, CogRx, Denali, Eisai, LabCorp, Merry Life, Nervgen, Novo Nordisk, Optoceutics, Passage Bio, Pinteon Therapeutics, Prothena, Quanterix, Red Abbey Labs, reMYND, Roche, Samumed, Siemens Healthineers, Triplet Therapeutics, and Wave, has given lectures sponsored by Alzecure, BioArctic, Biogen, Celectricon, Fujirebio, Lilly, Novo Nordisk, Roche, and WebMD, and is a co-founder of Brain Biomarker Solutions in Gothenburg AB (BBS), which is a part of the GU Ventures Incubator Program (outside submitted work). AJH has consulted for Quanterix and Lilly.

References

1. Yun HM, Choi DY, Oh KW, Hong JT. PRDX6 Exacerbates Dopaminergic Neurodegeneration in a MPTP Mouse Model of Parkinson's Disease. *Mol Neurobiol*. Aug 2015;52(1):422-31. doi:10.1007/s12035-014-8885-4

2. Beach TG, Monsell SE, Phillips LE, Kukull W. Accuracy of the clinical diagnosis of Alzheimer disease at National Institute on Aging Alzheimer Disease Centers, 2005-2010. *J Neuropathol Exp Neurol*. Apr 2012;71(4):266-73. doi:10.1097/NEN.0b013e31824b211b
3. Schoonenboom NS, Reesink FE, Verwey NA, et al. Cerebrospinal fluid markers for differential dementia diagnosis in a large memory clinic cohort. *Neurology*. Jan 3 2012;78(1):47-54. doi:10.1212/WNL.0b013e31823ed0f0
4. Jack CR, Jr., Bennett DA, Blennow K, et al. NIA-AA Research Framework: Toward a biological definition of Alzheimer's disease. *Alzheimers Dement*. Apr 2018;14(4):535-562. doi:10.1016/j.jalz.2018.02.018
5. Ewers M, Mattsson N, Minthon L, et al. CSF biomarkers for the differential diagnosis of Alzheimer's disease: A large-scale international multicenter study. *Alzheimers Dement*. Nov 2015;11(11):1306-15. doi:10.1016/j.jalz.2014.12.006
6. Robinson JL, Lee EB, Xie SX, et al. Neurodegenerative disease concomitant proteinopathies are prevalent, age-related and APOE4-associated. *Brain*. Jul 1 2018;141(7):2181-2193. doi:10.1093/brain/awy146
7. Park SA, Han SM, Kim CE. New fluid biomarkers tracking non-amyloid- β and non-tau pathology in Alzheimer's disease. *Exp Mol Med*. Apr 2020;52(4):556-568. doi:10.1038/s12276-020-0418-9
8. Chahine LM, Beach TG, Brumm MC, et al. In vivo distribution of α -synuclein in multiple tissues and biofluids in Parkinson disease. *Neurology*. Sep 1 2020;95(9):e1267-e1284. doi:10.1212/wnl.0000000000010404
9. Simonsen AH, Kuiperij B, El-Agnaf OM, et al. The utility of α -synuclein as biofluid marker in neurodegenerative diseases: a systematic review of the literature. *Biomark Med*. 2016;10(1):19-34. doi:10.2217/bmm.14.105
10. Groveman BR, Orrù CD, Hughson AG, et al. Rapid and ultra-sensitive quantitation of disease-associated α -synuclein seeds in brain and cerebrospinal fluid by α Syn RT-QuIC. *Acta Neuropathol Commun*. Feb 9 2018;6(1):7. doi:10.1186/s40478-018-0508-2
11. Manne S, Kondru N, Hepker M, et al. Ultrasensitive Detection of Aggregated α -Synuclein in Glial Cells, Human Cerebrospinal Fluid, and Brain Tissue Using the RT-QuIC Assay: New High-Throughput Neuroimmune Biomarker Assay for Parkinsonian Disorders. *J Neuroimmune Pharmacol*. Sep 2019;14(3):423-435. doi:10.1007/s11481-019-09835-4
12. Howard E, Irwin DJ, Rascovsky K, et al. Cognitive Profile and Markers of Alzheimer Disease-Type Pathology in Patients With Lewy Body Dementias. *Neurology*. Apr 6 2021;96(14):e1855-e1864. doi:10.1212/wnl.0000000000011699
13. Spotorno N, Coughlin DG, Olm CA, et al. Tau pathology associates with in vivo cortical thinning in Lewy body disorders. *Ann Clin Transl Neurol*. Dec 2020;7(12):2342-2355. doi:10.1002/acn3.51183
14. McAleese KE, Walker L, Erskine D, Thomas AJ, McKeith IG, Attems J. TDP-43 pathology in Alzheimer's disease, dementia with Lewy bodies and ageing. *Brain Pathol*. Jul 2017;27(4):472-479. doi:10.1111/bpa.12424
15. Jack CR, Jr., Andrews JS, Beach TG, et al. Revised criteria for diagnosis and staging of Alzheimer's disease: Alzheimer's Association Workgroup. *Alzheimers Dement*. Aug 2024;20(8):5143-5169. doi:10.1002/alz.13859
16. Karikari TK, Ashton NJ, Brinkmalm G, et al. Blood phospho-tau in Alzheimer disease: analysis, interpretation, and clinical utility. *Nat Rev Neurol*. Jul 2022;18(7):400-418. doi:10.1038/s41582-022-00665-2

17. Prince M, Bryce R, Albanese E, Wimo A, Ribeiro W, Ferri CP. The global prevalence of dementia: a systematic review and metaanalysis. *Alzheimers Dement*. Jan 2013;9(1):63-75.e2. doi:10.1016/j.jalz.2012.11.007
18. Chaudhry A, Rizig M. Comparing fluid biomarkers of Alzheimer's disease between African American or Black African and white groups: A systematic review and meta-analysis. *J Neurol Sci*. Feb 15 2021;421:117270. doi:10.1016/j.jns.2020.117270
19. Teunissen CE, Verberk IMW, Thijssen EH, et al. Blood-based biomarkers for Alzheimer's disease: towards clinical implementation. *Lancet Neurol*. Jan 2022;21(1):66-77. doi:10.1016/s1474-4422(21)00361-6
20. Hampel H, Cummings J, Blennow K, Gao P, Jack CR, Jr., Vergallo A. Developing the ATX(N) classification for use across the Alzheimer disease continuum. *Nat Rev Neurol*. Sep 2021;17(9):580-589. doi:10.1038/s41582-021-00520-w
21. Sabbagh MN, Hendrix S, Harrison JE. FDA position statement "Early Alzheimer's disease: Developing drugs for treatment, Guidance for Industry". *Alzheimers Dement (N Y)*. 2019;5:13-19. doi:10.1016/j.trci.2018.11.004
22. Palmqvist S, Janelidze S, Quiroz YT, et al. Discriminative Accuracy of Plasma Phospho-tau217 for Alzheimer Disease vs Other Neurodegenerative Disorders. *Jama*. Aug 25 2020;324(8):772-781. doi:10.1001/jama.2020.12134
23. Smirnov DS, Ashton NJ, Blennow K, et al. Plasma biomarkers for Alzheimer's Disease in relation to neuropathology and cognitive change. *Acta Neuropathol*. Apr 2022;143(4):487-503. doi:10.1007/s00401-022-02408-5
24. Keshavan A, Pannee J, Karikari TK, et al. Population-based blood screening for preclinical Alzheimer's disease in a British birth cohort at age 70. *Brain*. Mar 3 2021;144(2):434-449. doi:10.1093/brain/awaa403
25. Katisko K, Cajanus A, Huber N, et al. GFAP as a biomarker in frontotemporal dementia and primary psychiatric disorders: diagnostic and prognostic performance. *J Neurol Neurosurg Psychiatry*. Dec 2021;92(12):1305-1312. doi:10.1136/jnnp-2021-326487
26. Giannini LAA, Seelaar H, van der Ende EL, et al. Clinical Value of Longitudinal Serum Neurofilament Light Chain in Prodromal Genetic Frontotemporal Dementia. *Neurology*. Sep 5 2023;101(10):e1069-e1082. doi:10.1212/wnl.0000000000207581
27. van Dyck CH, Swanson CJ, Aisen P, et al. Lecanemab in Early Alzheimer's Disease. *N Engl J Med*. Jan 5 2023;388(1):9-21. doi:10.1056/NEJMoa2212948
28. Feng W, Beer JC, Hao Q, et al. NULISA: a proteomic liquid biopsy platform with attomolar sensitivity and high multiplexing. *Nat Commun*. Nov 9 2023;14(1):7238. doi:10.1038/s41467-023-42834-x
29. Ibanez L, Liu M, Beric A, et al. Benchmarking of a multi-biomarker low-volume panel for Alzheimer's Disease and related dementia research. *medRxiv*. Jun 14 2024;doi:10.1101/2024.06.13.24308895
30. Folstein MF, Folstein SE, McHugh PR. "Mini-mental state". A practical method for grading the cognitive state of patients for the clinician. *J Psychiatr Res*. Nov 1975;12(3):189-98. doi:10.1016/0022-3956(75)90026-6
31. Morris JC. The Clinical Dementia Rating (CDR): current version and scoring rules. *Neurology*. Nov 1993;43(11):2412-4. doi:10.1212/wnl.43.11.2412-a
32. McKeith IG, Boeve BF, Dickson DW, et al. Diagnosis and management of dementia with Lewy bodies: Fourth consensus report of the DLB Consortium. *Neurology*. Jul 4 2017;89(1):88-100. doi:10.1212/wnl.0000000000004058

33. Rascovsky K, Hodges JR, Knopman D, et al. Sensitivity of revised diagnostic criteria for the behavioural variant of frontotemporal dementia. *Brain*. Sep 2011;134(Pt 9):2456-77. doi:10.1093/brain/awr179
34. Young JJ, Lavakumar M, Tampi D, Balachandran S, Tampi RR. Frontotemporal dementia: latest evidence and clinical implications. *Ther Adv Psychopharmacol*. Jan 2018;8(1):33-48. doi:10.1177/2045125317739818
35. Dunne RA, Aarsland D, O'Brien JT, et al. Mild cognitive impairment: the Manchester consensus. *Age Ageing*. Jan 8 2021;50(1):72-80. doi:10.1093/ageing/afaa228
36. Mattsson N, Andreasson U, Persson S, et al. CSF biomarker variability in the Alzheimer's Association quality control program. *Alzheimers Dement*. May 2013;9(3):251-61. doi:10.1016/j.jalz.2013.01.010
37. Vrillon A, Bousiges O, Götze K, et al. Plasma biomarkers of amyloid, tau, axonal, and neuroinflammation pathologies in dementia with Lewy bodies. *Alzheimers Res Ther*. Jul 3 2024;16(1):146. doi:10.1186/s13195-024-01502-y
38. Ashton NJ, Keshavan A, Brum WS, et al. The Alzheimer's Association Global Biomarker Standardization Consortium (GBSC) plasma phospho-tau Round Robin study. *medRxiv*. Aug 22 2024;doi:10.1101/2024.08.22.24312244
39. Zeng X, Lafferty TK, Sehrawat A, et al. Multi-analyte proteomic analysis identifies blood-based neuroinflammation, cerebrovascular and synaptic biomarkers in preclinical Alzheimer's disease. *medRxiv*. Jun 16 2024;doi:10.1101/2024.06.15.24308975
40. Milà-Alomà M, Ashton NJ, Shekari M, et al. Plasma p-tau231 and p-tau217 as state markers of amyloid- β pathology in preclinical Alzheimer's disease. *Nat Med*. Sep 2022;28(9):1797-1801. doi:10.1038/s41591-022-01925-w
41. Dage JL, Wennberg AMV, Airey DC, et al. Levels of tau protein in plasma are associated with neurodegeneration and cognitive function in a population-based elderly cohort. *Alzheimers Dement*. Dec 2016;12(12):1226-1234. doi:10.1016/j.jalz.2016.06.001
42. Mielke MM, Hagen CE, Wennberg AMV, et al. Association of Plasma Total Tau Level With Cognitive Decline and Risk of Mild Cognitive Impairment or Dementia in the Mayo Clinic Study on Aging. *JAMA Neurol*. Sep 1 2017;74(9):1073-1080. doi:10.1001/jamaneurol.2017.1359
43. Illán-Gala I, Lleo A, Karydas A, et al. Plasma Tau and Neurofilament Light in Frontotemporal Lobar Degeneration and Alzheimer Disease. *Neurology*. Feb 2 2021;96(5):e671-e683. doi:10.1212/wnl.0000000000011226
44. Mielke MM, Hagen CE, Xu J, et al. Plasma phospho-tau181 increases with Alzheimer's disease clinical severity and is associated with tau- and amyloid-positron emission tomography. *Alzheimers Dement*. Aug 2018;14(8):989-997. doi:10.1016/j.jalz.2018.02.013
45. Nilsson J, Ashton NJ, Benedet AL, et al. Quantification of SNAP-25 with mass spectrometry and Simoa: a method comparison in Alzheimer's disease. *Alzheimers Res Ther*. Jun 4 2022;14(1):78. doi:10.1186/s13195-022-01021-8
46. Yang HS, Yau WW, Carlyle BC, et al. Plasma VEGFA and PGF impact longitudinal tau and cognition in preclinical Alzheimer's disease. *Brain*. Jun 3 2024;147(6):2158-2168. doi:10.1093/brain/awae034
47. Cousins KAQ, Shaw LM, Chen-Plotkin A, et al. Distinguishing Frontotemporal Lobar Degeneration Tau From TDP-43 Using Plasma Biomarkers. *JAMA Neurol*. Nov 1 2022;79(11):1155-1164. doi:10.1001/jamaneurol.2022.3265

48. Diaz-Galvan P, Przybelski SA, Algeciras-Schimnich A, et al. Plasma biomarkers of Alzheimer's disease in the continuum of dementia with Lewy bodies. *Alzheimers Dement*. Apr 2024;20(4):2485-2496. doi:10.1002/alz.13653
49. Kawahata I, Sekimori T, Oizumi H, Takeda A, Fukunaga K. Using Fatty Acid-Binding Proteins as Potential Biomarkers to Discriminate between Parkinson's Disease and Dementia with Lewy Bodies: Exploration of a Novel Technique. *Int J Mol Sci*. Aug 26 2023;24(17)doi:10.3390/ijms241713267
50. Dulewicz M, Kulczyńska-Przybik A, Słowik A, Borawska R, Mroczko B. Fatty Acid Binding Protein 3 (FABP3) and Apolipoprotein E4 (ApoE4) as Lipid Metabolism-Related Biomarkers of Alzheimer's Disease. *J Clin Med*. Jul 6 2021;10(14)doi:10.3390/jcm10143009
51. Bolsewig K, van Unnik A, Blujdea ER, et al. Association of Plasma Amyloid, P-Tau, GFAP, and NfL With CSF, Clinical, and Cognitive Features in Patients With Dementia With Lewy Bodies. *Neurology*. Jun 25 2024;102(12):e209418. doi:10.1212/wnl.0000000000209418
52. Bolsewig K, Hok AHYS, Sepe FN, et al. A Combination of Neurofilament Light, Glial Fibrillary Acidic Protein, and Neuronal Pentraxin-2 Discriminates Between Frontotemporal Dementia and Other Dementias. *J Alzheimers Dis*. 2022;90(1):363-380. doi:10.3233/jad-220318
53. La Joie R, Bejanin A, Fagan AM, et al. Associations between [(18)F]AV1451 tau PET and CSF measures of tau pathology in a clinical sample. *Neurology*. Jan 23 2018;90(4):e282-e290. doi:10.1212/wnl.0000000000004860
54. Chouliaras L, Thomas A, Malpetti M, et al. Differential levels of plasma biomarkers of neurodegeneration in Lewy body dementia, Alzheimer's disease, frontotemporal dementia and progressive supranuclear palsy. *J Neurol Neurosurg Psychiatry*. Jun 2022;93(6):651-658. doi:10.1136/jnnp-2021-327788
55. Mattsson N, Zetterberg H, Janelidze S, et al. Plasma tau in Alzheimer disease. *Neurology*. Oct 25 2016;87(17):1827-1835. doi:10.1212/wnl.0000000000003246
56. Fossati S, Ramos Cejudo J, Debure L, et al. Plasma tau complements CSF tau and P-tau in the diagnosis of Alzheimer's disease. *Alzheimers Dement (Amst)*. Dec 2019;11:483-492. doi:10.1016/j.dadm.2019.05.001
57. Therriault J, Vermeiren M, Servaes S, et al. Association of Phosphorylated Tau Biomarkers With Amyloid Positron Emission Tomography vs Tau Positron Emission Tomography. *JAMA Neurol*. Feb 1 2023;80(2):188-199. doi:10.1001/jamaneurol.2022.4485
58. Mattsson-Carlgen N, Andersson E, Janelidze S, et al. A β deposition is associated with increases in soluble and phosphorylated tau that precede a positive Tau PET in Alzheimer's disease. *Sci Adv*. Apr 2020;6(16):eaaz2387. doi:10.1126/sciadv.aaz2387
59. Sato C, Barthélemy NR, Mawuenyega KG, et al. Tau Kinetics in Neurons and the Human Central Nervous System. *Neuron*. Mar 21 2018;97(6):1284-1298.e7. doi:10.1016/j.neuron.2018.02.015
60. Liao L, Cheng D, Wang J, et al. Proteomic characterization of postmortem amyloid plaques isolated by laser capture microdissection. *J Biol Chem*. Aug 27 2004;279(35):37061-8. doi:10.1074/jbc.M403672200
61. Xiong F, Ge W, Ma C. Quantitative proteomics reveals distinct composition of amyloid plaques in Alzheimer's disease. *Alzheimers Dement*. Mar 2019;15(3):429-440. doi:10.1016/j.jalz.2018.10.006

62. Bai B, Wang X, Li Y, et al. Deep Multilayer Brain Proteomics Identifies Molecular Networks in Alzheimer's Disease Progression. *Neuron*. May 20 2020;106(4):700. doi:10.1016/j.neuron.2020.04.031
63. Drummond E, Nayak S, Faustin A, et al. Proteomic differences in amyloid plaques in rapidly progressive and sporadic Alzheimer's disease. *Acta Neuropathol*. Jun 2017;133(6):933-954. doi:10.1007/s00401-017-1691-0
64. He Z, Guo JL, McBride JD, et al. Amyloid- β plaques enhance Alzheimer's brain tau-seeded pathologies by facilitating neuritic plaque tau aggregation. *Nat Med*. Jan 2018;24(1):29-38. doi:10.1038/nm.4443
65. Vergara C, Houben S, Suain V, et al. Amyloid- β pathology enhances pathological fibrillary tau seeding induced by Alzheimer PHF in vivo. *Acta Neuropathol*. Mar 2019;137(3):397-412. doi:10.1007/s00401-018-1953-5
66. Smith R, Wibom M, Pawlik D, Englund E, Hansson O. Correlation of In Vivo [18F]Flortaucipir With Postmortem Alzheimer Disease Tau Pathology. *JAMA Neurol*. Mar 1 2019;76(3):310-317. doi:10.1001/jamaneurol.2018.3692
67. Buerger K, Ewers M, Pirttilä T, et al. CSF phosphorylated tau protein correlates with neocortical neurofibrillary pathology in Alzheimer's disease. *Brain*. Nov 2006;129(Pt 11):3035-41. doi:10.1093/brain/awl269
68. Horie K, Barthélemy NR, Mallipeddi N, et al. Regional correlation of biochemical measures of amyloid and tau phosphorylation in the brain. *Acta Neuropathol Commun*. Aug 27 2020;8(1):149. doi:10.1186/s40478-020-01019-z
69. Lantero Rodriguez J, Karikari TK, Suárez-Calvet M, et al. Plasma p-tau181 accurately predicts Alzheimer's disease pathology at least 8 years prior to post-mortem and improves the clinical characterisation of cognitive decline. *Acta Neuropathol*. Sep 2020;140(3):267-278. doi:10.1007/s00401-020-02195-x
70. Ashton NJ, Pascoal TA, Karikari TK, et al. Plasma p-tau231: a new biomarker for incipient Alzheimer's disease pathology. *Acta Neuropathol*. May 2021;141(5):709-724. doi:10.1007/s00401-021-02275-6
71. Therriault J, Pascoal TA, Lussier FZ, et al. Biomarker modeling of Alzheimer's disease using PET-based Braak staging. *Nat Aging*. Jun 2022;2(6):526-535. doi:10.1038/s43587-022-00204-0
72. Bridel C, Somers C, Sieben A, et al. Associating Alzheimer's disease pathology with its cerebrospinal fluid biomarkers. *Brain*. Nov 21 2022;145(11):4056-4064. doi:10.1093/brain/awac013
73. Palmqvist S, Insel PS, Stomrud E, et al. Cerebrospinal fluid and plasma biomarker trajectories with increasing amyloid deposition in Alzheimer's disease. *EMBO Mol Med*. Dec 2019;11(12):e111170. doi:10.15252/emmm.201911170
74. Kaeser SA, Häsler LM, Lambert M, et al. CSF p-tau increase in response to A β -type and Danish-type cerebral amyloidosis and in the absence of neurofibrillary tangles. *Acta Neuropathol*. Feb 2022;143(2):287-290. doi:10.1007/s00401-021-02400-5
75. Koss DJ, Dubini M, Buchanan H, Hull C, Platt B. Distinctive temporal profiles of detergent-soluble and -insoluble tau and A β species in human Alzheimer's disease. *Brain Res*. Nov 15 2018;1699:121-134. doi:10.1016/j.brainres.2018.08.014
76. Wildsmith KR, Schauer SP, Smith AM, et al. Identification of longitudinally dynamic biomarkers in Alzheimer's disease cerebrospinal fluid by targeted proteomics. *Mol Neurodegener*. Jun 6 2014;9:22. doi:10.1186/1750-1326-9-22

77. McDade E, Wang G, Gordon BA, et al. Longitudinal cognitive and biomarker changes in dominantly inherited Alzheimer disease. *Neurology*. Oct 2 2018;91(14):e1295-e1306. doi:10.1212/wnl.0000000000006277
78. Koss DJ, Jones G, Cranston A, Gardner H, Kanaan NM, Platt B. Soluble pre-fibrillar tau and β -amyloid species emerge in early human Alzheimer's disease and track disease progression and cognitive decline. *Acta Neuropathol*. Dec 2016;132(6):875-895. doi:10.1007/s00401-016-1632-3
79. Alafuzoff I, Arzberger T, Al-Sarraj S, et al. Staging of neurofibrillary pathology in Alzheimer's disease: a study of the BrainNet Europe Consortium. *Brain Pathol*. Oct 2008;18(4):484-96. doi:10.1111/j.1750-3639.2008.00147.x
80. Armstrong RA. Laminar distribution of beta-amyloid deposits in dementia with Lewy bodies and in Alzheimer's disease. *Am J Alzheimers Dis Other Demen*. Jun-Jul 2006;21(3):175-81. doi:10.1177/1533317506289256
81. van Steenoven I, van der Flier WM, Scheltens P, Teunissen CE, Lemstra AW. Amyloid- β peptides in cerebrospinal fluid of patients with dementia with Lewy bodies. *Alzheimers Res Ther*. Oct 10 2019;11(1):83. doi:10.1186/s13195-019-0537-5
82. Gildengers A, Weinstein AM, Gujral S, et al. Where do plasma biomarkers fit in with current Alzheimer's disease detection? *The American Journal of Geriatric Psychiatry*. 2024/10/01/ 2024;doi:<https://doi.org/10.1016/j.jagp.2024.09.015>
83. Triana-Baltzer G, Moughadam S, Slemmon R, et al. Development and validation of a high-sensitivity assay for measuring p217+tau in plasma. *Alzheimers Dement (Amst)*. 2021;13(1):e12204. doi:10.1002/dad2.12204
84. Martínez-Dubarbie F, Guerra-Ruiz A, López-García S, et al. Accuracy of plasma A β 40, A β 42, and p-tau181 to detect CSF Alzheimer's pathological changes in cognitively unimpaired subjects using the Lumipulse automated platform. *Alzheimers Res Ther*. Oct 2 2023;15(1):163. doi:10.1186/s13195-023-01319-1
85. Leuzy A, Mattsson-Carlsson N, Cullen NC, et al. Robustness of CSF A β 42/40 and A β 42/P-tau181 measured using fully automated immunoassays to detect AD-related outcomes. *Alzheimers Dement*. Jul 2023;19(7):2994-3004. doi:10.1002/alz.12897
86. Chong JR, Ashton NJ, Karikari TK, et al. Plasma P-tau181 to A β 42 ratio is associated with brain amyloid burden and hippocampal atrophy in an Asian cohort of Alzheimer's disease patients with concomitant cerebrovascular disease. *Alzheimers Dement*. Oct 2021;17(10):1649-1662. doi:10.1002/alz.12332
87. Fowler CJ, Stoops E, Rainey-Smith SR, et al. Plasma p-tau181/A β (1-42) ratio predicts A β -PET status and correlates with CSF-p-tau181/A β (1-42) and future cognitive decline. *Alzheimers Dement (Amst)*. 2022;14(1):e12375. doi:10.1002/dad2.12375
88. Parkin GM, Corey-Bloom J, Snell C, et al. Salivary Huntingtin protein is uniquely associated with clinical features of Huntington's disease. *Sci Rep*. Jan 19 2023;13(1):1034. doi:10.1038/s41598-023-28019-y
89. Álvarez-Sánchez L, Peña-Bautista C, Ferré-González L, et al. Assessment of Plasma and Cerebrospinal Fluid Biomarkers in Different Stages of Alzheimer's Disease and Frontotemporal Dementia. *Int J Mol Sci*. Jan 8 2023;24(2)doi:10.3390/ijms24021226
90. Darabi S, Ariaei A, Rustamzadeh A, Afshari D, Charkhat Gorgich EA, Darabi L. Cerebrospinal fluid and blood exosomes as biomarkers for amyotrophic lateral sclerosis; a systematic review. *Diagn Pathol*. Mar 1 2024;19(1):47. doi:10.1186/s13000-024-01473-6

91. Shi M, Liu C, Cook TJ, et al. Plasma exosomal α -synuclein is likely CNS-derived and increased in Parkinson's disease. *Acta Neuropathol.* Nov 2014;128(5):639-650. doi:10.1007/s00401-014-1314-y
92. Gosch Berton G, Cytia Lima Fonseca Rodrigues A, Dos Santos Borges R, Rodrigues Cardoso N, de Oliveira TA, Oliveira Marques MV. Abelson Tyrosine Kinase Inhibitors in Parkinson's Disease and Lewy Body Dementia: A Systematic Review, Meta-analysis, and Meta-regression. *Clin Neuropharmacol.* Jul-Aug 01 2024;47(4):113-119. doi:10.1097/wnf.0000000000000597
93. Hok AHYS, Del Campo M, Boiten WA, et al. Neuroinflammatory CSF biomarkers MIF, sTREM1, and sTREM2 show dynamic expression profiles in Alzheimer's disease. *J Neuroinflammation.* May 5 2023;20(1):107. doi:10.1186/s12974-023-02796-9
94. Angelopoulou E, Paudel YN, Shaikh MF, Piperi C. Fractalkine (CX3CL1) signaling and neuroinflammation in Parkinson's disease: Potential clinical and therapeutic implications. *Pharmacol Res.* Aug 2020;158:104930. doi:10.1016/j.phrs.2020.104930
95. Oeckl P, Metzger F, Nagl M, et al. Alpha-, Beta-, and Gamma-synuclein Quantification in Cerebrospinal Fluid by Multiple Reaction Monitoring Reveals Increased Concentrations in Alzheimer's and Creutzfeldt-Jakob Disease but No Alteration in Synucleinopathies. *Mol Cell Proteomics.* Oct 2016;15(10):3126-3138. doi:10.1074/mcp.M116.059915
96. Barba L, Paolini Paoletti F, Bellomo G, et al. Alpha and Beta Synucleins: From Pathophysiology to Clinical Application as Biomarkers. *Mov Disord.* Apr 2022;37(4):669-683. doi:10.1002/mds.28941
97. Rahman MM, Lendel C. Extracellular protein components of amyloid plaques and their roles in Alzheimer's disease pathology. *Mol Neurodegener.* Aug 28 2021;16(1):59. doi:10.1186/s13024-021-00465-0
98. Liu IH, Uversky VN, Munishkina LA, Fink AL, Halfter W, Cole GJ. Agrin binds alpha-synuclein and modulates alpha-synuclein fibrillation. *Glycobiology.* Dec 2005;15(12):1320-31. doi:10.1093/glycob/cwj014
99. Coulson DT, Beyer N, Quinn JG, et al. BACE1 mRNA expression in Alzheimer's disease postmortem brain tissue. *J Alzheimers Dis.* 2010;22(4):1111-22. doi:10.3233/jad-2010-101254
100. Mathews PM, Levy E. Cystatin C in aging and in Alzheimer's disease. *Ageing Res Rev.* Dec 2016;32:38-50. doi:10.1016/j.arr.2016.06.003
101. Liu L, Liu L, Lu Y, Zhang T, Zhao W. GDP dissociation inhibitor 1 (GDI1) attenuates β -amyloid-induced neurotoxicity in Alzheimer's diseases. *Neurosci Lett.* Jan 1 2024;818:137564. doi:10.1016/j.neulet.2023.137564
102. Agbemenyah HY, Agis-Balboa RC, Burkhardt S, Delalle I, Fischer A. Insulin growth factor binding protein 7 is a novel target to treat dementia. *Neurobiol Dis.* Feb 2014;62:135-43. doi:10.1016/j.nbd.2013.09.011
103. Bishnoi RJ, Palmer RF, Royall DR. Serum interleukin (IL)-15 as a biomarker of Alzheimer's disease. *PLoS One.* 2015;10(2):e0117282. doi:10.1371/journal.pone.0117282
104. Hansson O, Santillo AF, Meeter LH, et al. CSF placental growth factor - a novel candidate biomarker of frontotemporal dementia. *Ann Clin Transl Neurol.* May 2019;6(5):863-872. doi:10.1002/acn3.763
105. Skillbäck T, Mattsson N, Hansson K, et al. A novel quantification-driven proteomic strategy identifies an endogenous peptide of pleiotrophin as a new biomarker of Alzheimer's disease. *Sci Rep.* Oct 17 2017;7(1):13333. doi:10.1038/s41598-017-13831-0

106. Biose IJ, Ismael S, Ouvrier B, White AL, Bix GJ. The Potential Role of Integrin Signaling in Memory and Cognitive Impairment. *Biomolecules*. Jan 5 2023;13(1)doi:10.3390/biom13010108
107. Li G, He X, Li H, et al. Overexpression of Slit2 improves function of the paravascular pathway in the aging mouse brain. *Int J Mol Med*. Oct 2018;42(4):1935-1944. doi:10.3892/ijmm.2018.3802
108. Wang B, Li H, Mutlu SA, et al. The Amyloid Precursor Protein Is a Conserved Receptor for Slit to Mediate Axon Guidance. *eNeuro*. May-Jun 2017;4(3)doi:10.1523/eneuro.0185-17.2017
109. Kivisäkk P, Carlyle BC, Sweeney T, et al. Increased levels of the synaptic proteins PSD-95, SNAP-25, and neurogranin in the cerebrospinal fluid of patients with Alzheimer's disease. *Alzheimers Res Ther*. Apr 23 2022;14(1):58. doi:10.1186/s13195-022-01002-x
110. Yan T, Ding F, Zhao Y. Integrated identification of key genes and pathways in Alzheimer's disease via comprehensive bioinformatical analyses. *Hereditas*. 2019;156:25. doi:10.1186/s41065-019-0101-0
111. Barrachina M, Castaño E, Dalfó E, Maes T, Buesa C, Ferrer I. Reduced ubiquitin C-terminal hydrolase-1 expression levels in dementia with Lewy bodies. *Neurobiol Dis*. May 2006;22(2):265-73. doi:10.1016/j.nbd.2005.11.005
112. Ng ASL, Tan YJ, Lu Z, et al. Plasma ubiquitin C-terminal hydrolase L1 levels reflect disease stage and motor severity in Parkinson's disease. *Aging (Albany NY)*. Jan 13 2020;12(2):1488-1495. doi:10.18632/aging.102695
113. Pesämaa I, Müller SA, Robinson S, et al. A microglial activity state biomarker panel differentiates FTD-granulin and Alzheimer's disease patients from controls. *Mol Neurodegener*. Sep 29 2023;18(1):70. doi:10.1186/s13024-023-00657-w
114. Naz N, Naqvi SF, Hohn N, et al. Cerebral Folate Metabolism in Post-Mortem Alzheimer's Disease Tissues: A Small Cohort Study. *Int J Mol Sci*. Dec 30 2022;24(1)doi:10.3390/ijms24010660
115. Walker DG, Lue LF, Tang TM, et al. Changes in CD200 and intercellular adhesion molecule-1 (ICAM-1) levels in brains of Lewy body disorder cases are associated with amounts of Alzheimer's pathology not α -synuclein pathology. *Neurobiol Aging*. Jun 2017;54:175-186. doi:10.1016/j.neurobiolaging.2017.03.007
116. Dayon L, Núñez Galindo A, Wojcik J, et al. Alzheimer disease pathology and the cerebrospinal fluid proteome. *Alzheimers Res Ther*. Jul 18 2018;10(1):66. doi:10.1186/s13195-018-0397-4
117. Wu Y, Libby JB, Dumitrescu L, et al. Association of 10 VEGF Family Genes with Alzheimer's Disease Endophenotypes at Single Cell Resolution. *bioRxiv*. May 22 2024;doi:10.1101/2024.04.12.589221
118. Johnson ECB, Bian S, Haque RU, et al. Cerebrospinal fluid proteomics define the natural history of autosomal dominant Alzheimer's disease. *Nat Med*. Aug 2023;29(8):1979-1988. doi:10.1038/s41591-023-02476-4
119. Roberts JA, Varma VR, Candia J, et al. Unbiased proteomics and multivariable regularized regression techniques identify SMOC1, NOG, APCS, and NTN1 in an Alzheimer's disease brain proteomic signature. *NPJ Aging*. Jul 6 2023;9(1):18. doi:10.1038/s41514-023-00112-6
120. Zhang X, Zhu C, Beecham G, et al. A rare missense variant of CASP7 is associated with familial late-onset Alzheimer's disease. *Alzheimers Dement*. Mar 2019;15(3):441-452. doi:10.1016/j.jalz.2018.10.005

121. Sohma H, Imai S, Takei N, et al. Evaluation of annexin A5 as a biomarker for Alzheimer's disease and dementia with lewy bodies. *Front Aging Neurosci.* 2013;5:15. doi:10.3389/fnagi.2013.00015
122. Nilsson J, Pichet Binette A, Palmqvist S, et al. Cerebrospinal fluid biomarker panel for synaptic dysfunction in a broad spectrum of neurodegenerative diseases. *Brain.* Jul 5 2024;147(7):2414-2427. doi:10.1093/brain/awae032
123. Soldan A, Oh S, Ryu T, et al. NPTX2 in Cerebrospinal Fluid Predicts the Progression From Normal Cognition to Mild Cognitive Impairment. *Ann Neurol.* Oct 2023;94(4):620-631. doi:10.1002/ana.26725
124. Zhou J, Wade SD, Graykowski D, et al. The neuronal pentraxin Nptx2 regulates complement activity and restrains microglia-mediated synapse loss in neurodegeneration. *Sci Transl Med.* Mar 29 2023;15(689):eadf0141. doi:10.1126/scitranslmed.adf0141
125. Sirkis DW, Bonham LW, Karch CM, Yokoyama JS. Immunological signatures in frontotemporal lobar degeneration. *Curr Opin Neurol.* Apr 2019;32(2):272-278. doi:10.1097/wco.0000000000000665
126. Hsiao-Nakamoto J, Chiu CL, VandeVrede L, et al. Alterations in Lysosomal, Glial and Neurodegenerative Biomarkers in Patients with Sporadic and Genetic Forms of Frontotemporal Dementia. *bioRxiv.* Feb 12 2024;doi:10.1101/2024.02.09.579529
127. Pankiewicz JE, Lizińczyk AM, Franco LA, Sadowski MJ. Peroxiredoxin 6 Regulates Glia Toxicity in Tau Mediated Neurodegeneration. *Alzheimer's & Dementia.* 2022;18(S3):e060472. doi:<https://doi.org/10.1002/alz.060472>
128. Gómez-Tortosa E, Sanders JL, Newell K, Hyman BT. Cortical neurons expressing calcium binding proteins are spared in dementia with Lewy bodies. *Acta Neuropathol.* Jan 2001;101(1):36-42. doi:10.1007/s004010000270
129. Donaghy PC, Cockell SJ, Martin-Ruiz C, et al. Blood mRNA Expression in Alzheimer's Disease and Dementia With Lewy Bodies. *Am J Geriatr Psychiatry.* Sep 2022;30(9):964-975. doi:10.1016/j.jagp.2022.02.003
130. Del Campo M, Peeters CFW, Johnson ECB, et al. CSF proteome profiling across the Alzheimer's disease spectrum reflects the multifactorial nature of the disease and identifies specific biomarker panels. *Nat Aging.* Nov 2022;2(11):1040-1053. doi:10.1038/s43587-022-00300-1

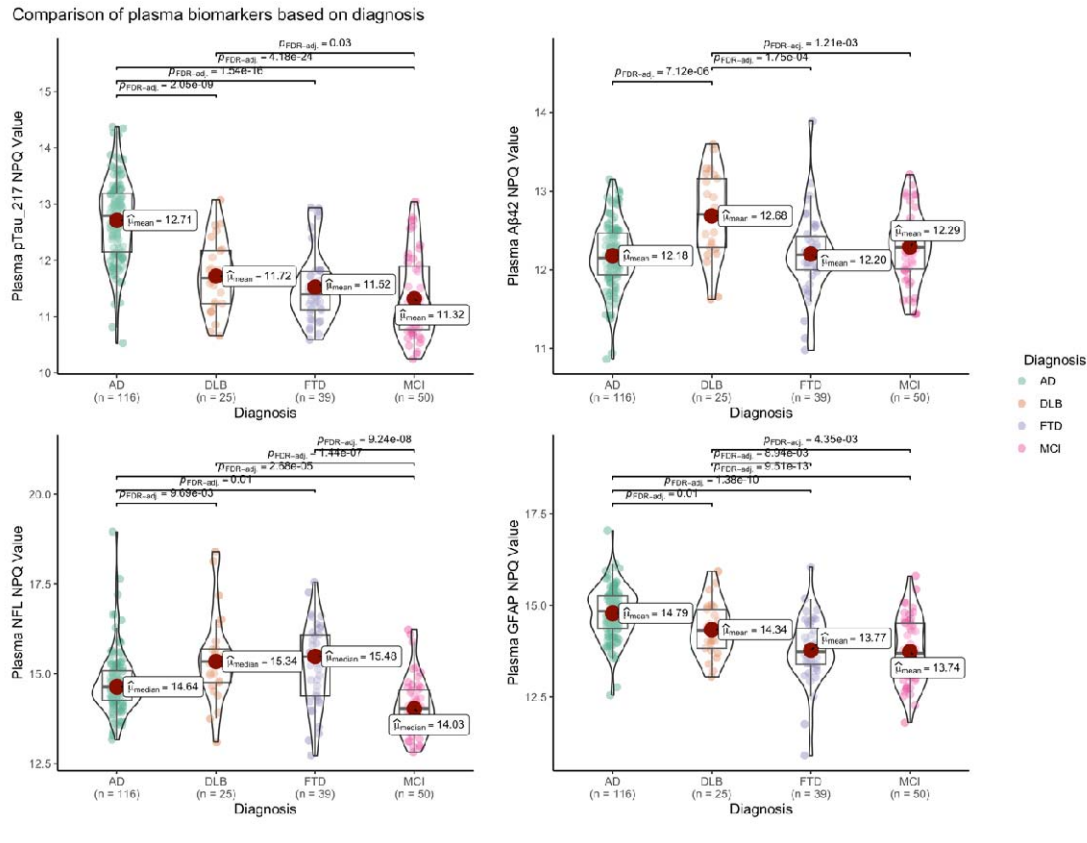


Figure 1. Violin plots illustrating plasma biomarker levels of pTau₂₁₇, Aβ₄₂, NFL, and GFAP across patients with AD, DLB, FTD, and MCI. Each violin plot shows the distribution of normalized NPQ values for each biomarker within the diagnostic groups, with mean or median values highlighted by red squares. Statistically significant differences between diagnostic groups were assessed using adjusted p-values ($p < 0.05$, FDR-adj indicated) from group comparisons. NPQ: Normalized Protein Quantification, pTau-217: Phosphorylated tau-217, Aβ₄₂: amyloid-beta 42, NFL: neurofilament light chain, GFAP: glial fibrillary acidic protein, AD: Alzheimer’s Disease, DLB: Dementia with Lewy Bodies, FTD: Frontotemporal Dementia, MCI: Mild Cognitive Impairment, FDR-adj: Post hoc pairwise Dunn’s test with FDR (False Discovery Rate) adjustment

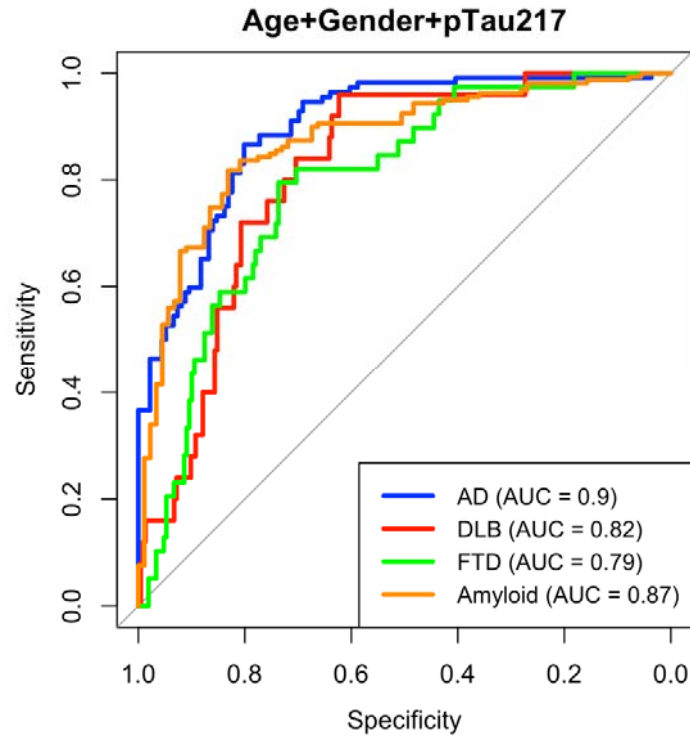


Figure 2. ROC curves for CSF amyloid status, AD, DLB and FTD diagnosis. The ROC curves display the diagnostic performance of a model combining plasma pTau217 levels, age, and gender for predicting AD, DLB, FTD diagnoses, and amyloid status in cerebrospinal fluid (CSF), separately. The AUC for AD, DLB, FTD, and amyloid positivity are 0.9, 0.82, 0.79, and 0.87, respectively. AD: Alzheimer's Disease, DLB: Dementia with Lewy Bodies, FTD: Frontotemporal Dementia, AUC: Area Under the Curve

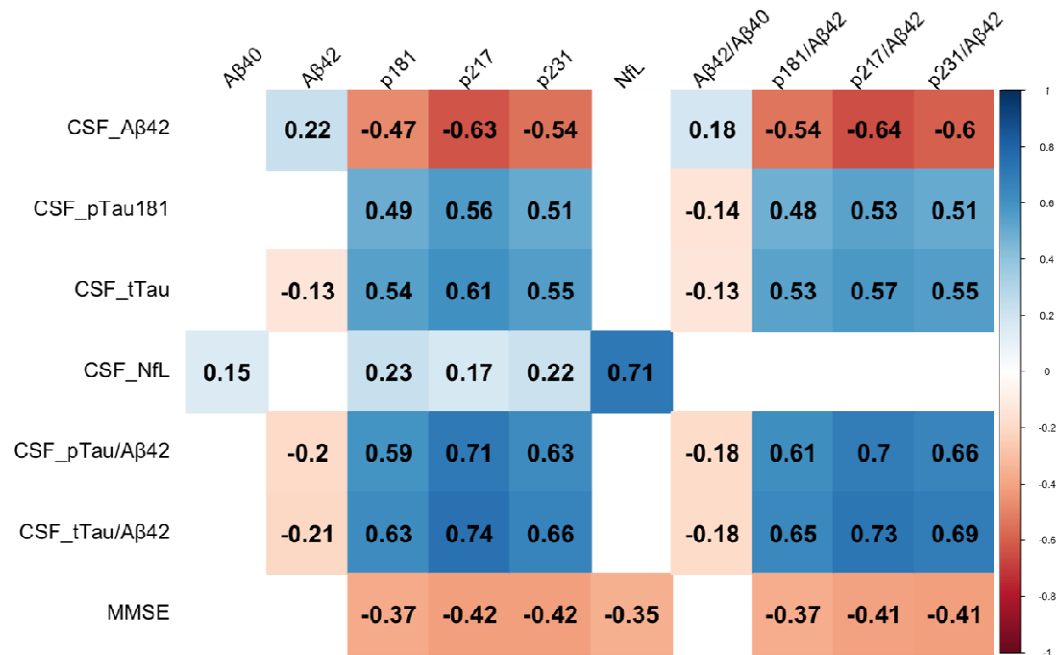


Figure 3. Correlation heatmap between CSF and plasma biomarkers for all cohort. The heatmap displays the correlation between CSF biomarkers and MMSE on the y-axis and plasma biomarkers on the x-axis. The numbers represent Spearman correlation coefficients, indicating the strength and direction of the relationships between the variables. Blue indicates positive correlations, and red indicates negative correlations. Only FDR corrected p value < 0.05 are shown. Aβ42: Amyloid-beta 42, Aβ40: Plasma Amyloid-beta 40, pTau181: Phosphorylated tau 181, tTau: Total tau, NfL: Neurofilament light chain, pTau/Aβ42: Ratio of phosphorylated tau 181 to Aβ42, tTau/Aβ42: Ratio of total tau to Aβ42, MMSE: Mini-Mental State Examination score, p181: Phosphorylated tau-181, p217: Phosphorylated tau-217, p231: Phosphorylated tau-231, Aβ42/Aβ40: Ratio of Aβ42 to Aβ40, p181/Aβ42: Ratio of phosphorylated tau 181 to Aβ42, p217/Aβ42: Ratio of phosphorylated tau 217 to Aβ42, p231/Aβ42: Ratio of phosphorylated tau 231 to Aβ42.

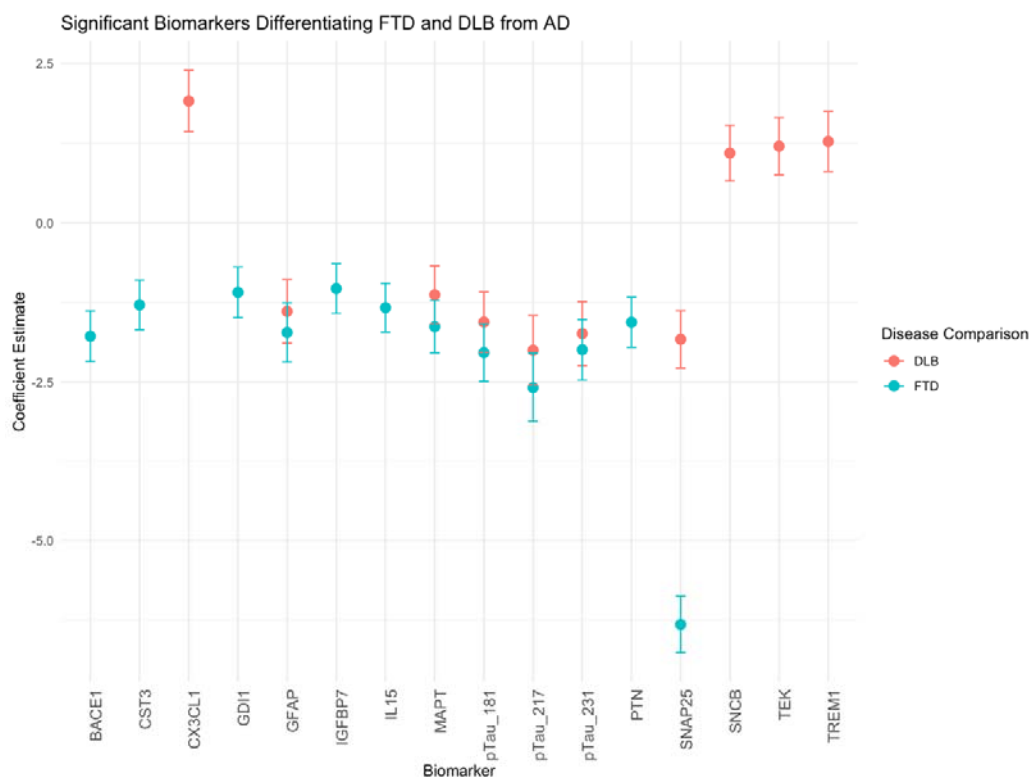


Figure 4. Multinomial Logistic Regression Coefficients for Biomarkers Differentiating DLB and FTD from AD. Biomarkers that above zero are increased in DLB compared to AD. Biomarkers that below zero are increased in AD compared to DLB or FTD. FTD: Frontotemporal Dementia, DLB: Dementia with Lewy Bodies, AD: Alzheimer’s Disease, BACE1: beta-site amyloid precursor protein cleaving enzyme 1, CST3: cystatin C, CX3CL1: chemokine (C-X3-C motif) ligand 1 (fractalkine), GDI1: GDP dissociation inhibitor 1, GFAP: glial fibrillary acidic protein, IGFBP7: insulin-like growth factor binding protein 7, IL15: interleukin-15, MAPT: microtubule-associated protein tau, pTau181: phosphorylated Tau-181, pTau217: Phosphorylated Tau-217, pTau231: Phosphorylated Tau-231, PTN: pleiotrophin, SNAP25: synaptosomal-associated protein 25, SNCB: beta synuclein, TEK: tyrosine kinase, TREM1: triggering receptor expressed on myeloid cells 1

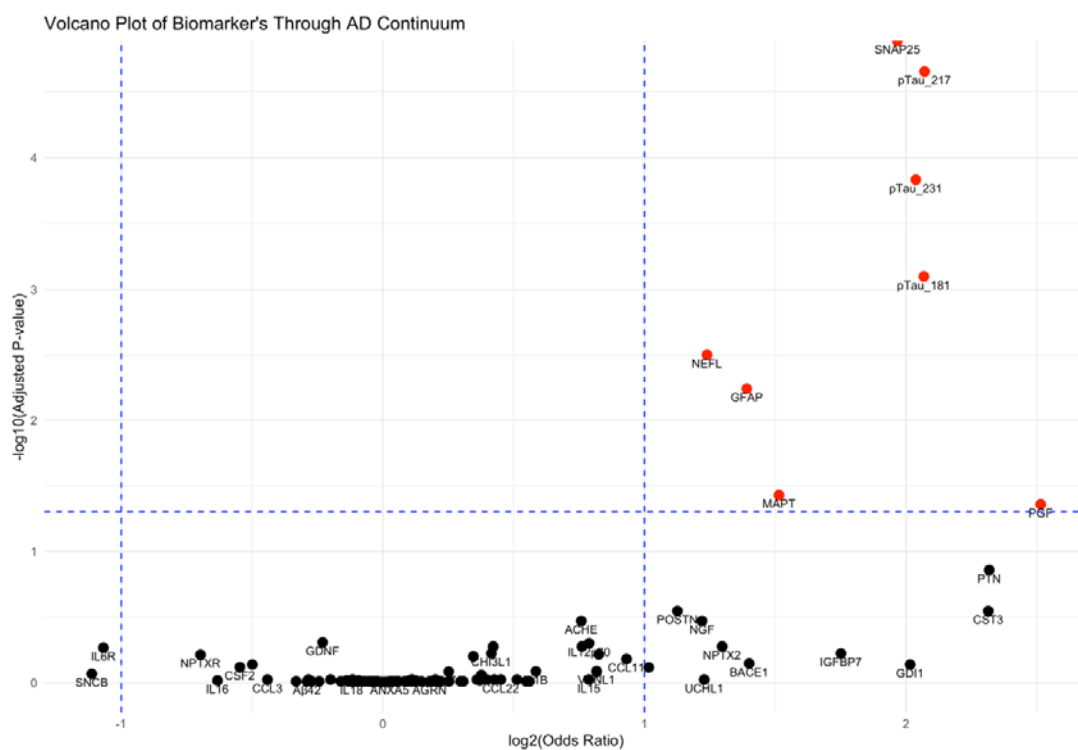


Figure 5. Volcano Plot of Biomarkers Across the AD Continuum Based on Ordinal Regression. Red biomarkers are significantly increasing with disease stage. AD: Alzheimer's Disease, pTau181: phosphorylated tau-181, pTau217: phosphorylated tau-217, pTau231: phosphorylated tau-231, SNAP25: synaptosomal-associated protein 25, NEFL: neurofilament light chain, GFAP: glial fibrillary acidic protein, MAPT: microtubule-associated protein tau, PGF: placental growth factor

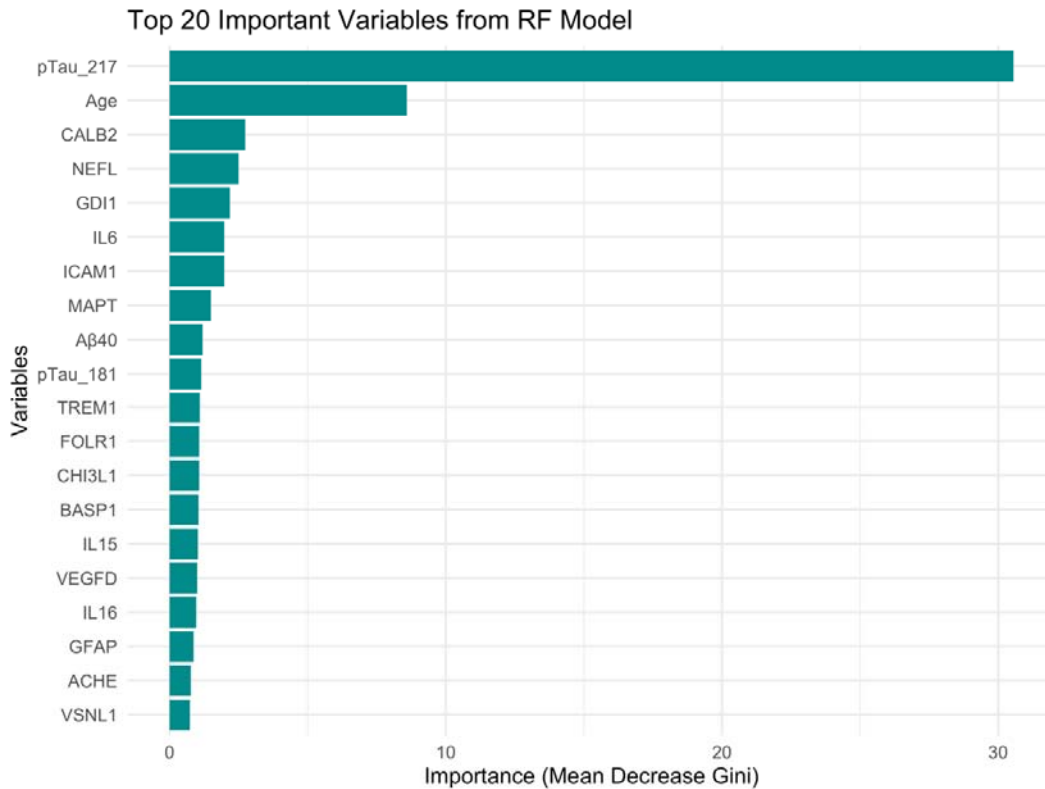


Figure 6. Top 20 Important Variables for Differentiating AD, DLB, and FTD using a Random Forest Model. The plot ranks the top 20 most important variables based on the Mean Decrease Gini score from the Random Forest model. pTau_217: phosphorylated tau-217, CALB2: calretinin, NEFL: neurofilament light chain, GDI1: GDP dissociation inhibitor 1, IL6: interleukin 6, ICAM1: intercellular adhesion molecule 1, MAPT: microtubule-associated protein tau, Aβ40: amyloid beta 40, pTau_181: phosphorylated tau-181, TREM1: triggering receptor expressed on myeloid cells 1, FOLR1: folate receptor 1, CHI3L1(YKL40): chitinase-3-like protein 1, BASP1: brain acid soluble protein 1, IL15: interleukin 15, VEGFD: vascular endothelial growth factor D, IL16: interleukin 16, GFAP: glial fibrillary acidic protein, ACHE: acetylcholinesterase, VSNL1: visinin like 1