

# The retina across the psychiatric spectrum: a systematic review and meta-analysis

Nils M. Kallen, M.D.<sup>1\*</sup>, Giacomo Cecere, M.D.<sup>1\*</sup>, Dario Palpella, M.D.<sup>3\*</sup>, Finn Rabe, Ph.D.<sup>1</sup>, Foivos Georgiadis, M.D.<sup>1</sup>, Paul Badstübner<sup>4</sup>, Victoria Edkins, Ph.D.<sup>1</sup>, Miriam Trindade<sup>4</sup>, Stephanie Homan, Ph.D.<sup>1</sup>, Wolfgang Omlor, M.D., Ph.D.<sup>1</sup>, Erich Seifritz, M.D.<sup>1</sup>, Philipp Homan, M.D., Ph.D.<sup>1,2</sup>

1 University Hospital of Psychiatry Zurich, Zurich, Switzerland.

2 Neuroscience Center Zurich, University and ETH Zurich, Zurich, Switzerland.

3 Università degli Studi di Milano-Bicocca, Milan, Italy

4 University of Zurich, Zurich, Switzerland

\* These authors contributed equally to this work

Author for correspondence: Philipp Homan, MD, PhD. Department of Adult Psychiatry and Psychotherapy, Psychiatric Hospital, University of Zurich, Lenggstrasse 31, 8032 Zurich, Switzerland. Email: philipp.homan@bli.uzh.ch

## Abstract:

The identification of structural retinal layer differences between patients diagnosed with certain psychiatric disorders and healthy controls has provided a potentially promising route to the identification of biomarkers for these disorders. Optical coherence tomography has been used to study whether retinal structural differences exist in schizophrenia spectrum disorders (SSD), bipolar disorder (BPD), major depressive disorder (MDD), obsessive-compulsive disorder (OCD), attention deficit hyperactivity disorder (ADHD), and alcohol and opiate use disorders. However, there is considerable variation in the amount of available evidence relating to each disorder and heterogeneity in the results obtained. We conducted the first systematic review and meta-analysis of evidence across all psychiatric disorders for which data was available. The quality of the evidence was graded and key confounding variables were accounted for. Of 381 screened articles, 87 were included. The evidence was of very low to moderate quality. Meta-analyses revealed that compared to healthy controls, the peripapillary retinal nerve fiber layer (pRNFL) was significantly thinner in SSD (SMD = -0.32;  $p < 0.001$ ), BPD (SMD = -0.4;  $p < 0.001$ ), OCD (SMD = -0.26;  $p = 0.041$ ), and ADHD (SMD = -0.48;  $p = 0.033$ ). Macular thickness was only significantly less in SSD (SMD = -0.59;  $p < 0.001$ ). pRNFL quadrant analyses revealed that reduced pRNFL thickness in SSD and BPD was most prominent in the superior and inferior quadrants. Macular subfield analyses indicated that BPD may have region-specific effects on retinal thickness. In

NOTE: This preprint reports new research that has not been certified by peer review and should not be used to guide clinical practice.

conclusion, these findings suggest substantial retinal differences in SSD and BPD, reinforcing their potential as biomarkers in clinical settings.

## 1. Introduction

The efficacy of current pharmacological options for many psychiatric illnesses is limited. This is in part due to the heterogeneity with which these illnesses are presented and in part due to an incomplete understanding of their neurochemical bases [1-3]. The identification of biomarkers for psychiatric disorders offers potential for improving diagnosis, therapeutics, and prognosis.

In the search for such biomarkers, oculomics research examining the retina has gained traction in the last decade. The retina and the brain are embryologically and structurally similar. The retina is immunoprivileged, since it is shielded from external and internal threats by its blood-retinal barriers and an immune-suppressive microenvironment. Furthermore, it utilizes the same neurotransmitters and has a layered structure, similar to that of the brain. These features, in addition to the opportunity afforded by optical coherence tomography (OCT) to image the retina non-invasively, have led to the exploration of its use as a surrogate marker to understand or detect structural changes in the brain.

The retina captures incoming photons and transmits them as electrical and chemical signals along neural pathways to the occipital lobe, enabling the brain to create visual images. The retina comprises ten distinct layers. From innermost to outermost, these layers are the inner limiting membrane; the retinal nerve fiber layer (RNFL); the ganglion cell layer (GCL); the inner plexiform layer (IPL); the outer plexiform layer; the outer nuclear layer; the external limiting membrane; the photoreceptor layer; and the retinal pigment epithelium. The macula, the most visually sensitive area of the retina, sits at the center of the retina [4]. See Figure 1 for a simplified diagram of the retinal layers of interest.

Research across various neurological conditions, including multiple sclerosis [5], Parkinson's disease [6-8], and Alzheimer's disease [9], has found that thinning of retinal layers correlates with brain volume loss and disease progression. Similarly, the retina has emerged as a novel focus in psychiatric research.

In the last decade, an increasing number of studies have used OCT to investigate possible relationships between psychiatric diagnoses and measurements of retinal structures [10-96]. Most studies have focused on RNFL thickness, macular thickness (MT), or macular volume (MV) in people diagnosed with

schizophrenia spectrum disorders (SSD) (see Supplementary (hereafter denoted as 'S in table and figure references) Table S1). Fewer have examined retinal differences in patients with bipolar disorder (BPD) (Table S2) or major depressive disorder (MDD) (Table S3). A limited number of studies have considered other disorders such as attention-deficit/hyperactivity disorder (ADHD) (Table S4), obsessive-compulsive disorder (OCD) (Table S5), or substance use disorders such as alcohol use disorder (AUD) or opiate use disorder (OUD) (Table S6). Collectively, the findings of these studies have been inconclusive due to a lack of data with respect to some disorders and inconsistencies in the results obtained.

The heterogeneity of results obtained to date might be attributable to several factors. First, it could be explained by confounding factors such as patients' ages, disease severity, disease stage (e.g. first episode or recurrent presentation), or smoking which is more common in patients with some psychiatric disorders than in the general population [97-100]. In the few studies that made retinal comparisons between different psychiatric disorders [11, 35, 58, 62], it was rare to account for the higher rates of comorbidities such as hypertension and diabetes in some illnesses compared to others [27, 41, 51]. Second, heterogeneity could have resulted from inconsistencies and differences in the measurements taken. While most studies reported peripapillary RNFL (pRNFL) thickness, some only reported macular RNFL thickness or did not specify the location of measurements (see Tables S18 - S20 for summary). Finally, the eye or eyes measured and how these measurements were reported varied considerably. Most studies reported values for each eye separately, but some reported the values for only the right eye or the mean for both eyes. In some cases, the laterality of the eye measured was not reported [33, 71] or the laterality of the eye measured was randomized [66, 93], despite significant differences between the right and left eyes in healthy controls [101, 102].

To prove useful as a diagnostic biomarker, different diagnoses would ideally show different retinal phenotypes. A study utilizing UK Biobank data [103] compared retinal thickness differences observed in SSD, BPD, and MDD. Deviations across diagnostic groups were driven by SSD and BPD with a significant difference in MT observed between the two. A systematic review and thematic synthesis of studies examining retinal differences in patients with SSD, BPD and MDD [104] found that abnormal findings were most common in SSD, followed by BPD, with no difference found in MDD. Whilst collectively these results could suggest retinal thinning to be a trait marker for SSD and BPD, the

observational study designs used are not suitable to distinguish cause and effect for the observed parameters and are prone to bias in the selection of patients, controls and covariates. Clinical studies with a diagnostic design would help address the question of diagnostic accuracy and reproducibility. Unfortunately, such studies are lacking, as the area of clinical application (e.g. diagnosis, prognosis, assessment of disease progression or evaluation of therapeutic response) remains unclearly defined and, as highlighted, the question of whether psychiatric diagnoses present distinct RNLF and/or macular thinning profiles remains unanswered.

Meta-analysis provides an ideal means by which to attempt to clarify the existence of differential phenotypes across psychiatric disorders, enabling the utilization of studies with different foci and methodologies whilst simultaneously providing a more accurate prediction of effect size. Although meta-analyses carried out have provided valuable insights, methodological and scope-related limitations curtail their ability to provide a comprehensive understanding. Meta-analyses to date have included a limited number of psychiatric conditions, namely SDD and BPD [105, 106] or SDD, BPD and MDD [104]. Several studies [104-109] did not assess the certainty of evidence using the GRADE framework which would have helped to clarify the strength of conclusions drawn. In the one case where grading of the evidence was performed [110], it was done partially, without considering upgrading factors such as the magnitude of the effect or dose-response relationships. This would have limited the maximal quality of evidence achievable to “low”.

The aim of this systematic review and meta-analysis was to provide understanding of the retinal differences that can be observed across all psychiatric disorders for which data are available – SDD, BPD, MDD, ADHD, OCD, AUD and OUD. Key confounding variables (age, sex, disease duration and smoking status) and ocular laterality were accounted for, and a full GRADE assessment with consideration of upgrading factors was performed. The analysis provides a comprehensive overview of the available evidence relating to the existence of potential retinal biomarker candidates. It highlights both promising biomarker candidates and informs future research directions.

## **2. Methods**

### **2.1 Study design and protocol**

The current systematic review and meta-analysis is based on the Preferred Reporting Items for Systematic Reviews and Meta-Analyses (PRISMA) 2020 Statement and registered on the international prospective register of systematic reviews PROSPERO (<https://www.crd.york.ac.uk/prospero/>, ID: CRD42023442718) [111].

### **2.2. Eligibility criteria**

We included all studies that met the following eligibility criteria: (1) a study population with any psychiatric diagnosis according to the International Statistical Classification of Diseases and Related Health Problems 10th Revision (ICD-10), or the Diagnostic and Statistical Manual of Mental Disorders (DSM) IV or V criteria; (2) inclusion of data from at least one OCT measurement; (3) inclusion of a healthy control group; (4) a minimum participant number of 10 per condition. Studies were excluded which (i) included samples with a mean age of <18 years; (ii) utilized post-mortem measurements; (iii) only reporting OCT angiography, choroidal layer, or optic cup/disk parameters; (iv) had not undergone peer review (e.g., conference abstracts and dissertations); (v) reported incomplete data; or (vi) exclusively used biobank data.

### **2.3 Search strategy and study selection**

We systematically searched Embase, MEDLINE, and APA PsycINFO databases for articles indexed prior to June 2024, without language or publication date restrictions. The full search strategy is reported in Supplementary File 1. We carried out an additional, post hoc, non-systematic search on Google Scholar to check for further studies. We also performed a manual search of the reference lists of two relevant and recent reviews [104, 110].

### **2.4 Data extraction**

We used a standard template to extract key information for all eligible studies: year of publication; country of research; inclusion and exclusion criteria; sample size, mean age and sex ratio of participants; diagnosis; duration of treatment and/or illness; chlorpromazine equivalents; participants' smoking status; OCT device used; laterality of the measurements (left, right, or both); and retinal measurements included. Only baseline measurements were included if the study reported multiple

longitudinal retinal assessments. In studies where multiple groups were compared (e.g., age groups [80] or clinical presentations [11, 16, 55, 71, 81, 89, 112]), we extracted data for all groups and the results were incorporated individually in the consecutive analyses. In studies that compared measurements from the same participants using two devices [55, 112], we used the exhaustive measurements that came from the most common device among all studies. We extracted the study with the larger sample size in case of partial participant overlap, or the study which contained the most participant details in the case of complete overlap. In studies where medication dosage was not reported in chlorpromazine equivalents [44, 58, 93], we used the formulas from Leucht et al. [113, 114] to convert them for comparability. Four authors independently extracted data for a blind check of accuracy.

## 2.5 Evaluation of Study Quality

The quality of each study included in our systematic review and meta-analysis was evaluated using the Newcastle-Ottawa Scale (NOS). [115] Higher scores on the NOS indicate better study quality. Two researchers independently assessed each study using the NOS. In cases where their assessments differed, they resolved the discrepancies through discussion to reach a consensus on the final NOS score. For study summaries including NOS scores see Tables S1 – S6.

## 2.6 Data analysis

Meta-analyses were performed for each retinal measure and diagnosis when data from at least three samples were available. When studies reported the means and standard deviations (SD) of retinal measurements separately for the left and right eyes, we calculated a combined mean and SD representing both eyes and used this for the main analyses. Meta-analysis of each retinal measurement was based on standardized mean difference (SMD) with a 95% confidence interval (CI). Pooled estimates were obtained by weighing each study according to a random-effects (RE) model. Heterogeneity across studies was evaluated according to standard cut-offs for  $I^2$  statistics. [116] Publication bias was assessed using Egger's regression test [117] for correlates when data was available from at least 10 studies [118]. We used the trim-and-fill method for analyses which provided an Egger's test score of  $p < 0.10$ . For analyses with at least 10 studies which showed statistical significance ( $p < 0.05$ ) but high heterogeneity ( $I^2 > 50\%$ ), we performed a sequential sensitivity analysis.

The minimum number of studies required to reduce the I<sup>2</sup> value below 50% were then removed and a further assessment carried out to determine whether the new estimates remained significant [119].

Influential studies were identified using differences in fits (DFFITS), differences in beta values (DFBETAS), cook's distances, and hat values according to standard thresholds [120]. Influential studies were examined in detail to understand whether the results were due to specific bias, a measurement modality, or patient characteristics. The respective meta-analyses were repeated after influential study exclusion to assess their effect on the main results.

If a meta-analysis for a specific retinal parameter was statistically significant and included at least 10 samples, we conducted meta-regression analyses. These analyses explored the influence of factors such as age, sex, disease duration, and chlorpromazine equivalents, NOS ratings, and Positive and Negative Syndrome Scale for Schizophrenia (PANSS) scores on the retinal parameters.

All analyses were performed in R (4.2.3) using the metafor package [121].

## **2.7 Grading of the evidence**

We used the standard GRADE items approach [122] for non-interventional observational studies, to classify the certainty of the evidence as high, moderate, low, or very low, for each variable showing a statistically significant estimate ( $p < 0.05$ ). First, we evaluated the effect according to the standard cut-offs for SMD magnitude (0.2 small, 0.5 medium, 0.8 large) We downgraded or upgraded the certainty of the evidence by one level if the magnitude was small ( $SMD < 0.2$ ) or large ( $SMD > 0.8$ ) respectively. We also upgraded for a dose-response relationship if the meta-regression analysis assessing the effect of disease duration was significant.

Second, we assessed the impact of "risk of bias" on our findings by using meta-regression analyses to determine whether lower-quality studies, as identified by the NOS, were linked to greater differences in retinal measurements. The same approach was applied to account for potential biases due to age or sex differences between patients and controls. If any of these analyses revealed significant bias and the resulting controlled meta-analyses showed no significant results, we downgraded the quality of evidence by one level.

Third, we evaluated the precision of the effect estimates using a minimally contextualized approach [123]. We defined a minimal important difference, set at  $\Delta=-0.2$  for all retinal parameters, corresponding to an optimal information size of 800 participants ( $\alpha=0.05$ ;  $\beta=0.2$ ). We then examined the upper CI of the pooled estimates and downgraded the certainty of the evidence if the upper CI reached or exceeded the minimal important difference. In the case that the upper CI did not encompass the minimal important difference, we downgraded by one level if the total sample was less than 50% of the optimal information size. In addition, we assessed the “consistency” of findings according to the  $I^2$  value. We downgraded the quality of evidence by one level if inconsistency was estimated ( $I^2 \geq 50\%$ ) and the sequential between-study heterogeneity sensitivity analysis was non-significant.

Finally, we estimated the risk of “publication bias”, downgrading the quality of evidence by one level if fewer than 10 studies were included or Egger’s test p-value was  $<0.10$ , and the trim-and-fill method did not show significant differences in the retinal measurement. We thus labeled effect estimates as (i) high, (ii) moderate, (iii) low, or (iv) very low quality, depending on whether they (i) lay close, (ii) were likely to be close but possibly substantially different, (iii) might be substantially different, or (iv) were likely to be substantially different to the true effect [124]. The quality was addressed independently by three authors and any disagreement was resolved through discussion.

### **3. Results**

#### **3.1 Descriptive Statistics**

Our search generated 605 records (328 from Embase, 188 from PubMed, and 89 from PsycINFO). After removing duplicates, 382 unique articles were screened. Following title and abstract review, 160 potentially eligible studies were retrieved for full-text assessment. Of these, 79 studies were excluded: 29 were grey literature, 21 lacked the predefined measures of interest, 10 included heterogeneous samples, 6 did not provide sufficient data for meta-analysis, 3 were Biobank studies, 2 lacked a healthy control group, 1 had fewer than 10 participants in one or more groups, and 7 had samples which overlapped with an included study. Additionally, from the reference list of Komatsu et al. (2024), seven relevant studies missing from our search were identified, of which one was excluded due to sample overlap. The remaining 87 studies were included in the meta-analysis [10-96]. The study selection process is presented in Figure S1. For an overview of the studies included, see Tables S1 - S6. Due to



the limited number of studies in OCD, AUD, OUD and ADHD only restricted statistical analyses of publication bias using Egger's test were possible.

Figure 1 summarizes the data available for the meta-analysis for each layer of interest and for each psychiatric diagnosis. The most complete data was available for SDD, followed by BPD and then MDD. For ADHD, OCD, AUD and OUD there were three studies for each disorder which reported pRNFL thickness; insufficient data pertaining to other layers was available. For an overview of data availability per study see Tables S18 – S20.

For pRNFL average thickness and pRNFL thickness in each of the four quadrants, contour-enhanced funnel plots and an Egger's regression test showed no significant publication bias in studies of SSD (Figure S23 and S24 and Table S7 **Fehler! Verweisquelle konnte nicht gefunden werden.**) or MDD (see Figures S36 and S37 and Table S9). In BPD, testing for influential studies revealed that Khalil et al. (2017) [22] substantially contributed to heterogeneity (LOO reduced  $I^2$  from 86.1% to 59.8% and estimated SMD from -0.50 to -0.40). Due to its influence on heterogeneity and the risk of it leading to an overestimation of effect size, the study was excluded from further analyses. For funnel plots and Egger's test results for pRNFL average thickness and pRNFL thickness in each quadrant in studies of BPD, see Figures S31 and S32 and Table S8.

For MT and macular subfields, the contour-enhanced funnel plot indicates publication bias in MT (Egger's test  $p=0.02$ ) and central foveal thickness (Egger's test  $p<0.01$ ) in studies of SSD (Figures S25 - S28 and Table S7). Testing for influential studies and LOO revealed that the study by Sarkar et al. (2021) contributed considerably to heterogeneity in the central foveal subfield (LOO reduced  $I^2$  from 84.4% to 27.1%). Publication bias was non-significant after removing the study and re-calculating the regression models. For studies of BPD, funnel plots did not provide evidence of publication bias for MT or macular subfields (see Figure S33 - S35 and Table S8).

In relation to SSD: For MV, funnel plots and an Egger's test did not point to publication bias (Figure S29). For GCL-IPL, there was evidence of a slight publication bias (Egger's test  $p= 0.04$ ), favoring a conservative estimate (Figure S30 and Table S7). Heterogeneity was low ( $I^2$  28.3%) and testing for influential studies did not reveal any that contributed considerably to heterogeneity.

## 3.2 Meta-Analysis

### Comparative Results for pRNFL thickness

We used a RE model to calculate the pooled SMDs between pRNFL thickness for each disorder and healthy controls. Figure 2 displays these RE model results. A significant difference with a small- to medium-effect size was observed whereby thickness was less in SSD (SMD -0.32, CI -0.42 – 0.21,  $p < 0.01$ ) and BPD (SMD -0.40, CI -0.56 - -0.23,  $p < 0.01$ ) than in controls. We did not find evidence of significant pRNFL differences in MDD (SMD 0.09, CI -0.22 – 0.04,  $p = 0.2$ ). In OCD and ADHD the pRNFL was significantly thinner in patients than in controls (OCD: SMD -0.26, CI -0.5 – 0.01,  $p = 0.04$ , ADHD: SMD -0.48, CI -0.92 - -0.04,  $p = 0.03$ ). No significant difference was found in AUD (SMD -0.45, CI -1.25 – 0.36,  $p = 0.28$ ) or OUD (SMD 0.11, CI -0.54 – 0.76,  $p = 0.74$ ). For individual forest plots see Figures S3 – S9).

Meta-regression analyses to evaluate the effect of covariates revealed a negative correlation between disease duration and overall pRNFL thickness and a slight positive correlation between chlorpromazine equivalents and overall pRNFL thickness. (See Tables S10 – S16.)

### Comparative results for pRNFL quadrants

Figure 3 shows comparative SMDs for SSD, BPD and MDD. In SSD, all pRNFL quadrants were significantly thinner than in controls. The observed effect was strongest for the superior and inferior quadrants (superior: SMD -0.25, CI -0.38 - -0.13,  $p < 0.001$ ; inferior: SMD -0.25, CI -0.38 - -0.13,  $p = 0.001$ ) and less pronounced for the temporal and nasal subfields (temporal: SMD -0.20, CI -0.30 - -0.09,  $p < 0.001$ ; nasal: SMD -0.14, CI -0.26 - -0.02,  $p = 0.027$ ). A negative correlation between pRNFL thickness and disease duration was observed in the superior quadrant (mirroring the correlation observed for overall pRNFL thickness), but not in the temporal, inferior or nasal quadrants. A negative correlation with PANSS total score was observed in the nasal quadrant. See Tables S10 – S16, for results of meta regressions, and Figure S10 for the forest plots.

For BPD there were only significant differences in some quadrants: The effect sizes were greatest in the superior and inferior pRNFL quadrants (SMD -0.39, CI -0.52 - -0.25,  $p < 0.001$ , and SMD -0.40, CI -0.54 - -0.26,  $p < 0.001$  respectively), and comparatively small in the nasal quadrant (SMD -0.20, CI -0.39 - -0.01,  $p = 0.04$ ). There was no significant difference in the temporal quadrant (SMD -0.12, CI -0.28 - -0.05,  $p = 0.169$ ). (See Figure S11 for forest plots.)

We found no significant difference between patients and controls in any pRNFL quadrant measure in MDD (superior: SMD -0.01, CI -0.19 - 0.16,  $p = 0.87$ ; inferior: SMD -0.05, CI -0.42 - 0.32,  $p=0.79$ ; temporal: SMD -0.01, CI -0.30 - 0.29,  $p=0.96$ ; nasal: SMD -0.09, CI -0.36 - 0.18,  $p=0.48$ ). For forest plots see Figure S12.

### **Comparative Results for Overall Macula and Subfields**

MT was significantly less in SSD than in controls (SMD -0.59, CI: -0.78 - -0.39,  $p<0.01$ ); this effect size was medium. No significant difference was found for BPD (SMD -0.2, CI -0.51 - 0.10,  $p=0.18$ ) or MDD (SMD -0.05, CI -0.26 - 0.16,  $p=0.64$ ). For forest plots, see Figures S13 – S15. Meta-regression analysis showed a positive correlation of MT differences with age group differences between patient and control groups for SSD. This indicates a possible selection and recruiting bias (see Tables S10 – S16). For BPD and MDD, there were insufficient studies for meta-regression.

We also found that all macular subfield measurements for SSD were significantly less than for controls. This was the case for both the inner (superior: SMD -0.57, CI -0.87 - -0.28,  $p<0.001$ ; inferior: SMD -0.52, CI -0.73 - -0.31,  $p <0.01$ ; temporal: SMD -0.42, CI -0.61 - -0.22,  $p<0.01$ ; nasal: SMD -0.49, CI -0.74 - -0.25,  $p<0.001$ ) and outer rings (superior: SMD -0.57, CI -0.87 - -0.28,  $p<0.01$ ; inferior: SMD -0.52, CI -0.73 - -0.31,  $p<0.01$ ; temporal: SMD -0.42, CI -0.61 - -0.22,  $p<0.01$ ; nasal: SMD -0.49, CI -0.74 - -0.25,  $p<0.01$ ).

Only three studies were available for macular subfield analysis in BPD. Of the inner ring macular subfields, the superior, nasal and temporal subfield measurements were significantly less in patients than controls (superior: SMD -0.43, CI -0.85 - -0.01,  $p=0.04$ ; nasal: SMD -0.44, CI -0.63 - -0.24,  $p<0.01$ ; temporal: SMD -0.47, CI -0.67 - -0.28,  $p<0.01$ ). There was no significant difference for the inferior subfield (SMD -0.36, -0.76 - 0.03,  $p=0.07$ ). For the outer ring macular subfields, only the superior subfield was significantly less than in controls (SMD -0.70, CI -0.95 - -0.45,  $p <0.01$ ). There were no significant differences in the nasal, inferior, and temporal subfields (nasal: SMD -0.24, CI -0.67 - 0.20,  $p=0.29$ ; inferior: SMD -0.13, CI -0.63 - 0.37,  $p=0.61$ ; temporal: SMD -0.21, CI -0.66 - 0.24,  $p=0.35$ ). For an overview of macular differences in SSD and BPD, see Figure S16. For individual forest plots for macula subfields for SSD and BPD, see Figures S17 – S20.

For MV, sufficient data was only available to conduct a meta-analysis for SSD. The difference between patients and controls was significant with a medium effect size (SMD -0.52, CI -0.67 - -0.37,  $p < 0.01$ ). See Figure S21.

### **GCL-IPL**

Research on combined GCL-IPL was limited, with data available only for SSD and MDD. For SSD, a significant thickness difference was observed (SMD -0.40, CI -0.57 - -0.23,  $p < 0.01$ ). In MDD the difference was almost significant (SMD -0.24, CI: -0.48 - 0.01,  $p = 0.06$ ).

### **3.3 Grading of the evidence**

According to the GRADE assessment, no evidence was deemed to be of high quality. The strongest evidence was for SSD, which demonstrated moderate certainty for overall pRNFL thinning. The evidence for SSD was of low-quality for all macular measurements (10 out of 10) and of low or very low-quality evidence for the pRNFL quadrant measurements (two each). For BPD, most evidence was rated as “very low” for most measurements. For only three measurements (overall, inferior, and superior RNFL thinning in both eyes) was the evidence rated as “low”. The other diagnostic groups (MDD, OCD, ADHD, AUD, and OUD) consistently showed very low-quality evidence across all statistically significant results. The downgrades were primarily due to imprecise CIs and publication bias resulting from the small number of studies. Smaller effect sizes and inconsistency due to the limited studies also contributed to the downgrades, although to a lesser extent. A small subset of the SSD meta-analyses received upgrades due to a dose-response relationship with disease duration, but no upgrades were made based on a large magnitude of effect. A detailed GRADE assessment report is available in Table S17.

## 4 Discussion

Oculomics is a relatively new and rapidly growing field in psychiatric and neuroscience research that aims to identify ophthalmic biomarkers for systemic disorders. Unfortunately, the limited presence of, and adherence to reporting guidelines has led to a disorderly body of research. Measurement protocols are often inadequately described, and generated data is often incomplete and lacks control for key confounders. Our goal was to disentangle the currently available data to investigate how retinal layers are affected in different psychiatric disorders.

Our meta-analysis reveals significant retinal differences between patient and control groups across various psychiatric conditions, with the most pronounced effects observed in SSD and BPD. These findings go beyond previously published meta-analyses: By including a broad range of psychiatric disorders and adhering to guidelines for evidence synthesis and quality grading, we have provided new neurobiological insights across the psychiatric spectrum.

### Overall pRNFL and pRNFL quadrants

The strongest evidence of a difference in pRNFL thickness between patients and controls was observed for SSD. Analyses of individual pRNFL quadrants also revealed a pattern of thinner inferior and superior quadrants in SSD compared to controls. However, it should be noted that effect sizes were in the small to medium range. There is also evidence of a negative relationship between SSD disease duration and pRNFL thickness. This finding is consistent with studies which have evidenced that thickness differences are not typically present in first-episode patients but are common in chronically ill individuals [43], [48]. The thinning effect could be associated with the neurodegenerative aspects of schizophrenia, reflecting and potentially predicting broader neural deficits. In vivo imaging studies have shown significant brain structural changes in schizophrenia, with consistent findings of reduced cortical grey matter volume and cortical thinning [125, 126] which might also alter retinal structures via retrograde trans-synaptic degeneration [127]. It is also possible that synaptic loss, rather than changes in neuronal or glial numbers might underlie these structural alterations [128-132].

Consistent with previous meta-analyses [104-106], it was found that pRNFL differences also occur in BPD. Although the certainty of the evidence is lower than that for SDD, the size of the difference

observed between patients and controls is greater. Analyses of individual pRNFL quadrants in BPD also revealed a pattern of thinner inferior and superior quadrants compared to controls.

While lower statistical accuracy due to the availability of fewer studies could explain the seemingly greater difference observed in BPD than in SSD, there could also be a role for underlying pathomechanisms. As in SSD, dendritic spine loss has been observed in BPD [129] and genetic studies have revealed a significant genetic overlap between BPD and SSD [129, 130]. Disturbances in circadian rhythm are common in BPD and indicate relevant disturbance in the retinohypothalamic pathway responsible for the sleep-wake cycle. [133-136]. The additional degeneration of axons forming the retinohypothalamic pathway could explain the more pronounced effect observed in BPD.

There was no evidence of either overall pRNFL or pRNFL quadrant thickness differences between MDD patients and controls. Our findings relating to the pRNFL in SSD, BPD, and MDD align with research using the UK Biobank dataset, which also identified retinal differences in SSD and BPD, but not MDD, using a normative modeling approach [103].

There is evidence that ADHD and OCD are also associated with a thinner overall pRNFL. However, the effect sizes were small. Retinal thinness in OCD may reflect broader neurobiological alterations associated with this condition, potentially including neurodegeneration or inflammatory processes.

There is evidence that the pRNFL thickness differences evidenced for ADHD in the adult population in our meta-analysis are not apparent for the adolescent population [108]. The finding of pRNFL thickness differences in adults with ADHD, but not in adolescents seems counter to the current hypothesis of delayed cortical maturation in ADHD; the reasons for this discrepancy remain unclear. A possible explanation may relate to the effects of prolonged exposure to dopaminergic medication. Tuenel et al. [68] found the largest effect in older patients (mean age 33) who used medication continuously. In contrast, Kaymak et al. [57] observed a smaller, yet significant, difference in younger patients (mean age 23.21) who had been off medication for at least a year. Surprisingly, Erdogan et al. [54] found no difference in thickness measurements in patients on medication for at least six months, suggesting other disorder-specific factors may influence these outcomes.

There was no evidence of differences in overall pRNFL thickness between those with either alcohol or opiate use disorder and controls. pRNFL quadrant analysis did provide evidence of differential patterns in AUD and OUD: In AUD the temporal pRNFL was significantly thinner than in controls but the nasal pRNFL was not. Conversely in OUD this pattern was reversed. While this may suggest that retinal effects are specific to the substance of abuse, the body of research is very small, we do not have data pertaining to all subfields, and there is considerable lack of consistency in the results. Research is also complicated for these disorders because of the difficulty in disaggregating the neurobiological bases and the substance-based effects. Before further studies in this field are undertaken, clear justification based on the potential for benefits and applications should be given.

### **Overall Macular and Subfields**

Overall MT was significantly less than controls for SSD but not for BPD or MDD. The possibility to further differentiate between SSD and BPD is evidenced by the macular subfield analyses: In SSD all macular subfields were significantly thinner than in controls, whereas in BPD only five of nine subfields were significantly thinner (although statistical power in this case was lower than for SSD). It is possible however that these findings were spurious and a consequence of the small number of studies included in the subfield analysis. One alternative possibility is that the differential observations in SSD and BPD relate to different rates of smoking.

Smoking is a risk factor for macular thinning [137] due to its effects on microvasculature. The smoking rate is higher in patients with SSD than in those with BPD [99, 100] and studies show impaired brain and retinal microvasculature and disruption of blood-brain barrier in SSD [138, 139]. While retrograde degeneration supposedly only affects the RNFL and GCL, processes such as loss of dendritic spines, inter-neural connection and aberrant inflammation could affect all retinal layers, therefore causing or contributing to the differences observed between SSD and BPD. More comprehensive evidence from larger and more detailed clinical studies is needed to assess if the subfield differences evidenced in this meta-analysis can be reproduced in larger scale studies or were due to variabilities within previous studies, confounding factors or small sample sizes.

For MDD, subfield analysis was only possible for the central subfield and no significant difference was found. Further research is needed to ascertain whether MT differences are entirely absent for MDD or they are in fact confined to specific subfields.

### **Ganglion Cell-Inner Plexiform Layer (GCL-IPL) Thickness**

Research on combined GCL-IPL was limited, with selected data available only for SSD and MDD. While a statistically significant difference was observed in SSD, the difference observed for MDD was almost statistically significant ( $p=0.055$ ), but the overall certainty of evidence was very low. Overall, these findings suggest that GCL-IPL thinness may be a marker which could be used to differentiate psychotic (e.g. SSD) and affective (e.g. MDD) disorders. Indeed, this hypothesis is supported by two recent biobank studies [140, 141] which found an association between polygenic risk scores for schizophrenia in healthy controls and GCL-IPL thickness. However, with only limited studies reporting on combined GCL-IPL or its constituent parts, there is a need for further research to further test this hypothesis and its clinical utility [103, 133, 134].

### **Limitations and Future Directions**

This meta-analysis primarily used averages of data from left and right eyes to optimize statistical strength. This is because a large portion of studies only reported pooled results. While we additionally analyzed separate right and left eye data wherever possible, overall evidence was weaker due to low study numbers. Given evidence that laterality analysis may offer insights which are not apparent from pooled data [101, 102], future research should consider reporting interocular differences separately.

Also, we grouped all schizophrenia spectrum disorders into one group, comprising a variety of first episode, chronic and treatment resistant subgroups and various syndromes. Thus, a promising area of research may be to focus on retinal differences in specific psychotic syndromes such as schizoaffective or brief psychotic disorders.

Contour-enhanced funnel plots and Egger's tests were used to ward against publication bias. However, these tools are not perfect, especially with low study numbers. We tried to limit heterogeneity by excluding influential studies that contributed excessively to the estimated effect, and still observed moderate heterogeneity. Whether this is due to variance in relevant covariates such as different clinical subgroups or health-related variables such as body mass index (BMI) should be explored in future



research. Unfortunately, to date, studies have been inconsistent in the reporting of disorder-related covariables and potential confounders. Consequently, visual acuity, BMI, level of education, and ocular pressure could not be included in the meta-regression analyses.

The combined use of different OCT device types and layer segmentation software is also limiting because different devices with variances in resolution could provide differing layer measurements. While we conducted meta-regression to examine these effects, studies did not consistently report technical characteristics such as center wavelength and wavelength range, speed of acquisition, number of horizontal and vertical scan lines, raster or radial scan, the dimensions of area of interest mapped and where said area was centered (e.g. fovea or optic cup). While reporting recommendations for OCT studies do exist, for example, the APOSTEL-Recommendations, few completely or even partially adhered to them.

This meta-analysis focused on the retinal structures that have to date received the most attention in psychiatric literature. Future research could broaden the focus to examine for example, the choroid layer, retinal vascularization or electroretinography.

## **5 Conclusion**

Our findings suggest that SSD and BPD are associated with a thinner pRNFL while MDD is not. Differences in MT appear to further enable a differentiation between SSD and BPD, as reduced thickness is only observed in the former. For OCD, ADHD, AUD, and OUD, as results remain inconsistent and based on minimal data, more research is needed clarify the potential of retinal markers to act as biomarkers for these disorders.

We need quantitatively more and qualitatively better evidence for the whole spectrum of psychiatric disorders. The range of focus should be extended to other clinically relevant psychiatric conditions such as schizotypal disorders, borderline personality disorder and autism spectrum disorder.

Retinal structural differences observed via OCT show promise as biomarkers to distinguish psychosis-associated endophenotypes from other psychiatric disorders and could therefore serve as a useful adjunct in clinical decision making. Future research should explore the utility of the retinal differences observed as biomarkers in real-world clinical settings, as findings from controlled environments may

not always translate to practice. Studies directly comparing patient groups are also necessary to validate discriminatory accuracy.

## **Funding**

This work was supported by a Young Talents in Clinical Research grant of the Swiss Academy of Medical Sciences (SAMS) and the G. & J. Bangerter-Rhyner Foundation (Grant no. YTCR-19/22, to NK); and by an ERC Synergy Grant (Grant no. 101118756, to PH).

## REFERENCES

1. Garcia-Gutierrez, M.S., et al., *Biomarkers in Psychiatry: Concept, Definition, Types and Relevance to the Clinical Reality*. Front Psychiatry, 2020. **11**: p. 432.
2. Carvalho, A.F., et al., *Evidence-based umbrella review of 162 peripheral biomarkers for major mental disorders*. Transl Psychiatry, 2020. **10**(1): p. 152.
3. Abi-Dargham, A., et al., *Candidate biomarkers in psychiatric disorders: state of the field*. World Psychiatry, 2023. **22**(2): p. 236-262.
4. Heavner, W. and L. Pevny, *Eye development and retinogenesis*. Cold Spring Harb Perspect Biol, 2012. **4**(12).
5. Petzold, A., et al., *Retinal layer segmentation in multiple sclerosis: a systematic review and meta-analysis*. Lancet Neurol, 2017. **16**(10): p. 797-812.
6. Chrysou, A., et al., *Reduced Thickness of the Retina in de novo Parkinson's Disease Shows A Distinct Pattern, Different from Glaucoma*. J Parkinsons Dis, 2024. **14**(3): p. 507-519.
7. Chrysou, A., N.M. Jansonius, and T. van Laar, *Retinal layers in Parkinson's disease: A meta-analysis of spectral-domain optical coherence tomography studies*. Parkinsonism Relat Disord, 2019. **64**: p. 40-49.
8. Lee, J.Y., et al., *Optical coherence tomography in Parkinson's disease: is the retina a biomarker?* J Parkinsons Dis, 2014. **4**(2): p. 197-204.
9. Chan, V.T.T., et al., *Spectral-Domain OCT Measurements in Alzheimer's Disease: A Systematic Review and Meta-analysis*. Ophthalmology, 2019. **126**(4): p. 497-510.
10. Ascaso F.J., C.L., Quintanilla M.A., Galve L.G., López-Antón R., Cristóbal J.A., Lobo A., *Retinal nerve fiber layer thickness measured by optical coherence tomography in patients with schizophrenia: A short report*. Eur J Psy, 2010. **24**(4): p. 227-35.
11. Chu, E.M., et al., *A window into the brain: an in vivo study of the retina in schizophrenia using optical coherence tomography*. Psychiatry Res, 2012. **203**(1): p. 89-94.
12. Lee, W.W., et al., *Retinal nerve fiber layer structure abnormalities in schizophrenia and its relationship to disease state: evidence from optical coherence tomography*. Invest Ophthalmol Vis Sci, 2013. **54**(12): p. 7785-92.
13. Ascaso, F.J., et al., *Retinal nerve fiber layer and macular thickness in patients with schizophrenia: Influence of recent illness episodes*. Psychiatry Res, 2015. **229**(1-2): p. 230-6.
14. Leveque, C., et al., *An optical biosensor assay for rapid dual detection of Botulinum neurotoxins A and E*. Sci Rep, 2015. **5**: p. 17953.
15. Mota M, P.P., Klut C, Coutinho I, Santos C, Pires G et al., *Evaluation of Structural Changes in the Retina of Patients with Schizophrenia*. Ophthalmology Research: an International Journal, 2015. **4**(2): p. 45-52.
16. Celik, M., et al., *Decreases in ganglion cell layer and inner plexiform layer volumes correlate better with disease severity in schizophrenia patients than retinal nerve fiber layer thickness: Findings from spectral optic coherence tomography*. Eur Psychiatry, 2016. **32**: p. 9-15.
17. Kalenderoglu, A., et al., *Optic coherence tomography shows inflammation and degeneration in major depressive disorder patients correlated with disease severity*. J Affect Disord, 2016. **204**: p. 159-65.
18. Kalenderoglu, A., et al., *Can the retinal ganglion cell layer (GCL) volume be a new marker to detect neurodegeneration in bipolar disorder?* Compr Psychiatry, 2016. **67**: p. 66-72.
19. Mehraban, A., et al., *Peripapillary retinal nerve fiber layer thickness in bipolar disorder*. Graefes Arch Clin Exp Ophthalmol, 2016. **254**(2): p. 365-71.
20. Yildiz, M., et al., *Duration of the depressive episode is correlated with ganglion cell inner plexiform layer and nasal retinal fiber layer thicknesses: Optical coherence tomography findings in major depression*. Psychiatry Res Neuroimaging, 2016. **251**: p. 60-6.
21. Yilmaz, U., et al., *Retinal nerve fiber layer and macular thickness measurement in patients with schizophrenia*. Eur J Ophthalmol, 2016. **26**(4): p. 375-8.
22. Khalil, M.A., et al., *Optical coherence tomography findings in patients with bipolar disorder*. J Affect Disord, 2017. **218**: p. 115-122.
23. Sonmez, I., F. Kosger, and U. Aykan, *Retinal Nerve Fiber Layer Thickness Measurement by Spectral-Domain Optical Coherence Tomography in Patients with Major Depressive Disorder*. Noro Psikiyat Ars, 2017. **54**(1): p. 62-66.
24. Delibaş D.H., K.Ö., Erdoğan E., Şahin T., Bilgiç Ö., Erol A., *Decreases in retinal nerve fiber layer and ganglion cell-inner plexiform layer thickness in schizophrenia, relation to insight: A controlled study*. Anatolian Journal of Psychiatry, 2018. **19**(3): p. 264-273

25. Özen, M., et al., *Comparison of optic coherence tomography results in patients diagnosed with OCD: findings in favor of neurodegeneration*. *Anatolian Journal of Psychiatry*, 2018(0).
26. Schonfeldt-Lecuona, C., et al., *Retinal changes in patients with major depressive disorder - A controlled optical coherence tomography study*. *J Affect Disord*, 2018. **227**: p. 665-671.
27. Silverstein, S.M., et al., *Optical coherence tomography indices of structural retinal pathology in schizophrenia*. *Psychol Med*, 2018. **48**(12): p. 2023-2033.
28. Topcu-Yilmaz, P., M. Aydin, and B. Cetin Ilhan, *Evaluation of retinal nerve fiber layer, macular, and choroidal thickness in schizophrenia: spectral optic coherence tomography findings*. *Psychiatry and Clinical Psychopharmacology*, 2018. **29**(1): p. 28-33.
29. Alici, S., et al., *Optical coherence tomography findings in bipolar disorder: a preliminary receiver operating characteristic analysis on ganglion cell layer volume for diagnosis*. *Archives of Clinical Psychiatry (São Paulo)*, 2019. **46**(5): p. 125-131.
30. Garcia-Martin E, G.A., Garcia-Campayo J, Vilades E, Orduna E, Polo V, Larrosa JM, Pablo LE, Satue M., *Visual function and retinal changes in patients with bipolar disorder*. *Retina*, 2019. **39**: p. 2012 - 2021.
31. Gemelli, H., et al., *Retinal nerve fiber layer analysis in cocaine users*. *Psychiatry Res*, 2019. **271**: p. 226-229.
32. Genc, A., et al., *The alteration of retinal nerve fibre layer thickness with repetitive transcranial magnetic stimulation in patients with treatment resistant major depression*. *Int J Psychiatry Clin Pract*, 2019. **23**(1): p. 57-61.
33. Polat, S., et al., *The Place of Optical Coherence Tomography in Patients with Obsessive Compulsive Disorder*. *Eurasian J Med*, 2019. **51**(3): p. 237-241.
34. Polo, V., et al., *Ability of swept source OCT to detect retinal changes in patients with bipolar disorder*. *Eye (Lond)*, 2019. **33**(4): p. 549-556.
35. Altun, I.K., et al., *Psychopharmacological Signatures in the Retina in Schizophrenia and Bipolar Disorder: An Optic Coherence Tomography Study*. *Psychiatr Danub*, 2020. **32**(3-4): p. 351-358.
36. Bannai, D., et al., *Retinal layer abnormalities and their association with clinical and brain measures in psychotic disorders: A preliminary study*. *Psychiatry Res Neuroimaging*, 2020. **299**: p. 111061.
37. Gokcinar, N.B., et al., *Optical coherence tomography neurodegenerative findings in patients with bipolar disorder*. *Asia Pac Psychiatry*, 2020. **12**(4): p. e12394.
38. Hosak L, Z.T., Studnicka J, Stepanov A, Ustohla L, Michalec M, Lochmann J, Jurecka T, Sadykov E, Goswami M, De Boever P, Balca V, Sery O, *Retinal arteriolar and venular diameters are widened in patients with schizophrenia*. *Psychiatry and Clinical Neuroscience*, 2020. **74**(11): p. 619-621.
39. Jerotic, S., et al., *Retinal structural abnormalities in young adults with psychosis spectrum disorders*. *Prog Neuropsychopharmacol Biol Psychiatry*, 2020. **98**: p. 109825.
40. Jung, K.I., et al., *Attenuated Visual Function in Patients with Major Depressive Disorder*. *J Clin Med*, 2020. **9**(6).
41. Kalenderoglu, A., et al., *Increases in retinal nerve fiber layer thickness may represent the neuroprotective effect of cannabis: an optical coherence tomography study*. *J Addict Dis*, 2020. **38**(3): p. 280-290.
42. Kurtulmus, A., et al., *An investigation of retinal layer thicknesses in unaffected first-degree relatives of schizophrenia patients*. *Schizophr Res*, 2020. **218**: p. 255-261.
43. Lai, A., et al., *Retinal structural alterations in chronic versus first episode schizophrenia spectrum disorders*. *Biomarkers in Neuropsychiatry*, 2020. **2**.
44. Liu, Y., et al., *Association of retinal nerve fiber abnormalities with serum CNTF and cognitive functions in schizophrenia patients*. *PeerJ*, 2020. **8**: p. e9279.
45. Miller, M., et al., *Optical coherence tomography of the retina in schizophrenia: Inter-device agreement and relations with perceptual function*. *Schizophr Res*, 2020. **219**: p. 13-18.
46. Onur, O., O. Acar, and I. Onur, *Optical Coherence Tomography Findings in Obsessive Compulsive Disorder: A preliminary Receiver Operating Characteristic Analysis On Ganglion Cell Layer Volume for Neurodegeneration*. *Psychiatry and Clinical Psychopharmacology*, 2020. **30**(3).
47. Orum, M.H. and A. Kalenderoglu, *Decreases in retinal nerve fiber layer thickness correlates with cumulative alcohol intake*. *J Addict Dis*, 2020. **38**(4): p. 400-410.
48. Ozsoy, F. and S. Alim, *Optical coherence tomography findings in patients with alcohol use disorder and their relationship with clinical parameters*. *Cutan Ocul Toxicol*, 2020. **39**(1): p. 54-60.

49. Schonfeldt-Lecuona, C., et al., *Retinal single-layer analysis with optical coherence tomography (OCT) in schizophrenia spectrum disorder*. Schizophr Res, 2020. **219**: p. 5-12.
50. Talebnejad, M.R., et al., *Effects of chronic methamphetamine abuse on the retinal nerve fiber layer, ganglion cell layer and Bruch's membrane opening minimum rim width*. Neurotoxicology, 2020. **80**: p. 140-143.
51. Alizadeh, M., et al., *Non-linear associations between retinal nerve fibre layer (RNFL) and positive and negative symptoms among men with acute and chronic schizophrenia spectrum disorder*. J Psychiatr Res, 2021. **141**: p. 81-91.
52. Asanad, S., et al., *Neuroretinal Biomarkers for Schizophrenia Spectrum Disorders*. Transl Vis Sci Technol, 2021. **10**(4): p. 29.
53. Budakoglu, O., et al., *Retinal nerve fibre layer and peripapillary vascular density by optical coherence tomography angiography in schizophrenia*. Clin Exp Optom, 2021. **104**(7): p. 788-794.
54. Erdogan, E., D. Hakan Delibas, and O. Karti, *Assessment of Optical Coherence Tomography Findings in Adults with Attention Deficit Hyperactivity Disorder: A Case-Control Study*. Psychiatry Clin Psychopharmacol, 2021. **31**(4): p. 370-378.
55. Gandu, S., et al., *Inter-device reliability of swept source and spectral domain optical coherence tomography and retinal layer differences in schizophrenia*. Biomarkers in Neuropsychiatry, 2021. **5**.
56. Jerotic, S., et al., *Sex differences in macular thickness of the retina in patients with psychosis spectrum disorders*. Prog Neuropsychopharmacol Biol Psychiatry, 2021. **110**: p. 110280.
57. Kaymak, D., et al., *Retinal Nerve Fiber Layer Thickness and Its Relationship With Executive Functions in Adult Attention Deficit Hyperactivity Disorder Patients*. Psychiatry Investig, 2021. **18**(12): p. 1171-1179.
58. Koman-Wierdak, E., et al., *Analysis of the Peripapillary and Macular Regions Using OCT Angiography in Patients with Schizophrenia and Bipolar Disorder*. J Clin Med, 2021. **10**(18).
59. Kulu, M., et al., *Optical Coherence Tomography findings in patients with Multiple Substance Use Disorder*. Cutan Ocul Toxicol, 2021. **40**(1): p. 37-44.
60. Kurt, A., et al., *An Optical Coherence Tomography Study that Supports the Neurovascular Basis of Schizophrenia Disease*. Alpha Psychiatry, 2021. **23**(1): p. 12-17.
61. Liu, Y., et al., *The changes in retinal nerve fiber layer and macular thickness in Chinese patients with alcohol dependency*. Drug Alcohol Depend, 2021. **229**(Pt B): p. 109130.
62. Liu, Y., et al., *Factors related to retinal nerve fiber layer thickness in bipolar disorder patients and major depression patients*. BMC Psychiatry, 2021. **21**(1): p. 301.
63. Liu Y, C.J., Huang L, Yan S, Bian Q, Yang F., *Relationships Among Retinal Nerve Fiber Layer Thickness, Vascular Endothelial Growth Factor, and Cognitive Impairment in Patients with Schizophrenia*. Neuropsychiatr Dis Treat., 2021. **17**: p. 3597 - 3606.
64. Orum, M.H. and A. Kalenderoglu, *Acute opioid use may cause choroidal thinning and retinal nerve fiber layer increase*. J Addict Dis, 2021. **39**(3): p. 322-330.
65. Sahin, T., et al., *Evaluation of the retinal nerve fiber layer with optic coherence tomography in patients with alcohol use disorder*. J Fr Ophthalmol, 2021. **44**(5): p. 665-669.
66. Sanchez-Morla, E.M., et al., *Automatic Diagnosis of Bipolar Disorder Using Optical Coherence Tomography Data and Artificial Intelligence*. J Pers Med, 2021. **11**(8).
67. Sarkar, S., et al., *Exploring the role of macular thickness as a potential early biomarker of neurodegeneration in acute schizophrenia*. Int Ophthalmol, 2021. **41**(8): p. 2737-2746.
68. Tunel, M. and N.S. Keskek, *Retinal Scan with Optical Coherence Tomography in Adult Attention Deficit Hyperactivity Disorder*. Turk Psikiyatri Derg, 2021. **32**(3): p. 176-182.
69. Ayik, B., et al., *Retinal changes in bipolar disorder as an endophenotype candidate: Comparison of OCT-detected retinal changes in patients, siblings, and healthy controls*. Psychiatry Res, 2022. **313**: p. 114606.
70. Bozali, E. and D. Yalinbas, *Analysis of the Thickness of the Outer Retinal Layer Using Optical Coherence Tomography - A Predictor of Visual Acuity in Schizophrenia*. Klin Monbl Augenheilkd, 2022. **239**(10): p. 1232-1238.
71. Cokunlu, Y., et al., *Ganglion cell complex thickness changes in patients with different states of bipolar disorder*. Eye (Lond), 2022. **36**(5): p. 1034-1041.
72. Hanifi Kokacya, M. and A. Idil Cakmak, *Optical Coherence Tomography Angiography in Schizophrenia*. Alpha Psychiatry, 2022. **23**(5): p. 253-261.
73. Kaya, H., et al., *Comparing retinal changes measured by optical coherence tomography in patients with schizophrenia and their siblings with healthy controls: Are retinal findings potential endophenotype candidates?* Asian J Psychiatr, 2022. **72**: p. 103089.

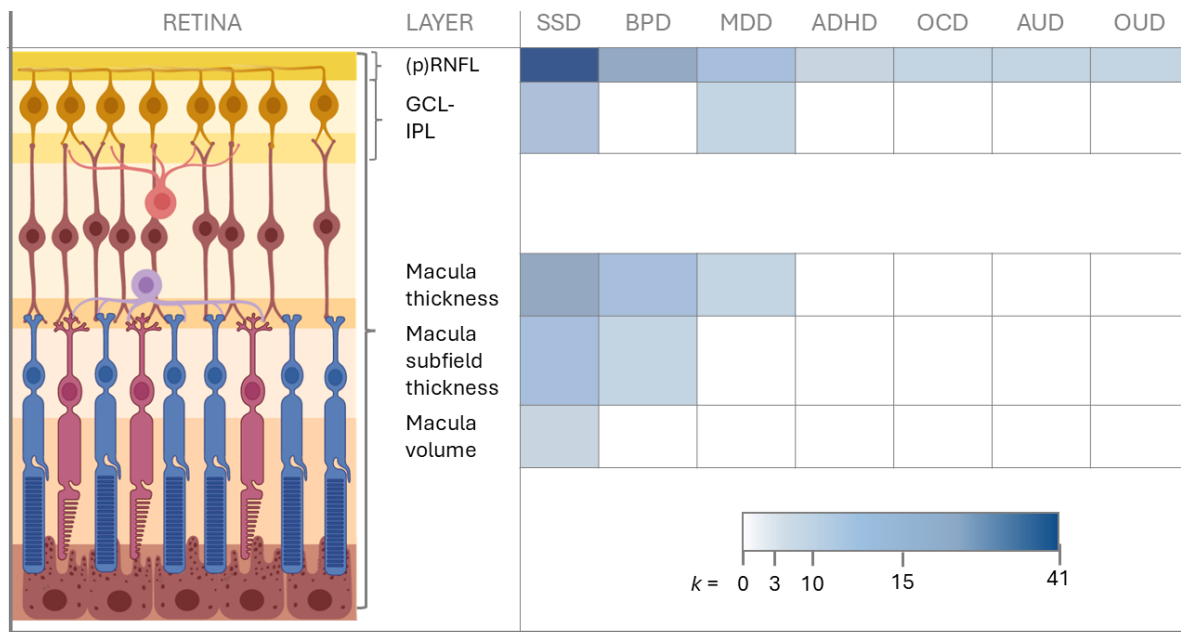


74. Khalil DH, A.K., Khalil M, Khowyled A, *Optical coherence tomography in Egyptian schizophrenics and its correlation to disease parameters*. Delta Journal of Ophthalmology, 2022. **23**: p. 198 - 205.
75. Kilicarlsan, T., et al., *The relation of optical coherence tomography findings with oxidative stress parameters in patients with bipolar disorder and unaffected first-degree relatives*. J Affect Disord, 2022. **296**: p. 283-290.
76. Liu, X., et al., *Development of a Novel Retina-Based Diagnostic Score for Early Detection of Major Depressive Disorder: An Interdisciplinary View*. Front Psychiatry, 2022. **13**: p. 897759.
77. Mustafa, A. and U. Turgay, *Optical coherence tomography angiography in patients with euthymic bipolar disorder*. J Affect Disord, 2022. **317**: p. 15-21.
78. Satue, M., et al., *Evaluation of Progressive Retinal Degeneration in Bipolar Disorder Patients over a Period of 5 Years*. Curr Eye Res, 2022. **47**(7): p. 1061-1067.
79. Boudriot, E., et al., *Optical coherence tomography reveals retinal thinning in schizophrenia spectrum disorders*. Eur Arch Psychiatry Clin Neurosci, 2023. **273**(3): p. 575-588.
80. Domagala, A., et al., *Differentiation of the retinal morphology aging trajectories in schizophrenia and their associations with cognitive dysfunctions*. Front Psychiatry, 2023. **14**: p. 1207608.
81. Kango, A., et al., *A comparative study of retinal layer changes among patients with schizophrenia and healthy controls*. Acta Neuropsychiatr, 2023. **35**(3): p. 165-176.
82. Kurt, A., et al., *Optical Coherence Tomography Findings in Bipolar Disorder Patients and the Related Factors*. Psychiatry Clin Psychopharmacol, 2023. **33**(4): p. 254-263.
83. Kurtulmus, A., et al., *Clinical and biological correlates of optical coherence tomography findings in schizophrenia*. Eur Arch Psychiatry Clin Neurosci, 2023. **273**(8): p. 1837-1850.
84. Lubinski, W., et al., *Visual pathway function in untreated individuals with major depression*. Adv Clin Exp Med, 2023. **32**(1): p. 117-123.
85. Ozsoy, F., et al., *Relationship between optical coherence tomography findings and clinical variables in patients with opiate use disorder*. Arq Bras Oftalmol, 2023. **86**(1): p. 20-26.
86. Sirlir Emir, B., et al., *Evaluation of Optical Coherence Tomography Findings in Antisocial Personality Disorder Patients*. Alpha Psychiatry, 2023. **24**(4): p. 121-127.
87. Tasdelen, R., et al., *Investigation of the Relationship Between Cognitive Functions and Retinal Findings From Spectral Optical Coherence Tomography in Patients With Schizophrenia and Their Healthy Siblings*. Psychiatry Investig, 2023. **20**(3): p. 236-244.
88. Torun, I.M., et al., *Choroidal structural alterations and choroidal vascularity index in bipolar disorder patients*. Photodiagnosis Photodyn Ther, 2023. **42**: p. 103518.
89. Yesilkaya, U.H., *Investigating the effects of glucose and lipid metabolism on neuronal structure using optical coherence tomography in treatment-resistant schizophrenia*. Dusunen Adam: The Journal of Psychiatry and Neurological Sciences, 2023: p. 157-167.
90. Baykara, S., et al., *Retinal changes in generalized anxiety disorder patients*. Int J Psychiatry Med, 2024. **59**(3): p. 270-286.
91. Boudriot, E., et al., *Signature of Altered Retinal Microstructures and Electrophysiology in Schizophrenia Spectrum Disorders Is Associated With Disease Severity and Polygenic Risk*. Biol Psychiatry, 2024.
92. Carriello, M.A., et al., *Retinal layers and symptoms and inflammation in schizophrenia*. Eur Arch Psychiatry Clin Neurosci, 2024. **274**(5): p. 1115-1124.
93. Daneshvar R., N.M., Fayyazi Bordbar M.R., Faridhosseini F., Fotouhi M., Motamed Shariati M., *Optic nerve head neurovascular assessments in patients with schizophrenia: A cross-sectional study*. Health Sci Rep, 2024. **7**(5).
94. Friedel, E.B.N., et al., *Retinal Thinning in Adults with Autism Spectrum Disorder*. J Autism Dev Disord, 2024. **54**(3): p. 1143-1156.
95. Özgedik Turhan N., A.Ö., Ulaş F., Buğdayci G., Altıntaş Gülner M., *Vitamin D: An Overlooked Parameter in Studies of Depression Using Optic Coherence Tomography*. Noro Psikiyatrs Ars, 2024. **61**: p. 66-72.
96. Xiao, Q., et al., *The prospects for early detection with optical coherence tomography (OCT) and OCT angiography in major depressive disorder*. J Affect Disord, 2024. **347**: p. 8-14.
97. Lasser, K., et al., *Smoking and mental illness: A population-based prevalence study*. JAMA, 2000. **284**(20): p. 2606-10.
98. Smith, P.H., C.M. Mazure, and S.A. McKee, *Smoking and mental illness in the U.S. population*. Tob Control, 2014. **23**(e2): p. e147-53.
99. Li, X.H., et al., *Prevalence of smoking in patients with bipolar disorder, major depressive disorder and schizophrenia and their relationships with quality of life*. Sci Rep, 2017. **7**(1): p. 8430.

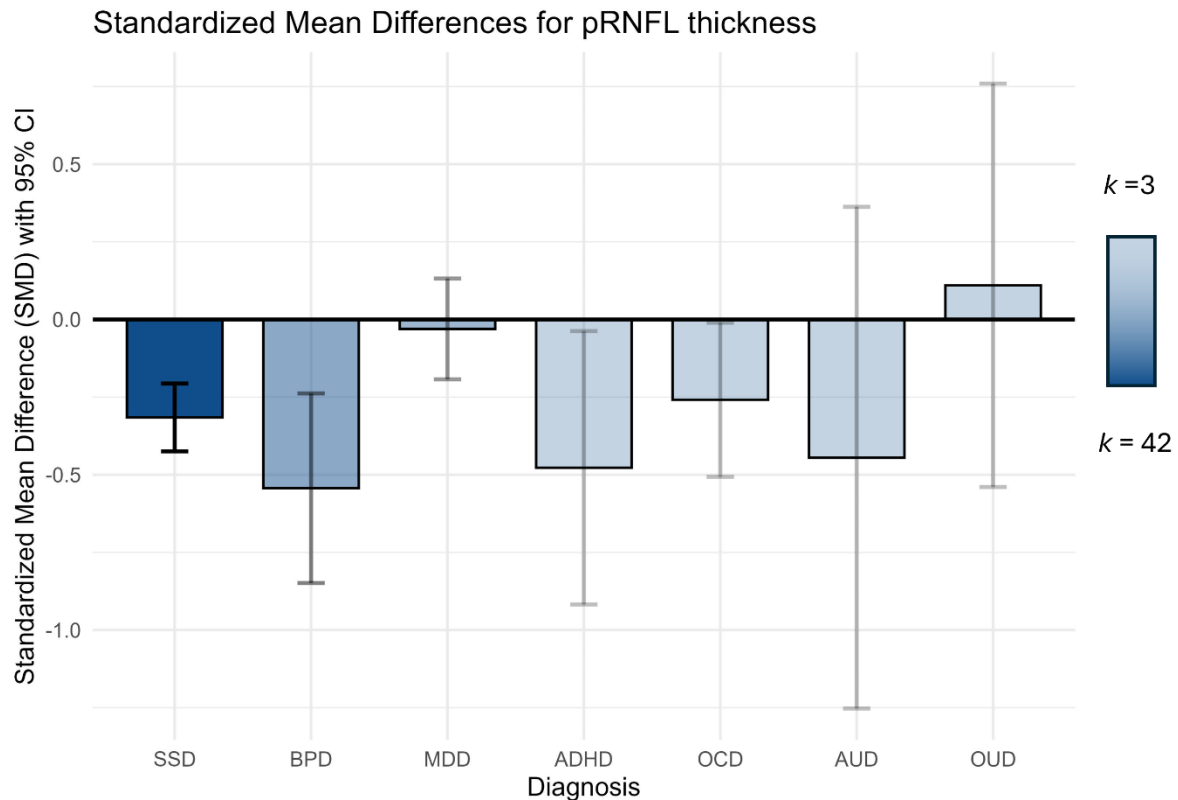
100. Dickerson, F., et al., *Cigarette Smoking by Patients With Serious Mental Illness, 1999-2016: An Increasing Disparity*. Psychiatr Serv, 2018. **69**(2): p. 147-153.
101. Budenz, D.L., *Symmetry between the right and left eyes of the normal retinal nerve fiber layer measured with optical coherence tomography (an AOS thesis)*. Trans Am Ophthalmol Soc, 2008. **106**: p. 252-75.
102. Hwang, Y.H., et al., *Interocular symmetry of retinal nerve fibre layer thickness in healthy eyes: a spectral-domain optical coherence tomographic study*. Clin Exp Optom, 2014. **97**(6): p. 550-4.
103. Georgiadis, F., et al., *Detecting transdiagnostic retinal deviations in mental disorders through normative modeling*. medRxiv, 2024.
104. Prasannakumar, A., et al., *A systematic review and meta-analysis of optical coherence tomography studies in schizophrenia, bipolar disorder and major depressive disorder*. World J Biol Psychiatry, 2023. **24**(8): p. 707-720.
105. Lizano, P., et al., *A Meta-analysis of Retinal Cytoarchitectural Abnormalities in Schizophrenia and Bipolar Disorder*. Schizophr Bull, 2020. **46**(1): p. 43-53.
106. Sheehan, N., et al., *Neuroretinal Alterations in Schizophrenia and Bipolar Disorder: An Updated Meta-analysis*. Schizophr Bull, 2024. **50**(5): p. 1067-1082.
107. Kazakos, C.T. and V. Karageorgiou, *Retinal Changes in Schizophrenia: A Systematic Review and Meta-analysis Based on Individual Participant Data*. Schizophr Bull, 2020. **46**(1): p. 27-42.
108. Li, S.L., et al., *The association between attention-deficit/hyperactivity disorder and retinal nerve fiber/ganglion cell layer thickness measured by optical coherence tomography: a systematic review and meta-analysis*. Int Ophthalmol, 2021. **41**(9): p. 3211-3221.
109. Shew, W., et al., *Optical Coherence Tomography in Schizophrenia Spectrum Disorders: A Systematic Review and Meta-analysis*. Biol Psychiatry Glob Open Sci, 2024. **4**(1): p. 19-30.
110. Komatsu, H., et al., *Retina as a potential biomarker in schizophrenia spectrum disorders: a systematic review and meta-analysis of optical coherence tomography and electroretinography*. Mol Psychiatry, 2024. **29**(2): p. 464-482.
111. Page, M.J., et al., *Updating guidance for reporting systematic reviews: development of the PRISMA 2020 statement*. J Clin Epidemiol, 2021. **134**: p. 103-112.
112. Hong, E.H., et al., *Comparison of repeatability of swept-source and spectral-domain optical coherence tomography for measuring inner retinal thickness in retinal disease*. PLoS One, 2019. **14**(1): p. e0210729.
113. Leucht, S., et al., *Dose-Response Meta-Analysis of Antipsychotic Drugs for Acute Schizophrenia*. Am J Psychiatry, 2020. **177**(4): p. 342-353.
114. Leucht, S., et al., *Dose Equivalents for Antipsychotic Drugs: The DDD Method*. Schizophr Bull, 2016. **42 Suppl 1**(Suppl 1): p. S90-4.
115. Wells, G.A., et al. *The Newcastle-Ottawa Scale (NOS) for Assessing the Quality of Nonrandomised Studies in Meta-Analyses*. 2014.
116. Higgins, J.P., et al., *Measuring inconsistency in meta-analyses*. BMJ, 2003. **327**(7414): p. 557-60.
117. Egger, M., et al., *Bias in meta-analysis detected by a simple, graphical test*. BMJ, 1997. **315**(7109): p. 629-34.
118. Sterne, J.A.C., *Addressing Reporting Biases*, in *Cochrane Handbook for Systematic Reviews and Interventions: Cochrane Book Series*, J.P. Higgins, Editor. 2008.
119. Patsopoulos, N.A., E. Evangelou, and J.P. Ioannidis, *Sensitivity of between-study heterogeneity in meta-analysis: proposed metrics and empirical evaluation*. Int J Epidemiol, 2008. **37**(5): p. 1148-57.
120. Viechtbauer, W., *Conducting Meta-Analyses in R with the metafor Package*. Journal of Statistical Software, 2010. **36**(3): p. 1 - 48.
121. Viechtbauer, W., *Conducting Meta-Analyses in R with the metafor Package*. Journal of Statistical Software, 2010. **36**(3).
122. Schünemann, H.J., Higgins, J.P., Vist, G.E., Glasziou, P., Akl, E.A., Skoetz, N., Guyatt, G.H., *Completing "Summary of findings" tables and grading the certainty of the evidence*, in *Cochrane Handbook for Systematic Reviews of Interventions*, J.P. Higgins, Editor. 2019.
123. Zeng, L., Brignardello-Petersen, R., Hultcrantz, M., Mustafa, R. A., Murad, M. H., Iorio, A., Traversy, G., Akl, E. A., Mayer, M., Schünemann, H. J., & Guyatt, G. H., *GRADE Guidance 34: update on rating imprecision using a minimally contextualized approach*. J Clin Epidemiol, 2022. **150**: p. 216-224.
124. Balshem H, H.M., Schünemann HJ, et al, *GRADE guidelines: 3. Rating the quality of evidence*. J Clin Epidemiol, 2011. **64**(4): p. 401-6.

125. van Erp, T.G.M., et al., *Cortical Brain Abnormalities in 4474 Individuals With Schizophrenia and 5098 Control Subjects via the Enhancing Neuro Imaging Genetics Through Meta Analysis (ENIGMA) Consortium*. *Biol Psychiatry*, 2018. **84**(9): p. 644-654.
126. Haijma, S.V., et al., *Brain volumes in schizophrenia: a meta-analysis in over 18 000 subjects*. *Schizophr Bull*, 2013. **39**(5): p. 1129-38.
127. Sharma, S., et al., *Trans-synaptic degeneration in the visual pathway: Neural connectivity, pathophysiology, and clinical implications in neurodegenerative disorders*. *Surv Ophthalmol*, 2022. **67**(2): p. 411-426.
128. Mitelman, S.A., et al., *Longitudinal Assessment of Gray and White Matter in Chronic Schizophrenia: A Combined Diffusion-Tensor and Structural Magnetic Resonance Imaging Study*. *Open Neuroimag J*, 2009. **3**: p. 31-47.
129. Konopaske, G.T., et al., *Prefrontal cortical dendritic spine pathology in schizophrenia and bipolar disorder*. *JAMA Psychiatry*, 2014. **71**(12): p. 1323-31.
130. Onwordi, E.C., et al., *Synaptic Terminal Density Early in the Course of Schizophrenia: An In Vivo UCB-J Positron Emission Tomographic Imaging Study of SV2A*. *Biol Psychiatry*, 2024. **95**(7): p. 639-646.
131. Howes, O.D. and E.C. Onwordi, *The synaptic hypothesis of schizophrenia version III: a master mechanism*. *Mol Psychiatry*, 2023. **28**(5): p. 1843-1856.
132. Howes, O., et al., *Synaptic changes in psychiatric and neurological disorders: state-of-the art of in vivo imaging*. *Neuropsychopharmacology*, 2024.
133. Smeland, O.B., et al., *Genome-wide analysis reveals extensive genetic overlap between schizophrenia, bipolar disorder, and intelligence*. *Mol Psychiatry*, 2020. **25**(4): p. 844-853.
134. Cardno, A.G. and M.J. Owen, *Genetic relationships between schizophrenia, bipolar disorder, and schizoaffective disorder*. *Schizophr Bull*, 2014. **40**(3): p. 504-15.
135. Bhoi, J.D., et al., *Circadian clock organization in the retina: From clock components to rod and cone pathways and visual function*. *Prog Retin Eye Res*, 2023. **94**: p. 101119.
136. Abreu, T. and M. Braganca, *The bipolarity of light and dark: A review on Bipolar Disorder and circadian cycles*. *J Affect Disord*, 2015. **185**: p. 219-29.
137. Thornton, J., et al., *Smoking and age-related macular degeneration: a review of association*. *Eye (Lond)*, 2005. **19**(9): p. 935-44.
138. Lizano, P., et al., *Brain microvascular endothelial cells and blood-brain barrier dysfunction in psychotic disorders*. *Mol Psychiatry*, 2023. **28**(9): p. 3698-3708.
139. Pong, S., et al., *The Role of Brain Microvascular Endothelial Cell and Blood-Brain Barrier Dysfunction in Schizophrenia*. *Complex Psychiatry*, 2020. **6**(1-2): p. 30-46.
140. Rabe, F., et al., *Genetic susceptibility to schizophrenia through neuroinflammatory pathways is associated with retinal thinning: Findings from the UK-Biobank*. *medRxiv*, 2024.
141. Blose, B.A., et al., *Association between polygenic risk for schizophrenia and retinal morphology: A cross-sectional analysis of the United Kingdom Biobank*. *Psychiatry Res*, 2024. **339**: p. 116106.

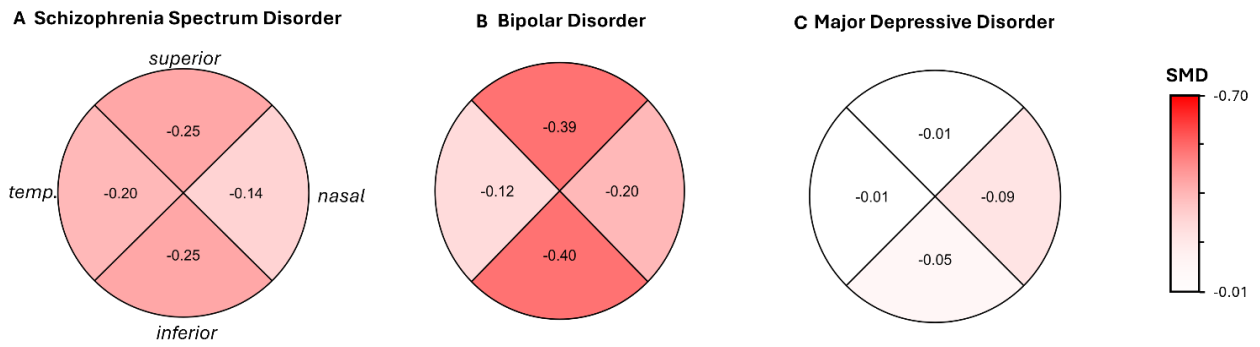




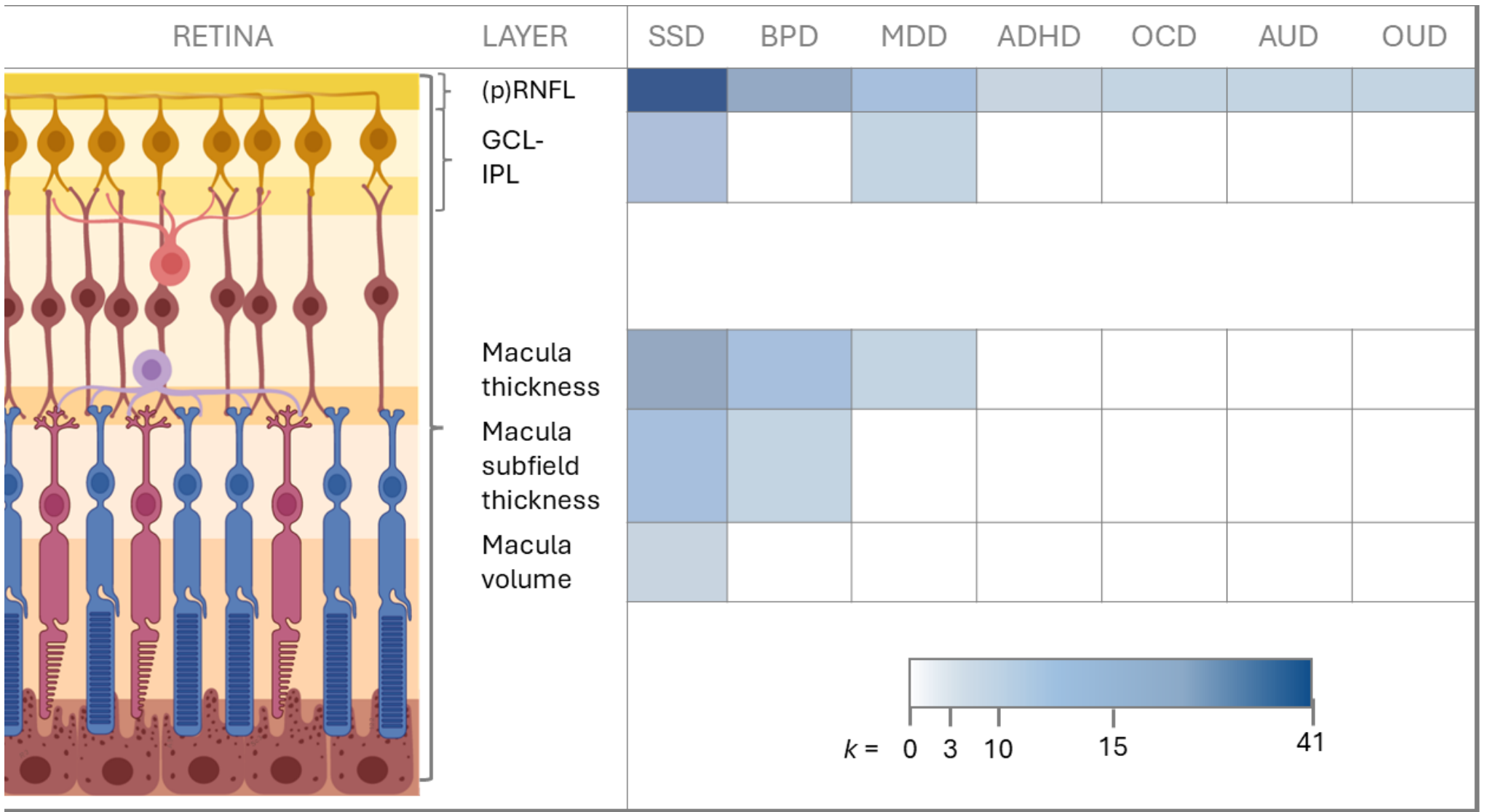
**Figure 1** Retinal layers and data availability per diagnosis. Left part: cross-section of the retina in the macula region, centered around the fovea. Dark yellow cells = ganglion cells forming the retinal nerves with their axons. Light red cells = amacrine cells (immune cells). Dark red cells = bipolar cells. Purple cells = horizontal cells. Rods (blue) and cones (pink). Lowest layer shows cells of the retinal pigment epithelium. Right part: an overview of data availability graded on a blue scale: The lightest blue indicates the minimum number of studies (3) used for analyses. The darkest blue indicates the highest number (41). White boxes indicates that fewer than three studies were available and analyses was not performed.



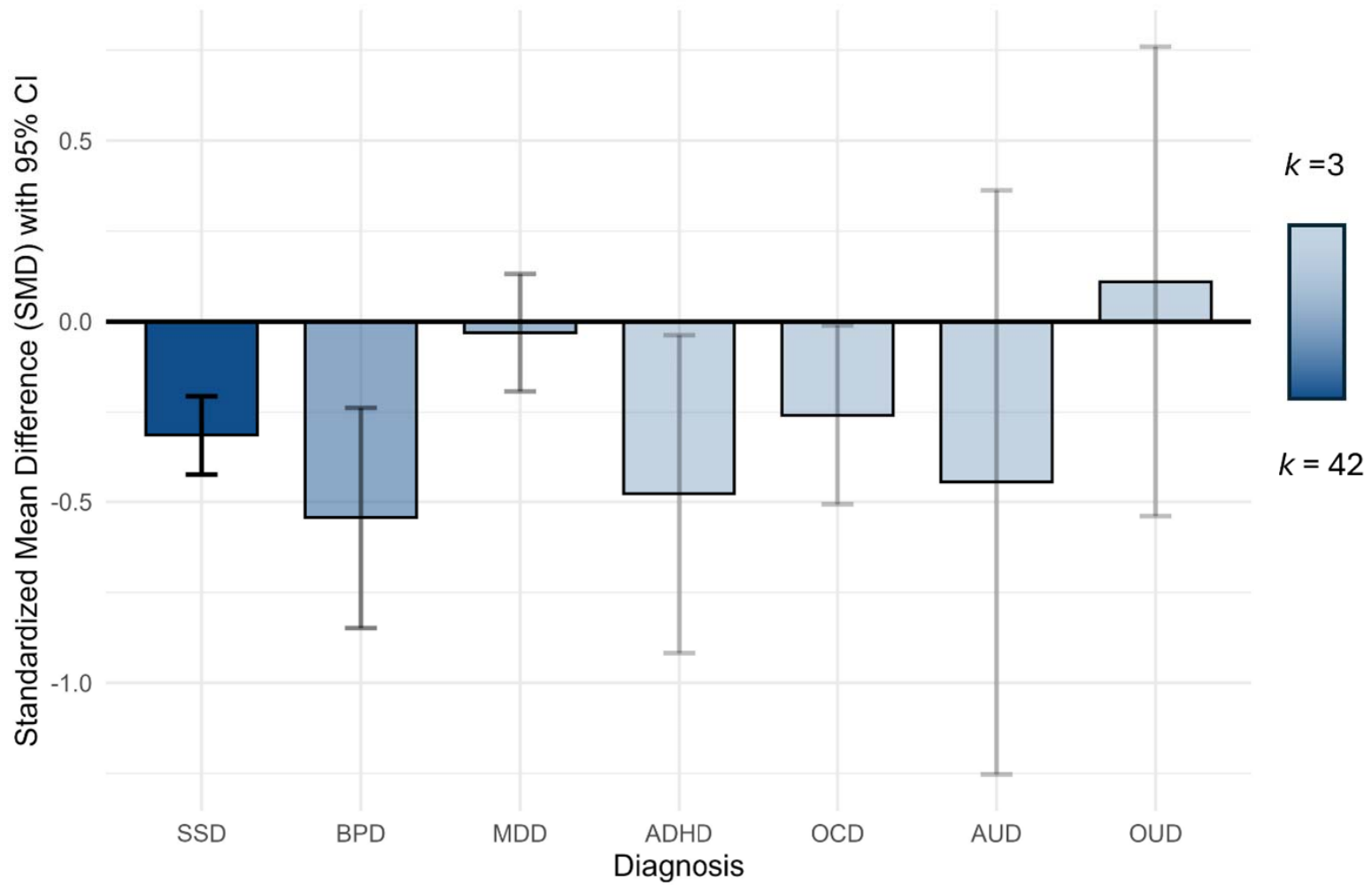
**Figure 2** Random effects model results of the meta-analysis for pRNFL for different psychiatric diagnoses. Each bar plot shows the result of a meta-analysis of multiple studies with the estimated effect size as standardized mean differences and corresponding confidence intervals on the y-axis. Color transparency of bar plots and confidence intervals corresponds to the number of studies available for final analysis with higher color saturation, meaning a higher number of studies. SSD: 42 samples from 36 studies included; BPD: 16 studies included in the meta-analysis; MDD: 10 samples from 9 studies included; ADHD: 3 studies available; AUD: 3 studies available and; ODD: 3 studies available.



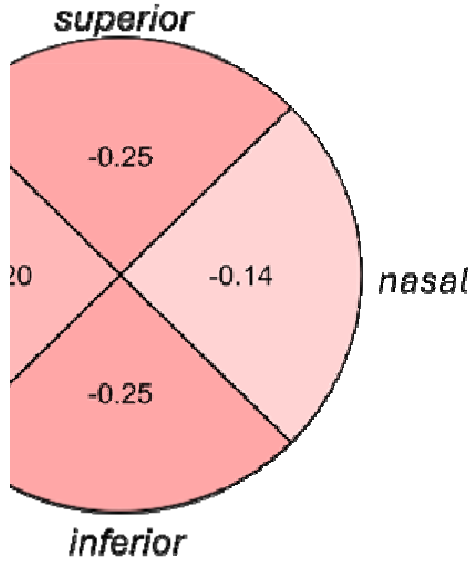
**Figure 3** Random effects model results of the meta-analysis for pRNFL quadrants. Clockwise: superior (top), nasal (right), inferior (bottom), and temporal (left). (A) schizophrenia spectrum disorders, (B) bipolar disorder, and (C) major depressive disorder. Color intensity corresponds to effect size, with darker colors signifying more pronounced effects and lighter colors signifying less pronounced effects.



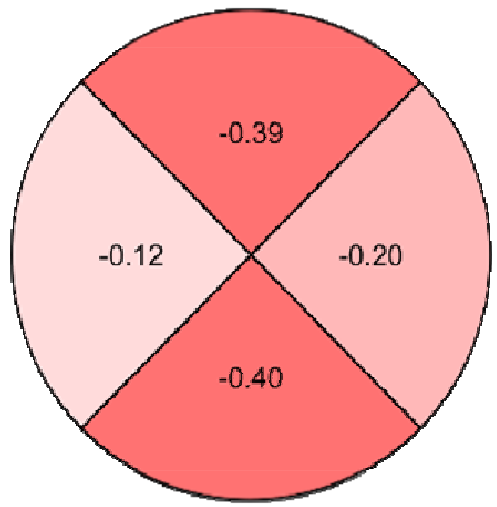
Standardized Mean Differences for pRNFL thickness



**A Schizophrenia Spectrum Disorder**



**B Bipolar Disorder**



**C Major Depressive Disorder**

